

---

# 2023-2024 Visiting Team Guide





## About SIUE

Location: Edwardsville, Illinois – just 25 minutes from St. Louis

Founded: 1957

Enrollment: 12,750

Nickname: Cougars

Colors: Red, Black, White

Athletic Affiliation: NCAA Division I

Conference: Ohio Valley Conference, Mid-American Conference (Wrestling)

Chancellor: Dr. James T. Minor

Athletic Director: Andrew Gavin

Intercollegiate sports:

Men: Basketball, Baseball, Cross Country, Golf, Soccer, Indoor and Outdoor Track and Field, Wrestling

Women: Basketball, Cross Country, Soccer, Softball, Tennis, Indoor and Outdoor Track and Field, Volleyball



# 2023-24 SIUE Visiting Team Guide

## Table of Contents

About SIUE . . . . .	2
General Ticket Information . . . . .	3
SIUE Intercollegiate Athletics Staff . . . . .	4
SIUE Coaches Directory . . . . .	5
Sports Medicine / Athletics Training. . . . .	7
Emergency Action Plan . . . . .	6
SIUE Facilities . . . . .	7-11
Vadalabene Center . . . . .	7
Ralph Korte Stadium. . . . .	8
Simmons Baseball Complex. . . . .	9
Cougar Field & Fulginti Indoor Hitting. . . . .	10
Cross Country Course & Tennis Courts . . . . .	11
Maps & Directions . . . . .	12-13
SIUE Preferred Lodging & Restaurants. . . . .	14
Local Entertainment Options . . . . .	15
Emergency Contacts . . . . .	16

## General Ticket Information

Standard business hours are 9:00 a.m.-4:30 p.m. Hours may vary on game days.

Phone: 855-SIUE-TIX

Website: [siuecougars.com/tickets](http://siuecougars.com/tickets)

Email: [gosiuetix@siue.edu](mailto:gosiuetix@siue.edu)

Office: Vadalabene Center Room 1332



A T H L E T I C S

SIUE Intercollegiate Athletics Staff Directory

Senior Administration

University Chancellor

Dr. James T. Minor

Intercollegiate Athletics Committee Chairperson

Dr. Robert Dixon • rdixon@siue.edu

NCAA Faculty Athletic Representative

Dr. Cherese Fine • cfine@siue.edu

Director of Athletics

Andrew Gavin • siuead@siue.edu

Deputy Athletic Director / SWA

Jaci DeClue • jadurbi@siue.edu

Deputy Athletic Director

Dan McIver • dmciver@siue.edu

Associate AD for DEI/Chief Diversity Officer

Venessa A. Brown, PhD • vbrown@siue.edu

Associate Athletic Director / Events and Facilities

Eric Crist • ecrist@siue.edu

Associate Athletic Director / Compliance and Admin,

Mark Izquierdo • maizqui@siue.edu

Associate Athletic Director / High Performance

Mark Jamison • majamis@siue.edu

Associate Athletic Director / Sales and Partnerships

Jake Sutter • jaksutt@siue.edu

Assistant Athletic Director / Student-Athlete Success

Ashley Beaton Simpson • ashsimp@siue.edu

Compliance and Student-Athlete Services

Deputy Athletic Director

Jaci DeClue • jadurbi@siue.edu • (618) 650-3722

Associate Athletic Director / Compliance and Admin,

Mark Izquierdo • maizqui@siue.edu

Assistant Athletic Director / Student-Athlete Success

Ashley Beaton Simpson • ashsimp@siue.edu

Academic Advisor

Lindsey Schmidt • listock@siue.edu

Athletic Communications

Director of Athletic Communications & Broadcasting

Joe Pott • jpott@siue.edu

Athletic Communications Assistant

Eric Hess • ehess@siue.edu

Athletic Communications Graduate Assistant

Owen Hetherington • ohether@siue.edu

Athletic Training

Head Athletic Trainer

Gerald Schlemmer • gschlem@siue.edu

Associate Head Athletic Trainer

James Mays • jamays@siue.edu

Assistant Athletic Trainer

Hannah Daily • hdaily@siue.edu

Assistant Athletic Trainer

Mason Cotterel • masocot@siue.edu

Assistant Athletic Trainer

Daniel Maples • dmaples@siue.edu

Assistant Athletic Trainer

Lupana Morales • lupmora@siue.edu

Event Management and Facility Operations

Associate Athletic Director / Events and Facilities

Eric Crist • ecrist@siue.edu

Facilities Graduate Assistant

Chris French • chrifren@siue.edu

Facilities Graduate Assistant

Josh Curran • jcurran@siue.edu

External Relations

Associate Athletic Director / Sales and Partnerships

Jake Sutter • jaksutt@siue.edu

Assistant Director of External Affairs

Laura Smith • lsmitae@siue.edu

Director of Marketing and Promotions

Luke Young • luyoung@siue.edu

Ticketing

Associate Athletic Director / Sales and Partnerships

Jake Sutter • jaksutt@siue.edu

Ticketing and Annual Funds Graduate Assistant

Cardeionte Wilson • cardwil@siue.edu

Athletic Performance

Assistant Athletic Director for High Performance

Mark Jamison • majamis@siue.edu

Director of Basketball Performance

Jake Smith • jsmitcl@siue.edu

Assistant Director of Athletic Performance

John Reape • jreape@siue.edu





A T H L E T I C S

## SIUE Intercollegiate Athletics Coaches & Sports Directory

- Baseball**  
**Office:** (618) 650-2032  
**Head Coach:** Sean Lyons  
**Assistant Coaches:** Adam Vasil  
**Athletic Trainer:** Hannah Daily • hdaily@siue.edu
- Men's Basketball**  
**Office:** (618) 650-2896  
**Head Coach:** Brian Barone  
**Assistant Coaches:** Colin Schneider, Ryan Hellenthal, Angres Thorpe, Darreon Reddick  
**Special Assistant to the Head Coach:** Mike Waldo  
**Athletic Trainer:** Daniel Maples • dmaples@siue.edu
- Women's Basketball**  
**Office:** (618) 650-2791  
**Head Coach:** Samantha Quigley Smith  
**Assistant Coaches:** Jazmin Pitts, Ariel Massengale, Liz Doran  
**Director of Operations:** Hunter Lindell  
**Athletic Trainer:** Lupana Morales • lupmora@siue.edu
- Men's and Women's Cross Country**  
**Office:** (618) 650-2828  
**Head Coach:** Marcus Evans  
**Assistant Coach:** Josh Wolfe  
**Athletic Trainer:** Lupana Morales • lupmora@siue.edu
- Men's Golf**  
**Office:** (618) 650-2865  
**Head Coach:** Derrick Brown  
**Athletic Trainer:** Daniel Maples • dmaples@siue.edu
- Men's Soccer**  
**Office:** (618) 650-2865  
**Head Coach:** Cale Wassermann  
**Assistant Coaches:** Jordan Grant, Jaxsen Wirth  
**Athletic Trainer:** James Mays • jamays@siue.edu
- Women's Soccer**  
**Office:** (618) 650-2427  
**Head Coach:** Derek Burton  
**Assistant Coaches:** Alexis Smith, Alyssa Krause  
**Athletic Trainer:** Hannah Daily • hdaily@siue.edu
- Softball**  
**Office:** (618) 650-3712  
**Head Coach:** Ben Sorden  
**Assistant Coach:** Courtney Gentile  
**Athletic Trainer:** Gerry Schlemmer • gschlem@siue.edu
- Women's Tennis**  
**Office:** (618) 650-5083  
**Head Coach:** Adam Albertsen  
**Assistant Coach:** Bob Meyers  
**Athletic Trainer:** Daniel Maples • dmaples@siue.edu
- Men's and Women's Track & Field**  
**Office:** (618) 650-2828  
**Head Coach:** Marcus Evans  
**Assistant Coaches:** Erin Wykoff, Josh Wolfe  
**Athletic Trainer:** Mason Cotterel • masocot@siue.edu
- Volleyball**  
**Office:** (618) 650-5285  
**Head Coach:** Kendall Paulus  
**Assistant Coach:** Kaycie Shebeneck  
**Volunteer Assistant:** Kristen Torre  
**Athletic Trainer:** Gerry Schlemmer • gschlem@siue.edu
- Wrestling**  
**Office:** (618) 650-5211  
**Head Coach:** Jeremy Spates  
**Associate Head Coach:** Daryl Thomas  
**Assistant Coaches:** Te'Shan Campbell  
**Volunteer Assistant:** Logun Taylor  
**Graduate Assistant Coaches:** Jake McKiernan  
**Athletic Trainer:** Mason Cotterel • masocot@siue.edu

# COUGARS

## A T H L E T I C S

### SIUE Intercollegiate Athletics Sports Medicine / Athletic Training

#### Head Athletic Trainer

Gerald Schlemmer • gschlem@siue.edu  
Phone: (618) 650-2883 Cell: 618-581-8981

#### Associate Head Athletic Trainer

James Mays • jamays@siue.edu • (618) 650-5877

#### Assistant Athletic Trainers

Hannah Daily • hdaily@siue.edu • (618) 650-2883  
Daniel Maples • dmaples@siue.edu • (618) 650-2883  
Lupana Morales • lupmora@siue.edu • (618) 650-2883  
Mason Cotterel • masocot@siue.edu • (618) 650-2883

## Emergency Action Plan

A member of the athletic training staff is on site for all intercollegiate athletics events at SIUE. A certified athletic trainer is within close proximity of each venue. If requested by the visiting team, the certified athletic trainer on duty will evaluate the injury and develop an action plan for its disposition. A team physician from the orthopedic group will be on call at the hospital.

In an emergency situation that requires transportation via ambulance, the senior athletic training staff member on duty will contact the SIUE Police Department to dispatch an ambulance. The number for contacting the dispatcher is 911 from any campus phone or (618) 650-3324 from any other phone. Upon activation, the police will contact local emergency medical personnel and meet them on campus to escort them to the athletic venue.

In a nonemergency situation that requires immediate care from an off-campus provider, the senior athletic training staff member on duty will communicate with the visiting athletic trainer or the coaching staff as to treatment options and will assist the visiting team members with transportation and referral information. The athletic training staff will be of assistance if necessary.

Please forward a copy of this plan to the coaches of any sports who will be traveling without an athletic trainer.

#### Athletic Training Facilities

Vadalabene Center  
35 Circle Drive VC 2201  
Phone: (618) 650-2883  
Hours: 7-6 p.m. (Other times by appointment)  
Pre-Event Hours: Two hours before contest  
Pre-Event Services available to  
• Men's and Women's Basketball, Wrestling, Women's Tennis and Volleyball  
Services:  
• Supportive taping • Padding • Cryo-therapy (ice bags and cups)  
• Hydrotherapy (hot and cold)\*\*  
• Moist heat packs • Intermittent compression therapy  
• PROM/AAROM\*\* • Ultrasound\*\* • US Combination\*\*  
• PRE/PNF Exercise\*\*  
• E-stim: High volt, Russian, interferential, micro current\*\*  
\*\*If your team is traveling without an athletic trainer or with a student athletic trainer, please send written instruction from a Certified athletic trainer or team physician for the use of modalities.

#### Ralph Korte Stadium Athletic Training Room

Basement West Stands  
3345 Stadium Drive, (near south entrance)  
Phone: (618) 650-5880  
Hours: 2-6 p.m. (Other times by appointment)  
Pre-Event Hours: Two hours before contest  
Pre-Event Services available to  
• Men's and Women's Cross Country  
• Men's and Women's Soccer  
• Men's and Women's Outdoor Track and Field  
• Baseball (visiting team with prior arrangements)  
• Softball (visiting team with prior arrangements)  
Services:  
• Supportive taping • Padding • Cryo-therapy (ice bags and cups)  
• Hydrotherapy (hot and cold)\*\*  
• Moist heat packs • Intermittent compression therapy\*\*  
• PROM/AAROM\*\* • Ultrasound\*\* • US Combination\*\*  
• PRE/PNF Exercise\*\* • E-stim: High volt, Russian, interferential\*\*  
\*\*If your team is traveling without an athletic trainer or with a student athletic trainer, please send written instruction from a Certified athletic trainer or team physician for the use of modalities.



# COUGARS

A T H L E T I C S

## SIUE Intercollegiate Athletics Facilities



### First Community Arena at Vadalabene Center Men's & Women's Basketball, Volleyball & Wrestling

The Sam M. Vadalabene Center opened on December 5, 1984. First Community Credit Union partnered with SIUE athletics in 2019 to rename the arena First Community Arena at Vadalabene Center. The facility is home to SIUE men's and women's basketball, volleyball, and wrestling. It also serves as the indoor practice facility for baseball and track.

In 2008, the facility underwent a renovation, nearly tripling the number of chair back seats as well as adding a new locker room, two classrooms, a student-athlete academic center, and office space. A new playing floor also was installed and the facility was officially rededicated on February 7, 2009.

Through the years, the Vadalabene Center has been host to numerous events, including the Illinois High School Association Class AA basketball sectionals, the Prairie State Games, and the State Games of America. It also is the site for SIUE commencement ceremonies.

#### Practices

Visiting teams may arrange a practice time with the home coaching staff in the days preceding a game. Practice times will vary due to events previously scheduled at the facility. Written notification is required at least one week prior to that start of the game. Upon arrival to your practice session, a student manager or coach will meet you and will be available to fulfill your needs throughout your time within the facility. We will provide balls, towels, game clocks, and water for your practice.

#### Laundry Availability

Available (Please contact home coaching staff to make arrangements)

#### Parking

Buses may park in the North section of Lot F by the Student Fitness Center. In addition, Lot F is reserved for season ticket holders and officials. Lot P-12 and Lot A are available for guest parking. VIP parking is located in the north meter lot (M) in front of the Vadalabene Center.

#### Entrances

We recommend visiting teams and spirit squads utilize the Vadalabene Center West Side entrance. Will Call and Pass Lists are at the West Entrance of the Vadalabene Center. General tickets can be purchased at both the East and West entrances.

#### Locker Room

Visiting Team locker rooms are available in VC 1323 which is located in the hallway on the south side of the main gym. Visiting Team Coach's locker room is available in VC 1322 which is located in the hallway on the south side of the main gym. Showers are available in both locker rooms. Towels, a marker board, drinking water and an ice chest will be provided.

#### Film & Video Positions

Camera positions are available for game filming on the north mezzanine level on the black platforms (basketball) and west balcony (volleyball).

#### Media Relations and Press Conference Information

The media room (used for basketball home games) is located in room 1333 in the Vadalabene Center, which is in the hallway north of the main gym. Please contact Athletic Communications Joe Pott (618) 650-2860 or TBA at (618) 650-5908 with all media related requests.



# COUGARS

## A T H L E T I C S



### **Bob Guelker Field/Ralph Korte Stadium** **Men's & Women's Soccer, Men's & Women's Track & Field**

#### **Bob Guelker Field**

Bob Guelker field is home to the SIUE soccer teams.

#### **Regulations**

The rules and regulations of the NCAA shall govern the conduct of all play for nonconference games. Conference games shall abide by all rules and regulations of the Ohio Valley Conference (Women's) and the Mid-American Conference (Men's).

#### **Bob Guelker Field**

Bob Guelker Field is a state-of-the-art FIFA 2-Star rated Mondo synthetic field.

#### **Ralph Korte Stadium**

Ralph Korte Stadium is home to the SIUE Track & Field teams.

#### **Track**

Eight 48" lane "broken back" track (122m turns, 78m straights)

#### **Horizontal Jumps**

4 Horizontal Jump Pits - behind stadium (2 North, 2 South)

#### **Vertical Jumps**

2 Pole Vault Sites - behind stadium (1 North, 1 South)  
2 High Jump Sites - behind stadium (1 North, 1 South)

#### **Throws**

2 Discus Sites - behind stadium (1 Northwest and 1 Southwest)  
2 Hammer Sites - behind stadium (1 Northwest and 1 Southwest)  
5 Shot Put Sites - behind stadium (1 North, 4 South)  
2 Javelin Sites - behind stadium (1 North, 1 South)

#### **Film & Video Positions**

Camera positions are available for game filming in the bleachers.

#### **Laundry Availability**

Available (Please contact home coaching staff to make arrangements)

#### **Parking**

Parking lot is located adjacent to Ralph Korte Stadium. Team buses and other vehicles are expected to park in this lot. No vehicles are allowed inside the facility fences.

#### **Pets**

Pets are prohibited in Ralph Korte Stadium and in the surrounding areas.

#### **Restroom Facilities**

Restrooms are located on the back side of the Ralph Korte Stadium.

#### **Shower/Locker Room**

Shower and locker room facilities are available inside Ralph Korte Stadium. Please bring your own towels.

#### **Sports Medicine**

Visiting teams may use the Ralph Korte Stadium Athletic Training Room before competition.

#### **Practice**

Visiting teams may arrange a practice time in the days preceding a game. Written notification is required at least one week prior to the start of the game. SIUE will determine if weather and/or field conditions are acceptable.

#### **Warm-Up**

Visiting teams are given 60 minutes for warm-up preceding the match on Bob Guelker Field, unless otherwise agreed upon by coaches and referees.



# COUGARS

## A T H L E T I C S



### Roy E. Lee Field/Simmons Baseball Complex Baseball

#### Roy E. Lee Field

Roy Lee Field is home to the SIUE baseball team and is located at the Simmons Baseball Complex on the SIUE campus.

**Lighted:** Yes

**Capacity:** 1,000

#### Bus Parking

Bus parking is available on the west side of Simmons Baseball Complex.

#### Pets

Pets are prohibited within Simmons Baseball Complex.

#### Restroom Facilities

Restrooms are available on site.

#### Laundry Availability

Please contact home coaching staff to make arrangements.

#### Shower/Locker Rooms

Shower and locker room facilities are available upon request; however, they are not located on site.

#### Dugout Assignments

The visiting team will occupy the first base dugout.

#### Sports Medicine

Services are available on site. Contact Athletic Training staff in advance for special requests.

#### Practice

Please contact home coaching staff to make arrangements.

#### Warm-Up

Please contact home coaching staff to make arrangements.

#### Pregame Protocol

Contact the Event Management Staff at (618) 650-2869.

#### Film & Video Positions

Camera positions are available for game filming in the bleachers.

#### History of the Field:

Roy E. Lee Field is named for former Coach Roy Lee, the founder of the SIUE baseball program. Lee amassed 237 wins in 11 seasons as the Cougars' head coach. He enjoyed nine winning seasons, and finished his career with a .617 winning percentage. Lee put the Cougars into the national spotlight with eight consecutive appearances in the NCAA Championships from 1970 to 1977. In three appearances at the Division II College World Series, the Cougars' best finish was second place in 1976.

SIUE baseball began playing at the current site with the start of the 1972 season. Major renovations took place in 2004 and again in 2005. The site was transformed from a field to a stadium in 2005, when the grandstand was upgraded to include the brick stadium, permanent restrooms, concession stands, concourse, and entrance gate.

Another round of renovations took place following the 2010 season when the Cougars received a new clubhouse and home dugout. The natural grass infield was replaced with Astro Turf® GameDay Grass in time to play all but three home games on it during the 2011 season. Following the 2014 season, the outfield also was replaced with Astro Turf®. The Astro Turf® surface means less rainouts but more importantly more practice time on the field during the offseason.



# COUGARS

## A T H L E T I C S



### Cougar Field & Fulginiti Indoor Hitting Facility Softball

Cougar Field & Fulginiti Indoor Hitting facilities are home to the SIUE Cougar softball team.

#### Stadium

Cougar Field is located on Stadium Drive next to Korte Stadium on the SIUE campus.

**Lighted:** Yes

**Capacity:** 1,000

#### Parking

Parking lot is located adjacent to Cougar Field. Team buses and other vehicles are expected to park in this lot. The driveway alongside the field is prohibited for use by any vehicle.

#### Pets

Pets are prohibited in Cougar Field.

#### Restroom Facilities

Restrooms are located on the outside of the clubhouse on the 3rd base side.

#### Laundry

Laundry facilities are not available.

#### Shower/Locker Room

Shower and locker room facilities are available upon request; however, they are not located on site.

#### Dugout Assignments

Visiting team entrance is through the right field gate. The visiting team will occupy the first base dugout.

#### Sports Medicine

Visiting teams may use the Ralph Korte Stadium Athletic Training Room before competition.

#### Practice

Visiting teams may arrange a practice time in the days preceding a series. Written notification is required at least one week prior to the start of a series. SIUE will determine if weather and field conditions are acceptable, and the visiting team may be required to assist with the tarp.

#### Warm-Up

Official Game protocols will be sent out prior to arrival on campus.

Cages are indoor and will be available on the following schedule:

1:35 prior to game – SIUE has Indoor Facility for warm-up

1:00 prior to game –Visitors have Indoor Facility for warm-up

0:25 prior to game – game field is available for warm-up.

\*Each team will have eight minutes of warm up on the field prior to game. The public address announcer will announce when it is time to begin and end the on field warm-up session.

Bat testing is mandatory for all Ohio Valley Conference visiting teams.

Visitors bat testing – 1:30 prior to game

SIUE bat testing – 1:00 prior to game  
\*Turf or tennis shoes are to be worn in the batting cages at all times – no metal spikes permitted.

Film & Video Positions

Videotaping area is available in centerfield on the video platform.

Extension cord will not be provided.

#### Pregame Protocol

Starting lineups and roster cards should be given to the announcer 45 minutes prior to game time.

23 minutes prior to game time: Home team warm-up – line grounders (8 minutes)

14 minutes prior to game time: Visiting team warm-up – line grounders (8 minutes)

6 minutes prior to game time: Umpires and coaches at home plate

4 minutes prior to game time: Team introductions

2 minutes prior to game time: National Anthem

#### Regulations

The rules and regulations of the NCAA shall govern the conduct of all play for nonconference games. Conference games shall abide by all rules and regulations of the NCAA with the exception that the International Tiebreaker Rule will be used following the completion of the ninth inning.



# COUGARS

A T H L E T I C S



## SIUE Tennis Courts & Cross Country Course

### Tennis Courts

Main Facility

SIUE Tennis Courts

Indoor Facility

YMCA Meyer Center • (618) 655-1460

Parking

Lot B Monday - Friday 4:30 p.m.

Lot F Friday - Sunday 4:30 p.m.

Tennis Courts

Practice: Contact Women's Head Coach

Adam Albertsen • (618) 650-5083

Restroom facilities and shower/locker rooms

Vadalabene Center/Student Fitness Center

### SIUE Cross Country Course

Home Course

Located on the north side of campus on N. University Drive, just south of the intersection of N. University Drive and New Poag Road

Course Description

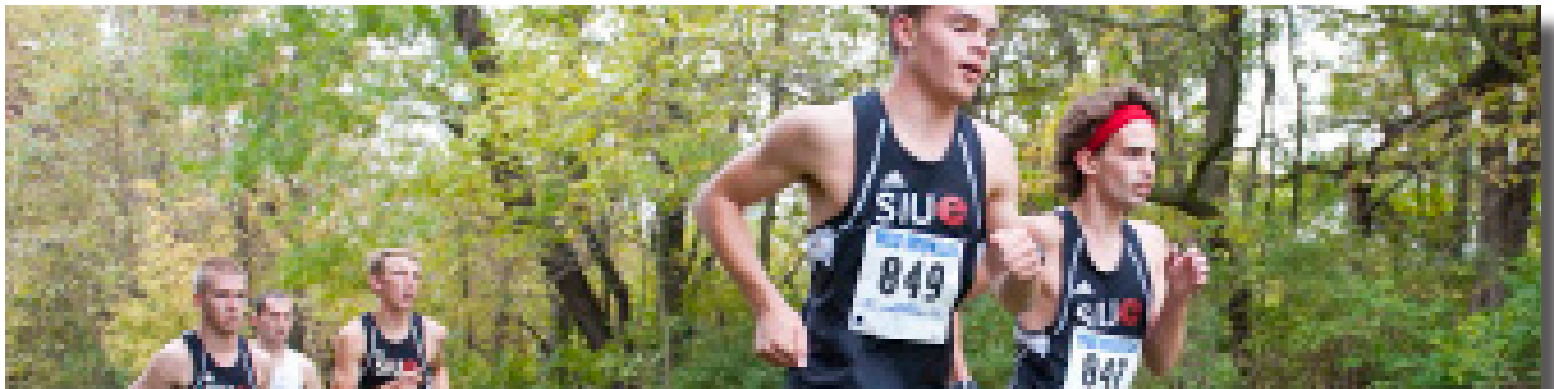
98 percent grass, 2 percent gravel course over rolling hills with distances of 5K, 6K, 8K, 10K (spectator friendly)

Shower/Locker Rooms

Shower and locker room facilities are available upon request; however they are not located on site.

Team and Spectator Parking

N. University Drive across the street from the course





## A T H L E T I C S

### Maps and Directions

#### Physical Addresses

[siuecougars.com/directions](http://siuecougars.com/directions)

Facilities all located in Edwardsville, IL (62026)

Vadalabene Center & Tennis Courts; 6 Hairpin Dr., follow to the north side of Circle Drive.

Korte Stadium & Cougar (softball) Stadium; 3345 Stadium Drive

Simmons Baseball Complex; 5200 New Poag Road

#### Regional Map

[siue.edu/maps/map\\_regional.pdf](http://siue.edu/maps/map_regional.pdf)

#### Campus Map

[siue.edu/maps/map\\_campus.pdf](http://siue.edu/maps/map_campus.pdf)

#### Airport and Airline Information

Lambert-St. Louis International Airport  
(314) 426-8000

30 minutes from the SIUE campus

AirTran, American Airlines, Southwest, Delta, Frontier, United, US Airways, Great Lakes, Northwest, Continental Airlines, Air Choice One, USA 3000

#### Ground Transportation

Enterprise Rent-A-Car  
Edwardsville/Glen Carbon  
4251 S. State Route 159  
Glen Carbon, IL 62034  
(618) 288-8812

#### Driving Directions

Just 25 minutes from St. Louis, SIUE is easily accessible from a number of Interstate highways: I-55, I-64, and I-70. Here's how to get here from each:

##### I-55

From north of campus: Take I-55 South to I-270 West. Use the I-270 directions below for the final directions to campus.

From south of campus: Take I-55 North to I-255 North (Chicago) to I-270 East. Use the I-270 directions below for the final directions to campus.

##### I-64

From east of campus: Take I-64 West to I-255 North (Chicago). Use the I-270 directions below for the final directions to campus.

From west of campus: Take I-64 West to I-255 North (Chicago). Take I-255 to I-270 East (Indianapolis). Use the I-270 directions below for the final directions to campus.

##### I-70

From east of campus: Take I-70 to I-270 West. Use the I-270 directions below for the final directions to campus. From west of campus: Take I-70 to I-270 East into Illinois. If you are crossing into Illinois on the Jefferson Barracks Bridge, take I-255 North (Chicago) to I-270 East at Illinois 157 North Exit. Use the I-270 directions below for the final directions to campus.

##### From I-270

Take the Illinois 157 North Exit. Once you're on Illinois 157 North, going straight at the stop light (instead of following 157 to the right) will bring you straight to the campus core.

#### Parking

Pay parking is available in Visitor Lot B. Persons with disabilities may park in the disability parking spots in Visitor Lot B.





A T H L E T I C S

## Maps and Directions Simmons Baseball Complex & Cougar Field

### Directions to Simmons Baseball Complex

From the West (Kansas City)

From Interstate 270 (north edge of St. Louis area), take interstate 255 north (Illinois 255). Take Exit 3 (New Poag Road) and turn right. The field is on the right in about a mile.

### From the South (Cape Girardeau, Mo.)

From Interstate 55, go north and take Interstate 255 (toward Chicago). Continue on Interstate 255 past Interstate 270 interchange and onto Illinois 255. Take Exit 3 (New Poag Road) and turn right. The field is on the right in about a mile.

### From the East (Evansville, Ind.)

Go west on Interstate 64 and take Interstate 255 (toward Chicago). Continue on Interstate 255 past Interstate 270 interchange onto Illinois 255. Take Exit 3 (New Poag Road) and turn right. The field is on your right in about a mile.

### From the East (Indianapolis, Ind.)

Go West on Interstate 70 until it merges with Interstate 270 (toward Kansas City). From Interstate 270, take Exit 9 (Edwardsville) and turn right onto Bluff Road/Illinois 157/University Drive. Go through the light toward the SIUE campus. Turn left on Stadium Drive. Go north on Stadium Drive and turn left on New Poag Road. The field is on the left.

### From the North (Chicago, Ill.)

Take Interstate 55 south. Turn off on Exit 20B (Interstate 270 west). Take Exit 9 (toward Edwardsville) and turn right onto Bluff Road/Illinois 157/University Drive. Go through the light toward the SIUE Campus. Turn left on Stadium Drive. Go north on Stadium Drive and turn left at New Poag Road. The field is on the left.

### Directions to Cougar Softball Field

From the West (Kansas City)

From Interstate 270 (northern edge of St. Louis area), take Exit 9 (Edwardsville) and turn left on Bluff Road/Illinois 157/University Drive. Go through the light toward the SIUE campus. Turn left on Stadium Drive. Cougar Field is on the right, adjacent to Korte Stadium.

### From the South (Cape Girardeau, Mo.)

From Interstate 55, go north on Interstate 255 (toward Chicago). Go north to Interstate 270. Merge right (toward Indianapolis). From Interstate 270, take Exit 9 (Edwardsville) and turn left onto Bluff Road/Illinois 157/University Drive. Go through the light toward the SIUE Campus. Turn left on Stadium Drive. Cougar Field is on the right, adjacent to Korte Stadium.

### From the East (Evansville, Ind.)

Go west on Interstate 64 and take Interstate 255 (toward Chicago). Go north to Interstate 270. Merge right (toward Indianapolis). From Interstate 270, take Exit 9 (Edwardsville) and turn left onto Bluff Road/Illinois 157/University Drive. Go through the light toward the SIUE Campus. Turn left on Stadium Drive. Cougar Field is on the right, adjacent to Korte Stadium.

### From the East (Indianapolis)

Go west on Interstate 70 until it merges with Interstate 270 (toward Kansas City). From Interstate 270, take Exit 9 (Edwardsville) and turn right onto Bluff Road/Illinois 157/University Drive. Go through the light toward the SIUE Campus. Turn left on Stadium Drive. Cougar Field is on the right, adjacent to Korte Stadium.

### From the North (Chicago)

Go south on Interstate 55. Take Exit 20B (Interstate 270 west). Take Exit 9 (Edwardsville) and turn right onto Bluff Road/Illinois 157/University Drive. Go through the light toward the SIUE Campus. Turn left on Stadium Drive. Cougar Field is on the right, adjacent to Korte Stadium.





A T H L E T I C S

## SIUE Preferred Lodging & Restaurants

### Lodging

#### [DoubleTree by Hilton](#)

I-55/70 & IL 157  
Collinsville, IL 62234  
(618) 345-2800  
Contact: Kayla Bray, 618-301-5007  
9.2 miles from campus

#### [Drury Inn](#)

I-55/70 & IL Rt. 157  
Collinsville, IL 62234  
618-345-7700  
Ask about special SIUE rates  
Contact: Karen Whitchurch  
618-570-1098  
karen.whitchurch@druryhotels.com  
8.7 miles from campus

#### [Townplace/Holiday Inn Express](#)

HWY 157, 6101 Center Grove Rd,  
Edwardsville, IL 62025  
Contact: Rebecca Raymer  
(618) 655-3008  
rebecca.raymer@genhotels.com  
2.2 miles from campus

### Restaurants - Sponsors

#### [Global Brew Tap House](#)

2329 Plum Street  
Edwardsville, IL 62025  
(618) 307-5858  
3.2 miles from campus

#### [Brick + Bramble](#)

2323 Plum Street  
Edwardsville, IL 62025  
(618) 650-9151  
3.2 miles from campus

#### [Edley's Bar-B-Que](#)

2392 S State Rte 157  
Glen Carbon, IL 62034  
(618) 307-9111  
ellery@edleysmw.com  
3.1 miles from campus

#### [Chick-fil-A of Edwardsville](#)

2319 Troy Road  
Edwardsville, IL 62025  
(618) 391-0563  
jennatolle@glenedcfa.com  
2.7 miles from campus

#### [Subway Restaurants](#)

4 Club Centre Shopping Center  
Edwardsville, IL 62025  
(618) 656-6056  
travisacord@hsmanagementinc.com  
2.8 miles from campus

#### [Subway Restaurants](#)

108 S. Buchanan Street  
Edwardsville, IL 62025  
(618) 656-6671  
travisacord@hsmanagementinc.com  
3.6 miles from campus

#### [Chicken Salad Chick](#)

2323 Plum Street  
Edwardsville, IL 62025  
(618) 650-9018  
edwardsville@chickensaladchick.com  
3.2 miles from campus

#### [Jersey Mike's Subs](#)

1990 Troy Road  
Edwardsville, IL 62025  
(618) 692-5533  
clayton@ajsfood.net  
3.5 miles from campus

#### [Porter's Steakhouse](#)

1000 Eastport Place  
Collinsville, IL 62234  
(618) 345-2400  
9.1 miles from campus

#### [Nothing Bundt Cakes](#)

6151 Trace Parkway Dr. Unit C  
Edwardsville, IL 62025  
(618) 221-4931  
aaron.fricke@nothingbundtcakes.com  
1.7 miles from campus

#### [Old Herald Brewery & Distillery](#)

115 E. Clay Street  
Collinsville, IL 62234  
(618) 855-8027  
10 miles from campus





# A T H L E T I C S

## Local Entertainment Options

Gateway Fun Park  
8 Gateway Drive  
Collinsville, IL 62234  
(618) 345-7116

Showplace 12  
6633 Center Grove Rd.  
Edwardsville, IL 62025  
(618) 659-7469

St. Clair Square Mall  
134 St. Clair Square  
Fairview Heights, IL 62208  
(618) 628-1650

Altitude Trampoline Park  
91 Fountain Drive  
Glen Carbon, IL 62034  
(618) 744-6959

### St. Louis Area

Urban Chestnut Brewing Company  
Food, brewery tours, German brewed beer, trivia, and much more.  
4465 Manchester Ave.  
St. Louis, MO 63110  
(314) 222-0143  
Tues.-Thurs. 12 p.m.-10 p.m.  
Fri.-Sat. 12 p.m.-12 a.m.  
Sun. 12 p.m.-9 p.m.

Anheuser-Busch Brewery  
Tour one of the world's largest breweries and bottling facilities.  
Located on 12th at Lynch, downtown  
(314) 577-2626  
Cost: Free  
Mon.-Sat. 10 a.m.- 4 p.m.  
Sun. 11:30 a.m. - 4 p.m.

The Arch & Jefferson Memorial  
The 630-ft. high, stainless steel monument is a symbol of St. Louis's role as the Gateway to the West.  
Downtown  
(314) 655-1700  
Cost: \$10 (16 years and up)  
Open Daily 9 a.m. – 6 p.m.  
Tram Hours: 9:50 a.m. - 4:50 p.m.

Busch Stadium - St. Louis Cardinals  
700 Clark Ave.  
Tickets: (314) 345-9000  
Busch Stadium Service: (314) 345-9000  
Open Daily 10 a.m. - 5 p.m.

Grant's Farm  
Visit the historical home of Ulysses Grant, tour the 281-acre wildlife preserve, and see the world famous Anheuser-Busch Clydesdales.  
10501 Gravois Rd.  
Admission: Free  
Tours: (314) 843-1700  
Wed.-Fri. 9:30 a.m. - 2:30 p.m.  
Sat.-Sun. 9:30 a.m. - 3:30 p.m.

Laclede's Landing  
The Landing district, named for the founder of St. Louis, is a 9-square-block historic area that offers many entertainment choices.  
710 North Second Street  
(just north of the Arch)  
(314) 241-5875

The Dome at America's Center  
701 Convention Plaza  
Tickets: (314) 342-5201

St. Louis Science Center  
Ranked one of the top five science museums in the world.  
5050 Oakland Ave., south of Hwy. 40  
(314) 289-4400  
Mon.-Sat. 9:30 a.m. - 4:30 p.m.  
Sun. 11 a.m. - 4:30 p.m.

St. Louis Zoo  
The St. Louis Zoo has been named #1 Zoo by Zagat Survey's U.S. Family Travel Guide in association with Parenting magazine. The Zoo is home to 18,000 exotic animals, many of them rare and endangered.  
One Government Drive  
Admission: Free  
(314) 781-0900  
Open every day  
9 a.m. - 5 p.m.

Union Station  
Once the world's largest and busiest railroad terminal, now restored to feature several attractions including the St. Louis Wheel and the St. Louis Aquarium.  
1820 Market Street, downtown St. Louis  
314-923-3900

Enterprise Center – St. Louis Blues  
1401 Clark Avenue  
Tickets: 800-745-3000



A T H L E T I C S

## Emergency Contacts

SIUE Police Department  
Emergency: 911  
Nonemergency: (618) 650-3324

Alton Memorial Hospital  
One Memorial Drive  
Alton, IL 62002  
(618) 463-7300

BJC Sports Medicine & Orthopedic Specialist  
8 Sunset Hills Professional Park  
Edwardsville, IL 62025  
(618) 692-6109

Anderson Hospital  
6800 State Rt. 162  
Maryville, IL 62062  
(618) 288-5711

Edwardsville Police Department  
333 South Main Street  
Edwardsville, IL 62025  
(618) 656-2131

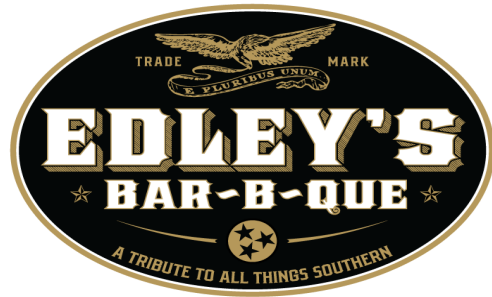
Edwardsville Fire Department  
783 NW University Drive  
Edwardsville, IL 62026  
(618) 692-7543

Ambulance  
410 North Main Street  
Edwardsville, IL 62025  
(618) 692-7541



Glen Carbon Location  
2392 S. State Rt. 157  
Glen Carbon, IL 62034

O'Fallon Location  
541 W. US Highway 50  
O'Fallon IL, 62269



## Catering Options

### *Meat and Sides Package*

Includes your choice of bun or cornbread, as well as plates, napkins, cutlery and serving utensils.

Meat & two sides: \$13 per person

Meat & three sides: \$14 per person

*Meat choices: (choose up to 2): pork, chicken, turkey, or \*brisket*

*Side choices: bean salad, potato salad, cole slaw, baked beans, green beans, grits casserole, \*mac n' cheese, or \*banana pudding*

*\*denotes an up-charge*

*brisket is an additional \$2.00 per person. mac n' cheese is an additional \$1.00 per person banana pudding is an additional \$1.00 per person*

### *A la Cart*

One pound serves three people.  
One quart feeds six people.

Pork \$16.00 per lb

Turkey \$17.00 per lb

Chicken \$16.00 per lb

Brisket \$23.00 per lb

Sides \$12.00 per quart

Banana Pudding and Mac n Cheese  
\$13.00 per quart

Cornbread and Bun \$1.00 per person

Side Salad \$4.00 per person

**To place a catering order call or email: 618-230-3522 or [Ellery@edleysmw.com](mailto:Ellery@edleysmw.com)**

Please allow 24 hours notice to all orders. NOTE: Please allow 24 hours notice for cancellations. Edley's reserves the right to charge 50% of the bill for cancellations within 24 hours of the scheduled catering delivery time. Delivery fee dependent upon location.

# Exclusive Discounts for SIUE.



## At A Glance

- Book now and mention SIUE Athletics Partner Rate and take 15% OFF our Best Available Rate (Subject to availability)
- Only 8 miles from campus
- Complimentary parking and wifi
- Award-winning steakhouse - Porter's, perfect for team meals and functions

For more information contact Cynthia Heimsath,  
618.345.2800 | [cheimsath@lhmc.com](mailto:cheimsath@lhmc.com)  
[DoubleTreeSiue.com](http://DoubleTreeSiue.com)



Book now and enjoy an amazing stay and a great deal, with stylish guest rooms, comforting amenities, and the casually chic, Porter's Steakhouse, with a seasonal menu and extensive wine list.



## DOUBLETREE

BY HILTON  
COLLINSVILLE - ST. LOUIS

[DOUBLETREECOLLINSVILLE.COM](http://DOUBLETREECOLLINSVILLE.COM)

1000 EASTPORT PLAZA DRIVE COLLINSVILLE, ILLINOIS 618.345.2800

# DRURY

## INN & SUITES

ST. LOUIS | COLLINSVILLE

### TRAVEL happy

From Hot Breakfast

From \$199/Weekend\*

From \$179/night

**DRURY HOTELS AND SUITES ARE NOW PART OF THE HILTON WORLDWIDE**

Use Corporate Code: 300407

# SIUE

## ATHLETICS

DRURYHOTELS.COM | 800-DRURYINN

# GAME ON.

**Call ahead for great team discounts or download the app for fast easy pickup.**

**Delivery options also available through Grubhub, Doordash, and UberEats**



**4 Club Centre Shopping Center  
(618) 656-6056**

**108 S Buchanan Street  
(618) 656-6671**

**SUBWAY**

# SEE YOU AT THE STATION

#stlunionstation

IT'S MORE THAN ATTRACTION.  
IT'S A DESTINATION!



# UNION STATION

ST. LOUIS

1820 Market Street

St. Louis, MO 63103

(314) 923-3900



Proud  
Partner  
of SIUE  
Athletics



**FREE**  
Delivery & Setup  
**PLUS**  
Visiting Team  
Discount

## Catering for Every Occasion

Catering as Easy as 1-2-3!

1

How many people do you want to serve?

2

Which option is best for you?  
(Bag/Box/Personal)

3

Choose Your Sides + Drinks

### Subs by the Box



Our subs are perfect for the office or any gathering. Choose from any of our cold subs. Order plenty - they'll be back for seconds!

Each box serves 10

### Subs by the Bag



Order your favorite subs off the menu! Just unwrap the subs and dig in! Delicious, easy and a great value.

#### Sub Sizes:

Mini (Feeds 1)  
Regular, Wrap, or Tub (Feeds 2)  
Giant (Feeds 4)

### Personal Boxed Lunches



Includes any Cold Sub, Chips & Cookie. Ideal for business meetings, school activities, field trips, outdoor gatherings or other fun events.

Available in Regular or Mini Sizes

### Extras

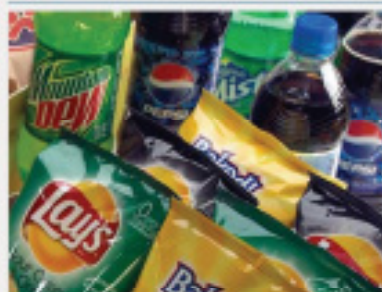
#### Salad Bowls



Only the freshest ingredients go into Jersey Mike's salads. Serve as a meal or as a complement to any gathering. Tossed & Grilled Chicken.

Bowl Serves Up to 10 Guests

#### Chips & Drinks



Chips, Assorted Bottled Drinks, Iced Tea (1 gallon)

Other options may be available. Some restrictions may apply. See store for details.

#### Fresh Baked Cookies/Brownies



Our Cookie and brownie trays are the perfect finale to any type of gathering - fresh-baked daily right in the store. And believe us, you'll taste the difference.

Assorted Varieties Available

Email [clayton@ajsfood.net](mailto:clayton@ajsfood.net) or call 618-692-5533.



## SIUE Catering Options

To order, please allow 24 hour notice  
 Call the Edwardsville store at 618-650-9018 or  
 Email- edwardsville@chickensaladchick.com

### Box Lunches

Standard Box Lunch-Chicken Salad **\$10.00**  
 Chicken salad sandwich or scoop with choice of side, plus cookie  
 Additional side add \$2.00  
 \*also turkey club, egg salad, and pimento cheese options

Signature Sandwich Box **\$12.00**  
 Signature Sandwich with choice of side, plus cookie  
 Additional side add \$2.00  
 \*also turkey club, egg salad, and pimento cheese options

### Catering Platter Options

Mini Croissant Platter (serves 10-12) **\$46.00**  
 Assorted Sandwich platter (serves 10-12) **\$46.00**

Group Sandwich luncheon (serves 10-12) **\$94.00**  
 Sandwiches or mini croissants  
 Choice of 2 sides  
 Choice of dessert

### Specialty Trays

Assorted Fruit Tray (serves 10-12) **\$50.00**  
 Fresh Strawberry Tray (serves 10-12) **\$45.00**  
 Pimento Cheese Ball Tray (serves 10-12) **\$25.00**

### Sweet Treats

Round Buttercream Cookies-12 **\$10.00**  
 Flower Buttercream Cookies 12 **\$20.00**  
 Chocolate Crispy Bites-50 bites **\$16.00**

### Chicken Salad Flavors

#### TRADITIONAL

##### Classic Carol

All white meat, shredded chicken, finely-minced celery, mayonnaise, & our secret seasoning. (400 cal/serving)

##### Olivia's Old South

A southern tradition combining sweet pickles & eggs. (380 cal/serving)

#### FRUITY & NUTTY

##### Fancy Nancy

Dress it up with Fuji apples, seedless grapes, & crushed pecans. (410 cal/serving)

##### Cranberry Kelli

A mixture of dried, sweetened cranberries & slivered almonds. (460 cal/ serving)

##### Fruity Fran

A refreshing blend of Fuji apples, seedless grapes, & pineapples. (340 cal/serving)

#### SAVORY

##### Laurn's Lemon Basil

Our brightest flavor featuring chopped pecans, fresh basil & lemon. (390 cal/serving)

##### Dixie Chick

An onion-lover's delight! The only one with onions. (370 cal/serving)

##### Sassy Scotty

A zesty blend of ranch, bacon, & shredded cheddar cheese. (450 cal/serving)

##### Barbie-Q

A hickory smoked BBQ flavor that is sure to please. (390 cal/serving)

#### SPICY

##### Buffalo Barclay

Craving wings? This is definitely the choice for you. (390 cal/serving)

##### Jalapeño Holly

Whew! The name says it all, diced jalapeños galore. (370 cal/serving)

##### Kickin Kay Lynne

This flavor powerhouse is a combination of buffalo sauce, ranch, bacon, shredded cheddar cheese, jalapeños, & Sriracha! (370 cal/serving)

