

2016-17 St. Francis Brooklyn Women's Basketball

St. Francis Brooklyn Terriers
(6-18, 4-9 NEC)



AT

Sacred Heart Pioneers
(13-11, 10-3 NEC)



***Monday, February 13, 2017**

***7 p.m. – William H. Pitt Center**

***Fairfield, Connecticut**

A Past With The Pio's:

Their first match-up of the season was nearly a comeback of epic proportions, but the Sacred Heart Pioneers were able to hold off a late St. Francis Terrier surge and leave Brooklyn Heights with a 81-74 win. In the fourth quarter, the Terriers scored 32 points, 20 of which came in the final four minutes, but were ultimately denied the jaw-dropping victory.

Last season, the Terriers were defeated in both contests against the 2016 NEC Regular Season Champion Pioneers. Prior to the 2015-16, the Terriers had won two straight home games against Sacred Heart, by a combined 44 points no less. Overall, the Pioneers have gotten the better of the recent history between the two NEC teams, winning three straight and 7-of-11.

January 16, 2017 - vs. Sacred Heart – Loss 81-74

February 6, 2016 – @ Sacred Heart – Loss 63-55

January 16, 2016 – vs. Sacred Heart – Loss 68-51

March 8, 2015 – @ Sacred Heart – Won 77-59

February 14, 2015 – vs. Sacred Heart – Won 77-53

January 3, 2015 – @ Sacred Heart – Loss 71-55

February 17, 2014 – @ Sacred Heart – Loss 77-53

January 18, 2014 – vs. Sacred Heart – Won 69-49

March 10, 2013 – @ Sacred Heart – Loss 64-38

March 2, 2013 – vs. Sacred Heart – Loss 57-53

January 5, 2013 – @ Sacred Heart – Won 56-47



SFCathletics.com

Date	Opponent	Results
Su. 11/13/16	@ James Madison	L 83-57
W. 11/16/16	V. Monmouth	W 87-78
Sa. 11/19/16	@ Loyola	L 69-60
F. 11/25/16	@ Colorado	L 81-54
Sa. 11/26/16	@ Boston College/SMU	L 73-58
W. 11/30/16	V. Howard	L 78-63
Sa. 12/3/16	@ Army	L 69-46
W. 12/7/16	V. Manhattan	L 55-52
Su. 12/11/16	V. Saint Peter's	W 58-52
Sa. 12/17/16	@ Iona	L 62-46
W. 12/21/16	@ Rider	L 77-60
Th. 12/29/16	V. Bryant	W 63-47
Sa. 12/31/16	V. Central Connecticut	L 61-53
Sa. 1/7/17	@ Robert Morris	W 56-49
M. 1/9/17	@ Saint Francis U	L 79-62
Sa. 1/14/17	@ LIU-Brooklyn	W 56-54
M. 1/16/17	V. Sacred Heart	L 81-74
Sa. 1/21/17	V. Mount St. Mary's	L 62-44
M. 1/23/17	@ Fairleigh Dickinson	W 66-59
Sa. 1/28/17	V. Fairleigh Dickinson	L 59-58
M. 1/30/17	@ Wagner College	L 58-45
Sa. 2/4/17	V. Robert Morris	L 61-54
M. 2/6/17	V. Saint Francis U	L 75-59
Sa. 2/11/17	@ Bryant	L 63-54
M. 2/13/17	@ Sacred Heart	
Sa. 2/18/17	V. Wagner College	
M. 2/20/17	V. LIU-Brooklyn	
Sa. 2/25/17	@ CCSU	
M. 2/27/17	@ Mount Saint Mary's	



St. Francis-Brooklyn Women's Basketball

COLLEGE INFORMATION

Location	Brooklyn Heights, NY
Founded	1859
President	Brendan J. Dugan '68
Enrollment	2,700
Nickname	Terriers
Colors	Red & Royal Blue
Affiliation	NCAA Division I
Conference	Northeast (NEC)
Home Court (Capacity)	Pope PE Center (1,200)
	Peter Aquilone Court
School Website	www.sfc.edu
Athletics Website	www.sfcathletics.com
Twitter	@SFBKTerriers

COACHING STAFF

Head Coach	John Thurston (Seton Hall '70)
Overall Record at SFBK	58-89 (Fifth Season)
Overall Career Record	99 -110 (as a women's head coach) 165-232 (as a men's head coach)
Overall NEC Record	35-50 (Fifth Season)
Associate Head Coach	Dionne Dodson (Muskingum '97)
	Third as Associate Head Coach; Ninth Overall
Assistant Coach	Kaitlyn Vican (Fordham '11)
	Sixth Season
	Ranait Griff (Fordham '13)
	Second Season
Team Managers	Jeffrey Armstrong (St. Francis College '18)
	Third Season

TEAM INFORMATION

Final 2015-16 Overall Record	7-22
Final 2015-16 Conference Record/Finish	4-14/9th place
2015-16 Postseason Recap	No Playoffs
Letterwinners Returning/Lost	10/5
Starters Returning/Lost	4/1
First Season	1973-74
First Northeast Conference Season	1988-89
All-Time Program Record	325-796
All-Time Conference Record	113-383
Northeast Conference Regular Season Titles	None
Northeast Conference Championships	1 (2014-15)
All-Time Northeast Conference Tournament Record	7-10
NCAA Tournament Appearances	1 (2014-15)
WNIT Tournament Appearances	1 (Preseason WNIT 2014-15)

Top Returnees (2015-16 stats)

Maria Palarino	8.6 ppg, 4.1 rpg, 50.5% FG
Alex Delaney	8.3 ppg, 3.2 rpg, 2.5 apg
Olivia Levey	8.0 ppg, 4.5 rpg, 83.3% FT

Key Players Lost

Leah Fechko	14.9 ppg, 8.6 rpg, 3.6 apg, 2.4 spg
Cassidy Derda	4.8 ppg, 2.8 rpg, 88.2% FT



St. Francis-Brooklyn coaching staff: (left to right):
Assistant Coach Ranait Griff
Associate Head Coach Dionne Dodson
Head Coach John Thurston
Assistant Coach Kaitlyn Vican



St. Francis Brooklyn's team photo: (top left to right) Dana DiRenzo, Maria Palarino, Olivia Levey, Samantha Keltos, Tori Wagner, Lorraine Hickman, Alex Delaney

(Bottom left to right): Jade Johnson, Mia Ehling, Kat Phipps, Rachel Iozzia, Meg Crupi, Etta Andersen



Academic Excellence Continued...

The Women's Basketball Coaches Association Academic Top 25 presented by AT&T annually recognizes women's college basketball teams across the country that maintain the highest cumulative grade-point average of all student-athletes.

In the 21st annual rankings, the St. Francis Brooklyn Terriers earned their first ever Academic National Championship, topping the WBCA Academic Top 25 Team Honor Roll with a 3.712 team GPA.

"It's great to be number one in the country in anything, because that's something that the overwhelming majority of college student-athletes never get the chance to be," said Terriers' head coach John Thurston. "It's number one – the best in the country. In anything, whether it be sports or academics, I'm really, really happy for the players. They did this; it took a lot of hard work and effort on their part."

To qualify for the Academic Honor Roll, teams are nominated by a head coach who is a WBCA member. The team must also carry a combined GPA of 3.0 or better for consideration, making this prestigious honor that much more elite.

"Our women's basketball program continues to exceed expectations," said Terriers' Athletic Director Irma Garcia. "We were beyond thrilled two years ago to earn a spot in the women's NCAA Tournament for the first time in school history – we are proud to have such well-rounded student athletes' excelling both on and off the court."

"Coach Thurston has instilled in all of us the importance of education and striving for excellence in the classroom," added sophomore forward Dana DiRenzo, who accumulated a 3.98 GPA as a freshman. "It is a top priority for our team, so we all work extremely hard to succeed academically. The coaching staff gives us the tools and support we need to balance the rigors of being a student-athlete at St. Francis College. We are thrilled to be recognized by the WBCA for our academic efforts and will continue to reach our highest potential."

RANKINGS THROUGH THE YEARS

2015-16	#1	3.712
2014-15	#2	3.656
2013-14	#4	3.608
2012-13	#2	3.625

3.712

#1

2015-2016
DIVISION I

WOMEN'S BASKETBALL
GPA IN THE NATION!





2016-17 Numerical Roster

No.	Name	Pos.	Yr.	Ht.	Hometown/Previous School
3	Mia Ehling	G	So.	5-8	Holmdel, NJ / Holmdel
4	Etta Andersen	G	So.	5-8	Copenhagen, Denmark / Hjemly Sportsschool
11	Rachel Iozzia	G	Sr.	5-10	Bayville, NJ / Central Regional
12	Maria Palarino	G	So.	5-10	Irwin, PA / Penn Trafford
13	Samantha Keltos	F	Fr.	6-2	Ontario, Canada / Sir Winston Churchill
14	Alex Delaney	F	Jr.	6-0	Sydney, Australia / Monte Sant' Angelo / Mercy College
23	Jade Johnson	G	Fr.	5-9	Adelaide, Australia / Immanuel College
24	Kat Phipps	G	So.	5-6	Spring Lake, NJ / St. Rose
32	Dana DiRenzo	F	So.	5-10	Hammonton, NJ / St. Joseph's
33	Meg Crupi	G	Fr.	5-8	Melbourne, Australia / Box Hill
34	Lorraine Hickman	F	So.	6-0	Floral Park, NY / Floral Park
35	Olivia Levey	F	Sr.	6-0	Seymour, CT / Luralton Hall
40	Tori Wagner	F	So.	6-2	Freehold, NJ / Freehold Twp

Coaching Staff

Head Coach	John Thurston (Seton Hall '70); Fifth Season
Associate Head Coach	Dionne Dodson (Muskingum '97); Ninth Season, Third as Associate Head Coach
Assistant Coach	Kaitlyn Vican (Fordham '11); Sixth Season
Assistant Coach	Ranait Griff (Fordham '13); Second Season
Team Manager	Jeffrey Armstrong (St. Francis College '18); Third Season

Pronunciations

3	Mia Ehling	Eel-ing
4	Etta Andersen	Et-uh
11	Rachel Iozzia	Eye-oh-zee-a
12	Maria Palarino	Pal-uh-ree-no
32	Dana DiRenzo	Dee-Renzo
34	Lorraine Hickman	Lorr-ain man
35	Olivia Levey	Lee-vee

Class Breakdown

Year	Total
Freshman	3
Sophomore	7
Junior	1
Senior	2





2016-17 Media Roster



3- Mia Ehling
G * So. * 5-8
Holmdel, NJ
(Holmdel)



4- Etta Andersen
G * So. * 5-8
Copenhagen,
Denmark
(Hjemly Sportss-
chool)



**11- Rachel
Iozzia**
G * Sr. * 5-10
Bayville, NJ
(Central Re-
gional)



**12- Maria
Palarino**
F * So. * 5-10
Irwin, PA
(Penn Trafford)



**13- Samantha
Keltos** F * Fr. * 6-2
Ontario, Canada
(Sir Winston
Churchill Sec-
ondary School)



14- Alex Delaney
F * Jr. * 6-0
Sydney, Australia
(Monte Sant'
Angelo/
Mercy College)



23- Jade Johnson
G * Fr. * 5-9
Adelaide, Aus-
tralia
(Immanuel Col-
lege)



24- Kat Phipps
G * So. * 5-6
Spring Lake, NJ
(St. Rose)



**32- Dana
DiRenzo**
G * So. * 5-10
Hammonton,
NJ
(St. Joseph's)



33- Meg Crupi
G * Fr. * 5-8 Mel-
bourne, Australia
(Box Hill Senior
Secondary Col-
lege)



**34- Lorraine
Hickman**
F * So. * 6-0
Floral Park, NY
(Floral Park)



35- Olivia Levey
F * Sr. * 6-0
Seymour, CT
(Lauralton Hall)



40- Tori Wagner
F * So. * 6-2
Freehold, NJ
(Freehold Twp)



Probable Starters

Probable Starters (Current 2016-17 stats)

Pos.	No.	Player name	MPG	PPG	RPG	APG	Quick Player Notes
F	35	Olivia Levey *Senior*	24.3	11.2	5.3	0.7	Won NEC Player of the Week (12/5/16 to 12/11/16) . Two-time NEC Prime Performer.
F	14	Alex Delaney *Junior*	31.4	9.9	5.0	2.9	Team leader in three-point shooting, assists and steals.
G	23	Kat Phipps *Sophomore*	16.0	4.3	1.2	0.8	Earned 2017 Battle of Brooklyn MVP Honors with team-high 11 pts (nine in 4th qtr).
G	12	Maria Palarino *Sophomore*	31.5	10.8	6.6	2.5	Team leading scorer and rebounder in conference play. 3-time NEC Prime Performer.
G	11	Rachel Iozzia *Senior*	26.5	5.0	2.7	2.7	Fourth leading scorer and leading three-point shooter on team in NEC play.

Probable Bench (2016-17 stats)

Pos.	No.	Player name	MPG	PPG	RPG	APG	Quick Player Notes
G	32	Dana DiRenzo *Sophomore*	18.5	2.8	3.8	1.1	Fourth leading rebounder who had eight points & seven rebounds at RMU (1/7/17).
G	23	Jade Johnson *Freshman*	19.3	7.0	2.3	1.1	Leading freshman scorer who has netted 14 points on multiple occasions.
G	3	Mia Ehling *Sophomore*	7.0	1.1	0.7	0.4	Had a career-high five points at Saint Francis University (1/9/17).
G	4	Etta Andersen *Sophomore*	8.5	0.8	0.5	0.6	Started first five appearances in 2016-17 season.
G	33	Meg Crupi *Freshman*	7.2	1.3	0.6	0.6	Erupted for career-high 12 pts in 4th quarter comeback vs Sacred Heart (1/16/17).
F	40	Tori Wagner *Sophomore*	6.2	2.1	1.0	0.2	Scored a season-high six points on 75% shooting against Monmouth (11/16/16).
F	34	Lorraine Hickman *Sophomore*	8.7	2.8	1.8	0.3	Had a career-high 14 points in 18 minutes against Fairleigh Dickinson (1/28/17).
F	13	Sam Keltos *Freshman*	10.0	3.3	2.3	0.3	Poured on a career-high 11 pts in 15 minutes vs. Sacred Heart (1/16/17).





Support Staff



Irma Garcia
Director of Athletics



Chase Licata
Assistant Director
of Athletics



Carl Quigley
Assistant Direc-
tor of Athletics



Jim Hoffman
Director of
Compliance



Maggie Martini
Director of Marketing
Senior Woman Admin.



David Gansell
Director of Athletic
Communications
Men's BB Contact



Andrew Cornicello
Head Athletic Trainer



Yuki Miyazawa
Head Strength &
Conditioning Coach



Dexter Henry
Director of
New Media



Dr. Jennifer Lancaster
Faculty Athletic
Representative



Meagan Grieger
Athletics Academic
Advisor



Erica Rabe
Athletic Assistant



Lynson Willis
Assistant Athletic
Trainer



Arianna DeLucia
Assistant Athletic
Trainer



Monet Bernard
Assistant Strength &
Conditioning Coach



Bryan Fonseca
Athletic Communica-
tions Staff Assistant
Women's BB Contact



Jeffrey Armstrong
WBB Team
Manager





Combined 2016-17 Statistics

St. Francis Brooklyn Combined Team Statistics (as of Feb 11, 2017) All games

RECORD:	OVERALL	HOME	AWAY	NEUTRAL
ALL GAMES	6-18	3-8	3-9	0-1
CONFERENCE	4-9	1-6	3-3	0-0
NON-CONFERENCE	2-9	2-2	0-6	0-1

#	Player	gp-gs	min	avg	Total		3-Point		F-Throw		Rebounds				pf	dq	a	to	blk	stl	pts	avg
					fg-fga	fg%	3fg-fga	3fg%	ft-fa	ft%	off	def	tot	avg								
35	LEVEY, Olivia	24-22	584	24.3	106-250	.424	2-8	.250	55-70	.786	40	87	127	5.3	69	0	16	56	5	20	269	11.2
12	PALARINO, Maria	24-24	757	31.5	86-174	.494	15-44	.341	71-106	.670	50	108	158	6.6	62	1	59	65	3	24	258	10.8
14	DELANEY, Alex	24-24	754	31.4	78-213	.366	40-125	.320	41-54	.759	16	104	120	5.0	64	2	69	65	10	32	237	9.9
11	IOZZIA, Rachel	24-24	636	26.5	41-125	.328	28-88	.318	11-17	.647	4	61	65	2.7	18	0	65	54	1	18	121	5.0
23	JOHNSON, Jade	15-6	289	19.3	38-117	.325	16-68	.235	13-19	.684	6	28	34	2.3	19	0	17	38	2	11	105	7.0
24	PHIPPS, Kat	24-6	384	16.0	28-90	.311	11-43	.256	37-42	.881	12	17	29	1.2	29	0	19	30	3	11	104	4.3
13	KELTOS, Samantha	24-0	241	10.0	29-81	.358	9-34	.265	13-16	.813	17	39	56	2.3	16	0	8	33	9	9	80	3.3
32	DIRENZO, Dana	24-7	444	18.5	24-76	.316	4-22	.182	16-24	.667	41	51	92	3.8	38	1	27	43	0	15	68	2.8
40	WAGNER, Tori	22-1	136	6.2	14-42	.333	0-0	.000	16-24	.667	6	15	21	1.0	13	0	5	19	2	2	44	2.0
34	HICKMAN, Lorraine	12-1	104	8.7	12-33	.364	0-0	.000	10-14	.714	10	12	22	1.8	10	0	4	11	1	1	34	2.8
33	CRUPI, Meg	19-0	137	7.2	7-23	.304	4-13	.308	7-11	.636	5	6	11	0.6	14	0	11	14	1	6	25	1.3
03	EHLING, Mia	21-0	148	7.0	9-37	.243	5-17	.294	0-0	.000	2	12	14	0.7	17	0	8	9	1	8	23	1.1
04	ANDERSEN, Etta	22-5	186	8.5	6-23	.261	1-14	.071	4-4	1.000	1	11	12	0.5	23	0	13	17	2	6	17	0.8
Team											56	72	128				14					
Total.....		24	4800		478-1284	.372	135-476	.284	294-401	.733	266	623	889	37.0	392	4	321	468	40	163	1385	57.7
Opponents.....		24	4900		577-1449	.398	166-522	.318	265-376	.705	301	574	875	36.5	414	6	362	359	98	244	1585	66.0

TEAM STATISTICS	SFBK	OPP
SCORING	1385	1585
Points per game	57.7	66.0
Scoring margin	-8.3	-
FIELD GOALS-ATT	478-1284	577-1449
Field goal pct	.372	.398
3 POINT FG-ATT	135-476	166-522
3-point FG pct	.284	.318
3-pt FG made per game	5.6	6.9
FREE THROWS-ATT	294-401	265-376
Free throw pct	.733	.705
F-Throws made per game	12.3	11.0
REBOUNDS	889	875
Rebounds per game	37.0	36.5
Rebounding margin	+0.6	-
ASSISTS	321	362
Assists per game	13.4	15.1
TURNOVERS	468	359
Turnovers per game	19.5	15.0
Turnover margin	-4.5	-
Assist/turnover ratio	0.7	1.0
STEALS	163	244
Steals per game	6.8	10.2
BLOCKS	40	98
Blocks per game	1.7	4.1
ATTENDANCE	3484	11268
Home games-Avg/Game	11-317	12-814
Neutral site-Avg/Game	-	1-1495

Date	Opponent	Score	Att.
11/13/16	at JMU	L 57-83	3480
11/16/16	MONW	w 87-78	335
11/19/16	at Loyola Maryland	L 60-69	217
! 11/25/16	at Colorado	L 54-81	1473
! 11/26/16	vs Boston College	L 58-73	1495
11/30/16	HOW	L 63-78	225
12/3/16	at Army West Point	L 46-69	640
12/7/16	MANHATTAN	L 52-55	185
12/11/16	SAINT PETER'S	w 58-52	305
12/21/16	at Rider University	L 60-77	796
12/17/16	at Iona College	L 46-62	525
* 12/29/16	BRYW	w 63-47	265
* 12/31/16	CCSU	L 53-61	287
* 1/7/17	at Robert Morris	w 56-49	469
* 1/9/17	at SFU	L 62-79	407
* 1/16/17	SHU	L 74-81	243
* 1/14/17	at LIU Brooklyn	w 56-54	732
* 1/21/17	MOUNT-W	L 44-62	573
* 1/23/17	at Fairleigh Dickinson	w 66-59	317
* 1/27/17	FAIRLEIGH DICKINSON	L 58-59	317
* 01/30/17	at WAGNER	L 45-58	308
* 2/4/17	ROBERT MORRIS	L 54-61	513
* 2/6/17	SFU	L 59-75	236
* 2/11/17	at BRYANT	L 54-63	409

* - Conference game

Score by Periods	1st	2nd	3rd	4th	Totals
St. Francis Brooklyn	315	308	396	366	1385
Opponents	378	382	428	397	1585

2016-17 NEC Stats

St. Francis Brooklyn Combined Team Statistics (as of Feb 11, 2017) Conference games

RECORD:	OVERALL	HOME	AWAY	NEUTRAL
ALL GAMES	4-9	1-6	3-3	0-0
CONFERENCE	4-9	1-6	3-3	0-0
NON-CONFERENCE	0-0	0-0	0-0	0-0

#	Player	gp-gs	min	avg	Total		3-Point		F-Throw		Rebounds				pf	dq	a	to	blk	stl	pts	avg
					fg-fga	fg%	3fg-fga	3fg%	ft-fa	ft%	off	def	tot	avg								
12	PALARINO, Maria	13-13	416	32.0	50-110	.455	7-28	.250	36-61	.590	28	55	83	6.4	40	1	34	35	3	17	143	11.0
14	DELANEY, Alex	13-13	423	32.5	44-118	.373	22-67	.328	21-28	.750	11	59	70	5.4	36	1	42	37	7	23	131	10.1
35	LEVEY, Olivia	13-12	301	23.2	49-124	.395	2-7	.286	30-35	.857	17	46	63	4.8	40	0	11	30	3	6	130	10.0
11	IOZZIA, Rachel	13-13	390	30.0	29-85	.341	23-62	.371	9-14	.643	3	37	40	3.1	9	0	41	31	0	13	90	6.9
24	PHIPPS, Kat	13-2	220	16.9	19-50	.380	5-23	.217	20-23	.870	10	5	15	1.2	15	0	12	16	2	6	63	4.8
13	KELTOS, Samantha	13-0	131	10.1	19-48	.396	7-25	.280	4-6	.667	11	19	30	2.3	10	0	6	14	2	4	49	3.8
32	DIRENZO, Dana	13-7	273	21.0	13-48	.271	1-9	.111	13-18	.722	25	32	57	4.4	21	1	14	22	0	11	40	3.1
34	HICKMAN, Lorraine	12-1	104	8.7	12-33	.364	0-0	.000	10-14	.714	10	12	22	1.8	10	0	4	11	1	1	34	2.8
40	WAGNER, Tori	11-0	53	4.8	6-19	.316	0-0	.000	9-14	.643	3	6	9	0.8	7	0	1	9	1	2	21	1.9
33	CRUPI, Meg	11-0	85	7.7	6-15	.400	4-11	.364	1-3	.333	4	4	8	0.7	9	0	7	9	1	3	17	1.5
23	JOHNSON, Jade	4-4	74	18.5	6-25	.240	2-17	.118	1-2	.500	1	9	10	2.5	4	0	1	9	1	4	15	3.8
03	EHLING, Mia	11-0	70	6.4	4-16	.250	3-8	.375	0-0	.000	2	8	10	0.9	8	0	5	2	0	3	11	1.0
04	ANDERSEN, Etta	11-0	60	5.5	0-3	.000	0-2	.000	0-0	.000	1	3	4	0.4	12	0	3	6	0	6	0	0.0
Team											27	37	64					8				
Total.....		13	2600		257-694	.370	76-259	.293	154-218	.706	153	332	485	37.3	221	3	181	239	21	99	744	57.2
Opponents.....		13	2600		287-746	.385	91-273	.333	143-203	.704	154	303	457	35.2	226	5	176	207	52	116	808	62.2

TEAM STATISTICS	SFBK	OPP	Date	Opponent	Score	Att.
SCORING	744	808	* 12/29/16	BRYW	W 63-47	265
Points per game	57.2	62.2	* 12/31/16	CCSU	L 53-61	287
Scoring margin	-4.9	-	* 1/7/17	at Robert Morris	W 56-49	469
FIELD GOALS-ATT	257-694	287-746	* 1/9/17	at SFU	L 62-79	407
Field goal pct	.370	.385	* 1/16/17	SHU	L 74-81	243
3 POINT FG-ATT	76-259	91-273	* 1/14/17	at LIU Brooklyn	W 56-54	732
3-point FG pct	.293	.333	* 1/21/17	MOUNT-W	L 44-62	573
3-pt FG made per game	5.8	7.0	* 1/23/17	at Fairleigh Dickinson	W 66-59	317
FREE THROWS-ATT	154-218	143-203	* 1/27/17	FAIRLEIGH DICKINSON	L 58-59	317
Free throw pct	.706	.704	* 01/30/17	at WAGNER	L 45-58	308
F-Throws made per game	11.8	11.0	* 2/4/17	ROBERT MORRIS	L 54-61	513
REBOUNDS	485	457	* 2/6/17	SFU	L 59-75	236
Rebounds per game	37.3	35.2	* 2/11/17	at BRYANT	L 54-63	409
Rebounding margin	+2.2	-	* - Conference game			
ASSISTS	181	176				
Assists per game	13.9	13.5				
TURNOVERS	239	207				
Turnovers per game	18.4	15.9				
Turnover margin	-2.5	-				
Assist/turnover ratio	0.8	0.9				
STEALS	99	116				
Steals per game	7.6	8.9				
BLOCKS	21	52				
Blocks per game	1.6	4.0				
ATTENDANCE	2434	2642				
Home games-Avg/Game	7-348	6-440				
Neutral site-Avg/Game	-	0-0				

Score by Periods	1st	2nd	3rd	4th	Totals
St. Francis Brooklyn	182	152	215	195	744
Opponents	196	205	194	213	808



Head Coach John Thurston

Fifth Season

John Thurston is entering his fifth season as the head coach of the St. Francis Brooklyn women's basketball squad. Under the guidance of coach Thurston, the Terriers have established themselves as a winning program both on and off the court.

One year removed from putting together the best regular season in school history with a record of 19-11 (10-8 NEC) in 2013-14, Thurston helped lead the Terriers to their first Northeast Conference Championship, marking the school's first automatic NCAA tournament bid in either Division I basketball program. The Terriers lost to eventual National Champion and women's basketball power UConn Huskies in the tournament's opening round.

Last season, the Terriers finished 7-22 (4-14 NEC) but sent off one of the most decorated players in school history with Leah Fechko, Thurston's first recruit at St. Francis. While playing under the tutelage of coach Thurston, Fechko earned many accolades including 2015-16 Defensive Player of the Year, and 2015-16 First Team All-NEC, with multiple NEC All-Defensive Team selections.

The 2015-16 campaign also marked the birth of a new generation of Terriers with the addition of seven new freshmen, and an overall underclassmen heavy team, a testament to Thurston's recruiting.

Off the court, the Terriers have excelled in the purest form of the word, and this has been no more evident than in the last couple of seasons. Entering their anticipated 2016-17 campaign, the Terriers are coming off of the school's first Women's Basketball College Association's Academic National Championship, sporting the country's highest cumulative GPA at 3.72.

As a group, St. Francis Brooklyn Women's Basketball Team finished with a 3.656 overall team GPA in 2014-



15, finishing second in the WBCA Top 25 rankings, which was the highest GPA in either the men's or women's NCAA Tournament field that season.

The 2015-16 Terrier season also marked the team's fourth consecutive NEC Sportsmanship Award for women's basketball. The NEC Sportsmanship Award

John Thurston's Coaching Career Breakdown

School	Years	Record	W/L Pct.
Fairleigh Dickinson University-Florham (Men's)	3	39-39	.500
James Madison University (Men's)	3	31-44	.413
Wingate University (Men's)	9	95-149	.389
Northwood (Women's)	2	41-21	.661
St. Francis Brooklyn (Women's)	4+	58-89	.394
Career Totals	21	264-342	.434
(Men's)	15	165-232	.416
(Women's)	6+	99-110	.474



Head Coach John Thurston

Fifth Season



Roll in that season.

Thurston is one of only a few coaches who have been a head coach at the NCAA DI, DII, DIII and NAIA levels in 26 years of coaching men's college basketball from 1971-1997. During the early 1970's, Thurston's Fairleigh Dickinson-Florham teams were known for their high scoring offense, averaging close to one hundred points per game.

After a stint at FDU-Florham, Thurston joined Lou Campanelli's staff at James Madison, where he spent ten years as an assistant and was later promoted to head coach in 1985. During his tenure at JMU, the Dukes went to four NCAA tournaments and made one National Invitational Tournament (NIT) appearance. For his tremendous efforts during the 1986-87 campaign, Thurston was named the Colonial Athletic Association "Coach of the Year."

Thurston's next coaching stop found him at Wingate University, where he spent nine years in North Carolina. He served a dual role as Athletic Director and head basketball coach while helping the school transition from NAIA to nationally competitive DII affiliation.

In the fall of 2003, Thurston returned to collegiate coaching as he served as Ann Hancock's top assistant at the University of North Carolina-Wilmington. Two years later, Thurston moved to West Palm Beach, Florida, where he was hired at Northwood University to develop the school's first women's basketball program.

In their first two seasons of competition, he led the Seahawks to two Florida Sun Conference titles and their first appearance at the NAIA National Tournament in 2008 in Sioux City, Iowa. Thurston was named FSC Coach of the Year in 2008, and had back-to-back Player of the Year selections in current St. Francis Brooklyn assistant coach Kaitlyn Vican (2007) and Kara Otterbine (2008).

Through 45 years in the game, Thurston has gained the respect as an evaluator and developer of talent, ranging from NBA players, six overall NBA draft choices, 15 European professionals, four "Rookies of the Year," three "Players of the Year," two "Defensive Players of the Year," 19 All-Conference selections, three 2,000 point scorers and 16 1,000 point scorers. Twelve of his former players have already been elected to their school's respective Hall of Fame.

Thurston is a 1966 graduate of Archbishop Molloy High School in Queens, New York, where he was an All-City performer in both baseball and basketball under legendary coach Jack Curran. In June of 1966, Thurston was selected by the Los Angeles Dodgers in the 1966 MLB Amateur Draft. He continued his education at Seton Hall University, where he played both baseball and basketball for the Pirates. In 1970, he was awarded the John F. Kennedy Award as the school's most outstanding student-athlete.

Thurston and his wife, Candice, have been married for 45 years and have two daughters, Clancy and Corey. During the offseason, he spends time with his four grandchildren, Jack, Rhone, Luke and Elsa.

is designed to acknowledge the team in each conference sport that, according to their peers, most closely demonstrate good sportsmanship based on the NEC Principles of Sportsmanship and Standards of Conduct.

Academic and overall off the court success has proven to be the foundation of the revival of the Terriers' women's basketball program.

In 2011-12, while coach Thurston served as the associate head coach, the team first appeared on the WBCA Academic Top-25 as they placed tenth with an overall team grade point average of 3.456. The following season, Thurston's first as head coach, the team finished in a tie with DePaul University for second in the nation with a team grade point average of 3.625. The 2013-14 Terriers capped off a successful season with a fourth-place finish with an overall GPA of 3.608.

In addition to being named to the WBCA Academic Top 25 Honor Roll in every season dating back to 2011-12, the Terriers had previously earned four consecutive Northeast Conference Team Institutional Awards thanks in large part to having one of their past student-athletes, Sarah Benedetti, being named one of 20 winners of the 13th annual Division I-AAA Athletics Directors Association (DI-AAA ADA) Scholar-Athlete Team. In 2013-14, Katie Fox, was one of 20 winners of the 12th annual Division I-AAA Athletics Directors Association (DI-AAA ADA) Scholar-Athlete Team while having 11 Terriers named to the NEC's Academic Honor and four being named to the NEC Commissioner Honor



Associate Head Coach Dionne Dodson

Dionne Dodson enters her ninth season with the Terriers and will once again serve as head coach John Thurston's associate head coach. She has held this role since the start of the 2014-15 campaign.

In Dodson's first season as Associate Head Coach, the Terriers put together a season for the ages.

After a magical run to end the year, the Terriers captured the school's first ever championship in the Northeast Conference. The NEC title victory gave the Terriers an automatic bid to the NCAA tournament, which was their first ever time playing in March Madness.

"Coach Dodson has done an outstanding job of coordinating recruiting, budget, academic support and NCAA compliance here at St. Francis and will continue to do so," said Thurston. "She has been extremely loyal to the college and the women's basketball program. Dionne has done it all in her years as an assistant and I believe she is ready to be a head coach."

Since her arrival, five players have been named to the Northeast Conference All-Rookie Team with three All Northeast Conference Team selections, and numerous Terriers have been honored by being chosen to the NEC Academic Honor Roll and Commissioners' Honor Roll. With Dodson on hand, St. Francis Brooklyn garnered their first Capital One All-Academic District 1 First Team selection. As a whole, the Terriers been named to the WBCA Top 25 Academic Honor Roll on multiple occasions, winning the top-25 WBCA Academic National Championship last season.

Dodson spent two seasons at Fordham University where she was involved in all aspects of the program. Her duties included the coordination of the entire recruiting system, assisting with scouting and tape breakdown and on-floor coaching while organizing summer camps. One of her recruits that Dodson brought to the Rose Hill campus ranks seventh all-time on the career scoring list.

Prior to Fordham, Dodson served as the assistant coach and recruiting coordinator at Manhattan College for three years. Of the players she recruited to Riverdale, five student-athletes rank among the top in career scoring, while three are amongst the career leaders in rebounds, and one each for career assists and career blocks. In her time with the Jaspers, Dodson has coached numerous athletes to All-MAAC selections, two of which were named to the First Team, two to the Second Team and two Third Team while having three players named to All-Rookie teams.

Dodson spent a single season at Coastal Carolina University of the Big South Conference. Her responsibilities at Coastal included coordination of the entire recruiting system, assisting with scouting and on-floor coaching.

Dodson received her start in coaching at Saint Francis University in Loretto, Pennsylvania where she served as an assistant coach from 1999- 2002, helping the Red Flash win the 2000 and 2002 Northeast Conference regular season and tournament championships and advancing to the NCAA Tournament. She was responsible for developing and monitoring the strength and conditioning program as well as monitoring the academic



progress of the student-athletes.

Dodson also assisted in recruiting, on-floor coaching of the guards and with scouting as well as organizing community service activities. The players she helped recruited were named a NCAA Post Graduate Scholarship recipient, a two-time Academic All-American, NEC Player of the Year, two time NEC Scholar-Athlete of the Year, NEC Rookie of the Year, NEC Defensive Player of the Year, NEC Tournament MVP and a member of the NEC 25th Anniversary Team.

A 1997 graduate of Muskingum College in New Concord, Ohio, Dodson received a Bachelor's degree in Psychology. She later earned a Master's degree in Sport Management from Slippery Rock University in 2003.



Assistant Coach Kaitlyn Vican



Kaitlyn Vican begins her sixth season on the Terrier sidelines. Vican assists with scouting and player development, and in July 2015, Vican was promoted to second assistant coach.

During the 2014-15 season, Vican's fourth on the Terriers' staff, the women's basketball program reached new heights it had never seen before. The Terriers ran through the Northeast Conference and managed to win the first ever NEC championship in the school's history for either Division-I basketball program.

As a result, the Terriers then made it to the NCAA tournament for the first time in school history, marking the first time the school has participated in March Madness. That spring, the Terriers were defeated by the eventual champion UConn Huskies in the opening round of the final 64, which ended a remarkable run for Vican and the Terriers.

"Coach Vican is a tremendous asset to the women's basketball program," commented head coach John Thurston. "Kaitlyn has been with me as either a player or coach for the past eight years and does the work of three people put together. She understands our players' mentality. Her determination, attention to detail and commitment is second to none."

Throughout her time with the Terriers, Vican has aided in the development of multiple All Northeast Conference Team Selections in Jaymee Veney and Leah Fechko.

Vican is a 2011 graduate of Fordham University, where she majored in Communications and Media Studies. She was a member of the Rams women's basketball team from 2008-2011. After sitting out the 2008-09 season, due to NCAA transfer rules, Kaitlyn averaged 11.1 points per game. She started six of the team's first ten games. She scored in double-figures seven of those ten games. In her first start, she posted a career-high 17 points and pulled down seven rebounds. Unfortunately, Vican suffered what would be a career-ending back injury in the middle of her first season with the Rams.

Before attending Fordham, Vican played two seasons at Northwood University in West Palm Beach, Florida. She helped lead the team to back-to-back conference championships from 2006-to-2008. As a freshman, she was the FSC Player and Rookie of the Year, becoming the first player in league history in any sport to claim both honors in the same season. Vican was named to the NAIA Honorable Mention squad in 2006-07 after leading the circuit in scoring (14.8 ppg) and was fifth in rebounding (6.8) while being named the team's Most Outstanding Player.

Vican appeared in Sports Illustrated's "Faces in the Crowd" section for her achievements during the team's inaugural campaign. As a sophomore, Vican led the team in scoring (14.3 ppg) and rebounding (8.3) before a season ending injury in January. She was named to the 2nd team All-FSC squad.



Assistant Coach Ranait Griff



Ranait Griff enters her second season as an assistant coach after entering John Thurston's women's basketball coaching staff in 2015-16. Griff also oversees the film exchange program between all non-conference and conference opponents. Griff currently coordinates the travel arrangements for Terriers' women's basketball and also assists in player development.

Upon her arrival Thurston said, "Ranait Griff is a very intelligent and enthusiastic young coach whom we are thrilled to have as part of our staff. She has great experience coaching in one of the top travel team programs in New Jersey. She gained valuable experience working the past two years for top level coaches Pat Coyle and Phyllis Mangina on the staff at Saint Peter's. We expect her to have a great impact working with our young players."

Griff joins St. Francis Brooklyn after two seasons as an assistant at Saint Peter's University under coach Pat Coyle. Griff is a 2013 graduate of Fordham University in the Bronx where she played with current assistant coach Kaitlyn Vican from 2009-10 where Thurston was as an assistant coach. As one of four seniors in her final season with Fordham, the Rams went to the WNIT after the team recorded the most wins in program history in the last 30 years.

Like fellow Assistant Coach Kaitlyn Vican, Griff is a graduate of Fordham University. While at Fordham she earned a degree in business administration with a concentration in marketing.

The Summit, New Jersey native feels right at home with seven members of the 2015-16 Terriers squad residing in the Garden State.

"I came to St. Francis Brooklyn for the opportunity to coach with John," Coach Griff said upon accepting an Assistant Coaching position at St. Francis-Brooklyn. "He was the reason I went to Fordham. I'm excited to join his staff here at St. Francis Brooklyn. With seven new freshmen joining the team, it is exciting to get the chance to start all over again and teach."

In 2016, Coach Griff was awarded the prestigious honor of being inducted into the Rutgers Prep Athletic Hall of Fame where she attended high school. At Rutgers Prep, Griff was a standout athlete who played basketball, soccer and lacrosse.

ST. FRANCIS COLLEGE

BROOKLYN TOUGH

2016-2017





#35 Olivia Levey

Senior, Forward, 6-0

Seymour, CT/Lauralton

Thurston's Tidbits: "Liv had a solid year last year and now she is in the best shape of her career. There is a very noticeable increase in her on-court quickness and energy level. Always a force on the low block, Liv is our best shooter 15' and in. Always an intelligent player, we are seeing a more versatile defender and rebounder in preseason drills."

2015-16 (Junior): Named to the Northeast Conference Winter Academic Honor Roll...Averaged 8.0 points and 4.5 rebounds per game, which was second-best on the team. Poured career highs in points and rebounds (23 & 12) at CCSU on January 30...Scored double digits in seven games...

2014-15 (Sophomore): Missed entire season due to injury.

2013-14 (Freshman): Appeared in 19 games for the Terriers...Logged 4.2 minutes per contest...Tallied 1.4 points per game with her best game coming against the LIU Brooklyn Blackbirds at Barclays Center when she went 4-of-4 from the field for a career-best eight points...

Prior to St. Francis Brooklyn: Levey, a 5-11 forward, spent her freshman year playing for Christian Heritage where she was a 1,000 point scorer. Levey was named to the 2009-10 Boston Globe All-Scholastics Team as well as the Connecticut Post All-Star Second Team, and was honored with All-New England Honorable Mention selection.

In her second season, her first at Lauralton Hall, Levey garnered two Most Valuable Player awards, receiving the awards at the Mercy Classic and the 2011 Northeast College Showcase. In addition, Levey was selected to the Mercy Classic All-Tournament Team.

With her stock rising, Levey was nominated for the 2012 Gatorade Player of the Year in addition to being named a two-time All-SWC Conference selection, and a two-time SWC All-Tournament Team selection.

Levey as she was selected to the New Haven Register All-Area team, as well as being honored as a Connecticut Post All Star/Super 15 from 2010-to-2012. To conclude the year, Levey was selected to the New Haven Tap-Off Club All-Area Team and was an All-State First Team Class LL choice.

As a member of the CBC Exodus, Levey averaged 16 points per game, 10.0 rebounds per contest and two blocks a game to help lead her team to a 23-2 record, which was ranked third in the entire state of Connecticut. Levey was named to the National Honor Society in high school.

O. Levey Career Stats

Season	GP-GS	min/avg	Total		3-PT		F-Throws		Rebounds				Scoring				
			fg- fga	pct	fg- fga	pct	ft- fta	pct	off	def	tot	avg	pts	avg			
2013-14	19-0	80/4.2	13-23	.565	0-0	.000	1-3	.333	5	9	14	0.7	12	1	13	2	3
2015-16	26-19	519/20.0	74-181	.409	0-0	.000	60-72	.8333	56	61	117	4.5	58	20	55	7	15
TOTAL	45-19	599/13.3	87-204	.426	0-0	.000	61-75	.813	61	70	131	2.9	70	21	68	9	18

Career Highs Prior to 2016-17

Points: 23, at Central Connecticut- 01/30/16

Rebounds: 12, at Central Connecticut- 01/30/16

Assists: 3, SHU- 01/16/16; at Monmouth- 12/29/15

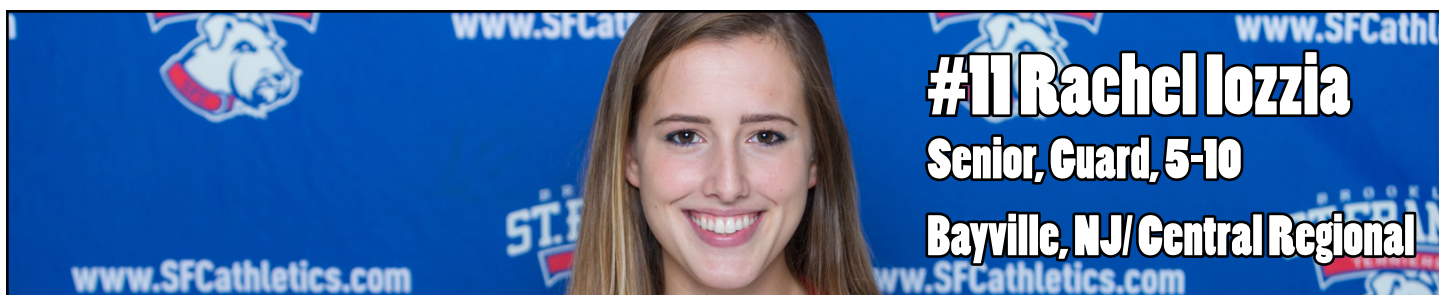
Steals: 3, at Mount St. Mary's- 01/04/16

Blocks: 3 [t-1st], at Lafayette- 12/04/15

FG made: 7, at Central Connecticut- 01/30/16

FT made: 9 [t-4th], at Central Connecticut- 01/30/16

FT attempts: 9 [t-9th], at Central Connecticut- 01/30/16



Thurston's Tidbits: "Rachel has seen her playing time increase each year of her career. She is a very steady player who has a thorough knowledge of our system. She plays multiple positions, which in itself makes her very valuable. Rachel is an excellent passer and she can hurt defenses with her long range shooting ability."

2015-16 (Junior): Named to the Northeast Conference Winter Commissioner's Honor Roll...Named to the Northeast Conference Winter Academic Honor Roll...Appeared in 28 games (10 starts) and averaged a career-high 17.7 minutes per game during her junior campaign...Averaged 4.0 points per game...Shot 33.6% (41-of-122) from the field during the season...Scored a career-high 12 points on 5-of-10 (50.0%) shooting from the field against Manhattan College on December 18, 2015 in 22 minutes of play off the bench.

2014-15 (Sophomore): Named to the Northeast Conference Winter Commissioner's Academic Honor Roll... Named to the Northeast Conference Academic Honor Roll...Appeared in 17 games for St. Francis Brooklyn averaging six minutes per contest.

Prior to St. Francis Brooklyn: Iozzia enjoyed a stellar four-year career at Central Regional. While serving as team captain all four years, she averaged 11.4 points per game, while pulling down 1.6 rebounds per contest, and dishing nearly two assists per game. She became just the fifth female to reach the 1,000 career point plateau for the Golden Eagles, and the first one to do so in twelve years as she led Central to a 49-18 victory over Lakewood. For her career, Iozzia netted 1,103 career points, the third highest total in Central Regional school history.

Iozzia recorded the most three-pointers in a season during her freshman campaign as the Bayville native connected on 47 three-pointers. In the first round of the SJ III, Iozzia scored eight points and handed out a school single-game record 15 assists, as the Golden Eagles defeated the 14th seeded Camden Panthers, 56-27. She set the single-season assist record with 143 and left Central Regional as the all-time school leader in assists with 345. Iozzia is third in school history with 224 career steals.

Among her accolades, Iozzia was named to the 2012-13 All-Ocean County Second Team. She garnered Most Valuable Player in each of her four years in high school, while also being named Scholar Athlete. She was the recipient of the Xerox Award during her junior season.

R. Iozzia Career Stats

Season	GP-GS	min/avg	Total		3-PT		F-Throws		Rebounds										Scoring	
			fg-fga	pct	fg-fga	pct	ft-fga	pct	off	def	tot	avg	pf	fo	ast	to	blk	stl	pts	avg
2014-15	17-0	102/6.0	2-14	.143	1-10	.100	0-0	.000	0	9	9	0.5	4	0	6	9	0	1	5	0.3
2015-16	28-10	495/17.7	41-122	.336	21-70	.300	8-10	.800	6	38	44	1.6	18	0	35	45	0	19	111	4.0
TOTAL	45-10	597/13.3	43-136	.316	22-80	.275	8-10	.800	6	47	53	1.2	22	0	41	55	0	20	116	2.6

Career Highs Prior to 2016-17

Points: 12, at Manhattan- 12/18/15

Rebounds: 4 vs. Norfolk State- 12/30/15

Assists: 6 [1-6th], at LIU Brooklyn- 01/23/16

Steals: 4 [1-8th], at LIU Brooklyn- 01/23/16

FG made: 5, at Manhattan- 12/18/15

FG attempts: 11, at Monmouth- 12/29/15

3FG made: 2, 5 times

3FG attempts: 7, at Manhattan- 12/18/15; vs Norfolk State- 12/30/15

FT made: 2, SFU - 01/11/16; Wagner College- 02/01/16; Central Connecticut- 02/29/16

FT attempts: 2, 5 times



Thurston's Tidbits: "Alex is our most experienced and knowledgeable player. She also plays multiple positions and can hold her own defensively. Her long range shooting as a stretch four has been her most potent offensive weapon. Alex is one of those players who can keep her team together on and off the floor."

2015-16 (Sophomore): Named to the Northeast Conference Winter Academic Honor Roll... Appeared in 19 games (14 starts) and averaged a career-high 29.6 minutes per-game, which was also good for the second most minutes played per-game behind Leah Fechko (38.7)... Averaged a career-best 8.3 points, 3.2 rebounds, and 2.5 assists per game... Shot 30.4% (28-of-92) from behind the arc during the season... Scored a career-high 18 points on 6-of-12 (50.0%) shooting from the field on February 8 against Fairleigh Dickinson University... Scored in double figures five times during the season.

2014-15 (Freshman): Named to the 2014-15 Northeast Conference Winter Academic Honor Roll... Hit the game-winning bucket versus Stony Brook in the Terriers first home win of the season... Averaged 16.6 minutes per game in 32 contests played, notching three starts... Scored a season-high 12 points against Sacred Heart in the NEC Quarterfinals.

Prior to St. Francis Brooklyn: Delaney has represented her country at the National Championships for six seasons. She was a member of the U18 team that won the championship in 2012, a second place finish in 2014, and a third-place showing in 2013. In the most recent National Championships, as a U-20 member, Delaney averaged 15.7 points per game while dishing out 5.3 assists. She also pulled down 6.3 rebounds per contest and shot 94.1 percent from the free-throw line.

Among her accolades, Delaney was named Player of the Tournament at the Australian Schools Tournament in 2013, NSW Youth League All Star 5 Team and Sydney Comets Warath League Best Defensive Player in 2013. She was awarded the prestigious Blue Award for her achievements in school sports and was named the Senior Basketballer of the Year for her last three years in high school. Academically, Alex received the High Achievers Award from Monte Sant' Angelo Catholic College for her achievements in the Higher School Certificate (HSC), where she achieved 99.5 out of a possible 99.9 ATAR score.

A. Delaney Career Stats

Season	GP-GS	min/avg	Total		3-PT		F-Throws		Rebounds										Scoring	
			fg-fga	pct	fg-fga	pct	ft-fta	pct	off	def	tot	avg	pf	fo	ast	to	blk	stl	pts	avg
2014-15	32-3	530/16.0	40-93	.430	22-60	.367	19-29	.655	6	41	47	1.5	45	0	26	45	4	13	121	3.8
2015-16	19-14	562/29.6	53-159	.333	28-92	.304	24-40	.600	5	56	61	3.2	44	0	48	47	2	11	158	8.3
TOTAL	51-17	1092/21.4	93-252	.369	50-152	.329	43-69	.623	11	97	108	2.1	90	0	74	93	6	24	279	5.5

Career Highs Prior to 2016-17

Points: 18, Fairleigh Dickinson- 02/08/16

Rebounds: 7, Fairleigh Dickinson- 02/08/16

Assists: 7 [1-4th], at Robert Morris- 02/22/16

Steals: 3, at LIU Brooklyn- 03/02/16

Blocks: 1 [1-8th], 6 times

FG made: 7 Central Connecticut- 02/29/16

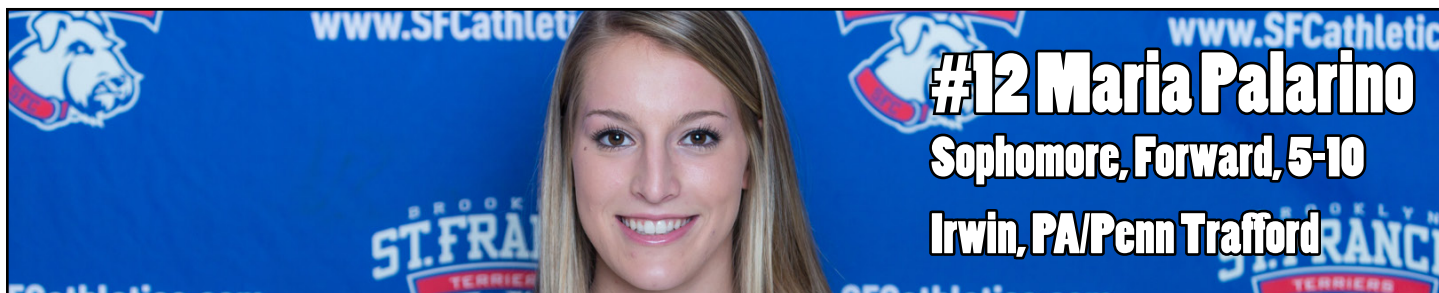
FG attempts: 16, Central Connecticut- 02/08/16

3FG made: 4 [1-4th], Fairleigh Dickinson- 02/08/16

3FG attempts: 8, Central Connecticut- 02/29/16

FT made: 5, at Robert Morris- 02/20/16

FT attempts: 8, at Robert Morris- 02/20/16



Thurston's Tidbits: "Maria is a workhorse for us. She is a very solid all around player who plays at high intensity at all times. Strong and aggressive, she developed a more well-rounded offensive game last year. Always a good defensive player, we will look for her to pick up some of the rebounding lost from Leah Fechko's graduation."

2015-16 (Freshman): Named to NEC All-Rookie First Team...Named to the Northeast Conference Winter Commissioner's Honor Roll...Named to the Northeast Conference Winter Academic Honor Roll...Second leading team scorer with 8.6 points per game. Career-high 18 points at Robert Morris on February 20... Started 23 of 29 season appearances...Shot a team-best 50.5% from the floor...Was team's third leading rebounder grabbing 4.1 boards per contest.

Prior to St. Francis Brooklyn: The 5-10 Pennsylvania native joins the Terriers after averaging 17.3 points per game in her senior season at Penn Trafford High School. Max Preps ranked Palarino 18th overall in the state of Pennsylvania. She finished her career at Penn Trafford with 1,287 points and was a 49% overall shooter for her team. During her senior year, Palarino shot 52% from the field overall and 62% from inside the three-point arc.

Palarino was selected as the Penn-Trafford Girls Basketball Player of the Year. She led her team in points, free throws, blocked shots and defensive rebounds. She scored her 1,000th point against the Obama Academy of International Studies on December 29, 2014. Against Blackhawk on December 16, 2014, Palarino led her team with 30 points and 14 boards. She shined as well against Greater Latrobe recording a near triple-double with 29 points, 11 steals and 8 rebounds.

M. Palarino Career Stats

Season	GP-GS	min/avg	Total		3-PT		F-Throws		Rebounds				Scoring					
			fg- fga	pct	fg- fga	pct	ft- fta	pct	off	def	tot	avg	pf	fo	ast	to	blk	stl
2015-16	29-24	853/29.4	95-188	.505	16-45	.356	44-76	.579	41	77	118	4.1	68	3	56	59	8	21
TOTAL	29-24	853/29.4	95-188	.505	16-45	.356	44-76	.579	41	77	118	4.1	68	3	56	59	8	21

Career Highs Prior to 2016-17

Points: 18, at Robert Morris- 02/20/16

Rebounds: 9, at Robert Morris- 02/20/16

Assists: 5, Fairleigh Dickinson- 02/08/16

Steals: 4 [1-8th], LOYOLA- 02/22/15

Blocks: 2 [1-4th], at LIU Brooklyn- 01/23/16

FG made: 7, at Monmouth- 12/29/15; vs Norfolk State- 12/30/15

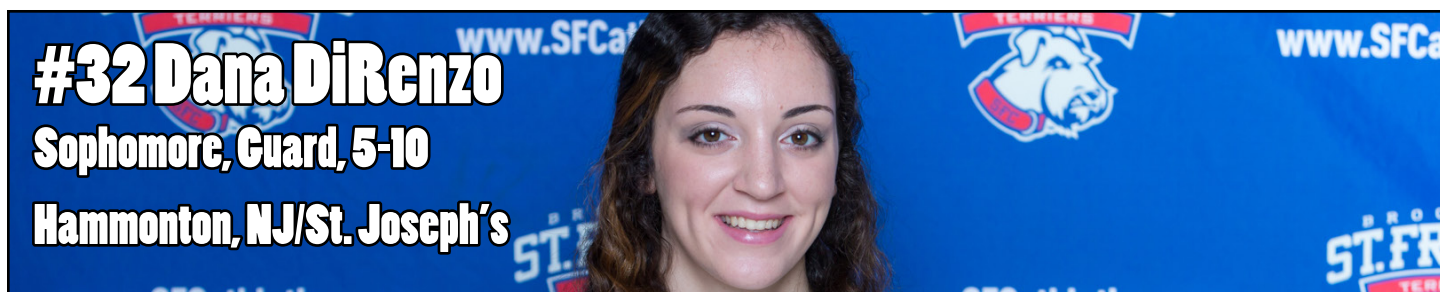
FG attempts: 13, vs Norfolk State- 12/30/15

3FG made: 3 [1-10th], at Georgia Tech- 11/15/15

3FG attempts: 5, vs Norfolk State- 12/30/15

FT made: 8 [1-8th], Wagner College- 02/02/16

FT attempts: 11 [4th], Wagner College- 02/01/16



Thurston's Tidbits: "Dana is our best rebounder at both ends of the floor. As with most very conscientious kids, the more confidence she gains the better she plays. Dana missed a lot of the season last year after getting off to a good start. We are looking forward to her continued progress."

2015-16 (Freshman): Named to the Northeast Conference Winter Academic Honor Roll... Appeared in 16 games (13 starts) and averaged 21.8 minutes played per game... Averaged 4.3 points and 3.6 rebounds per game... Shot 79.2% (19-of-24) from the free-throw line... Netted a career high 10 points against Georgetown on November 28, 2015... Pulled down a career best 9 rebounds at Monmouth on December 29, 2015.

Prior to St. Francis Brooklyn: DiRenzo averaged 22.3 points and 15 rebounds per game in her final season at St. Joe's. DiRenzo set school records in career points (1,580) and rebounds (1,316.) She dished out 245 assists, swiped 342 steals and swatted down 82 blocks. She was also a member of her school's National Honor Society.

She recorded six triple doubles in four seasons in high school and will look to bring her aggressiveness on the boards to Brooklyn Heights in 2015. DiRenzo notched 21 rebounds in a contest against Atlantic City and subsequently, set the new rebounding record at her school in that game.

DiRenzo's accolades at St. Joseph's included: First Team CAL, AC Press First Team All-Star, All-South Jersey Second Team, Hammonton Gazette Winter Sport Player of the Year, Carino Basketball Club First Team All-Parochial, Dave Lewis Iron Woman Award Winner, NJSIAA Women in Sports Award Winner & ESPN Athlete of the Week.

D. DiRenzo Career Stats

			Total		3-PT		F-Throws		Rebounds										Scoring	
Season	GP-GS	min/avg	fg-fga	pct	fg-fga	pct	ft-fta	pct	off	def	tot	avg	pf	fo	ast	to	blk	stl	pts	avg
2015-16	16-13	348/21.8	20-70	.286	9-28	.321	19-24	.792	26	32	58	3.6	29	0	7	18	2	12	68	4.3
TOTAL	16-13	348/21.8	20-70	.286	9-28	.321	19-24	.792	26	32	58	3.6	29	0	55	18	2	12	68	4.3

Career Highs Prior to 2016-17

Points: 10, vs Georgetown- 11/28/15

Rebounds: 9, at Monmouth- 12/29/15

Assists: 2, at Monmouth- 12/29/15

Steals: 3, at Lafayette- 12/04/15; LOYOLA- 12/22/15

Blocks: 1 [1-8th], at Saint Peter's- 11/22/15; LOYOLA- 12/22/15

FG made: 3, vs Georgetown- 11/28/15; LOYOLA- 12/22/15; at Monmouth- 12/29/15

FG attempts: 9, at Saint Peter's- 11/22/15

3FG made: 2, at Fairleigh Dickinson- 1/2/16; vs Georgetown- 11/28/15

3FG attempts: 3, 7 times

FT made: 3, 7 times

FT made: 6, at Vermont- 11/27/15

FT attempts: 6, at Vermont- 11/27/15



#24 Kat Phipps
Sophomore, Guard, 5-6
Spring Lake, NJ/ St. Rose

Thurston's Tidbits: "Kat is an incredibly hard worker. She has worked very hard in the off-season to adjust her game to the college level. She is shooting with more confidence than at this point last year, but she is also making plays and developing into an all-around threat."

2015-16 (Freshman): Named to the Northeast Conference Winter Academic Honor Roll... Appeared in 28 games (15 starts) and averaged 21.2 minutes played per game... Averaged 4.1 points per game and shot 86.8% (33-of-38) from the free-throw line... Recorded her first-career basket, a three-pointer against Georgia Tech in the Terriers season-opener on November 15, 2015.

Prior to St. Francis Brooklyn: Phipps was named to NJ.com's All-Senior Second Team. Phipps scored 1,610 points in four seasons at St. Rose, including 713 in her senior campaign. She sank 153 three-pointers last season to bring her high school career total to 237 made threes. Phipps averaged 22.3 points per game in the 2014-15 campaign with 23 games of 20 or more points. She eclipsed the 30 point mark four times and scored 42 points in a contest with St. Mary's NY. Phipps opened the season with nine straight games scoring 21 or more points. She set the state record for three-pointers made in a season, shattering the previous mark of 111.

Phipps drained at least one three-pointer in all but one of her 32 games played. She made nine threes on two separate occasions and averaged 4.8 made threes per contest. She also averaged 5.4 rebounds and 3.4 assists per game to go along with her scoring average of 22.3 points per game. She recorded three double-doubles in her senior year. Phipps converted five or more shots from long distance on 19 occasions. Phipps was named MVP of the Soaring Eagle Holiday Festival.

Phipps was named First Team All Division from 2013-15, 2015 First Team All Shore, 2015 Second Team All-State, 2015 Honorable Mention All-Metro Team, 2015 Shore Sports Zone Player of the Year Finalist, and the 2015 St. Rose Athlete of the Year (James T. Murphy Award).

K. Phipps Career Stats

Season	GP-GS	min/avg	Total		3-PT		F-Throws		Rebounds										Scoring	
			fg-fga	pct	fg-fga	pct	ft-fta	pct	off	def	tot	avg	pf	fo	ast	to	blk	stl	pts	avg
2015-16	28-15	594/21.2	32-121	.565	19-73	.000	33-38	.868	24	34	58	2.1	54	0	40	40	2	14	116	4.1
TOTAL	28-15	594/21.2	32-121	.565	19-73	.000	33-38	.868	24	34	58	2.1	54	0	40	40	2	14	116	4.1

Career Highs Prior to 2016-17

Points: 10, at Central Connecticut- 01/30/16; vs Norfolk State- 12/30/15

Rebounds: 6, at Sacred Heart- 02/06/16

Assists: 6 [1-6th], LIU Brooklyn- 02/13/16

Steals: 2, 4 times

Blocks: 1 [1-8th], at LIU Brooklyn - 01/23/16; at Fairleigh Dickinson- 01/02/16

FG made: 3, at Central Conneticut- 10/23/16; vs. Northfolk State-12/20/15; at St. Francis U- 2/22/16

FG attempts: 6, 4 times

3FG made: 3 [1-10th], at Central Conneticut- 01/26/16; vs Northfolk State- 12/30/15

3FG attempts: 6, at WAGNER SEAHAWKS- 01/26/16; at Central Conneticut- 01/20/16

FT made: 6, at Robert Morris- 01/20/16

FT attempts: 6, at Robert Morris- 02/20/16



Thurston's Tidbits: "Tori's effectiveness has increased as her strength and conditioning have improved. We count on Tori for shot blocking and low post scoring. Tori has a very good touch out to 15' and we plan on taking advantage of that more this year."

2015-16 (Freshman): Named to the Northeast Conference Winter Academic Honor Roll...Appeared in 27 games and averaged 8.4 minutes per game...Averaged 2.2 points per game on 33.9% 19-of-56 shooting from the field...Shot 87.5% (21-of-24) from the free-throw line...Scored a career-high nine points on 2-of-4 (50.0%) shooting from the field and shot a perfect 5-of-5 from the free-throw line against Fairleigh Dickinson University on February 8...Recorded a career-high two blocks on February 8 against Fairleigh Dickinson.

Prior to St. Francis Brooklyn: Wagner is a 6-2 center who will fill the post-player void that Jaymee Veney leaves behind. In an interview with the Patriot Press, the future Terrier said she chose St. Francis Brooklyn because it is a small school with amazing coaches. Wagner is Freehold's all-time leader in blocked shots. In her senior year she averaged 12.4 points, 8.4 rebounds and 2.4 blocks per game. She was recently named as a National Girls and Women in Sports recipient. Along with Ehling and Phipps, Wagner is also a 1,000 Point Scorer and is one of just seven girls to achieve that milestone at Freehold.

Wagner has found success at the AAU level as well. Here are some of her notable AAU achievements: 2011 USJN National Showcase Champions, 2011 Vivian Stringer Shootout Champions, 2012 U16 AAU Super Regional Champions, 2012 All Gym Ratz Team, 2013 USJN Big Apple Challenge Pool All Star Team. Max-Preps ranked her 58th overall in the state of New Jersey.

T. Wagner Career Stats

Season	GP-GS	min/avg	Total		3-PT		F-Throws		Rebounds											Scoring	
			fg-fga	pct	fg-fga	pct	ft-fta	pct	off	def	tot	avg	pf	fo	ast	to	blk	stl	pts	avg	
2015-16	27-0	227/8.4	19-56	.339	0-1	.000	21-24	.875	12	17	29	1.1	40	0	12	23	10	1	59	2.2	
TOTAL	27-0	227/8.4	19-56	.339	0-1	.000	21-24	.875	12	17	29	1.1	40	0	12	23	10	1	59	2.2	

Career Highs Prior to 2016-17

Points: 9, Fairleigh Dickinson - 02/08/16

Rebounds: 5, vs Northfolk State - 12/20/15

Assists: 2, Fairleigh Dickinson 02/08/16; LOYOLA- 12/22/15; vs Northfolk State- 12/30/15

Steals: 1, at Georgia Tech- 11/15/15

Blocks: 2 [1-4th], Fairleigh Dickinson- 02/08/16

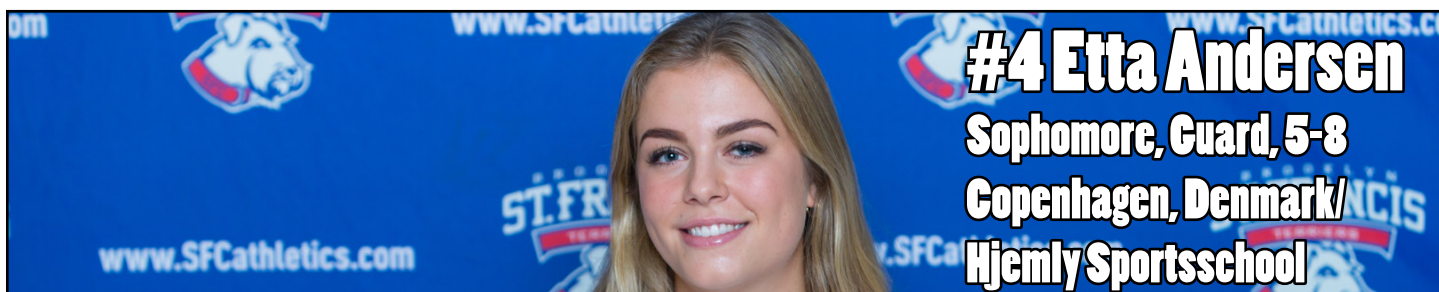
FG made: 2, 4 times

FG attempts: 5, ARMY- 12/08/15

3FG attempts: 1, at WAGNER SEAHAWKS- 01/26/16

FT made: 5, Fairleigh Dickinson- 02/08/16

FT attempts: 6, at Fairleigh Dickinson- 01/02/16



Thurston's Tidbits: "Etta has all the physical tools for a point guard; good size, speed and quickness and good strength. From a technical point of view she has good handles, range on her shot and good court vision. Having missed two thirds of the season last year with injuries she just needs repetitions to improve her decision making capabilities."

2015-16 (Freshman): Named to the Northeast Conference Winter Commissioner's Honor Roll...Named to the Northeast Conference Winter Academic Honor Roll... Appeared in nine games (one start) in her freshman campaign...Averaged 11.8 minutes per game...Made her first career start on November 22, 2015 on the road against Saint Peter's University...Averaged 2.6 points, 0.6 rebounds, and 0.9 assists per game.

Prior to St. Francis Brooklyn: Andersen was the lone international recruit for Thurston and his staff last year. Andersen will join Alex Delaney as the other foreign born player on the 2015-16 Terriers. Andersen is a 5-9 guard who played the 2014-15 season for Stevnsgade in her home country of Denmark. For Stevnsgade, she scored a career-best 10 points on four separate occasions.

Andersen competed in the U18 European Championships- Division B and averaged 7.1 points per game. She also competed in the U16 European Champions- Division B and averaged 5.4 points per game. While playing in the U18, she scored 14 points against Switzerland. In that same game she notched six steals, and sunk four three-pointers.

Andersen was nominated for the "Talent of the Year" award after playing with the Stevnsgade Superwomen. She was the youngest person on the squad. The team won the cup in her final season with the Superwomen.

E. Andersen Career Stats

Season	GP-GS	min/avg	Total		3-PT		F-Throws		Rebounds				Scoring					
			fg-fga	pct	fg-fga	pct	ft-fta	pct	off	def	tot	avg	pf	fo	ast	to	blk	stl
2015-16	9-1	106/11.8	8-26	.286	5-12	.417	2-5	.400	1	4	5	0.6	9	0	8	19	1	0
TOTAL	9-1	106/11.8	8-26	.286	5-12	.417	2-5	.400	1	4	5	0.6	9	0	8	19	1	0

Career Highs Prior to 2016-17

Points: 5, at Vermont- 11/27/15; at Monmouth- 12/29/15

Rebounds: 2, at Vermont-11/27/15

Assists: 3, at Georgia Tech-11/15/15; at Vermont-11/27/15

Blocks: 1 [1-5th], at Vermont- 11/27/15

FG made: 2, at Vermont-11/27/15; at Monmouth-12/29/15

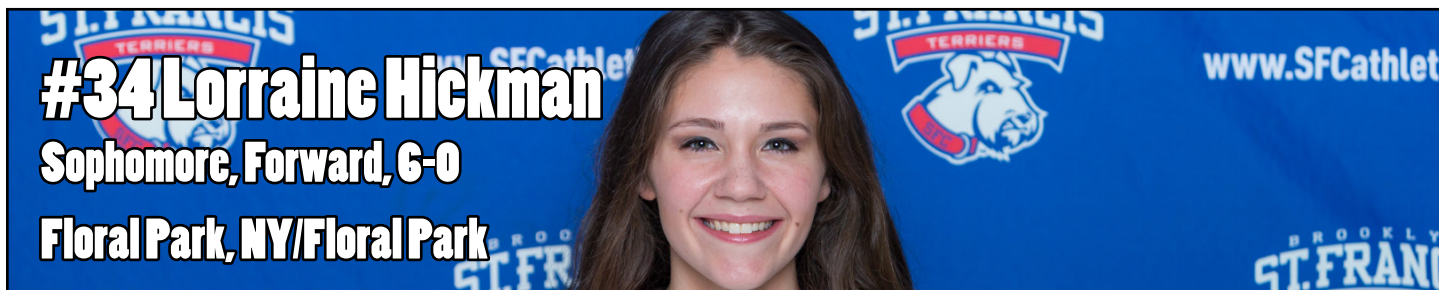
FG attempts: 10, at Vermont-11/27/15

3FG made: 1, 5 times

3FG attempts: 3, at Vermont-11/27/15; at Monmouth-12/29/15

FT made: 2, at Lafayette-12/04/15

FT attempts: 2, Rider-11/18/15; at Lafayette-12/04/15



Thurston's Tidbits: "We are looking forward to Lorraine's return to action full time later in the fall. It will take her time to return to top form and condition but we are hoping she can provide additional rebounding and inside scoring by the second half of the season."

2015-16 (Freshman): Appeared in six games and averaged 5.0 minutes per game...Averaged 3.2 points per game on 87.5% (7-of-8) shooting from the field...Recorded her first collegiate points on November 28, 2015 against Georgetown University...Scored a career-high eight points on a perfect 2-of-2 shooting from the field and 4-of-4 from the free-throw line in eight minutes of play against the Hoyas.

Prior to St. Francis Brooklyn: Hickman, 6-1, becomes the first New Yorker to join Thurston's squad since Jasmin Robinson '13. Hickman is a three-time All-County Athlete who finished her career by scoring nearly 1,000 points and pulling down over 500 boards. She was named to the All-State Girls 5th Team by the New York State Sports Writers Association.

Against Nassau Conference A-III rival Bethpage, Hickman scored 25 points to go along with 12 rebounds, 16 of her 25 came in the first quarter. In the 2013-14 season, Hickman recorded 11 games of 10 or more rebounds and nine double-doubles. In an interview, Floral Park Head Coach Mike Spina spoke highly of his varsity athlete, calling her one of his hardest workers he has coached in 30 years on the sidelines.

L. Hickman Career Stats

Season	GP-GS	min/avg	Total		3-PT		F-Throws		Rebounds				Scoring								
			fg-fga	pct	fg-fga	pct	ft-fta	pct	off	def	tot	avg	pf	fo	ast	to	blk	stl	pts	avg	
2015-16	7-0	30	14.3	7-9	.778	0-0	.000	5-7	.714	0	4	4	0.6	1	0	1	5	0	1	19	2.7
TOTAL	7-0	30	14.3	7-9	.778	0-0	.000	5-7	.714	0	4	4	0.6	1	0	1	5	0	1	19	2.7

Career Highs Prior to 2016-17

Points: 8, vs Georgetown-11/28/15

Rebounds: 2, vs Georgetown-11/28/15

Assists: 1, vs Georgetown-11/28/15

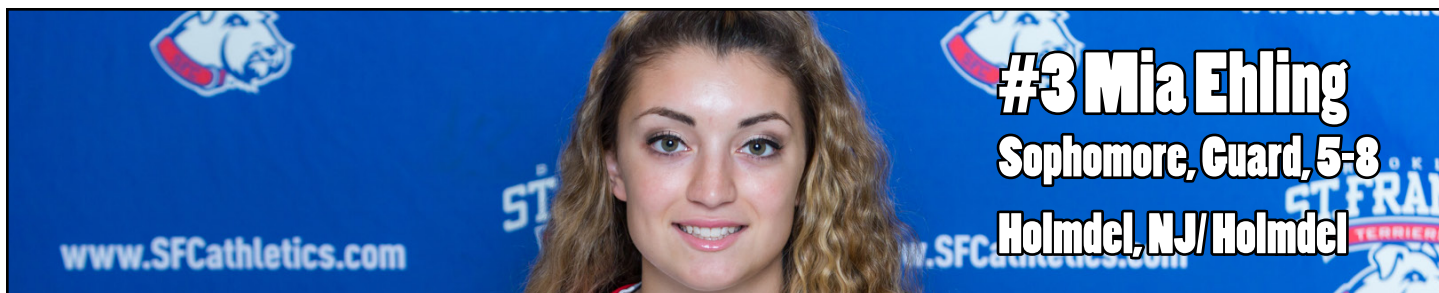
Steals: 1, ARMY-12/08/15

FG made: 3, at Lafayette-12/04/15

FG attempts: 3, at Lafayette 12/04/15; ARMY-12/08/15

FT made: 4, vs Georgetown-11/28/15

FT attempts: 4, vs Georgetown-11/28/15



Thurston's Tidbits: "Mia has shown in workouts that she has the potential to be a capable scorer at both guard spots. She has good range, quick release, a nice pull-up game and she is not afraid to attack the basket. She just needs game experience."

2015-16 (Freshman): Missed entire season due to injury.

Prior to St. Francis Brooklyn: In her senior season with the Holmdel Hornets, the 5-8 Ehling averaged 13.6 points per game and scored in double-digits in 16 out of 22 contests. She scored 17 or more points in eight games including two games of 22 points and 23 points against Life Center and Manalapan, respectively.

Ehling was a 1,000 Point Scorer at Holmdel. The milestone making basket came in a loss to St. John Vianney on a jump shot in the second quarter. Just like future teammate Leah Fechko, Ehling has ball theft on her mind. She recorded 29 steals in 22 games and recorded three or more steals six times, including one game with five steals against Raritan. In the Quarterfinal Round of the NJSIAA Tournament against Somerville, she scored 12 points en route to a Holmdel victory.

Ehling compiled an impressive resume at Holmdel. Her accolades include: First Team All "A" Division, Arthur Harmon MVP All-Star Game Award 2015, Holiday Tournament 2014 MVP, and Class A Central Second Team. Ehling's Hornets made it to the State Championship Game in 2014. She also competed in the Shore Basketball Coaches Association Senior All-Star Game.

M. Ehling Career Stats

Season	GP-GS min/avg	Total fg-fga pct	3-PT fg-fga pct	F-Throws ft-fta pct	Rebounds off def tot avg	pf fo ast to blk stl	Scoring pts avg

Career Highs Prior to 2016-17



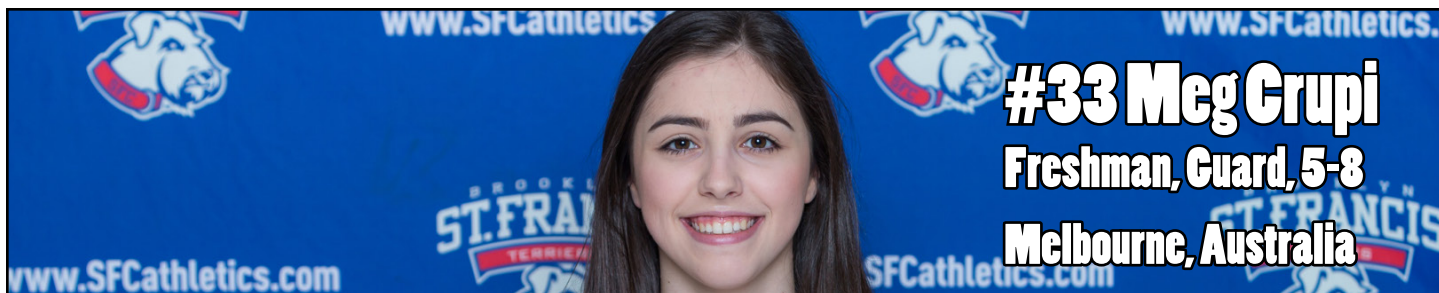
Thurston's Tidbits: "We are very high on Jade at both the two and three positions. She has a scorer's mentality with excellent range on her shot. Jade also has shown the ability to attack the basket under control and make plays in traffic. With experience at the American game she is going to be a good one."

Prior to St. Francis Brooklyn: Johnson hails from Grange, Adelaide/SA, Australia...The 5-9 guard played at Immanuel College located in SA, Australia...The Australian native was named a reserve on the U17 Australian Women's Basketball Team (2014) and the U17 World Championships in Czech Republic...Johnson was also a U18 South Australian Metro Women's Basketball Team Representative (2013-14)...Johnson was awarded the South Australian Sports Institute Talented Athlete Scholarship Award (2013-14)...She was a member of the National Intensive Training Program (NITP) and SA Elite Squad...In the 2013 U18 Australian National Junior Championships Johnson averaged 20.8 points per game...The year prior she led the 2012 U16 Australian National Junior Championships tournament in scoring with 21.3 points per game...While playing for the FEBC Senior Women in the Central Australian Basketball League, Johnson was named MVP in her rookie year...The Australian was the leading scorer averaging 16.1 points per game that season... Johnson will enter St. Francis College without declaring a major...She does have interest in studying business, which can lead to a career that requires her to travel for work.

J. Johnson Career Stats

Season	GP-GS min/avg	Total fg- fga pct	3-PT fg- fga pct	F-Throws ft- fta pct	Rebounds off def tot avg	pf fo ast to blk stl	Scoring pts avg

Career Highs Prior to 2016-17



Thurston's Tidbits: "Meg is a ball-control, steady; keep you in your offense type guard. That comes from playing with older, high level players back home in Australia. A solid defender, she can keep you honest with her perimeter shooting. Not flashy, she does not make many mistakes with the ball."

Prior to St. Francis Brooklyn: Crupi, a 5-8 guard from Melbourne, Australia joins the Terriers after a career at Box Hill Senior Secondary College located in her hometown of Victoria. While at Box Hill Senior Secondary College, Crupi was a four-year starter on the varsity team and was captain during her junior and senior years.

Crupi will join fellow signee Jade Johnson as the two newest Terriers to hail from Australia. They duo will join sophomore forward Alex Delaney, who is from Sydney, Australia. Recent graduates Eilidh Simpson and Jessica Kaufman both hail from Melbourne, Australia.

During the 2015 season Crupi enjoyed success during her senior campaign. Her high school team was ranked first overall in Division I throughout the state of Victoria. Crupi was also a member of the McDonald's Cup Division I High School State Championship team. In the championship game, the guard scored 16 points, recorded seven rebounds, three assists, and one block in 33 minutes of play.

The 5-8 guard is also a member of the Victorian State Team, as well as the Diamond Valley Eagles – her club team.

Crupi averaged 8.0 points, 2.6 rebounds and 1.8 assists per game in 2016, playing for the Diamond Valley Eagles. She put together a notable performance against the Melbourne Tigers as she scored 16 points and recorded two rebounds, two assists, and two steals in 19 minutes.

M. Crupi Career Stats

Season	GP-GS min/avg	Total fg-fga pct	3-PT fg-fga pct	F-Throws ft-fta pct	Rebounds off def tot avg	pf fo ast to blk stl	Scoring pts avg

Career Highs Prior to 2016-17



Thurston's Tidbits: "Sam has been the pre-season's biggest surprise to date. A very smooth, finesse player. She is very effective 15' and in off the dribble, and she also possesses three-point shooting ability. We are trying to find the position where she will be most valuable but she should see plenty of playing time."

Prior to St. Francis Brooklyn: Keltos, a 6-2 forward from Ontario, Canada played under her father Frank Keltos at Sir Winston Churchill Secondary School located in St. Catherines, Ontario...Over the course of her high school career, Keltos was twice named team MVP (2013-15); she was also selected as the All-City MVP in 2015, and twice a Regional All-Star (2013-15)...Keltos led her senior girl's team to the program's first-ever All Ontario Championship OFSAA...The Ontario native is majoring in Health Promotions/Biology...One of Keltos' goals is to become a medical professional.

S. Keltos Career Stats

Season	GP-GS min/avg	Total fg-fga pct	3-PT fg-fga pct	F-Throws ft-fta pct	Rebounds off def tot avg	pf fo ast to blk stl	Scoring pts avg

Career Highs Prior to 2016-17