

RUTGERS

WOMEN'S BASKETBALL

@RUTGERSWBB | SCARLETKNIGHTS.COM

SCHEDULE & TIME/RESULTS

NOVEMBER

Mon. 6	Monmouth	W, 56-51
Thurs. 9	Wagner	W, 86-43
Sun. 12	Auburn	L, 76-56
Wed. 15	at Seton Hall	L, 82-63
Sat. 18	Saint Francis (PA)	W, 80-51
Mon. 20	Fairfield	L, 78-54
Fri. 24	Texas Tech%	L, 79-72
Sat. 25	Boise State%	L, 68-65
Wed. 29	Delaware State	W, 82-48

DECEMBER

Sun. 1	Lafayette	W, 69-48
Tues. 5	La Salle	W, 98-67
Sat. 9	#16/15 Indiana*	L, 66-55
Wed. 13	at Princeton	L, 66-55
Sun. 17	Virginia Tech	L, 84-59
Sat. 30	at Northwestern*	L, 77-70

JANUARY

Tues. 2	at Purdue*	L, 77-76
Fri. 5	Iowa*	L, 103-69
Thurs. 11	at Ohio State*	L, 90-55
Sun. 14	Penn State*	L, 94-80
Wed. 17	at Illinois*	L, 96-68
Sun. 21	Michigan*	L, 56-60
Sat. 27	at Wisconsin*	L, 73-62
Tues. 30	Michigan State*	L, 82-64

FEBRUARY

Sat. 3	at Nebraska*	W, 71-70
Tues. 6	Maryland*	L, 67-59
Sat. 10	at Michigan*	L, 86-58
Tues. 13	Minnesota*	W, 81-73
Sat. 17	Wisconsin*	L, 61-43
Wed. 21	at Maryland*	L, 81-62
Sat. 24	at Michigan State*	2:00 PM

MARCH

Sun. 3	Northwestern*	2:00 PM
Wed. 6-Sun. 10	Big Ten Tournament#	TBD

All times listed in Eastern Standard Time
Home Games in **bold** played at Jersey Mike's Arena
% South Point Classis - Las Vegas, Nevada
* Big Ten Conference Game
Big Ten Tournament Game - Target Center - Minneapolis, Minn.

ATHLETIC COMMUNICATIONS

Erin Neri | @erin_neri
C: 732-947-9292
eneri@scarletknights.com

GAME 30: RUTGERS AT MICHIGAN STATE /// SAT. FEB. 24, 2024 /// 2 P.M.
EAST LANSING, MICH. /// BRESLIN CENTER /// B1G+ /// WRSU



8-21 (2-14 B1G) | H: 7-10 | A: 1-9 | N: 0-2

PPG: 66.2 PPGA: 72.2

FG%: .424 3PT%: .318 FT%: .709

RPG: 36.7 (+1.0) APG: 12.5

TOPG: 18.5 SPG: 6.9 BPG: 4.3

Rankings: NR/NR (AP; USA Today/WBCA Coaches)

SERIES HISTORY AGAINST MICHIGAN STATE: Michigan State owns the slight advantage in the all-time series, 8-7. The Scarlet Knights came out on top in back-to-back meetings in 2021 and 2022 before falling in the last two meetings.



19-7 (9-6 B1G) | H: 11-2 | A: 5-4 | N: 3-1

PPG: 84.3 PPGA: 68.0

FG%: .479 3PT%: .367 FT%: .738

RPG: 34.8 (+0.6) APG: 18.9

TOPG: 11.4 SPG: 9.1 BPG: 3.6

Rankings: RV/RV (AP; USA Today/WBCA Coaches)

NOTES & NEWS

Last Time Out

Rutgers was defeated by Maryland (16-10, 8-7 B1G), 81-62, on Wednesday night on the road.

Destiny Adams paced the team with 15 points while Kassondra Brown and Lisa Thompson also added 11 points apiece.

Adams, Brown and Chyna Cornwell all recorded eight rebounds each to lead the team.

The Scarlet Knights kept the score close after the first quarter, only trailing by five points. However, the Terps broke away in the second, taking a double-digit lead into halftime and kept it more the rest of the contest.

Earlier This Season...

Destiny Adams recorded her second double-double of the Big Ten season as Rutgers fell to Michigan State, 82-64, on Tuesday, Jan. 30. The junior scored 28 points and grabbed 10 rebounds.

The Scarlet Knights played the Spartans to a close first half, with MSU holding just a seven-point edge heading into the break before pulling away later in the game. Adams and Kassondra Brown led the charge for RU in the first 20 minutes of play, notching 16 and 10 points, respectively.

In addition, Brown recorded three assists and three rebounds in the effort.

Jillian Huerter added to the offense, notching her sixth-career double-figure scoring performance with her 10 points.

Rutgers dished out 19 team assists, tied for its second most in a contest this season. Antonia Bates led the way in the passing game, matching a career-best seven assists.

Scouting the Spartans

Michigan State has won its last two games, defeating both Michigan (70-66) and Purdue (68-59).

Julia Ayrault (14.9), Moira Joiner (14.5), DeeDee Hagemann (13.0), Theryn Hallock (11.2) and Tory Ozment (10.2) all currently pace the Spartans with double-digit scoring averages. Ayrault also leads the team off the boards with 7.2 rebounds per game.

PROBABLE STARTERS (Based on Previous Starting Five)



Mya Petticord
10.2 ppg, 3.4 rpg



Jillian Huerter
6.6 ppg, 2.0 rpg



Antonia Bates
3.4 ppg, 3.5 rpg



Destiny Adams
15.3 ppg, 7.4 rpg



Chyna Cornwell
7.6 ppg, 7.3 rpg

2023-24 RUTGERS SCARLET KNIGHTS

No.	Name	Pos.	Cl.	Ht.	Hometown/High School (Previous College)
0	Jillian Huerter	G	Fr.	6-0	Clifton Park, N.Y./Shenendehowa
1	Destiny Adams	G/F	Jr.	6-3	Manchester, N.J./Manchester (UNC)
2	Kaylene Smikle	G	So.	6-0	Farmingdale, N.Y./Westtown
3	Mya Petticord	G	So.	5-9	Detroit, Mich./Arbor Prep (Texas A&M)
4	Antonia Bates	G/F	So.	6-3	Easton, Pa./Rutgers Prep
11	Awa Sidibe	G	Grad.	5-11	Bamako, Mali/Inland Careers (Salt Lake City CC)
20	Erica Lafayette	G/F	Sr.	6-0	Baton Rouge, La./McKinley
22	Kassondra Brown	C	Grad.	6-2	Abington, Pa./Abington (St. Peter's)
24	Lisa Thompson	G	Fr.	5-9	Joliet, Ill./Example Academy
33	Kennedy Brandt	G	Fr.	5-10	Glen Ellyn, Ill./Glenbard West
54	Chyna Cornwell	F	Sr.	6-3	Conover, N.C./Newton Conover

Head Coach: Coquese Washington (Notre Dame '93) – 2nd season at Rutgers, 14th season overall

Assistant Coach: Tasha Pointer (Rutgers '01) – 2nd season

Assistant Coach: John Hampton (Mansfield '08) – 2nd season

Assistant Coach: Nneka Enemkpali (Texas '15) – 1st season

Assistant Coach: Jeanine Wasielewski (Northwestern '91) – 1st season

Dir. of Athletic Culture & Professional Development: Kahleah Copper (Rutgers '15) – 1st season

Chief of Staff: Stephen Fishler (Penn State '16) – 2nd season

Director of Operations: Ali Hoesly (Rutgers '16) – 2nd season

Director of Scouting & Technology: Kara Wilson (Wayne State '21) – 2nd season

PRONUNCIATION GUIDE

Coquese Washington	Ko-KWEES
Nneka Enemkpali	Neck-AH En-EM-pali
Jeanine Wasielewski	Waas-AH-LOO-ski
Kahleah Copper	Kah-LEE-Ah
2 Kaylene Smikle	Kay-lean Smike-LL
3 Mya Petticord	MY-ah Pett-I-CORD
15 Awa Sidibe	AH-wah sid-EE-bay
22 Kassondra Brown	Kass-ON-dra
24 Lisa Thompson	Tomp-SON
33 Kennedy Brandt	Ken-A-dee Brant
54 Chyna Cornwell	China

RUTGERS MEDIA POLICY

POST-GAME PRESS CONFERENCES

Rutgers head coach Coquese Washington, and student-athletes will be made available to the media following a brief cooling-off period in the studio on the second floor of Jersey Mike's Arena.

Please direct any student-athlete requests to Rutgers Director of Athletic Communications Erin Neri (eneri@scarletknights.com/732-947-9292).

Visiting teams are given the opportunity to meet the media first.

WEBSITES

All of the latest information on Rutgers women's basketball is available on the World Wide Web on Rutgers' site, www.scarletknights.com. In addition, Big Ten Conference information can be accessed at www.BigTen.org.

IN-SEASON INTERVIEW POLICY:

Rutgers holds weekly media availability (either in person or via teleconference). Other requests for Head Coach Coquese Washington should be made at least three days in advance. Requests for student-athlete interviews should be made- if possible - 48 hours in advance. All interviews must be coordinated through the Office of Athletic Communications, and interviews will not be granted on a game day.

QUICK FACTS

Founded:	1766
Enrollment:	71,000
President:	Jonathan Holloway
Director of Athletics:	Patrick Hobbs
Nickname:	Scarlet Knights
Conference:	Big Ten
Home Court (Capacity):	Jersey Mike's Arena (8,000)

TEAM INFORMATION

2022-23 Overall Record:	12-20
2022-23 Big Ten Record/Finish:	5-13 / 11th
2023 Postseason:	--
Letterwinners R/L:	6/2
Starters R/L:	5/0
Head Coach:	Coquese Washington (Notre Dame '93)
Overall Record/Seasons:	229-30/14
Record at RU/Seasons:	19-41/2

BASKETBALL HISTORY

First Year of Program:	1974
Overall All-Time Record:	1,012-516 (.668)
Number of NCAA Appearances:	26
Last NCAA Tournament Appearance:	2021
Number of WNIT Appearances:	2
Last WNIT Appearance	2016



ASSOCIATED PRESS TOP 25 POLL -
Week 15 (Feb. 12)

Rank	Team (Record)	Points (1st)	Prev.
1.	South Carolina (25-0)	875 (35)	1
2.	Ohio State (22-3)	824	2
3.	Stanford (23-3)	804	3
4.	Iowa (23-3)	742	4
5.	Texas (24-3)	730	5
6.	NC State (23-3)	714	6
7.	USC (20-4)	654	10
8.	Virginia Tech (22-4)	593	12
9.	Oregon State (21-4)	554	11
10.	Kansas State (22-4)	520	7
11.	Colorado (20-5)	519	8
12.	UCLA (20-5)	497	9
13.	LSU (21-4)	465	13
14.	Indiana (21-3)	446	14
15.	UConn (22-5)	423	15
16.	Gonzaga (26-2)	326	17
17.	Syracuse (22-4)	272	19
18.	Utah (19-7)	246	22
19.	Notre Dame (18-6)	242	16
20.	Louisville (21-6)	228	18
21.	Creighton (21-3)	201	20
22.	West Virginia (22-3)	172	24
23.	Oklahoma (18-7)	94	23
24.	Baylor (19-6)	88	21
25.	Princeton (20-3)	66	25

Others receiving votes:

UNLV 41, Fairfield 28, North Carolina 4, Saint Joseph's 4, Mississippi St. 2, Tennessee 1.

USA TODAY/WBCA COACHES POLL -
Week 16 (Feb. 20)

Rank	Team (Record)	Points (1)	Prev.
1.	South Carolina (25-0)	800 (32)	1
2.	Ohio State (22-3)	761	2
3.	Stanford (23-3)	730	3
4.	Iowa (23-3)	697	4
5.	Texas (24-3)	659	5
6.	NC State (23-3)	637	7
7.	USC (20-4)	584	10
8.	Virginia Tech (22-4)	527	13
9.	Kansas State (22-4)	511	6
10.	LSU (22-4)	510	11
11.	Colorado (20-5)	466	8
12.	UCLA (20-5)	434	9
13.	UConn (23-5)	433	14
14.	Oregon State (21-4)	394	15
15.	Gonzaga (26-2)	383	16
16.	Indiana (21-4)	348	12
17.	Syracuse (22-4)	265	20
18.	Notre Dame (19-6)	243	17
19.	Utah (19-7)	207	22
20.	Louisville (21-6)	202	18
21.	Creighton (21-4)	177	19
22.	West Virginia (22-3)	154	23
23.	Princeton (20-3)	96	24
24.	Baylor (19-6)	72	21
25.	Oklahoma (18-7)	44	25

Others receiving votes:

UNLV 30; Saint Joseph's 15; Fairfield 5; Ball State 5; Tennessee 4; Michigan State 3; Richmond 2; Florida State 1; Duke 1;

2023-24 Big Ten Standings (as of Feb. 22)

	BIG TEN	OVERALL
Ohio State	13-1 .929	22-3 .880
Iowa	12-2 .857	23-3 .885
Indiana	12-3 .800	22-4 .840
Nebraska	10-6 .625	18-9 .667
Michigan State	9-6 .600	19-7 .731
Maryland	8-7 .533	16-10 .615
Penn State	7-8 .467	16-10 .615
Michigan	7-8 .467	16-12 .593
Illinois	7-8 .467	13-12 .520
Wisconsin	6-9 .400	13-12 .520
Minnesota	5-10 .333	15-11 .577
Purdue	4-11 .267	11-15 .423
Northwestern	3-12 .200	8-18 .308
Rutgers	2-14 .125	8-21 .276

RUTGERS IN THE 2023-24 POLLS

Week:	Date	Associated Press	ESPN/USA Today Coaches
1	Week 1/Preseason (Oct. 17/17)	NR	NR
2	Week 2 (Nov. 13/14)	NR	NR
3	Week 3 (Nov. 20/21)	NR	NR
4	Week 4 (Nov. 27/28)	NR	NR
5	Week 5 (Dec. 4/5)	NR	NR
6	Week 6 (Dec. 11/12)	NR	NR
7	Week 7 (Dec. 18/19)	NR	NR
8	Week 8 (Dec. 25/26)	NR	NR
9	Week 9 (Jan. 1/2)	NR	NR
10	Week 10 (Jan. 8/9)	NR	NR
11	Week 11 (Jan. 15/16)	NR	NR
12	Week 12 (Jan. 22/23)	NR	NR
13	Week 13 (Jan. 29/30)	NR	NR
14	Week 14 (Feb. 5/6)	NR	NR
15	Week 15 (Feb. 12/13)	NR	NR
16	Week 16 (Feb. 19/20)	NR	NR

#TRENDING

Strong Off the Boards

The Scarlet Knights are picking up where they left off last season with a strong presence on the boards.

In the second game of the season against Wagner, RU beat their previous high off the glass from last season, grabbing 55 boards. The squad secured is highest difference of the campaign against Wagner with a +24 margin.

With 1,064 rebounds so far, Rutgers currently ranks third in the Big Ten off the glass. Destiny Adams sits sixth overall in the conference, averaging 7.4 boards per game. She also ranks third in offensive rebounds averaging 2.9 rebounds.

RU has reached 40+ rebounds in seven outings this campaign and come out ahead on the glass 16 times.

The Scarlet "Double-Double" Knights

Rutgers has recorded 13 double-doubles through 29 games this season. Destiny Adams leads the way with seven, while Chyna Cornwell (3), Kaylene Smikle (2) and Kassondra Brown (1) all follow closely behind.

Adams and Brown have both recorded at least one double-doubles in Big Ten play. Adams leads the way with three as she recorded 23 points and 13 rebounds at Purdue (Jan. 2), 28 points and 10 rebounds versus Michigan State (Jan. 30), 21 points and 10 rebounds against Minnesota (Feb. 13) and 18 points and 10

rebounds versus Wisconsin (Feb. 17). Brown secured 12 points and 11 boards against Iowa (Jan. 5) as well.

Adams, a product of Manchester, New Jersey, also set the season-high off the glass for RU with in her first contest at Rutgers with a 13-point, 17-rebound double-double performance versus Wagner (Nov. 6).

Block Party

With 125 blocks so far this season, Rutgers currently paces the Big Ten in denials. The next highest in the rankings trails by 14 stops.

Antonia bates currently ranks third in the conference with 44 blocks, averaging 1.6 per outing. The sophomore has registered a block in all but four games this season and recorded 3+ denials in five contests.

RUTGERS IN THE NCAA
TOURNAMENT

Number of NCAA Appearances: 26

NCAA Tournament Record: 36-25 (.590)

First Round: 7 (1990, 1991, 1994, 2004, 2010, 2012, 2019)

Second Round: 7 (1989, 1992, 1993, 2001, 2003, 2011, 2015)

Sweet Sixteen: 4 (1988, 1998, 2006, 2009)

Elite Eight: 5 (1986, 1987, 1999, 2005, 2008)

Final Four: 2 (2000, 2007)

NCAA Final: 1 (2007)

THE WASHINGTON FILE

Coque Washington was named the third full-time head coach in the history of Rutgers women's basketball on May 23, 2022. A three-time Big Ten Coach of the Year during her 12-year tenure at Penn State, Washington (first name pronounced ko-KWEES) arrived "On the Banks" with extensive experience program building and coaching championship-caliber basketball.

During her first year at the helm of the Scarlet Knights, Washington set a solid foundation for the team. She guided the program to its 1,000th win in program history with a road victory over Minnesota (Jan. 12), becoming just the 22nd Division I team and the third squad in the Big Ten to reach the milestone. In the same game against the Gophers, Washington also picked up her 100th Big Ten win.

Washington helped guide freshman guard Kaylene Smikle to greatness, as she was named to the All-Big Ten Second Team (Media & Coaches) and the Big Ten All-Freshman team (Media & Coaches). The guard also collected three Big Ten Freshman of the Week honors, the most in program history. Under Washington's direction, Smikle became Rutgers' all-time leading freshman scorer, ending the season with 573 points to best the previous high of 536 points. She is the third freshman in program history to amass 500+ points.

Smikle paced the team with 17.9 points per game in addition to averaging 19.5 points in Big Ten play. She was the only Scarlet Knight to net 20+ points in a game during the season and accomplished the feat 15 times, including versus 12 Big Ten opponents, leading all freshmen in reaching double-digit scoring. The Farmingdale, New York product also paced the team with 56 three-pointers and 69 steals to rank top-10 in the conference in both categories.

Washington also saw Chyna Cornwell named an All-Big Ten Honorable Mention (Media) as well as earning the Big Ten Sportsmanship Award. In a breakout season, Cornwell paced RU with nine double-doubles, including four in Big Ten play. Her 16 rebounds against Northwestern in the first round of the Big Ten Tournament set the new Big Ten Tournament program high, which was set in 2015 by current WNBA superstar Betnijah Laney. The Conover, North Carolina native led the team with 274 total rebounds to rank third in the Big Ten in addition to 105 offensive boards to tie for first in the league.

Before settling "On The Banks" Washington spent two seasons at Notre Dame, marking her second coaching stint in South Bend after serving as assistant coach for her alma mater from 1999-2007. She earned her first head coaching position at Penn State, where she became the first female African American head coach in the school's history and went on to lead the Lady Lions to three Big Ten titles and four NCAA Tournaments. Washington also spent the 2019-20 season as associate head coach at Oklahoma.

During her most recent two seasons at Notre Dame, the Fighting Irish returned to the national scene with an appearance in the NCAA Sweet 16 in 2022. The Sweet 16 run marked Washington's

10th season on the sidelines in South Bend following an eight-year stint as an assistant under Naismith Basketball Hall of Fame inductee Muffet McGraw, highlighted by eight consecutive NCAA Tournaments, four NCAA Sweet 16 appearances, and the 2001 NCAA Championship.

The Washington era at Rutgers signals the head coach's return to the Big Ten. From 2012-14, the Lady Lions claimed three consecutive Big Ten regular-season titles, becoming one of four programs in conference history to win three or more regular-season crowns in a row. She guided Penn State to Sweet 16 appearances in 2012 and 2014 while developing 17 players to All-Big Ten status on 32 separate occasions.

Washington earned Big Ten Coach of the Year honors three times (2012-14), WBCA Regional Coach of the Year twice (2012, 2013), and was named a finalist for WBCA National Coach of the Year two times (2012, 2013). She was also selected as the 2011 and 2014 Black Coaches Association (BCA) Female Coach of the Year.

Her programs' success has mirrored her prowess on the recruiting trail, where she signed 12 top-25 recruiting classes throughout her coaching career at Notre Dame and Penn State. After recruitment came development as Washington mentored six All-Americans and 13 future WNBA professionals. During her tenure at Notre Dame, Washington was directly responsible for developing three All-Americans and two Frances Pomeroy Naismith Award winners – Niele Ivey (current Notre Dame head coach) and Megan Duffy (current Marquette University head coach). Washington also worked with Alicia Ratay, who is the NCAA's career three-point field goal percentage leader.

A student of the game, Washington enjoyed success in the college ranks and later as a professional in the WNBA. During her time in an Irish uniform, Washington rewrote the record books with 554 career assists (seventh all-time) and 307 career steals (third all-time). Her 2.7 steals-per-game career average still holds the top spot in South Bend. Washington was just as impressive in the classroom, earning her undergraduate degree in just three years and, later, earning a juris doctorate from Notre Dame Law School in 1997 to become a "Double-Domer."

Washington then played six seasons in the WNBA and won a WNBA title with the Houston Comets in 2000. She followed the Comets' championship season with another strong campaign in 2001, ranking among the Top 10 in the WNBA in assists (ninth) and steals (fourth) as the Comets made their fifth consecutive playoff appearance. Midway through the 2002 season, she was traded to the Indiana Fever, where she guided that club to its first-ever playoff berth and became the first player in WNBA history to lead three different squads to the postseason.

She was a key figure in helping create the WNBA Players Association (WNBPA), serving as the founding president of the WNBPA from 1999 until 2001. She served as the executive vice president of the WNBPA from 2001 until her retirement in 2003. Washington led negotiations

for the association's first collective bargaining agreement, and as executive vice president, was a mainstay in the negotiations for the league's second collective bargaining agreement, which brought about the first free agency system in women's professional sports.

Washington's service to the game has gone beyond coaching. She has served on the WBCA Board of Directors and led a committee tasked to grow the game of women's basketball. She won a gold medal with Team USA at the 2013 World University Games and served on the USA Basketball Women's Junior National Committee from 2009-12. She was a member of the Kay Yow Cancer Fund Board of Directors from 2012-15 and served five years on the NCAA Women's Basketball Issues Committee. Currently, she Co-Chairs the WBCA's Diversity, Equity & Inclusion Committee.

A native of Flint, Michigan, Washington was inducted into the Greater Flint Area Sports Hall of Fame in December 2009. Washington and her husband, Raynell Brown, have two children, Quenton and Rhainya.

COQUESE WASHINGTON

Overall Record: 229-210 (.539)/14 seasons
Overall Big Ten Record: 112-146 (.450)/14 seasons
Rutgers Record: 20-41 (.375)/2 seasons
Rutgers Big Ten Record: 7-29 (.278)/2 season
Hometown: Flint, Michigan
Education: Notre Dame
 - B.A., History '92
 - Juris Doctorate '97

COACHING CHRONOLOGY

Rutgers Head Coach (2022-present)
Notre Dame Associate Head Coach (2020-2022)
Oklahoma Associate Head Coach (2019-2020)
Penn State Head Coach (2007-2019; 12 seasons)
 209-169 (.553)/98-106 (.480) B1G
 3x Big Ten Champions 2012, 2013, 2014
Notre Dame Associate Head Coach (2005-2007)
Notre Dame Assistant Coach (1999-2005)
 2001 National Champions
 2001 Big East Tournament Champions



SCARLET KNIGHTS AGAINST THE TOP-25

Rutgers has played five opponents currently ranked in the AP/USA Today/WBCA Coaches Polls.

- No. 4/4 Iowa*
- No. 2/2 Ohio State*
- No. 8/8 Virginia Tech
- No. 14/16 Indiana*
- No. 25/23 Princeton

Fairfield (AP & USA Today/WBCA) and Michigan State* (AP & USA Today/WBCA) are also all currently receiving votes between both polls.

*Big Ten contest

KNIGHTS OF HONOR

Rutgers women's basketball has officially established the "Knights of Honor" this season to recognize players and teams that made significant contributions to Rutgers Women's Basketball.

The historic 1982, 2000 and 2007 teams will be a part of the inaugural "Knights of Honor" class. The three teams will be celebrated on Sunday, Jan. 21 as Rutgers takes on Michigan at 2 p.m. as part of the 50 seasons celebration. The "Knights of Honor" will be celebrated with pregame autographs as well as a pregame ceremony.

The "Knights of Honor" will be immortalized in Jersey Mike's Arena along with RU's three retired jerseys - #45 June Olkowski, #33 Sue Wicks and #25 Cappie Pondexter.

50 SEASONS

Rutgers will celebrate 50 seasons of women's basketball on Sunday, Jan. 21 against Michigan at 2 p.m. The team will welcome back both Letterwinners and fans "On The Banks" during the weekend for various events, activities and giveaways celebrating 50 years of Rutgers women's basketball.

Since their first season in 1974, the Scarlet Knights have proven they are a nationally elite program with a tradition of success. The program has appeared in 26 NCAA Tournaments in addition to four Sweet Sixteens, five Elite Eights, two Final Fours and one National Championship game.

Rutgers has also produced over 35 1,000-point scorers, four First Team All-Americans and 56 All-Conference Team Selections. Scarlet Knights have gone onto find success at the professional level as well, with 24 alumni who have competed in the WNBA, six WNBA Champions, four Olympians and 11 Team USA Basketball members.

RU has had two Naismith Hall of Fame coaches in Theresa Grentz and C. Vivian

Stringer who both led the program to new heights during their time in Piscataway, setting a strong foundation and culture for generations to follow. Current head coach Coquese Washington has continued to build upon their tradition and bring Rutgers into a new era.

Rutgers just launched its 50 seasons website, where you can scroll through photo and video galleries, check out a timeline of the program's history, view archives statistics and Alumni Spotlights. Fans can also submit their favorite Scarlet Knights memory from through the years. You can access all this information and more at scarletknights.com

SCARLET KNIGHTS ON THE BIG SCREEN

Rutgers will appear on national television seven times this season with six scheduled contests on the Big Ten Network and one on Fox Sports 1.

- vs. Auburn – Saturday, Nov. 12 – 5 p.m. (BTN)
- vs. Indiana – Saturday, Dec. 9 – 4 p.m. (BTN)
- vs. Virginia Tech – Sunday, Dec. 17 – 5:30 p.m. (FS1)
- vs. Iowa – Friday, Dec. 5 – 6 p.m. (BTN)
- At Ohio State – Thursday, Jan. 11 – 6 p.m. (BTN)
- vs. Maryland – Tuesday, Feb. 6 – 8:30 p.m. (BTN)
- vs. Minnesota – Tuesday, Feb. 13 – 7 p.m. (BTN)

THEME GAMES

- Nov. 6 – vs. Monmouth – Opening Day
- Nov. 12 – vs. Auburn – Nikki McCray-Penson Day
- Nov. 18 – vs. Saint Francis – Food Drive
- Nov. 19 – vs. Delaware State – Recess Game
- Dec. 9 – vs. Indiana – Blackout Game
- Dec. 17 – vs. Virginia Tech – Holiday Hoops/Youth Spirit Game
- Jan. 5 – vs. Iowa – Scarlet Out Game
- Feb. 6 – vs. Maryland – Black Excellence Game
- Jan. 21 – vs. Michigan – 50th Season Celebration
- Feb. 17 – vs. Wisconsin – Play4Kay Game
- March 3 – vs. Northwestern – Senior Day/Thank You Fans

More theme games and details will be released as each individual contest approaches.

For the Stars and Stripes

Kahleah Copper was officially named to the FIBA Olympic Qualifying Tournament

roster on Sunday, Feb. 4. After a 101-39 win over Senegal to end the tournament, Copper helped Team USA qualify for the 2024 Olympic games in Paris from July 26 to August 11.

Copper played for Rutgers from 2012 to 2016, was picked No. 7 overall in the 2016 WNBA draft and has since been a WNBA Champion, WNBA Finals MVP and one of the league's most dynamic players. She was also a part of the 2022 World Cup Championship team with USA Basketball.

Copper was named the Director of Athletic Culture & Professional Development earlier this season. In this role, she focuses on helping student-athletes continue to grow and develop for careers on the next level. Copper will aid in recruiting efforts, alumni events, fundraising and community outreach opportunities. An eight-year veteran of the WNBA, Copper will also assist with on-court workouts and share her professional basketball experience.

D-D-D-DEFENSE

Rutgers has held 155 of its past 205 opponents under their scoring averages.

- 2017-18: 29-of-32
- 2018-19: 30-of-32
- 2019-20: 28-of-31
- 2020-21: 18-of-19
- 2021-22: 27-of-31
- 2022-23: 12-of-31
- 2022-23: 11-of-29

2023-24

Team:	Avg. Entering Game w/ RU:	Total Pts. vs. RU:
Monmouth	63.6	51
Wagner	63.1	43
Auburn	69.0	76
Seton Hall	69.7	82
Saint Francis	48.7	51
Fairfield	86.7	78
Texas Tech	76.0	79
Boise State	66.2	68
Delaware St.	42.8	48
Lafayette	59.4	48
La Salle	63.6	67
Indiana	78.9	66
Princeton	67.9	66
Virginia Tech	81.0	84
Northwestern	63.7	77
Purdue	68.2	77
Iowa	90.8	103
Ohio State	81.6	90
Penn State	87.2	94
Illinois	73.3	96
Michigan	70.3	56
Wisconsin	64.0	73
Michigan St.	86.7	82
Nebraska	74.2	70
Maryland	80.3	67
Michigan	69.3	86
Minnesota	72.7	73
Wisconsin	62.6	61
Maryland	79.2	81

GAME 30: AT MICHIGAN STATE | SATURDAY, FEB. 24, 2024

Specialty Stats

Points Off Turnovers			Points in Paint			Second Chance Points			Fast Break Points			Bench Points		
Date	Team	RU OPP	Date	Team	RU OPP	Date	Team	RU OPP	Date	Team	RU OPP	Date	Team	RU OPP
11/6/23	vs. Monmouth	14-13	11/6/23	vs. Monmouth	26-22	11/6/23	vs. Monmouth	12-8	11/6/23	vs. Monmouth	12-11	11/6/23	vs. Monmouth	11-21
11/9/23	vs. Wagner	31-13	11/9/23	vs. Wagner	44-26	11/9/23	vs. Wagner	17-2	11/9/23	vs. Wagner	43-17	11/9/23	vs. Wagner	24-7
11/12/23	vs. Auburn	11-29	11/12/23	vs. Auburn	20-46	11/12/23	vs. Auburn	15-13	11/12/23	vs. Auburn	13-18	11/12/23	vs. Auburn	14-11
11/15/23	vs. Seton Hall	13-30	11/15/23	vs. Seton Hall	38-26	11/15/23	vs. Seton Hall	3-22	11/15/23	vs. Seton Hall	8-9	11/15/23	vs. Seton Hall	9-21
11/18/23	vs. Saint Francis	20-12	11/18/23	vs. Saint Francis	24-24	11/18/23	vs. Saint Francis	10-8	11/18/23	vs. Saint Francis	21-16	11/18/23	vs. Saint Francis	37-6
11/20/23	vs. Fairfield	9-29	11/20/23	vs. Fairfield	20-38	11/20/23	vs. Fairfield	5-17	11/20/23	vs. Fairfield	7-12	11/20/23	vs. Fairfield	21-25
11/24/23	vs. Texas Tech	22-22	11/24/23	vs. Texas Tech	50-22	11/24/23	vs. Texas Tech	8-9	11/24/23	vs. Texas Tech	10-5	11/24/23	vs. Texas Tech	17-14
11/25/23	vs. Boise State	18-17	11/25/23	vs. Boise State	34-20	11/25/23	vs. Boise State	15-12	11/25/23	vs. Boise State	4-6	11/25/23	vs. Boise State	9-26
11/29/23	vs. Delaware St.	23-19	11/29/23	vs. Delaware St.	48-26	11/29/23	vs. Delaware St.	19-2	11/29/23	vs. Delaware St.	14-9	11/29/23	vs. Delaware St.	13-15
12/1/23	vs. Lafayette	24-20	12/1/23	vs. Lafayette	44-18	12/1/23	vs. Lafayette	16-5	12/1/23	vs. Lafayette	20-13	12/1/23	vs. Lafayette	16-2
12/5/23	vs. La Salle	19-9	12/5/23	vs. La Salle	46-16	12/5/23	vs. La Salle	18-7	12/5/23	vs. La Salle	27-8	12/5/23	vs. La Salle	40-30
12/9/23	vs. Indiana	7-16	12/9/23	vs. Indiana	32-44	12/9/23	vs. Indiana	8-6	12/9/23	vs. Indiana	8-7	12/9/23	vs. Indiana	10-0
12/13/23	vs. Princeton	11-26	12/13/23	vs. Princeton	18-32	12/13/23	vs. Princeton	13-12	12/13/23	vs. Princeton	3-12	12/13/23	vs. Princeton	18-18
12/18/23	vs. Virginia Tech	10-11	12/18/23	vs. Virginia Tech	22-16	12/18/23	vs. Virginia Tech	10-22	12/18/23	vs. Virginia Tech	17-8	12/18/23	vs. Virginia Tech	15-18
12/30/23	vs. Northwestern	16-24	12/30/23	vs. Northwestern	30-38	12/30/23	vs. Northwestern	14-7	12/30/23	vs. Northwestern	10-10	12/30/23	vs. Northwestern	23-12
1/2/24	vs. Purdue	4-16	1/2/24	vs. Purdue	24-32	1/2/24	vs. Purdue	16-15	1/2/24	vs. Purdue	7-2	1/2/24	vs. Purdue	21-4
1/5/24	vs. Iowa	18-12	1/5/24	vs. Iowa	58-36	1/5/24	vs. Iowa	16-13	1/5/24	vs. Iowa	23-17	1/5/24	vs. Iowa	27-16
1/11/24	vs. Ohio State	7-36	1/11/24	vs. Ohio State	26-34	1/11/24	vs. Ohio State	7-16	1/11/24	vs. Ohio State	2-15	1/11/24	vs. Ohio State	44-8
1/14/24	vs. Penn State	13-33	1/14/24	vs. Penn State	42-38	1/14/24	vs. Penn State	19-7	1/14/24	vs. Penn State	17-18	1/14/24	vs. Penn State	11-44
1/17/24	vs. Illinois	8-12	1/17/24	vs. Illinois	26-40	1/17/24	vs. Illinois	9-14	1/17/24	vs. Illinois	9-2	1/17/24	vs. Illinois	22-28
1/21/24	vs. Michigan	12-21	1/21/24	vs. Michigan	18-30	1/21/24	vs. Michigan	2-13	1/21/24	vs. Michigan	12-14	1/21/24	vs. Michigan	19-11
1/27/24	vs. Wisconsin	19-16	1/27/24	vs. Wisconsin	30-30	1/27/24	vs. Wisconsin	10-14	1/27/24	vs. Wisconsin	13-8	1/27/24	vs. Wisconsin	20-19
1/30/24	vs. Michigan St.	9-23	1/30/24	vs. Michigan St.	30-42	1/30/24	vs. Michigan St.	10-5	1/30/24	vs. Michigan St.	2-13	1/30/24	vs. Michigan St.	22-26
2/3/24	vs. Nebraska	8-25	2/3/24	vs. Nebraska	34-28	2/3/24	vs. Nebraska	4-15	2/3/24	vs. Nebraska	3-10	2/3/24	vs. Nebraska	34-30
2/6/24	vs. Maryland	21-14	2/6/24	vs. Maryland	28-28	2/6/24	vs. Maryland	9-12	2/6/24	vs. Maryland	9-11	2/6/24	vs. Maryland	13-14
2/10/24	vs. Michigan	17-25	2/10/24	vs. Michigan	28-36	2/10/24	vs. Michigan	3-7	2/10/24	vs. Michigan	2-4	2/10/24	vs. Michigan	19-16
2/13/24	vs. Minnesota	8-16	2/13/24	vs. Minnesota	20-26	2/13/24	vs. Minnesota	10-21	2/13/24	vs. Minnesota	19-4	2/13/24	vs. Minnesota	17-6
2/17/24	vs. Wisconsin	9-20	2/17/24	vs. Wisconsin	22-32	2/17/24	vs. Wisconsin	7-5	2/17/24	vs. Wisconsin	2-15	2/17/24	vs. Wisconsin	11-6
2/21/24	vs. Maryland	6-17	2/21/24	vs. Maryland	26-38	2/21/24	vs. Maryland	11-10	2/21/24	vs. Maryland	4-16	2/21/24	vs. Maryland	24-22

1,000 POINT CLUB

1. Sue Wicks (1984-88)	*2,655
2. Tyler Scaife (2013-18)	2,233
3. Cappie Pondexter (2002-06)	2,211
4. Kahleah Copper (2012-2016)	1,872
5. Regina Howard (1983-87)	1,807
6. Vicky Picott (1987-91)	1,792
7. Telicher Austin (1985-89)	1,789
8. Caroline DeRoose (1990-94)	1,762
-- Arella Guirantes (2016-21)#	1,696
9. Tanya Hansen (1988-92)	1,682
-- Charise Wilson (2014-19) &	1,665
10. Matee Ajavon (2004-08)	1,622
11. Epiphanny Prince (2006-09)	1,552
12. June Olkowski (1978-82)	1,500
13. Tasha Pointer (1997-01)	1,456
14. Kathy Glutz (1976-80)	1,415
15. Liz Hanson (1992-96)	1,413
16. Arella Guirantes (2018-21)	1,408
17. Betnijah Laney (2011-2015)	1,401
18. Shawnetta Stewart (1997-00)	1,346
19. Tomora Young (1995-99)	1,344
20. Kia Vaughn (2005-09)	1,329
21. Khadijah Rushdan (2007-12)	1,288
22. Patti Sikorski (1976-80)	1,284
23. Lorrie Lawrence (1980-84)	1,272
24. Essence Carson (2004-08)	1,262
25. Tammy Sutton-Brown (1997-01)	1,246
-- Stasha Carey (2014-2019) ^	1,227
26. Julie Salmon (1982-86)	1,226
27. Patty Coyle (1978-82)	1,209
28. Monique Oliver (2009-13)	1,204
29. Kassondra Brown (2022-present) &	1,188
30. April Sykes (2008-12)	1,162
31. Brittany Ray (2006-10)	1,142
32. Jennie Hall (1979-83)	1,104
33. Denise Kenney (1976-79)	1,103
34. Kai Carter (2022-23) @	1,082
35. Patty Delehanty (1978-82)	1,078
36. Michelle Campbell (2002-06)	1,054
37. Kristen Foley (1982-87)	1,051
38. Erica Wheeler (2009-13)	1,027
39. Dawn McCullough (2000-04)	1,009

* Rutgers leader men's or women's
^ - includes two seasons at Pitt
& - includes four seasons at URI
- includes one season at Texas Tech
@ - includes three season at UNC Asheville
& - includes two seasons at RI and one at Saint Peter's

GAME-BY-GAME STARTING LINEUP

Date	Team	G	G	F/G	F	C
11/6/23	vs. Monmouth	Mya Petticord	Kaylene Smikle	Antonia Bates	Destiny Adams	Chyna Cornwell
11/9/23	vs. Wagner	Mya Petticord	Kaylene Smikle	Antonia Bates	Destiny Adams	Chyna Cornwell
11/12/23	vs. Auburn	Mya Petticord	Kaylene Smikle	Antonia Bates	Destiny Adams	Chyna Cornwell
11/15/23	vs. Seton Hall	Mya Petticord	Kaylene Smikle	Antonia Bates	Destiny Adams	Chyna Cornwell
11/18/23	vs. Saint Francis	Mya Petticord	Kaylene Smikle	Antonia Bates	Destiny Adams	Chyna Cornwell
11/20/23	vs. Fairfield	Mya Petticord	Kaylene Smikle	Antonia Bates	Destiny Adams	Chyna Cornwell
11/24/23	vs. Texas Tech	Lisa Thompson	Kaylene Smikle	Antonia Bates	Destiny Adams	Chyna Cornwell
11/25/23	vs. Boise State	Lisa Thompson	Kaylene Smikle	Antonia Bates	Destiny Adams	Chyna Cornwell
11/29/23	vs. Delaware St.	Lisa Thompson	Kaylene Smikle	Erica Lafayette	Destiny Adams	Chyna Cornwell
12/1/23	vs. Lafayette	Lisa Thompson	Kaylene Smikle	Antonia Bates	Destiny Adams	Chyna Cornwell
12/5/23	vs. La Salle	Lisa Thompson	Kaylene Smikle	Antonia Bates	Destiny Adams	Chyna Cornwell
12/9/23	vs. Indiana	Lisa Thompson	Kaylene Smikle	Antonia Bates	Destiny Adams	Chyna Cornwell
12/13/23	vs. Princeton	Lisa Thompson	Kaylene Smikle	Antonia Bates	Destiny Adams	Chyna Cornwell
12/17/23	vs. Virginia Tech	Lisa Thompson	Kaylene Smikle	Antonia Bates	Destiny Adams	Chyna Cornwell
12/30/23	vs. Northwestern	Mya Petticord	Lisa Thompson	Antonia Bates	Destiny Adams	Chyna Cornwell
1/2/24	vs. Purdue	Mya Petticord	Lisa Thompson	Jillian Huertter	Destiny Adams	Chyna Cornwell
1/5/24	vs. Iowa	Mya Petticord	Lisa Thompson	Jillian Huertter	Destiny Adams	Chyna Cornwell
1/11/24	vs. Ohio State	Mya Petticord	Lisa Thompson	Jillian Huertter	Destiny Adams	Chyna Cornwell
1/14/24	vs. Penn State	Mya Petticord	Lisa Thompson	Jillian Huertter	Destiny Adams	Kassondra Brown
1/17/24	vs. Illinois	Mya Petticord	Lisa Thompson	Antonia Bates	Destiny Adams	Kassondra Brown
1/21/24	vs. Michigan	Mya Petticord	Lisa Thompson	Antonia Bates	Destiny Adams	Chyna Cornwell
1/27/24	vs. Wisconsin	Mya Petticord	Lisa Thompson	Antonia Bates	Destiny Adams	Chyna Cornwell
1/30/24	vs. Michigan St.	Lisa Thompson	Erica Lafayette	Antonia Bates	Destiny Adams	Chyna Cornwell
2/3/24	vs. Nebraska	Lisa Thompson	Jillian Huertter	Antonia Bates	Destiny Adams	Chyna Cornwell
2/6/24	vs. Maryland	Lisa Thompson	Jillian Huertter	Antonia Bates	Destiny Adams	Chyna Cornwell
2/10/24	vs. Michigan	Mya Petticord	Jillian Huertter	Antonia Bates	Destiny Adams	Chyna Cornwell
2/13/24	vs. Minnesota	Mya Petticord	Jillian Huertter	Antonia Bates	Destiny Adams	Chyna Cornwell
2/17/24	vs. Wisconsin	Mya Petticord	Jillian Huertter	Antonia Bates	Destiny Adams	Chyna Cornwell
2/21/24	vs. Maryland	Mya Petticord	Jillian Huertter	Antonia Bates	Destiny Adams	Chyna Cornwell

DOUBLE DOUBLES

	Season	Career
Destiny Adams	7	7
Chyna Cornwell	3	12
Kaylene Smikle	2	2
Kassondra Brown	1	1
Awa Sidibe		1
Antonia Bates		
Kennedy Brandt		
Jillian Huertter		
Erica Lafayette		
Mya Petticord		
Lisa Thompson		

MISCELLANEOUS STATISTICS (2023-24)

Most points scored..... 98, vs. La Salle (12/5/23)
 Fewest points scored..... 43, vs. Wisconsin (2/17/24)
 Most points allowed..... 103, vs. Iowa (1/5/24)
 Fewest points allowed..... 43, vs. Wagner (11/9/23)

Largest margin of victory..... 43, vs. Wagner (11/9/23)
 Smallest margin of victory..... 1, vs. Nebraska (2/3/24)

Largest margin of defeat..... -35, vs. Ohio State (1/11/24)
 Smallest margin of defeat..... -1, vs. Purdue (1/2/24)

Largest first period lead..... 17, vs. Wagner (11/9/23)
 Smallest first period lead..... 17, vs. Saint Francis (11/18/23)
 Smallest first period deficit..... 1, vs. Indiana (12/9/23)
 Largest first period deficit..... -20, vs. Fairfield (11/20/23)
 Smallest first period deficit..... -1, vs. Michigan State (1/30/24)
 Smallest first period deficit..... -1, vs. Nebraska (2/3/24)

Largest halftime lead..... 35, vs. Wagner (11/9/23)
 Smallest halftime lead..... 2, vs. Northwestern (12/30/23)
 Largest halftime deficit..... -29, vs. Ohio State (1/11/24)
 Largest halftime deficit..... -29, vs. Michigan 92/10/24)
 Smallest halftime deficit..... -3, vs. Purdue (1/2/24)

Largest third period lead..... 39, vs. Wagner (11/9/23)
 Smallest third period lead..... 4, vs. Minnesota (2/13/24)
 Largest third period deficit..... -35, vs. Iowa (1/5/24)
 Smallest third period deficit..... -3, vs. Boise State (11/25/23)

Largest lead..... 51, vs. Wagner (11/9/23)
 Largest deficit..... 42, vs. Ohio State (1/11/24)

Largest comeback for win..... 10, vs. Minnesota (2/13/24)

Largest rebounding margin..... +24, vs. Wagner (11/9/23)
 Largest opp. rebounding margin..... +17, vs. Iowa (1/5/24)

Most points by RU player..... 33, Destiny Adams
 vs. Penn State (1/14/24)
 Most points by RU player..... 33, Kaylene Smikle
 vs. Delaware State (11/29/23)
 Most points by opp player..... 31, Serah Williams
 Wisconsin (1/27/24)

Most rebounds by RU player..... 17, Destiny Adams
 vs. Monmouth (11/6/23)
 Most rebounds by opp player..... 18, Serah Williams
 vs. Wisconsin (2/17/24)

Most rebounds by RU..... 55, vs. Wagner (11/9/23)
 Most rebounds by opp..... 51, vs. Iowa (1/5/24)

Most steals by RU player..... 5, Destiny Adams
 vs. Wagner (11/9/23)
 Most steals by opp player..... 8, Jacy Sheldon
 vs. Ohio State (1/11/24)

Most steals by RU..... 14, vs. Delaware State (11/29/23)
 Most steals by opp..... 15, vs. Wagner (11/9/23)

Most assists by RU player..... 8, Antonia Bates
 vs. Minnesota (2/13/24)
 Most assists by opp player..... 11, Amari Wright
 vs. Seton Hall (11/15/23)

Most assists by RU..... 21, vs. Wagner (11/9/23)
 Most assists by RU..... 21, vs. La Salle (12/5/23)
 Most assists by opp..... 28, vs. Iowa (1/5/24)

Most blocks by RU player..... 4, Antonia Bates
 vs. Boise State (11/25/23), vs. Delaware State (11/29/23)
 vs. & vs. Michigan (1/21/24)
 Most blocks by opp player..... 5, Serah Williams
 Wisconsin (2/17/24)

Most blocks by RU..... 12, vs. Delaware State (11/29/23)
 Most blocks by opp..... 10, vs. Boise State (11/25/23)

Most RU 1st quarter points..... 24, vs. Saint Francis (11/18/23)
 Most RU 2nd quarter points..... 29, vs. Illinois (1/17/24)
 Most RU 3rd quarter points..... 27, vs. Saint Francis (11/18/23)
 Most RU 4th quarter points..... 27, vs. Maryland (2/21/24)
 Most RU overtime points..... 29, vs. Minnesota (2/13/24)
 Most RU overtime points..... N/A

In Rutgers wins...

Team Statistics		RU	OPP
Scoring		623	451
Points per game		77.9	56.4
Scoring margin		+21.5	-
Field goals-att		220-473	156-492
Field goal pct		.467	.317
3 point fg-att		53-146	48-179
3-point FG pct		.363	.268
3-pt FG made per game		6.6	6.0
Free throws-att		130-183	91-137
Free throw pct		.710	.664
F-Throws made per game		16.3	11.4
Rebounds		360	270
Rebounds per game		45.0	33.8
Rebounding margin		+11.3	-
Assists		132	90
Assists per game		16.5	11.3
Turnovers		145	138
Turnovers per game		18.1	17.3
Turnover margin		-0.9	-
Assist/turnover ratio		0.9	0.7
Steals		79	76
Steals per game		9.9	9.5
Blocks		50	26
Blocks per game		6.3	3.3
Winning streak		8	-
Home win streak		7	-
Attendance		10810	5831
Home games-Avg/Game		7-1544	1-5831
Neutral site-Avg/Game		-	0-0

Score by Periods							
Team	1st	2nd	3rd	4th	OT	OT	TOT
Rutgers	141	153	180	149	0	623	
Opponents	101	99	118	133	0	451	

In Rutgers losses...

Team Statistics		RU	OPP
Scoring		1296	1642
Points per game		61.7	78.2
Scoring margin		-16.5	-
Field goals-att		464-1144	596-1288
Field goal pct		.406	.463
3 point fg-att		92-310	154-425
3-point FG pct		.297	.362
3-pt FG made per game		4.4	7.3
Free throws-att		276-390	296-413
Free throw pct		.708	.717
F-Throws made per game		13.1	14.1
Rebounds		704	766
Rebounds per game		33.5	36.5
Rebounding margin		-3.0	-
Assists		233	396
Assists per game		11.0	18.9
Turnovers		392	276
Turnovers per game		18.7	13.1
Turnover margin		-5.5	-
Assist/turnover ratio		0.6	1.4
Steals		120	161
Steals per game		5.7	7.7
Blocks		75	70
Blocks per game		3.6	3.3
Winning streak		0	-
Home win streak		0	-
Attendance		36064	30749
Home games-Avg/Game		10-3606	9-3417
Neutral site-Avg/Game		-	2-0

Score by Periods							
Team	1st	2nd	3rd	4th	OT	OT	TOT
Rutgers	278	286	360	372	0	1296	
Opponents	421	411	397	413	0	1642	

2023-24 GAME BY GAME LEADERS

Scoring		23-24	At RU
Destiny Adams		11	11
Kaylene Smikle		9	28
Awa Sidibe		5	
Kassondra Brown		4	7
Mya Petticord		4	4
Chyna Cornwell		2	3
Lisa Thompson		2	2
Jillian Huerter		2	2
Antonia Bates		1	1
Erica Lafayette		1	1
20-pt scorers		23-34	At RU
Kaylene Smikle		6	20
Destiny Adams		6	6
Kassondra Brown		1	1
Mya Petticord		1	1
30-pt scorers		23-34	At RU
Kaylene Smikle		1	1
Destiny Adams		1	1
Double-Figure Scoring		23-24	At RU
Destiny Adams		24	24
Kaylene Smikle		11	37
Kassondra Brown		13	24
Mya Petticord		9	9
Lisa Thompson		9	9
Chyna Cornwell		7	22
Jillian Huerter		6	6
Antonia Bates		2	3
Erica Lafayette		1	8
Awa Sidibe			21
Double-Doubles		23-24	At RU
Destiny Adams		7	7
Chyna Cornwell		2	11
Awa Sidibe			1
Kassondra Brown		1	2
Kaylene Smikle		2	2
Rebounding		23-24	At RU
Destiny Adams		14	14
Chyna Cornwell		12	33
Kassondra Brown		5	13
Kaylene Smikle		2	8
Awa Sidibe			8
Mya Petticord		2	2
Antonia Bates		1	1
Double-Digit Rebounding		23-24	At RU
Chyna Cornwell		8	20
Destiny Adams		7	7
Kassondra Brown		2	6
Kaylene Smikle		2	2
Awa Sidibe			1
Antonia Bates		1	1

Assists		23-24	At RU
Antonia Bates		11	15
Awa Sidibe			19
Mya Petticord		7	7
Kaylene Smikle		6	11
Erica Lafayette			3
Lisa Thompson		4	4
Kassondra Brown		4	5
Destiny Adams		2	2
Jillian Huerter		2	2
Antonia Bates		1	1
5+ Assists		23-24	At RU
Antonia Bates		9	9
Mya Petticord		3	3
Kaylene Smikle		1	3
Erica Lafayette			1
Lisa Thompson		1	1
Awa Sidibe			6
Kassondra Brown		1	1
Double-Digit Assists		23-24	At RU
Steals		23-24	At RU
Destiny Adams		11	11
Antonia Bates		11	14
Kaylene Smikle		7	22
Kassondra Brown		7	15
Jillian Huerter		4	4
Awa Sidibe			7
Mya Petticord		3	3
Lisa Thompson		3	3
Chyna Cornwell		2	7
Erica Lafayette		1	2
3+ Steals		23-24	At RU
Destiny Adams		6	6
Kaylene Smikle		6	18
Awa Sidibe			5
Kassondra Brown		2	4
Mya Petticord		2	2
Antonia Bates		3	3
Chyna Cornwell		1	3
Lisa Thompson		1	1
Blocked Shots		23-24	At RU
Antonia Bates		20	28
Destiny Adams		8	8
Chyna Cornwell		9	18
Kaylene Smikle		3	12
Awa Sidibe			10
Kassondra Brown		5	15
Erica Lafayette		2	2
Lisa Thompson		2	2
Jillian Huerter		1	1
3+ Blocks		23-24	At RU
Antonia Bates		5	8
Destiny Adams		1	1
Kassondra Brown			3
Chyna Cornwell			2

RUTGERS RECORD WHEN...

at home	7-10
on road	1-9
at neutral sites	0-2
games decided by 3 pts or less	1-2
games decided by 4-10 points	2-5
games decided by 11-20 points	0-8
games decided by more than 20 pts	5-6
overtime/double overtime	0-0
vs. top 25 teams (AP & Coaches Polls)	0-4
vs. teams receiving votes (AP & Coaches Polls)	0-2
leading end of first period	5-4
trailing end of first period	3-16
tied at end of first period	0-1
leading at the half	6-2
trailing at the half	0-19
tied at the half	2-0
leading end of third period	8-2
trailing end of third period	0-20
tied end of third period	0-0
shooting less than 30%	0-0
shooting 30-39%	1-7
shooting 40-49%	4-12
shooting 50% or better	3-2
opponent shoots 45% or better	0-9
opponent shoots less than 45%	8-12
scoring less than 50 points	0-1
scoring 50-59 points	1-9
scoring 60-69 points	1-7
scoring 70-79 points	1-3
scoring 80 or more points	5-1
opponent scores less than 50 points	3-0
opponent scores 50-59 points	2-1
opponent scores 60-69 points	1-5
opponent scores 70-79 points	2-6
opponent scores 80 or more points	0-9
RU out-rebounds opponent	7-8
opponent out-rebounds RU	1-12
RU equals opponent in rebounds	0-1
RU shoots 75% or better from the FT line	3-9
RU has more FT attempts	6-5
opponent has more FT attempts	2-15
RU equals opponent in FT attempts	0-1
RU shoots 40% or better from '3'	4-5
opponent shoots 40% or better from '3'	1-9
attempting more three pointers than opponent	2-4
attempting fewer three pointers than opponent	5-16
attempting same number of three pointers	1-1
RU has more turnovers than opponent	3-18
RU has fewer turnovers than opponent	4-2
RU and opponent have equal turnovers	1-1
RU has 10 or more steals	5-3
RU has 9 or fewer steals	3-18
scoring more points off turnovers	6-3
scoring fewer points off turnovers	2-17
scoring same amount of points off turnovers	0-1
scoring more points in the paint	6-5
scoring fewer points in the paint	1-14
scoring same amount of points in the paint	1-2
scoring more second chance points	6-11
scoring fewer second chance points	2-10
scoring same amount of second chance points	0-0
scoring more fast break points	7-6
scoring fewer fast break points	1-14
scoring same amount of fast break points	0-1
bench outscores opponent bench	6-9
bench is outscored by opponent bench	2-11
benches score equal amount of points	0-1
when one or fewer players score in double figures	0-1
when two or more players score double figures	2-8
when three or more players score double figures	4-5
when four or more players score in double figures	1-4
when five or more players score in double figures	1-1
November	4-5
December	2-4
January	0-8
February	2-4
March	0-0
In nationally televised games	1-7
In scarlet uniforms	0-7
In white uniforms	7-6
In black uniforms	1-4
In other uniforms	0-4

LAST TIME...

RU Scored 100+ Points	107-33, vs. Coppin State (Nov. 9, 2019)
RU Scored 90-99 Points	98-67, vs. La Salle (Dec. 5, 2023)
RU Scored 39 or Fewer Points	38-50, at Nebraska (Feb. 1, 2022)
RU Opponent Scored 100+ Points	68-103, vs. #4/3 Iowa (Jan. 5, 2024)
RU Opponent Scored 90-99 Points	96-68, vs. Illinois (Jan. 17, 2024)
RU Opponent Scored 39 or Fewer Points	74-36, Delaware State (Dec. 12, 2021)
RU Opponent Scored 29 or Fewer Points	65-26, vs. Savannah St (Dec. 13, 2015)
RU Defeated a Ranked Opponent	71-63, #22/20 Ohio State (March 5, 2021)
RU Won in Overtime	86-82 (OT), vs. Penn State (Jan. 26, 2023)
RU Won in Double Overtime	91-79 (2OT), vs. Seton Hall (March 27, 2014)
RU Won in Triple Overtime	89-84 (3OT), vs. Ole Miss (Dec. 12, 2006)
Opponent Won in Overtime	67-77, vs. Iowa (Feb. 21, 2018)
Opponent Won in Double Overtime	71-73, at Minnesota (Feb. 2, 2020)
RU Won by 50+ Points	99-30 (+69), Sacred Heart (Dec. 20, 2020)
RU Won by 40-49 Points	86-43 (+43), Wagner (Nov. 9, 2023)
RU Won by 30-39 Points	98-67 (+31), vs. La Salle (Dec. 5, 2023)
RU Lost by 25+ Points	28, 86-58, vs. Michigan (Feb. 10, 2024)
RU Shot 60% or Better From Field	.600 (39-65) vs. UCF (Feb. 15, 2014)
RU Shot Less Than 25% From Field	.242 (16-66), vs. Purdue (Feb. 15, 2017)
RU Opponent Shot Less Than 20% From Field	.167 (8-48), Sacred Heart (Dec. 20, 2020)
RU Opponent Shot Less Than 20% From 3-Point Range	20.0% (4-for-20), vs. Michigan (Jan. 21, 2024)
RU Shot 90% or Better from Free Throw Line (10 att.)	.92.9 (26-28), vs. Minnesota (Feb. 13, 2024)
RU Had 50+ Rebounds	55, vs. Wagner (Nov. 9, 2023)
RU Had 25+ Turnovers	28, vs. #17/16 Ohio State (Jan. 11, 2024)
RU Had Less Than 10 Turnovers	9, vs. La Salle (Dec. 5, 2023)
RU Had Five or Fewer Turnovers	4, vs. Michigan State (Jan. 20, 2020)
RU Forced 25+ Turnovers	28, vs. Northwestern (Feb. 15, 2023)
RU Had 20+ Steals	21, vs. Saint Peter's (Nov. 9, 2021)
RU Had 25+ Assists	25, vs. Hampton (Dec. 18, 2020)
RU Had 10+ Blocked Shots	12, vs. Delaware State (Nov. 29, 2023)
RU Opponent Had 20+ Steals	21, vs. Temple, (Dec. 30, 2007)
RU Opponent Had 20+ Assists	25, L, 86-58, vs. Michigan (Feb. 10, 2024)
RU Opponent Had 10+ Blocked Shots	10, vs. Boise State (Nov. 25, 2023)
All Five RU Starters in Double-Figures:	Awa Sidibe (16), Kai Carter (16), Erica Lafayette (11), Chyna Cornwell (11), Abby Streeter (11) (vs. Hofstra 11/7/22)
Six RU Players in Double Figures:	Kaylene Smikle (21), Destiny Adams (17), Jillian Hueter (16), Kassondra Brown (12), Lisa Thompson (11), Erica Lafayette (10) vs. La Salle (Dec. 5, 2023)
Five RU Players in Double-Figures:	Chyna Cornwell (12), Mya Petticord (12), Kassondra Brown (12), Destiny Adams (11) and Lisa Thompson (11) vs. Iowa (Jan. 5, 2024)
Two RU Players With 20+ Points in a Game	Mya Petticord (25) & Destiny Adams (21) vs. Minnesota (Feb. 13, 2024)
Two RU Players With Double-Doubles	Destiny Adams (17 pts, 10 reb) & Kaylene Smikle (21 pts, 11 reb), vs. La Salle (Dec. 5, 2023)
Three RU Players With Double-Doubles	Arella Guirantes (19 pts, 11 reb), Jordan Wallace (14 pts, 10 reb), Tekia Mack (10 pts, 10 reb) vs. Harvard (Nov. 17, 2019)
RU Player with 10 or More FT without a Miss	Destiny Adams (11-11), at Purdue (Jan. 2, 2024)
RU Player with 20 or More Rebounds	Osh Brown (20), vs. DePaul (Nov. 25, 2021)
RU Player with 10 or More Assists	Arella Guirantes (11), Manhattan (Dec. 23, 2020)
RU Player with 7 or More Steals	Tekia Mack (8), Minnesota (Feb. 17, 2021)
RU Player with 5 or More Blocks	Tyia Singleton (6), #22/20 Ohio State (March 5, 2021)
RU Player with 20+ points & 20+ rebounds	Osh Brown (20, 20), vs DePaul (Nov. 25, 2021)
RU Player Scored 30-39 points	Destiny Adams (33), vs. Penn State (Jan. 14, 2024)
RU Player Scored 40+ points	Cappie Pondexter (40), at South Florida (Jan. 11, 2006)
RU Player with a triple-double	Arella Guirantes (17pts, 10reb, 11ast), Manhattan (Dec. 23, 2020)

TV & RADIO ROSTER

2023-24 RUTGERS WOMEN'S BASKETBALL - SCARLET KNIGHTS



#0 Jillian Huerter
Fr. | G | 6-0
Clifton Park, N.Y.



#1 Destiny Adams
Jr. | G/F | 6-3
Manchester, N.J.



#2 Kaylene Smikle
So. | G | 6-0
Farmingdale, N.Y.



#3 Mya Petticord
So. | G | 5-9
Detroit, Mich.



#4 Antonia Bates
So. | G/F | 6-3
Easton, Pa.



#11 Awa Sidibe
Gr. | G | 5-11
Bamako, Mali



#20 Erika Lafayette
Sr. | G | 6-0
Baton Rouge, La.



#22 Kassondra Brown
Gr. | C | 6-2
Abington, Pa.



#24 Lisa Thompson
Fr. | G | 5-9
Joliet, Ill.



#33 Kennedy Brandt
Fr. | G | 5-10
Glen Ellyn, Ill.



#54 Chyna Cornwell
Sr. | C | 6-3
Conover, N.C.

2023-24 RUTGERS WOMEN'S BASKETBALL - COACHING STAFF



Coquese Washington
Head Coach



Tasha Pointer
Assistant Coach



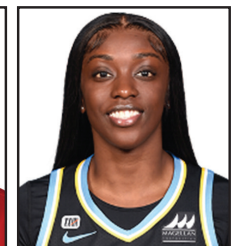
John Hampton
Assistant Coach



Nneka Enemkpali
Assistant Coach



Jeanine Wasielewski
Assistant Coach



Kahleah Copper
Dir. Athletic Culture
& Professional
Development

RUTGERS IN THE NATIONAL STATS

Statistic	Player	National Rank	Conference Rank	Value	National Leader	Value	Conference Leader	Value
Assist/Turnover Ratio (250 ranked)	Antonia Bates	146	21	1.50	Klara Jackson, UNLV	3.27	DeeDee Hagemann, Michigan St.	3.02
Assists (147 ranked)	Antonia Bates	146	21	1.50	Klara Jackson, UNLV	3.27	DeeDee Hagemann, Michigan St.	3.02
Assists Per Game (249 ranked)	Antonia Bates	246	25	3.2	Caitlin Clark, Iowa	220	Caitlin Clark, Iowa	220
Blocks (149 ranked)	Antonia Bates	246	25	3.2	Caitlin Clark, Iowa	8.5	Caitlin Clark, Iowa	8.5
Blocks Per Game (247 ranked)	Antonia Bates	42	5	44	Cameron Brink, Stanford	90	Serah Williams, Wisconsin	68
Double Doubles (45 ranked)	Antonia Bates	42	5	44	Cameron Brink, Stanford	90	Serah Williams, Wisconsin	68
Field Goal Attempts (150 ranked)	Antonia Bates	61	5	1.57	Cameron Brink, Stanford	3.60	Serah Williams, Wisconsin	2.96
Field Goal Percentage (250 ranked)	Antonia Bates	61	5	1.57	Cameron Brink, Stanford	281	Caitlin Clark, Iowa	281
Field Goals (149 ranked)	Antonia Bates	66	4	165	Caitlin Clark, Iowa	26	Alexis Markowski, Nebraska	16
Free Throw Attempts (148 ranked)	Destiny Adams	150	5	319	Caitlin Clark, Iowa	591	Caitlin Clark, Iowa	591
Free Throw Percentage (250 ranked)	Destiny Adams	60	9	51.7	Lauren Betts, UCLA	67.3	Mackenzie Holmes, Indiana	65.4
Free Throws (145 ranked)	Destiny Adams	60	9	51.7	Lauren Betts, UCLA	67.3	Mackenzie Holmes, Indiana	65.4
Minutes Per Game (150 ranked)	Destiny Adams	56	4	165	Caitlin Clark, Iowa	281	Caitlin Clark, Iowa	281
Points (200 ranked)	Destiny Adams	62	7	444	Caitlin Clark, Iowa	38.38	Makira Cook, Illinois	34.89
Points Per Game (250 ranked)	Destiny Adams	62	7	444	Caitlin Clark, Iowa	852	Caitlin Clark, Iowa	852
Rebounds (150 ranked)	Destiny Adams	145	19	15.3	Caitlin Clark, Iowa	32.8	Caitlin Clark, Iowa	32.8
Rebounds (Defensive) Per Game (30 ranked)	Destiny Adams	145	19	15.3	Caitlin Clark, Iowa	32.8	Caitlin Clark, Iowa	32.8
Rebounds (Offensive) Per Game (30 ranked)	Destiny Adams	69	7	215	Lauren Gustin, BYU	433	Alexis Markowski, Nebraska	290
Rebounds Per Game (250 ranked)	Destiny Adams	69	7	215	Lauren Gustin, BYU	433	Alexis Markowski, Nebraska	290
Steals (150 ranked)	Destiny Adams	76	9	212	Lauren Gustin, BYU	10.4	Serah Williams, Wisconsin	8.2
Steals Per Game (246 ranked)	Destiny Adams	76	9	212	Lauren Gustin, BYU	10.4	Serah Williams, Wisconsin	8.2
Three Point Attempts (149 ranked)	Destiny Adams	156	11	7.4	Lauren Gustin, BYU	15.5	Serah Williams, Wisconsin	11.3
Three Point Percentage (163 ranked)	Destiny Adams	156	11	7.4	Lauren Gustin, BYU	15.5	Serah Williams, Wisconsin	11.3
Three Pointers (139 ranked)	Destiny Adams	171	13	7.3	Lauren Gustin, BYU	15.5	Serah Williams, Wisconsin	11.3
Three Pointers Per Game (246 ranked)	Destiny Adams	171	13	7.3	Lauren Gustin, BYU	15.5	Serah Williams, Wisconsin	11.3

Statistic	National Rank	Conference Rank	Value	National Leader	Value	Conference Leader	Value
Assist/Turnover Ratio (349 ranked)	266	27	0.68	Green Bay	1.68	Michigan St.	1.66
Assists Per Game (349 ranked)	266	27	0.68	Green Bay	1.68	Michigan St.	1.66
Bench Points Per Game (349 ranked)	203	27	12.5	Iowa	21.2	Iowa	21.2
Blocks Per Game (349 ranked)	203	27	12.5	Iowa	21.2	Iowa	21.2
Field Goal Percentage (349 ranked)	184	19	17.8	Murray St.	37.9	Michigan St.	26.8
Field Goal Percentage Defense (349 ranked)	184	19	17.8	Murray St.	37.9	Michigan St.	26.8
Fouls Per Game (349 ranked)	48	3	4.3	South Carolina	8.3	Wisconsin	4.4
Free Throw Attempts Per Game (349 ranked)	48	3	4.3	South Carolina	8.3	Wisconsin	4.4
Free Throw Percentage (349 ranked)	110	21	42.4	Indiana	51.8	Indiana	51.8
Free Throws Made Per Game (349 ranked)	110	21	42.4	Indiana	51.8	Indiana	51.8
Rebound Margin (349 ranked)	272	17	42.2	South Carolina	31.4	Wisconsin	39.4
Rebounds (Defensive) Per Game (349 ranked)	272	17	42.2	South Carolina	31.4	Wisconsin	39.4
Rebounds (Offensive) Per Game (349 ranked)	294	25	18.9	Dartmouth	10.8	Minnesota	14.3
Rebounds Per Game (349 ranked)	294	25	18.9	Dartmouth	10.8	Minnesota	14.3
Scoring Defense (349 ranked)	49	7	19.76	LSU	28.35	Maryland	21.00
Scoring Margin (349 ranked)	49	7	19.76	LSU	28.35	Maryland	21.00
Three Point Attempts Per Game (349 ranked)	177	23	70.9	Creighton	82.0	Illinois	79.0
Three Point Percentage (349 ranked)	177	23	70.9	Creighton	82.0	Illinois	79.0
Three Pointers Per Game (349 ranked)	56	9	14.00	LSU	20.85	Maryland	16.19
Three Pointers Per Game (349 ranked)	56	9	14.00	LSU	20.85	Maryland	16.19
Three Pointers Per Game (349 ranked)	169	17	1.01	SIU	15.0	Nebraska	9.3
Three Pointers Per Game (349 ranked)	169	17	1.01	SIU	15.0	Nebraska	9.3
Three Pointers Per Game (349 ranked)	177	19	25.1	South Carolina	32.7	Iowa	31.0
Three Pointers Per Game (349 ranked)	177	19	25.1	South Carolina	32.7	Iowa	31.0
Three Pointers Per Game (349 ranked)	172	9	11.6	Ga. Southern	18.1	Nebraska	13.3
Three Pointers Per Game (349 ranked)	172	9	11.6	Ga. Southern	18.1	Nebraska	13.3
Three Pointers Per Game (349 ranked)	168	11	36.69	LSU	47.23	Iowa	41.77
Three Pointers Per Game (349 ranked)	168	11	36.69	LSU	47.23	Iowa	41.77
Three Pointers Per Game (349 ranked)	320	23	72.2	UAlbany	51.0	Ohio St.	62.2
Three Pointers Per Game (349 ranked)	320	23	72.2	UAlbany	51.0	Ohio St.	62.2
Three Pointers Per Game (349 ranked)	278	25	-6.0	South Carolina	32.5	Iowa	21.9
Three Pointers Per Game (349 ranked)	278	25	-6.0	South Carolina	32.5	Iowa	21.9
Three Pointers Per Game (349 ranked)	157	23	66.2	Iowa	92.7	Iowa	92.7
Three Pointers Per Game (349 ranked)	157	23	66.2	Iowa	92.7	Iowa	92.7
Three Pointers Per Game (349 ranked)	242	19	6.9	Niagara	14.8	Ohio St.	10.4
Three Pointers Per Game (349 ranked)	242	19	6.9	Niagara	14.8	Ohio St.	10.4
Three Pointers Per Game (349 ranked)	286	27	15.7	Marshall	31.2	Iowa	28.5
Three Pointers Per Game (349 ranked)	286	27	15.7	Marshall	31.2	Iowa	28.5
Three Pointers Per Game (349 ranked)	135	25	31.8	Indiana	41.0	Indiana	41.0
Three Pointers Per Game (349 ranked)	135	25	31.8	Indiana	41.0	Indiana	41.0
Three Pointers Per Game (349 ranked)	287	19	33.4	VCU	23.6	Illinois	29.0
Three Pointers Per Game (349 ranked)	287	19	33.4	VCU	23.6	Illinois	29.0
Three Pointers Per Game (349 ranked)	251	27	5.0	Montana	11.1	Iowa	10.7
Three Pointers Per Game (349 ranked)	251	27	5.0	Montana	11.1	Iowa	10.7





0

JILLIAN HUERTER
FRESHMAN • GUARD
CLIFTON PARK, N.Y. / SHENENDEHOWA



2023-24 Rutgers Women's Basketball
Individual Game-by-Game
All games

Page 1/11
as of Feb 22, 2024

#0 HUERTER, Jillian

Opponent	Date	GS	MIN	Total		3-Pointers		Free throws		Rebounds				PF	A	TO	BLK	STL	PTS	AVG
				FG-FGA	PCT	3FG-3FGA	PCT	FT-FTA	PCT	OFF	DEF	TOT	AVG							
Monmouth	11/06/2023		12:07	0-2	.000	0-2	.000	0-0	.000	1	1	2	2.0	1	1	2	0	1	0	0.0
Wagner	11/09/2023		20:18	2-6	.333	2-6	.333	1-2	.500	0	2	2	2.0	1	0	3	2	0	7	3.5
Auburn	11/12/2023		22:08	4-7	.571	3-6	.500	0-0	.000	0	2	2	2.0	2	1	1	0	1	11	6.0
at Seton Hall	11/15/2023		23:34	1-3	.333	0-2	.000	0-0	.000	0	2	2	2.0	4	1	3	0	0	2	5.0
Saint Francis (PA)	11/18/2023		30:52	5-8	.625	5-7	.714	0-0	.000	0	1	1	1.8	3	2	0	1	1	15	7.0
Fairfield	11/20/2023		23:16	3-8	.375	3-8	.375	0-0	.000	0	1	1	1.7	2	2	3	0	0	9	7.3
vs Texas Tech	11/24/2023		20:39	2-7	.286	1-6	.167	1-2	.500	0	1	1	1.6	5	1	1	1	0	6	7.1
vs Boise St.	11/25/2023		19:10	3-7	.429	3-5	.600	0-0	.000	0	1	1	1.5	1	0	0	0	0	9	7.4
Delaware St.	11/29/2023		30:09	2-8	.250	2-8	.250	2-2	1.000	0	3	3	1.7	0	2	1	2	1	8	7.4
Lafayette	12/01/2023		22:11	2-5	.400	2-5	.400	0-0	.000	0	1	1	1.6	0	0	1	0	2	6	7.3
La Salle	12/05/2023		29:32	5-7	.714	4-6	.667	2-2	1.000	0	2	2	1.6	1	4	0	0	0	16	8.1
Indiana	12/09/2023		33:27	0-5	.000	0-4	.000	0-0	.000	0	4	4	1.8	2	2	0	0	0	0	7.4
at Princeton	12/13/2023		19:39	1-4	.250	1-2	.500	1-2	.500	1	0	1	1.8	1	0	1	0	0	4	7.2
Virginia Tech	12/17/2023		09:41	0-2	.000	0-0	.000	0-0	.000	0	0	0	1.6	0	1	0	0	0	0	6.6
at Northwestern	12/30/2023		27:55	1-6	.167	1-4	.250	1-2	.500	1	1	2	1.7	1	2	2	0	1	4	6.5
at Purdue	01/02/2024	*	38:06	6-10	.600	4-7	.571	0-0	.000	0	0	0	1.6	3	2	2	0	1	16	7.1
Iowa	01/05/2024	*	36:38	3-7	.429	1-4	.250	0-0	.000	0	2	2	1.6	4	2	0	1	2	7	7.1
at Ohio St.	01/11/2024	*	26:22	1-5	.200	0-2	.000	3-4	.750	0	0	0	1.5	3	0	2	0	1	5	6.9
Penn St.	01/14/2024	*	15:11	0-4	.000	0-3	.000	0-0	.000	0	1	1	1.5	2	0	3	0	0	0	6.6
at Illinois	01/17/2024		24:17	3-5	.600	2-2	1.000	0-0	.000	0	2	2	1.5	1	0	2	0	0	8	6.7
Michigan	01/21/2024		25:43	4-6	.667	3-5	.600	1-2	.500	1	0	1	1.5	2	1	0	0	0	12	6.9
at Wisconsin	01/27/2024		30:59	2-5	.400	2-4	.500	1-2	.500	1	3	4	1.6	4	3	1	0	1	7	6.9
Michigan St.	01/30/2024		29:30	3-8	.375	3-7	.429	1-2	.500	0	4	4	1.7	4	4	4	0	0	10	7.0
at Nebraska	02/03/2024	*	35:20	3-10	.300	1-6	.167	0-1	.000	1	6	7	1.9	2	1	6	0	1	7	7.0
Maryland	02/06/2024	*	24:42	3-7	.429	3-7	.429	0-0	.000	0	3	3	2.0	1	1	2	0	0	9	7.1
at Michigan	02/10/2024	*	31:55	1-4	.250	0-3	.000	0-0	.000	0	2	2	2.0	2	1	0	0	0	2	6.9
Minnesota	02/13/2024	*	19:19	2-6	.333	2-6	.333	0-0	.000	0	1	1	1.9	1	1	2	0	1	6	6.9
Wisconsin	02/17/2024	*	16:06	0-3	.000	0-3	.000	0-0	.000	0	3	3	2.0	1	0	1	0	0	0	6.6
at Maryland	02/21/2024	*	27:01	2-10	.200	2-6	.333	0-0	.000	0	2	2	2.0	3	2	0	0	1	6	6.6
Totals		10	725:47	64-175	.366	50-136	.368	14-23	.609	6	51	57	2.0	57	37	43	7	15	192	6.6

Player Averages

Games Played	Minutes/ game	Points/ game	FG Pct	3FG Pct	FT Pct	Rebounds/ game	Assists/ game	Turnovers/ game	Assist/Turnover ratio	Steals/ game	Blocks/ game
29	25.0	6.6	36.6	36.8	60.9	2.0	1.3	1.5	0.9	0.5	0.2



0

JILLIAN HUERTER
FRESHMAN • GUARD
CLIFTON PARK, N.Y. / SHENENDEHOWA

HUERTER, Jillian

SEASON	TEAM	GP-GS	MIN/AVG	Field Goals		3-Point		F-Throws		Rebounds				Scoring						
				FG-FGA	FG%	3FG-3FGA	3FG%	FT-FTA	FT%	OFF	DEF	TOT	AVG	PF-FO	A	TO	BLK	STL	PTS	AVG
2023-24	RU	29-10	726/25.0	64-175	.366	50-136	.368	14-23	.609	6	51	57	2.0	57-1	37	43	7	15	192	6.6
TOTAL		29-10	726/25.0	64-175	.366	50-136	.368	14-23	.609	6	51	57	2.0	57-1	37	43	7	15	192	6.6

Single Game Highs

Statistic	Value	
Points	16	vs La Salle 12/05/23, at Purdue 01/02/24
Rebounds	7	at Nebraska 02/03/24
Assists	4	vs La Salle 12/05/23, vs Michigan St. 01/30/24
Steals	2	vs Lafayette 12/01/23, vs Iowa 01/05/24
Blocks	2	vs Wagner 11/09/23, vs Delaware St. 11/29/23
FG Made	6	at Purdue 01/02/24
FG Attempts	10	at Nebraska 02/03/24, at Purdue 01/02/24, at Maryland 02/21/24
3FG Made	5	vs Saint Francis (PA) 11/18/23
3FG Attempts	8	vs Fairfield 11/20/23, vs Delaware St. 11/29/23
FT Made	3	at Ohio St. 01/11/24
FT Attempts	4	at Ohio St. 01/11/24

Prior to Rutgers

- Prior to the 2021-22 season, Huerter went to Shenendehowa High School where she helped guide her team back-to-back two Section 2 Championships (2019 & 2020) as well as a Suburban Council Championship in 2021
- While at Shenendehowa, she also averaged 15.9 points, 6.0 rebounds and 3.8 assists before going into player her final year of high school ball at the Kent School
- Also played for AAU team, Elevate NYBC
- 2x Section 2 All-Tournament Team and All-Star pick
- News Channel 13 All-Star
- Section 2 Class AA All-Tournament Team
- Suburban Council First Team and Senior Team selection
- Suburban Council Excellence in Leadership Award



1

DESTINY ADAMS

JUNIOR • GUARD/FORWARD
MANCHESTER, N.J. / MANCHESTER (UNC)



2023-24 Rutgers Women's Basketball Individual Game-by-Game All games

Page 2/11
as of Feb 22, 2024

#1 ADAMS, Destiny

Opponent	Date	GS	MIN	Total		3-Pointers		Free throws		Rebounds				PF	A	TO	BLK	STL	PTS	AVG	
				FG-FGA	PCT	3FG-3FGA	PCT	FT-FTA	PCT	OFF	DEF	TOT	AVG								
Monmouth	11/06/2023	*	31:14	5-15	.333	0-1	.000	3-5	.600	6	11	17	17.0	4	1	2	1	2	13	13.0	
Wagner	11/09/2023	*	24:25	6-12	.500	0-0	.000	5-6	.833	4	8	12	14.5	1	5	0	3	5	17	15.0	
Auburn	11/12/2023	*	29:37	2-7	.286	0-0	.000	0-0	.000	1	7	8	12.3	5	2	6	2	3	4	11.3	
at Seton Hall	11/15/2023	*	31:52	11-15	.733	0-1	.000	5-7	.714	4	4	8	11.3	4	0	7	0	1	27	15.3	
Saint Francis (PA)	11/18/2023	*	25:33	4-4	1.000	0-0	.000	3-4	.750	1	3	4	9.8	3	2	2	1	2	11	14.4	
Fairfield	11/20/2023	*	23:23	4-7	.571	0-0	.000	1-4	.250	3	3	6	9.2	4	3	4	0	0	9	13.5	
vs Texas Tech	11/24/2023	*	29:18	5-7	.714	0-0	.000	3-4	.750	1	2	3	8.3	5	3	5	0	1	13	13.4	
vs Boise St.	11/25/2023	*	29:22	2-7	.286	0-0	.000	2-2	1.000	1	4	5	7.9	4	2	4	0	3	6	12.5	
Delaware St.	11/29/2023	*	27:31	7-12	.583	0-0	.000	5-7	.714	4	2	6	7.7	1	1	2	2	2	19	13.2	
Lafayette	12/01/2023	*	25:30	7-10	.700	0-0	.000	0-5	.000	5	3	8	7.7	1	1	5	1	3	14	13.3	
La Salle	12/05/2023	*	27:40	7-11	.636	0-0	.000	3-5	.600	4	6	10	7.9	3	4	3	1	2	17	13.6	
Indiana	12/09/2023	*	30:52	4-10	.400	0-0	.000	2-4	.500	2	6	8	7.9	3	3	1	0	1	10	13.3	
at Princeton	12/13/2023	*	33:50	4-10	.400	0-1	.000	2-3	.667	3	2	5	7.7	3	3	2	1	1	10	13.1	
Virginia Tech	12/17/2023	*	21:32	1-3	.333	0-0	.000	0-0	.000	2	3	5	7.5	3	1	1	1	1	2	12.3	
at Northwestern	12/30/2023	*	27:32	4-7	.571	0-0	.000	1-1	1.000	0	2	2	7.1	5	1	2	0	2	9	12.1	
at Purdue	01/02/2024	*	40:00	6-15	.400	0-0	.000	11-11	1.000	3	10	13	7.5	4	1	0	2	1	23	12.8	
Iowa	01/05/2024	*	19:57	5-9	.556	0-0	.000	1-4	.250	2	4	6	7.4	4	2	3	2	0	11	12.6	
at Ohio St.	01/11/2024	*	31:07	6-11	.545	0-0	.000	6-6	1.000	4	3	7	7.4	4	1	6	0	1	18	12.9	
Penn St.	01/14/2024	*	36:18	13-21	.619	0-0	.000	7-11	.636	5	4	9	7.5	3	2	5	0	0	33	14.0	
at Illinois	01/17/2024	*	32:29	10-19	.526	0-0	.000	6-8	.750	3	3	6	7.4	2	0	4	1	0	26	14.6	
Michigan	01/21/2024	*	30:00	3-8	.375	0-1	.000	5-5	1.000	0	2	2	7.1	4	0	4	0	1	11	14.4	
at Wisconsin	01/27/2024	*	23:24	3-12	.250	0-0	.000	5-6	.833	4	3	7	7.1	4	1	4	0	2	11	14.3	
Michigan St.	01/30/2024	*	38:32	9-16	.563	0-0	.000	10-14	.714	8	2	10	7.3	3	1	4	1	1	28	14.9	
at Nebraska	02/03/2024	*	32:35	5-11	.455	0-1	.000	1-4	.250	1	5	6	7.2	4	3	5	0	0	11	14.7	
Maryland	02/06/2024	*	36:03	7-13	.538	0-0	.000	8-13	.615	5	3	8	7.2	4	1	4	2	4	22	15.0	
at Michigan	02/10/2024	*	32:54	5-6	.833	1-1	1.000	4-8	.500	1	5	6	7.2	3	0	2	0	4	15	15.0	
Minnesota	02/13/2024	*	31:07	6-10	.600	0-0	.000	9-9	1.000	1	9	10	7.3	4	2	4	1	1	21	15.2	
Wisconsin	02/17/2024	*	33:10	7-17	.412	0-0	.000	4-7	.571	4	6	10	7.4	4	0	5	0	1	18	15.3	
at Maryland	02/21/2024	*	21:01	7-14	.500	0-0	.000	1-1	1.000	3	5	8	7.4	5	3	2	0	0	15	15.3	
Totals			29	857:48	165-319	.517	1-6	.167	113-164	.689	85	130	215	7.4	101	49	98	22	45	444	15.3

Player Averages

Games Played	Minutes/ game	Points/ game	FG Pct	3FG Pct	FT Pct	Rebounds/ game	Assists/ game	Turnovers/ game	Assist/Turnover ratio	Steals/ game	Blocks/ game
29	29.6	15.3	51.7	16.7	68.9	7.4	1.7	3.4	0.5	1.6	0.8



1

DESTINY ADAMS

JUNIOR • GUARD/FORWARD
MANCHESTER, N.J. / MANCHESTER (UNC)

ADAMS, Destiny

				Field Goals		3-Point		F-Throws		Rebounds												Scoring	
SEASON	TEAM	GP-GS	MIN/AVG	FG-FGA	FG%	3FG-3FGA	3FG%	FT-FTA	FT%	OFF	DEF	TOT	AVG	PF-FO	A	TO	BLK	STL	PTS	AVG			
2021-22	UNC	28-0	226/8.1	29-69	.420	0-0	.000	27-46	.587	31	41	72	2.6	49-1	9	24	8	23	85	3.0			
2022-23	UNC	33-4	569/17.2	53-114	.465	11-42	.262	18-33	.545	50	76	126	3.8	100-3	18	32	26	50	135	4.1			
2023-24	RU	29-29	858/29.6	165-319	.517	1-6	.167	113-164	.689	85	130	215	7.4	101-4	49	98	22	45	444	15.3			
TOTAL FOR RU		29-29	858/29.6	165-319	.517	1-6	.167	113-164	.689	85	130	215	7.4	101-4	49	98	22	45	444	15.3			
TOTAL		90-33	1652/18.4	247-502	.492	12-48	.250	158-243	.650	166	247	413	4.6	250-8	76	154	56	118	664	7.4			

Single Game Highs

Statistic	Value
Points	33 vs Penn St. 01/14/24
Rebounds	17 vs Monmouth 11/06/23
Assists	5 vs Wagner 11/09/23
Steals	6 vs Boston College 02/12/23
Blocks	3 vs Notre Dame 01/08/23, at Virginia 01/12/23, vs Wagner 11/09/23
FG Made	13 vs Penn St. 01/14/24
FG Attempts	21 vs Penn St. 01/14/24
3FG Made	2 vs South Carolina St. 11/16/22, vs Michigan 12/20/22, vs NC State 01/15/23
3FG Attempts	6 vs Wake Forest 02/19/23
FT Made	11 at Purdue 01/02/24
FT Attempts	14 vs Michigan St. 01/30/24

2022-23 | Sophomore (UNC)

- Played in all 33 games and made four starts
- Averaged 4.1 points and 3.8 rebounds in 17.2 minutes
- Ranked 16th in the ACC in steals (1.5 per game) and 23rd in blocks (0.8 per game), both second on the team
- Scored a career-high 23 points against South Carolina State (Nov. 16) in her first career start
- Recorded a career-high nine rebounds against NC State (Jan. 15), scoring eight points, including two three-pointers, in the fourth quarter of the homecourt win
- Registered a career-high three blocks against both Notre Dame (Jan. 8) and Virginia (Jan. 12)

2021-22 | Freshman (UNC)

- Appeared in 28 of 32 games
- Averaged 3.0 points and 2.6 rebounds
- Scored a career-high 10 points against Appalachian State (Nov. 17), as all of her points came in the fourth quarter, when she was 4-5 from the field and 2-3 from the foul line
- Played a key role in UNC's fourth-quarter comeback at Boston College, scoring the first point in a game-winning 10-0 run
- Grabbed a career-high seven rebounds, five of them offensive, over Syracuse (Dec. 30)

Prior to UNC

- Graduate of Manchester Township High School
- Named to the Jordan Brand Classic 2021 Girls National Team and the 2021 McDonald's All-American Girls Team
- Ranked 20th in the ESPNW Class of 2021 rankings
- Graduated as Manchester's all-time leading scorer
- 2020-21 Gatorade New Jersey Girls Basketball Player of the Year, the first ever from Manchester Township
- Averaged 30.1 points, 18.7 rebounds, 3.1 assists and 2.5 blocks as a senior
- 2020 Shore Conference Player of the Year after totaling 19 double-doubles
- Earned All-Conference and Second Team All-State honors in 2019 and led Manchester Township to a New Jersey State Championship



2

KAYLENE SMIKLE
SOPHOMORE • GUARD
FARMINGDALE, N.Y. / WESTTOWN



2023-24 Rutgers Women's Basketball
Individual Game-by-Game
All games

Page 3/11
as of Feb 22, 2024

#2 SMIKLE, Kaylene

Opponent	Date	GS	MIN	Total		3-Pointers		Free throws		Rebounds				PF	A	TO	BLK	STL	PTS	AVG
				FG-FGA	PCT	3FG-3FGA	PCT	FT-FTA	PCT	OFF	DEF	TOT	AVG							
Monmouth	11/06/2023	*	20:19	2-10	.200	0-2	.000	1-2	.500	0	0	0	0.0	3	0	2	0	2	5	5.0
Wagner	11/09/2023	*	24:16	4-8	.500	0-2	.000	12-14	.857	2	9	11	5.5	0	1	5	0	1	20	12.5
Auburn	11/12/2023	*	32:18	6-18	.333	3-7	.429	4-4	1.000	1	4	5	5.3	5	2	3	0	4	19	14.7
at Seton Hall	11/15/2023	*	33:14	4-13	.308	1-5	.200	4-5	.800	2	6	8	6.0	2	1	6	2	1	13	14.3
Saint Francis (PA)	11/18/2023	*	24:43	3-10	.300	1-5	.200	2-2	1.000	0	4	4	5.6	2	5	6	2	0	9	13.2
Fairfield	11/20/2023	*	29:25	3-8	.375	1-3	.333	0-0	.000	1	4	5	5.5	0	4	4	0	1	7	12.2
vs Texas Tech	11/24/2023	*	35:37	8-19	.421	1-3	.333	3-6	.500	1	3	4	5.3	4	6	5	0	2	20	13.3
vs Boise St.	11/25/2023	*	37:54	11-22	.500	2-5	.400	1-3	.333	2	3	5	5.3	2	4	3	0	3	25	14.8
Delaware St.	11/29/2023	*	31:27	13-20	.650	5-9	.556	2-3	.667	3	1	4	5.1	3	3	6	0	3	33	16.8
Lafayette	12/01/2023	*	28:12	5-14	.357	0-5	.000	3-3	1.000	3	3	6	5.2	2	1	4	2	1	13	16.4
La Salle	12/05/2023	*	30:19	7-17	.412	1-4	.250	6-8	.750	1	10	11	5.7	2	3	0	0	3	21	16.8
Indiana	12/09/2023	*	36:01	8-18	.444	1-3	.333	2-4	.500	1	3	4	5.6	5	2	0	0	1	19	17.0
at Princeton	12/13/2023	*	32:17	4-15	.267	3-5	.600	3-4	.750	2	2	4	5.5	4	4	4	1	3	14	16.8
Virginia Tech	12/17/2023	*	40:00	5-15	.333	1-3	.333	11-14	.786	2	2	4	5.4	3	1	3	1	1	22	17.1
at Northwestern	12/30/2023		04:42	1-3	.333	0-1	.000	0-1	.000	0	2	2	5.1	0	1	1	0	0	2	16.1
Totals		14	440:45	84-210	.400	20-62	.323	54-73	.740	21	56	77	5.1	37	38	52	8	26	242	16.1

Player Averages

Games Played	Minutes/game	Points/game	FG Pct	3FG Pct	FT Pct	Rebounds/game	Assists/game	Turnovers/game	Assist/Turnover ratio	Steals/game	Blocks/game
15	29.4	16.1	40.0	32.3	74.0	5.1	2.5	3.5	0.7	1.7	0.5



2

KAYLENE SMIKLE
SOPHOMORE • GUARD
FARMINGDALE, N.Y. / WESTTOWN

SMIKLE, Kaylene

				Field Goals		3-Point		F-Throws		Rebounds									Scoring	
SEASON	TEAM	GP-GS	MIN/AVG	FG-FGA	FG%	3FG-3FGA	3FG%	FT-FTA	FT%	OFF	DEF	TOT	AVG	PF-FO	A	TO	BLK	STL	PTS	AVG
2022-23	RU	32-19	968/30.3	182-454	.401	56-155	.361	153-193	.793	58	86	144	4.5	87-2	51	116	24	69	573	17.9
2023-24	RU	15-14	441/29.4	84-210	.400	20-62	.323	54-73	.740	21	56	77	5.1	37-2	38	52	8	26	242	16.1
TOTAL		47-33	1409/30.0	266-664	.401	76-217	.350	207-266	.778	79	142	221	4.7	124-4	89	168	32	95	815	17.3

Single Game Highs

Statistic	Value	
Points	33	vs Delaware St. 11/29/23
Rebounds	11	vs Wagner 11/09/23, vs La Salle 12/05/23
Assists	6	vs Texas Tech 11/24/23
Steals	5	vs N.C. Central 11/16/22, at Iowa 02/12/23, vs Northwestern 02/15/23
Blocks	3	vs N.C. Central 11/16/22, vs Hampton 12/10/22
FG Made	13	vs Delaware St. 11/29/23
FG Attempts	23	at Indiana 01/29/23
3FG Made	5	vs South Dakota St. 11/20/22, vs Delaware St. 11/29/23
3FG Attempts	9	vs Nebraska 01/07/23, vs Delaware St. 11/29/23
FT Made	13	vs Illinois 03/02/23
FT Attempts	14	vs Illinois 03/02/23, vs Wagner 11/09/23, vs Virginia Tech 12/17/23

2022-23 | Freshman

- All-Big Ten Second Team (Coaches & Media)
- Big Ten All-Freshman Team (Coaches & Media)
- Three-time Big Ten Freshman of the Week – the most in program history
- Paced the team with 17.9 points per game in addition to averaging 19.5 points in Big Ten play
- The only Scarlet Knight to net 20+ points in a game this season and has accomplished the feat 15, including versus 12 Big Ten opponents, to pace all freshmen in reached double-digit scoring in 27 of 32 outings this campaign including in the last 19 of 20 games
- All-time leading freshman scorer in program history, ending the season with 573 points, beating the previous best of 536 points
- Third freshman in program history to pass the 500-point milestone
- Paces the team with 56 three-pointers and has his at least one three in all but two outings this season
- Her five three's against South Dakota State (Nov. 20) rank as the highest performance in a single game for RU this season
- Led RU with 69 steals to rank fourth in the Big Ten and first among freshmen
- Secured 3+ takeaways on 13 occasions and 5+ grabs three times while topping the team in the statistic 16 times

Prior to Rutgers

- A four-star recruit and the No. 11 ranked wing in the nation according to espnW and the No. 64 overall recruit in the country
- A fierce and agile competitor is known for her diverse abilities to score the basketball and defend with tenacity with Westtown High School and Exodus NYC
- Has high-leverage experience playing in the elite AAU tournament, the Rose Classic.
- 2021-22 Gatorade Pennsylvania Girls Basketball Player of the Year
- Led the Westtown Moose to a 21-4 record and the semifinals of the Pennsylvania Independent Schools Athletic Association state tournament at the time of her selection
- Averaged 22.5 points, 6.2 rebounds and 2.1 steals through 25 games
- A First Team All-Friends Schools League honoree, she was an All-EYBL selection the summer of 2021
- 2021-22 McDonald's All-America Game nominee
- Named All-State honorable mention in New York in 2019-20, and was selected as a All-Nike National First Team following a breakout 2021 AAU season with Exodus NYC while leading the league in four separate statistical categories



3

MYA PETTICORD
SOPHOMORE • GUARD
DETROIT, MICH. / ARBOR PREP (TEXAS A&M)



2023-24 Rutgers Women's Basketball
Individual Game-by-Game
All games

Page 4/11
as of Feb 22, 2024

#3 PETTICORD, Mya

Opponent	Date	GS	MIN	Total		3-Pointers		Free throws		Rebounds				PF	A	TO	BLK	STL	PTS	AVG
				FG-FGA	PCT	3FG-3FGA	PCT	FT-FTA	PCT	OFF	DEF	TOT	AVG							
Monmouth	11/06/2023	*	34:23	5-13	.385	1-3	.333	6-11	.545	2	4	6	6.0	0	0	2	0	3	17	17.0
Wagner	11/09/2023	*	28:29	3-8	.375	0-2	.000	0-0	.000	0	3	3	4.5	3	6	3	0	4	6	11.5
Auburn	11/12/2023	*	32:19	2-9	.222	1-4	.250	3-5	.600	1	0	1	3.3	3	3	3	0	0	8	10.3
at Seton Hall	11/15/2023	*	15:24	2-5	.400	1-3	.333	2-2	1.000	0	1	1	2.8	5	0	2	0	0	7	9.5
Saint Francis (PA)	11/18/2023	*	32:34	1-7	.143	0-3	.000	4-4	1.000	2	6	8	3.8	1	2	2	0	0	6	8.8
Fairfield	11/20/2023	*	11:06	1-2	.500	0-1	.000	0-0	.000	0	1	1	3.3	0	0	3	0	0	2	7.7
at Northwestern	12/30/2023	*	34:16	5-12	.417	2-5	.400	0-0	.000	0	3	3	3.3	0	3	1	0	1	12	8.3
at Purdue	01/02/2024	*	34:49	5-10	.500	1-2	.500	3-5	.600	1	3	4	3.4	3	2	4	0	0	14	9.0
Iowa	01/05/2024	*	37:04	3-10	.300	2-6	.333	4-4	1.000	0	2	2	3.2	0	4	2	1	0	12	9.3
at Ohio St.	01/11/2024	*	33:29	2-7	.286	1-3	.333	5-6	.833	0	1	1	3.0	4	1	4	0	0	10	9.4
Penn St.	01/14/2024	*	34:42	3-8	.375	1-2	.500	5-5	1.000	2	1	3	3.0	3	3	2	0	2	12	9.6
at Illinois	01/17/2024	*	37:33	6-10	.600	2-4	.500	2-2	1.000	1	4	5	3.2	3	6	1	0	1	16	10.2
Michigan	01/21/2024	*	34:38	3-7	.429	0-3	.000	3-4	.750	0	8	8	3.5	3	2	7	1	0	9	10.1
at Wisconsin	01/27/2024	*	37:31	5-11	.455	1-3	.333	4-4	1.000	0	6	6	3.7	1	1	4	0	1	15	10.4
at Nebraska	02/03/2024		21:27	2-3	.667	0-1	.000	1-1	1.000	0	2	2	3.6	1	1	0	0	0	5	10.1
Maryland	02/06/2024		36:41	2-8	.250	0-2	.000	0-0	.000	0	1	1	3.4	4	5	2	0	2	4	9.7
at Michigan	02/10/2024	*	22:54	3-9	.333	1-4	.250	0-0	.000	0	2	2	3.4	1	0	3	0	0	7	9.5
Minnesota	02/13/2024	*	39:31	6-15	.400	4-7	.571	9-10	.900	0	3	3	3.3	2	2	2	0	0	25	10.4
Wisconsin	02/17/2024	*	37:09	4-11	.364	1-5	.200	0-0	.000	2	2	4	3.4	2	2	5	0	2	9	10.3
at Maryland	02/21/2024	*	25:16	3-10	.300	0-2	.000	2-2	1.000	2	1	3	3.4	0	1	2	0	2	8	10.2
Totals			18 621:16	66-175	.377	19-65	.292	53-65	.815	13	54	67	3.4	39	44	54	2	18	204	10.2

Player Averages

Games Played	Minutes/game	Points/game	FG Pct	3FG Pct	FT Pct	Rebounds/game	Assists/game	Turnovers/game	Assist/Turnover ratio	Steals/game	Blocks/game
20	31.1	10.2	37.7	29.2	81.5	3.4	2.2	2.7	0.8	0.9	0.1



3

MYA PETTICORD
SOPHOMORE • GUARD
DETROIT, MICH. / ARBOR PREP (TEXAS A&M)

PETTICORD, Mya

				Field Goals		3-Point		F-Throws		Rebounds									Scoring	
SEASON	TEAM	GP-GS	MIN/AVG	FG-FGA	FG%	3FG-3FGA	3FG%	FT-FTA	FT%	OFF	DEF	TOT	AVG	PF-FO	A	TO	BLK	STL	PTS	AVG
2022-23	TA&M	21-1	326/15.5	18-71	.254	7-33	.212	13-13	1.000	8	27	35	1.7	11-0	11	23	0	11	56	2.7
2023-24	RU	20-18	621/31.1	66-175	.377	19-65	.292	53-65	.815	13	54	67	3.4	39-1	44	54	2	18	204	10.2
TOTAL FOR RU		20-18	621/31.1	66-175	.377	19-65	.292	53-65	.815	13	54	67	3.4	39-1	44	54	2	18	204	10.2
TOTAL		41-19	948/23.1	84-246	.341	26-98	.265	66-78	.846	21	81	102	2.5	50-1	55	77	2	29	260	6.3

Single Game Highs

Statistic	Value	
Points	25	vs Minnesota 02/13/24
Rebounds	8	vs Saint Francis (PA) 11/18/23, vs Michigan 01/21/24
Assists	6	vs Wagner 11/09/23, at Illinois 01/17/24
Steals	4	vs Wagner 11/09/23
Blocks	1	vs Iowa 01/05/24, vs Michigan 01/21/24
FG Made	6	at Illinois 01/17/24, vs Minnesota 02/13/24
FG Attempts	15	vs Minnesota 02/13/24
3FG Made	4	vs Minnesota 02/13/24
3FG Attempts	7	vs Minnesota 02/13/24
FT Made	9	vs Minnesota 02/13/24
FT Attempts	11	vs Monmouth 11/06/23

2022-23 | Freshman (Texas A&M)

- Appeared in 21 games season and made one start
- Averaged just over 15 minutes of playing time per outing
- Hit multiple career-highs against SMU on Dec. 18, including 10 points and three assists
- Grabbed a career best five rebounds against Purdue (Dec. 21) and three steals versus Ole Miss (March 3) in the Quarterfinals of the SEC Tournament
- Was a perfect 13-of-13 from the charity stripe on the season

Before Texas A&M

- A graduate of Arbor Prep in Ypsilanti, Michigan
- A four-star recruit and No. 81-ranked prospect according to ESPNW in the 2022 class
- Led her team to the 2022 Division III State Title and was named the Michigan Associated Press Division III Player of the Year
- Averaged 22.9 points per game while shooting 50 percent from the field and 80 percent from the charity stripe her senior season
- Finished her high school career as Arbor Prep's all-time leading scorer, totaling 1,709 points
- Named the 2020 Ann Arbor News Player of the Year and as well as a four-time Detroit Free Press All-State First Team selection



4

ANTONIA BATES
SOPHOMORE • GUARD/FORWARD
EASTON, PA / RUTGERS PREP



2023-24 Rutgers Women's Basketball
Individual Game-by-Game
All games

Page 5/11
as of Feb 22, 2024

#4 BATES , Antonia

Opponent	Date	GS	MIN	Total		3-Pointers		Free throws		Rebounds				PF	A	TO	BLK	STL	PTS	AVG
				FG-FGA	PCT	3FG-3FGA	PCT	FT-FTA	PCT	OFF	DEF	TOT	AVG							
Monmouth	11/06/2023	*	27:03	0-1	.000	0-0	.000	0-0	.000	0	3	3	3.0	4	3	2	1	1	0	0.0
Wagner	11/09/2023	*	28:38	2-5	.400	0-2	.000	0-0	.000	1	1	2	2.5	3	6	0	2	1	4	2.0
Auburn	11/12/2023	*	15:06	0-1	.000	0-1	.000	0-0	.000	0	1	1	2.0	0	0	1	0	0	0	1.3
at Seton Hall	11/15/2023	*	27:22	1-4	.250	0-2	.000	0-0	.000	1	5	6	3.0	4	1	0	2	1	2	1.5
Saint Francis (PA)	11/18/2023	*	18:53	2-4	.500	2-4	.500	0-0	.000	0	4	4	3.2	2	4	1	2	0	6	2.4
Fairfield	11/20/2023	*	28:41	3-7	.429	2-6	.333	0-0	.000	0	2	2	3.0	3	3	2	1	1	8	3.3
vs Texas Tech	11/24/2023	*	27:57	3-3	1.000	1-1	1.000	0-0	.000	0	1	1	2.7	5	3	2	1	1	7	3.9
vs Boise St.	11/25/2023	*	32:48	1-4	.250	1-2	.500	0-0	.000	0	4	4	2.9	2	2	0	4	2	3	3.8
Delaware St.	11/29/2023		24:15	0-1	.000	0-1	.000	0-0	.000	0	3	3	2.9	1	6	2	4	2	0	3.3
Lafayette	12/01/2023	*	33:57	0-5	.000	0-3	.000	1-2	.500	3	7	10	3.6	1	7	3	1	3	1	3.1
La Salle	12/05/2023	*	29:36	2-6	.333	0-0	.000	0-0	.000	0	6	6	3.8	3	3	2	1	2	4	3.2
Indiana	12/09/2023	*	40:00	3-5	.600	3-4	.750	2-2	1.000	0	2	2	3.7	3	3	3	2	1	11	3.8
at Princeton	12/13/2023	*	36:37	4-4	1.000	1-1	1.000	1-1	1.000	0	2	2	3.5	0	0	2	2	1	10	4.3
Virginia Tech	12/17/2023	*	23:45	1-4	.250	1-1	1.000	0-0	.000	0	1	1	3.4	0	0	5	0	1	3	4.2
at Northwestern	12/30/2023	*	12:09	0-3	.000	0-1	.000	0-0	.000	1	1	2	3.3	0	1	1	0	2	0	3.9
Iowa	01/05/2024		24:28	2-7	.286	0-5	.000	0-0	.000	1	2	3	3.3	2	1	1	2	1	4	3.9
at Ohio St.	01/11/2024		31:45	0-1	.000	0-1	.000	0-0	.000	0	2	2	3.2	1	0	2	3	1	0	3.7
Penn St.	01/14/2024		30:49	0-0	.000	0-0	.000	0-0	.000	0	6	6	3.3	2	5	4	1	1	0	3.5
at Illinois	01/17/2024	*	19:32	0-1	.000	0-0	.000	0-0	.000	0	3	3	3.3	5	1	1	1	1	0	3.3
Michigan	01/21/2024	*	38:17	1-2	.500	1-1	1.000	0-0	.000	0	6	6	3.5	5	5	2	4	1	3	3.3
at Wisconsin	01/27/2024	*	36:43	1-3	.333	0-1	.000	1-2	.500	0	3	3	3.4	3	1	1	1	1	3	3.3
Michigan St.	01/30/2024	*	37:11	1-3	.333	0-1	.000	0-0	.000	0	2	2	3.4	2	7	4	1	1	2	3.2
at Nebraska	02/03/2024	*	36:02	3-3	1.000	1-1	1.000	0-0	.000	0	4	4	3.4	2	7	4	3	1	7	3.4
Maryland	02/06/2024	*	25:27	0-5	.000	0-2	.000	0-2	.000	1	4	5	3.5	3	5	3	2	0	0	3.3
at Michigan	02/10/2024	*	31:51	1-5	.200	1-3	.333	3-4	.750	0	1	1	3.4	4	2	4	0	1	6	3.4
Minnesota	02/13/2024	*	33:59	2-6	.333	0-2	.000	4-4	1.000	1	5	6	3.5	1	8	3	1	4	8	3.5
Wisconsin	02/17/2024	*	35:30	1-3	.333	0-1	.000	1-2	.500	1	6	7	3.6	4	2	3	1	3	3	3.5
at Maryland	02/21/2024	*	34:30	0-5	.000	0-3	.000	0-0	.000	0	2	2	3.5	2	4	2	1	0	0	3.4
Totals			24 822:51	34-101	.337	14-50	.280	13-19	.684	10	89	99	3.5	67	90	60	44	35	95	3.4

Player Averages

Games Played	Minutes/ game	Points/ game	FG Pct	3FG Pct	FT Pct	Rebounds/ game	Assists/ game	Turnovers/ game	Assist/Turnover ratio	Steals/ game	Blocks/ game
28	29.4	3.4	33.7	28.0	68.4	3.5	3.2	2.1	1.5	1.3	1.6



4

ANTONIA BATES
SOPHOMORE • GUARD/FORWARD
EASTON, PA / RUTGERS PREP

BATES , Antonia

				Field Goals		3-Point		F-Throws		Rebounds									Scoring	
SEASON	TEAM	GP-GS	MIN/AVG	FG-FGA	FG%	3FG-3FGA	3FG%	FT-FTA	FT%	OFF	DEF	TOT	AVG	PF-FO	A	TO	BLK	STL	PTS	AVG
2022-23	RU	32-0	631/19.7	26-90	.289	18-57	.316	7-11	.636	4	53	57	1.8	60-0	27	42	30	20	77	2.4
2023-24	RU	28-24	823/29.4	34-101	.337	14-50	.280	13-19	.684	10	89	99	3.5	67-3	90	60	44	35	95	3.4
TOTAL		60-24	1454/24.2	60-191	.314	32-107	.299	20-30	.667	14	142	156	2.6	127-3	117	102	74	55	172	2.9

Single Game Highs

Statistic	Value	
Points	12	at Boston College 11/30/22
Rebounds	10	vs Lafayette 12/01/23
Assists	8	vs Minnesota 02/13/24
Steals	4	vs Minnesota 02/13/24
Blocks	4	vs Delaware St. 11/29/23, vs Michigan 01/21/24, vs Boise St. 11/25/23
FG Made	4	at Boston College 11/30/22, at Princeton 12/13/23
FG Attempts	7	at Boston College 11/30/22, vs Fairfield 11/20/23, vs Iowa 01/05/24
3FG Made	4	at Boston College 11/30/22
3FG Attempts	6	at Boston College 11/30/22, vs Fairfield 11/20/23
FT Made	4	vs Minnesota 02/13/24
FT Attempts	4	at Michigan 02/10/24, vs Minnesota 02/13/24

2022-23 | Freshman

- Appeared in all 32 games of the campaign
- Netted a career-high 12 points at Boston College (Nov. 30) for her only double-digit outings of the slate
- Secured a career best four field goals and four three-pointers, the second highest single game performance of the season for RU, against the Terriers
- Ranked third on the team with 18 three-pointers
- Paced Rutgers with 30 blocks to rank ninth in the Big Ten, the second highest freshman in the top-10
- She led the team in the statistic eight times and secured her career best 3+ denials on three occasions
- Also set career bests with five rebounds at Wisconsin (Feb. 20), four assists versus Princeton (Dec. 15) and two steals against Northwestern (Feb. 15)

Prior to Rutgers

- Born in Bound Brook, New Jersey before moving to Easton, Pennsylvania when she was four-years-old
- Originally starred for Notre Dame High School before transferring to Rutgers Prep for her final year of high school
- Came up as a guard, and has since sprouted in height and ability across the court
- Athletic in transition, attacks the rim, hits jumpers from mid-range to the arc, grabs rebounds, and plays anticipatory defense
- Scored 12.4 points per game in her senior season for Notre Dame while leading the Crusaders to their first state semifinal in program history
- Class 3A All-State Second Team selection by the PA Sports Writers in 2020-21
- Played AAU ball with the New Jersey Sparks, and was the No. 40 ranked guard in the country in her class according to espnW



11

AWA SIDIBE
GRADUATE STUDENT • GUARD
BAMAKO, MALI / INLAND CAREERS (SALT LAKE CITY CC)

SIDIBE, Awa

				Field Goals		3-Point		F-Throws		Rebounds												Scoring	
SEASON	TEAM	GP-GS	MIN/AVG	FG-FGA	FG%	3FG-3FGA	3FG%	FT-FTA	FT%	OFF	DEF	TOT	AVG	PF-FO	A	TO	BLK	STL	PTS	AVG			
2021-22	RU	30-4	414/13.8	50-104	.481	2-9	.222	21-35	.600	34	45	79	2.6	29-0	12	23	12	20	123	4.1			
2022-23	RU	32-32	1063/33.2	112-262	.427	2-19	.105	70-89	.787	38	129	167	5.2	84-1	100	118	22	44	296	9.3			
2023-24	RU	1-0	1/0.8	0-0	.000	0-0	.000	0-0	.000	0	0	0	0.0	0-0	0	0	0	0	0	0.0			
TOTAL		63-36	1478/23.5	162-366	.443	4-28	.143	91-124	.734	72	174	246	3.9	113-1	112	141	34	64	419	6.7			

Single Game Highs

Statistic	Value	
Points	18	vs N.C. Central 11/16/22
Rebounds	10	vs Seton Hall 11/11/22
Assists	8	vs Wisconsin 02/05/23
Steals	4	4 times
Blocks	2	6 times
FG Made	8	vs N.C. Central 11/16/22
FG Attempts	13	vs Purdue 02/09/23, vs Northwestern 03/01/23
3FG Made	1	4 times
3FG Attempts	4	vs Princeton 12/15/22
FT Made	8	vs Penn St. 01/26/23
FT Attempts	12	vs Penn St. 01/26/23

2022-23 | Senior (Rutgers)

- One of two Scarlet Knights to start all 32 games of the season
- Averaged 9.3 points and 5.2 rebounds per game
- Netted a career-best 18 points against NC Central (Nov. 16) and ranked second on the team with 18 double-digit scoring outings
- Paced the team with 100 assists and dished a career-best eight helpers against Wisconsin (Feb. 5)
- She led the team in the dimes in 20 games and secured 5+ assists in six outings
- Ranked second on the squad with 44 steals, leading the Scarlet Knights in the stat seven times and collecting 3+ grabs five times

2021-22 | Junior (Rutgers)

- Played in 30 games with four starts, averaging 13.9 minutes per contest
- Averaged 4.1 points, 2.6 rebounds while shooting .481 from the field
- Scored a season-high 15 points, a game-high in a Rutgers win over Delaware State (Dec. 12), shooting 5-of-5 from the floor and 4-of-5 from the free throw line
- Stuff
- Netted 12 points on 6-of-9 shooting in the overtime win over Harvard (Nov. 19)
- Shot 6-of-8 for 12 points in a Big Ten game against Purdue (Feb. 20)
- Made Rutgers debut with six points on 3-of-4 shooting in win over Saint Peter's (Nov. 9)

Prior to Rutgers

2020-21 at Salt Lake Community College: NJCAA All-America Second Team at Salt Lake CC ... Region 18 Player of the Year ... All-Region First Team ... Averaged 17.4 ppg, shooting .525 from the floor with an average of 6.4 rebounds.

2019-20 at Salt Lake Community College: WBCA NJCAA Player of the Year ... NJCAA All-America Second Team ... Region 18 Player of the Year ... All-Region First Team ... All-Tournament Team Region 18 ... Averaged 14.9 points and 5.7 rebounds ... Deans List.

20

SENIOR • GUARD/FORWARD
BATON ROUGE, LA / MCKINLEY

Page 6/11
as of Feb 22, 2024

Opponent	Date	GS	MIN	Total		3-Pointers		Free throws		Rebounds											
				FG-FGA	PCT	3FG-3FGA	PCT	FT-FTA	PCT	OFF	DEF	TOT	AVG	PF	A	TO	BLK	STL	PTS	AVG	
at Maryland	02/21/2024		00:47	0-0	.000	0-0	.000	0-0	.000	0	0	0	0.0	0	0	0	0	0	0	0.0	
Totals		0	00:47	0-0	.000	0-0	.000	0-0	.000	0	0	0	0.0	0	0	0	0	0	0	0.0	

[illegible]



20

ERICA LAFAYETTE
SENIOR • GUARD/FORWARD
BATON ROUGE, LA / MCKINLEY

LAFAYETTE, Erica

				Field Goals		3-Point		F-Throws		Rebounds								Scoring		
SEASON	TEAM	GP-GS	MIN/AVG	FG-FGA	FG%	3FG-3FGA	3FG%	FT-FTA	FT%	OFF	DEF	TOT	AVG	PF-FO	A	TO	BLK	STL	PTS	AVG
2020-21	RU	10-0	91/9.1	5-9	.556	2-3	.667	2-2	1.000	5	11	16	1.6	13-0	3	5	1	2	14	1.4
2021-22	RU	17-1	77/4.5	3-10	.300	1-5	.200	4-4	1.000	3	9	12	0.7	14-0	1	7	2	1	11	0.6
2022-23	RU	32-28	689/21.5	66-191	.346	11-47	.234	39-46	.848	23	56	79	2.5	47-0	41	61	2	13	182	5.7
2023-24	RU	29-2	351/12.1	23-74	.311	15-55	.273	2-3	.667	8	20	28	1.0	26-0	4	7	4	4	63	2.2
TOTAL		88-31	1207/13.7	97-284	.342	29-110	.264	47-55	.855	39	96	135	1.5	100-0	49	80	9	20	270	3.1

Single Game Highs

Statistic	Value	
Points	19	vs Hampton 12/10/22
Rebounds	7	vs Seton Hall 11/11/22
Assists	5	vs Hofstra 11/07/22
Steals	2	4 times
Blocks	2	vs N.C. Central 11/16/22
FG Made	5	vs Hampton 12/10/22, vs Penn St. 01/26/23
FG Attempts	11	vs Hampton 12/10/22, at Penn St. 12/30/22
3FG Made	3	vs Wagner 11/09/23, vs Minnesota 02/13/24
3FG Attempts	5	vs New Orleans 12/18/22, vs Delaware St. 11/29/23
FT Made	8	vs Hampton 12/10/22
FT Attempts	8	vs Hampton 12/10/22

2022-23 | Junior

- Played in 32 games and made 28 starts
- Ended the season averaging 5.7 points and 2.5 boards per game
- Scored a career-high 19 against Hampton (Dec. 10)
- Reached double digit scoring in eight outings
- Netted a career best two three-pointers at Michigan State (Jan. 22)
- Set career-highs in back-to-back contests with five assists in the season opener versus Hofstra (Nov. 7) and seven rebounds against Seton Hall (Nov. 11)
- Also set her new personal standard with a pair of steals and blocks against NC Central (Nov. 16)
- She led the Scarlet Knights in helpers in three contests this season

2021-22 | Sophomore

- Played in 17 games with one start
- Scored four points in a win over Delaware State (Dec. 12)
- 2020-21 | Freshman
- Played in 10 games as a freshman, averaging 9.1 minutes
- Recorded a season-high 21 minutes in a close game against No. 14 Maryland on Dec. 14, notching three points, three boards, and two steals
- Scored a young-career-high seven points in a victory over Hampton on Dec. 18 on 3-of-4 shooting, adding a career-high four rebounds in the win

Prior to Rutgers

- Three-star prospect and No. 40 ranked wing according to espnW Hoopgurlz
- One of the top recruits out of the state of Louisiana, ranked No. 2 by Blue Star Basketball, No. 3 by All-Star Girls Report and No. 4 by espnW Hoopgurlz.
- Selected All-State MVP, District MVP and graduated with three First Team All-State and All-District honors
- Named a Louisiana Sports Writers Association Class 5 All-State Honorable Mention following her junior season with McKinley High School
- Averaged near 20 points, eight rebounds and five assists per game – leading her squad to a runner-up finish in District 5-5A
- Coached by former WNBA player Temeka Johnson



22

KASSONDRA BROWN
GRADUATE STUDENT • CENTER
ABINGTON, PA / ABINGTON / SAINT PETER'S



2023-24 Rutgers Women's Basketball
Individual Game-by-Game
All games

Page 7/11
as of Feb 22, 2024

#20 LAFAYETTE, Erica

Opponent	Date	GS	MIN	Total		3-Pointers		Free throws		Rebounds				PF	A	TO	BLK	STL	PTS	AVG
				FG-FGA	PCT	3FG-3FGA	PCT	FT-FTA	PCT	OFF	DEF	TOT	AVG							
Monmouth	11/06/2023		09:26	0-2	.000	0-1	.000	0-0	.000	0	2	2	2.0	1	0	1	1	0	0	0.0
Wagner	11/09/2023		16:44	3-4	.750	3-4	.750	0-0	.000	0	1	1	1.5	1	0	0	0	0	9	4.5
Auburn	11/12/2023		05:31	0-1	.000	0-1	.000	0-0	.000	1	0	1	1.3	0	0	0	0	0	0	3.0
at Seton Hall	11/15/2023		10:16	0-2	.000	0-1	.000	0-0	.000	0	1	1	1.3	0	1	0	0	0	0	2.3
Saint Francis (PA)	11/18/2023		04:09	0-1	.000	0-0	.000	0-0	.000	0	1	1	1.2	3	0	0	0	0	0	1.8
Fairfield	11/20/2023		07:39	0-2	.000	0-2	.000	0-0	.000	0	0	0	1.0	0	0	0	0	2	0	1.5
vs Texas Tech	11/24/2023		03:40	0-1	.000	0-1	.000	0-0	.000	0	0	0	0.9	1	0	0	0	0	0	1.3
vs Boise St.	11/25/2023		03:36	0-0	.000	0-0	.000	0-0	.000	0	0	0	0.8	0	0	0	0	0	0	1.1
Delaware St.	11/29/2023	*	15:44	1-7	.143	0-5	.000	0-0	.000	1	2	3	1.0	1	0	1	0	1	2	1.2
Lafayette	12/01/2023		10:56	1-1	1.000	0-0	.000	0-0	.000	0	1	1	1.0	2	0	1	0	0	2	1.3
La Salle	12/05/2023		14:37	4-5	.800	1-2	.500	1-1	1.000	1	0	1	1.0	2	0	0	0	1	10	2.1
Indiana	12/09/2023		03:31	0-1	.000	0-1	.000	0-0	.000	0	0	0	0.9	0	0	0	0	0	0	1.9
at Princeton	12/13/2023		13:16	0-3	.000	0-2	.000	0-0	.000	0	0	0	0.8	0	0	0	1	0	0	1.8
Virginia Tech	12/17/2023		03:26	0-0	.000	0-0	.000	0-0	.000	0	0	0	0.8	0	0	1	0	0	0	1.6
at Northwestern	12/30/2023		18:22	0-3	.000	0-3	.000	0-0	.000	1	0	1	0.8	3	1	1	0	0	0	1.5
at Purdue	01/02/2024		16:51	0-0	.000	0-0	.000	0-0	.000	0	0	0	0.8	0	0	0	0	0	0	1.4
Iowa	01/05/2024		05:33	0-4	.000	0-4	.000	0-0	.000	0	0	0	0.7	2	0	0	0	0	0	1.4
at Ohio St.	01/11/2024		05:58	0-0	.000	0-0	.000	1-2	.500	0	1	1	0.7	1	0	0	0	0	1	1.3
Penn St.	01/14/2024		07:13	1-2	.500	1-2	.500	0-0	.000	0	0	0	0.7	0	0	0	0	0	3	1.4
at Illinois	01/17/2024		16:30	2-3	.667	2-3	.667	0-0	.000	1	0	1	0.7	2	0	0	0	0	6	1.7
Michigan	01/21/2024		16:08	1-5	.200	0-4	.000	0-0	.000	0	1	1	0.7	1	0	0	0	0	2	1.7
at Wisconsin	01/27/2024		09:39	0-1	.000	0-0	.000	0-0	.000	1	0	1	0.7	0	1	0	1	0	0	1.6
Michigan St.	01/30/2024	*	28:45	0-5	.000	0-4	.000	0-0	.000	0	1	1	0.7	2	1	1	0	1	0	1.5
at Nebraska	02/03/2024		14:15	3-3	1.000	2-2	1.000	0-0	.000	0	1	1	0.8	0	0	0	0	0	8	1.8
Maryland	02/06/2024		16:25	1-4	.250	1-2	.500	0-0	.000	2	4	6	1.0	2	0	2	0	0	3	1.8
at Michigan	02/10/2024		08:17	0-2	.000	0-2	.000	0-0	.000	0	0	0	0.9	0	0	0	0	0	0	1.8
Minnesota	02/13/2024		24:00	3-4	.750	3-4	.750	0-0	.000	0	1	1	0.9	2	0	0	0	0	9	2.0
Wisconsin	02/17/2024		22:59	2-4	.500	2-2	1.000	0-0	.000	0	2	2	1.0	0	0	0	0	0	6	2.2
at Maryland	02/21/2024		17:10	1-4	.250	0-3	.000	0-0	.000	0	1	1	1.0	0	0	0	0	0	2	2.2
Totals		2	350:37	23-74	.311	15-55	.273	2-3	.667	8	20	28	1.0	26	4	7	4	4	63	2.2

Player Averages

Games Played	Minutes/ game	Points/ game	FG Pct	3FG Pct	FT Pct	Rebounds/ game	Assists/ game	Turnovers/ game	Assist/Turnover ratio	Steals/ game	Blocks/ game
29	12.1	2.2	31.1	27.3	66.7	1.0	0.1	0.2	0.6	0.1	0.1



22

KASSONDRA BROWN
GRADUATE STUDENT • CENTER
ABINGTON, PA / ABINGTON / SAINT PETER'S

BROWN, Kassondra

				Field Goals		3-Point		F-Throws		Rebounds									Scoring	
SEASON	TEAM	GP-GS	MIN/AVG	FG-FGA	FG%	3FG-3FGA	3FG%	FT-FTA	FT%	OFF	DEF	TOT	AVG	PF-FO	A	TO	BLK	STL	PTS	AVG
2019-20	URI	29-1	470/16.2	85-183	.464	6-22	.273	45-74	.608	66	81	147	5.1	45-1	16	65	10	8	221	7.6
2020-21	URI	18-0	231/12.8	17-48	.354	0-1	.000	16-27	.593	28	27	55	3.1	22-0	12	13	0	5	50	2.8
2021-22	SP	28-28	839/30.0	157-341	.460	17-47	.362	86-118	.729	93	190	283	10.1	77-4	59	105	23	44	417	14.9
2022-23	RU	31-26	733/23.6	95-208	.457	10-32	.313	51-63	.810	45	117	162	5.2	94-3	35	63	25	30	251	8.1
2023-24	RU	29-2	656/22.6	88-191	.461	10-32	.313	63-86	.733	51	107	158	5.4	95-7	52	61	17	20	249	8.6
TOTAL FOR RU		60-28	1389/23.2	183-399	.459	20-64	.313	114-149	.765	96	224	320	5.3	189-10	87	124	42	50	500	8.3
TOTAL		135-57	2930/21.7	442-971	.455	43-134	.321	261-368	.709	283	522	805	6.0	333-15	174	307	75	107	1188	8.8

Single Game Highs

Statistic	Value	
Points	28	at Siena 03/03/22
Rebounds	16	vs Wagner 11/17/21, vs Coppin St. 12/11/21
Assists	5	at Canisius 12/19/21, vs Wisconsin 02/17/24
Steals	4	at Lehigh 11/12/21, vs Howard 11/21/21, at Boston College 11/30/22
Blocks	3	5 times
FG Made	10	at Fairfield 02/01/22
FG Attempts	19	vs Coppin St. 12/11/21, at Monmouth 02/07/22, at Siena 03/03/22
3FG Made	3	at Iona 02/19/22
3FG Attempts	5	at North Dakota 11/15/19, at Fairfield 02/01/22, at Rider 02/26/22
FT Made	10	vs Wagner 11/17/21
FT Attempts	13	at Siena 03/03/22

2022-23 | Senior (Rutgers)

- Played in all 31 games she was available for and made 26 starts
- Averaged 8.1 points and 5.2 rebounds per game
- Netted a season-high 18 points against NJIT (Nov. 13) and reached 10+ points in 11 contests
- Grabbed a season best 12 off the glass versus Princeton (Dec. 15) and secured double digit boards in three games
- Earned one double-double against Minnesota (Jan. 12) with 10 points and 10 rebounds
- Ranked second for RU with 25 blocks but led the team in the stat in 10 outings
- Tied her season-high three blocks on three occasions, most recently against Michigan (Jan. 19)

2021-22 | Junior (Saint Peter's)

- Appeared and started in 28 games for the Peacocks.
- Averaged 14.9 points and 10.1 rebounds per game.
- Ranked 33rd in the nation with 13 double-doubles and 35th with 10.1 rebounds per game.
- Scored a career high 28 points against Siena on 3/3.
- Grabbed a career high 16 rebounds twice on the season, with the most recent coming against Coppin State on 12/11.
- Recorded nine straight doubles in MAAC Play to close out the season.
- Scored 15+ points in 16 games.
- Had 10+ rebounds in 15 games.
- Two-time MAAC Player of the Week (2/14 and 2/28).
- Named to the 2021-22 MAAC All-Second Team.

Before Saint Peter's

- Played two seasons at Division I University of Rhode Island
- Appeared in 47 games, making one start
- Scored 271 points and pulled in 202 rebounds
- Four year varsity member of Abington High School
- Captained the Philly Pride AAU team for four seasons and the Abington Ghosts for two
- Named First Team All-League for three straight years (2017, 2018, 2019)
- Named Intelligencer's Player of the Year (2019)
- Earned girl's basketball MVP and the MVP Senior Athlete Award in 2019
- Set the record for most rebounds in a game her senior year.
- Abington had 92 wins, eighth state playoff appearances, two league Championships, one SOL Championship and one District Championship in Kassondra's four years



24

LISA THOMPSON
FRESHMAN • GUARD
JOLIET, ILL. / EXAMPLE ACADEMY



2023-24 Rutgers Women's Basketball
Individual Game-by-Game
All games

Page 8/11
as of Feb 22, 2024

#22 BROWN, Kassondra

Opponent	Date	GS	MIN	Total		3-Pointers		Free throws		Rebounds				PF	A	TO	BLK	STL	PTS	AVG
				FG-FGA	PCT	3FG-3FGA	PCT	FT-FTA	PCT	OFF	DEF	TOT	AVG							
Monmouth	11/06/2023		12:35	1-4	.250	0-0	.000	2-4	.500	3	2	5	5.0	3	0	2	0	0	4	4.0
Wagner	11/09/2023		19:36	3-6	.500	0-0	.000	0-2	.000	4	5	9	7.0	2	2	2	2	0	6	5.0
Auburn	11/12/2023		22:46	0-2	.000	0-0	.000	1-2	.500	0	3	3	5.7	3	1	4	0	1	1	3.7
at Seton Hall	11/15/2023		13:05	1-2	.500	1-2	.500	0-0	.000	1	0	1	4.5	2	0	1	0	0	3	3.5
Saint Francis (PA)	11/18/2023		16:24	3-7	.429	0-0	.000	0-0	.000	3	4	7	5.0	1	0	2	1	0	6	4.0
Fairfield	11/20/2023		24:03	1-4	.250	0-2	.000	5-7	.714	1	3	4	4.8	3	0	3	0	1	7	4.5
vs Texas Tech	11/24/2023		27:06	5-9	.556	0-1	.000	1-2	.500	3	5	8	5.3	3	3	1	1	0	11	5.4
vs Boise St.	11/25/2023		13:15	0-1	.000	0-0	.000	0-0	.000	0	3	3	5.0	5	0	3	0	0	0	4.8
Delaware St.	11/29/2023		23:47	2-4	.500	0-0	.000	1-2	.500	3	4	7	5.2	1	4	1	1	3	5	4.8
Lafayette	12/01/2023		20:57	2-7	.286	0-0	.000	3-4	.750	2	8	10	5.7	0	2	1	1	1	7	5.0
La Salle	12/05/2023		14:20	5-8	.625	0-1	.000	2-3	.667	2	4	6	5.7	5	2	0	1	1	12	5.6
Indiana	12/09/2023		27:41	4-7	.571	1-2	.500	1-2	.500	3	5	8	5.9	4	1	2	1	0	10	6.0
at Princeton	12/13/2023		30:02	4-8	.500	1-1	1.000	5-8	.625	4	3	7	6.0	2	2	2	0	1	14	6.6
Virginia Tech	12/17/2023		38:53	4-9	.444	1-3	.333	6-8	.750	2	4	6	6.0	4	0	1	2	1	15	7.2
at Northwestern	12/30/2023		23:39	7-9	.778	0-0	.000	3-3	1.000	3	3	6	6.0	5	2	3	0	0	17	7.9
at Purdue	01/02/2024		13:27	1-3	.333	0-1	.000	2-2	1.000	1	2	3	5.8	5	0	2	1	0	4	7.6
Iowa	01/05/2024		23:34	3-9	.333	1-1	1.000	5-5	1.000	3	8	11	6.1	3	1	2	0	2	12	7.9
at Ohio St.	01/11/2024		21:46	2-7	.286	0-0	.000	3-4	.750	3	1	4	6.0	4	2	1	1	1	7	7.8
Penn St.	01/14/2024	*	24:39	6-9	.667	1-1	1.000	0-0	.000	1	5	6	6.0	2	4	4	0	0	13	8.1
at Illinois	01/17/2024	*	23:05	0-6	.000	0-3	.000	4-4	1.000	0	2	2	5.8	4	0	2	0	0	4	7.9
Michigan	01/21/2024		28:50	2-5	.400	0-0	.000	1-4	.250	1	6	7	5.9	1	2	2	1	2	5	7.8
at Wisconsin	01/27/2024		20:03	5-8	.625	0-0	.000	3-3	1.000	3	0	3	5.7	4	4	2	0	2	13	8.0
Michigan St.	01/30/2024		17:27	5-8	.625	1-2	.500	1-1	1.000	0	3	3	5.6	5	3	1	1	2	12	8.2
at Nebraska	02/03/2024		22:40	7-9	.778	2-3	.667	5-5	1.000	1	4	5	5.6	4	4	0	0	0	21	8.7
Maryland	02/06/2024		16:23	2-5	.400	0-0	.000	2-2	1.000	1	3	4	5.5	5	0	5	1	1	6	8.6
at Michigan	02/10/2024		27:00	5-12	.417	0-4	.000	0-0	.000	1	3	4	5.5	2	4	3	0	0	10	8.7
Minnesota	02/13/2024		31:01	2-5	.400	0-1	.000	4-4	1.000	0	4	4	5.4	4	1	3	0	1	8	8.6
Wisconsin	02/17/2024		33:16	2-9	.222	1-3	.333	0-2	.000	1	3	4	5.4	4	5	4	1	0	5	8.5
at Maryland	02/21/2024		25:05	4-9	.444	0-1	.000	3-3	1.000	1	7	8	5.4	5	3	2	1	0	11	8.6
Totals		2	656:26	88-191	.461	10-32	.313	63-86	.733	51	107	158	5.4	95	52	61	17	20	249	8.6

Player Averages

Games Played	Minutes/ game	Points/ game	FG Pct	3FG Pct	FT Pct	Rebounds/ game	Assists/ game	Turnovers/ game	Assist/Turnover ratio	Steals/ game	Blocks/ game
29	22.6	8.6	46.1	31.3	73.3	5.4	1.8	2.1	0.9	0.7	0.6



24

LISA THOMPSON
FRESHMAN • GUARD
JOLIET, ILL. / EXAMPLE ACADEMY

THOMPSON, Lisa

				Field Goals		3-Point		F-Throws		Rebounds										Scoring	
SEASON	TEAM	GP-GS	MIN/AVG	FG-FGA	FG%	3FG-3FGA	3FG%	FT-FTA	FT%	OFF	DEF	TOT	AVG	PF-FO	A	TO	BLK	STL		PTS	AVG
2023-24	RU	29-19	639/22.0	76-210	.362	16-47	.340	39-47	.830	15	44	59	2.0	66-3	37	76	3	19		207	7.1
TOTAL		29-19	639/22.0	76-210	.362	16-47	.340	39-47	.830	15	44	59	2.0	66-3	37	76	3	19		207	7.1

Single Game Highs

Statistic	Value	
Points	17	at Northwestern 12/30/23
Rebounds	6	vs Saint Francis (PA) 11/18/23, at Wisconsin 01/27/24
Assists	5	vs La Salle 12/05/23
Steals	3	vs Penn St. 01/14/24
Blocks	1	at Nebraska 02/03/24, at Maryland 02/21/24, vs Texas Tech 11/24/23
FG Made	8	at Purdue 01/02/24
FG Attempts	18	vs Iowa 01/05/24
3FG Made	4	vs Saint Francis (PA) 11/18/23
3FG Attempts	6	vs Saint Francis (PA) 11/18/23
FT Made	7	at Northwestern 12/30/23
FT Attempts	8	at Northwestern 12/30/23

Prior to Rutgers

- Led her team at Example Academy to the 2023 Independent National Championship
- Hailed as the two-time Herald News Player of the Year and an Illinois All-State honoree
- Prior to her time at Example Academy, Thompson attended Joliet West High School, where she also guided her squad to three consecutive conference championships her first three seasons
- Averaged double-digit points all four years of her high school career, including 23 points per game during her junior season
- Also recorded over five rebounds, three assists and four steals per game during her third year
- Named a McDonald's All-American Nominee as well as earning an invite to the USA Women's U17 World Cup Team Trials.
- Shined in the classroom as well, earning a spot on the Honor Roll four years in a row and Alpha Kappa Alpha student of the month selection twice



33

KENNEDY BRANDT
FRESHMAN • GUARD
GLEN ELLYN, ILL. / GLENBARD WEST



2023-24 Rutgers Women's Basketball
Individual Game-by-Game
All games

Page 9/11
as of Feb 22, 2024

#24 THOMPSON, Lisa

Opponent	Date	GS	MIN	Total		3-Pointers		Free throws		Rebounds				PF	A	TO	BLK	STL	PTS	AVG
				FG-FGA	PCT	3FG-3FGA	PCT	FT-FTA	PCT	OFF	DEF	TOT	AVG							
Monmouth	11/06/2023		23:48	3-10	.300	1-3	.333	0-0	.000	1	0	1	1.0	0	0	0	0	0	7	7.0
Wagner	11/09/2023		12:01	1-3	.333	0-0	.000	0-0	.000	0	0	0	0.5	5	1	4	0	1	2	4.5
Auburn	11/12/2023		09:24	0-4	.000	0-0	.000	2-2	1.000	0	0	0	0.3	4	0	2	0	0	2	3.7
at Seton Hall	11/15/2023		20:41	1-4	.250	0-2	.000	2-2	1.000	1	0	1	0.5	1	2	1	0	1	4	3.8
Saint Francis (PA)	11/18/2023		25:40	5-12	.417	4-6	.667	2-2	1.000	0	6	6	1.6	3	2	5	0	1	16	6.2
Fairfield	11/20/2023		25:38	2-6	.333	1-3	.333	0-0	.000	0	1	1	1.5	1	0	2	0	0	5	6.0
vs Texas Tech	11/24/2023	*	26:11	3-7	.429	1-2	.500	0-0	.000	2	0	2	1.6	4	2	2	1	1	7	6.1
vs Boise St.	11/25/2023	*	30:55	3-7	.429	0-2	.000	4-5	.800	1	1	2	1.6	3	0	0	0	1	10	6.6
Delaware St.	11/29/2023	*	16:22	1-3	.333	1-2	.500	0-0	.000	0	3	3	1.8	1	3	4	0	2	3	6.2
Lafayette	12/01/2023	*	27:21	3-6	.500	1-2	.500	2-2	1.000	0	1	1	1.7	2	3	4	0	2	9	6.5
La Salle	12/05/2023	*	26:12	4-8	.500	1-2	.500	2-3	.667	1	2	3	1.8	4	5	3	0	1	11	6.9
Indiana	12/09/2023	*	15:36	0-5	.000	0-0	.000	0-0	.000	0	0	0	1.7	2	0	3	0	0	0	6.3
at Princeton	12/13/2023	*	18:44	1-2	.500	0-0	.000	1-2	.500	0	1	1	1.6	0	0	2	0	0	3	6.1
Virginia Tech	12/17/2023	*	30:55	2-13	.154	0-1	.000	4-5	.800	0	3	3	1.7	3	1	0	0	0	8	6.2
at Northwestern	12/30/2023	*	26:37	5-12	.417	0-3	.000	7-8	.875	3	1	4	1.9	5	1	5	0	1	17	6.9
at Purdue	01/02/2024	*	30:14	8-15	.533	0-1	.000	0-0	.000	1	2	3	1.9	5	2	3	0	1	16	7.5
Iowa	01/05/2024	*	32:34	5-18	.278	1-3	.333	0-0	.000	0	2	2	1.9	1	0	3	0	0	11	7.7
at Ohio St.	01/11/2024	*	23:22	3-7	.429	1-2	.500	1-1	1.000	1	2	3	2.0	3	1	8	0	0	8	7.7
Penn St.	01/14/2024	*	32:05	5-11	.455	1-1	1.000	0-0	.000	0	0	0	1.9	3	2	4	0	3	11	7.9
at Illinois	01/17/2024	*	19:41	0-5	.000	0-2	.000	0-0	.000	0	1	1	1.9	1	3	0	0	0	0	7.5
Michigan	01/21/2024	*	14:00	3-7	.429	0-2	.000	0-0	.000	0	2	2	1.9	1	1	2	0	0	6	7.4
at Wisconsin	01/27/2024	*	27:19	3-13	.231	1-3	.333	2-4	.500	0	6	6	2.0	3	0	2	0	0	9	7.5
Michigan St.	01/30/2024	*	27:42	2-5	.400	0-0	.000	2-2	1.000	1	4	5	2.2	4	3	7	0	0	6	7.4
at Nebraska	02/03/2024	*	12:47	2-3	.667	1-1	1.000	0-0	.000	0	2	2	2.2	2	1	2	1	1	5	7.3
Maryland	02/06/2024	*	25:54	5-7	.714	1-2	.500	0-0	.000	1	2	3	2.2	2	2	3	0	1	11	7.5
at Michigan	02/10/2024		24:51	3-8	.375	0-0	.000	3-3	1.000	1	1	2	2.2	1	0	2	0	0	9	7.5
Minnesota	02/13/2024		03:11	0-1	.000	0-0	.000	0-0	.000	0	0	0	2.1	0	1	0	0	0	0	7.3
Wisconsin	02/17/2024		08:16	0-1	.000	0-0	.000	0-0	.000	0	0	0	2.0	0	0	0	0	0	0	7.0
at Maryland	02/21/2024		20:34	3-7	.429	0-2	.000	5-6	.833	1	1	2	2.0	2	1	3	1	2	11	7.1
Totals			19 638:35	76-210	.362	16-47	.340	39-47	.830	15	44	59	2.0	66	37	76	3	19	207	7.1

Player Averages

Games Played	Minutes/game	Points/game	FG Pct	3FG Pct	FT Pct	Rebounds/game	Assists/game	Turnovers/game	Assist/Turnover ratio	Steals/game	Blocks/game
29	22.0	7.1	36.2	34.0	83.0	2.0	1.3	2.6	0.5	0.7	0.1



33

KENNEDY BRANDT
FRESHMAN • GUARD
GLEN ELLYN, ILL. / GLENBARD WEST

BRANDT, Kennedy

				Field Goals		3-Point		F-Throws		Rebounds				Scoring						
SEASON	TEAM	GP-GS	MIN/AVG	FG-FGA	FG%	3FG-3FGA	3FG%	FT-FTA	FT%	OFF	DEF	TOT	AVG	PF-FO	A	TO	BLK	STL	PTS	AVG
2023-24	RU	6-0	12/2.1	0-3	.000	0-3	.000	3-4	.750	0	2	2	0.3	2-0	0	1	0	0	3	0.5
TOTAL		6-0	12/2.1	0-3	.000	0-3	.000	3-4	.750	0	2	2	0.3	2-0	0	1	0	0	3	0.5

Single Game Highs

Statistic	Value	
Points	2	vs La Salle 12/05/23
Rebounds	1	vs Delaware St. 11/29/23, vs La Salle 12/05/23
FG Attempts	1	vs Wagner 11/09/23, vs Delaware St. 11/29/23, vs La Salle 12/05/23
3FG Attempts	1	vs Wagner 11/09/23, vs Delaware St. 11/29/23, vs La Salle 12/05/23
FT Made	2	vs La Salle 12/05/23
FT Attempts	2	vs Lafayette 12/01/23, vs La Salle 12/05/23

Prior to Rutgers

- Graduated from Glenbard West High School
- Averaged 15 points, five rebounds and three assists per game
- Glenbard West Female Athlete of the Year
- Two-time All-Area and All-Conference pick as well as an All-State selection
- Played for Illinois Rockets AAU Team
- Also excelled in other sports as she was a state qualifier in track and an All-State honoree in field hockey



54

CHYNA CORNWELL
SENIOR • FORWARD
CONOVER, N.C. / NEWTON CONOVER



2023-24 Rutgers Women's Basketball
Individual Game-by-Game
All games

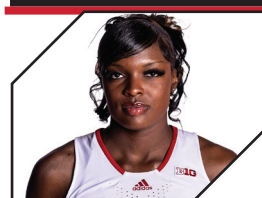
Page 10/11
as of Feb 22, 2024

#33 BRANDT, Kennedy

Opponent	Date	GS	MIN	Total		3-Pointers		Free throws		Rebounds				PF	A	TO	BLK	STL	PTS	AVG
				FG-FGA	PCT	3FG-3FGA	PCT	FT-FTA	PCT	OFF	DEF	TOT	AVG							
Wagner	11/09/2023		05:09	0-1	.000	0-1	.000	0-0	.000	0	0	0	0.0	1	0	1	0	0	0	0.0
Saint Francis (PA)	11/18/2023		00:46	0-0	.000	0-0	.000	0-0	.000	0	0	0	0.0	0	0	0	0	0	0	0.0
Delaware St.	11/29/2023		01:43	0-1	.000	0-1	.000	0-0	.000	0	1	1	0.3	0	0	0	0	0	0	0.0
Lafayette	12/01/2023		01:15	0-0	.000	0-0	.000	1-2	.500	0	0	0	0.3	0	0	0	0	0	1	0.3
La Salle	12/05/2023		02:28	0-1	.000	0-1	.000	2-2	1.000	0	1	1	0.4	1	0	0	0	0	2	0.6
at Illinois	01/17/2024		01:08	0-0	.000	0-0	.000	0-0	.000	0	0	0	0.3	0	0	0	0	0	0	0.5
Totals		0	12:29	0-3	.000	0-3	.000	3-4	.750	0	2	2	0.3	2	0	1	0	0	3	0.5

Player Averages

Games Played	Minutes/ game	Points/ game	FG Pct	3FG Pct	FT Pct	Rebounds/ game	Assists/ game	Turnovers/ game	Assist/Turnover ratio	Steals/ game	Blocks/ game
6	2.1	0.5	0.0	0.0	75.0	0.3	0.0	0.2	0.0	0.0	0.0



54

CHYNA CORNWELL
SENIOR • FORWARD
CONOVER, N.C. / NEWTON CONOVER

CORNWELL, Chyna

SEASON	TEAM	GP-GS	MIN/AVG	Field Goals		3-Point		F-Throws		Rebounds										Scoring	
				FG-FGA	FG%	3FG-3FGA	3FG%	FT-FTA	FT%	OFF	DEF	TOT	AVG	PF-FO	A	TO	BLK	STL		PTS	AVG
2020-21	RU	9-0	49/5.5	3-7	.429	0-0	.000	2-2	1.000	3	6	9	1.0	4-0	0	1	1	0		8	0.9
2021-22	RU	24-0	168/7.0	23-38	.605	0-0	.000	6-20	.300	19	31	50	2.1	11-0	0	14	3	4		52	2.2
2022-23	RU	32-32	830/25.9	114-222	.514	0-0	.000	77-114	.675	105	169	274	8.6	66-1	10	49	25	29		305	9.5
2023-24	RU	29-27	673/23.2	84-157	.535	0-0	.000	52-89	.584	75	137	212	7.3	57-0	12	62	18	17		220	7.6
TOTAL		94-59	1720/18.3	224-424	.528	0-0	.000	137-225	.609	202	343	545	5.8	138-1	22	126	47	50		585	6.2

Single Game Highs

Statistic	Value	
Points	18	vs Hampton 12/10/22
Rebounds	17	vs Northwestern 02/15/23
Assists	2	at Michigan 02/10/24
Steals	3	4 times
Blocks	3	vs Hofstra 11/07/22, vs Cornell 11/27/22, vs Northwestern 03/01/23
FG Made	8	vs Lafayette 12/01/23
FG Attempts	13	vs Boise St. 11/25/23
FT Made	6	vs N.C. Central 11/16/22, vs Hampton 12/10/22
FT Attempts	11	vs Hampton 12/10/22

2022-23 | Junior

- All-Big Ten Honorable Mention (Media)
- Big Ten Sportsmanship Honoree
- One of two Scarlet Knights to start all 32 games of the season
- Averaged 9.5 points and 8.6 rebounds per game
- Paced RU with nine double-doubles including four in Big Ten play and her most recent in the first round of the Big Ten Tournament against Northwestern (March 1)
- Cornwell's 16 rebounds against the Wildcats set the new Big Ten Tournament program high which was set in 2015
- With 17 boards in the regular season against Northwestern (Feb. 15), 16 rebounds against the Wildcats (March 1) in the conference tournament and 16 versus Cornell (Nov. 27) she secured three of the top-10 single game performances in the Big Ten this season
- Led the team with 274 total rebounds to rank third in the Big Ten
- Ended the regular season 105 offensive boards to tie for first in the Big Ten
- The junior led the team off the glass in 22 outings and reached 10+ boards in 13 contests
- Cornwell netted a career-best 18 points against Hampton (Dec. 10) and ranked third on the team with 16 outings of 10+ points
- She also set career highs with three blocks (March 1) and three steals (Feb. 15) against Northwestern

2021-22 | Sophomore

- Played in 24 of Rutgers' 31 contests with 2.2ppg and 2.1rpg with a .606 shooting percentage (23-of-38)
- Scored nine and eight points in consecutive Big Ten games against Purdue (Jan. 2) and Minnesota (Jan. 6)
- Grabbed a season and career-high nine rebounds against Minnesota on Jan. 6
- Netted eight points on 4-of-5 shooting in a victory over Delaware State on Dec. 12
- Member of Rutgers' Student-Athlete Advisory Committee (SAAC)
- SAAC Social Media Coordinator
- 2020-21 | Freshman
- Made collegiate debut on Nov. 27 and scored first collegiate points at Nebraska on Jan. 3
- Played in nine games as a freshman with a season-high 11 minutes against Illinois on Feb. 20
- Scored four points in 10 minutes in a win against Minnesota on Feb. 17
- Grabbed three rebounds in 11 minutes in a victory against Illinois on Feb. 20

Prior to Rutgers

- During four years at Newton-Conover High School, finished with 2,631 points and 2,143 rebounds
- No. 48 overall prospect according to All-Star Girls Report
- ESPN Top 100 player No. 60, ranked No. 14 nationally in position (forward) by ESPN, 4-star ESPN recruit, grade 95
- NCBCA State Girls Basketball Player of the Year 2020 & NCBCA First Team All-State 2018, 2019, 2020
- South Fork 2A All-Conference 2017, 2018, 2019, 2020 & South Fork 2A Conference Player of the Year 2019, 2020
- McDonald's All-American Nominee
- All-Tournament Team 2018, 2019, 2020
- Team MVP 2018, 2019, 2020
- North Carolina Miss Basketball
- Charlotte Observer Player of the Year 2020
- First Team All-Observer 2019, 2020 & First Team All-District 10 2019, 2020
- District 10 Girls Basketball Player of the Year 2019, 2020
- All-County Player of the Year 2019, 2020 & All-County First Team 2019, 2020
- North Carolina MaxPreps Girls Basketball Player of the Year 2020
- MaxPreps First Team All-State 2020
- North Carolina 2A Girls Basketball State Champion 2020
- Female Athlete of the Year 2019, 2020
- East/West All-Star game player selection, North Carolina/South Carolina All-Star game player selection
- HighSchoolOT All-West team selection
- All-Observer girls basketball All-Decade team 2019
- AP All-State 2019, 2020 & AP State Girls Basketball Player of the Year 2020



2023-24 Rutgers Women's Basketball
Season Box Score
All games

Game Records

Record	Overall	Home	Away	Neutral
ALL GAMES	8-21	7-10	1-9	0-2
CONFERENCE	2-14	1-7	1-7	0-0
NON-CONFERENCE	6-7	6-3	0-2	0-2

Team Box Score

No.	Player	Total					3-Point			F-Throw		Rebounds													
		GP-GS	MIN	AVG	FG-FGA	FG%	3FG-3FGA	3FG%	FT-FTA	FT%	OFF	DEF	TOT	AVG	PF	DQ	A	TO	BLK	STL	PTS	AVG			
2	SMIKLE, Kaylene	15-14	440:45	29.4	84-210	.400	20-62	.323	54-73	.740	21	56	77	5.1	37	2	38	52	8	26	242	16.1			
1	ADAMS, Destiny	29-29	857:48	29.6	165-319	.517	1-6	.167	113-164	.689	85	130	215	7.4	101	4	49	98	22	45	444	15.3			
3	PETTICORD, Mya	20-18	621:16	31.1	66-175	.377	19-65	.292	53-65	.815	13	54	67	3.4	39	1	44	54	2	18	204	10.2			
22	BROWN, Kassondra	29-2	656:26	22.6	88-191	.461	10-32	.313	63-86	.733	51	107	158	5.4	95	7	52	61	17	20	249	8.6			
54	CORNWELL, Chyna	29-27	672:41	23.2	84-157	.535	0-0	.000	52-89	.584	75	137	212	7.3	57	0	12	62	18	17	220	7.6			
24	THOMPSON, Lisa	29-19	638:35	22.0	76-210	.362	16-47	.340	39-47	.830	15	44	59	2.0	66	3	37	76	3	19	207	7.1			
0	HUERTER, Jillian	29-10	725:47	25.0	64-175	.366	50-136	.368	14-23	.609	6	51	57	2.0	57	1	37	43	7	15	192	6.6			
4	BATES , Antonia	28-24	822:51	29.4	34-101	.337	14-50	.280	13-19	.684	10	89	99	3.5	67	3	90	60	44	35	95	3.4			
20	LAFAYETTE, Erica	29-2	350:37	12.1	23-74	.311	15-55	.273	2-3	.667	8	20	28	1.0	26	0	4	7	4	4	63	2.2			
33	BRANDT, Kennedy	6-0	12:29	2.1	0-3	.000	0-3	.000	3-4	.750	0	2	2	0.3	2	0	0	1	0	0	3	0.5			
11	SIDIBE, Awa	1-0	00:47	0.8	0-0	.000	0-0	.000	0-0	.000	0	0	0	0.0	0	0	0	0	0	0	0	0.0			
Team											53	37	90					23							
Total		29	5800		684-1615	.424	145-456	.318	406-573	.709	337	727	1064	36.7	547	21	363	537	125	199	1919	66.2			
Opponents		29	5800		752-1780	.422	202-604	.334	387-550	.704	372	664	1036	35.7	519	9	486	414	96	237	2093	72.2			

Score by Periods

Team	1st	2nd	3rd	4th	OT	TOT
Rutgers	419	439	540	521	0	1919
Opponents	522	510	515	546	0	2093



2023-24 Rutgers Women's Basketball
Season Box Score
In Conference games

Game Records

Record	Overall	Home	Away	Neutral
ALL GAMES	2-14	1-7	1-7	0-0
CONFERENCE	2-14	1-7	1-7	0-0
NON-CONFERENCE	0-0	0-0	0-0	0-0

Team Box Score

No.	Player				Total		3-Point		F-Throw		Rebounds											
		GP-GS	MIN	AVG	FG-FGA	FG%	3FG-3FGA	3FG%	FT-FTA	FT%	OFF	DEF	TOT	AVG	PF	DQ	A	TO	BLK	STL	PTS	AVG
1	ADAMS, Destiny	16-16	497:01	31.1	100-199	.503	1-3	.333	81-112	.723	46	72	118	7.4	60	2	21	55	9	19	282	17.6
3	PETTICORD, Mya	14-12	467:00	33.4	52-131	.397	16-49	.327	38-43	.884	8	39	47	3.4	27	0	33	39	2	11	158	11.3
2	SMIKLE, Kaylene	2-1	40:43	20.4	9-21	.429	1-4	.250	2-5	.400	1	5	6	3.0	5	1	3	1	0	1	21	10.5
22	BROWN, Kassondra	16-2	379:37	23.7	57-120	.475	7-22	.318	37-44	.841	23	59	82	5.1	61	5	36	38	8	11	158	9.9
24	THOMPSON, Lisa	16-12	344:43	21.5	47-125	.376	6-22	.273	20-24	.833	9	26	35	2.2	35	2	18	47	2	9	120	7.5
0	HUERTER, Jillian	16-10	442:30	27.7	34-101	.337	24-73	.329	7-13	.538	4	34	38	2.4	36	0	22	27	1	9	99	6.2
54	CORNWELL, Chyna	16-14	326:40	20.4	39-76	.513	0-0	.000	21-39	.538	34	64	98	6.1	31	0	6	26	7	5	99	6.2
4	BATES , Antonia	15-12	468:14	31.2	15-52	.288	6-26	.231	11-16	.688	5	49	54	3.6	39	2	52	38	23	19	47	3.1
20	LAFAYETTE, Erica	16-1	231:36	14.5	14-45	.311	11-36	.306	1-2	.500	5	12	17	1.1	15	0	3	4	1	1	40	2.5
33	BRANDT, Kennedy	1-0	01:08	1.1	0-0	.000	0-0	.000	0-0	.000	0	0	0	0.0	0	0	0	0	0	0	0	0.0
11	SIDIBE, Awa	1-0	00:47	0.8	0-0	.000	0-0	.000	0-0	.000	0	0	0	0.0	0	0	0	0	0	0	0	0.0
Team											19	20	39					18				
Total		16	3200		367-870	.422	72-235	.306	218-298	.732	154	380	534	33.4	309	12	194	293	53	85	1024	64.0
Opponents		16	3200		461-999	.461	111-315	.352	219-312	.702	199	378	577	36.1	282	5	303	203	41	123	1252	78.3

Score by Periods

Team	1st	2nd	3rd	4th	OT	TOT
Rutgers	201	230	302	291	0	1024
Opponents	321	298	315	318	0	1252



2023-24 Rutgers Women's Basketball
Team Game-by-Game
All games

Page 1/1
as of Feb 22, 2024

			Total		3-Pointers		Free throws		Rebounds										
Opponent	Date	Score	FG-FGA	PCT	3FG-3FGA	PCT	FT-FTA	PCT	OFF	DEF	TOT	AVG	PF	A	TO	BLK	STL	PTS	AVG
Monmouth	11/06/2023	56-51 W	19-63	.302	2-12	.167	16-29	.552	23	30	53	53.0	20	5	18	4	11	56	56.0
Wagner	11/09/2023	86-43 W	29-61	.475	5-17	.294	23-29	.793	16	39	55	54.0	18	21	20	9	12	86	71.0
Auburn	11/12/2023	56-76 L	17-53	.321	7-19	.368	15-21	.714	13	27	40	49.3	26	9	24	3	10	56	66.0
at Seton Hall	11/15/2023	63-82 L	23-52	.442	3-18	.167	14-17	.824	12	22	34	45.5	24	6	21	4	4	63	65.3
Saint Francis (PA)	11/18/2023	80-51 W	26-58	.448	12-25	.480	16-18	.889	11	33	44	45.2	19	18	21	7	7	80	68.2
Fairfield	11/20/2023	54-78 L	20-49	.408	7-25	.280	7-13	.538	8	25	33	43.2	13	13	24	2	6	54	65.8
vs Texas Tech	11/24/2023	72-79 L	30-58	.517	4-14	.286	8-14	.571	11	18	29	41.1	29	19	20	4	5	72	66.7
vs Boise St.	11/25/2023	65-68 L	25-61	.410	6-14	.429	9-13	.692	13	19	32	40.0	20	9	15	6	10	65	66.5
Delaware St.	11/29/2023	82-48 W	32-62	.516	8-26	.308	10-16	.625	16	30	46	40.7	9	20	17	12	14	82	68.2
Lafayette	12/01/2023	69-48 W	28-60	.467	3-15	.200	10-22	.455	20	28	48	41.4	10	14	22	5	12	69	68.3
La Salle	12/05/2023	98-67 W	35-70	.500	7-16	.438	21-29	.724	15	31	46	41.8	22	21	9	5	11	98	71.0
Indiana	12/09/2023	56-66 L	22-54	.407	5-14	.357	7-13	.538	9	21	30	40.8	20	11	14	4	3	56	69.8
at Princeton	12/13/2023	55-66 L	18-48	.375	6-12	.500	13-20	.650	16	19	35	40.4	11	10	21	7	7	55	68.6
Virginia Tech	12/17/2023	59-84 L	15-50	.300	3-8	.375	26-34	.765	9	26	35	40.0	17	4	12	4	5	59	67.9
at Northwestern	12/30/2023	70-77 L	25-60	.417	3-17	.176	17-23	.739	17	21	38	39.9	19	12	19	0	7	70	68.1
at Purdue	01/02/2024	76-77 L	27-59	.458	5-11	.455	17-20	.850	11	23	34	39.5	23	8	15	3	3	76	68.6
Iowa	01/05/2024	69-103 L	26-70	.371	5-23	.217	12-17	.706	9	25	34	39.2	17	10	11	6	5	69	68.6
at Ohio St.	01/11/2024	55-90 L	17-46	.370	2-8	.250	19-23	.826	12	23	35	38.9	23	5	28	4	4	55	67.8
Penn St.	01/14/2024	80-94 L	31-59	.525	4-9	.444	14-18	.778	15	23	38	38.9	18	17	24	2	6	80	68.5
at Illinois	01/17/2024	68-96 L	23-53	.434	6-14	.429	16-20	.800	8	19	27	38.3	21	10	13	3	2	68	68.5
Michigan	01/21/2024	50-56 L	18-41	.439	4-16	.250	10-17	.588	4	30	34	38.1	19	11	21	6	4	50	67.6
at Wisconsin	01/27/2024	62-73 L	21-59	.356	4-11	.364	16-21	.762	10	23	33	37.9	19	12	16	2	7	62	67.3
Michigan St.	01/30/2024	64-82 L	22-50	.440	4-14	.286	16-23	.696	11	22	33	37.7	22	19	23	4	5	64	67.2
at Nebraska	02/03/2024	71-70 W	28-47	.596	7-15	.467	8-12	.667	4	32	36	37.6	16	18	23	4	3	71	67.3
Maryland	02/06/2024	59-67 L	22-53	.415	5-15	.333	10-18	.556	12	25	37	37.6	23	14	22	5	9	59	67.0
at Michigan	02/10/2024	58-86 L	22-52	.423	3-17	.176	11-16	.688	5	16	21	36.9	14	9	15	1	6	58	66.7
Minnesota	02/13/2024	81-73 W	23-50	.460	9-20	.450	26-28	.929	6	26	32	36.7	16	15	15	4	9	81	67.2
Wisconsin	02/17/2024	43-61 L	17-53	.321	4-14	.286	5-11	.455	9	25	34	36.6	18	9	19	2	7	43	66.3
at Maryland	02/21/2024	62-81 L	23-64	.359	2-17	.118	14-18	.778	12	26	38	36.7	21	14	15	3	5	62	66.2
Total		1919	684-1615	.424	145-456	.318	406-573	.709	337	727	1064	36.7	547	363	537	125	199	1919	66.2
Opponents		2093	752-1780	.422	202-604	.334	387-550	.704	372	664	1036	35.7	519	486	414	96	237	2093	72.2

Rutgers Averages

Games Played	Points/game	FG Pct	3FG Pct	FT Pct	Rebounds/game	Assists/game	Turnovers/game	Assist/Turnover ratio	Steals/game	Blocks/game
29	66.2	42.4	31.8	70.9	36.7	12.5	18.5	0.7	6.9	4.3





2023-24 Rutgers Women's Basketball
Opponents Game-by-Game
All games

Page 1/1
as of Feb 22, 2024

Opponent	Date	Score		Total		3-Pointers		Free throws		Rebounds										
				FG-FGA	PCT	3FG-3FGA	PCT	FT-FTA	PCT	OFF	DEF	TOT	AVG	PF	A	TO	BLK	STL	PTS	AVG
Monmouth	11/06/2023	56-51	W	15-53	.283	4-24	.167	17-21	.810	10	29	39	39.0	22	9	19	8	5	51	51.0
Wagner	11/09/2023	86-43	W	15-64	.234	2-17	.118	11-15	.733	12	19	31	35.0	22	6	21	3	15	43	47.0
Auburn	11/12/2023	56-76	L	27-58	.466	2-11	.182	20-31	.645	9	25	34	34.7	16	14	12	7	11	76	56.7
at Seton Hall	11/15/2023	63-82	L	25-57	.439	10-24	.417	22-27	.815	14	19	33	34.3	18	19	13	0	8	82	63.0
Saint Francis (PA)	11/18/2023	80-51	W	18-59	.305	3-13	.231	12-20	.600	12	21	33	34.0	17	8	17	2	12	51	60.6
Fairfield	11/20/2023	54-78	L	31-69	.449	11-37	.297	5-8	.625	14	23	37	34.5	13	22	13	1	11	78	63.5
vs Texas Tech	11/24/2023	72-79	L	22-54	.407	9-25	.360	26-29	.897	16	19	35	34.6	19	18	19	2	5	79	65.7
vs Boise St.	11/25/2023	65-68	L	25-58	.431	7-16	.438	11-16	.688	17	24	41	35.4	18	17	10	6	6	68	66.0
Delaware St.	11/29/2023	82-48	W	19-64	.297	5-23	.217	5-10	.500	16	18	34	35.2	14	9	20	5	13	48	64.0
Lafayette	12/01/2023	69-48	W	18-55	.327	7-22	.318	5-10	.500	8	18	26	34.3	16	11	19	4	10	48	62.4
La Salle	12/05/2023	98-67	W	21-64	.328	9-28	.321	16-25	.640	15	24	39	34.7	25	13	17	3	6	67	62.8
Indiana	12/09/2023	56-66	L	26-54	.481	3-16	.188	11-18	.611	9	24	33	34.6	11	20	11	5	6	66	63.1
at Princeton	12/13/2023	55-66	L	26-58	.448	5-12	.417	9-12	.750	15	17	32	34.4	15	15	15	5	10	66	63.3
Virginia Tech	12/17/2023	59-84	L	29-68	.426	17-37	.459	9-14	.643	15	30	45	35.1	22	22	9	5	2	84	64.8
at Northwestern	12/30/2023	70-77	L	28-55	.509	3-11	.273	18-23	.783	8	21	29	34.7	16	24	15	5	9	77	65.6
at Purdue	01/02/2024	76-77	L	28-63	.444	4-13	.308	17-26	.654	16	17	33	34.6	19	16	10	1	3	77	66.3
Iowa	01/05/2024	69-103	L	39-72	.542	10-25	.400	15-20	.750	12	39	51	35.6	13	28	9	3	5	103	68.5
at Ohio St.	01/11/2024	55-90	L	30-69	.435	11-26	.423	19-25	.760	19	16	35	35.6	20	20	12	1	13	90	69.7
Penn St.	01/14/2024	80-94	L	35-63	.556	12-20	.600	12-20	.600	9	13	22	34.8	20	23	11	3	11	94	70.9
at Illinois	01/17/2024	68-96	L	38-70	.543	6-13	.462	14-17	.824	13	25	38	35.0	17	17	6	4	5	96	72.2
Michigan	01/21/2024	50-56	L	20-55	.364	4-20	.200	12-18	.667	10	23	33	34.9	17	7	15	0	9	56	71.4
at Wisconsin	01/27/2024	62-73	L	25-60	.417	5-26	.192	18-22	.818	13	29	42	35.2	20	18	19	5	7	73	71.5
Michigan St.	01/30/2024	64-82	L	32-58	.552	7-20	.350	11-19	.579	9	20	29	35.0	21	22	11	1	11	82	72.0
at Nebraska	02/03/2024	71-70	W	23-68	.338	7-26	.269	17-20	.850	13	17	30	34.8	17	17	8	1	9	70	71.9
Maryland	02/06/2024	59-67	L	22-68	.324	4-13	.308	19-28	.679	25	23	48	35.3	19	13	16	1	12	67	71.7
at Michigan	02/10/2024	58-86	L	34-55	.618	12-21	.571	6-7	.857	5	28	33	35.2	16	25	15	1	7	86	72.2
Minnesota	02/13/2024	81-73	W	27-65	.415	11-26	.423	8-16	.500	15	23	38	35.3	25	17	17	0	6	73	72.3
Wisconsin	02/17/2024	43-61	L	24-58	.414	5-18	.278	8-12	.667	9	30	39	35.4	12	18	15	7	7	61	71.9
at Maryland	02/21/2024	62-81	L	30-66	.455	7-21	.333	14-21	.667	14	30	44	35.7	19	18	13	3	3	81	72.2
Total		2093		752-1780	.422	202-604	.334	387-550	.704	372	664	1036	35.7	519	486	414	96	237	2093	72.2
Rutgers		1919		684-1615	.424	145-456	.318	406-573	.709	337	727	1064	36.7	547	363	537	125	199	1919	66.2

Opponents Averages

Games Played	Points/game	FG Pct	3FG Pct	FT Pct	Rebounds/game	Assists/game	Turnovers/game	Assist/Turnover ratio	Steals/game	Blocks/game
29	72.2	42.2	33.4	70.4	35.7	16.8	14.3	1.2	8.2	3.3

GAME 30: AT MICHIGAN STATE | SATURDAY, FEB. 24, 2024



2023-24 Rutgers Women's Basketball
Points-rebounds-assists
All games

Page 1/1
as of Feb 22, 2024

Opponent	Date	Score	0	1	2	3	4	11	20	22	24	33	54
			HUERTER,JI	ADAMS,DEST	SMIKLE,KAY	PETTICORD,	BATES ,ANT	SIDIBE,AWA	LAFAYETTE,	BROWN,KASS	THOMPSON,L	BRANDT,KEN	CORNWELL,C
Monmouth	11/06/2023	56-51 W	0-2-1	13-17-1	5-0-0	17-6-0	0-3-3	DNP	0-2-0	4-5-0	7-1-0	DNP	10-10-0
Wagner	11/09/2023	86-43 W	7-2-0	17-12-5	20-11-1	6-3-6	4-2-6	DNP	9-1-0	6-9-2	2-0-1	0-0-0	15-8-0
Auburn	11/12/2023	56-76 L	11-2-1	4-8-2	19-5-2	8-1-3	0-1-0	DNP	0-1-0	1-3-1	2-0-0	DNP	11-13-0
at Seton Hall	11/15/2023	63-82 L	2-2-1	27-8-0	13-8-1	7-1-0	2-6-1	DNP	0-1-1	3-1-0	4-1-2	DNP	5-5-0
Saint Francis (PA)	11/18/2023	80-51 W	15-1-2	11-4-2	9-4-5	6-8-2	6-4-4	DNP	0-1-0	6-7-0	16-6-2	0-0-0	11-6-1
Fairfield	11/20/2023	54-78 L	9-1-2	9-6-3	7-5-4	2-1-0	8-2-3	DNP	0-0-0	7-4-0	5-1-0	DNP	7-13-1
vs Texas Tech	11/24/2023	72-79 L	6-1-1	13-3-3	20-4-6	DNP	7-1-3	DNP	0-0-0	11-8-3	7-2-2	DNP	8-5-1
vs Boise St.	11/25/2023	65-68 L	9-1-0	6-5-2	25-5-4	DNP	3-4-2	DNP	0-0-0	0-3-0	10-2-0	DNP	12-8-1
Delaware St.	11/29/2023	82-48 W	8-3-2	19-6-1	33-4-3	DNP	0-3-6	DNP	2-3-0	5-7-4	3-3-3	0-1-0	12-12-1
Lafayette	12/01/2023	69-48 W	6-1-0	14-8-1	13-6-1	DNP	1-10-7	DNP	2-1-0	7-10-2	9-1-3	1-0-0	16-9-0
La Salle	12/05/2023	98-67 W	16-2-4	17-10-4	21-11-3	DNP	4-6-3	DNP	10-1-0	12-6-2	11-3-5	2-1-0	5-4-0
Indiana	12/09/2023	56-66 L	0-4-2	10-8-3	19-4-2	DNP	11-2-3	DNP	0-0-0	10-8-1	0-0-0	DNP	6-2-0
at Princeton	12/13/2023	55-66 L	4-1-0	10-5-3	14-4-4	DNP	10-2-0	DNP	0-0-0	14-7-2	3-1-0	DNP	0-10-1
Virginia Tech	12/17/2023	59-84 L	0-0-1	2-5-1	22-4-1	DNP	3-1-0	DNP	0-0-0	15-6-0	8-3-1	DNP	9-11-0
at Northwestern	12/30/2023	70-77 L	4-2-2	9-2-1	2-2-1	12-3-3	0-2-1	DNP	0-1-1	17-6-2	17-4-1	DNP	9-8-0
at Purdue	01/02/2024	76-77 L	16-0-2	23-13-1	DNP	14-4-2	DNP	DNP	0-0-0	4-3-0	16-3-2	DNP	3-11-1
Iowa	01/05/2024	69-103 L	7-2-2	11-6-2	DNP	12-2-4	4-3-1	DNP	0-0-0	12-11-1	11-2-0	DNP	12-6-0
at Ohio St.	01/11/2024	55-90 L	5-0-0	18-7-1	DNP	10-1-1	0-2-0	DNP	1-1-0	7-4-2	8-3-1	DNP	6-13-0
Penn St.	01/14/2024	80-94 L	0-1-0	33-9-2	DNP	12-3-3	0-6-5	DNP	3-0-0	13-6-4	11-0-2	DNP	8-9-1
at Illinois	01/17/2024	68-96 L	8-2-0	26-6-0	DNP	16-5-6	0-3-1	DNP	6-1-0	4-2-0	0-1-3	0-0-0	8-6-0
Michigan	01/21/2024	50-56 L	12-1-1	11-2-0	DNP	9-8-2	3-6-5	DNP	2-1-0	5-7-2	6-2-1	DNP	2-5-0
at Wisconsin	01/27/2024	62-73 L	7-4-3	11-7-1	DNP	15-6-1	3-3-1	DNP	0-1-1	13-3-4	9-6-0	DNP	4-2-1
Michigan St.	01/30/2024	64-82 L	10-4-4	28-10-1	DNP	DNP	2-2-7	DNP	0-1-1	12-3-3	6-5-3	DNP	6-6-0
at Nebraska	02/03/2024	71-70 W	7-7-1	11-6-3	DNP	5-2-1	7-4-7	DNP	8-1-0	21-5-4	5-2-1	DNP	7-8-1
Maryland	02/06/2024	59-67 L	9-3-1	22-8-1	DNP	4-1-5	0-5-5	DNP	3-6-0	6-4-0	11-3-2	DNP	4-5-0
at Michigan	02/10/2024	58-86 L	2-2-1	15-6-0	DNP	7-2-0	6-1-2	DNP	0-0-0	10-4-4	9-2-0	DNP	9-3-2
Minnesota	02/13/2024	81-73 W	6-1-1	21-10-2	DNP	25-3-2	8-6-8	DNP	9-1-0	8-4-1	0-0-1	DNP	4-5-0
Wisconsin	02/17/2024	43-61 L	0-3-0	18-10-0	DNP	9-4-2	3-7-2	DNP	6-2-0	5-4-5	0-0-0	DNP	2-1-0
at Maryland	02/21/2024	62-81 L	6-2-2	15-8-3	DNP	8-3-1	0-2-4	0-0-0	2-1-0	11-8-3	11-2-1	DNP	9-8-0





2023-24 Rutgers Women's Basketball
Combined Team Statistics
All games

Page 1/1
as of Feb 22, 2024

Game Records

Record	Overall	Home	Away	Neutral
ALL GAMES	8-21	7-10	1-9	0-2
CONFERENCE	2-14	1-7	1-7	0-0
NON-CONFERENCE	6-7	6-3	0-2	0-2

Score by Periods

Team	1st	2nd	3rd	4th	OT	TOT
Rutgers	419	439	540	521	0	1919
Opponents	522	510	515	546	0	2093

Team Box Score

No.	Player				Total		3-Point		F-Throw		Rebounds															
		GP-GS	MIN	AVG	FG-FGA	FG%	3FG-3FGA	3FG%	FT-FTA	FT%	OFF	DEF	TOT	AVG	PF	DQ	A	TO	BLK	STL	PTS	AVG				
2	SMIKLE, Kaylene	15-14	440:45	29.4	84-210	.400	20-62	.323	54-73	.740	21	56	77	5.1	37	2	38	52	8	26	242	16.1				
1	ADAMS, Destiny	29-29	857:48	29.6	165-319	.517	1-6	.167	113-164	.689	85	130	215	7.4	101	4	49	98	22	45	444	15.3				
3	PETTICORD, Mya	20-18	621:16	31.1	66-175	.377	19-65	.292	53-65	.815	13	54	67	3.4	39	1	44	54	2	18	204	10.2				
22	BROWN, Kassondra	29-2	656:26	22.6	88-191	.461	10-32	.313	63-86	.733	51	107	158	5.4	95	7	52	61	17	20	249	8.6				
54	CORNWELL, Chyna	29-27	672:41	23.2	84-157	.535	0-0	.000	52-89	.584	75	137	212	7.3	57	0	12	62	18	17	220	7.6				
24	THOMPSON, Lisa	29-19	638:35	22.0	76-210	.362	16-47	.340	39-47	.830	15	44	59	2.0	66	3	37	76	3	19	207	7.1				
0	HUERTER, Jillian	29-10	725:47	25.0	64-175	.366	50-136	.368	14-23	.609	6	51	57	2.0	57	1	37	43	7	15	192	6.6				
4	BATES, Antonia	28-24	822:51	29.4	34-101	.337	14-50	.280	13-19	.684	10	89	99	3.5	67	3	90	60	44	35	95	3.4				
20	LAFAYETTE, Erica	29-2	350:37	12.1	23-74	.311	15-55	.273	2-3	.667	8	20	28	1.0	26	0	4	7	4	4	63	2.2				
33	BRANDT, Kennedy	6-0	12:29	2.1	0-3	.000	0-3	.000	3-4	.750	0	2	2	0.3	2	0	0	1	0	0	3	0.5				
11	SIDIBE, Awa	1-0	00:47	0.8	0-0	.000	0-0	.000	0-0	.000	0	0	0	0.0	0	0	0	0	0	0	0	0.0				
Team											53	37	90				23									
Total		29	5800		684-1615	.424	145-456	.318	406-573	.709	337	727	1064	36.7	547	21	363	537	125	199	1919	66.2				
Opponents		29	5800		752-1780	.422	202-604	.334	387-550	.704	372	664	1036	35.7	519	9	486	414	96	237	2093	72.2				

Team Statistics

	RU	OPP
Scoring	1919	2093
Points per game	66.2	72.2
Scoring margin	-6.0	-
Field goals-att	684-1615	752-1780
Field goal pct	.424	.422
3 point fg-att	145-456	202-604
3-point FG pct	.318	.334
3-pt FG made per game	5.0	7.0
Free throws-att	406-573	387-550
Free throw pct	.709	.704
F-Throws made per game	14.0	13.3
Rebounds	1064	1036
Rebounds per game	36.7	35.7
Rebounding margin	+1.0	-
Assists	363	486
Assists per game	12.5	16.8
Turnovers	537	414
Turnovers per game	18.5	14.3
Turnover margin	-4.2	-
Assist/turnover ratio	0.7	1.2
Steals	199	237
Steals per game	6.9	8.2
Blocks	125	96
Blocks per game	4.3	3.3
Winning streak	0	-
Home win streak	0	-
Attendance	46874	36580
Home games-Avg/Game	17-2757	10-3658
Neutral site-Avg/Game	-	2-0

Team Results

Date	Opponent		Score	Att.
11/06/2023	Monmouth	W	56-51	1403
11/09/2023	Wagner	W	86-43	1688
11/12/2023	Auburn	L	56-76	1619
11/15/2023	at Seton Hall	L	63-82	822
11/18/2023	Saint Francis (PA)	W	80-51	1709
11/20/2023	Fairfield	L	54-78	1309
11/24/2023	vs Texas Tech	L	72-79	0
11/25/2023	vs Boise St.	L	65-68	0
11/29/2023	Delaware St.	W	82-48	1786
12/01/2023	Lafayette	W	69-48	1497
12/05/2023	La Salle	W	98-67	1216
12/09/2023	Indiana	L	56-66	3525
12/13/2023	at Princeton	L	55-66	1307
12/17/2023	Virginia Tech	L	59-84	4731
12/30/2023	at Northwestern	L	70-77	1820
01/02/2024	at Purdue	L	76-77	3263
01/05/2024	Iowa	L	69-103	8000
01/11/2024	at Ohio St.	L	55-90	5227
01/14/2024	Penn St.	L	80-94	6938
01/17/2024	at Illinois	L	68-96	2845
01/21/2024	Michigan	L	50-56	4647
01/27/2024	at Wisconsin	L	62-73	6035
01/30/2024	Michigan St.	L	64-82	1409
02/03/2024	at Nebraska	W	71-70	5831
02/06/2024	Maryland	L	59-67	1328
02/10/2024	at Michigan	L	58-86	4238
02/13/2024	Minnesota	W	81-73	1511
02/17/2024	Wisconsin	L	43-61	2558
02/21/2024	at Maryland	L	62-81	5192



2023-24 Rutgers Women's Basketball
Combined Team Statistics
In Conference games

Page 1/1
as of Feb 22, 2024

Game Records

Record	Overall	Home	Away	Neutral
ALL GAMES	2-14	1-7	1-7	0-0
CONFERENCE	2-14	1-7	1-7	0-0
NON-CONFERENCE	0-0	0-0	0-0	0-0

Score by Periods

Team	1st	2nd	3rd	4th	OT	TOT
Rutgers	201	230	302	291	0	1024
Opponents	321	298	315	318	0	1252

Team Box Score

No.	Player				Total		3-Point		F-Throw		Rebounds											
		GP-GS	MIN	AVG	FG-FGA	FG%	3FG-3FGA	3FG%	FT-FTA	FT%	OFF	DEF	TOT	AVG	PF	DQ	A	TO	BLK	STL	PTS	AVG
1	ADAMS, Destiny	16-16	497:01	31.1	100-199	.503	1-3	.333	81-112	.723	46	72	118	7.4	60	2	21	55	9	19	282	17.6
3	PETTICORD, Mya	14-12	467:00	33.4	52-131	.397	16-49	.327	38-43	.884	8	39	47	3.4	27	0	33	39	2	11	158	11.3
2	SMIKLE, Kaylene	2-1	40:43	20.4	9-21	.429	1-4	.250	2-5	.400	1	5	6	3.0	5	1	3	1	0	1	21	10.5
22	BROWN, Kassondra	16-2	379:37	23.7	57-120	.475	7-22	.318	37-44	.841	23	59	82	5.1	61	5	36	38	8	11	158	9.9
24	THOMPSON, Lisa	16-12	344:43	21.5	47-125	.376	6-22	.273	20-24	.833	9	26	35	2.2	35	2	18	47	2	9	120	7.5
0	HUERTER, Jillian	16-10	442:30	27.7	34-101	.337	24-73	.329	7-13	.538	4	34	38	2.4	36	0	22	27	1	9	99	6.2
54	CORNWELL, Chyna	16-14	326:40	20.4	39-76	.513	0-0	.000	21-39	.538	34	64	98	6.1	31	0	6	26	7	5	99	6.2
4	BATES, Antonia	15-12	468:14	31.2	15-52	.288	6-26	.231	11-16	.688	5	49	54	3.6	39	2	52	38	23	19	47	3.1
20	LAFAYETTE, Erica	16-1	231:36	14.5	14-45	.311	11-36	.306	1-2	.500	5	12	17	1.1	15	0	3	4	1	1	40	2.5
33	BRANDT, Kennedy	1-0	01:08	1.1	0-0	.000	0-0	.000	0-0	.000	0	0	0	0.0	0	0	0	0	0	0	0	0.0
11	SIDIBE, Awa	1-0	00:47	0.8	0-0	.000	0-0	.000	0-0	.000	0	0	0	0.0	0	0	0	0	0	0	0	0.0
Team											19	20	39					18				
Total		16	3200		367-870	.422	72-235	.306	218-298	.732	154	380	534	33.4	309	12	194	293	53	85	1024	64.0
Opponents		16	3200		461-999	.461	111-315	.352	219-312	.702	199	378	577	36.1	282	5	303	203	41	123	1252	78.3

Team Statistics

	RU	OPP
Scoring	1024	1252
Points per game	64.0	78.3
Scoring margin	-14.3	-
Field goals-att	367-870	461-999
Field goal pct	.422	.461
3 point fg-att	72-235	111-315
3-point FG pct	.306	.352
3-pt FG made per game	4.5	6.9
Free throws-att	218-298	219-312
Free throw pct	.732	.702
F-Throws made per game	13.6	13.7
Rebounds	534	577
Rebounds per game	33.4	36.1
Rebounding margin	-2.7	-
Assists	194	303
Assists per game	12.1	18.9
Turnovers	293	203
Turnovers per game	18.3	12.7
Turnover margin	-5.6	-
Assist/turnover ratio	0.7	1.5
Steals	85	123
Steals per game	5.3	7.7
Blocks	53	41
Blocks per game	3.3	2.6
Winning streak	0	-
Home win streak	0	-
Attendance	29916	34451
Home games-Avg/Game	8-3740	8-4306
Neutral site-Avg/Game	-	0-0

Team Results

Date	Opponent		Score	Att.
12/09/2023	Indiana	L	56-66	3525
12/30/2023	at Northwestern	L	70-77	1820
01/02/2024	at Purdue	L	76-77	3263
01/05/2024	Iowa	L	69-103	8000
01/11/2024	at Ohio St.	L	55-90	5227
01/14/2024	Penn St.	L	80-94	6938
01/17/2024	at Illinois	L	68-96	2845
01/21/2024	Michigan	L	50-56	4647
01/27/2024	at Wisconsin	L	62-73	6035
01/30/2024	Michigan St.	L	64-82	1409
02/03/2024	at Nebraska	W	71-70	5831
02/06/2024	Maryland	L	59-67	1328
02/10/2024	at Michigan	L	58-86	4238
02/13/2024	Minnesota	W	81-73	1511
02/17/2024	Wisconsin	L	43-61	2558
02/21/2024	at Maryland	L	62-81	5192