

# RUTGERS

## WOMEN'S BASKETBALL

@RUTGERSWBB | SCARLETKNIGHTS.COM

### SCHEDULE & RESULTS

#### NOVEMBER

Wed. 25 MONMOUTH W 82-38

#### DECEMBER

Fri. 11 @ Wisconsin \* W 70-65

Mon. 14 #14 MARYLAND \* L 91-87

Fri. 18 HAMPTON W 94-45

Sun. 20 SACRED HEART W 99-30

Wed. 23 MANHATTAN W 84-41

Thurs. 31 @ Iowa \* L 90-84

#### JANUARY

Sun. 3 @ Nebraska \* L 53-50

Thurs. 7 PURDUE \* PPD

Sun. 10 @ Ohio State \* PPD

Thurs. 14 NORTHWESTERN \* PPD

Mon. 18 @ Indiana \* PPD

Thurs. 21 PENN STATE \* PPD

Sun. 24 IOWA \* PPD

Thurs. 28 @ Maryland \* PPD

#### FEBRUARY

Mon. 1 MICHIGAN \* PPD

Thurs. 4 @ Indiana PPD

Sun. 7 NEBRASKA \* W 78-62

Thurs. 11 @ #21/20 Northwestern \* W 70-54

Sun. 14 @ Purdue \* W 75-57

Wed. 17 MINNESOTA \* W 83-56

Sat. 20 ILLINOIS \* W 75-46

Wed. 24 @ Michigan State \* 3 PM

Sun. 28 @ Penn State \* 12:30 PM

#### MARCH

Fri. 5 or OHIO STATE \* TBA

Sat. 6

Tues. 9 - Big Ten Tournament  
Sat. 13 at Banker's Life Fieldhouse  
Indianapolis, Ind.

Home Games in **BOLD**

\* Big Ten Conference Game

All Times are Eastern and subject to change

### ATHLETIC COMMUNICATIONS

Matt Choquette | @matt\_choquette  
O: 732-445-8119 | C: 484-695-3291  
mchoquette@scarletknights.com

GAME 14: RUTGERS @ MICHIGAN STATE /// WED. FEB. 24, 2021 /// 3 PM ET  
EAST LANSING, MI /// BRESLIN CENTER /// B1G NETWORK /// WRSU 88.7 FM



10-3 (6-3 B1G) | H: 7-1 | A: 3-2 | N: 0-0

PPG: 79.3 PPGA: 56.0

FG%: .483 3PT%: .392 FT%: .789

RPG: 34.3 (+3.5) APG: 15.5

TOPG: 13.3 SPG: 13.7 BPG: 4.9

Rankings: 25/RV (AP; ESPN/USA Today)

NET: 11th (as of Feb. 23)



12-6 (7-6 B1G) | H: 8-3 | A: 4-3 | N: 0-0

PPG: 77.4 PPGA: 68.9

FG%: .460 3PT%: .323 FT%: .683

RPG: 36.6 (+2.8) APG: 18.1

TOPG: 14.2 SPG: 8.9 BPG: 4.0

Rankings: NR/NR (AP; ESPN/USA Today)

NET: 39th (as of Feb. 17)

**SERIES HISTORY:** MSU leads the all-time series, 6-5, since 2006, and 5-3 as Big Ten regular season opponents. The Spartans are on a two-game winning streak after a 57-53 victory in East Lansing last season. MSU is 4-1 when the series is played in East Lansing.

### NOTES & NEWS

**RUTGERS RANKED:** Rutgers women's basketball made its debut in the Associated Press Poll on Monday with a No. 25 national ranking. The Scarlet Knights received 50 points to make its way into the Top 25 for the first time since February of 2019, and have now been nationally ranked in three of the last four seasons since 2017-18. Following a five-week hiatus, Rutgers has won five consecutive games in the Big Ten by an average margin of 22.5 points, including a road victory at then-No.21/20 Northwestern.

**NET WORKING:** Rutgers is listed at No. 11 in the NCAA Evaluation Tool (NET) rankings, which replace RPI as a guide for selecting at-large bids for the NCAA Tournament. The NET rankings take into account Adjusted Net Efficiency (offensive vs. defensive points per possession weighted on quality of opponent) and Team Value Index (results-oriented). *Rutgers is ranked second in the NCAA with 114.8 points per offensive possessions, and fifth in the NCAA with a 32.6 average point margin per 100 possessions.*

**ARELLA RISING:** Redshirt senior guard **Arella Guirantes** (the reigning Metropolitan Area Player of the Week) is on six national watch lists: The Senior CLASS Award, the Wooden Award for Most Outstanding Player, the Naismith Trophy and Wade Trophy for National Player of the Year, a Top 10 semifinalist for the Meyers Shooting Guard Award, and the Naismith Defensive Player of the Year Award.

**Only Player** to rank Top 5 in Big Ten in scoring, assists, blocks & steals

**Triple-double** on Dec. 23 vs. Manhattan (6th in RU history) with 17 points, 10 rebounds & 11 assists

**Three 30+ point performances** vs. No. 9 Maryland, Iowa & Purdue

**SHINE ON:** True freshman **Diamond Johnson**, the No. 6 overall recruit in the nation according to ESPN, is one of 10 named to the Nancy Lieberman Award Watch List semifinalists for the country's top point guard. The Neumann Goretti product earned Rutgers' first ever Big Ten Freshman of the Week honor on Dec. 21. Johnson has scored in double-figures in all 13 of her games and has scored 18 or more in eight of her last nine.

**Ranks 2nd in the NCAA** with a .533 three-point shooting percentage (40-75).

**THOU SHALL STEAL:** Rutgers ranks fourth in the country with 13.7 steals per game and is fourth in the nation in turnover margin at 8.3 through 13 games. Three Scarlet Knights make up the Top 6 in the Big Ten in steals per game with Tekia Mack (3rd in the nation - 3.6), Arella Guirantes (2.2) and Mael Gilles (2.2).

**THAT'S OFFENSIVE:** Rutgers has scored 80 or more points in three Big Ten games this season. Before this year, Rutgers has had a total of three 80+ games since joining the conference in 2014-15. RU is on a current five-game streak of scoring 70+ in conference games, the first time that has happened since 1997-98 in the Big East. RU earlier scored 80+ in five consecutive games for the first time since the 1990-91 season. The Scarlet Knights rank sixth in the nation in scoring margin at +23.3, scoring 79.3 points per game (17th in the nation).

**WELCOME TO THE B1G:** Rutgers is one of the youngest teams in the nation with eight newcomers and 71 percent of the roster starting the season with two years experience or less in Division I. RU is one of just 32 teams across the nation with 10 or more players on the roster with two years experience or less.

### 2020-21 ROSTER STATS & QUICK HITS

NO.	NAME	POS.	HT.	PPG	RPG	APG/BPG*	NOTES
1	Zipporah Broughton	G	5-7	11.3	2.3	4.3	1st career double-double (10pts, 10ast) vs. Hampton
2	Liz Martino	G	6-0	2.5	1.0	0.6	Ranked as high as No. 25 overall prospect before a knee injury junior year of HS
3	Diamond Johnson	G	5-5	18.7	3.8	2.6	Lieberman Award Top 10 Watch List (top point guard); No. 6 overall prospect; 2x Gatorade PA Player of the Year
4	Destiny Marshall	G	5-10	2.1	0.8	0.1	Transfer from Jacksonville; 14.9ppg, 5.0rpg in 22 games last season
10	Erica Lafayette	F	6-0	1.6	1.8	0.3	A consensus Top 5 recruit from Louisiana
11	Stephanie Guihon	G	5-6	2.3	0.5	0.2	Walk-on transfer from Longwood eligible for 2020-21 season
12	Sakima Walker	C	6-4	4.0	2.1	0.5*	No. 21 overall recruit; Ohio Player of the Year
13	Mael Gilles	G	6-12	7.3	4.5	1.3	B1G career-high 14 vs. Michigan; Career-high 17 points vs. Towson
15	Arella Guirantes	C	6-6	0.0	0.0	0.0	Product of NBA Academy; Senegal native
20	Joiya Maddox	G	5-10	-	-	-	3 or more 3ptFG makes in 3 games last season; missed final 16 games w/ injury
22	Tyia Singleton	F	6-2	6.4	5.8	1.0*	Played in the Geico High School National Championships
24	Arella Guirantes	G	5-11	22.2	5.9	5.2	Watch Lists: Naismith DPOY, Meyers Shooting Guard Award Top 10, Naismith/Wade Trophies; Wooden Award
31	Tekia Mack	F	6-1	11.8	5.8	2.9	19-20 B1G All-Defensive Team; All-B1G Honorable Mention; Same HS as Cappie Pondexter
54	Chyna Cornwell	F	6-3	0.9	1.3	0.0	No. 48 overall prospect; No. Carolina Player of the Year; 2,631 points, 2,143 rebounds in HS

## 2020-21 RUTGERS SCARLET KNIGHTS

No.	Name	Pos.	Cl.	Ht.	Hometown/High School (Previous College)
1	Zipporah Broughton	G	Jr.	5-7	Wetumpka, Ala. / Robert E. Lee
2	Liz Martino	G	Fr.	6-0	Lanham, Md. / Riverdale Baptist
3	Diamond Johnson	G	Fr.	5-5	Philadelphia, Pa. / Neumann Goretti
4	Destiny Marshall	G	R-Jr.	5-10	Augusta, Ga. / Grovetown (Jacksonville)
10	Erica Lafayette	G/F	Fr.	6-0	Baker, La. / McKinley
11	Stephanie Guihon	G	R-Jr.	5-6	Largo, Md. / Largo (Longwood)
12	Sakima Walker	C	Fr.	6-4	Columbus, Ohio / Africentric Early College
13	Mael Gilles	F	Sr.	6-1	Montreal-Nord, Quebec / Montmorency
15	Aicha Ndour	C	Fr.	6-6	Somone, Senegal / Cushing Academy
20	Joiya Maddox	G	So.	5-10	Hoover, Ala. / Hoover
22	Tyia Singleton	F	R-So.	6-2	Winter Haven, Fla. / Winter Haven
24	Arella Guirantes	G	R-Sr.	5-11	Bellport, N.Y. / Bellport
31	Tekia Mack	F/G	Sr.	6-1	Chicago, Ill. / Marshall
54	Chyna Cornwell	F	Fr.	6-3	Conover, N.C. / Newton Conover

**Head Coach:** C. Vivian Stringer (Slippery Rock, '71) - 50th season overall, 26th season at Rutgers

**Associate Head Coach:** Tim Eatman (Talladega '88) - 6th season

**Assistant Coaches:** Nadine Domond (Iowa '98) - 5th season, Michelle Edwards (Iowa, '89) - 18th season

**Director of Program Administration, Operations and Scouting:** Betsy Yonkman (Central Michigan, '86)

**Director of Video/Assistant Director of Operations:** Brian Shank (Rutgers '16)

**Recruiting Coordinator:** Geoffrey Lanier (Southern Connecticut State '93)

**Director of Player Development:** Will Abrams (Utica '11)

## PRONUNCIATION GUIDE

1 Zipporah Broughton	zip-POUR-rah BROUGHT-on - (Nickname Zippy)
11 Stephanie Guihon	GHEE-yawn
12 Sakima Walker	sah-KEE-muh
13 Mael Gilles	my-EL JEYE-els
15 Aicha Ndour	EYE-shuh na-DOOR
22 Tyia Singleton	TIE-uh
24 Arella Guirantes	uh-REL-uh guh-RAHN-tez
31 Tekia Mack	tuh-KEY-uh
20 Joiya Maddox	JOY-uh
54 Chyna Cornwell	China

## NCAA CAREER WINNER

Head coach C. Vivian Stringer is the third winningest active coach in women's basketball and one of three current active coaches among all divisions with more than 1,000 career victories. She is fifth all-time in career wins among women's basketball coaches.

## WINNINGEST WBB HEAD COACHES

Coach	Years	Won	Lost
Pat Summitt, Tenn	38	1,098	208
Tara VanDerveer, Stanford *	41	1,094	253
Geno Auriemma, UConn *	36	1,091	142
Barbara Stevens, Bentley	42	1,058	291
<b>C. Vivian Stringer, Rutgers *</b>	<b>49</b>	<b>1,041</b>	<b>421</b>
Sylvia Hatchell, UNC	44	1,023	405
Muffett McGraw, Notre Dame	38	936	293
Jim Foster, Chattanooga	40	903	347
Jody Conradt, Texas	38	900	309

\* - denotes active coach

Records at the beginning of 2020-21

## ALL-TIME RUTGERS WINNER

With a 75-51 victory over Tulane in the first game of the Paradise Jam over Thanksgiving Weekend in 2015, C. Vivian Stringer became Rutgers' all-time leader in basketball victories - men or women.

## All-Time Rutgers WBB Coaching Records (By Wins)

C. Vivian Stringer	530-289/(1995-present) 26 seasons
Theresa Grentz	434-150/(1977-95) 19 seasons
Ellen Johns	6-5/(1974-75) One season
Dottie McCrea	5-9/(1975-76) One season

## ALL-TIME B1G WINNER

Rutgers head coach C. Vivian Stringer is no stranger to the league. Stringer was at the helm of the Iowa Hawkeye program from 1983-95 and holds the record for most Big Ten victories in conference history with 229 wins in league play. She won 169 games while at Iowa and 60 at Rutgers.

## ALL-TIME B1G WBB WINS (entering 20-21)

C. Vivian Stringer,	223
IOWA(1983-95), RU (1995-Present)	
Lisa Bluder, IOWA (2000-Present)	207
Rene Portland, PSU (1980-07)	176
Karen Langeland, MSU (1976-00)	156
Sharon Versyp, IND/PUR (2005-Present)	145
Suzy Merchant, MSU (2007-Present)	136
Jim Foster, OSU (2002-12)	136
Don Perrelli, NU (1984-99)	135
Nancy Darsch, OSU (1985-97)	134
Lin Dunn, PUR (1987-96)	120
Pam Borton, MINN (2002-14)	104
Theresa Grentz, ILL (1995-07)	101

\*Records at the beginning of 2020-21\*

## ALL-TIME B1G WBB WIN PERCENTAGE

Coach	Years	Record	PCT
Tara Van Derveer, OSU	4	53-4	.929
Brenda Frese, MINN/MD	6	103-17	.858
Carolyn Peck, PUR	2	26-5	.857
Kristy Curry, PUR	7	86-26	.768
Lin Dunn, PUR	9	120-38	.759
Nell Fortner, PUR	1	12-4	.750
Jim Foster, OSU	11	136-46	.747
Rene Portland, PSU	15	175-69	.717
C. Vivian Stringer, IOWA/RU	18	223-95	.701
Kevin McGuff, OSU	7	82-38	.683

## RUTGERS MEDIA POLICY

### POST-GAME PRESS CONFERENCES

Rutgers head coach C. Vivian Stringer, and student-athletes will be made available to the media following a brief cooling-off period via WebEx. Rutgers' freshmen are not available for post-game press conferences.

Please direct any student-athlete requests to Rutgers Director of Athletic Communications Matt Choquette (mchoquette@scarlet-knights.com/484.695.3291).

Visiting teams are given the opportunity to meet the media first.

### WEBSITES

All of the latest information on Rutgers women's basketball is available on the World Wide Web on Rutgers' site, [www.scarletknights.com](http://www.scarletknights.com). In addition, Big Ten Conference information can be accessed at [www.BigTen.org](http://www.BigTen.org).

### IN-SEASON INTERVIEW POLICY:

Rutgers holds weekly media availability (either in person or via teleconference). Other requests for Head Coach C. Vivian Stringer should be made at least three days in advance. Requests for student-athlete interviews should be made- if possible - 48 hours in advance. All interviews must be coordinated through the Office of Athletic Communications, and interviews will not be granted on a game day.

## QUICK FACTS

Founded:	1766
Enrollment:	71,000
President:	Jonathan Holloway
Director of Athletics:	Patrick Hobbs
Nickname:	Scarlet Knights
Conference:	Big Ten
Home Court (Capacity):	The RAC (8,000)

## TEAM INFORMATION

2019-20 Overall Record:	22-9
2019-20 Big Ten Record/Finish:	11-7 / 5th
2020 Postseason:	NCAA Tournament cancelled
Letterwinners R/L:	6/4
Starters R/L:	3/2
Head Coach:	C. Vivian Stringer (Slippery Rock, '71)
Overall Record/Seasons:	1051-424 (.712)/50
Record at RU/Seasons:	531-289 (.646)/26

## BASKETBALL HISTORY

First Year of Program:	1974
Overall All-Time Record:	977-451 (.683)
Number of NCAA Appearances:	25
Last NCAA Tournament Appearance:	2019
Number of WNIT Appearances:	2
Last WNIT Appearance	2016

### ASSOCIATED PRESS TOP 25 POLL - as of Feb. 22

Rank	Team	Record	Pts.	Prev.
1	UConn (28)	18-1	748	1
2	NC State	15-2	685	4
3	Texas A&M (1)	20-1	684	5
4	Stanford (1)	20-2	660	6
5	South Carolina	18-3	638	2
6	Louisville	20-2	599	3
7	Baylor	17-2	588	7
8	Maryland	16-2	539	9
9	Arizona	15-2	522	10
10	UCLA	13-4	459	8
11	Indiana	14-4	425	14
12	Michigan	13-2	415	11
13	South Florida	13-1	398	12
14	Oregon	13-6	294	13
15	Ohio State	13-4	287	15
16	Arkansas	17-7	276	18
17	Georgia	17-4	257	22
18	West Virginia	17-3	244	19
19	Kentucky	15-6	231	17
20	Tennessee	13-6	206	21
21	Gonzaga	19-3	186	16
22	SD State	19-2	125	23
23	Missouri State	15-2	93	25
24	DePaul	13-5	85	19
25	Rutgers	10-3	50	NR

**Others Receiving Votes:** Oklahoma State 16, Northwestern 11, Florida Gulf Coast 8, Stephen F. Austin 6, Virginia Tech 5, South Dakota 3, Georgia Tech 3, Marquette 1.

### ESPN/USA TODAY COACHES POLL - as of Feb. 23

Rnk	Team (Record)	Pts.	Prev.	1st
1	Connecticut (18-1)	797	1	30
2	Stanford (21-2)	746	4	0
3	Texas A&M (20-1)	727	5	2
4	NC State (15-2)	695	6	0
5	Louisville (20-2)	670	2	0
6	South Carolina (18-3)	662	3	0
7	Baylor (17-2)	608	8	0
8	Maryland (16-2)	565	10	0
9	Arizona (15-3)	556	7	0
10	UCLA (13-4)	476	9	0
11	Indiana (14-4)	467	12	0
12	Michigan (13-2)	462	11	0
13	South Florida (13-1)	379	15	0
14	Ohio State (13-4)	342	13	0
15	Oregon (13-6)	330	13	0
16	Arkansas (17-7)	301	18	0
17	Kentucky (15-6)	267	17	0
18	Georgia (17-4)	232	23	0
19t	Missouri State (15-2)	207	20	0
19t	Gonzaga (19-3)	207	16	0
21	Tennessee (13-6)	178	21	0
22	West Virginia (17-3)	165	24	0
23	DePaul (13-5)	94	19	0
24	SD State (19-2)	92	25	0
25	Northwestern (12-5)	56	22	0

**Others Receiving Votes:** Florida Gulf Coast (19-2) 45; **Rutgers (10-3) 32**; Iowa (12-6) 10; Oregon State (8-6) 6; Mississippi State (8-7) 6; Washington State (10-10) 5; Texas (15-6) 4; Oklahoma State (17-6) 4; Georgia Tech (13-6) 2; Dayton (12-2) 2; Rice (13-2) 1; Marquette (16-4) 1; Alabama (15-6) 1.

### Big Ten Standings (as of Feb. 22)

	BIG TEN		OVERALL		PF-PA	
Maryland	12-1	0.923	17-2	0.895	1775-1385	DOUBLE-BYE IN BIG TOURNAMENT
Indiana	12-2	0.857	14-4	0.778	1363-1070	
Michigan	8-2	0.800	13-2	0.867	1183-928	
Ohio State*	9-4	0.692	13-4	0.765	1399-1174	
Northwestern	10-5	0.667	12-5	0.706	1210-1053	
Rutgers	6-3	0.667	10-3	0.769	1031-728	SINGLE-BYE IN BIG TOURNAMENT
Iowa	8-6	0.571	12-7	0.632	1675-1562	
Michigan State	7-6	0.538	12-6	0.667	1393-1240	
Nebraska	9-8	0.529	11-9	0.550	1382-1401	
Minnesota	6-10	0.375	7-11	0.389	1245-1446	
Penn State	5-10	0.333	8-11	0.421	1433-1461	
Purdue	3-12	0.200	6-13	0.316	1263-1379	
Wisconsin	2-15	0.118	5-15	0.250	1299-1523	
Illinois	1-14	0.067	3-15	0.167	1062-1301	

\*ineligible for postseason

### RUTGERS IN THE 2020-21 POLLS

Week:	Date	Associated Press	ESPN/USA Today Coaches
0	Nov. 9	RV (1)	RV (7)
1	Dec. 7	NR	RV (9)
2	Dec. 14	RV (1)	RV (12)
3	Dec. 21	RV (6)	RV (19)
4	Dec. 28	RV (6)	RV (7)
5	Jan. 1	RV (5)	RV (7)
6-10	Jan. 7-Feb. 8	NR	NR
11	Feb. 15	RV (10)	RV (4)
12	Feb. 22	25 (50)	RV (32)

### #TRENDING

- Tekia Mack tied a RAC record with eight steals vs. Minnesota, the most in any Rutgers game since Syessence Davis had 10 at Penn State in Jan. 2015 (the school record), then set a career high with eight assists in the Illinois victory.
- Diamond Johnson has made four or more three-pointers in five-straight games.
- Arella Guirantes' five blocks at Purdue were the most in a game since Caitlin Jenkins had six vs. Siena in December 2017.
- Rutgers' win at No. 21/20 Northwestern was its first ranked road win since a 73-65 victory at No. 4 Maryland on Dec. 31, 2018.
- In consecutive games, Tyia Singleton set new career highs in rebounding (11 vs. Nebraska) and point scoring (17 vs. Northwestern).
- Diamond Johnson has made 19 consecutive free throws heading into the MSU game, and has not missed since at Wisconsin on Dec. 11.
- Currently graded .789 from the charity stripe, RU is strongly challenging its single-season free throw percentage record of .734 ('80-81).
- RU has outscored opponents in the paint in 12 of 13 games this season.
- RU is 8-0 with a lead at halftime.
- The Scarlet Knights have outscored opponents by an average of 16.5 in points off turnovers (27.5 - 11.0).
- Arella Guirantes has five career 30+ point games, all against Big Ten opponents.
- RU's 87 points against Maryland were Rutgers' most in a Big Ten game since joining the conference in 2014-15 ... and most in a conference game since 90 vs. Seton Hall in the Big East in 2013.

- Guirantes' 30+point double-double vs. Maryland was Rutgers' first since Kahleah Copper had 30 and 10 against St. Joseph's on Nov. 13, 2015.
- With Diamond Johnson at 18.7 points per game, a look at the Top 5 freshman scoring averages in team history:
  1. Cappie Pondexter (02-03) - 18.3ppg
  2. Patti Sikorski (76-77) - 15.8ppg
  3. Kathy Glutz (76-77) - 15.5ppg
  4. June Olkowski (78-79) - 15.5ppg
  5. Sue Wicks (84-85) - 14.9 ppg

### NATIONAL RANKS

- Diamond Johnson: 3FG% (2nd - .533)
- Team: Steals/gm (4th - 13.7)
- Team: Turnover margin (4th - 8.3)
- Team: Scoring margin (6th - 23.3)
- Team: FG% (7th - .483)
- Team: 3ptFG% (7th - .392)
- Team: Turnovers forced (10th - 21.6)
- Arella Guirantes: FT% (10th - .910)
- Team: FT% (11th - .789)
- Arella Guirantes: Pts/gm (14th - 22.2)
- Team: Scoring offense (17th - 79.3)
- Team: Scoring defense (22nd - 56.0)



### RARE COMPANY

Only five players in recorded history have scored 20 or more points per game during a season under the tutelage of head coach C. Vivian Stringer. Two of them are a part of the 2020-21 Scarlet Knights - one player (Arella Guirantes) and one assistant coach (Michelle Edwards).

**20+ppg Seasons under Coach Stringer**  
**Cheyney State**  
 1981-82 – Valerie Walker (21.6 ppg.)

**Iowa**  
**1987-88 – Michelle Edwards (20.0 ppg)**  
 1989-90 – Franthea Price (21.2 ppg)

**Rutgers**  
 2005-06 – Cappie Pondexter (21.6 ppg)  
**2019-20 – Arella Guirantes (20.6 ppg)**

*\*\* NOTE: There's a strong possibility, although no solid records exist, that Yolanda Laney (Betnijah's mother) also averaged 20 ppg during at least one of the three seasons she and Coach were at Cheyney (1980-81 through 1982-83) \*\**

### B1G PLAYER OF THE YEAR NOMINEE

Arella Guirantes 2020-21 season highlights:

- Senior CLASS Award Top 10 Finalist for excellence in classroom, community, character and competition.
- espnW National Player of the Week & NCAA Starting 5 (Dec. 14)
- Two-time Big Ten Player of the Week (Dec. 14 & 21) & two-time B1G Honor Roll
- Only player in the Big Ten to rank in the conference's Top 5 in points, assists, steals and blocks per game.
- Ranks 3rd in Big Ten in scoring and 14th nationally with 22.2 points per game.
- Third player in Rutgers history to record a triple-double (6th triple-double performance) with 17 points, 10 rebounds and career-high 11 assists vs. Manhattan on Dec. 23.
- Third career 30+ point game vs. No. 14 Maryland on Dec. 14.
- Fourth career 30+ point game at RV Iowa on Dec. 31.
- Fifth career 30+ game at Purdue on Feb. 14.
- 28 consecutive free throws made over five games from Dec. - Feb.

### BIG TEN LEADERS

- Team: Steals/gm - 13.7
- Team: Scoring margin - 23.3
- Team: Scoring defense - 56.0
- Arella Guirantes: FT% - .910
- Diamond Johnson: 3ptFG% - .533

### TRIPLE-DOUBLE HISTORY

Arella Guirantes became the third player in Rutgers history to record a triple-double, and put together the sixth triple-double performance in the Rutgers record books.

#### Rutgers Triple-Doubles

Dec. 23, 2020 vs. Manhattan  
 Arella Guirantes (17pts, 10reb, 11ast)

Feb. 8, 2011 vs. Pittsburgh  
 Khadijah Rushdan (13pts, 10reb, 10ast)

Feb. 27, 2001 vs. Georgetown  
 Tasha Pointer (18pts, 10reb, 10ast)

Feb. 10, 2001 vs. Providence  
 Tasha Pointer (17pts, 10reb, 11ast)

Jan. 17, 2001 vs. West Virginia  
 Tasha Pointer (10pts, 10reb, 10ast)

Jan. 10, 2001 vs. Providence  
 Tasha Pointer (18pts, 11reb, 14ast)

### GETTING OFFENSIVE

Rutgers is producing its highest scoring average during C. Vivian Stringer's 26-year tenure "On the Banks." The five next highest scoring averages are all from NCAA Tournament teams, including the Elite Eight squad from 1999 and the Sweet 16 group from 1998.

#### Top RU Scoring Averages Under C. Vivian Stringer

- ~ 79.3 (12 games) 20-21 - 10-3 - TBD
- 1. 70.0 (35 games) 98-99 - 29-6 - Elite Eight
- 2. 68.7 (32 games) 14-15 - 23-10 - 2nd Round
- 3. 68.7 (32 games) 97-98 - 22-10 - Sweet 16
- 4. 67.3 (29 games) 02-03 - 21-8 - 2nd Round
- 5. 66.5 (31 games) 19-20 - 22-9
- 5. 66.2 (37 games) 13-14 - WNIT Champions
- 7. 65.6 (31 games) 00-01 - 23-8 - 2nd Round

### WINNING AS A TEAM

Rutgers put together five consecutive games with four or more players scoring in double-figures from Dec. 11-23.

Rutgers has had four or more double-digit scorers in seven of its 13 games.

RU handed out 25 assists in the win against Hampton, the most in a game since 25 vs. FDU on Dec. 20, 2017.

All 10 players entering the Hampton victory scored at least one bucket.

### FREE RECORDS

Arella Guirantes is chasing more free throw history at Rutgers. At .910 on the 2020-21 season, she is on pace to break the school record of .901 set by Tomora Young during the 1997-98 season.

Guirantes set a Rutgers record with 171 made free throws last season, surpassing the 155 by RU Hall of Famer Sue Wicks during her National Player of the Year season in 1987-88.

In the Big Ten Tournament, Guirantes set a single-game tournament record with 15 free throws made, topping the old mark of 14 by Ohio State's Jessica Davenport against Indiana on March 2, 2007.

Guirantes' 15-of-16 free throw mark in that game (94.8%) ranks 10th all-time in the Big Ten Tournament record book for free throw percentage in a game, and is the best free throw performance since 2016 at the championship tournament. This came eight days after she set a Rutgers record with 14 makes without a miss on Feb. 27 in a win over Wisconsin at the RAC. The 15 made free throws tie a Rutgers overall record for a single game (most since Monique Oliver's 15 in 2010, also tying Regina Howard from 1987).

### ROOKIE RECORDS

At 18.8 points per game, freshman guard Diamond Johnson is challenging Cappie Pondexter's freshman scoring record of 18.3ppg set during the 2002-03 season.

Johnson is also taking aim at the single-season three-point shooting percentage record. Johnson has a .533 mark (40-75), which would be the highest percentage in program history ahead of current record holder Pondexter's .488 (62-127) from 2005-06.

### COACH OF THE WEEK

C. Vivian Stringer was named the NCAA Women's Basketball Coach of the Week by ESPN on Feb. 17.

The Scarlet Knights won a pair of road games by an average of 17 points, including victory at No. 21/20 Northwestern, to stretch a winning streak to three since returning from a five-week hiatus. Rutgers reached 70 points or more in both victories at Northwestern and Purdue.

### THE FUTURE IS NOW

With the addition of No. 6 nationally ranked prospect **Diamond Johnson**, the Rutgers women's basketball 2020 recruiting class has been ranked **No. 8 in the nation** and **No. 1 in the Big Ten** by ESPN and **No. 5 in the nation** by Blue Star Basketball. The early signing period class of five includes four players ranked among the Top 55 prospects in the country.

Johnson was named as a participant in the prestigious Jordan Brand Classic - a national high school basketball all-star game.

Johnson, Walker, Cornwell and Martino were named nominees to the 2020 McDonald's All-America Games.

#### Diamond Johnson | No. 6 (ESPN)

##### 5-5 | Guard | Philadelphia

- Coach Stringer's 10th five-star recruit since 2007, and highest ranked prospect since 2009.
- 2019 Gatorade Pennsylvania Girls' Basketball Player of the Year
- Scored 54 points in the district championship game; averaged 28.1 points, 5.8 rebounds, 4.5 assists and 4.0 steals through the district championship as a junior at Neumann Goretti.

#### Sakima Walker | No. 21 (All-Star Girls Report) 6-4 | Post | Columbus, Ohio

- Four-star recruit
- One of 50 players nationally on the 2020 Naismith Trophy Girls High School Player of the Year Watch List.
- Won consecutive Division III Ohio State Championship titles with the Africentric Early College girls basketball team, including a perfect 28-0 season in 2018-19.

#### Chyna Cornwell | No. 48 (ASGR)

##### 6-3 | Forward | Conover, N.C.

- Four-star recruit
- North Carolina All-State performer; averaged 28.3 points and 20.5 rebounds per game as a junior on her way to All-District 10 Player of the Year accolades.
- 1,848 points and 1,616 rebounds in her high school career entering her senior year.

#### Elizabeth Martino | No. 54 (Blue Star Basketball) 6-0 | Guard | Upper Marlboro, Md.

- Three-star recruit
- Ranked as high as the No. 25 prospect in the nation according to espnW Hoopgurlz before a knee injury ended her junior season.
- Tried out for the 2017 FIBA U16 Women's Americas Championship with Team USA.

#### Erica Lafayette | No. 2 in Alabama (BSB)

##### 6-0 | Wing | Baker, La.

- Three-star recruit
- Louisiana Sports Writers Association Class 5 All-State Honorable Mention following her junior season with McKinley High School.
- Averaged near 20 points, eight rebounds and five assists per game - leading her squad to a runner-up finish in District 5-5A.

### ANOTHER B1G MILESTONE FOR STRINGER

Head coach C. Vivian Stringer became the first Big Ten women's basketball coach to record 200 wins in conference play in the Scarlet Knights' 45-41 win over Northwestern on Dec. 28.

She currently owns a 229-98 record in regular season Big Ten contests, which includes 169 victories while at Iowa from 1983-95 and 60 at Rutgers.

Stringer is the seventh overall basketball coach in Big Ten history to reach the milestone joining:

Bob Knight, Indiana (1972-2000)  
Tom Izzo, Michigan State (1995-present)  
Gene Keady, Purdue (1981-2005)  
Ward Lambert, Purdue (1917; 1919-45)  
Lou Henson, Illinois (1976-96)  
C. Vivian Stringer, Iowa (1983-95)/ Rutgers (2014-present)  
Branch McCracken, Indiana (1939-43; 1947-65)

### STRINGER MILESTONE NUMBERS TO REMEMBER

Rutgers head coach Stringer has compiled a 1051-424 career record in her 50 seasons of coaching and joined the elite 1,000 career victory club on November 13, 2018 in the Scarlet Knight victory over Central Connecticut State.

Stringer is the sixth NCAA women's basketball coach and fifth NCAA Division I women's basketball coach to reach the milestone victory. In 2013, Stringer became just the seventh coach - men's or women's - to reach the 900-win mark.

With a 60-54 win over Minnesota on Feb. 28, 2019, Stringer was credited with her 36th 20-win seasons to tie former Tennessee head coach Pat Summitt for women's basketball coaches with the most 20-win seasons.

A 63-48 victory over Wisconsin on Feb. 27, 2020 clinched Stringer's 37th 20-win season, breaking the tie with Pat Summitt and setting the new NCAA record.

The Naismith and Women's Basketball Hall of Fame Coach is the third winningest active coach in women's basketball and one of three current active coaches among all divisions with more than 1,000 career victories. She is fifth all-time in career wins among women's basketball coaches.

### D-D-D-DEFENSE

Rutgers has held 99 of its past 108 opponents under their scoring averages.

- 2017-18: 29-of-32
- 2018-19: 30-of-32
- 2019-20: 28-of-31
- 2020-21: 12-of-13

#### 2019-20

Team:	Avg. Entering Game w/ RU:	Total Pts. vs. RU:
S. Alabama	68.0	56
Coppin State	57.2	33
Niagara	68.0	37
Harvard	63.0	46
LSU	66.2	64
Vanderbilt	71.0	56
Georgia Tech	75.8	43
Virginia	58.6	63
Towson	68.5	57
Southern	59.2	58
Marshall	68.3	41
Wisconsin	66.6	61
Indiana	75.8	66
Purdue	65.0	53
Illinois	65.8	51
Nebraska	73.4	65
Penn State	70.6	57
Michigan State	73.4	66
Michigan	72.6	71
Illinois	64.6	41
Minnesota	72.6	57*
Penn State	68.1	39
Maryland	81.6	79
Michigan State	69.3	57
Michigan	72.2	41
Northwestern	70.4	82
Ohio State	72.2	57
Wisconsin	65.6	43
Iowa	80.1	63*
Wisconsin	64.8	55
Indiana	72.4	74

\* in regulation time

#### 2020-21

Team:	Avg. Entering Game w/ RU:	Total Pts. vs. RU:
Monmouth	50.9	38
Wisconsin	75.5	65
Maryland	98.3	91
Hampton	64.4	45
Sacred Heart	64.0	30
Manhattan	55.8	41
Iowa	90.0	90
Nebraska	68.0	53
Nebraska	67.2	62
Northwestern	73.2	54
Purdue	65.5	57
Minnesota	70.4	56
Illinois	53.3	46
Michigan State	77.4	

## Specialty Stats

Zipporah Broughton	10 pts, 10 ast;	HAMPTON, 12/18/20
Mael Gilles	14 pts, 11 reb;	MARYLAND, 12/14/20
Arella Guirantes	33 pts, 10 reb;	MARYLAND, 12/14/20
Arella Guirantes	25 pts, 10 reb;	SACRED HEART, 12/20/20
Arella Guirantes	17 pts, 10 reb, 11 ast;	MANHATTAN, 12/23/20
Tekia Mack	16 pts, 13 reb;	at Northwestern, 02/11/21

# MISCELLANEOUS STATISTICS (2020-21)

Most points scored.....	99, Sacred Heart (12-20-20)
Fewest points scored.....	50, at Nebraska (1-3-21)
Most points allowed.....	91, #14 Maryland (12-14-20)
Fewest points allowed.....	30, Sacred Heart (12-20-20)
Largest margin of victory.....	69, Sacred Heart (12-20-20)
Smallest margin of victory.....	5, at Wisconsin (12-11-20)
Largest margin of defeat.....	6, at Iowa (12-31-20)
Smallest margin of defeat.....	3, at Nebraska (1-3-21)
Largest first period lead.....	20, Sacred Heart (12-20-20)
Smallest first period lead.....	1, two games
Largest first period deficit.....	16, at Iowa (12-31-20)
Smallest first period deficit.....	2, at Wisconsin (12-11-20)
.....	#14 Maryland (12-14-20)
Largest halftime lead.....	32, Sacred Heart (12-20-20)
Smallest halftime lead.....	3, at Purdue (2-14-21)
Largest halftime deficit.....	2, at Iowa (12-31-20)
Smallest halftime deficit.....	1, at Wisconsin (12-11-20)
.....	1, at Nebraska (1-3-21)
Largest third period lead.....	59, Sacred Heart (12-20-20)
Smallest third period lead.....	1, at Nebraska (1-3-21)
Largest third period deficit.....	7, at Iowa (12-31-20)
Smallest third period deficit.....	7, at Iowa (12-31-20)
Largest lead.....	73, Sacred Heart (12-20-20)
Largest deficit.....	20, at Iowa (12-31-20)
Largest comeback for win.....	at #21/20 Northwestern (2-11-21)
.....	down 6 with 1:17 left in the 2nd; won 70-54
Largest rebounding margin.....	18, Hampton (12-18-20)
.....	18, Sacred Heart (12-20-20)
Largest opp. rebounding margin.....	12, at Nebraska (1-3-21)
Most points by RU player.....	34, Arella Guirantes,
.....	Iowa (12-31-20)
Most points by opp player.....	28, Caitlin Clark
.....	at Iowa (12-31-20)
Most rebounds by RU player.....	13, Tekia Mack
.....	at #21/20 Northwestern (2-11-21)
Most rebounds by opp player.....	13, Courtney Warley
.....	Manhattan (12-23-20)
.....	13, Bella Cravens
.....	at Nebraska (1-3-21)
Most rebounds by RU.....	45, Sacred Heart (12-20-20)
Most rebounds by opp.....	46, at Nebraska (1-3-21)
Most steals by RU player.....	8, Tekia Mack
.....	Minnesota (2-17-21)
Most steals by opp player.....	4, Julie Pospisilova
.....	at Wisconsin (12-11-20)
Most steals by RU.....	22, at Wisconsin (12-11-20)
Most steals by opp.....	10, Hampton (12-18-20)
Most assists by RU player.....	11, Arella Guirantes
.....	Manhattan (12-23-20)
Most assists by opp player.....	6, Caitlin Clark
.....	at Iowa (12-31-20)
.....	6, Gabbie Marshall
.....	at Iowa (12-31-20)
Most assists by RU.....	25, Hampton (12-18-20)
Most assists by opp.....	18, at Iowa (12-31-20)
Most blocks by RU player.....	5, Arella Guirantes
.....	at Purdue (2-14-21)
Most blocks by opp player.....	2, eight players
Most blocks by RU.....	8, at Wisconsin (12-11-20)
.....	8, Hampton (12-18-20)
Most blocks by opp.....	6, Nebraska (2-7-21)
Most RU 1st quarter points.....	27, Sacred Heart (12-20-20)
Most RU 2nd quarter points.....	28, at Iowa (12-31-20)
Most RU 3rd quarter points.....	30, Hampton (12-18-20)
Most RU 4th quarter points.....	28, at Iowa (12-31-20)

# In Rutgers wins...

TEAM STATISTICS	RU	OPP
SCORING	810	494
Points per game	81.0	49.4
Scoring margin	+31.6	-
FIELD GOALS-ATT	301-605	162-470
Field goal pct	.498	.345
3 POINT FG-ATT	75-191	50-157
3-point FG pct	.393	.318
3-pt FG made per gam	7.5	5.0
FREE THROWS-ATT	133-171	120-176
Free throw pct	.778	.682
F-Throws made per ga	13.3	12.0
REBOUNDS	349	289
Rebounds per game	34.9	28.9
Rebounding margin	+6.0	-
ASSISTS	164	104
Assists per game	16.4	10.4
TURNOVERS	128	229
Turnovers per game	12.8	22.9
Turnover margin	+10.1	-
Assist/turnover ratio	1.3	0.5
STEALS	144	61
Steals per game	14.4	6.1
BLOCKS	53	24
Blocks per game	5.3	2.4

# In Rutgers losses...

TEAM STATISTICS	RU	OPP
SCORING	221	234
Points per game	73.7	78.0
Scoring margin	-4.3	-
FIELD GOALS-ATT	83-191	79-174
Field goal pct	.435	.454
3 POINT FG-ATT	23-60	27-66
3-point FG pct	.383	.409
3-pt FG made per gam	7.7	9.0
FREE THROWS-ATT	32-38	49-63
Free throw pct	.842	.778
F-Throws made per ga	10.7	16.3
REBOUNDS	97	113
Rebounds per game	32.3	37.7
Rebounding margin	-5.3	-
ASSISTS	38	47
Assists per game	12.7	15.7
TURNOVERS	45	52
Turnovers per game	15.0	17.3
Turnover margin	+2.3	-
Assist/turnover ratio	0.8	0.9
STEALS	34	16
Steals per game	11.3	5.3
BLOCKS	11	7
Blocks per game	3.7	2.3

# 2020-21 GAME BY GAME LEADERS

Scoring	20-21	Career
Zipporah Broughton	1	2
Mael Gilles	-	1
Arella Guirantes	7	37
Diamond Johnson	3	3
Tekia Mack	1	6
Tyia Singleton	1	1
20-pt scorers	20-21	Career
Arella Guirantes	8	26*
Diamond Johnson	5	5
Tekia Mack	1	5
30-pt scorers		
Arella Guirantes	3	5
Double-Figure Scoring	20-21	Career
Zipporah Broughton	5	8
Mael Gilles	4	14
Arella Guirantes	12	74 *
Diamond Johnson	13	13
Tekia Mack	7	30
Joiya Maddox	-	1
Tyia Singleton	3	3
Sakima Walker	1	1
Double-Doubles	20-21	Career
Zipporah Broughton	1	1
Mael Gilles	1	4
Arella Guirantes	3	10 *
Tekia Mack	1	5
Rebounding	20-21	Career
Mael Gilles	1 (1)	5
Arella Guirantes	4	13
Diamond Johnson	1	1
Tekia Mack	1 (2)	11
Tyia Singleton	4 (1)	4
Double-Digit Rebounding	20-21	Career
Mael Gilles	1	4
Arella Guirantes	3	6
Tekia Mack	-	5
Tyia Singleton	2	2
Assists	20-21	Career
Zipporah Broughton	2	6
Mael Gilles	1 (1)	1
Arella Guirantes	6 (1)	18
Diamond Johnson	1 (1)	1
Tekia Mack	2	5

5+ Assists	20-21	Career
Zipporah Broughton	3	5
Mael Gilles	1	1
Arella Guirantes	9	15
Diamond Johnson	2	2
Tekia Mack	2	4
Double-Digit Assists	20-21	Career
Zipporah Broughton	1	1
Arella Guirantes	1	1
Steals	20-21	Career
Zipporah Broughton	2	5
Mael Gilles	0 (2)	2
Arella Guirantes	2 (1)	10
Diamond Johnson	1 (2)	1
Tekia Mack	3 (3)	13
Liz Martino	1	1
3+ Steals	20-21	Career
Zipporah Broughton	2	4
Mael Gilles	5	10
Arella Guirantes	7	15 *
Diamond Johnson	5	5
Tekia Mack	5	20
Liz Martino	2	2
Tyia Singleton	2	2
Blocked Shots	20-21	Career
Mael Gilles	0 (1)	5
Arella Guirantes	4 (2)	14
Tekia Mack	2 (1)	9
Tyia Singleton	1	2
Sakima Walker	1	1
3+ Blocks	20-21	Career
Mael Gilles	-	4
Arella Guirantes	4	8 *
Tekia Mack	-	2
Tyia Singleton	1	1
Sakima Walker	1	1

0 - indicates tie

\* - Includes numbers from previous school



### RUTGERS RECORD WHEN...

at home	7-1
on road	3-2
at neutral sites	0-0
games decided by 3 pts or less	0-1
games decided by 4-10 points	1-2
games decided by 11-20 points	3-0
games decided by more than 20 pts	6-0
overtime/double overtime	0-0
vs. top 25 teams (AP & Coaches Polls)	1-1
vs. top 10 teams (AP & Coaches Polls)	0-0
leading end of first period	9-1
trailing end of first period	1-2
tied at end of first period	0-0
leading at the half	8-0
trailing at the half	1-2
tied at the half	1-1
leading end of third period	10-1
trailing end of third period	0-1
tied end of third period	0-1
shooting less than 30%	0-0
shooting 30-39%	1-1
shooting 40-49%	4-2
shooting 50% or better	5-0
opponent shoots 45% or better	1-1
opponent shoots less than 45%	9-2
scoring less than 50 points	0-0
scoring 50-59 points	0-1
scoring 60-69 points	0-0
scoring 70-79 points	5-0
scoring 80 or more points	5-2
opponent scores less than 50 points	5-0
opponent scores 50-59 points	3-1
opponent scores 60-69 points	2-0
opponent scores 70-79 points	0-0
opponent scores 80 or more points	0-2
RU out-rebounds opponent	6-1
opponent out-rebounds RU	2-2
RU equals opponent in rebounds	2-0
RU shoots 75% or better from the FT line	6-2
RU has more FT attempts	5-0
opponent has more FT attempts	4-3
RU equals opponent in FT attempts	1-0
RU shoots 40% or better from '3'	6-2
opponent shoots 40% or better from '3'	1-2
attempting more three pointers than opponent	8-1
attempting fewer three pointers than opponent	2-2
attempting same number of three pointers	0-0
RU has more turnovers than opponent	0-1
RU has fewer turnovers than opponent	10-2
RU and opponent have equal turnovers	1-0
RU has 10 or more steals	8-2
RU has 9 or fewer steals	2-1
scoring more points in the paint	10-2
scoring fewer points in the paint	0-1
scoring same amount of points in the paint	0-0
scoring more points off turnovers	10-2
scoring fewer points off turnovers	0-1
scoring same amount of points off turnovers	0-0
scoring more second chance points	8-2
scoring fewer second chance points	3-1
scoring same amount of second chance points	0-0
scoring more fast break points	9-1
scoring fewer fast break points	1-2
scoring same amount of fast break points	0-0
bench outscores opponent bench	6-1
bench is outscored by opponent bench	3-2
benches score equal amount of points	1-0
when one or fewer players score in double figures	0-0
when two or more players score double figures	10-3
when three or more players score double figures	9-2
when four or more players score in double figures	5-2
when five or more players score in double figures	1-0
November	1-0
December	4-2
January	0-1
February	5-0
March	0-0
In nationally televised games	3-0
In scarlet uniforms	3-2
In white uniforms	7-1
In black uniforms	0-0
When SID Matt Choquette wears Baby Yoda socks	2-0

### LAST TIME...

RU Scored 100+ Points	107-33, Coppin State (Nov. 9, 2019)
RU Scored 90-99 Points	99-30, Sacred Heart (Dec. 20, 2020)
RU Scored 39 or Fewer Points	33-47, at Purdue (Jan. 10, 2018)
RU Opponent Scored 100+ Points	58-100, at Penn State (Nov. 28, 1994)
RU Opponent Scored 90-99 Points	84-90, at Iowa (Dec. 31, 2020)
RU Opponent Scored 39 or Fewer Points	99-30, Sacred Heart (Dec. 20, 2020)
RU Opponent Scored 29 or Fewer Points	65-26, vs. Savannah St (Dec. 13, 2015)
RU Defeated a Ranked Opponent	70-54, at #21/20 Northwestern (Feb. 11, 2021)
RU Won in Overtime	78-74 (OT), vs. #18/20 Iowa (March 1, 2020)
RU Won in Double Overtime	91-79 (2OT), vs. Seton Hall (March 27, 2014)
RU Won in Triple Overtime	89-84 (3OT), vs. Ole Miss (Dec. 12, 2006)
Opponent Won in Overtime	67-77, vs. Iowa (Feb. 21, 2018)
Opponent Won in Double Overtime	71-73, at Minnesota (Feb. 2, 2020)
RU Won by 50+ Points	99-30 (+69), Sacred Heart (Dec. 20, 2020)
RU Won by 40-49 Points	84-41 (+43), Manhattan (Dec. 23, 2020)
RU Won by 30-39 Points	72-39 (+33), Penn State (Feb. 6, 2020)
RU Lost by 25+ Points	79-50 (-29) at #12 Maryland (Feb. 9, 2020)
RU Shot 60% or Better From Field	600 (39-65) vs. UCF (Feb. 15, 2014)
RU Shot Less Than 25 % From Field	242 (16-66), vs. Purdue (Feb. 15, 2017)
RU Opponent Shot Less Than 20% From Field	167 (8-48), Sacred Heart (Dec. 20, 2020)
RU Opponent Shot Less Than 20% From 3-Point Range	182 (4-22), Manhattan (Dec. 23, 2020)
RU Shot 90% or Better from Free Throw Line	94% (15-16), at Iowa (Dec. 31, 2020)
RU Had 50+ Rebounds	52, Illinois (Jan. 30, 2020)
RU Had 25+ Turnovers	26, vs. ETSU (Nov. 24, 2018)
RU Had Less Than 10 Turnovers	4, Michigan State (Jan. 20, 2020)
RU Had Five or Fewer Turnovers	4, Michigan State (Jan. 20, 2020)
RU Forced 25+ Turnovers	32, Sacred Heart (Dec. 20, 2020)
RU Had 20+ Steals	22, at Wisconsin (Dec. 11, 2020)
RU Had 25+ Assists	25, Hampton (Dec. 18, 2020)
RU Had 10+ Blocked Shots	10, Illinois (Jan. 30, 2020)
RU Opponent Had 20+ Steals	21, vs. Temple, (Dec. 30, 2007)
RU Opponent Had 20+ Assists	20, at Ohio State (Feb. 8, 2018)
RU Opponent Had 10+ Blocked Shots	10, vs. Penn State (Dec. 31, 2016)
All Five RU Starters in Double-Figures:	Tekia Mack (21), Arella Guirantes (17), Mael Gilles (16), KK Sanders (16), Jordan Wallace (10), Coppin State (Nov. 9, 2019)
Six RU Players in Double Figures:	Tekia Mack (21), Arella Guirantes (17), Mael Gilles (16), KK Sanders (16), Joiya Maddox (14), Jordan Wallace (10), Coppin State (Nov. 9, 2019)
Five RU Players in Double-Figures:	Arella Guirantes (25), Diamond Johnson (21), Tyia Singleton (14), Zippy Broughton (13), Sakima Walker (12), Sacred Heart (Dec. 20, 2020)
Two RU Players With 20+ Points in a Game	Arella Guirantes (24) & Diamond Johnson (20) Illinois (Feb. 20, 2021)
Two RU Players With Double-Doubles	Arella Guirantes (33 pts, 10 reb) & Mael Gilles (14 pts, 11 reb), vs. #14 Maryland (Dec. 14, 2020)
Three RU Players With Double-Doubles	Arella Guirantes (19 pts, 11 reb), Jordan Wallace (14 pts, 10 reb), Tekia Mack (10 pts, 10 reb) vs. Harvard (Nov. 17, 2019)
RU Player with 10 or More FT without a Miss	Arella Guirantes (14-14), Wisconsin (Feb. 27, 2020)
RU Player with 15 or More Rebounds	Mael Gilles (16), Niagara (Nov. 13, 2019)
RU Player with 10 or More Assists	Arella Guirantes (11), Manhattan (Dec. 23, 2020)
RU Player with 7 or More Steals	Tekia Mack (8), Minnesota (Feb. 17, 2021)
RU Player with 5 or More Blocks	Arella Guirantes (5), at Purdue (Feb. 14, 2021)
RU Player Scored 30-39 points	Arella Guirantes (34), at Iowa (Dec. 31, 2020)
RU Player Scored 40+ points	Cappie Pondexter (40), at South Florida (Jan. 11, 2006)
RU Player with a triple-double	Arella Guirantes (17pts, 10reb, 11ast), Manhattan (Dec. 23, 2020)





# C. VIVIAN STRINGER

Head Coach • 26th Season at Rutgers, 50th Season Overall

One of the most recognizable names in all of college basketball, C. Vivian Stringer – mother, teacher, coach - has built an illustrious legacy highlighted by countless unforgettable moments through a tireless work ethic and desire for excellence. A pioneer, visionary and leader during her four decades of success on the hardwood, Stringer once again made history as she eclipsed the monumental 1,000 career victory milestone during the 2018-19 campaign, further adding to her legacy as one of the most influential faces in basketball. In 2019-20, she surpassed the late, great Pat Summitt and became the NCAA record holder with 37 seasons of 20 or more victories.

With 49 seasons on the sidelines, Stringer has been the primary architect in transforming three programs into national title contenders ever since her appearance in the first-ever NCAA National Championship game. She has guided teams to 27 of the 38 NCAA Tournaments, including 10 straight from 2003 to 2012 and not including the presumed inclusion in the cancelled 2020 tournament.

The first coach in men's or women's basketball history to take three different schools to the Final Four (Cheyney in 1982, Iowa in 1993 and Rutgers, in 2000 and again in 2007), Stringer has been a pioneer, visionary and leader during her four decades of success on the hardwood.

Stringer has compiled an overall record of 1041-421, which ranks fifth all-time among NCAA women's basketball coaching victories, and was the fifth coach in NCAA Division I women's basketball history to surpass the 1,000 career win milestone.

While at Rutgers for the last 25 seasons, Stringer has registered 521-286 mark having led the Scarlet Knights to 17 NCAA Tournaments, including two Final Four appearances, as well as the WNIT Championship title in 2014.

Stringer was enshrined into the Naismith Basketball Hall of Fame in arguably the best class ever in 2009. She joined fellow basketball greats Michael Jordan, David Robinson, John Stockton and Jerry Sloan to receive basketball's ultimate honor. She became just the 11th women's coach to earn the prestigious prize.

A 2001 inductee into the Women's Basketball Hall of Fame, Stringer made her sixth appearance on a USA Basketball coaching staff in 2004, serving as an assistant coach for the gold-medal winning U.S. Olympic Team. Named one of the "101 Most Influential Minorities in Sports" by Sports Illustrated in 2003, Stringer continues to be one of the most recognized coaches in the game.

A coal miner's daughter, Stringer learned a valuable lesson from her parents growing up in the small tight-knit community of Edenborn in western Pennsylvania: "Work hard and don't look for excuses, and you can achieve anything."

That lesson has stuck with the legendary college basketball coach and has been one of the primary messages she has passed on to the hundreds of players who have stood before her. It's been her perseverance and strength in the eyes of adversity that has meant the most to the people around her. Stringer prides herself on not only teaching her players the game of basketball but more importantly providing them life lessons that stand the test of time.

Stringer has overcome many challenges in her life; the loss of her beloved father at the tender age of 19; in 1982, her only daughter being stricken with spinal meningitis just prior to her Cheyney team's appearance in the very first Final Four; the sudden death of her beloved husband, Bill, to a heart attack on Thanksgiving Day 1992 and a bout with breast cancer which she kept a secret from nearly everyone in her life. Through it all, Stringer has handled life with dignity and grace rising above the tragedies to make a difference in the lives of hundreds of young women.

Stringer was at a loss for words before she was to give her Naismith enshrinement speech on Sept. 11. After all, her career extended over four decades of work and involved countless players and coaches who touched her life. Overcome with emotion and fighting back tears, Stringer delivered one of

the most eloquent speeches, sharing with the crowd and a national audience on ESPN how her desire to coach was fueled early in her life.

In a moment where she was being heralded for her lifetime of accomplishments, Stringer saw it as an opportunity to say thank you to people who had given her as much as she had given them. "I celebrate, you my players. It is because of your hard work, passion, execution of the game plans and commitment to one another that I am here tonight," Stringer said during the ceremony.

In addition to Naismith, Stringer is also a member of the Women's Basketball Hall of Fame. Enshrined on June 9, 2001, in Knoxville, Tenn., the honor truly showed Stringer's mark on the game in regards to equality, innovation and growth.

Stringer has been named the National Coach of the Year three times (Wade Trophy -- 1982, Converse -- 1988 and Naismith -- 1993) by her peers. She also was named the 1993 Coach of the Year by Sports Illustrated, USA Today, Converse, the Los Angeles Times and the Black Coaches Association.

In addition, she was tabbed the 2000 Female Coach of the Year by the Rainbow/PUSH Organization, a group founded by Rev. Jesse Jackson; the District V Coach of the Year in 1985, 1988 and 1993; the District I Coach of the Year in 1998 and 2006; the Big Ten Coach of the Year in 1991 and 1993; the

## A HISTORY OF SUCCESS

Year	School	Record (Pct)	National Finish
1971-79	Cheyney	144-35 (.804)	—
1979-80	Cheyney	26-7 (.833)	AIWA "B" First Round
1980-81	Cheyney	26-3 (.897)	AIWA Regional Final
1981-82	Cheyney	28-3 (.903)	NCAA Final Four
1982-83	Cheyney	27-3 (.900)	NCAA Regional Semifinal
1983-84	Iowa	17-10 (.630)	—
1984-85	Iowa	20-8 (.714)	—
1985-86	Iowa	22-7 (.759)	NCAA Second Round
1986-87	Iowa	26-5 (.839)	NCAA Regional Final
1987-88	Iowa	29-2 (.935)	NCAA Regional Final
1988-89	Iowa	27-5 (.844)	NCAA Regional Semifinal
1989-90	Iowa	23-6 (.793)	NCAA Second Round
1990-91	Iowa	21-9 (.700)	NCAA Second Round
1991-92	Iowa	25-4 (.862)	NCAA Second Round
1992-93	Iowa	27-4 (.871)	NCAA Final Four
1993-94	Iowa	21-7 (.750)	NCAA Second Round
1994-95	Iowa	11-17 (.393)	—
1995-96	Rutgers	13-15 (.464)	—
1996-97	Rutgers	11-17 (.393)	—
1997-98	Rutgers	22-10 (.688)	NCAA Regional Semifinal
1998-99	Rutgers	29-6 (.829)	NCAA Regional Final
1999-00	Rutgers	26-8 (.765)	NCAA Final Four
2000-01	Rutgers	23-8 (.742)	NCAA Second Round
2001-02	Rutgers	9-20 (.310)	—
2002-03	Rutgers	21-8 (.724)	NCAA Second Round
2003-04	Rutgers	21-12 (.636)	NCAA First Round
2004-05	Rutgers	28-7 (.800)	NCAA Regional Final
2005-06	Rutgers	27-5 (.864)	NCAA Regional Semifinal
2006-07	Rutgers	27-9 (.765)	National Title Game
2007-08	Rutgers	27-7 (.794)	NCAA Regional Final
2008-09	Rutgers	21-13 (.618)	NCAA Regional Semifinal
2009-10	Rutgers	18-15 (.545)	NCAA First Round
2010-11	Rutgers	20-13 (.606)	NCAA Second Round
2011-12	Rutgers	22-10 (.687)	NCAA First Round
2012-13	Rutgers	16-14 (.533)	—
2013-14	Rutgers	28-9 (.757)	WNIT CHAMPIONS
2014-15	Rutgers	23-10 (.697)	NCAA Second Round
2015-16	Rutgers	19-15 (.559)	WNIT Second Round
2016-17	Rutgers	6-24 (.200)	—
2017-18	Rutgers	20-12 (.625)	—
2018-19	Rutgers	22-10 (.688)	NCAA First Round
2019-20	Rutgers	22-9 (.710)	Postseason cancelled
2020-21	Rutgers	10-3 (.769)	—
<b>TOTALS</b>		<b>1051-424 (.712)</b>	

## GAME 14: RUTGERS @ MICHIGAN STATE /// WEDNESDAY, FEBRUARY 24, 2021

BIG EAST Coach of the Year in 1998 and 2005; and a six-time Metropolitan Basketball Writers Association Coach of the Year (1998-00, 2005-06 and 2008).

One of her most personally-gratifying accolades was receiving the 1993 Carol Eckman Award, which acknowledges the coach demonstrating spirit, courage, integrity, commitment, leadership and service to the game of women's basketball.

A finalist for the Naismith National Coach of the Year Award seven times, Stringer was humbled when the U.S. Sports Academy decided to name its annual women's coaching award in her honor. The C. Vivian Stringer Medallion Award of Sport for Women's Coaching was handed out for the first time in July of 2002.

Stringer has also been inducted into numerous Halls of Fame, including the New Jersey Hall of Fame and the Sport in Society Hall of Fame in 2005, and in 2006 she entered the University of Iowa Athletics Hall of Fame. Also in 2006, Stringer was inducted into the International Women's Sports Hall of Fame at the Women's Sports Foundation's Annual Salute to Women.

One of her most memorable events and honors in Stringer's life took place in September 2008 in Beaverton, Ore., when Nike named its second child development center after Stringer. The 35,000 square foot facility, houses 26 classrooms which provide care, learning and development for nearly 300 children between the ages of six months and five years old.

Additionally, in 2013, the Black Coaches Association named its annual Coach of the Year honor after Stringer.

Along with her well documented collegiate experience, Stringer has also successfully tested herself in the international arena. An assistant coach for the gold-medal 2004 U.S. Olympic Team, her first USA Basketball experience came as an assistant for the bronze-medal 1980 USA Jones Cup Team.

Stringer has had extensive head-coaching experience in the national program, leading the 1982 U.S. Olympic Festival East Team to a bronze medal and the 1984 U.S. World University Games Team (Kobe, Japan) to a silver.

Stringer also guided the 1989 U.S. World Championship Qualifying Team (Sao Paulo, Brazil) to a gold and a qualification for the following year's FIBA World Championship, as well as a bronze medal showing for the 1991 Pan American Games Team (Havana, Cuba).

A noted administrator, Stringer was one of the key players in the development of the Women's Basketball Coaches Association. Stringer serves on the Board of Directors of the Kay Yow/WBCA Cancer Fund, created in the fall of 2007. The Foundation, in partnership with the V Foundation for Cancer Research, is an initiative to fight breast cancer. She also serves on the U.S. Department of State's Council to Empower Women and Girls Through Sports.

A native of Edenborn, Pa., and a member of the Alumni Hall of Fame at her alma mater, Slippery Rock University, Stringer and the late William D. Stringer have three children -- David, Janine and Justin.

Stringer became a first-time grandmother in June 2009 with the addition of granddaughter, Dayton, and welcomed her first grandson, Ryker, in the summer of 2013.

### THE STRINGER FILE

**Overall Record:** 1051-424 (.712)/50th season  
**RU Record:** 531-289 (.645)/26th season  
**Hometown:** Edenborn, Pa.  
**Birthday:** March 16  
**Education:** B.S., health and physical education, Slippery Rock '71  
M.Ed., health and physical education, Slippery Rock '73

### COACHING CHRONOLOGY

Cheyney University (1971-83; 12 seasons)  
251-51 (.831)

University of Iowa (1983-95; 12 seasons)  
269-84 (.762)

Rutgers University (1995-present; 26 seasons)  
531-289 (.645)

### HIGHLIGHTS & MILESTONES

- First to lead three different schools to the NCAA Final Four (Cheyney, 1982; Iowa, 1993; Rutgers, 2000, 2007)
- Naismith Memorial Basketball Hall of Fame, 2009
- Women's Basketball Hall of Fame, 2001
- John R. Wooden Award's "Legends of Coaching", 2020
- National Coach of the Year - 1982, 1988, 1993
- First African-American Coach to reach 1,000 wins
- Fifth-winningest women's coach all-time, third among active head coaches
- Seventh coach (men's or women's) to record 900 wins, Fourth woman to achieve the feat
- Eighth coach (men's or women's) to record 800 wins, Third woman to achieve the feat
- Has 37 20-win seasons during her career, an NCAA record
- Appearances in 27 of 38 NCAA Tournaments, including 10 regional finals
- 2004 U.S. Olympic Gold Medalist (Assistant Coach)
- 300th win; 1-26-86 vs. Wisconsin, 68-32
- 400th win; 12-30-89 vs. North Carolina, 106-81; Hilton Head Island Super Shootout
- 500th win; 1-28-94 vs. Michigan, 78-56
- 600th win; 12-18-99 vs. Texas, 68-64
- 700th win; 12-8-04 vs. Princeton, 68-46
- 800th win; 2-27-08 vs. DePaul, 60-46
- 900th win; 2-26-13 vs. USF, 58-56
- 1000th win; 11-13-18 vs. CCSU, W 73-44

### HALL OF FAME INDUCTIONS:

- Naismith Memorial Basketball Hall of Fame (2009)
- Women's Basketball Hall of Fame (2001)
- International Women's Sports Hall of Fame (2006)
- National Black Colleges Alumni Hall of Fame (2019)
- New Jersey Hall of Fame (2020)
- New Jersey Women's Hall of Fame (2012)
- Sports Hall of Fame of New Jersey (2005)
- University of Iowa Athletics Hall of Fame (2006)
- Joe Cipriano/Jim Valvano Nike Hall of Fame Award (1993)
- Sport in Society Hall of Fame (2005)
- Fayette County Sports Hall of Fame (2010)
- Communiplex Hall of Fame (1987)

### COACH OF THE YEAR:

- Naismith National Coach of the Year (1993)
- NCAA, Wade Trophy National Coach of the Year (1982)
- Two-time Converse National Coach of the Year (1988, 1993)
- Black Coaches Association Coach of the Year (1993, 1998)
- Sports Illustrated Coach of the Year (1993)
- USA Today Coach of the Year (1993)
- Los Angeles Times Coach of the Year (1993)
- Seven-time finalist for Naismith National Coach of the Year Award (1999, 2000, 2001, 2003, 2005, 2008, 2009)

- Two-time BIG EAST Conference Coach of the Year (1998, 2005)
- Two-time Big Ten Conference Coach of the Year (1991, 1993)
- Three-time NCAA District V Coach of the Year (1985, 1988, 1993)
- Two-time WBCA District I Coach of the Year (1998, 2006)
- NCAA District II Coach of the Year (1983)
- Seven-time Metropolitan Basketball Writers Association Coach of the Year (1998, 1999, 2000, 2005, 2006, 2007, 2008)
- Three-time New Jersey Basketball Coaches Association Coach of the Year (1998, 1999, 2000)
- Big Ten Sportswriters' Coach of the Year (1993)
- Rainbow Push Organization Coach of the Year (2000)
- Giant Steps Coach of the Year (1994)
- Pennsylvania AIAW Coach of the Year (1982)
- Philadelphia Sportswriters' Coach of the Year (1981, 1980)

### BY THE NUMBERS:

- Fifth all-time (all divisions) in career victories, third among active head coaches (all divisions)
- First coach (men's or women's) to lead three different schools to the NCAA Final Four (Cheyney 1982; Iowa - 1993; Rutgers - 2000, 2007)
- Fourth women's coach and seventh coach all-time

- (men's or women's) to register 900 wins
- Third women's coach to record 750, 800 and 850 wins
- First African-American Division I coach (men's or women's) to reach 900 victory mark
- 25 NCAA Tournaments appearances (1982-83, 1986-94, 1998-2001, 2003-2012)
- Nine NCAA Tournament Regional Finals (1982, 1987, 1988, 1993, 1999, 2000, 2005, 2007, 2008)
- 41 All-BIG EAST honorees, including four Defensive Players of the Year
- Nation's best defensive team in 1981, 1983 and 1993
- Nation's second-best defensive team in 1985, 2005, 2006 and 2008
- 1979, 1980, 1981 and 1982 Pennsylvania AIAW state champions

### NAMED IN HONOR OF C. VIVIAN STRINGER'S LEGACY:

- WBCA/Black Coaches Association annual Coach of the Year Award (2013)
- Nike's second child development center in Beaverton, Ore.
- U.S. Sports Academy Medallion Award of Sport for Women's Coaching (2002)

# GAME 14: RUTGERS @ MICHIGAN STATE /// WEDNESDAY, FEBRUARY 24, 2021

Rutgers - 2020-21 Women's Basketball Ranking Summary thru games 02/22/2021

Statistic	National Rank	Conference Rank	Value	National Leader	Value	Conference Leader	Value
Assist Turnover Ratio (336 ranked)	33	7	1.17	Bucknell	1.72	Maryland	1.60
Assists (336 ranked)	216	14	202	Drake	454	Iowa	368
Assists Per Game (336 ranked)	43	6	15.5	Baylor	22.1	Iowa	20.4
Blocked Shots (336 ranked)	94	6	64	Oklahoma St.	164	Nebraska	121
Blocked Shots Per Game (336 ranked)	31	2	4.9	South Carolina	7.2	Nebraska	6.0
Defensive Rebounds per Game (30 ranked)				Troy	33.0	Nebraska	30.4
Fewest Fouls (336 ranked)	50	1	225	Duke	52	Rutgers	225
Fewest Turnovers (336 ranked)	22	1	173	San Jose St.	51	Rutgers	173
Field-Goal Percentage (336 ranked)	7	3	48.3	UConn	52.1	Iowa	51.1
Field-Goal Percentage Defense (336 ranked)	64	3	37.4	Baylor	31.8	Indiana	36.7
Free Throw Attempts (336 ranked)	287	14	209	Arkansas	558	Northwestern	372
Free Throws Made (336 ranked)	254	14	165	Arkansas	409	Maryland	293
Free-Throw Percentage (336 ranked)	11	2	78.9	Milwaukee	83.3	Maryland	80.5
Offensive Rebounds per Game (30 ranked)				Delaware	19.2	Maryland	15.5
Personal Fouls Per Game (336 ranked)	197	11	17.3	Fresno St.	12.6	Northwestern	15.5
Rebound Margin (336 ranked)	83	3	3.5	Baylor	19.5	Michigan	13.5
Rebounds (336 ranked)	305	14	446	Troy	1,135	Nebraska	811
Rebounds Per Game (336 ranked)	283	14	34.31	Troy	51.59	Michigan	44.07
Scoring Defense (336 ranked)	22	1	56.0	SFA	49.9	Rutgers	56.0
Scoring Margin (336 ranked)	6	1	23.3	SFA	32.4	Rutgers	23.3
Scoring Offense (336 ranked)	17	4	79.3	Maryland	92.4	Maryland	92.4
Steals (336 ranked)	48	2	178	Grand Canyon	284	Northwestern	214
Steals Per Game (336 ranked)	4	1	13.7	Grand Canyon	14.2	Rutgers	13.7
Three Pt FG Defense (336 ranked)	298	13	34.5	South Fla.	19.8	Ohio St.	25.7
Three-Point Field Goals Attempted (149 ranked)				FGCU	718	Penn St.	437
Three-Point Field Goals Made (335 ranked)	182	9	98	FGCU	246	Maryland	165
Three-Point Field Goals Per Game (336 ranked)	57	4	7.5	FGCU	11.7	Maryland	9.2
Three-Point Field-Goal Percentage (336 ranked)	7	2	39.2	Oregon St.	41.1	Maryland	40.5
Turnover Margin (336 ranked)	4	2	8.31	Northwestern	10.29	Northwestern	10.29
Turnovers Forced (336 ranked)	10	2	21.62	SFA	24.90	Northwestern	21.76
Turnovers Per Game (336 ranked)	39	5	13.3	Bucknell	9.0	Indiana	11.1
Won-Lost Percentage (329 ranked)	42	4	76.9	Bucknell	100.0	Maryland	88.9

Statistic	Player	National Rank	Conference Rank	Value	National Leader	Value	Conference Leader	Value
Assist Turnover Ratio (250 ranked)	Arella Guirantes	137	15	1.58	Allie Best, Marist	5.12	Niya Beverley, Penn St.	4.27
Assists (145 ranked)	Arella Guirantes	145	13	68	Mayra Caicedo, Little Rock	146	Caitlin Clark, Iowa	119
Assists Per Game (249 ranked)	Arella Guirantes	30	5	5.2	Tiana Mangakahia, Syracuse	7.7	Caitlin Clark, Iowa	6.6
Blocked Shots (135 ranked)	Arella Guirantes	67	3	28	Natasha Mack, Oklahoma St.	96	Kate Cain, Nebraska	63
Blocked Shots Per Game (249 ranked)	Arella Guirantes Tyia Singleton	38 213	3 11	2.15 1.00	Natasha Mack, Oklahoma St.	4.17	Kate Cain, Nebraska	3.15
Defensive Rebounds per Game (30 ranked)					Natalie Kucowski, Lafayette	11.0	McKenna Warnock, Iowa	7.8
Double Doubles (36 ranked)					Alexus Dye, Troy	17	Imani Lewis, Wisconsin	11
Field Goal Attempts (146 ranked)					Dyaisha Fair, Buffalo	416	Caitlin Clark, Iowa	344
Field Goals Made (149 ranked)					Natasha Mack, Oklahoma St.	195	Caitlin Clark, Iowa	163
Field-Goal Percentage (250 ranked)	Diamond Johnson Arella Guirantes	29 210	4 18	54.3 42.3	Monika Czinano, Iowa	67.4	Monika Czinano, Iowa	67.4
Final Points (200 ranked)	Arella Guirantes	143	11	288	Ashley Joens, Iowa St.	542	Caitlin Clark, Iowa	485
Free Throw Attempts (143 ranked)					Chelsea Dungee, Arkansas Anastasia Hayes, Middle Tenn.	194 194	Sam Haiby, Nebraska	123
Free Throws Made (146 ranked)	Arella Guirantes	82	9	71	Chelsea Dungee, Arkansas	155	Sam Haiby, Nebraska	98
Free-Throw Percentage (250 ranked)	Arella Guirantes	10	1	91.0	Cierra Hall, UC Davis	97.1	Arella Guirantes, Rutgers	91.0
Minutes Played (150 ranked)					Sophie Bussard, Southeast Mo. St.	818:59	Sydney Hilliard, Wisconsin	683:01
Minutes Played Per Game (150 ranked)	Arella Guirantes	36	1	36.60	Aislynn Hayes, Middle Tenn.	39.69	Arella Guirantes, Rutgers	36.60
Offensive Rebounds per Game (30 ranked)					Unique Thompson, Auburn	5.7	Naz Hillmon, Michigan	5.1
Points Per Game (250 ranked)	Arella Guirantes Diamond Johnson	14 60	3 7	22.2 18.7	Anastasia Hayes, Middle Tenn.	28.2	Caitlin Clark, Iowa	26.9
Rebounds (149 ranked)					Natasha Mack, Oklahoma St.	278	Imani Lewis, Wisconsin	181
Rebounds Per Game (250 ranked)					Natalie Kucowski, Lafayette	13.6	Naz Hillmon, Michigan	11.5
Steals (143 ranked)	Tekia Mack	115	5	36	Veronica Burton, Northwestern	72	Veronica Burton, Northwestern	72
Steals Per Game (248 ranked)	Tekia Mack Arella Guirantes Mael Gilles Diamond Johnson	3 88 107 128	2 4 6 8	3.60 2.23 2.15 2.00	Veronica Burton, Northwestern	4.24	Veronica Burton, Northwestern	4.24
Three-Point Field Goals Attempted (146 ranked)					Aisha Sheppard, Virginia Tech	204	Caitlin Clark, Iowa	165
Three-Point Field Goals Made (146 ranked)	Diamond Johnson	87	5	40	Joanna Krimili, San Francisco	78	Katie Bengan, Maryland	68
Three-Point Field Goals Per Game (244 ranked)	Diamond Johnson Arella Guirantes	16 179	3 9	3.08 1.92	Aisha Sheppard, Virginia Tech	3.95	Katie Bengan, Maryland	3.78
Three-Point Field-Goal Percentage (161 ranked)	Diamond Johnson	2	1	53.3	Paige Bueckers, UConn	53.7	Diamond Johnson, Rutgers	53.3
Triple Doubles (2 ranked)	Arella Guirantes	2	2	1	Grace Berger, Indiana	3	Grace Berger, Indiana	3



## TV & RADIO ROSTER



**#1 • Zipporah Broughton**  
G • Jr. • 5-7  
Wetumpka, Ala. /  
Robert. E Lee



**#2 • Liz Martino**  
G • Fr. • 6-0  
Lanham, Md. /  
Riverdale Baptist



**#3 • Diamond Johnson**  
G • Fr. • 5-5  
Philadelphia, Pa. /  
Neumann Goretti



**#4 • Destiny Marshall**  
G • R-Jr. • 5-10  
Augusta, Ga. /  
Grovetown/Jacksonville



**#10 • Erica Lafayette**  
G/F • Fr. • 5-10  
Baker, La. /  
McKinley



**#11 • Stephanie Guihon**  
G • R-Jr. • 5-6  
Largo, Md. /  
Largo / Longwood



**#12 • Sakima Walker**  
C • Fr. • 6-4  
Columbus, Ohio /  
Africentric Early College



**#13 • Mael Gilles**  
F • Sr. • 6-1  
Montreal-Nord, Quebec /  
Montmorency



**#15 • Aicha Ndour**  
C • Fr. • 6-6  
Somone, Senegal /  
Cushing Academy



**#20 • Joiya Maddox**  
G • So. • 5-10  
Hoover, Ala. / Hoover



**#22 • Tyia Singleton**  
F • R-So. • 6-2  
Winter Haven, Fla. /  
Winter Haven



**#24 • Arella Guirantes**  
G • R-Sr. • 5-11  
Bellport, N.Y. /  
Bellport



**#31 • Tekia Mack**  
F/G • Sr. • 6-1  
Chicago, Ill. /  
Marshall



**#54 • Chyna Cornwell**  
F • Fr. • 6-3  
Conover, N.C. /  
Newton Conover



**HEAD COACH**  
**C. VIVIAN STRINGER**  
50TH SEASON  
26TH AT RUTGERS



**ASSOCIATE HEAD COACH**  
**TIM EATMAN**  
6TH SEASON



**ASSISTANT COACH**  
**NADINE DOMOND**  
5TH SEASON



**ASSISTANT COACH**  
**MICHELLE EDWARDS**  
18TH SEASON  
2ND AS ASST. COACH



GAME 14: RUTGERS @ MICHIGAN STATE /// WEDNESDAY, FEBRUARY 24, 2021



# 1 ZIPPORAH BROUGHTON

JUNIOR • GUARD  
WETUMPKA, ALA. / ROBERT E. LEE

## 2020-21 GAME-BY-GAME

Opponent	Date	GS	MIN	Total FG-FGA	PCT	3-Pointers 3FG-3FGA	PCT	Free throws FT-FTA	PCT	Rebounds OFF DEF TOT	AVG	PF	A	T/O	BLK	STL	PTS	AVG
Monmouth	11/27/2020	*	15:39	2-6	.333	1-5	.200	4-4	1.000	1 1 2	2.0	4	1	1	0	1	9	9.0
at Wisconsin	12/11/2020	*	37:06	9-19	.474	0-5	.000	0-0	.000	1 1 2	2.0	2	2	2	1	6	18	13.5
Maryland	12/14/2020	*	37:28	4-11	.364	2-4	.500	0-0	.000	0 3 3	2.3	4	3	3	0	0	10	12.3
Hampton	12/18/2020	*	29:50	4-6	.667	2-4	.500	0-0	.000	0 3 3	2.5	2	10	1	0	0	10	11.8
Sacred Heart	12/20/2020	*	29:57	5-8	.625	3-3	1.000	0-2	.000	1 1 2	2.4	0	8	1	0	7	13	12.0
Manhattan	12/23/2020	*	40:00	7-12	.583	2-7	.286	3-5	.600	0 4 4	2.7	2	5	2	0	2	19	13.2
at Iowa	12/31/2020	*	04:55	0-3	.000	0-1	.000	0-0	.000	0 0 0	2.3	0	1	0	0	0	0	11.3
<b>Totals</b>			<b>7 194:55</b>	<b>31-65</b>	<b>.477</b>	<b>10-29</b>	<b>.345</b>	<b>7-11</b>	<b>.636</b>	<b>3 13 16</b>	<b>2.3</b>	<b>14</b>	<b>30</b>	<b>10</b>	<b>1</b>	<b>16</b>	<b>79</b>	<b>11.3</b>

### Player Averages

Games Played	Minutes/ game	Points/ game	FG Pct	3FG Pct	FT Pct	Rebounds/ game	Assists/ game	Turnovers/ game	Assist/Turnover ratio	Steals/ game	Blocks/ game
7	27.8	11.3	47.7	34.5	63.6	2.3	4.3	1.4	3.0	2.3	0.1

Points	19	MANHATTAN (12/23/20)
Field Goals Made	9	at Wisconsin (12/11/20)
Field Goal Attempts	19	at Wisconsin (12/11/20)
FG Pct (min 5 made)	.625 (5-8)	SACRED HEART (12/20/20)
3-Point Field Goals Made	3	SACRED HEART (12/20/20)
3-Point FG Attempts	7	MANHATTAN (12/23/20)
3-Pt FG Pct (min 2 made)	1.000 (3-3)	SACRED HEART (12/20/20)
Free Throws Made	4	MONMOUTH (11/27/20)
Free Throw Attempts	5	MANHATTAN (12/23/20)
FT Pct (min 3 made)	1.000 (4-4)	MONMOUTH (11/27/20)
Rebounds	4	MANHATTAN (12/23/20)
Assists	10	HAMPTON (12/18/20)
Steals	7	SACRED HEART (12/20/20)
Blocked Shots	1	at Wisconsin (12/11/20)
Turnovers	3	MARYLAND (12/14/20)
Fouls	4	MONMOUTH (11/27/20)
Minutes	40	MANHATTAN (12/23/20)

Points	19	at Ohio St. 03/03/19, vs Manhattan 12/23/20
Rebounds	5	at Minnesota 02/02/20
Assists	10	vs Hampton 12/18/20
Steals	7	vs Sacred Heart 12/20/20
Blocks	1	at Iowa 01/23/19, vs Niagara 11/13/19, at W
FG Made	9	at Wisconsin 12/11/20
FG Attempts	19	at Wisconsin 12/11/20
3FG Made	3	at Ohio St. 03/03/19, at Michigan 01/26/20,
3FG Attempts	7	vs Buffalo 03/22/19, vs Manhattan 12/23/20
FT Made	4	vs Monmouth 11/27/20
FT Attempts	5	vs Manhattan 12/23/20

## CAREER STATISTICS

SEASON	TEAM	GP-GS	MIN/AVG	Field Goals FG-FGA	FG%	3-Point 3FG-FGA	3FG%	F-Throws FT-FTA	FT%	Rebounds OFF DEF TOT	AVG	PF-FO	AST	TO	BLK	STL	PTS	AVG
2018-19	RU	25-3	368/14.7	35-101	.347	12-45	.267	15-26	.577	9 29 38	1.5	27-0	36	29	1	16	97	3.9
2019-20	RU	27-2	433/16.0	36-107	.336	10-45	.222	14-21	.667	15 22 37	1.4	40-0	25	41	1	18	96	3.6
2020-21	RU	7-7	195/27.8	31-65	.477	10-29	.345	7-11	.636	3 13 16	2.3	14-0	30	10	1	16	79	11.3
<b>TOTAL</b>		<b>59-12</b>	<b>996/16.9</b>	<b>102-273</b>	<b>.374</b>	<b>32-119</b>	<b>.269</b>	<b>36-58</b>	<b>.621</b>	<b>27 64 91</b>	<b>1.5</b>	<b>81-0</b>	<b>91</b>	<b>80</b>	<b>3</b>	<b>50</b>	<b>272</b>	<b>4.6</b>



# 2 LIZ MARTINO

FRESHMAN • GUARD  
LANHAM, MD / RIVERDALE BAPTIST

## 2020-21 GAME-BY-GAME

Opponent	Date	GS	MIN	Total		3-Pointers		Free throws		Rebounds			PF	A	T/O	BLK	STL	PTS	AVG	
				FG-FGA	PCT	3FG-3FGA	PCT	FT-FTA	PCT	OFF	DEF	TOT								AVG
Monmouth	11/27/2020		12:19	2-6	.333	1-4	.250	2-2	1.000	1	0	1	1.0	2	3	0	0	2	7	7.0
at Wisconsin	12/11/2020		09:52	0-3	.000	0-1	.000	0-0	.000	0	1	1	1.0	1	1	0	0	1	0	3.5
Maryland	12/14/2020		02:49	1-1	1.000	1-1	1.000	0-0	.000	0	0	0	0.7	0	0	0	0	0	3	3.3
Hampton	12/18/2020		18:28	3-5	.600	0-1	.000	2-2	1.000	1	2	3	1.3	0	2	2	0	6	8	4.5
Sacred Heart	12/20/2020		18:55	3-5	.600	1-2	.500	1-3	.333	0	0	0	1.0	1	0	0	0	3	8	5.2
Manhattan	12/23/2020		06:37	0-5	.000	0-2	.000	0-0	.000	2	2	4	1.5	0	0	1	0	1	0	4.3
at Iowa	12/31/2020		02:01	0-0	.000	0-0	.000	0-0	.000	0	0	0	1.3	0	0	1	0	1	0	3.7
at Nebraska	01/03/2021		08:26	0-1	.000	0-0	.000	0-0	.000	1	0	1	1.3	0	0	0	0	1	0	3.3
Nebraska	02/07/2021		07:21	0-0	.000	0-0	.000	0-0	.000	1	1	2	1.3	0	0	0	0	0	0	2.9
at Northwestern	02/11/2021		00:32	0-0	.000	0-0	.000	0-0	.000	0	0	0	1.2	0	0	0	0	0	0	2.6
Minnesota	02/17/2021		04:10	0-0	.000	0-0	.000	0-0	.000	0	0	0	1.1	0	0	0	0	1	0	2.4
Illinois	02/20/2021		12:38	2-3	.667	0-0	.000	0-0	.000	0	0	0	1.0	2	1	2	0	1	4	2.5
Totals			0 104:07	11-29	.379	3-11	.273	5-7	.714	6	6	12	1.0	6	7	6	0	17	30	2.5

### Player Averages

Games Played	Minutes/ game	Points/ game	FG Pct	3FG Pct	FT Pct	Rebounds/ game	Assists/ game	Turnovers/ game	Assist/Turnover ratio	Steals/ game	Blocks/ game
12	8.7	2.5	37.9	27.3	71.4	1.0	0.6	0.5	1.2	1.4	0.0

Points	8	vs Hampton 12/18/20, vs Sacred Heart 12/20/20
Rebounds	4	vs Manhattan 12/23/20
Assists	3	vs Monmouth 11/27/20
Steals	6	vs Hampton 12/18/20
FG Made	3	vs Hampton 12/18/20, vs Sacred Heart 12/20/20
FG Attempts	6	vs Monmouth 11/27/20
3FG Made	1	vs Sacred Heart 12/20/20, vs Maryland 12/14/20
3FG Attempts	4	vs Monmouth 11/27/20
FT Made	2	vs Hampton 12/18/20, vs Monmouth 11/27/20
FT Attempts	3	vs Sacred Heart 12/20/20

## CAREER STATISTICS

SEASON	TEAM	GP-GS	MIN/AVG	Field Goals FG-FGA	FG%	3-Point 3FG-FGA	3FG%	F-Throws FT-FTA	FT%	Rebounds OFF DEF TOT	AVG	PF-FO	AST	TO	BLK	STL	PTS	AVG
2020-21	RU	12-0	104/8.7	11-29	.379	3-11	.273	5-7	.714	6 6 12	1.0	6-0	7	6	0	17	30	2.5
<b>TOTAL</b>		<b>12-0</b>	<b>104/8.7</b>	<b>11-29</b>	<b>.379</b>	<b>3-11</b>	<b>.273</b>	<b>5-7</b>	<b>.714</b>	<b>6 6 12</b>	<b>1.0</b>	<b>6-0</b>	<b>7</b>	<b>6</b>	<b>0</b>	<b>17</b>	<b>30</b>	<b>2.5</b>

SEASON HIGHS CAREER HIGHS

SEASON & CAREER HIGHS



3

**DIAMOND JOHNSON**

FRESHMAN • GUARD

PHILADELPHIA, PA / NEUMANN GORETTI

## 2020-21 GAME-BY-GAME

Opponent	Date	GS	MIN	Total		3-Pointers		Free throws		Rebounds			PF	A	T/O	BLK	STL	PTS	AVG	
				FG-FA	PCT	3FG-3FA	PCT	FT-FTA	PCT	OFF	DEF	TOT								AVG
Monmouth	11/27/2020		19:53	5-6	.833	3-4	.750	2-4	.500	0	0	0	0.0	2	0	1	0	0	15	15.0
at Wisconsin	12/11/2020		21:48	6-15	.400	1-3	.333	4-5	.800	6	0	6	3.0	3	1	2	0	2	17	16.0
Maryland	12/14/2020		30:54	6-15	.400	2-5	.400	4-4	1.000	2	2	4	3.3	4	3	2	0	3	18	16.7
Hampton	12/18/2020	*	24:19	4-11	.364	3-8	.375	0-0	.000	1	1	2	3.0	1	3	3	0	1	11	15.3
Sacred Heart	12/20/2020	*	22:15	9-13	.692	1-3	.333	2-2	1.000	4	4	8	4.0	0	2	1	0	3	21	16.4
Manhattan	12/23/2020	*	35:02	8-11	.727	5-8	.625	2-2	1.000	0	3	3	3.8	2	2	2	0	2	23	17.5
at Iowa	12/31/2020		34:58	6-11	.545	2-4	.500	4-4	1.000	1	1	2	3.6	5	3	2	0	3	18	17.6
at Nebraska	01/03/2021	*	35:55	8-15	.533	1-4	.250	2-2	1.000	3	3	6	3.9	0	2	2	1	0	19	17.8
Nebraska	02/07/2021	*	40:00	8-11	.727	4-7	.571	2-2	1.000	0	1	1	3.6	2	3	1	0	3	22	18.2
at Northwestern	02/11/2021	*	39:28	4-11	.364	4-6	.667	2-2	1.000	3	2	5	3.7	3	5	1	0	2	14	17.8
at Purdue	02/14/2021	*	40:00	7-14	.500	4-8	.500	1-1	1.000	3	6	9	4.2	3	6	2	0	2	19	17.9
Minnesota	02/17/2021	*	37:59	10-15	.667	6-7	.857	0-0	.000	0	0	0	3.8	3	1	1	0	2	26	18.6
Illinois	02/20/2021	*	30:24	8-16	.500	4-8	.500	0-0	.000	2	2	1	3.8	1	3	2	0	3	20	18.7
Totals			9 412:55	89-164	.543	40-75	.533	25-28	.893	25	24	49	3.8	29	34	22	1	26	243	18.7

### Player Averages

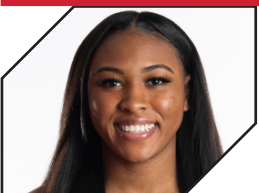
Games Played	Minutes/game	Points/game	FG Pct	3FG Pct	FT Pct	Rebounds/game	Assists/game	Turnovers/game	Assist/Turnover ratio	Steals/game	Blocks/game
13	31.8	18.7	54.3	53.3	89.3	3.8	2.6	1.7	1.5	2.0	0.1

Points	26	vs Minnesota 02/17/21
Rebounds	9	at Purdue 02/14/21
Assists	6	at Purdue 02/14/21
Steals	3	5 times
Blocks	1	at Nebraska 01/03/21
FG Made	10	vs Minnesota 02/17/21
FG Attempts	16	vs Illinois 02/20/21
3FG Made	6	vs Minnesota 02/17/21
3FG Attempts	8	4 times
FT Made	4	vs Maryland 12/14/20, at Wisconsin 12/11
FT Attempts	5	at Wisconsin 12/11/20

SEASON & CAREER HIGHS

## CAREER STATISTICS

SEASON	TEAM	GP-GS	MIN/AVG	Field Goals		3-Point		F-Throws		Rebounds				Scoring						
				FG-FGA	FG%	3FG-FGA	3FG%	FT-FTA	FT%	OFF	DEF	TOT	AVG	PF-FO	AST	TO	BLK	STL	PTS	AVG
2020-21	RU	13-9	413/31.8	89-164	.543	40-75	.533	25-28	.893	25	24	49	3.8	29-1	34	22	1	26	243	18.7
<b>TOTAL</b>		<b>13-9</b>	<b>413/31.8</b>	<b>89-164</b>	<b>.543</b>	<b>40-75</b>	<b>.533</b>	<b>25-28</b>	<b>.893</b>	<b>25</b>	<b>24</b>	<b>49</b>	<b>3.8</b>	<b>29-1</b>	<b>34</b>	<b>22</b>	<b>1</b>	<b>26</b>	<b>243</b>	<b>18.7</b>



4

**DESTINY MARSHALL**

REDSHIRT JUNIOR • GUARD

AUGUSTA, GA / GROVETOWN (JACKSONVILLE)

## 2020-21 GAME-BY-GAME

Opponent	Date	GS	MIN	Total		3-Pointers		Free throws		Rebounds			PF	A	T/O	BLK	STL	PTS	AVG	
				FG-FGA	PCT	3FG-3FGA	PCT	FT-FTA	PCT	OFF	DEF	TOT								AVG
Monmouth	11/27/2020		01:48	1-1	1.000	0-0	.000	0-0	.000	0	0	0	0	0	0	0	0	2	2.0	
Maryland	12/14/2020		00:27	0-0	.000	0-0	.000	0-0	.000	0	0	0	0	0	1	0	0	0	1.0	
Hampton	12/18/2020		09:31	1-3	.333	0-0	.000	3-3	1.000	0	2	2	0.7	3	0	2	0	1	5	2.3
Sacred Heart	12/20/2020		08:53	2-4	.500	0-0	.000	0-0	.000	1	3	4	1.5	1	1	3	0	1	4	2.8
Manhattan	12/23/2020		01:09	0-0	.000	0-0	.000	0-0	.000	0	0	0	1.2	0	0	0	0	0	0	2.2
Nebraska	02/07/2021		00:33	0-0	.000	0-0	.000	0-0	.000	0	0	0	1.0	0	0	0	0	0	0	1.8
Minnesota	02/17/2021		04:38	2-3	.667	0-0	.000	0-0	.000	0	0	0	0.9	1	0	0	0	0	4	2.1
Illinois	02/20/2021		05:39	1-2	.500	0-1	.000	0-0	.000	0	0	0	0.8	3	0	0	0	1	2	2.1
Totals			0 32:38	7-13	.538	0-1	.000	3-3	1.000	1	5	6	0.8	8	1	6	0	3	17	2.1

### Player Averages

Games Played	Minutes/game	Points/game	FG Pct	3FG Pct	FT Pct	Rebounds/game	Assists/game	Turnovers/game	Assist/Turnover ratio	Steals/game	Blocks/game
8	4.1	2.1	53.8	0.0	100.0	0.8	0.1	0.8	0.2	0.4	0.0

Points	5	HAMPTON (12/18/20)
Field Goals Made	2	MINNESOTA (02/17/21)
Field Goal Attempts	4	SACRED HEART (12/20/20)
3-Point FG Attempts	3	SACRED HEART (12/20/20)
Free Throws Made	3	ILLINOIS (02/20/21)
Free Throw Attempts	3	HAMPTON (12/18/20)
FT Pct (min 3 made)	1.000 (3-3)	HAMPTON (12/18/20)
Rebounds	4	SACRED HEART (12/20/20)
Assists	1	SACRED HEART (12/20/20)
Steals	1	ILLINOIS (02/20/21)
Turnovers	1	SACRED HEART (12/20/20)
Fouls	3	HAMPTON (12/18/20)
Minutes	10	ILLINOIS (02/20/21)
		HAMPTON (12/18/20)

Points	28	vs NJIT 01/13/20
Rebounds	8	5 times
Assists	4	at Mercer 12/29/19
Steals	4	vs USC Upstate 11/19/19, vs Bethune
Blocks	2	vs Johnson (FL) 11/16/19
FG Made	12	vs NJIT 01/13/20
FG Attempts	25	at Florida A&M 12/17/19
3FG Made	2	at Florida St. 11/13/19, at Liberty 01/
3FG Attempts	5	at Liberty 01/11/20
FT Made	7	vs USC Upstate 11/19/19, at Kennesa
FT Attempts	9	vs USC Upstate 11/19/19, at Kennesa

SEASON HIGHS CAREER HIGHS

## CAREER STATISTICS

SEASON	TEAM	GP-GS	MIN/AVG	Field Goals		3-Point		F-Throws		Rebounds				Scoring						
				FG-FGA	FG%	3FG-FGA	3FG%	FT-FTA	FT%	OFF	DEF	TOT	AVG	PF-FO	AST	TO	BLK	STL	PTS	AVG
2019-20	Jville	22-18	548/24.9	130-299	.435	12-38	.316	56-72	.778	59	52	111	5.0	64-3	18	63	6	31	328	14.9
2020-21	RU	8-0	33/4.1	7-13	.538	0-1	.000	3-3	1.000	1	5	6	0.8	8-0	1	6	0	3	17	2.1
<b>TOTAL FOR RU</b>		<b>8-0</b>	<b>33/4.1</b>	<b>7-13</b>	<b>.538</b>	<b>0-1</b>	<b>.000</b>	<b>3-3</b>	<b>1.000</b>	<b>1</b>	<b>5</b>	<b>6</b>	<b>0.8</b>	<b>8-0</b>	<b>1</b>	<b>6</b>	<b>0</b>	<b>3</b>	<b>17</b>	<b>2.1</b>
<b>TOTAL</b>		<b>30-18</b>	<b>580/19.3</b>	<b>137-312</b>	<b>.439</b>	<b>12-39</b>	<b>.308</b>	<b>59-75</b>	<b>.787</b>	<b>60</b>	<b>57</b>	<b>117</b>	<b>3.9</b>	<b>72-3</b>	<b>19</b>	<b>69</b>	<b>6</b>	<b>34</b>	<b>345</b>	<b>11.5</b>



10

**ERICA LAFAYETTE**  
FRESHMAN • FORWARD  
BAKER, LA / MCKINLEY

## 2020-21 GAME-BY-GAME

Opponent	Date	GS	MIN	Total		3-Pointers		Free throws		Rebounds				PF	A	T/O	BLK	STL	PTS	AVG
				FG-FGA	PCT	3FG-3FGA	PCT	FT-FTA	PCT	OFF	DEF	TOT	AVG							
Monmouth	11/27/2020	00:03	00:03	0-0	.000	0-0	.000	0-0	.000	0	0	0	0.0	0	0	0	0	0	0	0.0
Maryland	12/14/2020	20:19	20:19	1-2	.500	1-2	.500	0-0	.000	2	1	3	1.5	4	0	1	0	2	3	1.5
Hampton	12/18/2020	14:01	14:01	3-4	.750	1-1	1.000	0-0	.000	0	4	4	2.3	2	0	0	0	0	7	3.3
Sacred Heart	12/20/2020	19:37	19:37	1-2	.500	0-0	.000	0-0	.000	2	0	2	2.3	2	0	2	1	0	2	3.0
Manhattan	12/23/2020	04:56	04:56	0-0	.000	0-0	.000	0-0	.000	0	1	1	2.0	0	0	0	0	0	0	2.4
at Iowa	12/31/2020	02:09	02:09	0-0	.000	0-0	.000	0-0	.000	0	0	0	1.7	1	0	0	0	0	0	2.0
at Nebraska	01/03/2021	14:10	14:10	0-1	.000	0-0	.000	0-0	.000	0	2	2	1.7	1	1	0	0	0	0	1.7
Minnesota	02/17/2021	05:35	05:35	0-0	.000	0-0	.000	0-0	.000	0	1	1	1.6	0	1	0	0	0	0	1.5
Illinois	02/20/2021	08:53	08:53	0-0	.000	0-0	.000	2-2	1.000	1	2	3	1.8	2	1	1	0	0	2	1.6
<b>Totals</b>			<b>0 89:43</b>	<b>5-9</b>	<b>.556</b>	<b>2-3</b>	<b>.667</b>	<b>2-2</b>	<b>1.000</b>	<b>5</b>	<b>11</b>	<b>16</b>	<b>1.8</b>	<b>12</b>	<b>3</b>	<b>4</b>	<b>1</b>	<b>2</b>	<b>14</b>	<b>1.6</b>

### Player Averages

Games Played	Minutes/game	Points/game	FG Pct	3FG Pct	FT Pct	Rebounds/game	Assists/game	Turnovers/game	Assist/Turnover ratio	Steals/game	Blocks/game
9	10.0	1.6	55.6	66.7	100.0	1.8	0.3	0.4	0.8	0.2	0.1

Points	7	vs Hampton 12/18/20
Rebounds	4	vs Hampton 12/18/20
Assists	1	vs Minnesota 02/17/21, at Nebraska 01/03/21
Steals	2	vs Maryland 12/14/20
Blocks	1	vs Sacred Heart 12/20/20
FG Made	3	vs Hampton 12/18/20
FG Attempts	4	vs Hampton 12/18/20
3FG Made	1	vs Hampton 12/18/20, vs Maryland 12/14/20

SEASON & CAREER HIGHS

## CAREER STATISTICS

SEASON	TEAM	GP-GS	MIN/AVG	Field Goals		3-Point		F-Throws		Rebounds				Scoring						
				FG-FGA	FG%	3FG-FGA	3FG%	FT-FTA	FT%	OFF	DEF	TOT	AVG	PF-FO	AST	TO	BLK	STL	PTS	AVG
2020-21	RU	9-0	90/10.0	5-9	.556	2-3	.667	2-2	1.000	5	11	16	1.8	12-0	3	4	1	2	14	1.6
<b>TOTAL</b>		<b>9-0</b>	<b>90/10.0</b>	<b>5-9</b>	<b>.556</b>	<b>2-3</b>	<b>.667</b>	<b>2-2</b>	<b>1.000</b>	<b>5</b>	<b>11</b>	<b>16</b>	<b>1.8</b>	<b>12-0</b>	<b>3</b>	<b>4</b>	<b>1</b>	<b>2</b>	<b>14</b>	<b>1.6</b>



11

**STEPHANIE GUIHON**  
REDSHIRT JUNIOR • GUARD  
LARDO, MD / LARGO (LONGWOOD)

## 2020-21 GAME-BY-GAME

Opponent	Date	GS	MIN	Total		3-Pointers		Free throws		Rebounds				PF	A	T/O	BLK	STL	PTS	AVG
				FG-FGA	PCT	3FG-3FGA	PCT	FT-FTA	PCT	OFF	DEF	TOT	AVG							
Monmouth	11/27/2020	08:00	08:00	2-2	1.000	0-0	.000	0-0	.000	1	0	1	1.0	1	0	0	0	0	4	4.0
Hampton	12/18/2020	06:56	06:56	1-2	.500	0-0	.000	0-0	.000	0	0	0	0.5	2	0	1	0	0	2	3.0
Sacred Heart	12/20/2020	05:48	05:48	0-0	.000	0-0	.000	0-2	.000	0	0	0	0.3	1	0	0	0	0	0	2.0
Manhattan	12/23/2020	07:39	07:39	2-3	.667	0-0	.000	0-0	.000	0	0	0	0.3	1	0	0	0	0	4	2.5
Minnesota	02/17/2021	08:57	08:57	0-2	.000	0-1	.000	0-0	.000	1	1	2	0.6	0	0	0	0	0	0	2.0
Illinois	02/20/2021	17:29	17:29	1-3	.333	0-1	.000	2-2	1.000	0	0	0	0.5	2	1	0	0	0	4	2.3
<b>Totals</b>			<b>0 54:49</b>	<b>6-12</b>	<b>.500</b>	<b>0-2</b>	<b>.000</b>	<b>2-4</b>	<b>.500</b>	<b>2</b>	<b>1</b>	<b>3</b>	<b>0.5</b>	<b>7</b>	<b>1</b>	<b>1</b>	<b>0</b>	<b>0</b>	<b>14</b>	<b>2.3</b>

### Player Averages

Games Played	Minutes/game	Points/game	FG Pct	3FG Pct	FT Pct	Rebounds/game	Assists/game	Turnovers/game	Assist/Turnover ratio	Steals/game	Blocks/game
6	9.1	2.3	50.0	0.0	50.0	0.5	0.2	0.2	1.0	0.0	0.0

Points	4	vs Manhattan 12/23/20, vs Illinois 02/20/21, v
Rebounds	2	vs Minnesota 02/17/21
Assists	1	vs Illinois 02/20/21
FG Made	2	vs Manhattan 12/23/20, vs Monmouth 11/27/20
FG Attempts	3	vs Manhattan 12/23/20, vs Illinois 02/20/21
3FG Attempts	1	vs Minnesota 02/17/21, vs Illinois 02/20/21
FT Made	2	vs Illinois 02/20/21
FT Attempts	2	vs Sacred Heart 12/20/20, vs Illinois 02/20/21

SEASON & CAREER HIGHS

## DIVISION I CAREER STATISTICS

SEASON	TEAM	GP-GS	MIN/AVG	Field Goals		3-Point		F-Throws		Rebounds				Scoring						
				FG-FGA	FG%	3FG-FGA	3FG%	FT-FTA	FT%	OFF	DEF	TOT	AVG	PF-FO	AST	TO	BLK	STL	PTS	AVG
2020-21	RU	6-0	55/9.1	6-12	.500	0-2	.000	2-4	.500	2	1	3	0.5	7-0	1	1	0	0	14	2.3
<b>TOTAL</b>		<b>6-0</b>	<b>55/9.1</b>	<b>6-12</b>	<b>.500</b>	<b>0-2</b>	<b>.000</b>	<b>2-4</b>	<b>.500</b>	<b>2</b>	<b>1</b>	<b>3</b>	<b>0.5</b>	<b>7-0</b>	<b>1</b>	<b>1</b>	<b>0</b>	<b>0</b>	<b>14</b>	<b>2.3</b>



12

**SAKIMA WALKER**

FRESHMAN • CENTER

COLUMBUS, OHIO / AFRICENTRIC EARLY COLLEGE

## 2020-21 GAME-BY-GAME

Opponent	Date	GS	MIN	Total FG-FGA	PCT	3-Pointers 3FG-3FGA	PCT	Free throws FT-FTA	PCT	Rebounds OFF DEF TOT AVG	PF	A	T/O	BLK	STL	PTS	AVG
Monmouth	11/27/2020		10:41	2-2	1.000	0-0	.000	1-1	1.000	1 0 1 1.0	1	1	1	1	1	5	5.0
at Wisconsin	12/11/2020		04:45	1-1	1.000	0-0	.000	0-0	.000	0 0 0 0.5	0	0	1	0	0	2	3.5
Maryland	12/14/2020		05:37	0-0	.000	0-0	.000	0-0	.000	0 1 1 0.7	0	0	1	0	0	0	2.3
Hampton	12/18/2020		15:48	2-4	.500	0-0	.000	2-3	.667	2 5 7 2.3	1	2	1	3	0	6	3.3
Sacred Heart	12/20/2020		20:02	5-6	.833	0-0	.000	2-3	.667	3 5 8 3.4	2	1	3	0	0	12	5.0
Manhattan	12/23/2020		07:34	2-3	.667	0-0	.000	1-1	1.000	2 0 2 3.2	1	0	1	0	0	5	5.0
at Iowa	12/31/2020		17:52	2-3	.667	0-0	.000	0-1	.000	2 0 2 3.0	3	0	2	0	1	4	4.9
at Northwestern	02/11/2021		15:35	1-1	1.000	0-0	.000	0-0	.000	0 0 0 2.6	1	0	0	0	0	2	4.5
at Purdue	02/14/2021		10:41	2-2	1.000	0-0	.000	0-0	.000	0 0 0 2.3	1	0	0	0	0	4	4.4
Minnesota	02/17/2021		19:51	1-2	.500	0-0	.000	2-2	1.000	1 1 2 2.3	2	0	4	1	1	4	4.4
Illinois	02/20/2021		03:39	0-0	.000	0-0	.000	0-0	.000	0 0 0 2.1	2	0	1	0	1	0	4.0
<b>Totals</b>		<b>0</b>	<b>122:06</b>	<b>18-24</b>	<b>.750</b>	<b>0-0</b>	<b>.000</b>	<b>8-11</b>	<b>.727</b>	<b>11 12 23 2.1</b>	<b>14</b>	<b>4</b>	<b>15</b>	<b>5</b>	<b>4</b>	<b>44</b>	<b>4.0</b>

### Player Averages

Games Played	Minutes/game	Points/game	FG Pct	3FG Pct	FT Pct	Rebounds/game	Assists/game	Turnovers/game	Assist/Turnover ratio	Steals/game	Blocks/game
11	11.1	4.0	75.0	0.0	72.7	2.1	0.4	1.4	0.3	0.4	0.5

Statistic	Value
Points	12 vs Sacred Heart 12/20/20
Rebounds	8 vs Sacred Heart 12/20/20
Assists	2 vs Hampton 12/18/20
Steals	1 4 times
Blocks	3 vs Hampton 12/18/20
FG Made	5 vs Sacred Heart 12/20/20
FG Attempts	6 vs Sacred Heart 12/20/20
FT Made	2 vs Hampton 12/18/20, vs Sacred Heart 12/20
FT Attempts	3 vs Hampton 12/18/20, vs Sacred Heart 12/20

SEASON & CAREER HIGHS

## CAREER STATISTICS

SEASON	TEAM	GP-GS	MIN/AVG	Field Goals FG-FGA FG%	3-Point 3FG-FGA 3FG%	F-Throws FT-FTA FT%	Rebounds OFF DEF TOT AVG	PF-FO	AST	TO	BLK	STL	PTS	AVG
2020-21	RU	11-0	122/11.1	18-24 .750	0-0 .000	8-11 .727	11 12 23 2.1	14-0	4	15	5	4	44	4.0
<b>TOTAL</b>		<b>11-0</b>	<b>122/11.1</b>	<b>18-24 .750</b>	<b>0-0 .000</b>	<b>8-11 .727</b>	<b>11 12 23 2.1</b>	<b>14-0</b>	<b>4</b>	<b>15</b>	<b>5</b>	<b>4</b>	<b>44</b>	<b>4.0</b>



13

**MAEL GILLES**

SENIOR • FORWARD

MONTREAL-NORD, QUEBEC / MONTMORENCY

## 2020-21 GAME-BY-GAME

Opponent	Date	GS	MIN	Total FG-FGA	PCT	3-Pointers 3FG-3FGA	PCT	Free throws FT-FTA	PCT	Rebounds OFF DEF TOT AVG	PF	A	T/O	BLK	STL	PTS	AVG
Monmouth	11/27/2020	*	29:10	2-7	.286	1-6	.167	0-0	.000	1 2 3 3.0	4	3	2	0	2	5	5.0
at Wisconsin	12/11/2020	*	36:01	0-5	.000	0-2	.000	0-0	.000	2 3 5 4.0	3	3	0	0	4	0	2.5
Maryland	12/14/2020	*	40:00	6-10	.600	1-1	1.000	1-1	1.000	7 4 11 6.3	3	0	2	1	2	14	6.3
Hampton	12/18/2020	*	25:34	8-9	.889	0-0	.000	0-0	.000	3 1 4 5.8	3	0	1	1	3	16	8.8
Sacred Heart	12/20/2020	*	23:51	0-3	.000	0-1	.000	0-0	.000	1 0 1 4.8	1	0	0	0	1	0	7.0
Manhattan	12/23/2020	*	38:12	5-9	.556	0-1	.000	2-4	.500	3 4 7 5.2	2	1	1	2	4	12	7.8
at Iowa	12/31/2020	*	32:15	6-10	.600	2-4	.500	0-0	.000	4 2 6 5.3	5	1	2	0	3	14	8.7
at Nebraska	01/03/2021	*	33:20	1-3	.333	0-1	.000	2-2	1.000	0 1 1 4.8	3	0	1	0	2	4	8.1
Nebraska	02/07/2021	*	40:00	3-6	.500	1-2	.500	0-0	.000	2 3 5 4.8	1	1	1	1	4	7	8.0
at Northwestern	02/11/2021	*	40:00	2-6	.333	0-2	.000	2-2	1.000	0 4 4 4.7	1	5	1	1	0	6	7.8
at Purdue	02/14/2021	*	40:00	3-10	.300	0-4	.000	0-0	.000	3 1 4 4.6	1	1	3	0	1	6	7.6
Minnesota	02/17/2021	*	26:53	3-6	.500	1-2	.500	2-2	1.000	2 3 5 4.7	3	0	2	0	1	9	7.8
Illinois	02/20/2021	*	19:45	1-3	.333	0-1	.000	0-0	.000	0 2 2 4.5	3	2	0	0	1	2	7.3
<b>Totals</b>		<b>13</b>	<b>425:01</b>	<b>40-87</b>	<b>.460</b>	<b>6-27</b>	<b>.222</b>	<b>9-11</b>	<b>.818</b>	<b>28 30 58 4.5</b>	<b>33</b>	<b>17</b>	<b>16</b>	<b>6</b>	<b>28</b>	<b>95</b>	<b>7.3</b>

### Player Averages

Games Played	Minutes/game	Points/game	FG Pct	3FG Pct	FT Pct	Rebounds/game	Assists/game	Turnovers/game	Assist/Turnover ratio	Steals/game	Blocks/game
13	32.7	7.3	46.0	22.2	81.8	4.5	1.3	1.2	1.1	2.2	0.5

Points	16	HAMPTON (12/18/20)
Field Goals Made	8	HAMPTON (12/18/20)
Field Goal Attempts	10	at Purdue (02/14/21)
	10	at Iowa (12/31/20)
	10	MARYLAND (12/14/20)
FG Pct (min 5 made)	.889	(8-9) HAMPTON (12/18/20)
3-Point Field Goals Made	2	at Iowa (12/31/20)
3-Point FG Attempts	6	MONMOUTH (11/27/20)
3-Pt FG Pct (min 2 made)	.500	(2-4) at Iowa (12/31/20)
Free Throws Made	2	MINNESOTA (02/17/21)
	2	at Northwestern (02/11/21)
	2	NEBRASKA (01/03/21)
Free Throw Attempts	2	MANHATTAN (12/23/20)
Rebounds	11	MANHATTAN (12/23/20)
Assists	5	MARYLAND (12/14/20)
Steals	4	at Northwestern (02/11/21)
	4	MANHATTAN (12/23/20)
	4	NEBRASKA (02/07/21)
Blocked Shots	4	at Wisconsin (12/11/20)
Turnovers	3	MANHATTAN (12/23/20)
Fouls	5	at Purdue (02/14/21)
Minutes	40	at Iowa (12/31/20)
	40	at Northwestern (02/11/21)
Points	17	vs Towson 12/08/19
Rebounds	16	vs Saint Francis (PA) :
Assists	5	at Northwestern 02/1:
Steals	4	4 times
Blocks	4	vs Michigan 02/16/20
FG Made	8	vs Hampton 12/18/20
FG Attempts	12	vs Niagara 11/13/19, :
3FG Made	4	at Illinois 01/09/20
3FG Attempts	9	at Illinois 01/09/20
FT Made	5	vs Saint Francis (PA) :
FT Attempts	6	vs Saint Francis (PA) :

SEASON HIGHS CAREER HIGHS

## CAREER STATISTICS

SEASON	TEAM	GP-GS	MIN/AVG	Field Goals FG-FGA FG%	3-Point 3FG-FGA 3FG%	F-Throws FT-FTA FT%	Rebounds OFF DEF TOT AVG	PF-FO	AST	TO	BLK	STL	PTS	AVG
2017-18	RU	25-0	142/5.7	9-29 .310	1-6 .167	3-3 1.000	15 16 31 1.2	21-0	6	13	9	9	22	0.9
2018-19	RU	29-9	272/9.4	22-63 .349	3-10 .300	12-15 .800	16 39 55 1.9	24-0	11	18	11	9	59	2.0
2019-20	RU	31-28	863/27.9	76-185 .411	24-66 .364	27-38 .711	49 107 156 5.0	76-2	35	47	22	46	203	6.5
2020-21	RU	13-13	425/32.7	40-87 .460	6-27 .222	9-11 .818	28 30 58 4.5	33-1	17	16	6	28	95	7.3
<b>TOTAL</b>		<b>98-50</b>	<b>1703/17.4</b>	<b>147-364 .404</b>	<b>34-109 .312</b>	<b>51-67 .761</b>	<b>108 192 300 3.1</b>	<b>154-3</b>	<b>69</b>	<b>94</b>	<b>48</b>	<b>92</b>	<b>379</b>	<b>3.9</b>





15

**AICHA NDOUR**  
FRESHMAN • CENTER  
SOMONE, SENEGAL / CUSHING ACADEMY

## 2020-21 GAME-BY-GAME

Opponent	Date	GS	MIN	Total FG-FGA	PCT	3-Pointers 3FG-3FGA	PCT	Free throws FT-FTA	PCT	Rebounds OFF DEF TOT AVG	PF	A	T/O	BLK	STL	PTS	AVG
Illinois	02/20/2021		01:50	0-1	.000	0-0	.000	0-0	.000	0 0 0 0.0	0	0	1	0	1	0	0.0
<b>Totals</b>		<b>0</b>	<b>01:50</b>	<b>0-1</b>	<b>.000</b>	<b>0-0</b>	<b>.000</b>	<b>0-0</b>	<b>.000</b>	<b>0 0 0 0.0</b>	<b>0</b>	<b>0</b>	<b>1</b>	<b>0</b>	<b>1</b>	<b>0</b>	<b>0.0</b>

### Player Averages

Games Played	Minutes/game	Points/game	FG Pct	3FG Pct	FT Pct	Rebounds/game	Assists/game	Turnovers/game	Assist/Turnover ratio	Steals/game	Blocks/game
1	1.8	0.0	0.0	0.0	0.0	0.0	0.0	1.0	0.0	1.0	0.0

Statistic	Value
Steals	1
FG Attempts	1

SEASON & CAREER HIGHS

## CAREER STATISTICS

				Field Goals		3-Point		F-Throws		Rebounds								Scoring		
SEASON	TEAM	GP-GS	MIN/AVG	FG-FGA	FG%	3FG-FGA	3FG%	FT-FTA	FT%	OFF	DEF	TOT	AVG	PF-FO	AST	TO	BLK	STL	PTS	AVG
2020-21	RU	1-0	2/1.8	0-1	.000	0-0	.000	0-0	.000	0	0	0	0.0	0-0	0	1	0	1	0	0.0
TOTAL		1-0	2/1.8	0-1	.000	0-0	.000	0-0	.000	0	0	0	0.0	0-0	0	1	0	1	0	0.0



20

**JOIYA MADDUX**  
SOPHOMORE • GUARD  
HOOVER, ALA. / HOOVER

## 2020-21 GAME-BY-GAME

Points	14	vs Coppin St. 11/09/19
Rebounds	4	vs Marshall 12/15/19
Assists	2	vs Niagara 11/13/19, vs M
Steals	1	vs Coppin St. 11/09/19, vs
FG Made	4	vs Coppin St. 11/09/19
FG Attempts	12	vs Marshall 12/15/19
3FG Made	4	vs Coppin St. 11/09/19
3FG Attempts	11	vs Marshall 12/15/19
FT Made	2	vs Coppin St. 11/09/19
FT Attempts	2	vs Coppin St. 11/09/19, vs

SEASON HIGHS CAREER HIGHS

## CAREER STATISTICS

				Field Goals		3-Point		F-Throws		Rebounds								Scoring		
SEASON	TEAM	GP-GS	MIN/AVG	FG-FGA	FG%	3FG-FGA	3FG%	FT-FTA	FT%	OFF	DEF	TOT	AVG	PF-FO	AST	TO	BLK	STL	PTS	AVG
2019-20	RU	15-0	134/9.0	13-40	.325	10-33	.303	5-7	.714	5	9	14	0.9	14-0	6	7	0	2	41	2.7
TOTAL		15-0	134/9.0	13-40	.325	10-33	.303	5-7	.714	5	9	14	0.9	14-0	6	7	0	2	41	2.7

GAME 14: RUTGERS @ MICHIGAN STATE /// WEDNESDAY, FEBRUARY 24, 2021



22

**TYIA SINGLETON**  
 REDSHIRT SOPHOMORE • FORWARD  
 WINTER HAVEN, FLA. / WINTER HAVEN

2020-21 GAME-BY-GAME

Opponent	Date	GS	MIN	Total	3-Pointers	Free throws	Rebounds	PF	A	T/O	BLK	STL	PTS	AVG
FG-FGA	PCT	3FG-FGA	PCT	FT-FTA	PCT	OFF	DEF	TOT	AVG					
Monmouth	11/27/2020	*	27:19	2-3 .667	0-0 .000	0-0 .000	3 5 8	8.0	2	1	2	1	3	4.0
at Wisconsin	12/11/2020	*	28:44	3-4 .750	0-0 .000	0-0 .000	2 4 6	7.0	5	0	3	3	1	6.0
Maryland	12/14/2020	*	17:12	3-4 .750	0-0 .000	0-0 .000	0 5 5	6.3	5	1	1	1	0	6.3
Hampton	12/18/2020	*	25:08	2-4 .500	0-0 .000	0-0 .000	4 4 8	6.8	3	0	4	2	2	4.0
Sacred Heart	12/20/2020	*	19:58	4-6 .667	0-0 .000	6-6 1.000	3 1 4	6.2	3	1	1	2	0	14.6
Manhattan	12/23/2020	*	24:16	1-4 .250	0-0 .000	2-2 1.000	4 1 5	6.0	4	1	0	3	4	6.3
at Iowa	12/31/2020	*	23:38	1-1 .000	0-0 .000	0-0 .000	1 1 2	5.4	4	1	1	0	2	5.7
at Nebraska	01/03/2021	*	21:29	2-4 .500	0-0 .000	0-0 .000	4 3 7	5.6	4	0	0	1	4	5.5
Nebraska	02/07/2021	*	27:39	3-5 .600	0-0 .000	0-0 .000	3 8 11	6.2	4	0	3	0	0	6.6
at Northwestern	02/11/2021	*	30:10	7-9 .778	0-0 .000	3-4 .750	3 4 7	6.3	4	0	1	1	1	17.6
at Purdue	02/14/2021	*	29:19	2-3 .667	0-0 .000	0-0 .000	3 3 6	6.3	4	2	3	1	0	4.6
Minnesota	02/17/2021	*	10:11	1-4 .250	0-0 .000	0-0 .000	1 0 1	5.8	4	0	1	0	0	6.1
Illinois	02/20/2021	*	25:54	5-12 .417	0-0 .000	0-0 .000	4 2 6	5.8	3	1	2	2	3	10.6
<b>Totals</b>			<b>13</b>	<b>310:58</b>	<b>36-63</b>	<b>.571</b>	<b>0-0</b>	<b>.000</b>	<b>11-12</b>	<b>.917</b>	<b>35</b>	<b>41</b>	<b>76</b>	<b>5.8</b>

Player Averages

Games Played	Minutes/game	Points/game	FG Pct	3FG Pct	FT Pct	Rebounds/game	Assists/game	Turnovers/game	Assist/Turnover ratio	Steals/game	Blocks/game
13	23.9	6.4	57.1	0.0	91.7	5.8	0.6	1.8	0.3	1.2	1.0

Points	17	at Northwestern (02/11/21)
Field Goals Made	7	at Northwestern (02/11/21)
Field Goal Attempts	12	ILLINOIS (02/20/21)
FG Pct (min 5 made)	.778 (7-9)	at Northwestern (02/11/21)
Free Throws Made	6	SACRED HEART (12/20/20)
Free Throw Attempts	6	SACRED HEART (12/20/20)
FT Pct (min 3 made)	1.000 (6-6)	SACRED HEART (12/20/20)
Rebounds	11	NEBRASKA (02/07/21)
Assists	2	at Purdue (02/14/21)
Steals	3	ILLINOIS (02/20/21)
	3	MANHATTAN (12/23/20)
	3	MONMOUTH (11/27/20)
Blocked Shots	3	at Wisconsin (12/11/20)
Turnovers	4	HAMPTON (12/18/20)
Fouls	5	MARYLAND (12/14/20)
	5	at Wisconsin (12/11/20)
Minutes	30	at Northwestern (02/11/21)

Statistic	Value	
Points	17	at Northwestern 02/11/21
Rebounds	11	vs Nebraska 02/07/21
Assists	2	vs Coppin St. 11/09/19, at Purdue 02/14/21
Steals	3	vs Manhattan 12/23/20, vs Illinois 02/20/21
Blocks	3	at Wisconsin 12/11/20
FG Made	7	at Northwestern 02/11/21
FG Attempts	12	vs Illinois 02/20/21
FT Made	6	vs Sacred Heart 12/20/20

CAREER STATISTICS

SEASON	TEAM	GP-GS	MIN/AVG	Field Goals	3-Point	F-Throws	Rebounds	PF	A	T/O	BLK	STL	PTS	AVG
FG-FGA	FG%	3FG-FGA	3FG%	FT-FTA	FT%	OFF	DEF	TOT	AVG	PF-FO	AST	TO	BLK	STL
2018-19	RU	6-0	45/7.4	3-4 .750	0-0 .000	0-0 .000	6 8 14	2.3	5-0	1	5	2	0	6
2019-20	RU	30-0	307/10.2	25-50 .500	0-0 .000	7-12 .583	38 39 77	2.6	56-2	8	22	11	5	57
2020-21	RU	13-13	311/23.9	36-63 .571	0-0 .000	11-12 .917	35 41 76	5.8	49-2	8	23	13	16	83
<b>TOTAL</b>		<b>49-13</b>	<b>663/13.5</b>	<b>64-117</b>	<b>.547</b>	<b>0-0</b>	<b>.000</b>	<b>18-24</b>	<b>.750</b>	<b>79</b>	<b>88</b>	<b>167</b>	<b>3.4</b>	<b>110-4</b>



24

**ARELLA GUIRANTES**  
 REDSHIRT SENIOR • GUARD  
 BELLPORT, N.Y. / BELLPORT (TEXAS TECH)

2020-21 GAME-BY-GAME

Opponent	Date	GS	MIN	Total	3-Pointers	Free throws	Rebounds	PF	A	T/O	BLK	STL	PTS	AVG
FG-FGA	PCT	3FG-FGA	PCT	FT-FTA	PCT	OFF	DEF	TOT	AVG					
Monmouth	11/27/2020	*	33:11	7-13 .538	2-5 .400	6-6 1.000	0 5 5	5.0	1	5	3	3	3	22.0
at Wisconsin	12/11/2020	*	37:01	3-14 .214	0-4 .000	10-11 .909	3 6 9	7.0	3	1	2	4	3	16.0
Maryland	12/14/2020	*	40:00	12-23 .522	3-4 .750	6-9 .667	1 9 10	8.0	4	6	8	1	1	33.7
Hampton	12/18/2020	*	30:24	7-16 .438	5-8 .625	6-6 1.000	1 5 6	7.5	1	8	2	3	25	24.0
Sacred Heart	12/20/2020	*	30:44	7-14 .500	1-2 .500	10-11 .909	0 10 10	8.0	2	4	4	3	25	24.2
Manhattan	12/23/2020	*	34:35	7-18 .389	1-5 .200	2-3 .667	3 7 10	8.3	3	11	2	2	4	17.3
at Iowa	12/31/2020	*	40:00	10-20 .500	5-11 .455	9-9 1.000	0 2 2	7.4	3	5	5	1	4	34.6
at Nebraska	01/03/2021	*	40:00	3-24 .125	0-5 .000	2-2 1.000	0 5 5	7.1	2	3	3	2	4	8.2
Nebraska	02/07/2021	*	39:27	5-21 .238	1-5 .200	6-6 1.000	0 1 1	6.4	2	6	1	1	2	21.9
at Northwestern	02/11/2021	*	40:00	5-15 .333	0-2 .000	5-5 1.000	1 2 3	6.1	3	5	4	1	0	15.2
at Purdue	02/14/2021	*	40:00	11-18 .611	3-4 .750	5-5 1.000	0 5 5	6.0	1	5	2	5	0	30.2
Minnesota	02/17/2021	*	37:23	8-14 .571	2-4 .500	4-5 .800	0 4 4	5.8	1	7	4	1	0	22.0
Illinois	02/20/2021	*	33:06	11-17 .647	2-4 .500	0-0 .000	1 6 7	5.9	1	2	3	1	2	22.2
<b>Totals</b>			<b>13</b>	<b>475:51</b>	<b>96-227</b>	<b>.423</b>	<b>25-63</b>	<b>.397</b>	<b>71-78</b>	<b>.910</b>	<b>10</b>	<b>67</b>	<b>77</b>	<b>5.9</b>

Player Averages

Games Played	Minutes/game	Points/game	FG Pct	3FG Pct	FT Pct	Rebounds/game	Assists/game	Turnovers/game	Assist/Turnover ratio	Steals/game	Blocks/game
13	36.6	22.2	42.3	39.7	91.0	5.9	5.2	3.3	1.6	2.2	2.2

Points	34	at Iowa (12/31/20)
Field Goals Made	12	MARYLAND (12/14/20)
Field Goal Attempts	24	at Nebraska (01/03/21)
FG Pct (min 5 made)	.647 (11-17)	ILLINOIS (02/20/21)
3-Point Field Goals Made	5	at Iowa (12/31/20)
3-Point FG Attempts	11	at Iowa (12/31/20)
3-PT FG Pct (min 2 made)	.750 (3-4)	at Purdue (02/14/21)
Free Throws Made	10	MARYLAND (12/14/20)
Free Throw Attempts	10	SACRED HEART (12/20/20)
FT Pct (min 3 made)	1.000 (9-9)	at Wisconsin (12/11/20)
	1.000 (6-6)	SACRED HEART (12/20/20)
	1.000 (6-6)	at Iowa (12/31/20)
	1.000 (6-6)	NEBRASKA (02/07/21)
	1.000 (5-5)	MANHATTAN (11/23/20)
	1.000 (5-5)	at Purdue (02/14/21)
	1.000 (5-5)	at Northwestern (02/11/21)
Rebounds	10	MANHATTAN (12/23/20)
	10	SACRED HEART (12/20/20)
	10	MARYLAND (12/14/20)
Assists	11	MANHATTAN (12/23/20)
Steals	4	at Nebraska (01/03/21)
	4	at Iowa (12/31/20)
Blocked Shots	5	MANHATTAN (12/23/20)
Turnovers	8	at Purdue (02/14/21)
Fouls	4	MARYLAND (12/14/20)
Minutes	40	at Purdue (02/14/21)

Points	36	vs Ohio St. 02/22/2
Rebounds	13	vs New Mexico 11/1
Assists	11	vs Manhattan 12/2
Steals	5	vs LSU 12/15/18, at
Blocks	5	vs Prairie View 11/1
FG Made	15	vs Ohio St. 02/22/2
FG Attempts	24	4 times
3FG Made	5	vs Hampton 12/18/
3FG Attempts	11	at Iowa 12/31/20
FT Made	15	vs Indiana 03/06/2
FT Attempts	16	vs Indiana 03/06/2

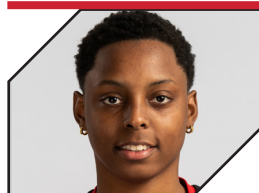
CAREER STATISTICS

SEASON	TEAM	GP-GS	MIN/AVG	Field Goals	3-Point	F-Throws	Rebounds	PF	A	T/O	BLK	STL	PTS	AVG
FG-FGA	FG%	3FG-FGA	3FG%	FT-FTA	FT%	OFF	DEF	TOT	AVG	PF-FO	AST	TO	BLK	STL
2016-17	TTU	29-27	797/27.5	108-263 .411	18-67 .269	54-62 .871	23 117 140	4.8	49-1	36	74	28	31	288
2018-19	RU	32-21	911/28.5	146-370 .395	24-100 .240	70-87 .805	42 93 135	4.2	44-0	54	53	9	39	386
2019-20	RU	30-30	1109/37.0	205-496 .413	37-96 .385	171-211 .810	41 140 181	6.0	52-0	94	95	37	48	618
2020-21	RU	13-13	476/36.6	96-227 .423	25-63 .397	71-78 .910	10 67 77	5.9	27-0	68	43	28	29	288
<b>TOTAL FOR RU</b>		<b>75-64</b>	<b>2496/33.3</b>	<b>447-1093</b>	<b>.409</b>	<b>86-259</b>	<b>.332</b>	<b>312-376</b>	<b>.830</b>	<b>93</b>	<b>300</b>	<b>393</b>	<b>5.2</b>	<b>123-0</b>
<b>TOTAL</b>		<b>104-91</b>	<b>3293/31.7</b>	<b>555-1356</b>	<b>.409</b>	<b>104-326</b>	<b>.319</b>	<b>366-438</b>	<b>.836</b>	<b>116</b>	<b>417</b>	<b>533</b>	<b>5.1</b>	<b>172-1</b>

SEASON HIGHS CAREER HIGHS

SEASON HIGHS CAREER HIGHS

GAME 14: RUTGERS @ MICHIGAN STATE /// WEDNESDAY, FEBRUARY 24, 2021



31

**TEKIA MACK**  
SENIOR • FORWARD  
CHICAGO, ILL. / MARSHALL

2020-21 GAME-BY-GAME

Opponent	Date	GS	MIN	Total		3-Pointers		Free throws		Rebounds				PF	A	T/O	BLK	STL	PTS	AVG	
				FG-FGA	PCT	3FG-3FGA	PCT	FT-FTA	PCT	OFF	DEF	TOT	AVG								
Monmouth	11/27/2020	*	35:08	3-10	.300	1-7	.143	2-2	1.000	0	6	6	6.0	1	3	3	1	6	9	9.0	
at Wisconsin	12/11/2020	*	24:43	3-8	.375	1-2	.500	4-10	.400	3	1	4	5.0	4	2	0	0	5	11	10.0	
Maryland	12/14/2020	*	05:14	0-1	.000	0-0	.000	0-0	.000	0	0	0	0.3	0	0	0	0	0	0	6.7	
at Iowa	12/31/2020	*	40:00	4-12	.333	2-7	.286	2-2	1.000	2	4	6	4.0	1	6	0	2	1	12	8.0	
at Nebraska	01/03/2021	*	40:00	6-14	.429	1-5	.200	0-2	.000	1	6	7	4.6	4	2	2	2	3	13	9.0	
Nebraska	02/07/2021	*	40:00	10-16	.625	2-6	.333	4-8	.500	1	4	5	4.7	4	4	2	2	4	26	11.8	
at Northwestern	02/11/2021	*	40:00	6-11	.545	2-3	.667	2-6	.333	7	6	13	5.9	1	0	3	0	2	16	12.4	
at Purdue	02/14/2021	*	40:00	3-7	.429	2-4	.500	4-6	.667	1	3	4	5.6	2	2	3	0	2	12	12.4	
Minnesota	02/17/2021	*	34:25	5-9	.556	0-2	.000	2-4	.500	4	4	8	5.9	3	2	1	1	8	12	12.3	
Illinois	02/20/2021	*	29:59	3-7	.429	1-3	.333	0-0	.000	1	4	5	5.8	2	8	2	0	5	7	11.8	
Totals			10	329:29	43-95	.453	12-39	.308	20-40	.500	20	38	58	5.8	22	29	16	8	36	118	11.8

Player Averages

Games Played	Minutes/game	Points/game	FG Pct	3FG Pct	FT Pct	Rebounds/game	Assists/game	Turnovers/game	Assist/Turnover ratio	Steals/game	Blocks/game
10	32.9	11.8	45.3	30.8	50.0	5.8	2.9	1.6	1.8	3.6	0.8

Points	26	NEBRASKA (02/07/21)
Field Goals Made	10	NEBRASKA (02/07/21)
Field Goal Attempts	16	NEBRASKA (02/07/21)
FG Pct (min 5 made)	.625	(10-16) at Purdue (02/14/21)
3-Point Field Goals Made	2	at Northwestern (02/11/21)
3-Point Field Goal Attempts	7	at Northwestern (02/11/21)
3-Point FG Pct (min 2 made)	.667	(2-3) at Northwestern (02/11/21)
Free Throws Made	4	at Northwestern (02/11/21)
Free Throw Attempts	10	at Northwestern (02/11/21)
FT Pct (min 3 made)	.667	(4-6) at Northwestern (02/11/21)
Rebounds	13	at Northwestern (02/11/21)
Assists	8	ILLINOIS (02/20/21)
Steals	8	MINNESOTA (02/17/21)
Blocked Shots	2	NEBRASKA (02/07/21)
Turnovers	3	at Nebraska (01/03/21)
Fouls	3	at Iowa (12/31/20)
Minutes	40	at Northwestern (02/11/21)
Points	26	vs Nebraska 02/07/21
Rebounds	14	at Minnesota 02/02/20, vs Indiana 03/06/20
Assists	8	vs Illinois 02/20/21
Steals	8	vs Minnesota 02/17/21
Blocks	3	at Michigan St. 02/13/20, vs Nebraska 01/11/21
FG Made	10	at Indiana 02/18/19, vs Nebraska 02/07/21
FG Attempts	17	vs Iowa 03/01/20
3FG Made	4	at Indiana 02/18/19
3FG Attempts	7	at Iowa 12/31/20, vs Monmouth 11/27/20
FT Made	8	vs South Carolina 11/24/17
FT Attempts	10	vs Indiana 03/06/20, at Wisconsin 12/11/20

SEASON HIGHS CAREER HIGHS

CAREER STATISTICS

SEASON	TEAM	GP-GS	MIN/AVG	Field Goals FG-FGA	FG%	3-Point 3FG-3FGA	3FG%	F-Throws FT-FTA	FT%	Rebounds OFF DEF TOT AVG	PF-FO	AST	TO	BLK	STL	PTS	AVG
2017-18	RU	28-1	214/7.6	16-40	.400	2-10	.200	18-29	.621	16 16 32 1.1	27-0	11	16	5	16	52	1.9
2018-19	RU	29-2	414/14.3	63-120	.525	12-35	.343	15-28	.536	39 40 79 2.7	55-0	18	36	9	34	153	5.3
2019-20	RU	31-31	1004/32.4	137-302	.454	17-71	.239	65-104	.625	67 150 217 7.0	75-1	70	43	26	66	356	11.5
2020-21	RU	10-10	329/32.9	43-95	.453	12-39	.308	20-40	.500	20 38 58 5.8	22-0	29	16	8	36	118	11.8
<b>TOTAL</b>		<b>98-44</b>	<b>1962/20.0</b>	<b>259-557</b>	<b>.465</b>	<b>43-155</b>	<b>.277</b>	<b>118-201</b>	<b>.587</b>	<b>142 244 386 3.9</b>	<b>179-1</b>	<b>128</b>	<b>111</b>	<b>48</b>	<b>152</b>	<b>679</b>	<b>6.9</b>



54

**CHYNA CORNWELL**  
FRESHMAN • FORWARD  
CONOVER, NC / NEWTON CONOVER

2020-21 GAME-BY-GAME

Opponent	Date	Total			3-Pointers		Free throws		Rebounds			PF	A	T/O	BLK	STL	PTS	AVG
		GS	MIN	FG-FGA	PCT	3FG-3FGA	PCT	FT-FTA	PCT	OFF	DEF							
Monmouth	11/27/2020		06:49	0-0	.000	0-0	.000	0-0	.000	0	0	0	0.0	0	0	0	0	0.0
at Iowa	12/31/2020		02:12	0-0	.000	0-0	.000	0-0	.000	0	1	1	0.5	0	0	0	0	0.0
at Nebraska	01/03/2021		06:40	1-1	1.000	0-0	.000	0-0	.000	0	2	2	1.0	0	0	0	0	2.7
Nebraska	02/07/2021		05:00	0-0	.000	0-0	.000	0-0	.000	0	0	0	0.8	1	0	1	0	0.5
at Northwestern	02/11/2021		04:15	0-0	.000	0-0	.000	0-0	.000	0	0	0	0.6	2	0	0	0	0.4
Minnesota	02/17/2021		09:58	1-2	.500	0-0	.000	2-2	1.000	1	2	3	1.0	1	0	0	0	4.1
Illinois	02/20/2021		10:44	0-3	.000	0-0	.000	0-0	.000	2	1	3	1.3	0	0	1	0	0.9
Totals		0	45:38	2-6	.333	0-0	.000	2-2	1.000	3	6	9	1.3	4	0	1	1	6.9

Player Averages

Games Played	Minutes/game	Points/game	FG Pct	3FG Pct	FT Pct	Rebounds/game	Assists/game	Turnovers/game	Assist/Turnover ratio	Steals/game	Blocks/game
7	6.5	0.9	33.3	0.0	100.0	1.3	0.0	0.1	0.0	0.0	0.1

Points	4	vs Minnesota 02/17/21
Rebounds	3	vs Minnesota 02/17/21, vs Illinois 02/20/21
Blocks	1	vs Illinois 02/20/21
FG Made	1	vs Minnesota 02/17/21, at Nebraska 01/03/21
FG Attempts	3	vs Illinois 02/20/21
FT Made	2	vs Minnesota 02/17/21
FT Attempts	2	vs Minnesota 02/17/21

SEASON & CAREER HIGHS

CAREER STATISTICS

SEASON	TEAM	GP-GS	MIN/AVG	Field Goals FG-FGA	FG%	3-Point 3FG-3FGA	3FG%	F-Throws FT-FTA	FT%	Rebounds OFF DEF TOT AVG	PF-FO	AST	TO	BLK	STL	PTS	AVG
2020-21	RU	7-0	46/6.5	2-6	.333	0-0	.000	2-2	1.000	3 6 9 1.3	4-0	0	1	1	0	6	0.9
<b>TOTAL</b>		<b>7-0</b>	<b>46/6.5</b>	<b>2-6</b>	<b>.333</b>	<b>0-0</b>	<b>.000</b>	<b>2-2</b>	<b>1.000</b>	<b>3 6 9 1.3</b>	<b>4-0</b>	<b>0</b>	<b>1</b>	<b>1</b>	<b>0</b>	<b>6</b>	<b>0.9</b>



2020-21 Rutgers Women's Basketball  
Team Game-by-Game  
All games

Page 1/1  
as of Feb 23, 2021

Opponent	Date	Score		Total		3-Pointers		Free throws		Rebounds				PF	A	TO	BLK	STL	PTS	AVG
				FG-FGA	PCT	3FG-FGA	PCT	FT-FTA	PCT	OFF	DEF	TOT	AVG							
Monmouth	11/27/2020	82-38	W	28-56	.500	9-31	.290	17-19	.895	10	20	30	30.0	18	17	13	6	18	82	82.0
at Wisconsin	12/11/2020	70-65	W	25-69	.362	2-17	.118	18-26	.692	17	16	33	31.5	21	10	10	8	22	70	76.0
Maryland	12/14/2020	87-91	L	33-67	.493	10-17	.588	11-14	.786	15	26	41	34.7	24	13	21	3	8	87	79.7
Hampton	12/18/2020	94-45	W	35-64	.547	11-22	.500	13-14	.929	15	28	43	36.8	18	25	17	8	16	94	83.3
Sacred Heart	12/20/2020	99-30	W	36-61	.590	6-11	.545	21-29	.724	16	29	45	38.4	13	17	16	7	18	99	86.4
Manhattan	12/23/2020	84-41	W	32-65	.492	8-23	.348	12-17	.706	16	26	42	39.0	15	20	10	4	16	84	86.0
at Iowa	12/31/2020	84-90	L	29-60	.483	11-27	.407	15-16	.938	11	11	22	36.6	22	17	14	3	15	84	85.7
at Nebraska	01/03/2021	50-53	L	21-63	.333	2-15	.133	6-8	.750	11	23	34	36.3	14	8	10	5	11	50	81.3
Nebraska	02/07/2021	78-62	W	29-59	.492	8-20	.400	12-16	.750	8	20	28	35.3	14	14	10	4	13	78	80.9
at Northwestern	02/11/2021	70-54	W	25-53	.472	6-13	.462	14-19	.737	17	19	36	35.4	15	15	11	3	5	70	79.8
at Purdue	02/14/2021	75-57	W	28-54	.519	9-20	.450	10-12	.833	11	19	30	34.9	12	16	13	6	5	75	79.4
Minnesota	02/17/2021	83-56	W	31-57	.544	9-16	.563	12-15	.800	12	19	31	34.6	18	11	13	3	13	83	79.7
Illinois	02/20/2021	75-46	W	32-67	.478	7-18	.389	4-4	1.000	12	19	31	34.3	21	19	15	4	18	75	79.3
<b>Total</b>		<b>1031</b>		<b>384-795</b>	<b>.483</b>	<b>98-250</b>	<b>.392</b>	<b>165-209</b>	<b>.789</b>	<b>171</b>	<b>275</b>	<b>446</b>	<b>34.3</b>	<b>225</b>	<b>202</b>	<b>173</b>	<b>64</b>	<b>178</b>	<b>1031</b>	<b>79.3</b>
Opponents		728		241-644	.374	77-223	.345	169-239	.707	153	248	401	30.8	199	151	281	31	77	728	56.0

Rutgers Averages

Games Played	Points/game	FG Pct	3FG Pct	FT Pct	Rebounds/game	Assists/game	Turnovers/game	Assist/Turnover ratio	Steals/game	Blocks/game
13	79.3	48.3	39.2	78.9	34.3	15.5	13.3	1.2	13.7	4.9



GAME 14: RUTGERS @ MICHIGAN STATE /// WEDNESDAY, FEBRUARY 24, 2021



2020-21 Rutgers Women's Basketball  
Points-rebounds-assists  
All games

Page 1/1  
as of Feb 23, 2021

Opponent	Date	Score		1	2	3	4	10	11	12	13	15	22	24	31	54
				BROUGHTON,	MARTINO,L	JOHNSON,D	MARSHALL,D	LAFAYETTE,	GUIHON,STE	WALKER,SAK	GILLES,MAE	NDOUR,AICH	SINGLETON,	GUIRANTES,	MACK,TEKIA	CORNWELL,C
MU	11/27/2020	82-38	W	9-2-1	7-1-3	15-0-0	2-0-0	0-0-0	4-1-0	5-1-1	5-3-3	DNP	4-8-1	22-5-5	9-6-3	0-0-0
at Wisc	12/11/2020	70-65	W	18-2-2	0-1-1	17-6-1	DNP	DNP	DNP	2-0-0	0-5-3	DNP	6-6-0	16-9-1	11-4-2	DNP
MD	12/14/2020	87-91	L	10-3-3	3-0-0	18-4-3	0-0-0	3-3-0	DNP	0-1-0	14-11-0	DNP	6-5-1	33-10-6	0-0-0	DNP
Hamp	12/18/2020	94-45	W	10-3-10	8-3-2	11-2-3	5-2-0	7-4-0	2-0-0	6-7-2	16-4-0	DNP	4-8-0	25-6-8	DNP	DNP
SH	12/20/2020	99-30	W	13-2-8	8-0-0	21-8-2	4-4-1	2-2-0	0-0-0	12-8-1	0-1-0	DNP	14-4-1	25-10-4	DNP	DNP
MC	12/23/2020	84-41	W	19-4-5	0-4-0	23-3-2	0-0-0	0-1-0	4-0-0	5-2-0	12-7-1	DNP	4-5-1	17-10-11	DNP	DNP
at Iowa	12/31/2020	84-90	L	0-0-1	0-0-0	18-2-3	DNP	0-0-0	DNP	4-2-0	14-6-1	DNP	2-2-1	34-2-5	12-6-6	0-1-0
at Nebr	01/03/2021	50-53	L	DNP	0-1-0	19-6-2	DNP	0-2-1	DNP	DNP	4-1-0	DNP	4-7-0	8-5-3	13-7-2	2-2-0
Nebr	02/07/2021	78-62	W	DNP	0-2-0	22-1-3	0-0-0	DNP	DNP	DNP	7-5-1	DNP	6-11-0	17-1-6	26-5-4	0-0-0
at NU	02/11/2021	70-54	W	DNP	0-0-0	14-5-5	DNP	DNP	DNP	2-0-0	6-4-5	DNP	17-7-0	15-3-5	16-13-0	0-0-0
at Purdue	02/14/2021	75-57	W	DNP	DNP	19-9-6	DNP	DNP	DNP	4-0-0	6-4-1	DNP	4-6-2	30-5-5	12-4-2	DNP
MINN	02/17/2021	83-56	W	DNP	0-0-0	26-0-1	4-0-0	0-1-1	0-2-0	4-2-0	9-5-0	DNP	2-1-0	22-4-7	12-8-2	4-3-0
Illini	02/20/2021	75-46	W	DNP	4-0-1	20-3-3	2-0-0	2-3-1	4-0-1	0-0-0	2-2-2	0-0-0	10-6-1	24-7-2	7-5-8	0-3-0



2020-21 Rutgers Women's Basketball  
Opponents Game-by-Game  
All games

Page 1/1  
as of Feb 23, 2021

				Total		3-Pointers		Free throws		Rebounds										
Opponent	Date	Score		FG-FGA	PCT	3FG-FGA	PCT	FT-FTA	PCT	OFF	DEF	TOT	AVG	PF	A	TO	BLK	STL	PTS	AVG
Monmouth	11/27/2020	82-38	W	13-41	.317	5-13	.385	7-17	.412	11	19	30	30.0	17	11	30	1	6	38	38.0
at Wisconsin	12/11/2020	70-65	W	22-48	.458	4-12	.333	17-23	.739	11	29	40	35.0	18	13	27	5	5	65	51.5
Maryland	12/14/2020	87-91	L	29-68	.426	11-26	.423	22-31	.710	18	19	37	35.7	18	17	14	2	9	91	64.7
Hampton	12/18/2020	94-45	W	14-49	.286	4-15	.267	13-21	.619	11	14	25	33.0	17	10	23	0	10	45	59.8
Sacred Heart	12/20/2020	99-30	W	8-48	.167	4-23	.174	10-14	.714	14	13	27	31.8	21	4	32	1	7	30	53.8
Manhattan	12/23/2020	84-41	W	11-47	.234	4-22	.182	15-19	.789	11	18	29	31.3	21	9	22	3	5	41	51.7
at Iowa	12/31/2020	84-90	L	30-49	.612	12-22	.545	18-21	.857	8	21	29	31.0	15	18	19	1	4	90	57.1
at Nebraska	01/03/2021	50-53	L	20-57	.351	4-18	.222	9-11	.818	15	31	46	32.9	10	12	19	4	3	53	56.6
Nebraska	02/07/2021	78-62	W	21-50	.420	9-18	.500	11-16	.688	10	21	31	32.7	14	11	19	6	2	62	57.2
at Northwestern	02/11/2021	70-54	W	19-50	.380	5-17	.294	11-15	.733	14	13	27	32.1	14	11	11	4	6	54	56.9
at Purdue	02/14/2021	75-57	W	21-47	.447	9-16	.563	6-8	.750	8	14	22	31.2	12	14	17	0	7	57	56.9
Minnesota	02/17/2021	83-56	W	21-47	.447	3-13	.231	11-19	.579	12	15	27	30.8	12	12	22	2	4	56	56.8
Illinois	02/20/2021	75-46	W	12-43	.279	3-8	.375	19-24	.792	10	21	31	30.8	10	9	26	2	9	46	56.0
Total		728		241-644	.374	77-223	.345	169-239	.707	153	248	401	30.8	199	151	281	31	77	728	56.0
Rutgers		1031		384-795	.483	98-250	.392	165-209	.789	171	275	446	34.3	225	202	173	64	178	1031	79.3

Opponents Averages

Games Played	Points/game	FG Pct	3FG Pct	FT Pct	Rebounds/game	Assists/game	Turnovers/game	Assist/Turnover ratio	Steals/game	Blocks/game
13	56.0	37.4	34.5	70.7	30.8	11.6	21.6	0.5	5.9	2.4



2020-21 Rutgers Women's Basketball  
Individual Game-by-Game  
All games

Page 13/13  
as of Feb 23, 2021

#54 CORNWELL, Chyna

Opponent	Date	GS	MIN	Total		3-Pointers		Free throws		Rebounds				PF	A	T/O	BLK	STL	PTS	AVG
				FG-FGA	PCT	3FG-3FGA	PCT	FT-FTA	PCT	OFF	DEF	TOT	AVG							
Monmouth	11/27/2020		06:49	0-0	.000	0-0	.000	0-0	.000	0	0	0	0.0	0	0	0	0	0	0	0.0
at Iowa	12/31/2020		02:12	0-0	.000	0-0	.000	0-0	.000	0	1	1	0.5	0	0	0	0	0	0	0.0
at Nebraska	01/03/2021		06:40	1-1	1.000	0-0	.000	0-0	.000	0	2	2	1.0	0	0	0	0	0	2	0.7
Nebraska	02/07/2021		05:00	0-0	.000	0-0	.000	0-0	.000	0	0	0	0.8	1	0	1	0	0	0	0.5
at Northwestern	02/11/2021		04:15	0-0	.000	0-0	.000	0-0	.000	0	0	0	0.6	2	0	0	0	0	0	0.4
Minnesota	02/17/2021		09:58	1-2	.500	0-0	.000	2-2	1.000	1	2	3	1.0	1	0	0	0	0	4	1.0
Illinois	02/20/2021		10:44	0-3	.000	0-0	.000	0-0	.000	2	1	3	1.3	0	0	0	1	0	0	0.9
<b>Totals</b>		<b>0</b>	<b>45:38</b>	<b>2-6</b>	<b>.333</b>	<b>0-0</b>	<b>.000</b>	<b>2-2</b>	<b>1.000</b>	<b>3</b>	<b>6</b>	<b>9</b>	<b>1.3</b>	<b>4</b>	<b>0</b>	<b>1</b>	<b>1</b>	<b>0</b>	<b>6</b>	<b>0.9</b>

Player Averages

Games Played	Minutes/game	Points/game	FG Pct	3FG Pct	FT Pct	Rebounds/game	Assists/game	Turnovers/game	Assist/Turnover ratio	Steals/game	Blocks/game
7	6.5	0.9	33.3	0.0	100.0	1.3	0.0	0.1	0.0	0.0	0.1



2020-21 Rutgers Women's Basketball  
Combined Team Statistics  
All games

Page 1/1  
as of Feb 23, 2021

Game Records

Record	Overall	Home	Away	Neutral
ALL GAMES	10-3	7-1	3-2	0-0
CONFERENCE	6-3	3-1	3-2	0-0
NON-CONFERENCE	4-0	4-0	0-0	0-0

Score by Periods

Team	1st	2nd	3rd	4th	OT	TOT
Rutgers	250	240	290	251	0	1031
Opponents	177	168	188	195	0	728

Team Box Score

No.	Player				Total		3-Point		F-Throw		Rebounds												
		GP-GS	MIN	AVG	FG-FGA	FG%	3FG-FGA	3FG%	FT-FTA	FT%	OFF	DEF	TOT	AVG	PF	DQ	A	TO	BLK	STL	PTS	AVG	
24	GUIRANTES, Arella	13-13	475:51	36.6	96-227	.423	25-63	.397	71-78	.910	10	67	77	5.9	27	0	68	43	28	29	288	22.2	
3	JOHNSON, Diamond	13-9	412:55	31.8	89-164	.543	40-75	.533	25-28	.893	25	24	49	3.8	29	1	34	22	1	26	243	18.7	
31	MACK, Tekia	10-10	329:29	32.9	43-95	.453	12-39	.308	20-40	.500	20	38	58	5.8	22	0	29	16	8	36	118	11.8	
1	BROUGHTON, Zipporah	7-7	194:55	27.8	31-65	.477	10-29	.345	7-11	.636	3	13	16	2.3	14	0	30	10	1	16	79	11.3	
13	GILLES, Mael	13-13	425:01	32.7	40-87	.460	6-27	.222	9-11	.818	28	30	58	4.5	33	1	17	16	6	28	95	7.3	
22	SINGLETON, Tyia	13-13	310:58	23.9	36-63	.571	0-0	.000	11-12	.917	35	41	76	5.8	49	2	8	23	13	16	83	6.4	
12	WALKER, Sakima	11-0	122:06	11.1	18-24	.750	0-0	.000	8-11	.727	11	12	23	2.1	14	0	4	15	5	4	44	4.0	
2	MARTINO, Liz	12-0	104:07	8.7	11-29	.379	3-11	.273	5-7	.714	6	6	12	1.0	6	0	7	6	0	17	30	2.5	
11	GUIHON, Stephanie	6-0	54:49	9.1	6-12	.500	0-2	.000	2-4	.500	2	1	3	0.5	7	0	1	1	0	0	14	2.3	
4	MARSHALL, Destiny	8-0	32:38	4.1	7-13	.538	0-1	.000	3-3	1.000	1	5	6	0.8	8	0	1	6	0	3	17	2.1	
10	LAFAYETTE, Erica	9-0	89:43	10.0	5-9	.556	2-3	.667	2-2	1.000	5	11	16	1.8	12	0	3	4	1	2	14	1.6	
54	CORNWELL, Chyna	7-0	45:38	6.5	2-6	.333	0-0	.000	2-2	1.000	3	6	9	1.3	4	0	0	1	1	0	6	0.9	
15	NDOUR, Aicha	1-0	01:50	1.8	0-1	.000	0-0	.000	0-0	.000	0	0	0	0.0	0	0	0	1	0	1	0	0.0	
Team											22	21	43					9					
Total		13	2600		384-795	.483	98-250	.392	165-209	.789	171	275	446	34.3	225	4	202	173	64	178	1031	79.3	
Opponents		13	2600		241-644	.374	77-223	.345	169-239	.707	153	248	401	30.8	199	2	151	281	31	77	728	56.0	

Team Statistics

	RU	OPP
<b>Scoring</b>	<b>1031</b>	<b>728</b>
Points per game	79.3	56.0
Scoring margin	+23.3	-
<b>Field goals-att</b>	<b>384-795</b>	<b>241-644</b>
Field goal pct	.483	.374
<b>3 point fg-att</b>	<b>98-250</b>	<b>77-223</b>
3-point FG pct	.392	.345
3-pt FG made per game	7.5	5.9
<b>Free throws-att</b>	<b>165-209</b>	<b>169-239</b>
Free throw pct	.789	.707
F-Throws made per game	12.7	13.0
<b>Rebounds</b>	<b>446</b>	<b>401</b>
Rebounds per game	34.3	30.8
Rebounding margin	+3.5	-
<b>Assists</b>	<b>202</b>	<b>151</b>
Assists per game	15.5	11.6
<b>Turnovers</b>	<b>173</b>	<b>281</b>
Turnovers per game	13.3	21.6
Turnover margin	+8.3	-
Assist/turnover ratio	1.2	0.5
<b>Steals</b>	<b>178</b>	<b>77</b>
Steals per game	13.7	5.9
<b>Blocks</b>	<b>64</b>	<b>31</b>
Blocks per game	4.9	2.4
<b>Winning streak</b>	<b>5</b>	<b>-</b>
Home win streak	6	-
<b>Attendance</b>	<b>0</b>	<b>489</b>
Home games-Avg/Game	8-0	5-98
Neutral site-Avg/Game	-	0-0

Team Results

Date	Opponent		Score	Att.
11/27/2020	Monmouth	W	82-38	0
12/11/2020	at Wisconsin	W	70-65	0
12/14/2020	Maryland	L	87-91	0
12/18/2020	Hampton	W	94-45	0
12/20/2020	Sacred Heart	W	99-30	0
12/23/2020	Manhattan	W	84-41	0
12/31/2020	at Iowa	L	84-90	328
01/03/2021	at Nebraska	L	50-53	0
02/07/2021	Nebraska	W	78-62	0
02/11/2021	at Northwestern	W	70-54	0
02/14/2021	at Purdue	W	75-57	161
02/17/2021	Minnesota	W	83-56	0
02/20/2021	Illinois	W	75-46	0