



# SOUTHERN ARKANSAS UNIVERSITY

## 2019 LADY MULERIDER SOFTBALL GAME NOTES

### VS. SOUTHEASTERN OKLAHOMA STATE | MAR. 22-23 | MAGNOLIA, ARK.



## 2019 | SCHEDULE AND RESULTS

OVERALL RECORD:	22-6
GAC RECORD:	13-3
HOME RECORD:	4-0
ROAD RECORD:	9-3
NEUTRAL RECORD:	9-3
STREAK:	W4

Date	Opponent	Time/Result
Feb. 1	Southwest Baptist University%	W, 7-0
Feb. 2	Rogers State University%	W, 1-0
Feb. 2	Missouri S&T%	W, 10-0 (6)
Feb. 8	#22 Valdosta State University^	L, 0-3
Feb. 8	#18 Palm Beach Atlantic University^	L, 3-6
Feb. 9	University of West Georgia^	W, 1-0
Feb. 9	University of Tampa^	W, 8-0 (5)
Feb. 10	#5 Saint Leo University^	W, 13-1 (5)
Feb. 16	University of Missouri-St. Louis#	L, 2-3
Feb. 16	Maryville University#	W, 5-1
Feb. 17	Emporia State University#	W, 6-0
Feb. 17	Northeastern State University#	W, 9-0
Feb. 24	Harding (DH)*	W, 9-5 (9); W, 6-4 (8)
Feb. 25	Harding (DH)*	W, 3-2 (8); W, 3-2
Mar. 1	<b>Northwest Oklahoma State (DH)*</b>	<b>W, 14-2 (5); W, 3-0</b>
Mar. 2	<b>Northwest Oklahoma State (DH)*</b>	<b>W, 10-2 (5); W, 8-0 (5)</b>
Mar. 8	Southwestern Oklahoma State University (DH)*	L, 7-8; W, 6-3
Mar. 9	Southwestern Oklahoma State University (DH)*	L, 0-10 (5); L, 6-8
Mar. 15	East Central University (DH)*	W, 6-0; W, 6-2
Mar. 16	East Central University (DH)*	W, 5-2; W, 13-1 (5)
Mar. 22	<b>Southeastern Oklahoma State University (DH)*</b>	<b>4 p.m./6 p.m.</b>
Mar. 23	<b>Southeastern Oklahoma State University (DH)*</b>	<b>1 p.m./3 p.m.</b>
Mar. 26	<b>University of Arkansas at Monticello (DH)*</b>	<b>4 p.m./6 p.m.</b>
Mar. 29	Oklahoma Baptist University (DH)*	2 p.m./4 p.m.
Mar. 30	Oklahoma Baptist University (DH)*	Noon/2 p.m.
Apr. 5	<b>Southern Nazarene University (DH)*</b>	<b>4 p.m./6 p.m.</b>
Apr. 6	<b>Southern Nazarene University (DH)*</b>	<b>Noon/2 p.m.</b>
Apr. 9	University of Arkansas at Monticello (DH)*	2 p.m./4 p.m.
Apr. 12	<b>Arkansas Tech University (DH)*</b>	<b>4 p.m./6 p.m.</b>
Apr. 13	<b>Arkansas Tech University (DH)*</b>	<b>1 p.m./3 p.m.</b>
Apr. 19	Duachita Baptist University (DH)*	2 p.m./4 p.m.
Apr. 20	Duachita Baptist University (DH)*	2 p.m./4 p.m.
Apr. 26	<b>Henderson State University (DH)*</b>	<b>4 p.m./6 p.m.</b>
Apr. 27	<b>Henderson State University (DH)*</b>	<b>1 p.m./3 p.m.</b>

#### Great American Conference Championships

May 2-4 Bentonville, Ark.\* TBD

**Bold** - Home Game  
 \* - Great American Conference Game  
 % - Ronnie Hawkins Invitational  
 ^ - NFCA Division II Leadoff Classic  
 # - UAM Division II Softball Classic

## THE SLATE



**SOUTHERN ARKANSAS**  
LADY MULERIDERS

RECORD 22-6 (13-3)

**SERIES INFORMATION**

DATES:.....MARCH 22-23  
 LOCATION:.....MAGNOLIA, ARK.  
 OPPONENT:.....SOUTHEASTERN OKLAHOMA STATE  
 FIELD:.....DAWSON FIELD AT THE DR. MARGARET DOWNING SOFTBALL COMPLEX



**SOUTHEASTERN OKLAHOMA**  
STATE SAVAGE STORM

RECORD 10-16 (8-8)

## LEADING OFF

The SAU Softball team, for the second time this season, will host a conference series as they welcome Southeastern Oklahoma State into Magnolia for a four-game set. The Savage Storm are 10-16 on the season and 8-8 in conference play. They are coming off a weekend split against Arkansas-Monticello, having also taken three of four from Southwestern Oklahoma State and a split from Arkansas Tech. The Savage Storm's offense is batting .284 on the season, averaging 3.7 runs per game. The Savage Storm have hit nine home runs on the season and fifty total extra base hits, slugging .388 while reaching base at a .358 clip. The offensive effort is led by Elexis Watson, who is batting .346 on the season with team highs in hits, runs, doubles, home runs, total bases, slugging and on-base percentage. The Savage Storm pitching staff holds a 6.12 ERA on the season, striking out 95 batters in 161.1 innings as opponents hit .324 against the Savage Storm. All five pitchers who have featured for the Savage Storm this season have also started in the field/lineup for the Savage Storm, with Emily Cudd and

Destiny Riddle making ten starts each in the circle and Cudd making two starts in the lineup while Riddle has started every single game for the Savage Storm. After this weekend, the Savage Storm take on East Central in a midweek doubleheader before hosting Ouachita in a four-game series. The Muleriders are 22-6 on the season and 13-3 in conference play, and are the fifth-ranked team in the country. The Muleriders are coming off a sweep of East Central that saw Sarah Evans win GAC Freshman of the Week as she hit a triple and two home runs in 11 at-bats last weekend. The Muleriders are batting .283 with a league-high 42 home runs on the season, led by Chelsea Fagan's 12 big flies. Elisa Favela is leading the team with a .338 batting average and seven doubles, as well as going 6-0 in the circle this season as the Mulerider staff owns a 2.06 ERA, striking out 183 batters in 180 innings as opponents are only hitting .200 against Mulerider pitching. After this weekend, the Muleriders host Monticello in a midweek doubleheader before traveling to Shawnee to take on Oklahoma Baptist in a four-game series.

## PROJECTED STARTING LINEUPS/ROTATION

PLAYER	CL.	B/T	AVG	H	2B	3B	HR	RBI	OB%	SLG%
SARAH EVANS	Fr.	R/R	.310	22	3	1	5	13	.438	.592
FAITH OTTS	Jr.	R/R	.300	27	4	0	7	25	.390	.578
ELISA FAVELA	Jr.	R/R	.338	27	7	0	4	21	.411	.575
CHELSEA FAGAN	Jr.	R/R	.325	25	1	0	12	29	.388	.805
LAINA SUESUE	Jr.	L/L	.299	23	3	0	2	12	.443	.416
SARAH PITRE	Sr.	R/R	.277	23	4	1	5	21	.344	.530
SAVANAH MARTINEZ	Sr.	L/L	.269	14	4	0	3	13	.424	.519
RACHEL MILLER	Jr.	R/L	.253	22	4	0	4	14	.394	.437
HALLIE SAINTIGNAN	Sr.	L/L	.159	7	2	0	0	5	.275	.205

WEEKEND ROTATION	CL.	W-L	ERA	IP	H	R	ER	K	BB	BAA
VICTORIA TAYLOR	Jr.	5-3	2.21	57.0	32	19	18	87	14	.161
SYDNEY WADER	Jr.	11-2	1.99	77.1	61	28	22	58	19	.207
ELISA FAVELA	Jr.	6-0	1.44	34.0	23	12	7	27	7	.183



**SOUTHERN ARKANSAS UNIVERSITY**  
**2019 LADY MULERIDER SOFTBALL GAME NOTES**  
**VS. SOUTHEASTERN OKLAHOMA STATE | MAR. 22-23 | MAGNOLIA, ARK.**



## GENERAL

**Name of School** ..... Southern Arkansas University  
**City/Zip** ..... Magnolia, AR 71753-5000  
**Founded** ..... 1909  
**Enrollment** ..... 4,771  
**Nickname** ..... Lady Muleriders  
**School Colors** ..... Royal Blue (PMS 293) and Gold (PMS 110)  
**Home Field** ..... Dawson Field at Mulerider Softball Complex  
**Capacity** ..... 600  
**Affiliation** ..... NCAA Division II  
**Conference** ..... Great American  
**President** ..... Dr. Trey Berry  
**Alma Mater, Yr.** ..... Ouachita Baptist/1984  
**Athletics Director** ..... Steve Browning  
**Alma Mater, Yr.** ..... Southern Arkansas / 2001  
**Athletic Dept. Phone** ..... (870) 235-4102

## HISTORY

**First Year of Softball:** ..... 1999  
**All-Time Record:** ..... 640-536 (.544)  
**No. Years in NCAA Tournament Play/Last:** ..... 4 / 2018  
**Last Post-Season Appearance:** .. 2018 NCAA Division II Softball World Series (3-2)

### Milestone Wins

**First Win** ..... 2/26/99 vs. Missouri-Rolla (W, 1-0)  
**100th Win** ..... 4/14/02 at Henderson State (W, 12-2)  
**200th Win** ..... 3/17/06 vs. Hillsdale (W, 4-3)  
**300th Win** ..... 3/20/12 at Delta State (W, 1-0)  
**400th Win** ..... 4/19/15 vs. Southern Nazarene (W, 11-3)  
**500th Win** ..... 5/4/17 vs. Henderson State (W, 7-2)  
**600th Win** ..... 4/15/18 vs. Harding (W, 8-0, 5 innings)

## MEDIA INFORMATION

**Live Stats** ..... Provided by SAU Sports Information  
<http://www.sidearmstats.com/saumag/softball/>

**Live Video** ..... Provided by SAU Sports Information  
<http://new.livestream.com/accounts/10140781>



## COACHING STAFF

**Head Coach** ..... **Jason Anderson**  
 Alma Mater, Year ..... Arkansas Tech, 2001  
 Record at SAU ..... 206-68 (5th Year)  
 Career Record (11th year) ..... 514-143 (.781)  
 Email ..... JasonAnderson@saumag.edu  
 Twitter ..... @JAnderson\_Coach  
 Softball Office Phone ..... (870) 235-4384  
 Best Time To Reach Coach ..... Mornings

**Assistant Coach** ..... **Kayla English**  
 Alma Mater, Year ..... Dayton, 2015

**Assistant Coach** ..... **Brooke Goad**  
 Alma Mater, Year ..... Southern Arkansas, 2018

**Graduate Assistant Coach** ..... **Brynn Baca**  
 Alma Mater, Year ..... Lamar, 2017

**Graduate Assistant Coach** ..... **Robyn Leighton**  
 Alma Mater, Year ..... Morehead State, 2018

## TEAM INFORMATION

**2018 Overall Record** ..... 60-11  
**2018 Conference Record/Finish** ..... 38-6 / 1st  
**Final Ranking Last Year (Poll)** ..... 3 (NFCA)  
**Lettermen Returning** ..... 13  
**Lettermen Lost** ..... 10  
**Starters Returning** ..... (4 pos.) / (1 pitcher)  
**Starters Lost** ..... (5 pos.) / (1 pitcher)  
**Newcomers** ..... 19 (16 pos. / 5 pitcher)

## SPORTS INFORMATION

**Assistant Director of Athletics for Communications** ..... Jacob Pumphrey  
**SID Email** ..... sausid@saumag.edu  
**Email** ..... jacobpumphrey@saumag.edu  
**SID Office Phone** ..... (870) 235-4139  
**SID Fax** ..... (870) 235-5362

**Assistant Director of Athletic Communications:** ..... Nick Rackley  
**Email** ..... nicholasrackley@saumag.edu  
**Office Phone** ..... (870) 235-4104  
**Cell Phone** ..... (817) 217-2923

**Mailing Address** ..... MSC 9420  
 Magnolia, AR 71753-9420

**Athletics Website** ..... www.muleriderathletics.com  
**Athletics Twitter** ..... @MuleriderSports  
**Softball Twitter** ..... @SAUSoftball



# SOUTHERN ARKANSAS UNIVERSITY

## 2019 LADY MULERIDER SOFTBALL GAME NOTES

### VS. SOUTHEASTERN OKLAHOMA STATE | MAR. 22-23 | MAGNOLIA, ARK.



## THE WEEK AHEAD

SUNDAY	MONDAY	TUESDAY	WEDNESDAY	THURSDAY	FRIDAY	SATURDAY
24	25	26	27	28	29	30
		 Arkansas-Monticello (DH) Dawson Field 4 p.m./6 p.m.			 Oklahoma Baptist (DH) Shawnee, Okla. 2 p.m./4 p.m.	 Oklahoma Baptist (DH) Shawnee, Okla. Noon/2 p.m.

### 2019 GAC STANDINGS (AS OF 3/21/19)

TEAM	GAC	PCT.	OVERALL	PCT.	STREAK
<b>Southern Arkansas</b>	<b>13-3</b>	<b>0.813</b>	<b>22-6</b>	<b>0.786</b>	<b>W4</b>
Arkansas-Monticello	9-3	0.750	16-4	0.800	W4
Southern Nazarene	10-6	0.625	15-12	0.556	W2
Arkansas Tech	9-6	0.600	15-12	0.556	W1
Henderson State	10-7	0.588	16-13	0.552	W3
Quachita	7-5	0.583	9-13	0.409	W1
Harding	8-8	0.500	16-12	0.571	W3
<b>Southeastern Oklahoma State</b>	<b>8-8</b>	<b>0.500</b>	<b>10-16</b>	<b>0.385</b>	<b>L2</b>
Southwestern Oklahoma State	7-10	0.412	8-18	0.308	L4
Oklahoma Baptist	5-12	0.294	11-18	0.379	L3
East Central	3-11	0.214	7-16	0.304	L7
Northwestern Oklahoma State	3-13	0.188	3-21	0.125	L6

## How SAU Ranks in #theGAC

### Team Hitting Rankings

Category	Stat	Rank
Batting Average	.283	7th
Slugging %	.506	1st
On-base %	.388	3rd
Runs Scored	170	2nd
Hits	212	4th
Runs Batted In	162	1st
Doubles	37	T-3rd
Triples	2	T-9th
Homeruns	42	1st
Total Bases	313	1st
Walks	100	2nd
Hit By Pitch	31	1st
Strikeouts	132	2nd
Sacrifice Bunts	11	T-7th
Sacrifice Flies	4	7th
Stolen bases	7	12th
Ground into Double Plays	3	T-2nd

### Team Pitching Rankings

Category	Stat	Rank
Earned Run Average	2.06	2nd
Opponent Batting Average	.200	1st
Strikeouts	183	1st
Saves	2	T-6th
Runners picked off	0	T-4th
Hits allowed	134	2nd
Walks	40	2nd
Homeruns allowed	9	2nd
Wild pitches	9	9th
Hit batters	16	T-6th

### Team Fielding Rankings

Category	Stat	Rank
Fielding %	.968	2nd
Chances	759	5th
Putouts	540	4th
Assists	195	7th
Errors	24	10th
Double Plays Turned	2	T-10th
Stolen bases against	35	5th
Runners caught stealing	6	T-7th
Steal attempts against	41	5th
Passed balls	3	11th

### 2019 GAC PLAYERS OF THE WEEK

#### WEEK 1 (FEB. 4)

**PITCHER** VICTORIA TAYLOR (SAU)  
**PLAYER** MADIE GREEN (HSU)  
**FRESHMAN** MABRY SMITH (DBU)

#### WEEK 2 (FEB. 11)

**PITCHER** VICTORIA TAYLOR (SAU)  
**PLAYER** BRILEY FERINGA (HU)  
**FRESHMAN** HANNA JONES (HU)

#### WEEK 3 (FEB. 18)

**PITCHER** SYDNEY WADER (SAU)  
**PLAYER** TARAH HILTON (ECU)  
**FRESHMAN** MAHINA SAUER (SNU)  
 ABBIE MOORE (HSU)

#### WEEK 4 (FEB. 26)

**PITCHER** BAILEY SHAFFER (ATU)  
**PLAYER** FRANKI HULL (OKB)  
**FRESHMAN** KALIE JOHNSON (NWOSU)

#### WEEK 5 (MAR. 4)

**PITCHER** ELISA FAVELA (SAU)  
**PLAYER** ELISA FAVELA (SAU)  
**FRESHMAN** ASHLYN TAYLOR (HSU)

#### WEEK 6 (MAR. 12)

**PITCHER** HAYLEY McGREE (UAM)  
**PLAYER** MAHINA SAUER (SNU)  
**FRESHMAN** HANNAH MORRIS (SWOSU)  
 ASHLYN TAYLOR (HSU)

#### WEEK 7 (MAR. 18)

**PITCHER** MICHELLE SORENSEN (HSU)  
**PLAYER** MARISSA BUTLER (OUA)  
 PEYTON MILLS (HU)  
 MACY WILSON (OUA)  
**FRESHMAN** SARAH EVANS (SAU)



**SOUTHERN ARKANSAS UNIVERSITY**  
**2019 LADY MULERIDER SOFTBALL GAME NOTES**  
**VS. SOUTHEASTERN OKLAHOMA STATE | MAR. 22-23 | MAGNOLIA, ARK.**



**MULERIDERS' RECORD WHEN...**

GENERAL	
OVERALL	22-6
CONFERENCE	13-3
HOME GAMES	4-0
AWAY GAMES	9-3
NEUTRAL SITE	9-3
DAY GAMES	19-6
NIGHT GAMES	3-0
VS LEFT STARTER	0-1
VS RIGHT STARTER	22-5
1-RUN GAMES	4-2
2-RUN GAMES	1-1
5+ RUN GAMES	11-1
EXTRA INNINGS	3-0
SHUTOUTS	10-2

SCORING	
SCORING 0-2 RUNS	2-3
SCORING 3-5 RUNS	5-1
SCORING 6-9 RUNS	10-2
SCORING 10+ RUNS	5-0
OPPONENT 0-2 RUNS	19-0
OPPONENT 3-5 RUNS	3-2
OPPONENT 6-9 RUNS	0-3
OPPONENT 10+ RUNS	0-1
SCORED IN 1ST INNING	8-0
OPP. SCORED IN 1ST INNING	3-2
SCORES FIRST	20-1
OPP. SCORES FIRST	2-5

LEADING   TRAILING	
AFTER 4 LEADING	18-0
AFTER 4 TRAILING	1-6
AFTER 4 TIED	3-0
AFTER 5 LEADING	14-0
AFTER 5 TRAILING	1-4
AFTER 5 TIED	2-1
AFTER 6 LEADING	11-0
AFTER 6 TRAILING	1-5
AFTER 6 TIED	3-0

HOME RUNS	
HIT 0 HOME RUNS	4-3
HIT 1 HOME RUN	5-1
HIT 2+ HOME RUNS	13-2
OPPONENT 0 HOME RUNS	19-1
OPPONENT 1 HOME RUN	3-4
OPPONENT 2+ HRs	0-1

ERRORS	
MADE 0 ERRORS	12-2
MADE 1 ERROR	7-0
MADE 2+ ERRORS	3-4
OPP. MADE 0 ERRORS	6-2
OPP. MADE 1 ERROR	10-2
OPP. MADE 2+ ERRORS	6-2

Hit   Out-Hit	
OUT-HIT OPPONENT	19-1
OUT-HIT BY OPPONENT	1-5
HITS ARE TIED	2-0

**NFCA DII TOP-25 (3-20-19)**

#	SCHOOL (1ST-PLACE VOTES)	POINTS	RECORD
1	NORTH GEORGIA (11)	393	26-6
2	CENTRAL OKLAHOMA (5)	379	24-1
3	WEST FLORIDA	367	27-4
4	CHICO STATE	343	18-5
<b>5</b>	<b>SOUTHERN ARKANSAS</b>	<b>324</b>	<b>22-6</b>
6	WEST TEXAS A&M	315	22-6
7	CONCORDIA IRVINE	293	19-3
8	GRAND VALLEY STATE	286	16-2
9	CARSON-NEWMAN	272	14-1
10	UAH	256	22-7
11	TEXAS A&M KINGSVILLE	247	23-4
12	FLORIDA TECH	220	23-7
<b>13</b>	<b>VALDOSTA STATE</b>	<b>182</b>	<b>17-7</b>
14	TEXAS A&M-COMMERCE	176	21-8
15	WAYNE STATE UNIVERSITY	174	17-4
16	UC SAN DIEGO	171	18-6
17	AUGUSTANA	159	16-4
18	COLORADO MESA	144	20-6
19	SOUTHERN NEW HAMPSHIRE	103	14-4
20	INDIANAPOLIS	84	19-7
21	MISSISSIPPI COLLEGE	81	20-6
22	WINONA STATE	48	13-3
23	LINCOLN MEMORIAL	43	23-5
24	ANGELO STATE	35	22-9
24	WESTERN OREGON	35	12-4

**DROPPED OUT:** No. 19 CEDARVILLE, T-No. 20 WINGATE, T-No. 20 CAL STATE SAN BERNARDINO

**RECEIVING VOTES:** CEDARVILLE (33), GEORGIAN COURT (10), TARLETON STATE (10), CAL STATE SAN BERNARDINO (5), ASHLAND (3), CENTRAL WASHINGTON (1), NOVA SOUTHEASTERN (1).

2019 OPPONENTS IN **BOLD**





# SOUTHERN ARKANSAS UNIVERSITY

## 2019 LADY MULERIDER SOFTBALL GAME NOTES

### VS. SOUTHEASTERN OKLAHOMA STATE | MAR. 22-23 | MAGNOLIA, ARK.



## Team Leaders

<b>Hitting</b>		
Category	Player	Stat
Batting Average	Elisa Favela	.338
Slugging %	Chelsea Fagan	.805
On-base %	Laina Suesue	.443
Runs Scored	Chelsea Fagan	23
Hits	Faith Otts and Elisa Favela	27
Runs Batted In	Chelsea Fagan	29
Doubles	Elisa Favela	7
Triples	Sarah Pitre and Sarah Evans	1
Homeruns	Chelsea Fagan	12
Total Bases	Chelsea Fagan	62
Walks	Laina Suesue	17
Hit By Pitch	Faith Otts	8
Strikeouts	Sarah Evans	20
Sacrifice Bunts	Hallie Saintignan	3
Sacrifice Flies	Sarah Evans, Sarah Pitre, Faith Otts, Rachel Miller	1
Stolen bases	Rachel Miller	5
Ground into Double Plays	Faith Otts	2

<b>Pitching</b>		
Category	Player	Stat
Games Started	Sydney Wader	13
Appearances	Sydney Wader	13
Wins	Sydney Wader	11
Losses	Victoria Taylor	3
Complete Games	Sydney Wader	9
Innings Pitched	Sydney Wader	77.1
Earned Run Average	Elisa Favela	1.44
Opponent Batting Average	Victoria Taylor	.161
Strikeouts	Victoria Taylor	87
Saves	Brooke Ford-Nelson	2
Hits allowed	Elisa Favela	23
Walks	Elisa Favela	7
Homeruns allowed	Sydney Wader, Elisa Favela, Victoria Taylor	3
Wild pitches	Sydney Wader	6
Hit batters	Victoria Taylor	10

<b>Fielding</b>		
Category	Player	Stat
Chances	Laina Suesue	210
Putouts	Laina Suesue	203
Assists	Sarah Evans	55
Errors	Sarah Evans	7
Fielding %	Laina Suesue, Chelsea Fagan, Victoria Taylor, Abbie Dow, Elisa Favela	1.000
Fielding DPs	Sarah Evans, Faith Otts, Sarah Pitre	1

## GAME-BY-GAME STARTERS BY POSITION

Pitcher			Leadoff		
	Games started	Record		Games started	Record
Sydney Wader	13	11-2	Rachel Miller	19	15-4
Victoria Taylor	11	7-4	Sarah Evans	9	7-2
Elisa Favela	4	4-0			
<b>Catcher</b>			<b>2nd Spot</b>		
Laina Suesue	28	22-6	Faith Otts	16	13-3
			Rachel Miller	7	5-2
			Sarah Evans	3	2-1
			Laina Suesue	2	2-0
<b>First Base</b>			<b>3rd Spot</b>		
Chelsea Fagan	22	20-2	Faith Otts	10	7-3
Christina Hill	5	1-4	Elisa Favela	10	7-3
Abbie Dow	1	1-0	Sarah Evans	6	6-0
			Savannah Martinez	2	2-0
<b>Second Base</b>			<b>Cleanup</b>		
Sarah Pitre	27	21-6	Chelsea Fagan	16	14-2
Sarah Evans	1	1-0	Laina Suesue	6	5-1
			Savannah Martinez	4	3-1
			Sarah Pitre	2	0-2
<b>Third Base</b>			<b>5th Spot</b>		
Faith Otts	28	22-6	Sarah Pitre	10	9-1
			Chelsea Fagan	7	6-1
			Laina Suesue	6	2-4
			Elisa Favela	2	2-0
			Faith Otts	2	2-0
			Savannah Martinez	1	1-0
<b>Shortstop</b>			<b>6th Spot</b>		
Sarah Evans	22	19-3	Elisa Favela	9	7-2
Savannah Martinez	6	3-3	Sarah Pitre	6	5-1
			Laina Suesue	5	5-0
			Savannah Martinez	4	2-2
			Christina Hill	2	2-0
			Sarah Evans	1	1-0
			Ryah Kaniho	1	0-1
<b>Left Field</b>			<b>7th Spot</b>		
Savannah Martinez	10	10-0	Sarah Pitre	9	7-2
Hallie Saintignan	9	6-3	Laina Suesue	5	4-1
Shelby Fleming	7	4-3	Savannah Martinez	5	5-0
Hannah Scullion	2	2-0	Ryah Kaniho	4	2-2
			Sarah Evans	3	3-0
			Christina Hill	1	0-1
			Elisa Favela	1	1-0
<b>Center Field</b>			<b>8th Spot</b>		
Rachel Miller	28	22-6	Shelby Fleming	6	3-3
			Christina Hill	5	2-3
			Elisa Favela	4	4-0
			Laina Suesue	4	4-0
			Savannah Martinez	3	3-0
			Ryah Kaniho	2	2-0
			Rachel Miller	2	2-0
			Hallie Saintignan	1	1-0
			Sarah Evans	1	1-0
<b>Right Field</b>			<b>9th Spot</b>		
Ryah Kaniho	10	6-4	Hallie Saintignan	16	12-4
Hallie Saintignan	8	7-1	Ryah Kaniho	3	2-1
Christina Hill	6	6-0	Christina Hill	3	3-0
Savannah Martinez	2	2-0	Hannah Scullion	2	2-0
Sarah Evans	1	1-0	Sarah Evans	1	1-0
Maeson Grace	1	0-1	Maeson Grace	1	0-1
			Shelby Fleming	1	1-0
			Abbie Dow	1	1-0
<b>Designated Player</b>					
Elisa Favela	24	19-5			
Brooke Ford-Nelson	2	2-0			
Chelsea Fagan	1	0-1			
Savannah Martinez	1	1-0			



# SOUTHERN ARKANSAS UNIVERSITY

## 2019 LADY MULERIDER SOFTBALL GAME NOTES

### VS. SOUTHEASTERN OKLAHOMA STATE | MAR. 22-23 | MAGNOLIA, ARK.



#### TEAM HIGHS

##### BATTING

Category	Stat	Game
At bats	38	at Harding (2/24/19)
Runs scored	14	vs. NW Oklahoma (3/1/19)
Hits	15	vs. NW Oklahoma (3/2/19)
RBI's	14	vs. NW Oklahoma (3/1/19)
Doubles	3	done six times
Triples	1	vs. Missouri S&T (2/2/19)
		at East Central (3/16/19)
Home runs	4	at East Central (3/16/19)
Total bases	24	vs. NW Oklahoma (3/2/19)
Walks	11	vs. NW Oklahoma (3/1/19)
Strikeouts	17	vs. Missouri-St. Louis (2/16/19)
Sac hits	3	vs. Northeastern State (2/17/19)
Sac flies	2	vs. NW Oklahoma (3/2/19)
		at East Central (3/16/19)
Stolen bases	2	vs. Southwest Baptist (2/1/19)
Hit by pitch	3	at Harding (2/24/19)
		vs. NW Oklahoma (3/2/19)
		at East Central (3/16/19)
Caught Stealing	1	at Harding (2/24/19)
Runners LOB	11	at Harding (2/25/19)
Hit into DP	2	at Southwestern Okla. (3/9/19)
		at East Central (3/16/19)

##### FIELDING

Putouts	27	at Harding (2/24/19)
Assists	17	at East Central (3/16/19)
Errors	4	at Southwestern Okla. (3/9/19)
Passed Balls	1	at Harding (2/24/19)
		vs. NW Oklahoma (3/2/19)
		at Southwestern Okla. (3/8/19)
DPs turned	1	vs. Northeastern State (2/17/19)
		vs. NW Oklahoma (3/2/19)

##### PITCHING

Innings pitched	9.0	at Harding (2/24/19)
Runs allowed	10	at Southwestern Okla. (3/9/19)
Earned runs	10	at Southwestern Okla. (3/9/19)
Walks allowed	5	at Southwestern Okla. (3/9/19)
		at Southwestern Okla. (3/9/19)
Strikeouts	14	vs. Emporia State (2/17/19)
Hits allowed	13	at Harding (2/24/19)
Doubles allowed	2	at Southwestern Okla. (3/9/19)
Triples allowed	1	at Southwestern Okla. (3/8/19)
Home runs allowed	2	at Southwestern Okla. (3/8/19)
Wild pitches	2	at Harding (2/24/19)
		at Southwestern Okla. (3/9/19)
Hit batters	2	done five times

#### INDIVIDUAL GAME HIGHS

##### BATTING

Category	Stat	Game
At bats	5	done five times
Runs scored	3	done eight times
Hits	4	Sarah Pitre vs. Northeastern State
		Faith Otts at East Central
RBI's	7	Chelsea Fagan vs. NW Oklahoma
		Faith Otts at East Central
Doubles	2	Elisa Favela vs. Tampa
Triples	1	Sarah Pitre vs. Missouri S&T
Home runs	2	Chelsea Fagan vs. NW Oklahoma
		Faith Otts at East Central
Total bases	10	Faith Otts at East Central
Walks	3	done four times
Strikeouts	3	done 5 times
Sac hits	2	Christina Hill vs. Northeastern State
Sac flies	1	done four times
Stolen bases	1	done seven times
Hit by pitch	2	Sarah Evans vs. Missouri S&T
		Faith Otts at Harding
		Faith Otts at East Central
Caught stealing	1	Ryah Kaniho at Harding
Runners LOB	5	Rachel Miller at East Central

##### FIELDING

Putouts	16	Laina Suesue vs Rogers State
Assists	11	Sarah Evans at East Central
Errors	2	Sarah Evans at Harding
		Faith Otts at Southwest Okla.
Passed Balls	1	Laina Suesue at Harding
		Laina Suesue vs. NW Oklahoma
		Laina Suesue at Southwest Okla.

##### PITCHING

Innings pitched	8.0	Sydney Wader at Harding
Runs allowed	8	Sydney Wader at Southwest Okla.
Earned runs	8	Sydney Wader at Southwest Okla.
Walks allowed	5	Sydney Wader at Southwest Okla.
Strikeouts	14	Victoria Taylor vs Emporia State
Hits allowed	10	Sydney Wader at Southwest Okla.
Doubles allowed	2	Sydney Wader at Southwest Okla.
Triples allowed	1	Sydney Wader at Southwest Okla.
Home runs allowed	1	done times
Wild pitches	2	Sydney Wader at Harding
		Sydney Wader at Southwest Okla.
Hit batters	2	done five times

#### INNING-BY-INNING SCORING SUMMARY (AS OF 3-21-19)

TEAM	1	2	3	4	5	6	7	Ex	TOTALS
SOUTHERN ARKANSAS	21	26	30	21	35	15	14	8	170
OPPONENTS	11	10	6	12	11	9	5	1	60





# SOUTHERN ARKANSAS UNIVERSITY

## 2019 LADY MULERIDER SOFTBALL GAME NOTES

### VS. SOUTHEASTERN OKLAHOMA STATE | MAR. 22-23 | MAGNOLIA, ARK.



## JASON ANDERSON

HEAD SOFTBALL COACH  
5TH SEASON AT SAU  
ARKANSAS TECH (2001)

Jason Anderson enters into his fifth season as the head coach of the Southern Arkansas softball program and in his short time at SAU, Anderson has helped the Lady Mulerider softball program reach new heights.

Last season, Anderson and the Lady Mulerid-

ers authored another successful chapter in the program's continual rise to national prominence as a program-best 60-11 record saw Southern Arkansas finish third in the nation at the NCAA Division II Women's College World Series in Salem, Virginia. It was the program's second World Series appearance in three years and came on the heels of SAU claiming their second Central Region Championship which they did at home as the #2 seed in the tournament.

Additionally, Southern Arkansas claimed the program's first outright regular season conference title with a 38-6 record in GAC play. SAU did not lose a league series and won 10 of the 11 four-game sets, including six series sweeps on their way to a new program standard of 49 regular season wins. In all, Anderson and the Lady Muleriders posted an unblemished 21-0 mark Dawson Field inside the Mulerider Softball Complex, which included a 5-0 mark in postseason play. Under Anderson's direction, the SAU offense dominated opposing pitching as it finished the regular season with the league-lead in average, slugging percentage, on-base percentage, runs scored, RBI, home runs, total bases, walks, and owned the league's second-most hits. The Lady Muleriders finished the 2018 campaign ranked third in the nation in home runs per game (1.59) and seventh in slugging percentage (.551).

Powering the Lady Muleriders on their historic run was a highly dangerous lineup that broke the Great American Conference's single-season team home run record for the second-straight year after his 2018 squad belted 98 home runs in the regular season to top the 95 that were hit by the club in 64 games last season. However, it wasn't all about offense in Anderson's fourth season as the Lady Mulerider pitching staff posted regular season league-bests in ERA, opponent batting average, strikeouts, strikeouts looking, wins, and the fewest hits, runs, earned runs and walks allowed. The club finished with a 3.80 strikeout-to-walk ratio that ranked seventh nationally and the staff's 1.76 ERA concluded the campaign as the seventh-lowest in the country.

Individual accolades were plenty during and following the 2018 season as Anderson saw nine of his players combine to claim 13 GAC "of the Week" honors with five players, two pitchers and a pair of freshmen receiving the weekly recognition. Eight players were selected to All-GAC teams, highlighted by redshirt senior Brooke Goad and sophomore Victoria Taylor claiming GAC Player and Pitcher of the Year honors, respectively, while Anderson claimed the league's Coach of the Year award.

The playing duo of Goad and Taylor became the first teammates in NCAA Division II history to record a 30-30 campaign as Goad, the GAC's Female Athlete of the Year, belted 32 home runs, while Taylor recorded 33 wins; both program records. Additionally, the duo was named as finalists for the Schutt Sports/NFCA Division II

National Player of the Year, while also securing All-America honors from the NFCA and D2CCA; while also being named the latter's Central Region Player and Pitcher of the Year, respectively.

The Muleriders finished the season ranked No. 3 nationally by the NFCA and spent time in the organization's Top 25 throughout the regular season and postseason run.

In 2018, Southern Arkansas finished 46-18 including the team's second-straight season with twenty or more wins in Magnolia. The Lady Muleriders finished second in the Great American Conference regular season with a 32-12 mark in league play, SAU made the GAC Tournament for the sixth year in a row, third under Anderson, where it finished as tournament Runner-Up and received an at-large bid (#5 seed) to its second-straight NCAA Central Region Tournament.

The Lady Muleriders finished the season with the GAC's second-best team batting average (.312) led by Maddie Dow's league-best average of .423. Dow concluded her season campaign as the GAC Female Athlete of the Year, consensus All-America honoree, and the CoSIDA Division II Softball Academic All-America of the Year. Southern Arkansas also boasted the third-lowest team ERA (1.91) behind strong seasons from Kaylee Garner and Victoria Taylor who combined for 38 wins, 20 complete games, 13 shutouts, and 294 strikeouts in 309.2 innings pitched.

In 2016, Anderson guided the Lady Muleriders to their best season in program history as they captured a then school-record 53 wins en route to the program's second Great American Conference Tournament Championship, its first Central Region title, and first appearance in the NCAA Division Women's College Softball World Series.

The 53 victories in 2016 marked the fourth time in Anderson's nine-year head coaching career that his team has surpassed the 50-win mark, and the first time it has been accomplished in the 18-year history of the Lady Mulerider softball program.

During the course of that record-setting run, SAU became ranked nationally for the first time in program history in late March, and after seven weeks of being nationally ranked, the club ended the season tabbed fourth in the NFCA DII Top-25 Coaches Poll following a fourth-place finish at the College World Series. It was the sixth time in Anderson's coaching career that his team finished with a top-5 national ranking at the conclusion of the season.

Statistically, Anderson's 2016 team finished the year ranked in the top-25 nationally in home runs per game (8th | 1.13), slugging percentage (11th | .501), win-loss percentage (13th | .828), on-base percentage (14th | .409), fielding percentage (16th | .971), and earned run average (22nd | 1.96).

The offensive-minded coach, Anderson has helped build a team that has re-written numerous offensive records. In his first season, Anderson's Lady Muleriders established team single-season offensive records in Batting Average, Slugging Percentage, On-Base Percentage, and Walks. This past year, he helped surpass each of those records, while also establishing new team single-season marks in Wins (53), Runs Scored (381), Homeruns (72), Runs Batted In (343), and Total Bases (839).

In his first year as the head coach at SAU, Anderson would win 26 games while also leading the Lady Muleriders to their fourth-straight GAC Tournament berth. A proven winner in his career, Anderson, a native of Sheridan, Ark. has amassed an outstanding career coaching record of 386-108 (.781).

The first 226 of those career wins came during a five-year stint at Central Baptist College (Conway, Ark.).



# SOUTHERN ARKANSAS UNIVERSITY

## 2019 LADY MULERIDER SOFTBALL GAME NOTES

### VS. SOUTHEASTERN OKLAHOMA STATE | MAR. 22-23 | MAGNOLIA, ARK.



In those five seasons at CBC, Anderson lost only 38 games against his 226 wins as he compiled an eye-popping .856 winning percentage with the Mustangs. In each of his first three seasons at CBC, Anderson guided the Mustangs to a berth in the National Christian College Athletic Association (NCCAA) National Tournament. A five-time NCCAA Regional Coach of the Year, Anderson's 2010 CBC team would go a remarkable 52-1 (.981) en route to a NCCAA National Championship. Anderson would later be named the NCCAA National Coach of the Year that season. In the two seasons following the 2010 national championship, Anderson's Mustangs would win 50+ games twice as they advanced to the NAIA National Tournament in 2011 and 2012. In each of those seasons, the Mustangs would end the season nationally-ranked in the top-five.

Following the 2012 season, Anderson left CBC and moved to the coaching ranks of NCAA Division II as he became the head coach at the University of North Alabama (Florence, Ala.). In his lone season at UNA, Anderson led North Alabama to one of the best seasons in school history. That year, the Lions put together a 40-20 record and were ranked as high as No. 10 nationally in the NCAA Division II polls (NFCA).

Anderson's UNA team in 2013 would set new single-season school records for wins (40), hits (572), RBIs (330), doubles (108), team batting average (.338) and games played (60), while qualifying for only the second NCAA Regional in UNA history.

A total of five players were named to the All-Gulf South Conference team at the end of the year, three of which also landed on the All-South Region squad.

After that one year at North Alabama, Anderson moved to the coaching ranks in the Great American Conference (GAC) as he was named head coach at Northwestern Oklahoma State University (Alva, Okla.).

While at NWOSU, Anderson would take a team that had not had a winning season since 2008 and turn them into a 41-15 club. Picked to finish ninth in the preseason GAC coaches' poll, Anderson would have his team end up second in the GAC regular season standings after his Rangers' club finished in a tie in the loss column,

but one game back in the win column to regular season champs, Southeastern Oklahoma.

Statistically, Anderson's 2014 Rangers would set numerous records including the school record for wins (41) and winning percentage (.732). Offensively, his team would set new school single-season marks in batting average (.325), slugging percentage (.535), runs scored (351), hits (516), doubles (92), homeruns (79), RBIs (322), total bases (853), and walks (174).

Along with the team records set, Anderson coached four players who would go on to set or tie 12 single-season individual records.

In his career, Anderson has coached the National Pitcher of the Year (2011, 2010), the National Player of the Year (2011), the National Newcomer of the Year (2016), the CoSIDA Division II Softball Academic All-America of the Year (2017), the GAC Female Athlete of the Year (2018, 2017), 23 All-Americans, 50 All-Conference honorees, and 19 All-Region players among many other athletes that have received individual athletic and academic accolades.

Anderson is married to the former Renee Byford and the couple has two children, Addison and Kyler.

## THE ANDERSON FILE

### Education:

Arkansas Tech University	B.A. Sociology/Criminal Justice (2001)
Webster University	M.B.A (2005)

### Coaching Experience:

2008-12	Head Coach	Central Baptist College
2013	Head Coach	University of North Alabama
2014	Head Coach	Northwestern Oklahoma State Univ.
2015-present	Head Coach	Southern Arkansas

### Head Coaching Record:

2008-12	Central Baptist College	226-38 (.856)
2013	University of North Alabama	40-20 (.667)
2014	Northwestern Oklahoma State	41-15 (.732)
2015-present	Southern Arkansas	206-70 (.746)
11 years		514-143 (.782)

### Career Coaching Year-by-Year:

2008	29-9	Central Baptist
2009	35-13	Central Baptist
2010	52-1	Central Baptist
2011	57-7	Central Baptist
2012	53-8 (13-1 MCAC)	Central Baptist
2013	40-20 (21-13 GSC)	North Alabama
2014	41-15 (27-11 GAC)	NW Oklahoma
2015	26-24 (16-16 GAC)	Southern Arkansas
2016	53-11 (33-8 GAC)	Southern Arkansas
2017	46-18 (32-12 GAC)	Southern Arkansas
2018	60-11 (38-6 GAC)	Southern Arkansas
2019	22-6 (13-3 GAC)	Southern Arkansas
Total	514-143 (193-70)	



**SOUTHERN ARKANSAS UNIVERSITY**  
**2019 LADY MULERIDER SOFTBALL GAME NOTES**  
**VS. SOUTHEASTERN OKLAHOMA STATE | MAR. 22-23 | MAGNOLIA, ARK.**



**KAYLA ENGLISH**

ASSISTANT SOFTBALL COACH  
 3RD SEASON AT SAU  
 DAYTON (2015)

Kayla English enters her third season as an assistant coach with the Lady Muleriders and will continue serving as the team's pitching coach after directing a Southern Arkansas staff that posted the

Great American Conference's third-lowest team ERA (1.91) in 2017.

Under English's leadership, Kaylee Garner (Second-Team) and Victoria Taylor (Honorable Mention) claimed league postseason honors, while the pitching staff recorded 373 strikeouts to just 107 walks and added 46 wins, while opponents hit just .229 during the season.

Prior to her coming to SAU, English was a Graduate Assistant softball coach at Midwestern State University. During her lone year at Midwestern State, English coached two first-team players, a pair of second-team players, and one third-team player. Midwestern's pitching staff was ranked in the top five in strikeouts and batting average against within the Lone Star Conference. Along with her ability to coach a dominant pitching staff, English also has experience with recruiting successful pitchers to fit the needs of the program.

Before beginning her coaching career, English served as a notorious pitcher for the University of Dayton in which she spent all four years of her collegiate career. As a freshman, English held the lowest ERA on the team with a 2.55 and recorded 134 strikeouts in 140 innings pitched. During her career, she was named Atlantic 10 Pitcher of the Year, 4-time All-Atlantic 10, and first-team All-Conference in 2015, while also being a 10-time conference pitcher of the week. English also logged Dayton's first perfect game in 2015, and a no-hitter in 2014. A native of Grapevine, Texas holds the record for most strikeouts in a career at Dayton with 564.

Additionally, in her career English is third in wins with 53, and fourth in opponent batting average at .222. In her final year with the Dayton Flyers, English had her best statistical year as she recorded a 2.14 ERA with 121 strikeouts in 124 innings pitched en route to being named to the A-10 All-Rookie Team.



**BROOKE GOAD**

ASSISTANT SOFTBALL COACH  
 1ST SEASON AT SAU  
 SAU (2018)

Brooke Goad enters into her first year as an assistant coach for the Mulerider Softball program as she will make the transition to the coaching ranks at SAU after a historic record-breaking career as a player for the Muleriders.

A native of Waxahachie, Texas, Goad developed into the most prolific power hitter not only in SAU history, but in NCAA Division II lore as well. For her career, Goad hit .365 (245-for-671) with 262 runs scored, 51 doubles, two triples, 90 home runs, 213 RBIs and 218 walks. Additionally, she posted a .849 career slugging percentage and boasted a .534 on-base percentage.

A three-time All-America honoree for her unparalleled offensive production, Goad's 90 home runs over the course of her career are a NCAA Division II All-Time record. In fact, Goad's career home run total is tied for the third-most all-time, regardless of division.

As the nation's most potent power bat in recent memory, Goad also became a hitter not many opposing pitchers wanted to face and her walk totals reflected that sentiment. With 218 career walks and nearly half of those coming in her senior season, Goad is also currently the DII All-Time leader in walks.

In her true freshman campaign in 2014, Goad burst onto the scene with 15 home runs in just 36 games. Unfortunately, that sensational rookie season was cut short at 36 games as Goad suffered the first of what would be three significant knee injuries. Goad battled back from that initial injury to play the beginning of her sophomore season in 2015. Through just nine games that year, Goad had two more home runs, but like her freshman season, Goad missed the remainder of the year with a knee injury.

After gaining a medical redshirt for the 2015 season, Goad came back healthy in 2016 and as a redshirt sophomore helped lead the Muleriders to the NCAA Division II Softball Championship for the first time in program history. Individually, Goad earned her first All-America plaudit as she batted .364 that year and hit a SAU and Great American Conference (GAC) single-season record 23 home runs. Goad then followed that up in 2017 with an 18 home run campaign and was once more an All-American.

While her career had already achieved elite status, Goad found a way to elevate it even more her senior year as she had one of the best offensive seasons ever in softball. That year, Goad hit .393 (68-for-173) with 80 runs scored, eight doubles, 32 home runs 72 RBIs and 91 walks. A consensus first-team All-America selection, Goad set DII single-season records for home runs and walks. Her production at the plate helped lead the Muleriders back to the NCAA DII Softball Championship for the second time in three years.

The Female Athlete of the Year overall in the GAC in 2017-18, Goad's senior season saw her set nine single-season program hitting records, including slugging percentage, on-base percentage, games played, runs scored, RBI, home runs, total bases, walks, and intentional walks. That output helped her finish her career as the sole owner of nine career program hitting records.



**SOUTHERN ARKANSAS UNIVERSITY**  
**2019 LADY MULERIDER SOFTBALL GAME NOTES**  
**VS. SOUTHEASTERN OKLAHOMA STATE | MAR. 22-23 | MAGNOLIA, ARK.**



**BRYNN BACA**

GRADUATE ASSISTANT SOFTBALL COACH  
 2ND SEASON AT SAU  
 LAMAR (2017)

Brynn Baca enters her second season as a graduate assistant for the Lady Mulerider Softball program. Baca will work with the catchers and hitters during her second year at Southern



**ROBYN LEIGHTON**

GRADUATE ASSISTANT SOFTBALL COACH  
 1ST SEASON AT SAU  
 MOREHEAD STATE (2018)

Robyn Leighton enters her first year as a graduate assistant softball coach at Southern Arkansas.

Arkansas.

This is the first coaching stop for Baca, but the Round Rock, Texas, native brings expansive Division I playing experience to Magnolia after a standout career with Lamar of the Southland Conference. A two-time All-Southland Conference First-Team selection as a catcher, Baca concluded her career in Beaumont as the program leader in hit-by-pitch (46), and on-base percentage (.446), finished tied with the career record in steals (37) and owns the program's third-highest career batting average (.315).

Baca appeared in 199 games in her four years as a Lady Cardinal, making 193 starts. As a senior she led the team in assists (275) and hit .313 with 33 RBI, while also setting a single-season school record with 18 HBP and finishing a game shy of the program's reached base safely streak after successfully reaching in 25 straight games. That production helped Baca lead Lamar to a regional championship and a second-place finish at the National Invitational Softball Championships where she hit .360 in nine games, while being named to the All-Tournament Team.

Academically, Baca claimed several academic honors while at Lamar including being named a First-Team selection on the Southland Conference All-Academic Team as a junior after being named to the Southland Conference Commissioner's Academic Honor Roll as a freshman.

In the summer of 2017, following her four-year career at Lamar, Baca was invited by USA Baseball to participate in the Women's National Team Development Program. In 2016, Baca finished as a finalist for the 2016 US National Team that competed in the Women's Baseball World Cup.

A native of Parker, Colo., Leighton comes to SAU for her first coaching experience after a productive four-year playing career at NCAA Division I-Morehead State University (Morehead, Ky.). A career .305 hitter, Leighton played in 175 games and totaled 66 runs scored, 15 doubles, three triples, 26 home runs, and 82 RBIs as an Eagle.

After playing in 28 games as a freshman and hitting .259, Leighton broke out as a sophomore and was a second-team All-Ohio Valley Conference (OVC) honoree after she hit .343 (46-for-134) in 51 games with eight doubles, two triples, six home runs and drove in 21.

A year later, Leighton's average dipped slightly to .308 over a 45-game season, but her power production increased as she doubled her home run output to 12 while driving in a career-best 34 runs. Leighton capped her career with another productive year as she hit .284 over 51 games with a pair of doubles, six home runs and 21 RBIs.



# SOUTHERN ARKANSAS UNIVERSITY

## 2019 LADY MULERIDER SOFTBALL GAME NOTES

VS. SOUTHEASTERN OKLAHOMA STATE | MAR. 22-23 | MAGNOLIA, ARK.



# 2019 Softball Roster

#	Full Name	Pos.	Ht.	Cls.	B/T.	Hometown / Previous School
1	Faith Otts	IF	5-7	Jr.	R/R	Benton, Ark./Harmony Grove HS
2	Kylie Cowan	UTL	5-7	So.	S/R	Foreman, Ark./Foreman HS
3	Yulissa Hinojosa	IF	5-8	Jr.	L/R	McAllen, Texas/Nikki Rowe HS
4	Maeson Grace	DF	5-7	So.	R/R	Sheridan, Ark./Sheridan HS
5	Abbie Dow	1B	5-10	R-So.	R/R	Bonham, Texas/Sam Rayburn HS
6	Sarah Pitre	IF	5-7	So.	R/R	Youngsville, La./Ovey Comeaux HS
7	Sydney Wader	RHP	6-2	Jr.	R/R	Vilonia, Ark./ Louisiana-Monroe
8	Victoria Taylor	RHP	5-8	Jr.	R/R	Greenwood, Ark./Greenwood HS
9	MacKenzie Downs	RHP	5-4	Fr.	R/R	Bonham, Texas/Bonham HS
10	Rachel Miller	UTL	5-11	Jr.	R/L	Rusk, Texas/Rusk HS
11	Christina Hill	UTL	5-10	Jr.	L/L	Southlake, Texas/NCTC
12	Taylor Stricklin	DF	5-3	Sr.	L/L	Houston, Texas/Goose Creek Memorial
13	Samantha Garcia	IF	5-3	Fr.	R/R	Haltom City, Texas/Haltom HS
14	Emily Maxwell	IF	5-5	Fr.	R/R	Queen City, Texas/Queen City HS
15	Hallie Saintignan	DF	5-6	So.	L/L	Benton, La./Benton HS
16	Lauren Hodges	IF	5-6	Fr.	L/L	Paris, Texas/North Lamar HS
17	Laina Suesue	UTL	5-9	Jr.	L/L	Salt Lake City, Utah/Salt Lake CC
18	Hannah Scullion	DF	5-6	Jr.	L/L	Houston, Texas/Trinity Valley CC
19	Shelby Fleming	DF	6-0	Jr.	R/R	Asher, Okla./Grayson CC
22	Elisa Favela	UTL	5-8	Jr.	R/R	Ewa Beach, Hawaii/Bossier Parrish CC
23	Savanah Martinez	UTL	5-10	Jr.	R/R	Riesel, Texas/Trinity Valley CC
24	Alexis Cuellar	UTL	5-4	Sr.	R/R	Canyon, Texas/Seward County College
25	Kimberly Abundis	RHP	5-3	Jr.	R/R	San Antonio, Texas/Trinity Valley CC
26	Shelrika Bryant	IF	5-4	Jr.	R/R	Bastrop, La./Bossier Parrish CC
27	Zoie Lunsford	DF	5-7	Fr.	R/R	Alma, Ark./Eastern Oklahoma State
28	Chelsea Fagan	UTL	5-10	Jr.	R/R	Bastrop, La./Bossier Parrish CC
29	Ryah Kaniho	UTL	5-5	Jr.	R/R	Lahainaluna, Hawaii/Trinity Valley CC
30	Dustie Cummings	UTL	5-6	Fr.	R/R	Greenwood, Ark./Greenwood HS
32	Macy Turner	UTL	5-5	Fr.	R/R	Camden, Ark./Camden Harmony Grove
33	Brooke Ford-Nelson	P/UTL	5-8	Sr.	L/R	Denton, Texas/NCTC
37	Sarah Evans	UTL	5-5	Fr.	R/R	Bryant, Ark./Bryant HS



**SOUTHERN ARKANSAS UNIVERSITY**  
**2019 LADY MULERIDER SOFTBALL GAME NOTES**  
**VS. SOUTHEASTERN OKLAHOMA STATE | MAR. 22-23 | MAGNOLIA, ARK.**



## 2019 SOFTBALL ROSTER

### Coaching Staff

Jason Anderson - Head Coach | Kayla English - Assistant Coach | Brooke Goad - Assistant Coach  
 | Brynn Baca - Graduate Assistant Coach | Robyn Leighton - Graduate Assistant Coach



**1 | Faith Otts | Junior**  
**INF | Benton, AR | Harmony Grove HS**

Overall: .300 | GAC: .327 | Last 10: .323  
 On-base streak: 3

Season Stats

Games played/started	28/28
Slash Line	.300/.390/.578
Hits-ABs	27-90
RBI/Runs	25/20
2Bs/3Bs/HRs	4/0/7
Walks-Strikeouts-HBPs	6-8-8
Stolen Bases	0-0
Putouts-Assists-Errors	18-45-5



**4 | Maeson Grace | Sophomore**  
**OF | Sheridan, AR | Sheridan HS**

Overall: .200 | GAC: .333 | Last 10: .333  
 On-base streak: 1

Season Stats

Games played/started	15/1
Slash Line	.200/.200/.200
Hits-ABs	1-5
RBI/Runs	0/3
2Bs/3Bs/HRs	0/0/0
Walks-Strikeouts-HBPs	0-2-0
Stolen Bases	0-0
Putouts-Assists-Errors	2-0-0



**5 | Abbie Dow | Redshirt-Sophomore**  
**1B | Bonham, TX | Sam Rayburn HS**

Overall: .250 | GAC: .250 | Last 10: .250  
 On-base streak: 1

Season Stats

Games played/started	1/1
Slash Line	.250/.500/.250
Hits-ABs	1-4
RBI/Runs	1/0
2Bs/3Bs/HRs	1/0/0
Walks-Strikeouts-HBPs	0-2-0
Stolen Bases	0-0
Putouts-Assists-Errors	11-0-0



**6 | Sarah Pitre | Sophomore**  
**INF | Youngsville, LA | Ovey Comeaux HS**

Overall: .277 | GAC: .240 | Last 10: .258  
 On-base streak: 1

Season Stats

Games played/started	27/27
Slash Line	.277/.344/.530
Hits-ABs	23-83
RBI/Runs	21/16
2Bs/3Bs/HRs	4/1/5
Walks-Strikeouts-HBPs	9-16-0
Stolen Bases	0-0
Putouts-Assists-Errors	41-34-3



**7 | Sydney Wader | Junior**  
**RHP | Vilonia, AR | Louisiana-Monroe**

Overall: 11-2, 1.99 ERA, 58 K, 19 BB  
 GAC: 7-1, 2.61 ERA, 33 K, 15 BB

Season Stats

Games played/started	13/13
ERA	1.99
Innings Pitched	77.1
Strikeouts-Walks	58-19
Hits-Runs-Earned Runs	61-28-22
Extra base hits allowed	12
Opponent Batting Average	.207
Complete Games/Shutouts	9/3



**8 | Victoria Taylor | Junior**  
**RHP | Greenwood, AR | Greenwood HS**

Overall: 5-3, 2.21 ERA, 87 K, 14 BB  
 GAC: 0-2, 6.00 ERA, 21 K, 7 BB

Season Stats

Games played/started	11/11
ERA	2.21
Innings Pitched	57.0
Strikeouts-Walks	87-14
Hits-Runs-Earned Runs	32-19-18
Extra base hits allowed	7
Opponent Batting Average	.161
Complete Games/Shutouts	5/4



**SOUTHERN ARKANSAS UNIVERSITY**  
**2019 LADY MULERIDER SOFTBALL GAME NOTES**  
**VS. SOUTHEASTERN OKLAHOMA STATE | MAR. 22-23 | MAGNOLIA, ARK.**

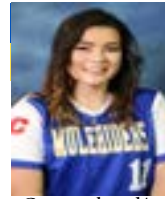


**10 | Rachel Miller | Junior**  
**UTL | Rusk, TX | Rusk HS**

**Overall: .253 | GAC: .204 | Last 10: .226**  
**On-base streak: 0**

**Season Stats**

Games played/started	28/28
Slash Line	.253/.394/.437
Hits-ABs	22-87
RBI/Runs	14/22
2Bs/3Bs/HRs	4/0/4
Walks-Strikeouts-HBPs	14-15-7
Stolen Bases	5-5
Putouts-Assists-Errors	27-2-1



**11 | Christina Hill | Junior**  
**UTL | Southlake, TX | NCTC**

**Overall: .393 | GAC: .286 | Last 10: .333**  
**On-base streak: 5**

**Season Stats**

Games played/started	11/11
Slash Line	.393/.485/.500
Hits-ABs	11-28
RBI/Runs	5/4
2Bs/3Bs/HRs	3/0/0
Walks-Strikeouts-HBPs	5-3-0
Stolen Bases	0-0
Putouts-Assists-Errors	30-0-2



**12 | Taylor Stricklin | Senior**  
**OF | Houston, TX | Goose Creek Memorial**

**Overall: .000 | GAC: .000 | Last 10: .000**  
**On-base streak: 0**

**Season Stats**

Games played/started	10/0
Slash Line	.000/.000/.000
Hits-ABs	0-0
RBI/Runs	0/2
2Bs/3Bs/HRs	0/0/0
Walks-Strikeouts-HBPs	0-0-0
Stolen Bases	0-0
Putouts-Assists-Errors	0-0-0



**15 | Hallie Saintignan | Sophomore**  
**OF | Benton, AR | Benton HS**

**Overall: .159 | GAC: .200 | Last 10: .222**  
**On-base streak: 1**

**Season Stats**

Games played/started	23/17
Slash Line	.159/.275/.205
Hits-ABs	7-44
RBI/Runs	5/12
2Bs/3Bs/HRs	2/0/0
Walks-Strikeouts-HBPs	7-7-0
Stolen Bases	0-0
Putouts-Assists-Errors	12-0-1



**17 | Laina Suesue | Junior**  
**C/UTL | Salt Lake City, UT | Salt Lake CC**

**Overall: .299 | GAC: .395 | Last 10: .444**  
**On-base streak: 10**

**Season Stats**

Games played/started	28/28
Slash Line	.299/.443/.416
Hits-ABs	23-77
RBI/Runs	12/14
2Bs/3Bs/HRs	3/0/2
Walks-Strikeouts-HBPs	17-7-3
Stolen Bases	1-1
Putouts-Assists-Errors	203-7-0



**18 | Hannah Scullion | Junior**  
**OF | Houston, TX | Trinity Valley CC**

**Overall: .200 | GAC: .000 | Last 10: .000**  
**On-base streak: 0**

**Season Stats**

Games played/started	17/2
Slash Line	.200/.333/.200
Hits-ABs	1-5
RBI/Runs	0/6
2Bs/3Bs/HRs	0/0/0
Walks-Strikeouts-HBPs	1-2-0
Stolen Bases	1-1
Putouts-Assists-Errors	1-0-0



**19 | Shelby Fleming | Junior**  
**OF | Asher, OK | Grayson CC**

**Overall: .105 | GAC: .000 | Last 10: .000**  
**On-base streak: 1**

**Season Stats**

Games played/started	8/7
Slash Line	.105/.150/.105
Hits-ABs	2-19
RBI/Runs	1/0
2Bs/3Bs/HRs	0/0/0
Walks-Strikeouts-HBPs	1-12-0
Stolen Bases	0-0
Putouts-Assists-Errors	2-0-1



**22 | Elisa Favela | Junior**  
**UT | Ewa Beach, HI | Bossier Parish CC**

**Overall: .338 | GAC: .375 | Last 10: .400**  
**On-base streak: 5**

**Season Stats**

Games played/started	27/26
Slash Line	.338/.411/.575
Hits-ABs	27-80
RBI/Runs	21/12
2Bs/3Bs/HRs	7/0/4
Walks-Strikeouts-HBPs	10-8-0
Stolen Bases	0-0
Putouts-Assists-Errors	1-7-0



**SOUTHERN ARKANSAS UNIVERSITY**  
**2019 LADY MULERIDER SOFTBALL GAME NOTES**  
**VS. SOUTHEASTERN OKLAHOMA STATE | MAR. 22-23 | MAGNOLIA, ARK.**



**22 | Elisa Favela | Junior**  
**RHP | Ewa Beach, HI | Bossier Parish**

**Overall: 6-0, 1.44 ERA, 27 K, 7 BB**  
**GAC: 6-0, 1.44 ERA, 27 K, 7 BB**

Season Stats

Games played/started	8/4
ERA	1.44
Innings Pitched	34.0
Strikeouts-Walks	27-7
Hits-Runs-Earned Runs	23-12-7
Extra base hits allowed	4
Opponent Batting Average	.183
Complete Games/Shutouts	3/2



**23 | Savanah Martinez | Junior**  
**UTL | Riesel, TX | Trinity Valley CC**

**Overall: .269 | GAC: .289 | Last 10: .345**  
**On-base streak: 2**

Season Stats

Games played/started	20/19
Slash Line	.269/.424/.519
Hits-ABs	14-52
RBIs/Runs	13/11
2Bs/3Bs/HRs	4/0/3
Walks-Strikeouts-HBPs	9-10-5
Stolen Bases	0-0
Putouts-Assists-Errors	16-8-2



**28 | Chelsea Fagan | Junior**  
**UTL | Bastrop, LA | Bossier Parrish CC**

**Overall: .325 | GAC: .325 | Last 10: .400**  
**On-base streak: 6**

Season Stats

Games played/started	23/23
Slash Line	.325/.388/.805
Hits-ABs	25-77
RBIs/Runs	29/23
2Bs/3Bs/HRs	1/0/12
Walks-Strikeouts-HBPs	7-14-1
Stolen Bases	0-0
Putouts-Assists-Errors	138-3-0

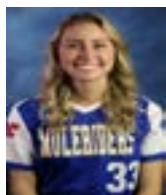


**29 | Ryah Kaniho | Junior**  
**UTL | Laihainaluna, HI | Bossier Parrish**

**Overall: .231 | GAC: .294 | Last 10: .182**  
**On-base streak: 0**

Season Stats

Games played/started	12/10
Slash Line	.231/.333/.269
Hits-ABs	6-26
RBIs/Runs	2/2
2Bs/3Bs/HRs	1/0/0
Walks-Strikeouts-HBPs	3-6-1
Stolen Bases	0-1
Putouts-Assists-Errors	6-0-1



**33 | Brooke Ford-Nelson | Senior**  
**RHP/UTL | Denton, TX | NCTC**

**Overall: 0-1, 3.60 ERA, 11 K, 0 BB, 2 S**  
**GAC: 0-0, 5.25 ERA, 3 K, 0 BB, 1 S**

Season Stats

Games played/started	9/0
ERA	3.60
Innings Pitched	11.2
Strikeouts-Walks	11-0
Hits-Runs-Earned Runs	18-6-6
Extra base hits allowed	1
Opponent Batting Average	.353
Saves	2



**37 | Sarah Evans | Freshman**  
**UTL | Bryant, AR | Bryant HS**

**Overall: .310 | GAC: .351 | Last 10: .400**  
**On-base streak: 6**

Season Stats

Games played/started	24/24
Slash Line	.310/.438/.592
Hits-ABs	22-71
RBIs/Runs	13/22
2Bs/3Bs/HRs	3/1/5
Walks-Strikeouts-HBPs	11-20-6
Stolen Bases	0-0
Putouts-Assists-Errors	28-55-7



**SOUTHERN ARKANSAS UNIVERSITY**  
**2019 LADY MULERIDER SOFTBALL GAME NOTES**  
**VS. SOUTHEASTERN OKLAHOMA STATE | MAR. 22-23 | MAGNOLIA, ARK.**



**Southern Arkansas Softball**  
**Statistics Summary for Southern Arkansas (as of Mar 21, 2019)**  
**(All games)**

Record: 22-6 Home: 5-0 Away: 9-3 Neutral: 8-3 GAC: 13-3

Date	Opponent	Score	Player	avg	slug	ob%	g	ab	r	h	2b	3b	hr	rbi	bb	so	sb	cs	e
2/1	vs Southwest Baptist	w 7-0	Elisa Favela	.338	.575	.411	27	80	12	27	7	0	4	21	10	8	0	0	0
2/2	vs Rogers State	w 1-0	Chelsea Fagan	.325	.805	.388	23	77	23	25	1	0	12	29	7	14	0	0	0
2/2	MISSOURI S&T	w 10-0	Sarah Evans	.310	.592	.438	24	71	22	22	3	1	5	13	11	20	0	0	7
2/8	vs #22 Valdosta State	L 0-3	Faith Otts	.300	.578	.390	28	90	20	27	4	0	7	25	6	8	0	0	5
2/8	vs Palm Beach Atl.	L 3-6	Laina Suesue	.299	.416	.443	28	77	14	23	3	0	2	12	17	7	1	0	0
2/9	vs West Ga.	w 1-0	Sarah Pitre	.277	.530	.344	27	83	16	23	4	1	5	21	9	16	0	0	3
2/9	vs Tampa	w 8-0	Savannah Martinez	.269	.519	.424	20	52	11	14	4	0	3	13	9	10	0	0	2
2/10	vs #5 Saint Leo	w 13-1	Rachel Miller	.253	.437	.394	28	87	22	22	4	0	4	14	14	15	5	0	1
2/16	vs Missouri-St. Louis	L 2-3	-----																
2/16	vs Maryville	w 5-1	Christina Hill	.393	.500	.485	11	28	4	11	3	0	0	5	5	3	0	0	2
2/17	vs Emporia State	w 6-0	Abbie Dow	.250	.500	.250	1	4	0	1	1	0	0	1	0	2	0	0	0
2/17	vs Northeastern State	w 9-0	Ryah Kaniho	.231	.269	.333	12	26	2	6	1	0	0	2	3	6	0	1	1
*2/24	at Harding	w 9-5	Hannah Scullion	.200	.200	.333	17	5	6	1	0	0	0	0	1	2	1	0	0
*2/24	at Harding	w 6-4	Maeson Grace	.200	.200	.200	15	5	3	1	0	0	0	0	0	2	0	0	0
*2/25	at Harding	w 3-2	Hallie Saintignan	.159	.205	.275	23	44	12	7	2	0	0	5	7	7	0	0	1
*2/25	at Harding	w 3-2	Shelby Fleming	.105	.105	.150	8	19	0	2	0	0	0	1	1	12	0	0	1
*3/1	NW OKLAHOMA	w 14-2	Taylor Stricklin	.000	.000	.000	11	1	3	0	0	0	0	0	0	0	0	0	0
*3/1	NW OKLAHOMA	w 3-0	Victoria Taylor	.000	.000	.000	2	0	0	0	0	0	0	0	0	0	0	0	0
*3/2	NW OKLAHOMA	w 10-2	Brooke Ford-Nelso	.000	.000	.000	2	0	0	0	0	0	0	0	0	0	0	0	0
*3/2	NW OKLAHOMA	w 8-0	Totals	.283	.506	.388	28	749	170	212	37	2	42	162	100	132	7	1	24
*3/8	at Southwestern Okla.	L 7-8	Opponents	.200	.264	.261	28	671	65	134	14	1	9	60	40	183	35	6	35

LOB - Team (192), Opp (134). DPs turned - Team (2), Opp (7).

Player	era	w-l	app	gs	cg	sh	sv	ip	h	r	er	bb	so	avg	hr
Elisa Favela	1.44	6-0	8	4	3	2	0	34.0	23	12	7	7	27	.183	3
Sydney Wader	1.99	11-2	13	13	9	3	0	77.1	61	28	22	19	58	.207	3
Victoria Taylor	2.21	5-3	11	11	5	4	0	57.0	32	19	18	14	87	.161	3
-----															
Brooke Ford-Nelson	3.60	0-1	9	0	0	0	2	11.2	18	6	6	0	11	.353	0
Totals	2.06	22-6	28	28	17	10	2	180.0	134	65	53	40	183	.200	9
Opponents	5.40	6-22	28	28	4	2	3	177.2	212	170	137	100	132	.283	42

PB - Team (3), Laina Suesue 3, Opp (3). SBA/ATT - Laina Suesue (35-40), V. Taylor (14-16), Sydney Wader (14-15), Elisa Favela (3-6), Ford-Nelson (4-4).

Score by innings	1	2	3	4	5	6	7	8	9	Total
Southern Arkansas	21	26	30	21	35	15	14	3	5	170
Opponents	11	10	6	12	11	9	5	0	1	65

Win-loss breakouts: Day 19-6; Night 3-0; vs Left 0-1; vs Right 22-5;  
 1-run games 4-2; 2-run games 1-1; 5+run games 11-1; Extra inns 3-0; Shutouts 10-2.  
 Current streak: Won 4; Longest winning streak: 11; Longest losing streak: 2.  
 Attendance: Home 542 (avg 180); Away 2605 (avg 118); Total 3147 (avg 125).



**SOUTHERN ARKANSAS UNIVERSITY**  
**2019 LADY MULERIDER SOFTBALL GAME NOTES**  
**VS. SOUTHEASTERN OKLAHOMA STATE | MAR. 22-23 | MAGNOLIA, ARK.**



**Southern Arkansas Softball**  
**Games Summary for Southern Arkansas (as of Mar 21, 2019)**  
**(All games)**

<b>Score by innings</b>	<b>1</b>	<b>2</b>	<b>3</b>	<b>4</b>	<b>5</b>	<b>6</b>	<b>7</b>	<b>8</b>	<b>9</b>	<b>Total</b>
Southern Arkansas	21	26	30	21	35	15	14	3	5	170
Opponents	11	10	6	12	11	9	5	0	1	65

**Record when ...**

Overall	22-6	After 4 leading	18-0
Conference	13-3	..... trailing	1-6
Non-Conference	9-3	..... tied	3-0
Home games	5-0	After 5 leading	14-0
Away games	9-3	..... trailing	1-4
Neutral site	8-3	..... tied	2-1
Day games	19-6	After 6 leading	11-0
Night games	3-0	..... trailing	1-5
vs Left starter	0-1	..... tied	3-0
vs Right starter	22-5		
1-Run games	4-2	Hit 0 home runs	4-3
2-Run games	1-1	... 1 home run	5-1
5+Run games	11-1	... 2+ home runs	13-2
Extra innings	3-0		
Shutouts	10-2	Opponent 0 home runs	19-1
		..... 1 home run	3-4
		..... 2+ HRs	0-1
Scoring 0-2 runs	2-3		
..... 3-5 runs	5-1		
..... 6-9 runs	10-2	Made 0 errors	12-2
..... 10+ runs	5-0	.... 1 error	7-0
		.... 2+ errors	3-4
Opponent 0-2 runs	19-0		
..... 3-5 runs	3-2	Opp. made 0 errors	6-2
..... 6-9 runs	0-3	..... 1 error	10-2
..... 10+ runs	0-1	..... 2+ errors	6-2
Scored in 1st inning	8-0		
Opp. scored in 1st	3-2	Out-hit opponent	19-1
Scores first	20-1	Out-hit by opponent	1-5
Opp. scores first	2-5	Hits are tied	2-0

**Record when team scores:**

Runs	0	1	2	3	4	5	6	7	8	9	10+
W-L	0-2	2-0	0-1	3-1	0-0	2-0	5-1	1-1	2-0	2-0	5-0

**Record when opponent scores:**

Runs	0	1	2	3	4	5	6	7	8	9	10+
W-L	10-0	3-0	6-0	1-2	1-0	1-0	0-1	0-0	0-2	0-0	0-1

**Record when leading after:**

Inn.	1	2	3	4	5	6
W-L	8-0	11-0	15-0	18-0	14-0	11-0

**Record when trailing after:**

Inn.	1	2	3	4	5	6
W-L	1-2	2-5	1-6	1-6	1-4	1-5

**Record when tied after:**

Inn.	1	2	3	4	5	6
W-L	13-4	9-1	6-0	3-0	2-1	3-0

Current winning streak: 4  
 Longest winning streak: 11  
 Longest losing streak: 2

Home attendance : 542 ( 3 dates avg = 180 )  
 Away attendance : 2605 ( 22 dates avg = 118 )  
 Total attendance: 3147 ( 25 dates avg = 125 )



**SOUTHERN ARKANSAS UNIVERSITY**  
**2019 LADY MULERIDER SOFTBALL GAME NOTES**  
**VS. SOUTHEASTERN OKLAHOMA STATE | MAR. 22-23 | MAGNOLIA, ARK.**



**Southern Arkansas Softball**  
**Batting Leaders for Southern Arkansas (as of Mar 21, 2019)**  
**(All games)**

Hitting minimums - 1 Games 4 AB 1 TPA 2.0 TPA/Game  
 Pitching minimums - 1 Games 3 IP 1.0 IP/Game

<p><b>Batting avg</b></p> <p>1. Elisa Favela .338                  2. Chelsea Fagan .325                  3. Sarah Evans .310                  4. Faith Otts .300                  5. Laina Suesue .299</p> <p><b>Runs scored</b></p> <p>1. Chelsea Fagan 23                  2. Sarah Evans 22                     Rachel Miller 22                  4. Faith Otts 20                  5. Sarah Pitre 16</p> <p><b>Doubles</b></p> <p>1. Elisa Favela 7                  2. Faith Otts 4                     Savannah Martinez 4                     Rachel Miller 4                     Sarah Pitre 4</p> <p><b>Total bases</b></p> <p>1. Chelsea Fagan 62                  2. Faith Otts 52                  3. Elisa Favela 46                  4. Sarah Pitre 44                  5. Sarah Evans 42</p> <p><b>Sac bunts</b></p> <p>1. Hallie Saintignan 3                  2. Christina Hill 2                     Elisa Favela 2                  4. 4 tied at..... 1</p> <p><b>Caught stealing</b></p> <p>1. Ryah Kaniho 1</p> <p><b>Strikeouts</b></p> <p>1. Sarah Evans 20                  2. Sarah Pitre 16                  3. Rachel Miller 15                  4. Chelsea Fagan 14                  5. Shelby Fleming 12</p> <p><b>At bats</b></p> <p>1. Faith Otts 90                  2. Rachel Miller 87                  3. Sarah Pitre 83                  4. Elisa Favela 80                  5. 2 tied at... 77</p> <p><b>Games as sub</b></p> <p>1. Hannah Scullion 15                  2. Maeson Grace 14                  3. Taylor Stricklin 10                  4. Hallie Saintignan 6                  5. 2 tied at... 2</p>	<p><b>Slugging pct</b></p> <p>1. Chelsea Fagan .805                  2. Sarah Evans .592                  3. Faith Otts .578                  4. Elisa Favela .575                  5. Sarah Pitre .530</p> <p><b>Hits</b></p> <p>1. Faith Otts 27                     Elisa Favela 27                  3. Chelsea Fagan 25                  4. Sarah Pitre 23                     Laina Suesue 23</p> <p><b>Triples</b></p> <p>1. Sarah Pitre 1                     Sarah Evans 1</p> <p><b>Walks</b></p> <p>1. Laina Suesue 17                  2. Rachel Miller 14                  3. Sarah Evans 11                  4. Elisa Favela 10                  5. 2 tied at.. 9</p> <p><b>Sac flies</b></p> <p>1. Rachel Miller 1                     Sarah Evans 1                     Sarah Pitre 1                     Faith Otts 1</p> <p><b>Steal attempts</b></p> <p>1. Rachel Miller 5                  2. Laina Suesue 1                     Hannah Scullion 1                     Ryah Kaniho 1</p> <p><b>Grounded into DP</b></p> <p>1. Faith Otts 2                  2. Savannah Martinez 1</p> <p><b>Games played</b></p> <p>1. Rachel Miller 28                     Faith Otts 28                     Laina Suesue 28                  4. Elisa Favela 27                     Sarah Pitre 27</p>	<p><b>On base pct</b></p> <p>1. Laina Suesue .443                  2. Sarah Evans .438                  3. Savannah Martinez .424                  4. Elisa Favela .411                  5. Rachel Miller .394</p> <p><b>Runs batted in</b></p> <p>1. Chelsea Fagan 29                  2. Faith Otts 25                  3. Sarah Pitre 21                     Elisa Favela 21                  5. Rachel Miller 14</p> <p><b>Home runs</b></p> <p>1. Chelsea Fagan 12                  2. Faith Otts 7                  3. Sarah Evans 5                     Sarah Pitre 5                  5. 2 tied at... 4</p> <p><b>Hit by pitch</b></p> <p>1. Faith Otts 8                  2. Rachel Miller 7                  3. Sarah Evans 6                  4. Savannah Martinez 5                  5. Laina Suesue 3</p> <p><b>Stolen bases</b></p> <p>1. Rachel Miller 5                  2. Laina Suesue 1                     Hannah Scullion 1</p> <p><b>Stolen base pct</b></p> <p>1. Rachel Miller 1.000                     Laina Suesue 1.000</p> <p><b>Total plate appearances</b></p> <p>1. Rachel Miller 110                  2. Faith Otts 106                  3. Laina Suesue 97                  4. Sarah Pitre 94                  5. Elisa Favela 92</p> <p><b>Game starts</b></p> <p>1. Faith Otts 28                     Rachel Miller 28                     Laina Suesue 28                  4. Sarah Pitre 27                  5. Elisa Favela 25</p>
---	--	---



**SOUTHERN ARKANSAS UNIVERSITY**  
**2019 LADY MULERIDER SOFTBALL GAME NOTES**  
**VS. SOUTHEASTERN OKLAHOMA STATE | MAR. 22-23 | MAGNOLIA, ARK.**



**Southern Arkansas Softball**  
**Pitching Leaders for Southern Arkansas (as of Mar 21, 2019)**  
**(All games)**

Hitting minimums - 1 Games 4 AB 1 TPA 2.0 TPA/Game  
 Pitching minimums - 1 Games 3 IP 1.0 IP/Game

<table border="0"> <thead> <tr><th colspan="2"><b>Earned run avg</b></th></tr> </thead> <tbody> <tr><td>1. Elisa Favela</td><td>1.44</td></tr> <tr><td>2. Sydney Wader</td><td>1.99</td></tr> <tr><td>3. Victoria Taylor</td><td>2.21</td></tr> </tbody> </table>	<b>Earned run avg</b>		1. Elisa Favela	1.44	2. Sydney Wader	1.99	3. Victoria Taylor	2.21	<table border="0"> <thead> <tr><th colspan="2"><b>Opposing bat avg</b></th></tr> </thead> <tbody> <tr><td>1. Victoria Taylor</td><td>.161</td></tr> <tr><td>2. Elisa Favela</td><td>.183</td></tr> <tr><td>3. Sydney Wader</td><td>.207</td></tr> </tbody> </table>	<b>Opposing bat avg</b>		1. Victoria Taylor	.161	2. Elisa Favela	.183	3. Sydney Wader	.207	<table border="0"> <thead> <tr><th colspan="2"><b>Won-loss pct</b></th></tr> </thead> <tbody> <tr><td>1. Elisa Favela</td><td>1.000</td></tr> <tr><td>2. Sydney Wader</td><td>.846</td></tr> <tr><td>3. Victoria Taylor</td><td>.625</td></tr> </tbody> </table>	<b>Won-loss pct</b>		1. Elisa Favela	1.000	2. Sydney Wader	.846	3. Victoria Taylor	.625				
<b>Earned run avg</b>																														
1. Elisa Favela	1.44																													
2. Sydney Wader	1.99																													
3. Victoria Taylor	2.21																													
<b>Opposing bat avg</b>																														
1. Victoria Taylor	.161																													
2. Elisa Favela	.183																													
3. Sydney Wader	.207																													
<b>Won-loss pct</b>																														
1. Elisa Favela	1.000																													
2. Sydney Wader	.846																													
3. Victoria Taylor	.625																													
<table border="0"> <thead> <tr><th colspan="2"><b>Wins</b></th></tr> </thead> <tbody> <tr><td>1. Sydney Wader</td><td>11</td></tr> <tr><td>2. Elisa Favela</td><td>6</td></tr> <tr><td>3. Victoria Taylor</td><td>5</td></tr> </tbody> </table>	<b>Wins</b>		1. Sydney Wader	11	2. Elisa Favela	6	3. Victoria Taylor	5	<table border="0"> <thead> <tr><th colspan="2"><b>Losses</b></th></tr> </thead> <tbody> <tr><td>1. Victoria Taylor</td><td>3</td></tr> <tr><td>2. Sydney Wader</td><td>2</td></tr> <tr><td>3. Brooke Ford-Nelson</td><td>1</td></tr> </tbody> </table>	<b>Losses</b>		1. Victoria Taylor	3	2. Sydney Wader	2	3. Brooke Ford-Nelson	1	<table border="0"> <thead> <tr><th colspan="2"><b>Saves</b></th></tr> </thead> <tbody> <tr><td>1. Brooke Ford-Nelson</td><td>2</td></tr> </tbody> </table>	<b>Saves</b>		1. Brooke Ford-Nelson	2								
<b>Wins</b>																														
1. Sydney Wader	11																													
2. Elisa Favela	6																													
3. Victoria Taylor	5																													
<b>Losses</b>																														
1. Victoria Taylor	3																													
2. Sydney Wader	2																													
3. Brooke Ford-Nelson	1																													
<b>Saves</b>																														
1. Brooke Ford-Nelson	2																													
<table border="0"> <thead> <tr><th colspan="2"><b>Innings pitched</b></th></tr> </thead> <tbody> <tr><td>1. Sydney Wader</td><td>77.1</td></tr> <tr><td>2. Victoria Taylor</td><td>57.0</td></tr> <tr><td>3. Elisa Favela</td><td>34.0</td></tr> </tbody> </table>	<b>Innings pitched</b>		1. Sydney Wader	77.1	2. Victoria Taylor	57.0	3. Elisa Favela	34.0	<table border="0"> <thead> <tr><th colspan="2"><b>Batters struck out</b></th></tr> </thead> <tbody> <tr><td>1. Victoria Taylor</td><td>87</td></tr> <tr><td>2. Sydney Wader</td><td>58</td></tr> <tr><td>3. Elisa Favela</td><td>27</td></tr> <tr><td>4. Brooke Ford-Nelson</td><td>11</td></tr> </tbody> </table>	<b>Batters struck out</b>		1. Victoria Taylor	87	2. Sydney Wader	58	3. Elisa Favela	27	4. Brooke Ford-Nelson	11	<table border="0"> <thead> <tr><th colspan="2"><b>Appearances</b></th></tr> </thead> <tbody> <tr><td>1. Sydney Wader</td><td>13</td></tr> <tr><td>2. Victoria Taylor</td><td>11</td></tr> <tr><td>3. Brooke Ford-Nelson</td><td>9</td></tr> <tr><td>4. Elisa Favela</td><td>8</td></tr> </tbody> </table>	<b>Appearances</b>		1. Sydney Wader	13	2. Victoria Taylor	11	3. Brooke Ford-Nelson	9	4. Elisa Favela	8
<b>Innings pitched</b>																														
1. Sydney Wader	77.1																													
2. Victoria Taylor	57.0																													
3. Elisa Favela	34.0																													
<b>Batters struck out</b>																														
1. Victoria Taylor	87																													
2. Sydney Wader	58																													
3. Elisa Favela	27																													
4. Brooke Ford-Nelson	11																													
<b>Appearances</b>																														
1. Sydney Wader	13																													
2. Victoria Taylor	11																													
3. Brooke Ford-Nelson	9																													
4. Elisa Favela	8																													
<table border="0"> <thead> <tr><th colspan="2"><b>Games started</b></th></tr> </thead> <tbody> <tr><td>1. Sydney Wader</td><td>13</td></tr> <tr><td>2. Victoria Taylor</td><td>11</td></tr> <tr><td>3. Elisa Favela</td><td>4</td></tr> </tbody> </table>	<b>Games started</b>		1. Sydney Wader	13	2. Victoria Taylor	11	3. Elisa Favela	4	<table border="0"> <thead> <tr><th colspan="2"><b>Games finished</b></th></tr> </thead> <tbody> <tr><td>1. Brooke Ford-Nelson</td><td>7</td></tr> <tr><td>2. Elisa Favela</td><td>4</td></tr> </tbody> </table>	<b>Games finished</b>		1. Brooke Ford-Nelson	7	2. Elisa Favela	4	<table border="0"> <thead> <tr><th colspan="2"><b>Games in relief</b></th></tr> </thead> <tbody> <tr><td>1. Brooke Ford-Nelson</td><td>9</td></tr> <tr><td>2. Elisa Favela</td><td>4</td></tr> </tbody> </table>	<b>Games in relief</b>		1. Brooke Ford-Nelson	9	2. Elisa Favela	4								
<b>Games started</b>																														
1. Sydney Wader	13																													
2. Victoria Taylor	11																													
3. Elisa Favela	4																													
<b>Games finished</b>																														
1. Brooke Ford-Nelson	7																													
2. Elisa Favela	4																													
<b>Games in relief</b>																														
1. Brooke Ford-Nelson	9																													
2. Elisa Favela	4																													
<table border="0"> <thead> <tr><th colspan="2"><b>Wild pitches</b></th></tr> </thead> <tbody> <tr><td>1. Sydney Wader</td><td>6</td></tr> <tr><td>2. Victoria Taylor</td><td>2</td></tr> <tr><td>3. Brooke Ford-Nelson</td><td>1</td></tr> </tbody> </table>	<b>Wild pitches</b>		1. Sydney Wader	6	2. Victoria Taylor	2	3. Brooke Ford-Nelson	1	<table border="0"> <thead> <tr><th colspan="2"><b>Balks</b></th></tr> </thead> <tbody> </tbody> </table>	<b>Balks</b>		<table border="0"> <thead> <tr><th colspan="2"><b>Hit batters</b></th></tr> </thead> <tbody> <tr><td>1. Victoria Taylor</td><td>10</td></tr> <tr><td>2. Sydney Wader</td><td>5</td></tr> <tr><td>3. Elisa Favela</td><td>1</td></tr> </tbody> </table>	<b>Hit batters</b>		1. Victoria Taylor	10	2. Sydney Wader	5	3. Elisa Favela	1										
<b>Wild pitches</b>																														
1. Sydney Wader	6																													
2. Victoria Taylor	2																													
3. Brooke Ford-Nelson	1																													
<b>Balks</b>																														
<b>Hit batters</b>																														
1. Victoria Taylor	10																													
2. Sydney Wader	5																													
3. Elisa Favela	1																													
<table border="0"> <thead> <tr><th colspan="2"><b>Intentional BB allowed</b></th></tr> </thead> <tbody> </tbody> </table>	<b>Intentional BB allowed</b>		<table border="0"> <thead> <tr><th colspan="2"><b>Runners picked off</b></th></tr> </thead> <tbody> </tbody> </table>	<b>Runners picked off</b>		<table border="0"> <thead> <tr><th colspan="2"><b>Batters SO out looking</b></th></tr> </thead> <tbody> <tr><td>1. Victoria Taylor</td><td>24</td></tr> <tr><td>2. Sydney Wader</td><td>11</td></tr> <tr><td>3. Elisa Favela</td><td>8</td></tr> <tr><td>4. Brooke Ford-Nelson</td><td>3</td></tr> </tbody> </table>	<b>Batters SO out looking</b>		1. Victoria Taylor	24	2. Sydney Wader	11	3. Elisa Favela	8	4. Brooke Ford-Nelson	3														
<b>Intentional BB allowed</b>																														
<b>Runners picked off</b>																														
<b>Batters SO out looking</b>																														
1. Victoria Taylor	24																													
2. Sydney Wader	11																													
3. Elisa Favela	8																													
4. Brooke Ford-Nelson	3																													
<table border="0"> <thead> <tr><th colspan="2"><b>Sac bunts allowed</b></th></tr> </thead> <tbody> <tr><td>1. Sydney Wader</td><td>5</td></tr> <tr><td>2. Victoria Taylor</td><td>3</td></tr> <tr><td>3. Elisa Favela</td><td>2</td></tr> </tbody> </table>	<b>Sac bunts allowed</b>		1. Sydney Wader	5	2. Victoria Taylor	3	3. Elisa Favela	2	<table border="0"> <thead> <tr><th colspan="2"><b>Sac flies allowed</b></th></tr> </thead> <tbody> <tr><td>1. Elisa Favela</td><td>1</td></tr> <tr><td>    Sydney Wader</td><td>1</td></tr> </tbody> </table>	<b>Sac flies allowed</b>		1. Elisa Favela	1	Sydney Wader	1	<table border="0"> <thead> <tr><th colspan="2"><b>Hits allowed</b></th></tr> </thead> <tbody> <tr><td>1. Elisa Favela</td><td>23</td></tr> <tr><td>2. Victoria Taylor</td><td>32</td></tr> <tr><td>3. Sydney Wader</td><td>61</td></tr> </tbody> </table>	<b>Hits allowed</b>		1. Elisa Favela	23	2. Victoria Taylor	32	3. Sydney Wader	61						
<b>Sac bunts allowed</b>																														
1. Sydney Wader	5																													
2. Victoria Taylor	3																													
3. Elisa Favela	2																													
<b>Sac flies allowed</b>																														
1. Elisa Favela	1																													
Sydney Wader	1																													
<b>Hits allowed</b>																														
1. Elisa Favela	23																													
2. Victoria Taylor	32																													
3. Sydney Wader	61																													
<table border="0"> <thead> <tr><th colspan="2"><b>Runs allowed</b></th></tr> </thead> <tbody> <tr><td>1. Elisa Favela</td><td>12</td></tr> <tr><td>2. Victoria Taylor</td><td>19</td></tr> <tr><td>3. Sydney Wader</td><td>28</td></tr> </tbody> </table>	<b>Runs allowed</b>		1. Elisa Favela	12	2. Victoria Taylor	19	3. Sydney Wader	28	<table border="0"> <thead> <tr><th colspan="2"><b>Earned runs allowed</b></th></tr> </thead> <tbody> <tr><td>1. Elisa Favela</td><td>7</td></tr> <tr><td>2. Victoria Taylor</td><td>18</td></tr> <tr><td>3. Sydney Wader</td><td>22</td></tr> </tbody> </table>	<b>Earned runs allowed</b>		1. Elisa Favela	7	2. Victoria Taylor	18	3. Sydney Wader	22	<table border="0"> <thead> <tr><th colspan="2"><b>Walks allowed</b></th></tr> </thead> <tbody> <tr><td>1. Elisa Favela</td><td>7</td></tr> <tr><td>2. Victoria Taylor</td><td>14</td></tr> <tr><td>3. Sydney Wader</td><td>19</td></tr> </tbody> </table>	<b>Walks allowed</b>		1. Elisa Favela	7	2. Victoria Taylor	14	3. Sydney Wader	19				
<b>Runs allowed</b>																														
1. Elisa Favela	12																													
2. Victoria Taylor	19																													
3. Sydney Wader	28																													
<b>Earned runs allowed</b>																														
1. Elisa Favela	7																													
2. Victoria Taylor	18																													
3. Sydney Wader	22																													
<b>Walks allowed</b>																														
1. Elisa Favela	7																													
2. Victoria Taylor	14																													
3. Sydney Wader	19																													
<table border="0"> <thead> <tr><th colspan="2"><b>Doubles allowed</b></th></tr> </thead> <tbody> <tr><td>1. Elisa Favela</td><td>1</td></tr> <tr><td>2. Victoria Taylor</td><td>4</td></tr> <tr><td>3. Sydney Wader</td><td>8</td></tr> </tbody> </table>	<b>Doubles allowed</b>		1. Elisa Favela	1	2. Victoria Taylor	4	3. Sydney Wader	8	<table border="0"> <thead> <tr><th colspan="2"><b>Triples allowed</b></th></tr> </thead> <tbody> <tr><td>1. Elisa Favela</td><td>0</td></tr> <tr><td>    Victoria Taylor</td><td>0</td></tr> <tr><td>3. Sydney Wader</td><td>1</td></tr> </tbody> </table>	<b>Triples allowed</b>		1. Elisa Favela	0	Victoria Taylor	0	3. Sydney Wader	1	<table border="0"> <thead> <tr><th colspan="2"><b>Home runs allowed</b></th></tr> </thead> <tbody> <tr><td>1. Victoria Taylor</td><td>3</td></tr> <tr><td>    Elisa Favela</td><td>3</td></tr> <tr><td>    Sydney Wader</td><td>3</td></tr> </tbody> </table>	<b>Home runs allowed</b>		1. Victoria Taylor	3	Elisa Favela	3	Sydney Wader	3				
<b>Doubles allowed</b>																														
1. Elisa Favela	1																													
2. Victoria Taylor	4																													
3. Sydney Wader	8																													
<b>Triples allowed</b>																														
1. Elisa Favela	0																													
Victoria Taylor	0																													
3. Sydney Wader	1																													
<b>Home runs allowed</b>																														
1. Victoria Taylor	3																													
Elisa Favela	3																													
Sydney Wader	3																													



**SOUTHERN ARKANSAS UNIVERSITY**  
**2019 LADY MULERIDER SOFTBALL GAME NOTES**  
**VS. SOUTHEASTERN OKLAHOMA STATE | MAR. 22-23 | MAGNOLIA, ARK.**



**Southern Arkansas Softball**  
**Fielding Leaders for Southern Arkansas (as of Mar 21, 2019)**  
**(All games)**

Hitting minimums - 1 Games  
 Pitching minimums - 1 Games 3 IP 1.0 IP/Game

<table border="0"> <thead> <tr> <th colspan="2"><b>Fielding pct</b></th> </tr> </thead> <tbody> <tr><td>1. Laina Suesue</td><td>1.000</td></tr> <tr><td>Chelsea Fagan</td><td>1.000</td></tr> <tr><td>Victoria Taylor</td><td>1.000</td></tr> <tr><td>Abbie Dow</td><td>1.000</td></tr> <tr><td>Elisa Favela</td><td>1.000</td></tr> </tbody> </table>	<b>Fielding pct</b>		1. Laina Suesue	1.000	Chelsea Fagan	1.000	Victoria Taylor	1.000	Abbie Dow	1.000	Elisa Favela	1.000	<table border="0"> <thead> <tr> <th colspan="2"><b>Chances</b></th> </tr> </thead> <tbody> <tr><td>1. Laina Suesue</td><td>210</td></tr> <tr><td>2. Chelsea Fagan</td><td>141</td></tr> <tr><td>3. Sarah Evans</td><td>90</td></tr> <tr><td>4. Sarah Pitre</td><td>78</td></tr> <tr><td>5. Faith Otts</td><td>68</td></tr> </tbody> </table>	<b>Chances</b>		1. Laina Suesue	210	2. Chelsea Fagan	141	3. Sarah Evans	90	4. Sarah Pitre	78	5. Faith Otts	68	<table border="0"> <thead> <tr> <th colspan="2"><b>Putouts</b></th> </tr> </thead> <tbody> <tr><td>1. Laina Suesue</td><td>203</td></tr> <tr><td>2. Chelsea Fagan</td><td>138</td></tr> <tr><td>3. Sarah Pitre</td><td>41</td></tr> <tr><td>4. Christina Hill</td><td>30</td></tr> <tr><td>5. Sarah Evans</td><td>28</td></tr> </tbody> </table>	<b>Putouts</b>		1. Laina Suesue	203	2. Chelsea Fagan	138	3. Sarah Pitre	41	4. Christina Hill	30	5. Sarah Evans	28
<b>Fielding pct</b>																																						
1. Laina Suesue	1.000																																					
Chelsea Fagan	1.000																																					
Victoria Taylor	1.000																																					
Abbie Dow	1.000																																					
Elisa Favela	1.000																																					
<b>Chances</b>																																						
1. Laina Suesue	210																																					
2. Chelsea Fagan	141																																					
3. Sarah Evans	90																																					
4. Sarah Pitre	78																																					
5. Faith Otts	68																																					
<b>Putouts</b>																																						
1. Laina Suesue	203																																					
2. Chelsea Fagan	138																																					
3. Sarah Pitre	41																																					
4. Christina Hill	30																																					
5. Sarah Evans	28																																					
<table border="0"> <thead> <tr> <th colspan="2"><b>Assists</b></th> </tr> </thead> <tbody> <tr><td>1. Sarah Evans</td><td>55</td></tr> <tr><td>2. Faith Otts</td><td>45</td></tr> <tr><td>3. Sarah Pitre</td><td>34</td></tr> <tr><td>4. Sydney Wader</td><td>20</td></tr> <tr><td>5. Victoria Taylor</td><td>10</td></tr> </tbody> </table>	<b>Assists</b>		1. Sarah Evans	55	2. Faith Otts	45	3. Sarah Pitre	34	4. Sydney Wader	20	5. Victoria Taylor	10	<table border="0"> <thead> <tr> <th colspan="2"><b>Errors</b></th> </tr> </thead> <tbody> <tr><td>1. Sarah Evans</td><td>7</td></tr> <tr><td>2. Faith Otts</td><td>5</td></tr> <tr><td>3. Sarah Pitre</td><td>3</td></tr> <tr><td>4. Christina Hill</td><td>2</td></tr> <tr><td>Savannah Martinez</td><td>2</td></tr> </tbody> </table>	<b>Errors</b>		1. Sarah Evans	7	2. Faith Otts	5	3. Sarah Pitre	3	4. Christina Hill	2	Savannah Martinez	2	<table border="0"> <thead> <tr> <th colspan="2"><b>Fielding double plays</b></th> </tr> </thead> <tbody> <tr><td>1. Sarah Pitre</td><td>1</td></tr> <tr><td>Sarah Evans</td><td>1</td></tr> <tr><td>Faith Otts</td><td>1</td></tr> </tbody> </table>	<b>Fielding double plays</b>		1. Sarah Pitre	1	Sarah Evans	1	Faith Otts	1				
<b>Assists</b>																																						
1. Sarah Evans	55																																					
2. Faith Otts	45																																					
3. Sarah Pitre	34																																					
4. Sydney Wader	20																																					
5. Victoria Taylor	10																																					
<b>Errors</b>																																						
1. Sarah Evans	7																																					
2. Faith Otts	5																																					
3. Sarah Pitre	3																																					
4. Christina Hill	2																																					
Savannah Martinez	2																																					
<b>Fielding double plays</b>																																						
1. Sarah Pitre	1																																					
Sarah Evans	1																																					
Faith Otts	1																																					
<table border="0"> <thead> <tr> <th colspan="2"><b>Stolen bases against</b></th> </tr> </thead> <tbody> <tr><td>1. Laina Suesue</td><td>35</td></tr> <tr><td>2. Sydney Wader</td><td>14</td></tr> <tr><td>Victoria Taylor</td><td>14</td></tr> <tr><td>4. Brooke Ford-Nelson</td><td>4</td></tr> <tr><td>5. Elisa Favela</td><td>3</td></tr> </tbody> </table>	<b>Stolen bases against</b>		1. Laina Suesue	35	2. Sydney Wader	14	Victoria Taylor	14	4. Brooke Ford-Nelson	4	5. Elisa Favela	3	<table border="0"> <thead> <tr> <th colspan="2"><b>Caught stealing by</b></th> </tr> </thead> <tbody> <tr><td>1. Laina Suesue</td><td>5</td></tr> <tr><td>2. Elisa Favela</td><td>3</td></tr> <tr><td>3. Victoria Taylor</td><td>2</td></tr> <tr><td>4. Sydney Wader</td><td>1</td></tr> </tbody> </table>	<b>Caught stealing by</b>		1. Laina Suesue	5	2. Elisa Favela	3	3. Victoria Taylor	2	4. Sydney Wader	1	<table border="0"> <thead> <tr> <th colspan="2"><b>Steal attempts against</b></th> </tr> </thead> <tbody> <tr><td>1. Laina Suesue</td><td>40</td></tr> <tr><td>2. Victoria Taylor</td><td>16</td></tr> <tr><td>3. Sydney Wader</td><td>15</td></tr> <tr><td>4. Elisa Favela</td><td>6</td></tr> <tr><td>5. Brooke Ford-Nelson</td><td>4</td></tr> </tbody> </table>	<b>Steal attempts against</b>		1. Laina Suesue	40	2. Victoria Taylor	16	3. Sydney Wader	15	4. Elisa Favela	6	5. Brooke Ford-Nelson	4		
<b>Stolen bases against</b>																																						
1. Laina Suesue	35																																					
2. Sydney Wader	14																																					
Victoria Taylor	14																																					
4. Brooke Ford-Nelson	4																																					
5. Elisa Favela	3																																					
<b>Caught stealing by</b>																																						
1. Laina Suesue	5																																					
2. Elisa Favela	3																																					
3. Victoria Taylor	2																																					
4. Sydney Wader	1																																					
<b>Steal attempts against</b>																																						
1. Laina Suesue	40																																					
2. Victoria Taylor	16																																					
3. Sydney Wader	15																																					
4. Elisa Favela	6																																					
5. Brooke Ford-Nelson	4																																					
<table border="0"> <thead> <tr> <th colspan="2"><b>Passed balls</b></th> </tr> </thead> <tbody> <tr><td>1. Laina Suesue</td><td>3</td></tr> </tbody> </table>	<b>Passed balls</b>		1. Laina Suesue	3	<table border="0"> <thead> <tr> <th colspan="2"><b>Catchers interference</b></th> </tr> </thead> <tbody> </tbody> </table>	<b>Catchers interference</b>																																
<b>Passed balls</b>																																						
1. Laina Suesue	3																																					
<b>Catchers interference</b>																																						



**SOUTHERN ARKANSAS UNIVERSITY**  
**2019 LADY MULERIDER SOFTBALL GAME NOTES**  
**VS. SOUTHEASTERN OKLAHOMA STATE | MAR. 22-23 | MAGNOLIA, ARK.**



**Southern Arkansas Softball**  
**Season Game Highs for Southern Arkansas (as of Mar 21, 2019)**  
**(All games)**

TEAM GAME HIGHS

Batting

At bats:	38	-	at Harding (Feb 24, 2019)
Runs scored:	14	-	vs NW Oklahoma (Mar 01, 2019)
Hits:	15	-	vs NW Oklahoma (Mar 02, 2019)
RBIs:	14	-	vs NW Oklahoma (Mar 01, 2019)
Doubles:	3	-	(6 times )
Triples:	1	-	vs Missouri S&T (Feb 02, 2019)
Home runs:	4	-	at East Central (3/16/2019)
Total bases:	24	-	vs NW Oklahoma (Mar 02, 2019)
Walks:	11	-	vs NW Oklahoma (Mar 01, 2019)
Strikeouts:	17	-	vs Missouri-St. Louis (Feb 16, 2019 at Arkadelphia, AR)
Sac hits:	3	-	vs Northeastern State (Feb 17, 2019 at Arkadelphia, AR)
Sac flies:	2	-	vs NW Oklahoma (Mar 02, 2019)
Stolen bases:	2	-	at East Central (3/16/2019)
Hit by pitch:	2	-	vs Southwest Baptist (2/1/2019 at Arkadelphia,Ark.)
Caught stealing:	3	-	at Harding (Feb 24, 2019)
Runners LOB:	3	-	vs NW Oklahoma (Mar 02, 2019)
Hit into DP:	3	-	at East Central (3/16/2019)
Hit into DP:	1	-	at Harding (Feb 24, 2019)
Runners LOB:	11	-	at Harding (Feb 25, 2019)
Hit into DP:	2	-	at Southwestern Okla. (Mar 09, 2019)
Hit into DP:	2	-	at East Central (3/15/2019)

Fielding

Putouts:	27	-	at Harding (Feb 24, 2019)
Assists:	17	-	at East Central (3/16/2019)
Errors:	4	-	at Southwestern Okla. (Mar 09, 2019)
Passed balls:	1	-	at Harding (Feb 24, 2019)
DPs turned:	1	-	vs NW Oklahoma (Mar 02, 2019)
DPs turned:	1	-	vs Southwestern Okla. (Mar 08, 2019)
DPs turned:	1	-	vs Northeastern State (Feb 17, 2019 at Arkadelphia, AR)
DPs turned:	1	-	vs NW Oklahoma (Mar 02, 2019)

Pitching

Innings pitched:	9.0	-	at Harding (Feb 24, 2019)
Runs allowed:	10	-	at Southwestern Okla. (Mar 09, 2019)
Earned runs:	10	-	at Southwestern Okla. (Mar 09, 2019)
Walks allowed:	5	-	at Southwestern Okla. (Mar 09, 2019)
Strikeouts:	5	-	at Southwestern Okla. (Mar 09, 2019)
Strikeouts:	14	-	vs Emporia State (Feb 17, 2019 at Arkadelphia, AR)
Hits allowed:	13	-	at Harding (Feb 24, 2019)
Doubles allowed:	2	-	at Southwestern Okla. (Mar 09, 2019)
Triples allowed:	1	-	at Southwestern Okla. (Mar 08, 2019)
Homers allowed:	2	-	at Southwestern Okla. (Mar 08, 2019)
Wild pitches:	2	-	at Harding (Feb 24, 2019)
Wild pitches:	2	-	at Southwestern Okla. (Mar 09, 2019)
Hit batters:	2	-	(5 times )



**SOUTHERN ARKANSAS UNIVERSITY**  
**2019 LADY MULERIDER SOFTBALL GAME NOTES**  
**VS. SOUTHEASTERN OKLAHOMA STATE | MAR. 22-23 | MAGNOLIA, ARK.**



**Southern Arkansas Softball**  
**Season Game Highs for Southern Arkansas (as of Mar 21, 2019)**  
**(All games)**

INDIVIDUAL GAME HIGHS

Batting

At bats:	5	-	(5 times )
Runs scored:	3	-	(8 times )
Hits:	4	-	Sarah Pitre vs Northeastern State (Feb 17, 2019 at Arkadelphia, AR)
	4	-	Faith Otts at East Central (3/16/2019)
RBI's:	7	-	Chelsea Fagan vs NW Oklahoma (Mar 01, 2019)
	7	-	Faith Otts at East Central (3/16/2019)
Doubles:	2	-	Elisa Favela vs Tampa (2/9/2019 at Clearwater, Fla.)
Triples:	1	-	Sarah Pitre vs Missouri S&T (Feb 02, 2019)
	1	-	Sarah Evans at East Central (3/16/2019)
Home runs:	2	-	Chelsea Fagan vs NW Oklahoma (Mar 01, 2019)
	2	-	Faith Otts at East Central (3/16/2019)
Total bases:	10	-	Faith Otts at East Central (3/16/2019)
Walks:	3	-	(4 times )
Strikeouts:	3	-	(5 times )
Sac hits:	2	-	Christina Hill vs Northeastern State (Feb 17, 2019 at Arkadelphia, AR)
Sac flies:	1	-	(4 times )
Stolen bases:	1	-	(7 times )
Hit by pitch:	2	-	Sarah Evans vs Missouri S&T (Feb 02, 2019)
	2	-	Faith Otts at Harding (Feb 24, 2019)
	2	-	Faith Otts at East Central (3/16/2019)
Caught stealing:	1	-	Ryah Kaniho at Harding (Feb 24, 2019)
Runners LOB:	5	-	Rachel Miller at East Central (3/16/2019)

Fielding

Putouts:	16	-	Laina Suesue vs Rogers State (Feb 02, 2019 at Arkadelphia, Ark.)
Assists:	11	-	Sarah Evans at East Central (3/16/2019)
Errors:	2	-	Sarah Evans at Harding (Feb 25, 2019)
	2	-	Faith Otts at Southwestern Okla. (Mar 09, 2019)
Passed balls:	1	-	Laina Suesue at Harding (Feb 24, 2019)
	1	-	Laina Suesue vs NW Oklahoma (Mar 02, 2019)
	1	-	Laina Suesue at Southwestern Okla. (Mar 08, 2019)

Pitching

Innings pitched:	8.0	-	Sydney Wader at Harding (Feb 24, 2019)
Runs allowed:	8	-	Sydney Wader at Southwestern Okla. (Mar 09, 2019)
Earned runs:	8	-	Sydney Wader at Southwestern Okla. (Mar 09, 2019)
Walks allowed:	5	-	Sydney Wader at Southwestern Okla. (Mar 09, 2019)
Strikeouts:	14	-	Victoria Taylor vs Emporia State (Feb 17, 2019 at Arkadelphia, AR)
Hits allowed:	10	-	Sydney Wader at Southwestern Okla. (Mar 09, 2019)
Doubles allowed:	2	-	Sydney Wader at Southwestern Okla. (Mar 09, 2019)
Triples allowed:	1	-	Sydney Wader at Southwestern Okla. (Mar 08, 2019)
Homers allowed:	1	-	(9 times )
Wild pitches:	2	-	Sydney Wader at Harding (Feb 24, 2019)
	2	-	Sydney Wader at Southwestern Okla. (Mar 09, 2019)
Hit batters:	2	-	(5 times )