



# 2015-16 SAMFORD WOMEN'S BASKETBALL GAME NOTES



## GAME 24

Samford (15-8, 7-1 SoCon) vs. Western Carolina (6-16, 2-6 SoCon)

3 p.m. (CT), Feb. 6, 2016

Birmingham, Ala., Pete Hanna Center (5,000)

### 2015-16 SCHEDULE/RESULTS

DATE	OPPONENT	TIME/RESULT
Nov. 13	at #11 Mississippi State	L, 47-68
Nov. 15	AUM	W, 82-32
Nov. 17	Troy	W, 73-69
Nov. 21	Shorter	W, 53-33
Nov. 24	at Jacksonville State	W, 50-39
Nov. 27	vs. Nicholls State%	W, 45-43
Nov. 28	at Southern Miss%	L, 48-56
Dec. 1	at Alabama A&M	W, 54-30
Dec. 5	at UT Martin	L, 50-52
Dec. 11	at Indiana	L, 56-65 (OT)
Dec. 13	at Georgia Tech	L, 55-66
Dec. 17	at Alabama State	W, 54-35
Dec. 21	at UAB	L, 41-61
Dec. 28	at LSU	W, 47-44
Jan. 2	Harvard	L, 56-60
Jan. 7	at Western Carolina*	W, 59-42
Jan. 9	at UNCG*	W, 57-52
Jan. 16	Mercer*	L, 60-63
Jan. 21	ETSU*	W, 55-47
Jan. 23	Chattanooga*	W, 48-43
Jan. 28	at Furman*	W, 58-45
Jan. 30	at Wofford*	W, 58-39
Feb. 4	UNCG*	W, 80-49
Feb. 6	Western Carolina*	3 p.m.
Feb. 13	at Mercer*	1 p.m.
Feb. 17	at Chattanooga*	5:30 p.m.
Feb. 20	at ETSU*	1 p.m.
Feb. 25	Furman*	6 p.m.
Feb. 27	Wofford*	6 p.m.
Mar. 4-7	SoCon Tournament#	TBD

\*-Southern Conference Game

%-Lady Eagle Thanksgiving Tournament

#-Asheville, N.C.

All Times are Central and subject to change

### THE GAME

Samford will wrap up its two-game home-stand by hosting Western Carolina Saturday at 3 p.m. in the Pete Hanna Center.

Samford enters the game with a record of 15-8 overall and 7-1 in Southern Conference play. The Bulldogs are coming off an 80-49 win over UNCG Thursday.

Western Carolina is currently 6-16 overall and 2-6 in league play. The Catamounts are coming off a 63-42 loss at Mercer Thursday evening.

### THE SERIES

Samford and Western Carolina will be meeting for the 18th time, with Samford holding a 13-4 advantage in the series.

The teams met earlier this season. Samford and WCU played on Jan. 7 in the SoCon opener for both teams, with Samford winning by a score of 59-42 in Cullowhee, N.C.

Samford is 6-1 against Western Carolina in Birmingham, 6-2 when playing in Cullowhee, N.C., and 1-1 at neutral sites.

### SAMFORD'S PROBABLE STARTERS

No.	Name	Pos.	PPG	RPG
3	Destiney Elliott	F	9.1	7.7
10	Taylor Reece	F	8.9	2.5
11	Amara Mayers	G	8.0	4.1
12	Krista Stricklin	G	6.1	3.7
13	Brittany Stevens	G	6.1	3.0

\*-Starters based on last game

# 2015-16 SAMFORD WOMEN'S BASKETBALL

## **SAMFORD'S RECORD WHEN...**

Samford controls the tip	6-4
Opponent controls the tip	9-4
Played at home	6-2
Played on the road	8-6
Played at a neutral site	1-0
Played a team with a .500+ record	6-4
Played a team with a .500 record	2-1
Played a team with a below .500 record	7-3
Samford leads at the half	12-3
Opponent leads at the half	3-5
Tied at the half	0-0
Samford leads with five minutes left	15-1
Opponent leads with five minutes left	0-7
Tied with five minutes left	0-0
Samford leads with one minute left	15-1
Opponent leads with one minute left	0-6
Tied with one minute left	0-1
Samford outrebounds opponent	11-0
Opponent outrebounds Samford	4-7
Rebounds are equal	0-1
Samford shoots 50% or better from field	3-0
Samford shoots less than 50% from the field	12-8
Samford takes more shots	11-2
Opponent takes more shots	2-6
Shots are equal	2-0
Samford blocks more shots	5-3
Opponent blocks more shots	8-5
Blocks are equal	2-0
Samford has more turnovers	3-6
Opponent has more turnovers	10-1
Turnovers are equal	2-1
Samford has more steals	10-1
Opponent has more steals	4-7
Steals are equal	1-0
Samford bench outscores opponent's bench	9-6
Opponent bench outscores Samford's bench	5-2
Benches score the same	1-0
Samford shoots more free throws	8-0
Opponent shoots more free throws	7-7
Free throws are the same	0-1
November games	5-2
December games	3-4
January games	6-2
February games	1-0
March games	0-0
Monday games	1-1
Tuesday games	3-0
Wednesday games	0-0
Thursday games	5-0
Friday games	1-2
Saturday games	4-4
Sunday games	1-1
Overtime games	0-1

## **SAMFORD AT HOME**

In its 18-plus seasons, Samford has an all-time record of 146-98 in home games.

Now in its ninth season in the Pete Hanna Center, the Bulldogs are 85-27 in their current home. In 10 seasons in Seibert Hall, Samford had a record of 61-71 in that facility. This season, Samford has 11 games on its schedule to be played at the Pete Hanna Center, and the Bulldogs are currently 6-2 in those games.

## **REECE CLIMBING THE CHARTS**

With her 12 points at UAB on Dec. 21, Samford senior center Taylor Reece became just the seventh player in program history to score 1,000 career points. She currently sits in fifth place in school history with 1,118 points in her Samford career.

Reece is 129 points away from tying Aimee Cochran for fourth place in program history with 1,247 points.

## **THE LAST TIME OUT**

Samford used a strong second half to pull away for an 80-49 SoCon win over UNCG Thursday in the Pete Hanna Center.

Samford was led in scoring by Kassidy Blevins with 17 points. Lydia McGee had 12 points and nine rebounds. Brittany Stevens recorded her first career double-double with 11 points, a career-high 10 rebounds and six assists. Amara Mayers added 10 points for the Bulldogs.

## **SAMFORD AGAINST SOCON TEAMS**

Now in its eighth season as a member of the Southern Conference, Samford has a record of 91-49 in league games. Against the current members of the SoCon, Samford has an all-time record of 69-42, including a 13-4 record against Saturday's opponent, Western Carolina.

Samford's all-time record against each current SoCon school is: Chattanooga (7-16), East Tennessee State (3-1), Furman (11-5), Mercer (5-10), UNCG (13-4), Wofford (17-2) and Western Carolina (13-4).

So far this season, Samford is 7-1 in SoCon games.

# 2015-16 SAMFORD WOMEN'S BASKETBALL

## THE LAST TIME ...

**A Samford player scored 20-29 points:** Dec. 11, 2015, 20 by Destiney Elliott at Indiana

**A Samford player scored 30 or more points:** Jan. 23, 2013, 31 by Jazmine Martin vs. Chattanooga

**A Samford player had 10 or more rebounds:** Feb. 4, 2016, 10 by Brittany Stevens vs. UNCG

**A Samford player had 10 or more assists:** Feb. 13, 2012, 10 by Jazmine Powers vs. Coll. of Charleston

**A Samford player blocked 5 or more shots:** Jan. 10, 2015, 5 by Hannah Nichols at UNCG

**A Samford player had 5 or more steals:** Nov. 27, 2015, 7 by Kassidy Blevins vs. Nicholls State

**A Samford player recorded a double-double:** Feb. 4, 2016, Brittany Stevens, 11 pts., 10 reb. vs. UNCG

**A Samford game went into overtime:** Dec. 11, 2015, Indiana 65, Samford 56 in Bloomington, Ind.

**A Samford player made 10 or more field goals:** Jan. 17, 2015, 11 by Taylor Reece vs. Furman  
**Samford scored 80-89 points:** Feb. 4, 2016, 80-49, vs. UNCG

**Samford scored 90-99 points:** Dec. Dec. 7, 2010, 95-59, vs. Berry College

**Samford scored 100 or more points:** Dec. 19, 1999, 100-67 vs. Centenary

**Samford failed to hit a three-pointer:** Jan. 23, 2016, 0-7 vs. Chattanooga (W, 48-43)

### **Samford won a game by:**

1: Jan. 18, 2014, 59-58, vs. Furman

2-4: Dec. 28, 2015, 47-44, at LSU

5-9: Jan. 23, 2016, 48-43, vs. Chattanooga

10-14: Jan. 28, 2016, 58-45, at Furman

15-19: Jan. 30, 2016, 58-39, at Wofford

20-24: Dec. 1, 2015, 54-30, at Alabama A&M

25-29: Feb. 14, 2015, 68-43, at Wofford

30-34: Feb. 4, 2016, 80-49, vs. UNCG

35-39: Nov. 27, 2012, 62-24, vs. AUM

40+: Nov. 15, 2015, 82-32, vs. AUM

## THE LAST TIME AGAINST WCU

Samford and Western Carolina last met on Jan. 7, with Samford winning by a score of 59-42 in Cullowhee, N.C.

In the win, Samford was led by Krista Stricklin with 15 points. Destiney Elliott had 14 points and eight rebounds. Taylor Reece added 10 points for the Bulldogs.

## SU AGAINST NORTH CAROLINA TEAMS

Samford has an all-time record of 52-44 against teams from North Carolina, including a record of 13-4 against Saturday's opponent, Western Carolina.

SU has played the following North Carolina teams: Appalachian State (9-6), Campbell (1-13), Davidson (6-8), Duke (0-1), Elon (8-7), Gardner-Webb (1-1), UNC Asheville (1-1), UNCG (13-4) and Western Carolina (13-4).

## LEADING THE WAY

So far this season, Destiney Elliott leads Samford in both scoring and rebounding at 9.1 points and 7.7 rebounds per game. Taylor Reece averages 8.9 points per game.

Amara Mayers is second on the team in rebounding at 4.1 rebounds per game.

Brittany Stevens leads the team in assists at 2.6 assists per game. Elliott averages 1.9 assists per game.

## A LOOK AT WESTERN CAROLINA

Western Carolina is currently 6-16 overall and 2-6 in league play. WCU is coming off a 63-42 loss at Mercer Thursday.

Ace Easter leads WCU in scoring, averaging 12.3 points per game. Sheray Bonner scores 8.9 points per game for the Catamounts.

Bonner leads the squad in rebounding, grabbing 7.8 boards per contest. Erika Joseph averages 6.1 rebounds per game for Western Carolina.

Kyia Hough leads the team in assists, averaging 2.9 assists per game. Raziyah Farrington dishes out 1.8 assists per game.

## AMONG NATIONAL LEADERS

Samford enters Saturday's game ranked third in the nation in scoring defense, allowing just 49.3 points per game.

# 2015-16 SAMFORD WOMEN'S BASKETBALL

## SAMFORD IN FEBRUARY GAMES

In its 18-plus seasons of women's basketball, Samford has a record of 72-67 in games played in the month of February.

The program's best February record came in 2006-07 when the Bulldogs were 7-1.

Last season, Samford was 4-4 in the second month.

This season, Samford has seven February games on its schedule, and the Bulldogs are currently 1-0 in those contests.

## CONFERENCE PRESEASON PREDICTIONS

In the preseason Southern Conference polls, Samford was picked to finish third by the league's media and tied for third by the SoCon head coaches.

### 2015-16 SoCon Preseason Media Poll

Place	School (1st)	Points
-------	--------------	--------

1.	Chattanooga (19)	159
2.	ETSU (1)	122
3.	<b>Samford</b>	<b>113</b>
4.	Furman	103
5.	Mercer	101
6.	Western Carolina	49
7.	Wofford	40
8.	UNCG	33

### 2015-16 SoCon Preseason Media Poll

Place	School (1st)	Points
-------	--------------	--------

1.	Chattanooga (7)	49
2.	Furman	36
3.	ETSU	35
	<b>Samford (1)</b>	<b>35</b>
5.	Mercer	29
6.	UNCG	19
7.	Western Carolina	11
8.	Wofford	10

## PRESEASON ALL-CONFERENCE

Samford senior center Taylor Reece was the Bulldogs' lone representative on the preseason All-SoCon team, released by the league's coaches in October.

Reece returns after averaging 10.6 points and 2.9 rebounds per game last season.

## 2015-16 QUICK FACTS

### GENERAL INFORMATION

Location: Birmingham, Ala.

Year Founded: 1841

Enrollment: 5,206

Nickname: Bulldogs

School Colors: Red and Blue

Arena (Capacity): Pete Hanna Center (5,000)

Affiliation: NCAA Division I

Conference: Southern

President: Dr. Andrew Westmoreland

Alma Mater/Year: Ouachita Baptist University/1979

Director of Athletics: Martin Newton

Alma Mater/Year: Samford/1983

### ATHLETIC COMMUNICATIONS

Assistant AD (WBB Contact): Joey Mullins

Office Phone: (205) 726-2799

Cell Phone: (205) 532-3477

E-mail: jmmulli1@samford.edu

Director: Zac Schrieber

Office Phone: (205) 726-2802

Cell Phone: (205) 532-3476

E-mail: zdschrie@samford.edu

Assistant Director: Herb Brooks

Office Phone: (205) 726-4005

E-mail: hbrooks@samford.edu

SID Fax: (205) 726-2132

Website: [www.samfordsports.com](http://www.samfordsports.com)

### HISTORY

First Year of Basketball: 1997-98

All-Time Record: 278-277 (18-plus years)

All-Time Division I Record: 278-277 (18-plus years)

Years in NCAA Tournament/Last: 2/2012

Last postseason Opponent: vs. Duke, NCAA Tournament, L, 47-82, Nashville, Tenn., Mar. 18, 2012

### TEAM INFORMATION

2014-15 Overall Record: 15-15

2014-15 Conference Record/Finish: 8-6/4th

### WOMEN'S BASKETBALL STAFF

Head Coach: Mike Morris (Belhaven, '92)

Record at Samford: 237-180 (13-plus years)

Career Record: 237-180 (13-plus years)

Assistant Coaches: Ty Margenthaler (1st year, SIUE, '97),

Ruth Ketcham (3rd year, Samford, '12), Serena Clark (ETSU, '15)

# STARTING LINEUPS

at Miss. State	Stevens	Stricklin	Mayers	Elliott	Reece
AUM	Stevens	Stricklin	Mayers	Elliott	Reece
Troy	Stevens	Stricklin	Mayers	Elliott	Reece
Shorter	Stevens	Stricklin	Mayers	Elliott	Reece
at Jacksonville St.	Stevens	Stricklin	Mayers	Elliott	Reece
vs. Nicholls State	Stevens	Stricklin	Mayers	Elliott	Reece
at Southern Miss.	Stevens	Stricklin	Mayers	Elliott	Riggins
at Alabama A&M	Stevens	Stricklin	Mayers	Elliott	Reece
at UT Martin	Stevens	Stricklin	Mayers	Elliott	Reece
at Indiana	Stevens	Stricklin	Mayers	Elliott	Reece
at Georgia Tech	Stevens	Stricklin	Mayers	Elliott	Reece
at Alabama State	Stevens	Stricklin	Mayers	Elliott	Reece
at UAB	Stevens	Stricklin	Mayers	Elliott	Riggins
at LSU	Stevens	Stricklin	Mayers	Elliott	Riggins
Harvard	Stevens	Stricklin	Mayers	Elliott	Reece
at W. Carolina	Stevens	Stricklin	Mayers	Elliott	Reece
at UNCG	Stevens	Stricklin	Mayers	Elliott	Reece
Mercer	Stevens	Stricklin	Mayers	Elliott	Reece
ETSU	Stevens	Stricklin	Mayers	Elliott	Reece
Chattanooga	Stevens	Stricklin	Mayers	Elliott	Reece
at Furman	Stevens	Stricklin	Mayers	Elliott	Reece
at Wofford	Stevens	Stricklin	Mayers	Elliott	Reece
UNCG	Stevens	Stricklin	Mayers	Elliott	Reece
W. Carolina					
at Mercer					
at Chattanooga					
at ETSU					
Furman					
Wofford					

# LEADERS

Points	Rebounds	Assists	Steals	Blocks
Stevens (13)	Mayers (5)	Stevens (4)	3 players (1)	Reece (1)
Reece/Blevins (15)	3 players (5)	3 players (4)	McGee (3)	3 players (1)
Blevins (19)	Elliott (9)	Stevens/Elliott (3)	3 players (2)	Reece (2)
3 players (8)	Elliott (5)	Elliott (3)	Stevens (3)	Elliott/Blevins (1)
Mayers (16)	Elliott (12)	Reece (2)	Mayers (4)	3 players (1)
Elliott (17)	Elliott (11)	Stevens (4)	Blevins (7)	Elliott/Riggins (1)
Mayers (14)	Elliott (8)	Riggins (3)	4 players (1)	Elliott (2)
Mayers (14)	Elliott (8)	Stevens (3)	Fletcher (3)	Elliott/Reece (1)
Elliott (13)	Elliott (18)	4 players (2)	Stevens (3)	Elliott (1)
Elliott (20)	Stricklin (10)	Stevens (4)	Reece/Blevins (2)	Reece (3)
Stricklin (16)	Elliott (7)	Riggins (5)	Blevins/Riggins (2)	Riggins (1)
Mayers (18)	Elliott (9)	Stevens (4)	Mayers (4)	None
Reece (12)	Elliott (6)	4 players (2)	Elliott/Stevens (3)	Reece (2)
Reece (14)	Stricklin/ Blevins (6)	Stevens/Blevins (3)	Elliott (2)	Reece/Elliott (2)
Blevins (19)	Mayers (6)	Stricklin/Riggins (3)	Stricklin (2)	4 players (1)
Stricklin (15)	Elliott (8)	Stevens (4)	3 players (1)	Stricklin (1)
Reece (15)	Elliott (9)	Mayers (3)	Stevens (4)	3 players (1)
Reece (14)	Reece (7)	Elliott/McGee (5)	Elliott (1)	Reece (2)
Reece (17)	Elliott (12)	Reece/Stricklin (4)	Mayers (2)	Elliott (2)
Mayers (18)	Elliott/Stricklin (5)	Blevins (4)	Mayers (4)	Stricklin (2)
Mayers (12)	Elliott (6)	Reece (6)	Mayers/Stricklin (2)	Blevins (3)
Mayers/Stevens (10)	Stricklin (10)	Stevens (3)	Mayers (2)	4 players (1)
Blevins (17)	Stevens (10)	Stevens (6)	Stricklin (3)	Elliott/Riggins (1)

# MISC. SCORING

SU-Opp.	Paint	Off TO	2nd Ch.	Fastbreak	Bench
at Miss. State	12-38	9-34	3-22	0-10	6-33
AUM	20-8	32-8	12-3	2-2	46-9
Troy	18-20	24-21	7-4	2-6	33-9
Shorter	24-16	15-6	11-2	0-7	17-5
at Jacksonville State	30-12	4-9	8-0	2-0	10-13
vs. Nicholls State	24-20	16-11	6-2	4-4	5-16
at Southern Miss.	26-26	19-9	4-11	0-4	6-27
at Alabama A&M	32-8	11-8	10-7	0-0	14-19
at UT Martin	18-20	14-12	8-6	6-2	15-6
at Indiana	26-30	10-18	6-14	4-4	10-1
at Georgia Tech	18-30	9-11	2-4	0-2	29-17
at Alabama State	24-18	10-11	2-0	3-2	16-11
at UAB	20-18	12-4	2-4	2-3	15-2
at LSU	12-22	3-9	9-12	0-0	26-8
Harvard	18-22	15-13	2-18	2-4	32-12
at W. Carolina	50-12	15-11	9-0	2-0	12-24
at UNCG	26-22	16-10	4-4	4-10	15-15
Mercer	28-20	4-18	6-11	0-3	22-13
ETSU	34-24	9-14	4-7	2-0	17-12
Chattanooga	26-24	20-10	0-13	0-6	2-6
at Furman	18-20	9-5	2-8	0-0	17-12
at Wofford	26-18	14-8	5-3	4-4	22-9
UNCG	44-28	13-7	12-9	0-8	40-11
W. Carolina					
at Mercer					
at Chattanooga					
at ETSU					
Furman					
Wofford					

# NOTABLE

Season opener for both teams  
Team ties school record with 24 assists  
Samford comes from behind in 4th quarter to win  
Samford leads from start to finish in the win  
Amara Mayers has a career-high 16 points and a career-high seven rebounds  
Destiney Elliott records her second career double-double with 17 pts. and 11 reb.  
Loss snaps Samford's five-game win streak  
First 6-2 start since 2010-11 season  
Destiney Elliott ties school record with 18 rebounds  
Destiney Elliott scores a career-high 20 points  
Samford drops third-straight game, all on the road  
Amara Mayers scored a career-high 18 points  
Taylor Reece became the 7th player in program history to score 1,000 career points  
Samford's first-ever win over LSU and first over an SEC team since 2010  
Samford's first home loss of the season  
SoCon opener for both teams  
Samford scored the final six points of the game to pull away for the win  
Mercer's Kahlia Lawrence hit a three-pointer at the buzzer for the Bears to win  
Three Samford post players scored in double figures  
Amara Mayers tied a career-high with 18 points  
Samford's first win at Furman since 2012  
Samford held Wofford to just 27.5-percent shooting  
Samford placed four players in double figure scoring





## MIKE MORRIS HEAD COACH

Since taking over as the second head coach of Samford women's basketball in 2002, Mike Morris has taken the program to new heights.

Over the last 10 years, the Bulldogs have posted seven of the top-eight win totals in school history, including the program's only six 20-win seasons.

Morris guided the program to back-to-back Southern Conference Tournament titles and NCAA Tournament appearances in 2011 and 2012. The team reached a national postseason tournament for the three years in a row, including a WNIT appearance in 2010.

The 2010-11 Bulldogs set a school record for wins with a 25-8 record, winning the SoCon Tournament and reaching the NCAA Tournament for the first time. Despite losing two of the top players in program history, the 2011-12 team won 20 games again, and won its second-straight SoCon title and NCAA Tournament berth.

The 2009-10 team reached the finals of the Southern Conference Tournament for the first time and earned the program's first-ever national postseason appearance. The team also earned its first national postseason win with a 66-65 win over Ole Miss in the first round of the WNIT at the Pete Hanna Center.

The 2009-10 team also tied the then-school record for wins with a 23-11 overall record and a 14-6 mark in SoCon play.

In 2008-09, the Bulldogs set a school record for conference wins with a 16-4 league record in their first year in the SoCon. The team finished with an overall record of 22-7, reaching the semifinals of the SoCon Tournament.

After the season, Morris was named the 2009 SoCon Coach of the Year. The award marked the second Coach of the Year award for Morris, as he was named the Ohio Valley Conference Coach of the Year in 2006.

The 2007-08 Bulldogs set a then-school record for most wins in a season, posting a 23-9 overall record and a 15-5 record in the OVC. The Bulldogs also posted their first-ever wins over Southeastern Conference (Alabama) and Big 12 (Missouri) opponents, and reached the semifinals of the OVC Tournament for a third year in a row.

The 2006-07 season was another winning one with a record of 18-13 and another trip to the OVC semifinals.

In the 2005-06 season, Samford posted its first 20-win season, finishing with a 21-8 overall record, and the Bulldogs were 15-5 in OVC play. For the first time since joining the league in 2003, the team reached the semifinals of the OVC Tournament.

Morris has increased the team's win total in seven of his 12 seasons as head coach. In his first season (2002-03), the team won seven games, up from three the previous season. In his second season (2003-04), the Bulldogs posted 10 wins, only the second time in school history that the team managed double-digit wins. The 2004-05 squad won 13 games, and the 2005-06 team won 21 games. In 2007-08, the Bulldogs won a then-record 23 games, up from 18 in 2006-07. The 2009-10 team also won 23 games and the 2010-11 team won a school-record 25 contests.

Morris is in his 21st season overall at Samford, spending eight seasons as an assistant coach on the men's staff. While working with the men's team, Morris served as the team's top recruiter and directed Samford's summer basketball camps. He was on the bench for both Samford Atlantic Sun Championship seasons and NCAA Tournament appearances.

Before his arrival at Samford in 1994, Morris served for three years as an assistant coach under veteran coach Lenny Acuff at Belhaven College. He coached at Belhaven for two seasons before joining Acuff's staff in 1993 at Berry College in Rome, Ga. In his first year at Belhaven, the Blazers finished with the most wins in nine years, compiling a 17-16 record. The next year, Belhaven went 18-15 and hosted the first round of the NAIA District Playoffs for the first time in 20 years.

Morris played basketball for two seasons at the University of Alabama in Huntsville [UAH], where he was chosen team captain and team MVP his senior season. While at UAH, Morris was the NCAA Division II national champion in free-throw percentage, making 92.1 percent from the line. He played his first two seasons at Jefferson State Junior College in Birmingham.

The Holly Pond, Ala., native earned a B.A. in psychology from Belhaven College in 1992. He has completed 24 hours toward his master's degree in administration from Jacksonville State.

Morris is married to the former Melanie Nix of Huntsville, Ala. They have a son, Peyton, 22, and a daughter, Paige, 19.

### THE MORRIS FILE

#### COACHING EXPERIENCE

2002-present	Head Coach Samford University
1994-2002	Men's Assistant Coach Samford University
1993-94	Assistant Coach Berry College
1991-93	Assistant Coach Belhaven College

#### PLAYING EXPERIENCE

1989-91	University of Alabama in Huntsville
1987-89	Jefferson State Community College

#### EDUCATION

1992	B.S., psychology Belhaven College
------	--------------------------------------

#### PERSONAL

Birthday	May 6, 1969
Hometown	Holly Pond, Alabama
Wife	Melanie
Children	Peyton (22), Paige (19)
Member	WBCA

# 2015-16 ROSTER

No.	Name	Pos.	Ht.	Cl.	Hometown/Previous School
2	Hannah Nichols	G	5-10	Jr.	Madison, Ala./Madison County HS
3	Destiney Elliott	F	6-0	So.	Oneonta, Ala./Oneonta HS
4	Lydia McGee	G	5-10	RS-Jr.	Madison, Ala./Madison Academy
5	Kassidy Blevins	G	5-9	RS-So.	Ringgold, Ga./Gordon Lee HS
10	Taylor Reece	F	6-3	RS-Sr.	Hendersonville, Tenn./Brentwood Acad.
11	Amara Mayers	G	5-9	RS-Sr.	Harvest, Ala./Belmont University
12	Krista Stricklin	G	5-7	Sr.	Hayden, Ala./Hayden HS
13	Brittany Stevens	G	5-3	Jr.	Norcross, Ga./Wesleyan School
21	Keke Fletcher	F	5-11	RS-Sr.	Huntsville, Ala./Madison Academy
22	Ellen Riggins	F	6-0	Jr.	Murfreesboro, Tenn./Oakland HS
31	Cassidy Williams	G	5-8	Fr.	Peachtree City, Ga./McIntosh HS
32	Olivia Crozier	F	6-1	Fr.	Madison, Ind./Madison HS

Head Coach: Mike Morris (14th year, Belhaven, '92)

Assistant Coaches: Ty Margenthaler (1st year, SIUE, '97), Ruth Ketcham (3rd year, Samford, '12), Serena Clark (1st year, ETSU, '15)

## ROSTER BY CLASS

### FRESHMEN

Olivia Crozier  
Cassidy Williams

### SOPHOMORES

Kassidy Blevins  
Destiney Elliott

### JUNIORS

Lydia McGee  
Hannah Nichols  
Ellen Riggins  
Brittany Stevens

## SENIORS

Keke Fletcher  
Amara Mayers  
Taylor Reece  
Krista Stricklin

## ROSTER BY STATE

### ALABAMA (6)

HARVEST	Amara Mayers
HAYDEN	Krista Stricklin
HUNTSVILLE	Keke Fletcher
MADISON	Lydia McGee
	Hanna Nichols
ONEONTA	Destiney Elliott

## GEORGIA (3)

NORCROSS	Brittany Stevens
PEACHTREE CITY	Cassidy Williams
RINGGOLD	Kassidy Blevins

## INDIANA (1)

MADISON	Olivia Crozier
---------	----------------

## TENNESSEE (2)

HENDERSONVILLE	Taylor Reece
MURFREESBORO	Ellen Riggins





# 10 TAYLOR REECE

Post • 6-2 • RS-Senior

Hendersonville, Tenn. • Brentwood Academy

**Senior (2015-16):** Scored nine points in the season opener at 11th-ranked Mississippi State . . . shared the team lead in scoring with 15 and in rebounds with five against AUM . . . had seven points against Shorter . . . scored 11 points at Jacksonville State . . . scored 10 points at Alabama A&M . . . scored 12 points at Indiana . . . led the team with 12 points and became the seventh player in school history to score 1,000 career points at UAB . . . led the team with 14 points at LSU . . . scored nine points against Harvard . . . scored 10 points at Western Carolina . . . led the team with 15 points at UNCG . . . had 14 points and seven rebounds against Mercer . . . led the team with 17 points against ETSU . . .

scored 14 points against Chattanooga . . . had 10 points and six assists at Furman.

**Junior (2014-15):** Started all 30 games . . . averaged 10.6 points per game . . . also dished out 48 assists on the season . . . named second team All-SoCon by the league's coaches . . . led the team with 16 points in the season opener at Memphis . . . scored 12 points against Alabama A&M . . . scored 13 points against North Florida . . . scored 22 points against UT Martin . . . had nine points at Georgia State . . . scored 22 points and pulled down six rebounds against Penn State . . . scored 12 points at Troy . . . scored 10 points against UAB . . . had 12 points at Tulane . . . scored eight points at Kansas State . . . had 12 points and four rebounds at UNCG . . . scored a career-high 28 points against Furman . . . led the team with 10 points and five rebounds at #25 Chattanooga . . . scored 17 points, shooting a perfect 5-of-5 from three-point range, at East Tennessee State . . . had 16 points and five rebounds against Wofford . . . tied a career high with five assists against UNCG . . . had 10 points and five rebounds against #20 Chattanooga . . . had 13 points against East Tennessee State . . . scored 19 points and dished out five assists at Mercer.

**Redshirt (2013-14):** Sat out this season after suffering a preseason knee injury . . . received a medical redshirt.

**Sophomore (2012-13):** Saw action in all 31 games, including 30 starts . . . averaged 10.4 points and 3.6 rebounds per game . . . scored six points in the season-opener at Florida State . . . had seven points at Jacksonville State . . . scored eight points against Alabama State . . . had seven points against Tennessee State . . . scored 17 points and tied a career high with nine rebounds against Wofford . . . scored 14 points at Tennessee Tech . . . had 12 points at Oregon . . . led the team with 19 points against College of Charleston . . . had a team-high 20 points against Georgia Southern . . . had 14 points and six rebounds at Western Carolina . . . had nine points and six rebounds against Appalachian State . . . scored 12 points at Wofford . . . had 12 points at Chattanooga . . . had 15 points, seven rebounds and four assists against UNCG . . . scored 18 points against Elon . . . scored 12 points at College of Charleston . . . had 10 points against Western Carolina . . . scored 20 points at Appalachian State . . . scored 24 points and grabbed six rebounds in a win over Wofford in the SoCon Tournament . . . had 15 points against Elon in the SoCon Tournament.

**Freshman (2011-12):** Saw action in 32 games, including 30 starts . . . tied for second on the team in scoring, averaging 8.8 points per game . . . pulled down 3.1 rebounds per game . . . named to the SoCon's All-Freshman team . . . named to the second-team All-Tournament team for the SoCon Tournament . . . scored 12 points in her collegiate debut against Montana in the Maggie Dixon Classic . . . scored 10 points at Alabama





State . . . scored 11 points against Jacksonville State . . . had eight points, six rebounds and four assists, including making the eventual game-winning three-pointer in overtime against Western Carolina . . . scored eight points and dished out five assists at Florida . . . scored eight points at Georgia Southern . . . scored eight points at College of Charleston . . . scored 19 points and pulled down nine rebounds against Furman . . . scored 16 points against Wofford . . . scored 10 points at Chattanooga . . . led the team with a career-high 21 points and seven rebounds at Davidson . . . scored 12 points against UNC Greensboro . . . scored nine points at Wofford . . . had 10 points against Georgia Southern . . . scored 11 points against College of Charleston . . . scored 11 points at Furman. . . . had nine points against Davidson . . . led the team with 18 points against Elon in the quarterfinals of the Southern Conference Tournament . . . scored 10 points against Duke in the NCAA Tournament.

**High School:** Was a finalist for Miss Basketball in Tennessee in 2010 and 2011 . . . named All-State in 2011 at Brentwood Academy . . . named All-Region every year from 2008 to 2011 . . . earned the Harvard Book Award . . . named to the Headmaster's List from 2007 to 2011 . . . also competed in track.

**Personal:** Born March 13, 1993 . . . daughter of Steve and Dana Reece . . . both of her parents played basketball at Vanderbilt . . . sister, Macy, plays volleyball at Auburn . . . earned her degree in nursing last spring, and is now enrolled in Nurse Practitioner School.

### CAREER BESTS

Points: 28, vs. Furman, Jan. 17, 2015

Rebounds: 9 (twice), last vs. Wofford, Dec. 1, 2012

Assists: 6, at Furman, Jan. 28, 2016



Taylor Reece

			Total		3-Point		F-Throws		Rebounds											Scoring	
Season	gp-gs	min/avg	fg-fga	pct	fg-fga	pct	ft-fta	pct	off	def	tot	avg	pf	fo	ast	to	blk	stl	pts	avg	
2011-12	32-30	799/25.0	104-259	.402	37-95	.389	37-43	.860	35	64	99	3.1	84	3	47	62	26	18	282	8.8	
2012-13	31-30	926/29.9	113-306	.369	33-99	.333	64-73	.877	17	95	112	3.6	89	3	67	73	32	16	323	10.4	
2014-15	30-30	819/27.3	128-288	.444	39-90	.433	22-36	.611	15	71	86	2.9	75	2	48	47	24	13	317	10.6	
2015-16	22-20	547/24.9	74-183	.404	21-75	.280	27-35	.771	11	43	54	2.5	48	0	37	39	18	10	196	8.9	
TOTAL	115-110	3091/26.9	419-1036	.404	130-359	.362	150-187	.802	78	273	351	3.1	296	8	199	221	100	57	1118	9.7	



# 11 AMARA MAYERS

Guard • 5-9 • RS-Senior  
Harvest, Ala. • Belmont University

**Senior (2015-16):** Scored nine points and led the team with five rebounds in the season opener at 11th-ranked Mississippi State . . . scored eight points against Shorter . . . had 16 points and a career-high seven rebounds at Jacksonville State . . . scored 14 points at Southern Miss and was named to the All-Tournament team for the Lady Eagle Thanksgiving Classic . . . led the team with 14 points at Alabama A&M . . . had seven points and seven rebounds at UT Martin . . . scored a career-high 18 points at Alabama State . . . tied a career high with 18 points against Chattanooga . . . led the team with 12 points at Furman . . . had 10 points and five rebounds at Wofford . . . scored 10 points against UNCG.

**Junior (2014-15):** Saw action in 29 games, including three starts . . . averaged 2.5 points and 2.3 rebounds per game . . . had five points, four rebounds and three assists against North Florida . . . grabbed a career-high six rebounds against Penn State . . . scored 10 points against UCLA . . . grabbed six rebounds at UNCG . . . scored seven points against Wofford . . . had six points and three assists against UNCG . . . scored nine points against East Tennessee State.

**Sophomore (2013-14):** Saw action in 16 games . . . averaged 1.6 points and 1.5 rebounds per game . . . made her Samford debut in the season opener at Memphis . . . led the team with 12 points at UAB.

**2012-13:** Sat out the season after transferring from Belmont University.

**Previous College:** Played one season at Belmont University . . . played in all 30 contests, earning one start . . . third on the team in three-point field-goal percentage (.324) . . . scored five or more points on seven occasions.

**High School:** Helped Madison Academy to its first 3A state championship title in 2011 . . . earned All-State Tournament Team honors . . . McDonald's All-America nominee . . . named Alabama All-State Second Team . . . Class 3A Area 14 All-Team selection . . . Decatur Orthopedic Ladies Classic All-Tournament Team and MVP . . . Huntsville Times Elite Second Team . . . ranked #5 in Birmingham News 2011 Super Seniors . . . selected to play in the Alabama-Mississippi All-Star game . . . was ranked by ESPN HoopGurlz as the Class of 2011's No. 34 guard in the country and No. 5 player in the state of Alabama by Prentice Beverly's Bama PrepGirls.

**Personal:** Born Dec. 10, 1993 . . . daughter of Samuel Mayers and Barbara Upshaw-Mayers . . . majoring in sports administration.

## SAMFORD CAREER BESTS

Points: 18 (twice), last vs. Chattanooga, Jan. 23, 2016  
Rebounds: 7 (twice), last at UT Martin, Dec. 5, 2015  
Assists: 3 (five times), last at UNCG, Jan. 9, 2016





Amara Mayers

Season	gp-gs	min/avg	Total		3-Point		F-Throws		Rebounds				pf	fo	ast	to	blk	stl	Scoring	
			fg-fga	pct	fg-fga	pct	ft-fta	pct	off	def	tot	avg							pts	avg
2013-14	16-0	164/10.3	8-33	.242	3-16	.188	6-6	1.000	1	23	24	1.5	11	0	4	16	0	6	25	1.6
2014-15	29-3	416/14.3	25-67	.373	7-23	.304	16-24	.667	10	56	66	2.3	30	0	24	41	4	14	73	2.5
2015-16	23-23	556/24.2	70-158	.443	9-36	.250	34-61	.557	15	79	94	4.1	27	0	28	47	1	30	183	8.0
TOTAL	68-26	1136/16.7	103-258	.399	19-75	.253	56-91	.615	26	158	184	2.7	68	0	56	104	5	50	281	4.1



## 12 KRISTA STRICKLIN

Guard • 5-7 • Senior  
Hayden, Ala. • Hayden HS

**Senior (2015-16):** Had seven points and four rebounds in the season opener at 11th-ranked Mississippi State . . . scored seven points and grabbed five rebounds against AUM . . . scored eight points against Troy . . . scored seven points against Shorter . . . scored nine points against Nicholls State in the Lady Eagle Thanksgiving Classic . . . had nine points at Alabama A&M . . . scored 10 points and grabbed 10 rebounds at Indiana . . . led the team with 16 points at Georgia Tech . . . led the team with 15 points at Western Carolina . . . had seven points and 10 rebounds at Wofford . . . scored nine points against UNCG.

**Junior (2014-15):** Started all 30 games . . . averaged 7.7 points and 4.7 rebounds per game . . . grabbed six rebounds in the season opener at Memphis . . . scored 13 points against North Florida . . . pulled down seven rebounds against UT Martin . . . had nine points, four rebounds and three assists against Penn State . . . led the team with 15 points at Troy . . . scored 10 points against UAB . . . had nine points and six rebounds at Auburn . . . grabbed 10 rebounds at Tulane . . . scored eight points against UCLA . . . had eight points and seven rebounds against Alabama State . . . grabbed six rebounds at Kansas . . . had 10 points and six rebounds against Auburn Montgomery . . . scored 13 points and grabbed seven rebounds at UNCG . . . scored nine points at Western Carolina . . . had 13 points, five rebounds and four assists against Wofford . . . had 15 points and six rebounds against UNCG . . . had nine points and six rebounds against East Tennessee State . . . scored a career-high 19 points, grabbed eight rebounds and dished out four assists at Mercer . . . scored nine points against Furman in the Southern Conference Tournament.

**Sophomore (2013-14):** Played in all 30 games, starting 11 contests . . . averaged 4.8 points and 3.7 rebounds per game . . . dished out 31 assists . . . scored 15 points and grabbed seven rebounds in season-opening win at Memphis . . . led the team with 15 points at North Florida . . . led the team with six rebounds at UAB . . . had 12 points and 11 rebounds against Rice . . . scored 10 points and grabbed five rebounds against South Alabama . . . pulled down a career-high 13 rebounds at Alabama State . . . had eight points against Mercer . . . scored seven points against Jacksonville State . . . scored 10 points and grabbed six rebounds against Davidson . . . had 12 points and seven rebounds against Georgia Southern . . . scored 13 points against Appalachian State.

**Freshman (2012-13):** Played in 30 games, including 20 starts . . . averaged 5.5 points and 5.2 rebounds per game . . . saw her first collegiate action in the season-opener at Florida State . . . grabbed four rebounds against Alabama State . . . scored six points against Furman . . . scored seven points at Tennessee Tech . . . recorded her first career double-double, scoring 12 points and grabbing 11 rebounds at Oregon . . . grabbed seven rebounds against College





of Charleston . . . scored 12 points and grabbed eight rebounds against Georgia Southern . . . scored 16 points and grabbed eight rebounds at Davidson . . . scored 18 points, including hitting the game-winning shot at the buzzer, and grabbed nine rebounds against Appalachian State . . . had nine points and eight rebounds at Wofford . . . tied a career-high with 11 rebounds at Georgia Southern . . . had 12 points and eight rebounds at College of Charleston . . . grabbed seven rebounds against Western Carolina . . . had 16 points and seven rebounds at Appalachian State . . . had seven points and 11 rebounds in a win over Wofford in the SoCon Tournament . . . scored 13 points against Elon in the SoCon Tournament.

**High School:** Prepped at Hayden High School in Hayden, Ala . . . scored an impressive 3,155 points, ranking her ninth in the history of the state of Alabama . . . averaged 26.9 points per game as a senior in 2011-12 . . . also averaged 6.3 rebounds, 3.6 assists and 5.1 steals per game . . . named All-Area and All-County all four years of high school.

**Personal:** Born June 11, 1994 . . . daughter of Jay Stricklin and Lou Ann Stricklin . . . majoring in fitness and health promotion.

## CAREER BESTS

Points: 19, at Mercer, Feb. 28, 2015

Rebounds: 13, at Alabama State, Dec. 4, 2013

Assists: 4 (three times), last vs. ETSU, Jan. 21, 2016



Krista Stricklin

Season	gp-gs		Total		3-Point		F-Throws		Rebounds				Scoring							
			fg-fga	pct	fg-fga	pct	ft-fta	pct	off	def	tot	avg	pf	fo	ast	to	blk	stl	pts	avg
2012-13	30-20	845/28.2	52-152	.342	30-91	.330	31-47	.660	14	142	156	5.2	53	1	33	80	6	22	165	5.5
2013-14	30-11	595/19.8	51-128	.398	14-54	.259	27-42	.643	19	92	111	3.7	58	2	31	28	1	19	143	4.8
2014-15	30-30	901/30.0	84-176	.477	25-60	.417	37-58	.638	15	126	141	4.7	56	0	53	53	5	20	230	7.7
2015-16	23-23	657/28.6	52-134	.388	16-57	.281	21-37	.568	20	65	85	3.7	38	0	27	25	12	16	141	6.1
TOTAL	113-84	2998/26.5	239-590	.405	85-262	.324	116-184	.630	68	425	493	4.4	205	3	144	186	24	77	679	6.0



## 21 KEKE FLETCHER

Forward • 5-11 • RS-Senior  
Huntsville, Ala. • Madison Academy

**Senior (2015-16):** Scored seven points against AUM . . . had six points in home game against Harvard.

**Junior (2014-15):** Saw action in 21 games . . . averaged 1.2 points and 0.5 rebounds per game . . . scored seven points against North Florida . . . had three points and three rebounds against Alabama State . . . scored three points against Western Carolina.

**Sophomore (2013-14):** Saw action in all 30 games, including five starts . . . averaged 2.8 points and 1.5 rebounds per game . . . scored six points at UAB . . . had seven points, four rebounds and three assists against Rice . . . scored a career-high 14 points against South Alabama . . . scored six points at Utah . . . grabbed a career-high 11 rebounds against Western Carolina . . . scored 11 points at Wofford . . . scored six points against Eon.

**Freshman (2012-13):** Saw action in 26 games . . . averaged 2.0 points and 1.0 rebound per game . . . saw her first collegiate action in the season-opener at Florida State . . . dished out four assists against Alabama State . . . scored six points against AUM . . . scored a career-high 10 points against Furman . . . grabbed four rebounds at UNCG . . . scored six points at Western Carolina . . . had six points and five rebounds against Elon.

**Redshirt (2011-12):** Had to sit out the season after suffering a knee injury . . . will apply for a medical redshirt.

**High School:** Was named first-team All-State after leading her Madison Academy team to a 3A state championship . . . earned a spot on the Huntsville Times Elite Girls Basketball First Team . . . also was selected for the Alabama/Mississippi All-Star game . . . won the U.S. National Minority Leadership Award . . . also won the U.S. Presidential Outstanding Academic Excellence Award . . . named to National Honor Society, and named a finalist for Miss Madison Academy.

**Personal:** Born Feb. 28, 1993 . . . daughter of John and Cathy Fletcher . . . majoring in psychology at Samford.

### CAREER BESTS

Points: 14, vs. South Alabama, Nov. 30, 2013

Rebounds: 11, vs. Western Carolina, Feb. 8, 2014

Assists: 4, vs. Alabama State, Nov. 23, 2012







Keke Fletcher

			Total		3-Point		F-Throws		Rebounds										Scoring	
Season	gp-gs	min/avg	fg-fga	pct	fg-fga	pct	ft-fta	pct	off	def	tot	avg	pf	fo	ast	to	blk	stl	pts	avg
2012-13	26-0	237/9.1	14-28	.500	12-21	.571	12-12	1.000	5	20	25	1.0	15	0	20	15	3	2	52	2.0
2013-14	30-5	435/14.5	30-85	.353	21-59	.356	2-4	.500	14	31	45	1.5	30	0	16	21	2	13	83	2.8
2014-15	21-0	140/6.7	10-30	.333	4-18	.222	1-2	.500	1	10	11	0.5	8	0	3	6	3	4	25	1.2
2015-16	18-0	177/9.8	14-37	.378	6-25	.240	0-0	.000	5	17	22	1.2	4	0	8	3	2	5	34	1.9
TOTAL	95-5	989/10.4	68-180	.378	43-123	.350	15-18	.833	25	78	103	1.1	57	0	47	45	10	24	194	2.0



## 2 HANNAH NICHOLS

Guard • 5-10 • Junior  
Madison, Ala. • Madison County HS

**Sophomore (2014-15):** Started all 30 games . . . led the team in scoring at 14.1 points per game . . . named second team All-SoCon by both the coaches and the media . . . led the team with 13 points against Alabama A&M . . . scored a team-high 17 points against North Florida . . . scored a career-high 22 points against UT Martin . . . scored 14 points at Georgia State . . . had 13 points and seven rebounds against Penn State . . . scored 14 points at Troy . . . led the team with 19 points against UAB . . . had 13 points and seven rebounds at Auburn . . . scored 14 points and grabbed nine rebounds at Tulane . . . led the team with 12 points against UCLA . . . scored 14 points against Alabama State . . . scored 12 points at Kansas . . . led the team with 12 points at Kansas State . . . scored 12 points against Auburn Montgomery . . . tied a career high with 22 points at Western Carolina . . . had 15 points and five rebounds in home win over Western Carolina . . . led the team with 21 points against Mercer . . . had 14 points and six rebounds against Wofford . . . tied a career high with 22 points against UNCG . . . scored 22 points for the second-straight game in a win at Wofford . . . had 16 points at Furman . . . scored 15 points against #20 Chattanooga . . . scored 19 points against East Tennessee State . . . scored 16 points at Mercer . . . scored nine points against Furman in the SoCon Tournament.

**Freshman (2013-14):** Named Southern Conference Freshman of the Year . . . finished second on the team in scoring, averaging 8.1 points per game . . . led the team in rebounding, grabbing 4.3 boards per contest . . . scored 12 points and pulled down seven rebounds in her collegiate debut at Memphis . . . scored nine points against Talladega College . . . had 14 points and six rebounds at North Florida . . . had seven points and seven rebounds in win at UNCG . . . scored seven points at Utah . . . had seven points and seven rebounds against Jacksonville State . . . had 11 points and six rebounds against Davidson . . . scored 16 points against Georgia Southern . . . scored 13 points and grabbed seven rebounds at Appalachian State . . . scored nine points at Western Carolina . . . had 12 points against Furman . . . scored 20 points against Wofford . . . had nine points and six rebounds at Chattanooga . . . had 12 points and six rebounds against Western Carolina . . . had nine points against Appalachian State . . . contributed 12 points at Wofford . . . had nine points and seven rebounds at Furman . . . scored 12 points against Chattanooga . . . scored 13 points against Elon.

**High School:** Named All-State Honorable Mention at Madison County High School . . . also named to the All-State Tournament Team . . . nominated for 4A Player of the Year . . . selected to play in the Alabama-Mississippi All-Star Game . . . also participated in volleyball and softball in high school.

**Personal:** Born January 12, 1995 . . . daughter of Bruce and Judy Nichols . . . majoring in sports administration.

### CAREER BESTS

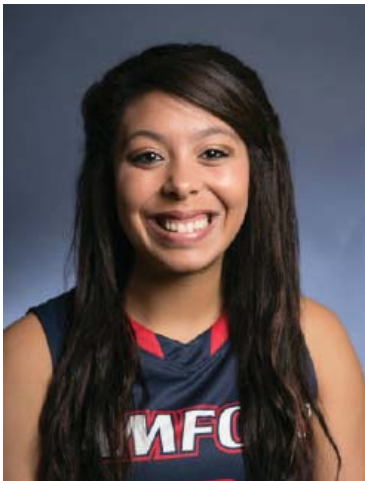
Points: 22 (four times), last at Wofford, Feb. 14, 2015

Rebounds: 9, at Tulane, Dec. 18, 2014

Assists: 3 (twice), last vs. Furman, Jan. 17, 2015

Hannah Nichols																					
			Total		3-Point		F-Throws		Rebounds											Scoring	
Season	gp-gs	min/avg	fg-fga	pct	fg-fga	pct	ft-fa	pct	off	def	tot	avg	pf	fo	ast	to	blk	stl	pts	avg	
2013-14	30-1	616/20.5	88-202	.436	51-130	.392	15-29	.517	13	115	128	4.3	61	0	26	54	11	12	242	8.1	
2014-15	30-30	939/31.3	150-342	.439	80-204	.392	44-55	.800	9	104	113	3.8	60	0	33	53	21	17	424	14.1	
TOTAL	60-31	1555/25.9	238-544	.438	131-334	.392	59-84	.702	22	219	241	4.0	121	0	59	107	32	29	666	11.1	





## 3 DESTINEY ELLIOTT

Forward • 6-0 • Sophomore  
Oneonta, Ala. • Oneonta HS

**Sophomore (2015-16):** Had seven points, four rebounds and four assists against AUM . . . had eight points and nine rebounds against Troy . . . grabbed a career-high 12 rebounds at Jacksonville State . . . scored 17 points and grabbed 11 rebounds against Nicholls State in the Lady Eagle Thanksgiving Classic . . . also had nine points and eight rebounds against Southern Mississippi in the Lady Eagle Thanksgiving Classic, earning All-Tournament honors . . . scored 13 points and tied a school record with 18 rebounds at UT Martin . . . scored a career-high 20 points and grabbed nine rebounds at Indiana . . . had 11 points and nine rebounds at Alabama State . . . scored 11 points and grabbed six rebounds at UAB . . . had seven points and five rebounds at LSU . . . had 14 points and eight rebounds at Western Carolina . . . had 11 points and nine rebounds at UNCG . . . had 12 points, six rebounds and five assists against Mercer . . . scored 15 points and grabbed 12 rebounds against ETSU . . . had nine points and six rebounds at Furman.

**Freshman (2014-15):** Started all 30 games . . . led the team in rebounding, averaging 5.8 boards per contest . . . third on the team in scoring, averaging 9.0 points per game . . . named to the SoCon's All-Freshman team . . . scored 12 points and grabbed six rebounds in her collegiate debut at Memphis . . . had eight points, eight rebounds and five assists against Alabama A&M . . . dished out six assists against North Florida . . . scored 15 points and grabbed nine rebounds against UT Martin . . . pulled down eight rebounds against Penn State . . . scored 15 points and grabbed nine rebounds against UAB . . . had nine points and nine rebounds at Auburn . . . scored 11 points at Tulane . . . had 10 points and five rebounds against UCLA . . . posted her first career double-double with 18 points and 11 rebounds against Alabama State . . . had nine points at Kansas . . . tied a career high with 18 points against Auburn Montgomery . . . grabbed eight rebounds at Western Carolina . . . had six assists and nine rebounds against Furman . . . scored 15 points against Western Carolina . . . led the team with seven rebounds at East Tennessee State . . . grabbed 10 rebounds against Mercer . . . scored 15 points against UNCG . . . had 16 points and seven rebounds at Furman . . . scored 15 points against #20 Chattanooga . . . had nine points, five rebounds and four assists at Mercer . . . scored 11 points and grabbed six rebounds against Furman in the SoCon Tournament.

**High School:** Was named the Most Valuable Player of the Alabama 4A State Tournament in 2013 and 2014, leading her Oneonta High School team to back-to-back state titles . . . also named MVP of the 4A Regional Finals and 4A Player of the Year for Alabama in both 2013 and 2014 . . . named All-Area five times and All-Tournament for her area four times . . . was a three-time County MVP . . . scored over 3,000 points in her high school career . . . played for former Samford assistant coach Amber Deline at Oneonta High School.

**Personal:** Born September 6, 1995 . . . daughter of Lee'Ann Hughes and David Elliott . . . majoring in elementary education.

### CAREER BESTS

Points: 20, at Indiana, Dec. 11, 2015

Rebounds: 18, at UT Martin, Dec. 5, 2015

Assists: 6 (twice), last vs. Furman, Jan. 17, 2015

Destiney Elliott																				
Season	gp-gs	min/avg	Total		3-Point		F-Throws		Rebounds				Scoring							
			fg-fga	pct	fg-fga	pct	ft-fa	pct	off	def	tot	avg	pts	pf	fo	ast	to	blk	stl	avg
14-15	30-30	864/28.8	103-207	.498	12-36	.333	53-82	.646	52	122	174	5.8	271	77	0	68	79	11	32	9.0
15-16	23-23	638/27.7	80-189	.423	18-52	.346	31-45	.689	49	127	176	7.7	209	64	1	44	51	20	23	9.1
ITAL	53-53	1502/28.3	183-396	.462	30-88	.341	84-127	.661	101	249	350	6.6	480	141	1	112	130	31	55	9.1



# 4 LYDIA MCGEE

Guard • 5-10 • RS-Junior  
Madison, Ala. • Madison Academy

**Junior (2015-16):** Scored nine points against AUM . . . scored 12 points against Troy . . . had six points and four rebounds at Jacksonville State . . . returned to action against Mercer after missing 11 games due to injury . . . scored 10 points and dished out five assists against Mercer . . . had 12 points and nine rebounds against UNCG.

**Sophomore (2014-15):** Saw action in 24 games, including eight starts . . . missed the first six games with an injury . . . averaged 6.6 points and 3.8 rebounds per game . . . saw her first action of the season at Troy, scoring four points and grabbing three rebounds . . . had six points against UAB . . . scored 14 points and dished out five assists at Tulane . . . contributed eight points against UCLA . . . dished out five assists against Alabama State . . . had 10 points and five rebounds at UNCG . . . scored nine points at Western Carolina . . . scored 12 points and grabbed seven rebounds against Furman . . . posted her first career double-double, scoring 10 points and grabbing 11 rebounds against Western Carolina . . . scored 12 points at East Tennessee State . . . scored 11 points against Mercer . . . had nine points and six rebounds against Wofford . . . had 13 points and six rebounds against UNCG . . . scored nine points at Wofford . . . had eight points against East Tennessee State.

**Freshman (2013-14):** Saw action in 30 games, including 26 starts . . . averaged 5.8 points and 3.6 rebounds per game . . . grabbed five rebounds in the season opener at Memphis . . . scored six points at North Florida . . . had six points against South Alabama . . . scored nine points in win at UNCG . . . had seven points and five rebounds at Oklahoma . . . had 11 points and six rebounds against Jacksonville State . . . scored 14 points and dished out five assists against Davidson . . . had nine points against Georgia Southern . . . had 11 points and five rebounds at Western Carolina . . . had 12 points, five rebounds and a career-high six assists against Wofford . . . scored 15 points, and grabbed six rebounds at Davidson . . . scored 11 points against Chattanooga . . . scored a career-high 16 points, grabbed four rebounds and dished out five assists against UNCG.

**Redshirt (2012-13):** Saw action in eight game, including three starts before suffering a season-ending leg injury . . . received a medical redshirt . . . averaged 6.0 points and 3.3 assists per game . . . saw her first collegiate action in the season-opener at Florida State, grabbing five rebounds . . . dished out four assists at Jacksonville State . . . scored four points against Alabama State . . . had six points and six rebounds against Tennessee State . . . scored eight points against AUM . . . earned her first start against Wofford, scoring a career-high 11 points and dishing out a career-high five assists . . . tied career highs in points with 11 and assists with five against Furman.

**High School:** Was a three-time member of the Alabama Sports Writers Association All-State team out of Madison Academy . . . was a four-time All-Area and All-Region selection . . . named Area MVP in 2012 . . . named to National Honor Society.

**Personal:** Born Dec. 2, 1993 . . . daughter of Terry and Lisa McGee . . . majoring in health science.

## CAREER BESTS

Points: 16, vs. UNCG, Feb. 28, 2014

Rebounds: 11, vs. Western Carolina, Jan. 19, 2015

Assists: 6, vs. Wofford, Jan. 20, 2014

Lydia McGee																					
			Total		3-Point		F-Throws		Rebounds											Scoring	
Season	gp-gs	min/avg	fg-fga	pct	fg-fga	pct	ft-fa	pct	off	def	tot	avg	pf	fo	ast	to	blk	stl	pts	avg	
2012-13	8-3	228/28.5	17-41	.415	3-10	.300	11-15	.733	3	23	26	3.3	18	0	21	18	1	11	48	6.0	
2013-14	30-26	777/25.9	58-133	.436	8-20	.400	49-63	.778	34	73	107	3.6	84	4	49	50	5	23	173	5.8	
2014-15	24-8	597/24.9	52-123	.423	6-24	.250	48-58	.828	16	75	91	3.8	54	1	45	46	2	15	158	6.6	
2015-16	12-0	169/14.1	21-48	.438	2-7	.286	13-16	.813	10	18	28	2.3	19	0	14	24	2	8	57	4.8	
TOTAL	74-37	1771/23.9	148-345	.429	19-61	.311	121-152	.796	63	189	252	3.4	175	5	129	138	10	57	436	5.9	



# 5 KASSIDY BLEVINS

Guard • 5-9 • RS-Sophomore  
Ringgold, Ga. • Gordon Lee HS

**Sophomore (2015-16):** Scored 15 points and dished out four assists against AUM . . . led the team with 19 points against Troy . . . scored nine points at UT Martin . . . scored eight points at Indiana . . . scored 14 points at Georgia Tech . . . had nine points and six rebounds at LSU . . . led the team with 19 points against Harvard . . . scored eight points at UNCG . . . scored 10 points at Furman . . . scored nine points at Wofford . . . led the team with 17 points against UNCG.

**Redshirt (2014-15):** Saw action in the first eight games before suffering a season-ending knee injury . . . received a medical redshirt . . . averaged 5.8 points per game . . . scored 11 points against Alabama A&M . . . had nine points, four rebounds and four assists against North Florida . . . scored seven points and dished out four assists at Troy . . . had eight points against UAB.

**Freshman (2013-14):** Saw action in 23 games, including 10 starts . . . averaged 6.5 points and 2.2 rebounds per game . . . made her collegiate debut against Talladega College . . . scored six points against Mercer . . . scored eight points against Davidson . . . had seven points and five rebounds at Western Carolina . . . scored 10 points and grabbed five rebounds against Furman . . . had 10 points and five rebounds against Wofford . . . scored 13 points at Chattanooga . . . led the team with a career-high 21 points at Georgia Southern . . . had 13 points at Davidson . . . had nine points and a career-high seven rebounds against Chattanooga . . . tied a career high with 21 points against UNCG . . . scored 13 points against Elon . . . scored 13 points in the SoCon Tournament against Davidson.

**High School:** Named 2013 Class A Player of the Year from Gordon Lee High School . . . named first team All-State and All-Region for each of her last three years . . . led her team to the 2013 state championship . . . named Chattanooga Best of Preps Player of the Year . . . named North Georgia Player of the Year . . . named team MVP three times.

**Personal:** Born Oct. 27, 1994 . . . daughter of Billy and Karen Blevins . . . majoring in English education.

## CAREER BESTS

Points: 21 (twice), last vs. UNCG, Feb. 28, 2014

Rebounds: 7, vs. Chattanooga, Feb. 24, 2014

Assists: 4 (five times), last vs. Chattanooga, Jan. 23, 2016

Kassidy Blevins																					
			Total		3-Point		F-Throws		Rebounds											Scoring	
Season	gp-gs	min/avg	fg-fga	pct	fg-fga	pct	ft-fta	pct	off	def	tot	avg	pf	fo	ast	to	blk	stl	pts	avg	
2013-14	23-10	418/18.2	56-146	.384	28-82	.341	10-14	.714	6	44	50	2.2	38	0	21	28	7	14	150	6.5	
2014-15	8-0	156/19.5	13-29	.448	7-19	.368	13-18	.722	1	15	16	2.0	9	0	17	11	1	5	46	5.8	
2015-16	23-0	478/20.8	57-147	.388	36-99	.364	13-17	.765	9	46	55	2.4	25	0	31	22	9	20	163	7.1	
TOTAL	54-10	1052/19.5	126-322	.391	71-200	.355	36-49	.735	16	105	121	2.2	72	0	69	61	17	39	359	6.6	



# 13 BRITTANY STEVENS

Guard • 5-3 • Junior

Norcross, Ga. • Wesleyan School

**Junior (2015-16):** Led the team with 13 points and four assists in the season opener at 11th-ranked Mississippi State . . . scored 12 points against Troy, and made 6-of-6 free-throw attempts against Troy . . . scored eight points against Shorter . . . had eight points, four rebounds and four assists against Nicholls State in the Lady Eagle Thanksgiving Classic . . . scored nine points at UT Martin . . . had seven points and hit the eventual game-winning shot at LSU . . . scored seven points at UNCG . . . scored eight points at Furman . . . had 10 points, six rebounds and three assists at Wofford . . . recorded her first career double-double with 11 points and 10 rebounds, and dished out six assists against UNCG.

**Sophomore (2014-15):** Saw action in 22 games, including 19 starts . . . missed eight games with a hand injury . . . led the team in assists, averaging 3.5 per game . . . also averaged 6.0 points per game . . . scored five points in the season opener at Memphis . . . dished out five assists against Alabama A&M . . . scored eight points and dished out six assists against UT Martin . . . had six points and four assists against Auburn Montgomery . . . scored eight points at UNCG . . . had eight points and five assists at Western Carolina . . . scored 11 points and dished out four assists against Furman . . . scored 13 points against Western Carolina . . . dished out a career-high seven assists against Wofford . . . scored nine points at Wofford . . . contributed six assists against #20 Chattanooga . . . tied a career high with seven assists at Mercer . . . scored a career-high 17 points against Furman in the SoCon Tournament.

**Freshman (2013-14):** Played in all 30 games, including 29 starts . . . averaged 3.8 points and 2.3 rebounds per game . . . led the team in assists with 52 . . . had four points, six rebounds and six assists in her collegiate debut at Memphis . . . scored eight points at UAB . . . had six points, four rebounds and four assists against South Alabama . . . had five points, five rebounds and five assists against Mercer . . . scored eight points in win at UNCG . . . shared the team lead with nine points at Utah . . . had six points against Furman . . . scored six points and grabbed five rebounds at Georgia Southern . . . scored 10 points at Furman . . . dished out five assists against UNCG.

**High School:** Helped lead her team to four state championships at Wesleyan School in Georgia . . . was named All-Region as both a junior and senior . . . named All-County and second team All-State as a senior . . . also competed in softball and track and field.

**Personal:** Born Aug. 11, 1995 . . . daughter of Dennis and Vee Stevens . . . majoring in English, with a minor in religion.

## CAREER BESTS

Points: 17, vs. Furman (SoCon Tourn.), Mar. 5, 2015

Rebounds: 10, vs. UNCG, Feb. 4, 2016

Assists: 7 (twice), last at Mercer, Feb. 28, 2015

Brittany Stevens

Season	gp-gs	min/avg	Total		3-Point		F-Throws		Rebounds				Scoring							
			fg-fga	pct	fg-fga	pct	ft-fa	pct	off	def	tot	avg	pts	pf	fo	ast	to	blk	stl	
'013-14	30-29	699/23.3	38-97	.392	12-28	.429	25-53	.472	8	60	68	2.3	75	1	52	59	2	45	113	3.8
'014-15	22-19	686/31.2	42-118	.356	10-35	.286	37-48	.771	7	41	48	2.2	68	1	76	56	1	29	131	6.0
'015-16	23-23	702/30.5	46-132	.348	9-38	.237	39-50	.780	13	55	68	3.0	56	0	60	53	0	26	140	6.1
TOTAL	75-71	2087/27.8	126-347	.363	31-101	.307	101-151	.669	28	156	184	2.5	199	2	188	168	3	100	384	5.1





## 22 ELLEN RIGGINS

Forward • 6-0 • Junior  
Murfreesboro, Tenn. • Oakland HS

**Junior (2015-16):** Scored nine points against AUM . . . scored nine points and grabbed five rebounds at Southern Mississippi in the Lady Eagle Thanksgiving Classic . . . had 12 points, five rebounds and five assists at Georgia Tech . . . scored 13 points at Alabama State . . . scored 10 points against ETSU . . . had eight points and seven rebounds at Wofford . . . had seven points and six rebounds against UNCG.

**Sophomore (2014-15):** Saw action in all 30 games . . . averaged 3.3 points and 3.1 rebounds per game . . . scored six points in the season opener at Memphis . . . had seven points and four assists against North Florida . . . had 14 points, eight rebounds and four assists at Georgia State . . . scored nine points against Penn State . . . scored eight points and grabbed eight rebounds at Troy . . . grabbed seven rebounds against UAB . . . scored six points against Furman . . . scored 10 points at Wofford . . . had five points against East Tennessee State.

**Freshman (2013-14):** Played in all 30 games, including 25 starts . . . averaged 7.0 points and 3.7 rebounds per game . . . led the team with 16 points, and grabbed six rebounds in her collegiate debut at Memphis . . . had 15 points and nine rebounds against Talladega College . . . had nine points and six rebounds against Rice . . . scored nine points and grabbed six rebounds against South Alabama . . . led the team with 15 points at Alabama State . . . scored eight points against Mercer . . . had eight points at Elon . . . had 12 points and six rebounds at Appalachian State . . . had 14 points and six rebounds at Chattanooga . . . grabbed seven rebounds at Davidson . . . scored 14 points at Wofford . . . had nine points, eight rebounds and five assists . . . had eight points and four rebounds against Davidson in the SoCon Tournament.

**High School:** Was a three-year team captain at Oakland High School . . . named All-District all four years . . . named All-Area as a junior, and team MVP as both a sophomore and junior . . . named All-District Tournament as a junior and senior . . . was the Daily News Journal Presidential Cup recipient as a senior . . . also competed in volleyball and tennis . . . named All-District for tennis as a senior.

**Personal:** Born May 13, 1995 . . . daughter of Patrick Riggins and Ronda Hawkins . . . majoring in communication studies.

### CAREER BESTS

Points: 16, at Memphis, Nov. 10, 2013

Rebounds: 9, vs. Talladega College, Nov. 14, 2013

Assists: 5 (twice), last at Georgia Tech, Dec. 13, 2015

Ellen Riggins																					
Season			Total		3-Point		F-Throws		Rebounds											Scoring	
	gp-gs	min/avg	fg-fga	pct	fg-fga	pct	ft-fta	pct	off	def	tot	avg	pf	fo	ast	to	blk	stl	pts	avg	
2013-14	30-25	691/23.0	68-205	.332	9-49	.184	65-79	.823	43	67	110	3.7	67	2	37	75	5	22	210	7.0	
2014-15	30-0	474/15.8	36-94	.383	4-17	.235	23-37	.622	24	68	92	3.1	46	0	33	50	2	10	99	3.3	
2015-16	23-3	411/17.9	43-108	.398	2-25	.080	24-36	.667	16	53	69	3.0	39	0	23	42	8	10	112	4.9	
TOTAL	83-28	1576/19.0	147-407	.361	15-91	.165	112-152	.737	83	188	271	3.3	152	2	93	167	15	42	421	5.1	



## 31 CASSIDY WILLIAMS

Guard • 5-8 •

Freshman

Peachtree City, Ga. •

McIntosh HS

**Freshman (2015-16):** Scored six points and grabbed three rebounds in her collegiate debut at 11th-ranked Mississippi State . . . also had six points against AUM . . . had eight points and four rebounds against Shorter . . . scored six points at UT Martin . . . scored five points against Harvard . . . scored six points against Mercer.

**High School:** Named first team All-State as a senior at McIntosh High School in Georgia . . . named Region Player of the Year, South-Metro Player of the Year and Southern Crescent Player of the Year . . . ranked in the top 50 at the World Championship trials . . . also named second team All-State as a junior . . . also participated in lacrosse.

**Personal:** Born July 13, 1997 . . . daughter of Michael and Cathy Williams . . . majoring in health sciences.

### CAREER BESTS

Points: 8, vs. Shorter, Nov. 21, 2015

Rebounds: 5, at Georgia Tech, Dec. 13, 2015

Assists: 2 (twice), last at Alabama State, Dec. 17, 2015

Cassidy Williams

			Total		3-Point		F-Throws		Rebounds											Scoring	
Season	gp-gs	min/avg	fg-fga	pct	fg-fga	pct	ft-fa	pct	off	def	tot	avg	pf	fo	ast	to	blk	stl	pts	avg	
2015-16	23-0	290/12.6	17-57	.298	13-44	.295	2-2	1.000	6	21	27	1.2	19	0	9	26	1	4	49	2.1	
TOTAL	23-0	290/12.6	17-57	.298	13-44	.295	2-2	1.000	6	21	27	1.2	19	0	9	26	1	4	49	2.1	



## **32 OLIVIA CROZIER**

**Forward • 6-1 •**

**Freshman**

**Madison, Ind. •**

**Madison HS**

**High School:** Named All-State as both a junior and senior at Madison High School . . . was also named honorable mention All-State as a sophomore . . . named the Madison Courier Area Offensive and Defensive Player of the Year . . . won the HHC Academic Award as a member of the National Honor Society . . . as a senior, averaged 18.5 points and 11.7 rebounds per game.

**Personal:** Born Sept. 29, 1996 . . . daughter of Andy and Pam Crozier . . . majoring in nursing.

# 2015-16 BOX SCORES



Official Basketball Box Score -- Game Totals -- Final Statistics  
**Samford vs Mississippi State**  
 11/13/15 5:16 pm at Starkville, Miss. (Humphrey Coliseum)



**Samford 47 • 0-1**

#	Player	Total		3-Ptr		Rebounds		PF	TP	A	TO	Blk	Stl	Min
		FG-FGA	FG-FGA	FT-FTA	Off Def Tot	Off Def Tot	PF TP							
03	Destiney Elliott	f	1-4	0-0	1-1	0 2 2	5 3	0 3 0	1	18				
10	Taylor Reece	f	4-8	1-5	0-0	0 1 1	2 9	2 3 1	0	31				
11	Amara Mayers	g	3-5	3-3	0-2	1 4 5	3 9	2 1 0	1	26				
12	Krista Stricklin	g	3-7	1-3	0-0	0 4 4	2 7	2 2 0	1	29				
13	Brittany Stevens	g	3-7	0-0	7-8	0 1 1	4 13	4 5 0	0	34				
04	Lydia McGee		0-0	0-0	0-0	0 1 1	3 0	0 5 0	0	9				
05	Kassidy Blevins		0-1	0-1	0-0	0 1 1	1 0	0 0 0	0	4				
21	Keke Fletcher		0-2	0-2	0-0	1 3 4	0 0	0 0 0	0	19				
22	Ellen Riggins		0-0	0-0	0-0	2 2 2	0 0	0 3 0	0	9				
31	Cassidy Williams		2-4	2-4	0-0	0 3 3	2 6	0 6 0	0	21				
Team					1 6 7									
Totals			16-38	7-18	8-11	3 28 31	24 47	10 28 1	3	200				
FG % 1st Half: 4-9		21.1%	2nd half: 12-19	63.2%	Game: 16-38	42.1%	Deadball							
3FG % 1st Half: 2-9		22.2%	2nd half: 5-9	55.6%	Game: 7-18	38.9%	Rebounds							
FT % 1st Half: 4-7		57.1%	2nd half: 4-4	100.0%	Game: 8-11	72.7%	2							

**Mississippi State 68 • 1-0**

#	Player	Total		3-Ptr		Rebounds		PF	TP	A	TO	Blk	Stl	Min
		FG-FGA	FG-FGA	FT-FTA	Off Def Tot	Off Def Tot	PF TP							
03	Breanna Richardson	f	3-10	0-2	0-0	3 0 3	3 6	1 3 1	2	21				
15	Tesira McCowan	c	1-3	0-0	0-1	3 0 3	0 2	0 1 1	0	11				
00	Dominique Dillingham	g	4-11	2-3	3-4	6 5 11	3 13	0 1 0	2	35				
02	Morgan William	g	2-7	0-1	2-3	1 3 4	4 6	2 1 0	0	23				
35	Victoria Vivians	g	4-14	0-5	0-2	1 2 3	2 8	1 0 0	2	23				
01	Blair Schaefer	g	1-10	0-5	3-4	2 2 4	1 5	0 0 0	2	16				
05	Sherise Williams		0-2	0-0	2-2	3 1 4	0 2	0 0 0	0	9				
10	Jazzmun Holmes		4-8	0-2	4-4	1 2 3	3 12	1 3 0	5	18				
13	Ketara Chapel		3-4	0-0	0-0	2 1 3	0 6	1 0 0	1	21				
44	LaKaris Salter		1-4	0-2	0-0	1 2 3	0 2	0 0 0	0	3				
45	Chinwe Okorie		2-4	0-0	2-2	4 1 5	2 6	0 1 0	0	20				
Team					1 1 2									
Totals			25-77	2-20	16-22	28 20 48	18 68	6 10 2	14	200				
FG % 1st Half: 11-39		28.2%	2nd half: 14-38	36.8%	Game: 25-77	32.5%	Deadball							
3FG % 1st Half: 1-13		7.7%	2nd half: 1-7	14.3%	Game: 2-20	10.0%	Rebounds							
FT % 1st Half: 11-13		84.6%	2nd half: 9-9	55.6%	Game: 16-22	72.7%	2							

Officials: Cameron Inouye, Ed Sidlasky, Kim Thebo

Technical fouls: Samford-None. Mississippi State-None.

Attendance:

Score by periods	1st	2nd	3rd	4th	Total
Samford	12	2	20	13	47
Mississippi State	16	18	12	22	68

Last FG - SAM 4th-01:43, MS 4th-01:20.

Largest lead - SAM by 7 1st-05:55, MS by 21 3rd-08:19.

SAM led for 05:29. MS led for 33:26. Game was tied for 01:05.

Score tied - 2 times.

Lead changed - 2 times.



Official Basketball Box Score -- Game Totals -- Final Statistics  
**Auburn Montgomery vs Samford**  
 11/15/15 2 p.m. at Birmingham, Ala. (Pete Hanna Center)



**Auburn Montgomery 32 • 4-1**

#	Player	Total		3-Ptr		Rebounds		PF	TP	A	TO	Blk	Stl	Min
		FG-FGA	FG-FGA	FT-FTA	Off Def Tot	Off Def Tot	PF TP							
22	Reggotta Craig	f	2-8	1-2	2-4	2 4 6	3 7	0 2 1	0	34				
30	Marren Schwartz	c	0-0	0-0	0-0	0 0 0	0 0	0 0 0	1	10				
03	Jatoria Carter	g	1-6	1-2	0-0	0 4 4	2 3	4 2 0	0	22				
04	Lyndsey Macon	g	0-1	0-0	2-2	0 3 3	0 2	0 4 0	1	17				
12	Kaylan Withrow	g	4-5	3-4	0-0	0 0 0	1 11	1 1 0	1	31				
00	Kyla Rooks		2-3	0-0	0-0	0 0 0	1 4	0 2 0	0	8				
02	Jaycie Bobo		0-4	0-2	1-2	1 0 1	0 1	0 0 0	0	15				
05	Tatyana Dorden		0-1	0-1	0-0	0 2 2	0 0	0 1 0	0	6				
10	Keyonda Mason		0-0	0-0	0-0	0 0 0	3 0	0 1 0	0	16				
11	Anastasia Evans		0-3	0-2	0-0	0 0 0	5 0	0 2 0	0	5				
21	Jada Williams		2-8	0-2	0-0	0 3 3	3 4	1 2 0	0	19				
23	Aleksandra Trisic		0-3	0-2	0-0	1 0 1	3 0	0 4 0	2	17				
Team					0 1 1									
Totals			11-42	5-17	5-8	4 17 21	21 32	6 22 2	5	200				
FG % 1st Half: 9-25		36.0%	2nd half: 2-17	11.8%	Game: 11-42	26.2%	Deadball							
3FG % 1st Half: 4-9		44.4%	2nd half: 1-8	12.5%	Game: 5-17	29.4%	Rebounds							
FT % 1st Half: 1-2		50.0%	2nd half: 4-6	66.7%	Game: 5-8	62.5%	2							

**Samford 82 • 1-1**

#	Player	Total		3-Ptr		Rebounds		PF	TP	A	TO	Blk	Stl	Min
		FG-FGA	FG-FGA	FT-FTA	Off Def Tot	Off Def Tot	PF TP							
03	Destiney Elliott	f	2-6	1-3	2-2	1 3 4	1 7	4 3 0	2	19				
10	Taylor Reece	c	5-11	2-6	3-4	1 4 5	0 15	2 2 1	0	19				
11	Amara Mayers	g	1-5	1-4	0-2	2 4 6	0 3	2 0 0	1	19				
12	Krista Stricklin	g	2-3	2-3	1-2	1 4 5	1 7	2 0 1	0	21				
13	Brittany Stevens	g	1-3	0-2	2-2	2 3 5	2 4	1 0 1	0	18				
04	Lydia McGee		4-7	0-2	1-2	2 2 4	1 9	3 3 1	3	22				
05	Kassidy Blevins		4-4	4-4	3-4	1 2 3	3 15	4 0 0	1	24				
21	Keke Fletcher		3-6	1-2	0-0	1 2 3	0 7	1 1 0	0	12				
22	Ellen Riggins		4-6	0-0	1-2	1 2 3	1 9	1 2 0	1	22				
31	Cassidy Williams		2-3	2-2	0-0	1 0 1	3 6	1 2 0	0	24				
Team					0 2 2									
Totals			28-54	13-28	13-20	13 28 41	12 82	24 14 3	9	200				
FG % 1st Half: 14-25		56.0%	2nd half: 14-29	48.3%	Game: 28-54	51.9%	Deadball							
3FG % 1st Half: 8-15		53.3%	2nd half: 5-13	38.5%	Game: 13-28	46.4%	Rebounds							
FT % 1st Half: 6-8		75.0%	2nd half: 7-12	58.3%	Game: 13-20	65.0%	3							

Officials: Darrell Mitchell, David Jenkins, Kristen Jones

Technical fouls: Auburn Montgomery-None. Samford-None.

Attendance: 373

Score by periods	1st	2nd	3rd	4th	Total
Auburn Montgomery	12	11	6	3	32
Samford	21	21	20	20	82

Last FG - AUW 3rd-06:37, SAM 4th-00:28.

Largest lead - AUW None, SAM by 50 4th-00:28.

AUW led for 00:00. SAM led for 39:07. Game was tied for 00:53.

Score tied - 0 times.

Lead changed - 0 times.



Official Basketball Box Score -- Game Totals -- Final Statistics  
**Troy vs Samford**  
 11/17/15 6 p.m. at Birmingham, Ala. (Pete Hanna Center)



**Troy 69 • 1-1**

#	Player	Total		3-Ptr		Rebounds			PF	TP	A	TO	Blk	Stl	Min
		FG-FGA	FG-FGA	FT-FTA	Off	Def	Tot								
22	Upshaw, Amahni	f	1-2	0-0	0-0	0	3	3	5	2	0	2	0	0	13
34	Ramirez, Caitlyn	f	5-9	2-2	0-0	1	5	6	5	12	3	1	0	1	21
04	Beverly Kelley, A.	g	11-17	2-6	9-9	0	7	7	2	33	3	5	0	3	35
20	Gibbs, Ta Kleria	g	4-8	2-4	0-0	0	4	4	3	10	1	2	0	3	26
21	Reid, Rachel	g	1-5	0-3	1-2	0	1	1	2	3	2	1	0	3	22
03	Mendoza, Amanda		1-3	1-1	0-0	0	0	0	4	3	2	3	0	2	20
10	Chilis, Jayla		0-0	0-0	0-0	0	0	0	0	0	1	0	1	0	2
14	Banks, Claressa		0-1	0-1	0-0	0	2	2	0	0	0	4	0	0	17
23	Emerson, Kristin		1-5	0-0	0-0	0	3	3	4	2	0	2	0	0	14
25	Johnson, Casie		0-0	0-0	1-2	0	1	1	2	1	1	0	0	0	14
32	Williams, Dajia		0-1	0-0	3-4	2	0	2	3	3	0	2	0	0	5
33	Day, Lauren		0-0	0-0	0-0	1	0	1	2	0	0	1	0	0	6
44	Fili-Aime', La'Tia		0-0	0-0	0-0	0	0	0	1	0	0	0	0	0	5
Totals			24-51	7-17	14-17	4	30	34	33	69	13	23	1	12	200
Game															
FG % 1st Half: 12-28			42.9%	2nd half: 12-23	52.2%	Game: 24-51		47.1%							Deadball
FT % 1st Half: 5-8			62.5%	2nd half: 2-3	66.7%	Game: 14-17		82.4%							Rebounds
FT % 1st Half: 0-0			0.0%	2nd half: 1-2	50.0%	Game: 1-1		100%							



# 2015-16 BOX SCORES



Official Basketball Box Score -- Game Totals -- Final Statistics  
**Samford vs Jacksonville State**  
 11/24/15 5:30 p.m. at Jacksonville, Ala. (Pete Mathews Col.)



## Samford 50 • 4-1

#	Player	Total		3-Ptr		Rebounds			PF	TP	A TO Blk			Stl	Min
		FG-FGA	FG-FGA	FT-FTA	FT-FTA	Off	Def	Tot			A	TO	Blk	Stl	
03	Destiney Elliott	f	0-6	0-1	2-2	0	12	12	2	2	1	3	1	2	25
10	Taylor Reece	f	3-10	2-7	0-0	0	3	3	1	11	2	0	1	0	24
11	Amara Mayers	g	8-10	0-1	0-1	2	5	7	0	16	0	4	0	4	29
12	Krista Stricklin	g	2-4	0-0	2-2	0	0	0	1	6	0	0	1	0	23
13	Brittany Stevens	g	1-5	1-3	2-2	0	3	3	4	5	1	3	0	3	37
04	Lydia McGee	g	3-7	0-1	0-0	3	1	4	2	6	0	4	0	0	19
05	Kassidy Blevins	g	0-0	0-0	0-0	0	2	2	1	0	0	1	0	1	11
22	Ellen Riggins	g	2-8	0-3	0-2	0	2	2	0	4	0	1	0	0	16
31	Cassidy Williams	g	0-1	0-1	0-0	1	1	2	1	0	0	1	0	0	16
Team						1	4	5							
Totals		19-51	3-17	9-13	7	33	40	12	50	4	17	3	10	200	
FG % 1st Half: 9-26		34.6%	2nd half: 10-25	40.0%	Game: 19-51	37.3%	Deadball		Rebounds						
3FG % 1st Half: 3-10		30.0%	2nd half: 0-7	0.0%	Game: 3-17	17.6%	2								
FT % 1st Half: 2-2		100.0%	2nd half: 7-11	63.6%	Game: 9-13	69.2%									

## Jacksonville State 39 • 1-4

#	Player	Total		3-Ptr		Rebounds			PF	TP	A TO Blk			Stl	Min
		FG-FGA	FG-FGA	FT-FTA	FT-FTA	Off	Def	Tot			A	TO	Blk	Stl	
34	PEARSON, Rayven	f	0-3	0-0	0-0	0	1	1	4	0	0	1	1	0	12
04	BENSON, Briana	g	4-15	1-7	0-0	0	5	5	3	9	1	4	1	1	30
11	STRAIN, Courtney	g	3-11	2-6	0-0	1	4	5	2	8	0	1	0	1	37
14	JAMES, Destiny	g	1-7	1-5	3-4	0	8	8	2	6	4	3	1	2	33
24	MORRISON, Gretchen	g	1-5	1-2	0-0	0	0	0	2	3	1	3	0	1	26
03	NAUGHTON, Kelly	g	3-7	2-4	0-0	0	2	2	2	8	1	2	0	2	31
15	LONG, Chloe	g	2-3	0-0	1-2	0	3	3	2	5	1	2	2	0	31
Team						3	3	6							
Totals		14-51	7-24	4-6	4	26	30	17	39	8	16	5	7	200	
FG % 1st Half: 7-25		28.0%	2nd half: 7-26	26.9%	Game: 14-51	27.5%	Deadball		Rebounds						
3FG % 1st Half: 3-10		30.0%	2nd half: 4-14	28.6%	Game: 7-24	29.2%	2								
FT % 1st Half: 1-2		50.0%	2nd half: 3-4	75.0%	Game: 4-6	66.7%									

Officials: R-Meadow Overstreet, U1-Kelcey Roegiers, U2-Alex Sheffield  
 Technical fouls: Samford-None, Jacksonville State-None.  
 Attendance: 472

Score by periods		1st	2nd	3rd	4th	Total	Points	In	Off	2nd	Fast	Bench
		10	13	15	12	50						
Samford		10	13	15	12	50	SAM	30	4	8	2	10
Jacksonville State		9	9	5	16	39	JSU	12	9	0	0	13

Last FG - SAM 4th-03:10, JSU 4th-01:06.  
 Largest lead - SAM by 17 4th-08:56, JSU by 3 2nd-07:50.  
 SAM led for 35:01, JSU led for 04:07. Game was tied for 00:52.  
 Score tied - 2 times.  
 Lead changed - 3 times.



Official Basketball Box Score -- Game Totals -- Final Statistics  
**Nicholls vs Samford**  
 11/27/15 7:30 p.m. at Hattiesburg, Miss. (Reed Green Coliseum)



## Nicholls 43 • 1-3

#	Player	Total		3-Ptr		Rebounds			PF	TP	A TO Blk			Stl	Min
		FG-FGA	FG-FGA	FT-FTA	FT-FTA	Off	Def	Tot			A	TO	Blk	Stl	
40	Lilly, Marina	c	3-6	0-0	0-0	0	7	7	4	6	0	3	1	0	25
05	Pawlowski, Hope	g	2-5	0-1	0-0	0	3	3	4	4	4	7	0	3	30
14	Deakin-Sharp, Sammi	g	5-9	1-1	2-3	0	2	2	4	13	4	5	0	2	31
15	Hamilton, Ain	g	1-6	0-0	0-0	0	0	0	2	2	1	4	0	0	20
20	Barrios, Cassidy	g	1-3	0-1	0-0	1	7	8	2	2	3	4	2	1	38
01	Mandic, Jovana	g	1-2	0-0	0-0	0	1	1	2	0	1	1	1	0	10
12	Black, Karissa	g	0-0	0-0	0-0	0	0	0	1	0	0	1	0	0	1
22	Coleman, Brenisha	g	1-1	0-0	0-0	0	0	0	0	2	0	0	0	0	2
30	Brown, Karrington	g	2-2	1-1	0-0	0	1	1	2	5	0	3	0	1	13
32	McCarthy, LiAnn	g	3-12	1-6	0-0	0	7	7	3	7	0	0	0	0	30
Team						2	3	5							
Totals		19-46	3-10	2-3	3	31	34	23	43	12	28	4	7	200	
FG % 1st Half: 12-20		60.0%	2nd half: 7-26	26.9%	Game: 19-46	41.3%	Deadball		Rebounds						
3FG % 1st Half: 3-6		50.0%	2nd half: 0-4	0.0%	Game: 3-10	30.0%	0								
FT % 1st Half: 0-0		0.0%	2nd half: 2-3	66.7%	Game: 2-3	66.7%									

## Samford 45 • 5-1

#	Player	Total		3-Ptr		Rebounds			PF	TP	A TO Blk			Stl	Min
		FG-FGA	FG-FGA	FT-FTA	FT-FTA	Off	Def	Tot			A	TO	Blk	Stl	
03	Destiney Elliott	f	8-15	0-1	1-4	5	6	11	2	17	3	3	2	2	32
10	Taylor Reece	f	1-5	0-4	0-0	0	1	1	3	2	0	1	0	0	25
11	Amara Mayers	g	1-8	0-3	2-4	0	6	6	2	4	3	3	0	1	32
12	Krista Stricklin	g	3-10	2-6	1-2	1	1	2	2	9	0	0	0	0	26
13	Brittany Stevens	g	2-4	1-2	3-6	1	3	4	3	8	4	2	0	0	35
04	Lydia McGee	g	0-0	0-0	0-0	0	1	1	0	0	0	0	0	0	0
05	Kassidy Blevins	g	1-9	1-6	0-0	0	3	3	0	3	2	1	0	7	25
22	Ellen Riggins	g	1-3	0-0	0-0	3	1	4	2	0	4	0	0	0	12
31	Cassidy Williams	g	0-4	0-4	0-0	1	1	2	0	1	1	0	0	0	13
Team						2	2	4							
Totals		17-58	4-26	7-16	13	25	38	14	45	13	16	2	10	200	
FG % 1st Half: 9-30		30.0%	2nd half: 8-28	28.6%	Game: 17-58	29.3%	Deadball		Rebounds						
3FG % 1st Half: 2-16		12.5%	2nd half: 2-10	20.0%	Game: 4-26	15.4%	6								
FT % 1st Half: 1-2		50.0%	2nd half: 6-14	42.9%	Game: 7-16	43.8%									

Officials: R-Ron Harris, U1-Ashley Gilpin, U2-Whitney Dunlap  
 Technical fouls: Nicholls-None, Samford-None.  
 Attendance: 1320

Score by periods	1st	2nd	3rd	4th	Total	Points	In Paint	Off T/O	2nd Chance	Fast Break	Bench
Nicholls	13	14	6	10	43						
Samford	12	9	14	10	45						

Last FG - NICH 4th-00:57, SAM 4th-01:14.  
 Largest lead - NICH by 8 2nd-04:43, SAM by 8 1st-03:16.  
 NICH led for 12:51, SAM led for 20:28. Game was tied for 06:18.  
 Score tied - 5 times.  
 Lead changed - 6 times.



Official Basketball Box Score -- Game Totals -- Final Statistics  
**Samford vs Southern Miss**  
 11/28/15 4:30 p.m. at Hattiesburg, Miss. (Reed Green Coliseum)



## Samford 48 • 5-2

#	Player		Total			Rebounds			PF	TP	A	TO	Blk	Stl	Min
			FG-FGA	FG-FGA	FT-FTA	Off	Def	Total							
03	Destiney Elliott	f	4-10	1-5	0-0	3	5	8	4	9	2	1	2	1	35
22	Ellen Riggins	f	4-9	1-5	0-0	1	4	5	3	9	3	3	1	0	34
11	Amara Mayers	g	6-11	1-1	1-2	0	4	4	0	14	1	5	0	1	30
12	Krista Stricklin	g	1-6	1-4	0-0	1	2	3	2	3	1	1	0	1	35
13	Brittany Stevens	g	3-5	0-1	1-2	0	3	3	4	7	2	4	0	1	28
05	Kassidy Blevins		0-2	0-2	0-0	0	1	1	1	0	1	1	0	0	13
21	Keke Fletcher		1-5	1-5	0-0	0	2	2	1	3	2	0	0	0	11
31	Cassidy Williams		1-5	1-2	0-0	1	0	1	2	3	0	1	0	0	14
Team						4	3	7							
Totals			20-53	6-25	2-4	10	24	34	17	48	12	18	3	4	200
FG % 1st Half: 11-25    44.0%    2nd half: 9-28    32.1%    Game: 20-53    37.7%															
3FG % 1st Half: 3-12    25.0%    2nd half: 3-13    23.1%    Game: 6-25    24.0%															
FT % 1st Half: 1-2    50.0%    2nd half: 1-2    50.0%    Game: 2-4    50.0%															
															Deadball Rebounds 1

# 2015-16 BOX SCORES



Official Basketball Box Score -- Game Totals -- Final Statistics  
**Samford vs UT Martin**  
 12/5/15 2 p.m. at Elam Center - Martin, Tenn.



## Samford 50 • 6-3

#	Player	Total		3-Ptr		Rebounds			PF	TP	A	TO	Blk	Stl	Min
		FG-FGA	FG-FGA	FT-FTA	FT-FTA	Off	Def	Tot							
03	Destiney Elliott	5-12	1-3	2-4	2-4	7	11	18	3	13	2	1	1	1	35
10	Taylor Reece	2-11	0-4	0-0	0-0	0	2	2	2	4	2	1	0	0	27
11	Amara Mayers	3-7	1-2	0-0	0-0	1	6	7	2	7	2	1	0	0	30
12	Krista Stricklin	1-5	0-2	0-0	0-0	1	1	2	2	1	4	0	0	0	25
13	Brittany Stevens	4-5	1-1	0-0	0-0	1	1	2	3	9	2	5	0	0	30
05	Kassidy Blevins	3-8	3-7	0-0	0-0	0	2	2	0	9	0	0	0	0	20
21	Keke Fletcher	0-0	0-0	0-0	0-0	0	0	0	0	0	0	0	0	0	4
22	Ellen Riggins	0-2	0-2	0-0	0-0	0	3	3	0	0	1	0	0	0	13
31	Cassidy Williams	2-5	2-5	0-0	0-0	0	0	0	0	6	0	2	0	0	16
Team						0	1	1							
Totals		20-55	8-26	2-4	2-4	10	27	37	11	50	10	14	1	4	200
FG % 1st Half: 9-26		34.6%	2nd half: 11-29	37.9%	Game: 20-55	36.4%	Deadball								
3FG % 1st Half: 3-11		27.3%	2nd half: 5-15	33.3%	Game: 8-26	30.8%	Rebounds								
FT % 1st Half: 2-2		100.0%	2nd half: 0-2	0.0%	Game: 2-4	50.0%	0								

## UT Martin 52 • 4-4

#	Player	Total		3-Ptr		Rebounds			PF	TP	A	TO	Blk	Stl	Min
		FG-FGA	FG-FGA	FT-FTA	FT-FTA	Off	Def	Tot							
10	RUFFIN, DaiJia	5-14	2-6	2-2	2-2	1	7	8	1	14	3	3	1	0	35
14	ROBERTS, Chelsea	0-1	0-1	2-2	2-2	1	10	11	1	2	5	0	0	1	40
20	SCHUBERT, Katie	5-11	1-4	1-1	1-1	0	1	1	1	12	2	2	0	2	40
21	WARD, Jessy	1-7	0-5	0-0	0-0	0	2	2	0	2	2	2	0	0	26
23	HOWARD, Haley	5-10	4-8	2-2	2-4	6	4	16	0	4	16	0	2	1	37
04	ROBERTSON, Emanyne	1-2	0-1	0-0	0-0	0	1	1	0	2	0	2	0	1	8
33	TAYLOR, Myah	2-6	0-3	0-0	0-0	0	0	0	0	4	1	1	0	0	14
Team						1	1	2							
Totals		19-51	7-28	7-7	7-7	5	26	31	7	52	13	12	2	6	200
FG % 1st Half: 11-24		45.8%	2nd half: 8-27	29.6%	Game: 19-51	37.3%	Deadball								
3FG % 1st Half: 4-12		33.3%	2nd half: 3-6	18.8%	Game: 7-28	25.0%	Rebounds								
FT % 1st Half: 4-4		100.0%	2nd half: 3-3	100.0%	Game: 7-7	100.0%	0.1								

Officials: Doug Klenc, Wendy Dailey, Kerry Winders  
 Technical fouls: Samford-None. UT Martin-None.  
 Attendance: 740

Score by periods	1st	2nd	3rd	4th	Total
Samford	12	11	11	16	50
UT Martin	16	14	6	16	52

Last FG - SAM 4th-00:08, UTM 4th-00:59.  
 Largest lead - SAM by 4 3rd-05:55, UTM by 10 2nd-01:48.  
 SAM led for 08:42, UTM led for 28:49. Game was tied for 02:11.

	In	Off	2nd	Fast	Bench
Points	Paint	T/O	Chance	Break	
SAM	18	14	8	6	15
UTM	20	12	6	2	6

Score tied - 5 times.  
 Lead changed - 5 times.



Official Basketball Box Score -- Game Totals -- Final Statistics  
**Samford vs Georgia Tech**  
 12/13/15 2:00 pm ET at Atlanta, Ga. (McCamish Pavilion)



## Samford 55 • 6-5

#	Player	Total		3-Ptr		Rebounds			PF	TP	A	TO	Blk	Stl	Min
		FG-FGA	FG-FGA	FT-FTA	FT-FTA	Off	Def	Tot							
03	Destiney Elliott	1-7	0-3	1-2	1-2	4	3	7	4	3	3	2	0	1	37
10	Taylor Reece	0-6	0-1	0-0	0-0	1	1	2	1	0	0	3	0	0	15
11	Amara Mayers	1-5	1-3	0-2	1	1	2	1	3	0	1	0	0	1	15
12	Krista Stricklin	6-8	3-4	1-2	0	3	3	4	16	1	0	0	0	1	35
13	Brittany Stevens	1-6	0-3	2-2	0	2	2	2	4	3	3	0	0	0	21
05	Kassidy Blevins	5-9	4-8	0-0	0	1	1	0	14	1	1	0	0	2	27
22	Ellen Riggins	4-6	0-0	4-4	1	4	5	3	12	5	3	1	0	2	28
31	Cassidy Williams	1-4	1-4	0-0	0	5	5	1	3	1	2	0	0	1	22
Team						2	0	2							
Totals		19-51	9-26	8-12	9	20	29	16	55	14	16	1	8	200	
FG % 1st Half: 9-27		33.3%	2nd half: 10-24	41.7%	Game: 19-51	37.3%	Deadball								
3FG % 1st Half: 3-11		27.3%	2nd half: 6-15	40.0%	Game: 9-26	34.6%	Rebounds								
FT % 1st Half: 3-6		50.0%	2nd half: 5-6	83.3%	Game: 8-12	66.7%	2.1								

## Georgia Tech 66 • 7-3

#	Player	Total		3-Ptr		Rebounds			PF	TP	A	TO	Blk	Stl	Min
		FG-FGA	FG-FGA	FT-FTA	FT-FTA	Off	Def	Tot							
10	Katarina Vuckovic	4-10	2-5	0-0	0	1	3	4	2	10	1	3	1	0	37
54	Rodreka Rogers	5-6	0-0	0-0	0	1	1	4	10	2	3	1	3	23	
00	Imani Tillford	1-3	0-0	0-0	1	5	6	3	2	4	2	0	0	3	32
02	Aaliyah Whiteside	7-12	0-1	9-9	2	8	10	1	23	3	2	0	2	39	
20	Irene Gari	2-8	0-2	0-0	0	2	2	1	4	1	1	0	2	32	
05	Ciani Cryor	1-2	0-1	3-4	0	1	1	1	5	3	1	0	0	11	
15	Chelsea Guimaraes	0-0	0-0	0-0	0	1	1	0	0	0	0	0	1	0	3
21	Zaire O'Neil	2-3	0-0	2-2	0	0	0	2	6	1	0	1	0	1	8
55	Antonia Peresson	2-4	2-4	0-0	0	2	2	1	6	0	1	0	0	15	
Team						0	2	2							
Totals		24-48	4-13	14-15	4	25	29	15	66	15	15	3	11	200	
FG % 1st Half: 10-24		41.7%	2nd half: 14-24	58.3%	Game: 24-48	50.0%	Deadball								
3FG % 1st Half: 3-9		33.3%	2nd half: 1-4	25.0%	Game: 4-13	30.8%	Rebounds								
FT % 1st Half: 8-8		100.0%	2nd half: 6-7	85.7%	Game: 14-15	93.3%	0								

Officials: Bob Enterline, Angel Stanton, Jules Gallien  
 Technical fouls: Samford-None. Georgia Tech-None.  
 Attendance: 1008

Score by periods	1st	2nd	3rd	4th	Total
Samford	10	14	17	14	55
Georgia Tech	13	18	22	13	66

Last FG - SAM 4th-04:55, GT 4th-07:04.  
 Largest lead - SAM None, GT by 21 3rd-05:20.  
 SAM led for 00:00, GT led for 38:35. Game was tied for 01:25.

Score tied - 2 times.  
 Lead changed - 0 times.



Official Basketball Box Score -- Game Totals -- Final Statistics  
**Samford vs Indiana**  
 12/11/15 7 p.m. at Bloomington, Ind. (Assembly Hall)



## Samford 56 • 6-4

#	Player	Total			3-Ptr		Rebounds			PF	TP	A	TO	Blk	Stl	Min
		FG-FGA	FG-FGA	FT-FTA	Off	Def	Tot									
03	Destiney Elliott	f	8-12	4-6	0-0	0	1	8	9	4	20	1	1	2	1	42
10	Taylor Reece		5-16	2-7	0-0	0	0	0	4	12	2	3	3	2	35	
11	Amara Mayers	g	1-5	0-1	0-0	0	0	2	3	2	1	5	0	1	22	
12	Krista Stricklin	g	4-10	1-5	1-4	1	9	10	3	10	1	3	0	0	36	
13	Brittany Stevens		1-3	0-1	0-0	2	4	6	4	2	4	4	0	1	40	
05	Kassidy Blevins		3-8	1-5	1-2	1	3	4	8	1	1	2	2	30		
21	Keke Fletcher		0-0	0-0	0-0	0	0	0	0	0	0	0	1	3		
22	Ellen Riggins		1-1	0-0	0-0	0	0	1	2	2	1	2	1	0	10	
31	Cassidy Williams		0-0	0-0	0-0	0	0	0	0	0	0	0	0	0	7	
Team							1	1	2							
Totals			23-55	8-25	2-6	6	28	34	24	56	11	20	9	7	225	
FG % 1st Half: 12-25		48.0%	2nd half: 10-25	40.0%	OT: 1-5	20.0%	Game: 23-55	41.8%	Deadball							
3FG % 1st Half: 5-11		45.5%	2nd half: 2-11	18.2%	OT: 1-3	33.3%	Game: 8-25	32.0%	Rebounds							
FT % 1st Half: 1-2		50.0	2nd half: 0-0	0.0%	OT: 1-4	25.0%	Game: 2-6	33.3%								

# 2015-16 BOX SCORES



Official Basketball Box Score -- Game Totals -- Final Statistics  
**Samford vs UAB**  
 12/21/15 1:00 pm CT at Bartow Arena



## Samford 41 • 7-6

#	Player	Total		3-Ptr		Rebounds			PF	TP	A	TO	Bk	Stl	Min
		FG-FGA	FG-FGA	FT-FTA	Off	Def	Tot								
03	Destiney Elliott	-	4-8	2-5	1-2	1	5	6	4	11	2	1	1	3	30
11	Amara Mayers	-	2-6	0-1	2-2	1	3	4	2	6	1	1	0	0	28
12	Krista Stricklin	-	1-7	0-1	0-0	2	1	3	1	2	0	0	1	0	27
13	Brittany Stevens	-	1-9	1-4	0-0	0	1	1	3	3	2	2	0	0	37
22	Ellen Riggins	-	2-5	0-0	0-0	0	4	4	0	4	1	1	0	0	25
05	Kassidy Blevins	-	1-6	1-4	0-0	1	1	2	0	3	2	2	0	0	22
10	Taylor Reece	-	5-12	0-2	2-4	0	2	2	2	12	2	1	2	1	22
21	Keke Fletcher	-	0-0	0-0	0-0	0	1	1	0	0	0	0	0	1	3
31	Cassidy Williams	-	0-2	0-2	0-0	0	1	1	0	0	0	0	0	0	6
Team						0	2	2							
Totals			16-55	4-19	5-8	5	21	26	12	41	10	8	4	8	200
FG % 1st Half: 11-25    44.0%    2nd half: 5-30    16.7%    Game: 16-55    29.1%															
3FG % 1st Half: 2-8    25.0%    2nd half: 2-11    18.2%    Game: 4-19    21.1%															
FT % 1st Half: 3-6    50.0%    2nd half: 2-2    100.0%    Game: 5-8    62.5%															
Rebounds															

## UAB 61 • 7-4

#	Player	Total		3-Ptr		Rebounds			PF	TP	A	TO	Bk	Stl	Min
		FG-FGA	FG-FGA	FT-FTA	Off	Def	Tot								
04	DUFELMEIER, Bianca	-	2-7	1-5	0-0	0	7	7	1	5	4	1	0	0	30
12	FARMER, Keonna	-	5-15	0-0	2-2	1	3	4	1	12	3	0	0	0	30
15	WINBORNE, Brittany	-	6-7	0-0	0-2	3	9	12	1	12	2	3	4	1	33
20	KUZMANIC, Deanna	-	5-12	3-5	1-2	1	7	8	1	14	1	3	3	0	32
21	BLACK, Chelsea	-	4-6	1-1	7-8	0	3	3	1	16	3	2	0	2	35
14	LEWIS, Terra	-	0-0	0-0	0-0	0	0	0	0	0	0	0	0	0	2
22	GARLAND, Maya	-	0-1	0-1	0-0	2	2	4	0	0	1	1	0	0	20
23	ANDERSON, Kayla	-	0-2	0-0	0-0	1	1	2	1	0	0	1	0	0	19
24	RAWLS, Kara	-	1-2	0-0	0-0	0	1	1	3	2	0	0	0	0	11
41	WEBB, Dyman	-	0-0	0-0	0-0	0	0	0	0	0	0	0	0	0	2
Team						1	2	3							
Totals			23-52	5-12	10-14	9	35	44	9	61	14	11	7	5	200
FG % 1st Half: 10-30		33.3%	2nd half: 13-22	59.1%	Game: 23-52	44.2%	Deadball								
3FG % 1st Half: 2-8		25.0%	2nd half: 3-4	75.0%	Game: 5-12	41.7%	Rebounds								
FT % 1st Half: 2-2		100.0%	2nd half: 8-12	66.7%	Game: 10-14	71.4%									

Officials: Mary Day, Meadow Overstreet, Jules Gallien  
 Technical fouls: Samford-None. UAB-None.  
 Attendance: 323

Score by periods	1st	2nd	3rd	4th	Total
Samford	12	15	10	4	41
UAB	9	15	18	19	61

Points	In	Off	2nd	Fast	Bench
SAM	20	12	2	2	15
UAB	18	4	4	3	2

Last FG - SAM 4th-03:06, UAB 4th-03:43.  
 Largest lead - SAM by 4 3rd-09:03, UAB by 20 4th-00:13.  
 SAM led for 10:21, UAB led for 24:26. Game was tied for 05:13.

Score tied - 6 times.  
 Lead changed - 6 times.



Official Basketball Box Score -- Game Totals -- Final Statistics  
**Samford vs LSU**  
 12/28/15 7:01 PM at Baton Rouge, La. (Maravich Center)



## Samford 47 • 8-6

#	Player		Total		3-Ptr		Rebounds			PF	TP	A	TO	Bk	Stl	Min
			FG-FGA	FG-FGA	FT-FTA	Off	Def	Total								
03	Destiney Elliott	f	2-7	1-3	2-2	1	4	5	3	7	1	2	2	2	27	
22	Ellen Riggins	f	0-4	0-2	3-6	1	1	2	3	3	0	0	0	0	14	
11	Amara Mayers	g	2-4	0-0	0-2	1	2	3	1	4	1	5	0	0	23	
12	Krista Stricklin	g	0-4	0-4	0-2	2	4	6	1	0	1	2	1	0	24	
13	Brittany Stevens	g	2-3	1-1	2-2	0	1	1	2	7	3	1	0	1	40	
05	Kassidy Blevins	g	3-11	3-7	0-0	3	3	6	1	9	3	1	0	1	28	
10	Taylor Reece	g	5-9	2-5	2-4	0	4	4	2	14	1	1	2	0	28	
21	Keke Fletcher	g	1-1	1-1	0-0	1	1	2	0	0	0	0	0	0	11	
31	Cassidy Williams	g	0-3	0-3	0-0	1	0	1	0	0	0	0	0	0	5	
Team						5	3	8								
Totals			15-46	8-26	9-18	15	23	38	13	47	10	14	5	4	200	
FG % 1st Half: 8-20		40.0%	2nd half: 7-26	26.9%	Game: 15-46	32.6%	Deadball									
3FG % 1st Half: 6-16		37.5%	2nd half: 2-10	20.0%	Game: 8-26	30.8%	Rebounds									
FT % 1st Half: 4-8		50.0%	2nd half: 5-10	50.0%	Game: 9-18	50.0%	6									

## LSU 44 • 6-7

#	Player		Total		3-Ptr		Rebounds			PF	TP	A	TO	Bk	Stl	Min
			FG-FGA	FG-FGA	FT-FTA	Off	Def	Total								
31	JONES, Ann	f	2-5	1-2	0-0	1	2	3	2	5	1	2	0	1	25	
02	NORTON, Shanice	g	1-6	0-1	0-0	1	2	3	4	2	1	2	0	2	18	
04	PEDERSEN, Anne	g	6-10	1-1	2-2	3	3	6	5	15	2	1	0	1	30	
10	RHODES, Jasmine	g	3-5	0-0	0-0	2	2	4	3	6	0	0	2	1	30	
13	HILL, Rina	g	4-10	0-0	0-0	1	2	3	1	8	4	2	0	0	40	
01	DEEMER, Jenna	g	1-10	0-3	4-4	1	4	5	2	6	0	0	0	2	30	
20	HYDER, Alexis	g	1-8	0-0	0-0	2	3	5	1	2	0	1	1	0	18	
32	QUINN, Constance	g	0-0	0-0	0-0	0	0	0	1	0	0	0	0	0	7	
35	FAREO, Aliyah	g	0-0	0-0	0-0	1	1	2	2	0	0	0	0	0	2	
Team						1	0	1					1			
Totals				18-54	2-7	6-6	13	19	32	21	44	8	9	3	7	200
FG % 1st Half:			7-26	26.9%	2nd half:	11-28	39.3%	Game:	18	54	33.3%	Deadball				
3FG % 1st Half:			2-5	40.0%	2nd half:	0-2	0.0%	Game:	2-7	28.6%	Rebounds					
FT % 1st Half:			2-2	100.0%	2nd half:	4-4	100.0%	Game:	6-6	100.0%						

Officials: Laura Morris, Ed Sidlasky, Carla Fountain  
 Technical fouls: Samford-None. LSU-None.  
 Attendance: 2511

Score by periods	1st	2nd	3rd	4th	Total
Samford	12	14	11	10	47
LSU	8	10	14	12	44

Points	In	Off	2nd	Fast	Bench
SAM	12	3	9	0	26
LSU	22	9	12	0	8

Last FG - SAM 4th-00:31, LSU 4th-00:59.  
 Largest lead - SAM by 10 2nd-01:36, LSU by 2 1st-09:32.  
 SAM led for 35:11, LSU led for 02:43. Game was tied for 02:06.

Score tied - 2 times.  
 Lead changed - 3 times.



Official Basketball Box Score -- Game Totals -- Final Statistics  
**Harvard vs Samford**  
 1/2/16 2 p.m. at Birmingham, Ala. (Pete Hanna Center)



## Harvard 60 • 5-7

#	Player		Total		3-Ptr		Rebounds			PF	TP	A	TO	Bk	Stl	Min
			FG-FGA	FG-FGA	FT-FTA	Off	Def	Tot								
24	Ann Marie Healy	f	5-9	0-1	6-8	2	3	5	3	16	0	1	0	0	0	22
00	Nani Redford		1-7	0-1	2-2	2	4	6	0	4	2	0	0	0	0	33
02	Shilpa Tummala	g	5-10	4-7	0-0	1	1	2	2	14	2	0	0	4	32	
12	Kit Metoyer	g	4-8	2-5	2-2	1	4	5	2	12	3	4	0	2	35	
20	Madeline Raster	g	1-6	0-1	0-0	1	6	7	1	2	1	3	0	0	22	
10	Destiny Nunley		2-9	0-0	1-2	1	5	6	0	5	1	1	0	1	19	
11	Kirby Porter		1-4	0-0	1-2	2	1	3	2	3	1	1	0	1	15	
21	Taylor Finley		0-1	0-0	0-0	1	0	1	2	0	0	1	0	1	10	
25	Sydney Skinner		0-3	0-0	4-4	2	3	5	0	4	0	2	1	1	12	
Team						3	0	3								
Totals			19-57	6-15	16-20	16	27	43	12	60	12	16	1	10	200	
FG % 1st Half: 10-32			31.3%	2nd half: 9-25	36.0%	Game: 19-57			33.3%	Deadball						
3FG % 1st Half: 4-10			40.0%	2nd half: 2-5	40.0%	Game: 6-15			40.0%	Rebounds						
FT % 1st Half: 7-8			87.5%	2nd half: 9-12	75.0%	Game: 16-20			80.0%	1						

## Samford 54 • 8-7

#	Player	Total		3-Ptr
---	--------	-------	--	-------

# 2015-16 BOX SCORES



Official Basketball Box Score -- Game Totals -- Final Statistics  
**Samford vs UNCg**  
 1/9/16 2:00 p.m. at Greensboro, N.C. (Fleming Gymnasium)



**Samford 57 • 10-7, 2-0 SoCon**

#	Player	Total		3-Ptr		Rebounds			PF	TP	A TO Blk Stl			Min
		FG-FGA	FG-FGA	FT-FTA	Off Def Tot	PF	TP	A TO Blk Stl						
03	Destiney Elliott	5-11	1-2	0-0	2 7 9	2	11	2 5 1 0	0	28				
10	Taylor Reece	7-12	1-1	0-0	2 1 3	3	15	2 1 0 0	0	26				
11	Amara Mayers	2-6	0-0	1-3	0 3 3	2	5	3 5 0 1	0	23				
12	Krista Stricklin	0-3	0-1	4-6	1 3 4	3	4	1 1 1 0	0	35				
13	Brittany Stevens	2-6	1-1	2-2	0 2 2	3	7	2 9 0 4	0	37				
26	Kassidy Blevins	3-7	2-6	0-0	0 3 3	2	8	1 2 0 1	0	22				
01	Keke Fletcher	1-4	0-3	0-0	0 1 1	0	2	1 0 1 0	0	12				
22	Ellen Riggins	2-5	0-0	1-2	0 1 1	2	5	1 1 0 1	0	14				
31	Cassidy Williams	0-0	0-0	0-0	0 0 0	1	0	0 0 0 0	0	3				
Team					3 5 8			1						
Totals		22-54	5-14	8-13	8 26 34	18	57	13 25 3 7	0	200				
FG % 1st Half:		9-28	32.1%	2nd half:	13-26	50.0%	Game:	22-54	40.7%	Deadball Rebounds				
3FG % 1st Half:		3-8	37.5%	2nd half:	2-6	33.3%	Game:	5-14	35.7%					
FT % 1st Half:		3-4	75.0%	2nd half:	5-9	55.6%	Game:	8-13	61.5%					

**UNCg 52 • 8-9, 0-2 SoCon**

#	Player	Total		3-Ptr		Rebounds			PF	TP	A TO Blk Stl			Min
		FG-FGA	FG-FGA	FT-FTA	Off Def Tot	PF	TP	A TO Blk Stl						
22	India Timpton	0-3	0-0	2-4	2 0 2	3	2	1 0 1 3	0	29				
44	Mariah Wilson	0-1	0-0	0-0	2 1 3	2	0	0 0 3 1	0	9				
13	Jazmine Missouri	2-6	0-0	1-1	1 3 4	4	5	1 2 0 2	0	33				
02	Lucy Mason	7-15	0-2	4-4	0 5 5	5	18	2 4 0 2	0	35				
25	Shanese Harris	5-13	0-0	2-2	1 5 6	2	12	1 5 0 2	0	31				
01	Keli Foster	2-4	0-1	1-2	0 0 0	1	5	0 3 0 2	0	13				
02	Kaitlin Callahan	0-0	0-0	0-0	0 1 1	0	0	1 2 1 0	0	4				
10	Gena Penick	0-1	0-0	0-0	1 2 3	1	0	0 2 0 0	0	13				
14	Bailey Williams	0-2	0-1	3-4	0 1 1	0	3	0 1 0 0	0	3				
15	Jade Scaife	1-6	0-0	5-6	1 4 5	2	7	0 0 0 2	0	30				
Team					0 2 2									
Totals		17-51	0-4	18-23	8 24 32	20	52	6 21 5 14	0	200				
FG % 1st Half:		7-26	26.9%	2nd half:	10-25	40.0%	Game:	17-51	33.3%	Deadball Rebounds				
3FG % 1st Half:		0-2	0.0%	2nd half:	0-2	0.0%	Game:	0-4	0.0%					
FT % 1st Half:		4-6	66.7%	2nd half:	14-17	82.4%	Game:	18-23	78.3%					

Officials: Eric Brewton, Kristi Vera, Marie Christian  
 Technical fouls: Samford-None, UNCg-None.  
 Attendance: 252

Score by periods	1st	2nd	3rd	4th	Total
Samford	19	5	15	18	57
UNCg	7	11	16	18	52

Last FG - SAM 4th-01:54, UNCg 4th-02:37.  
 Largest lead - SAM by 15 1st-04:26, UNCg by 2 1st-09:40.  
 SAM led for 36:38, UNCg led for 00:58. Game was tied for 00:54.

Score tied - 2 times.  
 Lead changed - 5 times.



Official Basketball Box Score -- Game Totals -- Final Statistics  
**ETSU vs Samford**  
 1/21/16 6 p.m. at Birmingham, Ala. (Pete Hanna Center)



**ETSU 47 • 11-9, 3-2 SoCon**

#	Player	Total		3-Ptr		Rebounds			PF	TP	A TO Blk Stl			Min
		FG-FGA	FG-FGA	FT-FTA	Off Def Tot	PF	TP	A TO Blk Stl						
24	Shomari Kendrick	2-2	0-0	0-0	1 4 5	0	4	0 1 2 1	0	32				
30	Sadasia Tipps	1-1	0-0	0-0	1 2 3	1	2	0 2 1 0	0	19				
02	Shamaria Bridges	2-7	0-4	1-2	0 0 0	0	5	0 1 0 1	0	14				
10	Chandler Christopher	4-12	0-3	2-4	0 3 3	3	10	2 1 1 0	0	40				
14	Tianna Tarter	5-14	0-4	4-4	1 6 7	4	14	3 3 0 1	0	37				
03	Adriane Vaughan	0-0	0-0	0-0	0 1 1	0	0	0 1 0 0	0	5				
04	Carley Lytton	1-4	1-3	2-3	0 1 1	0	5	0 1 0 1	0	20				
05	Raven Dean	2-4	1-1	2-2	1 0 1	4	7	0 2 0 0	0	14				
22	Mallore Schurr	0-3	0-0	0-0	0 3 3	0	0	0 2 0 0	0	19				
Team					2 5 7									
Totals		17-47	2-15	11-15	6 25 31	12	47	5 14 4 4	0	200				
FG % 1st Half:		11-25	44.0%	2nd half:	6-22	27.3%	Game:	17-47	36.2%	Deadball Rebounds				
3FG % 1st Half:		2-10	20.0%	2nd half:	0-5	0.0%	Game:	2-15	13.3%					
FT % 1st Half:		1-2	50.0%	2nd half:	10-13	76.9%	Game:	11-15	73.3%					

**Samford 55 • 11-8, 3-1 SoCon**

#	Player	Total		3-Ptr		Rebounds			PF	TP	A TO Blk Stl			Min
		FG-FGA	FG-FGA	FT-FTA	Off Def Tot	PF	TP	A TO Blk Stl						
03	Destiney Elliott	7-14	1-2	0-0	5 7 12	1	15	2 5 2 1	0	33				
10	Taylor Reece	7-12	3-5	0-0	0 4 4	2	17	4 0 0 0	0	26				
11	Amara Mayers	0-2	0-0	0-0	0 3 3	2	0	0 1 0 0	0	12				
12	Krista Stricklin	1-3	0-1	0-0	1 4 5	4	2	4 0 1 0	0	37				
13	Brittany Stevens	1-2	0-0	2-2	0 0 0	1	4	0 1 0 0	0	29				
04	Lydia McGee	0-4	0-0	1-2	0 1 1	0	1	2 3 0 1	0	14				
05	Kassidy Blevins	3-9	0-5	0-0	0 1 1	0	6	0 0 0 0	0	26				
22	Ellen Riggins	4-9	0-2	2-3	0 1 1	1	10	0 2 1 0	0	17				
31	Cassidy Williams	0-2	0-1	0-0	0 0 0	0	0	1 0 0 0	0	6				
Team					4 3 7									
Totals		23-57	4-16	5-7	10 24 34	11	55	13 12 4 5	0	200				
FG % 1st Half:		9-28	32.1%	2nd half:	14-29	48.3%	Game:	23-57	40.4%	Deadball Rebounds				
3FG % 1st Half:		3-8	37.5%	2nd half:	1-8	12.5%	Game:	4-16	25.0%					
FT % 1st Half:		1-2	50.0%	2nd half:	4-5	80.0%	Game:	5-7	71.4%					

Officials: Jerrald Drummond, Rashan Michel, David Jenkins  
 Technical fouls: ETSU-None, Samford-None.  
 Attendance: 334

Score by periods	1st	2nd	3rd	4th	Total
ETSU	24	14	7	0	45
Samford	9	13	20	13	55

Last FG - ETSU 4th-00:11, SAM 4th-01:38.  
 Largest lead - ETSU by 6 2nd-04:41, SAM by 12 4th-06:18.  
 ETSU led for 11:54, SAM led for 26:21. Game was tied for 01:45.

Score tied - 4 times.  
 Lead changed - 4 times.



Official Basketball Box Score -- Game Totals -- Final Statistics  
**Mercer vs Samford**  
 1/16/16 2 p.m. at Birmingham, Ala. (Pete Hanna Center)



**Mercer 63 • 13-5, 3-0 SoCon**

#	Player	Total		3-Ptr		Rebounds			PF	TP	A TO Blk Stl			Min
		FG-FGA	FG-FGA	FT-FTA	Off Def Tot	PF	TP	A TO Blk Stl						
02	Amanda Thompson	4-8	0-0	1-2	1 4 5	1	9	2 1 0 0	0	32				
04	Rachel Selph	3-4	0-0	1-1	0 1 1	4	7	0 0 0 1	0	19				
01	Sydni Means	3-9	0-0	4-4	1 7 8	2	10	5 2 0 1	0	36				
11	Linnea Rosendal	2-5	2-4	0-0	0 1 1	3	6	1 0 0 0	0	17				
24	Kahlia Lawrence	6-18	1-2	5-6	2 3 5	2	18	3 1 0 0	0	39				
05	Brittnee Broadway	1-6	0-2	4-4	3 1 4	0	6	1 0 0 0	0	20				
22	Alex Williams	2-6	0-0	3-3	3 2 5	3	7	0 0 0 2	0	28				
23	Kayla Potts	0-0	0-0	0-0	0 0 0	0	0	0 0 0 0	0	1				
25	KeKe Calloway	0-2	0-0	0-0	1 2 3	1	0	0 0 0 0	0	8				
Team					2 0 2									
Totals		21-58	3-8	18-20	13 21 34	17	63	12 7 1 7	0	200				
FG % 1st Half:		7-25	28.0%	2nd half:	14-33	42.4%	Game:	21-58	36.2%	Deadball Rebounds				
3FG % 1st Half:		0-2	0.0%	2nd half:	3-6	50.0%	Game:	3-8	37.5%					
FT % 1st Half:		8-9	88.9%	2nd half:	10-11	90.9%	Game:	18-20	90.0%					

**Samford 60 • 10-8, 2-1 SoCon**

#	Player	Total		3-Ptr		Rebounds			PF	TP	A TO Blk Stl				Min
		FG-FGA	FG-FGA	FT-FTA	Off	Def	Tot	A			TO	Blk	Stl		
03	Destiney Elliott	f	4-6	0-1	4-5	2	4	6	3	12	5	2	1	1	29
10	Taylor Reece	f	6-11	2-5	0-0	2	5	7	2	14	2	4	2	0	31
11	Amara Mayers	g	1-4	0-1	1-2	0	4	4	0	3	2	0	0	0	16
12	Krista Stricklin	g	1-3	0-1	1-2	1	3	4	1	4	0	2	0	0	24
13	Brittany Stevens	g	1-4	1-3	2-4	0	0	0	1	5	1	0	0	0	20
04	Lydia McGee		4-6	0-0	2-2	1	2	3	4	10	5	1	0	0	23
05	Kassidy Belevins		0-6	0-0	0-2	2	2	2	0	2	0	1	0	0	24
21	Keke Fletcher		0-0	0-0	0-0	0	1	1	0	0	0	0	0	0	3
22	Ellen Riggins		2-5	0-1	2-4	0	1	1	2	6	1	3	0	0	16
13	Cassidy Williams		2-3	2-2	0-0	1	0	1	0	6	0	1	0	0	14
Team						0	2	2							
Totals			21-48	5-20	13-20	7	24	31	15	60	18	13	4	1	200
FG % 1st Half: 9-25		36.0%		2nd half: 12-23	52.2%		Game: 21-48		43.8%		Deadball				
3FG % 1st Half: 5-15		33.3%		2nd half: 0-5	0.0%		Game: 5-20		25.0%		Rebounds				
FT % 1st Half: 4-7		57.1%		2nd half: 9-10	90.0%		Game: 10-14		71.4%						



# 2015-16 BOX SCORES



Official Basketball Box Score -- Game Totals -- Final Statistics  
**Samford vs Furman**  
 01/28/16 11 a.m. at Greenville, S.C. (Timmons Arena)



## Samford 58 • 13-8, 5-1 SoCon

#	Player	Total		3-Ptr		Rebounds			PF	TP	A	TO	Blk	Stl	Min
		FG-FGA	FG-FGA	FT-FTA	Off	Def	Tot								
03	Destiney Elliott	1	3-4	1-1	2-2	1	5	6	2	9	3	1	1	0	29
10	Taylor Reece	1	4-7	2-3	0-0	0	4	4	3	10	6	2	2	1	31
11	Amara Mayers	g	4-11	2-4	2-2	0	4	4	1	12	1	1	0	2	26
12	Krista Stricklin	g	1-3	0-1	0-0	0	3	3	1	2	3	0	1	2	35
13	Brittany Stevens	g	4-11	0-5	0-0	0	2	2	1	8	2	2	0	0	29
04	Lydia McGee		0-3	0-0	0-0	0	0	0	0	0	0	0	0	0	5
05	Kassidy Blevins		4-7	2-3	0-0	1	3	4	1	10	0	1	3	0	23
21	Keke Fletcher		1-2	1-1	0-0	0	1	1	0	3	0	0	0	0	6
22	Ellen Riggins		2-5	0-1	0-0	0	2	2	1	4	0	0	0	0	14
31	Cassidy Williams		0-0	0-0	0-0	0	0	0	0	0	0	0	0	0	2
Team						1	1	2							
Totals			23-53	8-19	4-4	3	25	28	10	58	15	8	7	5	200
FG % 1st Half: 12-25		48.0%	2nd half: 11-28	39.3%	Game: 23-53	43.4%	Deadball								
3FG % 1st Half: 4-8		50.0%	2nd half: 4-11	36.4%	Game: 8-19	42.1%	Rebounds								
FT % 1st Half: 0-0		0.0%	2nd half: 4-4	100.0%	Game: 4-4	100.0%	0								

## Furman 45 • 11-10, 4-2 SoCon

#	Player	Total		3-Ptr		Rebounds			PF	TP	A	TO	Blk	Stl	Min
		FG-FGA	FG-FGA	FT-FTA	Off	Def	Tot								
13	Kaitlyn Duncan	1	1-1	1-1	0-0	0	2	2	1	3	1	1	0	0	15
21	Holli Wilkins	1	5-12	0-3	1-3	2	7	9	3	11	2	4	0	1	40
24	Cierra Carter	1	2-6	0-3	2-2	1	3	4	0	6	0	1	1	0	21
12	Kelsey Ellis	g	0-7	0-5	0-0	2	4	6	2	0	1	1	0	0	40
20	Whitney Bunn	g	5-16	1-8	2-2	0	4	4	2	13	5	3	0	1	39
05	Allison Beasley		3-8	2-7	1-1	1	7	8	2	9	1	3	0	0	22
42	Shianne Goodwin		1-3	0-0	1-2	1	1	2	0	3	0	1	0	0	20
44	Tiara Wood		0-0	0-0	0-0	1	0	1	0	0	0	1	0	0	3
Team						2	1	3							
Totals			17-53	4-27	7-10	10	29	39	11	45	10	15	2	2	200
FG % 1st Half: 9-28		32.1%	2nd half: 8-25	32.0%	Game: 17-53	32.1%	Deadball								
3FG % 1st Half: 2-14		14.3%	2nd half: 2-13	15.4%	Game: 4-27	14.8%	Rebounds								
FT % 1st Half: 6-7		85.7%	2nd half: 1-3	33.3%	Game: 7-10	70.0%	2								

Officials: Lawson Newton, Meadow Overstreet, Brandon Marion  
 Technical fouls: Samford-None, Furman-None.  
 Attendance: 1427

Score by periods	1st	2nd	3rd	4th	Total
Samford	15	13	14	16	58
Furman	10	16	7	12	45

Last FG - SAM 4th-02:30, FUR 4th-01:35.  
 Largest lead - SAM by 13 4th-00:32, FUR by 3 2nd-03:01.  
 SAM led for 32:46, FUR led for 02:41. Game was tied for 02:54.

Points	In	Off	2nd	Fast	Bench
SAM	18	9	2	0	17
FUR	20	5	8	0	12

Score tied - 2 times.  
 Lead changed - 6 times.



Official Basketball Box Score -- Game Totals -- Final Statistics  
**UNCG vs Samford**  
 2/4/16 4 p.m. at Birmingham, Ala. (Pete Hanna Center)



## UNCG 49 • 8-15, 0-8 SoCon

#	Player	Total		3-Ptr		Rebounds			PF	TP	A	TO	Blk	Stl	Min
		FG-FGA	FG-FGA	FT-FTA	Off	Def	Tot								
15	Jade Scaife	1	0-9	0-0	2-4	0	4	4	1	2	0	0	0	0	29
22	India Timpton	1	2-4	0-2	0-0	2	2	4	3	4	1	3	0	0	27
01	Keli Foster	g	7-20	2-9	3-5	2	5	7	2	19	0	1	0	0	36
02	Kaitlin Callahan	g	1-1	0-0	0-0	0	0	0	2	2	1	1	0	0	14
12	Lucy Mason	g	5-12	0-1	1-2	1	6	7	2	11	5	3	0	1	36
03	Jazmine Missouri		1-1	0-0	1-2	1	1	2	3	3	3	2	0	2	18
10	Gena Penick		1-1	0-0	0-0	0	0	0	0	2	0	1	0	0	4
14	Bailey Williams		0-1	0-0	0-0	0	1	1	1	0	0	0	0	0	5
21	Medena Bartley		1-2	0-0	0-0	0	0	0	0	2	0	0	0	0	4
24	Anielle Harvey		0-0	0-0	2-2	0	1	1	0	2	0	0	0	0	5
25	Shaniese Harris		1-2	0-0	0-0	0	1	1	1	2	0	2	0	0	17
44	Mariah Wilson		0-1	0-0	0-2	1	0	1	1	0	0	0	1	0	5
Team						2	1	3							
Totals			19-54	2-12	9-17	9	22	31	16	49	10	13	1	3	200
FG % 1st Half: 10-28		35.7%	2nd half: 9-26	34.6%	Game: 19-54	35.2%	Deadball								
3FG % 1st Half: 1-5		20.0%	2nd half: 1-7	14.3%	Game: 2-12	16.7%	Rebounds								
FT % 1st Half: 3-7		42.9%	2nd half: 6-10	60.0%	Game: 9-17	52.9%	4								

## Samford 80 • 15-8, 7-1 SoCon

#	Player	Total		3-Ptr		Rebounds			PF	TP	A	TO	Blk	Stl	Min
		FG-FGA	FG-FGA	FT-FTA	Off	Def	Tot								
03	Destiney Elliott	1	4-7	0-1	0-0	0	5	5	3	8	1	3	1	0	21
10	Taylor Reece	1	1-1	0-0	0-0	0	0	0	2	2	1	1	0	1	10
11	Amara Mayers	g	4-6	0-0	2-3	0	2	2	1	10	2	0	0	0	19
12	Krista Stricklin	g	3-7	1-2	2-2	1	1	2	0	9	0	0	0	0	26
13	Brittany Stevens	g	3-10	0-1	5-6	3	7	10	1	11	6	0	0	1	31
04	Lydia McGee		5-8	0-0	2-2	3	6	9	3	12	1	2	0	1	24
05	Kassidy Blevins		6-10	2-4	3-4	1	2	3	1	17	1	0	0	0	23
21	Keke Fletcher		1-3	0-2	0-0	1	0	1	1	2	0	0	0	0	8
22	Ellen Riggins		3-7	0-1	1-2	1	5	6	3	7	2	2	1	1	30
31	Cassidy Williams		0-0	0-0	2-2	0	0	0	2	2	0	1	0	0	8
Team						1	2	3							
Totals			30-59	3-11	17-21	11	30	41	17	80	14	9	2	8	200
FG % 1st Half: 14-32		43.8%	2nd half: 16-27	59.3%	Game: 30-59	50.8%	Deadball								
3FG % 1st Half: 2-5		40.0%	2nd half: 1-6	16.7%	Game: 3-11	27.3%	Rebounds								
FT % 1st Half: 4-5		80.0%	2nd half: 13-16	81.3%	Game: 17-21	81.0%	0								

Officials: Kerry Pierre, Carla Roberts, Rob Fessler  
 Technical fouls: UNCG-None, Samford-None.  
 Attendance: 306

Score by periods	1st	2nd	3rd	4th	Total
UNCG	11	13	9	16	49
Samford	14	20	24	22	80

Last FG - UNCG 4th-00:47, SAM 4th-00:22.  
 Largest lead - UNCG None, SAM by 31 4th-00:22.  
 UNCG led for 00:00, SAM led for 38:54. Game was tied for 01:04.

Score tied - 0 times.  
 Lead changed - 0 times.



Official Basketball Box Score -- Game Totals -- Final Statistics  
**Samford vs Wofford**  
 1/30/16 2:00 pm at Ben Johnson Arena, Spartanburg, S.C.



## Samford 58 • 14-8, 6-1 SoCon

#	Player	FG Total		3-Ptr		Rebounds			PF	TP	A	TO	Blk	Stl	Min
		FG-FGA	FG-FGA	FT-FTA	Off	Def	Tot								
03	Destiney Elliott	1	1-8	0-2	4-6	6	2	8	2	6	1	1	0	1	25
10	Taylor Reece	1	1-5	1-2	0-0	1	0	1	2	3	2	3	1	1	21
11	Amara Mayers	g	4-11	0-3	2-2	1	4	5	2	10	2	3	1	2	25
12	Krista Stricklin	g	3-5	0-0	1-4	1	9	10	0	7	0	3	1	1	25
13	Brittany Stevens	g	4-10	0-1	2-4	2	4	6	2	10	3	0	0	1	38
04	Lydia McGee		1-3	0-1	3-4	1	0	1	3	5	0	1	0	0	11
05	Kassidy Blevins		3-7	1-5	2-3	0	0	0	1	9	1	0	1	0	21
21	Keke Fletcher		0-2	0-0	0-0	0	0	0	0	0	0	0	0	0	4
22	Ellen Riggins		1-3	0-1	6-6	4	3	7	4	8	0	1	0	0	19
23	Cassidy Williams		0-2	0-2	0-0	0	0	0	0	0	0	0	0	1	11
Team						1	7	8			1				
Totals			18-56	2-18	20-29	17	29	46	16	58	9	13	4	7	200
FG 1st Half: 11-35    31.4%                      2nd half: 7-21    33.3%                      Game: 18-56    32.1%															
3FG 1st Half: 2-12    16.7%                      2nd half: 0-19    0%                                      Game: 2-31    6.5%															
FT 1st Half: 2-2    100%                              2nd half: 18-27    66.7%                              Game: 20-29    69.0%															
															Doubleball Rebounds: 5.1



## RECORDS

### TEAM RECORDS

Points: 101, vs. Florida Atlantic (1/9/99)  
First-Half Points: 50, vs. Florida Atlantic (1/9/99)  
Second-Half Points: 54, vs. Centenary (12/19/99)  
vs. Troy State (3/9/00)  
Field Goals Made: 39, vs. Troy State (3/9/00)  
Field-Goal Attempts: 84, vs. Centenary (12/19/99)  
Field-Goal Percentage: .628 (27-43), vs. Central Conn, (12/29/10)  
3-Point Field Goals Made: 15, vs. East Tennessee State (11/17/07); 15 vs. Wofford (1/26/09); 15 vs. Berry College (12/7/10); 15 at Saint Peter's (12/30/10)  
3-Point Field-Goal Attempts: 33, vs. Wofford (1/26/09)  
3-Point Field-Goal Percentage: .727 (8-11), at Belmont (3/1/03)  
Free Throws Made: 40, vs. Southeast Missouri (12/18/05)  
Free Throws Attempted: 46, vs. Southeast Missouri (12/18/05)  
Free-Throw Percentage (min. 10 att.): 1.000 (14-14), vs. Davidson (1/19/09); 1.000 (12-12) vs. Clemson (12/12/10); 1.000 (12-12) at St. Peter's (12/30/10)  
Rebounds: 65, vs. Troy State (3/9/00)  
Assists: 24, 10 times, last vs. AUM (11/15/15)  
Steals: 22, vs. Troy State (2/26/98)  
Blocks: 12, vs. Central Florida (1/27/00)  
Turnovers: 40, at UNO (12/13/97) 40, at Fla International (2/12/98)

### INDIVIDUAL GAME RECORDS

Most Points: 35, Emily London, at Davidson (1/9/10)  
Most Field Goals Made: 14, Jodi Morris, at Florida Atlantic (2/25/99); Jodi Morris, vs. Campbell (3/10/00)  
Most Field-Goal Attempts: 25, Aimee Cochran, vs. Georgia State (2/28/98)  
Highest Field-Goal Percentage (min. 7 attempts): 1.000, Danielle Pinkston (7-7), at Troy State (1/5/98)  
3-Point Field Goals Made: 7, Chelsee Insell, vs. Eastern Kentucky (2/18/06); Emily London at St. Peter's (12/30/10)

#### **3-Point Field-Goal Attempts: 18, Hannah Nichols vs. Mercer (2/2/15)**

Highest 3-Point Field-Goal Percentage (min. 5 attempts): 1.000 (5-5), Taylor Reece, vs. ETSU (1/31/15), Taylor Reece, vs. Furman (1/17/15)  
Most Free Throws Made: 12, Chelsee Insell, vs. Tennessee State (2/26/04)  
Most Free-Throw Attempts: 14, Giovanni Price, vs. Alabama (11/17/00); Giovanni Price, vs. Washington State (12/29/00); Veronica Pike, vs. Jacksonville State (1/6/04)  
Highest Free-Throw Percentage (min. 8 attempts): 1.000, 15 times, most recent, Emily London (8-8), vs. Western Carolina (3/4/11)

#### **Most Rebounds: 18, Destiney Elliott, at UT Martin (12/5/15), Cortney Moore, vs. Charleston (1/8/98)**

Most Offensive Rebounds: 9, Cortney Moore, vs. Charleston (1/8/98)

#### **Most Defensive Rebounds: 11, Destiney Elliott, at UT Martin (12/5/15), Cortney Moore, vs. Florida Atlantic (2/14/98)**

Most Assists: 13, Clarissa Tomlinson, vs. Troy State (3/10/00)  
Most Blocked Shots: 7, Cortney Moore, vs. Nicholls State (12/15/97)  
Most Steals: 10, Aimee Cochran, vs. Troy State (2/26/98)

### INDIVIDUAL SEASON RECORDS

Most Games Played: 34, Savannah Hill, Monica Maxwell, Paige Anderson, Hannah Dawson, Megan Wilderotter, Alex Crow (2009-10)  
Most Games Started: 34, Savannah Hill, Monica Maxwell (2009-10)  
Most Points: 535, Emily London (2010-11)  
Highest Scoring Average: 18.6, Jodi Morris (1998-99)  
Most Field Goals Made: 214, Jodi Morris (1999-2000)  
Most Field-Goal Attempts: 428, Jodi Morris (1999-2000)  
Highest Field-Goal Percentage: .530, Veronica Pike, 122-230 (2006-07)  
3-Point Field Goals Made: 84, Emily London (2010-11)  
**3-Point Field-Goal Attempts: 204, Hannah Nichols (2015-16)**  
Highest 3-Point Field-Goal Percentage (min. 50 attempts): .488, Emily London, 60-123 (2007-08)  
Most Free Throws Made: 117, Emily London (2010-11)  
Most Free-Throw Attempts: 156, Giovanni Price (2000-01)  
Highest Free-Throw Percentage (min. 50 attempts): .936, Emily London, 117-125 (2010-11)  
Most Rebounds: 225, Cortney Moore (1997-98)  
Most Offensive Rebounds: 88, Cortney Moore (1997-98)  
Most Defensive Rebounds: 137, Cortney Moore (1997-98)  
Highest Rebounding Average: 8.7, Cortney Moore (1997-98)  
Most Assists: 201, Clarissa Tomlinson (1999-2000)  
Highest Assist Average: 6.9, Clarissa Tomlinson (1999-2000)  
Most Blocked Shots: 70, Cortney Moore (1997-98)  
Highest Blocked-Shot Average: 2.7, Cortney Moore (1997-98)  
Most Steals: 78, Aimee Cochran (1997-98)  
Best Steal Average: 3.0, Aimee Cochran (1997-98)

### INDIVIDUAL CAREER RECORDS

Most Games Played: 130, Megan Wilderotter (2005-2010)  
Most Games Started: 112, Emily London (2007-11)  
Most Points: 1,760, Emily London (2007-11)  
Highest Scoring Average: 18.6, Jodi Morris (1998-2000)  
Most Field Goals Made: 595, Savannah Hill (2007-11)  
Most Field-Goal Attempts: 1,306, Alex Munday (2003-08)  
Highest Field-Goal Percentage: .502, Emily London (2007-11)  
3-Point Field Goals Made: 276, Emily London (2007-11)  
3-Point Field-Goal Attempts: 641, Monica Maxwell (2006-10)  
Highest 3-Point Field-Goal Percentage (min. 50 attempts): .474, Emily London, (276-582) (2007-11)  
Most Free Throws Made: 382, Emily London (2007-11)  
Most Free-Throw Attempts: 427, Veronica Pike (2003-07)  
Highest Free-Throw Percentage: .897, Emily London, (382-425) (2007-11)  
Most Total Rebounds: 725, Cortney Moore (1997-2001)  
Most Assists: 463, Aimee Cochran (1997-2001)  
Most Blocked Shots: 196, Cortney Moore (1997-2001)  
Most Steals: 289, Aimee Cochran (1997-2001)

### Returning players are in bold.

## ALL-TIME TOP 10

### POINTS

1. Emily London	1,760
2. Alex Munday	1,603
3. Savannah Hill	1,539
4. Aimee Cochran	1,247
<b>5. Taylor Reece</b>	<b>1,118</b>
6. Monica Maxwell	1,072
7. Chelsea Insell	1,008
8. Hannah Dawson	915
9. Jodi Morris	912
10. Paige Anderson	902

### REBOUNDS

1. Cortney Moore	725
2. Savannah Hill	686
3. Hannah Dawson	617
4. Alex Munday	612
5. Noot Pittman	535
6. Giovanni Price	519
<b>7. Krista Stricklin</b>	<b>493</b>
8. Emily London	491
9. Aimee Cochran	444
10. Taryn Towns	432

### ASSISTS

1. Aimee Cochran	463
2. Savannah Hill	376
3. Clarissa Tomlinson	336
4. Cora Beth Smith	332
5. Emily London	303
6. Megan Wilderotter	294
7. Taryn Towns	268
8. LaBrena Friend	239
9. Hannah Dawson	201
<b>10. Brittany Stevens</b>	<b>188</b>

### BLOCKS

1. Cortney Moore	196
<b>2. Taylor Reece</b>	<b>100</b>
3. Savannah Hill	98
4. Christy Robinson	73
5. Jodi Morris	67
6. Veronica Pike	45
7. Monica Maxwell	44
8. Clarissa Tomlinson	43
9. Giovanni Price	42
10. Hannah Dawson	40

### STEALS

1. Aimee Cochran	289
2. Emily London	162
3. Cora Beth Smith	153

4. Megan Wilderotter	151
Clarissa Tomlinson	151
6. Hannah Dawson	131
7. LaBrena Friend	129
8. Monica Maxwell	127
9. Taryn Towns	121
10. Wendi Wilcox	118

### FREE THROWS MADE

1. Emily London	382
2. Alex Munday	295
3. Veronica Pike	294
4. Giovanni Price	278
5. Taryn Towns	258
6. Savannah Hill	228
7. Paige Anderson	217
8. Aimee Cochran	215
9. Chelsea Insell	202
10. Megan Wilderotter	182

### FREE THROWS ATTEMPTED

1. Veronica Pike	427
2. Emily London	424
3. Giovanni Price	390
4. Alex Munday	371
5. Taryn Towns	341
6. Hannah Nichols	332
7. Aimee Cochran	312
8. Savannah Hill	305
9. Paige Anderson	260
10. Megan Wilderotter	253

### 3-POINTERS MADE

1. Emily London	276
2. Monica Maxwell	220
3. Chelsea Insell	202
4. Paige Anderson	149
5. Hannah Dawson	135
<b>6. Hannah Nichols</b>	<b>133</b>
<b>7. Taylor Reece</b>	<b>128</b>
8. Alex Munday	126
9. Savannah Hill	121
10. Aimee Cochran	112

### 3-POINTERS ATTEMPTED

1. Monica Maxwell	641
2. Emily London	582
3. Chelsea Insell	551
4. Hannah Dawson	407
5. Aimee Cochran	381
6. Paige Anderson	379

## ALL-TIME TOP 10

---

<b>T-7. Taylor Reece</b>	<b>359</b>
T-7. Alex Munday	359
<b>9. Hannah Nichols</b>	<b>334</b>
10. Cora Beth Smith	257
Sarah Clement	257

### FIELD GOALS MADE

1. Savannah Hill	595
2. Alex Munday	591
3. Emily London	551
4. Aimee Cochran	460
<b>5. Taylor Reece</b>	<b>419</b>
6. Jodi Morris	362
7. Hannah Dawson	327
8. Chelsea Insell	302
9. Veronica Pike	299
10. Cora Beth Smith	292

### FIELD GOALS ATTEMPTED

1. Alex Munday	1,306
2. Savannah Hill	1,255
3. Aimee Cochran	1,193
4. Emily London	1,098
<b>5. Taylor Reece</b>	<b>1,036</b>
6. Giovanni Price	832
7. Hannah Dawson	825
8. Chelsea Insell	780
9. Cora Beth Smith	774
10. Jodi Morris	724

### GAMES STARTED

1. Hannah Dawson	125
2. Emily London	112
3. Savannah Hill	111
<b>4. Taylor Reece</b>	<b>110</b>
5. Aimee Cochran	109
6. Alex Munday	99
7. Monica Maxwell	95
8. Megan Wilderotter	94
9. Chelsea Insell	92
10. Courtney Moore	90

### GAMES PLAYED

1. Megan Wilderotter	130
2. Hannah Dawson	129
3. Savannah Hill	128
4. Paige Anderson	126
5. Monica Maxwell	125
6. Alex Munday	124
7. Emily London	123
8. Jazmine Powers	122
9. Taryn Towns	119
10. Veronica Pike	115

## RECORD VS ALL OPPONENTS

OPPONENT	GAMES	W	L	LAST	SITE	SCORE
Alabama	9	2	7	11/18/8	A	SU 61 UA 55*
Alabama State	13	9	4	12/17/15	A	SU 54, ASU 35
Alabama A&M	4	3	1	12/1/15	A	SU 54, AAMU 30
Alcorn State	2	1	1	12/6/4	A	ASU 61 SU 48
Appalachian State	15	9	6	2/10/14	H	SU 55, ASU 47
Auburn	2	0	2	12/14/14	A	AU 64, SU 41
Auburn-Montgomery	3	3	0	11/15/15	H	SU 82, AUM 32
Austin Peay	10	7	3	2/9/8	A	SU 65APSU 56*
Baylor	1	0	1	12/13/8	A	BU 63 SU 51
Belmont	6	0	6	3/1/3	A	BU 66 SU 53
Berry College	1	1	0	12/7/10	H	SU 95 BC 59
Birmingham-So	4	3	1	11/20/6	H	SU 73 BSC 66
Campbell	14	1	13	2/22/3	H	CU 60 SU 50
Centenary	2	2	0	11/25/6	N	SU 60 CC 36
Central Connecticut	1	1	0	12/29/10	N	SU 76 CCS 57
Central Florida	10	2	8	2/1/3	H	UCF 71 SU 49
Charleston (S.C.)	12	11	1	2/18/13	A	CC 63 SU 62
Chattanooga	23	7	16	1/23/16	H	SU 48, UTC 43
Clemson	2	1	1	12/12/12	A	CU 63 SU 51
Columbus State	1	0	1	12/3/98	H	CSC 78 SU 74
Cornell	1	1	0	12/29/9	N	SU 62 SU 46
Davidson	14	6	8	3/8/14	N	DC 55, SU 42
Dayton	1	0	1	12/29/5	N	DU 68 SU 59
DePaul	1	0	1	11/12/11	A	DU 86, SU 57
Duke	1	0	1	3/18/12	N	DU 82 SU 47
East Tennessee	4	3	1	1/21/16	H	SU 55, ETSU 47
Eastern Kentucky	12	6	6	3/4/8	H	SU 69 EKU 56
Eastern Illinois	8	5	3	3/1/8	A	EIU 68 SU 60
Elon	15	8	7	3/2/14	H	EU 44, SU 43
Evansville	2	1	1	11/15/9	A	SU 69 UE 66
Florida	1	0	1	12/28/11	A	UF 81 SU 56
Florida Atlantic	12	6	6	11/25/7	A	SU 70 FAU 59
Florida Int	1	0	1	2/12/98	A	FIU 101 SU 33
Florida State	3	0	3	11/11/12	A	FSU 77 SU 42
Furman	16	11	5	1/28/16	A	SU 58, FU 45
Gardner-Webb	2	1	1	2/20/3	H	SU 73GWU 64
George Washington	1	0	1	12/1/7	N	GW 64 SU 57
Georgia Southern	12	9	3	2/1/14	A	SU 58, GSU 43
Georgia State	13	2	11	11/28/14	A	GSU 61, SU 56
Georgia Tech	3	0	3	12/13/15	A	GT 66, SU 55
Harvard	1	0	1	1/2/16	H	HU 60, SU 54
Indiana	1	0	1	12/11/15	A	IU 65, SU 56*
Iowa	1	0	1	12/3/6	A	UI 66 SU 60
Jacksonville	5	3	2	11/19/4	H	SU 61 JU 46
Jacksonville State	32	18	14	11/24/15	A	SU 50, JSU 39
Kansas	1	0	1	12/29/14	A	KU 66, SU 44
Kansas State	1	0	1	12/30/14	A	KSU 60, SU 41
Kentucky	1	0	1	12/21/11	A	UK 90 SU 61
Liberty	1	0	1	11/21/97	A	LU 85 SU 49
Lipscomb	3	3	0	11/24/8	A	SU 62 LU 48
Louisiana—Monroe	1	0	1	12/29/3	N	ULM 71 SU 57
LSU	2	1	1	12/28/15	A	SU 47, LSU 44
Martin Methodist	1	1	0	1/4/3	H	SU 70 MM 58
Maryland	1	0	1	11/24/9	A	UM 76 SU 49
McNeese State	2	2	0	11/21/9	A	SU 72MSU 58
Memphis	3	2	1	11/16/14	A	UM 64, SU 48
Mercer	15	5	10	1/16/16	H	MU 63, SU 60
Miami	1	0	1	11/18/5	A	UM 72SU 51
Michigan State	1	0	1	12/8/0	H	MSU 63 SU 35

Montana	1	1	0	11/11/11	N	SU 59, UM 45
Mississippi State	2	0	2	11/13/15	A	MSU 68, SU 47
Miss Valley State	1	1	0	12/30/3	N	SU 72 MVSU 44
Missouri	1	1	0	11/24/7	N	SU 65 UM 49
Missouri State	1	0	1	3/21/10	A	MSU 75 SU 54
Morehead State	12	8	4	2/14/8	H	SU 57MSU 59
Morris Brown	1	1	0	11/30/2	N	SU 70 MB 50
Murray State	9	3	6	3/7/8	N	MSU 68 SU 56
Navy	1	0	1	11/28/98	N	USNA 63 SU 55
New Orleans	4	2	2	11/21/8	H	SU 58UNO 46
Nicholls State	3	3	0	11/27/15	N	SU 45, NSU 43
Norfolk State	1	1	0	11/28/9	N	SU 70 NSU 33
North Florida	2	1	1	11/24/14	H	SU 81, UNF 47
North Texas	1	1	0	11/27/9	N	SU 67 UNT 53
Oklahoma	1	0	1	12/29/13	A	UO 66, SU 35
Ole Miss	1	1	0	3/18/10	H	SU 66 UM 65
Oregon	1	0	1	12/18/12	A	UO 72, SU 61
Penn State	1	1	0	11/30/14	N	SU 59, PSU 56*
Princeton	2	1	1	11/16/7	H	SU 77 PU 68
Providence	1	1	0	11/27/99	N	SU 73 PC 72
Robert Morris	1	0	1	12/30/0	N	RMC 63 SU 54
Rice	2	0	2	11/29/13	N	Rice 57 SU 52
Saint Peter's Coll	1	1	0	12/30/10	A	SU 67 SPC 53
Shorter	1	1	0	11/21/15	H	SU 53, Shorter 33
South Alabama	1	1	0	11/30/13	N	SU 70, USA 49
South Carolina	1	0	1	12/28/6	A	USC 64 SU 56
South Florida	1	1	0	11/27/10	H	SU 64 USF 47
S.E. Missouri	14	4	10	11/26/11	N	SU 63 SEMO 58
Southern Mississippi	5	1	4	11/28/15	A	USM 56, SU 48
Stetson	10	6	4	2/6/3	H	SU 52 Stet 48
Talladega College	1	0	1	11/14/13	H	TC 50, SU 49
UT Martin	14	5	9	12/5/15	A	UTM 52, SU 50
Tennessee State	11	9	2	11/24/12	H	TSU 57 SU 40
Tennessee Tech	13	6	7	12/6/12	A	TTU 65 SU 56
Texas—San Antonio	1	0	1	12/30/4	A	UTSA 52 SU 48
Texas Tech	1	0	1	11/15/10	A	TTU 58 SU 42
Troy	17	7	10	11/17/15	H	SU 73, Troy 69
Tulane	2	1	1	12/18/14	A	TU 58, SU 56
UAB	4	1	3	12/21/15	A	UAB 61, SU 41
UCLA	1	0	1	12/19/14	N	UCLA 71, SU 52
UNC—Asheville	2	1	1	12/16/3	H	SU 53 UNCA 45
UNCG	17	13	4	2/4/16	H	SU 80, UNCG 49
Utah	1	0	1	12/21/13	A	Utah 69, SU 49
Vanderbilt	2	0	2	11/18/10	A	VU 70 SU 60
Virginia	1	0	1	12/28/9	A	UV 69 SU 60
Washington State	1	0	1	12/29/0	N	WSU 76 SU 49
Western Carolina	17	13	4	1/7/16	A	SU 59, WCU 42
Western Kentucky	1	0	1	11/25/11	N	WKU 58, SU 57
Western Michigan	1	0	1	12/31/4	N	WMU 63 SU 46
Wofford	19	17	2	1/30/16	A	SU 58, WC 39
Totals	555	278	277			

\*overtime game





**2015-16 Samford Women's Basketball**  
**Samford Combined Team Statistics (as of Feb 04, 2016)**  
**All games**



RECORD:	OVERALL	HOME	AWAY	NEUTRAL
ALL GAMES	15-8	6-2	8-6	1-0
CONFERENCE	7-1	3-1	4-0	0-0
NON-CONFERENCE	8-7	3-1	4-6	1-0

#	Player	gp-gs	min	avg	Total		3-Point		F-Throw		Rebounds						a	to	blk	stl	pts	avg
					fg-fga	fg%	3fg-fga	3fg%	ft-fa	ft%	off	def	tot	avg	pf	dq						
03	Destiney Elliott	23-23	638	27.7	80-189	.423	18-52	.346	31-45	.689	49	127	176	7.7	64	1	44	51	20	23	209	9.1
10	Taylor Reece	22-20	547	24.9	74-183	.404	21-75	.280	27-35	.771	11	43	54	2.5	48	0	37	39	18	10	196	8.9
11	Amara Mayers	23-23	556	24.2	70-158	.443	9-36	.250	34-61	.557	15	79	94	4.1	27	0	28	47	1	30	183	8.0
05	Kassidy Blevins	23-0	478	20.8	57-147	.388	36-99	.364	13-17	.765	9	46	55	2.4	25	0	31	22	9	20	163	7.1
12	Krista Stricklin	23-23	657	28.6	52-134	.388	16-57	.281	21-37	.568	20	65	85	3.7	38	0	27	25	12	16	141	6.1
13	Brittany Stevens	23-23	702	30.5	46-132	.348	9-38	.237	39-50	.780	13	55	68	3.0	56	0	60	53	0	26	140	6.1
22	Ellen Riggins	23-3	411	17.9	43-108	.398	2-25	.080	24-36	.667	16	53	69	3.0	39	0	23	42	8	10	112	4.9
04	Lydia McGee	12-0	169	14.1	21-48	.438	2-7	.286	13-16	.813	10	18	28	2.3	19	0	14	24	2	8	57	4.8
31	Cassidy Williams	23-0	290	12.6	17-57	.298	13-44	.295	2-2	1.000	6	21	27	1.2	19	0	9	26	1	4	49	2.1
21	Keke Fletcher	18-0	177	9.8	14-37	.378	6-25	.240	0-0	.000	5	17	22	1.2	4	0	8	3	2	5	34	1.9
Team											39	66	105					13				
Total.....		23	4625		474-1193	.397	132-458	.288	204-299	.682	193	590	783	34.0	339	1	281	345	73	152	1284	55.8
Opponents.....		23	4626		408-1179	.346	77-320	.241	240-323	.743	211	566	777	33.8	380	-	210	361	74	161	1133	49.3

TEAM STATISTICS	SAM	OPP	Date	Opponent	Score	Att.
SCORING	1284	1133	11/13/15	at Mississippi State	L 47-68	0
Points per game	55.8	49.3	11/15/15	AUBURN MONTGOMERY	w 82-32	373
Scoring margin	+6.6	-	11/17/15	TROY	w 73-69	469
FIELD GOALS-ATT	474-1193	408-1179	11/21/15	SHORTER	w 53-33	287
Field goal pct	.397	.346	11/24/15	at Jacksonville State	w 50-39	472
3 POINT FG-ATT	132-458	77-320	# 11/27/15	vs Nicholls	w 45-43	1320
3-point FG pct	.288	.241	# 11/28/15	at Southern Miss	L 48-56	1262
3-pt FG made per game	5.7	3.3	12/1/15	at Alabama A&M	w 54-30	378
FREE THROWS-ATT	204-299	240-323	12/5/15	at UT Martin	L 50-52	740
Free throw pct	.682	.743	12/11/15	at Indiana	Lot 56-65	3088
F-Throws made per game	8.9	10.4	12/13/15	at Georgia Tech	L 55-66	1008
REBOUNDS	783	777	12/17/15	at Alabama State	w 54-35	256
Rebounds per game	34.0	33.8	12/21/15	at UAB	L 41-61	323
Rebounding margin	+0.3	-	12/28/15	at LSU	w 47-44	2511
ASSISTS	281	210	1/2/16	HARVARD	L 54-60	429
Assists per game	12.2	9.1	* 1/7/16	at Western Carolina	w 59-42	537
TURNOVERS	345	361	* 1/9/16	at UNCG	w 57-52	252
Turnovers per game	15.0	15.7	* 1/16/16	MERCER	L 60-63	377
Turnover margin	+0.7	-	* 1/21/16	ETSU	w 55-47	334
Assist/turnover ratio	0.8	0.6	* 1/23/16	CHATTANOOGA	w 48-43	667
STEALS	152	161	* 1/28/16	at Furman	w 58-45	1427
Steals per game	6.6	7.0	* 1/30/16	at Wofford	w 58-39	511
BLOCKS	73	74	* 2/4/16	UNCG	w 80-49	306
Blocks per game	3.2	3.2				
ATTENDANCE	3242	14085				
Home games-Avg/Game	8-405	14-912				
Neutral site-Avg/Game	-	1-1320				

\* = Southern Conference game

# = Lady Eagle Thanksgiving Classic (Hattiesburg, Miss.)

Score by Periods	1st	2nd	3rd	4th	OT	Totals
Samford	307	294	358	321	4	1284
Opponents	250	272	287	311	13	1133



**2015-16 Samford Women's Basketball**  
**Samford Season Schedule/Results & Leaders (as of Feb 04, 2016)**  
**All games**



RECORD:	OVERALL	HOME	AWAY	NEUTRAL
ALL GAMES	15-8	6-2	8-6	1-0
CONFERENCE	7-1	3-1	4-0	0-0
NON-CONFERENCE	8-7	3-1	4-6	1-0

Date	Opponent	Score	Att.	High Points	High Rebounds
11/13/15	at Mississippi State	47-68 L		(13)Brittany Stevens	(5)Amara Mayers
11/15/15	AUBURN MONTGOMERY	W 82-32	373	(15)Taylor Reece (15)Kassidy Blevins	(6)Amara Mayers
11/17/15	TROY	W 73-69	469	(19)Kassidy Blevins	(9)Destiney Elliott
11/21/15	SHORTER	W 53-33	287	(8)Brittany Stevens (8)Cassidy Williams (8)Amara Mayers	(5)Destiney Elliott
11/24/15	at Jacksonville State	W 50-39	472	(16)Amara Mayers	(12)Destiney Elliott
11/27/15	#vs Nicholls	W 45-43	1320	(17)Destiney Elliott	(11)Destiney Elliott
11/28/15	#at Southern Miss	48-56 L	1262	(14)Amara Mayers	(8)Destiney Elliott
12/1/15	at Alabama A&M	W 54-30	378	(14)Amara Mayers	(8)Destiney Elliott
12/5/15	at UT Martin	50-52 L	740	(13)Destiney Elliott	(18)Destiney Elliott
12/11/15	at Indiana	56-65 Lot	3088	(20)Destiney Elliott	(10)Krista Stricklin
12/13/15	at Georgia Tech	55-66 L	1008	(16)Krista Stricklin	(7)Destiney Elliott
12/17/15	at Alabama State	W 54-35	256	(18)Amara Mayers	(9)Destiney Elliott
12/21/15	at UAB	41-61 L	323	(12)Taylor Reece	(6)Destiney Elliott
12/28/15	at LSU	W 47-44	2511	(14)Taylor Reece	(6)Kassidy Blevins (6)Krista Stricklin
1/2/16	HARVARD	54-60 L	429	(19)Kassidy Blevins	(6)Amara Mayers
1/7/16	*at Western Carolina	W 59-42	537	(15)Krista Stricklin	(8)Destiney Elliott
1/9/16	*at UNCG	W 57-52	252	(15)Taylor Reece	(9)Destiney Elliott
1/16/16	*MERCER	60-63 L	377	(14)Taylor Reece	(7)Taylor Reece
1/21/16	*ETSU	W 55-47	334	(17)Taylor Reece	(12)Destiney Elliott
1/23/16	*CHATTANOOGA	W 48-43	667	(18)Amara Mayers	(5)Destiney Elliott (5)Krista Stricklin
1/28/16	*at Furman	W 58-45	1427	(12)Amara Mayers	(6)Destiney Elliott
1/30/16	*at Wofford	W 58-39	511	(10)Amara Mayers (10)Brittany Stevens	(10)Krista Stricklin
2/4/16	*UNCG	W 80-49	306	(17)Kassidy Blevins	(10)Brittany Stevens

\* = Southern Conference game

# = Lady Eagle Thanksgiving Classic (Hattiesburg, Miss.)

Attendance Summary	Games	Attend	Avg/Game
Home	8	3242	405
Away	14	12765	912
Neutral	1	1320	1320
Total	23	17327	753



2015-16 Samford Women's Basketball  
Samford Season Box Score (as of Feb 04, 2016)  
All games



RECORD:	OVERALL	HOME	AWAY	NEUTRAL
ALL GAMES	15-8	6-2	8-6	1-0
CONFERENCE	7-1	3-1	4-0	0-0
NON-CONFERENCE	8-7	3-1	4-6	1-0

#	Player	gp-gs	min	avg	Total		3-Point		F-Throw		Rebounds				pf	dq	a	to	blk	stl	pts	avg
					fg-fga	fg%	3fg-fga	3fg%	ft-fa	ft%	off	def	tot	avg								
03	Destiney Elliott	23-23	638	27.7	80-189	.423	18-52	.346	31-45	.689	49	127	176	7.7	64	1	44	51	20	23	209	9.1
10	Taylor Reece	22-20	547	24.9	74-183	.404	21-75	.280	27-35	.771	11	43	54	2.5	48	0	37	39	18	10	196	8.9
11	Amara Mayers	23-23	556	24.2	70-158	.443	9-36	.250	34-61	.557	15	79	94	4.1	27	0	28	47	1	30	183	8.0
05	Kassidy Blevins	23-0	478	20.8	57-147	.388	36-99	.364	13-17	.765	9	46	55	2.4	25	0	31	22	9	20	163	7.1
12	Krista Stricklin	23-23	657	28.6	52-134	.388	16-57	.281	21-37	.568	20	65	85	3.7	38	0	27	25	12	16	141	6.1
13	Brittany Stevens	23-23	702	30.5	46-132	.348	9-38	.237	39-50	.780	13	55	68	3.0	56	0	60	53	0	26	140	6.1
22	Ellen Riggins	23-3	411	17.9	43-108	.398	2-25	.080	24-36	.667	16	53	69	3.0	39	0	23	42	8	10	112	4.9
04	Lydia McGee	12-0	169	14.1	21-48	.438	2-7	.286	13-16	.813	10	18	28	2.3	19	0	14	24	2	8	57	4.8
31	Cassidy Williams	23-0	290	12.6	17-57	.298	13-44	.295	2-2	1.000	6	21	27	1.2	19	0	9	26	1	4	49	2.1
21	Keke Fletcher	18-0	177	9.8	14-37	.378	6-25	.240	0-0	.000	5	17	22	1.2	4	0	8	3	2	5	34	1.9
Team											39	66	105					13				
Total.....		23	4625		474-1193	.397	132-458	.288	204-299	.682	193	590	783	34.0	339	1	281	345	73	152	1284	55.8
Opponents.....		23	4626		408-1179	.346	77-320	.241	240-323	.743	211	566	777	33.8	380	-	210	361	74	161	1133	49.3

Score by Periods	1st	2nd	3rd	4th	OT	Totals
Samford	307	294	358	321	4	1284
Opponents	250	272	287	311	13	1133



2015-16 Samford Women's Basketball  
Samford Overall Team Statistics (as of Feb 04, 2016)  
All games



TEAM STATISTICS	SAM	OPP
SCORING	1284	1133
Points per game	55.8	49.3
Scoring margin	+6.6	-
FIELD GOALS-ATT	474-1193	408-1179
Field goal pct	.397	.346
3 POINT FG-ATT	132-458	77-320
3-point FG pct	.288	.241
3-pt FG made per game	5.7	3.3
FREE THROWS-ATT	204-299	240-323
Free throw pct	.682	.743
F-Throws made per game	8.9	10.4
REBOUNDS	783	777
Rebounds per game	34.0	33.8
Rebounding margin	+0.3	-
ASSISTS	281	210
Assists per game	12.2	9.1
TURNOVERS	345	361
Turnovers per game	15.0	15.7
Turnover margin	+0.7	-
Assist/turnover ratio	0.8	0.6
STEALS	152	161
Steals per game	6.6	7.0
BLOCKS	73	74
Blocks per game	3.2	3.2
WINNING STREAK	5	-
Home win streak	3	-
ATTENDANCE	3242	14085
Home games-Avg/Game	8-405	14-912
Neutral site-Avg/Game	-	1-1320

Score by Periods	1st	2nd	3rd	4th	OT	Totals
Samford	307	294	358	321	4	1284
Opponents	250	272	287	311	13	1133





2015-16 Samford Women's Basketball  
Samford Category Leaders (as of Feb 04, 2016)  
All games



Points	G	Pts	Pts/G
Destiney Elliott	23	209	9.1
Taylor Reece	22	196	8.9
Amara Mayers	23	183	8.0
Kassidy Blevins	23	163	7.1
Krista Stricklin	23	141	6.1
Brittany Stevens	23	140	6.1
Ellen Riggins	23	112	4.9
Lydia McGee	12	57	4.8
Cassidy Williams	23	49	2.1
Keke Fletcher	18	34	1.9

FG Percentage	FG	Att	Pct
Amara Mayers	70	158	.443
Lydia McGee	21	48	.438
Destiney Elliott	80	189	.423
Taylor Reece	74	183	.404
Ellen Riggins	43	108	.398
Krista Stricklin	52	134	.388
Kassidy Blevins	57	147	.388
Keke Fletcher	14	37	.378
Brittany Stevens	46	132	.348
Cassidy Williams	17	57	.298

3-Point Percentage	3FG	Att	Pct
Kassidy Blevins	36	99	.364
Destiney Elliott	18	52	.346
Cassidy Williams	13	44	.295
Lydia McGee	2	7	.286
Krista Stricklin	16	57	.281
Taylor Reece	21	75	.280
Amara Mayers	9	36	.250
Keke Fletcher	6	25	.240
Brittany Stevens	9	38	.237
Ellen Riggins	2	25	.080

Free Throw Percent	FG	Att	Pct
Cassidy Williams	2	2	1.000
Lydia McGee	13	16	.813
Brittany Stevens	39	50	.780
Taylor Reece	27	35	.771
Kassidy Blevins	13	17	.765
Destiney Elliott	31	45	.689
Ellen Riggins	24	36	.667
Krista Stricklin	21	37	.568
Amara Mayers	34	61	.557

Scoring Average	G	Pts	Avg/G
Destiney Elliott	23	209	9.1
Taylor Reece	22	196	8.9
Amara Mayers	23	183	8.0
Kassidy Blevins	23	163	7.1
Krista Stricklin	23	141	6.1
Brittany Stevens	23	140	6.1
Ellen Riggins	23	112	4.9
Lydia McGee	12	57	4.8
Cassidy Williams	23	49	2.1
Keke Fletcher	18	34	1.9

Field Goal Attempts	G	Att	Att/G
Destiney Elliott	23	189	8.2
Taylor Reece	22	183	8.3
Amara Mayers	23	158	6.9
Kassidy Blevins	23	147	6.4
Krista Stricklin	23	134	5.8

Field Goals Made	G	Made	Made/G
Destiney Elliott	23	80	3.5
Taylor Reece	22	74	3.4
Amara Mayers	23	70	3.0
Kassidy Blevins	23	57	2.5
Krista Stricklin	23	52	2.3

3-Point FG Attempts	G	Att	Att/G
Kassidy Blevins	23	99	4.3
Taylor Reece	22	75	3.4
Krista Stricklin	23	57	2.5
Destiney Elliott	23	52	2.3
Cassidy Williams	23	44	1.9

3-Point FG Made	G	Made	Made/G
Kassidy Blevins	23	36	1.6
Taylor Reece	22	21	1.0
Destiney Elliott	23	18	0.8
Krista Stricklin	23	16	0.7
Cassidy Williams	23	13	0.6

Free Throw Attempts	G	Att	Att/G
Amara Mayers	23	61	2.7
Brittany Stevens	23	50	2.2
Destiney Elliott	23	45	2.0
Krista Stricklin	23	37	1.6
Ellen Riggins	23	36	1.6

Free Throws Made	G	Made	Made/G
Brittany Stevens	23	39	1.7
Amara Mayers	23	34	1.5
Destiney Elliott	23	31	1.3
Taylor Reece	22	27	1.2
Ellen Riggins	23	24	1.0



2015-16 Samford Women's Basketball  
Samford Category Leaders (as of Feb 04, 2016)  
All games



Rebounds	G	Reb	Reb/G
Destiney Elliott	23	176	7.7
Amara Mayers	23	94	4.1
Krista Stricklin	23	85	3.7
Ellen Riggins	23	69	3.0
Brittany Stevens	23	68	3.0

Rebound Average	G	Reb	Avg/G
Destiney Elliott	23	176	7.7
Amara Mayers	23	94	4.1
Krista Stricklin	23	85	3.7
Ellen Riggins	23	69	3.0
Brittany Stevens	23	68	3.0

Offensive Rebounds	G	No.	Avg/G
Destiney Elliott	23	49	2.1
Krista Stricklin	23	20	0.9
Ellen Riggins	23	16	0.7
Amara Mayers	23	15	0.7
Brittany Stevens	23	13	0.6

Defensive Rebounds	G	No.	Avg/G
Destiney Elliott	23	127	5.5
Amara Mayers	23	79	3.4
Krista Stricklin	23	65	2.8
Brittany Stevens	23	55	2.4
Ellen Riggins	23	53	2.3

Fouls	G	No.	Per/G
Destiney Elliott	23	64	2.8
Brittany Stevens	23	56	2.4
Taylor Reece	22	48	2.2
Ellen Riggins	23	39	1.7
Krista Stricklin	23	38	1.7

Foulsouts	G	No.
Destiney Elliott	23	1

Assists	G	No.	Ast/G
Brittany Stevens	23	60	2.6
Destiney Elliott	23	44	1.9
Taylor Reece	22	37	1.7
Kassidy Blevins	23	31	1.3
Amara Mayers	23	28	1.2

Steals	G	No.	Stl/G
Amara Mayers	23	30	1.3
Brittany Stevens	23	26	1.1
Destiney Elliott	23	23	1.0
Kassidy Blevins	23	20	0.9
Krista Stricklin	23	16	0.7

Blocked Shots	G	No.	Blk/G
Destiney Elliott	23	20	0.9
Taylor Reece	22	18	0.8
Krista Stricklin	23	12	0.5
Kassidy Blevins	23	9	0.4
Ellen Riggins	23	8	0.3

Minutes	G	No.	Min/G
Brittany Stevens	23	702	30.5
Krista Stricklin	23	657	28.6
Destiney Elliott	23	638	27.7
Amara Mayers	23	556	24.2
Taylor Reece	22	547	24.9

Turnovers	G	No.	TO/G
Brittany Stevens	23	53	2.3
Destiney Elliott	23	51	2.2
Amara Mayers	23	47	2.0
Ellen Riggins	23	42	1.8
Taylor Reece	22	39	1.8



2015-16 Samford Women's Basketball  
Samford Overall/Conference Statistics (as of Feb 04, 2016)  
All games



SUMMARY	Overall Statistics										Conference Statistics									
	gp-gs	min/g	fg%	3fg%	ft%	r/g	a/g	stl	blk	pts/g	gp-gs	min/g	fg%	3fg%	ft%	r/g	a/g	stl	blk	pts/g
Destiney Elliott	23-23	27.7	.423	.346	.689	7.7	1.9	23	20	9.1	8-8	27.0	.515	.300	.684	7.4	2.0	3	6	10.5
Taylor Reece	22-20	24.9	.404	.280	.771	2.5	1.7	10	18	8.9	8-8	24.9	.522	.450	1.000	2.8	2.4	6	5	10.6
Amara Mayers	23-23	24.2	.443	.250	.557	4.1	1.2	30	1	8.0	8-8	21.6	.420	.200	.692	3.5	1.5	12	1	7.8
Kassidy Blevins	23-0	20.8	.388	.364	.765	2.4	1.3	20	9	7.1	8-0	22.3	.404	.233	.714	2.0	1.5	3	5	6.8
Krista Stricklin	23-23	28.6	.388	.281	.568	3.7	1.2	16	12	6.1	8-8	30.3	.500	.250	.588	4.5	1.3	7	7	5.8
Brittany Stevens	23-23	30.5	.348	.237	.780	3.0	2.6	26	0	6.1	8-8	29.5	.340	.154	.722	3.3	2.3	6	0	6.4
Ellen Riggins	23-3	17.9	.398	.080	.667	3.0	1.0	10	8	4.9	8-0	18.4	.395	.000	.737	3.3	0.5	3	3	6.0
Lydia McGee	12-0	14.1	.438	.286	.813	2.3	1.2	8	2	4.8	6-0	16.3	.393	.000	.800	2.5	1.3	4	1	5.0
Cassidy Williams	23-0	12.6	.298	.295	1.000	1.2	0.4	4	1	2.1	8-0	7.6	.250	.400	1.000	0.1	0.1	1	1	1.0
Keke Fletcher	18-0	9.8	.378	.240	.000	1.2	0.4	5	2	1.9	6-0	8.3	.273	.143	.000	1.0	0.3	0	1	1.2
Totals	23		.397	.288	.682	34.0	12.2	152	73	55.8	8		.434	.250	.718	34.1	12.8	45	30	59.4
Opponent	23		.346	.241	.743	33.8	9.1	161	74	49.3	8		.339	.186	.702	32.0	8.0	47	30	47.5

SCORING	Overall Statistics									Conference Statistics								
	fg-fga	fg%	3fg-fga	3fg%	ft-fta	ft%	pts	pts/g		fg-fga	fg%	3fg-fga	3fg%	ft-fta	ft%	pts	pts/g	
Destiney Elliott	80-189	.423	18-52	.346	31-45	.689	209	9.1		34-66	.515	3-10	.300	13-19	.684	84	10.5	
Taylor Reece	74-183	.404	21-75	.280	27-35	.771	196	8.9		35-67	.522	9-20	.450	6-6	1.000	85	10.6	
Amara Mayers	70-158	.443	9-36	.250	34-61	.557	183	8.0		21-50	.420	2-10	.200	18-26	.692	62	7.8	
Kassidy Blevins	57-147	.388	36-99	.364	13-17	.765	163	7.1		21-52	.404	7-30	.233	5-7	.714	54	6.8	
Krista Stricklin	52-134	.388	16-57	.281	21-37	.568	141	6.1		17-34	.500	2-8	.250	10-17	.588	46	5.8	
Brittany Stevens	46-132	.348	9-38	.237	39-50	.780	140	6.1		18-53	.340	2-13	.154	13-18	.722	51	6.4	
Ellen Riggins	43-108	.398	2-25	.080	24-36	.667	112	4.9		17-43	.395	0-7	.000	14-19	.737	48	6.0	
Lydia McGee	21-48	.438	2-7	.286	13-16	.813	57	4.8		11-28	.393	0-2	.000	8-10	.800	30	5.0	
Cassidy Williams	17-57	.298	13-44	.295	2-2	1.000	49	2.1		2-8	.250	2-5	.400	2-2	1.000	8	1.0	
Keke Fletcher	14-37	.378	6-25	.240	0-0	.000	34	1.9		3-11	.273	1-7	.143	0-0	.000	7	1.2	
Totals	474-1193	.397	132-458	.288	204-299	.682	1284	55.8		179-412	.434	28-112	.250	89-124	.718	475	59.4	
Opponent	408-1179	.346	77-320	.241	240-323	.743	1133	49.3		138-407	.339	19-102	.186	85-121	.702	380	47.5	

TOTALS	Overall Statistics										Conference Statistics									
	o-reb	d-reb	total	pf	fo	a	to	a/to	hi	pts	o-reb	d-reb	total	pf	fo	a	to	a/to	hi	pts
Destiney Elliott	49	127	176	64	1	44	51	0.9	20		17	42	59	21	0	16	22	0.7	15	
Taylor Reece	11	43	54	48	0	37	39	0.9	17		5	17	22	20	0	19	13	1.5	17	
Amara Mayers	15	79	94	27	0	28	47	0.6	18		4	24	28	9	0	12	13	0.9	18	
Kassidy Blevins	9	46	55	25	0	31	22	1.4	19		2	14	16	8	0	12	3	4.0	17	
Krista Stricklin	20	65	85	38	0	27	25	1.1	16		6	30	36	13	0	10	7	1.4	15	
Brittany Stevens	13	55	68	56	0	60	53	1.1	13		6	20	26	12	0	18	14	1.3	11	
Ellen Riggins	16	53	69	39	0	23	42	0.5	13		7	19	26	18	0	4	16	0.3	10	
Lydia McGee	10	18	28	19	0	14	24	0.6	12		5	10	15	11	0	8	10	0.8	12	
Cassidy Williams	6	21	27	19	0	9	26	0.3	8		0	1	1	4	0	1	6	0.2	6	
Keke Fletcher	5	17	22	4	0	8	3	2.7	7		2	4	6	2	0	2	0	0.0	3	
Totals	193	590	783	339	1	281	345	0.8	82		69	204	273	118	0	102	109	0.9	80	
Opponent	211	566	777	380	-	210	361	0.6	69		74	182	256	135	-	64	119	0.5	63	



2015-16 Samford Women's Basketball  
Samford Team Game-by-Game (as of Feb 04, 2016)  
All games



TEAM STATISTICS

Opponent	Date	Score		Total		3-Pointers		Free throws		Rebounds				pf	a	t/o	blk	stl	pts	avg
				fg-fga	pct	3fg-fga	pct	ft-fa	pct	off	def	tot	avg							
at Mississippi State	11/13/15	47-68	L	16-38	.421	7-18	.389	8-11	.727	3	28	31	31.0	24	10	28	1	3	47	47.0
AUBURN MONTGOMERY	11/15/15	82-32	W	28-54	.519	13-28	.464	13-20	.650	13	28	41	36.0	12	24	14	3	9	82	64.5
TROY	11/17/15	73-69	W	20-56	.357	9-32	.281	24-28	.857	8	25	33	35.0	17	13	19	3	10	73	67.3
SHORTER	11/21/15	53-33	W	22-57	.386	8-21	.381	1-2	.500	7	23	30	33.8	10	13	10	2	9	53	63.8
at Jacksonville State	11/24/15	50-39	W	19-51	.373	3-17	.176	9-13	.692	7	33	40	35.0	12	4	17	3	10	50	61.0
vs Nicholls	11/27/15	45-43	W	17-58	.293	4-26	.154	7-16	.438	13	25	38	35.5	14	13	16	2	10	45	58.3
at Southern Miss	11/28/15	48-56	L	20-53	.377	6-25	.240	2-4	.500	10	24	34	35.3	17	12	18	3	4	48	56.9
at Alabama A&M	12/1/15	54-30	W	21-54	.389	5-16	.313	7-8	.875	9	28	37	35.5	13	14	10	2	5	54	56.5
at UT Martin	12/5/15	50-52	L	20-55	.364	8-26	.308	2-4	.500	10	27	37	35.7	11	10	14	1	4	50	55.8
at Indiana	12/11/15	56-65	Lot	23-55	.418	8-25	.320	2-6	.333	6	28	34	35.5	24	11	20	9	7	56	55.8
at Georgia Tech	12/13/15	55-66	L	19-51	.373	9-26	.346	8-12	.667	9	20	29	34.9	16	14	16	1	8	55	55.7
at Alabama State	12/17/15	54-35	W	19-46	.413	5-19	.263	11-17	.647	4	28	32	34.7	11	10	16	0	11	54	55.6
at UAB	12/21/15	41-61	L	16-55	.291	4-19	.211	5-8	.625	5	21	26	34.0	12	10	8	4	8	41	54.5
at LSU	12/28/15	47-44	W	15-46	.326	8-26	.308	9-18	.500	15	23	38	34.3	13	10	14	5	4	47	53.9
HARVARD	1/2/16	54-60	L	20-52	.385	7-22	.318	7-8	.875	5	25	30	34.0	15	11	16	4	5	54	53.9
at Western Carolina	1/7/16	59-42	W	26-48	.542	1-7	.143	6-10	.600	10	24	34	34.0	19	10	17	1	3	59	54.2
at UNCG	1/9/16	57-52	W	22-54	.407	5-14	.357	8-13	.615	8	26	34	34.0	18	13	25	3	7	57	54.4
MERCER	1/16/16	60-63	L	21-48	.438	5-20	.250	13-20	.650	7	24	31	33.8	15	18	13	4	1	60	54.7
ETSU	1/21/16	55-47	W	23-57	.404	4-16	.250	5-7	.714	10	24	34	33.8	11	13	12	4	5	55	54.7
CHATTANOOGA	1/23/16	48-43	W	16-37	.432	0-7	.000	16-20	.800	3	22	25	33.4	12	10	12	5	9	48	54.4
at Furman	1/28/16	58-45	W	23-53	.434	8-19	.421	4-4	1.000	3	25	28	33.1	10	15	8	7	5	58	54.6
at Wofford	1/30/16	58-39	W	18-56	.321	2-18	.111	20-29	.690	17	29	46	33.7	16	9	13	4	7	58	54.7
UNCG	2/4/16	80-49	W	30-59	.508	3-11	.273	17-21	.810	11	30	41	34.0	17	14	9	2	8	80	55.8
Samford		1284		474-1193	.397	132-458	.288	204-299	.682	193	590	783	34.0	339	281	345	73	152	1284	55.8
Opponents		1133		408-1179	.346	77-320	.241	240-323	.743	211	566	777	33.8	380	210	361	74	161	1133	49.3

Games played: 23  
Points/game: 55.8  
FG Pct: 39.7  
3FG Pct: 28.8  
FT Pct: 68.2

Rebounds/game: 34.0  
Assists/game: 12.2  
Turnovers/game: 15.0  
Assist/turnover ratio: 0.8  
Steals/game: 6.6  
Blocks/game: 3.2





2015-16 Samford Women's Basketball  
Samford Opponent Game-by-Game (as of Feb 04, 2016)  
All games



OPPONENT STATISTICS

Opponent	Date	Score		Total		3-Pointers		Free throws		Rebounds											
				fg-fga	pct	3fg-fga	pct	ft-fa	pct	off	def	tot	avg	pf	a	t/o	blk	stl	pts	avg	
at Mississippi State	11/13/15	47-68	L	25-77	.325	2-20	.100	16-22	.727	28	20	48	48.0	18	6	10	2	14	68	68.0	
AUBURN MONTGOMERY	11/15/15	82-32	W	11-42	.262	5-17	.294	5-8	.625	4	17	21	34.5	21	6	22	2	5	32	50.0	
TROY	11/17/15	73-69	W	24-51	.471	7-17	.412	14-17	.824	4	30	34	34.3	33	13	23	1	12	69	56.3	
SHORTER	11/21/15	53-33	W	12-36	.333	3-9	.333	6-8	.750	3	29	32	33.8	12	8	21	4	4	33	50.5	
at Jacksonville State	11/24/15	50-39	W	14-51	.275	7-24	.292	4-6	.667	4	26	30	33.0	17	8	16	5	7	39	48.2	
vs Nicholls	11/27/15	45-43	W	19-46	.413	3-10	.300	2-3	.667	3	31	34	33.2	23	12	28	4	7	43	47.3	
at Southern Miss	11/28/15	48-56	L	20-56	.357	2-6	.333	14-19	.737	15	24	39	34.0	14	9	15	4	5	56	48.6	
at Alabama A&M	12/1/15	54-30	W	10-43	.233	3-15	.200	7-14	.500	6	21	27	33.1	17	3	14	4	4	30	46.2	
at UT Martin	12/5/15	50-52	L	19-51	.373	7-28	.250	7-7	1.000	5	26	31	32.9	7	13	12	2	6	52	46.9	
at Indiana	12/11/15	56-65	Lot	18-63	.286	2-16	.125	27-31	.871	19	28	47	34.3	8	9	14	2	11	65	48.7	
at Georgia Tech	12/13/15	55-66	L	24-48	.500	4-13	.308	14-15	.933	4	25	29	33.8	15	15	15	3	11	66	50.3	
at Alabama State	12/17/15	54-35	W	14-45	.311	0-9	.000	7-12	.583	4	26	30	33.5	18	10	16	0	6	35	49.0	
at UAB	12/21/15	41-61	L	23-52	.442	5-12	.417	10-14	.714	9	35	44	34.3	9	14	11	7	5	61	49.9	
at LSU	12/28/15	47-44	W	18-54	.333	2-7	.286	6-6	1.000	13	19	32	34.1	21	8	9	3	7	44	49.5	
HARVARD	1/2/16	54-60	L	19-57	.333	6-15	.400	16-20	.800	16	27	43	34.7	12	12	16	1	10	60	50.2	
at Western Carolina	1/7/16	59-42	W	15-41	.366	4-11	.364	8-19	.421	7	15	22	33.9	18	5	17	4	4	42	49.7	
at UNCG	1/9/16	57-52	W	17-51	.333	0-4	.000	18-23	.783	8	24	32	33.8	20	6	21	5	14	52	49.8	
MERCER	1/16/16	60-63	L	21-58	.362	3-8	.375	18-20	.900	13	21	34	33.8	17	12	7	1	7	63	50.6	
ETSU	1/21/16	55-47	W	17-47	.362	2-15	.133	11-15	.733	6	25	31	33.7	12	5	14	4	4	47	50.4	
CHATTANOOGA	1/23/16	48-43	W	18-52	.346	1-9	.111	6-7	.857	13	21	34	33.7	17	7	15	6	6	43	50.0	
at Furman	1/28/16	58-45	W	17-53	.321	4-27	.148	7-10	.700	10	29	39	34.0	11	10	15	2	2	45	49.8	
at Wofford	1/30/16	58-39	W	14-51	.275	3-16	.188	8-10	.800	8	25	33	33.9	24	9	17	7	7	39	49.3	
UNCG	2/4/16	80-49	W	19-54	.352	2-12	.167	9-17	.529	9	22	31	33.8	16	10	13	1	3	49	49.3	
Opponents		1133		408-1179	.346	77-320	.241	240-323	.743	211	566	777	33.8	380	210	361	74	161	1133	49.3	
Samford		1284		474-1193	.397	132-458	.288	204-299	.682	193	590	783	34.0	339	281	345	73	152	1284	55.8	

Games played: 23  
Points/game: 49.3  
FG Pct: 34.6  
3FG Pct: 24.1  
FT Pct: 74.3

Rebounds/game: 33.8  
Assists/game: 9.1  
Turnovers/game: 15.7  
Assist/turnover ratio: 0.6  
Steals/game: 7.0  
Blocks/game: 3.2



2015-16 Samford Women's Basketball  
Samford Team Game-by-Game Comparison (as of Feb 04, 2016)  
All games



Opponent	1st	2nd	Score	Mar	Total FG	FG Pct	3-Pointers	3FG Pct	Free Throws	FT Pct	Rebounds	A
Mississippi State	14/34	33/34	47-68	(21)	16-38/25-77	.421/.325	7-18/2-20	.389/.100	8-11/16-22	.727/.727	31/48 (17)	1
AUBURN MONTGOMERY	42/23	40/9	82-32	+50	28-54/11-42	.519/.262	13-28/5-17	.464/.294	13-20/5-8	.650/.625	41/21 +20	2
TROY	26/29	47/40	73-69	+4	20-56/24-51	.357/.471	9-32/7-17	.281/.412	24-28/14-17	.857/.824	33/34 (1)	1
SHORTER	30/18	23/15	53-33	+20	22-57/12-36	.386/.333	8-21/3-9	.381/.333	1-2/6-8	.500/.750	30/32 (2)	1
Jacksonville State	23/18	27/21	50-39	+11	19-51/14-51	.373/.275	3-17/7-24	.176/.292	9-13/4-6	.692/.667	40/30 +10	1
Nicholls	21/27	24/16	45-43	+2	17-58/19-46	.293/.413	4-26/3-10	.154/.300	7-16/2-3	.438/.667	38/34 +4	1
Southern Miss	26/31	22/25	48-56	(8)	20-53/20-56	.377/.357	6-25/2-6	.240/.333	2-4/14-19	.500/.737	34/39 (5)	1
Alabama A&M	29/12	25/18	54-30	+24	21-54/10-43	.389/.233	5-16/3-15	.313/.200	7-8/7-14	.875/.500	37/27 +10	1
UT Martin	23/30	27/22	50-52	(2)	20-55/19-51	.364/.373	8-26/7-28	.308/.250	2-4/7-7	.500/1000	37/31 +6	1
Indiana	30/24	22/28	56-65	(9)	23-55/18-63	.418/.286	8-25/2-16	.320/.125	2-6/27-31	.333/.871	34/47 (13)	1
Georgia Tech	24/31	31/35	55-66	(11)	19-51/24-48	.373/.500	9-26/4-13	.346/.308	8-12/14-15	.667/.933	29/29 -	1
Alabama State	22/15	32/20	54-35	+19	19-46/14-45	.413/.311	5-19/0-9	.263/.000	11-17/7-12	.647/.583	32/30 +2	1
UAB	27/24	14/37	41-61	(20)	16-55/23-52	.291/.442	4-19/5-12	.211/.417	5-8/10-14	.625/.714	26/44 (18)	1
LSU	26/18	21/26	47-44	+3	15-46/18-54	.326/.333	8-26/2-7	.308/.286	9-18/6-6	.500/1000	38/32 +6	1
HARVARD	25/31	29/29	54-60	(6)	20-52/19-57	.385/.333	7-22/6-15	.318/.400	7-8/16-20	.875/.800	30/43 (13)	1
Western Carolina	33/10	26/32	59-42	+17	26-48/15-41	.542/.366	1-7/4-11	.143/.364	6-10/8-19	.600/.421	34/22 +12	1
UNCG	24/18	33/34	57-52	+5	22-54/17-51	.407/.333	5-14/0-4	.357/.000	8-13/18-23	.615/.783	34/32 +2	1
MERCER	27/22	33/41	60-63	(3)	21-48/21-58	.438/.362	5-20/3-8	.250/.375	13-20/18-20	.650/.900	31/34 (3)	1
ETSU	22/25	33/22	55-47	+8	23-57/17-47	.404/.362	4-16/2-15	.250/.133	5-7/11-15	.714/.733	34/31 +3	1
CHATTANOOGA	19/17	29/26	48-43	+5	16-37/18-52	.432/.346	0-7/1-9	.000/.111	16-20/6-7	.800/.857	25/34 (9)	1
Furman	28/26	30/19	58-45	+13	23-53/17-53	.434/.321	8-19/4-27	.421/.148	4-4/7-10	1000/.700	28/39 (11)	1
Wofford	26/15	32/24	58-39	+19	18-56/14-51	.321/.275	2-18/3-16	.111/.188	20-29/8-10	.690/.800	46/33 +13	1
UNCG	34/24	46/25	80-49	+31	30-59/19-54	.508/.352	3-11/2-12	.273/.167	17-21/9-17	.810/.529	41/31 +10	1

Note: Game totals are displayed in the format TEAM/OPPONENT for each category



2015-16 Samford Women's Basketball  
Samford Points-Rebounds-Assists (as of Feb 04, 2016)  
All games



Opponent	Date	Score		03	04	05	10	11	12	13
				ELLIOTT,DE	MCGEE,LYDI	BLEVINS,KA	REECE,TAYL	MAYERS,AMA	STRICKLIN,	STEVENS,BR
at Mississippi State	11/13/15	47-68	L	3-2-0	0-1-0	0-1-0	9-1-2	9-5-2	7-4-2	13-1-4
AUBURN MONTGOMERY	11/15/15	82-32	w	7-4-4	9-4-3	15-3-4	15-5-2	3-6-2	7-5-2	4-5-4
TROY	11/17/15	73-69	w	8-9-3	12-2-2	19-3-1	6-2-1	6-4-1	8-3-2	12-3-3
SHORTER	11/21/15	53-33	w	6-5-3	0-1-1	5-3-0	7-3-1	8-1-0	7-1-1	8-3-1
at Jacksonville State	11/24/15	50-39	w	2-12-1	6-4-0	0-2-0	11-3-2	16-7-0	6-0-0	5-3-1
vs Nicholls	11/27/15	45-43	w	17-11-3	0-1-0	3-3-2	2-1-0	4-6-3	9-2-0	8-4-4
at Southern Miss	11/28/15	48-56	L	9-8-2	DNP	0-1-1	DNP	14-4-1	3-3-1	7-3-2
at Alabama A&M	12/1/15	54-30	w	6-8-2	DNP	5-3-2	10-2-2	14-3-1	9-3-2	3-3-3
at UT Martin	12/5/15	50-52	L	13-18-2	DNP	9-2-0	4-2-2	7-7-2	2-2-1	9-2-2
at Indiana	12/11/15	56-65	L	20-9-1	DNP	8-4-1	12-0-2	2-2-1	10-10-1	2-6-4
at Georgia Tech	12/13/15	55-66	L	3-7-3	DNP	14-1-1	0-2-0	3-2-0	16-3-1	4-2-3
at Alabama State	12/17/15	54-35	w	11-9-1	DNP	0-3-1	0-2-0	18-6-1	7-0-0	2-2-4
at UAB	12/21/15	41-61	L	11-6-2	DNP	3-2-2	12-2-2	6-4-1	2-3-0	3-1-2
at LSU	12/28/15	47-44	w	7-5-1	DNP	9-6-3	14-4-1	4-3-1	0-6-1	7-1-3
HARVARD	1/2/16	54-60	L	2-4-0	DNP	19-2-1	9-3-1	7-6-0	2-4-3	2-3-2
at Western Carolina	1/7/16	59-42	w	14-8-0	DNP	4-2-3	10-1-0	4-4-1	15-3-1	4-4-4
at UNCG	1/9/16	57-52	w	11-9-2	DNP	8-3-1	15-3-2	5-3-3	4-4-1	7-2-2
MERCER	1/16/16	60-63	L	12-6-5	10-3-5	0-2-2	14-7-2	3-4-2	4-4-0	5-0-1
ETSU	1/21/16	55-47	w	15-12-2	1-1-2	6-1-0	17-4-4	0-3-0	2-5-4	4-0-0
CHATTANOOGA	1/23/16	48-43	w	9-5-2	2-1-0	0-1-4	14-2-2	18-3-1	3-5-1	2-2-0
at Furman	1/28/16	58-45	w	9-6-3	0-0-0	10-4-0	10-4-6	12-4-1	2-3-3	8-2-2
at Wofford	1/30/16	58-39	w	6-8-1	5-1-0	9-0-1	3-1-2	10-5-2	7-10-0	10-6-3
UNCG	2/4/16	80-49	w	8-5-1	12-9-1	17-3-1	2-0-1	10-2-2	9-2-0	11-10-6

Opponent	Date	Score		21	22	31
				FLETCHER,K	RIGGINS,EL	WILLIAMS,C
at Mississippi State	11/13/15	47-68	L	0-4-0	0-2-0	6-3-0
AUBURN MONTGOMERY	11/15/15	82-32	w	7-3-1	9-3-1	6-1-1
TROY	11/17/15	73-69	w	0-0-0	0-1-0	2-1-0
SHORTER	11/21/15	53-33	w	0-1-2	4-3-2	8-4-2
at Jacksonville State	11/24/15	50-39	w	DNP	4-2-0	0-2-0
vs Nicholls	11/27/15	45-43	w	DNP	2-4-0	0-2-1
at Southern Miss	11/28/15	48-56	L	3-2-2	9-5-3	3-1-0
at Alabama A&M	12/1/15	54-30	w	5-3-0	0-4-1	2-2-1
at UT Martin	12/5/15	50-52	L	0-0-0	0-3-1	6-0-0
at Indiana	12/11/15	56-65	L	0-0-0	2-1-1	0-0-0
at Georgia Tech	12/13/15	55-66	L	DNP	12-5-5	3-5-1
at Alabama State	12/17/15	54-35	w	3-0-0	13-2-1	0-2-2
at UAB	12/21/15	41-61	L	0-1-0	4-4-1	0-1-0
at LSU	12/28/15	47-44	w	3-2-0	3-2-0	0-1-0
HARVARD	1/2/16	54-60	L	6-0-1	2-2-3	5-1-0
at Western Carolina	1/7/16	59-42	w	0-2-1	8-5-0	0-0-0
at UNCG	1/9/16	57-52	w	2-1-1	5-1-1	0-0-0
MERCER	1/16/16	60-63	L	0-1-0	6-1-1	6-1-0
ETSU	1/21/16	55-47	w	DNP	10-1-0	0-0-1
CHATTANOOGA	1/23/16	48-43	w	DNP	0-3-0	0-0-0
at Furman	1/28/16	58-45	w	3-1-0	4-2-0	0-0-0
at Wofford	1/30/16	58-39	w	0-0-0	8-7-0	0-0-0
UNCG	2/4/16	80-49	w	2-1-0	7-6-2	2-0-0



2015-16 Samford Women's Basketball  
Samford Game-by-Game Highs (as of Feb 04, 2016)  
All games



Opponent	Date	Score	Points	Rebounds	Assists	Steals	Blocked shots
at Mississippi State	11/13/15	47-68	13-Brittany Stevens	5-Amara Mayers	4-Brittany Stevens	1-Krista Stricklin Amara Mayers Destiney Elliott	1-Taylor Reece
AUBURN MONTGOMERY	11/15/15	82-32	15-Kassidy Blevins Taylor Reece	6-Amara Mayers	4-Kassidy Blevins Brittany Stevens Destiney Elliott	3-Lydia McGee	1-Krista Stricklin Lydia McGee Taylor Reece
TROY	11/17/15	73-69	19-Kassidy Blevins	9-Destiney Elliott	3-Brittany Stevens Destiney Elliott	2-Cassidy Williams Krista Stricklin Brittany Stevens	2-Taylor Reece
SHORTER	11/21/15	53-33	8-Amara Mayers Cassidy Williams Brittany Stevens	5-Destiney Elliott	3-Destiney Elliott	3-Brittany Stevens	1-Kassidy Blevins Destiney Elliott
at Jacksonville State	11/24/15	50-39	16-Amara Mayers	12-Destiney Elliott	2-Taylor Reece	4-Amara Mayers	1-Taylor Reece Destiney Elliott Krista Stricklin
vs Nicholls	11/27/15	45-43	17-Destiney Elliott	11-Destiney Elliott	4-Brittany Stevens	7-Kassidy Blevins	2-Destiney Elliott
at Southern Miss	11/28/15	48-56	14-Amara Mayers	8-Destiney Elliott	3-Ellen Riggins	1-Destiney Elliott Brittany Stevens Krista Stricklin Amara Mayers	2-Destiney Elliott
at Alabama A&M	12/1/15	54-30	14-Amara Mayers	8-Destiney Elliott	3-Brittany Stevens	3-Keke Fletcher	1-Destiney Elliott Taylor Reece
at UT Martin	12/5/15	50-52	13-Destiney Elliott	18-Destiney Elliott	2-Brittany Stevens Destiney Elliott Amara Mayers Taylor Reece	3-Brittany Stevens	1-Destiney Elliott
at Indiana	12/11/15	56-65	20-Destiney Elliott	10-Krista Stricklin	4-Brittany Stevens	2-Kassidy Blevins Taylor Reece	3-Taylor Reece
at Georgia Tech	12/13/15	55-66	16-Krista Stricklin	7-Destiney Elliott	5-Ellen Riggins	2-Ellen Riggins Kassidy Blevins	1-Ellen Riggins
at Alabama State	12/17/15	54-35	18-Amara Mayers	9-Destiney Elliott	4-Brittany Stevens	4-Amara Mayers	None
at UAB	12/21/15	41-61	12-Taylor Reece	6-Destiney Elliott	2-Taylor Reece Destiney Elliott Kassidy Blevins Brittany Stevens	3-Destiney Elliott Brittany Stevens	2-Taylor Reece
at LSU	12/28/15	47-44	14-Taylor Reece	6-Krista Stricklin Kassidy Blevins	3-Brittany Stevens Kassidy Blevins	2-Destiney Elliott	2-Taylor Reece Destiney Elliott
HARVARD	1/2/16	54-60	19-Kassidy Blevins	6-Amara Mayers	3-Ellen Riggins Krista Stricklin	2-Krista Stricklin	1-Kassidy Blevins Destiney Elliott Ellen Riggins Krista Stricklin
at Western Carolina	1/7/16	59-42	15-Krista Stricklin	8-Destiney Elliott	4-Brittany Stevens	1-Taylor Reece Krista Stricklin Kassidy Blevins	1-Krista Stricklin
at UNCG	1/9/16	57-52	15-Taylor Reece	9-Destiney Elliott	3-Amara Mayers	4-Brittany Stevens	1-Krista Stricklin Keke Fletcher Destiney Elliott
MERCER	1/16/16	60-63	14-Taylor Reece	7-Taylor Reece	5-Lydia McGee Destiney Elliott	1-Destiney Elliott	2-Taylor Reece
ETSU	1/21/16	55-47	17-Taylor Reece	12-Destiney Elliott	4-Taylor Reece Krista Stricklin	2-Amara Mayers	2-Destiney Elliott
CHATTANOOGA	1/23/16	48-43	18-Amara Mayers	5-Krista Stricklin Destiney Elliott	4-Kassidy Blevins	4-Amara Mayers	2-Krista Stricklin





2015-16 Samford Women's Basketball  
Samford Game-by-Game Highs (as of Feb 04, 2016)  
All games



Opponent	Date	Score	Points	Rebounds	Assists	Steals	Blocked shots
at Furman	1/28/16	58-45	12-Amara Mayers	6-Destiney Elliott	6-Taylor Reece	2-Amara Mayers Krista Stricklin	3-Kassidy Blevins
at Wofford	1/30/16	58-39	10-Brittany Stevens Amara Mayers	10-Krista Stricklin	3-Brittany Stevens	2-Amara Mayers	1-Krista Stricklin Amara Mayers Kassidy Blevins Taylor Reece
UNCG	2/4/16	80-49	17-Kassidy Blevins	10-Brittany Stevens	6-Brittany Stevens	3-Krista Stricklin	1-Destiney Elliott Ellen Riggins



2015-16 Samford Women's Basketball  
Samford Team High/Low Analysis (as of Feb 04, 2016)  
All games



Samford - TEAM GAME HIGHS

POINTS	82	AUBURN MONTGOMERY (11/15/15)
	80	UNCG (2/4/16)
	73	TROY (11/17/15)
	60	MERCER (1/16/16)
	59	at Western Carolina (1/7/16)
FIELD GOALS MADE	30	UNCG (2/4/16)
	28	AUBURN MONTGOMERY (11/15/15)
FIELD GOAL ATTEMPTS	59	UNCG (2/4/16)
	58	vs Nicholls (11/27/15)
FIELD GOAL PERCENTAGE	.542 (26-48)	at Western Carolina (1/7/16)
	.519 (28-54)	AUBURN MONTGOMERY (11/15/15)
3 PT FIELD GOALS MADE	13	AUBURN MONTGOMERY (11/15/15)
	9	at Georgia Tech (12/13/15)
	9	TROY (11/17/15)
3 PT FG ATTEMPTS	32	TROY (11/17/15)
	28	AUBURN MONTGOMERY (11/15/15)
3 PT FG PERCENTAGE	.464 (13-28)	AUBURN MONTGOMERY (11/15/15)
	.421 (8-19)	at Furman (1/28/16)
FREE THROWS MADE	24	TROY (11/17/15)
	20	at Wofford (1/30/16)
FREE THROW ATTEMPTS	29	at Wofford (1/30/16)
	28	TROY (11/17/15)
FREE THROW PERCENTAGE	1.000 (4-4)	at Furman (1/28/16)
	.875 (7-8)	HARVARD (1/2/16)
	.875 (7-8)	at Alabama A&M (12/1/15)
REBOUNDS	46	at Wofford (1/30/16)
	41	UNCG (2/4/16)
	41	AUBURN MONTGOMERY (11/15/15)
ASSISTS	24	AUBURN MONTGOMERY (11/15/15)
	18	MERCER (1/16/16)
STEALS	11	at Alabama State (12/17/15)
	10	vs Nicholls (11/27/15)
	10	at Jacksonville State (11/24/15)
	10	TROY (11/17/15)
BLOCKED SHOTS	9	at Indiana (12/11/15)
	7	at Furman (1/28/16)
TURNOVERS	28	at Mississippi State (11/13/15)
	25	at UNCG (1/9/16)
FOULS	24	at Indiana (12/11/15)
	24	at Mississippi State (11/13/15)



2015-16 Samford Women's Basketball  
Samford High/Low Analysis (as of Feb 04, 2016)  
All games



Opponent - GAME HIGHS

POINTS	69		TROY (11/17/15)
	68		at Mississippi State (11/13/15)
	66		at Georgia Tech (12/13/15)
	65		at Indiana (12/11/15)
	63		MERCER (1/16/16)
FIELD GOALS MADE	25		at Mississippi State (11/13/15)
	24		at Georgia Tech (12/13/15)
	24		TROY (11/17/15)
FIELD GOAL ATTEMPTS	77		at Mississippi State (11/13/15)
	63		at Indiana (12/11/15)
FIELD GOAL PERCENTAGE	.500	(24-48)	at Georgia Tech (12/13/15)
	.471	(24-51)	TROY (11/17/15)
3 PT FIELD GOALS MADE	7		at UT Martin (12/5/15)
	7		at Jacksonville State (11/24/15)
	7		TROY (11/17/15)
3 PT FG ATTEMPTS	28		at UT Martin (12/5/15)
	27		at Furman (1/28/16)
3 PT FG PERCENTAGE	.417	(5-12)	at UAB (12/21/15)
	.412	(7-17)	TROY (11/17/15)
FREE THROWS MADE	27		at Indiana (12/11/15)
	18		MERCER (1/16/16)
	18		at UNCG (1/9/16)
FREE THROW ATTEMPTS	31		at Indiana (12/11/15)
	23		at UNCG (1/9/16)
FREE THROW PERCENTAGE	1.000	(7-7)	at UT Martin (12/5/15)
	1.000	(6-6)	at LSU (12/28/15)
REBOUNDS	48		at Mississippi State (11/13/15)
	47		at Indiana (12/11/15)
ASSISTS	15		at Georgia Tech (12/13/15)
	14		at UAB (12/21/15)
STEALS	14		at UNCG (1/9/16)
	14		at Mississippi State (11/13/15)
BLOCKED SHOTS	7		at Wofford (1/30/16)
	7		at UAB (12/21/15)
TURNOVERS	28		vs Nicholls (11/27/15)
	23		TROY (11/17/15)
FOULS	33		TROY (11/17/15)
	24		at Wofford (1/30/16)



2015-16 Samford Women's Basketball  
Samford High/Low Analysis (as of Feb 04, 2016)  
All games



Samford - GAME LOWS

POINTS	41		at UAB (12/21/15)
	45		vs Nicholls (11/27/15)
	47		at Mississippi State (11/13/15)
	47		at LSU (12/28/15)
	48		at Southern Miss (11/28/15)
	48		CHATTANOOGA (1/23/16)
FIELD GOALS MADE	15		at LSU (12/28/15)
	16		at Mississippi State (11/13/15)
	16		at UAB (12/21/15)
	16		CHATTANOOGA (1/23/16)
FIELD GOAL ATTEMPTS	37		CHATTANOOGA (1/23/16)
	38		at Mississippi State (11/13/15)
FIELD GOAL PERCENTAGE	.291	(16-55)	at UAB (12/21/15)
	.293	(17-58)	vs Nicholls (11/27/15)
3 PT FIELD GOALS MADE	0		CHATTANOOGA (1/23/16)
	1		at Western Carolina (1/7/16)
3 PT FG ATTEMPTS	7		at Western Carolina (1/7/16)
	7		CHATTANOOGA (1/23/16)
3 PT FG PERCENTAGE	.000	(0-7)	CHATTANOOGA (1/23/16)
	.111	(2-18)	at Wofford (1/30/16)
FREE THROWS MADE	1		SHORTER (11/21/15)
	2		at Southern Miss (11/28/15)
	2		at UT Martin (12/5/15)
	2		at Indiana (12/11/15)
FREE THROW ATTEMPTS	2		SHORTER (11/21/15)
	4		at Southern Miss (11/28/15)
	4		at UT Martin (12/5/15)
	4		at Furman (1/28/16)
FREE THROW PERCENTAGE	.333	(2-6)	at Indiana (12/11/15)
	.438	(7-16)	vs Nicholls (11/27/15)
REBOUNDS	25		CHATTANOOGA (1/23/16)
	26		at UAB (12/21/15)
ASSISTS	4		at Jacksonville State (11/24/15)
	9		at Wofford (1/30/16)
STEALS	1		MERCER (1/16/16)
	3		at Mississippi State (11/13/15)
	3		at Western Carolina (1/7/16)
BLOCKED SHOTS	0		at Alabama State (12/17/15)
	1		at Mississippi State (11/13/15)
	1		at UT Martin (12/5/15)
	1		at Georgia Tech (12/13/15)
	1		at Western Carolina (1/7/16)
TURNOVERS	8		at UAB (12/21/15)
	8		at Furman (1/28/16)
FOULS	10		SHORTER (11/21/15)
	10		at Furman (1/28/16)





2015-16 Samford Women's Basketball  
Samford High/Low Analysis (as of Feb 04, 2016)  
All games



Opponent - GAME LOWS

POINTS	30		at Alabama A&M (12/1/15)
	32		AUBURN MONTGOMERY (11/15/15)
	33		SHORTER (11/21/15)
	35		at Alabama State (12/17/15)
	39		at Jacksonville State (11/24/15)
	39		at Wofford (1/30/16)
FIELD GOALS MADE	10		at Alabama A&M (12/1/15)
	11		AUBURN MONTGOMERY (11/15/15)
FIELD GOAL ATTEMPTS	36		SHORTER (11/21/15)
	41		at Western Carolina (1/7/16)
FIELD GOAL PERCENTAGE	.233	(10-43)	at Alabama A&M (12/1/15)
	.262	(11-42)	AUBURN MONTGOMERY (11/15/15)
3 PT FIELD GOALS MADE	0		at Alabama State (12/17/15)
	0		at UNCG (1/9/16)
3 PT FG ATTEMPTS	4		at UNCG (1/9/16)
	6		at Southern Miss (11/28/15)
3 PT FG PERCENTAGE	.000	(0-9)	at Alabama State (12/17/15)
	.000	(0-4)	at UNCG (1/9/16)
FREE THROWS MADE	2		vs Nicholls (11/27/15)
	4		at Jacksonville State (11/24/15)
FREE THROW ATTEMPTS	3		vs Nicholls (11/27/15)
	6		at Jacksonville State (11/24/15)
	6		at LSU (12/28/15)
FREE THROW PERCENTAGE	.421	(8-19)	at Western Carolina (1/7/16)
	.500	(7-14)	at Alabama A&M (12/1/15)
REBOUNDS	21		AUBURN MONTGOMERY (11/15/15)
	22		at Western Carolina (1/7/16)
ASSISTS	3		at Alabama A&M (12/1/15)
	5		at Western Carolina (1/7/16)
	5		ETSU (1/21/16)
STEALS	2		at Furman (1/28/16)
	3		UNCG (2/4/16)
BLOCKED SHOTS	0		at Alabama State (12/17/15)
	1		TROY (11/17/15)
	1		HARVARD (1/2/16)
	1		MERCER (1/16/16)
	1		UNCG (2/4/16)
TURNOVERS	7		MERCER (1/16/16)
	9		at LSU (12/28/15)
FOULS	7		at UT Martin (12/5/15)
	8		at Indiana (12/11/15)



2015-16 Samford Women's Basketball  
Samford Player High/Low Analysis (as of Feb 04, 2016)  
All games



Samford - INDIVIDUAL GAME HIGHS

Points	20		Destiney Elliott at Indiana (12/11/15)
	19		Kassidy Blevins vs Harvard (1/2/16)
	19		Kassidy Blevins vs Troy (11/17/15)
	18		Amara Mayers vs Chattanooga (1/23/16)
	18		Amara Mayers at Alabama State (12/17/15)
Field Goals Made	8		Destiney Elliott at Indiana (12/11/15)
	8		Destiney Elliott vs Nicholls (11/27/15)
	8		Amara Mayers at Jacksonville State (11/24/15)
Field Goal Att.	16		Taylor Reece at Indiana (12/11/15)
	15		Destiney Elliott vs Nicholls (11/27/15)
	15		Kassidy Blevins vs Troy (11/17/15)
FG Pct (min 5 made)	.875	(7-8)	Krista Stricklin at Western Carolina (1/7/16)
	.833	(5-6)	Amara Mayers vs Chattanooga (1/23/16)
3-Point FG Made	5		Kassidy Blevins vs Harvard (1/2/16)
	5		Kassidy Blevins vs Troy (11/17/15)
3-Point FG Att.	11		Kassidy Blevins vs Troy (11/17/15)
	9		Kassidy Blevins vs Harvard (1/2/16)
3-Pt FG Pct (min 2 made)	1.000	(4-4)	Kassidy Blevins vs Auburn Montgomery (11/15/15)
	1.000	(3-3)	Amara Mayers at Mississippi State (11/13/15)
	1.000	(2-2)	Cassidy Williams vs Mercer (1/16/16)
	1.000	(2-2)	Lydia McGee vs Troy (11/17/15)
	1.000	(2-2)	Cassidy Williams vs Auburn Montgomery (11/15/15)
Free Throws Made	8		Amara Mayers vs Chattanooga (1/23/16)
	7		Brittany Stevens at Mississippi State (11/13/15)
Free Throw Att.	10		Amara Mayers vs Chattanooga (1/23/16)
	10		Amara Mayers at Alabama State (12/17/15)
FT Pct (min 3 made)	1.000	(6-6)	Ellen Riggins at Wofford (1/30/16)
	1.000	(6-6)	Brittany Stevens vs Troy (11/17/15)
	1.000	(4-4)	Taylor Reece vs Chattanooga (1/23/16)
	1.000	(4-4)	Taylor Reece vs Harvard (1/2/16)
	1.000	(4-4)	Ellen Riggins at Georgia Tech (12/13/15)
	1.000	(4-4)	Lydia McGee vs Troy (11/17/15)
Rebounds	18		Destiney Elliott at UT Martin (12/5/15)
	12		Destiney Elliott vs ETSU (1/21/16)
	12		Destiney Elliott at Jacksonville State (11/24/15)
Assists	6		Brittany Stevens vs UNCG (2/4/16)
	6		Taylor Reece at Furman (1/28/16)
Steals	7		Kassidy Blevins vs Nicholls (11/27/15)
	4		Amara Mayers vs Chattanooga (1/23/16)
	4		Brittany Stevens at UNCG (1/9/16)
	4		Amara Mayers at Alabama State (12/17/15)
	4		Amara Mayers at Jacksonville State (11/24/15)
Blocked Shots	3		Kassidy Blevins at Furman (1/28/16)
	3		Taylor Reece at Indiana (12/11/15)
Turnovers	9		Brittany Stevens at UNCG (1/9/16)
	6		Cassidy Williams at Mississippi State (11/13/15)
Fouls	5		Destiney Elliott at Mississippi State (11/13/15)
	4		Ellen Riggins at Wofford (1/30/16)
	4		Destiney Elliott vs Chattanooga (1/23/16)
	4		Krista Stricklin vs ETSU (1/21/16)
	4		Lydia McGee vs Mercer (1/16/16)
	4		Krista Stricklin at Western Carolina (1/7/16)
	4		Destiney Elliott at Western Carolina (1/7/16)

	4	Ellen Riggins at Western Carolina (1/7/16)
	4	Taylor Reece vs Harvard (1/2/16)
	4	Destiney Elliott at UAB (12/21/15)
	4	Brittany Stevens at Alabama State (12/17/15)
	4	Krista Stricklin at Georgia Tech (12/13/15)
	4	Destiney Elliott at Georgia Tech (12/13/15)
	4	Brittany Stevens at Indiana (12/11/15)
	4	Taylor Reece at Indiana (12/11/15)
	4	Destiney Elliott at Indiana (12/11/15)
	4	Kassidy Blevins at Indiana (12/11/15)
	4	Destiney Elliott at Southern Miss (11/28/15)
	4	Brittany Stevens at Southern Miss (11/28/15)
	4	Brittany Stevens at Jacksonville State (11/24/15)
	4	Taylor Reece vs Troy (11/17/15)
	4	Destiney Elliott vs Troy (11/17/15)
	4	Brittany Stevens at Mississippi State (11/13/15)
Minutes	42	Destiney Elliott at Indiana (12/11/15)
	40	Brittany Stevens at LSU (12/28/15)
	40	Brittany Stevens at Indiana (12/11/15)
	38	Brittany Stevens at Wofford (1/30/16)
	37	Krista Stricklin vs ETSU (1/21/16)
	37	Brittany Stevens at UNCG (1/9/16)
	37	Brittany Stevens at UAB (12/21/15)
	37	Destiney Elliott at Georgia Tech (12/13/15)
	37	Brittany Stevens at Jacksonville State (11/24/15)



2015-16 Samford Women's Basketball  
Samford Opponent High/Low Analysis (as of Feb 04, 2016)  
All games



OPPONENT INDIVIDUAL GAME HIGHS

Points	33	Beverly Kelley, A. vs Troy (11/17/15)
	23	Aaliyah Whiteside at Georgia Tech (12/13/15)
	21	Tyra Buss at Indiana (12/11/15)
	19	Keli Foster vs UNCG (2/4/16)
	19	Kentra Washington at Wofford (1/30/16)
	19	Amanda Cahill at Indiana (12/11/15)
Field Goals Made	11	Beverly Kelley, A. vs Troy (11/17/15)
	7	Keli Foster vs UNCG (2/4/16)
	7	Lucy Mason at UNCG (1/9/16)
	7	Aaliyah Whiteside at Georgia Tech (12/13/15)
Field Goal Att.	20	Keli Foster vs UNCG (2/4/16)
	18	Kahlia Lawrence vs Mercer (1/16/16)
	18	Amanda Cahill at Indiana (12/11/15)
FG Pct (min 5 made)	.857 (6-7)	WINBORNE, Brittany at UAB (12/21/15)
	.833 (5-6)	Roddreka Rogers at Georgia Tech (12/13/15)
3-Point FG Made	4	Shilpa Tummala vs Harvard (1/2/16)
	4	HOWARD, Haley at UT Martin (12/5/15)
3-Point FG Att.	9	Keli Foster vs UNCG (2/4/16)
	8	Whitney Bunn at Furman (1/28/16)
	8	HOWARD, Haley at UT Martin (12/5/15)
3-Pt FG Pct (min 2 made)	1.000 (2-2)	NORRIS, Brittny at Southern Miss (11/28/15)
	1.000 (2-2)	Ramirez, Caitlyn vs Troy (11/17/15)
Free Throws Made	15	Tyra Buss at Indiana (12/11/15)
	9	Aaliyah Whiteside at Georgia Tech (12/13/15)
	9	Beverly Kelley, A. vs Troy (11/17/15)
Free Throw Att.	17	Tyra Buss at Indiana (12/11/15)
	9	Aaliyah Whiteside at Georgia Tech (12/13/15)
	9	Beverly Kelley, A. vs Troy (11/17/15)
FT Pct (min 3 made)	1.000 (9-9)	Aaliyah Whiteside at Georgia Tech (12/13/15)
	1.000 (9-9)	Beverly Kelley, A. vs Troy (11/17/15)
	1.000 (5-5)	Amanda Cahill at Indiana (12/11/15)
	1.000 (4-4)	Tianna Tarter vs ETSU (1/21/16)
	1.000 (4-4)	Brittnee Broadway vs Mercer (1/16/16)
	1.000 (4-4)	Sydni Means vs Mercer (1/16/16)
	1.000 (4-4)	Lucy Mason at UNCG (1/9/16)
	1.000 (4-4)	Sydney Skinner vs Harvard (1/2/16)
	1.000 (4-4)	DEEMER, Jenna at LSU (12/28/15)
	1.000 (4-4)	Jazzmun Holmes at Mississippi State (11/13/15)
	1.000 (3-3)	Alex Williams vs Mercer (1/16/16)
	1.000 (3-3)	Jenn Anderson at Indiana (12/11/15)
Rebounds	13	Alexis Gassion at Indiana (12/11/15)
	12	Jasmine Joyner vs Chattanooga (1/23/16)
	12	WINBORNE, Brittany at UAB (12/21/15)
Assists	5	Lucy Mason vs UNCG (2/4/16)
	5	Whitney Bunn at Furman (1/28/16)
	5	Sydni Means vs Mercer (1/16/16)
	5	Smith, Shamyiah at Alabama State (12/17/15)
	5	ROBERTS, Chelsea at UT Martin (12/5/15)
Steals	5	Tyra Buss at Indiana (12/11/15)
	5	Jazzmun Holmes at Mississippi State (11/13/15)
Blocked Shots	4	Grayson Pinholster at Wofford (1/30/16)
	4	WINBORNE, Brittany at UAB (12/21/15)
	4	Deborah Martin at Alabama A&M (12/1/15)



Turnovers	7	Pawlowski, Hope vs Nicholls (11/27/15)
	7	McClendon, Shakierya vs Shorter (11/21/15)
Fouls	5	Lucy Mason at UNCG (1/9/16)
	5	PEDERSEN, Anne at LSU (12/28/15)
	5	Ramirez, Caitlyn vs Troy (11/17/15)
	5	Upshaw, Amahni vs Troy (11/17/15)
	5	Anastasia Evans vs Auburn Montgomery (11/15/15)