



# 2015-16 SAMFORD WOMEN'S BASKETBALL GAME NOTES



## GAME 18

Samford (10-7, 2-0 SoCon) vs. Mercer (12-5, 2-0 SoCon)  
2 p.m. (CT), Jan. 16, 2016  
Birmingham, Ala., Pete Hanna Center (5,000)

### 2015-16 SCHEDULE/RESULTS

DATE	OPPONENT	TIME/RESULT
Nov. 13	at #11 Mississippi State	L, 47-68
Nov. 15	AUM	W, 82-32
Nov. 17	Troy	W, 73-69
Nov. 21	Shorter	W, 53-33
Nov. 24	at Jacksonville State	W, 50-39
Nov. 27	vs. Nicholls State%	W, 45-43
Nov. 28	at Southern Miss%	L, 48-56
Dec. 1	at Alabama A&M	W, 54-30
Dec. 5	at UT Martin	L, 50-52
Dec. 11	at Indiana	L, 56-65 (OT)
Dec. 13	at Georgia Tech	L, 55-66
Dec. 17	at Alabama State	W, 54-35
Dec. 21	at UAB	L, 41-61
Dec. 28	at LSU	W, 47-44
Jan. 2	Harvard	L, 56-60
Jan. 7	at Western Carolina*	W, 59-42
Jan. 9	at UNCG*	W, 57-52
Jan. 16	Mercer*	2 p.m.
Jan. 21	ETSU*	6 p.m.
Jan. 23	Chattanooga*	2 p.m.
Jan. 28	at Furman*	10 a.m.
Jan. 30	at Wofford*	1 p.m.
Feb. 4	UNCG*	5 p.m.
Feb. 6	Western Carolina*	2 p.m.
Feb. 13	at Mercer*	1 p.m.
Feb. 17	at Chattanooga*	5:30 p.m.
Feb. 20	at ETSU*	1 p.m.
Feb. 25	Furman*	6 p.m.
Feb. 27	Wofford*	6 p.m.
Mar. 4-7	SoCon Tournament#	TBD

\*-Southern Conference Game

%-Lady Eagle Thanksgiving Tournament

#-Asheville, N.C.

All Times are Central and subject to change

### THE GAME

Samford will return home to host the Mercer Bears Saturday at 2 p.m. in the Pete Hanna Center.

Samford enters the game with a record of 10-7 overall and 2-0 in Southern Conference play. The Bulldogs are coming off a 57-52 win at UNCG last Saturday.

Mercer is currently 12-5 overall and 2-0 in league games. The Bears are coming off a 92-88 overtime win at Western Carolina last Saturday.

### THE SERIES

Samford and Mercer will be meeting for the 14th time, with Mercer holding a 9-4 advantage in the series.

The teams met twice last season, with Mercer winning both contests. On Feb. 2, Mercer defeated Samford, 74-59 in the Pete Hanna Center. The teams met again on Feb. 28, with Mercer earning a 70-65 win over the Bulldogs.

The teams were co-members of the Atlantic Sun Conference from 1997 until 2003.

### SAMFORD'S PROBABLE STARTERS

No.	Name	Pos.	PPG	RPG
3	Destiney Elliott	F	8.8	7.9
10	Taylor Reece	F	8.5	2.3
11	Amara Mayers	G	7.6	4.3
12	Krista Stricklin	G	6.7	3.3
13	Brittany Stevens	G	5.9	2.8

\*-Starters based on last game

# 2015-16 SAMFORD WOMEN'S BASKETBALL

## SAMFORD'S RECORD WHEN...

Samford controls the tip	3-3
Opponent controls the tip	7-4
Played at home	3-1
Played on the road	6-6
Played at a neutral site	1-0
Played a team with a .500+ record	3-3
Played a team with a .500 record	2-1
Played a team with a below .500 record	5-3
Samford leads at the half	8-2
Opponent leads at the half	2-5
Tied at the half	0-0
Samford leads with five minutes left	10-0
Opponent leads with five minutes left	0-7
Tied with five minutes left	0-0
Samford leads with one minute left	10-0
Opponent leads with one minute left	0-6
Tied with one minute left	0-1
Samford outrebounds opponent	8-0
Opponent outrebounds Samford	2-6
Rebounds are equal	0-1
Samford shoots 50% or better from field	2-0
Samford shoots less than 50% from the field	8-7
Samford takes more shots	8-2
Opponent takes more shots	1-5
Shots are equal	1-0
Samford blocks more shots	3-2
Opponent blocks more shots	6-5
Blocks are equal	1-0
Samford has more turnovers	3-5
Opponent has more turnovers	5-1
Turnovers are equal	2-1
Samford has more steals	6-1
Opponent has more steals	4-6
Steals are equal	0-0
Samford bench outscores opponent's bench	5-5
Opponent bench outscores Samford's bench	4-2
Benches score the same	1-0
Samford shoots more free throws	5-0
Opponent shoots more free throws	5-7
Free throws are the same	0-0
November games	5-2
December games	3-4
January games	2-1
February games	0-0
March games	0-0
Monday games	1-1
Tuesday games	3-0
Wednesday games	0-0
Thursday games	2-0
Friday games	1-2
Saturday games	2-3
Sunday games	1-1
Overtime games	0-1

## SAMFORD AT HOME

In its 18-plus seasons, Samford has an all-time record of 143-97 in home games.

Now in its ninth season in the Pete Hanna Center, the Bulldogs are 82-26 in their current home. In 10 seasons in Seibert Hall, Samford had a record of 61-71 in that facility. This season, Samford has 11 games on its schedule to be played at the Pete Hanna Center, and the Bulldogs are currently 3-1 in those games.

## REECE CLIMBING THE CHARTS

With her 12 points at UAB on Dec. 21, Samford senior center **Taylor Reece** became just the seventh player in program history to score 1,000 career points. She currently sits in sixth place in school history with 1,058 points in her Samford career.

Reece is just 14 points away from tying Monica Maxwell for fifth place in program history with 1,072 points.

## THE LAST TIME OUT

Samford improved to 2-0 in Southern Conference play with a 57-52 win at UNCG Saturday afternoon.

Samford was led in the game by **Taylor Reece** with 15 points. **Destiney Elliott** had 11 points and nine rebounds. **Kassidy Blevins** scored eight points, while **Brittany Stevens** added seven points for Samford.

## SAMFORD AGAINST SOCON TEAMS

Now in its eighth season as a member of the Southern Conference, Samford has a record of 86-48 in league games. Against the current members of the SoCon, Samford has an all-time record of 63-41, including a 4-9 record against Saturday's opponent, Mercer.

Samford's all-time record against each current SoCon school is: Chattanooga (6-16), East Tennessee State (2-1), Furman (10-5), Mercer (4-9), UNCG (12-4), Wofford (16-2) and Western Carolina (13-4).

So far this season, Samford is 2-0 in SoCon games.

# 2015-16 SAMFORD WOMEN'S BASKETBALL

## THE LAST TIME ...

**A Samford player scored 20-29 points:** Dec. 11, 2015, 20 by Destiney Elliott at Indiana

**A Samford player scored 30 or more points:** Jan. 23, 2013, 31 by Jazmine Martin vs. Chattanooga

**A Samford player had 10 or more rebounds:** Dec. 11, 2015, 10 by Krista Stricklin at Indiana

**A Samford player had 10 or more assists:** Feb. 13, 2012, 10 by Jazmine Powers vs. Coll. of Charleston

**A Samford player blocked 5 or more shots:** Jan. 10, 2015, 5 by Hannah Nichols at UNCG

**A Samford player had 5 or more steals:** Nov. 27, 2015, 7 by Kassidy Blevins vs. Nicholls State

**A Samford player recorded a double-double:** Dec. 11, 2015, Krista Stricklin, 10 pts., 10 reb. at Indiana

**A Samford game went into overtime:** Dec. 11, 2015, Indiana 65, Samford 56 in Bloomington, Ind.

**A Samford player made 10 or more field goals:** Jan. 17, 2015, 11 by Taylor Reece vs. Furman

**Samford scored 80-89 points:** Nov. 15, 2015, 82-32, vs. AUM

**Samford scored 90-99 points:** Dec. Dec. 7, 2010, 95-59, vs. Berry College

**Samford scored 100 or more points:** Dec. 19, 1999, 100-67 vs. Centenary

**Samford failed to hit a three-pointer:** Feb. 15, 2007, 0-15 at Morehead State (W, 58-48)

**Samford won a game by:**

1: Jan. 18, 2014, 59-58, vs. Furman

2-4: Dec. 28, 2015, 47-44, at LSU

5-9: Jan. 9, 2016, 57-52, at UNCG

10-14: Nov. 24, 2015, 50-39, at Jacksonville State

15-19: Jan. 7, 2016, 59-42, at Western Carolina

20-24: Dec. 1, 2015, 54-30, at Alabama A&M

25-29: Feb. 14, 2015, 68-43, at Wofford

30-34: Nov. 24, 2014, 81-47, vs. North Florida

35-39: Nov. 27, 2012, 62-24, vs. AUM

40+: Nov. 15, 2015, 82-32, vs. AUM

## MAKING THREES

Entering Saturday's game, Samford has made at least one three-pointer in 273 consecutive games.

The last time SU failed to make a three-pointer was Feb. 15, 2007, in a 58-48 win at Morehead State.

## SAMFORD AGAINST GEORGIA TEAMS

Samford has an all-time record of 18-27 against teams from the state of Georgia, including a mark of 4-9 against Saturday's opponent, Mercer.

Samford has played the following Georgia teams: Berry College (1-0), Columbus State (0-1), Georgia Southern (9-3), Georgia State (2-11), Georgia Tech (0-3), Mercer (4-9), Morris Brown (1-0) and Shorter (1-0).

## LEADING THE WAY

So far this season, **Destiney Elliott** leads Samford in both scoring (8.8 ppg.) and rebounding (7.9 rpg.). **Taylor Reece** ranks second in scoring (8.5 ppg.). **Amara Mayers** ranks second on the squad in rebounding (4.3 rpg.). **Brittany Stevens** leads the team in assists, dishing out 2.8 assists per game.

## A LOOK AT MERCER

Mercer comes into the game with a record of 12-5 overall and 2-0 in Southern Conference play. The Bears are coming off a 92-88 overtime win at Western Carolina last Saturday.

The Bears are led in scoring by Kahlia Lawrence, averaging 17.9 points per game. Linnea Rosendal scores 9.7 points per game for Mercer.

Rachel Selph is the team's leading rebounder, averaging 5.9 boards per contest. Amanda Thompson averages 5.8 rebounds per game for the Bears.

Sydni Means leads Mercer in assists, dishing out 5.6 assists per game. Lawrence averages 2.8 assists per game, ranking second on the squad.

## AMONG NATIONAL LEADERS

Samford enters Saturday's game ranked third in the nation in scoring defense, allowing just 49.8 points per game. The Bulldogs also rank 30th in the nation in field goal percentage defense, holding their opponents to 35.0 percent shooting.

# 2015-16 SAMFORD WOMEN'S BASKETBALL

## SAMFORD IN JANUARY GAMES

In its 18-plus seasons of women's basketball, Samford has a record of 83-75 in games played in the month of January.

Last season, Samford was 5-2 in the first month. This season, Samford has eight games in the month of January on its schedule, and the Bulldogs are currently 2-1 in those contests.

## CONFERENCE PRESEASON PREDICTIONS

In the preseason Southern Conference polls, Samford was picked to finish third by the league's media and tied for third by the SoCon head coaches.

### 2015-16 SoCon Preseason Media Poll

Place	School (1st)	Points
1.	Chattanooga (19)	159
2.	ETSU (1)	122
<b>3.</b>	<b>Samford</b>	<b>113</b>
4.	Furman	103
5.	Mercer	101
6.	Western Carolina	49
7.	Wofford	40
8.	UNCG	33

### 2015-16 SoCon Preseason Media Poll

Place	School (1st)	Points
1.	Chattanooga (7)	49
2.	Furman	36
3.	ETSU	35
	<b>Samford (1)</b>	<b>35</b>
5.	Mercer	29
6.	UNCG	19
7.	Western Carolina	11
8.	Wofford	10

## PRESEASON ALL-CONFERENCE

Samford senior center Taylor Reece was the Bulldogs' lone representative on the preseason All-SoCon team, released by the league's coaches in October.

Reece returns after averaging 10.6 points and 2.9 rebounds per game last season.

## 2015-16 QUICK FACTS

### GENERAL INFORMATION

Location: Birmingham, Ala.  
Year Founded: 1841  
Enrollment: 5,206  
Nickname: Bulldogs  
School Colors: Red and Blue  
Arena (Capacity): Pete Hanna Center (5,000)  
Affiliation: NCAA Division I  
Conference: Southern  
President: Dr. Andrew Westmoreland  
Alma Mater/Year: Ouachita Baptist University/1979  
Director of Athletics: Martin Newton  
Alma Mater/Year: Samford/1983

### ATHLETIC COMMUNICATIONS

Assistant AD (WBB Contact): Joey Mullins  
Office Phone: (205) 726-2799  
Cell Phone: (205) 532-3477  
E-mail: jmmulli1@samford.edu  
Director: Zac Schrieber  
Office Phone: (205) 726-2802  
Cell Phone: (205) 532-3476  
E-mail: zdschrie@samford.edu  
Assistant Director: Herb Brooks  
Office Phone: (205) 726-4005  
E-mail: hbrooks@samford.edu  
SID Fax: (205) 726-2132  
Website: [www.samfordsports.com](http://www.samfordsports.com)

### HISTORY

First Year of Basketball: 1997-98  
All-Time Record: 273-276 (18-plus years)  
All-Time Division I Record: 273-276 (18-plus years)  
Years in NCAA Tournament/Last: 2/2012  
Last postseason Opponent: vs. Duke, NCAA Tournament, L, 47-82, Nashville, Tenn., Mar. 18, 2012

### TEAM INFORMATION

2014-15 Overall Record: 15-15  
2014-15 Conference Record/Finish: 8-6/4th

### WOMEN'S BASKETBALL STAFF

Head Coach: Mike Morris (Belhaven, '92)  
Record at Samford: 232-179 (13-plus years)  
Career Record: 232-179 (13-plus years)  
Assistant Coaches: Ty Margenthaler (1st year, SIUE, '97), Ruth Ketcham (3rd year, Samford, '12), Serena Clark (ETSU, '15)

# STARTING LINEUPS

at Miss. State	Stevens	Stricklin	Mayers	Elliott	Reece
AUM	Stevens	Stricklin	Mayers	Elliott	Reece
Troy	Stevens	Stricklin	Mayers	Elliott	Reece
Shorter	Stevens	Stricklin	Mayers	Elliott	Reece
at Jacksonville St.	Stevens	Stricklin	Mayers	Elliott	Reece
vs. Nicholls State	Stevens	Stricklin	Mayers	Elliott	Reece
at Southern Miss.	Stevens	Stricklin	Mayers	Elliott	Riggins
at Alabama A&M	Stevens	Stricklin	Mayers	Elliott	Reece
at UT Martin	Stevens	Stricklin	Mayers	Elliott	Reece
at Indiana	Stevens	Stricklin	Mayers	Elliott	Reece
at Georgia Tech	Stevens	Stricklin	Mayers	Elliott	Reece
at Alabama State	Stevens	Stricklin	Mayers	Elliott	Reece
at UAB	Stevens	Stricklin	Mayers	Elliott	Riggins
at LSU	Stevens	Stricklin	Mayers	Elliott	Riggins
Harvard	Stevens	Stricklin	Mayers	Elliott	Reece
at W. Carolina	Stevens	Stricklin	Mayers	Elliott	Reece
at UNCG	Stevens	Stricklin	Mayers	Elliott	Reece
Mercer					
ETSU					
Chattanooga					
at Furman					
at Wofford					
UNCG					
W. Carolina					
at Mercer					
at Chattanooga					
at ETSU					
Furman					
Wofford					

# LEADERS

Points	Rebounds	Assists	Steals	Blocks
Stevens (13)	Mayers (5)	Stevens (4)	3 players (1)	Reece (1)
Reece/Blevins (15)	3 players (5)	3 players (4)	McGee (3)	3 players (1)
Blevins (19)	Elliott (9)	Stevens/Elliott (3)	3 players (2)	Reece (2)
3 players (8)	Elliott (5)	Elliott (3)	Stevens (3)	Elliott/Blevins (1)
Mayers (16)	Elliott (12)	Reece (2)	Mayers (4)	3 players (1)
Elliott (17)	Elliott (11)	Stevens (4)	Blevins (7)	Elliott/Riggins (1)
Mayers (14)	Elliott (8)	Riggins (3)	4 players (1)	Elliott (2)
Mayers (14)	Elliott (8)	Stevens (3)	Fletcher (3)	Elliott/Reece (1)
Elliott (13)	Elliott (18)	4 players (2)	Stevens (3)	Elliott (1)
Elliott (20)	Stricklin (10)	Stevens (4)	Reece/Blevins (2)	Reece (3)
Stricklin (16)	Elliott (7)	Riggins (5)	Blevins/Riggins (2)	Riggins (1)
Mayers (18)	Elliott (9)	Stevens (4)	Mayers (4)	None
Reece (12)	Elliott (6)	4 players (2)	Elliott/Stevens (3)	Reece (2)
Reece (14)	Stricklin/ Blevins (6)	Stevens/Blevins (3)	Elliott (2)	Reece/Elliott (2)
Blevins (19)	Mayers (6)	Stricklin/Riggins (3)	Stricklin (2)	4 players (1)
Stricklin (15)	Elliott (8)	Stevens (4)	3 players (1)	Stricklin (1)
Reece (15)	Elliott (9)	Mayers (3)	Stevens (4)	3 players (1)

# MISC. SCORING

SU-Opp.	Paint	Off TO	2nd Ch.	Fastbreak	Bench
at Miss. State	12-38	9-34	3-22	0-10	6-33
AUM	20-8	32-8	12-3	2-2	46-9
Troy	18-20	24-21	7-4	2-6	33-9
Shorter	24-16	15-6	11-2	0-7	17-5
at Jacksonville State	30-12	4-9	8-0	2-0	10-13
vs. Nicholls State	24-20	16-11	6-2	4-4	5-16
at Southern Miss.	26-26	19-9	4-11	0-4	6-27
at Alabama A&M	32-8	11-8	10-7	0-0	14-19
at UT Martin	18-20	14-12	8-6	6-2	15-6
at Indiana	26-30	10-18	6-14	4-4	10-1
at Georgia Tech	18-30	9-11	2-4	0-2	29-17
at Alabama State	24-18	10-11	2-0	3-2	16-11
at UAB	20-18	12-4	2-4	2-3	15-2
at LSU	12-22	3-9	9-12	0-0	26-8
Harvard	18-22	15-13	2-18	2-4	32-12
at W. Carolina	50-12	15-11	9-0	2-0	12-24
at UNCG	26-22	16-10	4-4	4-10	15-15
Mercer					
ETSU					
Chattanooga					
at Furman					
at Wofford					
UNCG					
W. Carolina					
at Mercer					
at Chattanooga					
at ETSU					
Furman					
Wofford					

# NOTABLE

Season opener for both teams  
Team ties school record with 24 assists  
Samford comes from behind in 4th quarter to win  
Samford leads from start to finish in the win  
Amara Mayers has a career-high 16 points and a career-high seven rebounds  
Destiney Elliott records her second career double-double with 17 pts. and 11 reb.  
Loss snaps Samford's five-game win streak  
First 6-2 start since 2010-11 season  
Destiney Elliott ties school record with 18 rebounds  
Destiney Elliott scores a career-high 20 points  
Samford drops third-straight game, all on the road  
Amara Mayers scored a career-high 18 points  
Taylor Reece became the 7th player in program history to score 1,000 career points  
Samford's first-ever win over LSU and first over an SEC team since 2010  
Samford's first home loss of the season  
SoCon opener for both teams  
Samford scored the final six points of the game to pull away for the win





## MIKE MORRIS HEAD COACH

Since taking over as the second head coach of Samford women's basketball in 2002, Mike Morris has taken the program to new heights.

Over the last 10 years, the Bulldogs have posted seven of the top-eight win totals in school history, including the program's only six 20-win seasons.

Morris guided the program to back-to-back Southern Conference Tournament titles and NCAA Tournament appearances in 2011 and 2012. The team reached a national postseason tournament for the three years in a row, including a WNIT appearance in 2010.

The 2010-11 Bulldogs set a school record for wins with a 25-8 record, winning the SoCon Tournament and reaching the NCAA Tournament for the first time. Despite losing two of the top players in program history, the 2011-12 team won 20 games again, and won its second-straight SoCon title and NCAA Tournament berth.

The 2009-10 team reached the finals of the Southern Conference Tournament for the first time and earned the program's first-ever national postseason appearance. The team also earned its first national postseason win with a 66-65 win over Ole Miss in the first round of the WNIT at the Pete Hanna Center.

The 2009-10 team also tied the then-school record for wins with a 23-11 overall record and a 14-6 mark in SoCon play.

In 2008-09, the Bulldogs set a school record for conference wins with a 16-4 league record in their first year in the SoCon. The team finished with an overall record of 22-7, reaching the semifinals of the SoCon Tournament.

After the season, Morris was named the 2009 SoCon Coach of the Year. The award marked the second Coach of the Year award for Morris, as he was named the Ohio Valley Conference Coach of the Year in 2006.

The 2007-08 Bulldogs set a then-school record for most wins in a season, posting a 23-9 overall record and a 15-5 record in the OVC. The Bulldogs also posted their first-ever wins over Southeastern Conference (Alabama) and Big 12 (Missouri) opponents, and reached the semifinals of the OVC Tournament for a third year in a row.

The 2006-07 season was another winning one with a record of 18-13 and another trip to the OVC semifinals.

In the 2005-06 season, Samford posted its first 20-win season, finishing with a 21-8 overall record, and the Bulldogs were 15-5 in OVC play. For the first time since joining the league in 2003, the team reached the semifinals of the OVC Tournament.

Morris has increased the team's win total in seven of his 12 seasons as head coach. In his first season (2002-03), the team won seven games, up from three the previous season. In his second season (2003-04), the Bulldogs posted 10 wins, only the second time in school history that the team managed double-digit wins. The 2004-05 squad won 13 games, and the 2005-06 team won 21 games. In 2007-08, the Bulldogs won a then-record 23 games, up from 18 in 2006-07. The 2009-10 team also won 23 games and the 2010-11 team won a school-record 25 contests.

Morris is in his 21st season overall at Samford, spending eight seasons as an assistant coach on the men's staff. While working with the men's team, Morris served as the team's top recruiter and directed Samford's summer basketball camps. He was on the bench for both Samford Atlantic Sun Championship seasons and NCAA Tournament appearances.

Before his arrival at Samford in 1994, Morris served for three years as an assistant coach under veteran coach Lenny Acuff at Belhaven College. He coached at Belhaven for two seasons before joining Acuff's staff in 1993 at Berry College in Rome, Ga. In his first year at Belhaven, the Blazers finished with the most wins in nine years, compiling a 17-16 record. The next year, Belhaven went 18-15 and hosted the first round of the NAIA District Playoffs for the first time in 20 years.

Morris played basketball for two seasons at the University of Alabama in Huntsville [UAH], where he was chosen team captain and team MVP his senior season. While at UAH, Morris was the NCAA Division II national champion in free-throw percentage, making 92.1 percent from the line. He played his first two seasons at Jefferson State Junior College in Birmingham.

The Holly Pond, Ala., native earned a B.A. in psychology from Belhaven College in 1992. He has completed 24 hours toward his master's degree in administration from Jacksonville State.

Morris is married to the former Melanie Nix of Huntsville, Ala. They have a son, Peyton, 22, and a daughter, Paige, 19.

### THE MORRIS FILE

#### COACHING EXPERIENCE

2002-present	Head Coach Samford University
1994-2002	Men's Assistant Coach Samford University
1993-94	Assistant Coach Berry College
1991-93	Assistant Coach Belhaven College

#### PLAYING EXPERIENCE

1989-91	University of Alabama in Huntsville
1987-89	Jefferson State Community College

#### EDUCATION

1992	B.S., psychology Belhaven College
------	--------------------------------------

#### PERSONAL

Birthday	May 6, 1969
Hometown	Holly Pond, Alabama
Wife	Melanie
Children	Peyton (22), Paige (19)
Member	WBCA

# 2015-16 ROSTER

No.	Name	Pos.	Ht.	Cl.	Hometown/Previous School
2	Hannah Nichols	G	5-10	Jr.	Madison, Ala./Madison County HS
3	Destiney Elliott	F	6-0	So.	Oneonta, Ala./Oneonta HS
4	Lydia McGee	G	5-10	RS-Jr.	Madison, Ala./Madison Academy
5	Kassidy Blevins	G	5-9	RS-So.	Ringgold, Ga./Gordon Lee HS
10	Taylor Reece	F	6-3	RS-Sr.	Hendersonville, Tenn./Brentwood Acad.
11	Amara Mayers	G	5-9	RS-Sr.	Harvest, Ala./Belmont University
12	Krista Stricklin	G	5-7	Sr.	Hayden, Ala./Hayden HS
13	Brittany Stevens	G	5-3	Jr.	Norcross, Ga./Wesleyan School
21	Keke Fletcher	F	5-11	RS-Sr.	Huntsville, Ala./Madison Academy
22	Ellen Riggins	F	6-0	Jr.	Murfreesboro, Tenn./Oakland HS
31	Cassidy Williams	G	5-8	Fr.	Peachtree City, Ga./McIntosh HS
32	Olivia Crozier	F	6-1	Fr.	Madison, Ind./Madison HS

Head Coach: Mike Morris (14th year, Belhaven, '92)

Assistant Coaches: Ty Margenthaler (1st year, SIUE, '97), Ruth Ketcham (3rd year, Samford, '12), Serena Clark (1st year, ETSU, '15)

## ROSTER BY CLASS

### FRESHMEN

Olivia Crozier  
Cassidy Williams

### SOPHOMORES

Kassidy Blevins  
Destiney Elliott

### JUNIORS

Lydia McGee  
Hannah Nichols  
Ellen Riggins  
Brittany Stevens

## SENIORS

Keke Fletcher  
Amara Mayers  
Taylor Reece  
Krista Stricklin

## ROSTER BY STATE

### ALABAMA (6)

HARVEST	Amara Mayers
HAYDEN	Krista Stricklin
HUNTSVILLE	Keke Fletcher
MADISON	Lydia McGee
	Hanna Nichols
ONEONTA	Destiney Elliott

## GEORGIA (3)

NORCROSS	Brittany Stevens
PEACHTREE CITY	Cassidy Williams
RINGGOLD	Kassidy Blevins

## INDIANA (1)

MADISON	Olivia Crozier
---------	----------------

## TENNESSEE (2)

HENDERSONVILLE	Taylor Reece
MURFREESBORO	Ellen Riggins





# 10 TAYLOR REECE

Post • 6-2 • RS-Senior

Hendersonville, Tenn. • Brentwood Academy

**Senior (2015-16):** Scored nine points in the season opener at 11th-ranked Mississippi State . . . shared the team lead in scoring with 15 and in rebounds with five against AUM . . . had seven points against Shorter . . . scored 11 points at Jacksonville State . . . scored 10 points at Alabama A&M . . . scored 12 points at Indiana . . . led the team with 12 points and became the seventh player in school history to score 1,000 career points at UAB . . . led the team with 14 points at LSU . . . scored nine points against Harvard . . . scored 10 points at Western Carolina . . . led the team with 15 points at UNCG.

**Junior (2014-15):** Started all 30 games . . . averaged 10.6 points per game . . . also dished out 48 assists on the season . . . named second team All-SoCon by the league's coaches . . . led the team with 16 points in the season opener at Memphis . . . scored 12 points against Alabama A&M . . . scored 13 points against North Florida . . . scored 22 points against UT Martin . . . had nine points at Georgia State . . . scored 22 points and pulled down six rebounds against Penn State . . . scored 12 points at Troy . . . scored 10 points against UAB . . . had 12 points at Tulane . . . scored eight points at Kansas State . . . had 12 points and four rebounds at UNCG . . . scored a career-high 28 points against Furman . . . led the team with 10 points and five rebounds at #25 Chattanooga . . . scored 17 points, shooting a perfect 5-of-5 from three-point range, at East Tennessee State . . . had 16 points and five rebounds against Wofford . . . tied a career high with five assists against UNCG . . . had 10 points and five rebounds against #20 Chattanooga . . . had 13 points against East Tennessee State . . . scored 19 points and dished out five assists at Mercer.

**Redshirt (2013-14):** Sat out this season after suffering a preseason knee injury . . . received a medical redshirt.

**Sophomore (2012-13):** Saw action in all 31 games, including 30 starts . . . averaged 10.4 points and 3.6 rebounds per game . . . scored six points in the season-opener at Florida State . . . had seven points at Jacksonville State . . . scored eight points against Alabama State . . . had seven points against Tennessee State . . . scored 17 points and tied a career high with nine rebounds against Wofford . . . scored 14 points at Tennessee Tech . . . had 12 points at Oregon . . . led the team with 19 points against College of Charleston . . . had a team-high 20 points against Georgia Southern . . . had 14 points and six rebounds at Western Carolina . . . had nine points and six rebounds against Appalachian State . . . scored 12 points at Wofford . . . had 12 points at Chattanooga . . . had 15 points, seven rebounds and four assists against UNCG . . . scored 18 points against Elon . . . scored 12 points at College of Charleston . . . had 10 points against Western Carolina . . . scored 20 points at Appalachian State . . . scored 24 points and grabbed six rebounds in a win over Wofford in the SoCon Tournament . . . had 15 points against Elon in the SoCon Tournament.

**Freshman (2011-12):** Saw action in 32 games, including 30 starts . . . tied for second on the team in scoring, averaging 8.8 points per game . . . pulled down 3.1 rebounds per game . . . named to the SoCon's All-Freshman team . . . named to the second-team All-Tournament team for the SoCon Tournament . . . scored 12 points in her collegiate debut against Montana in the Maggie Dixon Classic . . . scored 10 points at Alabama State . . . scored 11 points against Jacksonville State . . . had eight points, six rebounds and four assists, including making the eventual game-winning three-pointer in overtime against





Western Carolina . . . scored eight points and dished out five assists at Florida . . . scored eight points at Georgia Southern . . . scored eight points at College of Charleston . . . scored 19 points and pulled down nine rebounds against Furman . . . scored 16 points against Wofford . . . scored 10 points at Chattanooga . . . led the team with a career-high 21 points and seven rebounds at Davidson . . . scored 12 points against UNC Greensboro . . . scored nine points at Wofford . . . had 10 points against Georgia Southern . . . scored 11 points against College of Charleston . . . scored 11 points at Furman. . . . had nine points against Davidson . . . led the team with 18 points against Elon in the quarterfinals of the Southern Conference Tournament . . . scored 10 points against Duke in the NCAA Tournament.

**High School:** Was a finalist for Miss Basketball in Tennessee in 2010 and 2011 . . . named All-State in 2011 at Brentwood Academy . . . named All-Region every year from 2008 to 2011 . . . earned the Harvard Book Award . . . named to the Headmaster's List from 2007 to 2011 . . . also competed in track.

**Personal:** Born March 13, 1993 . . . daughter of Steve and Dana Reece . . . both of her parents played basketball at Vanderbilt . . . sister, Macy, plays volleyball at Auburn . . . earned her degree in nursing last spring, and is now enrolled in Nurse Practitioner School.

### CAREER BESTS

Points: 28, vs. Furman, Jan. 17, 2015

Rebounds: 9 (twice), last vs. Wofford, Dec. 1, 2012

Assists: 5 (three times), last at Mercer, Feb. 28, 2015



Taylor Reece

			Total		3-Point		F-Throws		Rebounds											Scoring	
Season	gp-gs	min/avg	fg-fga	pct	fg-fga	pct	ft-fa	pct	off	def	tot	avg	pf	fo	ast	to	blk	stl	pts	avg	
2011-12	32-30	799/25.0	104-259	.402	37-95	.389	37-43	.860	35	64	99	3.1	84	3	47	62	26	18	282	8.8	
2012-13	31-30	926/29.9	113-306	.369	33-99	.333	64-73	.877	17	95	112	3.6	89	3	67	73	32	16	323	10.4	
2014-15	30-30	819/27.3	128-288	.444	39-90	.433	22-36	.611	15	71	86	2.9	75	2	48	47	24	13	317	10.6	
2015-16	16-14	396/24.8	50-137	.365	13-57	.228	23-31	.742	8	28	36	2.3	34	0	20	27	13	5	136	8.5	
TOTAL	109-104	2940/27.0	395-990	.399	122-341	.358	146-183	.798	75	258	333	3.1	282	8	182	209	95	52	1058	9.7	



# 11 AMARA MAYERS

Guard • 5-9 • RS-Senior  
Harvest, Ala. • Belmont University

**Senior (2015-16):** Scored nine points and led the team with five rebounds in the season opener at 11th-ranked Mississippi State . . . scored eight points against Shorter . . . had 16 points and a career-high seven rebounds at Jacksonville State . . . scored 14 points at Southern Miss and was named to the All-Tournament team for the Lady Eagle Thanksgiving Classic . . . led the team with 14 points at Alabama A&M . . . had seven points and seven rebounds at UT Martin . . . scored a career-high 18 points at Alabama State.

**Junior (2014-15):** Saw action in 29 games, including three starts . . . averaged 2.5 points and 2.3 rebounds per game . . . had five points, four rebounds and three assists against North Florida . . . grabbed a career-high six rebounds against Penn State . . . scored 10 points against UCLA . . . grabbed six rebounds at UNCG . . . scored seven points against Wofford . . . had six points and three assists against UNCG . . . scored nine points against East Tennessee State.

**Sophomore (2013-14):** Saw action in 16 games . . . averaged 1.6 points and 1.5 rebounds per game . . . made her Samford debut in the season opener at Memphis . . . led the team with 12 points at UAB.

**2012-13:** Sat out the season after transferring from Belmont University.

**Previous College:** Played one season at Belmont University . . . played in all 30 contests, earning one start . . . third on the team in three-point field-goal percentage (.324) . . . scored five or more points on seven occasions.

**High School:** Helped Madison Academy to its first 3A state championship title in 2011 . . . earned All-State Tournament Team honors . . . McDonald's All-America nominee . . . named Alabama All-State Second Team . . . Class 3A Area 14 All-Team selection . . . Decatur Orthopedic Ladies Classic All-Tournament Team and MVP . . . Huntsville Times Elite Second Team . . . ranked #5 in Birmingham News 2011 Super Seniors . . . selected to play in the Alabama-Mississippi All-Star game . . . was ranked by ESPN HoopGurlz as the Class of 2011's No. 34 guard in the country and No. 5 player in the state of Alabama by Prentice Beverly's Bama PrepGirls.

**Personal:** Born Dec. 10, 1993 . . . daughter of Samuel Mayers and Barbara Upshaw-Mayers . . . majoring in sports administration.

## SAMFORD CAREER BESTS

Points: 18, at Alabama State, Dec. 17, 2015

Rebounds: 7 (twice), last at UT Martin, Dec. 5, 2015

Assists: 3 (five times), last at UNCG, Jan. 9, 2016





Amara Mayers

Season	gp-gs min/avg		Total		3-Point		F-Throws		Rebounds										Scoring	
			fg-fga	pct	fg-fga	pct	ft-fita	pct	off	def	tot	avg	pf	fo	ast	to	blk	stl	pts	avg
2013-14	16-0	164/10.3	8-33	.242	3-16	.188	6-6	1.000	1	23	24	1.5	11	0	4	16	0	6	25	1.6
2014-15	29-3	416/14.3	25-67	.373	7-23	.304	16-24	.667	10	56	66	2.3	30	0	24	41	4	14	73	2.5
2015-16	17-17	426/25.1	52-118	.441	7-27	.259	19-42	.452	14	59	73	4.3	20	0	20	40	0	19	130	7.6
TOTAL	62-20	1006/16.2	85-218	.390	17-66	.258	41-72	.569	25	138	163	2.6	61	0	48	97	4	39	228	3.7



# 12 KRISTA STRICKLIN

**Guard • 5-7 • Senior**  
**Hayden, Ala. • Hayden HS**

**Senior (2015-16):** Had seven points and four rebounds in the season opener at 11th-ranked Mississippi State . . . scored seven points and grabbed five rebounds against AUM . . . scored eight points against Troy . . . scored seven points against Shorter . . . scored nine points against Nicholls State in the Lady Eagle Thanksgiving Classic . . . had nine points at Alabama A&M . . . scored 10 points and grabbed 10 rebounds at Indiana . . . led the team with 16 points at Georgia Tech . . . led the team with 15 points at Western Carolina.

**Junior (2014-15):** Started all 30 games . . . averaged 7.7 points and 4.7 rebounds per game . . . grabbed six rebounds in the season opener at Memphis . . . scored 13 points against North Florida . . . pulled down seven rebounds against UT Martin . . . had nine points, four rebounds and three assists against Penn State . . . led the team with 15 points at Troy . . . scored 10 points against UAB . . . had nine points and six rebounds at Auburn . . . grabbed 10 rebounds at Tulane . . . scored eight points against UCLA . . . had eight points and seven rebounds against Alabama State . . . grabbed six rebounds at Kansas . . . had 10 points and six rebounds against Auburn Montgomery . . . scored 13 points and grabbed seven rebounds at UNCG . . . scored nine points at Western Carolina . . . had 13 points, five rebounds and four assists against Wofford . . . had 15 points and six rebounds against UNCG . . . had nine points and six rebounds against East Tennessee State . . . scored a career-high 19 points, grabbed eight rebounds and dished out four assists at Mercer . . . scored nine points against Furman in the Southern Conference Tournament.

**Sophomore (2013-14):** Played in all 30 games, starting 11 contests . . . averaged 4.8 points and 3.7 rebounds per game . . . dished out 31 assists . . . scored 15 points and grabbed seven rebounds in season-opening win at Memphis . . . led the team with 15 points at North Florida . . . led the team with six rebounds at UAB . . . had 12 points and 11 rebounds against Rice . . . scored 10 points and grabbed five rebounds against South Alabama . . . pulled down a career-high 13 rebounds at Alabama State . . . had eight points against Mercer . . . scored seven points against Jacksonville State . . . scored 10 points and grabbed six rebounds against Davidson . . . had 12 points and seven rebounds against Georgia Southern . . . scored 13 points against Appalachian State.

**Freshman (2012-13):** Played in 30 games, including 20 starts . . . averaged 5.5 points and 5.2 rebounds per game . . . saw her first collegiate action in the season-opener at Florida State . . . grabbed four rebounds against Alabama State . . . scored six points against Furman . . . scored seven points at Tennessee Tech . . . recorded her first career double-double, scoring 12 points and grabbing 11 rebounds at Oregon . . . grabbed seven rebounds against College of Charleston . . . scored 12 points and grabbed eight rebounds against Georgia Southern . . . scored 16





points and grabbed eight rebounds at Davidson . . . scored 18 points, including hitting the game-winning shot at the buzzer, and grabbed nine rebounds against Appalachian State . . . had nine points and eight rebounds at Wofford . . . tied a career-high with 11 rebounds at Georgia Southern . . . had 12 points and eight rebounds at College of Charleston . . . grabbed seven rebounds against Western Carolina . . . had 16 points and seven rebounds at Appalachian State . . . had seven points and 11 rebounds in a win over Wofford in the SoCon Tournament . . . scored 13 points against Elon in the SoCon Tournament.

**High School:** Prepped at Hayden High School in Hayden, Ala . . . scored an impressive 3,155 points, ranking her ninth in the history of the state of Alabama . . . averaged 26.9 points per game as a senior in 2011-12 . . . also averaged 6.3 rebounds, 3.6 assists and 5.1 steals per game . . . named All-Area and All-County all four years of high school.

**Personal:** Born June 11, 1994 . . . daughter of Jay Stricklin and Lou Ann Stricklin . . . majoring in fitness and health promotion.

### CAREER BESTS

Points: 19, at Mercer, Feb. 28, 2015

Rebounds: 13, at Alabama State, Dec. 4, 2013

Assists: 4 (twice), last at Mercer, Feb. 28, 2015



Krista Stricklin

			Total		3-Point		F-Throws		Rebounds											Scoring	
Season	gp-gs	min/avg	fg-fga	pct	fg-fga	pct	ft-fa	pct	off	def	tot	avg	pf	fo	ast	to	blk	stl	pts	avg	
2012-13	30-20	845/28.2	52-152	.342	30-91	.330	31-47	.660	14	142	156	5.2	53	1	33	80	6	22	165	5.5	
2013-14	30-11	595/19.8	51-128	.398	14-54	.259	27-42	.643	19	92	111	3.7	58	2	31	28	1	19	143	4.8	
2014-15	30-30	901/30.0	84-176	.477	25-60	.417	37-58	.638	15	126	141	4.7	56	0	53	53	5	20	230	7.7	
2015-16	17-17	485/28.5	42-111	.378	15-52	.288	15-26	.577	16	40	56	3.3	32	0	19	20	7	10	114	6.7	
TOTAL	107-78	2826/26.4	229-567	.404	84-257	.327	110-173	.636	64	400	464	4.3	199	3	136	181	19	71	652	6.1	



## 21 KEKE FLETCHER

Forward • 5-11 • RS-Senior  
Huntsville, Ala. • Madison Academy

**Senior (2015-16):** Scored seven points against AUM . . . had six points in home game against Harvard.

**Junior (2014-15):** Saw action in 21 games . . . averaged 1.2 points and 0.5 rebounds per game . . . scored seven points against North Florida . . . had three points and three rebounds against Alabama State . . . scored three points against Western Carolina.

**Sophomore (2013-14):** Saw action in all 30 games, including five starts . . . averaged 2.8 points and 1.5 rebounds per game . . . scored six points at UAB . . . had seven points, four rebounds and three assists against Rice . . . scored a career-high 14 points against South Alabama . . . scored six points at Utah . . . grabbed a career-high 11 rebounds against Western Carolina . . . scored 11 points at Wofford . . . scored six points against Eon.

**Freshman (2012-13):** Saw action in 26 games . . . averaged 2.0 points and 1.0 rebound per game . . . saw her first collegiate action in the season-opener at Florida State . . . dished out four assists against Alabama State . . . scored six points against AUM . . . scored a career-high 10 points against Furman . . . grabbed four rebounds at UNCG . . . scored six points at Western Carolina . . . had six points and five rebounds against Elon.

**Redshirt (2011-12):** Had to sit out the season after suffering a knee injury . . . will apply for a medical redshirt.

**High School:** Was named first-team All-State after leading her Madison Academy team to a 3A state championship . . . earned a spot on the Huntsville Times Elite Girls Basketball First Team . . . also was selected for the Alabama/Mississippi All-Star game . . . won the U.S. National Minority Leadership Award . . . also won the U.S. Presidential Outstanding Academic Excellence Award . . . named to National Honor Society, and named a finalist for Miss Madison Academy.

**Personal:** Born Feb. 28, 1993 . . . daughter of John and Cathy Fletcher . . . majoring in psychology at Samford.

### CAREER BESTS

Points: 14, vs. South Alabama, Nov. 30, 2013

Rebounds: 11, vs. Western Carolina, Feb. 8, 2014

Assists: 4, vs. Alabama State, Nov. 23, 2012







Keke Fletcher

Season	gp-gs	min/avg	Total		3-Point		F-Throws		Rebounds												Scoring	
			fg-fga	pct	fg-fga	pct	ft-fa	pct	off	def	tot	avg	pf	fo	ast	to	blk	stl			pts	avg
2012-13	26-0	237/9.1	14-28	.500	12-21	.571	12-12	1.000	5	20	25	1.0	15	0	20	15	3	2			52	2.0
2013-14	30-5	435/14.5	30-85	.353	21-59	.356	2-4	.500	14	31	45	1.5	30	0	16	21	2	13			83	2.8
2014-15	21-0	140/6.7	10-30	.333	4-18	.222	1-2	.500	1	10	11	0.5	8	0	3	6	3	4			25	1.2
2015-16	14-0	156/11.1	12-30	.400	5-21	.238	0-0	.000	4	15	19	1.4	3	0	8	3	2	5			29	2.1
TOTAL	91-5	968/10.6	66-173	.382	42-119	.353	15-18	.833	24	76	100	1.1	56	0	47	45	10	24			189	2.1



## 2 HANNAH NICHOLS

Guard • 5-10 • Junior  
Madison, Ala. • Madison County HS

**Sophomore (2014-15):** Started all 30 games . . . led the team in scoring at 14.1 points per game . . . named second team All-SoCon by both the coaches and the media . . . led the team with 13 points against Alabama A&M . . . scored a team-high 17 points against North Florida . . . scored a career-high 22 points against UT Martin . . . scored 14 points at Georgia State . . . had 13 points and seven rebounds against Penn State . . . scored 14 points at Troy . . . led the team with 19 points against UAB . . . had 13 points and seven rebounds at Auburn . . . scored 14 points and grabbed nine rebounds at Tulane . . . led the team with 12 points against UCLA . . . scored 14 points against Alabama State . . . scored 12 points at Kansas . . . led the team with 12 points at Kansas State . . . scored 12 points against Auburn Montgomery . . . tied a career high with 22 points at Western Carolina . . . had 15 points and five rebounds in home win over Western Carolina . . . led the team with 21 points against Mercer . . . had 14 points and six rebounds against Wofford . . . tied a career high with 22 points against UNCG . . . scored 22 points for the second-straight game in a win at Wofford . . . had 16 points at Furman . . . scored 15 points against #20 Chattanooga . . . scored 19 points against East Tennessee State . . . scored 16 points at Mercer . . . scored nine points against Furman in the SoCon Tournament.

**Freshman (2013-14):** Named Southern Conference Freshman of the Year . . . finished second on the team in scoring, averaging 8.1 points per game . . . led the team in rebounding, grabbing 4.3 boards per contest . . . scored 12 points and pulled down seven rebounds in her collegiate debut at Memphis . . . scored nine points against Talladega College . . . had 14 points and six rebounds at North Florida . . . had seven points and seven rebounds in win at UNCG . . . scored seven points at Utah . . . had seven points and seven rebounds against Jacksonville State . . . had 11 points and six rebounds against Davidson . . . scored 16 points against Georgia Southern . . . scored 13 points and grabbed seven rebounds at Appalachian State . . . scored nine points at Western Carolina . . . had 12 points against Furman . . . scored 20 points against Wofford . . . had nine points and six rebounds at Chattanooga . . . had 12 points and six rebounds against Western Carolina . . . had nine points against Appalachian State . . . contributed 12 points at Wofford . . . had nine points and seven rebounds at Furman . . . scored 12 points against Chattanooga . . . scored 13 points against Elon.

**High School:** Named All-State Honorable Mention at Madison County High School . . . also named to the All-State Tournament Team . . . nominated for 4A Player of the Year . . . selected to play in the Alabama-Mississippi All-Star Game . . . also participated in volleyball and softball in high school.

**Personal:** Born January 12, 1995 . . . daughter of Bruce and Judy Nichols . . . majoring in sports administration.

### CAREER BESTS

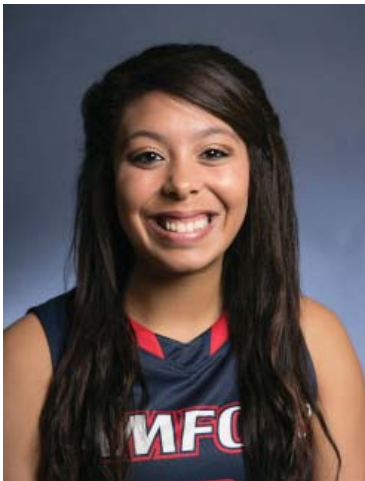
Points: 22 (four times), last at Wofford, Feb. 14, 2015

Rebounds: 9, at Tulane, Dec. 18, 2014

Assists: 3 (twice), last vs. Furman, Jan. 17, 2015

Hannah Nichols																				
Season	gp-gs	min/avg	Total		3-Point		F-Throws		Rebounds				Scoring							
			fg-fga	pct	fg-fga	pct	ft-fa	pct	off	def	tot	avg	pf	fo	ast	to	blk	stl	pts	avg
2013-14	30-1	616/20.5	88-202	.436	51-130	.392	15-29	.517	13	115	128	4.3	61	0	26	54	11	12	242	8.1
2014-15	30-30	939/31.3	150-342	.439	80-204	.392	44-55	.800	9	104	113	3.8	60	0	33	53	21	17	424	14.1
TOTAL	60-31	1555/25.9	238-544	.438	131-334	.392	59-84	.702	22	219	241	4.0	121	0	59	107	32	29	666	11.1





## 3 DESTINEY ELLIOTT

Forward • 6-0 • Sophomore  
Oneonta, Ala. • Oneonta HS

**Sophomore (2015-16):** Had seven points, four rebounds and four assists against AUM . . . had eight points and nine rebounds against Troy . . . grabbed a career-high 12 rebounds at Jacksonville State . . . scored 17 points and grabbed 11 rebounds against Nicholls State in the Lady Eagle Thanksgiving Classic . . . also had nine points and eight rebounds against Southern Mississippi in the Lady Eagle Thanksgiving Classic, earning All-Tournament honors . . . scored 13 points and tied a school record with 18 rebounds at UT Martin . . . scored a career-high 20 points and grabbed nine rebounds at Indiana . . . had 11 points and nine rebounds at Alabama State . . . scored 11 points and grabbed six rebounds at UAB . . .

had seven points and five rebounds at LSU . . . had 14 points and eight rebounds at Western Carolina . . . had 11 points and nine rebounds at UNCG.

**Freshman (2014-15):** Started all 30 games . . . led the team in rebounding, averaging 5.8 boards per contest . . . third on the team in scoring, averaging 9.0 points per game . . . named to the SoCon's All-Freshman team . . . scored 12 points and grabbed six rebounds in her collegiate debut at Memphis . . . had eight points, eight rebounds and five assists against Alabama A&M . . . dished out six assists against North Florida . . . scored 15 points and grabbed nine rebounds against UT Martin . . . pulled down eight rebounds against Penn State . . . scored 15 points and grabbed nine rebounds against UAB . . . had nine points and nine rebounds at Auburn . . . scored 11 points at Tulane . . . had 10 points and five rebounds against UCLA . . . posted her first career double-double with 18 points and 11 rebounds against Alabama State . . . had nine points at Kansas . . . tied a career high with 18 points against Auburn Montgomery . . . grabbed eight rebounds at Western Carolina . . . had six assists and nine rebounds against Furman . . . scored 15 points against Western Carolina . . . led the team with seven rebounds at East Tennessee State . . . grabbed 10 rebounds against Mercer . . . scored 15 points against UNCG . . . had 16 points and seven rebounds at Furman . . . scored 15 points against #20 Chattanooga . . . had nine points, five rebounds and four assists at Mercer . . . scored 11 points and grabbed six rebounds against Furman in the SoCon Tournament.

**High School:** Was named the Most Valuable Player of the Alabama 4A State Tournament in 2013 and 2014, leading her Oneonta High School team to back-to-back state titles . . . also named MVP of the 4A Regional Finals and 4A Player of the Year for Alabama in both 2013 and 2014 . . . named All-Area five times and All-Tournament for her area four times . . . was a three-time County MVP . . . scored over 3,000 points in her high school career . . . played for former Samford assistant coach Amber Deline at Oneonta High School.

**Personal:** Born September 6, 1995 . . . daughter of Lee'Ann Hughes and David Elliott . . . majoring in elementary education.

### CAREER BESTS

Points: 20, at Indiana, Dec. 11, 2015

Rebounds: 18, at UT Martin, Dec. 5, 2015

Assists: 6 (twice), last vs. Furman, Jan. 17, 2015

Destiney Elliott

			Total		3-Point		F-Throws		Rebounds											Scoring	
Season	gp-gs	min/avg	fg-fga	pct	fg-fga	pct	ft-fa	pct	off	def	tot	avg	pf	fo	ast	to	blk	stl	pts	avg	
2014-15	30-30	864/28.8	103-207	.498	12-36	.333	53-82	.646	52	122	174	5.8	77	0	68	79	11	32	271	9.0	
2015-16	17-17	473/27.8	58-145	.400	16-45	.356	18-28	.643	35	99	134	7.9	49	1	30	37	15	20	150	8.8	
TOTAL	47-47	1337/28.4	161-352	.457	28-81	.346	71-110	.645	87	221	308	6.6	126	1	98	116	26	52	421	9.0	



# 4 LYDIA MCGEE

Guard • 5-10 • RS-Junior  
Madison, Ala. • Madison Academy

**Junior (2015-16):** Scored nine points against AUM . . . scored 12 points against Troy . . . had six points and four rebounds at Jacksonville State.

**Sophomore (2014-15):** Saw action in 24 games, including eight starts . . . missed the first six games with an injury . . . averaged 6.6 points and 3.8 rebounds per game . . . saw her first action of the season at Troy, scoring four points and grabbing three rebounds . . . had six points against UAB . . . scored 14 points and dished out five assists at Tulane . . . contributed eight points against UCLA . . . dished out five assists against Alabama State . . . had 10 points and five rebounds at UNCG . . . scored nine points at Western Carolina . . . scored 12 points and grabbed seven rebounds against Furman . . . posted her first career double-double, scoring 10 points and grabbing 11 rebounds against Western Carolina . . . scored 12 points at East Tennessee State . . . scored 11 points against Mercer . . . had nine points and six rebounds against Wofford . . . had 13 points and six rebounds against UNCG . . . scored nine points at Wofford . . . had eight points against East Tennessee State.

**Freshman (2013-14):** Saw action in 30 games, including 26 starts . . . averaged 5.8 points and 3.6 rebounds per game . . . grabbed five rebounds in the season opener at Memphis . . . scored six points at North Florida . . . had six points against South Alabama . . . scored nine points in win at UNCG . . . had seven points and five rebounds at Oklahoma . . . had 11 points and six rebounds against Jacksonville State . . . scored 14 points and dished out five assists against Davidson . . . had nine points against Georgia Southern . . . had 11 points and five rebounds at Western Carolina . . . had 12 points, five rebounds and a career-high six assists against Wofford . . . scored 15 points, and grabbed six rebounds at Davidson . . . scored 11 points against Chattanooga . . . scored a career-high 16 points, grabbed four rebounds and dished out five assists against UNCG.

**Redshirt (2012-13):** Saw action in eight game, including three starts before suffering a season-ending leg injury . . . received a medical redshirt . . . averaged 6.0 points and 3.3 assists per game . . . saw her first collegiate action in the season-opener at Florida State, grabbing five rebounds . . . dished out four assists at Jacksonville State . . . scored four points against Alabama State . . . had six points and six rebounds against Tennessee State . . . scored eight points against AUM . . . earned her first start against Wofford, scoring a career-high 11 points and dishing out a career-high five assists . . . tied career highs in points with 11 and assists with five against Furman.

**High School:** Was a three-time member of the Alabama Sports Writers Association All-State team out of Madison Academy . . . was a four-time All-Area and All-Region selection . . . named Area MVP in 2012 . . . named to National Honor Society.

**Personal:** Born Dec. 2, 1993 . . . daughter of Terry and Lisa McGee . . . majoring in health science.

## CAREER BESTS

Points: 16, vs. UNCG, Feb. 28, 2014

Rebounds: 11, vs. Western Carolina, Jan. 19, 2015

Assists: 6, vs. Wofford, Jan. 20, 2014

Lydia McGee																			
Season	gp-gs	min/avg	Total fg-fga	pct	3-Point fg-fga	pct	F-Throws ft-fa	pct	Rebounds off	def	tot	avg	pf	fo	ast	to	blk	stl	Scoring pts avg
2012-13	8-3	228/28.5	17-41	.415	3-10	.300	11-15	.733	3	23	26	3.3	18	0	21	18	1	11	48 6.0
2013-14	30-26	777/25.9	58-133	.436	8-20	.400	49-63	.778	34	73	107	3.6	84	4	49	50	5	23	173 5.8
2014-15	24-8	597/24.9	52-123	.423	6-24	.250	48-58	.828	16	75	91	3.8	54	1	45	46	2	15	158 6.6
2015-16	6-0	71/11.8	10-20	.500	2-5	.400	5-6	.833	5	8	13	2.2	8	0	6	14	1	4	27 4.5
TOTAL	68-37	1673/24.6	137-317	.432	19-59	.322	113-142	.796	58	179	237	3.5	164	5	121	128	9	53	406 6.0



# 5 KASSIDY BLEVINS

Guard • 5-9 • RS-Sophomore  
Ringgold, Ga. • Gordon Lee HS

**Sophomore (2015-16):** Scored 15 points and dished out four assists against AUM . . . led the team with 19 points against Troy . . . scored nine points at UT Martin . . . scored eight points at Indiana . . . scored 14 points at Georgia Tech . . . had nine points and six rebounds at LSU . . . led the team with 19 points against Harvard . . . scored eight points at UNCG.

**Redshirt (2014-15):** Saw action in the first eight games before suffering a season-ending knee injury . . . received a medical redshirt . . . averaged 5.8 points per game . . . scored 11 points against Alabama A&M . . . had nine points, four rebounds and four assists against North Florida . . . scored seven points and dished out four assists at Troy . . . had eight points against UAB.

**Freshman (2013-14):** Saw action in 23 games, including 10 starts . . . averaged 6.5 points and 2.2 rebounds per game . . . made her collegiate debut against Talladega College . . . scored six points against Mercer . . . scored eight points against Davidson . . . had seven points and five rebounds at Western Carolina . . . scored 10 points and grabbed five rebounds against Furman . . . had 10 points and five rebounds against Wofford . . . scored 13 points at Chattanooga . . . led the team with a career-high 21 points at Georgia Southern . . . had 13 points at Davidson . . . had nine points and a career-high seven rebounds against Chattanooga . . . tied a career high with 21 points against UNCG . . . scored 13 points against Elon . . . scored 13 points in the SoCon Tournament against Davidson.

**High School:** Named 2013 Class A Player of the Year from Gordon Lee High School . . . named first team All-State and All-Region for each of her last three years . . . led her team to the 2013 state championship . . . named Chattanooga Best of Preps Player of the Year . . . named North Georgia Player of the Year . . . named team MVP three times.

**Personal:** Born Oct. 27, 1994 . . . daughter of Billy and Karen Blevins . . . majoring in English education.

## CAREER BESTS

Points: 21 (twice), last vs. UNCG, Feb. 28, 2014

Rebounds: 7, vs. Chattanooga, Feb. 24, 2014

Assists: 4 (four times), last vs. AUM, Nov. 15, 2015

Kassidy Blevins																				
			Total		3-Point		F-Throws		Rebounds										Scoring	
Season	gp-gs	min/avg	fg-fga	pct	fg-fga	pct	ft-fa	pct	off	def	tot	avg	pf	fo	ast	to	blk	stl	pts	avg
2013-14	23-10	418/18.2	56-146	.384	28-82	.341	10-14	.714	6	44	50	2.2	38	0	21	28	7	14	150	6.5
2014-15	8-0	156/19.5	13-29	.448	7-19	.368	13-18	.722	1	15	16	2.0	9	0	17	11	1	5	46	5.8
2015-16	17-0	344/20.2	41-106	.387	31-76	.408	8-10	.800	7	37	44	2.6	20	0	23	21	4	19	121	7.1
TOTAL	48-10	918/19.1	110-281	.391	66-177	.373	31-42	.738	14	96	110	2.3	67	0	61	60	12	38	317	6.6



# 13 BRITTANY STEVENS

Guard • 5-3 • Junior

Norcross, Ga. • Wesleyan School

**Junior (2015-16):** Led the team with 13 points and four assists in the season opener at 11th-ranked Mississippi State . . . scored 12 points against Troy, and made 6-of-6 free-throw attempts against Troy . . . scored eight points against Shorter . . . had eight points, four rebounds and four assists against Nicholls State in the Lady Eagle Thanksgiving Classic . . . scored nine points at UT Martin . . . had seven points and hit the eventual game-winning shot at LSU . . . scored seven points at UNCG.

**Sophomore (2014-15):** Saw action in 22 games, including 19 starts . . . missed eight games with a hand injury . . . led the team in assists, averaging 3.5 per game . . . also averaged 6.0 points per game . . . scored five points in the season opener at Memphis . . . dished out five assists against Alabama A&M . . . scored eight points and dished out six assists against UT Martin . . . had six points and four assists against Auburn Montgomery . . . scored eight points at UNCG . . . had eight points and five assists at Western Carolina . . . scored 11 points and dished out four assists against Furman . . . scored 13 points against Western Carolina . . . dished out a career-high seven assists against Wofford . . . scored nine points at Wofford . . . contributed six assists against #20 Chattanooga . . . tied a career high with seven assists at Mercer . . . scored a career-high 17 points against Furman in the SoCon Tournament.

**Freshman (2013-14):** Played in all 30 games, including 29 starts . . . averaged 3.8 points and 2.3 rebounds per game . . . led the team in assists with 52 . . . had four points, six rebounds and six assists in her collegiate debut at Memphis . . . scored eight points at UAB . . . had six points, four rebounds and four assists against South Alabama . . . had five points, five rebounds and five assists against Mercer . . . scored eight points in win at UNCG . . . shared the team lead with nine points at Utah . . . had six points against Furman . . . scored six points and grabbed five rebounds at Georgia Southern . . . scored 10 points at Furman . . . dished out five assists against UNCG.

**High School:** Helped lead her team to four state championships at Wesleyan School in Georgia . . . was named All-Region as both a junior and senior . . . named All-County and second team All-State as a senior . . . also competed in softball and track and field.

**Personal:** Born Aug. 11, 1995 . . . daughter of Dennis and Vee Stevens . . . majoring in English, with a minor in religion.

## CAREER BESTS

Points: 17, vs. Furman (SoCon Tourn.), Mar. 5, 2015

Rebounds: 6 (twice), last at Indiana, Dec. 11, 2015

Assists: 7 (twice), last at Mercer, Feb. 28, 2015

Brittany Stevens																				
			Total		3-Point		F-Throws		Rebounds										Scoring	
Season	gp-gs	min/avg	fg-fga	pct	fg-fga	pct	ft-fa	pct	off	def	tot	avg	pf	fo	ast	to	blk	stl	pts	avg
2013-14	30-29	699/23.3	38-97	.392	12-28	.429	25-53	.472	8	60	68	2.3	75	1	52	59	2	45	113	3.8
2014-15	22-19	686/31.2	42-118	.356	10-35	.286	37-48	.771	7	41	48	2.2	68	1	76	56	1	29	131	6.0
2015-16	17-17	535/31.5	32-92	.348	8-27	.296	28-34	.824	8	40	48	2.8	48	0	48	50	0	24	100	5.9
TOTAL	69-65	1920/27.8	112-307	.365	30-90	.333	90-135	.667	23	141	164	2.4	191	2	176	165	3	98	344	5.0





## 22 ELLEN RIGGINS

Forward • 6-0 • Junior  
Murfreesboro, Tenn. • Oakland HS

**Junior (2015-16):** Scored nine points against AUM . . . scored nine points and grabbed five rebounds at Southern Mississippi in the Lady Eagle Thanksgiving Classic . . . had 12 points, five rebounds and five assists at Georgia Tech . . . scored 13 points at Alabama State.

**Sophomore (2014-15):** Saw action in all 30 games . . . averaged 3.3 points and 3.1 rebounds per game . . . scored six points in the season opener at Memphis . . . had seven points and four assists against North Florida . . . had 14 points, eight rebounds and four assists at Georgia State . . . scored nine points against Penn State . . . scored eight points and grabbed eight rebounds at Troy . . . grabbed seven rebounds against UAB . . . scored six points against Furman . . . scored 10 points at Wofford . . . had five points against East Tennessee State.

**Freshman (2013-14):** Played in all 30 games, including 25 starts . . . averaged 7.0 points and 3.7 rebounds per game . . . led the team with 16 points, and grabbed six rebounds in her collegiate debut at Memphis . . . had 15 points and nine rebounds against Talladega College . . . had nine points and six rebounds against Rice . . . scored nine points and grabbed six rebounds against South Alabama . . . led the team with 15 points at Alabama State . . . scored eight points against Mercer . . . had eight points at Elon . . . had 12 points and six rebounds at Appalachian State . . . had 14 points and six rebounds at Chattanooga . . . grabbed seven rebounds at Davidson . . . scored 14 points at Wofford . . . had nine points, eight rebounds and five assists . . . had eight points and four rebounds against Davidson in the SoCon Tournament.

**High School:** Was a three-year team captain at Oakland High School . . . named All-District all four years . . . named All-Area as a junior, and team MVP as both a sophomore and junior . . . named All-District Tournament as a junior and senior . . . was the Daily News Journal Presidential Cup recipient as a senior . . . also competed in volleyball and tennis . . . named All-District for tennis as a senior.

**Personal:** Born May 13, 1995 . . . daughter of Patrick Riggins and Ronda Hawkins . . . majoring in communication studies.

### CAREER BESTS

Points: 16, at Memphis, Nov. 10, 2013

Rebounds: 9, vs. Talladega College, Nov. 14, 2013

Assists: 5 (twice), last at Georgia Tech, Dec. 13, 2015

Ellen Riggins																					
Season	gp-gs	min/avg	Total		3-Point		F-Throws		Rebounds											Scoring	
			fg-fga	pct	fg-fga	pct	ft-fa	pct	off	def	tot	avg	pf	fo	ast	to	blk	stl	pts	avg	
2013-14	30-25	691/23.0	68-205	.332	9-49	.184	65-79	.823	43	67	110	3.7	67	2	37	75	5	22	210	7.0	
2014-15	30-0	474/15.8	36-94	.383	4-17	.235	23-37	.622	24	68	92	3.1	46	0	33	50	2	10	99	3.3	
2015-16	17-3	296/17.4	31-75	.413	2-18	.111	13-21	.619	10	39	49	2.9	27	0	20	31	5	8	77	4.5	
TOTAL	77-28	1461/19.0	135-374	.361	15-84	.179	101-137	.737	77	174	251	3.3	140	2	90	156	12	40	386	5.0	



## 31 CASSIDY WILLIAMS

Guard • 5-8 •

Freshman

Peachtree City, Ga. •

McIntosh HS

**Freshman (2015-16):** Scored six points and grabbed three rebounds in her collegiate debut at 11th-ranked Mississippi State . . . also had six points against AUM . . . had eight points and four rebounds against Shorter . . . scored six points at UT Martin . . . scored five points against Harvard.

**High School:** Named first team All-State as a senior at McIntosh High School in Georgia . . . named Region Player of the Year, South-Metro Player of the Year and Southern Crescent Player of the Year . . . ranked in the top 50 at the World Championship trials . . . also named second team All-State as a junior . . . also participated in lacrosse.

**Personal:** Born July 13, 1997 . . . daughter of Michael and Cathy Williams . . . majoring in health sciences.

### CAREER BESTS

Points: 8, vs. Shorter, Nov. 21, 2015

Rebounds: 5, at Georgia Tech, Dec. 13, 2015

Assists: 2 (twice), last at Alabama State, Dec. 17, 2015

Cassidy Williams

			Total		3-Point		F-Throws		Rebounds											Scoring	
Season	gp-gs	min/avg	fg-fga	pct	fg-fga	pct	ft-fa	pct	off	def	tot	avg	pf	fo	ast	to	blk	stl	pts	avg	
2015-16	17-0	243/14.3	15-49	.306	11-39	.282	0-0	.000	6	20	26	1.5	17	0	8	24	0	3	41	2.4	
TOTAL	17-0	243/14.3	15-49	.306	11-39	.282	0-0	.000	6	20	26	1.5	17	0	8	24	0	3	41	2.4	



## **32 OLIVIA CROZIER**

**Forward • 6-1 •**

**Freshman**

**Madison, Ind. •**

**Madison HS**

**High School:** Named All-State as both a junior and senior at Madison High School . . . was also named honorable mention All-State as a sophomore . . . named the Madison Courier Area Offensive and Defensive Player of the Year . . . won the HHC Academic Award as a member of the National Honor Society . . . as a senior, averaged 18.5 points and 11.7 rebounds per game.

**Personal:** Born Sept. 29, 1996 . . . daughter of Andy and Pam Crozier . . . majoring in nursing.

# 2015-16 BOX SCORES



Official Basketball Box Score -- Game Totals -- Final Statistics  
**Samford vs Mississippi State**  
 11/13/15 5:16 pm at Starkville, Miss. (Humphrey Coliseum)



**Samford 47 • 0-1**

#	Player	Total		3-Ptr		Rebounds		PF	TP	A	TO	Blk	Stl	Min
		FG-FGA	FG-FGA	FT-FTA	Off Def Tot	Off Def Tot	PF TP							
03	Destiney Elliott	f	1-4	0-0	1-1	0 2 2	5 3	0 3 0	1	18				
10	Taylor Reece	f	4-8	1-5	0-0	0 1 1	2 9	2 3 1	0	31				
11	Amara Mayers	g	3-5	3-3	0-2	1 4 5	3 9	2 1 0	1	26				
12	Krista Stricklin	g	3-7	1-3	0-0	0 4 4	2 7	2 2 0	1	29				
13	Brittany Stevens	g	3-7	0-0	7-8	0 1 1	4 13	4 5 0	0	34				
04	Lydia McGee		0-0	0-0	0-0	0 1 1	3 0	0 5 0	0	9				
05	Kassidy Blevins		0-1	0-1	0-0	0 1 1	1 0	0 0 0	0	4				
21	Keke Fletcher		0-2	0-2	0-0	1 3 4	0 0	0 0 0	0	19				
22	Ellen Riggins		0-0	0-0	0-0	2 2 2	0 0	0 3 0	0	9				
31	Cassidy Williams		2-4	2-4	0-0	0 3 3	2 6	0 6 0	0	21				
Team					1 6 7									
Totals			16-38	7-18	8-11	3 28 31	24 47	10 28 1	3	200				
FG % 1st Half: 4-9		21.1%	2nd half: 12-19	63.2%	Game: 16-38	42.1%	Deadball							
3FG % 1st Half: 2-9		22.2%	2nd half: 5-9	55.6%	Game: 7-18	38.9%	Rebounds							
FT % 1st Half: 4-7		57.1%	2nd half: 4-4	100.0%	Game: 8-11	72.7%								

**Mississippi State 68 • 1-0**

#	Player	Total		3-Ptr		Rebounds		PF	TP	A	TO	Blk	Stl	Min
		FG-FGA	FG-FGA	FT-FTA	Off Def Tot	Off Def Tot	PF TP							
03	Breanna Richardson	f	3-10	0-2	0-0	3 0 3	3 6	1 3 1	2	21				
15	Tesira McCowan	c	1-3	0-0	0-1	3 0 3	0 2	0 1 1	0	11				
00	Dominique Dillingham	g	4-11	2-3	3-4	6 5 11	3 13	0 1 0	2	35				
02	Morgan William	g	2-7	0-1	2-3	1 3 4	4 6	2 1 0	0	23				
35	Victoria Vivians	g	4-14	0-5	0-2	1 2 3	2 8	1 0 0	2	23				
01	Blair Schaefer	g	1-10	0-5	3-4	2 2 4	1 5	0 0 0	2	16				
05	Sherise Williams		0-2	0-0	2-2	3 1 4	0 2	0 0 0	0	9				
10	Jazzmun Holmes		4-8	0-2	4-4	1 2 3	3 12	1 3 0	5	18				
13	Ketara Chapel		3-4	0-0	0-0	2 1 3	0 6	1 0 0	1	21				
44	LaKaris Salter		1-4	0-2	0-0	1 2 3	0 2	0 0 0	0	3				
45	Chinwe Okorie		2-4	0-0	2-2	4 1 5	2 6	0 1 0	0	20				
Team					1 1 2									
Totals			25-77	2-20	16-22	28 20 48	18 68	6 10 2	14	200				
FG % 1st Half: 11-39		28.2%	2nd half: 14-38	36.8%	Game: 25-77	32.5%	Deadball							
3FG % 1st Half: 1-13		7.7%	2nd half: 1-7	14.3%	Game: 2-20	10.0%	Rebounds							
FT % 1st Half: 11-13		84.6%	2nd half: 9-9	55.6%	Game: 16-22	72.7%								

Officials: Cameron Inouye, Ed Sidlasky, Kim Thebo

Technical fouls: Samford-None. Mississippi State-None.

Attendance:

Score by periods	1st	2nd	3rd	4th	Total
Samford	12	2	20	13	47
Mississippi State	16	18	12	22	68

Last FG - SAM 4th-01:43, MS 4th-01:20.

Largest lead - SAM by 7 1st-05:55, MS by 21 3rd-08:19.

SAM led for 05:29. MS led for 33:26. Game was tied for 01:05.

Points	In	Off	2nd	Fast	Bench
SAM	12	9	3	0	6
MS	38	34	22	10	33

Score tied - 2 times.  
Lead changed - 2 times.



Official Basketball Box Score -- Game Totals -- Final Statistics  
**Auburn Montgomery vs Samford**  
 11/15/15 2 p.m. at Birmingham, Ala. (Pete Hanna Center)



**Auburn Montgomery 32 • 4-1**

#	Player	Total		3-Ptr		Rebounds		PF	TP	A	TO	Blk	Stl	Min
		FG-FGA	FG-FGA	FT-FTA	Off Def Tot	Off Def Tot	PF TP							
22	Reggotta Craig	f	2-8	1-2	2-4	2 4 6	3 7	0 2 1	0	34				
30	Marren Schwartz	c	0-0	0-0	0-0	0 0 0	0 0	0 0 0	1	10				
03	Jatoria Carter	g	1-6	1-2	0-0	0 4 4	2 3	4 2 0	0	22				
04	Lyndsey Macon	g	0-1	0-0	2-2	0 3 3	0 2	0 4 0	1	17				
12	Kaylan Withrow	g	4-5	3-4	0-0	0 0 0	1 11	1 1 0	1	31				
00	Kyla Rooks		2-3	0-0	0-0	0 0 0	1 4	0 2 0	0	8				
02	Jaycie Bobo		0-4	0-2	1-2	1 0 1	0 1	0 0 0	0	15				
05	Tatyana Dorden		0-1	0-1	0-0	0 2 2	0 0	0 1 0	0	6				
10	Keyonda Mason		0-0	0-0	0-0	0 0 0	3 0	0 1 0	0	16				
11	Anastasia Evans		0-3	0-2	0-0	0 0 0	5 0	0 2 0	0	5				
21	Jada Williams		2-8	0-2	0-0	0 3 3	3 4	1 2 0	0	19				
23	Aleksandra Trisic		0-3	0-2	0-0	1 0 1	3 0	0 4 0	2	17				
Team					0 1 1									
Totals			11-42	5-17	5-8	4 17 21	21 32	6 22 2	5	200				
FG % 1st Half: 9-25		36.0%	2nd half: 2-17	11.8%	Game: 11-42	26.2%	Deadball							
3FG % 1st Half: 4-9		44.4%	2nd half: 1-8	12.5%	Game: 5-17	29.4%	Rebounds							
FT % 1st Half: 1-2		50.0%	2nd half: 4-6	66.7%	Game: 5-8	62.5%								

**Samford 82 • 1-1**

#	Player	Total		3-Ptr		Rebounds		PF	TP	A	TO	Blk	Stl	Min
		FG-FGA	FG-FGA	FT-FTA	Off Def Tot	Off Def Tot	PF TP							
03	Destiney Elliott	f	2-6	1-3	2-2	1 3 4	1 7	4 3 0	2	19				
10	Taylor Reece	c	5-11	2-6	3-4	1 4 5	0 15	2 2 1	0	19				
11	Amara Mayers	g	1-5	1-4	0-2	2 4 6	0 3	2 0 0	1	19				
12	Krista Stricklin	g	2-3	2-3	1-2	1 4 5	1 7	2 0 1	0	21				
13	Brittany Stevens	g	1-3	0-2	2-2	2 3 5	2 4	1 0 1	0	18				
04	Lydia McGee		4-7	0-2	1-2	2 2 4	1 9	3 3 1	3	22				
05	Kassidy Blevins		4-4	4-4	3-4	1 2 3	3 15	4 0 0	1	24				
21	Keke Fletcher		3-6	1-2	0-0	1 2 3	0 7	1 1 0	0	12				
22	Ellen Riggins		4-6	0-0	1-2	1 2 3	1 9	1 2 0	1	22				
31	Cassidy Williams		2-3	2-2	0-0	1 0 1	3 6	1 2 0	0	24				
Team					0 2 2									
Totals			28-54	13-28	13-20	13 28 41	12 82	24 14 3	9	200				
FG % 1st Half: 14-25		56.0%	2nd half: 14-29	48.3%	Game: 28-54	51.9%	Deadball							
3FG % 1st Half: 8-15		53.3%	2nd half: 5-13	38.5%	Game: 13-28	46.4%	Rebounds							
FT % 1st Half: 6-8		75.0%	2nd half: 7-12	58.3%	Game: 13-20	65.0%								

Officials: Darrell Mitchell, David Jenkins, Kristen Jones

Technical fouls: Auburn Montgomery-None. Samford-None.

Attendance: 373

Score by periods	1st	2nd	3rd	4th	Total
Auburn Montgomery	12	11	6	3	32
Samford	21	21	20	20	82

Last FG - AU/MW 3rd-06:37, SAM 4th-00:28.

Largest lead - AU/MW None, SAM by 50 4th-00:28.

AU/MW led for 00:00. SAM led for 39:07. Game was tied for 00:53.

Score tied - 0 times.  
Lead changed - 0 times.



Official Basketball Box Score -- Game Totals -- Final Statistics  
**Troy vs Samford**  
 11/17/15 6 p.m. at Birmingham, Ala. (Pete Hanna Center)



**Troy 69 • 1-1**

#	Player	Total		3-Ptr		Rebounds			PF	TP	A	TO	Blk	Stl	Min
		FG-FGA	FG-FGA	FT-FTA	Off	Def	Tot								
22	Uphshaw, Amahni	f	1-2	0-0	0-0	0	3	3	5	2	0	2	0	0	13
34	Ramirez, Caitlyn	f	5-9	2-2	0-0	1	5	6	5	12	3	1	0	1	21
04	Beverly Kelley, A.	g	11-17	2-6	9-9	0	7	7	2	33	3	5	0	3	35
20	Gibbs, Ta Kleria	g	4-8	2-4	0-0	0	4	4	1	10	1	2	0	0	26
21	Reid, Rachel	g	1-5	0-3	1-2	0	1	1	2	3	2	1	0	3	22
03	Mendoza, Amanda		1-3	1-1	0-0	0	0	0	4	3	2	3	0	2	20
10	Chilis, Jayla		0-0	0-0	0-0	0	0	0	0	0	1	0	1	0	2
14	Banks, Claressa		0-1	0-1	0-0	0	2	2	0	0	0	4	0	0	17
23	Emerson, Kristin		1-5	0-0	0-0	0	3	3	4	2	0	2	0	0	14
25	Johnson, Casie		0-0	0-0	1-2	0	1	1	2	1	1	0	0	0	14
32	Williams, Dajia		0-1	0-0	3-4	2	0	2	3	3	0	2	0	0	5
33	Day, Lauren		0-0	0-0	0	1	0	1	2	0	0	1	0	0	6
44	Fili-Aime', La'Tia		0-0	0-0	0-0	0	0	0	1	0	0	0	0	0	5
Totals			24-51	7-17	14-17	4	30	34	33	69	13	23	1	12	200
Game															
FG % 1st Half: 12-28			42.9%	2nd half: 12-23	52.2%	Game: 24-51		47.1%							Deadball
FT % 1st Half: 5-8			62.5%	2nd half: 2-3	66.7%	Game: 14-17		82.4%							Rebounds
FT % 1st Half: 0-0			0.0%	2nd half: 1-2	50.0%	Game: 1-1		100%							



# 2015-16 BOX SCORES



Official Basketball Box Score -- Game Totals -- Final Statistics  
**Samford vs Jacksonville State**  
 11/24/15 5:30 p.m. at Jacksonville, Ala. (Pete Mathews Col.)



## Samford 50 • 4-1

#	Player	Total		3-Ptr		Rebounds			PF	TP	A TO Blk			Stl	Min
		FG-FGA	FG-FGA	FT-FTA	Off Def Tot	PF	TP	A TO Blk							
03	Destiney Elliott	f	0-6	0-1	2-2	0	12	12	2	2	1	3	1	2	25
10	Taylor Reece	f	3-10	2-7	0-0	0	3	3	1	11	2	0	1	0	24
11	Amara Mayers	g	8-10	0-1	0-1	2	5	7	0	16	0	4	0	4	29
12	Krista Stricklin	g	2-4	0-0	2-2	0	0	0	1	6	0	0	1	0	23
13	Brittany Stevens	g	1-5	1-3	2-2	0	3	3	4	5	1	3	0	3	37
04	Lydia McGee	g	3-7	0-1	0-0	3	1	4	2	6	0	4	0	0	19
05	Kassidy Blevins	g	0-0	0-0	0-0	0	2	2	1	0	0	1	0	1	11
22	Ellen Riggins	g	2-8	0-3	0-2	0	2	2	0	4	0	1	0	0	16
31	Cassidy Williams	g	0-1	0-1	0-0	1	1	2	1	0	0	1	0	0	16
Team						1	4	5							
Totals		19-51	3-17	9-13	7	33	40	12	50	4	17	3	10	200	
FG % 1st Half: 9-26		34.6%	2nd half: 10-25		40.0%	Game: 19-51		37.3%	Deadball Rebounds 2						
3FG % 1st Half: 3-10		30.0%	2nd half: 0-7		0.0%	Game: 3-17		17.6%							
FT % 1st Half: 2-2		100.0%	2nd half: 7-11		63.6%	Game: 9-13		69.2%							

## Jacksonville State 39 • 1-4

#	Player	Total		3-Ptr		Rebounds			PF	TP	A TO Blk			Stl	Min
		FG-FGA	FG-FGA	FT-FTA	Off Def Tot	PF	TP	A TO Blk							
34	PEARSON, Rayven	f	0-3	0-0	0-0	0	1	1	4	0	0	1	1	0	12
04	BENSON, Briana	g	4-15	1-7	0-0	0	5	5	3	9	1	4	1	1	30
11	STRAIN, Courtney	g	3-11	2-6	0-0	1	4	5	2	8	0	1	0	1	37
14	JAMES, Destiny	g	1-7	1-5	3-4	0	8	8	2	6	4	3	1	2	33
24	MORRISON, Gretchen	g	1-5	1-2	0-0	0	0	0	2	3	1	3	0	1	26
03	NAUGHTON, Kelly	g	3-7	2-4	0-0	0	2	2	2	8	1	2	0	2	31
15	LONG, Chloe	g	2-3	0-0	1-2	0	3	3	2	5	1	2	2	0	31
Team						3	3	6							
Totals		14-51	7-24	4-6	4	26	30	17	39	8	16	5	7	200	
FG % 1st Half: 7-25		28.0%	2nd half: 7-26		26.9%	Game: 14-51		27.5%	Deadball Rebounds 2						
3FG % 1st Half: 3-10		30.0%	2nd half: 4-14		28.6%	Game: 7-24		29.2%							
FT % 1st Half: 1-2		50.0%	2nd half: 3-4		75.0%	Game: 4-6		66.7%							

Officials: R-Meadow Overstreet, U1-Kelcey Roegiers, U2-Alex Sheffield  
 Technical fouls: Samford-None, Jacksonville State-None.  
 Attendance: 472

Score by periods		1st	2nd	3rd	4th	Total		
Samford		10	13	15	12	50		
Jacksonville State		9	9	5	16	39		

Last FG - SAM 4th-03:10, JSU 4th-01:06.  
 Largest lead - SAM by 17 4th-08:56, JSU by 3 2nd-07:50.  
 SAM led for 35:01, JSU led for 04:07. Game was tied for 00:52.  
 Score tied - 2 times.  
 Lead changed - 3 times.



Official Basketball Box Score -- Game Totals -- Final Statistics  
**Samford vs Southern Miss**  
 11/28/15 4:30 p.m. at Hattiesburg, Miss. (Reed Green Coliseum)



## Samford 48 • 5-2

#	Player	Total		3-Ptr		Rebounds			PF	TP	A TO Blk			Stl	Min
		FG-FGA	FG-FGA	FT-FTA	Off Def Tot	PF	TP	A TO Blk							
03	Destiney Elliott	f	4-10	1-5	0-0	3	5	8	4	9	2	1	2	1	35
22	Ellen Riggins	f	4-9	1-5	0-0	1	4	5	3	9	3	3	1	0	34
11	Amara Mayers	g	6-11	1-1	1-2	0	4	4	0	14	1	5	0	1	30
12	Krista Stricklin	g	1-6	1-4	0-0	1	2	3	2	3	1	1	0	1	35
13	Brittany Stevens	g	3-5	0-1	1-2	0	3	3	4	7	2	4	0	1	28
05	Kassidy Blevins	g	0-2	0-2	0-0	0	1	1	1	0	1	1	0	0	13
21	Keke Fletcher	g	1-5	1-5	0-0	0	2	2	1	0	2	0	0	0	11
31	Cassidy Williams	g	1-5	1-2	0-0	1	0	1	2	3	0	1	0	0	14
Team						4	3	7							
Totals		20-53	6-25	2-4	10	24	34	17	48	12	18	3	4	200	
FG % 1st Half: 11-25		44.0%	2nd half: 9-28		32.1%	Game: 20-53		37.7%	Deadball Rebounds 1						
3FG % 1st Half: 3-12		25.0%	2nd half: 3-13		23.1%	Game: 6-25		24.0%							
FT % 1st Half: 1-2		50.0%	2nd half: 1-2		50.0%	Game: 2-4		50.0%							

## Southern Miss 56 • 3-2

#	Player	Total		3-Ptr		Rebounds			PF	TP	A TO Blk			Stl	Min
		FG-FGA	FG-FGA	FT-FTA	Off Def Tot	PF	TP	A TO Blk							
02	COTTON, Lashyra	f	2-8	0-1	3-4	0	2	2	1	7	1	1	2	0	26
21	KING, Jayla	f	3-12	0-1	0-0	5	2	7	2	6	0	3	0	2	25
01	VEIGA, Tajanar	g	1-1	0-0	0-0	0	1	1	2	2	2	1	0	0	17
10	CLEMONS, Jerontay	g	3-7	0-0	2-4	0	4	4	8	0	6	0	2	32	
12	DINKINS, Brittany	g	2-6	0-1	2-2	0	3	3	3	6	4	3	0	1	29
03	JEWETT-GILES, Keri	g	2-6	0-1	4-6	0	4	4	1	8	2	0	0	0	23
15	JENKINS, Caitlin	g	5-12	0-0	1-1	7	4	11	1	11	0	0	1	1	27
24	NORRIS, Brittany	g	2-4	2-2	0-0	0	3	3	0	6	0	1	0	0	18
44	WILSON, Shayla	g	0-0	0-0	2-2	1	0	1	0	2	0	0	0	0	3
Team						2	1	3							
Totals		20-56	2-6	14-19	15	24	39	14	56	9	15	4	5	200	
FG % 1st Half: 11-29		37.9%	2nd half: 9-27		33.3%	Game: 20-56		35.7%	Deadball Rebounds 2						
3FG % 1st Half: 1-3		33.3%	2nd half: 1-3		33.3%	Game: 2-6		33.3%							
FT % 1st Half: 8-9		88.9%	2nd half: 6-10		60.0%	Game: 14-19		73.7%							

Officials: R-Ron Harris; U1-Ashley Gilpin; U2-Whitney Dunlap  
 Technical fouls: Samford-None, Southern Miss-None.  
 Attendance: 1262

Score by periods		1st	2nd	3rd	4th	Total		
Samford		10	16	16	6	48		
Southern Miss		11	20	15	10	56		

Last FG - SAM 4th-02:29, USM 4th-08:20.  
 Largest lead - SAM by 2 1st-04:23, USM by 10 4th-08:20.  
 SAM led for 01:11, USM led for 34:51. Game was tied for 03:36.  
 Score tied - 4 times.  
 Lead changed - 2 times.



Official Basketball Box Score -- Game Totals -- Final Statistics  
**Nicholls vs Samford**  
 11/27/15 7:30 p.m. at Hattiesburg, Miss. (Reed Green Coliseum)



## Nicholls 43 • 1-3

#	Player		Total		3-Ptr		Rebounds			PF	TP	A			To	Blk	Stl	Min				
			FG-FGA	FG-FGA	FT-FTA	Off	Def	Total	PF			TP	A	To					Blk			
40	Lilly, Marina	c	3-6	0-0	0-0	0	7	7	4	6	0	3	1	0	25							
05	Pawlowski, Hope	g	2-5	0-1	0-0	0	3	3	4	4	4	7	0	3	30							
14	Deakin-Sharp, Sammi	g	5-9	1-1	2-3	0	2	2	4	13	4	5	0	2	31							
15	Hamilton, Airi	g	1-6	0-0	0-0	0	0	0	2	2	1	4	0	0	20							
20	Barris, Cassidy	g	1-3	0-1	0-0	1	7	8	2	2	3	4	2	1	38							
01	Mandic, Jovana	g	1-2	0-0	0-0	0	1	1	1	2	0	1	1	0	10							
12	Black, Karissa	g	0-0	0-0	0-0	0	0	0	1	0	0	1	0	0	1							
22	Coleman, Brenisha	g	1-1	0-0	0-0	0	0	0	0	2	0	0	0	0	2							
30	Brown, Karrington	g	2-2	1-1	0-0	0	1	1	2	5	0	3	0	1	13							
32	McCarthy, LiAnn	g	3-12	1-6	0-0	0	7	7	3	7	0	0	0	0	30							
Team							2		3		5											
Totals			19-46		3-10		2-3		31			33		23		43		12	28	4	7	200
FG % 1st Half: 12-20 60.0% 2nd half: 7-26 26.9% Game: 19-46 41.3% Deadball																						
3FG % 1st Half: 3-6 50.0% 2nd half: 0-4 0.0% Game: 3-10 30.0% Rebounds																						
FT % 1st Half: 0-0 0.0% 2nd half: 2-3 66.7% Game: 2-3 66.7% 0																						

# 2015-16 BOX SCORES



Official Basketball Box Score -- Game Totals -- Final Statistics  
**Samford vs UT Martin**  
 12/5/15 2 p.m. at Elam Center - Martin, Tenn.



## Samford 50 • 6-3

#	Player	Total		3-Ptr		Rebounds			PF	TP	A	TO	Blk	Stl	Min
		FG-FGA	FG-FGA	FT-FTA	FT-FTA	Off	Def	Tot							
03	Destiney Elliott	5-12	1-3	2-4	2-4	7	11	18	3	13	2	1	1	1	35
10	Taylor Reece	2-11	0-4	0-0	0-0	0	2	2	2	4	2	1	0	0	27
11	Amara Mayers	3-7	1-2	0-0	0-0	1	6	7	2	7	2	1	0	0	30
12	Krista Stricklin	1-5	0-2	0-0	0-0	1	1	2	2	1	4	0	0	0	25
13	Brittany Stevens	4-5	1-1	0-0	0-0	1	1	2	3	9	2	5	0	0	30
05	Kassidy Blevins	3-8	3-7	0-0	0-0	0	2	2	0	9	0	0	0	0	20
21	Keke Fletcher	0-0	0-0	0-0	0-0	0	0	0	0	0	0	0	0	0	4
22	Ellen Riggins	0-2	0-2	0-0	0-0	0	3	3	0	0	1	0	0	0	13
31	Cassidy Williams	2-5	2-5	0-0	0-0	0	0	0	0	6	0	2	0	0	16
Team						0	1	1							
Totals		20-55	8-26	2-4	2-4	10	27	37	11	50	10	14	1	4	200
FG % 1st Half: 9-26		34.6%	2nd half: 11-29	37.9%	Game: 20-55	36.4%	Deadball								
3FG % 1st Half: 3-11		27.3%	2nd half: 5-15	33.3%	Game: 8-26	30.8%	Rebounds								
FT % 1st Half: 2-2		100.0%	2nd half: 0-2	0.0%	Game: 2-4	50.0%									

## UT Martin 52 • 4-4

#	Player	Total		3-Ptr		Rebounds			PF	TP	A	TO	Blk	Stl	Min
		FG-FGA	FG-FGA	FT-FTA	FT-FTA	Off	Def	Tot							
00	RUFFIN, DaiJia	5-14	2-6	2-2	2-2	1	7	8	1	14	3	3	1	0	35
14	ROBERTS, Chelsea	0-1	0-1	2-2	2-2	1	10	11	1	2	5	0	0	1	40
20	SCHUBERT, Katie	5-11	1-4	1-1	1-1	0	1	1	1	12	2	2	0	2	40
21	WARD, Jessy	1-7	0-5	0-0	0-0	0	2	2	0	2	2	2	0	0	26
23	HOWARD, Haley	5-10	4-8	2-2	2-4	6	4	16	0	4	16	0	2	1	37
04	ROBERTSON, Emanyne	1-2	0-1	0-0	0-0	0	1	1	0	2	0	2	0	1	8
33	TAYLOR, Myah	2-6	0-3	0-0	0-0	0	0	0	0	4	1	1	0	0	14
Team						1	1	2							
Totals		19-51	7-28	7-7	7-7	5	26	31	7	52	13	12	2	6	200
FG % 1st Half: 11-24		45.8%	2nd half: 8-27	29.6%	Game: 19-51	37.3%	Deadball								
3FG % 1st Half: 4-12		33.3%	2nd half: 3-6	18.8%	Game: 7-28	25.0%	Rebounds								
FT % 1st Half: 4-4		100.0%	2nd half: 3-3	100.0%	Game: 7-7	100.0%									

Officials: Doug Klenc, Wendy Dailey, Kerry Winders  
 Technical fouls: Samford-None. UT Martin-None.  
 Attendance: 740

Score by periods	1st	2nd	3rd	4th	Total
Samford	12	11	11	16	50
UT Martin	16	14	6	16	52

Last FG - SAM 4th-00:08, UTM 4th-00:59.  
 Largest lead - SAM by 4 3rd-05:55, UTM by 10 2nd-01:48.  
 SAM led for 08:42, UTM led for 28:49. Game was tied for 02:11.

	In	Off	2nd	Fast	Bench
Points	Paint	T/O	Chance	Break	
SAM	18	14	8	6	15
UTM	20	12	6	2	6

Score tied - 5 times.  
 Lead changed - 5 times.



Official Basketball Box Score -- Game Totals -- Final Statistics  
**Samford vs Indiana**  
 12/11/15 7 p.m. at Bloomington, Ind. (Assembly Hall)



## Samford 56 • 6-4

#	Player	Total		3-Ptr		Rebounds			PF	TP	A	TO	Blk	Stl	Min
		FG-FTA	FG-FGA	FT-FTA	FT-FTE	Off	Def	Tot							
03	Destiney Elliott	f	8-12	4-6	0-0	1	8	9	4	20	1	1	2	1	42
10	Taylor Reece		5-16	2-7	0-0	0	4	12	2	3	3	2	3	3	35
11	Amara Mayers		1-5	0-1	0-0	0	2	2	3	2	1	5	0	1	22
12	Krista Stricklin		4-10	1-5	1-4	1	9	10	3	10	1	3	0	0	36
13	Brittany Stevens	g	1-3	0-1	0-0	2	4	6	4	2	4	4	0	1	40
05	Kassidy Blevins	g	3-9	1-5	1-2	1	3	4	8	1	1	2	2	30	
21	Keke Fletcher		0-0	0-0	0-0	0	0	0	0	0	0	0	0	1	3
22	Ellen Riggins		1-1	0-0	0-0	0	1	1	2	2	1	2	1	0	10
31	Cassidy Williams		0-0	0-0	0-0	0	0	0	0	0	0	0	0	0	7
Team						1	1	2			1				
Totals			23-55	8-25	2-6	6	28	34	24	56	11	20	9	7	225
FG % 1st Half: 12-25		48.0%	2nd half: 10-25		40.0%	OT: 1-5	20.0%	Game: 23-55		41.8%	Deadball				
3FG % 1st Half: 5-11		45.5%	2nd half: 2-11		18.2%	OT: 1-3	33.3%	Game: 8-25		32.0%	Rebounds				
FT % 1st Half: 1-2		50.0%	2nd half: 0-0		0.0%	OT: 1-4	25.0%	Game: 2-6		33.3%					

## Indiana 65 • 7-2

#	Player	Total		3-Ptr		Rebounds			PF	TP	A	TO	Blk	Stl	Min
		FG-FGA	FG-FGA	FT-FTA	Off	Def	Tot								
33	Amanda Cahill	6-18	2-6	5-5	4	7	11	1	19	2	3	1	3	38	
43	Jenn Anderson	3-7	0-0	3-3	1	0	1	0	9	0	1	0	0	21	
03	Tyra Buss	3-12	0-3	15-17	2	7	9	1	21	3	6	0	5	41	
23	Alexis Gassion	5-13	0-1	3-4	6	7	13	0	13	2	0	1	2	40-	
24	Tyshee Towner	1-4	0-2	0-0	1	1	2	0	2	0	1	0	0	29	
02	Jess Walter	0-4	0-2	1-2	0	2	2	2	1	0	1	0	1	19	
11	Kym Royster	0-1	0-0	0-0	0	0	0	0	2	0	0	0	0	4	
21	Karlee McBride	0-1	0-0	0-0	1	0	1	0	0	0	2	0	0	5	
40	Lyndsay Leikem	0-3	0-2	0-0	2	3	5	2	0	2	0	0	0	28	
Team		18-63	2-16	27-31	19	28	47	8	65	9	14	2	11	225	
Totals		18-63	2-16	27-31	19	28	47	8	65	9	14	2	11	225	
FG % 1st Half: 9-29		31.0%	2nd half: 7-25	28.0%	OT: 2-9	22.2%	Game: 18-63	28.6%	Deadball						
3FG % 1st Half: 0-10		0.0%	2nd half: 1-4	25.0%	OT: 1-2	50.0%	Game: 2-16	12.5%	Rebounds						
FT % 1st Half: 6-6		75.0%	2nd half: 13-14	92.9%	OT: 8-9	88.9%	Game: 27-31	87.1%	1						

Officials: Laura Morris, Doug Knight, Katie Lukanich  
 Technical fouls: Samford-Kassidy Blevins. Indiana-None.  
 Attendance: 3088

Score by periods	1st	2nd	3rd	4th	OT	Total
Samford	20	10	15	7	4	56
Indiana	14	10	22	6	13	65

Last FG - SAM OT-00:26, IND OT-01:09.  
 Largest lead - SAM by 11 3rd-04:00, IND by 10 OT-00:36.  
 SAM led for 25:39, IND led for 11:15. Game was tied for 08:06.

Score tied - 3 times.  
 Lead changed - 4 times.



Official Basketball Box Score -- Game Totals -- Final Statistics  
**Samford vs Georgia Tech**  
 12/13/15 2:00 pm ET at Atlanta, Ga. (McCamish Pavilion)



## Samford 55 • 6-5

#	Player	Total			3-Ptr			Rebounds			PF	TP	A	TO	Blk	Stl	Min
		FG	FGA	FG-FGA	FT	FTA	FT-FTA	Off	Def	Tot							
03	Destiney Elliott	f	1-7	0-3	1-2	4	3	7	4	3	3	2	0	1	37		
10	Taylor Reece	f	0-6	0-1	0-0	1	1	2	1	0	0	3	0	0	15		
11	Amara Mayers	g	1-5	1-3	0-2	1	1	2	1	3	0	1	0	1	15		
12	Krista Stricklin	g	6-8	3-4	1-2	0	3	3	4	16	1	0	0	1	35		
13	Brittany Stevens	g	1-6	0-3	2-2	0	2	2	2	4	3	3	0	0	21		
05	Kassidy Blevins		5-9	4-8	0-0	0	1	1	0	14	1	1	0	2	27		
22	Ellen Riggins		4-6	0-0	4-4	1	4	5	3	12	5	3	1	2	28		
31	Cassidy Williams		1-4	1-4	0-0	0	5	5	1	3	1	2	0	1	22		
Team						2	0	2				1					
Totals			19-51	9-26	8-12	9	20	29	16	55	14	16	1	8	200		
FG % 1st Half: 9-27		33.3%	2nd half: 10-24	41.7%	Game: 19-51	37.3%	Deadball										
3FG % 1st Half: 3-11		27.3%	2nd half: 6-15	40.0%	Game: 9-26	34.6%	Rebounds										
FT % 1st Half: 3-6		50.0%	2nd half: 5-8	63.3%	Game: 8-12	66.7%											



**Samford 41 • 7-6**

#	Player	Total		3-PT		Rebounds											
		FG	FTA	FG	FTA	Off	Def	Total	PF	TP	A	To	Blk	Stl	Min		
03	Destiny Elliott	-	4-8	2-5	1-2	1	5	6	4	11	2	1	1	3	30		
11	Amara Mayers	-	2-6	0-1	1-2	1	3	4	2	6	1	1	0	0	28		
12	Krista Stricklin	-	1-7	0-1	0-0	2	1	3	1	2	0	0	1	0	27		
13	Brianna Stevens	-	1-4	0-0	0-0	0	1	1	3	2	0	0	0	0	25		
22	Ellen Riggins	-	2-5	0-0	0-0	0	4	4	0	4	1	1	0	0	25		
05	Kassidy Blevins	-	1-6	1-4	0-0	1	1	2	0	3	2	2	0	0	22		
10	Taylor Reece	-	5-12	0-2	2-4	0	2	2	2	12	2	1	2	1	22		
21	Keke Fletcher	-	0-0	0-0	0-0	0	1	1	0	0	0	0	0	1	3		
30	Cassidy Williams	-	0-2	0-2	0-0	0	1	1	0	0	0	0	0	0	6		
Team		-	0	0	0	0	2	2	0	0	0	0	0	0			
Totals		-	16-55	4-19	5-8	5	21	26	12	41	10	8	4	8	200		
FG % 1st Half: 11-25		44.0%	2nd half: 5-10	16.7%	Game: 16-55		28.6%	Rebounds									
3FG % 1st Half: 3-8		25.0%	2nd half: 2-11	18.2%	Game: 4-19		21.1%	2									
FT % 1st Half: 3-6		50.0%	2nd half: 2-2	100.0%	Game: 5-8		62.5%										

UAB 61 • 7-4

#	Player	Total			3-Ptr			Rebounds			A	T	Bk	St	Min
		FG-FG%	FT-FTA	FT-FTA	Off	Def	TP	TP							
04	DUFELMEIER, Bianca	2-7	1-5	0-0	0	7	7	1	5	4	1	0	0	30	
12	FARMER, Keonna	5-15	0-0	2-2	1	3	4	1	12	3	0	0	0	30	
15	WINBORNE, Brittany	6-7	0-0	0-2	3	9	12	1	12	2	3	4	1	33	
20	KUZMANIC, Deanna	5-12	3-5	1-2	1	7	8	1	14	1	3	3	0	32	
21	BLACK, Chelsea	4-6	1-1	7-8	0	3	3	1	16	3	2	2	0	35	
00	LEWIS, Terra	0-0	0-0	0-0	0	0	0	0	0	0	0	0	0	2	
14	GARLAND, Maya	0-1	0-1	0-0	2	2	0	0	0	1	1	0	2	22	
23	ANDERSON, Kayla	0-2	0-0	0-0	1	1	1	0	0	0	1	0	0	11	
24	RAWLS, Kara	1-2	0-0	0-0	1	2	1	3	2	0	0	0	0	25	
41	WEBB, Dyman	0-0	0-0	0-0	0	0	0	0	0	0	0	0	0	2	
	Team	23-52	5-12	10-14	9	35	44	9	61	14	11	7	5	200	
	Totals														
	FG 1st Half: 10-30	33.3%	2nd half: 13-22	59.1%	Game: 23-52	44.2%								Deadball	
	3FG 1st Half: 2-8	25.0%	2nd half: 3-4	75.0%	Game: 5-12	41.7%								Rebounds	
	FT 1st Half: 2-2	100.0%	2nd half: 8-12	66.7%	Game: 10-14	71.4%									

Officials: Mary Day, Meadow Overstreet, Jules Gallien  
Technical fouls: Samford-None. UAB-None.  
Attendance: 323

Score by periods	1st	2nd	3rd	4th	Total
Samford	12	15	10	4	41
UAB	9	15	18	19	61

Points	In Paint	Off T/O	2nd Chance	Fast Break	Bench
SAM	20	12	2	2	15
LIAR	18	4	4	3	2

Last FG - SAM 4th-03:06, UAB 4th-03:43.  
Largest lead - SAM by 4 3rd-09:03, UAB by 20 4th-00:13.  
SAM led for 10:21. UAB led for 24:26. Game was tied for 05:13.

Score tied - 6 times.  
Lead changed - 6 times



Official Basketball Box Score -- Game Totals -- Final Statistics  
**Samford vs LSU**  
**12/28/15 7:01 PM at Baton Rouge, La. (Maravich Center)**



Samford 47 • 8-6

#	Player		Total		3-Pr		Rebounds					A	T	Blk	St	Min
			FG	FGA	FG	FGA	FT	FTA	Off	Def	TP					
03	Destiny Elliott	f	2-7	1-3	2-2	1	4	5	3	7	1	2	2	2	27	
22	Ellen Riggins	f	0-4	0-2	3-6	1	1	2	3	3	0	0	0	0	14	
11	Amara Mayers	g	2-4	0-0	0-2	1	2	3	1	4	1	5	0	0	23	
12	Krista Stricklin	g	0-4	0-4	0-2	2	4	6	1	0	1	2	1	0	24	
13	Brittany Stevens	g	2-3	1-1	2-2	0	1	1	2	7	3	1	0	1	40	
05	Kassidy Blevins		3-11	3-7	0-0	3	3	6	1	9	3	1	0	1	28	
10	Taylor Reece		5-9	2-5	2-4	0	4	4	2	14	1	1	2	0	18	
21	Keke Fletcher		1-1	1-1	0-0	1	1	2	0	3	0	0	0	0	21	
31	Cassidy Williams		0-3	0-3	0-0	1	0	1	0	0	0	0	0	0	5	
	Team					5	3	8			2					
	Totals		15-46	8-26	9-18	15	25	38	13	47	10	14	5	4	200	
	FG % 1st Half:	8-20	40.0%	2nd half:	7-26	26.9%	Game:	15-46	32.6%						Deadball	
	3FG % 1st Half:	6-16	37.5%	2nd half:	2-10	20.0%	Game:	8-26	30.8%						Rebounds	
	FT % 1st Half:	4-8	50.0%	2nd half:	5-10	50.0%	Game:	9-18	50.0%						6	

LSU 44 • 6-7

#	Player		Total	3-Ptr	Rebounds												
			FG-FGA	FG-FGA	FT-FTA	Off	Def	Total	PF	TP	A	To	Bk	St			Min
31	JONES, Ann	f	2-5	1-2	0-0	1	2	3	2	5	1	2	0	1	25		
02	NORTON, Shanice	f	1-6	0-1	0-0	1	2	3	4	2	1	2	0	2	18		
04	PEDERSEN, Anne	g	6-10	1-1	2-2	3	3	6	5	15	2	1	0	1	30		
10	RHODES, Jasmine	f	3-5	0-0	0-0	2	2	4	3	6	0	0	2	1	30		
13	HILL, Rina	g	4-10	0-0	0-0	1	2	3	1	8	4	2	0	0	40		
01	DEEMER, Jenna	f	1-10	0-3	4-4	1	4	5	2	6	0	0	0	2	30		
20	HYDER, Alexis	f	1-8	0-0	0-0	2	3	5	1	2	0	1	1	0	18		
32	QUINN, Constance	f	0-0	0-0	0-0	0	0	0	1	0	0	0	0	0	7		
35	FAREO, Allylah	f	0-0	0-0	0-0	1	1	2	0	0	0	0	0	0	2		
	Team					1	0	1			1						
	Totals		18-54	2-7	6-6	13	19	32	21	44	8	9	3	7	200		
	FG % 1st Half:	7-26	26.9%	2nd half:	11-28	39.3%	Game:	18	54	33.3%							Deadball
	3FG % 1st Half:	2-5	40.0%	2nd half:	0-2	0.0%	Game:	2-7	28.6%								Rebounds
	FT % 1st Half:	2-2	100.0%	2nd half:	4-4	100.0%	Game:	6-6	100.0%								

Officials: Laura Morris, Ed Sidlasky, Carla Fountain  
Technical fouls: Samford-None. LSU-None.  
Attendance: 2511

Score by periods	1st	2nd	3rd	4th	Total
Samford	12	14	11	10	47
USU	8	10	14	12	44

Points	In Paint	Off T/O	2nd Chance	Fast Break	Bench
SAM	12	3	9	0	26
LSU	22	0	12	0	0

Last FG - SAM 4th-00:31, LSU 4th-00:59.  
Largest lead - SAM by 10 2nd-01:36, LSU by 2 1st-09:32.  
SAM led for 35:11. LSU led for 02:43. Game was tied for 02:06.



Official Basketball Box Score -- Game Totals -- Final Statistics  
**Harvard vs Samford**  
**1/2/16 2 p.m. at Birmingham, Ala. (Pete Hanna Center)**



Harvard 60 • 5-7

#	Player	Total			3-Ptr			Rebounds									
		FG	FGA	FG%	FT	FTA	FT%	Off	Def	Total	PF	TP	A	To	Bk	Stl	Min
24	AnnMarie Healy	1	5-9	0-1	6-8	2	3	5	3	16	0	1	0	1	0	0	22
00	Nani Redford	0	1-7	0-1	2-2	2	4	6	0	4	2	4	2	0	0	0	33
02	Shilpa Tummalala	0	5-10	4-7	0-0	1	1	2	2	14	2	12	2	0	0	4	32
12	Kit Metoyer	0	4-8	2-5	2-2	1	4	5	2	14	3	4	0	2	2	35	
20	Madeline Raster	0	1-6	0-1	0-0	1	6	7	1	2	1	3	0	0	0	22	
10	Destiny Nunley	0	2-9	0-0	1-2	1	5	6	0	5	1	1	0	1	0	19	
11	Kirby Porter	0	1-4	0-0	1-2	2	1	3	2	3	1	1	0	1	0	1	15
21	Taylor Finley	0	0-1	0-0	0-0	1	0	1	2	0	0	1	0	1	0	1	10
25	Sydney Skinner	0	0-3	0-0	4-4	2	3	5	0	4	0	2	1	1	1	1	12
	Team							3	0	3					1		
	Totals		19-57	6-15	16-20	16	27	43	12	60	12	16	1	0	0	0	200
	FG % 1st Half:	10-32	31.3%	2nd half:	9-25	36.0%	Game:	19-57	33.3%								Deadball
	3FG % 1st Half:	4-10	40.0%	2nd half:	2-5	40.0%	Game:	6-15	40.0%								Rebounds
	FT % 1st Half:	7-8	87.5%	2nd half:	9-12	75.0%	Game:	16-20	80.0%								

Samford 54 • 8-7

#	Player	Total			3-Ptr		Rebounds							
		FG-FGA	FT-FGA	FT-FTA	Off	Def	Total	PF	TP	A	To	Bk	Stl	Min
03	Destiny Elliott	1-6	0-2	0-0	3	1	4	1	2	0	1	1	0	21
10	Taylor Reece	2-7	1-3	4-4	0	3	3	4	9	1	3	0	0	24
11	Amara Mayers	2-6	0-1	3-4	0	6	6	1	7	0	3	0	1	26
12	Krista Stricklin	1-6	0-1	0-0	2	2	2	2	2	2	1	1	2	26
15	Brittany Stevens	3-3	0-1	0-0	3	3	2	2	2	2	0	0	0	26
05	Kassidy Blevins	7-12	5-9	0-0	0	2	2	2	19	1	2	1	0	24
21	Keke Fletcher	3-4	0-1	0-0	0	0	0	6	1	1	0	0	0	19
22	Ellen Riggins	1-4	0-1	0-0	0	2	2	2	3	2	1	0	1	16
31	Cassidy Williams	2-4	1-3	0-0	0	1	1	2	5	0	2	0	0	15
	Totals				0	5	5			1				
	Total	20-52	7-22	7-8	5	25	30	15	54	11	16	4	5	200
	FG % 1st Half: 10-26	38.5%	2nd half: 10-26	38.5%	Game: 20-52	38.5%								Deadball
	3FG % 1st Half: 2-8	25.0%	2nd half: 5-11	45.5%	Game: 7-22	31.8%								Rebounds
	FT % 1st Half: 3-4	75.0%	2nd half: 4-4	100.0%	Game: 7-8	87.5%								

Officials: Joe Cunningham, Meadow Overstreet, Daniel Drake  
Technical fouls: Harvard-None. Samford-None.  
Attendance: 429

Score by periods	1st	2nd	3rd	4th	Total
Harvard	21	10	16	13	60
Samford	10	15	15	14	54

Points	In Paint	Off T/O	2nd Chance	Fast Break	Bench
HARV	22	13	18	4	12
SAM	18	15	2	2	32

Last FG - HARV 4th-03:16, SAM 4th-00:05.  
Largest lead - HARV by 12 4th-06:54, SAM by 3 1st-06:27.  
HARV led for 36:08. SAM led for 03:36. Game was tied for 00:16.

Score tied - 0 times.  
Lead changed - 3 times.



Official Basketball Box Score -- Game Totals -- Final Statistics  
**Samford vs Western Carolina**  
**1/7/16 7:00 PM at Cullowhee, NC**



**Samford 59 • 9-7, 1-0**

#	Player	Total		3-Ptr		Rebounds				A	T	Bk	Stl	Min
		FG-FGA	FT-FTA	FG-FGA	FT-FTA	Off	Def	Tot	TP					
03	Destiny Elliott	f 7-11	0-1	2-2	0	7	8	4	14	0	3	0	0	23
10	Taylor Reece	f 4-9	0-1	0-0	1	1	1	13	0	0	0	0	1	22
11	Amara Mayers	g 4-10	0-1	2-4	3	1	4	0	4	1	1	0	0	23
12	Krista Stricklin	g 7-8	1-2	0-0	1	2	3	4	15	1	1	0	1	35
16	Brittany Stevens	g 2-7	0-0	0-0	1	2	3	1	4	2	0	0	0	20
95	Kassidy Blevins	2-4	0-0	0-0	0	2	2	1	4	3	0	0	1	22
06	Kate Fletcher	0-0	0-0	0-0	1	1	2	1	0	1	0	0	0	17
22	Ellen Riggins	3-5	0-0	2-2	1	4	5	4	8	0	0	0	0	18
31	Cassidy Williams	0-0	0-0	0-0	0	0	0	1	0	0	4	0	0	11
	Team				2	3	5			2				
	Totals	26-48	1-7	6-10	10	24	34	19	59	10	17	1	3	200
	FG % 1st Half: 15-24	62.5%	2nd half: 11-24	45.8%	Game: 26-48	54.2%								Deadball
	3FG % 1st Half: 1-3	33.3%	2nd half: 0-0	0.0%	Game: 1-3	14.3%								Rebounds
	FT % 1st Half: 2-2	100%	2nd half: 4-8	50.0%	Game: 6-10	60.0%								

Western Carolina 42 • 4-11, 0-1

#	Player	F	FG	FGA	3-Ptr	FT	FTA	Rebounds	Off	Def	Tot	PF	TP	A	To	Bk	Sl	Min
11	Bonner,Sherae	f	1-5	0-0	-2-8	3	6	9	4	4	0	3	3	0	27			
44	Mack,Brianne	f	0-0	0-0	0-0	0	0	0	0	0	0	1	0	0	5			
43	Hough,Kiya	g	3-9	1-3	0-0	0	2	2	1	7	1	1	0	0	32			
22	Easter,Ea	g	3-6	1-1	0-2	0	1	1	3	7	1	4	0	0	26			
31	Farrington,Raziyah	g	0-2	0-0	0-0	0	0	0	1	0	1	1	0	0	11			
15	Simpson,Lindsay		4-8	-2-6	-2-2	0	1	1	1	12	1	4	0	0	22			
20	Allen,Angel		1-1	0-0	0-0	0	0	0	1	0	1	0	0	0	16			
23	Mitchem,JonTay		2-6	0-1	1-3	2	1	3	0	5	0	0	0	0	14			
25	Joseph,Erika		1-2	0-0	0-0	1	2	3	4	2	0	1	1	3	27			
34	Brown,Juli		0-0	0-0	-2-2	0	0	0	2	2	0	0	0	0	9			
37	Burleson,Lindsey		1-1	0-0	0-0	0	0	0	1	1	0	0	1	0	8			
52	Hatfield,Emily		0-1	0-0	-1-2	0	0	0	0	1	0	0	0	0	3			
	Team					1	2	3			1							
	Totals		15-41	4-11	8-19	7	15	22	18	42	5	17	4	4	200			
	FG % 1st Half:	4-18	22.2%	2nd half:	4-23	47.8%	Game:	15-41	36.6%									Deadball
	3FG % 1st Half:	1-3	33.3%	2nd half:	3-8	37.5%	Game:	3-15	20.0%									Rebounds
	FT % 1st Half:	1-6	16.7%	2nd half:	7-13	53.8%	Game:	8-19	42.1%									

Officials: Lori Jones, Kim Crabtree, Tim Bostic  
Technical fouls: Samford-None. Western Carolina-None  
Attendance: 537

Score by periods	1st	2nd	3rd	4th	Total
Samford	17	16	16	10	59
Western Carolina	4	6	13	19	42

	In Paint	Off T/O	2nd Chance	Fast Break	Bench
SAM	50	15	9	2	12
WCU	12	11	0	0	24

Last FG - SAM 4th-00:04, WCU 4th-00:33.  
Largest lead - SAM by 29 3rd-02:53, WCU by 2 1st-09:04.  
SAM led for 36:58. WCU led for 01:21. Game was tied for 01:41

Score tied - 1 time.  
Lead changed - 1 time.

# 2015-16 BOX SCORES



Official Basketball Box Score -- Game Totals -- Final Statistics  
**Samford vs UNCG**  
 1/9/16 2:00 p.m. at Greensboro, N.C. (Fleming Gymnasium)



## Samford 57 • 10-7, 2-0 SoCon

#	Player	Total		3-Ptr		Rebounds			PF	TP	A	TO	Blk	Stl	Min
		FG-FGA	FG-FGA	FG-FGA	FT-FTA	Off	Def	Tot							
03	Destiney Elliott	f	5-11	1-2	0-0	2	7	9	2	11	2	5	1	0	28
10	Taylor Reece	f	7-12	1-1	0-0	2	1	3	3	15	2	1	0	0	26
11	Amara Mayers	g	2-6	0-0	1-3	0	3	3	2	5	3	5	0	1	23
12	Krista Stricklin	g	0-3	0-1	4-6	1	3	4	3	4	1	1	1	0	35
13	Brittany Stevens	g	2-6	1-1	2-2	0	2	2	3	7	2	9	0	4	37
06	Kassidy Blevins		3-7	2-6	0-0	0	3	3	2	8	1	2	0	1	22
21	Keke Fletcher		1-4	0-3	0-0	0	1	1	0	2	1	0	1	0	12
22	Ellen Riggins		2-5	0-0	1-2	0	1	1	2	5	1	1	0	1	14
31	Cassidy Williams		0-0	0-0	0-0	0	0	0	1	0	0	0	0	0	3
Team						3	5	8				1			
Totals			22-54	5-14	8-13	8	26	34	18	57	13	25	3	7	200
FG % 1st Half:		9-28	32.1%	2nd half:	13-26	50.0%	Game:		22-54	40.7%	Deadball				
3FG % 1st Half:		3-8	37.5%	2nd half:	2-6	33.3%	Game:		5-14	35.7%	Rebounds				
FT % 1st Half:		3-4	75.0%	2nd half:	5-9	55.6%	Game:		8-13	61.5%					

## UNCG 52 • 8-9, 0-2 SoCon

#	Player	Total		3-Ptr		Rebounds			PF	TP	A	TO	Blk	Stl	Min
		FG-FGA	FG-FGA	FG-FGA	FT-FTA	Off	Def	Tot							
22	India Timpton	f	0-3	0-0	2-4	2	0	2	3	2	1	2	1	3	29
44	Mariah Wilson	c	0-1	0-0	0-0	2	1	3	2	0	0	0	3	1	9
03	Jazmine Missouri	g	2-6	0-0	1-1	1	3	4	4	5	1	2	0	2	33
12	Lucy Mason	g	7-15	0-2	4-4	0	5	5	5	18	2	4	0	2	35
25	Shanese Harris	g	5-13	0-0	2-2	1	5	6	2	12	1	5	0	2	31
01	Keli Foster		2-4	0-1	1-2	0	0	0	1	5	0	3	0	2	13
02	Kaitlin Callahan		0-0	0-0	0-0	0	1	1	0	0	1	2	1	0	4
10	Gena Penick		0-1	0-0	0-0	1	2	3	1	0	0	2	0	0	13
14	Bailey Williams		0-2	0-1	3-4	0	1	1	0	3	0	1	0	0	3
15	Jade Scaife		1-6	0-0	5-6	1	4	5	2	7	0	0	0	2	30
Team						0	2	2							
Totals			17-51	0-4	18-23	8	24	32	20	52	6	21	5	14	200
FG % 1st Half:		7-26	26.9%	2nd half:	10-25	40.0%	Game:		17-51	33.3%	Deadball				
3FG % 1st Half:		0-2	0.0%	2nd half:	0-2	0.0%	Game:		0-4	0.0%	Rebounds				
FT % 1st Half:		4-6	66.7%	2nd half:	14-17	82.4%	Game:		18-23	78.3%					

Officials: Eric Brewton, Kristi Vera, Marie Christian  
 Technical fouls: Samford-None. UNCG-None.

Attendance: 252

Score by periods	1st	2nd	3rd	4th	Total
Samford	19	5	15	18	57
UNCG	7	11	16	18	52

Points	In	Off	2nd	Fast	Bench
Paint	T/O	Chance	Break		
SAM	26	16	4	4	15
UNCG	22	20	4	10	15

Last FG - SAM 4th-01:54, UNCG 4th-02:37.

Largest lead - SAM by 15 1st-04:26, UNCG by 2 1st-09:40.

SAM led for 36:08, UNCG led for 00:58. Game was tied for 00:54.

Score tied - 2 times.

Lead changed - 5 times.

## RECORDS

### TEAM RECORDS

Points: 101, vs. Florida Atlantic (1/9/99)  
First-Half Points: 50, vs. Florida Atlantic (1/9/99)  
Second-Half Points: 54, vs. Centenary (12/19/99)  
vs. Troy State (3/9/00)  
Field Goals Made: 39, vs. Troy State (3/9/00)  
Field-Goal Attempts: 84, vs. Centenary (12/19/99)  
Field-Goal Percentage: .628 (27-43), vs. Central Conn, (12/29/10)  
3-Point Field Goals Made: 15, vs. East Tennessee State (11/17/07); 15 vs. Wofford (1/26/09); 15 vs. Berry College (12/7/10); 15 at Saint Peter's (12/30/10)  
3-Point Field-Goal Attempts: 33, vs. Wofford (1/26/09)  
3-Point Field-Goal Percentage: .727 (8-11), at Belmont (3/1/03)  
Free Throws Made: 40, vs. Southeast Missouri (12/18/05)  
Free Throws Attempted: 46, vs. Southeast Missouri (12/18/05)  
Free-Throw Percentage (min. 10 att.): 1.000 (14-14), vs. Davidson (1/19/09); 1.000 (12-12) vs. Clemson (12/12/10); 1.000 (12-12) at St. Peter's (12/30/10)  
Rebounds: 65, vs. Troy State (3/9/00)  
Assists: 24, 10 times, last vs. AUM (11/15/15)  
Steals: 22, vs. Troy State (2/26/98)  
Blocks: 12, vs. Central Florida (1/27/00)  
Turnovers: 40, at UNO (12/13/97) 40, at Fla International (2/12/98)

### INDIVIDUAL GAME RECORDS

Most Points: 35, Emily London, at Davidson (1/9/10)  
Most Field Goals Made: 14, Jodi Morris, at Florida Atlantic (2/25/99); Jodi Morris, vs. Campbell (3/10/00)  
Most Field-Goal Attempts: 25, Aimee Cochran, vs. Georgia State (2/28/98)  
Highest Field-Goal Percentage (min. 7 attempts): 1.000, Danielle Pinkston (7-7), at Troy State (1/5/98)  
3-Point Field Goals Made: 7, Chelsee Insell, vs. Eastern Kentucky (2/18/06); Emily London at St. Peter's (12/30/10)  
**3-Point Field-Goal Attempts: 18, Hannah Nichols vs. Mercer (2/2/15)**  
Highest 3-Point Field-Goal Percentage (min. 5 attempts): 1.000 (5-5), Taylor Reece, vs. ETSU (1/31/15), Taylor Reece, vs. Furman (1/17/15)  
Most Free Throws Made: 12, Chelsee Insell, vs. Tennessee State (2/26/04)  
Most Free-Throw Attempts: 14, Giovanni Price, vs. Alabama (11/17/00); Giovanni Price, vs. Washington State (12/29/00); Veronica Pike, vs. Jacksonville State (1/6/04)  
Highest Free-Throw Percentage (min. 8 attempts): 1.000, 15 times, most recent, Emily London (8-8), vs. Western Carolina (3/4/11)

**Most Rebounds: 18, Destiney Elliott, at UT Martin (12/5/15),** Cortney Moore, vs. Charleston (1/8/98)

Most Offensive Rebounds: 9, Cortney Moore, vs. Charleston (1/8/98)

**Most Defensive Rebounds: 11, Destiney Elliott, at UT Martin (12/5/15),** Cortney Moore, vs. Florida Atlantic (2/14/98)

Most Assists: 13, Clarissa Tomlinson, vs. Troy State (3/10/00)

Most Blocked Shots: 7, Cortney Moore, vs. Nicholls State (12/15/97)

Most Steals: 10, Aimee Cochran, vs. Troy State (2/26/98)

### INDIVIDUAL SEASON RECORDS

Most Games Played: 34, Savannah Hill, Monica Maxwell, Paige Anderson, Hannah Dawson, Megan Wilderotter, Alex Crow (2009-10)

Most Games Started: 34, Savannah Hill, Monica Maxwell (2009-10)

Most Points: 535, Emily London (2010-11)

Highest Scoring Average: 18.6, Jodi Morris (1998-99)

Most Field Goals Made: 214, Jodi Morris (1999-2000)

Most Field-Goal Attempts: 428, Jodi Morris (1999-2000)

Highest Field-Goal Percentage: .530, Veronica Pike, 122-230 (2006-07)

3-Point Field Goals Made: 84, Emily London (2010-11)

**3-Point Field-Goal Attempts: 204, Hannah Nichols (2015-16)**

Highest 3-Point Field-Goal Percentage (min. 50 attempts): .488, Emily London, 60-123 (2007-08)

Most Free Throws Made: 117, Emily London (2010-11)

Most Free-Throw Attempts: 156, Giovanni Price (2000-01)

Highest Free-Throw Percentage (min. 50 attempts): .936, Emily London, 117-125 (2010-11)

Most Rebounds: 225, Cortney Moore (1997-98)

Most Offensive Rebounds: 88, Cortney Moore (1997-98)

Most Defensive Rebounds: 137, Cortney Moore (1997-98)

Highest Rebounding Average: 8.7, Cortney Moore (1997-98)

Most Assists: 201, Clarissa Tomlinson (1999-2000)

Highest Assist Average: 6.9, Clarissa Tomlinson (1999-2000)

Most Blocked Shots: 70, Cortney Moore (1997-98)

Highest Blocked-Shot Average: 2.7, Cortney Moore (1997-98)

Most Steals: 78, Aimee Cochran (1997-98)

Best Steal Average: 3.0, Aimee Cochran (1997-98)

### INDIVIDUAL CAREER RECORDS

Most Games Played: 130, Megan Wilderotter (2005-2010)

Most Games Started: 112, Emily London (2007-11)

Most Points: 1,760, Emily London (2007-11)

Highest Scoring Average: 18.6, Jodi Morris (1998-2000)

Most Field Goals Made: 595, Savannah Hill (2007-11)

Most Field-Goal Attempts: 1,306, Alex Munday (2003-08)

Highest Field-Goal Percentage: .502, Emily London (2007-11)

3-Point Field Goals Made: 276, Emily London (2007-11)

3-Point Field-Goal Attempts: 641, Monica Maxwell (2006-10)

Highest 3-Point Field-Goal Percentage (min. 50 attempts): .474, Emily London, (276-582) (2007-11)

Most Free Throws Made: 382, Emily London (2007-11)

Most Free-Throw Attempts: 427, Veronica Pike (2003-07)

Highest Free-Throw Percentage: .897, Emily London, (382-425) (2007-11)

Most Total Rebounds: 725, Cortney Moore (1997-2001)

Most Assists: 463, Aimee Cochran (1997-2001)

Most Blocked Shots: 196, Cortney Moore (1997-2001)

Most Steals: 289, Aimee Cochran (1997-2001)

**Returning players are in bold.**



## ALL-TIME TOP 10

### POINTS

1. Emily London	1,760
2. Alex Munday	1,603
3. Savannah Hill	1,539
4. Aimee Cochran	1,247
5. Monica Maxwell	1,072
<b>6. Taylor Reece</b>	<b>1,058</b>
7. Chelsee Insell	1,008
8. Hannah Dawson	915
9. Jodi Morris	912
10. Paige Anderson	902

### REBOUNDS

1. Cortney Moore	725
2. Savannah Hill	686
3. Hannah Dawson	617
4. Alex Munday	612
5. Noot Pittman	535
6. Giovanni Price	519
7. Emily London	491
<b>8. Krista Stricklin</b>	<b>464</b>
9. Aimee Cochran	444
10. Taryn Towns	432

### ASSISTS

1. Aimee Cochran	463
2. Savannah Hill	376
3. Clarissa Tomlinson	336
4. Cora Beth Smith	332
5. Emily London	303
6. Megan Wilderotter	294
7. Taryn Towns	268
8. LaBrena Friend	239
9. Hannah Dawson	201
10. Jazmine Powers	187

### BLOCKS

1. Cortney Moore	196
2. Savannah Hill	98
<b>3. Taylor Reece</b>	<b>95</b>
4. Christy Robinson	73
5. Jodi Morris	67
6. Veronica Pike	45
7. Monica Maxwell	44
8. Clarissa Tomlinson	43
9. Giovanni Price	42
10. Hannah Dawson	40

### STEALS

1. Aimee Cochran	289
2. Emily London	162
3. Cora Beth Smith	153

4. Megan Wilderotter	151
Clarissa Tomlinson	151
6. Hannah Dawson	131
7. LaBrena Friend	129
8. Monica Maxwell	127
9. Taryn Towns	121
10. Wendi Wilcox	118

### FREE THROWS MADE

1. Emily London	382
2. Alex Munday	295
3. Veronica Pike	294
4. Giovanni Price	278
5. Taryn Towns	258
6. Savannah Hill	228
7. Paige Anderson	217
8. Aimee Cochran	215
9. Chelsee Insell	202
10. Megan Wilderotter	182

### FREE THROWS ATTEMPTED

1. Veronica Pike	427
2. Emily London	424
3. Giovanni Price	390
4. Alex Munday	371
5. Taryn Towns	341
6. Hannah Nichols	332
7. Aimee Cochran	312
8. Savannah Hill	305
9. Paige Anderson	260
10. Megan Wilderotter	253

### 3-POINTERS MADE

1. Emily London	276
2. Monica Maxwell	220
3. Chelsee Insell	202
4. Paige Anderson	149
5. Hannah Dawson	135
<b>6. Hannah Nichols</b>	<b>131</b>
7. Alex Munday	126
<b>8. Taylor Reece</b>	<b>122</b>
9. Savannah Hill	121
10. Aimee Cochran	112

### 3-POINTERS ATTEMPTED

1. Monica Maxwell	641
2. Emily London	582
3. Chelsee Insell	551
4. Hannah Dawson	407
5. Aimee Cochran	381
6. Paige Anderson	379

## ALL-TIME TOP 10

---

7. Alex Munday	359
<b>8. Taylor Reece</b>	<b>341</b>
<b>9. Hannah Nichols</b>	<b>334</b>
10. Cora Beth Smith	257
Sarah Clement	257

### FIELD GOALS MADE

1. Savannah Hill	595
2. Alex Munday	591
3. Emily London	551
4. Aimee Cochran	460
<b>5. Taylor Reece</b>	<b>395</b>
6. Jodi Morris	362
7. Hannah Dawson	327
8. Chelsea Insell	302
9. Veronica Pike	299
10. Cora Beth Smith	292

### FIELD GOALS ATTEMPTED

1. Alex Munday	1,306
2. Savannah Hill	1,255
3. Aimee Cochran	1,193
4. Emily London	1,098
<b>5. Taylor Reece</b>	<b>990</b>
6. Giovanni Price	832
7. Hannah Dawson	825
8. Chelsea Insell	780
9. Cora Beth Smith	774
10. Jodi Morris	724

### GAMES STARTED

1. Hannah Dawson	125
2. Emily London	112
3. Savannah Hill	111
4. Aimee Cochran	109
<b>5. Taylor Reece</b>	<b>104</b>
6. Alex Munday	99
7. Monica Maxwell	95
8. Megan Wilderotter	94
9. Chelsea Insell	92
10. Courtney Moore	90

### GAMES PLAYED

1. Megan Wilderotter	130
2. Hannah Dawson	129
3. Savannah Hill	128
4. Paige Anderson	126
5. Monica Maxwell	125
6. Alex Munday	124
7. Emily London	123
8. Jazmine Powers	122
9. Taryn Towns	119
10. Veronica Pike	115

## RECORD VS ALL OPPONENTS

OPPONENT	GAMES	W	L	LAST	SITE	SCORE
Alabama	9	2	7	11/18/8	A	SU 61 UA 55*
Alabama State	13	9	4	12/17/15	A	SU 54, ASU 35
Alabama A&M	4	3	1	12/1/15	A	SU 54, AAMU 30
Alcorn State	2	1	1	12/6/4	A	ASU 61 SU 48
Appalachian State	15	9	6	2/10/14	H	SU 55, ASU 47
Auburn	2	0	2	12/14/14	A	AU 64, SU 41
Auburn-Montgomery	3	3	0	11/15/15	H	SU 82, AUM 32
Austin Peay	10	7	3	2/9/8	A	SU 65APSU 56*
Baylor	1	0	1	12/13/8	A	BU 63 SU 51
Belmont	6	0	6	3/1/3	A	BU 66 SU 53
Berry College	1	1	0	12/7/10	H	SU 95 BC 59
Birmingham-So	4	3	1	11/20/6	H	SU 73 BSC 66
Campbell	14	1	13	2/22/3	H	CU 60 SU 50
Centenary	2	2	0	11/25/6	N	SU 60 CC 36
Central Connecticut	1	1	0	12/29/10	N	SU 76 CCS 57
Central Florida	10	2	8	2/1/3	H	UCF 71 SU 49
Charleston (S.C.)	12	11	1	2/18/13	A	CC 63 SU 62
Chattanooga	22	6	16	2/21/15	H	UTC 56, SU 49
Clemson	2	1	1	12/12/12	A	CU 63 SU 51
Columbus State	1	0	1	12/3/98	H	CSC 78 SU 74
Cornell	1	1	0	12/29/9	N	SU 62 SU 46
Davidson	14	6	8	3/8/14	N	DC 55, SU 42
Dayton	1	0	1	12/29/5	N	DU 68 SU 59
DePaul	1	0	1	11/12/11	A	DU 86, SU 57
Duke	1	0	1	3/18/12	N	DU 82 SU 47
East Tennessee	3	2	1	2/23/15	H	SU 69, ETSU 46
Eastern Kentucky	12	6	6	3/4/8	H	SU 69 EKU 56
Eastern Illinois	8	5	3	3/1/8	A	EIU 68 SU 60
Elon	15	8	7	3/2/14	H	EU 44, SU 43
Evansville	2	1	1	11/15/9	A	SU 69 UE 66
Florida	1	0	1	12/28/11	A	UF 81 SU 56
Florida Atlantic	12	6	6	11/25/7	A	SU 70 FAU 59
Florida Int	1	0	1	2/12/98	A	FIU 101 SU 33
Florida State	3	0	3	11/11/12	A	FSU 77 SU 42
Furman	15	10	5	3/5/15	N	FU 65, SU 54
Gardner-Webb	2	1	1	2/20/3	H	SU 73GWU 64
George Washington	1	0	1	12/1/7	N	GW 64 SU 57
Georgia Southern	12	9	3	2/1/14	A	SU 58, GSU 43
Georgia State	13	2	11	11/28/14	A	GSU 61, SU 56
Georgia Tech	3	0	3	12/13/15	A	GT 66, SU 55
Harvard	1	0	1	1/2/16	H	HU 60, SU 54
Indiana	1	0	1	12/11/15	A	IU 65, SU 56*
Iowa	1	0	1	12/3/6	A	UI 66 SU 60
Jacksonville	5	3	2	11/19/4	H	SU 61 JU 46
Jacksonville State	32	18	14	11/24/15	A	SU 50, JSU 39
Kansas	1	0	1	12/29/14	A	KU 66, SU 44
Kansas State	1	0	1	12/30/14	A	KSU 60, SU 41
Kentucky	1	0	1	12/21/11	A	UK 90 SU 61
Liberty	1	0	1	11/21/97	A	LU 85 SU 49
Lipscomb	3	3	0	11/24/8	A	SU 62 LU 48
Louisiana—Monroe	1	0	1	12/29/3	N	ULM 71 SU 57
LSU	2	1	1	12/28/15	A	SU 47, LSU 44
Martin Methodist	1	1	0	1/4/3	H	SU 70 MM 58
Maryland	1	0	1	11/24/9	A	UM 76 SU 49
McNeese State	2	2	0	11/21/9	A	SU 72MSU 58
Memphis	3	2	1	11/16/14	A	UM 64, SU 48
Mercer	13	4	9	2/28/15	A	MU 60, SU 65
Miami	1	0	1	11/18/5	A	UM 72SU 51
Michigan State	1	0	1	12/8/0	H	MSU 63 SU 35

Montana	1	1	0	11/11/11	N	SU 59, UM 45
Mississippi State	2	0	2	11/13/15	A	MSU 68, SU 47
Miss Valley State	1	1	0	12/30/3	N	SU 72 MVSU 44
Missouri	1	1	0	11/24/7	N	SU 65 UM 49
Missouri State	1	0	1	3/21/10	A	MSU 75 SU 54
Morehead State	12	8	4	2/14/8	H	SU 57MSU 59
Morris Brown	1	1	0	11/30/2	N	SU 70 MB 50
Murray State	9	3	6	3/7/8	N	MSU 68 SU 56
Navy	1	0	1	11/28/98	N	USNA 63 SU 55
New Orleans	4	2	2	11/21/8	H	SU 58UNO 46
Nicholls State	3	3	0	11/27/15	N	SU 45, NSU 43
Norfolk State	1	1	0	11/28/9	N	SU 70 NSU 33
North Florida	2	1	1	11/24/14	H	SU 81, UNF 47
North Texas	1	1	0	11/27/9	N	SU 67 UNT 53
Oklahoma	1	0	1	12/29/13	A	UO 66, SU 35
Ole Miss	1	1	0	3/18/10	H	SU 66 UM 65
Oregon	1	0	1	12/18/12	A	UO 72, SU 61
Penn State	1	1	0	11/30/14	N	SU 59, PSU 56*
Princeton	2	1	1	11/16/7	H	SU 77 PU 68
Providence	1	1	0	11/27/99	N	SU 73 PC 72
Robert Morris	1	0	1	12/30/0	N	RMC 63 SU 54
Rice	2	0	2	11/29/13	N	Rice 57 SU 52
Saint Peter's Coll	1	1	0	12/30/10	A	SU 67 SPC 53
Shorter	1	1	0	11/21/15	H	SU 53, Shorter 33
South Alabama	1	1	0	11/30/13	N	SU 70, USA 49
South Carolina	1	0	1	12/28/6	A	USC 64 SU 56
South Florida	1	1	0	11/27/10	H	SU 64 USF 47
S.E. Missouri	14	4	10	11/26/11	N	SU 63 SEMO 58
Southern Mississippi	5	1	4	11/28/15	A	USM 56, SU 48
Stetson	10	6	4	2/6/3	H	SU 52 Stet 48
Talladega College	1	0	1	11/14/13	H	TC 50, SU 49
UT Martin	14	5	9	12/5/15	A	UTM 52, SU 50
Tennessee State	11	9	2	11/24/12	H	TSU 57 SU 40
Tennessee Tech	13	6	7	12/6/12	A	TTU 65 SU 56
Texas—San Antonio	1	0	1	12/30/4	A	UTSA 52 SU 48
Texas Tech	1	0	1	11/15/10	A	TTU 58 SU 42
Troy	17	7	10	11/17/15	H	SU 73, Troy 69
Tulane	2	1	1	12/18/14	A	TU 58, SU 56
UAB	4	1	3	12/21/15	A	UAB 61, SU 41
UCLA	1	0	1	12/19/14	N	UCLA 71, SU 52
UNC—Asheville	2	1	1	12/16/3	H	SU 53 UNCA 45
UNCG	16	12	4	1/9/16	A	SU 57, UNCG 52
Utah	1	0	1	12/21/13	A	Utah 69, SU 49
Vanderbilt	2	0	2	11/18/10	A	VU 70 SU 60
Virginia	1	0	1	12/28/9	A	UV 69 SU 60
Washington State	1	0	1	12/29/0	N	WSU 76 SU 49
Western Carolina	17	13	4	1/7/16	A	SU 59, WCU 42
Western Kentucky	1	0	1	11/25/11	N	WKU 58, SU 57
Western Michigan	1	0	1	12/31/4	N	WMU 63 SU 46
Wofford	18	16	2	2/14/15	A	SU 68, WC 43
Totals	549	273	276			

\*overtime game



**2015-16 Samford Women's Basketball**  
**Samford Combined Team Statistics (as of Jan 09, 2016)**  
**All games**



RECORD:	OVERALL	HOME	AWAY	NEUTRAL
ALL GAMES	10-7	3-1	6-6	1-0
CONFERENCE	2-0	0-0	2-0	0-0
NON-CONFERENCE	8-7	3-1	4-6	1-0

#	Player	gp-gs	min	avg	Total		3-Point		F-Throw		Rebounds								a	to	blk	stl	pts	avg
					fg-fga	fg%	3fg-fga	3fg%	ft-fa	ft%	off	def	tot	avg	pf	dq								
03	Destiney Elliott	17-17	473	27.8	58-145	.400	16-45	.356	18-28	.643	35	99	134	7.9	49	1	30	37	15	20	150	8.8		
10	Taylor Reece	16-14	396	24.8	50-137	.365	13-57	.228	23-31	.742	8	28	36	2.3	34	0	20	27	13	5	136	8.5		
11	Amara Mayers	17-17	426	25.1	52-118	.441	7-27	.259	19-42	.452	14	59	73	4.3	20	0	20	40	0	19	130	7.6		
05	Kassidy Blevins	17-0	344	20.2	41-106	.387	31-76	.408	8-10	.800	7	37	44	2.6	20	0	23	21	4	19	121	7.1		
12	Krista Stricklin	17-17	485	28.5	42-111	.378	15-52	.288	15-26	.577	16	40	56	3.3	32	0	19	20	7	10	114	6.7		
13	Brittany Stevens	17-17	535	31.5	32-92	.348	8-27	.296	28-34	.824	8	40	48	2.8	48	0	48	50	0	24	100	5.9		
22	Ellen Riggins	17-3	296	17.4	31-75	.413	2-18	.111	13-21	.619	10	39	49	2.9	27	0	20	31	5	8	77	4.5		
04	Lydia McGee	6-0	71	11.8	10-20	.500	2-5	.400	5-6	.833	5	8	13	2.2	8	0	6	14	1	4	27	4.5		
31	Cassidy Williams	17-0	243	14.3	15-49	.306	11-39	.282	0-0	.000	6	20	26	1.5	17	0	8	24	0	3	41	2.4		
21	Keke Fletcher	14-0	156	11.1	12-30	.400	5-21	.238	0-0	.000	4	15	19	1.4	3	0	8	3	2	5	29	2.1		
	Team										29	51	80					11						
	Total.....	17	3425		343-883	.388	110-367	.300	129-198	.652	142	436	578	34.0	258	1	202	278	47	117	925	54.4		
	Opponents.....	17	3426		302-864	.350	62-233	.266	181-244	.742	152	423	575	33.8	283	-	157	280	53	132	847	49.8		

TEAM STATISTICS	SAM	OPP	Date	Opponent	Score	Att.
SCORING	925	847	11/13/15	at Mississippi State	L 47-68	0
Points per game	54.4	49.8	11/15/15	AUBURN MONTGOMERY	w 82-32	373
Scoring margin	+4.6	-	11/17/15	TROY	w 73-69	469
FIELD GOALS-ATT	343-883	302-864	11/21/15	SHORTER	w 53-33	287
Field goal pct	.388	.350	11/24/15	at Jacksonville State	w 50-39	472
3 POINT FG-ATT	110-367	62-233	# 11/27/15	vs Nicholls	w 45-43	1320
3-point FG pct	.300	.266	# 11/28/15	at Southern Miss	L 48-56	1262
3-pt FG made per game	6.5	3.6	12/1/15	at Alabama A&M	w 54-30	378
FREE THROWS-ATT	129-198	181-244	12/5/15	at UT Martin	L 50-52	740
Free throw pct	.652	.742	12/11/15	at Indiana	Lot 56-65	3088
F-Throws made per game	7.6	10.6	12/13/15	at Georgia Tech	L 55-66	1008
REBOUNDS	578	575	12/17/15	at Alabama State	w 54-35	256
Rebounds per game	34.0	33.8	12/21/15	at UAB	L 41-61	323
Rebounding margin	+0.2	-	12/28/15	at LSU	w 47-44	2511
ASSISTS	202	157	1/2/16	HARVARD	L 54-60	429
Assists per game	11.9	9.2	* 1/7/16	at Western Carolina	w 59-42	537
TURNOVERS	278	280	* 1/9/16	at UNCG	w 57-52	252
Turnovers per game	16.4	16.5				
Turnover margin	+0.1	-				
Assist/turnover ratio	0.7	0.6				
STEALS	117	132				
Steals per game	6.9	7.8				
BLOCKS	47	53				
Blocks per game	2.8	3.1				
ATTENDANCE	1558	12147				
Home games-Avg/Game	4-390	12-902				
Neutral site-Avg/Game	-	1-1320				

\* = Southern Conference game

# = Lady Eagle Thanksgiving Classic (Hattiesburg, Miss.)

Score by Periods	1st	2nd	3rd	4th	OT	Totals
Samford	239	206	254	222	4	925
Opponents	184	209	215	226	13	847





2015-16 Samford Women's Basketball  
Samford Season Schedule/Results & Leaders (as of Jan 09, 2016)  
All games



RECORD:	OVERALL	HOME	AWAY	NEUTRAL
ALL GAMES	10-7	3-1	6-6	1-0
CONFERENCE	2-0	0-0	2-0	0-0
NON-CONFERENCE	8-7	3-1	4-6	1-0

Date	Opponent	Score	Att.	High Points	High Rebounds
11/13/15	at Mississippi State	47-68 L		(13)Brittany Stevens	(5)Amara Mayers
11/15/15	AUBURN MONTGOMERY	W 82-32	373	(15)Taylor Reece (15)Kassidy Blevins	(6)Amara Mayers
11/17/15	TROY	W 73-69	469	(19)Kassidy Blevins	(9)Destiney Elliott
11/21/15	SHORTER	W 53-33	287	(8)Brittany Stevens (8)Cassidy Williams (8)Amara Mayers	(5)Destiney Elliott
11/24/15	at Jacksonville State	W 50-39	472	(16)Amara Mayers	(12)Destiney Elliott
11/27/15	#vs Nicholls	W 45-43	1320	(17)Destiney Elliott	(11)Destiney Elliott
11/28/15	#at Southern Miss	48-56 L	1262	(14)Amara Mayers	(8)Destiney Elliott
12/1/15	at Alabama A&M	W 54-30	378	(14)Amara Mayers	(8)Destiney Elliott
12/5/15	at UT Martin	50-52 L	740	(13)Destiney Elliott	(18)Destiney Elliott
12/11/15	at Indiana	56-65 Lot	3088	(20)Destiney Elliott	(10)Krista Stricklin
12/13/15	at Georgia Tech	55-66 L	1008	(16)Krista Stricklin	(7)Destiney Elliott
12/17/15	at Alabama State	W 54-35	256	(18)Amara Mayers	(9)Destiney Elliott
12/21/15	at UAB	41-61 L	323	(12)Taylor Reece	(6)Destiney Elliott
12/28/15	at LSU	W 47-44	2511	(14)Taylor Reece	(6)Kassidy Blevins (6)Krista Stricklin
1/2/16	HARVARD	54-60 L	429	(19)Kassidy Blevins	(6)Amara Mayers
1/7/16	*at Western Carolina	W 59-42	537	(15)Krista Stricklin	(8)Destiney Elliott
1/9/16	*at UNCG	W 57-52	252	(15)Taylor Reece	(9)Destiney Elliott

\* = Southern Conference game

# = Lady Eagle Thanksgiving Classic (Hattiesburg, Miss.)

Attendance Summary	Games	Attend	Avg/Game
Home	4	1558	390
Away	12	10827	902
Neutral	1	1320	1320
Total	17	13705	806



2015-16 Samford Women's Basketball  
Samford Season Box Score (as of Jan 09, 2016)  
All games



RECORD:	OVERALL	HOME	AWAY	NEUTRAL
ALL GAMES	10-7	3-1	6-6	1-0
CONFERENCE	2-0	0-0	2-0	0-0
NON-CONFERENCE	8-7	3-1	4-6	1-0

##	Player	gp-gs	min	avg	Total		3-Point		F-Throw		Rebounds				pf	dq	a	to	blk	stl	pts	avg
					fg-fga	fg%	3fg-fga	3fg%	ft-fa	ft%	off	def	tot	avg								
03	Destiney Elliott	17-17	473	27.8	58-145	.400	16-45	.356	18-28	.643	35	99	134	7.9	49	1	30	37	15	20	150	8.8
10	Taylor Reece	16-14	396	24.8	50-137	.365	13-57	.228	23-31	.742	8	28	36	2.3	34	0	20	27	13	5	136	8.5
11	Amara Mayers	17-17	426	25.1	52-118	.441	7-27	.259	19-42	.452	14	59	73	4.3	20	0	20	40	0	19	130	7.6
05	Kassidy Blevins	17-0	344	20.2	41-106	.387	31-76	.408	8-10	.800	7	37	44	2.6	20	0	23	21	4	19	121	7.1
12	Krista Stricklin	17-17	485	28.5	42-111	.378	15-52	.288	15-26	.577	16	40	56	3.3	32	0	19	20	7	10	114	6.7
13	Brittany Stevens	17-17	535	31.5	32-92	.348	8-27	.296	28-34	.824	8	40	48	2.8	48	0	48	50	0	24	100	5.9
22	Ellen Riggins	17-3	296	17.4	31-75	.413	2-18	.111	13-21	.619	10	39	49	2.9	27	0	20	31	5	8	77	4.5
04	Lydia McGee	6-0	71	11.8	10-20	.500	2-5	.400	5-6	.833	5	8	13	2.2	8	0	6	14	1	4	27	4.5
31	Cassidy Williams	17-0	243	14.3	15-49	.306	11-39	.282	0-0	.000	6	20	26	1.5	17	0	8	24	0	3	41	2.4
21	Keke Fletcher	14-0	156	11.1	12-30	.400	5-21	.238	0-0	.000	4	15	19	1.4	3	0	8	3	2	5	29	2.1
Team											29	51	80					11				
Total.....		17	3425		343-883	.388	110-367	.300	129-198	.652	142	436	578	34.0	258	1	202	278	47	117	925	54.4
Opponents.....		17	3426		302-864	.350	62-233	.266	181-244	.742	152	423	575	33.8	283	-	157	280	53	132	847	49.8

Score by Periods	1st	2nd	3rd	4th	OT	Totals
Samford	239	206	254	222	4	925
Opponents	184	209	215	226	13	847



2015-16 Samford Women's Basketball  
Samford Overall Team Statistics (as of Jan 09, 2016)  
All games



TEAM STATISTICS	SAM	OPP
SCORING	925	847
Points per game	54.4	49.8
Scoring margin	+4.6	-
FIELD GOALS-ATT	343-883	302-864
Field goal pct	.388	.350
3 POINT FG-ATT	110-367	62-233
3-point FG pct	.300	.266
3-pt FG made per game	6.5	3.6
FREE THROWS-ATT	129-198	181-244
Free throw pct	.652	.742
F-Throws made per game	7.6	10.6
REBOUNDS	578	575
Rebounds per game	34.0	33.8
Rebounding margin	+0.2	-
ASSISTS	202	157
Assists per game	11.9	9.2
TURNOVERS	278	280
Turnovers per game	16.4	16.5
Turnover margin	+0.1	-
Assist/turnover ratio	0.7	0.6
STEALS	117	132
Steals per game	6.9	7.8
BLOCKS	47	53
Blocks per game	2.8	3.1
WINNING STREAK	2	-
Home win streak	0	-
ATTENDANCE	1558	12147
Home games-Avg/Game	4-390	12-902
Neutral site-Avg/Game	-	1-1320

Score by Periods	1st	2nd	3rd	4th	OT	Totals
Samford	239	206	254	222	4	925
Opponents	184	209	215	226	13	847



2015-16 Samford Women's Basketball  
Samford Category Leaders (as of Jan 09, 2016)  
All games



Points	G	Pts	Pts/G
Destiney Elliott	17	150	8.8
Taylor Reece	16	136	8.5
Amara Mayers	17	130	7.6
Kassidy Blevins	17	121	7.1
Krista Stricklin	17	114	6.7
Brittany Stevens	17	100	5.9
Ellen Riggins	17	77	4.5
Cassidy Williams	17	41	2.4
Keke Fletcher	14	29	2.1
Lydia McGee	6	27	4.5

FG Percentage	FG	Att	Pct
Lydia McGee	10	20	.500
Amara Mayers	52	118	.441
Ellen Riggins	31	75	.413
Destiney Elliott	58	145	.400
Keke Fletcher	12	30	.400
Kassidy Blevins	41	106	.387
Krista Stricklin	42	111	.378
Taylor Reece	50	137	.365
Brittany Stevens	32	92	.348
Cassidy Williams	15	49	.306

3-Point Percentage	3FG	Att	Pct
Kassidy Blevins	31	76	.408
Lydia McGee	2	5	.400
Destiney Elliott	16	45	.356
Brittany Stevens	8	27	.296
Krista Stricklin	15	52	.288
Cassidy Williams	11	39	.282
Amara Mayers	7	27	.259
Keke Fletcher	5	21	.238
Taylor Reece	13	57	.228
Ellen Riggins	2	18	.111

Free Throw Percent	FG	Att	Pct
Lydia McGee	5	6	.833
Brittany Stevens	28	34	.824
Kassidy Blevins	8	10	.800
Taylor Reece	23	31	.742
Destiney Elliott	18	28	.643
Ellen Riggins	13	21	.619
Krista Stricklin	15	26	.577
Amara Mayers	19	42	.452

Scoring Average	G	Pts	Avg/G
Destiney Elliott	17	150	8.8
Taylor Reece	16	136	8.5
Amara Mayers	17	130	7.6
Kassidy Blevins	17	121	7.1
Krista Stricklin	17	114	6.7
Brittany Stevens	17	100	5.9
Ellen Riggins	17	77	4.5
Lydia McGee	6	27	4.5
Cassidy Williams	17	41	2.4
Keke Fletcher	14	29	2.1

Field Goal Attempts	G	Att	Att/G
Destiney Elliott	17	145	8.5
Taylor Reece	16	137	8.6
Amara Mayers	17	118	6.9
Krista Stricklin	17	111	6.5
Kassidy Blevins	17	106	6.2

Field Goals Made	G	Made	Made/G
Destiney Elliott	17	58	3.4
Amara Mayers	17	52	3.1
Taylor Reece	16	50	3.1
Krista Stricklin	17	42	2.5
Kassidy Blevins	17	41	2.4

3-Point FG Attempts	G	Att	Att/G
Kassidy Blevins	17	76	4.5
Taylor Reece	16	57	3.6
Krista Stricklin	17	52	3.1
Destiney Elliott	17	45	2.6
Cassidy Williams	17	39	2.3

3-Point FG Made	G	Made	Made/G
Kassidy Blevins	17	31	1.8
Destiney Elliott	17	16	0.9
Krista Stricklin	17	15	0.9
Taylor Reece	16	13	0.8
Cassidy Williams	17	11	0.6

Free Throw Attempts	G	Att	Att/G
Amara Mayers	17	42	2.5
Brittany Stevens	17	34	2.0
Taylor Reece	16	31	1.9
Destiney Elliott	17	28	1.6
Krista Stricklin	17	26	1.5

Free Throws Made	G	Made	Made/G
Brittany Stevens	17	28	1.6
Taylor Reece	16	23	1.4
Amara Mayers	17	19	1.1
Destiney Elliott	17	18	1.1
Krista Stricklin	17	15	0.9





2015-16 Samford Women's Basketball  
Samford Category Leaders (as of Jan 09, 2016)  
All games



Rebounds	G	Reb	Reb/G
Destiney Elliott	17	134	7.9
Amara Mayers	17	73	4.3
Krista Stricklin	17	56	3.3
Ellen Riggins	17	49	2.9
Brittany Stevens	17	48	2.8

Rebound Average	G	Reb	Avg/G
Destiney Elliott	17	134	7.9
Amara Mayers	17	73	4.3
Krista Stricklin	17	56	3.3
Ellen Riggins	17	49	2.9
Brittany Stevens	17	48	2.8

Offensive Rebounds	G	No.	Avg/G
Destiney Elliott	17	35	2.1
Krista Stricklin	17	16	0.9
Amara Mayers	17	14	0.8
Ellen Riggins	17	10	0.6
Brittany Stevens	17	8	0.5
Taylor Reece	16	8	0.5

Defensive Rebounds	G	No.	Avg/G
Destiney Elliott	17	99	5.8
Amara Mayers	17	59	3.5
Krista Stricklin	17	40	2.4
Brittany Stevens	17	40	2.4
Ellen Riggins	17	39	2.3

Fouls	G	No.	Per/G
Destiney Elliott	17	49	2.9
Brittany Stevens	17	48	2.8
Taylor Reece	16	34	2.1
Krista Stricklin	17	32	1.9
Ellen Riggins	17	27	1.6

Foulouts	G	No.
Destiney Elliott	17	1

Assists	G	No.	Ast/G
Brittany Stevens	17	48	2.8
Destiney Elliott	17	30	1.8
Kassidy Blevins	17	23	1.4
Taylor Reece	16	20	1.3
Ellen Riggins	17	20	1.2
Amara Mayers	17	20	1.2

Steals	G	No.	Stl/G
Brittany Stevens	17	24	1.4
Destiney Elliott	17	20	1.2
Kassidy Blevins	17	19	1.1
Amara Mayers	17	19	1.1
Krista Stricklin	17	10	0.6

Blocked Shots	G	No.	Blk/G
Destiney Elliott	17	15	0.9
Taylor Reece	16	13	0.8
Krista Stricklin	17	7	0.4
Ellen Riggins	17	5	0.3
Kassidy Blevins	17	4	0.2

Minutes	G	No.	Min/G
Brittany Stevens	17	535	31.5
Krista Stricklin	17	485	28.5
Destiney Elliott	17	473	27.8
Amara Mayers	17	426	25.1
Taylor Reece	16	396	24.8

Turnovers	G	No.	TO/G
Brittany Stevens	17	50	2.9
Amara Mayers	17	40	2.4
Destiney Elliott	17	37	2.2
Ellen Riggins	17	31	1.8
Taylor Reece	16	27	1.7



2015-16 Samford Women's Basketball  
Samford Overall/Conference Statistics (as of Jan 09, 2016)  
All games



SUMMARY	Overall Statistics										Conference Statistics									
	gp-gs	min/g	fg%	3fg%	ft%	r/g	a/g	stl	blk	pts/g	gp-gs	min/g	fg%	3fg%	ft%	r/g	a/g	stl	blk	pts/g
Destiney Elliott	17-17	27.8	.400	.356	.643	7.9	1.8	20	15	8.8	2-2	25.5	.545	.333	.000	8.5	1.0	0	1	12.5
Taylor Reece	16-14	24.8	.365	.228	.742	2.3	1.3	5	13	8.5	2-2	24.0	.524	.500	1.000	2.0	1.0	1	0	12.5
Amara Mayers	17-17	25.1	.441	.259	.452	4.3	1.2	19	0	7.6	2-2	21.5	.300	.000	.429	3.5	2.0	1	0	4.5
Kassidy Blevins	17-0	20.2	.387	.408	.800	2.6	1.4	19	4	7.1	2-0	22.0	.455	.286	.000	2.5	2.0	2	0	6.0
Krista Stricklin	17-17	28.5	.378	.288	.577	3.3	1.1	10	7	6.7	2-2	35.0	.636	.333	.667	3.5	1.0	1	2	9.5
Brittany Stevens	17-17	31.5	.348	.296	.824	2.8	2.8	24	0	5.9	2-2	34.5	.308	.500	1.000	3.0	3.0	4	0	5.5
Ellen Riggins	17-3	17.4	.413	.111	.619	2.9	1.2	8	5	4.5	2-0	16.0	.500	.000	.750	3.0	0.5	1	0	6.5
Lydia McGee	6-0	11.8	.500	.400	.833	2.2	1.0	4	1	4.5										
Cassidy Williams	17-0	14.3	.306	.282	.000	1.5	0.5	3	0	2.4	2-0	7.0	.000	.000	.000	0.0	0.0	0	0	0.0
Keke Fletcher	14-0	11.1	.400	.238	.000	1.4	0.6	5	2	2.1	2-0	14.5	.250	.000	.000	1.5	1.0	0	1	1.0
Totals	17		.388	.300	.652	34.0	11.9	117	47	54.4	2		.471	.286	.609	34.0	11.5	10	4	58.0
Opponent	17		.350	.266	.742	33.8	9.2	132	53	49.8	2		.348	.267	.619	27.0	5.5	18	9	47.0

SCORING	Overall Statistics								Conference Statistics							
	fg-fga	fg%	3fg-fga	3fg%	ft-fta	ft%	pts	pts/g	fg-fga	fg%	3fg-fga	3fg%	ft-fta	ft%	pts	pts/g
Destiney Elliott	58-145	.400	16-45	.356	18-28	.643	150	8.8	12-22	.545	1-3	.333	0-2	.000	25	12.5
Taylor Reece	50-137	.365	13-57	.228	23-31	.742	136	8.5	11-21	.524	1-2	.500	2-2	1.000	25	12.5
Amara Mayers	52-118	.441	7-27	.259	19-42	.452	130	7.6	3-10	.300	0-1	.000	3-7	.429	9	4.5
Kassidy Blevins	41-106	.387	31-76	.408	8-10	.800	121	7.1	5-11	.455	2-7	.286	0-0	.000	12	6.0
Krista Stricklin	42-111	.378	15-52	.288	15-26	.577	114	6.7	7-11	.636	1-3	.333	4-6	.667	19	9.5
Brittany Stevens	32-92	.348	8-27	.296	28-34	.824	100	5.9	4-13	.308	1-2	.500	2-2	1.000	11	5.5
Ellen Riggins	31-75	.413	2-18	.111	13-21	.619	77	4.5	5-10	.500	0-0	.000	3-4	.750	13	6.5
Lydia McGee	10-20	.500	2-5	.400	5-6	.833	27	4.5								
Cassidy Williams	15-49	.306	11-39	.282	0-0	.000	41	2.4	0-0	.000	0-0	.000	0-0	.000	0	0.0
Keke Fletcher	12-30	.400	5-21	.238	0-0	.000	29	2.1	1-4	.250	0-3	.000	0-0	.000	2	1.0
Totals	343-883	.388	110-367	.300	129-198	.652	925	54.4	48-102	.471	6-21	.286	14-23	.609	116	58.0
Opponent	302-864	.350	62-233	.266	181-244	.742	847	49.8	32-92	.348	4-15	.267	26-42	.619	94	47.0

TOTALS	Overall Statistics										Conference Statistics									
	o-reb	d-reb	total	pf	fo	a	to	a/to	hi	pts	o-reb	d-reb	total	pf	fo	a	to	a/to	hi	pts
Destiney Elliott	35	99	134	49	1	30	37	0.8	20		3	14	17	6	0	2	8	0.3	14	
Taylor Reece	8	28	36	34	0	20	27	0.7	15		2	2	4	6	0	2	1	2.0	15	
Amara Mayers	14	59	73	20	0	20	40	0.5	18		3	4	7	2	0	4	6	0.7	5	
Kassidy Blevins	7	37	44	20	0	23	21	1.1	19		0	5	5	3	0	4	2	2.0	8	
Krista Stricklin	16	40	56	32	0	19	20	1.0	16		2	5	7	7	0	2	2	1.0	15	
Brittany Stevens	8	40	48	48	0	48	50	1.0	13		1	5	6	4	0	6	11	0.5	7	
Ellen Riggins	10	39	49	27	0	20	31	0.6	13		1	5	6	6	0	1	5	0.2	8	
Lydia McGee	5	8	13	8	0	6	14	0.4	12											
Cassidy Williams	6	20	26	17	0	8	24	0.3	8		0	0	0	2	0	0	4	0.0	0	
Keke Fletcher	4	15	19	3	0	8	3	2.7	7		1	2	3	1	0	2	0	0.0	2	
Totals	142	436	578	258	1	202	278	0.7	82		18	50	68	37	0	23	42	0.5	59	
Opponent	152	423	575	283	-	157	280	0.6	69		15	39	54	38	-	11	38	0.3	52	



2015-16 Samford Women's Basketball  
Samford Team Game-by-Game (as of Jan 09, 2016)  
All games



TEAM STATISTICS

Opponent	Date	Score		Total		3-Pointers		Free throws		Rebounds				pf	a	t/o	blk	stl	pts	avg
				fg-fga	pct	3fg-fga	pct	ft-fa	pct	off	def	tot	avg							
at Mississippi State	11/13/15	47-68	L	16-38	.421	7-18	.389	8-11	.727	3	28	31	31.0	24	10	28	1	3	47	47.0
AUBURN MONTGOMERY	11/15/15	82-32	W	28-54	.519	13-28	.464	13-20	.650	13	28	41	36.0	12	24	14	3	9	82	64.5
TROY	11/17/15	73-69	W	20-56	.357	9-32	.281	24-28	.857	8	25	33	35.0	17	13	19	3	10	73	67.3
SHORTER	11/21/15	53-33	W	22-57	.386	8-21	.381	1-2	.500	7	23	30	33.8	10	13	10	2	9	53	63.8
at Jacksonville State	11/24/15	50-39	W	19-51	.373	3-17	.176	9-13	.692	7	33	40	35.0	12	4	17	3	10	50	61.0
vs Nicholls	11/27/15	45-43	W	17-58	.293	4-26	.154	7-16	.438	13	25	38	35.5	14	13	16	2	10	45	58.3
at Southern Miss	11/28/15	48-56	L	20-53	.377	6-25	.240	2-4	.500	10	24	34	35.3	17	12	18	3	4	48	56.9
at Alabama A&M	12/1/15	54-30	W	21-54	.389	5-16	.313	7-8	.875	9	28	37	35.5	13	14	10	2	5	54	56.5
at UT Martin	12/5/15	50-52	L	20-55	.364	8-26	.308	2-4	.500	10	27	37	35.7	11	10	14	1	4	50	55.8
at Indiana	12/11/15	56-65	Lot	23-55	.418	8-25	.320	2-6	.333	6	28	34	35.5	24	11	20	9	7	56	55.8
at Georgia Tech	12/13/15	55-66	L	19-51	.373	9-26	.346	8-12	.667	9	20	29	34.9	16	14	16	1	8	55	55.7
at Alabama State	12/17/15	54-35	W	19-46	.413	5-19	.263	11-17	.647	4	28	32	34.7	11	10	16	0	11	54	55.6
at UAB	12/21/15	41-61	L	16-55	.291	4-19	.211	5-8	.625	5	21	26	34.0	12	10	8	4	8	41	54.5
at LSU	12/28/15	47-44	W	15-46	.326	8-26	.308	9-18	.500	15	23	38	34.3	13	10	14	5	4	47	53.9
HARVARD	1/2/16	54-60	L	20-52	.385	7-22	.318	7-8	.875	5	25	30	34.0	15	11	16	4	5	54	53.9
at Western Carolina	1/7/16	59-42	W	26-48	.542	1-7	.143	6-10	.600	10	24	34	34.0	19	10	17	1	3	59	54.2
at UNCG	1/9/16	57-52	W	22-54	.407	5-14	.357	8-13	.615	8	26	34	34.0	18	13	25	3	7	57	54.4
Samford		925		343-883	.388	110-367	.300	129-198	.652	142	436	578	34.0	258	202	278	47	117	925	54.4
Opponents		847		302-864	.350	62-233	.266	181-244	.742	152	423	575	33.8	283	157	280	53	132	847	49.8

Games played: 17  
Points/game: 54.4  
FG Pct: 38.8  
3FG Pct: 30.0  
FT Pct: 65.2

Rebounds/game: 34.0  
Assists/game: 11.9  
Turnovers/game: 16.4  
Assist/turnover ratio: 0.7  
Steals/game: 6.9  
Blocks/game: 2.8



2015-16 Samford Women's Basketball  
Samford Opponent Game-by-Game (as of Jan 09, 2016)  
All games



OPPONENT STATISTICS

Opponent	Date	Score		Total		3-Pointers		Free throws		Rebounds											
				fg-fga	pct	3fg-fga	pct	ft-fa	pct	off	def	tot	avg	pf	a	t/o	blk	stl	pts	avg	
at Mississippi State	11/13/15	47-68	L	25-77	.325	2-20	.100	16-22	.727	28	20	48	48.0	18	6	10	2	14	68	68.0	
AUBURN MONTGOMERY	11/15/15	82-32	W	11-42	.262	5-17	.294	5-8	.625	4	17	21	34.5	21	6	22	2	5	32	50.0	
TROY	11/17/15	73-69	W	24-51	.471	7-17	.412	14-17	.824	4	30	34	34.3	33	13	23	1	12	69	56.3	
SHORTER	11/21/15	53-33	W	12-36	.333	3-9	.333	6-8	.750	3	29	32	33.8	12	8	21	4	4	33	50.5	
at Jacksonville State	11/24/15	50-39	W	14-51	.275	7-24	.292	4-6	.667	4	26	30	33.0	17	8	16	5	7	39	48.2	
vs Nicholls	11/27/15	45-43	W	19-46	.413	3-10	.300	2-3	.667	3	31	34	33.2	23	12	28	4	7	43	47.3	
at Southern Miss	11/28/15	48-56	L	20-56	.357	2-6	.333	14-19	.737	15	24	39	34.0	14	9	15	4	5	56	48.6	
at Alabama A&M	12/1/15	54-30	W	10-43	.233	3-15	.200	7-14	.500	6	21	27	33.1	17	3	14	4	4	30	46.2	
at UT Martin	12/5/15	50-52	L	19-51	.373	7-28	.250	7-7	1.000	5	26	31	32.9	7	13	12	2	6	52	46.9	
at Indiana	12/11/15	56-65	Lot	18-63	.286	2-16	.125	27-31	.871	19	28	47	34.3	8	9	14	2	11	65	48.7	
at Georgia Tech	12/13/15	55-66	L	24-48	.500	4-13	.308	14-15	.933	4	25	29	33.8	15	15	15	3	11	66	50.3	
at Alabama State	12/17/15	54-35	W	14-45	.311	0-9	.000	7-12	.583	4	26	30	33.5	18	10	16	0	6	35	49.0	
at UAB	12/21/15	41-61	L	23-52	.442	5-12	.417	10-14	.714	9	35	44	34.3	9	14	11	7	5	61	49.9	
at LSU	12/28/15	47-44	W	18-54	.333	2-7	.286	6-6	1.000	13	19	32	34.1	21	8	9	3	7	44	49.5	
HARVARD	1/2/16	54-60	L	19-57	.333	6-15	.400	16-20	.800	16	27	43	34.7	12	12	16	1	10	60	50.2	
at Western Carolina	1/7/16	59-42	W	15-41	.366	4-11	.364	8-19	.421	7	15	22	33.9	18	5	17	4	4	42	49.7	
at UNCG	1/9/16	57-52	W	17-51	.333	0-4	.000	18-23	.783	8	24	32	33.8	20	6	21	5	14	52	49.8	
Opponents		847		302-864	.350	62-233	.266	181-244	.742	152	423	575	33.8	283	157	280	53	132	847	49.8	
Samford		925		343-883	.388	110-367	.300	129-198	.652	142	436	578	34.0	258	202	278	47	117	925	54.4	

Games played: 17  
Points/game: 49.8  
FG Pct: 35.0  
3FG Pct: 26.6  
FT Pct: 74.2

Rebounds/game: 33.8  
Assists/game: 9.2  
Turnovers/game: 16.5  
Assist/turnover ratio: 0.6  
Steals/game: 7.8  
Blocks/game: 3.1





2015-16 Samford Women's Basketball  
Samford Team Game-by-Game Comparison (as of Jan 09, 2016)  
All games



Opponent	1st	2nd	Score	Mar	Total FG	FG Pct	3-Pointers	3FG Pct	Free Throws	FT Pct	Rebounds	A
Mississippi State	14/34	33/34	47-68	(21)	16-38/25-77	.421/.325	7-18/2-20	.389/.100	8-11/16-22	.727/.727	31/48 (17)	1
AUBURN MONTGOMERY	42/23	40/9	82-32	+50	28-54/11-42	.519/.262	13-28/5-17	.464/.294	13-20/5-8	.650/.625	41/21 +20	2
TROY	26/29	47/40	73-69	+4	20-56/24-51	.357/.471	9-32/7-17	.281/.412	24-28/14-17	.857/.824	33/34 (1)	1
SHORTER	30/18	23/15	53-33	+20	22-57/12-36	.386/.333	8-21/3-9	.381/.333	1-2/6-8	.500/.750	30/32 (2)	1
Jacksonville State	23/18	27/21	50-39	+11	19-51/14-51	.373/.275	3-17/7-24	.176/.292	9-13/4-6	.692/.667	40/30 +10	1
Nicholls	21/27	24/16	45-43	+2	17-58/19-46	.293/.413	4-26/3-10	.154/.300	7-16/2-3	.438/.667	38/34 +4	1
Southern Miss	26/31	22/25	48-56	(8)	20-53/20-56	.377/.357	6-25/2-6	.240/.333	2-4/14-19	.500/.737	34/39 (5)	1
Alabama A&M	29/12	25/18	54-30	+24	21-54/10-43	.389/.233	5-16/3-15	.313/.200	7-8/7-14	.875/.500	37/27 +10	1
UT Martin	23/30	27/22	50-52	(2)	20-55/19-51	.364/.373	8-26/7-28	.308/.250	2-4/7-7	.500/1000	37/31 +6	1
Indiana	30/24	22/28	56-65	(9)	23-55/18-63	.418/.286	8-25/2-16	.320/.125	2-6/27-31	.333/.871	34/47 (13)	1
Georgia Tech	24/31	31/35	55-66	(11)	19-51/24-48	.373/.500	9-26/4-13	.346/.308	8-12/14-15	.667/.933	29/29 -	1
Alabama State	22/15	32/20	54-35	+19	19-46/14-45	.413/.311	5-19/0-9	.263/.000	11-17/7-12	.647/.583	32/30 +2	1
UAB	27/24	14/37	41-61	(20)	16-55/23-52	.291/.442	4-19/5-12	.211/.417	5-8/10-14	.625/.714	26/44 (18)	1
LSU	26/18	21/26	47-44	+3	15-46/18-54	.326/.333	8-26/2-7	.308/.286	9-18/6-6	.500/1000	38/32 +6	1
HARVARD	25/31	29/29	54-60	(6)	20-52/19-57	.385/.333	7-22/6-15	.318/.400	7-8/16-20	.875/.800	30/43 (13)	1
Western Carolina	33/10	26/32	59-42	+17	26-48/15-41	.542/.366	1-7/4-11	.143/.364	6-10/8-19	.600/.421	34/22 +12	1
UNCG	24/18	33/34	57-52	+5	22-54/17-51	.407/.333	5-14/0-4	.357/.000	8-13/18-23	.615/.783	34/32 +2	1

Note: Game totals are displayed in the format TEAM/OPPONENT for each category



2015-16 Samford Women's Basketball  
Samford Points-Rebounds-Assists (as of Jan 09, 2016)  
All games



Opponent	Date	Score		03	04	05	10	11	12	13
				ELLIOTT,DE	MCGEE,LYDI	BLEVINS,KA	REECE,TAYL	MAYERS,AMA	STRICKLIN,	STEVENS,BR
at Mississippi State	11/13/15	47-68	L	3-2-0	0-1-0	0-1-0	9-1-2	9-5-2	7-4-2	13-1-4
AUBURN MONTGOMERY	11/15/15	82-32	w	7-4-4	9-4-3	15-3-4	15-5-2	3-6-2	7-5-2	4-5-4
TROY	11/17/15	73-69	w	8-9-3	12-2-2	19-3-1	6-2-1	6-4-1	8-3-2	12-3-3
SHORTER	11/21/15	53-33	w	6-5-3	0-1-1	5-3-0	7-3-1	8-1-0	7-1-1	8-3-1
at Jacksonville State	11/24/15	50-39	w	2-12-1	6-4-0	0-2-0	11-3-2	16-7-0	6-0-0	5-3-1
vs Nicholls	11/27/15	45-43	w	17-11-3	0-1-0	3-3-2	2-1-0	4-6-3	9-2-0	8-4-4
at Southern Miss	11/28/15	48-56	L	9-8-2	DNP	0-1-1	DNP	14-4-1	3-3-1	7-3-2
at Alabama A&M	12/1/15	54-30	w	6-8-2	DNP	5-3-2	10-2-2	14-3-1	9-3-2	3-3-3
at UT Martin	12/5/15	50-52	L	13-18-2	DNP	9-2-0	4-2-2	7-7-2	2-2-1	9-2-2
at Indiana	12/11/15	56-65	L	20-9-1	DNP	8-4-1	12-0-2	2-2-1	10-10-1	2-6-4
at Georgia Tech	12/13/15	55-66	L	3-7-3	DNP	14-1-1	0-2-0	3-2-0	16-3-1	4-2-3
at Alabama State	12/17/15	54-35	w	11-9-1	DNP	0-3-1	0-2-0	18-6-1	7-0-0	2-2-4
at UAB	12/21/15	41-61	L	11-6-2	DNP	3-2-2	12-2-2	6-4-1	2-3-0	3-1-2
at LSU	12/28/15	47-44	w	7-5-1	DNP	9-6-3	14-4-1	4-3-1	0-6-1	7-1-3
HARVARD	1/2/16	54-60	L	2-4-0	DNP	19-2-1	9-3-1	7-6-0	2-4-3	2-3-2
at Western Carolina	1/7/16	59-42	w	14-8-0	DNP	4-2-3	10-1-0	4-4-1	15-3-1	4-4-4
at UNCG	1/9/16	57-52	w	11-9-2	DNP	8-3-1	15-3-2	5-3-3	4-4-1	7-2-2

Opponent	Date	Score		21	22	31
				FLETCHER,K	RIGGINS,EL	WILLIAMS,C
at Mississippi State	11/13/15	47-68	L	0-4-0	0-2-0	6-3-0
AUBURN MONTGOMERY	11/15/15	82-32	w	7-3-1	9-3-1	6-1-1
TROY	11/17/15	73-69	w	0-0-0	0-1-0	2-1-0
SHORTER	11/21/15	53-33	w	0-1-2	4-3-2	8-4-2
at Jacksonville State	11/24/15	50-39	w	DNP	4-2-0	0-2-0
vs Nicholls	11/27/15	45-43	w	DNP	2-4-0	0-2-1
at Southern Miss	11/28/15	48-56	L	3-2-2	9-5-3	3-1-0
at Alabama A&M	12/1/15	54-30	w	5-3-0	0-4-1	2-2-1
at UT Martin	12/5/15	50-52	L	0-0-0	0-3-1	6-0-0
at Indiana	12/11/15	56-65	L	0-0-0	2-1-1	0-0-0
at Georgia Tech	12/13/15	55-66	L	DNP	12-5-5	3-5-1
at Alabama State	12/17/15	54-35	w	3-0-0	13-2-1	0-2-2
at UAB	12/21/15	41-61	L	0-1-0	4-4-1	0-1-0
at LSU	12/28/15	47-44	w	3-2-0	3-2-0	0-1-0
HARVARD	1/2/16	54-60	L	6-0-1	2-2-3	5-1-0
at Western Carolina	1/7/16	59-42	w	0-2-1	8-5-0	0-0-0
at UNCG	1/9/16	57-52	w	2-1-1	5-1-1	0-0-0



2015-16 Samford Women's Basketball  
Samford Game-by-Game Highs (as of Jan 09, 2016)  
All games



Opponent	Date	Score	Points	Rebounds	Assists	Steals	Blocked shots
at Mississippi State	11/13/15	47-68	13-Brittany Stevens	5-Amara Mayers	4-Brittany Stevens	1-Krista Stricklin Amara Mayers Destiney Elliott	1-Taylor Reece
AUBURN MONTGOMERY	11/15/15	82-32	15-Kassidy Blevins Taylor Reece	6-Amara Mayers	4-Kassidy Blevins Brittany Stevens Destiney Elliott	3-Lydia McGee	1-Krista Stricklin Lydia McGee Taylor Reece
TROY	11/17/15	73-69	19-Kassidy Blevins	9-Destiney Elliott	3-Brittany Stevens Destiney Elliott	2-Cassidy Williams Krista Stricklin Brittany Stevens	2-Taylor Reece
SHORTER	11/21/15	53-33	8-Amara Mayers Cassidy Williams Brittany Stevens	5-Destiney Elliott	3-Destiney Elliott	3-Brittany Stevens	1-Kassidy Blevins Destiney Elliott
at Jacksonville State	11/24/15	50-39	16-Amara Mayers	12-Destiney Elliott	2-Taylor Reece	4-Amara Mayers	1-Taylor Reece Destiney Elliott Krista Stricklin
vs Nicholls	11/27/15	45-43	17-Destiney Elliott	11-Destiney Elliott	4-Brittany Stevens	7-Kassidy Blevins	2-Destiney Elliott
at Southern Miss	11/28/15	48-56	14-Amara Mayers	8-Destiney Elliott	3-Ellen Riggins	1-Destiney Elliott Brittany Stevens Krista Stricklin Amara Mayers	2-Destiney Elliott
at Alabama A&M	12/1/15	54-30	14-Amara Mayers	8-Destiney Elliott	3-Brittany Stevens	3-Keke Fletcher	1-Destiney Elliott Taylor Reece
at UT Martin	12/5/15	50-52	13-Destiney Elliott	18-Destiney Elliott	2-Brittany Stevens Destiney Elliott Amara Mayers Taylor Reece	3-Brittany Stevens	1-Destiney Elliott
at Indiana	12/11/15	56-65	20-Destiney Elliott	10-Krista Stricklin	4-Brittany Stevens	2-Kassidy Blevins Taylor Reece	3-Taylor Reece
at Georgia Tech	12/13/15	55-66	16-Krista Stricklin	7-Destiney Elliott	5-Ellen Riggins	2-Ellen Riggins Kassidy Blevins	1-Ellen Riggins
at Alabama State	12/17/15	54-35	18-Amara Mayers	9-Destiney Elliott	4-Brittany Stevens	4-Amara Mayers	None
at UAB	12/21/15	41-61	12-Taylor Reece	6-Destiney Elliott	2-Taylor Reece Destiney Elliott Kassidy Blevins Brittany Stevens	3-Destiney Elliott Brittany Stevens	2-Taylor Reece
at LSU	12/28/15	47-44	14-Taylor Reece	6-Krista Stricklin Kassidy Blevins	3-Brittany Stevens Kassidy Blevins	2-Destiney Elliott	2-Taylor Reece Destiney Elliott
HARVARD	1/2/16	54-60	19-Kassidy Blevins	6-Amara Mayers	3-Ellen Riggins Krista Stricklin	2-Krista Stricklin	1-Kassidy Blevins Destiney Elliott Ellen Riggins Krista Stricklin
at Western Carolina	1/7/16	59-42	15-Krista Stricklin	8-Destiney Elliott	4-Brittany Stevens	1-Taylor Reece Krista Stricklin Kassidy Blevins	1-Krista Stricklin
at UNCG	1/9/16	57-52	15-Taylor Reece	9-Destiney Elliott	3-Amara Mayers	4-Brittany Stevens	1-Krista Stricklin Keke Fletcher Destiney Elliott



2015-16 Samford Women's Basketball  
Samford Team High/Low Analysis (as of Jan 09, 2016)  
All games



Samford - TEAM GAME HIGHS

POINTS	82	AUBURN MONTGOMERY (11/15/15)
	73	TROY (11/17/15)
	59	at Western Carolina (1/7/16)
	57	at UNCG (1/9/16)
	56	at Indiana (12/11/15)
FIELD GOALS MADE	28	AUBURN MONTGOMERY (11/15/15)
	26	at Western Carolina (1/7/16)
FIELD GOAL ATTEMPTS	58	vs Nicholls (11/27/15)
	57	SHORTER (11/21/15)
FIELD GOAL PERCENTAGE	.542 (26-48)	at Western Carolina (1/7/16)
	.519 (28-54)	AUBURN MONTGOMERY (11/15/15)
3 PT FIELD GOALS MADE	13	AUBURN MONTGOMERY (11/15/15)
	9	at Georgia Tech (12/13/15)
	9	TROY (11/17/15)
3 PT FG ATTEMPTS	32	TROY (11/17/15)
	28	AUBURN MONTGOMERY (11/15/15)
3 PT FG PERCENTAGE	.464 (13-28)	AUBURN MONTGOMERY (11/15/15)
	.389 (7-18)	at Mississippi State (11/13/15)
FREE THROWS MADE	24	TROY (11/17/15)
	13	AUBURN MONTGOMERY (11/15/15)
FREE THROW ATTEMPTS	28	TROY (11/17/15)
	20	AUBURN MONTGOMERY (11/15/15)
FREE THROW PERCENTAGE	.875 (7-8)	HARVARD (1/2/16)
	.875 (7-8)	at Alabama A&M (12/1/15)
REBOUNDS	41	AUBURN MONTGOMERY (11/15/15)
	40	at Jacksonville State (11/24/15)
ASSISTS	24	AUBURN MONTGOMERY (11/15/15)
	14	at Georgia Tech (12/13/15)
	14	at Alabama A&M (12/1/15)
STEALS	11	at Alabama State (12/17/15)
	10	vs Nicholls (11/27/15)
	10	at Jacksonville State (11/24/15)
	10	TROY (11/17/15)
BLOCKED SHOTS	9	at Indiana (12/11/15)
	5	at LSU (12/28/15)
TURNOVERS	28	at Mississippi State (11/13/15)
	25	at UNCG (1/9/16)
FOULS	24	at Indiana (12/11/15)
	24	at Mississippi State (11/13/15)





2015-16 Samford Women's Basketball  
Samford High/Low Analysis (as of Jan 09, 2016)  
All games



Opponent - GAME HIGHS

POINTS	69		TROY (11/17/15)
	68		at Mississippi State (11/13/15)
	66		at Georgia Tech (12/13/15)
	65		at Indiana (12/11/15)
	61		at UAB (12/21/15)
FIELD GOALS MADE	25		at Mississippi State (11/13/15)
	24		at Georgia Tech (12/13/15)
	24		TROY (11/17/15)
FIELD GOAL ATTEMPTS	77		at Mississippi State (11/13/15)
	63		at Indiana (12/11/15)
FIELD GOAL PERCENTAGE	.500	(24-48)	at Georgia Tech (12/13/15)
	.471	(24-51)	TROY (11/17/15)
3 PT FIELD GOALS MADE	7		at UT Martin (12/5/15)
	7		at Jacksonville State (11/24/15)
	7		TROY (11/17/15)
3 PT FG ATTEMPTS	28		at UT Martin (12/5/15)
	24		at Jacksonville State (11/24/15)
3 PT FG PERCENTAGE	.417	(5-12)	at UAB (12/21/15)
	.412	(7-17)	TROY (11/17/15)
FREE THROWS MADE	27		at Indiana (12/11/15)
	18		at UNCG (1/9/16)
FREE THROW ATTEMPTS	31		at Indiana (12/11/15)
	23		at UNCG (1/9/16)
FREE THROW PERCENTAGE	1.000	(7-7)	at UT Martin (12/5/15)
	1.000	(6-6)	at LSU (12/28/15)
REBOUNDS	48		at Mississippi State (11/13/15)
	47		at Indiana (12/11/15)
ASSISTS	15		at Georgia Tech (12/13/15)
	14		at UAB (12/21/15)
STEALS	14		at UNCG (1/9/16)
	14		at Mississippi State (11/13/15)
BLOCKED SHOTS	7		at UAB (12/21/15)
	5		at UNCG (1/9/16)
	5		at Jacksonville State (11/24/15)
TURNOVERS	28		vs Nicholls (11/27/15)
	23		TROY (11/17/15)
FOULS	33		TROY (11/17/15)
	23		vs Nicholls (11/27/15)



2015-16 Samford Women's Basketball  
Samford High/Low Analysis (as of Jan 09, 2016)  
All games



Samford - GAME LOWS

POINTS	41		at UAB (12/21/15)
	45		vs Nicholls (11/27/15)
	47		at Mississippi State (11/13/15)
	47		at LSU (12/28/15)
	48		at Southern Miss (11/28/15)
FIELD GOALS MADE	15		at LSU (12/28/15)
	16		at Mississippi State (11/13/15)
	16		at UAB (12/21/15)
FIELD GOAL ATTEMPTS	38		at Mississippi State (11/13/15)
	46		at Alabama State (12/17/15)
	46		at LSU (12/28/15)
FIELD GOAL PERCENTAGE	.291	(16-55)	at UAB (12/21/15)
	.293	(17-58)	vs Nicholls (11/27/15)
3 PT FIELD GOALS MADE	1		at Western Carolina (1/7/16)
	3		at Jacksonville State (11/24/15)
3 PT FG ATTEMPTS	7		at Western Carolina (1/7/16)
	14		at UNCG (1/9/16)
3 PT FG PERCENTAGE	.143	(1-7)	at Western Carolina (1/7/16)
	.154	(4-26)	vs Nicholls (11/27/15)
FREE THROWS MADE	1		SHORTER (11/21/15)
	2		at Southern Miss (11/28/15)
	2		at UT Martin (12/5/15)
	2		at Indiana (12/11/15)
FREE THROW ATTEMPTS	2		SHORTER (11/21/15)
	4		at Southern Miss (11/28/15)
	4		at UT Martin (12/5/15)
FREE THROW PERCENTAGE	.333	(2-6)	at Indiana (12/11/15)
	.438	(7-16)	vs Nicholls (11/27/15)
REBOUNDS	26		at UAB (12/21/15)
	29		at Georgia Tech (12/13/15)
ASSISTS	4		at Jacksonville State (11/24/15)
	10		at Mississippi State (11/13/15)
	10		at UT Martin (12/5/15)
	10		at Alabama State (12/17/15)
	10		at UAB (12/21/15)
	10		at LSU (12/28/15)
	10		at Western Carolina (1/7/16)
STEALS	3		at Mississippi State (11/13/15)
	3		at Western Carolina (1/7/16)
BLOCKED SHOTS	0		at Alabama State (12/17/15)
	1		at Mississippi State (11/13/15)
	1		at UT Martin (12/5/15)
	1		at Georgia Tech (12/13/15)
	1		at Western Carolina (1/7/16)
TURNOVERS	8		at UAB (12/21/15)
	10		SHORTER (11/21/15)
	10		at Alabama A&M (12/1/15)
FOULS	10		SHORTER (11/21/15)
	11		at UT Martin (12/5/15)
	11		at Alabama State (12/17/15)



2015-16 Samford Women's Basketball  
Samford High/Low Analysis (as of Jan 09, 2016)  
All games



Opponent - GAME LOWS

POINTS	30		at Alabama A&M (12/1/15)
	32		AUBURN MONTGOMERY (11/15/15)
	33		SHORTER (11/21/15)
	35		at Alabama State (12/17/15)
	39		at Jacksonville State (11/24/15)
FIELD GOALS MADE	10		at Alabama A&M (12/1/15)
	11		AUBURN MONTGOMERY (11/15/15)
FIELD GOAL ATTEMPTS	36		SHORTER (11/21/15)
	41		at Western Carolina (1/7/16)
FIELD GOAL PERCENTAGE	.233	(10-43)	at Alabama A&M (12/1/15)
	.262	(11-42)	AUBURN MONTGOMERY (11/15/15)
3 PT FIELD GOALS MADE	0		at Alabama State (12/17/15)
	0		at UNCG (1/9/16)
3 PT FG ATTEMPTS	4		at UNCG (1/9/16)
	6		at Southern Miss (11/28/15)
3 PT FG PERCENTAGE	.000	(0-9)	at Alabama State (12/17/15)
	.000	(0-4)	at UNCG (1/9/16)
FREE THROWS MADE	2		vs Nicholls (11/27/15)
	4		at Jacksonville State (11/24/15)
FREE THROW ATTEMPTS	3		vs Nicholls (11/27/15)
	6		at Jacksonville State (11/24/15)
	6		at LSU (12/28/15)
FREE THROW PERCENTAGE	.421	(8-19)	at Western Carolina (1/7/16)
	.500	(7-14)	at Alabama A&M (12/1/15)
REBOUNDS	21		AUBURN MONTGOMERY (11/15/15)
	22		at Western Carolina (1/7/16)
ASSISTS	3		at Alabama A&M (12/1/15)
	5		at Western Carolina (1/7/16)
STEALS	4		SHORTER (11/21/15)
	4		at Alabama A&M (12/1/15)
	4		at Western Carolina (1/7/16)
BLOCKED SHOTS	0		at Alabama State (12/17/15)
	1		TROY (11/17/15)
	1		HARVARD (1/2/16)
TURNOVERS	9		at LSU (12/28/15)
	10		at Mississippi State (11/13/15)
FOULS	7		at UT Martin (12/5/15)
	8		at Indiana (12/11/15)



2015-16 Samford Women's Basketball  
Samford Player High/Low Analysis (as of Jan 09, 2016)  
All games



Samford - INDIVIDUAL GAME HIGHS

Points	20		Destiney Elliott at Indiana (12/11/15)
	19		Kassidy Blevins vs Harvard (1/2/16)
	19		Kassidy Blevins vs Troy (11/17/15)
	18		Amara Mayers at Alabama State (12/17/15)
	17		Destiney Elliott vs Nicholls (11/27/15)
Field Goals Made	8		Destiney Elliott at Indiana (12/11/15)
	8		Destiney Elliott vs Nicholls (11/27/15)
	8		Amara Mayers at Jacksonville State (11/24/15)
Field Goal Att.	16		Taylor Reece at Indiana (12/11/15)
	15		Destiney Elliott vs Nicholls (11/27/15)
	15		Kassidy Blevins vs Troy (11/17/15)
FG Pct (min 5 made)	.875	(7-8)	Krista Stricklin at Western Carolina (1/7/16)
	.800	(8-10)	Amara Mayers at Jacksonville State (11/24/15)
3-Point FG Made	5		Kassidy Blevins vs Harvard (1/2/16)
	5		Kassidy Blevins vs Troy (11/17/15)
3-Point FG Att.	11		Kassidy Blevins vs Troy (11/17/15)
	9		Kassidy Blevins vs Harvard (1/2/16)
3-Pt FG Pct (min 2 made)	1.000	(4-4)	Kassidy Blevins vs Auburn Montgomery (11/15/15)
	1.000	(3-3)	Amara Mayers at Mississippi State (11/13/15)
	1.000	(2-2)	Lydia McGee vs Troy (11/17/15)
	1.000	(2-2)	Cassidy Williams vs Auburn Montgomery (11/15/15)
Free Throws Made	7		Brittany Stevens at Mississippi State (11/13/15)
	6		Amara Mayers at Alabama State (12/17/15)
	6		Brittany Stevens vs Troy (11/17/15)
Free Throw Att.	10		Amara Mayers at Alabama State (12/17/15)
	8		Brittany Stevens at Mississippi State (11/13/15)
FT Pct (min 3 made)	1.000	(6-6)	Brittany Stevens vs Troy (11/17/15)
	1.000	(4-4)	Taylor Reece vs Harvard (1/2/16)
	1.000	(4-4)	Ellen Riggins at Georgia Tech (12/13/15)
	1.000	(4-4)	Lydia McGee vs Troy (11/17/15)
Rebounds	18		Destiney Elliott at UT Martin (12/5/15)
	12		Destiney Elliott at Jacksonville State (11/24/15)
Assists	5		Ellen Riggins at Georgia Tech (12/13/15)
	4		Brittany Stevens at Western Carolina (1/7/16)
	4		Brittany Stevens at Alabama State (12/17/15)
	4		Brittany Stevens at Indiana (12/11/15)
	4		Brittany Stevens vs Nicholls (11/27/15)
	4		Kassidy Blevins vs Auburn Montgomery (11/15/15)
	4		Brittany Stevens vs Auburn Montgomery (11/15/15)
	4		Destiney Elliott vs Auburn Montgomery (11/15/15)
	4		Brittany Stevens at Mississippi State (11/13/15)
Steals	7		Kassidy Blevins vs Nicholls (11/27/15)
	4		Brittany Stevens at UNCG (1/9/16)
	4		Amara Mayers at Alabama State (12/17/15)
	4		Amara Mayers at Jacksonville State (11/24/15)
Blocked Shots	3		Taylor Reece at Indiana (12/11/15)
	2		Taylor Reece at LSU (12/28/15)
	2		Destiney Elliott at LSU (12/28/15)
	2		Taylor Reece at UAB (12/21/15)
	2		Kassidy Blevins at Indiana (12/11/15)
	2		Destiney Elliott at Indiana (12/11/15)
	2		Destiney Elliott at Southern Miss (11/28/15)
	2		Destiney Elliott vs Nicholls (11/27/15)



	2	Taylor Reece vs Troy (11/17/15)
Turnovers	9	Brittany Stevens at UNCG (1/9/16)
	6	Cassidy Williams at Mississippi State (11/13/15)
Fouls	5	Destiney Elliott at Mississippi State (11/13/15)
	4	Ellen Riggins at Western Carolina (1/7/16)
	4	Krista Stricklin at Western Carolina (1/7/16)
	4	Destiney Elliott at Western Carolina (1/7/16)
	4	Taylor Reece vs Harvard (1/2/16)
	4	Destiney Elliott at UAB (12/21/15)
	4	Brittany Stevens at Alabama State (12/17/15)
	4	Destiney Elliott at Georgia Tech (12/13/15)
	4	Krista Stricklin at Georgia Tech (12/13/15)
	4	Destiney Elliott at Indiana (12/11/15)
	4	Brittany Stevens at Indiana (12/11/15)
	4	Kassidy Blevins at Indiana (12/11/15)
	4	Taylor Reece at Indiana (12/11/15)
	4	Brittany Stevens at Southern Miss (11/28/15)
	4	Destiney Elliott at Southern Miss (11/28/15)
	4	Brittany Stevens at Jacksonville State (11/24/15)
	4	Taylor Reece vs Troy (11/17/15)
	4	Destiney Elliott vs Troy (11/17/15)
	4	Brittany Stevens at Mississippi State (11/13/15)
Minutes	42	Destiney Elliott at Indiana (12/11/15)
	40	Brittany Stevens at LSU (12/28/15)
	40	Brittany Stevens at Indiana (12/11/15)
	37	Brittany Stevens at UNCG (1/9/16)
	37	Brittany Stevens at UAB (12/21/15)
	37	Destiney Elliott at Georgia Tech (12/13/15)
	37	Brittany Stevens at Jacksonville State (11/24/15)



2015-16 Samford Women's Basketball  
Samford Opponent High/Low Analysis (as of Jan 09, 2016)  
All games



OPPONENT INDIVIDUAL GAME HIGHS

Points	33		Beverly Kelley, A. vs Troy (11/17/15)
	23		Aaliyah Whiteside at Georgia Tech (12/13/15)
	21		Tyra Buss at Indiana (12/11/15)
	19		Amanda Cahill at Indiana (12/11/15)
	18		Lucy Mason at UNCG (1/9/16)
Field Goals Made	11		Beverly Kelley, A. vs Troy (11/17/15)
	7		Lucy Mason at UNCG (1/9/16)
	7		Aaliyah Whiteside at Georgia Tech (12/13/15)
Field Goal Att.	18		Amanda Cahill at Indiana (12/11/15)
	17		Beverly Kelley, A. vs Troy (11/17/15)
FG Pct (min 5 made)	.857	(6-7)	WINBORNE, Brittany at UAB (12/21/15)
	.833	(5-6)	Roddreka Rogers at Georgia Tech (12/13/15)
3-Point FG Made	4		Shilpa Tummala vs Harvard (1/2/16)
	4		HOWARD, Haley at UT Martin (12/5/15)
3-Point FG Att.	8		HOWARD, Haley at UT Martin (12/5/15)
	7		Shilpa Tummala vs Harvard (1/2/16)
	7		BENSON, Briana at Jacksonville State (11/24/15)
3-Pt FG Pct (min 2 made)	1.000	(2-2)	NORRIS, Brittny at Southern Miss (11/28/15)
	1.000	(2-2)	Ramirez, Caitlyn vs Troy (11/17/15)
Free Throws Made	15		Tyra Buss at Indiana (12/11/15)
	9		Aaliyah Whiteside at Georgia Tech (12/13/15)
	9		Beverly Kelley, A. vs Troy (11/17/15)
Free Throw Att.	17		Tyra Buss at Indiana (12/11/15)
	9		Aaliyah Whiteside at Georgia Tech (12/13/15)
	9		Beverly Kelley, A. vs Troy (11/17/15)
FT Pct (min 3 made)	1.000	(9-9)	Aaliyah Whiteside at Georgia Tech (12/13/15)
	1.000	(9-9)	Beverly Kelley, A. vs Troy (11/17/15)
	1.000	(5-5)	Amanda Cahill at Indiana (12/11/15)
	1.000	(4-4)	Lucy Mason at UNCG (1/9/16)
	1.000	(4-4)	Sydney Skinner vs Harvard (1/2/16)
	1.000	(4-4)	DEEMER, Jenna at LSU (12/28/15)
	1.000	(4-4)	Jazzmun Holmes at Mississippi State (11/13/15)
	1.000	(3-3)	Jenn Anderson at Indiana (12/11/15)
Rebounds	13		Alexis Gassion at Indiana (12/11/15)
	12		WINBORNE, Brittany at UAB (12/21/15)
Assists	5		Smith, Shamyiah at Alabama State (12/17/15)
	5		ROBERTS, Chelsea at UT Martin (12/5/15)
Steals	5		Tyra Buss at Indiana (12/11/15)
	5		Jazzmun Holmes at Mississippi State (11/13/15)
Blocked Shots	4		WINBORNE, Brittany at UAB (12/21/15)
	4		Deborah Martin at Alabama A&M (12/1/15)
Turnovers	7		Pawlowski, Hope vs Nicholls (11/27/15)
	7		McClendon, Shakierya vs Shorter (11/21/15)
Fouls	5		Lucy Mason at UNCG (1/9/16)
	5		PEDERSEN, Anne at LSU (12/28/15)
	5		Ramirez, Caitlyn vs Troy (11/17/15)
	5		Upshaw, Amahni vs Troy (11/17/15)
	5		Anastasia Evans vs Auburn Montgomery (11/15/15)