



USC Upstate Women's Basketball

2020-21 Game Notes

Contact: Codie Kunstmann • Email: codiek@uscupstate.edu • Office: (864) 503-5152

Game Central

USC Upstate
Spartans
(5-12, 3-9 BSC)



VS

Radford
Highlanders
(2-7, 2-5 BSC)



Head Coach: Becky Burke
Record at Upstate: 5-12 (1st season)
Overall Record: 88-44 (5th season)

Head Coach: Mike McGuire
Record at Radford: 135-94 (3rd season)
Overall Record: Same

Series History: Radford leads 6-1

Trend: +5 Radford

Last Meeting: Upstate lost 78057 (2/25/20, Radford, Va.)

Opening Tip

- This is the eighth all-time meeting between the Spartans and the Highlanders. Radford leads the series 6-1 and has taken the last five consecutive meetings between the two teams.
- Upstate has won two of its last three games and is coming off a 70-68 win at Gardner-Webb on Jan. 23. The Spartans are looking to win back-to-back games for only the second time this season.
- Molly Coleman posted her third double-double of the month in game one against Gardner-Webb with 14 points and a career-high 12 rebounds. She's averaging a team third-best 9.5 points per game and second-best rebounding average with 5.6 boards per game.
- Molly Coleman continues to play a crucial role for the Spartans and is coming off a strong performance at Hampton. In game one against the Pirates, she notched her second double-double of the season with 13 points and a game-high 10 rebounds alongside three blocks. She followed that up with 17 points, eight rebounds, and two blocks in game two of the series.
- Michaela Gibbons continues to ease back onto the court and has led the Spartan bench in scoring the past three games.
- Denijsha Wilson still leads the Spartans in scoring with 12.2 points per game and McKinley Brooks-Sumpter is close behind with 11.2 points per game.
- Tina Lindenfield leads the Highlanders in scoring with 9.1 points per game and Bryonna McClean is averaging a team-high 6.1 rebounds per game.

Projected Starting Lineup (from SID)



G • 1 • Denijsha Wilson
5-3 • Jr. • Darby, Pa.

Pts.	Reb.	Ast.	Min.
12.2	3.3	3.0	30.8



G • 10 • McKinley Brooks-Sumpter
5-8 • Fr. • Columbia, S.C.

Pts.	Reb.	Ast.	Min.
11.2	6.3	2.3	29.0



G • 12 • Jada Logan
5-8 • So. • Rutherfordton, N.C.

Pts.	Reb.	Ast.	Min.
5.4	5.5	2.2	25.5



G • 15 • Anda Kuzmina
5-9 • Sr. • Riga, Latvia

Pts.	Reb.	Ast.	Min.
4.6	3.1	1.7	24.0



F • 34 • Molly Coleman
6-2 • Jr. • Clinton, South Australia

Pts.	Reb.	Blk.	Min.
9.5	5.6	0.9	27.1



Head Coach Becky Burke
1st season at USC Upstate (5-12)
5th season overall (88-44)

Game Information

Date: Jan. 29, 6 p.m. | Jan. 30, 4 p.m.

Site: G.B. Hodge Center | Spartanburg, S.C.

Live Stats: www.upstatespartans.com

Live Video: ESPN+

Twitter: @UpstateWBB

Hashtag: #SpartanArmy -> #JoinUP

Schedule/Results

NOVEMBER

25 at Auburn L, 82-41

DECEMBER

2 at Alabama L, 98-59
5 **ST. ANDREWS** **W, 86-40**
6 **FLAGLER** **W, 52-42**
13 at Old Dominion L, 73-39
17 at Winthrop * L, 59-54
18 at Winthrop * W, 56-49
30 **HIGH POINT *** **L, 60-52**
31 **HIGH POINT *** **L, 70-48**

JANUARY

4 at Longwood * L, 79-70
5 at Longwood * L, 54-52
9 **PRESBYTERIAN *** **L, 60-50**
10 **PRESBYTERIAN *** **L, 66-53**
15 at Hampton * L, 86-77
16 at Hampton * W, 64-59
22 at Gardner-Webb * L, 52-62
23 at Gardner-Webb * W, 70-68
29 **RADFORD *** **6:00pm**
30 **RADFORD *** **4:00pm**

FEBRUARY

5 at UNC Asheville * 5:00pm
6 at UNC Asheville * 4:00pm
19 **CAMPBELL *** **6:00pm**
20 **CAMPBELL *** **4:00pm**
25 **CHARLESTON SOU. *** **6:00pm**
26 **CHARLESTON SOU. *** **6:00pm**

MARCH

9-14 Big South Championship TBA

All Games are EST and subject to change.
Home games are in **bold**.

* - Big South Conference Game

Quick Facts

UNIVERSITY INFORMATION

School: USC Upstate**Location:** Spartanburg, S.C.**Founded:** 1967**Enrollment:** 6,200**Nickname:** Spartans**Colors:** Green (349), White and Black**Home Facility (Capacity):** G.B. Hodge Center (833)**Press Row Phone:** (864) 503-5058**Affiliation:** NCAA Division I**Conference:** Big South**Interim Chancellor:** J. Derham Cole, Jr.**Director of Athletics:** Daniel Feig**Faculty Athletics Representative:** Dr. Jim Griffis**Senior Woman Administrator:** Sarah Gildersleeve**Athletic Department Phone:** (864) 503-5141

WOMEN'S BASKETBALL HISTORY

First Year of Women's Basketball: 1974**Overall All-Time Record:** 587-667**No. of Years in NCAA Tournament (Div. II):** 4**Last Year in NCAA Tourney, (Div. II):** 2005-06**Last NCAA Tourney Opponent:** Wingate**Result:** L, 67-59

TEAM INFORMATION

2020-21 Overall Record: 5-12**2020-21 BSC Record:** 3-9**Starters Returning/Lost:** 3/2**Letterwinners Returning/Lost:** 8/7**Newcomers:** 6

COACHING STAFF

Head Coach: Becky Burke**Alma Mater:** University of Louisville, 2012**Record at School/Years:** 5-12/1st season**Overall Record/Years:** 88-44/5th season**Best Way To Reach Coach:** Through SID**Assistant Coaches:** Candyce Wheeler, Drew Landers, Nicole Ambrose**Athletic Trainer:** Abby Earich

ATHLETIC COMMUNICATIONS

Contact: Codie Kunstmann, Associate Director**Office:** (864) 503-5152**Fax:** (864) 503-5127**Email:** codiek@uscupstate.edu**Website:** www.upstatespartans.com

SOCIAL MEDIA

Official Athletics Twitter: @UpstateSpartans**WBB Twitter:** @UpstateWBB**Facebook:** USC Upstate Athletics**Instagram:** @UpstateWBB**YouTube:** Upstate Spartans

WHAT TO CALL US

Please refer to the University of South Carolina Upstate as USC Upstate on first reference. Upstate is acceptable after first reference. Do not use hyphens.

The Radford Series

This is the eighth all-time meeting between the Spartans and the Highlanders. Radford leads the series 6-1 and has taken the last five consecutive meetings between the two teams. Upstate's lone win in the series came on Dec. 18, 2010 by a score of 87-81 on home court. Most recently, Radford took a 78-57 win in Spartanburg on Feb. 25, 2020 in a game where former Spartan standout Riley Popplewell notched a career-high 26 points and 12 rebounds.

Scouting the Opponent

Makaila Wilson had a season-high 19 points, including five 3-pointers, in the loss to the Pirates on Tuesday, while Kyanna Morgan established career-highs of 14 points and eight rebounds in the contest. Tina Lindenfield leads the Highlanders in scoring with 9.1 points per game and Bryonna McClean is averaging a team-high 6.1 rebounds per game.

Big South Preseason Poll

Rk - School (first-place votes)	Points
1 - Campbell (6)	112
2 - Radford (2)	107
3 - High Point (3)	104
4 - Hampton	86
5 - Gardner-Webb	70
6 - Longwood	66
7 - UNC Asheville	56
8 - Presbyterian College	48
9 - USC Upstate	30
10 - Charleston Southern	24
11 - Winthrop	23

Brooks-Sumpter Tabbed Big South Freshman of the Week

USC Upstate guard McKinley Brooks-Sumpter is the Big South Women's Basketball Freshman of the Week for games played Dec. 28-Jan. 3. The Columbia, S.C. native earned the honors for her efforts in the High Point series Dec. 30-31.

Brooks-Sumpter averaged 17.0 points, 7.5 rebounds, 1.5 assists, and 1.0 steals in those two games. She opened the series pacing all scorers with a career-high 24 points alongside 10 boards for her second double-double of her career on Wednesday. The following night, she put up 10 points, marking seven straight

Tale of the Tape

Series History

Overall Series (DI Era)	Radford leads 6-1
Current Streak	+5 Radford
Home	1-2
Away	0-4
Neutral	N/A

Statistical Comparison

Category	Upstate	Radford
Record	5-12	2-7
Scoring Average	57.4	61.2
Scoring Margin	-7.8	-11.5
Opponents Average	65.1	72.7
Field Goal Pct.	38.9	37.2
3-Point FG Pct.	28.1	31.5
Free Throw Pct.	62.8	67.9
Rebounding Avg.	38.3	39.1
Rebounding Margin	+0.5	-2.5
Assists/Game	12.9	11.9
Turnovers/Game	18.8	18.3
Turnover Margin	-4.1	-5.9
Assist-to-Turnover Ratio	0.7	0.6
Steals/Game	5.4	4.7
Blocks/Game	1.5	3.3

games in which she has scored in double-figures.

Wilson Named BSC Player of the Week by College Sports Madness

College Sports Madness has named Denijsha Wilson as the Big South Player of the Week, the publication announced on Monday, Dec. 7. The honor comes after Wilson helped the Spartans to a 2-1 record on the week including a matchup at Alabama and wins over St. Andrews and Flagler.

Wilson put up double-digits against the Crimson Tide on Wednesday with 12 points while dishing out six assists and pulling down five rebounds. The Darby, Pa. native then made her debut at the Hodge in a perfect back-to-back weekend for the Spartans, starting with a season-high 19-point effort against St. Andrews on Saturday. On Sunday, Wilson hauled in seven rebounds and notched 16 points in a win over Flagler.

Old Friends

Despite a brand new coaching staff and six newcomers for the Spartans this year, this team has a lot of prior connections. Newcomers Dakota McCaughan and Denijsha Wilson played with each other on the same church league team back in elementary school. Furthermore, Coach Burke and Coach Wheeler were teammates on the 2009 Louisville Final Four team while Coach Ambrose was a student assistant for the Cards at the time. Lastly, Coach Burke originally recruited Molly McCutcheon at Charleston, to only be reunited here at Upstate.

It Runs in the Family

Assistant Coach Drew Landers is no stranger to DI women's basketball as he is the son of legendary University of Georgia women's basketball coach Andy Landers.

International Ties

The Spartans have three international players on the team this season. Gift Sampson is a native of Lagos, Nigeria, Anda Kuzmina is from Riga, Latvia, and Molly Coleman is from Clinton, South Australia.

Alumni Spotlight

Riley Popplewell was named the 2019-20 Big South Conference Woman of the Year based on the criteria of Service and Leadership (including community services, campus activities and leadership positions), Academic Achievement, Athletics Excellence and a Personal Statement from each candidate. With a degree in Elementary Education, Popplewell graduated with a 4.0 GPA as a four-year starter for the Spartans. She surpassed 1,000 career points and 700 career rebounds during her senior year of 2019-20, was the Big South's second-leading rebounder this past season with 8.6 rebounds per game and was third in free throw percentage at 79.5.

In her final game in green and black, Popplewell played a pivotal role in helping the Spartans advance in a conference tournament for the first time since 2016. She dropped 23 points and pulled down 17 rebounds against Winthrop in the First Round of the Hercules Tires Big South Women's Basketball Championship as Upstate became the first-ever 10-seed to advance to the Big South Tournament Quarterfinals.

This past spring she was a recipient of the Big South Conference's Christenberry Award for Academic Excellence, which is the highest academic honor a Big South student-athlete can achieve. Popplewell was also one of 10 national selections for the 2019-20 DI-AAA Athletic Directors Association Scholar-Athlete Team. The two-time CoSIDA Academic All-District Team member was named the 2019-20 USC Upstate Female Academic Athlete of the Year after earning the USC Upstate School of Education Outstanding Student-Teacher Award in the fall of 2019. Popplewell was also the 2017-18 ASUN Scholar-Athlete of the Year followed by the Big South

The Last Time...

USC Upstate won back-to-back games...

vs St. Andrews (12/5/20), vs Flagler (12/6/20)

USC Upstate lost back-to-back games...

vs Presbyterian (1/10/21), at Hampton (1/15/21)

USC Upstate played an overtime game...

vs Campbell, L, 80-72 (2OT)

USC Upstate won an overtime game...

at South Carolina State (12/12/16), W, 73-67

USC Upstate scored 100 points in a game...

vs Bob Jones (12/8/18), W, 101-53

USC Upstate allowed 100 points in a game...

at South Carolina (11/21/19), L, 112-32

USC Upstate scored 90 points in a game...

at NJIT (1/6/18), W, 95-57

USC Upstate allowed 90 points in a game...

at Alabama (12/2/20), L, 98-59

USC Upstate won at the Hodge Center...

vs Flagler (12/6/20), W, 52-42

USC Upstate lost at the Hodge Center...

vs Presbyterian (1/10/21), L, 66-53

USC Upstate won on the road...

at Gardner-Webb (1/23/21), W, 70-68

USC Upstate lost on the road...

at Gardner-Webb (1/22/21), L, 62-52

USC Upstate won at a neutral site...

vs. Columbus State (PBT, 3/2/06), W, 69-62

USC Upstate lost at a neutral site...

vs. Stetson (ASUN, 3/15/14), L, 90-60

USC Upstate won by 20 or more points...

vs St. Andrews (12/5/20), W, 86-40

USC Upstate lost by 20 or more points...

vs High Point (12/31/20), L, 70-48

USC Upstate won by 30 or more points...

vs St. Andrews (12/5/20), W, 86-40

USC Upstate lost by 30 or more points...

at Old Dominion (12/13/20), L, 73-39

A USC Upstate player hit a buzzer-beating shot...

Shelby Hicks vs. Jacksonville (1/29/15), W, 66-64

A USC Upstate player had a double-double...

Molly Coleman at Gardner-Webb (1/22/21), L, 62-52

Five or More USC Upstate players scored 10 or more points...

Wilson, Brooks-Sumpter, Gibbons, Timberlake, Flantos

vs St. Andrews (12/5/20), W, 86-40

Four USC Upstate players scored 10 or more points...

Lewis (19), Moore (13), Logan (11), Popplewell (10), vs FAMU (11/5/19), W, 74-61

Two USC Upstate players had 10 or more rebounds...

Popplewell (17), Gibbons (10) at Winthrop (3/10/20), W, 60-57

A USC Upstate player had 20 or more points...

Denijsha Wilson (27) at Hampton (1/15/21)

A USC Upstate player had 30 or more points...

DeNisha Swain (33) at Winthrop (1/11/19)

A USC Upstate player had 10 or more rebounds...

Molly Coleman (12) at Gardner-Webb (1/22/21), L, 62-52

A USC Upstate player had 15 or more rebounds...

Prudent (15) at Winthrop (12/18/20), W, 56-49

A USC Upstate player had 20 or more rebounds...

Brittany Starling (24) vs. Florida Gulf Coast (2/15/16)

A USC Upstate player had 10 or more assists...

Anda Kuzmina (10) vs Presbyterian (2/4/20)

A USC Upstate player had 10 or more free throws made...

Riley Popplewell (15) vs Longwood (1/11/20)

A USC Upstate player had 10 or more field goals made...

Denijsha Wilson (10) at Hampton (1/15/21)

A USC Upstate player had five or more 3-pointers...

Dakota McCaughan (5) at Auburn (11/25/20)

A USC Upstate player had five or more steals...

Michaela Gibbons (5), vs FAMU (11/5/19)

Women's Basketball Scholar-Athlete of the Year in 2018-19.

Additionally, she participated in service projects throughout her collegiate career with United Way of the Piedmont Reading Buddies, McCarthy Teszler School Prom, Carolina Miracle League, Habitat for Humanity, and local nursing homes. She was also involved with Cru, National Walk to School Day, Girl/Boy Scouts, and community clean up days. Popplewell was the recipient of the 2018-19 USC Upstate SAAC Spartan Heart Award, and was honored with the 2020 USC Upstate Joe Bowman Pinnacle Award for Career Achievement. Popplewell is currently playing professionally in Spain.

What's in a Name?

USC Upstate is one of five NCAA Division I schools that use the Spartans nickname. Upstate shares the Spartan nickname with Michigan State, Norfolk State, UNC Greensboro and San Jose State.

About USC Upstate

The University of South Carolina Upstate is a regional comprehensive university offering more than 40 undergraduate and graduate programs in liberal arts and sciences, business administration, nursing, and education.

Located along the I-85 corridor in Spartanburg between Greenville and Charlotte, USC Upstate is ranked by U.S. News & World Report at #2 among Top Public Schools. It serves as a major talent producer for the region, with more than 6,000 students, approximately 1,300 new graduates a year, and nearly 30,000 alumni, many of whom live and work in the state.

The USC Upstate Spartans compete in 15 NCAA Division I sports as a member of the Big South Conference.

2020-21 Big South Standings

School	Big South		Overall	
	W-L	Pct.	W-L	Pct.
High Point	10-2	.833	12-5	.706
Campbell	7-3	.700	10-5	.667
Longwood	7-3	.700	8-7	.533
UNC Asheville	5-3	.625	6-7	.462
Presbyterian	6-6	.500	7-7	.500
Gardner-Webb	5-5	.500	5-10	.333
Hampton	4-5	.444	4-7	.364
Charleston Southern	4-6	.400	6-8	.429
Radford	2-5	.286	2-7	.222
USC UPSTATE	3-9	.250	5-12	.294
Winthrop	2-8	.200	3-10	.231

Spartans Home/on the Road

Category	Home	Away
Record	2-4	3-8
Points/Gm	56.8	57.6
Scoring Margin	+0.5	-12.3
Points Allowed/Gm	56.3	69.9
Field Goal%	38.2	39.3
3-Pt. Field Goal%	22.5	30.2
Free Throw %	60.2	64.4
Opp. Field Goal%	35.1	41.1
Opp. 3-Pt. FG%	31.9	30.3
Opp. Free Throw %	68.0	69.8
Rebounding Avg	40.3	39.2
Opp. Rebound Avg	35.3	39.2
Rebounding Margin	+5.0	-2.0
Assists/Gm	13.5	12.6
Turnovers/Gm	17.8	19.4
Turnover Margin	+3.3	-6.4
Asst./TO Ratio	0.8	0.7
Steals/Gm	7.0	4.5
Blocks/Gm	1.8	1.3

Career By The Numbers**CAREER DOUBLE-FIGURE SCORING GAMES**

Anda Kuzmina	19
Michaela Gibbons	19
Jada Logan	3
Barrett Herring	8
Dakota McCaughan	4
Marnicha Prudent	3
McKinley Brooks-Sumpter	9
Denijsha Wilson	11
Lillian Flantos	1
Maya Timberlake	2
Molly Coleman	9

CAREER 30-PLUS POINT SCORING GAMES**CAREER 20-PLUS POINT SCORING GAMES**

Michaela Gibbons	2
Anda Kuzmina	1
McKinley Brooks-Sumpter	2
Denijsha Wilson	1

CAREER DOUBLE-DOUBLES

Michaela Gibbons	2
Barrett Herring	1
Anda Kuzmina	1
Marnicha Prudent	2
McKinley Brooks-Sumpter	2
Molly Coleman	3

CAREER DOUBLE-FIGURE REBOUNDING GAMES

Michaela Gibbons	3
Barrett Herring	2
Jada Logan	2
Marnicha Prudent	3
McKinley Brooks-Sumpter	2
Molly Coleman	3

CAREER 4-PLUS ASSIST GAMES

Anda Kuzmina	7
Jada Logan	6
Maya Timberlake	1
Michaela Gibbons	1
Molly McCutcheon	1
Dakota McCaughan	3
Denijsha Wilson	8
McKinley Brooks-Sumpter	3

CAREER THREE-PLUS 3-POINT FG MADE GAMES

Michaela Gibbons	14
Anda Kuzmina	11
Dakota McCaughan	3
Denijsha Wilson	3

CAREER STARTS

Anda Kuzmina	62
Michaela Gibbons	51
Jada Logan	26
Barrett Herring	19
Marnicha Prudent	5
Molly McCutcheon	1
Denijsha Wilson	16
McKinley Brooks-Sumpter	13
Dakota McCaughan	4
Molly Coleman	13
Maya Timberlake	9
Lillian Flantos	4

All-Time at the Hodge Center			
Year	Win	Loss	Pct.
1973-74	--	--	--
1974-75	--	--	--
1975-76	0	7	.000
1976-77	3	4	.429
1977-78	6	2	.750
1978-79	9	0	1.000
1979-80	7	6	.538
1980-81	3	4	.429
1981-82	7	2	.778
1982-83	6	2	.750
1983-84	6	6	.500
1984-85	4	7	.364
1985-86	13	2	.867
1986-87	12	2	.857
1987-88	8	6	.571
1988-89	8	5	.615
1989-90	10	3	.769
1990-91	10	3	.769
1991-92	7	6	.538
1992-93	14	2	.875
1993-94	15	0	1.000
1994-95	13	2	.867
1995-96	9	5	.643
1996-97	5	9	.357
1997-98	9	4	.692
1998-99	4	9	.308
1999-00	4	10	.286
2000-01	3	9	.250
2001-02	5	8	.385
2002-03	9	4	.692
2003-04	4	9	.308
2004-05	10	3	.769
2005-06	8	5	.615
2006-07	7	6	.538
2007-08	3	8	.273
2008-09	9	4	.692
2009-10	11	3	.846
2010-11	11	2	.846
2011-12	6	7	.462
2012-13	7	7	.500
2013-14	9	4	.692
2014-15	10	4	.714
2015-16	13	3	.813
2016-17	6	9	.400
2017-18	9	7	.563
2018-19	5	7	.416
2019-20	7	8	.545
2020-21	2	4	.500
TOTAL	330	228	.591

Game-By-Game Starting Lineups

Opponent	1	2	3	4	5
Auburn	Wilson	McCutcheon	Kuzmina	Gibbons	Prudent
Alabama	Wilson	McCaughan	Brooks-Sumpter	Gibbons	Prudent
St. Andrews	Wilson	McCaughan	Brooks-Sumpter	Gibbons	Coleman
Flagler	Wilson	McCaughan	Brooks-Sumpter	Gibbons	Coleman
Old Dominion	Wilson	McCaughan	Timberlake	Prudent	Coleman
Winthrop	Wilson	Brooks-Sumpter	Timberlake	Flantos	Prudent
Winthrop	Wilson	Brooks-Sumpter	Timberlake	Flantos	Prudent
High Point	Wilson	Brooks-Sumpter	Timberlake	Flantos	Prudent
High Point	Wilson	Brooks-Sumpter	Timberlake	Flantos	Prudent
Longwood	Wilson	Brooks-Sumpter	Timberlake	Kuzmina	Coleman
Longwood	Wilson	Logan	Timberlake	Kuzmina	Coleman
Presbyterian	Wilson	Logan	Timberlake	Kuzmina	Coleman
Presbyterian	Logan	Brooks-Sumpter	Timberlake	Kuzmina	Coleman
Hampton	Wilson	Brooks-Sumpter	Logan	Kuzmina	Coleman
Hampton	Wilson	Brooks-Sumpter	Logan	Kuzmina	Coleman
Gardner-Webb	Wilson	Brooks-Sumpter	Logan	Kuzmina	Coleman
Gardner-Webb	Wilson	Brooks-Sumpter	Logan	Kuzmina	Coleman

2020-21 Miscellaneous

Double-Digit Scorers	Total (High)
Marnicha Prudent	3 (16 at Winthrop, 12/18/20)
Dakota McCaughan	3 (15 at Auburn, 11/25/20)
McKinley Brooks-Sumpter	9 (24 vs HPU, 12/30/20)
Denijsha Wilson	11 (27 at Hampton, 1/15/21)
Michaela Gibbons	2 (12 at Hampton, 1/16/21)
Maya Timberlake	2 (11 vs St. Andrews, 12/5/20)
Lillian Flantos	1 (10 vs St. Andrews, 12/5/20)
Molly Coleman	9 (19 at Longwood, 1/4/21)
Jada Logan	1 (19 at Gardner-Webb, 1/23/21)

20-Point Scorers	Game
McKinley Brooks-Sumpter	at Alabama, 12/2/20
McKinley Brooks-Sumpter	vs High Point, 12/30/20
Denijsha Wilson	at Hampton, 1/15/21

30-Point Scorers	Game
------------------	------

Double-Digit Rebounders	Total (High)
Marnicha Prudent	3 (15 at Winthrop, 12/18/20)
M. Brooks-Sumpter	2 (12 at Winthrop, 12/17/20)
Molly Coleman	3 (12, at Gardner-Webb, 1/22/21)
Jada Logan	1 (13 at Hampton, 1/16/21)

Double-Doubles	Game
Marnicha Prudent	at Auburn, 11/25/20
M. Brooks-Sumpter	at Winthrop, 12/17/20
Marnicha Prudent	at Winthrop, 12/18/20
McKinley Brooks-Sumpter	vs High Point, 12/30/20
Molly Coleman	at Longwood, 1/4/21
Molly Coleman	at Hampton, 1/15/21
Molly Coleman	at Gardner-Webb, 1/22/21

This Week in the Big South

Tuesday, Jan. 26

Radford 51 at Hampton 66

Friday, Jan. 29

Charleston Southern at Winthrop, 1 p.m.

Gardner-Webb at Campbell, 5 p.m.

Hampton at UNC Asheville, 5 p.m.

Presbyterian at Longwood, 6 p.m.

Radford at USC Upstate, 6 p.m.

Hampton at High Point POSTPONED

Saturday, Jan. 30

Charleston Southern at Winthrop, 1 p.m.

Gardner-Webb at Campbell, 3 p.m.

Hampton at UNC Asheville, 3 p.m.

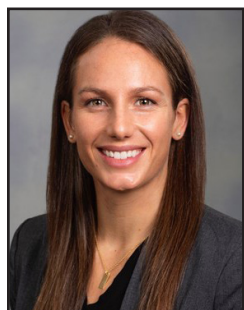
Radford at USC Upstate, 4 p.m.

Presbyterian at Longwood, 6 p.m.

Hampton at High Point POSTPONED

Bench Production

GAME	UPST-OPP	DIFF.	UPST HIGH BENCH SCORER
at Auburn	23-51	-28	McCaughan (15)
at Alabama	8-29	-21	Coleman (8)
St. Andrews	33-4	+29	Timberlake (11)
Flagler	11-10	+1	Prudent (7)
at ODU	11-17	-6	Sampson/Flantos (4)
at Winthrop	21-25	-4	McCaughan (10)
at Winthrop	4-29	-25	McCaughan (3)
vs High Point	10-19	-9	Coleman (10)
vs High Point	21-25	-4	Coleman (10)
at Longwood	14-8	+6	McCaughan (6)
at Longwood	16-6	+10	Prudent (11)
vs Presbyterian	11-0	+11	Prudent (6)
vs Presbyterian	23-19	+4	McCaughan (13)
at Hampton	4-28	-24	McCaughan (3)
at Hampton	12-15	-3	Gibbons (12)
at GWU	10-20	-10	Gibbons (6)
at GWU	11-16	-5	Gibbons (9)



BECKY BURKE

Head Coach

1st Season

University of Louisville, 2012

Becky Burke is entering her first season at the helm of the USC Upstate Women's Basketball program. It was announced on June 8, 2020 that she was selected to lead the Spartan program, making her the 15th head coach in Upstate's program history, second in the Division I era.

"I felt like USC Upstate was a place where we could win before I even came on my campus visit, and after visiting, that was confirmed for me. It comes down to that simply. This is a place where we can recruit because of the campus support and resources, and I think the conference is winnable. At the end of the day you want to bring in a staff that plays to win championships, and I think everything is in place to do just that," said Burke.

"I'm looking forward to building relationships with the players and bringing fresh energy and life into the program. That's what you need when you're building, and I'm excited about watching them grow and seeing what they're going to do."

Burke takes the reins of the Upstate program after an impressive two-year stint at the NCAA DII level as the head coach at the University of Charleston in West Virginia. She brought the Golden Eagles back to national prominence in just her first season at the helm of the program in 2018-19, leading the team to a 25-7 record which was a 12-win improvement from the previous year. The Golden Eagles cracked the national top-25 that season and made their first NCAA Tournament since 2014 while leading the country in field goal percentage and the Mountain East Conference in defensive scoring. Burke coached a pair of First Team AllConference picks which included a DII All-American.

In her second year, the Golden Eagles entered the 2019-20 season as the conference's preseason No. 2 team and went on to a 23-7 record while once again leading the conference in defensive scoring behind another pair of All-Conference picks and the MEC Freshman of the Year.

Prior to her time at Charleston, Burke started the women's basketball program at Embry Riddle Aeronautical University in Prescott, Ariz. in 2015 and went on to be the head coach of the Eagles for two seasons. She led the team to a winning record in its inaugural season in 2016-17. In her second season at ERAU, the Eagles ranked nationally in the NAIA top-25 and compiled a 21-6 record, 11-3 in the California Pacific Conference. Burke recruited and coached three all-conference performers in two seasons at ERAU.

Burke earned a spot on the Women's Basketball Coaches Association 30-Under-30 list in 2019, and was the only head coach to appear on the exclusive list.

Before her head coaching career, Burke served as an assistant coach at Saint Joseph's College for the 2014-15 season where she was the recruiting coordinator and strength and conditioning coach while also being responsible for player development, scouting, and scheduling. Prior to that, she was the director of basketball

operations at California State University, Fullerton in 2013-14.

Burke had a standout playing career at the University of Louisville where she graduated with a degree in sports management in 2012. In four years as a Cardinal, she helped her team to three NCAA Tournament appearances including the championship game in 2009 and the Sweet Sixteen in 2011. She led the Cards in scoring her sophomore year and in 3-point field goal percentage her junior year. She tied a school record for 3-pointers in a game her senior year and ranks fourth all-time in 3-pointers made. Burke is a member of the 1,000-point club and became just the second Cardinal to participate in the State Farm College 3-Point Shoot-Out in 2012, finishing as the runner-up.

"I'm very grateful and humbled that AD Daniel Feig chose me to be the leader of this program and these young women," Burke said. "I want to thank him and the other administrators for giving me this opportunity."

A native of Clarks Summit, Pa., Burke starred at her hometown high school, Abington Heights. She was named the Pennsylvania Class 4A Player of the Year her senior year by the Associated Press and scored over 2,100 points in her four-year high school career.

Burke resides in Spartanburg with her fiancé, Jenna, and the couple will marry on May 22, 2021.

THE BURKE FILE

HOMETOWN: Clarks Summit, PA

FAMILY: Fiancé - Jenna

EDUCATIONAL BACKGROUND

2012 B.S. - Sports Management
University of Louisville

COLLEGIATE COACHING EXPERIENCE

2014-15 Assistant Coach - Saint Joseph's College
2015-18 Head Coach - Embry Riddle Aeronautical University
2018-20 Head Coach - University of Charleston (WV)
2020-Pres. Head Coach - USC Upstate

COACHING HONORS

2019 Women's Basketball Coaches Association 30-Under-30

PLAYING EXPERIENCE

2008-2012 Guard, Louisville

PLAYING HONORS

2009 NCAA Tournament Runner-up
2011 NCAA Tournament Sweet Sixteen
2012 State Farm College 3-Point Shootout Runner-up

AS A HEAD COACH

Year	Team	Record
2016-17	Embry Riddle (AZ)	14-12
2017-18	Embry Riddle (AZ)	21-6
2018-19	Charleston (WV)	25-7
2019-20	Charleston (WV)	23-7
2020-21	USC Upstate	5-12
Total	5 years	88-44

What They're Saying About Becky Burke:

Daniel Feig

*Director of Athletics/Vice Chancellor for Intercollegiate Athletics
USC Upstate*

"I am so excited to welcome Coach Burke to USC Upstate! She has been a winner at every stage of her career – as a student-athlete at Louisville, as a head coach in her mid-20s starting the program at Embry Riddle, and as a head coach most recently at the University of Charleston. From my first phone call with her, I felt her tremendous energy, contagious enthusiasm, personal charisma and commitment to excellence in all facets of running a collegiate basketball program. I have no doubt she will lead our program to new heights on the floor, while building relationships with our student-athletes to prepare them for a lifetime of success off the floor. I look forward to introducing her to our student-athletes, staff, University and community."

Jeff Walz

Head Women's Basketball Coach University of Louisville

"I'm very excited for Becky as she has done a tremendous job at every stop she's had along the way to this point of her career. This is just the next step for her. She's had success at every stop. She's very passionate and knowledgeable, and just does a fantastic job of getting the best out of her student-athletes. She coaches the same way she played which is with a lot of passion and heart and fire, and I think that is going to continue to lead her to great success."

Samantha Williams

Head Women's Basketball Coach Eastern Kentucky University

"Becky is a go-getter and I always knew she had a bright future and was going to be successful in the coaching profession. She was one of the most vocal kids that I've ever coached. She's just someone who brings the energy and has that charisma about her. There's a reason why she's moved up the ranks as quickly as she has. Her presence and her energy - you can feel that when you talk to her and I think it's contagious. I have no doubt that she's going to do great things at Upstate."

Bethann Ord

Head Women's Basketball Coach Binghamton University

"USC Upstate is getting a great young coach coming in. She's a fierce competitor - she was as a player and is as a coach. She's very knowledgeable about the game and I think she's going to do a tremendous job. I'm excited about watching her growth. She's in it for the kids, and that's really important and what it's about."



CANDYCE WHEELER

Assistant Coach

1st Season

University of Louisville, 2008

Wheeler, a former teammate of Burke's on the 2009 Final Four team at the University of Louisville, comes to Upstate from Bellarmine University where she served as the assistant women's basketball coach for the past four seasons.

In her first year with the Knights in 2016-17, Wheeler helped guide the team to an NCAA Tournament berth as well as its first back-to-back 20-win season in 12 years. Bellarmine made the Great Lakes Valley Conference Tournament in all of Wheeler's four seasons with the program, including an appearance in the title game in 2018-19. Additionally, Wheeler coached five All-GLVC selections.

Prior to her stint at Bellarmine, Wheeler was an assistant coach at her high school alma mater, DuPont Manual, and helped lead the team to a 7th Region Championship and an appearance in the state tournament. As an assistant coach at Western Kentucky University in 2013-14, she helped the Hilltoppers to a Sun Belt Conference Title and a berth in the NCAA Tournament. Before that, she returned to U of L as a graduate assistant under head coach Jeff Walz in 2012-13 and helped the Cardinals to the NCAA Tournament Finals for the second time in program history.

As a player at Louisville, Wheeler earned First Team All-Big East nods her senior year in 2008-09. She led the Cardinals to the program's first-ever NCAA Tournament championship game that season where she recorded a double-double against UConn and was named to the Raleigh Regional All-Tournament Team. Her junior year, she earned Second-Team All-Big East honors and was named to the Big East All-Tournament Team.

Wheeler earned her psychology degree from U of L and was selected in the third round of the 2009 WNBA draft by the San Antonio Silver Stars. She went on to play professionally overseas in Luxembourg, Germany, and Puerto Rico. Wheeler married her husband, Gary, in May 2019.



DREW LANDERS

Assistant Coach
1st Season
Ole Miss, 2013

Landers, the son of legendary Georgia's women's basketball coach Andy Landers, joins the Upstate program from Mercer University where he has been the director of player personnel for women's basketball since 2018.

There, he was in charge of team operations that included travel, lodging, and meals as well as scouting, planning summer camps, managing the team budget, and devising team practice schedules and itineraries. He also acted as the liaison for compliance.

Prior to Mercer, Landers was the director of women's basketball operations at the University of Mississippi in 2017-18. In addition to the same responsibilities he had at Mercer, Landers also recruited practice players and mentored support staff, student managers, and student-athletes during his time at Ole Miss. In 2016-17, he was the women's basketball video coordinator at the University of Virginia after interning with Georgia's men's and women's basketball programs in 2014-15 where he assisted with film, scouting reports, and playbooks.

Additionally, Landers has worked with the Southeastern Conference in the past, volunteering at football media days and men's and women's basketball tournaments. He received his bachelor's in business administration from Ole Miss in 2013.



NICOLE AMBROSE

Assistant Coach
1st Season
University of Louisville, 2012

Ambrose was a student manager for women's basketball at U of L during Coach Burke's time there, and she joins the Spartans after spending the last three seasons as an assistant coach at Indiana University Southeast.

During her tenure, she helped coach the Grenadiers to their first-ever River States Conference West Division Championship and an appearance in the River States Conference Tournament Championship. Ambrose compiled a 54-38 record at IU Southeast while coaching two All-RSC First Team selections and two All-RSC Second Team selections.

Before her time at IU Southeast, Ambrose was the head coach at Waggenger High School in Louisville, KY during the 2016-17 school year. Prior to that, she spent three seasons as an assistant coach at Louisville Male High School and Assumption High School in Louisville, KY.

In addition to coaching scholastically, Ambrose directed the Louisville Legends Gauntlet travel program from 2016-2018 and sent more than 15 players to the collegiate ranks. In 2017, she founded The Outlet, LLC, a girls basketball exposure company that highlights players from Kentucky and surrounding states. In May 2019, Ambrose and The Outlet partnered with WNBA and University of Louisville stars Angel McCoughtry and Asia Durr to hold the Derby City Duo Skills Camp.

Ambrose was a student-manager and then a graduate assistant for U of L's women's basketball team, and during her time there, the Cardinals made two NCAA Sweet 16 appearances and one NCAA National Championship appearance. She graduated from U of L in 2012 with a bachelor's in sport administration and again in 2014 with a master's of business administration in entrepreneurship. In 2019, she graduated with her master's degree in teaching from the University of the Cumberlands.

USC Upstate By The Numbers

	Big South	Overall		Big South	Overall
Record	3-9	5-12	Having 10 or more assists	3-9	5-12
Playing a ranked opponent	0-0	0-0	Having less than 10 assists	0-0	0-0
Home	0-5	2-5	Score more points in paint than opponent	1-4	3-4
Road	3-4	3-7	Score equal/less pts. in paint than opp.	2-5	2-8
Neutral	0-0	0-0	Scoring more pts. off TOs than opponent	2-0	3-0
Leading at halftime	2-3	3-3	Scoring equal/less pts. off TOs than opp.	1-0	2-12
Trailing at halftime	1-4	2-8	Scoring more 2nd-chance points	1-5	2-5
Tied at halftime	0-1	0-1	Scoring equal/less 2nd-chance points	2-4	3-7
Overtime	0-0	0-0	Scoring more fast break points	2-4	4-4
0 players score in double figures	0-0	0-0	Scoring equal/less fast break points	1-5	1-8
1 player scores in double figures	0-2	0-3	Playing in November	0-0	0-1
2 players score in double figures	0-4	0-5	Playing in December	1-3	3-5
3 players score in double figures	3-3	4-4	Playing in January	2-6	2-6
4 players score in double figures	0-0	0-0	Playing in February	0-0	0-0
5 players score in double figures	0-0	1-0	Playing in March	0-0	0-0
More than 5 players score in double figures	0-0	0-0	Playing during the day	2-4	4-5
Starters out-score opponent's starters	3-2	5-3	Playing at night	1-5	1-7
Opponent's starters score equal/more	0-7	0-10	Playing on Sunday	0-1	1-2
Bench out-scores opponent's bench	0-4	2-4	Playing on Monday	0-1	0-1
Opponent's bench scores equal/more	3-5	3-8	Playing on Tuesday	0-1	0-1
Shooting 50% or better	1-1	2-1	Playing on Wednesday	0-1	0-3
Shooting between 40-49%	1-2	1-2	Playing on Thursday	0-2	0-2
Shooting between 30-39%	1-6	2-8	Playing on Friday	1-2	1-2
Shooting less than 30%	0-0	0-1	Playing on Saturday	2-1	3-1
Shooting better than opponent	2-3	4-3	Margin is 5 points or less	2-2	2-2
Shooting worse than/equal to opponent	1-6	1-9	Margin is between 6-10	1-5	2-5
More made FTs than opponent	3-3	5-3	Margin is between 11-20	0-1	0-1
Having equal/less FTs than opponent	0-6	0-9	Margin is more than 20	0-1	1-4
Out-rebounding opponent	3-7	4-7	Having a 20-point scorer	0-2	0-3
Having equal/less rebounds than opponent	0-2	1-5	Having a 30-point scorer	0-0	0-0
Having more TOs than opponent	2-6	2-9	Scoring 49 points or less	0-1	0-3
Having equal/less TOs than opponent	1-3	3-3	Scoring 50-59 points	1-6	2-7
Attempting more FT than 3FG	3-5	5-6	Scoring 60-69 points	1-0	1-0
Attempting equal/less FT than 3FG	0-4	0-6	Scoring 70-79 points	1-2	1-2
Making 5 or more 3FGs	1-3	1-5	Scoring 80-89 points	0-0	1-0
Making less than 5 3FGs	2-6	4-7	Scoring 90-99 points	0-0	0-0
Making no 3FGs	0-0	0-0	Scoring 100+ points	0-0	0-0
Attempting 15 or more 3FGs	0-3	1-5			
Attempting less than 15 3FGs	3-6	4-7			
No Upstate players foul out	2-4	4-5			
One or more Upstate players foul out	1-5	1-7			

2020-21 Season Statistics



2020-21 USC Upstate Women's Basketball Combined Team Statistics All games

Page 1/1
as of Jan 27, 2021

Game Records

Record	Overall	Home	Away	Neutral
ALL GAMES	5-12	2-4	3-8	0-0
CONFERENCE	3-9	0-4	3-5	0-0
NON-CONFERENCE	2-3	2-0	0-3	0-0

Score by Periods

Team	1st	2nd	3rd	4th	OT	TOT
USC Upstate	336	337	172	130	0	975
Opponents	361	411	178	157	0	1107

Team Box Score

No.	Player				Total		3-Point		F-Throw		Rebounds											
		GP-GS	MIN	AVG	FG-FGA	FG%	3FG-FGA	3FG%	FT-FTA	FT%	OFF	DEF	TOT	AVG	PF	DQ	A	TO	BLK	STL	PTS	AVG
1	WILSON, Denijsha	17-16	523:50	30.8	68-157	.433	19-52	.365	52-71	.732	11	45	56	3.3	34	1	51	72	0	20	207	12.2
10	BROOKS-SUMPTER, McKinley	15-13	434:28	29.0	66-184	.359	5-18	.278	31-49	.633	26	68	94	6.3	41	1	35	41	0	16	168	11.2
34	COLEMAN, Molly	17-12	459:55	27.1	66-117	.564	0-0	.000	30-58	.517	32	64	96	5.6	31	1	15	33	16	9	162	9.5
5	MCCUTCHEON, Molly	1-1	33:03	33.1	2-7	.286	2-6	.333	0-0	.000	0	0	0	0.0	2	0	5	2	0	1	6	6.0
21	PRUDENT, Marnicha	14-6	249:21	17.8	26-74	.351	0-0	.000	27-38	.711	21	48	69	4.9	38	3	13	25	0	5	79	5.6
12	LOGAN, Jada	12-7	305:38	25.5	24-58	.414	0-4	.000	17-22	.773	21	45	66	5.5	18	0	26	26	1	6	65	5.4
0	MCCAUGHAN, Dakota	14-4	292:37	20.9	26-93	.280	20-77	.260	1-2	.500	1	23	24	1.7	22	1	27	31	2	8	73	5.2
33	GIBBONS, Michaela	10-4	191:24	19.1	14-57	.246	8-36	.222	12-13	.923	3	21	24	2.4	18	1	4	11	1	4	48	4.8
15	KUZMINA, Anda	14-9	336:25	24.0	24-75	.320	14-49	.286	3-9	.333	3	40	43	3.1	25	0	24	24	5	8	65	4.6
25	TIMBERLAKE, Maya	14-9	276:33	19.8	21-54	.389	0-0	.000	5-12	.417	7	27	34	2.4	23	0	15	22	0	7	47	3.4
23	FLANTOS, Lillian	16-4	267:08	16.7	22-47	.468	0-0	.000	2-12	.167	18	27	45	2.8	31	0	5	16	0	8	46	2.9
3	SAMPSON, Gift	5-0	30:38	6.1	4-10	.400	0-0	.000	1-2	.500	2	5	7	1.4	1	0	0	4	0	0	9	1.8
Team											29	64	93					13				
Total		17	3401		363-933	.389	68-242	.281	181-288	.628	174	477	651	38.3	284	8	220	320	25	92	975	57.4
Opponents		17	3400		405-1032	.392	118-382	.309	179-259	.691	193	450	643	37.8	311	4	236	250	51	147	1107	65.1

Team Statistics

	USCU	OPP
Scoring	975	1107
Points per game	57.4	65.1
Scoring margin	-7.8	-
Field goals-att	363-933	405-1032
Field goal pct	.389	.392
3 point fg-att	68-242	118-382
3-point FG pct	.281	.309
3-pt FG made per game	4.0	6.9
Free throws-att	181-288	179-259
Free throw pct	.628	.691
F-Throws made per game	10.6	10.5
Rebounds	651	643
Rebounds per game	38.3	37.8
Rebounding margin	+0.5	-
Assists	220	236
Assists per game	12.9	13.9
Turnovers	320	250
Turnovers per game	18.8	14.7
Turnover margin	-4.1	-
Assist/turnover ratio	0.7	0.9
Steals	92	147
Steals per game	5.4	8.6
Blocks	25	51
Blocks per game	1.5	3.0
Winning streak	1	-
Home win streak	0	-
Attendance	823	1298
Home games-Avg/Game	6-137	11-118
Neutral site-Avg/Game	-	0-0

Team Results

Date	Opponent		Score	Att.
11/25/2020	at Auburn	L	41-82	588
12/02/2020	at Alabama	L	59-98	460
12/05/2020	St. Andrews	W	86-40	135
12/06/2020	Flagler	W	52-42	128
12/13/2020	at Old Dominion	L	39-73	250
12/17/2020	at Winthrop	L	54-59	0
12/18/2020	at Winthrop	W	56-49	0
12/30/2020	High Point	L	52-60	140
12/31/2020	High Point	L	48-70	140
01/04/2021	at Longwood	L	70-79	0
01/05/2021	at Longwood	L	52-54	0
01/09/2021	Presbyterian	L	50-60	140
01/10/2021	Presbyterian	L	53-66	140
01/15/2021	at Hampton	L	77-86	0
01/16/2021	at Hampton	W	64-59	0
01/22/2021	at Gardner-Webb	L	52-62	0
01/23/2021	at Gardner-Webb	W	70-68	0

2020-21 Season Results



2020-21 USC Upstate Women's Basketball
Season Schedule/Results & Leaders
All games

Page 1/1
as of Jan 27, 2021

Game Records

Record	Overall	Home	Away	Neutral
ALL GAMES	5-12	2-4	3-8	0-0
CONFERENCE	3-9	0-4	3-5	0-0
NON-CONFERENCE	2-3	2-0	0-3	0-0

Team Results

Date	Opponent		Score	Att.	High Points	High Rebounds
11/25/2020	at Auburn	L	41-82	588	(15) MCCAUGHAN, Dakota	(10) PRUDENT, Marnicha
12/02/2020	at Alabama	L	59-98	460	(21) BROOKS-SUMPTER, McKinley	(8) BROOKS-SUMPTER, McKinley
12/05/2020	St. Andrews	W	86-40	135	(19) WILSON, Denijsha	(7) FLANTOS, Lillian
12/06/2020	Flagler	W	52-42	128	(16) WILSON, Denijsha	(10) PRUDENT, Marnicha
12/13/2020	at Old Dominion	L	39-73	250	(10) COLEMAN, Molly	(5) TIMBERLAKE, Maya
12/17/2020	at Winthrop	L	54-59	0	(10) MCCAUGHAN, Dakota	(12) BROOKS-SUMPTER, McKinley
					(10) BROOKS-SUMPTER, McKinley	
12/18/2020	at Winthrop	W	56-49	0	(17) WILSON, Denijsha	(15) PRUDENT, Marnicha
12/30/2020	High Point	L	52-60	140	(24) BROOKS-SUMPTER, McKinley	(10) BROOKS-SUMPTER, McKinley
12/31/2020	High Point	L	48-70	140	(10) BROOKS-SUMPTER, McKinley	(9) COLEMAN, Molly
					(10) COLEMAN, Molly	
01/04/2021	at Longwood	L	70-79	0	(19) COLEMAN, Molly	(10) COLEMAN, Molly
01/05/2021	at Longwood	L	52-54	0	(12) WILSON, Denijsha	(7) PRUDENT, Marnicha
01/09/2021	Presbyterian	L	50-60	140	(12) COLEMAN, Molly	(9) BROOKS-SUMPTER, McKinley
01/10/2021	Presbyterian	L	53-66	140	(13) MCCAUGHAN, Dakota	(9) COLEMAN, Molly
01/15/2021	at Hampton	L	77-86	0	(27) WILSON, Denijsha	(10) COLEMAN, Molly
01/16/2021	at Hampton	W	64-59	0	(18) WILSON, Denijsha	(13) LOGAN, Jada
01/22/2021	at Gardner-Webb	L	52-62	0	(14) COLEMAN, Molly	(12) COLEMAN, Molly
01/23/2021	at Gardner-Webb	W	70-68	0	(19) LOGAN, Jada	(8) LOGAN, Jada

Attendance Summary

	Games	Attend	Avg/Game
Home	6	823	137
Away	11	1298	118
Neutral	0	0	0
Total	17	2121	125

2020-21 Season Box Score



2020-21 USC Upstate Women's Basketball
Season Box Score
All games

Page 1/1
as of Jan 27, 2021

Game Records

Record	Overall	Home	Away	Neutral
ALL GAMES	5-12	2-4	3-8	0-0
CONFERENCE	3-9	0-4	3-5	0-0
NON-CONFERENCE	2-3	2-0	0-3	0-0

Team Box Score

No.	Player				Total		3-Point		F-Throw		Rebounds											
		GP-GS	MIN	AVG	FG-FGA	FG%	3FG-FGA	3FG%	FT-FTA	FT%	OFF	DEF	TOT	AVG	PF	DQ	A	TO	BLK	STL	PTS	AVG
1	WILSON, Denijsha	17-16	523:50	30.8	68-157	.433	19-52	.365	52-71	.732	11	45	56	3.3	34	1	51	72	0	20	207	12.2
10	BROOKS-SUMPTER, McKinley	15-13	434:28	29.0	66-184	.359	5-18	.278	31-49	.633	26	68	94	6.3	41	1	35	41	0	16	168	11.2
34	COLEMAN, Molly	17-12	459:55	27.1	66-117	.564	0-0	.000	30-58	.517	32	64	96	5.6	31	1	15	33	16	9	162	9.5
5	MCCUTCHEON, Molly	1-1	33:03	33.1	2-7	.286	2-6	.333	0-0	.000	0	0	0	0.0	2	0	5	2	0	1	6	6.0
21	PRUDENT, Marnicha	14-6	249:21	17.8	26-74	.351	0-0	.000	27-38	.711	21	48	69	4.9	38	3	13	25	0	5	79	5.6
12	LOGAN , Jada	12-7	305:38	25.5	24-58	.414	0-4	.000	17-22	.773	21	45	66	5.5	18	0	26	26	1	6	65	5.4
0	MCCAUGHAN, Dakota	14-4	292:37	20.9	26-93	.280	20-77	.260	1-2	.500	1	23	24	1.7	22	1	27	31	2	8	73	5.2
33	GIBBONS, Michaela	10-4	191:24	19.1	14-57	.246	8-36	.222	12-13	.923	3	21	24	2.4	18	1	4	11	1	4	48	4.8
15	KUZMINA, Anda	14-9	336:25	24.0	24-75	.320	14-49	.286	3-9	.333	3	40	43	3.1	25	0	24	24	5	8	65	4.6
25	TIMBERLAKE , Maya	14-9	276:33	19.8	21-54	.389	0-0	.000	5-12	.417	7	27	34	2.4	23	0	15	22	0	7	47	3.4
23	FLANTOS , Lillian	16-4	267:08	16.7	22-47	.468	0-0	.000	2-12	.167	18	27	45	2.8	31	0	5	16	0	8	46	2.9
3	SAMPSON, Gift	5-0	30:38	6.1	4-10	.400	0-0	.000	1-2	.500	2	5	7	1.4	1	0	0	4	0	0	9	1.8
Team											29	64	93					13				
Total		17	3401		363-933	.389	68-242	.281	181-288	.628	174	477	651	38.3	284	8	220	320	25	92	975	57.4
Opponents		17	3400		405-1032	.392	118-382	.309	179-259	.691	193	450	643	37.8	311	4	236	250	51	147	1107	65.1

Score by Periods

Team	1st	2nd	3rd	4th	OT	TOT
USC Upstate	336	337	172	130	0	975
Opponents	361	411	178	157	0	1107

2020-21 Category Leaders



2020-21 USC Upstate Women's Basketball
Category Leaders
All games

Page 1/3
as of Jan 27, 2021

Points

##	Player	G	Pts	Pts/G
1	Wilson, Denijsha	17	207	12.2
10	Brooks-Sumpter, McKinley	15	168	11.2
34	Coleman, Molly	17	162	9.5
21	Prudent, Marnicha	14	79	5.6
0	McCaughan, Dakota	14	73	5.2
12	Logan, Jada	12	65	5.4
15	Kuzmina, Anda	14	65	4.6
33	Gibbons, Michaela	10	48	4.8
25	Timberlake, Maya	14	47	3.4
23	Flantos, Lillian	16	46	2.9
3	Sampson, Gift	5	9	1.8
5	McCutcheon, Molly	1	6	6.0

Scoring Average

##	Player	G	Pts	Pts/G
1	Wilson, Denijsha	17	207	12.2
10	Brooks-Sumpter, McKinley	15	168	11.2
34	Coleman, Molly	17	162	9.5
5	McCutcheon, Molly	1	6	6.0
21	Prudent, Marnicha	14	79	5.6
12	Logan, Jada	12	65	5.4
0	McCaughan, Dakota	14	73	5.2
33	Gibbons, Michaela	10	48	4.8
15	Kuzmina, Anda	14	65	4.6
25	Timberlake, Maya	14	47	3.4
23	Flantos, Lillian	16	46	2.9
3	Sampson, Gift	5	9	1.8

Field Goal Percentage

##	Player	FG	Att	Pct
34	Coleman, Molly	66	117	.564
23	Flantos, Lillian	22	47	.468
1	Wilson, Denijsha	68	157	.433
12	Logan, Jada	24	58	.414
3	Sampson, Gift	4	10	.400
25	Timberlake, Maya	21	54	.389
10	Brooks-Sumpter, McKinley	66	184	.359
21	Prudent, Marnicha	26	74	.351
15	Kuzmina, Anda	24	75	.320
5	McCutcheon, Molly	2	7	.286
0	McCaughan, Dakota	26	93	.280
33	Gibbons, Michaela	14	57	.246

Field Goal Attempts

##	Player	G	Att	Att/G
10	Brooks-Sumpter, McKinley	15	184	12.3
1	Wilson, Denijsha	17	157	9.2
34	Coleman, Molly	17	117	6.9
0	McCaughan, Dakota	14	93	6.6
15	Kuzmina, Anda	14	75	5.4

Field Goals Made

##	Player	G	Made	Made/G
1	Wilson, Denijsha	17	68	4.0
10	Brooks-Sumpter, McKinley	15	66	4.4
34	Coleman, Molly	17	66	3.9
21	Prudent, Marnicha	14	26	1.9
0	McCaughan, Dakota	14	26	1.9

3-Point FG Percentage

##	Player	3FG	Att	Pct
1	Wilson, Denijsha	19	52	.365
5	McCutcheon, Molly	2	6	.333
15	Kuzmina, Anda	14	49	.286
10	Brooks-Sumpter, McKinley	5	18	.278
0	McCaughan, Dakota	20	77	.260
33	Gibbons, Michaela	8	36	.222

3-Point FG Attempts

##	Player	G	Att	Att/G
0	McCaughan, Dakota	14	77	5.5
1	Wilson, Denijsha	17	52	3.1
15	Kuzmina, Anda	14	49	3.5
33	Gibbons, Michaela	10	36	3.6
10	Brooks-Sumpter, McKinley	15	18	1.2

3-Point FG Made

##	Player	G	Made	Made/G
0	McCaughan, Dakota	14	20	1.4
1	Wilson, Denijsha	17	19	1.1
15	Kuzmina, Anda	14	14	1.0
33	Gibbons, Michaela	10	8	0.8
10	Brooks-Sumpter, McKinley	15	5	0.3

2020-21 Category Leaders



2020-21 USC Upstate Women's Basketball
Category Leaders
All games

Page 2/3
as of Jan 27, 2021

Free Throw Percentage

##	Player	Made	Att	Pct
33	Gibbons, Michaela	12	13	.923
12	Logan , Jada	17	22	.773
1	Wilson, Denijsha	52	71	.732
21	Prudent, Marnicha	27	38	.711
10	Brooks-Sumpter, McKinley	31	49	.633
34	Coleman, Molly	30	58	.517
0	McCaughan, Dakota	1	2	.500
3	Sampson, Gift	1	2	.500
25	Timberlake , Maya	5	12	.417
15	Kuzmina, Anda	3	9	.333
23	Flantos , Lillian	2	12	.167

Free Throw Attempts

##	Player	G	Att	Att/G
1	Wilson, Denijsha	17	71	4.2
34	Coleman, Molly	17	58	3.4
10	Brooks-Sumpter, McKinley	15	49	3.3
21	Prudent, Marnicha	14	38	2.7
12	Logan , Jada	12	22	1.8

Free Throws Made

##	Player	G	Made	Made/G
1	Wilson, Denijsha	17	52	3.1
10	Brooks-Sumpter, McKinley	15	31	2.1
34	Coleman, Molly	17	30	1.8
21	Prudent, Marnicha	14	27	1.9
12	Logan , Jada	12	17	1.4

Rebounds

##	Player	G	Reb	Reb/G
34	Coleman, Molly	17	96	5.6
10	Brooks-Sumpter, McKinley	15	94	6.3
21	Prudent, Marnicha	14	69	4.9
12	Logan , Jada	12	66	5.5
1	Wilson, Denijsha	17	56	3.3

Assists

##	Player	G	Ast	Ast/G
1	Wilson, Denijsha	17	51	3.0
10	Brooks-Sumpter, McKinley	15	35	2.3
0	McCaughan, Dakota	14	27	1.9
12	Logan , Jada	12	26	2.2
15	Kuzmina, Anda	14	24	1.7

Rebounds Average

##	Player	G	Reb	Reb/G
10	Brooks-Sumpter, McKinley	15	94	6.3
34	Coleman, Molly	17	96	5.6
12	Logan , Jada	12	66	5.5
21	Prudent, Marnicha	14	69	4.9
1	Wilson, Denijsha	17	56	3.3

Steals

##	Player	G	Stl	Stl/G
1	Wilson, Denijsha	17	20	1.2
10	Brooks-Sumpter, McKinley	15	16	1.1
34	Coleman, Molly	17	9	0.5
0	McCaughan, Dakota	14	8	0.6
15	Kuzmina, Anda	14	8	0.6

Offensive Rebounds

##	Player	G	OReb	OReb/G
34	Coleman, Molly	17	32	1.9
10	Brooks-Sumpter, McKinley	15	26	1.7
21	Prudent, Marnicha	14	21	1.5
12	Logan , Jada	12	21	1.8
23	Flantos , Lillian	16	18	1.1

Blocked Shots

##	Player	G	Blk	Blk/G
34	Coleman, Molly	17	16	0.9
15	Kuzmina, Anda	14	5	0.4
0	McCaughan, Dakota	14	2	0.1
12	Logan , Jada	12	1	0.1
33	Gibbons, Michaela	10	1	0.1

Defensive Rebounds

##	Player	G	DReb	DReb/G
10	Brooks-Sumpter, McKinley	15	68	4.5
34	Coleman, Molly	17	64	3.8
21	Prudent, Marnicha	14	48	3.4
1	Wilson, Denijsha	17	45	2.6
12	Logan , Jada	12	45	3.8

Minutes

##	Player	G	Min	Min/G
1	Wilson, Denijsha	17	524	30:49
34	Coleman, Molly	17	460	27:03
10	Brooks-Sumpter, McKinley	15	434	28:58
15	Kuzmina, Anda	14	336	24:02
12	Logan , Jada	12	306	25:28

2020-21 Category Leaders



2020-21 USC Upstate Women's Basketball
Category Leaders
All games

Page 3/3
as of Jan 27, 2021

Fouls

##	Player	G	PF	PF/G
10	Brooks-Sumpter, McKinley	15	41	2.7
21	Prudent, Marnicha	14	38	2.7
1	Wilson, Denijsha	17	34	2.0
34	Coleman, Molly	17	31	1.8
23	Flantos, Lillian	16	31	1.9

Turnovers

##	Player	G	TO	TO/G
1	Wilson, Denijsha	17	72	4.2
10	Brooks-Sumpter, McKinley	15	41	2.7
34	Coleman, Molly	17	33	1.9
0	McCaughan, Dakota	14	31	2.2
12	Logan, Jada	12	26	2.2

Foul Outs

##	Player	G	FO
21	Prudent, Marnicha	14	3
1	Wilson, Denijsha	17	1
10	Brooks-Sumpter, McKinley	15	1
34	Coleman, Molly	17	1
0	McCaughan, Dakota	14	1



DAKOTA MCCAUGHAN

Freshman • 5-5 • Guard

Secane, Pa.

(Ridley High School)

0

Game-By-Game

#0 MCCAUGHAN, Dakota

Opponent	Date	GS	MIN	Total		3-Pointers		Free throws		Rebounds				PF	A	T/O	BLK	STL	PTS	AVG
				FG-FGA	PCT	3FG-3FGA	PCT	FT-FTA	PCT	OFF	DEF	TOT	AVG							
at Auburn	11/25/2020		30:24	5-11	.455	5-11	.455	0-0	.000	0	0	0	0.0	2	5	6	0	1	15	15.0
at Alabama	12/02/2020	*	33:58	4-10	.400	2-7	.286	0-0	.000	0	2	2	1.0	2	2	2	0	0	10	12.5
St. Andrews	12/05/2020	*	17:34	2-6	.333	1-5	.200	0-0	.000	0	1	1	1.0	3	2	1	0	1	5	10.0
Flagler	12/06/2020	*	27:48	0-7	.000	0-6	.000	0-0	.000	0	6	6	2.3	2	1	2	1	0	0	7.5
at Old Dominion	12/13/2020	*	21:00	1-2	.500	1-2	.500	0-0	.000	1	1	2	2.2	2	1	2	1	0	3	6.6
at Winthrop	12/17/2020		29:00	3-13	.231	3-13	.231	1-2	.500	0	4	4	2.5	5	3	6	0	3	10	7.2
at Winthrop	12/18/2020		19:00	1-6	.167	1-5	.200	0-0	.000	0	0	0	2.1	0	1	0	0	0	3	6.6
High Point	12/30/2020		18:22	0-5	.000	0-4	.000	0-0	.000	0	2	2	2.1	2	5	2	0	1	0	5.8
High Point	12/31/2020		01:51	0-0	.000	0-0	.000	0-0	.000	0	0	0	1.9	0	0	0	0	0	0	5.1
at Longwood	01/04/2021		13:05	2-5	.400	2-5	.400	0-0	.000	0	0	0	1.7	2	0	3	0	0	6	5.2
at Longwood	01/05/2021		23:37	2-8	.250	1-6	.167	0-0	.000	0	4	4	1.9	0	0	1	0	1	5	5.2
Presbyterian	01/09/2021		13:25	0-2	.000	0-1	.000	0-0	.000	0	1	1	1.8	1	1	2	0	0	0	4.8
Presbyterian	01/10/2021		34:33	5-15	.333	3-9	.333	0-0	.000	0	2	2	1.8	1	5	2	0	1	13	5.4
at Hampton	01/15/2021		09:00	1-3	.333	1-3	.333	0-0	.000	0	0	0	1.7	0	1	2	0	0	3	5.2
Totals		4	292:37	26-93	.280	20-77	.260	1-2	.500	1	23	24	1.7	22	27	31	2	8	73	5.2

Player Averages

Games Played	Minutes/ game	Points/ game	FG Pct	3FG Pct	FT Pct	Rebounds/ game	Assists/ game	Turnovers/ game	Assist/Turnover ratio	Steals/ game	Blocks/ game
14	20.9	5.2	28.0	26.0	50.0	1.7	1.9	2.2	0.9	0.6	0.1

CAREER HIGHS

Points	15, at Auburn, 11/25/20
Rebounds	6, vs Flagler, 12/6/20
Assists	5, 3 times
Blocks	1, twice
Steals	3, at Winthrop, 12/17/20
FGM	5, twice
FGA	15, vs Presbyterian, 1/10/21
3FGM	5, at Auburn, 11/25/20
3FGA	13, at Winthrop, 12/17/20
FTM	1, at Winthrop, 12/17/20
FTA	2, at Winthrop, 12/17/20
Minutes	34, at Alabama, 12/2/20

SEASON HIGHS

Points	15, at Auburn, 11/25/20
Rebounds	6, vs Flagler, 12/6/20
Assists	5, 3 times
Blocks	1, twice
Steals	3, at Winthrop, 12/17/20
FGM	5, twice
FGA	15, vs Presbyterian, 1/10/21
3FGM	5, at Auburn, 11/25/20
3FGA	13, at Winthrop, 12/17/20
FTM	1, at Winthrop, 12/17/20
FTA	2, at Winthrop, 12/17/20
Minutes	34, at Alabama, 12/2/20

Career Statistics

				Field Goals		3-Point		F-Throws		Rebounds				Scoring						
SEASON	TEAM	GP-GS	MIN/AVG	FG-FGA	FG%	3FG-FGA	3FG%	FT-FTA	FT%	OFF	DEF	TOT	AVG	PF-FO	AST	TO	BLK	STL	PTS	AVG
2020-21	USCU	14-4	293/20.9	26-93	.280	20-77	.260	1-2	.500	1	23	24	1.7	22-1	27	31	2	8	73	5.2
TOTAL		14-4	293/20.9	26-93	.280	20-77	.260	1-2	.500	1	23	24	1.7	22-1	27	31	2	8	73	5.2



DENIJSHA WILSON

Junior • 5-3 • Guard

Darby, Pa.

(Labette Community College)

1

Game-By-Game

#1 WILSON, Denijsha

Opponent	Date	GS	MIN	Total		3-Pointers		Free throws		Rebounds				PF	A	T/O	BLK	STL	PTS	AVG
				FG-FGA	PCT	3FG-3FGA	PCT	FT-FTA	PCT	OFF	DEF	TOT	AVG							
at Auburn	11/25/2020	*	31:52	0-7	.000	0-2	.000	0-0	.000	0	0	0	0.0	2	1	5	0	1	0	0.0
at Alabama	12/02/2020	*	36:47	6-12	.500	0-1	.000	0-0	.000	2	3	5	2.5	1	6	5	0	1	12	6.0
St. Andrews	12/05/2020	*	28:10	5-9	.556	1-4	.250	8-11	.727	2	4	6	3.7	1	2	2	0	2	19	10.3
Flagler	12/06/2020	*	32:43	4-8	.500	3-4	.750	5-6	.833	0	7	7	4.5	1	1	2	0	0	16	11.8
at Old Dominion	12/13/2020	*	37:00	3-13	.231	0-3	.000	3-4	.750	0	4	4	4.4	0	4	5	0	1	9	11.2
at Winthrop	12/17/2020	*	21:00	1-4	.250	0-1	.000	2-2	1.000	0	1	1	3.8	3	4	4	0	1	4	10.0
at Winthrop	12/18/2020	*	32:00	5-12	.417	3-6	.500	4-5	.800	0	4	4	3.9	3	5	1	0	2	17	11.0
High Point	12/30/2020	*	29:26	5-6	.833	1-2	.500	3-5	.600	1	4	5	4.0	4	1	6	0	0	14	11.4
High Point	12/31/2020	*	24:08	3-6	.500	0-2	.000	1-2	.500	2	2	4	4.0	3	1	4	0	2	7	10.9
at Longwood	01/04/2021	*	35:32	6-15	.400	1-5	.200	4-5	.800	0	1	1	3.7	1	4	5	0	0	17	11.5
at Longwood	01/05/2021	*	34:53	3-13	.231	2-5	.400	4-6	.667	1	4	5	3.8	2	4	3	0	1	12	11.5
Presbyterian	01/09/2021	*	34:28	4-9	.444	2-4	.500	1-2	.500	0	4	4	3.8	1	1	5	0	2	11	11.5
Presbyterian	01/10/2021	*	09:51	1-1	1.000	0-0	.000	2-2	1.000	0	0	0	3.5	0	0	1	0	0	4	10.9
at Hampton	01/15/2021	*	38:00	10-15	.667	4-5	.800	3-4	.750	1	2	3	3.5	4	4	6	0	1	27	12.1
at Hampton	01/16/2021	*	36:00	6-13	.462	0-4	.000	6-9	.667	2	3	5	3.6	2	5	4	0	1	18	12.5
at Gardner-Webb	01/22/2021	*	24:00	2-7	.286	1-2	.500	2-2	1.000	0	0	0	3.4	5	3	5	0	1	7	12.1
at Gardner-Webb	01/23/2021	*	38:00	4-7	.571	1-2	.500	4-6	.667	0	2	2	3.3	1	5	9	0	4	13	12.2
Totals			16 523:50	68-157	.433	19-52	.365	52-71	.732	11	45	56	3.3	34	51	72	0	20	207	12.2

Player Averages

Games Played	Minutes/ game	Points/ game	FG Pct	3FG Pct	FT Pct	Rebounds/ game	Assists/ game	Turnovers/ game	Assist/Turnover ratio	Steals/ game	Blocks/ game
17	30.8	12.2	43.3	36.5	73.2	3.3	3.0	4.2	0.7	1.2	0.0

Points	27, at Hampton, 1/15/21
Rebounds	7, vs Flagler, 12/6/20
Assists	6, at Alabama, 12/2/20
Blocks	N/A
Steals	4, at Gardner-Webb, 1/23/21
FGM	10, at Hampton, 1/15/21
FGA	15, twice
3FGM	4, at Hampton, 1/15/21
3FGA	6, at Winthrop, 12/18/20
FTM	8, vs St. Andrews, 12/5/20
FTA	11, vs St. Andrews, 12/5/20
Minutes	38, at Hampton, 1/15/21

SEASON HIGHS

Points	27, at Hampton, 1/15/21
Rebounds	7, vs Flagler, 12/6/20
Assists	6, at Alabama, 12/2/20
Blocks	N/A
Steals	4, at Gardner-Webb, 1/23/21
FGM	10, at Hampton, 1/15/21
FGA	15, twice
3FGM	4, at Hampton, 1/15/21
3FGA	6, at Winthrop, 12/18/20
FTM	8, vs St. Andrews, 12/5/20
FTA	11, vs St. Andrews, 12/5/20
Minutes	38, at Hampton, 1/15/21

Career Statistics

				Field Goals		3-Point		F-Throws		Rebounds									Scoring	
SEASON	TEAM	GP-GS	MIN/AVG	FG-FGA	FG%	3FG-FGA	3FG%	FT-FTA	FT%	OFF	DEF	TOT	AVG	PF-FO	AST	TO	BLK	STL	PTS	AVG
2020-21	USCU	17-16	524/30.8	68-157	.433	19-52	.365	52-71	.732	11	45	56	3.3	34-1	51	72	0	20	207	12.2
TOTAL		17-16	524/30.8	68-157	.433	19-52	.365	52-71	.732	11	45	56	3.3	34-1	51	72	0	20	207	12.2



MOLLY MCCUTCHEON

Junior • 5-7 • Guard

Vincent, Ohio

(Warren HS)

5

Game-By-Game

#5 MCCUTCHEON, Molly

Opponent	Date	GS	MIN	Total		3-Pointers		Free throws		Rebounds				PF	A	T/O	BLK	STL	PTS	AVG
				FG-FGA	PCT	3FG-3FGA	PCT	FT-FTA	PCT	OFF	DEF	TOT	AVG							
at Auburn	11/25/2020	*	33:03	2-7	.286	2-6	.333	0-0	.000	0	0	0	0.0	2	5	2	0	1	6	6.0
Totals		1	33:03	2-7	.286	2-6	.333	0-0	.000	0	0	0	0.0	2	5	2	0	1	6	6.0

Player Averages

Games Played	Minutes/game	Points/game	FG Pct	3FG Pct	FT Pct	Rebounds/game	Assists/game	Turnovers/game	Assist/Turnover ratio	Steals/game	Blocks/game
1	33.1	6.0	28.6	33.3	0.0	0.0	5.0	2.0	2.5	1.0	0.0

CAREER HIGHS

Points	6, at Auburn, 11/25/20
Rebounds	N/A
Assists	5, at Auburn, 11/25/20
Blocks	N/A
Steals	1, 3 times
FGM	2, at Auburn, 11/25/20
FGA	7, at Auburn, 11/25/20
3FGM	2, at Auburn, 11/25/20
3FGA	6, at Auburn, 11/25/20
FTM	1, Converse, 11/13/18
FTA	2, Converse, 11/13/18
Minutes	8, at Furman, 11/17/18

SEASON HIGHS

Points	6, at Auburn, 11/25/20
Rebounds	N/A
Assists	5, at Auburn, 11/25/20
Blocks	N/A
Steals	1, at Auburn, 11/25/20
FGM	2, at Auburn, 11/25/20
FGA	7, at Auburn, 11/25/20
3FGM	2, at Auburn, 11/25/20
3FGA	6, at Auburn, 11/25/20
FTM	N/A
FTA	N/A
Minutes	32, at Auburn, 11/25/20

Career Statistics

				Field Goals		3-Point		F-Throws		Rebounds				Scoring						
SEASON	TEAM	GP-GS	MIN/AVG	FG-FGA	FG%	3FG-FGA	3FG%	FT-FTA	FT%	OFF	DEF	TOT	AVG	PF-FO	AST	T/O	BLK	STL	PTS	AVG
2018-19	USCU	9-0	38/4.2	0-5	.000	0-3	.000	1-2	.500	2	2	4	0.4	1-0	3	2	1	2	1	0.1
2019-20	USCU	1-0	2/1.7	0-1	.000	0-1	.000	0-0	.000	0	0	0	0.0	0-0	0	0	0	0	0	0.0
2020-21	USCU	1-1	33/33.1	2-7	.286	2-6	.333	0-0	.000	0	0	0	0.0	2-0	5	2	0	1	6	6.0
TOTAL		11-1	73/6.6	2-13	.154	2-10	.200	1-2	.500	2	2	4	0.4	3-0	8	4	1	3	7	0.6



MCKINLEY BROOKS-SUMPTER

Freshman • 5-8 • Guard

Columbia, S.C.

(AC Flora High School)

10

Game-By-Game

#10 BROOKS-SUMPTER, McKinley

Opponent	Date	GS	MIN	Total		3-Pointers		Free throws		Rebounds				PF	A	T/O	BLK	STL	PTS	AVG	
				FG-FA	PCT	3FG-3FA	PCT	FT-FTA	PCT	OFF	DEF	TOT	AVG								
at Alabama	12/02/2020	*	35:47	9-18	.500	2-2	1.000	1-2	.500	2	6	8	8.0	3	1	4	0	1	21	21.0	
St. Andrews	12/05/2020	*	21:15	7-11	.636	0-0	.000	1-3	.333	0	4	4	6.0	2	2	2	0	3	15	18.0	
Flagler	12/06/2020	*	26:54	4-13	.308	0-1	.000	4-5	.800	2	3	5	5.7	4	3	3	0	4	12	16.0	
at Winthrop	12/17/2020	*	27:00	4-14	.286	0-2	.000	2-5	.400	2	10	12	7.3	4	1	3	0	0	10	14.5	
at Winthrop	12/18/2020	*	34:00	6-16	.375	0-2	.000	1-3	.333	2	6	8	7.4	4	2	1	0	1	13	14.2	
High Point	12/30/2020	*	36:32	10-24	.417	0-1	.000	4-5	.800	3	7	10	7.8	2	1	3	0	0	24	15.8	
High Point	12/31/2020	*	32:07	3-22	.136	0-2	.000	4-6	.667	3	2	5	7.4	1	2	5	0	2	10	15.0	
at Longwood	01/04/2021	*	26:59	2-12	.167	0-1	.000	2-2	1.000	1	3	4	7.0	1	6	0	0	0	6	13.9	
at Longwood	01/05/2021		04:60	0-0	.000	0-0	.000	0-0	.000	0	1	1	6.3	1	0	0	0	0	0	12.3	
Presbyterian	01/09/2021		26:11	1-6	.167	0-1	.000	0-0	.000	5	4	9	6.6	4	3	5	0	1	2	11.3	
Presbyterian	01/10/2021	*	29:43	2-6	.333	0-1	.000	5-5	1.000	2	4	6	6.5	4	2	3	0	1	9	11.1	
at Hampton	01/15/2021	*	40:00	7-12	.583	1-1	1.000	2-6	.333	1	5	6	6.5	5	2	3	0	1	17	11.6	
at Hampton	01/16/2021	*	34:00	2-10	.200	0-1	.000	3-4	.750	0	4	4	6.3	2	2	2	0	0	7	11.2	
at Gardner-Webb	01/22/2021	*	26:00	4-12	.333	0-1	.000	1-2	.500	3	6	9	6.5	3	4	4	0	1	9	11.1	
at Gardner-Webb	01/23/2021	*	33:00	5-8	.625	2-2	1.000	1-1	1.000	0	3	3	6.3	1	4	3	0	1	13	11.2	
Totals			13	434:28	66-184	.359	5-18	.278	31-49	.633	26	68	94	6.3	41	35	41	0	16	168	11.2

Player Averages

Games Played	Minutes/game	Points/game	FG Pct	3FG Pct	FT Pct	Rebounds/game	Assists/game	Turnovers/game	Assist/Turnover ratio	Steals/game	Blocks/game
15	29.0	11.2	35.9	27.8	63.3	6.3	2.3	2.7	0.9	1.1	0.0

CAREER HIGHS

Points	24, vs High Point, 12/30/20
Rebounds	12, at Winthrop, 12/17/20
Assists	6, at Longwood, 1/4/21
Blocks	N/A
Steals	4, vs Flagler, 12/6/20
FGM	10, vs High Point, 12/30/20
FGA	24, vs High Point, 12/30/20
3FGM	2, twice
3FGA	2, 5 times
FTM	5, vs Presbyterian, 1/10/21
FTA	6, twice
Minutes	40, at Hampton, 1/15/21

SEASON HIGHS

Points	24, vs High Point, 12/30/20
Rebounds	12, at Winthrop, 12/17/20
Assists	6, at Longwood, 1/4/21
Blocks	N/A
Steals	4, vs Flagler, 12/6/20
FGM	10, vs High Point, 12/30/20
FGA	24, vs High Point, 12/30/20
3FGM	2, twice
3FGA	2, 5 times
FTM	5, vs Presbyterian, 1/10/21
FTA	6, twice
Minutes	40, at Hampton, 1/15/21

BROOKS-SUMPTER, Mckinley

Career Statistics

				Field Goals		3-Point		F-Throws		Rebounds									Scoring	
SEASON	TEAM	GP-GS	MIN/AVG	FG-FGA	FG%	3FG-FGA	3FG%	FT-FTA	FT%	OFF	DEF	TOT	AVG	PF-FO	AST	TO	BLK	STL	PTS	AVG
2020-21	USCU	15-13	434/29.0	66-184	.359	5-18	.278	31-49	.633	26	68	94	6.3	41-1	35	41	0	16	168	11.2
TOTAL		15-13	434/29.0	66-184	.359	5-18	.278	31-49	.633	26	68	94	6.3	41-1	35	41	0	16	168	11.2



JADA LOGAN

Sophomore • 5-8 • Guard

Rutherfordton, N.C.

(RS Central High School)

12

Game-By-Game

#12 LOGAN, Jada

Opponent	Date	GS	MIN	Total		3-Pointers		Free throws		Rebounds			PF	A	T/O	BLK	STL	PTS	AVG	
				FG-FGA	PCT	3FG-3FGA	PCT	FT-FTA	PCT	OFF	DEF	TOT	AVG							
at Winthrop	12/17/2020		14:00	1-2	.500	0-1	.000	0-0	.000	0	0	0	0.0	1	1	0	0	1	2	2.0
at Winthrop	12/18/2020		13:00	0-2	.000	0-0	.000	1-2	.500	1	0	1	0.5	2	0	1	0	0	1	1.5
High Point	12/30/2020		20:30	0-4	.000	0-1	.000	0-0	.000	3	0	3	1.3	2	2	3	1	0	0	1.0
High Point	12/31/2020		20:27	2-5	.400	0-0	.000	0-0	.000	4	3	7	2.8	1	1	1	0	0	4	1.8
at Longwood	01/04/2021		18:20	2-3	.667	0-0	.000	0-0	.000	0	4	4	3.0	1	1	1	0	1	4	2.2
at Longwood	01/05/2021	*	19:58	3-8	.375	0-1	.000	1-2	.500	2	4	6	3.5	0	1	1	0	7	3.0	
Presbyterian	01/09/2021	*	28:33	3-5	.600	0-1	.000	0-0	.000	0	4	4	3.6	2	2	3	0	1	6	3.4
Presbyterian	01/10/2021	*	31:50	1-7	.143	0-0	.000	2-2	1.000	5	2	7	4.0	2	5	0	0	1	4	3.5
at Hampton	01/15/2021	*	28:00	2-5	.400	0-0	.000	3-3	1.000	2	5	7	4.3	3	3	2	0	1	7	3.9
at Hampton	01/16/2021	*	36:00	1-4	.250	0-0	.000	5-8	.625	4	9	13	5.2	2	5	3	0	0	7	4.2
at Gardner-Webb	01/22/2021	*	39:00	1-4	.250	0-0	.000	2-2	1.000	0	6	6	5.3	1	3	4	0	0	4	4.2
at Gardner-Webb	01/23/2021	*	36:00	8-9	.889	0-0	.000	3-3	1.000	0	8	8	5.5	1	2	7	0	1	19	5.4
Totals			7 305:38	24-58	.414	0-4	.000	17-22	.773	21	45	66	5.5	18	26	26	1	6	65	5.4

Player Averages

Games Played	Minutes/ game	Points/ game	FG Pct	3FG Pct	FT Pct	Rebounds/ game	Assists/ game	Turnovers/ game	Assist/Turnover ratio	Steals/ game	Blocks/ game
12	25.5	5.4	41.4	0.0	77.3	5.5	2.2	2.2	1.0	0.5	0.1

CAREER HIGHS

Points	19, at Gardner-Webb, 1/23/21
Rebounds	13, at Hampton, 1/16/21
Assists	8, Western Carolina, 11/12/19
Blocks	1, vs High Point, 12/30/20
Steals	2, 8 times
FGM	8, at Gardner-Webb, 1/23/21
FGA	13, FAMU, 11/5/19
3FGM	2, twice
3FGA	7, FAMU, 11/5/19
FTM	5, at Hampton, 1/16/21
FTA	8, at Hampton, 1/16/21
Minutes	39, at Gardner-Webb, 1/22/21

SEASON HIGHS

Points	19, at Gardner-Webb, 1/23/21
Rebounds	13, at Hampton, 1/16/21
Assists	5, twice
Blocks	1, vs High Point, 12/30/20
Steals	1, 6 times
FGM	8, at Gardner-Webb, 1/23/21
FGA	9, at Gardner-Webb, 1/23/21
3FGM	N/A
3FGA	1, 4 times
FTM	5, at Hampton, 1/16/21
FTA	8, at Hampton, 1/16/21
Minutes	39, at Gardner-Webb, 1/22/21

Career Statistics

SEASON	TEAM	GP-GS	MIN/AVG	Field Goals FG-FGA FG%	3-Point 3FG-3FGA 3FG%	F-Throws FT-FTA FT%	Rebounds OFF DEF TOT AVG	PF-FO	AST	TO	BLK	STL	Scoring PTS AVG
2019-20	USCU	29-20	600/20.7	36-146 .247	10-50 .200	17-29 .586	37 70 107 3.7	39-0	53	74	0	23	99 3.4
2020-21	USCU	12-7	306/25.5	24-58 .414	0-4 .000	17-22 .773	21 45 66 5.5	18-0	26	26	1	6	65 5.4
TOTAL		41-27	905/22.1	60-204 .294	10-54 .185	34-51 .667	58 115 173 4.2	57-0	79	100	1	29	164 4.0



ANDA KUZMINA

Senior • 5-9 • Guard

Riga, Latvia

(Latvijas Universitate)

15

Game-By-Game

#15 KUZMINA, Anda

			Total			3-Pointers		Free throws		Rebounds											
Opponent	Date	GS	MIN	FG-FGA	PCT	3FG-3FGA	PCT	FT-FTA	PCT	OFF	DEF	TOT	AVG	PF	A	T/O	BLK	STL	PTS	AVG	
at Auburn	11/25/2020	*	16:38	0-2	.000	0-1	.000	0-0	.000	0	1	1	1.0	1	2	1	0	3	0	0.0	
St. Andrews	12/05/2020		20:05	3-6	.500	0-3	.000	0-0	.000	0	2	2	1.5	3	4	1	0	0	6	3.0	
Flagler	12/06/2020		05:06	0-1	.000	0-1	.000	0-0	.000	0	1	1	1.3	0	0	0	0	0	0	2.0	
at Old Dominion	12/13/2020		22:00	1-3	.333	1-3	.333	0-0	.000	0	3	3	1.8	0	2	2	0	0	3	2.3	
High Point	12/30/2020		04:57	0-1	.000	0-0	.000	0-0	.000	1	3	4	2.2	0	1	0	0	1	0	1.8	
High Point	12/31/2020		35:10	3-9	.333	1-6	.167	0-0	.000	2	4	6	2.8	0	1	2	1	1	7	2.7	
at Longwood	01/04/2021	*	23:34	2-4	.500	2-3	.667	0-0	.000	0	6	6	3.3	1	1	4	0	0	6	3.1	
at Longwood	01/05/2021	*	20:06	0-3	.000	0-2	.000	0-0	.000	0	1	1	3.0	4	2	1	0	0	0	2.8	
Presbyterian	01/09/2021	*	33:19	3-10	.300	2-7	.286	0-0	.000	0	4	4	3.1	4	4	2	1	1	8	3.3	
Presbyterian	01/10/2021	*	29:30	3-12	.250	2-8	.250	0-3	.000	0	3	3	3.1	4	0	1	2	2	8	3.8	
at Hampton	01/15/2021	*	35:00	3-8	.375	3-7	.429	0-1	.000	0	4	4	3.2	2	3	3	0	0	9	4.3	
at Hampton	01/16/2021	*	26:00	1-2	.500	0-1	.000	1-1	1.000	0	2	2	3.1	1	0	2	0	0	3	4.2	
at Gardner-Webb	01/22/2021	*	29:00	2-6	.333	2-3	.667	2-2	1.000	0	1	1	2.9	2	2	3	1	0	8	4.5	
at Gardner-Webb	01/23/2021	*	36:00	3-8	.375	1-4	.250	0-2	.000	0	5	5	3.1	3	2	2	0	0	7	4.6	
Totals			9	336:25	24-75	.320	14-49	.286	3-9	.333	3	40	43	3.1	25	24	24	5	8	65	4.6

Player Averages

Games Played	Minutes/game	Points/game	FG Pct	3FG Pct	FT Pct	Rebounds/game	Assists/game	Turnovers/game	Assist/Turnover ratio	Steals/game	Blocks/game
14	24.0	4.6	32.0	28.6	33.3	3.1	1.7	1.7	1.0	0.6	0.4

CAREER HIGHS

Points	20, Brevard, 1/2/18
Rebounds	8, three times
Assists	10, Presbyterian, 2/4/20
Blocks	2, vs Presbyterian, 1/10/21
Steals	4, at Winthrop, 3/7/20
FGM	8, Brevard, 1/2/18
FGA	15, twice
3FGM	5, at Winthrop, 1/9/19
3FGA	9, 3 times
FTM	7, Winthrop, 2/26/19
FTA	8, Winthrop, 2/26/19
Minutes	40, N.C. Central, 12/30/17

SEASON HIGHS

Points	9, at Hampton, 1/15/21
Rebounds	6, twice
Assists	4, twice
Blocks	2, vs Presbyterian, 1/10/21
Steals	3, at Auburn, 11/25/20
FGM	3, 6 times
FGA	12, vs Presbyterian, 1/10/21
3FGM	3, at Hampton, 1/15/21
3FGA	8, vs Presbyterian, 1/10/21
FTM	2, at Gardner-Webb, 1/22/21
FTA	3, vs Presbyterian, 1/10/21
Minutes	36, at Gardner-Webb, 1/23/21

Career Statistics

SEASON	TEAM	GP-GS	MIN/AVG	Field Goals		3-Point		F-Throws		Rebounds				Scoring						
				FG-FGA	FG%	3FG-3FGA	3FG%	FT-FTA	FT%	OFF	DEF	TOT	AVG	PF-FO	AST	TO	BLK	STL	PTS	AVG
2017-18	USCU	30-29	811/27.0	96-251	.382	40-121	.331	30-43	.698	14	79	93	3.1	41-0	46	96	1	13	262	8.7
2018-19	USCU	30-12	451/15.0	40-136	.294	23-81	.284	9-10	.900	9	44	53	1.8	22-0	16	26	3	11	112	3.7
2019-20	USCU	30-14	590/19.7	45-125	.360	15-68	.221	16-24	.667	12	69	81	2.7	27-0	40	57	3	15	121	4.0
2020-21	USCU	14-9	336/24.0	24-75	.320	14-49	.286	3-9	.333	3	40	43	3.1	25-0	24	24	5	8	65	4.6
TOTAL		104-64	2188/21.0	205-587	.349	92-319	.288	58-86	.674	38	232	270	2.6	115-0	126	203	12	47	560	5.4



MARNICHA PRUDENT

Junior • 5-11 • Forward

Ft. Lauderdale, Fla.

(Indian River State College)

21

Game-By-Game

#21 PRUDENT, Marnicha

Opponent	Date	GS	MIN	Total		3-Pointers		Free throws		Rebounds				PF	A	T/O	BLK	STL	PTS	AVG
				FG-FGA	PCT	3FG-3FGA	PCT	FT-FTA	PCT	OFF	DEF	TOT	AVG							
at Auburn	11/25/2020	*	31:22	2-7	.286	0-0	.000	6-6	1.000	1	9	10	10.0	5	0	3	0	2	10	10.0
at Alabama	12/02/2020	*	12:18	1-3	.333	0-0	.000	0-2	.000	2	1	3	6.5	5	0	1	0	0	2	6.0
St. Andrews	12/05/2020		13:34	1-6	.167	0-0	.000	1-2	.500	1	2	3	5.3	1	2	0	0	1	3	5.0
Flagler	12/06/2020		20:41	2-6	.333	0-0	.000	3-6	.500	0	10	10	6.5	1	3	1	0	0	7	5.5
at Old Dominion	12/13/2020	*	09:00	0-2	.000	0-0	.000	4-4	1.000	0	1	1	5.4	3	1	0	0	0	4	5.2
at Winthrop	12/17/2020		25:00	3-11	.273	0-0	.000	0-0	.000	5	2	7	5.7	1	1	4	0	0	6	5.3
at Winthrop	12/18/2020	*	38:00	7-12	.583	0-0	.000	2-5	.400	4	11	15	7.0	3	2	2	0	2	16	6.9
High Point	12/30/2020	*	15:32	0-5	.000	0-0	.000	4-4	1.000	3	2	5	6.8	2	1	3	0	0	4	6.5
High Point	12/31/2020	*	17:21	3-4	.750	0-0	.000	0-0	.000	0	1	1	6.1	1	2	2	0	0	6	6.4
at Longwood	01/04/2021		12:56	1-2	.500	0-0	.000	0-0	.000	1	2	3	5.8	5	0	0	0	0	2	6.0
at Longwood	01/05/2021		26:01	3-8	.375	0-0	.000	5-5	1.000	3	4	7	5.9	2	1	4	0	0	11	6.5
Presbyterian	01/09/2021		15:19	2-4	.500	0-0	.000	2-2	1.000	1	1	2	5.6	4	0	4	0	0	6	6.4
Presbyterian	01/10/2021		08:17	1-3	.333	0-0	.000	0-2	.000	0	1	1	5.2	3	0	0	0	0	2	6.1
at Hampton	01/16/2021		04:00	0-1	.000	0-0	.000	0-0	.000	0	1	1	4.9	2	0	1	0	0	0	5.6
Totals		6	249:21	26-74	.351	0-0	.000	27-38	.711	21	48	69	4.9	38	13	25	0	5	79	5.6

Player Averages

Games Played	Minutes/game	Points/game	FG Pct	3FG Pct	FT Pct	Rebounds/game	Assists/game	Turnovers/game	Assist/Turnover ratio	Steals/game	Blocks/game
14	17.8	5.6	35.1	0.0	71.1	4.9	0.9	1.8	0.5	0.4	0.0

CAREER HIGHS

Points	16, at Winthrop, 12/18/20
Rebounds	15, at Winthrop, 12/18/20
Assists	3, vs Flagler, 12/6/20
Blocks	N/A
Steals	2, twice
FGM	7, at Winthrop, 12/18/20
FGA	12, at Winthrop, 12/18/20
3FGM	N/A
3FGA	N/A
FTM	6, at Auburn, 11/25/20
FTA	6, twice
Minutes	38, at Winthrop, 12/18/20

SEASON HIGHS

Points	16, at Winthrop, 12/18/20
Rebounds	15, at Winthrop, 12/18/20
Assists	3, vs Flagler, 12/6/20
Blocks	N/A
Steals	2, twice
FGM	7, at Winthrop, 12/18/20
FGA	12, at Winthrop, 12/18/20
3FGM	N/A
3FGA	N/A
FTM	6, at Auburn, 11/25/20
FTA	6, twice
Minutes	38, at Winthrop, 12/18/20

Career Statistics

				Field Goals		3-Point		F-Throws		Rebounds				Scoring						
SEASON	TEAM	GP-GS	MIN/AVG	FG-FGA	FG%	3FG-FGA	3FG%	FT-FTA	FT%	OFF	DEF	TOT	AVG	PF-FO	AST	TO	BLK	STL	PTS	AVG
2020-21	USCU	14-6	249/17.8	26-74	.351	0-0	.000	27-38	.711	21	48	69	4.9	38-3	13	25	0	5	79	5.6
TOTAL		14-6	249/17.8	26-74	.351	0-0	.000	27-38	.711	21	48	69	4.9	38-3	13	25	0	5	79	5.6



LILLIAN FLANTOS

Sophomore • 5-11 • Forward

Lumberton, N.C.

(South View HS)

23

Game-By-Game

#23 FLANTOS, Lillian

Opponent	Date	GS	MIN	Total		3-Pointers		Free throws		Rebounds				PF	A	T/O	BLK	STL	PTS	AVG
				FG-FGA	PCT	3FG-3FGA	PCT	FT-FTA	PCT	OFF	DEF	TOT	AVG							
at Auburn	11/25/2020		25:21	2-5	.400	0-0	.000	0-0	.000	2	3	5	5.0	2	0	3	0	1	4	4.0
at Alabama	12/02/2020		28:44	0-2	.000	0-0	.000	0-0	.000	1	1	2	3.5	3	0	1	0	0	0	2.0
St. Andrews	12/05/2020		21:02	5-5	1.000	0-0	.000	0-0	.000	2	5	7	4.7	2	0	0	0	3	10	4.7
Flagler	12/06/2020		15:49	1-2	.500	0-0	.000	0-2	.000	0	0	0	3.5	3	0	2	0	3	2	4.0
at Old Dominion	12/13/2020		17:00	2-2	1.000	0-0	.000	0-0	.000	1	3	4	3.6	4	1	1	0	0	4	4.0
at Winthrop	12/17/2020	*	25:00	3-5	.600	0-0	.000	0-0	.000	1	1	2	3.3	3	1	3	0	0	6	4.3
at Winthrop	12/18/2020	*	35:00	2-8	.250	0-0	.000	1-4	.250	2	6	8	4.0	2	2	1	0	0	5	4.4
High Point	12/30/2020	*	26:40	0-2	.000	0-0	.000	0-0	.000	2	4	6	4.3	4	0	0	0	1	0	3.9
High Point	12/31/2020	*	20:42	0-3	.000	0-0	.000	0-4	.000	1	1	2	4.0	1	0	2	0	0	0	3.4
at Longwood	01/04/2021		08:42	1-1	1.000	0-0	.000	0-0	.000	1	1	2	3.8	0	0	0	0	0	2	3.3
at Longwood	01/05/2021		07:36	0-3	.000	0-0	.000	0-0	.000	3	2	5	3.9	1	0	0	0	0	0	3.0
Presbyterian	01/09/2021		06:53	1-1	1.000	0-0	.000	1-2	.500	0	0	0	3.6	0	0	0	0	0	3	3.0
Presbyterian	01/10/2021		14:39	2-4	.500	0-0	.000	0-0	.000	1	0	1	3.4	3	1	1	0	0	4	3.1
at Hampton	01/15/2021		03:00	0-0	.000	0-0	.000	0-0	.000	0	0	0	3.1	0	0	1	0	0	0	2.9
at Gardner-Webb	01/22/2021		09:00	2-2	1.000	0-0	.000	0-0	.000	1	0	1	3.0	2	0	1	0	0	4	2.9
at Gardner-Webb	01/23/2021		02:00	1-2	.500	0-0	.000	0-0	.000	0	0	0	2.8	1	0	0	0	0	2	2.9
Totals		4	267:08	22-47	.468	0-0	.000	2-12	.167	18	27	45	2.8	31	5	16	0	8	46	2.9

Player Averages

Games Played	Minutes/ game	Points/ game	FG Pct	3FG Pct	FT Pct	Rebounds/ game	Assists/ game	Turnovers/ game	Assist/Turnover ratio	Steals/ game	Blocks/ game
16	16.7	2.9	46.8	0.0	16.7	2.8	0.3	1.0	0.3	0.5	0.0

CAREER HIGHS

Points	10, vs St. Andrews, 12/5/20
Rebounds	8, twice
Assists	2, at Winthrop, 12/18/20
Blocks	2, twice
Steals	3, twice
FGM	5, vs St. Andrews, 12/5/20
FGA	8, at Winthrop, 12/18/20
3FGM	1, 5 times
3FGA	4, twice
FTM	2, twice
FTA	4, twice
Minutes	35, at Winthrop, 3/7/20

SEASON HIGHS

Points	10, vs St. Andrews, 12/5/20
Rebounds	8, at Winthrop, 12/18/20
Assists	2, at Winthrop, 12/18/20
Blocks	N/A
Steals	3, twice
FGM	5, vs St. Andrews, 12/5/20
FGA	8, at Winthrop, 12/18/20
3FGM	N/A
3FGA	N/A
FTM	1, twice
FTA	4, twice
Minutes	35, at Winthrop, 12/18/20

Career Statistics

				Field Goals		3-Point		F-Throws		Rebounds				Scoring						
SEASON	TEAM	GP-GS	MIN/AVG	FG-FGA	FG%	3FG-FGA	3FG%	FT-FTA	FT%	OFF	DEF	TOT	AVG	PF-FO	AST	TO	BLK	STL	PTS	AVG
2019-20	USCU	23-0	208/9.0	12-52	.231	5-30	.167	5-8	.625	19	27	46	2.0	40-0	3	17	6	9	34	1.5
2020-21	USCU	16-4	267/16.7	22-47	.468	0-0	.000	2-12	.167	18	27	45	2.8	31-0	5	16	0	8	46	2.9
TOTAL		39-4	475/12.2	34-99	.343	5-30	.167	7-20	.350	37	54	91	2.3	71-0	8	33	6	17	80	2.1



MAYA TIMBERLAKE

Sophomore • 5-10 • Guard

Norcross, Ga.

(Greater Atlanta Christian HS)

25

Game-By-Game

#25 TIMBERLAKE, Maya

			Total			3-Pointers		Free throws		Rebounds											
Opponent	Date	GS	MIN	FG-FGA	PCT	3FG-3FGA	PCT	FT-FTA	PCT	OFF	DEF	TOT	AVG	PF	A	T/O	BLK	STL	PTS	AVG	
at Auburn	11/25/2020		11:01	0-1	.000	0-0	.000	0-0	.000	0	1	1	1.0	3	0	2	0	0	0	0.0	
St. Andrews	12/05/2020		27:02	5-8	.625	0-0	.000	1-2	.500	1	3	4	2.5	2	2	1	0	2	11	5.5	
Flagler	12/06/2020		27:29	1-4	.250	0-0	.000	0-0	.000	1	2	3	2.7	2	3	2	0	0	2	4.3	
at Old Dominion	12/13/2020	*	32:00	1-5	.200	0-0	.000	0-2	.000	1	4	5	3.3	2	0	1	0	2	2	3.8	
at Winthrop	12/17/2020	*	27:00	3-5	.600	0-0	.000	0-0	.000	0	2	2	3.0	1	1	0	0	0	6	4.2	
at Winthrop	12/18/2020	*	22:00	0-2	.000	0-0	.000	1-4	.250	1	3	4	3.2	1	1	4	0	0	1	3.7	
High Point	12/30/2020	*	15:11	0-2	.000	0-0	.000	0-0	.000	0	1	1	2.9	0	0	1	0	0	0	3.1	
High Point	12/31/2020	*	17:21	1-4	.250	0-0	.000	2-2	1.000	1	3	4	3.0	3	2	2	0	0	4	3.3	
at Longwood	01/04/2021	*	25:23	4-8	.500	0-0	.000	0-0	.000	1	1	2	2.9	1	1	0	0	2	8	3.8	
at Longwood	01/05/2021	*	36:13	5-10	.500	0-0	.000	0-0	.000	0	1	1	2.7	2	2	3	0	1	10	4.4	
Presbyterian	01/09/2021	*	16:58	1-3	.333	0-0	.000	0-0	.000	0	3	3	2.7	4	3	3	0	0	2	4.2	
Presbyterian	01/10/2021	*	07:56	0-1	.000	0-0	.000	0-0	.000	0	0	0	2.5	1	0	2	0	0	0	3.8	
at Hampton	01/15/2021		07:00	0-0	.000	0-0	.000	1-2	.500	1	2	3	2.5	1	0	1	0	0	1	3.6	
at Gardner-Webb	01/22/2021		04:00	0-1	.000	0-0	.000	0-0	.000	0	1	1	2.4	0	0	0	0	0	0	3.4	
Totals			9	276:33	21-54	.389	0-0	.000	5-12	.417	7	27	34	2.4	23	15	22	0	7	47	3.4

Player Averages

Games Played	Minutes/game	Points/game	FG Pct	3FG Pct	FT Pct	Rebounds/game	Assists/game	Turnovers/game	Assist/Turnover ratio	Steals/game	Blocks/game
14	19.8	3.4	38.9	0.0	41.7	2.4	1.1	1.6	0.7	0.5	0.0

CAREER HIGHS

Points	11, vs St. Andrews, 12/5/20
Rebounds	5, at Old Dominion, 12/13/20
Assists	4, Mars Hill, 11/16/19
Blocks	1, Hampton, 2/18/20
Steals	2, 8 times
FGM	5, twice
FGA	10, at Longwood, 1/5/21
3FGM	2, Mars Hill, 11/16/19
3FGA	4, 3 times
FTM	2, vs High Point, 12/31/20
FTA	4, at Winthrop, 12/18/20
Minutes	36, at Longwood, 1/5/21

SEASON HIGHS

Points	11, vs St. Andrews, 12/5/20
Rebounds	5, at Old Dominion, 12/13/20
Assists	3, twice
Blocks	N/A
Steals	2, 3 times
FGM	5, twice
FGA	10, at Longwood, 1/5/21
3FGM	N/A
3FGA	N/A
FTM	2, vs High Point, 12/31/20
FTA	4, at Winthrop, 12/18/20
Minutes	36, at Longwood, 1/5/21

Career Statistics

				Field Goals		3-Point		F-Throws		Rebounds										Scoring	
SEASON	TEAM	GP-GS	MIN/AVG	FG-FGA	FG%	3FG-FGA	3FG%	FT-FTA	FT%	OFF	DEF	TOT	AVG	PF-FO	AST	TO	BLK	STL	PTS	AVG	
2019-20	USCU	28-0	315/11.3	14-65	.215	6-32	.188	2-4	.500	12	20	32	1.1	42-0	20	24	1	15	36	1.3	
2020-21	USCU	14-9	277/19.8	21-54	.389	0-0	.000	5-12	.417	7	27	34	2.4	23-0	15	22	0	7	47	3.4	
TOTAL		42-9	592/14.1	35-119	.294	6-32	.188	7-16	.438	19	47	66	1.6	65-0	35	46	1	22	83	2.0	



BARRETT HERRING

Junior • 6-3 • Center

Birmingham, Ala.

(Spain Park HS)

30

Game-By-Game

CAREER HIGHS

Points	18, at Gardner-Webb, 1/18/20
Rebounds	15, Gardner-Webb, 2/29/20
Assists	3, Hampton, 1/14/20
Blocks	4, twice
Steals	2, twice
FGM	7, at Gardner-Webb, 1/18/20
FGA	15, twice
3FGM	1, twice
3FGA	2, Hampton, 1/14/20
FTM	6, Hampton, 1/14/20
FTA	7, UNCA, 1/6/20
Minutes	32, Gardner-Webb, 2/29/20

SEASON HIGHS

Points
Rebounds
Assists
Blocks
Steals
FGM
FGA
3FGM
3FGA
FTM
FTA
Minutes

Career Statistics

				Field Goals		3-Point		F-Throws		Rebounds											Scoring	
SEASON	TEAM	GP-GS	MIN/AVG	FG-FGA	FG%	3FG-FGA	3FG%	FT-FTA	FT%	OFF	DEF	TOT	AVG	PF-FO	AST	TO	BLK	STL	PTS	AVG		
2018-19	USCU	5-1	22/4.3	0-3	.000	0-0	.000	1-4	.250	3	2	5	1.0	6-0	0	2	4	1	1	0.2		
2019-20	USCU	25-19	476/19.0	76-195	.390	2-10	.200	40-63	.635	45	94	139	5.6	53-1	13	29	36	9	194	7.8		
TOTAL		30-20	497/16.6	76-198	.384	2-10	.200	41-67	.612	48	96	144	4.8	59-1	13	31	40	10	195	6.5		



MICHAELA GIBBONS

Senior • 5-11 • Forward

Troutman, N.C.

(Hopewell HS)

33

Game-By-Game

#33 GIBBONS, Michaela

Opponent	Date	GS	MIN	Total		3-Pointers		Free throws		Rebounds				PF	A	T/O	BLK	STL	PTS	AVG	
				FG-FGA	PCT	3FG-3FGA	PCT	FT-FTA	PCT	OFF	DEF	TOT	AVG								
at Auburn	11/25/2020	*	12:30	1-5	.200	0-1	.000	0-0	.000	0	1	1	1.0	2	0	2	0	0	2	2.0	
at Alabama	12/02/2020	*	34:57	2-13	.154	2-10	.200	0-0	.000	0	7	7	4.0	3	1	2	0	1	6	4.0	
St. Andrews	12/05/2020	*	25:33	4-7	.571	2-5	.400	0-0	.000	0	2	2	3.3	2	1	3	1	1	10	6.0	
Flagler	12/06/2020	*	13:24	0-5	.000	0-1	.000	0-0	.000	0	2	2	3.0	1	0	1	0	0	0	4.5	
at Old Dominion	12/13/2020		09:00	0-1	.000	0-1	.000	0-0	.000	0	0	0	2.4	0	0	0	0	0	0	3.6	
at Winthrop	12/17/2020		11:00	1-2	.500	1-2	.500	0-0	.000	0	1	1	2.2	0	1	0	0	0	3	3.5	
at Winthrop	12/18/2020		06:00	0-1	.000	0-1	.000	0-0	.000	0	0	0	1.9	0	0	0	0	0	0	3.0	
at Hampton	01/16/2021		24:00	2-8	.250	2-6	.333	6-6	1.000	1	4	5	2.3	3	0	1	0	1	12	4.1	
at Gardner-Webb	01/22/2021		32:00	1-9	.111	0-6	.000	4-5	.800	1	2	3	2.3	2	0	1	0	1	6	4.3	
at Gardner-Webb	01/23/2021		23:00	3-6	.500	1-3	.333	2-2	1.000	1	2	3	2.4	5	1	1	0	0	9	4.8	
Totals			4	191:24	14-57	.246	8-36	.222	12-13	.923	3	21	24	2.4	18	4	11	1	4	48	4.8

Player Averages

Games Played	Minutes/game	Points/game	FG Pct	3FG Pct	FT Pct	Rebounds/game	Assists/game	Turnovers/game	Assist/Turnover ratio	Steals/game	Blocks/game
10	19.1	4.8	24.6	22.2	92.3	2.4	0.4	1.1	0.4	0.4	0.1

CAREER HIGHS

Points	21, Charleston Southern, 1/19/19
Rebounds	12, Longwood, 1/26/19
Assists	4, UNCA, 1/6/20
Blocks	1, 15 times
Steals	5, FAMU, 11/5/19
FGM	8, at N.C. Central, 11/24/18
FGA	19, at Hampton, 1/29/19
3FGM	7, Charleston Southern, 1/19/19
3FGA	13, Western Carolina, 11/12/19
FTM	6, twice
FTA	6, twice
Minutes	45, Campbell, 2/1/20

SEASON HIGHS

Points	12, at Hampton, 1/16/21
Rebounds	7, at Alabama, 12/2/20
Assists	1, 4 times
Blocks	1, vs St. Andrews, 12/5/20
Steals	1, 4 times
FGM	4, vs St. Andrews, 12/5/20
FGA	13, at Alabama, 12/2/20
3FGM	2, twice
3FGA	10, at Alabama, 12/2/20
FTM	6, at Hampton, 1/16/21
FTA	6, at Hampton, 1/16/21
Minutes	32, at Gardner-Webb, 1/22/21

Career Statistics

SEASON	TEAM	GP-GS	MIN/AVG	Field Goals		3-Point		F-Throws		Rebounds				Scoring						
				FG-FGA	FG%	3FG-FGA	3FG%	FT-FTA	FT%	OFF	DEF	TOT	AVG	PF-FO	AST	TO	BLK	STL	PTS	AVG
2017-18	USCU	26-0	296/11.4	38-99	.384	19-59	.322	14-19	.737	10	36	46	1.8	33-1	4	14	7	12	109	4.2
2018-19	USCU	29-18	858/29.6	92-275	.335	54-174	.310	15-22	.682	19	130	149	5.1	57-0	11	47	8	38	253	8.7
2019-20	USCU	30-30	1033/34.4	53-225	.236	42-180	.233	9-15	.600	9	134	143	4.8	37-0	32	53	10	30	157	5.2
2020-21	USCU	10-4	191/19.1	14-57	.246	8-36	.222	12-13	.923	3	21	24	2.4	18-1	4	11	1	4	48	4.8
TOTAL		95-52	2378/25.0	197-656	.300	123-449	.274	50-69	.725	41	321	362	3.8	145-2	51	125	26	84	567	6.0



MOLLY COLEMAN

Junior • 6-2 • Forward

Clinton, South Australia
(Gillette College)

34

Game-By-Game

#34 COLEMAN, Molly

Opponent	Date	GS	MIN	Total		3-Pointers		Free throws		Rebounds				PF	A	T/O	BLK	STL	PTS	AVG
				FG	PCT	3FG	PCT	FT	PCT	OFF	DEF	TOT	AVG							
at Auburn	11/25/2020		05:36	1-2	.500	0-0	.000	0-0	.000	0	1	1	1.0	0	0	0	0	0	2	2.0
at Alabama	12/02/2020		17:29	3-6	.500	0-0	.000	2-4	.500	1	1	2	1.5	1	0	2	0	0	8	5.0
St. Andrews	12/05/2020	*	14:42	2-5	.400	0-0	.000	0-0	.000	0	3	3	2.0	2	0	1	0	0	4	4.7
Flagler	12/06/2020	*	28:44	5-5	1.000	0-0	.000	3-9	.333	1	3	4	2.5	0	3	2	0	1	13	6.8
at Old Dominion	12/13/2020	*	38:00	5-13	.385	0-0	.000	0-0	.000	1	3	4	2.8	1	1	3	2	1	10	7.4
at Winthrop	12/17/2020	*	20:00	3-3	1.000	0-0	.000	1-2	.500	1	2	3	2.8	4	0	2	1	0	7	7.3
at Winthrop	12/18/2020		01:00	0-0	.000	0-0	.000	0-0	.000	0	0	0	2.4	0	0	0	0	0	0	6.3
High Point	12/30/2020		32:51	4-8	.500	0-0	.000	2-4	.500	1	7	8	3.1	0	1	1	1	2	10	6.8
High Point	12/31/2020		30:53	5-8	.625	0-0	.000	0-1	.000	5	4	9	3.8	1	3	0	0	0	10	7.1
at Longwood	01/04/2021	*	35:29	8-13	.615	0-0	.000	3-5	.600	5	5	10	4.4	1	1	2	1	0	19	8.3
at Longwood	01/05/2021	*	26:36	2-7	.286	0-0	.000	3-7	.429	3	3	6	4.5	5	1	1	1	1	7	8.2
Presbyterian	01/09/2021	*	24:54	4-5	.800	0-0	.000	4-5	.800	1	1	2	4.3	4	0	2	1	1	12	8.5
Presbyterian	01/10/2021	*	33:41	4-9	.444	0-0	.000	1-2	.500	2	7	9	4.7	3	1	2	2	0	9	8.5
at Hampton	01/15/2021	*	40:00	4-8	.500	0-0	.000	5-10	.500	4	6	10	5.1	4	1	2	3	1	13	8.9
at Hampton	01/16/2021	*	40:00	8-10	.800	0-0	.000	1-2	.500	2	6	8	5.3	2	0	5	2	0	17	9.4
at Gardner-Webb	01/22/2021	*	37:00	5-11	.455	0-0	.000	4-5	.800	4	8	12	5.7	2	1	5	1	1	14	9.7
at Gardner-Webb	01/23/2021	*	33:00	3-4	.750	0-0	.000	1-2	.500	1	4	5	5.6	1	2	3	1	1	7	9.5
Totals		12	459:55	66-117	.564	0-0	.000	30-58	.517	32	64	96	5.6	31	15	33	16	9	162	9.5

Player Averages

Games Played	Minutes/game	Points/game	FG Pct	3FG Pct	FT Pct	Rebounds/game	Assists/game	Turnovers/game	Assist/Turnover ratio	Steals/game	Blocks/game
17	27.1	9.5	56.4	0.0	51.7	5.6	0.9	1.9	0.5	0.5	0.9

Points	19, at Longwood, 1/4/21
Rebounds	12, at Gardner-Webb, 1/22/21
Assists	3, twice
Blocks	3, at Hampton, 1/15/21
Steals	2, vs High Point, 12/30/20
FGM	8, twice
FGA	13, twice
3FGM	N/A
3FGA	N/A
FTM	5, at Hampton, 1/15/21
FTA	10, at Hampton, 1/15/21
Minutes	40, twice

SEASON HIGHS

Points	19, at Longwood, 1/4/21
Rebounds	12, at Gardner-Webb, 1/22/21
Assists	3, twice
Blocks	3, at Hampton, 1/15/21
Steals	2, vs High Point, 12/30/20
FGM	8, twice
FGA	13, twice
3FGM	N/A
3FGA	N/A
FTM	5, at Hampton, 1/15/21
FTA	10, at Hampton, 1/15/21
Minutes	40, twice

Career Statistics

				Field Goals		3-Point		F-Throws		Rebounds									Scoring	
SEASON	TEAM	GP-GS	MIN/AVG	FG-FGA	FG%	3FG-FGA	3FG%	FT-FTA	FT%	OFF	DEF	TOT	AVG	PF-FO	AST	TO	BLK	STL	PTS	AVG
2020-21	USCU	17-12	460/27.1	66-117	.564	0-0	.000	30-58	.517	32	64	96	5.6	31-1	15	33	16	9	162	9.5
TOTAL		17-12	460/27.1	66-117	.564	0-0	.000	30-58	.517	32	64	96	5.6	31-1	15	33	16	9	162	9.5

Roster

NUMERICAL

No.	Name	Pos.	Yr.	Ht.	Hometown/Previous School
0	Dakota McCaughan	G	Fr.	5-5	Secane, Penn. / Ridley HS
1	Denijsha Wilson	G	Jr.	5-3	Darby, Penn. / Labette Community College
5	Molly McCutcheon	G	Jr.	5-7	Vincent, Ohio / Warren HS
10	McKinley Brooks-Sumpter	G	R-Fr.	5-8	Columbia, S.C. / AC Flora HS
12	Jada Logan	G	So.	5-8	Rutherfordton, N.C. / R-S Central HS
15	Anda Kuzmina	G	Sr.	5-9	Riga, Latvia / Latvijas Universitate
21	Marnicha Prudent	F	Jr.	5-11	Ft. Lauderdale, Fla. / Indian River State College
23	Lillian Flantos	F	So.	5-11	Lumberton, N.C. / South View HS
25	Maya Timberlake	G/F	So.	5-10	Norcross, Ga. / Greater Atlanta Christian HS
30	Barrett Herring	C	Jr.	6-3	Birmingham, Ala. / Spain Park HS
33	Michaela Gibbons	F	Sr.	5-11	Troutman, N.C. / Hopewell HS
34	Molly Coleman	F	Jr.	6-2	Clinton, South Australia / Gillette College

ALPHABETICAL

No.	Name	Pos.	Yr.	Ht.	Hometown/Previous School
10	McKinley Brooks-Sumpter	G	R-Fr.	5-8	Columbia, S.C. / AC Flora HS
34	Molly Coleman	F	Jr.	6-2	Clinton, South Australia / Gillette College
23	Lillian Flantos	F	So.	5-11	Lumberton, N.C. / South View HS
33	Michaela Gibbons	F	Sr.	5-11	Troutman, N.C. / Hopewell HS
30	Barrett Herring	C	Jr.	6-3	Birmingham, Ala. / Spain Park HS
15	Anda Kuzmina	G	Sr.	5-9	Riga, Latvia / Latvijas Universitate
12	Jada Logan	G	So.	5-8	Rutherfordton, N.C. / R-S Central HS
0	Dakota McCaughan	G	Fr.	5-5	Secane, Penn. / Ridley High School
5	Molly McCutcheon	G	Jr.	5-7	Vincent, Ohio / Warren HS
21	Marnicha Prudent	F	Jr.	5-11	Ft. Lauderdale, Fla. / Indian River State College
25	Maya Timberlake	G/F	So.	5-10	Norcross, Ga. / Greater Atl Christian HS
1	Denijsha Wilson	G	Jr.	5-3	Darby, Penn. / Labette Community College

Coaching Staff**Head Coach:** Becky Burke (1st season)**Assistant Coach:** Candyce Wheeler (1st season)**Assistant Coach:** Drew Landers (1st season)**Assistant Coach:** Nicole Ambrose (1st season)

Radio/TV Chart



#0 Dakota McCaughan
Fr. | G | 5-5



#1 Denijsha Wilson
Jr. | G | 5-3



#5 Molly McCutcheon
Jr. | G | 5-7



#10 McKinley Brooks-Sumpter
RS Fr. | G | 5-8



#12 Jada Logan
So. | G | 5-8



#15 Anda Kuzmina
Sr. | G | 5-9



#21 Marnicha Prudent
Jr. | F | 5-11



#23 Lillian Flantos
So. | F | 5-11



#25 Maya Timberlake
So. | G/F | 5-10



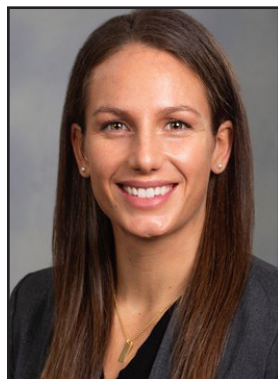
#30 Barrett Herring
Jr. | C | 6-3



#33 Michaela Gibbons
Sr. | F | 5-11



#34 Molly Coleman
Jr. | F | 6-2



Becky Burke
Head Coach



Candyce Wheeler
Assistant Coach



Drew Landers
Assistant Coach



Nicole Ambrose
Assistant Coach