

2007 Season Review

2007 marked a great year to be involved with the University of Alabama men's tennis team. Head coach Billy Pate and the Crimson Tide gained valuable recognition by having one of the most successful seasons in school history.

A Lesson in History

The Crimson Tide ended the 2007 season with a No. 14 national ranking, tying the 1983 team for the third-highest final ranking in school history. The No. 14 ranking is also the highest ranking since 1993, when the Tide ended the season at No. 9.

Alabama posted 22 team wins this season, making it the only team in 20 years to have a 20-plus win season.

Senior Joseph Jung became the winningest player in Alabama history and produced 20 or more wins in each of his four seasons at the Capstone, a feat unmatched by any other Tide player.

Billy Mertz entered the record books this season by posting 27 singles victories. That number ties him for sixth all-time for singles victories in a season.

Alabama in the National Rankings

Not only did the Tide fare well as a team, but also Alabama ended the season with four ranked individuals, three of which will return next fall. Alabama's lone senior, Joseph Jung, was the only Tide player to hold a national ranking all year and ended the season at No. 96.

Junior Billy Mertz entered the rankings on April 3rd at No. 86 and climbed up for the rest of the season, eventually ending at No. 71.

In doubles, sophomores Dan Buikema and Mathieu Thibaudeau ended the season just shy of the top 25 at No. 26 after debuting in the rankings at No. 35 in February.

Other members of the team spent time in the rankings but did not finish the season ranked. Thibaudeau spent some time in the singles rankings at No. 121 in the middle of the year while Jung and freshman Saketh Myneni held a No. 44 doubles ranking early in the season.

Success Equals Recognition

Head coach Billy Pate did not go unnoticed this season as he led his team to its fourth NCAA appearance in five seasons and one of its most successful showings in school history. Coach Pate was honored for his outstanding coaching this season with the SEC Co-Coach of the Year and Regional Coach of the Year awards, as well as a National Coach of the Year nomination. Both awards were the first for Coach Pate since he arrived at the Capstone in 2003.

Billy Mertz was also honored for his achievements this season. The junior from Silver Spring, Md. received 2nd team All-SEC honors after posting 25 singles wins in the regular season. Mertz and doubles partner junior Javier Bes also added seven conference doubles victories.

Alabama and the SEC

Alabama proved to be a dominating force in the conference this year after posting a 7-4 record, tying the Tide for third place. After a disappointing loss to Florida in the SEC tournament, the Tide rebounded and was one of five SEC schools to advance to the round of 16 in the NCAA tournament. The Tide finished the season with the third highest national team ranking out of the conference schools behind No. 1 Georgia and No. 7 Ole Miss. Alabama returns five of its six singles players and will have a good chance at the conference title next season.



'07 Season Recap

Alabama started off the season at home, posting a 5-1 record, with its only loss to No. 4 Virginia. Even though the Tide lost the battle with the Cavaliers, it proved to be a positive experience. Alabama won the doubles point against its first ranked team of the season and the No. 1 tandem of Buikema and Thibaudeau broke onto the national scene after defeating No. 7 Somdev Devvarman and Treat Huey.

After the loss to Virginia, the Tide downed Furman and Winthrop before facing No. 23 Clemson in its last pre-season home match. Alabama fared well against the higher-ranked squad from South Carolina and used its dominating doubles play to get ahead going into singles. The Tide dominated the Tigers in the bottom of the lineup with Buikema clinching the match from the No. 6 slot. The combination of strong doubles play and a solid bottom half of the lineup in singles would prove to be the recipe for success for the remainder of the season.

After Clemson, the Tide headed on its first road trip of the season to face Princeton and Columbia. Alabama won with ease at both venues and entered conference play with confidence.

The Crimson Tide knew it was going to be tested in the first half of conference action and they proved they were up to the challenge. Alabama spend the first two weeks on the road, first at Vanderbilt and Kentucky and then on to Ole Miss and Mississippi State. All four matches came down to the wire, with the Tide capturing a 4-3 victory at Vanderbilt, No. 7 Ole Miss and Mississippi State.

Upon returning home, Alabama took a short hiatus from conference action to play in the Blue Gray national in Montgomery, Ala. The Tide faced three formidable opponents on the road to the tournament championship, where they faced a tough Notre Dame squad. Alabama started off strong by capturing the doubles point, however, Notre Dame's singles lineup proved too tough for the Tide and eventually fell by a 4-1 decision.

Back in conference action, the Tide encountered two tough teams and found itself on a three-match losing streak before bouncing back against No. 15 Florida at home. Once again, Alabama took the doubles point before dominating the bottom of the singles lineup en route to a 5-2 victory. The Tide then breezed by South Carolina and Arkansas, falling to LSU along the way.

Back at home, the Tide hosted a non-conference double-header to honor senior Joseph Jung. Jung made his final appearance at the UA Varsity courts as a member of the Crimson Tide and helped his team earn two solid victories on that day.

Alabama headed on the road the next day to in-state foe Auburn for the final match of the regular season. With a win, the Tide would secure a four-way for third heading into the conference tournament. In an exciting match that lasted two days the Tide came out victorious with Thibaudeau clinching the match from the No. 4 slot. With the match knotted at 3-3 and Thibaudeau in his third set, rain forced the match to be delayed until the following day. Thibaudeau dominated the rest of the match and clinched his fifth match of the season.

Following the emotional match with Auburn, the Tide set its sights on the SEC tournament. Alabama breezed through the first round against South Carolina but did not fare so well against the Florida Gators.

With the conference season coming to an end, the No. 17 Crimson Tide found itself heading to Durham, N.C., home of the No. 14 ranked host Duke, for the first two round of the NCAA tournament. Pate and the Tide focused set their sights on the first-round foe No. 51 East Tennessee State. East Tennessee State was a tough first round pick and Alabama had to play to their full potential to overcome the Bucs.

Next on the list was No. 14 Duke on its home turf. Alabama came out flat in doubles and lost the point for only the fifth time during the season. However, the Tide emerged with a different attitude in singles, winning five of the six first sets before rain forced the match into a 3 hour delay that

resulted in finishing the match indoors. The match came down to Jung on court two against Duke's Joey Atas. Down one set, Jung came from behind in the second set and won in a tie-breaker to force a third and deciding set. Jung defeated Atas 7-5 in the third set to send his team to the Sweet Sixteen for only the fifth time in school history. Jung also picked up his 20th win and became the only Tide player to earn 20 wins in each of his four seasons at the Capstone.

Alabama headed to Athens, Ga. for the first time since 2003 and prepared to face No. 4 Baylor. Alabama lost the doubles point but put in a good showing in singles. The Tide was in good positions on courts 2, 3 and 6 in singles before Thibaudeau lost the deciding match on court 4 in three sets. Baylor won the match by a 4-0 ledger and went on to the semi-finals.

Although the team's season was over, two Alabama individuals stayed in Athens, Ga. to prepare for the NCAA doubles tournament. The Tide's top tandem of Dan Buikema and Mathieu Thibaudeau were selected as one of the nation's top 32 doubles teams to duke it out for the national doubles title. The Alabama pair drew a tough first round match-up against the reigning champions from Illinois. Alabama lost in the first round in a close match and Illinois went on to the finals for the second consecutive year.

Alabama ended the season with a 22-8 record, nine returners and a lot of valuable experience that will better prepare the Tide for the 2008 season.

"I'm very proud of the season we had," stated Alabama head coach Billy Pate. "Last fall the guys really set some lofty but achievable goals and were able to reach almost all of them. However, this is where we want to be on an annual basis. I think we'll be eager to achieve even more next year and I'm excited about the potential this team has to do that."

2007 Season Recap

CRIMSON TIDE TENNIS

2007 CRIMSON TIDE MATCH MATRIX

SINGLES	Overall	Dual	Conf	1	2	3	4	5	6	Nat'l	Reg'l	Streak
Javier Bes	23-11	17-8	8-3	---	6-16	2-0	9-5	6-3	---	1-1	0-0	L 1
Dan Buikema	11-8	6-5	0-4	---	---	---	---	1-1	5-4	0-0	0-0	W 1
Joseph Jung	20-23	11-17	1-11	6-13	5-4	---	---	---	---	4-18	0-0	L 1
Jordie Kindervater	2-2	0-0	0-0	---	---	---	---	---	---	0-0	0-0	W 2
Billy Mertz	27-11	21-7	8-4	3-4	3-0	13-3	1-0	---	---	3-5	0-0	L 1
Saketh Myneni	17-10	10-4	5-2	---	---	---	1-0	---	9-4	---	---	---
Taylor Striplin	8-7	2-1	0-0	---	---	---	---	---	2-1	0-0	0-0	L 1
Sammy Struyf	18-20	11-17	4-8	0-4	7-9	4-4	---	---	---	0-0	0-0	L 2
Mathieu Thibaudeau	23-12	19-7	9-3	---	---	1-1	1-3	11-2	3-2	1-4	0-0	L 1
Houssam Yassine	5-6	5-4	1-1	---	---	---	1-0	1-2	3-2	0-1	0-0	L 1
Totals	172-121	113-75	41-38	9-21	15-13	20-8	20-11	21-7	28-15	13-42	0-0	

DOUBLES	Overall	Dual	Conf	1	2	3	Nat'l	Reg'l	Streak
Daniel Buikema/Mathieu Thibaudeau	25-15	15-12	5-7	15-12	---	---	5-8	0-0	L 1
Javier Bes/Sammy Struyf	9-2	8-1	3-1	---	1-0	7-1	0-1	0-0	W 3
Joseph Jung/Saketh Myneni	19-10	15-10	8-3	1-0	13-10	1-0	0-2	0-0	L 3
Jordie Kindervater/Saketh Myneni	6-1	3-0	0-0	---	1-0	2-0	0-0	0-0	W 3
Javier Bes/Billy Mertz	17-7	15-4	6-2	---	2-0	13-4	0-0	0-0	L 1
Saketh Myneni/Sammy Struyf	2-3	0-0	0-0	---	---	---	0-0	0-0	L 3
Joseph Jung/Taylor Striplin	3-0	0-0	0-0	---	---	---	0-0	0-0	W 3
Jordie Kindervater/Taylor Striplin	0-1	0-0	0-0	---	---	---	0-0	0-0	L 1
Billy Mertz/Saketh Myneni	1-0	0-0	0-0	---	---	---	0-0	0-0	W 1
Mathieu Thibaudeau/Houssam Yassine	0-1	0-0	0-0	---	---	---	0-0	0-0	L 1
Javier Bes/Joseph Jung	1-0	1-0	0-0	---	1-0	---	0-0	0-0	W 1
Dan Buikema/Jordie Kindervater	1-0	1-0	0-0	---	---	1-0	0-0	0-0	W 1
Totals	84-40	58-27	22-13	16-12	18-10	24-5	5-11	0-0	

INDIVIDUAL DOUBLES RECORDS

Player	Overall	Dual	SEC
Javier Bes	26-8	23-4	9-2
Dan Buikema	26-16	16-13	5-6
Jordie Kindervater	7-2	4-0	0-0
Joseph Jung	24-8	17-8	8-3
Billy Mertz	17-6	14-3	6-1
Saketh Myneni	29-12	19-8	8-3
Taylor Striplin	3-1	0-0	0-0
Sammy Struyf	11-5	8-1	3-1
Mat Thibaudeau	25-17	15-13	5-6
Houssam Yassine	0-1	0-0	0-0

AlumniWeekend

CRIMSON TIDE TENNIS



The University of Alabama men's tennis team invites its alumni back to the Capstone every year to challenge the varsity in a dual match. This year, the 2008 squad played against some of the best players in Alabama tennis history and came out on top, 32-16.

"It's always a pleasure to have our alumni back on campus for various events," said Alabama head coach Billy Pate. "With such a talented and diverse group of individuals, we have had a rich history of achievement with our men's tennis program. Our graduates have gone on to successful careers in different parts of the United States and around the world so it means a great deal to our current players to have them visit and enjoy the tremendous growth our university has experienced the past few years."

The varsity and alumni teamed up to play four pro-set doubles matches. The cumulative score of the four matches was taken to deter-

mine the winner.

Alabama's Daniel Buikema and Mathieu Thibaudeau teamed up against former All-American Max Belski and William Boyles with the varsity outlasting the alumni 8-6. Belski and Boyles were both a part of the 2003 Sweet 16 team.

The Tide's Javier Bes and Sammy Struyf defeated John Isern and former All-American and SEC champion John Stimpson, 8-2. Isern was also a part of the 2003 Sweet 16 team and Stimpson is one of the most decorated players in Alabama history. A 1990 graduate, Stimpson was a singles and doubles All-American in 1990, an SEC singles champion and ranked as high as 179 in the ITF rankings.

Andrew Felsenthal and Trey Walston paired up to defeat Joseph Jung and Tom Givan, 8-6, in their match. Jung, a 2007 graduate, was a 2006 NCAA singles qualifier and helped lead his team to the NCAA Sweet 16 in 2007, while

Givan was a member of the 2003 NCAA squad.

In the final match of the day, Jordie Kindervater and Saketh Myneni teamed up to defeat the Swedish duo of Hans Carlsson and Stefan Olsson, 8-2. Carlsson along with three-time SEC selection Olsson qualified for the 1981 NCAA doubles tournament.

The match was the last chance for competition for the Tide until the dual match season starts on Thursday, January 10 at noon against Hawaii in Honolulu, Hawaii.

Alabama in the Professional Ranks



Crimson Tide legend Ellis Ferreira with partner Rick Leach following the duo's triumphant win in the Australian Open finals in 2000.

Ellis Ferreira

- 2000 Australian Open Doubles Champion
- Winner of 18 professional events and finalists in 15 others, including the 2000 U.S. Open.
- 2004 World Team Tennis Champion
- He won his first three professional doubles events in 1992-1993.
- Won over \$2 million on tour
- Once occupied the No. 1 world ranking for doubles players
- Played in 1996 Olympics



Clinton Ferreira

Won three doubles titles and played in nine finals on tour. Ranked as high as No. 139 in doubles



Stephen Mitchell

Won first three futures events and qualified for and entered the ATP World rankings in Nov. 2004.



Juan Carlos Bianchi

Three-time Member of Venezuela's Davis Cup Team (1989, 1991, 1996)



Rick Witsken

All-American at Alabama and doubles specialist. Reached as high as No. 438 in world doubles rankings.



John Stimpson

Won first career event in April of 1991. Reached No. 179 in ITF rankings.



Fransico Rodriguez

Actively playing on ATP tour. Stars in Davis Cup for Paraguay and reached career high of 373 in 2004.

CRIMSON TIDE MEN'S TENNIS

Alabama's All-Americans

Note: Clinton Ferreira and Gregg Hahn, while paired together in 1986, also earned All-American honors.



Jeff Robinson
Singles 1976 and 1977



Andy Soils
Singles 1984



Greg Hahn
Singles 1985



John Stimpson
Singles 1990



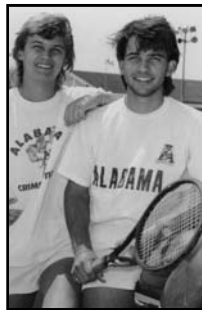
Francisco Rodriguez
Singles 1998 and 1999



Maxim Belski
Singles 2001



Andy Soils/ Greg Hahn
Doubles 1985



**Clinton Ferreira
Ellis Ferreira**
Doubles 1989



**Ellis Ferreira
John Stimpson**
Doubles 1990



**Ellis Ferreira
Rick Witsken**
Doubles 1991



Juan Carlos Bianchi/ Rick Witsken
Doubles 1993

CRIMSON TIDE MEN'S TENNIS

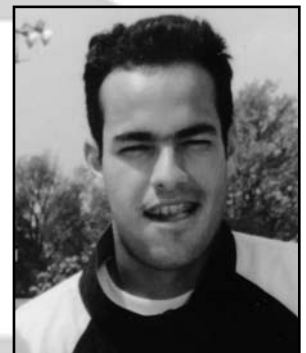
Alabama's Past Olympians



Constantinos Efremoglou
Greece
1992 Seoul



Ellis Ferreira
South Africa
1996 Atlanta



Juan Carlos Bianchi
Venezuela
1996 Atlanta

At the NCAA Championships



2007

NCAA Championships

Coach: Billy Pate

Site: Athens, Ga.

First round -- Alabama 4, ETSU 2

Second round -- Alabama 4, Duke 3

Round of 16 -- Baylor 4, Alabama 0

Back Row (From left): Asst. Coach Lee Nickell, Head Coach Billy Pate, Jordie Kindervater, Sammy Struyf, Houssam Yassine, Billy Mertz, Saketh Myneni, Daniel Buikema. Front Row (from left): Javier Bes, Mathieu Thibaudeau, Taylor Striplin, Joseph Jung, Volunteer Asst. Matt Hill

2007

First Round • May 11 • Durham, N.C.

Alabama 5, East Tennessee State 2

Singles

1. Predrag Burmazovic (ETSU) def. No. 74 Billy Mertz (UA) 3-6, 6-3, 7-5
2. Enrique Olivares (ETSU) def. No. 88 Joseph Jung (UA) 6-2, 6-3
3. Sammy Struyf (UA) def. Felix Insaurrealde (ETSU) 6-4, 6-3
4. Mathieu Thibaudeau (UA) led Sebastian Serrano (ETSU) 5-7, 7-6, 2-1 susp.
5. Javier Bes (UA) def. Lisandro Picardo (ETSU) 6-4, 6-0
6. Saketh Myneni (UA) def. Travis Sandlant (ETSU) 6-3, 3-6, 7-6 (6)

Doubles

1. No. 26 Buikema/Thibaudeau (UA) def. Sanglant/Ahlgren (ETSU) 9-7
2. Olivares/Serrano (ETSU) def. Myneni/Jung (UA) 8-4
3. Bes/Mertz (UA) def. Isaza/Picardo (ETSU) 8-6

Second Round • May 12 • Durham, N.C.

Alabama 4, Duke 3

Singles

1. No. 71 Billy Mertz (UA) def. No. 80 Kiril Dimitrov (DUKE) 6-3, 7-5
2. No. 88 Joseph Jung (UA) def. No. 105 Joey Atas (DUKE) 4-6, 7-6, 7-5
3. Peter Rodrigues (DUKE) def. Sammy Struyf (UA) 6-7, 6-1, 6-3
4. Mathieu Thibaudeau (UA) def. Dylan Arnould (DUKE) 6-3, 6-4
5. Javier Bes (UA) def. David Goulet (DUKE) 6-1, 4-6, 1-1 ret.
6. Alex Stone (DUKE) def. Saketh Myneni (UA) 4-6, 6-4, 7-6

Doubles

1. No. 7 Goulet/Atas (DUKE) led No. 23 Buikema/Thibaudeau (UA) 8-7 unf.
2. Arnould/Samuels (DUKE) def. Myneni/Jung (UA) 8-4
3. Dimitrov/Rodrigues (DUKE) def. Bes/Mertz (UA) 8-5

Round of 16 • May 17 • Athens, Ga.

Baylor 4, Alabama 0

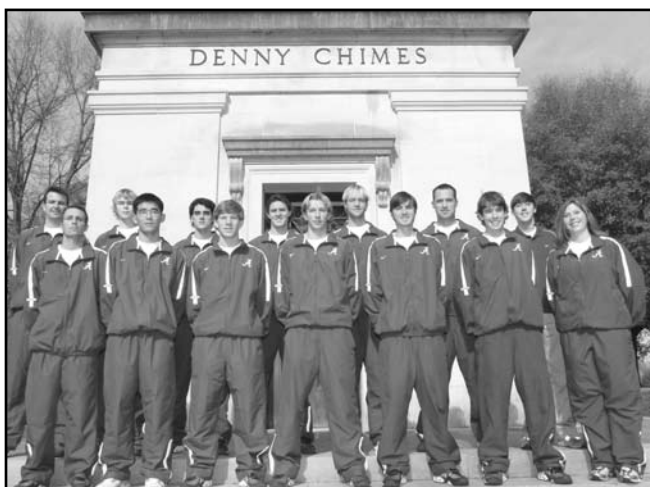
Singles

1. No. 11 Lars Poerschke (BU) def. No. 71 Billy Mertz (UA) 7-6 (3), 6-0
2. No. 19 Michal Kokta led No. 88 Joseph Jung (UA) 6-3, 4-6, 1-0 susp.
3. Matt Brown (BU) led Sammy Struyf (UA) 6-3, 1-6, 2-1
4. No. 120 Matija Zgaga (BU) def. Mathieu Thibaudeau (UA) 6-4, 3-6, 6-2
5. No. 113 Dominik Mueller (BU) def. Javier Bes (UA) 6-4, 6-3
6. Denes Lukacs (BU) led Saketh Myneni (UA) 7-6 (2), 4-3 susp.

Doubles

1. No. 60 Poerschke/Kokta (BU) def. No. 23 Buikema/Thibaudeau 8-6
2. Zgaga/Lukacs (BU) def. Myneni/Jung (UA) 8-5
3. Galic/Brown (BU) vs. Mertz/Bes (UA) 6-6 susp.

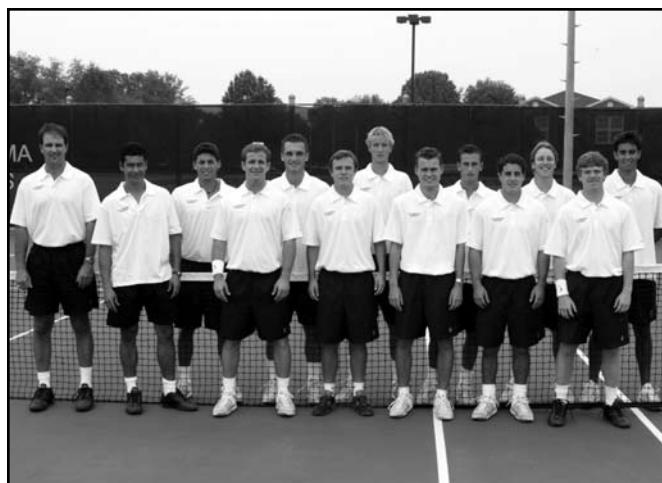
At the NCAA Championships



2006

NCAA Championships
Coach: Billy Pate
Site: Athens, Ga.
First round -- Georgia Tech 4, Alabama 2

The 2006 Crimson Tide squad (from left): Head Coach Billy Pate, Mathieu Thiбаudeau, Javier Bes, Jordie Kindervater, Dan Buikema, Asst. Coach Lee Nickell, John Wood (Mgr.), Volunteer Asst. Coach Matt Hill, Joseph Jung, Andrew Felsenthal, Sammy Struyf, Taylor Striplin, Billy Mertz, Kelley Etherideg (Athletic Trainer)



2003

NCAA Championships
Coach: Billy Pate
Site: Cambridge, Mass.
First round -- Alabama 4, Marist 0
Second round -- Alabama 4, Harvard 0
Round of 16 -- Baylor 4, Alabama 1

The 2003 Crimson Tide squad (from left): Head Coach Billy Pate, Asst. Coach Mario Rincon, Brad Friedman, William Boyles, Maxim Belski, Tom Givan, Geoff Hiscox, Christian Brodersen, Chris Gostek, Brian Isern, Stephen Mitchell, Matt Drummond, Michael Ray Pallares



2004

NCAA Championships
Coach: Billy Pate
Site: Richmond, Va.
First round -- Texas A&M 4, Alabama 0

The 2004 Crimson Tide squad (from left): Eric Law (Trainer), Head Coach Billy Pate, Stephen Mitchell, Chris Gostek, RJ Murray, Christian Brodersen, Asst. Coach Mario Rincon, Student Asst. Geoff Hiscox, Tom McVey, Mike Green, Luigi D'Agord, Eric Molnar, Joseph Jung, Matt Drummond



2002

NCAA Championships
Coach: Adam Steinberg
Site: Oxford, Miss.
First round -- MTSU 4, Alabama 3

The 2002 Crimson Tide squad (from left back): Chris McRae, Brian Isern, Chris Gostek, Matt Way (trainer), Tom Givan, William Boyles, Christian Brodersen, Michael Ray Pallares, Mario Rincon (Asst. Coach), Bradley Friedman, Stephen Mitchell, Nick Beuque, Adam Steinberg (head coach)

Alabama in the NCAA



2001

NCAA Championships
Coach: Adam Steinberg
Site: Miami, Fla.

First round -- Minnesota 4, Alabama 1

The 2001 Crimson Tide squad (from left back): Tad Berkowitz, Brad Friedman, William Boyles, Stephen Mitchell, Chris Gostek, Maxim Belski, Michael Ray Pallares, Susheel Narla, Head Coach Adam Steinberg, Chris McRae, Tom Givan, Christian Brodersen, Alfonso Perez, Brian Isern



1998

Region III Qualifier
Coach: Adam Steinberg
Site: Lexington, Kent.

First round -- Alabama 4, Kentucky 0
Semifinals -- Florida 4, Alabama 3
Region finals -- Auburn 4, Alabama 2

The '98 Crimson Tide squad (from left back): Jimmy Chambers, Graydon Oliver, Karim Zahner, Alin Taranga, Ariel Rivero, Shea Richardson (Trainer), Mason Snider, Francisco Rodriguez, Thompson, Chris Lopez, Weylu Chang, Student Asst. Coach Rashid Hassan, Head Coach Adam Steinberg, Asst. Coach Geoff Young



1999

NCAA Championships
Coach: Adam Steinberg
Site: Blacksburg, Va.

First round -- Alabama 4, Hampton 1
Second round -- Virginia Tech 4, Alabama 3

The '99 Crimson Tide squad (from left back): Head Coach Adam Steinberg, Graydon Oliver, Alin Taranga, Ariel Rivero, Jason Welden (Mgr.), Asst. Coach Geoff Young, Jimmy Chambers, Mason Snider, Francisco Rodriguez, Weylu Chang, Chris McRae, Karim Zaher



1997

Region III Qualifier
Coach: Joey Rivé
Site: Gainesville, Fla.

First round - Alabama 4, Southern Miss 2
Second round -- Alabama 4, MTSU 3
Region finals -- Florida 4, Alabama 2

The 1997 Crimson Tide squad (from left back): Rashid Hassan, Greg Thompson, Mason Snider, Marc Urbainczyk, Alin Taranga, Ariel Rivero, Karim Zaher, Asst. Coach Geoff Young, Student Asst. Mark Johnson, Tim Bates (Mgr.), Seth Woodard (Trainer), Head Coach Joey Rive

Alabama in the NCAA



1996

Region III Qualifier

Coach: Joey Rivé

Site: Baton Rouge, La.

First round -- Alabama 4, MTSU 3
 Second round -- Auburn 4, Alabama 3

The 1996 Crimson Tide squad (from left back): Head Coach Joey Rive, Alin Taranga, Karim Zaher, Kip Layman, Ariel Rivero, Marco Mazzotta, Asst. Coach Chuck Coleman, mark Johnson, Marc Hayden, Chris Lopez, Rashid Hassan, Sven Goth Not Pictured: Robert Sproul



1990

Team Finals

Coach: John Kreis

Site: Indian Wells, Calif.

First round -- Northwestern 5, Alabama 2

The 1990 Crimson Tide squad (from left back); Head Coach John Kreis, Brad McMurray, Rick Wisken, Ellis Ferreira, Tony Matkulak, John Stimpson, Asst. Coach Kevin Swank, Jim Ramage (Mgr.), Matt McKelvain, Michael Sass, Jerome Fournier, Warren Rutenberg



1993

Team Finals

Coach: John Kreis

Site: Athens, Ga.

Second round -- Alabama 5, UAB 4
 Round of 16 -- UCLA 5, Alabama 0

The 1993 Crimson Tide squad (from left back): The 1993 Crimson Tide squad (from left back); Mohamed Elwany, mark Johnson, Cecil Brandon, Tommy Patterson (Trainer), Matt Turner, Marc Hayden, Stan Long (Mgr.), Asst. Coach Brian Rahaley, Head Coach John Kreis, Anders Lindgren, Rick Witsken, Brett Gibson (Mgr.), Juan Carlos Bianchi, Kip Layman



1989

Team Finals

Coach: John Kreis

Site: Athens, Ga.

First round - South Carolina 5, Alabama 4

The 1989 Crimson Tide squad (from left back): Brad McMurry, Clinton Ferreira, Head Coach John Kreis, Constantinos Efremoglou, Ellis Ferreira, Scott France, Warren Rutenberg, Jerome Fournier, Ben Bowden (Mgr.)

Alabama in the NCAA

Alabama's NCAA Individual Qualifiers

Year	Name	Event	Final Round
1974	Mike Cahill	Singles	Fourth Round (Round of 32)
	Chuck Bibee	Singles	First Round
	Sam Vuille	Singles	Second Round
	Chip Wade	Singles	Fourth Round (Round of 32)
	Vuille/Wade	Doubles	Third Round
1976	Cahill/Bibee	Doubles	Second Round
	Jeff Robinson	Singles	Second Round (128 Draw)
	Steve Pierre	Singles	First Round
	Bob Deller	Singles	First Round
	Sam Vuille	Singles	First Round
1977	Deller/Vuille	Doubles	Second Round
	Robinson/Pierre	Doubles	First Round
1977	Jeff Robinson	Singles	Second Round (68 Draw)
1981	Olsson/Carlson	Doubles	First Round
1984	Andy Solis	Singles	First Round
	Gregg Hahn	Singles	First Round
1985	Gregg Hahn	Singles	First Round
	Andy Solis	Singles	First Round
	Hahn/Solis	Doubles	First Round
1986	Ferreira/Hahn	Doubles	Semifinals
	Gregg Hahn	Singles	First Round
1989	Clinton Ferreira	Singles	Second Round
	John Stimpson	Singles	First Round
	Ferreira/Ellis Ferreira	Doubles	Round of 16
1990	Ellis Ferreira	Singles	First Round
	John Stimpson	Singles	First Round (9-16 Seed)
	Ferreira/Stimpson	Doubles	Semifinal (5-8 Seed)
1991	Ellis Ferreira	Singles	Second Round
	Ferreira/Rick Witsken	Doubles	Quarterfinals (5-8 Seed)
1993	Juan Carlos Bianchi	Singles	Second Round
	Bianchi/Rick Witsken	Doubles	First Round
1994	Cecil Brandon	Singles	Second Round
	Marco Mazzotta	Singles	First Round
1997	Francisco Rodriguez	Singles	First Round
1998	Francisco Rodriguez	Singles	First Round
1999	Francisco Rodriguez	Singles	First Round
2000	Francisco Rodriguez	Singles	First Round
	Francisco Rodriguez	Doubles	First Round
	Maxim Belski	Doubles	First Round
2001	Maxim Belski	Singles	First Round
2002	Maxim Belski	Singles	Second Round
2004	Stephen Mitchell	Singles	First Round
2006	Joseph Jung	Singles	Second Round
2007	Dan Buikema	Doubles	First Round
	Mathieu Thibaudeau	Doubles	First Round



Maxim Belski - NCAA Doubless Draw in 2000 and NCAA Singles Draw 2001 and 2002



Joseph Jung - NCAA Singles Draw in 2006



The NCAA Championships

The best teams in collegiate tennis have gathered annually since 1946 to determine the men's national champion. The first national collegiate team championship was held at Northwestern with Southern Cal defeating William & Mary for the championship. The University of Georgia has hosted the national event at the Dan Magill Tennis Complex and Henry Field Stadium more than any other school in the nation. Athens has hosted the event 20 times, including a consecutive stretch from 1977 through 1989. The championships were last in Athens in 2007.

Individual national titles have been officially contested since 1883 when Harvard's Joseph Clark won the spring title and his teammate Howard Taylor won the fall national championship. The format was changed the following year and only one championship has been awarded per year. The tournament was not held in 1917 and 1918. Clark and Taylor paired to win the first doubles title in the spring of 1883, and the Harvard duo of Taylor and R.E. Presbrey were champions in the fall.

Team Champions

Year	Champion	Runner-up	Host
1990	Stanford	Tennessee	Southern Cal
1991	Southern Cal	Georgia	Georgia
1992	Stanford	Notre Dame	Georgia
1993	Southern Cal	UCLA	Georgia
1994	Southern Cal	Stanford	Notre Dame
1995	Stanford	Ole Miss	Georgia
1996	Stanford	Georgia	Georgia
1997	Stanford	Georgia	UCLA
1998	Stanford	Georgia	Georgia
1999	Georgia	UCLA	Georgia
2000	Stanford	VCU	Georgia
2001	Georgia	Tennessee	Georgia
2002	Southern Cal	Georgia	Texas A&M
2003	Illinois	Vanderbilt	Georgia
2004	Baylor	UCLA	Tulsa
2005	UCLA	Baylor	Texas A&M
2006	Pepperdine	Georgia	Stanford
2007	Georgia	Illinois	Georgia

All-Time Team Champions: Stanford (17), Southern Cal (16), UCLA (16), Georgia (5), William & Mary (2), Michigan (1), Notre Dame (1), Pepperdine (1), San Francisco (1), Trinity (1), Tulane (1), Illinois (1), Baylor (1)

Singles Champions

Year	Champion	School
1990	Steve Bryan	Texas
1991	Jared Palmer	Stanford
1992	Alex O'Brien	Stanford
1993	Chris Woodruff	Tennessee
1994	Mark Merklein	Florida
1995	Sargis Sargsian	Arizona State
1996	Cecil Mamiit	USC
1997	Luke Smith	UCLA
1998	Bob Bryan	Stanford
1999	Jeff Morrison	Florida
2000	Alex Kim	Stanford
2001	Matias Boeker	Georgia
2002	Matias Boeker	Georgia
2003	Amer Delic	Illinois
2004	Benjamin Becker	Baylor
2005	Benedikt Dorsch	Baylor
2006	Benjamin Kohlloeffel	UCLA
2007	Somdev Devvarman	Virginia

All-Time Singles Champions (By Institution): Harvard (16), USC (13), Stanford (13), UCLA (10), Yale (9), Tulane (8), Princeton (5), Georgia (4), Miami (4), Texas (4), Pennsylvania (3), Rice (3), California (2), Columbia (2), Florida (2), Michigan (2), Trinity (2), Arizona State (1), Brown (1), Cincinnati (1), Cornell (1), Kenyon (1), Lehigh (1), LSU (1), Navy (1), Pepperdine (1), Philadelphia Osteo (1), San Francisco (1), San Jose State (1), Tennessee (1), Trinity (Conn.), Utah (1), Washington (1), William & Mary (1) and UNLV (1), Illinois (1), Baylor (2), Virginia (1)

Doubles Champions

Year	Duo (School)
1990	Doug Eisenman & Matt Lucena (California)
1991	Matt Lucena & Bent-Ove Pedersen (California)
1992	Chris Cocotos & Alex O'Brien (Stanford)
1993	David Blair & Mark Merklein (Florida)
1994	Laurent Miquelard & Joc Simmons (Mississippi State)
1995	Mahesh Bhupathi & Ali Hamadeh (Ole Miss)
1996	Justin Gimelstob & Srdjan Muskatirovic (UCLA)
1997	Tim Blenkiron & Luke Smith (UNLV)
1998	Bob Bryan & Mike Bryan (Stanford)
1999	Ryan Wolters & K.J. Hippensteel (Stanford)
2000	Cary Franklin & Graydon Oliver (Illinois)
2001	Matias Boeker & Travis Parrott (Georgia)
2002	Andrew Columbo & Mark Kovacs (Auburn)
2003	Brian Wilson & Rajeev Ram (Illinois)
2004	KC Corkery & Sam Warburg (Stanford)
2005	John Isner & Antonio Ruiz (Georgia)
2006	Kevin Anderson & Ryan Rowe (Illinois)
2007	Marco Borne & Andreas Siljeström (Middle Tennessee)

All-Time Doubles Champions (By Institution): Southern Cal (20), Harvard (17), Stanford (14), UCLA (11), Yale (11), California (9), Princeton (5), Texas (5), Illinois (3), Pennsylvania (3), Columbia (2), Miami (2), Pepperdine (2), Tulane (2), Georgia (2), Arkansas (1), Auburn (1), Brown (1), Florida (1), Mississippi (1), Mississippi State (1), Occidental (1), Rice (1), Tennessee (1), TCU (1), Trinity (1), Washington (1), William & Mary (1), UNLV (1), Middle Tennessee (1).

Career Record Singles Titles

3 by Malcolm Chance, Brown & Yale (1893-94-95) and Francisco Segura, Miami (1943-44-45)

Career Record Individual Titles

6 by Malcolm Chance, Brown & Yale (singles: 1893-94-95 and doubles: 1893-94-95). 5 by W.P. Knapp, Yale (singles: 1884-85 and doubles 1884-85-86)

Professionals Who Won NCAA Singles Championships

1963, 64	Dennis Ralston (Southern Cal)
1965	Arthur Ashe (UCLA)
1968	Stan Smith (Southern Cal)
1971	Jimmy Connors (UCLA)
1972	Dick Stockton (Trinity)
1978	John McEnroe (Stanford)
1979	Kevin Curren (Texas)
1984, 85	Mikael Pernfors (Georgia)
2006	John Isner (Georgia)

The Intercollegiate Tennis Association

About the ITA

The Intercollegiate Tennis Association (ITA) is a non-profit service organization comprised of men's and women's college tennis coaches from all three NCAA divisions, NAIA, and Junior and Community colleges and universities, and auxiliary members who are dedicated to the growth and promotion of college tennis. Their primary goals are to increase the visibility and recognition of college tennis players and coaches, to improve the quality of competition and sportsmanship at all of the different levels of college tennis, and to educate and serve those individuals and groups who are involved in college tennis: junior and college players, their coaches and parents, tournament officials and the at-large tennis public.

Final 2007 Team Rankings

1. Georgia
2. Virginia
3. Ohio State University
4. Baylor
5. Illinois
6. Notre Dame
7. Mississippi
8. UCLA
9. Southern California
10. North Carolina
11. Oklahoma State
12. Texas
13. Wake Forest
- 14. Alabama**
15. LSU
16. Florida
17. Duke
18. Florida State
19. North Carolina State
20. Pepperdine
21. Michigan
22. Tulsa
23. Clemson
24. Boise State
25. Tennessee
26. Oklahoma
27. South Alabama
28. VCU
29. Auburn
30. Old Dominion
31. Texas A&M
32. Wisconsin, Madison
33. Texas Tech
34. Rice
35. Washington
36. Georgia State
37. Vanderbilt
38. Univ. of Miami (FL)
39. Virginia Tech
40. Minnesota, Twin Cities
41. Texas A&M Corpus Christi
42. California
43. Penn State
44. Elon
45. William and Mary
46. San Diego State Univ.
47. Georgia Tech
48. Arizona State Univ.
49. Middle Tennessee State
50. SMU

ITA National Coach of the Year

Manuel Diaz, UGA

ITA Assistant Coach of the Year

Mark Booras, LSU

ITA/Farnsworth National

Senior Player of the Year

John Isner, UGA

ITA National Rookie Player of the Year

Jesse Levine, UF

ITA National Player to Watch

Kevin Anderson, Illinois

ITA/Arthur Ashe, Jr. Award for Leadership and Sportsmanship

Danny Bryan, LSU

ITA/Rafael Osuna Sportsmanship Award

Somdev Devvarman, UVA

ITA/John Van Nostrand Memorial Award

Stephen Bass, Notre Dame

Alabama in the ITA End of the Season Rankings

Year	Ranking	Record	Coach
2007	No. 14	22-8	Billy Pate
2006	No. 40	14-13	Billy Pate
2005	No. 56	10-15	Billy Pate
2004	No. 39	10-15	Billy Pate
2003	No. 15	19-10	Billy Pate
2002	No. 18	15-8	Adam Steinberg
2001	No. 19	19-9	Adam Steinberg
2000	No. 50	5-17	Adam Steinberg
1999	No. 18	17-11	Adam Steinberg
1998	No. 22	13-12	Adam Steinberg
1996	No. 28	15-12	Joey Rive'
1994	No. 34	7-17	John Kreis
1993	No. 9	19-5	John Kreis
1990	No. 18	16-12	John Kreis
1989	No. 11	18-8	John Kreis
1988	No. 21	17-10	Tommy Wade
1987	No. 19	20-8	Tommy Wade
1986	No. 19	18-11	Tommy Wade
1985	No. 22	20-11	Tommy Wade
1984	No. 16	20-12	Tommy Wade
1983	No. 14	20-4	Tommy Wade
1976	No. 28	23-3	Bill McClain
1975	No. 19	16-8	Bill McClain
1974	No. 12	16-6	Bill McClain
1973	No. 16	18-5	Bill McClain

SINGLES

Year	Name	Class	Ranking	Record
2007	Billy Mertz	JR	No. 71	27-10
	Joseph Jung	SR	No. 88	20-22
2006	Joseph Jung	JR	No. 55	21-17
2005	Luigi D'Agord	SO	No. 54	27-18
	Joseph Jung	SO	No. 64	23-12
2004	Stephen Mitchell	SR	No. 45	21-15
2003	Maxim Belski	SR	No. 78	15-22
	Chris Gostek	JR	No. 85	19-6
	Stephen Mitchell	JR	No. 97	23-12
2002	Maxim Belski	JR	No. 48	14-15

2001	Maxim Belski	SO	No. 19	21-12
2000	Francisco Rodriguez	SR	No. 47	13-14
	Maxim Belski	FR	No. 62	13-8
1999	Francisco Rodriguez	JR	No. 10	29-15
1998	Francisco Rodriguez	SO	No. 15	25-16
	Chris Lopez	SR	No. 83	16-17
1996	Marco Mazzotta	SR	No. 97	18-20
1994	Cecil Brandon	SR	No. 47	19-19
	Marco Mazzotta	SO	No. 59	23-19
1993	Juan Carlos Bianchi	SO	No. 21	23-15
	Cecil Brandon	JR	No. 62	31-7
	Rick Witsken	SR	No. 75	25-16
1992	Matt Turner	SO	No. 63	22-13
	Cecil Brandon	SO	No. 77	31-7
1991	Ellis Ferreira	SR	No. 35	30-20
1990	John Stimpson	JR	No. 10	34-11
	Ellis Ferreira	JR	No. 57	29-16
1989	John Stimpson	SO	No. 31	23-9
	Clinton Ferreira	SR	No. 32	22-13
1985	Gregg Hahn	JR	No. 18	25-5

DOUBLES

Year Duo	CL	RNK	REC
2007	Dan Buikema, Mat Thibaudeau	SO/SO	No. 23 25-15
2005	Luigi D'Agord/Eric Molnar	SO/SO	No. 35 14-14
2004	Chris Gostek/Stephen Mitchell	SR/SR	No. 45 7-11
2002	Maxim Belski/Stephen Mitchell	JR/SO	No. 58 8-3
2000	Francisco Rodriguez/Maxim Belski	SR/FR	No. 16 15-7
1999	Francisco Rodriguez/Ariel Rivero	JR/SR	No. 43 15-15
1998	Chris Lopez/Graydon Oliver	SR/FR	No. 39 19-15
1993	Rick Witsken/Juan Carlos Bianchi	SR/SO	No. 7 23-9
1991	Ellis Ferreira/Rick Witsken	SR/SO	No. 6 23-6
1990	John Stimpson/Ellis Ferreira	JR/JR	No. 6 17-6
1989	Clinton Ferreira/Ellis Ferreira	SR/JR	No. 8 23-8
1986	Clinton Ferreira/Gregg Hahn	FR/SR	No. 6 17-2
1985	Andy Solis/Gregg Hahn	SR/JR	No. 10 19-4

The Southeastern Conference



Setting the Standard for Intercollegiate Athletics in Tennis

The Southeastern Conference men's tennis programs are among the nation's leader on the collegiate hardcourt. That trend continued as the conference made another strong national showing in 2006.

In team competition, Georgia advanced to the championship match but fell just short of its fifth title with a 4-2 loss to Pepperdine. In singles, Erling Tveit of Ole Miss made it to the NCAA semifinal round before losing 6-3, 6-1 to the eventual national champion Benjamin Kohlloeffel of UCLA.

Georgia's John Isner and Antonio Ruiz captured the NCAA Doubles Championship in 2005 with a 7-6 (4), 7-5 victory over LSU's Mark Growcott and Ken Skupski in an all-SEC final. The previous year in 2004, Georgia's doubles team of Bo Hodge and John Isner played Stanford's KC Corkery and Sam Warburg in the doubles final. The Stanford duo defeated Hodge and Isner, 6-2, 6-7, 6-4 for the title.

Overall the SEC has 16 NCAA singles champions in men's tennis dating back to 1930. Eight of those singles titles have come since 1984. Prior to Matias Boeker's back-to-back titles in 2001 and 2002, Florida's Jeff Morrison won the title in 1999.

Five of the nine doubles titles have come since 1993, with all five coming from different SEC schools. Florida won in 1993 with the doubles tandem of David Blair and partner, singles champion Merklein.

Mississippi State followed in 1994 with Laurent Miquelard and Joc Simmons and Ole Miss duo Mahesh Bhupathi and Ali Hamadeh captured the doubles title in 1995. In 2001, Matias Boeker and Travis Parrott of Georgia took home the title.

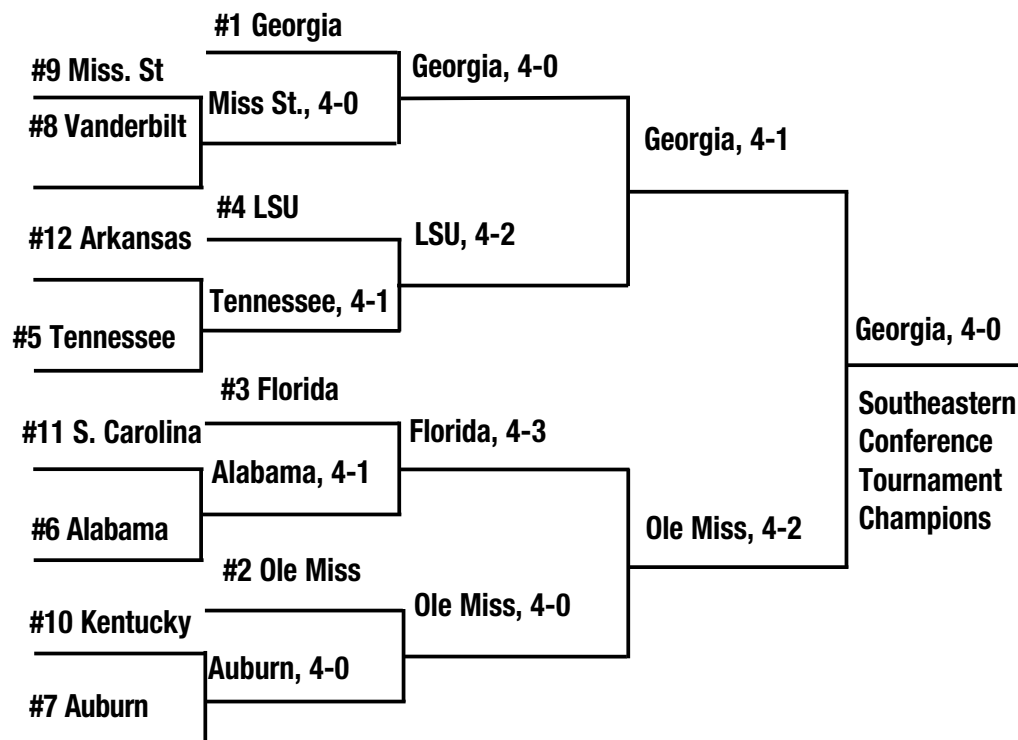
National team titles for the league have been captured by Tulane (1959) and in its current configuration, Georgia. The Bulldogs boasts four men's NCAA championship team titles (1985, 1987, 1999 and 2001).



SEC by the numbers...

- 5 NCAA team championships (59, 85, 87, 99, 01)
- 13 NCAA runner-up teams (88, 89, 90, 91, 93, 95, 97, 98, 2001, 02, 03, 06)
- 11 consecutive years with a team in the national semifinals (1993-2003)
- 10 NCAA doubles titles (57, 59, 80, 83, 93, 94, 95, 2001, 02, 05)
- 16 NCAA singles champions dating back to 1930, with eight since 1984 and three of the last eight individual champions
- 121 singles ITA All-Americans since 1990
- 118 players have received ITA All-America doubles honors since 1990
- Back-to-back NCAA singles champions six times (36-37, 53-54, 54-55, 84-85, 93-94, 2001-02)

2007 SEC Championships



Team	SEC	All
Eastern Division		
Georgia*	11-0	28-0
Florida	7-4	17-8
Tennessee	7-4	
Kentucky	3-8	
Vanderbilt	4-7	
South Carolina	2-9	
Western Division		
Ole Miss^	8-3	22-6
LSU	7-41	4-10
Alabama	7-4	22-8
Auburn	6-5	
Mississippi State	3-8	
Arkansas	0-11	7-21

* SEC Champion, SEC Eastern Division Champion and SEC Tournament Champion
^ SEC Western Division Champion

Year	Champion(s)	Pts.	Runners-Up	Pts.	UA's Finish	Tournament Champ
1938	Georgia Tech	24	Tulane	16	---	---
1939	Tulane	19	Vanderbilt	12	---	---
1940	LSU	19	Vanderbilt	12	---	---
1941	Tulane	18	LSU	11	---	---
1942	Tulane	21	LSU	9	---	---
1946	Georgia Tech	17	Tulane	12	---	---
1947	Tulane	23	Georgia Tech	12	---	---
1948	Tulane	23	Georgia Tech	12	---	---
1949	Tulane	21	Georgia Tech	8	5(4-0)	---
1950	Florida	25	Tennessee/Tulane	23	6(4-2)	---
1951	Tenn./Tulane	24	Florida	19	5(6-3)	---
1952	Tulane	32	Tennessee	28	6(2-6)	---
1953	Tulane	36	Florida/LSU	17	6(0-9)	---
1954	Tulane	29	LSU	23	6(1-7)	---
1955	Tulane	32	Florida	21	No Entry (0-4)	---
1956	Tulane	31	Georgia Tech	21	No Entry (3-3)	---
1957	Tulane	31	LSU	24	9(1-6)	---
1958	Tulane	32	LSU	26	No Entry (1-4)	---
1959	Tulane	34	Georgia Tech	21	No Entry (0-6)	---
1960	Georgia Tech	26	Tulane	24	No Entry (1-6)	---
1961	Florida	30	Georgia	22	8 (3-4-1)	---
1962	Tulane	28	Georgia	22	5 (7-0)	---
1963	Tulane	33	Georgia	21	3 (7-5)	---
1964	Tulane	27	Mississippi State	24	5 (4-2)	---
1965	Miss. State	32	Tulane	25	10 (4-3)	---
1966	Tennessee	27	Mississippi State	26	7(3-4)	---
1967	Miss. State	28	Tennessee	26	6(3-5)	---
1968	Florida	27	Mississippi State	24	7(0-6)	---
1969	Florida	35	Georgia	27	8(3-2)	---
1970	Tennessee	22	Georgia	21	8(1-4)	---
1971	Georgia	34	Tennessee	17	5(5-4-1)	---
1972	Georgia	27	MSU/Tennessee	21	4(8-4)	---
1973	Georgia	23	Alabama	21	2(5-0)	---
1974	Georgia	30	Tennessee	22	3(4-3)	---
1975	Fia./Georgia	21	Tennessee	20	4(4-5)	---
1976	Alabama/LSU	23	Florida	20	1-Tie (7-0)	---
1977	Georgia	26	LSU	21	3 (7-3)	---
1978	Georgia	25	Tennessee	15	6-Tie (4-5)	---
1979	Georgia	28	Tennessee	25	7-Tie (2-5)	---
1980	Tennessee	26	Georgia	22	5(3-6)	---

Year	Champion(s)	Pts.	Runners-Up	Pts.	UA's Finish	Champ
1981	Georgia	26	Alabama	25	2(7-2)	---
1982	Georgia	25	Tennessee	19	3(4-3)	---
1983	Auburn	25	Alabama	21	2(7-2)	---
1984	Auburn	29	Georgia	26	3(6-5)	---
1985	Georgia/LSU	25	Tennessee	20	4(7-3)	---
1986	Tennessee	25	Georgia	18	4-Tie (9-3)	---
1987	Georgia	26	Tennessee	18	5 (4-6)	---
1988	Georgia	20	Kentucky	18	8 (4-6)	---
1989	Georgia	22	Kentucky	15	4 (5-4)	---
1990	Tennessee	12	Georgia	10	5 (5-3)	---
1991	Georgia	10	LSU	9	8 (2-9)	---
1992	Kentucky	12	LSU	11	8-Tie (4-8)	---
1993	Georgia/Miss St	11.5	Alabama/LSU (3rd)	9.5	3-Tie (9-2)	---
1994	Florida	13	Georgia/Miss. St.	10	11-Tie (2-10)	---
1995	Georgia	14	LSU	11	12 (0-12)	---
1996	Ole Miss/Georgia	12	Miss. St. (3rd)	11	7 (6-7)	---
1997	Ole Miss/Georgia	12	LSU (3rd)	9	7(6-7)	---
1998	LSU	15	Georgia	13	10 (3-9)	---
1999	LSU/Georgia	11	Ole Miss/Florida	10	5 (7-7)	---
2000	Tennessee/Florida	10-1	Ole Miss	9-2	11 (2-10)	Florida
2001	Georgia	11-0	Tennessee	9-2	6-Tie (7-7)	Georgia
2002	Georgia	10-1	Auburn	7-4	6-Tie (7-4)	Tennessee
2003	Florida	11-0	Ole Miss/Vanderbilt	9-3	6-Tie (5-6)	Vanderbilt
2004	Ole Miss	9-2	Florida	8-3	12-Tie (2-9)	Georgia
2005	Florida/Ole Miss	10-1	Georgia	8-3	12 (1-10)	Florida
2006	Georgia	11-0	Ole Miss	8-3	8 (4-7)	Georgia
2007	Georgia	11-0	Ole Miss	8-3	3-Tie (7-4)	Georgia

CHAMPIONSHIP BREAKDOWN

Georgia 23, Tennessee 7, Florida 8, LSU 4, Mississippi State 3, Auburn 2, Ole Miss 3, Alabama 1, Kentucky 1. Former members: Tulane 15, Georgia Tech 2.

THE POINTS FORMULA

One point is awarded for each SEC team victory during the regular season. In the SEC Tournament, the winners of 1st round matches receive a half point, as well as another half point if they win in the next round. The top four seeded teams, who receive a bye in the first round, also receive a half point for being a top seed. Thereafter, the winners of the subsequent rounds shall receive one point. The final order of finish for the SEC Championship is determined by the total of aggregate points accumulated at the end of the tournament. This method was used until 1999. From 1938-39, the SEC Champion was determined by the accumulation of points in an individual flighted tournament. Today the champion is determined by best winning percentage within the SEC.

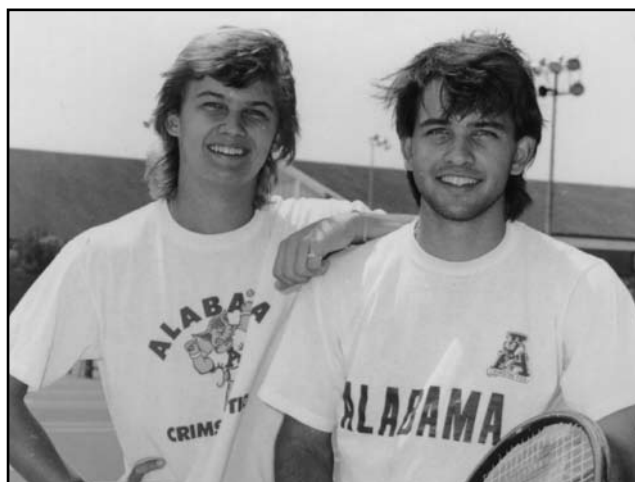
Alabama and the SEC

The Crimson Tide's All-SEC Players

1967	Jim Heacock (2nd Team)
1971	Mike Cahill (1st Team)
1972	Mike Cahill (1st Team)
	John Antonas (2nd Team)
1973	Mike Cahill (1st Team)
	John Antonas (2nd Team)
1974	Mike Cahill
1975	Bob Deeler
	Speedy Gilstrap
	Sam Vuille
	Chip Wade
1976	Bob Deller
	Jeff Robinson
1977	Jeff Robinson
	Mike Shore
1978	Jeff Robinson
1980	Pat Perrin
1981	Denys Maasdorp
	Stefan Olsson
	Michael Wennberg
1982	Dennys Maasdorp
	Stefan Olsson
1983	Stefan Olsson
	Mark Wilder
	Gregg Hahn
1984	Gregg Hahn
	Andy Solis
1985	Gregg Hahn
	Andy Solis
1986	Clinton Ferreira (Doubles)
	Gregg Hahn (Singles and Doubles)
1988	Clinton Ferreira (Singles)
1989	Clinton Ferreira
1990	John Stimpson (Singles and Doubles)
	Ellis Ferreira (Singles and Doubles)
1991	Ellis Ferreira (Singles and Doubles)
	Rick Witsken (Doubles)
1993	Juan Carlos Bianchi (2nd Team S&D)
	Cecil Brandon (2nd Team Singles)
	Rick Witsken (2nd Team Singles)
1998	Francisco Rodriguez (1st Team Singles)
1999	Francisco Rodriguez (1st Team S and 2nd team D)
	Ariel Rivero (2nd Team Doubles)
2000	Francisco Rodriguez (1st Team Doubles)
	Maxim Belski (1st Team Doubles)
2001	Maxim Belski (1st Team Singles)
2002	Maxim Belski (2nd Team Singles)
2003	Maxim Belski (2nd Team Singles)
2004	Stephen Mitchell (2nd Team Singles)
2005	Luigi D'Agord (2nd Team Singles)
	Joseph Jung (2nd Team Singles)
2007	Billy Mertz (2nd Team Singles)

SELECTION FORMATS

1966-73: First Team and Second Team
 1974-84: One Team List
 1985: Six First Team and 12 Honorable Mention
 1986-88: Can be All-SEC in singles, doubles or both
 1989: Only six were selected
 1990-92: Converted back to format used in 1988
 1993: First and Second teams for singles and doubles
 1994: Converted back to format used in 1992
 1995-Present: Converted back to format used in 1993



1989 SEC Outdoor Champions Clinton and Ellis Ferreira

Alabama's SEC Outdoor Individual Champions

SINGLES

Year	Name	Position
1973	Sam Vuille	No. 4
1974	Mike Cahill	No. 1
1975	Speedy Gilstrap	No. 3
	Bob Deller	No. 4
	Steve Pierre	No. 5
1976	Jeff Robinson	No. 1
	Sam Vuille	No. 4
1977	Jeff Robinson	No. 1
	Mike Shore	No. 3
1981	Michael Wennberg	No. 2
	Dennys Maasdorp	No. 6
1982	Dennys Maasdorp	No. 2
1983	Gregg Hahn	No. 5
1989	Clinton Ferreira	No. 1
	John Stimpson	No. 2

DOUBLES

Year	Duo	Position
1963	Jamie Musalem/G. O'Connell	No. 1
1972	Mike Voyles/John Antonas	No. 2
1975	Speedy Gilstrap/Bob Deller	No. 3
1976	Steve Pierre/Jeff Robinson	No. 1
	Bob Deller/Sam Vuille	No. 2
1985	Andy Solis/Gregg Hahn	No. 1
1988	Wynard van den Boom/Ellis Ferreira	No. 2
1989	Clinton Ferreira/Ellis Ferreira	No. 1

Note: From 1953-1989 the SEC Champion was determined by the accumulation of points in an individual flighted tournament. After 1989, the flighted tournament was discontinued, thus there were no singles and doubles champions named from 1990-92. In 1990, the SEC began using a team dual match format to determine the conference champion.

From 1993-94, the SEC individual champions were those singles players and doubles teams which win their respective titles at the Coaches Indoor Tournament held each fall. In 1993, Alabama's Juan Carlos Bianchi and Rick Witsken teamed up to win the indoor title. No singles or doubles champions were recognized by the SEC after the 1994 season. The SEC Indoor Coaches Classic is still held each year, but the winner is not considered a conference champion.

Alabama Records



Joseph Jung is the only player in Alabama's tennis history to record four 20-win seasons in a single career.

Alabama's Single-Season Records

20-WIN SQUADS

Year	Record (Pct.)	Coach
1972	27-7 (.794)	Bill McClain
1976	23-3 (.885)	Bill McClain
1981	20-4 (.833)	Armistead Neely
1983	20-4 (.833)	Tommy Wade
1987	20-8 (.714)	Tommy Wade
1985	20-11 (.645)	Tommy Wade
1984	20-12 (.625)	Tommy Wade
2007	22-8 (.733)	Billy Pate

SINGLES WINNING (20+ WINS IN A SEASON)

Name	Record	(Pct.)	Year	Position
Denys Maasdorp	24-0	1.000	1981	No. 6
Mike Shore	27-2	.931	1976	No. 3
John Antonas	21-3	.875	1972	No. 2
Mike Cahill	25-5	.833	1975	No. 1
Andy Solis	33-7	.825	1983	No. 1
Cecil Brandon	31-7	.816	1993	No. 3
Chris Lopez	22-5	.815	1977	No. 3
Chip Wade	26-6	.813	1975	No. 3
Christian Brodersen	21-5	.808	2002	No. 6
John Stimpson	34-11	.756	1990	No. 1
Gregg Hahn	31-10	.756	1983	No. 5
Gregg Hahn	32-11	.744	1985	No. 2
Christian Brodersen	27-9	.750	2003	No. 5
Chris Gostek	22-8	.733	2003	No. 3
Billy Mertz	27-10	.730	2007	Nos. 1/3/4/5
Francisco Rodriguez	29-15	.659	1999	No. 1
Joseph Jung	23-12	.657	2005	No. 1/2
Javier Bes	22-11	.667	2007	No. 4/5
Gregg Hahn	28-15	.651	28-15	No. 2
Francisco Rodriguez	25-16	.609	1998	No. 1
Maxim Belski	21-12	.636	2001	No. 1
Mathieu Thibaudeau	21-12	.636	2007	Nos. 3/4/5
Stephen Mitchell	21-13	.618	2004	No. 1

Ellis Ferreira	30-20	.600	1991	No. 1
Luigi D'Agord	27-18	.600	2005	No. 1/2
Billy Mertz	24-16	.600	2005	No. 4/5/6
Joseph Jung	21-17	.553	2006	No. 1
Joseph Jung	20-21	.476	2007	No. 1/2

DOUBLES RECORDS

Duo	Year	Record	Pct.
Gregg Hahn/Clinton Ferreira	1986	17-2	.895
Gregg Hahn/Andy Solis	1985	19-4	.826
Ellis Ferreira/Rick Witsken	1991	23-6	.793
Clinton Ferreira/Ellis Ferreira	1989	23-8	.742
John Stimpson/Ellis Ferreira	1990	17-6	.739
Javier Bes/Billy Mertz	2007	16-6	.727
Javier Bes/Billy Mertz	2006	13-5	.722
Rick Witsken/Juan Carlos Bianchi	1993	23-9	.719
Joseph Jung/Saketh Myneni	2007	20-8	.714
Alin Taranga/Rashid Hassan	1996	22-9	.710

Best Team Record

27-7 — 1972 Team — Coach Bill McClain

Most Consecutive Team Wins

12 in 1986 (23-3)

10 in 1973 (18-5), 1983 (20-4), 1989 (18-8)

Most Consecutive Team Losses

20 in 1995 (1-22)

7 in 1959 (2-10)

Most Shutout Team Wins in a Season

5 in 1993

Shutout Win Streak

4 to begin the 1993 season

Most 1 Point Matches in a Season (5-4 or 4-3 Wins)

14 in 1997 (Won 7 and Lost 7)

11 in 1996 (Won 6 and Lost 5)

10 in 2007 (Won 9 and Lost 1)

Most Consecutive Singles Wins

24 by Denys Maasdorp in 1981

Most Consecutive Doubles Wins

16 by Clinton Ferreira and Greg Hahn in 1986

Highest Rankings During the Season

Singles

No. 5 Francisco Rodriguez, Pre-Season and May 5, 1999

No. 7 Gregg Hahn, First Poll, Spring 1985

No. 9 John Stimpson, April 17-May 1, 1990

Doubles

No. 3 Clinton Ferreira/Ellis Ferreira, April-Mid May 1989

No. 3 Ellis Ferreira/Rick Witsken, March 12-26, 1991

No. 5 Daniel Buikema/Mathieu Thibaudeau, September 7, 2007

Team

No. 7 Pre-Season, 1993-1994

No. 8 May 6-27, 1993

No. 9 March 23, 1999

No. 11 Feb. 26, 2003

No. 11 March 20, 2007

All-Time Alabama Tennis Results



Coach Billy Pate
2003-present (75-61)

2007

Coach Billy Pate	(22-8)
T-3rd in SEC	(7-4)
1/27 Troy	W 5-2
1/27 Jacksonville State	W 7-0
2/4 Virginia	L 3-4
2/10 Furman	W 6-1
2/10 Winthrop	W 7-0
2/16 Clemson	W 4-3
2/23 Princeton	W 5-2
2/24 Columbia	W 7-0
3/2 Vanderbilt	W 4-3
3/4 Kentucky	L 3-4
3/9 Ole Miss	W 4-3
3/11 Miss. State	W 4-3
3/15 Louisville	W 4-2
3/16 North Carolina State	W 4-3
3/17 Boise State	W 4-2
3/18 Notre Dame	L 1-4
3/23 Tennessee	L 2-5
3/25 Georgia	L 2-5
3/30 Florida	W 5-2
4/1 South Carolina	W 6-1
4/6 LSU	L 2-5
4/8 Arkansas	W 6-1
4/11 Samford	W 7-0
4/14 UAB	W 5-2
4/19 +South Carolina	W 4-1
4/20 +Florida	L 3-4
5/11 #East Tennessee St.	W 4-2
5/12 #Duke	W 4-3
5/17 #Baylor	L 0-4

2006

Coach Billy Pate	(14-13)
8th in SEC	(4-7)
1/29 Furman	W 6-1
1/29 Troy	W 6-1
2/10 Oklahoma	W 5-2
2/12 Michigan	L 1-6
2/18 Georgia Tech	L 1-6
2/25 Florida State	L 2-5
3/3 Vanderbilt	W 4-3
3/5 Kentucky	L 3-4
3/10 Ole Miss	L 0-7
3/12 Mississippi State	L 3-4
3/16 Tulsa	L 0-4
3/17 Oregon	W 4-1
3/18 Colorado	W 4-3
3/22 Southern Miss.	W 6-1
3/22 Birmingham Southern	W 6-1
3/24 Tennessee	W 5-2
3/26 Georgia	L 1-6
3/31 Florida	L 1-6
4/2 South Carolina	L 3-4
4/7 LSU	L 3-4
4/9 Arkansas	W 4-3

4/12 Samford	W 6-0
4/12 UAB	W 4-3
4/15 Auburn	W 4-2
4/20 +Auburn	W 4-1
4/21 +Georgia	L 0-4
5/13 #Georgia Tech	L 2-4

2005

Coach Billy Pate	(10-15)
12th in SEC	(1-10)
1/28 Birmingham Southern	W 6-1
1/28 Central Florida	W 6-1
1/30 Furman	W 5-2
1/30 Troy	W 5-2
2/5 Rice	L 2-5
2/11 Virginia	L 1-6
2/13 William & Mary	W 4-3
2/19 Michigan	L 1-6
2/27 Ohio State	L 3-4
3/4 Georgia	L 1-6
3/6 Tennessee	L 1-6
3/11 Ole Miss	L 2-5
3/13 Miss. State	L 2-5
3/18 North Carolina	W 6-1
3/23 Southern Miss.	W 4-3
3/25 South Carolina	L 1-6
3/27 Florida	L 2-5
4/1 Vanderbilt	L 2-5
4/3 Kentucky	L 1-6
4/8 Arkansas	L 3-4
4/10 LSU	L 2-5
4/13 Samford	W 6-1
4/13 UAB	W 6-1
4/16 Auburn	W 6-1
4/21 +Tennessee	L 2-4

2004

Coach Billy Pate	(10-15)
12th in SEC	(2-9)
2/7 Troy State	W 7-0
2/7 Furman	W 6-1
2/14 Ohio State	L 1-6
2/20 South Florida	L 3-4
2/22 Central Florida	W 6-1
2/25 Middle Tennessee	W 4-3
3/5 Ole Miss	L 3-4
3/7 Mississippi State	L 3-4
3/11 William & Mary	W 4-3
3/12 North Carolina	L 0-4
3/13 Boise State	L 1-4
3/19 South Carolina	W 4-3
3/21 Florida	L 1-6
3/26 Vanderbilt	L 2-5
3/28 Kentucky	L 1-6
3/31 Rice	W 4-3
4/2 Arkansas	W 5-2
4/4 LSU	L 1-6
4/7 UAB	W 6-1
4/10 Auburn	L 2-5
4/16 Georgia	L 3-4
4/18 Tennessee	L 3-4
4/22 +LSU	L 0-4
5/15 #Texas A&M	L 0-4

2003

Coach Billy Pate	(19-10)
T-6th in SEC	(4-7)
1/26 Troy State	W 7-0
1/26 Southern Miss	W 7-0
2/1 Northwestern	W 5-2
2/7 Georgia Tech	W 4-3
2/9 Jacksonville State	W 6-1
2/9 Georgia State	W 6-1

2/12 Tenn.-Chattanooga	W 7-1
2/14 Ohio State	W 4-3
2/16 Florida State	W 4-3
2/19 Middle Tennessee	W 5-2
2/28 LSU	W 6-1
3/2 Arkansas	L 4-3
3/7 Tennessee	L 4-1
3/9 Georgia	W 5-2
3/12 South Florida	W 4-3
3/14 Mississippi State	L 4-3
3/16 Ole Miss	L 4-2
3/22 Texas A&M	L 6-1
3/28 Florida	L 5-2
3/30 South Carolina	W 4-3
4/4 Kentucky	W 4-2
4/6 Vanderbilt	L 7-0
4/9 UAB	W 6-1
4/12 Auburn	L 4-3
4/17 +Mississippi State	W 4-1
4/18 + Florida	L 4-0
5/10 # Marist	W 4-0
5/11 # Harvard	W 4-0
5/17 # Baylor	L 4-1



Coach Adam Steinberg
1998-2002 (69-57)

2002

Coach Adam Steinberg	(15-8)
6th in SEC	(7-4)
1/25 Samford	W 7-0
1/27 Southern Miss	W 6-1
2/2 TCU	L 2-5
2/8 Louisville	W 4-3
2/9 Ohio State	L 3-4
2/15 Clemson	W 5-2
2/17 Michigan	W 4-3
2/22 Florida State	W 5-2
2/25 Furman	W 4-3
3/1 *LSU	W 4-1
3/3 *Arkansas	W 4-2
3/8 *Tennessee	L 2-4
3/15 *Georgia	L 1-6
3/15 *Mississippi State	W 4-3
3/17 *Ole Miss	L 0-6
3/25 Columbia	W 6-1
3/29 *Florida	L 2-5
3/31 *South Carolina	W 4-3
4/5 *Kentucky	W 4-2
4/7 *Vanderbilt	W 4-3
4/13 *Auburn	W 4-0
4/18 •LSU	L 2-4
5/11 #Middle Tennessee	L 3-4

2001

Coach Adam Steinberg	(19-10)
6th in SEC	(5-6)
1/28 Troy State	W 7-0
2/2 Southern Miss	W 5-2
2/2 Samford	W 7-0

2/11 Florida State	W 7-0
2/18 Kentucky	L 2-5
2/21 Auburn-Montgomery	W 7-0
2/24 South Carolina State	W 5-2
2/24 UAB	W 4-1
3/2 Ole Miss	W 4-3
3/4 Tennessee	L 3-4
3/9 South Carolina	W 4-3
3/11 Georgia	L 0-7
3/15 Indiana State	- L 2-4
3/16 Harvard	-W 4-0
3/17 Northwestern	-W 4-1
3/21 Middle Tennessee	W 6-1
3/24 Vanderbilt	L 3-4
3/27 Furman	W 5-2
3/28 Clemson	W 6-1
4/4 Florida	W 4-2
4/7 LSU	L 2-5
4/8 Arkansas	L 3-4
4/11 Mississippi State	W 4-3
4/14 Baylor	L 3-4
4/15 Auburn	W 4-3
4/19 Florida	+W 4-0
4/20 LSU	+W 4-3
4/21 Tennessee	+L 2-4
5/12 #Minnesota	L 1-4

2000

Coach Adam Steinberg	(5-17)
11th in SEC	(2-10)
2/10 Baylor	L 2-5
2/12 Miami	L 2-5
2/16 *Tennessee	L 3-4
2/20 UAB	L 2-5
2/26 Jacksonville State	W 8-0
2/26 Georgia State	W 4-3
3/3 *Arkansas	L 1-4
3/8 *South Carolina	W 5-2
3/12 *Georgia	W 4-2
3/17 -Harvard	W 4-0
3/18 -VCU	L 1-4
3/19 -Auburn	L 1-4
3/22 *LSU	L 0-7
3/25 *Vanderbilt	L 3-4
3/28 Texas A&M	L 1-6
3/30 SMU	L 1-6
4/4 *Mississippi	L 2-5
4/7 *Florida	L 1-6
4/9 *Kentucky	L 1-6
4/14 *Mississippi State	L 1-6
4/16 *Auburn	L 0-7
4/20 *Mississippi State	L 0-4

1999

Coach Adam Steinberg	(17-11)
5th in SEC	(7-7)
1/16 Troy State	W 7-0
1/16 Georgia State	W 7-0
1/20 Southern Miss	W 7-0
1/29 Illinois	L 1-6
1/30 Northwestern	L 2-5
2/12 *Vanderbilt	L 3-4
2/21 UAB	W 6-1
2/27 Princeton	W 4-3
3/2 *Tennessee	W 4-3
3/5 *South Carolina	W 4-3
3/7 *Georgia	L 3-4
3/11 *Ole Miss	W 4-3
3/18 -Virginia	L 1-4
3/19 -Wake Forest	W 4-1
3/20 -Boise State	W 4-2
3/24 *Kentucky	L 2-5
3/26 *Auburn	W 5-2
3/28 *Arkansas	W 7-0

Alabama Year-by-Year Results (continued)

4/1	BYU-Hawaii	W 6-1
4/2	Hawaii	W 5-2
4/7	*Florida	L 1-6
4/9	*LSU	L 1-6
4/15	*Mississippi State	L 2-5
4/22	*Vanderbilt	W 4-2
4/23	*Florida	W 4-3
4/24	*Georgia	L 0-4
5/14	#Hampton	W 4-1
5/15	#Virginia Tech	L 3-4

1998

Coach Adam Steinberg (13-12)		
10th in SEC (3-9)		
1/24	Troy State	W 7-0
1/24	Georgia State	W 6-1
1/30	Southern Miss	W 7-0
2/13	Georgia Tech	W 5-2
2/14	Northwestern	L 5-2
2/25	UAB	W 4-3
3/2	Miami	W 5-2
3/7	Georgia	L 5-2
3/9	Florida	W 4-3
3/14	Tennessee	L 5-2
3/17	Kentucky	L 5-2
3/19	Fresno State	W 4-2
3/20	Harvard	L 6-1
3/21	New Mexico	W 5-2
3/25	Mississippi St.	L 5-2
3/28	Ole Miss	L 6-1
3/31	Arkansas	W 4-3
4/2	LSU	L 4-0
4/5	South Carolina	L 6-1
4/9	Auburn	L 4-3
5/15	*Kentucky	W 4-0
5/16	*Florida	W 4-3
5/17	*Auburn	L 4-2



Coach Joey Rivé
1995-1997 (32-45)

1997

Coach Joey Rivé (16-11)		
7th in SEC (6-7)		
1/18	Troy State	W 6-1
1/18	Georgia State	W 5-2
2/1	Southern Miss	W 4-3
2/5	UAB	L 3-4
2/14	Florida Atlantic	L 3-4
2/15	Miami	W 4-3
2/22	Georgia Tech	W 4-3
2/28	*Mississippi State	L 3-4
3/2	*Ole Miss	L 1-6
3/5	*Arkansas	W 7-0
3/7	*Georgia	L 2-5
3/9	*South Carolina	W 4-3
3/13	~Michigan	W 5-2
3/14	~MTSU	L 3-4
3/14	~North Carolina	W 4-3
3/15	~Tulane	W 4-3
3/19	*LSU	L 3-4
3/22	*Auburn	W 6-1
3/29	*Vanderbilt	W 5-2
3/31	*Kentucky	L 3-4
4/6	*Tennessee	W 7-0
4/12	*Florida	L 3-4
4/17	Vanderbilt	W 4-0
4/18	Ole Miss	L 0-4

5/9	#Southern Miss	W 4-2
5/10	#MTSU	W 4-3
5/11	#Florida	L 2-4

1996

Coach Joey Rivé (15-12)		
7th in SEC (6-7)		
1/20	Troy State	W 7-0
1/20	Georgia State	W 7-0
2/2	*Northwestern	L 3-4
2/3	*Michigan State	W 6-1
2/18	Miami	W 4-1
2/24	Samford	W 4-3
2/25	Southern Miss	W 6-1
3/5	South Carolina	W 4-3
3/9	at LSU	L 1-6
3/12	Kentucky	W 4-3
3/14	~Tulane	W 5-2
3/14	~Ole Miss	L 0-4
3/15	~New Mexico	L 3-4
3/16	~Florida State	W 4-1
3/22	Mississippi State	L 1-6
3/25	Ole Miss	L 3-4
3/27	Arkansas	W 4-3
4/6	Tennessee	L 2-5
4/9	UAB	L 3-4
4/12	Georgia	L 0-7
4/17	at Auburn	W 4-3
4/19	Florida	L 2-5
4/21	Vanderbilt	W 6-1
4/25	South Carolina	W 4-3
4/26	Georgia	L 1-4
5/10	#MTSU	W 4-1
5/11	#Auburn	L 3-4

1995

Coach Joey Rivé (1-22)		
12th in SEC (0-12)		
1/27	Miami	L 0-7
1/28	Pepperdine (at Miami)	L 2-5
2/11	Southern Miss	W 7-0
2/11	Southwestern Louisiana	3-4
2/18	*Minnesota	L 2-5
2/19	*Ohio State	L 3-4
2/26	UAB	L 2-5
3/11	Ole Miss	L 1-6
3/16	~Mississippi State	L 0-6
3/17	~Miami	L 3-4
3/18	~Auburn	L 2-4
3/22	Tennessee	L 2-5
3/25	MTSU	L 3-4
3/27	Kentucky	L 1-4
3/29	Vanderbilt	L 2-5
4/1	Florida	L 0-7
4/4	Auburn	L 2-5
4*9	Arkansas	L 1-6
4/14	Georgia	L 0-7
4/15	South Carolina	L 1-5
4/19	Mississippi State	L 0-7
4/22	LSU	L 2-5
4/27	Florida	L 0-4



Coach John Kreis
1989-1994 (80-69)

1994

Coach John Kreis (7-17)		
11th in SEC (2-10)		
1/28	*Minnesota	L 1-6
1/29	*Indiana	W 5-2
2/12	UAB	W 4-3
2/19	Miami	L 2-5
2/24	*Mississippi State	L 0-7
2/25	*Notre Dame	L 3-4
2/26	*VCU	L 3-4
3/5	MTSU	W 4-3
3/5	Southwest Louisiana	W 7-0
3/13	LSU	W 6-1
3/17	~Duke	L 1-6
3/18	~Drake	W 6-3
3/19	~Arizona State	L 3-4
3/26	Tennessee	L 1-6
3/28	Ole Miss	L 0-7
3/30	Arkansas	L 2-5
4/2	Auburn	L 3-4
4/8	Kentucky	W 5-2
4/10	Georgia	L 3-4
4/14	Mississippi State	L 1-6
4/17	Florida	L 1-6
4/22	South Carolina	L 2-5
4/24	Vanderbilt	L 3-4
5/28	Auburn	L 2-5

1993

Coach John Kreis (19-5)		
3rd in SEC (9-2)		
1/30	Southwestern Louisiana	W 7-0
1/30	Samford University	W 7-0
2/13	MTSU	W 7-0
2/13	Tulane	W 7-0
2/27	Miami	W 5-2
2/28	Arizona	W 4-3
3/7	South Carolina	W 5-2
3/8	Georgia	L 1-6
3/18	Indiana	W 5-2
3/19	North Carolina	W 5-2
3/20	UAB	W 4-3
3/21	Notre Dame	L 2-5
3/25	Mississippi State	W 4-3
3/38	Vanderbilt	W 4-3
3/30	Kentucky	W 4-3
4/1	Florida	W 4-3
4/6	Louisiana State	L 1-6
4/9	Arkansas	W 6-1
4/10	Ole Miss	W 5-2
4/13	Auburn	W 7-0
4/15	Tennessee	W 5-2
4/22	Florida	L 2-5
5/15	#UAB	W 5-4
5/16	#UCLA	L 0-5

1992

Coach John Kreis (9-13)		
8th in SEC (4-8)		
1/31	Kansas	L 4-5
2/1	Arizona State	L 3-6
2/15	Wisconsin	W 7-2
2/16	Northwestern	W 6-3

2/22	Arkansas	L 6-0
2/29	Southwestern Louisiana	W 5-1
3/1	Vanderbilt	W 7-2
3/10	South Carolina	W 5-4
3/12	East Tennessee State	W 5-1
3/14	Georgia	L 4-5
3/21	Kentucky	L 0-6
3/27	Drake	L 2-4
3/28	South Florida	L 4-5
3/31	Tulane	W 8-1
4/2	LSU	L 1-5
4/4	Tennessee	W 6-0
4/10	Ole Miss	L 4-5
4/15	Florida	L 4-5
4/16	Mississippi State	L 4-5
4/18	Auburn	L 4-5
4/23	South Carolina	W 5-1
4/24	Georgia	L 1-5

1991

Coach John Kreis (11-14)		
8th in SEC (2-9)		
	Indiana	L 1-5
2/3	MTSU	W 6-3
2/15	Clemson	L 4-5
2/16	Miami	W 5-4
2/24	Murray State	W 7-2
2/26	UAB	W 6-3
3/1	Southwestern Louisiana	W 7-1
3/2	Ole Miss	L 4-5
3/7	Long Beach State	W 5-1
3/8	Notre Dame	W 5-2
3/9	Harvard	W 5-4
	*Ole Miss	L 4-5
3/16	*Georgia	L 1-5
3/21	Indiana	W 5-3
3/23	Texas Christian	L 2-5
3/24	Arizona	L 0-6
3/28	*Florida	L 4-5
4/3	*LSU	L 1-5
4/25	*Vanderbilt	W 5-4
4/8	*Kentucky	L 1-5
4/13	*Auburn	L 4-5
4/19	*Tennessee	L 1-5
4/20	*Mississippi State	L 1-5
4/25	*Vanderbilt	W 5-1
4/26	*Georgia	L 1-5

1990

Coach John Kreis (16-12)		
5th in SEC (5-3)		
1/13	Minnesota	L 4-5
1/14	Southern Methodist	W 7-2
2/15	UAB	W 7-2
2/17	*Georgia	L 3-6
2/22	*Texas Christian	W 5-3
2/23	*Georgia	L 3-5
2/24	*UCLA	L 1-5
3/4	*Florida	W 8-1
3/7	UNLV	W 7-2
3/9	*Tennessee	L 0-6
3/11	Minnesota	W 9-0
3/13	Arizona State	L 4-5
3/16	Oklahoma	W 9-0
3/17	Notre Dame	W 5-4
3/18	Texas	L 1-5
3/24	*LSU	W 5-4
3/25	SW Louisiana	W 5-4
3/29	Clemson	W 5-1
3/30	San Diego	W 5-4
3/31	South Carolina	L 1-5
4/6	Florida International	W 8-1
4/7	*Kentucky	W 5-1
4/12	*Mississippi	W 5-2
4/14	*Auburn	L 3-6
4/21	*Vanderbilt	W 5-1
4/24	*Mississippi State	L 2-5
4/27	Auburn	L 4-5
	# Northwestern	L 2-5

Alabama Year-by-Year Results (continued)

1989

Coach John Kreis (18-8)

4th in SEC (5-4)

1/13 Southern Methodist W 6-3

1/14 Indiana L 3-6

1/15 Tennessee L 3-6

3/2 Wake Forest W 7-2

3/3 Arkansas W 5-4

3/4 South Carolina L 4-5

3/5 Cal-Santa Barbara W 6-3

3/12 *Florida W 6-3

3/14 *Kentucky L 3-6

3/15 *Vanderbilt W 5-4

3/18 SIU-Carbondale W 6-3

3/19 Southwestern Louisiana W 5-1

3/22 *Tennessee W 6-3

3/24 West Virginia W 7-2

3/25 Clemson W 7-2

3/30 Southern California W 5-2

3/31 Miami W 6-1

4/1 South Carolina W 4-3

4/2 Kentucky W 4-2

4/8 South Florida W 5-1

4/12 *LSU L 3-6

4/18 *Ole Miss W 6-3

4/20 *Mississippi State L 4-5

4/23 *Auburn W 5-4

4/28 *Georgia L 3-6

5/12 # South Carolina L 2-5



Coach Tommy Wade
1983-1988 (115-56)

1988

Coach Tommy Wade (17-10)

8th in SEC (4-6)

2/12 Southeastern Louisiana W 5-2

2/13 *Mississippi State L 4-5

2/14 Florida State W 5-1

2/17 Texas L 2-5

2/19 West Virginia L 4-5

Utah W 5-1

2/28 Southern Miss W 8-1

3/3 Miami W 6-3

3/4 Cal-Santa Barbara W 6-3

3/5 Texas Christian L 1-5

3/10 MTSU W 8-1

3/12 Southwestern Louisiana W 5-4

3/13 *LSU L 1-8

Murray State W 5-1

3/18 Austin Peay State W 5-1

3/24 Pepperdine L 1-5

3/26 Trinity W 5-3

4/2 *Tennessee L 2-7

4/9 *Vanderbilt W 9-0

4/11 Tennessee Tech W 6-2

4/15 *Mississippi State W 6-3

4/17 *Kentucky L 3-6

4/20 Memphis State W 6-0

4/23 *Georgia L 3-6

4/25 *Ole Miss L 4-5

4/30 *Auburn W 5-4

5/10 *Florida W 6-3

1987

Coach Tommy Wade (20-8)

5th in SEC (4-6)

1/24 Louisville W 6-3

1/25 Southwestern Louisiana W 5-4

1/25 *Tennessee L 4-5

2/14 Wake Forest W 5-4

2/15 North Carolina State W 5-1

2/22 Mississippi State W 7-2

2/27 Southeast Louisiana W 5-1

2/28 South Alabama W 8-1

3/1 Georgia Southern W 5-1

3/5 UAB W 9-0

3/11 Florida State W 6-3

3/12 *Florida L 3-6

3/14 Murray State W 5-1

3/17 Tennessee Tech W 5-1

3/20 Southern Illinois W 8-1

3/21 Louisville W 5-1

3/26 Clemson L 4-5

3/28 Minnesota W 5-1

4/4 Northeast Louisiana L 2-7

4/5 Indiana W 6-0

4/7 *Tennessee L 3-6

4/9 *Ole Miss W 7-2

4/14 *LSU L 4-5

4/18 *Kentucky L 4-5

4/19 *Vanderbilt W 6-3

4/21 *Georgia L 4-5

4/25 *Auburn W 6-3

4/28 *Mississippi State W 6-3

1986

Coach Tommy Wade (18-11)

4th in SEC (9-3)

2/22 *Mississippi State W 7-2

3/3 Texas Christian L 3-6

3/5 Arkansas-Little Rock W 6-0

3/6 Southern Methodist L 2-7

3/7 SW Louisiana L 4-5

3/8 *Kentucky L 1-5

3/9 Houston W 6-1

3/12 Murray State W 5-1

3/15 Wake Forest L 4-5

3/17 Memphis State W 6-3

3/22 Florida State W 7-2

3/22 SW Louisiana L 4-5

3/23 Louisville W 6-3

3/26 Cal-State-Long Beach W 5-4

3/27 Arkansas L 1-5

3/28 *Georgia W 5-4

3/29 South Carolina L 1-5

4/3 *Ole Miss W 6-3

4/6 *Florida W 5-4

4/9 UAB W 6-0

4/12 *LSU L 4-5

4/13 NE Louisiana L 4-5

4/17 *Vanderbilt W 7-2

4/19 *Kentucky W 5-4

4/20 Louisiana Tech W 5-4

4/27 *Auburn L 4-5

4/26 *Tennessee W 5-4

5/1 *Mississippi State W 8-1

5/3 *Georgia W 6-3

1985

Coach Tommy Wade (20-11)

4th in SEC (7-3)

Emory W 6-0

2/16 Georgia Tech W 7-2

2/23 Memphis State W 6-3

2/27 *Mississippi State W 8-1

3/2 Murray State W 7-2

3/3 Wake Forest W 8-1

3/3 Southern Methodist L 1-8

3/6 Arizona W 6-1

3/7 Texas A & M L 4-5

3/8 Arkansas-Little Rock W 5-3

3/8 Arkansas L 3-5

3/9 SW Louisiana W 5-4

3/12 Lander College W 6-3

3/15 Florida State L 3-6

3/16 *Florida W 6-3

3/19 Texas Christian L 3-6

3/22 South Florida W 5-1

3/25 *Mississippi State W 7-2

Wichita State W 6-3

Pepperdine L 2-7

South Carolina L 1-5

Arkansas-Little Rock W 5-1

NE Louisiana L 4-5

Louisiana Tech W 9-0

*LSU L 3-6

*Kentucky W 5-4

*Vanderbilt W 8-1

*Ole Miss W 9-0

*Auburn W 7-2

*Georgia L 1-8

*Tennessee L 4-5

1984

Coach Tommy Wade (20-12)

3rd in SEC (6-5)

1/21 Kentucky W 5-4

2/2 Stanford L 4-5

2/4 Utah W 6-3

2/26 Southern Methodist L 2-7

3/1 Texas Christian W 6-0

3/1 Trinity L 3-5

Texas A & M L 2-7

3/7 Landor College W 9-0

Texas L 2-5

3/8 *Vanderbilt W 8-0

3/9 Memphis State W 8-1

3/14 SW Louisiana L 2-7

3/16 West Texas State W 8-1

3/17 *LSU L 3-6

3/18 Indiana W 5-1

3/22 South Florida W 9-0

3/24 Austin Peay State W 9-0

3/25 South Alabama W 8-1

3/29 South Carolina W 6-2

3/30 *Florida W 5-1

3/31 *Georgia L 3-6

4/1 *Tennessee W 5-4

4/6 *Florida W 8-1

4/7 Florida State W 8-1

4/10 *Georgia L 3-6

4/13 *Auburn L 2-7

4/14 Arkansas-Little Rock W 5-2

Miami W 9-0

*Ole Miss L 4-5

4/18 *Tennessee L 4-5

Georgia Tech W 9-0

Kentucky W 7-2

1983

Coach Tommy Wade (20-4)

2nd in SEC (7-2)

3/2 Brigham Young W 7-2

3/3 Arkansas L 4-5

3/3 Tulsa W 5-4

3/5 *Auburn W 5-2

3/6 Texas Christian W 5-4

3/13 South Florida W 5-1

3/14 Central Florida W 7-2

3/16 *Florida W 7-1

3/18 South Alabama W 6-3

3/19 Texas A & M L 3-6

3/28 *LSU L 2-7

3/31 South Alabama W 5-4

4/2 *Auburn W 7-2

4/3 *Tennessee L 3-6

4/4 Murray State W 8-1

4/7 *Mississippi State W 8-1

4/9 *Vanderbilt W 8-1

4/10 Memphis State W 5-1

4/12 SW Louisiana W 6-3

4/15 Tulane W 8-1

4/16 *Kentucky W 6-3

4/18 Murray State W 7-2

4/14 Georgia W 5-4

4/21 *Ole Miss W 7-2



Coach Armistead Neely
1978-1982 (73-40)

1982

Coach Armistead Neely (14-8)

3rd in SEC (4-3)

2/12 Murray State W 8-1

2/13 Tennessee-Chattanooga W 6-3

3/3 Arizona State W 5-4

3/4 TCU L 1-5

3/5 Oklahoma State L 2-5

3/5 Arizona L 0-6

3/9 Trinity L 2-7

3/13 South Florida W 6-1

3/15 Miami L 3-6

3/20 North Carolina W 5-4

3/24 Georgia Southern W 8-1

3/26 *LSU W 5-4

3/30 *Vanderbilt W 5-4

4/1 Florida International W 7-2

4/2 Samford W 9-0

4/3 South Alabama W 6-3

4/9 *Ole Miss W 8-1

4/10 Florida State W 6-3

4/13 *Ole Miss L 4-5

4/15 *Tennessee L 2-7

*Kentucky W 6-3

*Florida L 4-5

1981

Coach Armistead Neely (20-4)

2nd in SEC (7-2)

2/20 Austin Peay State W 9-0

2/26 Birmingham-Southern W 9-0

2/28 Louisiana Tech W 8-1

3/3 Alabama State W 9-0

3/7 *Florida W 5-4

3/8 South Florida W 7-2

3/10 Miami L 3-6

3/11 Rollins College W 7-2

3/13 Florida State W 8-1

3/23 Wake Forest W 7-2

3/25 Samford W 9-0

3/26 Tennessee-Martin W 9-0

3/30 *Ole Miss W 6-3

3/30 Jefferson State W 9-0

4/6 SW Louisiana L 4-5

4/8 Jackson W 9-0

4/11 *Tennessee W 7-0

4/13 *LSU W 7-2

4/15 *Mississippi State W 7-2

4/17 *Auburn L 4-5

4/18 *Kentucky W 8-1

4/20 *Vanderbilt W 7-2

4/22 South Alabama W 9-0

4/24 *Georgia L 3-6

Alabama Year-by-Year Results (continued)

1980

Coach Armistead Neely	(13-10)
5th in SEC	(3-6)
2/16 *Auburn	L 1-5
3/1 William & Mary	W 7-2
3/7 Penn State	W 9-0
3/9 Davidson	W 8-1
3/10 Furman	W 5-4
3/11 North Carolina	L 4-5
3/12 North Carolina State	L 0-8
3/21 Samford	W 8-1
3/24 Southern Miss	W 9-0
3/28 Memphis State	L 2-7
3/31 Florida State	W 7-2
4/2 UAB	W 8-1
4/10 *Kentucky	W 8-1
4/12 *Tennessee	L 2-7
4/15 Jefferson State	W 9-0
4/11 SW Louisiana	W 5-4
4/19 *LSU	L 3-6
4/21 *Georgia	L 4-5
4/26 *Florida	L 4-5
5/8 Miami	L 0-9
5/10 *Auburn	L 0-9
5/12 *Ole Miss	W 6-3
5/13 Mississippi State	W 6-3

1979

Coach Armistead Neely	(11-11)
7th in SEC	(2-5)
3/2 NE Louisiana	W 9-0
3/4 North Carolina State	L 2-7
3/10 *Florida	L 3-6
3/12 South Florida	W 6-3
3/14 Miami	L 3-6
3/15 Columbia	L 2.5-5.5
3/16 Rollins College	W 7-2
3/18 Florida State	W 5-4
3/21 Samford	W 9-0
3/23 *Georgia	L 0-9
3/29 South Carolina	W 5-4
4/1 SW Louisiana	W 6-3
4/11 *LSU	L 1-8
4/13 Houston	L 1-8
4/14 Pan American	W 5-4
4/16 Trinity	L 1-7
4/20 *Kentucky	W 7-2
4/21 *Auburn	L 3-6
4/23 *Vanderbilt	W 7-2
5/9 Memphis State	L 4-5
5/13 *Mississippi State	L 2-7
4/14 Alabama College	W 8-1

1978

Coach Armistead Neely	(15-8)
6th in SEC	(4-5)
2/12 *Vanderbilt	W 5-4
2/24 Samford	W 7-2
3/3 MTSU	W 6-3
3/11 Presbyterian	W 9-0
3/13 Furman	W 8-1
3/14 North Carolina State	L 4-5
3/15 Duke	W 8-1
3/17 South Carolina	L 3-6
3/22 Southern Illinois	W 7-2
3/28 Wisconsin	W 6-0
3/31 SW Louisiana	W 6-3
4/1 *LSU	L 2-7
4/2 NE Louisiana	W 6-3
4/7 Georgia Tech	W 6-3
4/8 *Florida	W 6-3
4/10 Washington & Lee	W 7-3
4/14 *Tennessee	L 1-3
4/15 *Kentucky	L 3-6
4/17 Florida State	L 4-5
4/19 *Georgia	L 2-7
4/23 *Mississippi State	W 7-2
4/25 *Ole Miss	W 6-3
4/28 *Auburn	L 4-5



Coach Bill McClain
1970-1977 (142-58-1)

1977

Coach Bill McClain	(13-8)
3rd in SEC	(7-3)
2/20 Clemson	W 6-3
3/6 *Vanderbilt	W 6-0
3/9 *Mississippi State	W 6-3
3/12 *Florida	L 4-5
3/14 Wake Forest	L 4-5
3/15 Yale	W 7-2
3/17 Miami	L 2-7
3/19 Florida State	W 9-0
3/24 South Carolina	L 3-6
3/31 Houston	W 5-4
4/2 Trinity	L 1-8
4/6 Northeast Louisiana	W 8-1
4/13 *Ole Miss	W 6-3
4/16 *Georgia	L 1-8
4/18 Georgia Tech	W 6-3
4/21 *Vanderbilt	W 6-3
4/25 *Tennessee	W 7-2
4/30 *LSU	L 2-7
5/8 Southern California	L 1-8
5/12 *Auburn	W 7-2
5/15 *Kentucky	W 9-0

1976

Coach Bill McClain	(23-3)
1st in SEC	(7-0)
3/1 *Ole Miss	W 5-4
3/7 Penn State	W 8-1
3/8 North Carolina State	W 5-4
3/9 Furman	W 7-2
3/10 Wake Forest	W 5-4
3/11 Clemson	W 8-1
3/14 Houston	L 4-5
3/19 Tennessee Tech	W 9-0
3/19 Eastern Kentucky	W 9-0
3/20 Ohio State	W 7-2
3/21 *Georgia	W 5-4
3/27 *Tennessee	W 6-3
4/2 *LSU	W 6-3
4/3 SW Louisiana	W 6-3
4/4 NE Louisiana	W 9-0
4/8 *Mississippi State	W 9-0
4/10 *Auburn	W 8-1
4/11 Florida State	W 7-2
4/12 Georgia Tech	W 9-0
4/15 Trinity	L 2-7
4/17 *Vanderbilt	W 8-1
4/18 MTSU	W 9-0
4/20 Pan American	L 4-5
4/25 MTSU	W 8-1
5/1 Samford	W 7-0
5/5 Michigan	W 7-2

1975

Coach Bill McClain	(16-8)
4th in SEC	(4-5)
222 Samford	W 7-2
3/3 Trinity	L 3-6
3/4 Texas	L 3-6
3/5 Southern Methodist	L 2-7

3/7 Houston	W 5-4
3/8 Pan American	W 6-3
3/11 Missouri	W 6-3
3/12 Austin Peay State	W 6-0
3/17 Clemson	W 8-1
3/21 Southern Illinois	W 7-2
3/21 *Ole Miss	W 9-0
3/22 Mercy Hurst	W 7-2
3/22 *Vanderbilt	W 9-0
3/25 Illinois	W 9-0
3/27 *Florida State	L 4-5
3/29 *Florida	L 3-6
3/11 *Kentucky	L 4-5
3/12 *Tennessee	L 3-6
3/14 Austin Peay State	W 8-1
3/16 *Auburn	W 9-1
3/17 *LSU	W 6-3
3/19 *Georgia	L 3-6
3/21 Georgia Tech	W 9-0
3/23 Pepperdine	W 5-4

1974

Coach Bill McClain	(16-6)
3rd in SEC	(4-3)
2/25 Southern Methodist	L 1-8
3/4 Huntingdon College	W 9-0
3/9 Samford	W 7-2
3/11 Houston	L 3-6
3/13 Missouri	W 8-1
3/13 Kansas	W 4-2
3/18 *Florida	L 4-5
3/22 *Ole Miss	W 9-0
3/23 *Vanderbilt	W 9-0
3/24 Michigan State	W 7-2
3/30 *Georgia	L 4-7
3/31 Pan American	W 8-4
4/9 Clemson	W 8-1
4/10 Furman	W 8-0
4/10 Edinboro State	W 9-0
4/19 *LSU	L 4-5
4/20 Tulane	W 7-2
4/21 Northeast Louisiana	L 4-5
4/23 *Mississippi State	W 9-0
4/26 *Auburn	W 8-1
4/27 Florida State	W 6-2
5/7 Samford	W 8-1

1973

Coach Bill McClain	(18-5)
2nd in SEC	(5-0)
3/2 Wake Forest	L 4-5
3/5 Memphis State	W 8-1
3/7 Marshall	W 9-0
3/13 Indiana	W 9-0
3/15 Arkansas	W 6-3
3/17 *Ole Miss	W 6-3
3/17 *LSU	W 6-3
3/19 Austin Peay State	W 8-1
3/20 Michigan State	W 7-1
3/24 *Kentucky	W 9-0
3/27 *Auburn	W 9-0
3/31 Southern Methodist	L 0-9
4/1 Texas A & M	L 3-6
42 Rice	W 5-4
4/3 Trinity	L 2-6
4/11 Presbyterian	W 6-3
4/13 Southern Illinois	W 6-3
4/13 Missouri	W 5-1
4/14 Michigan	L 2-7
4/21 *Florida	W 5-4
4/24 South Alabama	W 9-0
4/26 Samford	W 6-3
4/28 Samford	W 6-3

1972

Coach Bill McClain	(27-7)
4th in SEC	(8-4)
2/19 Samford	W 7-2
3/3 Wake Forest	L 4-5

3/4 Furman	W 9-0
3/11 Austin Peay State	W 6-1
3/14 Samford	W 5-3
3/15 Hawaii	W 9-0
3/18 *Georgia	L 4-5
3/19 Minnesota	W 9-0
3/20 Minnesota	W 7-1
3/21 Michigan State	W 9-0
3/22 Michigan State	W 7-2
3/24 *LSU	W 8-1
3/24 *Ole Miss	W 9-0
3/25 Southern Illinois	W 5-4
3/25 Memphis State	W 6-3
3/28 Houston	L 2-7
3/31 Tennessee Tech	W 8-1
4/1 *Tennessee	L 3-6
4/2 *Vanderbilt	W 9-0
4/4 *Kentucky	W 6-3
4/5 Middle Tennessee State	W 8-1
4/7 *Florida	W 6-3
4/8 Georgia Tech	W 9-0
4/11 South Alabama	W 8-1
4/12 *Mississippi State	L 4-5
4/14 *Auburn	W 5-4
4/15 Columbus College	W 8-1
4/21 *LSU	L 4-5
4/22 Tulane	W 5-4
4/25 *Mississippi State	W 5-4
4/26 Samford	W 5-4
5/5 *Auburn	W 5-4
5/6 Florida State	L 4-5
5/6 South Alabama	W 9-0

1971

Coach Bill McClain	(19-12-1)
5th in SEC	(5-4-1)
3/3 Northwood	W 7-2
3/10 Memphis State	L 3-6
Austin Peay State	W 8-0
*Mississippi State	W 5-4
Austin Peay State	W 8-2
*Tennessee	L 4-5
3/24 Michigan State	L 3-6
3/26 Southern Illinois	L 3-6
Western Illinois	W 9-0
William & Mary	W 9-0
3/31 Southern Miss	W 9-0
4/4 Illinois St.	W 7-2
Jacksonville	W 9-0
*Florida	L 4-5
4/9 Florida State	L 4-5
4/10 *Auburn	W 9-0
4/11 South Alabama	W 9-0
4/12 Eastern Michigan	W 9-0
4/12 *Kentucky	T 4-4
4/15 Georgia Tech	L 0-9
4/16 *Georgia	L 0-9
4/17 Columbus College	L 4-5
4/21 Samford	W 6-3
4/23 Springhill College	W 6-3
4/23 South Alabama	W 6-1
4/26 *Mississippi State	L 4-5
4/27 Samford	W 7-2
4/28 *Auburn	W 9-0
5/1 *LSU	W 6-3
5/1 *Ole Miss	W 8-1
5/2 Tulane	L 3-6
5/3 Tennessee Tech	L 3-6

1970

Coach Bill McClain	(10-10)
8th in SEC	(1-4)
3/16 Samford	W 9-0
3/18 Birmingham-Southern	W 9-0
Westchester Street	W 8-0
Furman	L 1-5
3/24 Indiana State	L 4-5
3/24 *Vanderbilt	L 1-8
3/25 Illinois State	W 8-1
3/26 Southern Miss	W 6-3

Alabama Year-by-Year Results (continued)

3/27	Tulane	L 1-8
3/28	*LSU	L 1-8
	Wisconsin	L 0-9
4/10	Oglethorpe	W 7-2
4/11	*Georgia	L 0-9
4/15	Springhill	W 7-2
	Southwestern (Tenn.)	W 7-2
4/18	Memphis State	L 3-6
4/21	Columbus College	L 0-9
4/22	Birmingham-Southern	W 7-2
4/25	*Auburn	W 6-3
4/28	*Ole Miss	L 1.5-7.5



Coach Dale Anderson
1968-1969 (11-15)

1969

Coach Dale Anderson	(7-5)	
8th in SEC	(3-2)	
3/15	Birmingham-Southern	W 9-0
3/19	David Lipscomb	W 9-0
3/20	*Georgia	L 0-9
3/31	Columbus College	L 3-6
4/7	Tulane	L 0-9
4/11	*Ole Miss	W 5-4
4/12	*Mississippi State	L 3-6
4/18	Springhill	L 4-5
4/19	South Alabama	W 6-3
4/24	*Auburn	W 6-3
4/28	Southern Miss	W 6-3
4/30	*Auburn	W 6-3

1968

Coach Dale Anderson	(4-10)	
7th in SEC	(0-6)	
	*Mississippi State	L 0-9
3/25	Birmingham-Southern	W 6-3
3/27	*Vanderbilt	L 2-7
3/29	Kalamazoo	L 1-8
3/30	Birmingham-Southern	W 8-1
4/5	Florida State	L 0-9
4/6	*Georgia	L 0-9
4/11	*Tennessee	L 0-9
4/12	Southern Miss	W 6-2
4/20	Samford	W 8-1
4/25	*Auburn	L 4-5
4/26	South Carolina	L 2-7
4/30	*Auburn	L 4-5
5/2	*Mississippi State	L 1-8

1967

Coach Bill Mallory	(7-7)	
6th in SEC	(3-5)	
	Sewanee	L 1-8
3/18	Birmingham-Southern	W 9-0
3/25	*Florida	L 0-9
3/31	Birmingham-Southern	W 8-1
4/1	Illinois	L 1-8
4/4	Southern Miss	W 8-1
4/7	*Tennessee	L 0-9
4/8	*Vanderbilt	W 6-3
4/13	Murray State	L 1-5
4/18	*Georgia	L 1-8
4/22	*Auburn	W 5-4
4/26	Southern Miss	W 7-2
4/28	*Auburn	W 6-3
5/5	*Ole Miss	L 2-7

5/6	*Mississippi State	L 0-9
1966		
Coach Earl Baumgardner	(5-9)	
7th in SEC	(3-4)	
3/19	Florida State	L 2-7
3/25	*Mississippi State	L 0-7
3/29	*Ole Miss	W 9-0
4/1	*Auburn	W 8-1
4/8	*Tennessee	L 1-8
4/12	Eastern Kentucky	W 5-4
4/13	Wisconsin	L 2-7
4/14	*Auburn	W 6-0
4/15	*Georgia	L 0-9
4/22	*LSU	L 2-7
4/23	Tulane	L 0-9
4/28	Southern Miss	W 6-3
4/29	Pensacola Naval Station	L 4-5
4/30	Murray State	L 1-5

1965

Coach Earl Baumgardner	(8-6)	
10th in SEC	(4-3)	
3/19	*Tulane	L 0-6
3/20	*LSU	W 5-4
3/27	Pensacola Naval Station	L 3-6
4/2	*Mississippi State	L 0-9
4/3	Emory	W 5-4
4/6	*Auburn	W 6-3
4/9	Springhill College	W 8-1
4/10	*Georgia	L 0-9
4/15	Southern Miss	W 7-2
4/16	*Auburn	W 6-3
4/23	Springhill	W 7-2
4/24	Pensacola Naval Station	L 1-6
4/30	*Vanderbilt	W 7-2
5/1	Murray State	L 4-5



Coach Jason Morton
1961-1964 (51-20-1)

1964

Coach Jason Morton	(15-3)	
5th in SEC	(4-2)	
3/16	*Vanderbilt	W 9-0
3/18	David Lipscomb	W 8-1
3/21	Kalamazoo	W 6-3
3/21	Springhill College	W 7-0
3/26	*Georgia	L 2-7
3/27	Ohio State	W 7-3
3/27	Furman	W 9-0
3/28	Presbyterian	W 5-4
4/1	Washington (MO)	W 7-2
4/4	Sewanee	W 7-2
4/6	Georgia Tech	L 2-6
4/10	*Auburn	W 9-0
4/11	*Tulane	L 0-9
4/16	Southern Miss	W 7-2
4/17	Springhill	W 9-0
4/18	Pensacola Naval Station	W 8-1
4/25	*LSU	W 7-2
4/28	*Auburn	W 8-0

1963

Coach Jason Morton	(15-5)	
3rd in SEC	(7-5)	
	Springhill College	W 9-0

Pensacola Naval Station	W 8-1
Virginia Tech	W 9-0
*Auburn	W 8-1
*Mississippi State	L 4-5
*Ole Miss	W 9-0
Amherst	W 8-1
*Georgia	L 3-6
Southern Miss	W 8-1
*Georgia Tech	L 2.5-6.5
Clemson	L 3-6
Murray State	W 8-1
Springhill College	W 9-0
*Tulane	L 0-9
*LSU	W 8-1
*Auburn	W 9-0
*Ole Miss	W 8-1
*Mississippi State	W 5-4
*Vanderbilt	W 7.5-1.5
Sewanee	W 8-1

1962

Coach Jason Morton	(13-2)	
5th in SEC	(7-0)	
3/16	Howard	W 7-2
3/19	*Vanderbilt	W 5-4
3/22	Southern Mississippi	L 2-5
3/23	Springhill	W 8-1
3/24	Pensacola Naval Station	L 3-6
3/29	Sewanee	W 8-1
4/6	*Auburn	W 9-0
4/7	*Ole Miss	W 8-1
4/12	*Mississippi State	W 8-1
4/17	*Auburn	W 9-0
4/12	*Mississippi State	W 8-1
4/13	Springhill College	W 6-3
4/16	Howard	W 8-1
4/27	*Ole Miss	W 9-0
4/28	Southwestern (Tenn.)	W 8-1

1961

Coach Jason Morton	(8-10-1)	
8th in SEC	(3-4-1)	
3/15	Howard	L 2-7
3/17	Memphis State	L 4-5
3/18	Southwestern (Tenn.)	W 6-3
3/20	Springhill College	L 2-5
3/24	*Auburn	T 3-3
3/28	*Ole Miss	W 8-1
4/6	*Mississippi State	L 0-9
4/7	*Ole Miss	W 7-2
4/11	Birmingham-Southern	W 9-0
4/13	*Auburn	W 7-2
4/15	*Vanderbilt	L 4-5
4/20	*Tennessee	L 3-6
4/21	Springhill College	L 4-5
4/22	Pensacola Jr. College	W 9-0
4/28	Alabama College	W 9-0
4/29	Florida State	L 0-9
5/3	*Mississippi State	L 4-5
5/5	Howard	L 4-5
5/9	Birmingham-Southern	W 8-1

1960

Coach Rafael del Valle	(5-11)	
No SEC Finish	(1-6)	
3/19	Southern Illinois	L 0-9
3/24	Howard	L 3-6
3/29	*Ole Miss	L 0-9
3/31	Birmingham-Southern	W 7-2
4/6	Alabama College	W 9-0
4/7	Howard	L 0-8
4/9	*Kentucky	W 6-3
4/20	Southwestern (Tenn.)	L 2-7
4/21	Alabama College	W 9-0
4/22	*Mississippi State	L 1-8
4/23	*Vanderbilt	L 1-8
4/26	*Auburn	L 4-5
4/26	*Auburn	L 1-8
5/5	*Ole Miss	L 2-7
5/6	Springhill	L 3-4

5/10	Birmingham-Southern	W 8-1
1959		
Coach Rafael del Valle	(2-10)	
No SEC Finish	(0-6)	
3/12	*Mississippi State	L 0-9
3/14	Pensacola Jr. College	W 9-0
3/19	Howard	L 0-9
3/23	Southern Illinois	L 0-9
4/4	*Ole Miss	L 1-8
4/7	*Mississippi State	L 0-9
4/9	Howard	L 0-9
4/15	*Auburn	L 1-8
4/20	*Auburn	L 1-8
4/21	Birmingham-Southern	W 5-2
4/23	*Ole Miss	L 0-9
5/1	Springhill	L 3-4

1958

Coach Rafael del Valle	(2-8)	
No SEC Finish	(1-4)	
3/18	Howard	L 2-7
3/22	Springhill College	W 5-2
3/27	*Mississippi State	L 1-8
3/29	Georgia State	L 2-5
4/1	*Auburn	W 5-3
4/10	*Ole Miss	L 1-8
4/12	Murray State	L 2-5
4/15	Howard	L 2-6
4/17	*Vanderbilt	L 2-7
4/19	*Georgia	L 0-9



Coach Eugene Lambert
1957 (3-8)

1957

Coach Eugene Lambert	(3-8)	
9th in SEC	(1-6)	
3/13	*Mississippi State	L 2-6
3/15	Pensacola Naval Station	L 1-8
3/20	Southwestern (Tenn.)	W 5-4
3/25	*Georgia Tech	L 1-7
3/26	*Georgia	L 2-7
3/27	*Georgia Tech	L 2-6
4/13	Springhill College	W 6-1
4/15	Howard	L 3-6
4/20	*Vanderbilt	L 2-7
4/24	*Mississippi State	L 1-8
4/26	*Auburn	W 8-1

1956

Coach C. de la Menardiere	(7-5)	
No SEC Finish	(3-3)	
3/14	*Mississippi State	W 8-0
3/19	Marion Institute	W 9-0
3/21	Southern Illinois	W 5-4
3/24	Maxwell Field	L 2-7
4/7	Millsaps	L 0-9
4/12	Birmingham-Southern	W 9-0
4/19	*Auburn	W 6-3
4/24	Birmingham-Southern	W 9-0
4/27	*Mississippi State	L 3-6

Alabama Year-by-Year Results (continued)



Coach C. de la Menardiere

1951-1953 (15-26), 1956 (7-5)

1955

Coach Rafael del Valle	(1-6)
No SEC Finish	(0-4)
3/31 Birmingham-Southern	W 9-0
4/4 Indiana	L 0-9
4/5 *Ole Miss	L 1-8
4/18 *Mississippi State	L 2-7
4/28 *Mississippi State	L 0-9
4/29 *Auburn	L 0-9
4/30 Sewanee	L 1-8

1954

Coach Rafael del Valle	(5-10)
6th in SEC	(1-7)
3/18 Marion Institute	W 9-0
3/22 Springhill College	W 7-0
4/5 Michigan	L 1-8
4/7 *Mississippi State	L 1-8
4/10 Concordia	W 7-0
4/13 Indiana	L 0-7
4/14 Southwestern (Tenn.)	W 5-3
4/15 *Tennessee	L 0-9

4/17 *Vanderbilt	L 2-7
4/20 *Ole Miss	L 1-8
4/22 *Georgia Tech	L 0-8
4/23 *Auburn	L 0-6
4/27 *Georgia	W 5-2
4/29 *Auburn	L 2-6
5/1 Sewanee	L 3-6

1953

Coach C. de la Menardiere	(3-12)
6th in SEC	(0-9)
3/21 Davidson	L 0-9
3/23 Springhill College	W 7-0
3/30 Indiana	L 0-9
3/31 Southwestern (Tenn.)	W 7-2
4/1 *LSU	L 0-9
4/7 *Mississippi State	L 1-8
4/17 Sewanee	L 2-7
4/23 *Mississippi State	L 3-6
4/24 Marion Institute	W 9-0
4/25 *Auburn	L 2-6
4/29 *Auburn	L 2-5
5/1 *Georgia Tech	L 1-8
5/2 *Georgia	L 3-6
5/5 *Tennessee	L 1-8
5/6 *Florida	L 0-9

1952

Coach C. de la Menardiere	(3-8)
No SEC Finish	(2-6)
3/29 Concordia	W 6-0
4/1 *Mississippi State	L 2-7
4/5 *Georgia Tech	L 3-6
4/7 *Mississippi State	L 3-6
4/14 Western Michigan	L 1-7
4/18 Sewanee	L 2-7
4/19 *Vanderbilt	L 0-9
4/24 *Auburn	W 6-3

4/29 *Auburn	W 7-2
5/6 *LSU	L 1-8
5/7 *Tulane	L 0-7

1951

Coach C. de la Menardiere	(9-6)
5th in SEC	(6-3)
*Vanderbilt	L 1-8
Concordia	W 7-0
Indiana	L 1-8
*Georgia Tech	L 4-5
Illinois-Normal	W 5-4
Birmingham-Southern	L 4-5
*Mississippi State	W 8-0
*Auburn	W 7-0
*LSU	W 8-0
*Tulane	L 2-7
*Auburn	W 9-0
Sewanee	L 3-6
Birmingham-Southern	W 5-4
*Mississippi State	W 5-4
*Georgia	W 8-1

1950

Coach Lee Shapiro	(7-8)
6th in SEC	(4-2)
3/24 Springhill College	W 5-2
3/31 Springhill College	L 4-5
4/3 Birmingham-Southern	L 1-8
4/5 *LSU	L 3-6
4/7 *Mississippi State	W 7-2
4/8 *Auburn	W 6-1
4/13 Western Michigan	W 5-4
4/14 *LSU	W 7-2
4/15 *Tulane	L 2-5
4/20 *Auburn	W 7-1
4/22 Sewanee	W 8-1
4/29 *Mississippi State	L 3-6
5/3 Birmingham-Southern	L 2-7

5/6 !Pensacola Naval Station	
5/10 Sewanee	L 1-6

1949

Coach Lee Shapiro	(8-1)
5th in SEC	(4-0)
4/8 *Mississippi State	W 6-0
4/14 Birmingham-Southern	W 9-0
4/16 Howard	W 9-0
4/18 *Auburn	W 6-1
4/21 Michigan State	W 6-3
4/25 *Auburn	W 7-2
4/30 Birmingham Civic Club	L 2-7
5/4 Howard	W 7-0
5/7 *Mississippi State	W 6-0

Alabama Year-by-Year Results (continued)

Alabama's Year-by-Year Record

Year	Coach	Record	SEC Finish	National Ranking
1949	Lee Shapiro	8-1	5th	—
1950	Lee Shapiro	7-8	6th	—
1951	C. de la Manardiere	9-6	5th	—
1952	C. de la Manardiere	3-8	6th	—
1953	C. de la Manardiere	3-12	6th	—
1954	Rafael del Valle	5-10	6th	—
1955	Rafael del Valle	1-6	*	—
1956	C. de la Manardiere	7-5	*	—
1957	Eugene Lambert	3-8	9th	—
1958	Rafael del Valle	2-8	*	—
1959	Rafael del Valle	2-10	*	—
1960	Rafael del Valle	5-11	*	—
1961	Jason Morton	8-10-1	8th	—
1962	Jason Morton	13-2	5th	—
1963	Jason Morton	15-5	3rd	—
1964	Jason Morton	15-3	5th	—
1965	Earl Baumgardner	8-6	10th	—
1966	Earl Baumgardner	5-9	7th	—
1967	Bill Mallory	7-7	6th	—
1968	Dale Anderson	4-10	7th	—
1969	Dale Anderson	7-5	8th	—
^1970	Bill McClain	10-10	8th	—
1971	Bill McClain	19-11-1	5th	—
1972	Bill McClain	27-7	4th	—
1973	Bill McClain	18-5	2nd	No. 16
1974	Bill McClain	16-6	3rd	No. 12
1975	Bill McClain	16-8	4th	No. 19
1976	Bill McClain	23-3	1st	No. 28
1977	Bill McClain	13-8	3rd	—
1978	Armistead Neely	15-8	6th	—
1979	Armistead Neely	11-11	7th	—
1980	Armistead Neely	13-9	5th	—
1981	Armistead Neely	20-4	2nd	—
1982	Armistead Neely	14-8	3rd	—
1983	Tommy Wade	20-4	2nd	No. 14
1984	Tommy Wade	20-12	3rd	No. 16
1985	Tommy Wade	20-11	4th	No. 22
1986	Tommy Wade	18-11	4th	No. 19
1987	Tommy Wade	20-8	5th	No. 19
1988	Tommy Wade	17-10	8th	No. 21
1989	John Kreis	18-8	4th	No. 11
#1990	John Kreis	16-12	5th	No. 18
1991	John Kreis	11-14	8th	—
1992	John Kreis	9-13	8th	—
1993	John Kreis	19-5	3rd	No. 9
1994	John Kreis	7-17	11th	No. 34
1995	Joey Rivé	1-22	12th	—
1996	Joey Rivé	15-12	7th	No. 28
1997	Joey Rivé	16-11	7th	No. 21
1998	Adam Steinberg	13-12	10th	No. 22
1999	Adam Steinberg	17-11	5th	No. 18
2000	Adam Steinberg	5-17	11th	No. 50
2001	Adam Steinberg	19-9	11th	No. 19
2002	Adam Steinberg	15-8	6th	No. 18
2003	Billy Pate	19-10	6th	No. 15
2004	Billy Pate	10-15	12th	---
2005	Billy Pate	10-15	12th	No. 56
2006	Billy Pate	14-13	8th	No. 40
2007	Billy Pate	22-8	T-3rd	No. 14

* Alabama did not compete due to conflict with final exams

^ 1970 was the first year the Intercollegiate Tennis Coaches Association began compiling its national rankings

SEC changed the format of the championship tournament to team dual play rather than individual and team championships

Alabama's All-Time Record vs. Opponents (Won 721, Lost 536, Tied 2)

Opponent	Series Began	UA-Opp.	Millsaps	1956	0-1
Alabama-Birmingham (UAB)	1980	14-4	Mississippi	1972	4-3
Alabama College	1960	4-0	Mississippi State	1954	29-28
Alabama State	1981	1-0	Missouri	1949	29-43
Amherst	1963	1-0	Murray State	1973	3-0
Arizona	1982	2-2	Nevada-Las Vegas	1958	9-4
Arizona State	1982	1-3	New Mexico	1990	1-0
Arkansas	1973	10-9	Northeast Louisiana	1996	1-1
Arkansas-Little Rock	1984	4-0	North Carolina	1974	4-4
Auburn	1949	53-29-1	North Carolina State	1980	4-2
Austin Peay State	1971	9-0	Northwestern	1976	3-2
Baylor	2000	0-3	Notre Dame	1990	3-4
Birmingham Civic Club	1949	0-1	Norwood	1990	2-3
Birmingham Southern	1949	20-4	Oglethorpe	1971	1-0
Boise State	1999	2-1	Ohio State	1970	1-0
Brigham Young (BYU)	1983	1-0	Ohio State	1964	3-4
Brigham Young - Hawaii	1999	1-0	Oklahoma	1990	2-0
Cal-Los Angeles (UCLA)	1990	0-2	Oklahoma State	1982	0-1
Cal-Santa Barbara	1988	2-0	Oregon	2006	1-0
Central Florida	1983	3-0	Pan American	1974	3-1
Clemson	1963	8-3	Penn State	1976	2-0
Colorado	2006	1-0	Pensacola Junior College	1959	2-0
Columbus College	1969	2-2	Pensacola Naval Station	1957	2-6
Columbia	1979	2-1	Pepperdine	1975	1-3
Concordia	1951	3-0	Presbyterian	1964	3-0
David Liscomb	1964	2-0	Princeton	1999	2-0
Davidson College	1953	1-1	Rice	1973	2-1
Drake	1992	0-2	Rollins College	1979	2-0
Duke	1978	2-1	Samford	1949	28-9
Eastern Kentucky	1966	2-0	San Diego	1990	1-0
Eastern Michigan	1971	1-0	Sewanee	1950	4-6
East Tennessee State (ETSU)	1992	2-0	South Alabama	1969	12-0
Edinboro State	1974	1-0	South Carolina	1968	16-13
Emory	1965	2-0	Southeast Louisiana	1987	3-0
Florida	1953	16-28	Southern California	1989	1-1
Florida Atlantic	1997	0-1	South Florida	1979	8-2
Florida International	1982	2-0	Southern Illinois	1956	7-3
Florida State	1961	13-9	S. Illinois-Carbondale	1989	1-0
Fresno State	1998	1-0	Southern Methodist	1973	2-7
Furman	1964	11-1	Southern Mississippi	1962	22-1
Georgia	1951	8-47	Southwestern Louisiana	1976	13-6
Georgia Southern	1982	2-0	Southwestern (Tenn.)	1953	6-1
Georgia State	1958	5-1	Springhill College	1950	15-6
Georgia Tech	1951	9-11	Stanford	1984	0-1
Hampton	1999	1-0	Tennessee	1953	11-32
Harvard	1991	3-1	Tennessee-Chattanooga	1982	2-0
Hawaii	1972	2-0	Tennessee-Martin	1981	1-0
Houston	1972	3-4	Tennessee Tech	1971	4-1
Huntingdon College	1974	1-0	Texas	1975	0-4
Illinois	1967	1-2	Texas A&M	1973	0-6
Illinois-Normal	1951	1-0	Texas Christian	1982	3-6
Illinois State	1970	1-0	Trinity College	1973	1-7
Indiana	1951	5-6	Troy	1996	9-0
Indiana State	1991	0-1	Tulane	1950	7-11
Jackson State	1981	1-0	Tulsa	1983	1-1
Jacksonville	1971	1-0	Utah	1984	2-0
Jacksonville State	2000	3-0	Vanderbilt	1951	35-17
Jefferson State	1980	2-0	Virginia	1999	0-3
Kalamazoo	1964	1-1	Virginia Commonwealth	1994	0-2
Kansas	1974	1-1	Virginia Tech	1963	1-1
Kentucky	1960	21-17-1	Wake Forest	1972	6-4
Lander College	1984	2-0	Washington (Mo.)	1964	1-0
Long Beach State	1986	2-0	Washington & Lee	1978	1-0
Louisiana State	1950	17-32	Westchester Street	1970	1-0
Louisiana Tech	1981	3-0	Western Illinois	1971	1-0
Louisville	1986	5-0	Western Michigan	1950	1-1
Marion Institute	1953	3-0	West Texas State	1984	1-0
Marist	2003	1-0	West Virginia	1988	1-1
Marshall	1973	1-0	West Virginia	1988	1-1
Maxwell Field	1956	0-1	Wichita State	1985	1-0
Memphis State	1961	7-5	William & Mary	1971	4-0
Mercyhurst	1975	1-0	Winthrop	2007	1-0
Miami	1977	8-9	Wisconsin	1966	2-2
Michigan	1954	3-4	Yale	1977	1-0
Michigan State	1949	7-1			
Middle Tennessee State	1972	12-3			

All-Time Roster

A
 Farra Alford (1970)
 Jack Allison (1958)
 Roberta Alison (1963-65)
 3VL — *Alexander City*
 Dale Anderson (1966)
 John Antonas (1972-73)
 2VL — *Nassau, Bahamas*

B
 Charlton Bargeron (1957-58)
 Tim Bates (1996-97)
Orlando, Fla.
 Maxim Belski (2000-03)
 1VL — *Minks Belarus, Russia*
 Javier Bes (2005-pres.)
 1VL Zaragoza, Spain
 Nicolas-John Beuque (2001-2002)
 1VL — *Gex, France*
 Juan Carlos Bianchi (1993)
 1VL — *Maracay, Venezuela*
 Charles Bibee (1971-74)
 4VL — *Lynchburg, Va.*
 Jeff Bingo (1984-85)
 2VL — *Boca Raton, Fla.*
 Steve Bloomberg (1967-69)
 Charles Bolander (1983)
 1VL — *Ft. Lauderdale, Fla.*
 Greg Boucher (1970-71)
 2VL — *Van Nuys, Calif.*
 Bill Bowman (1954)
 Ben Bowden (1986-89)
 4VL — *Manager — Brundidge*
 Ben Boykin (1948-51)
 William Boyles (2000-03)
 1VL — *Pensacola, Fla.*
 Cecil Brandon (1991-94)
 4VL — *Charlotte, N.C.*
 Christian Brodersen (2001-04)
 4VL — *Heinsberg, Germany*
 Mark Buckley (1979)
 1VL — *Petersburg, Va.*
 Dan Buikema (2006-pres.)
 1VL — *Battle Creek, Mich.*

C
 Mike Cahill (1971-74)
 4VL — *Eagle, Wisc.*
 Mike Campanaro (1985-86)
 2VL — *Monroe, Conn.*
 Alex Canavatti (1991)
 1VL — *Monterrey, Mexico*
 Hans Carlson (1981-84)
 3VL — *Oskalshamn, Sweden*
 Bryan Cassis (1988)
 1VL — *Louisville, Ky.*
 Weylu Chang (1995-99)
 3VL — *Lynnfield, Mass.*

Bob Coons (1982)
 1VL — *Glastonbury, Colo.*
 Tom Cooper (1956-57-59)
 Miguel Cordova (1964)
 Tony Cox (1953-54)
 B.J. Crain (1950-51)
 Cameron Cross (1994)
 1VL — *London, Ontario*
 Maurice Crowe (1977-78)
 2VL — *Mobile*

D
 Luigi D'Agord (2004-05)
 Freeport, Bahamas
 Carol Dailey (1952)
 Dan Davis (1995)
 1VL, *Naples, Fla.*
 Bob Deller (1975-78)
 4VL — *Reno, Nevada*
 Bobby Dickinson (1985)
 1VL — *Sarasota, Fla.*
 Don Dillard (1972-74)
 3VL — *Birmingham*
 Slavko Djukic (1994-95)
 2VL — *Novi Sad, Yugoslavia*
 Matt Drummond (2003-05)
 1VL- *Jasper, AL*

E
 Bob Eager (1961-63)
 Ray Edwards (1951-52)
 Constantinos Efremlou (1986-89)
 4VL — *Athens, Greece*
 Malcolm Elley (1979-80)
 2VL — *Wellington, New Zealand*
 Mohamed Elwany (1992-94)
 3VL — *Cairo, Egypt*
 Tommy English (1970-71)
 2VL — *Tuscaloosa*
 John Evert (1979-80)
 2VL — *Ft. Lauderdale, Fla.*

F
 Akhter Farooq (1972-73)
 2VL — *Lahore, Pakistan*
 Fred Feinberg (1963-65)
 Andrew Felsenthal (2005-pres.)
 Memphis, Tenn.
 Clinton Ferreira (1986-89)
 4VL — *Durban, South Africa*
 Ellis Ferreira (1988-91)
 4VL — *Durban, South Africa*
 Scott Fligel (1989)
 1VL — *Charlotte, N.C.*
 Jerome Fournier (1988-91)
 4VL — *Quebec, Canada*
 Scott France (1989)
 1VL — *Atlanta, Ga.*

Brad Friedman (2000-2003)
 4VL — *Birmingham, Ala.*

G
 Brett Gibson (1991-92)
 2VL — *Manager — Tuscaloosa*
 Heath Gibson (1994-95)
 2VL — *Tuscaloosa*
 Speedy Gilstrap (1975)
 Frank Giovanni (1949)
 Tom Givan (2000-2003)
 4VL — *Atlanta, Ga.*
 Ken Goodwin (1957-59)
 Tripp Gordon (1981-82)
 2VL — *Diablo, Calif.*
 Sven Goth (1996)
 1VL — *Strullendorf, Germany*
 Dave Green (1949)
 Mike Green (1974-75)
 2VL — *St. Petersburg, Fla.*
 Buddy Greer (1958-60)
 Mike Grossman (1985-86)
 2VL — *Dallas, Texas*
 Chris Gostek (2001-04)
 4VL- *London, Ontario*
 Fernando Guarachi (1970-71)
 2VL — *Santiago, Chili*

H
 Frank Hahn (1957-59)
 Gregg Hahn (1983-86)
 4VL — *Tuscaloosa*
 Jim Harris (1961)
 Joe Harvey (1979-80)
 2VL, *Auckland, New Zealand*
 Rashid Hassan (1996-97)
 2VL — *Harare, Zimbabwe*
 Marc Hayden (1993-96)
 4VL — *Mobile*
 Jim Heacock (1967)
 Tom Henderson (1960)
 Gavin Hewson (1987)
 1VL — *Johannesburg, South Africa*
 Pat Higginbotham (1960-61)
 Art Hill (1956)
 Bryant Hirsberg (1986)
 Gordy Hirsch (1994)
 Merrill Horton (1951)
 Ken Howell (1956)
 Joe Hughes (1977)
 1VL — *Birmingham*
 Geoff Hiscox (2003)
 1VL *Maple, Ontario*

I
 Brian Isern (2000-2003)
 4VL — *Amarillo, Texas*



Mark Johnson

J
 Wayne Jackson (1981)
 1VL — *Rockwood, Canada*
 Leslie Jacobs (1967-70)
 Mark Johnson (1993-96)
 4VL — *Dallas, Texas*
 Robert Johnson (1977)
 1VL — *Eatonville, Fla.*
 George Jordan (1952-56)
 Lonnie Jordan (1949)
 Joseph Jung (2004-2007)
 4VL --- *Deerfield Beach, Fla.*
 Michael Jung (2007-pres.)
Deerfield Beach, Fla.

K
 Paul Kantor (1951)
 Lynwood Keith (1959)
 Frank Kendall, Jr. (1962)
 Tom Kendall (1966-68)
 Jordie Kindervater (2005-pres.)
St. John's, Newfoundland
 Steve Kirson (1979-80)
 2VL — *Balto, Md.*
 Don Kramer (1954-56)
 Sheldon Kramer (1953)
 Jimmy Kyle (1950-51)

L
 Joe Lane (1981-82)
 2VL — *Baltimore, Md.*
 Pete Lanier (1966)
 Russ Lanthorne (1969-70)
 2VL — *LaJolla, Calif.*
 Jerry Lapidus (1950-51)
 Lionel Layden (1953)
 Kip Layman (1993-96)
 4VL — *Newport News, Va.*
 Earl LeCroy (1953-55)
 Henner Lenhardt (1984-85)
 2VL — *Orlando, Fla.*
 Anders Lindgren (1992-94)
 3VL — *Ahus, Sweden*
 Frank Lonshore (1952-53)

Chris Lopez (1995-96)
2VL — Miami, Fla.
Brad Losson (1972-75)
4VL — St. Joseph, Mo.

M

Denys Maasdorp (1981-82)
2VL — Port Elizabeth, Africa
Rick MacKay (1971)
1VL — Birmingham
Blake Mallick (1985)
1VL — Sarasota, Fla.
Billy Mann (1960)
Joe Maples (1972-74)
3VL — Athens
Alan Marks (1992)
Alexandria, La.
Sam Massey (1959)
Tony Matkulak (1989-90)
2VL — Melbourne, Australia
Rhodes Mazer (1953)
Marco Mazzotta (1994-95-96)
3VL — Caracas, Venezuela
Matt McKelvain (1990)
1VL — Fairhope
Brad McMurray (1987-90)
4VL — Boynton Beach, Fla.
Chris McRae (1999-2002)
2VL — Louisville, Ky.
John McWilliams (1955-57)
3VL — Captain, Selma
Billy Mertz (2005-pres.)
1 VL Silver Spring, Md.
Mike Miller (1962)
Tony Miller (1965)
Monty Mims (1971-72)
2VL — Jasper
Stephen Mitchell (2001-04)
4VL-Capetown, South Africa
Manny Morales (1969-70)
2VL — San Diego, Calif.
Tony Morandini (1978)
1VL — Ribeirao Preto, Brazil
Eric Molnar (2004-05)
1VL --- Guelph, Ontario
Les Mullins (1968)
R.J. Murray (2004-05)
1VL ---Clearwater, Fla./NC State
Jaime Musaleu (1962-64)
Saketh Myneni (2007-pres.)
Andhra Pradesh, India

N

Susheel Naria (1999-2001)
2VL — Hyderabad, India
Cuan Neething (1978-80)
3VL — Pretoria, South Africa

O

George O'Connell (1962-64)
Jim Odum (1957)
Mike O'Leary (1975-77)
3VL — Houston, Texas
Graydon Oliver (1998-99)
2VL — Ft. Lauderdale, Fla.
Stefan Olsson (1981-84)
4VL — Karlshamn, Sweden
Barry Owen (1969-70)
2VL — Anchorage, Alaska

P

Michael Ray Pallares (2001-2003)
3VL-Leonia, NJ
Alton Parker (1966)
Frank Parsons (1961-63)
Alfonso Perez (2000)
1VL — Guadalajara, Mexico
Pat Perrin (1978-80)
3VL — Richmond, Va.
Walter Perrin (1960-61)
Fleming Peterson (1954)
Steve Pierre (1975-77)
2VL — Panama
Harvey Platt (1953-54)
John Pool (1959)

R

Mike Reiney (1985-88)
4VL — Jacksonville, Fla.
Louis Reynolds (1956-58)
Walker Reynolds, III (1967-68)
Grantland Rice, Jr. (1949)
David Riggs (1952-55)
Stokes Ritchie (1971)
1VL — Montgomery
Ariel Rivero (1996-99)
4VL — Buenos Aires, Argentina
Jeff Robinson (1976-78)
3VL — Los Gatos, Calif.
John Robinson (1949)
Francisco Rodriguez (1997-2000)
3VL — Ascuncion, Paraguay
Warren Ruttenberg (1988-92)
3VL — Birmingham

S

Joao Sacomandi (2003)
Baura, Brazil
Joey Salerno (1992-93)
1VL — Omaha, Neb.
Michael Sass (1990)
Greg Schweitzer (2000)
1VL
Robert Seraphim (1977)
Steve Shaw (1981-82)
2VL — London, England
Mike Shore (1976-78)
3VL — Mercer Island, Wash.
Mike Smith (1980-82)
3VL — Brookfield, Wisc.
Stewart Smith (1955)
Mason Snider (1997-2000)
3VL — Tallahassee, Fla.
Andy Solis (1982-85)
4VL — Gainesville, Fla.
Robert Sproul (1995-96)
2VL — Birmingham
Richard Stewart (1961)
Jack Stewart (1979-82)
3VL — Chagrin Fall, Ohio
John Stimpson (1987-90)
3VL — Mobile
Taylor Striplin (2005-pres.)
Birmingham, Ala.
Sammy Struyf (2005-pres.)
1 VL Waregem, Belgium
Wally Swanson, Jr. (1966-67)

T

Alin Taranga (1996-99)
4VL — Dundee, South Africa
Ed Terrell (1963-65)
Matthieu Thibaudeau (2006-pres.)
1VL — St. Georges, Quebec
John Thomas (1968-71)
3VL — Dothan
Bill Thompson (1971)
1VL — Albuquerque, N.M.
Dick Thompson (1952)
Joseph Tommie (1952-53)
2VL — Birmingham
Joe Travis (1954)
Phil Turits (1955)
Matt Turner (1991-94)
4VL — Knoxville, Tenn.

V

Sten Van Beurden (1992)
1VL — Duivendrecht, Holland
Wynand van den Boom (1985-88)
4VL — Amsterdam, Netherlands
Louis van Huyssteen (1996)
1VL — Johannesburg, South Africa
Steven Viljoen (1985)
1VL — Johannesburg, South Africa
Mike Voyles (1972-73)
2VL — Jacksonville, Fla.
Sam Vuille (1973-75)
3VL — St. Petersburg, Fla.



Chip Wade

W

Chip Wade (1973-76)
4VL — El Paso, Texas
Trey Walston (2007-Present)
Birmingham, Ala.
Frank Ward (1968)
Scotty Watson (1958)
Michael Wennberg (1981-82)
2VL — Gothenburg, Sweden
Roy White (1966)
Don Williamson (1986)
Mark Wilder (1983-84)
2VL — Jacksonville
Clayton Wilson (1989-90)
2VL — Tuscaloosa
Rick Witsken (1990-93)
4VL — Carmel, Ind.

Bee Wood (1964-65)
Roy Woodruff (1958-59)

Y

Houssam Yassine (2007-pres.)
Rabat, Morocco

Z

Karim Zaher (1996-99)
4VL — Cairo, Egypt

All-Time Crimson Tide Assistant Coaches:

1974 John Antonas
1977 Steve Pierre
1978 Sam Vuille
1979-80 Paul Masters
1982 Keith Swindoll
1982-85 Steve Hannum
1986 Andy Solis
1986 Jack Stewart
1987-88 John Cleary
1988 Glen Fanelli
1989 . Wynand van den Boom

1990 Kevin Swank
1992 Warren Ruttenberg
1993 Joey Salerno
1994 Kevin Chase
1995 Stan Long
1996 Chuck Coleman
1996-99 Geoff Young
2000-01 Tad Berkowitz
2001-04 Mario Rincon
2004-Present Lee Nickell

CRIMSON RACKET CLUB

ALABAMA
CRIMSON TIDE™

2007-2008
Men's & Women's
Tennis

CRIMSON
RACKET
CLUB



Crimson Racket Club Mission

"It is our goal to grow tennis in the Tuscaloosa community and generate more interest in our men's and women's tennis programs at the Capstone. With your membership in the Crimson Racket Club, you can join in the excitement of Alabama Tennis. Your support will help us build programs that will continue to gain national prominence and contend for the SEC Championship."

-Jenny Mainz (head women's tennis coach) & Billy Pate (head men's tennis coach)

The Crimson Racket Club comprises 71 members dedicated to supporting the men's and women's tennis programs at the University of Alabama. Headed by David Ford, the Crimson Racket Club donated over \$5,000 to the tennis programs at the Capstone.

Membership Rewards

\$25- Game Level Membership:

Includes a media guide, poster and t-shirt

\$60- Set Level Membership:

Includes a media guide, poster, newsletter, t-shirt, scheduled Indoor Tennis Facility privileges during the winter

\$125 or more- Match Level Membership:

Includes media guide, poster, newsletters, t-shirt, scheduled Indoor Tennis Facility privileges during the winter season and (2) invitations to the end of the year tennis banquet

NIKE TENNIS CAMP AT ALABAMA

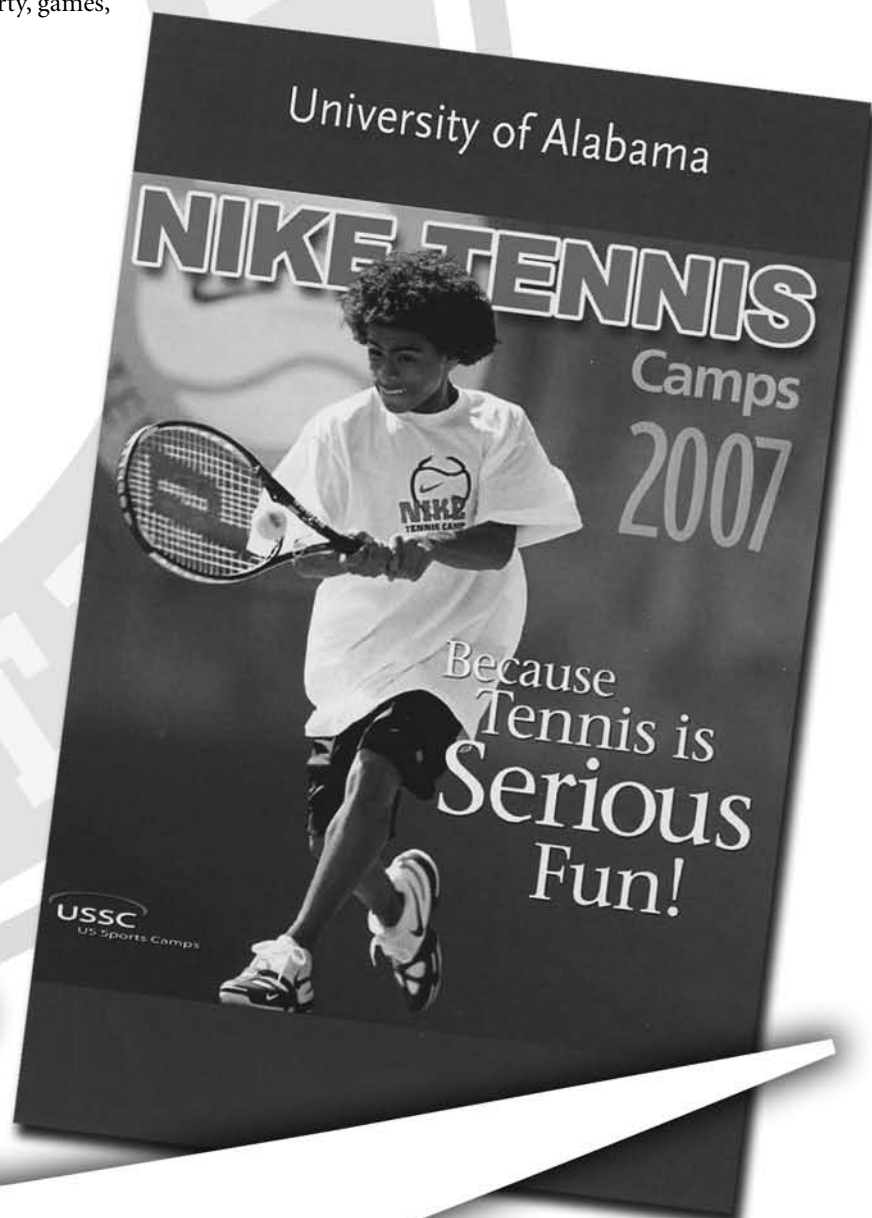
The University of Alabama welcomes hundreds of youth and junior tennis players from across the nation to the Crimson Tide Nike Tennis Camp each summer. In his fifth year at the helm of the Crimson Tide Nike Tennis camp, UA head coach Billy Pate offers a long history of tennis coaching and camp experience to the participants. Tide assistant men's tennis coach Lee Nickell is also a camp veteran as he returns for his fourth year assisting Pate and brings energy and experience to the campers.

The University of Alabama's athletic program is steeped in tradition and pride, which makes this Crimson Tide Nike Tennis Camp an unforgettable experience. Participants are sure to receive the best instruction during the two week period that is offered. Campers will play at one of the finest tennis complexes in the nation, which features twelve lighted outdoor courts, and four indoor courts at the Hank Crisp Indoor Facility. Campers also have access to the varsity track, swimming pools, and numerous recreational facilities. Off-court activities include a pizza party, games, and other social events.

The Nike Tennis Camp at the University of Alabama will be June 1-5 and June 8-12. Alabama hosts one of only 60 Nike Tennis Camps from around the nation and is a great place to spend the summer.

Typical Weekly Schedule:

- 7:00 am: Wake-up and breakfast**
- 8:30 am: Stretching**
- 8:40 am: Agility Conditioning**
- 9:25 am: Serve, Serve Return, Serve and Volley**
- 10:10 am: Ball Machine Practice (Groundstrokes and net play)**
- 10:55 am: Active Drilling**
- 12:00 pm: Lunch**
- 1:00 pm: Off court-Physical Fitness Testing/ Speaker**
- 2:25 pm: Singles Play**
- 3:45 pm: Doubles Situation and Drills**
- 5:15 pm: Dinner**
- 6:30 pm: Evening Activity**
- 10:00 pm: Campers to rooms**
- 10:15 pm: Lights Out**



Alabama's Tennis Facilities



The University of Alabama Tennis Stadium is among the best collegiate venues in the nation.

"We're very fortunate to be able to train and play in one of the nation's top facilities," head coach Billy Pate said. "This gives everything we do, from hosting a tournament to a dual match, from practice and exhibitions and clinics, a first class environment. It also places everything that our coaches and players need to be successful right at our fingertips. I couldn't be prouder of our complex and what it means to our program."

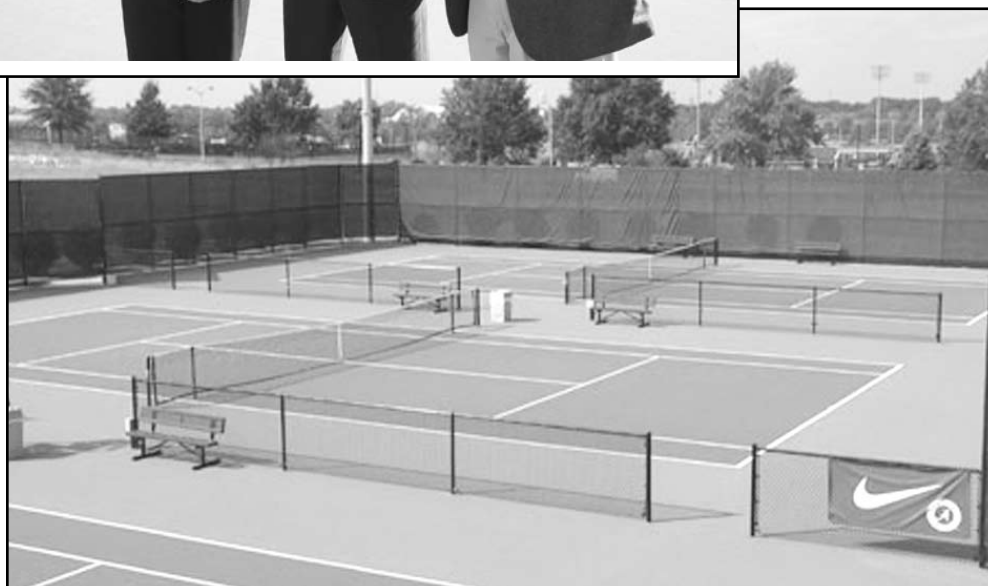
The facility was recently named one of nine winners of the 25th annual USTA Facility Awards Program, recognizing excellence in the construction and/or renovation of public tennis facilities throughout the country.

"We're awfully proud of that award," Pate said. "Only two collegiate programs in the nation earned that distinction and it's great to be one of them."

The outdoor complex features 12 outdoor hard courts with permanent seating for 2,000. The \$4.2 million facility, built in 2004, is composed



Left: Alabama head coach Billy Pate receives the USTA Facility Award from USTA-Alabama's Elaine Francis (left) and Jeff Gray (right).



of a team lounge with plasma TV, a conference room, coaches' offices, player locker rooms with private restrooms and showers, a full-service athletic training room, and a concession stand with a kitchen.

Wireless internet access is available, and the facility is equipped with a sound system and electronic scoreboard.

And while poor weather is a rarity in Tuscaloosa, Alabama does have the convenience of its own indoor facility which is located adjacent to Coleman Coliseum on the Alabama campus. The Hank Crisp Indoor Tennis Facility houses four courts, a players lounge and coaches offices.