



SLIPPERY ROCK WOMEN'S BASKETBALL

ROCK GAME NOTES

Tyler McIntosh, Ast. Director of Athletic Communication | tyler.mcintosh@sru.edu | Office: 724.738.2777 | Cell: 330.303.0149

2019-20 ROCK WOMEN'S BASKETBALL SCHEDULE

11/8	vs. Johnson C. Smith University [1]	L, 76-52
11/9	at Elizabeth City State University [1]	W, 76-75
11/15	at Bowie State University	L, 58-50
11/20	at Salem University	W, 108-105
11/23	SHIPPENSBURG UNIVERSITY*	1 p.m.
11/24	LOCK HAVEN UNIVERSITY*	1 p.m.
11/30	at Tiffin University	1 p.m.
12/7	at Shepherd University*	1 p.m.
12/17	at Notre Dame College	6 p.m.
12/20	at Kutztown University*	1 p.m.
12/21	at West Chester University*	1 p.m.
1/3	at Clarion University*	5:30 p.m.
1/6	CALIFORNIA UNIVERSITY (PA)*	5:30 p.m.
1/8	INDIANA UNIVERSITY (PA)*	5:30 p.m.
1/11	at Seton Hill University*	1 p.m.
1/15	MILLERSVILLE UNIVERSITY*	5:30 p.m.
1/18	at University of Pitt-Johnstown*	1 p.m.
1/22	at Mercyhurst University*	5:30 p.m.
1/25	EDINBORO UNIVERSITY*	1 p.m.
1/29	GANNON UNIVERSITY*	5:30 p.m.
2/1	at California University (Pa.)*	1 p.m.
2/5	CLARION UNIVERSITY*	7 p.m.
2/8	at Indiana University (Pa.)*	5:30 p.m.
2/12	UNIVERSITY OF PITT-JOHNSTOWN*	5:30 p.m.
2/15	SETON HILL UNIVERSITY*	1 p.m.
2/22	at Gannon University*	1 p.m.
2/26	at Edinboro University*	5:30 p.m.
2/29	MERCYHURST UNIVERSITY*	1 p.m.

[1] PSAC-CIAA Challenge in Elizabeth City, N.C.

* PSAC West contest

Home Games in **BOLD CAPS**

THE ROCK	STAT COMPARISON	SHIP	LHU
71.5	Points per Game	75.3	75.0
78.5	Opp. Points per Game	69.5	72.3
42.1	Field Goal Pct.	42.4	39.5
42.0	Opp. Field Goal Pct.	41.3	37.8
32.1	3-Point Pct.	25.7	26.4
36.1	Opp. 3-Point Pct.	36.7	30.9
4.3	3-Pointers Made*	4.5	5.8
79.1	Free Throw Pct.	63.1	62.7
21.8	Free Throws Made*	19.3	18.5
37.8	Rebounds Per Game	44.8	50.3
39.2	Opp. Rebounds Per Game	33.0	36.3
-1.5	Rebounding Margin	+11.8	+14.0
8.0	Assists*	14.8	13.5
15.5	Turnovers*	19.5	21.5
13.3	Opp. Turnovers*	17.8	17.3
-2.2	Turnover Margin	-1.7	-4.2
4.3	Steals*	8.0	8.8
2.3	Blocked Shots*	3.8	2.0
0-0	Home Record	2-0	2-0
0-1	Away Record	0-2	0-0
2-1	Neutral Court Record	0-0	0-2

* Per game averages

GAMES 5-6 - THE ROCK (2-2) vs SHIPPENSBURG (2-2) / LOCK HAVEN (2-2)

Saturday, Nov. 23 vs. Shippensburg • Sunday, Nov. 24 vs. Lock Haven

Sat., Nov. 23 SRU vs. Shippensburg

Sun., Nov. 24 SRU vs. Lock Haven

SRU-SHIP All-Time Series
vs. Shippensburg 17-39
Current Streak Slippery Rock W1
Last Meeting Nov. 18, 2017
Result Slippery Rock won 92-63
..... Game played at Slippery Rock

SRU-LHU All-Time Series
vs. Lock Haven 48-32
Current Streak Slippery Rock W3
Last Meeting Dec. 18, 2018
Result Slippery Rock won 77-66
..... Game played at Slippery Rock



SLIPPERY ROCK

Record 2-2
PSAC West Record 0-0
Head Coach Bobby McGraw
Record (Year) 59-84 (6th)



SHIPPENSBURG

Record 2-2
PSAC East Record 0-0
Head Coach Kristy Trn
Record (Year) 343-231 (21st)



LOCK HAVEN

Record 2-2
PSAC East Record 0-0
Head Coach Jennifer Smith
Record (Year) ... 103-202 (13th)

QUICK HITS

- Following four straight games on the road to start the season, the Slippery Rock University women's basketball team will finally make its 2019-20 home debut this weekend when it hosts Shippensburg University and Lock Haven University for a pair of Pennsylvania State Athletic Conference crossover contests at Morrow Field House.
- Slippery Rock is growing accustomed to playing tight games this year as three of its four games to date have been decided by eight points or less, two of which SRU has won.
- SRU is is 17-10 (.630) in PSAC crossover games under head coach **Bobby McGraw**.
- Shippensburg holds a 39-17 record against The Rock all-time, but SRU did defeat the Raiders, 92-63, the last time the two schools met two years ago thanks in no small part to a 27-point, nine-rebound performance by **Madison Johnson**.
- Slippery Rock has won three straight games in its series against Lock Haven to improve its record over the Bald Eagles to 48-32 all-time. The Rock downed the Bald Eagles 77-66 a year ago behind a 26-point showing by **Brooke Hinderliter**. **Daeja Quick** had 14 points against LHU as well.
- SRU is coming off of a high-scoring 108-105 victory at Salem University.

PROBABLE STARTERS

##	Player	Pos.	Yr.	Pts.	Reb.	Ast.	Hometown
2	Daeja Quick	G	Jr.	13.0	3.3	4.0	Coraopolis, Pa.
1	Madison Johnson	G	R-Sr.	18.0	6.0	1.0	Knox, Pa.
23	Brooke Hinderliter	G	Sr.	15.3	4.5	1.0	Seminole, Pa.
20	LeeAnn Gibson	F	Sr.	9.0	10.0	0.5	Chicora, Pa.
24	Karington Ketterer	F	Sr.	5.3	4.3	0.5	Ellwood City, Pa.

ROCK RESERVES

##	Player	Pos.	Yr.	Pts.	Reb.	Ast.	Hometown
30	Anyah Curd	F	Fr.	6.5	5.8	0.5	Girard, Ohio
11	Olivia Fusaro	G	So.	5.5	1.3	0.3	West Shamokin, Pa.
3	Kasch Harris	G	R-Jr.	1.3	0.5	0.3	Philadelphia, Pa.
22	Brittany Andrews	G/F	Jr.	1.3	0.8	0.3	Pittsburgh, Pa.
5	Caroline Gibson	G	Fr.	1.0	0.0	0.0	Laurel, Pa.
34	Carol Weber	F	So.	1.0	0.0	0.0	Harrisburg, Pa.
10	Lindsay Frabotta	G	Fr.	0.0	0.0	0.0	New Castle, Pa.
12	Chelsea DeSalve	G	Fr.	0.0	0.0	0.0	DuBois, Pa.
4	Emily Grandy	G	So.	0.0	0.0	0.0	Sharpsville, Pa.
21	Nylla Sydnor-Crooks	F	Jr.	-	-	-	Philadelphia, Pa.

SLIPPERY ROCK WOMEN'S BASKETBALL



1 MADISON JOHNSON
GUARD, R-SR., 5-8
KNOX, PA.



2 DAEJA QUICK
GUARD, JR., 5-6
CORAOPOLIS, PA.



3 KASCH HARRIS
GUARD, R-JR., 5-5
PHILADELPHIA, PA.



4 EMILY GRANDY
GUARD, SO., 5-8
SHARPSVILLE, PA.



5 CAROLINE GIBSON
GUARD, FR., 5-5
LAUREL, PA.



10 LINDSEY FRABOTTA
GUARD, FR., 5-9
NEW CASTLE, PA.



11 OLIVIA FUSARO
GUARD, SO., 5-8
WEST SHAMOKIN, PA.



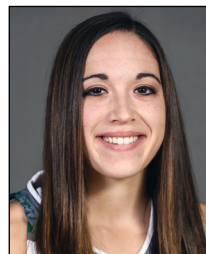
12 CHELSEA DESALVE
GUARD, FR., 5-7
DUBOIS, PA.



20 LEEANN GIBSON
FORWARD, SR., 5-10
CHICORA, PA.



21 NYLLA SYDNOR-CROOKS
FORWARD, JR., 5-11
PHILADELPHIA, PA.



22 BRITTANY ANDREWS
GUARD, JR., 5-9
PITTSBURGH, PA.



23 BROOKE HINDERLITER
GUARD, SR., 5-9
SEMINOLE, PA.



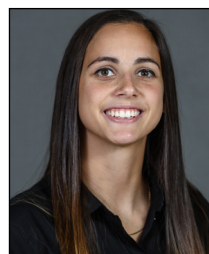
24 KARINGTON KETTERER
FORWARD, SR., 6-0
ELLWOOD CITY, PA.



30 ANYAH CURD
FORWARD, FR., 6-0
GIRARD, OHIO



34 CAROL WEBER
FORWARD, SO., 6-1
HARRISBURG, PA.



KRISTA PIETROPOLA
GRADUATE ASSISTANT
FIRST SEASON



CHENARA WILSON
ASSISTANT COACH
THIRD SEASON



BOBBY MCGRAW
HEAD COACH
SIXTH SEASON

No.	Name	Position	Ht.	Yr.	Hometown / High School / Last College
1	Madison Johnson	Guard	5-8	R-Sr.	Knox, Pa. / Keystone (St. Francis)
2	Daeja Quick	Guard	5-6	Jr.	Coraopolis, Pa. / Cornell (District of Columbia)
3	Kasch Harris	Guard	5-5	R-Jr.	Philadelphia, Pa. / Neuman Gorreti (Harford)
4	Emily Grandy	Guard	5-8	So.	Sharpsville, Pa. / Sharpsville (Carlow)
5	Caroline Gibson	Guard	5-5	Fr.	Laurel, Pa. / Laurel
10	Lindsay Frabotta	Guard	5-9	Fr.	New Castle, Pa. / New Castle
11	Olivia Fusaro	Guard	5-8	So.	West Shamokin, Pa. / West Shamokin
12	Chelsea DeSalve	Guard	5-7	Fr.	DuBois, Pa. / DuBois
20	LeeAnn Gibson	Forward	5-10	Sr.	Chicora, Pa. / Karns City
21	Nylla Sydnor-Crooks	Forward	5-11	Jr.	Philadelphia, Pa. / Mastery Charter South
22	Brittany Andrews	Guard/Forward	5-9	Jr.	Pittsburgh, Pa. / South Park
23	Brooke Hinderliter	Guard	5-9	Sr.	Seminole, Pa. / Redbank Valley
24	Karington Ketterer	Forward	6-0	Sr.	Ellwood City, Pa. / Lincoln (Pitt-Johnstown)
30	Anyah Curd	Forward	6-0	Fr.	Girard, Ohio / Youngstown Ursuline
34	Carol Weber	Forward	6-1	So.	Harrisburg, Pa. / Central Dauphin

Head Coach: Bobby McGraw (Fifth season, Tiffin University)

Assistant Coach: Chenara Wilson

Graduate Assistant Coach: Krista Pietropola

Student Assistant Coach: Alexis Deyarmin

MOST POINTS SCORED IN 12 YEARS

The Rock's offensive explosion against Salem marked the team's highest point total since scoring 101 points in a victory against Lock Haven on Feb. 18, 2009. Overall, SRU's 108 points was the third-highest total in program history.

Season-Opponent.....	Points Scored
2008-09 vs. Salem	111
1982-83 vs. Indiana (Pa.)	109
2019-20 at Salem	108
1990-91 vs. Thiel	107
1985-86 at Florida Memorial.....	106

HISTORIC NIGHT AT THE FOUL LINE VS. SALEM

Spurring on one of The Rock's highest scoring nights in program history was a 44-for-52 showing from the foul line against Salem.

SRU easily set new single-game program records for both free throws made and free throws attempted while its 84.6 free throw percentage continued a sustained pattern of success of Bobby McGraw coached teams at the foul line. Slippery Rock leads the PSAC in free throw percentage this year at .791 and has made 74 percent of its free throws over the last six years.

CROSSOVER SUCCESS

This weekend's games are two of six crossover games that Slippery Rock will play against the PSAC East this season. These games will count towards the league standings and could play a huge role in deciding which teams make the PSAC Tournament and which stay at home at the end of the season.

Slippery Rock has thrived recently in crossover games under head coach Bobby McGraw. Entering 2019-20, Slippery Rock is 17-10 (.630) against its PSAC East counterparts over the last five years.

PSAC East Opponent.....	SRU Record Since 2014-15
Mansfield.....	4-0
Lock Haven	3-1
East Stroudsburg	2-1
Kutztown	2-1
Millersville	2-1
West Chester	2-1
Shippensburg.....	1-2
Bloomsburg	1-3
Shepherd	0-0

BREAKOUT YEAR IN THE MAKING

Madison Johnson was solid for The Rock in her first two years at SRU while also flashing her enormous potential on several occasions. However, Johnson has performed on a completely different level over the first four games of her senior season.

So far in 2019-20, Johnson has averaged 18.0 points, 6.0 rebounds and 1.0 assists per game while shooting 52.3 percent from the floor overall and 78.6 percent at the foul line. Johnson has scored at least 14 points in all four games for SRU this year, including a 28-point career-high at Salem. Johnson comes into the weekend ranked eighth in the PSAC in scoring and 10th in field goal percentage.

ONE AND ONLY

Freshman forward **Anyah Curd** is the only freshman in the PSAC West to average at least 6.0 points (6.5), 5.0 rebounds (5.8) and 1.0 blocks (1.5) per game over the early stages of the season. Overall, Curd heads into the weekend ranked fourth in the PSAC in both total blocks (six) and blocks per game (1.5).

WELCOME BACK

After missing the first two games of the season, **LeeAnn Gibson** returned to play in The Rock's last two games and her impact has been noticeable.

Slippery Rock was out-rebounded 79-62 (-17) in its first two games. However, with Gibson in the lineup SRU has held a combined 89-78 (+11) edge in rebounding over the last two games. In two games this season, Gibson has averaged 10.0 rebounds per game to go with 9.0

19 STRAIGHT FREE THROWS FOR HINDERLITER

As part of her 19-point performance against Salem, Brooke Hinderliter went 11-for-11 at the foul line to increase her consecutive made free throw streak to 19. This recent run of made free throws marks the third time in her career that she has made at least 19 straight free throws with her career-best being 27 in 2017-18. The program record for consecutive free throws made is 31 by Kory Fielitz in 1993-94.

9 ASSISTS FOR QUICK

Daeja Quick dished out a career-high nine assists at Salem to go with 13 points and five rebounds. Quick's assist total was the highest by a Rock player since Lexi Carpenter had 11 assists vs. Pitt-Johnstown on Jan. 18,, 2017. As The Rock's top point guard, Quick has averaged 13.0 points, 4.0 assists and 3.3 rebounds per game this year.

ROUNDING OUT THE ROTATION

The rest of The Rock's primary eight-player rotation consists of **Karington Ketterer**, **Olivia Fusaro** and **Kasch Harris**. Ketterer has started all four games, averaging 5.3 points and 4.3 rebounds. After playing sparingly as a freshman, Fusaro has averaged 15.3 minutes per game while scoring 5.5 points and grabbing 1.3 rebounds per game. Harris is SRU's backup point guard who has made just three turnovers this year.

SCOUTING SHIPPENSBURG

The Raiders are off to a 2-2 start to the year with wins over Wheeling (88-58) and Frostburg (80-68) and losses to West Virginia Wesleyan (67-64) and Lincoln (85-69). Shippensburg ranks third in the PSAC in both rebounding (44.8) and rebounding margin (+11.8).

Much like The Rock's Brooke Hinderliter, Ariel Jones is one of the top players in the region. Through four games, Jones has averaged 23.8 points, 2.5 rebounds, 2.0 steals and 1.8 assists per game while shooting 44.8 percent from the field.

Destiny Jefferson is the Raiders' second-leading scorer at 14.8 points per game. Jefferson has also passed out a team-best 4.8 assists per game. Inside, Aunbrielle Green nearly averages a double-double at 8.8 points, 9.0 rebounds and 1.3 blocks per game.

SCOUTING LOCK HAVEN

Lock Haven, which plays at Cal U. on Saturday, enters the weekend with a 2-2 overall record. After losing its first two games of the year, LHU has rebounded with consecutive wins over Nyack (88-75) and PSU Altoona (82-49).

Defensively, the Bald Eagles are holding opponents to just a 37.8 field goal percentage. With 50.3 rebounds per game, Lock Haven is the top rebounding team in the PSAC. However, LHU does have a tendency to commit turnovers as evidenced by its 21.5 turnovers per game, the second-highest average in the PSAC.

Four players average at least 10 points per game for Lock Haven in Ahnera Parker (18.0), Marena Lonardi (15.5), Rieligh Devine (13.0) and Jaynelle Robinson (12.3). Robinson also averages a PSAC-best 13.8 rebounds per game.

RECORDS WATCH

With virtually her entire senior season still in front of her, **Brooke Hinderliter**'s name is littered throughout The Rock's career record book. She comes into the weekend ranked second in program history in free throws made (347), third in offensive rebounds (197), 12th in points scored (1,262), 10th in minutes played (2,535), 18th in total rebounds (480), 18th in steals (101) and 24th in assists (165).

LeeAnn Gibson ranks seventh in program history in offensive rebounds (152), 22nd in career foul shots made (151), 22nd in defensive rebounds (197) and 25th in minutes played (1,721).

Madison Johnson is tied with Gibson in made free throws with 151.

REMARKABLE TURNAROUND

Slippery Rock has won 57 games in five years under head coach McGraw. It took The Rock nine seasons to reach just 63 victories prior to McGraw's arrival. More impressive than SRU's overall win turnaround under McGraw has been its performance in league games. The Rock has won 41 PSAC contests in McGraw's five-year tenure. Comparatively, it took the program 12 years prior to McGraw's arrival to compile 41 league victories. The Rock's +23 conference-win total in McGraw's first five seasons (41) compared to the five-year total immediately preceding his arrival (13) ranks fourth in the PSAC behind only East Stroudsburg (+32), Cal U (+30) and Indiana (+29).

TOUGH NON-CONFERENCE SLATE

As has always been the case under head coach Bobby McGraw, The Rock will once again play a tough non-conference schedule this season. Slippery Rock's six non-league opponents combined for a .509 (88-83) winning percentage a year ago, the fourth highest among the nine PSAC West teams.

#-Team	Combined Non-Conference Opponent Winning %
1-Mercyhurst	.610 (111-71)
2-California	.588 (107-75)
3-Edinboro	.532 (57-50)
4-Slippery Rock	.509 (88-83)
5-Seton Hill	.508 (82-80)
6-Gannon	.474 (82-91)
7-Indiana	.452 (76-92)
8-Clarion	.378 (65-107)
9-Pitt-Johnstown	.337 (55-108)

GAMES PLAYED / GAMES STARTED / CONSEC. STARTS

NAME	GP	GS	Career GP	Career Starts	Consec. Starts
Hinderliter	4	4	88	87	79
Quick%	4	4	60	53	17
Johnson^	4	4	81	35	6
Ketterer*	4	4	67	6	4
L. Gibson	2	2	77	44	2
Andrews	4	0	30	0	-
Harris	4	0	29	5	-
Fusaro	4	0	24	0	-
Grandy#	1	0	17	0	-
Curd	4	2	4	2	-
C. Gibson	2	0	2	0	-
Frabotta	2	0	2	0	-
DeSalve	2	0	2	0	-
Weber	2	0	2	0	-
Sydnor-Crooks	0	0	0	0	-

^ Johnson played in 22 games at St. Francis in 2015-16

% Quick played in 28 games (26 starts) at UDC in 2017-18

* Ketterer played 35 games for Pitt-Johnstown from 2016-18

Grandy played 16 games for Carlow in 2018-19

BEST ALL-AROUND PLAYER IN THE REGION?

Brooke Hinderliter enters her senior season as one of the top all-around players in the Atlantic Region. Coming into the season she is the only active player among all athletes from the PSAC, CIAA and MEC to have recorded at least 1,200 points, 400 rebounds, 150 assists and 100 steals over her career.

NAME	School	Points	Reb.	Steals	Assists
Brooke Hinderliter	Slippery Rock	1,262	480	101	165
Sylvia Hudson	Urbana	1,344	441	115	90
Seina Adachi	Notre Dame	1,390	297	197	220
Michaela Barnes	Edinboro	1,315	271	97	195
Ariel Jones	Shippensburg	1,394	246	117	163

NCAA ACTIVE FREE THROW PERCENTAGE LEADERS

Through the first 88 games of her career, Brooke Hinderliter ranks 10th among all active players in the NCAA, regardless of division, in career free throw shooting percentage at .838 (347-for-414).

#-Player (School)	Free Throw Percentage
1-Monica Burns (Cal U / DII)	.918 (302-329)
2-Rebekah Hand (Marist / DI)	.891 (318-357)
3-Breanna Wright (Abilene Christian / DI)	.852 (259-304)
4-Hanna Crymble (Vermont / DI)	.849 (315-371)
5-Jodi Johnson (Ashland / DII)	.849 (438-516)
t6-Hannah Frazier (Wheaton / DIII)	.845 (257-304)
t6-Kenya Earl (Lawrence / DIII)	.845 (289-342)
8-Maddie Capuano (Moravian / DIII)	.841 (329-391)
9-Sabrina Ionescu (Oregon / DI)	.839 (349-416)
t10-Brooke Hinderliter (Slippery Rock / DII)	.838 (347-414)
t10-Jarrellyn McCall (Knox / DIII)	.838 (275-328)
11-Courtney Woods (Syracuse / DI)	.837 (283-338)
12-Michaela Barnes (Edinboro / DII)	.831 (320-385)

DIVISION II ACTIVE SCORING LEADERS

Brooke Hinderliter begins the season ranked 19th among all NCAA Division II athletes in career points scored with 1,262.

#-Player (School)	Points
1-Jodi Johnson (Ashland)	1,720
2-Hailey Diestelkamp (Drury)	1,685
3-Emily Miller (Roberts Wesleyan)	1,506
4-Karen Donehew (North Greenville)	1,505
5-Mackenzie Hailey (Tarleton)	1,462
6-Alexy Mollenhauer (Anderson)	1,449
7-Kallie Bildner (Lindenwood)	1,420
8-Seina Adachi (Notre Dame)	1,390
9-Mckayla Roberts (Le Moyne)	1,378
10-Ariel Jones (Shippensburg)	1,373
11-Sylvia Hudson (Urbana)	1,344
12-Jada Smith (Union)	1,330
13-Pink Jones (Henderson State)	1,321
14-Michaela Barnes (Edinboro)	1,315
15-Jessica Harris (Lander)	1,275
16-Tiffany Valentine (Spring Hill)	1,273
t17-Shareka McNeill (Virginia Union)	1,270
t17-Tyra Aska (Southwestern Okla.)	1,270
19-Brooke Hinderliter (Slippery Rock)	1,262
20-Alyssa Williams (Jefferson)	1,260
t21-Cassidy Boensch (Grand Valley State)	1,258
t21-Kaely Hummel (Sioux Falls)	1,258
23-Cassie Askvig (Mary)	1,255

UP NEXT

Slippery Rock will embark on a four-game road trip that runs 38 days starting Nov. 30 at Tiffin.

AROUND THE PSAC

PSAC WEST	PSAC	PCT.	OVR	PCT.	STREAK
Cal U	0-0	0.000	5-0	1.000	W5
Seton Hill	0-0	0.000	3-0	1.000	W3
Pitt-Johnstown	0-0	0.000	4-1	0.800	W2
Gannon	0-0	0.000	3-1	0.750	W2
IUP	0-0	0.000	3-1	0.750	W1
Slippery Rock	0-0	0.000	2-2	0.500	W1
Edinboro	0-0	0.000	1-1	0.500	L1
Clarion	0-0	0.000	1-3	0.250	W1
Mercyhurst	0-0	0.000	0-4	0.000	L4
PSAC EAST	PSAC	PCT.	OVR	PCT.	STREAK
Shepherd	0-0	0.000	5-0	1.000	W5
E. Stroudsburg	0-0	0.000	2-1	0.667	W1
Bloomsburg	0-0	0.000	1-1	0.500	W1
Lock Haven	0-0	0.000	2-2	0.500	W2
Mansfield	0-0	0.000	2-2	0.500	L1
Shippensburg	0-0	0.000	2-2	0.500	L2
West Chester	0-0	0.000	2-3	0.400	L2
Millersville	0-0	0.000	1-2	0.333	W1
Kutztown	0-0	0.000	1-3	0.250	W1

UPCOMING GAMES

SATURDAY, NOVEMBER 23

Shippensburg at SLIPPERY ROCK (1 p.m.)

West Chester at Gannon (1 p.m.)
 Shepherd at Edinboro (1 p.m.)
 Kutztown at Clarion (1 p.m.)
 Lock Haven at Cal U (1 p.m.)
 East Stroudsburg at Pitt-Johnstown (1 p.m.)
 Millersville at Mercyhurst (1 p.m.)
 Mansfield at Seton Hill (1 p.m.)
 Bloomsburg at Indiana (5:30 p.m.)

SUNDAY, NOVEMBER 24

Lock Haven at SLIPPERY ROCK (1 p.m.)

Bloomsburg at Seton Hill (1 p.m.)
 Shippensburg at Edinboro (1 p.m.)
 Millersville at Gannon (1 p.m.)
 Mansfield at California (1 p.m.)
 West Chester at Clarion (1 p.m.)
 Shepherd at Mercyhurst (1 p.m.)
 Kutztown at Pitt-Johnstown (1 p.m.)
 East Stroudsburg at Indiana (5:30 p.m.)

TUESDAY, NOVEMBER 26

Chestnut Hill at East Stroudsburg (5 p.m.)
 Holy Family at Bloomsburg (5:30 p.m.)
 Shippensburg at Jefferson (6 p.m.)

WEDNESDAY, NOVEMBER 27

Pitt-Johnstown at Robert Morris (10 a.m.)
 Malone at Clarion (1 p.m.)
 Ursuline at Mercyhurst (2 p.m.)
 Indiana at Salem (3 p.m.)

SATURDAY, NOVEMBER 30

SLIPPERY ROCK at Tiffin (1 p.m.)

PSU Lehigh Valley at Kutztown (1 p.m.)
 Gannon at Bowie State (2 p.m.)

SUNDAY, DECEMBER 1

Jefferson at East Stroudsburg (1 p.m.)
 Holy Family at Shippensburg (2 p.m.)
 Frostburg State at Seton Hill (4 p.m.)

SLIPPERY ROCK HIGHS

1 MADISON JOHNSON

SEASON-HIGHS

Points 28 at Salem
 3PM 2 at Salem
 FTM 8 (2x)
 Reb. 10 at Salem
 Assists..... 3 at Salem
 Steals..... 1 at Bowie State
 Blocks 1 at Salem

CAREER-HIGHS

Points 28 at Salem
 3PM 4 vs Shipp.(17-18)
 FTM 11 vs Walsh (17-18)
 Rebounds 13 at Clarion (18-19)
 Assists..... 7 at Clarion (17-18)
 Steals..... 4 at VSU (17-18)
 Blocks 3 vs UPJ (18-19)

2 DAEJA QUICK

SEASON-HIGHS

Points 19 vs Elizabeth City
 3PM 2 (2x)
 FTM 9 at Salem
 Reb. 5 at Salem
 Assists..... 9 at Salem
 Steals..... 1 (2x)
 Blocks 1 at Salem

CAREER-HIGHS

Points 23 (2x)
 3PM 3 at Walsh (19-20)
 FTM 9 at Salem (19-20)
 Rebounds 7 (2x)
 Assists..... 9 at Salem (19-20)
 Steals..... 1 (2x)
 Blocks 1 (4x)

3 KASCH HARRIS

SEASON-HIGHS

Points 3 vs Elizabeth City
 3PM 1 vs Elizabeth City
 FTM N/A
 Reb. 1 (2x)
 Assists..... 1 at Salem
 Steals..... N/A
 Blocks N/A

CAREER-HIGHS

Points 8 vs Johnson Smith
 3PM 2 vs Clarion
 FTM 6 vs Lock Haven
 Rebounds 5 vs Johnson Smith
 Assists..... 3 vs Johnson Smith
 Steals..... 2 vs Bowie State
 Blocks N/A

4 EMILY GRANDY

SEASON-HIGHS

Points N/A
 3PM N/A
 FTM N/A
 Reb. N/A
 Assists..... N/A
 Steals..... N/A
 Blocks N/A

CAREER-HIGHS

Points N/A
 3PM N/A
 FTM N/A
 Reb. N/A
 Assists..... N/A
 Steals..... N/A
 Blocks N/A

5 CAROLINE GIBSON

SEASON-HIGHS

Points 2 vs Johnson C Smith
 3PM N/A
 FTM 2 vs Johnson C Smith
 Reb. N/A
 Assists..... N/A
 Steals..... N/A
 Blocks N/A

CAREER-HIGHS

Points... 2 vs Johnson C Smith (19-20)
 3PM N/A
 FTM... 2 vs Johnson C Smith (19-20)
 Reb. N/A
 Assists..... N/A
 Steals..... N/A
 Blocks N/A

10 LINDSAY FRABOTTA

SEASON-HIGHS

Points N/A
 3PM N/A
 FTM N/A
 Reb. N/A
 Assists..... N/A
 Steals..... N/A
 Blocks N/A

CAREER-HIGHS

Points N/A
 3PM N/A
 FTM N/A
 Reb. N/A
 Assists..... N/A
 Steals..... N/A
 Blocks N/A

11 OLIVIA FUSARO

SEASON-HIGHS

Points 13 at Salem
 3PM 2 (2x)
 FTM 5 at Salem
 Reb. 3 at Salem
 Assists..... 1 at Salem
 Steals..... 2 vs Elizabeth City
 Blocks N/A

CAREER-HIGHS

Points 15 at Indiana (18-19)
 3PM 2 (2x)
 FTM (2x)
 Rebounds 5 at Indiana (18-19)
 Assists..... 2 vs Mansfield (18-19)
 Steals..... 3 vs Salem (18-19)
 Blocks 1 (2x)

12 CHELSEA DESALVE

SEASON-HIGHS

Points N/A
 3PM N/A
 FTM N/A
 Reb. N/A
 Assists..... N/A
 Steals..... N/A
 Blocks N/A

CAREER-HIGHS

Points N/A
 3PM N/A
 FTM N/A
 Reb. N/A
 Assists..... N/A
 Steals..... N/A
 Blocks N/A

SLIPPERY ROCK HIGHS

20 LEEANN GIBSON

SEASON-HIGHS	CAREER-HIGHS
Points 14 at Salem	Points 14 at Salem
3PM N/A	3PM N/A
FTM 4 at Salem	FTM 5 (6x)
Reb. 13 at Bowie State	Reb. 13 at Bowie State (19-20)
Assists..... 1 at Salem	Assists..... 4 vs Mansfield (17-18)
Steals..... 1 at Bowie State	Steals..... 3 at Ashland (16-17)
Blocks N/A	Blocks 2 vs Mansfield (17-18)

22 BRITTANY ANDREWS

SEASON-HIGHS	CAREER-HIGHS
Points 3 at Salem	Points 6 (3x)
3PM N/A	3PM N/A
FTM 3 at Salem	FTM 3 at Salem (19-20)
Reb. 2 at Salem	Rebounds 6 vs Salem (18-19)
Assists..... 1 at Salem	Assists..... 1 (4x)
Steals..... 1 vs Elizabeth City	Steals..... 2 vs Bowie State (18-19)
Blocks N/A	Blocks 1 (3x)

24 KARINGTON KETTERER

SEASON-HIGHS	CAREER-HIGHS
Points 10 at Salem	Points 10 at Salem (19-20)
3PM N/A	3PM N/A
FTM 4 at Salem	FTM 5 at Clarion (18-19)
Reb. 5 vs Johnson C. Smith	Rebounds . 9 vs. Edinboro (18-19)
Assists..... 1 (2x)	Assists..... 2 (2x)
Steals..... 1 at Salem	Steals.. 3 vs Elizabeth City (18-19)
Blocks 1 at Salem	Blocks 2 (3x)

34 CAROL WEBER

SEASON-HIGHS	CAREER-HIGHS
Points 2 vs. Johnson C. Smith	Points 2 vs. JCS (19-20)
3PM N/A	3PM N/A
FTM N/A	FTM N/A
Reb. N/A	Reb. N/A
Assists..... N/A	Assists..... N/A
Steals..... N/A	Steals..... N/A
Blocks N/A	Blocks N/A

SINGLE-GAME HIGHS

Points 28-Madison Johnson (Nov. 20 at Salem)
Field Goals Made 9-Madison Johnson (Nov. 20 at Salem)
Field Goals Att..... 15-Brooke Hinderliter (Twice)
Field Goal Pct. 750 (9-12)-Madison Johnson (Nov. 20 at Salem)
3-Pointers Made 2-Six Times
3-Pointers Attempted 6-Two Times
3-Point Field Goal Pct. 1.000 (2-2)-Madison Johnson (Nov. 20 at Salem)
Free Throws Made 11-Brooke Hinderliter (Nov. 20 at Salem)
Free Throws Att. 11-(Two Times)
Free Throw Pct. 1.000 (11-11)-Brooke Hinderliter (Nov. 20 at Salem)
Rebounds 13-LeeAnn Gibson (Nov. 15 at Bowie State)
Offensive Rebounds..... 4-Three Times
Defensive Rebounds 9-LeeAnn Gibson (Nov. 15 at Bowie State)
Assists 9-Daeja Quick (Nov. 20 at Salem)
Steals..... 2-Three Times
Blocks 3-Anyah Curd (Nov. 15 at Bowie State)
Minutes Played 38-Karington Ketterer (Nov. 9 vs. Elizabeth City)

21 NYLLA SYDNOR-CROOKS

SEASON-HIGHS	CAREER-HIGHS
Points N/A	Points N/A
3PM N/A	3PM N/A
FTM N/A	FTM N/A
Reb. N/A	Reb. N/A
Assists..... N/A	Assists..... N/A
Steals..... N/A	Steals..... N/A
Blocks N/A	Blocks N/A

23 BROOKE HINDERLITER

SEASON-HIGHS	CAREER-HIGHS
Points 19 at Salem	Points 33 vs ESU (18-19)
3PM N/A	3PM 3 vs Wayne State (18-19)
FTM 11 at Salem	FTM 13 vs California (18-19)
Reb. 6 vs Elizabeth City	Rebounds 11 (2x)
Assists..... 2 at Bowie State	Assists..... 6 (2x)
Steals..... 2 at Bowie State	Steals..... 4 (3x)
Blocks N/A	Blocks 2 at California (17-18)

30 ANYAH CURD

SEASON-HIGHS	CAREER-HIGHS
Points 11 vs Elizabeth City	Points ... 11 vs Elizabeth City (19-20)
3PM 2 vs Elizabeth City	3PM 2 vs Elizabeth City (19-20)
FTM 3 vs Elizabeth City	FTM 3 vs Elizabeth City (19-20)
Reb. 9 (2x)	Reb. 9 (2x)
Assists..... 2 vs Elizabeth City	Assists.. 2 vs Elizabeth City (19-20)
Steals..... 1 (3x)	Steals 1 (3x)
Blocks 3 at Bowie State	Blocks 2 at Bowie State (19-20)

CAREER POINTS / REBOUNDS

Brooke Hinderliter 1,262 points / 480 rebounds
Madison Johnson 562 points / 251 rebounds
LeeAnn Gibson 463 points / 349 rebounds
Daeja Quick 293 points / 109 rebounds
Karington Ketterer 87 points / 82 rebounds
Kasch Harris 55 points / 35 rebounds
Brittany Andrews..... 55 points / 50 rebounds
Olivia Fusaro 68 points / 31 rebounds
Anyah Curd..... 26 points / 23 rebounds
Caroline Gibson 2 points / 0 rebounds
Carol Weber 2 points / 0 rebounds
Nylla Crooks 0 points / 0 rebounds
Chelsea DeSalve 0 points / 0 rebounds
Lindsay Frabotta 0 points / 0 rebounds
Emily Grandy 0 points / 0 rebounds

SLIPPERY ROCK'S RECORD IN...

Games Decided by 1-5 Points.....	2-0
Games Decided by 6-10 Points.....	0-1
Games Decided by 11+ Points.....	0-1
Overtime Games	0-0
Losing at Halftime.....	1-2
Leading / Tied at Halftime	1-0
SRU Shoots Above 40% From The Field	2-1
SRU Shoots Below 40% From The Field	0-1
SRU Makes At Least 7 3-Pointers.....	1-0
SRU Makes Fewer Than 7 3-Pointers.....	1-2
SRU Outrebounds Opponent	1-1
SRU Outrebounded By Opponent	1-1
Rebounds Are Equal	0-0
SRU Commits Fewer Turnovers than Opponent	1-0
SRU Commits More Turnovers than Opponent	1-2
Turnovers Are Equal	0-0
Games in November	2-2
Games in December	0-0
Games in January	0-0
Games in February.....	0-0
Games SRU Scores 59 Or Fewer Points.....	0-2
Games SRU Scores 60-69 Points.....	0-0
Games SRU Scores 70-79 Points.....	1-0
Games SRU Scores 80-89 Points.....	0-0
Games SRU Scores 90+ Points	1-0
Games Opponent Scores 59 Or Fewer Points	0-1
Games Opponent Scores 60-69 Points	0-0
Games Opponent Scores 70-79 Points	1-1
Games Opponent Scores 80-89 Points	0-0
Games Opponent Scores 90+ Points	1-0

SEASON LEADERS

Points	Madison Johnson (72), Brooke Hinderliter (61)
PPG*	Madison Johnson (18.0), Brooke Hinderliter (15.3)
FG%	Madison Johnson (52.3%), Daeja Quick (41.5%)
Field Goals*	Brooke Hinderliter (6.0), Daeja Quick (5.5)
3-Pointers.....	Daeja Quick (4), Anyah Curd (3)
3FG%	Daeja Quick (36.4%), Olivia Fusaro (33.3%)
FT%	Brooke Hinderliter (96.2%), Madison Johnson (78.6%)
RPG*	LeeAnn Gibosn (10.0), Madison Johnson (6.0)
ORPG*	Madison Johnson (2.3), Karington Ketterer (1.8)
DRPG*	Anyah Curd (4.8), Madison Johnson (3.8)
Assists*	Daeja Quick (4.0)
Steals*	Olivia Fusaro (1.3)
Blocks	Anyah Curd (6)
Minutes*	Madison Johnson (32.0), Daeja Quick (31.5)

* Per game averages

SINGLE-SEASON FREE THROW SHOOTING % AT SRU

A staple for The Rock under fifth-year head coach Bobby McGraw has been its exemplary free throw shooting. Four of the top-10 single-season team free throw shooting percentages have happened on McGraw's watch.

#-Season (Coach)	Shooting Percentage
1-1997-98 (Darcie Vincent)774 (429-554)
2-2015-16 (Bobby McGraw)770 (404-525)
3-2001-02 (Laurel Heilman).....	.748 (324-433)
4-2016-17 (Bobby McGraw)747 (440-589)
5-2017-18 (Bobby McGraw)739 (391-529)
6-1990-91 (Cheryl Kennedy).....	.733 (484-660)
7-1999-00 (Darcie Vincent)732 (431-589)
8-2002-03 (Laurel Heilman).....	.725 (306-422)
9-2014-15 (Bobby McGraw)721 (391-542)
10-1991-92 (Cheryl Kennedy).....	.721 (411-570)

THE LAST TIME SLIPPERY ROCK...

Scored 100 or more points:

Nov. 20, 2019 at Salem (108)

Scored 40 or fewer points:

Feb. 5, 2014 at Gannon (39)

Won by 30 points:

Jan. 22, 2019 at Mansfield (70-39)

Shot 55% from the floor:

Feb. 26, 2018 at California (59.2%, 29-for-49)

Shot 50% from 3-FG (Min. 10 att.):

Jan. 18, 2018 vs. Pitt-Johnstown (50.0%, 7-for-14)

Made 10 3-pointers:

Jan. 13, 2018 vs. Mansfield (12)

Made 14 3-pointers:

Nov. 10, 2012 vs. Urbana (14)

Shot 85% from the foul line (Min. 10 made):

Nov. 15, 2019 at Bowie State (100%, 10-for-10)

Had 50 rebounds:

Nov. 20, 2017 at Kutztown (57)

Had 20 offensive rebounds:

Feb. 27, 2019 vs. Salem (20)

Had 20 assists:

Feb. 27, 2019 vs. Salem (21)

Forced 20 turnovers:

Feb. 2, 2019 vs. California (20)

Committed five or less turnovers:

Dec. 4, 2008 vs. Salem International (5)

Scored 50 points in a half:

Nov. 20, 2019 at Salem (56 / Second Half)

Played in a overtime game

Jan. 23, 2016 at Gannon (W, 72-65)

SPECIALTY STATISTICS (SRU-OPPONENT)

Opponent	Final	Bench	POT	2nd	Fast Break
Johnson Smith (L)	52-76	Not Kept	Not Kept	Not Kept	Not Kept
Elizabeth City (W)	76-75	9-11	13-16	10-5	2-0
Bowie (L)	50-58	7-9	8-22	10-14	0-2
Salem (W)	108-105	34-27	22-19	13-16	10-0
Shippensburg	-	-	-	-	-
Lock Haven	-	-	-	-	-
Tiffin	-	-	-	-	-
Shepherd	-	-	-	-	-
Notre Dame	-	-	-	-	-
Kutztown	-	-	-	-	-
West Chester	-	-	-	-	-
Clarion	-	-	-	-	-
California	-	-	-	-	-
Indiana	-	-	-	-	-
Seton Hill	-	-	-	-	-
Millersville	-	-	-	-	-
Pitt-Johnstown	-	-	-	-	-
Mercyhurst	-	-	-	-	-
Edinboro	-	-	-	-	-
Gannon	-	-	-	-	-
California	-	-	-	-	-
Clarion	-	-	-	-	-
Indiana	-	-	-	-	-
Pitt-Johnstown	-	-	-	-	-
Seton Hill	-	-	-	-	-
Gannon	-	-	-	-	-
Edinboro	-	-	-	-	-
Mercyhurst	-	-	-	-	-
TOTALS	286-314	50-47	43-57	33-35	12-2

SLIPPERY ROCK PROGRAM RECORDS

CAREER POINTS LEADERS

1-Heather Kearney (95 Games : 1995-99).....	1,760
2-Kory Fielitz (104 Games : 1990-94).....	1,694
3-Lori Robinson (102 Games : 1993-96, 97-98).....	1,479
4-Shelbey Wardman (101 Games : 1998-02).....	1,461
5-Jackie Altenweg (108 Games : 1998-02).....	1,449
6-Beth Dansberger (106 Games : 1992-96).....	1,343
7-Stacey Green (105 Games : 2001-05).....	1,329
8-Melissa McKavish (110 Games : 1999-03).....	1,318
9-D'Asia Chambers (96 Games : 2011-15).....	1,313
10-Jodi Kest (94 Games : 1980-84).....	1,289
11-Pam Andersen (100 Games : 1992-96).....	1,275
12-Brooke Hinderliter (88 Games : 2016-Still Active).....	1,262
13-Diane Walker (53 Games : 1984-86).....	1,163
14-Amanda Nero (106 Games : 2005-09).....	929
15-Erin Frankovich (107 Games : 2001-05).....	904
16-Ciara Patterson (67 Games : 2015-19).....	902
17-Becky Siembak (57 Games : 1999-01).....	880
18-Kristen Danihy (104 Games : 1987-91).....	873
19-Annette Bergman (105 Games : 1989-93).....	872
t20-Lexi Carpenter (47 Games : 2015-17).....	855
t20-Kristen Bonner (105 Games : 2002-06).....	855
22-Julie Molloy (75 Games : 2007-10).....	827
t23-Ranee Aggers (105 Games : 1990-95).....	822
t23-Amy Neuhouser (54 Games : 1990-92).....	822
25-Erica Aiello (106 Games : 2012-16).....	805
26-Judy Guess (54 Games : 1990-92).....	796
27-Kim Sabol (80 Games : 1985-89).....	780
28-Morgan Henderson (112 Games : 2015-19).....	763
29-Nikki Presto (95 Games : 2006-10).....	760
30-Kelly Kirkendall (95 Games : 1981-85).....	753
31-Robin Blalock (52 Games : 1987-90).....	694
32-Dawn Marple (105 Games : 1989-93).....	672

CAREER STARTS

1-Amber McFeely (108 Games : 2002-06).....	103
t2-Beth Dansberger (106 Games : 1992-96).....	101
t2-Jackie Altenweg (108 Games : 1998-02).....	101
t2-Stacey Green (105 Games : 2001-05).....	101
5-Shelbey Wardman (101 Games : 1998-02).....	100
6-Erin Frankovich (107 Games : 2001-05).....	97
7-Heather Kearney (95 Games : 1995-99).....	95
8-Nikki Presto (95 Games : 2006-10).....	92
t9-Annette Bergman (105 Games : 1989-93).....	89
t9-Kory Fielitz (104 Games : 1990-94).....	89
11-Brooke Hinderliter (88 Games : 2016-Still Active).....	87
12-Erica Aiello (106 Games : 2012-16).....	86
t13-Lori Robinson (102 Games : 1993-96, 97-98).....	85
t13-Morgan Henderson (112 Games : 2015-19).....	85
15-Kristen Bonner (105 Games : 2002-06).....	82
16-D'Asia Chambers (96 Games : 2011-15).....	78

CAREER FREE THROWS MADE

1-Heather Kearney (95 Games : 1995-99).....	460
2-Brooke Hinderliter (88 Games : 2016-Still Active).....	347
3-Melissa McKavish (110 Games : 1999-03).....	308
4-Kory Fielitz (104 Games : 1990-94).....	289
5-Lori Robinson (102 Games : 1993-96, 97-98).....	276
6-Jackie Altenweg (108 Games : 1998-02).....	262
7-Shelbey Wardman (101 Games : 1998-02).....	261
8-Amy Neuhouser (54 Games : 1990-92).....	243
9-Lexi Carpenter (47 Games : 2015-17).....	237
10-Stacey Green (105 Games : 2001-05).....	236
11-Pam Andersen (100 Games : 1992-96).....	229

CAREER OFFENSIVE REBOUNDS

1-Stacey Green (105 Games : 2001-05).....	274
2-Becky Siembak (57 Games : 1999-01).....	250
3-Brooke Hinderliter (88 Games : 2016-Still Active).....	197
4-Morgan Henderson (112 Games : 2015-19).....	189
5-Tracy Whitling (57 Games : 1999-01).....	168
6-Erin Frankovich (107 Games : 2001-05).....	165
7-LeeAnn Gibson (77 Games : 2016-Still Active).....	152
8-Emilee Vitez (98 Games : 2009-13).....	151
9-Mallory Heinle (109 Games : 2014-18).....	146
10-D'Asia Chambers (96 Games : 2011-15).....	143
11-Megan Hardiman (99 Games : 2012-16).....	132
12-Jessica Schake (77 Games : 2005-09).....	129
13-Melissa McKavish (110 Games : 1999-03).....	124

CAREER REBOUNDS

1-Kory Fielitz (104 Games : 1990-94).....	961
2-Heather Kearney (95 Games : 1995-99).....	949
3-Stacey Green (105 Games : 2001-05).....	938
4-Lori Robinson (102 Games : 1993-96, 97-98).....	740
5-D'Asia Chambers (96 Games : 2011-15).....	723
6-Pam Andersen (100 Games : 1992-96).....	664
7-Morgan Henderson (112 Games : 2015-19).....	630
8-Diane Walker (53 Games : 1984-86).....	600
9-Erin Frankovich (107 Games : 2001-05).....	599
10-Beth Dansberger (106 Games : 1992-96).....	575
11-Becky Siembak (57 Games : 1999-01).....	552
12-Jodi Kest (94 Games : 1980-84).....	540
13-Jackie Collins (73 Games : 1979-83).....	529
14-Kristen Danihy (104 Games : 1987-91).....	522
15-Viola Bournes (47 Games : 1986-88).....	519
16-Kelly Kirkendall (95 Games : 1981-85).....	504
17-Tracy Whitling (57 Games : 1999-01).....	493
18-Brooke Hinderliter (88 Games : 2016-Still Active).....	480
19-Melissa McKavish (110 Games : 1999-03).....	477
20-Mallory Heinle (109 Games : 2014-18).....	470

CAREER MINUTES PLAYED

6-Jackie Altenweg (108 Games : 1998-02).....	2,705
7-Shelbey Wardman (101 Games : 1998-02).....	2,702
8-Morgan Henderson (112 Games : 2015-19).....	2,628
9-D'Asia Chambers (96 Games : 2011-15).....	2,536
10-Brooke Hinderliter (88 Games : 2016-Still Active).....	2,535
11-Kristen Bonner (105 Games : 2002-06).....	2,496
12-Amanda Nero (106 Games : 2005-09).....	2,482

500 POINTS / 500 REBOUNDS IN A CAREER AT THE ROCK

1-Jodi Kest (94 Games : 1980-84).....	1,289 Points / 540 Rebounds
2-Kelly Kirkendall (95 Games : 1981-85).....	753 Points / 504 Rebounds
3-Diane Walker (53 Games : 1984-86).....	1,163 Points / 600 Rebounds
4-Viola Bournes (47 Games : 1986-88).....	541 Points / 519 Rebounds
5-Kristen Danihy (104 Games : 1987-91).....	873 Points / 522 Rebounds
6-Kory Fielitz (104 Games : 1990-94).....	1,694 Points / 961 Rebounds
7-Beth Dansberger (106 Games : 1992-96).....	1,343 Points / 575 Rebounds
8-Pam Andersen (100 Games : 1992-96).....	1,275 Points / 664 Rebounds
9-Lori Robinson (102 Games : 1993-98).....	1,479 Points / 740 Rebounds
10-Heather Kearney (95 Games : 1995-99).....	1,760 Points / 949 Rebounds
11-Becky Siembak (57 Games : 1999-01).....	880 Points / 552 Rebounds
12-Erin Frankovich (107 Games : 2001-05).....	904 Points / 599 Rebounds
13-Stacey Green (105 Games : 2001-05).....	1,329 Points / 938 Rebounds
14-D'Asia Chambers (96 Games : 2011-15).....	1,313 Points / 723 Rebounds
15-Morgan Henderson (112 Games : 2015-19).....	763 Points / 630 Rebounds

UP NEXT

Brooke Hinderliter (88 Games : 2016-SA) 1,262 Points / 480 Rebounds

2019-20 Slippery Rock Women's Basketball
Slippery Rock Combined Team Statistics (as of Nov 21, 2019)
All games



RECORD:	OVERALL	HOME	AWAY	NEUTRAL
ALL GAMES	2-2	0-0	1-1	1-1
CONFERENCE	0-0	0-0	0-0	0-0
NON-CONFERENCE	2-2	0-0	1-1	1-1

#	Player	gp-gs	min	Total		3-Point		F-Throw		Rebounds				pf	dq	a	to	blk	stl	pts	avg	
				fg-fga	fg%	3fg-fga	3fg%	ft-fa	ft%	off	def	tot	avg									
01	JOHNSON, Madison	4-4	128	32.0	23-44	.523	4-6	.667	22-28	.786	9	15	24	6.0	12	1	4	13	1	1	72	18.0
23	HINDERLITER, Brooke	4-4	116	29.0	18-53	.340	0-6	.000	25-26	.962	6	12	18	4.5	12	1	4	12	0	3	61	15.3
02	QUICK, Daeja	4-4	126	31.5	17-41	.415	4-11	.364	14-19	.737	2	11	13	3.3	9	1	16	8	1	2	52	13.0
20	GIBSON, LeeAnn	2-2	51	25.5	7-13	.538	0-0	.000	4-5	.800	6	14	20	10.0	5	0	1	8	0	1	18	9.0
30	CURD, ANYAH	4-2	114	28.5	9-21	.429	3-11	.273	5-6	.833	4	19	23	5.8	5	0	2	7	6	3	26	6.5
11	FUSARO, Olivia	4-0	61	15.3	6-19	.316	5-15	.333	5-6	.833	1	4	5	1.3	6	0	1	3	0	5	22	5.5
24	KETTERER, Karington	4-4	122	30.5	8-13	.615	0-0	.000	5-12	.417	7	10	17	4.3	10	0	2	3	1	1	21	5.3
22	ANDREWS, Brittany	4-0	19	4.8	0-3	.000	0-1	.000	5-6	.833	0	3	3	0.8	4	0	1	2	0	1	5	1.3
03	HARRIS, Kasch	4-0	44	11.0	2-6	.333	1-3	.333	0-0	.000	0	2	2	0.5	11	0	1	3	0	0	5	1.3
05	GIBSON, Caroline	2-0	4	2.0	0-0	.000	0-0	.000	2-2	1.000	0	0	0	0.0	0	0	0	0	0	0	2	1.0
34	WEBER, Carol	2-0	10	5.0	1-3	.333	0-0	.000	0-0	.000	0	0	0	0.0	0	0	0	0	0	0	2	1.0
12	DeSALVE, Chelsea	2-0	1	0.5	0-0	.000	0-0	.000	0-0	.000	0	0	0	0.0	0	0	0	0	0	0	0	0.0
04	GRANDY, Emily	1-0	2	2.0	0-0	.000	0-0	.000	0-0	.000	0	0	0	0.0	0	0	0	0	0	0	0	0.0
10	FRABOTTA, Lindsay	2-0	4	2.0	0-0	.000	0-0	.000	0-0	.000	0	0	0	0.0	0	0	0	0	0	0	0	0.0
Team											9	17	26				3					
Total.....		4	802		91-216	.421	17-53	.321	87-110	.791	44	107	151	37.8	74	3	32	62	9	17	286	71.5
Opponents.....		4	791		108-257	.420	30-83	.361	68-100	.680	64	93	157	39.2	76	2	44	53	6	25	314	78.5

TEAM STATISTICS	ROCK-W	OPP	Date	Opponent	Score	Att.
SCORING	286	314	11/8/19	vs Johnson C. Smith	L 52-76	0
Points per game	71.5	78.5	11/9/19	vs Elizabeth City St.	W 76-75	0
Scoring margin	-7.0	-	11/15/19	at Bowie State	L 50-58	350
FIELD GOALS-ATT	91-216	108-257	11-20-19	at Salem	W 108-105	139
Field goal pct	.421	.420	* - Conference game			
3 POINT FG-ATT	17-53	30-83				
3-point FG pct	.321	.361				
3-pt FG made per game	4.3	7.5				
FREE THROWS-ATT	87-110	68-100				
Free throw pct	.791	.680				
F-Throws made per game	21.8	17.0				
REBOUNDS	151	157				
Rebounds per game	37.8	39.2				
Rebounding margin	-1.5	-				
ASSISTS	32	44				
Assists per game	8.0	11.0				
TURNOVERS	62	53				
Turnovers per game	15.5	13.3				
Turnover margin	-2.2	-				
Assist/turnover ratio	0.5	0.8				
STEALS	17	25				
Steals per game	4.3	6.3				
BLOCKS	9	6				
Blocks per game	2.3	1.5				
ATTENDANCE	0	489				
Home games-Avg/Game	0-0	2-244				
Neutral site-Avg/Game	-	2-0				

Score by Periods	1st	2nd	3rd	4th	Totals
Slippery Rock	54	66	82	84	286
Opponents	60	85	75	94	314