



# RICHMOND WOMEN'S BASKETBALL

## 2022-23 GAME NOTES 3X NCAA TOURNAMENT | 9X WNIT

### GAME 15

## RICHMOND SPIDERS

10-4, 0-0 A-10

HEAD COACH: Aaron Roussel  
RICHMOND RECORD: 54-44 (4th Season)  
OVERALL RECORD: 366-166 (19th Season)



VS



## LOYOLA CHICAGO RAMBLERS

6-8, 1-0 A-10

HEAD COACH: Allison Guth  
LUC RECORD: 6-8 (1st season)  
OVERALL RECORD: 105-82 (7th season)

### GAME INFO

VS: LOYOLA CHICAGO RAMBLERS  
DATE: JAN. 4, 2023  
TIME: 7 PM ET  
LOCATION: CHICAGO, ILL. GENTILE ARENA  
STREAM: ESPN+  
STATS: RICHMONDSPIDERS.COM  
TWITTER: @SPIDERWBBALL

### 2022-23 SCHEDULE/RESULTS

10-4 | A-10: 0-1 | H: 3-2 | A: 4-1 | N: 3-1

NOVEMBER		All Times ET
7	at Liberty	W, 69-48
10	MOUNT ST. MARY'S	W, 87-44
13	at Clemson	L, 41-60
17	at UMBC	W, 64-57
20	HAMPTON	W, 68-65 (OT)
26	vs. Idaho ^	W, 80-49
27	vs. Northern Illinois ^	L, 64-67

DECEMBER		All Times ET
1	at William & Mary	W, 74-62
4	DUKE	L, 100-49
11	LONGWOOD	W, 119-55
15	at Elon	W, 63-51
20	vs. Ball State !	W, 75-73
21	vs. Tarleton State !	W, 55-43
31	GEORGE WASHINGTON *	L, 65-63

JANUARY		All Times ET
4	at Loyola *	7 PM
8	at Davidson *	1 PM
11	VCU *	6 PM
18	at Rhode Island *	6 PM
21	GEORGE MASON *	6 PM
25	at Fordham *	7 PM
29	SAINT JOSEPH'S *	4 PM

FEBRUARY		All Times ET
1	at UMass *	7 PM
4	at Dayton *	12 PM
8	LA SALLE *	6 PM
12	DAVIDSON *	1 PM
15	SAINT LOUIS *	6 PM
18	at Duquesne *	2 PM
22	at VCU *	6 PM
25	ST. BONAVENTURE *	6 PM

MARCH		All Times ET
1-5	Atlantic 10 Championship	TBD

HOME  
\*Atlantic 10 Game  
^ Navy Classic | ! Puerto Rico Classic

### OPENING TIP

- Spiders dropped the final game of the 2022 calendar, 65-63, to George Washington, opening Atlantic 10 Conference action. Addie Budnik collected her fifth-straight double-figure scoring game with 14 points. Grace Townsend also posted 14 points while Sydney Boone chipped in a season-high 10 points, including two three-pointers.

- Richmond ranks second in the Atlantic 10 scoring defense, holding opponents to 60.0 points while sitting in fourth in scoring offense, averaging 69.3 points per game. UR is second in field goal percentage (.436), field goal percentage defense (.372), three point percentage defense (.278), and three-point field goals made (120).

- Grace Townsend is among the top of the league in assists (4th, 61), assists per game (5th, 4.4) and steals per game (10th, 1.85). Addie Budnik is third in total blocks (25), third in blocks per game (1.7), 12th in rebounds per game (6.6) and 12th in total rebounds (93). Siobhan Ryan is third in three pointers (36), second in three-point percentage (40.9) and fourth three-point per game (2.57).

### PREVIOUS GAME STARTERS

1

GRACE TOWNSEND  
G | JR. | 5-5 | MIDLOTHIAN, VA.

PTS	REB	AST	STL	MIN
10.9	5.1	4.4	1.8	30.6

32

SIOBHAN RYAN  
G | JR. | 6-0 | BUFFALO, N.Y.

PTS	REB	AST	STL	MIN
10.5	4.1	2.1	0.4	30.1

25

KATIE HILL  
G | SO. | 6-0 | COLTS NECK, N.J.

PTS	REB	AST	STL	MIN
10.6	4.4	1.0	1.5	28.4

11

CAYLA WILLIAMS  
F | SO. | 6-2 | GAINESVILLE, VA.

PTS	REB	AST	BLK	MIN
2.3	1.8	0.5	0.5	17.6

20

ADDIE BUDNIK  
F | JR. | 6-2 | HIGHLAND PARK, ILL.

PTS	REB	AST	BLK	MIN
14.1	6.6	2.6	1.7	32.4

**ROSTER BY POSITION**

**GUARDS (8)**

Angel Burgos, Grace Townsend, Siobhan Ryan, Kylee Lewandowski, Sydney Boone, Katie Hill, Torin Rogers, Rachel Ullstrom

**FORWARDS (6)**

Addie Budnik, Elaina Chapman, Cayla Williams, Jada Green, Emilija Krista Grava, Maggie Doogan

**ROSTER BY CLASS**

**GRADUATE (1)**

Emilija Krista Grava

**SENIORS (2)**

Angel Burgos, Elaina Chapman

**JUNIORS (4)**

Addie Budnik, Kylee Lewandowski, Siobhan Ryan, Grace Townsend

**SOPHOMORES (3)**

Sydney Boone, Katie Hill, Cayla Williams

**FRESHMEN (4)**

Maggie Doogan, Jada Green, Torin Rogers, Rachel Ullstrom

**ROSTER BY STATE**

**FLORIDA**

Jada Green

**ILLINOIS**

Addie Budnik

**MASSACHUSETTS**

Rachel Ullstrom

**NEW JERSEY**

Katie Hill

**NEW YORK**

Siobhan Ryan

**NORTH CAROLINA**

Torin Rogers

**PENNSYLVANIA**

Kylee Lewandowski, Maggie Doogan

**VIRGINIA**

Grace Townsend, Elaina Chapman, Angel Burgos, Sydney Boone, Cayla Williams

**ROSTER BY COUNTRY**

**LATIVA**

Emilija Krista Grava

**ROSTER BY HEIGHT**

6-3.....Elaina Chapman  
6-2.....Addie Budnik  
6-2.....Maggie Doogan  
6-2.....Emilija Krista Grava  
6-2.....Cayla Williams  
6-1.....Jada Green  
6-1.....Kylee Lewandowski  
6-1.....Torin Rogers  
6-1.....Rachel Ullstrom  
6-0.....Siobhan Ryan  
6-0.....Katie Hill  
5-8.....Angel Burgos  
5-8.....Sydney Boone  
5-5.....Grace Townsend

**2022-23 NUMERICAL ROSTER**

#.....	Name .....	Pos .....	Ht.....	Yr.....	Hometown (HS/Previous School)
1.....	Grace Townsend.....	G.....	5-5.....	Jr.....	Midlothian, Va. (James River)
2.....	Sydney Boone.....	G.....	5-8.....	So.....	Richmond, Va. (Highland Springs)
4.....	Jada Green.....	F.....	6-1.....	Fr.....	Parkland, Fla. (St. Thomas Aquinas)
11.....	Cayla Williams.....	F.....	6-2.....	So.....	Gainesville, Va. (Episcopal)
13.....	Torin Rogers.....	G.....	6-1.....	Fr.....	Brasstown, N.C. (Murphy)
20.....	Addie Budnik.....	F.....	6-2.....	Jr.....	Highland Park, Ill. (Highland Park)
21.....	Kylee Lewandowski.....	G.....	6-1.....	Jr.....	Pittsburgh, Pa. (North Catholic)
22.....	Rachel Ullstrom.....	G.....	6-1.....	Fr.....	Auburn, Mass. (Marianapolis Prep)
24.....	Emilija Krista Grava ..F.....	6-2.....	GS.....		Ligatne, Lativa (Wagner)
25.....	Katie Hill.....	G.....	6-0.....	So.....	Colts Neck, N.J. (Saint John Vianney)
31.....	Elaina Chapman.....	F.....	6-3.....	Sr.....	Richmond, Va. (Trinity Episcopal)
32.....	Siobhan Ryan.....	G.....	6-0.....	Jr.....	Buffalo, N.Y. (Sacred Heart Academy)
41.....	Angel Burgos.....	G.....	5-8.....	Sr.....	Richmond, Va. (Trinity Episcopal)
44.....	Maggie Doogan.....	F.....	6-2.....	Fr.....	Broomall, Pa. (Cardinal O'Hara)

**2022-23 ALPHABETICAL ROSTER**

#.....	Name .....	Pos .....	Ht.....	Yr.....	Hometown (HS)
2.....	Sydney Boone.....	G.....	5-8.....	So.....	Richmond, Va. (Highland Springs)
20.....	Addie Budnik.....	F.....	6-2.....	Jr.....	Highland Park, Ill. (Highland Park)
41.....	Angel Burgos.....	G.....	5-8.....	Sr.....	Richmond, Va. (Trinity Episcopal)
31.....	Elaina Chapman.....	F.....	6-3.....	Jr.....	Richmond, Va. (Trinity Episcopal)
44.....	Maggie Doogan.....	F.....	6-2.....	Fr.....	Broomall, Pa. (Cardinal O'Hara)
4.....	Jada Green.....	F.....	6-1.....	Fr.....	Parkland, Fla. (St. Thomas Aquinas)
25.....	Katie Hill.....	G.....	6-0.....	So.....	Colts Neck, N.J. (Saint John Vianney)
24.....	Emilija Krista Grava ..F.....	6-2.....	GS.....		Ligatne, Lativa (Wagner)
21.....	Kylee Lewandowski.....	G.....	6-1.....	So.....	Pittsburgh, Pa. (North Catholic)
13.....	Torin Rogers.....	G.....	6-1.....	Fr.....	Brasstown, N.C. (Murphy)
32.....	Siobhan Ryan.....	G.....	6-0.....	So.....	Buffalo, N.Y. (Sacred Heart Academy)
1.....	Grace Townsend.....	G.....	5-5.....	So.....	Midlothian, Va. (James River)
22.....	Rachel Ullstrom.....	G.....	6-1.....	Fr.....	Auburn, Mass. (Marianapolis Prep)
11.....	Cayla Williams.....	F.....	6-2.....	So.....	Gainesville, Va. (Episcopal)

**COACHING STAFF**

**HEAD COACH**

Aaron Roussell (Iowa, '01), 4th season

**ASSISTANT COACHES**

Jeanine Radice (Fordham, '89), 4th season

Ka'lia Johnson (Duke, '15), 1st season

Brittany Pinkney (VCU, '08), 4th season

**DIRECTOR OF BASKETBALL OPERATIONS**

Janelle Silver-Martin (Morgan State, '16), 2nd season

**DIRECTOR OF PROGRAM DEVELOPMENT**

John Studer (Illinois, '81), 4th season

**PRONUNCIATION GUIDE**

#20..Budnik .....	(BUD-nick)
#21..Lewandowski.....	(Lew-an-DOW-ski)
#32..Siobhan .....	(Sha-VOHN)
Roussell.....	(Ruh-SELL)
Radice .....	(Rah-DEES)

## UNIVERSITY FACTS

Location .....	University of Richmond, Va.
Founded .....	1830
Enrollment .....	3,147
Nickname .....	Spiders
Colors .....	Red and Blue
President .....	Kevin F. Hallock
Director of Athletics .....	John Hardt
SWA/Associate AD .....	LaRee Sugg
Conference .....	Atlantic 10
Affiliation .....	NCAA Division I
Home Court/Capacity .....	Robins Center/7,201
School Website .....	www.richmond.edu

## TEAM INFORMATION

2021-22 Overall Record .....	16-14
2021-22 A-10 Record .....	7-9
2021-22 A-10 Finish .....	8th
2021-22 Home Record .....	7-7
2021-22 Away Record .....	8-5
2021-22 Neutral Record .....	1-2
Starters Returning/Lost .....	3/2
Letterwinners Returning/Lost .....	8/8
Newcomers .....	4

## RETURNING STAT LEADERS

Points .....	Addie Budnik (13.6)
Rebounds .....	Addie Budnik (5.9)
Assists .....	Grace Townsend (158)
3-Point FG .....	Addie Budnik (43)
3-Point FG% .....	Addie Budnik (.361)
Free Throw % .....	Grace Townsend (.778)
Field Goal % .....	Addie Budnik (.498)
Blocks .....	Addie Budnik (77)
Steals .....	Grace Townsend (37)
Minutes .....	Addie Budnik (33.7)

## ATHLETICS PUBLIC RELATIONS

Public Relations Contact .....	Bridgette Robles
Office Phone .....	(804)287-6455
Cell Phone .....	(417) 818-7379
E-Mail Address .....	brobles@richmond.edu
Richmond Athletics Website .....	richmondspiders.com
Twitter/Instagram .....	@SpiderWBBall
Facebook .....	/RichmondWBB
YouTube .....	/RichmondSpiders
Conference Website .....	www.atlantic10.com



**SPIDER  
BASKETBALL**

## SERIES HISTORY VS LOYOLA CHICAGO

This is the first meeting between the Spiders and the Ramblers. This is the first year of Loyola University Chicago's membership in the Atlantic 10.

## SCOUTING THE RAMBLERS

LUC picked up their opening Atlantic 10 Conference game, defeating Saint Louis 60-47 for a third-straight win. Maya Chandler paces the squad, averaging 12.1 points and 1.4 steals per game. Sam Galanopoulos is the other Rambler averaging double figures (10.1) with 3.1 boards and 2.6 assists per game.

## CENTURY MARK AT ROBINS CENTER

In Richmond's historic 119-55 victory over Longwood (Dec. 11), many women's basketball home records and overall program records fell. The Spiders 119-point output marks a new women's basketball program record of points scored at the Robins Center, eclipsing the 115-point total against American, scored on Jan. 28, 2000. It's also been five seasons since UR has scored 100 points, collecting a 100-63 victory over Savannah State (Nov. 22, 2017). UR's 30 helpers is a new Robins Center women's basketball program record that had stood since 1986 (28 against both UNCW, Feb. 10, and vs Coppin State, Dec. 9). Richmond also reset the program record of made three-pointers with 18, erasing two games of 17 made three-point totals against American (Jan. 28, 200) and Massachusetts (Dec. 28, 1998).

## SPIDERS SWEEP A-10 WEEKLY AWARDS

Addie Budnik and Rachel Ullstrom collected Atlantic 10 Women's Basketball Player of the Week and Rookie of the Week, respectively, Dec. 12. In the Spiders 119-55 victory over Longwood at Robins Center Sunday, Budnik posted her first double-double of the season with 15 points, on 6-of-8 shooting from the field, and 13 rebounds. She also had a season-high four blocks and four assists. This is Budnik's first A-10 Player of the Week honor, after collecting three Rookie of the Week accolades in 2020-21. Ullstrom came off the bench to lead all scorers with a career-high 26 points, with three three-pointers, a career-high seven rebounds and four steals in the Spiders victory.

## BUDNIK BLOCKING PARTY

Addie Budnik currently sits seventh in Division I and 11th over all three NCAA Divisions averaging 2.48 blocks among all active women's basketball student-athletes. She is also 20th in D1 with 151 blocked shots in 51 career games. Budnik finished her sophomore campaign 12th in the country with 77 total blocks and 11th in the country averaging 2.57 blocks-per-game. She was second in the league to Saint Louis' Brooke Flowers. Budnik paced a Spiders squad that tallied 159 total blocks to lead the A-10 and rank 17th nationally and ninth overall with 5.3 blocks per game.

## ROUSSELL CAPTURES MILESTONE

With the Spiders 80-49 victory over Idaho (Nov. 26), Head Coach Aaron Roussell captured his 200th victory at the NCAA Division I level. UR's victory over William & Mary is his 50th victory at the helm of the Spiders in his fourth season.

## PRESEASON EYES ON BUDNIK

Addie Budnik was named to the 2023 Becky Hammon Mid-Major Player of the Year, presented by Her Hoop Stats (10/19). The award was first given out to South Dakota's Ciara Duffy in 2020, while FGCU's Kierstan Bell brought it home in 2021 and 2022. Budnik was also named to the Katrina McClain Award, to honor the best power forward (10/20), as announced by the Naismith Memorial Basketball Hall of Fame and the Women's Basketball Coaches Association. She is one of five non-power five players and the lone A-10 player to appear on the list.

## ATLANTIC 10 2022-23 STANDINGS (GAMES THRU JAN. 3)

Team.....	A-10 .....	Overall
Saint Joseph's.....	1-0.....	11-2
UMass.....	1-0.....	11-3
Rhode Island.....	1-0.....	10-3
Fordham.....	1-0.....	9-5
George Washington.....	1-0.....	9-5
Loyola Chicago.....	1-0.....	6-8
Dayton.....	1-0.....	2-10
Saint Louis.....	1-1.....	5-12
Duquesne.....	0-1.....	10-4
<b>Richmond.....</b>	<b>0-1.....</b>	<b>10-4</b>
La Salle.....	0-1.....	9-7
George Mason.....	0-1.....	7-7
Davidson.....	0-1.....	7-8
VCU.....	0-1.....	3-10
St. Bonaventure.....	0-1.....	3-13

## 2022-23 A-10 PRESEASON AWARDS

### PRESEASON ALL-CONFERENCE FIRST TEAM

Anna DeWolfe, Fordham  
 Kayla Spruill, La Salle  
 Sam Breen, Massachusetts  
 Sydney Taylor, Massachusetts  
**Addie Budnik, Richmond**  
 Sara Te-Biasu, VCU

### PRESEASON ALL-CONFERENCE SECOND TEAM

Elle Sutphin, Davidson  
 Asiah Dingle, Fordham  
 Claire Jacobs, La Salle  
 Destiney Philoxy, Massachusetts  
 Katie Jekot, Saint Joseph's  
 Brooke Flowers, Saint Louis

### PRESEASON ALL-CONFERENCE THIRD TEAM

Tess Myers, Duquesne  
 Mayowa Taiwo, George Washington  
 Tenin Magassa, Rhode Island  
 Emma Squires, Rhode Island  
 Talya Brugler, Saint Joseph's  
 Kyla McMakin, Saint Louis

### PRESEASON ALL-DEFENSIVE TEAM

Megan McConnell, Duquesne  
 Asiah Dingle, Fordham  
 Mayowa Taiwo, George Washington  
 Destiney Philoxy, Massachusetts  
 Brooke Flowers, Saint Louis

## 2022-23 A-10 PRESEASON POLL

1. Massachusetts (15) - 225
2. La Salle - 188
3. Rhode Island - 184
4. Fordham - 183
5. VCU - 152
6. Saint Joseph's - 140
7. Davidson - 135
- 8. Richmond - 125**
9. Duquesne - 109
10. Dayton - 99
11. George Washington - 82
12. Saint Louis - 73
13. Loyola Chicago - 41
14. George Mason - 38
15. St. Bonaventure - 26

## BUDNIK NAMED PRESEASON FIRST-TEAM ALL-CONFERENCE

Junior Addie Budnik is the Spiders first all-conference first team pick since Janelle Hubbard in 2016. Budnik is Richmond's leading returner in scoring, rebounds, 3-pointers, blocks, and minutes played. She posted double-digits in 23 of 30 games last season, including nine in-a-row from Nov. 18 to Dec. 19. She led Richmond with 19 points against Davidson in the second round of the A-10 Tournament. Budnik opened the season with her first-career double-double on 16 points and a career-high 10 rebounds against Charlotte. She notched six 20+ point games including a tied career-high 23 against UMBC. She put up a career-high seven blocks in back-to-back games early in the season, and she ended the regular season by scoring the game-winning basket in the last second against VCU for a comeback victory where the Spiders erased a 17-point deficit. Her team-high 77 blocks last year are second-most in a single season in Richmond's program history.

## RICHMOND PICKED EIGHTH IN A-10 PRESEASON POLL

The Spiders, who finished eighth in the conference last season with a 7-9 mark in league play, received 125 points in the voting process from the A-10's head coaches. UMass was the unanimous favorite with all 15 first-place votes and 225 points. La Salle was picked second with 188 points, and Rhode Island rounded out the top three with 184 points.

## MWANZA, SWIDER, SWEENEY SIGN WITH UR FOR 2023-24 SEASON

Head Coach Aaron Roussell welcomed Melissa Mwanza, Courtney Swider and Ally Sweeney to the Richmond program on National Signing Day. Mwanza, a post player from Life Christian Academy in Richmond, Va., averaged 11 points and six rebounds per game as a junior. Her sophomore season was cut short due to COVID. Mwanza moved to Life Christian from Zimbabwe prior to the start of her sophomore season. She also gained a lot of experience playing with AAU team Cap City Ballerz. Sweeney, a point guard, comes to Richmond as a four-year starter for Sparta High in Sparta, N.J. She led her squad to a State Championship in 2021 and 2022, as well as three-straight league and county championship titles. She is a three-time All-League and All-County selection and Sparta High team MVP, while twice serving as team captain. Swider, a 6-4 forward from Portsmouth, R.I., helped Tabor Academy to a NEPSAC Class AA Championship last season. From a basketball family, both her parents played college basketball, her mother at University of New Hampshire and her father at Fordham University. Her brother Cole is a rookie on the Los Angeles Lakers and her sister Kylie is a Junior on the Villanova Women's Basketball team. Courtney is also a member of the varsity volleyball team at Tabor.



**SERIES HISTORY VS RAMBLERS**

All-Time Record: 0-0

Trend: First meeting

First Meeting:

Last Time:

**TALE OF THE TAPE**

Stats	LUC	UR
Points Per Game	58.1	69.3
Opp. PPG	61.9	50.0
Scoring Margin	-3.8	9.3
FG Percentage	.400	.436
Opp. FG Percentage	.434	.371
3-Point Percentage	.314	.343
Opp. 3-Point Percentage	.261	.278
Free Throw Percentage	.791	.773
Opp. FT Percentage	.723	.694
Rebounds Per Game	29.4	37.2
Opp. Reb Per Game	34.9	33.9
Rebound Margin	-5.5	3.3
Assists Per Game	11.3	14.6
Opp. Assists Per Game	13.1	13.0
Turnovers Per Game	16.5	17.3
Opp. Turnovers Per Game	15.4	16.1
Turnover Margin	-1.1	-1.2
Asst/TO Ratio	0.7	0.8
Steals Per Game	7.2	7.6
Opp. Steals Per Game	7.4	7.4
Blocks Per Game	1.6	3.6
Opp. Blocks Per Game	3.4	2.9

**1,000 POINT SCORERS (26 Members)**

1) Karen Elsner	2,367	14) Michele Koclanes	1,205
1981-82	624	1998-99	202
1982-83	572	1999-00	304
1983-84	646	2000-01	340
1984-85	525	2001-02	359
2) Brittani Shells	2,042	15) Ginny Norton	1,194
2007-08	433	1987-88	158
2008-09	484	1988-89	295
2009-10	550	1989-90	270
2010-11	575	1990-91	471
3) Kate Flavin	1,770	16) Jennifer Meade	1,177
2001-02	242	1994-95	52
2002-03	463	1995-96	232
2003-04	594	1996-97	389
2004-05	471	1997-98	504
4) Pam Bryant	1,766	17) Jaide Hinds-Clarke	1,130
1986-87	288	2016-17	219
1987-88	379	2017-18	226
1988-89	579	2018-19	307
1989-90	520	2019-20	378
5) Janelle Hubbard	1,717	18) Johanna McKnight	1,106
2013-14	343	2004-05	63
2014-15	460	2006-07	256
2015-16	492	2007-08	415
2016-17	422	2008-09	372
6) Laurie Governor	1,655	19) Saona Chapman	1,100
1984-85	341	2003-04	481
1985-86	444	2004-05	361
1986-87	461	2005-06	258
1987-88	409	20) Rachael Bilney	1,073
7) Julie Jones	1,521	2008-09	156
1988-89	378	2009-10	189
1989-90	354	2010-11	368
1990-91	385	2011-12	360
1991-92	404	21) Dana Pappas	1,071
8) Abby Oliver	1,488	1984-85	205
2008-09	207	1985-86	287
2009-10	336	1986-87	237
2010-11	419	1987-88	342
2011-12	526	22) Jackie Isreal	1,067
9) Micaela Parson	1,401	1981-82	326
2014-15	83	1982-83	232
2015-16	400	1983-84	259
2016-17	336	1984-85	250
2017-18	582	23) Denise Winn	1,048
10) Amber Goppert	1,398	1992-93	136
2000-01	197	1993-94	360
2001-02	475	1994-95	294
2002-03	373	1995-96	258
2003-04	353	24) Lauren Tolson	1,012
11) Genevieve Okoro	1,337	2012-13	75
2010-11	192	2013-14	174
2011-12	349	2014-15	433
2012-13	62	2015-16	107
2013-14	349	2016-17	223
2014-15	385	25) Kristina King	1,006
12) Christina Champion	1,261	2010-11	75
2003-04	311	2011-12	136
2004-05	305	2012-13	419
2005-06	68	2013-14	376
2006-07	313	26) Kate Klimkiewicz	1,002
2007-08	264	2018-19	12
13) Ebony Tanner	1,215	2019-20	323
1999-00	106	2020-21	314
2000-01	227	2021-22	353
2001-02	364	Getting Close...	
2002-03	518	Addie Budnik	855
		2020-21	250
		2021-22	407
		2022-23	198

## INDIVIDUAL SUPERLATIVES

### Double-Digit Scoring Games

Player	19-20	20-21	21-22	22-23	Career
Addie Budnik	14	23	6		43
Elaina Chapman	3	5			8
Grace Townsend	6	16	6		28
Siobhan Ryan	3	9	5		16
Angel Burgos	1				1
Sydney Boone		2	1		3
Cayla Williams		2			2
Katie Hill		2	4		6
Rachel Ullstrom			3		3
Emilija Krista Grava			3		3

### 20-Point Games

Player	19-20	20-21	21-22	22-23	Career
Addie Budnik	2	6	1		9
Siobhan Ryan		3	3		6
Grace Townsend	1				1

### Double-Doubles

Player	19-20	20-21	21-22	22-23	Career
Elaina Chapman	2	2			4
Siobhan Ryan	1				1
Addie Budnik		1	1		2
Grace Townsend		2	1		3

### 5-Assist Games

Player	19-20	20-21	21-22	22-23	Career
Grace Townsend	5	15	2		22
Addie Budnik		2	1		3
Siobhan Ryan			1		1

### 5-Steal Games

Player	19-20	20-21	21-22	22-23	Career
Elaina Chapman	1				1
Grace Townsend		1			1

### 10-Rebound Games

Player	19-20	20-21	21-22	22-23	Career
Elaina Chapman	2	7			9
Siobhan Ryan		1			1
Addie Budnik			1		2
Kylee Lewandowski			1		1
Grace Townsend		1	1		2

### Double-Digit Scoring Streaks

Player	Current	Longest
Addie Budnik	5	9
Grace Townsend	1	5
Elaina Chapman	2	2
Siobhan Ryan	2	2
Angel Burgos	1	1
Sydney Boone	1	1
Cayla Williams	1	1
Katie Hill	4	4
Emilija Krista Grava	3	3
Rachel Ullstrom		2

## THE LAST TIME THE SPIDERS...

Won at home	12/11/22 vs Longwood (W, 119-55)
Won on the road	12/15/22 at Elon (W, 63-51)
Won on a neutral court	12/21/22 vs. Tarleton State (W, 55-43)
Scored 100 or more points	12/11/22 vs Longwood (119)
Gave up 100 or more points	12/4/22 vs Duke (100-49)
Scored less than 50 points	12/4/22 vs Duke (L, 100-49)
Allowed less than 50 points	12/21/22 vs. Tarleton State (W, 55-43)
Went into overtime	11/20/22 vs Hampton (W, 68-65, OT)
Won in overtime	11/20/22 vs Hampton (W, 68-65, OT)
Went into double-overtime	2/11/14 vs. Fordham (W, 78-77, 2OT)
Won by 20 or more	11/7/22 at Liberty (W, 69-48)
Won by 30 or more	11/26/22 vs Idaho (W, 80-49)
Won by 40 or more	12/11/22 vs Longwood (W, 119-55)
Lost by 50 or more	11/24/22 vs Duke (L, 100-49)
Won five games in-a-row	12/12/21-1/5/22 (Seven Straight)
Won 10 games in-a-row	12/29/89-02/10/90 (15 Straight)
Lost five games in-a-row	1/5/19-1/23/19 (Five Straight)
Had five players score in double-figures	12/11/22 vs Longwood (119-55) (5)
Erased a double-digit deficit to win	2/23/22 at VCU (17) (W, 59-57)
Recorded a double-double	12/11/22 vs Longwood (Addie Budnik, 15 pts, 13 reb.)
Had a player score 20 or more	12/21/22 vs. Tarleton State (Addie Budnik, 28 pts)
Had a player score 25 or more	12/21/22 vs. Tarleton State (Addie Budnik, 28 pts)
Had a player score 30 or more	2/27/18 vs. Davidson (Micaela Parson, 30)
Had two players score 20 or more	12/11/21 vs. Longwood (Ullstrom, 26 pts; Ryan, 20 pts)
Had a player record 15 rebounds or more	2/24/19 vs. La Salle (Jaide Hinds-Clarke, 15 rebs)
Had a player record 5 blocks or more	12/1/21 vs. UMBC (Addie Budnik, 5)
Had a player record 5 steals or more	2/16/22 at Duquesne (Grace Townsend, 6)
Had a player with 10 assists or more	12/4/21 at Ohio (Grace Townsend, 10)
Had a player make 5 or more 3's	12/20/22 vs Ball State (Siobhan Ryan, 7)
Had a player record 20 pts, 15 rebs.	2/14/15 vs. La Salle (Genevieve Okoro, 27 pts, 15 reb)
Had a player record 20 pts, 20 rebs.	12/20/02 at William & Mary (Kate Flavin, 24 pts, 22 reb)

## RICHMOND PROGRAM HISTORY

First Season	1919-20
All-Time Record	981-733-7
Most Wins in a Season	26 (1990-91)
NCAA Appearances (Last)	3 (2005)
WNIT Appearances (Last)	9 (2015)
Winningest Coach	Michael Shafer (223 Wins)

## RICHMOND TEAM RECORDS

Most Points Scored	11/30/96 vs. Delaware State (123)
FG Made	11/30/86 vs. Queens (46)
3FG Made	12/11/22 vs. Longwood (18)
Free Throws Made	11/20/84 vs. Georgetown (39)
Offensive Rebounds	2/2/95 vs. George Mason (31)
Defensive Rebounds	12/29/21 vs. Coppin State (42)
Total Rebounds	11/26/88 vs. Georgia Tech (67)
Assists	11/30/96 vs. Delaware State (33)
Turnovers	1/3/97 vs. ODU (36)
Blocked Shots	11/21/21 vs. UMBC (13)
Steals	12/29/92 vs. Stony Brook (23)

**RICHMOND'S RECORD WHEN...**

	<b>Non-Conference</b>	<b>A-10</b>	<b>Postseason</b>	<b>Overall</b>
Playing at home	3-2	0-1	0-0	3-1
On the road	4-1	0-0	0-0	4-1
Neutral court	3-1	0-0	0-0	3-1
After a loss	3-0	0-0	0-0	3-0
Playing a ranked opponent	0-0	0-0	0-0	0-0
Playing during the day	7-3	0-1	0-0	7-2
Playing at night	3-1	0-0	0-0	3-1
Leading after first quarter	6-3	0-1	0-0	4-2
Trailing after first quarter	4-1	0-0	0-0	4-1
Tied after first quarter	0-0	0-0	0-0	0-0
Leading at halftime	10-2	0-1	0-0	8-1
Trailing at halftime	0-2	0-0	0-0	0-2
Tied at halftime	0-0	0-0	0-0	0-0
Leading after third quarter	9-2	0-1	0-0	8-1
Trailing after third quarter	1-2	0-0	0-0	0-2
Tied after third quarter	0-0	0-0	0-0	0-0
Leading with five mins to play in regulation	9-2	0-1	0-0	8-1
Trailing with five mins to play in regulation	1-2	0-0	0-0	0-2
Tied with five mins to play in regulation	0-0	0-0	0-0	0-0
Scoring first	7-2	0-0	0-0	6-2
Opponent scores first	3-2	0-1	0-0	2-1
Outrebounds opponent	9-2	0-0	0-0	6-2
Outrebounded by opponent	2-2	0-1	0-0	2-1
Higher FG% than opponent	9-1	0-1	0-0	7-0
Lower FG% than opponent	0-3	0-0	0-0	0-3
Same FG% as opponent	1-0	0-0	0-0	1-0
Makes more 3's than opponent	6-0	0-0	0-0	4-0
Makes fewer 3's than opponent	3-3	0-1	0-0	3-2
Makes same 3's as opponent	1-1	0-0	0-0	1-1
Makes more free throws than opponent	7-1	0-0	0-0	7-1
Opponent makes more free throws	2-3	0-1	0-0	0-2
Makes equal free throws as opponent	1-0	0-0	0-0	1-0
Commits more turnovers than opponent	7-2	0-0	0-0	5-2
Commits fewer turnovers than opponent	3-2	0-1	0-0	3-1
Commits equal turnovers as opponent	0-0	0-0	0-0	0-0
Playing in November	5-2	-	-	5-2
Playing in December	5-2	-	-	5-2
Playing in January	-	-	-	0-0
Playing in February	-	-	-	0-0
Playing in March	-	-	-	0-0



## HEAD COACH AARON ROUSSELL

### FOURTH SEASON AT RICHMOND (IOWA '01)

Aaron Roussell enters his fourth season at the helm of the Richmond Spiders women's basketball team in 2022-23. He was named head coach on April 2, 2019. Roussell has 18 years of head coaching experience and a career winning percentage of .687 with an overall record of 356-162.

In year three with the Spiders, Roussell saw his best statistical season offensively at Richmond. The team ranked first in the Atlantic 10 in field goal percentage, effective field goal percentage, and two-point percentage while ranking second in three-point percentage and points per game, and third in assists. Previously, the Spiders ranked 13th and 14th in each of these categories in Roussell's first season as head coach in 2019-20. The Spiders also ranked top-10 in the nation in effective field goal percentage and two-point percentage after ranking 339th in both categories in 2019-20.

The Spiders finished the 2021-22 season 16-14 overall featuring an eight-game win streak that saw a 2-0 mark in the Florida Atlantic Pre-Christmas Tournament and a buzzer-beating win at A-10 opponent George Washington. The season was also highlighted by a Power 5 win as the Spiders defeated Virginia, 74-65, at the Cavalier Classic.

Additionally in 2021-22, Roussell coached Emma Squires to A-10 Sixth Woman of the Year honors while Addie Budnik was named All-Conference Second Team.

#### ROUSSELL YEAR-BY-YEAR RECORD

Year	Record	A-10	Finish	Postseason
22-23	10-4	0-1		
21-22	16-14	7-9	8th	0-1
20-21	13-9	9-6	6th	1-1
19-20	15-17	7-9	9th	1-1

**Richmond Total:** 54-44

**Atlantic 10 Total:** 23-26

**Career Coaching Record:** 366-166

#### PROFILE

Hometown - Plymouth, Minn.

Education - B.A. Iowa '01

M.A. Minnesota State '04

#### CAREER HIGHLIGHTS

- 200th win came 11/16/22 with dominate 80-49 victory over Idaho at the Navy Classic.
- Coached Addie Budnik to A-10 Rookie of the Year honors in 2020-21
- Two-time Patriot League Coach of the Year
- Bucknell record for wins in a season (28-6 in 2018-19)
- First WNIT victory in Patriot League history (2016)
- Four straight national postseason appearances at Bucknell (NCAA - 2017, 2019, WNIT - 2016, 2018)
- Bucknell-record 29-game home winning streak
- Four straight 20-win seasons (2016-19)
- Guided Bucknell's Claire DeBoer to 2017 Patriot League Player of the Year and Tournament MVP honors

#### HEAD COACHING EXPERIENCE

Richmond - 2019-present

Bucknell - 2012-19

University of Chicago - 2004-12

(2,462), field goals (875), 3-pointers (283) and assists (529). Bucknell's four-straight postseason appearances is the best run in program history. Roussell led the Bison to a 22-10 record in 2017-18, including a 15-3 mark in league play, finishing second in the standings. Bucknell accepted an invitation to the WNIT and played at West Virginia to cap the season.

Roussell turned around the Bucknell program almost immediately upon his arrival in Lewisburg, Pa., for the 2012-13 season. The year prior to his arrival, the Bison only won five games and he improved that mark 10 wins in year one with a 15-15 record - his lone season at Bucknell not over a .500 winning percentage. He finished as a finalist for the WBCA Spalding Maggie Dixon Division I Rookie Coach of the Year Award in 2013. He continued to build the program and in year two at the helm, helped the Bison post a winning record at 16-14, Bucknell's first winning season since 2008-09. The Bison earned a bid into the Women's Basketball Invitational postseason tournament for the first time in program history. The rise kept coming in 2014-15 as the Bison finished with an 18-12 record, the most wins for the Bison since 2007.

Much of Roussell's success at Bucknell was a result of his ability to quickly develop talent and meld it with the team's veteran players. Under this guidance, Bucknell earned three Patriot League Rookie of the Year award winners from 2014-16 and one of those student-athletes - Claire DeBoer - went on to earn Patriot League Player of the Year accolades in 2016-17.

Prior to his time at Bucknell, Roussell spent eight years (2004-2012) as the highly successful head coach at the University of Chicago where he compiled a 161-50 (.763) record, including a 52-5 mark with a 43-game regular season winning streak over his last two seasons leading the Maroons.

Roussell is a 2001 graduate of the University of Iowa, where he double-majored in journalism/mass communications and political science. In 2002 he began a two-year stint as a graduate assistant women's basketball coach at Minnesota State. In addition to his coaching duties, he completed a master's degree in sports administration.

Roussell and his wife, Molly, have an 12-year-old son, Riley, a eight-year-old daughter, Kelsey, and a five-year-old daughter, Kendall.



## ***ASSISTANT COACHES***



***JEANINE RADICE  
ASSISTANT COACH  
FOURTH SEASON (FORDHAM '89)***



***KA'LIA JOHNSON  
ASSISTANT COACH  
FIRST SEASON (DUKE '15)***



***BRITTANY PINKNEY  
ASSISTANT COACH  
FOURTH SEASON (VCU '08)***

## ***SUPPORT STAFF***



***JANELLE SILVER-MARTIN  
DIRECTOR OF OPERATIONS  
SECOND SEASON (MORGAN STATE '16)***



***JOHN STUDER  
DIR. OF PROGRAM DEVELOPMENT  
FOURTH SEASON (ILLINOIS '81)***



# GRACE TOWNSEND

**JUNIOR**  
**5-5 / GUARD**  
**MIDLOTHIAN, VA.**  
**JAMES RIVER**

# 1

## TOP PERFORMANCES

### POINTS

Season ..... 23 (at William & Mary, 12/1/22)  
 Career ..... 25 (vs. Fordham, 2/23/22)

### REBOUNDS

Season ..... 11 (vs. Idaho, 11/26/22)  
 Career ..... 13 (vs. Fordham, 2/23/22)

### ASSISTS

Season ..... 9 (vs Ball State, 12/20/22)  
 Career ..... 10 (at Ohio, 12/4/21)

### BLOCKS

Season ..... 1 (2x, last vs. Idaho, 11/26/22)  
 Career ..... 1 (5x, last at Liberty, 11/7/22)

### STEALS

Season ..... 3 (at Clemson, 11/13/22)  
 Career ..... 6 (at Duquesne, 2/16/22)

### FIELD GOALS MADE

Season ..... 7 (2x last at William & Mary, 12/1/22)  
 Career ..... 10 (vs. Fordham, 2/23/22)

### FIELD GOALS ATTEMPTED

Season ..... 12 (vs GW, 12/31/22)  
 Career ..... 14 (2x, last vs. Fordham, 2/23/22)

### FREE-THROWS MADE

Season ..... 8 (at William & Mary, 12/1/22)  
 Career ..... 8 (at William & Mary, 12/1/22)

### FREE-THROWS ATTEMPTED

Season ..... 9 (at William & Mary, 12/1/22)  
 Career ..... 9 (at William & Mary, 12/1/22)

### 3-POINT FIELD GOALS MADE

Season ..... 4 (vs. Hampton, 11/20/22)  
 Career ..... 4 (vs. Hampton, 11/20/22)

### 3-POINT FIELD GOALS ATTEMPTED

Season ..... 4 (vs. Hampton, 11/20/22)  
 Career ..... 5 (3x, last vs. VCU, 2/2/22)

### MINUTES

Season ..... 39 (vs. Hampton, 11/20/22)  
 Career ..... 39 (vs. Hampton, 11/20/22)

### #1 TOWNSEND, Grace

Opponent	Date	GS	MIN	Total		3-Pointers		Free throws		Rebounds				PF		A		TO		BLK		STL		PTS		AVG
				FG-FGA	PCT	3FG-3FGA	PCT	FT-FTA	PCT	OFF	DEF	TOT	AVG													
at Liberty	11/07/2022	*	33:58	3-6	.500	1-3	.333	7-8	.875	1	7	8	8.0	2	3	5	1	1	14	14.0						
Mount St. Mary's	11/10/2022	*	23:11	2-5	.400	0-0	.000	2-4	.500	0	4	4	6.0	0	6	1	0	2	6	10.0						
at Clemson	11/13/2022	*	36:15	3-8	.375	0-1	.000	1-1	1.000	1	5	6	6.0	1	4	5	0	3	7	9.0						
at UMBC	11/17/2022	*	34:52	3-10	.300	0-1	.000	4-4	1.000	1	4	5	5.8	3	2	4	0	2	10	9.3						
Hampton	11/20/2022	*	39:38	7-10	.700	4-4	1.000	1-4	.250	0	2	2	5.0	1	1	2	0	2	19	11.2						
vs Idaho	11/26/2022	*	24:22	3-5	.600	1-1	1.000	3-4	.750	0	11	11	6.0	2	4	1	1	2	10	11.0						
vs NIU	11/27/2022	*	35:21	0-9	.000	0-2	.000	10-14	.714	2	5	7	6.1	0	4	1	0	2	10	10.9						
at William & Mary	12/01/2022	*	29:30	7-11	.636	1-2	.500	8-9	.889	0	4	4	5.9	2	4	1	0	2	23	12.4						
Duke	12/04/2022	*	31:08	3-10	.300	1-2	.500	1-1	1.000	0	1	1	5.3	2	4	4	0	2	8	11.9						
Longwood	12/11/2022	*	22:10	3-5	.600	1-2	.500	2-2	1.000	0	1	1	4.9	1	7	2	0	2	9	11.6						
at Elon	12/15/2022	*	31:30	5-7	.714	0-1	.000	2-6	.333	0	5	5	4.9	1	6	4	0	2	12	11.6						
vs Ball St.	12/20/2022	*	32:15	3-6	.500	0-0	.000	0-1	.000	0	5	5	4.9	3	9	3	0	2	6	11.2						
vs Tarleton St.	12/21/2022	*	27:48	2-6	.333	0-1	.000	0-0	.000	1	7	8	5.2	4	6	3	0	0	4	10.6						
George Washington	12/31/2022	*	29:07	6-12	.500	1-1	1.000	1-5	.200	0	5	5	5.1	1	1	3	0	1	14	10.9						
<b>Totals</b>			<b>14</b>	<b>431:05</b>	<b>50-110</b>	<b>.455</b>	<b>10-21</b>	<b>.476</b>	<b>42-63</b>	<b>.667</b>	<b>6</b>	<b>66</b>	<b>72</b>	<b>5.1</b>	<b>23</b>	<b>61</b>	<b>39</b>	<b>2</b>	<b>25</b>	<b>152</b>	<b>10.9</b>					

### Player Averages

Games Played	Minutes/game	Points/game	FG Pct	3FG Pct	FT Pct	Rebounds/game	Assists/game	Turnovers/game	Assist/Turnover ratio	Steals/game	Blocks/game
14	30.8	10.9	45.5	47.6	66.7	5.1	4.4	2.8	1.6	1.8	0.1

## AS A JUNIOR

- Led all players with eight rebounds, as the shortest person on the court against Liberty.
- Posted 13 points, eight rebounds, and three assists in the Spiders 21-point win over Liberty.
- Chipped in six helpers, four assists and six points against Mount St. Mary's
- Paced UR with 19 points in overtime win against Hampton, tallying four three-pointers, two rebounds and two steals
- Led UR with 23 points, including nine points over two minutes in the fourth quarter, all on and-one three-point plays against William & Mary

## CAREER SUMMARY

SEASON	TEAM	GP-GS	MIN/AVG	Field Goals		3-Point		F-Throws		Rebounds				Scoring	
				FG-FGA	FG%	3FG-3FGA	3FG%	FT-FTA	FT%	OFF	DEF	TOT	AVG	PF-FO	PTS AVG
2020-21	UR	22-0	442/20.1	44-106	.415	11-25	.440	45-60	.750	17	60	77	3.5	35-0	73
2021-22	UR	30-29	942/31.4	109-244	.447	18-69	.261	77-99	.778	17	135	152	5.1	58-0	158
2022-23	UR	14-14	431/30.8	50-110	.455	10-21	.476	42-63	.667	6	66	72	5.1	23-0	61
<b>TOTAL</b>		<b>66-43</b>	<b>1816/27.5</b>	<b>203-460</b>	<b>.441</b>	<b>39-115</b>	<b>.339</b>	<b>164-222</b>	<b>.739</b>	<b>40</b>	<b>261</b>	<b>301</b>	<b>4.6</b>	<b>116-0</b>	<b>292</b>



# SYDNEY BOONE

**SOPHOMORE**  
**5-8 / GUARD**  
**RICHMOND, VA.**  
**HIGHLAND SPRINGS**

# 2

## TOP PERFORMANCES

### POINTS

Season ..... 10 (vs GW, 12/31/22)  
 Career ..... 12 (at Hampton, 11/13/21)

### REBOUNDS

Season ..... 3 (2x last vs GW, 12/31/22)  
 Career ..... 5 (vs. Dayton, 1/26/22)

### ASSISTS

Season ..... 5 (vs Longwood, 12/11/22)  
 Career ..... 5 (vs Longwood, 12/11/22)

### BLOCKS

Season .....  
 Career ..... 1 (at GW, 1/5/22)

### STEALS

Season ..... 1 (2x last vs Longwood, 12/11/22)  
 Career ..... 2 (vs. W&M, 12/12/21)

### FIELD GOALS MADE

Season ..... 41 (vs GW, 12/31/22)  
 Career ..... 4 (2x last vs GW, 12/31/22)

### FIELD GOALS ATTEMPTED

Season ..... 5 (2x last vs GW, 12/31/22)  
 Career ..... 8 (at Hampton, 11/13/21)

### FREE-THROWS MADE

Season ..... 2 (2x last vs Tarleton State, 12/21/22)  
 Career ..... 4 (vs. UMES, 12/1/21)

### FREE-THROWS ATTEMPTED

Season ..... 2 (2x last vs Tarleton State, 12/21/22)  
 Career ..... 4 (vs. UMES, 12/1/21)

### 3-POINT FIELD GOALS MADE

Season ..... 2 (vs GW, 12/31/22)  
 Career ..... 3 (at Hampton, 11/13/21)

### 3-POINT FIELD GOALS ATTEMPTED

Season ..... 4 (vs Longwood, 12/11/22)  
 Career ..... 5 (at Hampton, 11/13/21)

### MINUTES

Season ..... 19 (vs GW, 12/31/22)  
 Career ..... 19 (vs GW, 12/31/22)

## GAME-BY-GAME STATISTICS

### #2 BOONE, Sydney

2022-2023 Season - Summary																				
Opponent	Date	GS	MIN	Total		3-Pointers		Free throws		Rebounds			PF	A	TO	BLK	STL	PTS	AVG	
				FG-FGA	PCT	3FG-3FGA	PCT	FT-FTA	PCT	OFF	DEF	TOT								AVG
Mount St. Mary's	11/10/2022		05:50	1-1	1.000	0-0	.000	0-0	.000	0	0	0	0	0	0	0	0	1	2	2.0
at Clemson	11/13/2022		01:41	0-1	.000	0-0	.000	0-0	.000	0	0	0	0	0	0	0	0	0	0	1.0
at UMBC	11/17/2022		04:22	0-2	.000	0-1	.000	0-0	.000	0	0	0	0	0	0	0	0	0	0	0.7
Hampton	11/20/2022		05:22	0-1	.000	0-1	.000	0-0	.000	0	0	0	0	0	2	2	1	0	0	0.5
vs Idaho	11/26/2022		11:28	0-4	.000	0-2	.000	0-0	.000	1	1	2	0.4	2	2	2	2	0	0	0.4
vs NIU	11/27/2022		04:38	0-1	.000	0-1	.000	0-0	.000	0	0	0	0.3	1	0	0	0	0	0	0.3
at William & Mary	12/01/2022		10:30	1-1	1.000	1-1	1.000	2-2	1.000	0	2	2	0.6	2	0	2	0	0	5	1.0
Duke	12/04/2022		06:34	0-1	.000	0-0	.000	0-0	.000	0	1	1	0.6	1	1	2	0	0	0	0.9
Longwood	12/11/2022		14:57	1-5	.200	1-4	.250	0-0	.000	0	0	0	0.6	0	5	0	0	1	3	1.1
at Elon	12/15/2022		08:30	0-1	.000	0-1	.000	0-0	.000	0	3	3	0.8	0	1	2	0	0	0	1.0
vs Ball St.	12/20/2022		07:42	1-2	.500	0-0	.000	0-0	.000	0	2	2	0.9	0	2	2	0	1	2	1.1
vs Tarleton St.	12/21/2022		15:29	0-2	.000	0-2	.000	2-2	1.000	0	0	0	0.8	1	0	2	0	0	2	1.2
George Washington	12/31/2022		18:21	4-5	.800	2-3	.667	0-0	.000	0	3	3	1.0	0	1	1	0	0	10	1.8
Totals			0 115:25	8-27	.296	4-16	.250	4-4	1.000	1	12	13	1.0	9	16	14	0	3	24	1.8

### Player Averages

Games Played	Minutes/ game	Points/ game	FG Pct	3FG Pct	FT Pct	Rebounds/ game	Assists/ game	Turnovers/ game	Assist/Turnover ratio	Steals/ game	Blocks/ game
13	8.9	1.8	29.6	25.0	100.0	1.0	1.2	1.1	1.1	0.2	0.0

## AS A SOPHOMORE

- Posted season-high 10 points, with two three-pointers, against GW
- Dished out a career-high five assists against Longwood
- Scored five points, including a three-pointer, against W&M

## CAREER SUMMARY

SEASON	TEAM	GP-GS	MIN	AVG	Field Goals		3-Point		F-Throws		Rebounds			PF	FO	A	TO	BLK	STL	Scoring	
					FG-FGA	FG%	3FG-3FGA	3FG%	FT-FTA	FT%	OFF	DEF	TOT							PTS	AVG
2021-22	UR	28-0	212	7.6	27-76	.355	16-39	.410	12-15	.800	4	33	37	1.3	20-0	21	32	2	6	82	2.9
2022-23	UR	13-0	115	8.9	8-27	.296	4-16	.250	4-4	1.000	1	12	13	1.0	9-0	16	14	0	3	24	1.8
<b>TOTAL</b>		<b>41-0</b>	<b>327</b>	<b>8.0</b>	<b>35-103</b>	<b>.340</b>	<b>20-55</b>	<b>.364</b>	<b>16-19</b>	<b>.842</b>	<b>5</b>	<b>45</b>	<b>50</b>	<b>1.2</b>	<b>29-0</b>	<b>37</b>	<b>46</b>	<b>2</b>	<b>9</b>	<b>106</b>	<b>2.6</b>



**JADA GREEN**

**FRESHMAN  
6-1 / FORWARD  
PARKLAND, FLA.  
ST. THOMAS AQUINAS**

**4**

**TOP PERFORMANCES**

**POINTS**

Season .....  
Career .....

**REBOUNDS**

Season .....  
Career .....

**ASSISTS**

Season .....  
Career .....

**BLOCKS**

Season .....  
Career .....

**STEALS**

Season .....  
Career .....

**FIELD GOALS MADE**

Season .....  
Career .....

**FIELD GOALS ATTEMPTED**

Season .....  
Career .....

**FREE-THROWS MADE**

Season .....  
Career .....

**FREE-THROWS ATTEMPTED**

Season .....  
Career .....

**3-POINT FIELD GOALS MADE**

Season .....  
Career .....

**3-POINT FIELD GOALS ATTEMPTED**

Season .....  
Career .....

**MINUTES**

Season .....  
Career .....

**GAME-BY-GAME STATISTICS**

-Will miss the 2022-23 season due to knee surgery prior to the season.

**PREP CAREER HIGHLIGHTS**

- Florida 6A State Champion
- Led her high school team with 9.6 boards per game her junior year
- Broward All-County 6A Second-Team
- USA Today High School Sports Southeast Florida Nominee
- McDonalds All-American Nominee

**CAREER SUMMARY**





# CAYLA WILLIAMS

**SOPHOMORE**  
**6-0 / FORWARD**  
**GAINESVILLE, VA.**  
**EPISCOPAL**

# 11

## GAME-BY-GAME STATISTICS

## TOP PERFORMANCES

### POINTS

Season ..... 8 (vs. Mount St. Mary's, 11/10/22)  
 Career ..... 11 (vs. W&M, 12/12/21)

### REBOUNDS

Season ..... 4 (at UMBC, 11/17/22)  
 Career ..... 7 (at Longwood, 12/15/21)

### ASSISTS

Season ..... 2 (2x last vs GW, 12/31/22)  
 Career ..... 3 (vs. UMBC, 11/21/21)

### BLOCKS

Season ..... 1 (5x, last vs Tarleton State, 12/21/22)  
 Career ..... 2 (5x, last vs. VCU, 2/2/22)

### STEALS

Season ..... 1 (4x last vs GW, 12/31/22)  
 Career ..... 3 (vs. UMBC, 11/21/21)

### FIELD GOALS MADE

Season ..... 3 (vs. Mount St. Mary's, 11/10/22)  
 Career ..... 4 (vs. W&M, 12/12/21)

### FIELD GOALS ATTEMPTED

Season ..... 5 (vs. Mount St. Mary's, 11/10/22)  
 Career ..... 7 (3x, last vs. Coppin State, 12/29/21)

### FREE-THROWS MADE

Season ..... 2 (at Liberty, 11/7/22)  
 Career ..... 2 (at Liberty, 11/7/22)

### FREE-THROWS ATTEMPTED

Season ..... 2 (at Liberty, 11/7/22)  
 Career ..... 2 (8x, last at Liberty, 11/7/22)

### 3-POINT FIELD GOALS MADE

Season ..... 2 (2x last at William & Mary, 12/1/22)  
 Career ..... 3 (vs. VCU, 2/2/22)

### 3-POINT FIELD GOALS ATTEMPTED

Season ..... 3 (3x last vs GW, 12/31/22)  
 Career ..... 4 (2x, last vs. Coppin State, 12/29/21)

### MINUTES

Season ..... 28 (at William & Mary, 12/1/22)  
 Career ..... 28 (at William & Mary, 12/1/22)

#11 WILLIAMS, Cayla

Opponent	Date	GS	MIN	Total		3-Pointers		Free throws		Rebounds				PF	A	TO	BLK	STL	PTS	AVG	
				FG-FGA	PCT	3FG-3FGA	PCT	FT-FTA	PCT	OFF	DEF	TOT	AVG								
at Liberty	11/07/2022	*	18:32	0-1	.000	0-0	.000	2-2	1.000	0	1	1	1.0	2	0	1	0	1	2	2.0	
Mount St. Mary's	11/10/2022	*	14:10	3-5	.600	2-3	.667	0-0	.000	1	2	3	2.0	2	0	4	0	0	8	5.0	
at Clemson	11/13/2022	*	08:02	0-0	.000	0-0	.000	0-2	.000	0	0	0	1.3	2	0	0	1	1	0	3.3	
at UMBC	11/17/2022	*	15:51	0-2	.000	0-1	.000	0-0	.000	1	3	4	2.0	2	0	0	1	0	0	2.5	
Hampton	11/20/2022	*	11:38	0-1	.000	0-0	.000	0-0	.000	0	1	1	1.8	4	1	1	0	0	0	2.0	
vs Idaho	11/26/2022	*	18:41	1-4	.250	0-2	.000	0-0	.000	0	1	1	1.7	0	0	0	0	0	2	2.0	
vs NIU	11/27/2022	*	14:51	0-1	.000	0-1	.000	2-2	1.000	1	0	1	1.6	1	0	1	1	1	2	2.0	
at William & Mary	12/01/2022	*	28:16	2-4	.500	2-3	.667	0-0	.000	0	2	2	1.6	4	2	6	1	1	6	2.5	
Duke	12/04/2022	*	24:42	2-7	.286	1-4	.250	0-0	.000	0	3	3	1.8	2	0	1	1	0	5	2.8	
at Elon	12/15/2022	*	14:09	0-0	.000	0-0	.000	0-0	.000	2	2	4	2.0	1	0	1	0	0	0	2.5	
vs Ball St.	12/20/2022	*	23:49	0-3	.000	0-1	.000	0-0	.000	0	0	0	1.8	4	1	1	0	0	0	2.3	
vs Tarleton St.	12/21/2022	*	21:59	1-3	.333	0-2	.000	0-0	.000	1	2	3	1.9	1	0	4	1	0	2	2.3	
George Washington	12/31/2022	*	14:49	1-4	.250	1-3	.333	0-0	.000	0	1	1	1.8	0	2	0	0	1	3	2.3	
Totals			12	229:29	10-35	.286	6-21	.286	4-6	.667	6	18	24	1.8	25	6	20	6	5	30	2.3

Player Averages

Games Played	Minutes/game	Points/game	FG Pct	3FG Pct	FT Pct	Rebounds/game	Assists/game	Turnovers/game	Assist/Turnover ratio	Steals/game	Blocks/game
13	17.7	2.3	28.6	28.6	66.7	1.8	0.5	1.5	0.3	0.4	0.5

## AS A SOPHOMORE

- Limited Liberty's red-shirt senior center Mya Berkman just eight points and seven rebounds, as a career double-figure scorer.
- Went 2-of-3 from long range against Mount St. Mary's

## CAREER SUMMARY

WILLIAMS, Cayla

				Field Goals		3-Point		F-Throws		Rebounds								Scoring		
SEASON	TEAM	GP-GS	MIN/AVG	FG-FGA	FG%	3FG-3FGA	3FG%	FT-FTA	FT%	OFF	DEF	TOT	AVG	PF-FO	A	TO	BLK	STL	PTS	AVG
2021-22	UR	29-16	435/15.0	34-80	.425	14-43	.326	5-13	.385	20	51	71	2.4	71-3	14	19	16	8	87	3.0
2022-23	UR	13-12	229/17.7	10-35	.286	6-21	.286	4-6	.667	6	18	24	1.8	25-0	6	20	6	5	30	2.3



# TORIN ROGERS

**FRESHMAN**  
**6-1 / GUARD**  
**BRASSTOWN, N.C.**  
**MURPHY**

# 13

## TOP PERFORMANCES

### POINTS

Season ..... 9 (vs Longwood, 12/11/22)  
 Career ..... 9 (vs Longwood, 12/11/22)

### REBOUNDS

Season ..... 3 (2x last vs Longwood, 12/11/22)  
 Career ..... 3 (2x last vs Longwood, 12/11/22)

### ASSISTS

Season ..... 2 (vs Longwood, 12/11/22)  
 Career ..... 2 (vs Longwood, 12/11/22)

### BLOCKS

Season ..... 1 (vs Longwood, 12/11/22)  
 Career ..... 1 (vs Longwood, 12/11/22)

### STEALS

Season ..... 1 (vs Longwood, 12/11/22)  
 Career ..... 1 (vs Longwood, 12/11/22)

### FIELD GOALS MADE

Season ..... 3 (vs Longwood, 12/11/22)  
 Career ..... 3 (vs Longwood, 12/11/22)

### FIELD GOALS ATTEMPTED

Season ..... 5 (vs Longwood, 12/11/22)  
 Career ..... 5 (vs Longwood, 12/11/22)

### FREE-THROWS MADE

Season ..... 2 (vs. Idaho, 11/26/22)  
 Career ..... 2 (vs. Idaho, 11/26/22)

### FREE-THROWS ATTEMPTED

Season ..... 2 (2x last vs Longwood, 12/11/22)  
 Career ..... 2 (2x last vs Longwood, 12/11/22)

### 3-POINT FIELD GOALS MADE

Season ..... 2 (vs Longwood, 12/11/22)  
 Career ..... 2 (vs Longwood, 12/11/22)

### 3-POINT FIELD GOALS ATTEMPTED

Season ..... 2 (vs Longwood, 12/11/22)  
 Career ..... 2 (vs Longwood, 12/11/22)

### MINUTES

Season ..... 22 (vs Longwood, 12/11/22)  
 Career ..... 22 (vs Longwood, 12/11/22)

## GAME-BY-GAME STATISTICS

### #13 ROGERS, Torin

Opponent	Date	GS	MIN	Total		3-Pointers		Free throws		Rebounds				PF	A	TO	BLK	STL	PTS	AVG
				FG	PCT	3FG	PCT	FT	PCT	OFF	DEF	TOT	AVG							
at Liberty	11/07/2022		02:03	0-1	.000	0-0	.000	0-0	.000	0	1	1	1.0	0	0	0	0	0	0	0.0
Mount St. Mary's	11/10/2022		08:53	0-0	.000	0-0	.000	0-0	.000	0	3	3	2.0	1	0	3	0	0	0	0.0
at Clemson	11/13/2022		01:41	0-1	.000	0-1	.000	0-0	.000	1	0	1	1.7	0	0	1	0	0	0	0.0
vs Idaho	11/26/2022		04:56	1-2	.500	0-0	.000	2-2	1.000	0	0	0	1.3	1	0	0	0	0	4	1.0
at William & Mary	12/01/2022		03:30	1-2	.500	0-1	.000	1-1	1.000	0	0	0	1.0	0	0	0	0	0	3	1.4
Duke	12/04/2022		04:42	0-1	.000	0-0	.000	0-2	.000	1	1	2	1.2	1	1	0	0	0	0	1.2
Longwood	12/11/2022		21:58	3-5	.600	2-2	1.000	1-2	.500	0	3	3	1.4	1	2	3	1	1	9	2.3
at Elon	12/15/2022		08:12	1-3	.333	1-3	.333	0-2	.000	0	1	1	1.4	0	0	0	0	0	3	2.4
vs Ball St.	12/20/2022		11:24	2-3	.667	1-1	1.000	0-0	.000	1	0	1	1.3	2	0	1	0	0	5	2.7
vs Tarleton St.	12/21/2022		06:45	0-2	.000	0-2	.000	0-0	.000	0	2	2	1.4	1	0	2	0	0	0	2.4
George Washington	12/31/2022		00:08	0-0	.000	0-0	.000	0-0	.000	0	0	0	1.3	0	0	0	0	0	0	2.2
<b>Totals</b>		<b>0</b>	<b>74:13</b>	<b>8-20</b>	<b>.400</b>	<b>4-10</b>	<b>.400</b>	<b>4-9</b>	<b>.444</b>	<b>3</b>	<b>11</b>	<b>14</b>	<b>1.3</b>	<b>7</b>	<b>3</b>	<b>10</b>	<b>1</b>	<b>1</b>	<b>24</b>	<b>2.2</b>

### Player Averages

Games Played	Minutes/game	Points/game	FG Pct	3FG Pct	FT Pct	Rebounds/game	Assists/game	Turnovers/game	Assist/Turnover ratio	Steals/game	Blocks/game
11	6.7	2.2	40.0	40.0	44.4	1.3	0.3	0.9	0.3	0.1	0.1

## AS A FRESHMAN...

- Played in her first collegiate game at Liberty, collecting a rebound
- Against Mount St. Mary's, pulled down three boards
- Posted career-high nine points, three rebounds, two assists, a block and a steal against Longwood

## CAREER SUMMARY

			Field Goals			3-Point		F-Throws		Rebounds								Scoring			
SEASON	TEAM	GP-GS	MIN	AVG	FG-FGA	FG%	3FG-3FGA	3FG%	FT-FTA	FT%	OFF	DEF	TOT	AVG	PF-FO	A	TO	BLK	STL	PTS	AVG
2022-23	UR	11-0	74	6.7	8-20	.400	4-10	.400	4-9	.444	3	11	14	1.3	7-0	3	10	1	1	24	2.2
TOTAL		11-0	74	6.7	8-20	.400	4-10	.400	4-9	.444	3	11	14	1.3	7-0	3	10	1	1	24	2.2

**ADDIE BUDNIK**

**JUNIOR**  
**6-2 / FORWARD**  
**HIGHLAND PARK, ILL.**  
**HIGHLAND PARK**

**20****GAME-BY-GAME STATISTICS****TOP PERFORMANCES****POINTS**

Season ..... 28 (vs Tarleton State, 12/21/22)  
 Career ..... 28 (vs Tarleton State, 12/21/22)

**REBOUNDS**

Season ..... 13 (vs Longwood, 12/11/22)  
 Career ..... 13 (vs Longwood, 12/11/22)

**ASSISTS**

Season ..... 5 (vs. Mount St. Mary's, 11/10/22)  
 Career ..... 6 (vs. Rhode Island, 2/19/22)

**BLOCKS**

Season ..... 5 (at Elon, 12/15/22)  
 Career ..... 7 (2x, last vs. UMBC, 11/21/21)

**STEALS**

Season ..... 4 (2x last at Elon, 12/15/22)  
 Career ..... 4 (3x, last at Elon, 12/15/22)

**FIELD GOALS MADE**

Season ..... 12 (vs Tarleton State, 12/21/22)  
 Career ..... 12 (vs Tarleton State, 12/21/22)

**FIELD GOALS ATTEMPTED**

Season ..... 16 (at UMBC, 11/17/22)  
 Career ..... 16 (2x, last at UMBC, 11/17/22)

**FREE-THROWS MADE**

Season ..... 5 (at UMBC, 11/17/22)  
 Career ..... 6 (2x, last at George Mason, 1/19/22)

**FREE-THROWS ATTEMPTED**

Season ..... 5 (2x last at William & Mary, 12/1/22)  
 Career ..... 9 (at Duquesne, 2/16/22)

**3-POINT FIELD GOALS MADE**

Season ..... 3 (2x last vs Tarleton State, 12/21/22)  
 Career ..... 4 (3x, last vs. UMass, 1/15/22)

**3-POINT FIELD GOALS ATTEMPTED**

Season ..... 7 (vs Duke, 12/4/22)  
 Career ..... 8 (3x, last vs. VCU, 2/2/22)

**MINUTES**

Season ..... 37 (vs Ball State, 12/20/22)  
 Career ..... 44 (vs. SLU, 3/12/21)

#20 BUDNIK, Addie

Opponent	Date	GS	MIN	Total		3-Pointers		Free throws		Rebounds			PF	A	TO	BLK	STL	PTS	AVG		
				FG-FGA	PCT	3FG-3FGA	PCT	FT-FTA	PCT	OFF	DEF	TOT								AVG	
at Liberty	11/07/2022	*	33:29	8-14	.571	1-2	.500	4-4	1.000	2	5	7	7.0	2	3	3	0	2	21	21.0	
Mount St. Mary's	11/10/2022	*	27:27	6-8	.750	2-3	.667	2-2	1.000	2	4	6	6.5	1	5	1	1	4	16	18.5	
at Clemson	11/13/2022	*	32:24	4-10	.400	0-4	.000	0-0	.000	4	3	7	6.7	2	1	6	0	1	8	15.0	
at UMBC	11/17/2022	*	28:21	5-16	.313	1-5	.200	5-5	1.000	4	3	7	6.8	3	2	3	1	0	16	15.3	
Hampton	11/20/2022	*	35:34	3-9	.333	0-5	.000	0-0	.000	4	7	11	7.6	1	4	4	2	0	6	13.4	
vs Idaho	11/26/2022	*	25:12	2-5	.400	1-3	.333	3-4	.750	0	9	9	7.8	2	3	2	2	0	8	12.5	
vs NIU	11/27/2022	*	39:27	6-14	.429	3-8	.375	1-1	1.000	2	5	7	7.7	3	2	3	1	1	16	13.0	
at William & Mary	12/01/2022	*	32:33	5-12	.417	3-4	.750	3-5	.600	2	5	7	7.6	0	3	3	2	2	16	13.4	
Duke	12/04/2022	*	32:08	2-11	.182	2-7	.286	0-0	.000	0	2	2	7.0	2	2	2	0	1	6	12.6	
Longwood	12/11/2022	*	28:01	6-8	.750	0-0	.000	3-4	.750	6	7	13	7.6	3	4	1	4	1	15	12.8	
at Elon	12/15/2022	*	34:24	6-9	.667	2-3	.667	1-2	.500	0	2	2	7.1	1	3	4	5	4	15	13.0	
vs Ball St.	12/20/2022	*	36:30	5-12	.417	1-5	.200	2-2	1.000	1	4	5	6.9	2	2	5	2	0	13	13.0	
vs Tarleton St.	12/21/2022	*	31:27	12-13	.923	3-3	1.000	1-1	1.000	2	5	7	6.9	3	2	7	4	2	28	14.2	
George Washington	12/31/2022	*	35:40	7-13	.538	0-2	.000	0-0	.000	0	3	3	6.6	2	0	3	0	0	14	14.1	
Totals			14	452:36	77-154	.500	19-54	.352	25-30	.833	29	64	93	6.6	27	36	47	24	18	198	14.1

Player Averages

Games Played	Minutes/game	Points/game	FG Pct	3FG Pct	FT Pct	Rebounds/game	Assists/game	Turnovers/game	Assist/Turnover ratio	Steals/game	Blocks/game
14	32.3	14.1	50.0	35.2	83.3	6.6	2.6	3.4	0.8	1.3	1.7

**AS A JUNIOR**

- Hit the buzzer-beater three-pointer for the win over Ball State and posted career-high 28 points on near perfect shooting from the field against Tarleton State at the Puerto Rico Clasico.

- Atlantic 10 Player of the Week after posting a double-double against Longwood

- Preseason A-10 First Team Selection

- Named to the 2023 Becky Hammon Mid-Major Player of the Year, presented by Her Hoop Stats

- Katrina McClain Award, to honor the best power forward (10/20), as announced by the Naismith

Memorial Basketball Hall of Fame and the Women's Basketball Coaches Association

- Opened the season posting 21 points, two points shy of her career high, 7 rebounds and 3 assists at Liberty.

- Collected second career double-double of 15 points and 13 rebounds, with four assists and a season-high four blocks against Longwood, which earned Atlantic 10 Player of the Week accolades, the first of her career

**CAREER SUMMARY**

				Field Goals		3-Point		F-Throws		Rebounds						Scoring				
SEASON	TEAM	GP-GS	MIN/AVG	FG-FGA	FG%	3FG-3FGA	3FG%	FT-FTA	FT%	OFF	DEF	TOT	PF-FO	A	T	BLK	STL	PTS	AVG	
2020-21	UR	22-18	753/34.2	94-194	.485	22-68	.324	40-45	.889	32	79	111	5.0	43-0	41	48	65	15	250	11.4
2021-22	UR	30-29	1010/33.7	155-311	.498	43-119	.361	54-80	.675	56	120	176	5.9	59-0	66	60	77	21	407	13.6
2022-23	UR	14-14	453/32.3	77-154	.500	19-54	.352	25-30	.833	29	64	93	6.6	27-0	36	47	24	18	198	14.1
TOTAL		66-61	2216/33.6	326-659	.495	84-241	.349	119-155	.768	117	263	380	5.8	129-0	143	155	166	54	855	13.0



# KYLEE LEWANDOWSKI

**JUNIOR**  
**6-1 / GUARD**  
**PITTSBURGH, PA.**  
**NORTH CATHOLIC**

# 21

## TOP PERFORMANCES

### POINTS

Season ..... 10 (vs Longwood, 12/11/22)  
 Career ..... 10 (vs Longwood, 12/11/22)

### REBOUNDS

Season ..... 3, (vs Tarleton State, 12/21/22)  
 Career ..... 11 (at Hampton, 11/13/21)

### ASSISTS

Season ..... 1 (vs Longwood, 12/11/22)  
 Career ..... 2 (at Ohio, 12/4/21)

### BLOCKS

Season .....  
 Career ..... 1 (4x, last at Ohio, 12/4/21)

### STEALS

Season ..... 2 (vs Longwood, 12/11/22)  
 Career ..... 2 (3x, last vs Longwood, 12/11/22)

### FIELD GOALS MADE

Season ..... 4 (vs Longwood, 12/11/22)  
 Career ..... 4 (vs Longwood, 12/11/22)

### FIELD GOALS ATTEMPTED

Season ..... 7 (vs Longwood, 12/11/22)  
 Career ..... 9 (at Ohio, 12/4/21)

### FREE-THROWS MADE

Season ..... 1 (vs. Idaho, 11/26/22)  
 Career ..... 2 (vs. La Salle, 2/20/21)

### FREE-THROWS ATTEMPTED

Season ..... 2 (vs. Idaho, 11/26/22)  
 Career ..... 2 (5x, last vs. Idaho, 11/26/22)

### 3-POINT FIELD GOALS MADE

Season ..... 2 (vs Longwood, 12/11/22)  
 Career ..... 2 (6x, last vs Longwood, 12/11/22)

### 3-POINT FIELD GOALS ATTEMPTED

Season ..... 5 (vs Longwood, 12/11/22)  
 Career ..... 7 (vs. UMES, 12/1/21)

### MINUTES

Season ..... 11 (vs Longwood, 12/11/22)  
 Career ..... 23 (at Ohio, 12/4/21)

## GAME-BY-GAME STATISTICS

#21 LEWANDOWSKI, Kylee

Opponent	Date	GS	MIN	Total		3-Pointers		Free throws		Rebounds		PF	A	TO	BLK	STL	PTS	AVG
				FG-FGA	PCT	3FG-3FGA	PCT	FT-FTA	PCT	OFF	DEF							
at Liberty	11/07/2022		01:46	0-0	.000	0-0	.000	0-0	.000	0	0	0	0.0	0	0	0	0	0.0
Mount St. Mary's	11/10/2022		08:57	0-2	.000	0-1	.000	0-0	.000	0	2	2	1.0	0	0	1	0	0.0
at Clemson	11/13/2022		01:41	0-0	.000	0-0	.000	0-0	.000	0	0	0	0.7	0	0	0	0	0.0
at UMBC	11/17/2022		03:52	0-2	.000	0-2	.000	0-0	.000	0	0	0	0.5	0	0	0	0	0.0
vs Idaho	11/26/2022		03:22	1-1	1.000	1-1	1.000	1-2	.500	0	2	2	0.8	0	0	0	4	0.8
at William & Mary	12/01/2022		00:52	0-0	.000	0-0	.000	0-0	.000	0	0	0	0.7	0	0	0	0	0.7
Duke	12/04/2022		05:39	0-2	.000	0-2	.000	0-0	.000	0	0	0	0.6	0	0	1	0	0.6
Longwood	12/11/2022		11:10	4-7	.571	2-5	.400	0-0	.000	0	1	1	0.6	1	1	1	0	1.8
at Elon	12/15/2022		00:44	0-0	.000	0-0	.000	0-0	.000	0	0	0	0.6	0	0	0	0	1.6
vs Ball St.	12/20/2022		02:18	0-1	.000	0-1	.000	0-0	.000	0	0	0	0.5	0	0	0	0	1.4
vs Tarleton St.	12/21/2022		06:54	0-1	.000	0-1	.000	0-0	.000	0	3	3	0.7	0	0	0	0	1.3
George Washington	12/31/2022		00:24	0-1	.000	0-0	.000	0-0	.000	0	0	0	0.7	0	0	0	0	1.2
<b>Totals</b>			<b>0 47:37</b>	<b>5-17</b>	<b>.294</b>	<b>3-13</b>	<b>.231</b>	<b>1-2</b>	<b>.500</b>	<b>0</b>	<b>8</b>	<b>8</b>	<b>0.7</b>	<b>1</b>	<b>1</b>	<b>3</b>	<b>0</b>	<b>2 14 1.2</b>

Player Averages

Games Played	Minutes/ game	Points/ game	FG Pct	3FG Pct	FT Pct	Rebounds/ game	Assists/ game	Turnovers/ game	Assist/Turnover ratio	Steals/ game	Blocks/ game
12	4.0	1.2	29.4	23.1	50.0	0.7	0.1	0.3	0.3	0.2	0.0

## AS A JUNIOR

- Collected two rebounds against Mount St. Mary's
- Scored four points, including two from the free throw line, against Idaho
- Tallied career-high 10 points, with two three pointers, with the second marking the Spiders new program record 18th three pointer against Longwood

## CAREER SUMMARY

SEASON	TEAM	GP-GS	MIN/AVG	Field Goals		3-Point		F-Throws		Rebounds		PF-FO		TO	BLK	STL	Scoring	
				FG-FGA	FG%	3FG-3FGA	3FG%	FT-FTA	FT%	OFF	DEF	TOT	AVG				PTS	AVG
2020-21	UR	10-0	48/4.8	3-14	.214	2-8	.250	2-2	1.000	2	12	14	1.4	3-0	2	3	0	4 10 1.0
2021-22	UR	24-0	218/9.1	24-72	.333	18-56	.321	1-6	.167	3	36	39	1.6	9-0	6	8	4	3 67 2.8
2022-23	UR	12-0	48/4.0	5-17	.294	3-13	.231	1-2	.500	0	8	8	0.7	1-0	1	3	0	2 14 1.2
<b>TOTAL</b>		<b>46-0</b>	<b>314/6.8</b>	<b>32-103</b>	<b>.311</b>	<b>23-77</b>	<b>.299</b>	<b>4-10</b>	<b>.400</b>	<b>5</b>	<b>56</b>	<b>61</b>	<b>1.3</b>	<b>13-0</b>	<b>9</b>	<b>14</b>	<b>4</b>	<b>9 91 2.0</b>





# RACHEL ULLSTROM

**FRESHMAN**  
**6-1 | GUARD**  
**AUBURN, MASS.**  
**MARIANAPOLIS PREP**

# 22

## TOP PERFORMANCES

### POINTS

Season ..... 26 (vs Longwood, 12/11/22)  
 Career ..... 26 (vs Longwood, 12/11/22)

### REBOUNDS

Season ..... 7 (vs. Hampton, 11/20/22)  
 Career ..... 7 (vs. Hampton, 11/20/22)

### ASSISTS

Season ..... 4 (vs Ball State, 12/20/22)  
 Career ..... 4 (vs Ball State, 12/20/22)

### BLOCKS

Season ..... 1 (at Elon, 12/15/22)  
 Career ..... 1 (at Elon, 12/15/22)

### STEALS

Season ..... 3 (vs. Mount St. Mary's, 11/10/22)  
 Career ..... 3 (vs. Mount St. Mary's, 11/10/22)

### FIELD GOALS MADE

Season ..... 6 (vs. Mount St. Mary's, 11/10/22)  
 Career ..... 6 (vs. Mount St. Mary's, 11/10/22)

### FIELD GOALS ATTEMPTED

Season ..... 12 (vs. Mount St. Mary's, 11/10/22)  
 Career ..... 12 (vs. Mount St. Mary's, 11/10/22)

### FREE-THROWS MADE

Season ..... 3 (2vs GW, 12/31/22)  
 Career ..... 3 (vs GW, 12/31/22)

### FREE-THROWS ATTEMPTED

Season ..... 4 (vs GW, 12/31/22)  
 Career ..... 4 (vs GW, 12/31/22)

### 3-POINT FIELD GOALS MADE

Season ..... 3 (vs Ball State, 12/20/22)  
 Career ..... 3 (vs Ball State, 12/20/22)

### 3-POINT FIELD GOALS ATTEMPTED

Season ..... 5 (vs Ball State, 12/20/22)  
 Career ..... 5 (vs Ball State, 12/20/22)

### MINUTES

Season ..... 21 (vs Ball State, 12/20/22)  
 Career ..... 21 (vs Ball State, 12/20/22)

## GAME-BY-GAME STATISTICS

#22 ULLSTROM, Rachel

Opponent	Date	GS	MIN	Total		3-Pointers		Free throws		Rebounds				PF	A	TO	BLK	STL	PTS	AVG
				FG-FGA	PCT	3FG-3FGA	PCT	FT-FTA	PCT	OFF	DEF	TOT	AVG							
at Liberty	11/07/2022		11:51	0-0	.000	0-0	.000	0-0	.000	0	1	1	1.0	0	1	0	0	0	0	0.0
Mount St. Mary's	11/10/2022		16:51	6-12	.500	0-3	.000	1-1	1.000	3	2	5	3.0	0	0	1	0	3	13	6.5
at Clemson	11/13/2022		14:33	0-3	.000	0-1	.000	0-0	.000	1	0	1	2.3	0	0	1	0	0	0	4.3
at UMBC	11/17/2022		12:17	2-5	.400	2-4	.500	0-0	.000	2	3	5	3.0	0	1	0	0	0	6	4.8
Hampton	11/20/2022		09:04	0-4	.000	0-0	.000	0-0	.000	2	5	7	3.8	0	0	2	0	0	0	3.8
vs Idaho	11/26/2022		10:18	0-0	.000	0-0	.000	0-0	.000	1	1	2	3.5	1	0	0	0	0	0	3.2
vs NIU	11/27/2022		05:53	1-2	.500	0-1	.000	0-0	.000	2	1	3	3.4	0	0	0	0	0	2	3.0
at William & Mary	12/01/2022		14:50	1-5	.200	0-4	.000	0-0	.000	1	1	2	3.3	1	0	0	0	0	2	2.9
Duke	12/04/2022		17:06	4-8	.500	1-4	.250	2-2	1.000	1	1	2	3.1	0	0	1	0	1	11	3.8
Longwood	12/11/2022		23:57	11-16	.688	3-7	.429	1-1	1.000	3	4	7	3.5	3	1	0	0	4	26	6.0
at Elon	12/15/2022		17:15	2-5	.400	1-4	.250	1-2	.500	1	3	4	3.5	1	1	0	1	0	6	6.0
vs Ball St.	12/20/2022		21:40	4-6	.667	3-5	.600	2-2	1.000	0	3	3	3.5	0	4	1	0	0	13	6.6
vs Tarleton St.	12/21/2022		10:00	0-0	.000	0-0	.000	0-0	.000	0	2	2	3.4	1	1	2	0	1	0	6.1
George Washington	12/31/2022		12:03	1-2	.500	0-1	.000	3-4	.750	1	2	3	3.4	0	0	0	0	1	5	6.0
<b>Totals</b>			<b>0</b>	<b>197:37</b>	<b>32-68</b>	<b>.471</b>	<b>10-34</b>	<b>.294</b>	<b>10-12</b>	<b>.833</b>	<b>18</b>	<b>29</b>	<b>47</b>	<b>3.4</b>	<b>7</b>	<b>9</b>	<b>1</b>	<b>10</b>	<b>84</b>	<b>6.0</b>

### Player Averages

Games Played	Minutes/ game	Points/ game	FG Pct	3FG Pct	FT Pct	Rebounds/ game	Assists/ game	Turnovers/ game	Assist/Turnover ratio	Steals/ game	Blocks/ game
14	14.1	6.0	47.1	29.4	83.3	3.4	0.6	0.6	1.0	0.7	0.1

## AS A FRESHMAN ...

- Named Atlantic 10 Rookie of the Week after leading all scorers with 26 points against Longwood.
- Tallied her first collegiate points against Mount St. Mary's, chipping in 13 points, five rebounds and three steals in the win.

## CAREER SUMMARY

				Field Goals		3-Point		F-Throws		Rebounds				Scoring						
SEASON	TEAM	GP-GS	MIN/AVG	FG-FGA	FG%	3FG-3FGA	3FG%	FT-FTA	FT%	OFF	DEF	TOT	AVG	PF-FO	A	TO	BLK	STL	PTS	AVG
2022-23	UR	14-0	198/14.1	32-68	.471	10-34	.294	10-12	.833	18	29	47	3.4	7-0	9	9	1	10	84	6.0
<b>TOTAL</b>		<b>14-0</b>	<b>198/14.1</b>	<b>32-68</b>	<b>.471</b>	<b>10-34</b>	<b>.294</b>	<b>10-12</b>	<b>.833</b>	<b>18</b>	<b>29</b>	<b>47</b>	<b>3.4</b>	<b>7-0</b>	<b>9</b>	<b>9</b>	<b>1</b>	<b>10</b>	<b>84</b>	<b>6.0</b>



# EMILIJA KRISTA GRAVA

**GRADUATE STUDENT**  
**6-2 / FORWARD**  
**LIGATNE, LATIVA**  
**WAGNER**

# 24

**LIEPAJAS PAPIRISK SSS**

## GAME-BY-GAME STATISTICS

### TOP PERFORMANCES

#### POINTS

Season ..... 16 (at UMBC, 11/17/22)  
 Career ..... 45 (vs. St. Peters, 11/13/19)

#### REBOUNDS

Season ..... 7 (vs Longwood, 12/11/22)  
 Career ..... 12 (at Central Conn. St, 2/19/22)

#### ASSISTS

Season ..... 3 (vs Longwood, 12/11/22)  
 Career ..... 5 (at Bryant, 1/6/22)

#### BLOCKS

Season ..... 1 (7x, last vs GW, 12/31/22)  
 Career ..... 3 (2x, last at Mount St. Mary's, 2/10/22)

#### STEALS

Season ..... 1 (5x last vs GW, 12/31/22)  
 Career ..... 3 (St. Francis Brooklyn, 2/5/21)

#### FIELD GOALS MADE

Season ..... 7 (at UMBC, 11/17/22)  
 Career ..... 15 (vs. Mount St. Mary's, 3/5/21)

#### FIELD GOALS ATTEMPTED

Season ..... 11 (at UMBC, 11/17/22)  
 Career ..... 26 (vs. Mount St. Mary's, 3/5/21)

#### FREE-THROWS MADE

Season ..... 4 (2x last vs. Hampton, 11/20/22)  
 Career ..... 10 (at Brown, 11/20/21)

#### FREE-THROWS ATTEMPTED

Season ..... 5 (at UMBC, 11/17/22)  
 Career ..... 10 (at Brown, 11/20/21)

#### 3-POINT FIELD GOALS MADE

Season ..... 2 (4x, last vat Elon, 12/15/22)  
 Career ..... 2 (5x, last at Elon, 12/15/22)

#### 3-POINT FIELD GOALS ATTEMPTED

Season ..... 5 (2x last vs. Hampton, 11/20/22)  
 Career ..... 5 (2x last vs. Hampton, 11/20/22)

#### MINUTES

Season ..... 32 (vs. Hampton, 11/20/22)  
 Career ..... 38 (at Seton Hall, 12/11/20)

Opponent	Date	GS	MIN	Total		3-Pointers		Free throws		Rebounds			PF	A	TO	BLK	STL	PTS	AVG	
				FG-FGA	PCT	3FG-3FGA	PCT	FT-FTA	PCT	OFF	DEF	TOT	AVG							
at Liberty	11/07/2022		14:36	3-4	.750	1-2	.500	0-0	.000	0	0	0	0	4	0	1	0	7	7.0	
Mount St. Mary's	11/10/2022		18:48	2-3	.667	0-1	.000	4-4	1.000	2	3	5	2.5	1	2	1	0	8	7.5	
at Clemson	11/13/2022		25:11	4-8	.500	2-4	.500	0-0	.000	0	0	0	1.7	4	0	0	1	10	8.3	
at UMBC	11/17/2022		24:57	7-11	.636	2-5	.400	0-0	.000	0	0	0	1.3	2	1	3	1	0	16	10.3
Hampton	11/20/2022		31:46	3-8	.375	2-5	.400	4-4	1.000	1	3	4	1.8	1	1	3	1	1	12	10.6
vs Idaho	11/26/2022		25:30	4-7	.571	0-2	.000	0-0	.000	0	1	1	1.7	2	1	1	1	1	8	10.2
vs NIU	11/27/2022		25:34	2-4	.500	1-2	.500	2-2	1.000	2	3	5	2.1	3	3	2	0	0	7	9.7
at William & Mary	12/01/2022		18:07	1-5	.200	0-1	.000	0-0	.000	4	1	5	2.5	0	1	0	1	0	2	8.8
Duke	12/04/2022		21:13	1-2	.500	0-0	.000	0-0	.000	1	2	3	2.6	0	1	1	1	0	2	8.0
Longwood	12/11/2022	*	25:41	2-7	.286	1-1	1.000	2-2	1.000	3	4	7	3.0	3	3	2	1	0	7	7.9
at Elon	12/15/2022	*	23:15	4-8	.500	2-3	.667	0-0	.000	0	4	4	3.1	1	0	2	0	0	10	8.1
vs Tarleton St.	12/21/2022		19:50	4-9	.444	1-4	.250	0-0	.000	0	2	2	3.0	3	0	2	0	1	9	8.2
George Washington	12/31/2022		29:23	3-7	.429	0-2	.000	0-0	.000	2	3	5	3.2	3	1	2	1	1	6	8.0
Totals		2	303:50	40-83	.482	12-32	.375	12-12	1.000	15	26	41	3.2	27	14	20	7	5	104	8.0

#### Player Averages

Games Played	Minutes/game	Points/game	FG Pct	3FG Pct	FT Pct	Rebounds/game	Assists/game	Turnovers/game	Assist/Turnover ratio	Steals/game	Blocks/game
13	23.4	8.0	48.2	37.5	100.0	3.2	1.1	1.5	0.7	0.4	0.5

## AT RICHMOND...

- Scored five-straight points (a three-pointer and a layup) to stop a 9-1 run by Liberty in the first quarter before getting into foul trouble.
- Posted season-high 10 points, including two three-pointers, against Clemson
- Paced the Spiders with 16 points, on seven field goals, including two three-pointers against UMBC
- Tallied three-straight games with double-figure scoring (at Clemson, at UMBC, vs Hampton.)

## HONORS WHILE AT WAGNER (2018-22)

- Northeast Conference (NEC) Preseason All-NEC Team (2020-21)
- Northeast Conference (NEC) First Team (2019-20, 2020-21, 2021-22)
- First Seahawk in program history to be named to three consecutive All-Northeast Conference (NEC) First Teams.
- Metropolitan Basketball Writers' Association (MBWA) Second Team (2020-21)
- Metropolitan Basketball Writers' Association (MBWA) Third Team (2019-20, 2021-22)
- Northeast Conference (NEC) All-Rookie Team (2018-19)
- Northeast Conference (NEC) Player of the Week (Nov. 18, 2019, Jan. 29, 2020, Feb. 8, 2021, Mar. 8, 2021, Dec. 13, 2021, Feb. 7, 2022)
- Northeast Conference (NEC) Rookie of the Week (Nov. 19, 2018)
- Northeast Conference (NEC) Winter Academic Honor Roll (2020-21; 2021-22)
- Became the 25th member of the Wagner women's basketball 1,000 Point Club (1,311)
- Finished her Wagner career with 1,311 career points (12th all-time); 13.4 points per game (12th all-time) 567 rebounds, and 549 field goals made (7th all-time).

## CAREER SUMMARY

					Field Goals		3-Point		F-Throws		Rebounds								Scoring	
SEASON	TEAM	GP-GS	MIN/AVG	FG-FGA	FG%	3FG-3FGA	3FG%	FT-FTA	FT%	OFF	DEF	TOT	AVG	PF-FO	A	TO	BLK	STL	PTS	AVG
2018-19	WC	21-17	577/27.5	92-220	.418	6-23	.261	23-34	.676	52	62	114	5.4	69-21	54	16	20	213	10.1	
2019-20	WC	29-29	890/30.7	193-414	.466	4-16	.250	64-83	.771	78	96	174	6.0	73-1	27	74	23	27	454	15.7
2020-21	WC	19-19	578/30.4	113-243	.465	5-20	.250	36-49	.735	40	65	105	5.5	39-1	17	45	11	17	267	14.1
2021-22	WC	29-27	895/30.8	151-343	.440	11-39	.282	64-78	.821	78	96	174	6.0	61-0	31	51	24	13	377	13.0
2022-23	UR	13-2	304/23.4	40-83	.482	12-32	.375	12-12	1.000	15	26	41	3.2	27-0	14	20	7	5	104	8.0
TOTAL FOR UR		13-2	304/23.4	40-83	.482	12-32	.375	12-12	1.000	15	26	41	3.2	27-0	14	20	7	5	104	8.0
TOTAL		111-94	3243/29.2	589-1303	.452	38-130	.292	199-256	.777	263	345	608	5.5	269-4	110	244	81	82	1415	12.7

**COLTS NECK, N.J.**  
**SAINT JOHN VIANNEY**



Season ..... 35 (vs GW, 12/31/22)  
Career ..... 35 (vs GW, 12/31/22)

Opponent	Date	GS	MIN	Total		3-Pointers		Free throws		Rebounds			PF	A	TO	BLK	STL	PTS	AVG	
				FG-FGA	PCT	3FG-3FGA	PCT	FT-FTA	PCT	OFF	DEF	TOT								AVG
at Liberty	11/07/2022	*	33:14	2-8	.250	2-4	.500	1-2	.500	0	1	1	1	0	2	7	7.0			
Mount St. Mary's	11/10/2022	*	19:36	3-6	.500	1-1	1.000	5-6	.833	1	3	4	2.5	0	0	1	12	9.5		
at Clemson	11/13/2022	*	31:55	6-19	.316	1-8	.125	0-0	.000	0	1	1	2.0	1	0	1	23	10.7		
at UMBC	11/17/2022	*	25:10	3-7	.429	0-2	.000	4-4	1.000	1	4	5	2.8	3	0	3	10	10.5		
Hampton	11/20/2022	*	39:30	4-10	.400	1-5	.200	4-4	1.000	3	4	7	3.6	2	3	7	2	13	11.0	
vs Idaho	11/26/2022	*	18:45	1-3	.333	0-1	.000	6-6	1.000	3	5	8	4.3	2	0	4	0	8	10.5	
vs NIU	11/27/2022	*	27:01	6-11	.545	1-4	.250	0-0	.000	0	3	3	4.5	2	1	3	1	13	10.9	
at William & Mary	12/01/2022	*	32:60	3-8	.375	1-4	.250	2-2	1.000	1	6	7	4.1	3	0	2	0	9	10.6	
Duke	12/04/2022	*	27:42	3-10	.300	1-2	.500	2-3	.667	0	3	3	4.3	2	2	1	0	2	10.4	
Longwood	12/11/2022	*	16:59	6-9	.667	2-4	.500	4-6	.667	1	5	6	4.5	1	3	3	1	0	18	11.1
at Elon	12/15/2022	*	27:31	5-7	.714	0-1	.000	1-1	1.000	1	2	3	4.4	0	1	2	0	4	11	11.2
vs Ball St.	12/20/2022	*	34:23	4-7	.571	1-2	.500	0-0	.000	1	3	4	4.3	2	0	1	0	3	9	11.0
vs Tarleton St.	12/21/2022	*	28:21	2-8	.250	0-2	.000	3-3	1.000	3	5	8	4.6	1	1	1	0	7	10.7	
George Washington	12/31/2022	*	35:24	4-8	.500	1-1	1.000	0-0	.000	1	2	1	4.4	2	1	0	2	9	10.6	
Totals			14 398:29	52-121	.430	12-41	.293	32-37	.865	16	46	62	4.4	24	14	31	6	21	148	10.6

Games Played	Minutes/game	Points/game	FG Pct	3FG Pct	FT Pct	Rebounds/game	Assists/game	Turnovers/game	Assist/Turnover ratio	Steals/game	Blocks/game
14	28.5	10.6	43.0	29.3	86.5	4.4	1.0	2.2	0.5	1.5	0.4

- Saw her first collegiate action playing 12 minutes versus William & Mary after missing the first eight games of the season due to injury

				Field Goals		3-Point		F-Throws		Rebounds							Scoring				
SEASON	TEAM	GP-GS	MIN	AVG	FG-FGA	FG%	3FG-3FGA	3FG%	FT-FTA	FT%	OFF	DEF	TOT	AVG	PF-FO	A	TO	BLK	STL	PTS	AVG
2021-22	UR	19-0	256	13.5	22-52	.423	2-13	.154	15-22	.682	16	27	43	2.3	27-0	14	30	5	6	148	7.8
2022-23	UR	14-14	398	28.5	52-121	.430	12-41	.293	32-37	.865	16	46	62	4.4	24-0	10	31	6	21	148	10.6



# ELAINA CHAPMAN

**SENIOR**  
**6-3 / FORWARD**  
**RICHMOND, VA.**  
**TRINITY EPISCOPAL**

# 31

## TOP PERFORMANCES

### POINTS

Season .....  
 Career ..... 18 (vs. George Mason, 1/26/21)

### REBOUNDS

Season .....  
 Career ..... 14 (vs. Navy, 12/2/20)

### ASSISTS

Season .....  
 Career ..... 4 (2x, last @ William & Mary, 12/6/20)

### BLOCKS

Season .....  
 Career ..... 4 (@ Rhode Island, 1/7/20)

### STEALS

Season .....  
 Career ..... 5 (@ George Washington, 1/29/21)

### FIELD GOALS MADE

Season .....  
 Career ..... 7 (vs. George Mason, 1/26/21)

### FIELD GOALS ATTEMPTED

Season .....  
 Career ..... 12 (@ Howard, 12/22/20)

### FREE-THROWS MADE

Season .....  
 Career ..... 4 (4x, last @ George Mason, 1/31/21)

### FREE-THROWS ATTEMPTED

Season .....  
 Career ..... 8 (vs. St. Bonaventure, 2/2/20)

### 3-POINT FIELD GOALS MADE

Season .....  
 Career ..... 1 (7x, last @ Duquesne, 1/10/21)

### 3-POINT FIELD GOALS ATTEMPTED

Season .....  
 Career ..... 5 (@ Virginia Tech, 11/25/20)

### MINUTES

Season .....  
 Career ..... 36 (@ Howard, 12/22/20)

## GAME-BY-GAME STATISTICS

- Suffered a career ending injury prior to the start of her junior season in 2021-22.

## AS A SOPHOMORE (2020-21)

- Played in 21 of 22 games, making 21 starts
- Finished fourth on the team in scoring at 7.0 points per game, including a career-high 18 points against George Mason
- Led the team in rebounding at 7.1 boards per game (150 rebounds)
- Posted two double-doubles against George Washington (10 points, 10 rebounds) and at Howard (13 points, 11 rebounds)
- Scored in double figures five times and pulled down 10 or more rebounds seven times
- Grabbed a career-high 14 rebounds against Navy
- Shot 40.0 percent from the field (54-for-135) and 57.4 percent from the free throw line (35-for-61)
- Came away with 18 blocks, second on the team
- Her career-game against George Mason went 7-for-11 from the field for 18 points and eight rebounds
- Swiped four steals against George Washington in the A-10 Championship second round
- Played a career-high 36 minutes at Howard, scoring 13 points with 11 rebounds

## CAREER SUMMARY

SEASON	TEAM	GP-GS	MIN/AVG	Field Goals			3-Point			F-Throws			Rebounds				Scoring			
				FG-FGA	FG%	3FG-3FGA	3FG%	FT-FTA	FT%	OFF	DEF	TOT	AVG	PF-FO	A	TO	BLK	STL	PTS	AVG
2019-20	UR	32-2	590/18.4	48-125	.384	4-18	.222	41-77	.532	38	110	148	4.6	50-0	25	56	31	19	141	4.4
2020-21	UR	21-21	556/26.5	54-135	.400	4-15	.267	35-61	.574	49	101	150	7.1	48-1	28	47	18	26	147	7.0
TOTAL		53-23	1146/21.6	102-260	.392	8-33	.242	76-138	.551	87	211	298	5.6	98-1	53	103	49	45	288	5.4



# SIOBHAN RYAN

**JUNIOR**  
**6-0 / GUARD**  
**BUFFALO, N.Y.**  
**HEART ACADEMY**

**32**

## TOP PERFORMANCES

## POINTS

Season ..... 27 (vs Ball State, 12/20/22)  
Career ..... 27 (vs Ball State, 12/20/22)

## REBOUNDS

Season .....8 (vs. Hampton, 11/20/22)  
Career .....12 (@ Howard, 12/22/20)

## ASSISTS

Season .....5 (2x last vs Tarleton State, 12/21/22)  
Career .....5 (2x last vs Tarleton State, 12/21/22)

## BLOCKS

Season .....  
Career ..... 1 (9x, last vs. Rhode Island, 2/19/22)

## STEALS

Season ..... 2 (vs. Mount St. Mary's, 11/10/22)  
Career ..... 3 (vs. Davidson, 2/9/22)

## FIELD GOALS MADE

Season ..... 10 (vs Ball State, 12/20/22)  
Career ..... 10 (2x last vs Ball State, 12/20/22)

### FIELD GOALS ATTEMPTED

Season ..... 14 (vs. Idaho, 11/26/22)  
Career ..... 17 (vs. Southern Miss, 12/20/21)

### FREE-THROWS MADE

Season ..... 4 (vs. Idaho, 11/26/22)  
Career ..... 4 (vs. Idaho, 11/26/22)

### FREE-THROWS ATTEMPTED

Season ..... 4 (vs. Idaho, 11/26/22)  
Career ..... 4 (3x, last vs. Idaho, 11/26/22)

### 3-POINT FIELD GOALS MADE

Season ..... 7 (vs Ball State, 12/20/22)  
Career ..... 7 (vs Ball State, 12/20/22)

### 3-POINT FIELD GOALS ATTEMPTED

Season ..... 12 (vs Longwood, 12/11/22)  
Career ..... 12 (vs Longwood, 12/11/22)

## MINUTES

Season .....41 (vs. Hampton, 11/20/22)  
Career .....41 (vs. Hampton, 11/20/22)

### #32 RYAN, Siobhan

Opponent	Date	GS	Total			3-Pointers		Free throws		Rebounds			PF	A	TO	BLK	STL	PTS	AVG			
			FG-FGA	PCT	3FG-3FGA	PCT	FT-FTA	PCT	OFF	DEF	TOT	AVG										
at Liberty	11/07/2022	*	32	10	5-8	.625	3-5	.600	0-0	.000	0	4	4	4.0	2	1	0	0	13	13.0		
Mount St. Mary's	11/10/2022	*	26	05	4-6	.667	3-3	1.000	0-0	.000	0	3	3	3.5	1	5	2	0	2	11	12.0	
at Clemson	11/13/2022	*	28	19	0-7	.000	0-5	.000	0-0	.000	1	6	7	4.7	1	0	0	0	0	0	8.0	
at UMBc	11/17/2022	*	37	46	1-8	.125	1-5	.200	1-2	.500	2	4	6	5.0	3	1	3	0	0	4	7.0	
Hampton	11/20/2022	*	41	26	5-12	.417	4-11	.364	2-2	1.000	2	6	8	5.6	0	2	3	0	1	16	8.8	
vs Idaho	11/26/2022	*	30	31	7-14	.500	5-9	.556	4-4	1.000	0	5	5	5.5	2	1	2	0	0	23	11.2	
vs NIU	11/27/2022	*	30	28	2-9	.222	2-5	.400	0-0	.000	1	4	5	5.4	3	4	3	0	0	6	10.4	
at William & Mary	12/01/2022	*	28	00	2-5	.400	2-5	.400	2-2	1.000	0	3	3	5.1	2	3	1	0	1	8	10.1	
Duke	12/04/2022	*	21	40	3-7	.429	2-6	.333	0-0	.000	0	0	0	4.6	1	0	2	0	0	8	9.9	
Longwood	12/11/2022	*	23	49	7-13	.538	6-12	.500	0-0	.000	0	3	3	4.4	1	1	0	0	1	20	10.9	
at Elon	12/15/2022	*	33	46	3-6	.500	0-3	.000	0-0	.000	0	4	4	4.4	1	4	2	0	0	6	10.5	
vs Ball St.	12/20/2022	*	30	00	10-13	.769	9-9	.778	0-0	.000	0	3	3	4.3	3	1	2	0	0	27	11.8	
vs Tarleton St.	12/21/2022	*	30	60	1-5	.200	1-5	.200	0-0	.000	0	5	5	4.3	4	5	3	0	0	3	11.2	
George Washington	12/31/2022	*	24	41	1-8	.125	0-5	.000	0-0	.000	0	1	1	4.1	1	2	2	0	0	2	10.5	
Totals			14	419	40	51-121	.421	36-88	.409	9-10	.900	6	51	57	4.1	25	30	25	0	6	147	10.5

### Player Averages

Games Played	Minutes/ game	Points/ game	FG Pct	3FG Pct	FT Pct	Rebounds/ game	Assists/ game	Turnovers/ game	Assist/Turnover ratio	Steals/ game	Blocks/ game
14	30.0	10.5	42.1	40.9	90.0	4.1	2.1	1.8	1.2	0.4	0.0

## AS A JUNIOR

- Led the Spiders with seven three-pointers and game high 27 points in win over Ball State
- Perfect from long range (3-for-3) against Mount St. Mary's
- Posted season-highs in points (16) and rebounds (8) in overtime win against Hampton
- Upped her season-high in points to 23 in victory over Idaho
- Matched career-high six made three-pointers to pace the Spiders program record 18 made three pointers against Longwood

## CAREER SUMMARY

				Field Goals		3-Point		F-Throws		Rebounds						Scoring					
SEASON TEAM	GP-G	MIN/AVG		FG-FGA	FG%	3FG-3FGA	3FG%	FT-FTA	FT%	OFF	DEF	TOT	AVG	PP-F	A	TO	BK	STL	PTS	AVG	
2020-21	UR	22-6	412/18.7	40-116	.345	15-66	.227	18-25	.720	13	36	49	2.2	33-0	23	36	5	6	113	5.1	
2021-22	UR	30-29	781/26.0	90-214	.421	41-123	.333	31-42	.738	29	68	97	3.2	61-0	39	73	5	17	252	8.4	
2022-23	UR	14-14	420/30.0	51-121	.421	36-88	.409	9-10	.900	6	15	21	3.1	25-0	30	25	0	6	147	10.5	
TOTAL				66-49	1613/24.6	181-451	.401	92-277	.332	58-77	.753	48	155	203	3.1	119-0	92	134	10	512	7.8



# ANGEL BURGOS

**SENIOR**  
**5-8 / GUARD**  
**RICHMOND, VA.**  
**TRINITY EPISCOPAL**

# 41

## TOP PERFORMANCES

### POINTS

Season ..... 5 (vs. Mount St. Mary's, 11/10/22)  
 Career ..... 13 (at Dayton, 3/6/20)

### REBOUNDS

Season ..... 5 (vs. Mount St. Mary's, 11/10/22)  
 Career ..... 5 (2x last vs. Mount St. Mary's, 11/10/22)

### ASSISTS

Season ..... 3 (vs Longwood, 12/11/22)  
 Career ..... 3 (vs Longwood, 12/11/22)

### BLOCKS

Season ..... 1 (vs Longwood, 12/11/22)  
 Career ..... 1 (4x, last vs Longwood, 12/11/22)

### STEALS

Season ..... 1 (vs Longwood, 12/11/22)  
 Career ..... 3 (vs. Duquesne, 2/12/20)

### FIELD GOALS MADE

Season ..... 2 (vs. Mount St. Mary's, 11/10/22)  
 Career ..... 5 (@ Dayton, 3/6/20)

### FIELD GOALS ATTEMPTED

Season ..... 3 (vs Longwood, 12/11/22)  
 Career ..... 7 (@ Dayton, 3/6/20)

### FREE-THROWS MADE

Season ..... 1 (vs. Mount St. Mary's, 11/10/22)  
 Career ..... 3 (vs. Duquesne, 1/1/22)

### FREE-THROWS ATTEMPTED

Season ..... 3 (vs. Mount St. Mary's, 11/10/22)  
 Career ..... 4 (2x, last vs. Duquesne, 1/1/22)

### 3-POINT FIELD GOALS MADE

Season .....  
 Career ..... 1 (@ Dayton, 3/6/20)

### 3-POINT FIELD GOALS ATTEMPTED

Season ..... 1 (vs Longwood, 12/11/22)  
 Career ..... 2 (vs. Duquesne, 2/12/20)

### MINUTES

Season ..... 11 (2x last vs Longwood, 12/11/22)  
 Career ..... 18 (@ Dayton, 3/6/20)

## GAME-BY-GAME STATISTICS

### #41 BURGOS, Angel

Opponent	Date	GS	MIN	Total		3-Pointers		Free throws		Rebounds		PF	A	TO	BLK	STL	PTS	AVG
				FG-FGA	PCT	3FG-3FGA	PCT	FT-FTA	PCT	OFF	DEF							
at Liberty	11/07/2022		02:10	0-1	.000	0-0	.000	0-0	.000	0	0	0	0.0	0	1	0	0	0.0
Mount St. Mary's	11/10/2022		12:11	2-3	.667	0-0	.000	1-3	.333	0	5	5	2.5	0	2	0	0	5 2.5
at Clemson	11/13/2022		03:55	0-1	.000	0-1	.000	0-0	.000	0	0	0	1.7	0	1	0	0	1.7
at UMBC	11/17/2022		00:46	0-0	.000	0-0	.000	0-0	.000	0	0	0	1.3	0	0	0	0	1.3
vs Idaho	11/26/2022		03:19	0-1	.000	0-0	.000	0-0	.000	0	0	0	1.0	0	0	0	0	1.0
at William & Mary	12/01/2022		00:52	0-0	.000	0-0	.000	0-0	.000	0	0	0	0.8	0	0	1	0	0.8
Duke	12/04/2022		07:26	0-1	.000	0-0	.000	0-0	.000	0	2	2	1.0	1	0	1	0	0.7
Longwood	12/11/2022		11:19	1-3	.333	0-1	.000	0-0	.000	0	2	2	1.1	2	3	0	1	2 0.9
at Elon	12/15/2022		00:44	0-0	.000	0-0	.000	0-0	.000	0	0	0	1.0	0	0	0	0	0.8
vs Tarleton St.	12/21/2022		00:29	0-0	.000	0-0	.000	0-0	.000	0	1	1	1.0	0	0	0	0	0.7
<b>Totals</b>			<b>0 43:11</b>	<b>3-10</b>	<b>.300</b>	<b>0-2</b>	<b>.000</b>	<b>1-3</b>	<b>.333</b>	<b>0</b>	<b>10</b>	<b>10</b>	<b>1.0</b>	<b>3</b>	<b>7</b>	<b>2</b>	<b>1</b>	<b>7 0.7</b>

### Player Averages

Games Played	Minutes/ game	Points/ game	FG Pct	3FG Pct	FT Pct	Rebounds/ game	Assists/ game	Turnovers/ game	Assist/Turnover ratio	Steals/ game	Blocks/ game
10	4.3	0.7	30.0	0.0	33.3	1.0	0.7	0.2	3.5	0.1	0.1

## AS A SENIOR

- Saw her first game action of the season playing four minutes in a win at Liberty
- Scored five points, pulled down five rebound and dished out two assists againsts Mount St. Mary's
- Had season-high three assists and a block in the Spiders victory over Longwood

## CAREER SUMMARY

BURGOS, Angel			Field Goals		3-Point		F-Throws		Rebounds		Scoring	
SEASON	TEAM	GP-GS	MIN/AVG	FG-FGA	FG%	3FG-3FGA	3FG%	FT-FTA	FT%	OFF DEF TOT AVG	PF-FO	A TO BLK STL PTS AVG
2019-20	UR	18-0	107/6.0	11-21	.524	1-7	.143	4-6	.667	3 16 19 1.1	15-0	9 13 2 5 27 1.5
2020-21	UR	8-0	33/4.1	2-5	.400	0-0	.000	1-4	.250	2 2 4 0.5	5-0	3 4 0 1 5 0.6
2021-22	UR	15-0	59/3.9	0-8	.000	0-3	.000	6-8	.750	4 11 15 1.0	12-0	6 8 1 1 6 0.4
2022-23	UR	10-0	43/4.3	3-10	.300	0-2	.000	1-3	.333	0 10 10 1.0	3-0	7 2 1 1 7 0.7
<b>TOTAL</b>		<b>51-0</b>	<b>242/4.7</b>	<b>16-44</b>	<b>.364</b>	<b>1-12</b>	<b>.083</b>	<b>12-21</b>	<b>.571</b>	<b>9 39 48 0.9</b>	<b>35-0</b>	<b>25 27 4 8 45 0.9</b>

**MAGGIE DOOGAN**

**FRESHMAN**  
**6-2 / FORWARD**  
**BROOMALL, PA.**  
**CARDINAL O'HARA HS**

**44****TOP PERFORMANCES****POINTS**

Season ..... 13 (vs. Idaho, 11/26/22)  
 Career ..... 13 (vs. Idaho, 11/26/22)

**REBOUNDS**

Season ..... 5 (2x, last vs. Idaho, 11/26/22)  
 Career ..... 5 (2x, last vs. Idaho, 11/26/22)

**ASSISTS**

Season ..... 3 (vs. Idaho, 11/26/22)  
 Career ..... 3 (vs. Idaho, 11/26/22)

**BLOCKS**

Season ..... 1 (2x, last vs. Idaho, 11/26/22)  
 Career ..... 1 (2x, last vs. Idaho, 11/26/22)

**STEALS**

Season ..... 3 (vs. Mount St. Mary's, 11/10/22)  
 Career ..... 3 (vs. Mount St. Mary's, 11/10/22)

**FIELD GOALS MADE**

Season ..... 5 (vs. Idaho, 11/26/22)  
 Career ..... 5 (vs. Idaho, 11/26/22)

**FIELD GOALS ATTEMPTED**

Season ..... 12 (vs. Idaho, 11/26/22)  
 Career ..... 12 (vs. Idaho, 11/26/22)

**FREE-THROWS MADE**

Season ..... 2 (3x last vs. Idaho, 11/26/22)  
 Career ..... 2 (3x last vs. Idaho, 11/26/22)

**FREE-THROWS ATTEMPTED**

Season ..... 2 (3x last vs. Idaho, 11/26/22)  
 Career ..... 2 (3x last vs. Idaho, 11/26/22)

**3-POINT FIELD GOALS MADE**

Season ..... 1 (2x, last vs. Idaho, 11/26/22)  
 Career ..... 1 (2x, last vs. Idaho, 11/26/22)

**3-POINT FIELD GOALS ATTEMPTED**

Season ..... 5 (vs. Idaho, 11/26/22)  
 Career ..... 5 (vs. Idaho, 11/26/22)

**MINUTES**

Season ..... 24 (vs. Idaho, 11/26/22)  
 Career ..... 24 (vs. Idaho, 11/26/22)

**GAME-BY-GAME STATISTICS**

Opponent	Date	GS	MIN	Total		3-Pointers		Free throws		Rebounds				PF	A	TO	BLK	STL	PTS	AVG
				FG-FGA	PCT	3FG-3FGA	PCT	FT-FTA	PCT	OFF	DEF	TOT	AVG							
at Liberty	11/07/2022		16:12	1-3	.333	1-3	.333	2-2	1.000	0	1	1	1.0	3	0	1	0	1	5	5.0
Mount St. Mary's	11/10/2022		18:01	2-4	.500	0-2	.000	2-2	1.000	1	2	3	2.0	3	2	3	0	3	6	5.5
at Clemson	11/13/2022		14:23	1-4	.250	0-2	.000	0-0	.000	0	1	1	1.7	2	0	3	0	1	2	4.3
at UMBC	11/17/2022		11:46	1-4	.250	0-1	.000	0-0	.000	2	3	5	2.5	1	1	1	1	0	2	3.8
Hampton	11/20/2022		11:02	1-2	.500	0-0	.000	0-0	.000	2	2	4	2.8	1	0	3	0	0	2	3.4
vs Idaho	11/26/2022		23:36	5-12	.417	1-5	.200	2-2	1.000	0	5	5	3.2	1	3	3	1	2	13	5.0
vs NIU	11/27/2022		16:47	3-8	.375	2-5	.400	0-0	.000	1	3	4	3.3	2	1	1	0	2	8	5.4
<b>Totals</b>		<b>0</b>	<b>111:47</b>	<b>14-37</b>	<b>.378</b>	<b>4-18</b>	<b>.222</b>	<b>6-6</b>	<b>1.000</b>	<b>6</b>	<b>17</b>	<b>23</b>	<b>3.3</b>	<b>13</b>	<b>7</b>	<b>15</b>	<b>2</b>	<b>9</b>	<b>38</b>	<b>5.4</b>

**Player Averages**

Games Played	Minutes/ game	Points/ game	FG Pct	3FG Pct	FT Pct	Rebounds/ game	Assists/ game	Turnovers/ game	Assist/Turnover ratio	Steals/ game	Blocks/ game
7	16.0	5.4	37.8	22.2	100.0	3.3	1.0	2.1	0.5	1.3	0.3

**AS A FRESHMAN...**

- Hit a three-pointer against Liberty for her first collegiate points
- Posted six points, three rebounds, three steals and two assists against Mount St. Mary's
- Against Idaho tallied season-highs in points (13), rebounds (5), assists (3), minutes (24)
- Missing games starting in December due to hand injury sustained against Northern Illinois

**PREP CAREER HIGHLIGHTS**

- Two-time Delaware County Daily Times Player of the Year
- PIAA 5A State Champion
- 5A First-Team All-State
- All-Catholic First-Team
- Also lettered in volleyball at Cardinal O'Hara
- McDonalds All-American Nominee

**CAREER SUMMARY**

				Field Goals		3-Point		F-Throws		Rebounds				Scoring						
SEASON	TEAM	GP-GS	MIN/AVG	FG-FGA	FG%	3FG-3FGA	3FG%	FT-FTA	FT%	OFF	DEF	TOT	AVG	PF-FO	A	TO	BLK	STL	PTS	AVG
2022-23	UR	7-0	112/16.0	14-37	.378	4-18	.222	6-6	1.000	6	17	23	3.3	13-0	7	15	2	9	38	5.4
<b>TOTAL</b>		<b>7-0</b>	<b>112/16.0</b>	<b>14-37</b>	<b>.378</b>	<b>4-18</b>	<b>.222</b>	<b>6-6</b>	<b>1.000</b>	<b>6</b>	<b>17</b>	<b>23</b>	<b>3.3</b>	<b>13-0</b>	<b>7</b>	<b>15</b>	<b>2</b>	<b>9</b>	<b>38</b>	<b>5.4</b>

# COMBINED STATS



## 2022-23 Richmond Women's Basketball Season Box Score All games

Page 1/1  
as of Jan 03, 2023

### Game Records

Record	Overall	Home	Away	Neutral
ALL GAMES	10-4	3-2	4-1	3-1
CONFERENCE	0-1	0-1	0-0	0-0
NON-CONFERENCE	10-3	3-1	4-1	3-1

### Team Box Score

No.	Player				Total		3-Point		F-Throw		Rebounds													
		GP-GS	MIN	AVG	FG-FGA	FG%	3FG-3FGA	3FG%	FT-FTA	FT%	OFF	DEF	TOT	AVG	PF	DQ	A	TO	BLK	STL	PTS	AVG		
20	BUDNIK, Addie	14-14	452:36	32.3	77-154	.500	19-54	.352	25-30	.833	29	64	93	6.6	27	0	36	47	24	18	198	14.1		
1	TOWNSEND, Grace	14-14	431:05	30.8	50-110	.455	10-21	.476	42-63	.667	6	66	72	5.1	23	0	61	39	2	25	152	10.9		
25	HILL, Katie	14-14	398:29	28.5	52-121	.430	12-41	.293	32-37	.865	16	46	62	4.4	24	0	14	31	6	21	148	10.6		
32	RYAN, Siobhan	14-14	419:40	30.0	51-121	.421	36-88	.409	9-10	.900	6	51	57	4.1	25	0	30	25	0	6	147	10.5		
24	KRISTA GRAVA, Emilija	13-2	303:50	23.4	40-83	.482	12-32	.375	12-12	1.000	15	26	41	3.2	27	0	14	20	7	5	104	8.0		
22	ULLSTROM, Rachel	14-0	197:37	14.1	32-68	.471	10-34	.294	10-12	.833	18	29	47	3.4	7	0	9	9	1	10	84	6.0		
44	DOOGAN, Maggie	7-0	111:47	16.0	14-37	.378	4-18	.222	6-6	1.000	6	17	23	3.3	13	0	7	15	2	9	38	5.4		
11	WILLIAMS, Cayla	13-12	229:29	17.7	10-35	.286	6-21	.286	4-6	.667	6	18	24	1.8	25	0	6	20	6	5	30	2.3		
13	ROGERS, Torin	11-0	74:13	6.7	8-20	.400	4-10	.400	4-9	.444	3	11	14	1.3	7	0	3	10	1	1	24	2.2		
2	BOONE, Sydney	13-0	115:25	8.9	8-27	.296	4-16	.250	4-4	1.000	1	12	13	1.0	9	0	16	14	0	3	24	1.8		
21	LEWANDOWSKI, Kylee	12-0	47:37	4.0	5-17	.294	3-13	.231	1-2	.500	0	8	8	0.7	1	0	1	3	0	2	14	1.2		
41	BURGOS, Angel	10-0	43:11	4.3	3-10	.300	0-2	.000	1-3	.333	0	10	10	1.0	3	0	7	2	1	1	7	0.7		
Team											24	33	57					7						
Total		14	2825		350-803	.436	120-350	.343	150-194	.773	130	391	521	37.2	191	0	204	242	50	106	970	69.3		
Opponents		14	2825		312-840	.371	98-352	.278	118-170	.694	144	330	474	33.9	234	2	182	226	41	104	840	60.0		

### Score by Periods

Team	1st	2nd	3rd	4th	OT	TOT
Richmond	275	228	222	235	10	970
Opponents	202	199	217	215	7	840



# SEASON BOX SCORE



## 2022-23 Richmond Women's Basketball Individual Game-by-Game All games

Page 3/12  
as of Jan 03, 2023

### #11 WILLIAMS, Cayla

Opponent	Date	GS	MIN	Total		3-Pointers		Free throws		Rebounds				Other Stats							
				FG-FGA	PCT	3FG-3FGA	PCT	FT-FTA	PCT	OFF	DEF	TOT	AVG	PF	A	TO	BLK	STL	PTS	AVG	
at Liberty	11/07/2022	*	18:32	0-1	.000	0-1	.000	2-2	1.000	0	1	1	1.0	2	0	1	0	1	2	2.0	
Mount St. Mary's	11/10/2022	*	14:10	3-5	.600	2-3	.667	0-0	.000	1	2	3	2.0	2	0	4	0	0	8	5.0	
at Clemson	11/13/2022	*	08:02	0-0	.000	0-0	.000	0-2	.000	0	0	0	1.3	2	0	0	1	1	0	3.3	
at UMBC	11/17/2022	*	15:51	0-2	.000	0-1	.000	0-0	.000	1	3	4	2.0	2	0	0	1	0	0	2.5	
Hampton	11/20/2022	*	11:38	0-1	.000	0-0	.000	0-0	.000	0	1	1	1.8	4	1	1	0	0	0	2.0	
vs Idaho	11/26/2022	*	18:41	1-4	.250	0-2	.000	0-0	.000	0	1	1	1.7	0	0	0	0	0	2	2.0	
vs NIU	11/27/2022	*	14:51	0-1	.000	0-1	.000	2-2	1.000	1	0	1	1.6	1	0	1	1	1	2	2.0	
at William & Mary	12/01/2022	*	28:16	2-4	.500	2-3	.667	0-0	.000	0	2	2	1.6	4	2	6	1	1	6	2.5	
Duke	12/04/2022	*	24:42	2-7	.286	1-4	.250	0-0	.000	0	3	3	1.8	2	0	1	1	0	5	2.8	
at Elon	12/15/2022		14:09	0-0	.000	0-0	.000	0-0	.000	2	2	4	2.0	1	0	1	0	0	0	2.5	
vs Ball St.	12/20/2022	*	23:49	0-3	.000	0-1	.000	0-0	.000	0	0	0	1.8	4	1	1	0	0	0	2.3	
vs Tarleton St.	12/21/2022	*	21:59	1-3	.333	0-2	.000	0-0	.000	1	2	3	1.9	1	0	4	1	0	2	2.3	
George Washington	12/31/2022	*	14:49	1-4	.250	1-3	.333	0-0	.000	0	1	1	1.8	0	2	0	0	1	3	2.3	
Totals		12	229:29	10-35	.286	6-21	.286	4-6	.667	6	18	24	1.8	25	6	20	6	5	30	2.3	

### Player Averages

Games Played	Minutes/game	Points/game	FG Pct	3FG Pct	FT Pct	Rebounds/game	Assists/game	Turnovers/game	Assist/Turnover ratio	Steals/game	Blocks/game
13	17.7	2.3	28.6	28.6	66.7	1.8	0.5	1.5	0.3	0.4	0.5

# CONFERENCE ONLY STATS



## 2022-23 Richmond Women's Basketball Team Overall Conference In Conference games

Page 1/1  
as of Jan 03, 2023

### Summary

Player	Overall Statistics										Conference Statistics									
	GP-GS	MIN/G	FG%	3FG%	FT%	R/G	A/G	STL	BLK	PTS/G	GP-GS	MIN/G	FG%	3FG%	FT%	R/G	A/G	STL	BLK	PTS/G
TOWNSEND, Grace	1-1	29.1	.500	1.000	.200	5.0	1.0	1	0	14.0	1-1	29.1	.500	1.000	.200	5.0	1.0	1	0	14.0
BUDNIK, Addie	1-1	35.7	.538	.000	.000	3.0	0.0	0	0	14.0	1-1	35.7	.538	.000	.000	3.0	0.0	0	0	14.0
BOONE, Sydney	1-0	18.3	.800	.667	.000	3.0	1.0	0	0	10.0	1-0	18.3	.800	.667	.000	3.0	1.0	0	0	10.0
HILL, Katie	1-1	35.4	.500	1.000	.000	2.0	1.0	2	0	9.0	1-1	35.4	.500	1.000	.000	2.0	1.0	2	0	9.0
KRISTA GRAVA, Emilija	1-0	29.4	.429	.000	.000	5.0	1.0	1	1	6.0	1-0	29.4	.429	.000	.000	5.0	1.0	1	1	6.0
ULLSTROM, Rachel	1-0	12.1	.500	.000	.750	3.0	0.0	1	0	5.0	1-0	12.1	.500	.000	.750	3.0	0.0	1	0	5.0
WILLIAMS, Cayla	1-1	14.8	.250	.333	.000	1.0	2.0	1	0	3.0	1-1	14.8	.250	.333	.000	1.0	2.0	1	0	3.0
RYAN, Siobhan	1-1	24.7	.125	.000	.000	1.0	2.0	0	0	2.0	1-1	24.7	.125	.000	.000	1.0	2.0	0	0	2.0
LEWANDOWSKI, Kylee	1-0	0.4	.000	.000	.000	0.0	0.0	0	0	0.0	1-0	0.4	.000	.000	.000	0.0	0.0	0	0	0.0
ROGERS, Torin	1-0	0.1	.000	.000	.000	0.0	0.0	0	0	0.0	1-0	0.1	.000	.000	.000	0.0	0.0	0	0	0.0
<b>Totals</b>	<b>1</b>		<b>.450</b>	<b>.278</b>	<b>.444</b>	<b>29.0</b>	<b>8.0</b>	<b>6</b>	<b>1</b>	<b>63.0</b>	<b>1</b>		<b>.450</b>	<b>.278</b>	<b>.444</b>	<b>29.0</b>	<b>8.0</b>	<b>6</b>	<b>1</b>	<b>63.0</b>
<b>Opponent</b>	<b>1</b>		<b>.433</b>	<b>.269</b>	<b>.667</b>	<b>38.0</b>	<b>12.0</b>	<b>6</b>	<b>3</b>	<b>65.0</b>	<b>1</b>		<b>.433</b>	<b>.269</b>	<b>.667</b>	<b>38.0</b>	<b>12.0</b>	<b>6</b>	<b>3</b>	<b>65.0</b>

### Scoring

Player	Overall Statistics								Conference Statistics							
	FG-FGA	FG%	3FG-3FGA	3FG%	FT-FTA	FT%	PTS	PTS/G	FG-FGA	FG%	3FG-3FGA	3FG%	FT-FTA	FT%	PTS	PTS/G
TOWNSEND, Grace	6-12	.500	1-1	1.000	1-5	.200	14	14.0	6-12	.500	1-1	1.000	1-5	.200	14	14.0
BUDNIK, Addie	7-13	.538	0-2	.000	0-0	.000	14	14.0	7-13	.538	0-2	.000	0-0	.000	14	14.0
BOONE, Sydney	4-5	.800	2-3	.667	0-0	.000	10	10.0	4-5	.800	2-3	.667	0-0	.000	10	10.0
HILL, Katie	4-8	.500	1-1	1.000	0-0	.000	9	9.0	4-8	.500	1-1	1.000	0-0	.000	9	9.0
KRISTA GRAVA, Emilija	3-7	.429	0-2	.000	0-0	.000	6	6.0	3-7	.429	0-2	.000	0-0	.000	6	6.0
ULLSTROM, Rachel	1-2	.500	0-1	.000	3-4	.750	5	5.0	1-2	.500	0-1	.000	3-4	.750	5	5.0
WILLIAMS, Cayla	1-4	.250	1-3	.333	0-0	.000	3	3.0	1-4	.250	1-3	.333	0-0	.000	3	3.0
RYAN, Siobhan	1-8	.125	0-5	.000	0-0	.000	2	2.0	1-8	.125	0-5	.000	0-0	.000	2	2.0
LEWANDOWSKI, Kylee	0-1	.000	0-0	.000	0-0	.000	0	0.0	0-1	.000	0-0	.000	0-0	.000	0	0.0
ROGERS, Torin	0-0	.000	0-0	.000	0-0	.000	0	0.0	0-0	.000	0-0	.000	0-0	.000	0	0.0
<b>Totals</b>	<b>27-60</b>	<b>.450</b>	<b>5-18</b>	<b>.278</b>	<b>4-9</b>	<b>.444</b>	<b>63</b>	<b>63.0</b>	<b>27-60</b>	<b>.450</b>	<b>5-18</b>	<b>.278</b>	<b>4-9</b>	<b>.444</b>	<b>63</b>	<b>63.0</b>
<b>Opponent</b>	<b>26-60</b>	<b>.433</b>	<b>7-26</b>	<b>.269</b>	<b>6-9</b>	<b>.667</b>	<b>65</b>	<b>65.0</b>	<b>26-60</b>	<b>.433</b>	<b>7-26</b>	<b>.269</b>	<b>6-9</b>	<b>.667</b>	<b>65</b>	<b>65.0</b>

### Totals

Player	Overall Statistics										Conference Statistics									
	O-REB	D-REB	TOTAL	PF	FO	A	TO	A/TO	HI	PTS	O-REB	D-REB	TOTAL	PF	FO	A	TO	A/TO	HI	PTS
TOWNSEND, Grace	0	5	5	1	0	1	3	0.3	14		0	5	5	1	0	1	3	0.3	14	
BUDNIK, Addie	0	3	3	2	0	0	3	0.0	14		0	3	3	2	0	0	3	0.0	14	
BOONE, Sydney	0	3	3	0	0	1	1	1.0	10		0	3	3	0	0	1	1	1.0	10	
HILL, Katie	1	1	2	2	0	1	1	1.0	9		1	1	2	2	0	1	1	1.0	9	
KRISTA GRAVA, Emilija	2	3	5	3	0	1	2	0.5	6		2	3	5	3	0	1	2	0.5	6	
ULLSTROM, Rachel	1	2	3	0	0	0	0	0.0	5		1	2	3	0	0	0	0	0.0	5	
WILLIAMS, Cayla	0	1	1	0	0	2	0	2.0	3		0	1	1	0	0	2	0	2.0	3	
RYAN, Siobhan	0	1	1	1	0	2	2	1.0	2		0	1	1	1	0	2	2	1.0	2	
LEWANDOWSKI, Kylee	0	0	0	0	0	0	0	0.0	0		0	0	0	0	0	0	0	0.0	0	
ROGERS, Torin	0	0	0	0	0	0	0	0.0	0		0	0	0	0	0	0	0	0.0	0	
<b>Totals</b>	<b>7</b>	<b>22</b>	<b>29</b>	<b>9</b>	<b>0</b>	<b>8</b>	<b>12</b>	<b>0.7</b>	<b>63</b>		<b>7</b>	<b>22</b>	<b>29</b>	<b>9</b>	<b>0</b>	<b>8</b>	<b>12</b>	<b>0.7</b>	<b>63</b>	
<b>Opponent</b>	<b>12</b>	<b>26</b>	<b>38</b>	<b>14</b>	<b>0</b>	<b>12</b>	<b>16</b>	<b>0.8</b>	<b>65</b>		<b>12</b>	<b>26</b>	<b>38</b>	<b>14</b>	<b>0</b>	<b>12</b>	<b>16</b>	<b>0.8</b>	<b>65</b>	

# SEASON RESULTS

## Game Records

Record	Overall	Home	Away	Neutral
ALL GAMES	10-4	3-2	4-1	3-1
CONFERENCE	0-1	0-1	0-0	0-0
NON-CONFERENCE	10-3	3-1	4-1	3-1

## Team Results

Date	Opponent		Score	Att.	High Points	High Rebounds
11/07/2022	at Liberty	W	69-48	763	(21) BUDNIK, Addie	(8) TOWNSEND, Grace
11/10/2022	Mount St. Mary's	W	87-44	396	(16) BUDNIK, Addie	(6) BUDNIK, Addie
11/13/2022	at Clemson	L	40-61	857	(13) HILL, Katie	(7) RYAN, Siobhan
						(7) BUDNIK, Addie
11/17/2022	at UMBC	W	64-57	125	(16) KRISTA GRAVA, Emilija	(7) BUDNIK, Addie
					(16) BUDNIK, Addie	
11/20/2022	Hampton	Wot	68-65	471	(19) TOWNSEND, Grace	(11) BUDNIK, Addie
11/26/2022	vs Idaho	W	80-49	174	(23) RYAN, Siobhan	(11) TOWNSEND, Grace
11/27/2022	vs NIU	L	64-67	173	(16) BUDNIK, Addie	(7) BUDNIK, Addie
						(7) TOWNSEND, Grace
12/01/2022	at William & Mary	W	74-62	229	(23) TOWNSEND, Grace	(7) BUDNIK, Addie
						(7) HILL, Katie
12/04/2022	Duke	L	49-100	1262	(11) ULLSTROM, Rachel	(3) KRISTA GRAVA, Emilija
						(3) WILLIAMS, Cayla
						(3) HILL, Katie
12/11/2022	Longwood	W	119-55	618	(26) ULLSTROM, Rachel	(13) BUDNIK, Addie
12/15/2022	at Elon	W	63-51	3087	(15) BUDNIK, Addie	(5) TOWNSEND, Grace
12/20/2022	vs Ball St.	W	75-73	100	(27) RYAN, Siobhan	(5) BUDNIK, Addie
						(5) TOWNSEND, Grace
12/21/2022	vs Tarleton St.	W	55-43	100	(28) BUDNIK, Addie	(8) TOWNSEND, Grace
						(8) HILL, Katie
12/31/2022	George Washington	L	63-65	627	(14) BUDNIK, Addie	(5) KRISTA GRAVA, Emilija
					(14) TOWNSEND, Grace	(5) TOWNSEND, Grace

## Attendance Summary

	Games	Attend	Avg/Game
Home	5	3374	675
Away	5	5061	1012
Neutral	4	547	137
<b>Total</b>	<b>14</b>	<b>8982</b>	<b>642</b>

# CATEGORY LEADERS



## 2022-23 Richmond Women's Basketball Category Leaders All games

Page 1/3  
as of Jan 03, 2023

### Points

##	Player	G	Pts	Pts/G
20	Budnik, Addie	14	198	14.1
1	Townsend, Grace	14	152	10.9
25	Hill, Katie	14	148	10.6
32	Ryan, Siobhan	14	147	10.5
24	Krista Grava, Emilija	13	104	8.0
22	Ullstrom, Rachel	14	84	6.0
44	Doogan, Maggie	7	38	5.4
11	Williams, Cayla	13	30	2.3
13	Rogers, Torin	11	24	2.2
2	Boone, Sydney	13	24	1.8
21	Lewandowski, Kylee	12	14	1.2
41	Burgos, Angel	10	7	0.7

### Scoring Average

##	Player	G	Pts	Pts/G
20	Budnik, Addie	14	198	14.1
1	Townsend, Grace	14	152	10.9
25	Hill, Katie	14	148	10.6
32	Ryan, Siobhan	14	147	10.5
24	Krista Grava, Emilija	13	104	8.0
22	Ullstrom, Rachel	14	84	6.0
44	Doogan, Maggie	7	38	5.4
11	Williams, Cayla	13	30	2.3
13	Rogers, Torin	11	24	2.2
2	Boone, Sydney	13	24	1.8
21	Lewandowski, Kylee	12	14	1.2
41	Burgos, Angel	10	7	0.7

### Field Goal Percentage

##	Player	FG	Att	Pct
20	Budnik, Addie	77	154	.500
24	Krista Grava, Emilija	40	83	.482
22	Ullstrom, Rachel	32	68	.471
1	Townsend, Grace	50	110	.455
25	Hill, Katie	52	121	.430
32	Ryan, Siobhan	51	121	.421
13	Rogers, Torin	8	20	.400
44	Doogan, Maggie	14	37	.378
41	Burgos, Angel	3	10	.300
2	Boone, Sydney	8	27	.296
21	Lewandowski, Kylee	5	17	.294
11	Williams, Cayla	10	35	.286

### Field Goal Attempts

##	Player	G	Att	Att/G
20	Budnik, Addie	14	154	11.0
25	Hill, Katie	14	121	8.6
32	Ryan, Siobhan	14	121	8.6
1	Townsend, Grace	14	110	7.9
24	Krista Grava, Emilija	13	83	6.4

### Field Goals Made

##	Player	G	Made	Made/G
20	Budnik, Addie	14	77	5.5
25	Hill, Katie	14	52	3.7
32	Ryan, Siobhan	14	51	3.6
1	Townsend, Grace	14	50	3.6
24	Krista Grava, Emilija	13	40	3.1

### 3-Point FG Percentage

##	Player	3FG	Att	Pct
1	Townsend, Grace	10	21	.476
32	Ryan, Siobhan	36	88	.409
13	Rogers, Torin	4	10	.400
24	Krista Grava, Emilija	12	32	.375
20	Budnik, Addie	19	54	.352
22	Ullstrom, Rachel	10	34	.294
25	Hill, Katie	12	41	.293
11	Williams, Cayla	6	21	.286
2	Boone, Sydney	4	16	.250
21	Lewandowski, Kylee	3	13	.231
44	Doogan, Maggie	4	18	.222

### 3-Point FG Attempts

##	Player	G	Att	Att/G
32	Ryan, Siobhan	14	88	6.3
20	Budnik, Addie	14	54	3.9
25	Hill, Katie	14	41	2.9
22	Ullstrom, Rachel	14	34	2.4
24	Krista Grava, Emilija	13	32	2.5

### 3-Point FG Made

##	Player	G	Made	Made/G
32	Ryan, Siobhan	14	36	2.6
20	Budnik, Addie	14	19	1.4
25	Hill, Katie	14	12	0.9
24	Krista Grava, Emilija	13	12	0.9
1	Townsend, Grace	14	10	0.7



# CATEGORY LEADERS

## Free Throw Percentage

##	Player	Made	Att	Pct
44	Doogan, Maggie	6	6	1.000
24	Krista Grava, Emilija	12	12	1.000
2	Boone, Sydney	4	4	1.000
32	Ryan, Siobhan	9	10	.900
25	Hill, Katie	32	37	.865
20	Budnik, Addie	25	30	.833
22	Ullstrom, Rachel	10	12	.833
1	Townsend, Grace	42	63	.667
11	Williams, Cayla	4	6	.667
21	Lewandowski, Kylee	1	2	.500
13	Rogers, Torin	4	9	.444
41	Burgos, Angel	1	3	.333

## Free Throw Attempts

##	Player	G	Att	Att/G
1	Townsend, Grace	14	63	4.5
25	Hill, Katie	14	37	2.6
20	Budnik, Addie	14	30	2.1
24	Krista Grava, Emilija	13	12	0.9
22	Ullstrom, Rachel	14	12	0.9

## Free Throws Made

##	Player	G	Made	Made/G
1	Townsend, Grace	14	42	3.0
25	Hill, Katie	14	32	2.3
20	Budnik, Addie	14	25	1.8
24	Krista Grava, Emilija	13	12	0.9
22	Ullstrom, Rachel	14	10	0.7

## Rebounds

##	Player	G	Reb	Reb/G
20	Budnik, Addie	14	93	6.6
1	Townsend, Grace	14	72	5.1
25	Hill, Katie	14	62	4.4
32	Ryan, Siobhan	14	57	4.1
22	Ullstrom, Rachel	14	47	3.4

## Assists

##	Player	G	Ast	Ast/G
1	Townsend, Grace	14	61	4.4
20	Budnik, Addie	14	36	2.6
32	Ryan, Siobhan	14	30	2.1
2	Boone, Sydney	13	16	1.2
25	Hill, Katie	14	14	1.0

## Rebounds Average

##	Player	G	Reb	Reb/G
20	Budnik, Addie	14	93	6.6
1	Townsend, Grace	14	72	5.1
25	Hill, Katie	14	62	4.4
32	Ryan, Siobhan	14	57	4.1
22	Ullstrom, Rachel	14	47	3.4

## Steals

##	Player	G	Stl	Stl/G
1	Townsend, Grace	14	25	1.8
25	Hill, Katie	14	21	1.5
20	Budnik, Addie	14	18	1.3
22	Ullstrom, Rachel	14	10	0.7
44	Doogan, Maggie	7	9	1.3

## Offensive Rebounds

##	Player	G	OReb	OReb/G
20	Budnik, Addie	14	29	2.1
22	Ullstrom, Rachel	14	18	1.3
25	Hill, Katie	14	16	1.1
24	Krista Grava, Emilija	13	15	1.2
1	Townsend, Grace	14	6	0.4

## Blocked Shots

##	Player	G	Blk	Blk/G
20	Budnik, Addie	14	24	1.7
24	Krista Grava, Emilija	13	7	0.5
25	Hill, Katie	14	6	0.4
11	Williams, Cayla	13	6	0.5
1	Townsend, Grace	14	2	0.1

## Defensive Rebounds

##	Player	G	DReb	DReb/G
1	Townsend, Grace	14	66	4.7
20	Budnik, Addie	14	64	4.6
32	Ryan, Siobhan	14	51	3.6
25	Hill, Katie	14	46	3.3
22	Ullstrom, Rachel	14	29	2.1

## Minutes

##	Player	G	Min	Min/G
20	Budnik, Addie	14	453	32:20
1	Townsend, Grace	14	431	30:48
32	Ryan, Siobhan	14	420	29:59
25	Hill, Katie	14	398	28:28
24	Krista Grava, Emilija	13	304	23:22

# CATEGORY LEADERS



## 2022-23 Richmond Women's Basketball Category Leaders All games

Page 3/3  
as of Jan 03, 2023

### Fouls

##	Player	G	PF	PF/G
20	Budnik, Addie	14	27	1.9
24	Krista Grava, Emilija	13	27	2.1
32	Ryan, Siobhan	14	25	1.8
11	Williams, Cayla	13	25	1.9
25	Hill, Katie	14	24	1.7

### Turnovers

##	Player	G	TO	TO/G
20	Budnik, Addie	14	47	3.4
1	Townsend, Grace	14	39	2.8
25	Hill, Katie	14	31	2.2
32	Ryan, Siobhan	14	25	1.8
24	Krista Grava, Emilija	13	20	1.5

### Foul Outs

##	Player	G	FO
----	--------	---	----

# GAME-BY-GAME STARTING LINEUP

OPPONENT.....	1.....	2.....	3.....	4.....	5.....	RECORD
at Liberty .....	Townsend .....	Hill.....	Ryan.....	Williams.....	Budnik .....	1-0
Mount St. Mary's.....	Townsend .....	Hill.....	Ryan.....	Williams.....	Budnik .....	2-0
at Clemson.....	Townsend .....	Hill.....	Ryan.....	Williams.....	Budnik .....	2-1
at UMBC .....	Townsend .....	Hill.....	Ryan.....	Williams.....	Budnik .....	3-1
Hampton .....	Townsend .....	Hill.....	Ryan.....	Williams.....	Budnik .....	4-1
vs. Idaho .....	Townsend .....	Hill.....	Ryan.....	Williams.....	Budnik .....	5-1
vs. Northern Illinois .....	Townsend .....	Hill.....	Ryan.....	Williams.....	Budnik .....	5-2
at William & Mary .....	Townsend .....	Hill.....	Ryan.....	Williams.....	Budnik .....	6-2
Duke .....	Townsend .....	Hill.....	Ryan.....	Williams.....	Budnik .....	6-3
Longwood .....	Townsend .....	Hill.....	Ryan.....	Grava.....	Budnik .....	7-3
at Elon .....	Townsend .....	Hill.....	Ryan.....	Grava.....	Budnik .....	8-3
vs. Ball State .....	Townsend .....	Hill.....	Ryan.....	Williams.....	Budnik .....	9-3
vs. Tarleton State .....	Townsend .....	Hill.....	Ryan.....	Williams.....	Budnik .....	10-3
George Washington *						
at Loyola Chicago *						
at Davidson *						
VCU *						
at Rhode Island *						
George Mason *						
at Fordham *						
Saint Joseph's *						
at UMass *						
at Dayton *						
La Salle *						
Davidson *						
Saint Louis *						
at Duquesne *						
at VCU *						
St. Bonaventure *						

## TEAM GAME-BY-GAME

				Total		3-Pointers		Free throws		Rebounds											
Opponent	Date	Score		FG-FGA	PCT	3FG-3FGA	PCT	FT-FTA	PCT	OFF	DEF	TOT	AVG	PF	A	TO	BLK	STL	PTS	AVG	
at Liberty	11/07/2022	69-48	W	22-46	.478	9-20	.450	16-18	.889	5	23	28	28.0	18	11	13	1	8	69	69.0	
Mount St. Mary's	11/10/2022	87-44	W	31-55	.564	8-17	.471	17-22	.773	11	34	45	36.5	9	22	18	1	16	87	78.0	
at Clemson	11/13/2022	40-61	L	18-62	.290	3-27	.111	1-3	.333	10	22	32	35.0	13	6	17	3	10	40	65.3	
at UMBC	11/17/2022	64-57	W	22-67	.328	6-27	.222	14-15	.933	20	29	49	38.5	17	10	18	5	2	64	65.0	
Hampton	11/20/2022	68-65	Wot	23-57	.404	11-31	.355	11-14	.786	16	31	47	40.2	12	14	26	3	6	68	65.6	
vs Idaho	11/26/2022	80-49	W	25-58	.431	9-26	.346	21-24	.875	6	43	49	41.7	15	14	15	5	6	80	68.0	
vs NIU	11/27/2022	64-67	L	20-59	.339	9-29	.310	15-19	.789	12	27	39	41.3	15	15	14	3	7	64	67.4	
at William & Mary	12/01/2022	74-62	W	23-53	.434	10-25	.400	18-21	.857	9	26	35	40.5	14	13	16	4	6	74	68.3	
Duke	12/04/2022	49-100	L	18-60	.300	8-27	.296	5-8	.625	5	17	22	38.4	12	11	18	2	6	49	66.1	
Longwood	12/11/2022	119-55	W	44-78	.564	18-38	.474	13-17	.765	15	34	49	39.5	16	30	13	8	13	119	71.4	
at Elon	12/15/2022	63-51	W	26-46	.565	6-19	.316	5-13	.385	4	28	32	38.8	6	16	19	6	10	63	70.6	
vs Ball St.	12/20/2022	75-73	W	29-53	.547	13-24	.542	4-5	.800	3	20	23	37.5	16	19	17	2	6	75	71.0	
vs Tarleton St.	12/21/2022	55-43	W	22-49	.449	5-22	.227	6-6	1.000	7	35	42	37.8	19	15	26	6	4	55	69.8	
George Washington	12/31/2022	63-65	L	27-60	.450	5-18	.278	4-9	.444	7	22	29	37.2	9	8	12	1	6	63	69.3	
Total		970		350-803	.436	120-350	.343	150-194	.773	130	391	521	37.2	191	204	242	50	106	970	69.3	
Opponents		840		312-840	.371	98-352	.278	118-170	.694	144	330	474	33.9	234	182	226	41	104	840	60.0	

### Richmond Averages

Games Played	Points/game	FG Pct	3FG Pct	FT Pct	Rebounds/game	Assists/game	Turnovers/game	Assist/Turnover ratio	Steals/game	Blocks/game
14	69.3	43.6	34.3	77.3	37.2	14.6	17.3	0.8	7.6	3.6

# TV/RADIO CHART



**1 • GRACE TOWNSEND**  
JR • G • 5-5 • MIDLOTHIAN, VA.



**2 • SYDNEY BOONE**  
SO • G • 5-8 • RICHMOND, VA.



**4 • JADA GREEN**  
FR • F • 6-1 • PARKLAND, FLA.



**11 • CAYLA WILLIAMS**  
SO • F • 6-2 • GAINESVILLE, VA.



**13 • TORIN ROGERS**  
JR • G • 6-1 • BRASSTOWN, NC



**20 • ADDIE BUDNIK**  
JR • F • 6-2 • HIGHLAND PARK, ILL.



**21 • KYLEE LEWANDOWSKI**  
JR • G • 6-1 • PITTSBURGH, PA.



**22 • RACHEL ULLSTROM**  
FR • G • 6-1 • AUBURN, MASS.



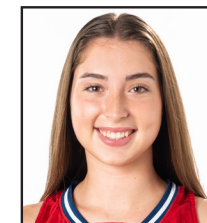
**24 • EMILIA KRISTA GRAVA**  
GS • F • 6-2 • LIGATNE, LATIVA



**25 • KATIE HILL**  
SO • G • 6-0 • COLTS NECK, N.J.



**31 • ELAINA CHAPMAN**  
SR • F • 6-3 • RICHMOND, VA.



**32 • SIOBHAN RYAN**  
JR • G • 6-0 • BUFFALO, N.Y.



**41 • ANGEL BURGOS**  
SR • G • 5-8 • RICHMOND, VA.



**44 • MAGGIE DOOGAN**  
FR • F • 6-2 • BROOMALL, PA.



**AARON ROUSSELL**  
HEAD COACH



**JEANINE RADICE**  
ASSISTANT COACH



**BRITTANY PINKNEY**  
ASSISTANT COACH



**KA'LIA JOHNSON**  
ASSISTANT COACH



**JANELLE SILVER-MARTIN**  
DIR. OF BASKETBALL OPERATIONS



**JOHN STUDER**  
DIR. OF PROGRAM DEVELOPMENT