



# RICHMOND WOMEN'S BASKETBALL

## 2022-23 GAME NOTES 3X NCAA TOURNAMENT | 9X WNIT

### GAME 14

## RICHMOND SPIDERS

10-3, 0-0 A-10

HEAD COACH: Aaron Roussel

RICHMOND RECORD: 54-43 (4th Season)

OVERALL RECORD: 366-165 (19th Season)



VS



## GEORGE WASHINGTON COLONIALS

8-5, 1-0 A-10

HEAD COACH: Caroline McCombs

GW RECORD: 21-32 (2nd season)

OVERALL RECORD: 130-76 (9th season)

### GAME INFO

VS: GEORGE WASHINGTON COLONIALS

DATE: DEC. 31, 2022

TIME: 12 PM ET

STREAM: ESPN+

STATS: RICHMONDSPIDERS.COM

TWITTER: @SPIDERWBBALL

### 2022-23 SCHEDULE/RESULTS

10-3 | A-10: 0-0 | H: 3-1 | A: 4-1 | N: 3-1

| NOVEMBER |                         | All Times ET  |
|----------|-------------------------|---------------|
| 7        | at Liberty              | W, 69-48      |
| 10       | MOUNT ST. MARY'S        | W, 87-44      |
| 13       | at Clemson              | L, 41-60      |
| 17       | at UMBC                 | W, 64-57      |
| 20       | HAMPTON                 | W, 68-65 (OT) |
| 26       | vs. Idaho ^             | W, 80-49      |
| 27       | vs. Northern Illinois ^ | L, 64-67      |

| DECEMBER |                      |           |
|----------|----------------------|-----------|
| 1        | at William & Mary    | W, 74-62  |
| 4        | DUKE                 | L, 100-49 |
| 11       | LONGWOOD             | W, 119-55 |
| 15       | at Elon              | W, 63-51  |
| 20       | vs. Ball State !     | W, 75-73  |
| 21       | vs. Tarleton State ! | W, 55-43  |
| 31       | GEORGE WASHINGTON *  | 12 PM     |

| JANUARY |                   |      |
|---------|-------------------|------|
| 4       | at Loyola *       | 7 PM |
| 8       | at Davidson *     | 1 PM |
| 11      | VCU *             | 6 PM |
| 18      | at Rhode Island * | 6 PM |
| 21      | GEORGE MASON *    | 6 PM |
| 25      | at Fordham *      | 7 PM |
| 29      | SAINT JOSEPH'S *  | 4 PM |

| FEBRUARY |                   |       |
|----------|-------------------|-------|
| 1        | at UMass *        | 7 PM  |
| 4        | at Dayton *       | 12 PM |
| 8        | LA SALLE *        | 6 PM  |
| 12       | DAVIDSON *        | 1 PM  |
| 15       | SAINT LOUIS *     | 6 PM  |
| 18       | at Duquesne *     | 2 PM  |
| 22       | at VCU *          | 6 PM  |
| 25       | ST. BONAVENTURE * | 6 PM  |

| MARCH |                          |     |
|-------|--------------------------|-----|
| 1-5   | Atlantic 10 Championship | TBD |

### HOME

\*Atlantic 10 Game

^ Navy Classic | ! Puerto Rico Classic

### OPENING TIP

- The Spiders open the Atlantic 10 slate off to its best start since the 2011-12 season that put together a 12-2 non-conference record before finishing 23-9 with a WNIT post-season run.

- At the Puerto Rico Classico, Richmond collected victories over both Ball State and Tarleton State. Addie Budnik knocked down a three-pointer with 2.2 seconds left to capture the victory, while Siobhan Ryan scored 27-points with seven three pointers to pace the Spiders. The squad quickly shifted focus to take out Tarleton State, where Budnik went 12-for-13, including three-for-three from long-range, for a career-high 28 points and four blocks.

- Richmond ranks second in the Atlantic 10 scoring defense, holding opponents to 59.6 points while sitting in fourth in scoring offense, averaging 69.8 points per game. UR is third in field goal percentage (.435), three-point field goals made (115) while second in opponent field goal percentage (.367).

- Grace Townsend is among the top of the league in assists (4th, 60), assists per game (4th, 4.6) and steals per game (10th, 1.85). Addie Budnik is third in total blocks (21), third in blocks per game (1.62), 12th in rebounds per game (6.9) and 11th in total rebounds (90). Siobhan Ryan is third in three pointers (36), fifth in three-point percentage (43.4) and fourth three-point attempts (83).

### PREVIOUS GAME STARTERS

1

GRACE TOWNSEND  
G / JR. / 5-5 / MIDLOTHIAN, VA.

| PTS  | REB | AST | STL | MIN  |
|------|-----|-----|-----|------|
| 10.6 | 5.2 | 4.6 | 1.8 | 30.7 |

32

SIOBHAN RYAN  
G / JR. / 6-0 / BUFFALO, N.Y.

| PTS  | REB | AST | STL | MIN  |
|------|-----|-----|-----|------|
| 11.2 | 4.3 | 2.2 | 0.5 | 30.5 |

25

KATIE HILL  
G / SO. / 6-0 / COLTS NECK, N.J.

| PTS  | REB | AST | STL | MIN  |
|------|-----|-----|-----|------|
| 10.7 | 4.6 | 1.0 | 1.5 | 27.8 |

11

CAYLA WILLIAMS  
F / SO. / 6-2 / GAINESVILLE, VA.

| PTS | REB | AST | BLK | MIN  |
|-----|-----|-----|-----|------|
| 2.3 | 1.9 | 0.3 | 0.5 | 17.8 |

20

ADDIE BUDNIK  
F / JR. / 6-2 / HIGHLAND PARK, ILL.

| PTS  | REB | AST | BLK | MIN  |
|------|-----|-----|-----|------|
| 14.2 | 6.9 | 2.8 | 1.6 | 32.2 |

**ROSTER BY POSITION**

**GUARDS (8)**

Angel Burgos, Grace Townsend, Siobhan Ryan, Kylee Lewandowski, Sydney Boone, Katie Hill, Torin Rogers, Rachel Ullstrom

**FORWARDS (6)**

Addie Budnik, Elaina Chapman, Cayla Williams, Jada Green, Emilija Krista Grava, Maggie Doogan

**ROSTER BY CLASS**

**GRADUATE (1)**

Emilija Krista Grava

**SENIORS (2)**

Angel Burgos, Elaina Chapman

**JUNIORS (4)**

Addie Budnik, Kylee Lewandowski, Siobhan Ryan, Grace Townsend

**SOPHOMORES (3)**

Sydney Boone, Katie Hill, Cayla Williams

**FRESHMEN (4)**

Maggie Doogan, Jada Green, Torin Rogers, Rachel Ullstrom

**ROSTER BY STATE**

**FLORIDA**

Jada Green

**ILLINOIS**

Addie Budnik

**MASSACHUSETTS**

Rachel Ullstrom

**NEW JERSEY**

Katie Hill

**NEW YORK**

Siobhan Ryan

**NORTH CAROLINA**

Torin Rogers

**PENNSYLVANIA**

Kylee Lewandowski, Maggie Doogan

**VIRGINIA**

Grace Townsend, Elaina Chapman, Angel Burgos, Sydney Boone, Cayla Williams

**ROSTER BY COUNTRY**

**LATIVA**

Emilija Krista Grava

**ROSTER BY HEIGHT**

6-3.....Elaina Chapman  
6-2.....Addie Budnik  
6-2.....Maggie Doogan  
6-2.....Emilija Krista Grava  
6-2.....Cayla Williams  
6-1.....Jada Green  
6-1.....Kylee Lewandowski  
6-1.....Torin Rogers  
6-1.....Rachel Ullstrom  
6-0.....Siobhan Ryan  
6-0.....Katie Hill  
5-8.....Angel Burgos  
5-8.....Sydney Boone  
5-5.....Grace Townsend

**2022-23 NUMERICAL ROSTER**

| #.....  | Name .....                    | Pos ..... | Ht.....  | Yr..... | Hometown (HS/Previous School)         |
|---------|-------------------------------|-----------|----------|---------|---------------------------------------|
| 1.....  | Grace Townsend.....           | G.....    | 5-5..... | Jr..... | Midlothian, Va. (James River)         |
| 2.....  | Sydney Boone.....             | G.....    | 5-8..... | So..... | Richmond, Va. (Highland Springs)      |
| 4.....  | Jada Green.....               | F.....    | 6-1..... | Fr..... | Parkland, Fla. (St. Thomas Aquinas)   |
| 11..... | Cayla Williams.....           | F.....    | 6-2..... | So..... | Gainesville, Va. (Episcopal)          |
| 13..... | Torin Rogers.....             | G.....    | 6-1..... | Fr..... | Brasstown, N.C. (Murphy)              |
| 20..... | Addie Budnik.....             | F.....    | 6-2..... | Jr..... | Highland Park, Ill. (Highland Park)   |
| 21..... | Kylee Lewandowski.....        | G.....    | 6-1..... | Jr..... | Pittsburgh, Pa. (North Catholic)      |
| 22..... | Rachel Ullstrom.....          | G.....    | 6-1..... | Fr..... | Auburn, Mass. (Marianapolis Prep)     |
| 24..... | Emilija Krista Grava ..F..... | 6-2.....  | GS.....  |         | Ligatne, Lativa (Wagner)              |
| 25..... | Katie Hill.....               | G.....    | 6-0..... | So..... | Colts Neck, N.J. (Saint John Vianney) |
| 31..... | Elaina Chapman.....           | F.....    | 6-3..... | Sr..... | Richmond, Va. (Trinity Episcopal)     |
| 32..... | Siobhan Ryan.....             | G.....    | 6-0..... | Jr..... | Buffalo, N.Y. (Sacred Heart Academy)  |
| 41..... | Angel Burgos.....             | G.....    | 5-8..... | Sr..... | Richmond, Va. (Trinity Episcopal)     |
| 44..... | Maggie Doogan.....            | F.....    | 6-2..... | Fr..... | Broomall, Pa. (Cardinal O'Hara)       |

**2022-23 ALPHABETICAL ROSTER**

| #.....  | Name .....                    | Pos ..... | Ht.....  | Yr..... | Hometown (HS)                         |
|---------|-------------------------------|-----------|----------|---------|---------------------------------------|
| 2.....  | Sydney Boone.....             | G.....    | 5-8..... | So..... | Richmond, Va. (Highland Springs)      |
| 20..... | Addie Budnik.....             | F.....    | 6-2..... | Jr..... | Highland Park, Ill. (Highland Park)   |
| 41..... | Angel Burgos.....             | G.....    | 5-8..... | Sr..... | Richmond, Va. (Trinity Episcopal)     |
| 31..... | Elaina Chapman.....           | F.....    | 6-3..... | Jr..... | Richmond, Va. (Trinity Episcopal)     |
| 44..... | Maggie Doogan.....            | F.....    | 6-2..... | Fr..... | Broomall, Pa. (Cardinal O'Hara)       |
| 4.....  | Jada Green.....               | F.....    | 6-1..... | Fr..... | Parkland, Fla. (St. Thomas Aquinas)   |
| 25..... | Katie Hill.....               | G.....    | 6-0..... | So..... | Colts Neck, N.J. (Saint John Vianney) |
| 24..... | Emilija Krista Grava ..F..... | 6-2.....  | GS.....  |         | Ligatne, Lativa (Wagner)              |
| 21..... | Kylee Lewandowski.....        | G.....    | 6-1..... | So..... | Pittsburgh, Pa. (North Catholic)      |
| 13..... | Torin Rogers.....             | G.....    | 6-1..... | Fr..... | Brasstown, N.C. (Murphy)              |
| 32..... | Siobhan Ryan.....             | G.....    | 6-0..... | So..... | Buffalo, N.Y. (Sacred Heart Academy)  |
| 1.....  | Grace Townsend.....           | G.....    | 5-5..... | So..... | Midlothian, Va. (James River)         |
| 22..... | Rachel Ullstrom.....          | G.....    | 6-1..... | Fr..... | Auburn, Mass. (Marianapolis Prep)     |
| 11..... | Cayla Williams.....           | F.....    | 6-2..... | So..... | Gainesville, Va. (Episcopal)          |

**COACHING STAFF**

**HEAD COACH**

Aaron Roussel (Iowa, '01), 4th season

**ASSISTANT COACHES**

Jeanine Radice (Fordham, '89), 4th season

Ka'lia Johnson (Duke, '15), 1st season

Brittany Pinkney (VCU, '08), 4th season

**DIRECTOR OF BASKETBALL OPERATIONS**

Janelle Silver-Martin (Morgan State, '16), 2nd season

**DIRECTOR OF PROGRAM DEVELOPMENT**

John Studer (Illinois, '81), 4th season

**PRONUNCIATION GUIDE**

|                       |                  |
|-----------------------|------------------|
| #20..Budnik .....     | (BUD-nick)       |
| #21..Lewandowski..... | (Lew-an-DOW-ski) |
| #32..Siobhan .....    | (Sha-VOHN)       |
| Roussel.....          | (Ruh-SELL)       |
| Radice .....          | (Rah-DEES)       |

## UNIVERSITY FACTS

|                             |                             |
|-----------------------------|-----------------------------|
| Location .....              | University of Richmond, Va. |
| Founded .....               | 1830                        |
| Enrollment .....            | 3,147                       |
| Nickname .....              | Spiders                     |
| Colors .....                | Red and Blue                |
| President .....             | Kevin F. Hallock            |
| Director of Athletics ..... | John Hardt                  |
| SWA/Associate AD .....      | LaRee Sugg                  |
| Conference .....            | Atlantic 10                 |
| Affiliation .....           | NCAA Division I             |
| Home Court/Capacity .....   | Robins Center/7,201         |
| School Website .....        | www.richmond.edu            |

## TEAM INFORMATION

|                                    |       |
|------------------------------------|-------|
| 2021-22 Overall Record .....       | 16-14 |
| 2021-22 A-10 Record .....          | 7-9   |
| 2021-22 A-10 Finish .....          | 8th   |
| 2021-22 Home Record .....          | 7-7   |
| 2021-22 Away Record .....          | 8-5   |
| 2021-22 Neutral Record .....       | 1-2   |
| Starters Returning/Lost .....      | 3/2   |
| Letterwinners Returning/Lost ..... | 8/8   |
| Newcomers .....                    | 4     |

## RETURNING STAT LEADERS

|                    |                       |
|--------------------|-----------------------|
| Points .....       | Addie Budnik (13.6)   |
| Rebounds .....     | Addie Budnik (5.9)    |
| Assists .....      | Grace Townsend (158)  |
| 3-Point FG .....   | Addie Budnik (43)     |
| 3-Point FG% .....  | Addie Budnik (.361)   |
| Free Throw % ..... | Grace Townsend (.778) |
| Field Goal % ..... | Addie Budnik (.498)   |
| Blocks .....       | Addie Budnik (77)     |
| Steals .....       | Grace Townsend (37)   |
| Minutes .....      | Addie Budnik (33.7)   |

## ATHLETICS PUBLIC RELATIONS

|                                  |                      |
|----------------------------------|----------------------|
| Public Relations Contact .....   | Bridgette Robles     |
| Office Phone .....               | (804)287-6455        |
| Cell Phone .....                 | (417) 818-7379       |
| E-Mail Address .....             | brobles@richmond.edu |
| Richmond Athletics Website ..... | richmondspiders.com  |
| Twitter/Instagram .....          | @SpiderWBBall        |
| Facebook .....                   | /RichmondWBB         |
| YouTube .....                    | /RichmondSpiders     |
| Conference Website .....         | www.atlantic10.com   |



**SPIDER  
BASKETBALL**

## SERIES HISTORY VS GEORGE WASHINGTON

The Spiders are 20-28 against the Colonials, but have won the last five match ups over the last three seasons, including last season on a Kate Klimiewicz buzz-beating three-pointer in Washington, D.C., that was featured in ESPN SportsCenter Top10.

## SCOUTING THE COLONIALS

GW heads to the Robins Center winners of three-straight games and four of it's last five. The Colonials have three averaging double-figure scoring over those five contests, including Mia Lakstigala (13.3), Nya Robertson (12.0) and Jayla Thornton (11.3) while Mayowa Taiwo was just shy of averaging a double double with 9.8 points and 12.4 rebounds per game.

## CENTURY MARK AT ROBINS CENTER

In Richmond's historic 119-55 victory over Longwood (Dec. 11), many women's basketball home records and overall program records fell. The Spiders 119-point output marks a new women's basketball program record of points scored at the Robins Center, eclipsing the 115-point total against American, scored on Jan. 28, 2000. It's also been five seasons since UR has scored 100 points, collecting a 100-63 victory over Savannah State (Nov. 22, 2017). UR's 30 helpers is a new Robins Center women's basketball program record that had stood since 1986 (28 against both UNCW, Feb. 10, and vs Coppin State, Dec. 9). Richmond also reset the program record of made three-pointers with 18, erasing two games of 17 made three-point totals against American (Jan. 28, 200) and Massachusetts (Dec. 28, 1998).

## SPIDERS SWEEP A-10 WEEKLY AWARDS

Addie Budnik and Rachel Ullstrom collected Atlantic 10 Women's Basketball Player of the Week and Rookie of the Week, respectively, Dec. 12. In the Spiders 119-55 victory over Longwood at Robins Center Sunday, Budnik posted her first double-double of the season with 15 points, on 6-of-8 shooting from the field, and 13 rebounds. She also had a season-high four blocks and four assists. This is Budnik's first A-10 Player of the Week honor, after collecting three Rookie of the Week accolades in 2020-21. Ullstrom came off the bench to lead all scorers with a career-high 26 points, with three three-pointers, a career-high seven rebounds and four steals in the Spiders victory.

## BUDNIK BLOCKING PARTY

Addie Budnik currently sits seventh in Division I and 11th over all three NCAA Divisions averaging 2.48 blocks among all active women's basketball student-athletes. She is also 20th in D1 with 151 blocked shots in 51 career games. Budnik finished her sophomore campaign 12th in the country with 77 total blocks and 11th in the country averaging 2.57 blocks-per-game. She was second in the league to Saint Louis' Brooke Flowers. Budnik paced a Spiders squad that tallied 159 total blocks to lead the A-10 and rank 17th nationally and ninth overall with 5.3 blocks per game.

## ROUSSELL CAPTURES MILESTONE

With the Spiders 80-49 victory over Idaho (Nov. 26), Head Coach Aaron Roussell captured his 200th victory at the NCAA Division I level. UR's victory over William & Mary is his 50th victory at the helm of the Spiders in his fourth season.

## PRESEASON EYES ON BUDNIK

Addie Budnik was named to the 2023 Becky Hammon Mid-Major Player of the Year, presented by Her Hoop Stats (10/19). The award was first given out to South Dakota's Ciara Duffy in 2020, while FGCU's Kierstan Bell brought it home in 2021

## ATLANTIC 10 2022-23 STANDINGS (GAMES THRU DEC. 30)

| Team              | A-10       | Overall     |
|-------------------|------------|-------------|
| Loyola Chicago    | 1-0        | 6-8         |
| Saint Joseph's    | 0-0        | 10-2        |
| Duquesne          | 0-0        | 10-3        |
| <b>Richmond</b>   | <b>0-0</b> | <b>10-3</b> |
| UMass             | 0-0        | 10-3        |
| Rhode Island      | 0-0        | 9-3         |
| Fordham           | 0-0        | 8-5         |
| George Washington | 0-0        | 8-5         |
| La Salle          | 0-0        | 8-6         |
| George Mason      | 0-0        | 7-6         |
| Davidson          | 0-0        | 7-7         |
| VCU               | 0-0        | 3-9         |
| St. Bonaventure   | 0-0        | 3-12        |
| Dayton            | 0-0        | 1-10        |
| Saint Louis       | 0-1        | 4-12        |

## 2022-23 A-10 PRESEASON AWARDS

### PRESEASON ALL-CONFERENCE FIRST TEAM

Anna DeWolfe, Fordham  
 Kayla Spruill, La Salle  
 Sam Breen, Massachusetts  
 Sydney Taylor, Massachusetts  
**Addie Budnik, Richmond**  
 Sara Te-Biasu, VCU

### PRESEASON ALL-CONFERENCE SECOND TEAM

Elle Sutphin, Davidson  
 Asiah Dingle, Fordham  
 Claire Jacobs, La Salle  
 Destiney Philoxy, Massachusetts  
 Katie Jekot, Saint Joseph's  
 Brooke Flowers, Saint Louis

### PRESEASON ALL-CONFERENCE THIRD TEAM

Tess Myers, Duquesne  
 Mayowa Taiwo, George Washington  
 Tenin Magassa, Rhode Island  
 Emma Squires, Rhode Island  
 Talya Brugler, Saint Joseph's  
 Kyla McMakin, Saint Louis

### PRESEASON ALL-DEFENSIVE TEAM

Megan McConnell, Duquesne  
 Asiah Dingle, Fordham  
 Mayowa Taiwo, George Washington  
 Destiney Philoxy, Massachusetts  
 Brooke Flowers, Saint Louis

## 2022-23 A-10 PRESEASON POLL

1. Massachusetts (15) - 225
2. La Salle - 188
3. Rhode Island - 184
4. Fordham - 183
5. VCU - 152
6. Saint Joseph's - 140
7. Davidson - 135
- 8. Richmond - 125**
9. Duquesne - 109
10. Dayton - 99
11. George Washington - 82
12. Saint Louis - 73
13. Loyola Chicago - 41
14. George Mason - 38
15. St. Bonaventure - 26

and 2022. Budnik was also named to the Katrina McClain Award, to honor the best power forward (10/20), as announced by the Naismith Memorial Basketball Hall of Fame and the Women's Basketball Coaches Association. She is one of five non-power five players and the lone A-10 player to appear on the list.

## BUDNIK NAMED PRESEASON FIRST-TEAM ALL-CONFERENCE

Junior Addie Budnik is the Spiders first all-conference first team pick since Janelle Hubbard in 2016. Budnik is Richmond's leading returner in scoring, rebounds, 3-pointers, blocks, and minutes played. She posted double-digits in 23 of 30 games last season, including nine in-a-row from Nov. 18 to Dec. 19. She led Richmond with 19 points against Davidson in the second round of the A-10 Tournament. Budnik opened the season with her first-career double-double on 16 points and a career-high 10 rebounds against Charlotte. She notched six 20+ point games including a tied career-high 23 against UMBC. She put up a career-high seven blocks in back-to-back games early in the season, and she ended the regular season by scoring the game-winning basket in the last second against VCU for a comeback victory where the Spiders erased a 17-point deficit. Her team-high 77 blocks last year are second-most in a single season in Richmond's program history.

## RICHMOND PICKED EIGHTH IN A-10 PRESEASON POLL

The Spiders, who finished eighth in the conference last season with a 7-9 mark in league play, received 125 points in the voting process from the A-10's head coaches. UMass was the unanimous favorite with all 15 first-place votes and 225 points. La Salle was picked second with 188 points, and Rhode Island rounded out the top three with 184 points.

## MWANZA, SWIDER, SWEENEY SIGN WITH UR FOR 2023-24 SEASON

Head Coach Aaron Roussel welcomed Melissa Mwanza, Courtney Swider and Ally Sweeney to the Richmond program on National Signing Day. Mwanza, a post player from Life Christian Academy in Richmond, Va., averaged 11 points and six rebounds per game as a junior. Her sophomore season was cut short due to COVID. Mwanza moved to Life Christian from Zimbabwe prior to the start of her sophomore season. She also gained a lot of experience playing with AAU team Cap City Ballerz. Sweeney, a point guard, comes to Richmond as a four-year starter for Sparta High in Sparta, N.J. She led her squad to a State Championship in 2021 and 2022, as well as three-straight league and county championship titles. She is a three-time All-League and All-County selection and Sparta High team MVP, while twice serving as team captain. Swider, a 6-4 forward from Portsmouth, R.I., helped Tabor Academy to a NEPSAC Class AA Championship last season. From a basketball family, both her parents played college basketball, her mother at University of New Hampshire and her father at Fordham University. Her brother Cole is a rookie on the Los Angeles Lakers and her sister Kylie is a Junior on the Villanova Women's Basketball team. Courtney is also a member of the varsity volleyball team at Tabor.



**SERIES HISTORY VS COLONIALS**

All-Time Record: 20-28

Trend: W 5

First Meeting: 1924-25 (L, 24-18)

Last Time: W, 66-63 (1/5/2022)

at George Washington

**TALE OF THE TAPE**

| Stats                   | GW   | UR   |
|-------------------------|------|------|
| Points Per Game         | 67.7 | 69.8 |
| Opp. PPG                | 61.9 | 59.6 |
| Scoring Margin          | 5.8  | 10.2 |
| FG Percentage           | .411 | .435 |
| Opp. FG Percentage      | .387 | .367 |
| 3-Point Percentage      | .365 | .346 |
| Opp. 3-Point Percentage | .318 | .279 |
| Free Throw Percentage   | .696 | .789 |
| Opp. FT Percentage      | .739 | .696 |
| Rebounds Per Game       | 38.3 | 37.8 |
| Opp. Reb Per Game       | 34.7 | 33.5 |
| Rebound Margin          | 3.6  | 4.3  |
| Assists Per Game        | 11.2 | 15.1 |
| Opp. Assists Per Game   | 12.7 | 13.1 |
| Turnovers Per Game      | 14.8 | 17.1 |
| Opp. Turnovers Per Game | 15.8 | 16.2 |
| Turnover Margin         | 1.0  | -1.5 |
| Asst/TO Ratio           | 0.8  | 0.9  |
| Steals Per Game         | 6.7  | 7.7  |
| Opp. Steals Per Game    | 6.7  | 7.5  |
| Blocks Per Game         | 2.6  | 3.5  |
| Opp. Blocks Per Game    | 2.7  | 2.9  |


**SPIDER  
BASKETBALL**
**1,000 POINT SCORERS (26 Members)**

|                                    |                                    |
|------------------------------------|------------------------------------|
| 1) Karen Elsner ..... 2,367        | 14) Michele Koclanes ..... 1,205   |
| 1981-82 ..... 624                  | 1998-99 ..... 202                  |
| 1982-83 ..... 572                  | 1999-00 ..... 304                  |
| 1983-84 ..... 646                  | 2000-01 ..... 340                  |
| 1984-85 ..... 525                  | 2001-02 ..... 359                  |
| 2) Brittani Shells ..... 2,042     | 15) Ginny Norton ..... 1,194       |
| 2007-08 ..... 433                  | 1987-88 ..... 158                  |
| 2008-09 ..... 484                  | 1988-89 ..... 295                  |
| 2009-10 ..... 550                  | 1989-90 ..... 270                  |
| 2010-11 ..... 575                  | 1990-91 ..... 471                  |
| 3) Kate Flavin ..... 1,770         | 16) Jennifer Meade ..... 1,177     |
| 2001-02 ..... 242                  | 1994-95 ..... 52                   |
| 2002-03 ..... 463                  | 1995-96 ..... 232                  |
| 2003-04 ..... 594                  | 1996-97 ..... 389                  |
| 2004-05 ..... 471                  | 1997-98 ..... 504                  |
| 4) Pam Bryant ..... 1,766          | 17) Jaide Hinds-Clarke ..... 1,130 |
| 1986-87 ..... 288                  | 2016-17 ..... 219                  |
| 1987-88 ..... 379                  | 2017-18 ..... 226                  |
| 1988-89 ..... 579                  | 2018-19 ..... 307                  |
| 1989-90 ..... 520                  | 2019-20 ..... 378                  |
| 5) Janelle Hubbard ..... 1,717     | 18) Johanna McKnight ..... 1,106   |
| 2013-14 ..... 343                  | 2004-05 ..... 63                   |
| 2014-15 ..... 460                  | 2006-07 ..... 256                  |
| 2015-16 ..... 492                  | 2007-08 ..... 415                  |
| 2016-17 ..... 422                  | 2008-09 ..... 372                  |
| 6) Laurie Governor ..... 1,655     | 19) Saona Chapman ..... 1,100      |
| 1984-85 ..... 341                  | 2003-04 ..... 481                  |
| 1985-86 ..... 444                  | 2004-05 ..... 361                  |
| 1986-87 ..... 461                  | 2005-06 ..... 258                  |
| 1987-88 ..... 409                  | 20) Rachael Bilney ..... 1,073     |
| 7) Julie Jones ..... 1,521         | 2008-09 ..... 156                  |
| 1988-89 ..... 378                  | 2009-10 ..... 189                  |
| 1989-90 ..... 354                  | 2010-11 ..... 368                  |
| 1990-91 ..... 385                  | 2011-12 ..... 360                  |
| 1991-92 ..... 404                  | 21) Dana Pappas ..... 1,071        |
| 8) Abby Oliver ..... 1,488         | 1984-85 ..... 205                  |
| 2008-09 ..... 207                  | 1985-86 ..... 287                  |
| 2009-10 ..... 336                  | 1986-87 ..... 237                  |
| 2010-11 ..... 419                  | 1987-88 ..... 342                  |
| 2011-12 ..... 526                  | 22) Jackie Isreal ..... 1,067      |
| 9) Micaela Parson ..... 1,401      | 1981-82 ..... 326                  |
| 2014-15 ..... 83                   | 1982-83 ..... 232                  |
| 2015-16 ..... 400                  | 1983-84 ..... 259                  |
| 2016-17 ..... 336                  | 1984-85 ..... 250                  |
| 2017-18 ..... 582                  | 23) Denise Winn ..... 1,048        |
| 10) Amber Goppert ..... 1,398      | 1992-93 ..... 136                  |
| 2000-01 ..... 197                  | 1993-94 ..... 360                  |
| 2001-02 ..... 475                  | 1994-95 ..... 294                  |
| 2002-03 ..... 373                  | 1995-96 ..... 258                  |
| 2003-04 ..... 353                  | 24) Lauren Tolson ..... 1,012      |
| 11) Genevieve Okoro ..... 1,337    | 2012-13 ..... 75                   |
| 2010-11 ..... 192                  | 2013-14 ..... 174                  |
| 2011-12 ..... 349                  | 2014-15 ..... 433                  |
| 2012-13 ..... 62                   | 2015-16 ..... 107                  |
| 2013-14 ..... 349                  | 2016-17 ..... 223                  |
| 2014-15 ..... 385                  | 25) Kristina King ..... 1,006      |
| 12) Christina Champion ..... 1,261 | 2010-11 ..... 75                   |
| 2003-04 ..... 311                  | 2011-12 ..... 136                  |
| 2004-05 ..... 305                  | 2012-13 ..... 419                  |
| 2005-06 ..... 68                   | 2013-14 ..... 376                  |
| 2006-07 ..... 313                  | 26) Kate Klimkiewicz ..... 1,002   |
| 2007-08 ..... 264                  | 2018-19 ..... 12                   |
| 13) Ebony Tanner ..... 1,215       | 2019-20 ..... 323                  |
| 1999-00 ..... 106                  | 2020-21 ..... 314                  |
| 2000-01 ..... 227                  | 2021-22 ..... 353                  |
| 2001-02 ..... 364                  | Getting Close...                   |
| 2002-03 ..... 518                  | Addie Budnik ..... 841             |
|                                    | 2020-21 ..... 250                  |
|                                    | 2021-22 ..... 407                  |
|                                    | 2022-23 ..... 184                  |

## INDIVIDUAL SUPERLATIVES

### Double-Digit Scoring Games

| Player               | 19-20 | 20-21 | 21-22 | 22-23 | Career |
|----------------------|-------|-------|-------|-------|--------|
| Addie Budnik         | 14    | 23    | 5     |       | 42     |
| Elaina Chapman       | 3     | 5     |       |       | 8      |
| Grace Townsend       | 6     | 16    | 5     |       | 27     |
| Siobhan Ryan         | 3     | 9     | 5     |       | 16     |
| Angel Burgos         | 1     |       |       |       | 1      |
| Sydney Boone         |       | 2     |       |       | 2      |
| Cayla Williams       |       | 2     |       |       | 2      |
| Katie Hill           |       | 2     | 4     |       | 6      |
| Rachel Ullstrom      |       |       | 3     |       | 3      |
| Emilija Krista Grava |       |       | 3     |       | 3      |

### 20-Point Games

| Player         | 19-20 | 20-21 | 21-22 | 22-23 | Career |
|----------------|-------|-------|-------|-------|--------|
| Addie Budnik   | 2     | 6     | 1     |       | 9      |
| Siobhan Ryan   |       | 3     | 3     |       | 6      |
| Grace Townsend | 1     |       |       |       | 1      |

### Double-Doubles

| Player         | 19-20 | 20-21 | 21-22 | 22-23 | Career |
|----------------|-------|-------|-------|-------|--------|
| Elaina Chapman | 2     | 2     |       |       | 4      |
| Siobhan Ryan   | 1     |       |       |       | 1      |
| Addie Budnik   |       | 1     | 1     |       | 2      |
| Grace Townsend |       | 2     | 1     |       | 3      |

### 5-Assist Games

| Player         | 19-20 | 20-21 | 21-22 | 22-23 | Career |
|----------------|-------|-------|-------|-------|--------|
| Grace Townsend | 5     | 15    | 2     |       | 22     |
| Addie Budnik   |       | 2     | 1     |       | 3      |
| Siobhan Ryan   |       |       | 1     |       | 1      |

### 5-Steal Games

| Player         | 19-20 | 20-21 | 21-22 | 22-23 | Career |
|----------------|-------|-------|-------|-------|--------|
| Elaina Chapman | 1     |       |       |       | 1      |
| Grace Townsend |       | 1     |       |       | 1      |

### 10-Rebound Games

| Player            | 19-20 | 20-21 | 21-22 | 22-23 | Career |
|-------------------|-------|-------|-------|-------|--------|
| Elaina Chapman    | 2     | 7     |       |       | 9      |
| Siobhan Ryan      |       | 1     |       |       | 1      |
| Addie Budnik      |       |       | 1     |       | 2      |
| Kylee Lewandowski |       |       | 1     |       | 1      |
| Grace Townsend    |       | 1     | 1     |       | 2      |

### Double-Digit Scoring Streaks

| Player               | Current | Longest |
|----------------------|---------|---------|
| Addie Budnik         | 4       | 9       |
| Grace Townsend       |         | 5       |
| Elaina Chapman       |         | 2       |
| Siobhan Ryan         |         | 2       |
| Angel Burgos         |         | 1       |
| Sydney Boone         |         | 1       |
| Cayla Williams       |         | 1       |
| Katie Hill           |         | 4       |
| Emilija Krista Grava |         | 3       |
| Rachel Ullstrom      |         | 2       |

## THE LAST TIME THE SPIDERS...

|  |  |
|--|--|
| Won at home                              | 12/11/22 vs Longwood (W, 119-55)                         |
| Won on the road                          | 12/15/22 at Elon (W, 63-51)                              |
| Won on a neutral court                   | 12/21/22 vs. Tarleton State (W, 55-43)                   |
| Scored 100 or more points                | 12/11/22 vs Longwood (119)                               |
| Gave up 100 or more points               | 12/4/22 vs Duke (100-49)                                 |
| Scored less than 50 points               | 12/4/22 vs Duke (L, 100-49)                              |
| Allowed less than 50 points              | 12/21/22 vs. Tarleton State (W, 55-43)                   |
| Went into overtime                       | 11/20/22 vs Hampton (W, 68-65, OT)                       |
| Won in overtime                          | 11/20/22 vs Hampton (W, 68-65, OT)                       |
| Went into double-overtime                | 2/11/14 vs. Fordham (W, 78-77, 2OT)                      |
| Won by 20 or more                        | 11/7/22 at Liberty (W, 69-48)                            |
| Won by 30 or more                        | 11/26/22 vs Idaho (W, 80-49)                             |
| Won by 40 or more                        | 12/11/22 vs Longwood (W, 119-55)                         |
| Lost by 50 or more                       | 11/24/22 vs Duke (L, 100-49)                             |
| Won five games in-a-row                  | 12/12/21-1/5/22 (Seven Straight)                         |
| Won 10 games in-a-row                    | 12/29/89-02/10/90 (15 Straight)                          |
| Lost five games in-a-row                 | 1/5/19-1/23/19 (Five Straight)                           |
| Had five players score in double-figures | 12/11/22 vs Longwood (119-55) (5)                        |
| Erased a double-digit deficit to win     | 2/23/22 at VCU (17) (W, 59-57)                           |
| Recorded a double-double                 | 12/11/22 vs Longwood (Addie Budnik, 15 pts, 13 reb.)     |
| Had a player score 20 or more            | 12/21/22 vs. Tarleton State (Addie Budnik, 28 pts)       |
| Had a player score 25 or more            | 12/21/22 vs. Tarleton State (Addie Budnik, 28 pts)       |
| Had a player score 30 or more            | 2/27/18 vs. Davidson (Micaela Parson, 30)                |
| Had two players score 20 or more         | 12/11/21 vs. Longwood (Ullstrom, 26 pts; Ryan, 20 pts)   |
| Had a player record 15 rebounds or more  | 2/24/19 vs. La Salle (Jaide Hinds-Clarke, 15 rebs)       |
| Had a player record 5 blocks or more     | 12/1/21 vs. UMBC (Addie Budnik, 5)                       |
| Had a player record 5 steals or more     | 2/16/22 at Duquesne (Grace Townsend, 6)                  |
| Had a player with 10 assists or more     | 12/4/21 at Ohio (Grace Townsend, 10)                     |
| Had a player make 5 or more 3's          | 12/20/22 vs Ball State (Siobhan Ryan, 7)                 |
| Had a player record 20 pts, 15 rebs.     | 2/14/15 vs. La Salle (Genevieve Okoro, 27 pts, 15 reb)   |
| Had a player record 20 pts, 20 rebs.     | 12/20/02 at William & Mary (Kate Flavin, 24 pts, 22 reb) |

## RICHMOND PROGRAM HISTORY

|                         |                           |
|-------------------------|---------------------------|
| First Season            | 1919-20                   |
| All-Time Record         | 981-733-7                 |
| Most Wins in a Season   | 26 (1990-91)              |
| NCAA Appearances (Last) | 3 (2005)                  |
| WNIT Appearances (Last) | 9 (2015)                  |
| Winningest Coach        | Michael Shafer (223 Wins) |

## RICHMOND TEAM RECORDS

|                    |                                   |
|--------------------|-----------------------------------|
| Most Points Scored | 11/30/96 vs. Delaware State (123) |
| FG Made            | 11/30/86 vs. Queens (46)          |
| 3FG Made           | 12/11/22 vs. Longwood (18)        |
| Free Throws Made   | 11/20/84 vs. Georgetown (39)      |
| Offensive Rebounds | 2/2/95 vs. George Mason (31)      |
| Defensive Rebounds | 12/29/21 vs. Coppin State (42)    |
| Total Rebounds     | 11/26/88 vs. Georgia Tech (67)    |
| Assists            | 11/30/96 vs. Delaware State (33)  |
| Turnovers          | 1/3/97 vs. ODU (36)               |
| Blocked Shots      | 11/21/21 vs. UMBC (13)            |
| Steals             | 12/29/92 vs. Stony Brook (23)     |

**RICHMOND'S RECORD WHEN...**

|   | <b>Non-Conference</b> | <b>A-10</b> | <b>Postseason</b> | <b>Overall</b> |
|---|-----------------------|-------------|-------------------|----------------|
| Playing at home                               | 3-1                   | 0-0         | 0-0               | 3-1            |
| On the road                                   | 4-1                   | 0-0         | 0-0               | 4-1            |
| Neutral court                                 | 3-1                   | 0-0         | 0-0               | 3-1            |
| After a loss                                  | 3-0                   | 0-0         | 0-0               | 3-0            |
| Playing a ranked opponent                     | 0-0                   | 0-0         | 0-0               | 0-0            |
| Playing during the day                        | 7-2                   | 0-0         | 0-0               | 7-2            |
| Playing at night                              | 3-1                   | 0-0         | 0-0               | 3-1            |
| Leading after first quarter                   | 6-2                   | 0-0         | 0-0               | 4-2            |
| Trailing after first quarter                  | 4-1                   | 0-0         | 0-0               | 4-1            |
| Tied after first quarter                      | 0-0                   | 0-0         | 0-0               | 0-0            |
| Leading at halftime                           | 10-1                  | 0-0         | 0-0               | 8-1            |
| Trailing at halftime                          | 0-2                   | 0-0         | 0-0               | 0-2            |
| Tied at halftime                              | 0-0                   | 0-0         | 0-0               | 0-0            |
| Leading after third quarter                   | 9-1                   | 0-0         | 0-0               | 8-1            |
| Trailing after third quarter                  | 1-2                   | 0-0         | 0-0               | 0-2            |
| Tied after third quarter                      | 0-0                   | 0-0         | 0-0               | 0-0            |
| Leading with five mins to play in regulation  | 9-1                   | 0-0         | 0-0               | 8-1            |
| Trailing with five mins to play in regulation | 1-2                   | 0-0         | 0-0               | 0-2            |
| Tied with five mins to play in regulation     | 0-0                   | 0-0         | 0-0               | 0-0            |
| Scoring first                                 | 7-2                   | 0-0         | 0-0               | 6-2            |
| Opponent scores first                         | 3-1                   | 0-0         | 0-0               | 2-1            |
| Outrebounds opponent                          | 9-2                   | 0-0         | 0-0               | 6-2            |
| Outrebounded by opponent                      | 2-1                   | 0-0         | 0-0               | 2-1            |
| Higher FG% than opponent                      | 9-0                   | 0-0         | 0-0               | 7-0            |
| Lower FG% than opponent                       | 0-3                   | 0-0         | 0-0               | 0-3            |
| Same FG% as opponent                          | 1-0                   | 0-0         | 0-0               | 1-0            |
| Makes more 3's than opponent                  | 6-0                   | 0-0         | 0-0               | 4-0            |
| Makes fewer 3's than opponent                 | 3-2                   | 0-0         | 0-0               | 3-2            |
| Makes same 3's as opponent                    | 1-1                   | 0-0         | 0-0               | 1-1            |
| Makes more free throws than opponent          | 7-1                   | 0-0         | 0-0               | 7-1            |
| Opponent makes more free throws               | 2-2                   | 0-0         | 0-0               | 0-2            |
| Makes equal free throws as opponent           | 1-0                   | 0-0         | 0-0               | 1-0            |
| Commits more turnovers than opponent          | 7-2                   | 0-0         | 0-0               | 5-2            |
| Commits fewer turnovers than opponent         | 3-1                   | 0-0         | 0-0               | 3-1            |
| Commits equal turnovers as opponent           | 0-0                   | 0-0         | 0-0               | 0-0            |
| Playing in November                           | 5-2                   | -           | -                 | 5-2            |
| Playing in December                           | 5-1                   | -           | -                 | 5-1            |
| Playing in January                            | -                     | -           | -                 | 0-0            |
| Playing in February                           | -                     | -           | -                 | 0-0            |
| Playing in March                              | -                     | -           | -                 | 0-0            |



## HEAD COACH AARON ROUSSELL

### FOURTH SEASON AT RICHMOND (IOWA '01)

Aaron Roussell enters his fourth season at the helm of the Richmond Spiders women's basketball team in 2022-23. He was named head coach on April 2, 2019. Roussell has 18 years of head coaching experience and a career winning percentage of .687 with an overall record of 356-162.

In year three with the Spiders, Roussell saw his best statistical season offensively at Richmond. The team ranked first in the Atlantic 10 in field goal percentage, effective field goal percentage, and two-point percentage while ranking second in three-point percentage and points per game, and third in assists. Previously, the Spiders ranked 13th and 14th in each of these categories in Roussell's first season as head coach in 2019-20. The Spiders also ranked top-10 in the nation in effective field goal percentage and two-point percentage after ranking 339th in both categories in 2019-20.

The Spiders finished the 2021-22 season 16-14 overall featuring an eight-game win streak that saw a 2-0 mark in the Florida Atlantic Pre-Christmas Tournament and a buzzer-beating win at A-10 opponent George Washington. The season was also highlighted by a Power 5 win as the Spiders defeated Virginia, 74-65, at the Cavalier Classic.

Additionally in 2021-22, Roussell coached Emma Squires to A-10 Sixth Woman of the Year honors while Addie Budnik was named All-Conference Second Team.

#### ROUSSELL YEAR-BY-YEAR RECORD

| Year  | Record | A-10 | Finish | Postseason |
|-------|--------|------|--------|------------|
| 22-23 | 10-3   |      |        |            |
| 21-22 | 16-14  | 7-9  | 8th    | 0-1        |
| 20-21 | 13-9   | 9-6  | 6th    | 1-1        |
| 19-20 | 15-17  | 7-9  | 9th    | 1-1        |

**Richmond Total:** 54-43

**Atlantic 10 Total:** 23-25

**Career Coaching Record:** 366-165

#### PROFILE

Hometown - Plymouth, Minn.

Education - B.A. Iowa '01

M.A. Minnesota State '04

#### CAREER HIGHLIGHTS

- 200th win came 11/16/22 with dominate 80-49 victory over Idaho at the Navy Classic.
- Coached Addie Budnik to A-10 Rookie of the Year honors in 2020-21
- Two-time Patriot League Coach of the Year
- Bucknell record for wins in a season (28-6 in 2018-19)
- First WNIT victory in Patriot League history (2016)
- Four straight national postseason appearances at Bucknell (NCAA - 2017, 2019, WNIT - 2016, 2018)
- Bucknell-record 29-game home winning streak
- Four straight 20-win seasons (2016-19)
- Guided Bucknell's Claire DeBoer to 2017 Patriot League Player of the Year and Tournament MVP honors

#### HEAD COACHING EXPERIENCE

Richmond - 2019-present

Bucknell - 2012-19

University of Chicago - 2004-12

(2,462), field goals (875), 3-pointers (283) and assists (529). Bucknell's four-straight postseason appearances is the best run in program history. Roussell led the Bison to a 22-10 record in 2017-18, including a 15-3 mark in league play, finishing second in the standings. Bucknell accepted an invitation to the WNIT and played at West Virginia to cap the season.

Roussell turned around the Bucknell program almost immediately upon his arrival in Lewisburg, Pa., for the 2012-13 season. The year prior to his arrival, the Bison only won five games and he improved that mark 10 wins in year one with a 15-15 record - his lone season at Bucknell not over a .500 winning percentage. He finished as a finalist for the WBCA Spalding Maggie Dixon Division I Rookie Coach of the Year Award in 2013. He continued to build the program and in year two at the helm, helped the Bison post a winning record at 16-14, Bucknell's first winning season since 2008-09. The Bison earned a bid into the Women's Basketball Invitational postseason tournament for the first time in program history. The rise kept coming in 2014-15 as the Bison finished with an 18-12 record, the most wins for the Bison since 2007.

Much of Roussell's success at Bucknell was a result of his ability to quickly develop talent and meld it with the team's veteran players. Under this guidance, Bucknell earned three Patriot League Rookie of the Year award winners from 2014-16 and one of those student-athletes - Claire DeBoer - went on to earn Patriot League Player of the Year accolades in 2016-17.

Prior to his time at Bucknell, Roussell spent eight years (2004-2012) as the highly successful head coach at the University of Chicago where he compiled a 161-50 (.763) record, including a 52-5 mark with a 43-game regular season winning streak over his last two seasons leading the Maroons.

Roussell is a 2001 graduate of the University of Iowa, where he double-majored in journalism/mass communications and political science. In 2002 he began a two-year stint as a graduate assistant women's basketball coach at Minnesota State. In addition to his coaching duties, he completed a master's degree in sports administration.

Roussell and his wife, Molly, have an 12-year-old son, Riley, a eight-year-old daughter, Kelsey, and a five-year-old daughter, Kendall.



## ***ASSISTANT COACHES***



***JEANINE RADICE  
ASSISTANT COACH  
FOURTH SEASON (FORDHAM '89)***



***KA'LIA JOHNSON  
ASSISTANT COACH  
FIRST SEASON (DUKE '15)***



***BRITTANY PINKNEY  
ASSISTANT COACH  
FOURTH SEASON (VCU '08)***

## ***SUPPORT STAFF***



***JANELLE SILVER-MARTIN  
DIRECTOR OF OPERATIONS  
SECOND SEASON (MORGAN STATE '16)***



***JOHN STUDER  
DIR. OF PROGRAM DEVELOPMENT  
FOURTH SEASON (ILLINOIS '81)***



# GRACE TOWNSEND

**JUNIOR**  
**5-5 / GUARD**  
**MIDLOTHIAN, VA.**  
**JAMES RIVER**

# 1

## GAME-BY-GAME STATISTICS

### TOP PERFORMANCES

#### POINTS

Season ..... 23 (at William & Mary, 12/1/22)  
 Career ..... 25 (vs. Fordham, 2/23/22)

#### REBOUNDS

Season ..... 11 (vs. Idaho, 11/26/22)  
 Career ..... 13 (vs. Fordham, 2/23/22)

#### ASSISTS

Season ..... 9 (vs Ball State, 12/20/22)  
 Career ..... 10 (at Ohio, 12/4/21)

#### BLOCKS

Season ..... 1 (2x, last vs. Idaho, 11/26/22)  
 Career ..... 1 (5x, last at Liberty, 11/7/22)

#### STEALS

Season ..... 3 (at Clemson, 11/13/22)  
 Career ..... 6 (at Duquesne, 2/16/22)

#### FIELD GOALS MADE

Season ..... 7 (2x last at William & Mary, 12/1/22)  
 Career ..... 10 (vs. Fordham, 2/23/22)

#### FIELD GOALS ATTEMPTED

Season ..... 11 (at William & Mary, 12/1/22)  
 Career ..... 14 (2x, last vs. Fordham, 2/23/22)

#### FREE-THROWS MADE

Season ..... 8 (at William & Mary, 12/1/22)  
 Career ..... 8 (at William & Mary, 12/1/22)

#### FREE-THROWS ATTEMPTED

Season ..... 9 (at William & Mary, 12/1/22)  
 Career ..... 9 (at William & Mary, 12/1/22)

#### 3-POINT FIELD GOALS MADE

Season ..... 4 (vs. Hampton, 11/20/22)  
 Career ..... 4 (vs. Hampton, 11/20/22)

#### 3-POINT FIELD GOALS ATTEMPTED

Season ..... 4 (vs. Hampton, 11/20/22)  
 Career ..... 5 (3x, last vs. VCU, 2/2/22)

#### MINUTES

Season ..... 39 (vs. Hampton, 11/20/22)  
 Career ..... 39 (vs. Hampton, 11/20/22)

#### #1 TOWNSEND, Grace

| Opponent          | Date       | GS | Total |        |       | 3-Pointers |       | Free throws |       | Rebounds |     |     | PF  | A   | TO | BLK | STL | PTS | AVG |      |      |
|-------------------|------------|----|-------|--------|-------|------------|-------|-------------|-------|----------|-----|-----|-----|-----|----|-----|-----|-----|-----|------|------|
|                   |            |    | FG    | FGA    | PCT   | 3FG        | 3FGA  | PCT         | FT    | FTA      | PCT | OFF |     |     |    |     |     |     |     | DEF  | TOT  |
| at Liberty        | 11/07/2022 | *  | 33:58 | 3-6    | .500  | 1-3        | .333  | 7-8         | .875  | 1        | 7   | 8   | 8.0 | 2   | 3  | 5   | 1   | 1   | 14  | 14.0 |      |
| Mount St. Mary's  | 11/10/2022 | *  | 23:11 | 2-5    | .400  | 0-0        | .000  | 2-4         | .500  | 0        | 4   | 4   | 6.0 | 0   | 6  | 1   | 0   | 2   | 6   | 10.0 |      |
| at Clemson        | 11/13/2022 | *  | 36:15 | 3-8    | .375  | 0-1        | .000  | 1-1         | 1.000 | 1        | 5   | 6   | 6.0 | 1   | 4  | 5   | 0   | 3   | 7   | 9.0  |      |
| at UMBC           | 11/17/2022 | *  | 34:52 | 3-10   | .300  | 0-1        | .000  | 4-4         | 1.000 | 1        | 4   | 5   | 5.8 | 3   | 2  | 4   | 0   | 2   | 10  | 9.3  |      |
| Hampton           | 11/20/2022 | *  | 39:38 | 7-10   | .700  | 4-4        | 1.000 | 1-4         | .250  | 0        | 2   | 2   | 5.0 | 1   | 1  | 2   | 0   | 2   | 19  | 11.2 |      |
| vs Idaho          | 11/26/2022 | *  | 24:22 | 3-5    | .600  | 1-1        | 1.000 | 3-4         | .750  | 0        | 11  | 11  | 6.0 | 2   | 4  | 1   | 1   | 2   | 10  | 11.0 |      |
| vs NIU            | 11/27/2022 | *  | 35:21 | 0-9    | .000  | 0-2        | .000  | 10-14       | .714  | 2        | 5   | 7   | 6.1 | 0   | 4  | 1   | 0   | 2   | 10  | 10.9 |      |
| at William & Mary | 12/01/2022 | *  | 29:30 | 7-11   | .636  | 1-2        | .500  | 8-9         | .889  | 0        | 4   | 4   | 5.9 | 2   | 4  | 1   | 0   | 2   | 23  | 12.4 |      |
| Duke              | 12/04/2022 | *  | 31:08 | 3-10   | .300  | 1-2        | .500  | 1-1         | 1.000 | 0        | 1   | 1   | 5.3 | 2   | 4  | 4   | 0   | 2   | 8   | 11.9 |      |
| Longwood          | 12/11/2022 | *  | 22:10 | 3-5    | .600  | 1-2        | .500  | 2-2         | 1.000 | 0        | 1   | 1   | 4.9 | 1   | 7  | 2   | 0   | 2   | 9   | 11.6 |      |
| at Elon           | 12/15/2022 | *  | 31:30 | 5-7    | .714  | 0-1        | .000  | 2-6         | .333  | 0        | 5   | 5   | 4.9 | 1   | 6  | 4   | 0   | 2   | 12  | 11.6 |      |
| vs Ball St.       | 12/20/2022 | *  | 32:15 | 3-6    | .500  | 0-0        | .000  | 0-1         | .000  | 0        | 5   | 5   | 4.9 | 3   | 9  | 3   | 0   | 2   | 6   | 11.2 |      |
| vs Tarleton St.   | 12/21/2022 | *  | 27:48 | 2-6    | .333  | 0-1        | .000  | 0-0         | .000  | 1        | 7   | 8   | 5.2 | 4   | 6  | 3   | 0   | 0   | 4   | 10.6 |      |
| Totals            |            |    | 13    | 401:58 | 44-98 | .449       | 9-20  | .450        | 41-58 | .707     | 6   | 61  | 67  | 5.2 | 22 | 60  | 36  | 2   | 24  | 138  | 10.6 |

#### Player Averages

| Games Played | Minutes/ game | Points/ game | FG Pct | 3FG Pct | FT Pct | Rebounds/ game | Assists/ game | Turnovers/ game | Assist/Turnover ratio | Steals/ game | Blocks/ game |
|--------------|---------------|--------------|--------|---------|--------|----------------|---------------|-----------------|-----------------------|--------------|--------------|
| 13           | 30.9          | 10.6         | 44.9   | 45.0    | 70.7   | 5.2            | 4.6           | 2.8             | 1.7                   | 1.8          | 0.2          |

## AS A JUNIOR

- Led all players with eight rebounds, as the shortest person on the court against Liberty.
- Posted 13 points, eight rebounds, and three assists in the Spiders 21-point win over Liberty.
- Chipped in six helpers, four assists and six points against Mount St. Mary's
- Paced UR with 19 points in overtime win against Hampton, tallying four three-pointers, two rebounds and two steals
- Led UR with 23 points, including nine points over two minutes in the fourth quarter, all on and-one three-point plays against William & Mary

## CAREER SUMMARY

|         |      |       | Field Goals |         | 3-Point |         | F-Throws |         | Rebounds |     | PF-FO |     | A   |       | TO  |     | BLK |     | STL |      | Scoring |  |
|---------|------|-------|-------------|---------|---------|---------|----------|---------|----------|-----|-------|-----|-----|-------|-----|-----|-----|-----|-----|------|---------|--|
| SEASON  | TEAM | GP-GS | MIN/AVG     | FG-GA   | FG%     | 3FG-3GA | 3FG%     | FT-FTA  | FT%      | OFF | DEF   | TOT | AVG | PF    | FO  | A   | TO  | BLK | STL | PTS  | AVG     |  |
| 2020-21 | UR   | 22-0  | 442/20.1    | 44-106  | .415    | 11-25   | .440     | 45-60   | .750     | 17  | 60    | 77  | 3.5 | 35-0  | 73  | 58  | 1   | 22  | 144 | 6.5  |         |  |
| 2021-22 | UR   | 30-29 | 942/31.4    | 109-244 | .447    | 18-69   | .261     | 77-99   | .778     | 17  | 135   | 152 | 5.1 | 58-0  | 158 | 97  | 3   | 37  | 313 | 10.4 |         |  |
| 2022-23 | UR   | 13-13 | 402/30.9    | 44-98   | .449    | 9-20    | .450     | 41-58   | .707     | 6   | 61    | 67  | 5.2 | 22-0  | 60  | 36  | 2   | 24  | 138 | 10.6 |         |  |
| TOTAL   |      | 65-42 | 1786/27.5   | 197-448 | .440    | 38-114  | .333     | 163-217 | .751     | 40  | 256   | 296 | 4.6 | 115-0 | 291 | 191 | 6   | 83  | 595 | 9.2  |         |  |



# SYDNEY BOONE

**SOPHOMORE**  
**5-8 / GUARD**  
**RICHMOND, VA.**  
**HIGHLAND SPRINGS**

# 2

## TOP PERFORMANCES

### POINTS

Season ..... 5 (at William & Mary, 12/1/22)  
 Career ..... 12 (at Hampton, 11/13/21)

### REBOUNDS

Season ..... 3 (at Elon, 12/15/22)  
 Career ..... 5 (vs. Dayton, 1/26/22)

### ASSISTS

Season ..... 5 (vs Longwood, 12/11/22)  
 Career ..... 5 (vs Longwood, 12/11/22)

### BLOCKS

Season .....  
 Career ..... 1 (at GW, 1/5/22)

### STEALS

Season ..... 1 (2x last vs Longwood, 12/11/22)  
 Career ..... 2 (vs. W&M, 12/12/21)

### FIELD GOALS MADE

Season ..... 1 (4x last vs Ball State, 12/20/22)  
 Career ..... 4 (at Hampton, 11/13/21)

### FIELD GOALS ATTEMPTED

Season ..... 5 (vs Longwood, 12/11/22)  
 Career ..... 8 (at Hampton, 11/13/21)

### FREE-THROWS MADE

Season ..... 2 (2x last vs Tarleton State, 12/21/22)  
 Career ..... 4 (vs. UMES, 12/1/21)

### FREE-THROWS ATTEMPTED

Season ..... 2 (2x last vs Tarleton State, 12/21/22)  
 Career ..... 4 (vs. UMES, 12/1/21)

### 3-POINT FIELD GOALS MADE

Season ..... 1 (2x last vs Longwood, 12/11/22)  
 Career ..... 3 (at Hampton, 11/13/21)

### 3-POINT FIELD GOALS ATTEMPTED

Season ..... 4 (vs Longwood, 12/11/22)  
 Career ..... 5 (at Hampton, 11/13/21)

### MINUTES

Season ..... 15 (vs Tarleton State, 12/21/22)  
 Career ..... 15 (2x last vs Tarleton State, 12/21/22)

## GAME-BY-GAME STATISTICS

### #2 BOONE, Sydney

| Opponent          | Date       | GS | MIN   | Total  |       | 3-Pointers |       | Free throws |       | Rebounds |     |     | PF  | A   | TO | BLK | STL | PTS | AVG |      |   |
|-------------------|------------|----|-------|--------|-------|------------|-------|-------------|-------|----------|-----|-----|-----|-----|----|-----|-----|-----|-----|------|---|
|                   |            |    |       | FG-FGA | PCT   | 3FG-3FGA   | PCT   | FT-FTA      | PCT   | OFF      | DEF | TOT |     |     |    |     |     |     |     | AVG  |   |
| Mount St. Mary's  | 11/10/2022 |    | 05:50 | 1-1    | 1.000 | 0-0        | .000  | 0-0         | .000  | 0        | 0   | 0   | 0.0 | 0   | 0  | 0   | 0   | 1   | 2.0 |      |   |
| at Clemson        | 11/13/2022 |    | 01:41 | 0-1    | .000  | 0-0        | .000  | 0-0         | .000  | 0        | 0   | 0   | 0.0 | 0   | 0  | 0   | 0   | 0   | 1.0 |      |   |
| at UMBC           | 11/17/2022 |    | 04:22 | 0-2    | .000  | 0-1        | .000  | 0-0         | .000  | 0        | 0   | 0   | 0.0 | 0   | 2  | 0   | 0   | 0   | 0.7 |      |   |
| Hampton           | 11/20/2022 |    | 05:22 | 0-1    | .000  | 0-1        | .000  | 0-0         | .000  | 0        | 0   | 0   | 0.0 | 2   | 2  | 1   | 0   | 0   | 0.5 |      |   |
| vs Idaho          | 11/26/2022 |    | 11:28 | 0-4    | .000  | 0-2        | .000  | 0-0         | .000  | 1        | 1   | 2   | 0.4 | 2   | 2  | 2   | 0   | 0   | 0.4 |      |   |
| vs NIU            | 11/27/2022 |    | 04:38 | 0-1    | .000  | 0-1        | .000  | 0-0         | .000  | 0        | 0   | 0   | 0.3 | 1   | 0  | 0   | 0   | 0   | 0.3 |      |   |
| at William & Mary | 12/01/2022 |    | 10:30 | 1-1    | 1.000 | 1-1        | 1.000 | 2-2         | 1.000 | 0        | 2   | 2   | 0.6 | 2   | 0  | 2   | 0   | 0   | 5.1 |      |   |
| Duke              | 12/04/2022 |    | 06:34 | 0-1    | .000  | 0-0        | .000  | 0-0         | .000  | 0        | 1   | 1   | 0.6 | 1   | 1  | 2   | 0   | 0   | 0.9 |      |   |
| Longwood          | 12/11/2022 |    | 14:57 | 1-5    | .200  | 1-4        | .250  | 0-0         | .000  | 0        | 0   | 0   | 0.6 | 0   | 5  | 0   | 0   | 1   | 3.1 |      |   |
| at Elon           | 12/15/2022 |    | 08:30 | 0-1    | .000  | 0-1        | .000  | 0-0         | .000  | 0        | 3   | 3   | 0.8 | 0   | 1  | 2   | 0   | 0   | 1.0 |      |   |
| vs Ball St.       | 12/20/2022 |    | 07:42 | 1-2    | .500  | 0-0        | .000  | 0-0         | .000  | 0        | 2   | 2   | 0.9 | 0   | 2  | 2   | 0   | 1   | 2.1 |      |   |
| vs Tarleton St.   | 12/21/2022 |    | 15:29 | 0-2    | .000  | 0-2        | .000  | 2-2         | 1.000 | 0        | 0   | 0   | 0.8 | 1   | 0  | 2   | 0   | 0   | 1.2 |      |   |
| Totals            |            |    | 0     | 97:04  | 4-22  | .182       | 2-13  | .154        | 4-4   | 1.000    | 1   | 9   | 10  | 0.8 | 9  | 15  | 13  | 0   | 3   | 14.1 | 2 |

### Player Averages

| Games Played | Minutes/ game | Points/ game | FG Pct | 3FG Pct | FT Pct | Rebounds/ game | Assists/ game | Turnovers/ game | Assist/Turnover ratio | Steals/ game | Blocks/ game |
|--------------|---------------|--------------|--------|---------|--------|----------------|---------------|-----------------|-----------------------|--------------|--------------|
| 12           | 8.1           | 1.2          | 18.2   | 15.4    | 100.0  | 0.8            | 1.3           | 1.1             | 1.2                   | 0.3          | 0.0          |

## AS A SOPHOMORE

- Dished out a career-high five assists against Longwood
- Scored five points, including a three-pointer, against W&M

## CAREER SUMMARY

|         |      |       | Field Goals |     | 3-Point |      | F-Throws |      | Rebounds |       |     |     |     |     |       |    | Scoring |     |     |     |     |
|---------|------|-------|-------------|-----|---------|------|----------|------|----------|-------|-----|-----|-----|-----|-------|----|---------|-----|-----|-----|-----|
| SEASON  | TEAM | GP-GS | MIN         | AVG | FG-FGA  | FG%  | 3FG-3FGA | 3FG% | FT-FTA   | FT%   | OFF | DEF | TOT | AVG | PF-FO | A  | TO      | BLK | STL | PTS | AVG |
| 2021-22 | UR   | 28-0  | 212         | 7.6 | 27-76   | .355 | 16-39    | .410 | 12-15    | .800  | 4   | 33  | 37  | 1.3 | 20-0  | 21 | 32      | 2   | 6   | 82  | 2.9 |
| 2022-23 | UR   | 12-0  | 97          | 8.1 | 4-22    | .182 | 2-13     | .154 | 4-4      | 1.000 | 1   | 9   | 10  | 0.8 | 9-0   | 15 | 13      | 0   | 3   | 14  | 1.2 |
| TOTAL   |      | 40-0  | 309         | 7.7 | 31-98   | .316 | 18-52    | .346 | 16-19    | .842  | 5   | 42  | 47  | 1.2 | 29-0  | 36 | 45      | 2   | 9   | 96  | 2.4 |



**JADA GREEN**

**FRESHMAN  
6-1 / FORWARD  
PARKLAND, FLA.  
ST. THOMAS AQUINAS**

**4**

**TOP PERFORMANCES**

**POINTS**

Season .....  
Career .....

**REBOUNDS**

Season .....  
Career .....

**ASSISTS**

Season .....  
Career .....

**BLOCKS**

Season .....  
Career .....

**STEALS**

Season .....  
Career .....

**FIELD GOALS MADE**

Season .....  
Career .....

**FIELD GOALS ATTEMPTED**

Season .....  
Career .....

**FREE-THROWS MADE**

Season .....  
Career .....

**FREE-THROWS ATTEMPTED**

Season .....  
Career .....

**3-POINT FIELD GOALS MADE**

Season .....  
Career .....

**3-POINT FIELD GOALS ATTEMPTED**

Season .....  
Career .....

**MINUTES**

Season .....  
Career .....

**GAME-BY-GAME STATISTICS**

-Will miss the 2022-23 season due to knee surgery prior to the season.

**PREP CAREER HIGHLIGHTS**

- Florida 6A State Champion
- Led her high school team with 9.6 boards per game her junior year
- Broward All-County 6A Second-Team
- USA Today High School Sports Southeast Florida Nominee
- McDonalds All-American Nominee

**CAREER SUMMARY**





# CAYLA WILLIAMS

**SOPHOMORE**  
**6-0 / FORWARD**  
**GAINESVILLE, VA.**  
**EPISCOPAL**

# 11

## GAME-BY-GAME STATISTICS

## TOP PERFORMANCES

### POINTS

Season ..... 8 (vs. Mount St. Mary's, 11/10/22)  
 Career ..... 11 (vs. W&M, 12/12/21)

### REBOUNDS

Season ..... 4 (at UMBC, 11/17/22)  
 Career ..... 7 (at Longwood, 12/15/21)

### ASSISTS

Season ..... 2 (at William & Mary, 12/1/22)  
 Career ..... 3 (vs. UMBC, 11/21/21)

### BLOCKS

Season ..... 1 (5x, last vs Tarleton State, 12/21/22)  
 Career ..... 2 (5x, last vs. VCU, 2/2/22)

### STEALS

Season ..... 1 (3x last at William & Mary, 12/1/22)  
 Career ..... 3 (vs. UMBC, 11/21/21)

### FIELD GOALS MADE

Season ..... 3 (vs. Mount St. Mary's, 11/10/22)  
 Career ..... 4 (vs. W&M, 12/12/21)

### FIELD GOALS ATTEMPTED

Season ..... 5 (vs. Mount St. Mary's, 11/10/22)  
 Career ..... 7 (3x, last vs. Coppin State, 12/29/21)

### FREE-THROWS MADE

Season ..... 2 (at Liberty, 11/7/22)  
 Career ..... 2 (at Liberty, 11/7/22)

### FREE-THROWS ATTEMPTED

Season ..... 2 (at Liberty, 11/7/22)  
 Career ..... 2 (8x, last at Liberty, 11/7/22)

### 3-POINT FIELD GOALS MADE

Season ..... 2 (2x last at William & Mary, 12/1/22)  
 Career ..... 3 (vs. VCU, 2/2/22)

### 3-POINT FIELD GOALS ATTEMPTED

Season ..... 3 (2x last at William & Mary, 12/1/22)  
 Career ..... 4 (2x, last vs. Coppin State, 12/29/21)

### MINUTES

Season ..... 28 (at William & Mary, 12/1/22)  
 Career ..... 28 (at William & Mary, 12/1/22)

#11 WILLIAMS, Cayla

| Opponent          | Date       | GS | MIN    | Total  |      | 3-Pointers |      | Free throws |       | Rebounds |     |     |     | PF | A | TO | BLK | STL | PTS | AVG |
|-------------------|------------|----|--------|--------|------|------------|------|-------------|-------|----------|-----|-----|-----|----|---|----|-----|-----|-----|-----|
|                   |            |    |        | FG-FGA | PCT  | 3FG-3FGA   | PCT  | FT-FTA      | PCT   | OFF      | DEF | TOT | AVG |    |   |    |     |     |     |     |
| at Liberty        | 11/07/2022 | *  | 18:32  | 0-1    | .000 | 0-1        | .000 | 2-2         | 1.000 | 0        | 1   | 1   | 1.0 | 2  | 0 | 1  | 0   | 1   | 2   | 2.0 |
| Mount St. Mary's  | 11/10/2022 | *  | 14:10  | 3-5    | .600 | 2-3        | .667 | 0-0         | .000  | 1        | 2   | 3   | 2.0 | 2  | 0 | 4  | 0   | 0   | 8   | 5.0 |
| at Clemson        | 11/13/2022 | *  | 08:02  | 0-0    | .000 | 0-0        | .000 | 0-2         | .000  | 0        | 0   | 0   | 1.3 | 2  | 0 | 0  | 1   | 1   | 0   | 3.3 |
| at UMBC           | 11/17/2022 | *  | 15:51  | 0-2    | .000 | 0-1        | .000 | 0-0         | .000  | 1        | 3   | 4   | 2.0 | 2  | 0 | 0  | 1   | 0   | 0   | 2.5 |
| Hampton           | 11/20/2022 | *  | 11:38  | 0-1    | .000 | 0-0        | .000 | 0-0         | .000  | 0        | 1   | 1   | 1.8 | 4  | 1 | 1  | 0   | 0   | 0   | 2.0 |
| vs Idaho          | 11/26/2022 | *  | 18:41  | 1-4    | .250 | 0-2        | .000 | 0-0         | .000  | 0        | 1   | 1   | 1.7 | 0  | 0 | 0  | 0   | 0   | 2   | 2.0 |
| vs NIU            | 11/27/2022 | *  | 14:51  | 0-1    | .000 | 0-1        | .000 | 2-2         | 1.000 | 1        | 0   | 1   | 1.6 | 1  | 0 | 1  | 1   | 1   | 2   | 2.0 |
| at William & Mary | 12/01/2022 | *  | 28:16  | 2-4    | .500 | 2-3        | .667 | 0-0         | .000  | 0        | 2   | 2   | 1.6 | 4  | 2 | 6  | 1   | 1   | 6   | 2.5 |
| Duke              | 12/04/2022 | *  | 24:42  | 2-7    | .286 | 1-4        | .250 | 0-0         | .000  | 0        | 3   | 3   | 1.8 | 2  | 0 | 1  | 1   | 0   | 5   | 2.8 |
| at Elon           | 12/15/2022 | *  | 14:09  | 0-0    | .000 | 0-0        | .000 | 0-0         | .000  | 2        | 2   | 4   | 2.0 | 1  | 0 | 1  | 0   | 0   | 0   | 2.5 |
| vs Ball St.       | 12/20/2022 | *  | 23:49  | 0-3    | .000 | 0-1        | .000 | 0-0         | .000  | 0        | 0   | 0   | 1.8 | 4  | 1 | 1  | 0   | 0   | 0   | 2.3 |
| vs Tarleton St.   | 12/21/2022 | *  | 21:59  | 1-3    | .333 | 0-2        | .000 | 0-0         | .000  | 1        | 2   | 3   | 1.9 | 1  | 0 | 4  | 1   | 0   | 2   | 2.3 |
| Totals            |            | 11 | 214:40 | 9-31   | .290 | 5-18       | .278 | 4-6         | .667  | 6        | 17  | 23  | 1.9 | 25 | 4 | 20 | 6   | 4   | 27  | 2.3 |

Player Averages

| Games Played | Minutes/game | Points/game | FG Pct | 3FG Pct | FT Pct | Rebounds/game | Assists/game | Turnovers/game | Assist/Turnover ratio | Steals/game | Blocks/game |
|--------------|--------------|-------------|--------|---------|--------|---------------|--------------|----------------|-----------------------|-------------|-------------|
| 12           | 17.9         | 2.3         | 29.0   | 27.8    | 66.7   | 1.9           | 0.3          | 1.7            | 0.2                   | 0.3         | 0.5         |

## AS A SOPHOMORE

- Limited Liberty's red-shirt senior center Mya Berkman just eight points and seven rebounds, as a career double-figure scorer.
- Went 2-of-3 from long range against Mount St. Mary's

## CAREER SUMMARY

WILLIAMS, Cayla

WILLIAMS, Cayla

|         |      |       |          | Field Goals |      | 3-Point  |      | F-Throws |      | Rebounds |     |     |     |       |    |    |     | Scoring |     |     |
|---------|------|-------|----------|-------------|------|----------|------|----------|------|----------|-----|-----|-----|-------|----|----|-----|---------|-----|-----|
| SEASON  | TEAM | GP-GS | MIN/AVG  | FG-FGA      | FG%  | 3FG-3FGA | 3FG% | FT-FTA   | FT%  | OFF      | DEF | TOT | AVG | PF-FO | A  | TO | BLK | STL     | PTS | AVG |
| 2021-22 | UR   | 29-16 | 435/15.0 | 34-80       | .425 | 14-43    | .326 | 5-13     | .385 | 20       | 51  | 71  | 2.4 | 71-3  | 14 | 19 | 16  | 8       | 87  | 3.0 |
| 2022-23 | UR   | 12-11 | 215/17.9 | 9-31        | .290 | 5-18     | .278 | 4-6      | .667 | 6        | 17  | 23  | 1.9 | 25-0  | 4  | 20 | 6   | 4       | 27  | 2.3 |



# TORIN ROGERS

**FRESHMAN**  
**6-1 / GUARD**  
**BRASSTOWN, N.C.**  
**MURPHY**

# 13

## TOP PERFORMANCES

### POINTS

Season ..... 9 (vs Longwood, 12/11/22)  
 Career ..... 9 (vs Longwood, 12/11/22)

### REBOUNDS

Season ..... 3 (2x last vs Longwood, 12/11/22)  
 Career ..... 3 (2x last vs Longwood, 12/11/22)

### ASSISTS

Season ..... 2 (vs Longwood, 12/11/22)  
 Career ..... 2 (vs Longwood, 12/11/22)

### BLOCKS

Season ..... 1 (vs Longwood, 12/11/22)  
 Career ..... 1 (vs Longwood, 12/11/22)

### STEALS

Season ..... 1 (vs Longwood, 12/11/22)  
 Career ..... 1 (vs Longwood, 12/11/22)

### FIELD GOALS MADE

Season ..... 3 (vs Longwood, 12/11/22)  
 Career ..... 3 (vs Longwood, 12/11/22)

### FIELD GOALS ATTEMPTED

Season ..... 5 (vs Longwood, 12/11/22)  
 Career ..... 5 (vs Longwood, 12/11/22)

### FREE-THROWS MADE

Season ..... 2 (vs. Idaho, 11/26/22)  
 Career ..... 2 (vs. Idaho, 11/26/22)

### FREE-THROWS ATTEMPTED

Season ..... 2 (2x last vs Longwood, 12/11/22)  
 Career ..... 2 (2x last vs Longwood, 12/11/22)

### 3-POINT FIELD GOALS MADE

Season ..... 2 (vs Longwood, 12/11/22)  
 Career ..... 2 (vs Longwood, 12/11/22)

### 3-POINT FIELD GOALS ATTEMPTED

Season ..... 2 (vs Longwood, 12/11/22)  
 Career ..... 2 (vs Longwood, 12/11/22)

### MINUTES

Season ..... 22 (vs Longwood, 12/11/22)  
 Career ..... 22 (vs Longwood, 12/11/22)

## GAME-BY-GAME STATISTICS

#13 ROGERS, Torin

| Opponent          | Date       | GS | MIN   | Total  |      | 3-Pointers |       | Free throws |       | Rebounds |     |     |     | PF  |    | A TO |    | BLK | STL | PTS | AVG |
|-------------------|------------|----|-------|--------|------|------------|-------|-------------|-------|----------|-----|-----|-----|-----|----|------|----|-----|-----|-----|-----|
|                   |            |    |       | FG-FGA | PCT  | 3FG-3FGA   | PCT   | FT-FTA      | PCT   | OFF      | DEF | TOT | AVG | A   | TO |      |    |     |     |     |     |
| at Liberty        | 11/07/2022 |    | 02:03 | 0-1    | .000 | 0-0        | .000  | 0-0         | .000  | 0        | 1   | 1   | 1.0 | 0   | 0  | 0    | 0  | 0   | 0   | 0.0 |     |
| Mount St. Mary's  | 11/10/2022 |    | 08:53 | 0-0    | .000 | 0-0        | .000  | 0-0         | .000  | 0        | 3   | 3   | 2.0 | 1   | 0  | 3    | 0  | 0   | 0   | 0.0 |     |
| at Clemson        | 11/13/2022 |    | 01:41 | 0-1    | .000 | 0-1        | .000  | 0-0         | .000  | 1        | 0   | 1   | 1.7 | 0   | 0  | 1    | 0  | 0   | 0   | 0.0 |     |
| vs Idaho          | 11/26/2022 |    | 04:56 | 1-2    | .500 | 0-0        | .000  | 2-2         | 1.000 | 0        | 0   | 0   | 1.3 | 1   | 0  | 0    | 0  | 0   | 4   | 1.0 |     |
| at William & Mary | 12/01/2022 |    | 03:30 | 1-2    | .500 | 0-1        | .000  | 1-1         | 1.000 | 0        | 0   | 0   | 1.0 | 0   | 0  | 0    | 0  | 0   | 3   | 1.4 |     |
| Duke              | 12/04/2022 |    | 04:42 | 0-1    | .000 | 0-0        | .000  | 0-2         | .000  | 1        | 1   | 2   | 1.2 | 1   | 1  | 0    | 0  | 0   | 0   | 1.2 |     |
| Longwood          | 12/11/2022 |    | 21:58 | 3-5    | .600 | 2-2        | 1.000 | 1-2         | .500  | 0        | 3   | 3   | 1.4 | 1   | 2  | 3    | 1  | 1   | 9   | 2.3 |     |
| at Elon           | 12/15/2022 |    | 08:12 | 1-3    | .333 | 1-3        | .333  | 0-2         | .000  | 0        | 1   | 1   | 1.4 | 0   | 0  | 0    | 0  | 0   | 3   | 2.4 |     |
| vs Ball St.       | 12/20/2022 |    | 11:24 | 2-3    | .667 | 1-1        | 1.000 | 0-0         | .000  | 1        | 0   | 1   | 1.3 | 2   | 0  | 1    | 0  | 0   | 5   | 2.7 |     |
| vs Tarleton St.   | 12/21/2022 |    | 06:45 | 0-2    | .000 | 0-2        | .000  | 0-0         | .000  | 0        | 2   | 2   | 1.4 | 1   | 0  | 2    | 0  | 0   | 0   | 2.4 |     |
| Totals            |            |    | 0     | 74:05  | 8-20 | .400       | 4-10  | .400        | 4-9   | .444     | 3   | 11  | 14  | 1.4 | 7  | 3    | 10 | 1   | 1   | 24  | 2.4 |

Player Averages

| Games Played | Minutes/game | Points/game | FG Pct | 3FG Pct | FT Pct | Rebounds/game | Assists/game | Turnovers/game | Assist/Turnover ratio | Steals/game | Blocks/game |
|--------------|--------------|-------------|--------|---------|--------|---------------|--------------|----------------|-----------------------|-------------|-------------|
| 10           | 7.4          | 2.4         | 40.0   | 40.0    | 44.4   | 1.4           | 0.3          | 1.0            | 0.3                   | 0.1         | 0.1         |

## AS A FRESHMAN...

- Played in her first collegiate game at Liberty, collecting a rebound
- Against Mount St. Mary's, pulled down three boards
- Posted career-high nine points, three rebounds, two assists, a block and a steal against Longwood

## CAREER SUMMARY

|         |      |       | Field Goals |        | 3-Point |          | F-Throws |        | Rebounds |     |     |     |     |       |   |    | Scoring |     |     |     |
|---------|------|-------|-------------|--------|---------|----------|----------|--------|----------|-----|-----|-----|-----|-------|---|----|---------|-----|-----|-----|
| SEASON  | TEAM | GP-GS | MIN/AVG     | FG-FGA | FG%     | 3FG-3FGA | 3FG%     | FT-FTA | FT%      | OFF | DEF | TOT | AVG | PF-FO | A | TO | BLK     | STL | PTS | AVG |
| 2022-23 | UR   | 10-0  | 74/7.4      | 8-20   | .400    | 4-10     | .400     | 4-9    | .444     | 3   | 11  | 14  | 1.4 | 7-0   | 3 | 10 | 1       | 1   | 24  | 2.4 |
| TOTAL   |      | 10-0  | 74/7.4      | 8-20   | .400    | 4-10     | .400     | 4-9    | .444     | 3   | 11  | 14  | 1.4 | 7-0   | 3 | 10 | 1       | 1   | 24  | 2.4 |

**ADDIE BUDNIK**

**JUNIOR**  
**6-2 / FORWARD**  
**HIGHLAND PARK, ILL.**  
**HIGHLAND PARK**

**20****GAME-BY-GAME STATISTICS****TOP PERFORMANCES****POINTS**

Season ..... 28 (vs Tarleton State, 12/21/22)  
 Career ..... 28 (vs Tarleton State, 12/21/22)

**REBOUNDS**

Season ..... 13 (vs Longwood, 12/11/22)  
 Career ..... 13 (vs Longwood, 12/11/22)

**ASSISTS**

Season ..... 5 (vs. Mount St. Mary's, 11/10/22)  
 Career ..... 6 (vs. Rhode Island, 2/19/22)

**BLOCKS**

Season ..... 4 (2x last vs Tarleton State, 12/21/22)  
 Career ..... 7 (2x, last vs. UMBC, 11/21/21)

**STEALS**

Season ..... 4 (2x last at Elon, 12/15/22)  
 Career ..... 4 (3x, last at Elon, 12/15/22)

**FIELD GOALS MADE**

Season ..... 12 (vs Tarleton State, 12/21/22)  
 Career ..... 12 (vs Tarleton State, 12/21/22)

**FIELD GOALS ATTEMPTED**

Season ..... 16 (at UMBC, 11/17/22)  
 Career ..... 16 (2x, last at UMBC, 11/17/22)

**FREE-THROWS MADE**

Season ..... 5 (at UMBC, 11/17/22)  
 Career ..... 6 (2x, last at George Mason, 1/19/22)

**FREE-THROWS ATTEMPTED**

Season ..... 5 (2x last at William & Mary, 12/1/22)  
 Career ..... 9 (at Duquesne, 2/16/22)

**3-POINT FIELD GOALS MADE**

Season ..... 3 (2x last vs Tarleton State, 12/21/22)  
 Career ..... 4 (3x, last vs. UMass, 1/15/22)

**3-POINT FIELD GOALS ATTEMPTED**

Season ..... 7 (vs Duke, 12/4/22)  
 Career ..... 8 (3x, last vs. VCU, 2/2/22)

**MINUTES**

Season ..... 37 (vs Ball State, 12/20/22)  
 Career ..... 44 (vs. SLU, 3/12/21)

**#20 BUDNIK, Addie**

| Opponent          | Date       | GS | MIN       | Total         |               | 3-Pointers  |              | Free throws |              | Rebounds    |           |           |           | PF         | A         | TO        | BLK       | STL       | PTS       | AVG         |
|-------------------|------------|----|-----------|---------------|---------------|-------------|--------------|-------------|--------------|-------------|-----------|-----------|-----------|------------|-----------|-----------|-----------|-----------|-----------|-------------|
|                   |            |    |           | FG-FGA        | PCT           | 3FG-3FGA    | PCT          | FT-FTA      | PCT          | OFF         | DEF       | TOT       | AVG       |            |           |           |           |           |           |             |
| at Liberty        | 11/07/2022 | *  | 33:29     | 8-14          | .571          | 1-2         | .500         | 4-4         | 1.000        | 2           | 5         | 7         | 7.0       | 2          | 3         | 3         | 0         | 2         | 21        | 21.0        |
| Mount St. Mary's  | 11/10/2022 | *  | 27:27     | 6-8           | .750          | 2-3         | .667         | 2-2         | 1.000        | 2           | 4         | 6         | 6.5       | 1          | 5         | 1         | 1         | 4         | 16        | 18.5        |
| at Clemson        | 11/13/2022 | *  | 32:24     | 4-10          | .400          | 0-4         | .000         | 0-0         | .000         | 4           | 3         | 7         | 6.7       | 2          | 1         | 6         | 0         | 1         | 8         | 15.0        |
| at UMBC           | 11/17/2022 | *  | 28:21     | 5-16          | .313          | 1-5         | .200         | 5-5         | 1.000        | 4           | 3         | 7         | 6.8       | 3          | 2         | 3         | 1         | 0         | 16        | 15.3        |
| Hampton           | 11/20/2022 | *  | 35:34     | 3-9           | .333          | 0-5         | .000         | 0-0         | .000         | 4           | 7         | 11        | 7.6       | 1          | 4         | 4         | 2         | 0         | 6         | 13.4        |
| vs Idaho          | 11/26/2022 | *  | 25:12     | 2-5           | .400          | 1-3         | .333         | 3-4         | .750         | 0           | 9         | 9         | 7.8       | 2          | 3         | 2         | 2         | 0         | 8         | 12.5        |
| vs NIU            | 11/27/2022 | *  | 39:27     | 6-14          | .429          | 3-8         | .375         | 1-1         | 1.000        | 2           | 5         | 7         | 7.7       | 3          | 2         | 3         | 1         | 1         | 16        | 13.0        |
| at William & Mary | 12/01/2022 | *  | 32:33     | 5-12          | .417          | 3-4         | .750         | 3-5         | .600         | 2           | 5         | 7         | 7.6       | 0          | 3         | 3         | 2         | 2         | 16        | 13.4        |
| Duke              | 12/04/2022 | *  | 32:08     | 2-11          | .182          | 2-7         | .286         | 0-0         | .000         | 0           | 2         | 2         | 7.0       | 2          | 2         | 2         | 0         | 1         | 6         | 12.6        |
| Longwood          | 12/11/2022 | *  | 28:01     | 6-8           | .750          | 0-0         | .000         | 3-4         | .750         | 6           | 7         | 13        | 7.6       | 3          | 4         | 1         | 4         | 1         | 15        | 12.8        |
| at Elon           | 12/15/2022 | *  | 34:24     | 6-9           | .667          | 2-3         | .667         | 1-2         | .500         | 0           | 2         | 2         | 7.1       | 1          | 3         | 4         | 2         | 4         | 15        | 13.0        |
| vs Ball St.       | 12/20/2022 | *  | 36:30     | 5-12          | .417          | 1-5         | .200         | 2-2         | 1.000        | 1           | 4         | 5         | 6.9       | 2          | 2         | 5         | 2         | 0         | 13        | 13.0        |
| vs Tarleton St.   | 12/21/2022 | *  | 31:27     | 12-13         | .923          | 3-3         | 1.000        | 1-1         | 1.000        | 2           | 5         | 7         | 6.9       | 3          | 2         | 7         | 4         | 2         | 28        | 14.2        |
| <b>Totals</b>     |            |    | <b>13</b> | <b>416:56</b> | <b>70-141</b> | <b>.496</b> | <b>19-52</b> | <b>.365</b> | <b>25-30</b> | <b>.833</b> | <b>29</b> | <b>61</b> | <b>90</b> | <b>6.9</b> | <b>25</b> | <b>36</b> | <b>44</b> | <b>21</b> | <b>18</b> | <b>14.2</b> |

**Player Averages**

| Games Played | Minutes/ game | Points/ game | FG Pct | 3FG Pct | FT Pct | Rebounds/ game | Assists/ game | Turnovers/ game | Assist/Turnover ratio | Steals/ game | Blocks/ game |
|--------------|---------------|--------------|--------|---------|--------|----------------|---------------|-----------------|-----------------------|--------------|--------------|
| 13           | 32.1          | 14.2         | 49.6   | 36.5    | 83.3   | 6.9            | 2.8           | 3.4             | 0.8                   | 1.4          | 1.6          |

**AS A JUNIOR**

- Hit the buzzer-beater three-pointer for the win over Ball State and posted career-high 28 points on near perfect shooting from the field against Tarleton State at the Puerto Rico Clasico.

- Atlantic 10 Player of the Week after posting a double-double against Longwood

- Preseason A-10 First Team Selection

- Named to the 2023 Becky Hammon Mid-Major Player of the Year, presented by Her Hoop Stats

- Katrina McClain Award, to honor the best power forward (10/20), as announced by the Naismith

Memorial Basketball Hall of Fame and the Women's Basketball Coaches Association

- Opened the season posting 21 points, two points shy of her career high, 7 rebounds and 3 assists at Liberty.

- Collected second career double-double of 15 points and 13 rebounds, with four assists and a season-high four blocks against Longwood, which earned Atlantic 10 Player of the Week accolades, the first of her career

**CAREER SUMMARY**

| SEASON TEAM |       |         |           |           |          |        |        |         |      |     |     |     |       |       |     |     | Field Goals |     | 3-Point |      | F-Throws |  | Rebounds |  |  |  | Scoring |  |  |  |
|-------------|-------|---------|-----------|-----------|----------|--------|--------|---------|------|-----|-----|-----|-------|-------|-----|-----|-------------|-----|---------|------|----------|--|----------|--|--|--|---------|--|--|--|
| SEASON TEAM | GP-GS | MIN/AVG | FG-FGA    | FG%       | 3FG-3FGA | 3FG%   | FT-FTA | FT%     | OFF  | DEF | TOT | AVG | PF-FO | A     | TO  | BLK | STL         | PTS | AVG     |      |          |  |          |  |  |  |         |  |  |  |
| 2020-21     | UR    | 22-18   | 753/34.2  | 94-194    | .485     | 22-68  | .324   | 40-45   | .889 | 32  | 79  | 111 | 5.0   | 43-0  | 41  | 48  | 65          | 15  | 250     | 11.4 |          |  |          |  |  |  |         |  |  |  |
| 2021-22     | UR    | 30-29   | 1010/33.7 | 155-311   | .498     | 43-119 | .361   | 54-80   | .675 | 56  | 120 | 176 | 5.9   | 59-0  | 66  | 60  | 77          | 21  | 407     | 13.6 |          |  |          |  |  |  |         |  |  |  |
| 2022-23     | UR    | 13-13   | 417/32.1  | 70-141    | .496     | 19-52  | .365   | 25-30   | .833 | 29  | 61  | 90  | 6.9   | 25-0  | 36  | 44  | 18          | 18  | 184     | 14.2 |          |  |          |  |  |  |         |  |  |  |
| TOTAL       |       |         | 65-60     | 2181/33.5 | 319-646  | 94     | 84-239 | 119-155 | 768  | 117 | 260 | 377 | 5.8   | 127-0 | 143 | 152 | 163         | 54  | 841     | 12.2 |          |  |          |  |  |  |         |  |  |  |



# KYLEE LEWANDOWSKI

**JUNIOR**  
**6-1 / GUARD**  
**PITTSBURGH, PA.**  
**NORTH CATHOLIC**

# 21

## TOP PERFORMANCES

### POINTS

Season ..... 10 (vs Longwood, 12/11/22)  
 Career ..... 10 (vs Longwood, 12/11/22)

### REBOUNDS

Season ..... 3, (vs Tarleton State, 12/21/22)  
 Career ..... 11 (at Hampton, 11/13/21)

### ASSISTS

Season ..... 1 (vs Longwood, 12/11/22)  
 Career ..... 2 (at Ohio, 12/4/21)

### BLOCKS

Season .....  
 Career ..... 1 (4x, last at Ohio, 12/4/21)

### STEALS

Season ..... 2 (vs Longwood, 12/11/22)  
 Career ..... 2 (3x, last vs Longwood, 12/11/22)

### FIELD GOALS MADE

Season ..... 4 (vs Longwood, 12/11/22)  
 Career ..... 4 (vs Longwood, 12/11/22)

### FIELD GOALS ATTEMPTED

Season ..... 7 (vs Longwood, 12/11/22)  
 Career ..... 9 (at Ohio, 12/4/21)

### FREE-THROWS MADE

Season ..... 1 (vs. Idaho, 11/26/22)  
 Career ..... 2 (vs. La Salle, 2/20/21)

### FREE-THROWS ATTEMPTED

Season ..... 2 (vs. Idaho, 11/26/22)  
 Career ..... 2 (5x, last vs. Idaho, 11/26/22)

### 3-POINT FIELD GOALS MADE

Season ..... 2 (vs Longwood, 12/11/22)  
 Career ..... 2 (6x, last vs Longwood, 12/11/22)

### 3-POINT FIELD GOALS ATTEMPTED

Season ..... 5 (vs Longwood, 12/11/22)  
 Career ..... 7 (vs. UMES, 12/1/21)

### MINUTES

Season ..... 11 (vs Longwood, 12/11/22)  
 Career ..... 23 (at Ohio, 12/4/21)

## GAME-BY-GAME STATISTICS

#21 LEWANDOWSKI, Kylee

| Opponent          | Date       | GS | MIN            | Total       |             | 3-Pointers  |             | Free throws |             | Rebounds |          |          |            | PF       | A        | TO       | BLK      | STL      | PTS       | AVG        |
|-------------------|------------|----|----------------|-------------|-------------|-------------|-------------|-------------|-------------|----------|----------|----------|------------|----------|----------|----------|----------|----------|-----------|------------|
|                   |            |    |                | FG-FGA      | PCT         | 3FG-3FGA    | PCT         | FT-FTA      | PCT         | OFF      | DEF      | TOT      | AVG        |          |          |          |          |          |           |            |
| at Liberty        | 11/07/2022 |    | 01:46          | 0-0         | .000        | 0-0         | .000        | 0-0         | .000        | 0        | 0        | 0        | 0.0        | 0        | 0        | 0        | 0        | 0        | 0         | 0.0        |
| Mount St. Mary's  | 11/10/2022 |    | 08:57          | 0-2         | .000        | 0-1         | .000        | 0-0         | .000        | 0        | 2        | 2        | 1.0        | 0        | 0        | 1        | 0        | 0        | 0         | 0.0        |
| at Clemson        | 11/13/2022 |    | 01:41          | 0-0         | .000        | 0-0         | .000        | 0-0         | .000        | 0        | 0        | 0        | 0.0        | 0        | 0        | 0        | 0        | 0        | 0         | 0.0        |
| at UMBC           | 11/17/2022 |    | 03:52          | 0-2         | .000        | 0-2         | .000        | 0-0         | .000        | 0        | 0        | 0        | 0.5        | 0        | 0        | 0        | 0        | 0        | 0         | 0.0        |
| vs Idaho          | 11/26/2022 |    | 03:22          | 1-1         | 1.000       | 1-1         | 1.000       | 1-2         | .500        | 0        | 2        | 2        | 0.8        | 0        | 0        | 0        | 0        | 0        | 4         | 0.8        |
| at William & Mary | 12/01/2022 |    | 00:52          | 0-0         | .000        | 0-0         | .000        | 0-0         | .000        | 0        | 0        | 0        | 0.0        | 0        | 0        | 0        | 0        | 0        | 0         | 0.0        |
| Duke              | 12/04/2022 |    | 05:39          | 0-2         | .000        | 0-2         | .000        | 0-0         | .000        | 0        | 0        | 0        | 0.0        | 0        | 0        | 1        | 0        | 0        | 0         | 0.0        |
| Longwood          | 12/11/2022 |    | 11:10          | 4-7         | .571        | 2-5         | .400        | 0-0         | .000        | 0        | 1        | 1        | 0.6        | 1        | 1        | 1        | 0        | 2        | 10        | 1.8        |
| at Elon           | 12/15/2022 |    | 00:44          | 0-0         | .000        | 0-0         | .000        | 0-0         | .000        | 0        | 0        | 0        | 0.0        | 0        | 0        | 0        | 0        | 0        | 0         | 0.0        |
| vs Ball St.       | 12/20/2022 |    | 02:18          | 0-1         | .000        | 0-1         | .000        | 0-0         | .000        | 0        | 0        | 0        | 0.0        | 0        | 0        | 0        | 0        | 0        | 0         | 0.0        |
| vs Tarleton St.   | 12/21/2022 |    | 06:54          | 0-1         | .000        | 0-1         | .000        | 0-0         | .000        | 0        | 3        | 3        | 0.7        | 0        | 0        | 0        | 0        | 0        | 0         | 0.0        |
| <b>Totals</b>     |            |    | <b>0 47:13</b> | <b>5-16</b> | <b>.313</b> | <b>3-13</b> | <b>.231</b> | <b>1-2</b>  | <b>.500</b> | <b>0</b> | <b>8</b> | <b>8</b> | <b>0.7</b> | <b>1</b> | <b>1</b> | <b>3</b> | <b>0</b> | <b>2</b> | <b>14</b> | <b>1.3</b> |

Player Averages

| Games Played | Minutes/game | Points/game | FG Pct | 3FG Pct | FT Pct | Rebounds/game | Assists/game | Turnovers/game | Assist/Turnover ratio | Steals/game | Blocks/game |
|--------------|--------------|-------------|--------|---------|--------|---------------|--------------|----------------|-----------------------|-------------|-------------|
| 11           | 4.3          | 1.3         | 31.3   | 23.1    | 50.0   | 0.7           | 0.1          | 0.3            | 0.3                   | 0.2         | 0.0         |

## AS A JUNIOR

- Collected two rebounds against Mount St. Mary's
- Scored four points, including two from the free throw line, against Idaho
- Tallied career-high 10 points, with two three pointers, with the second marking the Spiders new program record 18th three pointer against Longwood

## CAREER SUMMARY

|         |      |       |         | Field Goals |      | 3-Point  |      | F-Throws |       | Rebounds |     |     |     | Scoring |   |    |     |     |     |     |
|---------|------|-------|---------|-------------|------|----------|------|----------|-------|----------|-----|-----|-----|---------|---|----|-----|-----|-----|-----|
| SEASON  | TEAM | GP-GS | MIN/AVG | FG-FGA      | FG%  | 3FG-3FGA | 3FG% | FT-FTA   | FT%   | OFF      | DEF | TOT | AVG | PF-FO   | A | TO | BLK | STL | PTS | AVG |
| 2020-21 | UR   | 10-0  | 48/4.8  | 3-14        | .214 | 2-8      | .250 | 2-2      | 1.000 | 2        | 12  | 14  | 1.4 | 3-0     | 2 | 3  | 0   | 4   | 10  | 1.0 |
| 2021-22 | UR   | 24-0  | 218/9.1 | 24-72       | .333 | 18-56    | .321 | 1-6      | .167  | 3        | 36  | 39  | 1.6 | 9-0     | 6 | 8  | 4   | 3   | 67  | 2.8 |
| 2022-23 | UR   | 11-0  | 47/4.3  | 5-16        | .313 | 3-13     | .231 | 1-2      | .500  | 0        | 8   | 8   | 0.7 | 1-0     | 1 | 3  | 0   | 2   | 14  | 1.3 |
| TOTAL   |      | 45-0  | 313/7.0 | 32-102      | .314 | 23-77    | .299 | 4-10     | .400  | 5        | 56  | 61  | 1.4 | 13-0    | 9 | 14 | 4   | 9   | 91  | 2.0 |





# RACHEL ULLSTROM

**FRESHMAN**  
**6-1 | GUARD**  
**AUBURN, MASS.**  
**MARIANAPOLIS PREP**

# 22

## TOP PERFORMANCES

### POINTS

Season ..... 13 (2x last vs Ball State, 12/20/22)  
 Career ..... 13 (2x last vs Ball State, 12/20/22)

### REBOUNDS

Season ..... 7 (vs. Hampton, 11/20/22)  
 Career ..... 7 (vs. Hampton, 11/20/22)

### ASSISTS

Season ..... 4 (vs Ball State, 12/20/22)  
 Career ..... 4 (vs Ball State, 12/20/22)

### BLOCKS

Season ..... 1 (at Elon, 12/15/22)  
 Career ..... 1 (at Elon, 12/15/22)

### STEALS

Season ..... 3 (vs. Mount St. Mary's, 11/10/22)  
 Career ..... 3 (vs. Mount St. Mary's, 11/10/22)

### FIELD GOALS MADE

Season ..... 6 (vs. Mount St. Mary's, 11/10/22)  
 Career ..... 6 (vs. Mount St. Mary's, 11/10/22)

### FIELD GOALS ATTEMPTED

Season ..... 12 (vs. Mount St. Mary's, 11/10/22)  
 Career ..... 12 (vs. Mount St. Mary's, 11/10/22)

### FREE-THROWS MADE

Season ..... 2 (2x last vs Ball State, 12/20/22)  
 Career ..... 2 (2x last vs Ball State, 12/20/22)

### FREE-THROWS ATTEMPTED

Season ..... 2 (3x, last vs Ball State, 12/20/22)  
 Career ..... 2 (3x, last vs Ball State, 12/20/22)

### 3-POINT FIELD GOALS MADE

Season ..... 3 (vs Ball State, 12/20/22)  
 Career ..... 3 (vs Ball State, 12/20/22)

### 3-POINT FIELD GOALS ATTEMPTED

Season ..... 5 (vs Ball State, 12/20/22)  
 Career ..... 5 (vs Ball State, 12/20/22)

### MINUTES

Season ..... 21 (vs Ball State, 12/20/22)  
 Career ..... 21 (vs Ball State, 12/20/22)

## GAME-BY-GAME STATISTICS

#22 ULLSTROM, Rachel

| Opponent          | Date       | GS | MIN             | Total        |             | 3-Pointers   |             | Free throws |             | Rebounds  |           |           |            | PF       | A        | TO       | BLK      | STL      | PTS       | AVG        |
|-------------------|------------|----|-----------------|--------------|-------------|--------------|-------------|-------------|-------------|-----------|-----------|-----------|------------|----------|----------|----------|----------|----------|-----------|------------|
|                   |            |    |                 | FG-FGA       | PCT         | 3FG-3FGA     | PCT         | FT-FTA      | PCT         | OFF       | DEF       | TOT       | AVG        |          |          |          |          |          |           |            |
| at Liberty        | 11/07/2022 |    | 11:51           | 0-0          | .000        | 0-0          | .000        | 0-0         | .000        | 0         | 1         | 1         | 1.0        | 0        | 1        | 1        | 0        | 0        | 0         | 0.0        |
| Mount St. Mary's  | 11/10/2022 |    | 16:51           | 6-12         | .500        | 0-3          | .000        | 1-1         | 1.000       | 3         | 2         | 5         | 3.0        | 0        | 0        | 1        | 0        | 3        | 13        | 6.5        |
| at Clemson        | 11/13/2022 |    | 14:33           | 0-3          | .000        | 0-1          | .000        | 0-0         | .000        | 1         | 0         | 1         | 2.3        | 0        | 0        | 1        | 0        | 0        | 0         | 4.3        |
| at UMBC           | 11/17/2022 |    | 12:17           | 2-5          | .400        | 2-4          | .500        | 0-0         | .000        | 2         | 3         | 5         | 3.0        | 0        | 1        | 0        | 0        | 0        | 6         | 4.8        |
| Hampton           | 11/20/2022 |    | 09:04           | 0-4          | .000        | 0-0          | .000        | 0-0         | .000        | 2         | 5         | 7         | 3.8        | 0        | 0        | 2        | 0        | 0        | 0         | 3.8        |
| vs Idaho          | 11/26/2022 |    | 10:18           | 0-0          | .000        | 0-0          | .000        | 0-0         | .000        | 1         | 1         | 2         | 3.5        | 1        | 0        | 0        | 0        | 0        | 0         | 3.2        |
| vs NIU            | 11/27/2022 |    | 05:53           | 1-2          | .500        | 0-1          | .000        | 0-0         | .000        | 2         | 1         | 3         | 3.4        | 0        | 0        | 0        | 0        | 0        | 2         | 3.0        |
| at William & Mary | 12/01/2022 |    | 14:50           | 1-5          | .200        | 0-4          | .000        | 0-0         | .000        | 1         | 1         | 2         | 3.3        | 1        | 0        | 0        | 0        | 0        | 2         | 2.9        |
| Duke              | 12/04/2022 |    | 17:06           | 4-8          | .500        | 1-4          | .250        | 2-2         | 1.000       | 1         | 1         | 2         | 3.1        | 0        | 0        | 1        | 0        | 1        | 11        | 3.8        |
| Longwood          | 12/11/2022 |    | 23:57           | 11-16        | .688        | 3-7          | .429        | 1-1         | 1.000       | 3         | 4         | 7         | 3.5        | 3        | 1        | 0        | 0        | 4        | 26        | 6.0        |
| at Elon           | 12/15/2022 |    | 17:15           | 2-5          | .400        | 1-4          | .250        | 1-2         | .500        | 1         | 3         | 4         | 3.5        | 1        | 1        | 0        | 1        | 0        | 6         | 6.0        |
| vs Ball St.       | 12/20/2022 |    | 21:40           | 4-6          | .667        | 3-5          | .600        | 2-2         | 1.000       | 0         | 3         | 3         | 3.5        | 0        | 4        | 1        | 0        | 0        | 13        | 6.6        |
| vs Tarleton St.   | 12/21/2022 |    | 10:00           | 0-0          | .000        | 0-0          | .000        | 0-0         | .000        | 0         | 2         | 2         | 3.4        | 1        | 1        | 2        | 0        | 1        | 0         | 6.1        |
| <b>Totals</b>     |            |    | <b>0 185:34</b> | <b>31-66</b> | <b>.470</b> | <b>10-33</b> | <b>.303</b> | <b>7-8</b>  | <b>.875</b> | <b>17</b> | <b>27</b> | <b>44</b> | <b>3.4</b> | <b>7</b> | <b>9</b> | <b>9</b> | <b>1</b> | <b>9</b> | <b>79</b> | <b>6.1</b> |

### Player Averages

| Games Played | Minutes/game | Points/game | FG Pct | 3FG Pct | FT Pct | Rebounds/game | Assists/game | Turnovers/game | Assist/Turnover ratio | Steals/game | Blocks/game |
|--------------|--------------|-------------|--------|---------|--------|---------------|--------------|----------------|-----------------------|-------------|-------------|
| 13           | 14.3         | 6.1         | 47.0   | 30.3    | 87.5   | 3.4           | 0.7          | 0.7            | 1.0                   | 0.7         | 0.1         |

## AS A FRESHMAN ...

- Named Atlantic 10 Rookie of the Week after leading all scorers with 26 points against Longwood.
- Tallied her first collegiate points against Mount St. Mary's, chipping in 13 points, five rebounds and three steals in the win.

## CAREER SUMMARY

|              |      |             |                 | Field Goals  |             | 3-Point      |             | F-Throws   |             | Rebounds  |           |           |            | Scoring    |          |          |          |          |           |            |
|--------------|------|-------------|-----------------|--------------|-------------|--------------|-------------|------------|-------------|-----------|-----------|-----------|------------|------------|----------|----------|----------|----------|-----------|------------|
| SEASON       | TEAM | GP-GS       | MIN/AVG         | FG-FGA       | FG%         | 3FG-3FGA     | 3FG%        | FT-FTA     | FT%         | OFF       | DEF       | TOT       | AVG        | PF-FO      | A        | TO       | BLK      | STL      | PTS       | AVG        |
| 2022-23      | UR   | 13-0        | 186/14.3        | 31-66        | .470        | 10-33        | .303        | 7-8        | .875        | 17        | 27        | 44        | 3.4        | 7-0        | 9        | 9        | 1        | 9        | 79        | 6.1        |
| <b>TOTAL</b> |      | <b>13-0</b> | <b>186/14.3</b> | <b>31-66</b> | <b>.470</b> | <b>10-33</b> | <b>.303</b> | <b>7-8</b> | <b>.875</b> | <b>17</b> | <b>27</b> | <b>44</b> | <b>3.4</b> | <b>7-0</b> | <b>9</b> | <b>9</b> | <b>1</b> | <b>9</b> | <b>79</b> | <b>6.1</b> |



# EMILIJA KRISTA GRAVA

**GRADUATE STUDENT**  
**6-2 / FORWARD**  
**LIGATNE, LATIVA**  
**WAGNER**

# 24

**LIEPAJAS PAPIRISK SSS**

## GAME-BY-GAME STATISTICS

### TOP PERFORMANCES

#### POINTS

Season ..... 16 (at UMBC, 11/17/22)  
 Career ..... 45 (vs. St. Peters, 11/13/19)

#### REBOUNDS

Season ..... 7 (vs Longwood, 12/11/22)  
 Career ..... 12 (at Central Conn. St, 2/19/22)

#### ASSISTS

Season ..... 3 (vs Longwood, 12/11/22)  
 Career ..... 5 (at Bryant, 1/6/22)

#### BLOCKS

Season ..... 1 (6x, last vs Longwood, 12/11/22)  
 Career ..... 3 (2x, last at Mount St. Mary's, 2/10/22)

#### STEALS

Season ..... 1 (4x last vs Tarleton State, 12/21/22)  
 Career ..... 3 (St. Francis Brooklyn, 2/5/21)

#### FIELD GOALS MADE

Season ..... 7 (at UMBC, 11/17/22)  
 Career ..... 15 (vs. Mount St. Mary's, 3/5/21)

#### FIELD GOALS ATTEMPTED

Season ..... 11 (at UMBC, 11/17/22)  
 Career ..... 26 (vs. Mount St. Mary's, 3/5/21)

#### FREE-THROWS MADE

Season ..... 4 (2x last vs. Hampton, 11/20/22)  
 Career ..... 10 (at Brown, 11/20/21)

#### FREE-THROWS ATTEMPTED

Season ..... 5 (at UMBC, 11/17/22)  
 Career ..... 10 (at Brown, 11/20/21)

#### 3-POINT FIELD GOALS MADE

Season ..... 2 (4x, last vat Elon, 12/15/22)  
 Career ..... 2 (5x, last at Elon, 12/15/22)

#### 3-POINT FIELD GOALS ATTEMPTED

Season ..... 5 (2x last vs. Hampton, 11/20/22)  
 Career ..... 5 (2x last vs. Hampton, 11/20/22)

#### MINUTES

Season ..... 32 (vs. Hampton, 11/20/22)  
 Career ..... 38 (at Seton Hall, 12/11/20)

| Opponent          | Date       | GS | MIN    | Total  |      | 3-Pointers |       | Free throws |       | Rebounds |     |     |     | PF | A  | TO | BLK | STL | PTS | AVG  |
|-------------------|------------|----|--------|--------|------|------------|-------|-------------|-------|----------|-----|-----|-----|----|----|----|-----|-----|-----|------|
|                   |            |    |        | FG-FGA | PCT  | 3FG-3FGA   | PCT   | FT-FTA      | PCT   | OFF      | DEF | TOT | AVG |    |    |    |     |     |     |      |
| at Liberty        | 11/07/2022 |    | 14:36  | 3-4    | .750 | 1-2        | .500  | 0-0         | .000  | 0        | 0   | 0   | 0.0 | 4  | 0  | 1  | 0   | 0   | 7   | 7.0  |
| Mount St. Mary's  | 11/10/2022 |    | 18:48  | 2-3    | .667 | 0-1        | .000  | 4-4         | 1.000 | 2        | 3   | 5   | 2.5 | 1  | 2  | 1  | 0   | 0   | 8   | 7.5  |
| at Clemson        | 11/13/2022 |    | 25:11  | 4-8    | .500 | 2-4        | .500  | 0-0         | .000  | 0        | 0   | 0   | 1.7 | 4  | 0  | 0  | 0   | 1   | 10  | 8.3  |
| at UMBC           | 11/17/2022 |    | 24:57  | 7-11   | .636 | 2-5        | .400  | 0-0         | .000  | 0        | 0   | 0   | 1.3 | 2  | 1  | 3  | 1   | 0   | 16  | 10.3 |
| Hampton           | 11/20/2022 |    | 31:46  | 3-8    | .375 | 2-5        | .400  | 4-4         | 1.000 | 1        | 3   | 4   | 1.8 | 1  | 1  | 3  | 1   | 1   | 12  | 10.6 |
| vs Idaho          | 11/26/2022 |    | 25:30  | 4-7    | .571 | 0-2        | .000  | 0-0         | .000  | 0        | 1   | 1   | 1.7 | 2  | 1  | 1  | 1   | 1   | 8   | 10.2 |
| vs NIU            | 11/27/2022 |    | 25:34  | 2-4    | .500 | 1-2        | .500  | 2-2         | 1.000 | 2        | 3   | 5   | 2.1 | 3  | 3  | 2  | 0   | 0   | 7   | 9.7  |
| at William & Mary | 12/01/2022 |    | 18:07  | 1-5    | .200 | 0-1        | .000  | 0-0         | .000  | 4        | 1   | 5   | 2.5 | 0  | 1  | 0  | 1   | 0   | 2   | 8.8  |
| Duke              | 12/04/2022 |    | 21:13  | 1-2    | .500 | 0-0        | .000  | 0-0         | .000  | 1        | 2   | 3   | 2.6 | 0  | 1  | 1  | 1   | 0   | 2   | 8.0  |
| Longwood          | 12/11/2022 | *  | 25:41  | 2-7    | .286 | 1-1        | 1.000 | 2-2         | 1.000 | 3        | 4   | 7   | 3.0 | 3  | 3  | 2  | 1   | 0   | 7   | 7.9  |
| at Elon           | 12/15/2022 | *  | 23:15  | 4-8    | .500 | 2-3        | .667  | 0-0         | .000  | 0        | 4   | 4   | 3.1 | 1  | 0  | 2  | 0   | 0   | 10  | 8.1  |
| vs Tarleton St.   | 12/21/2022 |    | 19:50  | 4-9    | .444 | 1-4        | .250  | 0-0         | .000  | 0        | 2   | 2   | 3.0 | 3  | 0  | 2  | 0   | 1   | 9   | 8.2  |
| Totals            |            | 2  | 274:27 | 37-76  | .487 | 12-30      | .400  | 12-12       | 1.000 | 13       | 23  | 36  | 3.0 | 24 | 13 | 18 | 6   | 4   | 98  | 8.2  |

#### Player Averages

| Games Played | Minutes/game | Points/game | FG Pct | 3FG Pct | FT Pct | Rebounds/game | Assists/game | Turnovers/game | Assist/Turnover ratio | Steals/game | Blocks/game |
|--------------|--------------|-------------|--------|---------|--------|---------------|--------------|----------------|-----------------------|-------------|-------------|
| 12           | 22.9         | 8.2         | 48.7   | 40.0    | 100.0  | 3.0           | 1.1          | 1.5            | 0.7                   | 0.3         | 0.5         |

### AT RICHMOND...

- Scored five-straight points (a three-pointer and a layup) to stop a 9-1 run by Liberty in the first quarter before getting into foul trouble.
- Posted season-high 10 points, including two three-pointers, against Clemson
- Paced the Spiders with 16 points, on seven field goals, including two three-pointers against UMBC
- Tallied three-straight games with double-figure scoring (at Clemson, at UMBC, vs Hampton.)

### HONORS WHILE AT WAGNER (2018-22)

- Northeast Conference (NEC) Preseason All-NEC Team (2020-21)
- Northeast Conference (NEC) First Team (2019-20, 2020-21, 2021-22)
- First Seahawk in program history to be named to three consecutive All-Northeast Conference (NEC) First Teams.
- Metropolitan Basketball Writers' Association (MBWA) Second Team (2020-21)
- Metropolitan Basketball Writers' Association (MBWA) Third Team (2019-20, 2021-22)
- Northeast Conference (NEC) All-Rookie Team (2018-19)
- Northeast Conference (NEC) Player of the Week (Nov. 18, 2019, Jan. 29, 2020, Feb. 8, 2021, Mar. 8, 2021, Dec. 13, 2021, Feb. 7, 2022)
- Northeast Conference (NEC) Rookie of the Week (Nov. 19, 2018)
- Northeast Conference (NEC) Winter Academic Honor Roll (2020-21; 2021-22)
- Became the 25th member of the Wagner women's basketball 1,000 Point Club (1,311)
- Finished her Wagner career with 1,311 career points (12th all-time); 13.4 points per game (12th all-time) 567 rebounds, and 549 field goals made (7th all-time).

### CAREER SUMMARY

|              |      |        | Field Goals |          |      | 3-Point  |      |         | F-Throws |     | Rebounds |     |     |       |     |     |     |     | Scoring |      |
|--------------|------|--------|-------------|----------|------|----------|------|---------|----------|-----|----------|-----|-----|-------|-----|-----|-----|-----|---------|------|
| SEASON       | TEAM | GP-GS  | MIN/AVG     | FG-FGA   | FG%  | 3FG-3FGA | 3FG% | FT-FTA  | FT%      | OFF | DEF      | TOT | AVG | PF-FO | A   | TO  | BLK | STL | PTS     | AVG  |
| 2018-19      | WC   | 21-17  | 577/27.5    | 92-220   | .418 | 6-23     | .261 | 23-34   | .676     | 52  | 62       | 114 | 5.4 | 69-2  | 21  | 54  | 16  | 20  | 213     | 10.1 |
| 2019-20      | WC   | 29-29  | 890/30.7    | 193-414  | .466 | 4-16     | .250 | 64-83   | .771     | 78  | 96       | 174 | 6.0 | 73-1  | 27  | 74  | 23  | 27  | 454     | 15.7 |
| 2020-21      | WC   | 19-19  | 578/30.4    | 113-243  | .465 | 5-20     | .250 | 36-49   | .735     | 40  | 65       | 105 | 5.5 | 39-1  | 17  | 45  | 11  | 17  | 267     | 14.1 |
| 2021-22      | WC   | 29-27  | 895/30.8    | 151-343  | .440 | 11-39    | .282 | 64-78   | .821     | 78  | 96       | 174 | 6.0 | 61-0  | 31  | 51  | 24  | 13  | 377     | 13.0 |
| 2022-23      | UR   | 12-2   | 274/22.9    | 37-76    | .487 | 12-30    | .400 | 12-12   | 1.000    | 13  | 23       | 36  | 3.0 | 24-0  | 13  | 18  | 6   | 4   | 98      | 8.2  |
| TOTAL FOR UR |      | 12-2   | 274/22.9    | 37-76    | .487 | 12-30    | .400 | 12-12   | 1.000    | 13  | 23       | 36  | 3.0 | 24-0  | 13  | 18  | 6   | 4   | 98      | 8.2  |
| TOTAL        |      | 110-94 | 3214/29.2   | 586-1296 | .452 | 38-128   | .297 | 199-256 | .777     | 261 | 342      | 603 | 5.5 | 266-4 | 109 | 242 | 80  | 81  | 1409    | 12.8 |

**KATIE HILL**

**SOPHOMORE**  
**6-0 / GUARD**  
**COLTS NECK, N.J.**  
**SAINT JOHN VIANNEY**

**25****TOP PERFORMANCES****POINTS**

Season ..... 18 (vs Longwood, 12/11/22)  
 Career ..... 18 (vs Longwood, 12/11/22)

**REBOUNDS**

Season ..... 8 (vs Tarleton State, 12/21/22)  
 Career ..... 8 (vs Tarleton State, 12/21/22)

**ASSISTS**

Season ..... 3 (vs Longwood, 12/11/22)  
 Career ..... 3 (vs Longwood, 12/11/22)

**BLOCKS**

Season ..... 1 (3x last vs Tarleton State, 12/21/22)  
 Career ..... 1 (7x, last vs Tarleton State, 12/21/22)

**STEALS**

Season ..... 4 (at Elon, 12/15/22)  
 Career ..... 4 (at Elon, 12/15/22)

**FIELD GOALS MADE**

Season ..... 6 (2x last vs Longwood, 12/11/22)  
 Career ..... 6 (3x last vs Longwood, 12/11/22)

**FIELD GOALS ATTEMPTED**

Season ..... 19 (at Clemson, 11/13/22)  
 Career ..... 19 (at Clemson, 11/13/22)

**FREE-THROWS MADE**

Season ..... 5 (vs. Mount St. Mary's, 11/10/22)  
 Career ..... 6 (vs. Coppin State, 12/29/21)

**FREE-THROWS ATTEMPTED**

Season ..... 6 (2x last vs Longwood, 12/11/22)  
 Career ..... 8 (vs. Coppin State, 12/29/21)

**3-POINT FIELD GOALS MADE**

Season ..... 2 (2x last vs Longwood, 12/11/22)  
 Career ..... 2 (2x last vs Longwood, 12/11/22)

**3-POINT FIELD GOALS ATTEMPTED**

Season ..... 5 (vs Hampton, 11/20/22)  
 Career ..... 5 (vs. Hampton, 11/20/22)

**MINUTES**

Season ..... 34 (vs Ball State, 12/20/22)  
 Career ..... 34 (vs Ball State, 12/20/22)

**GAME-BY-GAME STATISTICS**

| Opponent          | Date       | GS | MIN    | Total  |      | 3-Pointers |       | Free throws |       | Rebounds |     |     |     | PF | A  | TO | BLK | STL | PTS | AVG  |
|-------------------|------------|----|--------|--------|------|------------|-------|-------------|-------|----------|-----|-----|-----|----|----|----|-----|-----|-----|------|
|                   |            |    |        | FG-FGA | PCT  | 3FG-3FGA   | PCT   | FT-FTA      | PCT   | OFF      | DEF | TOT | AVG |    |    |    |     |     |     |      |
| at Liberty        | 11/07/2022 | *  | 33:14  | 2-8    | .250 | 2-4        | .500  | 1-2         | .500  | 0        | 1   | 1   | 1.0 | 3  | 2  | 1  | 0   | 2   | 7   | 7.0  |
| Mount St. Mary's  | 11/10/2022 | *  | 19:36  | 3-6    | .500 | 1-1        | 1.000 | 5-6         | .833  | 1        | 3   | 4   | 2.5 | 0  | 0  | 1  | 0   | 1   | 12  | 9.5  |
| at Clemson        | 11/13/2022 | *  | 31:55  | 6-19   | .316 | 1-8        | .125  | 0-0         | .000  | 0        | 1   | 1   | 2.0 | 1  | 0  | 1  | 2   | 3   | 13  | 10.7 |
| at UMBC           | 11/17/2022 | *  | 25:10  | 3-7    | .429 | 0-2        | .000  | 4-4         | 1.000 | 1        | 4   | 5   | 2.8 | 3  | 0  | 3  | 1   | 0   | 10  | 10.5 |
| Hampton           | 11/20/2022 | *  | 39:30  | 4-10   | .400 | 1-5        | .200  | 4-4         | 1.000 | 3        | 4   | 7   | 3.6 | 2  | 3  | 7  | 0   | 2   | 13  | 11.0 |
| vs Idaho          | 11/26/2022 | *  | 18:45  | 1-3    | .333 | 0-1        | .000  | 6-6         | 1.000 | 3        | 5   | 8   | 4.3 | 2  | 0  | 4  | 0   | 1   | 8   | 10.5 |
| vs NIU            | 11/27/2022 | *  | 27:01  | 6-11   | .545 | 1-4        | .250  | 0-0         | .000  | 0        | 3   | 3   | 4.1 | 2  | 1  | 3  | 1   | 1   | 13  | 10.9 |
| at William & Mary | 12/01/2022 | *  | 32:60  | 3-8    | .375 | 1-4        | .250  | 2-2         | 1.000 | 1        | 6   | 7   | 4.5 | 3  | 0  | 2  | 0   | 0   | 9   | 10.6 |
| Duke              | 12/04/2022 | *  | 27:42  | 3-10   | .300 | 1-2        | .500  | 2-3         | .667  | 0        | 3   | 3   | 4.3 | 2  | 2  | 1  | 0   | 2   | 9   | 10.4 |
| Longwood          | 12/11/2022 | *  | 16:59  | 6-9    | .667 | 2-4        | .500  | 4-6         | .667  | 1        | 5   | 6   | 4.5 | 1  | 3  | 3  | 1   | 0   | 18  | 11.2 |
| at Elon           | 12/15/2022 | *  | 27:31  | 5-7    | .714 | 0-1        | .000  | 1-1         | 1.000 | 1        | 2   | 3   | 4.4 | 0  | 1  | 2  | 0   | 4   | 11  | 11.2 |
| vs Ball St.       | 12/20/2022 | *  | 34:23  | 4-7    | .571 | 1-2        | .500  | 0-0         | .000  | 1        | 3   | 4   | 4.3 | 2  | 0  | 1  | 0   | 3   | 9   | 11.0 |
| vs Tarleton St.   | 12/21/2022 | *  | 28:21  | 2-8    | .250 | 0-2        | .000  | 3-3         | 1.000 | 3        | 5   | 8   | 4.6 | 1  | 1  | 1  | 1   | 0   | 7   | 10.7 |
| Totals            |            | 13 | 363:05 | 48-113 | .425 | 11-40      | .275  | 32-37       | .865  | 15       | 45  | 60  | 4.6 | 22 | 13 | 30 | 6   | 19  | 139 | 10.7 |

**Player Averages**

| Games Played | Minutes/game | Points/game | FG Pct | 3FG Pct | FT Pct | Rebounds/game | Assists/game | Turnovers/game | Assist/Turnover ratio | Steals/game | Blocks/game |
|--------------|--------------|-------------|--------|---------|--------|---------------|--------------|----------------|-----------------------|-------------|-------------|
| 13           | 27.9         | 10.7        | 42.5   | 27.5    | 86.5   | 4.6           | 1.0          | 2.3            | 0.4                   | 1.5         | 0.5         |

**AS A SOPHOMORE...**

-Tallied 12 points on 3-of-6 shooting, with a three pointer, and five of six from the free throw line, plus pulled down five rebounds.

-Led the Spiders with season-high 13 points at Clemson

-Posted career-high 18 points and 3 assists against Longwood

**AS A FRESHMAN (21-22)**

- Hauled in a career-high seven rebounds along with making her first career 3-pointer during a road win at George Mason

- Had a career-high three steals versus George Washington that all came in a span of 1:17 in the third quarter, also scored eight points on 4-of-5 shooting from the field

- Posted her first-career double-digit scoring game with 10 points in a season-high 16 minutes of playing time versus Coppin State, went 6-of-8 from the free throw line and added five rebounds

- Saw her first collegiate action playing 12 minutes versus William & Mary after missing the first eight games of the season due to injury

**CAREER SUMMARY**

HILL, Katie

| SEASON  | TEAM | GP-GS | MIN/AVG  | Field Goals |      | 3-Point  |      | F-Throws |      | Rebounds |     |     |     | Scoring |          |
|---------|------|-------|----------|-------------|------|----------|------|----------|------|----------|-----|-----|-----|---------|----------|
|         |      |       |          | FG-FGA      | FG%  | 3FG-3FGA | 3FG% | FT-FTA   | FT%  | OFF      | DEF | TOT | AVG | PF-FO   | PTS AVG  |
| 2021-22 | UR   | 19-0  | 256/13.5 | 22-52       | .423 | 2-13     | .154 | 15-22    | .682 | 16       | 27  | 43  | 2.3 | 27-0    | 61 3.2   |
| 2022-23 | UR   | 13-13 | 363/27.9 | 48-113      | .425 | 11-40    | .275 | 32-37    | .865 | 15       | 45  | 60  | 4.6 | 22-0    | 139 10.7 |



# ELAINA CHAPMAN

**SENIOR**  
**6-3 / FORWARD**  
**RICHMOND, VA.**  
**TRINITY EPISCOPAL**

# 31

## TOP PERFORMANCES

### POINTS

Season .....  
 Career ..... 18 (vs. George Mason, 1/26/21)

### REBOUNDS

Season .....  
 Career ..... 14 (vs. Navy, 12/2/20)

### ASSISTS

Season .....  
 Career ..... 4 (2x, last @ William & Mary, 12/6/20)

### BLOCKS

Season .....  
 Career ..... 4 (@ Rhode Island, 1/7/20)

### STEALS

Season .....  
 Career ..... 5 (@ George Washington, 1/29/21)

### FIELD GOALS MADE

Season .....  
 Career ..... 7 (vs. George Mason, 1/26/21)

### FIELD GOALS ATTEMPTED

Season .....  
 Career ..... 12 (@ Howard, 12/22/20)

### FREE-THROWS MADE

Season .....  
 Career ..... 4 (4x, last @ George Mason, 1/31/21)

### FREE-THROWS ATTEMPTED

Season .....  
 Career ..... 8 (vs. St. Bonaventure, 2/2/20)

### 3-POINT FIELD GOALS MADE

Season .....  
 Career ..... 1 (7x, last @ Duquesne, 1/10/21)

### 3-POINT FIELD GOALS ATTEMPTED

Season .....  
 Career ..... 5 (@ Virginia Tech, 11/25/20)

### MINUTES

Season .....  
 Career ..... 36 (@ Howard, 12/22/20)

## GAME-BY-GAME STATISTICS

- Suffered a career ending injury prior to the start of her junior season in 2021-22.

## AS A SOPHOMORE (2020-21)

- Played in 21 of 22 games, making 21 starts
- Finished fourth on the team in scoring at 7.0 points per game, including a career-high 18 points against George Mason
- Led the team in rebounding at 7.1 boards per game (150 rebounds)
- Posted two double-doubles against George Washington (10 points, 10 rebounds) and at Howard (13 points, 11 rebounds)
- Scored in double figures five times and pulled down 10 or more rebounds seven times
- Grabbed a career-high 14 rebounds against Navy
- Shot 40.0 percent from the field (54-for-135) and 57.4 percent from the free throw line (35-for-61)
- Came away with 18 blocks, second on the team
- Her career-game against George Mason went 7-for-11 from the field for 18 points and eight rebounds
- Swiped four steals against George Washington in the A-10 Championship second round
- Played a career-high 36 minutes at Howard, scoring 13 points with 11 rebounds

## CAREER SUMMARY

| SEASON  | TEAM | GP-GS | MIN/AVG   | Field Goals |      |          | 3-Point |        |      | F-Throws |     |     | Rebounds |       |    |     | Scoring |     |     |     |
|---------|------|-------|-----------|-------------|------|----------|---------|--------|------|----------|-----|-----|----------|-------|----|-----|---------|-----|-----|-----|
|         |      |       |           | FG-FGA      | FG%  | 3FG-3FGA | 3FG%    | FT-FTA | FT%  | OFF      | DEF | TOT | AVG      | PF-FO | A  | TO  | BLK     | STL | PTS | AVG |
| 2019-20 | UR   | 32-2  | 590/18.4  | 48-125      | .384 | 4-18     | .222    | 41-77  | .532 | 38       | 110 | 148 | 4.6      | 50-0  | 25 | 56  | 31      | 19  | 141 | 4.4 |
| 2020-21 | UR   | 21-21 | 556/26.5  | 54-135      | .400 | 4-15     | .267    | 35-61  | .574 | 49       | 101 | 150 | 7.1      | 48-1  | 28 | 47  | 18      | 26  | 147 | 7.0 |
| TOTAL   |      | 53-23 | 1146/21.6 | 102-260     | .392 | 8-33     | .242    | 76-138 | .551 | 87       | 211 | 298 | 5.6      | 98-1  | 53 | 103 | 49      | 45  | 288 | 5.4 |





# SIOBHAN RYAN

**JUNIOR**  
**6-0 / GUARD**  
**BUFFALO, N.Y.**  
**SACRED HEART ACADEMY**

# 32

## TOP PERFORMANCES

### POINTS

Season ..... 27 (vs Ball State, 12/20/22)  
 Career ..... 27 (vs Ball State, 12/20/22)

### REBOUNDS

Season ..... 8 (vs. Hampton, 11/20/22)  
 Career ..... 12 (@ Howard, 12/22/20)

### ASSISTS

Season ..... 5 (2x last vs Tarleton State, 12/21/22)  
 Career ..... 5 (2x last vs Tarleton State, 12/21/22)

### BLOCKS

Season .....  
 Career ..... 1 (9x, last vs. Rhode Island, 2/19/22)

### STEALS

Season ..... 2 (vs. Mount St. Mary's, 11/10/22)  
 Career ..... 3 (vs. Davidson, 2/9/22)

### FIELD GOALS MADE

Season ..... 10 (vs Ball State, 12/20/22)  
 Career ..... 10 (2x last vs Ball State, 12/20/22)

### FIELD GOALS ATTEMPTED

Season ..... 14 (vs. Idaho, 11/26/22)  
 Career ..... 17 (vs. Southern Miss, 12/20/21)

### FREE-THROWS MADE

Season ..... 4 (vs. Idaho, 11/26/22)  
 Career ..... 4 (vs. Idaho, 11/26/22)

### FREE-THROWS ATTEMPTED

Season ..... 4 (vs. Idaho, 11/26/22)  
 Career ..... 4 (3x, last vs. Idaho, 11/26/22)

### 3-POINT FIELD GOALS MADE

Season ..... 7 (vs Ball State, 12/20/22)  
 Career ..... 7 (vs Ball State, 12/20/22)

### 3-POINT FIELD GOALS ATTEMPTED

Season ..... 12 (vs Longwood, 12/11/22)  
 Career ..... 12 (vs Longwood, 12/11/22)

### MINUTES

Season ..... 41 (vs. Hampton, 11/20/22)  
 Career ..... 41 (vs. Hampton, 11/20/22)

### #32 RYAN, Siobhan

| Opponent          | Date       | GS | MIN   | Total  |        | 3-Pointers |       | Free throws |       | Rebounds |     |     |     | PF  | A  | TO | BLK | STL | PTS | AVG  |      |
|-------------------|------------|----|-------|--------|--------|------------|-------|-------------|-------|----------|-----|-----|-----|-----|----|----|-----|-----|-----|------|------|
|                   |            |    |       | FG-FGA | PCT    | 3FG-3FGA   | PCT   | FT-FTA      | PCT   | OFF      | DEF | TOT | AVG |     |    |    |     |     |     |      |      |
| at Liberty        | 11/07/2022 | *  | 32:10 | 5-8    | .625   | 3-5        | .600  | 0-0         | .000  | 0        | 4   | 4   | 4.0 | 2   | 1  | 0  | 0   | 1   | 13  | 13.0 |      |
| Mount St. Mary's  | 11/10/2022 | *  | 26:05 | 4-6    | .667   | 3-3        | 1.000 | 0-0         | .000  | 0        | 3   | 3   | 3.5 | 1   | 5  | 2  | 0   | 2   | 11  | 12.0 |      |
| at Clemson        | 11/13/2022 | *  | 28:19 | 0-7    | .000   | 0-5        | .000  | 0-0         | .000  | 1        | 6   | 7   | 4.7 | 1   | 0  | 0  | 0   | 0   | 0   | 8.0  |      |
| at UMBC           | 11/17/2022 | *  | 37:46 | 1-8    | .125   | 1-5        | .200  | 1-2         | .500  | 2        | 4   | 6   | 5.0 | 3   | 1  | 3  | 0   | 0   | 4   | 7.0  |      |
| Hampton           | 11/20/2022 | *  | 41:26 | 5-12   | .417   | 4-11       | .364  | 2-2         | 1.000 | 2        | 6   | 8   | 5.6 | 0   | 2  | 3  | 0   | 1   | 16  | 8.8  |      |
| vs Idaho          | 11/26/2022 | *  | 30:31 | 7-14   | .500   | 5-9        | .556  | 4-4         | 1.000 | 0        | 5   | 5   | 5.5 | 2   | 1  | 2  | 0   | 0   | 23  | 11.2 |      |
| vs NIU            | 11/27/2022 | *  | 30:28 | 2-9    | .222   | 2-5        | .400  | 0-0         | .000  | 1        | 4   | 5   | 5.4 | 3   | 4  | 3  | 0   | 0   | 6   | 10.4 |      |
| at William & Mary | 12/01/2022 | *  | 28:00 | 2-5    | .400   | 2-5        | .400  | 2-2         | 1.000 | 0        | 3   | 3   | 5.1 | 2   | 3  | 1  | 0   | 1   | 8   | 10.1 |      |
| Duke              | 12/04/2022 | *  | 21:40 | 3-7    | .429   | 2-6        | .333  | 0-0         | .000  | 0        | 0   | 0   | 4.6 | 1   | 0  | 2  | 0   | 0   | 8   | 9.9  |      |
| Longwood          | 12/11/2022 | *  | 23:49 | 7-13   | .538   | 6-12       | .500  | 0-0         | .000  | 0        | 3   | 3   | 4.4 | 1   | 1  | 0  | 0   | 1   | 20  | 10.9 |      |
| at Elon           | 12/15/2022 | *  | 33:46 | 3-6    | .500   | 0-3        | .000  | 0-0         | .000  | 0        | 4   | 4   | 4.4 | 1   | 4  | 2  | 0   | 0   | 6   | 10.5 |      |
| vs Ball St.       | 12/20/2022 | *  | 30:00 | 10-13  | .769   | 7-9        | .778  | 0-0         | .000  | 0        | 3   | 3   | 4.3 | 3   | 1  | 2  | 0   | 0   | 27  | 11.8 |      |
| vs Tarleton St.   | 12/21/2022 | *  | 30:60 | 1-5    | .200   | 1-5        | .200  | 0-0         | .000  | 0        | 5   | 5   | 4.3 | 4   | 5  | 3  | 0   | 0   | 3   | 11.2 |      |
| Totals            |            |    | 13    | 394:59 | 50-113 | .442       | 36-83 | .434        | 9-10  | .900     | 6   | 50  | 56  | 4.3 | 24 | 28 | 23  | 0   | 6   | 145  | 11.2 |

### Player Averages

| Games Played | Minutes/game | Points/game | FG Pct | 3FG Pct | FT Pct | Rebounds/game | Assists/game | Turnovers/game | Assist/Turnover ratio | Steals/game | Blocks/game |
|--------------|--------------|-------------|--------|---------|--------|---------------|--------------|----------------|-----------------------|-------------|-------------|
| 13           | 30.4         | 11.2        | 44.2   | 43.4    | 90.0   | 4.3           | 2.2          | 1.8            | 1.2                   | 0.5         | 0.0         |

## AS A JUNIOR

- Led the Spiders with seven three-pointers and game high 27 points in win over Ball State
- Perfect from long range (3-for-3) against Mount St. Mary's
- Posted season-highs in points (16) and rebounds (8) in overtime win against Hampton
- Upped her season-high in points to 23 in victory over Idaho
- Matched career-high six made three-pointers to pace the Spiders program record 18 made three pointers against Longwood

## CAREER SUMMARY

|             |       |         |          | Field Goals |           | 3-Point  |      | F-Throws |      | Rebounds |      |     |     |       |     |       |     | Scoring |     |      |     |
|-------------|-------|---------|----------|-------------|-----------|----------|------|----------|------|----------|------|-----|-----|-------|-----|-------|-----|---------|-----|------|-----|
| SEASON TEAM | GP-GS | MIN/AVG |          | FG-FGA      | FG%       | 3FG-3FGA | 3FG% | FT-FTA   | FT%  | OFF      | DEF  | TOT | AVG | PF-FO | A   | TO    | BLK | STL     | PTS | AVG  |     |
| 2020-21     | UR    | 22-6    | 412/18.7 | 40-116      | .345      | 15-66    | .227 | 18-25    | .720 | 13       | 36   | 49  | 2.2 | 33-0  | 23  | 36    | 5   | 6       | 113 | 5.1  |     |
| 2021-22     | UR    | 30-29   | 781/26.0 | 90-214      | .421      | 41-123   | .333 | 31-42    | .738 | 29       | 68   | 97  | 3.2 | 61-0  | 39  | 73    | 5   | 17      | 252 | 8.4  |     |
| 2022-23     | UR    | 13-13   | 395/30.4 | 50-113      | .442      | 36-83    | .434 | 9-10     | .900 | 6        | 50   | 56  | 4.3 | 24-0  | 28  | 23    | 0   | 6       | 145 | 11.2 |     |
| TOTAL       |       |         |          | 65-48       | 1588/24.4 | 180-443  | .406 | 92-272   | .338 | 58-77    | .753 | 48  | 154 | 202   | 3.1 | 118-0 | 90  | 132     | 10  | 510  | 7.8 |



# ANGEL BURGOS

**SENIOR**  
**5-8 / GUARD**  
**RICHMOND, VA.**  
**TRINITY EPISCOPAL**

# 41

## TOP PERFORMANCES

### POINTS

Season ..... 5 (vs. Mount St. Mary's, 11/10/22)  
 Career ..... 13 (at Dayton, 3/6/20)

### REBOUNDS

Season ..... 5 (vs. Mount St. Mary's, 11/10/22)  
 Career ..... 5 (2x last vs. Mount St. Mary's, 11/10/22)

### ASSISTS

Season ..... 3 (vs Longwood, 12/11/22)  
 Career ..... 3 (vs Longwood, 12/11/22)

### BLOCKS

Season ..... 1 (vs Longwood, 12/11/22)  
 Career ..... 1 (4x, last vs Longwood, 12/11/22)

### STEALS

Season ..... 1 (vs Longwood, 12/11/22)  
 Career ..... 3 (vs. Duquesne, 2/12/20)

### FIELD GOALS MADE

Season ..... 2 (vs. Mount St. Mary's, 11/10/22)  
 Career ..... 5 (@ Dayton, 3/6/20)

### FIELD GOALS ATTEMPTED

Season ..... 3 (vs Longwood, 12/11/22)  
 Career ..... 7 (@ Dayton, 3/6/20)

### FREE-THROWS MADE

Season ..... 1 (vs. Mount St. Mary's, 11/10/22)  
 Career ..... 3 (vs. Duquesne, 1/1/22)

### FREE-THROWS ATTEMPTED

Season ..... 3 (vs. Mount St. Mary's, 11/10/22)  
 Career ..... 4 (2x, last vs. Duquesne, 1/1/22)

### 3-POINT FIELD GOALS MADE

Season .....  
 Career ..... 1 (@ Dayton, 3/6/20)

### 3-POINT FIELD GOALS ATTEMPTED

Season ..... 1 (vs Longwood, 12/11/22)  
 Career ..... 2 (vs. Duquesne, 2/12/20)

### MINUTES

Season ..... 11 (2x last vs Longwood, 12/11/22)  
 Career ..... 18 (@ Dayton, 3/6/20)

## GAME-BY-GAME STATISTICS

### #41 BURGOS, Angel

| Opponent          | Date       | GS | MIN            | Total       |             | 3-Pointers |             | Free throws |             | Rebounds |           | PF        | A          | TO       | BLK      | STL      | PTS      | AVG          |
|-------------------|------------|----|----------------|-------------|-------------|------------|-------------|-------------|-------------|----------|-----------|-----------|------------|----------|----------|----------|----------|--------------|
|                   |            |    |                | FG-FGA      | PCT         | 3FG-3FGA   | PCT         | FT-FTA      | PCT         | OFF      | DEF       |           |            |          |          |          |          |              |
| at Liberty        | 11/07/2022 |    | 02:10          | 0-1         | .000        | 0-0        | .000        | 0-0         | .000        | 0        | 0         | 0         | 0.0        | 0        | 1        | 0        | 0        | 0.0          |
| Mount St. Mary's  | 11/10/2022 |    | 12:11          | 2-3         | .667        | 0-0        | .000        | 1-3         | .333        | 0        | 5         | 5         | 2.5        | 0        | 2        | 0        | 0        | 5 2.5        |
| at Clemson        | 11/13/2022 |    | 03:55          | 0-1         | .000        | 0-1        | .000        | 0-0         | .000        | 0        | 0         | 0         | 1.7        | 0        | 1        | 0        | 0        | 1.7          |
| at UMBC           | 11/17/2022 |    | 00:46          | 0-0         | .000        | 0-0        | .000        | 0-0         | .000        | 0        | 0         | 0         | 1.3        | 0        | 0        | 0        | 0        | 1.3          |
| vs Idaho          | 11/26/2022 |    | 03:19          | 0-1         | .000        | 0-0        | .000        | 0-0         | .000        | 0        | 0         | 0         | 1.0        | 0        | 0        | 0        | 0        | 1.0          |
| at William & Mary | 12/01/2022 |    | 00:52          | 0-0         | .000        | 0-0        | .000        | 0-0         | .000        | 0        | 0         | 0         | 0.8        | 0        | 0        | 1        | 0        | 0.8          |
| Duke              | 12/04/2022 |    | 07:26          | 0-1         | .000        | 0-0        | .000        | 0-0         | .000        | 0        | 2         | 2         | 1.0        | 1        | 0        | 1        | 0        | 0.7          |
| Longwood          | 12/11/2022 |    | 11:19          | 1-3         | .333        | 0-1        | .000        | 0-0         | .000        | 0        | 2         | 2         | 1.1        | 2        | 3        | 0        | 1        | 2 0.9        |
| at Elon           | 12/15/2022 |    | 00:44          | 0-0         | .000        | 0-0        | .000        | 0-0         | .000        | 0        | 0         | 0         | 1.0        | 0        | 0        | 0        | 0        | 0.8          |
| vs Tarleton St.   | 12/21/2022 |    | 00:29          | 0-0         | .000        | 0-0        | .000        | 0-0         | .000        | 0        | 1         | 1         | 1.0        | 0        | 0        | 0        | 0        | 0.7          |
| <b>Totals</b>     |            |    | <b>0 43:11</b> | <b>3-10</b> | <b>.300</b> | <b>0-2</b> | <b>.000</b> | <b>1-3</b>  | <b>.333</b> | <b>0</b> | <b>10</b> | <b>10</b> | <b>1.0</b> | <b>3</b> | <b>7</b> | <b>2</b> | <b>1</b> | <b>7 0.7</b> |

### Player Averages

| Games Played | Minutes/ game | Points/ game | FG Pct | 3FG Pct | FT Pct | Rebounds/ game | Assists/ game | Turnovers/ game | Assist/Turnover ratio | Steals/ game | Blocks/ game |
|--------------|---------------|--------------|--------|---------|--------|----------------|---------------|-----------------|-----------------------|--------------|--------------|
| 10           | 4.3           | 0.7          | 30.0   | 0.0     | 33.3   | 1.0            | 0.7           | 0.2             | 3.5                   | 0.1          | 0.1          |

## AS A SENIOR

- Saw her first game action of the season playing four minutes in a win at Liberty
- Scored five points, pulled down five rebound and dished out two assists againsts Mount St. Mary's
- Had season-high three assists and a block in the Spiders victory over Longwood

## CAREER SUMMARY

|         |      |       | Field Goals |     |        | 3-Point |          | F-Throws |        | Rebounds |     |     |     |     |       |    |    | Scoring |     |     |     |
|---------|------|-------|-------------|-----|--------|---------|----------|----------|--------|----------|-----|-----|-----|-----|-------|----|----|---------|-----|-----|-----|
| SEASON  | TEAM | GP-GS | MIN         | AVG | FG-FGA | FG%     | 3FG-3FGA | 3FG%     | FT-FTA | FT%      | OFF | DEF | TOT | AVG | PF-FO | A  | TO | BLK     | STL | PTS | AVG |
| 2019-20 | UR   | 18-0  | 107         | 6.0 | 11-21  | .524    | 1-7      | .143     | 4-6    | .667     | 3   | 16  | 19  | 1.1 | 15-0  | 9  | 13 | 2       | 5   | 27  | 1.5 |
| 2020-21 | UR   | 8-0   | 33          | 4.1 | 2-5    | .400    | 0-0      | .000     | 1-4    | .250     | 2   | 2   | 4   | 0.5 | 5-0   | 3  | 4  | 0       | 1   | 5   | 0.6 |
| 2021-22 | UR   | 15-0  | 59          | 3.9 | 0-8    | .000    | 0-3      | .000     | 6-8    | .750     | 4   | 11  | 15  | 1.0 | 12-0  | 6  | 8  | 1       | 1   | 6   | 0.4 |
| 2022-23 | UR   | 10-0  | 43          | 4.3 | 3-10   | .300    | 0-2      | .000     | 1-3    | .333     | 0   | 10  | 10  | 1.0 | 3-0   | 7  | 2  | 1       | 1   | 7   | 0.7 |
| TOTAL   |      | 51-0  | 242         | 4.7 | 16-44  | .364    | 1-12     | .083     | 12-21  | .571     | 9   | 39  | 48  | 0.9 | 35-0  | 25 | 27 | 4       | 8   | 45  | 0.9 |

**MAGGIE DOOGAN****FRESHMAN****6-2 / FORWARD****BROOMALL, PA.****CARDINAL O'HARA HS****44****TOP PERFORMANCES****POINTS**

Season ..... 13 (vs. Idaho, 11/26/22)  
 Career ..... 13 (vs. Idaho, 11/26/22)

**REBOUNDS**

Season ..... 5 (2x, last vs. Idaho, 11/26/22)  
 Career ..... 5 (2x, last vs. Idaho, 11/26/22)

**ASSISTS**

Season ..... 3 (vs. Idaho, 11/26/22)  
 Career ..... 3 (vs. Idaho, 11/26/22)

**BLOCKS**

Season ..... 1 (2x, last vs. Idaho, 11/26/22)  
 Career ..... 1 (2x, last vs. Idaho, 11/26/22)

**STEALS**

Season ..... 3 (vs. Mount St. Mary's, 11/10/22)  
 Career ..... 3 (vs. Mount St. Mary's, 11/10/22)

**FIELD GOALS MADE**

Season ..... 5 (vs. Idaho, 11/26/22)  
 Career ..... 5 (vs. Idaho, 11/26/22)

**FIELD GOALS ATTEMPTED**

Season ..... 12 (vs. Idaho, 11/26/22)  
 Career ..... 12 (vs. Idaho, 11/26/22)

**FREE-THROWS MADE**

Season ..... 2 (3x last vs. Idaho, 11/26/22)  
 Career ..... 2 (3x last vs. Idaho, 11/26/22)

**FREE-THROWS ATTEMPTED**

Season ..... 2 (3x last vs. Idaho, 11/26/22)  
 Career ..... 2 (3x last vs. Idaho, 11/26/22)

**3-POINT FIELD GOALS MADE**

Season ..... 1 (2x, last vs. Idaho, 11/26/22)  
 Career ..... 1 (2x, last vs. Idaho, 11/26/22)

**3-POINT FIELD GOALS ATTEMPTED**

Season ..... 5 (vs. Idaho, 11/26/22)  
 Career ..... 5 (vs. Idaho, 11/26/22)

**MINUTES**

Season ..... 24 (vs. Idaho, 11/26/22)  
 Career ..... 24 (vs. Idaho, 11/26/22)

**GAME-BY-GAME STATISTICS**

| Opponent         | Date       | GS       | MIN           | Total        |             | 3-Pointers  |             | Free throws |              | Rebounds |           |           |            | PF        | A        | TO        | BLK      | STL      | PTS       | AVG        |
|------------------|------------|----------|---------------|--------------|-------------|-------------|-------------|-------------|--------------|----------|-----------|-----------|------------|-----------|----------|-----------|----------|----------|-----------|------------|
|                  |            |          |               | FG-FGA       | PCT         | 3FG-3FGA    | PCT         | FT-FTA      | PCT          | OFF      | DEF       | TOT       | AVG        |           |          |           |          |          |           |            |
| at Liberty       | 11/07/2022 |          | 16:12         | 1-3          | .333        | 1-3         | .333        | 2-2         | 1.000        | 0        | 1         | 1         | 1.0        | 3         | 0        | 1         | 0        | 1        | 5         | 5.0        |
| Mount St. Mary's | 11/10/2022 |          | 18:01         | 2-4          | .500        | 0-2         | .000        | 2-2         | 1.000        | 1        | 2         | 3         | 2.0        | 3         | 2        | 3         | 0        | 3        | 6         | 5.5        |
| at Clemson       | 11/13/2022 |          | 14:23         | 1-4          | .250        | 0-2         | .000        | 0-0         | .000         | 0        | 1         | 1         | 1.7        | 2         | 0        | 3         | 0        | 1        | 2         | 4.3        |
| at UMBC          | 11/17/2022 |          | 11:46         | 1-4          | .250        | 0-1         | .000        | 0-0         | .000         | 2        | 3         | 5         | 2.5        | 1         | 1        | 1         | 1        | 0        | 2         | 3.8        |
| Hampton          | 11/20/2022 |          | 11:02         | 1-2          | .500        | 0-0         | .000        | 0-0         | .000         | 2        | 2         | 4         | 2.8        | 1         | 0        | 3         | 0        | 0        | 2         | 3.4        |
| vs Idaho         | 11/26/2022 |          | 23:36         | 5-12         | .417        | 1-5         | .200        | 2-2         | 1.000        | 0        | 5         | 5         | 3.2        | 1         | 3        | 3         | 1        | 2        | 13        | 5.0        |
| vs NIU           | 11/27/2022 |          | 16:47         | 3-8          | .375        | 2-5         | .400        | 0-0         | .000         | 1        | 3         | 4         | 3.3        | 2         | 1        | 1         | 0        | 2        | 8         | 5.4        |
| <b>Totals</b>    |            | <b>0</b> | <b>111:47</b> | <b>14-37</b> | <b>.378</b> | <b>4-18</b> | <b>.222</b> | <b>6-6</b>  | <b>1.000</b> | <b>6</b> | <b>17</b> | <b>23</b> | <b>3.3</b> | <b>13</b> | <b>7</b> | <b>15</b> | <b>2</b> | <b>9</b> | <b>38</b> | <b>5.4</b> |

**Player Averages**

| Games Played | Minutes/ game | Points/ game | FG Pct | 3FG Pct | FT Pct | Rebounds/ game | Assists/ game | Turnovers/ game | Assist/Turnover ratio | Steals/ game | Blocks/ game |
|--------------|---------------|--------------|--------|---------|--------|----------------|---------------|-----------------|-----------------------|--------------|--------------|
| 7            | 16.0          | 5.4          | 37.8   | 22.2    | 100.0  | 3.3            | 1.0           | 2.1             | 0.5                   | 1.3          | 0.3          |

**AS A FRESHMAN...**

- Hit a three-pointer against Liberty for her first collegiate points
- Posted six points, three rebounds, three steals and two assists against Mount St. Mary's
- Against Idaho tallied season-highs in points (13), rebounds (5), assists (3), minutes (24)
- Missing games starting in December due to hand injury sustained against Northern Illinois

**PREP CAREER HIGHLIGHTS**

- Two-time Delaware County Daily Times Player of the Year
- PIAA 5A State Champion
- 5A First-Team All-State
- All-Catholic First-Team
- Also lettered in volleyball at Cardinal O'Hara
- McDonalds All-American Nominee

**CAREER SUMMARY**

|         |      |       |     | Field Goals |        | 3-Point |          | F-Throws |        | Rebounds |     |     |     |     |       |   |    | Scoring |     |     |     |
|---------|------|-------|-----|-------------|--------|---------|----------|----------|--------|----------|-----|-----|-----|-----|-------|---|----|---------|-----|-----|-----|
| SEASON  | TEAM | GP-GS | MIN | AVG         | FG-FGA | FG%     | 3FG-3FGA | 3FG%     | FT-FTA | FT%      | OFF | DEF | TOT | AVG | PF-FO | A | TO | BLK     | STL | PTS | AVG |
| 2022-23 | UR   | 7-0   | 112 | 16.0        | 14-37  | .378    | 4-18     | .222     | 6-6    | 1.000    | 6   | 17  | 23  | 3.3 | 13-0  | 7 | 15 | 2       | 9   | 38  | 5.4 |
| TOTAL   |      | 7-0   | 112 | 16.0        | 14-37  | .378    | 4-18     | .222     | 6-6    | 1.000    | 6   | 17  | 23  | 3.3 | 13-0  | 7 | 15 | 2       | 9   | 38  | 5.4 |

# COMBINED STATS



## 2022-23 Richmond Women's Basketball Combined Team Statistics All games

Page 1/1  
as of Dec 27, 2022

### Game Records

| Record         | Overall | Home | Away | Neutral |
|----------------|---------|------|------|---------|
| ALL GAMES      | 10-3    | 3-1  | 4-1  | 3-1     |
| CONFERENCE     | 0-0     | 0-0  | 0-0  | 0-0     |
| NON-CONFERENCE | 10-3    | 3-1  | 4-1  | 3-1     |

### Score by Periods

| Team      | 1st | 2nd | 3rd | 4th | OT | TOT |
|-----------|-----|-----|-----|-----|----|-----|
| Richmond  | 251 | 220 | 206 | 220 | 10 | 907 |
| Opponents | 183 | 187 | 203 | 195 | 7  | 775 |

### Team Box Score

| No.       | Player                |       |        |      | Total   |      | 3-Point  |      | F-Throw |       | Rebounds |     |     |      |     |    |     |     |     |     |     |      |  |
|-----------|-----------------------|-------|--------|------|---------|------|----------|------|---------|-------|----------|-----|-----|------|-----|----|-----|-----|-----|-----|-----|------|--|
|           |                       | GP-GS | MIN    | AVG  | FG-FGA  | FG%  | 3FG-3FGA | 3FG% | FT-FTA  | FT%   | OFF      | DEF | TOT | AVG  | PF  | DQ | A   | TO  | BLK | STL | PTS | AVG  |  |
| 20        | BUDNIK, Addie         | 13-13 | 416:56 | 32.1 | 70-141  | .496 | 19-52    | .365 | 25-30   | .833  | 29       | 61  | 90  | 6.9  | 25  | 0  | 36  | 44  | 21  | 18  | 184 | 14.2 |  |
| 32        | RYAN, Siobhan         | 13-13 | 394:59 | 30.4 | 50-113  | .442 | 36-83    | .434 | 9-10    | .900  | 6        | 50  | 56  | 4.3  | 24  | 0  | 28  | 23  | 0   | 6   | 145 | 11.2 |  |
|           | HILL, Katie           | 13-13 | 363:05 | 27.9 | 48-113  | .425 | 11-40    | .275 | 32-37   | .865  | 15       | 45  | 60  | 4.6  | 22  | 0  | 13  | 30  | 6   | 19  | 139 | 10.7 |  |
| 1         | TOWNSEND, Grace       | 13-13 | 401:58 | 30.9 | 44-98   | .449 | 9-20     | .450 | 41-58   | .707  | 6        | 61  | 67  | 5.2  | 22  | 0  | 60  | 36  | 2   | 24  | 138 | 10.6 |  |
| 24        | KRISTA GRAVA, Emilija | 12-2  | 274:27 | 22.9 | 37-76   | .487 | 12-30    | .400 | 12-12   | 1.000 | 13       | 23  | 36  | 3.0  | 24  | 0  | 13  | 18  | 6   | 4   | 98  | 8.2  |  |
| 22        | ULLSTROM, Rachel      | 13-0  | 185:34 | 14.3 | 31-66   | .470 | 10-33    | .303 | 7-8     | .875  | 17       | 27  | 44  | 3.4  | 7   | 0  | 9   | 9   | 1   | 9   | 79  | 6.1  |  |
| 44        | DOOGAN, Maggie        | 7-0   | 111:47 | 16.0 | 14-37   | .378 | 4-18     | .222 | 6-6     | 1.000 | 6        | 17  | 23  | 3.3  | 13  | 0  | 7   | 15  | 2   | 9   | 38  | 5.4  |  |
| 13        | ROGERS, Torin         | 10-0  | 74:05  | 7.4  | 8-20    | .400 | 4-10     | .400 | 4-9     | .444  | 3        | 11  | 14  | 1.4  | 7   | 0  | 3   | 10  | 1   | 1   | 24  | 2.4  |  |
| 11        | WILLIAMS, Cayla       | 12-11 | 214:40 | 17.9 | 9-31    | .290 | 5-18     | .278 | 4-6     | .667  | 6        | 17  | 23  | 1.9  | 25  | 0  | 4   | 20  | 6   | 4   | 27  | 2.3  |  |
| 21        | LEWANDOWSKI, Kylee    | 11-0  | 47:13  | 4.3  | 5-16    | .313 | 3-13     | .231 | 1-2     | .500  | 0        | 8   | 8   | 0.7  | 1   | 0  | 1   | 3   | 0   | 2   | 14  | 1.3  |  |
| 2         | BOONE, Sydney         | 12-0  | 97:04  | 8.1  | 4-22    | .182 | 2-13     | .154 | 4-4     | 1.000 | 1        | 9   | 10  | 0.8  | 9   | 0  | 15  | 13  | 0   | 3   | 14  | 1.2  |  |
| 41        | BURGOS, Angel         | 10-0  | 43:11  | 4.3  | 3-10    | .300 | 0-2      | .000 | 1-3     | .333  | 0        | 10  | 10  | 1.0  | 3   | 0  | 7   | 2   | 1   | 1   | 7   | 0.7  |  |
| Team      |                       |       |        |      |         |      |          |      |         |       | 21       | 30  | 51  |      |     |    | 7   |     |     |     |     |      |  |
| Total     |                       | 13    | 2625   |      | 323-743 | .435 | 115-332  | .346 | 146-185 | .789  | 123      | 369 | 492 | 37.8 | 182 | 0  | 196 | 230 | 46  | 100 | 907 | 69.8 |  |
| Opponents |                       | 13    | 2625   |      | 286-779 | .367 | 91-326   | .279 | 112-161 | .696  | 131      | 304 | 435 | 33.5 | 220 | 2  | 170 | 210 | 38  | 98  | 775 | 59.6 |  |

### Team Statistics

|                        | UR             | OPP            |
|------------------------|----------------|----------------|
| <b>Scoring</b>         | <b>907</b>     | <b>775</b>     |
| Points per game        | 69.8           | 59.6           |
| Scoring margin         | +10.2          | -              |
| <b>Field goals-att</b> | <b>323-743</b> | <b>286-779</b> |
| Field goal pct         | .435           | .367           |
| <b>3 point fg-att</b>  | <b>115-332</b> | <b>91-326</b>  |
| 3-point FG pct         | .346           | .279           |
| 3-pt FG made per game  | 8.8            | 7.0            |
| <b>Free throws-att</b> | <b>146-185</b> | <b>112-161</b> |
| Free throw pct         | .789           | .696           |
| F-Throws made per game | 11.2           | 8.6            |
| <b>Rebounds</b>        | <b>492</b>     | <b>435</b>     |
| Rebounds per game      | 37.8           | 33.5           |
| Rebounding margin      | +4.4           | -              |
| <b>Assists</b>         | <b>196</b>     | <b>170</b>     |
| Assists per game       | 15.1           | 13.1           |
| <b>Turnovers</b>       | <b>230</b>     | <b>210</b>     |
| Turnovers per game     | 17.7           | 16.2           |
| Turnover margin        | -1.5           | -              |
| Assist/turnover ratio  | 0.9            | 0.8            |
| <b>Steals</b>          | <b>100</b>     | <b>98</b>      |
| Steals per game        | 7.7            | 7.5            |
| <b>Blocks</b>          | <b>46</b>      | <b>38</b>      |
| Blocks per game        | 3.5            | 2.9            |
| <b>Winning streak</b>  | <b>4</b>       | <b>-</b>       |
| Home win streak        | 1              | -              |
| <b>Attendance</b>      | <b>2747</b>    | <b>5061</b>    |
| Home games-Avg/Game    | 4-687          | 5-1012         |
| Neutral site-Avg/Game  | -              | 4-137          |

### Team Results

| Date       | Opponent          |     | Score  | Att. |
|------------|-------------------|-----|--------|------|
| 11/07/2022 | at Liberty        | W   | 69-48  | 763  |
| 11/10/2022 | Mount St. Mary's  | W   | 87-44  | 396  |
| 11/13/2022 | at Clemson        | L   | 40-61  | 857  |
| 11/17/2022 | at UMBC           | W   | 64-57  | 125  |
| 11/20/2022 | Hampton           | Wot | 68-65  | 471  |
| 11/26/2022 | vs Idaho          | W   | 80-49  | 174  |
| 11/27/2022 | vs NIU            | L   | 64-67  | 173  |
| 12/01/2022 | at William & Mary | W   | 74-62  | 229  |
| 12/04/2022 | Duke              | L   | 49-100 | 1262 |
| 12/11/2022 | Longwood          | W   | 119-55 | 618  |
| 12/15/2022 | at Elon           | W   | 63-51  | 3087 |
| 12/20/2022 | vs Ball St.       | W   | 75-73  | 100  |
| 12/21/2022 | vs Tarleton St.   | W   | 55-43  | 100  |



# SEASON BOX SCORE



## 2022-23 Richmond Women's Basketball Season Box Score All games

Page 1/1  
as of Dec 27, 2022

### Game Records

| Record         | Overall | Home | Away | Neutral |
|----------------|---------|------|------|---------|
| ALL GAMES      | 10-3    | 3-1  | 4-1  | 3-1     |
| CONFERENCE     | 0-0     | 0-0  | 0-0  | 0-0     |
| NON-CONFERENCE | 10-3    | 3-1  | 4-1  | 3-1     |

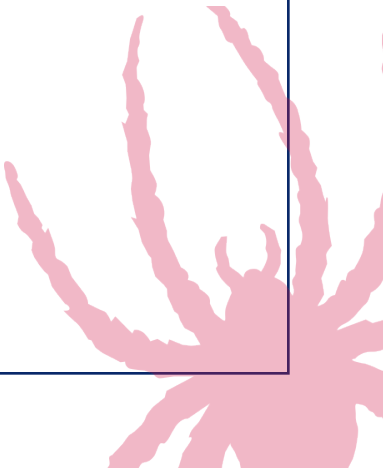
### Team Box Score

| No.       | Player                |       |        |      | Total   |      | 3-Point  |      | F-Throw |       | Rebounds |     |     |      |     |    |     |     |     |     |     |      |  |  |
|-----------|-----------------------|-------|--------|------|---------|------|----------|------|---------|-------|----------|-----|-----|------|-----|----|-----|-----|-----|-----|-----|------|--|--|
|           |                       | GP-GS | MIN    | AVG  | FG-FGA  | FG%  | 3FG-3FGA | 3FG% | FT-FTA  | FT%   | OFF      | DEF | TOT | AVG  | PF  | DQ | A   | TO  | BLK | STL | PTS | AVG  |  |  |
| 20        | BUDNIK, Addie         | 13-13 | 416:56 | 32.1 | 70-141  | .496 | 19-52    | .365 | 25-30   | .833  | 29       | 61  | 90  | 6.9  | 25  | 0  | 36  | 44  | 21  | 18  | 184 | 14.2 |  |  |
| 32        | RYAN, Siobhan         | 13-13 | 394:59 | 30.4 | 50-113  | .442 | 36-83    | .434 | 9-10    | .900  | 6        | 50  | 56  | 4.3  | 24  | 0  | 28  | 23  | 0   | 6   | 145 | 11.2 |  |  |
| 25        | HILL, Katie           | 13-13 | 363:05 | 27.9 | 48-113  | .425 | 11-40    | .275 | 32-37   | .865  | 15       | 45  | 60  | 4.6  | 22  | 0  | 13  | 30  | 6   | 19  | 139 | 10.7 |  |  |
| 1         | TOWNSEND, Grace       | 13-13 | 401:58 | 30.9 | 44-98   | .449 | 9-20     | .450 | 41-58   | .707  | 6        | 61  | 67  | 5.2  | 22  | 0  | 60  | 36  | 2   | 24  | 138 | 10.6 |  |  |
| 24        | KRISTA GRAVA, Emilija | 12-2  | 274:27 | 22.9 | 37-76   | .487 | 12-30    | .400 | 12-12   | 1.000 | 13       | 23  | 36  | 3.0  | 24  | 0  | 13  | 18  | 6   | 4   | 98  | 8.2  |  |  |
| 22        | ULLSTROM, Rachel      | 13-0  | 185:34 | 14.3 | 31-66   | .470 | 10-33    | .303 | 7-8     | .875  | 17       | 27  | 44  | 3.4  | 7   | 0  | 9   | 9   | 1   | 9   | 79  | 6.1  |  |  |
| 44        | DOOGAN, Maggie        | 7-0   | 111:47 | 16.0 | 14-37   | .378 | 4-18     | .222 | 6-6     | 1.000 | 6        | 17  | 23  | 3.3  | 13  | 0  | 7   | 15  | 2   | 9   | 38  | 5.4  |  |  |
| 13        | ROGERS, Torin         | 10-0  | 74:05  | 7.4  | 8-20    | .400 | 4-10     | .400 | 4-9     | .444  | 3        | 11  | 14  | 1.4  | 7   | 0  | 3   | 10  | 1   | 1   | 24  | 2.4  |  |  |
| 11        | WILLIAMS, Cayla       | 12-11 | 214:40 | 17.9 | 9-31    | .290 | 5-18     | .278 | 4-6     | .667  | 6        | 17  | 23  | 1.9  | 25  | 0  | 4   | 20  | 6   | 4   | 27  | 2.3  |  |  |
| 21        | LEWANDOWSKI, Kylee    | 11-0  | 47:13  | 4.3  | 5-16    | .313 | 3-13     | .231 | 1-2     | .500  | 0        | 8   | 8   | 0.7  | 1   | 0  | 1   | 3   | 0   | 2   | 14  | 1.3  |  |  |
| 2         | BOONE, Sydney         | 12-0  | 97:04  | 8.1  | 4-22    | .182 | 2-13     | .154 | 4-4     | 1.000 | 1        | 9   | 10  | 0.8  | 9   | 0  | 15  | 13  | 0   | 3   | 14  | 1.2  |  |  |
| 41        | BURGOS, Angel         | 10-0  | 43:11  | 4.3  | 3-10    | .300 | 0-2      | .000 | 1-3     | .333  | 0        | 10  | 10  | 1.0  | 3   | 0  | 7   | 2   | 1   | 1   | 7   | 0.7  |  |  |
| Team      |                       |       |        |      |         |      |          |      |         |       | 21       | 30  | 51  |      |     |    |     | 7   |     |     |     |      |  |  |
| Total     |                       | 13    | 2625   |      | 323-743 | .435 | 115-332  | .346 | 146-185 | .789  | 123      | 369 | 492 | 37.8 | 182 | 0  | 196 | 230 | 46  | 100 | 907 | 69.8 |  |  |
| Opponents |                       | 13    | 2625   |      | 286-779 | .367 | 91-326   | .279 | 112-161 | .696  | 131      | 304 | 435 | 33.5 | 220 | 2  | 170 | 210 | 38  | 98  | 775 | 59.6 |  |  |

### Score by Periods

| Team      | 1st | 2nd | 3rd | 4th | OT | TOT |
|-----------|-----|-----|-----|-----|----|-----|
| Richmond  | 251 | 220 | 206 | 220 | 10 | 907 |
| Opponents | 183 | 187 | 203 | 195 | 7  | 775 |

**CONFERENCE ONLY STATS**



# SEASON RESULTS

## Game Records

| Record         | Overall | Home | Away | Neutral |
|----------------|---------|------|------|---------|
| ALL GAMES      | 10-3    | 3-1  | 4-1  | 3-1     |
| CONFERENCE     | 0-0     | 0-0  | 0-0  | 0-0     |
| NON-CONFERENCE | 10-3    | 3-1  | 4-1  | 3-1     |

## Team Results

| Date       | Opponent          |     | Score  | Att. | High Points                | High Rebounds             |
|------------|-------------------|-----|--------|------|----------------------------|---------------------------|
| 11/07/2022 | at Liberty        | W   | 69-48  | 763  | (21) BUDNIK, Addie         | (8) TOWNSEND, Grace       |
| 11/10/2022 | Mount St. Mary's  | W   | 87-44  | 396  | (16) BUDNIK, Addie         | (6) BUDNIK, Addie         |
| 11/13/2022 | at Clemson        | L   | 40-61  | 857  | (13) HILL, Katie           | (7) RYAN, Siobhan         |
|            |                   |     |        |      |                            | (7) BUDNIK, Addie         |
| 11/17/2022 | at UMBC           | W   | 64-57  | 125  | (16) KRISTA GRAVA, Emilija | (7) BUDNIK, Addie         |
|            |                   |     |        |      | (16) BUDNIK, Addie         |                           |
| 11/20/2022 | Hampton           | Wot | 68-65  | 471  | (19) TOWNSEND, Grace       | (11) BUDNIK, Addie        |
| 11/26/2022 | vs Idaho          | W   | 80-49  | 174  | (23) RYAN, Siobhan         | (11) TOWNSEND, Grace      |
| 11/27/2022 | vs NIU            | L   | 64-67  | 173  | (16) BUDNIK, Addie         | (7) BUDNIK, Addie         |
|            |                   |     |        |      |                            | (7) TOWNSEND, Grace       |
| 12/01/2022 | at William & Mary | W   | 74-62  | 229  | (23) TOWNSEND, Grace       | (7) BUDNIK, Addie         |
|            |                   |     |        |      |                            | (7) HILL, Katie           |
| 12/04/2022 | Duke              | L   | 49-100 | 1262 | (11) ULLSTROM, Rachel      | (3) KRISTA GRAVA, Emilija |
|            |                   |     |        |      |                            | (3) WILLIAMS, Cayla       |
|            |                   |     |        |      |                            | (3) HILL, Katie           |
| 12/11/2022 | Longwood          | W   | 119-55 | 618  | (26) ULLSTROM, Rachel      | (13) BUDNIK, Addie        |
| 12/15/2022 | at Elon           | W   | 63-51  | 3087 | (15) BUDNIK, Addie         | (5) TOWNSEND, Grace       |
| 12/20/2022 | vs Ball St.       | W   | 75-73  | 100  | (27) RYAN, Siobhan         | (5) BUDNIK, Addie         |
|            |                   |     |        |      |                            | (5) TOWNSEND, Grace       |
| 12/21/2022 | vs Tarleton St.   | W   | 55-43  | 100  | (28) BUDNIK, Addie         | (8) TOWNSEND, Grace       |
|            |                   |     |        |      |                            | (8) HILL, Katie           |

## Attendance Summary

|              | Games     | Attend      | Avg/Game   |
|--------------|-----------|-------------|------------|
| Home         | 4         | 2747        | 687        |
| Away         | 5         | 5061        | 1012       |
| Neutral      | 4         | 547         | 137        |
| <b>Total</b> | <b>13</b> | <b>8355</b> | <b>643</b> |

# CATEGORY LEADERS



## 2022-23 Richmond Women's Basketball Category Leaders All games

Page 1/3  
as of Dec 27, 2022

### Points

| ## | Player                | G  | Pts | Pts/G |
|----|-----------------------|----|-----|-------|
| 20 | Budnik, Addie         | 13 | 184 | 14.2  |
| 32 | Ryan, Siobhan         | 13 | 145 | 11.2  |
| 25 | Hill, Katie           | 13 | 139 | 10.7  |
| 1  | Townsend, Grace       | 13 | 138 | 10.6  |
| 24 | Krista Grava, Emilija | 12 | 98  | 8.2   |
| 22 | Ullstrom, Rachel      | 13 | 79  | 6.1   |
| 44 | Doogan, Maggie        | 7  | 38  | 5.4   |
| 11 | Williams, Cayla       | 12 | 27  | 2.3   |
| 13 | Rogers, Torin         | 10 | 24  | 2.4   |
| 21 | Lewandowski, Kylee    | 11 | 14  | 1.3   |
| 2  | Boone, Sydney         | 12 | 14  | 1.2   |
| 41 | Burgos, Angel         | 10 | 7   | 0.7   |

### Scoring Average

| ## | Player                | G  | Pts | Pts/G |
|----|-----------------------|----|-----|-------|
| 20 | Budnik, Addie         | 13 | 184 | 14.2  |
| 32 | Ryan, Siobhan         | 13 | 145 | 11.2  |
| 25 | Hill, Katie           | 13 | 139 | 10.7  |
| 1  | Townsend, Grace       | 13 | 138 | 10.6  |
| 24 | Krista Grava, Emilija | 12 | 98  | 8.2   |
| 22 | Ullstrom, Rachel      | 13 | 79  | 6.1   |
| 44 | Doogan, Maggie        | 7  | 38  | 5.4   |
| 13 | Rogers, Torin         | 10 | 24  | 2.4   |
| 11 | Williams, Cayla       | 12 | 27  | 2.3   |
| 21 | Lewandowski, Kylee    | 11 | 14  | 1.3   |
| 2  | Boone, Sydney         | 12 | 14  | 1.2   |
| 41 | Burgos, Angel         | 10 | 7   | 0.7   |

### Field Goal Percentage

| ## | Player                | FG | Att | Pct  |
|----|-----------------------|----|-----|------|
| 20 | Budnik, Addie         | 70 | 141 | .496 |
| 24 | Krista Grava, Emilija | 37 | 76  | .487 |
| 22 | Ullstrom, Rachel      | 31 | 66  | .470 |
| 1  | Townsend, Grace       | 44 | 98  | .449 |
| 32 | Ryan, Siobhan         | 50 | 113 | .442 |
| 25 | Hill, Katie           | 48 | 113 | .425 |
| 13 | Rogers, Torin         | 8  | 20  | .400 |
| 44 | Doogan, Maggie        | 14 | 37  | .378 |
| 21 | Lewandowski, Kylee    | 5  | 16  | .313 |
| 41 | Burgos, Angel         | 3  | 10  | .300 |
| 11 | Williams, Cayla       | 9  | 31  | .290 |
| 2  | Boone, Sydney         | 4  | 22  | .182 |

### Field Goal Attempts

| ## | Player                | G  | Att | Att/G |
|----|-----------------------|----|-----|-------|
| 20 | Budnik, Addie         | 13 | 141 | 10.8  |
| 32 | Ryan, Siobhan         | 13 | 113 | 8.7   |
| 25 | Hill, Katie           | 13 | 113 | 8.7   |
| 1  | Townsend, Grace       | 13 | 98  | 7.5   |
| 24 | Krista Grava, Emilija | 12 | 76  | 6.3   |

### Field Goals Made

| ## | Player                | G  | Made | Made/G |
|----|-----------------------|----|------|--------|
| 20 | Budnik, Addie         | 13 | 70   | 5.4    |
| 32 | Ryan, Siobhan         | 13 | 50   | 3.8    |
| 25 | Hill, Katie           | 13 | 48   | 3.7    |
| 1  | Townsend, Grace       | 13 | 44   | 3.4    |
| 24 | Krista Grava, Emilija | 12 | 37   | 3.1    |

### 3-Point FG Percentage

| ## | Player                | 3FG | Att | Pct  |
|----|-----------------------|-----|-----|------|
| 1  | Townsend, Grace       | 9   | 20  | .450 |
| 32 | Ryan, Siobhan         | 36  | 83  | .434 |
| 24 | Krista Grava, Emilija | 12  | 30  | .400 |
| 13 | Rogers, Torin         | 4   | 10  | .400 |
| 20 | Budnik, Addie         | 19  | 52  | .365 |
| 22 | Ullstrom, Rachel      | 10  | 33  | .303 |
| 11 | Williams, Cayla       | 5   | 18  | .278 |
| 25 | Hill, Katie           | 11  | 40  | .275 |
| 21 | Lewandowski, Kylee    | 3   | 13  | .231 |
| 44 | Doogan, Maggie        | 4   | 18  | .222 |
| 2  | Boone, Sydney         | 2   | 13  | .154 |

### 3-Point FG Attempts

| ## | Player                | G  | Att | Att/G |
|----|-----------------------|----|-----|-------|
| 32 | Ryan, Siobhan         | 13 | 83  | 6.4   |
| 20 | Budnik, Addie         | 13 | 52  | 4.0   |
| 25 | Hill, Katie           | 13 | 40  | 3.1   |
| 22 | Ullstrom, Rachel      | 13 | 33  | 2.5   |
| 24 | Krista Grava, Emilija | 12 | 30  | 2.5   |

### 3-Point FG Made

| ## | Player                | G  | Made | Made/G |
|----|-----------------------|----|------|--------|
| 32 | Ryan, Siobhan         | 13 | 36   | 2.8    |
| 20 | Budnik, Addie         | 13 | 19   | 1.5    |
| 24 | Krista Grava, Emilija | 12 | 12   | 1.0    |
| 25 | Hill, Katie           | 13 | 11   | 0.8    |
| 22 | Ullstrom, Rachel      | 13 | 10   | 0.8    |



# CATEGORY LEADERS

## Free Throw Percentage

| ## | Player                | Made | Att | Pct   |
|----|-----------------------|------|-----|-------|
| 44 | Doogan, Maggie        | 6    | 6   | 1.000 |
| 24 | Krista Grava, Emilija | 12   | 12  | 1.000 |
| 2  | Boone, Sydney         | 4    | 4   | 1.000 |
| 32 | Ryan, Siobhan         | 9    | 10  | .900  |
| 22 | Ullstrom, Rachel      | 7    | 8   | .875  |
| 25 | Hill, Katie           | 32   | 37  | .865  |
| 20 | Budnik, Addie         | 25   | 30  | .833  |
| 1  | Townsend, Grace       | 41   | 58  | .707  |
| 11 | Williams, Cayla       | 4    | 6   | .667  |
| 21 | Lewandowski, Kylee    | 1    | 2   | .500  |
| 13 | Rogers, Torin         | 4    | 9   | .444  |
| 41 | Burgos, Angel         | 1    | 3   | .333  |

## Free Throw Attempts

| ## | Player                | G  | Att | Att/G |
|----|-----------------------|----|-----|-------|
| 1  | Townsend, Grace       | 13 | 58  | 4.5   |
| 25 | Hill, Katie           | 13 | 37  | 2.8   |
| 20 | Budnik, Addie         | 13 | 30  | 2.3   |
| 24 | Krista Grava, Emilija | 12 | 12  | 1.0   |
| 32 | Ryan, Siobhan         | 13 | 10  | 0.8   |

## Free Throws Made

| ## | Player                | G  | Made | Made/G |
|----|-----------------------|----|------|--------|
| 1  | Townsend, Grace       | 13 | 41   | 3.2    |
| 25 | Hill, Katie           | 13 | 32   | 2.5    |
| 20 | Budnik, Addie         | 13 | 25   | 1.9    |
| 24 | Krista Grava, Emilija | 12 | 12   | 1.0    |
| 32 | Ryan, Siobhan         | 13 | 9    | 0.7    |

## Rebounds

| ## | Player           | G  | Reb | Reb/G |
|----|------------------|----|-----|-------|
| 20 | Budnik, Addie    | 13 | 90  | 6.9   |
| 1  | Townsend, Grace  | 13 | 67  | 5.2   |
| 25 | Hill, Katie      | 13 | 60  | 4.6   |
| 32 | Ryan, Siobhan    | 13 | 56  | 4.3   |
| 22 | Ullstrom, Rachel | 13 | 44  | 3.4   |

## Assists

| ## | Player          | G  | Ast | Ast/G |
|----|-----------------|----|-----|-------|
| 1  | Townsend, Grace | 13 | 60  | 4.6   |
| 20 | Budnik, Addie   | 13 | 36  | 2.8   |
| 32 | Ryan, Siobhan   | 13 | 28  | 2.2   |
| 2  | Boone, Sydney   | 12 | 15  | 1.3   |
| 25 | Hill, Katie     | 13 | 13  | 1.0   |

## Rebounds Average

| ## | Player           | G  | Reb | Reb/G |
|----|------------------|----|-----|-------|
| 20 | Budnik, Addie    | 13 | 90  | 6.9   |
| 1  | Townsend, Grace  | 13 | 67  | 5.2   |
| 25 | Hill, Katie      | 13 | 60  | 4.6   |
| 32 | Ryan, Siobhan    | 13 | 56  | 4.3   |
| 22 | Ullstrom, Rachel | 13 | 44  | 3.4   |

## Steals

| ## | Player           | G  | Stl | Stl/G |
|----|------------------|----|-----|-------|
| 1  | Townsend, Grace  | 13 | 24  | 1.8   |
| 25 | Hill, Katie      | 13 | 19  | 1.5   |
| 20 | Budnik, Addie    | 13 | 18  | 1.4   |
| 22 | Ullstrom, Rachel | 13 | 9   | 0.7   |
| 44 | Doogan, Maggie   | 7  | 9   | 1.3   |

## Offensive Rebounds

| ## | Player                | G  | OReb | OReb/G |
|----|-----------------------|----|------|--------|
| 20 | Budnik, Addie         | 13 | 29   | 2.2    |
| 22 | Ullstrom, Rachel      | 13 | 17   | 1.3    |
| 25 | Hill, Katie           | 13 | 15   | 1.2    |
| 24 | Krista Grava, Emilija | 12 | 13   | 1.1    |
| 32 | Ryan, Siobhan         | 13 | 6    | 0.5    |

## Blocked Shots

| ## | Player                | G  | Blk | Blk/G |
|----|-----------------------|----|-----|-------|
| 20 | Budnik, Addie         | 13 | 21  | 1.6   |
| 25 | Hill, Katie           | 13 | 6   | 0.5   |
| 24 | Krista Grava, Emilija | 12 | 6   | 0.5   |
| 11 | Williams, Cayla       | 12 | 6   | 0.5   |
| 1  | Townsend, Grace       | 13 | 2   | 0.2   |

## Defensive Rebounds

| ## | Player           | G  | DReb | DReb/G |
|----|------------------|----|------|--------|
| 20 | Budnik, Addie    | 13 | 61   | 4.7    |
| 1  | Townsend, Grace  | 13 | 61   | 4.7    |
| 32 | Ryan, Siobhan    | 13 | 50   | 3.8    |
| 25 | Hill, Katie      | 13 | 45   | 3.5    |
| 22 | Ullstrom, Rachel | 13 | 27   | 2.1    |

## Minutes

| ## | Player                | G  | Min | Min/G |
|----|-----------------------|----|-----|-------|
| 20 | Budnik, Addie         | 13 | 417 | 32:04 |
| 1  | Townsend, Grace       | 13 | 402 | 30:55 |
| 32 | Ryan, Siobhan         | 13 | 395 | 30:23 |
| 25 | Hill, Katie           | 13 | 363 | 27:56 |
| 24 | Krista Grava, Emilija | 12 | 274 | 22:52 |

# CATEGORY LEADERS



## 2022-23 Richmond Women's Basketball Category Leaders All games

Page 3/3  
as of Dec 27, 2022

### Fouls

| ## | Player                | G  | PF | PF/G |
|----|-----------------------|----|----|------|
| 11 | Williams, Cayla       | 12 | 25 | 2.1  |
| 20 | Budnik, Addie         | 13 | 25 | 1.9  |
| 32 | Ryan, Siobhan         | 13 | 24 | 1.8  |
| 24 | Krista Grava, Emilija | 12 | 24 | 2.0  |
| 25 | Hill, Katie           | 13 | 22 | 1.7  |

### Turnovers

| ## | Player          | G  | TO | TO/G |
|----|-----------------|----|----|------|
| 20 | Budnik, Addie   | 13 | 44 | 3.4  |
| 1  | Townsend, Grace | 13 | 36 | 2.8  |
| 25 | Hill, Katie     | 13 | 30 | 2.3  |
| 32 | Ryan, Siobhan   | 13 | 23 | 1.8  |
| 11 | Williams, Cayla | 12 | 20 | 1.7  |

### Foul Outs

| ## | Player | G | FO |
|----|--------|---|----|
|----|--------|---|----|

# GAME-BY-GAME STARTING LINEUP

| OPPONENT.....               | 1.....         | 2.....    | 3.....    | 4.....        | 5.....       | RECORD |
|-----------------------------|----------------|-----------|-----------|---------------|--------------|--------|
| at Liberty .....            | Townsend ..... | Hill..... | Ryan..... | Williams..... | Budnik ..... | 1-0    |
| Mount St. Mary's.....       | Townsend ..... | Hill..... | Ryan..... | Williams..... | Budnik ..... | 2-0    |
| at Clemson.....             | Townsend ..... | Hill..... | Ryan..... | Williams..... | Budnik ..... | 2-1    |
| at UMBC .....               | Townsend ..... | Hill..... | Ryan..... | Williams..... | Budnik ..... | 3-1    |
| Hampton .....               | Townsend ..... | Hill..... | Ryan..... | Williams..... | Budnik ..... | 4-1    |
| vs. Idaho .....             | Townsend ..... | Hill..... | Ryan..... | Williams..... | Budnik ..... | 5-1    |
| vs. Northern Illinois ..... | Townsend ..... | Hill..... | Ryan..... | Williams..... | Budnik ..... | 5-2    |
| at William & Mary .....     | Townsend ..... | Hill..... | Ryan..... | Williams..... | Budnik ..... | 6-2    |
| Duke .....                  | Townsend ..... | Hill..... | Ryan..... | Williams..... | Budnik ..... | 6-3    |
| Longwood .....              | Townsend ..... | Hill..... | Ryan..... | Grava.....    | Budnik ..... | 7-3    |
| at Elon .....               | Townsend ..... | Hill..... | Ryan..... | Grava.....    | Budnik ..... | 8-3    |
| vs. Ball State .....        | Townsend ..... | Hill..... | Ryan..... | Williams..... | Budnik ..... | 9-3    |
| vs. Tarleton State .....    | Townsend ..... | Hill..... | Ryan..... | Williams..... | Budnik ..... | 10-3   |
| George Washington *         |                |           |           |               |              |        |
| at Loyola Chicago *         |                |           |           |               |              |        |
| at Davidson *               |                |           |           |               |              |        |
| VCU *                       |                |           |           |               |              |        |
| at Rhode Island *           |                |           |           |               |              |        |
| George Mason *              |                |           |           |               |              |        |
| at Fordham *                |                |           |           |               |              |        |
| Saint Joseph's *            |                |           |           |               |              |        |
| at UMass *                  |                |           |           |               |              |        |
| at Dayton *                 |                |           |           |               |              |        |
| La Salle *                  |                |           |           |               |              |        |
| Davidson *                  |                |           |           |               |              |        |
| Saint Louis *               |                |           |           |               |              |        |
| at Duquesne *               |                |           |           |               |              |        |
| at VCU *                    |                |           |           |               |              |        |
| St. Bonaventure *           |                |           |           |               |              |        |

## TEAM GAME-BY-GAME

|                   |            |        |     | Total   |      | 3-Pointers |      | Free throws |       | Rebounds |     |     |      |     |     |     |     |     |     |      |  |
|-------------------|------------|--------|-----|---------|------|------------|------|-------------|-------|----------|-----|-----|------|-----|-----|-----|-----|-----|-----|------|--|
| Opponent          | Date       | Score  |     | FG-FGA  | PCT  | 3FG-3FGA   | PCT  | FT-FTA      | PCT   | OFF      | DEF | TOT | AVG  | PF  | A   | TO  | BLK | STL | PTS | AVG  |  |
| at Liberty        | 11/07/2022 | 69-48  | W   | 22-46   | .478 | 9-20       | .450 | 16-18       | .889  | 5        | 23  | 28  | 28.0 | 18  | 11  | 13  | 1   | 8   | 69  | 69.0 |  |
| Mount St. Mary's  | 11/10/2022 | 87-44  | W   | 31-55   | .564 | 8-17       | .471 | 17-22       | .773  | 11       | 34  | 45  | 36.5 | 9   | 22  | 18  | 1   | 16  | 87  | 78.0 |  |
| at Clemson        | 11/13/2022 | 40-61  | L   | 18-62   | .290 | 3-27       | .111 | 1-3         | .333  | 10       | 22  | 32  | 35.0 | 13  | 6   | 17  | 3   | 10  | 40  | 65.3 |  |
| at UMBC           | 11/17/2022 | 64-57  | W   | 22-67   | .328 | 6-27       | .222 | 14-15       | .933  | 20       | 29  | 49  | 38.5 | 17  | 10  | 18  | 5   | 2   | 64  | 65.0 |  |
| Hampton           | 11/20/2022 | 68-65  | Wot | 23-57   | .404 | 11-31      | .355 | 11-14       | .786  | 16       | 31  | 47  | 40.2 | 12  | 14  | 26  | 3   | 6   | 68  | 65.6 |  |
| vs Idaho          | 11/26/2022 | 80-49  | W   | 25-58   | .431 | 9-26       | .346 | 21-24       | .875  | 6        | 43  | 49  | 41.7 | 15  | 14  | 15  | 5   | 6   | 80  | 68.0 |  |
| vs NIU            | 11/27/2022 | 64-67  | L   | 20-59   | .339 | 9-29       | .310 | 15-19       | .789  | 12       | 27  | 39  | 41.3 | 15  | 15  | 14  | 3   | 7   | 64  | 67.4 |  |
| at William & Mary | 12/01/2022 | 74-62  | W   | 23-53   | .434 | 10-25      | .400 | 18-21       | .857  | 9        | 26  | 35  | 40.5 | 14  | 13  | 16  | 4   | 6   | 74  | 68.3 |  |
| Duke              | 12/04/2022 | 49-100 | L   | 18-60   | .300 | 8-27       | .296 | 5-8         | .625  | 5        | 17  | 22  | 38.4 | 12  | 11  | 18  | 2   | 6   | 49  | 66.1 |  |
| Longwood          | 12/11/2022 | 119-55 | W   | 44-78   | .564 | 18-38      | .474 | 13-17       | .765  | 15       | 34  | 49  | 39.5 | 16  | 30  | 13  | 8   | 13  | 119 | 71.4 |  |
| at Elon           | 12/15/2022 | 63-51  | W   | 26-46   | .565 | 6-19       | .316 | 5-13        | .385  | 4        | 28  | 32  | 38.8 | 6   | 16  | 19  | 3   | 10  | 63  | 70.6 |  |
| vs Ball St.       | 12/20/2022 | 75-73  | W   | 29-53   | .547 | 13-24      | .542 | 4-5         | .800  | 3        | 20  | 23  | 37.5 | 16  | 19  | 17  | 2   | 6   | 75  | 71.0 |  |
| vs Tarleton St.   | 12/21/2022 | 55-43  | W   | 22-49   | .449 | 5-22       | .227 | 6-6         | 1.000 | 7        | 35  | 42  | 37.8 | 19  | 15  | 26  | 6   | 4   | 55  | 69.8 |  |
| Total             |            | 907    |     | 323-743 | .435 | 115-332    | .346 | 146-185     | .789  | 123      | 369 | 492 | 37.8 | 182 | 196 | 230 | 46  | 100 | 907 | 69.8 |  |
| Opponents         |            | 775    |     | 286-779 | .367 | 91-326     | .279 | 112-161     | .696  | 131      | 304 | 435 | 33.5 | 220 | 170 | 210 | 38  | 98  | 775 | 59.6 |  |

### Richmond Averages

| Games Played | Points/game | FG Pct | 3FG Pct | FT Pct | Rebounds/game | Assists/game | Turnovers/game | Assist/Turnover ratio | Steals/game | Blocks/game |
|--------------|-------------|--------|---------|--------|---------------|--------------|----------------|-----------------------|-------------|-------------|
| 13           | 69.8        | 43.5   | 34.6    | 78.9   | 37.8          | 15.1         | 17.7           | 0.9                   | 7.7         | 3.5         |

# TV/RADIO CHART



**1 • GRACE TOWNSEND**  
JR • G • 5-5 • MIDLOTHIAN, VA.



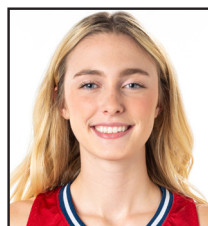
**2 • SYDNEY BOONE**  
SO • G • 5-8 • RICHMOND, VA.



**4 • JADA GREEN**  
FR • F • 6-1 • PARKLAND, FLA.



**11 • CAYLA WILLIAMS**  
SO • F • 6-2 • GAINESVILLE, VA.



**13 • TORIN ROGERS**  
JR • G • 6-1 • BRASSTOWN, NC



**20 • ADDIE BUDNIK**  
JR • F • 6-2 • HIGHLAND PARK, ILL.



**21 • KYLEE LEWANDOWSKI**  
JR • G • 6-1 • PITTSBURGH, PA.



**22 • RACHEL ULLSTROM**  
FR • G • 6-1 • AUBURN, MASS.



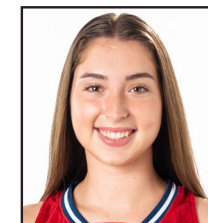
**24 • EMILIA KRISTA GRAVA**  
GS • F • 6-2 • LIGATNE, LATIVA



**25 • KATIE HILL**  
SO • G • 6-0 • COLTS NECK, N.J.



**31 • ELAINA CHAPMAN**  
SR • F • 6-3 • RICHMOND, VA.



**32 • SIOBHAN RYAN**  
JR • G • 6-0 • BUFFALO, N.Y.



**41 • ANGEL BURGOS**  
SR • G • 5-8 • RICHMOND, VA.



**44 • MAGGIE DOOGAN**  
FR • F • 6-2 • BROOMALL, PA.



**AARON ROUSSELL**  
HEAD COACH



**JEANINE RADICE**  
ASSISTANT COACH



**BRITTANY PINKNEY**  
ASSISTANT COACH



**KA'LIA JOHNSON**  
ASSISTANT COACH



**JANELLE SILVER-MARTIN**  
DIR. OF BASKETBALL OPERATIONS



**JOHN STUDER**  
DIR. OF PROGRAM DEVELOPMENT