

RICE ATHLETIC HALL OF FAME
and
DISTINGUISHED R MAN AWARD



THIRD ANNUAL PRESENTATION

6:30 P.M. SATURDAY, NOVEMBER 25, 1972

GRAND HALL

RICE MEMORIAL CENTER

HOUSTON, TEXAS

"To be eligible to receive the Hall of Fame award, the recipient shall possess or shall have possessed, in addition to outstanding ability in sport or sports, other qualifications such as sportsmanship, character and integrity, and be one who has brought great distinction to Rice University; and shall have completed his athletic eligibility or services with the Athletic Department of Rice University at least five (5) years prior to his selection."

The qualifications for the Distinguished R Man Award are as follows:

Must be a member of the R Association.

Must have shown an interest in athletics at Rice after graduation.

Must be a graduate of Rice University.

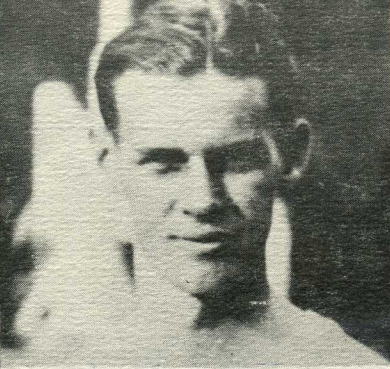
Candidate must have led an exemplary life, well adjusted with respect to his personal, family, civic and public responsibilities and served his community in an outstanding manner.

Must have excelled and achieved distinction and success in his own chosen field of business or profession.

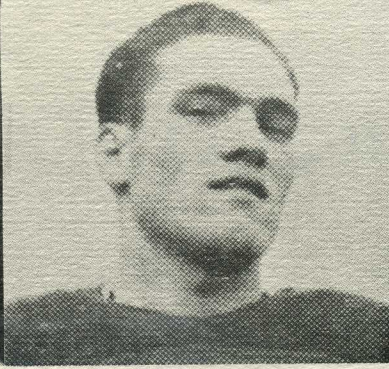
... FROM R ASSOCIATION BY-LAWS



KALB



COLEMAN



WITT



PATTE

For Rice's Honor...

Eight more stars of Rice University's Great Days of the past are named for the Rice Athletic Hall of Fame in the Third Annual Presentation of Awards. By class years, they are:

E. F. "TINY" KALB, Class of 1916, was one of the cornerstones of Rice's athletic program. At six feet three and 210 pounds, he was a giant of his times. He helped get the then Institute off to a rootin', tootin' start. On Coach Phil Arbuckle's football teams of 1913-1916 as tackle and sometime offensive center, he helped the Owls to a fine 19-6-5 record in those four of the school's first five years against such established powers as Notre Dame, Tulane, Texas, LSU,

Southwestern and Austin College. In basketball, "Tiny's" teams' results were even better. Rice's first basketball team in 1915 won eight, lost one. As captain, he led the 1916 team to 10 wins, two losses, just missing the "state championship" (which then included the Southwest Conference) by losing to TU in Austin 17-16. Tiny came to Rice from old-time Houston (Central) High. He was the second president of the R Association. He maintained a deep and continuous interest in Rice during successful business careers in cotton and oil until his death September 5, 1964. "Tiny" played one year of football (1916 season) as a post-graduate student. The Conference thereafter immediately passed a rule, still in effect - no post-grads can play. He was a holy terror, never using a helmet and only rarely a noseguard.

LESLIE COLEMAN, Class of 1923, came to Rice from Corpus Christi, following his older brother, Stewart. He became a four-sport letterman, Rice's first champion tennis player, and an "iron man" of collegiate competition. Les, as a freshman, started out by teaming with Stewart to win the doubles championship of SWC in 1919 against previously all-winning Texas. In 1923 as a senior, Les played first base on the Rice baseball team one day in Houston. Next morning in Waco, he got beat in an all-out finals match for the SWC Tennis championship. That afternoon he won the SWC half-mile in record time. In his "Lookin' 'Em Over" column in The Houston Post in 1928, Lloyd Gregory recalled Les' heroics and called it one of the SWC's greatest one-man efforts. Les was the only SWC man to beat Texas U's great tennis star, "Red" Thalheimer, in singles. The 1923 Campanile credited Les with three letters each in tennis, basketball and one in baseball. After a great career in banking in both New York City and Houston, Les died in Houston in 1969.

HARRY WITT, Class of 1936, was the bruising blocker and linebacker at fullback in 1934 on Rice's first SWC football champions, playing in the backfield with All Americans Bill Wallace and John McCauley. He also did the coffin-corner punting superbly. Look at any 1934 game picture. Harry always was on the ground - usually with two "enemies" down with him. Oddly, his greatest single feat came in 1933, a bad year for the Owls. He carried 16 consecutive times for a Rice team weakened by ineligibilities and injuries to move the ball 80 yards and beat Arkansas, that

... We Will

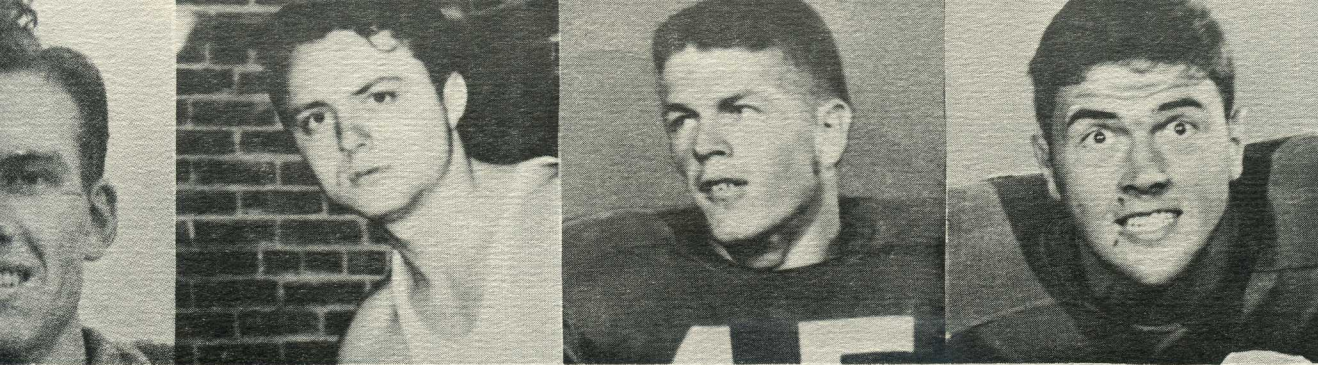
R MAN
OF
DISTINCTION

1972



FULWILER

HOWARD D. FULWILER (Class of 1917) came to Rice from Abilene High as a fullback, but Rice needed a guard. The 160-pound "Piggy" Fulwiler that day in 1914 as a freshman gave up dreams of ball-carrying headlines and got into the trenches for Rice. He has been there ever since . . . four years of hardnosed football on the fine Rice teams of 1913-16 which rang up 19 wins, six losses and five ties . . . two years of track . . . first president of the R Association organized the year he graduated . . . the longest span of financial support for Rice of any donor. Oh yes, he also took time out to be a War I flier for Uncle Sam. After many successful years as owner of auto dealerships, he now is a banking, business and civic leader in El Paso. Mrs. Fulwiler is the former Juanita Harper. They have one daughter, Mrs. James L. Brennan, and four grandchildren, also of El Paso. This year's "For Rice's Honor," the annual publication which reports on support for Rice among alumni and friends, headlined Piggy's long devotion to the school he credits with helping him so much as follows: "Fulwiler Guards Rice's Longest Line of Support." He took his B.S. in Electrical Engineering with Rice's second graduating class . . . 55 years ago.



ANDERSON

CARSWELL

JOHNSON

CHAPMAN

...Rice's Glory

year's champs, 7-6. Harry came to Rice from Houston's Reagan High. He also was a fine basketball player, lettering three years on strong Owl teams. He now lives in Sao Paulo, Brazil, as an executive of Anderson, Clayton & Company.

JACK PATTERSON, Class of 1939, on one late spring day in 1939 did the almost impossible. He competed in six - count 'em - events in the SWC track and field championships, won by Rice. He was captain of the Owls. His events: 110 and 220 hurdles, 440 yard dash, mile relay, javelin and high jump. He also went on to win the 400 meter hurdles in the National AAU. He, like Flying Freddie Wolcott - was robbed of his chance for a Gold Medal when Hitler marched against the world, destroying the 1940 Olympics. Jack came to Rice from Merkel in West Texas. He is now Athletic Director of Baylor University in Waco.

FRANK CARSWELL, Class of 1941, was the greatest "shot" in Rice's basketball history, many say. Certainly he was one of the Owl's greatest basebalers. He was all-SWC for three years in basketball and won All-American mention. He was all-everything in baseball (before all-SWC records in that sport began). He signed immediately into big league ball and enjoyed a fine career as manager-player in the Detroit Tiger organization. Frank came to Rice from Jefferson Davis High in Houston. He recently has been living in Carmine, Texas.

DAVID "KOSSE" JOHNSON, Class of 1954, possibly climaxed Jess Neely's tactical success as a football coach. As a fast, wiry halfback disguised as an All American (1953) fullback, he ripped opponents' lines apart on quick hitting, not raw power, and operated equally well blocking downfield for such as another All American, Dickie Maegle. Kosse was even quick as a kicker, a potent threat. Kosse came to Rice from Robert E. Lee High in Baytown. He gave Rice a big boost in leadership as well as execution for three great years including the 1953 SWC co-champions. An injury knocked him out of Rice's triumph in the 1954 Cotton Bowl against Alabama, but Rice fans generally knew Kosse had led 'em to the lip of the cup.

Be Loyal...

DR. RICHARD A. CHAPMAN, Class of 1954, was a top product of what Coaches Jess Neely and Joe Davis called the "Up-End Kids," the hard-hitting 1950 Rice Owlets that grew from that freshman year into the SWC co-champs and Cotton Bowl Champions of 1953-54. Dick was one of the 1953 team's tri-captains. All-SWC tackle in 1952, Dick went all the way to All American tackle in 1953 then was first draft choice of the Detroit Lions but chose not to go into pro ball. Coming to Rice from Waxahachie High, Dick was a superb scholar as well as athlete. He was chosen by his team mates for the Bob Quin Award. He went on to highest scholarship attainment to become Dr. Richard Chapman, Ph.D. He now is in high-level research in physics for Texas Instruments in Dallas.



COACH JESS NEELY



1940



1966

For 27 seasons, JESS CLAIBORNE NEELY ruled the Owl's roost as head football coach and athletic director. He saw his Owls win 144 games, more victories than any other Southwest Conference Coach, before or - to date - since. He led Rice to four championships, two outright and two shared, into six Bowl games where he split, beating Tennessee, Alabama and North Carolina - losing to Navy, Mississippi and Kansas. Equally a success at the box office, Jess is credited with having paid off a \$2 million balance due on the great new Rice Stadium he helped so materially to set the stage for and build. At the same time, his football "take" was contributing thousands of dollars to other Rice funds and activities. Jess came to Rice as a successful coach from Clemson in 1940. He returned to his alma mater, Vanderbilt (Class of 1922), after his last Rice season effectively helping lead a renaissance in Vandy's athletics. In 1971, Coach Neely was inducted into the National Hall of Fame as a player at Vanderbilt under the great old timer, Dan McGugin, and as outstanding coach, joining three of his "boys", Weldon Humble and James "Froggie" Williams of Rice and Banks McFadden of Clemson, in this greatest of all football shrines.

PROGRAM

Invocation

DINNER

Welcome

W. C. TREADWAY
President R Association

For the University

DR. NORMAN HACKERMAN
President

For the Athletic Department

A. M. "Red" BALE
Athletic Director

DISTINGUISHED R MAN, 1972

Howard D. Fulwiler '17

CLARK NEALON
Houston Post

HALL OF FAME

E. F. "Tiny" Kalb, '16

MR. NEALON

Harry W. Witt, '36
Jack Patterson, '39

JOHN COFFEE, '34
Distinguished R Man, '72

Les Coleman, '23

FRED STANCLIFF, '26
Distinguished R Man, '71

Richard Chapman, '54
Kosse Johnson, '54

KENNY PAUL, '55
President, R Association, '65

Frank W. Carswell, '41

DR. ALAN CHAPMAN, Chairman,
Committee on Intercollegiate Athletics

Jess Neely

JOE DAVIS
Former Rice Coach

SPECIAL AWARDS

MR. TREADWAY

"... For Rice's Honor ..."

ALL

PREVIOUSLY INDUCTED

DISTINGUISHED R MEN

1969 - Herbert Allen '29
1970 - H. L. "Tony" Bell '19
1971 - H. Malcolm Lovett '21
Fred J. Stancliff '26
Lou Hassell '33

1972 - Ralph W. Noble II '48
George R. Miner '50
Weldon G. Humble '47
Emmett Brunson '29
John B. Coffee '34

HALL OF FAME

H. L. "Tony" Bell, '19
*Wash Underwood, '27
William G. Henry, '45
Robert Kinney, '42
Emmett Brunson, '29
Dick Maegle, '55
Weldon G. Humble, '47
Bill Wallace, '36
*Fred Wolcott, '40

Dr. Fred Hansen, '63
James "Froggie" Williams, '50
*Eddie Dyer, '22
*Claude Bracey, '30
*Jake Hess, '32
*John McCauley, '36
*Marion L. Lindsey, '22
*John Underwood, '22
Lou Hassell, '33

Wilbur Hess, '35
David R. Weichert, '37
Frank Guernsey, Jr., '41
Fred "Moose" Hartman, '41
Bill T. Closs, '43
Bill Howton, '52
Gene Schwinger, '54
G. L. "Buddy" Dial, '59
John R. May, '65

*Deceased