

WOMEN'S BASKETBALL

 2022-23 PURDUE BOILERMAKERS

 **TALE OF THE TAPE**
THE MATCHUP **A WIN WOULD**

- Be the first two AP Top-5 wins since 2003-04, and two Top-10 wins since 2011-12
- Be Purdue's first home ranked win since Jan. 20, 2019 vs. No. 25 Indiana
- Mark three straight ranked wins for the first time since 2000-01

KG QUICK HITS**HEAD COACH KATIE GEARLDS**

- Born - Oct. 26, 1984 (38 years old)
- Second season as head coach at her alma mater
- Hired as associate head coach on March 26, 2021
- Elevated to head coach on Sept. 16, 2021
- 10th season as a head coach, second at Purdue
- Six-year professional basketball career
- College - Purdue '07
- High School - Beech Grove '03

AT PURDUE (2021-PRESENT)

- Went 17-15 in opening campaign, posting a 10-win improvement, the best jump by a first-year head coach at Purdue
- Head coach just 47 days before the 2021-22 season began
- Announced as the associate head coach on March 26, 2021, as part of a succession plan that, originally, would see her take over the head seat for the 2022-23 campaign

AT MARIAN (2013-2021)

- Went 228-50 (82%) over eight seasons at Marian in the NAIA
- Won back-to-back NAIA National Championships in 2016 and 2017
- Named NAIA National Coach of the Year three times (2016, 2017, 2020)

PROFESSIONAL CAREER (2007-2013)

- Played six professional seasons across the WNBA, Spain, Greece, Portugal and Slovakia
- Went 7th overall to the Seattle Storm in the 2007 WNBA Draft, the highest pick in program history.

AT PURDUE (2004-07)

- 2007 All-America, 4-time All-Big Ten selection, 2007 Big Ten champ
- Tallied 1,974 points, 238 3-pointers and 103 wins at Purdue
- Four NCAA Tournament appearances and a 2007 Elite Eight

AT BEECH GROVE HIGH SCHOOL

- 2003 3A Indiana State Champion, Indiana Miss Basketball
- 2,521 career points, sixth in state history, averaging 30.1 points
- 2003 McDonald's All-America Game MVP, alongside LeBron James

LAST TIME OUT

- For the first time in program history, Purdue knocked off a top-5 team on the road with a 73-65 win over No. 2 Ohio State.
- Purdue knocked down 13 3-pointers in the win as Abbey Ellis and Cassidy Hardin evenly split 10.
- After Ohio State erased a 17-point lead to tie it at 58-58 with five minutes to go, the Boilermakers went on a 7-0 run to seal the win.
- Ellis was electric with 26 points to lead all scorers.
- Purdue turned 15 Ohio State turnovers into 22 points.

STARTING LINEUPS

Lineup (Record)	Games
1. Layden, Terry, Petree, Harper, Hardin (8-2)	1-10
2. Terry, Petree, Harper, Hardin, Ellis (5-1)	11-13, 19-21
3. Terry, Petree, Harper, Hardin, Smith (1-1)	14-15
4. Terry, Harper, Layden, Ellis, Smith (0-1)	16
5. Terry, Harper, Layden, Ellis, Learn (1-1)	17-18

Player	19	20	21	22	23	Total	Record [^]
Abbey Ellis	-	29*	23*	31	9	92*	24-17
Cassidy Hardin	3	8	-	31	18	60	39-21
Caitlyn Harper	3*	5*	10*	32*	21	69*	15-6
Ainhua Holzer	-	-	-	-	-	-	-
Madison Layden	-	-	21	28	13	62	31-61
Ava Learn	-	-	-	-	2	2	1-1
Lasha Petree	12	29	27	26	18	112	14-4
Addison Potts	-	-	-	-	-	-	-
Jayla Smith	-	-	-	1	3	4	1-3
Lilly Stoddard	-	-	-	-	-	-	-
Jeanae Terry	-	11*	23*	32	21	87*	32-21
Rickie Woltman	-	-	-	22	-	22	11-11

* includes starts at previous school | [^] Record at Purdue

BOILER NOTES**BOILERMAKER BASKETBALL**

- Purdue Women's Basketball is in its 48th season in 2022-23 with an all-time record of 919-532. Last season, Purdue became the 40th program in NCAA Division I history to reach 900 wins and ranks fifth in all-time victories among current Big Ten teams.
- The Boilermakers are the only team from the Big Ten to win a national championship, hoisting the title in 1999.
- The program has reached the NCAA Tournament 26 times with 12 Sweet 16s, eight Elite 8s, three final fours and a trio of national championship game appearances.
- In addition to its NCAA success, Purdue owns the Big Ten record for most tournament titles with nine.

KG ERA YEAR 2

- With a full offseason to prepare for the 2022-23 campaign, head coach Katie Gearlds is in her second year at her alma mater.
- The Boilermakers already posted a 9-1 record in non-conference play, the best mark since 2003-04 and tied for the third best in program history.
- Taking over the reins of the program a mere 47 days ahead of the season last year, Gearlds converted Purdue into a fast-paced, let-fly offense that smashed the program record for 3-pointers made and attempted.
- After the program won just seven games in 2020-21, Gearlds guided the Boilermakers to 17 wins in her initial campaign, marking the biggest win improvement by a first-year head coach at Purdue.
- In the second game against a ranked opponent under Gearlds, Purdue snapped a 19-game skid against AP Top 25 teams with a 66-61 win over No. 17 Florida State at the St. Pete Showcase.
- Gearlds took the Boilermakers back to the postseason for the first time since 2017-18, reaching the second round of the WNIT.
- Purdue's 10-2 mark in the non-conference in 2021-22 was the second best by a first-year head coach in program history.

SELLING OUT MACKAY

- For the third time in program history and the first since 2000, Mackey Arena sold out for a women's basketball game.
- Following renovations of Mackey Arena, the new attendance number grew to 14,876.
- The attendance figure will set a new record for the program, as well as mark the 16th highest-attended game in Big Ten history.
- The crowd will also be the third largest in the nation this season behind Missouri at South Carolina (15,444) and Florida at Oklahoma (19,236).
- Purdue will be the fifth Big Ten team to go over 10,000 in attendance this season (Michigan, Maryland, Iowa, Indiana).
- Good for the program. Good for the rivalry. Good for the game.

Purdue Women's Basketball Sellouts

Date	Opponent	Result	Attendance	Top Scorer
2/5/2023	#4 Indiana			
2/27/2000	Iowa	W, 73-59	14,123	Katie Douglas - 24
2/14/1999	Ohio State	W, 88-58	14,123	Camille Cooper - 19

A TOUGH STRETCH

- Purdue is in a stretch of three straight games against ranked opponents in No. 22 Illinois (W, 62-52), No. 2 Ohio State (W, 73-65) and No. 4 Indiana.
- The last time Purdue faced three straight ranked teams in the regular season came against No. 4 Notre Dame, No. 20 LSU and No. 14 Stanford.
- It is the first time Purdue has played three consecutive league games against ranked clubs.

MILESTONE WATCH

- Lasha Petree needs 54 points to join the 2,000-point club.
- Abbey Ellis is 76 points away from 1,500 for her career.
- Cassidy Hardin is 33 3-pointers away from 200 for her career, which would make her the fifth Boilermaker to join that club.
- With 10 points against Illinois, the Caitlyn Harper crossed the 1,500-point plateau for her career.
- Jeanae Terry joined the 500-assist club for her career with a pair of dimes against Nebraska.

BOUNCING THE BUCKEYES

- For the first time in program history, a phrase that's truly remarkable when thinking about the history of Purdue Women's Basketball, the Boilermakers defeated a top-5 opponent on the road when they knocked off No. 2 Ohio State.
- Purdue unleashed a barrage of 3-pointer, connecting on a season-high 13, while holding the Buckeyes to just 7-of-28 from behind the arc.
- Ohio State entered the game as the top team in the nation in steals. The Boilermakers kept that number down to five, while flipping 15 Buckeye turnovers into 22 points.
- Purdue built a 17-point lead in the third quarter, only for Ohio State to tie the game with five minutes to play in the fourth. Madison Layden and Abbey Ellis combined for a 7-0 run that put the game out of reach in the final minutes.

DOWN GO THE RANKED ILLINI

- Opening a stretch of three straight games against a ranked opponent, the Boilermakers put on a masterclass on defense and the glass to defeat No. 22 Maryland 62-52.
- The Boilermakers earned their first road ranked win since 2018 against No. 10 Maryland.
- Purdue's defense held the hottest 3-point shooting team in the Big Ten to just 15.4% from distance.
- Abbey Ellis (16 points) and Jeanae Terry (10 points, 14 rebounds) teamed up on countless plays to stifle any Illinois comeback and silence the State Farm Center.
- Strangely enough, Purdue did not attempt a free throw until the final minute of the game. The Boilermakers finished 5-of-6 at the line to seal the win.

HONOR ROLL FOR ABBEY

- Abbey Ellis garnered her first Big Ten Honor Roll appearance as a Boilermaker after leading Purdue in scoring in both its wins over ranked opponents.
- The Australian averaged 21 points and four rebounds per game, while shooting 60% from the field and 58.3% from outside, in the wins over No. 22 Illinois and No. 2 Ohio State.
- Against the Illini, Ellis went for 16 points on 6-of-9 shooting with a pair of triples.
- Ellis exploded against the Buckeyes for 26 points, including a quintet of 3-pointers.

RANKED MATCHUPS

- Head coach Katie Gearlds guided Purdue to back-to-back ranked wins for the first time since 2018.
- With a 73-65 win over No. 2 Ohio State in Columbus, the Boilermakers tallied their first ever top-five win on the road.
- The Boilermakers picked up their first ranked win of the season against No. 22 Illinois in January, a 62-52 decision.
- Purdue is 3-9 in ranked games under Gearlds.
- Purdue fell on a 3-point buzzer beater earlier this season to No. 20 Maryland at Mackey Arena, 77-74.
- Purdue snapped the program's 19-game skid to ranked teams with a 66-61 win over No. 17 Florida State last season.
- Gearlds was 23-22 against ranked teams during her playing days in West Lafayette. Her highest ranked win was over No. 5 Kansas State as a freshman in 2003.

ELITE COMPANY

- Jeanae Terry is in elite company as one of a select group of players with over six points, rebounds and assists per game.

	School	PPG	RPG	APG
Jeanae Terry	Purdue	7.0	8.0	6.9
Olivia Miles	Notre Dame	15.3	7.2	7.1
Caitlin Clark	Iowa	27.8	7.9	7.9

BOILER NOTES**OUR AUSSIE, ABBEY**

- After coming off the bench for the majority of non-conference action, Abbey Ellis has picked up her output in Big Ten play.
- Ellis sits second on the team with 11.9 points per game, with 12.8 as a starter and 11.3 points per game coming off the bench.
- The Australian international is 24th in the nation and first in the Big Ten with a 88.7% free throw mark on the year.
- She has finished in double figures in 11 games with four outings of 20 points or more.
- Ellis dropped a season-high 29 points against SIUE, before going for 24 and 20 against Northwestern and Nebraska in back-to-back games.
- She earned a spot on the Big Ten Honor Roll with 21 points and four rebounds per game, while shooting 60% overall and 58% from three in the wins over No. 22 Illinois and No. 2 Ohio State.
- Ellis was one of three players in the nation to average 15 points per game and shoot 70 FG%, 60 3PT% and 90 FT% (17 ppg, 71.4% fg, 66.7% 3pt, 100% ft) in the first two weeks of the season.

TRANSFER TROUBLEMAKERS

- Lasha Petree and Caitlyn Harper have quickly become impact players for the Boilermakers.
- The duo set the tone in the exhibition with 36 combined points.
- Both were prolific scorers at their previous institutions and have provided a boost to the Purdue offense.

Games with Harper or Petree as a Leading Scorer:	12
Games either Harper or Petree in double figures:	20
Games both Harper or Petree in double figures:	8
Harper/Petree Combined Season Average:	25 PPG
Highest Combined Game:	40 2x last vs. Syracuse (H-9, P-31)

NATIONAL NAE

- Jeanae Terry opened the season with two non-point double-doubles, the first in Purdue history.
- Terry was the first player in the country to reach 100 assists and rebounds this year.
- Terry has tallied five or more assists in 15 games and 10 or more rebounds six times.
- The Detroit native is 17th in Purdue history with 328 assists.
- With a pair of dimes against Nebraska, Terry crossed the 500-assist plateau for her career.
- Terry has grabbed seven or more rebounds in 16 games.
- Terry has dished out eight or more assists in eight games this season, the most by a Boilermaker in the last 15 seasons.
- Terry is tracking to finish in the Purdue single-season top-10 for assist-to-turnover ratio for the second year in a row, chasing the record of 2.57 held by Katie Gearlds in (2005-06).
- Terry finished her junior year ranked sixth in the Big Ten in assist-to-turnover ratio, third in assists (per game), 11th in rebounds per game and second in triple-doubles.

Jeanae Terry	National	Big Ten	Stat
Assist-to-Turnover	32	6	2.34
Assists	7	2	145
Assists Per Game	9	2	6.9
Rebounds	91	6	169
Rebounds Per Game	97	5	8.0
Steals	62	4	46
Steals Per Game	81	3	2.2

JT THE STAT STUFFER

- Jeanae Terry continues stuff the stat sheet every night as one of the nation's top passers and best rebounding guards.
- Terry has recorded five rebounds and five assists in 14 games, second only to Caitlin Clark's 18 this season.
- Terry is one of six players in the nation to record five points, five assists and five rebounds in 11 or more games this year.
- Terry is on pace to become just the fourth Boilermaker in program history to dish out 150 or more assists in multiple seasons, accomplished by Stephanie White, MaChelle Joseph and Jennifer Jacoby.

NUMBERS TO KNOW IN THE GEARLDS ERA

- Purdue is 26-5 when leading after the first quarter and 30-4 when taking a lead into the fourth quarter.
- The Boilermakers are 21-13 when knocking down seven or more 3-pointers.
- Purdue is 13-9 when shooting 35% from distance or better and 26-7 when shooting 40% or better overall, including 12-1 with a field goal clip above 50%.
- The Boilermakers are 20-3 when outrebounding opponents.
- Purdue is 17-8 when forcing 15 or more turnovers.
- The Boilermakers hold a 23-3 record when scoring 70 or more points, while also posting a 27-5 mark when holding opponents below that mark.

HARPING ON HARPER

- Purdue's second transfer commitment out of the portal landed the 2022 WAC Player of the Year from Cal Baptist.
- She sits third on the team with 11.1 points per game.
- Harper is 1-of-8 players in the Big Ten averaging over 10 points per game while shooting 55% or better from the field.
- The redshirt senior has made her mark on the outside with 14 triples at a 41.2% clip.
- Harper paced Purdue with a season-high 20 points on the road at Penn State to top her 13 games in double figures.
- With her 10 points against Illinois, Harper joined the 1,500-point club for her career, following 1,286 points at Cal Baptist.
- The redshirt senior was named the 11th best transfer from a mid-major to a high-major this offseason by HerHoopsStats.com.
- The Hartland, Wisc., native came to Purdue after leading the WAC in scoring in 2021-22 with 17.7 points per game with a 52.4% shooting clip.
- Harper's honor haul also includes 2022 CoSIDA Academic All-America, 2021-22 WAC Player of the Year, 2021 WAC Tournament MVP.
- Hailing from a basketball family, Harper's father Dale played at Bemidji State and her sister Alaina currently plays for Grand Canyon.

SPLASH ZONE

- Following a record-breaking 3-point barrage last season, head coach Katie Gearlds has an even deeper roster to shoot the 3-ball.
- Purdue obliterated the single-game and season marks for 3-pointers made (239) and attempted (738) during 2021-22.
- Hardly surprising, when you consider that Gearlds won the 2007 College Slam 3-Point Contest on the men's and women's side.
- Gearlds would also not hesitate to tell you that she could still out shoot all of them today.

Name	Season 3-Pointers	Career 3-Pointers
Abbey Ellis	28	149*
Cassidy Hardin	43	197
Caitlyn Harper	14	82*
Madison Layden	28	136
Lasha Petree	30	244*
Addison Potts	-	-
Jayla Smith	13	29
Jeanae Terry	1	34*
Totals	157	871

*Includes Previous School

MULTI-HEADED MONSTER

- The Boilermakers pose a problem to every team they face this year - who are you going to stop?
- Head coach Katie Gearlds has a multitude of scoring options at her disposal, as three different players have led the team in scoring this season.

Points Leaders	Games	Record	Season High
Abbey Ellis	6	4-2	29 vs. SIUE
Caitlyn Harper	3	2-1	20 at Penn State
Madison Layden	2	0-2	16 vs. Michigan
Lasha Petree	9	7-2	31 vs. Syracuse
Cassidy Hardin	2	2-0	18 vs. Indiana State

INDIANA MISS BASKETBALL

- Jayla Smith is the 10th Indiana Miss Basketball to play at Purdue, winning the award in 2021 after a senior campaign of 19.5 points and 4.6 steals per game at Lawrence North.
- The long history of Purdue welcoming the state's top player extended back to 2003, when Katie Gearlds became the fifth honoree to pick West Lafayette.
- Madison Layden nearly added to the tally in 2020, coming in second.
- Purdue holds the record for most Indiana Miss Basketball winners, followed by Indiana, Notre Dame, Tennessee tied for second with four.

BOILERMAKER MISS BASKETBALL WINNERS

Year	Name	High School	Year	Name	High School
1984	Sharon Versyp	Mishawaka	1991	Jennifer Jacoby	Rossville
1995	Stephanie White	Seeger	1998	Kelly Komara	Lake Central
2003	Katie Gearlds	Beech Grove	2005	Jodi Howell	Alexandria
2008	Brittany Rayburn	Attica	2010	Courtney Moses	Oak Hill
2017	Karissa McLaughlin	Homestead	2021	Jayla Smith	Lawrence North

THE WORLD NEEDS MORE

- Head coach Katie Gearlds has placed an emphasis on returning Purdue Women's Basketball back to the national stage.
- To reach that goal, the program's new culture is centered around success on and off the court.
- Dedicated to empowering student-athletes, Gearlds posed a question to the players ahead of the season. The answers are displayed on the backs of the Boilermakers' shooting shirts.

What does the world need more of?

Katie Gearlds — Hope	Beth Couture — Compassion
Micheal Scruggs — Faith	Alex Guyton — Understanding
Anastacia Kirby — Freedom	Jaelen Nice — Faith
Lakan Hasser-Smith — Trust	Abbey Ellis — Courage
Cassidy Hardin — Love	Caitlyn Harper — Hope
Ainhwa Holzer — Wisdom	Madison Layden — Compassion
Ava Learn — Love	Lasha Petree — Jesus
Addison Potts — Love	Jayla Smith — Justice
Lilly Stoddard — Faith	Jeanae Terry — Genuineness

Rickie Woltman — Acceptance

RANDOM ODDS AND ENDS

Name	Consecutive Made Free Throws	Straight Games with a Three	Consecutive Starts
2 - Holzer	-	-	-
3 - Smith	5	-	-
5 - Hardin	5	1	3
10 - Terry	3	-	53
11 - Petree	1	-	3
14 - Learn	15	-	-
23 - Ellis	3	2	6
30 - Potts	-	-	-
31 - Stoddard	-	-	-
33 - Layden	4	1	-
34 - Harper	11	1	59*
35 - Woltman	3	-	-

Opening Tips	Won-Lost	Record in Games
Ava Learn	0-2	1-1
Lasha Petree	6-12-1	13-5
Jayla Smith	0-1	0-1

Scoring First	2	3	FT	Record in Games
Cassidy Hardin	1	3		3-1
Caitlyn Harper	2	1		2-1
Madison Layden	2	3		5-0
Lasha Petree	5	1		5-1
Jayla Smith	1			0-1
Jeanae Terry	2			0-2

PURDUE AT MACKEY ARENA

Broke Ground: July 1965 | First Game: Dec. 2, 1967 | Capacity: 14,876
 First Women's Game: Dec. 2, 1975 | Purdue 78, Illinois 74
 Gearlds Overall: 19-9 | Non-Con: 13-1 | BIG: 6-8
 Purdue Overall: 489-175 | Non-Con: 246-71 | BIG: 243-104
 Home Wins vs. Ranked Teams: 53

LARGEST CROWDS OF KG ERA

Attendance	Date	Opponent	Result
8,005	1/16/22	No. 5 Indiana	L, 73-78 (OT)
5,457	12/21/21	North Alabama	W, 86-53
5,003	1/21/23	Minnesota	W, 75-56
4,811	2/27/22	Wisconsin	L, 63-62
3,552	1/3/23	Wisconsin	W, 73-61

BIG TEN STANDINGS

	Big Ten	Overall	Streak
Indiana	11-1	21-1	W9
Iowa	10-1	18-4	W7
Ohio State	9-3	20-3	W1
Maryland	9-3	18-5	L1
Michigan	8-4	18-5	W2
Illinois	7-5	17-6	L1
Purdue	6-5	15-6	W3
Nebraska	5-6	13-9	W1
Penn State	4-8	13-10	W1
Michigan State	3-8	11-11	L2
Rutgers	3-8	12-10	L2
Wisconsin	2-9	7-16	L2
Minnesota	2-9	9-13	L3
Northwestern	1-10	8-14	L1

NATIONAL RANKINGS

	National	BIG	Stat
Assist-to-Turnover	58	7	1.06
Assists per Game	27	6	16.7
Blocked Shots per Game	147	10	3.2
Field-Goal %	22	6	46.2
Field-Goal % Defense	87	3	38.1
Fouls Per Game	131	4	16.3
FT Made Per Game	202	12	16.1
FT Attempts Per Game	65	6	75.2
Fouls Per Game	158	12	12.1
Rebound Margin	154	9	1.5
Defensive Rebounds Per Game	63	6	27.5
Offensive Rebounds Per Game	325	14	8.8
Rebounds Per Game	198	11	36.3
Scoring Defense	202	5	64.8
Scoring Margin	86	8	8.1
Scoring Offense	59	9	72.9
Steals Per Game	179	9	7.8
3-Point Attempts Per Game	93	5	21.8
3-Point Percentage	64	7	34.3
3-Point Percentage Defense	129	6	29.9
3-Pointers Per Game	64	5	7.5
Turnover Margin	196	10	-24
Turnovers Forced Per Game	230	10	15.5
Turnovers Per Game	157	8	15.7
Winning Percentage	63	7	71.4

INDIVIDUAL NATIONAL RANKINGS (TOP-50)

TOP 50 RANKINGS	National	BIG	Stat
Abbey Ellis			
Free Throw Percentage	24	1	88.7
Jeanae Terry			
Assist-to-Turnover	32	6	2.34
Assists	7	2	145
Assists Per Game	9	2	6.9

BOILER NOTES**LAYDEN IS LITERALLY EVERYWHERE**

- Junior Madison Layden continues to be an all-around producer with 71 points, 3.2 assists and 4.2 rebounds per game.
- The second-year captain has recorded a steal in 58 of her 71 career games.
- Layden moved into the program's top-15 for career 3-pointers, currently 15th with 134 triples.
- The junior stepped up in the fourth quarter against Ohio State to score seven of her 10 points, including five straight after the Buckeyes tied the game at 58-58 with five minutes to play.
- Layden connected on a quartet of triples against Michigan to score a season-high 16 points.
- She went 5-of-8 from outside against Florida State for 15 points.
- Layden missed the Illinois State and Texas A&M games through illness. She returned against Iowa to score eight points and hit a pair of three off the bench.
- Last year, Layden was one of just 10 players nationally to accumulate 130 rebounds (134), 80 assists (80), 60 three-pointers (63) and 45 steals (49).
- Layden was tabbed All-Big Ten honorable mention last year and All-Big Ten Freshman Team in 2020-21.
- She hit double figures in 21 of 29 outings last year.

LASHA "JUST A BUCKET" PETREE

- Fifth-year senior Lasha Petree wasted no time cementing herself as one of Purdue's go-to options on offense.
- Petree was named the No. 9 transfer this season by ESPNW.
- Petree leads the team with 13.9 points per game, while shooting 43.2% with 30 triples.
- She has scored in double figures in 15 games this season.
- She has gone for 20 or more points in five outings, including a season high of 31 against Syracuse.
- The Detroit native is 17th in Division I among active career scorers.
- Petree was tabbed as one of the top transfers this year by HerHoopStats.com
- At Rutgers, the Detroit native totaled 8.3 points per night and hit 38 3-pointers at a 37.6% clip.
- Her final season at Bradley saw her average 18 points per game with 53 triples to earn All-MVC honors for the second straight year and appear on the Naismith Award Watch List.
- Petree joined Purdue out of the transfer portal following three years at Bradley and last year at Rutgers.

HOT HANDS

- Purdue has shot 50% or better in seven games, and ranks 22nd nationally and sixth in the Big Ten with a clip of 46.2%.
- Purdue is 13-4 when shooting 40% or better this season.
- The Boilermakers' season-best 60.7% mark was against Harvard.
- Starting the season with a clip of 45% or better in the first five outings, Purdue was ranked No. 1 in the nation.

MAKING IMPROVEMENTS

- Even with 47 days of preparation, the Boilermakers took strides to improve production and limit opponent success during the 2021-22 season.

Stat	20-21	21-22	22-23
Points Per Game	66.2	69.2	72.9
Opp. Points Per Game	73.5	67.3	64.8
Field Goal Pct.	41.4	42.2	46.2
Opp Field Goal Pct.	44.7	41.5	38.1
3-Pts Per Game	6.2	7.5	7.5
Opp. 3-Pts Per Game	5.5	4.8	6.7
Rebounds Per Game	35.3	35.8	36.3
Assists Per Game	13.9	15.8	16.7
Turnovers Per Game	17.3	15.1	15.7
Steals Per Game	7.3	7.0	7.8
Blocks Per Game	2.6	3.9	3.2

DROPPING DIMES

- Head coach Katie Gearlds wants her team to run and shoot before turning the ball over.
- Led by Jeanae Terry's 145 assists, Purdue is averaging 16.7 helpers per game to rank 27th nationally and sixth in the Big Ten.
- Madison Layden sits second on the team with 61 helpers.
- Terry is sixth in the Big Ten with a 2.34 assist-to-turnover ratio.
- The 2022-23 Boilermakers are on pace to crack the program's single-season top 10 in assists per game.
- The Boilermakers have made it an emphasis to make the extra pass recording five games with 20 or more assists and two games with an assist-to-turnover ratio better than 2-1.

ELLIS' ENERGY

- In her second season in West Lafayette, Abbey Ellis has brought Mackey Arena to its feet countless times with her circus shots and impact 3-pointers.
- She quickly became a fan favorite in West Lafayette last year, earning All-Big Ten honorable mention in her first campaign.
- Purdue's first Australian rocks a ribbon in her hair during games from a selection that her mother sends her to wear.
- The senior has also gained a sizeable following on TikTok \ @abbey_22 with videos shared by Barstool Sports, Slam and more.

INSIDE-OUT

- While the Boilermakers continue to light it up from the outside, Purdue's offense has worked the ball inside this year, averaging 32.9 points per game in the lane with five games over 40.
- After holding opponents to just 4.8 3-pointers per game last year, that number has ventured up to 6.5 per night, as opponents have had to find space outside the lane to score.
- Purdue's interior defense has improved to keep teams to 25.3 points per game in the paint, outscoring teams 690-532 in the lane on the year.

JAYLA'S SOPHOMORE JUMP

- Jayla has tallied 8.2 points per game this season with eight games in double figures.
- Smith joined the starting lineup for the first time this season against Wisconsin.
- Smith made significant strides during the offseason to set up a more important role during her sophomore season.
- She matched her career high in her sophomore debut with 16 points against Marshall, including a pair of clutch 3-pointers to seal the win.
- Smith scored over 1,000 points, won one IHSAA 4A State Championship (2020 over Layden's Northwestern) and was named Indiana Miss Basketball during her prep career.

DOCTOR, DOCTOR GIVE ME THE THREE

- Cassidy Hardin's final year in West Lafayette averaging 72 points per game with 43 of her 52 made field goals coming from behind the arc.
- In her career, Hardin has made 197 3-pointers and just 32 2-point shots.
- She is fifth in Purdue history in career 3-pointers. The fifth-year senior needs just three triples to become the fifth Boilermaker to join the 200-3-point club.
- Hardin returned for a final year in West Lafayette as a fifth-year senior with the extra year of eligibility by the NCAA. Hardin came back after deferring her start to IU Medical School to next fall with the goal of getting Purdue to the NCAA Tournament.
- A do-anything-for-the-program player, Hardin has one of the quickest catch and releases in the Big Ten. She also has no program playing post defense or laying her body on the line as the team's leader in charges taken. Hardin jumped into the starting lineup for the first time in her career last season and connected on a career-high 78 3-pointers at a 33.5% clip.
- The Bargersville, Ind., native graduated with a degree in honors biochemistry in May of 2022. Her current specialty she would like to pursue is anesthesiology.

BOILER NOTES**GONNA LEARN TODAY**

- Learn is scoring 3.5 points in 10.3 minutes per night.
- Learn made her first career start on the road at Northwestern.
- The sophomore gave the Boilermakers a huge spark in their come-from-behind win over Oklahoma State, scoring 12 points and going 8-of-10 at the line.
- Against Wisconsin, Learn went for 12 points on 5-of-5 shooting from the field and 2-of-2 free throws. Ten of her points came over a five-minute span in the third quarter.
- Learn added another spark against Penn State with eight points in a career-high 23 minutes of action.
- After seeing her minutes drive up at the end of her freshman season, Learn embraced her role as an all-hustle utility player on the court and electric factory on the bench.

IN THE NON-CON

- The Boilermakers wrapped up non-conference action with a 9-1 record, the best mark since Katie Gearlds was a freshman in 2003-04 (10-1)
- The 9-1 clip tied for the third best in program history with teams from 2001-02, 1998-99, 1990-91 and 1989-90. The program's best mark was 11-1 in 2002-03.
- Lasha Petree paced Purdue with 18.2 points per game with Abbey Ellis and Caitlyn Harper adding 11.2 points each.
- Gearlds now has an 18-3 mark in non-conference play at Purdue. Her 85.7% winning clip is second in program history behind Marsha Reall, who went 8-1 in the 1986-87 season.

OT BOILERS

- Purdue has played in two overtime games under head coach Katie Gearlds with a 1-1 mark. The Boilermakers outlasted Michigan State this season 76-71 in an extra period.
- The Boilermakers are 34-29 all-time in overtime games.
- As a player, Gearlds was 5-2 when needing an extra frame.

WISE WOLTMAN

- Rickie Woltman has provided big minutes throughout the season off the bench inside.
- The senior is averaging 3.6 points and 3.3 rebounds 13 minutes per game.
- With Harper in foul trouble, Woltman fell two rebounds shy of a double-double against Minnesota, going for 10 points and eight boards in 24 minutes of work.
- Woltman, a starter in 22 games last year, completely bought into her new role off the bench during the offseason to provide a one-two punch with Harper.

START UNKNOWN, FINISH UNFORGETTABLE

- Jeanae Terry wasted little time adding to her historic resume with the first two non-point double-doubles in Purdue history.
- Going for 10 assists and 10 rebounds against Marshall, Terry is just the fifth player from the Big Ten since 2009 to achieve such a feat.
- The senior did it again against Marshall with 10 rebounds, 10 assists and nine points, becoming just the fifth player in the nation over the last 15 seasons to record multiple non-point triple-doubles.
- Terry became the 13th Boilermaker in program history to go for a double-double in the season opener.
- The senior is the first Boilermaker to record multiple triple-doubles in a season and a career with two last year.
- Terry is fueled by her personal mantra - Start unknown. Finish unforgettable.
- Only five players in the nation have record two non-point double-doubles since 2009.

Player	Team	Date,Opp	Stat
Jeanae Terry	Purdue	11/10/22, Marshall	10r, 10a
Jaz Shelly	Nebraska	2/3/22, Penn State	12r, 11a
Samantha Logic	Iowa	11/16/14, Robert Morris	14r, 11a
Samantha Logic	Iowa	12/28/12, Texas	15r, 14a
Lacey Simpson	Illinois	11/18/09, Central Mich.	16r, 11a

TRIPLE-DOUBLE HISTORY

- Jeanae Terry stands alone in Purdue history, men's & women's basketball, as the only player to ever record multiple triple-doubles in a career.
- The junior recorded the fourth triple-double in program history with 10 points, 11 rebounds and 12 assists against Minnesota, made more impressive by not committing a turnover in the win.
- Her first career triple-double came against Miami in December when she went for 11 points, 12 rebounds and 10 assists.
- In both of her triple-double performances, the last category Terry hit double digits in was points.
- Terry is tied for fifth in Big Ten history.
- Terry now sits with Stephanie White and Danielle Campbell as the only Boilermakers in triple-double club.

PURDUE TRIPLE-DOUBLES

Name	Opponent, Date	Points	Rebounds	Assists/Blocks
Jeanae Terry	Minnesota, 1/27/22	10	11	12 asts.
Jeanae Terry	Miami, 12/19/21	11	12	10 asts.
Stephanie White	Indiana, 1/22/99	20	11	10 asts.
Danielle Campbell	Butler, 11/17/07	12	11	11 blks.
Joe Barry Carroll*	Arizona, 12/10/77	16	16	11 blks.

*BoilerBall all-time leader in rebounds and blocked shots.

THE FIRST FIVE, THE KG 5 (NAME STILL UNDER CONSIDERATION)

- On National Signing Day, head coach Katie Gearlds welcome five high school seniors to the Boilermaker family, including two ESPNW Top 100 players.
- The class was ranked No. 21 by ESPNW.
- The first recruiting class that Gearlds had a full year to study, Mary Ashley Groot, McKenna Layden, Rashunda Jones, Sophie Swanson and Emily Monson will join Purdue in the summer of 2023.
- Mary Ashley Groot is a 6-2 forward from New York City tabbed a four-star prospect and part of Prospect Nation's Elite 150 and No. 97 by ESPNW
- Rashunda Jones is a 5-8 guard from Washington, Ind., earning four stars, a 93 rating and the No. 79 player by ESPNW.
- Sophie Swanson, a 5-10 guard from Barrington, Ill., was named the 2022 Illinois Miss Basketball after leading Barrington High School to Illinois runner-up honors.
- Emily Monson was named a Prospects Nation Elite 150 member as a 6-0 guard out of Murfreesboro, Tenn.
- The Layden legacy at Purdue will continue with McKenna, a 6-1 guard from Kokomo, Ind., and the little sister of Madison also garnered Elite 150 status from Prospect Nation.
- Monson, Jones, Layden and Groot were all tabbed McDonald's All-America Game nominees.

BTN PREDICTIONS

- Ahead of the season, Big Ten Network's analyst Meghan McKeown, unveiled her top-20 players and best transfers.
- McKeown tabbed Madison Layden No. 18 in her preseason top-20 impact players in the league.
- 2022 WAC Player of the Year Caitlyn Harper was also picked as one of the top-11 transfers to the Big Ten.
- On the eve of the regular season, McKeown highlighted the Boilermakers as the top sleeper team in the conference.

A HISTORY OF WINNING

- Putting on the Old Gold & Black carries with it a standard that was set more than three decades ago when the Boilermakers lifted their first Big Ten title in 1991.
- Purdue is the only Big Ten team to win a national championship in women's basketball.
- Despite not reaching the Big Dance since 2016-17, the Boilermakers' 26 NCAA Tournament appearances are tied with Ohio State for second in the Big Ten behind Iowa's 28.
- With its last Big Ten Tournament title coming in 2013, Purdue owns the record for most league tourney championships with nine (1998-99-2000-03-04-07-08-12-13)
- Purdue has won seven Big Ten regular season championships, good for fourth in the league, with the last one coming in 2002.

PURDUE SPECIALTY STATS (PURDUE/OPP)

	Off TO	Paint	2nd-Ch.	Fast B.	Bench
Marshall	13-6	28-30	12-6	13-5	16-9
Murray State	17-6	46-24	9-9	15-6	23-13
SIUE	42-7	58-22	12-8	23-2	44-23
Indiana State	15-23	34-18	1-7	21-7	26-25
Harvard	14-11	46-24	10-15	10-4	31-14
FSU	20-16	24-40	14-15	14-9	20-24
Okla. State	14-7	28-24	17-4	8-10	29-4
Syracuse	13-16	54-28	9-17	13-8	33-3
MSU	21-18	34-30	15-9	18-15	23-17
Maryland	19-25	34-28	6-17	2-15	26-23
Illinois State	14-10	32-22	9-7	8-3	21-12
Texas A&M	14-9	28-20	7-13	9-2	8-6
Iowa	15-8	24-28	7-13	7-6	19-19
Wisconsin	30-12	40-24	8-11	12-8	24-6
Penn State	14-11	24-26	6-10	6-15	12-19
Michigan	10-16	24-32	6-20	11-0	13-17
NU	20-8	26-22	9-0	12-13	21-14
Nebraska	11-14	20-36	11-14	11-7	19-23
Minnesota	20-2	34-20	6-11	0-3	29-5
Illinois	11-12	32-22	10-8	6-4	17-5
Ohio State	22-14	20-32	6-14	7-9	12-6
Indiana					
Rutgers					
NU					
MSU					
Indiana					
Penn State					
Minnesota					
Totals	370-240	690-532	190-228	226-151	466-287
Averages	17.6-11.4	32.9-25.3	9.0-10.9	10.8-7.2	22.2-13.7

PURDUE SCORING BY CLASS

	Fr.	So.	Jr.	R-Sr./Sr.	5th
Marshall	-	16	13	22	22
Murray State	-	12	15	37	26
SIUE	2	9	3	65	21
Indiana State	-	18	10	14	35
Harvard	2	10	-	41	32
FSU	-	3	15	31	26
Okla. State	-	15	6	29	21
Syracuse	-	18	4	31	34
MSU	-	8	9	30	29
Maryland	-	4	4	41	25
Illinois State	-	15	-	30	19
Texas A&M	-	8	-	29	22
Iowa	-	9	8	19	32
Wisconsin	-	20	-	32	21
Penn State	-	19	-	26	15
Michigan	-	16	16	17	10
NU	-	13	8	39	5
Nebraska	-	13	-	36	15
Minnesota	-	13	6	30	26
Illinois	-	6	9	38	9
Ohio State	-	2	10	46	15
Indiana					
Rutgers					
NU					
MSU					
Indiana					
Penn State					
Minnesota					
Totals	4	247	136	683	460
Averages	0.2	11.8	6.5	32.5	21.9

HITTING ONE HUNDRED

- The Boilermakers put up 100 points in their 42-point victory over SIUE, the second century game
- Four different Boilermakers finished in double figures, led by Abbey Ellis' 29 points, the most by a Purdue player ever off the bench.
- Purdue shot a blistering 56.5% from the field, only going 5-of-17 from deep, while matching SIUE's total output with 58 points in the paint.
- The Boilermakers flipped 25 Cougar turnovers in 42 points.
- The Boilermakers scored 101 points against Denver on Dec. 12, 2021, the first 100-point performance since scoring 109 against Central Michigan on Dec. 28, 2013

BALLIN' IN MEXICO

- The Boilermakers posted a 2-1 record during their time at the Cancun Challenge over Thanksgiving weekend with wins over Oklahoma State and Harvard.
- Jeanae Terry and Lasha Petree garnered all-tournament honors.
- Lasha Petree topped 20 points in a pair of games to finish with 19.3 over the three outings at a 47.9% shooting clip.
- Terry went for 8.0 points, 10.7 rebounds and 7.1 assists per game, totaling 22 of Purdue's 55 helpers on the weekend.
- Following a 22-point win over Harvard, the Boilermakers suffered their first setback of the season with a one-point loss to Florida State.
- Gearlds' fired her squad up for the tournament finale, as the Boilermakers rallied from a nine-point deficit in the second half to beat Oklahoma State 71-65, closing the game on an 11-2 run.

WBOF INDUCTEE CAROLYN PECK

- Former Purdue head coach Carolyn Peck was named a member of the Women's Basketball Hall of Fame class of 2023.
- Peck served as Purdue's head coach for two seasons and led the Boilermakers to the 1999 NCAA National Championship, the only Big Ten team to win a women's basketball title.
- Following two seasons in West Lafayette, Peck coached the WNBA Orlando Miracle and at Florida. She also served on staff at Vanderbilt under her former player and Purdue standout Stephanie White.
- Peck has also served as one of the premier women's basketball analysts for ESPN.

IBHOF INDUCTEE KATIE DOUGLAS

- Purdue legend Katie Douglas was named to the Indiana Basketball Hall of Fame Class of 2023 and will be inducted during a ceremony in April.
- Douglas is the 16th Boilermaker to earn the prestigious honor.
- The graduate from Perry Meridian was an Indiana All-Star and guided Purdue to its two national championship game appearances, including the 1999 title.
- Douglas then played in the WNBA, winning the 2012 WNBA title, reaching five All-Star Games and five WNBA All-Defensive Team honors.

Hall of Famer	Class	Hall of Famer	Class
Carmella Martin	2003	MaChelle Joseph	2015
Darlene Zinn	2006	Beth Millard	2015
Debbie Funkhouser	2008	Jennifer Jacoby	2017
Sharon Versyp	2010	Tricia Cullop	2018
Laura Newcomb	2011	Cindy Lamping	2018
Annie Kvachkoff	2013	Pat Grimm*	2019
Brenda Keslay	2014	Stephanie White	2022
Teri Moren	2014	Katie Douglas	2023

FIRST ROUNDERS ON THE SIDELINES

- Head coach Katie Gearlds is on of just seven former top-10 picks in the WNBA Draft to serve as a head coach this season.
- Gearlds was taken seventh overall by the Seattle Storm in 2007, Purdue's highest draft pick.

TOP-10 WNBA PICKS & CURRENT DI HEAD COACHES

Name	School	Year - Pick, Team
DeLisha Milton-Jones	Old Dominion	1999 - 4th, Los Angeles
Dawn Staley	South Carolina	1999 - 9th, Charlotte
Tamika Williams-Jeter	Dayton	2002 - 6th, Minnesota
Kara Lawson	Duke	2003 - 5th, Sacramento
Nicole Powell	UC Riverside	2004 - 3rd, Charlotte
Lindsay Whalen	Minnesota	2004 - 4th, Connecticut
Katie Gearlds	Purdue	2007 - 7th, Seattle
Laura Harper	Towson	2008 - 10th, Sacramento

MVP HEAD COACHES

- Head coach Katie Gearlds is on of just seven former top-10 picks. Prior to her All-American career at Purdue, Gearlds was named the 2003 Indiana Miss Basketball and MVP of the McDonald's All-America Game, alongside LeBron James.

MCDONALD'S ALL-AMERICA MVP & CURRENT DI HEAD COACH

Name	School	Year	Alma Mater
Bobby Hurley	Arizona State	1989	Duke
Jerry Stackhouse	Vanderbilt	1993	North Carolina
Shaheen Holloway	Seton Hall	1996	Seton Hall
Katie Gearlds	Purdue	2003	Purdue

SINGLE-SEASON TURNAROUND

- Katie Gearlds guided Purdue to 17 wins this season after inheriting a squad that won just seven contests in 2020-21 47 days ahead of the year.
- The 10-win improvement is the most by a first-year head coach in program history and tied for the third best overall.

SINGLE-SEASON WIN IMPROVEMENTS

SEASON	WINS	IMPROVEMENT	COACH
1994	13	+13	Linn Dunn
1999	34	+11	Carolyn Peck
2022	17	+10	Katie Gearlds
1981	14	+10	Dr. Ruth Jones
2006	26	+9	Kristy Curry
2016	20	+9	Sharon Versyp

AT THE ALMA MATER

- After an All-American career at Purdue, head coach Katie Gearlds returned to her alma mater in 2021-22 to return the program to national prominence.
- This season, Gearlds is one of 32 coaches in Division I to lead their alma mater.
- She is one of 17 coaches in the six major basketball conferences to lead her alma mater.

Katie Gearlds	Purdue	Lindsay Whalen	Minnesota
Brooke Wychoff	Florida State	Amy Williams	Nebraska
Niele Ivey	Notre Dame	Nicole Powell	Stanford
Felisha Legette-Jack	Syracuse	Robin Harmony	Miami
Krista Gerlich	Texas Tech	Kellie Harper	Tennessee
Jim Flanery	Creighton	Mike Neighbors	Arkansas
Doug Bruno	DePaul	Scott Rueck	Oregon State
Anthony Bozzella	Seton Hall	Adia Barnes	Arizona
Denise Dillon	Villanova		

SENIOR LEADERSHIP

- Purdue's roster features six players classified as a senior (Terry, Ellis, Woltman), redshirt senior (Harper) or a fifth year senior (Hardin, Petree).
- The elder group entered the season with 558 combined games of experience under their belts.
- The six seniors are tied for the most in the Big Ten (including graduate students) with Michigan state, Penn State, Maryland and Ohio State.

MOST SENIORS

School	Senior/Grads	School	Senior/Grads
Purdue	6	Maryland	6
Michigan St.	6	Ohio St.	6
Penn St.	6	Michigan	5
Indiana	4	Iowa	4
Minnesota	4	Indiana	4
Iowa	4	Minnesota	4
Nebraska	3	Illinois	2

NEW YEAR, NEW CULTURE

- The Boilermakers are **ALL-IN** this season under head coach Katie Gearlds. Gearlds, who took over the program a mere 47 days prior last year, had a full offseason to establish a new culture and bring back elite expectations to this storied program.
- On top of spending the full offseason implementing an overhaul of the offense and defensive principles (rather than adjusting on the fly last year), the squad spent the summer building a culture centered on leadership and excellence on and off the court.
- Prior to the first practice of the year, the coaching staff asked the team for goals. The primary goal was taking the next step for the program and return it to the NCAA Tournament.

STARTING FIVE RETURNS

- The Boilermakers brought back their entire starting lineup from 2021-22 with 145 of a possible 160 starts back in West Lafayette.
- Aided by the NCAA waiver following the COVID-19 pandemic, Cassidy Hardin will become just the third player to play in five different seasons in program history.
- The five returners match the most by a Boilermaker squad in the last 10 years, joining the 2019-20 campaign.
- Even with Rickie Woltman, Cassidy Hardin, Jeanae Terry, Madison Layden and Abbey Ellis back for another year in West Lafayette, transfers Lasha Petree and Caitlyn Harper will enter their names into the lineup, meaning Purdue will have an experienced group coming off the bench.

Year	Returning Starters	Starts From Prev. Year	Final Record	NCAA
2013-14	3	97	22-9	Y
2014-15	2	59	11-20	
2015-16	3	94	20-12	Y
2016-17	3	101	23-13	Y
2017-18	2	78	20-14	
2018-19	3	114	19-15	
2019-20	5	170	18-14	
2020-21	3	98	7-16	
2021-22	2	41	17-15	
2022-23	5	145	-	-

2022-23 PURDUE WOMEN'S BASKETBALL GAME NOTES

PURDUE IN THE POLLS

Week	AP	Coaches	NET
Preseason	-	-	-
Week 1	-	-	-
Week 2	-	-	-
Week 3	-	-	-
Week 4	-	-	-
Week 5	RV	-	36
Week 6	-	-	44
Week 7	-	-	38
Week 8	-	-	39
Week 9	-	-	43
Week 10	-	-	48
Week 11	-	-	48
Week 12	-	-	44
Week 13	RV	RV	37
Week 14	-	-	-
Week 15	-	-	-
Week 16	-	-	-
FINAL	-	-	-

SINGLE-GAME RECORDS

SINGLE-GAME POINTS

Overall	41	Katie Gearlds	at Wisconsin	2/18/07
Senior	41	Katie Gearlds	at Wisconsin	2/18/07
Junior	37	MaChelle Joseph	at Michigan State	2/15/91
Sophomore	40	Shereka Wright	at Michigan	2/17/02
Freshman	34	Leslie Johnson	at Vanderbilt	12/5/93

SINGLE-GAME FIELD GOALS

Overall	16	MaChelle Joseph	at Michigan State	2/15/91
Senior	14	Jannon Roland	at Ohio state	1/23/97
Junior	16	MaChelle Joseph	at Michigan State	2/15/91
Sophomore	15	Shereka Wright	at Michigan	2/17/02
Freshman	13	Leslie Johnson	Northwestern	2/27/94

SINGLE-GAME 3-POINTERS

Overall	12	Brittany Rayburn	at Minnesota	1/12/12
Senior	12	Brittany Rayburn	at Minnesota	1/12/12
Junior	7	Karissa McLaughlin	at Michigan State	1/30/20
Sophomore	9	2x, K. McLaughlin	Northwestern	2/17/19
Freshman	6	5x, Madison Layden	at Iowa	1/18/21

SINGLE-GAME FREE THROWS MADE

Overall	16	Shereka Wright	Penn State	1/16/03
Senior	13	2x, Shereka Wright	at Northwestern	2/15/04
Junior	16	Shereka Wright	Penn State	1/16/03
Sophomore	14	3x, Courtney Moses	at Northwestern	1/26/12
Freshman	14	Leslie Johnson	Ohio State	2/13/94

SINGLE-GAME REBOUNDING

Overall	25	Leslie Schultz	at Miami (OH)	12/2/81
Senior	20	Joy Holmes	at Wisconsin	1/27/91
Junior	25	Leslie Schultz	at Miami (OH)	12/2/81
Sophomore	20	Cathey Tyree	at Michigan State	1/11/85
Freshman	23	Natasha Cender	Michigan	2/7/76
Offensive	12	Joy Holmes	Minnesota	2/10/91
Defensive	16	2x, Whitney Bays	at Dayton	12/7/14

SINGLE-GAME ASSISTS

Overall	16	MaChelle Joseph	Northern Illinois	3/22/92
Senior	16	MaChelle Joseph	Northern Illinois	3/22/92
Junior	14	Lisa Jahner	Michigan	3/7/87
Sophomore	12	MaChelle Joseph	New Mexico State	12/29/89
Freshman	11	3x, K. McLaughlin	Penn State	1/28/18

SINGLE-GAME BLOCKS

Overall	11	Danielle Campbell	Butler	11/17/07
Senior	9	Ae'Rianna Harris	at #5 South Carolina	12/15/19
Junior	11	Danielle Campbell	Butler	11/17/07
Sophomore	7	3x, Ae'Rianna Harris	Lamar	11/18/17
Freshman	7	2x, Nora Kiesler	at Penn State	1/30/16

SINGLE-GAME STEALS

Overall	12	Joy Holmes	Minnesota	1/13/89
Senior	9	Michelle Duhart	Michigan State	2/24/00
Junior	10	Cherelle george	South Carolina	11/26/05
Sophomore	12	Joy Holmes	Minnesota	1/13/89
Freshman	8	FahKara Malone	Illinois	2/8/07

BOILER NOTES

• Check out which Boilermakers are climbing the single-season and career charts this year.

CAREER 3-POINTERS

1.	Karissa McLaughlin	244	2018-21
2.	Courtney Moses	240	2011-14
3.	Katie Gearlds	238	2004-07
4.	Brittany Rayburn	201	2009-12
5.	Dominique Oden	193	2017-20
6.	Cassidy Hardin	197	2019-Present
7.	Jodi Howell	188	2006-10
8.	Stephanie White	183	1996-99
9.	Ashley Morrisette	181	2014-17
10.	Ukari Figgs	174	1996-99
11.	KK Houser	167	2010-14
12.	Beth Jones	157	2001-04
13.	MaChelle Joseph	154	1989-92
14.	Kelly Komara	137	1999-02
15.	Madison Layden	134	2021-Present

SEASON ASSISTS

1.	Lisa Jahner	201	1987-88
2.	Jeanae Terry	183	2021-22
3.	April Wilson	179	2015-16
4.	Ashley Morrisette	172	2016-17
5.	Erika Valek	171	2002-03
6.	MaChelle Joseph	167	1991-92
7.	KK Houser	161	2012-13
8.	Stephanie White	160	1997-98
9.	MaChelle Joseph	159	1990-91
	Jennifer Jacoby	159	1993-94
11.	Jennifer Jacoby	158	1994-95
12.	Stephanie White	156	1998-99
13.	MaChelle Joseph	152	1989-90
14.	MaChelle Joseph	159	1988-89
15.	FahKara Malone	148	2006-07
	Jeanae Terry	145	2022-23

CAREER ASSISTS AT PURDUE

11.	Ukari Figgs	409	1996-99
12.	Kelly Komara	402	1999-02
13.	Katie Gearlds	399	2004-07
14.	Ashley Morrisette	370	2014-17
15.	Karissa McLaughlin	362	2018-21
16.	Dominique Oden	345	2017-20
17.	Jeanae Terry	328	2022-Present
18.	Kayana Traylor	311	2019-21
19.	Cindy Lamping	308	1992-95
20.	Courtney Moses	294	2011-14
21.	Shereka Wright	291	2001-04
22.	Carol Emanuel	278	1980-83
23.	Sharika Webb	277	2003-06
24.	Teri Moren	275	1988-91
25.	Lindsay Wisdom-Hylton	273	2005-09

CAREER TRIPLE-DOUBLES

1.	Jeanae Terry	2	2021-Present
----	--------------	---	--------------



KATIE GEARLDS

HEAD COACH | 2ND SEASON AT PURDUE | 10TH SEASON OVERALL | PURDUE '07

@katiegearlds4
@katiegearlds4

Year	Overall	BIG	Non-Con.	BIG Tourney	NCAAs	WNIT	Home	Road	Neutral	vs. Top-25	Unranked
2021-22	17-15	7-11	9-2	0-1	-	1-1	11-6	5-7	1-2	1-6	16-9
2022-23	15-6	6-5	9-1				8-3	5-2	2-1	2-3	13-3
Totals	32-21	13-16	18-3	0-1	-	1-1	19-9	10-9	3-3	3-9	29-12
Pct.	.604	.448	.857	.000	-	.500	.679	.526	.500	.250	.707

RECORD-BREAKING FIRST YEAR

- Katie Gearlds reached the 250-win plateau for her career against Harvard, reaching the feat in 315 career games.

RECORD-BREAKING FIRST YEAR

- The Katie Gearlds era started sooner than expected in 2021-22, when she took over the program a mere 47 days prior to the season opener.
- Despite being thrust into the head chair, Gearlds guided the program on its first step back to national prominence.
- Purdue finished 17-15 on the year, winning 10 more games than the previous campaign. It was the best win improvement by first-year head coach at Purdue and the third best in program history.
- The Boilermakers finished 10-2 in the non-conference, marking the second-best clip by a first-year head coach.
- Purdue snapped a 19-game skid against ranked opposition when Gearlds and the Boilermakers knocked off No. 17 Florida State at the St. Pete Showcase.
- The Boilermakers reached the postseason for the first time since 2017-18, ending the campaign in the second round of the WNIT.
- Abbey Ellis, Madison Layden and Jeanae Terry all garnered All-Big Ten honorable mention.

COACHING EXPERIENCE

- Spent eight seasons taking Marian University winning back-to-back NAIA National Championships in 2016 and 2017.
- Went 228-50 record, an 82% clip with the Knights.
- Three-time NAIA National Coach of the Year, won 10 total Crossroads League titles and made seven appearances in the NAIA Tournament.
- Guided 12 WBCA NAIA All-America selections, compared to just five in the first 37 years of the program's existence.

PROFESSIONAL CAREER

- Played professionally over six seasons
- Spent three seasons in the WNBA with the Seattle Storm,
- Was taken with the seventh overall pick in the 2007 WNBA Draft, the highest selection ever from Purdue
- Two of her closest teammates and friends over the years are WNBA legend Sue Bird and fellow WNBA great and New Orleans Pelicans Vice President of Basketball Operations Swin Cash.

ALL-AMERICAN AT PURDUE CAREER

- Was a three-year starter from 2004-07.
- Ranks fourth in program history with 1,974 points and was the ninth fastest to join the 1,000-point club.
- Named a Legend of Mackey Arena for the 50th season.
- Won two Big Ten Tournament titles and never missed the NCAA Tournament with Gearlds in the squad
- Reached three Sweet 16s and one Elite Eight.
- Set the Purdue single-game record with 41 points at Wisconsin on Feb. 18, 2007, and scored 707 points to tie the single-season program record.
- 2007 Third Team AP All-America WBCA Honorable Mention
- Four-time All-Big Ten and the 2004 Big Ten Freshman of the Year.
- Earned a bachelor's degree in sociology and minored in psychology and communications from Purdue in 2007.

KG Quips

Having a similar swagger she had in her playing days, Gearlds is always good for a quick quip and a motivational word for her players.

- **"All In"** – Gearlds' motto for the 2022-23 season. Developing a new culture.
- **"Let's Ride"** – Gearlds' motto for the 2021-22 season. Have fun, play loose.
- **"Be Tough to Beat"** – Drive to compete, work to improve and stay together.

ONE-OF-A-KIND PREP CAREER

- Attended Beech Grove High School.
- Named the Indiana Miss Basketball in 2003.
- Amassed 2,521 career points, good for sixth in IHSAA history.
- Averaged 30.1 points, 9.4 rebounds, 5.4 assists and 5.1 steals per game to lead Beech Grove High School to the 2003 Class 3A State Championship.
- Nike/WBCA All-America, First Team All-State and the Gatorade Indiana Player of the Year.
- A McDonald's All-American, was named the MVP of the McDonald's All-America Game the same season as a young talent from Akron, Ohio – LeBron James.

ELITE LEADERS

- Gearlds is the highest draft pick in Purdue history, going seventh overall to the Seattle Storm in 2007.
- She is one-of-eight current Division I head coaches who were also a Top-10 WNBA pick.
- The MVP of the 2003 McDonald's All-America Game alongside the boy's game honoree LeBron James, Gearlds is one-of-four former MVPs to be a head coach in 2021-22 and the only women's representative.

INSPIRED BY GREATNESS

- Gearlds has a deep bench of basketball legends who have touched and continue to influence her career.
- One of the few people who can say they've worked with two G.O.A.T.s, Gearlds was the MVP of the 2003 McDonald's All-America Game with LeBron James.
- Sue Bird, her teammate with the Storm and a mentor over the last 15 years, inspired Gearlds to go into coaching.
- She also shared the court in Seattle with Swin Cash (V.P. New Orleans Pelicans), Adia Barnes (Arizona head coach) and Lauren Jackson (owner Melbourne Boomers).
- She competed against Chris Paul in the skills challenge ahead of the 2003 McDonald's All-America Game.

AN INDIANA LEGEND

- One of the best products of Indiana basketball, Gearlds claimed a state title, a Big Ten championship and a national title with programs from the Crossroads State.
- Named Indiana Miss Basketball as a senior at Beech Grove in 2003, Gearlds guided the Hornets to a 3A state championship, setting a state record across all classes with 33 points in the final. Today, she ranks 11th in state history with 2,521 career points.
- As a Boilermaker from 2003-07, Gearlds reached the NCAA Tournament four times, won two Big Ten Tournament titles, sits fourth in Purdue history with 1,974 career points and holds the record for points in a season with 707 with Stephanie White.
- Following a six-year professional career, Gearlds took over the reins at Marian in Indianapolis, posting a 227-49 record over eight years, winning three NAIA Coach of the Year honors and claiming two national championships.

GEARLDS' YEAR-BY-YEAR

Year	School	Overall	Conf.	Post.	Rank
2013-14	Marian	16-16	8-10	-	-
2014-15	Marian	28-6	14-4	NAIA R32	-
2015-16	Marian	32-6	16-2	NAIA Champ	No. 1
2016-17	Marian	35-3	17-1	NAIA Champ	No. 1
2017-18	Marian	32-3	17-1	NAIA R16	No. 8
2018-19	Marian	27-7	16-2	NAIA R32	No. 17
2019-20	Marian	31-3	16-2	NAIA R16	No. 13
2020-21	Marian	27-6	16-0	NAIA R32	No. 9
2021-22	Purdue	17-15	7-11	1-1	-
2022-23	Purdue	15-6	6-5		
10th Year		260-71	13-16	1-1	-

GEARLDS' TIMELINE

2021-Present	Head Coach, Purdue
2013-21	Head Coach, Marian
2013	Toyota Huelva, Spain
2011-12	Orion Ibaizabal Galdakao, Portugal
2010	FEA Neas Halkindonas, Greece
2008	Kosit Kosice, Slovakia
2007-09	Seattle Storm, WNBA
2003-07	All-America Guard, Purdue
1999-03	All-America Guard, Beech Grove High School

POWER 5 COACHES UNDER 40

Age	Name	School	Birthdate
35	Jacie Hoyt	Oklahoma State	4/2/1987
37	Kelly Rae Finley	Florida	4/27/1985
38	Katie Gearlds	Purdue	10/26/1984
39	Carolyn Kieger	Penn State	8/17/1983
39	Yolett McPhee-McCuin	Ole Miss	4/30/1983
39	Amaka Agugua-Hamilton	Virginia	4/13/1983

GEARLDS IN THE PURDUE RECORD BOOK

Stat	Rank	Total	Year/Game
Single Game Points	1	41	Wisconsin, 2/18/07
Season Points	T1	707	2006-07
Career Points	4	1,974	2004-07
Career Average	4	14.8	2004-07
Season 10+ Point Games	3	33	2006-07
Career 10+ Point Games	4	102	2004-07
Season 30+ Point Games	2	4	2006-07
Career 30+ Point Games	2	6	2004-07
Season Field Goals	2	250	2006-07
Career Field Goals	3	711	2004-07
Season 3-Pointers	T1	88	2006-07
Career 3-Pointers	3	238	2004-07
Season Asst/TO	1	2.57	2005-06
Career Asst/TO	T2	1.64	2004-07
Season Minutes	1	1,359	2006-07
Career Minutes	2	4,475	2004-07

2022-23 ROSTER

No.	Name	Yr.	Pos.	Ht.	Hometown/High School/Previous School
2	Ainhua Holzer	Fr.	G	5-9	Martigny, Switzerland
3	Jayla Smith	So.	G	6-0	Indianapolis, Ind. / Lawrence North
5	Cassidy Hardin	5th.	G	5-10	Bargersville, Ind. / Center Grove
10	Jeanae Terry	Sr.	G	5-11	Detroit, Mich. / Wayne Memorial / Illinois
11	Lasha Petree	5th	G	6-0	Detroit, Mich. / Arbor Prep / Bradley / Rutgers
14	Ava Learn	So.	G	6-1	Hyde Park, N.Y. / Our Lady of Lourdes
23	Abbey Ellis	Sr.	G	5-6	Melbourne, Australia / Cal Poly
30	Addison Potts	Fr.	G	6-0	Fort Myers, Fla. / South Fort Myers
31	Lilly Stoddard	Fr.	F	6-4	Crown Point, Ind. / Crown Point
33	Madison Layden	Jr.	G	6-1	Kokomo, Ind. / Northwestern
34	Caitlyn Harper	R-Sr.	F	6-2	Hartland, Wisc. / Arrowhead / Cal Baptist
35	Rickie Woltman	Sr.	F	6-3	St. Louis, Mo. / Incarnate Word

Staff	Position	Year at Purdue	Year Coaching	Alma Mater
Katie Gearlds	Head Coach	2nd Year	10th Year	Purdue '07
Beth Couture	Associate Head Coach	7th Year	36th Year	Erksine '84
Michael Scruggs	Assistant Coach / Recruiting	4th Year	15th Year	Tennessee '08
Alex Guyton	Assistant Coach	4th Year	4th Year	Purdue '12
Tiffini Grimes	Deputy Athletic Director / SWA	1st Year		Purdue '05
Anastacia Kirby	Director of Operations	1st Year		Marian '17
Lakan Hasser-Smith	Director of Video / Recruiting	1st Year		Marian '16
Jason Pullara	Director of Strength & Conditioning	4th Year		Purdue '01
Jessica Lipsett	Director of Athletic Training / Physical Therapy	20th Year		Illinois '00
Jaelen Nice	Graduate Assistant	1st Year		Purdue '21
Ainhua Holzer	i-KNOW-ah	Beth Couture	COO-chur	
Ava Learn	AA-va	Katie Gearlds	Geralds (soft-g)	
Lasha Petree	LAY-sha pee-TREE	Lakan Hasser-Smith	LAKE-en	
Jeanae Terry	Jah-NAY			
Lilly Stoddard	STAH-dard			

Associate Head Coach Beth Couture

Alma Mater: Erskine '84 | **Season at Purdue/Career:** 7th/36th
Select Experience: Purdue Assistant (16-19), Converse College - Head Coach (14-15), Butler - Head Coach (02-14), Presbyterian - Head Coach (89-02)
Select Highlights: 5 WNIT appearances and 4 20-plus win seasons at Butler, 6 NCAA Division II appearances, Kodak All-American during playing time at Erskine

Assistant Coach Michael Scruggs

Alma Mater: Tennessee '08 | **Season at Purdue/Career:** 4th/10th
Select Experience: Loyola-Chicago - Assistant (16-19), LSU - Director of Video Operations (12-14), Chattanooga - Assistant (09-11), Tennessee - Practice Player (04-08)
Select Highlights: Practice player at Tennessee during Candace Parker's career, winning two national titles, also learned from Nikki Fargas at LSU and Wes Moore

Assistant Coach Alex Guyton

Alma Mater: Purdue '12 | **Season at Purdue/Career:** 4th/4th
Select Experience: Purdue - Director of Player Development (19-21), Eastern Illinois - Assistant (17-19), Carmel HS - Assistant (14-17)
Select Highlights: Played 124 games w/On a pair of Big Ten Tournament titles, 3 NCAA Tournaments and an Elite Eight, coached Michigan's Amy Dilk while at Carmel

Director of Video Lakan Hasser-Smith

Alma Mater: Marian '16 | **Season at Purdue/Career:** 1st/6th
Select Experience: Marian - Assistant (17-21)
Select Highlights: Marian all-time leading scorer, won an NAIA national title as a player and a coach with Katie Gearlds

Director of Operations Anastacia Kirby

Alma Mater: Marian '17 | **Season at Purdue/Career:** 1st/1st
Select Highlights: Won two NAIA national titles playing under Gearlds at Marian

Associate Director of Sports Medicine Jessica Lipsett (Illinois '00)

20th season at Purdue, all with the women's basketball program - 2011 Indiana Athletic Trainers Association Trainer of the Year - Husband, Tanner, was the former WBB SID and now the Wrestling Director of Operations - Rumored to have magic healing powers



2 AINHOA HOLZER



3 JAYLA SMITH



5 CASSIDY HARDIN



10 JEANAE TERRY



11 LASHA PETREE



14 AVA LEARN



23 ABBEY ELLIS



30 ADDISON POTTS



31 LILLY STODDARD



33 MADISON LAYDEN



34 CAITLYN HARPER



35 RICKIE WOLTMAN



KATIE GEARLDS



BETH COUTURE



MICHAEL SCRUGGS



ALEX GUYTON

 PURDUE WHEN

By In-Game Leads/Deficits 22-23 Under Gearlds

By Quarter/Half Scoring **22-23 Under Gearlds**

By Shooting Percentages

By 3-Point Shooting 22-23 Under Gearlds

By Free Throws 22-23 Under Gearlds

By Rebounding/Second Chance 22-23 Under Gearlds

By Assist/Turnovers 22-23 Under Gearlds

By Players in Double Figures

By Ranked Opponent	22-23	Under Gearlds
--------------------	-------	---------------

By Day of the Week/Steam/TV 22-23 Under Gearlds

By Scoring Margin 22-23 Under GearldsBy Purdue Scoring 22-23 Under GearldsBy Opponent Scoring 22-23 Under Gearlds

By Uniforms 22-23 Under Gearlds

SCORING BY QUARTERS

PURDUE WOMEN'S BASKETBALL

TEAM GAME-BY-GAME COMPARISON

PURDUE WOMEN'S BASKETBALL

2022-23 PURDUE WOMEN'S BASKETBALL GAME NOTES

TEAM STATISTICS BREAKDOWN

All Games	Record	FG-FGA	FG%	3P-3PA	3%	FT-FTA	FT%	Off.	Def.	Tot.	Avg.	F	DQ	Ast.	TO	Blk.	Stl.	Pts.	Avg.
All Games	15-6	559-1209	.462	157-458	.343	255-339	.752	184	578	762	36.3	343	1	350	330	67	163	1530	72.9
		488-1281	.381	140-468	.299	244-361	.676	253	477	730	34.8	358	2	262	325	57	154	1360	64.8
Home	8-3	305-620	.492	78-222	.351	148-196	.755	89	286	375	34.1	173	1	191	167	39	86	836	76.0
		255-673	.379	70-236	.297	128-173	.740	135	232	367	33.4	194	0	137	175	24	66	708	64.4
Away	5-2	171-419	.408	54-170	.318	67-87	.770	69	203	272	38.9	115	0	108	118	21	58	463	66.1
		159-416	.382	49-163	.301	81-127	.638	78	180	258	36.9	113	2	93	112	26	66	448	64.0
Neutral	2-1	83-170	.488	25-66	.379	40-56	.714	26	89	115	38.3	55	0	51	45	7	19	231	77.0
		74-192	.385	21-69	.304	35-61	.574	40	65	105	35.0	51	0	32	38	7	22	204	68.0
Won	15-0	418-872	.479	106-318	.333	188-253	.743	131	436	567	37.8	240	1	262	229	47	122	1130	75.3
		323-904	.357	92-339	.271	165-247	.668	176	334	510	34.0	263	2	179	242	42	111	903	60.2
Lost	0-6	141-337	.418	51-140	.364	67-86	.779	53	142	195	32.5	103	0	88	101	20	41	400	66.7
		165-377	.438	48-129	.372	79-114	.693	77	143	220	36.7	95	0	83	83	15	43	457	76.2
Big Ten	Record	FG-FGA	FG%	3P-3PA	3%	FT-FTA	FT%	Off.	Def.	Tot.	Avg.	F	DQ	Ast.	TO	Blk.	Stl.	Pts.	Avg.
All Games	6-5	274-632	.434	83-247	.336	118-148	.797	101	289	390	35.5	178	0	174	188	33	89	749	68.1
		264-663	.398	79-248	.319	133-194	.686	128	254	382	34.7	178	2	152	175	31	89	740	67.3
Home	2-3	125-271	.461	37-105	.352	58-75	.773	38	113	151	30.2	78	0	84	78	14	38	345	69.0
		124-304	.408	35-108	.324	62-83	.747	63	106	169	33.8	82	0	68	78	9	29	345	69.0
Away	4-2	149-361	.413	46-142	.324	60-73	.822	63	176	239	39.8	100	0	90	110	19	51	404	67.3
		140-359	.390	44-140	.314	71-111	.640	65	148	213	35.5	96	2	84	97	22	60	395	65.8
Non-Conference Record		FG-FGA	FG%	3P-3PA	3%	FT-FTA	FT%	Off.	Def.	Tot.	Avg.	F	DQ	Ast.	TO	Blk.	Stl.	Pts.	Avg.
All Games	9-1	285-577	.494	74-211	.351	137-191	.717	83	289	372	37.2	165	1	176	142	34	74	781	78.1
		224-618	.362	61-220	.277	111-167	.665	125	223	348	34.8	180	0	110	150	26	65	620	62.0
Current Streak Record		FG-FGA	FG%	3P-3PA	3%	FT-FTA	FT%	Off.	Def.	Tot.	Avg.	F	DQ	Ast.	TO	Blk.	Stl.	Pts.	Avg.
Overall	3-0	82-180	.456	26-77	.338	20-23	.870	25	89	114	38.0	40	0	47	36	8	19	210	70.0
		63-188	.335	17-78	.218	30-42	.714	40	71	111	37.0	47	1	33	39	12	17	173	57.7
Month	Record	FG-FGA	FG%	3P-3PA	3%	FT-FTA	FT%	Off.	Def.	Tot.	Avg.	F	DQ	Ast.	TO	Blk.	Stl.	Pts.	Avg.
November	7-1	239-472	.506	62-169	.367	118-164	.720	70	237	307	38.4	132	1	145	116	27	60	658	82.3
		188-503	.374	52-173	.301	88-135	.652	97	175	272	34.0	149	0	93	121	19	53	516	64.5
December	3-2	123-282	.436	35-114	.307	60-79	.759	40	140	180	36.0	85	0	74	90	18	39	341	68.2
		119-317	.375	37-121	.306	60-92	.652	66	119	185	37.0	83	1	67	75	13	43	335	67.0
January	5-3	197-455	.433	60-175	.343	77-96	.802	74	201	275	34.4	126	0	131	124	22	64	531	66.4
		181-461	.393	51-174	.293	96-134	.716	90	183	273	34.1	126	1	102	129	25	58	509	63.6
February																			
March																			
Ranked/UR	Record	FG-FGA	FG%	3P-3PA	3%	FT-FTA	FT%	Off.	Def.	Tot.	Avg.	F	DQ	Ast.	TO	Blk.	Stl.	Pts.	Avg.
vs. Ranked	2-3	125-283	.442	39-116	.336	47-59	.797	38	120	158	31.6	78	0	68	76	14	36	336	67.2
		130-306	.425	39-123	.317	58-82	.707	60	118	178	35.6	82	1	69	69	15	35	357	71.4
vs. Unranked	13-3	434-926	.469	118-342	.345	208-280	.743	146	458	604	37.8	265	1	282	254	53	127	1194	74.6
		358-975	.367	101-345	.293	186-279	.667	193	359	552	34.5	276	1	193	256	42	119	1003	62.7
5-Game	Record	FG-FGA	FG%	3P-3PA	3%	FT-FTA	FT%	Off.	Def.	Tot.	Avg.	F	DQ	Ast.	TO	Blk.	Stl.	Pts.	Avg.
1-5	5-0	157-297	.529	42-104	.404	69-100	.690	41	145	186	37.2	76	1	99	67	15	44	425	85.0
		108-301	.359	32-104	.308	49-69	.710	54	106	160	32.0	96	0	63	83	13	29	297	59.4
6-10	3-2	134-280	.479	34-106	.321	81-105	.771	45	154	199	39.8	90	0	77	101	22	32	383	76.6
		135-345	.391	37-116	.319	60-99	.606	70	103	173	34.6	92	1	64	69	9	49	367	73.4
11-15	3-2	120-291	.412	32-108	.296	52-68	.765	43	127	170	34.0	80	0	79	76	15	47	324	64.8
		112-286	.392	35-112	.313	59-93	.634	61	131	192	38.4	77	0	62	85	15	40	318	63.6
16-20	3-2	123-283	.435	36-111	.324	43-55	.782	48	126	174	34.8	84	0	78	73	13	33	325	65.0
		108-289	.374	29-108	.269	68-88	.773	56	114	170	34.0	73	0	58	73	12	31	313	62.6
21-25	1-0	25-58	.431	13-29	.448	10-11	.909	7	26	33	33.0	13	0	17	13	2	7	73	73.0
		25-60	.417	7-28	.250	8-12	.667	12	23	35	35.0	20	1	14	15	8	5	65	65.0
26-30																			
31-35																			
36-40																			
Postseason	Record	FG-FGA	FG%	3P-3PA	3%	FT-FTA	FT%	Off.	Def.	Tot.	Avg.	F	DQ	Ast.	TO	Blk.	Stl.	Pts.	Avg.
Overall																			
Big Ten																			
NCAA																			

2022-23 PURDUE WOMEN'S BASKETBALL GAME NOTES

INDIVIDUAL HIGHS

Stat	Purdue High	Purdue Low	Opp. High	Opp. Low
Points	100 SIUE (11/17/2022)	59 2x last Michigan (01/10/2023)	83 at Iowa (12/29/2022)	51 Illinois St. (12/11/2022)
Field Goals Made	35 2x last SIUE (11/17/2022)	20 Nebraska (01/18/2023)	30 2x last Maryland (12/08/2022)	17 Illinois St. (12/11/2022)
Field Goal Attempts	72 at Iowa (12/29/2022)	47 Maryland (12/08/2022)	77 Syracuse (11/30/2022)	45 at Northwestern (01/14/2023)
Field Goal Percentage	.607 (34-56) vs Harvard (N) (11/24/2022)	.347 (25-72) at Iowa (12/29/2022)	.500 (28-56) Michigan (01/10/2023)	.275 (19-69) Minnesota (01/21/2023)
3-Pointers Made	13 at Ohio St. (01/29/2023)	3 2x last at Illinois (01/26/2023)	11 at Iowa (12/29/2022)	4 3x last at Illinois (01/26/2023)
3-Pointers Attempted	31 at Iowa (12/29/2022)	14 2x last vs. Wisconsin (1/1/2023)	28 2x last at Ohio St. (01/29/2023)	17 Michigan (01/10/2023)
3-Point Percentage	.474 (9-19) Indiana St. (11/20/2022)	.167 (3-18) at Illinois (01/26/2023)	.500 (9-18) at Penn State (1/7/2023)	.154 (4-26) at Illinois (01/26/2023)
Free Throws Made	25 SIUE (11/17/2022)	5 Minnesota (01/21/2023)	17 2x last Nebraska (01/18/2023)	6 Indiana St. (11/20/2022)
Free Throws Attempted	36 SIUE (11/17/2022)	6 2x last at Illinois (01/26/2023)	27 at Iowa (12/29/2022)	8 Indiana St. (11/20/2022)
Free Throw Percentage	.923 (12-13) Illinois St. (12/11/2022)	.500 (7-14) at Texas A&M (12/21/22)	.850 (17-20) Michigan (01/10/2023)	.500 (13-26) vs Oklahoma St. (11/26/2022)
Rebounds	50 at Michigan St. (12/05/2022)	20 Michigan (01/10/2023)	48 at Iowa (12/29/2022)	27 Murray St. (11/13/2022)
Assists	25 Murray St. (11/13/2022)	9 at Illinois (01/26/2023)	18 at Michigan St. (12/05/2022)	7 Syracuse (11/30/2022)
Steals	14 SIUE (11/17/2022)	2 Michigan (01/10/2023)	14 at Michigan St. (12/05/2022)	1 Minnesota (01/21/2023)
Blocks	6 3x last at Penn State (1/7/2023)	1 4x last at Northwestern (01/14/2023)	8 at Ohio St. (01/29/2023)	0 2x last Maryland (12/08/2022)
Turnovers	30 at Michigan St. (12/05/2022)	7 Murray St. (11/13/2022)	26 vs. Wisconsin (1/1/2023)	11 2x last at Illinois (01/26/2023)
Fouls	21 2x last at Michigan St. (12/05/2022)	13 4x last at Ohio St. (01/29/2023)	30 SIUE (11/17/2022)	13 4x last at Illinois (01/26/2023)

INDIVIDUAL HIGHS

Stat	Purdue Ind. High	Opponent Ind. High
Points	31 Lasha Petree vs Syracuse (11/30/2022)	26 Teisha Hyman vs Syracuse (11/30/2022)
Field Goals Made	13 Lasha Petree vs Syracuse (11/30/2022)	11 Teisha Hyman vs Syracuse (11/30/2022)
Field Goals Attempted	21 Lasha Petree vs Syracuse (11/30/2022)	25 Paige Robinson vs Illinois St. (12/11/2022)
3-Pointers Made	5 4x last Cassidy Hardin/Abbey Ellis at Ohio St. (01/29/2023)	5 Naomie Alnatas vs Oklahoma St. (N) (11/26/2022)
3-Pointers Attempted	11 3x last Cassidy Hardin vs Minnesota (01/21/2023)	11 Naomie Alnatas vs Oklahoma St. (N) (11/26/2022)
Free Throws Made	8 3x last Caitlyn Harper vs Nebraska (01/18/2023)	7 2x last Laila Phelia vs Michigan (01/10/2023)
Free Throws Attempted	10 Ava Learn vs Oklahoma St. (N) (11/26/2022)	10 Kamaria McDaniel at Michigan St. (12/05/2022)
Rebounds	14 Jeanae Terry at Illinois (01/26/2023)	15 Alanna Micheaux vs Minnesota (01/21/2023)
Assists	12 Jeanae Terry vs Indiana St. (11/20/2022)	6 McKenna Marisa at Penn State (1/7/2023)
Steals	5 Jeanae Terry vs. Wisconsin (1/1/2023)	7 Leilani Kapinus at Penn State (1/7/2023)
Blocks	4 2x last Caitlyn Harper vs Michigan (01/10/2023)	3 2x last Taylor Thierry at Ohio St. (01/29/2023)

MARGINS OF VICTORY/DEFEAT

	1	2	3	4	5	6	7	8	9	10	11	12	13	14	15	16	17	18	19	20	21+
Purdue					1	1		1	1	1	1	2							1		4
Opponent	1						1											1			1
When Leading											When Trailing										
Largest Margin of Victory	42 SIUE (11/17/2022)										Largest Margin of Defeat										
Largest Overall Lead	42 SIUE (11/17/2022)										Largest Overall Deficit										
Largest Halftime Lead	33 SIUE (11/17/2022)										Largest Halftime Deficit										
Largest Lead in a Loss	10 Florida State (11/25/2022)										Largest Deficit Overcome to Win										
Largest Halftime Lead in a Loss	6 Florida State (11/25/2022)										Largest Halftime Deficit in a Win										
Largest Purdue Run	14 Wisconsin (1/1/2023)										Largest Opponent Run										

RESULTS/LEADERS

Date	P / O	Opponent	W/L	Score	High Scorer	High Rebounds	High Assists	High Steals	High Blocks	Attend
N6	- / -	Purdue NW	W	98-67	22 - Harper	6 - Harper	7 - Layden	2 - 3 Tied	2 - Harper, Hardin	2,740
N10	- / -	Marshall	W	73-61	17 - Harper	10 - Terry	10 - Terry	3 - Layden	4 - Harper	2,058
N13	- / -	Murray State	W	90-61	23 - Petree	10 - Terry	10 - Terry	2 - Harper	2 - Harper	2,866
N17	- / -	SIUE	W	100-58	29 - Ellis	7 - Terry	4 - 3 Tied	4 - Terry/Smith	1 - Petree/Learn	1,861
N20	- / -	Indiana State	W	77-54	18 - Hardin	7 - Layden	12 - Terry	2 - Hard/Ellis	1 - Smith/Woltman	3,065
N24	- / -	Harvard	W	85-63	23 - Petree	13 - Terry	8 - Terry	4 - Terry	1 - Terry	200
N25	- / -	Florida State	L	76-75	15 - Petree/Layden	12 - Terry	8 - Terry	2 - Terry/Petree	1 - 3 Tied	248
N26	- / -	Oklahoma State	W	71-65	20 - Petree	7 - Terry	6 - Terry	3 - Layden	1 - 3 Tied	136
N30	B1G/ACC	Syracuse	W	87-78	31 - Petree	8 - Harper	6 - Terry	2 - Terry	2 - Petree, Woltman	2,521
D5	B1G	Michigan State	W	76-71	18 - Petree	10 - Woltman	8 - Terry	2 - Terry	3 - Petree	3,015
D8	B1G	Maryland	L	77-74	18 - Ellis	6 - Hardin	6 - Terry	3 - Terry	2 - Petree, Layden	3,007
D11	- / -	Illinois State	W	64-51	14 - Petree	7 - Terry, Ellis	6 - Terry	3 - Petree	2 - Learn	3,429
D21	- / -	Texas A&M	W	59-53	15 - Harper	11 - Terry	7 - Terry	2 - Terry, Petree	1 - Terry, Petree	1,608
D29	B1G	Iowa	L	83-68	22 - Petree	8 - Terry	7 - Terry	3 - Terry	1 - Harper	11,942
J1	B1G	Wisconsin	W	73-61	18 - Petree	6 - Terry	7 - Terry	5 - Terry	1 - Layden	3,552
J7	B1G	Penn State	L	70-60	20 - Harper	9 - Terry, Harper	5 - Layden	3 - Petree	2 - Learn	2,367
J10	B1G	Michigan	L	80-59	16 - Layden	3 - Terry, Layden	5 - Terry	1 - Terry, Hardin	4 - Harper	3,473
J14	B1G	Northwestern	W	65-54	24 - Ellis	9 - Terry	10 - Terry	2 - 5 Tied	1 - Smith	1,566
J18	B1G	Nebraska	L	71-64	20 - Ellis	8 - Terry	4 - Layden	2 - Terry, Layden	1 - Terry, Ellis	2,796
J21	B1G	Minnesota	W	75-56	14 - Hardin	8 - Woltman	8 - Terry	1 - 4 Tied	1 - 3 Tied	5,003
J26	B1G	Illinois	W	62-52	16 - Ellis	14 - Terry	4 - Terry	4 - Terry	1 - 3 Tied	2,584
J29	B1G	Ohio State	W	73-65	26 - Ellis	7 - Layden, Terry	8 - Terry	4 - Terry	1 - Smith, Layden	8,664
F5	B1G	Indiana								
F9	B1G	Rutgers								
F12	B1G	Northwestern								
F15	B1G	Michigan State								
F19	B1G	Indiana								
F22	B1G	Penn State								
F26	B1G	Minnesota								
M1		Big Ten Tournament								

2022-23 PURDUE WOMEN'S BASKETBALL GAME NOTES

THE LAST TIME

TEAM SCORING (GAME)		TEAM REBOUNDS		CONTINUED	
Won by 40+:	42 (80-38) at Ball State (11/7/18)	Had 20+ Rebound Margin:	20 (50-30) vs. Michigan State (12/4/22)	Five Players in Double Figures:	Karissa McLaughlin (23), Kayana Traylor (15), Ae'Rianna Harris (13), Dominique Oden (12), Jenelle Grant (11) vs. Illinois (1/17/20)
Won by 40+ (Big Ten):	43 (88-45) vs. Nebraska (1/26/17)	Had 25+ Rebound Margin:	30 (55-25) vs. USC Upstate (11/17/16)	10+Points in 10 Straight Games:	11, Lasha Petree (11/10/22-12/11/22)
Lost by 20+:	21 (80-59) vs. Michigan (1/10/23)	Outrebounded by 20+:	24 (50-26) vs. No. 8 Maryland (2/25/21)	10+Points in 20 Straight Games:	35, Shereka Wright (11/29/01 - 12/29/02)
Lost by 30+:	37 (83-46) at No. 12 Maryland (1/10/21)	Outrebounded by 25+:	28 (28-56) at Notre Dame (12/29/13)	10+Points in 30 Straight Games:	35, Shereka Wright (11/29/01 - 12/29/02)
Scored 90+:	90 vs. Murray State (11/13/22)	TEAM ASSISTS		INDIVIDUAL DOUBLE-DOUBLES	
Scored 90+ (Big Ten):	91 at Penn State (12/20/20)	Had 25:	25 vs. Murray State (11/13/22)	Double-Double:	10 pts, 14 rebs, Jeanae Terry at Illinois (1/26/23)
Scored 100+:	100 vs. SIUE (11/17/22)	Had 30:	31 vs. Incarnate Word (12/10/15)	Points-Rebounds:	10-14, Jeanae Terry at Illinois (1/26/23)
Scored 100+ (Big Ten):	110 (110-51) at Michigan (3/12/94)	Had Five or Fewer:	5 at Indiana (3/6/21)	Points-Assists:	19-11 Karissa McLaughlin at Wisconsin (12/31/18)
Scored 40 or Fewer:	40 (40-86) vs. Connecticut (11/24/18)	TEAM TURNOVERS		Points-Steals:	27-12, Joy Holmes vs. Minnesota (1/13/89)
Scored 50 or Fewer:	49 (62-49) vs. Michigan (2/11/21)	Committed 10 or Fewer:	8 vs. Minnesota (1/21/23)	Points-Blocks:	12-11, Danielle Campbell vs. Butler (11/17/07)
Scored 50 or Fewer and Won:	48 (48-46) at IUPUI (3/15/18)	Committed 20+:	21 at Penn State (1/7/23)	Freshman:	10-11 ast, Karissa McLaughlin vs. PSU (1/28/18)
Allowed 90+:	100 at Ohio State (2/18/21)	Forced 10 or Fewer:	8 at Ohio State (2/18/21)	Non-Point:	10 reb, 10 ast, Jeanae Terry vs. Murray State (11/13/22)
Allowed 90+ (Big Ten):	100 at Ohio State (2/18/21)	Forced 20+:	26 vs. Wisconsin (1/1/23)	20-10 Game:	21 pts, 12 rebs, Ae'Rianna Harris vs. PSU (1/26/20)
Allowed 100+:	100 at Ohio State (2/18/21)	TEAM CLOSE GAMES		30-10 Game:	30 pts, 10 reb, Stephanie White vs. Washington (3/14/98)
Allowed 50 or Fewer:	50, at Ohio State (12/28/19)	One-Point Games:	L, 76-75 vs. Florida State (11/25/22)	20-20 Game:	29 pts, 20 reb, Joy Holmes at Wisconsin (1/27/91)
Allowed 40 or Fewer:	38 at Ball State (11/7/18)	Two-Point or less Games:	L, 54-52, at Wisconsin (2/13/22)	Consecutive Double-Doubles:	2, Jeanae Terry (11/10-13/22)
TEAM SCORING (HALF)		Three-Point or less Games:	L, 77-74 vs. Maryland (12/8/22)	in Three Straight Games:	4, Fatou Diagne, (1/18-1/31)
Scored 60 in the First Half:	68 vs. Kent State (12/8/90)	Back-to-Back Games Decided by Three Points or Less:	L, 63-65 (OT) at Rutgers (1/16/19); W 56-53 vs. Indiana (1/20/19)	in Five Straight Games:	9, Whitney Bays (12/20/14 - 1/19/15)
Scored 60 in the Second Half:	60 vs. South Alabama (12/27/94)	Last Second Shot to Win:	Jeanae Terry, 2, vs. Georgia Tech (12/1/21)	Two Players with a Double-Double:	11 pts, 12 reb, Fatou Diagne
Scored 15 Points or Less:	15 (1st) vs. No. 18 Indiana (1/14/21)	Jeanae Terry, 2, vs. Rutgers (1/3/22)			15 pts, 10 reb, Ae'Rianna Harris, vs. Michigan State (3/5/20)
Scored 20 Points or Less:	17 (2nd) at Wisconsin (2/13/22)	Lost on a Last Second Shot:	Shyanne Sellers, 3-pt vs. Maryland (12/8/22)	Three Players with a Double-Double:	Ae'Rianna Harris (14 pts, 17 rebs) & Tamara Farquhar (13 pts, 14 rebs), vs. Western Illinois (11/17/20)
Allowed 50+:	50 (2nd) at Maryland (12/8/21)	TEAM SHOOTING		INDIVIDUAL TRIPLE-DOUBLES	
Allowed 15 Points or Less:	15 (1st) at Wisconsin (2/13/22)	Scored 30+:	31 (3rd) vs. Buffalo (12/9/20)	Triple-Double:	10 pts, 11 rebs, 12 assts - Jeanae Terry - vs. Minnesota (1/27/22)
Allowed 20 Points or Less:	19 (1st) vs. SIUE (11/17/22)	Scored 25+:	27 (1st) at Ohio State (1/29/23)	Before that	11 pts, 12 rebs, 10 assts - Jeanae Terry - vs. Miami (12/19/21)
TEAM SCORING (QUARTER)		Scored 10 Points or Less:	8 (4th) vs. Nebraska (1/18/23)	Before that	12 pts, 11 rebs, 11 blks - Danielle Campbell - vs. Butler (11/17/07)
Scored 5 Points or Less:	0 (2nd) vs. Florida State (11/27/21)	Scored 5 Points or Less:	9 (1st) at Northwestern (1/14/23)	Before that	20 pts, 11 rebs, 10 assts - Stephanie White - vs. Indiana (1/22/99)
Allowed 30+:	32 (4th) vs. Penn State (2/9/22)	Allowed 5 Points or Less:	2 (1st) at Wisconsin (2/13/22)	INDIVIDUAL FIELD GOALS	
Allowed 25+:	25 (4th) at Iowa (12/29/22)	TEAM COMEBACKS		Made 13 Field Goals:	13, Lasha Petree vs. Syracuse (11/30/22)
Allowed 10 Points or Less:	9 (1st) at Northwestern (1/14/23)	Came Back from 10+ Down to Win:	W, 66-61 vs. Florida State (11/27/21)	Made 15 Field Goals:	15, Shereka Wright at Michigan (2/17/02)
Allowed 5 Points or Less:	2 (1st) at Wisconsin (2/13/22)	Came Back from 15+ Down to Win:	W, 81-79 (OT) at Michigan (2/1/18; down 72-56 w/ 6:48 left in the 4th)	Attempted 20 Field Goals:	21 Lasha Petree vs. Syracuse (11/30/22)
TEAM SHOOTING		TEAM RANKED OPPONENTS		Attempted 25 Field Goals:	25, KK Houser vs. Penn State (1/30/14)
Shot 65% or Higher:	.735 (36-59) vs. Penn State (1/28/18)	Beat a Ranked Team:	#2 Ohio State (1/29/23)	Attempted 30 Field Goals:	33, MaChelle Joseph at Wisconsin (2/21/92)
Shot 60% or Higher:	.607 (34-56) vs. Harvard (11/24/22)	Beat Back-to-Back Ranked Team:	#22 Illinois, 62-52 (1/26/23)	INDIVIDUAL 3-POINTERS	
Shot 55% or Higher:	.553 (26-47) vs. Maryland (12/8/22)	Beat a Ranked Team on the Road:	#2 Ohio State (1/29/23)	Made Six 3-Pointers:	6, Abbey Ellis at Illinois (1/20/22)
Shot 50% or Higher:	.511 (24-47) vs. Illinois State (12/11/22)	Beat a Top-10 Ranked Team:	at #2 Ohio State (1/29/23)	Made Seven 3-Pointers:	7, Cassidy Hardin vs. Denver (12/12/21)
Shot 30% or Lower:	.296 (21-71) vs. Ohio State (12/5/21)	Beat a Top-10 Ranked Team on the Road:	at #2 Ohio State (1/29/23)	Made Eight 3-Pointers:	9, Karissa McLaughlin vs. NU (2/17/19)
Shot 25% or Lower:	.241 (13-54) at No. 12 Maryland (1/10/20)	Beat a Top-5 Ranked Team:	at #2 Ohio State (1/29/23)	Attempted 12 3-Pointers:	12, Cassidy Hardin at Nebraska (1/30/22)
Shot 35% or Lower and Won:	.308 (20-65) vs. Wisconsin (1/21/21)	Beat a Top-5 Ranked Team on the Road:	at #2 Ohio State (1/29/23)	Attempted 13 3-Pointers:	14, Madison Layden vs. Ohio State (12/5/21)
Opponent Shot 55% or Higher:	.582 (39-67) at Ohio State (2/18/21)	INDIVIDUAL SCORING		Made a 3-Pointer in 20 Straight Games:	24, Madison Layden (12/9/20-11/17/21)
Opponent Shot 50% or Higher:	.500 (28-56) vs. Michigan (1/10/23)	Scored 20 Points:	26, Abbey Ellis at Ohio State (1/29/23)	INDIVIDUAL FREE THROWS	
Opponent Shot 30% or Lower:	.275 (19-69) vs. Minnesota (1/21/23)	Scored 30 Points:	31, Lasha Petree vs. Syracuse (11/30/22)	Made 13 FTs:	14, Courtney Moses at Northwestern (1/26/12)
Opponent Shot 25% or Lower:	.242 (16-66) at Rutgers (2/19/17)	Scored 35 Points:	38, Brittany Rayburn at Minnesota (1/12/12)	Made 15 FTs:	15, Ukari Figgs vs. Washington (3/14/98)
TEAM 3-POINT SHOOTING		Scored 40 Points:	41, Katie Gearlds at Wisconsin (2/18/07)	Attempted 16 FTs:	18, Brittany Rayburn vs. Gardner-Webb (12/21/09)
Made 10+:	13 at Ohio State (1/29/23)	Scored 20 Points in Back-to-Back Games:	Abbey Ellis 20 vs. Nebraska (1/18/23)	Attempted 18 FTs:	18, Brittany Rayburn vs. Gardner-Webb (12/21/09)
Made 12+:	15 at Illinois (1/20/22)	Scored 20 Points in Three Straight Games:	Dominique Oden 28 vs. Penn State (1/26/20), 22 at Michigan State (1/30/20), 24 vs. No. 18 Indiana (2/3/20)	Attempted 20 FTs:	20, Shereka Wright at Northwestern (2/15/04)
Made 15+:	15 vs. Central Michigan (12/28/13), at Illinois (1/20/22)	Two Players w/ 20+:	22, Dominique Oden & 28, Karissa McLaughlin at Michigan State (1/30/20)	INDIVIDUAL STEALS	
Made 0:	0 vs. Valparaiso (12/6/20)	Three Players w/ 20+:	Whitney Bays (24), KK Houser (21), Liza Clemons (20) & Courtney Moses (20) vs. Central Michigan (12/28/13)	Grabbed Five Steals:	5, Jeanae Terry vs. Wisconsin (1/1/23)
Attempted 25+:	29 at Ohio State (1/29/23)	Four Players w/ 20+:	Whitney Bays (24), KK Houser (21), Liza Clemons (20)	Grabbed Six Steals:	6, Madison Layden, at Rutgers (2/20/22)
Attempted 30+:	30 vs. Minnesota (1/21/23)	TEAM FREE THROW SHOOTING		Grabbed Seven Steals:	8, FahKara Malone vs. Indiana (3/7/08)
Attempted Five or Less:	4 vs Boston College (12/3/15)	Made 25+:	25 vs. SIUE (11/17/22)	Grabbed Eight Steals:	8, FahKara Malone vs. Indiana (3/7/08)
Shot 50%+:	.652 (15-23) at Illinois (1/20/22)	Made 30+:	32 vs. DePaul (11/21/10)		
Shot 60%+:	.652 (15-23) at Illinois (1/20/22)	Made Five or Less:	5 at Illinois (1/26/23)		
		Made All Attempted:	7-7 at No. 5 Indiana (2/6/22)		
		Attempted 30+:	36 vs. SIUE (11/17/22)		
		Attempted 40+:	41 vs. Minnesota (1/18/04)		
		Attempted 10 or Less:	6 at Illinois (1/26/23)		
		Attempted Five or Less:	3 at Northwestern (2/24/22)		

THE LAST TIME (CONTINUED)

INDIVIDUAL REBOUNDS

Grabbed 15 Rebounds: 17, Jeanae Terry vs. Illinois (2/17/22)
 Grabbed 16 Rebounds: 17, Jeanae Terry vs. Illinois (2/17/22)
 Grabbed 17 Rebounds: 17, Jeanae Terry vs. Illinois (2/17/22)
 Grabbed 18 Rebounds: 18, Fatou Diagne vs. Penn State (1/31/21)
 Grabbed 19 Rebounds: 19, Whitney Bays vs. Ohio State (1/25/15)
 Grabbed 20 Rebounds: 20, Joy Holmes at Wisconsin (1/27/91)
 Grabbed Eight Off. Rebounds: 9, Jeanae Terry at Wisconsin (2/13/22)
 Grabbed 12 Defensive Rebounds: 14, Ae'Rianna Harris
 vs. Western Illinois (11/17/19)

10+ Rebounds in Three Straight Games:

3, Ae'Rianna Harris (11/17/19-11/29/19)

Two Players with 10+ Rebounds in a Game: Tamara Farquhar (14) &
 Ae'Rianna Harris (17) vs. Western Illinois (11/17/19)

Three Players 10+ Rebounds in a Game:

Bridget Perry (11), Whitney Bays (11) &
 Liza Clemons (13) vs. Northwestern (2/11/15)

INDIVIDUAL ASSISTS

Dished Out 10 Assists: 10, Jeanae Terry at Northwestern (1/14/23)
 Dished Out 11 Assists: 12, Jeanae Terry vs. Indiana State (11/20/22)
 Dished Out 12 Assists: 12, Jeanae Terry vs. Indiana State (11/20/22)
 Dished Out 5+ Assists in Five Straight Games:

6, Jeanae Terry (1/20/22 - 2/6/22)

Dished Out 10+ Assists in Two Straight Games:

Jeanae Terry vs. Marshall (11/10/22) & Murray State (11/14/22)

INDIVIDUAL MINUTES

Played a Complete Game: Madison Layden vs. Michigan State (3/3/22)
 Played at Least 40 Minutes: Jeanae Terry vs. Michigan State (12/4/22)
 Played Every Minute of an Overtime Game: Dominique Oden (45)
 Karissa McLaughlin (45) at Rutgers (1/16/19)
 Freshman Played 40 Minutes:
 Madison Layden (40) vs. Rutgers (2/14/21)
 Freshman Played a Complete Game:
 Madison Layden (40) vs. Rutgers (2/14/21)
 Played Consecutive Complete Games:
 Kayana Traylor, 2 vs. Michigan (2/11/21)

INDIVIDUAL FOULS

Technical Foul - Player: Tamara Farquhar, vs. Northwestern (12/17/20)
 Technical Foul - Coach: Katie Gearlds vs. SIUE (11/17/22)
 Fouled Out: Lasha Petree vs. Marshall (11/10/22)
 Two Players Fouled Out:
 Ra Shaya Kyle, Fatou Diagne vs. Michigan (2/11/21)
 Three Players Fouled Out: Tamara Farquhar, Ae'Rianna Harris
 & Dominique Oden vs. South Carolina (12/16/18 - 2 OT)

INDIVIDUAL BLOCKED SHOTS

Posted Five Blocks: 7, Ae'Rianna Harris vs. Michigan State (3/5/20)
 Posted Six Blocks: 7, Ae'Rianna Harris vs. Michigan State (3/5/20)
 Posted Seven Blocks: 7, Ae'Rianna Harris vs. Michigan State (3/5/20)
 Posted Eight Blocks: 9, Ae'Rianna Harris at South Carolina (12/15/19)
 Blocked 5+ Shots in Back-to-Back Games: Ae'Rianna Harris
 vs. UT Martin, 5 (12/18/17), Saint Mary's, 5 (12/20/17)
 & at Rutgers, 7 (12/28/17)

CAREER STAT TRACKER (SEASON/CAREER) *TOTAL INCLUDES PREVIOUS SCHOOL

Name	Double-Doubles	10+ Points	20+ Points	13FG	2+ 3FGs	10+ Rebounds	5+ Assists	3+ Blocks	3+ Steals	Complete Game
2 - Holzer	/	/	/	/	/	/	/	/	/	/
3 - Smith	/	8 (5-3) / 13 (8-5)	/	9 (6-3) / 19 (10-9)	3 (2-1) / 7 (3-4)	/	/	/	1 (1-0) / 4 (4-0)	/
5 - Hardin	/	8 (5-3) / 26 (18-8)	/	18 (12-6) / 93 (54-39)	11 (7-4) / 53 (35-18)	/	/	/	/	/
10 - Terry	3 (3-0) / 13* (6-0)	3 (3-0) / 30* (9-2)	/ 3*	1 (0-1) / 24* (2-2)	/	6 (5-1) / 19* (8-4)	17 (13-4) / 52* (24-13)	/ 1*	7 (5-2) / 21* (9-3)	/
11 - Petree	/	15 (11-4) / 92* (11-4)	5 (4-1) / 34* (4-1)	17 (13-4) / 106* (13-4)	11 (9-2) / 65* (8-2)	/	/	1 (1-0) / 21* (1-0)	3 (2-1) / 26* (2-1)	/
14 - Learn	/	2 (2-0) / 4 (4-0)	/	/	/	/	/	/	/	/
23 - Ellis	/ 2*	11 (8-3) / 64* (18-14)	4 (3-1) / 21* (4-1)	12 (9-3) / 66* (18-12)	8 (6-2) / 40* (12-5)	/	/	/	/	/
30 - Potts	/	/	/	/	/	/	/	/	/	/
31 - Stoddard	/	/	/	/	/	/	/	/	/	/
33 - Layden	/	6 (4-2) / 35 (21-14)	/	13 (9-4) / 59 (30-29)	9 (6-3) / 40 (22-18)	/	4 (3-1) / 12 (6-6)	/	2 (2-0) / 17 (9-8)	/
34 - Harper	/	13 (8-5) / 78* (8-5)	1 (0-1) / 20* (0-1)	11 (6-5) / 20* (6-5)	4 (1-3) / 21* (1-3)	/	/	2 (1-1) / 15* (1-1)	/	/
35 - Woltman	/	10 (1-0) / 2 (2-0)	/	/	/	1 (1-0) / 3 (3-0)	/	/	/	/

AINHOA
HOLZER

2

Height - 5-9 | **Position** - Guard | **Year** - Freshman | **Major** - Physics
Hometown - Martigny, Switzerland
Instagram - ainhoaholzer | **Twitter** - ainhoaholzer



	Season High	Career High	(*prior school)
Points	-	-	-
Rebounds	-	-	-
Assists	-	-	-
Steals	-	-	-
Blocks	-	-	-
Field Goals	-	-	-
3-Pointers	-	-	-
Free Throws	-	-	-
Minutes	-	-	-

HOLZER QUICK HITS

- Will miss the entire season due to a knee injury sustained in the penultimate game of the 2022 Swiss Basketball League regular season
- Named Sixth Woman and Most Improved Player of the 2021-22 Swiss Basketball League season
- Played four seasons in the Swiss Basketball League
- Called up for the U18 European Championships in 2019 and the U20 Swiss National Team in 2021 for the European Challengers and 2023 European Championships

JAYLA
SMITH

3

Height - 6-0 | **Position** - Guard | **Year** - Sophomore | **Major** - Business
Hometown - Indianapolis, Ind. | **High School** - Lawrence North
Instagram - s.jaylasmith | **Twitter** - _JaylaSmith | **TikTok** - s.jaylasmith



	Season High	Career High
Points	16 vs. Marshall, 11/10/22	16, 2x last vs. Marshall, 11/10/22
Rebounds	7 vs. Nebraska, 1/18/23	7, 3x last vs. Nebraska, 1/18/23
Assists	4, 2x last vs. Nebraska, 1/18/23	4, 2x last vs. Nebraska, 1/18/23
Steals	4, vs. SIUE, 11/17/22	4 2x last, vs. SIUE, 11/17/22
Blocks	1 8x last at Ohio State, 1/29/23	3, at Indiana 2/6/22
Field Goals	6 4x last vs. Minnesota, 1/21/23	6, 4x last vs. Michigan, 1/10/23
3-Pointers	3 vs. Marshall, 11/10/22	4, at Nebraska, 1/30/22
Free Throws	3, vs. SIUE, 11/17/22	3 2x last, vs. SIUE, 11/17/22
Minutes	30 at Penn State, 1/7/23	30 at Penn State, 1/7/23

SMITH QUICK HITS

- Joined the starting lineup against Wisconsin
- Primary substitute as a freshman with one start
- Knocked down a quartet of 3-pointers against Nebraska last season to set career high with 16 points
- 2021 Indiana Miss Basketball, 10th in program history
- Won the 2020 Indiana 3A State Championship, over Madison Layden's Northwestern, hitting 8 3-pointers
- No. 49 player in the nation and No. 1 in Indiana by MaxPreps
- 3-time First Team All-State selection

SEASON	GP-GS	MIN/AVG	FG-FGA	FG%	3FG-FGA	3FG%	FT-FTA	FT%	OFF	DEF	TOT	AVG	PF-FO	AST	TO	BLK	STL	PTS	AVG
2021-22	30-1	473/15.8	54-140	.386	16-55	.291	16-26	.615	13	39	52	1.7	25-0	21	29	11	22	140	4.7
2022-23	21-3	412/19.6	71-157	.452	13-50	.260	18-35	.514	17	31	48	2.3	24-0	26	28	8	19	173	8.2
TOTAL	51-4	885/17.4	125-297	.421	29-105	.276	34-61	.557	30	70	100	2.0	49-0	47	57	19	41	313	6.1

CASSIDY
HARDIN

5

Height - 5-10 | **Position** - Guard | **Year** - Fifth Year | **Major** - Honors Biochemistry (May 22)
Hometown - Center Grove, Ind. | **High School** - Center Grove
Instagram - cass_hardin | **TikTok** - casshardin5



	Season High	Career High
Points	18, vs. Indiana St., 11/20/22	25 vs. Denver, 12/12/21
Rebounds	6, 2x last at Ohio State, 1/29/23	8 vs. Minnesota, 1/27/22
Assists	3, 2x last at Illinois, 1/26/23	5, 3x last vs. North Alabama, 12/21/21
Steals	2, 3x last at Northwestern, 1/14/23	3 2x last vs. Denver, 12/12/21
Blocks	-	1, 10x last at Indiana, 2/6/22
Field Goals	5, 2x last at Ohio State, 1/29/23	7 vs. Denver, 12/12/21
3-Pointers	5, 2x last at Ohio State, 1/29/23	7 vs. Denver, 12/12/21
Free Throws	3, 2x last vs. Michigan, 1/10/23	4 vs. Denver, 12/12/21
Minutes	39 vs. Marshall, 11/10/22	43 vs. Indiana, 1/16/22

HARDIN QUICK HITS

- Fifth in career 3-pointers at Purdue
- Deferred starting medical school to return for fifth and final season in 2022-23
- One of three players in program history to play in parts of five seasons
- 197 of 229 career field goals made are 3-pointers
- Holds the third longest 3-point streak in history at 23 games
- Has indoor court at home
- Three-time academic All-Big Ten
- Indiana Doubles Tennis champion in 2017

SEASON	GP-GS	MIN/AVG	FG-FGA	FG%	3FG-FGA	3FG%	FT-FTA	FT%	OFF	DEF	TOT	AVG	PF-FO	AST	TO	BLK	STL	PTS	AVG
2018-19	32-3	421/13.2	25-109	.229	24-97	.247	8-10	.800	7	26	33	1.0	25-0	35	20	2	5	82	2.6
2019-20	29-8	494/17.0	43-121	.355	37-105	.352	2-2	1.000	5	45	50	1.7	27-0	29	28	2	15	125	4.3
2020-21	19-0	231/12.2	18-62	.290	15-54	.278	3-4	.750	6	17	23	1.2	21-0	8	14	0	4	54	2.8
2021-22	32-31	993/31.0	91-257	.354	78-233	.335	18-24	.750	6	75	81	2.5	74-2	50	36	7	23	278	8.7
2022-23	21-18	536/25.5	52-141	.369	43-124	.347	13-17	.765	3	52	55	2.6	29-0	31	20	0	15	160	7.6
TOTAL	133-60	2675/20.1	229-690	.332	197-613	.321	44-57	.772	27	215	242	1.8	176-2	153	118	11	62	699	5.3

JEANAE
TERRY

10

Height - 5-11 | **Position** - Guard | **Year** - Senior | **Major** - Sociology
Hometown - Detroit, Mich. | **High School** - Wayne Memorial | **Previous** - Illinois
Instagram - saucy__nae__ | **Twitter** - basquetbol_nae | **TikTok** - saucytiktok10



	Season High	Career High	(*prior school)
Points	17, vs. SIUE, 11/17/22	28, at Wisconsin, 1/31/21*	
Rebounds	14 at Illinois, 1/26/23	17, 2x last vs. Illinois, 2/17/22	
Assists	12, vs. Indiana St., 11/20/22	12 3x last, vs. Indiana St., 11/20/22	
Steals	5, vs. Wisconsin, 1/1/23	5, 5x last, vs. Wisconsin, 1/1/23	
Blocks	2, at Michigan State, 12/4/22	4, vs. Chicago State, 11/5/19*	
Field Goals	6, vs. SIUE, 11/17/22	9, vs. Penn State, 1/28/21*	
3-Pointers	1 vs. Nebraska, 1/18/23	3, 3x last vs. Ohio State, 1/7/21*	
Free Throws	5, 3x last, vs. Maryland, 12/8/22	11, at Wisconsin, 1/31/21*	
Minutes	41, at Michigan State, 12/4/22	41, at Michigan State, 12/4/22	

TERRY QUICK HITS

- 17th in program history in career assists at Purdue
- Joined 500-assist club with a pair of dimes vs. Nebraska
- First Boilermaker ever with a non-point double-double
- Earned All-Big Ten honorable mention last year
- Only Boilermaker (men or women) in history to record multiple triple-doubles in a season and a career
- Went 2-for-3 on game-winning shots in 2021-22
- Joined Stephanie White as the only Boilermaker to ever record over 150 assists and 200 rebounds in a season
- Played two seasons at Illinois
- Shot 34.1% from the field over first two years
- Two-time Class A All-State honoree

SEASON	GP-GS	MIN/AVG	FG-FGA	FG%	3FG-FGA	3FG%	FT-FTA	FT%	OFF	DEF	TOT	AVG	PF-FO	AST	TO	BLK	STL	PTS	AVG
2019-20	30-11	693/23.1	65-225	.289	15-57	.263	40-66	.606	34	79	113	3.8	55-1	91	50	17	35	185	6.2
2020-21	23-23	690/30.0	89-226	.394	15-58	.259	54-74	.730	48	131	179	7.8	48-1	101	96	6	41	247	10.7
2021-22	32-32	949/29.6	88-215	.409	3-21	.143	51-74	.689	66	157	223	7.0	80-2	183	100	14	41	230	7.2
2022-23	21-21	639/30.4	54-122	.443	1-9	.111	37-59	.627	43	126	169	8.0	43-0	145	62	9	46	146	7.0
PURDUE	53-53	1588/30.0	142-337	.421	4-30	.133	88-133	.662	109	283	392	7.4	123-2	328	162	23	87	376	7.1
TOTAL	106-87	2971/28.0	296-788	.376	34-145	.234	182-273	.667	191	493	684	6.5	226-4	520	308	46	163	808	7.6

2022-23 PURDUE WOMEN'S BASKETBALL GAME NOTES

LASHA PETREE

11

Height - 6-0 | **Position** - Guard | **Year** - Fifth Year | **Major** - Master's Management
Hometown - Detroit, Mich. | **High School** - Arbor Prep | **Previous** - Bradley & Rutgers
Instagram - lashapetree | **Twitter** - la3ha | **TikTok** - la3ha



	Season High	Career High	(*prior school)
Points	31 vs. Syracuse, 11/30/22	36, vs Indiana St. 01/05/20*	
Rebounds	8, at Michigan State, 12/4/22	12 at Evansville 01/11/19*	
Assists	3, 4x last vs. Minnesota, 1/21/23	6 at Drake 02/20/20*	
Steals	3, 3x last at Penn State, 1/7/23	6 vs Chicago St. 12/28/18*	
Blocks	3, at Michigan State, 12/4/22	6, 2x last, vs Loyola Chicago 01/23/21*	
Field Goals	13 vs. Syracuse, 11/30/22	13 2x last vs. Syracuse, 11/30/22	
3-Pointers	3 5x last vs. Minnesota, 1/21/23	6, vs North Dakota St. 12/05/19*	
Free Throws	7 at Iowa, 12/29/22	10, 2x last vs Texas 03/22/21*	
Minutes	34, at Michigan State, 12/4/22	40, 4x last vs. SIU, 2/27/20*	

PETREE QUICK HITS

- Made 100th career start against Harvard
- Ranks 17th in active Division I scoring and in the top 50 among 3-point leaders
- Transferred to Purdue ahead of the 2022-23 season, utilizing her extra year of eligibility from the NCAA.
- Spent three seasons at Bradley and one at Rutgers
- Career honors include - Preseason Naismith Award Watch List (2020-21), MVC Preseason Player of the Year (2020-21), First-Team All-MVC (2020-21 & 2019-20), MVC Freshman of the Year (2018-19), MVC Sixth Player of the Year (2018-19)
- Was a finalist for Michigan Miss Basketball as a senior

SEASON	GP-GS	MIN/AVG	FG-FGA	FG%	3FG-FGA	3FG%	FT-FTA	FT%	OFF	DEF	TOT	AVG	PF-FO	AST	TO	BLK	STL	PTS	AVG
2018-19	30-12	734/24.5	136-377	.361	56-160	.350	69-106	.651	33	67	100	3.3	62-1	22	59	31	46	397	13.2
2019-20	29-29	930/32.1	161-422	.382	67-208	.322	89-116	.767	22	95	117	4.0	65-0	46	102	50	46	478	16.5
2020-21	29-27	916/31.6	177-454	.390	53-185	.286	116-139	.835	21	90	111	3.8	72-0	43	76	63	40	523	18.0
2021-22	31-26	753/24.3	86-225	.382	38-101	.376	47-57	.825	28	70	98	3.2	58-0	32	61	22	35	257	8.3
2022-23	21-18	481/22.9	105-243	.432	30-81	.370	51-63	.810	17	52	69	3.3	55-1	27	59	13	22	291	13.9
TOTAL	140-112	3814/27.2	665-1721	.386	244-735	.332	372-481	.773	121	374	495	3.5	312-2	170	357	179	189	1946	13.9

AVA LEARN

14

Height - 6-1 | **Position** - Guard/Forward | **Year** - Sophomore | **Major** - Hospitality, Tourism
Hometown - Hyde Park, N.Y. | **High School** - Our Lady of Lourdes
Instagram - ava.learn | **Twitter** - AvaLearn | **TikTok** - ava.learn



	Season High	Career High
Points	12, 2x last, vs. Wisconsin, 1/1/23	13, at Rutgers, 2/20/22
Rebounds	4, 3x last, vs. Wisconsin, 1/1/23	4, 3x last, vs. Wisconsin, 1/1/23
Assists	3 vs. Michigan, 1/10/23	3 vs. Michigan, 1/10/23
Steals	1, 8x last at Northwestern, 1/14/23	2 vs. Wisconsin, 2/27/22
Blocks	2 2x last at Penn State, 1/7/23	3, at Northwestern, 2/24/22
Field Goals	5, vs. Wisconsin, 1/1/23	6, 2x last at Rutgers, 2/20/22
3-Pointers	-	-
Free Throws	8 vs. Oklahoma State, 11/26/22	8 vs. Oklahoma State, 11/26/22
Minutes	23 at Penn State, 1/7/23	23 3x last at Penn State, 1/7/23

LEARN QUICK HITS

- Made first career start at Northwestern
- Pure bundle of energy on and off the court
- Saw action off the bench in 22 games as a freshman
- Totaled 16.4 minutes per game over the final 16 games of the season, including a season-high 13 points at Rutgers
- No. 153 player in the nation and No. 41 guard by Girls Basketball Prep
- Four-time Poughkeepsie Journal All-Star

SEASON	GP-GS	MIN/AVG	FG-FGA	FG%	3FG-FGA	3FG%	FT-FTA	FT%	OFF	DEF	TOT	AVG	PF-FO	AST	TO	BLK	STL	PTS	AVG
2021-22	22-0	270/12.3	46-75	.613	0-7	.000	13-18	.722	26	34	60	2.7	59-4	6	17	13	8	105	4.8
2022-23	21-2	217/10.3	27-47	.574	0-1	.000	20-23	.870	12	29	41	2.0	27-0	12	20	6	8	74	3.5
TOTAL	43-2	487/11.3	73-122	.598	0-8	.000	33-41	.805	38	63	101	2.3	86-4	18	37	19	16	179	4.2

ABBIE ELLIS

23

Height - 5-6 | **Position** - Guard | **Year** - Senior | **Major** - Early Childhood Education
Hometown - Melbourne, Australia | **High School** - Our Lady of Mercy | **Previous** - Cal Poly
Instagram - _abbeyellis | **Twitter** - _abbeyellis | **TikTok** - abbeye_22



	Season High	Career High	(*prior school)
Points	29, vs. SIUE, 11/17/22	39, at San Diego St., 12/21/20*	
Rebounds	7 vs. Illinois State, 12/11/22	10, vs. Long Beach St., 3/10/21*	
Assists	4 vs. Michigan, 1/10/23	11, vs. Western Michigan, 11/14/21	
Steals	2, 3x last at Iowa, 12/29/22	8, vs. Santa Clara, 12/15/20*	
Blocks	1 2x last vs. Nebraska, 1/18/23	1, 13x last vs. Nebraska, 1/18/23	
Field Goals	9, 2x last at Ohio State, 1/29/23	14, vs. UC Riverside, 1/23/20*	
3-Pointers	5 at Ohio State, 1/29/23	8, at UC San Diego, 1/1/21*	
Free Throws	8, vs. SIUE, 11/17/22	10, at UC San Diego, 1/2/21*	
Minutes	39 vs. Nebraska, 1/18/23	44 vs. Indiana, 1/16/22	

ELLIS QUICK HITS

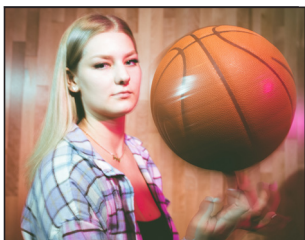
- 24th in the nation and first in the Big Ten in free throw%
- Big Ten Honor Roll after wins over Illinois and OSU
- Earned All-Big Ten honorable mention last year
- 85.4% free throw clip last year was the 10th best in a single season in Purdue history
- Crossed the 1,000-point plateau in 2021-22 with a 19-point performance against Indiana at Mackey Arena.
- Developed a sizable following on TikTok @abbeye_22 with videos shared by Barstool Sports, Slam and more.
- Mother Libbie sends several ribbons in different colors for her to wear in games
- Father Martin was an Australian Rules Football official who refereed 244 matches in 13 years, including the 2001 Grand Final.

SEASON	GP-GS	MIN/AVG	FG-FGA	FG%	3FG-FGA	3FG%	FT-FTA	FT%	OFF	DEF	TOT	AVG	PF-FO	AST	TO	BLK	STL	PTS	AVG
2019-20	29-29	950/32.8	165-392	.421	48-148	.324	73-87	.839	10	124	134	4.6	75-2	84	94	3	42	451	15.6
2020-21	24-23	753/31.4	127-322	.394	42-116	.362	71-80	.888	17	95	112	4.7	51-2	62	70	3	62	367	15.3
2021-22	32-31	928/29.0	128-275	.465	31-93	.333	82-96	.854	27	74	101	3.2	52-0	95	71	7	35	369	11.5
2022-23	20-9	538/26.9	77-154	.500	28-67	.418	55-62	.887	9	53	62	3.1	29-0	29	34	3	16	237	11.9
PURDUE	52-40	1465/28.2	205-429	.478	59-160	.369	137-158	.867	36	127	163	3.1	81-0	124	105	10	51	606	11.7
TOTAL	105-92	3169/30.2	497-1143	.435	149-424	.351	281-325	.865	63	346	409	3.9	207-4	270	269	16	155	1424	13.6

ADDISON POTTS

30

Height - 6-0 | **Position** - Guard | **Year** - Freshman | **Major** - Management
Hometown - Fort Myers, Fla. | **High School** - South Fort Myers
Instagram - addison_potts | **Twitter** - addison_potts3 | **TikTok** - aapp_33



	Season High	Career High	(*prior school)
Points	2, vs. SIUE, 11/17/22	2, vs. SIUE, 11/17/22	
Rebounds	-	-	
Assists	2, Murray State, 11/13/22	2, Murray State, 11/13/22	
Steals	-	-	
Blocks	-	-	
Field Goals	-	-	
3-Pointers	-	-	
Free Throws	-	-	
Minutes	6, vs. SIUE, 11/17/22	6, vs. SIUE, 11/17/22	

POTTS QUICK HITS

- 2022 Prep Girls Hoops Florida Miss Basketball
- 3-time First Team News-Press SWFL All-Area and Player of the Year finalist
- Won six varsity letters, starting high school career in seventh grade
- Totaled 2,098 points during prep career

SEASON	GP-GS	MIN/AVG	FG-FGA	FG%	3FG-FGA	3FG%	FT-FTA	FT%	OFF	DEF	TOT	AVG	PF-FO	AST	TO	BLK	STL	PTS	AVG
2022-23	4-0	18/4.4	1-3	.333	0-0	.000	0-1	.000	0	0	0	0.0	3-0	2	0	0	0	2	0.5

2022-23 PURDUE WOMEN'S BASKETBALL GAME NOTES

LILLY STODDARD 31



Height - 6-4 | **Position** - Forward | **Year** - Freshman | **Major** - Biomedical Sciences
Hometown - Crown Point, Ind. | **High School** - Crown Point
Instagram - lilly.stoddard | **Twitter** - lillystoddard00 | **TikTok** - lilly.stoddard

	Season High	Career High	(*prior school)
Points	2 vs. Harvard, 11/24/22	2 vs. Harvard, 11/24/22	
Rebounds	1, vs. Indiana St., 11/20/22	1, vs. Indiana St., 11/20/22	
Assists	-		
Steals	-		
Blocks	1, Murray State, 11/13/22	1, Murray State, 11/13/22	
Field Goals	1 vs. Harvard, 11/24/22	1 vs. Harvard, 11/24/22	
3-Pointers	-		
Free Throws	-		
Minutes	5 vs. Oklahoma State, 11/26/22	5 vs. Oklahoma State, 11/26/22	

STODDARD QUICK HITS

- No. 87 player in the nation by ESPNW
- Won 2021 IHSA 4A State Championship
- Finished with a 103-7 career record in high school
- Four-time conference and sectional champion
- Older Abby Stoddard plays at Butler

MADISON LAYDEN 33



Height - 6-1 | **Position** - Guard | **Year** - Junior | **Major** - Selling & Sales Management
Hometown - Kokomo, Ind. | **High School** - Northwestern
Instagram - madison_layden | **Twitter** - madison_layden | **TikTok** - madison_layden

	Season High	Career High
Points	16 vs. Michigan, 1/10/23	20, 2x last vs. Penn State, 2/9/22
Rebounds	8, at Michigan State, 12/4/22	8 4x last, at Michigan State, 12/4/22
Assists	6, Murray State, 11/13/22	7, vs. Michigan State - 1/3/21
Steals	4, vs. Wisconsin, 1/1/23	6, at Rutgers, 2/20/22
Blocks	2, vs. Maryland, 12/8/22	2 4x last, vs. Maryland, 12/8/22
Field Goals	6, Murray State, 11/13/22	8, 2x last vs. Penn State, 2/9/22
3-Pointers	5, vs. Florida State, 11/25/22	6, at Iowa - 1/18/21
Free Throws	5, vs. Indiana St., 11/20/22	6, vs. Dayton, 11/20/21
Minutes	38, at Michigan State, 12/4/22	44 vs. Indiana, 1/16/22

LAYDEN QUICK HITS

- Big Ten All-Freshman (2021), honorable mention (2022)
- One of six players to hit 45 3-pointers, dish out 65 assists and record 45 steals in each of the last two seasons (2020-21, 2021-22)
- Invited to the USA Basketball U19 World Cup Trials
- Tied freshman record with 7 3pts in a game at Iowa
- 2020 MaxPreps All-American, Indiana Gatorade Player of the Year and runner-up
- First in IHSA history to lead three Final Fours in scoring
- Ranked 13th in IHSA in career scoring and one of 46 2,000-point scorers in state history

SEASON	GP-GS	MIN/AVG	FG-FGA	FG%	3FG-FGA	3FG%	FT-FTA	FT%	OFF	DEF	TOT	AVG	PF-FO	AST	TO	BLK	STL	PTS	AVG
2022-23	6-0	16/2.7	1-4	.250	0-0	.000	0-0	.000	1	0	1	0.2	4-0	0	1	1	0	2	0.3

CAITLYN HARPER 34



Height - 6-2 | **Position** - Forward | **Year** - R-Senior | **Major** - Master's Management
Hometown - Hartland, Wisc. | **High School** - Arrowhead | **Previous** - Cal Baptist
Instagram - caitlynharper32 | **Twitter** - C_harp32 | **TikTok** - caitlynharper32

	Season High	Career High	(*prior school)
Points	20 at Penn State, 1/7/23	30, at Utah Valley, 1/15/22*	
Rebounds	9 at Penn State, 1/7/23	14, 3x last, vs. Chicago State*	
Assists	3 3x last, vs. Wisconsin, 1/1/23	5, at UTRGV, 2/13/21*	
Steals	2, 4x last at Northwestern, 1/14/23	5, at Sam Houston State, 1/27/22*	
Blocks	4 2x last vs. Michigan, 1/10/23	8, at Chicago State, 3/2/22*	
Field Goals	9 at Penn State, 1/7/23	12, vs. Utah Valley, 2/26/22	
3-Pointers	2 3x last vs. Michigan, 1/10/23	4, vs. Rice, 3/22/21*	
Free Throws	8 vs. Nebraska, 1/18/23	10, vs. Sam Houston State, 3/10/22*	
Minutes	36 at Penn State, 1/7/23	41, at Chicago State, 3/2/22*	

HARPER QUICK HITS

- Tallied 1,500th career point against Illinois
- Joined Purdue in the spring of 2022 with two years of eligibility remaining
- 2022 WAC Player of the Year and CoSIDA All-American
- Led the WAC in scoring with 17.7 points per game
- In 2021, secured All-WAC Second Team, WAC Tournament MVP and WNIT All-Region awards
- Picked up All-Wisconsin honors consecutive years, with a first-team nod in 2018
- Younger sister Alaina plays at Grand Canyon

SEASON	GP-GS	MIN/AVG	FG-FGA	FG%	3FG-FGA	3FG%	FT-FTA	FT%	OFF	DEF	TOT	AVG	PF-FO	AST	TO	BLK	STL	PTS	AVG
2018-19	29-3	470/16.2	100-203	.493	11-52	.212	40-58	.690	36	84	120	4.1	49-0	23	38	21	11	251	8.7
2019-20	5-5	121/24.3	32-56	.571	1-2	.500	16-18	.889	13	32	45	9.0	17-0	7	10	10	2	81	16.2
2020-21	27-10	642/23.8	149-281	.530	27-70	.386	60-76	.789	62	140	202	7.5	67-0	35	50	34	31	385	14.3
2021-22	32-32	964/30.1	223-421	.530	29-95	.305	94-127	.740	36	153	189	5.9	68-0	40	58	51	41	569	17.8
2022-23	21-21	516/24.6	96-165	.582	14-34	.412	27-37	.730	23	56	79	3.8	46-0	13	35	15	13	233	11.1
TOTAL	114-71	2713/23.8	600-1126	.533	82-253	.324	237-316	.750	170	465	635	5.6	247-0	118	191	131	98	1519	13.3

RICKIE WOLTMAN 35



Height - 6-4 | **Position** - Forward | **Year** - Senior | **Major** - Selling & Sales Management
Hometown - St. Louis, Mo. | **High School** - Incarnate Word
Instagram - slick_rick35 | **Twitter** - slick_rick_35 | **TikTok** - rickiew

	Season High	Career High
Points	10 vs. Minnesota, 1/21/23	18 vs. Penn State, 2/9/22
Rebounds	10, at Michigan State, 12/4/22	11, 2x last vs. Penn State, 2/9/22
Assists	1, 3x last vs. Minnesota, 1/21/23	3 at Rutgers, 2/20/22
Steals	1 3x last, at Michigan State, 12/4/22	2 2x last at Indiana, 2/6/22
Blocks	2 vs. Syracuse, 11/30/22	4 at Illinois State, 11/17/21
Field Goals	3, 2x last, vs. Wisconsin, 1/1/23	7 vs. North Alabama, 12/21/21
3-Pointers	-	-
Free Throws	4, vs. Indiana St., 11/20/22	4, vs. Indiana St., 11/20/22
Minutes	26, at Michigan State, 12/4/22	33, vs. West Virginia, 11/25/21

WOLTMAN QUICK HITS

- Resurgent junior season, started last 22 games of the year
- Played 20.3 minutes per game last year, following just 4.9 in her first two campaigns
- No. 25 by ESPNW and No. 919 by USA Today
- Won three straight Missouri State Championships
- 2019 WBCA All-America, Missouri All-State

SEASON	GP-GS	MIN/AVG	FG-FGA	FG%	3FG-FGA	3FG%	FT-FTA	FT%	OFF	DEF	TOT	AVG	PF-FO	AST	TO	BLK	STL	PTS	AVG
2019-20	19-0	91/4.8	8-14	.571	0-0	.000	1-3	.333	9	17	26	1.4	19-0	0	11	6	0	17	0.9
2020-21	13-0	65/5.0	5-11	.455	0-0	.000	3-3	1.000	2	9	11	0.8	10-0	2	3	2	2	13	1.0
2021-22	32-22	648/20.3	96-178	.539	0-0	.000	32-52	.615	47	118	165	5.2	80-1	13	41	34	10	224	7.0
2022-23	21-0	272/13.0	31-48	.646	0-0	.000	14-19	.737	19	51	70	3.3	31-0	4	17	6	3	76	3.6
TOTAL	85-22	1077/12.7	140-251	.558	0-0	.000	50-77	.649	77	195	272	3.2	140-1	19	72	48	15	330	3.9

2022-23 PURDUE WOMEN'S BASKETBALL GAME NOTES

3 | Jayla Smith

2022-23	Min.	FG	3FG	FT	O-D-T	PF	Pts	A	To	S	B	+/-
PNW (ex)	26	3-5	0-1	6-6	1-0-1	1	12	2	2	2	0	14
Marshall	28	6-11	3-4	1-2	0-2-2	1	16	0	2	2	1	6
Murray St.	23	3-9	0-3	2-3	3-2-5	2	8	2	1	1	1	11
SIUE	25	2-6	0-1	3-5	1-3-4	2	7	4	3	4	0	33
Indiana St.	26	4-7	1-2	1-6	0-1-1	1	10	1	0	1	1	0
Harvard	19	3-7	1-4	0-0	0-2-2	1	7	2	3	2	0	6
FSU	9	1-2	1-2	0-0	0-0-0	2	3	1	0	0	0	-4
Okla. State	11	1-2	0-1	1-1	0-0-0	0	3	0	1	0	0	-5
Syracuse	12	2-4	0-1	2-3	1-1-2	0	6	1	1	0	0	-4
MSU	10	0-2	0-1	0-0	0-1-1	0	0	0	2	1	0	-10
Maryland	10	0-2	0-1	0-0	0-1-1	0	0	0	2	1	0	-10
Illinois State	18	3-9	2-3	0-0	1-2-3	3	8	1	4	0	1	9
Texas A&M	23	4-8	0-2	0-2	0-0-0	2	8	2	0	1	0	7
Iowa	18	4-8	0-0	1-1	3-0-3	0	9	0	3	0	0	-19
Wisconsin*	23	3-8	0-2	2-6	1-1-2	0	8	1	1	1	0	14
Penn State*	30	4-10	2-4	1-2	3-2-5	0	11	2	1	1	1	-14
Michigan*	18	5-13	0-5	2-2	0-2-2	1	14	0	1	0	0	-10
NU	21	5-9	1-2	0-0	0-1-1	2	11	1	1	2	1	12
Nebraska	23	4-10	1-4	2-2	3-4-7	1	11	4	1	0	0	-8
Minnesota	22	6-9	1-3	0-0	0-1-1	3	13	2	0	0	1	13
Illinois	17	3-7	0-2	0-0	0-2-2	1	6	0	0	2	0	4
Ohio State	23	1-7	0-3	0-0	1-2-3	1	2	0	0	1	1	6
Indiana												
Rutgers												
NU												
MSU												
Indiana												
Penn State												
Minnesota												

* Started

^Big Ten Tournament

10 | Jeanae Terry

2022-23	Min.	FG	3FG	FT	O-D-T	PF	Pts	A	To	S	B	+/-
PNW (ex)	25	4-6	0-0	3-4	0-5-5	4	11	5	4	1	0	22
Marshall*	32	2-2	0-0	1-2	4-6-10	2	5	10	3	2	0	20
Murray St.*	30	2-4	0-0	5-5	1-9-10	1	9	10	0	1	0	42
SIUE*	27	6-9	0-0	5-9	2-5-7	2	17	4	1	4	0	31
Indiana St.*	26	0-2	0-0	0-0	1-5-6	2	0	12	2	1	0	33
Harvard*	31	3-6	0-2	1-3	1-12-13	2	7	8	5	4	1	7
FSU*	38	2-9	0-1	2-2	4-8-12	3	6	8	4	2	0	4
Okla. State*	30	4-8	0-0	3-5	3-4-7	2	11	6	1	0	1	4
Syracuse*	27	2-3	0-0	3-4	0-4-4	1	7	6	2	2	1	-1
MSU*	41	2-8	0-1	2-3	1-7-8	3	6	8	4	2	2	5
Maryland*	26	2-3	0-0	5-6	1-2-3	3	9	6	5	3	0	4
Illinois State*	36	4-5	0-0	1-2	1-6-7	1	9	6	2	0	0	15
Texas A&M*	36	1-2	0-0	1-2	0-11-11	2	3	7	1	2	1	11
Iowa*	34	2-8	0-2	0-0	2-6-8	1	4	7	1	3	0	-9
Wisconsin*	29	3-5	0-0	1-2	3-3-6	1	7	7	2	5	0	19
Penn State*	24	0-2	0-0	2-2	1-8-9	3	2	3	5	2	1	-1
Michigan*	26	2-6	0-0	0-0	1-2-3	3	4	5	5	1	0	-23
NU*	28	3-6	0-0	0-4	6-3-9	4	6	10	6	2	0	10
Nebraska*	28	2-6	1-2	3-6	3-5-8	2	8	2	4	2	1	-9
Minnesota*	27	4-9	0-0	0-0	1-6-7	1	8	8	4	0	0	11
Illinois*	35	5-11	0-1	0-0	6-8-14	2	10	4	4	4	1	16
Ohio State*	33	3-8	0-0	2-2	1-6-7	2	8	8	1	4	0	0
Indiana												
Rutgers												
NU												
MSU												
Indiana												
Penn State												
Minnesota												

* Started

^Big Ten Tournament

5 | Cassidy Hardin

2022-23	Min.	FG	3FG	FT	O-D-T	PF	Pts	A	To	S	B	+/-
PNW (ex)	25	3-7	3-7	0-0	0-6-6	1	9	2	1	0	2	17
Marshall*	39	3-11	3-11	0-0	0-4-4	1	9	1	0	1	0	15
Murray St.*	21	1-2	1-1	0-0	0-3-3	0	3	2	0	0	0	26
SIUE*	23	1-3	0-2	2-2	0-1-1	2	4	2	0	0	0	17
Indiana St.*	24	5-7	5-7	3-4	0-3-3	1	18	0	1	2	0	21
Harvard*	26	3-4	3-4	0-0	0-2-2	2	9	2	0	1	0	27
FSU*	15	4-9	3-8	0-0	0-4-4	3	11	0	2	0	0	-3
Okla. State*	25	0-2	0-2	1-2	0-2-2	2	1	0	0	0	0	4
Syracuse*	19	1-6	1-5	0-0	0-0-0	2	3	2	0	0	0	3
MSU*	29	4-11	3-9	0-0	1-3-4	1	11	1	1	0	0	5
Maryland*	31	4-7	3-6	0-0	0-6-6	0	11	3	1	1	0	3
Illinois State*	26	2-7	1-6	0-0	0-1-1	4	5	1	1	2	0	3
Texas A&M*	37	4-13	3-11	2-3	0-2-2	4	13	2	1	0	0	3
Iowa*	29	4-11	2-8	0-0	0-4-4	1	10	1	2	1	0	-12
Wisconsin*	19	1-3	1-3	0-0	0-1-1	1	3	2	0	1	0	-1
Penn State*	20	1-6	1-5	0-0	0-2-2	0	3	0	3	0	0	-4
Michigan	21	1-2	1-2	3-4	0-2-	0	6	1	0	1	0	-6
NU	20	1-5	1-4	0-0	0-1-1	1	3	2	4	2	0	5
Nebraska	22	2-5	2-4	0-0	0-1-1	1	6	1	0	1	0	-7
Minnesota*	31	4-11	4-11	2-2	1-3-4	1	14	2	0	1	0	19
Illinois*	28	1-8	0-6	0-0	0-2-2	1	2	3	0	0	0	2
Ohio State*	36	5-8	5-8	0-0	1-5-6	1	15	3	4	1	0	10
Indiana												
Rutgers												
NU												
MSU												
Indiana												
Penn State												
Minnesota												

* Started

^Big Ten Tournament

11 | Lasha Petree

2022-23	Min.	FG	3FG	FT	O-D-T	PF	Pts	A	To	S	B	+/-
PNW (ex)	23	4-9	2-4	4-4	1-1-2	3	14	1	3	2	1	15
Marshall*	21	5-12	1-5	2-3	1-0-1	5	13	0	3	0	0	-3
Murray St.*	25	9-15	3-5	2-2	1-3-4	4	23	0	0	0	0	18
SIUE*	23	7-13	1-4	2-3	0-1-1	0	17	0	1	3	1	18
Indiana St.*	15	6-9	2-4	3-4	0-1-1	3	17	1	5	0	0	11
Harvard*	26	9-14	3-5	2-3	1-2-3	3	23	0	3	0	0	25
FSU*	32	6-19	1-7	2-4	1-4-5	3	15	3	3	2	1	5
Okla. State*	32	8-15	1-4	3-4	3-3-6	3	20	3	2	2	0	5
Syracuse*	30	13-21	1-3	4-5	0-7-7	4	31	1	8	1	2	1
MSU*	34	7-14	2-5	2-2	2-6-8	3	18	2	8	1	3	6
Maryland*	29	5-11	1-4	3-4	0-2-2	3	14	0	2	0	2	-4
Illinois State*	29	4-10	1-2	5-5	2-1-3	4	14	1	3	3	1	8
Texas A&M*	27	2-13	2-6	3-4	2-4-	6	3	9	3	3	2	5
Iowa*	30	6-18	3-8	7-8	2-2-4	4	22	2	3	1	0	-2
Wisconsin*	30	5-13	2-4	6-6	0-1-1	3	18	3	4	2	0	2
Penn State*	23	4-14	2-4	2-2	0-5-5	3	12	1	2	3	0	-5
Michigan	11	1-5	0-1	2-2	0-1-1	2	4	1	1	0	0	-1
NU	11	1-5	0-1	0-0	0-1-1	0	2	2	0	1	0	-3
Nebraska	9	0-2	0-1	0-0	0-1-1	0	0	0	3	0	0	-8
Minnesota*	27	4-12	3-6	1-2	2-3-5	2	12	3	1	1	1	5
Illinois*	12	3-4	1-1	0-0	0-3-3	3	7	1	4	0	1	2
Ohio State*	11	0-4	0-1	0-0	0-1-1	0	0	0	0	0	0	0
Indiana												
Rutgers												
NU												
MSU												
Indiana												
Penn State												
Minnesota												

* Started

^Big Ten Tournament

2022-23 PURDUE WOMEN'S BASKETBALL GAME NOTES

14 | Ava Learn

2022-23	Min.	FG	3FG	FT	O-D-T	PF	Pts	A	To	S	B	+/-
PNW (ex)	15	1-2	0-0	2-3	1-2-3	2	4	3	1	0	0	16
Marshall	5	0-1	0-0	0-0	2-0-2	1	0	0	0	1	0	-3
Murray St.	10	2-3	0-1	0-0	1-0-1	1	4	0	1	1	0	-8
SIUE	12	1-1	0-0	0-0	2-2-4	1	2	1	2	0	1	11
Indiana St.	14	4-4	0-0	0-0	0-2-2	2	8	0	0	1	0	4
Harvard	15	1-2	0-0	1-2	0-2-2	1	3	1	1	0	0	5
FSU	3	0-1	0-0	0-0	0-0-0	1	0	0	0	0	0	-2
Okla. State	20	2-2	0-0	8-10	1-3-4	3	12	0	0	0	0	4
Syracuse	13	2-4	0-0	2-2	1-2-3	0	6	2	1	0	0	9
MSU	12	1-2	0-0	0-0	0-2-2	2	2	1	3	1	0	5
Maryland	7	1-1	0-0	2-2	1-1-2	2	4	0	1	1	0	-2
Illinois State	14	2-3	0-0	3-3	0-2-2	1	7	1	2	0	2	8
Texas A&M	6	0-1	0-0	0-0	0-0-0	0	0	0	1	1	0	2
Iowa	3	0-0	0-0	0-0	0-0-0	0	0	0	0	0	0	0
Wisconsin	15	5-5	0-0	2-2	0-4-4	3	12	1	2	0	0	5
Penn State	23	3-5	0-0	2-2	0-3-3	3	4	3	3	0	1	-5
Michigan	12	1-2	0-0	0-0	1-1-2	3	2	3	0	0	0	-5
NU*	16	1-6	0-0	0-0	2-1-3	1	2	0	1	1	0	-1
Nebraska*	14	1-4	0-0	0-0	1-1-2	4	2	1	3	0	0	5
Minnesota	5	0-0	0-0	0-0	0-3-3	1	0	0	0	0	1	6
Illinois	-1	0-0	0-0	0-0	0-0-0	0	0	0	0	0	0	2
Ohio State	2	0-0	0-0	0-0	0-0-0	0	0	0	0	0	0	-3
Indiana												
Rutgers												
NU												
MSU												
Indiana												
Penn State												
Minnesota												

* Started

^Big Ten Tournament

30 | Addison Potts

2022-23	Min.	FG	3FG	FT	O-D-T	PF	Pts	A	To	S	B	+/-
PNW (ex)	6	0-1	0-0	0-0	0-1-1	1	0	0	2	0	0	9
Marshall	DNP											
Murray St.	5-0	0-0	0-0	0-0	0-0-0	1	0	2	0	0	0	1
SIUE	7	1-2	0-0	0-1	0-0-0	0	2	0	0	0	0	11
Indiana St.*	4	0-0	0-0	0-0	0-0-0	1	0	0	0	0	0	-9
Harvard	3	0-1	0-0	0-0	0-0-0	1	0	0	0	0	0	-3
FSU	DNP											
Okla. State	DNP											
Syracuse	DNP											
MSU	DNP											
Maryland	DNP											
Illinois State	DNP											
Texas A&M	DNP											
Iowa	DNP											
Wisconsin	DNP											
Penn State	DNP											
Michigan	2	0-0	0-0	0-0	0-0-0	1	0	0	0	0	0	-1
NU	DNP											
Nebraska	DNP											
Minnesota	DNP											
Illinois	DNP											
Ohio State	DNP											
Indiana												
Rutgers												
NU												
MSU												
Indiana												
Penn State												
Minnesota												

* Started

^Big Ten Tournament

23 | Abbey Ellis

2022-23	Min.	FG	3FG	FT	O-D-T	PF	Pts	A	To	S	B	+/-
PNW (ex)	6	0-0	0-0	2-2	0-0-0	0	2	1	0	0	0	3
Marshall	DNP											
Murray St.	19	1-3	1-2	2-2	0-2-2	2	5	1	3	0	0	-5
SIUE	18	9-11	3-4	8-8	0-2-2	0	29	0	0	2	0	27
Indiana St.	19	1-5	0-1	0-0	0-3-3	0	2	2	3	2	0	11
Harvard	21	3-6	1-2	3-3	0-0-0	1	10	2	0	0	0	12
FSU	29	4-6	2-2	4-4	1-1-2	2	14	1	1	1	0	-1
Okla. State	32	8-15	1-4	3-4	3-3-6	3	20	3	2	2	0	5
Syracuse	21	3-5	1-3	2-4	0-3-3	1	9	0	2	1	0	5
MSU	21	4-6	0-1	5-5	0-1-1	2	13	0	3	1	0	-6
Maryland*	26	7-12	2-5	2-4	1-3-4	2	18	1	4	0	0	1
Illinois State*	36	3-7	0-2	3-3	1-6-7	0	9	3	1	1	1	12
Texas A&M*	31	4-9	2-5	1-2	1-1-2	0	11	1	1	0	0	2
Iowa*	29	1-6	0-3	1-2	1-4-5	3	3	1	1	2	0	0
Wisconsin	24	1-4	0-0	4-4	0-1-1	2	6	0	1	1	0	2
Penn State	21	1-4	0-2	2-2	0-3-3	3	4	3	3	0	1	-5
Michigan*	36	1-6	0-2	0-0	0-2-2	1	2	4	3	0	0	-20
NU*	34	7-15	3-8	7-7	0-2-2	2	24	3	2	1	0	15
Nebraska*	38	7-12	4-7	2-2	1-5-6	2	20	1	2	1	1	-7
Minnesota*	30	2-5	0-2	0-0	1-4-5	1	4	3	2	1	0	17
Illinois*	35	6-9	2-4	2-2	1-5-6	1	16	1	1	0	0	11
Ohio State*	30	9-16	5-8	3-4	0-2-2	2	26	1	0	1	0	9
Indiana												
Rutgers												
NU												
MSU												
Indiana												
Penn State												
Minnesota												

* Started

^Big Ten Tournament

31 | Lilly Stoddard

2022-23	Min.	FG	3FG	FT	O-D-T	PF	Pts	A	To	S	B	+/-
PNW (ex)	8	1-1	0-0	2-2	0-3-3	2	4	1	0	0	0	8
Marshall	DNP											
Murray St.	2-0	0-1	0-0	0-0	0-0-0	0	0	0	0	0	1	-3
SIUE	4	0-1	0-0	0-0	0-0-0	3	0	0	0	0	0	8
Indiana St.	3	0-1	0-0	0-0	1-0-1	0	0	0	1	0	0	-5
Harvard	5	1-1	0-0	0-0	0-0-0	1	2	0	0	0	0	-4
FSU	DNP											
Okla. State	DNP											
Syracuse	DNP											
MSU	DNP											
Maryland	DNP											
Illinois State	DNP											
Texas A&M	DNP											
Iowa	DNP											
Wisconsin	DNP											
Penn State	-1	0-0	0-0	0-0	0-0-0	0	0	0	0	0	0	-2
Michigan	3	0-0	0-0	0-0	0-0-0	0	0	0	0	0	0	-1
NU	DNP											
Nebraska	DNP											
Minnesota	DNP											
Illinois	DNP											
Ohio State	DNP											
Indiana												
Rutgers												
NU												
MSU												
Indiana												
Penn State												
Minnesota												

* Started

^Big Ten Tournament

2022-23 PURDUE WOMEN'S BASKETBALL GAME NOTES

33 | Madison Layden

2022-23	Min.	FG	3FG	FT	O-D-T	PF	Pts	A	To	S	B	+/-
PNW (ex)	26	2-6	2-5	2-2	1-2-3	2	8	7	0	0	23	
Marshall*	38	5-10	2-6	1-1	1-5-6	2	13	5	0	3	0	14
Murray St.*	30	6-13	3-7	0-0	0-1-1	3	15	6	0	0	0	32
SIUE*	26	1-6	1-5	0-0	0-5-5	3	3	4	1	0	0	18
Indiana St.*	30	2-8	1-5	5-6	0-7-7	2	10	4	2	1	0	19
Harvard*	27	0-2	0-1	0-0	0-3-3	2	0	5	2	0	0	18
FSU*	36	5-8	5-7	0-0	0-3-3	4	15	4	3	1	1	0
Okla. State*	29	2-9	2-8	0-0	0-6-6	3	6	2	4	3	1	3
Syracuse*	34	1-5	0-4	2-2	0-7-7	2	4	3	3	0	0	11
MSU*	37	2-6	1-3	4-4	0-8-8	4	9	3	4	0	0	8
Maryland*	37	1-4	1-4	1-2	0-5-5	2	4	4	4	2	2	-5
Illinois State	DNP											
Texas A&M	DNP											
Iowa	23	3-10	2-6	0-0	0-1-1	4	8	1	0	1	0	-15
Wisconsin	28	0-4	0-3	0-0	0-2-2	2	0	3	4	4	1	9
Penn State	21	0-2	0-2	0-0	0-0-0	3	0	5	1	1	0	-9
Michigan*	33	6-8	4-6	0-0	0-3-3	4	16	2	1	0	0	-17
NU*	35	2-7	2-7	2-2	0-7-7	2	8	1	0	2	0	5
Nebraska*	32	0-3	0-3	0-0	0-1-1	3	0	4	1	2	0	-2
Minnesota	23	2-5	2-5	0-0	0-3-3	0	6	2	0	0	0	12
Illinois*	34	3-8	0-4	3-4	0-5-5	3	9	0	3	1	0	5
Ohio State*	28	3-7	2-6	2-2	1-6-7	3	10	3	5	0	1	9
Indiana												
Rutgers												
NU												
MSU												
Indiana												
Penn State												
Minnesota												

* Started

^Big Ten Tournament

35 | Rickie Woltman

2022-23	Min.	FG	3FG	FT	O-D-T	PF	Pts	A	To	S	B	+/-
PNW (ex)	18	2-3	0-0	6-9	2-3-5	0	10	0	3	0	1	1
Marshall	10	0-1	0-0	0-0	0-2-2	0	0	0	0	1	0	3
Murray St.	15	3-5	0-0	0-0	1-2-3	1	6	0	1	0	1	-8
SIUE	14	1-3	0-0	2-4	2-3-5	1	4	0	1	1	0	21
Indiana St.	20	1-1	0-0	4-4	0-5-5	1	6	1	1	0	1	12
Harvard	12	4-5	0-0	1-1	1-4-5	0	9	1	0	0	0	6
FSU	10	1-1	0-0	1-2	1-0-1	0	3	0	0	0	1	-8
Okla. State	11	1-1	0-0	0-0	1-2-3	4	2	0	2	0	0	13
Syracuse	15	2-3	0-0	2-2	0-2-2	2	6	0	2	0	2	2
MSU	26	1-2	0-0	0-0	3-7-10	3	2	1	2	1	0	5
Maryland	11	2-3	0-0	0-0	2-0-2	1	4	0	0	0	0	-6
Illinois State	18	3-3	0-0	0-0	1-2-3	2	6	0	1	0	0	1
Texas A&M	10	0-1	0-0	0-0	1-1-2	2	0	0	1	0	0	-3
Iowa	7	1-2	0-0	0-0	1-1-2	1	2	0	0	0	0	-9
Wisconsin	9	3-4	0-0	0-0	2-1-3	1	6	0	1	0	0	10
Penn State	5	0-0	0-0	0-0	0-1-1	0	0	0	0	0	0	-5
Michigan	13	0-1	0-0	1-2	0-1-1	3	1	0	2	0	0	-4
NU	20	2-3	0-0	1-2	1-7-8	3	5	0	0	0	0	16
Nebraska	8	1-1	0-0	0-0	0-1-1	2	2	0	1	0	0	-4
Minnesota	24	4-6	0-0	2-2	1-7-8	1	10	1	1	0	0	15
Illinois	13	1-2	0-0	0-0	1-2-3	1	2	0	1	0	0	1
Ohio State	9	0-0	0-0	0-0-0	2	0	0	0	0	0	0	3
Indiana												
Rutgers												
NU												
MSU												
Indiana												
Penn State												
Minnesota												

* Started

^Big Ten Tournament

34 | Caitlyn Harper

2022-23	Min.	FG	3FG	FT	O-D-T	PF	Pts	A	To	S	B	+/-
PNW (ex)	24	10-13	0-0	2-3	1-4-5	2	22	1	3	2	2	25
Marshall*	30	6-11	2-3	3-6	2-2-4	1	17	0	3	0	4	8
Murray St.*	24	8-14	1-2	0-0	2-3-5	3	17	2	1	2	2	40
SIUE*	23	6-7	0-1	3-4	1-4-5	1	15	0	4	0	0	13
Indiana St.*	21	3-7	0-0	0-0	0-1-1	2	6	0	1	0	0	20
Harvard*	20	7-8	0-0	1-2	0-2-2	1	15	1	2	0	0	11
FSU*	30	3-7	0-0	2-4	2-4-6	1	8	0	1	0	0	4
Okla. State*	20	2-5	0-2	0-0	0-5-5	2	4	0	2	0	1	-2
Syracuse*	24	3-5	0-1	3-3	3-5-8	3	9	1	2	0	1	8
MSU*	13	3-5	1-1	2-3	1-2-3	3	9	0	2	0	1	1
Maryland*	26	4-4	0-0	2-3	0-2-2	0	10	0	3	2	0	4
Illinois State	25	3-4	0-0	0-0	1-1-2	3	6	0	3	1	0	9
Texas A&M*	32	7-11	1-4	0-1	1-4-5	2	15	3	0	1	0	3
Iowa*	29	4-9	2-4	0-0	1-4-5	4	10	0	1	1	1	-9
Wisconsin*	25	6-12	1-2	0-0	0-2-2	1	13	3	1	2	0	0
Penn State*	36	9-13	2-4	0-0	5-4-9	3	20	1	3	0	0	-1
Michigan*	27	4-7	2-2	0-0	0-1-1	2	10	0	1	0	4	-17
NU*	17	2-5	0-0	0-0	0-1-1	4	4	0	4	2	0	-4
Nebraska*	29	3-7	1-2	8-8	2-2-4	3	15	0	0	0	0	5
Minnesota*	14	4-9	0-3	0-0	1-2-3	3	8	0	0	1	0	-3
Illinois*	28	5-7	0-0	0-0	1-3-4	2	10	0	1	1	1	7
Ohio State*	32	4-8	1-3	3-3	0-2-2	2	12	2	0	0	0	6
Indiana												
Rutgers												
NU												
MSU												
Indiana												
Penn State												
Minnesota												

* Started

^Big Ten Tournament



2022-23 Purdue Women's Basketball Combined Team Statistics All games

Page 1/1
as of Feb 02, 2023

Game Records

Record	Overall	Home	Away	Neutral
ALL GAMES	15-6	8-3	5-2	2-1
CONFERENCE	6-5	2-3	4-2	0-0
NON-CONFERENCE	9-1	6-0	1-0	2-1

Score by Periods

Team	1st	2nd	3rd	4th	OT	TOT
Purdue	400	350	391	376	13	1530
Opponents	319	304	356	373	8	1360

Team Box Score

No.	Player				Total		3-Point			F-Throw		Rebounds												
		GP-GS	MIN	AVG	FG-FGA	FG%	3FG-3FGA	3FG%	FT-FTA	FT%	OFF	DEF	TOT	AVG	PF	DQ	A	TO	BLK	STL	PTS	AVG		
11	PETREE, Lasha	21-18	481:06	22.9	105-243	.432	30-81	.370	51-63	.810	17	52	69	3.3	55	1	27	59	13	22	291	13.9		
23	ELLIS, Abbey	20-9	537:43	26.9	77-154	.500	28-67	.418	55-62	.887	9	53	62	3.1	29	0	29	34	3	16	237	11.9		
34	HARPER, Caitlyn	21-21	516:24	24.6	96-165	.582	14-34	.412	27-37	.730	23	56	79	3.8	46	0	13	35	15	13	233	11.1		
3	SMITH, Jayla	21-3	411:50	19.6	71-157	.452	13-50	.260	18-35	.514	17	31	48	2.3	24	0	26	28	8	19	173	8.2		
5	HARDIN, Cassidy	21-18	535:42	25.5	52-141	.369	43-124	.347	13-17	.765	3	52	55	2.6	29	0	31	20	0	15	160	7.6		
33	LAYDEN, Madison	19-13	574:25	30.2	44-125	.352	28-92	.304	20-23	.870	2	78	80	4.2	51	0	61	38	6	21	136	7.2		
10	TERRY, Jeanae	21-21	639:19	30.4	54-122	.443	1-9	.111	37-59	.627	43	126	169	8.0	43	0	145	62	9	46	146	7.0		
35	WOLTMAN, Rickie	21-0	272:13	13.0	31-48	.646	0-0	.000	14-19	.737	19	51	70	3.3	31	0	4	17	6	3	76	3.6		
14	LEARN, Ava	21-2	216:44	10.3	27-47	.574	0-1	.000	20-23	.870	12	29	41	2.0	27	0	12	20	6	8	74	3.5		
30	POTTS, Addison	5-0	19:03	3.8	1-3	.333	0-0	.000	0-1	.000	0	0	0	0.0	4	0	2	0	0	0	2	0.4		
31	STODDARD, Lilly	6-0	16:06	2.7	1-4	.250	0-0	.000	0-0	.000	1	0	1	0.2	4	0	0	1	1	0	2	0.3		
4	RUDINI, Kate	3-0	04:24	1.5	0-0	.000	0-0	.000	0-0	.000	0	1	1	0.3	0	0	0	0	0	0	0	0.0		
Team											38	49	87					16						
Total		21	4225		559-1209	.462	157-458	.343	255-339	.752	184	578	762	36.3	343	1	350	330	67	163	1530	72.9		
Opponents		21	4225		488-1281	.381	140-468	.299	244-361	.676	253	477	730	34.8	358	2	262	325	57	154	1360	64.8		

Team Statistics

	PURDUE	OPP
Scoring	1530	1360
Points per game	72.9	64.8
Scoring margin	+8.1	-
Field goals-att	559-1209	488-1281
Field goal pct	.462	.381
3 point fg-att	157-458	140-468
3-point FG pct	.343	.299
3-pt FG made per game	7.5	6.7
Free throws-att	255-339	244-361
Free throw pct	.752	.676
F-Throws made per game	12.1	11.6
Rebounds	762	730
Rebounds per game	36.3	34.8
Rebounding margin	+1.5	-
Assists	350	262
Assists per game	16.7	12.5
Turnovers	330	325
Turnovers per game	15.7	15.5
Turnover margin	-0.2	-
Assist/turnover ratio	1.1	0.8
Steals	163	154
Steals per game	7.8	7.3
Blocks	67	57
Blocks per game	3.2	2.7
Winning streak	3	-
Home win streak	1	-
Attendance	33620	31746
Home games-Avg/Game	11-3056	7-4535
Neutral site-Avg/Game	-	3-195

Team Results

Date	Opponent		Score	Att.
11/10/2022	Marshall	W	73-61	2058
11/13/2022	Murray St.	W	90-61	2866
11/17/2022	SIUE	W	100-58	1861
11/20/2022	Indiana St.	W	77-54	3053
11/24/2022	vs Harvard	W	85-63	200
11/25/2022	vs Florida St.	L	75-76	248
11/26/2022	vs Oklahoma St.	W	71-65	136
11/30/2022	Syracuse	W	87-78	2521
12/05/2022	at Michigan St.	Wot	76-71	3015
12/08/2022	Maryland	L	74-77	3008
12/11/2022	Illinois St.	W	64-51	3429
12/21/2022	at Texas A&M	W	59-53	1608
12/29/2022	at Iowa	L	68-83	11942
01/01/2023	Wisconsin	W	73-61	3552
01/07/2023	at Penn St.	L	60-70	2367
01/10/2023	Michigan	L	59-80	3473
01/14/2023	at Northwestern	W	65-54	1566
01/18/2023	Nebraska	L	64-71	2796
01/21/2023	Minnesota	W	75-56	5003
01/26/2023	at Illinois	W	62-52	2584
01/29/2023	at Ohio St.	W	73-65	8664



2022-23 Purdue Women's Basketball Combined Team Statistics In Conference games

Page 1/1
as of Feb 02, 2023

Game Records

Record	Overall	Home	Away	Neutral
ALL GAMES	6-5	2-3	4-2	0-0
CONFERENCE	6-5	2-3	4-2	0-0
NON-CONFERENCE	0-0	0-0	0-0	0-0

Score by Periods

Team	1st	2nd	3rd	4th	OT	TOT
Purdue	199	177	186	174	13	749
Opponents	181	171	180	200	8	740

Team Box Score

No.	Player				Total		3-Point		F-Throw		Rebounds												
		GP-GS	MIN	AVG	FG-FGA	FG%	3FG-3FGA	3FG%	FT-FTA	FT%	OFF	DEF	TOT	AVG	PF	DQ	A	TO	BLK	STL	PTS	AVG	
23	ELLIS, Abbey	11-7	321:35	29.2	46-95	.484	16-41	.390	28-32	.875	5	32	37	3.4	21	0	18	22	2	8	136	12.4	
34	HARPER, Caitlyn	11-11	271:39	24.7	48-86	.558	10-21	.476	15-17	.882	11	25	36	3.3	27	0	6	16	7	9	121	11.0	
11	PETREE, Lasha	11-8	224:29	20.4	36-102	.353	14-36	.389	23-26	.885	6	26	32	2.9	23	0	15	28	7	9	109	9.9	
3	SMITH, Jayla	11-3	215:19	19.6	38-87	.437	5-27	.185	10-16	.625	12	17	29	2.6	9	0	11	11	4	8	91	8.3	
5	HARDIN, Cassidy	11-8	282:55	25.7	28-77	.364	23-67	.343	5-6	.833	3	30	33	3.0	8	0	19	15	0	9	84	7.6	
10	TERRY, Jeanae	11-11	329:19	29.9	28-72	.389	1-6	.167	15-25	.600	26	56	82	7.5	25	0	68	41	5	28	72	6.5	
33	LAYDEN, Madison	11-5	326:59	29.7	22-64	.344	14-49	.286	12-14	.857	1	41	42	3.8	30	0	28	23	4	13	70	6.4	
35	WOLTMAN, Rickie	11-0	140:51	12.8	15-24	.625	0-0	.000	4-6	.667	11	28	39	3.5	18	0	2	8	1	1	34	3.1	
14	LEARN, Ava	11-2	107:12	9.7	13-25	.520	0-0	.000	6-6	1.000	5	16	21	1.9	16	0	7	12	3	4	32	2.9	
31	STODDARD, Lilly	2-0	03:10	1.6	0-0	.000	0-0	.000	0-0	.000	0	0	0	0.0	0	0	0	0	0	0	0	0.0	
30	POTTS, Addison	1-0	01:31	1.5	0-0	.000	0-0	.000	0-0	.000	0	0	0	0.0	1	0	0	0	0	0	0	0.0	
Team											21	18	39					12					
Total		11	2225		274-632	.434	83-247	.336	118-148	.797	101	289	390	35.5	178	0	174	188	33	89	749	68.1	
Opponents		11	2225		264-663	.398	79-248	.319	133-194	.686	128	254	382	34.7	178	2	152	175	31	89	740	67.3	

Team Statistics

	PURDUE	OPP
Scoring	749	740
Points per game	68.1	67.3
Scoring margin	+0.8	-
Field goals-att	274-632	264-663
Field goal pct	.434	.398
3 point fg-att	83-247	79-248
3-point FG pct	.336	.319
3-pt FG made per game	7.5	7.2
Free throws-att	118-148	133-194
Free throw pct	.797	.686
F-Throws made per game	10.7	12.1
Rebounds	390	382
Rebounds per game	35.5	34.7
Rebounding margin	+0.7	-
Assists	174	152
Assists per game	15.8	13.8
Turnovers	188	175
Turnovers per game	17.1	15.9
Turnover margin	-1.2	-
Assist/turnover ratio	0.9	0.9
Steals	89	89
Steals per game	8.1	8.1
Blocks	33	31
Blocks per game	3.0	2.8
Winning streak	3	-
Home win streak	1	-
Attendance	17832	30138
Home games-Avg/Game	5-3566	6-5023
Neutral site-Avg/Game	-	0-0

Team Results

Date	Opponent		Score	Att.
12/05/2022	at Michigan St.	Wot	76-71	3015
12/08/2022	Maryland	L	74-77	3008
12/29/2022	at Iowa	L	68-83	11942
01/01/2023	Wisconsin	W	73-61	3552
01/07/2023	at Penn St.	L	60-70	2367
01/10/2023	Michigan	L	59-80	3473
01/14/2023	at Northwestern	W	65-54	1566
01/18/2023	Nebraska	L	64-71	2796
01/21/2023	Minnesota	W	75-56	5003
01/26/2023	at Illinois	W	62-52	2584
01/29/2023	at Ohio St.	W	73-65	8664

LAST TIME OUT



Official Basketball Box Score - Final

Purdue at Ohio St.

01/29/23 Value City Arena, Columbus
2022-23 Women's Basketball

Game Time: 1:00 PM

Game Duration: 1:48

Attendance: 8,664

Officials: Michael McConnell, Cameron Inouye, Nykesha Thompson

Purdue - 73

Record: 15-6 (6-5)

NO.	Name	Min	FG M-A	3P M-A	FT M-A	Rebounds			Fouls		TP	AS	TO	ST	Blocks		+/-
						OR	DR	TOT	PF	FD					BS	BA	
34	Caitlyn Harper	F 31:13	4-8	1-3	3-3	0	2	2	2	3	12	2	0	0	0	0	6
5	Cassidy Hardin	G 35:21	5-8	5-8	0-0	1	5	6	1	4	15	3	4	1	0	0	10
10	Jeanae Terry	G 32:10	3-8	0-0	2-2	1	6	7	2	1	8	8	1	4	0	2	0
11	Lasha Petree	G 10:54	0-4	0-1	0-0	0	1	1	0	0	0	0	0	0	0	3	0
23	Abbey Ellis	G 29:57	9-16	5-8	3-4	0	2	2	2	5	26	1	0	1	0	2	9
3	Jayla Smith	23:01	1-7	0-3	0-0	1	2	3	1	2	2	0	0	1	1	1	6
33	Madison Layden	27:37	3-7	2-6	2-2	1	6	7	3	4	10	3	5	0	1	0	9
35	Rickie Woltman	08:34	0-0	0-0	0-0	0	0	0	2	1	0	0	0	0	0	0	3
14	Ava Learn	01:13	0-0	0-0	0-0	0	0	0	0	0	0	0	0	0	0	0	-3
Team						3	2	5			0		3				
Totals			25-58	13-29	10-11	7	26	33	13	20	73	17	13	7	2	8	8

Technical Fouls::NONE

Shooting By Period			
1 st	FG%	9-16	56.3%
	3PT%	7-9	77.8%
	FT%	2-2	100%
2 nd	FG%	5-14	35.7%
	3PT%	2-8	25.0%
	FT%	2-2	100%
3 rd	FG%	5-17	29.4%
	3PT%	0-6	0.0%
	FT%	1-1	100%
4 th	FG%	6-11	54.5%
	3PT%	4-6	66.7%
	FT%	5-6	83.3%
GM	FG%	25-58	43.1%
	3PT%	13-29	44.8%
	FT%	10-11	90.9%

Dead Ball Rebounds: 3, 0

Ohio St. - 65

Record: 19-3 (8-3)

NO.	Name	Min	FG M-A	3P M-A	FT M-A	Rebounds			Fouls		TP	AS	TO	ST	Blocks		+/-
						OR	DR	TOT	PF	FD					BS	BA	
23	Rebeka Mikulasikova	F 36:50	5-11	1-5	0-0	1	2	3	4	0	11	4	2	0	0	0	-2
32	Cotie McMahon	F 37:50	4-11	1-3	2-3	3	4	7	4	3	11	4	4	0	3	1	-2
1	Rikki Harris	G 29:41	3-11	2-9	0-0	2	5	7	2	2	8	3	1	1	1	0	-8
2	Taylor Thierry	G 30:57	6-8	0-2	6-9	2	5	7	5	7	18	0	2	2	3	0	7
24	Taylor Mikesell	G 40:00	4-13	3-9	0-0	0	2	2	3	1	11	2	5	1	0	0	-8
3	Hevyne Bristow	11:13	1-1	0-0	0-0	3	1	4	1	0	2	1	1	0	0	0	-21
22	Eboni Walker	03:07	1-3	0-0	0-0	0	1	1	0	0	2	0	0	0	0	1	-6
5	Emma Shumate	10:19	1-2	0-0	0-0	1	1	2	0	0	2	0	0	1	1	0	0
20	Kaitlyn Costner	00:03	0-0	0-0	0-0	0	0	0	1	0	0	0	0	0	0	0	0
Team						0	2	2			0		0				
Totals			25-60	7-28	8-12	12	23	35	20	13	65	14	15	5	8	2	-8

Technical Fouls::NONE

Shooting By Period			
1 st	FG%	5-15	33.3%
	3PT%	1-6	16.7%
	FT%	2-3	66.7%
2 nd	FG%	6-15	40.0%
	3PT%	1-6	16.7%
	FT%	3-4	75%
3 rd	FG%	6-13	46.2%
	3PT%	3-6	50.0%
	FT%	0-0	0%
4 th	FG%	8-17	47.1%
	3PT%	2-10	20.0%
	FT%	3-5	60%
GM	FG%	25-60	41.7%
	3PT%	7-28	25.0%
	FT%	8-12	66.7%

Dead Ball Rebounds: 1, 1

	PURDUE	OSU
Biggest lead	17 (3 rd 8:23)	1 (1 st 9:07)
Best Scoring Run	13 (2 nd 9:14)	9 (4 th 6:58)
Lead Changes	7	
Times Tied	3	
Time with Lead	36:40	01:38

Points from	PURDUE	OSU
Turnovers	22	14
Paint	20	32
Second Chance	6	14
Fast Breaks	7	9
Bench	12	6

Period by Period Scoring					
	1st	2nd	3rd	4th	TOT
PURDUE	27	14	11	21	73
OSU	13	16	15	21	65

2022-23 PURDUE WOMEN'S BASKETBALL GAME NOTES



PURDUE BOILERMAKERS

Overall - 15-6 | BIG - 6-5 | Streak - W3 | AP - RV | Coaches - RV | NET - 37 | Home - 8-3 | Away - 5-2 | Neutral - 2-1 | Post - -
 Offense - 72.9 | Defense - 64.8 | Scoring Margin - +8.1 | Field Goal% - .462 | Field Goal% Defense - .381 | 3-Pt.%(PG) - .343 (7.5)
 Opp 3-Pt.%(PG) - .299 (6.7) | Rebounding - 36.3 | Rebound Margin - +1.5 | Assists - 16.7 | Turnovers - 15.7 | Turnover Margin - -0.2

SERIES HISTORY

Overall	55-38
At Home	26-14
On the Road	21-19
Neutral Site	8-5
Streak	Indiana - 7
Under Gearlds	1-0

2022-23 SCHEDULE

Opponent	Date/Result
Purdue NW	W, 98-67
Marshall	W, 73-61
Murray State	W, 90-61
SIUE	W, 100-58
Indiana State	W, 77-54
vs. Harvard (I)	W, 85-63
vs. Florida State (I)	L, 76-75
vs. Oklahoma State (I)	W, 71-65
Syracuse (2)	W, 87-78
at Michigan State*	W, 76-71
#20 Maryland*	L, 77-74
Illinois State	W, 64-51
at Texas A&M	W, 59-53
at #10 Iowa*	L, 83-68
Wisconsin*	W, 73-61
at Penn State*	L, 70-60
#17 Michigan*	L, 80-59
at Northwestern*	W, 65-54
Nebraska*	L, 71-64
Minnesota*	W, 75-56
at #22 Illinois*	W, 62-52
at #2 Ohio State	W, 73-65
#4 Indiana	F5
at Rutgers	F9
Northwestern	F12
Michigan State	F15
at Indiana	F19
Penn State	F22
at Minnesota	F26

- Big Ten Tournament (4) MI-5
 1 - Cancun Challenge (Mexico)
 2 - Big Ten/ACC Challenge
 3 - Las Vegas Holiday Classic
 4 - BIG Tournament (Minneapolis)

HEAD COACH KATIE GEARLDS

Purdue Record - 32-21 (2nd)
 Career Record - 260-71 (10th)
 Alma Mater - Purdue '07
 Highlights - 2x NAIA National Champ, 3x NAIA Coach of the Year, 8 years at Marian, 7th Overall to Seattle in 2007 Draft, Legend of Mackey, 2007 All-America

COACHING STAFF

Asso. Head Coach Beth Couture
 Assistant Coach Michael Scruggs
 Assistant Coach Alex Guyton

PRONUNCIATIONS

- 2 - Holzer - ah-NOAH
 14 - Learn - AA-va
 11 - Petree - LAY-sha pee-TREE
 10 - Terry - Jah-NAY
 31 - Stoddard - STAH-dard
 AHC - Couture - COO-chur
 HC - Gearlds - Gerald's (soft-g)
 DoV - Hasser-Smith - LAKE-en

2 - Ainhua Holzer - Fr. - G - 5-9 - Martigny, Switzerland

GP/GS	MIN.	PPG	RPG	APG	STLS	BLKS	FG%	3P%	FT%
/									

LAST GAME: Did not play due to season-ending injury

3 - Jayla Smith - So. - G - 6-0 - Indianapolis, Ind. - Lawrence North

GP/GS	MIN.	PPG	RPG	APG	STLS	BLKS	FG%	3P%	FT%
21/3	19.6	8.2	2.3	1.2	19	8	.452	.260	.514

LAST GAME: 2 pts, 3 rebs, 23 mins

5 - Cassidy Hardin - 5th - G - 5-10 - Center Grove, Ind. - Center Grove

GP/GS	MIN.	PPG	RPG	APG	STLS	BLKS	FG%	3P%	FT%
21/18	25.5	7.6	26	1.5	15	0	.369	.347	.765

LAST GAME: 15 pts, 5-8 3pt, 6 rebs, 3 asts, 1 stl, 36 mins

10 - Jeanae Terry - Sr. - G - 5-11 - Detroit, Mich. - Wayne Memorial - Illinois

GP/GS	MIN.	PPG	RPG	APG	STLS	BLKS	FG%	3P%	FT%
21/21	30.4	7.0	8.0	6.9	46	9	.443	.111	.627

LAST GAME: 8 pts, 7 rebs, 4 stls, 32 mins

11 - Lasha Petree - 5th - G - 6-0 - Detroit, Mich. - Arbor Prep - Bradley - Rutgers

GP/GS	MIN.	PPG	RPG	APG	STLS	BLKS	FG%	3P%	FT%
21/18	22.9	13.9	3.3	1.3	22	13	.432	.370	.810

LAST GAME: 11 mins

14 - Ava Learn - So. - G/F - 6-1 - Hyde Park, N.Y. - Our Lady of Lourdes

GP/GS	MIN.	PPG	RPG	APG	STLS	BLKS	FG%	3P%	FT%
21/2	10.3	3.5	2.0	0.6	8	6	.574	.000	.870

LAST GAME: 1 min

23 - Abbey Ellis - Sr. - G - 5-6 - Melbourne, Australia - Our Lady of Mercy - Cal Poly

GP/GS	MIN.	PPG	RPG	APG	STLS	BLKS	FG%	3P%	FT%
20/9	26.9	11.9	3.1	1.5	16	3	.500	.418	.887

LAST GAME: 26 pts, 9-16 fg, 5-8 3pt, 2 rebs, 1 ast, 1 stl,

30 - Addison Potts - Fr. - G - 6-0 - Fort Myers, Fla. - South Fort Myers

GP/GS	MIN.	PPG	RPG	APG	STLS	BLKS	FG%	3P%	FT%
5/0	3.8	0.4	0.0	0.4	0	0	.333	.000	.000

LAST GAME: Did not play

31 - Lilly Stoddard - Fr. - F - 6-4 - Crown Point, Ind. - Crown Point

GP/GS	MIN.	PPG	RPG	APG	STLS	BLKS	FG%	3P%	FT%
6/0	2.7	0.3	0.2	0.0	0	1	.250	.000	.000

LAST GAME: Did not play

33 - Madison Layden - Jr. - G - 6-1 - Kokomo, Ind. - Northwestern

GP/GS	MIN.	PPG	RPG	APG	STLS	BLKS	FG%	3P%	FT%
19/13	30.2	7.2	4.2	3.2	21	6	.352	.304	.870

LAST GAME: 9 pts, 5 rebs, 1 stl, 34 mins

34 - Caitlyn Harper - R-Sr. - F - 6-2 - Hartland, Wisc. - Arrowhead - Cal Baptist

GP/GS	MIN.	PPG	RPG	APG	STLS	BLKS	FG%	3P%	FT%
21/21	24.6	11.1	3.8	0.6	13	15	.582	.412	.730

LAST GAME: 12 pts, 2 rebs, 2 asts, 32 mins

35 - Rickie Woltman - Sr. - F - 6-4 - St. Louis, Mo. - Incarnate Word

GP/GS	MIN.	PPG	RPG	APG	STLS	BLKS	FG%	3P%	FT%
21/0	13.0	3.6	3.3	0.2	3	6	.646	.000	.737

LAST GAME: 9 mins

- Will miss the season due to injury
- Played several seasons in the Swiss Basketball League
- Represented Switzerland at several youth levels
- 2022 SBL Young & Most Improved Player

Career Highs:

P - -
 R - -
 A - -
 M - -

- Hit double figures seven times
- Made first start vs. Wisconsin
- Sank two triples late vs. Marshall
- Appeared in 30 games, averaging 4.7 points per game as a freshman
- Purdue's 10th Indiana Miss Basketball

Career Highs:

P - 16 2 times
 R - 7 3 times
 A - 4 2 times
 M - 30 at Penn State - 1/7/23

- Fifth in program history in 3-pointers
- Drained five 3-pointers at Ohio State
- Needs 3 triples to be 5th Boiler to hit 200
- Deferred medical school start to return
- 197 of 249 made shots have been threes
- Made a 3 in 93 games, multiple in 53

Career Highs:

P - 25 Denver - 12/12/21
 R - 8 Minnesota - 1/27/22
 A - 5 3 times
 M - 43 Indiana - 1/16/22

- 2nd in BIG in assists and assists per game
- 1-of-3 nationally over six ppg, rpg & apg
- 17th in Purdue history in career assists
- First Boiler with a non-point double-double
- Only player in Purdue history (men's & women's) to record multiple triple-doubles

Career Highs:

P - 28 at Wisconsin - 1/31/21
 R - 17 2 times
 A - 12 2 times
 M - 41 Michigan State - 12/5/22

- 54 points from 2,000 for her career
- 17th in among active DI players in points
- Scored in double figures in 15 games
- Recorded 100th career start vs. Harvard.
- Played three years at Bradley and one at Rutgers

Career Highs:

P - 36 Indiana State - 1/5/20
 R - 12 at Evansville - 1/11/19
 A - 6 at Drake - 2/20/20
 M - 40 4 times

- Made first career start at Northwestern
- Energetic spark off the bench
- Scored 10 in the third vs. Wisconsin
- Tallied five of Purdue's final 11 points to seal comeback win against Oklahoma State
- Four-time Poughkeepsie Journal All-Star

Career Highs:

P - 13 at Rutgers - 2/20/22
 R - 4 3 times
 A - 3 Michigan - 1/10/23
 M - 23 3 times

- 11 games in double figures
- Topped 20 points four times this year
- First in the Big Ten in FT%
- Wears ribbons sent from her mom Libby
- All-Big Ten honorable mention last year
- First Australian in program history

Career Highs:

P - 39 at San Diego St. - 12/21/20
 R - 10 Long Beach State - 3/10/21
 A - 11 Western Michigan - 11/14/21
 M - 44 Indiana - 1/16/22

- Scored first collegiate points vs. SIUE
- 2022 Prep Hoops Florida Miss Basketball
- 3-time First Team News-Press SWFL
- Played varsity basketball starting in seventh grade, scored 2,098 points

Career Highs:

P - 2 SIUE - 11/17/22
 R - -
 A - 2 Murray State - 11/13/22
 M - 7 SIUE - 11/17/22

- Scored first collegiate points vs. Harvard
- No. 87 player in the nation by ESPNW
- Won 2021 IHSAA 4A State Championship
- Finished with a 103-7 career record in high school

Career Highs:

P - 2 Florida State - 11/25/22
 R - 1 Indiana State - 11/20/22
 A - -
 M - 2 Murray State - 11/13/22

- 10 games in double figures
- Scored 16 pts with 4 3-pointers vs. Michigan
- 15th in Purdue history in 3-pointers
- Big Ten All-Freshman & honorable mention
- First in IHSAA history to lead three Final Fours in scoring

Career Highs:

P - 20 2 times
 R - 8 4 times
 A - 7 Michigan State - 1/3/21
 M - 44 Indiana - 1/16/22

- 13 games in double figures
- Tallied 1,500th career point vs. Illinois
- Dropped a season-high 20 at Penn State
- 1-of-6 from BIG with 10 ppg & 55 FG%
- 2022 WAC Player of the Year and CoSIDA All-American

Career Highs:

P - 30 at Utah Valley - 1/15/22
 R - 14 3 times
 A - 5 at UTRGV - 2/13/21
 M - 41 at Chicago State - 3/2/22

- Finished two rebounds shy of a double-double against Minnesota
- Played 20.3 minutes per game last year, following just 4.9 in her first two seasons
- No. 25 by ESPNW and No. 919 by USA Today

Career Highs:

P - 18 Penn State - 2/9/22
 R - 11 2 times
 A - 3 at Rutgers - 2/20/22
 M - 33 West Virginia - 11/25/21