

# PURDUE BOILERMAKERS

## 1999 NATIONAL CHAMPIONS

3 FINAL FOURS | 26 NCAA TOURNAMENTS | 7 BIG TEN TITLES | 9 BIG TEN TOURNAMENT TITLES

### - GAME INFORMATION

**Date:** Feb. 6, 2020  
**Tipoff:** 6 PM (EST)  
**Location:** Ann Arbor, Mich.  
**Arena:** Crisler Center  
**TV/Stream:** BTN  
**Talent:**  
**Radio:** Purdue Radio Network - 95.3 BOB FM  
**Talent:** Tim Newton  
**Live Stats:** mgoblue.com

### - SCHEDULE

Date	P/O Rank	Opponent	TV	Time/Result
<i>November</i>				
11/3	-/-	Southern Indiana	BTN+	W, 62-44
11/10	-/-	Milwaukee	BTN+	W, 68-55
11/14	-/-	at Chattanooga	ESPN+	W, 66-34
11/17	-/-	Western Illinois	BTN+	W, 66-59
11/24	-/-	Northern Illinois	BTN+	W, 68-63
11/29^	-/-	vs. Drake	FloHoops	W, 67-47
11/30^	-/-	vs. Arizona State	FloHoops	W, 59-52

<i>December</i>				
12/1	-/21	vs. Gonzaga	FloHoops	L, 63-50
12/5	RV/-	at Virginia Tech+	ACCNX	L, 67-54
12/8	RV/-	Kent State	BTN+	W, 77-64
12/15	-/5	at South Carolina	SECN+	L, 85-49
12/18	-/-	Western Kentucky	BTN+	W, 67-50
12/21	-/-	Bowling Green	BTN+	W, 81-74
12/28	-/-	at Ohio State*	BTN+	W, 66-50
12/31	-/-	Wisconsin*	BTN+	W, 72-61

<i>January</i>				
1/5	-/-	Rutgers*	BTN	L, 59-53
1/9	-/12	at Indiana*	BTN+	L, 66-48
1/12	-/RV	at Northwestern*	BTN+	L, 61-56
1/16	-/-	Illinois*	BTN+	W, 81-67
1/19	-/-	Minnesota*	BTN+	L, 72-59
1/22	-/-	at Nebraska*	BTN+	W, 76-68
1/26	-/-	Penn State*	BTN	W, 81-68
1/30	-/-	at Michigan State*	BTN+	W, 76-66

<i>February</i>				
2/3	-/18	Indiana*	BTN	L, 66-54
2/6	-/-	at Michigan*	BTN	6 PM
2/9	-/-	Iowa*	BTN+	2 PM
2/13	-/-	at Wisconsin*	BTN+	8 PM
2/16	-/-	at Illinois*	BTN+	3 PM
2/20	-/-	Michigan State*	BTN	7 PM
2/25	-/-	at Maryland*	BTN	8 PM
2/29	-/-	Ohio State*	BTN	4 PM

<i>March</i>				
3/4-8		Big Ten Tournament~	BTN/ESPN2	
3/20-23		NCAA First & Second Rounds		
3/27-30		NCAA Sweet 16 & Elite 8		

<i>April</i>				
4/3&5		NCAA Final Four & National Championship		

Rankings are AP/Coaches, reflect date game was played

! Exhibition Game  
 ^ 2019 Gulf Coast Showcase - Estero, Fla.  
 + Big Ten/ACC Challenge  
 ~ Big Ten Tournament - Indianapolis, Ind.  
 \* Big Ten Conference Game  
**Bold** Home Game

### - THE CONTENT

**Twitter:** @PurdueWBB  
**Instagram:** @PurdueWBB  
**Facebook:** /PurdueWBB  
**Website:** PurdueSports.com  
**Hashtag:** #BoilerUp

**NONE OF THAT**  
**LADY BOILERMAKER STUFF**  
 When writing about the Purdue women's basketball team, please refer to us only as the Boilermakers, NOT the Lady Boilers or Lady Boilermakers.

### - ATHLETICS COMMUNICATIONS

- Ian MacDougall | Associate Director  
 - O: 765-494-0529 | C: 317-313-7486  
 - imacdouga@purdue.edu

### GAME 24 | PURDUE AT MICHIGAN

**PURDUE BOILERMAKERS**



-VS-



**MICHIGAN WOLVERINES**

**15-8**

RECORD

**6-5**

BIG TEN

**14-7**

RECORD

**5-5**

BIG TEN

**N/A**

AP RANK

**N/A**

COACHES RANK

**N/A**

AP RANK

**N/A**

COACHES RANK

**SHARON VERSYP**

COACH



**KIM BARNES ARICO**

COACH

**291-170**

PURDUE RECORD | 14

**408-235**

CAREER RECORD | 20

**170-92**

SCHOOL RECORD | 8

**440-298**

CAREER RECORD | 24

### - BOILER NOTES

#### THE OPENING TIP

- The Boilermakers head back out on the road to face Michigan on BTN for the only regular-season matchup between the two sides.
- Thursday night marks the first of four games in 11 days for Purdue, including three on the road.
- Purdue will hold its 13th annual Beat Cancer Pinkout on Sunday against Iowa. The Boilermakers will rock special pink Nike uniforms that will be auctioned off during the game to raise money for the Community Cancer Network, which will benefit cancer patients and their families in the Lafayette/West Lafayette communities. Purdue will also sport Kobe V Protros Kay Yow edition.

#### LAST TIME OUT

- The Boilermakers saw their three-game winning streak snapped by No. 18 Indiana in a 66-54 loss.
- Purdue struggled to find any offensive rhythm, as just four players found the score sheet.
- Dominique Oden and Ae'Rianna Harris gave all-out effort in their final Barn Burner Trophy Game, combining for 40 points.

#### SAVING HER BEST FOR LAST

- Senior Dominique Oden has caught fire this conference season with 16.5 points per game in league games, good for eighth in the conference.
- The Atlanta native enters Monday after three straight outings with at least 20 points, the first Boilermaker to accomplish the feat since 2018.
- Oden has hit double figures in all but one Big Ten game this season, including all of the last six.

#### BOILERMAKER BIG 3

- Karissa McLaughlin, Dominique Oden and Ae'Rianna Harris have been the keys to Purdue's success this season with 40.2 points per game.
- There have been nine games in which all three finished in double figures, including the last five of the last six games.
- The group has combined for 50.9% (4,243-of-8,324) of Purdue's points since 2016-17.

#### SOLID RUN AS OF LATE

- Purdue enters Monday night winners of five of their last six outings.
- During the stretch, the Boilermakers have shot 45.3% from the field and blocked 5.1 shots per game.
- Oden and Harris have averaged at least 18 points per game, and totaled 7.1 and 8.4 boards per game, respectively.

### - A WIN WOULD...

- Be better than a loss.
- Be the third straight win in Ann Arbor.
- Move the Boilermakers above .500 on the road this season
- Be Purdue's fifth win in the last seven outings.
- Make the Boilermakers 4-4 when losing the game before.

### - RECORD BREAKDOWN

	2019-20 Season		Under Versyp	
<b>Overall:</b>	15-8	L1	291-170	
<b>Big Ten opponents:</b>	6-5	L1	134-97	
<b>Non-Conference (RS):</b>	9-3	W2	157-73	
<b>Home:</b>	9-3	L1	158-60	
<b>Away:</b>	4-4	W2	84-84	
<b>Neutral:</b>	2-1	L1	49-27	
<b>Post (BIG, NCAA, WNIT):</b>	0-0	L1	37-20	

### - ROSTER QUICK HITS/PRONUNCIATIONS

#	Name	Yr.	Pos.	Ht.	Hometown	Boiler Bullet Point
1	Karissa McLaughlin	Jr.	G	5-7	Fort Wayne, Ind.	• Connected on 54 3-pointers this season
2	Bria Harmon	Fr.	G	5-7	Atlanta, Ga.	• Took Collins HS to Georgia State title in 2016
3	Lyndsey Whilby	Jr.	G	5-11	Powder Springs, Ga.	• One of the top isolation players on the roster
5	Cassidy Hardin	So.	G	5-10	Bargersville, Ind.	• Knocked down four triples in the last two games
11	Dominique Oden	Sr.	G	5-8	Atlanta, Ga.	• Averaging 17 points per game over the last 10
12	Roxane Makolo	Fr.	G	5-10	St. Hubert, Quebec	• Primarily defensive substitution
13	Ajah Stallings	So.	G	5-8	Indianapolis, Ind.	• Second preferred walk-on in the Versyp era
15	Leony Boudreau	Jr.	G	5-10	Montreal, Quebec	• Created an hosted Wheel Rise Event this fall
22	Jenelle Grant	R-Jr.	F	6-0	London, England	• Dropped Purdue-high 16 points at Northwestern
23	Kayana Traylor	So.	G	5-9	Martinsville, Ind.	• Topped 200 career assists against Michigan State
25	Tamara Farquhar	Jr.	F	6-0	Pierrefonds, Quebec	• Injured vs. Rutgers, will miss rest of the season
30	Nyagoo Gony	So.	F	6-2	Lincoln, Neb.	• Played in 31 games as a rookie
32	Ae'Rianna Harris	Sr.	F	6-1	Indianapolis, Ind.	• Set and continues to set A LOT of records
35	Rickie Woltman	Fr.	F	6-3	St. Louis, Mo.	• Five star recruit, rotational player
45	Fatou Diagne	R-Sr.	C	6-4	Thies, Senegal	• Played for Senegal at 2019 AfroBasket

Léony Boudreau	LEE-oh-NEE BOO-drough	Bria Harmon	BREE-uh	Karissa McLaughlin	mick-LAUF-lynn
Fatou Diagne	FAH-too de-yahn	Ae'Rianna Harris	AIIR-ee-AH-nuh	Ajah Stallings	asia
Tamara Farquhar	tuh-MARE-uh FAR-quar	Nyagoo Gony	NYAH-gwah GOH-nee	Kayana Traylor	KAY-ah-nuh



- SERIES HISTORY

Overall .....	43-20
At Home .....	25-8
On the Road .....	22-11
Neutral Site .....	6-1
Streak .....	W2
Under Versyp .....	10-8
First Meeting .....	2/6/76   N, W, 65-53
Last Purdue Win .....	1/5/19   H, W, 71-70
Last Purdue Loss .....	2/8/17   H, L, 72-62

- BY THE NUMBERS

PURDUE		MICHIGAN
L1	STREAK	W1
65	POINTS	72.8
3.3	MARGIN	9.7
61.6	DEFENSE	63.1
.427	FG%	.456
.378	FG% DEFENSE	.401
5.2	THREES	4.7
.348	3FG%	.317
.288	3FG% DEFENSE	.314
.725	FT%	.682
2.3	REB MARGIN	7.5
14.8	ASSISTS	13.8
17	TOS	15.9
0.9	AST-TO	0.9
6.5	STEALS	7.1
4.7	BLOCKS	3.5

- ON THIS DAY

Overall .....	7-5
At Home .....	3-2
On the Road .....	3-3
Neutral Site .....	1-0
Last Time .....	2014   vs. Ohio State, W, 74-58
1988 – Michael Jordan makes his signature slam dunk from the free throw line inspiring Air Jordan and the Jumpman logo.	

- QUICK FACTS

UNIVERSITY INFORMATION	
Location	West Lafayette, Ind.
Enrollment	41,573
Founded	1869
Nickname	Boilermakers
Colors	Old Gold (PMS 7502) and Black
President	Mitchell E. Daniels Jr.
Athletics Director	Mike Bobinski
S.W.A.	Nancy Cross
F.A.R.	Marcy Towns
	Phillip VanFossen
Conference	Big Ten
Arena	Mackey Arena (1967)
Seating Capacity	14,804
Ticket Office	(800) 49-SPORT

TEAM INFORMATION	
2018-19 Overall Record	19-15
2018-19 Home Record	13-4
2018-19 Road Record	3-8
2018-19 Neutral Record	3-3
2018-19 Big Ten Record	8-10
2018-19 Big Ten Finish	T-10th
2018-19 Final Ranking	NR / NR
2019 Postseason	N/A
Starters R/L	5/0
Letterwinners R/L	11/2

PROGRAM HISTORY	
First Season	1975-76 (44th)
All-Time Record	877-489 (.642)
All-Time B1G Record	407-232 (.639)
Home Record (B1G)	464-155 (.734-86)
Road Record (B1G)	276-254 (.517-146)
Neutral Site Record	137-80 (.631)
NCAA Tournament Apps.	26 (Last: 2017)
NCAA Tournament Record	47-25 (.653)
NCAA Titles	1 (1999)
Final Four Appearances	3 (Last: 2001)
Big Ten Titles	7 (Last: 2002)
Big Ten Tournament Titles	9 (Last: 2013)
Big Ten Tournament Record	44-16 (.733)

- BOILER NOTES

RI-DICULOUS RECORDS	
• The running tally of Harris' records is starting to get a little crazy, as she etched her name to three more lists against Penn State.	
• Below is a list of every record Harris has set in her career.	
PURDUE (WOMEN)	
- Career blocks	- Career rebounds
- Blocks in a road game	- Career defensive rebounds
- Blocks in a B1G Tourney game	- Single-game field goal %
- Senior blocks in a game	- Junior-season RPG
- Senior-season blocked shots	- Junior-season rebounds
- Junior blocked shots per game	- Sophomore-season RPG
- Soph. blocks in a game	- Sophomore-season rebounds
- Soph.-season blocked shots	- Career double-doubles
- Soph.-season BPG	- Junior-season double-doubles
- Fresh.-season blocked shots	- Soph.-season double-doubles
- Fresh.-season BPG	
PURDUE (MEN & WOMEN)	
- Career blocks	

- The senior is the first player in program history to amass 1,000 points, 1,000 rebounds and 300 blocks in a career. She is just the second player in Big Ten history to accomplish the mark, joining Jessica Davenport from 2004-07 at Ohio State.
- Harris passed Joe Barry Carroll for the Purdue all-time blocks record, becoming the first Boilermaker with 350 blocks in a career.

SERIES HISTORY

- Purdue owns a 53-20 all-time series lead against Michigan.
- The Boilermakers have won the last two games in the series and four of the last five on the road against the Wolverines.
- The .726 winning percentage is the second highest against a Big Ten Conference opponent.

HARRIS B1G PLAYER OF THE WEEK

- Ae'rianna Harris was tabbed the Big Ten Conference Player of the Week for the week of Jan. 20-26
- The senior was instrumental in Purdue's two wins against Nebraska and Penn State with 23 points and 10.5 rebounds per game.
- Harris led the conference with a 76.9% field goal clip and recorded her fifth double-double of the year against Penn State.
- The Indianapolis native was named to the Naismith Women's Defensive Player of the Year Midseason Team.

THE TURNOVER BUG

- The Boilermakers have struggled to ward off the turnover bug this season with 17.0 giveaways per game.
- Purdue's turnovers have jumped up to 18 per game when on the road, but the Boilermakers' defense has forced 2.4 more opponent turnovers when away from home.
- Despite the high numbers of giveaways, the Boilermakers have found ways to win, notching 11 victories with at least 15 turnovers.

TAKING TEAMS OUT OF RHYTHM

- The Boilermakers' defense has stymied opposition this season, holding opponents to 61.6 points per game.
- Entering their games against Purdue, opponents have failed to hit their scoring average 20 times and their field goal clip 16 times.
- Opponents are averaging 11.6 points below their season average and 7.4% below their average field-goal percentage.
- After Tamara Farquhar's injury against Rutgers, the defense has allowed 5.7 more points per game, while the offense averaged 2.8 more points per game.

CONFERENCE WORK

- Purdue is fifth in the Big Ten in league games with 64 points per game allowed.
- Opponents are shooting just 40.1% against the Boilermakers, seventh in the conference.
- Karissa McLaughlin tops the conference in league games with 28 3-pointers at a 35.4% clip in league games.

A TRIO OF 1,000-POINT SCORERS

- Karissa McLaughlin, Dominique Oden and Ae'rianna Harris are the 33rd, 34th and 35th 1,000-point scorers in program history.
- They are the first trio with 1,000 points one a team since 2007 in Katie Gearlds, Erin Lawless and Lindsay Wisdom-Hylton.

MCLAUGHLIN MILESTONES

- Karissa McLaughlin's junior season has been filled with a host of milestones in addition to her 1,000-point total.
- The Fort Wayne native joined the 200 3-point club as its fourth member with Courtney Moses (240), Katie Gearlds (238) and Brittany Rayburn (201).
- McLaughlin also notched her 300th assist as the 16th player in program history.

DOMINANT DEFENSE

- Purdue is 38th in the nation in blocked shots per game with 4.7, and 17th in total blocks with 107.
- The Boilermakers are 105th in the nation and fifth in the Big Ten in scoring defense at 61.5 points allowed per game
- The Old Gold and Black has allowed just 10.3 second-chance points per game, thanks to 25.7 defensive rebounds per game.

HOME AND AWAY

- Purdue enters Thursday's showdown with a 9-3 mark at home and a 4-4 record on the road.
- Despite double-figure averages from Dominique Oden, Ae'rianna Harris and Karissa McLaughlin at home and on the road, the Boilermakers are averaging 7.5 points less on the road.
- Defensively, Purdue has allowed 62.1 points per game with an average of 1.9 more steals away from home.

SPLASH SISTERS

- Karissa McLaughlin, Cassidy Hardin, and Dominique Oden have connected on at least 15 3-pointers this year.
- McLaughlin leads the Big Ten in 3-point attempts and second in 3-pointers made with 54.
- Purdue is eighth in the conference with a 34.2% clip from distance and averaging 2.4 triples per game.

HOME SWEET HOME

- Purdue is 9-3 this season at Mackey Arena.
- The Boilermakers have a 43.7% shooting clip and an average of 68.9 points per game at home.
- Purdue has also dominated on the glass, outrebounding opponents by 6.3 boards per game.
- Dating back to 2015-16, Purdue is 55-20 in games at Mackey Arena, including a 31-6 mark in non-conference contests.

IRON WOMEN

- Even with a deep bench, the Boilermakers continue to squeeze everything they can out of their starting lineup accounting for 82% of Purdue's total points this season.
- The starters have scored all but 15 or fewer points in 17 games, including all 54 points against No. 18 Indiana on Feb. 3.
- Karissa McLaughlin leads the league in minutes played, Dominique Oden is third and Ae'rianna Harris is sixth.
- After a 2018-19 campaign with 18 total complete games, there have been just three complete games this season.
- Last season, McLaughlin, Oden and Ae'rianna Harris ranked first, fifth and 10th, respectively, in the Big Ten in minutes played.

DROPPING DIMES

- Purdue has assisted on 62.3% (341-547) of its made field goals.
- With the season's top mark of nine dimes against Northern Illinois, Kayana Traylor holds the team lead with 83 dimes.
- Purdue has had 18 performances with at least five helpers.
- Averaging 14.8 dimes per game, Purdue has dialed it up recently with 16.2 helpers over their last five outings.
- Traylor joined 200-assist club for her career against Michigan State..
- Purdue assisted on 63% of its shots from last year (493-779).

RISS DON'T MISS

- McLaughlin's 34 points against Kent State topped her previous career high of 28, set against Northwestern on Feb. 17, 2019. She went 9-for-15 from the field, including a 6-for-10 mark from deep, and a perfect 10-for-10 at the free throw line.
- The junior etched her name in the single-game record book at several points – T-7th points, T-10th 3-pointers, most points by a Boilermaker in a win at Mackey Arena.
- The Fort Wayne native featured on "SportsCenter Top 10" thanks to a 65-foot buzzer beater at the end of the first half with 0.5 seconds, checking in at No. 3. It was the second time she made the cut after the game-winning 3-pointer against Northwestern last year.

DEFENSIVE FOCUS

- Strong defense has always been a staple of a Sharon Versyp team, and the 2019-20 squad is nothing different, as Purdue has held eight opponents under 60 points.
- The 34 points allowed against Chattanooga were the second-fewest points the Boilermakers have ever given up a true road game and fewest since Feb. 20, 1976 at Northwestern during the program's first season.
- Dating back to the start of the 2014-15 campaign, the Boilermakers have held opponents under 60 points 74 times.
- In Purdue's history of 1,366 games, the Boilermakers have held an opponent under 60 points in 560 contests (41.1%).



**- BOILER NOTES****THE SHOOTING TOUCH**

- Purdue sits seventh in the Big Ten with a shooting clip of 42.7%, shooting above 40% in 15 games this season.
- Against Chattanooga, Purdue shot 52.7% from the field, the best mark since Jan. 5, 2019 against Michigan.
- The Boilermakers have created and converted the easy shots, with an average of 29.6 points in the paint, including a season-high 46 points in the paint against Illinois
- Opponents, meanwhile, have averaged just 37.8% from the field and 28.8% from behind the arc against the Boilermakers.

**400 FOR COACH V**

- With the win against Kent State, head coach Sharon Versyp joined the 400-victory club for her career.
- She has won a program record 158 games at Mackey Arena and sits third in wins behind Gene Keady (294) and Matt Painter (209)
- Versyp is the winningest coach in Purdue women's basketball history with 291 victories. She has led the Boilermakers to victory 358 times, when considering her 67 wins as a four-year starter at Purdue from 1985-1988.

**TURNING DEFENSE TO OFFENSE**

- Transition offense was a key emphasis during the offseason.
- Purdue is averaging 14.8 points off turnovers and 8.3 points on the fast break.
- Purdue's active hands have forced an average of 14.1 turnovers.
- On the flip side, the Boilermakers are giving up 16.7 points off turnovers per game due to an average of 17 giveaways per night.

**NIQUES NICE TOUCH**

- Dominique Oden is just the 15th player in program history to amass 100 starts in a career, hitting the mark earlier this season.
- The senior topped the 1,000-point mark as a junior, just the 33rd player to accomplish the feat before their senior campaign.
- Oden became the 15th player in program history to join the 1,500-point club after a 20-point performance against Wisconsin.
- Her excellence exceeds the bounds of the court as a civil engineering major, with an intensive internship on campus, as well as community service focuses with Hunger Hike, Carry the Torch and Community Cancer Network.

**MCLAUGHLIN FROM DEEEEEEP**

- Karissa McLaughlin leads the team with 54 3-pointers on the year.
- The junior is third in program history with 217 triples, closing in on Courtney Moses' record of 240.
- After six 3-pointers against Kent State, the Fort Wayne native tabbed her fifth career game with at least five triples.
- McLaughlin is a career 36.7% shooter from behind the arc, good for ninth in program history.
- In 91 career games, McLaughlin has drained at least one 3-pointer in 80 games and two in 64 contests.
- In her first two years at Purdue, she never shied away from a 3-point opportunity, setting the freshman and sophomore season records and tying the single-season mark of 88 triples.

**CHASING GIANTS**

- Ae'rianna Harris' blocking prowess is made even more remarkable when you consider the fact that she only stands 6-1.
- Harris has the highest approach vertical on the team at 28 inches and holds the second-highest standing vertical at 24 inches. Her vertical in both categories improved by at least three inches during the offseason.
- The Indianapolis native has contested the opening tip in all of her starts and has 89-17 record in jump balls, including a 4-0 mark in overtime games.
- The Indianapolis native is the shortest member of the Big Ten's 300-blocks club.

**BIG TEN 300-BLOCKS CLUB**

Player (School)	Blocks	School	HT
Allyssa DeHaan	503	Michigan State (07-10)	6-9
Jessica Davenport	384	Ohio State (04-07)	6-5
Trish Andrew	367	Michigan (08-11)	6-4
Amy Jaeschke	357	Northwestern (10-13)	6-5
<b>Ae'rianna Harris</b>	<b>354</b>	<b>Purdue (17-Pres.)</b>	<b>6-1</b>

**THIS IS PURDUE BASKETBALL**

- The 2019-20 season is the 45th campaign for women's basketball at Purdue.
- This is the 39th season for Big Ten women's basketball. Purdue has won a record nine Big Ten Conference Tournaments and seven regular season titles, including four outright - 1991, 1999, 2001 and 2002.
- Purdue has had 36 All-America selections by the Associated Press or WBCA in its history, with Ae'rianna Harris as the most recent honoree in 2019 as an Honorable Mention All-American.

**BOUNCE BACK CAMPAIGNS**

- The Boilermakers are going for their first NCAA Tournament appearance since the 2016-17 campaign.
- Purdue has made a program-best nine NCAA Tournaments under Versyp, reaching the Elite Eight twice.
- Under Versyp, the Boilermakers have received a postseason bid in 12 of her 13 seasons, electing to forgo a WNIT appearance in 2018-19 due to mounting injuries at the end of the season.
- Purdue is tied for 10th in Division I history with 26 NCAA Tournament appearances (Notre Dame, LSU, Iowa).
- The Boilermakers have failed to win 20 games just seven times since 1986-87, and every time they bounced back with at least 20 victories the following season, including a trio of Elite Eight appearances.

**BOILERS DOWN UNDER**

- In August, the Boilermakers went on a 10-day tour of Australia, including four games against professionals.
- The thrilling tour featured excursions to the Melbourne Star Ferris Wheel, a crocodile park, a dive at the Great Barrier Reef, a tour of the Sydney Opera House and a climb on the Sydney Harbour Bridge.
- The squad had 10 extra practices and ample time to bond together prior to the start of the school year.
- The team flew more than 44 hours in the air and over 22,000 miles during the tour.

**WHEEL RISE EVENT**

- In September, junior Leony Boudreau joined together with Shelby Gruss, a PhD candidate in agronomy and the former captain of the U.S. Wheelchair Basketball team, to create the Wheel Rise Event.
- Boudreau planned and carried out an afternoon that featured the Illinois wheelchair basketball team playing an intrasquad scrimmage, lectures from distinguished professors and opportunities for women's basketball players to see what it was like on the court in wheelchairs. (Hint: Very Hard)

**AN ALL-TIME GREAT ON THE SIDELINE**

- Head coach Sharon Versyp is in her 14th season leading Purdue.
- She holds the program record for overall and Big Ten wins and NCAA Tournament appearances
- Versyp was also a standout for the Boilermakers as a point guard from 1985-88, earning First Team All-Big Ten honors as a senior.

**NEW FACES ON THE BENCH**

- The Boilermakers had a handful of staff changes during the offseason.
- Melanie Balcomb, the all-time winningest coach at Vanderbilt, was named the senior associate head coach.
- Michael Scruggs joined the team as an assistant coach. He was a four-year practice player for Pat Summitt
- Former standout Alex Guyton returned to Purdue as the team's video coordinator and director of development.
- Jason Pullara was named the director of sports performance. He graduated from Purdue in 2001.
- Abby Abel made the transition to the staff as a graduate assistant after four years on the team.

**BOILERMAKER BUILT**

- Purdue has five former standouts playing professionally overseas.
- Andreona Keys | Celje | Slovenia | 17.3 ppg, 9.2 rpg, 3.0 apg
- Samantha Ostarello | San Martino | Italy | 12.8 ppg, 8.5 rpg
- Michaela Houser | Battipaglia | Italy | 18.4 ppg, 6.0 rpg, 6.0 apg
- Aya Traore | Gdessa | Portugal | 14.6 ppg, 6.9 rpg, 1.5 apg
- Ashley Morrisette | Dynamo-NPU | Ukraine

**ALWAYS TAKING SUGGESTIONS**

- Like the notes? Don't like them? Have a suggestion?
- Feel free to send an email to [imacdoug@purdue.edu](mailto:imacdoug@purdue.edu).
- Got hooked on "The West Wing Podcast", a great listen that breaks down the best show on television **ever**.
- H/T to Nathan Wiseman and Sarah Loesch for our fire #content.

**- THE RECORD WHEN PURDUE...**

	2019-20	Under Versyp
Plays at home	9-3	158-60
Plays on the road	4-4	84-84
Plays at a neutral site	2-1	49-26
Wins the game before	10-5	194-106
Loses the game before	4-3	92-61
Leads after the first quarter	11-1	67-17
Trails after the first quarter	2-6	22-41
Is tied after the first quarter	2-1	8-3
Leads at the half	13-1	227-43
Trails at the half	2-7	57-124
Is tied at the half		7-2
Leads after the third quarter	15-0	85-7
Trails after the third quarter	0-8	10-54
Is tied after the third quarter		2-0
Plays an overtime game		13-10
Leads with 2:00 left in regulation	15-0	266-16
Trails with 2:00 left in regulation	0-8	17-150
Tied with 2:00 left in regulation		7-2
Shoots 50% or better	3-0	63-5
Shoots less than 50%	12-8	237-164
Opp. shoots 50% or better		9-34
Opp. shoots less than 50%	15-8	282-132
Shoots better or same as Opp.	15-1	248-39
Shoots worse than Opp.	0-7	43-132
Makes more free throws than Opp.	12-1	230-53
Makes equal free throws	1-1	17-10
Makes less free throws than Opp.	2-6	43-107
Outrebounds Opp.	11-2	203-413
Is outrebounded	4-6	76-119
Ties Opp. in rebounds		11-7
Commits more TO's than Opp.	10-7	103-108
Commits equal or less TO's than Opp.	5-1	185-61
Scores more bench points	4-1	161-71
Scores equal bench points	2-0	9-8
Scores less bench points	9-7	120-90
Has no players in double figures	0-1	0-6
Has one player in double figures	0-1	8-22
Has two players in double figures	2-4	56-56
Has three players in double figures	8-2	118-66
Has four players in double figures	4-0	91-16
Has five players in double figures	1-0	18-3
Plays a ranked team	0-4	33-71
Plays a team ranked 1-5	0-1	4-20
Plays a team ranked 6-10		3-11
Plays a team ranked 10-25	0-3	26-38
Plays an unranked team	15-4	258-100
Plays on television	1-3	106-93
Plays on internet/webcast	14-5	112-54
Plays on Sunday	5-5	100-51
Plays on Monday	0-1	18-19
Plays on Tuesday	1-0	5-9
Plays on Wednesday	2-0	24-14
Plays on Thursday	3-2	82-48
Plays on Friday	1-0	29-8
Plays on Saturday	3-0	33-19
Margin is 5 points or fewer	1-1	58-39
Margin is between 6 and 10	5-1	56-38
Margin is between 11 and 20	8-5	108-68
Margin is between 21 and 30		40-16
Margin is between 31 and 40	1-1	21-5
Margin is more than 40		8-3
Scores 59 points or fewer	1-7	45-91
Scores between 60 and 69	7-1	104-55
Scores between 70 and 79	4-0	91-20
Scores between 80 and 89	3-0	38-3
Scores 90 points or more		11-0
Holds Opp. to fewer than 40	1-0	20-0
Holds Opp. to 41-50	3-1	73-1
Holds Opp. to 51-60	3-2	101-23
Holds Opp. to 61-70	7-4	70-59
Opp. scores 70 or more	1-2	27-86





**- BOILER NOTES****RI-JECTIONS**

- Ae'Rianna Harris is second on the NCAA active blocks list.
- Harris has blocked a shot in 100 of 127 career games.
- She broke the program record for blocks in 103 games.
- Harris broke Purdue's senior-season blocks record against Penn State. She owns the freshman, sophomore and senior year record, missing the junior mark by four.
- She is one-of-two players in Big Ten history to post at least two seasons with 300 points, 300 rebounds and 100 blocked shots.
- Harris has 68 rejections on the year, which is first in the Big Ten and fifth in the country. Her 3.09 blocks per game are first in the conference and ninth in the nation.
- Harris turned away nine shots against No. 5 South Carolina, tying Lindsay Wisdom-Hylton against Michigan State on Feb. 11, 2007, for second in program history.

**RI-BOUNDS (YES...KNOWINGLY USED THE SAME NICKNAME STYLE TWICE)**

- Ae'Rianna Harris is now the all-time leading rebounder in Purdue history, breaking the career record, held by Lindsay Wisdom Hylton, against Minnesota on Jan. 19.
- She was the first player to surpass 700 rebounds in three years at Purdue.
- The senior became the first player at Purdue with 1,000 rebounds in a career with nine boards against Michigan State.
- The Indianapolis native broke the program record for career defensive rebounds against Wisconsin.
- Harris is tied for second in program history with 26 double-doubles and second in rebounds per game at 7.9.

**PRESEASON MAMBO NO. 5 FOR RI**

- As one of the top returning players in the nation, Ae'Rianna Harris was lauded during the preseason with the following honors.
- Preseason All-Big Ten by coaches and media
- Lisa Leslie Award & Wade Trophy Watch List
- Citizen Naismith Trophy Watch List
- No. 24 player in the nation by ESPNW
- ESPNW's Graham Hays on Harris: "She has the ability to change a game without scoring a point."
- Named to the Naismith Defensive Player of the Year Midseason Team.

**HEY J**

- Jenelle Grant made the most of her first two starts with Purdue, dropping a season-high 16 points on the road at Northwestern on 7-of-16 shooting with a pair of assists.
- Grant notched two double-figure games in her first three starts.
- The redshirt junior made her long-awaited debut against Northern Illinois and appeared in the starting lineup for the first time on the road at No. 12/13 Indiana.
- The London native played two seasons at the University of the Pacific, before sitting out last season due to NCAA transfer rules.

**KT-4-3**

- Kayana Traylor holds the team lead in dimes with 83 dimes, which is good for eighth in the Big Ten.
- Purdue is 6-1 this season and 15-5 in her career when she dishes out at least five helpers.
- The sophomore dropped a career-high 19 points against Bowling Green, including a 9-for-10 mark at the free throw line.
- Traylor is just three assists away from joining the 200-assist club for her career.

**JOINING THE 1,000-POINT CLUB**

- McLaughlin joined the 1,000-point club with her 3-pointer with 5:24 remaining in the fourth against Western Kentucky.
- The junior is the 18th Boilermaker to reach the milestone as a junior and the 21st to hit the mark in less than 100 games.
- The 79 games it took to reach 1,000 points tied Carol Emanuel, Katie Douglas and Dominique Oden for the fifth-fastest pace.
- McLaughlin is the third 1,000-point scorer on the current roster, joining Oden and Ae'Rianna Harris.

**INTERNATIONAL FLAVOR**

- The 2019-20 roster has the highest amount of international players in program history with five.
- Three Canadians - Boudreau, Tamara Farquhar and Roxane Makolo - come from Quebec and Dawson College. The trio represent the only Canadians to play for Purdue.
- Fatou Diagne hails from Thies, Senegal, and Jenelle Grant calls London, England, home.
- Purdue has a total of eight international players in its history, five of whom are on this year's team.

**HALL OF FAMER - SHEREKA WRIGHT**

- Earlier this season, Purdue Athletics unveiled its 2020 Hall of Fame class, featuring women's basketball star Shereka Wright. The Boilermakers will honor Wright for its 2020 bobblehead game.
- Wright is the only three-time All-American at Purdue, the three-time All-Big Ten First Team selection amassed 2,251 points, 793 rebounds and 177 blocks.
- Wright made and attempted more free throws than any player in Big Ten Conference history, going 776 for 1,071 from the line.
- After a two-year career in the WNBA, Wright joined the college coaching ranks and currently serves as an associate head coach at Vanderbilt.

**REPRESENTING THEIR COUNTRIES**

- Fatou Diagne was named to Senegal's 2019 AfroBasket roster in August. The Thies, Senegal, native guided the Lionnes to championship game against Nigeria and runners-up honors.
- Averaged six points, and 7.4 rebounds during th tournament.
- Roxane Makolo traveled with the Boilermakers to Australia but did not play in a game.
- The Quebec native was tabbed to play for the U19 Canadian Junior National Team at the FIBA Women's Basketball World Cup in Bangkok, Thailand, where her team finished eighth.
- Karissa McLaughlin received an invitation to the U.S. Pan American Games trials last May. Coach Versyp accompanied McLaughlin for part of the five-day experience, which allowed the two to develop a tighter bond.

**JOINING THE FAMILY**

- Purdue added two standout recruits from Indiana on National Signing Day.
- Madison Layden, a 6-foot-1 guard from Kokomo, is a two-time state champion and regarded as one of the most versatile guards in the nation. She is a three-time All-State selection.
- Ra Shaya Kyle is an imposing 6-foot-6 post player from Marion. An All-State pick in 2019, Kyle is a five-star recruit and the No. 5 center in the nation by ESPN HoopGurlz.
- The recruiting class was ranked No. 17 by ESPN HoopGurlz and the fourth in the Big Ten, marking Versyp's 12th top-20 class at Purdue.
- Kyle set the Marian single-game and career points record earlier this season, while Layden broke the same marks in Howard County.

**- MISCELLANEOUS STATS**

Date	Opponent	[-Biggest Lead-]			Lead			Ties			[--Time in the Lead--]			Biggest Run			Pur/Opp			Fr.	So.	Jr.	Sr.
		Pur.	Opp.	Chang.	Pur.	Opp.	Tied	Pur.	Opp.	Tied	Pur.	Opp.	Off TO	Paint	2nd-Ch.	Fast B.	Bench	2nd-Ch.	Fast B.				
11/10	Milwaukee	24	0	1	0	39:35	:00	0:25	9	7	8/11	22/22	8/2	9/3	9/27	1	15	24	28				
11/14	@Chattanooga	36	2	2	2	38:05	:04	1:51	12	5	26/9	44/18	12/11	18/2	23/7	11	5	25	25				
11/17	Western Illinois	13	0	0	1	38:33	:00	1:27	7	6	10/21	38/32	13/7	6/14	9/12	0	3	33	30				
11/24	Northern Illinois	14	9	3	3	20:30	15:41	3:49	9	7	11/18	22/30	11/11	4/11	11/22	1	20	26	21				
11/29	Drake	24	4	1	0	32:20	3:50	3:49	13	5	25/10	18/30	11/14	0/0	17/17	0	21	25	21				
11/30	Arizona State	10	10	2	3	24:54	11:45	2:55	7	12	19/18	38/18	9/16	2/4	8/19	4	8	19	28				
12/1	Gonzaga	2	15	1	3	00:52	32:25	6:19	5	8	7/26	16/30	5/2	0/6	17/20	2	10	23	15				
12/5	@Virginia Tech	0	15	0	3	0:00	37:48	2:12	8	10	18/16	34/26	14/15	8/10	8/13	2	4	30	18				
12/8	Kent State	17	3	6	6	31:57	3:06	4:57	9	8	11/11	28/28	11/10	19/8	21/13	9	12	44	12				
12/15	@South Carolina	0	38	0	1	0:00	38:23	1:37	7	10	14/26	14/50	7/15	10/24	10/30	0	3	23	23				
12/18	Western Kentucky	20	5	4	4	31:42	5:31	2:47	10	9	20/9	28/26	14/8	10/6	10/9	7	7	31	22				
12/21	Bowling Green	7	7	6	6	19:14	16:46	4:00	8	9	11/21	40/32	12/7	4/2	22/22	0	25	31	25				
12/28	@Ohio State	21	0	0	0	39:24	:00	:36	9	5	22/18	32/26	10/5	10/10	14/21	2	15	25	24				
12/31	Wisconsin	14	4	6	3	33:59	3:09	2:52	8	8	11/16	32/44	12/14	11/9	8/3	0	6	32	34				
1/5	Rutgers	0	17	0	2	0:00	38:27	1:33	7	9	19/21	18/28	12/12	2/5	3/14	2	6	23	22				
1/9	@Indiana	4	24	3	1	4:58	33:46	1:16	6	11	11/26	26/28	6/9	7/17	12/14	2	15	10	21				
1/12	@Northwestern	6	18	8	1	8:53	28:47	2:20	8	10	9/19	20/30	11/10	7/6	7/9	2	3	29	22				
1/16	Illinois	20	2	3	0	38:54	0:42	0:24	7	10	7/15	46/32	13/6	20/13	7/22	2	15	39	25				
1/19	Minnesota	2	20	4	3	1:15	36:21	2:24	14	19	21/18	24/32	11/15	4/15	4/15	1	9	17	32				
1/22	@Nebraska	21	4	4	2	34:58	1:52	3:10	11	11	16/16	32/32	9/15	8/7	28/20	0	6	31	39				
1/26	Penn State	19	0	0	1	39:33	0:00	0:27	15	9	16/15	46/30	14/8	15/18	6/9	0	9	23	49				
1/30	@Michigan State	15	9	5	0	26:43	12:47	0:30	8	7	16/11	28/32	7/12	10/11	3/8	0	7	31	48				
2/3	Indiana	0	15	0	0	39:08	0:00	0:52	6	8	12/14	30/32	5/12	6/11	0/4	0	0	14	40				
2/6	@Michigan																						
2/9	Iowa																						
2/13	@Wisconsin																						
2/16	@Illinois																						
2/20	Michigan State																						
2/25	@Maryland																						
2/29	Ohio State																						
3/4	Big Ten Tourney																						
3/5	Big Ten Tourney																						
3/6	Big Ten Tourney																						

2019-20 Totals	340/385	680/688	238/236	190/225	257/350	48	224	608	624
2019-20 Averages	14.8/16.7	29.6/29.9	10.3/10.3	8.3/9.8	11.2/15.2	2.1	9.8	26.4	27.1



## - TEAM LEADERS

Date	Opponent	Scoring	Rebounds	Assists	Steals	Blocks
11/10	Milwaukee	Oden, 16	Farquhar, 7	Traylor/Makolo, 5	McLaughlin, 2	Harris, 3
11/14	@Chattanooga	Harris, 16	Farquhar, 7	McLaughlin, Traylor, 4	3 tied with 3	Farquhar, 3
11/17	Western Illinois	Oden, 16	Harris, 17	Oden, 6	McLaughlin, 2	Harris, 3
11/24	Northern Illinois	Traylor, 16	Harris, 10	Traylor, 9	3 tied with 2	Harris, 5
11/29	Drake	McLaughlin, 13	Harris, 11	Oden, 6	Oden, Traylor, 3	Harris, 4
11/30	Arizona State	Oden, 16	Harris, Farquhar, 8	Traylor, 2	Traylor, 2	Harris, 3
12/1	Gonzaga	Oden, 9	Harris, 10	Traylor, 4	3 tied, 1	Harris, 3
12/5	at Virginia Tech	Farquhar, 18	Harris, 7	McLaughlin, 7	Oden, 2	Harris, 3
12/8	Kent State	McLaughlin, 34	Farquhar, 8	McLaughlin, Traylor, 4	Makolo, 2    Diagne, Farquhar, 1	
12/15	@South Carolina	McLaughlin, 18	Harris, 7	Traylor, 3	3 tied, 2	Harris, 9
12/18	Western Kentucky	McLaughlin, 17	Oden, 9	McLaughlin, Traylor, 5	McLaughlin, 3	Harris, 1
12/21	Bowling Green	Harris, 23	Harris, 14	Traylor, 8	6 tied, 1	Harris, 5
12/28	at Ohio State	Traylor, 15	Farquhar, Oden, 8	Traylor, 3	McLaughlin, 4	Harris, 1
12/31	Wisconsin	McLaughlin, 22	Farquhar, 11	Traylor, 6	McLaughlin, Oden, 1	Harris, 5
1/5	Rutgers	McLaughlin, 17	Harris, Oden, 7	McLaughlin, 5	Hardin, 2	3 Tied, 1
1/9	@Indiana	Harris, 15	Harris, Oden, 5	3 Tied, 3	Grant, Oden, 3	4 Tied, 1
1/12	@Northwestern	Grant, 16	Harris, 14	Traylor, 6	Harris, 3	Harris, 3
1/16	Illinois	McLaughlin, 23	Harris, 10	3 Tied, 5	Traylor, 1	Harris, 4
1/19	Minnesota	Oden, 17	Oden, 7	McLaughlin, 7	Oden, 3	Harris, 7
1/22	@Nebraska	Harris, 25	Harris, 9	Oden, 5	McLaughlin, 2	Harris, 3
1/26	Penn State	Oden, 28	Harris, 12	Oden, 8	McLaughlin, 3	Harris, 2
1/30	@Michigan State	McLaughlin, 24	Oden, Harris, 9	McLaughlin, 5	Oden, 2	Harris, 1
2/3	Indiana	Oden, 24	Harris, 7	McLaughlin, 4	Harris, Oden, 3	Harris, 2
2/6	@Michigan					
2/9	Iowa					
2/13	@Wisconsin					
2/16	@Illinois					
2/20	Michigan State					
2/25	@Maryland					
2/29	Ohio State					
3/4-8	Big Ten					

Category	Home	Away	Neutral
Record	9-3	4-4	2-1
Pts Per Game	68.9	61.4	58.7
Points Allow.	63.2	62.1	54
Point Diff.	5.8	-0.8	4.7
FG%	.437	.420	.405
3FG%	.366	.336	.293
FT%	.720	.761	.678
Opp. FG%	.393	.378	.317
Opp. 3FG%	.347	.256	.106
Opp. FT%	.715	.691	.651
Rebound Avg.	39.2	34.6	31.7
O-Rebounds	11.9	9.6	9.7
D-Rebounds	27.3	25	22
Opp. Rebounds	32.8	37.3	32
Reb. Margin	6.3	-2.6	-0.3
Fouls	14.8	16	18.6
Assists	16.8	13.6	10
Turnovers	16.2	18	17.7
Blocks	4.6	4.9	4.3
Steals	5.8	7.5	6.7

	LAST 5	LAST 10	LAST 15
RECORD	3-2	5-5	9-6
POINTS	69.2	65.6	66.4
MARGIN	1.2	0.2	1.3
DEFENSE	68.0	65.4	65.1
FG%	.452	.437	.429
FG% DEFENSE	.439	.409	.407
THREES	5.8	5.5	5.6
3FG%	.349	.353	.359
3FG% DEFENSE	.351	.304	.311
FT%	.764	.729	.750
REB MARGIN	1.8	0.8	2.1
ASSISTS	16.2	15.4	15.3
TOS	15.6	16.2	16.6
AST-TO	1.0	1.0	0.9
STEALS	6.8	5.7	6.3
BLOCKS	3.4	4.0	4.1

Farquhar, Oden, McLaughlin, Traylor, Harris	10-3
Farquhar, Oden, McLaughlin, Diagne, Harris	1-1
Oden, McLaughlin, Traylor, Harris, Grant	1-3
Oden, McLaughlin, Hardin, Diagne, Grant	1-0
Oden, McLaughlin, Hardin, Harris, Grant	2-1

## - QUARTERS AND HALVES (PURDUE/OPP)

	Purdue	Opp.	Purdue	Opp.	Purdue/Opponent							F
	Starter Pts.	Starter Pts.	Bench Pts.	Bench Pts.	1Q	2Q	1H	3Q	4Q	2H	OT	
Milwaukee	59	28	9	27	16/10	16/14	32/24	19/13	17/18	36/31		68/55
@Chattanooga	43	27	23	7	26/12	15/2	41/14	13/8	12/12	25/20		66/34
Western Illinois	57	47	9	12	15/10	18/14	33/24	16/16	17/19	33/35		66/59
Northern Illinois	55	41	11	22	19/19	11/16	30/35	21/11	17/17	38/28		68/63
Drake	50	30	17	17	12/8	29/14	41/22	13/14	13/11	26/25		67/47
Arizona State	51	31	8	19	8/16	23/11	31/27	15/13	13/12	28/25		59/52
Gonzaga	33	43	17	20	9/14	11/17	20/31	20/19	10/13	30/32		50/63
@Virginia Tech	46	54	8	13	13/20	14/9	27/29	17/22	10/16	27/38		54/67
Kent State	56	51	21	13	19/16	19/8	38/24	17/19	22/21	39/40		77/64
@South Carolina	39	55	10	30	13/26	12/17	25/43	17/25	7/17	24/42		49/85
Western Kentucky	57	41	10	9	18/13	13/15	31/28	18/8	18/14	36/22		67/50
Bowling Green	59	52	22	22	20/20	18/23	38/43	20/13	23/18	43/31		81/74
@Ohio State	52	29	14	21	15/10	15/13	30/23	23/13	13/14	36/27		66/50
Wisconsin	69	53	3	8	16/14	19/14	35/28	15/11	22/22	37/33		72/61
Rutgers	39	56	14	3	9/24	10/4	19/28	17/15	17/16	34/31		53/59
@Indiana	36	52	12	14	6/14	10/14	16/28	15/22	17/16	32/38		48/66
@Northwestern	49	52	7	9	16/15	8/16	24/31	14/19	18/11	32/30		61/56
Illinois	74	45	7	22	21/16	16/10	37/26	20/16	24/25	44/41		81/67
Minnesota	51	58	8	14	16/16	15/19	31/35	12/19	16/18	28/37		59/72
@Nebraska	48	48	28	20	26/13	13/16	39/29	15/21	22/18	37/39		76/68
Penn State	75	59	6	9	17/13	17/16	34/29	27/18	20/21	47/39		81/68
@Michigan State	73	58	3	6	12/15	24/14	36/29	19/13	21/24	40/37		76/66
Indiana	54	62	0	4	10/16	11/18	21/34	21/14	12/18	33/32		54/66
@Michigan												
Iowa												
@Wisconsin												
@Illinois												
Michigan State												
@Maryland												
Ohio State												
B1G Tourney												
B1G Tourney												
B1G Tourney												
NCAA/WNIT												
19-20 Totals	1225	1088	269	341	352/360	357/314	709/664	404/362	381/391	785/753		1494/1417
Average ppg	53.3	47.3	11.7	14.8	15.3/15.7	15.5/13.7	30.8/28.9	17.6/15.7	16.6/17.0	34.1/32.7		65.0/61.6

- PURDUE GAME HIGHS

POINTS	81 Penn St. (01/26/2020)
	81 Illinois (01/16/2020)
	81 Bowling Green (12/21/2019)
FIELD GOALS MADE	35 Penn St. (01/26/2020)
FIELD GOAL ATTEMPTS	65 Illinois (01/16/2020)
FIELD GOAL PERCENTAGE	.556 (35-63) Penn St. (01/26/2020)
3 PT FG MADE	9 vs Drake (N) (11/29/2019)
	9 Northern Ill. (11/24/2019)
	9 Milwaukee (11/10/2019)
3 PT FG ATTEMPTS	25 Northern Ill. (11/24/2019)
3 PT FG PERCENTAGE	.600 (9-15) Milwaukee (11/10/2019)
FREE THROWS MADE	21 Kent St. (12/08/2019)
FREE THROW ATTEMPTS	27 Kent St. (12/08/2019)
FREE THROW PERCENTAGE	1.000 (6-6) Penn St. (01/26/2020)
REBOUNDS	56 Western Ill. (11/17/2019)
ASSISTS	23 Penn St. (01/26/2020)
STEALS	12 at Chattanooga (11/14/2019)
BLOCKED SHOTS	11 at South Carolina (12/15/2019)
TURNOVERS	23 at Ohio St. (12/28/2019)
	23 Western Ill. (11/17/2019)
FOULS	20 at Michigan St. (01/30/2020)
	20 Kent St. (12/08/2019)
	20 vs Arizona St. (N) (11/30/2019)
	20 Milwaukee (11/10/2019)

- OPPONENT GAME HIGHS

POINTS	85 at South Carolina (12/15/2019)
FIELD GOALS MADE	37 at South Carolina (12/15/2019)
FIELD GOAL ATTEMPTS	76 at South Carolina (12/15/2019)
FIELD GOAL PERCENTAGE	.487 (37-76) at South Carolina (12/15/2019)
3 PT FG MADE	11 Bowling Green (12/21/2019)
3 PT FG ATTEMPTS	26 Western Ill. (11/17/2019)
3 PT FG PERCENTAGE	.538 (7-13) Penn St. (01/26/2020)
FREE THROWS MADE	19 at Northwestern (01/12/2020)
FREE THROW ATTEMPTS	26 at Northwestern (01/12/2020)
	26 vs Arizona St. (N) (11/30/2019)
FREE THROW PERCENTAGE	.909 (10-11) Minnesota (01/19/2020)
	.909 (10-11) Rutgers (01/05/2020)
REBOUNDS	56 at South Carolina (12/15/2019)
ASSISTS	21 Bowling Green (12/21/2019)
STEALS	16 at South Carolina (12/15/2019)
BLOCKED SHOTS	11 at South Carolina (12/15/2019)
TURNOVERS	21 at Chattanooga (11/14/2019)
FOULS	24 Bowling Green (12/21/2019)

- PURDUE INDIVIDUAL GAME HIGHS

POINTS	34 Karissa McLaughlin vs Kent St. (12/08/2019)
FIELD GOALS MADE	13 Dominique Oden vs Penn St. (01/26/2020)
FIELD GOAL ATTEMPTS	20 Dominique Oden vs Penn St. (01/26/2020)
FIELD GOAL PERCENTAGE (min 5 made)	1.000 (5-5) Lyndsey Whilby vs Bowling Green (12/21/2019)
3 PT FG MADE	7 Karissa McLaughlin at Michigan St. (01/30/2020)
3 PT FG ATTEMPTS	12 Karissa McLaughlin vs Rutgers (01/05/2020)
3 PT FG PERCENTAGE (min 2 made)	1.000 (3-3) Lyndsey Whilby vs Bowling Green (12/21/2019)
FREE THROWS MADE	10 Dominique Oden at Michigan St. (01/30/2020)
	10 Karissa McLaughlin vs Kent St. (12/08/2019)
FREE THROW ATTEMPTS	12 Dominique Oden at Michigan St. (01/30/2020)
FREE THROW PERCENTAGE (min 3 made)	1.000 (10-10) Karissa McLaughlin vs Kent St. (12/08/2019)
REBOUNDS	17 Ae'Rianna Harris vs Western Ill. (11/17/2019)
ASSISTS	9 Kayana Traylor vs Northern Ill. (11/24/2019)
STEALS	4 Karissa McLaughlin at Ohio St. (12/28/2019)
BLOCKED SHOTS	9 Ae'Rianna Harris at South Carolina (12/15/2019)
TURNOVERS	7 Kayana Traylor vs Western Ill. (11/17/2020)

- PURDUE GAME LOWS

POINTS	48 at Indiana (01/09/2020)
FIELD GOALS MADE	17 at South Carolina (12/15/2019)
	17 vs Gonzaga (N) (12/01/2019)
FIELD GOAL ATTEMPTS	48 at Michigan St. (01/30/2020)
	48 Rutgers (01/05/2020)
	48 Milwaukee (11/10/2019)
FIELD GOAL PERCENTAGE	.288 (17-59) at South Carolina (12/15/2019)
3 PT FG MADE	0 at Virginia Tech (12/05/2019)
	0 vs Arizona St. (N) (11/30/2019)
3 PT FG ATTEMPTS	7 at Virginia Tech (12/05/2019)
3 PT FG PERCENTAGE	.000 (0-7) at Virginia Tech (12/05/2019)
FREE THROWS MADE	4 at Chattanooga (11/14/2019)
FREE THROW ATTEMPTS	6 Penn St. (01/26/2020)
	6 at Chattanooga (11/14/2019)
FREE THROW PERCENTAGE	.571 (8-14) at Indiana (01/09/2020)
REBOUNDS	26 at Michigan St. (01/30/2020)
ASSISTS	5 vs Arizona St. (N) (11/30/2019)
STEALS	1 Illinois (01/16/2020)
BLOCKED SHOTS	1 at Michigan St. (01/30/2020)
	1 Western Ky. (12/18/2019)
TURNOVERS	10 Indiana (02/03/2020)
FOULS	10 at Ohio St. (12/28/2019)

- OPPONENT GAME LOWS

POINTS	34 at Chattanooga (11/14/2019)
FIELD GOALS MADE	14 at Chattanooga (11/14/2019)
FIELD GOAL ATTEMPTS	52 at Michigan St. (01/30/2020)
FIELD GOAL PERCENTAGE	.219 (14-64) at Chattanooga (11/14/2019)
3 PT FG MADE	1 vs Gonzaga (N) (12/01/2019)
	1 vs Drake (N) (11/29/2019)
3 PT FG ATTEMPTS	8 at South Carolina (12/15/2019)
3 PT FG PERCENTAGE	.053 (1-19) vs Drake (N) (11/29/2019)
FREE THROWS MADE	3 at Chattanooga (11/14/2019)
FREE THROW ATTEMPTS	6 at Chattanooga (11/14/2019)
FREE THROW PERCENTAGE	.400 (6-15) Illinois (01/16/2020)
REBOUNDS	21 Penn St. (01/26/2020)
ASSISTS	4 at Chattanooga (11/14/2019)
STEALS	3 Indiana (02/03/2020)
BLOCKED SHOTS	1 vs Drake (N) (11/29/2019)
TURNOVERS	7 Illinois (01/16/2020)

- OPPONENT INDIVIDUAL GAME HIGHS

POINTS	35 Kamaria McDaniel vs Penn St. (01/26/2020)
FIELD GOALS MADE	11 Kamaria McDaniel vs Penn St. (01/26/2020)
FIELD GOAL ATTEMPTS	20 Imani Lewis vs Wisconsin (12/31/2019)
FIELD GOAL PERCENTAGE (min 5 made)	.750 (6-8) Madisen Parker vs Bowling Green (12/21/2019)
	.750 (6-8) Tyasha Harris at South Carolina (12/15/2019)
3 PT FG MADE	5 Madisen Parker vs Bowling Green (12/21/2019)
3 PT FG ATTEMPTS	10 Petra Holesinska vs Illinois (01/16/2020)
3 PT FG PERCENTAGE (min 2 made)	1.000 (4-4) Arella Guirantes vs Rutgers (01/05/2020)
FREE THROWS MADE	9 Ali Patberg vs Indiana (02/03/2020)
FREE THROW ATTEMPTS	9 Kamaria McDaniel vs Penn St. (01/26/2020)
	11 Ali Patberg vs Indiana (02/03/2020)
FREE THROW PERCENTAGE (min 3 made)	1.000 (5-5) Brandi Bisping vs Milwaukee (11/10/2019)
REBOUNDS	15 Imani Lewis vs Wisconsin (12/31/2019)
ASSISTS	9 Mari Hill vs Bowling Green (12/21/2019)
STEALS	6 Olivia Kaufmann vs Western Ill. (11/17/2019)
BLOCKED SHOTS	5 Abbie Wolf at Northwestern (01/12/2020)
	5 Evan Zars vs Western Ill. (11/17/2019)
TURNOVERS	5 Kamaria McDaniel vs Penn St. (01/26/2020)
	5 Jordan Hamilton at Northwestern (01/12/2020)
	5 Jordan Wallace vs Rutgers (01/05/2020)

5 Aaliyah Patty at Ohio St. (12/28/2019)
5 Caterion Thompson vs Bowling Green (12/21/2019)
5 Raneem Elgedawy vs Western Ky. (12/18/2019)
5 Megan Carter vs Kent St. (12/08/2019)
5 Aisha Sheppard at Virginia Tech (12/05/2019)
5 Eboni Williams at Chattanooga (11/14/2019)

- RECORDS WATCH

<b>Ae’Rianna Harris</b>				
<b>CAREER POINTS</b>				
Harris	18.	1,408		2017-Present
Record Holder	1.	2,405	MaChelle Joseph	1989-92
Next Up	17.	1,416	Ashley Morrisette	2014-17

<b>CAREER DOUBLE-FIGURE SCORING GAMES</b>				
Harris	T16.	79		2017-Present
Record Holder	1.	113	MaChelle Joseph	1989-92
Next Up	15.	81	Courtney Moses	2011-14

<b>CAREER SCORING AVERAGE</b>				
Harris	22.	11.0		2017-Present
Record Holder	1.	20.2	MaChelle Joseph	1989-92
Next Up	21.	11.3	Ashley Morrisette	2014-17

<b>CAREER FIELD GOALS MADE</b>				
Harris	16.	563		2017-Present
Record Holder	1.	902	MaChelle Joseph	1989-92
Next Up	15.	572	Courtney Moses	2010-14

<b>CAREER REBOUNDS</b>				
Record Holder	1.	1,007	Ae’Rianna Harris	2017-Present

<b>CAREER DEFENSIVE REBOUNDS</b>				
Record Holder	1.	731	Ae’Rianna Harris	2017-Present

<b>CAREER OFFENSIVE REBOUNDS</b>				
Harris	8.	276		2017-Present
Record Holder	1.	350	Shereka Wright	2001-04
Next Up	7.	285	Emily Heikes	2002-05

<b>CAREER REBOUNDS PER GAME</b>				
Harris	2.	7.9		2017-Present
Record Holder	1.	8.9	Whitney Bays	2014-15
Next Up	1.	8.9	Whitney Bays	2014-15

<b>CAREER BLOCKS</b>				
Record Holder	1.	354	Ae’Rianna Harris	2017-Present

<b>CAREER DOUBLE-DOUBLES</b>				
Harris	T1.	27		2017-Present
Record Holder	1.	27	Stacey Lovelace	1993-96

<b>SENIOR BLOCKED SHOTS</b>				
Record Holder	1.	70		2019-20

<b>Karissa McLaughlin</b>				
<b>CAREER POINTS</b>				
McLaughlin	28.	1,168		2018-Present
Record Holder	1.	2,405	MaChelle Joseph	1989-92
Next Up	27.	1,193	Cathery Tyree	1984-87

<b>CAREER DOUBLE-FIGURE SCORING GAMES</b>				
McLaughlin	25.	61		2018-Present
Record Holder	1.	113	MaChelle Joseph	1989-92
Next Up	22.	67	3 Tied	

<b>CAREER 3-POINTERS</b>				
McLaughlin	3.	217		2018-Present
Record Holder	1.	240	Courtney Moses	2011-14
Next Up	2.	238	Katie Gearlds	2004-07

<b>CAREER 3-POINT PERCENTAGE</b>				
McLaughlin	9.	36.2%		2018-Present
Record Holder	1.	41.9%	Nicole Erickson	1995-96
Next Up	8.	37.9%	Katie Gearlds	2004-07

<b>CAREER ASSISTS</b>				
McLaughlin	15.	327		2018-Present
Record Holder	1.	628	MaChelle Joseph	1989-92
Next Up	14.	370	Ashley Morrisette	2014-17

<b>CAREER ASSIST-TO-TURNOVER</b>				
McLaughlin	4.	1.55		2018-Present
Record Holder	1.	1.68	April Wilson	2013-16
Next Up	3.	1.64	Katie Gearlds	2004-07

<b>JUNIOR 3-POINTERS</b>				
McLaughlin	8.	54		2019-20
Record Holder	1.	71	Beth Jones	2002-03
Next Up	7.	56	Ukari Figgs	1997-98

<b>Dominique Oden</b>				
<b>CAREER POINTS</b>				
Oden	9.	1,667		2017-Present
Record Holder	1.	2,405	MaChelle Joseph	1989-92
Next Up	8.	1,674	Courtney Moses	2011-14

<b>CAREER SCORING AVERAGE</b>				
Oden	12.	13.1		2017-Present
Record Holder	1.	20.2	MaChelle Joseph	1989-92
Next Up	11.	13.3	Brittany Rayburn	2009-12

<b>CAREER DOUBLE-FIGURE SCORING GAMES</b>				
Oden	T6.	93		2017-Present
Record Holder	1.	113	MaChelle Joseph	1989-92
Next Up	5.	101	Katie Douglas	1998-01

<b>CAREER FIELD GOALS MADE</b>				
Oden	12.	603		2017-Present
Record Holder	1.	902	MaChelle Joseph	1989-92
Next Up	11.	635	Stacey Lovelace	1993-96

<b>CAREER 3-POINTERS</b>				
Oden	5.	189		2017-Present
Record Holder	1.	240	Courtney Moses	2011-14
Next Up	4.	201	Brittany Rayburn	2009-12

<b>CAREER 3-POINT PERCENTAGE</b>				
Oden	13.	35.9%		2017-Present
Record Holder	1.	41.9%	Nicole Erickson	1995-96
Next Up	12.	36.4%	Jannon Roland	1994-97

<b>CAREER FREE THROW PERCENTAGE</b>				
Oden	4.	81.4%		2017-Present
Record Holder	1.	90.6%	Courtney Moses	2011-14
Next Up	3.	84.1%	Ukari Figgs	1996-99d

<b>CAREER ASSISTS</b>				
Oden	16.	313		2017-Present
Record Holder	1.	628	MaChelle Joseph	1989-92
Next Up	15.	370	Ashley Morrisette	2014-17

<b>CAREER GAMES PLAYED</b>				
Oden	T20.	127		2017-Present
Record Holder	1.	140	Danielle Campbell	2006-09
Next Up	19.	128	2 Tied	

<b>CAREER GAMES STARTED</b>				
Oden	T5.	123		2017-Present
Record Holder	1.	131	Erika Valek	2001-04
Next Up	4.	124	FahKara Malone	2007-10

<b>CAREER MINUTES PLAYED</b>				
Oden	5.	4,216		2017-Present
Record Holder	1.	4,425	Katie Gearlds	2004-07
Next Up	4.	4,267	FahKara Malone	2007-10

- SINGLE-GAME RECORDS

<b>POINTS</b>				
Overall	41	Katie Gearlds	at Wisconsin	2/18/07
Senior	41	Katie Gearlds	at Wisconsin	2/18/07
Junior	37	MaChelle Joseph	at Michigan State	2/15/91
Sophomore	40	Shereka Wright	at Michigan	2/17/02
Freshman	34	Leslie Johnson	at Vanderbilt	12/5/93

<b>FIELD GOALS</b>				
Overall	16	MaChelle Joseph	at Michigan State	2/15/91
Senior	14	Jannon Roland	at Ohio State	1/23/97
Junior	16	MaChelle Joseph	at Michigan State	2/15/91
Sophomore	15	Shereka Wright	at Michigan	2/17/02
Freshman	13	Leslie Johnson	vs. Northwestern	2/27/94

<b>3-POINTERS</b>				
Overall	12	Brittany Rayburn	at Minnesota	1/12/12
Senior	12	Brittany Rayburn	at Minnesota	1/12/12
Junior	7	Karissa McLaughlin	at Michigan State	1/30/20
Sophomore	9	2x, Karissa McLaughlin	vs. Northwestern	2/17/19
Freshman	6	4x, Karissa McLaughlin	at Michigan	2/1/18

<b>FREE THROWS MADE</b>				
Overall	16	Shereka Wright	vs. Penn State	1/16/03
Senior	13	2x, Shereka Wright	at Northwestern	2/15/04
Junior	16	Shereka Wright	vs. Penn State	1/16/03
Sophomore	14	3x, Courtney Moses	at Northwestern	1/26/12
Freshman	14	Leslie Johnson	vs. Ohio State	2/13/94

<b>REBOUNDING</b>				
Overall	25	Leslie Schultz	at Miami (OH)	12/2/81
Senior	20	Joy Holmes	at Wisconsin	1/27/91
Junior	25	Leslie Schultz	at Miami (OH)	12/2/81
Sophomore	20	Cathery Tyree	at Michigan State	1/11/85
Freshman	23	Natasha Cender	vs. Michigan	2/7/76
Offensive	12	Joy Holmes	vs. Minnesota	2/10/91
Defensive	16	2x, Whitney Bays	at Dayton	12/7/14

<b>ASSISTS</b>				
Overall	16	MaChelle Joseph	vs. Northern Illinois	3/22/92
Senior	16	MaChelle Joseph	vs. Northern Illinois	3/22/92
Junior	14	Lisa Jahner	vs. Michigan	3/7/87
Sophomore	12	MaChelle Joseph	vs. New Mexico State	12/29/89
Freshman	11	3x, Karissa McLaughlin	vs. Penn State	1/28/18

<b>BLOCKS</b>				
Overall	11	Danielle Campbell	vs. Butler	11/17/07
Senior	9	Ae’Rianna Harris	at #5 South Carolina	12/15/19
Junior	11	Danielle Campbell	vs. Butler	11/17/07
Sophomore	7	3x, Ae’Rianna Harris	vs. Lamar	11/18/17
Freshman	7	2x, Nora Kiesler	at Penn State	1/30/16

<b>STEALS</b>				
Overall	12	Joy Holmes	vs. Minnesota	1/13/89
Senior	9	Michelle Duhart	vs. Michigan State	2/24/00
Junior	10	Cherelle george	vs. South Carolina	11/26/05
Sophomore	12	Joy Holmes	vs. Minnesota	1/13/89
Freshman	8	FahKara Malone	vs. Illinois	2/8/07

<b>TEAM</b>				
Most FG Made	57	vs. Kent State		12/8/90
Fewest FG Made	10	vs. Ohio State		2/7/76
Most FG Attempted	102	at Marion		1/10/78
Fewest FG Attempted	37	at Ohio State		1/13/00
Highest FG %	.735 (36-49)	vs. Penn State		1/28/18
Most 3-PT Made	15	2x, vs. Central Michigan		12/28/13
Most 3-PT Attempted	32	vs. Florida A&M		12/3/94
Highest 3-PT % (min. 10)	.800 (8-10)	vs. Michigan		2/3/95
Most FT Made	39	vs. Washington		3/14/98
Most FT Attempted	46	vs. Rutgers		3/22/99
High FT %	1.000 (17-17)	vs. Ball State		11/10/13
Most Rebounds	83	at Marion		1/10/78
Most Offensive Rebounds	35	vs. Michigan		1/5/94
Most Defensive Rebounds	49	vs. IPFW		11/21/04
Most Fouls	36	vs. Franklin		2/21/78
Fewest Fouls	4	vs. Southern Miss.		2/21/01
Most Assists	34	vs. IPFW		11/21/04
Most Turnovers	48	vs. Northwestern		1/25/79
Fewest Turnovers	2	vs. Northwester		12/29/96
Most Blocks	13	2x, Chicago State		11/22/11
Most Steals	34	vs. South Alabama		12/27/94
Most Points	129	vs. Kent State		12/8/90
Fewest Points	28	vs. Ohio State		2/7/76
Most Points in a Half	68	vs. Kent State		12/8/90
Fewest Points in a Half	13	vs. UConn		3/22/11
Most Points in a Quarter	36	vs. Central Michigan (3rd)		11/10/17
Fewest Points in a Quarter	2	vs. Minnesota (4th)		2/14/19
Most Points in a First Quarter	29	vs. Bradley		12/21/18
Fewest Points in a First Quarter	5	at Indiana		1/6/18
Most Points in a Second Quarter	29	vs. Drake		11/29/19
Fewest Points in a Second Quarter	5	vs. Oklahoma		3/19/16
Most Points in a Third Quarter	36	at Central Michigan		11/10/17
Fewest Points in a Third Quarter	6	vs. Villanova		11/12/16
Most Points in a Fourth Quarter	31	vs. Minnesota		1/14/16
Fewest Points in a Fourth Quarter	2	vs. Minnesota		2/14/19



- THE POLLS

ASSOCIATED PRESS

No.	Team	Record	Points	LW
1.	South Carolina (26)	21-1	746	1
2.	Baylor (3)	19-1	718	2
3.	Oregon	19-2	673	3
4.	UConn	19-1	662	4
5.	Louisville (1)	21-1	641	5
6.	Stanford	20-2	605	6
7.	NC State	21-1	563	7
8.	Mississippi St.	19-3	533	9
9.	Oregon St.	18-4	505	10
10.	UCLA	19-2	462	8
11.	Gonzaga	22-1	437	12
12.	Arizona	18-3	413	16
13.	Maryland	17-4	371	17
14.	DePaul	20-3	360	11
15.	Kentucky	17-4	302	13
16.	Texas A&M	18-4	291	15
17.	Florida St.	18-4	272	14
18.	Indiana	17-5	194	20
19.	Arizona St.	16-6	182	19
20.	Iowa	18-4	172	18
21.	Northwestern	19-3	171	23
22.	South Dakota	21-2	143	21
23.	Tennessee	17-5	90	22
24.	Missouri St.	18-3	77	24
25.	Arkansas	18-4	68	25

Others receiving votes: Princeton 48, TCU 25, LSU 13, Florida Gulf Coast 11, Stony Brook 2.

USA TODAY / WBCA COACHES POLL

No.	Team	Pts	LW	1st
1	Baylor (19-1)	784	1	18
2	South Carolina (21-1)	777	2	13
3	Oregon (20-2)	734	3	1
4	Louisville (21-1)	706	4	0
5	Stanford (20-2)	661	6	0
6	Connecticut (19-2)	641	5	0
7	N.C. State (21-1)	598	7	0
8	Mississippi State (20-3)	553	8	0
9	Oregon State (18-4)	536	10	0
10	UCLA (19-2)	490	9	0
11	Gonzaga (22-1)	484	11	0
12	Maryland (18-4)	410	16	0
12	Arizona (18-3)	410	17	0
14	DePaul (20-3)	357	12	0
15	Kentucky (17-4)	292	13	0
16	Texas A&M (18-4)	280	15	0
17	South Dakota (21-2)	277	18	0
18	Florida State (18-4)	251	14	0
19	Missouri State (18-3)	219	21	0
20	Iowa (18-4)	171	19	0
21	Arizona State (16-6)	148	20	0
22	Indiana (18-5)	137	23	0
23	Northwestern (19-3)	116	NR	0
24	Florida Gulf Coast (22-2)	103	24	0
25	Tennessee (17-5)	86	22	0

Others receiving votes: Arkansas (18-4) 75; Princeton (15-1) 72; TCU (16-4) 13; LSU (16-5) 9; Central Michigan (16-4) 5; Stony Brook (21-1) 3; West Virginia (14-5) 2.

- PURDUE RANKINGS

Week	AP	Coaches	RPI
Preseason	-	-	-
Week 1	-	-	-
Week 2	-	-	-
Week 3	-	-	-
Week 4	-	-	-
Week 5	RV	RV	-
Week 6	-	-	25
Week 7	-	-	25
Week 8	-	-	18
Week 9	-	-	13
Week 10	-	-	24
Week 11	-	-	27
Week 12	-	-	25
Week 13	-	-	29
Week 14	-	-	26
Week 15	-	-	-
Week 16	-	-	-
Week 17	-	-	-
Week 18	-	-	-

- THE BIG TEN RACE

Standings	Conf.	Pct.	PF	PA	Overall	Pct.	PF	PA	Home	Away	Neutral	Last 10	Streak
Northwestern	9-2	.818	71.1	61.2	19-3	.864	70.4	55.9	10-2	7-1	2-0	8-2	W2
Iowa	9-2	.818	78.5	69.9	18-4	.818	79.0	68.9	11-0	5-3	2-1	9-1	L1
Maryland	9-2	.818	75.4	62.1	18-4	.818	81.7	57.0	11-1	5-3	2-0	8-2	W7
Indiana	8-3	.727	72.0	62.0	18-5	.783	73.8	57.7	10-2	6-2	2-1	7-3	W4
Rutgers	6-4	.600	64.0	60.4	16-5	.762	68.3	55.0	9-2	5-3	2-0	6-4	L1
Purdue	6-5	.545	65.6	64.0	15-8	.652	65.0	61.6	9-3	4-4	2-1	5-5	L1
Michigan	5-5	.500	70.5	67.3	14-7	.667	72.8	63.1	10-2	3-4	1-1	5-5	W1
Ohio State	5-5	.500	69.1	69.1	12-9	.571	70.1	66.2	5-4	5-4	2-1	5-5	W1
Nebraska	5-6	.455	69.8	70.5	15-7	.682	72.0	65.0	11-3	2-4	2-0	4-6	L2
Minnesota	4-7	.364	66.2	67.8	14-8	.636	72.6	64.1	9-5	5-3	0-0	3-7	W2
Michigan State	4-7	.364	64.9	74.2	11-11	.500	69.9	66.4	8-2	2-6	1-3	4-6	L4
Wisconsin	3-8	.273	64.5	69.2	11-11	.500	65.6	64.2	7-4	3-6	1-1	3-7	W1
Illinois	1-9	.100	56.8	79.6	10-11	.476	63.5	70.6	9-5	1-6	0-0	1-9	L5
Penn State	1-10	.091	64.7	77.3	7-15	.318	68.1	72.6	5-8	1-6	1-1	1-9	L7

- BIG TEN PLAYER OF THE WEEK

Date	Player	School
Nov. 11	Arella Guirantes	Rutgers
Nov. 18	Nia Clouden	Michigan State
Dec. 2	Grace Berger	Indiana
Dec. 9	Arella Guirantes	Rutgers
Dec. 16	Destiny Pitts	Minnesota
Dec. 23	Dorka Juhász	Ohio State
Dec. 30	Kaila Charles	Maryland
Jan. 6	Kathleen Doyle	Iowa
Jan. 13	Kathleen Doyle	Iowa
Jan. 20	Abi Scheid	Northwestern
Jan. 27	<i>Ae' Rianna Harris</i>	<i>Purdue</i>
Feb. 3	Naz Hillmon	Michigan
Feb. 10		
Feb. 17		
Feb. 24		
March 1		

- BIG TEN FRESHMAN OF THE WEEK

Date	Player	School
Nov. 11	Mackenzie Holmes	Indiana
Nov. 18	Ashley Owusu	Maryland
Dec. 2	Ashley Owusu	Maryland
Dec. 9	Sara Scalia	Minnesota
Dec. 16	Kennedi Myles	Illinois
Dec. 23	Jacy Sheldon	Ohio State
Dec. 30	Mackenzie Holmes	Indiana
Jan. 6	Kierstan Bell	Ohio State
Jan. 13	Kierstan Bell	Ohio State
Jan. 20	Mackenzie Holmes	Indiana
Jan. 27	McKenna Warnock	Iowa
Feb. 3	Jasmine Powell	Minnesota
Feb. 10		
Feb. 17		
Feb. 24		
March 1		

- PURDUE ON THE BIG TEN HONOR ROLL

Date	Player	School
------	--------	--------

- BIG TEN PRESEASON HONORS

PRESEASON ALL-BIG TEN TEAM - COACHES

Ae' Rianna Harris  
Karrisa McLaughlin

PRESEASON ALL-BIG TEN POLL - COACHES

5. Purdue

PRESEASON ALL-BIG TEN TEAM - MEDIA

Ae' Rianna Harris  
Karrisa McLaughlin

- TEAM NATIONAL RANKINGS

	National	B1G	Stat
Assist-to-Turnover	135	11	.87
Assists	37	4	341
Assists per Game	71	6	14.8
Blocked Shots	17	2	107
Blocked Shots per Game	38	3	4.7
Fewest Fouls	190	8	362
Fewest Turnovers	295	13	391
Field-Goal %	71	7	42.7
Field-Goal % Defense	101	6	37.8
FT Attempts	96	9	386
FT Made	62	7	280
FT %	85	5	72.5
Fouls Per Game	81	4	15.7
Rebound Margin	119	7	2.3
Rebounds	94	7	842
Rebounds Per Game	228	12	36.6
Scoring Defense	105	5	61.6
Scoring Margin	138	11	3.3
Scoring Offense	185	13	65
Steals	217	11	150
Steals Per Game	272	13	6.5
3-Pointers FG Defense	75	4	28.8
3-Pointers Made	179	9	120
3-Pointers Per Game	231	9	5.2
3-Point % Percentage	50	5	34.8
Turnover Margin	297	13	-2.87
Turnovers Forced	280	12	14.1
Turnovers Per Game	224	13	17
Winning Percentage	87	8	65.2

- INDIV. NATIONAL RANKINGS (TOP-100)

	National	B1G	Stat
<i>Dominique Oden</i>			
Minutes Played	27	3	780:01
<i>Ae' Rianna Harris</i>			
Blocked Shots	5	1	70
Blocks per Game	10	2	3.04
Free Throws Attempt	86	10	103
Free Throws Made	90	10	74
Minutes Played	63	6	758:45
Rebounds	47	2	196
Rebounds Per Game	95	7	8.5

Karissa McLaughlin

Minutes Played	8	1	813:30
Minutes Per Game	74	2	35:37
3-Pointers Attempted	25	1	158
3-Pointers Made	83	5	2.35

NCAA ACTIVE BLOCKS LEADERS

Player (School)	Blocks	School	Level
Denia Davis-Stewart	365	Merrimack	DI
<i>Ae' Rianna Harris</i>	<i>354</i>	<i>Purdue</i>	<i>DI</i>
Riley Fitzwater	321	Concord	DII
Shanika Peterkin	313	Barton	DIII
Sara Hamson	293	BYU	D1





**- NUMERICAL ROSTER**

No.	Name	Yr.	Pos.	Ht.	Hometown (High School / Previous School)
1	Karissa McLaughlin	Jr.	G	5-7	Fort Wayne, Ind. (Homestead)
2	Bria Harmon	Fr.	G	5-7	Atlanta, Ga. (Collins Hill)
3	Lyndsey Whilby	Jr.	G	5-11	Powder Springs, Ga. (McEachern / Texas Tech)
5	Cassidy Hardin	So.	G	5-10	Bargersville, Ind. (Center Grove)
11	Dominique Oden	Sr.	G	5-8	Atlanta, Ga. (Marist)
12	Roxane Makolo	Fr.	G	5-10	St. Hubert, Quebec (Dawson College)
13	Ajah Stallings	So.	G	5-8	Indianapolis, Ind. (North Central)
15	Léony Boudreau	Jr.	G	5-10	Montreal, Quebec (Dawson College)
22	Jenelle Grant	R-Jr.	G/F	6-0	London, England (Harris Westminster / Pacific)
23	Kayana Traylor	So.	G	5-9	Martinsville, Ind. (Martinsville)
25	Tamara Farquhar	Jr.	G/F	6-0	Pierrefonds, Quebec (Dawson College)
30	Nyagoo Gony	So.	F	6-2	Lincoln, Neb. (Lincoln)
32	Ae'rianna Harris	Sr.	F	6-1	Indianapolis, Ind. (Lawrence North)
35	Rickie Woltman	Fr.	F	6-3	St. Louis, Mo. (Incarnate Word)
45	Fatou Diagne	R-Jr.	C	6-4	Thies, Senegal (Kocc Barma / Gulf Coast St. College)

**Head Coach:** Sharon Versyp - 14th Season - Purdue '88

**Senior Associate Head Coach:** Melanie Balcomb - 1st Season - Trenton State '84

**Associate Head Coach:** Beth Couture - 4th Season - Erskine '84

**Assistant Coach:** Michael Scruggs - 1st Season - Tennessee '08

**Director of Basketball Operations:** Terry Kix - 14th - Connecticut '85

**Director of Player Development & Video Coordination:** Alex Guyton - 1st Season - '12

**Director of Sports Performance:** Jason Pullaara - 1st Season - Purdue '01

**Sports Performance Associate:** Ben Dilley - 1st Season - Colorado '19

**Athletic Trainer:** Jessica Lipsett - 17th Season - Illinois '00

**Graduate Student Manager:** Abby Abel - 1st Season - Purdue '19

**Graduate Student Manager:** Aaron Rymer - 1st Season - East Tennessee State '19

**- ALPHABETICAL ROSTER**

No.	Name	Class
15	Leony Boudreau	Jr.
45	Fatou Diagne	R-Sr.
25	Tamara Farquhar	Jr.
30	Nyagoo Gony	So.
22	Jenelle Grant	R-Jr.
5	Cassidy Hardin	So.
32	Ae'rianna Harris	Sr.
2	Bria Harmon	Fr.
12	Roxane Makolo	Fr.
1	Karissa McLaughlin	Jr.
11	Dominique Oden	Sr.
13	Ajah Stallings	So.
23	Kayana Traylor	So.
3	Lyndsey Whilby	Jr.
35	Rickie Woltman	Fr.

**- PRONUNCIATIONS**

Abby Abel	able
Léony Boudreau	LEE-oh-NEE BOO-drough
Fatou Diagne	FAH-too de-yahn
Tamara Farquhar	tuh-MARE-uh FAR-quar
Bria Harmon	BREE-uh
Ae'rianna Harris	AIR-ee-AH-nuh
Nyagoo Gony	NYA-gwah GOH-nee (Think 3 Stooges laugh)
Karissa McLaughlin	mick-LAUF-lynn
Ajah Stallings	asia
Kayana Traylor	KAY-ah-nuh (ah-nuh as in Frozen princess)
Sharon Versyp	VRR-sip
Beth Couture	COO-chur

**- BY LOCATION**

<u>Indiana</u>	<u>5</u>
1 Karissa McLaughlin	Fort Wayne
5 Cassidy Hardin	Bargersville
13 Ajah Stallings	Indianapolis
23 Kayana Traylor	Martinsville
32 Ae'rianna Harris	Indianapolis

<u>International</u>	<u>5</u>
12 Roxane Makolo	Quebec, Canada
15 Leony Boudreau	Quebec, Canada
22 Jenelle Grant	London, England
25 Tamara Farquhar	Quebec, Canada
45 Fatou Diagne	Thies, Senegal

<u>Georgia</u>	<u>3</u>
2 Bria Harmon	Atlanta
3 Lyndsey Whilby	Powder Springs
11 Dominique Oden	Atlanta

<u>Missouri</u>	<u>1</u>
35 Rickie Woltman	St. Louis

<u>Nebraska</u>	<u>1</u>
30 Nyagoo Gony	Lincoln

**- BY CLASS**

<u>Freshman</u>	<u>3</u>
2 Bria Harmon	G
12 Roxane Makolo	G
35 Rickie Woltman	F

<u>Sophomore</u>	<u>4</u>
5 Cassidy Hardin	G
13 Ajah Stallings	G
23 Kayana Traylor	G
30 Nyagoo Gony	F

<u>Junior</u>	<u>6</u>
1 Karissa McLaughlin	G
3 Lyndsey Whilby	G
15 Leony Boudreau	G
22 Jenelle Grant	G/F
25 Tamara Farquhar	G/F
45 Fatou Diagne	C

<u>Senior</u>	<u>2</u>
11 Dominique Oden	G
32 Ae'rianna Harris	F



#1 // Karissa McLaughlin  
Junior // Guard  
Fort Wayne, Ind.



#2 // Bria Harmon  
Freshman // Guard  
Atlanta, Ga.



#3 // Lyndsey Whilby  
Junior // Guard  
Powder Springs, Ga.



#5 // Cassidy Hardin  
Sophomore // Guard  
Bargersville, Ind.



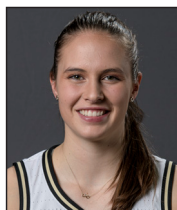
#11 // Dominique Oden  
Senior // Guard  
Atlanta, Ga.



#12 // Roxane Makolo  
Freshman // Guard  
Saint-Hubert, Quebec



#13 // Ajah Stallings  
Sophomore // Guard  
Indianapolis, Ind.



#15 // Léony Boudreau  
Junior // Guard  
Montreal, Quebec



#22 // Jenelle Grant  
RS Junior // Guard/Forward  
London, Eng.



#23 // Kayana Traylor  
Sophomore // Guard  
Martinsville, Ind.



#25 // Tamara Farquhar  
Junior // Guard/Forward  
Pierrefonds, Quebec



#30 // Nyagoo Gony  
Sophomore // Forward  
Lincoln, Neb.



#32 // Ae'rianna Harris  
Senior // Forward  
Indianapolis, Ind.



#35 // Rickie Woltman  
Freshman // Forward  
St. Louis, Mo.



#45 // Fatou Diagne  
RS Junior // Center  
Thies, Senegal



Sharon Versyp  
Head Coach  
14th season



Melanie Balcomb  
Sr. Associate Head Coach  
1st season



Beth Couture  
Associate Head Coach  
4th season



Michael Scruggs  
Assistant Coach  
1st season



Terry Kix  
Director of Operations  
14th season



**- HEAD COACH SHARON VERSYP**

- Eighth head coach in Purdue history, owns the longest coaching tenure with the Boilermakers, in her 14th season at her alma mater
- The winningest coach in program history with 291 victories, including a program record 134 in Big Ten Conference play
- Led Purdue to a program-record nine NCAA Tournament appearances, advancing to two Elite Eights, two Sweet 16's and a 12-9 career record in the national tournament
- Has a Big Ten Tournament-record 24 career wins at the conference tournament, including 22 at Purdue, leading the Boilermakers to six final appearances and four tournament titles with the Old Gold & Black
- Mentored four All-Americans, four NCAA Regional All-Tournament players, 32 All-Big Ten honorees, two Big Ten Defensive Players of the Year, two Big Ten Tournament Most Outstanding Players, 16 All-Big Ten Tournament award winners and a trio of WNBA Draft picks
- Current member of the Region 4 WBCA Division I Coaches' All-America selection committee, the Wade Trophy selection committee and the Lisa Leslie Award selection committee
- Additionally she has coached an Academic All-American, a Rhodes Scholar Finalist, 12 Big Ten Distinguished Scholars, 51 Academic All-Big Ten honorees, two members of the Allstate Good Works Team and a Honda Inspiration Award winner
- Twelve of her 15 recruiting classes have been ranked in the top-25 in the country

**Andreona Keys**

- No. 21 all-time scorer at Purdue, finishing with 1,246 career points
- One-of-three players in program history with 1,000 points, 600 rebounds and 300 assists (Stephanie White, Katie Douglas)
- Played 4,000 career minutes, one of eight players at Purdue to exceed the mark

**Ashley Morrisette**

- No. 14 all-time scorer at Purdue, finishing with 1,416 career points
- 2017 First Team All-Big Ten, Big Ten All-Defensive Team and Big Ten All-Tournament honoree
- Set a Purdue record with a 3 in 25 straight games, finished sixth all-time with 181 career 3's
- Dished out 172 assists as a senior, third-best single-season total in program history

**April Wilson**

- 1-of-5 players in program history to total 1,000 points, 500 assists and 200 steals
- First player to lead Purdue in scoring, assists and steals since Katie Douglas in 2001
- Best assist/turnover ratio in school history
- Two-time All-Big Ten honoree, 2016 Big Ten All-Defensive Team

**Whitney Bays**

- Set a new career rebounding average record in 2014-15, grabbing 8.9 boards per game in 62 career appearances
- Posted a Purdue single-season best 15 double-doubles in 2015, including a school record nine straight
- 2014 Big Ten Sixth Player of the Year
- Two-time All-Big Ten honoree

**KK Houser**

- 1-of-7 players in school history with at least 400 career assists and 200 career steals
- Top-10 in Purdue history in career assists (seventh) and steals (ninth)
- Three-time All-Big Ten honoree

**Courtney Moses**

- Top 3-point and free-throw shooter in school history
- Second all-time at Purdue with 129 career starts
- 2014 First Team All-Big Ten, Allstate Good Works Team

**Drey Mingo**

- 2013 Honorable Mention All-America, Honda Inspiration Award and V Foundation Comeback of the Year Finalist
- Two-time All-Big Ten honoree and 2013 Big Ten Tournament Most Outstanding Player

**Sam Ostarello**

- Two-time All-Big Ten honoree
- Set a Purdue single-season record and led the Big Ten Conference with 341 rebounds in 2012-13
- No. 2 all-time at Purdue with 901 career rebounds

**Brittany Rayburn**

- 2012 Second Team Academic All-America
- Three-time All-Big Ten honoree and 2012 Big Ten Tournament Most Outstanding Player
- NCAA single-game 3-point field goal record holder, making 12 at Minnesota on Jan. 12, 2012

**FahKara Malone**

- Two-time All-Big Ten honoree and 2008 Big Ten Tournament Most Outstanding Player
- Purdue career steals leader with 351, and fifth all-time with 513 assists
- 1-of-2 players in school history with at least 500 assists and 300 steals

**Lindsay Wisdom-Hylton**

- 2007 and 2009 Honorable Mention All-America
- 2007 Big Ten Defensive Player of the Year and 2007 and 2009 First Team All-Big Ten
- Purdue career leader with 968 rebounds and 281 blocked shots
- Only player in school history to record at least 1,000 points, 900 rebounds, 200 assists, 300 steals and 200 blocks

**Katie Gearlds**

- 2007 Third-Team All-America
- Four-time All-Big Ten honoree, earning first-team recognition in 2006 and 2007
- 2007 Big Ten Tournament Most Outstanding Player and 2004 Big Ten Freshman of the Year
- No. 4 scorer in Purdue history with 1,974 career points

**- VERSYP QUICK FACTS**

Hometown: Mishawaka, Indiana  
 High School: Mishawaka High School  
 Degree: Purdue, 1989

**Coaching Experience**

Years	School, Position
1989-93	Lawrence North High School, head coach
1993-96	Benton Central High School, head coach
1996-97	Louisville, assistant coach
1997-2000	James Madison, assistant coach
2000-05	Maine, head coach
2005-06	Indiana, head coach
2006-pres.	Purdue, head coach

**Playing Experience: Purdue, 1985-88**

Four-year starter
2x All-Big Ten Honorable Mention (1986, 1987)
1988 Second Team All-Big Ten
3x Academic All-Big Ten
1988 Big Ten Medal of Honor Nominee
1988 Purdue Athlete of the Year
1987 Academic All-District
1988 Second Team Academic All-America
1,000 Point Club (1,565 / 13th all-time)

**Coaching Honors**

2003 America East Coach of the Year
2005 America East Coach of the Year
2007 District VI Coach of the Year
2010 Indiana Basketball Hall of Fame
2013 New England Basketball Hall of Fame
2014 ESPNW Big Ten Coach of the Year

**Coaching Tree**

Katie Gearlds
Head Coach, Marian University
FahKara Malone
Assistant Coach, University of Indianapolis
Nadine Morgan
Former Associate Head Coach, Purdue University
Christy Smith
Former Head Coach, University of Incarnate Word
Lindsay Wisdom-Hylton
Assistant Coach, University of Wisconsin
Alex Guyton
Director of Player Development/Video, Purdue University



**- VERSYP'S HOME RECORD AT PURDUE**

Year	Non-Conf.	Big Ten	Overall
2006-07	6-0	6-2	12-2
2007-08	4-3	8-1	12-4
2008-09	5-1	7-2	12-3
2009-10	4-5	8-1	12-6
2010-11	8-1	6-2	14-3
2011-12	7-2	6-2	13-4
2012-13	5-0	5-3	10-3
2013-14	6-1	6-2	12-3
2014-15	5-2	1-8	6-10
2015-16	6-1	6-3	12-4
2016-17	5-3	5-3	10-6
2017-18	6-2	5-3	11-5
2018-19	7-1	6-3	13-4
2019-20	7-0	3-2	10-2
TOTALS	80-22 (.782)	78-38 (.682)	158-60 (.730)

**- WINS OVER TOP-25 TEAMS (33)**

Date	Opponent	Site	Result
11/17/06	#23 Washington	Home	88-64
11/19/06	#16 Baylor	Away	69-55
01/11/07	#20 Michigan State	Away	70-60
03/04/07	#22 Michigan State	Neutral*	64-61
03/05/07	#5 Ohio State	Neutral*	64-52
03/25/07	#13 Georgia	Neutral#	76-63
02/07/08	#19 Ohio State	Home	68-67
03/23/08	#17 Utah	Home#	66-59
01/05/09	#4 Texas	Home	66-55
03/23/09	#11 North Carolina	Neutral#	85-70
01/25/10	#4 Ohio State	Home	63-61
01/28/10	#23 Penn State	Away	80-76 (OT)
02/03/11	#20 Iowa	Home	60-41
12/04/12	#4 Texas A&M	Home	60-51
03/03/12	#9 Penn State	Neutral*	68-66
03/04/12	#24 Nebraska	Neutral*	74-70 (2OT)
01/05/13	#19 Nebraska	Away	69-66 (OT)
01/27/13	#25 Michigan State	Away	67-62 (OT)
03/09/13	#21 Nebraska	Neutral*	77-64
01/12/14	#14 Penn State	Away	84-74
01/19/14	#18 Nebraska	Away	77-75
03/02/14	#16 Nebraska	Home	82-66
01/22/15	#21 Minnesota	Away	90-88 (OT)
11/28/15	#22 Louisville	Neutral	62-60
01/07/16	#16 Northwestern	Away	85-71
03/04/17	#9 Ohio State	Neutral*	71-60
01/10/18	#21 Rutgers	Home	47-33
01/13/18	#18 Iowa	Away	76-70
02/01/18	#13 Michigan	Away	81-79 (OT)
02/15/18	#10 Maryland	Away	75-65
11/29/18	#21 Miami	Home	74-63
01/10/19	#17 Iowa	Home	62-57
01/20/19	#25 Indiana	Home	56-53

\* - Big Ten Tournament

# - NCAA Tournament

**- VERSYP OVERALL YEAR-BY-YEAR**

Year	School	Overall	Conf.	Post.	Rank
2000-01	Maine	12-16	9-9	--	--/--
2001-02	Maine	16-12	9-7	--	--/--
2002-03	Maine	25-6	16-0	WNIT (0-1)	--/--
2003-04	Maine	25-7	17-1	NCAA (0-1)	--/--
2004-05	Maine	20-10	16-2	WNIT (0-1)	--/--
2005-06	Indiana	19-14	9-7	WNIT (2-1)	--/--
2006-07	Purdue	31-6	14-2	NCAA (3-1)	11/7
2007-08	Purdue	19-15	11-7	NCAA (1-1)	--/--
2008-09	Purdue	25-11	13-5	NCAA (3-1)	RV/16
2009-10	Purdue	15-17	9-9	WNIT (1-1)	--/--
2010-11	Purdue	21-12	9-7	NCAA (1-1)	--/--
2011-12	Purdue	25-9	11-5	NCAA (1-1)	13/18
2012-13	Purdue	25-9	10-6	NCAA (1-1)	21/20
2013-14	Purdue	22-9	11-5	NCAA (1-1)	19/21
2014-15	Purdue	11-20	3-15	--	--/--
2015-16	Purdue	20-12	10-8	NCAA (0-1)	--/--
2016-17	Purdue	23-13	10-6	NCAA (1-1)	RV/--
2017-18	Purdue	20-14	9-7	WNIT (2-1)	--/--
2018-19	Purdue	19-14	8-10	--	--/--
2019-20	Purdue	15-8	6-5	--	--/--

**- VERSYP MILESTONE WINS**

Win	Score	Opponent	Date	Note
1	66-51	Fordham	11/19/00	
100	68-51	Belmont	11/29/05	
118	67-43	Belmont	11/9/06	First Win at Purdue
145	64-52	Ohio State	3/5/07	'07 B1G Tourney Title
146	63-42	Oral Roberts	3/17/07	1st NCAA Tourney Win
166	58-56	Illinois	3/9/08	'08 B1G Tourney Title
200	53-42	Northwestern	1/10/10	
217	65-64	Michigan	1/6/11	100th Win at Purdue
252	74-70 (2OT)	Nebraska	3/4/12	'12 B1G Tourney Title
277	62-47	Michigan State	3/10/13	'13 B1G Tourney Title
300	84-55	Akron	3/22/14	'14 NCAA 1st Round
317	61-58	Dayton	12/6/15	200th Win at Purdue
324	63-53	Indiana	1/10/16	Purdue Wins Record
384	60-42	Ohio State	12/28/18	Purdue B1G Wins Record
400	77-64	Kent State	12/8/19	
403	81-74	Bowling Green	12/21/19	450th game at Purdue

**NATIONAL AWARD WINNERS****Katie Gearlds**

2007 Associated Press Third Team All-America  
 2007 Kodak/WBCA Honorable Mention All-America

**Drey Mingo**

2013 Associated Press Honorable Mention All-America  
 2013 Honda Inspiration Award  
 2011 V Foundation Comeback of the Year Finalist  
 2013 V Foundation Comeback of the Year Finalist  
 2013 Allstate Good Works Team

**Lauren Mioton**

2008 Rhodes Scholar Finalist

**Courtney Moses**

2014 Allstate Good Works Team

**Brittany Rayburn**

2012 Second Team Academic All-America  
 NCAA Postgraduate Scholarship

**Lindsay Wisdom-Hylton**

2007 Associated Press Honorable Mention All-America  
 2007 Kodak/WBCA Honorable Mention All-America  
 2009 Kodak/WBCA Honorable Mention All-America

**Ae'rianna Harris**

2019 Associated Press Honorable Mention All-America

**- VERSYP AT PURDUE YEAR-BY-YEAR**

Year	Overall	B1G	Non-Con.	B1G Tourney	NCAAs	Home	Road	Neutral	vs. Top-25	Unranked
2006-07	31-6	14-2	17-4	3-0	3-1	12-2	11-3	8-1	6-4	25-2
2007-08	19-15	11-7	8-8	3-0	1-1	12-4	4-8	3-3	2-6	17-9
2008-09	25-11	13-5	12-6	2-1	3-1	12-3	7-5	6-3	2-7	23-4
2009-10	15-17	9-9	6-8	0-1	0-0	12-6	3-10	0-1	2-4	13-13
2010-11	21-12	9-7	12-5	1-1	1-1	14-3	4-8	3-1	1-5	20-7
2011-12	25-9	11-5	14-4	3-0	1-1	13-4	7-5	5-0	3-6	22-3
2012-13	25-9	10-6	15-3	3-0	1-1	10-3	9-4	6-2	3-4	22-5
2013-14	22-9	11-5	11-4	0-1	1-1	12-3	9-4	1-2	3-5	19-4
2014-15	11-20	3-15	8-5	1-1	0-0	6-10	3-8	2-2	1-5	10-15
2015-16	20-12	10-8	10-4	1-1	0-1	12-4	5-5	3-3	2-7	18-5
2016-17	23-13	10-6	13-7	3-1	1-1	10-6	7-5	6-3	1-6	22-7
2017-18	20-14	9-7	11-7	0-1	0-0	11-5	8-7	1-2	4-1	16-13
2018-19	19-14	8-10	11-4	2-0	0-0	13-4	3-8	3-2	3-6	16-9
2019-20	15-8	6-5	9-3	-	-	9-3	3-4	2-1	0-4	15-4
Totals	291-170	134-97	157-72	22-8	12-9	158-60	84-84	49-26	33-71	258-100
Pct.	.631	.582	.686	.733	.571	.727	.497	.653	.333	.719





**- THE BIG THREE****KARISSA MCLAUGHLIN**

JUNIOR  
GUARD  
5-7  
FORT WAYNE, IND.  
HOMESTEAD HS

**2019-20 / AS A JUNIOR**

- Named Preseason All-Big Ten by coaches and media
- Set a career high with 34 points against Kent State
- 35th 1,000-point scorer in program history, 21st prior to her 100th game and 18th as a junior
- Fourth player to make 200 3-pointers in program history and the 16th 300-assist club member

**2018-19 / AS A SOPHOMORE**

- Named First-Team All-Big Ten by both the coaches and media, becoming the third sophomore in program history to earn the honor (McChelle Joseph, Shereka Wright)
- Her 510 points were third-most by a sophomore in program history, and her 863 career points are fourth-most by a Purdue player over their first two seasons
- Tied Purdue's single-season 3-point record with 88 triples, matching Katie Gearlds' total from 2006-07
- Made a 3-point field goal in 15 consecutive games from marking the third-longest streak in program history
- Dished out 129 assists, the third-highest total all-time for a Purdue sophomore, and became the sixth Boilermaker to deal at least 100 in each of their first two seasons
- Tied Purdue's single-game 3-point percentage record, going 5-of-5 from distance against Miami

**2017-18 / AS A FRESHMAN**

- Earned Big Ten All-Freshman Team honors, becoming the 10th Boilermaker to earn first-year recognition and the fifth under Versyp (first since 2013)
- Her 75 3-pointers were a Purdue freshman record, and third-most in a season all-time for the Boilermakers
- Was the sixth freshman in program history to lead the team in assists
- Hit the game-winning shot in the opening round of the WNIT, canning a jumper with six seconds left to win at IUPUI
- Named the Purdue Female Breakout Athlete of the Year at the 2018 Golden Pete Awards

**HIGH SCHOOL**

- Four-year letterwinner at Homestead High School
- Led the Spartans to a 103-10 mark over her four-year career, including the 2017 Indiana High School 4A State Championship and a 42-0 career record at home
- Added four sectional championships, four conference titles, three regional championships and two semi-state titles
- Scored a school-record 2,586 career points at Homestead, and marks for free throw percentage (92 percent), single-season scoring (778), single-game scoring (40) and single-game 3's (12)
- Her career scoring total is ranked in the top-10 all-time in Indiana

**NOTEWORTHY**

- 2017 Gatorade Indiana Player of the Year
- 2017 Indiana Miss Basketball
- McDonald's All-America nominee
- Rated No. 61 player in the country and No. 10 point guard by ESPN HoopGurlz
- Three-time First Team All-State honoree (2015-17)
- Went to same high school as Caleb Swanigan (Homestead)

**PERSONAL**

- Full name: Karissa Ilene McLaughlin
- Major: Management
- Birthday: Oct. 29, 1998
- City Born: Warsaw, Ind

**FAVORITES**

Athlete: Steph Curry  
Sports Team: Golden State Warriors  
Movie: She's the Man  
Karaoke Song: This Is Me - Demi Lovato  
Snack: Pretzel Peanut Butter Nuggets  
Binge Show: Scandal  
Nickname Growing Up: Rissy Poo

**DOMINIQUE ODEN**

SENIOR  
GUARD  
5-8  
ATLANTA, GA.  
MARIST HS

**2018-19 / AS A JUNIOR**

- Named Honorable Mention All-Big Ten by the coaches and media, marking her second straight season with all-conference honors
- Became the 33rd 1,000-point scorer in program history, the 16th to eclipse it as a junior and 1-of-7 to hit the mark in less than 80 games
- Scored in double figures in 29-of-34 games in 2018-19
- 15th player in program history to hit 1,500 points in a career
- Posted her first career double-double with 19 points and a career-high 10 rebounds against South Carolina
- Joined 300 assist club as the 17th member
- 2019 Academic All-Big Ten

**2017-18 / AS A SOPHOMORE**

- Named Second Team All-Big Ten by the coaches and media after leading the Boilermakers in scoring in conference play with 15.5 points per game
- Posted nine 20-point outings on the season
- Was the first player in program history to hit at least 50 3-pointers in each of her first two seasons, and broke the program's sophomore record with 64
- First Boilermaker to score 20 in three straight since Brittany Rayburn in the 2009-10 season
- Named to the 2017 BTI Invitational all-tournament team

**2016-17 / AS A FRESHMAN**

- Made a then-Purdue freshman record 61 3-pointers, breaking the previous mark of 54 set by Courtney Moses in 2013-14,
- Scored the third-most points of any freshman in program history
- Hit 11 3's in the Big Ten Tournament, matching the 10th-highest total in tournament history
- 1-of-5 freshman to start under head coach Sharon Versyp
- Received the Dr. Ruth Jones Memorial Award at the postseason banquet

**HIGH SCHOOL**

- Four-year varsity letterwinner at the Marist School in Atlanta
- Scored more than 2,000 career points at Marist
- Named Marist's top offensive player as a senior, junior and sophomore and their top defensive player as a freshman
- Led her team to the 2015 AAAA Regional Championship
- Named First Team All-State in 2016 and Second Team All-State in 2015 by the Atlanta Journal Constitution
- Four-year honor roll student at Marist and a member of the National Honor Society and Spanish National Honor Society

**NOTEWORTHY**

- Rated a three-star player by ESPN HoopGurlz, and the No. 27 point guard in the nation
- Named the No. 74 recruit in the country by JumpOffPlus/Prospectnation.com
- Attended the same high school as 2013 honorable mention All-American Drey Mingo

**PERSONAL**

- Full name: Dominique Gibaud Oden
- Major: Civil Engineering
- Birthday: April 7, 1998
- City Born: New Orleans, Louisiana
- Relocated to Atlanta due to Hurricane Katrina

**FAVORITES**

Movie: Inception  
Sports Movie: Coach Carter  
Sport Outside Basketball: Volleyball  
Singer/Artist: Ariana Grande  
Karaoke Song: Let me Love You - Mario  
Food: Anything Mom cooks  
Binge Show: Game of Thrones

**AE'RIANNA HARRIS**

SENIOR  
FORWARD  
6-1  
INDIANAPOLIS, IND.  
LAWRENCE NORTH HS

**2019-20 / AS A SENIOR**

- Named Preseason All-Big Ten by coaches and media
- Tabbed to Lisa Leslie Award Preseason Watch List
- Placed on the Women's Citizen Naismith Trophy Watch List
- Garnered a spot on Wade Trophy Watch List
- On pace to be the first Boilermaker to join 1,000-point, 1,000 rebound and 300-block club and second in B1G history
- No. 24 ranked player in ESPNW's Preseason Top-25
- Owns the all-time rebounds and defensive boards career record
- All-time Purdue rebounding leader
- Second player in Big Ten history with 1,000 points, 1,000 rebounds and 300 blocks
- Big Ten Player of the Week, Jan. 27

**2018-19 / AS A JUNIOR**

- 2019 AP Honorable Mention All-America
- 2019 Naismith Defensive Player of the Year Finalist
- 2019 Big Ten Defensive Player of the Year
- One-of-4 players in conference history to win Big Ten Defensive Player of the Year in back-to-back seasons
- Named Second Team All-Big Ten and a unanimous pick for the Big Ten All-Defensive Team
- Became the 34th 1,000-point scorer in program history and the 17th individual to hit the mark during her junior season
- Set Purdue's single-game field goal percentage record against Purdue Fort Wayne on Nov. 18, hitting 10-of-10 from the field
- Broke the Boilermakers' career blocked shots record in three seasons, finishing 2018-19 with 284 rejections
- One-of-two players in Big Ten history to post at least two seasons with 300 points, 300 rebounds and 100 blocked shots (Amanda Zahui B., Minnesota)

**2017-18 / AS A SOPHOMORE**

- 2018 Big Ten Defensive Player of the Year
- Named second team All-Big Ten by the media and coaches
- Has the most rebounds (491) and blocked shots (180) of any player in program history over their first two seasons
- Broke the Purdue sophomore rebounding and average record
- Her 105 blocks are second on Purdue's single-season record list

**2016-17 / AS A FRESHMAN**

- Set a Purdue freshman record with 75 blocked shots
- Led the Big Ten in blocks, and second-most by a rookie nationally
- Already 17th in school history in blocks
- Connected on 52.4 percent from the floor, including 54 percent in conference play, good for seventh overall on the season and sixth in Big Ten action

**HIGH SCHOOL**

- Has earned four varsity letters at Ben Davis (2013-14) and Lawrence North (2015-16) High Schools
- Guided Lawrence North to conference and sectional titles in 2015-16
- Named AP Second Team All-State in 2016
- Named to the All-Metro Interscholastic Conference team 2014-16

**NOTEWORTHY**

- Named a five-star recruit and the No. 20 overall player (No. 6 forward) in the country by ESPN HoopGurlz
- Ranked No. 61 overall by JumpOffPlus/Prospectnation.com
- 2015 Nike National runners-up, the 2014 AAU National Championship runners-up and the 2012 AAU National Champions
- Nominated for the 2016 McDonald's All-America game
- Member of the 2016 Indiana All-Stars team

**PERSONAL**

- Full name: Ae'Rianna N. Harris
- Major: Studio Arts & Technology
- Birthday: Sept. 16, 1998

**FAVORITES**

Athlete: Tamika Catchings and Diana Taurasi  
Movie: Rent  
Sports Movie: Space Jam  
Karaoke Song: If I Ain't Got You - Alicia Keys  
Food: Fettuccine Alfredo  
Fun Fact: Can solve a Rubik's cube with one hand  
Nickname Growing Up: Ri Bug





# 1 | KARISSA MCLAUGHLIN

## JR. | G | 5-7 | FORT WAYNE, IND. | HOMESTEAD

- Constant catch and shoot threat from downtown, also has ability to create her own shot off the dribble
- Set a career-high 34 points against Kent State, tied for seventh in program history, going 6-10 from behind the arc
- 35th player in program history to join the 1,000-point club.
- Named Preseason All-Big Ten by the coaches and media
- First Team All-Big Ten (Coaches/Media), becoming the third Purdue sophomore to earn the honor
- Tied program record set by Katie Gearlds in 2006-07 with 88 3-pointers in a season
- Set the school record for most 3-pointers through freshman and sophomore campaigns at 163
- Despite not making the NCAA Tournament, finished the year with 1263:26 minutes played, ninth most in the NCAA and first in the Big Ten, went the distance in 13 contests in 2018-19
- Named 2017 Indiana Miss Basketball, becoming the ninth honoree to pursue their collegiate career in the Old Gold & Black

### - CAREER HIGHS

Points	34	vs. Kent State	12/8/19
Rebounds	5	3x last vs. Bradley	12/12/18
Assists	11	at Wisconsin	12/31/18
Steals	4	2x last at Ohio State	12/28/19
Blocks	1	5x last vs. Bowling Green	12/21/19
FG	9	4x last vs. Kent State	12/8/19
3FG	9	vs. Northwestern	2/17/19
FT	10	vs. Kent State	12/8/19
Minutes	49	vs. South Carolina (25)	12/16/18

### - SEASON HIGHS

Points	34	vs. Kent State	12/8/19
Rebounds	5	2x last vs. Western Illinois	11/17/19
Assists	7	2x last vs. Minnesota	1/19/20
Steals	4	at Ohio State	12/28/19
Blocks	1	vs. Bowling Green	12/21/19
FG	9	vs. Kent State	12/8/19
3FG	7	vs. Michigan State	1/30/20
FT	10	vs. Kent State	12/8/19
Minutes	39	2x last vs. Rutgers	1/5/20

### - MISCELLANEOUS GAME STATS

	19-20	19-20 B1G	Career	Career B1G
Double-Doubles	-	-	2 (1-1)	2 (1-1)
10+ Points	13 (10-3)	87 (6-2)	59 (40-19)	34 (20-14)
20+ Points	4 (4-0)	3 (3-0)	12 (10-2)	6 (6-0)
10+ Rebounds	-	-	-	-
5+ Assists	6 (5-1)	4 (3-1)	30 (25-5)	15 (11-4)
1+ 3PT Field Goals	19 (13-6)	10 (6-4)	80 (49-31)	40 (21-19)
2+ 3PT Field Goals	16 (11-5)	8 (5-3)	64 (40-24)	34 (19-15)
3+ Blocks	-	-	-	-
Led Team in Pts.	8 (6-2)	4 (3-1)	27 (16-11)	15 (7-8)
Led Team in Rebs.	-	-	-	-
Led Team in Assists	10 (6-4)	6 (3-3)	46 (28-18)	27 (14-13)
Led Team in Steals	7 (7-0)	3 (3-0)	19 (14-5)	9 (7-2)
Led Team in Blocks	-	-	-	-
Complete Games	1 (0-1)	1 (0-1)	20 (10-10)	15 (7-8)

### - CAREER STATS

SEASON	TEAM	GP-GS	MIN/AVG	FG-FGA	FG%	3FG-FGA	3FG%	FT-FTA	FT%	OFF	DEF	TOT	AVG	PF-FO	AST	TO	BLK	STL	PTS	AVG
2017-18	Purdue	34-30	1092/32.1	120-311	.386	75-198	.379	38-42	.905	12	76	88	2.6	53-0	120	92	1	20	353	10.4
2018-19	Purdue	34-34	1263/37.2	169-417	.405	88-236	.373	84-94	.894	11	78	89	2.6	51-0	129	70	2	31	510	15.0
2019-20	Purdue	23-23	814/35.4	105-268	.392	54-158	.342	41-48	.854	8	42	50	2.2	29-0	78	49	2	28	305	13.3
TOTAL		91-87	3169/34.8	394-996	.396	217-592	.367	163-184	.886	31	196	227	2.5	133-0	327	211	5	79	1168	12.8



# 2 | BRIAR HARMON

## FR. | G | 5-7 | ATLANTA, GA. | COLLINS HILL

- Four-year varsity letterwinner at Collins Hill High School
- Averaged 16.3 points, 4.6 assists and 2.1 steals per game as a senior for Collins Hill
- Ranked as the No. 42 overall recruit in the country by PASS Preferred Athlete Scouting and No. 83 by Blue Star Recruiting
- Tabbed a four-star player by Prospect Nation and the No. 25 point guard in the country
- Rated a three-star prospect by ESPN Hoopgurlz and received a 90 grade
- Atlanta Journal Constitution 7A First-Team All-State
- Third on the team with a 23.5-inch vertical
- Made Purdue debut with one minute of action against Milwaukee

### - CAREER HIGHS

Points			
Rebounds	1	at Chattanooga	11/14/19
Assists			
Steals			
Blocks			
FG			
3FG			
FT			
Minutes	3	at Chattanooga	11/14/19

### - SEASON HIGHS

Points			
Rebounds	1	at Chattanooga	11/14/19
Assists			
Steals			
Blocks			
FG			
3FG			
FT			
Minutes	3	at Chattanooga	11/14/19

### - MISCELLANEOUS GAME STATS

	19-20	19-20 B1G	Career	Career B1G
Double-Doubles	-	-	-	-
10+ Points	-	-	-	-
20+ Points	-	-	-	-
10+ Rebounds	-	-	-	-
5+ Assists	-	-	-	-
1+ 3PT Field Goals	-	-	-	-
2+ 3PT Field Goals	-	-	-	-
3+ Blocks	-	-	-	-
Led Team in Pts.	-	-	-	-
Led Team in Rebs.	-	-	-	-
Led Team in Assists	-	-	-	-
Led Team in Steals	-	-	-	-
Led Team in Blocks	-	-	-	-
Complete Games	-	-	-	-

### - CAREER STATS

SEASON	TEAM	GP-GS	MIN/AVG	FG-FGA	FG%	3FG-FGA	3FG%	FT-FTA	FT%	OFF	DEF	TOT	AVG	PF-FO	AST	TO	BLK	STL	PTS	AVG
2019-20	Purdue	3-0	6/2.1	0-1	.000	0-0	.000	0-0	.000	0	1	1	0.3	1-0	0	0	0	0	0	0.0
TOTAL		3-0	6/2.1	0-1	.000	0-0	.000	0-0	.000	0	1	1	0.3	1-0	0	0	0	0	0	0.0

### - GAME-BY-GAME

2019-20	Min.	FG	3FG	FT	O-D-T	PF	Pts	A	To	S	B	+/-
Milwaukee	34	3-4	2-2	0-0	0-1-1	3	8	3	1	2	0	14
@Chattanooga	33	3-8	2-7	0-0	0-1-1	0	8	4	2	1	1	31
Western Illinois	38	4-18	0-7	3-4	0-5-5	1	11	3	3	2	0	12
Northern Illinois	32	4-15	3-11	1-1	0-4-4	0	12	0	4	1	0	1
vs. Drake	35	5-12	3-5	0-0	1-0-1	1	13	5	1	2	0	20
vs. ASU	29	2-11	0-6	2-3	0-0-0	2	6	0	1	1	0	-8
vs. Gonzaga	34	2-10	2-6	0-0	0-2-2	0	2	0	0	0	0	-11
@Virginia Tech	36	2-10	0-4	2-2	0-1-1	0	6	7	2	0	0	-9
Kent State	39	9-15	6-10	10-10	0-4-4	2	34	4	2	1	0	13
@South Carolina	33	7-14	4-7	0-0	0-2-2	1	18	1	4	0	0	-24
Western Kentucky	34	6-14	3-9	2-3	0-0-0	2	17	5	1	3	0	25
Bowling Green	33	2-9	1-5	0-0	0-1-1	2	5	3	1	1	1	8
@Ohio State	35	3-9	1-6	2-2	1-1-2	1	9	2	3	4	0	13
Wisconsin	37	7-12	5-8	3-4	1-2-3	2	22	2	2	1	0	6
Rutgers	39	6-16	3-12	2-4	1-2-3	3	17	5	2	1	0	-6
@Indiana	36	3-9	0-5	0-0	0-2-2	1	6	2	3	0	0	-24
@Northwestern	37	3-8	2-5	0-0	0-0-0	0	8	2	4	0	0	-5
Illinois	34	4-10	0-1	4-5	2-7-9	1	12	5	0	0	0	20
Minnesota	38	4-10	2-6	0-0	2-2-4	3	10	7	3	1	0	-6
@Nebraska	38	5-11	3-8	6-6	0-2-2	0	19	1	2	2	0	8
Penn State	36	6-13	2-8	0-0	0-3-3	1	14	6	3	3	0	20
@Michigan State	38	8-15	7-11	1-1	0-0-0	1	24	5	1	1	0	10
Indiana	40	3-11	1-4	2-2	1-2-3	1	9	4	2	1	0	-12
@Michigan												
Iowa												
@Wisconsin												
@Illinois												
Michigan State												
@Maryland												
Ohio State												
Big Ten												
Big Ten												
Big Ten												
NCAA/WNIT												
NCAA/WNIT												



# 3 | LYNDSEY WHILBY

JR. | G | 5-11 | POWDER SPRINGS, GA. | McEachern | TEXAS TECH

- Appeared in 29 games in her first season with the Boilermakers, including three starts, and averaged 13.7 minutes per game
- Scored in double figures four times on the season, including two of the three games at the Big Ten Tournament
- Transferred to Purdue after one season at Texas Tech, where she averaged 7.2 points in 30 games and nine starts
- A three-time Georgia AAAAAA State Champion at McEachern High School
- Matched a career high with three assists on the road at Chattanooga, also recorded a career-high three steals

## - CAREER HIGHS

Points	21	2x: last at Oklahoma	2/24/18*
Rebounds	6	vs. Albany	12/19/18
Assists	3	4x last at Chattanooga	11/14/19
Steals	3	at Chattanooga	11/14/19
Blocks	1	5x: last vs. Minnesota	2/14/19
FG	8	vs. Incarnate Word	12/21/17*
3FG	5	2x: last at Oklahoma	2/24/18*
FT	7	vs. Iowa State	3/2/18*
Minutes	35	2x: last vs. Iowa State	3/2/18*

\* Includes time at Texas Tech

## - SEASON HIGHS

Points	13	vs. Bowling Green	12/21/19
Rebounds	4	4x last vs. Minnesota	1/19/20
Assists	3	at Chattanooga	11/14/19
Steals	3	at Chattanooga	11/14/19
Blocks	1	vs. Milwaukee	11/10/19
FG	5	vs. Bowling Green	12/21/19
3FG	3	vs. Bowling Green	12/21/19
FT	3	at No. 5 South Carolina	12/15/19
Minutes	21	vs. Western Illinois	11/17/19

## - CAREER STATS

SEASON	TEAM	GP-GS	MIN/AVG	FG-FGA	FG%	3FG-FGA	3FG%	FT-FTA	FT%	OFF	DEF	TOT	AVG	PF-FO	AST	TO	BLK	STL	PTS	AVG
2017-18	TTU	30-9	692/23.1	68-192	.354	39-121	.322	41-65	.631	15	53	68	2.3	53-0	24	65	1	26	216	7.2
2018-19	Purdue	29-3	396/13.7	35-109	.321	16-40	.400	23-34	.676	23	33	56	1.9	42-0	23	34	4	18	109	3.8
2019-20	Purdue	19-0	189/10.0	26-59	.441	8-20	.400	5-8	.625	10	19	29	1.5	19-0	6	23	1	8	65	3.4
TOTAL FOR Purdue		48-3	585/12.2	61-168	.363	24-60	.400	28-42	.667	33	52	85	1.8	61-0	29	57	5	26	174	3.6
TOTAL		78-12	1277/16.4	129-360	.358	63-181	.348	69-107	.645	48	105	153	2.0	114-0	53	122	6	52	390	5.0



# 5 | CASSIDY HARDIN

SO. | G | 5-10 | BARGERSVILLE, IND. | CENTER GROVE

- Poses constant threat on the perimeter, along with Karissa McLaughlin, Dominique Oden and Kayana Traylor
- Made 2019-20 debut against Northern Illinois, connecting on back-to-back 3-points the first time she touched the ball
- Missed first three games of the year due to injury
- Became just the fourth freshman to start first game of the season in the Versyp era in 2018-19 against Ball State
- McDonald's All-America nominee as a senior
- 2017 Indiana State Doubles Championship in tennis
- Made first start of the year against Nebraska

## - CAREER HIGHS

Points	14	vs. Purdue Fort Wayne	11/18/18
Rebounds	5	at Nebraska	1/23/20
Assists	5	vs. Western Illinois	11/15/18
Steals	2	at Wisconsin	12/31/18
Blocks	1	2x last at Northwestern	1/12/20
FG	5	Purdue Fort Wayne	11/18/18
3FG	4	vs. Purdue Fort Wayne	11/18/18
FT	2	2x: last vs. Bradley	12/21/18
Minutes	30	at Nebraska	1/23/20

## - SEASON HIGHS

Points	10	vs. Kent State	12/8/19
Rebounds	5	at Nebraska	1/23/20
Assists	4	at Nebraska	1/23/20
Steals	2	2x last vs. Rutgers	1/5/20
Blocks	1	at Northwestern	1/12/20
FG	3	3x last at No. 12 Indiana	1/9/20
3FG	3	vs. Drake	11/29/30
FT	2	vs. Kent State	12/8/19
Minutes	30	at Nebraska	1/23/20

## - CAREER STATS

SEASON	TEAM	GP-GS	MIN/AVG	FG-FGA	FG%	3FG-FGA	3FG%	FT-FTA	FT%	OFF	DEF	TOT	AVG	PF-FO	AST	TO	BLK	STL	PTS	AVG
2018-19	Purdue	32-3	421/13.2	25-109	.229	24-97	.247	8-10	.800	7	26	33	1.0	25-0	35	20	2	5	82	2.6
2019-20	Purdue	20-4	298/14.9	25-67	.373	20-56	.357	2-2	1.000	3	24	27	1.4	16-0	16	19	1	9	72	3.6
TOTAL		52-7	719/13.8	50-176	.284	44-153	.288	10-12	.833	10	50	60	1.2	41-0	51	39	3	14	154	3.0

## - GAME-BY-GAME

2019-20	Min.	FG	3FG	FT	0-D-T	PF	Pts	A	To	S	B	+/-
Milwaukee	15	2-6	1-3	0-0	1-3-4	3	5	0	1	0	1	-3
@Chattanooga	20	3-4	0-1	0-0	0-2-2	2	6	3	3	3	0	22
Western Illinois	21	4-5	1-1	0-0	0-4-4	3	9	0	3	1	0	2
Northern Illinois	13	2-5	0-1	0-0	3-0-3	1	4	0	3	0	0	-8
vs. Drake	1	0-0	0-0	0-0	1-0-1	0	0	0	0	1	0	-2
vs. ASU	4	0-0	0-0	0-0	0-0-0	0	0	0	1	0	0	-5
vs. Gonzaga	9	1-2	0-0	1-2	0-0-0	2	3	0	3	0	0	-1
@Virginia Tech	Did Not Play (death in family)											
Kent State	Did Not Play (death in family)											
@South Carolina	15	1-5	0-2	3-4	0-1-1	1	5	0	0	0	0	-19
Western Kentucky	3	0-0	0-0	0-0	0-1-1	0	0	0	0	0	0	0
Bowling Green	12	5-5	3-3	0-0	1-3-4	1	13	0	1	1	0	-3
@Ohio State	13	4-6	0-1	0-0	0-1-1	2	8	0	0	1	0	-1
Wisconsin	Did Not Play (illness)											
Rutgers	3	0-0	0-0	0-0	0-0-0	0	0	0	1	0	0	-7
@Indiana	7	0-1	0-1	0-0	0-1-1	0	0	0	1	0	0	-9
@Northwestern	5	1-2	1-1	0-0	0-0-0	0	3	0	1	0	0	-1
Illinois	9	2-3	1-1	0-0	1-1-2	2	5	1	3	0	0	1
Minnesota	18	0-6	0-2	0-0	2-2-4	2	0	1	2	1	0	12
@Nebraska	8	1-6	1-3	0-0	1-0-1	0	3	1	0	0	0	-1
Penn State	4	0-2	0-0	0-0	0-0-0	0	0	0	0	0	0	-6
@Michigan State	9	0-1	0-0	1-2	0-0-0	0	1	0	0	0	0	1
Indiana	Did Not Play											
@Michigan												
Iowa												
@Wisconsin												
@Illinois												
Michigan State												
@Maryland												
Ohio State												
Big Ten												
Big Ten												
Big Ten												
NCAA/WNIT												
NCAA/WNIT												



11 | DOMINIQUE ODEN  
SR. | G | 5-8 | ATLANTA, GA. | MARIST SCHOOL

- All-Gulf Coast Showcase Tournament Team selection - averaged 12 points, six rebounds and three assists per game
- Named Honorable Mention All-Big Ten by the coaches and media, marking her second straight season with all-conference honors in 2018-19
- Became the 33rd 1,000-point scorer in program history, surpassing the mark on Dec. 5, 2018 at Ohio University
- Earned Second Team All-Big Ten honors from the coaches and media in 2017-18
- One-of-4 players all-time at Purdue to hit at least 5-5 from 3-point range in a game, draining all five attempts vs. Northwestern in 2018
- Tabbed a team captain for the second straight year
- On pace to be just the 11th four-year starter in Purdue women's basketball history
- Born and raised in New Orleans but had to relocate to Atlanta as a child as a result of Hurricane Katrina

- CAREER HIGHS

Points	28	vs. Penn State	1/26/20
Rebounds	10	vs. South Carolina (25)	12/16/18
Assists	8	vs. Penn State	1/26/20
Steals	5	vs. Northwestern	1/13/19
Blocks	1	6x last at Chattanooga	11/14/19
FG	13	vs. Penn State	1/26/20
3FG	6	vs. Miami (21)	11/29/18
FT	10	vs. Michigan State	1/30/20
Minutes	49+	vs. South Carolina (25)	12/16/18

- SEASON HIGHS

Points	28	vs. Penn State	1/26/20
Rebounds	9	3x last vs. Michigan State	1/30/20
Assists	8	vs. Penn State	1/26/20
Steals	3	2x last vs. Drake	11/29/19
Blocks	1	2x last vs. Rutgers	1/5/20
FG	13	vs. Penn State	1/26/20
3FG	4	Milwaukee	11/10/19
FT	10	vs. Michigan State	1/30/20
Minutes	40	2x last vs. No. 18 Indiana	2/3/20

- MISCELLANEOUS GAME STATS

	19-20	19-20 B1G	Career	Career B1G
Double-Doubles	-	-	1 (0-1)	-
10+ Points	18 (13-5)	10 (6-4)	93 (62-31)	46 (27-19)
20+ Points	4 (3-1)	4 (3-1)	20 (16-4)	12 (10-2)
10+ Rebounds	-	-	1 (0-1)	-
5+ Assists	7 (7-0)	3 (3-0)	14 (12-2)	7 (7-0)
1+ 3PT Field Goals	11 (9-2)	5 (3-2)	85 (52-33)	41 (23-18)
2+ 3PT Field Goals	4 (4-0)	2 (2-0)	56 (38-18)	26 (19-7)
3+ Blocks	-	-	-	-
Led Team in Pts.	7 (4-3)	3 (1-2)	37 (23-14)	18 (10-8)
Led Team in Rebs.	6 (3-3)	5 (2-3)	10 (4-6)	7 (2-5)
Led Team in Assists	5 (5-0)	3 (3-0)	20 (10-10)	13 (6-7)
Led Team in Steals	10 (4-6)	5 (2-3)	39 (21-18)	20 (8-12)
Led Team in Blocks	1 (0-1)	1 (0-1)	1 (0-1)	1 (0-1)
Complete Games	2 (1-1)	2 (1-1)	13 (8-5)	10 (6-4)

- CAREER STATS

SEASON	TEAM	GP-GS	MIN/AVG	FG-FGA	FG%	3FG-FGA	3FG%	FT-FTA	FT%	OFF	DEF	TOT	AVG	PF-FO	AST	TO	BLK	STL	PTS	AVG
2016-17	Purdue	36-33	1118/31.1	144-324	.444	61-167	.365	41-50	.820	44	68	112	3.1	48-0	73	38	1	27	390	10.8
2017-18	Purdue	34-33	1110/32.6	168-375	.448	64-170	.376	78-92	.848	60	86	146	4.3	72-0	84	59	1	42	478	14.1
2018-19	Purdue	34-34	1208/35.5	176-408	.431	47-145	.324	91-112	.813	60	93	153	4.5	93-0	89	72	4	61	490	14.4
2019-20	Purdue	23-23	780/33.9	115-242	.475	17-47	.362	62-81	.765	58	74	132	5.7	62-1	67	57	2	34	309	13.4
TOTAL		127-123	4216/33.2	603-1349	.447	189-529	.357	272-335	.812	222	321	543	4.3	275-1	313	226	8	164	1667	13.1



12 | ROXANE MAKOLO  
FR. | G | 5-10 | ST. HUBERT, QUEBEC | DAWSON COLLEGE

- One of the top defenders on the team
- Competed in two seasons for Dawson College, appearing in 28 games with 14 starts
- Led her team to back-to-back RSEQ Provincial Championships
- Three-year member of the Canadian national team with 20 games of experience
- Represented Canada at U18 FIBA Americas, U17 FIBA Worlds, U16 FIBA Americas
- Dished out five assists in Purdue debut in a little under 20 minutes of action against Milwaukee

- CAREER HIGHS

Points	7	2x last vs. Western Kentucky	12/18/19
Rebounds	8	vs. Western Kentucky	12/18/19
Assists	5	Milwaukee	11/10/19
Steals	3	at Chattanooga	11/14/19
Blocks	2	at Chattanooga	11/14/19
FG	3	at Chattanooga	11/14/19
3FG	-	-	-
FT	3	vs. Kent State	12/8/19
Minutes	25	at Chattanooga	11/14/19

- SEASON HIGHS

Points	7	2x last vs. Western Kentucky	12/18/19
Rebounds	8	vs. Western Kentucky	12/18/19
Assists	5	Milwaukee	11/10/19
Steals	3	at Chattanooga	11/14/19
Blocks	2	at Chattanooga	11/14/19
FG	3	at Chattanooga	11/14/19
3FG	-	-	-
FT	3	vs. Kent State	12/8/19
Minutes	25	at Chattanooga	11/14/19

- MISCELLANEOUS GAME STATS

	19-20	19-20 B1G	Career	Career B1G
Double-Doubles	-	-	-	-
10+ Points	-	-	-	-
20+ Points	-	-	-	-
10+ Rebounds	-	-	-	-
5+ Assists	1 (1-0)	-	1 (1-0)	-
1+ 3PT Field Goals	-	-	-	-
2+ 3PT Field Goals	-	-	-	-
3+ Blocks	-	-	-	-
Led Team in Pts.	-	-	-	-
Led Team in Rebs.	-	-	-	-
Led Team in Assists	1 (1-0)	-	1 (1-0)	-
Led Team in Steals	2 (2-0)	-	2 (2-0)	-
Led Team in Blocks	-	-	-	-
Complete Games	-	-	-	-

- CAREER STATS

SEASON	TEAM	GP-GS	MIN/AVG	FG-FGA	FG%	3FG-FGA	3FG%	FT-FTA	FT%	OFF	DEF	TOT	AVG	PF-FO	AST	TO	BLK	STL	PTS	AVG
2019-20	Purdue	23-0	287/12.5	12-48	.250	0-4	.000	7-16	.438	17	27	44	1.9	25-0	18	21	2	12	31	1.3
TOTAL		23-0	287/12.5	12-48	.250	0-4	.000	7-16	.438	17	27	44	1.9	25-0	18	21	2	12	31	1.3

- GAME-BY-GAME

2019-20	Min.	FG	3FG	FT	0-D-T	PF	Pts	A	To	S	B	+/-
Milwaukee	33	6-12	4-5	0-0	3-2-5	3	16	2	0	0	0	17
@Chattanooga	32	4-10	1-3	2-2	3-2-5	3	11	2	1	3	1	28
Western Illinois	36	5-15	1-3	5-6	6-2-8	2	16	6	2	1	0	15
Northern Illinois	28	5-9	2-3	3-4	1-2-3	3	15	2	3	1	0	11
vs. Drake	29	3-10	1-2	4-6	3-1-4	4	11	6	1	3	0	14
vs. ASU	34	5-10	0-1	6-9	2-4-6	4	16	1	1	1	0	14
vs. Gonzaga	33	22-8	0-3	5-7	1-7-8	1	9	2	5	1	0	-17
@Virginia Tech	36	3-12	0-1	0-1	2-3-5	4	6	0	2	2	0	-8
Kent State	15	0-1	0-0	0-0	1-0-1	4	0	2	1	1	0	-2
@South Carolina	34	5-11	1-4	0-0	2-3-5	4	11	2	5	2	0	-22
Western Kentucky	38	5-11	1-3	3-4	6-3-9	2	14	3	4	0	0	20
Bowling Green	37	0-3	0-1	2-2	0-1-1	2	2	6	1	1	0	1
@Ohio State	34	4-6	0-0	4-4	3-5-8	0	12	2	5	1	0	20
Wisconsin	34	9-14	1-1	1-1	2-3-5	2	20	1	2	1	0	11
Rutgers	35	5-9	1-1	2-4	5-2-7	4	13	4	4	1	1	-8
@Indiana	38	1-4	0-2	4-4	2-3-5	2	6	0	2	3	0	-18
@Northwestern	32	6-9	1-2	1-2	1-5-6	5	14	2	5	2	0	2
Illinois	34	4-10	0-1	4-5	2-7-9	1	12	5	0	0	0	20
Minnesota	36	7-16	2-6	1-1	2-5-7	3	17	2	6	3	0	-16
@Nebraska	35	7-15	0-1	0-0	1-6-7	3	14	5	2	1	0	10
Penn State	40	13-20	1-1	1-1	4-0-4	1	28	8	2	1	0	13
@Michigan State	38	6-8	0-2	10-12	2-7-9	2	22	2	2	2	0	12
Indiana	40	10-19	0-1	4-6	4-1-5	3	24	2	1	3	0	-12
@Michigan	-	-	-	-	-	-	-	-	-	-	-	-
Iowa	-	-	-	-	-	-	-	-	-	-	-	-
@Wisconsin	-	-	-	-	-	-	-	-	-	-	-	-
@Illinois	-	-	-	-	-	-	-	-	-	-	-	-
Michigan State	-	-	-	-	-	-	-	-	-	-	-	-
@Maryland	-	-	-	-	-	-	-	-	-	-	-	-
Ohio State	-	-	-	-	-	-	-	-	-	-	-	-
Big Ten	-	-	-	-	-	-	-	-	-	-	-	-
Big Ten	-	-	-	-	-	-	-	-	-	-	-	-
Big Ten	-	-	-	-	-	-	-	-	-	-	-	-
NCAA/WNIT	-	-	-	-	-	-	-	-	-	-	-	-
NCAA/WNIT	-	-	-	-	-	-	-	-	-	-	-	-

- GAME-BY-GAME

2019-20	Min.	FG	3FG	FT	0-D-T	PF	Pts	A	To	S	B	+/-
Milwaukee	20	0-2	0-0	1-2	3-2-5	3	1	5	1	1	0	12
@Chattanooga	25	3-6	0-0	1-2	2-1-3	1	7	2	2	3	2	23
Western Illinois	11	0-1	0-0	0-2	1-1-2	0	0	1	2	0	0	-13
Northern Illinois	13	0-1	0-0	1-2	2-5-7	0	1	1	1	0	0	-2
vs. Drake	3	0-0	0-0	0-0	0-0-0	0	0	0	0	0	0	-4
vs. ASU	21	2-4	0-0	0-0	1-0-1	1	4	1	0	0	0	12
vs. Gonzaga	1	0-0	0-0	0-0	0-0-0	0	0	0	1	0	0	0
@Virginia Tech	23	1-4	0-0	0-2	0-3-3	3	2	2	0	1	0	-4
Kent State	16	1-2	0-0	3-4	0-0-0	0	5	0	0	2	0	7
@South Carolina	13	0-2	0-0	0-0	0-1-1	1	0	1	0	2	0	2
Western Kentucky	24	3-6	0-1	1-2	2-6-8	2	7	0	3	1	0	14
Bowling Green	8	0-4	0-1	0-0	1-0-1	0	0	1	2	0	1	-4
@Ohio State	4	1-1	0-0	0-0	0-0-0	0	2	0	1	0	0	3
Wisconsin	9	0-2	0-0	0-0	1-0-1	1	0	0	0	0	0	-1
Rutgers	23	1-3	0-1	0-0	0-1-1	1	2	1	4	0	0	2
@Indiana	2	0-1	0-0	0-0	0-1-1	1	0	0	0	0	0	-1
@Northwestern	7	0-0	0-0	0-0	0-0-0	1	0	0	0	1	0	-8
Illinois	13	0-3	0-0	0-0	2-1-3	1	0	0	2	0	0	-6
Minnesota	6	0-3	0-0	0-0	0-0-0	0	0	0	0	0	0	0
@Nebraska	3	0-0	0-0	0-0	0-1-1	1	0	0	1	0	0	-2
Penn State	9	0-0	0-0	0-0	0-1-1	3	0	1	1	0	0	-8
@Michigan State	16	0-1	0-1	0-0	0-2-2	5	0	1	0	0	0	6
Indiana	18	0-2	0-0	0-0	2-1-3	0	0	1	0	1	0	0
@Michigan	-	-	-	-	-	-	-	-	-	-	-	-
Iowa	-	-	-	-	-	-	-	-	-	-	-	-
@Wisconsin	-	-	-	-	-	-	-	-	-	-	-	-
@Illinois	-	-	-	-	-	-	-	-	-	-	-	-
Michigan State	-	-	-	-	-	-	-	-	-	-	-	-
@Maryland	-	-	-	-	-	-	-	-	-	-	-	-
Ohio State	-	-	-	-	-	-	-	-	-	-	-	-
Big Ten	-	-	-	-	-	-	-	-	-	-	-	-
Big Ten	-	-	-	-	-	-	-	-	-	-	-	-
Big Ten	-	-	-	-	-	-	-	-	-	-	-	-
NCAA/WNIT	-	-	-	-	-	-	-	-	-	-	-	-
NCAA/WNIT	-	-	-	-	-	-	-	-	-	-	-	-



# 13 | AJAH STALLINGS

SO. | G | 5-8 | INDIANAPOLIS, IND. | NORTH CENTRAL

- Appeared in 14 games in her first season with the Boilermakers, including five Big Ten Conference contests
- Received the Dr. Ruth Jones Memorial Award at the postseason banquet
- Second preferred walk-on in Versyp's 13 seasons at Purdue
- 2018 Indiana high school honorable mention all-state
- Featured by ESPNW in 2015

## - CAREER HIGHS

Points	2	3x: last at Wisconsin	12/31/18
Rebounds	1	2x: last vs. Illinois	2/7/19
Assists	3	vs. Purdue Fort Wayne	11/18/18
Steals	1	2x: last vs. Illinois	2/7/19
Blocks			
FG	1	2x: last at Wisconsin	12/31/18
3FG			
FT	2	vs. Western Illinois	11/15/18
Minutes	10	vs. Purdue Fort Wayne	11/18/18

## - SEASON HIGHS

Points			
Rebounds			
Assists	1	at Chattanooga	11/14/19
Steals			
Blocks			
FG			
3FG			
FT			
Minutes	2	Milwaukee	11/10/19

## - CAREER STATS

SEASON	TEAM	GP-GS	MIN/AVG	FG-FGA	FG%	3FG-FGA	3FG%	FT-FTA	FT%	OFF	DEF	TOT	AVG	PF-FO	AST	TO	BLK	STL	PTS	AVG
2018-19	Purdue	14-0	54/3.9	2-3	.667	0-1	.000	3-4	.750	0	2	2	0.1	5-0	3	0	0	3	7	0.5
2019-20	Purdue	3-0	5/1.5	0-0	.000	0-0	.000	0-0	.000	0	0	0	0.0	0-0	1	0	0	0	0	0.0
TOTAL		17-0	59/3.5	2-3	.667	0-1	.000	3-4	.750	0	2	2	0.1	5-0	4	0	0	3	7	0.4

## - GAME-BY-GAME

2019-20	Min.	FG	3FG	FT	0-D-T	PF	Pts	A	To	S	B	+/-
Milwaukee	2	0-0	0-0	0-0	0-0-0	0	0	0	0	0	0	-2
@Chattanooga	2	0-0	0-0	0-0	0-0-0	0	0	1	0	0	0	0
Western Illinois												
Northern Illinois												
vs. Drake												
vs. ASU												
vs. Gonzaga												
@Virginia Tech												
Kent State												
@South Carolina												
Western Kentucky												
Bowling Green												
@Ohio State												
Wisconsin												
Rutgers												
@Indiana	1	0-0	0-0	0-0	0-0-0	0	0	0	0	0	0	3
@Northwestern												
Illinois												
Minnesota												
@Nebraska												
Penn State												
@Michigan State												
Indiana												
@Michigan												
Iowa												
@Wisconsin												
@Illinois												
Michigan State												
@Maryland												
Ohio State												
Big Ten												
Big Ten												
Big Ten												
NCAA/WNIT												
NCAA/WNIT												

## - MISCELLANEOUS GAME STATS

	19-20	19-20 B1G	Career	Career B1G
Double-Doubles	-	-	-	-
10+ Points	-	-	-	-
20+ Points	-	-	-	-
10+ Rebounds	-	-	-	-
5+ Assists	-	-	-	-
1+ 3PT Field Goals	-	-	-	-
2+ 3PT Field Goals	-	-	-	-
3+ Blocks	-	-	-	-
Led Team in Pts.	-	-	-	-
Led Team in Rebs.	-	-	-	-
Led Team in Assists	-	-	-	-
Led Team in Steals	-	-	1 (1-0)	1 (1-0)
Led Team in Blocks	-	-	-	-
Complete Games	-	-	-	-



# 15 | LEONY BOUDREAU

JR. | G | 5-10 | MONTREAL, QUEBEC | DAWSON COLLEGE

- Planned and ran, from scratch, the "Wheel Rise Event", an afternoon in Holloway Gymnasium to help Paralympic athletes reach their full potential.
- The event included a wheelchair basketball game, lectures from world-renowned professors
- "Wheel Rise Event" was the culmination of a chance meeting with Shelby Gruss, a Purdue PhD candidate and former captain of the US Wheelchair Basketball Team
- Missed all but one game in 2018-19 due to injury
- Appeared in 15 games in her first season with the Boilermakers
- Along with Tamara Farquhar, they were the first two Canadian players in Purdue women's basketball history
- Hobbies include martial arts and triathlons

## - CAREER HIGHS

Points	3	at Ball State	11/7/18
Rebounds	2	at Hawaii	11/25/17
Assists	1	3x: last at Ball State	11/7/18
Steals	1	at Ball State	11/7/18
Blocks			
FG	1	at Ball State	11/8/18
3FG	1	at Ball State	11/7/18
FT	2	vs. Lamar	11/18/17
Minutes	8	at Hawaii	11/25/17

## - SEASON HIGHS

Points			
Rebounds			
Assists			
Steals			
Blocks			
FG			
3FG			
FT			
Minutes			

## - MISCELLANEOUS GAME STATS

	19-20	19-20 B1G	Career	Career B1G
Double-Doubles	-	-	-	-
10+ Points	-	-	-	-
20+ Points	-	-	-	-
10+ Rebounds	-	-	-	-
5+ Assists	-	-	-	-
1+ 3PT Field Goals	-	-	1 (1-0)	-
2+ 3PT Field Goals	-	-	-	-
3+ Blocks	-	-	-	-
Led Team in Pts.	-	-	-	-
Led Team in Rebs.	-	-	-	-
Led Team in Assists	-	-	-	-
Led Team in Steals	-	-	-	-
Led Team in Blocks	-	-	-	-
Complete Games	-	-	-	-

## - GAME-BY-GAME

2019-20	Min.	FG	3FG	FT	0-D-T	PF	Pts	A	To	S	B	+/-
Milwaukee												
@Chattanooga												
Western Illinois												
Northern Illinois												
vs. Drake												
vs. ASU												
vs. Gonzaga												
@Virginia Tech												
Kent State												
@South Carolina												
Western Kentucky												
Bowling Green												
@Ohio State												
Wisconsin												
Rutgers												
@Indiana												
@Northwestern												
Illinois												
Minnesota												
@Nebraska												
Penn State												
@Michigan State												
Indiana												
@Michigan												
Iowa												
@Wisconsin												
@Illinois												
Michigan State												
@Maryland												
Ohio State												
Big Ten												
Big Ten												
Big Ten												
NCAA/WNIT												
NCAA/WNIT												

## - CAREER STATS

SEASON	TEAM	GP-GS	MIN/AVG	FG-FGA	FG%	3FG-FGA	3FG%	FT-FTA	FT%	OFF	DEF	TOT	AVG	PF-FO	AST	TO	BLK	STL	PTS	AVG
2017-18	Purdue	16-0	42/2.6	0-8	.000	0-6	.000	2-2	1.000	2	2	4	0.3	9-0	2	4	0	0	2	0.1
2018-19	Purdue	1-0	6/5.7	1-1	1.000	1-1	1.000	0-0	.000	0	1	1	1.0	0-0	1	0	0	1	3	3.0
TOTAL		17-0	48/2.8	1-9	.111	1-7	.143	2-2	1.000	2	3	5	0.3	9-0	3	4	0	1	5	0.3





22 | JENELLE GRANT

R-JR. | G/F | 6-0 | LONDON, ENGLAND | HARRIS WESTMINSTER | PACIFIC

- One of the more versatile players on the team with the ability to play in the low post, shoot off the dribble and be a threat from behind the arc
- Made Purdue debut against Northern Illinois, scored first points against Drake and hit first 3-pointer against Gonzaga
- Missed start of the season due to injury
- Sat out the 2018-19 season due to NCAA transfer regulations
- Transferred to Purdue from the University of the Pacific, where she appeared in 56 games for the Tigers, including 23 starts
- A native of London, England, she's the first British player in Boilermaker history

- CAREER HIGHS

Points	22	vs. San Jose State	11/24/17
Rebounds	19	vs. Cal State Fullerton	11/13/17
Assists	5	vs. San Jose State	11/24/17
Steals	3	at No. 12 Indiana	1/9/20
Blocks	2	6 times	
FG	9	vs. San Jose State	11/24/17
3FG	4	at Seattle	12/17/17
FT	4	2 times	
Minutes	36	vs. San Jose State	11/24/17

- SEASON HIGHS

Points	14	at Northwestern	1/12/20
Rebounds	7	vs. Illinois	1/17/20
Assists	4	at Nebraska	1/23/20
Steals	3	at No. 12 Indiana	1/9/20
Blocks	1	2x last vs. Illinois	1/17/20
FG	7	at Northwestern	1/12/20
3FG	2	at Nebraska	1/23/20
FT	3	vs. Rutgers	1/5/20
Minutes	28	at Northwestern	1/12/20

- MISCELLANEOUS GAME STATS

	19-20	19-20 B1G	Career	Career B1G
Double-Doubles	-	-	2	-
10+ Points	2 (1-1)	2 (1-1)	15 (1-1)	2 (1-1)
20+ Points	-	-	2	-
10+ Rebounds	-	-	7	-
5+ Assists	-	-	1	-
1+ 3PT Field Goals	7 (4-3)	5 (3-2)	27* (4-3)	5 (3-2)
2+ 3PT Field Goals	1 (1-0)	1 (1-0)	5 (1-0)	1 (1-0)
3+ Blocks	-	-	-	-
Led Team in Pts.	1 (0-1)	1 (0-1)	1 (0-1)	1 (0-1)
Led Team in Rebs.	-	-	-	-
Led Team in Assists	-	-	-	-
Led Team in Steals	-	-	-	-
Led Team in Blocks	-	-	-	-
Complete Games	-	-	-	-

\*Includes time at Pacific but not the record

- CAREER STATS

SEASON	TEAM	GP-GS	MIN/AVG	FG-FGA	FG%	3FG-FGA	3FG%	FT-FTA	FT%	OFF	DEF	TOT	AVG	PF-FO	AST	TO	BLK	STL	PTS	AVG
2016-17	UOP	25-0	312/12.5	32-91	.352	7-16	.438	13-17	.765	28	47	75	3.0	33-0	12	28	6	5	84	3.4
2017-18	UOP	32-24	878/27.4	94-252	.373	20-75	.267	31-46	.674	62	166	228	7.1	81-3	37	70	21	18	239	7.5
2019-20	Purdue	20-8	290/14.5	33-82	.402	8-23	.348	16-22	.727	15	33	48	2.4	34-0	20	20	4	11	90	4.5
TOTAL FOR Purdue		20-8	290/14.5	33-82	.402	8-23	.348	16-22	.727	15	33	48	2.4	34-0	20	20	4	11	90	4.5
TOTAL		77-32	1480/19.2	159-425	.374	35-114	.307	60-85	.706	105	246	351	4.6	148-3	69	118	31	34	413	5.4



23 | KAYANA TRAYLOR

SO. | G | 5-9 | MARTINSVILLE, IND | MARTINSVILLE

- Started 22-of-33 games, becoming the 27th freshman starter in program history and the sixth under Versyp
- Dished out the sixth-most assists by a freshman in program history, the seventh Purdue rookie to ever eclipse 100 helpers
- Her 3.6 assists per game is the No. 5 freshman average all-time at Purdue, and ranked 16th in the Big Ten
- Second Purdue freshman in as many years to score in double figures in their first career game (McLaughlin)
- Set Martinsville High School records for scoring (2114), assists (437), free throws (472) and games played (98)
- 2018 Indiana Miss Basketball finalist
- McDonald's All-America nominee
- Has a team-high vertical of 25.5 inches

- CAREER HIGHS

Points	19	vs. Bowling Green	12/21/19
Rebounds	6	vs. Bradley	12/12/18
Assists	9	vs. Northern Illinois	11/24/19
Steals	4	at Indiana	3/3/19
Blocks	2	vs. Western Illinois	11/15/18
FG	7	vs. Maryland	2/25/19
3FG	4	vs. Maryland (8)	2/25/19
FT	9	vs. Bowling Green	12/21/19
Minutes	37	vs. South Carolina (25)	12/16/18

- SEASON HIGHS

Points	19	vs. Bowling Green	12/21/19
Rebounds	5	2x last vs. Bowling Green	12/21/19
Assists	9	vs. Northern Illinois	11/24/19
Steals	3	vs. Drake	11/29/19
Blocks	1	2x last at No. 5 South Carolina	12/15/19
FG	5	3x last vs. Illinois	11/17/20
3FG	3	at Ohio State	12/28/19
FT	9	vs. Bowling Green	12/21/19
Minutes	34	vs. Wisconsin	12/31/19

- MISCELLANEOUS GAME STATS

	19-20	19-20 B1G	Career	Career B1G
Double-Doubles	-	-	-	-
10+ Points	6 (6-0)	2 (2-0)	14 (10-4)	6 (4-2)
20+ Points	-	-	-	-
10+ Rebounds	-	-	-	-
5+ Assists	7 (6-1)	3 (2-1)	20 (15-5)	8 (5-3)
1+ 3PT Field Goals	6 (5-1)	3 (2-1)	18 (11-7)	9 (5-4)
2+ 3PT Field Goals	4 (4-0)	1 (1-0)	7 (4-3)	4 (1-3)
3+ Blocks	-	-	-	-
Led Team in Pts.	2 (2-0)	1 (1-0)	5 (3-2)	3 (2-1)
Led Team in Rebs.	1 (1-0)	-	1 (1-0)	-
Led Team in Assists	9 (7-2)	4 (2-2)	28 (19-9)	12 (7-5)
Led Team in Steals	4 (4-0)	1 (1-0)	11 (7-4)	7 (4-3)
Led Team in Blocks	-	-	1 (0-1)	1 (0-1)
Complete Games	-	-	-	-

- CAREER STATS

SEASON	TEAM	GP-GS	MIN/AVG	FG-FGA	FG%	3FG-FGA	3FG%	FT-FTA	FT%	OFF	DEF	TOT	AVG	PF-FO	AST	TO	BLK	STL	PTS	AVG
2018-19	Purdue	33-22	846/25.6	68-178	.382	17-60	.283	64-90	.711	15	49	64	1.9	69-0	119	88	7	32	217	6.6
2019-20	Purdue	23-17	550/23.9	48-114	.421	13-34	.382	45-59	.763	7	40	47	2.0	52-2	83	71	2	16	154	6.7
TOTAL		56-39	1396/24.9	116-292	.397	30-94	.319	109-149	.732	22	89	111	2.0	121-2	202	159	9	48	371	6.6

- GAME-BY-GAME

2019-20	Min.	FG	3FG	FT	O-D-T	PF	Pts	A	To	S	B	+/-
Milwaukee					0-0-0	3	15	5	5	0	0	19
@Chattanooga					0-3-3	5	5	4	1	1	0	12
Western Illinois					2-2-2	2	3	1	7	1	1	-1
Northern Illinois	33	4-6	2-3	6-8	1-1-2	3	16	9	3	1	0	13
vs. Drake	31	3-8	2-6	4-4	0-3-3	1	12	3	4	3	0	11
vs. ASU	33	3-8	0-2	2-2	0-0-0	3	8	2	3	2	0	8
vs. Gonzaga	26	4-8	0-1	0-0	0-0-0	2	8	4	4	0	0	-8
@Virginia Tech	17	1-1	0-0	2-2	0-2-2	3	4	3	5	0	0	1
Kent State	24	1-4	0-2	0-0	0-1-1	2	2	4	1	0	0	12
@South Carolina	15	1-4	1-2	0-0	0-1-1	2	3	3	5	0	1	-24
Western Kentucky	22	2-6	0-1	3-4	1-1-2	1	7	5	2	1	0	-3
Bowling Green	31	5-10	0-1	9-10	1-4-5	2	19	8	2	1	0	13
@Ohio State	30	3-5	3-4	6-6	0-3-3	2	15	3	5	1	0	12
Wisconsin	34	1-3	0-1	1-2	0-2-2	1	3	6	4	0	0	16
Rutgers	14	0-1	0-0	0-0	0-1-1	5	0	2	1	1	0	-1
@Indiana	26	3-10	0-0	1-4	3-1-4	1	7	3	3	0	0	-17
@Northwestern	26	1-5	1-2	0-0	0-2-2	1	3	6	2	0	0	-3
Illinois	29	5-9	1-2	4-5	0-3-3	4	15	2	3	1	0	12
Minnesota	18	1-1	0-0	1-2	0-2-2	3	3	3	2	0	0	-15
@Nebraska	14	0-4	0-1	0-0	0-1-1	1	0	2	1	3	0	-8
Penn State	18	1-1	0-0	2-2	1-0-1	2	4	1	4	0	0	1
@Michigan State	26	1-3	0-0	0-0	0-2-2	2	2	3	4	0	0	12
Indiana	15	0-2	0-0	0-2	0-1-1	1	0	1	0	0	0	-12
@Michigan												
Iowa												
@Wisconsin												
@Illinois												
Michigan State												
@Maryland												
Ohio State												
Big Ten												
Big Ten												
Big Ten												
NCAA/WNIT												
NCAA/WNIT												

- GAME-BY-GAME

2019-20	Min.	FG	3FG	FT	O-D-T	PF	Pts	A	To	S	B	+/-
Milwaukee	30	5-11	2-5	3-4	0-4-4	3	15	5	5	0	0	19
@Chattanooga	18	2-3	1-1	0-0	0-3-3	5	5	4	1	1	0	12
Western Illinois	24	1-1	0-0	1-2	0-2-2	2	3	1	7	1	1	-1
Northern Illinois	33	4-6	2-3	6-8	1-1-2	3	16	9	3	1	0	13
vs. Drake	31	3-8	2-6	4-4	0-3-3	1	12	3	4	3	0	11
vs. ASU	33	3-8	0-2	2-2	0-0-0	3	8	2	3	2	0	8
vs. Gonzaga	26	4-8	0-1	0-0	0-0-0	2	8	4	4	0	0	-8
@Virginia Tech	17	1-1	0-0	2-2	0-2-2	3	4	3	5	0	0	1
Kent State	24	1-4	0-2	0-0	0-1-1	2	2	4	1	0	0	12
@South Carolina	15	1-4	1-2	0-0	0-1-1	2	3	3	5	0	1	-24
Western Kentucky	22	2-6	0-1	3-4	1-1-2	1	7	5	2	1	0	-3
Bowling Green	31	5-10	0-1	9-10	1-4-5	2	19	8	2	1	0	13
@Ohio State	30	3-5	3-4	6-6	0-3-3	2	15	3	5	1	0	12
Wisconsin	34	1-3	0-1	1-2	0-2-2	1	3	6	4	0	0	16
Rutgers	14	0-1	0-0	0-0	0-1-1	5	0	2	1	1	0	-1
@Indiana	26	3-10	0-0	1-4	3-1-4	1	7	3	3	0	0	-17
@Northwestern	26	1-5	1-2	0-0	0-2-2	1	3	6	2	0	0	-3
Illinois	29	5-9	1-2	4-5	0-3-3	4	15	2	3	1	0	12
Minnesota	18	1-1	0-0	1-2	0-2-2	3	3	3	2	0	0	-15
@Nebraska	14	0-4	0-1	0-0	0-1-1	1	0	2	1	3	0	-8
Penn State	18	1-1	0-0	2-2	1-0-1	2	4	1	4	0	0	1
@Michigan State	26	1-3	0-0	0-0	0-2-2	2	2	3	4	0	0	12
Indiana	15	0-2	0-0	0-2	0-1-1	1	0	1	0	0	0	-12
@Michigan												
Iowa												
@Wisconsin												
@Illinois												
Michigan State												
@Maryland												
Ohio State												
Big Ten												
Big Ten												
Big Ten												
NCAA/WNIT												
NCAA/WNIT												



25 | TAMARA FARQUHAR  
JR. | G/F | 6-0 | PIERREFONDS, QUEBEC | DAWSON COLLEGE

- Hauled down a season-high 14 rebounds against Western Illinois to help Purdue win the rebounding margin by 22
- Started all 34 games for the Boilermakers, 1-of-3 players on the team to do so, averaging 29.3 minutes as a sophomore
- Pulled down 262 rebounds, good for 13th-most in a season in Purdue history and her 7.7 rebounds per game average was 10th best in the Big Ten
- Started 17-of-34 games as a freshman, becoming the fifth rookie starter in Versyp's career
- Along with Dawson College teammate Léony Boudreau, they were the first two Canadian players in Purdue women's basketball history

- CAREER HIGHS

Points	18	at Virginia Tech	12/5/19
Rebounds	18	at Northwestern	1/13/19
Assists	5	vs. Western Illinois	11/17/19
Steals	3	6x: last vs. Nebraska	1/31/19
Blocks	3	6x: last at Chattanooga	11/14/19
FG	8	2x: last at Virginia Tech	12/5/19
3FG	1	at Wisconsin	12/31/18
FT	4	vs. Western Illinois	11/15/18
Minutes	39	2x: last vs. Michigan	1/5/19

- SEASON HIGHS

Points	18	at Virginia Tech	12/5/19
Rebounds	14	vs. Western Illinois	11/17/19
Assists	5	vs. Western Illinois	11/17/19
Steals	2	2x: last vs. Western Kentucky	12/18/19
Blocks	3	at Chattanooga	11/14/19
FG	8	at Virginia Tech	12/5/19
3FG			
FT	4	vs. Bowling Green	12/21/19
Minutes	33	vs. Wisconsin	12/31/19

- MISCELLANEOUS GAME STATS

	19-20	19-20 B1G	Career	Career B1G
Double-Doubles	3 (3-0)	1 (1-0)	5 (3-2)	1 (1-0)
10+ Points	5 (4-1)	1 (1-0)	15 (12-3)	6 (6-0)
20+ Points	-	-	6 (5-1)	2 (1-1)
10+ Rebounds	3 (3-0)	1 (1-0)	11 (6-5)	5 (2-3)
5+ Assists	-	-	-	-
1+ 3PT Field Goals	-	-	1 (0-1)	1 (0-1)
2+ 3PT Field Goals	-	-	5 (2-3)	1 (0-1)
3+ Blocks	-	-	-	-
Led Team in Pts.	1 (0-1)	-	13 (5-8)	5 (2-3)
Led Team in Rebs.	5 (5-0)	1 (1-0)	10 (6-4)	1 (1-0)
Led Team in Assists	-	-	-	-
Led Team in Steals	1 (1-0)	-	12 (8-4)	6 (2-4)
Led Team in Blocks	2 (2-0)	-	9 (4-5)	3 (1-2)
Complete Games	-	-	-	-

- GAME-BY-GAME

2019-20	Min.	FG	3FG	FT	0-D-T	PF	Pts	A	To	S	B	+/-
Milwaukee	18	3-4	0-0	2-4	1-6-7	0	8	1	2	0	0	7
@Chattanooga	20	1-4	0-0	1-2	1-6-7	1	3	1	1	1	3	12
Western Illinois	31	5-8	0-0	3-6	7-7-14	2	13	5	5	0	2	13
Northern Illinois	21	3-7	0-0	2-2	2-6-8	2	8	0	1	2	0	6
vs. Drake	19	1-3	0-0	1-2	4-4-8	2	3	0	4	1	1	0
vs. ASU	19	4-6	0-0	1-1	4-4-8	3	9	1	1	1	0	7
vs. Gonzaga	19	2-6	0-0	0-0	1-5-6	3	4	0	2	0	0	-7
@Virginia Tech	25	8-13	0-0	2-3	4-2-6	0	18	1	2	0	1	-6
Kent State	25	4-9	0-0	0-0	3-5-8	1	8	2	2	1	1	13
@South Carolina	21	0-4	0-0	0-0	0-2-2	1	0	0	1	0	1	-21
Western Kentucky	29	4-10	0-0	3-5	1-6-7	1	11	0	4	2	0	8
Bowling Green	23	3-6	0-0	4-5	3-7-10	3	10	0	2	1	0	13
@Ohio State	31	1-6	0-0	2-2	0-8-8	1	4	2	2	1	0	20
Wisconsin	33	5-10	0-1	0-0	2-9-11	2	10	2	1	0	1	13
Rutgers	11	0-3	0-1	0-0	1-1-2	0	0	0	1	1	0	-8
@Indiana												Did Not Play (Injury)
@Northwestern												Did Not Play (Injury)
Illinois												Did Not Play (Injury)
Minnesota												Did Not Play (Injury)
@Nebraska												Did Not Play (Injury)
Penn State												Did Not Play (Injury)
@Michigan State												Did Not Play (Injury)
Indiana												Did Not Play (Injury)
@Michigan												
Iowa												
@Wisconsin												
@Illinois												
Michigan State												
@Maryland												
Ohio State												
Big Ten												
Big Ten												
Big Ten												
NCAA/WNIT												
NCAA/WNIT												

- CAREER STATS

SEASON	TEAM	GP-GS	MIN/AVG	FG-FGA	FG%	3FG-FGA	3FG%	FT-FTA	FT%	OFF	DEF	TOT	AVG	PF-FO	AST	TO	BLK	STL	PTS	AVG
2017-18	Purdue	34-17	740/21.8	69-176	.392	0-2	.000	20-41	.488	55	108	163	4.8	68-1	24	58	28	19	158	4.6
2018-19	Purdue	34-34	996/29.3	92-241	.382	1-4	.250	42-71	.592	90	172	262	7.7	68-0	44	84	24	28	227	6.7
2019-20	Purdue	15-15	343/22.9	44-99	.444	0-2	.000	21-32	.656	34	78	112	7.5	22-0	15	32	10	11	109	7.3
TOTAL		83-66	2079/25.0	205-516	.397	1-8	.125	83-144	.576	179	358	537	6.5	158-1	83	174	62	58	494	6.0



30 | NYAGOOA GONY  
SO. | F | 6-2 | LINCOLN, NEB. | LINCOLN

- Appeared in 31 games with one start, averaging 9.0 minutes per game
- Named the team's Co-Most Improved Player at the Purdue women's basketball postseason banquet
- Two-time honorable mention all-state honoree
- Led the state of Nebraska in rebounding in 2015-16

- CAREER HIGHS

Points	6	vs. Miami (21)	11/29/18
Rebounds	9	at Ball State	11/7/18
Assists	1	3x: last vs. Illinois	3/6/19
Steals	1	2x: last vs. Northwestern	2/17/19
Blocks	2	5x: last vs. Minnesota	2/14/19
FG	2	vs. Purdue Fort Wayne	11/18/18
3FG			
FT	4	vs. Miami (21)	11/29/18
Minutes	21	vs. Illinois	3/6/19

- SEASON HIGHS

Points	2	vs. Drake	11/29/30
Rebounds			
Assists			
Steals	1	vs. Drake	11/29/30
Blocks			
FG	1	vs. Drake	11/29/30
3FG			
FT			
Minutes	9	vs. Drake	11/29/30

- MISCELLANEOUS GAME STATS

	19-20	19-20 B1G	Career	Career B1G
Double-Doubles	-	-	-	-
10+ Points	-	-	-	-
20+ Points	-	-	-	-
10+ Rebounds	-	-	-	-
5+ Assists	-	-	-	-
1+ 3PT Field Goals	-	-	-	-
2+ 3PT Field Goals	-	-	-	-
3+ Blocks	-	-	-	-
Led Team in Pts.	-	-	-	-
Led Team in Rebs.	-	-	-	-
Led Team in Assists	-	-	-	-
Led Team in Steals	-	-	-	-
Led Team in Blocks	-	-	3 (2-1)	-
Complete Games	-	-	-	-

- GAME-BY-GAME

2019-20	Min.	FG	3FG	FT	0-D-T	PF	Pts	A	To	S	B	+/-
Milwaukee	1	0-0	0-0	0-0	0-0-0	0	0	0	0	0	0	-3
@Chattanooga	3	0-0	0-0	0-0	0-0-0	0	0	1	0	0	0	2
Western Illinois												Did Not Play
Northern Illinois												Did Not Play
vs. Drake	9	1-2	0-0	0-0	0-0-0	2	2	0	0	1	0	16
vs. ASU	1	0-0	0-0	0-0	0-1-1	0	0	0	0	0	0	0
vs. Gonzaga	2	0-0	0-0	0-0	0-0-0	0	0	0	0	0	0	-2
@Virginia Tech	1	0-0	0-0	0-0	0-0-0	0	0	0	0	0	0	0
Kent State												Did Not Play
@South Carolina												Did Not Play
Western Kentucky												Did Not Play
Bowling Green												Did Not Play
@Ohio State												Did Not Play
Wisconsin												Did Not Play
Rutgers												Did Not Play
@Indiana	1	0-0	0-0	0-0	0-0-0	0	0	0	0	0	0	5
@Northwestern												Did Not Play
Illinois												Did Not Play
Minnesota												Did Not Play
@Nebraska	1	0-0	0-0	0-0	0-0-0	1	0	0	1	0	0	-1
Penn State												Did Not Play
@Michigan State	1	0-0	0-0	0-0	0-0-0	0	0	0	0	0	0	2
Indiana												Did Not Play
@Michigan												
Iowa												
@Wisconsin												
@Illinois												
Michigan State												
@Maryland												
Ohio State												
Big Ten												
Big Ten												
Big Ten												
NCAA/WNIT												
NCAA/WNIT												

- CAREER STATS

SEASON	TEAM	GP-GS	MIN/AVG	FG-FGA	FG%	3FG-FGA	3FG%	FT-FTA	FT%	OFF	DEF	TOT	AVG	PF-FO	AST	TO	BLK	STL	PTS	AVG
2018-19	Purdue	31-1	280/9.0	11-30	.367	0-1	.000	12-19	.632	22	30	52	1.7	32-0	5	17	18	5	34	1.1
2019-20	Purdue	9-0	18/2.0	1-2	.500	0-0	.000	0-0	.000	0	1	1	0.1	3-0	0	2	0	1	2	0.2
TOTAL		40-1	298/7.4	12-32	.375	0-1	.000	12-19	.632	22	31	53	1.3	35-0	5	19	18	6	36	0.9



# 32 | AE'RIANNA HARRIS

SR. | F | 6-1 | INDIANAPOLIS, IND. | LAWRENCE NORTH

- All-Gulf Coast Showcase Team selection - averaged 9.7 poits, 9.7 rebounds and 3.33 blocks per game
- Sits third in Purdue history in total blocks, trailing A.J. Hammons (2013-16) and Joe Barry Carrol (1977-80)
- Became the first player in program and fifth in Big Ten history to amass 300 blocks in a career
- 2019 AP Honorable Mention All-America, Naismith Defensive Player of the Year Finalist, Big Ten Defensive Player of the Year
- One-of-4 players in conference history to win Big Ten Defensive Player of the Year in back-to-back seasons
- Named Second Team All-Big Ten and a unanimous pick for the Big Ten All-Defensive Team
- Became the 34th 1,000-point scorer in program history and the 17th individual to hit the mark during her junior year
- Entered 2019-20 as the NCAA active career shot block leader and one of two DI players among the top-five returners.
- "She can change games without scoring a point" - ESPNW's Graham Hays in the ESPNW Preseason Top-25 Players
- Has a vertical of 24 inches, second on the team
- Has blocked at least five shots in 17 games in her career

## - CAREER HIGHS

Points	27	vs. Penn State	1/28/18
Rebounds	18	vs. Indiana	2/12/18
Assists	5	2x last vs. Illinois	1/17/20
Steals	3	7x last vs. No. 18 Indiana	2/3/20
Blocks	9	vs. No. 5 South Carolina	12/15/19
FG	12	vs. Penn State	1/28/18
3FG	1	vs. Rutgers	1/10/18
FTM	9	vs. Albany	12/19/18
Minutes	44	at Rutgers (20)	1/16/19

## - SEASON HIGHS

Points	25	at Nebraska	1/23/20
Rebounds	17	vs. Western Illinois	11/17/19
Assists	5	vs. Illinois	1/17/20
Steals	3	2x last vs. No. 18 Indiana	2/3/20
Blocks	9	vs. No. 5 South Carolina	12/15/19
FG	10	2x last at Nebraska	1/23/20
3FG			
FT	8	vs. Wisconsin	12/31/19
Minutes	38	vs. Arizona State	11/30/19

## - MISCELLANEOUS GAME STATS

	19-20	19-20 B1G	Career	Career B1G
Double-Doubles	5 (5-0)	2 (2-0)	27 (17-8)	11 (5-6)
10+ Points	18 (13-5)	9 (6-3)	79 (48-31)	39 (19-20)
20+ Points	3 (3-0)	2 (2-0)	9 (8-1)	4 (3-1)
10+ Rebounds	8 (6-2)	3 (2-1)	38 (25-13)	17 (9-8)
5+ Assists	1 (1-0)	1 (1-0)	2 (2-0)	1 (1-0)
1+ 3PT Field Goals	-	-	1 (1-0)	1 (1-0)
2+ 3PT Field Goals	-	-	-	-
3+ Blocks	12 (8-4)	3 (2-1)	68 (43-25)	32 (18-14)
Lead Team in Pts.	4 (3-1)	2 (1-1)	18 (13-5)	9 (4-5)
Lead Team in Rebs.	14 (9-5)	7 (4-3)	71 (45-26)	36 (20-16)
Lead Team in Assists	1 (1-0)	1 (1-0)	3 (2-1)	2 (1-1)
Lead Team in Steals	4 (1-3)	2 (0-2)	28 (8-20)	11 (3-8)
Lead Team in Blocks	21 (13-8)	11 (6-5)	100 (58-42)	52 (27-25)
Complete Games	-	-	6 (3-3)	4 (2-2)

## - GAME-BY-GAME

2019-20	Min.	FG	3FG	FT	0-D-T	PF	Pts	A	To	S	B	+/-
Milwaukee	35	3-7	0-0	6-8	0-5-5	1	12	2	3	1	3	17
@Chattanooga	25	8-13	0-0	0-0	0-5-5	1	16	2	2	0	0	19
Western Illinois	37	5-12	0-0	4-4	3-14-17	1	14	0	0	0	3	11
Northern Illinois	34	3-9	0-0	0-0	1-9-10	0	6	1	0	2	5	7
vs. Drake	35	4-8	0-0	3-5	1-10-11	2	11	0	3	0	4	13
vs. ASU	38	4-8	0-0	4-6	2-6-8	2	12	0	5	1	3	13
vs. Gonzaga	27	1-6	0-0	4-8	4-6-10	5	6	1	2	0	3	-1
@Virginia Tech	31	5-9	0-0	2-2	1-6-7	4	12	1	2	1	3	-5
Kent State	20	3-7	0-0	6-10	3-2-5	3	12	0	1	0	0	6
@South Carolina	35	3-13	0-0	4-6	3-4-7	2	10	0	0	2	9	-30
Western Kentucky	31	3-5	0-0	2-2	1-5-6	3	8	1	2	0	1	16
Bowling Green	35	10-18	0-0	3-7	5-9-14	2	23	2	3	1	5	6
@Ohio State	32	4-13	0-0	4-6	1-6-7	2	12	1	3	2	2	19
Wisconsin	38	3-10	0-0	8-8	0-7-7	2	14	2	1	0	5	13
Rutgers	35	4-8	0-0	1-1	2-5-7	2	9	1	4	0	1	-4
@Indiana	30	6-14	0-0	3-4	1-3-4	2	15	1	3	1	1	-20
@Northwestern	35	3-15	0-1	2-2	4-10-14	4	8	2	3	3	3	-7
Illinois	34	6-11	0-0	1-3	2-8-10	2	13	5	1	0	4	20
Minnesota	31	5-10	0-0	5-6	1-4-5	0	15	0	3	1	7	-26
@Nebraska	33	10-12	0-0	5-6	2-7-9	4	25	2	0	0	3	9
Penn State	35	10-14	0-0	1-1	4-8-12	2	21	4	2	0	2	15
@Michigan State	37	6-13	0-0	4-5	0-9-9	2	16	3	0	0	1	7
Indiana	39	7-15	0-0	2-3	1-6-7	2	16	1	3	3	2	-10
@Michigan												
Iowa												
@Wisconsin												
@Illinois												
Michigan State												
@Maryland												
Ohio State												
Big Ten												
Big Ten												
Big Ten												
NCAA/WNIT												
NCAA/WNIT												

## - CAREER STATS

SEASON	TEAM	GP-GS	MIN/AVG	FG-FGA	FG%	3FG-FGA	3FG%	FT-FTA	FT%	OFF	DEF	TOT	AVG	PF-FO	AST	TO	BLK	STL	PTS	AVG
2016-17	Purdue	36-14	789/21.9	110-210	.524	0-0	.000	38-69	.551	55	132	187	5.2	82-1	24	45	75	28	258	7.2
2017-18	Purdue	34-34	1087/32.0	164-316	.519	1-2	.500	69-90	.767	81	223	304	8.9	81-0	60	63	105	42	398	11.7
2018-19	Purdue	34-33	1109/32.6	173-352	.491	0-2	.000	100-146	.685	98	222	320	9.4	89-0	40	61	104	37	446	13.1
2019-20	Purdue	23-22	759/33.0	116-250	.464	0-1	.000	74-103	.718	42	154	196	8.5	50-1	32	46	70	18	306	13.3
TOTAL		127-103	3744/29.5	563-1128	.499	1-5	.200	281-408	.689	276	731	1007	7.9	302-2	156	215	354	125	1408	11.1



# 35 | RICKIE WOLTMAN

FR. | F | 6-3 | ST. LOUIS, MO. | INCARNATE WORD

- Four-year varsity letterwinner and starter at Incarnate Word Academy
- Led her team to three straight Missouri High School State Championships in 2017, 2018 and 2019
- Made Purdue debut against Milwaukee, snagging four rebounds in six minutes of action

## - CAREER HIGHS

Points	4	2x last vs. Kent State	12/8/19
Rebounds	4	Milwaukee	11/10/19
Assists			
Steals			
Blocks	1	5x last at No. 12/13 Indiana	1/9/20
FG	2	2x last vs. Kent State	12/8/19
3FG			
FT			
Minutes	13	vs. Illinois	1/17/20

## - SEASON HIGHS

Points	4	2x last vs. Kent State	12/8/19
Rebounds	4	Milwaukee	11/10/19
Assists			
Steals			
Blocks	1	5x last at No. 12/13 Indiana	1/9/20
FG	2	2x last vs. Kent State	12/8/19
3FG			
FT			
Minutes	13	vs. Illinois	1/17/20

## - MISCELLANEOUS GAME STATS

	19-20	19-20 B1G	Career	Career B1G
Double-Doubles	-	-	-	-
10+ Points	-	-	-	-
20+ Points	-	-	-	-
10+ Rebounds	-	-	-	-
5+ Assists	-	-	-	-
1+ 3PT Field Goals	-	-	-	-
2+ 3PT Field Goals	-	-	-	-
3+ Blocks	-	-	-	-
Lead Team in Pts.	-	-	-	-
Lead Team in Rebs.	-	-	-	-
Lead Team in Assists	-	-	-	-
Lead Team in Steals	-	-	-	-
Lead Team in Blocks	-	-	-	-
Complete Games	-	-	-	-

## - GAME-BY-GAME

2019-20	Min.	FG	3FG	FT	0-D-T	PF	Pts	A	To	S	B	+/-
Milwaukee	7	0-0	0-0	0-0	0-4-4	0	0	0	1	0	1	-5
@Chattanooga	10	2-2	0-0	0-0	1-0-1	1	4	0	2	0	1	2
Western Illinois	2	0-0	0-0	0-0	0-0-0	0	0	0	1	0	0	-4
Northern Illinois	4	0-1	0-0	0-0	1-2-3	1	0	0	0	0	1	-3
vs. Drake	2	0-0	0-0	0-0	0-0-0	0	0	0	0	0	0	-4
vs. ASU												
vs. Gonzaga	4	1-1	0-0	0-0	1-0-1	1	2	0	0	0	0	-1
@Virginia Tech	2	0-0	0-0	0-0	0-0-0	2	0	0	1	0	0	-3
Kent State	9	2-2	0-0	0-1	1-2-3	3	4	0	1	0	0	10
@South Carolina	8	0-2	0-0	0-0	1-1-2	2	0	0	2	0	0	-14
Western Kentucky	2	0-0	0-0	0-0	0-2-2	1	0	0	1	0	0	1
Bowling Green	6	0-0	0-0	0-0	0-2-2	1	0	0	0	0	0	-1
@Ohio State	6	0-1	0-0	0-0	1-0-1	0	0	0	0	0	0	-5
Wisconsin	4	0-0	0-0	0-0	0-1-1	1	0	0	0	0	0	1
Rutgers	3	0-0	0-0	0-0	0-0-0	0	0	0	0	0	1	1
@Indiana	7	1-1	0-0	0-0	0-2-2	2	2	0	1	0	1	-5
@Northwestern	6	1-3	0-0	0-0	2-0-2	2	2	0	0	0	0	-5
Illinois	13	0-3	0-0	0-0	2-1-3	1	0	0	2	0	0	-6
Minnesota	4	0-0	0-0	1-2	1-0-1	0	1	0	0	0	0	3
@Nebraska	2	0-0	0-0	0-0	0-0-0	2	0	0	1	0	0	-3
Penn State												
@Michigan State												
Indiana												
@Michigan												
Iowa												
@Wisconsin												
@Illinois												
Michigan State												
@Maryland												
Ohio State												
Big Ten												
Big Ten												
Big Ten												
NCAA/WNIT												
NCAA/WNIT												

## - CAREER STATS

SEASON	TEAM	GP-GS	MIN/AVG	FG-FGA	FG%	3FG-FGA	3FG%	FT-FTA	FT%	OFF	DEF	TOT	AVG	PF-FO	AST	TO	BLK	STL	PTS	AVG
2019-20	Purdue	19-0	91/4.8	8-14	.571	0-0	.000	1-3	.333	9	17	26	1.4	19-0	0	11	6	0	17	0.9
TOTAL		19-0	91/4.8	8-14	.571	0-0	.000	1-3	.333	9	17	26	1.4	19-0	0	11	6	0	17	0.9



45 | FATOU DIAGNE  
R-JR. | C | 6-4 | THIES, SENEGAL | KOCC BARMA | GULF COAST STATE

- Made first start of the season against Kent State
- made great improvements during the offseason, thanks to two months with the Senegalese National Team
- Named to Senegal Women's National Team for 2019 AfroBasket and guided the Lionnes to the championship game
- Appeared in all five games, averaging six points and 7.4 rebounds per game at 2019 AfroBasket
- Did not travel with team to Australia due to national team commitments
- Played in 31 games, including six starts, averaging 9.1 minutes per game for the Boilermakers in 2018-19
- Sat out the 2017-18 season at Purdue due to injuries (foot)
- Played on back-to-back NJCAA National Championship teams at Gulf Coast State College
- Second player in program history from Senegal, following Aya Traore (2004-06)

- CAREER HIGHS

Points	8	at Iowa (17)	1/27/19
Rebounds	7	3x; last at Iowa (17)	1/27/19
Assists	3	2x last vs. Kent State	12/8/19
Steals	1	at Virginia Tech	12/5/19
Blocks	3	vs. Illinois	2/7/19
FG	4	at Iowa	1/27/19
3FG			
FT	1	4x last vs. Rutgers	1/5/20
Minutes	25	vs. South Carolina (25)	12/16/18

- SEASON HIGHS

Points	6	2x last at Virginia Tech	12/5/19
Rebounds	6	2x last vs. Arizona State	11/30/19
Assists	3	vs. Kent State	12/8/19
Steals	1	at Virginia Tech	12/5/19
Blocks	2	2x last at Virginia Tech	12/5/19
FG	3	2x last at Virginia Tech	12/5/19
3FG			
FT	1	3x last vs. Rutgers	1/5/20
Minutes	18	at Virginia Tech	12/5/19

- MISCELLANEOUS GAME STATS

	19-20	19-20 B1G	Career	Career B1G
Double-Doubles	-	-	-	-
10+ Points	-	-	-	-
20+ Points	-	-	-	-
10+ Rebounds	-	-	-	-
5+ Assists	-	-	-	-
1+ 3PT Field Goals	-	-	-	-
2+ 3PT Field Goals	-	-	-	-
3+ Blocks	-	-	-	-
Led Team in Pts.	-	-	-	-
Led Team in Rebs.	-	-	-	-
Led Team in Assists	-	-	-	-
Led Team in Steals	-	-	-	-
Led Team in Blocks	1 (1-0)		1 (1-0)	
Complete Games	-	-	-	-

- GAME-BY-GAME

2019-20	Min.	FG	3FG	FT	0-D-T	PF	Pts	A	To	S	B	+/-
Milwaukee	7	1-2	0-0	1-2	0-1-1	3	3	0	1	0	1	-3
@Chattanooga	11	3-5	0-0	0-0	1-5-6	0	6	0	0	0	0	11
Western Illinois	2	0-0	0-0	0-0	0-1-1	2	0	0	0	0	0	0
Northern Illinois	2	0-0	0-0	0-0	0-0-0	0	0	0	0	0	0	1
vs. Drake	2	0-0	0-0	0-0	0-1-1	2	0	0	0	0	0	4
vs. ASU	15	2-2	0-0	0-0	0-6-6	3	4	0	2	0	2	7
vs. Gonzaga	16	1-2	0-0	1-2	1-4-5	1	3	0	1	0	0	-6
@Virginia Tech	18	3-6	0-0	0-0	1-2-3	2	6	0	1	1	2	-11
Kent State	14	1-2	0-0	0-0	0-5-5	3	2	3	1	0	1	-3
@South Carolina	9	0-1	0-0	0-0	0-1-1	0	0	0	0	0	0	-12
Western Kentucky	7	0-2	0-0	0-0	0-2-2	2	0	0	1	0	0	0
Bowling Green												Did Not Play
@Ohio State	3	0-0	0-0	0-0	0-2-2	2	0	0	1	0	0	2
Wisconsin	3	0-0	0-0	0-0	0-1-1	0	0	1	1	0	0	1
Rutgers	14	0-2	0-0	1-2	0-1-1	0	1	0	0	0	0	-8
@Indiana	6	1-3	0-0	0-0	2-1-3	1	2	0	2	0	1	1
@Northwestern	8	0-0	0-0	2-4	2-2-4	1	2	1	0	0	0	2
Illinois	2	0-0	0-0	0-0	2-1-3	1	0	0	1	0	0	-3
Minnesota	5	0-0	0-0	1-2	0-0-0	0	1	0	0	0	0	10
@Nebraska	12	1-2	0-0	0-0	1-3-4	1	2	0	4	0	0	-6
Penn State	10	1-3	0-0	0-0	1-3-4	2	2	0	1	1	0	1
@Michigan State	5	0-1	0-0	0-0	1-0-1	2	0	0	1	0	0	6
Indiana	2	0-2	0-0	0-0	1-1-2	1	0	0	0	0	0	-3
@Michigan												
Iowa												
@Wisconsin												
@Illinois												
Michigan State												
@Maryland												
Ohio State												
Big Ten												
Big Ten												
Big Ten												
NCAA/WNIT												
NCAA/WNIT												

- CAREER STATS

SEASON	TEAM	GP-GS	MIN/AVG	FG-FGA	FG%	3FG-FGA	3FG%	FT-FTA	FT%	OFF	DEF	TOT	AVG	PF-FO	AST	TO	BLK	STL	PTS	AVG
2018-19	Purdue	31-6	281/9.1	27-52	.519	0-0	.000	2-12	.167	22	51	73	2.4	42-0	5	30	11	0	56	1.8
2019-20	Purdue	22-3	172/7.8	14-35	.400	0-0	.000	6-12	.500	13	43	56	2.5	29-0	5	18	7	2	34	1.5
TOTAL		53-9	453/8.5	41-87	.471	0-0	.000	8-24	.333	35	94	129	2.4	71-0	10	48	18	2	90	1.7





# 2019-20 Purdue Women's Basketball Combined Team Statistics All games

Page 1/1  
as of Feb 04, 2020

## Game Records

Record	Overall	Home	Away	Neutral
ALL GAMES	15-8	9-3	4-4	2-1
CONFERENCE	6-5	3-3	3-2	0-0
NON-CONFERENCE	9-3	6-0	1-2	2-1

## Score by Periods

Team	1st	2nd	3rd	4th	OT	TOT
Purdue	427	390	339	338	0	1494
Opponents	409	379	291	338	0	1417

## Team Box Score

No. Player					Total		3-Point		F-Throw		Rebounds													
		GP-GS	MIN	AVG	FG-FGA	FG%	3FG-FGA	3FG%	FT-FTA	FT%	OFF	DEF	TOT	AVG	PF	DQ	A	TO	BLK	STL	PTS	AVG		
11	ODEN, Dominique	23-23	780:01	33.9	115-242	.475	17-47	.362	62-81	.765	58	74	132	5.7	62	1	67	57	2	34	309	13.4		
32	HARRIS, Ae'Rianna	23-22	758:45	33.0	116-250	.464	0-1	.000	74-103	.718	42	154	196	8.5	50	1	32	46	70	18	306	13.3		
1	MCLAUGHLIN, Karissa	23-23	813:31	35.4	105-268	.392	54-158	.342	41-48	.854	8	42	50	2.2	29	0	78	49	2	28	305	13.3		
25	FARQUHAR, Tamara	15-15	342:47	22.9	44-99	.444	0-2	.000	21-32	.656	34	78	112	7.5	22	0	15	32	10	11	109	7.3		
23	TRAYLOR, Kayana	23-17	549:34	23.9	48-114	.421	13-34	.382	45-59	.763	7	40	47	2.0	52	2	83	71	2	16	154	6.7		
22	GRANT, Jenelle	20-8	289:43	14.5	33-82	.402	8-23	.348	16-22	.727	15	33	48	2.4	34	0	20	20	4	11	90	4.5		
5	HARDIN, Cassidy	20-4	297:41	14.9	25-67	.373	20-56	.357	2-2	1.000	3	24	27	1.4	16	0	16	19	1	9	72	3.6		
3	WHILBY, Lyndsey	19-0	189:11	10.0	26-59	.441	8-20	.400	5-8	.625	10	19	29	1.5	19	0	6	23	1	8	65	3.4		
45	DIAGNE, Fatou	22-3	172:19	7.8	14-35	.400	0-0	.000	6-12	.500	13	43	56	2.5	29	0	5	18	7	2	34	1.5		
12	MAKOLO, Roxane	23-0	286:47	12.5	12-48	.250	0-4	.000	7-16	.438	17	27	44	1.9	25	0	18	21	2	12	31	1.3		
35	WOLTMAN, Rickie	19-0	91:19	4.8	8-14	.571	0-0	.000	1-3	.333	9	17	26	1.4	19	0	0	11	6	0	17	0.9		
30	GONY, Nyagoa	9-0	17:37	2.0	1-2	.500	0-0	.000	0-0	.000	0	1	1	0.1	3	0	0	2	0	1	2	0.2		
13	STALLINGS, Ajah	3-0	04:35	1.5	0-0	.000	0-0	.000	0-0	.000	0	0	0	0.0	0	0	1	0	0	0	0	0.0		
2	HARMON, Bria	3-0	06:12	2.1	0-1	.000	0-0	.000	0-0	.000	0	1	1	0.3	1	0	0	0	0	0	0	0.0		
Team											33	40	73					22						
Total		23	4600		547-1281	.427	120-345	.348	280-386	.725	249	593	842	36.6	362	4	341	391	107	150	1494	65.0		
Opponents		23	4600		533-1410	.378	113-392	.288	238-343	.694	293	495	788	34.3	379	7	293	325	93	202	1417	61.6		

## Team Statistics

	PURDUE	OPP
<b>Scoring</b>	<b>1494</b>	<b>1417</b>
Points per game	65.0	61.6
Scoring margin	+3.3	-
<b>Field goals-att</b>	<b>547-1281</b>	<b>533-1410</b>
Field goal pct	.427	.378
<b>3 point fg-att</b>	<b>120-345</b>	<b>113-392</b>
3-point FG pct	.348	.288
3-pt FG made per game	5.2	4.9
<b>Free throws-att</b>	<b>280-386</b>	<b>238-343</b>
Free throw pct	.725	.694
F-Throws made per game	12.2	10.3
<b>Rebounds</b>	<b>842</b>	<b>788</b>
Rebounds per game	36.6	34.3
Rebounding margin	+2.3	-
<b>Assists</b>	<b>341</b>	<b>293</b>
Assists per game	14.8	12.7
<b>Turnovers</b>	<b>391</b>	<b>325</b>
Turnovers per game	17.0	14.1
Turnover margin	-2.9	-
Assist/turnover ratio	0.9	0.9
<b>Steals</b>	<b>150</b>	<b>202</b>
Steals per game	6.5	8.8
<b>Blocks</b>	<b>107</b>	<b>93</b>
Blocks per game	4.7	4.0
<b>Winning streak</b>	<b>0</b>	<b>-</b>
Home win streak	0	-
<b>Attendance</b>	<b>75394</b>	<b>33065</b>
Home games-Avg/Game	12-6283	8-4133
Neutral site-Avg/Game	-	3-640

## Team Results

Date	Opponent		Score	Att.
11/10/2019	Milwaukee	W	68-55	5717
11/14/2019	at Chattanooga	W	66-34	1509
11/17/2019	Western Ill.	W	66-59	5742
11/24/2019	Northern Ill.	W	68-63	5800
11/29/2019	vs Drake	W	67-47	1013
11/30/2019	vs Arizona St.	W	59-52	389
12/01/2019	vs Gonzaga	L	50-63	517
12/05/2019	at Virginia Tech	L	54-67	1282
12/08/2019	Kent St.	W	77-64	5585
12/15/2019	at South Carolina	L	49-85	11306
12/18/2019	Western Ky.	W	67-50	7106
12/21/2019	Bowling Green	W	81-74	5742
12/28/2019	at Ohio St.	W	66-50	4212
12/31/2019	Wisconsin	W	72-61	6080
01/05/2020	Rutgers	L	53-59	7441
01/09/2020	at Indiana	L	48-66	5159
01/12/2020	at Northwestern	L	56-61	1464
01/16/2020	Illinois	W	81-67	5886
01/19/2020	Minnesota	L	59-72	6077
01/22/2020	at Nebraska	W	76-68	3819
01/26/2020	Penn St.	W	81-68	6057
01/30/2020	at Michigan St.	W	76-66	4314
02/03/2020	Indiana	L	54-66	8161





## 2019-20 Purdue Women's Basketball Combined Team Statistics In Conference games

Page 1/1  
as of Feb 04, 2020

### Game Records

Record	Overall	Home	Away	Neutral
ALL GAMES	6-5	3-3	3-2	0-0
CONFERENCE	6-5	3-3	3-2	0-0
NON-CONFERENCE	0-0	0-0	0-0	0-0

### Score by Periods

Team	1st	2nd	3rd	4th	OT	TOT
Purdue	164	158	198	202	0	722
Opponents	166	154	181	203	0	704

### Team Box Score

No. Player					Total		3-Point		F-Throw		Rebounds														
		GP-GS	MIN	AVG	FG-FGA	FG%	3FG-FGA	3FG%	FT-FTA	FT%	OFF	DEF	TOT	AVG	PF	DQ	A	TO	BLK	STL	PTS	AVG			
11	ODEN, Dominique	11-11	395:59	36.0	72-130	.554	6-18	.333	32-40	.800	28	44	72	6.5	26	1	33	31	1	18	182	16.5			
32	HARRIS, Ae'Rianna	11-10	377:36	34.3	64-135	.474	0-1	.000	36-45	.800	18	73	91	8.3	24	0	22	23	31	10	164	14.9			
1	MCLAUGHLIN, Karissa	11-11	404:41	36.8	56-129	.434	28-79	.354	21-25	.840	7	21	28	2.5	15	0	41	27	0	14	161	14.6			
22	GRANT, Jenelle	11-8	212:39	19.3	26-62	.419	6-16	.375	11-17	.647	13	26	39	3.5	20	0	14	9	4	8	69	6.3			
23	TRAYLOR, Kayana	11-7	247:14	22.5	16-44	.364	5-10	.500	15-23	.652	4	18	22	2.0	23	1	32	29	0	6	52	4.7			
25	FARQUHAR, Tamara	3-3	75:19	25.1	6-19	.316	0-2	.000	2-2	1.000	3	18	21	7.0	3	0	4	4	1	2	14	4.7			
5	HARDIN, Cassidy	11-4	192:30	17.5	14-39	.359	11-32	.344	0-0	.000	0	20	20	1.8	11	0	11	14	1	4	39	3.5			
3	WHILBY, Lyndsey	9-0	76:19	8.5	8-27	.296	3-9	.333	1-2	.500	4	5	9	1.0	6	0	3	8	0	2	20	2.2			
45	DIAGNE, Fatou	11-1	69:41	6.3	3-13	.231	0-0	.000	4-8	.500	10	15	25	2.3	11	0	2	11	1	1	10	0.9			
35	WOLTMAN, Rickie	8-0	35:53	4.5	3-6	.500	0-0	.000	1-2	.500	4	4	8	1.0	7	0	0	2	3	0	7	0.9			
12	MAKOLO, Roxane	11-0	108:42	9.9	2-16	.125	0-2	.000	0-0	.000	5	8	13	1.2	14	0	4	9	0	2	4	0.4			
13	STALLINGS, Ajah	1-0	01:16	1.3	0-0	.000	0-0	.000	0-0	.000	0	0	0	0.0	0	0	0	0	0	0	0	0.0			
30	GONY, Nyagoa	3-0	02:10	0.7	0-0	.000	0-0	.000	0-0	.000	0	0	0	0.0	1	0	0	1	0	0	0	0.0			
Team											22	21	43					17							
Total		11	2200		270-620	.435	59-169	.349	123-164	.750	118	273	391	35.5	161	2	166	185	42	67	722	65.6			
Opponents		11	2200		262-654	.401	53-178	.298	127-176	.722	131	233	364	33.1	172	2	145	153	49	96	704	64.0			

### Team Statistics

	PURDUE	OPP
<b>Scoring</b>	<b>722</b>	<b>704</b>
Points per game	65.6	64.0
Scoring margin	+1.6	-
<b>Field goals-att</b>	<b>270-620</b>	<b>262-654</b>
Field goal pct	.435	.401
<b>3 point fg-att</b>	<b>59-169</b>	<b>53-178</b>
3-point FG pct	.349	.298
3-pt FG made per game	5.4	4.8
<b>Free throws-att</b>	<b>123-164</b>	<b>127-176</b>
Free throw pct	.750	.722
F-Throws made per game	11.2	11.5
<b>Rebounds</b>	<b>391</b>	<b>364</b>
Rebounds per game	35.5	33.1
Rebounding margin	+2.5	-
<b>Assists</b>	<b>166</b>	<b>145</b>
Assists per game	15.1	13.2
<b>Turnovers</b>	<b>185</b>	<b>153</b>
Turnovers per game	16.8	13.9
Turnover margin	-2.9	-
Assist/turnover ratio	0.9	0.9
<b>Steals</b>	<b>67</b>	<b>96</b>
Steals per game	6.1	8.7
<b>Blocks</b>	<b>42</b>	<b>49</b>
Blocks per game	3.8	4.5
<b>Winning streak</b>	<b>0</b>	<b>-</b>
Home win streak	0	-
<b>Attendance</b>	<b>39702</b>	<b>18968</b>
Home games-Avg/Game	6-6617	5-3794
Neutral site-Avg/Game	-	0-0

### Team Results

Date	Opponent		Score	Att.
12/28/2019	at Ohio St.	W	66-50	4212
12/31/2019	Wisconsin	W	72-61	6080
01/05/2020	Rutgers	L	53-59	7441
01/09/2020	at Indiana	L	48-66	5159
01/12/2020	at Northwestern	L	56-61	1464
01/16/2020	Illinois	W	81-67	5886
01/19/2020	Minnesota	L	59-72	6077
01/22/2020	at Nebraska	W	76-68	3819
01/26/2020	Penn St.	W	81-68	6057
01/30/2020	at Michigan St.	W	76-66	4314
02/03/2020	Indiana	L	54-66	8161



**2019-20 Purdue Women's Basketball  
Team Game-by-Game  
All games**

Page 1/1  
as of Feb 04, 2020

				Total		3-Pointers		Free throws		Rebounds											
Opponent	Date	Score		FG-FGA	PCT	3FG-FGA	PCT	FT-FTA	PCT	OFF	DEF	TOT	AVG	PF	A	TO	BLK	STL	PTS	AVG	
Milwaukee	11/10/2019	68-55	W	23-48	.479	9-15	.600	13-20	.650	9	29	38	38.0	20	18	16	6	4	68	68.0	
at Chattanooga	11/14/2019	66-34	W	29-55	.527	4-12	.333	4-6	.667	10	29	39	38.5	14	19	17	8	12	66	67.0	
Western Ill.	11/17/2019	66-59	W	24-60	.400	2-11	.182	16-24	.667	18	38	56	44.3	13	16	23	6	5	66	66.7	
Northern Ill.	11/24/2019	68-63	W	23-61	.377	9-25	.360	13-17	.765	11	33	44	44.3	11	15	17	6	9	68	67.0	
vs Drake	11/29/2019	67-47	W	23-55	.418	9-19	.474	12-17	.706	11	19	30	41.4	18	16	16	5	11	67	67.0	
vs Arizona St.	11/30/2019	59-52	W	22-49	.449	0-9	.000	15-21	.714	9	21	30	39.5	20	5	16	5	6	59	65.7	
vs Gonzaga	12/01/2019	50-63	L	17-49	.347	3-13	.231	13-21	.619	9	26	35	38.9	18	9	21	3	3	50	63.4	
at Virginia Tech	12/05/2019	54-67	L	23-57	.404	0-7	.000	8-12	.667	9	22	31	37.9	19	14	16	6	5	54	62.3	
Kent St.	12/08/2019	77-64	W	24-53	.453	8-18	.444	21-27	.778	10	25	35	37.6	20	20	11	2	7	77	63.9	
at South Carolina	12/15/2019	49-85	L	17-59	.288	6-18	.333	9-12	.750	8	20	28	36.6	16	7	19	11	7	49	62.4	
Western Ky.	12/18/2019	67-50	W	24-56	.429	5-16	.313	14-20	.700	16	28	44	37.3	15	15	20	1	8	67	62.8	
Bowling Green	12/21/2019	81-74	W	28-59	.475	6-13	.462	19-25	.760	11	30	41	37.6	17	21	14	6	6	81	64.3	
at Ohio St.	12/28/2019	66-50	W	22-52	.423	4-13	.308	18-20	.900	13	32	45	38.2	10	12	23	2	10	66	64.5	
Wisconsin	12/31/2019	72-61	W	26-54	.481	7-13	.538	13-15	.867	7	27	34	37.9	11	15	12	6	2	72	65.0	
Rutgers	01/05/2020	53-59	L	19-48	.396	6-19	.316	9-15	.600	12	16	28	37.2	15	14	18	3	6	53	64.2	
at Indiana	01/09/2020	48-66	L	19-50	.380	2-13	.154	8-14	.571	8	24	32	36.9	13	7	21	4	7	48	63.2	
at Northwestern	01/12/2020	56-61	L	22-61	.361	6-13	.462	6-9	.667	15	21	36	36.8	18	17	18	4	7	56	62.8	
Illinois	01/16/2020	81-67	W	31-65	.477	5-15	.333	14-19	.737	13	36	49	37.5	15	20	15	6	1	81	63.8	
Minnesota	01/19/2020	59-72	L	22-61	.361	6-22	.273	9-13	.692	11	25	36	37.4	13	13	20	8	8	59	63.5	
at Nebraska	01/22/2020	76-68	W	28-59	.475	8-20	.400	12-14	.857	9	31	40	37.6	18	19	16	3	8	76	64.2	
Penn St.	01/26/2020	81-68	W	35-63	.556	5-15	.333	6-6	1.000	13	24	37	37.5	14	23	18	3	5	81	65.0	
at Michigan St.	01/30/2020	76-66	W	25-48	.521	8-17	.471	18-22	.818	5	21	26	37.0	20	14	14	1	4	76	65.5	
Indiana	02/03/2020	54-66	L	21-59	.356	2-9	.222	10-17	.588	12	16	28	36.6	14	12	10	2	9	54	65.0	
Total		1494		547-1281	.427	120-345	.348	280-386	.725	249	593	842	36.6	362	341	391	107	150	1494	65.0	
Opponents		1417		533-1410	.378	113-392	.288	238-343	.694	293	495	788	34.3	379	293	325	93	202	1417	61.6	

**Purdue Averages**

Games Played	Points/game	FG Pct	3FG Pct	FT Pct	Rebounds/game	Assists/game	Turnovers/game	Assist/Turnover ratio	Steals/game	Blocks/game
23	65.0	42.7	34.8	72.5	36.6	14.8	17.0	0.9	6.5	4.7





**2019-20 Purdue Women's Basketball  
Opponents Game-by-Game  
All games**

Page 1/1  
as of Feb 04, 2020

			Total		3-Pointers		Free throws		Rebounds											
Opponent	Date	Score		FG-FGA	PCT	3FG-FGA	PCT	FT-FTA	PCT	OFF	DEF	TOT	AVG	PF	A	TO	BLK	STL	PTS	AVG
Milwaukee	11/10/2019	68-55	W	20-60	.333	7-17	.412	8-10	.800	11	20	31	31.0	16	14	12	2	9	55	55.0
at Chattanooga	11/14/2019	66-34	W	14-64	.219	3-17	.176	3-6	.500	23	17	40	35.5	7	4	21	2	5	34	44.5
Western Ill.	11/17/2019	66-59	W	24-73	.329	6-26	.231	5-7	.714	11	23	34	35.0	19	11	11	7	15	59	49.3
Northern Ill.	11/24/2019	68-63	W	24-65	.369	9-21	.429	6-9	.667	10	30	40	36.3	13	16	14	3	9	63	52.8
vs Drake	11/29/2019	67-47	W	18-62	.290	1-19	.053	10-16	.625	16	18	34	35.8	18	14	19	1	6	47	51.6
vs Arizona St.	11/30/2019	59-52	W	17-61	.279	3-16	.188	15-26	.577	17	17	34	35.5	21	5	15	3	9	52	51.7
vs Gonzaga	12/01/2019	50-63	L	23-60	.383	1-12	.083	16-21	.762	9	19	28	34.4	22	11	8	2	9	63	53.3
at Virginia Tech	12/05/2019	54-67	L	24-59	.407	7-20	.350	12-16	.750	14	25	39	35.0	15	14	15	3	6	67	55.0
Kent St.	12/08/2019	77-64	W	24-63	.381	6-18	.333	10-14	.714	15	19	34	34.9	23	9	13	6	4	64	56.0
at South Carolina	12/15/2019	49-85	L	37-76	.487	2-8	.250	9-15	.600	22	34	56	37.0	12	18	14	11	16	85	58.9
Western Ky.	12/18/2019	67-50	W	18-53	.340	4-17	.235	10-15	.667	9	19	28	36.2	17	11	17	2	13	50	58.1
Bowling Green	12/21/2019	81-74	W	28-60	.467	11-23	.478	7-12	.583	5	21	26	35.3	24	21	13	2	5	74	59.4
at Ohio St.	12/28/2019	66-50	W	19-60	.317	5-20	.250	7-9	.778	9	17	26	34.6	15	15	19	6	9	50	58.7
Wisconsin	12/31/2019	72-61	W	26-68	.382	3-16	.188	6-7	.857	15	22	37	34.8	15	15	9	4	8	61	58.9
Rutgers	01/05/2020	53-59	L	22-55	.400	5-11	.455	10-11	.909	17	18	35	34.8	18	12	16	2	10	59	58.9
at Indiana	01/09/2020	48-66	L	23-56	.411	4-15	.267	16-22	.727	12	23	35	34.8	15	12	16	6	11	66	59.3
at Northwestern	01/12/2020	56-61	L	20-62	.323	2-14	.143	19-26	.731	19	23	42	35.2	14	14	11	6	9	61	59.4
Illinois	01/16/2020	81-67	W	27-68	.397	7-25	.280	6-15	.400	8	23	31	35.0	22	13	7	4	8	67	59.8
Minnesota	01/19/2020	59-72	L	27-63	.429	8-19	.421	10-11	.909	11	28	39	35.2	13	14	17	3	14	72	60.5
at Nebraska	01/22/2020	76-68	W	24-60	.400	6-20	.300	14-20	.700	9	22	31	35.0	14	13	14	5	9	68	60.9
Penn St.	01/26/2020	81-68	W	24-54	.444	7-13	.538	13-19	.684	8	13	21	34.3	11	11	14	4	8	68	61.2
at Michigan St.	01/30/2020	76-66	W	24-52	.462	4-15	.267	14-22	.636	11	18	29	34.1	20	13	15	2	7	66	61.4
Indiana	02/03/2020	54-66	L	26-56	.464	2-10	.200	12-14	.857	12	26	38	34.3	15	13	15	7	3	66	61.6
Total		1417		533-1410	.378	113-392	.288	238-343	.694	293	495	788	34.3	379	293	325	93	202	1417	61.6
Purdue		1494		547-1281	.427	120-345	.348	280-386	.725	249	593	842	36.6	362	341	391	107	150	1494	65.0

**Opponents Averages**

Games Played	Points/game	FG Pct	3FG Pct	FT Pct	Rebounds/game	Assists/game	Turnovers/game	Assist/Turnover ratio	Steals/game	Blocks/game
23	61.6	37.8	28.8	69.4	34.3	12.7	14.1	0.9	8.8	4.0



**- MARGIN RECORDS**

In games decided by 1 point	26-22
Last win: 01/05/19 vs. Michigan (71-70)	
Last loss: 03/04/16 vs. Michigan State (64-65)	
In games decided by 2 points	40-30
Last win: 03/15/18 at IUPUI (48-46)	
Last loss: 01/16/19 vs. Rutgers (63-65)	
In games decided by 3 points	39-27
Last win: 02/17/19 vs. Northwestern (61-58)	
Last loss: 02/25/19 vs. Maryland (55-58)	
In games decided by 4 points	29-18
Last win: 03/07/19 vs. Nebraska (75-71)	
Last loss: 02/08/18 vs. Minnesota (74-78)	
In games decided by 5 points	30-21
Last win: 11/24/19 vs. Northern Illinois (68-63)	
Last loss: 1/12/20 at Northwestern (61-56)	
In games decided by 6 points	22-30
Last win: 01/13/18 at Iowa (76-70)	
Last loss: 01/05/20 vs. Rutgers (59-53)	vs.
In games decided by 7 points	19-19
Last win: 12/21/19 vs. Bowling Green (81-74)	
Last loss: 12/31/18 at Wisconsin (69-76)	
In games decided by 8 points	35-14
Last win: 11/23/20 at Nebraska (76-68)	
Last loss: 02/03/19 at Michigan State (66-74)	
In games decided by 9 points	36-23
Last win: 11/15/17 vs. Miami (Ohio) (75-66)	
Last loss: 12/16/18 vs. South Carolina (73-82 2OT)	
In games decided by 10 points	43-18
Last win: 1/30/20 at Michigan State (76-66)	
Last loss: 03/05/17 vs. Maryland (64-74)	
In games decided by 11-19 points	278-161
Last win: 1/26/20 vs. Penn State (81-69; +13)	
Last loss: 2/3/20 vs. No. 18 Indiana (66-54; -12_	
In games decided by 20-29 points	154-64
Last win: 11/29/19 vs. Drake (67-47; +20)	
Last loss: 03/03/19 at Indiana (51-73; -22)	
In games decided by 30-39 points	79-24
Last win: 11/14/19 at Chattanooga (66-34; +32)	
Last loss: 12/15/19 at No. 5 South Carolina (85-49; -36)	
In games decided by 40-49 points	30-5
Last win: 11/07/18 vs. Ball State (80-38; +42)	
Last loss: 11/24/18 vs. UConn (40-86; -46)	
In games decided by 50-59 points	7-1
Last win: 11/18/01 vs. E. Illinois (89-33; +56)	
Last loss: 01/16/08 vs. Connecticut (50-100; -50)	
In games decided by 60-69 points	6-0
Last win: 12/10/15 vs. Incarnate Word (95-27; +68)	
Last loss: NA	
In games decided by 70-79 points	1-0
Last win: 11/28/02 vs. Sav. St. (103-25; +78)	
Last loss: NA	

**- POINT-TOTAL RECORDS**

Record When Scoring 20-29 points	0-1
Last win: NA	
Last loss: 02/07/76 vs. Ohio State (28-61)	
Record When Scoring 30-39 points	0-8
Last win: NA	
Last loss: 12/11/11 vs. Notre Dame (38-66)	
Record When Scoring 40-49 points	5-62
Last win: 03/15/18 at IUPUI (48-46)	
Last loss: 1/9/20 at No. 12 Indiana (66-48)	
Record When Scoring 50-59 points	82-162
Last win: 11/30/19 vs. Arizona State (59-52)	
Last loss: 2/3/20 vs. No. 18 Indiana (66-54)	
Record When Scoring 60-69 points	246-176
Last win: 12/28/19 at Ohio State (66-50; +13)	
Last loss: 02/21/19 at Penn State (61-72)	
Record When Scoring 70-79 points	292-64
Last win: 1/30/20 at Michigan State (76-66)	
Last loss: 12/16/18 vs. South Carolina (73-82 2OT)	
Record When Scoring 80-89 points	172-11
Last win: 1/26/20 vs. Penn State (81-68)	
Last loss: 03/19/17 at Notre Dame (82-88 OT)	
Record When Scoring 90-99 points	61-2
Last win: 12/08/17 vs. Valparaiso (95-49)	
Last loss: 01/26/96 at Wisconsin (95-98 2OT)	
Record When Scoring 100-109 points	15-0
Last win: 12/28/13 vs. Central Michigan (109-97)	
Last loss: NA	
Record When Scoring 110-119 points	2-0
Last win: 03/12/94 at Michigan (110-51)	
Last loss: NA	
Record When Scoring 120-129 points	1-0
Last win: 12/08/90 vs. Kent State (129-81)	
Last loss: NA	
Record When Allowing 20-29 points	6-0
Last win: 12/11/16 vs. NCCU (61-27)	
Last loss: NA	
Record When Allowing 30-39 points	31-0
Last win: 11/14/19 at Chattanooga (66-34)	
Last loss: NA	
Record When Allowing 40-49 points	155-4
Last win: 11/29/19 vs. Drake (67-47)	
Last loss: 2/21/15 vs. Illinois (46-47)	
Record When Allowing 50-59 points	319-45
Last win: 12/28/19 at Ohio State (66-50)	
Last loss: 1/5/20 vs. Rutgers (59-53)	
Record When Allowing 60-69 points	266-147
Last win: 1/30/20 at Michigan State (76-66)	
Last loss: 2/3/20 vs. No. 18 Indiana (66-54)	
Record When Allowing 70-79 points	89-177
Last win: 12/21/19 vs. Bowling Green (81-74)	
Last loss: 1/19/20 vs. Minnesota (72-59)	
Record When Allowing 80-89 points	9-79
Last win: 01/22/15 at Minnesota (90-88 OT)	
Last loss: 12/15/19 at No. 5 South Carolina (85-49)	
Record When Allowing 90-99 points	1-33
Last win: 12/28/13 vs. Central Michigan (109-97)	
Last loss: 01/17/16 at Ohio State (70-90)	
Record When Allowing 100-109 points	0-3
Last win: NA	
Last loss: 12/09/10 at Texas A&M (55-100)	
Record When Allowing 110-119 points	0-1
Last win: NA	
Last loss: 03/10/83 at Minnesota (88-115)	



- THE LAST TIME

TEAM SCORING (GAME)	
Won by 40+:	42 (80-38) at Ball State (11/7/18)
Won by 40+ (Big Ten):	43 (88-45) vs. Nebraska (1/26/17)
Lost by 20+:	36 at No. 5 South Carolina (12/15/19)
Lost by 30+:	36 at No. 5 South Carolina (12/15/19)
Scored 90+:	95 (95-49) vs. Valparaiso (12/8/17)
Scored 90+ (Big Ten):	90 (90-73) vs. Iowa (1/24/16)
Scored 100+:	109 (109-97) vs. Central Michigan (12/28/13)
Scored 100+ (Big Ten):	110 (110-51) at Michigan (3/12/94)
Scored 40 or Fewer:	40 (40-86) vs. Connecticut (11/24/18)
Scored 50 or Fewer:	49 at No. 5 South Carolina (12/15/19)
Scored 50 or Fewer and Won:	48 (48-46) at IUPUI (3/15/18)
Allowed 90+:	90 at Ohio State (1/17/16)
Allowed 90+ (Big Ten):	90 at Ohio State (1/17/16)
Allowed 100+:	100 at Texas A&M (12/9/10)
Allowed 50 or Fewer:	50, at Ohio State (12/28/19)
Allowed 40 or Fewer:	38 at Ball State (11/7/18)

TEAM SCORING (HALF)	
Scored 60 in the First Half:	68 vs. Kent State (12/8/90)
Scored 60 in the Second Half:	60 vs. South Alabama (12/27/94)
Scored 15 Points or Less:	15 (1st) vs. Oklahoma (3/19/16)
Scored 20 Points or Less:	16 (1st) at No. 12 Indiana (1/9/20)
Allowed 50+:	52 (2nd) at Ohio State (1/17/16)
Allowed 15 Points or Less:	14 (1st) at Chattanooga (11/14/19)
Allowed 20 Points or Less:	14 (1st) at Chattanooga (11/14/19)

TEAM SCORING (QUARTER)	
Scored 30+:	30 (3rd) vs. Michigan State (2/24/18)
Scored 25+:	27 (3rd) vs. Penn State (1/26/20)
Scored 10 Points or Less:	10 (1st) vs. No. 18 Indiana (2/3/20)
Scored 6 Points or Less:	6 (1st) at No. 12 Indiana (1/9/20)
Allowed 30+:	32 (2nd) at Notre Dame (3/19/17)
Allowed 25+:	25 (4th) vs. Illinois (1/17/20)
Allowed 10 Points or Less:	4 (2nd) vs. Rutgers (1/5/20)
Allowed 6 Points or Less:	4 (2nd) vs. Rutgers (1/5/20)

TEAM SHOOTING	
Shot 65% or Higher:	.735 (36-59) vs. Penn State (1/28/18)
Shot 60% or Higher:	.735 (36-59) vs. Penn State (1/28/18)
Shot 55% or Higher:	.556 (35-63) vs. Penn State (1/26/20)
Shot 50% or Higher:	.521 (25-48) at Michigan State (1/30/20)
Shot 30% or Lower:	.300 at No. 5 South Carolina (12/15/19)
Shot 25% or Lower:	.246 (16-65) vs. Connecticut (11/24/18)
Shot 35% or Lower and Won:	.333 (22-66) vs. Dayton (12/6/15)
Opponent Shot 55% or Higher:	.576 (34-59) vs. Connecticut (11/24/18)
Opponent Shot 50% or Higher:	.500 (26-52) at Penn State (2/21/19)
Opponent Shot 30% or Lower:	.279 vs. Arizona State (11/30/19)
Opponent Shot 25% or Lower:	.242 (16-66) at Rutgers (2/19/17)

TEAM 3-POINT SHOOTING	
Made 10+:	12 vs. Northwestern (2/17/19)
Made 12+:	12 vs. Northwestern (2/17/19)
Made 15+:	15 vs. Central Michigan (12/28/13)
Made 0:	0 at Virginia Tech (12/5/19)
Attempted 25+:	25 at Ohio (12/5/18)
Attempted 30+:	31 vs. Connecticut (11/24/18)
Attempted Five or Less:	4 vs Boston College (12/3/15)
Shot 50%+:	.538 (7-13) vs. Wisconsin (12/31/19)
Shot 60%+:	.600 (12-20) vs. Northwestern (2/17/19)

TEAM FREE THROW SHOOTING	
Made 25+:	26 vs. Green Bay (3/17/17)
Made 30+:	32 vs. DePaul (11/21/10)
Made Five or Less:	4 at Chattanooga (11/17/19)
Made All Attempted:	6-6, vs. Penn State (1/26/20)
Attempted 30+:	31 vs. Purdue Fort Wayne (11/18/18)
Attempted 40+:	41 vs. Minnesota (1/18/04)
Attempted 10 or Less:	9 at Northwestern (1/12/20)
Attempted Five or Less:	3 vs. Villanova (11/12/16)

TEAM REBOUNDS	
Had 20+ Rebound Margin:	22 (56-34) vs. Western Illinois (11/17/19)
Had 25+ Rebound Margin:	30 (55-25) vs. USC Upstate (11/17/16)
Outrebounded by 20+:	21 (28-49) at Maryland (1/8/15)
Outrebounded by 25+:	28 (28-56) at Notre Dame (12/29/13)

TEAM ASSISTS	
Had 25:	31 vs. Incarnate Word (12/10/15)
Had 30:	31 vs. Incarnate Word (12/10/15)
Had Five or Fewer:	5 vs. Arizona State (11/30/19)

TEAM TURNOVERS	
Committed 10 or Fewer:	10 vs. No. 18 Indiana (2/3/20)
Committed 20+:	21 at No. 12 Indiana (1/9/20)
Forced 10 or Fewer:	7 vs. Illinois (1/16/20)
Forced 20+:	21 at Chattanooga (11/14/19)

TEAM CLOSE GAMES	
Game Decided by One Point:	W 71-70 vs. Michigan (1/5/19)
Game Decided by Two Points or Less:	L, 63-65 (OT) at Rutgers (1/16/19)
Game Decided by Three Points or Less:	L, 55-58 vs. Maryland (2/25/19)
Back-to-Back Games Decided by Three Points or Less:	L, 63-65 (OT) at Rutgers (1/16/19); W 56-53 vs. Indiana (1/20/19)
Made a Last Second Shot to Win:	Karissa McLaughlin 3-pointer vs. Northwestern (2/17/19)
Lost on a Last Second Shot:	Tyler Scaife vs. Rutgers (3/1/18)

TEAM OVERTIME	
Played an Overtime Game:	L, 63-65 at Rutgers (1/16/19)
Played a Double Overtime Game:	L, 73-82 vs. South Carolina (12/16/18)
Played a Triple Overtime Game:	W, 82-75 vs. Nebraska (2/2/12)
Played Consecutive Overtime Games:	W, 90-88 at Minnesota (1/22/15); L, 71-79 vs. Ohio State (1/25/15)

TEAM COMEBACKS	
Came Back from 10+ Down to Win:	W, 59-52 vs. Arizona State (11/11/18; down 18-8 w/ 9:43 left in the 2nd)
Came Back from 15+ Down to Win:	W, 81-79 (OT) at Michigan (2/1/18; down 72-56 w/ 6:48 left in the 4th)

TEAM RANKED OPPONENTS	
Beat a Ranked Team:	#25 Indiana, 56-53 (1/20/19)
Beat Back-to-Back Ranked Team:	#21 Rutgers, 47-33 (1/10/17), #18 Iowa, 76-70 (1/13/18)
Beat a Ranked Team on the Road:	#10 Maryland, 75-65 (2/15/18)
Beat a Top-10 Ranked Team:	#10 Maryland, 75-65 (2/15/18)
Beat a Top-10 Ranked Team on the Road:	#10 Maryland, 75-65 (2/15/18)
Beat a Top-5 Ranked Team:	#4 Texas A&M, 60-51 (12/4/11)
Beat a Top-5 Ranked Team on the Road:	N/A

INDIVIDUAL SCORING	
Scored 20 Points:	24, Dominique Oden, vs. No. 18 Indiana (2/3/20)
Scored 30 Points:	34, Karissa McLaughlin, vs. Kent State (12/8/19)
Scored 35 Points:	38, Brittany Rayburn at Minnesota (1/12/12)
Scored 40 Points:	41, Katie Geardls at Wisconsin (2/18/07)
Scored 20 Points in Back-to-Back Games:	Dominique Oden 28 vs. Penn State (1/26/20) 22 at Michigan State (1/30/20)
Scored 20 Points in Three Straight Games:	Dominique Oden 28 vs. Penn State (1/26/20) 22 at Michigan State (1/30/20), 24 vs. No. 18 Indiana (2/3/20)
Two Players w/ 20+:	22, Dominique Oden & 28, Karissa McLaughlin at Michigan State (1/30/20)
Three Players w/ 20+:	Whitney Bays (24), KK Houser (21), Liza Clemons (20) & Courtney Moses (20) vs. Central Michigan (12/28/13)
Four Players w/ 20+:	Whitney Bays (24), KK Houser (21), Liza Clemons (20) & Courtney Moses (20) vs. Central Michigan (12/28/13)
Five Players in Double Figures:	Karissa McLaughlin (23), Kayana Traylor (15), Ae'Rianna Harris (13), Dominique Oden (12), Jenelle Grant (11) vs. Illinois (1/17/20)

Double Figures in 10 Straight Games:	17, Karissa McLaughlin (12/21/18 - 2/1/19)
Double Figures in 20 Straight Games:	35, Shereka Wright (11/29/01 - 12/29/02)
Double Figures in 30 Straight Games:	35, Shereka Wright (11/29/01 - 12/29/02)

INDIVIDUAL DOUBLE-DOUBLES	
Double-Double:	21 pts, 12 rebs, Ae'Rianna Harris vs. Penn State (1/26/20)
Double-Double (Rebounds):	21 pts, 12 rebs, Ae'Rianna Harris vs. Penn State (1/26/20)
Double-Double (Assists):	19 pts, 11 ast, Karissa McLaughlin at Wisconsin (12/31/18)
Double-Double (Steals):	27 pts, 12 stl, Joy Holmes vs. Minnesota (1/13/89)
Double-Double (Blocks):	12 pts, 11 blk, Danielle Campbell vs. Butler (11/17/07)

Double-Double (Freshman):	10 pts, 11 ast, Karissa McLaughlin vs. Penn State (1/28/18)
Triple-Double:	12 pts, 11 reb, 11 blk, Danielle Campbell vs. Butler (11/17/07)
20-10 Game:	21 pts, 12 rebs, Ae'Rianna Harris vs. Penn State (1/26/20)
30-10 Game:	30 pts, 10 reb, Stephanie White vs. Washington (3/14/98)
20-20 Game:	29 pts, 20 reb, Joy Holmes at Wisconsin (1/27/91)
Consecutive Double-Doubles:	2, Ae'Rianna Harris (2/21-25/19)
Double-Double in Three Straight Games:	9, Whitney Bays (12/20/14 - 1/19/15)
Double-Double in Five Straight Games:	9, Whitney Bays (12/20/14 - 1/19/15)

Two Players Recorded a Double-Double:	10 pts, 10 rebs, Tamara Farquhar 23 pts, 14 rebs, Ae'Rianna Harris vs. Bowling Green (12/21/19)
Three Players Recorded a Double-Double:	Ae'Rianna Harris (14 pts, 17 rebs) & Tamara Farquhar (13 pts, 14 rebs), vs. Western Illinois (11/17/20)

INDIVIDUAL FIELD GOALS	
Made 13 Field Goals:	13, Dominique Oden, vs. Penn State (1/26/20)
Made 15 Field Goals:	15, Shereka Wright at Michigan (2/17/02)
Attempted 20 Field Goals:	20, Dominique Oden vs. Penn State (1/26/20)
Attempted 25 Field Goals:	25, KK Houser vs. Penn State (1/30/14)
Attempted 30 Field Goals:	33, MaChelle Joseph at Wisconsin (2/21/92)

INDIVIDUAL 3-POINTERS	
Made Six 3-Pointers:	6, Karissa McLaughlin at Michigan (2/1/18)
Made Seven 3-Pointers:	7, Courtney Moses vs. Iowa (2/16/14)
Made Eight 3-Pointers:	9, Karissa McLaughlin vs. Northwestern (2/17/19)
Attempted 12 3-Pointers:	12, Karissa McLaughlin at Wisconsin (12/31/18)
Attempted 13 3-Pointers:	13, KK Houser at Ohio State (1/2/14)
Made a 3-Pointer in 20 Straight Games:	25, Ashley Morrisette (1/30/16 - 12/17/16)

INDIVIDUAL FREE THROWS	
Made 13 FTs:	14, Courtney Moses at Northwestern (1/26/12)
Made 15 FTs:	15, Ukari Figgs vs. Washington (3/14/98)
Attempted 16 FTs:	18, Brittany Rayburn vs. Gardner-Webb (12/21/09)
Attempted 18 FTs:	18, Brittany Rayburn vs. Gardner-Webb (12/21/09)
Attempted 20 FTs:	20, Shereka Wright at Northwestern (2/15/04)

INDIVIDUAL REBOUNDS	
Grabbed 15 Rebounds:	17, Ae'Rianna Harris vs. Western Illinois (11/24/19)
Grabbed 16 Rebounds:	17, Ae'Rianna Harris vs. Western Illinois (11/24/19)
Grabbed 17 Rebounds:	17, Ae'Rianna Harris vs. Western Illinois (11/24/19)
Grabbed 18 Rebounds:	18, Tamara Farquhar at Northwestern (1/13/19)
Grabbed 19 Rebounds:	19, Whitney Bays vs. Ohio State (1/25/15)
Grabbed 20 Rebounds:	20, Joy Holmes at Wisconsin (1/27/91)
Grabbed Eight Offensive Rebounds:	9, Natasha Bogdanova at Mississippi State (12/20/05)

Grabbed 12 Defensive Rebounds:	14, Ae'Rianna Harris vs. Western Illinois (11/17/19)
Grabbed 10+ Rebounds in Three Consecutive Games:	3, Ae'Rianna Harris (11/17/19-11/29/19)
Two Players Grabbed 10+ Rebounds in a Game:	Tamara Farquhar (14) & Ae'Rianna Harris (17) vs. Western Illinois (11/17/19)
Three Players Grabbed 10+ Rebounds in a Game:	Bridget Perry (11), Whitney Bays (11) & Liza Clemons (13) vs. Northwestern (2/11/15)

INDIVIDUAL ASSISTS	
Dished Out Eight Assists:	8, Dominique Oden, vs. Penn State (1/26/20)
Dished Out Nine Assists:	9, Kayana Traylor vs. Northern Illinois (11/24/19)
Dished Out 10 Assists:	11, Karissa McLaughlin at Wisconsin (12/31/18)
Dished Out 11 Assists:	11, Karissa McLaughlin at Wisconsin (12/31/18)
Dished Out 12 Assists:	12, April Wilson vs. Iowa (1/24/16)
Dished Out 5+ Assists in Five Straight Games:	7, April Wilson (12/6/15 - 1/7/16)

Dished Out 10+ Assists in Two Straight Games:	KK Houser vs. Ohio State, 10 (1/14/13) & Minnesota, 10 (1/17/13)
---	--

INDIVIDUAL BLOCKED SHOTS	
Posted Five Blocks:	7, Ae'Rianna Harris vs. Minnesota (1/19/20)
Posted Six Blocks:	7, Ae'Rianna Harris vs. Minnesota (1/19/20)
Posted Seven Blocks:	7, Ae'Rianna Harris vs. Minnesota (1/19/20)
Posted Eight Blocks:	9, Ae'Rianna Harris at No. 5 South Carolina (12/15/19)
Blocked 5+ Shots in Back-to-Back Games:	Ae'Rianna Harris vs. UT Martin, 5 (12/18/17), Saint Mary's, 5 (12/20/17) & at Rutgers, 7 (12/28/17)

INDIVIDUAL STEALS	
Grabbed Five Steals:	5, Dominique Oden at Northwestern (1/13/19)
Grabbed Six Steals:	6, Lamina Cooper vs. Eastern Washington (12/17/17)
Grabbed Seven Steals:	8, FahKara Malone vs. Indiana (3/7/08)
Grabbed Eight Steals:	8, FahKara Malone vs. Indiana (3/7/08)

INDIVIDUAL MINUTES	
Played a Complete Game:	Dominique Oden, vs. Penn State (1/26/20)

Played at Least 40 Minutes:	Dominique Oden, vs. Penn State (1/26/20)
Played Every Minute of an Overtime Game:	Karissa McLaughlin (45) & Dominique Oden (45) at Rutgers (1/16/19)
Freshman Played 40 Minutes:	Karissa McLaughlin (40) at Ball State (3/18/18)
Freshman Played a Complete Game:	Karissa McLaughlin (40) at Ball State (3/18/18)
Played Consecutive Complete Games:	Karissa McLaughlin, 8 (2/12/18 - 3/18/18)

INDIVIDUAL FOULS	
Technical Foul - Player:	Lamina Cooper vs. Rutgers (1/10/18)
Technical Foul - Coach:	at Indiana (3/3/19)
Fouled Out:	Roxane Makolo at Michigan State (1/30/20)
Two Players Fouled Out:	Tamara Farquhar, Ae'Rianna Harris & Dominique Oden vs. South Carolina (12/16/18 - 2 OT)
Three Players Fouled Out:	Tamara Farquhar, Ae'Rianna Harris & Dominique Oden vs. South Carolina (12/16/18 - 2 OT)

