





COACHES AND ADMINISTRATION

Doug Schreiber, Head Coach	10-12
Todd Murphy, Assistant Coach	13
Rob Smith, Assistant, Coach	14
David Martinez, Volunteer Assistant Coach	15
Purdue Head Coaches	15
Morgan Burke, Athletics Director	16
Administration & Support Staff	17

HEAD COACH



DOUG SCHREIBER

**HEAD COACH
(7TH YEAR)**

CAREER RECORD
173-163, .515 (6 years)

OVERALL RECORD AT PURDUE
173-163, .515 (6 years)

BIG TEN RECORD AT PURDUE
89-86, .509 (6 years)

Since Doug Schreiber was named Purdue's head baseball coach on May 29, 1998, the Boilermakers have fast become a major force in the Big Ten Conference and have made big strides on the national level.

Over the last five Big Ten seasons, Purdue has posted the third-most conference wins (79) and the third-highest conference winning percentage (.534), trailing only Minnesota and Ohio State.

In 2004, the Boilermakers posted the fourth winning season under the guidance of Schreiber, ending the season with a 29-28 mark. Purdue returned to postseason play, finishing fifth in the Big Ten, only two games out of second place. The Boilermakers defeated Michigan State in the first round of the Big Ten Tournament before being eliminated by the number one and two seeds.

A staple in Schreiber baseball, the Boilermakers led the Big Ten in fielding three years in a row, from 2001 to 2003.

In 2001, Schreiber and his Boilermakers were on the brink of winning the school's first baseball conference championship since 1909. The Boilermakers finished the Big Ten season in second place at 19-7, just half a game behind champion Ohio State and its 20-7 record. The 2001 Boilermakers ended the season with a 32-24 mark and set a school record for most conference wins (19) and had the highest finish of any Boilermaker baseball team since 1928. Purdue had

PURDUE COACHING HISTORY

Head Coach	Tenure	Wins	Losses	Ties	Win Pct.
Doug Schreiber	1999-Pres.	173	163	0	.515
~ In 175 conference games, Schreiber has posted a record of 89-86 (.509).					
Bob Shepherd	1998	21	20	0	.512
~ In 27 conference games, Shepherd posted a record of 9-18 (.333).					
Steve Green	1992-98	163	181	1	.474
~ In 167 conference games, Green posted a record of 77-90 (.461).					
Dave Alexander	1978-91	407	378	7	.518
~ In 272 conference games, Alexander posted a record of 107-163-2 (.397).					
Joe Sexson	1960-77	221	298	8	.427
~ In 256 conference games, Sexson posted a record of 76-178-2 (.301).					
Paul Hoffman	1956-59	52	49	2	.515
~ In 49 conference games, Hoffman posted a record of 19-29-1 (.398).					
Hank Stram	1951-55	53	58	2	.478
~ In 59 conference games, Stram posted a record of 20-39 (.339).					
Mel Taube	1947-50	52	40	3	.563
~ In 49 conference games, Taube posted a record of 23-26 (.469).					
Ward Lambert	1917, 1919-35, 1945-46	163	156	7	.511
~ In 188 conference games, Lambert posted a record of 77-108-3 (.418).					
C.S. Doan	1943-44	15	16	1	.484
~ In 16 conference games, Doan posted a record of 5-10-1 (.344).					
Dutch Fehring	1936-42	84	86	5	.494
~ In 66 conference games, Fehring posted a record of 25-41 (.379).					
John Pierce	1918	6	7	0	.462
~ In six conference games, Pierce posted a record of 1-5 (.167).					
B.P. Pattison	1915-16	19	15	0	.559
~ In 23 conference games, Pattison posted a record of 12-11 (.522).					
Hugh Nicol	1906-14	67	36	1	.649
~ In 74 conference games, Nicol posted a record of 43-30-1 (.588).					
Phil O'Niel	1905	9	7	0	.563
J.C. Kelsey	1903-04	15	16	0	.484
Bill Priel	1902	10	4	1	.700
W.H. Fox	1900-01	19	10	0	.655
W.M. Phillips	1892-93	6	6	0	.500

THE SCHREIBER FILE

EDUCATION

_____ Purdue University
_____ B.A., Communications

WIFE

_____ Sarah

COACHING EXPERIENCE

_____ Purdue University (1999-Present)
_____ Head Coach

_____ Arizona State University (1995-98)
_____ Assistant Coach

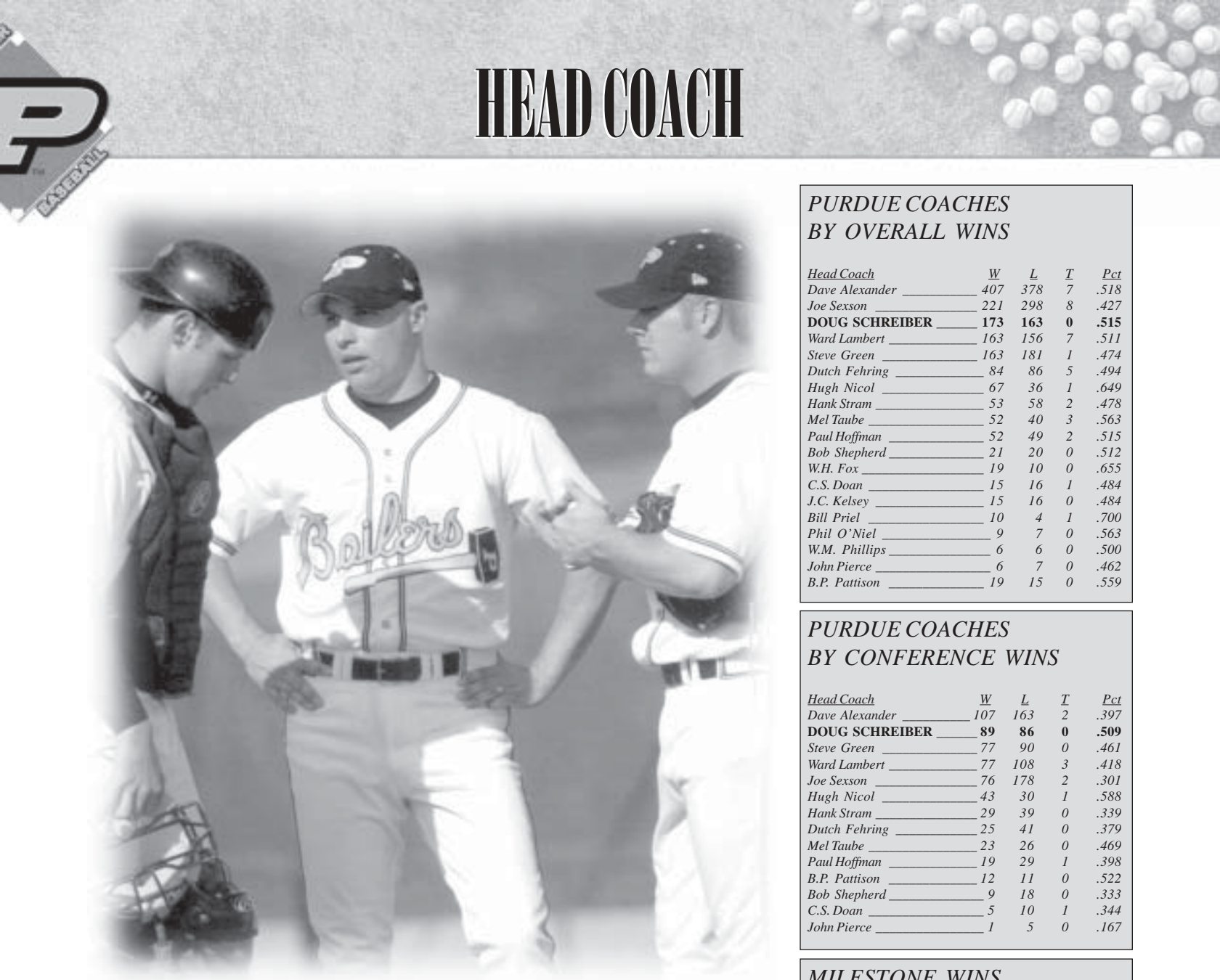
_____ University of Notre Dame (1994)
_____ Assistant Coach

_____ Butler University (1993)
_____ Assistant Coach

_____ Ball State University (1991-92)
_____ Graduate Assistant



Doug Schreiber started at second base for the Boilermakers for four seasons (1983-86).



HEAD COACH

PURDUE COACHES BY OVERALL WINS

<u>Head Coach</u>	<u>W</u>	<u>L</u>	<u>T</u>	<u>Pct</u>
Dave Alexander	407	378	7	.518
Joe Sexson	221	298	8	.427
DOUG SCHREIBER	173	163	0	.515
Ward Lambert	163	156	7	.511
Steve Green	163	181	1	.474
Dutch Fehring	84	86	5	.494
Hugh Nicol	67	36	1	.649
Hank Stram	53	58	2	.478
Mel Taube	52	40	3	.563
Paul Hoffman	52	49	2	.515
Bob Shepherd	21	20	0	.512
W.H. Fox	19	10	0	.655
C.S. Doan	15	16	1	.484
J.C. Kelsey	15	16	0	.484
Bill Priel	10	4	1	.700
Phil O'Niel	9	7	0	.563
W.M. Phillips	6	6	0	.500
John Pierce	6	7	0	.462
B.P. Pattison	19	15	0	.559

PURDUE COACHES BY CONFERENCE WINS

<u>Head Coach</u>	<u>W</u>	<u>L</u>	<u>T</u>	<u>Pct</u>
Dave Alexander	107	163	2	.397
DOUG SCHREIBER	89	86	0	.509
Steve Green	77	90	0	.461
Ward Lambert	77	108	3	.418
Joe Sexson	76	178	2	.301
Hugh Nicol	43	30	1	.588
Hank Stram	29	39	0	.339
Dutch Fehring	25	41	0	.379
Mel Taube	23	26	0	.469
Paul Hoffman	19	29	1	.398
B.P. Pattison	12	11	0	.522
Bob Shepherd	9	18	0	.333
C.S. Doan	5	10	1	.344
John Pierce	1	5	0	.167

MILESTONE WINS

<u>No.</u>	<u>Date</u>	<u>Score</u>
1.	March 6, 1999 _____ vs. Kent State University	18-11
25.	February 19, 2000 _____ at Vanderbilt University	4-1
50.	April 22, 2000 _____ vs. University of Illinois	9-2
75.	April 11, 2001 _____ at Butler University	10-2
100.	March 31, 2002 _____ vs. Penn State University	10-6
125.	March 23, 2003 _____ vs. Miami (Ohio)	12-2
150.	March 21, 2004 _____ at Jacksonville State	7-5

the top pitching staff and defense in the Big Ten in 2001, leading the conference with a team ERA of 3.67 in conference games and a .977 fielding percentage in all games.

Purdue finished the 2000 season in third place in the Big Ten with a 17-11 record, which included a dominating 9-3 mark against the other top three teams in the conference. The Boilermakers had a four-game series sweep against then-league-leader and No. 25 Illinois and finished the Big Ten regular season winning three out of four games at No. 25 and conference champion Minnesota. The Boilermakers ended the season with a 35-23 overall record and owned the top pitching staff in the Big Ten, with a team ERA of 4.12 in all games.

Two of Schreiber's six Purdue teams have been ranked in the top 25 in the country. Baseball America ranked Purdue No. 25 in the nation after the Boilermakers opened the 2001 season with upset wins over No. 1 Rice and No. 24 Wake Forest while capturing the championship of the Coca-Cola Classic, held in Houston, Texas. It

was the baseball program's first national ranking since 1993. Later that season, after posting a 13-game winning streak, the Boilermakers were ranked No. 29 by Collegiate Baseball. The 13-game streak was the nation's longest winning streak at that point in the season.

The 2002 squad entered the season ranked No. 24 in the country by the National Collegiate Baseball Writers Association (NCBWA) and No. 27 by Collegiate Baseball. It was the first time in school history that the baseball program started a season nationally ranked.

The 2000 Boilermakers earned big road wins at No. 6 Alabama, No. 16 East Carolina and No. 24 Notre Dame, helping Purdue finish the year with an RPI ranking of 45th in the country. That RPI ranking was the second-best in the Big Ten that season, just one spot behind conference champion Minnesota (44th).

Schreiber believes in playing a challenging non-conference schedule each year against some of the nation's elite baseball programs. During the past five years of the Schreiber era, Purdue

has faced national powers Alabama, Clemson, Oklahoma State, South Carolina, Long Beach State, UCLA, Rice, Notre Dame, Wake Forest, Central Florida, Cal State-Northridge, East Carolina, Tennessee, Vanderbilt, Florida and

HEAD COACH



Georgia Tech. This year's schedule includes games against Texas, Rice, Mississippi, Florida Atlantic and Notre Dame.

Schreiber owns a 173-163 overall record and a 89-86 Big Ten mark through his first six years as head coach of the Boilermakers. His overall win total ranks third in Purdue history, while his conference win total stands second, and he is the first Boilermaker coach since B.P. Pattison (1915-16) to have a winning overall and conference record. In 2001, Baseball America named Schreiber as one of the nation's top young Division I head coaches on the rise.

Prior to his naming as head coach at Purdue, Schreiber spent four seasons (1995-98) as the top assistant coach and recruiting coordinator under Pat Murphy at Arizona State University. Schreiber helped guide Arizona State to the College World Series and the national championship game in 1998. A year earlier, the Sun Devils finished as regional runners-up to Miami, and were two outs away from going to the College World Series. Schreiber's recruiting classes at ASU were ranked No. 1 in 1995 and No. 3 in 1996, and were nationally ranked in 1997 and 1998, as well.

Before going to Arizona State, Schreiber served as an assistant coach for Murphy at the University of Notre Dame in 1994. That season, the Fighting Irish finished 46-16 and ended the season just two wins shy of Omaha, finishing as regional runners-up to Auburn.

Schreiber began his coaching career as a graduate assistant under Pat Quinn at Ball State University for two seasons (1991-92) and spent one year (1993) as an assistant at Butler University.

A native of LaPorte, Ind., Schreiber was a four-year starter (1983-86) at second base for the Boilermakers. During his career, Purdue posted a 120-112-2 mark and established a school-record 37 victories his senior season when he was a second-team All-Big Ten selection. Schreiber still ranks among Purdue's career leaders in a variety of categories, including top-six ranking in four categories. Schreiber ranks first all-time in walks (132), fourth in runs scored (159), tied for third in games played (220) and tied for sixth in triples (9). He earned his bachelor of arts degree in communications and has completed some course work towards a master's in education.

Schreiber played for the Adray Sound of the Detroit Adray Summer League in 1983, where he started in the infield alongside future Major Leaguers Barry Larkin (shortstop) and Jim Leyritz (third base). Schreiber also played for the Cotuit Kettleers of the prestigious Cape Cod League, helping the team win the league championship in the summer of 1985.

Born Aug. 25, 1963, Schreiber is the son of legendary LaPorte High School baseball coach Ken Schreiber, a three-time National Prep Coach of the Year who retired in 1998. The elder Schreiber guided LaPorte to an Indiana-record seven state championships, including the 1982 season, when Doug was a senior co-captain and starting shortstop. Schreiber was also named the recipient of the prestigious L.V. Phillips Mental Attitude Award presented by the IHSA following his team's state championship run.

Schreiber and his wife, the former Sarah Piper, reside in Lafayette.

SCHREIBER BY OPPONENT

School	W	L	T	Pct
Alabama	1	2	0	.333
Alabama-Birmingham	2	1	0	.667
Austin Peay	2	0	0	1.000
Ball State	3	4	0	.429
Belmont	1	1	0	.500
Boston College	1	0	0	1.000
Butler	2	0	0	1.000
California-Riverside	0	2	0	.000
Cal State-Northridge	0	3	0	.000
Central Florida	0	1	0	.000
Chicago State	1	0	0	1.000
Cincinnati	3	1	0	.750
Clemson	0	3	0	.000
Cleveland State	1	0	0	1.000
Coastal Carolina	1	2	0	.333
Columbia	0	1	0	.000
Detroit Mercy	1	0	0	1.000
Duke	1	1	0	.500
East Carolina	1	2	0	.333
Eastern Illinois	2	0	0	1.000
Evansville	3	1	0	.750
Florida	0	3	0	.000
George Washington	0	1	0	.000
Georgia Tech	0	2	0	.000
ILLINOIS	12	9	0	.571
Illinois State	4	3	0	.571
INDIANA	10	13	0	.435
Indiana State	4	4	0	.500
Iona	1	0	0	1.000
IOWA	12	11	0	.522
IPFW	2	0	0	1.000
IUPUI	2	0	0	1.000
Jacksonville State	3	0	0	1.000
Kent State	1	0	0	1.000
Kentucky	1	2	0	.333
Lipscomb	1	0	0	1.000
Long Beach State	0	1	0	.000
Louisville	0	1	0	.000
Miami (Ohio)	5	1	0	.833
MICHIGAN	7	6	0	.538
MICHIGAN STATE	10	2	0	.833
Middle Tennessee State	2	1	0	.667
MINNESOTA	7	18	0	.280
Northern Illinois	3	0	0	1.000
NORTHWESTERN	15	9	0	.625
Notre Dame	1	1	0	.500
OHIO STATE	4	14	0	.222
Oklahoma State	0	3	0	.000
Pace	1	0	0	1.000
PENNSTATE	14	10	0	.583
Pittsburgh	0	1	0	.000
Princeton	0	2	0	.000
Rice	1	0	0	1.000
Rider	1	0	0	1.000
Rutgers	1	0	0	1.000
Sacred Heart	1	0	0	1.000
Saint Joseph's (Ind.)	1	0	0	1.000
San Diego	0	1	0	.000
South Carolina	0	1	0	.000
Tennessee	1	0	0	1.000
Texas-San Antonio	2	1	0	.667
Troy State	0	1	0	.000
UCLA	0	1	0	.000
UNLV	0	1	0	.000
Valparaiso	8	2	0	.800
Vanderbilt	2	6	0	.250
Wake Forest	1	0	0	1.000
Western Kentucky	1	0	0	1.000
Western Michigan	1	1	0	.500
Wofford	0	1	0	.000
Wright State	0	2	0	.000
Xavier	4	2	0	.667
TOTALS	173	163	0	.515





ASSISTANT COACH



**TODD
MURPHY**
ASSISTANT COACH
(7TH YEAR)

Todd Murphy enters his seventh season as Purdue's top assistant coach after joining the program in July 1998.

Murphy's primary responsibilities include working with the outfielders and catchers and assisting with the hitters and team offense. Additionally, he coordinates recruiting while assisting with all day-to-day operations of the program.

The 2004 catchers directed by Murphy threw out 42 percent of potential base stealers, the best in the Big Ten.

In 2003, the Boilermakers were second in the Big Ten in hitting with a .311 team batting average. It was the fourth time in Murphy's six years at Purdue that the Old Gold and Black finished the season hitting over .300. During the 25 years prior to Murphy's arrival in West Lafayette, Purdue hit .300 or better as a team only five times.

Last season also saw Purdue hitters being named Big Ten Player of the Week on five different occasions.

Purdue has established multiple school offensive records under his tutelage. The 2000 team established four school records: at-bats (1,925), hits (584), doubles (107) and stolen bases (106). The 2001 squad set a school record for batting average (.314) while eclipsing two records set the previous season: hits (587) and doubles (115).

Murphy joined the Boilermaker staff from the University of Illinois, where he was an assistant coach under Richard "Itch" Jones from 1994 to 1998. He worked with the outfielders and hitters, coordinated scouting and team defense, and assisted with recruiting and off-season weight training and conditioning.

Murphy helped guide the Fighting Illini to three consecutive Big Ten playoff appearances from 1996 to 1998. In his last season at Illinois, the Fighting Illini won a conference championship and earned a berth in the 1998 NCAA regional final game at Gainesville, Fla.

Prior to coaching at Illinois, Murphy was an assistant at Princeton during the 1994 season. He began his collegiate coaching career at his alma mater, Butler, serving as an assistant for the Bulldogs from 1992 to 1993. Murphy and Boilermaker head coach Doug Schreiber were both assistants at Butler in 1993.

The Indianapolis native graduated from Butler in 1991 with a bachelor's degree in secondary education/social studies and physical education. He was a three-year starter in center field for the Bulldogs.

After graduation from Butler, Murphy taught U.S. history and sociology at Bishop Chatard High School in Indianapolis during the 1992-93 school year.

Murphy and his wife, the former Lori Gher, have one daughter, Lindsay. The Murphys reside in West Lafayette.



THE MURPHY FILE

EDUCATION

_____ Butler University
_____ B.A., Secondary Education

WIFE

_____ Lori

CHILDREN

_____ Lindsay

COACHING EXPERIENCE

_____ Purdue University (1999-Present)
_____ Assistant Coach

_____ University of Illinois (1995-98)
_____ Assistant Coach

_____ Princeton University (1994)
_____ Assistant Coach

_____ Butler University (1992-93)
_____ Assistant Coach

ASSISTANT COACH



ROB SMITH

**ASSISTANT COACH
(4TH YEAR)**

Rob Smith enters his fourth season as the Boilermakers' pitching coach after rejoining the program in the fall of 2001.

In 2004, Smith directed a Purdue pitching staff that produced the second-best ERA (4.91) in the past 10 years of Boilermaker baseball, and the

fourth-best in the last 20 seasons. From his first season in 2002 to last season, Smith's guidance has helped the Boilermaker ERA lower by more than one run.

The 2004 pitching staff saved 15 games, second-best in the Big Ten last year and second-best at Purdue in the history of the program, barely missing the record of 16 established in 2000.

Another tribute to Smith's instruction is the increasing total of strikeouts by his hurlers as well as the decreasing number of walks allowed. In 2004, the Boilermakers struck out 338 opposing batters, the fourth-highest total in school history and the highest since 1998. Purdue pitchers allowed 173 free passes in 2004, fifth-lowest in the past 20 years.

Two of Smith's Boilermaker hurlers have been selected in the top 10 rounds of the Major League Baseball draft: closer Dustin Glant in 2003 by the Arizona Diamondbacks, and starter Chadd Blasko in 2002 by the Chicago Cubs.

Blasko was a first-round (supplemental) draft pick and 36th overall selection by the Chicago Cubs in the 2002 Major League Baseball draft. As a junior, Blasko was 3-1 in conference play with a 2.34 ERA, string out 44 batters in 50.0 innings pitched.

Four of Smith's pitchers have been honored as Big Ten Pitchers of the Week, two in 2002 and two in 2004: Blasko (March 23, 2002); Mitch Pruemer (May 13, 2002); Scott Byrnes (March

19, 2004); and Chris Toneguzzi (April 18, 2004). Along with the Big Ten honor, Blasko was named Louisville Slugger's National Player of the Week by Collegiate Baseball.

Prior to taking control of the Boilermaker pitching staff, Smith spent two seasons as manager and general manager of the Wisconsin Woodchucks of the Northwoods League. In 2001, he guided the team to its first league championship in the eight-year history of the franchise. Smith's teams posted club records for wins, with 34 (2000) and 37 (2001). His pitching staffs also set club records for ERA in both seasons.

Smith was a volunteer assistant coach at Purdue in 1999. He assisted with the pitchers and recruiting, and also worked with the catchers.

Prior to his original stint at Purdue, Smith founded and was the head coach of the Indiana Blue Storm, an 18-and-under team in Bloomington, Ind. During that time, he was also an assistant coach at Ellettsville (Ind.) Edgewood High School, working with the freshman, junior varsity and varsity teams.

Smith played college ball at Vincennes University from 1991 to 1994 and completed his degree at Indiana University in 1998.

Smith and his wife, RaeAnna, have identical twin daughters, Sierra and Serena, and a son, Tyson. The Smith family resides in Lafayette.

THE SMITH FILE

EDUCATION

_____ Indiana University
_____ B.S., General Studies

WIFE

_____ RaeAnna

CHILDREN

_____ Sierra, Serena and Tyson

COACHING EXPERIENCE

_____ Purdue University (2002-Present)
_____ Assistant Coach

_____ Wisconsin Woodchucks (2000-2001)
_____ Head Coach / General Manager

_____ Purdue University (1999)
_____ Volunteer Assistant Coach

_____ Indiana Blue Storm (1998)
_____ Head Coach

_____ St. Joseph's College (1997)
_____ Assistant Coach

_____ Edgewood H.S. (1995-1996)
_____ Assistant Coach





ASSISTANT COACH



**DAVID
MARTINEZ**

**VOLUNTEER ASSISTANT COACH
(1ST YEAR)**

David Martinez is the newest member of the Purdue coaching staff, joining the Boilermakers in the fall of 2004. Martinez will assist with the handling of the Purdue pitching staff along with assistant coach Rob Smith.

Prior to joining the Boilermaker staff, Martinez served as a volunteer assistant coach at Cal State-San Bernardino during the 2003-04 academic year. Among Martinez' responsibilities at CSSB was working with the pitchers and outfielders.

In one year at CS-San Bernardino, Martinez helped the Coyotes to a 30-26-1 record. The pitching staff recorded eight complete games, two shutouts and 10 saves.

Martinez began his coaching career as the pitching coach at Redlands East Valley High School in Redlands, Calif.

Martinez' collegiate playing experience began at Riverside Community College in Riverside, Calif.

Two seasons at RCC led to Martinez joining the baseball team at Nevada-Las Vegas, but a shoulder injury cut the right-handed pitcher's career short.

THE MARTINEZ FILE

EDUCATION

_____ CSU-San Bernardino
_____ B.S., Kinesiology

COACHING EXPERIENCE

_____ Purdue University (2004-Present)
_____ Volunteer Assistant Coach
_____ CSU-San Bernardino (2003-2004)
_____ Volunteer Assistant Coach
_____ Redlands East Valley H.S. (2002-2003)
_____ Pitching Coach

Martinez earned an associate degree from RCC in 1997 and completed his bachelor's degree in kinesiology at CSU-San Bernardino in 2004.

Martinez is single and resides in West Lafayette.

PURDUE HEAD COACHES



**DEVON
BROUSE**
*Men's & Women's
Golf*



**CAROL
BRUGGEMAN**
Softball



**KRISTY
CURRY**
Women's Basketball



**MAT
IANDOLO**
Women's Tennis



**GENE
KEADY**
Men's Basketball



**ROB
KLATTE**
Women's Soccer



**TM
MADDEN**
Men's Tennis

PURDUE HEAD COACHES



**JESSIE
REYES**
Wrestling



**DAN
ROSS**
*Men's
Swimming & Diving*



**DAVE
SHONDELL**
Volleyball



**JOE
TILLER**
Football



**JACK
WARNER**
*Men's & Women's
Track & Field
and Cross Country*



**CATHY
WRIGHT-EGER**
*Women's
Swimming & Diving*

ATHLETICS DIRECTOR



MORGAN BURKE

ATHLETICS DIRECTOR
12TH YEAR

Athletics Director Morgan Burke embarks on his 12th year in fall 2004 leading a department that is excelling in competition and upgrading facilities across 18 sports.

Known as "the athletics director who came down from the bleachers," Burke was an ardent fan, season ticket holder and John Purdue Club member for years before his 1992 appointment as the 11th director of intercollegiate athletics.

A Boilermaker varsity swimmer as an undergraduate, Burke never lost his competitive zeal. Often seen chatting with student-athletes, all of whom he seems to know on a first-name basis, Burke is a tireless ambassador for intercollegiate athletics.

A 1973 industrial management graduate, Burke was captain of the Boilermaker swim team his senior year and was a member of Phi Beta Kappa scholastic honorary. After graduation, he continued at Purdue and earned a master's degree in industrial relations in 1975. In 1980, he graduated with a law degree from John Marshall Law School in Chicago.

He pursued a successful career with Inland Steel Co. after law school, moving through 13 positions in an 18-year span. He was vice president when he departed to become athletics director.

When Burke succeeded George King as AD on Jan. 1, 1993, Purdue had a solid reputation for playing hard

and playing by the rules. Burke pledged to build on the foundation already in place. Working with coaches and staff, aggressive goals were set. He came to Purdue promising to build on the traditions and successes of the past to develop "a nationally prominent athletic organization that is excellent in all respects."

On the athletics side, Burke's expectation was to improve the position of Purdue teams in the Big Ten and nationally. During his tenure, squads have made significant strides by both measures. In 2003-04, 13 teams placed in the upper half of the Big Ten, a record number in Burke's time at Purdue. That figure compares with six squads in the upper half of the conference standings in 1992-93. In addition, the national Directors' Cup finish was 38th, a considerable gain over the 81st-place finish in 1994-95.

Similar excellence was expected in the classroom: To match or surpass the overall grade-point average of the general student body. That goal has been achieved each of the last 14 semesters. Following the 2004 spring semester, the cumulative GPA for all current Purdue student-athletes was a record 2.95. In addition, the average graduation rate has risen to 70 percent.

More specifically, Burke articulated an expectation for all areas of Intercollegiate Athletics to make measurable improvement.

Because Intercollegiate Athletics writes a check to the University for scholarships, financial resources had to be expanded greatly to support all sports. Burke challenged Purdue alumni and fans to get on board to propel Boilermaker athletics to greatness. He set a goal of doubling the size of the 4,350-member John Purdue Club as well as doubling the \$2.5 million raised annually to support student-athletes. Both goals have been achieved, with JPC memberships now at 9,000 and annual dollars raised to support scholarships and academic support services in excess of \$6 million.

Burke and his staff set a high standard for the future. They coined the term "25/75 Club" to articulate a vision of an intercollegiate athletics organization that achieves an average finish in the top 25 across all sports and graduates 75 percent of student-athletes. Precious few universities achieve this lofty status, and five schools were chosen as benchmark institutions: Duke, North Carolina, Notre Dame, Penn State and Stanford.

Burke and his staff have identified and addressed a number of facility priorities, upgrading practice and competition venues to attract and retain top student-athlete and coaching talent. Of three high-visibility projects, one is completed and bearing fruit, one opened in 2001 to the delight of swimmers and divers, and the third will welcome hundreds of thousands of football fans six Saturdays this fall.

The Birck Boilermaker Golf Complex, featuring a total redesign of the old "north course" by renowned designer Pete Dye, instantly placed Purdue golf facilities on the national map. The Kampen Course, the new name of the Dye-designed layout, hosted the 2003 NCAA Women's NCAA Championships and the 2004 Men's NCAA Central Regional. The Boilermaker Aquatic Center opened in fall 2001 and was the site of the women's 2003 Big Ten swimming and diving championships and the men's 2004 Big

Ten swimming and diving championships. In spring 2001, work started on the \$70-million renovation of Ross-Ade Stadium. The remade Ross-Ade boasts vastly expanded concessions and restrooms along a wider concourse, new concrete throughout, wider aisles and wider individual seats, and increased seating for fans in wheelchairs. Crowning the project is the Pavilion on the west side, housing suites, indoor and outdoor club seats, two stadium clubs, facilities for the working press and game-day staff, and offices for the John Purdue Club and marketing staff. The final touch was put on the project at the conclusion of the 2003 home season, when new sod was installed on the playing field.

Another goal of Burke's was to involve former student-athletes in the life of the department, to counsel and question, and provide ideas to keep the organization sharp. In 1993, he established an advisory council made up of 24 student-athlete alumni. The group meets annually to hear reports and make suggestions to Burke and senior administrators.

Last year, former student-athletes found a new home in Intercollegiate Athletics with the founding of the Varsity P Club. A subset of the John Purdue Club, the Varsity P Club hosts the annual Legends Weekend each fall, welcoming back Boilermaker athletes for golf, good times and the Ross-Ade Stadium roar.

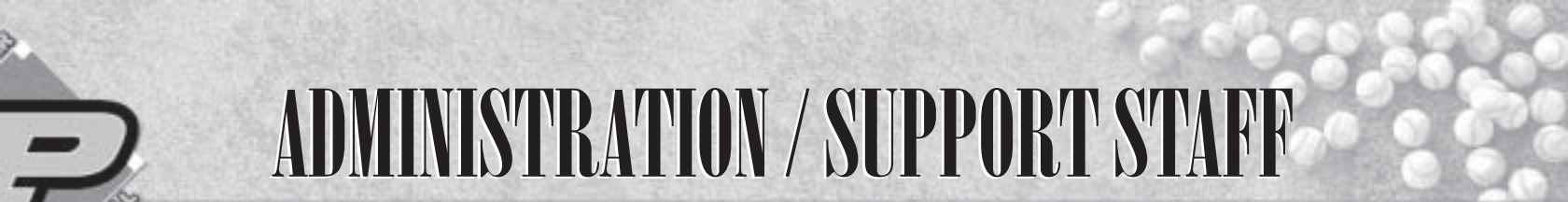
Burke, 52, is married to the former Catherine J. (Kate) Mullane, a Purdue alumna and pharmacist. They have three children: Joyce, Morgan Jr. and Patrick. Joyce is a Purdue alumna working as a materials engineer in Texas, Morgan Jr. is a senior landscape architecture student at Purdue, and Patrick is a high school senior.



The Burkes: Morgan, wife Kate, children Morgan Jr., Joyce and Patrick, and dog Kasey

PURDUE ATHLETICS DIRECTORS

1904-05	O.F. Cutts
1905-14	Hugh Nicol
1915-18	O.F. Cutts
1919-30	N.A. Kellogg
1931-36	Noble E. Kizer
1937	R.C. Woodworth (acting)
1938-39	Noble E. Kizer
1940	E.C. Elliott (acting)
1941	A.H. Elward
1942-71	Guy J. Mackey
1971-92	George S. King, Jr.
1992	John W. Hicks (interim)
1993-Present	Morgan J. Burke



ADMINISTRATION / SUPPORT STAFF

FACULTY REPRESENTATIVES



JEFFREY T. BOLIN



CHRISTIE SAHLEY



GLENN TOMPKINS
Senior Associate AD



ROGER BLALOCK
Senior Associate AD



NANCY CROSS
Senior Associate AD / SWA



JAY COOPERIDER
Associate AD

ASSOCIATE ATHLETICS DIRECTORS

ASSISTANT ATHLETICS DIRECTORS



ED HOWAT
Assistant AD



BARB KAPP
Assistant AD



STEVE SIMMERMAN
Assistant AD



GREG CHRISTOPHER
Assistant AD

BASEBALL SUPPORT STAFF



BRIAN BALLARD
Baseball Operations



BECKY BECK
Secretary



CHRISTOPHER CARR
Sports Psychologist



JUSTINE CRABBE
*Student
Athletic Trainer*



BOB HALLAS
*Superintendent of
Outdoor Facilities*



JEFF IRWIN
Event Coordinator



DOUG JONES
Groundskeeper



MIKE KERRIGAN
Baseball Operations



MIKE KRAUSS
Senior Team Physician



MARK LEDDY
*Sports Information
Assistant*



DENNY MILLER
*Director of
Sports Medicine*



TIM MILLER
Scoreboard Operator



ANDREA PANA
Team Physician



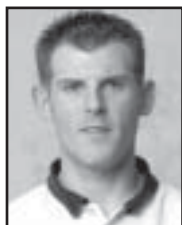
JOEL RASMUS
*Director of
Promotions*



WES ROBINSON
Athletic Trainer



BRYAN SEARCY
*Student
Athletic Trainer*



ANDREW STALEY
Equipment Manager



RON THOMSON
*Strength and
Conditioning*



CARSON TUCKER
*Public Address
Announcer*



MALLORI WALKER
Academic Advisor



NABIL YANG
Baseball Manager

