



**COACHES AND STAFF**





# DOUG SCHREIBER

## HEAD COACH

**4**

### 11TH YEAR

#### CAREER RECORD

285-278 (.506)

#### BIG TEN RECORD

153-144 (.515)

#### Biographical Information

Full Name..... Douglas Lee Schreiber  
Date of Birth ..... Aug. 25, 1963  
Place of Birth ..... La Porte, Ind.  
Education ..... Purdue University, B.A.,  
..... Communications  
Wife..... Sarah

#### Coaching Experience

Purdue ..... 1999-Present, Head Coach  
Arizona State..... 1995-98, Assistant Coach  
Notre Dame ..... 1994, Assistant Coach  
Butler..... 1993, Assistant Coach  
Ball State ..... 1991-92, Graduate Assistant

#### Schreiber's MLB Draft Picks

1999 Russ Morgan, pitcher ..... Houston (21)  
2000 Andy Helmer, pitcher ..... Cleveland (25)  
2001 Dave Gassner, pitcher ..... Toronto (24)  
2002 Chadd Blasko, pitcher ..... Chicago [NL] (1)  
2003 Dustin Glant, pitcher ..... Arizona (7)  
Nick McIntyre, second base ..... Detroit (20)  
2004 Simon Klink, third base ..... San Francisco (21)  
2005 Scott Byrnes, pitcher ..... Toronto (28)  
2006 Mitch Hilligoss, shortstop...New York [AL] (6)  
Chris Toneguzzi, pitcher ..... Milwaukee (13)  
Jay Buente, pitcher ..... Florida (14)  
Dan Sattler, pitcher ..... Texas (44)  
2007 Andrew Groves, pitcher ..... Colorado (11)  
2008 Josh Lindblom, pitcher ..... Los Angeles (2)  
Ryne White, first base ..... Arizona (4)  
Andy Loomis, pitcher ..... Florida (16)  
Dan Black, third base ..... San Francisco (35)\*  
Matt Bischoff, pitcher ..... New York [NL] (47)\*

\* Indicates did not sign a professional contract.

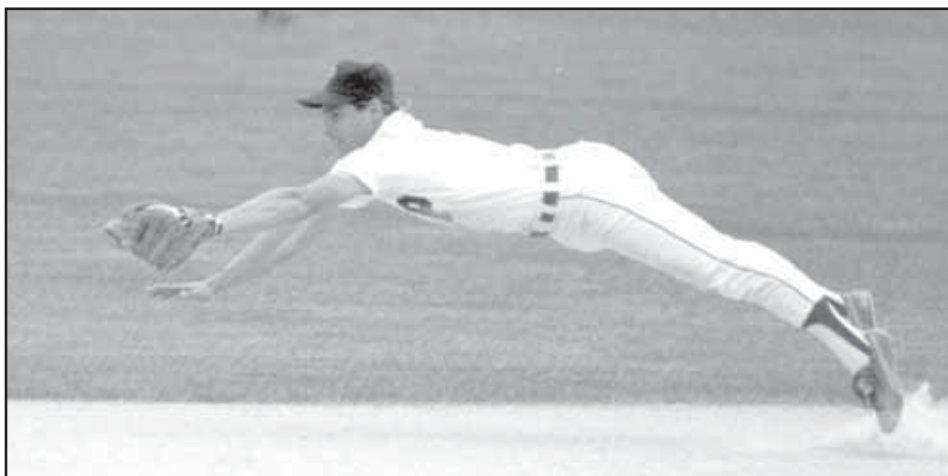
Since Doug Schreiber was named Purdue's head baseball coach on May 29, 1998, the Boilermakers have become a major force in the Big Ten Conference and have made big strides on a national level.

Entering his 11th year as the skipper at Purdue, Schreiber has posted a 285-278 overall record and a 153-144 Big Ten mark through his first 10 seasons. His overall win total ranks second in Purdue history, while his conference victories stands alone in first. In 2007, Schreiber became the third head coach in Purdue baseball history to surpass the 500-games mark as the Boilermakers' head man. Dave Alexander, whom Schreiber played for from 1983 to 1986, owns the record for most games coached at Purdue with 792 over 14 seasons, while Joe Sexson guided the Boilermakers for 527 games over 18 years.

A season removed from a 22-32 finish in 2007, Schreiber and his Boilermakers rebounded in a big way in 2008, positioning themselves for a run at the Big Ten Tournament title. Purdue advanced through the field at the conference championship and battled host school Michigan in the title game of the tournament before finally succumbing, 3-2, in Ann Arbor. The squad finished the season 32-26 overall and a very impressive 21-10 in league play to finish second in the conference standings. Six Boilermakers were recognized by the league office with All-Big Ten honors at the end of the year, including first-team members Ben Wolgamot and Matt Bischoff, while Josh Lindblom became the second-highest drafted player in Schreiber's tenure at Purdue.







Head coach Doug Schreiber was a four-year letterwinner at second base for the Boilermakers from 1983-86. He garnered second team All-Big Ten honors as a senior in 1986.

when he was selected in the second round of the June MLB First Year Player Draft.

The 2007 season looked promising in the early going as Purdue began 17-14 and 7-5 in conference action. However, a lost lead vs. eventual Big Ten champion Michigan sent the Boilermakers into a downward spiral as Purdue lost 18 of its final 23 games overall and 15 of the final 19 conference contests to finish the season 22-32 overall and 11-20 in the Big Ten. Despite the finish, the Boilermakers produced two of the top young players in the conference: consensus first team all-conference first baseman Ryne White; and pitcher and Big Ten Freshman of the Year Bischoff.

The 2006 season saw the Boilermakers post a 31-27 record and qualify for the Big Ten Tournament for a third straight season, the longest streak for Purdue since the tournament's inception in 1981. The Boilermakers produced six all-conference selections, the most since 2001, and had four players selected in the Major League draft, the most among all Big Ten schools in 2006. Early in the season, Purdue defeated No. 2 North Carolina, the eventual national runner-up, and won two of three games against No. 18 Missouri, which ended the season ranked No. 16.

The 2005 Boilermakers missed claiming its first Big Ten title since 1909 by one game, finishing second in the conference for the second time under Schreiber. Purdue continued its trend of playing one of the best schedules the nation could offer - one that was ranked as the toughest in the nation through the Spring Break trip. In the first month of the season, Purdue played Texas, the eventual national champion, and NCAA Super Regional qualifiers Mississippi and Rice.

In 2004, the Boilermakers posted the fourth winning season under the guidance of Schreiber, ending the season with a 29-28 mark. Purdue returned to postseason play, finishing fifth in the Big Ten, only two games out of second place. The Boilermakers defeated Michigan State in the first round of the Big Ten Tournament before being eliminated by the number one and two seeds.

A staple in Schreiber baseball, the Boilermakers led the Big Ten in fielding three years in a row, from 2001 to 2003.

In 2001, Schreiber and his Boilermakers were on the brink of winning the school's first baseball conference championship since 1909. The Boilermakers finished the Big Ten season in second place at 19-7, just half a game behind champion Ohio State and its 20-7 record. The 2001 Boilermakers ended the season with a 32-24 mark and set a school record for most conference wins (19) and had the highest finish of any Purdue baseball team since 1928. The Boilermakers had the top pitching staff and defense in the Big Ten in 2001, leading the conference with a team ERA of 3.67 in conference games and a .977 fielding percentage in all games.

Purdue finished the 2000 season in third place in the Big Ten with a 17-11 record, which included a dominating 9-3 mark against the other top three teams in the conference. The Boilermakers had a four-game series sweep against then-league-leader

## Purdue Head Coaching All-Time Records

### Seasons Coached

Ward Lambert .....	20
Joe Sexson .....	18
Dave Alexander .....	14
<b>Doug Schreiber .....</b>	<b>10</b>
Hugh Nicol .....	9

### Total Games Coached

Dave Alexander .....	792
<b>Doug Schreiber .....</b>	<b>563</b>
Joe Sexson .....	527
Steve Green .....	345
Ward Lambert .....	326

### Overall Wins

Dave Alexander .....	407
<b>Doug Schreiber .....</b>	<b>285</b>
Joe Sexson .....	221
Ward Lambert .....	163
Steve Green .....	163

### Overall Win Percentage (min. 100 games)

Hugh Nicol [67-36-1] .....	.649
Dave Alexander [407-378-7] .....	.518
Ward Lambert [163-156-7] .....	.511
<b>Doug Schreiber [285-278-0] .....</b>	<b>.506</b>
Dutch Fehring [84-86-5] .....	.494

### Big Ten Games Coached

<b>Doug Schreiber .....</b>	<b>297</b>
Dave Alexander .....	272
Joe Sexson .....	256
Steve Green .....	167
Ward Lambert .....	161

### Big Ten Wins

<b>Doug Schreiber .....</b>	<b>153</b>
Dave Alexander .....	107
Steve Green .....	77
Ward Lambert .....	77
Joe Sexson .....	76

### Big Ten Win Percentage (min. 50 games)

Hugh Nicol [43-30-1] .....	.588
<b>Doug Schreiber [153-144-0] .....</b>	<b>.515</b>
Steve Green [77-90-0] .....	.461
Ward Lambert [77-108-3] .....	.418
Dave Alexander [107-163-2] .....	.397

## Schreiber's Milestone Wins

1	March 6, 1999.....	18-11 vs. Kent State
25	Feb. 19, 2000 .....	4-1 at Vanderbilt
50	April 22, 2000.....	9-2 vs. Illinois
75	April 11, 2001.....	10-2 at Butler
100	March 31, 2002.....	10-6 vs. Penn State
125	March 23, 2003.....	12-2 vs. Miami (Ohio)
150	March 21, 2004.....	7-5 at Jacksonville State
175	March 19, 2005.....	2-1 at Texas A&M-Corpus Christi
200	May 27, 2005.....	4-3 at Illinois
213	April 2, 2006 #.....	9-4 at Illinois
222	April 26, 2006 % .....	13-4 vs. Valparaiso
225	May 7, 2006.....	6-2 vs. Penn State
250	May 6, 2007.....	6-1 at Penn State
275	April 25, 2008.....	6-2 vs. Minnesota
#	108th Big Ten win, becoming the winningest Purdue head coach in Big Ten action.	
%	222nd career win, surpassing Joe Sexson for second on the overall win list.	

## Schreiber's All-Big Ten Honorees

### 1999

Austin Bilke, pitcher .....	Third Team
Erik Frei, catcher .....	Third Team

### 2000

Daryl Hallada, designated hitter .....	First Team
Andy Helmer, pitcher .....	First Team
Nate Sickler, outfield .....	Second Team
Ben Quick, pitcher .....	Second Team
Jeremy Ballard, pitcher .....	Third Team

### 2001

David Blomberg, second base .....	First Team
Mike Duursma, shortstop .....	First Team
Nate Sickler, outfield .....	First Team
Dave Gassner, pitcher .....	First Team
Ben Quick, pitcher .....	Second Team
David Harrell, catcher .....	Third Team

### 2002

Chadd Blasko, pitcher .....	First Team
-----------------------------	------------

### 2003

Daniel Underwood, outfield .....	First Team
Simon Klink, third base .....	Third Team
Ben Fritz, catcher .....	Third Team

### 2004

Simon Klink, third base .....	Second Team
Mitch Koester, shortstop .....	Second Team
Trae Dauby, pitcher .....	Second Team
Andy Dahl, outfield .....	Third Team
John Hunter, designated hitter .....	Third Team

### 2005

Mitch Hilligoss, shortstop .....	First Team
Scott Byrnes, pitcher .....	First Team
John Hunter, third base .....	Second Team
Mitch Pruemer, pitcher .....	Second Team
Brent Coudron, pitcher .....	Third Team

### 2006

Mitch Hilligoss, shortstop .....	First Team
Ryne White, outfield .....	Second Team
Spencer Ingaldson, designated hitter .....	Second Team
Chris Toneguzzi, pitcher .....	Second Team
Ricky Heines, pitcher .....	Third Team
Dan Sattler, pitcher .....	Third Team

### 2007

Ryne White, first base .....	First Team
Matt Bischoff, pitcher (FOY) .....	Second Team
Tony Sedlmeyer, pitcher .....	Third Team

### 2008

Matt Bischoff, pitcher .....	First Team
Ben Wolgamot, second base .....	First Team
Brandon Haveman, outfield .....	Second Team
Josh Lindblom, pitcher .....	Second Team
Ryne White, first base .....	Third Team
Matt Jansen, pitcher .....	Third Team



and No. 25 Illinois and finished the Big Ten regular season winning three out of four games at No. 25 and conference champion Minnesota. The Boilermakers ended the season with a 35-23 overall record and owned the top pitching staff in the Big Ten, with a team ERA of 4.12 in all games.

Two of Schreiber's 10 Purdue teams have been ranked in the top 25 in the country. Baseball America ranked Purdue No. 25 in the nation after the Boilermakers opened the 2001 season with upset wins over No. 1 Rice and No. 24 Wake Forest while capturing the championship of the Coca-Cola Classic, held in Houston, Texas. It was the baseball program's first national ranking since 1993. Later that season, after posting a 13-game winning streak, the Boilermakers were ranked No. 29 by Collegiate Baseball. The 13-game streak was the nation's longest winning streak at that point in the season.

The 2002 squad entered the season ranked No. 24 in the country by the National Collegiate Baseball Writers Association (NCBWA) and No. 27 by Collegiate Baseball. It was the first time in school history that the baseball program started a season nationally ranked.

The 2000 Boilermakers earned road wins at No. 6 Alabama, No. 16 East Carolina and No. 24 Notre Dame, helping Purdue finish the year with an RPI ranking of 45th in the country. That RPI ranking was the second-best in the Big Ten that season, just one spot behind conference champion Minnesota (44th).

Schreiber believes in playing a challenging non-conference schedule each year against some of the nation's elite baseball programs. During the past seven years of the Schreiber era, Purdue has faced national powers Alabama, Auburn, Baylor, Central Florida, Clemson, Florida, Georgia, Georgia Tech, Kentucky, Long Beach State, Mississippi, Missouri, North Carolina, Notre Dame, Oklahoma State, Rice, South Carolina, Tennessee, Texas, UCLA, Vanderbilt and Wake Forest.

In 2001, Baseball America named Schreiber as one of the nation's top young Division I head coaches on the rise.

In 10 seasons as the head coach at Purdue, Schreiber has tutored 42 All-Big Ten Conference selections, including 14 who were named to the conference's first team, and has had 18 players selected in the Major League Baseball First-Year Player Draft.

Prior to becoming the head coach at Purdue, Schreiber spent four seasons (1995-98) as the top assistant coach and recruiting coordinator under Pat Murphy at Arizona State University. Schreiber helped guide Arizona State to the College World Series and the national championship game in 1998. A year earlier, the Sun Devils finished as regional





runners-up to Miami, and were two outs away from going to the College World Series. Schreiber's recruiting classes at ASU were ranked No. 1 in 1995 and No. 3 in 1996, and were nationally ranked in 1997 and 1998, as well.

Before going to ASU, Schreiber served as an assistant coach for Murphy at the University of Notre Dame in 1994. That season, the Fighting Irish finished 46-16 and ended the season just two wins shy of Omaha, finishing as regional runners-up to Auburn.

Schreiber began his coaching career as a graduate assistant under Pat Quinn at Ball State University for two seasons (1991-92) and spent one year (1993) as an assistant at Butler University.

A native of LaPorte, Ind., Schreiber was a four-year starter (1983-86) at second base for the Boilermakers. During his career, Purdue posted a 120-112-2 mark and established a school-record 37 victories his senior season when he was a second-team All-Big Ten selection. Schreiber still ranks among Purdue's career leaders in a variety of categories, including top-six ranking in four categories. Schreiber ranks first all-time in walks (132), fourth in runs scored (159), tied for third in games played (220) and tied for sixth in triples (9). He earned his bachelor of arts degree in communications and has completed some course work towards a master's in education.

Schreiber played for the Adray Sound of the Detroit Adray Summer League in 1983, where he started in the infield alongside future Major Leaguers Barry Larkin (shortstop) and Jim Leyritz (third base). Schreiber also played for the Cotuit Kettleers of the prestigious Cape Cod League, helping the team win the league championship in the summer of 1985.

Born Aug. 25, 1963, Schreiber is the son of legendary LaPorte High School baseball coach Ken Schreiber, a three-time National Prep Coach of the Year who retired in 1998. The elder Schreiber guided LaPorte to an Indiana-record seven state championships, including the 1982 season when Doug was a senior co-captain and starting shortstop. Schreiber was also named the recipient of the prestigious L.V. Phillips Mental Attitude Award presented by the IHSAA following his team's state championship run.

Schreiber and his wife, the former Sarah Piper, reside in Lafayette.



## Purdue Coaching History

### 1892-1893

W.M. Phillips Overall record 6-6 (.500)

### 1900-1901

W.H. Fox Overall record 19-10 (.655)

### 1902

Bill Priel Overall record 10-4-1 (.700)

### 1903-1904

J.C. Kelsey Overall record 15-16 (.484)

### 1905

Phil O'Neil Overall record 9-7 (.563)

### 1906-1914

Hugh Nicol Overall record 67-36-1 (.649)  
Big Ten record 43-30-1 (.588)

### 1915-1916

B.P. Patterson Overall record 19-15 (.559)  
Big Ten record 12-11 (.522)

### 1917, 1919-35 and 1945-46 (163-156-7, 77-108-3)

Ward Lambert Overall record 5-7 (.417)  
Big Ten record 3-5 (.375)

### 1918

John Pierce Overall record 6-7 (.462)  
Big Ten record 1-5 (.167)

### 1919-1935

Ward Lambert Overall record 139-131-7 (.514)  
Big Ten record 69-89-3 (.438)

### 1936-1942

Dutch Fehring Overall record 84-86-5 (.494)  
Big Ten record 25-41 (.379)

### 1943-1944

C.S. Doan Overall record 15-16-1 (.484)  
Big Ten record 5-10-1 (.344)

### 1945-1946

Ward Lambert Overall record 19-18 (.514)  
Big Ten record 5-14 (.263)

### 1947-1950

Mel Taube Overall record 52-40-3 (.563)  
Big Ten record 23-26 (.469)

### 1951-1955

Hank Stram Overall record 53-58-2 (.478)  
Big Ten record 20-39 (.339)

### 1956-1959

Paul Hoffman Overall record 52-49-2 (.515)  
Big Ten record 19-29-1 (.398)

### 1960-1977

Joe Sexson Overall record 221-298-8 (.427)  
Big Ten record 76-178-2 (.301)

### 1978-1991

Dave Alexander Overall record 407-378-7 (.518)  
Big Ten record 107-163-2 (.397)

### 1992-1998

Steve Green Overall record 163-181-1 (.474)  
Big Ten record 77-90 (.461)

### 1998

Bob Shepherd Overall record 21-20 (.512)  
Big Ten record 9-18 (.333)

### 1999-Present

Doug Schreiber Overall record 285-278 (.506)  
Big Ten record 153-144 (.515)



## SCHREIBER'S CAREER RECORD VS. OPPONENTS

The following is a conference-by-conference breakdown of Purdue's record under the guidance of head coach Doug Schreiber (1999-2008). For an all-time list of Purdue vs. other conference schools, please see pages 97 and 98.

### AMERICA EAST CONFERENCE

School	G	W	L	T	Pct.
Maine	1	0	1	0	.000
Totals	1	0	1	0	.000

**Other conference schools:** Albany, Binghamton, Hartford, Maryland-Baltimore County, Stony Brook and Vermont.

### ATLANTIC 10 CONFERENCE

School	G	W	L	T	Pct.
George Washington	1	0	1	0	.000
Saint Louis	3	2	1	0	.667
Xavier	6	4	2	0	.667
Totals	10	6	4	0	.600

**Other conference schools:** Dayton, Duquesne, Fordham, LaSalle, Massachusetts, UNC-Charlotte, Rhode Island, Richmond, St. Bonaventure, St. Joseph's and Temple.

### ATLANTIC COAST CONFERENCE

School	G	W	L	T	Pct.
Boston College	1	1	0	0	1.000
Clemson	3	0	3	0	.000
Duke	2	1	1	0	.500
Georgia Tech	2	0	2	0	.000
North Carolina	3	1	2	0	.333
Wake Forest	1	1	0	0	1.000
Totals	12	4	8	0	.333

**Other conference schools:** Florida State, Maryland, Miami, North Carolina State, Virginia and Virginia Tech.

### ATLANTIC SUN CONFERENCE

School	G	W	L	T	Pct.
Belmont	2	1	1	0	.500
Lipscomb	1	1	0	0	1.000
Totals	3	2	1	0	.667

**Other conference schools:** Campbell, East Tennessee State, Florida Gulf Coast, Gardner-Webb, Jacksonville, Kennesaw State, Mercer, North Florida, Stetson and South Carolina-Upstate.

### BIG 12 CONFERENCE

School	G	W	L	T	Pct.
Baylor	3	0	3	0	.000
Kansas State	1	0	1	0	.000
Missouri	3	2	1	0	.667
Oklahoma State	3	0	3	0	.000
Texas	3	0	3	0	.000
Totals	13	2	11	0	.154

**Other conference schools:** Kansas, Nebraska, Oklahoma, Texas A&M and Texas Tech.

### BIG EAST CONFERENCE

School	G	W	L	T	Pct.
Cincinnati	5	4	1	0	.800
Louisville	2	0	2	0	.000
Notre Dame	5	1	4	0	.200
Pittsburgh	1	0	1	0	.000
Rutgers	1	1	0	0	.000
Totals	14	6	8	0	.429

**Other conference schools:** Connecticut, Georgetown, Seton Hall, South Florida, St. John's, Villanova and West Virginia.

### BIG SOUTH CONFERENCE

School	G	W	L	T	Pct.
Coastal Carolina	3	1	2	0	.333
Totals	3	1	2	0	.333

**Other conference schools:** Charleston Southern, High Point, Liberty, UNC-Asheville, Radford, VMI and Winthrop.

### BIG TEN CONFERENCE

School	G	W	L	T	Pct.
Illinois	35	21	14	0	.600
Indiana	40	20	20	0	.500
Iowa	39	22	17	0	.564
Michigan	28	12	16	0	.429
Michigan State	22	15	7	0	.682
Minnesota	34	15	19	0	.441
Northwestern	41	22	19	0	.537
Ohio State	36	10	26	0	.278
Penn State	41	23	18	0	.561
Totals	316	160	156	0	.506

### BIG WEST CONFERENCE

School	G	W	L	T	Pct.
Cal State-Northridge	3	0	3	0	.000
Long Beach State	1	0	1	0	.000
UC-Riverside	2	0	2	0	.000
Totals	6	0	6	0	.000

**Other conference schools:** Cal Poly, Cal State Fullerton, Pacific, UC-Davis, UC-Irvine and UC-Santa Barbara.

### CONFERENCE USA

School	G	W	L	T	Pct.
Alabama-Birmingham	5	3	2	0	.600
Central Florida	1	0	1	0	.000
East Carolina	3	1	2	0	.333
Rice	2	1	1	0	.500
Totals	11	5	6	0	.455

**Other conference schools:** Houston, Marshall, Memphis, Southern Mississippi and Tulane.

### HORIZON LEAGUE

School	G	W	L	T	Pct.
Butler	2	2	0	0	1.000
Cleveland State	3	2	1	0	.667
Illinois-Chicago	1	0	1	0	.000
Valparaiso	14	11	3	0	.786
Wright State	2	0	2	0	.000
Totals	22	15	7	0	.682

**Other conference schools:** Wisconsin-Milwaukee and Youngstown State.

### IVY LEAGUE

School	G	W	L	T	Pct.
Columbia	1	0	1	0	.000
Princeton	2	0	2	0	.000
Totals	3	0	3	0	.000

**Other conference schools:** Brown, Cornell, Dartmouth, Harvard, Pennsylvania and Yale.

### METROATLANTIC ATHLETIC CONFERENCE

School	G	W	L	T	Pct.
Iona	1	1	0	0	1.000
Rider	1	1	0	0	1.000
Totals	2	2	0	0	1.000

**Other conference schools:** Canisius, Fairfield, Manhattan, Marist, Niagara, Siena and St. Peter's.

### MID-AMERICAN CONFERENCE

School	G	W	L	T	Pct.
Ball State	11	5	6	0	.456
Kent State	1	1	0	0	1.000
Miami	8	5	3	0	.625
Northern Illinois	3	3	0	0	1.000
Ohio	4	2	2	0	.500
Western Michigan	7	5	2	0	.714
Totals	34	21	13	0	.618

**Other conference schools:** Akron, Bowling Green, Buffalo, Central Michigan, Eastern Michigan and Toledo.

### MISSOURI VALLEY CONFERENCE

School	G	W	L	T	Pct.
Evansville	4	3	1	0	.750
Illinois State	9	5	4	0	.556
Indiana State	10	5	5	0	.500
Missouri State	2	2	0	0	1.000
Totals	25	15	10	0	.600

**Other conference schools:** Bradley, Creighton, Northern Iowa, Southern Illinois and Wichita State.

### MOUNTAIN WEST CONFERENCE

School	G	W	L	T	Pct.
Nevada-Las Vegas	1	0	1	0	.000
Totals	1	0	1	0	.000

**Other conference schools:** Air Force, Brigham Young, New Mexico, San Diego State, Texas Christian and Utah.

### NORTHEAST CONFERENCE

School	G	W	L	T	Pct.
Sacred Heart	1	1	0	0	1.000
Totals	1	1	0	0	1.000

**Other conference schools:** Central Connecticut State, Fairleigh Dickinson, Long Island, Monmouth, Mount St. Mary's, Quinnipiac and Wagner.

### OHIO VALLEY CONFERENCE

School	G	W	L	T	Pct.
Austin Peay	2	2	0	0	1.000
Eastern Illinois	2	2	0	0	1.000
Jacksonville State	3	3	0	0	1.000
Samford	3	2	1	0	.667
Totals	10	9	1	0	.900

**Other conference schools:** Eastern Kentucky, Morehead State, Murray State, Southeast Missouri State, Tennessee Tech and Tennessee-Martin.

### PACIFIC-10 CONFERENCE

School	G	W	L	T	Pct.
UCLA	1	0	1	0	.000
Totals	1	0	1	0	.000

**Other conference schools:** Arizona, Arizona St., California, Oregon St., Southern California, Stanford, Washington and Washington St.

### SOUTHEASTERN CONFERENCE

School	G	W	L	T	Pct.
Alabama	3	1	2	0	.333
Auburn	3	0	3	0	.000
Florida	3	0	3	0	.000
Georgia	3	1	2	0	.333
Kentucky	6	1	5	0	.167
Mississippi	3	0	3	0	.000
South Carolina	1	0	1	0	.000
Tennessee	1	1	0	0	1.000
Vanderbilt	8	2	6	0	.250
Totals	31	6	25	0	.194

**Other conference schools:** Arkansas, Louisiana State, Mississippi State.

### SOUTHERN CONFERENCE

School	G	W	L	T	Pct.
Wofford	1	0	1	0	.000
Totals	1	0	1	0	.000

**Other conference schools:** Appalachian State, College of Charleston, Davidson, Elon, Furman, Georgia Southern, UNC-Greensboro, The Citadel and Western Carolina.

### SOUTHLAND CONFERENCE

School	G	W	L	T	Pct.
Lamar	1	0	1	0	.000
Texas A&M-CC	3	1	2	0	.333
Texas-San Antonio	3	2	1	0	.667
Totals	7	3	4	0	.429

**Other conference schools:** Central Arkansas, McNeese State, Nicholls State, Northwestern State, Sam Houston State, Southeastern Louisiana, Stephen F. Austin, Texas State and Texas-Arlington.

### SUMMIT LEAGUE

School	G	W	L	T	Pct.
IPFW	2	2	0	0	1.000
Western Illinois	7	6	1	0	.857
Totals	9	8	1	0	.889

**Other conference schools:** Centenary, North Dakota State, Oakland, Oral Roberts, South Dakota State and Southern Utah.

### SUN BELT CONFERENCE

School	G	W	L	T	Pct.
Florida Atlantic	3	1	2	0	.333
Louisiana-Lafayette	1	1	0	0	1.000
Middle Tennessee St.	3	2	1	0	.667
Troy	1	0	1	0	.000
Western Kentucky	8	4	4	0	.500
Totals	16	8	8	0	.500

**Other conference schools:** Arkansas-Little Rock, Arkansas State, Florida International, Louisiana-Monroe, New Orleans and South Alabama.

### WEST COAST CONFERENCE

School	G	W	L	T	Pct.
San Diego	1	0	1	0	.000
Totals	1	0	1	0	.000

**Other conference schools:** Gonzaga, Loyola-Marymount, Pepperdine, Portland, San Francisco, Santa Clara and St. Mary's.

### NCAA DIVISION I INDEPENDENTS

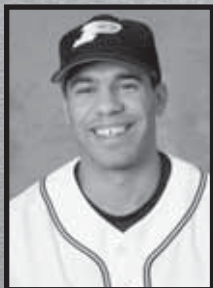
School	G	W	L	T	Pct.
Chicago State	4	4	0	0	1.000
Totals	4	4	0	0	1.000

**Other schools:** Dallas Baptist, Hawai'i-Hilo, LeMoyne, Longwood, New Jersey Tech, New York Tech, North Carolina Central, Northern Colorado, Presbyterian, Savannah State, Texas-Pan American and Utah Valley State.

### NON-DIVISION I / DEFUNCT PROGRAMS

School	G	W	L	T	Pct.
Detroit Mercy	1	1	0	0	1.000
Indiana Tech	1	1	0	0	1.000
IUPUI	2	2	0	0	1.000
Pace	1	1	0	0	1.000
Saint Joseph's (Ind.)	1	1	0	0	1.000
Totals	6	6	0	0	1.000





# SPENCER ALLEN

**ASSISTANT COACH**  
**(HITTERS/CATCHERS)**

**10**

## SECOND YEAR

### Biographical Information

Full Name.....Spencer Phillip Allen  
Date of Birth .....Dec. 10, 1977  
Place of Birth ..... Wrangell, Alaska  
Education ..... Iowa State, B.S., History  
Wife..... Jessica Draemel

### Coaching Experience

Purdue ..... 2007-Present, Assistant Coach  
Creighton..... 2005-06, Assistant Coach  
Iowa..... 2004, Volunteer Assistant Coach

Spencer Allen enters his second season as a member of the Purdue coaching staff after initially joining the Boilermaker baseball program in August 2007. He will primarily be responsible for the hitters and catchers.

In his first season on Schreiber's coaching staff, Allen helped guide the 2008 Boilermakers to a .309 team batting average, a school record and Big Ten best 124 doubles and 44 home runs. The 2008 Purdue offense posted all-time top five finishes in school history in batting average (t-4th), hits (575, 4th), runs (363, 5th), RBIs (336, 4th), doubles (1st) and total bases (857, 3rd).

Allen came to Purdue after serving as an area scout for the Detroit Tigers where his responsibilities included identifying and tracking Major League Baseball prospects in the Pacific Northwest and Canada. Allen was with the Tigers organization during the 2006 and 2007 seasons.

Prior to joining the Tigers' scouting team, Allen was a member of the coaching staff at Creighton University, handling the outfielders and catchers for the Bluejays. In Omaha, Neb., from during the 2005 and 2006 campaigns, Allen assisted with recruiting, organized travel, coordinated the program's baseball camp and monitored the academic success of the baseball student-athletes. The Bluejays compiled a 79-38 record during Allen's two seasons, winning their first-ever Missouri Valley Conference title in 2005.

Allen is no stranger to the Big Ten Conference, having served as a volunteer assistant coach at Iowa in 2004 under head coach Jack Dahm. At Iowa Allen's duties included working with the outfielders and hitters, overseeing the team's conditioning, handling on-campus recruiting and organizing the program's camps.

Allen is a 2001 graduate of Iowa State University, where he played baseball for the Cyclones for three seasons (1999-2001). An Academic All-Big 12 selection in 2001, he served as team captain during his final season and received the Scholar Athlete Award at ISU in 2000 and 2001.

Allen and his wife, Jessica, reside in Lafayette.







**RYAN SAWYERS**

**ASSISTANT COACH  
(PITCHERS)**

**25**

## FIRST YEAR

### Biographical Information

Full Name..... Ryan Daniel Sawyer  
Date of Birth ..... June 26, 1978  
Place of Birth ..... Boise, Idaho  
Education ..... West Virginia Wesleyan  
..... B.S., Business Admin  
..... West Virginia  
..... Master's, Athletic Coaching Education  
Wife..... Jaime Justice  
Children..... Brady and Chelsea

### Coaching Experience

Purdue ..... 2008-Present  
..... Assistant Coach  
Garden City CC..... 2005-08  
..... Assistant Coach  
Allegany College of Maryland..... 2004-05  
..... Assistant Coach  
Chillicothe Paints ..... 2004  
..... Assistant Coach  
Purdue ..... 2003-04  
..... Volunteer Assistant Coach  
Shepherd University ..... 2000-03  
..... Assistant Coach

Ryan Sawyer is the newest full-time member of the Purdue coaching staff, joining the Boilermakers in August. He will work primarily with the Purdue pitching staff and assist with the defense.

Sawyers, who was a volunteer assistant for the Boilermakers during the 2004 season, returns to Purdue with a league title in tow after leading the Springfield Sliders of the Central Illinois Collegiate League to the championship last summer. He was the Sliders' head coach in their first season in the league and led the team to a CICL-best 30-17 regular-season record.

Prior to joining Schreiber's staff at Purdue and his summer appointment in the CICL, he most recently served as an assistant at Garden City Community College in Garden City, Kan. During his three seasons (2005-08) with the BronxBusters he sent numerous players on to the Division I ranks and professional baseball, while also helping to lead them to a NJCAA Region VI runner-up finish in 2007.

He began his college coaching career with a three-year stint at Shepherd University (2000-03) where the Rams won three consecutive division titles and finished runners-up at the 2002 NCAA II North Atlantic Regional. Under Sawyer's direction the Rams led the West Virginia Intercollegiate Athletic Conference in ERA in 2002 and 2003.

After Shepherd, Sawyer spent a season as an assistant at Allegany College and has also served as the head coach for the Front Royal Cardinals in the Valley Baseball League and as the pitching coach for the Chillicothe Paints professional team in the Frontier League.

His collegiate playing career includes pitching two seasons at West Virginia Wesleyan College where he was named WVIAC Pitcher of the Year in 1999 and led the team in strikeouts both years. He also helped pitch Allegany College to a Junior College World Series appearance in 1997.

Sawyers, who holds a bachelor's degree from West Virginia Wesleyan and a master's degree from West Virginia, returns to Purdue with his wife, Jaime, son, Brady, and daughter, Chelsea.



**CHADD BLASKO**

**VOLUNTEER  
ASSISTANT COACH  
(PITCHERS)**

**40**

Chadd Blasko, a first team All-Big Ten selection for Purdue and the 36th overall selection in the 2002 MLB First-Year Player Draft, returns to West Lafayette as the Boilermakers' volunteer assistant coach. He will assist with the pitching staff.

Blasko, the highest drafted player during Schreiber's 10 seasons as the Boilers' skipper, pitched for three seasons with the Old Gold and Black from 2000-02. The right-hander posted a 15-10 overall record to go along with a 3.47 ERA, fifth-best in school history, and 156 strikeouts in 207 1/3 innings pitched. He was recognized with all-league honors in 2002 after going 5-3 in 12 starts with a 2.98 ERA and 78 strikeouts in 84 2/3 innings pitched.

The Chicago Cubs selected him with their supplemental pick in the first round following his junior season. He won 10 games in his first professional season and reached as high as Double-A, but shoulder issues derailed his playing career in early 2007.



# BASEBALL SUPPORT STAFF

## Baseball Operations



*Becky Beck  
Secretary*



*Chad Summers  
Student Manager*



*Daniel Scholl  
Student Manager*

## Event/Gameday Staff



*Dan Mason  
Event Manager*



*Carson Tucker  
Public Address*

## Sports Medicine/Athletic Training



*Denny Miller  
Director*



*Casey Kohr  
Athletic Trainer*



*Greg Rowdon  
Physician*

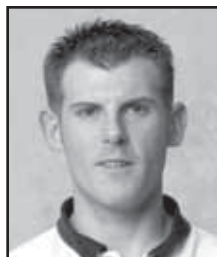


*Alayna Sundstrom  
Physician*

## Baseball Support System



*Ron Thomson  
Strength & Conditioning*



*Andrew Staley  
Equipment Manager*



*Tiffany Britten  
Academic Advisor*



*Charlie Roberts  
Ticket Manager*



*Julie Dunn  
Financial Aid*

## Promotions Staff



*Heather Hosely  
Promotions Director*



*Erin Kraebber  
Asst. Promotions Director*

## Facilities Staff



*Al Capitos  
Turf Manager*



*Jan Osting  
Groundskeeper*

## Concessions Staff



*David May*



*Barb Carter*

## Radio Broadcast



*Rob Blackman*



*Kyle Charters*



*Drew Charters*





## MORGAN BURKE

### ATHLETICS DIRECTOR

#### Athletics Administration



*Jeffrey T. Bolin*  
Faculty  
Representative



*Christine L. Sahley*  
Faculty  
Representative



*Roger Blalock*  
Senior Associate  
Athletics Director



*Nancy Cross*  
Senior Associate  
Athletics Director



*Glenn Tompkins*  
Senior Associate  
Athletics Director



*Ed Howatt*  
Associate  
Athletics Director



*Barb Kapp*  
Associate  
Athletics Director



*Tom Reiter*  
Assistant  
Athletics Director



*Tom Schott*  
Assistant  
Athletics Director



*Steve Simmerman*  
Assistant  
Athletics Director

Now in his 16th year as director of intercollegiate athletics, Morgan Burke embodies the Boilermaker spirit that drew him back to his alma mater.

During his tenure, the women's basketball team captured the national championship, the football team embarked on a run of 10 bowl games in 11 years and the men's basketball team achieved an unprecedented string of back-to-back-to-back Big Ten Conference championships.

No one wants to see the Boilermakers prevail in competition more than Burke, and few expend more energy in cheering them on to victory. But Burke views the academic accomplishments and athletic exploits as far greater than the sum of their parts.

In Burke's time at the helm of Purdue Intercollegiate Athletics, performances on and off the field reflect the high expectations that heralded his hiring.

A 1973 industrial management graduate, Burke was a member of Phi Beta Kappa scholastic honorary. After graduation, he continued at Purdue and earned a master's degree in industrial relations in 1975. In 1980, he graduated with a law degree from John Marshall Law School in Chicago.

He pursued a successful career with Inland Steel Co. after law school, moving through 13 positions in an 18-year span. He was vice president when he departed to become athletics director. When Burke succeeded George King as AD on Jan. 1, 1993, Purdue had a solid reputation for playing hard and playing by the rules. Burke pledged to build on the foundation already in place. Working with coaches and staff, aggressive goals were set.

On the athletics side, Burke's expectation was to improve the position of Purdue teams in the Big Ten and nationally. During his tenure, squads have made significant strides by both measures. In 2007-08, 14 teams earned the opportunity to play in postseason play, equaling the high-water mark in Burke's time at Purdue. On the national scene, the Boilermakers have gone from 81st in 1994-95 to 35th in 2005-06, 2006-07 and 2007-08 among 300 NCAA Division I programs.

Similar excellence was expected in the classroom - to match or surpass the overall grade-point average of the general student body. That goal has been achieved each of the last 22 semesters. Following the 2008 spring semester, the cumulative GPA for all current Purdue student-athletes was a record 2.98.

Because Intercollegiate Athletics writes a check to the university for scholarships, financial resources had to be expanded greatly to support all sports. Burke challenged Purdue alumni and fans to get on board to propel Boilermaker athletics to greatness. He set a goal of doubling the size of the 4,350-member John Purdue Club as well as doubling the \$2.5 million raised annually to support student-athletes. Both goals have been achieved, with JPC memberships now closing in on 9,000 and annual dollars raised to support scholarships and academic support services in excess of \$7 million. The goal is to raise memberships to 12,000 by 2013.

Burke and his staff have set a high standard for the future. As a rallying point on the road to preeminence, administrators coined the term "25/75 Club" to articulate a vision of an intercollegiate athletics organization that achieves an average finish in the top 25 across all sports and graduates 75 percent of student-athletes. To better reflect graduation success, the "25/75" will be altered to "25/85" and use as its metric the Graduation Success Rate (which better accounts for transfer activity) when the athletics department updated strategic plan is submitted to Purdue president France A. Córdova in December of 2008. The Graduation Success Rate presently stands at 79 percent.

Regular upgrades of competition and practice venues are vital in attracting and retaining top-student athlete and coaching talent, and that's why Burke and his staff have identified and addressed a number of facility priorities since the start of the new millennium. HNTB Architecture of Kansas City, Mo., has been retained to plan the development of a master plan for the "Northwest Site" - where soccer and tennis currently reside - to include new stadiums for baseball, softball and track and field. With this plan as a foundation, Cooke Douglas, Farr and Lemons was hired to prepare the detailed plans to upgrade the Varsity Soccer Complex and to build a new baseball facility.

Burke, 56, is married to the former Catherine J. (Kate) Mullane, a Purdue alumna and pharmacist. They have three children: Joyce, Morgan Jr. and Patrick. Joyce is a Purdue alumna working as a materials engineer; she and her husband, Ryan, reside in Austin, Texas. Morgan Jr., a Purdue graduate, is a landscape architect and works with a firm in San Francisco, where he lives with his wife Molly. Patrick is a senior at Purdue in the College of Engineering.