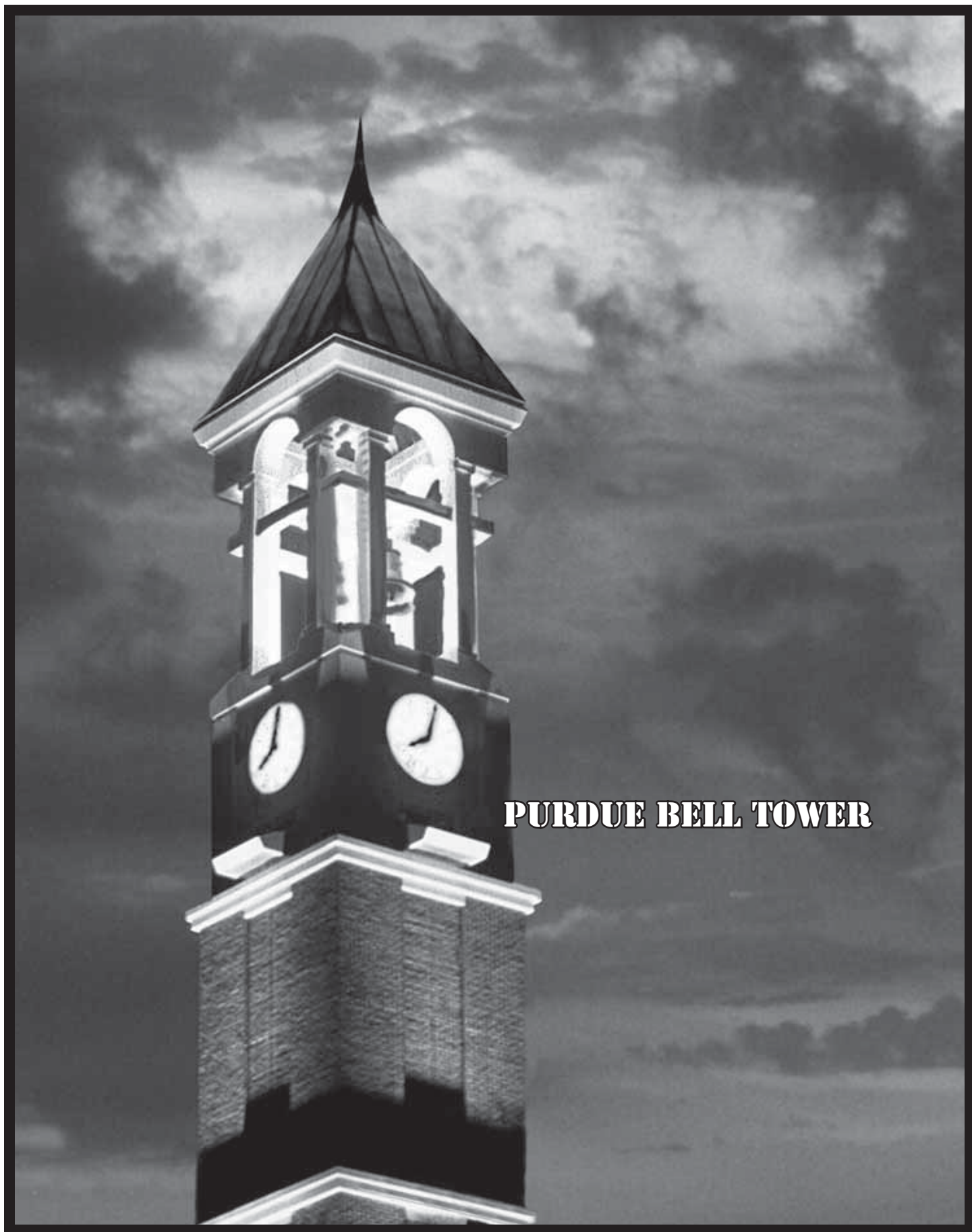
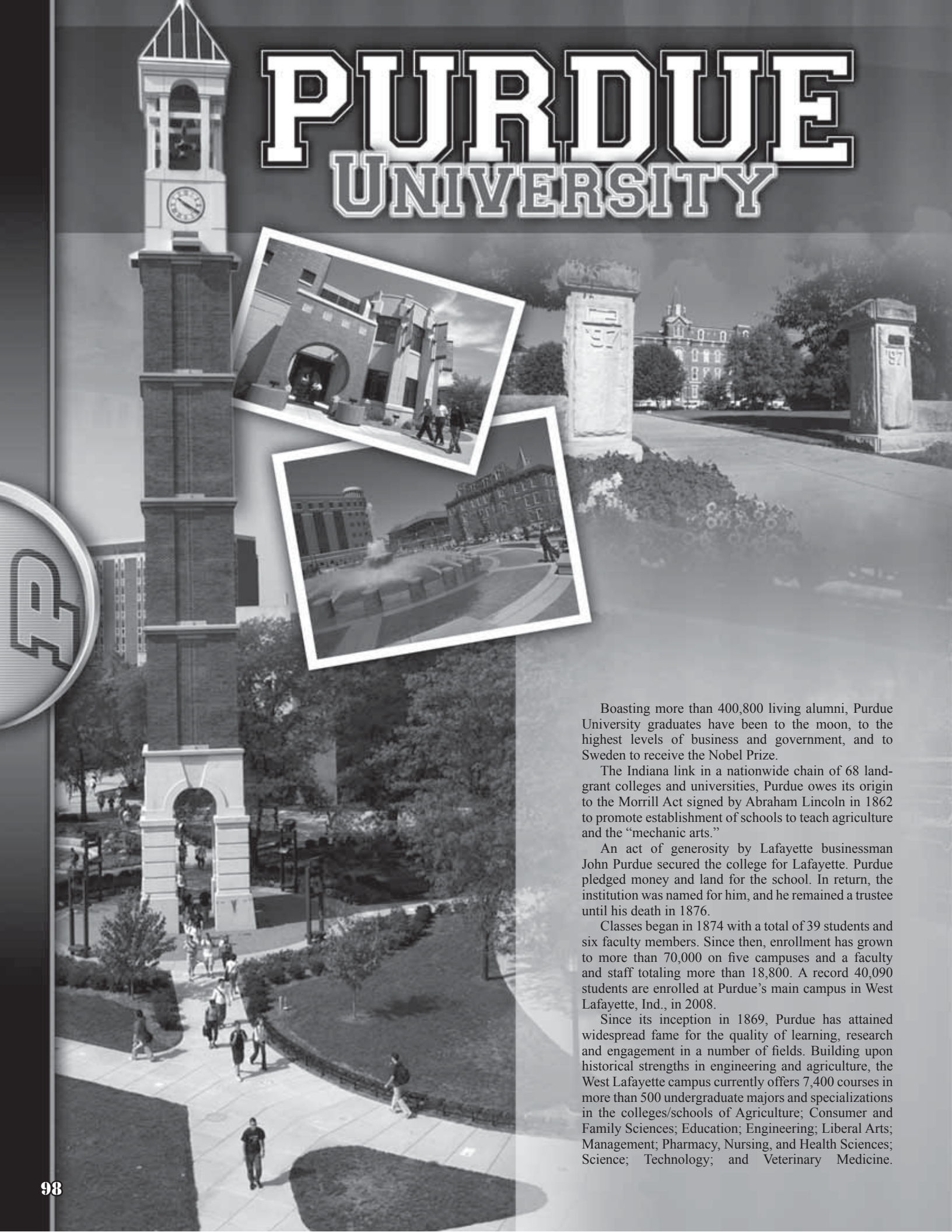


# THIS IS PURDUE



**PURDUE BELL TOWER**

# PURDUE UNIVERSITY



Boasting more than 400,800 living alumni, Purdue University graduates have been to the moon, to the highest levels of business and government, and to Sweden to receive the Nobel Prize.

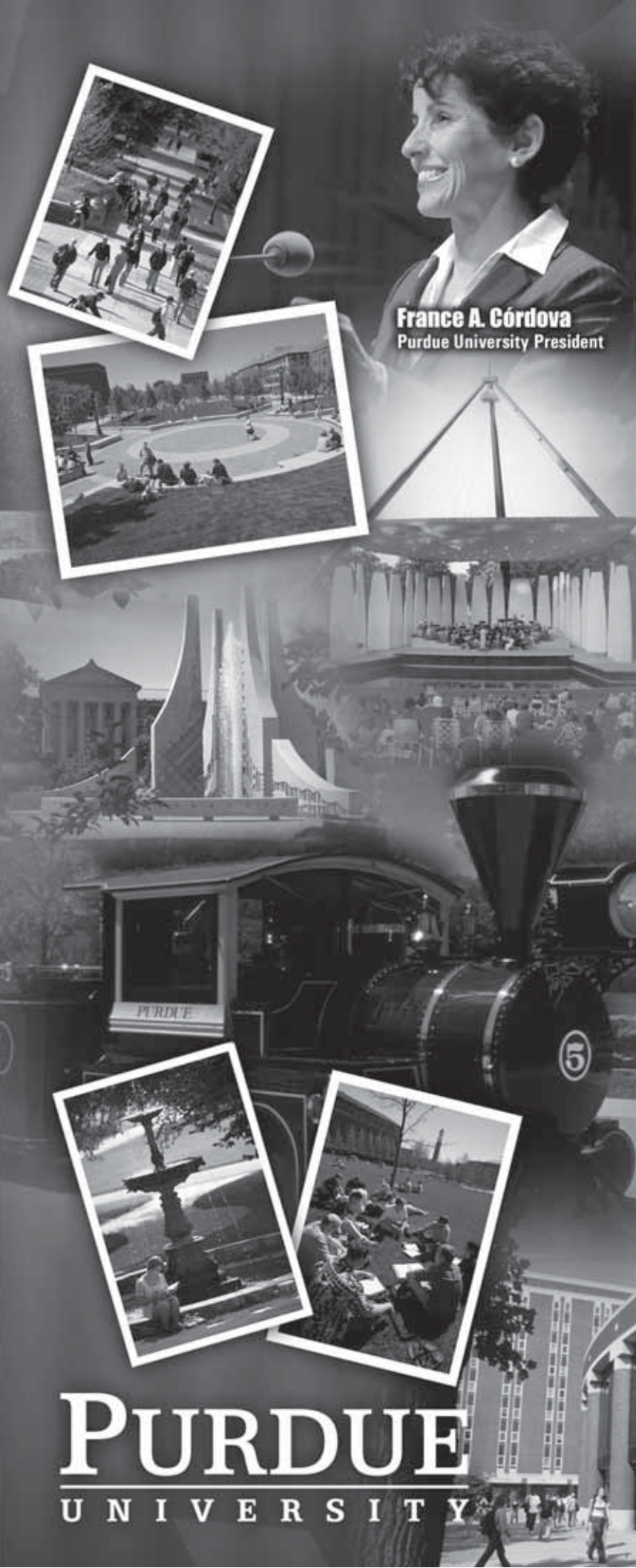
The Indiana link in a nationwide chain of 68 land-grant colleges and universities, Purdue owes its origin to the Morrill Act signed by Abraham Lincoln in 1862 to promote establishment of schools to teach agriculture and the “mechanic arts.”

An act of generosity by Lafayette businessman John Purdue secured the college for Lafayette. Purdue pledged money and land for the school. In return, the institution was named for him, and he remained a trustee until his death in 1876.

Classes began in 1874 with a total of 39 students and six faculty members. Since then, enrollment has grown to more than 70,000 on five campuses and a faculty and staff totaling more than 18,800. A record 40,090 students are enrolled at Purdue’s main campus in West Lafayette, Ind., in 2008.

Since its inception in 1869, Purdue has attained widespread fame for the quality of learning, research and engagement in a number of fields. Building upon historical strengths in engineering and agriculture, the West Lafayette campus currently offers 7,400 courses in more than 500 undergraduate majors and specializations in the colleges/schools of Agriculture; Consumer and Family Sciences; Education; Engineering; Liberal Arts; Management; Pharmacy, Nursing, and Health Sciences; Science; Technology; and Veterinary Medicine.





**France A. Córdoba**  
Purdue University President

Programs of graduate study and research leading to advanced degrees fall under the jurisdiction of the Graduate School.

Purdue is ranked 21st in the nation in the latest U.S. News & World Report top 50 public universities and, in 2004, was ranked 59th in the world and ninth among American public universities in a survey by The Times of London.

In addition to charting new paths through its instruction, Purdue also pushes back the frontiers of research, from unraveling the molecular structure of viruses to designing a self-supporting food system for space colonies to genetically engineering crops and plants for feeding an ever-increasing global population.

As one of the 25 largest colleges and universities in the United States, Purdue leaves its mark on the world – and beyond – on a daily basis. Long known as the “mother of astronauts,” the University boasts 22 graduates – 20 men and two women – who have been selected to participate in the NASA space program. From the 1960s to today, from the Mercury Program to today’s fleet of space shuttles, Purdue alumni have flown on more than one-third of all manned U.S. space flights. Neil Armstrong, the first person to walk on the moon, and Gene Cernan, the last person to leave it, both call Purdue alma mater. In addition to the astronauts, scores of scientists, engineers and other personnel who help support the space program have graduated from Purdue.

From the steam era to the space age, Purdue has forged a proud tradition of education, research and service to the state, the United States and the world – a tradition that gets stronger every day.

### Purdue University Quick Facts

Location .....	West Lafayette, Indiana 47907
Founded.....	1869
Enrollment.....	40,090
Acres .....	17,582 (14,517 for agriculture)
Buildings .....	387
Market Value of Endowment .....	\$1.8 billion
Living Alumni .....	More than 400,800
President.....	France A. Córdoba
Provost.....	William R. “Randy” Woodson
Faculty Representatives .....	Jeffrey T. Bolin
.....	Christie L. Sahley
Athletics Director .....	Morgan J. Burke
Nickname .....	Boilermakers
Colors .....	Old Gold and Black
Mascot .....	Boilermaker Special
Song.....	Hail Purdue
National Affiliation .....	NCAA Division I
Conference .....	Big Ten

# PURDUE

UNIVERSITY

PURDUE BOILERMAKERS



# LAFAYETTE WEST LAFAYETTE



West Lafayette, the location of Purdue University's main campus, is the twin city of Lafayette, the county seat of Tippecanoe County. On the banks of the Wabash River, surrounded by rich, green farmlands, the cities are located 60 miles northwest of Indianapolis and 120 miles southeast of Chicago.

With a population of more than 150,000, Tippecanoe County is one of the largest communities in northwestern Indiana, accessible from Interstate 65; U.S. Highways 52 and 231; and State Roads 25, 26, 38 and 43. Major bus lines and Amtrak trains stop daily. The Purdue Airport opened in 1930 as the first university-owned airport in the nation.

Lafayette-West Lafayette is a regional hub for restaurants, shops, museums and entertainment. The community offers three movie theaters with 25 screens, daily and weekly newspapers, 12 radio stations, a television station and cable system, 150 churches of all major denominations, an art museum, a historical museum, 2,100 acres of public parks and more than 30 miles of trails.

Nearby points of historic and scenic interest include Fort Ouiatenon, on the National Register of Historic Places; Battle Ground, where William Henry Harrison fought the Battle of Tippecanoe; and the Museum at Prophetstown and Prophetstown State Park, dedicated to the preservation of Woodland Native American agricultural and environmental heritage.

Lafayette also is home to the Long Center for the Performing Arts, Clegg Botanical Garden and Columbian Park Zoo. Located on the eastern side of the Wabash River, Lafayette shares the 13-mile long Wabash Heritage Trail with West Lafayette. Nearby Battle Ground, located northwest of West Lafayette, boasts Wolf Park, where people can see live wolves, coyotes and foxes in their natural habitat.

Not only are there places to go in Lafayette-West Lafayette, but there also are plenty of things to do. The area serves as host to numerous community events throughout the year, including the Taste of Tippecanoe, 'Round the Fountain Art Fair, Dancing in the Streets, Global Fest, Feast of the Hunters' Moon, Christmas Parade, Gus Macker 3-on-3 Basketball Tournament, Colt World Series and Trails of Tippecanoe Bike Tour.

West Lafayette has experienced a recent renaissance of sorts in an area called "the levee," located just across the John T. Myers Pedestrian Bridge from Riehle Plaza and downtown Lafayette. More than \$100 million worth of construction has gone into developing Wabash Landing. The result is numerous restaurants, shops and apartments that have made the location a new focal point for locals and students alike.

A diverse mixture of night spots, shopping centers, art museums and restaurants give Lafayette-West Lafayette a distinct and unique flavor. Boasting the convenience of a modern city and friendly "down-home" residents, Lafayette-West Lafayette is one of America's most-livable communities.

## Distance From West Lafayette To Midwestern Cities

Indianapolis, Ind. ....	60 miles
Fort Wayne, Ind. ....	114 miles
Chicago, Ill. ....	120 miles
Louisville, Ky. ....	175 miles
Cincinnati, Ohio. ....	181 miles
Milwaukee, Wis. ....	199 miles
Columbus, Ohio ....	236 miles
St. Louis, Mo. ....	265 miles
Davenport, Iowa. ....	267 miles
Madison, Wis. ....	273 miles
Detroit, Mich. ....	330 miles
Cleveland, Ohio ....	337 miles



# INDIANA

## THE CROSSROADS OF AMERICA

Indiana, "The Crossroads of America," has something for everyone. Whether you are in search of work, recreation or relaxation, the Hoosier State most likely will satisfy your needs.

Located in the heart of the Midwest, Indiana is welcoming to a variety of people because of its rich history, cultural opportunities and fertile landscape, not to mention its place as one of the major sports metropolises and industrial centers in the nation and world.

In the northwest corner of the state, one can traverse Indiana's 41-mile Lake Michigan waterfront. This area, which boasts the Indiana Dunes National Lakeshore, is good for work and play. It is home to industries that turn out iron, steel, oil, automobile parts and accessories, truck and bus bodies, aircraft engines and pharmaceuticals. Indiana gives to the world from factory to field. The state is a leader in agriculture, with corn as its main crop.

Beneath much of Indiana's rich soil is limestone. A large amount of the building limestone used in the U.S. is quarried in Indiana.

Those looking for a little adventure in Indiana can access more than 1.1 million acres of land available for outdoor recreation. Some of that land can be found in southern Indiana, where Wyandotte Cave, one of the largest caverns in the U.S., is located.

One can work and play in Indiana. But when it comes to sports spectating, Indiana is second to none. Everything starts in Indianapolis, home of the NFL Colts, NBA Pacers and WNBA Fever. The Indians, a Triple-A baseball team, play at Victory Field, while Indianapolis also is home to the Indiana Ice hockey team. During the summer, the city plays host to the Indianapolis Tennis Championships, a precursor to the U.S. Open. The summer starts with the Indianapolis 500 and draws to a close with the Brickyard 400 car races, run at the Indianapolis Motor Speedway.

Indianapolis has hosted one women's basketball and five men's basketball NCAA Final Fours. The men's finals return in 2010 and the women in 2011. Additionally, the city has conducted at least one Olympic Trials each year since 1984, including those for swimming and diving, synchronized swimming, track and field, and wrestling.

Lucas Oil Stadium, the new home of the Colts, will be the site of Super Bowl XLVI in 2012.

Whatever your pleasure is, you are sure to find it somewhere in the state of Indiana.



### QUICK FACTS

- 19th state, granted statehood on Dec. 11, 1816
- Indiana means "the land of the Indians"
- State motto is "The Crossroads of America"
- State capital is Indianapolis
- Indiana has 36,291 square miles of land
- Indiana has 92 counties
- State population in 2000 Census was 6,080,485
- 51 percent of the state population is female
- Median age is 35.2
- Five largest cities are Indianapolis, Fort Wayne, Evansville, South Bend and Gary





# ACADEMIC SUCCESS

Purdue University is a proud member of the NCAA and the Big Ten Conference. Founded in 1869, Purdue University has forged a tradition of education, research and service to the state, the United States and the world. As a Purdue student-athlete, you will receive the highest quality of education possible, coupled with a great intercollegiate athletics experience.

At Purdue University, we place value in the intercollegiate athletics experience of our student-athletes. The athletics department supports the educational mission of our institution in its pursuit of academic achievement and graduation.

Through participation in our athletics programs, students learn self-discipline, build self-confidence and develop competitive skills. Our student-athletes learn practical life lessons such as teamwork, sportsmanship, winning and losing, and hard work.

Through the Drew and Brittany Brees Student-Athlete Academic Center, you will find the resources necessary to excel as a student, a student-athlete and as a well-rounded individual.

## Academic Support Facilities

The facilities in the Drew and Brittany Brees Student-Athlete Academic Center and the staff in academic support services are available to help all of our student-athletes reach their academic goals. The Drew and Brittany Brees Student-Athlete Academic Center is located on the second floor of the Intercollegiate Athletic Facility and offers a range of academic support services for our student-athletes.

Services available include: monitored study tables; individual and group tutoring; 74-station computer lab; walk-in tutoring for math, chemistry and physics; supplemental instruction; laptop computers for traveling; and note-takers.

**Study Table** — Our main study table area is located in IAF room 220 and can seat 35 student-athletes. This room is monitored from 8 a.m. to 10:30 p.m. Monday through Thursday, from 8 a.m. to 5:00 p.m. on Friday and from noon to 10:30 p.m. on Sunday. It provides a comfortable and quiet area to study.

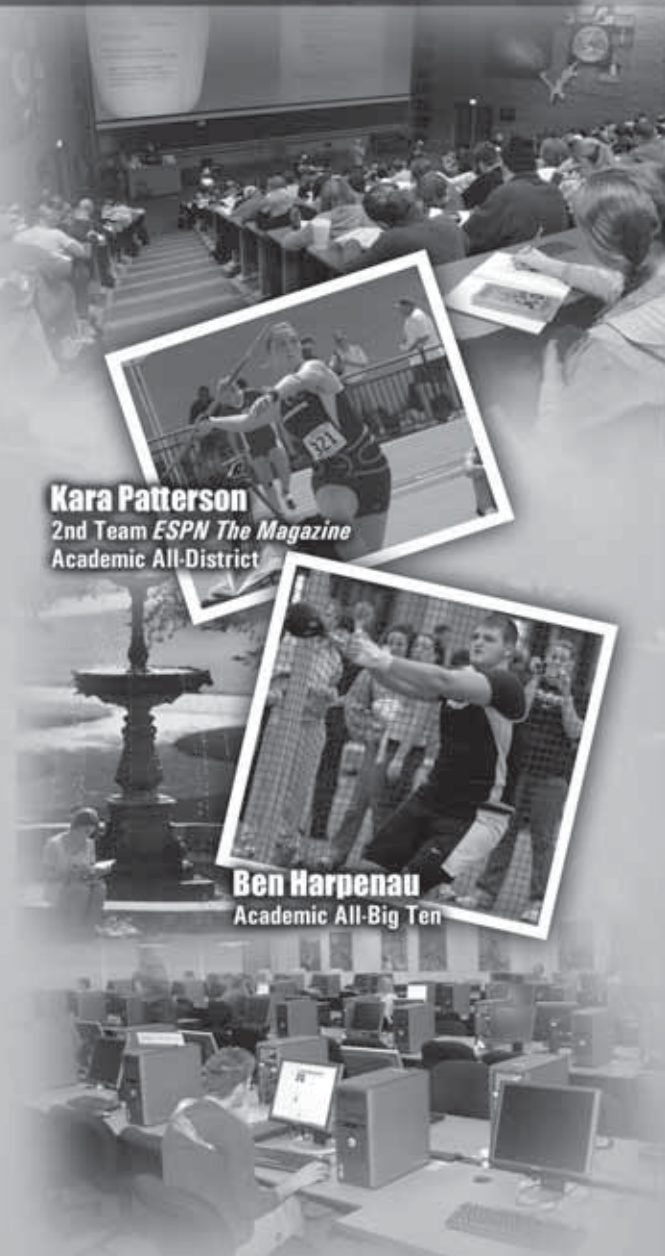
**Tutor Rooms** — We have several rooms for individual tutoring sessions in the IAF. Our student-athletes have the option to request tutors for any of their courses while here at Purdue. The facilities in the IAF provide a quiet and convenient location for those one-on-one sessions.

**Computer Lab** — We also have a 74-station computer lab in the IAF that is operated by the office of Information Technology at Purdue (ITaP). Since ITaP operates this lab there is a computer lab assistant in the room in case assistance is needed and ITaP maintains up-to-date software on all machines. The lab has 74 IBM computers, all of which have Internet connections and are connected to the University mainframe.

**Walk-In Tutoring** — Room 209B in the IAF is available for tutoring sessions (one-on-one or small group) during the day, but is reserved for our math walk-in tutor on designated evenings. IAF is also available for our Chemistry and English walk-in hours.

**Math walk-in hours** — Math walk-in tutors are located in the IAF on designated evenings. These tutors are available on a first come, first served basis for any student athlete who is experiencing difficulty in math.

**Chemistry walk-in hours** — Chemistry walk-in hours are located in the IAF on designated evenings. This service is offered on a first come first served basis for any student athlete needing assistance with any chemistry course offered at Purdue University.



**English walk-in hours** — The English walk-in tutor is located in the IAF on designated evenings. This service is offered on a first come, first served basis for any student athlete needing assistance with papers and writing projects.

**Career Resource Center** — Our Library/Career Resource Center is located in the IAF, Room 224. We house career resources and information from each of the 12 academic schools at Purdue. On Sunday evenings, the Library/Career Resource Center is reserved for the English walk-in tutor.

## Academic Mentor Program

The Academic Mentor Program was developed to provide our student-athletes with even greater support in meeting their individual academic needs. Every student-athlete presents a different academic need, and our staff wants to ensure all are receiving the necessary academic resources to succeed academically at Purdue. Mentors are individually selected to assist the program and are educated to ensure our mission of academic integrity.

## CHAMPS/Life Skills Program

Purdue is committed to providing the support necessary to make its student-athletes as successful as possible in the five commitment areas listed below.

The Purdue CHAMPS/Life Skills program is designed to help student-athletes realize their full personal, academic and athletic potential. Our staff is dedicated to providing the resources necessary to help all Purdue student-athletes realize their goals.



*Commitment to Academic Excellence*  
*Commitment to Personal Development*  
*Commitment to Career Development*  
*Commitment to Service*  
*Commitment to Athletic Excellence*

## Program of Excellence

Purdue was a 2004 recipient of the "Program of Excellence" Award. The award is given to universities whose CHAMPS programs have established student-athlete welfare as the cornerstone of their operating principles.

## Academic Recognition

**President's Cup** — At the conclusion of each semester, Purdue University's President presents an award to the athletic team with the highest semester grade point average. The President's Cup was established in 1998.

**Provost Award** — At the conclusion of each semester, Purdue's Provost presents an award to the athletic team with the most improvement from the previous semester's grade point average. The Provost Award was established in 2004.

**Honors Halftime** — At halftime of a men's basketball game each February, the athletics department takes the opportunity to publicly recognize all student-athletes who meet the following criteria: Academic All-Big Ten, Academic All-American, All-Big Ten in Sport, All-American in Sport, Team MVP, Big Ten Champions. Approximately 145 student-athletes are recognized each year.

**Senior Salute** — After four years of achieving in the classroom and on the field, Purdue's senior student-athletes receive a "thank you" from the John Purdue Club. The annual dinner brings together Boilermaker seniors for an evening of recognition and camaraderie. The evening provides the opportunity to recognize senior student-athletes who have achieved academic excellence. Each year a former Purdue student-athlete who has achieved excellence in their chosen career addresses the graduating seniors.

**Athletics Director's Honor Roll** — Each semester, all student-athletes who have achieved a semester grade point average of 3.50 and higher are recognized on the Athletics Director Honor Roll board.



**Coach's Honor Roll** — Each semester, all student-athletes who have achieved a semester grade point average of 3.00 to 3.49 are recognized on the Coaches Honor Roll board.

**Dean's List** — At the conclusion of each semester, the Registrar will indicate which students are scholastically eligible to be included on the Dean's List. The following criteria must be met:

1. Have at least 12 credit hours included in the graduation index.
2. Have at least 6 hours included in the semester index.
3. Attain at least a 3.5 graduation index.
4. Have at least a 3.0 current semester index.

**Semester Honors** — At the conclusion of each semester, the Registrar will indicate which students are scholastically eligible for Semester Honors. The following criteria must be met:

1. Have at least 6 credit hours included in the semester index.
2. Attain at least a 3.5 semester index.
3. Have at least a 2.0 graduation index.

**Academic All-Big Ten** — At the conclusion of the fall, winter, and spring athletic seasons, the Big Ten Conference honors student-athletes for achieving academic excellence. To be eligible for Academic All-Big Ten selection, athletes must be letter winners in at least their second academic year at their institution and carry a career grade point average (GPA) of 3.0 or better.

**Academic All-American** — You must be a starter or important reserve with legitimate athletic credentials and have at least a 3.20 cumulative grade point average. You must have completed at least one full academic year and have attained sophomore athletic and academic standing at Purdue University. You must have participated in 50 percent of your team's competitions at the same position. Each individual sport may have other criteria necessary to be named an Academic All-American.

## The "25/85" Club

The concept of "25/85" was developed and helped guide a comprehensive review of our athletic facilities. The "25/85" Club refers to an elite class of intercollegiate athletics departments. The term applies to those institutions that finish in the top 25 of the overall National Association of Collegiate Directors of Athletics (NACDA) Directors' Cup standings and graduate 85 percent of their student-athletes. The Directors' Cup is an award representing collective excellence in all varsity sports.

Purdue University is at the doorstep of the "25/85" Club. Over the next five years, energies will be focused on taking the next steps to national prominence.



# JOHN PURDUE CLUB



## The John Purdue Club

Since its inception in 1958, the John Purdue Club has been the home for Purdue's most loyal and devoted fans. Today, the Club is still true to the ideal first envisioned by Fred Hovde and Guy "Red" Mackey: a group of fans who share a passion for the Old Gold and Black and a commitment to providing a Purdue education for student-athletes.

Because Intercollegiate Athletics receives no funding from the state or University budgets, the success of the John Purdue Club is critical to the overall mission of the department. Each year, more than 9,000 Club members generated nearly \$6 million to underwrite the scholarship and academic support costs for student-athletes at Purdue.

John Purdue Club members provide the foundation for success – in the classroom, on the playing fields, and in life after graduation. And Club members provide the foundation of success for Boilermaker Athletics, by demonstrating through their generosity that cheers alone won't support Purdue's student-athletes.

For more information on the John Purdue Club call 800/213-2239.

## Endowed Scholarship Program Named for Grobens

The Groben Society is named for Richard "Dick" and Jeannette "Jeanne" Groben of Sarasota, Florida in honor of their generous contributions to the enduring success of Purdue Athletics. With gifts totaling more than \$1.25 million over the past year to help Purdue student-athletes, the Athletics Department has named its endowed scholarship program in honor of Dick and Jeanne.

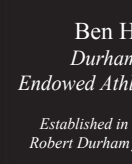
The Groben Society has been created to exclusively recognize those individuals who share the Groben's vision by investing in leadership created through the student-athlete experience. Members of the Groben Society will be recognized annually at a scholarship function during which they will have the opportunity to interact with their scholarship recipient and other Groben Society members, followed by a recognition ceremony on the floor of Mackey Arena during a basketball game. Each fall, new Groben Society members will be honored on the field at Ross Ade Stadium during a football game. Throughout the year, Groben Society members will be featured in articles in Gold and Black Illustrated, in the John Purdue Club webletter and on its website.

Today, 89 of the athletic department's scholarships are endowed. That number has grown from just 45 in 2002. Through the Groben Society, the plan is to see that number grow to more than 100 over the next few years. Over time, the goal is to endow at least half of the scholarships offered to Purdue's 500 student-athletes.



**Adetayo Adesanya**  
*Holly and Phillip Taggart*  
Endowed Athletic Scholarship

*Established in 2001 by Phil and Holly Taggart from Coto De Caza, Calif.*



**Ben Harpenau**  
*Durham Brothers*  
Endowed Athletic Scholarship

*Established in 2000 by John and Robert Durham from St. Louis, Mo.*



**Kara Patterson**  
*Durham Brothers*  
Endowed Athletic Scholarship

*Established in 2000 by John and Robert Durham from St. Louis, Mo.*



**Ben Pax**  
*Bruce and Judi Jacobs*  
Endowed Scholarship

*Established in 2006 by Bruce and Judi Jacobs of Winfield, Ill.*



**Mallory Peck**  
*Durham Brothers*  
Endowed Athletic Scholarship

*Established in 2000 by John and Robert Durham from St. Louis, Mo.*



**Stacey Wannemacher**  
*Al and Irene Kurtenbach*  
Endowed Athletic Scholarship

*Established in 2004 by Al and Irene Kurtenbach from Brookings, S.D.*





# DISTINGUISHED ALUMNI

Long known as the “mother of astronauts” and a world leader in engineering, science and agricultural education and research, Purdue University also sends its sons and daughters to make a difference around the world and at home in business, government and even entertainment.

Of the more than 400,800 living Purdue alumni, 44 percent reside in Indiana. More than 19,000 call California home, and more than 12,000 reside in Texas; the Hawaiian Islands are home to 740, and 346 live in Alaska.

Purdue graduates are pioneers and achievers in occupations as diverse as being elected to the Australian Parliament, serving as director of the National Science Foundation and heading up Disney Studios. Others have become underwater explorers, traveled the country and world as relief workers with American Red Cross, founded support groups for cancer survivors and operated the largest duckling farm in the United States.

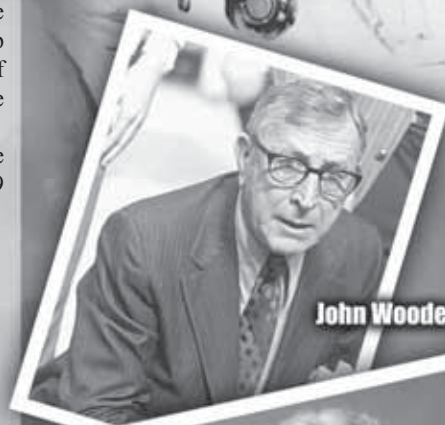
Nearly two-dozen members of the astronaut corps studied at Purdue. Notable among them are Neil Armstrong, Class of 1955, and Eugene Cernan, Class of 1956. Armstrong made history in 1969 as the first man to land a craft and step on the moon; Cernan was the last to leave it in 1972.

## **Accomplished Alumni**

- ♦ Humorist and playwright **George Ade**.
- ♦ **Ted Allen**, a food and wine connoisseur and Fab Five member of Bravo TV's Queer Eye for the Straight Guy.
- ♦ Astronauts **Neil Armstrong** and **Gene Cernan**, the first to walk on the moon and the last to leave it.
- ♦ Former U.S. Sen. **Birch Bayh**, father of former Indiana governor and current U.S. Sen. Evan Bayh.
- ♦ Tellabs chairman and Purdue trustee **Michael Birck**.
- ♦ **Beth Brooke**, Global Vice Chairman, Ernst & Young
- ♦ Dr. **Rita Colwell** - environmental microbiologist and scientific administrator
- ♦ Former presidential speechwriter and U.S. ambassador to Belize **Carolyn Curiel**.
- ♦ Hall of Fame quarterbacks **Len Dawson** and **Bob Griese**.
- ♦ **Pam Biggs Faerber**, founder of national support group for survivors of ovarian cancer.
- ♦ **Brian Lamb**, founder and chairman of C-SPAN.
- ♦ **Marge Magner**, chairman and CEO of Citigroup's Global Consumer Group.
- ♦ **Elwood Mead**, who oversaw the construction of the Hoover Dam.
- ♦ Former Indianapolis mayor **Bart Peterson**.
- ♦ **George Peppard**, actor, best known for his role as John “Hannibal” Smith on The A-Team.
- ♦ **Julian Phillips**, anchor of Fox & Friends Weekend on Fox News Channel.
- ♦ The late popcorn king **Orville Redenbacher**.
- ♦ **Ruth Siems**, home economist with General Foods, inventor of Stovetop Stuffing.
- ♦ **Faith Smith**, president of the only university to be founded and operated by American Indians.
- ♦ **Cliff Turpin**, who helped Orville and Wilbur Wright build and test their first flying machine in 1903.
- ♦ Dr. **Janice Voss**, NASA Astronaut and Science Director for the Kepler Spacecraft
- ♦ Hall of Fame basketball coach and All-American **John Wooden**.
- ♦ General Manager of the NFL's Houston Texans **Rick Smith**.



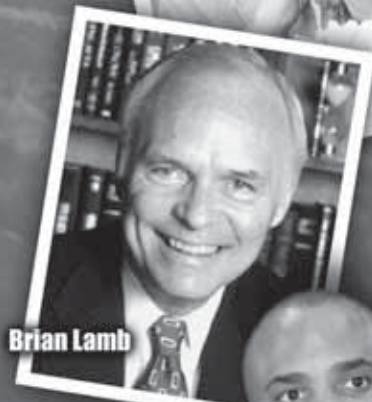
**Neil Armstrong**



**John Wooden**



**Orville Redenbacher**



**Brian Lamb**



**Ted Allen**



**Rick Smith**



# BIG TEN CONFERENCE

A meeting of seven Midwest university presidents on January 11, 1895 at the Palmer House in Chicago to discuss the regulation and control of intercollegiate athletics, was the first development of what would become one of organized sports' most successful undertakings. Those seven men, behind the leadership of James H. Smart, president of Purdue University, established the principles for which the Intercollegiate Conference of Faculty Representatives, more popularly known as the Big Ten Conference, would be founded.

At that meeting, a blueprint for the control and administration of college athletics under the direction of appointed faculty representatives was outlined. The presidents' first-known action "restricted eligibility for athletics to bonafide, full-time students who were not delinquent in their studies." This helped limit some problems of the times, especially the participation of professional athletes and "non-students" in the university's regular sporting events. That important legislation, along with others that would follow in the coming years, served as the primary building block for amateur intercollegiate athletics.

Eleven months after the presidents met, one faculty member from each of those seven universities met at the same Palmer House, and officially established the mechanics of the "Intercollegiate conference of Faculty Representatives", or "Big Ten Conference" of "Western Conference."

Those seven universities were: University of Chicago, University of Illinois, University of Michigan, University of Minnesota, Northwestern University, Purdue University and the University of Wisconsin. Indiana University and the State University of Iowa were admitted in 1899. Ohio State joined in 1912. Chicago withdrew in 1946 and Michigan State College (now Michigan State University) was added three years later in 1949.

After a 40-year period of constancy in membership, the Conference expanded to 11 members for the first time. On June 4, 1990, the Council of Presidents voted to confirm its earlier decision to integrate Pennsylvania State University into the Conference.

At the turn of the century, faculty representatives established rules for intercollegiate athletics that were novel for the time. As early as 1906, the faculty approved legislation that required eligible athletes to meet entrance requirements and to have completed a full year's work, along with having one year of residence. Freshmen and graduate students were not permitted to compete, training tables (or quarters) were forbidden, and coaches were to



be appointed by university bodies "at modest salaries."

Football and baseball were the popular sports prior to 1900. Wisconsin won the first two football championships and Chicago claimed the first three baseball titles. The first "official" sponsored championship was in out-door track. It was held at the University of Chicago in 1906 with Michigan earning the title.

Today, the Big Ten sponsors 25 championships, 12 for men and 13 for women. There have been many different athletic events popularized on Big Ten campuses. Some became extremely popular - football and basketball, for example. Others, like boxing, fell by the wayside.

The office of the commissioner of athletics was created in 1922 "to study athletic problems of the various Western Conference universities and assist in enforcing the eligibility rules which govern Big Ten athletics." Major John L. Griffith was appointed as the first commissioner and served in that position until his death in 1944. Kenneth L. "Tug" Wilson, former director of athletics at Northwestern, served from 1944 until he retired in 1961. Bill Reed, an assistant commissioner since 1951, succeeded Wilson until his death in 1971. Wayne Duke became the fourth Big Ten commissioner in 1971 and retired June 30, 1989. Duke was succeeded by James E. Delany on July 1, 1989. Delany came to the Big Ten following 10 years as Ohio Valley Conference Commissioner.

## BIG TEN CONFERENCE

### BIG TEN FACTS

- Big Ten Universities are members of the nation's only conference whose constituency is entirely composed of institutions that are members of the AAU, a prestigious association of major academic and research institutions in the United States and Canada.
- Big Ten Universities have more than four million living alumni and over 300,000 undergraduate students attending Big Ten universities.
- Big Ten Universities house on their campuses 10 of the nation's 35 largest academic libraries. Collectively, conference libraries hold nearly 70 million bound volumes and the institutions work collaboratively to build and share their resources with other league members.
- Since 1992, the Big Ten has created in excess of 2,000 new opportunities for women student-athletes and established 28 new women's teams.
- Big Ten universities provide approximately \$94 million in direct financial aid to more than 8,400 men and women student-athletes who compete for 25 championships, 12 for men and 13 for women. Conference institutions sponsor broad-based athletic programs with more than 270 teams.
- See their student-athletes graduate at a rate nine percent higher than all Division I student-athletes.
- The Big Ten recognized 2,018 Academic All-Big Ten honorees during the 2006-07 academic year, the highest total in the last decade. Over the past five years, the Conference has annually acknowledged more than 1,800 student-athletes as Academic All-Conference honorees.
- Big Ten Conference schools are among the national attendance leaders in football, men's and women's basketball and women's volleyball. During 2006-07, more than 8.7 million fans attended Big Ten home contests in those sports.





# BIG TEN NETWORK

*"Eleven schools, 252 varsity teams, one great network to cover it all. Welcome to the Big Ten Network, your ultimate source for Big Ten sports, featuring the games, passion and tradition of the nation's foremost athletic conference." — Dave Revsine, August 30, 2007, first words ever spoken on the Big Ten Network*

The Big Ten Network is dedicated to covering the Big Ten Conference and its 11 member institutions. The Big Ten Network provides unprecedented access to an extensive schedule of conference sports events and shows; original programs in academics, the arts and sciences; campus activities; and associated personalities. Sports programming includes live coverage of more events than ever before, along with news, highlights and analysis, all complemented by hours of university-produced campus programming.

The Big Ten Network is a joint venture between subsidiaries of the Big Ten Conference and Fox Cable Networks. The Big Ten Network reaches a national audience through distribution arrangements with approximately 240 cable and satellite companies.

In its "freshman season," the Big Ten Network televised more than 400 live events, plus hundreds of hours of original programming, classic games, coaches' shows and campus programming. Virtually all of the network's live event programming is available in high definition.

The network is led by President Mark Silverman, a former Disney executive who came to the network after serving as the general manager and senior vice president of ABC Cable Networks Group since April of 2004, managing the company's equity in such channels as Lifetime Television, A&E Network and the History Channel, each of which recorded their best financial performance in 2005. Silverman was also responsible for developing and launching new cable channels, shows and other key initiatives.

Located in the historic Montgomery Ward building in Chicago, the Big Ten Network is the first national television network to call the largest city in the Midwest its home. The original section of the building was designated as a historic landmark in 2000 for its significant role in American retail history. The space includes two studios and three control rooms as well as a 20,000 square-foot office space.

In May of 2007, the Big Ten Network announced its first on-air hire, signing ESPN college sports expert Dave Revsine to be its lead studio host. Revsine joined ESPN in October of 1996 as an anchor for ESPNNews and filled a variety of roles for the network over the past 10 years. The Northwestern graduate has anchored SportsCenter, hosted ESPN Radio's College GameDay for the last six years and hosted ESPN Radio's coverage of several BCS Championship games. He also hosted studio halftimes for basketball and co-hosted ESPN's coverage of the last two men's Final Fours.

In addition to airing more coverage of Big Ten sports than ever before, the Big Ten Network will also provide numerous benefits to communities around the Big Ten. Those include increased exposure for women's sports, providing positive role models for girls; a greater economic impact to the communities from added sporting event production, with the potential to generate higher attendance; and greater national exposure for the excellence that surrounds the academic endeavors of Big Ten universities, some of the most highly regarded in the nation. Also, an internship program at each of the 11 universities will offer students training for careers in sports, television and entertainment.

The Big Ten Network is a joint venture between subsidiaries of the Big Ten Conference and Fox Cable Networks. For more information regarding the Big Ten Network, visit [BigTenNetwork.com](http://BigTenNetwork.com).



Big Ten Network President Mark Silverman (from left), Fox National Cable Sports Networks President Bob Thompson, Chicago Mayor Richard M. Daley, Big Ten Commissioner James E. Delany and Illinois Department of Commerce and Economic Opportunity Director Jack Lavin announce the official Big Ten Network headquarters location at the historic Montgomery Ward building in Chicago.



Mark Silverman



Dave Revsine



**BigTenNetwork.com**

For video highlights of Big Ten teams, human interest features on your favorite student-athletes and all the latest happenings in the Big Ten, log onto [BigTenNetwork.com](http://BigTenNetwork.com). The network's online home also contains statistics, schedules and more.

Want to know when you can catch your team on Big Ten Network? When can you see last night's game again? Which classic games are coming up? The answers can be found on [BigTenNetwork.com](http://BigTenNetwork.com) where each school has a page that lists all of its upcoming programming.

## Big Ten and Comcast Reach Agreement

Comcast Corporation and the Big Ten Network announced a long-term multimedia agreement for Comcast to carry Big Ten Network programming across television, broadband and video-on-demand in time for the 2008 college soccer season.

Under the terms of the agreement, Comcast launched the network as part of its expanded basic level of service to promote it to the majority of its customers residing in states with Big Ten universities on Aug. 15. In spring 2009, Comcast may elect to move the network to a broadly distributed digital level of service in most of its systems in these states.

P  
U  
R  
D  
U  
E  
B  
O  
I  
L  
E  
R  
M  
A  
K  
E  
R  
S



# SPEED, STRENGTH & CONDITIONING

An effective speed, strength and conditioning program is essential to success in athletics today. This program has two primary goals: Performance enhancement — to enable the student-athlete to better perform in his or her sport by developing greater speed, strength, explosive power, agility and work capacity and injury prevention to reduce the likelihood of injury by better conditioning the body to withstand the rigors of sport, through effective use of core strength exercises to provide muscular balance; and plyometric exercises and conditioning drills to ensure the fitness of athletes, allowing them to perform at a high level over the course of their competitions. This is a developmental process that occurs over the course of an effective year-round, sport-specific speed, strength and conditioning program.

The Purdue speed, strength and conditioning program addresses those specific concerns by providing an effective training environment for Purdue athletics' greatest assets, its student-athletes. This environment is created by the speed, strength and conditioning staff, in conjunction with each sport coach, to develop a sport-specific training program to enhance those physical characteristics necessary to compete and excel in Big Ten and national competition. This program is implemented in one of the finest training centers in the country. The football, softball, wrestling, baseball, women's basketball, soccer, men's and women's track and field, and men's and women's golf teams train in the nearly 14,000-square-foot Mollenkopf Athletic Center weight room and adjoining indoor football practice field. This facility is fitted with all the equipment necessary to provide quality work for Purdue student-athletes in their respective sports.

Paramount in creating a training environment that will breed physical excellence is Purdue's qualified and highly motivated staff, which provides daily hands-on instruction in the techniques, skills and mental approach necessary to allow all student-athletes to excel in their physical training. The positive interaction between the student-athletes and speed, strength and conditioning coaches ensures that highly motivated athletes will receive the best experience possible and allow them to achieve their goals for themselves and their teams. As we like to say, the road to championships is paved with iron.





# ATHLETIC TRAINING

Purdue University has a long and rich history in health care for the student-athlete and in athletic training education. William E. "Pinky" Newell was the Purdue athletic trainer from 1949 to 1976. He was a founding father of the National Athletic Trainers Association (NATA) and was a leader in the development of formal educational programs in athletic training. His foresight and commitment to the profession and to Purdue student-athletes has placed Purdue among the leaders in care of athletes and the education of athletic trainers.

Purdue University Sports Medicine utilizes on-site daily care by the athletic training staff and team physicians, as well as consultants in orthopedics, dentistry, ophthalmology, neurology, and other medical specialties in Lafayette/West Lafayette and Indianapolis. With a staff of nine athletic trainers and more than 20 physicians and other health science professionals, the Purdue student-athlete's health is well cared for.

Purdue attracts some of the finest athletic trainers in the country. The nine athletic trainers on the Purdue staff were drawn here by the reputation of the athletic training program. Every athletic trainer at Purdue is highly qualified; each has a master's degree, a physical therapy degree or a PhD. Most athletic trainers on the Purdue staff also teach courses in the athletic training education program.

Every Purdue sport has its own staff athletic trainer, along with a complement of athletic training students, to care for Boilermaker student athletes.

The reputation of Purdue's athletic training education program reaches nationwide. Graduates of the program are head and assistant athletic trainers in the NFL, NBA, the Big Ten and the Pac-10, as well as other conferences across the country. They also serve in high schools and clinics in all parts of the United States.



**Dr. Greg  
Rowdon**



**Dr. K. Donald  
Shelbourne**



**Dr. Alayne  
Sundstrom**



**Denny  
Miller**



**Larry  
Leverenz**



**Jessica  
Lipsett**



**Alice  
Wilcoxson**



**Kara  
Kessans**



**Salvador  
Vallejo**



**Jeff  
Stein**



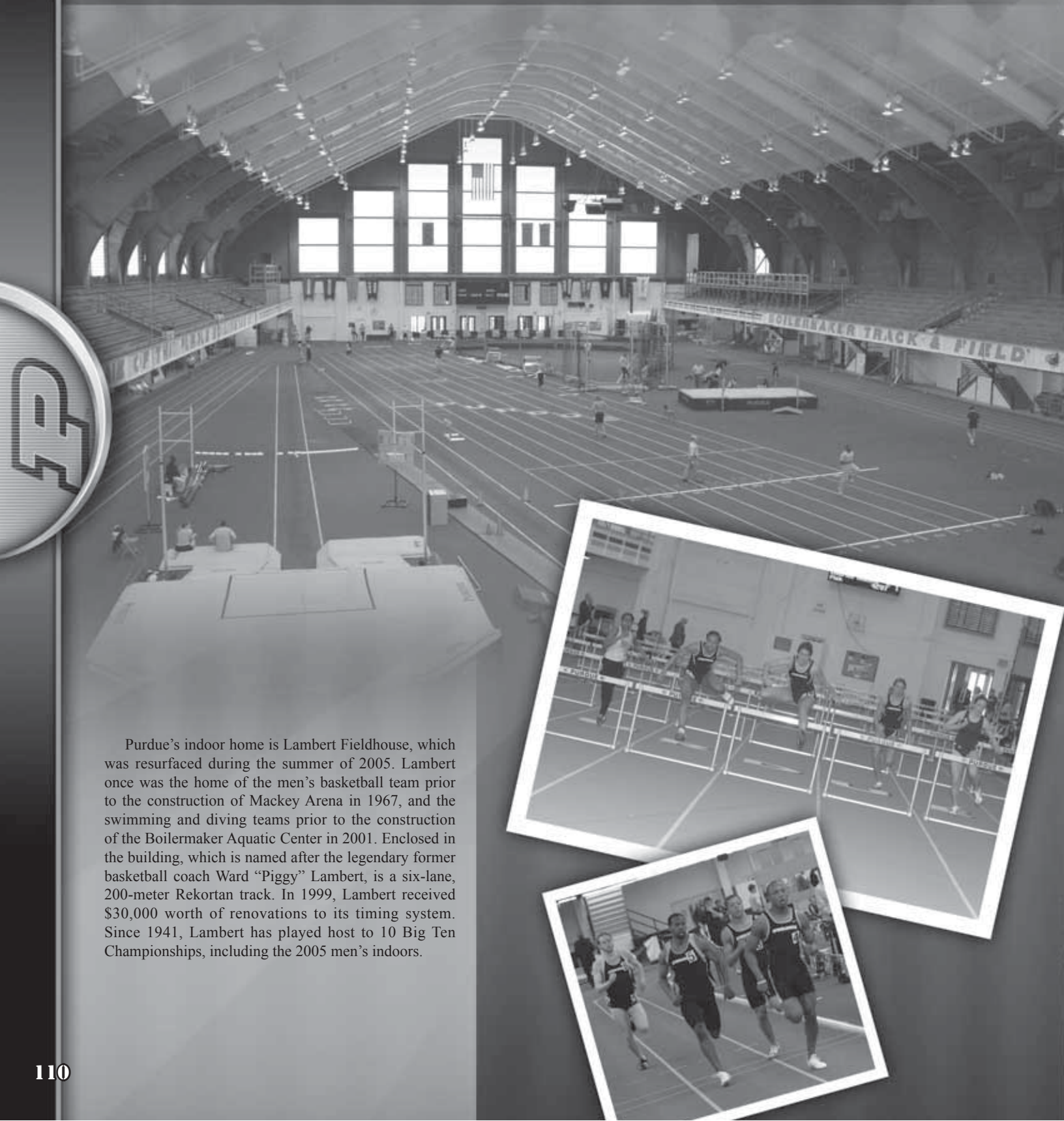
**Craig  
Voll**



**Casey  
Kohr**



# LAMBERT FIELDHOUSE



Purdue's indoor home is Lambert Fieldhouse, which was resurfaced during the summer of 2005. Lambert once was the home of the men's basketball team prior to the construction of Mackey Arena in 1967, and the swimming and diving teams prior to the construction of the Boilermaker Aquatic Center in 2001. Enclosed in the building, which is named after the legendary former basketball coach Ward "Piggy" Lambert, is a six-lane, 200-meter Rekortan track. In 1999, Lambert received \$30,000 worth of renovations to its timing system. Since 1941, Lambert has played host to 10 Big Ten Championships, including the 2005 men's indoors.



# DAVE RANKIN TRACK & FIELD

PURDUE BOILERMAKERS



Purdue's outdoor home is Rankin Track and Field, which was laid out at its present site of Stadium Drive in 1953. The facility is named after Dave Rankin, a former Purdue athlete and track and field coach. The 400-meter track consists of nine lanes that envelope a field containing pole vault and high jump runways at the south end, and long and triple jump runways on both the east and west sides. The generous field provides ample space for all throwing events. The complex also includes a press box with a viewing deck, as well as a scoreboard valued at \$360,000, installed in 1999.





# BOILERMAKERS IN THE PROS

The Purdue University track and field program has deep ties with the world of professional sports, not only within the emergence of track and field sports over the past 15-20 years, but also with the National Football League (NFL). This list of Boilermakers gives a great illustration of how the Purdue track and field program has helped athletes perfect their talents and allow them to succeed at an elite level.

## **Ann Stechshulte-Alyanak**

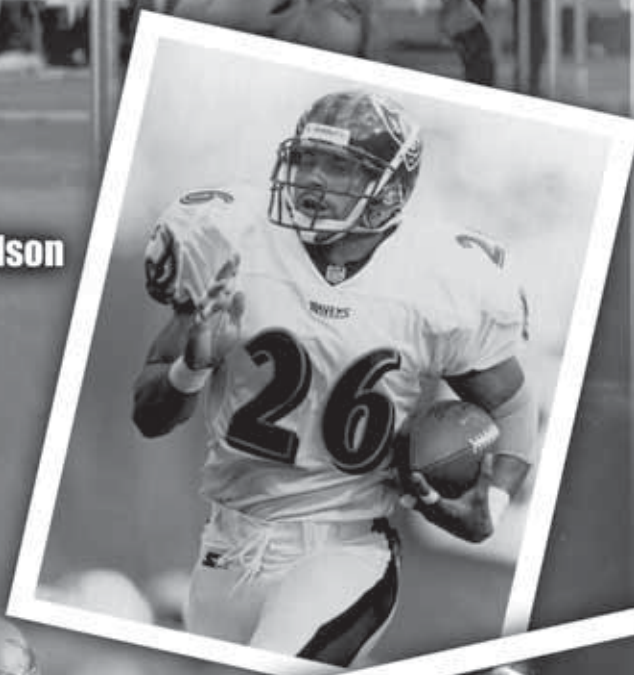
The most recent success story of the Purdue program, Ann Alyanak (then Stechshulte) was the USA's top finisher at the 2007 World Championships in Osaka, Japan, and placed second at the USA Championships in Boston last April.

## **Rod Woodson**

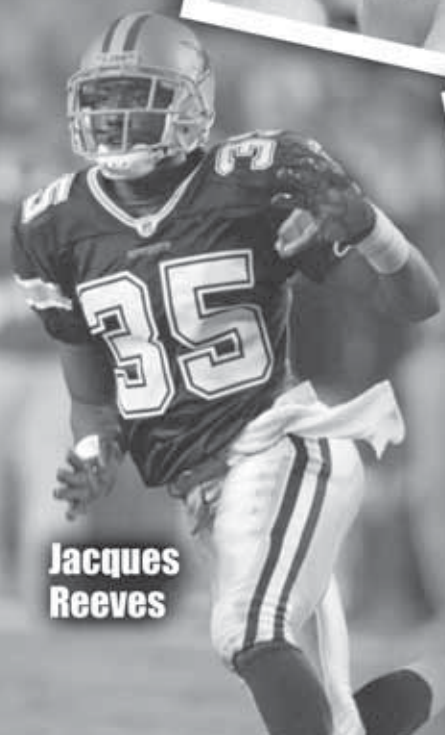
Rod Woodson is one of the top hurdlers in Purdue history and one of the great Purdue football players to ever play in the NFL. In 17 NFL seasons, he was an 11-time All-Pro selection, and in 1994, he was named to the NFL's 75th Anniversary Team.

Other Boilermakers who have gone on to compete professionally include Brian Alford, Larry Burton, Cris Dishman, Mel Gray, Ed Langford (also a 2007 inductee to the Purdue Intercollegiate Athletics Hall of Fame), Nedzad Mulabegovic, Jacques Reeves, Serene Ross, Vinny Sutherland, Ray Williams and Toyinda Wilson-Smith. As the level of talent for the Old Gold and Black goes up year-by-year this list will continue to expand and bring honor and prestige to the Purdue track and field program.

**Rod  
Woodson**



**Jacques  
Reeves**



**Ann  
Stechshulte**

