

Table of Contents

BOILERMAKERS



Table of Contents

Table of Contents and Quick Facts	1
2004-05 Outlook	2-3
Head Coach Devon Brouse	4-5
Associate Head Coach Greg Robertson	6
Assistant Coach JoJo Robertson	7
Golf Support Staff	8
Onnarin Sattayabanphot	9
Myrte Eikenaar	10
Caroline Haase	11
Kara Eschbach	12
Katie Fenn/ Whitney Frykman	13
Sarah Hughes/ Carolyn Mess	14
Casey North/ Danielle Wolter	15
Birck Boilermaker Golf Complex	16-17
Kampen Course Hole-by-Hole	18-19
Tom Spurgeon Golf Training Center	20
Boilermaker Practice Facility	21
Purdue University	22-23
John Purdue Club	24
Purdue Alumni	25
Academics	26-27
Compliance Guidelines	28
Purdue Spirit	29
Greater Lafayette	30
Indiana	31
Boiler Cup	32
Awards and Honors	33
Big Ten/ Team Championships	34
Individual Records	35
Team Records	36
All-Time Roster	37
Year-by-Year Results	38-40

Media Information

Purdue Golf Information

All releases, tournament recaps and statistics will be available on the official Purdue Intercollegiate Athletics Web site, purduesports.com.

If you wish to receive e-mails containing results and tournament information, contact Elliot Bloom in the Sports Information office at ebloom@purdue.edu or (765) 494-3196.

Purdue Golf Newsletter

Approximately six times a year, a newsletter is sent to fans, alumni and friends of Purdue Golf. If you wish to receive a copy of the newsletter, contact Elliot Bloom in Sports Information or associate head coach Greg Robertson at (765) 496-3935 or email him at grobertson@purdue.edu.

Interview Policies

Player interviews must be set up through Elliot Bloom of the Sports Information office. Coach Devon Brouse can be contacted directly in his office on weekday mornings at (765) 494-2290.

Tournament Coverage

Media planning to cover any golf tournament should contact the host school's sports information office for credentials.

Tournaments hosted by Purdue are open to all media. Credentials will be issued by the Purdue Sports Information office.

Directions to the Birck

Boilermaker Golf Complex

From the North

Take I-65 south to Exit No. 193 (US 231). Take US 231 south to US 52 (approx. 12 to a red flashing light). Turn left on US 52 (approx. five miles, veer right onto ramp for Purdue/West Lafayette Northwestern Avenue). On Northwestern Avenue, proceed to second stop light and turn right onto Cherry Lane. Golf complex will be on your right.

From the South

Take I-65 North to Exit No. 175 (SR 25). Off the exit, turn left at stoplight. Go to first stoplight, US 52 and turn right. Go to fourth stoplight, Yeager Road and turn left. Go to next stoplight, Northwestern Avenue, turn left. At second stoplight, turn right on Cherry Lane. Golf complex is on your right.

From the West

Take SR 26 to West Lafayette (becomes State Street). Follow State Street to Grant Street and turn right. Turn left onto Northwestern Avenue At the second stop light, turn left onto Cherry Lane. Golf complex will be on your right.

From the East

Follow SR 231 into West Lafayette, which becomes South River Road once you're across the river. At the stoplight turn left onto State Street. Turn right at Grant Street. Turn left onto Northwestern Avenue. At the second stop light, turn left onto Cherry Lane. Golf Complex will be on your right.

2005 Information Guide Credits

The 2005 Purdue Women's Golf Information Guide was produced by the Purdue Sports Information Office.

Editor: Elliot Bloom.

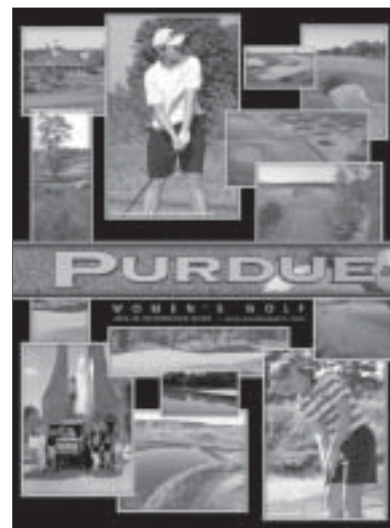
Editorial Contributors: Jay Cooperider, Tom Schott, Kathleen Offer, Mark Leddy, Wendy Mayer, Chris Macaluso, Lindsay Begley, Andrew Denham, Joe Pinter, Billy Buckles and Jen Bahan.

Photography: Tom Campbell, DIS Photographic Services, Jay Cooperider and Elliot Bloom.

Cover Design: Brandon Ray.

Prepress Assistance: Mindy Irby.

On the Cover: (Left to Right) 2004-05 team photo, Onnarin Sattayabanphot and Myrte Eikenaar.



BOILERMAKERS

2004-05 Season Outlook

Pursuing Excellence ...

The Boilermakers look to make sixth-straight NCAA appearance



Sophomore Myrte Eikenaar



Junior Onnarin Sattayabanphot

The Purdue women's golf team begins the 2005 season looking to make yet another trip to the NCAA Championships and to improve on last year's 22nd-place finish.

Appearances in the NCAA Championships have become the norm in this, Devon Brouse's seventh season, while such an accomplishment was unheard of prior to Brouse's presence as head coach.

Since Brouse arrived at Purdue, the men's and women's teams have made the NCAA Championships seven of 11 combined chances. He has produced 15 All-Big Ten, three All-American and six Academic All-American golfers.

Purdue has competed in the last five national championship tournaments, a feat only eight schools can claim.

"The significance of this is that it shows consistency in terms of achievement. It also shows that our players are competing at a high level. I can't name the other seven schools off the top of my head, but I'm sure the other schools are schools like Arizona, Duke, Texas, and Florida. Those are the SunBelt schools, and it's always our challenge to compete with them. It's a real tribute to our team to have been able to do just that."

For Purdue to extend the streak, the Boilermakers will need solid scores from the bottom end of their starting five.

This season, the Boilermakers' young lineup will aim to make it six appearances in a row at the NCAA Championships behind sophomore Myrte Eikenaar, who came to campus last season by way of the Netherlands. Junior Onnarin Sattayabanphot, "Moo" for short, who led Purdue with a 76.1 strokes-per-round scoring average during the 2003-2004 season, will also help lead the team.

"I think Myrte really gave our team a lift coming in January. I think it's safe to say that we would not have been able to make it to nationals and play well the way we did without her. She really filled the hole for us nicely. Myrte has made a tremendous impact, and she and Moo will probably be our top players. They are right there with the top players in the country. I made the statement all fall that we're going to be just as good as those two leaders lead us to be. They're certainly capable, and I expect them to play with the top players in the country."

Expect true freshman Whitney Frykman to claim one of the remaining spots, along with sophomore Caroline Hasse.

Frykman finished second on the team at the Mercedes-Benz Invitational, just her second college meet. She made the cut at the 2004 U.S. Women's Amateur Championships before arriving at Purdue.

"Whitney's performance this fall was a continuation of her good summer. We challenged her when we recruited her to go out and compete last summer and move up to the next level for college golf. It's going to be exciting to watch her progress. Her challenge for the spring will be continuing to improve. She's certainly capable, and I do think as a freshman it is a challenge to make the move to that spring semester with more confidence, and the same work ethic and competitive spirit she had this fall. If she does that, then she is going to be a strong contributor to our team."

“

"If we can put everything together and play with confidence, we will compete with the best teams in the nation, as well as the best in the Big Ten."

- Head coach Devon Brouse

Including Frykman, the Boilermakers welcome six newcomers. Camie Mess, Danielle Wolter, Casey North, Sarah Hughes and Katie Fenn are also freshmen looking to nab playing time.

"I think the freshmen are all players who could break into the starting lineup. The depth and ability of this class is important for our future."

Redshirt freshman Kara Eschbach fills out the roster. Brouse is thrilled with how hard Eschbach has worked.

"Kara has improved, probably as much, if not more, than anybody on the team. She went from a walk-on to a starter. She redshirted last year, her freshman year. To be in the lineup the next year after being a walk-on certainly shows a lot of progress. Kara is going to be a nice player in the future for us, definitely."

"The key is one of the things I've already alluded to, and it is for Myrte and Moo to really lead us, and certainly both players can compete with anyone in the Big Ten and even the country. We feel like if we can put everything together and play with a lot of confidence, we can play with anybody."

2004-05 Season Outlook

The Boilermakers will play a schedule that takes them to 11 different states to play against some of the best competition and in the most prestigious tournaments. This season, they play in a wide array of locales, from Nevada to Puerto Rico.

"Well, the fall schedule was very demanding," Brouse said. "We went all around the country, including the Match Play Championship at the end of the fall, where all the best teams in America are invited. Opening up the spring season, for the third year, we are hosting the Lady Puerto Rico Classic. We try and attract the top teams in America and have had great success doing that. After that, we're going to go down to the University of Florida tournament and then head to Las Vegas for our spring break trip. Then, we have our own Lady Boilermaker Invitational, a Wake Forest tournament in Greensboro, North Carolina, and Ohio State's tournament. Our goal is to not only compete, but to try to improve every week to be prepared for the Big Ten Championships."

The Boilermaker coaching staff has a new assistant coach in Jennifer "JoJo" Robertson, who aids Brouse mainly with the women's team, while associate head coach Greg Robertson helps mostly with the men.

"Both assistants have a tremendous work ethic. The energy and enthusiasm they have for Purdue golf is fantastic and we have made much progress because of them. Every season the assistants seem to bring more to our program."

Brouse looks forward to success, but he goes easy on setting lofty goals.

"I try not to put expectations on our squad. Certainly to win in the Big Ten is always our objective. Focusing on improvement is how we will do that. If we can do that, I feel like we can go on and compete nationally. How well we will do nationally is hard to say. There are a lot of good teams. We have to do well at regionals to get to nationals. I just want to have them ready and peaking at the right time. We believe we are capable if we put things together."

Golf Quick Facts

University

Location West Lafayette, Ind.
 Founded 1869
 Enrollment 38,564
 Nickname Boilermakers
 School Colors Old Gold and Black
 Affiliation NCAA Division I
 Conference Big Ten
 President Dr. Martin C. Jischke
 Alma Mater (Year) MIT (1968)
 Athletics Director Morgan J. Burke
 Alma Mater (Year) Purdue (1973)
 Ticket Office Phone (800) 49-SPORT
 Faculty Representatives
 Dr. Christie L. Sahley
 Jeffrey T. Bolin

Sports Information

Golf SID Elliot Bloom
 Phone (765) 494-3196
 Fax (765) 494-5447
 Email ebloom@purdue.edu
 Website www.purduesports.com
 Address Room 15, Mackey Arena
 West Lafayette, IN
 47906

Purdue Coaching Staff

Head Coach Devon Brouse
 Alma Mater (Year) Purdue (1971)
 Associate head coach Greg Robertson
 Alma Mater (Year) Oklahoma State (1997)
 Assistant coach JoJo Robertson
 Alma Mater (Year) Oklahoma State (1999)
 Golf office phone (765) 494-2290

Home Course Information

Home Course Facility
 Birk Boilermaker Golf Complex
 Location West Lafayette, Ind.
 Primary Course Kampen Course
 Par 72
 Yardage 6,181
 Secondary Course Ackerman Hills
 Par 72
 Yardage 5,900

Squad Information

2004 Big Ten Finish 4th
 2004 NCAA Finish 22nd
 Starters returning/lost 4/1
 Top returnees Myrte Eikenaar and
 Onnarin Sattayabanphot

2004-05 Roster

Name	Class	Hometown (High School/ Previous School)
Kara Eschbach	RS-Fr.	Grosse Ile, Mich. (Grosse Ile)
Myrte Eikenaar	So.	Diepenveen, Netherlands (Etty Hillesum Lyceum)
Katie Fenn	Fr.	Mansfield, Texas (Trinity Valley)
Whitney Frykman	Fr.	Acworth, Ga. (Harrison)
Caroline Hasse	So.	Culver, Ind. (Culver Academy)
Sarah Hughes	Fr.	Fort Wayne, Ind. (Bishop Dwenger)
Carolyn Mess	Fr.	Fort Wayne, Ind. (Northrop)
Casey North	Fr.	Mishawaka, Ind. (Penn)
Onnarin Sattayabanphot	Jr.	Bangkok, Thailand (La Salle)
Danielle Wolter	Fr.	Evansville, Ind. (Reitz Memorial)

2004-05 Schedule

Date	Event	Host School	Location
Sept. 11-12	Lady Northern	Michigan	Ann Arbor, Mich.
Oct. 8-10	Mercedes-Benz Invitational	Tennessee	Knoxville, Tenn.
Oct. 29-31	Landfall Tradition	UNC-Wilmington	Wilmington, N.C.
Nov. 14-16	Hooters Match Play Championships	NA	Howie-in-the-Hills, Fla.
Feb. 21-23	Lady Puerto Rico Invitational	Purdue	San Juan, P.R.
March 4-6	Lady Gator	Florida	Gainesville, Fla.
March 14-16	Lady Rebel Invite	UNLV	Las Vegas, Nev.
April 1-3	Bryan National Collegiate	Wake Forest	Greensboro, N.C.
April 9-10	Lady Boilermaker Invitational	Purdue	West Lafayette, Ind.
April 16-17	Lady Buckeye Invitational	Ohio State	Columbus, Ohio
April 22-24	Big Ten Championships	Michigan	Ann Arbor, Mich.
May 5-7	NCAA Regional Championships	TBA	TBA
May 17-20	NCAA Championships		Sunriver, Ore.

BOILERMAKERS

Head Coach Devon Brouse

Devon Brouse is in his seventh season as the head coach and director of golf operations.

Brouse became the Boilermaker coach in 1998 after leading North Carolina to 19 NCAA Championship tournaments in 21 years. In a short period of time, Brouse has guided the Purdue program into the forefront of collegiate golf.

A four-time conference coach of the year (three times in the ACC and once so far in the Big Ten), Brouse has led teams to 11 top-10 finishes at the NCAA Championships. In addition to his coaching duties for both the men's and women's golf teams at Purdue, Brouse is responsible for overseeing operations for the Birck Boilermaker Golf Complex. The 36-hole masterpiece features two distinctly challenging courses — the Ackerman Hills and Kampen layouts. The latter was designed by the legendary Pete Dye. The complex ranks among the finest in college golf.

During his first year in West Lafayette, Brouse guided the men's team to its first NCAA regional action in 10 years, while the women's team advanced to its third-straight appearance in an NCAA regional and a fourth-place finish in the Big Ten Championships.

In just his second season in charge, Brouse led the women to their first Big Ten title and their

highest NCAA finish (ninth) in school history. The men finished second in the Big Ten, their highest since 1995.

Year three of the Brouse era saw the Boilermaker men place second in the Big Ten again, and capture a share of first place in the NCAA Central Regionals. Meanwhile, the Purdue women placed fourth in the conference and second in the Central Regional. Both teams advanced to the NCAA Championships, where the women placed 20th and the men 28th.

The women's team has advanced to the NCAA Championships for the last five-straight seasons and the men's team has played in three of the last four championships.

In 2002, both men's and women's teams advanced to the NCAA Championships. The men placed seventh and women captured 16th place.

In 2003, Purdue hosted the NCAA Women's Golf National Championships on the Kampen Course. The women's team placed 12th in the tournament.

This past season, the Boilermakers hosted the NCAA Men's Golf Central Regional Championships and both men's and women's teams advanced to the NCAA Championships. For the women's team, it was its fifth-straight appearance in the event. The

*Brouse's Year-by-Year Results****Record at Purdue (1999 to Present)***

Year	Big Ten	NCAA
1999	4th (Women)	—
1999	11th (Men)	—
2000	1st (Women)	9th
2000	2nd (Men)	—
2001	4th (Women)	20th
2001	2nd (Men)	28th
2002	2nd (Women)	16th
2002	3rd (Men)	7th
2003	4th (Women)	12th
2003	5th (Men)	—
2004	4th (Women)	22nd
2004	4th (Men)	T-16th

Record at North Carolina (1978 to 1998)

Year	ACC	NCAA
1978	2nd	5th
1979	2nd	T-6th
1980	4th	—
1981	1st	T-18th
1982	3rd	9th
1983	1st	T-8th
1984	1st	4th
1985	T-3rd	T-16th
1986	1st	12th
1987	4th	8th
1988	7th	—
1989	3rd	13th
1990	T-3rd	7th
1991	2nd	2nd
1992	4th	23rd
1993	7th	3rd
1994	2nd	11th
1995	1st	19th
1996	1st	16th
1997	2nd	10th
1998	4th	25th

Head Coach Devon Brouse

BOILERMAKERS

squad is one of eight teams to accomplish that feat. The men's team has advanced to its third NCAA Championships over the last four years, one of 19 schools that can make that claim.

A class "A" member of the PGA, Brouse first joined the University of North Carolina in 1973 as the golf director and superintendent of facilities following two years as assistant director of the Indianapolis municipal golf course system. In 1977, he became assistant coach to Mike McLeod, and was named head coach one year later when McLeod retired.

Brouse immediately experienced success as North Carolina's head coach, leading the Tar Heels to a second-place finish in the ACC Tournament and a fifth-place showing at the NCAA Championships. Named the ACC Coach of the Year following the 1981, 1991 and 1995 seasons, Brouse built the Tar Heels into one of the premier golf programs in the United States. All told, Brouse led North Carolina to six ACC team championships (1981, 1983, 1984,

1986, 1995, 1996), 16 top-five conference finishes and 10 top-10 NCAA finishes, including second place in 1991 and third in 1993.

In addition to building the Tar Heels and Boilermakers into one of the nation's most respected golf programs, Brouse was also instrumental in the development of several individual players who achieved great success at both the collegiate and professional levels. Under his tutelage, he has produced six ACC individual champions, the 1984 NCAA individual champion and 40 All-American selections. In addition, Brouse also coached Patrick Moore, the leading money winner on the 2002 Buy.com Tour. Three of his pupils (Davis Love III, John Inman and Tom Scherrer) have won titles on the PGA Tour.

A native of Indianapolis, Ind., and a 1967 graduate of Decatur Central High School, Brouse earned a B.S. in agronomy from Purdue in 1971 and was a member of the Delta Tau Delta fraternity. Brouse and his wife, Kathy, have two sons, Matt and Brent, a daughter, Ashley and a grandson Scott David.

The Devon Brouse File

Hometown: Indianapolis, Ind.

Education: Purdue University, 1971

Wife: Kathy

Children: Matt, Brent, Ashley

Coaching Experience

- Head Coach, Purdue University
1998 to present
- Head Coach, University of North Carolina,
1978 to 1998

Coaching Highlights

- Big Ten coach of the year (2000)
- Three-time Atlantic Coast Conference coach of the year (1981, 1991, 1995)
- 1991 and 1995 District III North coach of the year
- 2002 Midwest region coach of the year
- 27 NCAA championship appearances
- Six ACC Titles
(1981, 1983, 1984, 1986, 1995, 1996)
- Six ACC individual champions
- 2001 NCAA Central regional champions
(Purdue men)
- 2002 NCAA Central regional champions
(Purdue men)
- 2000 Women's Big Ten champions
- 40 All-American selections
- 1984 NCAA individual champion
(John Inman)



BOILERMAKERS

Associate Head Coach Greg Robertson

Greg Robertson is in his third season as Purdue's associate head golf coach.

Robertson played collegiate golf at Oklahoma State University, where he graduated with a bachelor's degree in physical education in 1997.

After redshirting his freshman season, he played three seasons at Oklahoma State. During his four years in Stillwater, the Cowboys captured four conference crowns and won the 1995 NCAA Championship.

A native of Roswell, N.M., Robertson earned his degree from OSU, and then transferred to New Mexico, where he competed as a senior and began work on a master's degree in sports administration.

From 1998 to 2000, Robertson competed professionally. In 2000, he played on the Canadian Tour and participated in the PGA's Nissan Open in Los Angeles, Calif.

In 2001, Robertson competed in several state tournaments before returning to Stillwater to serve as volunteer assistant for the Cowboys.

Robertson's duties include recruiting and instruction for both programs, while aiding in organizing team practices, scheduling and team travel. He also assists in budgeting and fund-raising for both programs.

In July of 2003, Robertson married Ashlee Applegate. The couple resides in West Lafayette.

The Robertson File

Hometown: Roswell, N.M.

Education: Oklahoma State University, 1997

Coaching Experience

- Volunteer Assistant, Oklahoma State University 2001 to 2002
- Associate Head Coach, Purdue University 2002 to present

Playing Experience

- Oklahoma State University, 1993 to 1997
- University of New Mexico, 1997 to 1998
- Canadian Tour, 2000

Q & A with Coach Robertson**What's it like to coach under Devon Brouse?**

It's a privilege to be working with Coach Brouse. He's had tremendous success in the 27 years he's been coaching. It's a great opportunity for me to learn from one of the best coaches in the country.

Making the NCAA Tournament has gone from being the exception to the rule at Purdue. Talk about that high standard.

When Coach Brouse took over as the head coach, he changed the attitude of the program. Now, everyone expects to succeed. On top of that, the athletic department has done a tremendous job of providing the means to allow us to reach our highest goals. It started with the renovation of the Birck Boilermaker Golf Complex and, now the crowning touch is the Tom Spurgeon Training Center.

We know Purdue golf is a rising collegiate power, but talk about the academic side of Purdue.

Purdue has some of the best facilities in the country for golf. It's also one of the top academic institutions, which helps prepare our players for the rest of their lives. It's a great blend that would allow any individual to achieve any goal she desires both on and off the golf course.



Assistant Coach Jo Jo Robertson

BOILERMAKERS



JoJo Robertson is in her first year as assistant coach with the Purdue program, focusing most of her attention on the women's team. Robertson joined the staff in March 2005.

Robertson had a distinguished career from 1994 to 1999 at Oklahoma State University. While in Stillwater, she was named first team all-conference her senior season.

In 1995 and 1997, Robertson was the United States Women's Amateur Public Links Champion. In 1997, she was ranked No. 11 in *Golf Week* Magazine's Woman Amateur List and named one of *Golf Digest's* top ten amateurs.

In 1997 and 1998, she participated in the United States Women's Open, making the cut in her second attempt.

In 1998, she was a member of the United States Curtis Cup team.

Robertson worked for the Spring River Golf Course as an assistant golf professional from 1999 to 2000.

In 2001, she played on the Ladies Challenge Professional Golf Tour.

From 2000 to 2002, she played on the Futures Professional Golf Tour and was an assistant golf professional at the New Mexico Military Institute Golf Course until 2004.

Robertson coached the West Lafayette High School girls golf team in the fall of 2004 and worked at Purdue's Birk Boilermaker Golf Complex as assistant professional until being hired as assistant coach with the Boilermakers.

Robertson's duties include recruiting and instruction for both programs, while aiding in organizing team practices, scheduling and team travel.

The Robertson File

Hometown: Roswell, N.M.

Education: Oklahoma State University, 1999

Coaching Experience

- Assistant Coach, Purdue University
2005 to present
- Head Coach, West Lafayette High School
2004 to 2005

Playing Experience

- Oklahoma State University, 1994 to 1999
- Futures Professional Golf Tour, 2000 to 2002
- Ladies Challenge Professional Golf Tour, 2001

Q & A with Coach Robertson

What is the best thing about coaching on the Purdue Golf staff?

The best thing about the Purdue golf staff is a great working relationship combined with many years of coaching and playing experience. We are all very ambitious, with high goals and we will work well together toward making this program successful.

What is the biggest surprise a recruit can expect when they arrive at Purdue?

Purdue has so many things to offer. Not only is the University outstanding academically, but the golf course and practice facilities are rated near the top in the country. Purdue has everything that you need to be the best student-athlete.

Talk about the luxury of two great golf courses located right next to campus.

The golf courses next to campus are a great plus. It is wonderful to be able to walk to them from any place on campus. While other golf teams may have to travel to different courses to practice and play, our facilities are always close at hand.

BOILERMAKERS

Boilermaker Support Staff

Dan Ross
Head Golf
Professional

Dan Ross is in his first year as the head golf professional of the Birck Boilermaker Golf Complex.

A graduate of Taylor University, Ross was team captain and No. 1 player on the golf team during his junior and senior seasons.

Ross began working in the golf business as an assistant professional in 1992 and worked at Harrison Lake Country Club for Master Professional Tony Clecak until 1997. While there, he became a member of the PGA in 1995. In 1997 he became the head golf professional at Walnut Creek Golf Course in Upland, Ind., his home golf course in college. After two years at Walnut Creek, Ross was named the head golf professional at Edgewood Country Club in Anderson, Ind., where he worked for five years.

Ross and his wife, Luci, have been married since 1997 and have two children, Ally and Jackson.



Jim Scott
Birck Boilermaker Golf Complex
Superintendent

Jim Scott is in his 10th year as the superintendent of the Kampen and Ackerman Hills golf courses on Purdue's campus. His current projects include continued upgrades on two courses, including a new practice facility that features a driving range, chipping green and putting green.

In 1995, Scott joined the Purdue athletics department with the challenge of directing all facets of construction on the Birck Boilermaker Golf Complex. Since then, he has brought about the completion of the 18-hole championship Kampen Course, formerly known as the North Course, as well as major landscape changes to the 18-hole Ackerman Hills Course, formerly known as the South Course.

Prior to the reconstruction of Purdue's courses, Scott helped design 18-hole courses at the Wellington Golf Club in Wellington, Fla., and the Juday Creek Golf Club in South Bend, Ind.

Scott graduated from Purdue's School of Agriculture in 1987 with a bachelor's degree in turfgrass science.

Athletics Director

Morgan Burke
Athletics Director



Glenn Tompkins
Senior Associate Athletics Director



Roger Blalock
*Senior Associate
Athletics Director*



Nancy Cross
*Senior Associate
Athletics Director*



Jay Cooperider
Associate Athletics Director

Faculty Representatives

Jeffrey T. Bolin



Christie L. Sahley



Greg Christopher
Assistant Athletics Director



Ed Howat
Assistant Athletics Director



Barb Kapp
Assistant Athletics Director



Steve Simmerman
Assistant Athletics Director

Support Staff

Becky Beck
Secretary



Marilyn McFatrige
Event Management



Marty Quinn
Equipment Manager



Chris Scott
Event Coordinator



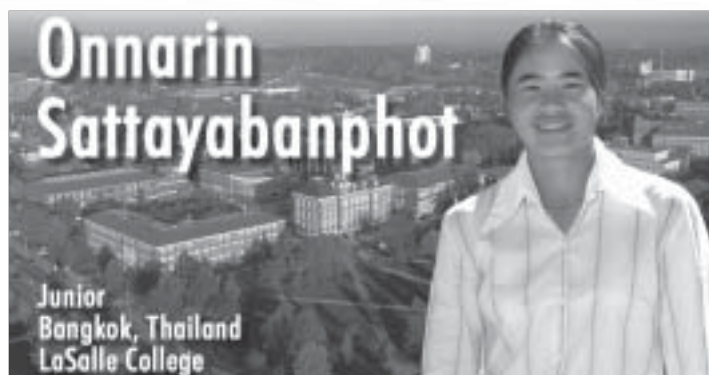
Brent Wills
Assistant Golf Professional



Nicole Westin
Academic Services

Athlete Profiles

BOILERMAKERS



Sattayabanphot's Career Accomplishments

Sophomore Season (2003-04)

- ▶ Her score counted in all 37 rounds in which Purdue competed
- ▶ Led the team with an average of 76.1 strokes per round
- ▶ Fired four even or under-par rounds
- ▶ Tied for fourth at the Badger Invitational
- ▶ Finished tied for 57th at the NCAA Championships, a team best
- ▶ Eight top-20 finishes

Freshman Season (2002-03)

- ▶ Saw action in nine tournaments and averaged 78.7
- ▶ Recorded three top-30 finishes
- ▶ Began season in January
- ▶ Tied for sixth at the Indiana Invitational
- ▶ Tied for 31st at the NCAA Central Regionals

High School (La Salle College)

- ▶ Captured 11 tournament wins over four years
- ▶ Member of the Thai National Team from 1999 to 2001
- ▶ Named 1999 Golfer of the Year by the Thailand Amateur Ladies Golf Association.
- ▶ Won silver medal as an individual and gold medal as a team member in the 20th Southeast Asia Games.
- ▶ Placed 29th at the 33rd Annual Junior World Gold Championships
- ▶ Won silver medal as a team member and gold medal as an individual in the 21st Southeast Asia Games.

Personal

- ▶ Majoring in industrial design
- ▶ Born Feb. 4, 1984, in Bangkok, Thailand
- ▶ Daughter of Ponphan and Nipon Sattayabanphot
- ▶ Has three sisters, Onanong (16), Nutthachon (13), Nutchanak (8).

Sattayabanphot's Career Statistics

<u>Season</u>	<u>Rounds</u>	<u>Strokes</u>	<u>Average</u>	<u>Low Round</u>
2002-03	25	1,968	78.7	74
2003-04	37	2,819	76.1	70
2004-05 (Fall)	9	676	75.1	71
Totals	71	5,463	76.9	70

Sattayabanphot's Tournament Results

2004-05 (Fall)

<u>Tournament</u>	<u>Date</u>	<u>Score</u>	<u>Finish</u>
Lady Northern	9/11-12	77-71-78--226	T-11
Mercedes-Benz Invitational	10/8-10	75-76-76--227	T-32
Landfall Tradition	10/29-31	75-73-75--223	T-22

2003-04

<u>Tournament</u>	<u>Date</u>	<u>Score</u>	<u>Finish</u>
Badger Invitational	9/12-14	73-77--150	T-4
Lady Northern	9/27-28	80-71-77--228	T-16
East Carolina Invitational	10/13-14	75-72-75--222	8
Mercedes-Benz Challenge	10/19-21	73-70-77--220	T-7
Lady Puerto Rico Classic	2/22-24	76-78-78--232	T-42
Lady Gator	3/7-9	78-78-76--232	T-20
Betsy Rawls Intercollegiate	3/21-23	82-78-78--238	T-17
Bryan National Collegiate	4/2-4	71-80-82--233	T-50
Lady Boilermaker	4/17-18	74-75-81--230	T-6
Big Ten Championships	4/23-25	76-77-73-76--302	T-6
NCAA Central Regionals	5/6-8	79-79-75--233	T-36
NCAA Championships	5/18-21	74-75-77-73--299	T-57

2002-03

<u>Tournament</u>	<u>Date</u>	<u>Score</u>	<u>Finish</u>
Regional Challenge	2/10-12	76-87--163	T-62
Lady Puerto Rico Classic	2/28-3/1	78-79-81--238	T-54
Lady Gamecock Classic	3/14-16	79--79	T-37
Bryan National Collegiate	3/28-30	84-78--162	T-77
Indiana Invitational	4/5-6	78-76-75--229	T-6
Lady Boilermaker Invitational	4/12-13	76-83-75--234	T-28
Big Ten Championships	4/25-27	80-78-79-77--314	T-28
NCAA Central Regionals	5/8-10	78-74-80--232	T-31
NCAA Championships	5/20-23	81-77-79-80--317	T-81



BOILERMAKERS

Athlete Profiles

Myrte
Eikenaar

Sophomore
Diepenveen, Netherlands
Etty Hillesum Lyceum

Eikenaar's Career Accomplishments**Freshman Season (2003-04)**

- ▶ Played in seven tournaments after joining the team in January
- ▶ Averaged 76.5 strokes per round, second best on the team
- ▶ Her score counted in all 23 rounds she played in
- ▶ Finished third at the Lady Boilermaker Invitational
- ▶ Shot team-low scores in three tournaments

High School (Etty Hillesum Lyceum/Deventer/Holland)

- ▶ 2003 Dutch Ladies Match Play Championship
- ▶ 2003 Dutch Ladies Stroke Play Championship
- ▶ 2004 Ladies Open Champion

Personal

- ▶ Born July 28, 1985
- ▶ Majoring in communication
- ▶ Daughter of Gert-Jan Eikenaar and Ria Van Der Hel
- ▶ Has younger sister, Florine Eikenaar

Eikenaar's Career Statistics

<u>Season</u>	<u>Rounds</u>	<u>Strokes</u>	<u>Average</u>	<u>Low Round</u>
2003-04	23	1,759	76.5	73
2004-05 (Fall)	9	673	74.8	71
Totals	32	2,432	76.0	71

Eikenaar's Tournament Results**2004-05 (Fall)**

<u>Tournament</u>	<u>Date</u>	<u>Score</u>	<u>Finish</u>
Lady Northern	9/11-12	72-72-76--220	4
Mercedes-Benz Invitational	10/8-10	76-82-81--239	T-69
Landfall Tradition	10/29-31	72-71-71--214	T-3

2003-04

<u>Tournament</u>	<u>Date</u>	<u>Score</u>	<u>Finish</u>
Lady Gator	3/7-9	81-75-75--231	T-16
Betsy Rawls Intercollegiate	3/21-23	83-81-79--243	T-34
Bryan National Collegiate	4/2-4	74-76-76--226	T-24
Lady Boilermaker	4/17-18	73-79-76--228	3
Big Ten Championships	4/23-25	75-76-75-81--307	T-11
NCAA Central Regionals	5/6-8	73-73-75--221	T-4
NCAA Championships	5/18-21	83-70-77-74--304	T-76



Athlete Profiles

BOILERMAKERS



Haase's Career Accomplishments

Freshman Season (2003-04)

- ▶ Played in all 12 tournaments
- ▶ Averaged 82 strokes per round
- ▶ Tied for 17th at the Badger Invitational

High School (Culver Academy)

- ▶ Earned four letters in golf and two in basketball
- ▶ Earned all-state honors all four years and was a four-time team MVP, while being named team captain for three
- ▶ 2001 Indiana state champion and 2000 runner-up
- ▶ Graduated cum laude and received the Gold A for academic excellence
- ▶ Served as chair of Culver honor council
- ▶ Earned the Superintendent's Bowl, awarded to the top senior girl, and the Jane Metcalfe Culver Bowl, honoring the top female student-athlete

Personal

- ▶ Majoring in kinesiology
- ▶ Born Nov. 2, 1984, in Culver, Ind.
- ▶ Daughter of Nancy and Fred Haase
- ▶ Has two brothers, David and Ryan

Haase's Career Statistics

Season	<u>Rounds</u>	<u>Strokes</u>	<u>Average</u>	<u>Low Round</u>
2003-04	37	3,035	82.0	73
2004-05 (Fall)	9	704	78.2	72
Totals	46	3,739	81.3	72

Haase's Tournament Results

2004-05 (Fall)

<u>Tournament</u>	<u>Date</u>	<u>Score</u>	<u>Finish</u>
Lady Northern	9/11-12	82-72-79--233	T-36
Mercedes-Benz Invitational	10/8-10	80-77-75--232	T-49
Landfall Tradition	10/29-31	80-74-85--239	54

2003-04

<u>Tournament</u>	<u>Date</u>	<u>Score</u>	<u>Finish</u>
Badger Invitational	9/12-14	81-80--161	T-17
Lady Northern	9/27-28	79-82-80--241	T-51
East Carolina Invitational	10/13-14	74-77-76--227	T-19
Mercedes-Benz Challenge	10/19-21	81-85-81--247	T-81
Lady Puerto Rico Classic	2/22-24	82-83-91--256	73
Lady Gator	3/7-9	82-86-83--251	T-77
Betsy Rawls Intercollegiate	3/21-23	95-90-82--267	86
Bryan National Collegiate	4/2-4	80-79-78--237	T-62
Lady Boilermaker	4/17-18	82-82-83--247	42
Big Ten Championships	4/23-25	79-81-80-85--325	T-43
NCAA Central Regionals	5/6-8	73-81-82--236	T-49
NCAA Championships	5/18-21	84-87-84-85--340	125



BOILERMAKERS

Athlete Profiles***Eschbach's Career Accomplishments*****Redshirt Season (2003-04)**

- ▶ Did not see action in any tournaments

High School (Grosse Ile)

- ▶ Four-year letterwinner in golf and swimming
- ▶ All-state honors in golf junior and senior year
- ▶ Placed seventh in state finals as a junior
- ▶ Placed sixth in state finals as a senior
- ▶ Academic all-state as a senior
- ▶ Named 2003 US Army scholar athlete
- ▶ Member of 2002 Div. III and 2002 Div. I state champions

Personal

- ▶ Majoring in accounting
- ▶ Born June 9, 1985, in Grosse Ile, Mich.
- ▶ Daughter of Herbert and Janis Eschbach
- ▶ Has two brothers, Jeff and Doug, and one sister, Elyse
- ▶ All three siblings attended Purdue

Eschbach's Career Statistics

<u>Season</u>	<u>Rounds</u>	<u>Strokes</u>	<u>Average</u>	<u>Low Round</u>
2004-05 (Fall)	3	251	83.7	80
Totals	3	251	83.7	80

Eschbach's Career Statistics**2004-05 (Fall)**

<u>Tournament</u>	<u>Date</u>	<u>Score</u>	<u>Finish</u>
Lady Northern	9/11-12	80-84-87--251	T-80



Athlete Profiles

BOILERMAKERS



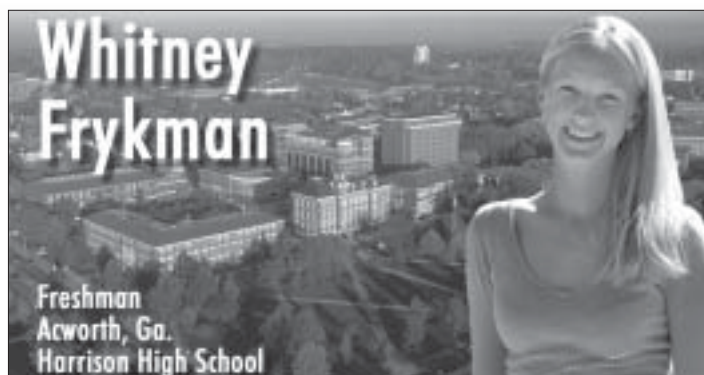
Fenn's Career Accomplishments

High School (Trinity Valley School)

- ▶ Won team MVP award three times
- ▶ Led team to three Southern Preparatory Conference championships
- ▶ All-state private school first team junior and senior seasons
- ▶ 2004 Texas Women's Junior Amateur Champion
- ▶ 2004 Dallas Junior Champion

Personal

- ▶ Majoring in agricultural and biological engineering
- ▶ Born July 31, 1986
- ▶ Daughter of Timothy and Shauna Fenn
- ▶ Brother Brian attends Purdue



Frykman's Career Accomplishments

High School (Harrison High School)

- ▶ Atlanta Junior Golf Association Player of the Year freshman and sophomore seasons
- ▶ AJGA Academic All-American senior year
- ▶ Finished second at state as individual and team junior year
- ▶ Made the cut at the 2004 US Women's Amateur Championship
- ▶ Wendy's High School Heisman Finalist

Personal

- ▶ Majoring in economics
- ▶ Born July 27, 1986
- ▶ Daughter of Dennis and Barbara Frykman
- ▶ Sister, Lindsay is an ice skater at Miami of Ohio University

Frykman's Career Statistics

2004-05 (Fall)

<u>Tournament</u>	<u>Date</u>	<u>Score</u>	<u>Finish</u>
Lady Northern	9/11-12	76-79-76--231	T-31
Mercedes-Benz Invitational	10/8-10	74-77-80--231	T-43
Landfall Tradition	10/29-31	74-78-75--227	T-32

<u>Season</u>	<u>Rounds</u>	<u>Strokes</u>	<u>Average</u>	<u>Low Round</u>
2004-05 (Fall)	9	689	76.6	74
Totals	9	689	76.6	74



BOILERMAKERS

*Athlete Profiles***Sarah Hughes**

Freshman
Fort Wayne
Bishop Dwenger High School

***Hughes' Career Accomplishments*****High School (Bishop Dwenger High School)**

- ▶ Golf state finalist all four years
- ▶ All-SAC Conference all four years
- ▶ Fourth at state as individual as a senior
- ▶ Team was runner-up as a senior

Personal

- ▶ Majoring in elementary education
- ▶ Born August 20, 1985
- ▶ Daughter of Ed and Linda Hughes
- ▶ Brother Edward attends Purdue

**Carolyn Mess**

Freshman
Fort Wayne, Ind.
Northrop High School

***Mess's Career Accomplishments*****High School (Richmond)**

- ▶ All-SAC conference all four years
- ▶ Three time high school MVP
- ▶ Sectional medalist senior season
- ▶ Winner of second flight in Indiana Women's Amateur
- ▶ Captain of tennis team
- ▶ Ranked eighth in class of 469 academically

Personal

- ▶ Majoring in accoustical engineering
- ▶ Born February 26, 1986
- ▶ Daughter of Karl Mess and the late Mary Hine.
- ▶ Sister, Sara, played golf for Michigan State.



Athlete Profiles

BOILERMAKERS



North's Career Accomplishments

High School (Penn High School)

- ▶ Played varsity golf all four years
- ▶ All-state junior and senior year
- ▶ IHSA Mental Attitude Award winner
- ▶ National Honor Society member

Personal

- ▶ Majoring in visual communications design
- ▶ Born January 23, 1986
- ▶ Daughter of Ned and Beth North
- ▶ Hobbies include ice skating and drawing



Wolter's Career Accomplishments

High School (Center Grove)

- ▶ First team All-SIAC all four years
- ▶ All-state junior and senior seasons
- ▶ Fourth at state tournament as a senior
- ▶ Member of Tigerettes dance squad for three years, including captain as a senior

Personal

- ▶ Majoring in photography
- ▶ Born July 1, 1985
- ▶ Daughter of Phil and Donna Wolter
- ▶ Sister, Lori, attends Evansville University





BOILERMAKERS

BOILERMAKERS

BOILERMAKERS

Birck Boilermaker Golf Complex

Purdue University features two 18-hole championship golf courses on its West Lafayette, Ind., campus. The courses are much different in character, but each promises a challenging test of golf.

The Ackerman Hills Course features a beautifully contoured layout over hilly, forested terrain with greens that are well-protected by trees and bunkers. The narrow fairways and numerous obstacles demand accurate shot-making.

The anchor of the Birck Boilermaker Golf Complex is the 7,272-yard, par-72 Kampen Course. It served as the site of the 2001 NCAA Women's Central Regional, 2003 NCAA Women's Championship and 2004 NCAA Men's Central Regional. In 2008, it will host the NCAA Men's Championships. Pete Dye, one of the most influential and creative golf course designers in the history of the sport, masterminded the redesign of the Kampen Course.

Anyone who has played Brickyard Crossing, Crooked Stick, PGA West or any of the dozens of courses that bear his stamp appreciates the special challenges Pete Dye presents to the golfer. The Kampen Course demands not only skilled shot-making but also an intellectual approach to the game. The combination of both courses on campus offers Purdue students one

of the finest golf facilities in the United States.

A native of Indianapolis, Ind., Dye took turf management classes at Purdue during the 1950s and is known as much for his sensitivity to the environment as he is for his imaginative and creative course layouts.

The Birck Boilermaker Golf Complex is situated on the north side of the Purdue campus. It serves not only the Purdue golf teams, but also students, faculty, staff and the public. The complex provides the Purdue men's and women's golf teams with additional challenges and rewarding opportunities to play and practice on one of the region's most beautiful golf courses.

"This is one of the top facilities in college golf," says Devon Brouse, who is Purdue director of golf operations, in addition to coaching the men's and women's teams. "The tradition at Purdue should flourish with the commitment we have with these new facilities."

"Nothing has ever been built that is comparable to this course," Dye says. "You walk the Kampen Course and you feel like you're in another world."

The \$8 million renovation to the golf complex included a new clubhouse named in Dye's honor, new irrigation system and new driving range, and the Turfgrass Research and Diagnostic Center. The first comprehensive turfgrass research facility in the country, the center functions as a living laboratory for teaching and research activities in a variety of academic disciplines, including agronomy, entomology and forestry.

Consistent with Dye's commitment to environmentally sound golf, more than 6,800 trees have been planted on the Kampen Course. Alice's Oak Forest, named after Dye's wife, runs from tee to green on the ninth hole, and trees have been planted so densely that wildlife eventually will flourish.

Birck Boilermaker Golf Complex

BOILERMAKERS



Kampen Course - No. 1



Kampen Course - No. 18



Ackerman Hills - No. 15



Kampen Course - No. 17



Ackerman Hills - No. 16



Ackerman Hills - No. 12

BOILERMAKERS

*The Kampen Course***Hole 1, Par 4, 387 Yards**

Tee shot sets up left to right with a large, shallow bunker covering the right side of the driving area. There is a generous collar adjacent to the right side of the green.

Hole 2, Par 3, 169 Yards

Water runs along the entire right side of the green. An errant shot to the left will leave the player a difficult pitch from the adjacent bluegrass rough back toward the water.

Hole 3, Par 4, 471 Yards

A deep bunker with grass nodules runs along the right side of the fairway. A player avoiding the bunker that guards the right side of the fairway might find a blind shot from the left rough. The green opens right to left, and there is an ample bailout area to the right of the green.

Hole 4, Par 5, 517 Yards

This short par 5 sets up right to left, opposite of hole No. 3. The player will have strategic options for the second shot—lay up short on the upper plateau, or go for it and favor the left side of the green.

Hole 5, Par 3, 233 Yards

Due to a highly elevated tee, everything is in front of you on this long par 3. The view of the bog to the left of the green is magnificent.

Hole 6, Par 5, 590 Yards

Both the tee shot and the second shot set up left to right on this long par 5. Stay left throughout this hole. The bog runs along the right side.



Hole No. 7 has a bunker running down the middle of the fairway.

Hole 7, Par 4, 310 Yards

This short par 4 with two fairways is split by a bunker running down the middle. Long hitters can drive this green.

Hole 8, Par 4, 370 Yards

Drive sets up left to right on this short par four. There is plenty of room to play, however the tee shot must stay left of the massive waste bunker along the right side. The green opens left to right.

Hole 9, Par 4, 472 Yards

This long par 4 has little or no margin for error with waste bunkers on the left, tall heather on the right, and a huge greenside bunker as you approach the clubhouse and the turn.

Hole 10, Par 5, 598 Yards

The back nine opens unmercifully with a very long par 5. A waste bunker guards the entire right side of the driving area. There is room to the right for your second shot. A bunker and water come into play to the left of this elevated green.



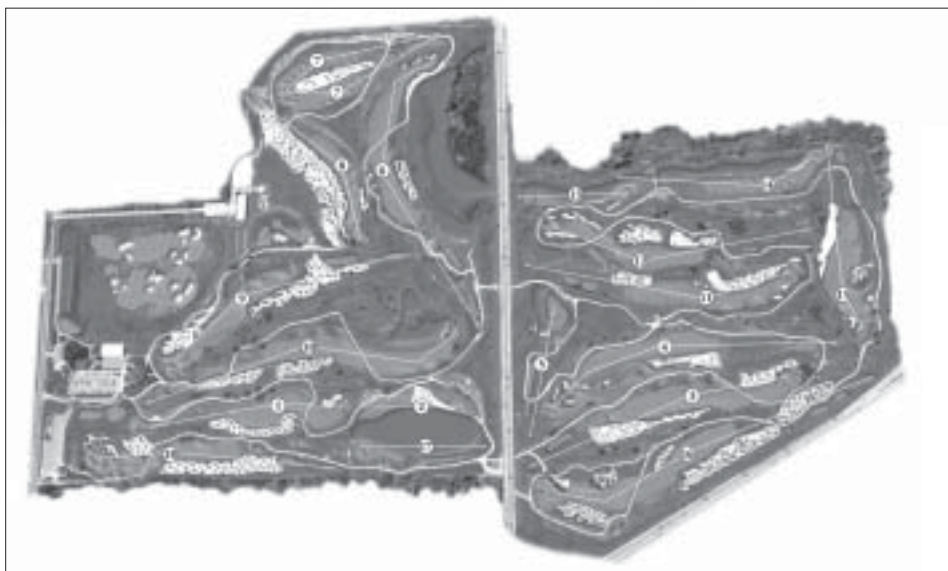
A par five, No. 6 wraps around a celery bog into a heavily guarded green.



Hole No. 9 is a par four with trouble along the left side of the fairway and right side of the green.

The Kampen Course

BOILERMAKERS



The Kampen Course hosted the 2003 NCAA Women's Golf Championships and the 2004 NCAA Men's Central Regional Championships. Kampen will also be the site of the 2008 NCAA Men's Golf Championships.

Hole 11, Par 4, 472 Yards

There is a slight margin for error to the right on the tee shot. The green is one of only a few on this course that is guarded by bunkers on both sides.

Hole 12, Par 4, 471 Yards

A severe waste bunker lines the right side of this long par 4 with a beautiful view to the southwest. The green sets up left to right.

Hole 13, Par 3, 196 Yards

The picturesque green to this par 3 is completely guarded with water along the entire front side and left side.

Hole 14, Par 4, 374 Yards

This short par 4 plays right to left off the tee, with plenty of open room to the right. However, water lines the entire hole on the left side. The green opens right to left, with the fairway sloping into the green.

Hole 15, Par 4, 358 Yards

This short par 4 presents the golfer with an uphill tee shot. The fairway narrows substantially between the elevated waste areas to the left and right. The green opens left to right with some room for error to the left.

Hole 16, Par 5, 604 Yards

This extremely long par 5 has a tee shot that sets up right to left and a second shot that sets, up left to right. This large green is elevated with a deep bunker guarding the front.



A statue of Emerson Kampen overlooks the tee boxes on hole No. 1.

Hole 17, Par 3, 211 Yards

This long par 3 has water lurking just to the right of the green, but has a generous landing area left of the green.

Hole 18, Par 4, 469 Yards

The final hole on the Kampen Course is also the most difficult. This very long par four sets up right to left from the tee. There is a large bunker guarding the left side of the driving area. Hitting the fairway is a must, as the approach shot to this green is by far the most difficult on the course.



The par-3 13th has water along the entire front and left side of the green.



No. 14 is a short par four with a bog along the left side of the fairway and green.

BOILERMAKERS

Tom Spurgeon Training Center

An indoor putting green, a swing-analysis video computer system and multiple heated hitting bays are just three of the features of a \$3 million indoor golf training center to be built at Purdue's Birck Boilermaker Golf Complex.

The 11,400-square-foot facility will be named the Tom Spurgeon Golf Training Center, after lead donor Tom Spurgeon.

Athletics Director Morgan Burke says the indoor training center will be the "jewel in the crown" of Purdue's 36-hole Birck Boilermaker Golf Complex. The Kampen and Ackerman Hills courses have undergone more than \$8 million in improvements since 1996.

Other areas of the facility include team locker rooms, a lounge, coaches' offices, a pro shop and a classroom. The architectural design will be similar to the clubhouse and other facilities at the complex. The center will be open to the public when not in use by Purdue golf teams.

Head men's and women's golf coach Devon Brouse said the facility will be a great help in training and teaching.

"From a technology standpoint, this takes us right to the forefront of college golf," Brouse said. "We already have outstanding golf courses and this facility will only compliment those."

The state-of-the-art computer and video swing analysis lab will help players with their motions and swings.

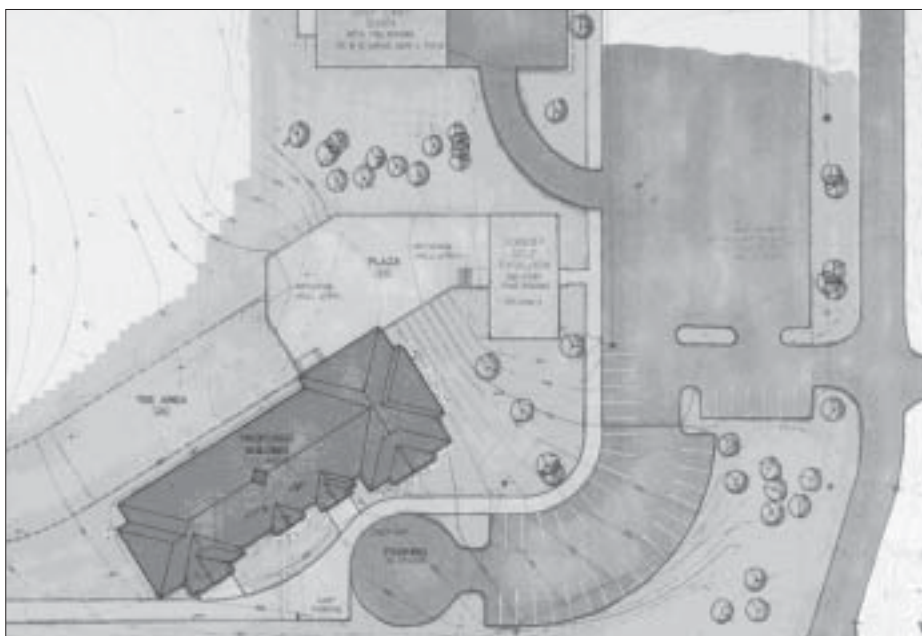
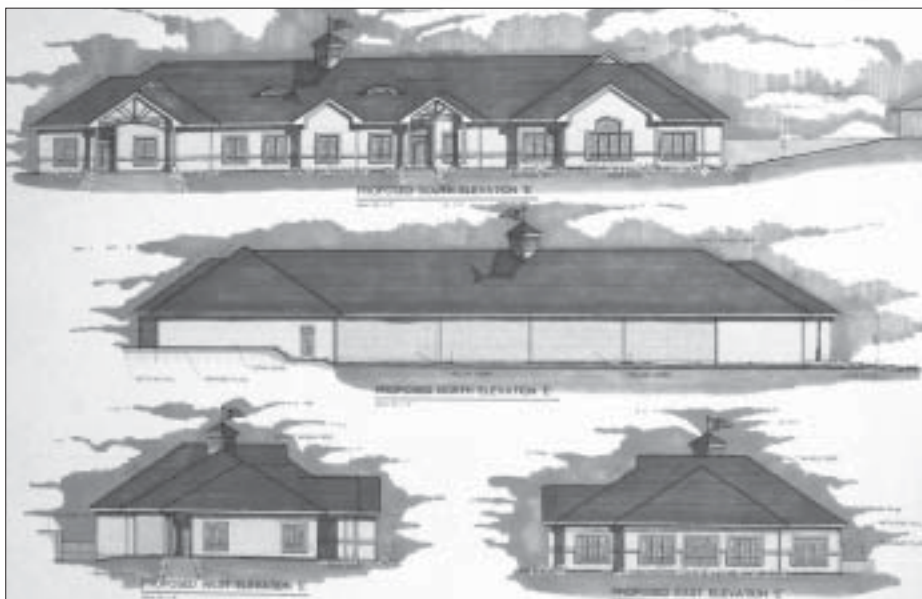
"We want to seize the momentum of strong finishes in the recent NCAA national golf championships and keep attracting the best student-athletes here," Brouse said.

Nancy Cross, associate athletics director, says Brouse is a visionary who, in the past six years, has not only established a solid tradition of top-caliber golf at Purdue, but also knows what it takes to position Purdue as an NCAA golf leader.

"Devon Brouse has taken Purdue golf to a new level," Cross said. "With his premier coaching staff, top-caliber athletes and a state-of-the-art training facility, we've hit an approach shot that should put us on the NCAA leader board for years to come."

Brouse said he looks forward to the day when Purdue golf is synonymous with college golf excellence.

"When I was a kid in the '50s and '60s, Purdue golf was pretty special," Brouse says. "We won the national championship in 1961. Now, we have that same kind of tradition redeveloping."



Boilermaker Practice Facility

BOILERMAKERS



The Boilermaker golf teams practice in a 15-acre complex directly adjacent to the Kampen Course.

The practice area features a private driving range, complete with instructional equipment and more than 15,000 square feet of tee areas. The tees are composed of both bluegrass and bentgrass area and are designed to enable the golfers to practice against any wind direction. The tees were renovated in the fall of 2004.

The tee area faces a range with target greens, giving the golfers a multitude of distances to hone skills with the scoring clubs.

Two practice greens surround a bunker to give the Boilermakers their own area in which to work on their short game.

The putting greens are 24,000 square feet and are both above and below the bunker.

"The whole practice complex makes a nice impression on a recruit," says coach Devon Brouse. "It's an opportunity obviously, for our players to get their work done individually, or whatever they need to do. We've got lots of short-game practice areas, and we've got a great amount of green space. This area, along with the indoor facilities, puts us right up with the very best facilities in the country."



BOILERMAKERS

Purdue University

Boasting more than 300,000 living alumni, Purdue University graduates have been to the moon, to the highest levels of business and government, and to Sweden to receive the Nobel Prize.

The Indiana link in a nationwide chain of 68 land-grant colleges and universities, Purdue owes its origin to the Morrill Act, signed by Abraham Lincoln in 1862 to promote establishment of schools to teach agriculture and the "mechanic arts."

An act of generosity by Lafayette businessman John Purdue secured the Indiana land-grant college for Lafayette. Purdue pledged money and land for the school. In return, the institution was named for him, and he remained a trustee until his death in 1876.

Classes began in 1874 with a total of 39 students and six faculty members. Since then, enrollment has grown to nearly 68,000 on five campuses and a faculty and staff totaling approximately 14,500. In excess of 38,000 students are enrolled at Purdue's main campus in West Lafayette, Ind.

Since its inception in 1869, Purdue has attained widespread fame for the quality of learning, discovery and engagement in a number of fields. Once known primarily as an engineering and agriculture school, the University now offers nearly 6,700 courses in more than 200 specializations in agriculture; consumer and family sciences; education; engineering; liberal arts; management; pharmacy, nursing, and health sciences; science; technology; and veterinary medicine. Students pursue advanced degrees through the Graduate School and the Krannert Graduate School of Management.

Purdue has one of the largest enrollments of women and minority students in engineering in the country, and the School of Veterinary Medicine is one of only 27 nationwide.

In addition to charting new paths through its instruction, Purdue also pushes back the frontiers of research, from unraveling the molecular structure of viruses to designing a self-supporting food system for space colonies to genetically engineering crops and plants for



Purdue University

BOILERMAKERS



feeding an ever-increasing global population.

As one of the 25 largest colleges and universities in the United States, Purdue leaves its mark on the world — and beyond — on a daily basis. Long known as the “mother of astronauts,” the University boasts 22 graduates — 20 men and two women — who have been selected to participate in the NASA space program.

From the 1960s to today, from the Mercury Program to today's fleet of space shuttles, Purdue alumni have flown on more than one-third of all manned U.S. space flights. Neil Armstrong, the first person to walk on the moon, and Eugene Cernan, the last person to leave it, both call Purdue alma mater. In addition to the astronauts, scores of scientists, engineers and other personnel who help support the space program have graduated from Purdue.

From the steam era to the space age, Purdue has forged a proud tradition of education, research and service to the state, the United States and the world — a tradition that gets stronger every day.

Purdue Facts

Location West Lafayette, Indiana 47907
Founded 1869
Enrollment 38,847
Acres 17,528 (14,256 for agriculture)
Capital Investment of Physical Plant systemwide \$1.5 billion
Estimated Replacement Cost	.. \$2.1 billion
Living Alumni In excess of 300,000
President Martin C. Jischke
Provost Sally K. Frost Mason
Dean of Students L. Tony Hawkins
Vice President for Student Services Thomas B. Robinson
Faculty Representatives Jeffrey T. Bolin
 Christie L. Sahley
Athletics Director Morgan J. Burke
Nickname Boilermakers
Colors Old Gold and Black
Mascot Boilermaker Special
Song Hail Purdue
National Affiliation NCAA Division I
Conference Big Ten

BOILERMAKERS

John Purdue Club***The John Purdue Club***

Since its inception in 1958, the John Purdue Club has been the home for Purdue's most loyal and devoted fans. Today, the Club is still true to the ideal first envisioned by Fred Hovde and Guy "Red" Mackey: a group of fans who share a passion for the Old Gold and Black and a commitment to providing a Purdue education for student-athletes.

Because Intercollegiate Athletics receives no funding from the state or University budgets, the success of the John Purdue Club is critical to the overall mission of the department. Each year, more than 9,000 Club members generate nearly \$6 million to underwrite the scholarship and academic support costs for student-athletes at Purdue.

John Purdue Club members provide the foundation for success – in the classroom, on the playing fields, and in life after graduation. And Club members provide the foundation of success for Boilermaker Athletics, by demonstrating through their generosity that cheers alone won't support Purdue's student-athletes.

Endowed Scholarships

Although all 9,000 John Purdue Club members are essential to Purdue Intercollegiate Athletics, Life Champion members continue to lead the way. These are members who have chosen to make a lasting impact in perpetuity by fully endowing a scholarship.

Today, Intercollegiate Athletics is able to boast 51 endowed scholarships, four of which have been designated by their donors to go each year to Purdue golfers. That means that four of the scholarships awarded each year by Devon Brouse and the Purdue golf program are financially secure and guaranteed through an endowment.

For more information on the John Purdue Club call 800-213-2239.

***Endowed Golf Scholarships***

Ted and Nancy Boots Endowed Scholarship
Established in 1997 by Ted and Nancy Boots, Indianapolis, Ind.

Ms. Jennifer E. Jones Endowed Scholarship
Established in 1998 by Jennifer E. Jones, Lebanon, Ind.

Ms. Susan R. Jones Endowed Scholarship
Established in 1998 by Susan R. Jones, Indianapolis, Ind.

Bob and Sally Weist Endowed Scholarship
Established in 2001 by Bob and Sally Weist, Chicago, Ill.



John Purdue Club members who have endowed scholarships join the student-athlete recipients and their respective coaches in a special gathering every year during a basketball game. This past year, the group meeting in the Shively Pavilion during a women's basketball game.

Purdue Alumni

BOILERMAKERS

Long known as the “mother of astronauts” and a world leader in engineering, science and agricultural education and research, Purdue University also sends its sons and daughters to make a difference around the world and at home in business, government and even entertainment.

Of the nearly 320,000 living Purdue alumni, 44 percent reside in Indiana. Nearly 10,000 call Texas home, and 16,000 reside in California; the Hawaiian Islands are home to 592, and 301 live in Alaska.

Purdue graduates are pioneers and achievers in occupations as diverse as being elected to the Australian Parliament, serving as director of the National Science Foundation and head of Disney Studios. Others have become underwater explorers, traveled the country and world as relief workers with American Red Cross, founded support groups for cancer survivors and operated the largest duckling farm in the United States.

Robert Charles, who graduated in 1958 with a mechanical engineering degree, holds the distinction of being the first and only U.S.-born member of the Australian Parliament.

Rita Colwell earned bachelor's and master's degrees in 1956 and 1958. A molecular biologist, she is credited with devising a scheme that will drastically curtail the spread of cholera in Africa.

A Purdue alumnus led the team that produced an icon of shopping that ranks with the shopping cart and cash register in its ubiquity: the Universal Product Code or bar code. While employed at IBM in the early 1970s, Paul McEnroe and his team came up with a way to track inventory and record purchases at the same time.

She advises millions of people each evening on whether to cancel picnics, water their lawns and gas up their snowblowers. Sharon Resultan, who graduated with a degree in earth and atmospheric sciences in 1987, is prime time anchor and forecaster on The Weather Channel. Her daunting task is to translate the technical language of convection systems and tropical conversion zones into whether the kids will need umbrellas or the flight bringing Grandma from Denver will be delayed.

A father-daughter alumni team carries on the Purdue tradition in the wild blue yonder and beyond. Jerry Ross and Amy Ross hail from Crown Point, Ind. Both earned bachelor's and master's degrees in engineering before joining the National Aeronautics and Space Administration. Jerry, a member of the Class of 1970, holds the record for most minutes spacewalking; he has played an integral role in the construction of the International Space Station and boasts seven flights aboard the space shuttle. On Earth, Amy, a member of the Class of 1994, designs gloves for use in spacewalks.

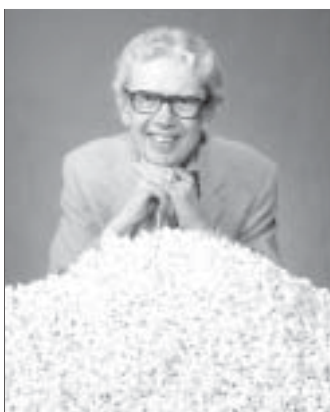
Nearly two-dozen members of the astronaut corps studied at Purdue. Notable among them are Neil Armstrong, Class of 1955, and Eugene Cernan, Class of 1956. Armstrong made history in 1969 as the first man to land a craft and step on the moon; Cernan was the last to leave it in 1972.



Bob Griese



Brian Lamb



Orville Redenbacher



John Wooden

Accomplished Alumni

- ▶ Humorist and playwright George Ade.
- ▶ Ted Allen, a food and wine connoisseur and Fab Five member of Bravo TV's "Queer Eye for the Straight Guy."
- ▶ Astronauts Neil Armstrong and Gene Cernan, the first to walk on the moon and the last to leave it.
- ▶ Former U.S. Sen. Birch Bayh, father of former Indiana governor and current U.S. Sen. Evan Bayh.
- ▶ Tellabs chairman and Purdue trustee Michael Birck.
- ▶ Susan Butler, managing partner for Accenture.
- ▶ Former presidential speechwriter and U.S. ambassador to Belize Carolyn Curiel.
- ▶ Hall of Fame quarterbacks Len Dawson and Bob Griese.
- ▶ Pam Biggs Faerber, founder of national support group for survivors of ovarian cancer.
- ▶ Callie Khouri, writer of the Oscar-winning movie *Thelma and Louise*.
- ▶ Brian Lamb, founder and chairman of the Cable-Satellite Public Affairs Network or C-SPAN.
- ▶ Marge Wagner, senior executive vice president with Citigroup.
- ▶ Elwood Mead, who oversaw the construction of the Hoover Dam.
- ▶ The late popcorn king Orville Redenbacher.
- ▶ Faith Smith, president of the only university to be founded and operated by American Indians.
- ▶ Cliff Turpin, who helped Orville and Wilbur Wright build and test their first flying machine in 1903.
- ▶ Hall of Fame basketball coach and All-American John Wooden.



Neil Armstrong

BOILERMAKERS

Excellence In Academics**Jane P. Beering
Academic Learning Center**

Purdue opened its Academic Learning Center in August 1994. In 2000, the center was renamed after former Purdue first lady Jane P. Beering, in recognition of her steadfast support of the Boilermakers. The center is located in the Intercollegiate Athletic Facility, between Mackey Arena and the Mollenkopf Athletic Center.

The center features five different study and research areas:

Study Tables — Located in Room 220, this area has a capacity of 40 student-athletes. It includes large study tables and is monitored from 8 a.m. to 10:30 p.m., Monday through Thursday, from 8 a.m. to 5 p.m. Friday and from noon to 10:30 p.m. Sunday. There is also a monitored study tables area in Wiley Residence Hall. This area is open Sunday through Thursday from 7:30-10 p.m.

One-on-One Tutor Rooms — This area in Room 226 has six individual rooms used for one-on-one tutoring. There also are two additional rooms available for tutoring.

Library/Career Resource Center — Recreational and reference reading materials are available as well as career information and assistance with career exploration in Room 224.

Computer Lab — Located in room 201, this newly designed 74 workstation computer lab is operated by the Purdue University Computing Center. It is fully connected to the campus mainframe and has World Wide Web connections. It is staffed by a lab assistant who assists student-athletes with hardware and software problems. It is equipped with scanners, zip drives and two printers for the student's use.

Large Group Study Room — This area holds up to 15 student-athletes and is located in Room 209B. It also houses math, chemistry, English and physics walk-in tutors, who are available from 7:30 p.m. to 10 p.m. Sunday through Thursday.



Students who choose to attend Purdue become a part of its strong tradition and receive the opportunity to carry the torch into tomorrow's legacy. Purdue graduates have consistently left their mark on the world and continue to do so every day. Here dreams are followed and made into reality.

Purdue grants the Bachelor of Arts (B.A.) and Bachelor of Science (B.S.) degrees. Students may also pursue advanced degrees through the Graduate School. Academic diversity is offered through nearly 6,700 courses in 12 schools:

- Agriculture
- Consumer and Family Sciences
- Education
- Engineering
- Health Sciences
- Liberal Arts
- Management
- Nursing
- Pharmacy and Pharmacal Sciences
- Science
- Technology
- Veterinary Medicine

Graduation rates for Purdue student-athletes continue to rank above the national average. A 2000 NCAA study analyzed students who enrolled from 1993-94 through 1998-99 to determine if they graduated within six years of freshman enrollment. Seventy percent of Purdue's student-athletes graduated, compared with 58 percent for NCAA Division I schools.

Purdue women were particularly impressive, graduating at a 78 percent rate, compared with 68 percent for NCAA Division I.

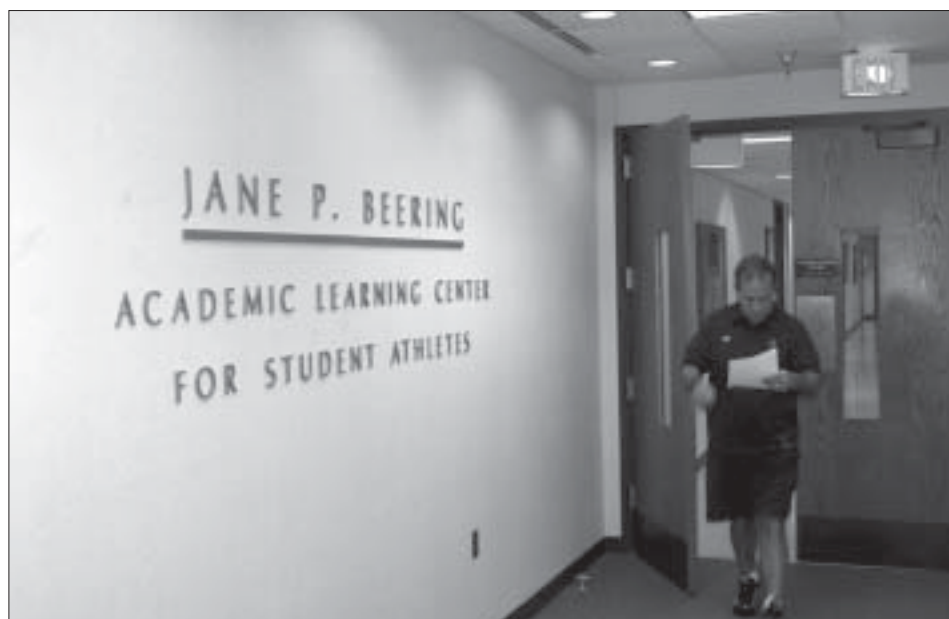
Moreover, the overall grade-point average of student athletes has surpassed that of Purdue students for seven consecutive years.

Academic support services are available to student-athletes in the Jane P. Beering Academic Learning Center. The staff is sensitive to the special needs of student-athletes and is dedicated to the academic success of each individual.

Student-athletes take advantage of the academic support services by learning ways to improve their study skills, time management and learning strategies. Assistance is provided through tutors and degree counseling, as well as general advising to help with the adjustment to college. Freshman progress is more closely monitored to give the student, professors and coaches up-to-date feedback as the student adjusts to the new collegiate environment.

Academic benefits abound at Purdue. Our Business and Industrial Development Center, for example, serves as a nationwide link between Purdue and industry. And the Department of English operates a Writing Lab and Phone-in Grammar Hotline used on a national scale.

Every day, day after day, Purdue continues to uphold and strengthen its reputation as one of the nation's finest academic institutions. The opportunity awaits you to become one of its fine graduates, allowing your dreams to become reality.



Excellence In Academics

BOILERMAKERS

Following is a list of specific schools and programs at Purdue University that are listed among the nation's top undergraduate programs, according to the most recent Gourman Report and the Spring 2003 issue of US News and World Report.



Accounting	9 th
Aerospace Engineering	6 th
Agricultural Business	8 th
Agricultural Economics	10 th
Agricultural Engineering	15 th
Agriculture	4 th
Agronomy	4 th
American Studies	30 th
Animal Sciences	5 th
Applied Mathematics	10 th
Astrophysics	7 th
Atmospheric Science	6 th
Bacteriology/ Microbiology	14 th
Biochemistry	22 nd
Biology	19 th
Biophysics	6 th
Botany	16 th
Business Administration	9 th
Cell Biology	8 th
Ceramic/ Art Design	9 th
Chemical Engineering	13 th
Chemistry	15 th
Civil Engineering	7 th
Communication	15 th
Computer Engineering	9 th
Dietetics	4 th
Earth Science	9 th
Ecology/ Environmental Studies	13 th
Economics	33 rd
Engineering	6 th
Electrical Engineering	9 th
Entomology	9 th
Environmental Sciences	11 th
Farm/ Ranch Management	9 th
Finance	9 th
Food Services Management	6 th
Forestry	9 th
Genetics	7 th
Geophysics/ Geoscience	14 th
Home Economics	4 th
Horticulture	4 th
Hotel, Restaurant and Institutional Management	7 th
Industrial Engineering	3 rd
Information Systems Management	13 th
Human Resources Management	10 th
Labor and Industrial Relations	7 th
Landscape Architecture	19 th
Logistics/ Supply Management.	10 th
Management	11 th
Management Information Systems	19 th
Marketing	8 th
Materials Engineering	29 th
Mathematics	26 th
Mechanical Engineering	7 th
Meteorology	7 th
Molecular Biology	14 th
Natural Resource Management	5 th
Nuclear Engineering	7 th
Nutrition	6 th
Operations Research	8 th
Pharmacy	5 th
Parks Management	15 th
Poultry Sciences	12 th
Product Operations Management	3 rd
Quantitative Analysis/ Methods	3 rd
Speech Pathology/ Audiology	4 th
Statistics	7 th
Wildlife Biology	3 rd

HELPING YOU UNDERSTAND THE RULES

Many times the NCAA rules and regulations may seem difficult to understand. We will identify and define some of the most frequently used terms in order to make the recruiting process more easily understood.

PROSPECTIVE STUDENT-ATHLETE (Prospect)

A prospective student athlete (prospect) is an individual who has either started in the ninth grade OR who has received ANY benefit from an institution or a booster. These types of benefits include:

- Providing an individual an expense paid visit to a collegiate institution (official visit)
- Having arranged in-person contact
- Providing an individual (or their relatives or friends) any financial assistance or other benefits that the institution does not provide to prospective students at large, not just student-athletes.

RECRUITING

Recruiting involves any solicitation of a prospect (or family members) by a Purdue University staff member for the purpose of encouraging him or her to enroll at Purdue and participate in the intercollegiate athletics program.

RECRUITING ACTIVITIES

Recruiting activities include written correspondence, e-mail, faxes, telephone conversations, evaluations, in-person contacts (both on-campus and off-campus) and official and unofficial visits.

A REPRESENTATIVE OF PURDUE'S ATHLETICS INTEREST

A representative of Purdue Athletics is an individual, independent agency, corporate entity or other organization that is essentially a booster, fan, friend, promoter or supporter of Purdue University athletics interests. They retain that identity indefinitely.

KEY RECRUITING RULES

- **Letters and emails** from college coaches, faculty and students (at the direction of a Purdue coaching staff member) are not permitted until **September 1** of the prospect's **junior year** in high school.
- **Phone calls** are not permitted until **July 1** at the beginning of the prospects **senior year** in high school. Coaches are generally only permitted to call a prospect once a week, but there are exceptions including unlimited calls during a contact period. Prospects may call a coach anytime.
- In-person, off-campus recruiting contacts are not permitted with a prospect or the prospect's relatives or legal guardian(s) prior to **July 1** following the prospect's **completion of the junior year** in high school.

- Unofficial visits are visits a prospect makes to Purdue University at his or her own expense. A prospect may make **unlimited unofficial visits**, unless it is during his or her sport's dead period. A coach is not permitted to have ANY contact, on- or off-campus, with a prospect during a dead period.
- A prospect is allowed **five official visits** during his or her senior year in high school, with no more than one visit to an institution. An official visit occurs when an institution pays for all or part of the visit to campus. An official visit may not exceed 48 hours.
- In all sports, coaches may not have any contact with a prospect prior to any athletics competition in which he or she is a participant during the day or days of competition, even if the prospect is on an official or unofficial visit.
- Alumni, boosters, and any other representatives of Purdue University athletics interests may not participate in recruiting. Phone calls, e-mails, and personal contact between these representatives and a prospect or the prospect's relatives are strictly prohibited.
- Prospects may not accept any benefit, gift or service, such as cash, clothing, cars, transportation, loans or discounts from a Purdue University staff member or a representative of Purdue's athletics interests. Doing so may jeopardize the prospect's eligibility to compete in intercollegiate athletics.

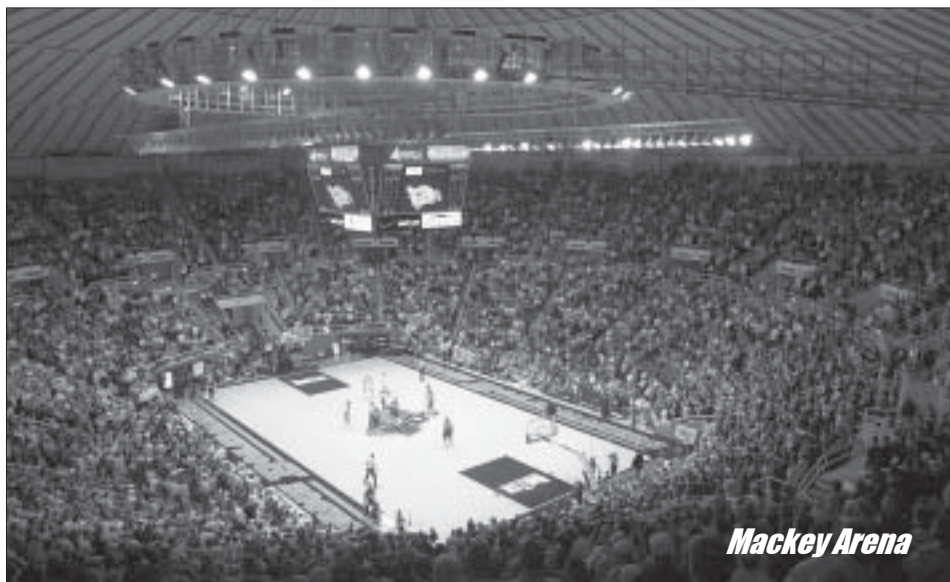
KEYS TO INITIAL-ELIGIBILITY

- Prospects who intend to participate in intercollegiate athletics must register with the NCAA Initial-Eligibility Clearinghouse. Prospects should apply for certification with the Clearinghouse immediately following their junior year in high school. Contact a high school counselor or the Clearinghouse (319-337-1492) for more information.
- In order to be eligible to practice and compete in intercollegiate athletics, prospects must have a minimum cumulative GPA in a core curriculum of 14 specific college-prep courses, and have achieved a minimum required score on the ACT or SAT. The required core courses and the initial-eligibility index (sliding scale of corresponding GPAs and test scores) can be found on the NCAA website (www.ncaa.org), the athletics website (www.purduesports.com) or by asking a high school counselor. The required SAT or ACT score must be achieved under national testing conditions on a national testing date (i.e., no residual (campus) testing or regional testing dates.)

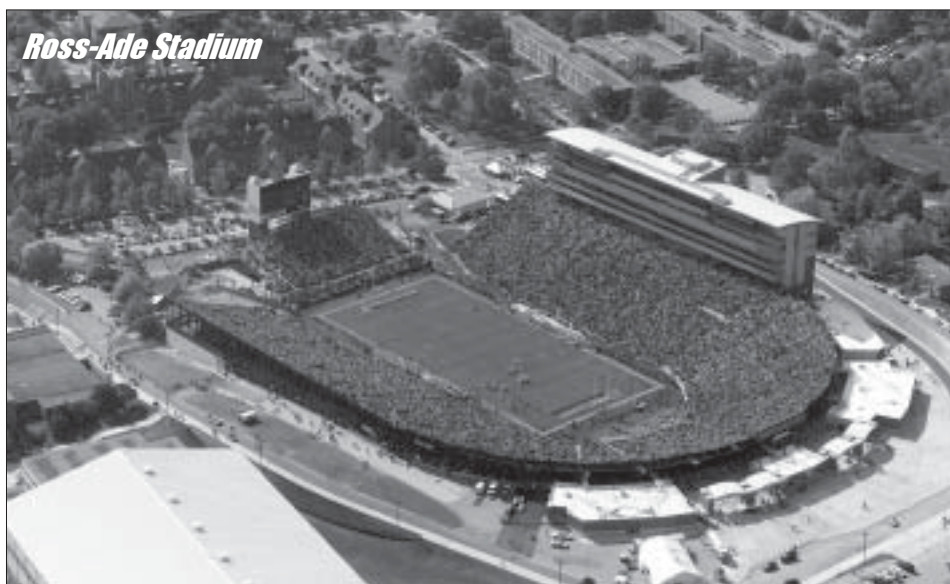
The information provided here is a brief overview of the many rules and regulations that govern intercollegiate athletics and does not include all applicable provisions. For further information, please visit the Purdue athletics website, (www.purduesports.com) and click on the compliance link on the left side on the page or contact the compliance office at 765-494-9752.

Purdue Spirit

BOILERMAKERS



Mackey Arena



Ross-Ade Stadium



**Boilermaker
Special**



**Purdue
Pete**

'Hail Purdue'

From the early days of Purdue sports in the 1880s, the fans shouted chants to cheer their teams. The Purdue fight song was copyrighted in 1913 by a Purdue alumnus and a student. E.J. Wotawa, class of 1912, provided the score; J. Morrison, class of 1915, the lyrics. The stirring tune is both battle cry and statement of the affection that true Boilermakers have for their school.

To your call once more we rally,
Alma Mater, hear our praise;
Where the Wabash spreads its valley,
Filled with joy our voices raise.
From the skies in swelling echoes
Come the cheers that tell the tale
Of your vic'tries and your heroes,
Hail Purdue! We sing all hail!

Hail, Hail to Old Purdue!
All hail to our old gold and black!
Hail, Hail to Old Purdue!
Our friendship may she never lack,
Ever grateful, ever true,
Thus we raise our song anew,
Of the days we've spent with you
All hail our own Purdue.

When in after years we're turning,
Alma Mater, back to you,
May our hearts with love be yearning,
For the scenes of old Purdue.
Back among your pathways winding,
Let us seek what lies before,
Fondest hopes and aim e'er finding,
While we sing of days of yore.



BOILERMAKERS

Greater Lafayette

West Lafayette, the location of Purdue's main campus, is the twin city of Lafayette. Flanking the Wabash River, the cities are located 65 miles northwest of Indianapolis and 126 miles southeast of Chicago.

With a population in excess of 140,000, Lafayette-West Lafayette is one of the largest metropolitan centers in northwestern Indiana, accessible from U.S. Highways 52 and 231, Interstate 65 and State Roads 25, 26, 38 and 43. Major bus lines and Amtrak trains stop daily.

Lafayette-West Lafayette is a regional hub for restaurants, shops, museums and entertainment. The community offers 26 movie theatres, daily and weekly newspapers, 12 radio stations, a television station and cable system, more than 60 churches of all major denominations, an art museum, a historical museum and 1,600 acres of public parks.

Nearby points of historic and scenic interest include Fort Ouiatenon, on the National Register of Historic Places; Battle Ground, where William Henry Harrison fought the Battle of Tippecanoe; and the developing projects of Museum at Prophetstown and Prophetstown State Park, dedicated to the preservation of Woodland Indian agricultural and environmental heritage.

Lafayette also is home to the Long Center for the Performing Arts, Clegg Botanical Gardens and Columbian Park Zoo. Located on the eastern side of the Wabash River, Lafayette shares the 13-mile long Wabash Heritage Trail with West Lafayette. Nearby Battle Ground, located northwest of West Lafayette, boasts Wolf Park, where people can see live wolves, coyotes and foxes in their natural habitat.

Not only are there places to go in Lafayette-West Lafayette, but there also are things to do. The area hosts numerous community events throughout the year, including the Taste of Tippecanoe, 'Round the Fountain Art Fair, Hot Summer Nights, Riverfront Jazz & Blues Festival, Global Fest, Feast of the Hunters' Moon, Christmas Parade, and Gus Macker 3-on-3 Basketball Tournament.

West Lafayette is experiencing a renaissance of sorts in an area called the "levee," where more than \$100 million worth of construction is under way. Once completed, Wabash Landing and the surrounding area will become a new focal point for residents and students, just across the John T. Myers Pedestrian Bridge from the Riehle Plaza and downtown Lafayette.

A diverse mixture of night spots, shopping centers, art museums and restaurants give Lafayette-West Lafayette a distinct and unique flavor. Boasting the convenience of a modern city and friendly "down-home" residents, Lafayette-West Lafayette is one of America's most-livable communities.



Indiana

BOILERMAKERS



The Indianapolis skyline



The Arts Garden in downtown Indianapolis



The Indianapolis 500

Indiana, "The Crossroads of America," has something for everyone. Whether you are in search of recreation or relaxation, the Hoosier State most likely will satisfy your needs.

Located in the heart of the Midwest, Indiana is welcoming to a variety of people because of its rich history, cultural opportunities and fertile landscape, not to mention its place as one of the major sports metropolises and industrial centers in the nation and world.

In the northwest corner of the state, one can traverse Indiana's 41-mile Lake Michigan waterfront. This area, which boasts the Indiana Dunes National Lakeshore, is good for work and play. It is home to industries that turn out iron, steel, oil, automobile parts and accessories, truck and bus bodies, aircraft engines, and pharmaceuticals.

Indiana gives to the world from factory to field. The state is a leader in agriculture, with corn as its main crop.

Beneath much of Indiana's rich soil is limestone. A large amount of the building limestone used in the U.S. is quarried in Indiana.

Those looking for a little adventure in Indiana can access more than 1.1 million acres of land available for outdoor recreation. Some of that land can be found in southern Indiana, where Wyandotte Cave, one of the largest caverns in the U.S., is located.

One can work and play in Indiana. But when it comes to sports spectating, Indiana is second to none. It all starts in Indianapolis, home of the NFL Colts, NBA Pacers and WNBA Fever. The Indians, a Triple-A baseball team, play at Victory Field, while Indianapolis also is home to the Indiana Blast USL soccer team, the Indianapolis Ice hockey team, and the Indiana Firebirds AFL arena football team. During the summer, Indianapolis hosts the RCA Championship tennis tournament, a precursor to the U.S. Open. The summer starts with the Indianapolis 500 and draws to a close with the Brickyard 400, car races run at the Indianapolis Motor Speedway.

Whatever your pleasure is, you are sure to find it somewhere in the state of Indiana.



BOILERMAKERS

Boiler Cup

The Boiler Cup is an annual fund raiser to help benefit the golf program. Each year, golf alumni and friends of the program make it back to West Lafayette for the event, which is usually on a home-football game weekend.

Following the golfing activities, a dinner is held in the Voinoff Pavilion where head coach Devon Brouse addresses the audience, and prizes are awarded to the winning teams.

For more information on participating in the 2005 Boiler Cup, contact associate head coach Greg Robertson at (765) 496-3935.



Honors and Awards

BOILERMAKERS

Big Ten Team Champions

2000

All-Big Ten Tournament

1982 Lori Heiden
Ellisa Luken
Judy Pollitt
1983 Lori Heiden

Team Most Valuable Players

1977 Ann Wiersig
1978 Ann Wiersig
1979 Linda Brandstetter
1980 Linda Brandstetter
1981 Bonnie Overmann
1982 Ellisa Luken
1983 Lori Heiden
1984 Lori Heiden
1985 Lorna Miedema
1986 Lorna Miedema
1987 Jeanine Wiernik
1988 Stephanie Ristau
1989 Stephanie Ristau
1990 Leanne Quinn
1991 Carrie Kotoshirodo
1992 Carrie Kotoshirodo
1993 Kristin Lindstrom
1994 Kristin Lindstrom
1995 Kristin Lindstrom

All-Big Ten

1995 Kristin Lindstrom
1997 Colleen Cashman
Angela Blythe
1998 Colleen Cashman
Stacy Orschell
Angela Blythe
1999 Stacy Orschell
Angela Blythe
2000 Stacy Orschell
Kari Damron
2001 Kari Damron
2002 Kari Damron
2003 Kari Damron

Second Team All-Big Ten

2003 Beth Hermes
Heather Zielinski
2004 Beth Hermes
Onnarin Sattayabanphot

Big Ten Freshman of the Year

2000 Kari Damron

Big Ten Coach of the Year

2000 Devon Brouse

Big Ten Player of the Year

2000 Stacy Orschell

Academic All-Big Ten

1989 Mary Meo
Leanne Quinn
1990 Leanne Quinn
1991 Susan Klein
Carrie Kotoshirodo
Leanne Quinn
1992 Susan Klein
Carrie Kotoshirodo
1993 Carrie Kotoshirodo
Kristin Lindstrom
1994 Kristin Lindstrom
Mindy Popiel
1995 Kristin Lindstrom
Mindy Popiel
1996 Kasia Bannon
Heather Hasselberg
Carrie Jacobsen
Megan Johnson
Kristin Lindstrom
Cherie Yeager
1997 Colleen Cashman
Jill Dickey
Johanna Gollings
Heather Hasselberg
Rebecca Burkhart
Colleen Cashman
Jill Dickey
Johanna Gollings
Heather Hasselberg
1998

1999

Lisa Kenley
Katie Kinsinger
Stacy Orschell
Rebecca Burkhart
Jill Dickey
Johanna Gollings
Lisa Kenley
Katie Kinsinger
Stacy Orschell
Andrea Quandt

2000

Lisa Kenley
Katie Kinsinger
Andrea Makauskas
Stacy Orschell
Andrea Quandt
Christy Rittenhouse
Kelly Beth Simmons

2001

Caroline Laurens
Andrea Makauskas
Christy Rittenhouse
Heather Zielinski

2002

Caroline Laurens
Christy Rittenhouse
Heather Zielinski

2003

Heather Zielinski

2004

Onnarin Sattayabanphot

NCAA Championships Appearances

2000

2001

2002

2003

2004



Lori Heiden was named All-Big Ten in both the 1982 and 1983 seasons.



Carrie Kotoshirodo was named the team's MVP twice during her career.

BOILERMAKERS

Team Championships



Left to right, back row: Stacy Orschell, Katie Kinsinger, Jill Young, Christy Rittenhouse, Andrea Makauskas, Andrea Quandt, assistant coach Rayma Fisher.

Front row: Head Coach Devon Brouse, Kari Damron, Heather Zielinski, Lisa Kenley, Kelly Beth Simmons, associate head coach Andrew Sapp.

2000 Big Ten Champions

The Boilermakers captured their first Big Ten Championship in 2000. The Boilermakers began the 1999-2000 season scorching the fields in both the Lady Northern Invitational and the Lady Buckeye Invitational.

The Old Gold and Black finished no worse than seventh during the regular season. The Boilermakers placed second at the Shootout at the Legends and then finished fifth in three-straight events.

At the Big Ten Championships, held in Madison, Wis., the Boilermakers not only blew the field away, but shattered the Big Ten record for the tournament.

The Boilermakers fired a four-round 1,167, breaking the previous low of 1,196 by 32 strokes.

Purdue went on to finish second in the NCAA Women's Central Regional and ninth at the NCAA Championships.

Team Tournament Championships

1976

Ball State Invite

1977

Tri Invite

1980

Indiana State Invite

1981

Badger Invite

Indiana State Invite

Purdue Invite

1982

Lady Cardinal Invite

1984

Purdue Invite

Lady Boiler Invite

1985

Notre Dame Invite

1986

Notre Dame Invite

Purdue Invite

1987

Purdue Invite

William and Mary Invite

1988

Notre Dame Invite

Purdue Invite

Illinois State Invite

Lady Missouri Invite

William and Mary Invite

1989

Ferris State Invite

1996

Lady Racer-Hilltopper Invite

Snowbird Invite

Boilermaker Invite

1997

Lady Topper Invite

1998

Snowbird Intercollegiate

1999

Hatter Spring Fling

2000

Lady Northern Invite

Lady Buckeye

Big Ten Championships

2002

Mercedes-Benz Championships

Team Tournament Championships (by tournament)

Ball State Invite	1976
Big Ten Championships	2000
Ferris State Invite	1989
Hatter Spring Fling	1999
Indiana State Invite	1980, 1981
Mercedes-Benz Championships	2002
Lady Boilermaker Invite	1984, 1996
Lady Buckeye Invite	2000
Lady Cardinal Invite	1982
Lady Missouri Invite	1988
Lady Northern Invite	2000
Lady Racer-Hilltopper Invite	1996
Lady Topper Invite	1997
Notre Dame Invite	1985, 1986, 1988
Purdue Invite	1981, 1984, 1987, 1988
Snowbird Intercollegiate	1996, 1998
Tri Invite	1977
William and Mary Invite	1987, 1988

Individual Records

BOILERMAKERS

Low Round

65	Rebecca Burkhart, Lady Wildcat Invitational	8/7/95
67	Stacy Orschell, Big Ten Championships	4/28/00
68	Angela Blythe, Wildcat Intercollegiate	2/22/99
68	Kari Damron, Big Ten Championships	4/28/00
68	Kari Damron, Shootout at the Legends	10/10/00
68	Caroline Laurens, Bryan National Collegiate	4/8/01
68	Andrea Makauskas, Big Ten Championships	4/29/00
68	Jenine Wiernik, Lady Boiler Invitational	9/12/87
69	Heather Zielinski, Big Ten Championships	4/27/03
69	Colleen Cashman, Lady Northern Invitational	9/20/97
70	Angela Blythe, Lady Kat Invitational	10/12/96
70	Andrea Makauskas, Bryan National Collegiate	4/8/01
70	Kari Damron, Shootout at the Legends	10/12/99
70	Stacy Orschell, Shootout at the Legends	10/12/99
70	Onnarin Sattayabanphot, Mercedes-Benz Challenge	10/22/03
70	Beth Hermes, Bryan National Collegiate	4/24/04

Low 36-Hole Tournament

68-76=144	Jeanine Wiernik, Lady Boiler Invite	Fall 1987
71-74=145	Angela Blythe, Snowbird Intercollegiate	3/13-14/97
71-75=146	Lisa Luken, Lady Cardinal Invite	9/25-26/81
72-75=149	Kari Damron, Bryan National Intercollegiate	3/28-30/03
75-72=147	Bonnie Overmann, Purdue Invite	9/27-28/80
72-76=148	Jeanine Wiernik, Notre Dame Invite	9/6/87
74-75=149	Beth Hermes, Bryan National Intercollegiate	3/28-30/03
74-75=149	Angela Blythe, Mad Hatter Spring Fling	3/20-21/99
73-76=149	Colleen Cashman, Snowbird Intercollegiate	3/12-13/98
73-77=150	Stephanie Ristau, Lady Boiler Invite	Fall 1987
79-71=150	Linda Branstetter, Indiana Invite	Fall 1978
79-71=150	Kari Damron, NCAA Preview	9/24-26/02

Low 54-Hole Tournament

71-73-68=212	Kari Damron, Shootout at the Legends	10/9-10/00
71-74-71=216	Kari Damron, NCAA Central Regionals	5/10-12/01
71-75-71=217	Stacy Orschell, Lady Northern	9/17-19/99
71-74-72=217	Kari Damron, Mercedes-Benz Championships	10/12-14/01
74-74-71=219	Kari Damron, Mercedes-Benz Championships	10/18/20/03
80-69-70=219	Kari Damron, Shootout at the Legends	10/11-12/99
77-74-68=219	Caroline Laurens, Bryan National	4/6-8/01
74-70-75=219	Kari Damron, Shootout at the Legends	10/8-9/01
72-73-74=219	Stacy Orschell, Lady Northern	9/19-21/97
74-75-71=220	Kari Damron, Lady Boilermaker Invitational	4/12-13/03
75-72-73=220	Kari Damron, Golfworld Collegiate	11/3-5/00
73-75-72=220	Kari Damron, Betsy Rawls Classic	3/12-14/01
73-70-77=220	Onnarin Sattayabanphot, Mercedes-Benz Challenge	10/19-21/03

Low 72-Hole Tournament

67-74-73-75=289	Stacy Orschell, Big Ten Championships	4/28-30/00
68-73-76-72=289	Kari Damron, Big Ten Championships	4/28-30/00
74-71-77-73=295	Heather Zielinski, NCAA Championships	5/22-24/02
75-75-74-73=296	Heather Zielinski, Big Ten Championships	4/28-30/00
74-75-70-77=296	Caroline Laurens, NCAA Championships	5/22-24/02
78-71-74-75=298	Kari Damron, NCAA Championships	5/22-24/02
80-68-75-78=301	Andrea Makauskas, Big Ten Championships	4/28-30/00
77-72-75-77=301	Stacy Orschell, Big Ten Championships	5/1-3/98
74-75-80-74=303	Kari Damron, Big Ten Championships	4/27-29/01
74-76-77-75=303	Kari Damron, Big Ten Championships	4/27-29/01
75-76-77-75=303	Kari Damron, NCAA Championships	5/24-27/00
74-78-77-75=304	Stacy Orschell, NCAA Championships	5/24-27/00
74-76-75-80=305	Kari Damron, Big Ten Championships	4/25-27/03
76-76-76-77=305	Kari Damron, NCAA Championships	5/22-25/01
76-73-80-77=306	Andrea Makauskas, NCAA Championships	5/24-27/00
79-74-80-73=307	Christy Rittenhouse, Big Ten Championships	4/28-30/00
73-81-80-74=308	Andrea Makauskas, Big Ten Championships	4/27-29/01



Angie Blythe holds the third-lowest 18-hole round and second-lowest 36-hole round in Boilermaker history.



Rebecca Burkhart's 65 in 1995 is the Boilermaker record for 18 holes.



Caroline Laurens fired a 296 at the 2002 NCAA Championships.

BOILERMAKERS

Team Records

Low Round

281	Bryan National Collegiate	4/8/01
287	Big Ten Championships	4/28/00
288	Shootout at the Legends	10/12/99
289	Big Ten Championships	4/29/00
289	Shootout at the Legends	10/10/00
292	Shootout at the Legends	10/9/00
292	Central District Invitational	2/25/02
293	Lady Northern Invitational	9/19/99
293	Purdue Invitational 9/28/80	
294	Landfall Tradition	9/1-3/03
294	Big Ten Championships	4/26/02
295	NCAA Central Regional Championships	5/10/01
295	NCAA East Regional Championships	5/11/00
295	Lady Northern	10/1/00
296	Lady Gamecock Classic	3/15/02
296	NCAA Championships	5/23/02
297	Lady Boilermaker Invitational	4/12-13/03
297	Bryan National Intercollegiate	3/28-30/03
297	Shootout at the Legends	10/12/98
297	Shootout at the Legends	10/8/01
297	Mercedes-Benz Championships	10/12/01
297	NCAA Regional Championships	5/11/02
297	NCAA Central Championships	5/23/02

Low 36-Hole Tournament

306-297=603	Bryan National Intercollegiate	3/28-30/03
302-305=607	Lady Boiler Golf Invitational	9/12-13/87
300-307=607	N. Illinois Snowbird Intercollegiate	3/13-14/97
303-309=612	Mad Hatter Spring Fling	3/20-21/99
322-293=615	Purdue Invitational	9/27-28/80
616	Notre Dame Invitational	9/6/87
307-309=616	Snowbird Intercollegiate	3/12-13/98
309-310=619	Badger Invitational	9/12-14/03
302-320=622	Mizzou Invitational	4/9-10/88
307-317=624	Lady Cardinal Golf Invitational	9/25-26/81

Low 54-Hole Tournament

292-300-289=881	Shootout at the Legends	10/9-10/00
309-298-281=888	Bryan National Collegiate	4/6-8/01
297-294-297=888	Wildcat Intercollegiate	2/22-24/99
306-298-288=892	Shootout at the Legends	10/11-12/99
303-300-293=896	Lady Northern Invitational	9/17-19/99
305-294-301=905	Landfall Tradition	9/1-3/03
297-300-303=900	Shootout at the Legends	10/12-13/98
295-301-304=900	NCAA East Regional Championships	5/11-13/00
300-299-304=903	Lady Northern Invitational	9/19-21/97
300-301-302=903	East Carolina Invitational	10/13-14/04
300-308-297=905	Lady Boilermaker Invitational	4/12-13/03
309-301-295=905	Lady Northern Invitational	9/30-10/1/00
295-300-311=906	NCAA Central Regional Championships	5/10-12/01
298-308-300=906	Golfworld Collegiate	11/3-5/00
298-303-306=907	Lady Buckeye Invitational	4/25-26/98

Low 72-Hole Tournament

287-289-298-293=1,167	Big Ten Championships	4/28-30/00
307-294-308-296=1,205	NCAA Championships	5/18-21/04
298-303-307-307=1,215	NCAA Championships	5/24-27/00
312-298-304-306=1,220	Big Ten Championships	5/1-3/98
305-310-303-313=1,231	Big Ten Championships	4/23-25/04
312-317-305-298=1,232	Big Ten Championships	4/25-27/03
316-309-304-305=1,234	NCAA Championships	5/20-23/03
298-313-319-305=1,235	Big Ten Championships	4/27-29/01
305-309-309-313=1,236	NCAA Championships	5/22-25/01
315-326-325-309=1,275	Big Ten Championships	4/30-5/2/99
318-318-323-317=1,276	Big Ten Championships	5/8-10/87
315-331-331-325=1,302	Big Ten Championships	5/2-4/97
326-323-325-332=1,306	Big Ten Championships	5/3-5/91
336-330-311-336=1,313	Big Ten Championships	5/5-7/95
330-323-318-343=1,314	Big Ten Championships	5/6-8/94



Jeanine Wiernik's 144 in 1987 is the lowest 36-hole score in Boilermaker history.



Stacy Orschell was the 2000 Big Ten Player of the Year and three-time All-Big Ten selection for the Boilermakers.



Colleen Cashman fired the ninth-lowest round (69) in school history at the Northern Invitational in 1997.

All-Time Roster

BOILERMAKERS

-A-		-G-		-L-		-R-	
Asbun, Ella	2003-04	Gahimer, Karen	1983-94	Laurens, Caroline	2000-2002	Randall, Janet	1985-87
Atkinson, Caryn	1989-91, 93	Glasier, Jenny	1998	Lee, Sophia	2003	Rasmussen, Amy	1992-93
Ayers, Sarah	1983-84	Gollings, Johanna	1995-99	Lindstrom, Kristin	1992-95	Rittenhouse, Christy	1999-2002
-B-		Granson, Alica	1989-92	Lucey, Clare	2003	Ristau, Stephanie	1985-88
Bannon, Kasis	1995-97	Granson, Nicole	1992-93	Luken, Lisa	1979-82	Robinson, Julia	1984-85
Bish, Carol	1984-86	Green, Miki	1990	Lynch, Therese	1980-81	Ross, Tamaira	1992-93
Blythe, Angie	1995-99	Griessen, Elizabeth	1983	-M-		Ruddick, Jean	1977
Brandstetter, Linda	1977-79	Guess, Kristen	1993	Makauskas, Andrea	1999-2002	Ruzzo, Elizabeth	1987-88
Booth, Maggie	1989-90	Guess, Rebecca	2001-2003	Meo, Mary	1986-89	-S-	
Boyer, Bonnie	1975-76	-H-		Mess, Carolyn	2004-present	Saladin, Liz	1988
Breland, Lori	1982-83	Haase, Caroline	2004-present	Michelson, Silvia	1980	Sattayabanphot, Onnarin	2003-present
Buda, Michele	1992-93	Hanley, Shannon	1986-87	Miedma, Lorna	1983-85	Schultz, Jackie	1989-92
Burkhart, Rebecca	1995-99	Hassleberg, Heather	1994-98	Miller, Chris	1985	Senn, Tracy	1985
-C-		Heath, Jody	1982-83	Mischke, Stephanie	1976-77	Simmons, Kelly Beth	1996-2000
Cashman, Colleen	1994-98	Heiden, Lori	1981-83	Moore, Judith	1988	Snyder, Lana	1985
Clark, Julie	1984	Heinicke, Diana	1981-82	-N-		Sokulski, Julie	1991
Coddens, Camille	1988-91	Hendker, Nancy	1976	Nelson, Becky	2003-04	Stinson, Maria	2004-present
Conley, Laura	1984	Hermes, Beth	2000-04	Nelson, Tiffany	1991-93	Suhr, Heather	2003
Costello, Laura	1993	Hertges, Nicole	1992-94	North, Casey	2004-present	-T-	
Couch, Alison	2000-01	Hindman, Emily	2003-04	-O-		Tang, Erin	2004
Crouse, Marilyn	1984-85	Homan, Andi	1998	O'Neal, Nancy Lynn	1981	-V-	
Craig, Carolyn	1978-79	Hughes, Sarah	2004-present	Overmann, Bonnie	1980-83	Vaughn, Suzanne	1981-82
-D-		Humphrey, Christine	1984-85	Orschell, Stacy	1996-2000	-W-	
Damron, Kari	1999-2003	-J-		-P-		Warren, Lori	1979
Davis, Debbie	1984	Jacobson, Carrie	1994-96	Padgett, Debbie	1987-88	Wells, Shawn	1987
Dickey, Jill	1995-99	Janovsky, Sarah	1990-91	Paucak, Audrey	1985, 87	Wiernik, Jean	1984-87
Dennis, Diana	1975	Johnson, Megan	1992-95	Pettinato, Tish	1984-85	Wiersig, Ann	1975-77
Drook, Julie	1975	Jones, Kim	1982-83	Phillips, Susan	1983-84	Will, Alisha	1993
Dumler, Jane	1983	-K-		Pollitt, Judy	1978-81	Wolter, Danielle	2004-present
-E-		Kaufman, Johannah	1981	Popiel, Mindy	1992-94	Wright, Carolyn	1981
Eppers, Lexie	1991	Keelan, Kathy	1981-82	Prather, Kellie	1982	Wright, Susan	1978-80
Eibel, Jennifer	1985-87	Keilberg, Julia	1976-77	Pulliam, Laura	1985-88	-Y-	
Eikenaar, Myrte	2004-present	Kenley, Lisa	1995-2000	Putnam, Lissa	2001-2002	Yeager, Cherie	1994-96
Eschbach, Kara	2004-present	Kinsinger, Katie	1996-2001	-O-		Young, Jill	2001
Evans, Michelle	1985	Klassen, Sharon	1975-76	Quandt, Andrea	1998-2001	-Z-	
-F-		Klein, Susan	1988-91	Quinn, Leanne	1988-90	Zehr, Nancy	1986
Katie Fenn	2004-present	Knight, Julie	1991	-R-		Zielinski, Heather	1999-2003
Whitney Frykman	2004-present	Koelher, Julie	1991	Zink, Angie	1994		
		Kotoshirodo, Carrie	1989-92				



Megan Johnson



Stephanie Ristau



Alica Granson

BOILERMAKERS

Year-by-Year Results



The 1976 Boilermakers were the first team in school history.

1976

Illinois	L, 547-585
Ball State Invitational	1st of 5
Central Michigan Invitational	3rd of 8
Midwest Regional	7th of 18
Indiana Invitational	8th of 16
Michigan State Invitational	4th of 10
Purdue Invitational	3rd of 7
Purdue Invitational	2nd of 4
Illini Invitational	6th of 8
Michigan State Invitational	4th of 15
Big Ten Championships	7th of 11

1977

Wisconsin Invitational	2nd of 10
Tri Invitational	1st, 328
Illinois State Invitational	5th of 15
Michigan Invitational	2nd of 8
Purdue Invitational	2nd of 17
Midwest Regional	2nd of 13
Indiana Invitational	2nd of 16
Illini Invitational	6th of 12
Big Ten Championships	6th of 11

1978

Quad Invitational	2nd, 351
Wisconsin Invitational	4th of 14
Illinois State Invitational	3rd of 19
Purdue Invitational	2nd of 16
Indiana Invitational	8th of 20
Midwest Regional	3rd of 16
Duke Invitational	8th of 15
Illini Invitational	5th of 15
Big Ten Championships	7th of 11

1979

Badger Invitational	2nd of 11
Illinois State Invitational	4th of 19
Illinois	W, 331-364
Purdue Invitational	8th of 16

Indiana Invitational	7th of 22
Midwest Regional	3rd of 19
Duke Invitational	15th of 18
Lady Bucks Invitational	11th of 18
Big Ten Championships	7th of 11



The 1982 Boilermakers

1980

Appalachian Invitational	9th of 14
Indiana State Invitational	1st of 10
Michigan State Invitational	8th of 17
Purdue Invitational	6th of 19
Indiana Invitational	7th of 20
Midwest Regional	5th of 19
Duke Invitational	15th of 18
Lady Bucks Invitational	11th of 18
Illini Invitational	2nd of 6
Big Ten Championships	7th of 11

1981

Badger Invitational	1st of 16
Indiana State Invitational	1st of 8
Purdue Invitational	1st of 9
Midwest Regional	6th of 21
Indiana Invitational	2nd of 8
North Carolina Invitational	21st of 27
Florida Invitational	3rd of 6
Illini Invitational	6th of 10
Michigan State Invitational	3rd of 8
Big Ten Championships	4th of 11

1982

Indiana Invitational	4th of 9
Minnesota Invitational	4th of 9
Lady Cardinal Invitational	1st of 10
Lady Boiler Invitational	6th of 16
Midwest Regional	14th of 15
Illini Invitational	3rd of 7
Spartan Invitational	3rd of 7
Purdue Invitational	2nd of 11
Big Ten Championships	3rd of 11

Year-by-Year Results

BOILERMAKERS

1983

Lady Boiler Invitational	2nd of 13
Illini Invitational	3rd of 7
Indiana Invitational	4th of 11
Northern Invitational	8th of 21
Lady Tarheel Invitational	14th of 19
Florida Invitational	14th of 15
Lady Boiler Invitational	9th of 16
Iowa Invitational	8th of 12
Big Ten Championships	6th of 11

1984

Michigan Invitational	6th of 8
Northern Invitational	11th of 19
Purdue Invitational	1st of 10
Lady Tarheel Invitational	13th of 19
Bradley Invitational	16th of 17
Lady Topper Invitational	6th of 8
Illini Invitational	4th of 6
Lady Boiler Invitational	1st of 8
Lady Buckeye Invitational	15th of 18
Big Ten Championships	7th of 11

1985

Notre Dame Invitational	1st of 7
Lady Boiler Invitational	3rd of 10
Northern Invitational	8th of 17
Lady Kat Invitational	17th of 17
Lady Wolverine Invitational	3rd of 6
Pat Bradley Invitational	13th of 14
Rollins Invitational	11th of 14
Purdue Classic	7th of 11
Buckeye Classic	4th of 11
Big Ten Championships	8th of 11

1986

Notre Dame Invitational	1st of 8
Northern Invitational	12th of 17
Purdue Invitational	1st of 13
Indiana Invitational	8th of 9
Northern Illinois Invitational	3rd of 6
Pat Bradley Invitational	12th of 15
Florida Invitational	5th of 6
Illini Invitational	7th of 10
Lady Boiler Invitational	4th of 14
Iowa Invitational	8th of 10
Mid-America Invitational	10th of 21
Big Ten Championships	9th of 11

1987

Notre Dame Invitational	2nd of 9
Lady Badger Invitational	8th of 9
Northern Invitational	11th of 15
Purdue Invitational	1st of 6
Pat Bradley Invitational	13th of 15
Jacksonville Invitational	2nd of 8
Northern Illinois Invitational	4th of 6
Lady Boiler Invitational	4th of 9
William and Mary Invitational	1st of 10
Lady Hawkeyes Invitational	3rd of 8
Big Ten Championships	5th of 9

1988

Notre Dame Invitational	1st of 11
Purdue Invitational	1st of 11
Illinois State Invitational	1st of 9
Lady Northern Invitational	4th of 16



The 1989 Boilermakers

Huskie Invitational	4th of 8
Lady Falcon Invitational	2nd of 3
Pat Bradley Invitational	11th of 13
Peggy Kirk Bell Invitational	10th of 17
Lady Missouri Invitational	1st of 8
William and Mary Invitational	1st of 9
Purdue Classic	2nd of 8
Big Ten Championships	8th of 9

1989

Lady Irish Invitational	2nd of 18
Indianapolis Invitational	2nd of 7
Illinois State Invitational	4th of 13
Lady Northern Invitational	6th of 21
Ferris State Invitational	1st of 5
Lady Kat Invitational	15th of 20
Pat Bradley Invitational	16th of 17
Peggy Kirk Invitational	10th of 13
Indiana Invitational	9th of 15
Lady Buckeye Invitational	5th of 9
Iowa Invitational	9th of 14
Big Ten Championships	6th of 9

1990

Lady Irish Invitational	5th of 18
Illinois State Invitational	9th of 20
Lady Northern Invitational	9th of 16
Lady Kat Invitational	15th of 17
Peggy Kirk Bell Invitational	17th of 17
Indiana Invitational	12th of 14
Lady Buckeye Invitational	14th of 17
Illini Spring Classic	6th of 9

Boilermaker Invitational	3rd of 9
Big Ten Championships	9th of 9

1991

Lady Irish Invitational	2nd of 24
Illinois State Invitational	6th of 17
Lady Northern Invitational	11th of 15
Lady Spartan Invitational	8th of 10
Ohio State Fall Invitational	18th of 19
Peggy Kirk Bell Invitational	15th of 19
Indiana Invitational	13th of 17
Ohio State Spring Invitational	5th of 16
Boilermaker Invitational	2nd of 12
Big Ten Championships	9th of 9

1992

Lady Wolverine Invitational	3rd of 9
Illinois State Invitational	7th of 19
Lady Spartan Invitational	7th of 18
Lady Northern Invitational	11th of 18
Cables End/Ram Invitational	7th of 12
Peggy Kirk Bell Invitational	8th of 18
Lady Topper Invitational	3rd of 8
Indiana Invitational	13th of 16
Boilermaker Invitational	4th of 17
Big Ten Championships	10th of 10

1993

Illinois State Invitational	6th of 19
Lady Northern Invitational	12th of 15
Lady Spartan Invitational	9th of 16

Lady Buckeye Invitational	5th of 12
Lady Kat Invitational	16th of 18
Cables End/Ram Invitational	2nd of 10
Peggy Kirk Bell Invitational	13th of 18
NIU Snowbird Intercollegiates	8th of 10
Lady Topper Invitational	4th of 16
Indiana Invitational	13th of 14
Boilermaker Invitational	6th of 14
Big Ten Championships	8th of 11

1994

Illinois State Invitational	5th of 20
Spartan Fall Invitational	11th of 21
Lady Monarch Invitational	5th of 10
Lady Northern Invitational	9th of 15
Lady Badger Invitational	6th of 9
Lady Cougar Invitational	12th of 15
Indiana Invitational	16th of 18
Boilermaker Invitational	5th of 13
Irish Invitational	6th of 9
Illini Spring Classic	4th of 8
Big Ten Championships	6th of 11

1995

Redbird Invitational	2nd of 17
Hawkeye Invitational	9th of 10
Lady Spartan Invitational	5th of 21
Lady Northern Intercollegiates	13th of 19
Lady Buckeye Invitational	5th of 11
Charleston Southern	W, 322-339
Indiana Invitational	14th of 15

BOILERMAKERS

Year-by-Year Results

Boilermaker Invitational	5th of 15
Lady Lion Invitational	10th of 13
Illini Spring Classic	2nd of 12
Lady Buckeye Invitational	4th of 12
Big Ten Championships	10th of 11

1996

Redbird Classic	2nd of 17
Wildcat Invitational	9th of 15
Lady Northern Invitational	10th of 15
Lady Kat Invitational	10th of 17
Lady Racer-Hilltopper Invitational	1st of 13
Texas A & M Aggie Classic	6th of 18
Snowbird Invitational	1st of 18
River Wilderness Invitational	5th of 13
Hoosier Invitational	6th of 17
Boilermaker Invitational	1st of 10
Hawkeye Invitational	2nd of 8
Big Ten Championships	6th of 11
NCAA Regionals	14th Place

1997

Redbird Classic	2nd of 17
Wildcat Invitational	9th of 15
Lady Northern Invitational	10th of 15
Lady Kat Invitational	10th of 17
Lady Topper Invitational	1st of 12
Midwest Classic	6th of 6
Fripp Island Intercollegiate	3rd of 24
Saluki Invitational	2nd of 14
Lady Buckeye Invitational	4th of 15
Boilermaker Invitational South	2nd of 12
Boilermaker Invitational North	6th of 15
Big Ten Championships	4th of 11

1998

SDSU/Aldila Classic	2nd of 16
Lady Kat Invitational	2nd of 18
Wolverine Invitational	2nd of 13
Lady Northern Invitational	3rd of 16
GTE MO-morial Invitational	4th of 16
River Wilderness USF Inv.	4th of 15
Peggy Kirk Bell Invitational	4th of 17
Snowbird Intercollegiate	1st of 20
Indiana Invitational	3rd of 15
Hawkeye Invitational	3rd of 10
Lady Buckeye Invitational	2nd of 8
Big Ten Championships	3rd of 11
NCAA Regionals	18th Place

1999

Lady Northern Invitational	4th of 14
Wolverine Invitational	2nd of 13
Shoot-Out at the Legends	3rd of 15
Memphis Intercollegiate	6th of 15
SMU/OSU Challenge	15th of 18
Arizona Invitational	7th of 16
Casa de Campo Intercollegiate	2nd of 13
Hatter Spring Fling	1st of 16
Indiana Invitational	3rd of 13
Lady Buckeye Invitational	2nd of 15
Big Ten Championships	4th of 11
NCAA Regionals	17th Place

2000

Lady Northern Invitational	1st of 16
Lady Buckeye	1st of 12
Shoot-Out at the Legends	2nd of 12
Mercedes-Benz Championship	5th of 18
SMU/OSU Challenge	5th of 18
Betsy Rawls Longhorn Classic	5th of 13
Indiana Invitational	7th of 15
Big Ten Championships	1st of 11
NCAA East Regional Championships	2nd Place
NCAA Championships	9th Place

2001

Lady Northern Invitational	2nd of 16
Shoot-Out at the Legends	2nd of 15
Mercedes-Benz Championship	4th of 15
Golf World/Palmetto Dunes Inv.	11th of 12
TRW Regional Challenge	11th of 18
Midwest Classic	7th of 18
Texas Shootout	3rd of 4
Betsy Rawls Longhorn Classic	4th of 17
Bryon National Invitational	4th of 17
Big Ten Championships	4th of 11
NCAA Central Regional Championships	7th Place
NCAA Championships	20th Place

2002

Fall Preview	T-19th of 24
Shootout at the Legends	6th of 19
Mercedes-Benz Championship	1st of 14
Lady Paladin Invitational	6th of 21
TRW Regional Challenge	15th of 18
Central District Invitational	T-2nd of 14
Lady Gamecock Classic	6th of 15
Bryan Collegiate Invitational	T-9th of 17
Lady Buckeye Invitational	5th of 15
Big Ten Championships	2nd of 11
NCAA Central Regional Championships	4th of 21
NCAA Championships	16th of 24



The 2000 Boilermakers were Big Ten Champions.

2003

Fall Preview	12th of 18
Mercedes-Benz Championships	5th of 14
Landfall Tradition	5th of 12
Northrup Grumman Challenge	T-12th of 18
Lady Puerto Rico Classic	11th of 15
Lady Gamecock Classic	14th of 15
Bryan Collegiate Invitational	8th of 18
Indiana Women's Invitational	1st of 11
Lady Boilermaker Invitational	2nd of 13
Big Ten Championships	4th of 11
NCAA Central Regional Championships	4th of 21
NCAA Championships	12th of 24

2004

Badger Invitational	2nd of 9
Lady Northern	10th of 15
East Carolina Invitational	5th of 17
Mercedes-Benz Invitational	16th of 16
Lady Puerto Rico Classic	14th of 15
Lady Gator	10th of 15
Betsy Rawls Invitational	T-6th of 18
Bryan National Collegiate	9th of 18
Lady Boilermaker Invitational	4th of 12
Big Ten Championships	4th of 11
NCAA Regional Championships	6th of 21
NCAA Championships	22nd of 24



The 2002 Boilermakers made it three-straight trips to the NCAA Tournament.