

Table of Contents

BOILERMAKERS



Table of Contents

| | |
|---|-------|
| Table of Contents and Quick Facts | 1 |
| 2005 Outlook | 2-3 |
| Head Coach Devon Brouse | 4-5 |
| Associate Head Coach Greg Robertson | 6 |
| Assistant Coach Christie Hermes | 7 |
| Golf Support Staff | 8 |
| Dustin Cone | 9 |
| Ryan Masuda | 10 |
| Bobby Bennett | 11 |
| Johan Edin | 12 |
| Pariya Junhasavasdikul | 13 |
| Brandon Lawson | 14 |
| Peter Richardson | 15 |
| Adam Vandoski/ Jonathan Schultz | 16 |
| Boiler Cup | 17 |
| Birck Boilermaker Golf Complex | 18-19 |
| Kampen Course Hole-by-Hole | 20-21 |
| Tom Spurgeon Golf Training Center | 22 |
| Boilermaker Practice Facility | 23 |
| Purdue University | 24-25 |
| John Purdue Club | 26 |
| Purdue Alumni | 27 |
| Academics | 28-29 |
| Compliance Guidelines | 30 |
| Purdue Spirit | 31 |
| Greater Lafayette | 32 |
| Indiana | 33 |
| Honors And Awards | 34-35 |
| Big Ten Championship Teams | 36-37 |
| 1961 National Champions | 38 |
| Team Championships | 39 |
| Individual Records | 40 |
| Team Records | 41 |
| All-Time Roster | 42 |
| Year-by-Year Results | 43-48 |

Media Information

Purdue Golf Information

All releases, tournament recaps and statistics will be available on the official Purdue Intercollegiate Athletics Web site, purduesports.com.

If you wish to receive e-mails containing results and tournament information, contact Elliot Bloom in the Sports Information office at ebloom@purdue.edu or (765) 494-3196.

Purdue Golf Newsletter

Approximately six times a year, a newsletter is sent to fans, alumni and friends of Purdue Golf. If you wish to receive a copy of the newsletter, contact Elliot Bloom in Sports Information or associate head coach Greg Robertson at (765) 496-3935 or e-mail him at groberson@purdue.edu.

Interview Policies

Player interviews must be set up through Elliot Bloom of the Sports Information office. Coach Devon Brouse can be contacted directly in his office on weekday mornings at (765) 494-2290.

Tournament Coverage

Media planning to cover any golf tournament should contact the host school's sports information office for credentials.

Tournaments hosted by Purdue are open to all media. Credentials will be issued by the Purdue Sports Information office.

Directions to the Birck

Boilermaker Golf Complex

From the North

Take I-65 south to Exit No. 193 (US 231). Take US 231 south to US 52 (approx. 12 to a red flashing light). Turn left on US 52 (approx. five miles, veer right onto ramp for Purdue/West Lafayette Northwestern Avenue). On Northwestern Avenue, proceed to second stop light and turn right onto Cherry Lane. Golf complex will be on your right.

From the South

Take I-65 North to Exit No. 175 (SR 25). Off the exit, turn left at stoplight. Go to first stoplight, US 52 and turn right. Go to fourth stoplight, Yeager Road and turn left. Go to next stoplight, Northwestern Avenue, turn left. At second stoplight, turn right on Cherry Lane. Golf complex is on your right.

From the West

Take SR 26 to West Lafayette (becomes State Street). Follow State Street to Grant Street and turn right. Turn left onto Northwestern Avenue. At the second stoplight, turn left onto Cherry Lane. Golf complex will be on your right.

From the East

Follow SR 231 into West Lafayette, which becomes South River Road once you're across the river. At the stoplight turn left onto State Street. Turn right at Grant Street. Turn left onto Northwestern Avenue. At the second stop light, turn left onto Cherry Lane. Golf Complex will be on your right.

2005 Information Guide Credits

The 2005 Purdue Men's Golf Information Guide was produced by the Purdue Sports Information office.

Editor: Elliot Bloom.

Editorial Contributors: Jay Cooperider, Tom Schott, Kathleen Offer, Mark Leddy, Wendy Mayer, Chris Macaluso, Lindsay Begley, Andrew Denham, Joe Pinter, Billy Buckles and Jen Bahan.

Photography: Tom Campbell, DIS Photographic Services, Jay Cooperider and Elliot Bloom.

Cover Design: Brandon Ray.

Prepress Assistance: Mindy Irby.

On the Cover: (Left to right) Bobby Bennett, Peter Richardson and Dustin Cone.



Full Steam Ahead ...

The Boilermakers roll through fall season, look ahead to spring



Sophomore Peter Richardson



Sophomore Pariya Junhasavasdikul

If the 2004 fall season was any indication, the 2005 spring season should be an exciting one for the Purdue men's golf team.

The Boilermakers played in six events in the fall, a record under coach Devon Brouse.

"Traditionally we're going to start with probably four tournaments in the fall," Brouse said. "If we have an opportunity to add a tournament that we think is a good opportunity for our young squad, we'll certainly do that. The chance to play the Hooter's match-play tournament this year was an unusual opportunity for our team. We took advantage of that. I think our weather here in the Midwest is great in the fall, so it makes sense to go ahead and try to play all the way up to mid-November."

Purdue excelled in the fall and finished the season with four top-three finishes, including a tie for first at the Radrick Farms Intercollegiate.

The Boilermakers also tied for third at the Windon Memorial Classic, placed second in the Alister MacKenzie Invitational, and finished third at the Landfall Tradition.

"I think this fall was great from the standpoint that we were competitive in almost every tournament we played in," said Brouse. "We had a chance to win at least four of the six tournaments we played in this fall. We only ended up winning one, but to be in the hunt and compete at that level is good for the team. We came away with the sense that we had room for improvement and some work to do. Hopefully it will be the right balance where we will improve as a team this spring."

The Boilermakers did not skip a beat following the graduation of line-up mainstays Shiv Kapur and Luke Epp. Kapur was an All-American last year.

"Anytime you graduate an All-American, it hurts, no matter how many good young players you have coming along," Brouse said. "To put the stroke average and strokes on the board like Shiv did and be an all-conference player for us the last couple of years is hard to replace. His presence has been missed, but it's the young players stepping up and filling those holes. Thus far, they've done the job."

Purdue returned three of five starters from a team that advanced to the program's third NCAA Championships appearance in the last four years.

"I think more important than the fact that we made it there is that we finished in the top-15 two of the past three years," said Brouse. "To be able to step up and compete at the top level is a goal of ours. You have to say Big Ten golf is very good on a national level. We know that if we can compete with the best teams in the Big Ten, then we will be okay against the best teams nationally as well."

The most consistent golfer of the fall season came from sophomore Bobby Bennett.

After seeing action in only one tournament as a freshman, Bennett recorded the lowest scoring average of the fall season by carding a 71.3. He posted the highest finish on the team in three tournaments.

"As a coach, that's what you hope a lot of your players will do," Brouse said about Bennett's emergence. "He really improved and took the challenge we gave him. For him to go home this summer and definitely improve and then come in this fall and continue to show improvement was just a real nice boost to our squad. Hopefully,

he'll continue to do that this spring and play very, very well."

Bennett tied for second place at the Radrick Farms Intercollegiate and won the Alister MacKenzie Invitational after firing a 207 over the three rounds, the second-lowest total in school history.

Sophomore Peter Richardson, from Carlisle, England, picked up right where he left off as a freshman. For the second-straight season, Richardson topped the field at the Windon Memorial Classic. As a freshman, Richardson had the second-lowest scoring average on the team behind the All-American Kapur.

"Peter is a very talented young player, but there are a lot of talented players in college golf, so talent alone is not what we are looking for," Brouse said. "Certainly to have the ability to win tournaments, which he has a few times at Purdue, gives us a nice feeling of confidence. To have a guy like Peter who can win a tournament on his own each week is leadership by example."

Two more holdovers from last year are senior Dustin Cone and sophomore Pariya Junhasavasdikul, Pi for short.

Cone is a very consistent player. Thirteen of his 14 rounds played this fall counted in the team's score.

Junhasavasdikul, from Bangkok, Thailand, sported the third lowest scoring average for the team as a freshman. He led the team with a seventh-place finish at the Landfall Tradition in the fall.

"Dustin is a senior, and he's seen a lot of college golf in his four years. I think he's been a consistent starter since the day he stepped on campus. He really had some flashes of brilliance late in the fall and is close to being in the winner's circle," said Brouse. "Pi brings a nice talent level to our team. If he can improve he will definitely make an impact in the spring and the rest of his career here at Purdue."

Rounding out the starting five is sophomore Brandon Lawson, a transfer from Stanford. Lawson has been a welcome addition for the Boilers, and, based on his performance this fall, can be counted on for a good score nearly every tournament.

"Brandon has the ability to play with the top players in college golf," said Brouse. "I think he's only scratched the surface of what he can do, so, hopefully, Brandon will show some improvement in the spring. We hope he will be an important part of our success."

The rest of the squad consists of senior Ryan Masuda, who saw action in one tournament in the fall, sophomores Johan Edin and Adam Vandoski, and redshirt freshman Jonathan Schultz.

Masuda, from Hilo, Hawaii, has played in seven events over his career with the Boilermakers. Edin played three tournaments as a freshman, highlighted by a round of 71 at the Gator Invitational. Vandoski participated in one event, the Badger Invitational, as a freshman and shot a 79 average. Schultz has yet to see action for Purdue.

The coaches are also eagerly anticipating the arrival of two newcomers in January.

Santiago Russi is coming in from Santiago, Chile, to join the team. He competed for his country at the World Amateur in Puerto Rico in October.

"Santiago is very good," said assistant coach Greg Robertson. "He will add great depth to our team, and make us a

2004-05 Season Outlook

BOILERMAKERS

more competitive squad. He should increase competition within the starting five and very likely will see playing time."

"We think he can possibly give our team a nice lift because of his track record," said Brouse. "He was a very highly recruited, accomplished player coming off a great junior career. He's ready to go coming off his season. In Chile in the southern hemisphere it is summer now so he just finished his season. We feel very positive about him. We expect him to give us quality depth and increase competition for the starting five, which is what we are always looking for."

Also joining the team is transfer Patrick Fillian. Fillian is a freshman coming in from Sacred Heart University where he excelled in the fall. He was named NEC Golfer of the Week and won the New England Championship. He also can boast a second and third place finish as an individual this fall.

"To me he looks like a late-bloomer. He was not highly recruited, but made some nice improvements over the summer and this fall," said Brouse. "We're hoping he can continue to do that. We think he can increase our depth and improve the competition for our starting line-up."

With the addition of Russi, the squad has a distinctive international flavor. Richardson, Junhasavadikul, and Russi all hail from foreign countries. Brouse says that the coaches know what they are getting when they recruit a foreign player and that they have many chances to see them play. Purdue's good name

helps them bring the best to the Boilermakers' campus.

"We discover them when they come to the United States to compete in junior golf in the summer. We watch them play on the tours quite often. In Santiago's case, we got to see him play a lot. Purdue is an attractive global university and has a great name throughout the world. To have the kind of academic reputation Purdue has in the world, really helps us recruit globally."

With just one senior starter, it is easy to see why Brouse is excited for the future. He has tailored his team to be young by design for a good reason.

"Everything is a function of how many players we have in the sophomore class. We're a little out of balance in that regard but it's a good thing to have young players. It's a good thing to look forward to the next couple of years. We know that with the men's national championship coming here in 2008, having a young team is important. We will continue to try to attract top young players."

Based on how excellent the fall was, Brouse is also anticipating this spring. The Boilermakers have a great chance to ensure continued success.

"My expectation is that they improve. You try not to look at the scoreboard ahead of time. If we improve individually and as a team, the finishes will take care of themselves," Brouse said.

Looking back at how well the Boilermakers did in the fall and adding in the impact of the infusion of new talent this spring, those finishes have a chance to be very special.

Golf Quick Facts

University

| | |
|-------------------------------|------------------------|
| Location | West Lafayette, Ind. |
| Founded | 1869 |
| Enrollment | 38,564 |
| Nickname | Boilermakers |
| School Colors | Old Gold and Black |
| Affiliation | NCAA Division I |
| Conference | Big Ten |
| President | Dr. Martin C. Jischke |
| Alma Mater (Year) | MIT (1968) |
| Athletics Director | Morgan J. Burke |
| Alma Mater (Year) | Purdue (1973) |
| Ticket Office Phone | (800) 49-SPORT |
| Faculty Representatives | |
| | Dr. Christie L. Sahley |
| | Jeffrey T. Bolin |

Sports Information

| | |
|----------------|-----------------------|
| Golf SID | Elliot Bloom |
| Phone | (765) 494-3196 |
| Fax | (765) 494-5447 |
| E-mail | ebloom@purdue.edu |
| Website | www.purduesports.com |
| Address | Room 15, Mackey Arena |
| | West Lafayette, IN |
| | 47906 |

Purdue Coaching Staff

| | |
|----------------------------|-----------------------|
| Head Coach | Devon Brouse |
| Alma Mater (Year) | Purdue (1971) |
| Associate head coach | Greg Robertson |
| Alma Mater (Year) | Oklahoma State (1997) |
| Assistant coach | Christie Hermes |
| Alma Mater (Year) | Northwestern (2001) |
| Golf office phone | (765) 494-2290 |

Home Course Information

| | |
|------------------------|--------------------------------|
| Home Facility | |
| | Birck Boilermaker Golf Complex |
| Location | West Lafayette, Ind. |
| Primary Course | Kampen Course |
| Par | 72 |
| Yardage | 7,272 |
| Secondary Course | Ackerman Hills |
| Par | 71 |
| Yardage | 6,436 |

Squad Information

| | |
|-------------------------------|------------------------|
| 2004 Big Ten Finish | 4th |
| Starters returning/lost | 3/2 |
| 2004 NCAA Finish | T-16th |
| Top returnees | |
| | Peter Richardson and |
| | Pariya Junhasavasdikul |

2004-05 Schedule

| Date | Event | Host School | Location/Result |
|-----------------|--|---------------------|----------------------|
| Sept. 11-12 | Michigan/Radrick Farms Intercollegiate | Michigan | T-1st |
| Oct. 4-5 | Winton Memorial Classic | Northwestern | T-3rd |
| Oct. 11-12 | Alister MacKenzie Invitational | California | 2nd |
| Oct. 25-26 | Big Ten/Pac Ten Challenge | Northwestern/Oregon | 9th |
| Oct. 29-31 | Landfall Tradition | UNC-Wilmington | 3rd |
| Nov. 14-16 | Hooters Match Play Championship | N/A | Second Round |
| Jan. 29 | ASU Match | Arizona State | Tempe, Ariz. |
| Feb. 5-6 | Gator Invitational | Florida | Gainesville, Fla. |
| Feb. 27-March 1 | Puerto Rico Classic | Purdue | Rio Grande, P.R. |
| March 13-14 | General Jim Hackler Intercollegiate | Coastal Carolina | Myrtle Beach, S.C. |
| March 18-20 | Hall of Fame Invitational | Texas | Houston, Texas |
| April 16-17 | Boilermaker Invitational | Purdue | West Lafayette, Ind. |
| May 6-8 | Big Ten Championships | Wisconsin | Madison, Wis. |
| May 19-21 | NCAA Central Regional Championships | Notre Dame | Notre Dame, Ind. |
| June 1-4 | NCAA Championships | N/A | Owings Mills, Md. |

2004-05 Roster

| Name | Class | Hometown (High School/ Previous School) |
|------------------------|--------|--|
| Bobby Bennett | So. | Greenwich, Conn. (New Trier) |
| Dustin Cone | Sr. | Bennington, Vt. (Mount Anthony Union) |
| Johan Edin | So. | Phoenix, Ariz. (Shadow Mountain) |
| Patrick Fillian | Fr. | Neptune, N.J. (St. Rose High School/ Sacred Heart) |
| Pariya Junhasavasdikul | So. | Bangkok, Thailand (Bangkok Christian) |
| Brandon Lawson | So. | Elburn, Ill. (Marmion Academy/ Stanford) |
| Ryan Masuda | RS-Sr. | Hilo, Hawaii (Waiakea) |
| Peter Richardson | So. | Carlisle, England (Trinity School) |
| Santiago Russi | Fr. | Santiago, Chile (Colegio Cumbres) |
| Jonathan Schultz | RS-Fr. | Richmond, Ind. (Richmond) |
| Adam Vandoski | So. | Greenwood, Ind. (Center Grove) |

BOILERMAKERS

Head Coach Devon Brouse



Head Coach
Seventh Season



Devon Brouse is in his seventh season as the head coach and director of golf operations.

Brouse became the Boilermaker coach in 1998 after leading North Carolina to 19 NCAA Championship tournaments in 21 years. In a short period of time, Brouse has guided the Purdue program into the forefront of collegiate golf.

A four-time conference coach of the year (three times in the ACC and once so far in the Big Ten), Brouse has led teams to 11 top-10 finishes at the NCAA Championships. In addition to his coaching duties for both the men's and women's golf teams at Purdue, Brouse is responsible for overseeing operations for the Birck Boilermaker Golf Complex. The 36-hole masterpiece features two distinctly challenging courses — the Ackerman Hills and Kampen layouts. The latter was designed by the legendary Pete Dye. The complex ranks among the finest in college golf.

During his first year in West Lafayette, Brouse guided the men's team to its first NCAA regional action in 10 years, while the women's team advanced to its third-straight appearance in an NCAA regional and a fourth-place finish in the Big Ten Championships.

In just his second season in charge, Brouse led the women to their first Big Ten title and their

highest NCAA finish (ninth) in school history. The men finished second in the Big Ten, their highest since 1995.

Year three of the Brouse era saw the Boilermaker men place second in the Big Ten again, and capture a share of first place in the NCAA Central Regionals. Meanwhile, the Purdue women placed fourth in the conference and second in the Central Regional. Both teams advanced to the NCAA Championships, where the women placed 20th and the men 28th.

The women's team has advanced to the NCAA Championships for the last five-straight seasons and the men's team has played in three of the last four championships.

In 2002, both men's and women's teams advanced to the NCAA Championships. The men placed seventh and women captured 16th place.

In 2003, Purdue hosted the NCAA Women's Golf National Championships on the Kampen Course. The women's team placed 12th in the tournament.

This past season, the Boilermakers hosted the NCAA Men's Golf Central Regional Championships and both men's and women's teams advanced to the NCAA Championships. For the women's team, it was its fifth-straight appearance in the event. The

Brouse's Year-by-Year Results

Record at Purdue (1999 to Present)

| Year | Big Ten | NCAA |
|------|-------------|--------|
| 1999 | 4th (Women) | — |
| 1999 | 11th (Men) | — |
| 2000 | 1st (Women) | 9th |
| 2000 | 2nd (Men) | — |
| 2001 | 4th (Women) | 20th |
| 2001 | 2nd (Men) | 28th |
| 2002 | 2nd (Women) | 16th |
| 2002 | 3rd (Men) | 7th |
| 2003 | 4th (Women) | 12th |
| 2003 | 5th (Men) | — |
| 2004 | 4th (Women) | 22nd |
| 2004 | 4th (Men) | T-16th |

Record at North Carolina (1978 to 1998)

| Year | ACC | NCAA | 1988 | 7th | — |
|------|-------|--------|------|-------|------|
| 1978 | 2nd | 5th | 1989 | 3rd | 13th |
| 1979 | 2nd | T-6th | 1990 | T-3rd | 7th |
| 1980 | 4th | — | 1991 | 2nd | 2nd |
| 1981 | 1st | T-18th | 1992 | 4th | 23rd |
| 1982 | 3rd | 9th | 1993 | 7th | 3rd |
| 1983 | 1st | T-8th | 1994 | 2nd | 11th |
| 1984 | 1st | 4th | 1995 | 1st | 19th |
| 1985 | T-3rd | T-16th | 1996 | 1st | 16th |
| 1986 | 1st | 12th | 1997 | 2nd | 10th |
| 1987 | 4th | 8th | 1998 | 4th | 25th |

Head Coach Devon Brouse

BOILERMAKERS

squad is one of eight teams to accomplish that feat. The men's team has advanced to its third NCAA Championships over the last four years, one of 19 schools that can make that claim.

A class "A" member of the PGA, Brouse first joined the University of North Carolina in 1973 as the golf director and superintendent of facilities following two years as assistant director of the Indianapolis municipal golf course system. In 1977, he became assistant coach to Mike McLeod, and was named head coach one year later when McLeod retired.

Brouse immediately experienced success as North Carolina's head coach, leading the Tar Heels to a second-place finish in the ACC Tournament and a fifth-place showing at the NCAA Championships. Named the ACC Coach of the Year following the 1981, 1991 and 1995 seasons, Brouse built the Tar Heels into one of the premier golf programs in the United States. All told, Brouse led North Carolina to six ACC team championships (1981, 1983, 1984, 1986, 1995, 1996), 16 top-five conference finishes and 10 top-10 NCAA finishes, including second place in 1991 and third in 1993.

In addition to building the Tar Heels and Boilermakers into one of the nation's most respected golf programs, Brouse was also instrumental in the development of several individual players who achieved great success at both the collegiate and professional levels. Under his tutelage, he has produced six ACC individual champions, the 1984 NCAA individual champion and 40 All-American selections. In addition, Brouse also coached Patrick Moore, the leading money winner on the 2002 Buy.com Tour. Three of his pupils (Davis Love III, John Inman and

Tom Scherrer) have won titles on the PGA Tour.

A native of Indianapolis, Ind., and a 1967 graduate of Decatur Central High School, Brouse earned a B.S. in agronomy from Purdue in 1971 and was a member of the Delta Tau Delta fraternity. Brouse and his wife, Kathy, have two sons, Matt and Brent, and a daughter, Ashley.



Associate head coach Greg Robertson, assistant coach Christie Hermes and head coach Devon Brouse are in their third season as a staff at Purdue.



The Devon Brouse File

Hometown: Indianapolis, Ind.

Education: Purdue University, 1971

Wife: Kathy

Children: Matt, Brent, Ashley

Coaching Experience

- Head Coach, Purdue University
1998 to present
- Head Coach, University of North Carolina,
1978 to 1998

Coaching Highlights

- Big Ten coach of the year (2000)
- Three-time Atlantic Coast Conference coach of the year (1981, 1991, 1995)
- 1991 and 1995 District III North coach of the year
- 2002 Midwest region coach of the year
- 27 NCAA championship appearances
- Six ACC Titles (1981, 1983, 1984, 1986, 1995, 1996)
- Six ACC individual champions
- 2001 NCAA Central regional champions (Purdue men)
- 2002 NCAA Central regional champions (Purdue men)
- 2000 Women's Big Ten champions
- 40 All-American selections
- 1984 NCAA individual champion (John Inman)



Greg Robertson is in his third season as Purdue's associate head golf coach.

Robertson played collegiate golf at Oklahoma State University, where he graduated with a bachelor's degree in physical education in 1997.

After redshirting his freshman season, he played three seasons at Oklahoma State. During his four years in Stillwater, the Cowboys captured four conference crowns and won the 1995 NCAA Championship.

A native of Roswell, N.M., Robertson earned his degree from OSU, and then transferred to New Mexico, where he competed as a senior and began work on a master's degree in sports administration.

From 1998 to 2000, Robertson competed professionally. In 2000, he played on the Canadian Tour and participated in the PGA's Nissan Open in Los Angeles, Calif.

In 2001, Robertson competed in several state tournaments before returning to Stillwater to serve as volunteer assistant for the Cowboys.

Robertson's duties include recruiting and instruction for both programs, while aiding in organizing team practices, scheduling and team travel. He also assists in budgeting and fund-raising for both programs.

In July of 2003, Robertson married Ashlee Applegate. The couple resides in West Lafayette.



The Robertson File

Hometown: Roswell, N.M.

Education: Oklahoma State University, 1997

Coaching Experience

- Volunteer Assistant, Oklahoma State University 2001 to 2002
- Associate Head Coach, Purdue University 2002 to present

Playing Experience

- Oklahoma State University, 1993 to 1997
- University of New Mexico, 1997 to 1998
- Canadian Tour, 2000

Q & A with Coach Robertson

What's it like to coach under Devon Brouse?

It's a privilege to be working with Coach Brouse. He's had tremendous success in the 27 years he's been coaching. It's a great opportunity for me to learn from one of the best coaches in the country.

Making the NCAA Tournament has gone from being the exception to the rule at Purdue.

Talk about that high standard.

When Coach Brouse took over as the head coach, he changed the attitude of the program. Now, everyone expects to succeed. On top of that, the athletic department has done a tremendous job of providing the means to allow us to reach our highest goals. It started with the renovation of the Birck Boilermaker Golf Complex and, now the crowning touch is the Tom Spurgeon Training Center.

We know Purdue golf is a rising collegiate power, but talk about the academic side of Purdue.

Purdue has some of the best facilities in the country for golf. It's also one of the top academic institutions, which helps prepare our players for the rest of their lives. It's a great blend that would allow any individual to achieve any goal she desires both on and off the golf course.

Assistant Coach Christie Hermes

BOILERMAKERS



Christie Hermes is in her fourth year as assistant coach with the Purdue golf program, focusing most of her attention on the women's team. Hermes joined the staff on July 1, 2001.

In her first season, the Boilermaker women's team won the Mercedes-Benz Championships. The squad advanced and finished 16th in the 2002 NCAA Championships in Auburn, Wash.

In 2003, the Boilermakers placed 12th at the NCAA Championships. In 2004, the Boilermakers advanced to their fifth-straight NCAA Championships appearance, one of eight schools to accomplish that feat.

Hermes, a native of Dixon, Ill., played at Northwestern from 1997 to 2001. A three-time Academic All-Big Ten selection, Hermes was a top-10 finisher at the Big Ten Championships hosted by Purdue in 1999. That same year, she qualified and played in the U.S. Women's Amateur in Asheville, N.C. In 2000, she was a member of the first team in Wildcat history to compete in the NCAA Championships.



The Hermes File

Hometown: Dixon, Ill.

Education: Northwestern University, 2001

Coaching Experience

- Assistant Coach, Purdue University
2001 to present

Playing Experience

- Northwestern University, 1997 to 2001

Q & A with Coach Hermes

What is the best thing about coaching on the Purdue Golf staff?

The best thing about the Purdue Golf staff is the wonderful combination we have. Our staff includes the broad experience and knowledge of Coach Brouse, who has been coaching for 27 years, along with the enthusiasm and fresh ideas of Coach Robertson and myself. It is a terrific combination and environment for our student-athletes to learn and develop.

What is the biggest surprise a recruit can expect when they arrive at Purdue?

There are several surprises. I think the first is how easy it is to get to practice with the golf courses being so close. They can walk from their residence halls. Not only can they walk, but our courses are amazing. They're like an oasis for our students away from their homes and studying. The other thing is how well our teams get along. They practice on their own together, study together and have fun together.

Talk about the luxury of two great golf courses located right next to campus.

While some other schools spend 20 minutes each way driving to the golf course, our student-athletes are at the course in two minutes driving or five minutes walking. These are tremendous world-class golf courses. We have hosted numerous national tournaments at our Kampen Course, including the 2003 Women's NCAA Championship and 2004 Men's NCAA Regional. Hosting those events affirms and rewards our commitment to our facilities and the sport of golf at Purdue University.

BOILERMAKERS

Boilermaker Support Staff



Dan Ross
Head Golf Professional

Dan Ross is in his first year as the head golf professional of the Birck Boilermaker Golf Complex.

A graduate of Taylor University, Ross was team captain and No. 1 player on the golf team during his junior and senior seasons.

Ross began working in the golf business as an assistant professional in 1992 and worked at Harrison Lake Country Club for Master Professional Tony Clecak until 1997. While there, he became a member of the PGA in 1995. In 1997 he became the head golf professional at Walnut Creek Golf Course in Upland, Ind., his home golf course in college. After two years at Walnut Creek, Ross was named the head golf professional at Edgewood Country Club in Anderson, Ind., where he worked for five years.

Ross and his wife, Luci, have been married since 1997 and have two children, Ally and Jackson.



Jim Scott
Birck Boilermaker Golf Complex Superintendent

Jim Scott is in his 10th year as the superintendent of the Kampen and Ackerman Hills golf courses on Purdue's campus. His current projects include continued upgrades on two courses, including a new practice facility that features a driving range, chipping green and putting green.

In 1995, Scott joined the Purdue athletics department with the challenge of directing all facets of construction on the Birck Boilermaker Golf Complex. Since then, he has brought about the completion of the 18-hole championship Kampen Course, formerly known as the North Course, as well as major landscape changes to the 18-hole Ackerman Hills Course, formerly known as the South Course.

Prior to the reconstruction of Purdue's courses, Scott helped design 18-hole courses at the Wellington Golf Club in Wellington, Fla., and the Juday Creek Golf Club in South Bend, Ind.

Scott graduated from Purdue's School of Agriculture in 1987 with a bachelor's degree in turfgrass science.

Athletics Director



Morgan Burke
Athletics Director

Senior Staff



Glenn Tompkins
Senior Associate Athletics Director



Roger Blalock
Senior Associate Athletics Director



Nancy Cross
Senior Associate Athletics Director



Jay Cooperider
Associate Athletics Director

Faculty Representatives



Jeffrey T. Bolin



Christie L. Sahley



Greg Christopher
Assistant Athletics Director



Ed Howat
Assistant Athletics Director



Barb Kapp
Assistant Athletics Director



Steve Simmerman
Assistant Athletics Director

Support Staff



Becky Beck
Secretary



Marilyn McFatrige
Event Management



Marty Quinn
Equipment Manager



JoJo Robertson
Assistant Golf Professional



Chris Scott
Event Coordinator



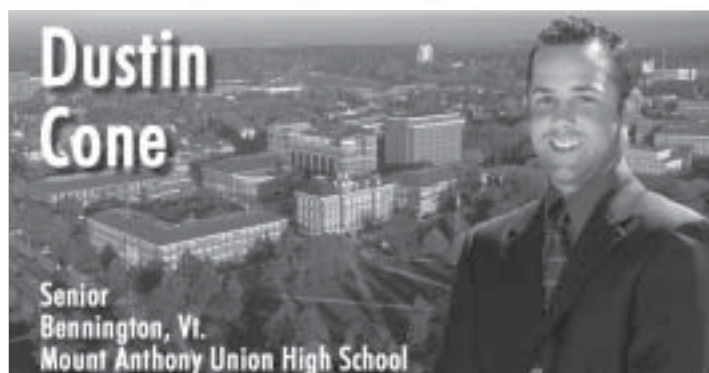
Brent Wills
Assistant Golf Professional



Nicole Westin
Academic Services

Athlete Profiles

BOILERMAKERS



Cone's Career Accomplishments

Senior Fall Season (2004-05)

- ▶ Competed in five events, with an average of 73.6
- ▶ Three top-25 finishes, including an 11th place tie at the Landfall Tradition

Junior Season (2003-04)

- ▶ Competed in all 13 events
- ▶ Averaged 75.1 strokes per round
- ▶ Tied for seventh at the Windon Memorial Classic
- ▶ Fired a round of 68 at the Boilermaker Invitational
- ▶ Finished in the top-20 three times

Sophomore Season (2002-03)

- ▶ Competed in 10 events, with an average of 76.0
- ▶ Recorded three top-30 finishes
- ▶ Fired a career-low 67 in the first round of the Gator Invitational
- ▶ Best finish was a tie for 25th at the Landfall Tradition
- ▶ Recorded six rounds at even par or better

Freshman Season (2001-02)

- ▶ Competed in 11 events and averaged a 74.4
- ▶ Recorded four top-30 finishes
- ▶ Fired a then-career-low 69 at the Johnny Owens Invitational and Big Ten Championships
- ▶ Best finish was a tie for seventh at the Kepler-Cleveland Intercollegiate
- ▶ Played 10 of 34 rounds at even par or better

High School (Mount Anthony Union)

- ▶ Four-year letterwinner in golf and basketball
- ▶ 2001 Boys Athlete of the Year
- ▶ Tied for first in the PGA Junior series in 1998 and won the event in 1999 at Penn State
- ▶ Placed first in the Vermont high school championships in senior and sophomore seasons
- ▶ Won the New England high school golf championships in freshman and senior seasons
- ▶ Member of state championship teams in freshman and sophomore seasons

Personal

- ▶ Majoring in retail management
- ▶ Born Sept. 4, 1982, in Maryville, Mo.
- ▶ Son of Cathy Allen and James Cone
- ▶ Has a sister, Courtney

Cone's Tournament Results

2001-02

| Tournament | Date | Score | Finish |
|-----------------------------|----------|------------------|--------|
| Badger Invitational | 9/8-9 | 76-72-75--223 | T-41 |
| Purina Classic | 10/8-9 | 73-77-72--222 | T-42 |
| Nelson Invitational | 10/26-28 | 77-78-75--230 | T-72 |
| Gator Invitational | 2/9-10 | 73-73-70--216 | T-24 |
| Puerto Rico Classic | 2/24-26 | 73-72-76--221 | T-28 |
| Conrad Rehling Invitational | 3/15-17 | 77-78-71--226 | T-54 |
| Johnny Owens Invitational | 3/29-30 | 79-78-69--226 | T-55 |
| Kepler-Cleveland Intercoll. | 5/12-13 | 73-71--144 | T-7 |
| Big Ten Championships | 5/3-5 | 69-72-77-78--296 | T-27 |
| NCAA Regionals | 15/6-18 | 74-74-87--235 | T-114 |
| NCAA Championships | 5/29-6/1 | 71-77-72-71--291 | T-63 |

2002-03

| Tournament | Date | Score | Finish |
|-----------------------------|---------|------------------|--------|
| Carpet Capital Classic | 9/27-29 | 78-71-82--231 | T-76 |
| NCAA Fall Preview | 10/7-8 | 80-74-82--236 | T-56 |
| Landfall Tradition | 9/1-3 | 83-71-71--225 | T-25 |
| Gator Invitational | 2/8-9 | 67-79-80--226 | T-37 |
| Puerto Rico Classic | 2/23-25 | 81-77-78--236 | T-73 |
| Conrad Rehling Invitational | 3/14-16 | 75-79-74--228 | T-52 |
| Furman Intercollegiate | 3/21-23 | 73-78-77--228 | T-51 |
| Augusta State Invitational | 4/5-6 | 68-72-73--213 | T-28 |
| Kepler Intercollegiate | 4/12-13 | 75-79-75--229 | T-27 |
| Big Ten Championships | 5/2-4 | 78-76-77-74--305 | T-50 |

2003-04

| Tournament | Date | Score | Finish |
|-------------------------------|--------------|---------------|--------|
| Badger Invitational | 9/12-14 | 74-76--150 | T-16 |
| Northern Intercollegiate | 9/20-21 | 74-77-75--227 | T-52 |
| Windon Memorial Classic | 10/6-7 | 75-70-70--215 | T-7 |
| Alister MacKenzie | 10/13-14 | 73-73-75--221 | T-53 |
| Landfall Tradition | 10/30-11/1-2 | 75-74-74--223 | T-32 |
| Gator Invitational | 1/31-2/1 | 77-75-79--231 | T-66 |
| Puerto Rico Classic | 2/22-24 | 75-79-75--229 | T-64 |
| Palmetto Intercollegiate | 3/15-16 | 75-76-80--231 | T-60 |
| Boilermaker Invitational | 4/10-11 | 73-68-76--217 | T-14 |
| Robert Kepler Intercollegiate | 4/17-18 | 82-76-71--229 | T-37 |
| Big Ten Championships | 5/7-9 | 79-76-71--226 | T-47 |
| NCAA Central Regionals | 5/20-22 | 74-77-80--231 | T-51 |
| NCAA Championships | 6/1-4 | 74-74-76--224 | - |

2004-05 (Fall)

| Tournament | Date | Score | Finish |
|--------------------------------|----------|---------------|--------|
| Radrick Farms Intercollegiate | 11/11-12 | 74-73-77--224 | T-39 |
| Windon Memorial Classic | 10/4-5 | 79-73-74--226 | T-44 |
| Alister MacKenzie Invitational | 10/11-12 | 72-71-73--216 | T-14 |
| Big Ten/Pac-10 Challenge | 10/25-26 | 77-75--152 | T-22 |
| Landfall Tradition | 10/29-31 | 71-70-72--213 | T-11 |

Cone's Career Statistics

| Season | Rounds | Strokes | Average | Low Round |
|----------------|------------|--------------|-------------|-----------|
| 2001-02 | 34 | 2,530 | 74.4 | 69 |
| 2002-03 | 31 | 2,357 | 76.0 | 67 |
| 2003-04 | 38 | 2,854 | 75.1 | 68 |
| 2004-05 (Fall) | 14 | 1,031 | 73.6 | 70 |
| Totals | 117 | 8,772 | 75.0 | 67 |



Masuda's Career Accomplishments

Senior Fall Season (2004-05)

- ▶ Tied for 57th place in the Big Ten/Pac-10 Challenge

Junior Season (2003-04)

- ▶ Did not see action in any tournaments

Sophomore Season (2002-03)

- ▶ Played in three events, with an average of 78.4
- ▶ Fired back-to-back 71s at the Augusta State Invitational
- ▶ Best finish was a tie for 46th at the Augusta State Invitational

Redshirt Season (2001-02)

- ▶ Did not see action in any tournaments

Freshman Season (2000-01)

- ▶ Played in three events, with an average of 77.8
- ▶ Recorded a season-low 72 in the Pepperdine Invitational
- ▶ Top finish was a tie for 33rd at the Pepperdine Invitational

High School (Waiakea)

- ▶ A three-time first-team Big Island Interscholastic Federation selection
- ▶ First team all-state selection
- ▶ 2000 HHSAA Individual Champion
- ▶ In 1999, placed 12th at the Junior World and was a U.S. Junior Qualifier
- ▶ Named 1997 BIIF Rookie of the Year and a first team BIIF selection
- ▶ As a senior was named to first team BIIF, first team all state, placed third at the BIIF Individual.
- ▶ Led his team to three consecutive HHSSA state tournament championships from 1998 to 2000.

Personal

- ▶ Majoring in management
- ▶ Born March 30, 1982, in Pullman, Wash.
- ▶ Son of Avis and Daryl Masuda
- ▶ Has one sister, Danielle

Masuda's Career Statistics

| Season | Rounds | Strokes | Average | Low Round |
|----------------|------------|--------------|-------------|-----------|
| 2000-01 | 9 | 700 | 77.78 | 72 |
| 2001-02 | Redshirted | | | |
| 2002-03 | 9 | 706 | 78.4 | 71 |
| 2003-04 | 0 | 0 | 0.0 | - |
| 2004-05 (Fall) | 2 | 160 | 80.0 | 79 |
| Totals | 20 | 1,566 | 78.3 | 71 |

Masuda's Tournament Results

2000-01

| Tournament | Date | Score | Finish |
|----------------------------|----------|---------------|--------|
| Pepperdine Intercollegiate | 10/9-10 | 72-78-78--228 | T-33 |
| The Nelson | 10/27-29 | 78-79-73--230 | T-72 |
| Seminole Intercollegiate | 3/13-14 | 83-75-84--242 | T-82 |

2001-02

| Tournament | Date | Score | Finish |
|------------|------|-------|--------|
| Redshirted | | | |

2002-03

| Tournament | Date | Score | Finish |
|----------------------------|---------|---------------|--------|
| Carpet Capital Classic | 9/27-29 | 83-82-82--247 | 89 |
| Augusta State Invitational | 4/5-6 | 75-71-71--217 | T-46 |
| Kepler Intercollegiate | 4/12-13 | 83-79-80--242 | T-80 |

2003-04

| Tournament | Date | Score | Finish |
|--------------|------|-------|--------|
| Did not play | | | |

2004-05 (Fall)

| Tournament | Date | Score | Finish |
|--------------------------|----------|------------|--------|
| Big Ten/Pac-10 Challenge | 10/25-26 | 81-79--160 | T-57 |



BOILERMAKERS

***Bennett's Tournament Results*****2003-04**

| Tournament | Date | Score | Finish |
|-------------------------|--------|---------------|--------|
| Winton Memorial Classic | 10/6-7 | 76-78-76--230 | T-69 |

2004-05 (Fall)

| Tournament | Date | Score | Finish |
|--------------------------------|----------|---------------|--------|
| Radrick Farms Intercollegiate | 11/11-12 | 71-70-73--214 | T-2 |
| Winton Memorial Classic | 10/4-5 | 81-73-67--221 | T-26 |
| Alister MacKenzie Invitational | 10/11-12 | 71-68-68--207 | T-1 |
| Big Ten/Pac-10 Challenge | 10/25-26 | 75-74--149 | T-11 |
| Landfall Tradition | 10/29-31 | 71-74-75--220 | T-28 |

Bennett's Career Accomplishments**Sophomore Fall Season (2004-05)**

- ▶ Played in five events and averaged a team-low 72.2 per round
- ▶ Won the Alister MacKenzie Invitational with a 207
- ▶ Tied for second at the Radrick Farms Intercollegiate with a 214
- ▶ Placed in the top 30 in all five events

Freshman Season (2003-04)

- ▶ Tied for 69th at the Winton Memorial Classic, his only event

High School (New Trier)

- ▶ Team captain and MVP as a senior
- ▶ Placed fourth in the 2003 Metropolitan Public-Links Amateur Championship
- ▶ Won 2002 IHSA Class AA sectional tournament
- ▶ Named IHSA Central Suburban League All-Conference last three seasons
- ▶ Won 2001 IHSA Class AA Regional Tournament
- ▶ Placed ninth at the 2001 Pepsi Little Peoples
- ▶ Earned four top-20 finishes in nine outings on AJGA Tour in 2001
- ▶ Placed fifth in the 2001 Indiana Junior Classic
- ▶ Named to New Trier honor roll as a senior

Personal

- ▶ Majoring in engineering
- ▶ Born Nov. 10, 1984, in Evanston, Ill.
- ▶ Son of Christine and William Bennett
- ▶ Has one brother, William, and one sister, Madeline
- ▶ Brother William is on the men's tennis team at Northwestern, and sister Madeline is on the crew team at Colgate

Bennett's Career Statistics

| Season | Rounds | Strokes | Average | Low Round |
|----------------|-----------|--------------|-------------|-----------|
| 2003-04 | 3 | 230 | 76.7 | 76 |
| 2004-05 (Fall) | 14 | 1,011 | 72.2 | 67 |
| Totals | 17 | 1,241 | 73.0 | 67 |



BOILERMAKERS

Athlete Profiles***Edin's Tournament Results***

| 2003-04 | | | |
|-------------------------------|----------|---------------|--------|
| Tournament | Date | Score | Finish |
| Gator Invitational | 1/31-2/1 | 73-71-80--224 | T-48 |
| Boilermaker Invitational | 4/10-11 | 73-78-74--225 | T-42 |
| Robert Kepler Intercollegiate | 4/17-18 | 75-80-78--233 | T-62 |

Edin's Career Accomplishments**Freshman Season (2003-04)**

- ▶ Played in three tournaments
- ▶ Fired a round of 71 at the Gator Invitational
- ▶ Tied for 42nd at the Boilermaker Invitational

High School (Shadow Mountain)

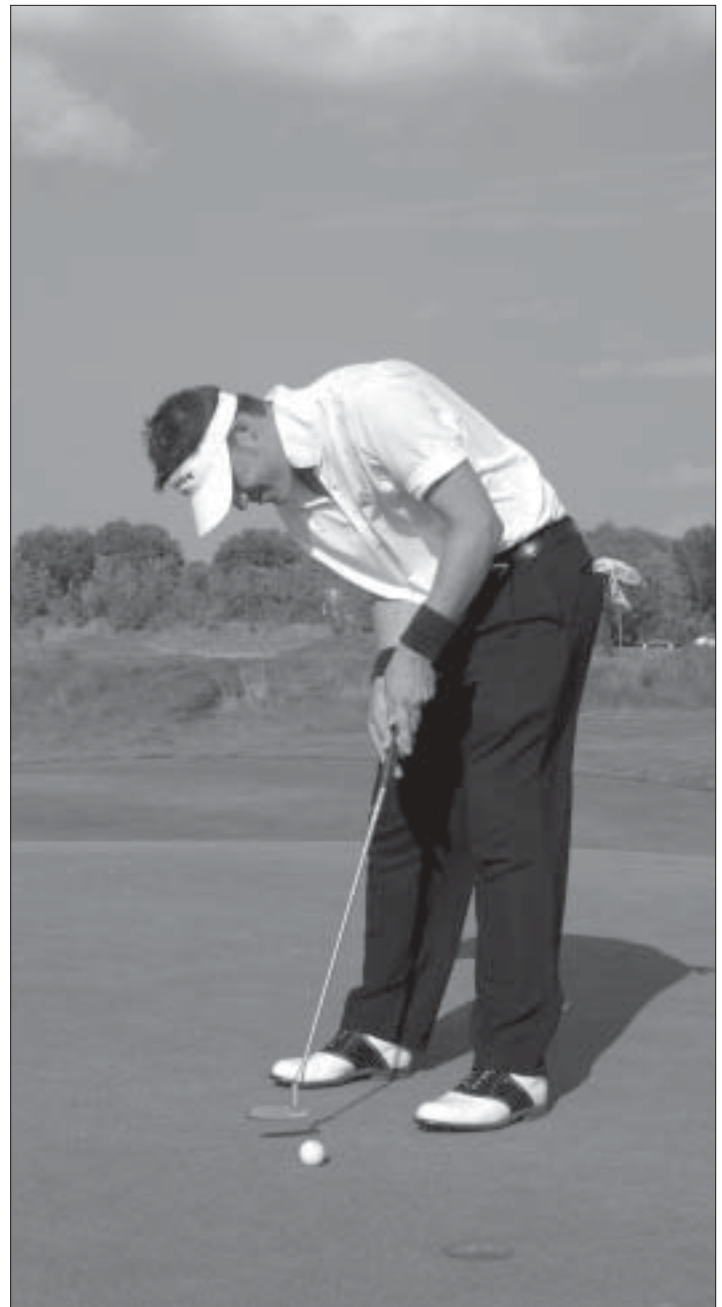
- ▶ Four-year letterman on varsity golf team
- ▶ Earned medalist honors in four events and named team MVP as a senior
- ▶ Competed on Plantation Junior Golf Tour and Desert Junior Golf Tour
- ▶ Placed fifth in the Phoenix city championships
- ▶ Fired a course-record 62 at Talking Stick while competing on the Saguaro Junior Masters Tour
- ▶ Participated in the 2001 Junior World Championships

Personal

- ▶ Majoring in management
- ▶ Born May 15, 1984, in Orebro, Sweden
- ▶ Son of Kristina and Janek Edin
- ▶ Has one brother, Christian

Edin's Career Statistics

| Season | Rounds | Strokes | Average | Low Round |
|---------------|----------|------------|-------------|-----------|
| 2003-04 | 9 | 682 | 75.8 | 71 |
| Totals | 9 | 682 | 75.8 | 71 |



Athlete Profiles

BOILERMAKERS



Junhasavasdikul's Career Accomplishments

Sophomore Fall Season (2004-05)

- ▶ Competed in five events and averaged 74.4 strokes per round
- ▶ Tied for seventh at the Landfall Tradition

Freshman Season (2003-04)

- ▶ Averaged 73.8 strokes per round, third on the team
- ▶ Finished in the top-40 in nine of the 14 tournaments he played in, including two top-10 places
- ▶ Tied for ninth at the Badger Invitational
- ▶ Shot a low round of 70 at Alister MacKenzie
- ▶ Over 90 percent of his rounds counted, third on the team

High School (Bangkok Christian)

- ▶ Tied for 50th in 2003 Thailand Open
- ▶ Won 2002 Optimist International Junior Golf Championship in West Palm Beach, Fla.
- ▶ Won 2002 Grohe NGC Junior Open Championship
- ▶ Voted 2000-01 Best Junior Boy Golfer by Executive Golf Magazine and Thailand Junior Golf Club
- ▶ Won 2001 Thailand Amateur Master Championship
- ▶ Earned silver medal at 2001 Southeast Asia Games
- ▶ Won 2001 Volkswagen Singapore Junior Open
- ▶ Placed fourth at 2001 UBC Asia Pacific Junior Open
- ▶ Runner-up at 2001 TGA Junior Golf Championship

Personal

- ▶ Undecided on major
- ▶ Born Aug. 14, 1984, in Bangkok, Thailand
- ▶ Son of Nanthana and Banthun Junhasavasdikul
- ▶ Has one brother, Paniti

Junhasavasdikul's Career Statistics

| Season | Rounds | Strokes | Average | Low Round |
|----------------|-----------|--------------|-------------|-----------|
| 2003-04 | 35 | 2,584 | 73.8 | 70 |
| 2004-05 (Fall) | 14 | 1,041 | 74.4 | 68 |
| Totals | 49 | 3,625 | 74.0 | 68 |

Junhasavasdikul's Tournament Results

2003-04

| Tournament | Date | Score | Finish |
|-------------------------------|--------------|---------------|--------|
| Badger Invitational | 9/12-14 | 73-76--149 | T-9 |
| Northern Intercollegiate | 9/20-21 | 77-77-71--225 | T-38 |
| Windon Memorial Classic | 10/6-7 | 76-77-76--229 | T-66 |
| Alister MacKenzie | 10/13-14 | 73-70-72--215 | T-31 |
| Landfall Tradition | 10/30-11/1-2 | 78-71-72--221 | T-25 |
| Puerto Rico Classic | 2/22-24 | 75-72-73--220 | T-32 |
| Palmetto Intercollegiate | 3/15-16 | 75-68-72--217 | T-15 |
| Boilermaker Invitational | 4/10-11 | 70-71-74--215 | 10 |
| Robert Kepler Intercollegiate | 4/17-18 | 74-74-78--226 | T-22 |
| Big Ten Championships | 5/7-9 | 73-73-71--217 | T-22 |
| NCAA Central Regionals | 5/20-22 | 80-73-79--232 | T-60 |
| NCAA Championships | 6/1-4 | 72-70-76--218 | - |

2004-05 (Fall)

| Tournament | Date | Score | Finish |
|--------------------------------|----------|---------------|--------|
| Radrick Farms Intercollegiate | 11/11-12 | 79-68-77--224 | T-39 |
| Windon Memorial Classic | 10/4-5 | 75-73-76--224 | T-35 |
| Alister MacKenzie Invitational | 10/11-12 | 77-70-77--224 | T-49 |
| Big Ten/Pac-10 Challenge | 10/25-26 | 77-82--159 | T-55 |
| Landfall Tradition | 10/29-31 | 71-70-72--213 | T-7 |





Lawson's Career Accomplishments

Sophomore Fall Season (2004-05)

- ▶ Competed in four events and averaged 73.8 strokes per round
- ▶ Tied for ninth at the Windon Memorial Classic

Freshman Season (2003-04 at Stanford)

- ▶ Compiled a 75.5-stroke average over 28 rounds
- ▶ Finished 32nd at the Cleveland Golf Classic
- ▶ Shot under par four times

High School (Marmion Academy)

- ▶ Four-year letterwinner
- ▶ 2002 Illinois High School state champion
- ▶ 2001 PGA Junior Series player of the year
- ▶ All-conference three straight years
- ▶ Two-year team MVP
- ▶ National Honor Society member

Personal

- ▶ Majoring in economics
- ▶ Born August 23, 1985
- ▶ Son of Katie and Robin Lawson
- ▶ Most exciting experience was sinking a six-foot putt to win individual state championship as a senior

Lawson's Career Statistics

| Season | Rounds | Strokes | Average | Low Round |
|----------------|-----------|--------------|-------------|-----------|
| 2003-04 | 28 | 2,115 | 75.5 | 71 |
| 2004-05 (Fall) | 12 | 886 | 73.8 | 69 |
| Totals | 40 | 3,001 | 75.0 | 69 |

Lawson's Tournament Results

2003-04

| Tournament | Date | Score | Finish |
|------------------------------|----------|------------------|--------|
| Windon Memorial Classic | 10/6-7 | 71-74-79--224 | T-36 |
| The Nelson Invitational | 10/24-26 | 71-73-74--218 | T-50 |
| The Prestige | 11/3-4 | 77-85-76--238 | T-73 |
| Taylor Made Intercollegiate | 2/11-13 | 80-73-74--227 | T-92 |
| Cleveland Golf Classic | 2/1-2 | 76-72-73--221 | T-32 |
| Oregon Duck Invitational | 3/22-23 | 80-74-74--228 | T-41 |
| ASU Thunderbird Invitational | 4/9-10 | 76-71-71--218 | T-48 |
| US Intercollegiate | 4/17-18 | 75-76-72--223 | T-39 |
| Pac-10 Championships | 4/26-28 | 74-81-84-79--318 | 54 |

2004-05 (Fall)

| Tournament | Date | Score | Finish |
|--------------------------------|----------|---------------|--------|
| Radrick Farms Intercollegiate | 11/11-12 | 73-75-72--210 | T-22 |
| Windon Memorial Classic | 10/4-5 | 72-69-76--217 | T-9 |
| Alister MacKenzie Invitational | 10/11-12 | 76-71-76--223 | T-47 |
| Landfall Tradition | 10/29-31 | 77-75-74--226 | T-44 |



Athlete Profiles

BOILERMAKERS



Richardson's Career Accomplishments

Sophomore Fall Season (2004-05)

- ▶ Played in five events and averaged 72.6 strokes per round
- ▶ Won the Windon Memorial Classic for the second-straight season
- ▶ Post four top-25 finishes

Freshman Season (2003-04)

- ▶ Named second-team All-Big Ten
- ▶ Averaged 73.4 strokes per round, second best on team
- ▶ Won the Windon Memorial Classic, his third collegiate event
- ▶ Recorded four top-10 finishes
- ▶ Fired a low round of 67 at the Windon Memorial Classic, best round on the team for the year
- ▶ Shot team-low scores at tournaments on three occasions
- ▶ Led the team with 13 even or under par rounds

High School (Trinity School)

- ▶ Semifinalist in the 2003 English Amateur
- ▶ Runner-up in 2003 South of England Youth Championship
- ▶ 2002 North of England Youth Champion
- ▶ 2002 Northern Boys Champion
- ▶ 2002 Northern Federation Champion
- ▶ 2001 England Boys Home Internationals Team
- ▶ Henriques Trophy Champion
- ▶ Placed fifth in the McEvoy Trophy
- ▶ Tied for 12th in the Carris Trophy
- ▶ Reached the fourth round in 2003 British Boys
- ▶ Reached the third round in 2002 British Boys
- ▶ Northern Federation Championship runner-up
- ▶ Set course record on home course playing in the Carlisle Schools Trophy

Personal

- ▶ Majoring in atmospheric chemistry
- ▶ Born April, 8, 1984, in Whitehaven, Cumbria
- ▶ Son of Elaine and Stuart Richardson

Richardson's Career Statistics

| Season | Rounds | Strokes | Average | Low Round |
|----------------|-----------|--------------|-------------|-----------|
| 2003-04 | 38 | 2,788 | 73.4 | 67 |
| 2004-05 (Fall) | 14 | 1,016 | 72.6 | 68 |
| Totals | 52 | 3,804 | 73.1 | 67 |

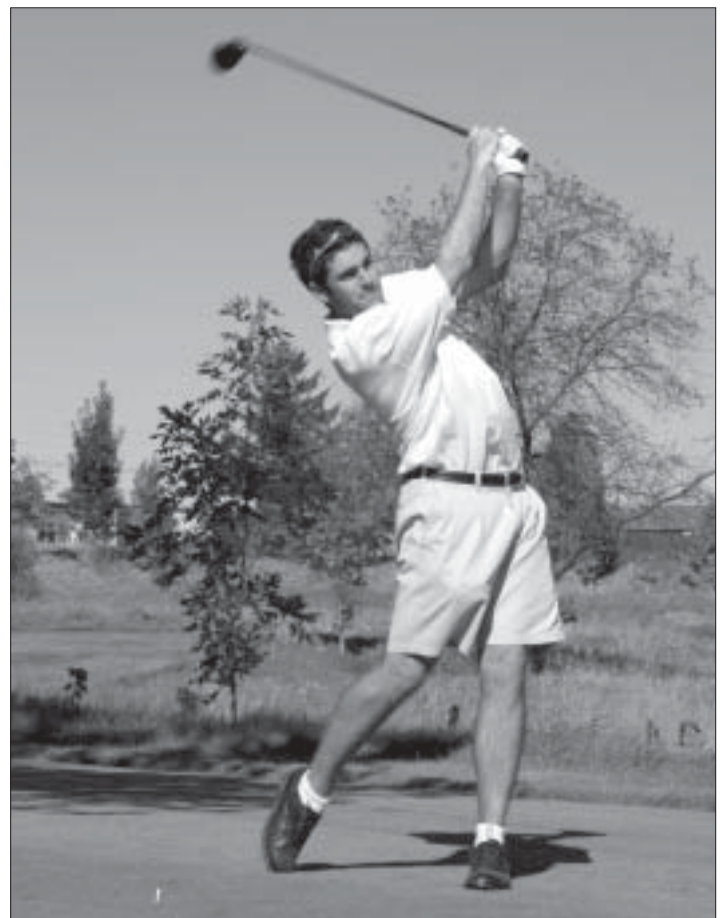
Richardson's Tournament Results

2003-04

| Tournament | Date | Score | Finish |
|-------------------------------|--------------|---------------|--------|
| Badger Invitational | 9/12-14 | 74-74--148 | T-6 |
| Northern Intercollegiate | 9/20-21 | 73-73-82--228 | T-56 |
| Windon Memorial Classic | 10/6-7 | 67-68-71--206 | 1 |
| Alister MacKenzie | 10/13-14 | 67-71-71--209 | 8 |
| Landfall Tradition | 10/30-11/1-2 | 77-73-71--221 | T-25 |
| Gator Invitational | 1/31-2/1 | 75-71-74--220 | T-33 |
| Puerto Rico Classic | 2/22-24 | 74-76-74--224 | T-46 |
| Palmetto Intercollegiate | 3/15-16 | 75-72-68--217 | T-15 |
| Boilermaker Invitational | 4/10-11 | 71-69-73--213 | T-6 |
| Robert Kepler Intercollegiate | 4/17-18 | 81-72-75--228 | T-33 |
| Big Ten Championships | 5/7-9 | 71-72-73--216 | T-17 |
| NCAA Central Regionals | 5/20-22 | 72-79-78--229 | T-38 |
| NCAA Championships | 6/1-4 | 74-73-73--220 | - |

2004-05 (Fall)

| Tournament | Date | Score | Finish |
|--------------------------------|----------|---------------|--------|
| Radrick Farms Intercollegiate | 11/11-12 | 73-74-73--220 | T-22 |
| Windon Memorial Classic | 10/4-5 | 70-68-74--212 | 1 |
| Alister MacKenzie Invitational | 10/11-12 | 69-76-70--215 | T-12 |
| Big Ten/Pac-10 Challenge | 10/25-26 | 83-71--154 | T-33 |
| Landfall Tradition | 10/29-31 | 69-71-75--215 | T-19 |





Jonathan Schultz

Redshirt Freshman
Richmond, Ind.
Richmond High School

Schultz's Career Accomplishments

Redshirt Season (2003-04)

- ▶ Did not see action in any tournaments

High School (Richmond)

- ▶ Two-time all-state selection
- ▶ Three-time All-North Central Conference honoree
- ▶ Helped team to 2002 state runner-up and 2003 state championship
- ▶ Earned individual conference champion honors in 2001
- ▶ Shot a career-low 67 and earned medalist honors in 2003 regional championship
- ▶ Four-year varsity golf team member
- ▶ Two-time member of the Indiana Tri-State team
- ▶ 2003 Indiana boys 17-age group state champion

Personal

- ▶ Majoring in management
- ▶ Born July 23, 1985, in Lancaster, Ohio
- ▶ Son of Linda and Tim Schultz
- ▶ Has one brother, Austin



Adam Vandoski

Sophomore
Greenwood, Ind.
Center Grove High School

Vandoski's Career Accomplishments

Freshman Season (2003-04)

- ▶ Finished 43rd at the Badger Invitational

High School (Center Grove)

- ▶ Named all-state as a senior
- ▶ 2001, 2003 sectional champion
- ▶ Earned Metropolitan Interscholastic all-conference in 2002 and 2003
- ▶ 2002 Johnson County champion and named all-county all four seasons
- ▶ Won 2003 Regent Park event on Collegiate Players Tour
- ▶ Placed 11th at 2003 Optimist International Jr. Golf Championship
- ▶ Finished 17th at 2003 Collegiate Players Tour National Championship
- ▶ Placed fourth at 2002 FCWT Gulf of Mexico Jr. Sandestin
- ▶ Was top five individual in 2003 IHSAA State Tournament

Personal

- ▶ Majoring in economics
- ▶ Born Oct. 16, 1984, in Franklin, Ind.
- ▶ Son of Nancy and Don Vandoski
- ▶ Has two sisters, Whitney, and Paige

Vandoski's Tournament Results

2003-04

| Tournament | Date | Score | Finish |
|---------------------|---------|-----------|--------|
| Badger Invitational | 9/12-14 | 81-77-158 | 43 |

Vandoski's Career Statistics

| Season | Rounds | Strokes | Average | Low Round |
|---------------|----------|------------|-------------|-----------|
| 2003-04 | 2 | 158 | 79.0 | 77 |
| Totals | 2 | 158 | 79.0 | 77 |

The Boiler Cup

BOILERMAKERS

The Boiler Cup celebrates the tradition and greatness of the Purdue golf program. Each year, golf alumni and friends of the program return to West Lafayette for the event, which is usually on a home-football game weekend.

After rounds of golf, a dinner is held in the Voinoff Pavilion. Devon Brouse addresses the audience, and prizes are awarded to the winning teams.

For more information on participating in the 2005 Boiler Cup, contact associate head coach Greg Robertson at (765) 496-3935.



BOILERMAKERS

Birck Boilermaker Golf Complex

Purdue University features two 18-hole championship golf courses on its West Lafayette, Ind., campus. The courses are much different in character, but each promises a challenging test of golf.

The Ackerman Hills Course features a beautifully contoured layout over hilly, forested terrain with greens that are well-protected by trees and bunkers. The narrow fairways and numerous obstacles demand accurate shot-making.

The anchor of the Birck Boilermaker Golf Complex is the 7,272-yard, par-72 Kampen Course. It served as the site of the 2001 NCAA Women's Central Regional, 2003 NCAA Women's Championship and 2004 NCAA Men's Central Regional. In 2008, it will host the NCAA Men's Championships. Pete Dye, one of the most influential and creative golf course designers in the history of the sport, masterminded the redesign of the Kampen Course.

Anyone who has played Brickyard Crossing, Crooked Stick, PGA West or any of the dozens of courses that bear his stamp appreciates the special challenges Pete Dye presents to the golfer. The Kampen Course demands not only skilled shot-making but also an intellectual approach to the game. The combination of both courses on campus offers Purdue students one

of the finest golf facilities in the United States.

A native of Indianapolis, Ind., Dye took turf management classes at Purdue during the 1950s and is known as much for his sensitivity to the environment as he is for his imaginative and creative course layouts.

The Birck Boilermaker Golf Complex is situated on the north side of the Purdue campus. It serves not only the Purdue golf teams, but also students, faculty, staff and the public. The complex provides the Purdue men's and women's golf teams with additional challenges and rewarding opportunities to play and practice on one of the region's most beautiful golf courses.

"This is one of the top facilities in college golf," says Devon Brouse, who is Purdue director of golf operations, in addition to coaching the men's and women's teams. "The tradition at Purdue should flourish with the commitment we have with these new facilities."

"Nothing has ever been built that is comparable to this course," Dye says. "You walk the Kampen Course and you feel like you're in another world."

The \$8 million renovation to the golf complex included a new clubhouse named in Dye's honor, new irrigation system and new driving range, and the Turfgrass Research and Diagnostic Center. The first comprehensive turfgrass research facility in the country, the center functions as a living laboratory for teaching and research activities in a variety of academic disciplines, including agronomy, entomology and forestry.

Consistent with Dye's commitment to environmentally sound golf, more than 6,800 trees have been planted on the Kampen Course. Alice's Oak Forest, named after Dye's wife, runs from tee to green on the ninth hole, and trees have been planted so densely that wildlife eventually will flourish.

Birck Boilermaker Golf Complex

BOILERMAKERS



Kampen Course - No. 1



Kampen Course - No. 18



Ackerman Hills - No. 15



Kampen Course - No. 17



Ackerman Hills - No. 16



Ackerman Hills - No. 12

BOILERMAKERS

*The Kampen Course***Hole 1, Par 4, 387 Yards**

Tee shot sets up left to right with a large, shallow bunker covering the right side of the driving area. There is a generous collar adjacent to the right side of the green.

Hole 2, Par 3, 169 Yards

Water runs along the entire right side of the green. An errant shot to the left will leave the player a difficult pitch from the adjacent bluegrass rough back toward the water.

Hole 3, Par 4, 471 Yards

A deep bunker with grass nodules runs along the right side of the fairway. A player avoiding the bunker that guards the right side of the fairway might find a blind shot from the left rough. The green opens right to left, and there is an ample bailout area to the right of the green.

Hole 4, Par 5, 517 Yards

This short par 5 sets up right to left, opposite of hole No. 3. The player will have strategic options for the second shot—lay up short on the upper plateau, or go for it and favor the left side of the green.

Hole 5, Par 3, 233 Yards

Due to a highly elevated tee, everything is in front of you on this long par 3. The view of the bog to the left of the green is magnificent.

Hole 6, Par 5, 590 Yards

Both the tee shot and the second shot set up left to right on this long par 5. Stay left throughout this hole. The bog runs along the right side.



Hole No. 7 has a bunker running down the middle of its fairway.

Hole 7, Par 4, 310 Yards

This short par 4 with two fairways is split by a bunker running down the middle. Long hitters can drive this green.

Hole 8, Par 4, 370 Yards

Drive sets up left to right on this short par four. There is plenty of room to play, however the tee shot must stay left of the massive waste bunker along the right side. The green opens left to right.

Hole 9, Par 4, 472 Yards

This long par 4 has little or no margin for error with waste bunkers on the left, tall heather on the right, and a huge greenside bunker as you approach the clubhouse and the turn.

Hole 10, Par 5, 598 Yards

The back nine opens unmercifully with a very long par 5. A waste bunker guards the entire right side of the driving area. There is room to the right for your second shot. A bunker and water come into play to the left of this elevated green.



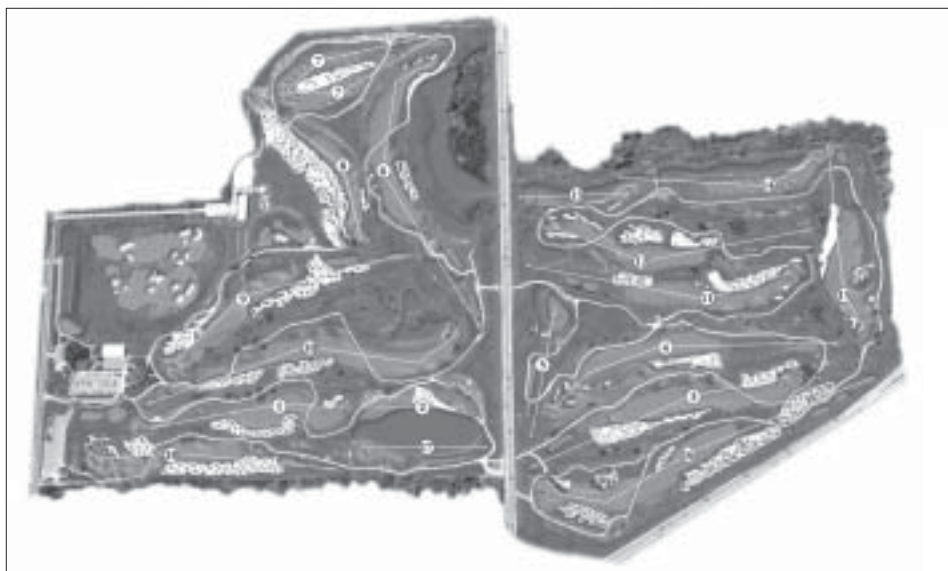
A par five, No. 6 wraps around a celery bog into a heavily guarded green.



Hole No. 9 is a par four with trouble along the left side of the fairway and right side of the green.

The Kampen Course

BOILERMAKERS



The Kampen Course has hosted the 2003 NCAA Women's Golf Championships and will host the 2008 NCAA Men's Championships.

Hole 11, Par 4, 472 Yards

There is a slight margin for error to the right on the tee shot. The green is one of only a few on this course that is guarded by bunkers on both sides.

Hole 12, Par 4, 471 Yards

A severe waste bunker lines the right side of this long par 4 with a beautiful view to the southwest. The green sets up left to right.

Hole 13, Par 3, 196 Yards

The picturesque green to this par 3 is completely guarded with water along the entire front side and left side.

Hole 14, Par 4, 374 Yards

This short par 4 plays right to left off the tee, with plenty of open room to the right. However, water lines the entire hole on the left side. The green opens right to left, with the fairway sloping into the green.

Hole 15, Par 4, 358 Yards

This short par 4 presents the golfer with an uphill tee shot. The fairway narrows substantially between the elevated waste areas to the left and right. The green opens left to right with some room for error to the left.

Hole 16, Par 5, 604 Yards

This extremely long par 5 has a tee shot that sets up right to left and a second shot that sets, up left to right. This large green is elevated with a deep bunker guarding the front.



A statue of Emerson Kampen sits behind the tee boxes on hole No. 1.

Hole 17, Par 3, 211 Yards

This long par 3 has water lurking just to the right of the green, but has a generous landing area left of the green.

Hole 18, Par 4, 469 Yards

The final hole on the Kampen Course is also the most difficult. This very long par four sets up right to left from the tee. There is a large bunker guarding the left side of the driving area. Hitting the fairway is a must, as the approach shot to this green is by far the most difficult on the course.



The par-3 13th has water along the entire front and left side of the green.



No. 14 is a short par four with a bog along the left side of the fairway and green.

BOILERMAKERS

Tom Spurgeon Training Center

An indoor putting green, a swing-analysis video computer system and multiple heated hitting bays are just three of the features of a \$3 million indoor golf training center to be built at Purdue's Birck Boilermaker Golf Complex.

The 11,400-square-foot facility will be named the Tom Spurgeon Golf Training Center, after lead donor Tom Spurgeon.

Athletics Director Morgan Burke says the indoor training center will be the "jewel in the crown" of Purdue's 36-hole Birck Boilermaker Golf Complex. The Kampen and Ackerman Hills courses have undergone more than \$8 million in improvements since 1996.

Other areas of the facility include team locker rooms, a lounge, coaches' offices, a pro shop and a classroom. The architectural design will be similar to the clubhouse and other facilities at the complex. The center will be open to the public when not in use by Purdue golf teams.

Head men's and women's golf coach Devon Brouse said the facility will be a great help in training and teaching.

"From a technology standpoint, this takes us right to the forefront of college golf," Brouse said. "We already have outstanding golf courses and this facility will only compliment those."

The state-of-the-art computer and video swing analysis lab will help players with their motions and swings.

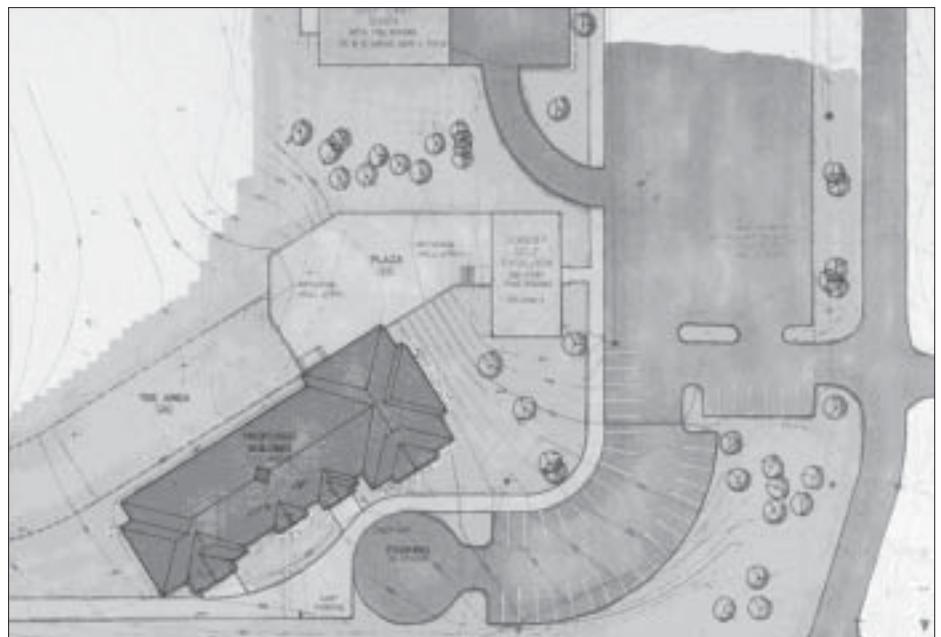
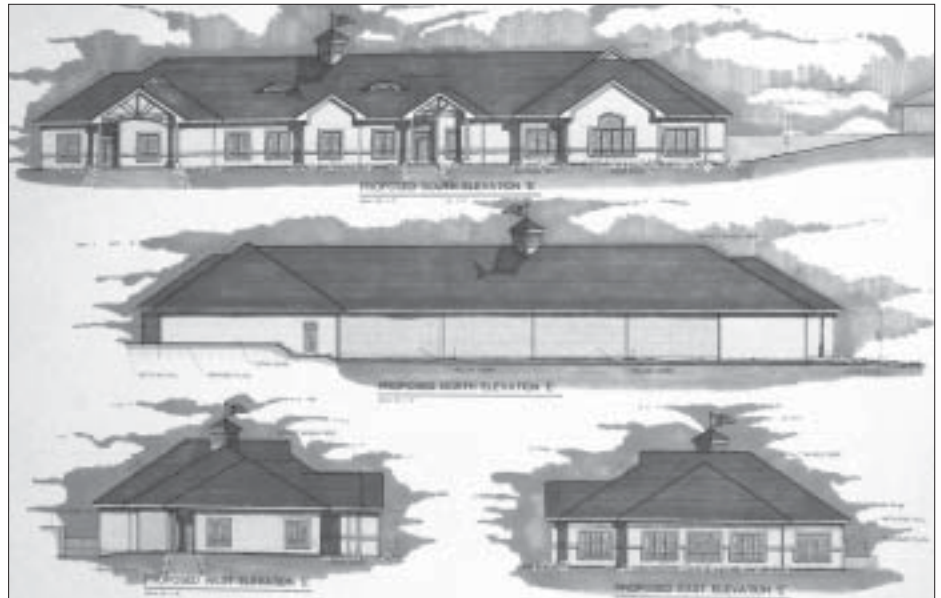
"We want to seize the momentum of strong finishes in the recent NCAA national golf championships and keep attracting the best student-athletes here," Brouse said.

Nancy Cross, associate athletics director, says Brouse is a visionary who, in the past six years, has not only established a solid tradition of top-caliber golf at Purdue, but also knows what it takes to position Purdue as an NCAA golf leader.

"Devon Brouse has taken Purdue golf to a new level," Cross said. "With his premier coaching staff, top-caliber athletes and a state-of-the-art training facility, we've hit an approach shot that should put us on the NCAA leader board for years to come."

Brouse said he looks forward to the day when Purdue golf is synonymous with college golf excellence.

"When I was a kid in the '50s and '60s, Purdue golf was pretty special," Brouse says. "We won the national championship in 1961. Now, we have that same kind of tradition redeveloping."



Boilermaker Practice Facility

BOILERMAKERS



The Boilermaker golf teams practice in a 15-acre complex directly adjacent to the Kampen Course.

The practice area features a private driving range, complete with instructional equipment and more than 15,000 square feet of tee areas. The tees are composed of both bluegrass and bentgrass area and are designed to enable the golfers to practice against any wind direction. The tees were renovated in the fall of 2004.

The tee area faces a range with target greens, giving the golfers a multitude of distances to hone skills with the scoring clubs.

Two practice greens surround a bunker to give the Boilermakers their own area in which to work on their short game.

The putting greens are 24,000 square feet and are both above and below the bunker.

"The whole practice complex makes a nice impression on a recruit," says coach Devon Brouse. "It's an opportunity obviously, for our players to get their work done individually, or whatever they need to do. We've got lots of short-game practice areas, and we've got a great amount of green space. This area, along with the indoor facilities, puts us right up with the very best facilities in the country."



BOILERMAKERS

Purdue University

Boasting more than 300,000 living alumni, Purdue University graduates have been to the moon, to the highest levels of business and government, and to Sweden to receive the Nobel Prize.

The Indiana link in a nationwide chain of 68 land-grant colleges and universities, Purdue owes its origin to the Morrill Act, signed by Abraham Lincoln in 1862 to promote establishment of schools to teach agriculture and the "mechanic arts."

An act of generosity by Lafayette businessman John Purdue secured the Indiana land-grant college for Lafayette. Purdue pledged money and land for the school. In return, the institution was named for him, and he remained a trustee until his death in 1876.

Classes began in 1874 with a total of 39 students and six faculty members. Since then, enrollment has grown to nearly 68,000 on five campuses and a faculty and staff totaling approximately 14,500. In excess of 38,000 students are enrolled at Purdue's main campus in West Lafayette, Ind.

Since its inception in 1869, Purdue has attained widespread fame for the quality of learning, discovery and engagement in a number of fields. Once known primarily as an engineering and agriculture school, the University now offers nearly 6,700 courses in more than 200 specializations in agriculture; consumer and family sciences; education; engineering; liberal arts; management; pharmacy, nursing, and health sciences; science; technology; and veterinary medicine. Students pursue advanced degrees through the Graduate School and the Krannert Graduate School of Management.

Purdue has one of the largest enrollments of women and minority students in engineering in the country, and the School of Veterinary Medicine is one of only 27 nationwide.

In addition to charting new paths through its instruction, Purdue also pushes back the frontiers of research, from unraveling the molecular structure of viruses to designing a self-supporting food system for space colonies to genetically engineering crops and plants for





feeding an ever-increasing global population.

As one of the 25 largest colleges and universities in the United States, Purdue leaves its mark on the world — and beyond — on a daily basis. Long known as the “mother of astronauts,” the University boasts 22 graduates — 20 men and two women — who have been selected to participate in the NASA space program.

From the 1960s to today, from the Mercury Program to today’s fleet of space shuttles, Purdue alumni have flown on more than one-third of all manned U.S. space flights. Neil Armstrong, the first person to walk on the moon, and Eugene Cernan, the last person to leave it, both call Purdue alma mater. In addition to the astronauts, scores of scientists, engineers and other personnel who help support the space program have graduated from Purdue.

From the steam era to the space age, Purdue has forged a proud tradition of education, research and service to the state, the United States and the world — a tradition that gets stronger every day.

Purdue Facts

| | |
|---|---------------------------------------|
| Location | West Lafayette, Indiana 47907 |
| Founded | 1869 |
| Enrollment | 38,847 |
| Acres | 17,528 (14,256 for agriculture) |
| Capital Investment of Physical Plant systemwide | \$1.5 billion |
| Estimated Replacement Cost | .. \$2.1 billion |
| Living Alumni | In excess of 300,000 |
| President | Martin C. Jischke |
| Provost | Sally K. Frost Mason |
| Dean of Students | L. Tony Hawkins |
| Vice President for Student Services | Thomas B. Robinson |
| Faculty Representatives | Jeffrey T. Bolin |
| | Christie L. Sahley |
| Athletics Director | Morgan J. Burke |
| Nickname | Boilermakers |
| Colors | Old Gold and Black |
| Mascot | Boilermaker Special |
| Song | Hail Purdue |
| National Affiliation | NCAA Division I |
| Conference | Big Ten |

The John Purdue Club

Since its inception in 1958, the John Purdue Club has been the home for Purdue's most loyal and devoted fans. Today, the Club is still true to the ideal first envisioned by Fred Hovde and Guy "Red" Mackey: a group of fans who share a passion for the Old Gold and Black and a commitment to providing a Purdue education for student-athletes.

Because Intercollegiate Athletics receives no funding from the state or University budgets, the success of the John Purdue Club is critical to the overall mission of the department. Each year, more than 9,000 Club members generate nearly \$6 million to underwrite the scholarship and academic support costs for student-athletes at Purdue.

John Purdue Club members provide the foundation for success – in the classroom, on the playing fields, and in life after graduation. And Club members provide the foundation of success for Boilermaker Athletics, by demonstrating through their generosity that cheers alone won't support Purdue's student-athletes.

Endowed Scholarships

Although all 9,000 John Purdue Club members are essential to Purdue Intercollegiate Athletics, Life Champion members continue to lead the way. These are members who have chosen to make a lasting impact in perpetuity by fully endowing a scholarship.

Today, Intercollegiate Athletics is able to boast 51 endowed scholarships, four of which have been designated by their donors to go each year to Purdue golfers. That means that four of the scholarships awarded each year by Devon Brouse and the Purdue golf program are financially secure and guaranteed through an endowment.

For more information on the John Purdue Club call 800-213-2239.

**Endowed Golf Scholarships**

Ted and Nancy Boots Endowed Scholarship
Established in 1997 by Ted and Nancy
Boots, Indianapolis, Ind.

Ms. Jennifer E. Jones Endowed Scholarship
Established in 1998 by Jennifer E. Jones,
Lebanon, Ind.

Ms. Susan R. Jones Endowed Scholarship
Established in 1998 by Susan R. Jones,
Indianapolis, Ind.

Bob and Sally Weist Endowed Scholarship
Established in 2001 by Bob and Sally Weist,
Chicago, Ill.



John Purdue Club members who have endowed scholarships join the student-athlete recipients and their respective coaches in a special gathering every year during a basketball game. This past year, the group meeting in the Shively Pavilion during a women's basketball game.

Purdue Alumni

BOILERMAKERS

Long known as the "mother of astronauts" and a world leader in engineering, science and agricultural education and research, Purdue University also sends its sons and daughters to make a difference around the world and at home in business, government and even entertainment.

Of the nearly 320,000 living Purdue alumni, 44 percent reside in Indiana. Nearly 10,000 call Texas home, and 16,000 reside in California; the Hawaiian Islands are home to 592, and 301 live in Alaska.

Purdue graduates are pioneers and achievers in occupations as diverse as being elected to the Australian Parliament, serving as director of the National Science Foundation and head of Disney Studios. Others have become underwater explorers, traveled the country and world as relief workers with American Red Cross, founded support groups for cancer survivors and operated the largest duckling farm in the United States.

Robert Charles, who graduated in 1958 with a mechanical engineering degree, holds the distinction of being the first and only U.S.-born member of the Australian Parliament.

Rita Colwell earned bachelor's and master's degrees in 1956 and 1958. A molecular biologist, she is credited with devising a scheme that will drastically curtail the spread of cholera in Africa.

A Purdue alumnus led the team that produced an icon of shopping that ranks with the shopping cart and cash register in its ubiquity: the Universal Product Code or bar code. While employed at IBM in the early 1970s, Paul McEnroe and his team came up with a way to track inventory and record purchases at the same time.

She advises millions of people each evening on whether to cancel picnics, water their lawns and gas up their snowblowers. Sharon Resultan, who graduated with a degree in earth and atmospheric sciences in 1987, is prime time anchor and forecaster on The Weather Channel. Her daunting task is to translate the technical language of convection systems and tropical conversion zones into whether the kids will need umbrellas or the flight bringing Grandma from Denver will be delayed.

A father-daughter alumni team carries on the Purdue tradition in the wild blue yonder and beyond. Jerry Ross and Amy Ross hail from Crown Point, Ind. Both earned bachelor's and master's degrees in engineering before joining the National Aeronautics and Space Administration. Jerry, a member of the Class of 1970, holds the record for most minutes spacewalking; he has played an integral role in the construction of the International Space Station and boasts seven flights aboard the space shuttle. On Earth, Amy, a member of the Class of 1994, designs gloves for use in spacewalks.

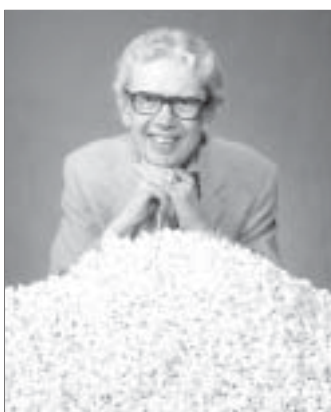
Nearly two-dozen members of the astronaut corps studied at Purdue. Notable among them are Neil Armstrong, Class of 1955, and Eugene Cernan, Class of 1956. Armstrong made history in 1969 as the first man to land a craft and step on the moon; Cernan was the last to leave it in 1972.



Bob Griese



Brian Lamb



Orville Redenbacher



John Wooden

Accomplished Alumni

- ▶ Humorist and playwright George Ade.
- ▶ Ted Allen, a food and wine connoisseur and Fab Five member of Bravo TV's "Queer Eye for the Straight Guy."
- ▶ Astronauts Neil Armstrong and Gene Cernan, the first to walk on the moon and the last to leave it.
- ▶ Former U.S. Sen. Birch Bayh, father of former Indiana governor and current U.S. Sen. Evan Bayh.
- ▶ Tellabs chairman and Purdue trustee Michael Birck.
- ▶ Susan Butler, managing partner for Accenture.
- ▶ Former presidential speechwriter and U.S. ambassador to Belize Carolyn Curiel.
- ▶ Hall of Fame quarterbacks Len Dawson and Bob Griese.
- ▶ Pam Biggs Faerber, founder of national support group for survivors of ovarian cancer.
- ▶ Callie Khouri, writer of the Oscar-winning movie *Thelma and Louise*.
- ▶ Brian Lamb, founder and chairman of the Cable-Satellite Public Affairs Network or C-SPAN.
- ▶ Marge Wagner, senior executive vice president with Citigroup.
- ▶ Elwood Mead, who oversaw the construction of the Hoover Dam.
- ▶ The late popcorn king Orville Redenbacher.
- ▶ Faith Smith, president of the only university to be founded and operated by American Indians.
- ▶ Cliff Turpin, who helped Orville and Wilbur Wright build and test their first flying machine in 1903.
- ▶ Hall of Fame basketball coach and All-American John Wooden.



Neil Armstrong

Jane P. Beering Academic Learning Center

Purdue opened its Academic Learning Center in August 1994. In 2000, the center was renamed after former Purdue first lady Jane P. Beering, in recognition of her steadfast support of the Boilermakers. The center is located in the Intercollegiate Athletic Facility, between Mackey Arena and the Mollenkopf Athletic Center.

The center features five different study and research areas:

Study Tables — Located in Room 220, this area has a capacity of 40 student-athletes. It includes large study tables and is monitored from 8 a.m. to 10:30 p.m. Monday through Thursday, from 8 a.m. to 5 p.m. Friday and from noon to 10:30 p.m. Sunday. There is also a monitored study tables area in Wiley Residence Hall. This area is open Sunday through Thursday from 7:30-10 p.m.

One-on-One Tutor Rooms — This area in Room 226 has six individual rooms used for one-on-one tutoring. There also are two additional rooms available for tutoring.

Library/Career Resource Center — Recreational and reference reading materials are available as well as career information and assistance with career exploration in Room 224.

Computer Lab — Located in room 201, this newly designed 74 workstation computer lab is operated by the Purdue University Computing Center. It is fully connected to the campus mainframe and has World Wide Web connections. It is staffed by a lab assistant who assists student-athletes with hardware and software problems. It is equipped with scanners, zip drives and two printers for the student's use.

Large Group Study Room — This area holds up to 15 student-athletes and is located in Room 209B. It also houses math, chemistry, English and physics walk-in tutors, who are available from 7:30 p.m. to 10 p.m. Sunday through Thursday.



Students who choose to attend Purdue become a part of its strong tradition and receive the opportunity to carry the torch into tomorrow's legacy. Purdue graduates have consistently left their mark on the world and continue to do so every day. Here dreams are followed and made into reality.

Purdue grants the Bachelor of Arts (B.A.) and Bachelor of Science (B.S.) degrees. Students may also pursue advanced degrees through the Graduate School. Academic diversity is offered through nearly 6,700 courses in 12 schools:

- Agriculture
- Consumer and Family Sciences
- Education
- Engineering
- Health Sciences
- Liberal Arts
- Management
- Nursing
- Pharmacy and Pharmacal Sciences
- Science
- Technology
- Veterinary Medicine

Graduation rates for Purdue student-athletes continue to rank above the national average. A 2000 NCAA study analyzed students who enrolled from 1993-94 through 1998-99 to determine if they graduated within six years of freshman enrollment. Seventy percent of Purdue's student-athletes graduated, compared with 58 percent for NCAA Division I schools.

Purdue women were particularly impressive, graduating at a 78 percent rate, compared with 68 percent for NCAA Division I.

Moreover, the overall grade-point average of student athletes has surpassed that of Purdue students for seven consecutive years.

Academic support services are available to student-athletes in the Jane P. Beering Academic Learning Center. The staff is sensitive to the special needs of student-athletes and is dedicated to the academic success of each individual.

Student-athletes take advantage of the academic support services by learning ways to improve their study skills, time management and learning strategies. Assistance is provided through tutors and degree counseling, as well as general advising to help with the adjustment to college. Freshman progress is more closely monitored to give the student, professors and coaches up-to-date feedback as the student adjusts to the new collegiate environment.

Academic benefits abound at Purdue. Our Business and Industrial Development Center, for example, serves as a nationwide link between Purdue and industry. And the Department of English operates a Writing Lab and Phone-in Grammar Hotline used on a national scale.

Every day, day after day, Purdue continues to uphold and strengthen its reputation as one of the nation's finest academic institutions. The opportunity awaits you to become one of its fine graduates, allowing your dreams to become reality.



Excellence In Academics

BOILERMAKERS

Following is a list of specific schools and programs at Purdue University that are listed among the nation's top undergraduate programs, according to the most recent Gourman Report and the Spring 2003 issue of US News and World Report.



| | |
|--|------------------|
| Accounting | 9 th |
| Aerospace Engineering | 6 th |
| Agricultural Business | 8 th |
| Agricultural Economics | 10 th |
| Agricultural Engineering | 15 th |
| Agriculture | 4 th |
| Agronomy | 4 th |
| American Studies | 30 th |
| Animal Sciences | 5 th |
| Applied Mathematics | 10 th |
| Astrophysics | 7 th |
| Atmospheric Science | 6 th |
| Bacteriology/ Microbiology | 14 th |
| Biochemistry | 22 nd |
| Biology | 19 th |
| Biophysics | 6 th |
| Botany | 16 th |
| Business Administration | 9 th |
| Cell Biology | 8 th |
| Ceramic/ Art Design | 9 th |
| Chemical Engineering | 13 th |
| Chemistry | 15 th |
| Civil Engineering | 7 th |
| Communication | 15 th |
| Computer Engineering | 9 th |
| Dietetics | 4 th |
| Earth Science | 9 th |
| Ecology/ Environmental Studies | 13 th |
| Economics | 33 rd |
| Engineering | 6 th |
| Electrical Engineering | 9 th |
| Entomology | 9 th |
| Environmental Sciences | 11 th |
| Farm/ Ranch Management | 9 th |
| Finance | 9 th |
| Food Services Management | 6 th |
| Forestry | 9 th |
| Genetics | 7 th |
| Geophysics/ Geoscience | 14 th |
| Home Economics | 4 th |
| Horticulture | 4 th |
| Hotel, Restaurant and Institutional Management | 7 th |
| Industrial Engineering | 3 rd |
| Information Systems Management | 13 th |
| Human Resources Management | 10 th |
| Labor and Industrial Relations | 7 th |
| Landscape Architecture | 19 th |
| Logistics/ Supply Management | 10 th |
| Management | 11 th |
| Management Information Systems | 19 th |
| Marketing | 8 th |
| Materials Engineering | 29 th |
| Mathematics | 26 th |
| Mechanical Engineering | 7 th |
| Meteorology | 7 th |
| Molecular Biology | 14 th |
| Natural Resource Management | 5 th |
| Nuclear Engineering | 7 th |
| Nutrition | 6 th |
| Operations Research | 8 th |
| Pharmacy | 5 th |
| Parks Management | 15 th |
| Poultry Sciences | 12 th |
| Product Operations Management | 3 rd |
| Quantitative Analysis/ Methods | 3 rd |
| Speech Pathology/ Audiology | 4 th |
| Statistics | 7 th |
| Wildlife Biology | 3 rd |

HELPING YOU UNDERSTAND THE RULES

Many times the NCAA rules and regulations may seem difficult to understand. We will identify and define some of the most frequently used terms in order to make the recruiting process more easily understood.

PROSPECTIVE STUDENT-ATHLETE (Prospect)

A prospective student athlete (prospect) is an individual who has either started in the ninth grade OR who has received ANY benefit from an institution or a booster. These types of benefits include:

- Providing an individual an expense paid visit to a collegiate institution (official visit)
- Having arranged in-person contact
- Providing an individual (or their relatives or friends) any financial assistance or other benefits that the institution does not provide to prospective students at large, not just student-athletes.

RECRUITING

Recruiting involves any solicitation of a prospect (or family members) by a Purdue University staff member for the purpose of encouraging him or her to enroll at Purdue and participate in the intercollegiate athletics program.

RECRUITING ACTIVITIES

Recruiting activities include written correspondence, e-mail, faxes, telephone conversations, evaluations, in-person contacts (both on-campus and off-campus) and official and unofficial visits.

A REPRESENTATIVE OF PURDUE'S ATHLETICS INTEREST

A representative of Purdue Athletics is an individual, independent agency, corporate entity or other organization that is essentially a booster, fan, friend, promoter or supporter of Purdue University athletics interests. They retain that identity indefinitely.

KEY RECRUITING RULES

- **Letters and emails** from college coaches, faculty and students (at the direction of a Purdue coaching staff member) are not permitted until **September 1** of the prospect's **junior year** in high school.
- **Phone calls** are not permitted until **July 1** at the beginning of the prospects **senior year** in high school. Coaches are generally only permitted to call a prospect once a week, but there are exceptions including unlimited calls during a contact period. Prospects may call a coach anytime.
- In-person, off-campus recruiting contacts are not permitted with a prospect or the prospect's relatives or legal guardian(s) prior to **July 1** following the prospect's **completion of the junior year** in high school.

- Unofficial visits are visits a prospect makes to Purdue University at his or her own expense. A prospect may make **unlimited unofficial visits**, unless it is during his or her sport's dead period. A coach is not permitted to have ANY contact, on- or off-campus, with a prospect during a dead period.
- A prospect is allowed **five official visits** during his or her senior year in high school, with no more than one visit to an institution. An official visit occurs when an institution pays for all or part of the visit to campus. An official visit may not exceed 48 hours.
- In all sports, coaches may not have any contact with a prospect prior to any athletics competition in which he or she is a participant during the day or days of competition, even if the prospect is on an official or unofficial visit.
- Alumni, boosters, and any other representatives of Purdue University athletics interests may not participate in recruiting. Phone calls, e-mails, and personal contact between these representatives and a prospect or the prospect's relatives are strictly prohibited.
- Prospects may not accept any benefit, gift or service, such as cash, clothing, cars, transportation, loans or discounts from a Purdue University staff member or a representative of Purdue's athletics interests. Doing so may jeopardize the prospect's eligibility to compete in intercollegiate athletics.

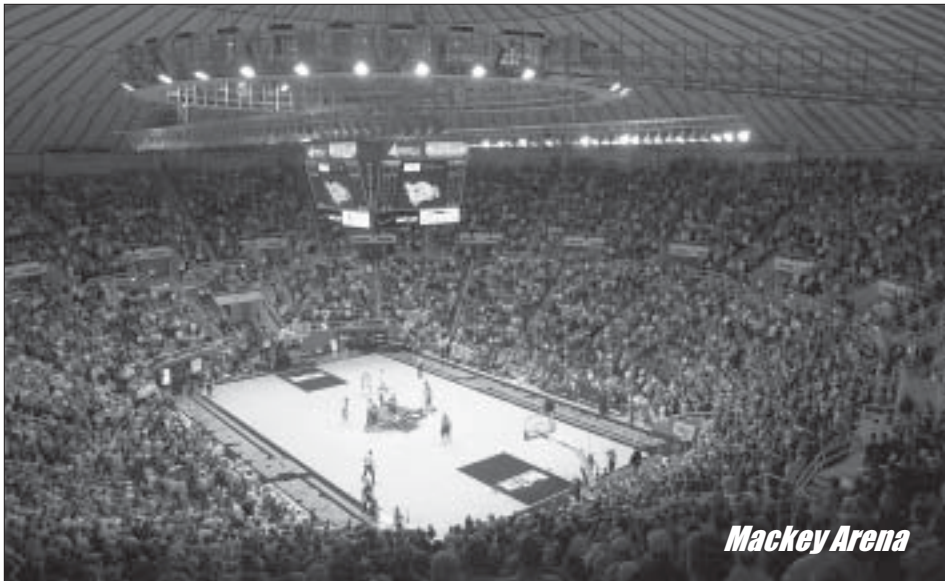
KEYS TO INITIAL-ELIGIBILITY

- Prospects who intend to participate in intercollegiate athletics must register with the NCAA Initial-Eligibility Clearinghouse. Prospects should apply for certification with the Clearinghouse immediately following their junior year in high school. Contact a high school counselor or the Clearinghouse (319-337-1492) for more information.
- In order to be eligible to practice and compete in intercollegiate athletics, prospects must have a minimum cumulative GPA in a core curriculum of 14 specific college-prep courses, and have achieved a minimum required score on the ACT or SAT. The required core courses and the initial-eligibility index (sliding scale of corresponding GPAs and test scores) can be found on the NCAA website (www.ncaa.org), the athletics website (www.purduesports.com) or by asking a high school counselor. The required SAT or ACT score must be achieved under national testing conditions on a national testing date (i.e., no residual (campus) testing or regional testing dates.)

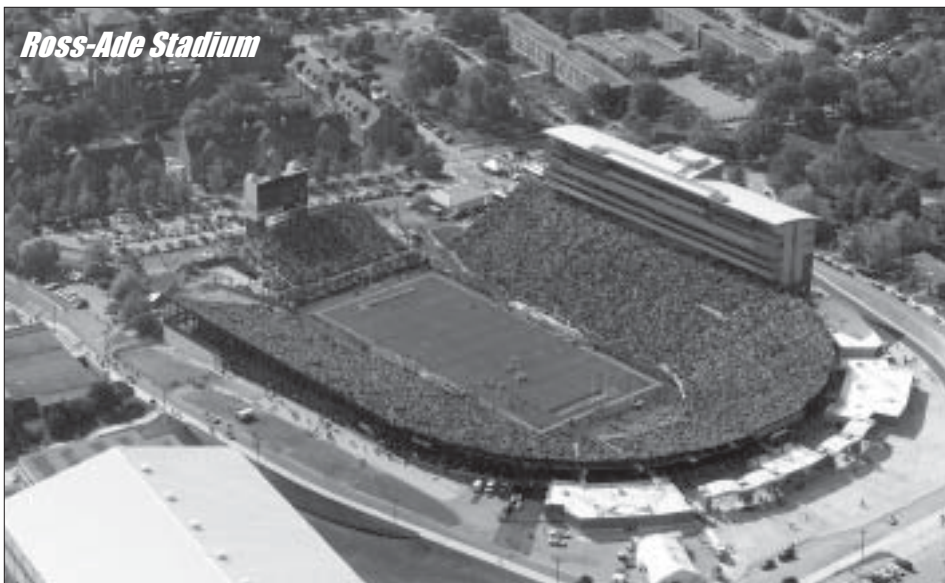
The information provided here is a brief overview of the many rules and regulations that govern intercollegiate athletics and does not include all applicable provisions. For further information, please visit the Purdue athletics website, (www.purduesports.com) and click on the compliance link on the left side on the page or contact the compliance office at 765-494-9752.

Purdue Spirit

BOILERMAKERS



Mackey Arena



Ross-Ade Stadium



**Boilermaker
Special**



**Purdue
Pete**

'Hail Purdue'

From the early days of Purdue sports in the 1880s, the fans shouted chants to cheer their teams. The Purdue fight song was copyrighted in 1913 by a Purdue alumnus and a student. E.J. Wotawa, class of 1912, provided the score; J. Morrison, class of 1915, the lyrics. The stirring tune is both battle cry and statement of the affection that true Boilermakers have for their school.

To your call once more we rally,
Alma Mater, hear our praise;
Where the Wabash spreads its valley,
Filled with joy our voices raise.
From the skies in swelling echoes
Come the cheers that tell the tale
Of your vic'tries and your heroes,
Hail Purdue! We sing all hail!

Hail, Hail to Old Purdue!
All hail to our old gold and black!
Hail, Hail to Old Purdue!
Our friendship may she never lack,
Ever grateful, ever true,
Thus we raise our song anew,
Of the days we've spent with you
All hail our own Purdue.

When in after years we're turning,
Alma Mater, back to you,
May our hearts with love be yearning,
For the scenes of old Purdue.
Back among your pathways winding,
Let us seek what lies before,
Fondest hopes and aim e'er finding,
While we sing of days of yore.



BOILERMAKERS

Greater Lafayette

West Lafayette, the location of Purdue's main campus, is the twin city of Lafayette.

Flanking the Wabash River, the cities are located 65 miles northwest of Indianapolis and 126 miles southeast of Chicago.

With a population in excess of 140,000, Lafayette-West Lafayette is one of the largest metropolitan centers in northwestern Indiana, accessible from U.S. Highways 52 and 231, Interstate 65 and State Roads 25, 26, 38 and 43. Major bus lines and Amtrak trains stop daily.

Lafayette-West Lafayette is a regional hub for restaurants, shops, museums and entertainment. The community offers 26 movie theatres, daily and weekly newspapers, 12 radio stations, a television station and cable system, more than 60 churches of all major denominations, an art museum, a historical museum and 1,600 acres of public parks.

Nearby points of historic and scenic interest include Fort Ouiatenon, on the National Register of Historic Places; Battle Ground, where William Henry Harrison fought the Battle of Tippecanoe; and the developing projects of Museum at Prophetstown and Prophetstown State Park, dedicated to the preservation of Woodland Indian agricultural and environmental heritage.

Lafayette also is home to the Long Center for the Performing Arts, Clegg Botanical Gardens and Columbian Park Zoo. Located on the eastern side of the Wabash River, Lafayette shares the 13-mile long Wabash Heritage Trail with West Lafayette. Nearby Battle Ground, located northwest of West Lafayette, boasts Wolf Park, where people can see live wolves, coyotes and foxes in their natural habitat.

Not only are there places to go in Lafayette-West Lafayette, but there also are things to do. The area hosts numerous community events throughout the year, including the Taste of Tippecanoe, 'Round the Fountain Art Fair, Hot Summer Nights, Riverfront Jazz & Blues Festival, Global Fest, Feast of the Hunters' Moon, Christmas Parade, and Gus Macker 3-on-3 Basketball Tournament.

West Lafayette is experiencing a renaissance of sorts in an area called the "levee," where more than \$100 million worth of construction is under way. Once completed, Wabash Landing and the surrounding area will become a new focal point for residents and students, just across the John T. Myers Pedestrian Bridge from the Riehle Plaza and downtown Lafayette.

A diverse mixture of night spots, shopping centers, art museums and restaurants give Lafayette-West Lafayette a distinct and unique flavor. Boasting the convenience of a modern city and friendly "down-home" residents, Lafayette-West Lafayette is one of America's most-livable communities.



Indiana

BOILERMAKERS



The Indianapolis skyline



The Arts Garden in downtown Indianapolis



The Indianapolis 500

Indiana, "The Crossroads of America," has something for everyone. Whether you are in search of recreation or relaxation, the Hoosier State most likely will satisfy your needs.

Located in the heart of the Midwest, Indiana is welcoming to a variety of people because of its rich history, cultural opportunities and fertile landscape, not to mention its place as one of the major sports metropolises and industrial centers in the nation and world.

In the northwest corner of the state, one can traverse Indiana's 41-mile Lake Michigan waterfront. This area, which boasts the Indiana Dunes National Lakeshore, is good for work and play. It is home to industries that turn out iron, steel, oil, automobile parts and accessories, truck and bus bodies, aircraft engines, and pharmaceuticals.

Indiana gives to the world from factory to field. The state is a leader in agriculture, with corn as its main crop.

Beneath much of Indiana's rich soil is limestone. A large amount of the building limestone used in the U.S. is quarried in Indiana.

Those looking for a little adventure in Indiana can access more than 1.1 million acres of land available for outdoor recreation. Some of that land can be found in southern Indiana, where Wyandotte Cave, one of the largest caverns in the U.S., is located.

One can work and play in Indiana. But when it comes to sports spectating, Indiana is second to none. It all starts in Indianapolis, home of the NFL Colts, NBA Pacers and WNBA Fever. The Indians, a Triple-A baseball team, play at Victory Field, while Indianapolis also is home to the Indiana Blast USL soccer team, the Indianapolis Ice hockey team, and the Indiana Firebirds AFL arena football team. During the summer, Indianapolis hosts the RCA Championship tennis tournament, a precursor to the U.S. Open. The summer starts with the Indianapolis 500 and draws to a close with the Brickyard 400, car races run at the Indianapolis Motor Speedway.

Whatever your pleasure is, you are sure to find it somewhere in the state of Indiana.



BOILERMAKERS

Big Ten Awards and Honors



Rick Dalpos



Eric Dutt



Shiv Kapur



Guy Wuollet



Jay Smith



Lenny Hartlage



Lee Williamson



Gary Gant



Don Denger



Bill Hofer



Fred Clark

All-Big Ten Selections (Officially Started in 1968)

| Year | Individual |
|------|------------------|
| 1969 | Don Klenk |
| 1969 | Jeff Radder |
| 1970 | Fred Clark |
| 1970 | Bill Hoffer |
| 1971 | Bill Hoffer |
| 1971 | Don Denger |
| 1972 | Gary Gant |
| 1981 | Rick Dalpos |
| 1981 | Eric Dutt |
| 1981 | Mike Granger |
| 1981 | Guy Wuollet |
| 1983 | Jay Smith |
| 1984 | Lenny Hartlage |
| 1985 | Lenny Hartlage |
| 1986 | Lenny Hartlage |
| 1987 | Lenny Hartlage |
| 2000 | Chris Mayson |
| 2000 | Lee Williamson |
| 2001 | Lee Williamson |
| 2002 | Lee Williamson |
| 2003 | Peter Karmis |
| 2004 | Shiv Kapur |
| 2004 | Peter Richardson |

Big Ten Individual Champions

| Year | Individual |
|------|--------------|
| 1928 | John Lehman |
| 1948 | Fred Wampler |
| 1949 | Fred Wampler |
| 1950 | Fred Wampler |
| 1951 | Gene Coulter |
| 1953 | Don Albert |
| 1954 | Bob Benning |
| 1956 | Joe Campbell |
| 1957 | Joe Campbell |
| 1958 | John Konsek |
| 1959 | John Konsek |
| 1960 | John Konsek |
| 1967 | Steve Mayhew |

Les Bolstad Award (Low season strokes average)

| Year | Individual |
|------|----------------|
| 2002 | Lee Williamson |

Big Ten Freshman of the Year

| Year | Individual |
|------|--------------|
| 2000 | Chris Mayson |

Big Ten Player of the Year

| Year | Individual |
|------|----------------|
| 2002 | Lee Williamson |

Big Ten Conference Team Championships

| School | Championships |
|----------------|---------------|
| Ohio State | 23 |
| Purdue | 12 |
| Michigan | 12 |
| Indiana | 8 |
| Illinois | 7 |
| Northwestern | 7 |
| Minnesota | 6 |
| Chicago | 3 |
| Wisconsin | 3 |
| Michigan State | 1 |
| Iowa | 1 |
| Penn State | 0 |

Big Ten Conference Individual Championships

| School | Championships |
|----------------|---------------|
| Ohio State | 18 |
| Michigan | 15 |
| Purdue | 13 |
| Illinois | 12 |
| Minnesota | 8 |
| Northwestern | 7 |
| Indiana | 6 |
| Chicago | 4 |
| Wisconsin | 4 |
| Iowa | 2 |
| Michigan State | 1 |
| Penn State | 0 |

Purdue Big Ten Team Championships

| | | |
|------|------|------|
| 1950 | 1953 | 1955 |
| 1956 | 1958 | 1959 |
| 1960 | 1964 | 1965 |
| 1967 | 1971 | 1981 |

National Awards and Honors



John Konsek



Gene Francis



Jerry Jackson



Terry Winter



Bob Zender



Rick Radder



Steve Mayhew

NCAA Team Championships Appearances

| Year | Score | Place |
|------|-------|--------|
| 1947 | 634 | T-14 |
| 1949 | 600 | T-2 |
| 1950 | 577 | 2 |
| 1951 | 611 | 5 |
| 1952 | 598 | T-3 |
| 1953 | 594 | 9 |
| 1954 | 599 | 10 |
| 1955 | 599 | T-9 |
| 1956 | 602 | T-2 |
| 1957 | 619 | 11 |
| 1958 | 602 | T-10 |
| 1959 | 571 | 2 |
| 1960 | 607 | T-2 |
| 1961 | 584 | 1 |
| 1962 | 611 | 6 |
| 1963 | 600 | T-11 |
| 1964 | 624 | 22 |
| 1965 | 594 | T-4 |
| 1966 | 618 | T-18 |
| 1967 | 596 | 4 |
| 1969 | 632 | T-17th |
| 1970 | 1202 | 10 |
| 1971 | 587 | 22nd |
| 1981 | 902 | T-25th |
| 2001 | 602 | 28th |
| 2002 | 1145 | 7 |
| 2004 | 871 | T-16 |

NCAA Individual Champions

| Year | Individual |
|------|-------------------------|
| 1950 | Fred Wampler |
| 1954 | Don Albert (medalist) |
| 1955 | Joe Campbell |
| 1960 | Gene Francis (medalist) |

Purdue Intercollegiate Hall of Fame Inductees

| Year of Induction | Individual |
|-------------------|-------------------------------|
| 1995 | Sam Voinoff (coach) |
| 1997 | Fred Wampler (player) |
| 2001 | Joe Campbell (player & coach) |

First Team All-America Selections

| Year | Individual |
|------|----------------|
| 1958 | John Konsek |
| 1959 | John Konsek |
| 1960 | John Konsek |
| 1962 | Jerry Jackson |
| 1964 | Terry Winter |
| 1971 | Bill Hoffer |
| 2002 | Lee Williamson |

Second Team All-America Selections

| Year | Individual |
|------|--------------|
| 1959 | Gene Francis |
| 1965 | Bob Zender |
| 1967 | Steve Mayhew |
| 1969 | Jeff Radder |
| 1970 | Fred Clark |

Third Team All-America Selections

| Year | Individual |
|------|--------------|
| 1958 | Gene Francis |
| 1960 | Gene Francis |
| 1963 | Terry Winter |
| 1981 | Rick Dalpos |

All-America Honorable Mention Selections

| Year | Individual |
|------|----------------|
| 1966 | Rick Radder |
| 1967 | Jim Duffy |
| 1968 | Don Klenk |
| 1970 | Don Padgett |
| 1970 | Jeff Radder |
| 1974 | Tom Fox |
| 1984 | Lenny Hartlage |
| 2001 | Lee Williamson |
| 2002 | Shiv Kapur |
| 2004 | Shiv Kapur |



Jim Duffy



Tom Fox



Jeff Radder

BOILERMAKERS

Championship Teams



1950 Big Ten Champions

(Left to right) Gene Coulter, Loomis Heston, Dwight Marsee, Fred Wampler, Dave Laffin, Norm Dunlap, Robert Buchanan



1956 Big Ten Champions

(Left to right) Front: Sam Voinoff, Joe Campbell, Art Lemmon, Bill Redding
Back: Wayne Ethern, Eddie McCallum, Tom Shaffer, Don Granger



1953 Big Ten Champions

(Left to right) Front: Sam Voinoff, Don Albert, Robert Krueger, Charles Houff, Ronald Pierce, Back: Richard Norton, Charles Bear, John Dykstra, Robert Benning



1958 Big Ten Champions

(Left to right) Front: Gene Francis, Harley Drake, Walter Samuels, Back: Sam Voinoff, Bob Black, Ted Boots, John Konsek



1955 Big Ten Champions

(Left to right) Front: Joe Campbell, Don Albert, Bill Redding
Back: Wayne Ethern, Tom Schafer, Don Granger



1959 Big Ten Champions

(Left to right) Front: Ted Boots, Carl Mitchell, Bob Black, Gene Francis, John Konsek, Back: Sam Voinoff, John Rolston, Frank Siepker, Joe Stewart, Tom Brown, Pete Beardsley, Ron Hronchek

Championships Teams

BOILERMAKERS



1960 Big Ten Champions

(Left to right) Front: Walter Samuels, Bob Black, John Konsek, Gene Francis
Back: Sam Voinoff, Tom Brown, Ron Hronchek, Jerry Jackson, Mark Darnell



1967 Big Ten Champions

(Left to right) Front: Sam Voinoff, John Robson, Brent Hartman, Steve Mayhew, Pat Welch, Mike Lampsa
Back: Dave Schumaker, Don Klenk, Jim Duffy, Jeff Wohlford, Bill Russell



1964 Big Ten Champions

(Left to right) Front: John Ryan, Steve Sundstrom, Mike Martin, Mike Gery
Back: Sam Voinoff, Bob O'Block, Jeff Radder, Chuck Hellman, Bob Zender, Terry Winter



1971 Big Ten Champions

(Left to right) Front: Jeff Radder, Fred Clark
Back: Sam Voinoff, Gary Grant, Don Denger, Ross Biddinger, Bill Hoffer



1965 Big Ten Champions

(Left to right) Front: Richard Bullock, Stephen Mayhew, Robert Zender, Terry Winter
Back: Sam Voinoff, Jim Duffy, Richard Radder, David Schumaker, Mark Shaw, Michael Gery



1981 Big Ten Champions

(Left to right) Front: Joe Campbell, Jay Miller, Mark Dutt, Larry Gosewehr, Mike Granger
Back: Eric Dutt, Jay Smith, Rick Dalpos, Guy Wuollet

BOILERMAKERS

1961 National Champions

The 1961 men's golf season was supposed to be a year of rebuilding for Purdue. The Boilermakers were a team of all underclassmen, having lost nine letter-winners in the previous two years. Gone from those teams were veterans Gene Francis and John Konsek, who propelled the Boilermakers to three consecutive Big Ten titles and runner-up showings at the NCAA championships in 1959 and 1960.

After posting a regular-season mark of 24-7, the 1961 Boilermakers took fourth-place honors at the Big Ten Championships. Competition at the 1961 collegiate championship came next, hosted by Purdue on its North and South courses.

Purdue was never favored to do much at nationals. Many considered Houston the heavy favorite, winning five-straight crowns from 1955 to 1960 and being led by two-time individual champion Richard Crawford.

On the first day of competition, Purdue came out of the gate strong. Boilermaker Mark Darnell paved the way on the South Course by posting back-to-back 34's for a first round 68. He led Ohio State's Jack Nicklaus by a stroke.

The conditions were not ideal, with rain in the forecast and winds gusting upwards of 26 miles per hour, making the flatter North Course much more difficult. Only 15 golfers shot par or better, including two Boilermakers, Mark Darnell and Jerry Jackson. Ohio State was the only university to match Purdue's feat

of two men under par. With the steady play of Steve Wilkinson and James Farlander, the Boilermakers finished day one at the top of the leaderboard with a five-stroke advantage over Oklahoma State.

By the start of the second day, Houston—down eight strokes to the Boilermakers—was still thought by many to be the best team on the course, managing national titles by only a single stroke in both 1956 and 1957.

Darnell led the way into day two but slipped just slightly and posted a 73 to give him 141 for the championship. That was not quite good enough, with the more consistent Jack Nicklaus shooting a 70-70—140, and forcing Darnell to take a one-stroke loss as well as runner-up honors for low individual scorer.

As the end of the final day neared, Arizona State and Southern California charged up the ranks as the rest of the frontrunners fell back. Still, Purdue finished steady with rounds of 288 and 295. Heavily favored Houston collapsed, and the five-time national champs finished 26 strokes behind Purdue.

The Boilermakers held off the last of the late surges as Jackson finished in the top 10, and both Wilkinson and Farlander matched their day one efforts to secure the victory. The title, only the sixth for a Big Ten team, was the first NCAA National Championship for Purdue in any sport and only the second national title after men's basketball claimed the 1932 crown.

1961 NCAA Championships

Team Results

| Finish | Team | Total Score |
|--------|---------------------|-------------|
| 1 | Purdue | 584 |
| 2 | Arizona State | 595 |
| 3 | Southern California | 596 |
| 4 | Oklahoma State | 597 |
| 5 | Texas A&M | 602 |
| 6 | Michigan State | 603 |
| 7 | Arizona | 604 |
| T8 | North Texas State | 604 |
| T8 | Minnesota | 607 |
| 10 | Georgia | 609 |
| T11 | Duke | 610 |
| T11 | Houston | 610 |
| T11 | Ohio State | 610 |
| 14 | Notre Dame | 611 |
| 15 | Florida | 615 |
| T16 | Northwestern | 617 |
| T16 | Stanford | 617 |
| 18 | Ohio | 623 |
| 19 | Ball State | 628 |
| 20 | Texas | 630 |

First Round Purdue Results

| Individual | Score |
|-----------------|----------|
| Mark Darnell | 34-34—68 |
| Jerry Jackson | 34-38—72 |
| Steve Wilkinson | 38-36—74 |
| James Farlander | 38-37—75 |
| Will Templin | 42-36—78 |

Second Round Purdue Results

| Individual | Score | Finish |
|------------|-----------|--------------------|
| Darnell | 68-73—141 | 2 nd |
| Jackson | 72-73—145 | T 9 th |
| Wilkinson | 74-74—148 | T 24 th |
| Farlander | 75-75—150 | T 37 th |
| Templin | 78-73—151 | T 44 th |



The 1961 Boilermakers: (back row, left to right) Coach Sam Voinoff, Jeff Mays, Joe Kack, Steve Wilkinson, Mark Darnell (front row, left to right) Bill Templin, Keith Stevens, Jim Farlander, Don Straszheim, Jerry Jackson



A wall hanging honoring the 1961 Purdue men's golf team adorns the Dye Clubhouse at the Birk Boilermaker Golf Complex.

BOILERMAKERS

Individual Records

Lowest Round

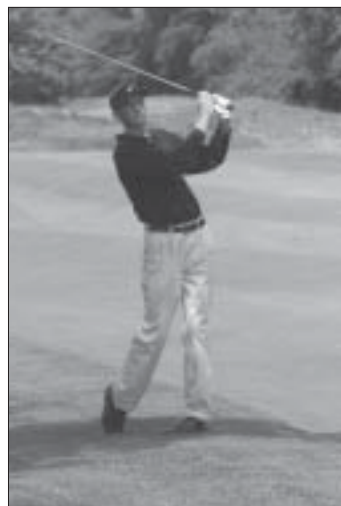
| Score | Individual | Date |
|-------|--|----------|
| 63 | Fred Wampler vs. Illinois | 4/27/49 |
| 65 | Chris Mayson, NCAA Regional | 5/17/02 |
| 65 | Lee Williamson, First Energy | 4/23/00 |
| 65 | Brad Chesterman, Indiana Intercollegiate | 9/15/91 |
| 65 | John Konsek vs. Kentucky | 4/20/60 |
| 65 | Gene Coulter vs. Iowa | 5/12/51 |
| 66 | Peter Karmis, Furman Intercollegiate | 3/22/03 |
| 66 | Lee Williamson, Puerto Rico Classic | 2/25/02 |
| 66 | Peter Karmis, The Gator | 2/10/02 |
| 66 | Lee Williamson, The Gator | 2/10/02 |
| 66 | Lee Williamson, The Nelson | 10/26/02 |
| 66 | Ryan Miller, Missouri Bluffs Intercollegiate | 10/11/98 |
| 66 | Harley Drake vs. Tennessee | 4/20/57 |
| 66 | Eric Dutt, Indianapolis Intercollegiate | 4/10/78 |
| 66 | Bob Benning vs. Western Kentucky | 4/7/53 |
| 66 | John David, Indiana State Intercollegiate | 5/27/39 |

Low 36-Hole Tournament

| Score | Individual | Date |
|-----------|---|-------------|
| 70-66=136 | Eric Dutt, Indianapolis Intercollegiate | 4/10/78 |
| 69-67=136 | Don Albert, NCAA Championships | 6/20-26/54 |
| 71-67=138 | Terry Winter vs. Ball State, Indiana and Notre Dame | 5/4/64 |
| 68-70=138 | Rick Radder vs. Ball State, Indiana and Notre Dame | 5/4/64 |
| 71-68=139 | Lee Williamson, Kepler Cleveland Intercollegiate | 5/12-13/02 |
| 73-69=139 | Bob O'Block vs. Ball State, Indiana and Notre Dame | 5/4/64 |
| 67-73=140 | Brian Glasco, Purdue Invitational | 4/13-15/84 |
| 70-70=140 | Bob Black vs. Tennessee | Spring 1960 |
| 68-72=140 | Joe Campbell, NCAA Championships | 6/25-7/1/50 |
| 72-68=140 | Dave Laffin, NCAA Championships | 6/25-7/1/50 |
| 71-69=140 | Fred Wampler, NCAA Championships | 6/25-7/1/50 |
| 74-66=140 | John David, ISU Intercollegiate | 5/27/39 |



Fred Wampler



Lee Williamson

Low 54-Hole Tournament

| Score | Individual | Date |
|--------------|---|-------------|
| 67-68-71=206 | Peter Richardson, Windon Memorial | 10/6-7/03 |
| 71-68-68=207 | Bobby Bennett, Alister MacKenzie | 10/11-12/04 |
| 71-67-70=208 | Lee Williamson, Badger Invitational | 9/8-9/01 |
| 67-71-71=209 | Peter Richardson, Alister MacKenzie | 10/13-14/03 |
| 70-67-72=209 | Lee Williamson, NCAA Regional | 5/16-18/02 |
| 72-69-68=209 | John Bachman, Purdue Invitational | 9/18-19/93 |
| 72-70-67=209 | Brad Chesterman, Purdue Invitational | 9/18-19/93 |
| 67-74-69=210 | Lee Williamson, Conrad Rehling Invitational | 3/15-17/02 |
| 66-72-72=210 | Lee Williamson, The Nelson | 9/26-28/01 |
| 73-65-73=211 | Chris Mayson, NCAA Regional | 5/16-18/02 |
| 72-68-71=211 | Chris Mayson, Gator Invitational | 2/9-10/02 |
| 73-70-68=211 | Rob Johnson, UK/J. Owens Invitational | 3/29-30/96 |
| 71-69-72=212 | Shiv Kapur, Boilermaker Invitational | 4/10-11/04 |
| 75-67-70=212 | Shiv Kapur, Johnny Owens Invitational | 3/29-30/02 |
| 73-71-68=212 | Shiv Kapur, Gator Invitational | 2/9-10/02 |
| 73-68-71=212 | Peter Karmis, The Nelson | 9/26-28/01 |
| 71-72-69=212 | Lee Williamson, Cobra Collegiate | 4/24-25/99 |
| 69-74-69=212 | Ryan Cate, Cobra Collegiate | 4/24-25/99 |
| 71-72-70=213 | Luke Epp, Big Ten Championships | 5/7-9/04 |
| 71-69-73=213 | Peter Richardson, Boilermaker Invitational | 4/10-11/04 |
| 75-66-69=213 | Peter Karmis, Furman Intercollegiate | 3/21-23/03 |
| 68-72-73=213 | Dustin Cone, Augusta State Invitational | 4/5-6/03 |
| 74-73-66=213 | Lee Williamson, Gator Invitational | 2/9-10/02 |
| 71-73-69=213 | Lee Williamson, Long Cove Invitational | 11/9-11/01 |
| 73-67-73=213 | Peter Karmis, The Purina Classic | 10/8-9/01 |
| 74-71-68=213 | Lee Williamson, Dr. Pepper Intercollegiate | 3/25-26/00 |
| 74-70-69=213 | Bert Jones, Legends Intercollegiate | 4/18-19/97 |

Low 72-Hole Tournament

| Score | Individual | Date |
|-----------------|---------------------------------------|-------------|
| 70-67-72-71=280 | Peter Karmis, Big Ten Championships | 5/2-4/03 |
| 71-72-67-71=281 | Joe Campbell, Big Ten Championships | 5/25-26/56 |
| 72-68-70-72=282 | Shiv Kapur, NCAA Championships | 6/1-5/04 |
| 71-73-71-67=282 | Shiv Kapur, NCAA Championships | 5/29-6/1/02 |
| 68-74-71-69=282 | John Konsek, Conference Club | 5/19-21/60 |
| 70-68-75-71=284 | Fred Wampler, Big Ten Championships | 5/16/82 |
| 71-70-74-70=285 | Lee Williamson, NCAA Championships | 5/29-6/1/02 |
| 70-73-72-70=285 | John Haime, Big Ten Championships | 5/16/82 |
| 69-69-76-72=286 | Ryan Miller, Big Ten Championships | 5/4-6/01 |
| 68-75-69-74=286 | Fred Clark, Cape Coral | 4/1-4/70 |
| 68-73-70-76=287 | Chris Mayson, Big Ten Championships | 5/3-5/02 |
| 70-75-70-73=288 | Peter Karmis, Big Ten Championships | 5/4-6/01 |
| 76-70-70-73=289 | Lee Williamson, Big Ten Championships | 5/4-6/01 |
| 70-72-74-73=289 | Lenny Hartlage, Big Ten Championships | 5/16-18/87 |
| 72-73-75-69=289 | Jim Russell, Northern Intercollegiate | 4/29-30/78 |
| 71-73-72-73=289 | John Hare, Big Ten Championships | 5/26-27/50 |
| 73-72-75-70=290 | Jeremy Senk, Big Ten Championships | 4/12-14/95 |
| 74-67-77-72=290 | Grant Mitchell, Big Ten Championships | 5/16/82 |
| 71-77-71-71=290 | Joe Campbell, Big Ten Championships | 5/24-25/57 |
| 73-70-73-74=290 | Don Albert, Big Ten Championships | 5/29-30/53 |
| 73-70-77-70=290 | Gene Coulter, Big Ten Championships | 5/24-25/51 |
| 71-68-72-79=290 | Gene Coulter, Big Ten Championships | 5/26-27/50 |

Team Records

BOILERMAKERS

Low Round

| Score | Tournament/Opponent | Date |
|-------|-------------------------------------|----------|
| 277 | Boilermaker Invitational | 4/10/04 |
| 277 | at Missouri Bluffs Intercollegiate | 10/11/98 |
| 278 | vs. Notre Dame, Indiana, Ball State | 5/4/64 |
| 278 | vs. Indiana, Notre Dame | 5/22/54 |
| 278 | vs. Iowa | 5/15/54 |
| 278 | at Western Kentucky | 4/7/53 |
| 280 | at Kent State | 4/25/99 |
| 280 | at Kentucky | 4/9/58 |
| 281 | at Tennessee | 3/31/61 |
| 281 | at Indiana | 4/25/53 |
| 281 | at Illinois | 5/1/50 |
| 282 | at Gator Invitational | 2/11/01 |
| 282 | at Kentucky | 3/27/64 |
| 282 | at Tennessee | 4/5/58 |
| 282 | at Kentucky | 4/24/57 |
| 282 | at Notre Dame | 4/30/51 |

Low 36-Hole Tournament

| Score | Tournament/Opponent | Date |
|-------------|----------------------------|-------------|
| 287-278=565 | vs. IU, ND, Ball State | 5/4/64 |
| 290-284=574 | Purdue Invitational | Spring 1971 |
| 287-288=575 | Illinois Intercollegiate | Spring 1971 |
| 285-294=579 | Pepsi Intercollegiate | 3/18-19/00 |
| 289-290=579 | Mid-American Invitational | Spring 1971 |
| 196-286=582 | ODU/Seascape Collegiate | 10/28-29/96 |
| 283-299=582 | Purdue Invitational | 4/26/69 |
| 291-291=582 | vs. IU, OSU, MSU | 4/16/66 |
| 292-292=584 | Dr. Pepper Intercollegiate | 3/23-24/01 |
| 294-291=585 | Purdue Invitational | 4/2/89 |
| 300-287=587 | Adams Cup of Newport | 10/14-15/98 |
| 293-296=589 | Purdue Meet | 5/15/65 |
| 290-301=591 | Badger Invitational | 9/12-14/04 |
| 291-301=592 | Xavier Invitational | 4/17/95 |
| 291-301=592 | vs. Northwestern | 5/24/47 |
| 300-293=593 | ODU/Sea Scape Collegiate | 10/30-31/95 |

Low 54-Hole Tournament

| Score | Tournament | Date |
|-----------------|---------------------------------|---------------|
| 283-289-280=852 | Cobra Collegiate | 4/24-25/99 |
| 283-286-284=853 | Augusta State Invitational | 4/5-6/03 |
| 285-277-293=855 | Boilermaker Invitational | 4/10-11/04 |
| 283-284-292=859 | Alister MacKenzie Invitational | 10/13-14/03 |
| 287-289-284=860 | Big Ten Championships | 5/7-9/04 |
| 293-287-284=864 | Gold Purdue Invitational | 9/18-19/93 |
| 293-282-290=865 | Gator Invitational | 2/10-11/01 |
| 289-288-291=868 | Windon Memorial Classic | 10/6-7/03 |
| 300-287-284=871 | Dr. Pepper Intercollegiate | 3/25-26/01 |
| 296-283-293=872 | Palmetto Intercollegiate | 4/15-16/04 |
| 300-286-289=875 | Black, Purdue Invitational | 9/18-19/93 |
| 299-285-293=877 | Furman Intercollegiate | 3/21-23/03 |
| 304-287-287=878 | Landfall Tradition | 10/31-11/2/03 |
| 292-293-293=878 | Colonial Golf Classic | 10/8-9/94 |
| 878 | Colonial Golf Classic | 4/11-12/81 |
| 298-289-292=879 | Missouri Bluffs Intercollegiate | 10/11-12/00 |
| 292-292-296=880 | Summit Collegiate Classic | 9/16-17/94 |
| 283-297-302=882 | Gator Invitational | 2/8-9/03 |
| 297-293-293=883 | NCAA Central Regional | 5/17-19/01 |
| 298-288-298=884 | Landfall Tradition | 11/1-3/03 |
| 296-291-298=885 | UK/Johnny Owens Invitational | 3/29-30/96 |
| 290-307-291=888 | Falcon Cross Creek Invitational | 9/15-17/95 |

Low 72-Hole Tournament

| Score | Tournament | Date |
|-----------------------|-----------------------|-------------|
| 284-287-293-281=1,145 | NCAA Championships | 5/29-6/1 |
| 286-283-285-291=1,145 | Big Ten Championships | 5/4-6/01 |
| 279-289-293-296=1157 | Big Ten Championships | 5/3-5/04 |
| 287-283-291-297=1,158 | Big Ten Championships | 5/26-27/50 |
| 294-284-289-292=1,159 | Big Ten Championships | 5/2-4/03 |
| 291-295-300-290=1,176 | Big Ten Championships | 5/17-19/91 |
| 300-294-302-285=1,181 | Big Ten Championships | 5/14-16/99 |
| 287-291-301-308=1,187 | Big Ten Championships | 5/12-14/89 |
| 297-297-298-299=1,191 | Big Ten Championships | Spring 1971 |
| 301-298-291-302=1,192 | Big Ten Championships | 5/16-17/69 |
| 298-296-305-296=1,193 | Big Ten Championships | 5/5-7/01 |
| 305-289-298-303=1,195 | Big Ten Championships | 5/29-30/53 |
| 296-300-305-295=1,196 | Big Ten Championships | 5/23-24/58 |
| 290-296-308-303=1,197 | Big Ten Championships | 5/12-14/95 |
| 295-296-306-301=1,198 | Cape Coral | 3/29-4/5/69 |
| 294-302-305-299=1,200 | Big Ten Championships | 5/16-18/86 |
| 293-297-308-302=1,200 | Northern Invitational | 5/2-3/69 |



The Boilermakers at the 2001 NCAA Championships in Durham, N.C.

BOILERMAKERS

All-Time Roster

| | | | | |
|-----------------------------|------------------------------|--------------------------------------|--------------------------------|------------------------------|
| A.A.A. | Decker, Tom 1983 | Howell, Clarence 1945 | Moehring, David 1998 | Smith, Jeff 1975-77 |
| Ainsworth, Scott 1983 | Deets, Nick 1986-87, '89 | Huffman, Colby 1996-2000 | Moore, Jeremy 1990 | Smith, Mike 1987 |
| Albert, Don 1952-55 | Deneau, Brian 1993 | Hughes, Bob 1980 | Moore, Kent 1976-78 | Smith, Phil 1982 |
| Aldinger, A.H. 1925-27 | Denger, Don 1969-71 | Hughes, Jim 1984 | Mortell, David 1984-87 | Solomon, J.T. 1992-94 |
| Allen, Sam 1975 | Dinka, W.P. 1930-32 | J.J.J. | Mortell, Mike 1982 | Stackhouse, Bob 1949 |
| Anderson, Bob 1988 | Dirks, Dennis 1973 | Jackson, Jerry 1960-62 | Mote, Tommy 1986 | Stackhouse, Dick 1946 |
| Anderson, Gene 1937-38 | Dmitrenko, Eric 1990-91 | Jacoby, Brian 1983 | Muessing, J.L. 1931 | Steele, J.M. 1976-77 |
| B.B.B. | Dobelbower, Ken 1934-36 | Jezeck, Jason 1989-92 | Murphy, C.E. 1923-26 | Stewart, Joe 1957, '59 |
| Bachman, John 1994-97 | Douglas, Steve 1976 | Johnson, Rob 1994-96 | Murray, Dick 1975-77 | Strauss, Jeremy 1993 |
| Baer, Charles 1954 | Drake, Harley 1957-59 | Jones, Bert 1996-2000 | N.N.N. | Sudac, Jim 1995-98 |
| Banning, Andy 1989 | Duffy, Jim 1965-67 | Jones, Chad 1998-2001 | Nelson, Garry 1982-85 | Suja, Rick 1976 |
| Barauskas, Ryan 2000-2003 | Dunlap, Norm 1950, '52 | Jugovic, Pat 1984 | Nemeth, Gene 1946-47, '49 | Sundstrom, Steve 1963, '65 |
| Barkett, Rob 1983-86 | Durniak, John 1949 | Junhasadasdikul, Pariya 2004- | Newman, R.T. 1933 | T.T.T. |
| Barrett, John 1989-92 | Durst, Brad 1993-96 | K.K.K. | Nicolet, Larry 1969, '71 | Templin, Bill 1961-63 |
| Baske, Royal 1938 | Dutt, Eric 1978-81 | Kack, Joe 1988 | Noble, Eric 1972 | Thomas, George 1949-50 |
| Bassett, Bill 1930-32 | Dutt, Mark 1979-81 | Kack, Joe 1961-62 | Norton, Dick 1952-54 | Thomas, R.W. 1929 |
| Beardsley, Pete 1957-59 | Dye, Charles 1951 | Kanute, Malcom 1985 | O.O.O. | Thorington, John 1960-61 |
| Bechtold, Paul 1986-87 | E.E.E. | Kapur, Shiv 2000-2004 | O'Block, Bob 1963, '65 | Todd, Doug 1972-73 |
| Bennett, Bobby 2004- | Epp, Luke 1999-2004 | Karmis, Peter 1999-2003 | O'Neal, John 1973-76 | Toepel, John 1966 |
| Benning, Bob 1952-54 | Edin, Johan 2004- | Karski, Mark 1986-87 | O'Neil, George 1944 | Traut, Ken 1992 |
| Biddenger, Ross 1970-71 | Etherton, Wayne 1954-56 | Kaufman, Clayton 1993 | P.P.P. | Truman, Dave 1966 |
| Bixler, Jack 1922-24 | Everson, Mark 1986-89 | Kaufmann, Craig 1988 | Parker, L.O. 1930, '32 | Turner, John 1975 |
| Black, Bob 1958-60 | F.F.F. | Keaffaber, Kirk 1991 | Pescatore, Tony 1988 | U.U.U. |
| Blank, E.J. 1937 | Farlander, Jim 1961-62 | Keaffaber, Kurt 1994 | Peterson, Bill 1938 | Utterback, Al 1989-90 |
| Bliss, Roger 1983 | Fennimore, Gary 1976 | Kelley, Andy 1991-94 | Piatek, Jerome 1972 | V.V.V. |
| Booche, Dan 1992 | Ferguson, Brian 1996 | Kessler, Eric 1978 | Piatek, Joe 1973-75 | Valainis, Andy 1987 |
| Boone, Mickey 1982-83 | Fesko, Don 1992 | King, Mike 1978 | Pierce, Ron 1953-55 | Vandoski, Adam 2004- |
| Boots, Ted 1958-59 | Finger, Charles 1973-74 | Kintz, Jim 1976-77 | Placido, Steve 1987 | Vaughn, Charlie 1976 |
| Bostwick, Jason 1989-91 | Fitzpatrick, Mike 1983 | Klein, Howard 1961 | Plawecki, Jeff 1982-83 | Vidimos, Dan 1983, '85-86 |
| Boucher, Dan 1991-92 | Ford, Ryan 1997-2001 | Klenk, Don 1967-69 | Plathow, Chad 1990-93 | Von Kleeck, Brian 1983 |
| Brackmann, David 1997-98 | Fox, Tom 1972-74 | Knipp, Wade 1941-42 | Pugh, Dave 1992, '94-95 | W.W.W. |
| Brewer, H.B. 1934-36 | Francis, Gene 1958-60 | Koehler, Arnold 1947 | Pulley, Jason 1999 | Walkey, Jeff 1998, 2001-2002 |
| Brocius, William 1985-87 | Freeze, Karl 1936-38 | Komansky, Greg 1992 | Pulliam, Mike 1992 | Walsh, Kevin 1990-93 |
| Brouse, Brent 1998-2000 | Fridlin, Charles 1925-27 | Konsek, John 1958-60 | R.R.R. | Wampler, Fred 1948-50 |
| Brown, Tom 1960 | G.G.G. | Kroft, F.C. 1942 | Radacich, John 1944 | Ward, Jim 1976 |
| Brown, V.B. 1921-23 | Gallippi, Gabe 1994 | Krueger, Bob 1953-55 | Radder, Jeff 1969-71 | Watermire, Jack 1958 |
| Brynes, A.E. 1921-22 | Gant, Gary 1971-72 | Kruzfeldt, Roberto 2002-2004 | Radder, Rick 1964-66 | Weatheron, G.P. 1921-23 |
| Buchanon, Bob 1950 | George, Cary 1976 | Kuc, Dave 1989 | Rainford, Steven 1989 | Welch, Pat 1967-68 |
| Bukowski, Jason 1999-2002 | Gery, Mike 1964-66 | L.L.L. | Redding, Bill 1955-57 | Weldy, Sam 1939-40 |
| Bullock, Dick 1963-65 | Gibson, Kurt 1988 | Laffin, Dave 1950-51 | Reitemeier, J.R. 1933-34 | Wescott, Doug 1989 |
| Bykowski, Bob 1992 | Gilliam, John 1969-71 | Lamb, Charles 1943-44, '47 | Richardson, Peter 2004- | White, Jeff 1984-85 |
| C.C.C. | Glasco, Brian 1982-85 | Lamps, Mike 1967-68 | Robison, John 1967-68 | White, Tom 1972-74 |
| Campbell, Joe 1955-57 | Goldapske, Eric 1993 | Lawson, Brandon 2005- | Roney, Pete C. 1996 | Wibel, Dick 1951-52 |
| Chalfant, Ryan 1995-96 | Goldberg, Greg 1990 | Lehman, John 1926-28 | Rousseau, Bob 1931-33 | Wiley, Eric 1979 |
| Channon, Harry 1995-98 | Goldstein, Hyman 1940 | Lemmon, Art 1957 | Russell, Bill 1968 | Wilkinson, Steve 1961-62 |
| Cate, Ryan 1997-2000 | Gosewehr, Larry 1980-81 | Lernihan, Tom 1975-76 | Russell, Jim 1974, '77-78 | Williams, Jeff 1986-89 |
| Chesterman, Brad 1992-95 | Gowin, Andy 1990 | Lockwood, Art 1934-36 | Ryan, John 1963-64 | Williamson, Lee 1998-2002 |
| Chinworth, Jim 1979 | Granger, Don 1955-57 | M.M.M. | S.S.S. | Williamson, R.L. 1925 |
| Clark, Fred 1969-71 | Granger, Mike 1978-81 | MacWhinnie, Bob 1972-74 | Samuels, Wally 1958, '60 | Williard, Jim 1992 |
| Cleary, John 1946-49 | Gring, Ron 1976-78 | Makowski, Bob 1970, '72 | Schaefer, Tom 1955-57 | Wilson, Jeff 1984 |
| Connaughton, Ed 1982-85 | H.H.H. | Marcinko, Tom 1991-92 | Schmidt Brent 1990-92 | Windlan, Tod 1986-89 |
| Cone, Dustin 2001- | Haime, John 1982-85 | Marshall, T.O. 1939 | Schultz, Jonathan 2004- | Winter, Terry 1963-65 |
| Conrad, Rob 1989 | Hampshire, Travis 2001-2002 | Marsee, Dwight 1947-48 | Schultz, Scott 1989-91 | Wise, Jack 1976 |
| Cook, Ken 1928, '30 | Hare, John 1948-50 | Martin, Mike 1962-64 | Schumaker, Dave 1965-67 | Wohlfred, Jeff 1968 |
| Cooper, Jack 1983, '85-87 | Harrison, Jim 1944 | Massey, David 1976 | Schutt, Roger 1941-42 | Wolfe, Donny 1995-96 |
| Cosler, Steve 1976-77 | Hartlage, Lenny 1984-87 | Masuda, Ryan 2000- | Senk, Jeremy 1993-96 | Wolfe, Jason 1998 |
| Coulter, Gene 1949-51 | Hartman, Brent 1967-69 | Maudlin, Matthew 1995-96 | Shannon, Richard 1992 | Wrasse, H.V. 1925 |
| Craig, G.H. 1934 | Hauner, Larry 1968 | Mayhew, Steve 1965-67 | Sharp, Doug 1976 | Wright, Troy 1987-89 |
| Craig, John 1976, '78-79 | Hayes, Michael 1993 | Mayson, Chris 1999-2003 | Shaw, Mark 1966 | Wuollet, Guy 1979-81 |
| Crowder, Brent 1992-93 | Heglin, Andy 1984, '86-88 | Marc Mazza 2002-2003 | Shidler, Greg 1995 | Wymer, Fred 1927 |
| Cue, Jim 1976 | Hellman, Charles 1962-64 | McCallum, Ed 1954-56 | Shieldmyer, Bill 1992 | Y.Y.Y. |
| Culp, Jack 1944 | Hendricks, Bryan 1984, '86 | McDaniel, Bill 1975 | Shulha, Bill 1970-72 | Young, R.K. 1931 |
| Curran, Turner 1940-41 | Hesler, Jack 1947-48, '51-52 | McDaniel, Doug 1940-42 | Sicklesmith, Bill 1973 | Z.Z.Z. |
| D.D.D. | Hicks, Todd 1987-90 | McEvoy, Pat 1976-77 | Skinner, Bill 1933-34 | Zender, Bob 1964-65 |
| Dahl, Bill 1946-48 | Hildebrande, Jim 1956 | McKenzie, Bob 1939-41 | Skinner, Bill 1940 | Zesiger, John 1992-94 |
| Dahl, George 1939-42 | Hill, Ralph 1939 | Mead, James 1989, '91-92 | Smith, Bernie 1983-85 | Zito, Matthew 1989 |
| Dale, Alan 1974 | Hobbs, R.M. 1933 | Meier, Brad 1976 | Smith, Bob 1935-37 | |
| Dalpos, Rick 1981 | Hoffer, Bob 1939-41 | Miller, Jess 1979-80 | Smith, Bret 1991 | |
| Darnell, Mark 1960-62 | Hoffer, Bill 1969-71 | Miller, Ryan 1997-2001 | Smith, Dave 1986-89 | |
| David, John 1937-39 | Houff, Charles 1951-53 | Mitchell, Carl 1958-59 | Smith, Grant 1986 | |
| David, Tim 1936 | Hough, Kevin 1990-92 | Mitchell, Grant 1982-84 | Smith, Jay 1981-83 | |

Year-By-Year Results



| | | | |
|---|---|---|---|
| <p>1921</p> <p>Michigan W, 8-3 Illinois T, 6-6</p> <p>1922</p> <p>Michigan L, 5-1 Illinois W, 7-5 Chicago L, 20-2 Big Ten Championships 6th of 8</p> <p>1923</p> <p>Chicago L, 12-10 Northwestern W, 14-4 Illinois L, 18-3 Michigan W, 14-8 Indiana W, 20-2 Big Ten Championships 6th of 7</p> <p>1924</p> <p>Northwestern L, 16-8 Michigan L, 22-2 Illinois L, 21-3 Chicago L, 21-1 Indiana L, 14-9</p> <p>1925</p> <p>Northwestern W, 18-4 Illinois L, 20-3 Chicago L, 11-10 Michigan L, 14-10 Indiana W, 19-5</p> <p>1926</p> <p>Northwestern L, 17-4 Chicago L, 11-9 Illinois L, 21-1 Indiana W, 19-5 Michigan L, 22.5-1.5</p> <p>1927</p> <p>DePauw W, 19.5-4.5 Wabash W, 17.5-6.5 Michigan W, 13-11 Northwestern W, 17.5-6.5 Chicago L, 19-5</p> | <p>Illinois L, 19-6 Indiana W, 18-6 Indiana Intercollegiate 1st Place Big Ten Championships 4th of 6</p> <p>1928</p> <p>DePauw L, 14.5-9.5 Illinois L, 12-0 Butler W, 16.5-4.5 Northwestern L, 12-4 Chicago L, 13-4 Indiana L, 10.5-7.5 Indiana Intercollegiate 3rd Place</p> <p>1929</p> <p>DePauw W, 14.5-9.5 Butler W, 24-0 Illinois L, 18-0 Michigan L, 18-0 Chicago L, 12.5-5.5 Indiana L, 12-6 Northwestern L, 11-1</p> <p>1930</p> <p>DePauw W, 9-3 Wabash W, 16.5-1.5 Michigan L, 14-4 Indiana L, 14-4 Northwestern T, 9-9 Illinois L, 10-8 Indiana Intercollegiate 3rd Place Big Ten Championships 8th of 9</p> <p>1931</p> <p>Michigan T, 9-9 DePauw L, 10-8 Northwestern L, 10-8 Chicago W, 13-5 Illinois L, 15-3 Indiana Intercollegiate 2nd Place Big Ten Championships 7th of 8</p> <p>1932</p> <p>Michigan L, 17-1 Notre Dame W, 10-8 Indiana W, 12.5-5.5</p> | <p>Illinois L, 15-3 Indiana Intercollegiate 1st Place</p> <p>1933</p> <p>Wabash W, 16.5-1.5 Notre Dame L, 15-3 Indiana L, 16-2 Chicago W, 11.5-6.5 Illinois L, 10-8 Indiana L, 14-4 Indiana Intercollegiate 3rd Place</p> <p>1934</p> <p>Wabash W, 15.5-2.5 Detroit W, 11.5-6.5 Notre Dame L, 15.5-2.5 Chicago W, 14.5-3.5 Indiana W, 10.5-7.5 Illinois T, 9-9 Michigan L, 15-6 Indiana L, 11.5-9.5 Indiana Intercollegiate 2nd Place Big Ten Championships 5th of 9</p> <p>1935</p> <p>Notre Dame L, 11.5-6.5 Michigan L, 16-0 Chicago W, 14.5-3.5 Indiana W, 11-7 Illinois L, 12.5-5.5 Indiana W, 11.5-6.5 Big Ten Championships 9th of 10</p> <p>1936</p> <p>Indiana T, 9-9 Michigan L, 16.5-4.5 Detroit L, 13.5-4.5 Notre Dame L, 14-4 Illinois L, 11-7 Indiana L, 10.5-7.5 Big Ten Championships 9th of 10</p> <p>1937</p> <p>Detroit W, 17-1 Iowa L, 10.5-7.5 Notre Dame W, 15-3 Michigan L, 12-6 DePauw W, 18-0 Illinois L, 10.5-7.5 Indiana L, 10-8 Chicago W, 18.5-2.5 Ohio State W, 17-4 Big Ten Championships 7th of 10</p> <p>1938</p> <p>Detroit W, 14-3 Notre Dame L, 9.5-8.5 Michigan L, 16-5 Indiana W, 12-9 Chicago L, 9.5-8.5 Ohio State W, 10-8 Indiana L, 7-5 Indiana Intercollegiate 2nd Place Big Ten Championships 8th of 10</p> | <p>1939</p> <p>Vanderbilt L, 10.5-7.5 Alabama L, 14-4 Tennessee W, 14-4 Indiana W, 11.5-6.5 Michigan L, 9.5-8.5 Detroit W, 11-7 Notre Dame W, 14-3 Butler W, 15-3 Chicago W, 10.5-7.5 Ohio State W, 14.5-12.5 Indiana Intercollegiate 2nd Place Big Ten Championships T-7th of 10</p> <p>1940</p> <p>Tennessee W, 16-11 Georgia Tech L, 22-5 Georgia Tech L, 26.5-1.5 Notre Dame W, 26-7 Butler L, 11-7 Michigan L, 16-8 Illinois L, 24-3 Ohio State L, 19-8 Michigan State L, 12-8 Chicago L, 9.5-8.5 Indiana L, 12.5-11.5 Big Ten Championships 9th of 9</p> <p>1941</p> <p>Detroit W, 16-5 Notre Dame L, 19-8 Illinois T, 22-5 Ohio State L, 14-13 Indiana L, 12.5-5.5 Michigan L, 19-8 Butler W, 17-7 Chicago W, 11-0 Indiana Intercollegiate 1st Place Big Ten Championships 9th of 10</p> <p>1942</p> <p>Notre Dame L, 19-8 Northwestern L, 14.5-9.5 Ohio State L, 18-6 Detroit W, 11-7 Michigan L, 13-11 Indiana L, 16-8 Big Ten Championships 8th of 9</p> <p>1943</p> <p>Detroit L, 11.5-6.5</p> <p>1944</p> <p>Northwestern W, 16-2 Indiana W, 11.5-5 Notre Dame W, 9.5-8.5 Detroit W, 12-0 Ohio State L, 7.5-4.5 Illinois W, 9-3 Indiana W, 17.5-12.5 Illinois L, 24-12 Chantue Field L, 28-8 Big Ten Championships 2nd of 7</p> |
|---|---|---|---|



The 1931-32 Boilermakers won the 1932 Indiana Intercollegiate.

BOILERMAKERS

Year-By-Year Results



The 1950-51 Boilermakers placed second in the 1951 Big Ten Championships.

| | |
|-----------------------|--------------|
| 1945 | |
| Northwestern | L, 21-3 |
| Illinois | L, 17-13 |
| Indiana | W, 12-6 |
| Illinois | L, 11.5-6.5 |
| Ohio State | L, 15-3 |
| Indiana | W, 17.5-12.5 |
| Illinois | L, 19-11 |
| Notre Dame | L, 17.5-6.5 |
| Big Ten Championships | 8th of 8 |

| | |
|-----------------------|--------------|
| 1946 | |
| Northwestern | L, 28.5-7.5 |
| Illinois | W, 22.5-12.5 |
| Indiana | W, 16-11 |
| Illinois | L, 20-7 |
| Ohio State | L, 26-1 |
| Notre Dame | L, 15.5-11.5 |
| Michigan | L, 20-7 |
| Indiana | T, 18-18 |
| Michigan State | W, 18-9 |
| Detroit | W, 14.5-5 |
| Big Ten Championships | 8th of 9 |

| | |
|-----------------------|--------------|
| 1947 | |
| Ohio State | T, 13.5-13.5 |
| Indiana State | W, 35-1 |
| Indiana | W, 28-14 |
| Notre Dame | W, 20-16 |
| Indiana | W, 22.5-4.5 |
| Illinois | W, 20.5-6.5 |
| Detroit | W, 17.5-5 |
| Michigan State | W, 19-8 |
| Illinois | L, 21-15 |
| Michigan | W, 26.5-9.5 |
| Northwestern | W, 18.5-14 |
| Michigan | W, 477-490 |
| Iowa | W, 477-492 |
| Big Ten Championships | 3rd of 9 |
| NCAA Championships | T-14th of 39 |

| | |
|-------------|--------------|
| 1948 | |
| Detroit | W, 14.5-3.5 |
| Indiana | L, 16-11 |
| Notre Dame | W, 14.5-12.5 |
| Illinois | L, 19.5-16.5 |

| | |
|-----------------------|--------------|
| Ohio State | W, 16.5-10.5 |
| Ohio State | L, 16-11 |
| Illinois | W, 16.5-10.5 |
| Indiana | W, 16-11 |
| Illinois | W, 26-10 |
| Big Ten Championships | 2nd of 9 |

| | |
|-------------------------|--------------|
| 1949 | |
| Indiana | W, 15-12 |
| Northwestern | W, 18.5-8.5 |
| Notre Dame | L, 17-10 |
| Illinois | W, 29.5-6.5 |
| Michigan | W, 18.5-8.5 |
| Illinois | W, 19-17 |
| Minnesota | W, 18-9 |
| Iowa | W, 21.5-5.5 |
| Illinois | W, 18.5-17.5 |
| Quad Intercollegiate | 1st, 888 |
| Indiana Intercollegiate | 1st Place |
| Big Ten Championships | 3rd of 9 |
| NCAA Championships | T-2nd of 31 |

| | |
|-----------------------|--------------|
| 1950 | |
| Indiana | W, 20.5-6.5 |
| Notre Dame | W, 24-3 |
| Illinois | W, 30-6 |
| Butler | W, 11-7 |
| Michigan State | W, 18-9 |
| Michigan | W, 14.5-12.5 |
| Ohio State | W, 21.5-14.5 |
| Indiana | W, 23.5-12.5 |
| Illinois | W, 29.5-6.5 |
| Ohio State | L, 14.5-12.5 |
| Illinois | W, 26-10 |
| Big Ten Championships | 1st of 9 |
| NCAA Championships | 2nd of 23 |

| | |
|-------------|--------------|
| 1951 | |
| Indiana | W, 27-9 |
| Michigan | L, 29-7 |
| Ohio State | L, 24-12 |
| Illinois | W, 26.5-9.5 |
| Michigan | W, 18-9 |
| Notre Dame | T, 13.5-13.5 |
| Indiana | W, 24-3 |

| | |
|-----------------------|--------------|
| Illinois | W, 29-7 |
| Iowa | W, 15.5-11.5 |
| Northwestern | L, 17-10 |
| Ohio State | W, 26.5-9.5 |
| Illinois | W, 30.5-5.5 |
| Indiana | W, 34-2 |
| Big Ten Championships | 2nd of 10 |
| NCAA Championships | 5th of 23 |

| | |
|-----------------------|--------------|
| 1952 | |
| Butler | W, 16-5 |
| North Carolina | L, 18.5-8.5 |
| Wake Forest | W, 15.5-11.5 |
| Ohio State | W, 22-14 |
| Michigan | L, 23.5-12.5 |
| Illinois | W, 28-8 |
| Notre Dame | W, 19-17 |
| Wisconsin | W, 24-12 |
| Detroit | W, 21-15 |
| Iowa | W, 31-11 |
| Ohio State | L, 19.5-16.5 |
| Michigan | W, 25-11 |
| Ohio State | W, 26.5-9.5 |
| Northwestern | W, 31-5 |
| Indiana | W, 21-6 |
| Ohio State | L, 23.5-12.5 |
| Indiana | W, 20.5-15.5 |
| Illinois | W, 32-10 |
| Big Ten Championships | 2nd of 10 |
| NCAA Championships | T-3rd of 24 |

| | |
|-------------------|--------------|
| 1953 | |
| Evansville | W, 23-4 |
| Camp Breckenridge | W, 20.5-6.5 |
| Evansville | W, 17.5-5 |
| Western Kentucky | W, 23-3 |
| Detroit | W, 23-4 |
| Wabash | W, 27-0 |
| Indiana | W, 16.5-10.5 |
| Illinois | L, 18.5-17.5 |
| Ohio State | L, 23-13 |
| Michigan | L, 19.5-6.5 |
| Illinois | W, 20.5-15.5 |

| | |
|-----------------------|--------------|
| Ohio State | L, 23-13 |
| Michigan State | W, 30-6 |
| Michigan | L, 19-17 |
| Notre Dame | L, 14-13 |
| Northwestern | W, 15.5-11.5 |
| Wisconsin | L, 18-9 |
| Big Ten Championships | 1st of 10 |
| NCAA Championships | 9th of 19 |

| | |
|-----------------------|--------------|
| 1954 | |
| Detroit | W, 24-3 |
| Tennessee | W, 14-13 |
| Tennessee | W, 17-10 |
| Vanderbilt | L, 15-12 |
| Louisville | W, 19-8 |
| Michigan | W, 24-12 |
| Ohio State | L, 25.5-10.5 |
| Indiana | W, 32-13 |
| Illinois | W, 26-10 |
| Michigan | W, 27-9 |
| Ohio State | W, 19.5-16.5 |
| Northwestern | L, 21-6 |
| Northwestern | W, 25.5-10.5 |
| Michigan | W, 19-17 |
| Iowa | T, 13.5-13.5 |
| Illinois | W, 32.5-15.5 |
| Indiana | W, 23-13 |
| Notre Dame | W, 23.5-12.5 |
| Big Ten Championships | 4th of 10 |
| NCAA Championships | 10th of 20 |

| | |
|----------------|--------------|
| 1955 | |
| Tennessee | W, 17-10 |
| Vanderbilt | W, 21-15 |
| Tennessee | W, 23.5-12.5 |
| Michigan State | W, 28.5-7.5 |
| Detroit | W, 30-6 |
| Ohio State | W, 26.5-9.5 |
| Michigan | L, 19-17 |
| Indiana | W, 27-9 |
| Ohio State | L, 26.5-9.5 |
| Michigan | W, 27.5-8.5 |
| Illinois | W, 30-18 |



The 1952-53 Boilermakers won the 1953 Big Ten Championships.

Year-By-Year Results



The 1954-55 Boilermakers won the 1955 Big Ten Championships.

| | | | |
|-----------------------|--------------|----------------|--------------|
| Ohio State | W, 20-16 | Michigan | W, 22.5-13.5 |
| Michigan | W, 23.5-18.5 | Illinois | W, 24-8 |
| Indiana | W, 29-9 | Indiana | W, 30-6 |
| Notre Dame | W, 25-7 | Ohio State | W, 20.5-15.5 |
| Illinois | W, 33.5-14.5 | Ohio State | W, 28-8 |
| Indiana | W, 28.5-7.5 | Michigan | W, 29.5-6.5 |
| Northwestern | W, 29-7 | Illinois | W, 31-17 |
| Wisconsin | W, 23.5-12.5 | Michigan State | W, 26.5-9.5 |
| Big Ten Championships | 1st of 10 | Michigan | L, 22.5-13.5 |
| NCAA Championships | T-9th of 33 | Ohio State | L, 20.5-15.5 |

1956

| | | | |
|------------|--------------|----------|--------------|
| Tennessee | W, 17-10 | Michigan | W, 22.5-13.5 |
| Tennessee | W, 15.5-11.5 | Illinois | W, 24-8 |
| Vanderbilt | W, 15.5-11.5 | Indiana | W, 30-6 |

1958

| | | | |
|-----------------------|--------------|-----------------------|--------------|
| Illinois | W, 28-8 | Tennessee | W, 26.5-9.5 |
| Michigan State | W, 24-12 | Tennessee | W, 31-5 |
| Detroit | W, 34.5-1.5 | Vanderbilt | W, 20.5-9.5 |
| Indiana | W, 27.5-8.5 | Kentucky | W, 24.5-2.5 |
| Notre Dame | W, 29.5-6.5 | Illinois | W, 23.5-12.5 |
| Ohio State | L, 27.5-14.5 | Detroit | W, 24-0 |
| Michigan | L, 21.5-14.5 | Wabash | W, 34-2 |
| Indiana | W, 29.5-6.5 | Indiana | L, 25.5-10.5 |
| Michigan | W, 23-19 | Ohio State | W, 23.5-12.5 |
| Ohio State | L, 23-13 | Michigan | W, 29-13 |
| Northwestern | W, 28.5-7.5 | Indiana | W, 24.5-11.5 |
| Ohio State | W, 29-7 | Ohio State | W, 25-17 |
| Michigan | W, 19.5-6.5 | Michigan | W, 28-8 |
| Notre Dame | W, 25-11 | Western Illinois | W, 25-2 |
| Detroit | W, 33-3 | Ohio State | W, 21.5-14.5 |
| Wisconsin | W, 24-12 | Illinois | W, 15-9 |
| Northwestern | W, 29.5-9.5 | Michigan | W, 29-19 |
| Illinois | W, 24-12 | Ohio State | L, 21-15 |
| Indiana | W, 29.5-9.5 | Notre Dame | W, 20.5-15.5 |
| Big Ten Championships | 1st of 10 | Indiana | W, 20-16 |
| NCAA Championships | T-2nd of 31 | Big Ten Championships | 1st of 10 |
| | | NCAA Championships | T-10th of 34 |

1957

| | | | |
|------------|-------------|------------|-------------|
| Tennessee | L, 14.5-12 | Tennessee | W, 21.5-5.5 |
| Tennessee | W, 21.5-5.5 | Vanderbilt | W, 11-10 |
| Vanderbilt | W, 11-10 | Kentucky | W, 36.5-9.5 |
| Kentucky | W, 36.5-9.5 | Detroit | W, 17.5-6.5 |
| Detroit | W, 17.5-6.5 | Tennessee | W, 21.5-5.5 |
| | | Kentucky | W, 17-10 |

| | | | |
|-----------------------|--------------|-------------------------|--------------|
| Tennessee | W, 21.5-5.5 | Tennessee | W, 20-7 |
| Illinois | W, 33.5-2.5 | Louisville | W, 26.5-9.5 |
| Wabash | W, 35-1 | Ball State | W, 25-11 |
| Indiana | W, 21.5-14.5 | Quad Meet | 1st, 912 |
| Illinois | W, 23-13 | Northern Illinois | W, 24-12 |
| Wisconsin | W, 22.5-13.5 | Eastern Illinois | W, 31.5-4.5 |
| Ohio State | W, 22.5-13.5 | Quad Meet | 3rd, 467 |
| Indiana | W, 22.5-13.5 | Quad Meet | 1st, 917 |
| Michigan | L, 28-8 | Notre Dame | L, 18.5-17.5 |
| Ohio State | W, 22-14 | Ball State | W, 25-11 |
| Indiana | W, 24-19 | Indiana | W, 23-13 |
| Western Illinois | W, 17-12 | Indiana Intercollegiate | 1st of 4 |
| Michigan | L, 21.5-20.5 | Big Ten Championships | 4th of 10 |
| Ohio State | W, 23.5-12.5 | NCAA Championships | 1st of 28 |
| Northwestern | W, 29-7 | | |
| Indiana | T, 18-18 | | |
| Big Ten Championships | 1st of 10 | | |
| NCAA Championships | 2nd of 20 | | |

1962

| | |
|-------------------------|--------------|
| North Carolina | W, 21.5-14.5 |
| Wake Forest | W, 16-11 |
| Ball State | W, 24.5-11.5 |
| Southern Illinois | W, 26.5-9.5 |
| Eastern Illinois | W, 32.5-3.5 |
| OSU Invitational | 1st Place |
| Notre Dame | W, 23.5-12.5 |
| Ohio State | W, 27-9 |
| Western Illinois | W, 28-8 |
| Indiana | W, 19.5-11.5 |
| Northwestern | W, 21.5-15.5 |
| Ball State | W, 28-8 |
| Michigan State | W, 23.5-12.5 |
| Ohio State | W, 26-10 |
| Illinois | W, 29-7 |
| Michigan | W, 26-10 |
| Ohio State | W, 18.5-17.5 |
| Michigan | W, 19.5-16.5 |
| Indiana Intercollegiate | 2nd of 4 |
| Big Ten Championships | 2nd of 10 |
| NCAA Championships | 6th of 31 |

1960

| | |
|-----------------------|--------------|
| Kentucky | W, 26-10 |
| Tennessee | W, 25-2 |
| Tennessee | W, 27-0 |
| Vanderbilt | W, 19-8 |
| Kentucky | W, 9.5-8.5 |
| Illinois | W, 30-6 |
| Indiana | W, 22.5-13.5 |
| Notre Dame | L, 20-16 |
| Indiana | L, 25.5-22.5 |
| Indiana | W, 11.5-6.5 |
| Michigan | W, 26-10 |
| Indiana | T, 18-18 |
| Ohio State | T, 18-18 |
| Ohio State | W, 26.5-9.5 |
| Indiana | W, 25-10 |
| Western Illinois | W, 30-6 |
| Michigan State | W, 22-14 |
| Big Ten Championships | 1st of 10 |
| NCAA Championships | 2nd of 34 |

1961

| | |
|---------------|-------------|
| Memphis State | L, 24-12 |
| Vanderbilt | W, 19-17 |
| Florida | L, 11-7 |
| Florida | L, 12-6 |
| Auburn | W, 13.5-4.5 |
| Auburn | L, 14-4 |



The 1960-61 Boilermakers captured the national championship.

BOILERMAKERS

Year-By-Year Results



The 1966-67 Boilermakers won the 1967 Big Ten Championships.

| | | | |
|------------------------------|--------------|-------------------------|--------------|
| Florida State | W, 10.5-7.5 | Northwestern | W, 765-773 |
| Louisville | W, 14-7 | Indiana Intercollegiate | 1st of 4 |
| Michigan State | W, 11.5-6.5 | Big Ten Championships | 1st of 10 |
| Quad Meet | 1st, 788 | NCAA Championships | 22nd of 41 |
| Michigan State | W, 14-4 | | |
| Western Illinois | W, 20-16 | 1965 | |
| Ohio State | W, 19-17 | Georgia | L, 19.5-16.5 |
| Illinois | W, 22-14 | Georgia | L, 22-14 |
| Michigan State | W, 14.5-3.5 | Tennessee | W, 20-16 |
| Indiana | W, 21-15 | Tennessee | W, 26-10 |
| Hoosier Open | 2nd of 12 | Tennessee | W, 26.5-9.5 |
| Wisconsin | L, 24-18 | Cincinnati | W, 28.5-7.5 |
| Michigan State | L, 16-14 | Southern Illinois | W, 24.5-11.5 |
| Illinois | W, 25.5-16.5 | Ohio State | W, 30.5-17.5 |
| Northwestern | W, 25-11 | Michigan State | W, 24.5-11.5 |
| Butler National | 7th of 18 | Indiana | W, 20-16 |
| Purdue Invitational | 2nd of 8 | Tri Meet | 1st, 1242 |
| Central Florida Invitational | 2nd of 10 | Quad Meet | 1st, 788 |
| Illini Invitational | 2nd of 11 | Purdue Invite | 3rd of 5 |
| Purdue Invitational | 1st of 11 | Ohio State | L, 914-915 |
| Kepler Invitational | 9th of 24 | Northern Invitational | 1st of 7 |
| Mid-America Invitational | 2nd of 20 | Indiana Intercollegiate | 1st of 4 |
| Northern Intercollegiate | 5th of 15 | Big Ten Championships | 1st of 10 |
| Big Ten Championships | 3rd of 10 | NCAA Championships | T-4th of 33 |
| NCAA Championships | T-11th of 30 | | |
| | | 1966 | |
| Tennessee | W, 21-18 | Florida Invitational | 7th of 20 |
| Tennessee | W, 25-2 | DePauw | W, 32-4 |
| Tennessee | W, 27-0 | Cincinnati | W, 35-1 |
| Indiana | W, 18-6 | Ball State | W, 29.5-6.5 |
| Indiana | L, 12.5-11.5 | Michigan State | W, 744-772 |
| Kentucky | W, 18-9 | Indiana | W, 893-924 |
| Kentucky | W, 16.5-10.5 | Ohio State | W, 1050-1065 |
| Western Illinois | W, 19.5-16.5 | Indiana | W, 888-933 |
| Southern Illinois | W, 23-13 | Purdue Invitational | 1st of 6 |
| Butler | W, 32-4 | Northern Invitational | 2nd of 13 |
| Quad Meet | 1st, 376 | Iowa Invitational | 3rd of 7 |
| Michigan State | W, 32-16 | Big Ten Championships | 7th of 10 |
| Quad Meet | 1st, 765 | NCAA Championships | T-18th of 31 |
| Indiana | W, 861-899 | | |
| Ohio State | W, 782-824 | 1967 | |
| Michigan | W, 943-966 | Florida Invitational | 7th of 20 |
| Illinois | W, 1075-1104 | DePauw | W, 31.5-4.5 |

| | | | |
|-----------------------------|--------------|---------------------------|--------------|
| Illinois | W, 26.5-9.5 | Big Ten Championships | 2nd of 10 |
| Indiana State | W, 24-12 | NCAA Championships | T-17th of 37 |
| Quad Meet | 1st, 769 | | |
| Tri Meet | 1st, 1081 | 1970 | |
| Ohio State | L, 1096-1103 | Florida Invitational | 6th of 40 |
| Tri Meet | 1st, 946 | Kepler Invitational | 4th of 16 |
| Tri Meet | 1st, 788 | Illini Invitational | 2nd of 12 |
| Western Illinois | W, 744-814 | Miami (Ohio) Invitational | 1st of 17 |
| Tri Meet | 1st, 1089 | Northern Invitational | 2nd of 14 |
| Illinois | W, 752-770 | Quad Meet | 1st, 755 |
| Tri Meet | 1st, 905 | Indiana Invitational | 6th of 9 |
| Tri Meet | 1st, 1066 | Big Ten Championships | 5th of 10 |
| Northern Invitational | 1st of 14 | NCAA Championships | 10th |
| Big Ten Championships | 1st of 10 | | |
| NCAA Championships | 4th of 39 | 1971 | |
| | | Florida Invitational | 7th of 39 |
| 1968 | | Kepler Invitational | 3rd of 19 |
| Wofford | L, 11-10 | Illini Invitational | 1st of 12 |
| Georgia | L, 13.5-5 | Miami (Ohio) Invitational | 4th of 15 |
| South Carolina | L, 12.5-8.5 | Northern Invitational | 1st of 17 |
| Georgia | L, 29.5-6.5 | Indiana Invitational | 1st of 9 |
| Georgia Tech | W, 21-6 | Northern Invitational | 3rd of 11 |
| Tennessee | L, 28.5-7.5 | Purdue Invitational | 1st of 8 |
| Tennessee | L, 19-17 | Big Ten Championships | 1st of 10 |
| Indiana | L, 1065-1099 | NCAA Championships | 22nd of 37 |
| Michigan State | L, 1085-1099 | | |
| Michigan | W, 780-789 | 1972 | |
| Marshall | W, 788-792 | Tennessee Invitational | 4th of 9 |
| Illinois | W, 1108-1131 | Kepler Invitational | 3rd of 19 |
| Ohio State | L, 1174-1108 | Michigan Invitational | 5th of 10 |
| Notre Dame | T, 770-770 | Miami (Ohio) Invitational | 5th of 16 |
| Indiana | L, 1074-1108 | Illini Invitational | 7th of 11 |
| Michigan State | L, 915-928 | Northern Invitational | 4th of 15 |
| Ohio State | L, 911-928 | Purdue Invitational | 4th of 10 |
| Northern Invitational | 10th of 13 | Big Ten Championships | 7th of 10 |
| Purdue Invite | 2nd of 5 | | |
| Big Ten Championships | 4th of 10 | 1973 | |
| | | Seminole Invitational | 19th of 24 |
| 1969 | | Kentucky Invitational | 7th of 10 |
| Florida Invitational | 6th of 40 | Illini Invitational | 6th of 10 |
| Kepler Invitational | 2nd of 14 | Kepler Invitational | 7th of 20 |
| Illini Invitational | 1st of 13 | Purdue Invitational | 6th of 12 |
| Purdue Invitational | 3rd of 6 | Northern Invitational | 11th of 15 |
| Michigan State Invitational | 2nd of 25 | Spartan Invitational | 5th of 34 |
| | | Big Ten Championships | 4th of 10 |



The 1964-65 Boilermakers won the 1965 Big Ten Championships.

Year-By-Year Results

BOILERMAKERS

| | | | | | | | |
|-------------------------------|--------------|----------------------------|--------------|-----------------------------|-------------|---------------------------------|------------|
| 1974 | | Mid-America Invitational | 5th of 15 | 1982 | | 1987 | |
| Florida Invitational | 6th of 40 | Northern Invitational | 7th of 16 | Indiana State Invitational | 2nd of 16 | U. of Indianapolis Invitational | 2nd of 22 |
| Kepler Invitational | 4th of 16 | Big Ten Championships | T-8th of 10 | Notre Dame Invitational | 1st of 12 | Butler National | 17th of 18 |
| Illini Invitational | 2nd of 12 | | | Purdue Fall Classic | 4th of 9 | Stetson Invitational | 2nd of 16 |
| Miami (Ohio) Invitational | 1st of 17 | 1978 | | Butler National | 17th of 19 | Central Florida Invite | 3rd of 12 |
| Northern Invitational | 2nd of 14 | DePauw | W, 595-656 | SE Intercollegiate | 24th of 26 | Purdue Invitational | 3rd of 16 |
| Quad Meet | 1st, 755 | Tri Meet | 1st, 451 | Kepler Invitational | 11th of 24 | Marshall Invitational | 6th of 18 |
| Indiana Invitational | 6th of 9 | Colonial Classic | 11th of 19 | Michigan Invitational | 2nd of 10 | Kepler Invitational | 14th of 23 |
| Big Ten Championships | 6th of 10 | Illini Invitational | 8th of 13 | Xavier Invitational | 7th of 12 | Kentucky Invitational | 10th of 18 |
| | | Indianapolis Invitational | 1st of 14 | Northern Invitational | 13th of 15 | Midwestern Invitational | 6th of 14 |
| 1975 | | Kepler Invitational | 12th of 23 | Big Ten Championships | T-3rd of 10 | Northern Intercollegiate | 4th of 11 |
| Tennessee | L, 1559-1595 | Purdue Invitational | 3rd of 17 | | | Big Ten Championships | 7th of 10 |
| Miami (Ohio) | W, 1106-1129 | Northern Invitational | 2nd of 16 | 1983 | | | |
| Xavier (Ohio) Invitational | 2nd of 5 | Michigan Invitational | 5th of 6 | Indiana State Invitational | 2nd of 18 | 1988 | |
| Illini Invitational | 6th of 14 | Big Ten Championships | 5th of 10 | Butler National | 5th of 18 | Indianapolis Invitational | 3rd of 20 |
| Indianapolis Invitational | 1st of 15 | | | Badger Invitational | 3rd of 9 | Butler National | 15th of 18 |
| Kepler Invitational | 23rd of 24 | 1979 | | Dixie Invitational | 9th of 26 | Stetson Invitational | 8th of 18 |
| Purdue Invitational | 3rd of 12 | Indiana State Invitational | 2nd of 16 | Colonel Invitational | 11th of 20 | Eastern Kentucky Classic | 10th of 20 |
| Mid-America Invitational | 8th of 15 | Illini Invitational | 5th of 15 | Illini Invitational | 1st of 15 | Purdue Invitational | 5th of 8 |
| Big Ten Championships | T-5th of 10 | Indianapolis Invitational | 4th of 13 | Kepler Invitational | 6th of 23 | Marshall Invitational | 9th of 18 |
| | | Kepler Invitational | 5th of 23 | Xavier Invitational | 2nd of 10 | Kepler Invitational | 10th of 23 |
| 1976 | | Northern Invitational | 11th of 15 | Purdue Invitational | 1st of 11 | Zip Invitational | 12th of 18 |
| Notre Dame Invitational | 2nd of 5 | Purdue Invitational | 4th of 16 | Northern Invitational | 9th of 15 | Midwestern Invitational | 10th of 15 |
| Indiana State Invitational | 1st of 17 | Big Ten Championships | 9th of 10 | Badger Invitational | 3rd of 8 | Northern Intercollegiate | 10th of 15 |
| DePauw | W, 604-658 | | | Big Ten Championships | T-8th of 10 | Big Ten Championships | 9th of 10 |
| Xavier (Ohio) Invitational | 1st of 8 | 1980 | | | | | |
| Ball State Invitational | 2nd of 14 | Indiana State Invitational | 1st of 18 | 1984 | | 1989 | |
| Illini Invitational | 7th of 15 | Evansville Invitational | 1st of 8 | Indiana State Invitational | 1st of 15 | Badger Fall Classic | 6th of 14 |
| Indianapolis Invitational | 3rd of 14 | Indianapolis Invitational | 1st of 15 | Butler National | 7th of 18 | Butler National | 18th of 18 |
| Kepler Invitational | 21st of 22 | Illini Invitational | 1st of 11 | Purdue Invitational | 2nd of 8 | Purdue Invitational | 4th of 11 |
| Purdue Invitational | 3rd of 15 | Kepler Invitational | 5th of 24 | Central Invitational | 2nd of 10 | Budget/UCFGolf Classic | 8th of 18 |
| Mid-America Invitational | 2nd of 15 | Purdue Invitational | 4th of 16 | Illini Invitational | 2nd of 11 | Eastern Kentucky Invitational | 6th of 17 |
| Northern Invitational | 13th of 16 | Big Ten Championships | 4th of 10 | Purdue Invitational | 1st of 11 | Purdue Invitational | 1st of 7 |
| Western Michigan Invitational | 2nd of 8 | | | Kepler Invitational | 9th of 24 | Kepler Invitational | 14th of 22 |
| Big Ten Championships | 3rd of 9 | 1981 | | Mid-America Invitational | 2nd of 20 | Zip Invitational | 10th of 18 |
| | | Notre Dame Invitational | 1st of 119 | Northern Intercollegiate | 5th of 15 | Midwestern Invitational | 13th of 15 |
| 1977 | | Indiana State Invitational | 1st of 19 | Big Ten Championships | 4th of 10 | Northern Intercollegiate | 12th of 15 |
| Notre Dame Invitational | 4th of 9 | Colonial Classic | 3rd of 23 | | | Big Ten Championships | 6th of 10 |
| Indiana State Invitational | 3rd of 17 | Kepler Invitational | 2nd of 24 | 1985 | | | |
| Illini Invitational | 8th of 15 | Northern Invitational | 2nd of 18 | Indiana State Invitational | 1st of 17 | 1990 | |
| Indianapolis Invitational | 1st of 16 | Schenkel Invitational | 17th of 22 | Badger Invitational | 4th of 11 | Johnny Bench Invitational | 18th of 22 |
| Kepler Invitational | 12th of 23 | Badger Invitational | 1st of 5 | Butler National | 11th of 18 | Indiana Intercollegiate | 2nd of 13 |
| Purdue Invitational | 6th of 14 | Big Ten Championships | 1st of 10 | Illini Invitational | 2nd of 12 | Northern Illinois Invitational | 11th of 16 |
| | | NCAA Championships | T-25th of 31 | Purdue Invitational | 1st of 15 | Eastern Kentucky Invitational | 16th of 18 |
| | | | | Kentucky Invitational | 1st of 8 | Kentucky Invitational | 23rd of 25 |
| | | | | Mid-America Invitational | 12th of 21 | Purdue Invitational | 9th of 12 |
| | | | | Kepler Invitational | 12 of 24 | Akron Invitational | 36th of 36 |
| | | | | Northern Invitational | 5th of 24 | Kepler Invitational | 23rd of 23 |
| | | | | Big Ten Championships | 2nd of 10 | Spartan Invitational | 15th of 16 |
| | | | | | | Big Ten Championships | 10th of 10 |
| | | | | 1986 | | 1991 | |
| | | | | Badger Invitational | 6th of 12 | Northern Iowa Invitational | 11th of 17 |
| | | | | Butler National | 7th of 18 | Johnny Bench Invitational | 18th of 20 |
| | | | | Michigan State Invitational | 11th of 11 | Indiana Intercollegiate | 2nd of 16 |
| | | | | Purdue Invitational | 1st of 8 | Northern Intercollegiate | 11th of 22 |
| | | | | Illinois State | W, 391-428 | Eastern Kentucky Invitational | 18th of 21 |
| | | | | Purdue Invitational | 6th of 14 | Kentucky Invitational | 23rd of 25 |
| | | | | Marshall Invitational | 7th of 18 | Indianapolis Invitational | 11th of 18 |
| | | | | Kepler Invitational | 11th of 21 | Indiana Invitational | 11th of 13 |
| | | | | Kentucky Invitational | 5th of 12 | Akron Zip Invitational | 13th of 17 |
| | | | | Mid-America Invitational | 10th of 21 | Kepler Invitational | 23rd of 23 |
| | | | | Northern Intercollegiate | 3rd of 22 | Wolverine Invitational | 15th of 17 |
| | | | | Big Ten Championships | 7th of 10 | Big Ten Championships | 9th of 10 |



The 1980-81 Boilermakers won the 1981 Big Ten Championships.

BOILERMAKERS

Year-By-Year Results

1992

| | |
|----------------------------|------------|
| Butler | W, 356-375 |
| Indiana Intercollegiate | 1st of 18 |
| Cincinnati Collegiates | 7th of 21 |
| Northern Intercollegiate | 17th of 17 |
| Buckeye Fall Classic | 7th of 12 |
| Bradley Fall Classic | 8th of 15 |
| Oak Meadow Intercollegiate | 6th of 16 |
| Purdue Invitational | 6th of 14 |
| Indiana Invitational | 12th of 14 |
| Firestone Intercollegiate | 23rd of 35 |
| Kepler Invitational | 18th of 18 |
| Wolverine Invitational | 15th of 19 |
| Big Ten Championships | 11th of 11 |

1993

| | |
|------------------------------|------------|
| Indiana Intercollegiate | 3rd of 15 |
| Cincinnati Invitational | 7th of 16 |
| Northern Intercollegiate | 19th of 20 |
| Bradley Fall Classic | 3rd of 15 |
| Persimmon Ridge Invitational | 18th of 18 |
| Wisconsin | L, 300-303 |
| Purdue Invitational | 7th of 16 |
| Indiana Invitational | 13th of 13 |
| Bradley Spring Invitational | 4th of 20 |
| Kepler Invitational | 20th of 20 |
| Bruce Fossum Invitational | 12th of 20 |
| Big Ten Championships | 11th of 11 |

1994

| | |
|------------------------------|------------|
| Purdue Invitational | 1st of 12 |
| Indiana Intercollegiate | 3rd of 11 |
| Butler Invitational | 1st of 11 |
| Northern Intercollegiate | 18th of 24 |
| Persimmon Ridge Invitational | 16th of 18 |
| Fripp Island Invitational | 10th of 19 |
| Sultan's Run Intercollegiate | 5th of 15 |
| Ball State Invitational | 3rd of 23 |
| Indiana Invitational | 11th of 13 |
| Indiana Intercollegiate | 12th of 18 |
| Iowa Hawkeye Invitational | 5th of 12 |
| Kepler Invitational | 16th of 16 |
| Big Ten Championships | 11th of 11 |

1995

| | |
|------------------------------|------------|
| WKU/Summit Classic | 1st of 15 |
| Marquette Intercollegiate | 4th of 18 |
| Northern Intercollegiate | 18th of 19 |
| Colonial Golf Classic | 1st of 18 |
| Fripp Island Invitational | 17th of 24 |
| Sultan's Run Intercollegiate | 1st of 18 |
| Johnny Owens Invitational | 8th of 13 |
| Ball State Invitational | 2nd of 22 |
| Indiana Intercollegiate | 6th of 18 |
| Xavier Invitational | 4th of 18 |
| Kepler Intercollegiate | 5th of 23 |
| Kent Invitational | 9th of 19 |
| Big Ten Championships | 2nd of 11 |

1996

| | |
|---------------------------------|------------|
| Falcon Cross Creek Invitational | 9th of 24 |
| Wolverine Invitational | 4th of 21 |
| Northern Intercollegiate | 2nd of 18 |
| ODU/Sea Scape Collegiate | 8th of 20 |
| Fripp Island Intercollegiate | 15th of 24 |
| Johnny Owens Invitational | 2nd of 16 |

| | |
|----------------------------|------------|
| Shootout at the Legends | 6th of 18 |
| Xavier Invitational | 4th of 18 |
| Kepler Intercollegiate | 10th of 18 |
| King Cobra Intercollegiate | 6th of 19 |
| Fossum Invitational | 7th of 19 |
| Big Ten Championships | 8th of 11 |

1997

| | |
|-------------------------------|------------|
| Falcon Creek Invitational | 24th of 24 |
| Wolverine Invitational | 14th of 18 |
| Northern Intercollegiate | 5th of 15 |
| Kroger Invitational | 10th of 18 |
| Seascape Invitational | 9th of 21 |
| William and Mary Invitational | 5th of 22 |
| The Citadel Invitational | 4th of 15 |
| Dr. Pepper Intercollegiate | 14th of 20 |
| Shootout at the Legends | 11th of 18 |
| Bruce Fossum Invitational | 17th of 21 |
| Cobra Intercollegiate | 8th of 18 |
| Big Ten Championships | 8th of 11 |

1998

| | |
|----------------------------|------------|
| ReliaStar Collegiate | 12th of 12 |
| Northern Intercollegiate | 8th of 17 |
| Shootout at the Legends | 15th of 18 |
| Kroger Intercollegiate | 11th of 18 |
| Seascape Collegiate | 12th of 21 |
| Dr. Pepper Intercollegiate | 12th of 18 |
| Johnny Owens Invitational | 7th of 20 |
| Kepler Intercollegiate | 7th of 16 |
| Kroger Invitational | 2nd of 15 |
| Cobra Collegiate | 10th of 19 |
| Wolverine Invitational | 18th of 18 |
| Big Ten Championships | 9th of 11 |

1999

| | |
|---------------------------------|------------|
| The Ridges Intercollegiate | 14th of 14 |
| Missouri Bluffs Intercollegiate | 9th of 15 |
| Adams Cups | 1st of 18 |
| Mauna Kea Resort Invitational | 3rd of 12 |
| San Jose Shoot Out | 16th of 18 |
| UNC Charlotte Birkdale Classic | 16th of 18 |
| Pepsi Intercollegiate | 11th of 25 |
| Dr. Pepper Intercollegiate | 8th of 19 |

| | |
|------------------------|------------|
| Marshall Invitational | 7th of 20 |
| Kepler Intercollegiate | 13th of 15 |
| Cobra Collegiate | 1st of 19 |
| Big Ten Championships | 11th of 11 |
| NCAA Regional | 19th Place |

2000

| | |
|-------------------------------|------------|
| The Ridges Intercollegiate | 15th of 15 |
| Northern Intercollegiate | 5th of 13 |
| Windon Memorial Classic | 11th of 15 |
| Purina/Missouri Classic | 11th of 17 |
| Mauna Kea Resort Invitational | 3rd of 11 |
| San Jose Shoot Out | 12th of 15 |
| Birkdale Collegiate | 13th of 18 |
| Pepsi Intercollegiate | 4th of 21 |
| Dr. Pepper Intercollegiate | 14th of 18 |
| Kepler Invitational | 12th of 17 |
| Big Ten Championships | 2nd of 11 |

2001

| | |
|----------------------------|-------------|
| PSINET Invitational | 3rd of 12 |
| Northern Intercollegiate | 1st of 18 |
| Pepperdine Intercollegiate | 3rd of 11 |
| Duke Classic | 10th of 18 |
| Stanford Invitational | 12th of 19 |
| Gator Invite | 13th of 15 |
| Puerto Rico Classic | 15th of 15 |
| Seminole Intercollegiate | 7th of 18 |
| Dr. Pepper Intercollegiate | 1st of 17 |
| Kepler Intercollegiate | 6th of 17 |
| First Energy Collegiate | 3rd of 19 |
| Big Ten Championships | 2nd of 11 |
| NCAA Regional | T-1st of 27 |
| NCAA Championships | 28th of 30 |

2002

| | |
|-----------------------------|------------|
| Badger Invitational | 3rd of 15 |
| Purina Classic | 3rd of 15 |
| Nelson Invitational | 7th of 15 |
| Golf World Invitational | 12th of 15 |
| Gator Invitational | 2nd of 15 |
| Puerto Rico Classic | 3rd of 15 |
| Johnny Owens Invitational | 1st of 18 |
| Conrad Rehling Invitational | 10th of 14 |

| | |
|------------------------|-------------|
| Kepler Intercollegiate | 3rd of 17 |
| Big Ten Championships | 3rd of 11 |
| NCAA Regional | T-1st of 21 |
| NCAA Championships | 7th of 30 |

2003

| | |
|-----------------------------|--------------------|
| Carpet Capital Classic | 18th of 18 |
| NCAA Fall Preview | 15th of 15 |
| Landfall Tradition | 5th of 12 |
| Hooters Match Play | Consolation Finals |
| The Gator | 3rd of 16 |
| Puerto Rico Classic | 15th of 18 |
| Conrad Rehling Invitational | 10th of 13 |
| Furman Intercollegiate | 3rd of 22 |
| Augusta State Invitational | 9th of 12 |
| Kepler Intercollegiate | 7th of 16 |
| Big Ten Championships | 5th of 11 |

2004

| | |
|--------------------------------|--------------|
| Badger Invitational | 4th of 9 |
| Northern Intercollegiate | 11th of 15 |
| Windon Memorial Classic | T-2nd of 17 |
| Alister MacKenzie Invitational | 8th of 16 |
| Landfall Tradition | 7th of 12 |
| Gator Invitational | T-11th of 15 |
| Puerto Rico Classic | 13th of 18 |
| Palmetto Intercollegiate | 6th of 14 |
| Boilermaker Invitational | 1st of 18 |
| Robert Kepler Intercollegiate | 8th of 18 |
| Big Ten Championships | 4th of 11 |
| NCAA Regional | 7th of 27 |
| NCAA Championships | T-16th of 30 |



The 2001-02 Boilermakers placed seventh in the NCAA Championships.