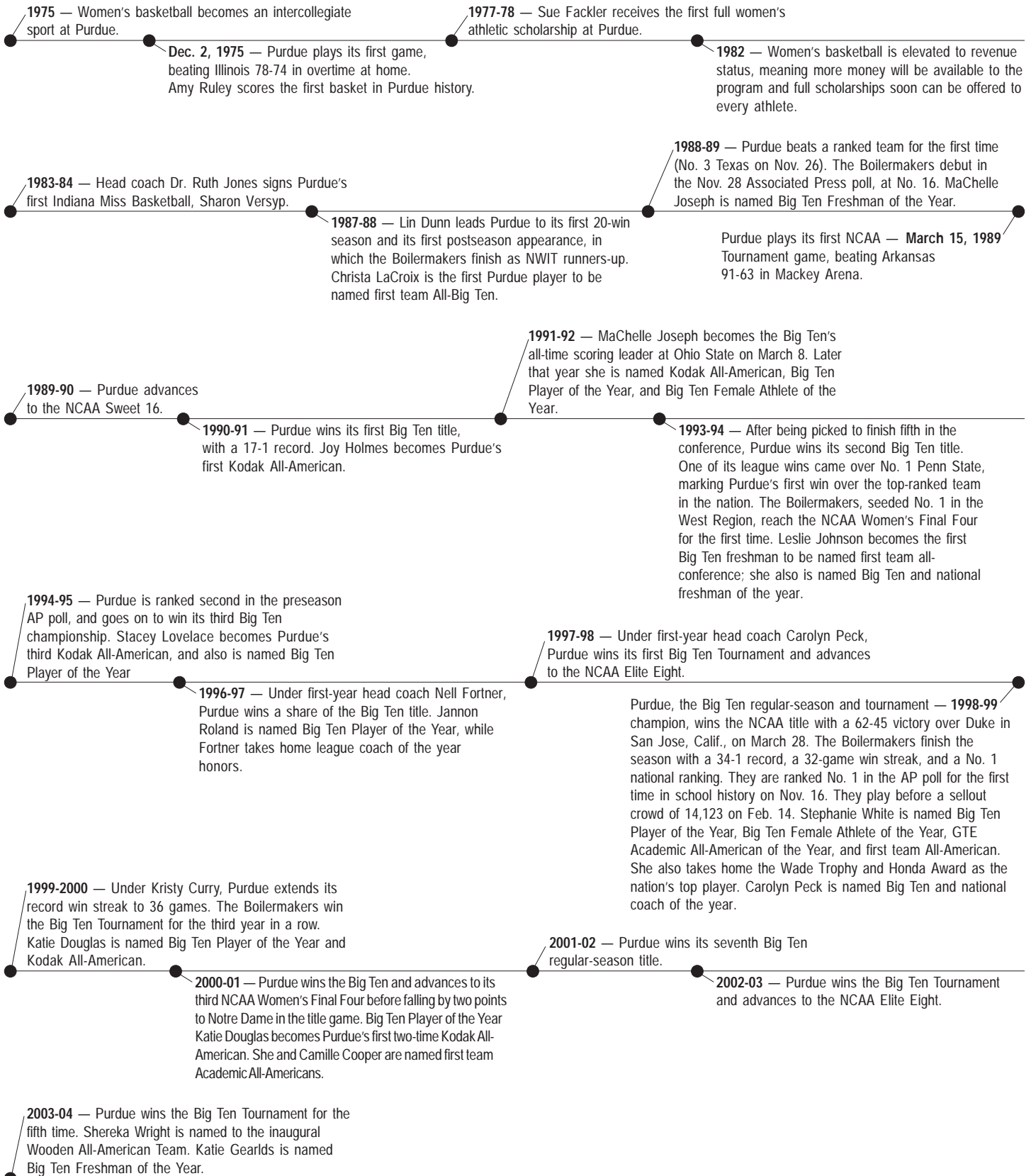




History



Shereka Wright '04 and John Wooden '32. Wright was a member of the inaugural Wooden Women's All-America Team in 2003-04.





Amy Ruley scored the first basket in Purdue history.

In the early days of Purdue women's basketball, the Boilermakers did not garner nearly as much attention as they would in the future. The press release written after the first game in Purdue history, in which the Boilermakers defeated Illinois 78-74 in overtime in West Lafayette, contained just 69 words:

"The Purdue women's basketball team shook off a stubborn Illinois squad 78-74 in overtime Tuesday night in Mackey Arena. The game was the season opener for the Boilermakers.

"Sophomore guard Holly Hamilton was the leading scorer for Purdue with 23 points. Center Betty Anderson led the Illini with 28 points.

"Illinois led at the half by a score of 37-29. The count was 69-69 at the end of regulation play."

PURDUE VS. ILLINOIS

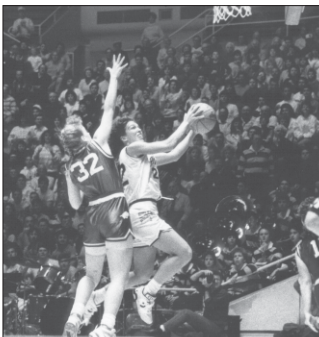
Dec. 2, 1975

Mackey Arena • West Lafayette, Ind.

- First Game In Purdue History -

Illinois	FG	FGA	FT	FTA	R	PF	A	TO	PTS
Beach	7	18	0	2	12	4	3	3	14
Diuzak	1	6	4	7	6	2	0	5	6
Anderson	12	19	4	5	9	3	1	6	28
Limestall	0	0	0	0	1	4	1	2	0
Roberts	4	12	4	6	4	0	4	12	12
Allen	1	1	0	0	4	1	0	4	2
Babb	0	1	2	2	1	0	1	0	2
Boner	2	3	0	3	2	5	0	2	4
Carlson	1	5	1	3	2	3	1	2	3
Travnik	0	3	3	5	4	0	0	1	3
Team					10				
Totals	28	68	18	33	45	22	11	37	74
		41.1		54.5					

Purdue	FG	FGA	FT	FTA	R	PF	A	TO	PTS
Crain	2	2	0	1	6	3	4	2	4
Llewellyn	8	14	4	9	9	3	1	5	20
Marrs	1	1	1	2	7	5	3	1	3
Hamilton	10	21	3	6	0	4	2	7	23
Ruley	5	10	1	3	3	5	1	3	11
Nicholas	6	8	0	0	1	5	2	8	12
Davis	0	0	0	0	1	1	1	4	0
Mott	0	3	0	0	1	1	0	1	0
Pieper	1	3	1	4	3	1	0	2	3
Cender	1	2	0	1	3	3	0	0	2
Harschman	0	0	0	0	0	0	0	1	0
Team					10				
Totals	34	64	10	26	44	31	14	34	78
		53.1		38.4					



MaChelle Joseph (above) and Joy Holmes (right) combined for 46 points in Purdue's NCAA Tournament debut against Arkansas.



PURDUE VS. ARKANSAS

March 15, 1989

Mackey Arena • West Lafayette, Ind.

Attendance: 3,676

- Purdue's First NCAA Tournament Game -

Arkansas	FG	3FG	FT	R	PF	PTS	A	TO	B	S	MIN
Martin-f	3-11	1-4	0-0	0	3	7	3	4	0	0	27
Wallace-f	5-16	0-0	1-1	10	5	11	4	4	0	2	38
Irwin-c	6-11	0-0	0-0	3	4	12	0	1	2	1	28
Wilson-g	1-1	0-0	0-0	1	1	2	3	6	0	0	14
Jackson-g	3-4	0-0	0-0	2	1	6	4	3	0	0	23
Nicholas	5-11	0-1	2-3	3	4	12	7	6	0	0	31
DeHorney	4-5	0-0	3-5	4	3	11	0	2	2	1	26
Pack	1-4	0-0	0-0	3	1	2	0	0	0	0	5
Chenault	0-0	0-0	0-2	2	0	0	0	1	0	0	4
Gore	0-0	0-0	0-2	0	1	0	1	0	0	0	2
Dickerson	0-0	0-0	0-0	0	0	0	0	0	0	0	2
Team						2					
Totals	28-63	1-5	6-13	30	23	63	22	27	4	4	200
	44.4	20.0	46.2								

#15 Purdue	FG	3FG	FT	R	PF	PTS	A	TO	B	S	MIN
Sauer-f	2-5	0-0	0-0	4	2	4	0	1	0	1	19
Holmes-f	10-20	0-0	2-2	9	1	22	3	7	1	6	35
Mateen-c	3-3	0-0	6-8	4	3	12	0	2	1	0	23
Moren-g	5-6	0-0	4-6	1	0	14	5	1	0	1	33
Joseph-g	7-16	0-0	10-10	8	2	24	9	5	0	2	32
Calhoun	1-1	0-0	0-2	2	2	2	2	1	2	0	18
Gill	2-7	0-0	0-2	7	1	4	0	0	0	1	16
Brooks	3-5	0-1	3-4	2	1	9	2	1	0	1	18
Jaumotte	0-1	0-0	0-0	2	2	0	0	1	0	0	4
Vaughan	0-1	0-0	0-0	0	0	0	0	0	0	0	2
Team						4					
Totals	33-65	0-1	25-34	43	14	91	21	19	4	12	200
	50.8	00.0	73.5								

Purdue made a big statement in its first-ever NCAA Tournament appearance. As a No. 5 seed in the Midwest Region, the Boilermakers outmuscled 12th-seeded Arkansas in the opening round, winning 91-63 before a Mackey Arena crowd of 3,676.

Arkansas took an early 6-2 lead before Purdue came back, eventually going ahead 25-21 with 7:34 left in the opening half. The Boilermakers led 38-29 at halftime.

Purdue scored the first four points of the second half and 17 of the first 25 to lead 55-37 with 14:33 to play. The lead grew to as many as 30 points.

Freshman MaChelle Joseph scored 24 points. Sophomore Joy Holmes scored 22, while sophomore Teri Moren added a season-high 14. Also scoring in double figures was sophomore Rhonda Mateen with 12.



Head coach Lin Dunn receives a Gatorade shower after the Boilermakers beat Illinois 112-49 for the first Big Ten title in school history.

Little was left to chance when Purdue's first crack at a Big Ten title was on the line. The Boilermakers were 14-1 heading into a March 1, 1991, matchup against Illinois, and needed just one more victory to claim the conference championship.

Purdue, which had beaten the Fighting Illini by 25 points exactly one month earlier, poured it on the second time around. After 20 minutes the Boilermakers found themselves ahead by 32 points. Purdue then outscored Illinois by 31 in the second half for the final 63-point margin, which currently ranks as the third-largest margin of victory in school history.

Eleven players scored for Purdue, led by senior center Rhonda Mateen's career-high 28 points. Senior Joy Holmes scored 24 to go along with eight steals, while junior MaChelle Joseph scored 21 points and dished out 10 assists.

PURDUE VS. ILLINOIS

March 1, 1991

Mackey Arena • West Lafayette, Ind.

Attendance: 4,298

- Purdue Clinches First Big Ten Title -

Illinois	FG	3FG	FT	R	PF	PTS	A	TO	B	S	MIN
Klingler*	1-6	0-0	0-0	4	5	2	0	3	0	0	22
Sharp*	6-17	0-2	1-2	8	1	13	1	9	0	1	32
Walker*	1-5	0-0	0-0	4	3	2	0	2	0	1	10
Estey*	0-4	0-0	0-0	1	3	0	4	2	0	0	24
Cunningham*	6-20	4-7	4-4	4	1	20	0	4	0	1	35
Ruhoff	0-1	0-0	2-2	4	3	2	1	2	0	0	16
Cundiff	2-7	0-0	2-2	1	4	6	0	1	0	1	23
Roach	0-1	0-0	4-4	0	1	4	2	5	0	0	17
Booker	0-5	0-3	0-0	1	1	0	0	3	0	0	20
Hunter	0-0	0-0	0-0	0	0	0	0	0	0	0	1
Team				6							
Totals	16-66	4-12	13-14	33	22	49	8	31	0	4	200
	24.2	33.3	92.9								

#16 Purdue

	FG	3FG	FT	R	PF	PTS	A	TO	B	S	MIN
Gill-f	4-4	0-0	0-0	8	1	8	3	1	1	1	21
Holmes-f	12-15	0-1	0-1	8	2	24	1	4	3	8	26
Mateen-c	11-14	1-1	5-6	6	2	28	1	1	3	0	26
Moren-g	2-4	0-0	2-2	1	3	6	5	5	1	2	21
Joseph-g	8-18	1-4	4-4	5	1	21	10	0	1	2	26
Cullop	2-5	0-0	4-5	2	0	8	0	1	1	0	16
Carney	2-7	0-1	0-0	4	1	4	3	2	0	0	18
Calhoun	1-1	0-0	0-1	5	2	2	2	1	0	2	14
Brooks	3-4	1-2	0-0	1	0	7	2	0	0	0	12
Tucker	1-3	0-0	0-1	2	1	2	1	1	1	0	10
Kraiza	1-2	0-0	0-0	1	0	2	2	1	1	1	10
Team				7							
Totals	47-77	3-9	15-20	50	13	112	30	17	12	16	200
	61.0	33.3	75.0								



Cindy Lamping iced Purdue's 57-54 win over Penn State on this shot with 31.7 seconds remaining.



Tonya Kirk (left) and Stacey Lovelace (right) celebrate knocking off the top-ranked Lady Lions.

The fifth time was a charm for Purdue. The Boilermakers, who had taken on the No. 1-ranked team in the land four times prior to Feb. 11, 1994, finally knocked off the top dog with a 57-54 homecourt win over Penn State, the last remaining undefeated team in the nation.

Purdue used a 17-3 run over the last six minutes of the first half to take a 36-23 lead at halftime. Penn State scored the first 12 points of the second half to draw within one. The Lady Lions trailed by one with under a minute left before the Boilermakers put the ball in the hands of junior Cindy Lamping. With 31.7 seconds remaining, Lamping hit a running jumper to give Purdue a three-point lead.

Jannon Roland, a freshman, led Purdue with 12 points off the bench. Lamping scored 11 with a team-high four assists. Also scoring in double figures was rookie Leslie Johnson, who scored 10 points and collected nine rebounds.

PURDUE VS. PENN STATE

Feb. 11, 1994

Mackey Arena • West Lafayette, Ind.

Attendance: 9,602

- Purdue Beats First Top-Ranked Team -

#1 Penn State	FG	3FG	FT	R	PF	PTS	A	TO	B	S	MIN
Holloway*	1-1	0-0	0-0	2	1	2	0	1	0	0	6
Donovan*	5-10	2-5	0-1	6	2	12	5	3	0	2	38
Masley*	3-7	0-0	3-4	7	2	9	1	1	0	3	39
Nicholson*	3-13	0-4	0-0	4	3	6	7	6	0	0	37
Mack*	4-11	1-3	4-4	2	2	13	0	3	0	0	34
Calhoun	5-7	0-0	0-0	10	0	10	1	0	4	1	30
Coleman	1-2	0-0	0-0	0	3	2	0	2	0	1	9
Thayer	0-0	0-0	0-0	0	0	0	0	1	0	0	1
Longworth	0-3	0-1	0-0	0	2	0	0	0	0	0	6
Team				5							
Totals	22-54	3-13	7-9	36	15	54	14	18	4	7	200
	40.7	23.1	77.8								

#11 Purdue

	FG	3FG	FT	R	PF	PTS	A	TO	B	S	MIN
Kirk-f	2-6	0-0	0-0	3	1	4	3	2	1	2	19
Johnson-f	5-10	0-0	0-2	9	3	10	2	0	0	1	33
Lovelace-c	4-9	0-0	1-3	7	3	9	2	1	1	2	33
Jacoby-g	3-8	2-3	0-0	2	0	8	2	2	0	1	40
Lamping-g	5-7	0-1	1-2	2	1	11	4	3	1	0	29
Roland	4-9	1-3	3-4	1	0	12	1	2	0	0	23
McCulley	0-2	0-0	0-0	0	0	0	1	1	1	0	8
Griffin	0-0	0-0	0-0	0	1	0	0	0	0	0	9
Lindsey	1-1	0-0	1-1	2	1	3	0	1	0	0	6
Team				2							
Totals	24-52	3-7	6-12	28	10	57	15	13	4	6	200
	46.2	42.9	50.0								



The Boilermakers celebrate earning their first trip to the NCAA Women's Final Four.

Purdue gained entry into the hallowed NCAA Women's Final Four for the first time ever with a convincing 82-65 win over Stanford in Maples Pavilion on March 26, 1994. As the higher seed, the Boilermakers wore their home jerseys on the Cardinal's home court and handed Stanford its first NCAA loss in its own gym. It was Stanford's worst homecourt loss since the 1986-87 season.

Trailing 10-9 five minutes into the game, Purdue went on a 19-7 run over the next nine-plus minutes and finished the first half with a 32-25 lead. The score was tied at 36 with 14 minutes remaining when sophomore Tonya Kirk hit a three-pointer for a 39-36 lead. The Cardinal later trailed by one point three different times but could never catch the Boilermakers. Purdue drained 17 of 18 free throws down the stretch.

Junior Jennifer Jacoby led Purdue with 20 points, while freshman Leslie Johnson scored 14. Sophomore Stacey Lovelace finished with 12, followed by Kirk with 11.

PURDUE VS. STANFORD

March 26, 1994

Maples Pavilion • Palo Alto, Calif.

Attendance: 7,500

- Purdue Advances To First Final Four -

#11 Stanford	FG	3FG	FT	R	PF	PTS	A	TO	B	S	MIN
Paye*	2-9	1-4	2-2	5	4	7	3	4	0	1	35
Hemmer*	5-9	0-0	7-8	6	5	17	0	5	0	2	28
Kaplan*	5-10	0-0	2-4	12	4	12	0	2	0	0	37
Wideman*	1-3	0-0	0-1	1	1	2	3	2	0	0	18
Hedgpeth*	4-10	1-4	0-1	4	5	9	0	2	0	1	36
Starbird	4-11	2-4	2-3	4	1	12	3	2	1	0	20
Kelsey	2-6	1-3	0-0	4	1	5	2	1	0	0	17
Harrington	0-4	0-2	1-2	1	1	1	0	0	0	0	8
Smith	0-0	0-0	0-0	0	2	0	0	0	0	0	1
Team				2							
Totals	23-62	5-17	14-21	39	24	65	11	18	1	4	200
	37.1	29.4	66.7								

#8 Purdue	FG	3FG	FT	R	PF	PTS	A	TO	B	S	MIN
Kirk-f	4-13	1-1	2-2	4	3	11	3	1	0	4	36
Johnson-f	4-5	0-0	6-8	5	4	14	1	2	0	0	24
Lovelace-c	6-12	0-0	0-0	7	5	12	2	2	0	2	31
Jacoby-g	4-4	2-2	10-12	4	2	20	1	5	0	0	39
Lamping-g	2-7	0-1	2-2	2	1	6	3	2	0	0	16
McCulley	1-3	0-0	4-5	6	4	6	1	2	0	0	12
Roland	4-6	1-1	0-0	0	0	9	2	1	0	1	22
Griffin	0-0	0-0	0-0	0	0	0	0	1	0	0	5
Lindsey	2-3	0-0	0-0	4	2	4	0	0	0	0	13
Hildebrand	0-0	0-0	0-0	0	0	0	0	0	0	0	1
Taggart	0-0	0-0	0-0	0	0	0	0	0	0	0	1
Team				3							
Totals	27-53	4-5	24-29	35	21	82	13	16	0	7	200
	50.9	80.0	82.8								



Stephanie White (above) and Camille Cooper (right) combined for 42 points and 14 rebounds against Tennessee.



Three-time defending national champion and No. 1-ranked Tennessee was no match for Purdue on this day, as the Boilermakers posted a convincing 78-68 victory in Mackey Arena on Nov. 15, 1998.

The Lady Vols, winners of 46 consecutive games since March 2, 1997, were ahead 11-10 just over four minutes into the game before the Boilermakers went to work. Purdue led 28-26 with just under nine minutes to go and went on an 18-7 run to build a 46-33 halftime lead. Tennessee closed to within five points at 68-63 with 4:10 remaining, but Purdue made six free throws down the stretch to seal the deal.

Senior Stephanie White led the way with 24 points, while sophomore Camille Cooper scored 18. Sophomore Katie Douglas and senior Ukari Figgs added 11 and 10 points respectively. Junior Michelle Duhart cleared a game-high 11 rebounds.

PURDUE VS. TENNESSEE

Nov. 15, 1998

Mackey Arena • West Lafayette, Ind.

Attendance: 11,788

- Purdue Snaps Lady Vols' 46-Game Win Streak -

#1 Tennessee	FG	3FG	FT	R	PF	PTS	A	TO	B	S	MIN
Holdsclaw-f	10-20	0-3	2-3	6	4	22	5	3	1	1	35
Catchings-f	6-10	0-3	0-0	7	5	12	4	3	0	1	28
Geter-c	6-11	0-1	0-1	5	2	12	1	1	1	2	27
Jolly-g	4-8	2-5	0-0	3	4	10	8	1	0	2	36
Randall-g	4-10	0-2	1-2	3	4	9	1	5	0	3	35
Snow	0-1	0-0	0-0	0	2	0	0	1	0	0	6
Butts	0-0	0-0	0-0	0	0	0	1	1	0	0	7
Clement	1-2	1-2	0-0	0	4	3	2	1	0	2	22
Pillow	0-0	0-0	0-2	1	0	0	0	0	0	0	4
Totals	31-62	3-16	3-8	25	25	68	22	16	2	11	200
	50.0	18.8	37.5								

#5 Purdue	FG	3FG	FT	R	PF	PTS	A	TO	B	S	MIN
Duhart-f	3-4	0-0	1-3	11	3	7	4	4	0	3	40
Curless-c	0-0	0-0	0-0	0	0	0	0	0	0	0	4
Figgs-g	2-9	0-4	6-6	1	2	10	4	1	0	0	25
White-g	8-12	2-3	6-9	6	2	24	4	4	0	2	40
Douglas-g	2-6	0-0	7-8	4	3	11	3	6	0	2	33
Komara	3-6	2-3	0-2	2	2	8	2	1	0	0	22
Young	0-0	0-0	0-0	0	0	0	0	0	0	0	1
Crawford	0-1	0-0	0-1	1	0	0	0	0	0	0	3
Cooper	8-11	0-0	2-4	8	3	18	1	2	1	0	32
Team				3							
Totals	26-49	4-10	22-33	36	15	78	18	18	1	7	200
	53.1	40.0	66.7								



Cindy Lamping tried to settle down the Boilermakers in their first NCAA Women's Final Four appearance.

Purdue's dream season came to an end with an 89-74 NCAA semifinal loss to eventual champion North Carolina in Richmond, Va., on April 2, 1994.

The fourth-ranked Tar Heels used a 12-0 run late in the second half to turn a 47-45 deficit into a 57-47 lead with 12 minutes remaining. Junior Cindy Lamping hit a three-pointer to make it 57-50, but the Boilermakers did not get any closer the rest of the way. Purdue trailed by as many as 13 points in the first half before rallying to within two points at halftime.

North Carolina shot 53 percent from the floor, becoming the second team all season to eclipse 50 percent shooting against the Boilermakers.

Freshman Leslie Johnson led Purdue with 16 points, while classmate Jannon Roland added 14. Sophomore Stacey Lovelace scored 12 points to go along with 15 rebounds.

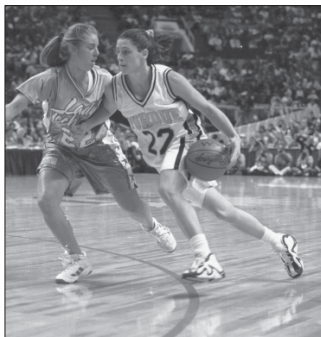
PURDUE VS. NORTH CAROLINA April 2, 1994

Richmond Coliseum • Richmond, Va.

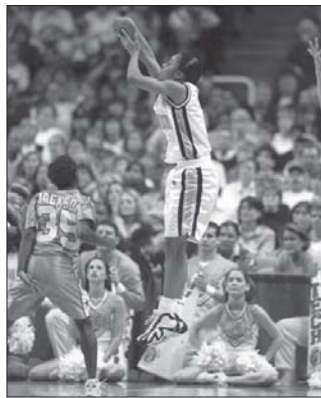
Attendance: 11,966

#4 North Carolina	FG	3FG	FT	R	PF	PTS	A	TO	B	S	MIN
Smith-f	9-16	1-3	4-5	8	3	23	8	6	2	1	39
Lawrence-f	1-7	1-4	2-2	2	1	5	3	1	1	0	39
Crawley-c	6-12	0-0	4-6	2	2	16	1	1	1	3	31
Jones-g	8-11	1-2	2-7	2	3	19	5	4	1	6	36
Sampson-g	6-12	1-2	3-6	6	4	16	0	3	0	5	15
Rouse	0-0	0-0	0-0	0	0	0	1	0	0	0	1
Sudreth	0-0	0-0	0-0	0	0	0	0	0	0	0	1
Jackson	0-0	0-0	0-0	0	0	0	0	0	0	0	1
McKee	2-2	0-0	0-0	1	1	4	0	1	0	0	9
Gillingham	1-1	0-0	0-0	0	0	2	0	0	0	0	1
Cooper	2-5	0-0	0-2	7	2	4	1	0	0	2	24
Gear	0-0	0-0	0-0	0	1	0	0	0	0	0	3
Team				8							
Totals	35-66	4-11	15-28	36	17	89	19	16	5	17	200
	53.0	36.4	53.6								

#8 Purdue	FG	3FG	FT	R	PF	PTS	A	TO	B	S	MIN
Kirk-f	2-9	0-5	2-2	3	2	6	2	4	0	1	23
Johnson-f	7-12	0-0	2-2	3	4	16	1	4	0	0	30
Lovelace-c	6-12	0-0	0-0	15	4	12	1	2	1	0	32
Jacoby-g	2-9	2-5	2-3	2	5	8	9	7	0	2	39
Lamping-g	4-6	1-2	0-0	4	0	9	1	2	0	0	11
Hildebrand	0-1	0-0	0-0	0	0	0	0	0	0	0	1
Taggart	0-0	0-0	0-0	0	0	0	0	0	0	0	1
Lindsey	0-0	0-0	0-0	0	1	0	0	2	0	0	8
McCulley	1-2	0-0	0-0	2	3	2	0	1	0	0	10
Griffin	3-5	0-0	1-2	2	0	7	2	1	0	1	14
Roland	6-14	1-2	1-2	6	4	14	1	5	1	0	32
Team				8							
Totals	31-70	4-14	8-11	45	23	74	17	28	2	4	200
	44.3	28.6	72.7								



Stephanie White (above) and Ukari Figgs (right) were nearly unstoppable against Louisiana Tech.



PURDUE VS. LOUISIANA TECH March 26, 1999

San Jose Arena • San Jose, Calif.

Attendance: 17,733

#3 Louisiana Tech	FG	3FG	FT	R	PF	PTS	A	TO	B	S	MIN
Maxwell-f	7-16	2-7	1-2	5	0	17	6	0	2	4	35
Wilson-f	8-15	1-1	1-1	4	3	18	1	0	0	0	26
Massey-c	3-8	0-0	0-0	11	3	6	0	1	0	0	27
Stallworth-g	1-6	0-0	2-2	6	1	4	2	4	2	0	26
Jackson-g	1-6	0-2	0-0	2	1	2	2	3	0	1	26
Walker	1-5	0-0	0-0	6	0	2	0	1	3	1	22
Lennox	5-15	3-7	1-3	3	4	14	2	1	0	3	21
Lewis	0-0	0-0	0-0	1	1	0	0	0	0	0	4
Sides	0-1	0-0	0-0	1	4	0	0	4	0	0	10
Lassiter	0-0	0-0	0-0	0	0	0	0	0	0	0	2
Gilmore	0-0	0-0	0-0	1	1	0	0	0	0	0	1
Team				1							
Totals	26-72	6-17	5-8	41	18	63	13	14	7	9	200
	36.1	35.3	62.5								

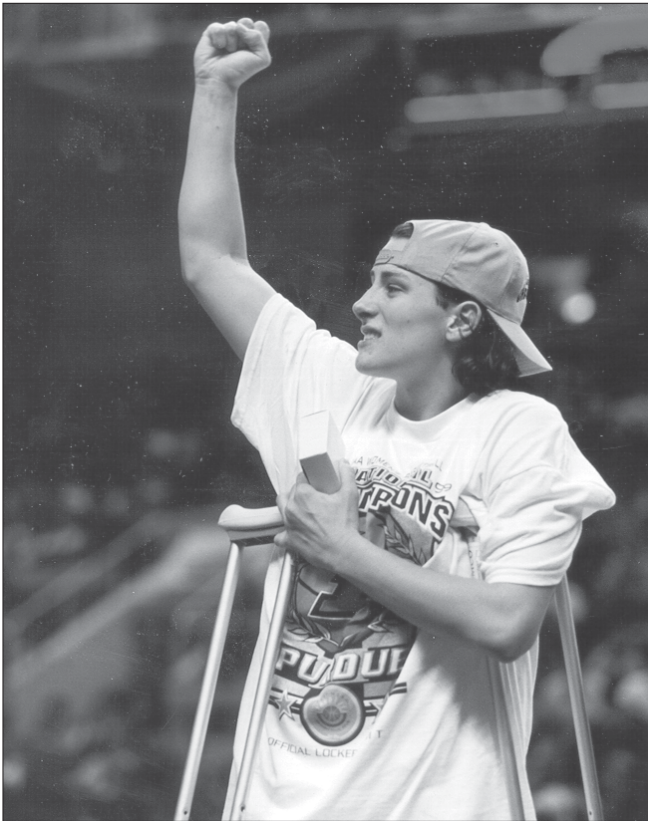
#1 Purdue	FG	3FG	FT	R	PF	PTS	A	TO	B	S	MIN
White-f	6-17	1-1	4-5	5	2	17	4	2	0	3	40
Duhart-f	0-0	0-0	0-0	4	1	0	1	1	0	0	25
Cooper-c	3-9	0-0	1-2	5	3	7	0	0	2	0	21
Figgs-g	8-14	5-7	3-4	10	1	24	4	3	0	1	40
Douglas-g	5-11	1-4	4-4	8	2	15	3	2	0	3	39
Crawford	2-4	0-0	2-2	3	1	6	0	0	0	0	16
Komara	0-2	0-1	0-0	3	0	0	0	2	0	0	5
Young	4-7	0-1	0-0	1	1	8	0	1	0	1	14
Team				4							
Totals	28-64	7-14	14-17	43	11	77	12	11	2	8	200
	43.8	50.0	82.4								

Purdue's second venture to the NCAA Women's Final Four began better than the first, as the Boilermakers picked up a 77-63 semifinal victory over No. 3 Louisiana Tech in San Jose, Calif., on March 26, 1999.

Purdue dusted off its scouting report of Louisiana Tech from its December meeting and put it to use for the second time. And for the second time, it worked. In the game's first eight minutes the two teams traded leads three times and neither could go ahead by more than three. A layup by sophomore Camille Cooper at the 11:45 mark gave Purdue a 15-13 lead, and the Boilermakers pressed on for a 40-27 halftime advantage.

Louisiana Tech got back into the game in the second half, closing to within three points. But Purdue finished the contest on a 19-8 run to claim the victory, earning its first-ever berth in an NCAA title game.

Senior Ukari Figgs led the way with 24 points and 10 rebounds. Senior Stephanie White and sophomore Katie Douglas added 17 and 15.



PURDUE VS. DUKE March 28, 1999

San Jose Arena • San Jose, Calif.

Attendance: 17,733

#10 Duke	FG	3FG	FT	R	PF	PTS	A	TO	B	S	MIN
Browne-f	2-13	0-1	1-2	9	2	5	0	3	0	0	31
Schweitzer-f	0-3	0-1	0-0	4	3	0	1	6	0	0	18
VanGorp-c	7-10	0-1	1-2	5	4	15	0	2	1	1	32
Howard-g	3-7	3-6	0-0	3	2	9	2	4	0	0	35
Erickson-g	3-9	2-6	0-0	2	5	8	4	2	0	0	37
Parent	2-3	0-0	2-2	5	3	6	4	0	0	0	21
Rice	1-5	0-4	0-0	8	3	2	0	3	1	1	20
Black	0-0	0-0	0-0	0	0	0	0	0	0	0	1
Gingrich	0-5	0-2	0-0	0	1	0	1	0	0	0	5
Team				2							
Totals	18-55	5-21	4-6	38	23	45	12	20	2	2	200
	32.7	23.8	66.7								

#1 Purdue	FG	3FG	FT	R	PF	PTS	A	TO	B	S	MIN
White-f	6-17	0-4	0-1	1	3	12	2	1	0	1	36
Duhart-f	2-3	0-0	1-2	5	3	5	2	0	1	2	37
Cooper-c	5-9	0-0	3-6	7	3	13	0	0	1	0	36
Figgs-g	5-15	0-5	8-9	3	1	18	1	5	0	3	40
Douglas-g	3-9	1-3	6-8	5	3	13	2	2	1	1	36
Crawford	0-0	0-0	0-0	0	1	0	0	0	0	0	4
Young	0-2	0-1	0-0	2	0	0	0	0	0	0	3
Komara	0-0	0-0	1-2	2	0	1	1	0	0	0	8
Team				8							
Totals	21-55	1-13	19-28	33	14	62	8	8	3	7	200
	38.2	7.7	67.9								

Destiny could not and would not be denied as Purdue beat Duke 62-45 for its first NCAA championship on March 28, 1999, in San Jose, Calif.

The Boilermakers started slowly in the first half; they shot just 28.6 percent from the floor and 16.7 percent from the free throw line en route to scoring a mere 17 points. But Purdue managed to stay close to the Blue Devils and trailed by only five (22-17) at the break.

Purdue came out after halftime on a mission to force and control the tempo of the game. And at the 12:53 mark of the second half, the Boilermakers took the lead at 32-30 on a driving layup by senior Ukari Figgs. A jumper by Figgs three minutes later put Purdue in control with a nine-point lead. But with little over four minutes remaining, senior All-American Stephanie White went down with a severely sprained ankle. And while White was still on the court writhing in pain out of the play, Duke took advantage of its 5-on-4 opportunity and converted a three-pointer to cut the lead to 47-42 with 4:01 to go.

Much to Duke's chagrin, however, the loss of White seemed to re-energize the Boilermakers, who held the Blue Devils scoreless for the next three minutes. Figgs finished the final contest of her collegiate career with a game-high 18 points, all in the second half, while White tallied 12 before leaving the game. Sophomores Camille Cooper and Katie Douglas both registered 13 in the historic victory.

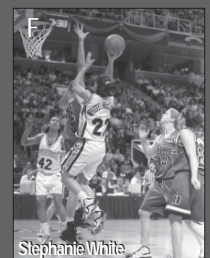
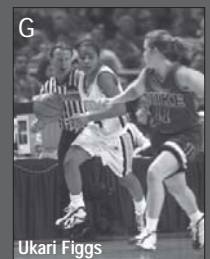
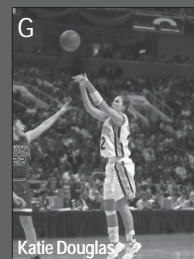


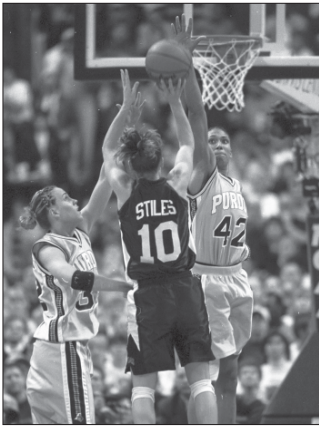
1998-99 Boilermakers

Danielle Bird	Jr.	G	5-7	Fort Wayne, Ind.
Camille Cooper	So.	C	6-4	Georgetown, Ky.
Candi Crawford	So.	F	6-1	Fort Wayne, Ind.
Mackenzie Curless	Jr.	F	6-1	Martinsville, Ind.
Katie Douglas	So.	G/F	6-1	Indianapolis, Ind.
Michelle Duhart	Jr.	F	6-0	Arlington, Va.
Ukari Figgs	Sr.	G	5-9	Georgetown, Ky.
Kelly Komara	Fr.	G	5-7	Schererville, Ind.
Mo-nique Langston	So.	G/F	5-11	Bakersfield, Calif.
Beth Lapaich	So.	F	6-0	La Porte, Ind.
Connie Murdock	So.	F	6-2	South Bend, Ind.
Mary Jo Noon	Fr.-R	C	6-5	Clarksville, Ind.
Shayla Potter	Jr.	G	5-6	Inglewood, Calif.
Amy Shaffer	Jr.	F	6-0	Hillsdale, Mich.
Stephanie White	Sr.	G/F	5-11	West Lebanon, Ind.
Tiffany Young	Jr.	G	5-11	Hillsboro, Ala.

Coaches: Carolyn Peck, Pam Stackhouse, Kerry Cremeans, Seth Kushkin

The Starting Five





Committee defense held Jackie Stiles, the NCAA's all-time leading scorer, in check, but Southwest Missouri State couldn't stop Katie Douglas.

Purdue faced a daunting task when it took the floor against Southwest Missouri State in the first semifinal of the 2001 NCAA Women's Final Four. The Boilermakers had to do what almost no team had done over the last four years: stop Jackie Stiles.

Stiles, the NCAA's all-time leading scorer, came into the contest averaging nearly 30 points per game. She scored seven of the Lady Bears' first nine points, but was held scoreless from the 16:46 mark of the first half until intermission.

In the meantime, Purdue worked to build a 17-point halftime lead. Over the final 20 minutes, Stiles scored 15 points. But as a group, the Lady Bears could do no better than trade baskets until the horn sounded in Purdue's 17-point victory.

Senior Katie Douglas scored a game-high 25 points, while classmate Camille Cooper added a double-double with 16 points and 10 rebounds.

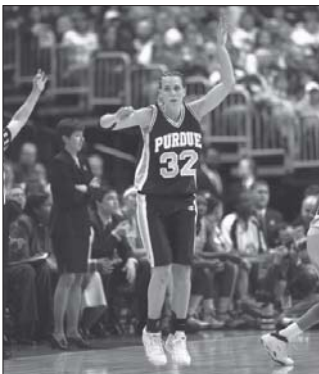
PURDUE VS. SW MISSOURI STATE March 30, 2001

Savvis Center • St. Louis, Mo.

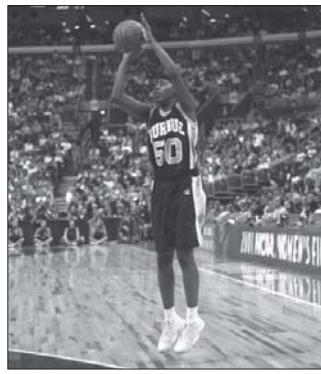
Attendance: 20,551

#15 SMS	FG	3FG	FT	R	PF	PTS	A	TO	B	S	MIN
Mitchem-f	4-9	1-3	2-2	4	3	11	2	3	0	1	34
Deer-f	4-7	3-5	0-0	2	4	11	2	2	0	0	34
Rante-c	2-3	0-0	0-0	5	4	4	2	2	1	0	20
Stiles-g	7-21	0-3	8-9	4	2	22	2	1	0	0	37
Campbell-g	1-3	0-0	0-0	0	5	2	2	4	0	2	25
Kiss	0-0	0-0	0-0	1	1	0	0	2	1	0	5
Vicente	3-8	0-0	2-5	2	2	8	3	1	0	2	14
Busbey	1-1	0-0	0-1	0	0	2	0	0	0	0	1
Kadic	0-0	0-0	0-0	1	0	0	0	0	0	0	1
Hohenberger	0-1	0-0	0-0	0	1	0	0	1	0	0	7
McMorris	0-0	0-0	0-0	0	0	0	0	1	0	0	1
Cavey	2-3	0-0	0-0	3	1	4	1	1	2	0	21
Team				7							
Totals	24-56	4-11	12-17	29	23	64	14	18	4	5	200
	42.9	36.4	70.6								

#9 Purdue	FG	3FG	FT	R	PF	PTS	A	TO	B	S	MIN
Hurns-f	4-8	0-0	1-2	12	1	9	0	3	1	2	34
Wright-f	4-9	1-2	2-4	6	2	11	3	0	2	1	34
Cooper-c	7-10	0-0	2-4	10	5	16	1	3	0	0	23
Komara-g	3-13	1-4	6-8	3	2	13	3	2	0	2	35
Douglas-g	8-15	3-5	6-9	7	0	25	2	3	1	2	37
Hicks	0-1	0-0	0-0	0	0	0	0	0	0	1	1
Parks	2-4	0-0	0-0	3	1	4	2	0	0	1	16
Jones	0-0	0-0	0-0	1	0	0	0	0	0	0	1
Crawford	1-4	0-0	1-2	3	2	3	0	0	1	0	16
Langston	0-0	0-0	0-0	0	1	0	0	0	0	0	1
Noon	0-1	0-0	0-0	1	1	0	0	0	0	0	2
Team				1							
Totals	29-65	5-11	18-29	47	15	81	11	11	5	9	200
	44.6	45.5	62.1								



Katie Douglas scored 18 points in 40 minutes in the title game.



Shereka Wright scored 17 points in a starting role against Notre Dame.

For the second time in three years, Purdue found itself battling for a national championship. This time the Boilermakers came up against a familiar foe in intrastate rival Notre Dame. Though the two teams met in South Bend four months earlier, with the Fighting Irish winning by 11, the game for all the marbles was played at the Savvis Center in St. Louis, Mo., on April 1.

Purdue took control early and led 10-2 less than four minutes into the contest. The Boilermakers held a six-point lead at halftime. But Notre Dame quickly tied the score at 32 at the beginning of the second half. Purdue responded and went ahead by eight with 12:33 left before the Fighting Irish again fought back to knot the issue at the 7:55 mark. Three more ties followed before a breakaway layup by senior Katie Douglas put Purdue up 66-64 with 1:22 to play. Notre Dame's Ruth Riley scored 21 seconds later. And after Purdue failed to convert on its next possession, Riley hit two free throws for what became the final margin.

Douglas' last-second attempt bounced off the rim.

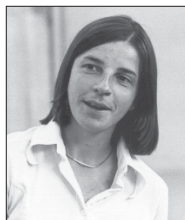
PURDUE VS. NOTRE DAME April 1, 2001

Savvis Center • St. Louis, Mo.

Attendance: 20,551

#9 Purdue	FG	3FG	FT	R	PF	PTS	A	TO	B	S	MIN
Hurns-f	7-13	0-0	3-5	7	0	17	0	2	1	1	39
Wright-f	6-15	2-4	3-5	4	2	17	0	2	1	1	34
Cooper-c	3-9	0-0	0-0	6	4	6	2	2	2	1	23
Komara-g	3-9	2-5	0-0	2	1	8	2	1	0	1	37
Douglas-g	6-15	3-6	3-3	7	2	18	5	6	0	5	40
Hicks	0-0	0-0	0-0	0	0	0	0	0	0	0	1
Parks	0-3	0-2	0-0	2	1	0	1	1	0	0	12
Crawford	0-2	0-0	0-2	4	4	0	2	1	0	1	11
Noon	0-1	0-0	0-0	0	2	0	0	0	0	0	3
Team				9							
Totals	25-67	7-17	9-15	41	16	66	12	16	4	10	200
	37.3	41.2	60.0								

#2 Notre Dame	FG	3FG	FT	R	PF	PTS	A	TO	B	S	MIN
Haney-f	6-11	0-0	1-2	5	3	13	2	0	1	1	35
Siemon-f	5-11	0-0	0-0	9	3	10	6	7	0	0	40
Riley-c	9-13	0-0	10-14	13	3	28	1	3	7	0	35
Ralay-g	1-6	1-4	0-0	4	4	3	2	1	0	1	25
Ivey-g	5-13	0-4	2-3	5	0	12	4	4	1	6	40
Joyce	0-2	0-2	2-2	0	1	2	1	0	0	0	20
Barksdale	0-0	0-0	0-0	2	0	0	0	0	2	0	5
Totals	26-56	1-10	15-21	38	14	68	16	15	11	8	200
	46.4	10.0	71.4								



Deborah Gebhardt
1976
8-8 (.500)
Big Ten: 0-0



Dr. Ruth Jones
1977-86
101-161 (.385)
Big Ten: 19-53 (.264)



Marsha Reall
1987
18-9 (.667)
Big Ten: 10-8 (.556)



Lin Dunn
1988-96
206-68 (.752)
Big Ten: 120-38 (.759)



Nell Fortner
1997
17-11 (.607)
Big Ten: 12-4 (.750)



Carolyn Peck
1998-99
57-11 (.838)
Big Ten: 26-6 (.813)



Kristy Curry
2000-present
153-44 (.777)
Big Ten: 73-23 (.760)

Season	Coach	Overall			Big Ten Conference				Postseason
		W	L	Pct.	W	L	Pct.	Place	
1975-76	Deborah Gebhardt — 1 year	8	8	.500	0	0	—	3rd*	
1976-77	Dr. Ruth Jones	7	16	.304	0	0	—	7th*	
1977-78	Dr. Ruth Jones	13	7	.650	0	0	—	T5th*	
1978-79	Dr. Ruth Jones	7	19	.269	0	0	—	T7th*	
1979-80	Dr. Ruth Jones	4	18	.182	0	0	—	T6th*	
1980-81	Dr. Ruth Jones	14	18	.438	0	0	—	T7th*	
1981-82	Dr. Ruth Jones	13	17	.433	0	0	—	T7th*	
1982-83	Dr. Ruth Jones	10	16	.385	3	15	.167	8th	
1983-84	Dr. Ruth Jones	5	23	.179	1	17	.056	10th	
1984-85	Dr. Ruth Jones	12	16	.429	6	12	.333	T7th	
1985-86	Dr. Ruth Jones — 10 years	16	11	.593	9	9	.500	T5th	
1986-87	Marsha Reall — 1 year	18	9	.667	10	8	.556	5th	
1987-88	Lin Dunn	21	10	.677	13	5	.722	3rd	NWIT Runner-Up
1988-89	Lin Dunn	24	6	.800	14	4	.778	3rd	NCAA Second Round**
1989-90	Lin Dunn	23	7	.767	14	4	.778	3rd	NCAA Sweet 16
1990-91	Lin Dunn	26	3	.897	17	1	.944	1st	NCAA Second Round
1991-92	Lin Dunn	23	7	.767	14	4	.778	2nd	NCAA Sweet 16
1992-93	Lin Dunn	16	11	.593	8	10	.444	6th	
1993-94	Lin Dunn	29	5	.853	16	2	.889	T1st	NCAA Final Four
1994-95	Lin Dunn	24	8	.750	13	3	.813	T1st	NCAA Elite Eight
1995-96	Lin Dunn — 9 years	20	11	.645	11	5	.688	4th	NCAA First Round
1996-97	Nell Fortner — 1 year	17	11	.607	12	4	.750	T1st	NCAA Second Round
1997-98	Carolyn Peck	23	10	.697	10	6	.625	T3rd	NCAA Elite Eight
1998-99	Carolyn Peck — 2 years	34	1	.971	16	0	1.000	1st	NCAA Champion
1999-00	Kristy Curry	23	8	.742	11	5	.688	T3rd	NCAA Second Round
2000-01	Kristy Curry	31	7	.816	14	2	.875	1st	NCAA Runner-Up
2001-02	Kristy Curry	24	6	.800	13	3	.813	1st	NCAA Second Round
2002-03	Kristy Curry	29	6	.829	12	4	.750	T2nd	NCAA Elite Eight
2003-04	Kristy Curry	29	4	.879	14	2	.875	2nd	NCAA Sweet 16
2004-05	Kristy Curry — 6 years	17	13	.567	9	7	.563	5th	NCAA Second Round
TOTALS	30 years	560	312	.642	260	132	.663		

* From 1976 to 1982, the Big Ten Tournament determined the conference champion and standings. Double round-robin play began in the 1982-83 season. Championships prior to the 1981-82 season were not sanctioned by the Big Ten.

** Purdue made its first four NCAA appearances as part of a 48-team field. The field grew to 64 in 1993-94.

All-Time Assistant Coaches

Lamar Boutwell (1996); Dallas Boychuk (1993-95); Tom Collen (1987-93); Kerry Cremeans (1997-03); Nancy Cross (1978, 1980-84); **Kelly Curry (2000-present)**; Luzzone Darr (1976); Carol Emanuel (1985-87); Gail Goestenkors (1987-92); Kathy Gordon (1984-85); Gail Hook (1995); Ellen Jacobs (1978); Rosie Jones (1989); MaChelle Joseph (1994-96); Seth Kushkin (1998-99); Erika Lang (1996); Karen Lawler (1990); Janet Malouf (1990); Pam Means (1991-93); **Katrina Merriweather (2004-present)**; Mary Ann Myers (1983); Carolyn Peck (1997); Darla Plice (1979); Lynette Robinson (1986); **Jannon Roland (2004-present)**; Sarah Sharp (1994); Pam Stackhouse (1997-03); Brock Touloukian (1988); Sue Wise (1986-87).



The All-Time Roster includes all student-athletes who have played in at least one official Purdue women's basketball game from 1975-76 to 2004-05. Year listed refers to the second calendar year of the season (e.g. 1999 refers to 1998-99).

- A -

Alston, Sandy (F/C) 1984-85-86-87
Anderson, Hannah (F) 2002-03-04-05
Anderson, Karen (C) 1983-84
Awald, Julie (G) 1981-82

- B -

Baker, Nellie (G) 1976
Bartz, Sue (F/C) 1979-80-81-82
Baxter, Barbie (G) 1997
Bechta, Debbie (G) 1977, 1980
Bird, Danielle (G) 1997-98-99-00
Bogdanova, Natasha (F) 2005
Brentlinger, Sandra (F) 1977
Brooks, DeLys (C) 1981-82
Brooks, Erika (F) 1988-89-90-91

- C -

Calhoun, Jane (C) 1988*-89-90-91-92
Carbaugh, Barbara (G) 1977
Carney, Staci (G) 1990-91-92-93
Carswell, Karen (G) 1976
Carter, Kim (G) 1980
Cender, Natasha (C) 1976
Chastain, Jane (C) 1976
Clem, Wendy (G) 1977
Clor, Mona (F) 1984-85-86-87
Cooper, Camille (C) 1998-99-00-01
Costello, Trina (F) 1987-88
Crain, Shelly (F) 1976
Crawford, Candi (F) 1998-99-00-01
Cullop, Tricia (F) 1990-91-92-93
Curless, Mackenzie (F) 1997-98-99-00
Curtis, Vicki (G) 1981

- D -

Davis, Brenda (F) 1976-77
Davis, Mandy (G) 2002
Desmond, Diamond (C) 1997
Doelling, Erin (G) 1983-84-85-86
Donaghy, Sally (G) 1984-85-86-87
Douglas, Katie (G/F) 1998-99-00-01
Duhart, Michelle (F) 1997-98-99-00
Carol Duncan (F) 2003-04-05

- E -

Eddie, Tina (F) 1991-92
Edgar, Alison (G) 1996
Emanuel, Carol (G/F) 1980-81-82-83
Erb, Summer (C) 1996
Erickson, Nicole (G) 1995-96
Evans, Shelia (G) 1988

- F -

Fackler, Sue (C) 1978-79-80
Feldhake, Barbara (C) 1977
Figgs, Ukari (G) 1996-97-98-99
Folk, Anita (G) 1979
Foote, Linda (G) 1987-88-89-90
Freeman, Kiki (F) 2005*
Fruend, Janet (F/C) 1984-85-86-87
Funkhouser, Debbie (G) 1978-79-80-81

- G -

Gearlds, Katie (G/F) 2004-05
Gill, Donna (F/C) 1989-90-91-92
Graham, Cherrise (G) 2001
Griffin, Melina (G/F) 1993-94-95-96

- H -

Hamilton, Holly (G) 1976
Hampel, Amy (G) 1980-81
Harris, Pat (G/F) 1979-80-81-82
Harshman, Carla (F) 1976
Hatke, Kathy (F) 1976-77-78
Heikes, Emily (C) 2002-03-04-05
Hicks, Lindsey (F) 2001-02-03-04
Hildebrand, Andrea (G) 1992-93-94
Holmes, Joy (G/F) 1988-89-90-91
Howard, Brianna (G) 2003
Humm, Tina (G) 1990
Hurns, Shalicia (F) 2001

- I -

Inman, Elisa (F) 2000
Isom, Jennifer (F) 1982-83-84-85

- J -

Jackson, Tye (G) 2005
Jacoby, Jennifer (G) 1992-93-94-95
Jahner, Lisa (G/F) 1985-86-87-88
Jaumotte, Juliann (C) 1988-89-90-91*-92
Johnson, Indi (C) 2004
Johnson, Leslie (C) 1994-95
Jones, Beth (G) 2001-02-03-04
Joppe, Jean (F) 1978-79
Joseph, MaChelle (G) 1989-90-91-92

- K -

Kelsay, Brenda (G) 1983-84
Kelsey, Joan (G/F) 1981
Keys, Sabrina (F) 2003-04
Kintzele, Darlene (G/F) 1983
Kirk, Tonya (F) 1993-94-95-96
Komara, Kelly (G) 1999-00-01-02
Kraiza, Stacy (F) 1989*-90-91
Kuhl, Chris (F) 1976-77
Kvachkoff, Anne (G) 1986-87-88-89

- L -

LaCroix, Christa (C) 1985-86-87-88
LaLonde, Michelle (F) 1981-82-83-84
Lamping, Cindy (G) 1992-93-94-95
Langston, Mo-nique (G/F) 1998-99-00-01
Lapaich, Beth (F) 1999-00
Lawless, Erin (F) 2004-05
Layman, Kelli (G/F) 1981-82-83-84
Lindsey, Carol (F) 1977-78
Lindsey, Shannon (C) 1992-93-94-95
Llewellyn, Linda (F) 1976
Lovelace, Stacey (F/C) 1993-94-95-96

- M -

Madsen, Carol (G) 1990
Marrs, Linda (F/C) 1976-77
Martin, Carmella (G/F) 1977-78
Mateen, Rhonda (C) 1988-89-90-91
Mays, Ashley (G) 2003-04-05
McCulley, Danielle (F) 1994-95
McGinnis, Margaret (G) 1979-80-81-82
McMullen, Lynn (G) 1976
Meadows, Laura (F) 2002
Meier, Doni (F) 1978
Millard, Beth (F/C) 1978-79-80
Miller, Betsy (C) 1977
Million, Renetta (G) 1985
Moren, Teri (G) 1988-89-90-91

Mott, Mindy (C) 1976
Murdock, Connie (F) 1998-99-00

- N -

Neal, Dena (G) 1976
Newcomb, Laura (F) 1978-79-80-81
Nicholas, Helen (G/F) 1976-77
Noon, Mary Jo (C) 1999*-00-01-02-03

- P -

Parks, Shinika (G) 2000-01
Pieper, Kathy (G/F) 1976
Pollack, Brina (G) 2005
Porritt, Amy (G) 1982-83-84-85
Potter, Shayla (G) 1997-98-99

- R -

Roland, Jannon (G/F) 1994-95-96-97
Ruley, Amy (G) 1976-77-78

- S -

Sanders, Rita (G) 1977-78-79
Sauer, Jill (F) 1986*-87-88-89
Schultz, Leslie (F/C) 1980-81-82-83
Schumm, Debbie (G) 1977
Shaffer, Amy (F) 1997-98-99
Sharp, Kay (G/F/C) 1984-85-86-87
Sharp, Sabrina (F/C) 1981
Stewart, Schenita (G) 1993
Stoner, Tina (G/F) 1983
Swopes, Sonja (G) 1992

- T -

Taggart, Nicki (G) 1994-95
Taylor, Missy (G/F) 2003
Terry, Michelle (F) 1993
Traore, Aya (F) 2004*-05
Tucker, Kay (F) 1990-91-92-93
Tyree, Cathey (F/C) 1984-85-86-87

- V -

Valek, Erika (G) 2001-02-03-04
Vancheri, Fran (G) 1983
Vander Plaats, Crystal (G) 2002
VanGorp, Michele (C) 1995-96
Vaughan, Jodi (F) 1988-89
Versyp, Sharon (G) 1985-86-87-88

- W -

Weeks, Marcia (G) 1977
Webb, Sharika (G) 2003-04-05
White, Stephanie (G/F) 1996-97-98-99
Williams, Brea (F) 2002
Wisdom-Hylton, Lindsay (F) 2005
Worster, Trish (G) 1988
Wright, Shereka (F) 2001-02-03-04
Wright, Susie (G) 1978

- Y -

Yasen, Corissa (F) 1997
Young, Lucy (F) 1976
Young, Tiffany (G) 1997-98-99

- Z -

Zelazny, Debra (F) 1983
Zinn, Darlene (G) 1978-79

* denotes redshirt season.
bold denotes name on 2005-06 roster.

**ALABAMA (2)**

Gadsden Diamond Desmond
Hillsboro Tiffany Young

ARIZONA (1)

Tucson Darlene Kintzele

CALIFORNIA (6)

Bakersfield Mo-nique Langston
Fullerton Nicole Erickson
Inglewood Shayla Potter
Los Angeles Indi Johnson
San Francisco Sabrina Keys
Suisun Shinika Parks

CONNECTICUT (1)

Roxbury Lucy Young

IDAHO (1)

Coeur d'Alene Corissa Yasen

ILLINOIS (8)

Berwyn Erin Lawless
Bourbonnais Andrea Hildebrand
Calumet City Staci Carney
Evanston Schenita Stewart
Naperville Lindsay Wisdom-Hylton
Palos Hills Emily Heikes
Waukegan DeLys Brooks
White Heath Trina Costello

INDIANA (83)

Anderson Melina Griffin
Chris Kuhl
Auburn MaChelle Joseph
Bedford Nellie Baker
Jane Chastain
Beech Grove Katie Gearlds
Bicknell Tricia Cullop
Bloomington Jennifer Isom
Bluffton Debbie Schumm
Bowling Green Linda Marrs
Butler Amy Hampel
Carmel Jodi Vaughan
Clarksville Linda Foote
Mary Jo Noon
Columbus Kathy Pieper
Connersville Missy Taylor
Crown Point Anne Kvachkoff
Culver Karen Carswell
East Chicago Carmella Martin
Elkhart Wendy Clem
Flora Darlene Zinn
Fort Wayne Danielle Bird
Candi Crawford
Donna Gill
Leslie Johnson
Cathey Tyree
Margaret McGinnis
Frankfort Carla Harshman
Gary Danielle McCulley
Hamburg Cindy Lamping
Hanover Brianna Howard
Indianapolis Katie Douglas
Barbara Feldhake
Shalicia Hurns
Shannon Lindsey
Ashley Mays
Marcia Weeks
Sharika Webb
Brea Williams

Knox
Kokomo
Lafayette

La Porte
Lebanon
Logansport
Lowell

Martinsville
Metea
Michigan City
Mishawaka
Muncie
Nappanee
New Castle
New Paris
Otterbein
Rochester
Rockville

Rossville
Rushville
Schererville
Seymour
Shelbyville
South Bend

Speedway
Spencerville
Tipton
Valparaiso
Walkerton
Warren
Warsaw
West Lafayette

West Lebanon
Williamspport
Zionsville

KENTUCKY (3)

Georgetown Camille Cooper
Ukari Figs
Tina Stoner
Louisville

MICHIGAN (10)

Birmingham Debra Zelazny
Brighton Natasha Cender
Detroit Stacey Lovelace
Hillsdale Amy Shaffer
Macomb Michele VanGorp
Redford Mona Clor
Richland Doni Meier
Saginaw Kiki Freeman
St. Clair Shores Stacy Kraiza
St. Joseph Amy Porritt

NEW JERSEY (2)

Marlboro Brina Pollack
Pedricktown Sandy Alston

Sandra Brentlinger
Beth Millard
Kim Carter
Kathy Hatke
Renetta Million
Kay Sharp
Beth Lapaich
Brenda Davis
Barbara Carbaugh
Linda Llewellyn
Amy Ruley
Mackenzie Curless
Shelly Crain
Erika Brooks
Sharon Versyp
Sabrina Sharp
Carol Duncan
Rita Sanders
Kelli Layman
Tina Humm
Laura Newcomb
Carol Lindsey
Lynn McMullen
Jennifer Jacoby
Betsy Miller
Kelly Komara
Teri Moren
Brenda Kelsay
Vicki Curtis
Connie Murdock
Dena Neal
Holly Hamilton
Alison Edgar
Jane Calhoun
Erin Doelling
Julie Awald
Mindy Mott
Anita Folk
Hannah Anderson
Crystal Vander Plaats
Stephanie White
Barbie Baxter
Susie Wright
Debbie Funkhouser

OHIO (19)

Akron Rhonda Mateen
Cincinnati Sally Donaghy
Tonya Kirk
Cleveland Sonja Swopes
Kay Tucker
Columbus Tina Eddie
Pat Harris
Michelle LaLonde
Lakewood Summer Erb
Joan Kelsey
Lebanon Lindsey Hicks
Maineville Beth Jones
Mansfield Joy Holmes
Reading Carol Madsen
Seven Hills Carol Emanuel
Springfield Sheila Evans
Michelle Terry
Jannon Roland
Elisa Inman

OKLAHOMA (1)

Norman Trish Worster

PENNSYLVANIA (6)

Conshohocken Cherrise Graham
Darby Debbie Bechta
Glenside Sue Fackler
Pittsburgh Juliann Jaumotte
Fran Vancheri
Helen Nicholas
Ridley Park

TEXAS (4)

Copperas Cove Shereka Wright
Houston Tye Jackson
Lubbock Erika Valek
Temple Mandy Davis

VIRGINIA (1)

Arlington Michelle Duhart

WEST VIRGINIA (1)

Huntington Laura Meadows

WISCONSIN (9)

Appleton Lisa Jahner
Jill Sauer
Green Bay Sue Bartz
Jean Joppe
Merrill Janet Freund
Neenah Leslie Schultz
Oak Creek Christa LaCroix
Platteville Nicki Taggart
Whitefish Bay Karen Anderson

CANADA (1)

Toronto (Ontario) Natasha Bogdanova

SENEGAL (1)

Dakar Aya Traore



6-FOOT-6 (2)

Summer Erb
Michele VanGorp

6-FOOT-5 (1)

Mary Jo Noon

6-FOOT-4 (5)

Natasha Bogdanova
Camille Cooper
Christa LaCroix
Shannon Lindsey
Stacey Lovelace

6-FOOT-3 (9)

DeLys Brooks
Jane Calhoun
Shalicia Hurns
Juliann Jaumotte
Stacy Kraiza
Rhonda Mateen
Danielle McCulley
Laura Meadows
Missy Taylor

6-FOOT-2 (11)

Karen Anderson
Tricia Cullop
Diamond Desmond
Sue Fackler
Elisa Inman
Indi Johnson
Tonya Kirk
Erin Lawless
Connie Murdock
Michelle Terry
Lindsay Wisdom-Hylton

6-FOOT-1 (18)

Natasha Cender
Candi Crawford
Mackenzie Curless
Katie Douglas
Carol Duncan
Tina Eddie
Barbara Feldhake
Kiki Freeman
Janet Freund
Katie Gearlds
Donna Gill
Lindsey Hicks
Leslie Johnson
Sabrina Keys
Jannon Roland
Jill Sauer
Aya Traore
Brea Williams

6-FOOT (14)

Hannah Anderson
Michelle Duhart
Melina Griffin
Emily Heikes
Lisa Jahner
Jean Joppe
Beth Lapaich
Carol Madsen
Beth Millard
Leslie Schultz
Amy Shaffer
Kay Tucker
Jodi Vaughn
Corissa Yasen

5-FOOT-11 (16)

Sue Bartz
Erika Brooks
Mona Clor
Trina Costello
Carol Emanuel
Darlene Kintzele
Michelle LaLonde
Mo-nique Langston
Betsy Miller
Kay Sharp
Sabrina Sharp
Tina Stoner
Cathey Tyree
Stephanie White
Tiffany Young
Debra Zelazny

5-FOOT-10 (10)

Sandy Alston
Jane Chastain
Sally Donaghy
Pat Harris
Joy Holmes
Jennifer Isom
Cindy Lamping
Linda Marrs
Doni Meier
Shereka Wright

5-FOOT-9 (13)

Ukari Figgs
Debbie Funkhouser
Andrea Hildebrand
Tye Jackson
Beth Jones
Joan Kelsey
Chris Kuhl
Anne Kvachkoff
Mindy Mott
Laura Newcomb
Sonja Swopes
Crystal Vander Plaats
Sharika Webb

5-FOOT-8 (15)

Sandra Brentlinger
Carla Harshman
Kathy Hatke
Brianna Howard
MaChelle Joseph
Brenda Kelsay
Kelli Layman
Linda Llewellyn
Carmella Martin
Ashley Mays
Teri Moren
Shinika Parks
Brina Pollack
Sharon Versyp
Lucy Young

5-FOOT-7 (19)

Julie Awald
Barbie Baxter
Danielle Bird
Shelly Crain
Vicki Curtis
Brenda Davis
Mandy Davis
Erin Doelling
Alison Edgar
Shelia Evans
Linda Foote
Cherrise Graham
Amy Hampel
Jennifer Jacoby
Kelly Komara
Carol Lindsey
Kathy Pieper
Schenita Stewart
Nicki Taggart

5-FOOT-6 (12)

Staci Carney
Wendy Clem
Nicole Erickson
Anita Folk
Tina Humm
Helen Nicholas
Shayla Potter
Rita Sanders
Debbie Schumm
Erika Valek
Fran Vancheri
Darlene Zinn

5-FOOT-5 (4)

Nellie Baker
Debbie Bechta
Barbara Carbaugh
Karen Carswell

5-FOOT-4 (8)

Kim Carter
Holly Hamilton
Margaret McGinnis
Renetta Million
Dena Neal
Amy Porritt
Amy Ruley
Susie Wright

5-FOOT-3 (3)

Lynn McMullen
Marcia Weaks
Trish Worster

**00**

Michelle Terry (1993)

1

Katie Gearlds (2004-05)

2

Laura Meadows (2002)

3

Summer Erb (1996); *Kelly Komara* (1999-00-01-02); *Natasha Bogdanova* (2005)

4

Teri Moren (1988-89-90-91); *Lindsey Hicks* (2001-02-03-04)

5

Lisa Jahner (1985); *Ukari Figgs* (1996-97-98-99); *Aya Traore* (2004-05)

10

Lynn McMullen (1976); *Sharon Versyp* (1985-86-87-88); *Staci Carney* (1990-91-92-93); *Hannah Anderson* (2002-03-04-05)

11

Kay Tucker (1990-91-92-93); *Nicole Erickson* (1995-96); *Barbie Baxter* (1997); *Shinika Parks* (2000-01); *Brina Pollack* (2005)

12

Amy Ruley (1976-77); *Pat Harris* (1979-80-81-82); *Brenda Kelsay* (1983-84); *Erika Brooks* (1988-89-90-91); *Andrea Hildebrand* (1992-93-94); *Alison Edgar* (1996); *Missy Taylor* (2003)

13

Nicki Taggart (1994-95)

14

Susie Wright (1978); *Anne Kvachkoff* (1986-87-88-89); *Crystal Vander Plaats* (2002)

15

Dena Neal (1976); *Barbara Feldhake* (1977); *Amy Ruley* (1978); *Margaret McGinnis* (1979-80-81-82); *Amy Porritt* (1983-84-85); *Lisa Jahner* (1986-87-88); *Tonya Kirk* (1993-94-95-96); *Danielle Bird* (1997-98-99-00)

20

Debbie Bechta (1977); *Christa LaCroix* (1985-86-87-88); *Donna Gill* (1989-90-91-92); *Corissa Yasen* (1997)

21

Barbara Carbaugh (1977); *Stacy Kraiza* (1990-91); *Shannon Lindsey* (1992-93-94-95); *Shayla Potter* (1998-99); *Elisa Inman* (2000); *Ashley Mays* (2003-04-05)

22

Lucy Young (1976); *Marcia Weaks* (1977); *Renetta Million* (1985); *Shelia Evans* (1988); *MaChelle Joseph* (1989-90-91-92); *Stephanie White* (1996-97-98-99)

23

Rhonda Mateen (1988-89-90-91); *Jennifer Jacoby* (1992-93-94-95); *Tiffany Young* (1997-98-99); *Tye Jackson* (2005)

24

Linda Marrs (1976-77); *Trina Costello* (1987); *Trish Worster* (1988); *Beth Lapaich* (1999-00); *Kiki Freeman* (2005)

25

Kathy Pieper (1976); *Rita Sanders* (1977-78-79); *Debbie Bechta* (1980); *Julie Awald* (1981-82); *Debra Zelazny* (1983); *Sandy Alston* (1984-86-87); *Mackenzie Curlless* (1997-98-99-00); *Mandy Davis* (2002); *Brianna Howard* (2003)

30

Holly Hamilton (1976); *Carmella Martin* (1977); *Darlene Zinn* (1979); *Kelli Layman* (1981-83-84); *Michelle LaLonde* (1982); *Jill Sauer* (1987); *Carol Madsen* (1990); *Schenita Stewart* (1993); *Danielle McCulley* (1994-95); *Beth Jones* (2001-02-03-04)

31

Debbie Funkhouser (1978-79-80-81); *Tina Stoner* (1983); *Melina Griffin* (1993-94-95-96); *Candi Crawford* (1998-99-00-01); *Indi Johnson* (2004)

32

Chris Kuhl (1977); *Beth Millard* (1978); *Anita Folk* (1979); *Joan Kelsey* (1981); *Fran Vancheri* (1983); *Mona Clor* (1984-85-86-87); *Linda Foote* (1988-89-90); *Stacey Lovelace* (1993-94-95-96); *Katie Douglas* (1998-99-00-01); *Lindsay Wisdom-Hylton* (2005)

33

Brenda Davis (1976-77); *Sandy Alston* (1985); *Tricia Cullop* (1990-91-92-93); *Michele VanGorp* (1995-96); *Michelle Duhart* (1997-98-99-00); *Erika Valek* (2001-02-03-04)

34

Mindy Mott (1976); *Sue Fackler* (1978-79); *Amy Hampel* (1980-81); *Michelle LaLonde* (1983); *Sally Donaghy* (1984-85-86-87); *Jill Sauer* (1988-89); *Sonja Swopes* (1992); *Leslie Johnson* (1994-95); *Diamond Desmond* (1997); *Sabrina Keys* (2003-04)

35

Linda Llewellyn (1976); *Laura Newcomb* (1978-79-80-81); *Amy Porritt* (1982); *Erin Doelling* (1983-84-85-86); *Tina Eddie* (1991-92); *Erin Lawless* (2004-05)

40

Kathy Hatke (1976); *Carmella Martin* (1978); *Kim Carter* (1980); *Vicki Curtis* (1981); *Jennifer Isom* (1982-83-84-85); *Linda Foote* (1987); *Joy Holmes* (1988-89-90-91); *Cindy Lamping* (1992-93-94-95); *Shayla Potter* (1997); *Connie Murdock* (1998-99-00)

41

Carla Harshman (1976); *Carol Lindsey* (1977-78); *Carol Emanuel* (1980-81-82-83); *Mo-nique Langston* (1998-99-00-01)

42

Shelley Crain (1976); *Darlene Zinn* (1978); *Sue Bartz* (1980-81-82); *Janet Freund* (1984-85-86-87); *Jodi Vaughan* (1988-89); *Tina Humm* (1990); *Jannon Roland* (1994-95-96-97); *Camille Cooper* (1998-99-00-01); *Carol Duncan* (2003-04-05)

43

Natasha Cender (1976); *Beth Millard* (1979-80); *Kelli Layman* (1982); *Michelle LaLonde* (1981-84); *Sharika Webb* (2003-04-05)

44

Helen Nicholas (1976-77); *Jean Joppe* (1978-79); *Leslie Schultz* (1980-81-82-83); *Kay Sharp* (1984-85-86-87); *Trina Costello* (1988); *Shalicia Hurns* (2001); *Brea Williams* (2002)

45

Jane Chastain (1976); *Kathy Hatke* (1977-78); *Sue Fackler* (1980); *DeLys Brooks* (1981-82); *Karen Anderson* (1983-84); *Jane Calhoun* (1989-90-91-92); *Cherrise Graham* (2001)

50

Doni Meier (1978); *Sue Bartz* (1979); *Sabrina Sharp* (1981); *Darlene Kintzele* (1983); *Cathey Tyree* (1984-85-86-87); *Shereka Wright* (2001-02-03-04)

52

Amy Shaffer (1997-98-99); *Emily Heikes* (2002-03-04-05)

55

Juliann Jaumotte (1988-89-90-92); *Mary Jo Noon* (2000-01-02-03)

**1975-76**

	PPG	RPG	APG
F: Brenda Davis, So., 5-7	8.2	3.8	0.0*
F: Linda Marrs, Fr., 5-10	4.6	9.6	0.1*
C: Natasha Cender, Fr., 6-1	7.8	11.6	0.1*
G: Amy Ruley, So., 5-4	7.3	1.9	0.6*
G: Holly Hamilton, So., 5-4	9.8	5.4	0.4*

1976-77

F: Carol Lindsey, Jr., 5-7	10.0	8.2	1.7
F: Kathy Hatke, Jr., 5-8	7.3	6.4	1.3
G: Amy Ruley, Jr., 5-4	9.2	2.2	2.9
G: Rita Sanders, Fr., 5-6	8.5	3.3	0.9
G: Helen Nicholas, Sr., 5-6	8.3	5.6	1.7

1977-78

F: Carol Lindsey, Sr., 5-7	10.3	4.4	1.1*
F: Jean Joppe, Fr., 6-0	10.3	6.9	1.0*
C: Sue Fackler, Fr., 6-2	14.9	10.2	0.6*
G: Amy Ruley, Sr., 5-4	6.9	2.5	1.7*
G: Rita Sanders, So., 5-6	5.5	1.3	0.3*

1978-79

F: Laura Newcomb, So., 5-9	8.2	5.3	1.1*
F: Jean Joppe, So., 6-0	7.6	6.9	1.8*
C: Sue Fackler, So., 6-2	10.8	6.6	1.2*
G: Debbie Funkhouser, So., 5-9	7.0	3.5	2.0*
G: Rita Sanders, Jr., 5-6	3.3	1.5	1.7*

1979-80

F: Carol Emanuel, Fr., 5-11	10.3	6.3	2.0
F: Laura Newcomb, Jr., 5-9	13.1	5.2	0.8
F: Sue Bartz, So., 5-11	6.1	5.4	0.5
G: Margaret McGinnis, So., 5-4	3.0	1.3	1.4
G: Debbie Funkhouser, Jr., 5-9	7.8	3.9	1.9

1980-81

F: Carol Emanuel, So., 5-11	11.1	5.6	2.6
F: Laura Newcomb, Sr., 5-9	13.5	6.0	1.8
F: Sue Bartz, Jr., 5-11	13.1	8.6	1.9
C: DeLys Brooks, Jr., 6-3	10.2	7.4	0.4
G: Debbie Funkhouser, Sr., 5-9	6.6	2.9	2.7

1981-82

F: Carol Emanuel, Jr., 5-11	16.9	7.7	2.5
F: Sue Bartz, Sr., 5-11	9.5	6.9	1.8
F: Leslie Schultz, Jr., 6-0	11.8	6.6	0.9
C: DeLys Brooks, Sr., 6-3	9.6	6.4	1.1
G: Margaret McGinnis, Sr., 5-4	3.9	2.5	2.1

1982-83

F: Carol Emanuel, Sr., 5-11	20.1	8.0	3.0
F: Jennifer Isom, So., 5-10	5.0	4.5	0.8
C: Leslie Schultz, Sr., 6-0	16.3	7.3	0.8
G: Erin Doelling, Fr., 5-7	7.7	2.7	1.1
G: Brenda Kelsay, So., 5-8	9.7	4.1	1.9

1983-84

F: Kay Sharp, Fr., 5-11	8.6	4.4	0.7
F: Cathey Tyree, Fr., 5-11	9.6	7.3	1.0
C: Janet Freund, Fr., 6-0	7.5	5.6	0.9
G: Erin Doelling, So., 5-7	9.8	2.6	2.5
G: Brenda Kelsay, Jr., 5-8	8.9	3.6	0.9

1984-85

	PPG	RPG	APG
Forward: Kay Sharp, So., 5-11	12.3	6.3	1.1
Forward: Cathey Tyree, So., 5-11	10.6	8.1	0.9
Center: Christa LaCroix, Fr., 6-4	4.5	4.0	0.5
Guard: Lisa Jahner, Fr., 6-0	10.0	4.5	3.4
Guard: Sharon Versyp, Fr., 5-8	12.3	2.9	3.0

1985-86

F: Sandy Alston, Jr., 5-10	5.6	4.4	1.0
F: Cathey Tyree, Jr., 5-11	11.4	7.0	1.4
G: Lisa Jahner, So., 6-0	10.0	4.7	3.0
G: Sharon Versyp, So., 5-8	14.6	3.1	3.3
G: Erin Doelling, Sr., 5-7	8.1	2.0	2.1

1986-87

F: Kay Sharp, Sr., 5-11	7.3	3.8	0.8
F: Cathey Tyree, Sr., 5-11	11.9	7.4	1.6
C: Christa LaCroix, Jr., 6-4	11.9	6.6	1.0
G: Lisa Jahner, Jr., 6-0	10.7	4.1	5.2
G: Sharon Versyp, Jr., 5-8	13.2	1.9	4.3

1987-88

F: Jill Sauer, Jr., 6-1	7.7	4.5	1.8
C: Christa LaCroix, Sr., 6-4	18.8	6.9	1.0
G: Lisa Jahner, Sr., 6-0	12.0	5.0	6.5
G: Sharon Versyp, Sr., 5-8	15.1	3.0	4.1
G: Anne Kvachkoff, Jr., 5-9	5.8	2.7	2.6

1988-89

F: Joy Holmes, So., 5-10	15.7	6.3	2.1
F: Jill Sauer, Sr., 6-1	5.6	4.3	0.6
C: Rhonda Mateen, So., 6-3	9.8	5.4	0.8
G: MaChelle Joseph, Fr., 5-8	18.9	4.4	5.0
G: Anne Kvachkoff, Sr., 5-9	9.7	3.4	3.2

1989-90

F: Joy Holmes, Jr., 5-10	16.8	7.2	1.6
F: Donna Gill, So., 6-1	7.7	6.1	1.1
C: Rhonda Mateen, Jr., 6-3	10.5	5.6	1.0
G: MaChelle Joseph, So., 5-8	19.4	2.4	5.1
G: Carol Madsen, Fr., 6-0	6.5	2.3	1.6

1990-91

F: Joy Holmes, Sr., 5-10	21.5	9.2	2.0
F: Donna Gill, Jr., 6-1	6.9	7.3	0.8
C: Rhonda Mateen, Sr., 6-3	15.4	6.8	0.9
G: Teri Moren, Sr., 5-8	3.4	2.4	4.3
G: MaChelle Joseph, Jr., 5-8	20.3	3.5	5.5

1991-92

F: Kay Tucker, Jr., 6-0	6.0	3.7	1.5
F: Donna Gill, Sr., 6-1	11.2	7.4	0.8
C: Jane Calhoun, Sr., 6-3	5.0	5.0	1.5
G: Staci Carney, Jr., 5-6	5.0	2.5	2.7
G: MaChelle Joseph, Sr., 5-8	22.2	4.0	5.6

1992-93

F: Kay Tucker, Sr., 6-0	9.1	4.4	2.2
F: Tricia Cullop, Sr., 6-2	9.0	5.7	1.7
C: Stacey Lovelace, Fr., 6-4	9.2	4.2	0.5
G: Jennifer Jacoby, So., 5-7	8.1	2.9	3.0
G: Cindy Lamping, So., 5-10	16.0	5.6	4.1



1993-94

	PPG	RPG	APG
F: Tonya Kirk, So., 6-2	9.7	3.8	2.3
F: Stacey Lovelace, So., 6-4	11.4	7.4	1.1
C: Leslie Johnson, Fr., 6-1	18.5	9.1	0.7
G: Jennifer Jacoby, Jr., 5-7	7.6	3.0	4.7
G: Cindy Lamping, Jr., 5-10	7.2	3.5	3.7

1994-95

F: Jannon Roland, So., 6-1	12.1	4.8	1.9
F: Danielle McCulley, So., 6-3	9.6	6.3	1.2
C: Stacey Lovelace, Jr., 6-4	14.2	8.1	1.3
G: Jennifer Jacoby, Sr., 5-7	8.5	3.1	5.1
G: Cindy Lamping, Sr., 5-10	3.5	2.6	1.2

1995-96

F: Tonya Kirk, Sr., 6-2	12.8	7.2	1.8
F: Jannon Roland, Jr., 6-1	13.6	4.0	2.9
C: Stacey Lovelace, Sr., 6-4	15.5	8.8	1.6
G: Nicole Erickson, So., 5-6	6.4	1.9	3.4
G: Stephanie White, Fr., 5-11	10.8	4.3	4.5

1996-97

F: Corissa Yasen, Sr., 6-0	11.4	6.2	1.5
F: Mackenzie Curless, Fr., 6-1	5.5	4.1	0.3
F: Jannon Roland, Sr., 6-1	18.9	7.2	1.4
G: Ukari Figgs, So., 5-9	9.6	3.5	3.1
G: Stephanie White, So., 5-11	16.4	5.2	4.4

1997-98

F: Stephanie White, Jr., 5-11	20.6	6.1	4.8
F: Michelle Duhart, So., 6-0	5.2	5.4	0.8
C: Mackenzie Curless, So., 6-1	7.8	4.0	0.3
G: Ukari Figgs, Jr., 5-9	15.5	5.1	3.7
G: Tiffany Young, So., 5-11	5.1	2.0	1.1

1998-99

F: Stephanie White, Sr., 5-11	20.2	5.4	4.5
F: Michelle Duhart, Jr., 6-0	3.7	5.7	0.7
C: Camille Cooper, So., 6-4	9.7	4.9	0.1
G: Ukari Figgs, Sr., 5-9	16.3	4.5	4.2
G: Katie Douglas, So., 6-1	14.1	6.2	3.5

1999-2000

	PPG	RPG	APG
F: Katie Douglas, Jr., 6-1	20.4	6.5	4.7
F: Michelle Duhart, Sr., 6-0	4.7	6.5	1.4
C: Camille Cooper, Jr., 6-4	15.3	7.5	0.2
G: Kelly Komara, So., 5-7	10.9	3.9	3.6
G: Shinika Parks, Jr., 5-8	8.3	4.4	3.5

2000-01

F: Katie Douglas, Sr., 6-1	15.5	4.7	3.7
F: Shalicia Hurns, Fr., 6-3	9.3	6.6	0.9
C: Camille Cooper, Sr., 6-4	14.2	6.5	0.6
G: Kelly Komara, Jr., 5-7	9.5	2.8	2.6
G: Erika Valek, Fr., 5-6	6.4	2.5	2.8

2001-02

F: Laura Meadows, Sr., 6-3	9.7	7.0	3.3
F: Shereka Wright, So., 5-10	19.0	6.6	1.9
C: Mary Jo Noon, Jr., 6-5	13.1	5.4	0.3
G: Kelly Komara, Sr., 5-7	12.7	4.4	4.2
G: Erika Valek, So., 5-6	7.6	3.5	2.7

2002-03

F: Lindsey Hicks, Jr., 6-1	5.7	4.0	2.3
F: Shereka Wright, Jr., 5-10	18.9	6.3	2.7
C: Mary Jo Noon, Sr., 6-5	11.0	4.9	0.6
G: Beth Jones, Jr., 5-9	8.7	2.4	2.5
G: Erika Valek, Jr., 5-6	14.0	3.8	4.9

2003-04

F: Lindsey Hicks, Sr., 6-1	6.5	3.9	1.4
F: Shereka Wright, Sr., 5-10	20.1	6.1	2.3
C: Emily Heikes, Jr., 6-0	6.2	6.3	0.4
G: Beth Jones, Sr., 5-9	6.3	1.7	2.0
G: Erika Valek, Sr., 5-6	8.8	3.8	4.0

2004-05

F: Erin Lawless, So., 6-2	14.2	5.3	1.0
F: Lindsay Wisdom-Hylton, Fr., 6-2	8.7	4.9	2.0
C: Emily Heikes, Sr., 6-0	5.2	6.4	1.2
G: Katie Gearlds, So., 6-1	14.1	3.8	3.0
G: Sharika Webb, Jr., 5-9	4.8	3.1	2.8

Freshman Starters*

Player	GP	GS	Pct.	Year
Natasha Cender, C	16	13	.813	1975-76
Linda Marrs, F	16	11	.688	1975-76
Rita Sanders, G	23	22	.957	1976-77
Sue Fackler, C	18	15	.833	1977-78
Jean Joppe, F	18	12	.667	1977-78
Carol Emanuel, F	22	22	1.000	1979-80
Erin Doelling, G	25	14	.560	1982-83
Janet Freund, C	28	14	.500	1983-84
Kay Sharp, F	28	17	.607	1983-84
Cathey Tyree, F	28	21	.750	1983-84
Lisa Jahner, G	28	16	.571	1984-85
Sharon Versyp, G	28	26	.929	1984-85
MaChelle Joseph, G	30	30	1.000	1988-89
Carol Madsen, G	30	15	.500	1989-90
Stacey Lovelace, C	24	16	.667	1992-93
Leslie Johnson, C	34	33	.971	1993-94
Stephanie White, G	31	31	1.000	1995-96
Mackenzie Curless, F	28	28	1.000	1996-97
Shalicia Hurns, F	38	21	.553	2000-01
Erika Valek, G	33	33	1.000	2000-01
Lindsay Wisdom-Hylton, F	30	21	.700	2004-05

* Players listed started at least 50 percent of the games they played as freshmen.

Four-Year Starters

Carol Emanuel, F	_____	1980-81-82-83
Cathey Tyree, F	_____	1984-85-86-87
Sharon Versyp, G	_____	1985-86-87-88
MaChelle Joseph, G	_____	1989-90-91-92
Stacey Lovelace, C/F	_____	1993-94-95-96
Stephanie White, G/F	_____	1996-97-98-99
Erika Valek, G	_____	2001-02-03-04

Joy Holmes — 1991
G/F, 5-10, Mansfield, Ohio



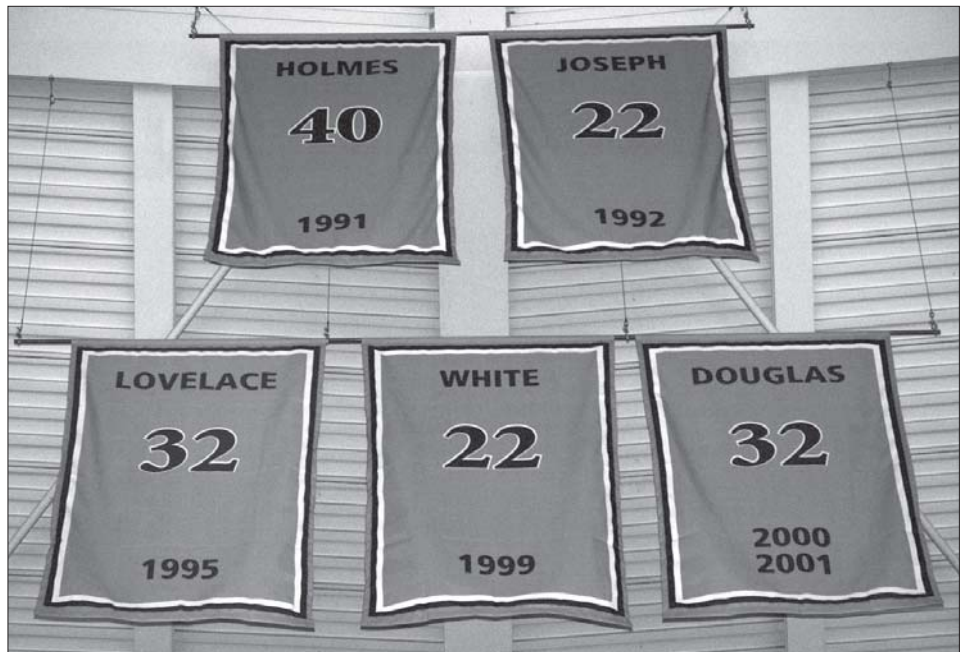
MaChelle Joseph — 1992
G, 5-8, Auburn, Ind.



Stacey Lovelace — 1995
F/C, 6-4, Detroit, Mich.



At the start of the 2003-04 season, fans entering Mackey Arena noticed something new: retired jersey banners honoring Purdue's men's and women's basketball All-Americans. The first five women's honorees were Joy Holmes, MaChelle Joseph, Stacey Lovelace, Stephanie White and Katie Douglas. Shereka Wright joined the group later that year, following a standout senior campaign in 2003-04. Retired jersey banners are awarded to players who are named first team All-American by Kodak, Wooden, or first or second team All-American by Associated Press. Men's retired jersey banners are awarded to consensus All-Americans.



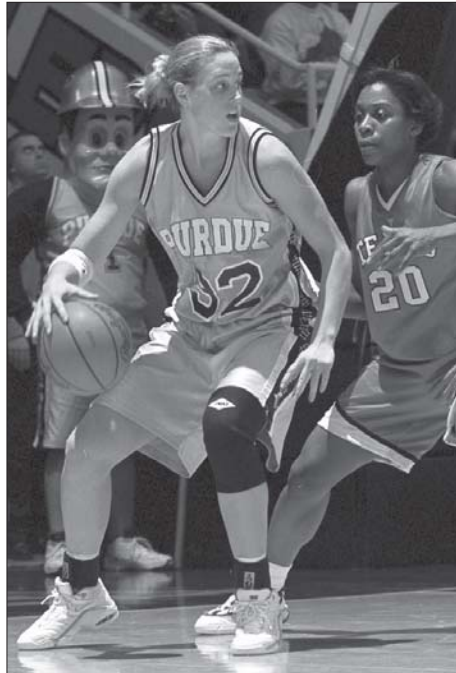
Purdue hoisted the first group of retired jersey banners for its All-Americans prior to the 2003-04 season.



Stephanie White — 1999
G/F, 5-11, West Lebanon, Ind.



Katie Douglas — 2000, 2001
G/F, 6-1, Indianapolis, Ind.



Shereka Wright — 2004
F, 5-10, Copperas Cove, Texas



Purdue head coach Kristy Curry presented All-American Shereka Wright and her parents, Walter and Mary, with her retired jersey banner on Nov. 21, 2004.

Purdue Men's Basketball All-Americans		
#22 Joe Barry Carroll		1980
#7 Norman Cottom		1934
#43 Terry Dischinger		1961, 1962
#23 Robert Kessler		1936
#10 Rick Mount		1969, 1970
#27 Charles "Stretch" Murphy		1929, 1930
#13 Glenn Robinson		1994
#42 Dave Schellhase		1966
#13 John Wooden		1930, 1931, 1932
#32 Jewell Young		1937, 1938

Purdue has a rich history with USA Basketball, the national governing body for men's and women's basketball in the United States. USA Basketball is responsible for the selection, training and fielding of USA teams that compete in International Basketball Federation (FIBA) sponsored international basketball competitions.

In addition to the selection and training of men's and women's basketball teams that represent the USA in international and national competitions, USA Basketball also is involved in the sanctioning of U.S. basketball team tours of foreign countries, foreign basketball team tours of the U.S., as well as overseeing the certification of FIBA and USA Basketball officials and the assignment of certified FIBA and USA Basketball officials to international competitions.

USA Basketball teams participate in numerous competitions, including the Olympic Games, World Championships, Pan-American Games and World University Games. In addition, USA Basketball fields Junior National teams to compete in FIBA Junior World Championships and Select teams to tour foreign countries for international tournaments.

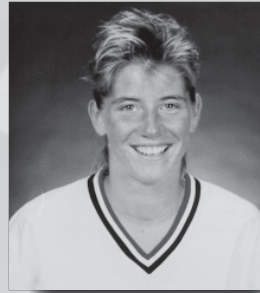
Numerous Purdue players and coaches have participated in USA Basketball, including former Boilermaker coach Nell Fortner. Fortner, who coached Purdue to a Big Ten regular-season championship in 1997, guided the USA Basketball Women's National Team to the gold medal at the 2000 Olympics in Sydney, Australia.

In August 2001, Purdue's Shereka Wright became the ninth Purdue player to don the red, white and blue as a member of the USA Basketball Women's World University Games Team. Wright and her 11 teammates won the gold medal in Beijing, China.



MaChelle Joseph

1989 Junior Nationals
1990 Junior Nationals
1992 Jones Cup (G)



Jennifer Jacoby

1995 Jones Cup (B)



Stacey Lovelace

1995 Jones Cup (B)



Jannon Roland

1995 Jones Cup (B)
1997 Jones Cup (S)



Stephanie White

1996 Select Team
1997 Jones Cup (S)



Ukari Figgs

1998 Select Team



Katie Douglas

1998 Select Team
1999 World University Games (S)



Camille Cooper

1999 World University Games (S)
2000 Jones Cup (G)



Shereka Wright

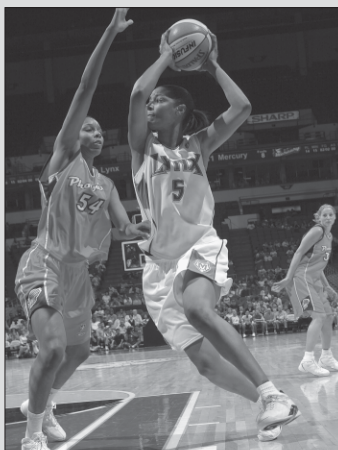
2001 World University Games (G)

(G)=Gold medal
(S)=Silver medal
(B)=Bronze medal

Boilermakers in the WNBA
- Active in 2005 -



Katie Douglas '01
Connecticut Sun

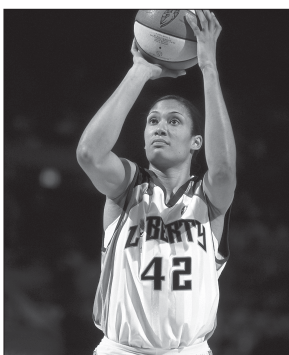


Stacey Lovelace '96
Minnesota Lynx

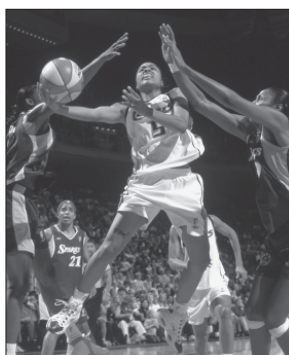


Shereka Wright '04
Phoenix Mercury

Boilermakers Formerly in the WNBA and ABL



Camille Cooper '01



Ukari Figs '99



Joy Holmes '91



Jennifer Jacoby '95



Jannon Roland '97



Stephanie White '99



Corissa Yasen '97

**From Purdue ...
To Professional**

Camille Cooper
Los Angeles Sparks, WNBA 2001
New York Liberty, WNBA 2001-02

Katie Douglas
Orlando Miracle, WNBA 2001-02
Connecticut Sun, WNBA 2003-

Ukari Figs
Los Angeles Sparks, WNBA 1999-2001
Portland Fire, WNBA 2002
Houston Comets, WNBA 2003

Joy Holmes
Seattle Reign, ABL 1997-98
Nashville Noise, ABL 1998-99
Detroit Shock, WNBA 2000

Jennifer Jacoby
Portland Power, ABL 1996-97
1997-98

Stacey Lovelace
Atlanta Glory, ABL 1996-97
1997-98
New England Blizzard, ABL 1998-99
Seattle Storm, WNBA 2000-01
Minnesota Lynx 2004-

Jannon Roland
Columbus Quest, ABL 1997-98
New England Blizzard, ABL 1997-98
1998-99
Orlando Miracle, WNBA 2000

Stephanie White
Charlotte Sting, WNBA 1999
Indiana Fever, WNBA 2000-04

Shereka Wright
Phoenix Mercury, WNBA 2004-

Corissa Yasen
Sacramento Monarchs, WNBA 1997

Beginning with the 1993-94 season, the Purdue and Indiana women's basketball teams have played an annual game for the Barn Burner Trophy.

The traveling trophy, funded by the Sara Lee Corporation as part of its Discover Women's Sports program, is similar in concept to football's Old Oaken Bucket, volleyball's Monon Spike, and women's soccer's Golden Boot. The winner of the wood plaque is responsible for bringing it back to its campus and adding a panel to denote its victory, detailing the score and the Most Valuable Player.

Purdue won the first Barn Burner game on March 2, 1994, and has won nine of the first 11. The Boilermakers' all-time series with the Hoosiers dates to Jan. 28, 1976, when Indiana beat Purdue 80-44 in Bloomington. Indiana won 17 of the first 19 meetings between the two schools from 1976 to 1986, but Purdue has turned the tables by winning 33 of the last 38 to take a 36-22 advantage.

In 2001-02, Purdue and Indiana raised the stakes in their storied rivalry by creating the Simon Properties-sponsored Crimson & Gold Cup, an all-sports competition between the two institutions. The results of meetings between every varsity sport in which both schools compete figure in the final tally, with the winner of each event earning one point. In sports that feature two meetings in one season, the winner is awarded half a point for a victory. Indiana won the inaugural trophy by a score of 10-9. Purdue won the trophy in 2002-03 and 2003-04, but the Cream and Crimson reclaimed the crown in 2004-05 by a 12-8 margin.

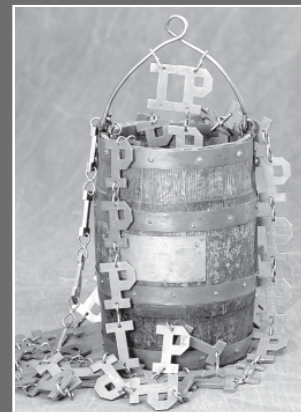


Jannon Roland was the first two-time Barn Burner Most Valuable Player honoree.

Purdue-Indiana Rivalry Trophies



Women's Basketball's Barn Burner



Football's Old Oaken Bucket



Volleyball's Monon Spike



Women's Soccer's Golden Boot

Purdue-Indiana Barn Burner Trophy Results

<u>Date</u>	<u>Location</u>	<u>Result</u>	<u>Most Valuable Player</u>
March 2, 1994	West Lafayette	Purdue 83-58	Jannon Roland, Purdue (23 points, 2 rebounds)
Feb. 10, 1995	Bloomington	Purdue 57-44	Jennifer Jacoby, Purdue (11 points, 4 rebounds)
Feb. 9, 1996	West Lafayette	Purdue 67-66	Jannon Roland, Purdue (13 points, 4 rebounds)
Jan. 26, 1997	West Lafayette	Indiana 51-50	Bridget Porter, Indiana (13 points, 14 rebounds)
Jan. 25, 1998	Bloomington	Indiana 85-71	Kristi Green, Indiana (18 points, 1 rebound)
Jan. 22, 1999	West Lafayette	Purdue 97-62	Stephanie White, Purdue (22 points, 11 rebounds)*
Jan. 23, 2000	Bloomington	Purdue 71-65 OT	Katie Douglas, Purdue (24 points, 15 rebounds)
Feb. 15, 2001	West Lafayette	Purdue 87-46	Camille Cooper, Purdue (25 points, 4 rebounds)
Jan. 17, 2002	Bloomington	Purdue 61-53	Laura Meadows, Purdue (15 points, 16 rebounds)
Feb. 27, 2003	West Lafayette	Purdue 74-48	Emily Heikes, Purdue (13 points, 7 rebounds)
Jan. 25, 2004	Bloomington	Purdue 71-47	Shereka Wright, Purdue (22 points, 3 rebounds)
Jan. 6, 2005	West Lafayette	Purdue 54-31	Emily Heikes, Purdue (11 points, 11 rebounds)

* White also recorded 10 assists, for a triple-double.



VS.





1991

Outright Champions (17-1)

Head Coach: Lin Dunn

Assistant Coaches: Tom Collen, Gail Goostenkors, Pam Means

Captains: Joy Holmes, MaChelle Joseph

Usual Starting Lineup: F-Holmes, F-Gill, C-Mateen, G-Moren, G-Joseph

Player	Hometown	PPG	RPG	APG
Erika Brooks, Sr., F, 5-11	Evanston, Ill.	3.6	1.5	0.4
Jane Calhoun, Jr., C, 6-3	Tipton, Ind.	2.0	3.1	0.7
Staci Carney, So., G, 5-6	Calumet City, Ill.	3.5	1.7	1.1
Tricia Cullop, So., F, 6-2	Bicknell, Ind.	3.5	2.6	0.5
Tina Eddie, So., F, 6-1	Columbus, Ohio	4.4	4.6	0.6
Donna Gill, Jr., F, 6-1	Fort Wayne, Ind.	6.9	7.3	0.8
Joy Holmes, Sr., F, 5-10	Mansfield, Ohio	21.5	9.2	2.0
Julian Jaumotte, Jr., C, 6-3	Pittsburgh, Pa.		Redshirted	
MaChelle Joseph, Jr., G, 5-8	Auburn, Ind.	20.3	3.5	5.5
Stacy Kraiza, So., F, 6-3	St. Clair Shores, Mich.	3.6	3.3	1.1
Rhonda Mateen, Sr., C, 6-3	Akron, Ohio	15.4	6.8	0.9
Teri Moren, Sr., G, 5-8	Seymour, Ind.	3.4	2.4	4.3
Kay Tucker, So., F, 6-0	Cleveland, Ohio	1.6	1.0	0.3

1994

Co-Champions (16-2)

Head Coach: Lin Dunn

Assistant Coaches: Dallas Boychuk, MaChelle Joseph, Sarah Sharp

Captains: Andrea Hildebrand, Cindy Lamping

Usual Starting Lineup: F-Kirk, F-Lovelace, C-Johnson, G-Jacoby, G-Lamping

Player	Hometown	PPG	RPG	APG
Melina Griffin, So., G, 6-0	Anderson, Ind.	3.9	2.7	1.3
Andrea Hildebrand, Jr., G, 5-9	Bourbonnais, Ill.	1.4	0.8	0.8
Jennifer Jacoby, Jr., G, 5-7	Rossville, Ind.	7.6	3.0	4.7
Leslie Johnson, Fr., C, 6-1	Fort Wayne, Ind.	18.5	9.1	0.7
Tonya Kirk, So., F, 6-2	Cincinnati, Ohio	9.7	3.8	2.3
Cindy Lamping, Jr., G, 5-10	Hamburg, Ind.	7.2	3.5	3.7
Shannon Lindsey, Jr., C, 6-4	Indianapolis, Ind.	3.2	2.4	0.6
Stacey Lovelace, So., F, 6-4	Detroit, Mich.	11.4	7.4	1.1
Danielle McCulley, Fr., F, 6-3	Gary, Ind.	6.1	4.2	0.5
Jannon Roland, Fr., G, 6-1	Urbana, Ohio	10.1	3.2	2.2
Nicki Taggart, Fr., G, 5-7	Platteville, Wis.	0.8	0.6	0.8

1995

Co-Champions (13-3)

Head Coach: Lin Dunn

Assistant Coaches: Dallas Boychuk, MaChelle Joseph, Gail Hook

Captains: Jennifer Jacoby, Cindy Lamping, Shannon Lindsey

Usual Starting Lineup: F-Roland, F-McCulley, C-Lovelace, G-Jacoby, G-Lamping

Player	Hometown	PPG	RPG	APG
Nicole Erickson, Fr., G, 5-6	Fullerton, Calif.	4.9	1.9	1.4
Melina Griffin, Jr., G, 6-0	Anderson, Ind.	4.2	2.6	1.3
Jennifer Jacoby, Sr., G, 5-7	Rossville, Ind.	8.5	3.1	5.1
Leslie Johnson, So., C, 6-1	Fort Wayne, Ind.	10.9	5.8	0.7
Tonya Kirk, Jr., F, 6-2	Cincinnati, Ohio	6.9	2.6	1.0
Cindy Lamping, Sr., G, 5-10	Hamburg, Ind.	3.5	2.6	1.2
Shannon Lindsey, Sr., C, 6-4	Indianapolis, Ind.	3.9	3.1	0.7
Stacey Lovelace, Jr., C, 6-4	Detroit, Mich.	14.2	8.1	1.3
Danielle McCulley, So., F, 6-3	Gary, Ind.	9.6	6.3	1.2
Jannon Roland, So., F, 6-1	Urbana, Ohio	12.1	4.8	1.9
Nicki Taggart, So., G, 5-7	Platteville, Wis.	0.9	0.6	1.2
Michele VanGorp, Fr., C, 6-6	Macomb, Mich.	2.2	1.8	0.2

1997

Tri-Champions (12-4)

Head Coach: Nell Fortner

Assistant Coaches: Carolyn Peck, Pam Stackhouse, Kerry Cremeans

Captain: Jannon Roland

Usual Starting Lineup: F-Yasen, F-Curless, F-Roland, G-Figgs, G-White

Player	Hometown	PPG	RPG	APG
Barbie Baxter, Sr., G, 5-7	Williamsport, Ind.	0.0	0.0	0.5
Danielle Bird, Fr., G, 5-7	Fort Wayne, Ind.	0.7	1.3	0.3
Mackenzie Curless, Fr., F, 6-1	Martinsville, Ind.	5.5	4.1	0.3
Michelle Duhart, Fr., F, 6-0	Arlington, Va.	2.0	3.2	0.4
Ukari Figgs, So., G, 5-9	Georgetown, Ky.	9.6	3.5	3.1
Shayla Potter, Fr., G, 5-6	Inglewood, Calif.	1.0	0.5	0.5
Jannon Roland, Sr., F, 6-1	Urbana, Ohio	18.9	7.2	1.4
Amy Shaffer, So., F, 6-0	Hillsdale, Mich.	0.0	0.3	0.0
Stephanie White, So., G, 5-11	West Lebanon, Ind.	16.4	5.2	4.4
Corissa Yasen, Sr., F, 6-0	Coeur d'Alene, Idaho	11.4	6.2	1.5
Tiffany Young, Fr., G, 5-11	Hillsboro, Ala.	2.6	1.4	0.2

1999

Outright Champions (16-0)

Head Coach: Carolyn Peck

Assistant Coaches: Pam Stackhouse, Kerry Cremeans, Seth Kushkin

Captains: Ukari Figgs, Stephanie White

Usual Starting Lineup: F-White-McCarty, F-Duhart, C-Cooper, G-Figgs, G-Douglas

Player	Hometown	PPG	RPG	APG
Danielle Bird, Jr., G, 5-7	Fort Wayne, Ind.	0.2	0.2	0.3
Camille Cooper, So., C, 6-4	Georgetown, Ky.	9.7	4.9	0.1
Candi Crawford, So., F, 6-1	Fort Wayne, Ind.	1.9	1.4	0.0
Mackenzie Curless, Jr., F, 6-1	Martinsville, Ind.	2.7	1.2	0.1
Katie Douglas, So., G/F, 6-1	Indianapolis, Ind.	14.1	6.2	3.5
Michelle Duhart, Jr., F, 6-0	Arlington, Va.	3.7	5.7	0.7
Ukari Figgs, Sr., G, 5-9	Georgetown, Ky.	16.3	4.5	4.2
Kelly Komara, Fr., G, 5-7	Schererville, Ind.	5.3	2.5	1.9
Mo-nique Langston, So., G/F, 5-11	Bakersfield, Calif.	1.4	0.4	0.1
Beth Lapaich, So., F, 6-0	La Porte, Ind.	0.0	0.0	0.3
Connie Murdock, So., F, 6-2	South Bend, Ind.	1.2	0.9	0.2
Mary Jo Noon, Fr., C, 6-5	Clarksville, Ind.		Redshirted	
Shayla Potter, Jr., G, 5-6	Inglewood, Calif.	0.0	1.0	0.0
Amy Shaffer, Sr., F, 6-0	Hillsdale, Mich.	0.6	0.1	0.0
Stephanie White, Sr., G/F, 5-11	West Lebanon, Ind.	20.2	5.4	4.5
Tiffany Young, Jr., G, 5-11	Hillsboro, Ala.	2.1	1.1	0.3

2001

Outright Champions (14-2)

Head Coach: Kristy Curry

Assistant Coaches: Pam Stackhouse, Kerry Cremeans, Kelly Curry

Captains: Camille Cooper, Katie Douglas

Usual Starting Lineup: F-Douglas, F-Hurns, C-Cooper, G-Komara, G-Valek

Player	Hometown	PPG	RPG	APG
Camille Cooper, Sr., C, 6-4	Georgetown, Ky.	14.2	6.5	0.6
Candi Crawford, Sr., F, 6-1	Fort Wayne, Ind.	3.3	2.3	0.2
Katie Douglas, Sr., G/F, 6-1	Indianapolis, Ind.	15.5	4.7	3.7
Lindsey Hicks, Fr., F, 6-1	Lebanon, Ohio	2.2	1.3	0.3
Shalicia Hurns, Fr., F, 6-3	Indianapolis, Ind.	9.3	6.6	0.9
Beth Jones, Fr., G, 5-9	Maineville, Ohio	1.8	0.5	0.3
Kelly Komara, Jr., G, 5-7	Schererville, Ind.	9.5	2.8	2.6
Mo-nique Langston, Sr., G/F, 5-11	Bakersfield, Calif.	0.5	0.8	0.5
Laura Meadows, Sr., F, 6-3	Huntington, W.Va.		Redshirted	
Mary Jo Noon, So., C, 6-5	Clarksville, Ind.	4.8	2.7	0.1
Shinika Parks, Sr., G, 5-8	Suisun, Calif.	3.6	1.9	1.5
Erika Valek, Fr., G, 5-6	Lubbock, Texas	6.4	2.5	2.8
Shereka Wright, Fr., F, 5-10	Copperas Cove, Texas	9.9	4.7	1.8

2002

Outright Champions (13-3)

Head Coach: Kristy Curry

Assistant Coaches: Pam Stackhouse, Kerry Cremeans, Kelly Curry

Captains: Kelly Komara, Laura Meadows

Usual Starting Lineup: F-Meadows, F-Wright, C-Noon, G-Komara, G-Valek

Player	Hometown	PPG	RPG	APG
Hannah Anderson, Fr., F, 6-0	West Lafayette, Ind.	1.3	1.3	0.0
Emily Heikes, Fr., F, 6-0	Palos Hills, Ill.	5.3	3.9	0.2
Lindsey Hicks, So., F, 6-1	Lebanon, Ohio	2.5	1.5	0.5
Beth Jones, So., G, 5-9	Maineville, Ohio	3.2	1.2	0.8
Kelly Komara, Sr., G, 5-7	Schererville, Ind.	12.7	4.4	4.2
Laura Meadows, Sr., F, 6-3	Huntington, W.Va.	9.7	7.0	3.3
Mary Jo Noon, Jr., C, 6-5	Clarksville, Ind.	13.1	5.4	0.3
Erika Valek, So., G, 5-6	Lubbock, Texas	7.6	3.5	2.7
Crystal Vander Plaats, Sr., G, 5-9	West Lafayette, Ind.	0.7	0.3	0.3
Brea Williams, Sr., F, 6-1	Jeffersonville, Ind.	0.0	0.0	0.0
Shereka Wright, So., F, 5-10	Copperas Cove, Texas	19.0	6.6	1.9

NCAA WOMAN OF THE YEAR

1999 — Stephanie White (finalist)
2001 — Camille Cooper (finalist)

MARGARET WADE TROPHY

1999 — Stephanie White

HONDA AWARD

1999 — Stephanie White

FRANCES POMEROY NAISMITH AWARD

2004 — Erika Valek

ASSOCIATED PRESS ALL-AMERICAN

1995 — Stacey Lovelace (HM)
1996 — Stacey Lovelace (HM)
1997 — Jannon Roland (HM)
1998 — Stephanie White (HM)
1999 — Stephanie White (1st Team)
Ukari Figgs (HM)
2000 — Katie Douglas (2nd Team)
2001 — Katie Douglas (1st Team)
Camille Cooper (HM)
2002 — Shereka Wright (3rd Team)
2003 — Shereka Wright (3rd Team)
2004 — Shereka Wright (2nd Team)

KODAK/WBCA ALL-AMERICAN*

1990 — Joy Holmes (HM)
1991 — Joy Holmes (1st Team)
MaChelle Joseph (HM)
1992 — MaChelle Joseph (1st Team)
1994 — Leslie Johnson (HM)
1995 — Stacey Lovelace (1st Team)
1997 — Jannon Roland (HM)
1998 — Stephanie White (HM)
1999 — Stephanie White (1st Team)
Ukari Figgs (HM)
2000 — Katie Douglas (1st Team)
2001 — Katie Douglas (1st Team)
Camille Cooper (HM)
2002 — Kelly Komara (HM)
Shereka Wright (HM)
2003 — Shereka Wright (HM)
2004 — Shereka Wright (HM)

* HM denotes All-District IV selection.

USBWA ALL-AMERICAN

1990 — MaChelle Joseph (2nd Team)
1991 — Joy Holmes (2nd Team)
1992 — MaChelle Joseph (1st Team)
1999 — Stephanie White (1st Team)
2000 — Katie Douglas (1st Team)
2001 — Katie Douglas (1st Team)

WOODEN ALL-AMERICAN

2004 — Shereka Wright (1st Team)

USBWA NATIONAL FRESHMAN OF THE YEAR

1994 — Leslie Johnson

NATIONAL SPORTS FEDERATION
ALL-AMERICAN

1983 — Carol Emanuel (2nd Team)

NCAA POSTGRADUATE SCHOLARSHIP

1982 — Sue Bartz
1995 — Cindy Lamping

USBWA DISTRICT IV PLAYER OF THE YEAR

1990 — MaChelle Joseph
1991 — Joy Holmes

USBWA ALL-DISTRICT IV

1990 — Joy Holmes
MaChelle Joseph
1991 — Joy Holmes
MaChelle Joseph

AIAW STATE ALL-TOURNAMENT TEAM

1982 — Carol Emanuel

MAIAW REGIONAL ALL-TOURNAMENT TEAM

1982 — Carol Emanuel
Leslie Schultz

NCAA WOMEN'S FINAL FOUR
ALL-TOURNAMENT TEAM

1999 — Katie Douglas
Ukari Figgs (MOP)
Stephanie White
2001 — Katie Douglas
Shalicia Hurns
Shereka Wright

NCAA REGIONAL ALL-TOURNAMENT TEAM

1992 — Donna Gill, Midwest
1994 — Leslie Johnson, West (MOP)
Tonya Kirk, West
1995 — Jennifer Jacoby, West
Jannon Roland, West
1998 — Ukari Figgs, Midwest
Stephanie White, Midwest
1999 — Camille Cooper, Midwest
Ukari Figgs, Midwest
Stephanie White, Midwest (MOP)
2001 — Camille Cooper, Mideast
Kelly Komara, Mideast (MOP)
2003 — Erika Valek, East
Shereka Wright, East

BIG TEN ALL-TOURNAMENT TEAM

1996 — Jannon Roland
Stacey Lovelace
1998 — Ukari Figgs
Stephanie White
1999 — Katie Douglas
Ukari Figgs
Stephanie White (MOP)
2000 — Camille Cooper
Katie Douglas
2001 — Camille Cooper
Katie Douglas
2003 — Erika Valek
Shereka Wright (MOP)
2004 — Katie Gearlds
Shereka Wright (MOP)

BIG TEN-SUZU FAVOR
FEMALE ATHLETE OF THE YEAR

1991 — Joy Holmes
1992 — MaChelle Joseph
1999 — Stephanie White
2001 — Katie Douglas

BIG TEN PLAYER OF THE YEAR

1991 — Joy Holmes
1992 — MaChelle Joseph
1995 — Stacey Lovelace
1997 — Jannon Roland (coaches)
1999 — Stephanie White
2000 — Katie Douglas (media)
2001 — Katie Douglas

CHICAGO TRIBUNE SILVER BASKETBALL

1991 — Joy Holmes
1992 — MaChelle Joseph
1995 — Stacey Lovelace
1997 — Jannon Roland
1999 — Stephanie White
2001 — Katie Douglas

BIG TEN DEFENSIVE PLAYER OF THE YEAR

2002 — Kelly Komara

BIG TEN FRESHMAN OF THE YEAR

1989 — MaChelle Joseph
1994 — Leslie Johnson
2004 — Katie Gearlds (coaches)

BIG TEN ALL-FRESHMAN TEAM

2001 — Shalicia Hurns
Shereka Wright
2004 — Katie Gearlds
Erin Lawless
2005 — Lindsay Wisdom-Hylton

ALL-BIG TEN

Note: Beginning in 1996, All-Big Ten teams were selected by both the coaches and the media. The coaches' selection is listed first, followed by the media's pick.

1985 — Kay Sharp (HM)
Cathey Tyree (HM)
1986 — Cathey Tyree (HM)
Sharon Versyp (HM)
1987 — Cathey Tyree (HM)
Sharon Versyp (HM)
1988 — Christa LaCroix (1st)
Sharon Versyp (2nd)
Lisa Jahner (HM)
1989 — Joy Holmes (1st)
MaChelle Joseph (2nd)
Anne Kvachkoff (HM)
1990 — Joy Holmes (1st)
MaChelle Joseph (1st)
Donna Gill (HM)
Rhonda Mateen (HM)
1991 — Joy Holmes (1st)
MaChelle Joseph (1st)
Rhonda Mateen (2nd)
1992 — MaChelle Joseph (1st)
Donna Gill (2nd)
1993 — Cindy Lamping (HM)
1994 — Leslie Johnson (1st)
Jennifer Jacoby (HM)
Stacey Lovelace (HM)
Jannon Roland (HM)
1995 — Stacey Lovelace (1st)
Jennifer Jacoby (2nd)
Jannon Roland (HM)
1996 — Stacey Lovelace (2nd/1st)
Jannon Roland (2nd/HM)
Tonya Kirk (HM/HM)
Stephanie White (HM/HM)
1997 — Jannon Roland (1st/1st)
Stephanie White (2nd/2nd)
Corissa Yassen (HM/HM)
1998 — Stephanie White (1st/1st)
Ukari Figgs (2nd/2nd)
Katie Douglas (—/HM)
1999 — Ukari Figgs (1st/1st)
Stephanie White (1st/1st)
Katie Douglas (2nd/2nd)
Camille Cooper (—/HM)
Michelle Duhart (—/HM)

2000	—	Katie Douglas (1st/1st)
		Camille Cooper (2nd/1st)
		Kelly Komara (—/HM)
2001	—	Camille Cooper (1st/1st)
		Katie Douglas (1st/1st)
		Kelly Komara (HM/HM)
		Shalicia Hurns (—/HM)
2002	—	Kelly Komara (1st/1st)
		Shereka Wright (1st/1st)
		Laura Meadows (2nd/HM)
		Mary Jo Noon (HM/HM)
2003	—	Erika Valek (1st/2nd)
		Shereka Wright (1st/1st)
		Mary Jo Noon (—/HM)
2004	—	Shereka Wright (1st/1st)
		Erika Valek (2nd/HM)
		Katie Gearlds (HM/HM)
2005	—	Katie Gearlds (2nd/3rd)
		Erin Lawless (HM/HM)

MOST VALUABLE PLAYER

1976	—	Natasha Cender
1977	—	Helen Nicholas
1978	—	Carol Lindsey
1979	—	Laura Newcomb
1980	—	Carol Emanuel
1981	—	Laura Newcomb
1982	—	Carol Emanuel
1983	—	Carol Emanuel
1984	—	Erin Doelling
1985	—	Kay Sharp
1986	—	Cathey Tyree
1987	—	Cathey Tyree
1988	—	Lisa Jahner
1989	—	Anne Kvachkoff
1990	—	Joy Holmes
1991	—	Joy Holmes
1992	—	MaChelle Joseph
1993	—	Cindy Lamping
		Kay Tucker
1994	—	Jennifer Jacoby
		Leslie Johnson
1995	—	Jennifer Jacoby
		Stacey Lovelace
1996	—	Stacey Lovelace
1997	—	Jannon Roland

* Purdue has not named a season MVP since 1997.

GTE ACADEMIC ALL-AMERICAN OF THE YEAR

1999	—	Stephanie White
------	---	-----------------

ACADEMIC ALL-AMERICAN

1981	—	Sue Bartz (2nd Team)
1982	—	Sue Bartz (1st Team)
		Carol Emanuel (2nd Team)
1983	—	Carol Emanuel (1st Team)
1988	—	Sharon Versyp (2nd Team)
		Christa LaCroix (3rd Team)
1998	—	Stephanie White (3rd Team)
1999	—	Stephanie White (1st Team)
2000	—	Katie Douglas (2nd Team)
2001	—	Camille Cooper (1st Team)
		Katie Douglas (1st Team)

ACADEMIC ALL-DISTRICT

1985	—	Erin Doelling
		Jennifer Isom
1986	—	Erin Doelling
1987	—	Sharon Versyp
1993	—	Cindy Lamping
1997	—	Stephanie White
1998	—	Stephanie White

1999	—	Stephanie White
2000	—	Camille Cooper
		Katie Douglas
2001	—	Camille Cooper
		Katie Douglas
2002	—	Kelly Komara
2004	—	Beth Jones

ACADEMIC ALL-BIG TEN

1983	—	Carol Emanuel
1985	—	Erin Doelling
1986	—	Erin Doelling (1st Team)
		Sandy Alston (2nd Team)
		Sharon Versyp (2nd Team)
		Janet Freund (HM)
		Christa LaCroix (HM)
1987	—	Sharon Versyp (1st Team)
		Janet Freund (2nd Team)
		Christa LaCroix (2nd Team)
		Anne Kvachkoff (HM)
		Jill Sauer (HM)
1988	—	Lisa Jahner
		Christa LaCroix
		Jill Sauer
		Sharon Versyp
1989	—	Anne Kvachkoff
		Jill Sauer
1990	—	Jane Calhoun
1991	—	Jane Calhoun
		Tricia Cullop
1992	—	Jane Calhoun
		Tricia Cullop
		MaChelle Joseph
1993	—	Tricia Cullop
		Cindy Lamping
1994	—	Cindy Lamping
1995	—	Cindy Lamping
		Nicki Taggart
1996	—	Michele VanGorp
1997	—	Barbie Baxter
		Amy Shaffer
		Stephanie White
1998	—	Danielle Bird
		Amy Shaffer
		Stephanie White
1999	—	Danielle Bird
		Camille Cooper
		Candi Crawford
		Katie Douglas
		Michelle Duhart
		Amy Shaffer
		Stephanie White
		Tiffany Young
2000	—	Danielle Bird
		Camille Cooper
		Candi Crawford
		Katie Douglas
		Michelle Duhart
		Kelly Komara
		Mo-nique Langston
2001	—	Camille Cooper
		Candi Crawford
		Katie Douglas
		Kelly Komara
		Mo-nique Langston
2002	—	Beth Jones
		Kelly Komara
		Laura Meadows
		Crystal Vander Plaats
2003	—	Beth Jones

2004	—	Hannah Anderson
		Carol Duncan
		Beth Jones
2005	—	Hannah Anderson
		Carol Duncan

ASSOCIATED PRESS**NATIONAL COACH OF THE YEAR**

Carolyn Peck	1999
--------------	------

NAISMITH COACH OF THE YEAR

Carolyn Peck	1999
--------------	------

JOHN AND NELLIE WOODEN AWARD**(NATIONAL COACH OF THE YEAR)**

Carolyn Peck	1999
--------------	------

BIG TEN COACH OF THE YEAR

Ruth Jones (coaches)	1986
Lin Dunn (coaches and media)	1989
Lin Dunn (media)	1991
Nell Fortner (coaches)	1997
Carolyn Peck (coaches and media)	1999

MACKEY AWARD WINNERS

Amy Porritt	1985
Erin Doelling	1986
Sharon Versyp	1988
Cindy Lamping	1995
Corissa Yasen	1997
Ukari Figgs	1999
Katie Douglas	2001
Kelly Komara	2002

VARSITY WALK AWARD WINNERS

Joy Holmes	1991
MaChelle Joseph	1992
Corissa Yasen	1997
Ukari Figgs	1999
Stephanie White	1999
Katie Douglas	2001
Kelly Komara	2002

BIG TEN MEDAL OF HONOR NOMINEES

Sharon Versyp	1988
Joy Holmes	1991
MaChelle Joseph	1992
Cindy Lamping	1995
Jannon Roland	1997
Stephanie White	1999
Camille Cooper	2001
Shereka Wright	2004

PURDUE ATHLETE OF THE YEAR

Cathey Tyree	1987
Sharon Versyp	1988
Joy Holmes	1991
MaChelle Joseph	1992
Jannon Roland	1997
Stephanie White	1998, 1999
Katie Douglas	2000, 2001
Shereka Wright	2004

PURDUE HALL OF FAME INDUCTEES

Carol Emanuel	Class of 1995
Joy Holmes	Class of 1997
Cathey Tyree	Class of 1998
Corissa Yasen	Class of 2003
Amy Ruley	Class of 2004



1990-91



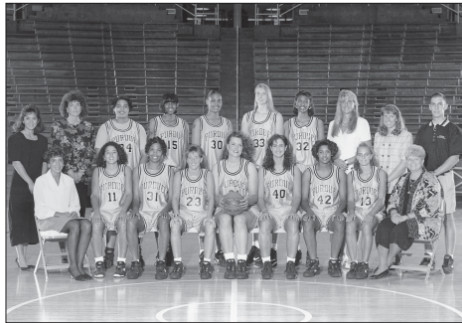
1991-92



1992-93



1993-94



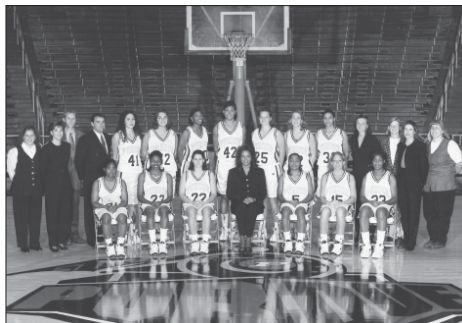
1994-95



1995-96



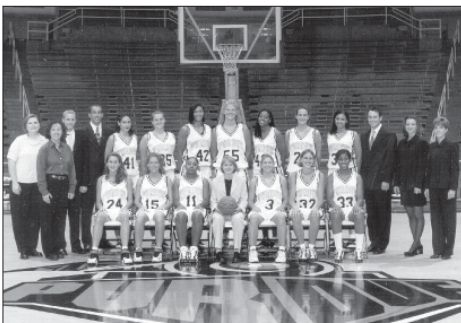
1996-97



1997-98



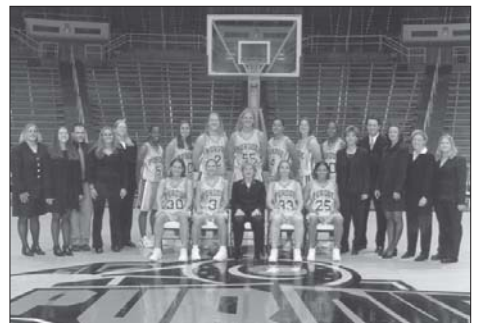
1998-99



1999-2000



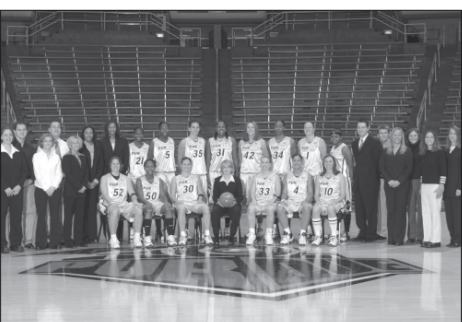
2000-01



2001-02



2002-03



2003-04



2004-05

