



2021-22 PITT WOMEN'S BASKETBALL GAME NOTES

Women's Basketball Contact: Louie Spina | (716) 429-5464 | lspina@athletics.pitt.edu

GAME NOTES



THE MATCHUP

PITT PANTHERS

3-0 | 0-0 ACC

Head Coach: Lance White
Record at Pitt: 24-60 (.286) / 4th year
Career Record: 24-60 (.286) / 4th year
Against Duquesne: 1-1

AT

DUQUESNE

1-3 | 0-0 A-10

Head Coach: Dan Burt
Record at Duquesne: 159-91 (.636) / 9th year
Career Record: 159-91 (.636) / 9th year
Against Pitt: 5-2

GAME 4 | PITT at Duquesne - Nov. 20, 2021 | 8:00 PM | Pittsburgh, Pa. | UPMC Cooper Fieldhouse (4,242)

BREAKING DOWN THE MATCHUP



PITTSBURGHPANTHERS.COM

PITT	CATEGORY	DUQUESNE
82.0	Scoring Offense	59.3
55.7	Scoring Defense	67.3
46.4%	FG %	36.1%
34.0%	FG % Defense	40.1%
34.8%	3PT FG %	31.9%
32.8%	3PT FG % Defense	28.7%
53.7	Rebounds/Game	37.0
19.3	Turnovers/Game	19.0
9.7	Steals/Game	6.0



GODUQUESNE.COM

FRONT PAGE NEWS

THE SERIES

- This meeting marks the 39th edition of the City game between the two teams with Pitt holding the 21-17 advantage in the series.
- The series is tied 8-8 in games played at Duquesne.
- Pitt's last win in the series came at Duquesne on Dec. 29, 2018 when they won 66-58.

A WIN WOULD...

- Be the Panthers' 22nd against the Dukes.
- Give Pitt a 4-0 start to the season for the first time since 2016-17.
- Give Pitt 44 victories against teams from the Atlantic-10 Conference.

STORYLINES

- The Panthers have continued to put an emphasis on rebounding the basketball and it has worked early on. Pitt currently leads the ACC and is tied for third in the NCAA in rebounds per game (53.7). Pitt also ranks second in the NCAA in rebound margin (+24.3) and tied for fourth in offensive rebounds per game (20.3).
- The Pitt offense is off to their best start in over 40 years as they are averaging 82.0 ppg through their first three games. The 246 points are the most through three games for Pitt since 1984-85 (248) and are the third most in program history. Pitt has scored 80+ points twice this season and are 7-0 when scoring 80+ under Lance White.

THE OPENING TIP

- Pitt will hit the road for their first road game of the season Saturday night as they take on Duquesne at 8:00 pm at the UPMC Cooper Fieldhouse. Saturday's game will air on ESPN+.
- Senior guard **Jayla Everett** is enjoying a strong start to her second as a Panther as she ranks fourth in the ACC in scoring (18.3 ppg) while also adding 2.3 rpg, 2.0 apg and 2.0 spg. She currently sits just 17 points shy of 1000 points for her collegiate career.
- Junior sharpshooter **Destiny Strother** burst onto the scene against LIU Wednesday night as she made her first career start. Strother finished her night with career-highs in points (17), assists (4), rebounds (4) and three-pointers made (5) as Pitt cruised to victory.

PROBABLE STARTERS



#4

Emy Hayford
5-8 • JR • G



#20

Jayla Everett
5-10 • SR • G



#31

Destiny Strother
5-9 • JR • G



#5

Amber Brown
6-0 • JR • F



#23

Rita Igbokwe
6-4 • JR • C

PPG	8.3
RPG	2.3
APG	4.0
FG%	61.1%

PPG	18.3
APG	2.0
RPG	2.3
3FG%	42.9%

PPG	8.3
RPG	2.3
APG	1.3
3FG%	41.2%

PPG	7.0
RPG	6.7
APG	3.0
SPG	1.0

PPG	11.0
PG	8.3
BPG	1.7
FG%	59.3%

2021-22 SCHEDULE

OVERALL: 3-0 | ACC: 0-0

Home: 3-0 | Away: 0-0 | Neutral: 0-0

Date	Opponent	Time/Result
N10	RADFORD	W, 82-63
N12	LAYFAYETTE	W, 72-63
N17	LIU	W, 92-41
N20	at Duquesne	8:00 PM
N25	vs. Texas A&M \$	8:00 PM
N26	vs. Northwestern \$	5:45 PM
N27	vs. South Dakota \$	5:45 PM
D1	RUTGERS %	6:00 PM
D4	at Ball State	1:00PM
D7	COPPIN STATE	6:00 PM
D10	NC STATE*	6:00 PM
D19	at Notre Dame*	2:00 PM
D22	HOLY CROSS	12:00 PM
D30	GEORGIA TECH*	6:00 PM
J2	at Boston College*	2:00 PM
J6	at Louisville*	7:00 PM
J13	BOSTON COLLEGE*	6:00 PM
J16	WAKE FOREST*	2:00 PM
J20	at Virginia Tech*	6:00 PM
J23	NOTRE DAME*	2:00 PM
J27	at Clemson*	7:00PM
J30	at Syracuse*	12:00 pm
F3	DUKE*	6:00 PM
F10	at North Carolina*	6:00 PM
F13	SYRACUSE*	2:00 PM
F17	at Miami*	6:00 PM
F20	at Virginia*	4:00 PM
F24	LOUISVILLE*	6:00 PM
F27	FLORIDA STATE*	2:00 PM

All Times Eastern | * - ACC Game

ALL CAPS Games Played at Petersen Events Center in Pittsburgh, PA

\$ - Paradise Jam

% - Big Ten/ACC Challenge

BROADCAST INFO



Pitt Sports Network

Channel: WJAS (1320 AM / 99.1 FM)

Talent: Josh Rowntree, Play-by-Play

Stream: PittsburghPanthers.com



Stream: ESPN+

Talent: TBA (Play-by-Play)

TBA (Analyst)

QUICK FACTS

THE BASICS

Location	Pittsburgh, Pa.
Founded	1787
Conference	Atlantic Coast (ACC)
Enrollment	34,580
Colors	Blue (PMS 289) & Gold (PMS 4515)
Nickname	Panthers
Mascot	Roc
Chancellor	Patrick Gallagher
Director of Athletics	Heather Lyke
Sport Administrator	Chris Hoppe
Home Arena (Cap.)	Petersen Events Center (12,508)

COURT FACTS

PETERSEN EVENTS CENTER

Year Built	2002
Capacity	12,508
Record at The Pete	151-135 (.528), 19th season
Largest Crowd This Season	6,730 vs. FDU (11/19/19)

TEAM HISTORY

First Season of Basketball	1974-75
All-Time Overall Record	640-714 (48 seasons)
All-Time ACC Record	28 - 102 (9 seasons)
All-Time NCAA Tournament Record	6-4
All-Time ACC Tournament Record	2-8
NCAA Appearances/Last	4 / 2015
WNIT Appearances/Last	5 / 2010

COACHING STAFF

Head Coach	Lance White (Texas Tech '96)
Career Record/Year	24 - 60 (4th Season)
Record at Pitt/Year	24 - 60 (4th Season)
Assoc. Head Coach	Terri Mitchell (4th season)
Assistant Coach	Josh Petersen (4th season)
Assistant Coach	Brianna Kiesel (1st season)
Dir. of Operations	Ali Hoesly (4th season)
Director of Video	Bryce Agler (1st season)
Dir. of Creative Content	Maurice Victor II (1st season)
Dir. of Recruiting Ops	Kaila Ealey (1st season)
Athletic Trainer	Brittany Buchheit (3rd season)
Equipment Manager	Alec Kopatich (2nd season)
Academic Coordinator	Tilly Sheets

MEDIA RELATIONS

Director of Media Relations	Louie Spina
Email	lspina@athletics.pitt.edu
Office Phone	(412) 648-7774
Cell Phone	(716) 429-5464
Media Relations Fax	(412) 648-8248
Press Row Phone	(412) 648-2318
Mailing Address	P.O. Box 7436, Pittsburgh, PA 15213-0436
Overnight Address	3719 Terrace St., Pittsburgh, PA 15261

MEDIA RELATIONS

Outlets interested in obtaining credentials to cover Pitt women's basketball home games should email Louie Spina at the following email address: lspina@athletics.pitt.edu.



PITT ROSTER

NO.	NAME	HT.	POS.	YR.	HOMETOWN / HIGH SCHOOL (LAST SCHOOL)
0	Sandrine Clesca	5-9	G	So.	Laval, Quebec, Canada / Winston-Salem Christian School
1	Dayshyanette Harris	5-7	G	Jr.	Youngstown, OH / Ursuline
2	Liatu King	6-0	G	So.	Washington, DC / Bishop McNamara
3	Taisha Exanor	6-0	G	So.	Chateaugay, Quebec, Canada / Dawson College
4	Emy Hayford	5-8	G	Jr.	Maastricht, Netherlands / Calandlyceum
5	Amber Brown	6-0	G	Jr.	Monroe, LA / Little Rock Christian Academy
10	Ismeni Prapa	5-7	G	Sr.	Athens, Greece / American Community School of Athens
13	Tracey Hueston	6-2	F	So.	Roanoke, VA / Northside
14	Cynthia Ezeja	6-3	F	R-So.	Athens, Greece / 20th High School of Athens
15	Mary Dunn	6-3	F	Gr.	Washington, PA / Trinity (Youngstown State)
20	Jayla Everett	5-10	G	Sr.	St. Louis, MO / Kirkwood (New Mexico)
21	Maliyah Johnson	6-0	F	Fr.	Columbus, OH / Africentric Early College
23	Rita Igboke	6-4	F	Jr.	Jonesboro, GA / Mundy's Mill
31	Destiny Strother	5-9	G	Jr.	Flint, MI / Carman-Ainsworth (Marquette)

PITT STAFF

Head Coach: Lance White (4th Season)
Associate Head Coach: Terri Mitchell (4th Season)
Assistant Coach: Josh Petersen (4th Season)
Assistant Coach: Brianna Kiesel (1st Season)
Athletic Trainer: Brittany Buchheit (3rd Season)
Director of Basketball Ops: Ali Hoesly (4th Season)
Director of Recruiting Ops: Kaila Ealey (1st Season)
Director of Video & Player Performance: Bryce Agler (1st season)
Director of Creative Content: Maurice Victor II (1st Season)

PRONUNCIATION GUIDE

Taisha Exanor	Tie - E - Shuh
Cynthia Ezeja	Eh - zay - zuh
Emy Hayford	Amy
Tracey Hueston	Houston
Rita Igboke	Ig-Bok-Way
Liatu King	Lee - uh - two
Maliyah Johnson	Mah - lee - uh
Ismeni Prapa	Is-Me-Knee Prop-Ah
Destiny Strother	STRUH - ther

SOCIAL






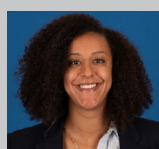
@Pitt_WBB



@pitt_wbb



Pitt Women's Basketball

	Lance White Head Coach
	Terri Mitchell Associate HC
	Josh Petersen Assistant Coach
	Brianna Kiesel Assistant Coach

2021-22 BROADCAST MEDIA CHEAT SHEET

* Last game starters noted with gold numbers


0
SANDRINE CLESCA

	GP/GS	PPG	RPG	APG	FG%	3FG%	FT%
21-22	3-0	6.7	2.7	3.7	.583	.333	.833
Career	14-3	3.9	1.4	1.5	.447	.455	.700

So. • G • 5-9 • Laval, Quebec, Canada / Winston-Salem Christian School

- True point guard with great vision of the court.
- Has improved her shooting touch from behind the arc.
- Plays controlled and makes all the right decisions on the court.


1
DAYSHANETTE HARRIS

	GP/GS	PPG	RPG	APG	FG%	3FG%	FT%
21-22	1-0	6.0	6.0	2.0	.500	.000	1.000
Career	46-39	12.4	4.5	3.3	.358	.232	.692

Jr. • G • 5-7 • Youngstown, OH / Ursuline

- Explosive guard who can get to the bucket in a variety of ways.
- Has an outstanding pull-up game that is hard to defend.
- Pesky on the defensive end of the court and baits players into turnovers.


2
LIATU KING

	GP/GS	PPG	RPG	APG	FG%	3FG%	FT%
21-22	3-0	3.0	6.7	2.7	.364	.000	.200
Career	22-0	4.7	4.9	0.9	.450	.000	.519

So. • G/F • 6-0 • Washington, DC / Bishop McNamara

- Athletic and tough wing player who loves to rebound the ball.
- Goes after every ball on the glass and has great touch to finish in tight.
- Strong mid-range jumper and strong attacking off the dribble.


3
TAISHA EXANOR

	GP/GS	PPG	RPG	APG	FG%	3FG%	FT%
21-22	3-2	3.3	7.3	1.7	.231	.250	.750
Career	19-2	2.4	2.4	0.5	.283	.235	.667

So. • G • 6-0 • Chateaugay, Quebec, Canada / Dawson College

- Super long and athletic wing player with an improving offensive game.
- Length causes issues on the defensive end of the court.
- Has range out to the three-point line and can get to the bucket when she needs.


4
EMY HAYFORD

	GP/GS	PPG	RPG	APG	FG%	3FG%	FT%
21-22	3-3	8.3	2.3	4.0	.611	.500	.400
Career	53-17	4.5	2.8	1.6	.303	.187	.656

Jr. • G • 5-8 • Maastricht, Netherlands / Calandlyceum

- Handling the ball more this season and has shown great court vision.
- Her strength is taking the ball out in transition and getting to the bucket.
- Great basketball IQ and has range out to the three-point line.


5
AMBER BROWN

	GP/GS	PPG	RPG	APG	FG%	3FG%	FT%
21-22	3-3	7.0	6.7	3.0	.300	.000	.529
Career	53-53	8.3	7.0	1.5	.419	.000	.600

Jr. • F • 6-0 • Monroe, LA / Little Rock Christian Academy

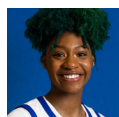
- Tenacious on the glass for being 6-foot tall. Has a knack for finding and battle for the ball on misses.
- Glue player that does a little of everything to help her team win.
- Improving game off the dribble towards the hoop. Strong in the paint.


10
ISMINI PRAPA

	GP/GS	PPG	RPG	APG	FG%	3FG%	FT%
21-22	1-0	0.0	0.0	0.0	.000	.000	.000
Career	49-0	1.7	0.8	0.4	.317	.321	.500

Sr. • G • 5-7 • Athens, Greece / American Community School of Athens

- Will miss the beginning of the season due to a knee injury.
- Has great range and a smooth stroke from behind the arc.
- Smart player who has improved ball handling and defense heading into this year.


13
TRACEY HUESTON

	GP/GS	PPG	RPG	APG	FG%	3FG%	FT%
21-22	3-0	2.0	1.3	0.0	.429	.000	.000
Career	19-0	1.9	1.4	0.2	.378	.000	.800

So. • F • 6-2 • Roanoke, VA / Northside

- Athletic forward with a very high basketball IQ.
- High motor player with toughness to rebound the ball down low.
- Has an improving shooting touch out to the three-point line.


14
CYNTHIA EZEJA

	GP/GS	PPG	RPG	APG	FG%	3FG%	FT%
21-22	0-0	0.0	0.0	0.0	.000	.000	.000
Career	17-4	2.9	5.9	0.5	.489	.000	.182

R-So. • F • 6-3 • Athens, Greece / 20th High School of Athens

- Physically gifted power forward who loves to rebound the basketball.
- Great on the defensive end of the court and cleans the glass.
- Improving scoring touch down low but great with put-backs on the offensive glass.


15
MARY DUNN

	GP/GS	PPG	RPG	APG	FG%	3FG%	FT%
21-22	3-0	8.3	5.0	0.0	.500	.000	.600
Career	117-65	11.3	4.7	0.6	.531	.267	.667

Gr. • F • 6-3 • Washington, PA / YSU / Trinity

- Experienced forward with strong leadership qualities.
- Great low post presence especially with back to the basket.
- Has great range with her jumper out to the three-point line.


20
JAYLA EVERETT

	GP/GS	PPG	RPG	APG	FG%	3FG%	FT%
21-22	3-3	18.3	2.3	2.0	.538	.429	.636
Career	72-70	13.7	3.0	3.3	.359	.334	.769

Sr. • G • 5-10 • St. Louis, MO / New Mexico / Kirkwood

- Explosive guard with an uncanny ability to score at all three levels.
- Super high basketball IQ with amazing court vision and leadership qualities.
- Great three-point shooter with range beyond the three-point line.
- Long defender with an ability to block shots and get in passing lanes.


21
MALIYAH JOHNSON

	GP/GS	PPG	RPG	APG	FG%	3FG%	FT%
21-22	3-0	3.7	2.7	0.3	.250	.000	.750
Career	3-0	3.7	2.7	0.3	.250	.000	.750

Fr. • G/F • 6-0 • Columbus, OH / Africentric Early College

- Long and athletic wing player who is just scratching the surface offensively.
- Improving range with her jumper out to the three-point line.
- Uses her athleticism on the defensive end to jump into passing lanes.
- Great rebounder for being 6-foot tall. Has a knack for finding 50-50 balls.


23
RITA IGBOKWE

	GP/GS	PPG	RPG	APG	FG%	3FG%	FT%
21-22	3-3	11.0	8.3	0.3	.593	.000	.200
Career	53-26	5.1	6.6	0.3	.491	.000	.494

Jr. • C • 6-4 • Jonesboro, GA / Mundy's Mill

- Athletically gifted center who is has the potential to be a star for Pitt.
- Great rebounder who attacks the glass hard on every possession.
- Great shot blocker who forces opponents to adjust shots down low.
- Improving offensive game with her back to the basket.


31
DESTINY STROTHER

	GP/GS	PPG	RPG	APG	FG%	3FG%	FT%
21-22	3-1	8.3	2.3	1.3	.450	.412	.000
Career	39-1	3.9	1.2	0.4	.358	.325	.500

Jr. • G • 5-9 • Flint, MI / Marquette / Carman-Ainsworth

- True shooting guard who can stroke it from anywhere on the court.
- Smooth lefty who can light it up from deep when she gets hot.
- Improving game off the dribble and on the defensive end of the court.

BY THE NUMBERS

161

Pitt has grabbed 161 rebounds through three games, the most rebounds they have recorded in the first three games of a season in program history.

27

Pitt forced LIU into 27 turnovers which marked the most Pitt has forced in a game since Dec. 21, 2018 against St. Francis (PA) when they forced 27 turnovers.

983

Senior guard **Jayla Everett** is just 17 points shy of 1000 points for her career. She has also connected on 147 career three-pointers across her impressive career.

TEAM NOTES

LAST TIME OUT - LIU

- » The Panthers completely dominated LIU from beginning to end on Wednesday as they secured their ninth biggest margin of defeat in program history, handing the Sharks a 92-41 loss.
- » Pitt had three players score in double figures led by **Destiny Strother** who netted a career-high 17. **Sandrine Clesca** finished with 13 points, all in the fourth quarter, while **Jayla Everett** had 12 points in 15 minutes of work.
- » The Pitt offense netted 92 points which marked the most under White and most overall since

NON-CONFERENCE DOMINATION

- » The Panthers have been dominant in the non-conference portion of their schedule over the years as they have posted 16 winning seasons in the last 17 years against non-conference foes.
- » Over the past eight seasons, Pitt owns a 53-30 (63.9%) record against non-conference opponents.

REBOUNDING PROWESS

- » One of the biggest points of emphasis for head coach Lance White since taking over the Panthers program prior to the 2018-19 season was rebounding. Pitt has taken that to heart through the first four years under White's guidance.
- » The Panthers are the best rebounding team in the ACC and are tied for third in the NCAA so far this season as they are averaging 53.7 rpg. Pitt and Georgia are tied for first in the NCAA in rebounding among teams with at least three games played.
- » The 161 total rebounds through three games are the most through the first three games of a season in program history.
- » Pitt also ranks second in the NCAA in rebound margin (+24.3 rpg) and tied for fourth in offensive rebounds per game (20.3).
- » The Panthers are currently the only team in the ACC to have five players averaging at least 6.0 rpg led by **Rita Igbokwe** who leads the team with 8.3 rpg.
- » Since White took over the program in 2018, Pitt has upped their rebounds per game average from 33.1 to 41.4 (+8.3 rpg), the biggest jump in the ACC and third largest in the nation over the span.
- » Pitt was ranked 325th in the NCAA in rebounding prior to White's arrival in 2017-18 and ranked 31st in the NCAA last year, a 294 spot improvement and biggest in the country.

REBOUNDS PER GAME (from 2018-21)

Team	RPG +	NCAA Rank Jump
Georgia Southern	10.15	271 to 7 (+264)
Presbyterian	9.98	349 to 97 (+252)
PITT	8.29	325 to 31 (+294)
Vanderbilt	7.70	340 to 77 (+263)
San Jose State	7.68	182 to 9 (+173)

OFFENSIVE FIREPOWER

- » The Pitt offense is enjoying their best start to a season in over 30 years as they are averaging 82.0 ppg through three wins.
- » The potent offensive attack has netted a total of 246 points which is the third most overall in program history through three games and the most since scoring 248 points in 1984-85.
- » Pitt has scored 80+ points twice this season and currently own a 7-0 record when they net at least 80 under White.
- » Last time out, Pitt netted a season-high 92 points in the win over LIU which marked the most they've scored under Lance White. The 92 points scored are the most by Pitt against a Division I opponent since Dec. 30, 2014 when they netted 93 in a win over Delaware State.
- » Eight Panthers are currently averaging at least 6.0 ppg so far this season led by Jayla Everett (18.3 ppg). Pitt, Duke and NC State are the only ACC teams that have eight players averaging at least 6.0 ppg this season.
- » Last season Pitt posted the highest scoring average in ACC games in program history, scoring 64.3 ppg against conference foes.
- » The Panthers scored 70+ points eight times a season ago, marking the most 70+ point games in a season since 2015-16 (eight). Pitt also had five conference games in which they netted 70+ points, a new program record.

SHOOTING FOR THE STARS

- » The Panthers are connecting on 46.4% of their field goal attempts through three games, the highest percentage through three games since shooting 47.8% in 2009-10.
- » Pitt has shot at least 45% from the floor in all three games this season, marking the first time they've done that in over 20 years.
- » Six Panthers are shooting at least 50% from the floor on the season led by Emy Hayford (61.1%) and Rita Igbokwe (59.3%).
- » Pitt is 11-3 under White when they shoot at least 45% from the floor while also owning a 20-9 record when they shoot a higher percentage from the floor than their opponent.



SPECIALITY STATS

Opponent	In Paint	Off TO's	2nd Chance	Fast Break	Bench
Radford	54	17	13	27	27
Lafayette	46	20	14	13	18
LIU	42	36	22	32	44
at Duquesne					
Texas A&M					
Northwestern					
South Dakota					
Rutgers					
at Ball State					
Coppin State					
NC State					
at Notre Dame					
Holy Cross					
Georgia Tech					
at BC					
at Louisville					
BC					
Wake Forest					
at Virginia Tech					
Notre Dame					
at Clemson					
at Syracuse					
Duke					
at UNC					
Syracuse					
at Miami					
at Virginia					
Louisville					
Florida State					

FAST BREAK

The Panthers held LIU to just 41 points and 26.2% shooting for the game last time out. It marked the least amount of points Pitt has allowed since Nov. 9, 2018 against New Orleans (38). Pitt improved to 5-0 under White when holding opponents to less than 50 points.

THE OPPONENT

SCOUTING THE DUKES



2021-22 STAT LEADERS

SCORING	G-GS	Pts.	PPG
Fatou Pouye	4-2	53	13.3
Tess Myers	4-4	52	13.0

REBOUNDING	G-GS	Rebs.	RPG
Megan McConnell	4-4	28	7.0
Fatou Pouye	4-2	20	5.0

ASSISTS	G-GS	Asts.	APG
Megan McConnell	4-4	17	4.3
Laia Sole	3-0	11	3.7

BLOCKS	G-GS	Blks.	BPG
Precious Johnson	4-4	3	0.8
Tess Myers	4-4	2	0.5

STEALS	G-GS	Stls.	SPG
Megan McConnell	4-4	10	2.5
Libby Bazalak	4-4	6	1.5

MINUTES PLAYED	G-GS	Mins.	MPG
Megan McConnell	4-4	151	37.8
Libby Bazalak	4-4	144	36.0

ABOUT DUQUESNE

- The Dukes enter Saturday night's game with a 1-3 overall record after falling to Longwood Wednesday by the score of 77-76.
- Duquesne is being led offensively by Fatou Pouye who is averaging 13.3 points and 5.0 rebounds across 23.5 minutes per game. Tess Myers is also enjoying a nice start to her season as she ranks second on the team in scoring (13.0 ppg) and grabbing 4.0 rpg while netting a team-best 13 triples.
- Megan McConnell is doing a little of everything for the Dukes as she is averaging 9.0 points, a team-high 7.0 rebounds, a team-high 4.3 assists and a team-best 2.5 steals while playing 37.8 minutes per game.
- As a team, Duquesne is averaging 59.3 ppg while allowing 67.3 ppg. They are shooting 36.1% from the floor while allowing opponents to shoot 40.1%.

EVERETT LEADING BY EXAMPLE

- » Senior captain **Jayla Everett** has embraced her role as the Panthers' go to option this season. She currently ranks fourth in the ACC in scoring (18.3 ppg) through three games.
- » Everett finished off the win over LIU with 12 points on 4-of-8 from the floor to go along with three rebounds, two steals, one assist and one block in just 15 minutes of action.
- » She is the first Panther since Shavonte Zellous in 2008-09 to open the season with back-to-back 20+ point games.
- » The 20-point night marked the ninth of her Pitt career and 16th overall. She has also scored 20+ points in four straight dating back to last season.
- » Everett has made two or more three-pointers 18 times for Pitt and 31 times overall in her career.
- » Last season, she earned Honorable Mention All-ACC honors as she posted averages of 31.8 mpg, 15.4 ppg, 2.8 apg and 2.2 rpg while connecting on a career-high 52 three-pointers. She is just the second player in program history (Brianna Kiesel) to earn All-ACC honors and set a program record for highest per game scoring average by a transfer player (15.4 ppg).
- » Her shooting prowess from behind the arc was on full display she set a new program record for three-pointers made per game (2.74).

HARRIS MAKES RETURN TO LINEUP

- » Junior guard **Dayshanette Harris** made her return to the Pitt lineup after being sidelined for the final four games last season and the first two games this season due to a knee injury.
- » She made her return in the win over LIU and netted six points, six rebounds and two assists in just 10 minutes of action.
- » The Youngstown, OH native had a productive second season as she started all 12 games she appeared in while averaging 12.6 ppg, a team-high 4.7 apg, 3.4 rpg and 1.4 spg. Harris also shot a career-best 85.7% from the charity stripe.
- » Her 4.7 assists per game ranked third in the ACC a season ago. It also marked the highest per game assist average by a Pitt player since Laine Selwyn in 2002-03.
- » Harris recorded at least five assists in eight games last season after only posting four such games as a freshman.
- » The talented scorer netted her 500th career point in her 39th game as a Panther. She is the seventh fastest player in program history to eclipse 500 career points and the fastest since Pitt joined the ACC in 2013-14.
- » Off the court, Harris earned ACC All-Academic Team honors for the second straight season. She is one of two Pitt players to earn the academic honor twice in a career.

INSIDE THE SERIES

SERIES BREAKDOWN - DUQUESNE

Series:	Pitt leads, 21-17
at Duquesne:	Series tied, 8-8
at Pitt:	Pitt leads, 12-7
Neutral Site:	Duquesne leads, 2-1

First Meeting:	Dec. 6, 1974, H - Pitt 91, Duq 32
Last Meeting:	Nov. 23, 2019, H - Pitt 62, Duq 81

Last Pitt Win:	Dec. 29, 2018, A - Pitt 66, Duq 58
Last Duquesne Win:	Nov. 23, 2019, H - Pitt 62, Duq 81
Streak:	Duquesne W1

ALL-TIME MEETINGS - Duquesne (Last 5)

Date	Site	Result	Score
Dec. 30, 2015	H	L	79-65
Dec. 29, 2016	A	L	63-54
Nov. 16, 2017	H	L	66-53
Dec. 29, 2018	A	W	66-58
Nov. 23, 2019	H	L	81-62

ALL-TIME RECORD VS. CONFERENCES

Conference (2021-22 opponent)	Record (%)
Atlantic 10 (Duquesne)	43-27 (.614)
Atlantic Coast Conference	85-224 (.275)
Big South (Radford)	6-3 (.667)
Big Ten (Northwestern, Rutgers)	34-89 (.276)
Mid-American (Ball State)	30-12 (.714)
Mid-Eastern (Coppin State)	15-1 (.938)
Northeast (LIU)	31-3 (.912)
Patriot League (Holy Cross, Lafayette)	18-3 (.857)
Southeastern (Texas A&M)	6-16 (.273)
Summit League (South Dakota)	0-1 (.000)

ALL-TIME RECORD VS. OPPONENTS

Team	Record	Last Time
Radford	3-0	11/10/21 - W, 82-63, H
Lafayette	3-1	11/12/21 - W, 72-63, H
LIU	1-0	11/17/21 - W, 92-41, H
Duquesne	21-17	11/23/19 - L, 81-62, H
Texas A&M	0-1	11/16/08 - L, 56-50, N
Northwestern	3-1	12/5/19 - L, 78-73, A
South Dakota	0-0	N/A
Rutgers	3-26	3/4/13 - L, 65-44, A
Ball State	3-0	12/18/14 - W, 59-47, H
Coppin State	1-1	11/25/03 - L, 75-61, H
NC State	2-8	2/25/21 - L, 83-53, A
Notre Dame	4-30	2/22/21 - L, 59-48, H
Holy Cross	1-0	12/6/15 - W, 56-50, H
Georgia Tech	3-7	2/28/21 - L, 65-60, A
Boston College	19-31	3/3/21 - L, 67-56, N
Louisville	2-21	2/18/21 - L, 82-58, H
Wake Forest	4-7	2/11/21 - L, 64-61 (OT), A
Virginia Tech	5-12	2/4/21 - L, 74-55, H
Clemson	8-8	1/26/21 - W, 79-69, A
Syracuse	19-47	2/7/21 - L, 71-67, H
Duke	0-12	2/13/20 - L, 73-56, H
North Carolina	6-5	2/14/21 - L, 81-72, H
Miami	9-24	1/21/21 - L, 72-68, H
Virginia	5-5	2/27/20 - L, 66-55, A
Florida State	0-8	12/20/20 - L, 67-53, A

TEAM NOTES...

WHAT CAN BROWN DO FOR YOU

- » Junior **Amber Brown** has turned into one of the most reliable players on the Pitt roster since joining the squad three years ago.
- » The do-it-all player is averaging 22.7 mpg, 7.0 ppg, 6.7 rpg and 3.0 apg so far this season while starting all three games.
- » Last time out, Brown netted a season-high nine points, three rebounds, two steals and one assist across just 19 minutes of work.
- » Brown has started all 53 games over the past three seasons while averaging a team-high 28.9 mpg over that span.
- » Her 1,466 minutes played in her first 50 career games are the most by a Pitt player through their first 50 games since Pitt joined the ACC in 2013-14.
- » A tenacious rebounder, Brown notched her 300th career rebound in just her 39th career game. She is the fastest player to 300 career rebounds since Pitt joined the ACC.
- » Since joining the squad, Brown has recorded 12 games with 10+ rebounds. She has also snagged at least five rebounds in 42 of her 53 career games.

IGBOKWE GROWING DAILY

- » Junior center **Rita Igbokwe** has made huge strides on the offensive end of the court in the offseason and she will be relied on to provide scoring down low for Pitt this season.
- » On the season, Igbokwe is averaging a career-high 20.7 mpg, 11.0 ppg, 8.3 rpg and 1.7 bpg while shooting 59.3% from the floor.
- » Igbokwe erupted in the win over Lafayette as she posted a career-high 23 points, 13 rebounds and four blocks in 26 minutes of work.

She also went an efficient 11-of-15 from the floor in the win.

- » The 23-point and 13-rebound game marked her third career double-double. It was also the first time a Pitt player has netted at least 23 points and 13 rebounds in a game since Stasha Carey had 26 points and 13 rebounds against Boston College on Jan. 21, 2016.
- » Igbokwe is one of two players in the NCAA this season (Ayoka Lee, Kansas St.) to have a game with at least 23 points, 13 rebounds and four blocks.
- » Igbokwe has posted 94 career blocks and has led Pitt in blocked shots in each of the last two seasons. She is looking to become the first Pitt player since Nickeia Morris, from 1996 to 1999, to lead the team in blocked shots in three straight seasons.
- » On the glass, she reached the 300 career rebounds plateau in her 43rd game, marking the second fastest by a Pitt player since joining the ACC (Amber Brown).

CLEANING THE OFFENSIVE GLASS

- » The Panthers have turned into one of the best offensive rebounding teams in the country under Lance White.
- » Pitt is averaging 20.3 offensive rebounds per game so far this season which leads the ACC and ranks fourth in the NCAA.
- » Pitt opened the season with 27 offensive rebounds in the win over Radford. It tied a high for the Panthers since White took over the program.
- » Pitt has five players who are averaging at least 2.0 orpg so far this season. **Rita Igbokwe** and **Taisha Exanor** lead the team averaging 3.0 orpg so far this season.

HIGHS & LOWS ANALYSIS...

Most First Quarter Points

Pitt	28	vs. LIU
Opponent	13	vs. Radford

Fewest First Quarter Points

Pitt	17	vs. Lafayette
Opponent	7	vs. LIU

Most Second Quarter Points

Pitt	27	vs. LIU
Opponent	13	vs. LIU

Fewest Second Quarter Points

Pitt	16	vs. Radford
Opponent	9	vs. Radford

Most First Half Points

Pitt	55	vs. LIU
Opponent	22	2x; last vs. Lafayette

Fewest First Half Points

Pitt	35	vs. Lafayette
Opponent	20	vs. LIU

Most Third Quarter Points

Pitt	22	vs. Radford
Opponent	25	vs. Lafayette

Fewest Third Quarter Points

Pitt	16	vs. LIU
Opponent	12	vs. LIU

Most Fourth Quarter Points

Pitt	23	vs. Radford
Opponent	23	vs. Radford

Fewest Fourth Quarter Points

Pitt	20	vs. Lafayette
Opponent	9	vs. Lafayette

Most Second Half Points

Pitt	45	vs. Radford
Opponent	41	2x; last vs. Lafayette

Fewest Second Half Points

Pitt	37	2x; last vs. LIU
Opponent	21	vs. LIU

PRODUCTION TRACKER

DOUBLE-DOUBLES

PLAYER	18-19	19-20	20-21	21-22	STRK	TOTAL
Amber Brown	-	5	-	-	-	5
Rita Igbokwe	-	1	1	1	1	3
Dayshannette Harris	-	1	1	-	-	2
Jayla Everett	1	-	-	-	-	1

10+ POINTS SCORED

PLAYER	18-19	19-20	20-21	21-22	STRK	TOTAL
Mary Dunn	22	4	15	1	-	64
Jayla Everett	23	9	15	3	5	50
Dayshannette Harris	-	16	11	-	-	27
Amber Brown	-	17	6	-	-	23
Rita Igbokwe	-	3	2	1	-	6
Destiny Strother	-	-	3	1	1	4
Emy Hayford	-	1	1	1	-	3
Liatu King	-	-	2	-	-	2
Sandrine Clesca	-	-	1	1	1	2
Ismini Prapa	-	1	-	-	-	1

20+ POINTS SCORED

PLAYER	18-19	19-20	20-21	21-22	STRK	TOTAL
Mary Dunn	6	1	6	-	-	16
Jayla Everett	4	3	7	2	-	16
Dayshannette Harris	-	-	5	2	-	8
Rita Igbokwe	-	-	-	1	-	1

30+ POINTS SCORED

PLAYER	17-18	18-19	19-20	20-21	STRK	TOTAL
Jayla Everett	-	-	1	-	-	1
Mary Dunn	-	-	-	-	-	1

10+ REBOUNDS

PLAYER	18-19	19-20	20-21	21-22	STRK	TOTAL
Amber Brown	-	9	2	1	-	12
Rita Igbokwe	-	6	2	1	-	9
Mary Dunn	3	1	2	-	-	6
Cynthia Ezeja	-	-	3	-	-	3
Dayshannette Harris	-	1	1	-	-	2
Liatu King	-	-	1	1	-	2
Emy Hayford	-	1	-	-	-	1
Taisha Exanor	-	-	-	1	1	1

10+ ASSISTS

PLAYER	17-18	18-19	19-20	20-21	STRK	TOTAL
Jayla Everett	-	-	1	-	-	1

30+ MINUTES

PLAYER	18-19	19-20	20-21	21-22	STRK	TOTAL
Jayla Everett	16	10	15	1	-	42
Amber Brown	-	24	3	-	-	27
Dayshannette Harris	-	13	6	-	-	19
Mary Dunn	7	2	8	-	-	17
Emy Hayford	-	3	1	-	-	4
Rita Igbokwe	-	1	-	-	-	1
Sandrine Clesca	-	-	1	-	-	1

40+ MINUTES

PLAYER	18-19	19-20	20-21	21-22	STRK	TOTAL
Jayla Everett	2	-	-	-	-	2

LED IN POINTS

PLAYER	18-19	19-20	20-21	21-22	STRK	TOTAL
Mary Dunn	13	3	11	-	-	27
Jayla Everett	6	5	11	1	-	23
Dayshannette Harris	-	13	5	-	-	18
Amber Brown	-	4	-	-	-	4
Rita Igbokwe	-	3	-	1	-	4
Destiny Strother	-	-	1	1	1	2
Liatu King	-	-	1	-	-	1
Sandrine Clesca	-	-	1	-	-	1

LED IN REBOUNDS

PLAYER	18-19	19-20	20-21	21-22	STRK	TOTAL
Amber Brown	-	15	6	-	-	21
Rita Igbokwe	-	11	8	1	-	20
Mary Dunn	8	2	5	-	-	17
Dayshannette Harris	-	4	3	-	-	7
Liatu King	-	-	4	1	-	5
Cynthia Ezeja	-	-	4	-	-	4
Tracey Hueston	-	-	1	-	-	1
Taisha Exanor	-	-	-	1	1	1

LED IN ASSISTS

PLAYER	18-19	19-20	20-21	21-22	STRK	TOTAL
Dayshannette Harris	-	16	11	-	-	27
Jayla Everett	9	10	6	1	-	25
Emy Hayford	-	3	4	1	-	8
Amber Brown	-	3	1	1	-	4
Ismini Prapa	-	2	-	-	-	2
Rita Igbokwe	-	1	-	-	-	1
Cynthia Ezeja	-	-	1	1	-	1
Sandrine Clesca	-	-	-	1	1	1

PANTHERS LARGEST...

LEAD:	51 vs. LIU
DEFICIT:	6 vs. Radford
MARGIN OF VICTORY:	51 vs. LIU
MARGIN OF DEFEAT:	N/A
HALFTIME LEAD:	35 vs. LIU
HALFTIME DEFICIT:	N/A
DEFICIT IN WIN:	6 vs. Radford
HALFTIME DEFICIT IN WIN:	N/A
LEAD IN LOSS:	N/A
HALFTIME LEAD IN LOSS:	N/A

TEAM NOTES...

HAYFORD OFF TO STRONG START

- » Junior **Emy Hayford** has taken over the point guard duties and ran with it for Pitt. Hayford is enjoying a career year as she is averaging 24.0 mpg, 9.5 ppg, 4.5 apg and 3.0 rpg while shooting 61.5% from the floor.
- » Hayford currently leads the ACC and ranks eighth in the NCAA in assist/turnover ratio (8.0).
- » She opened her season with a career-high 15 points, three rebounds and three assists on 7-of-8 from the floor in the win over Radford.
- » Last time out, Hayford posted a career-high six assists in a season-high 28 minutes of work in the win over Lafayette.

DUNN BRINGS EXPERIENCE/LEADERSHIP

- » With two degrees in hand and a successful five-year basketball career at Youngstown State, Pittsburgh native **Mary Dunn** decided to transfer home and play her sixth and final year of college basketball for the Panthers.
- » Dunn has come off the bench in all three games this season and is averaging 13.7 mpg, 8.3 ppg and 5.0 rpg while shooting 50% from the floor.
- » She currently ranks 18th amongst active D1 players in the NCAA in

career field goals made (542) and 60th in points scored (1,324) across 116 games. She has also posted a career field goal percentage of 53.1%.

- » The 6-3 forward capped her Penguins career appearing in 114 games and earning 65 starts. She posted career totals of 1,299 points, 540 rebounds, 91 blocks and 75 assists while shooting 53.2% from the floor over her five years.
- » Dunn played high school basketball at Trinity where she earned Third Team All-State honors as a senior and helped lead her team to the WPIAL Championship game for the first time in program history.

STROTHER EXPLODES AGAINST LIU

- » Junior sharpshooter **Destiny Strother** has been a key member off the Pitt bench since joining the squad last season.
- » Earning the first start of her career last time out, Strother exploded for a career-high 17 points, four assists and four rebounds in 23 minutes of work. She finished her career night going 6-of-8 from the floor and 5-of-7 from behind the arc in the win.
- » The lethal shooter is averaging 19.7 mpg, 8.3 ppg and 2.3 rpg while shooting 41.2% from behind the arc on the season, all career-bests.

GETTING THE START

	1	2	3	4	5
N10 RADFORD	Hayford	Everett	Exanor*	Brown	Igbokwe
N12 LAFAYETTE	Hayford	Everett	Exanor	Brown	Igbokwe
N17 LIU	Hayford	Everett	Strother*	Brown	Igbokwe
N20 at Duquesne	-	-	-	-	-
N25 TEXAS A&M+	-	-	-	-	-
N26 NORTHWESTERN+	-	-	-	-	-
N27 SOUTH DAKOTA+	-	-	-	-	-
D1 RUTGERS	-	-	-	-	-
D4 at Ball State	-	-	-	-	-
D7 COPPIN STATE	-	-	-	-	-
D10 NC STATE^	-	-	-	-	-
D19 at Notre Dame^	-	-	-	-	-
D22 HOLY CROSS	-	-	-	-	-
D30 GEORGIA TECH^	-	-	-	-	-
J2 at Boston College^	-	-	-	-	-
J6 at Louisville^	-	-	-	-	-
J13 BOSTON COLLEGE^	-	-	-	-	-
J16 WAKE FOREST^	-	-	-	-	-
J20 at Virginia Tech^	-	-	-	-	-
J23 NOTRE DAME^	-	-	-	-	-
J27 at Clemson^	-	-	-	-	-
J30 at Syracuse^	-	-	-	-	-
F3 DUKE^	-	-	-	-	-
F10 at North Carolina^	-	-	-	-	-
F13 SYRACUSE^	-	-	-	-	-
F17 at Miami^	-	-	-	-	-
F20 at Virginia^	-	-	-	-	-
F24 LOUISVILLE^	-	-	-	-	-
F27 FLORIDA STATE^	-	-	-	-	-

* - First Career Start
+ - Paradise Jam
^ - ACC Game

PANTHERS RECORD WHEN...

The Panthers Under White	20-21	21-22	Overall
Playing at home	3-7	3-0	15-29
Playing on the road	2-6	0-0	5-26
Playing at a neutral site	0-1	0-0	4-5

vs. Top 10 teams	0-2	0-0	0-9
vs. Top 25 teams	0-2	0-0	0-14

Games decided by 3 points or fewer	1-1	0-0	5-3
Games decided by 4-10 points	2-5	1-0	11-17
Games decided by 11-19 points	2-5	1-0	5-20
Games decided by 20 points or more	0-3	1-0	3-20

Leading at the half	3-3	3-0	14-6
Tied at the half	0-0	0-0	1-2
Trailing at the half	2-11	0-0	9-52

Leading with 5:00 remaining	4-1	3-0	21-4
Tied with 5:00 remaining	0-0	0-0	0-0
Trailing with 5:00 remaining	1-13	0-0	3-56

In overtime	0-1	0-0	1-2
-------------	-----	-----	-----

Pitt scores fewer than 50 points	0-0	0-0	0-13
Pitt scores 50-59 points	0-7	0-0	4-32
Pitt scores 60-69 points	0-4	0-0	6-9
Pitt scores 70-79 points	3-3	1-0	7-6
Pitt scores 80 or more points	2-0	2-0	7-0

Opponent scores fewer than 50 points	0-0	1-0	5-0
Opponent scores 50-59 points	2-1	0-0	8-4
Opponent scores 60-69 points	1-4	2-0	6-19
Opponent scores 70-79 points	1-3	0-0	4-23
Opponent scores 80 or more points	1-6	0-0	1-14

Pitt shoots 45% or better	0-1	3-0	11-3
Pitt shoots less than 45%	5-13	0-0	13-57

Opponent shoots 45% or better	0-3	0-0	1-18
Opponent shoots less than 45%	5-11	3-0	23-42

Pitt shoots better than opponent	3-5	3-0	20-9
Opponent shoots better than (or ties) Pitt	2-9	0-0	4-51

Pitt out-rebounds opponent	4-7	3-0	19-18
Opponent out-rebounds (or ties) Pitt	1-7	0-0	5-42

Pitt commits fewer than 14 turnovers	1-0	0-0	3-8
Pitt commits 14 or more turnovers	4-14	3-0	21-52

Pitt makes at least five 3-pointers	4-12	1-0	16-40
Pitt makes four or fewer 3-pointers	1-2	2-0	8-30

Pitt records seven or more steals	5-6	2-0	17-28
Pitt records six or fewer steals	0-8	1-0	7-32

Wearing white uniforms	3-5	3-0	17-24
Wearing royal uniforms	1-5	0-0	6-25
Wearing gold uniforms	0-2	1-2	1-4
Wearing pink uniforms	0-2	0-2	0-7

Pitt scores first	3-6	3-0	14-26
Opponent scores first	2-8	0-0	10-34

On Monday	0-1	0-0	1-3
On Tuesday	2-0	0-0	4-2
On Wednesday	1-1	2-0	5-4
On Thursday	0-7	0-0	4-24
On Friday	0-0	1-0	4-2
On Saturday	0-0	0-0	3-5
On Sunday	2-5	0-0	3-20

In November	2-0	3-0	13-8
In December	1-3	0-0	5-9
In January	1-2	0-0	2-17
In February	1-8	0-0	3-21
In March	0-1	0-0	1-5

TEAM NOTES...

TURNING THEM OVER

- » The Panthers have been getting it done on the defensive end of the court early on as they are forcing teams into turnovers at a high rate.
- » Pitt has forced 19.7 turnovers/game through three games.
- » Last time out, the Panthers forced LIU into 27 turnovers which marked the most Pitt has forced in a game since Dec. 21, 2018 against St. Francis (PA).
- » Pitt is 4-1 over the past two seasons when they win the turnover battle.
- » The Panthers have forced 20+ turnovers in a game 12 times since Lance White took over the program. They own a 6-6 record in those contests.

STEALS ON STEALS

- » The added length and athleticism to the lineup has helped Pitt generate more steals this season than in years past.
- » So far this season, Pitt is averaging 9.7 steals/game as they have accumulated 29 total steals in three games.
- » The 29 steals through three games are the most for Pitt since 2016-17 (31).
- » Last time out in the win over LIU, the Panthers recorded 17 steals as six players notched multiple thefts in the game. The 17 steals are the most in a game for Pitt since notching 17 at Wake Forest on Feb. 28, 2019.
- » Pitt has seven players who are averaging at least one steal per game so far this season led by

Jayla Everett who ranks 8th in the ACC averaging 2.0 spg.

- » As a team, Pitt ranks fifth in the ACC in steals per game (9.7 spg).

THANKS FOR THE ASSISTANCE

- » The teamwork and cohesion on the court has been one of the most recognizable difference this season for the Panthers.
- » Through three games, the Panthers are averaging 19.7 assists per game which ranks third in the ACC overall.
- » The 59 assists through the first three games of the season are the second most in program history. Pitt recorded 61 assists through the first three games during the 2002-03 campaign.
- » **Emy Hayford** leads the team in assists per game (4.0) while five players on the Panthers roster are averaging at least 2.0 apg so far this season.
- » Pitt has six games with 20+ assists under White and they own a 4-2 record in those contests.

BLOCK PARTY

- » The Panthers have posted 19 blocks (6.3 bpg) through three games which ranks fourth in the ACC.
- » The 19 blocks through the first three games are the most since 2015-16 when they posted 24 rejections in the first three games.
- » Pitt notched 11 blocks in the win over Lafayette which was the first double digit block game for Pitt under White and were the most in a game overall since 13 against Arkansas State on Nov. 27, 2017.

CAREER MILESTON WATCH

Mary Dunn (GR/F)

Milestone	Currently	To Go
1,400 points	1,324	76
600 rebounds	555	45
600 field goals made	542	58
125 games	117	8
100 blocks	94	6
100 assists	75	25

Jayla Everett (SR/G)

Milestone	Currently	To Go
1,000 points	983	17
250 assists	239	11
250 rebounds	216	34
150 three-pointers	147	3

Dayshyanette Harris (JR/G)

Milestone	Currently	To Go
600 points	572	28
250 rebounds	206	44
200 assists	151	49
150 free throws made	128	22
100 steals	73	27

Amber Brown (JR/F)

Milestone	Currently	To Go
500 points	440	60
400 rebounds	373	27
150 free throws made	126	24
100 assists	81	19

Rita Igboke (JR/C)

Milestone	Currently	To Go
300 points	268	32
400 rebounds	352	48
150 field goals made	115	35
100 blocks	94	6



TEAM NOTES...

JOHNSON MAKING EARLY IMPACT

- » The third recruiting class for head coach Lance White featured just two players, one of which is freshman **Maliyah Johnson**.
- » So far this season, Johnson has appeared in all three games off the bench and is averaging 17.7 mpg, 3.7 ppg and 2.7 rpg while also notching four steals defensively.
- » Last time out, Johnson posted the best game of her young career as she posted 22 minutes, five points, three rebounds and three steals in the win over LIU. She also went 3-of-4 from the free throw line.
- » Johnson finished off her senior season averaging 18.5 points and 12.0 rebounds while being named First Team All-City, First Team All-Central District and Third Team All-Ohio. She collected two Ohio State Championships during her career at Africentric Early College.
- » With her athleticism and shooting touch from the outside, Johnson is making a case right away to see minutes off the Pitt bench which should be utilized a lot this season, especially early on.

DOMINATING THE PAINT

- » The Panthers have dominated the paint early on in the season as they are averaging 47.3 paint points per game through three games.
- » The 142 points scored in the paint for Pitt through three games marks the most in program history through three games since joining the ACC in 2013-14.
- » Pitt opened the season with a win over Radford and netted 54 points inside the paint which are the most

scored in the paint since scoring 54 against Youngstown State on Dec. 2, 2009.

- » The Panthers have netted 40+ points in the paint in all three games to start the season, marking the first time they have done that since joining the ACC.

DEPTH KEY TO EARLY SUCCESS

- » Head coach Lance White has referenced the depth he has this season as one of the key contributors to the 3-0 start for Pitt.
- » The Panthers are receiving contributions from all 12 players on the roster. Last time out, all 12 players netted at least four points and a rebound in the win over LIU while each playing at least 10 minutes.
- » So far this season, Pitt is averaging 29.7 points/game from their bench including a season-high 44 last time out against LIU. It marked the most bench points for Pitt since scoring 47 in the win over New Orleans on Nov. 9, 2018.

RUN IT, RUN IT

- » Pitt has put an emphasis on getting out in transition as it seems to be working out so far.
- » On the year, Pitt is averaging 24.0 fast break points per game.
- » Last time out against LIU, Pitt netted a season-high 32 fast break points, marking the most by Pitt since joining the ACC in 2013-14.
- » The 72 fast break points through the first three games are the most in program history for the Panthers.

ASSOCIATED PRESS POLL (Week 2)

1. South Carolina (25)	2-0	744
2. UConn (5)	1-0	724
3. Maryland	3-0	691
4. Indiana	2-0	617
5. NC State	2-1	609
6. Baylor	2-0	562
7. Stanford	1-1	553
8. Iowa	3-0	547
9. Oregon	2-0	506
10. Louisville	0-1	467
11. Arizona	2-0	411
12. Texas	2-0	408
13. Michigan	2-0	393
14. Iowa State	1-0	379
15. Oregon State	1-0	272
16. Tennessee	2-0	243
17. Florida State	2-0	234
18. Georgia Tech	3-0	219
19. Kentucky	2-1	207
20. UCLA	1-0	186
21. Ohio State	2-0	181
22. West Virginia	0-0	119
23. South Florida	2-0	111
24. Texas A&M	2-0	101
25. Virginia Tech	3-0	85

BOLD- 2021-22 OPPONENT

2021-22 PITT TEAM STATS (ACC RANK)

TEAM STATS	ACC ONLY	ALL GAMES
Scoring Offense	N/A	82.0 (5th)
Scoring Defense	N/A	55.7 (9th)
Scoring Margin	N/A	+26.3 (7th)
FT Percentage	N/A	.563 (13th)
FG Percentage	N/A	.464 (8th)
FG Percentage Defense	N/A	.340 (10th)
3-FG Percentage	N/A	.348 (4th)
3-FG Pct. Defense	N/A	.328 (14th)
Rebounding Offense	N/A	53.7 (1st)
Rebounding Defense	N/A	29.3(T-1st)
Rebounding Margin	N/A	+24.3 (1st)
Blocks/Game	N/A	6.3 (4th)
Assists/Game	N/A	19.7 (3rd)
Steals/Game	N/A	9.7 (5th)
Turnover Margin	N/A	+0.3 (13th)
Assist/TO Ratio	N/A	1.0 (9th)
Offensive Rebounds	N/A	20.3 (T-1st)
Defensive Rebounds	N/A	33.3 (2nd)
3-FG Made/Game	N/A	5.3 (T-9th)

2021-22 INDIVIDUAL ACC STATS (ACC RANK)

Scoring		
Overall	Jayla Everett	18.3 ppg (4th)
ACC	--	--
Rebounding		
Overall	Rita Igbokwe	8.3 rpg (7th)
ACC	--	--
Assists		
Overall	Emy Hayford	4.0 apg (10th)
ACC	--	--
Steals		
Overall	Jayla Everett	2.0 spg (T-8th)
ACC	--	--
Blocks		
Overall	Rita Igbokwe	1.7 bpg (T-11th)
ACC	--	--
FG Percentage		
Overall	Rita Igbokwe	.593 (7th)
ACC	--	--
FT Percentage		
Overall	Amber Brown	.529 (15th)
ACC	--	--
3-FG Percentage		
Overall	Jayla Everett	.429 (8th)
ACC	--	--

2021-22 ACC STANDINGS

Team	Conf.	Overall
Notre Dame	1-0	3-0
Georgia Tech	0-0	4-0
Virginia Tech	0-0	4-0
Duke	0-0	3-0
Miami	0-0	3-0
North Carolina	0-0	3-0
Pitt	0-0	3-0
Wake Forest	0-0	3-0
Florida State	0-0	2-0
NC State	0-0	3-1
Boston College	0-0	2-1
Louisville	0-0	2-1
Clemson	0-0	1-2
Virginia	0-0	0-3
Syracuse	0-1	2-1

2021-22 ACC PRESEASON POLLS

2021-22 ACC PRESEASON COACHES POLL		
Place	Team	Points
1.	NC State (14)	224
2.	Louisville (1)	207
3.	Georgia Tech	192
4.	Virginia Tech	172
5.	Florida State	152
6.	Notre Dame	149
7.	North Carolina	127
8.	Duke	125
9.	Miami	92
10.	Clemson	83
11.	Boston College	78
12.	Syracuse	60
13.	Wake Forest	59
14.	Pitt	47
15.	Virginia	33

2021-22 ACC PRESEASON BLUE RIBBON PANEL POLL		
Place	Team	Points
1.	NC State (50)	847
2.	Louisville (7)	789
3.	Georgia Tech	691
4.	Virginia Tech	644
5.	Florida State	607
6.	Notre Dame	580
7.	North Carolina	488
8.	Duke	464
9.	Miami	355
10.	Clemson	324
11.	Boston College	297
12.	Wake Forest	250
13.	Syracuse	227
14.	Pitt	160
15.	Virginia	117

2021-22 PRESEASON ALL-ACC

Head Coaches Preseason All-ACC Team

Player	Pos.	Team
Taylor Soule	F	Boston College
Delicia Washington	G	Clemson
Lorela Cubaj	F	Georgia Tech
Lotta-Maj Lahtinen	G	Georgia Tech
Hailey Van Lith	G	Louisville
Jakia Brown-Turner	G	NC State
Elissa Cunane	C	NC State
Maddy Westbeld	F	Notre Dame
Elizabeth Kitley	C	Virginia Tech
Aisha Sheppard	G	Virginia Tech

Preseason Player of the Year

Elissa Cunane	C	NC
---------------	---	----

PRAPA & EZEJA BATTLING INJURIES

- » With the 2021-22 campaign underway, the Greek duo of **Ismeni Prapa** and **Cynthia Ezeja** are both fighting to get back on the court after sustaining offseason injuries.
- » After missing the entire 2020-21 season due to a knee injury, Prapa will miss the first several weeks of the season due to a knee injury sustained in practice.
- » Ezeja suffered a torn ACL in the spring and is making her way back. She is week-to-week to start the season.
- » Ezeja appeared in 17 games while earning four starts in her first collegiate season for the Panthers. She ranked second on the squad in rebounding (5.9 rpg) while adding 2.9 ppg, 1.1 bpg and shooting 48.9% from the floor.
- » Prapa has appeared in 49 games across her Pitt career while connecting on 17 three-pointers and scoring 83 points.

BRIANNA KIESEL RETURNS HOME

- » There is only one new face on the Pitt bench this season but it is a face that all Pitt fans will recognize as former Panther star Brianna Kiesel joined the program as an assistant coach.
- » Kiesel concluded a successful six-year professional playing career last spring to join the coaching staff at her alma mater. Kiesel had stops in the WNBA (playing 58 games), along with Poland, Sweden, Hungary and Israel.
- » Known for her hard work and dedication to the game, Kiesel is one of the greats in Pitt history as she ranks fifth in career points (1,938) fifth in assists (433) and eighth in steals (198).
- » She earned numerous All-League and national awards across her Pitt career but her most notable accomplishment might be seeing her name etched

twice on the prestigious Varsity Walk between the Cathedral of Learning and Heinz Chapel on campus.

OH, CAPTAINS, OUR CAPTAINS!

- » Prior to the start of the 2021-22 campaign, Lance White announced that Dayshannette Harris, Jayla Everett and Amber Brown were tabbed as team captains by their teammates.
- » All three players are first time team captains as Everett enters her senior year and Harris and Brown are juniors.

AISLIN MALCOLM SIGNS NLI

- » Head coach Lance White announced the signing of 2022 guard Aislin Malcolm on National Signing Day. She is the lone signing for Pitt for the 2022 class.
- » Malcolm comes to Pitt from nearby Chartiers Valley High School where she has blossomed into one of the best players in the state of Pennsylvania.
- » She is rated as a four-star recruit and the No. 98 recruit in the country according to ESPN. She also comes in as the No. 3 recruit in the state.
- » Malcolm is an outstanding shooter who helped Chartiers Valley to a state record 64-game win streak to start her career.
- » She has led her squad to three WPIAL Championships and one PIAA State title while accumulating 1,270 points and 197 three-pointers heading into her senior campaign.
- » Here's what Coach White had to say about Aislin. "Aislin's ability to shoot the basketball separates her from everyone else in the country and it immediately extends the perimeter for opposing defenses. She is one of the most accurate shooters I've watched in a long time and she can also handle the ball from any of the guard spots on the court. Her vision and her length on the perimeter will be a huge assets for our team moving forward."

2021-22 ACC PLAYER OF THE WEEK

Player of the Week

Date	Player	Pos.	Team
Nov. 15	Elizabeth Kitley	C	VT
	Jewel Spear	G	Wake Forest

Freshman of the Week

Date	Player	Pos.	Team
Nov. 15	Sonia Citron	G	Notre Dame

GAME-BY-GAME BOX SCORES

>> Game 1 vs. Radford - 11-10-21

Official Basketball Box Score - Final

Radford at Pitt

11/10/21 Petersen Events Center, Pittsburgh, PA

Pitt vs. Radford

Game Time: 6:00 PM

Game Duration: 1:51

Attendance: 1,272

Officials: Eric Green, Rob Cooper, Tawana Black

Records: 6-4

Records: 9-4

NO. Name	Min	FG M-A	3P M-A	FT M-A	Rebounds OR DR TOT	Fouls PF FD	TP	AS	TO	ST	Blocks BS BA	+/-	
0 Rachel LaLonde	F 22:30	5-6	0-1	0-0	1 3 4	1 0	10	0	1	0	0	0	-6
50 Jackie Christ	C 23:38	3-10	0-0	0-0	0 1 1	2 1	6	1	0	0	1	1	-10
3 Bridget Birkhead	G 30:44	2-11	1-6	0-0	0 3 3	2 3	5	0	0	0	0	0	-18
5 Danielle Montalbano	G 22:00	0-2	0-1	2-2	0 1 1	1 4	2	2	5	0	0	1	-16
12 Bryonna McClean	G 21:32	3-6	0-1	0-0	1 1 2	0 1	6	2	2	0	1	1	-15
22 Ashley Tudor	22:21	2-9	0-1	8-8	0 2 2	0 5	12	1	4	2	0	1	-11
24 Kyanna Morgan	18:00	4-6	3-4	0-0	0 0 0	3 1	11	2	1	1	0	0	-3
10 Makaila Brown	09:16	0-2	0-0	0-0	1 2 3	3 3	0	1	1	0	0	0	-6
30 Tayla Johnson	16:22	1-3	0-0	3-4	1 1 2	4 2	5	2	2	0	1	0	-9
23 Carmen Williams	13:37	2-2	2-2	0-0	0 0 0	0 0	6	0	0	0	0	0	-1
Team					1 4 5	0 0	0	0	0	0	0	0	
Totals		22-57	6-16	13-14	5 18 23	16 20	63	11	17	2	3	4	-19

Technical Fouls: NONE

Pitt - 66

Records: 1-0

NO. Name	Min	FG M-A	3P M-A	FT M-A	Rebounds OR DR TOT	Fouls PF FD	TP	AS	TO	ST	Blocks BS BA	+/-	
5 Amber Brown	F 22:09	3-7	0-0	1-3	2 5 7	3 4	4	7	3	4	1	0	1 5
23 Rila Igbowe	F 21:29	3-9	0-0	0-2	4 2 6	4 2	6	0	4	1	1	2	17
3 Tashia Exanor	G 25:25	1-6	0-2	2-2	4 2 6	0 1 4	3	0	0	0	0	0	12
4 Emy Hayford	G 19:20	7-8	1-1	0-0	1 2 3	3 3	15	3	0	1	0	1	14
20 Jayla Everett	G 24:39	8-14	3-5	4-6	0 2 2	0 3	23	3	0	1	2	0	32
31 Destiny Strother	G 14:27	1-5	0-3	0-0	1 0 1	0 0	2	0	0	1	0	0	-2
0 Sandrine Cieska	19:58	2-3	0-0	1-2	1 1 2	0 1	5	2	3	0	0	0	7
15 May Dunn	14:59	5-12	0-1	1-1	4 4 8	1 2	11	0	1	1	1	0	0
2 Lielu King	14:18	2 4	0-0	1 4	7 10	4 2	5 4	1	1	0	1	0	15
21 Malayah Johnson	14:10	1-2	0-0	0-0	1 2 3	1 1	2	1	2	1	0	0	-3
13 Tracey Hueston	09:06	1-4	0-0	0-0	0 2 2	4 0	2	0	1	0	1	0	-3
Team					6 2 8	0 0	0	0	0	0	0	0	
Totals		34-74	4-12	10-20	27 31 58	20 16	82	19	17	8	4	3	19

Technical Fouls: NONE

Dead Ball Rebounds: 0

		RAD		Pitt				RAD		Pitt		Period by Period Scoring									
Biggest lead		1 (1st 8:15)		26 (3rd 3:20)		Points from		Turnovers		13		1st		2nd		3rd		4th		TOT	
Best Scoring Run		6 (3rd 4:10)		25 (2nd 4:21)		Paint		Paint		24		RAD		13		6		18		23	
Lead Changes				2		Second Chance		4		13		PM		21		16		22		23	
Times Tied				1		Free Throws		6		27											
Time with Lead		00:07		36:28		Bench		34		27											

Records: 1-0															Shooting By Period						
NO.	Name	Min	FG M-A	3P M-A	FT M-A	Rebounds OR DR TOT	Fouls PF FD	TP	AS	TO	ST	Blocks BS BA	+/-	1st FG% 5-24 20.8%	3PT% 2-4 50.0%	FT% 3-4 75%	GM FG% 5-17 29.4%	3PT% 1-6 16.7%	FT% 5-6 83.3%	GM FG% 11-20 55.0%	
5	Amber Brown	F 22:09	3-7	0-0	1-3	2 5 7	3 4	7	3	4	1	0	1	5	2nd FG% 1-6 16.7%	3PT% 1-1 100.0%	FT% 1-1 100.0%				
23	Rita Igboke	F 21:29	3-9	0-0	0-2	4 2 6	4 2	6	0	4	1	1	2	17	3rd FG% 0-1 0.0%	FT% 0-0 0.0%	FT% 0-0 0.0%				
3	Taisha Exanor	G 25:25	1-6	0-2	2-2	4 2 6	0 1	4	3	0	0	0	0	12	4th FG% 10-13 76.9%	3PT% 1-1 100.0%	FT% 1-1 100.0%				
4	Emy Hayford	G 19:20	7-8	1-1	0-0	1 2 3	0 0	15	3	0	1	0	0	14	Technical Fouls: NONE						
20	Jayla Everett	G 24:39	8-14	3-5	4-6	0 2 2	0 3	23	3	0	2	0	0	32	Dead Ball Rebounds: 0						
31	Destiny Strother	14:27	1-5	0-0	0-0	1 0 1	0 0	2	0	1	1	0	0	-2							
0	Sandrine Clesca	19:58	2-3	0-0	1-2	1 1 2	0 1	5	2	3	0	0	0	7							
15	Mary Dunn	14:59	5-12	0-1	1-1	4 4 8	1 2	11	0	1	1	1	0	1							
2	Liatu King	14:18	2-4	0-0	1-4	3 7 10	4 2	6	4	1	0	1	0	15							
21	Maliyah Johnson	14:10	1-2	0-0	0-0	1 2 3	1 1	2	1	2	1	0	0	-3							
13	Tracey Hueston	09:06	1-4	0-0	0-0	0 2 2	4 0	2	0	1	0	1	0	-3							
	Team					6 2 8	0 0	0	0	0	0	0	0								
	Totals		34-74	4-12	10-20	27 31 58	20 16	82	19	17	8	4	3	19							
Technical Fouls: NONE															Dead Ball Rebounds: 0						

>> Game 3 vs. LIU - 11-17-21



Official Basketball Box Score - Final

LIU at Pitt

11/17/21 Petersen Events Center, Pittsburgh, PA

2021-22 Women's Basketball

LIU - 41

Record: 0-2

NO.	Name	Min	FG M-A	3P M-A	FT M-A	Rebounds	Fouls	TP	AS	TO	ST	Blocks	+/-
-----	------	-----	--------	--------	--------	----------	-------	----	----	----	----	--------	-----

POINT DIFFERENTIAL CHART

MARGIN	1	2	3	4	5	6	7	8	9	10	11	12	13	14	15	16-19	20-29	30-39	40-49	50+
WINS	-	-	-	-	-	-	-	-	1	-	-	-	-	-	-	1	-	-	-	1
LOSSES	-	-	-	-	-	-	-	-	-	-	-	-	-	-	-	-	-	-	-	-

THE LAST TIME IT HAPPENED...

TEAM

Played a ranked team:	2/25/21 at No. 2 NC State (L, 83-53)
Beat a ranked team:	3/21/15 vs. No. 17 Chattanooga (51-40)
Played a top-10 team:	2/25/21 at No. 2 NC State (L, 83-53)
Beat a top-10 team:	1/8/15 vs. No. 8/6 North Carolina (84-59)
Played a top-5 team:	2/25/21 at No. 2 NC State (L, 83-53)
Beat a top-5 team	Never
Won an overtime game:	12/21/18 vs. Saint Francis (PA) (78-75 OT)
Lost an overtime game:	2/11/21 at Wake Forest (64-61 OT)
Played two or more overtimes:	1/10/16 vs. NC State (78-76 3OT)
Played three overtimes:	1/10/16 vs. NC State (78-76 3OT)
Played four overtimes:	Never
Won an ACC home game:	12/13/20 vs. Clemson (80-71)
Won an ACC road game:	2/16/21 at Boston College (83-80)
Won an ACC Tournament game:	3/4/20 vs. #10 Notre Dame (67-65)
Won a non-conference road game:	12/29/18 at Duquesne (66-58)
Won a non-conference neutral site game:	11/30/19 vs. Ole Miss (58-50)
Lost a non-conference home game:	12/6/20 vs. Delaware (85-79)
Scored 100+ points:	12/29/02 vs. Norkolk State (W, 104-78)
Scored 100+ points in regulation:	12/29/02 vs. Norkolk State (W, 104-78)
Allowed 100+ points:	1/3/19 at No. 2 Notre Dame (L, 100-44)
Scored 90+ points:	11/17/21 vs. LIU (W, 92-41)
Allowed 90+ points:	1/3/19 at No. 2 Notre Dame (L, 100-44)
Scored 80+ points:	11/10/21 vs. Radford (W, 82-63)
Scored 50 points or fewer:	2/22/21 vs. Notre Dame (L, 59-48)
Allowed 50 points or fewer:	11/17/21 vs. LIU (W, 92-41)
Scored 40 points or fewer:	3/3/19 vs. No. 3 Louisville (L, 67-40)
Allowed 40 points or fewer:	11/9/18 vs. New Orleans (W, 90-38)
Made 10+ 3-pointers:	11/6/19 at UCF (10)
Allowed 10+ 3-pointers:	3/3/21 vs. Boston College (10)
Made 20+ free throws:	11/29/20 vs. Hofstra (20)
Opponent made 20+ free throws:	2/14/21 vs. North Carolina (26)
Shot 60 percent from the field:	12/29/12 at Buffalo (.603)
Opponent shot 60 percent from the field:	3/3/16 vs. Miami (.600)
Shot 50 percent from the field:	2/14/19 vs. North Carolina (.590)
Opponent shot 50 percent from field:	2/18/21 vs. No. 3 Louisville (.508)
Shot less than 30 percent:	2/23/20 vs. No. 5 Louisville (.293)
Opponent shot less than 30 percent:	11/17/21 vs. LIU (.262)
Shot less than 20 percent:	2/28/16 at Louisville (.192)
Opponent shot less than 20 percent:	11/17/16 vs. Loyola Chicago (.191)
Shot 60 percent from 3-point range:	2/28/19 at Wake Forest (.667)
Shot 50 percent from 3-point range:	12/10/20 at Virginia Tech (.563)
Opponent shot 50 percent from 3-point range:	2/25/21 at #2 NC State (.615)
Shot 100 percent from the free throw line:	11/21/17 at Cincinnati (7-7)
Shot 90 percent from the free throw line:	11/21/17 at Cincinnati (1.000)
Had 50+ rebounds:	11/17/21 vs. LIU (55)
Had 55+ rebounds:	11/17/21 vs. LIU (55)
Allowed 50+ rebounds:	2/9/20 at Notre Dame (50)
Had 25+ assists:	11/9/18 vs. New Orleans (28)
Had 30+ assists:	11/23/16 vs. Slippery Rock (32)
Had five or fewer turnovers:	11/21/16 vs. Loyola Maryland (5)
Had 25+ turnovers:	1/19/20 vs. Syracuse (26)
Forced 25+ turnovers:	11/17/21 vs. LIU (27)
Had 10+ blocks:	11/12/21 vs. Lafayette (11)
Allowed 10+ blocks:	2/16/20 at Syracuse (10)
Had 15+ steals:	11/17/21 vs. LIU (17)
Allowed 15+ steals:	1/14/16 at Syracuse (20)

INDIVIDUAL

40+ points:	12/21/08, Shavonte Zellous vs. Florida (42)
30+ points:	2/16/17, Brenna Wise vs. Virginia Tech (31)
20+ points:	11/12/21, Rita Igboke (23), Jayla Everett (20) vs. Lafayette
Two Panthers 20+ points:	11/12/21 vs. Lafayette
	Rita Igboke (23), Jayla Everett (20)
Five+ Panthers 10+ points:	11/25/17 vs. Arkansas State (16)
	Yacine Diop (16), Kauai Bradley (13), Cassidy Walsh (12),
	Alayna Gribble (11), Pika Rodriguez (11), Kalista Walters (10)
Double-Double:	11/12/21, Rita Igboke vs. Lafayette
	23 points, 13 rebounds
Double-Double (pts/assists):	2/28/19, Jasmine Whitney at Wake Forest
	19 points, 12 assists
Two Panthers with double-doubles:	12/9/17 vs. UNCW
	Yacine Diop (22 pts, 10 rebs), Kalista Walters (12 pts, 11 rebs),
Three Panthers with double-doubles:	3/2/16 vs. North Carolina
	Brenna Wise (25P, 10R), Stasha Carey (15P, 10R), Yacine Diop (14P, 12R)
Triple-Double:	2/9/02, Laine Selwyn vs. St. John's
	12 points, 11 rebounds, 10 assists
Opponent double-double:	2/22/21 vs. Notre Dame
	Maddy Westbeld (20 points, 11 rebounds)
Opponent triple-double:	2/3/19, Haley Gorecki, Duke
	16 points, 10 rebounds, 10 assists
Opponent 40+ points:	12/5/19, Kamaria McDaniel, Penn State (40)
Opponent 30+ points:	3/3/21, Cameron Swartz, Boston College (33)
Opponent 20+ points:	3/3/21, Cameron Swartz, Boston College (33)
15+ rebounds:	11/29/19, Rita Igboke vs. Ohio (18)
Opponent 15+ rebounds:	2/28/21, Lorela Cubaj, Georgia Tech (17)
10+ assists:	2/28/19, Jasmine Whitney at Wake Forest (12)
Opponent 10+ assists:	2/7/21, Tiana Mangakahia, Syracuse (11)
Seven or more blocks:	1/18/15, Monica Wignot at Georgia Tech (9)
Six or more blocks:	1/21/21, Rita Igboke vs. Miami (6)
Opponent six or more blocks:	12/29/18, Kadri-Ann Lass, Duquesne (6)
Five or more steals:	2/28/19, Cassidy Walsh at Wake Forest (5)
Two players with 5+ steals:	1/13/19, Jasmine Whitney (6), Kauai Bradley (5)
Opponent 5+ steals:	1/26/20, Jazmine Jones, at No. 5 Louisville (5)



Pitt secured just their second ACC Tournament win when they downed #10 Notre Dame, 67-65, behind a game-winning runner from freshman Dayshanette Harris.

PLAYER SEASON & CAREER HIGHS

2021-22	CAREER
0 - Sandrine Clesca	
Pts 13 vs. LIU (11/17/21)	13 vs. LIU (11/17/21)
Rebs 3, 2x; last vs. LIU (11/17/21)	3, 3x; last vs. LIU (11/17/21)
Asts 5 vs. LIU (11/17/21)	5 vs. LIU (11/17/21)
Blks -	1 at #2 NC State (2/25/21)
Stls 3 vs. LIU (11/17/21)	3 vs. LIU (11/17/21)
Mins 20 vs. Radford (11/10/21)	33 at #2 NC State (2/25/21)

1 - Dayshanette Harris	
Pts 6 vs. LIU (11/17/21)	27 at Boston College (2/20/20)
Rebs 6 vs. LIU (11/17/21)	10 vs. Notre Dame (3/4/20)
Asts 2 vs. LIU (11/17/21)	6, 3x; last at Virginia (2/27/20)
Blks -	3 vs. Wake Forest (1/30/20)
Stls -	4 at Penn State (12/5/19)
Mins 10 vs. LIU (11/17/21)	36 vs. #14 Florida St. (2/1/20)

2 - Liatu King	
Pts 5 vs. Radford (11/10/21)	15 at Clemson (1/26/21)
Rebs 10 vs. Radford (11/10/21)	10, 2x; last vs. Radford (11/10/21)
Asts 4 vs. Radford (11/10/21)	4 vs. Radford (11/10/21)
Blks 1, 3x; last vs. LIU (11/17/21)	4 at Boston College (2/16/21)
Stls 2 vs. LIU (11/17/21)	1, 8x; last vs. Lafayette (11/12/21)
Mins 16 vs. LIU (11/17/21)	25 at Boston College (2/16/21)

3 - Taisha Exanor	
Pts 4, 2x; last vs. LIU (11/17/21)	9, 2x; last vs. Boston College (3/3/21)
Rebs 11 vs. LIU (11/17/21)	11 vs. LIU (11/17/21)
Asts 3 vs. Radford (11/10/21)	3 vs. Radford (11/10/21)
Blks 1, 2x; last vs. LIU (11/17/21)	1, 3x; last vs. LIU (11/17/21)
Stls 1 vs. LIU (11/17/21)	2 vs. George Mason (11/25/20)
Mins 25 vs. Radford (11/10/21)	28 at Georgia Tech (2/28/21)

4 - Emy Hayford	
Pts 15 vs. Radford (11/10/21)	15 vs. Radford (11/10/21)
Rebs 3, 2x; last vs. Lafayette (11/12/21)	10 vs. FDU (11/19/19)
Asts 6 vs. Lafayette (11/12/21)	6 vs. Lafayette (11/12/21)
Blks -	1, 3x; last at Virginia Tech (1/9/20)
Stls 3 vs. LIU (11/17/21)	4 vs. Boston College (3/3/21)
Mins 27 vs. Lafayette (11/12/21)	33 vs. Duke (2/13/20)

5 - Amber Brown	
Pts 9 vs. LIU (11/17/21)	17 at Notre Dame (2/9/20)
Rebs 10 vs. Lafayette (11/12/21)	13 at UNC (12/30/19)
Asts 5 vs. Lafayette (11/12/21)	5, 2x; last vs. Lafayette (11/12/21)
Blks -	2; 2x; last at Cincinnati (12/21/19)
Stls 2 vs. LIU (11/17/21)	4 vs. Clemson (12/13/20)
Mins 27 vs. Lafayette (11/12/21)	38 at Wake Forest (2/11/21)

10 - Ismini Prapa	
Pts -	12 vs. Notre Dame (3/4/20)
Rebs -	6 vs. Georgia Tech (3/5/20)
Asts -	3 vs. Notre Dame (3/4/20)
Blks -	1, 2x; last at Virginia (2/27/20)
Stls -	2 vs. Virginia Tech (1/31/19)
Mins -	24 at #4 Louisville (1/27/19)

2021-22	CAREER
13 - Tracey Hueston	
Pts 4 vs. LIU (11/17/21)	6 vs. Hofstra (11/29/20)
Rebs 2 vs. Radford (11/10/21)	5 vs. Notre Dame (2/22/21)
Asts -	1, 3x; last at Georgia Tech (2/28/21)
Blks 1 vs. Radford (11/10/21)	1, 7x; last vs. Radford (11/10/21)
Stls -	1, 3x; last at Georgia Tech (2/28/21)
Mins 13 vs. LIU (11/17/21)	13 vs. LIU (11/17/21)

14 - Cynthia Ezeja	
Pts -	7 vs. Delaware (12/6/20)
Rebs -	13 at Georgia Tech (2/28/21)
Asts -	3 at #2 NC State (2/25/21)
Blks -	2, 5x; last at Georgia Tech (2/28/21)
Stls -	2, 2x; last vs. Notre Dame (2/22/21)
Mins -	27 at Georgia Tech (2/28/21)

15 - Mary Dunn	
Pts 11 vs. Radford (11/10/21)	30 vs. Eastern Michigan (11/16/19)
Rebs 8 vs. Radford (11/10/21)	13 vs. UIC (1/3/19)
Asts -	3, 7x; last vs. Purdue Fort Wayne (2/25/21)
Blks 1, 3x; last vs. LIU (11/17/21)	5 vs. Northern Kentucky (1/21/19)
Stls 1 vs. Radford (11/10/21)	3 vs. Eastern Michigan (11/16/19)
Mins 15 vs. Radford (11/10/21)	38 at Milwaukee (3/2/21)

20 - Jayla Everett	
Pts 23 vs. Radford (11/10/21)	34 vs. Loyola Marymount (12/19/19)
Rebs 3 vs. LIU (11/17/21)	6, 3x; last at Air Force (1/11/20)
Asts 3 vs. Radford (11/10/21)	10 at Air Force (1/11/20)
Blks 4 vs. Lafayette (11/12/21)	4 vs. Lafayette (11/12/21)
Stls 2, 3x; last vs. LIU (11/17/21)	6 vs. Northern Arizona (11/8/19)
Mins 30 vs. Lafayette (11/12/21)	45 at Houston (11/24/18)

21 - Maliyah Johnson	
Pts 5 vs. LIU (11/17/21)	5 vs. LIU (11/17/21)
Rebs 3, 2x; last vs. LIU (11/17/21)	3, 2x; last vs. LIU (11/17/21)
Asts 1 vs. Radford (11/10/21)	1 vs. Radford (11/10/21)
Blks -	-
Stls 3 vs. LIU (11/17/21)	3 vs. LIU (11/17/21)
Mins 22 vs. LIU (11/17/21)	22 vs. LIU (11/17/21)

23 - Rita Igbokwe	
Pts 23 vs. Lafayette (11/12/21)	23 vs. Lafayette (11/12/21)
Rebs 13 vs. Lafayette (11/12/21)	18 vs. Ohio (11/29/19)
Asts 1 vs. LIU (11/17/21)	2, 3x; last vs. George Mason (11/25/20)
Blks 4 vs. Lafayette (11/12/21)	6, 2x; last vs. Miami (1/21/21)
Stls 1, 3x; last vs. LIU (11/17/21)	3, 2x; last vs. GT (2/6/20)
Mins 26 vs. Lafayette (11/12/21)	32 vs. Duke (2/13/20)

31 - Destiny Strother	
Pts 17 vs. LIU (11/17/21)	17 vs. LIU (11/17/21)
Rebs 4 vs. LIU (11/17/21)	4 vs. LIU (11/17/21)
Asts 4 vs. LIU (11/17/21)	4 vs. LIU (11/17/21)
Blks -	1, 2x; last vs. Notre Dame (2/22/21)
Stls 1 vs. Radford (11/10/21)	2, 3x; last at Boston College (2/16/21)
Mins 23, 2x; last vs. LIU (11/17/21)	28 at Boston College (2/16/21)

SINGLE GAME INDIVIDUAL RECORDS...

INDIVIDUAL

FIELD GOALS ATTEMPTED

	FGA	Player	Date	Opponent
1.	31	Wanda Randolph	12/16/77	vs. Tennessee
	31	Brianna Kiesel	2/6/13	vs. Providence
3.	30	Wanda Randolph	2/23/79	vs. Rutgers
	30	Wanda Randolph	12/21/78	vs. Clemson
5.	29	Debbie Lewis	3/4/78	vs. Penn State

FIELD GOAL PERCENTAGE (MIN 8 MADE)

	FG%	Player (FGM-A)	Date	Opponent
1.	1.000	Kalista Walters (12-12)	12/31/17	vs. Chicago State
2.	.875	Lorri Johnson (14-16)	12/19/88	vs. Cleveland State

3FG MADE

	3FGM	Player	Date	Opponent
1.	7	Alayna Gribble	1/14/18	vs. Georgia Tech
	7	Alayna Gribble	2/2/17	at Syracuse
	7	Abby Dowd	1/14/12	at DePaul
	7	Haley Harguth	1/15/02	at Rutgers
	7	Haley Harguth	1/12/02	vs. Boston College
	7	Erin Maloy	2/1/92	vs. Providence
	7	Lorri Johnson	2/7/90	vs. Seton Hall

3FG ATTEMPTED

	3FGA	Player	Date	Opponent
1.	18	Erin Maloy	1/11/92	vs. Miami

3FG PERCENTAGE (MIN 4 MADE)

	3FG%	Player (3FGM-A)	Date	Opponent
1.	1.000	Jasmine Whitney (5-5)	11/12/16	vs. Mount St. Mary's
	1.000	Aysia Bugg (5-5)	11/27/15	vs. Old Dominion
	1.000	Ismini Prapa (4-4)	3/4/20	vs. Notre Dame
	1.000	Shayla Scott (4-4)	12/31/10	at Central Michigan
	1.000	Ashlee Anderson (4-4)	12/31/10	at Central Michigan

FREE THROWS MADE

	FTM	Player	Date	Opponent
1.	16	Laine Selwyn	2/26/02	vs. Providence

FREE THROWS ATTEMPTED

	FTA	Player	Date	Opponent
1.	19	Jennifer Bruce	2/13/85	vs. Seton Hall

FREE THROW PERCENTAGE

	FT%	Player	Date	Opponent
1.	1.000	Brenna Wise (13-13)	2/16/17	vs. Virginia Tech
	1.000	Brianna Kiesel (12-12)	2/5/15	at NC State
	1.000	Shavonte Zellous (12-12)	3/3/07	vs. Cincinnati
4.	1.000	Latia Howard (11-11)	12/21/96	vs. Duquesne
5.	1.000	Brianna Kiesel (10-10)	2/1/15	vs. Miami
6.	1.000	Jennifer Shingler (10-10)	1/30/90	vs. Providence

POINTS

	Pts.	Player	Date	Opponent
1.	45	Lorri Johnson	12/18/90	vs. Kent State
2.	42	Shavonte Zellous	12/21/08	vs. Florida
3.	39	Lorri Johnson	11/29/90	vs. Duquesne
	39	Lorri Johnson	1/11/89	vs. Syracuse
	39	Wanda Randolph	1/22/77	vs. Mercer

REBOUNDS

	Rebs.	Player	Date	Opponent
1.	30	Debbie Jones	12/13/75	vs. Glassboro
2.	25	Wanda Randolph	2/18/77	vs. Lock Haven
3.	23	Pam Piklasevich	1/30/80	vs. Syracuse
	23	Wanda Randolph	2/24/77	vs. Edinboro
	23	Debbie Jones	2/28/76	vs. Temple

ASSISTS

	Asts.	Player	Date	Opponent
1.	16	Laine Selwyn	12/30/01	vs. St. Francis
	16	Kim Tirik	1/18/84	vs. West Virginia
	16	Debbie Lewis	1/30/78	vs. La Salle
4.	15	Debbie Lewis	2/6/82	vs. Cleveland State
5.	14	Three players tied		

BLOCKS

	Blks.	Player	Date	Opponent
1.	11	Wanda Randolph	2/10/78	vs. St. Joseph's
2.	10	Wanda Randolph	2/24/77	vs. Edinboro
3.	9	Monica Wignot	1/15/15	at Georgia Tech
	9	Renita Aughburns	1/16/80	vs. Edinboro
	9	Wanda Randolph	2/22/78	vs. Edinboro

STEALS

	Stls.	Player	Date	Opponent
1.	10	Debbie Lewis	11/30/80	vs. Wyoming
2.	9	Laine Selwyn	1/15/03	vs. Virginia Tech
	9	Carol Morton	1/14/95	vs. Boston College
	9	Debbie Lewis	12/6/80	vs. DePaul
	9	Debbie Lewis	1/26/80	vs. Maryland



Wanda Randolph is the only Panther in program history to record double digit blocks in a game as she recorded a preprogram record 11 swats vs. St. Joseph's in 1978 and 10 rejections against Edinboro in 1977.

SINGLE GAME TEAM RECORDS...

TEAM

POINTS

	Pts.	Opponent	Date	Result
Overall	112	at Allegheny CC	1/22/77	W, 112-25
	112	vs. Bowie State	12/5/81	W, 112-62
Home	112	vs. Bowie State	12/5/81	W, 112-62
Away	112	at Allegheny CC	1/22/77	W, 112-25
Neutral	109	vs. Kean	3/12/76	W, 109-72
In a loss	105	at Providence	2/8/89	L, 123-105
By an opponent	123	at Providence	2/8/89	L, 123-105
Both teams total	228	at Providence	2/8/89	L, 123-105

FEWEST POINTS

	Pts.	Opponent	Date	Result
Overall	32	vs. Cheyney State	12/14/75	L, 47-32
	32	at St. John's	1/16/13	L, 61-32
Home	32	vs. Cheyney State	12/14/75	L, 47-32
Away	32	at St. John's	1/16/13	L, 61-32
Neutral	38	vs. Wake Forest	2/28/18	L, 72-38
In a win	49	vs. Villanova	2/25/95	W, 49-44
	49	vs. Penn State	11/18/98	W, 49-46
By an opponent	24	at Robert Morris	2/17/76	W, 62-24
Both teams total	71	at St. John's	1/27/01	L, 38-33

FIELD GOALS MADE

	FGM	Opponent	Date
1.	51	vs. Allegheny CC	1/22/77

FIELD GOALS ATTEMPTED

	FGA	Opponent	Date
1.	113	vs. Kent State	1/24/77

3FG MADE

	3FGM	Opponent	Date
1.	15	vs. Arkansas St.	11/25/17
2.	13	vs. Michigan	11/20/14

3FG ATTEMPTED

	3FGA	Opponent	Date
1.	35	vs. Notre Dame	1/25/18
2.	30	vs. North Carolina	2/14/21
	30	vs. Mt. St. Mary's	11/12/16
	30	vs. Duke	1/28/16

FREE THROWS MADE

	FTM	Opponent	Date
1.	37	vs. Providence	1/23/10

FREE THROWS ATTEMPTED

	FTA	Opponent	Date
1.	52	vs. St. John's	3/4/95

REBOUNDS

	Rebs.	Opponent	Date
1.	68	vs. Providence	2/6/13

ASSISTS

	Assts.	Opponent	Date
1.	34	at FAU	12/7/02

BLOCKS

	Blks.	Opponent	Date
1.	14	vs. Loyola (Md.)	11/30/14

STEALS

	Stls.	Opponent	Date
1.	25	vs. Niagara	11/22/81



The Panthers connected on a program record 15 three-pointers in a 87-47 victory over Arkansas State inside the Pete on 11/25/17. Junior **Kauai Bradley** drilled a team-high three triples in the victory.



The Panthers grabbed a program record 68 rebounds in a home double overtime loss to Providence on Feb. 7, 2013. Freshman Loliya Briggs grabbed a career-high nine rebounds in the loss.

PETERSEN EVENTS CENTER RECORDS...

PITTSBURGH RECORDS

TEAM	STAT	INDIVIDUAL
104 vs. Norfolk State (12/29/02)	Points	36, Asia Logan vs. William & Mary (11/11/12)
39 (3x), last vs. WKU (12/30/08)	FG Made	13 (3x), last by Danielle Garven vs. North Carolina (2/14/19)
81 vs. Louisville (2/8/06)	FG Attempted	31, Brianna Kiesel vs. Providence (2/6/13)
67.2 vs. Youngstown State (11/29/08)	FG Percentage	1.000 (min. 5 made) 12-of-12, Kalista Walters vs. Chicago State (12/31/17)
13 vs. Michigan (11/20/14)	3FG Made	6 (3x), last by Aysia Bugg vs. Central Conn. State (11/11/19)
30 (3x), last vs. North Carolina (2/14/21)	3FG Attempted	15, Jessica Allen vs. Clemson (12/21/03)
69.2 (min. 5 attempts) vs. Akron (11/22/05)	3FG Percentage	1.000 (min. 5 made), 5-of-5 by Jasmine Whitney vs. Mount St. Mary's (11/12/16)
30 vs. Syracuse (1/9/08)	FT Made	15, Brianna Kiesel vs. Central Michigan (11/20/11)
37 vs. Syracuse (1/9/08)	FT Attempted	25, Mandy Wittenmyer vs. Howard (12/31/02)
94.7, 18-of-19, (min. 6 made) vs. Holy Cross (12/6/15)	FT Percentage	1.000 (multiple times), last 10-10 by Jayla Everett vs. Hofstra (11/29/20)
61 (2x), last vs. NC State (1/10/16)	Rebounds	22, Chelsea Cole vs. Seton Hall (2/20/10)
32 vs. Slippery Rock (11/23/16)	Assists	14 (2x), last by Shavonte Zellous vs. DePaul (2/24/07)
28 vs. West Virginia (12/8/18)	Turnovers	10, Dayshannette Harris vs. Syracuse (1/19/20)
14 vs. Loyola (11/30/14)	Blocks	6 (2x), last by Rita Igboke vs. Miami (1/21/21)
18 vs. New Orleans (11/9/18)	Steals	8, Shayla Scott vs. Youngstown State (11/12/10)

OPPONENT RECORDS

TEAM	STAT	INDIVIDUAL
112 by Notre Dame (1/16/14)	Points	36, Kelly Mazzante (Penn State, 12/14/02)
40 by Notre Dame (1/16/14)	FG Made	13, Laura Kurz (Villanova, 2/18/09)
78 by Notre Dame (2/3/09)	FG Attempted	30, Kelly Mazzante (Penn State, 12/14/02)
62.2 by Xavier (12/28/03)	FG Percentage	--
14 by Central Conn. State (11/11/19)	3FG Made	6 (8x), last Dara Mabrey (Virginia Tech, 1/31/19)
48 by Youngstown State (11/12/10)	3FG Attempted	18, Kelsey Mitchell (Miami, 1/21/21)
75.0 (9-of-12) by Notre Dame (1/6/14)	3FG Percentage	--
34 by Syracuse (1/7/12)	FT Made	15, Iasia Hemingway (Syracuse, 1/7/12)
39 by George Mason (11/25/20)	FT Attempted	18, Alex Klein (Bryant, 12/6/16)
59 by Bucknell (11/8/13)	Rebounds	21, Sugieri Monsac (Robert Morris 12/1/04)
27 by Connecticut (2/21/12)	Assists	14, Nadirah McKenith (St. John's, 3/1/10)
29 (2x), last by New Orleans (11/9/18)	Turnovers	12, Jill Furstenburg (Providence, 2/19/05)
10 (4x) last by Lafayette (12/31/11)	Blocks	6 (3x), last Rashidat Junaid (Rutgers, 1/10/10)
14 by Penn State (12/9/04)	Steals	5, Mykasa Robinson (Louisville, 2/18/21)





LANCE WHITE

HEAD COACH | 4TH SEASON | TEXAS TECH '96

Lance White enters his fourth season at the helm of the Panthers in 2021-22 after being named as the ninth head coach in Pitt women's basketball history on April 19, 2018.

The 2020-21 campaign was an interesting one for all involved but the Panthers continued to forge ahead on the court. White's offense continued their steady improvement as they finished the season averaging 64.3 points per game during ACC contests, their highest per game average since joining the conference in 2013-14. The offense also netted 70+ points five times and 80+ points twice, the most by Pitt since joining the ACC.

Junior transfer Jayla Everett was able to make an immediate impact for the Panthers as she led the team in scoring (15.4 ppg) and three-pointers (52). Her 15.4 ppg was the highest per game average by a Pitt transfer in program history while also leading all ACC newcomers. Everett also earned Honorable Mention All-ACC honors, marking the first player under Coach White to earn All-Conference recognition and just the second in program history (Brianna Kiesel).

Off the court in 2020-21, sophomore Dayshanette Harris claimed her second straight Academic All-ACC award while the Panthers posted a 3.16 team GPA. Pitt also had eight ACC Honor Roll members, the most since 2016-17.

During the 2019-20 season, White's second season in charge, the Panthers showed growth in every part of the program and it was capped with an ACC Tournament victory over the defending ACC Champions, Notre Dame. The win over the Irish marked just the Panthers second ACC Tournament win in program history as freshman sensation Dayshanette Harris knocked down the game-winning jumper with just 2.7 seconds left in the game. With the win, Pitt handed Notre Dame just their second loss in ACC Tournament history.

The foundation for the Pitt program was laid in season two as White's "First Class" of seven student-athletes made huge impacts that will shape the program for years to come. The Pitt freshman class of Harris, Amber Brown, Emy Hayford and Rita Igboke was not only the best freshman class in the ACC but they were one of the best in the NCAA. The quartet averaged 31.0 points/game combined, the most ever by a Pitt freshman class.

The youthful Panthers roster during the 2019-20 campaign was able to gain loads of experience that will help down the road as Pitt was the only team in the ACC to start five newcomers, doing so in the final seven games of the season.

White signed his highest ranking recruiting class for the 2020-21 campaign as he will have five newcomers to the lineup, three freshman and two transfer student-athletes. The three freshman joining the program are Tracey Hueston, the 73rd ranked recruit in the 2020 class, Liatu King and Taisha Exanor. Hueston is the highest rated recruit for the Panthers since joining the ACC while King and Exanor are both three-star prospects with winning pedigrees.

Also joining the 2020 class will be New Mexico transfer Jayla Everett who earned the Mountain West Freshman of the Year accolades in 2018-19 after coming out of Kirkwood High School ranked as the 94th best player in the 2018 class. Sophomore Destiny Strother also transferred to Pitt after one year at Marquette, helping the Eagles to a 24-8 record while coming off the bench.

THE WHITE FILE

COACHING HIGHLIGHTS

- Earned first career victory as a head coach on Nov. 9, 2018 as Pitt downed New Orleans 90-38.
- Notched his first ACC of his head coaching career on Feb. 14, 2019 as the Panthers beat North Carolina, 91-78 at the Petersen Events Center.
- Led Panthers to just the second ACC Tournament win in program history on Mar. 4, 2020, downing defending champs Notre Dame, 67-65.
- Named WBCA National Assistant Coach of the Year in 2017.
- Made five appearances in the NCAA Sweet 16 as an assistant coach.
- Coached 10 WNBA draft picks and 38 All-ACC award winners in his coaching career.

COACHING EXPERIENCE

- Head Coach, Pitt, 2018-Pres.
- Associate HC, FSU, 2012-18
- Assistant coach, FSU, 2003-12
- Assistant coach, Texas Tech, 1998-03
- GA coach, Texas Tech, 1996-98
- Team manager, Texas Tech, 1992-96

EDUCATION

Undergraduate Degree: B.S. exercise & sport science

Graduate Degree: M.S. sports administration

Alma Mater: Texas Tech '96, '98

PERSONAL

Hometown: Spur, Texas

Family: Married to Melanie White; has two children: Vivian & Quentin

White came to Pitt after spending 15 years at Florida State, where he helped the Seminoles to a 350-145 (.707) record, including 12 seasons of 20+ wins.

During his final season at Florida State (2017-18), the Seminoles posted 25 or more wins for the fourth consecutive season, finishing with a 26-7 overall record and averaged the second-most points in a season in program history with 81.0 points per game. It was just the second time FSU averaged 80 or more points per game in a season. The team ranked in the Top 20 nationally in field goal percentage (20th), offensive rebounds per game (16th), rebound margin (sixth), rebounds per game (11th), scoring margin (10th) and scoring offense (13th). The Seminoles led the ACC in rebounding offense (42.8), rebounding margin (+10.0) and offensive rebounding percentage (41.4 percent).

During his time at FSU, 10 players were selected in the WNBA Draft, eight earned ACC All-Defensive team honors and 37 earned all-conference awards. He helped the Seminoles reach the NCAA Tournament in 13 of the past 14 years, while the team won at least one NCAA Tournament game in each of its past 15 appearances.

For his standout coaching efforts during the 2016-17 season, White was named the Women's Basketball Coaches Association (WBCA) National Assistant Coach of the Year.

White helped FSU reach new levels of success and brought an infectious energy to the program. He directed the Seminole defense and offense during his tenure in addition to being one of the country's top recruiters.

Florida State captured back-to-back regular season ACC co-titles in 2010 and 2011, and advanced to the 2010 NCAA Tournament Elite Eight. After serving as assistant coach for the first nine seasons in Tallahassee, White was promoted to associate head coach in advance of the 2012-13 campaign.

Prior to FSU, White spent 11 seasons at Texas Tech, including five years as an assistant coach with the Lady Raiders' top-10 program under legendary head coach Marsha Sharp. With White on staff, Texas Tech won three Big 12 championships and advanced to seven consecutive NCAA Tournaments, including five Sweet 16 and two Elite Eight appearances. He was a student assistant on Tech's 1993 national championship team and a graduate assistant coach for two seasons before being elevated to a full-time coach in 1998.

While in Lubbock, White worked with some of the best players the game has ever seen, including National Player of the Year and three-time WNBA MVP Sheryl Swoopes as well as Plenette Pierson, who was named 2007 WNBA Sixth Woman of the Year.

A 1996 graduate of Texas Tech, White earned his bachelor's degree in exercise and sports science. He went on to receive a master's degree in sports administration in August 1998. He attended Lubbock Christian University for three semesters before transferring to Texas Tech in January 1993.

As a high school athlete in Spur, he was a three-time All-District selection, two-time All-Region, and two-time third team all-state choice in basketball. His high school basketball and football teams advanced to the regional round both his junior and senior years. In addition to his football and basketball accolades, he was listed in the Spalding Top 100 tennis players in 1991.

He is married to the former Melanie Smith. The Whites are the proud parents of Quentin and Vivian.

WHITE YEAR-BY-YEAR

YEAR	OVERALL	PCT	CONF	PCT	POSTSEASON
1998-99	30-4	.882	14-2	.875	NCAA Sweet 16
1999-00	28-5	.848	13-3	.813	NCAA Elite Eight
2000-01	25-7	.781	13-3	.813	NCAA Sweet 16
2001-02	20-12	.625	8-8	.500	NCAA Sweet 16
2002-03	29-6	.829	13-3	.813	NCAA Elite Eight
2003-04	15-15	.500	7-9	.438	WNIT Second Round
2004-05	24-8	.750	9-5	.643	NCAA Second Round
2005-06	20-10	.667	10-4	.714	NCAA Second Round
2006-07	24-10	.706	10-4	.714	NCAA Sweet 16
2007-08	19-14	.576	7-7	.500	NCAA Second Round
2008-09	26-8	.765	12-2	.857	NCAA Second Round
2009-10	29-6	.829	12-2	.857	NCAA Elite Eight
2010-11	24-8	.750	11-3	.786	NCAA Second Round
2011-12	14-17	.452	6-10	.375	--
2012-13	23-10	.697	11-7	.611	NCAA Second Round
2013-14	21-12	.636	7-9	.438	NCAA Second Round
2014-15	32-5	.865	14-2	.875	NCAA Elite Eight
2015-16	25-8	.758	13-3	.813	NCAA Sweet 16
2016-17	28-7	.800	13-3	.813	NCAA Elite Eight
2017-18	26-7	.788	12-4	.750	NCAA Second Round
2018-19	10-21	.323	2-14	.125	--
2019-20	5-26	.161	1-17	.056	--
2020-21	5-14	.263	3-12	.200	--
2021-22	3-0	1.000	0-0	.000	--



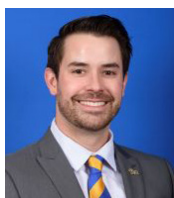
ON THE PITT BENCH



TERRI MITCHELL

Associate Head Coach | Duquesne, 1989

- » Fourth season at Pitt serving as associate head coach under head coach Lance White. Works with the Pitt guards.
- » Came to Pittsburgh after 18 seasons (1996-2014) as head coach at Marquette. Finished her time with the Golden Eagles as the program's all-time winningest head coach with a 348 career victories and advanced to the postseason 15 times.
- » Inducted into the Wisconsin Basketball Coaches Association Hall of Fame on Sept. 25, 2021.
- » She is a Harrisburg, PA native and was a four-year letterwinner and co-captain at Duquesne from 1985-89.



JOSH PETERSEN

Assistant Coach | Florida State, 2012

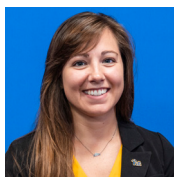
- » Fourth season at Pitt serving as assistant coach under head coach Lance White. Works with the Pitt post players.
- » Previously served as Assistant Coach at UNC Asheville for four seasons under Brenda Mock Kirkpatrick.
- » Spent six seasons at Florida State under the tutelage of White, two as graduate assistant and four as head team manager.
- » A native of Abernathy, TX, Petersen's middle school teacher at Hoover Middle School was White's wife, Melanie White.



BRIANNA KIESEL

Assistant Coach | Pitt, 2015

- » First season at Pitt serving as assistant coach under head coach Lance White. Works with the Pitt point guards.
- » Wrapped up her six year professional playing career (WNBA & overseas) earlier this season.
- » Returns to her alma mater after leading the Panthers to their last NCAA Tournament appearance (2015) as she averaged a career-high 18.4 ppg, 5.0 rpg and 4.5 apg while earning First Team All-ACC and All-ACC Defensive Team honors.
- » Finished her career ranked fifth in points (1,938) and assists (433) while having her name etched on the prestigious Varsity Walk.



BRITTANY BUCHHEIT

Athletic Trainer | California University of Pennsylvania, 2012

- » Third season at Pitt serving as athletic trainer under head coach Lance White.
- » Previously served as the athletic trainer for the Binghamton women's basketball team for the past four seasons.
- » Served as an intern athletic trainer at Binghamton before being promoted to full time in 2014.
- » She is a native of St. Mary's, PA and earned her graduate degree from California University of Pennsylvania in 2014.



ALI HOESLY

Director of Basketball Operations | Rutgers, 2016

- » Fourth season at Pitt serving as the director of basketball operations under head coach Lance White.
- » Previously served as assistant director of basketball operations and executive assistant to the head coach at Florida State.
- » Prior to her time at FSU, she was the head student manager for the Rutgers women's basketball team for two seasons.
- » Also served as an operations intern for the Washington Mystics in the WNBA in 2015.



BRYCE AGLER

Director of Video & Player Performance | Wittenburg, 2014

- » First season at Pitt serving as director of video & player performance under head coach Lance White.
- » Spent the last five seasons as an assistant coach in the WNBA (Los Angeles & Dallas).
- » Helped lead the Los Angeles Sparks to the 2016 WNBA Championship.
- » A 2014 graduate of Wittenburg, he started his coaching career as a women's basketball assistant coach at Eastern Illinois.



KAILA EALEY

Director of Recruiting Operations | NC State, 2018

- » First season at Pitt serving as director of recruiting operations under head coach Lance White.
- » Prior to Pitt, she was a five-year member of the women's basketball team at NC State (2015-20).
- » Finished off her playing career with 36 starts, 435 points, 326 rebounds, 241 assists and 104 steals.
- » Two-time All-ACC Academic Honor Roll member during her impressive collegiate career.

0 SANDRINE CLESCA

SO | Guard | 5-9 | Undeclared
Laval, Quebec, Canada | Winston-Salem Christian School



- Netted a season-high five points in the season opener vs. Radford.
- Had a career-high four assists and three rebounds in the win over Lafayette.
- Appeared in 11 games while starting the final three games of her freshman season.
- Averaged 11.7 minutes and 3.1 points on the year but averaged 25.0 minutes, 6.6 points and 2.0 rebounds across her three career starts.
- Netted a career-high 12 points, three rebounds and two steals on 5-for-9 from the floor in a road game against #2 NC State.

ABOUT CLESCA: High basketball IQ point guard who likes to create for others. Can get into the paint and distribute to teammates. Improving jumper will make her more difficult to guard.

Last Appearance: 13 mins, 2 pts, 4 assts, 3 rebs vs. Lafayette.



SEASON/CAREER HIGHS

POINTS

Season 13 vs. LIU, 11/17/21
Career 13 vs. LIU, 11/17/21

REBOUNDS

Season 3, 2x; last vs. LIU, 11/17/21
Career 3, 3x; last vs. LIU, 11/17/21

ASSISTS

Season 5 vs. LIU, 11/17/21
Career 5 vs. LIU, 11/17/21

BLOCKS

Season --
Career 1 at NC State, 2/25/21

STEALS

Season 3 vs. LIU, 11/17/21
Career 3 vs. LIU, 11/17/21

MINUTES

Season 20 vs. Radford, 11/10/21
Career 33 at NC State, 2/25/21

FIELD GOALS MADE

Season 4 vs. LIU, 11/17/21
Career 5 at NC State, 2/25/21

FIELD GOALS ATTEMPTED

Season 8 vs. LIU, 11/17/21
Career 9, 2x; last at Georgia Tech, 2/28/21

3PT FIELD GOALS MADE

Season 1 vs. LIU, 11/17/21
Career 2 at NC State, 2/25/21

3PT FIELD GOALS ATTEMPTED

Season 3 vs. LIU, 11/17/21
Career 3, 2x; last vs. LIU, 11/17/21

FREE THROWS MADE

Season 4 vs. LIU, 11/17/21
Career 4 vs. LIU, 11/17/21

FREE THROWS ATTEMPTED

Season 4 vs. LIU, 11/17/21
Career 4 vs. LIU, 11/17/21

2021-22 GAME-BY-GAME STATS

Opponent	Date	GS	MIN	Total		3-Pointers		Free throws		Rebounds				PF	A	TO	BLK	STL	PTS	AVG
				FG-FGA	PCT	3FG-3FGA	PCT	FT-FTA	PCT	OFF	DEF	TOT	AVG							
Radford	11/10/2021		19:58	2-3	.667	0-0	.000	1-2	.500	1	1	2	2.0	0	2	3	0	0	5	5.0
Lafayette	11/12/2021		13:15	1-1	1.000	0-0	.000	0-0	.000	0	3	3	2.5	0	4	1	0	0	2	3.5
LIU	11/17/2021		19:05	4-8	.500	1-3	.333	4-4	1.000	0	3	3	2.7	2	5	3	0	3	13	6.7
Totals		0	52:18	7-12	.583	1-3	.333	5-6	.833	1	7	8	2.7	2	11	7	0	3	20	6.7

Player Averages

Games Played	Minutes/game	Points/game	FG Pct	3FG Pct	FT Pct	Rebounds/game	Assists/game	Turnovers/game	Assist/Turnover ratio	Steals/game	Blocks/game
3	17.4	6.7	58.3	33.3	83.3	2.7	3.7	2.3	1.6	1.0	0.0

PRODUCTION TRACKER

	20-21	21-22	Streak	Career
Scored 5+ Points	4	2	1	6
Scored 10+ Points	1	1	1	2
Had Multiple Assists	3	3	4	6
Led Pitt in Assists	-	1	1	1
Had a Steal	3	1	1	4
Made a Three-Pointer	3	1	1	4
Played 20+ Minutes	2	1	-	3
Played 30+ Minutes	1	-	-	1

CAREER STATS

SEASON	TEAM	GP-GS	MIN/AVG	FG-FGA	FG%	3FG-3FGA	3FG%	FT-FTA	FT%	OFF	DEF	TOT	AVG	PF-FO	A	TO	BLK	STL	PTS	AVG
2020-21	Pitt	11-3	130/11.8	14-35	.400	4-8	.500	2-4	.500	1	11	12	1.1	6-0	10	11	1	4	34	3.1
2021-22	Pitt	3-0	52/17.4	7-12	.583	1-3	.333	5-6	.833	1	7	8	2.7	2-0	11	7	0	3	20	6.7
TOTAL		14-3	182/13.0	21-47	.447	5-11	.455	7-10	.700	2	18	20	1.4	8-0	21	18	1	7	54	3.9

1 DAYSHANETTE HARRIS

JR | Guard | 5-7 | Undeclared
Youngstown, OH | Ursuline



- Returned from injury against LIU and finished with six points, six rebounds and two assists in 10 minutes of work.
- Started each of the first 15 games of her sophomore season before sustaining a season-ending knee injury.
- Averaged 26.9 minutes, 12.4 points, a career-high 4.7 assists, 4.3 rebounds and 1.3 steals while shooting a career-high 77.2% from the free throw line in year two.
- She ranked third in the ACC in assists (4.7 apg) and her per game average was the highest by a Pitt player since 2002-03.
- Posted 11 games scoring in double figures including two scoring 20+ points.



ABOUT HARRIS: Athletic and strong guard with an uncanny ability to score the basketball. Loves to attack the rim and is great at finishing through contact. Continuing to improve outside shooting touch.

Last Appearance: 10 mins, 6 pts, 6 rebs, 2 assts vs. LIU.

SEASON/CAREER HIGHS

POINTS

Season 6 vs. LIU, 11/17/21
Career 27 at Boston College, 2/20/20

REBOUNDS

Season 6 vs. LIU, 11/17/21
Career 10 vs. Notre Dame, 3/4/20

ASSISTS

Season 2 vs. LIU, 11/17/21
Career 9 at Virginia Tech, 12/10/20

BLOCKS

Season --
Career 3 vs. Wake Forest, 1/30/20

STEALS

Season --
Career 4 at Penn State, 12/5/19

MINUTES

Season 10 vs. LIU, 11/17/21
Career 36, 2x; last at Wake Forest, 2/11/21

FIELD GOALS MADE

Season 2 vs. LIU, 11/17/21
Career 10 at Penn State, 12/5/19

FIELD GOALS ATTEMPTED

Season 4 vs. LIU, 11/17/21
Career 26 at Boston College, 2/20/20

3PT FIELD GOALS MADE

Season --
Career 3, 2x; last at Virginia, 2/27/20

3PT FIELD GOALS ATTEMPTED

Season 1 vs. LIU, 11/17/21
Career 8 at Boston College, 2/20/20

FREE THROWS MADE

Season 2 vs. LIU, 11/17/21
Career 8 vs. Virginia Tech, 2/4/21

FREE THROWS ATTEMPTED

Season 2 vs. LIU, 11/17/21
Career 10 vs. Virginia Tech, 2/4/21

2021-22 GAME-BY-GAME STATS

Opponent	Date	GS	MIN	Total		3-Pointers		Free throws		Rebounds				PF	A	TO	BLK	STL	PTS	AVG
				FG-FGA	PCT	3FG-3FGA	PCT	FT-FTA	PCT	OFF	DEF	TOT	AVG							
LIU	11/17/2021		09:33	2-4	.500	0-1	.000	2-2	1.000	1	5	6	6.0	0	2	1	0	0	6	6.0
Totals		0	09:33	2-4	.500	0-1	.000	2-2	1.000	1	5	6	6.0	0	2	1	0	0	6	6.0

Player Averages

Games Played	Minutes/game	Points/game	FG Pct	3FG Pct	FT Pct	Rebounds/game	Assists/game	Turnovers/game	Assist/Turnover ratio	Steals/game	Blocks/game
1	9.6	6.0	50.0	0.0	100.0	6.0	2.0	1.0	2.0	0.0	0.0

PRODUCTION TRACKER

	20-21	21-22	Streak	Career
Scored 10+ Points	11	-	-	27
Scored 20+ Points	2	-	-	8
Had Multiple Assists	14	1	1	36
Led Pitt in Assists	11	-	-	27
Had Multiple Steals	5	-	-	23
Had 5+ Rebounds	8	1	1	25
Played 20+ Minutes	14	-	-	40
Played 30+ Minutes	6	-	-	20

CAREER STATS

SEASON	TEAM	GP-GS	MIN/AVG	FG-FGA	FG%	3FG-3FGA	3FG%	FT-FTA	FT%	OFF	DEF	TOT	AVG	PF-FO	A	TO	BLK	STL	PTS	AVG
2019-20	Pitt	30-24	832/27.7	139-400	.348	20-75	.267	82-126	.651	29	106	135	4.5	90-5	79	134	7	53	380	12.7
2020-21	Pitt	15-15	401/26.7	70-186	.376	2-19	.105	44-57	.772	13	52	65	4.3	40-2	70	63	3	20	186	12.4
2021-22	Pitt	1-0	10/9.6	2-4	.500	0-1	.000	2-2	1.000	1	5	6	6.0	0-0	2	1	0	0	6	6.0
TOTAL		46-39	1242/27.0	211-590	.358	22-95	.232	128-185	.692	43	163	206	4.5	130-7	151	198	10	73	572	12.4

2 LIATU KING

SO | Guard | 6-0 | Undeclared
Washington, D.C. | Bishop McNamara



- Grabbed a season-high 10 rebounds and added five points and a career-high four assists in the win over Radford.
- Key member off the Pitt bench appearing in all 19 games during her freshman season.
- Averaged 14.3 minutes, 5.0 points and 4.6 rebounds while shooting 46.1% from the floor.
- Posted a career-high 15 points and eight rebounds on 7-for-11 from the floor in a road win at Clemson.
- Had nine points, a career-high 10 rebounds and a career-high four blocks against Boston College.

ABOUT KING: Super strong wing player with a knack for finding the basketball. Solid defender with a good pull up jump shot game. Good rebounder who loves to attack the basket.

Last Appearance: 9 mins, 2 rebs, 1 ast, 1 blk, 1 stl vs. Lafayette.



SEASON/CAREER HIGHS

POINTS

Season 5 vs. Radford, 11/10/21
Career 15 at Clemson, 1/26/21

REBOUNDS

Season 10 vs. Radford, 11/10/21
Career 10, 2x; last vs. Radford, 11/10/21

ASSISTS

Season 4 vs. Radford, 11/10/21
Career 4 vs. Radford, 11/10/21

BLOCKS

Season 1, 3x; last vs. LIU, 11/17/21
Career 4 at Boston College, 2/16/21

STEALS

Season 2 vs. LIU, 11/17/21
Career 2 vs. LIU, 11/17/21

MINUTES

Season 15 vs. LIU, 11/17/21
Career 25 at Boston College, 2/16/21

FIELD GOALS MADE

Season 2, 2x; last vs. LIU, 11/17/21
Career 7 at Clemson, 1/26/21

FIELD GOALS ATTEMPTED

Season 6 vs. LIU, 11/17/21
Career 11 at Clemson, 1/26/21

3PT FIELD GOALS MADE

Season --
Career --

3PT FIELD GOALS ATTEMPTED

Season --
Career --

FREE THROWS MADE

Season 1 vs. Radford, 11/10/21
Career 3, 2x; last at Boston College, 2/16/21

FREE THROWS ATTEMPTED

Season 4 vs. Radford, 11/10/21
Career 4, 4x; last vs. Radford, 11/10/21

2021-22 GAME-BY-GAME STATS

Opponent	Date	GS	MIN	Total		3-Pointers		Free throws		Rebounds				PF	A	TO	BLK	STL	PTS	AVG
				FG-FGA	PCT	3FG-3FGA	PCT	FT-FTA	PCT	OFF	DEF	TOT	AVG							
Radford	11/10/2021		14:18	2-4	.500	0-0	.000	1-4	.250	3	7	10	10.0	4	4	1	1	0	5	5.0
Lafayette	11/12/2021		09:02	0-1	.000	0-0	.000	0-0	.000	2	0	2	6.0	0	1	2	1	1	0	2.5
LIU	11/17/2021		15:41	2-6	.333	0-0	.000	0-1	.000	4	4	8	6.7	1	3	1	1	2	4	3.0
Totals		0	39:01	4-11	.364	0-0	.000	1-5	.200	9	11	20	6.7	5	8	4	3	3	9	3.0

Player Averages

Games Played	Minutes/game	Points/game	FG Pct	3FG Pct	FT Pct	Rebounds/game	Assists/game	Turnovers/game	Assist/Turnover ratio	Steals/game	Blocks/game
3	13.0	3.0	36.4	0.0	20.0	6.7	2.7	1.3	2.0	1.0	1.0

PRODUCTION TRACKER

	20-21	21-22	Streak	Career
Scored 5+ Points	10	1	-	11
Scored 10+ Points	2	-	-	2
Had 5+ Rebounds	8	1	-	9
Had 10+ Rebounds	1	1	-	2
Had Multiple Assists	4	1	-	5
Led Pitt in Rebounds	4	1	-	5
Played 20+ Minutes	4	-	-	4
Played 30+ Minutes	-	-	-	-

CAREER STATS

SEASON	TEAM	GP-GS	MIN/AVG	FG-FGA	FG%	3FG-3FGA	3FG%	FT-FTA	FT%	OFF	DEF	TOT	AVG	PF-FO	A	TO	BLK	STL	PTS	AVG
2020-21	Pitt	19-0	273/14.3	41-89	.461	0-0	.000	13-22	.591	37	51	88	4.6	30-0	11	17	8	7	95	5.0
2021-22	Pitt	3-0	39/13.0	4-11	.364	0-0	.000	1-5	.200	9	11	20	6.7	5-0	8	4	3	3	9	3.0
TOTAL		22-0	312/14.2	45-100	.450	0-0	.000	14-27	.519	46	62	108	4.9	35-0	19	21	11	10	104	4.7

3 TAISHA EXANOR

50 | Guard | 6-0 | Undeclared
Chateauguay, Quebec, Canada | Dawson College



- Has earned the start in both games so far this season while grabbing an average of 5.5 rebounds per game.
- Appeared in 16 games off the bench during her freshman season.
- Averaged 9.5 minutes, 2.3 points and 1.4 rebounds on the season but averaged 20.3 minutes, 5.0 points and 2.8 rebounds across the final four games of her first season.
- Tied a career-high with nine points and two rebounds while knocking down two three-pointers in the ACC Tournament loss to Boston College.

ABOUT EXANOR: Athletic and super long guard with great range and shooting touch. Has a high basketball IQ and causes issues defensively because of her length. Improving off the dribble and rebounding.

Last Appearance: 15 mins, 2 pts, 5 rebs, 1 ast, 1 blk vs. Lafayette.



SEASON/CAREER HIGHS

POINTS

Season 4, 2x; last vs. LIU, 11/17/21
Career 9, 2x; last vs. Boston College, 3/3/21

REBOUNDS

Season 11 vs. LIU, 11/17/21
Career 11 vs. LIU, 11/17/21

ASSISTS

Season 3 vs. Radford, 11/10/21
Career 3 vs. Radford, 11/10/21

BLOCKS

Season 1, 2x; last vs. LIU, 11/17/21
Career 1, 4x; last vs. LIU, 11/17/21

STEALS

Season 1 vs. LIU, 11/17/21
Career 2 vs. George Mason, 11/25/20

MINUTES

Season 25 vs. Radford, 11/10/21
Career 28 at Georgia Tech, 2/28/21

FIELD GOALS MADE

Season 1, 3x; last vs. LIU, 11/17/21
Career 4 vs. George Mason, 11/25/20

FIELD GOALS ATTEMPTED

Season 6 vs. Radford, 11/10/21
Career 9 vs. George Mason, 11/25/20

3PT FIELD GOALS MADE

Season 1 vs. LIU, 11/17/21
Career 2 vs. Boston College, 3/3/21

3PT FIELD GOALS ATTEMPTED

Season 2, 2x; last vs. LIU, 11/17/21
Career 4, 3x; last vs. Boston College, 3/3/21

FREE THROWS MADE

Season 2 vs. Radford, 11/10/21
Career 2 vs. Radford, 11/10/21

FREE THROWS ATTEMPTED

Season 2, 2x; last vs. LIU, 11/17/21
Career 2, 3x; last vs. LIU, 11/17/21

2021-22 GAME-BY-GAME STATS

Opponent	Date	GS	MIN	Total		3-Pointers		Free throws		Rebounds				PF	A	TO	BLK	STL	PTS	AVG
				FG	FGA	PCT	3FG	3FGA	PCT	FT	FTA	PCT	OFF	DEF	TOT	AVG				
Radford	11/10/2021	*	25:25	1-6	.167	0-2	.000	2-2	1.000	4	2	6	6.0	0	3	0	0	0	4	4.0
Lafayette	11/12/2021	*	15:13	1-3	.333	0-0	.000	0-0	.000	2	3	5	5.5	3	1	1	1	0	2	3.0
LIU	11/17/2021		19:35	1-4	.250	1-2	.500	1-2	.500	3	8	11	7.3	2	1	5	1	1	4	3.3
Totals		2	60:13	3-13	.231	1-4	.250	3-4	.750	9	13	22	7.3	5	5	6	2	1	10	3.3

Player Averages

Games Played	Minutes/ game	Points/ game	FG Pct	3FG Pct	FT Pct	Rebounds/ game	Assists/ game	Turnovers/ game	Assist/Turnover ratio	Steals/ game	Blocks/ game
3	20.1	3.3	23.1	25.0	75.0	7.3	1.7	2.0	0.8	0.3	0.7

PRODUCTION TRACKER

	20-21	21-22	Streak	Career
Scored 5+ Points	3	-	-	3
Scored 10+ Points	-	-	-	-
Had 5+ Rebounds	-	2	2	2
Had an Assist	5	2	2	7
Had Multiple Steals	1	-	-	1
Made A Three-Pointer	6	-	-	6
Played 20+ Minutes	2	1	-	3
Played 30+ Minutes	-	-	-	-

CAREER STATS

SEASON	TEAM	GP-GS	MIN/AVG	FG-FGA	FG%	3FG-3FGA	3FG%	FT-FTA	FT%	OFF	DEF	TOT	AVG	PF-FO	A	TO	BLK	STL	PTS	AVG
2020-21	Pitt	16-0	151/9.4	14-47	.298	7-30	.233	1-2	.500	11	12	23	1.4	19-0	5	5	2	8	36	2.3
2021-22	Pitt	3-2	60/20.1	3-13	.231	1-4	.250	3-4	.750	9	13	22	7.3	5-0	5	6	2	1	10	3.3
TOTAL		19-2	211/11.1	17-60	.283	8-34	.235	4-6	.667	20	25	45	2.4	24-0	10	11	4	9	46	2.4

4 EMY HAYFORD

JR | Guard | 5-8 | Undeclared
Maastricht, Netherlands | Calandlyceum



- Has started both games this season while averaging 9.5 ppg, 4.5 apg and 3.0 rpg.
- Appeared in all 19 games while earning three starts during her sophomore season.
- Finished the season averaging 18.4 minutes, 3.5 points, 2.3 rebounds and 2.1 assists.
- Posted a career-high 39 assists while posting 10 games with multiple assists and leading the team in assists five times.
- Posted a season-high 10 points, four rebounds and two assists at Virginia Tech.
- Notched a career-high five assists in two games during her second season (Louisville, Georgia Tech).

ABOUT HAYFORD: Explosive guard with an knack for getting to the bucket. Her quickness makes her an asset in the open floor. Great court vision makes her dangerous passing the ball.

Last Appearance: 27 mins, 4 pts, 3 rebs, 6 assts vs. Lafayette.



SEASON/CAREER HIGHS

POINTS

Season 15 vs. Radford, 11/10/21
Career 15 vs. Radford, 11/10/21

REBOUNDS

Season 3, 2x; last vs. Lafayette, 11/12/21
Career 10 vs. Fairleigh Dickinson, 11/19/19

ASSISTS

Season 6 vs. Lafayette, 11/12/21
Career 6 vs. Lafayette, 11/12/21

BLOCKS

Season --
Career 1, 4x; last at Miami, 3/1/20

STEALS

Season 3 vs. LIU, 11/17/21
Career 4 vs. Boston College, 3/3/21

MINUTES

Season 27 vs. Lafayette, 11/12/21
Career 33 vs. Duke, 2/13/20

FIELD GOALS MADE

Season 7 vs. Radford, 11/10/21
Career 7 vs. Radford, 11/10/21

FIELD GOALS ATTEMPTED

Season 8 vs. Radford, 11/10/21
Career 10, 3x; last vs #8 NC State, 1/23/20

3PT FIELD GOALS MADE

Season 1 vs. Radford, 11/10/21
Career 3 at Penn State, 12/5/19

3PT FIELD GOALS ATTEMPTED

Season 1, 2x; last vs. Lafayette, 11/12/21
Career 8 at Clemson, 1/16/20

FREE THROWS MADE

Season 2 vs. Lafayette, 11/12/21
Career 4, 2x; last at Boston College, 2/16/21

FREE THROWS ATTEMPTED

Season 4 vs. Lafayette, 11/12/21
Career 5 vs. Fairleigh Dickinson, 11/19/19

2021-22 GAME-BY-GAME STATS

Opponent	Date	GS	MIN	Total		3-Pointers		Free throws		Rebounds				PF	A	TO	BLK	STL	PTS	AVG
				FG-FGA	PCT	3FG-3FGA	PCT	FT-FTA	PCT	OFF	DEF	TOT	AVG							
Radford	11/10/2021	*	19:20	7-8	.875	1-1	1.000	0-0	.000	1	2	3	3.0	3	3	0	0	1	15	15.0
Lafayette	11/12/2021	*	26:45	1-5	.200	0-1	.000	2-4	.500	1	2	3	3.0	2	6	1	0	0	4	9.5
LIU	11/17/2021	*	16:01	3-5	.600	0-0	.000	0-1	.000	1	0	1	2.3	1	3	5	0	3	6	8.3
Totals		3	62:06	11-18	.611	1-2	.500	2-5	.400	3	4	7	2.3	6	12	6	0	4	25	8.3

Player Averages

Games Played	Minutes/ game	Points/ game	FG Pct	3FG Pct	FT Pct	Rebounds/ game	Assists/ game	Turnovers/ game	Assist/Turnover ratio	Steals/ game	Blocks/ game
3	20.7	8.3	61.1	50.0	40.0	2.3	4.0	2.0	2.0	1.3	0.0

PRODUCTION TRACKER

	20-21	21-22	Streak	Career
Scored 5+ Points	5	1	-	24
Scored 10+ Points	1	1	-	3
Had Multiple Assists	10	2	7	21
Led Pitt in Assists	5	1	1	9
Had Multiple Steals	3	-	-	9
Led Pitt in Steals	4	-	-	9
Played 20+ Minutes	5	1	1	26
Played 30+ Minutes	1	-	-	4

CAREER STATS

SEASON	TEAM	GP-GS	MIN/AVG	FG-FGA	FG%	3FG-3FGA	3FG%	FT-FTA	FT%	OFF	DEF	TOT	AVG	PF-FO	A	TO	BLK	STL	PTS	AVG
2019-20	Pitt	31-11	684/22.1	53-192	.276	17-86	.198	24-41	.585	33	67	100	3.2	61-2	36	65	4	18	147	4.7
2020-21	Pitt	19-3	349/18.4	25-84	.298	2-19	.105	14-15	.933	16	28	44	2.3	32-1	39	49	0	16	66	3.5
2021-22	Pitt	3-3	62/20.7	11-18	.611	1-2	.500	2-5	.400	3	4	7	2.3	6-0	12	6	0	4	25	8.3
TOTAL		53-17	1095/20.7	89-294	.303	20-107	.187	40-61	.656	52	99	151	2.8	99-3	87	120	4	38	238	4.5

5 AMBER BROWN

JR | Forward | 6-0 | Undeclared
Monroe, LA | Little Rock Christian Academy



- Has started both games this season while averaging 6.0 ppg, 8.5 rpg and 4.0 apg from her wing position.
- Started all 19 games at forward during her sophomore season. Has started all 50 games in her career.
- Has played 1,466 minutes in her career, the most by a Pitt player through her first 50 games since joining the ACC.
- Finished off her second season averaging 25.1 minutes, 7.3 points, 6.1 rebounds and 1.5 assists.
- Grabbed her 300th career rebound in her 39th game, the second fastest to 300 career rebounds since Pitt joined the ACC.



ABOUT BROWN: Ferocious rebounder with a knack for finding the ball off the rim. Strong in the open court with a great ability to finish at the hoop through contact. Added speed and improved her jumper during the offseason.

Last Appearance: 27 mins, 5 pts, 10 rebs, 5 assts vs. Lafayette.

SEASON/CAREER HIGHS

POINTS

Season 9 vs. LIU, 11/17/21
Career 17 at Notre Dame, 2/9/20

REBOUNDS

Season 10 vs. Lafayette, 11/12/21
Career 13 at North Carolina, 12/30/19

ASSISTS

Season 5 vs. Lafayette, 11/12/21
Career 5, 2x; last vs. Lafayette, 11/12/21

BLOCKS

Season -
Career 2, 2x; last at Cincinnati, 12/21/19

STEALS

Season 2 vs. LIU, 11/17/21
Career 4 vs. Clemson, 12/13/20

MINUTES

Season 27 vs. Lafayette, 11/12/21
Career 39 at Wake Forest, 2/11/21

FIELD GOALS MADE

Season 3 vs. Radford, 11/10/21
Career 7 at Notre Dame, 2/9/20

FIELD GOALS ATTEMPTED

Season 7, 2x; last vs. Lafayette, 11/12/21
Career 14 at Penn State, 12/5/19

3PT FIELD GOALS MADE

Season -
Career -

3PT FIELD GOALS ATTEMPTED

Season -
Career 1 at Virginia Tech, 1/9/20

FREE THROWS MADE

Season 5 vs. LIU, 11/17/21
Career 8, 2x; last vs. Syracuse, 2/7/21

FREE THROWS ATTEMPTED

Season 8 vs. LIU, 11/17/21
Career 14 vs. Notre Dame, 1/2/20

2021-22 GAME-BY-GAME STATS

Opponent	Date	GS	MIN	Total		3-Pointers		Free throws		Rebounds				PF	A	TO	BLK	STL	PTS	AVG
				FG-FGA	PCT	3FG-3FGA	PCT	FT-FTA	PCT	OFF	DEF	TOT	AVG							
Radford	11/10/2021	*	22:09	3-7	.429	0-0	.000	1-3	.333	2	5	7	7.0	3	3	4	0	1	7	7.0
Lafayette	11/12/2021	*	26:38	1-7	.143	0-0	.000	3-6	.500	5	5	10	8.5	0	5	3	0	0	5	6.0
LIU	11/17/2021	*	18:45	2-6	.333	0-0	.000	5-8	.625	1	2	3	6.7	1	1	2	0	2	9	7.0
Totals		3	67:32	6-20	.300	0-0	.000	9-17	.529	8	12	20	6.7	4	9	9	0	3	21	7.0

Player Averages

Games Played	Minutes/game	Points/game	FG Pct	3FG Pct	FT Pct	Rebounds/game	Assists/game	Turnovers/game	Assist/Turnover ratio	Steals/game	Blocks/game
3	22.5	7.0	30.0	0.0	52.9	6.7	3.0	3.0	1.0	1.0	0.0

PRODUCTION TRACKER

	20-21	21-22	Streak	Career
Scored 5+ Points	13	2	3	40
Scored 10+ Points	6	-	-	23
Had 5+ Rebounds	13	2	3	42
Had 10+ Rebounds	2	1	1	12
Led Pitt in Rebounds	6	-	-	21
Played 20+ Minutes	17	2	6	50
Played 30+ Minutes	3	-	-	27
Recorded a Double-Double	-	-	-	5

CAREER STATS

SEASON	TEAM	GP-GS	MIN/AVG	FG-FGA	FG%	3FG-3FGA	3FG%	FT-FTA	FT%	OFF	DEF	TOT	AVG	PF-FO	A	TO	BLK	STL	PTS	AVG
2019-20	Pitt	31-31	987/31.8	106-255	.416	0-1	.000	69-115	.600	80	158	238	7.7	64-0	44	79	10	28	281	9.1
2020-21	Pitt	19-19	479/25.2	45-100	.450	0-0	.000	48-78	.615	40	75	115	6.1	44-2	28	32	2	15	138	7.3
2021-22	Pitt	3-3	68/22.5	6-20	.300	0-0	.000	9-17	.529	8	12	20	6.7	4-0	9	9	0	3	21	7.0
TOTAL		53-53	1533/28.9	157-375	.419	0-1	.000	126-210	.600	128	245	373	7.0	112-2	81	120	12	46	440	8.3

10 ISMINI PRAPA

SR | Guard | 5-7 | Undeclared
Athens, Greece | American Community School of Athens



- Week-to-week with a knee injury entering the 2021-22 season.
- Missed the 2020-21 season due to a knee injury.
- Appeared in 27 games off the bench as a sophomore for the Panthers.
- Netted a career-high 12 points and three assists while going 4-for-4 from behind the arc in the ACC Tournament win over Notre Dame.
- Had 12 games this season with 10+ minutes played including in nine straight to close out her second season.
- Finished off the ACC Tournament with seven points and a career-high six rebounds in the loss to Georgia Tech (3/5/20).

ABOUT PRAPA: Great outside shooter with an improving mid-range game. High basketball IQ player who is a valuable asset for the Panthers off the bench.

Last Appearance: 24 mins, 7 pts, 6 rebs vs. Georgia Tech.



SEASON/CAREER HIGHS

POINTS

Season -
Career 12 vs. Notre Dame, 3/4/20

REBOUNDS

Season -
Career 6 vs. Georgia Tech, 3/5/20

ASSISTS

Season -
Career 3 vs. Notre Dame, 3/4/20

BLOCKS

Season -
Career 1, 2x; last at Virginia, 2/27/20

STEALS

Season -
Career 2 vs. Virginia Tech, 1/31/19

MINUTES

Season -
Career 24, 2x; last vs. Georgia Tech, 3/5/20

FIELD GOALS MADE

Season -
Career 4 vs. Notre Dame, 3/4/20

FIELD GOALS ATTEMPTED

Season -
Career 7, 2x; last vs. #5 Louisville, 2/23/20

3PT FIELD GOALS MADE

Season -
Career 4 vs. Notre Dame, 3/4/20

3PT FIELD GOALS ATTEMPTED

Season -
Career 4, 3x; last vs. Georgia Tech, 3/5/20

FREE THROWS MADE

Season -
Career 2 vs. Duke, 3/6/19

FREE THROWS ATTEMPTED

Season -
Career 2, 2x; last vs. Duke, 3/6/19

2021-22 GAME-BY-GAME STATS

OPP	DATE	ST	MIN	FG-FGA	PCT	3FG-FGA	PCT	FT-FTA	PCT	O	D	TOT	PF	A	T/O	BLK	STL	PTS
Radford	11/10	-	-	-	-	-	-	-	-	-	-	-	-	-	-	-	-	-
Lafayette	11/12	-	-	-	-	-	-	-	-	-	-	-	-	-	-	-	-	-
LIU	11/17	-	-	-	-	-	-	-	-	-	-	-	-	-	-	-	-	-
at Duquesne	11/20	-	-	-	-	-	-	-	-	-	-	-	-	-	-	-	-	-
Texas A&M	11/25	-	-	-	-	-	-	-	-	-	-	-	-	-	-	-	-	-
Northwestern	11/26	-	-	-	-	-	-	-	-	-	-	-	-	-	-	-	-	-
South Dakota	11/27	-	-	-	-	-	-	-	-	-	-	-	-	-	-	-	-	-
Rutgers	12/1	-	-	-	-	-	-	-	-	-	-	-	-	-	-	-	-	-
at Ball State	12/4	-	-	-	-	-	-	-	-	-	-	-	-	-	-	-	-	-
Coppin State	12/7	-	-	-	-	-	-	-	-	-	-	-	-	-	-	-	-	-
NC State*	12/10	-	-	-	-	-	-	-	-	-	-	-	-	-	-	-	-	-
at ND*	12/19	-	-	-	-	-	-	-	-	-	-	-	-	-	-	-	-	-
Holy Cross	12/22	-	-	-	-	-	-	-	-	-	-	-	-	-	-	-	-	-
GT*	12/30	-	-	-	-	-	-	-	-	-	-	-	-	-	-	-	-	-
at BC*	1/2	-	-	-	-	-	-	-	-	-	-	-	-	-	-	-	-	-
at Louisville*	1/6	-	-	-	-	-	-	-	-	-	-	-	-	-	-	-	-	-
BC*	1/13	-	-	-	-	-	-	-	-	-	-	-	-	-	-	-	-	-
Wake*	1/16	-	-	-	-	-	-	-	-	-	-	-	-	-	-	-	-	-
at VT*	1/20	-	-	-	-	-	-	-	-	-	-	-	-	-	-	-	-	-
ND*	1/23	-	-	-	-	-	-	-	-	-	-	-	-	-	-	-	-	-
at Clemson*	1/27	-	-	-	-	-	-	-	-	-	-	-	-	-	-	-	-	-
at Syracuse*	1/30	-	-	-	-	-	-	-	-	-	-	-	-	-	-	-	-	-
Duke*	2/3	-	-	-	-	-	-	-	-	-	-	-	-	-	-	-	-	-
at UNC*	2/10	-	-	-	-	-	-	-	-	-	-	-	-	-	-	-	-	-
Syracuse*	2/13	-	-	-	-	-	-	-	-	-	-	-	-	-	-	-	-	-
at Miami*	2/17	-	-	-	-	-	-	-	-	-	-	-	-	-	-	-	-	-
at UVA*	2/20	-	-	-	-	-	-	-	-	-	-	-	-	-	-	-	-	-
Louisville*	2/24	-	-	-	-	-	-	-	-	-	-	-	-	-	-	-	-	-
FSU*	2/27	-	-	-	-	-	-	-	-	-	-	-	-	-	-	-	-	-

PRODUCTION TRACKER

	20-21	21-22	Streak	Career
Scored 5+ Points	-	-	2	5
Scored 10+ Points	-	-	-	1
Had Multiple Assists	-	-	-	4
Led Pitt in Assists	-	-	-	2
Had Multiple Steals	-	-	-	1
Made a Three-Pointer	-	-	4	12
Played 20+ Minutes	-	-	3	4
Played 30+ Minutes	-	-	-	-

CAREER STATS

SEASON	TEAM	GP-GS	MIN	AVG	FG-FGA	FG%	3FG-3FGA	3FG%	FT-FTA	FT%	OFF	DEF	TOT	AVG	PF-FO	A	TO	BLK	STL	PTS	AVG
2018-19	Pitt	21-0	141	6.7	10-38	.263	4-16	.250	2-4	.500	8	2	10	0.5	19-0	7	17	1	3	26	1.2
2019-20	Pitt	27-0	269	10.0	22-63	.349	13-37	.351	0-0	.000	7	23	30	1.1	27-1	11	21	1	8	57	2.1
TOTAL		48-0	410	8.5	32-101	.317	17-53	.321	2-4	.500	15	25	40	0.8	46-1	18	38	2	11	83	1.7

13 TRACEY HUESTON

SO | Forward | 6-2 | Undeclared
Roanoke, VA | Northside



- Has appeared in both games off the Pitt bench while netting two points and two rebounds in the season opening win over Radford.
- Appeared in 16 games off the bench during her freshman season.
- Finished the season averaging 5.8 minutes, 1.9 points and 1.4 rebounds.
- Scored a career-high six points in just five minutes against Hofstra.
- Played a career-high 12 minutes against Notre Dame, finishing with four points and a career-high five rebounds.
- Had five games with multiple rebounds and six games with at least one block.

ABOUT HUESTON: Athletic forward with a very high basketball IQ. Has good touch on the jumper with range out to the three-point line. Improving her defense and rebounding.

Last Appearance: 2 mins, 1 reb vs. Lafayette.



SEASON/CAREER HIGHS

POINTS

Season 4 vs. LIU, 11/17/21
Career 6 vs. Hofstra, 11/29/20

REBOUNDS

Season 2 vs. Radford, 11/10/21
Career 5 vs. Notre Dame, 2/22/21

ASSISTS

Season --
Career 1, 3x; last at Georgia Tech, 2/28/21

BLOCKS

Season 1 vs. Radford, 11/10/21
Career 1, 7x; last vs. Radford, 11/10/21

STEALS

Season --
Career 1, 3x; last at Georgia Tech, 2/28/21

MINUTES

Season 13 vs. LIU, 11/17/21
Career 13 vs. LIU, 11/17/21

FIELD GOALS MADE

Season 2 vs. LIU, 11/17/21
Career 2, 4x; last vs. LIU, 11/17/21

FIELD GOALS ATTEMPTED

Season 4 vs. Radford, 11/10/21
Career 5 at Georgia Tech, 2/28/21

3PT FIELD GOALS MADE

Season --
Career --

3PT FIELD GOALS ATTEMPTED

Season --
Career 1, 2x; last vs. Boston College, 3/3/21

FREE THROWS MADE

Season --
Career 2, 3x; last vs. Notre Dame, 2/22/21

2021-22 GAME-BY-GAME STATS

Opponent	Date	GS	MIN	Total		3-Pointers		Free throws		Rebounds				PF	A	TO	BLK	STL	PTS	AVG
				FG-FGA	PCT	3FG-3FGA	PCT	FT-FTA	PCT	OFF	DEF	TOT	AVG							
Radford	11/10/2021		09:06	1-4	.250	0-0	.000	0-0	.000	0	2	2	2.0	4	0	1	1	0	2	2.0
Lafayette	11/12/2021		01:50	0-0	.000	0-0	.000	0-0	.000	0	1	1	1.5	0	0	0	0	0	0	1.0
LIU	11/17/2021		13:02	2-3	.667	0-0	.000	0-0	.000	0	1	1	1.3	3	0	2	0	0	4	2.0
Totals		0	23:58	3-7	.429	0-0	.000	0-0	.000	0	4	4	1.3	7	0	3	1	0	6	2.0

Player Averages

Games Played	Minutes/ game	Points/ game	FG Pct	3FG Pct	FT Pct	Rebounds/ game	Assists/ game	Turnovers/ game	Assist/Turnover ratio	Steals/ game	Blocks/ game
3	8.0	2.0	42.9	0.0	0.0	1.3	0.0	1.0	0.0	0.0	0.3

PRODUCTION TRACKER

	20-21	21-22	Streak	Career
Scored 5+ Points	2	-	-	2
Scored 10+ Points	-	-	-	-
Had 5+ Rebounds	1	-	-	1
Had a Blocked Shot	6	1	-	7
Led Pitt in Rebounding	1	-	-	1
Played 10+ Minutes	2	-	-	2
Played 20+ Minutes	-	-	-	-
Recorded a Double-Double	-	-	-	-

CAREER STATS

SEASON	TEAM	GP-GS	MIN/AVG	FG-FGA	FG%	3FG-3FGA	3FG%	FT-FTA	FT%	OFF	DEF	TOT	AVG	PF-FO	A	TO	BLK	STL	PTS	AVG
2020-21	Pitt	16-0	93/5.8	11-30	.367	0-2	.000	8-10	.800	11	12	23	1.4	18-0	3	9	6	3	30	1.9
2021-22	Pitt	3-0	24/8.0	3-7	.429	0-0	.000	0-0	.000	0	4	4	1.3	7-0	0	3	1	0	6	2.0
TOTAL		19-0	117/6.2	14-37	.378	0-2	.000	8-10	.800	11	16	27	1.4	25-0	3	12	7	3	36	1.9

14 CYNTHIA EZEJA

R-50 | Forward | 6-3 | Undeclared
Athens, Greece | 20th High School of Athens



- Appeared in 17 games while making four starts in her redshirt freshman season.
- Finished the season averaging 16.9 mpg, 2.9 ppg, 5.9 rpg and 1.1 bpg while shooting 48.9% from the floor.
- Ranked sixth in the ACC in offensive rebounds per game (2.82 orpg) while also leading the Panthers with 48 offensive boards on the year.
- Had three games with 10+ rebounds while leading the team in rebounding four times.

ABOUT EZEJA: Athletically gifted post player with an improving offensive game. Great rebounder, especially on the offensive glass, who attacks every ball off the rim. Physical on the defensive end of the court, making her hard to play against.

Last Appearance: 19 mins, 2 pts, 5 rebs, 1 ast, 1 blk vs. BC



SEASON/CAREER HIGHS

POINTS

Season --
Career 7 vs. Delaware, 12/6/20

REBOUNDS

Season --
Career 13 at Georgia Tech, 2/28/21

ASSISTS

Season --
Career 3 at NC State, 2/25/21

BLOCKS

Season --
Career 2, 6x; last at Georgia Tech, 2/28/21

STEALS

Season --
Career 2, 2x; last vs. Notre Dame, 2/22/21

MINUTES

Season --
Career 26 at Georgia Tech, 2/28/21

FIELD GOALS MADE

Season --
Career 3, 2x; last at Boston College, 2/16/21

FIELD GOALS ATTEMPTED

Season --
Career 6 at Florida State, 12/20/20

3PT FIELD GOALS MADE

Season --
Career --

3PT FIELD GOALS ATTEMPTED

Season --
Career --

FREE THROWS MADE

Season 1, 4x; last at Georgia Tech, 2/28/21
Career N/A

FREE THROWS ATTEMPTED

Season --
Career 4 at Georgia Tech, 2/28/21

2021-22 GAME-BY-GAME STATS

OPP	DATE	ST	MIN	FG-FGA	PCT	3FG-FGA	PCT	FT-FTA	PCT	O	D	TOT	PF	A	T/O	BLK	STL	PTS
Radford	11/10	-	-	-	-	-	-	-	-	-	-	-	-	-	-	-	-	-
Lafayette	11/12	-	-	-	-	-	-	-	-	-	-	-	-	-	-	-	-	-
LIU	11/17	-	-	-	-	-	-	-	-	-	-	-	-	-	-	-	-	-
at Duquesne	11/20	-	-	-	-	-	-	-	-	-	-	-	-	-	-	-	-	-
Texas A&M	11/25	-	-	-	-	-	-	-	-	-	-	-	-	-	-	-	-	-
Northwestern	11/26	-	-	-	-	-	-	-	-	-	-	-	-	-	-	-	-	-
South Dakota	11/27	-	-	-	-	-	-	-	-	-	-	-	-	-	-	-	-	-
Rutgers	12/1	-	-	-	-	-	-	-	-	-	-	-	-	-	-	-	-	-
at Ball State	12/4	-	-	-	-	-	-	-	-	-	-	-	-	-	-	-	-	-
Coppin State	12/7	-	-	-	-	-	-	-	-	-	-	-	-	-	-	-	-	-
NC State*	12/10	-	-	-	-	-	-	-	-	-	-	-	-	-	-	-	-	-
at ND*	12/19	-	-	-	-	-	-	-	-	-	-	-	-	-	-	-	-	-
Holy Cross	12/22	-	-	-	-	-	-	-	-	-	-	-	-	-	-	-	-	-
GT*	12/30	-	-	-	-	-	-	-	-	-	-	-	-	-	-	-	-	-
at BC*	1/2	-	-	-	-	-	-	-	-	-	-	-	-	-	-	-	-	-
at Louisville*	1/6	-	-	-	-	-	-	-	-	-	-	-	-	-	-	-	-	-
BC*	1/13	-	-	-	-	-	-	-	-	-	-	-	-	-	-	-	-	-
Wake*	1/16	-	-	-	-	-	-	-	-	-	-	-	-	-	-	-	-	-
at VT*	1/20	-	-	-	-	-	-	-	-	-	-	-	-	-	-	-	-	-
ND*	1/23	-	-	-	-	-	-	-	-	-	-	-	-	-	-	-	-	-
at Clemson*	1/27	-	-	-	-	-	-	-	-	-	-	-	-	-	-	-	-	-
at Syracuse*	1/30	-	-	-	-	-	-	-	-	-	-	-	-	-	-	-	-	-
Duke*	2/3	-	-	-	-	-	-	-	-	-	-	-	-	-	-	-	-	-
at UNC*	2/10	-	-	-	-	-	-	-	-	-	-	-	-	-	-	-	-	-
Syracuse*	2/13	-	-	-	-	-	-	-	-	-	-	-	-	-	-	-	-	-
at Miami*	2/17	-	-	-	-	-	-	-	-	-	-	-	-	-	-	-	-	-
at UVA*	2/20	-	-	-	-	-	-	-	-	-	-	-	-	-	-	-	-	-
Louisville*	2/24	-	-	-	-	-	-	-	-	-	-	-	-	-	-	-	-	-
FSU*	2/27	-	-	-	-	-	-	-	-	-	-	-	-	-	-	-	-	-

PRODUCTION TRACKER

	20-21	21-22	Streak	Career
Scored 5+ Points	3	-	-	3
Scored 10+ Points	-	-	-	-
Had 5+ Rebounds	12	-	3	12
Had 10+ Rebounds	3	-	-	3
Led Pitt in Rebounding	4	-	-	4
Had a Blocked Shot	12	-	5	12
Played 20+ Minutes	4	-	-	4
Played 30+ Minutes	-	-	-	-

CAREER STATS

SEASON	TEAM	GP-GS	MIN/AVG	FG-FGA	FG%	3FG-3FGA	3FG%	FT-FTA	FT%	OFF	DEF	TOT	AVG	PF-FO	A	TO	BLK	STL	PTS	AVG
2020-21	Pitt	17-4	289/17.0	23-47	.489	0-0	.000	4-22	.182	48	53	101	5.9	58-3	8	13	18	8	50	2.9
TOTAL		17-4	289/17.0	23-47	.489	0-0	.000	4-22	.182	48	53	101	5.9	58-3	8	13	18	8	50	2.9

15 MARY DUNN

GR | F | 6-3 | Education
Washington, PA | Trinity (Youngstown State)



- Has appeared in both games this season while averaging 8.5 ppg and 5.0 rpg off the bench.
- Transferred to Pitt after a successful five year career at Youngstown State.
- Has appeared in 114 games with 65 starts across her career. Posted 1,299 points, 540 rebounds, 91 blocks and 75 assists while shooting 53.2% from the floor in her career at YSU.
- Earned All-Horizon League Second Team honors last season after averaging a career-high 16.4 points and 5.9 rebounds while shooting 51.6% from the floor.
- Has 16 career games with 20+ points.

ABOUT DUNN: Super talented low post player who can score in multiple ways around the basket. Has range out to the three-point line. Strong leadership qualities and basketball IQ.

Last Appearance: 12 mins, 6 pts, 2 rebs, 1 blk vs. Lafayette.



SEASON/CAREER HIGHS

POINTS

Season 11 vs. Radford, 11/10/21
Career 30 vs. Eastern Michigan, 11/16/19

REBOUNDS

Season 8 vs. Radford, 11/10/21
Career 13 vs. UIC, 1/3/19

ASSISTS

Season -
Career 3, 7x; last vs. Purdue Fort Wayne, 2/25/21

BLOCKS

Season 1, 3x; last vs. LIU, 11/17/21
Career 5 vs. Northern Kentucky, 1/21/19

STEALS

Season 2 vs. LIU, 11/17/21
Career 3 vs. Eastern Michigan, 11/16/19

MINUTES

Season 15, 2x; last vs. LIU, 11/17/21
Career 38 at Milwaukee, 3/2/21

FIELD GOALS MADE

Season 5 vs. Radford, 11/10/21
Career 12, 2x; last vs. Purdue Fort Wayne, 2/25/21

FIELD GOALS ATTEMPTED

Season 12 vs. Radford, 11/10/21
Career 21 vs. Purdue Fort Wayne, 2/25/21

3PT FIELD GOALS MADE

Season -
Career 2, 3x; last vs. Eastern Michigan, 11/16/19

3PT FIELD GOALS ATTEMPTED

Season 1 vs. Radford, 11/10/21
Career 4, 2x; last vs. Wright State, 1/2/21

FREE THROWS MADE

Season 2 vs. Lafayette, 11/12/21
Career 9 at Robert Morris, 1/30/21

FREE THROWS ATTEMPTED

Season 2, 2x; last vs. LIU, 11/17/21
Career 11 at Milwaukee, 3/2/21

2021-22 GAME-BY-GAME STATS

Opponent	Date	GS	MIN	Total		3-Pointers		Free throws		Rebounds				PF	A	TO	BLK	STL	PTS	AVG
				FG-FGA	PCT	3FG-3FGA	PCT	FT-FTA	PCT	OFF	DEF	TOT	AVG							
Radford	11/10/2021		14:59	5-12	.417	0-1	.000	1-1	1.000	4	4	8	8.0	1	0	1	1	1	11	11.0
Lafayette	11/12/2021		11:49	2-4	.500	0-0	.000	2-2	1.000	1	1	2	5.0	1	0	2	1	0	6	8.5
LIU	11/17/2021		14:04	4-6	.667	0-0	.000	0-2	.000	1	4	5	5.0	1	0	0	1	0	8	8.3
Totals		0	40:53	11-22	.500	0-1	.000	3-5	.600	6	9	15	5.0	3	0	3	3	1	25	8.3

Player Averages

Games Played	Minutes/ game	Points/ game	FG Pct	3FG Pct	FT Pct	Rebounds/ game	Assists/ game	Turnovers/ game	Assist/Turnover ratio	Steals/ game	Blocks/ game
3	13.6	8.3	50.0	0.0	60.0	5.0	0.0	1.0	0.0	0.3	1.0

PRODUCTION TRACKER

	20-21	21-22	Streak	Career
Scored 10+ Points	15	1	-	64
Scored 20+ Points	6	-	-	16
Had 5+ Rebounds	-	1	-	55
Had 10+ Rebounds	2	-	-	6
Had Multiple Blocks	3	-	-	23
Had Multiple Assists	6	-	-	17
Played 20+ Minutes	17	-	-	61
Played 30+ Minutes	8	-	-	17

CAREER STATS

SEASON	TEAM	GP-GS	MIN/AVG	FG-FGA	FG%	3FG-3FGA	3FG%	FT-FTA	FT%	OFF	DEF	TOT	AVG	PF-FO	A	TO	BLK	STL	PTS	AVG
2016-17	YSU	28-22	549/19.6	131-255	.514	0-4	.000	53-85	.624	38	72	110	3.9	47-0	6	33	19	4	315	11.3
2017-18	YSU	32-12	418/13.1	93-170	.547	1-5	.200	32-57	.561	36	87	123	3.8	57-1	15	26	27	8	219	6.8
2018-19	YSU	32-10	725/22.6	165-296	.557	11-31	.355	61-94	.649	37	144	181	5.7	73-0	27	51	31	10	402	12.6
2019-20	YSU	4-4	116/29.0	26-53	.491	4-7	.571	12-14	.857	6	13	19	4.8	6-0	5	9	2	3	68	17.0
2020-21	YSU	18-17	507/28.1	116-225	.516	0-12	.000	63-81	.778	30	77	107	5.9	42-1	22	36	12	11	295	16.4
2021-22	Pitt	3-0	41/13.6	11-22	.500	0-1	.000	3-5	.600	6	9	15	5.0	3-0	0	3	3	1	25	8.3
TOTAL FOR Pitt		3-0	41/13.6	11-22	.500	0-1	.000	3-5	.600	6	9	15	5.0	3-0	0	3	3	1	25	8.3
TOTAL		117-65	2355/20.1	542-1021	.531	16-60	.267	224-336	.667	153	402	555	4.7	228-2	75	158	94	37	1324	11.3

2021-22 PITTSBURGH WOMEN'S BASKETBALL / PITTSBURGHPANTHERS.COM / @PITT_WBB

20 JAYLA EVERETT

SR | Guard | 5-10 | Undeclared
St. Louis, MO | Kirkwood (New Mexico)



- Started both games while netting back-to-back 20+ point games. Ranks second in the ACC in scoring (21.5 ppg).
- Made an immediate impact after transferring from New Mexico. Started all 19 games for the Panthers.
- Led the team in scoring (15.4 ppg) while also adding 2.8 assists and 2.2 rebounds per game. Her ppg average marked the highest by a Pitt transfer in program history.
- Posted a team-high 52 three-pointers while ranking fourth in the ACC in three-pointers made per game (2.7).
- Became just the second Panther to earn All-ACC honors, being named Honorable Mention.

ABOUT EVERETT: Athletic and long guard with experience and leadership qualities. Great shooter from deep with an uncanny ability to score the ball from anywhere on the court. High basketball IQ player who plays hard. Her length causes problems on the defensive end.

Last Appearance: 30 mins, 20 pts, 4 blks, 2 rebs, 2 assts, 2 stls vs. Lafayette.



SEASON/CAREER HIGHS

POINTS

Season 23 vs. Radford, 11/10/21
Career 34 vs. Loyola Marymount, 12/19/19

REBOUNDS

Season 3 vs. LIU, 11/17/21
Career 6, 3x; last at Air Force, 1/11/20

ASSISTS

Season 3 vs. Radford, 11/10/21
Career 10 at Air Force, 1/11/20

BLOCKS

Season 4 vs. Lafayette, 11/12/21
Career 4 vs. Lafayette, 11/12/21

STEALS

Season 2, 3x; last vs. LIU, 11/17/21
Career 6 vs. Northern Arizona, 11/8/19

MINUTES

Season 30 vs. Lafayette, 11/12/21
Career 45 at Houston, 11/24/18

FIELD GOALS MADE

Season 9 vs. Lafayette, 11/12/21
Career 10, 2x; last vs. Loyola Marymount, 12/19/19

FIELD GOALS ATTEMPTED

Season 17 vs. Lafayette, 11/12/21
Career 26 vs. Loyola Marymount, 12/19/19

3PT FIELD GOALS MADE

Season 3 vs. Radford, 11/10/21
Career 7 vs. Auburn, 11/11/18

3PT FIELD GOALS ATTEMPTED

Season 5, 2x; last vs. Lafayette, 11/12/21
Career 13 vs. Loyola Marymount, 12/19/19

FREE THROWS MADE

Season 4 vs. Radford, 11/10/21
Career 10 vs. Hofstra, 11/29/20

FREE THROWS ATTEMPTED

Season 6 vs. Radford, 11/10/21
Career 10 vs. Hofstra, 11/29/20

2021-22 GAME-BY-GAME STATS

Opponent	Date	GS	MIN	Total		3-Pointers		Free throws		Rebounds				PF	A	TO	BLK	STL	PTS	AVG
				FG-FGA	PCT	3FG-3FGA	PCT	FT-FTA	PCT	OFF	DEF	TOT	AVG							
Radford	11/10/2021	*	24:39	8-14	.571	3-5	.600	4-6	.667	0	2	2	2.0	0	3	0	0	2	23	23.0
Lafayette	11/12/2021	*	30:16	9-17	.529	1-5	.200	1-2	.500	0	2	2	2.0	0	2	4	4	2	20	21.5
LIU	11/17/2021	*	14:46	4-8	.500	2-4	.500	2-3	.667	0	3	3	2.3	0	1	3	1	2	12	18.3
Totals		3	69:41	21-39	.538	6-14	.429	7-11	.636	0	7	7	2.3	0	6	7	5	6	55	18.3

Player Averages

Games Played	Minutes/game	Points/game	FG Pct	3FG Pct	FT Pct	Rebounds/game	Assists/game	Turnovers/game	Assist/Turnover ratio	Steals/game	Blocks/game
3	23.2	18.3	53.8	42.9	63.6	2.3	2.0	2.3	0.9	2.0	1.7

PRODUCTION TRACKER

	20-21	21-22	Streak	Career
Scored 10+ Points	15	2	4	49
Scored 20+ Points	7	2	4	16
Had 5+ Rebounds	2	-	-	16
Had 5+ Assists	2	-	-	15
Made Multiple Three-Pointers	16	1	-	30
Played 20+ Minutes	19	2	21	70
Played 30+ Minutes	15	1	1	42
Recorded a Double-Double	-	-	-	1

CAREER STATS

SEASON	TEAM	GP-GS	MIN/AVG	FG-FGA	FG%	3FG-3FGA	3FG%	FT-FTA	FT%	OFF	DEF	TOT	AVG	PF-FO	A	TO	BLK	STL	PTS	AVG
2018-19	UNM	31-31	954/30.8	131-347	.378	58-173	.335	97-121	.802	28	82	110	3.5	55-0	114	95	31	37	417	13.5
2019-20	UNM	19-17	520/27.4	74-236	.314	31-107	.290	39-52	.750	17	40	57	3.0	34-0	65	45	11	31	218	11.5
2020-21	Pitt	19-19	604/31.8	97-277	.350	52-146	.356	47-63	.746	5	37	42	2.2	36-0	54	63	16	17	293	15.4
2021-22	Pitt	3-3	70/23.2	21-39	.538	6-14	.429	7-11	.636	0	7	7	2.3	0-0	6	7	5	6	55	18.3
TOTAL FOR Pitt		22-22	674/30.6	118-316	.373	58-160	.363	54-74	.730	5	44	49	2.2	36-0	60	70	21	23	348	15.8
TOTAL		72-70	2148/29.8	323-899	.359	147-440	.334	190-247	.769	50	166	216	3.0	125-0	239	210	63	91	983	13.7

21 MALIYAH JOHNSON

FR | G/F | 6-0 | Undeclared
Columbus, OH | Africentric Early College



- Has appeared in both games off the bench while netting a career-high four points against Lafayette and a career-best three boards in the win over Radford.
- Was a two-sport athlete (basketball, volleyball) at Africentric Early College in Columbus, OH.
- Helped lead her squad to two Ohio State Championships during her career (2018, 2019).
- Finished off her senior season averaging a career-high 18.5 points and 12.0 rebounds while leading her team to their sixth straight Division III district championship.
- Named First Team All-City, First Team All-Central District and Third Team All-Ohio during her strong senior campaign



ABOUT JOHNSON: Athletic wing who likes to attack the rim and has a knack for scoring off the dribble. Has a good stroke from behind the arc and physical rebounding the ball.

Last Appearance: 16 mins, 4 pts, 2 rebs vs. Lafayette.

SEASON/CAREER HIGHS

POINTS

Season 5 vs. LIU, 11/17/21
Career 5 vs. LIU, 11/17/21

REBOUNDS

Season 3, 2x; last vs. LIU, 11/17/21
Career 3, 2x; last vs. LIU, 11/17/21

ASSISTS

Season 1 vs. Radford, 11/10/21
Career 1 vs. Radford, 11/10/21

BLOCKS

Season --
Career --

STEALS

Season 3 vs. LIU, 11/17/21
Career 3 vs. LIU, 11/17/21

MINUTES

Season 22 vs. LIU, 11/17/21
Career 22 vs. LIU, 11/17/21

FIELD GOALS MADE

Season 2 vs. Lafayette, 11/12/21
Career 2 vs. Lafayette, 11/12/21

FIELD GOALS ATTEMPTED

Season 8 vs. LIU, 11/17/21
Career 8 vs. LIU, 11/17/21

3PT FIELD GOALS MADE

Season --
Career --

3PT FIELD GOALS ATTEMPTED

Season 2, 2x; last vs. LIU, 11/17/21
Career 2, 2x; last vs. LIU, 11/17/21

FREE THROWS MADE

Season --
Career --

FREE THROWS ATTEMPTED

Season --
Career --

2021-22 GAME-BY-GAME STATS

Opponent	Date	GS	MIN	Total		3-Pointers		Free throws		Rebounds				PF	A	TO	BLK	STL	PTS	AVG
				FG-FGA	PCT	3FG-3FGA	PCT	FT-FTA	PCT	OFF	DEF	TOT	AVG							
Radford	11/10/2021		14:10	1-2	.500	0-0	.000	0-0	.000	1	2	3	3.0	1	1	2	0	1	2	2.0
Lafayette	11/12/2021		15:49	2-6	.333	0-2	.000	0-0	.000	1	1	2	2.5	0	0	0	0	0	4	3.0
LIU	11/17/2021		22:12	1-8	.125	0-2	.000	3-4	.750	2	1	3	2.7	0	0	0	0	3	5	3.7
Totals		0	52:11	4-16	.250	0-4	.000	3-4	.750	4	4	8	2.7	1	1	2	0	4	11	3.7

Player Averages

Games Played	Minutes/game	Points/game	FG Pct	3FG Pct	FT Pct	Rebounds/game	Assists/game	Turnovers/game	Assist/Turnover ratio	Steals/game	Blocks/game
3	17.4	3.7	25.0	0.0	75.0	2.7	0.3	0.7	0.5	1.3	0.0

PRODUCTION TRACKER

	21-22	Streak	Career
Scored 5+ Points	-	-	-
Scored 10+ Points	-	-	-
Had 5+ Rebounds	-	-	-
Made a Three-Pointer	-	-	-
Recorded a Steal	1	1	1
Played 10+ Minutes	2	2	2
Played 20+ Minutes	-	-	-
Recorded a Double-Double	-	-	-

CAREER STATS

SEASON	TEAM	GP-GS	MIN/AVG	FG-FGA	FG%	3FG-3FGA	3FG%	FT-FTA	FT%	OFF	DEF	TOT	AVG	PF-FO	A	TO	BLK	STL	PTS	AVG
2021-22	Pitt	3-0	52/17.4	4-16	.250	0-4	.000	3-4	.750	4	4	8	2.7	1-0	1	2	0	4	11	3.7
TOTAL		3-0	52/17.4	4-16	.250	0-4	.000	3-4	.750	4	4	8	2.7	1-0	1	2	0	4	11	3.7

23 RITA IGBOKWE

JR | Center | 6-4 | Undeclared
Jonesboro, GA | Mundy's Mill



- Started both games this season at center. Posted a career-high 23 points, 13 rebounds and 4 blocks in the win over Lafayette, her third career double-double.
- Appeared in all 19 games while earning 16 starts at center during her sophomore season.
- Finished her second season averaging 18.3 minutes, a career-high 5.0 points, 6.2 rebounds and 1.5 blocks while shooting 50.6% from the floor.
- Ranked fifth in the ACC in blocked shots per game (1.5).
- Notched her only double-double of the season against Delaware (12/6) as she finished with 11 points and 11 rebounds in just 18 minutes.

ABOUT IGBOKWE: Athletically-gifted post player who loves to crash the glass and rebound. Has a great ability to block shots and adjust shots from opponents. Vastly improved offensive game will make her a force down low on both ends of the court.

Last Appearance: 26 mins, 23 pts, 13 rebs, 4 blks, 1 stl vs. Lafayette.



SEASON/CAREER HIGHS

POINTS

Season 23 vs. Lafayette, 11/12/21
Career 23 vs. Lafayette, 11/12/21

REBOUNDS

Season 13 vs. Lafayette, 11/12/21
Career 18 vs. Ohio, 11/29/19

ASSISTS

Season 1 vs. LIU, 11/17/21
Career 2, 3x; last vs. George Mason, 11/25/20

BLOCKS

Season 4 vs. Lafayette, 11/12/21
Career 6, 2x; last vs. Miami, 1/21/21

STEALS

Season 1, 2x; last vs. LIU, 11/17/21
Career 3, 2x; last vs. Georgia Tech, 2/6/20

MINUTES

Season 26 vs. Lafayette, 11/12/21
Career 32 vs. Duke, 2/13/20

FIELD GOALS MADE

Season 11 vs. Lafayette, 11/12/21
Career 11 vs. Lafayette, 11/12/21

FIELD GOALS ATTEMPTED

Season 15 vs. Lafayette, 11/12/21
Career 15 vs. Lafayette, 11/12/21

3PT FIELD GOALS MADE

Season -
Career -

3PT FIELD GOALS ATTEMPTED

Season -
Career -

FREE THROWS MADE

Season 1 vs. Lafayette, 11/12/21
Career 5 at Syracuse, 1/28/21

FREE THROWS ATTEMPTED

Season 3 vs. Lafayette, 11/12/21
Career 9 at Syracuse, 1/28/21

2021-22 GAME-BY-GAME STATS

Opponent	Date	GS	MIN	Total		3-Pointers		Free throws		Rebounds				PF		A		BLK		STL		PTS		AVG
				FG-FGA	PCT	3FG-3FGA	PCT	FT-FTA	PCT	OFF	DEF	TOT	AVG											
Radford	11/10/2021	*	21:29	3-9	.333	0-0	.000	0-2	.000	4	2	6	6.0	4	0	4	1	1	1	6	6.0			
Lafayette	11/12/2021	*	26:21	11-15	.733	0-0	.000	1-3	.333	4	9	13	9.5	2	0	2	4	1	23	14.5				
LIU	11/17/2021	*	14:34	2-3	.667	0-0	.000	0-0	.000	1	5	6	8.3	2	1	0	0	1	4	11.0				
Totals			3 62:24	16-27	.593	0-0	.000	1-5	.200	9	16	25	8.3	8	1	6	5	3	33	11.0				

Player Averages

Games Played	Minutes/game	Points/game	FG Pct	3FG Pct	FT Pct	Rebounds/game	Assists/game	Turnovers/game	Assist/Turnover ratio	Steals/game	Blocks/game
3	20.8	11.0	59.3	0.0	20.0	8.3	0.3	2.0	0.2	1.0	1.7

PRODUCTION TRACKER

	20-21	21-22	Streak	Career
Scored 5+ Points	8	2	2	21
Scored 10+ Points	2	1	1	6
Had 5+ Rebounds	14	2	3	37
Had 10+ Rebounds	2	1	1	9
Led Pitt in Rebounds	8	1	1	20
Had Multiple Blocks	6	1	1	24
Posted a double-double	1	1	1	3
Played 20+ Minutes	8	2	2	28

CAREER STATS

SEASON	TEAM	GP-GS	MIN/AVG	FG-FGA	FG%	3FG-3FGA	3FG%	FT-FTA	FT%	OFF	DEF	TOT	AVG	PF-FO	A	TO	BLK	STL	PTS	AVG
2019-20	Pitt	31-7	604/19.5	60-130	.462	0-0	.000	20-39	.513	92	118	210	6.8	89-7	9	39	60	19	140	4.5
2020-21	Pitt	19-16	347/18.3	39-77	.506	0-0	.000	17-33	.515	46	71	117	6.2	57-2	5	22	29	11	95	5.0
2021-22	Pitt	3-3	62/20.8	16-27	.593	0-0	.000	1-5	.200	9	16	25	8.3	8-0	1	6	5	3	33	11.0
TOTAL		53-26	1013/19.1	115-234	.491	0-0	.000	38-77	.494	147	205	352	6.6	154-9	15	67	94	33	268	5.1

31 DESTINY STROTHER

JR | Guard | 5-9 | Undeclared
Flint, MI | Carmen-Ainsworth (Marquette)



- Has appeared in both games off the bench while netting a season-high six points in the win over Lafayette.
- Was a key member of the Pitt bench appearing in all 19 games during her first season as a Panther.
- Finished the season averaging 17.7 minutes, 5.9 points and 1.7 rebounds.
- Ranked second on the team with 29 three-pointers while connecting on multiple triples in 10 games. Made the most threes of any ACC player without a start last season.
- Posted a career-high 15 points and three rebounds on 6-for-8 shooting in a road win over Clemson.



ABOUT STROTHER: Athletic lefty who can really stroke it from behind the arc. Has a knack for scoring the basketball from deep or off the bounce. Very active on the defensive end of the court.

Last Appearance: 23 mins, 6 pts, 2 rebs vs. Lafayette.

SEASON/CAREER HIGHS

POINTS

Season 17 vs. LIU, 11/17/21
Career 17 vs. LIU, 11/17/21

REBOUNDS

Season 4 vs. LIU, 11/17/21
Career 4 vs. LIU, 11/17/21

ASSISTS

Season 4 vs. LIU, 11/17/21
Career 4 vs. LIU, 11/17/21

BLOCKS

Season --
Career 1, 2x; last vs. Notre Dame, 2/22/21

STEALS

Season 1 vs. Radford, 11/10/21
Career 2, 3x; last at Boston College, 2/22/21

MINUTES

Season 23, 2x; last vs. LIU, 11/17/21
Career 28 at Boston College, 2/22/21

FIELD GOALS MADE

Season 6 vs. LIU, 11/17/21
Career 6, 2x; last vs. LIU, 11/17/21

FIELD GOALS ATTEMPTED

Season 8 vs. LIU, 11/17/21
Career 15 vs. North Carolina, 2/14/21

3PT FIELD GOALS MADE

Season 5 vs. LIU, 11/17/21
Career 5 vs. LIU, 11/17/21

3PT FIELD GOALS ATTEMPTED

Season 7, 2x; last vs. LIU, 11/17/21
Career 14 vs. North Carolina, 2/14/21

FREE THROWS MADE

Season --
Career 2 at Clemson, 1/26/21

FREE THROWS ATTEMPTED

Season --
Career 2, 4x; last at Boston College, 2/16/21

2021-22 GAME-BY-GAME STATS

Opponent	Date	GS	MIN	Total		3-Pointers		Free throws		Rebounds				PF	A	TO	BLK	STL	PTS	AVG
				FG-FGA	PCT	3FG-3FGA	PCT	FT-FTA	PCT	OFF	DEF	TOT	AVG							
Radford	11/10/2021		14:27	1-5	.200	0-3	.000	0-0	.000	1	0	1	1.0	0	0	1	0	1	2	2.0
Lafayette	11/12/2021		23:02	2-7	.286	2-7	.286	0-0	.000	0	2	2	1.5	2	0	2	0	0	6	4.0
LIU	11/17/2021	*	22:42	6-8	.750	5-7	.714	0-0	.000	2	2	4	2.3	0	4	0	0	0	17	8.3
Totals		1	60:11	9-20	.450	7-17	.412	0-0	.000	3	4	7	2.3	2	4	3	0	1	25	8.3

Player Averages

Games Played	Minutes/ game	Points/ game	FG Pct	3FG Pct	FT Pct	Rebounds/ game	Assists/ game	Turnovers/ game	Assist/Turnover ratio	Steals/ game	Blocks/ game
3	20.1	8.3	45.0	41.2	0.0	2.3	1.3	1.0	1.3	0.3	0.0

PRODUCTION TRACKER

	20-21	21-22	Streak	Career
Scored 5+ Points	12	1	1	13
Scored 10+ Points	4	-	-	4
Had 5+ Rebounds	-	-	-	-
Had 5+ Assists	-	-	-	-
Made a Three-Pointer	14	1	1	19
Played 10+ Minutes	17	2	3	19
Played 20+ Minutes	8	1	1	9
Recorded a Double-Double	-	-	-	-

CAREER STATS

SEASON	TEAM	GP-GS	MIN/AVG	FG-FGA	FG%	3FG-3FGA	3FG%	FT-FTA	FT%	OFF	DEF	TOT	AVG	PF-FO	A	TO	BLK	STL	PTS	AVG
2019-20	Marq	17-0	46/2.7	5-12	.417	4-9	.444	0-2	.000	2	4	6	0.4	5-0	4	2	0	3	14	0.8
2020-21	Pitt	19-0	336/17.7	40-119	.336	29-97	.299	4-6	.667	7	25	32	1.7	14-0	6	13	2	7	113	5.9
2021-22	Pitt	3-1	60/20.1	9-20	.450	7-17	.412	0-0	.000	3	4	7	2.3	2-0	4	3	0	1	25	8.3
TOTAL FOR Pitt		22-1	396/18.0	49-139	.353	36-114	.316	4-6	.667	10	29	39	1.8	16-0	10	16	2	8	138	6.3
TOTAL		39-1	442/11.3	54-151	.358	40-123	.325	4-8	.500	12	33	45	1.2	21-0	14	18	2	11	152	3.9

2021-22 COMBINED SEASON STATISTICS



2021-22 Pittsburgh Women's Basketball Combined Team Statistics All games

Page 1/1
as of Nov 18, 2021

Game Records

Record	Overall	Home	Away	Neutral
ALL GAMES	3-0	3-0	0-0	0-0
CONFERENCE	0-0	0-0	0-0	0-0
NON-CONFERENCE	3-0	3-0	0-0	0-0

Score by Periods

Team	1st	2nd	3rd	4th	OT	TOT
Pittsburgh	66	61	55	64	0	246
Opponents	31	33	55	48	0	167

Team Box Score

No.	Player				Total		3-Point		F-Throw		Rebounds													
		GP-GS	MIN	AVG	FG-FGA	FG%	3FG-3FGA	3FG%	FT-FTA	FT%	OFF	DEF	TOT	AVG	PF	DQ	A	TO	BLK	STL	PTS	AVG		
20	EVERETT, Jayla	3-3	69:41	23.2	21-39	.538	6-14	.429	7-11	.636	0	7	7	2.3	0	0	6	7	5	6	55	18.3		
23	IGBOKWE, Rita	3-3	62:24	20.8	16-27	.593	0-0	.000	1-5	.200	9	16	25	8.3	8	0	1	6	5	3	33	11.0		
15	DUNN, Mary	3-0	40:53	13.6	11-22	.500	0-1	.000	3-5	.600	6	9	15	5.0	3	0	0	3	3	1	25	8.3		
31	STROTHER, Destiny	3-1	60:11	20.1	9-20	.450	7-17	.412	0-0	.000	3	4	7	2.3	2	0	4	3	0	1	25	8.3		
4	HAYFORD, Emy	3-3	62:06	20.7	11-18	.611	1-2	.500	2-5	.400	3	4	7	2.3	6	0	12	6	0	4	25	8.3		
5	BROWN, Amber	3-3	67:32	22.5	6-20	.300	0-0	.000	9-17	.529	8	12	20	6.7	4	0	9	9	0	3	21	7.0		
0	CLESCA, Sandrine	3-0	52:18	17.4	7-12	.583	1-3	.333	5-6	.833	1	7	8	2.7	2	0	11	7	0	3	20	6.7		
1	HARRIS, Dayshanette	1-0	09:33	9.6	2-4	.500	0-1	.000	2-2	1.000	1	5	6	6.0	0	0	2	1	0	0	6	6.0		
21	JOHNSON, Maliyah	3-0	52:11	17.4	4-16	.250	0-4	.000	3-4	.750	4	4	8	2.7	1	0	1	2	0	4	11	3.7		
3	EXANOR, Taisha	3-2	60:13	20.1	3-13	.231	1-4	.250	3-4	.750	9	13	22	7.3	5	0	5	6	2	1	10	3.3		
2	KING, Liatu	3-0	39:01	13.0	4-11	.364	0-0	.000	1-5	.200	9	11	20	6.7	5	0	8	4	3	3	9	3.0		
13	HUESTON, Tracey	3-0	23:58	8.0	3-7	.429	0-0	.000	0-0	.000	0	4	4	1.3	7	0	0	3	1	0	6	2.0		
Team											8	4	12					1						
Total		3	600		97-209	.464	16-46	.348	36-64	.563	61	100	161	53.7	43	0	59	58	19	29	246	82.0		
Opponents		3	600		64-188	.340	20-61	.328	19-24	.792	24	64	88	29.3	52	0	34	59	7	15	167	55.7		

Team Statistics

	PITT	OPP
Scoring	246	167
Points per game	82.0	55.7
Scoring margin	+26.3	-
Field goals-att	97-209	64-188
Field goal pct	.464	.340
3 point fg-att	16-46	20-61
3-point FG pct	.348	.328
3-pt FG made per game	5.3	6.7
Free throws-att	36-64	19-24
Free throw pct	.563	.792
F-Throws made per game	12.0	6.3
Rebounds	161	88
Rebounds per game	53.7	29.3
Rebounding margin	+24.3	-
Assists	59	34
Assists per game	19.7	11.3
Turnovers	58	59
Turnovers per game	19.3	19.7
Turnover margin	+0.3	-
Assist/turnover ratio	1.0	0.6
Steals	29	15
Steals per game	9.7	5.0
Blocks	19	7
Blocks per game	6.3	2.3
Winning streak	3	-
Home win streak	3	-
Attendance	3722	0
Home games-Avg/Game	3-1241	0-0
Neutral site-Avg/Game	-	0-0

Team Results

Date	Opponent		Score	Att.
11/10/2021	Radford	W	82-63	1237
11/12/2021	Lafayette	W	72-63	1272
11/17/2021	LIU	W	92-41	1213

PITT GAME-BY-GAME STATISTICS



2021-22 Pittsburgh Women's Basketball Team Game-by-Game All games

Page 1/1
as of Nov 18, 2021

				Total		3-Pointers		Free throws		Rebounds											
Opponent	Date	Score		FG-FGA	PCT	3FG-3FGA	PCT	FT-FTA	PCT	OFF	DEF	TOT	AVG	PF	A	TO	BLK	STL	PTS	AVG	
Radford	11/10/2021	82-63	W	34-74	.459	4-12	.333	10-20	.500	27	31	58	58.0	20	19	17	4	8	82	82.0	
Lafayette	11/12/2021	72-63	W	30-66	.455	3-15	.200	9-17	.529	17	31	48	53.0	10	19	18	11	4	72	77.0	
LIU	11/17/2021	92-41	W	33-69	.478	9-19	.474	17-27	.630	17	38	55	53.7	13	21	23	4	17	92	82.0	
Total		246		97-209	.464	16-46	.348	36-64	.563	61	100	161	53.7	43	59	58	19	29	246	82.0	
Opponents		167		64-188	.340	20-61	.328	19-24	.792	24	64	88	29.3	52	34	59	7	15	167	55.7	

Pittsburgh Averages

Games Played	Points/game	FG Pct	3FG Pct	FT Pct	Rebounds/game	Assists/game	Turnovers/game	Assist/Turnover ratio	Steals/game	Blocks/game
3	82.0	46.4	34.8	56.3	53.7	19.7	19.3	1.0	9.7	6.3

OPPONENT GAME-BY-GAME STATISTICS



2021-22 Pittsburgh Women's Basketball Opponents Game-by-Game All games

Page 1/1
as of Nov 18, 2021

				Total		3-Pointers		Free throws		Rebounds											
Opponent	Date	Score		FG-FGA	PCT	3FG-3FGA	PCT	FT-FTA	PCT	OFF	DEF	TOT	AVG	PF	A	TO	BLK	STL	PTS	AVG	
Radford	11/10/2021	82-63	W	22-57	.386	6-16	.375	13-14	.929	5	18	23	23.0	16	11	17	3	2	63	63.0	
Lafayette	11/12/2021	72-63	W	26-70	.371	9-22	.409	2-3	.667	13	23	36	29.5	14	14	15	1	6	63	63.0	
LIU	11/17/2021	92-41	W	16-61	.262	5-23	.217	4-7	.571	6	23	29	29.3	22	9	27	3	7	41	55.7	
Total		167		64-188	.340	20-61	.328	19-24	.792	24	64	88	29.3	52	34	59	7	15	167	55.7	
Pittsburgh		246		97-209	.464	16-46	.348	36-64	.563	61	100	161	53.7	43	59	58	19	29	246	82.0	

Opponents Averages

Games Played	Points/game	FG Pct	3FG Pct	FT Pct	Rebounds/game	Assists/game	Turnovers/game	Assist/Turnover ratio	Steals/game	Blocks/game
3	55.7	34.0	32.8	79.2	29.3	11.3	19.7	0.6	5.0	2.3

POINTS-REBOUNDS-ASSISTS



2021-22 Pittsburgh Women's Basketball
Points-rebounds-assists
All games

Page 1/1
as of Nov 18, 2021

Opponent	Date	Score		0	1	2	3	4	5	13	15	20	21	23
				CLESCA,SAN	HARRIS,DAY	KING,LIATU	EXANOR,TAI	HAYFORD,EM	BROWN,AMBE	HUESTON,TR	DUNN,MARY	EVERETT,JA	JOHNSON,MA	IGBOKWE,RI
Radford	11/10/2021	82-63	W	5-2-2	DNP	5-10-4	4-6-3	15-3-3	7-7-3	2-2-0	11-8-0	23-2-3	2-3-1	6-6-0
Lafayette	11/12/2021	72-63	W	2-3-4	DNP	0-2-1	2-5-1	4-3-6	5-10-5	0-1-0	6-2-0	20-2-2	4-2-0	23-13-0
LIU	11/17/2021	92-41	W	13-3-5	6-6-2	4-8-3	4-11-1	6-1-3	9-3-1	4-1-0	8-5-0	12-3-1	5-3-0	4-6-1
				31										
				STROTHER,D										
Radford	11/10/2021	82-63	W	2-1-0										
Lafayette	11/12/2021	72-63	W	6-2-0										
LIU	11/17/2021	92-41	W	17-4-4										



TEAM RANKING SUMMARY - NCAA

NCAA Statistics

Pittsburgh - 2021-22 Women's Basketball Ranking Summary thru games 11/18/2021

Statistic	National Rank	Conference Rank	Value	National Leader	Value	Conference Leader	Value
Assist Turnover Ratio (348 ranked)	92	8	1.02	Oregon	2.31	Georgia Tech	1.6
Assists (348 ranked)	33	6	59	Maryland	91	Notre Dame	7
Assists Per Game (348 ranked)	24	3	19.7	Penn St.	26.0	Duke	20.
Blocked Shots (341 ranked)	28	7	19	Kansas St.	29	Notre Dame	2
Blocked Shots Per Game (343 ranked)	24	4	6.3	Providence	9.3	Duke	8.
				Richmond	9.3		
				South Carolina	9.3		
Defensive Rebounds per Game (30 ranked)	17	2	33.3	Idaho	36.0	Notre Dame	34.
				TCU	36.0		
Fewest Fouls (345 ranked)	91	3	43	Buffalo	13	Florida St.	4
Fewest Turnovers (348 ranked)	236	11	58	UConn	11	Duke	4
						Georgia Tech	4
Field-Goal Percentage (348 ranked)	70	8	46.4	UConn	56.9	Notre Dame	51.
Field-Goal Percentage Defense (348 ranked)	84	10	34.0	Oregon	24.8	North Carolina	25.
Free Throw Attempts (348 ranked)	79	6	64	Nebraska	109	Clemson	7
Free Throws Made (348 ranked)	150	9	36	Iowa	81	Notre Dame	5
Free-Throw Percentage (348 ranked)	330	13	56.2	Southern Ill.	90.0	Syracuse	78.
				Mississippi Val.	90.0		
Offensive Rebounds per Game (26 ranked)	4	1	20.3	Furman	21.3	Duke	20.
				Georgia	21.3	Pittsburgh	20.
Personal Fouls Per Game (348 ranked)	59	6	14.3	Wyoming	8.0	Virginia Tech	13.
Rebound Margin (348 ranked)	2	1	24.3	Marquette	25.7	Pittsburgh	24.
Rebounds (348 ranked)	22	7	161	Maryland	228	Notre Dame	19
Rebounds Per Game (348 ranked)	3	1	53.67	Buffalo	54.00	Pittsburgh	53.6
				TCU	54.00		
Scoring Defense (348 ranked)	98	9	55.7	West Virginia	33.0	Louisville	38.
Scoring Margin (348 ranked)	45	6	26.3	Buffalo	60.0	North Carolina	48.
Scoring Offense (348 ranked)	46	5	82.0	Buffalo	102.0	North Carolina	90.
Steals (348 ranked)	119	8	29	Tennessee St.	72	North Carolina	4
Steals Per Game (348 ranked)	115	5	9.7	West Virginia	21.0	North Carolina	14.
Three Pt FG Defense (348 ranked)	257	14	32.8	Siena	6.5	North Carolina	18.
Three-Point Field Goals Attempted (144 ranked)				App State	130	Virginia Tech	11
Three-Point Field Goals Made (348 ranked)	181	11	16	Virginia Tech	50	Virginia Tech	5
Three-Point Field Goals Per Game (348 ranked)	188	9	5.3	Utah	14.0	Virginia Tech	12.
Three-Point Field-Goal Percentage (348 ranked)	84	4	34.8	Texas	50.0	NC State	44.
				Pepperdine	50.0		
Turnover Margin (348 ranked)	192	12	0.33	West Virginia	20.00	North Carolina	13.0
Turnovers Forced (348 ranked)	116	8	19.67	West Virginia	35.00	North Carolina	29.0
Turnovers Per Game (348 ranked)	256	13	19.3	Oregon	8.0	Georgia Tech	11.
Won-Lost Percentage (294 ranked)	1	1	100.0	86 teams tied	100.0	9 teams tied	100.

INDIVIDUAL RANKING SUMMARY - NCAA

Statistic	Player	National Rank	Conference Rank	Value	National Leader	Value	Conference Leader	Value
Assist Turnover Ratio (247 ranked)	Emy Hayford Sandrine Clesca	154 241	11 19	2.00 1.57	LaTora Duff, New Mexico	26.00	Lorela Cubaj, Georgia Tech	3.80
Assists (123 ranked)					Ally Knights, North Florida	31	Georgia Amore, Virginia Tech	29
Assists Per Game (209 ranked)	Emy Hayford Sandrine Clesca	152 209	9 11	4.0 3.7	Myah Taylor, Mississippi St. Dominique Camp, Buffalo	9.0 9.0	Georgia Amore, Virginia Tech	7.2
Blocked Shots (96 ranked)	Jayla Everett Rita Igbokwe	96 96	11 11	5 5	Addie Budnik, Richmond Elizabeth Kitley, Virginia Tech	16 16	Elizabeth Kitley, Virginia Tech	16
Blocked Shots Per Game (235 ranked)	Jayla Everett Rita Igbokwe Mary Dunn Liatu King	102 102 235 235	10 10 23 23	1.67 1.67 1.00 1.00	Addie Budnik, Richmond	5.33	Elizabeth Kitley, Virginia Tech	4.00
Defensive Rebounds per Game (22 ranked)					Aijha Blackwell, Missouri	11.3	Lorela Cubaj, Georgia Tech	9.5
Double Doubles (12 ranked)					Angel Reese, Maryland	4	Lorela Cubaj, Georgia Tech Elizabeth Kitley, Virginia Tech	2 2
Field Goal Attempts (132 ranked)					Sali Kourouma, Little Rock	79	Elizabeth Kitley, Virginia Tech	59
Field Goals Made (132 ranked)	Jayla Everett	78	7	21	Ayoka Lee, Kansas St.	49	Elizabeth Kitley, Virginia Tech	37
Field-Goal Percentage (250 ranked)	Rita Igbokwe Jayla Everett	71 142	6 10	59.3 53.8	Kylee Watson, Oregon	84.6	Taylor Soule, Boston College	73.7
Final Points (187 ranked)	Jayla Everett	97	7	55	Ayoka Lee, Kansas St.	117	Jewel Spear, Wake Forest	82
Free Throw Attempts (145 ranked)	Amber Brown	94	4	17	Sali Kourouma, Little Rock	35	Jewel Spear, Wake Forest	23
Free Throws Made (148 ranked)					Sali Kourouma, Little Rock	28	Jewel Spear, Wake Forest	18
Free-Throw Percentage (245 ranked)					48 players tied	100.0	Lorela Cubaj, Georgia Tech	92.9
Minutes Played (150 ranked)					Megan McConnell, Duquesne	152:01	Jewel Spear, Wake Forest	137:01
Minutes Played Per Game (150 ranked)					Paige Bueckers, UConn	40.00	Amandine Toi, Virginia	34.56
Offensive Rebounds per Game (30 ranked)					Josie Williams, Utah Valley	7.3		
Points Per Game (239 ranked)	Jayla Everett	79	4	18.3	Paige Bueckers, UConn	34.0	Taylor Soule, Boston College	21.7
Rebounds (148 ranked)	Rita Igbokwe	148	12	25	Angel Reese, Maryland	60	Lorela Cubaj, Georgia Tech	47
Rebounds Per Game (250 ranked)	Rita Igbokwe Taisha Exanor	134 219	7 12	8.3 7.3	Jasmine Franklin, Missouri St.	15.7	Lorela Cubaj, Georgia Tech	11.8
Steals (99 ranked)					Dominique Claytor, Tennessee St. Mackenzie DeWees, Quinnipiac	16 16	Marnelle Garraud, Boston College	12
Steals Per Game (245 ranked)					Kirsten Deans, West Virginia	7.00	Marnelle Garraud, Boston College	4.00
Three-Point Field Goals Attempted (139 ranked)					Katie Benzan, Maryland Caitlin Clark, Iowa	34 34	Jewel Spear, Wake Forest	33
Three-Point Field Goals Made (121 ranked)	Destiny Strother	121	9	7	Aisha Sheppard, Virginia Tech	17	Aisha Sheppard, Virginia Tech	17
Three-Point Field Goals Per Game (172 ranked)	Destiny Strother Jayla Everett	120 172	8 9	2.33 2.00	Caroline Waite, Bradley	5.00	Aisha Sheppard, Virginia Tech	4.25
Three-Point Field-Goal Percentage (250 ranked)	Jayla Everett Destiny Strother	155 170	7 8	42.9 41.2	Kirsten Deans, West Virginia	100.0	Emily Engstler, Louisville	85.7
Triple Doubles (1 ranked)					5 players tied	1		

2021-22 PITTSBURGH PANTHERS - PHOTO ROSTER



SANDRINE CLESCA | G | SO
Cles - ka
Laval, Quebec, Canada
Winston-Salem Christian School



DAYSHANNETTE HARRIS | G | JR
Day - shu - net
Youngstown, Ohio
Ursuline



LIATU KING | G | SO
Lee - uh - two
Washington, DC
Bishop McNamara



TAISHA EXANOR | G | SO
Tie - E - sha Ex - a - nor
Chateaugay, Quebec, Canada
Dawson College



EMY HAYFORD | G | JR
Amy
Maastricht, Netherlands
Calandlyceum



AMBER BROWN | F | JR
Monroe, Louisiana
Little Rock Christian Academy



ISMINI PRAPA | G | SR
Is - me - knee Prop - uh
Athens, Greece
American Community School of Athens



TRACEY HUESTON | F | SO
Houston
Roanoke, Virginia
Northside



CYNTHIA EZEJA | F | R-SO
Eh - zay - zuh
Athens, Greece
20th High School of Athens



MARY DUNN | C | GR
Washington, Pennsylvania
Trinity (Youngstown State)



JAYLA EVERETT | G | SR
St. Louis, Missouri
Kirkwood (New Mexico)



MALIAH JOHNSON | G/F | FR
Muh - lee - uh
Columbus, Ohio
Africentric Early College



RITA IGBOKWE | C | JR
Ig - bock - way
Jonesboro, Georgia
Mundy's Mill



DESTINY STROTHER | G | JR
Struh - ther
Flint, Michigan
Carman-Ainsworth (Marquette)

ON THE PITT BENCH



LANCE WHITE
Head Coach | 4th Season



TERRI MITCHELL
Associate HC | 4th Season



JOSH PETERSEN
Assistant Coach | 4th Season



BRIANNA KIESEL
ASSISTANT COACH | 1st Season