

**Pitt Panthers [6-32, 2-10 ACC]***at Saint Francis (Pa.) [17-23, 5-3 NEC]**Tuesday, April 9 • Red Flash Softball Field • Loretto, Pa.***2019 Pitt Softball Schedule / Results**

Fri.	2/8	~ vs. Purdue	L, 13-9 (8)
		~ at College of Charleston	L, 10-4
Sat.	2/9	~ vs. Central Michigan	L, 11-6
		~ vs. Wichita State	W, 4-2
Sun.	2/10	~ vs. Wichita State	L, 7-2
Fri.	2/15	# vs. Wisconsin	L, 8-0
		# vs. Nebraska	L, 14-1 (5)
Sat.	2/16	# vs. Wisconsin	L, 8-0 (5)
Sun.	2/17	# vs. Nebraska	L, 16-2 (5)
Fri.	2/22	+ vs. Coastal Carolina	L, 5-0
		+ at UCF	L, 9-1 (5)
Sat.	2/23	+ vs. Coastal Carolina	L, 11-3 (5)
		+ at UCF	L, 2-0
Sun.	2/24	+ vs. Penn State	W, 2-0
Fri.	3/1	\$ vs. Nicholls State	L, 5-0
		\$ at Ole Miss	L, 6-1
Sat.	3/2	\$ vs. Nicholls State	W, 5-3
		\$ at Ole Miss	L, 4-3
Sun.	3/3	\$ at Ole Miss	Cancelled
Fri.	3/8	* at Virginia	L, 7-4
Sun.	3/10	* at Virginia	L, 7-6
		* at Virginia	L, 5-4
Wed.	3/13	at Liberty	L, 4-1
Fri.	3/15	* at Duke	L, 4-3 (9)
Sat.	3/16	* at Duke	L, 8-0 (6)
Sun.	3/17	* at Duke	W, 5-3
Tue.	3/19	vs. Ohio	L, 11-9 (10)
Sat.	3/23	* vs. Virginia Tech	L, 18-0 (5)
		* vs. Virginia Tech	L, 9-1
Sun.	3/24	* vs. Virginia Tech	L, 10-2
Wed.	3/27	vs. Penn State	L, 8-3
Fri.	3/29	* vs. North Carolina	L, 11-5
Sat.	3/30	* vs. North Carolina	L, 6-2
		* vs. North Carolina	W, 14-5 (5)
Wed.	4/3	Ohio State	L, 5-2 (9)
Fri.	4/5	at Missouri	L, 9-2
Sat.	4/6	vs. Oregon	L, 9-1 (5)
		at Missouri	W, 5-4
Sun.	4/7	vs. Oregon	L, 4-3
Tue.	4/9	at Saint Francis (Pa.)	2 p.m.
		at Saint Francis (Pa.)	4 p.m.
Fri.	4/12	* at Georgia Tech	4 p.m.
Sat.	4/13	* at Georgia Tech	1 p.m.
Sun.	4/14	* at Georgia Tech	1 p.m.
Tue.	4/16	vs. Kent State	5 p.m.
Fri.	4/19	* at Syracuse	4 p.m.
Sat.	4/20	* at Syracuse	1 p.m.
Sun.	4/21	* at Syracuse	12 p.m.
Sat.	4/27	* vs. Notre Dame	11 a.m.
Sun.	4/28	* vs. Notre Dame	7 p.m.
Mon.	4/29	* vs. Notre Dame	7 p.m.
Wed.	5/1	at Marshall	2 p.m.
Fri.	5/3	* vs. Boston College	5 p.m.
Sat.	5/4	* vs. Boston College	4 p.m.
Sun.	5/5	* vs. Boston College	12 p.m.
Wed.-Sat.	5/8-11	ACC Tournament	TBD

All home games in **bold** | All times are EST

All home games played at Vartabedian Field

* ACC Contest | ~ Cougar Classic | # ACC/Big Ten Challenge

+ UCF Knights Classic | \$ Ole Miss Classic

**PITT PANTHERS**

2019 Record [ACC] 6-32 [2-10]

2018 Record [ACC] 33-18-1 [16-6]

ESPN.com/USA Softball Poll NR

USA Today/NFCA Coaches Poll NR

Head Coach Jodi Hermanek

Career Record 403-408-1

**SAINT FRANCIS RED FLASH**

2019 Record [NEC] 17-23 [5-3]

2018 Record [NEC] 39-19 [16-0]

ESPN.com/USA Softball Poll RV

USA Today/NFCA Coaches Poll RV

Head Coach Jessica O'Donnell

Career Record 17-23

STATISTICAL COMPARISON

.232	AVG.	.288
115	R	241
219	Hits	325
31	HR	40
110	RBI	226
.372	SLG %	.476
101	BB	140
21	SB	23
6.76	ERA	6.24
92	K	105
1	SV	2

SERIES INFORMATION**PITT • SAINT FRANCIS**

Meeting 33rd/34th

Series Record Pitt leads • 22-10

First Meeting 3/25/98 • Saint Francis won 4-0

Last Meeting 4/5/17 • Pitt won 8-3 (9)

LIVE SCORING

Game 1: Pitt at Saint Francis April 9 | 2 p.m. EST

Link bit.ly/2uVt2qu

Game 2: Pitt at Saint Francis April 9 | 4 p.m. EST

Link bit.ly/2uVt2qu**BROADCAST**

Game 1: Pitt at Saint Francis

NEC Front Row April 9 | 2 p.m. EST

Link bit.ly/2G97JYN

Game 2: Pitt at Saint Francis

NEC Front Row April 9 | 4 p.m. EST

Link bit.ly/20YoUyY**MEDIA RELATIONS INFORMATION**

Softball SIDMatt Keenan

Office Phone412-648-8240

Cell Phone814-853-6645

Emailmak434@pitt.edu

GENERAL INFORMATION

Name of SchoolUniversity of Pittsburgh
 CityPittsburgh, Pa.
 Founded1787
 Enrollment34,850
 Nickname.....Panthers
 School ColorsBlue & Gold [PMS 661 / PMS 2766]
 Facility.....Vartabedian Field / Petersen Sports Complex
 Affiliation.....NCAA Division I
 Conference.....ACC
 Chancellor.....Dr. Patrick D. Gallagher
 Acting Athletics Director.....Heather Lyke

COACHING STAFF

Head Coach.....Jodi Hermanek
 Alma Mater.....CSU-Pueblo, '00
 Seasons at Pitt.....1st Season
 Career Record (14 Seasons)403-408-1 (.497)

Assistant Coach.....Jillian Van Wagnen
 Alma Mater.....Ohio, '12
 Seasons at Pitt.....1st Season

Assistant Coach.....Brock Van Faussien
 Alma Mater.....Liberty, '97
 Seasons at Pitt.....1st Season

Volunteer Assistant Coach.....Maddy Grimm
 Alma Mater.....Kent State, '17
 Seasons at Pitt.....1st Season

Director of OperationsDavid Horton Jr.
 Alma Mater.....Dallas Baptist, '01
 Seasons at Pitt.....1st Season

Athletic Trainer.....Hayley Harp
 Alma Mater.....Central Arkansas, '18
 Seasons at Pitt.....1st Season

TEAM INFORMATION

2018 Overall Record.....33-18-1
 2018 ACC Record [Finish].....16-6 [2nd]
 2018 ACC Tournament Record2-1
 Starters Returning/Lost.....6 / 3
 Letterwinners Returning/Lost.....14 / 5
 Newcomers6

PROGRAM HISTORY

First Year1998
 All-Time Record.....503-595-2
 All-Time ACC Record.....50-78
 All-Time Big East Record.....114-186
 Years in NCAA Tournament1 [2015]
 Most Single Season Wins37 [2015]
 Highest Single Season Win %667 [34-17 in 2011]

2019 ACC STANDINGS

Rk.	Team	Conf.	Pct.	Overall	Pct.
1.	Virginia Tech	13-2	0.867	33-5	0.868
2.	Florida State	9-2	0.818	37-4	0.902
3.	North Carolina	11-4	0.733	22-13	0.629
4.	Notre Dame	7-5	0.583	24-12	0.667
5.	Duke	8-7	0.533	19-22	0.463
6.	Syracuse	6-6	0.500	16-20	0.444
7.	Louisville	5-6	0.455	24-13	0.649
8.	Georgia Tech	5-7	0.417	23-19	0.548
9.	Virginia	5-10	0.333	16-21	0.432
T10.	NC State	3-9	0.250	21-18	0.538
T10.	Boston College	3-9	0.250	10-23	0.303
12.	Pitt	2-10	0.167	6-31	0.162

2019 ACC ATLANTIC DIVISION STANDINGS

Rk.	Team	Conf.	Pct.	Overall	Pct.
1.	Florida State	9-2	0.818	37-4	0.902
2.	Notre Dame	7-5	0.583	24-12	0.667
3.	Syracuse	6-6	0.500	16-20	0.444
4.	Louisville	5-6	0.455	24-13	0.649
T5.	NC State	3-9	0.250	21-18	0.538
T5.	Boston College	3-9	0.250	10-23	0.303

2019 ACC COASTAL DIVISION STANDINGS

Rk.	Team	Conf.	Pct.	Overall	Pct.
1.	Virginia Tech	13-2	0.867	33-5	0.868
2.	North Carolina	11-4	0.733	22-13	0.629
3.	Duke	8-7	0.533	19-22	0.463
4.	Georgia Tech	5-7	0.417	23-19	0.548
5.	Virginia	5-10	0.333	16-21	0.432
6.	Pitt	2-10	0.167	6-31	0.162

USA TODAY / NFCA POLL

#	School	Rec.	TP	PR
1.	UCLA (32)	32-1	800	1
2.	Oklahoma	32-2	763	2
3.	Florida State	35-3	737	3
4.	Alabama	36-2	693	4
5.	Tennessee	27-6	660	5
6.	Washington	29-6	650	7
7.	LSU	31-7	575	8
8.	Florida	29-8	565	6
9.	Arizona	27-7	544	11
10.	Louisiana	29-4	532	10
11.	Texas	31-8	469	9
12.	Georgia	28-10	416	12
13.	Auburn	30-7	349	14
14.	Arkansas	25-11	330	13
15.	Texas Tech	29-6	321	15
16.	Oklahoma State	26-10	282	21
17.	South Carolina	25-10	276	16
18.	Ole Miss	24-9	254	22
19.	Minnesota	25-9	250	19
20.	James Madison	23-6	216	20
21.	Arizona State	25-11	174	17
22.	Kentucky	22-13	152	18
23.	Michigan	23-10	99	23
24.	Virginia Tech	30-5	84	24
25.	Wisconsin	27-5	76	25

Dropped out: N/A

New to poll: N/A

Others receiving votes: Northwestern (29), Colorado State (28), Stanford (24), **Missouri (15)**, Western Kentucky (13), **Ohio State (6)**, Boise State (5), Indiana (5), Illinois (4), Tulsa (2), **Liberty (1)**, UNLV (1)

BOLD indicates 2019 opponent

*NCAA USA Today / NFCA Coaches Poll Updated Through April 2, 2019

ESPN.COM / USA SOFTBALL POLL

#	School	Rec.	TP	PR
1.	UCLA (20)	32-1	500	1
2.	Oklahoma	32-2	476	2
3.	Florida State	35-3	457	3
4.	Alabama	36-2	415	4
5.	LSU	31-7	402	5
6.	Washington	29-6	397	8
7.	Tennessee	27-6	384	6
8.	Arizona	27-7	364	9
9.	Florida	29-8	316	7
10.	Louisiana	29-4	312	11
11.	Texas	31-8	287	10
12.	Minnesota	25-9	262	15
13.	Oklahoma State	26-10	261	16
14.	Auburn	30-7	210	12
15.	Texas Tech	29-6	189	14
16.	Georgia	28-10	172	18
17.	Ole Miss	24-9	164	22
18.	James Madison	23-6	148	21
19.	Arizona State	25-11	145	13
T20.	Michigan	23-10	115	23
T20.	Virginia Tech	30-5	115	19
22.	Arkansas	25-11	106	20
23.	Kentucky	22-13	80	17
24.	Stanford	25-5	52	24
25.	Northwestern	25-7	40	RV

Dropped out: South Carolina (25)

New to poll: Northwestern (RV)

Others receiving votes: **Wisconsin (33)**, South Carolina (28), **Missouri (16)**, Tulsa (15), **UCF (11)**, Indiana (8), **Ohio State (6)**, Colorado State (4), South Florida (4), Illinois (2), Florida Gulf Coast (1), UNLV (1), Western Kentucky (1)

BOLD indicates 2019 opponent

*NCAA ESPN.COM / USA Softball Poll Updated Through March 26, 2019

NCAA RPI - TOP 50

#	Team	Conf.	Record
1.	Florida St.	ACC	35-3-0
2.	Oklahoma	Big 12	32-2-0
3.	UCLA	Pac-12	32-1-0
4.	LSU	SEC	31-7-0
5.	Washington	Pac-12	29-6-0
6.	Arizona	Pac-12	27-7-0
7.	Texas	Big 12	31-8-0
8.	Minnesota	Big Ten	25-9-0
9.	Florida	SEC	29-8-0
10.	Alabama	SEC	36-2-0
11.	Tennessee	SEC	27-6-0
12.	Ole Miss	SEC	24-9-0
13.	Oklahoma St.	Big 12	26-10-0
14.	Northwestern	Big Ten	25-7-0
15.	Auburn	SEC	30-7-0
16.	Texas Tech	Big 12	29-6-0
17.	Kentucky	SEC	22-13-0
18.	James Madison	CAA	23-6-0
19.	Tulsa	AAC	24-10-0
20.	Stanford	Pac-12	25-5-0
21.	Louisiana	Sun Belt	29-4-0
22.	Michigan	Big Ten	23-10-0
23.	Arkansas	SEC	25-11-0
24.	Mississippi St.	SEC	22-12-0
25.	Boise St.	MWC	23-8-0
26.	South Carolina	SEC	25-10-0
27.	Drake	MVC	21-13-0
28.	Virginia Tech	ACC	30-5-0
29.	Notre Dame	ACC	20-12-0
30.	South Fla.	AAC	26-14-0
31.	Colorado St.	MWC	27-4-0
32.	Missouri	SEC	17-13-0
33.	Ohio St.	Big Ten	20-10-0
34.	Arizona St.	Pac-12	25-11-0
35.	UCF	AAC	26-9-0
36.	Illinois	Big Ten	22-9-0
37.	Georgia	SEC	28-10-0
38.	Indiana	Big Ten	28-10-0
39.	Oregon	Pac-12	13-18-0
40.	UNLV	MWC	25-7-0
41.	Wisconsin	Big Ten	27-5-0
42.	Oregon St.	Pac-12	17-13-0
43.	Texas A&M	SEC	22-13-0
44.	Louisville	ACC	22-12-0
45.	Houston	AAC	24-12-0
46.	Louisiana Tech	C-USA	26-9-0
47.	North Carolina	ACC	19-13-0
48.	Troy	Sun Belt	25-13-0
49.	Longwood	Big South	21-11-0
50.	Lipscomb	ASUN	23-12-1

BOLD indicates 2019 opponent

*NCAA RPI Updated through March 31, 2019

QUICK HIT

- The University of Pittsburgh softball team will travel to Loretto, Pa., for a doubleheader against Saint Francis beginning at 2 p.m. Tuesday, April 9 at the Red Flash Softball Field.

LAST TIME OUT

- Pitt closed out the Mizzou Tournament with a 1-3 mark on the weekend, picking up a win against Missouri while also falling to the Tigers and dropping two contests against Oregon.
- Two Panther pitchers saw the mound in Pitt's win over Mizzou, with senior **Taylor Rahach** earning the start and freshman **Abby Edwards** coming in for relief duty. Edwards entered the game in the second frame, earning the win after allowing just one earned run and striking out four in 5.2 innings of action.
- Offensively, Pitt collected nine hits from five different players. Sophomore **Hunter Levesque** led the way with a 3-for-4 showing, adding three runs, two RBI and a long ball in the contest. Senior **Gabrielle Fredericks** posted a 2-for-3 effort to go along with a walk and two-run homer, while senior **Alexis Solak** rounded out the multi-hit group with a 2-for-4 performance at the plate, adding a double and RBI. Senior **Olivia Gray** and junior **Kaitlyn Kruger** also contributed one hit apiece in the matchup.

FACING A STRONG SCHEDULE

- Pitt faces one of the toughest schedules in the nation, with its strength of schedule currently ranked 28th in the country.
- The Panthers' 2019 slate currently features six teams that are either ranked or receiving votes in the USA Today/NFCA Poll, while six opponents also fit that criteria in the ESPN/USA Softball Poll.
- Pitt also has seven opponents on its schedule who are currently rated in the top 50 of the NCAA RPI.

LOOK OUT FOR LEVESQUE

- Coming off a 2018 season in which she garnered ACC All-Freshman Team recognition, sophomore **Hunter Levesque** has continued to be a constant in Pitt's starting lineup this season.
- The Troy, N.Y., native is the only Panther to start all 38 games on the season, and currently ranks first on the team in total bases (55), hits (29), RBI (20) and doubles (six), second in runs (20) and is tied for second in home runs (six).
- Levesque hit for a .357 batting average in the Panthers' season-opening weekend at the Cougar Classic (Feb. 8-10), adding five hits, three RBI, two runs and two walks.
- The sophomore batted .333 in Pitt's ACC series against Duke from March 15-17, collecting three hits, two doubles and one RBI.
- In Pitt's series against North Carolina from March 29-30, Levesque hit .556 while collecting five hits, three runs, two walks, one RBI and one double. In the Panthers' series finale against the Tar Heels, the sophomore recorded a career-high four hits.
- The Troy, N.Y., native hit for a .417 average in the Mizzou Tournament from April 5-7, adding five hits, five runs, four RBI, two home runs and two walks in four total games against Missouri and Oregon.

GRAY GOT GAME

- Senior **Olivia Gray** was named to the conference's first-ever Preseason All-ACC Team Tuesday, Jan. 29, and has amassed the stats to back it up so far this season.
- While appearing in just 18 games due to injury, Gray has still been able to compile a .333 batting average and .443 on-base percentage, adding 17 hits, 11 RBI, 10 runs, 10 walks, five doubles and three home runs.
- In Pitt's season-opening tournament at the Cougar Classic from Feb. 8-10, Gray finished the weekend with a .333 batting average while ranking first on the team in doubles (four) and tying for the team-lead in hits (six). She also added four runs and three RBI in the team's five contests.

- In the senior's first series back from injury, Gray hit for a .714 average to go along with six RBI, five hits, four runs, three walks and two home runs in three games against North Carolina from March 29-30.
- The Washington, Pa., native batted .333 against Missouri and Oregon in the Mizzou Tournament from April 5-7, collecting four hits, two runs, two RBI, two walks, one long ball and one double in just four contests.

PAVLICK PUTTING UP NUMBERS

- Freshman **Katlyn Pavlick** has had an impressive start to her Panther career offensively.
- On the season, Pavlick ranks first on the team in runs (22) and walks (19), is tied for second in home runs (six) and doubles (five), ranks third in total bases (48) and is tied for third in hits (25).
- Pavlick hit a leadoff long ball in her first career at-bat for Pitt, going on to close out the Panthers season-opening weekend at the Cougar Classic (Feb. 8-10) ranked first on the team in runs (five) and home runs (two), tied for first in hits (six) and second in both batting average (.429) and walks (three).
- In the Panthers' first ACC series against Virginia from March 9-10, the freshman hit .500 through three games, adding five runs, four hits, four walks, two home runs and a double.
- Pavlick hit for a .444 average in the Panthers' series against Duke from March 15-17, adding four hits, four RBI, two doubles and two walks. The freshman was a big factor in helping Pitt to collect its first ACC win of the season, going 2-for-2 with two doubles, two RBI and two walks in the Panthers' 5-3 victory against the Blue Devils Sunday, March 17.

FREDERICKS FINDING HER FOOTING AT THE PLATE

- After a quiet start to the season offensively, senior **Gabrielle Fredericks** has found her footing at the plate as of late, ranking third on the team in both on-base percentage (.394) and batting average (.333) during the Panthers' last 10 games.

- During that span, she has collected 10 hits, 10 RBI, five runs, four home runs and three walks.
- On the season, Fredericks owns a .275 batting average to go along with 25 hits, 16 RBI, nine walks, eight runs, seven home runs and four doubles.
- The New Philadelphia, Ohio, native batted .375 in Pitt's three-game ACC series against Virginia from March 9-10, collecting three hits, two RBI, two walks and one home run.
- The senior hit for a .300 average in Pitt's ACC series against North Carolina from March 29-30, adding five RBI, three hits, three runs and two home runs in three contests.
- Fredericks finished the Mizzou Tournament (April 5-7) with a .364 average, recording four hits, two RBI, two walks and one home run in four total contests against Missouri and Oregon.

SOLAK GETTING INTO THE SWING OF THINGS

- Senior **Alexis Solak** has picked up her production at the plate following a relatively slow start to the season offensively.
- In her last 15 games, the senior has compiled a .341 batting average to go along with 15 hits, five RBI, four runs, three doubles, three walks and one home run.
- On the season, Solak ranks second on the team in hits (27), fourth in total bases (37) and RBI (12) and is tied for fourth in doubles (four).
- Solak collected five RBI in Pitt's season-opening weekend at the Cougar Classic from Feb. 8-10. She recorded an RBI in four of five games, including a season-high tying two RBI against Central Michigan.
- The senior hit .333 at the Ole Miss Classic from March 1-2. In four contests, she amassed a team-high eight total bases off of four hits, one home run and one double.
- The Woodbridge, Ill., native batted .624 in the Panthers' ACC series against Duke from March 15-17, collecting five hits in just three games.
- Solak hit for a .364 average in Pitt's series against North Carolina from March 29-30, recording four hits, two runs, two doubles and one RBI.

THE SERIES - SAINT FRANCIS

- In a series dating back to 1998, the Panthers currently own a 22-10 all-time edge over the Red Flash.
- The teams' last meeting came April 5, 2017, with Pitt recording an 8-3 extra-innings victory against Saint Francis.
- The Panthers have won their last five contests against the Red Flash.

SCOUTING THE RED FLASH

- Saint Francis enters Tuesday's contests with a 17-23 [5-3 NEC] record, most recently splitting a doubleheader with Mount St. Mary's Sunday, April 7.
- The Red Flash closed out their 2018 campaign with a 39-19 [16-0 NEC] record, advancing to the NCAA Tournament, where they fell to Arizona and Mississippi State.
- Offensively, Saint Francis currently has four regulars hitting .300 or better on the season. Senior Hayley Norton currently leads the team with a .371 average.
- The Red Flash's workhorse on the mound this season has been freshman Christina Clark, who currently leads the team in innings pitched (108.1), ERA (5.49) and wins (eight).

UP NEXT

- The Panthers will head to Atlanta, Ga., for an ACC series with Georgia Tech beginning Friday, April 12.

ACC PRESEASON COACHES POLL

- The ACC released its annual Preseason Coaches Poll Tuesday, Jan. 29, with the Panthers projected to finish fourth in the conference.
- Florida State, who is coming off a College World Series Championship, was picked first in the poll after receiving 121 total points and 11 first place votes. Notre Dame, who made an appearance in the 2018 NCAA Tournament, placed second with 102 points. North Carolina came in third with 95 points, followed by Pitt with 88 points.

HONORS AND AWARDS

Olivia Gray

Preseason All-ACC Team	1/29/19
Pitt Student-Athlete of the Week	4/2/19

Katlyn Pavlick

Pitt Student-Athlete of the Week	3/12/19
----------------------------------	---------

ACC • Softball Predicted Order of Finish

<i>Rk.</i>	<i>Team</i>	<i>Points</i>	<i>1st Place Votes</i>
1.	Florida State	121	11
2.	Notre Dame	102	0
3.	North Carolina	95	0
4.	Pitt	88	0
5.	Louisville	75	0
6.	Duke	69	0
7.	Georgia Tech	55	0
8.	Syracuse	51	0
9.	Boston College	47	0
10.	Virginia Tech	41	1
11.	NC State	29	0
12.	Virginia	19	0

A CHANGE IN LEADERSHIP

- Head coach **Jodi Hermanek** is in her first season at the helm of the Pitt softball program.
- Hermanek joined the Panthers after spending the previous 10 years at Ohio University, where she led the Bobcats to two NCAA Tournament appearances, two MAC Tournament Championships and one MAC Regular Season Championship.
- In 14 seasons as a head coach at both Ohio and Southern Utah, Hermanek compiled a 397-376-1 (.514) record while advancing to the NCAA Tournament four times.

INTRODUCING THE STAFF

- Joining Hermanek on the coaching staff are assistant coaches **Jillian Van Wagnen** and **Brock Van Faussien**, as well as volunteer assistant **Maddy Grimm**.
- Van Wagnen spent four years as a player under Hermanek at Ohio before joining the Bobcats' coaching staff in 2014.
- Van Faussien has spent time in both baseball and softball, and most recently worked with a University of Georgia team that advanced all the way to the 2018 NCAA Women's College World Series.
- Grimm spent a year as an assistant coach at Ashland University following a standout career at

Kent State, where she still holds multiple program records.

RUNNING IT BACK

- The Panthers return 15 players from a season ago in seniors **Sarah Dawson**, **Marissa DeMatteo**, **Gabrielle Fredericks**, **Olivia Gray**, **Taylor Myers**, **Taylor Rahach**, **Alexis Solak** and **Nava Susi**, juniors **Alexee Haynes**, **Kaitlyn Kruger** and **Connor McGaffic**, redshirt sophomore **Brittany Knight** and sophomores **Morgan Batesole**, **Brie Horrell** and **Hunter Levesque**.
- Among the returnees are multiple key contributors to last year's success. Kruger earned NFCA All-Mid-Atlantic Region Third Team recognition a season ago, while Gray received First Team All-ACC honors, Levesque was named to the ACC All-Freshman Team and Dawson earned ACC All-Tournament Team accolades.

NEW IN TOWN

- Pitt added two transfers to the 2019 roster in junior **Walker Barbee** and sophomore **Chandler Walter**.
- Barbee joined the Panthers after spending the past two years at Elon University.
- Walter came to Pitt following a one-year stint at the University of Utah.

FRESH FACES

- The Panthers also welcomed four freshmen to the team in **Hannah Bach**, **Abby Edwards**, **Katlyn Pavlick** and **Sarah Seamans**.

2018 SEASON IN REVIEW

- The Panthers finished the 2018 season with a 33-18-1 overall record, including a 16-6 mark in conference play.
- Pitt won seven of its eight ACC series on the year, with both its 16 conference wins and seven series wins marking a program high since the team joined the league in 2014.
- The Panthers' strong play in conference led to

their first ACC Coastal Division Championship in program history.

- Pitt earned the No. 2 seed in the ACC Tournament, taking down Virginia Tech and North Carolina before falling to eventual National Champion Florida State in the championship game by a score of 5-4.

THE LAST TIME A PITT PLAYER...

Scored 3 Runs	Hunter Levesque at Missouri [4/16/19]
Scored 4 Runs	Giorgiana Zeremenko at Virginia Tech [3/23/18]
Had 3 Hits	Hunter Levesque at Missouri [4/16/19]
Had 4 Hits	Hunter Levesque vs. North Carolina [3/30/19]
Had 5 Hits	Maggie Sevilla at Ohio State [3/31/15]
Had 3 RBI	Morgan Batesole vs. North Carolina [3/30/19]
Had 4 RBI	Gabrielle Fredericks & Olivia Gray [3/30/19]
Had 5 RBI	Valeria Ortega vs. Virginia Tech [4/8/17]
Had 6 RBI	Shelby Pickett vs. St. Bonaventure [3/30/16]
Had 7 RBI	N/A
Had 8 RBI	McKayla Taylor at Syracuse [4/11/15]
Had 2 Doubles	Alexis Solak vs. North Carolina [3/30/19]
Had 3 Doubles	N/A
Had 2 Home Runs	Gabrielle Fredericks vs. North Carolina [3/30/19]
Had 3 Home Runs	Shelby Pickett vs. St. Bonaventure [3/30/16]
Leadoff Game with Homer	Hunter Levesque at Ole Miss [3/2/19]
Leadoff Inning with Homer	Katlyn Pavlick vs. North Carolina [3/30/19]
Pinch-Hit Homer	Connor McGaffic vs. Purdue [2/8/19]
Back-to-Back Home Runs	A. Haynes, G. Fredericks vs. Ohio [3/19/19]
Three Consecutive Home Runs	A. Solak, E. Hershman, O. Gray vs. NC State [4/21/17]
Grand Slam	Alexee Haynes vs. Ohio [3/19/19]
Walk-Off Homer	McKayla Taylor vs. Virginia Tech [5/10/18]
Had 7 Total Bases	Giorgiana Zeremenko at North Carolina [3/17/18]
Had 8 Total Bases	Gabrielle Fredericks vs. North Carolina [3/30/19]
Had 9 Total Bases	Alexis Solak vs. NC State [4/21/17]
Had 10 or More Total Bases	Giorgiana Zeremenko vs. Kent State [3/22/16]
Had 3 Walks	Alexis Solak at NC State [3/4/18]
Had 4 Walks	Kaitlyn Kruger vs. Purdue [2/8/19]
HBP Twice	Taylor Myers at Duke [3/17/19]
HBP Three + Times	Maggie Sevilla at Texas State, 4, [2/7/15]
Had 2 Sacrifice Bunts	Taylor Myers at Duke [3/17/19]
Had 3 Sacrifice Bunts	N/A
Had 2 Sac Flies	McKayla Taylor vs. Southern Illinois [2/26/16]
Had 3 Stolen Bases	Reba Tutt at East Tennessee State [3/12/11]
Had 4 Stolen Bases	N/A
7-Inning CG Shutout	Brittany Knight vs. Penn State [2/24/19]
Extra-Inning CG Shutout	Kayla Harris at No. 13/9 Florida State [4/6/18]
5-Inning Perfect Game	Sarah Dawson vs. Providence [2/27/16]
7-Inning Perfect Game	Kayla Harris vs. Southeastern Louisiana [2/26/17]
No-Hitter	Sarah Dawson vs. Providence [2/27/16]
7-Inning No-Hitter	Kayla Zinger vs. Connecticut [4/5/08]
10 K's	Kayla Harris vs. California [5/16/15]
11 K's	Kayla Harris vs. Georgia Tech [4/16/16]
12 K's	Karlyn Jones vs. Penn State [3/29/11]
13 K's	Alexa Larkin vs. St. John's [3/23/13]
17 K's	Laura LeViere vs. Morgan State [3/11/00]
Pitched 9+ Innings	Laura Belardinelli vs. Houston [2/27/04]
Pitched 10+ Innings	Kayla Harris vs. Georgia Tech [4/16/16]
Pitched 11+ Innings	Savannah King vs. Fordham [3/17/12]
Had 15 Putouts	Kaitlyn Manuel vs. Florida A&M [2/11/17]
Had 16 Putouts	Kaitlin Manuel vs. Southeastern Louisiana [2/26/17]
Had 17 Putouts	Jacki Haar vs. Morgan State [3/17/00]
Had 18 Putouts	Casey Pickard vs. Connecticut [4/16/05]
Had 7 Assists	Olivia Gray vs. Saint Joseph's [2/25/18]
Had 8 Assists	Olivia Gray vs. Loyola Marymount [2/11/18]
Had 9+ Assists	Olivia Gray at UCF, 10, [2/12/17]

PITT'S RECORD IN 2019 WHEN...

Overall	6-32
Conference.....	2-10
Non-Conference	4-22
Against Ranked Teams	0-3
Home Games	1-8
Road Games	2-12
Neutral Site Games	3-12
Day Games	5-25
Night Games	1-7
Extra Innings	0-4
Shutouts	1-7
Scored 0-2 Runs	1-19
Scored 3-5 Runs	4-9
Scored 6-9 Runs	0-4
Scored 10+ Runs	1-0
Opp. Scored 0-2 Runs	2-1
Opp. Scored 3-5 Runs	4-8
Opp. Scored 6-9 Runs	0-13
Opp. Scored 10+ Runs	0-10
Scored in the First Inning	1-8
Opp. Scored in the First Inning	1-15
Pitt Scored First	4-8
Opp. Scored First.....	2-24
Led After Four Innings	4-2
Trailed After Four Innings	0-28
Tied After Four Innings	2-2
Led After Five Innings	3-4
Trailed After Five Innings	0-20
Tied After Five Innings	2-1
Led After Six Innings	4-4
Trailed After Six Innings	0-17
Tied After Six Innings	1-3
Hit Zero Home Runs	2-19
Hit One Home Run	2-7
Hit 2+ Home Runs.....	2-6
Opp. Hit Zero Home Runs.....	5-9
Opp. Hit One Home Run.....	1-9
Opp. Hit 2+ Home Runs.....	0-14
Committed Zero Errors	3-9
Committed One Error.....	0-11
Committed 2 or more errors	3-12
Opp. Committed Zero Errors	3-16
Opp. Committed One Error	1-13
Opp. Committed 2 or more errors	2-3
Out-Hit Opponent.....	3-3
Out-Hit By Opponent.....	0-29
Hits are Tied	3-0
On Sunday	2-6
On Monday	0-0
On Tuesday	0-1
On Wednesday	0-3
On Thursday	0-0
On Friday	0-11
On Saturday	4-11
Current Streak	L1
Longest Winning Streak	W1
Longest Losing Streak.....	L9

2019 SEASON HIGHS | CAREER HIGHS

#1 | CONNOR MCGAFFIC | JR. | OF

Stat	Season High	Career High
H	1, [11x] last vs. Oregon [4/7/19]	2, [5x] last at CSU Fullerton [2/10/18]
2B	1, [3x] last at Duke [3/15/19]	1, [6x] last at Duke [3/15/19]
3B	N/A	N/A
HR	1, vs. Purdue [2/8/19]	1, [3x] last vs. Purdue [2/8/19]
TB	4, vs. Purdue [2/8/19]	5, [2x] last at CSU Fullerton [2/10/18]
RBI	3, vs. Purdue [2/8/19]	3, [3x] last vs. Purdue [2/8/19]
R	1, [3x] last vs. Oregon [4/7/19]	2, Virginia Tech [4/9/17]
BB	2, vs. Nicholls State [3/2/19]	2 [3x] last vs. Nicholls State [3/2/19]
HBP	1, North Carolina [3/30/19]	1, [5x] last North Carolina [3/30/19]
AB	4, Ohio [3/19/19]	Same
SB	N/A	1, [2x] last Duke [4/1/18]
C	3, at Virginia [3/10/19]	3, [3x] last at Virginia [3/10/19]
PO	2, [4x] last Virginia Tech [3/24/19]	3, vs. Rutgers [2/10/18]
A	1, at Virginia [3/10/19]	1, [2x] last at Virginia [3/10/19]

#3 | HANNAH BACH | FR. | C/U

Stat	Season High	Career High
H	1, at Virginia [3/10/19]	Same
2B	N/A	N/A
3B	N/A	N/A
HR	N/A	N/A
TB	1, at Virginia [3/10/19]	Same
RBI	N/A	N/A
R	1, [7x] last North Carolina [3/30/19]	Same
BB	1, vs. Nebraska [2/15/19]	Same
HBP	N/A	N/A
AB	3, at Virginia [3/10/19]	Same
SB	1, [4x] last Ohio State [4/3/19]	Same
C	4, at Virginia [3/10/19]	Same
PO	2, at Virginia [3/10/19]	Same
A	1, at Virginia [3/10/19]	Same

#4 | SARAH DAWSON | SR. | P

Stat	Season High	Career High
IP	2.2, vs. Purdue [2/8/19]	7.0, [8x] last Virginia [4/20/18]
H*	N/A	0, vs. Providence [2/27/16]
R*	N/A	0, [5x] last vs. Ball State [3/8/18]
ER*	N/A	0, [7x] last at Virginia Tech [3/23/18]
BB*	N/A	0, [8x] last Duke [4/1/18]
K	3, vs. Purdue [2/8/19]	7, [2x] last Georgia Tech [4/13/18]
C	N/A	4, [3x] last Marshall [4/28/18]
PO	N/A	2, vs. Ball State [3/8/18]
A	N/A	4, [2x] last Marshall [4/28/18]

*Five-Inning Minimum

#5 | HUNTER LEVESQUE | SO. | OF/INF

Stat	Season High	Career High
H	4, North Carolina [3/30/19]	Same
2B	1, [6x] last North Carolina [3/30/19]	1, [10x] last North Carolina [3/30/19]
3B	1, vs. Central Michigan [2/9/19]	1, [2x] last vs. Central Michigan [2/9/19]
HR	2, Ohio [3/19/19]	Same
TB	8, Ohio [3/19/19]	Same
RBI	4, Ohio [3/19/19]	Same
R	3, [2x] last at Missouri [4/6/19]	3, [3x] last at Missouri [4/6/19]
BB	2, at Virginia [3/10/19]	2, [3x] last at Virginia [3/10/19]
HBP	1, [3x] last at Duke [3/15/19]	1, [4x] last at Duke [3/15/19]
AB	5, vs. Purdue [2/8/19]	5, [2x] last vs. Purdue [2/8/19]
SB	2, at Virginia [3/10/19]	2, [2x] last at Virginia [3/10/19]
C	6, vs. Wisconsin [2/16/19]	Same
PO	6, vs. Wisconsin [2/16/19]	Same
A	1, [4x] last Ohio [3/20/19]	1, [6x] last Ohio [3/20/19]

#6 | TAYLOR MYERS | SR. | OF

Stat	Season High	Career High
H	1, [5x] last at Missouri [4/5/19]	2, [6x] last Duke [3/31/18]
2B	1, at College of Charleston [2/8/19]	2, vs. NC State [3/3/18]
3B	N/A	1, Ohio State [4/18/17]
HR	N/A	1 [3x] last vs. NC State [3/3/18]
TB	2, at College of Charleston [2/8/19]	5, at NC State [3/4/18]
RBI	1, at College of Charleston [2/8/19]	3, at NC State [3/4/18]
R	1, [10x] last at Missouri [4/5/19]	2, [3x] last Kent State [5/1/18]
BB	1, [2x] last North Carolina [3/30/19]	2, vs. Rutgers [3/10/18]
HBP	1, vs. Nebraska [2/15/19]	2, at NC State [3/4/18]
AB	3, [3x] last at Missouri [4/6/19]	5 vs. Wisconsin [2/17/18]
SB	1, [2x] last Virginia Tech [3/24/19]	1, [8x] last Virginia Tech [3/24/19]
C	3, [4x] last at Missouri [4/5/19]	5, [3x] last at Virginia Tech [3/23/18]
PO	3, [2x] last at Missouri [4/5/19]	5, [3x] last at Virginia Tech [3/23/18]
A	2, vs. Central Michigan [2/9/19]	Same

#7 | KAITLYN KRUGER | JR. | OF/INF

Stat	Season High	Career High
H	1, [4x] last at Missouri [4/6/19]	2, [5x] last Kent State [5/1/18]
2B	N/A	1, [4x] last Kent State [5/1/18]
3B	N/A	1, Kent State [5/1/18]
HR	N/A	1, [5x] last Georgia Tech [4/13/18]
TB	1, [4x] last at Missouri [4/6/19]	5, [2x] last Kent State [5/1/18]
RBI	N/A	4, Georgia Tech [4/13/18]
R	1, [2x] last at College of Charleston [2/8/19]	2, [3x] last Kent State [5/1/18]
BB	4, vs. Purdue [2/8/19]	Same
HBP	N/A	1, [3x] last at NC State [3/2/18]
AB	4, [2x] last vs. Wichita State [2/9/19]	4, [8x] last vs. Wichita State [2/9/19]
SB	N/A	1, [4x] last at Kent State [4/18/18]
C	8, [2x] last vs. Wichita State [2/10/19]	Same
PO	8, vs. Wichita State [2/9/19]	Same
A	2, vs. Wichita State [2/10/19]	Same

#10 | OLIVIA GRAY | SR. | INF

Stat	Season High	Career High
H	3, vs. Central Michigan [2/9/19]	3, [3x] last vs. Central Michigan [2/9/19]
2B	2, vs. Central Michigan [2/9/19]	2, [5x] last vs. Central Michigan [2/9/19]
3B	N/A	1, [2x] last Louisville [5/4/18]
HR	1, [3x] last vs. Oregon [4/7/19]	1, [18x] last vs. Oregon [4/7/19]
TB	5, [3x] last North Carolina [3/30/19]	5, [12x] last North Carolina [3/30/19]
RBI	4, North Carolina [3/30/19]	Same
R	2, [3x] last North Carolina [3/30/19]	3, [3x] last vs. Illinois [2/18/18]
BB	2, North Carolina [3/30/19]	3, vs. Northwestern [2/18/17]
HBP	N/A	2, at Saint Francis [4/5/17]
AB	5, vs. Purdue [2/8/19]	5, [6x] last vs. Purdue [2/8/19]
SB	N/A	1, [12x] last at Kent State [4/18/18]
C	10, at College of Charleston [2/8/19]	12, at UCF [2/12/17]
PO	5, vs. Wichita State [2/9/19]	6, at Florida State [4/6/18]
A	5, at College of Charleston [2/8/19]	10, at UCF [2/12/17]

#11 | TAYLOR RAHACH | SR. | P

Stat	Season High	Career High
IP	5.2, at Duke [3/16/19]	6, vs. Illinois [2/16/18]
H*	7, at Duke [3/16/19]	2, at NC State [3/4/18]
R*	7, at Duke [3/16/19]	1, vs. Illinois [2/16/18]
ER*	7, at Duke [3/16/19]	1, vs. Illinois [2/16/18]
BB*	3, at Duke [3/16/19]	1, vs. Illinois [2/16/18]
K	2, North Carolina [3/29/19]	5, Georgia Tech [4/13/18]
C	1, [2x] last North Carolina [3/29/19]	2, [3x] last at Ohio [3/27/18]
PO	N/A	1, [2x] last vs. Michigan [3/10/18]
A	1, [2x] last North Carolina [3/29/19]	2, [2x] last at Ohio [3/27/18]

*Five-Inning Minimum

2019 SEASON HIGHS | CAREER HIGHS

#12 | MARISSA DEMATTEO | SR. | INF

Stat	Season High	Career High
H	2, vs. Coastal Carolina [2/23/19]	2, [2x] last vs. Coastal Carolina [2/23/19]
2B	N/A	1, vs. Georgetown [2/19/16]
3B	N/A	N/A
HR	N/A	1, Duke [4/1/18]
TB	2, vs. Coastal Carolina [2/23/19]	4, Duke [4/1/18]
RBI	1, vs. Coastal Carolina [2/23/19]	2, vs. Saint Josephs [2/23/18]
R	1, vs. Wichita State [2/10/19]	1, [33x] last vs. Wichita State [2/10/19]
BB	1, [2x] last at UCF [2/23/19]	1, [6x] last at UCF [2/23/19]
HBP	N/A	1, [4x] last at FIU [3/7/18]
AB	3, [2x] last vs. Coastal Carolina [2/23/19]	3, [10x] last vs. Coastal Carolina [2/23/19]
SB	N/A	1, [4x] last Louisville [5/5/18]
C	7, vs. Wisconsin [2/16/19]	Same
PO	3, [3x] last at UCF [2/22/19]	3, [4x] last at UCF [2/22/19]
A	5, vs. Nebraska [2/15/19]	5, [2x] last vs. Nebraska [2/15/19]

#13 | CHANDLER WALTER | SO. | INF

Stat	Season High	Career High
H	2, vs. Purdue [2/8/19]	Same
2B	1, [2x] last at College of Charleston [2/8/19]	Same
3B	N/A	N/A
HR	N/A	N/A
TB	3, vs. Purdue [2/8/19]	Same
RBI	1, [3x] last at Virginia [3/9/19]	Same
R	1, [4x] last at Duke [3/17/19]	Same
BB	2, at Duke [3/17/19]	Same
HBP	1, [2x] last vs. Coastal Carolina [2/23/19]	Same
AB	4, [4x] last Ohio [3/19/19]	Same
SB	1, [2x] last at Virginia [3/10/19]	Same
C	7, vs. Purdue [2/8/19]	Same
PO	4, at Liberty [3/13/19]	Same
A	4, [2x] last Virginia Tech [3/23/19]	Same

#14 | BRIE HORRELL | SO. | INF/U

Stat	Season High	Career High
H	2, vs. Coastal Carolina [2/22/19]	Same
2B	N/A	N/A
3B	N/A	N/A
HR	1, [2x] last vs. Nebraska [2/17/19]	Same
TB	4, [2x] last vs. Nebraska [2/17/19]	Same
RBI	2, [2x] last vs. Nebraska [2/17/19]	Same
R	1, [3x] last vs. Nebraska [2/17/19]	Same
BB	1, [5x] last Ohio State [4/3/19]	Same
HBP	1, [5x] last at Duke [3/15/19]	Same
AB	3, [6x] last Virginia Tech [3/24/19]	Same
SB	N/A	N/A
C	9, vs. Wisconsin [2/15/19]	Same
PO	9, vs. Wisconsin [2/15/19]	Same
A	1, [6x] last at Missouri [4/6/19]	Same

#16 | NAVA SUSI | SR. | INF/U

Stat	Season High	Career High
H	N/A	N/A
2B	N/A	N/A
3B	N/A	N/A
HR	N/A	N/A
TB	N/A	N/A
RBI	1, vs. Nebraska [2/15/19]	Same
R	N/A	N/A
BB	N/A	N/A
HBP	N/A	N/A
AB	1, [2x] last Virginia Tech [3/24/19]	Same
SB	N/A	N/A
C	N/A	N/A
PO	N/A	N/A
A	N/A	N/A

#18 | WALKER BARBEE | JR. | C

Stat	Season High	Career High
H	2, Ohio [3/19/19]	Same
2B	1, [2x] last vs. Oregon [4/6/19]	Same
3B	N/A	N/A
HR	N/A	N/A
TB	2, [3x] last vs. Oregon [4/6/19]	Same
RBI	1, [4x] last vs. Oregon [4/6/19]	Same
R	N/A	N/A
BB	1, [7x] last vs. Oregon [4/7/19]	Same
HBP	1, [2x] last Virginia Tech [3/23/19]	Same
AB	4, at Virginia [3/9/19]	Same
SB	N/A	N/A
C	8, North Carolina [3/30/19]	Same
PO	6, at Virginia [3/9/19]	Same
A	3, [2x] last vs. Oregon [4/7/19]	Same

#20 | SARAH SEAMANS | FR. | OF

Stat	Season High	Career High
H	1, at UCF [2/23/19]	Same
2B	N/A	N/A
3B	N/A	N/A
HR	N/A	N/A
TB	1, at UCF [2/23/19]	Same
RBI	N/A	N/A
R	2, North Carolina [3/30/19]	Same
BB	1, [2x] last North Carolina [3/30/19]	Same
HBP	N/A	N/A
AB	3, [2x] last vs. Penn State [2/24/19]	Same
SB	1, at Virginia [3/10/19]	Same
C	3, [2x] last at Virginia [3/10/19]	Same
PO	3, [2x] last at Virginia [3/10/19]	Same
A	N/A	N/A

#22 | ALEXIS SOLAK | SR. | INF

Stat	Season High	Career High
H	3, [2x] last North Carolina [3/30/19]	4, at Troy [2/25/17]
2B	2, North Carolina [3/30/19]	Same
3B	N/A	N/A
HR	1, [2x] last Virginia Tech [3/24/19]	2, NC State [4/21/17]
TB	6, at Ole Miss [3/2/19]	9, vs. NC State [4/21/17]
RBI	2, [2x] last Virginia Tech [3/24/19]	4, [3x] last at Elon [3/7/17]
R	1, [7x] last vs. Oregon [4/6/19]	2, [11x] last Georgia Tech [4/13/18]
BB	1, [3x] last vs. Oregon [4/6/19]	3, at NC State [3/4/18]
HBP	1, at Duke [3/15/19]	2, vs. Georgetown [2/24/18]
AB	5, vs. Purdue [2/8/19]	5, [2x] last vs. Purdue [2/8/19]
SB	N/A	1, [6x] last Louisville [5/5/18]
C	11, Ohio [3/19/19]	Same
PO	6, [2x] last Ohio [3/19/19]	6, [3x] last Ohio [3/19/19]
A	4, [4x] last Ohio State [4/3/19]	6, vs. Grand Canyon [3/5/16]

#23 | ABBY EDWARDS | FR. | P/U

Stat	Season High	Career High
IP	8.2, at Duke [3/15/19]	Same
H*	4, at Missouri [4/6/19]	Same
R*	2, [2x] last at Missouri [4/6/19]	Same
ER*	1, [2x] last at Missouri [4/6/19]	Same
BB*	2, [3x] last at Missouri [4/6/19]	Same
K	4, at Missouri [4/6/19]	Same
C	4, [2x] last at Duke [3/17/19]	Same
PO	1, at UCF [2/23/19]	Same
A	4, at Duke [3/17/19]	Same

*Five-Inning Minimum

2019 SEASON HIGHS | CAREER HIGHS

#26 | MORGAN BATESOLE | SO. | INF

Stat	Season High	Career High
H	3, at Ole Miss [3/1/19]	Same
2B	1, at Duke [3/15/19]	1, [2x] last at Duke [3/15/19]
3B	N/A	N/A
HR	1, North Carolina [3/30/19]	Same
TB	4, North Carolina [3/30/19]	Same
RBI	3, North Carolina [3/30/19]	Same
R	1, [6x] last North Carolina [3/30/19]	1, [13x] last North Carolina [3/30/19]
BB	2, Ohio State [4/3/19]	Same
HBP	N/A	N/A
AB	5, Ohio [3/19/19]	Same
SB	1, [2x] last Ohio State [4/3/19]	1, [5x] last Ohio State [4/3/19]
C	8, vs. Nicholls State [3/2/19]	Same
PO	3, [3x] last Ohio State [4/3/19]	3, [4x] last Ohio State [4/3/19]
A	5, [2x] last Penn State [3/27/19]	Same

#27 | KATLYN PAVLICK | FR. | OF/INF

Stat	Season High	Career High
H	3, Virginia Tech [3/23/19]	Same
2B	2, at Duke [3/17/19]	Same
3B	N/A	N/A
HR	1, [6x] last North Carolina [3/30/19]	Same
TB	5, [2x] last at Virginia [3/10/19]	Same
RBI	2, [2x] last at Duke [3/17/19]	Same
R	2, [8x] last North Carolina [3/30/19]	Same
BB	2, [4x] last Virginia Tech [3/24/19]	Same
HBP	N/A	N/A
AB	4, [9x] last North Carolina [3/30/19]	Same
SB	1, [5x] last at Virginia [3/10/19]	Same
C	4, [2x] last at Virginia [3/10/19]	Same
PO	3, [9x] last North Carolina [3/30/19]	Same
A	1, at UCF [2/22/19]	Same

#30 | BRITTANY KNIGHT | RS-SO. | P

Stat	Season High	Career High
IP	7.0, [8x] last vs. Oregon [4/7/19]	7.2, at North Carolina [3/5/17]
H*	4, [2x] last vs. Penn State [2/24/19]	1, vs. Virginia Tech [4/9/17]
R*	0, vs. Penn State [2/24/19]	0, [4x] last vs. Penn State [2/24/19]
ER*	0, vs. Penn State [2/24/19]	0, [6x] last vs. Penn State [2/24/19]
BB*	0, [2x] last at Ole Miss [3/2/19]	0, [4x] last at Ole Miss [3/2/19]
K	8, [2x] last Virginia Tech [3/23/19]	Same
NP	140, vs. Coastal Carolina [2/22/19]	Same
C	5, vs. Wichita State [2/9/19]	5, [2x] last vs. Wichita State [2/9/19]
PO	2, vs. Wichita State [2/9/19]	Same
A	3, [2x] last vs. Penn State [2/24/19]	5, at UCF [2/10/17]

*Five-Inning Minimum

#31 | ALEXEE HAYNES | JR. | INF

Stat	Season High	Career High
H	3, vs. Nicholls State [3/2/19]	Same
2B	1, at Virginia [3/10/19]	1, [6x] last at Virginia [3/10/19]
3B	1, vs. Penn State [2/24/19]	1, [2x] last vs. Penn State [2/24/19]
HR	1, [3x] last North Carolina [3/29/19]	1, [5x] last North Carolina [3/29/19]
TB	4, [3x] last North Carolina [3/29/19]	4, [5x] last North Carolina [3/29/19]
RBI	4, Ohio [3/19/19]	Same
R	1, [4x] last North Carolina [3/29/19]	2, [3x] last at Georgia Tech [5/7/17]
BB	1, [4x] last at Virginia [3/9/19]	1, [18x] last at Virginia [3/9/19]
HBP	N/A	1, [3x] last at Georgia Tech [5/7/17]
AB	5, Ohio [3/19/19]	Same
SB	N/A	N/A
C	6, [3x] last vs. Central Michigan [2/9/19]	13, at FIU [3/7/18]
PO	6, [3x] last vs. Central Michigan [2/9/19]	13, at FIU [3/7/18]
A	1, vs. Nebraska [2/17/19]	1, [2x] last vs. Nebraska [2/17/19]

#48 | GABRIELLE FREDERICKS | SR. | INF/C

Stat	Season High	Career High
H	2, [7x] last at Missouri [4/6/19]	3, vs. Ball State [3/8/18]
2B	1, [4x] last at Liberty [3/13/19]	2, vs. Ball State [3/8/18]
3B	N/A	N/A
HR	2, North Carolina [3/30/19]	Same
TB	8, North Carolina [3/30/19]	8, [2x] last North Carolina [3/30/19]
RBI	4, North Carolina [3/30/19]	4, [2x] last North Carolina [3/30/19]
R	2, North Carolina [3/30/19]	Same
BB	2, [2x] last at Duke [3/17/19]	2, [3x] last at Duke [3/17/19]
HBP	N/A	1, at North Carolina [3/17/18]
AB	5, Ohio [3/19/19]	Same
SB	N/A	1, Georgia Tech [4/13/18]
C	14, North Carolina [3/30/19]	Same
PO	13, North Carolina [3/30/19]	13, [2x] last North Carolina [3/30/19]
A	3, Ohio [3/19/19]	Same

2019 STARTING LINEUPS BY POSITION

Date	Rank	Opp.	P	C	1B	2B	3B	SS	LF	CF	RF	DP
2/8		Purdue	Dawson	Barbee	Fredericks	Solak	Walter	Gray	Pavlick	Myers	Levesque	Kruger
2/8		College of Charleston	Edwards	Horrell	Haynes	Solak	Walter	Gray	Pavlick	Myers	Levesque	Kruger
2/9		Central Michigan	Rahach	Batesole	Haynes	Solak	Walter	Gray	Pavlick	Myers	Levesque	Kruger
2/9	RV	Wichita State	Knight	Horrell	Kruger	DeMatteo	Solak	Gray	Pavlick	Myers	Levesque	Walter
2/10	RV	Wichita State	Rahach	Horrell	Kruger	DeMatteo	Solak	Gray	Seamans	Myers	Levesque	Walter
2/15		Wisconsin	Knight	Horrell	Fredericks	DeMatteo	Solak	Gray	Pavlick	Myers	Levesque	Walter
2/15		Nebraska	Rahach	Barbee	Fredericks	DeMatteo	Solak	Gray	Pavlick	Myers	Levesque	Walter
2/16		Wisconsin	Knight	Barbee	Fredericks	DeMatteo	Solak	Gray	Pavlick	Myers	Levesque	Walter
2/17		Nebraska	Edwards	Horrell	Fredericks	DeMatteo	Solak	Gray	Pavlick	Myers	Levesque	Walter
2/22	RV	Coastal Carolina	Knight	Horrell	Fredericks	DeMatteo	Solak	Walter	Pavlick	Myers	Levesque	Haynes
2/22		UCF	Rahach	Barbee	Fredericks	DeMatteo	Solak	Walter	Pavlick	Myers	Levesque	Haynes
2/23	RV	Coastal Carolina	Rahach	Barbee	Fredericks	DeMatteo	Solak	Walter	Pavlick	Myers	Levesque	Horrell
2/23		UCF	Edwards	Barbee	Fredericks	DeMatteo	Batesole	Walter	Pavlick	Levesque	Seamans	Kruger
2/24		Penn State	Knight	Barbee	Fredericks	DeMatteo	Batesole	Walter	Pavlick	Levesque	Seamans	Haynes
3/1		Nicholls State	Knight	Barbee	Fredericks	Solak	Batesole	Walter	Pavlick	Levesque	Seamans	Haynes
3/1		Ole Miss	Edwards	Barbee	Fredericks	Solak	Batesole	Walter	Pavlick	Levesque	Seamans	Haynes
3/2		Nicholls State	Edwards	Barbee	Fredericks	Solak	Batesole	Walter	Pavlick	Levesque	McGaffic	Haynes
3/2		Ole Miss	Knight	Barbee	Fredericks	Solak	Batesole	Walter	Pavlick	Levesque	Seamans	Haynes
3/8		Virginia*	Knight	Barbee	Fredericks	Solak	Batesole	Walter	Pavlick	Levesque	Seamans	Haynes
3/9		Virginia*	Edwards	Horrell	Fredericks	Solak	Batesole	Walter	Pavlick	Levesque	Seamans	Haynes
3/10		Virginia*	Knight	Barbee	Fredericks	Bach	Batesole	Walter	Pavlick	Levesque	McGaffic	Haynes
3/13		Liberty	Rahach	Barbee	Fredericks	Solak	Batesole	Walter	Pavlick	Levesque	McGaffic	Kruger
3/15		Duke*	Edwards	Barbee	Fredericks	Solak	Batesole	Walter	Pavlick	Levesque	McGaffic	Haynes
3/16		Duke*	Rahach	Horrell	Fredericks	Solak	Batesole	Walter	Pavlick	Levesque	McGaffic	Haynes
3/17		Duke*	Edwards	Barbee	Fredericks	Solak	Batesole	Walter	Pavlick	Levesque	McGaffic	Haynes
3/19		Ohio	Edwards	Barbee	Fredericks	Solak	Batesole	Walter	Pavlick	Levesque	McGaffic	Haynes
3/23	24	Virginia Tech*	Edwards	Barbee	Fredericks	Solak	Batesole	Walter	Pavlick	Levesque	McGaffic	Haynes
3/23	24	Virginia Tech*	Knight	Horrell	Fredericks	Solak	Batesole	Walter	Pavlick	Levesque	McGaffic	Haynes
3/24	24	Virginia Tech*	Knight	Horrell	Fredericks	Solak	Batesole	Walter	Pavlick	Levesque	McGaffic	Haynes
3/27		Penn State	Knight	Barbee	Fredericks	Solak	Batesole	Walter	Pavlick	Levesque	McGaffic	Haynes
3/29		North Carolina*	Edwards	Barbee	Fredericks	Solak	Batesole	Gray	Pavlick	Levesque	McGaffic	Haynes
3/30		North Carolina*	Knight	Barbee	Fredericks	Solak	Batesole	Gray	Pavlick	Levesque	McGaffic	Haynes
3/30		North Carolina*	Rahach	Barbee	Fredericks	Solak	Batesole	Gray	Pavlick	Levesque	McGaffic	Haynes
4/3	RV	Ohio State	Edwards	Horrell	Fredericks	Solak	Batesole	Gray	Pavlick	Levesque	McGaffic	Kruger
4/5	RV	Missouri	Edwards	Barbee	Fredericks	Solak	Batesole	Gray	Myers	Levesque	McGaffic	Haynes
4/6		Oregon	Edwards	Barbee	Fredericks	Solak	Batesole	Gray	Myers	Levesque	McGaffic	Haynes
4/6	RV	Missouri	Rahach	Horrell	Fredericks	Solak	Batesole	Gray	Myers	Levesque	Seamans	Kruger
4/7		Oregon	Knight	Barbee	Fredericks	Solak	Batesole	Gray	Myers	Levesque	McGaffic	Haynes
4/9		Saint Francis (Pa.)										
4/9		Saint Francis (Pa.)										
4/12		Georgia Tech*										
4/13		Georgia Tech*										
4/14		Georgia Tech*										
4/16		Kent State										
4/19		Syracuse*										
4/20		Syracuse*										
4/21		Syracuse*										
4/27		Notre Dame*										
4/28		Notre Dame*										
4/29		Notre Dame*										
5/1		Marshall										
5/3		Boston College*										
5/4		Boston College*										
5/5		Boston College*										

2019 STARTING LINEUPS BY BATTING ORDER

Date	Rank	Opp.	1	2	3	4	5	6	7	8	9	10/FLEX
2/8		Purdue	Pavlick	Gray	Solak	Kruger	Fredericks	Levesque	Walter	Barbee	Myers	Dawson
2/8		College of Charleston	Pavlick	Gray	Solak	Kruger	Haynes	Levesque	Walter	Horrell	Myers	Edwards
2/9		Central Michigan	Pavlick	Gray	Kruger	Walter	Solak	Haynes	Levesque	Batesole	Myers	Rahach
2/9	RV	Wichita State	Pavlick	Gray	Kruger	Walter	Solak	Horrell	Levesque	DeMatteo	Myers	Knight
2/10	RV	Wichita State	Gray	DeMatteo	Walter	Horrell	Solak	Kruger	Levesque	Seamans	Myers	Rahach
2/15		Wisconsin	Pavlick	Gray	Walter	Solak	Levesque	Horrell	Fredericks	DeMatteo	Myers	Knight
2/15		Nebraska	Pavlick	Gray	Solak	Levesque	Walter	Fredericks	Barbee	DeMatteo	Myers	Rahach
2/16		Wisconsin	Gray	DeMatteo	Pavlick	Solak	Levesque	Walter	Fredericks	Barbee	Myers	Knight
2/17		Nebraska	Gray	DeMatteo	Pavlick	Solak	Walter	Levesque	Horrell	Fredericks	Myers	Edwards
2/22	RV	Coastal Carolina	Pavlick	DeMatteo	Walter	Haynes	Levesque	Solak	Horrell	Fredericks	Myers	Knight
2/22		UCF	Pavlick	DeMatteo	Haynes	Walter	Levesque	Solak	Barbee	Fredericks	Myers	Rahach
2/23	RV	Coastal Carolina	Pavlick	DeMatteo	Horrell	Walter	Levesque	Solak	Barbee	Fredericks	Myers	Rahach
2/23		UCF	Pavlick	DeMatteo	Fredericks	Levesque	Kruger	Walter	Barbee	Seamans	Batesole	Edwards
2/24		Penn State	Pavlick	DeMatteo	Haynes	Levesque	Fredericks	Walter	Barbee	Seamans	Batesole	Knight
3/1		Nicholls State	Pavlick	Levesque	Haynes	Barbee	Walter	Fredericks	Solak	Seamans	Batesole	Knight
3/1		Ole Miss	Pavlick	Levesque	Haynes	Walter	Barbee	Solak	Fredericks	Seamans	Batesole	Edwards
3/2		Nicholls State	Pavlick	Levesque	Haynes	Walter	Barbee	Solak	McGaffic	Fredericks	Batesole	Edwards
3/2		Ole Miss	Levesque	Pavlick	Haynes	Walter	Barbee	Solak	Fredericks	Seamans	Batesole	Knight
3/8		Virginia*	Pavlick	Levesque	Haynes	Walter	Barbee	Solak	Fredericks	Seamans	Batesole	Knight
3/9		Virginia*	Pavlick	Levesque	Horrell	Haynes	Fredericks	Solak	Walter	Seamans	Batesole	Edwards
3/10		Virginia*	Pavlick	Levesque	Haynes	Fredericks	McGaffic	Barbee	Walter	Batesole	Bach	Knight
3/13		Liberty	Pavlick	Levesque	Fredericks	Barbee	Kruger	Solak	McGaffic	Batesole	Walter	Rahach
3/15		Duke*	Levesque	Pavlick	Haynes	Fredericks	McGaffic	Solak	Barbee	Batesole	Walter	Edwards
3/16		Duke*	Levesque	Pavlick	Horrell	Fredericks	Haynes	Solak	McGaffic	Batesole	Walter	Rahach
3/17		Duke*	Pavlick	Levesque	Fredericks	Haynes	Solak	McGaffic	Barbee	Batesole	Walter	Edwards
3/19		Ohio	Pavlick	Levesque	Haynes	Fredericks	Solak	McGaffic	Batesole	Barbee	Walter	Edwards
3/23	24	Virginia Tech*	Pavlick	Levesque	Haynes	Fredericks	Solak	Batesole	McGaffic	Barbee	Walter	Edwards
3/23	24	Virginia Tech*	Pavlick	Levesque	Haynes	Solak	McGaffic	Fredericks	Horrell	Batesole	Walter	Knight
3/24	24	Virginia Tech*	Pavlick	Levesque	Solak	Haynes	Fredericks	McGaffic	Horrell	Batesole	Walter	Knight
3/27		Penn State	Pavlick	Levesque	Solak	Fredericks	Haynes	Barbee	McGaffic	Batesole	Walter	Knight
3/29		North Carolina*	Pavlick	Levesque	Solak	Fredericks	Haynes	McGaffic	Gray	Barbee	Batesole	Edwards
3/30		North Carolina*	Pavlick	Levesque	Haynes	Fredericks	Solak	Gray	McGaffic	Barbee	Batesole	Knight
3/30		North Carolina*	Pavlick	Levesque	Gray	Solak	Haynes	Fredericks	McGaffic	Barbee	Batesole	Rahach
4/3	RV	Ohio State	Pavlick	Levesque	Gray	Horrell	Solak	Fredericks	McGaffic	Kruger	Batesole	Edwards
4/5	RV	Missouri	Gray	Levesque	Fredericks	Solak	Haynes	McGaffic	Barbee	Myers	Batesole	Edwards
4/6		Oregon	Gray	Levesque	Fredericks	Haynes	Solak	McGaffic	Barbee	Myers	Batesole	Edwards
4/6	RV	Missouri	Gray	Levesque	Fredericks	Solak	Horrell	Kruger	Seamans	Myers	Batesole	Rahach
4/7		Oregon	Gray	Levesque	Fredericks	Solak	Haynes	Barbee	McGaffic	Myers	Batesole	Knight
4/9		Saint Francis (Pa.)										
4/9		Saint Francis (Pa.)										
4/12		Georgia Tech*										
4/13		Georgia Tech*										
4/14		Georgia Tech*										
4/16		Kent State										
4/19		Syracuse*										
4/20		Syracuse*										
4/21		Syracuse*										
4/27		Notre Dame*										
4/28		Notre Dame*										
4/29		Notre Dame*										
5/1		Marshall										
5/3		Boston College*										
5/4		Boston College*										
5/5		Boston College*										



2019 Pitt Softball
Overall Statistics for Pitt (as of Apr 07, 2019)
(All games Sorted by Batting avg)



Record: 6-32 Home: 1-8 Away: 2-12 Neutral: 3-12 ACC: 2-10

Player	avg	gp-gs	ab	r	h	2b	3b	hr	rbi	tb	slg%	bb	hp	so	gdp	ob%	sf	sh	sb-att	po	a	e	fld%
10 Olivia Gray	.333	18-17	51	10	17	5	0	3	11	31	.608	10	0	6	0	.443	0	0	0-2	36	36	9	.889
14 Brie Horrell	.289	24-13	38	3	11	0	0	2	6	17	.447	5	5	10	1	.438	0	0	0-0	48	6	3	.947
5 Hunter Levesque	.284	38-38	102	20	29	6	1	6	20	55	.539	14	3	20	1	.387	0	6	5-6	76	4	2	.976
48 Gabrielle Fredericks	.275	35-34	91	8	25	4	0	7	16	50	.549	9	0	23	1	.340	0	4	0-0	216	11	1	.996
27 Katlyn Pavlick	.258	34-33	97	22	25	5	0	6	10	48	.495	19	0	25	0	.379	0	0	5-5	49	1	1	.980
22 Alexis Solak	.255	36-35	106	7	27	4	0	2	12	37	.349	3	1	16	1	.279	1	2	0-1	58	56	11	.912
1 Connor McGaffic	.244	26-18	45	3	11	3	0	1	4	17	.378	6	1	20	0	.346	0	1	0-0	15	1	1	.941
26 Morgan Batesole	.231	29-27	65	6	15	1	0	1	8	19	.292	5	0	19	1	.286	0	1	2-4	27	44	5	.934
31 Alexee Haynes	.230	33-26	87	4	20	1	1	3	13	32	.368	4	0	9	3	.261	1	0	0-0	18	1	0	1.000
18 Walker Barbee	.183	28-25	60	0	11	2	0	0	4	13	.217	7	2	12	1	.282	2	1	0-0	75	12	4	.956
6 Taylor Myers	.132	34-16	38	10	5	1	0	0	1	6	.158	2	1	10	0	.195	0	2	2-2	31	3	1	.971
13 Chandler Walter	.118	30-30	76	4	9	2	0	0	3	11	.145	4	2	13	0	.183	0	2	2-2	32	47	7	.919

12 Marissa DeMatteo	.364	13-11	22	1	8	0	0	0	1	8	.364	2	0	1	0	.417	0	1	0-0	19	21	1	.976
3 Hannah Bach	.333	32-1	3	7	1	0	0	0	0	1	.333	1	0	2	0	.500	0	0	4-6	2	1	1	.750
7 Kaitlyn Kruger	.111	20-9	36	2	4	0	0	0	0	4	.111	8	0	7	0	.273	0	0	0-0	15	2	0	1.000
20 Sarah Seamans	.043	26-9	23	8	1	0	0	0	0	1	.043	2	0	8	0	.120	0	0	1-2	12	0	0	1.000
16 Nava Susi	.000	3-0	2	0	0	0	0	0	1	0	.000	0	0	1	0	.000	1	0	0-0	0	0	0	.000
11 Taylor Rahach	.000	1-1	0	0	0	0	0	0	0	0	.000	0	0	0	0	.000	0	0	0-0	0	2	0	1.000
Totals	.232	38	942	115	219	34	2	31	110	350	.372	101	15	202	9	.315	5	20	21-30	733	293	49	.954
Opponents	.340	38	1045	281	355	61	16	48	253	592	.567	161	22	92	11	.432	17	27	62-71	765	290	24	.978

LOB - Team (204), Opp (260). DPs turned - Team (14), Opp (14). TPs turned - Team (1). CI - Team (1), B. Horrell 1. Picked off - H. Bach 1, K. Pavlick 1.

(All games Sorted by Earned run avg)

Player	era	w-l	app	gs	cg	sho	sv	ip	h	r	er	bb	so	2b	3b	hr	b/avg	wp	hp	bks	sfa	sha
23 Abby Edwards	5.33	4-9	25	14	3	0/0	0	82.2	125	75	63	50	24	21	2	11	.352	5	5	0	4	7
30 Brittany Knight	6.19	2-15	26	14	11	1/0	0	113.0	149	122	100	55	52	28	9	24	.314	8	7	0	10	11
11 Taylor Rahach	9.79	0-8	21	9	1	0/0	1	44.1	73	73	62	50	13	12	5	12	.374	13	8	0	3	9

4 Sarah Dawson	2.62	0-0	1	1	0	0/0	0	2.2	4	1	1	2	3	0	0	0	.333	0	0	0	0	0
31 Alexee Haynes	42.00	0-0	2	0	0	0/0	0	1.2	4	10	10	4	0	0	0	1	.444	2	2	0	0	0
Totals	6.76	6-32	38	38	15	1/0	1	244.1	355	281	236	161	92	61	16	48	.340	28	22	0	17	27
Opponents	2.72	32-6	38	38	18	7/5	4	255.0	219	115	99	101	202	34	2	31	.232	13	15	0	5	20

PB - Team (8), W. Barbee 6, B. Horrell 2. Pickoffs - Team (0), Opp (2). SBA/ATT - W. Barbee (35-43), B. Knight (24-29), B. Horrell (26-26), A. Edwards (18-22), T. Rahach (19-19), A. Haynes (1-1), M. Batesole (1-1).



2019 Pitt Softball
Conference statistics for Pitt (as of Apr 07, 2019)
(ACC games only Sorted by Batting avg)



Record: 2-10 Home: 1-5 Away: 1-5 ACC: 2-10

Player	avg	gp-gs	ab	r	h	2b	3b	hr	rbi	tb	slg%	bb	hp	so	gdp	ob%	sf	sh	sb-att	po	a	e	fld%
27 Katlyn Pavlick	.371	12-12	35	9	13	3	0	3	7	25	.714	9	0	7	0	.500	0	0	3-3	21	0	1	.955
22 Alexis Solak	.364	11-11	33	3	12	2	0	1	3	17	.515	1	1	4	0	.400	0	1	0-0	23	21	2	.957
1 Connor McGaffic	.350	12-10	20	0	7	2	0	0	1	9	.450	2	1	7	0	.435	0	0	0-0	6	1	1	.875
5 Hunter Levesque	.313	12-12	32	5	10	4	0	0	5	14	.438	6	1	8	0	.436	0	4	4-5	26	0	1	.963
48 Gabrielle Fredericks	.273	12-12	33	4	9	0	0	3	7	18	.545	6	0	8	0	.385	0	1	0-0	85	3	0	1.000
26 Morgan Batesole	.267	12-12	30	4	8	1	0	1	6	12	.400	2	0	10	0	.313	0	0	1-2	8	17	2	.926
31 Alexee Haynes	.231	12-12	39	2	9	1	0	2	5	16	.410	1	0	5	2	.250	0	0	0-0	0	0	0	.000
14 Brie Horrell	.167	8-4	12	0	2	0	0	0	0	2	.167	1	3	2	1	.375	0	0	0-0	15	2	0	1.000
18 Walker Barbee	.095	9-8	21	0	2	0	0	0	2	2	.095	2	1	5	1	.192	2	1	0-0	26	4	1	.968
13 Chandler Walter	.045	9-9	22	2	1	0	0	0	1	1	.045	3	0	4	0	.160	0	0	1-1	6	16	2	.917

10 Olivia Gray	.714	3-3	7	4	5	0	0	2	6	11	1.571	3	0	1	0	.800	0	0	0-0	4	7	0	1.000
3 Hannah Bach	.333	10-1	3	2	1	0	0	0	0	1	.333	0	0	2	0	.333	0	0	1-1	2	1	1	.750
6 Taylor Myers	.286	11-0	7	5	2	0	0	0	0	2	.286	2	0	3	0	.444	0	2	2-2	8	0	0	1.000
7 Kaitlyn Kruger	.000	5-0	5	0	0	0	0	0	0	0	.000	0	0	1	0	.000	0	0	0-0	0	0	0	.000
20 Sarah Seamans	.000	8-2	3	6	0	0	0	0	0	0	.000	2	0	1	0	.400	0	0	1-2	3	0	0	1.000
16 Nava Susi	.000	1-0	1	0	0	0	0	0	0	0	.000	0	0	1	0	.000	0	0	0-0	0	0	0	.000
11 Taylor Rahach	.000	1-1	0	0	0	0	0	0	0	0	.000	0	0	0	0	.000	0	0	0-0	0	2	0	1.000
Totals	.267	12	303	46	81	13	0	12	43	130	.429	40	7	69	4	.364	2	9	13-16	234	88	12	.964
Opponents	.375	12	336	93	126	19	3	21	89	214	.637	52	7	26	5	.459	8	8	21-23	240	95	7	.980

LOB - Team (75), Opp (84). DPs turned - Team (6), Opp (7). TPs turned - Team (1).

(ACC games only Sorted by Earned run avg)

Player	era	w-l	app	gs	cg	sho	sv	ip	h	r	er	bb	so	2b	3b	hr	b/avg	wp	hp	bks	sfa	sha
23 Abby Edwards	4.98	2-3	9	5	2	0/0	0	32.1	49	25	23	16	7	5	0	7	.368	3	2	0	3	4
30 Brittany Knight	8.73	0-6	7	5	3	0/0	0	29.2	50	41	37	18	14	11	1	8	.373	3	1	0	3	1
11 Taylor Rahach	11.38	0-1	5	2	0	0/0	0	16.0	27	26	26	17	5	3	2	6	.391	2	4	0	2	3

31 Alexee Haynes	99.00	0-0	1	0	0	0/0	0	0.0	0	1	1	1	0	0	0	0		0	0	0	0	0
Totals	7.81	2-10	12	12	5	0/0	0	78.0	126	93	87	52	26	19	3	21	.375	8	7	0	8	8
Opponents	3.59	10-2	12	12	6	2/1	1	80.0	81	46	41	40	69	13	0	12	.267	3	7	0	2	9

PB - Team (1), W. Barbee 1. SBA/ATT - W. Barbee (14-16), B. Knight (10-11), B. Horrell (7-7), A. Edwards (5-6), T. Rahach (6-6).



2019 Pitt Softball
Individual Season/Career Summary for Pitt (as of Apr 07, 2019)
(All games Sorted by Batting avg)



Record: 6-32 Home: 1-8 Away: 2-12 Neutral: 3-12 ACC: 2-10

Player	SEASON													CAREER												
	Avg	G-GS	AB	R	H	2B	3B	HR	RBI	BB	Hbp	SO	Sb-Att	Avg	G-GS	AB	R	H	2B	3B	HR	RBI	BB	Hbp	SO	Sb-Att
10 Olivia Gray	.333	18-17	51	10	17	5	0	3	11	10	0	6	0-2	.310	168-163	474	91	147	31	2	18	81	60	12	63	14-24
14 Brie Horrell	.289	24-13	38	3	11	0	0	2	6	5	5	10	0-0	.282	26-13	39	3	11	0	0	2	6	5	5	10	0-0
5 Hunter Levesque	.284	38-38	102	20	29	6	1	6	20	14	3	20	5-6	.296	89-87	233	48	69	10	2	10	40	32	4	43	11-12
48 Gabrielle Fredericks	.275	35-34	91	8	25	4	0	7	16	9	0	23	0-0	.237	113-89	262	21	62	12	0	12	44	33	1	51	1-1
27 Katlyn Pavlick	.258	34-33	97	22	25	5	0	6	10	19	0	25	5-5	.258	34-33	97	22	25	5	0	6	10	19	0	25	5-5
22 Alexis Solak	.255	36-35	106	7	27	4	0	2	12	3	1	16	0-1	.269	159-151	443	61	119	15	0	12	75	32	14	77	6-7
1 Connor McGaffic	.244	26-18	45	3	11	3	0	1	4	6	1	20	0-0	.207	82-58	140	14	29	6	0	3	16	23	5	54	2-2
26 Morgan Batesole	.231	29-27	65	6	15	1	0	1	8	5	0	19	2-4	.222	60-28	72	15	16	2	0	1	9	6	0	22	5-7
31 Alexee Haynes	.230	33-26	87	4	20	1	1	3	13	4	0	9	0-0	.218	97-59	216	17	47	6	2	5	27	20	3	30	0-0
18 Walker Barbee	.183	28-25	60	0	11	2	0	0	4	7	2	12	0-0	.183	28-25	60	0	11	2	0	0	4	7	2	12	0-0
6 Taylor Myers	.132	34-16	38	10	5	1	0	0	1	2	1	10	2-2	.227	145-71	176	43	40	7	1	3	17	19	5	41	8-9
13 Chandler Walter	.118	30-30	76	4	9	2	0	0	3	4	2	13	2-2	.118	30-30	76	4	9	2	0	0	3	4	2	13	2-2

12 Marissa DeMatteo	.364	13-11	22	1	8	0	0	0	1	2	0	1	0-0	.247	114-26	89	34	22	1	0	1	5	6	3	22	4-5
3 Hannah Bach	.333	32-1	3	7	1	0	0	0	0	1	0	2	4-6	.333	32-1	3	7	1	0	0	0	0	1	0	2	4-6
7 Kaitlyn Kruger	.111	20-9	36	2	4	0	0	0	0	8	0	7	0-0	.243	80-44	140	27	34	4	1	5	18	21	3	28	5-5
20 Sarah Seamans	.043	26-9	23	8	1	0	0	0	0	2	0	8	1-2	.043	26-9	23	8	1	0	0	0	0	2	0	8	1-2
16 Nava Susi	.000	3-0	2	0	0	0	0	0	1	0	0	1	0-0	.000	3-0	2	0	0	0	0	0	1	0	0	1	0-0
11 Taylor Rahach	.000	1-1	0	0	0	0	0	0	0	0	0	0	0-0	.000	1-1	0	0	0	0	0	0	0	0	0	0	0-0
Totals	.232	38-38	942	115	219	34	2	31	110	101	15	202	21-30													
Opponents	.340	38-38	1045	281	355	61	16	48	253	161	22	92	62-71													

(All games Sorted by Earned run avg)

[illegible]

**2019 Pitt Softball
Team Game-by-Game for Pitt (as of Apr 07, 2019)
Batting (All games)**

Date	Opponent	ab	r	h	rbi	2b	3b	hr	tb	bb	ibb	sb	cs	hbp	sac	sf	gdp	k	po	a	e	lob	avg
Feb 08	vs Purdue	33	9	10	8	3	0	2	19	8	0	1	0	0	1	0	0	5	24	8	2	10	.303
Feb 08	at Col. of Charleston	27	4	9	4	2	0	0	11	4	0	0	1	1	1	0	0	1	18	10	3	8	.317
Feb 09	vs Central Michigan	28	6	9	6	2	1	1	16	3	0	2	0	1	1	0	1	2	18	6	5	6	.318
Feb 09	vs Wichita State	28	4	7	4	1	0	0	8	2	0	0	0	1	0	0	0	5	21	11	2	6	.302
Feb 10	vs Wichita State	25	2	3	2	1	0	1	7	2	0	1	0	0	0	0	0	10	21	12	3	4	.270
Feb 15	vs Wisconsin	22	0	3	0	0	0	0	3	0	0	0	0	1	0	0	0	4	21	4	2	2	.252
Feb 15	vs Nebraska	17	1	1	1	0	0	0	1	2	0	0	0	1	0	1	0	4	15	8	1	5	.233
Feb 16	vs Wisconsin	17	0	2	0	0	0	0	2	0	0	0	0	0	0	0	0	4	14	8	0	2	.223
Feb 17	vs Nebraska	17	2	3	2	0	0	1	6	3	0	0	1	0	0	0	0	4	12	6	2	3	.220
Feb 22	vs Coastal Carolina	27	0	7	0	1	0	0	8	1	0	0	0	0	1	0	0	4	21	3	0	8	.224
2/22/19	at UCF	17	1	3	1	2	0	0	5	1	0	0	0	0	0	0	0	2	14	1	2	2	.221
Feb 23	vs Coastal Carolina	18	3	5	3	1	0	1	9	2	0	0	0	1	0	0	0	3	14	2	1	3	.225
2/23/19	at UCF	25	0	5	0	0	0	0	5	2	0	0	0	0	1	0	0	6	18	8	1	7	.223
Feb 24	vs Penn State	22	2	4	2	0	1	0	6	3	0	1	0	0	0	1	0	5	21	11	0	6	.220
Mar 01	vs Nicholls	24	0	2	0	0	0	0	2	0	0	0	0	0	1	0	0	10	21	8	1	4	.210
Mar 01	at Ole Miss	26	1	8	1	0	0	0	8	0	0	0	0	1	0	0	2	3	18	5	0	5	.217
Mar 02	vs Nicholls	28	5	8	4	2	0	1	13	3	0	1	0	0	1	0	0	3	21	12	2	6	.222
Mar 02	at Ole Miss	23	3	5	3	1	0	3	15	1	0	0	2	0	1	0	0	6	19	10	0	1	.222
*Mar 09	at Virginia	26	4	5	2	2	0	0	7	4	0	3	0	1	1	0	0	4	18	5	1	7	.220
*Mar 10	at Virginia	26	6	7	6	2	0	1	12	6	0	5	1	1	1	0	0	3	20	8	3	7	.223
*Mar 10	at Virginia	28	4	6	3	0	0	2	12	4	0	2	0	0	0	0	0	5	18	8	4	7	.222
03/13/19	at Liberty	21	1	1	1	1	0	0	2	3	0	0	1	1	0	0	0	5	18	8	0	3	.215
*Mar 15	at Duke	31	3	9	3	2	0	0	11	0	0	0	2	3	1	1	0	4	26	10	1	6	.219
*Mar 16	at Duke	21	0	3	0	1	0	0	4	1	0	0	0	0	0	0	0	5	17	7	0	4	.217
*Mar 17	at Duke	25	5	11	5	3	0	1	17	7	0	1	0	0	4	0	0	5	21	11	0	10	.226
Mar 19	OHIO	40	9	11	9	0	0	4	23	3	0	0	0	0	2	0	0	8	30	16	2	6	.229
*Mar 23	VIRGINIA TECH	17	0	2	0	0	0	0	2	2	0	0	0	1	0	0	0	9	15	6	1	5	.226
*Mar 23	VIRGINIA TECH	25	1	6	1	0	0	0	6	2	0	0	0	0	0	0	1	5	21	5	1	5	.227
*Mar 24	VIRGINIA TECH	23	2	3	2	0	0	1	6	4	0	1	0	0	1	0	1	13	21	4	0	5	.223
Mar 27	PENN STATE	29	3	7	3	1	0	0	8	0	0	0	0	0	0	0	1	8	21	9	1	5	.224
*Mar 29	NORTH CAROLINA	29	5	9	5	0	0	2	15	2	0	0	0	0	1	0	2	10	21	5	0	6	.227
*Mar 30	NORTH CAROLINA	25	2	5	2	0	0	0	5	3	0	0	0	1	0	1	0	3	21	15	1	7	.227
*Mar 30	NORTH CAROLINA	27	14	15	14	3	0	5	33	5	0	1	0	0	0	0	0	3	15	4	0	6	.237
Apr 03	OHIO STATE	31	2	5	2	0	0	1	8	6	0	2	0	0	0	0	1	5	27	9	2	8	.235
Apr 05	at Mizzou	26	2	6	2	0	0	0	6	3	0	0	0	0	0	1	0	3	18	6	0	7	.235
Apr 06	vs Oregon	15	1	1	1	1	0	0	2	2	0	0	1	0	0	0	0	9	12	6	1	1	.232
Apr 06	at Mizzou	29	5	9	5	2	0	2	17	3	0	0	0	0	0	0	0	7	21	8	2	6	.234
Apr 07	vs Oregon	24	3	4	3	0	0	2	10	4	0	0	0	0	1	0	0	7	21	10	2	5	.232
Totals		942	115	219	110	34	2	31	350	101	0	21	9	15	20	5	9	202	733	293	49	204	.232

2019 Pitt Softball
Team Game-by-Game for Pitt (as of Apr 07, 2019)
Pitching (All games)

Date	Opponent	ip	h	r	er	bb	so	2b	3b	hr	wp	bk	hbp	dp	ibb	score	w-l	sv	era
Feb 08	vs Purdue	8.0	13	13	8	8	3	1	2	0	1	0	2	1	0	9-13	0-1	0	7.00
Feb 08	at Col. of Charleston	6.0	12	10	6	4	0	4	1	0	2	0	0	1	0	4-10	0-2	0	7.00
Feb 09	vs Central Michigan	6.0	8	11	4	6	2	1	0	0	1	0	4	0	0	6-11	0-3	0	6.30
Feb 09	vs Wichita State	7.0	4	2	1	3	1	0	1	0	0	0	0	1	0	4-2	1-3	0	4.93
Feb 10	vs Wichita State	7.0	10	7	5	4	2	1	0	1	0	0	2	0	0	2-7	1-4	0	4.94
Feb 15	vs Wisconsin	7.0	9	8	8	4	8	1	0	2	0	0	0	0	0	0-8	1-5	0	5.46
Feb 15	vs Nebraska	5.0	10	14	13	7	0	1	0	2	3	0	1	1	0	1-14	1-6	0	6.85
Feb 16	vs Wisconsin	4.2	9	8	8	4	1	2	0	1	0	0	0	0	0	0-8	1-7	0	7.32
Feb 17	vs Nebraska	4.0	10	16	13	5	2	3	0	2	4	0	2	0	0	2-16	1-8	0	8.45
Feb 22	vs Coastal Carolina	7.0	6	5	5	4	6	0	2	0	1	0	1	0	0	0-5	1-9	0	8.06
2/22/19	at UCF	4.2	10	9	5	7	1	2	0	0	2	0	0	0	0	1-9	1-10	0	8.02
Feb 23	vs Coastal Carolina	4.2	11	11	10	7	2	5	1	1	0	0	0	0	0	3-11	1-11	0	8.48
2/23/19	at UCF	6.0	7	2	1	3	1	1	0	0	0	0	0	1	0	0-2	1-12	0	7.91
Feb 24	vs Penn State	7.0	4	0	0	1	4	0	0	0	0	0	0	0	0	2-0	2-12	0	7.25
Mar 01	vs Nicholls	7.0	8	5	5	0	3	0	1	3	0	0	0	0	0	0-5	2-13	0	7.08
Mar 01	at Ole Miss	6.0	9	6	6	4	2	1	2	0	0	0	0	0	0	1-6	2-14	0	7.07
Mar 02	vs Nicholls	7.0	8	3	3	4	3	1	0	0	2	0	0	0	0	5-3	3-14	1	6.80
Mar 02	at Ole Miss	6.1	7	4	4	0	1	1	1	0	0	0	0	0	0	3-4	3-15	1	6.66
*Mar 09	at Virginia	6.0	8	7	7	3	5	3	1	1	0	0	0	0	0	4-7	3-16	1	6.74
*Mar 10	at Virginia	6.2	13	7	6	3	2	1	0	4	0	0	0	1	0	6-7	3-17	1	6.72
*Mar 10	at Virginia	6.0	9	5	3	2	0	0	0	2	1	0	0	0	0	4-5	3-18	1	6.57
03/13/19	at Liberty	6.0	7	4	4	5	1	2	0	0	0	0	0	0	0	1-4	3-19	1	6.48
*Mar 15	at Duke	8.2	7	4	3	2	1	1	0	1	1	0	1	0	0	3-4	3-20	1	6.24
*Mar 16	at Duke	5.2	8	8	8	5	1	2	1	1	0	0	2	0	0	0-8	3-21	1	6.38
*Mar 17	at Duke	7.0	11	3	3	4	0	1	0	0	1	0	1	1	0	5-3	4-21	1	6.22
Mar 19	OHIO	10.0	14	11	9	7	6	2	1	4	1	0	1	1	0	9-11	4-22	1	6.23
*Mar 23	VIRGINIA TECH	5.0	14	18	18	7	2	0	0	5	1	0	0	2	0	0-18	4-23	1	6.78
*Mar 23	VIRGINIA TECH	7.0	12	9	8	3	8	3	0	1	2	0	0	0	0	1-9	4-24	1	6.83
*Mar 24	VIRGINIA TECH	7.0	11	10	10	5	3	4	0	2	0	0	1	0	0	2-10	4-25	1	6.95
Mar 27	PENN STATE	7.0	9	8	4	4	3	2	1	2	0	0	0	0	0	3-8	4-26	1	6.84
*Mar 29	NORTH CAROLINA	7.0	11	11	11	8	3	2	1	1	2	0	1	0	0	5-11	4-27	1	6.99
*Mar 30	NORTH CAROLINA	7.0	14	6	6	5	0	0	0	2	0	0	0	2	0	2-6	4-28	1	6.95
*Mar 30	NORTH CAROLINA	5.0	8	5	4	5	1	2	0	1	0	0	1	0	0	14-5	5-28	1	6.92
Apr 03	OHIO STATE	9.0	10	5	5	4	3	3	0	3	0	0	1	1	0	2-5	5-29	1	6.80
Apr 05	at Mizzou	6.0	11	9	9	5	1	2	0	3	1	0	0	0	0	2-9	5-30	1	6.90
Apr 06	vs Oregon	4.0	9	9	8	4	2	2	0	2	0	0	0	1	0	1-9	5-31	1	7.02
Apr 06	at Mizzou	7.0	8	4	3	4	5	3	0	0	0	0	1	0	0	5-4	6-31	1	6.90
Apr 07	vs Oregon	7.0	6	4	2	1	3	1	0	1	2	0	0	0	0	3-4	6-32	1	6.76
Totals		244.1	355	281	236	161	92	61	16	48	28	0	22	14	0	115-281	6-32	1	6.76



2019 Pitt Softball
Game Results for Pitt (as of Apr 07, 2019)
(All games)



Date	Opponent	Score	Inns	Overall	ACC	Pitcher of record	Attend	Time
Feb 08, 2019	vs Purdue	L 9-13	(8)	0-1-0	0-0-0	B. Knight (L 0-1)	505	3:05
Feb 08, 2019	at Col. of Charleston	L 4-10	7	0-2-0	0-0-0	A. Edwards (L 0-1)	505	2:05
Feb 09, 2019	vs Central Michigan	L 6-11	7	0-3-0	0-0-0	T. Rahach (L 0-1)	250	2:11
Feb 09, 2019	vs Wichita State	w 4-2	7	1-3-0	0-0-0	B. Knight (W 1-1)	210	1:43
Feb 10, 2019	vs Wichita State	L 2-7	7	1-4-0	0-0-0	T. Rahach (L 0-2)	175	2:22
Feb 15, 2019	vs Wisconsin	L 0-8	7	1-5-0	0-0-0	B. Knight (L 1-2)	0	2:18
Feb 15, 2019	vs Nebraska	L 1-14	5	1-6-0	0-0-0	T. Rahach (L 0-3)	265	2:00
Feb 16, 2019	vs Wisconsin	L 0-8	5	1-7-0	0-0-0	B. Knight (L 1-3)	0	1:45
Feb 17, 2019	vs Nebraska	L 2-16	5	1-8-0	0-0-0	A. Edwards (L 0-2)	0	1:52
Feb 22, 2019	vs Coastal Carolina	L 0-5	7	1-9-0	0-0-0	B. Knight (L 1-4)	0	2:15
2/22/19	at UCF	L 1-9	5	1-10-0	0-0-0	T. Rahach (L 0-4)	438	1:48
Feb 23, 2019	vs Coastal Carolina	L 3-11	5	1-11-0	0-0-0	T. Rahach (L 0-5)	0	1:50
2/23/19	at UCF	L 0-2	7	1-12-0	0-0-0	A. Edwards (L 0-3)	444	2:08
Feb 24, 2019	vs Penn State	w 2-0	7	2-12-0	0-0-0	B. Knight (W 2-4)	0	1:50
Mar 01, 2019	vs Nicholls	L 0-5	7	2-13-0	0-0-0	B. Knight (L 2-5)	47	1:38
Mar 01, 2019	at Ole Miss	L 1-6	7	2-14-0	0-0-0	A. Edwards (L 0-4)	418	2:04
Mar 02, 2019	vs Nicholls	w 5-3	7	3-14-0	0-0-0	A. Edwards (W 1-4)	87	2:29
Mar 02, 2019	at Ole Miss	L 3-4	7	3-15-0	0-0-0	B. Knight (L 2-6)	278	1:50
* Mar 09, 2019	at Virginia	L 4-7	7	3-16-0	0-1-0	B. Knight (L 2-7)	104	2:23
* Mar 10, 2019	at Virginia-1	L 6-7	7	3-17-0	0-2-0	B. Knight (L 2-8)	127	2:40
* Mar 10, 2019	at Virginia-2	L 4-5	7	3-18-0	0-3-0	B. Knight (L 2-9)	127	1:50
03/13/19	at Liberty	L 1-4	7	3-19-0	0-3-0	T. Rahach (L 0-6)	111	1:57
* Mar 15, 2019	at Duke	L 3-4	(9)	3-20-0	0-4-0	A. Edwards (L 1-5)	248	2:58
* Mar 16, 2019	at Duke	L 0-8	6	3-21-0	0-5-0	T. Rahach (L 0-7)	272	1:57
* Mar 17, 2019	at Duke	w 5-3	7	4-21-0	1-5-0	A. Edwards (W 2-5)	309	2:23
Mar 19, 2019	OHIO	L 9-11	(10)	4-22-0	1-5-0	B. Knight (L 2-10)	75	3:30
* Mar 23, 2019	#24 VIRGINIA TECH-1	L 0-18	5	4-23-0	1-6-0	A. Edwards (L 2-6)	130	2:08
* Mar 23, 2019	#24 VIRGINIA TECH-2	L 1-9	7	4-24-0	1-7-0	B. Knight (L 2-11)	130	2:07
* Mar 24, 2019	#24 VIRGINIA TECH	L 2-10	7	4-25-0	1-8-0	B. Knight (L 2-12)	234	2:04
Mar 27, 2019	PENN STATE	L 3-8	7	4-26-0	1-8-0	B. Knight (L 2-13)	237	2:14
* Mar 29, 2019	NORTH CAROLINA	L 5-11	7	4-27-0	1-9-0	A. Edwards (L 2-7)	193	2:36
* Mar 30, 2019	NORTH CAROLINA-1	L 2-6	7	4-28-0	1-10-0	B. Knight (L 2-14)	157	2:34
* Mar 30, 2019	NORTH CAROLINA-2	w 14-5	5	5-28-0	2-10-0	A. Edwards (W 3-7)	97	2:25
Apr 03, 2019	OHIO STATE	L 2-5	(9)	5-29-0	2-10-0	T. Rahach (L 0-8)	157	3:26
Apr 05, 2019	at Mizzou	L 2-9	7	5-30-0	2-10-0	A. Edwards (L 3-8)	849	2:23
Apr 06, 2019	vs Oregon	L 1-9	5	5-31-0	2-10-0	A. Edwards (L 3-9)	0	1:28
Apr 06, 2019	at Mizzou	w 5-4	7	6-31-0	2-10-0	A. Edwards (W 4-8)	0	2:40
Apr 07, 2019	vs Oregon	L 3-4	7	6-32-0	2-10-0	B. Knight (L 2-15)	0	2:01

() extra inning game

Multiple Hit Games	2	3	4	5+	Total
48 Gabrielle Fredericks	7	-	-	-	7
22 Alexis Solak	4	2	-	-	6
27 Katlyn Pavlick	5	1	-	-	6
5 Hunter Levesque	3	2	1	-	6
10 Olivia Gray	3	1	-	-	4
26 Morgan Batesole	2	1	-	-	3
31 Alexee Haynes	1	1	-	-	2
18 Walker Barbee	1	-	-	-	1
12 Marissa DeMatteo	1	-	-	-	1
13 Chandler Walter	1	-	-	-	1
14 Brie Horrell	1	-	-	-	1
TEAM	29	8	1	0	38

Multiple RBI Games	2	3	4	5+	Total
5 Hunter Levesque	3	1	1	-	5
31 Alexee Haynes	3	-	1	-	4
48 Gabrielle Fredericks	3	-	1	-	4
10 Olivia Gray	2	-	1	-	3
27 Katlyn Pavlick	2	-	-	-	2
22 Alexis Solak	2	-	-	-	2
14 Brie Horrell	2	-	-	-	2
26 Morgan Batesole	-	1	-	-	1
1 Connor McGaffic	-	1	-	-	1
TEAM	17	3	4	0	24

Hitting Streaks	Longest	Current
22 Alexis Solak	7	-
27 Katlyn Pavlick	5	-
31 Alexee Haynes	4	-
48 Gabrielle Fredericks	4	2
14 Brie Horrell	4	-
10 Olivia Gray	4	2
5 Hunter Levesque	4	2
1 Connor McGaffic	4	1
12 Marissa DeMatteo	3	3
6 Taylor Myers	3	-
7 Kaitlyn Kruger	2	-
18 Walker Barbee	2	-
13 Chandler Walter	2	-
26 Morgan Batesole	2	-
20 Sarah Seamans	1	-
3 Hannah Bach	1	1

Reached Base Streaks	Longest	Current
10 Olivia Gray	10	10
31 Alexee Haynes	8	-
14 Brie Horrell	7	-
22 Alexis Solak	7	-
5 Hunter Levesque	6	2
27 Katlyn Pavlick	5	-
18 Walker Barbee	5	5
1 Connor McGaffic	5	1
48 Gabrielle Fredericks	4	2
6 Taylor Myers	4	-
13 Chandler Walter	4	-
26 Morgan Batesole	4	-
12 Marissa DeMatteo	3	3
7 Kaitlyn Kruger	3	-
3 Hannah Bach	2	2
20 Sarah Seamans	2	-

STARTERS SUMMARY

		Position											Batting Order								
Player	GS	p	c	1b	2b	3b	ss	lf	cf	rf	of	dh	1st	2nd	3rd	4th	5th	6th	7th	8th	9th
5 Hunter Levesqu	38	26	12	.	.	3	21	.	3	5	3	3	.	.
22 Alexis Solak	35	.	.	.	26	9	6	8	9	11	1	.	.
48 Gabrielle Frede	34	.	.	34	7	8	4	5	5	5	.
27 Katlyn Pavlick	33	33	28	3	2
13 Chandler Walte	30	3	21	6	.	.	3	8	3	3	4	.	9
26 Morgan Batesol	27	.	1	.	.	26	1	1	9	16
31 Alexee Haynes	26	.	.	2	24	.	.	13	5	7	1	.	.	.
18 Walker Barbee	25	.	25	2	4	3	9	7	.
1 Connor McGaffi	18	18	3	6	9	.	.
10 Olivia Gray	17	17	7	6	2	.	.	1	1	.	.
6 Taylor Myers	16	4	12	4	12
30 Brittany Knight	14	14
23 Abby Edwards	14	14
14 Brie Horrell	13	.	12	1	.	.	3	2	1	2	4	1	.
12 Marissa DeMatt	11	.	.	.	11	8	3	.
20 Sarah Seaman	9	1	.	8	1	8	.
7 Kaitlyn Kruger	9	.	.	2	7	.	.	2	2	2	2	.	1	.
11 Taylor Rahach	9	9
3 Hannah Bach	1	.	.	.	1	1



**2019 Pitt Softball
Batting Leaders for Pitt (as of Apr 07, 2019)
(All games)**



Hitting minimums - 10 Games 25% of Games 20 AB 1.0 AB/Game 20 TPA 1.0 TPA/Game
Pitching minimums - 1 Games 10% of Games 5 IP 5 BF

Batting avg		Slugging pct		On base pct	
1. 10 Olivia Gray	.333	1. 10 Olivia Gray	.608	1. 10 Olivia Gray	.443
2. 14 Brie Horrell	.289	2. 48 Gabrielle Fredericks	.549	2. 14 Brie Horrell	.438
3. 5 Hunter Levesque	.284	3. 5 Hunter Levesque	.539	3. 5 Hunter Levesque	.387
4. 48 Gabrielle Fredericks	.275	4. 27 Katlyn Pavlick	.495	4. 27 Katlyn Pavlick	.379
5. 27 Katlyn Pavlick	.258	5. 14 Brie Horrell	.447	5. 1 Connor McGaffic	.346
Runs scored		Hits		Runs batted in	
1. 27 Katlyn Pavlick	22	1. 5 Hunter Levesque	29	1. 5 Hunter Levesque	20
2. 5 Hunter Levesque	20	2. 22 Alexis Solak	27	2. 48 Gabrielle Fredericks	16
3. 10 Olivia Gray	10	3. 27 Katlyn Pavlick	25	3. 31 Alexee Haynes	13
6 Taylor Myers	10	48 Gabrielle Fredericks	25	4. 22 Alexis Solak	12
5. 2 tied at.....	8	5. 31 Alexee Haynes	20	5. 10 Olivia Gray	11
Doubles		Triples		Home runs	
1. 5 Hunter Levesque	6	1. 5 Hunter Levesque	1	1. 48 Gabrielle Fredericks	7
2. 10 Olivia Gray	5	31 Alexee Haynes	1	2. 5 Hunter Levesque	6
27 Katlyn Pavlick	5			27 Katlyn Pavlick	6
4. 48 Gabrielle Fredericks	4			4. 31 Alexee Haynes	3
22 Alexis Solak	4			10 Olivia Gray	3
Total bases		Walks		Hit by pitch	
1. 5 Hunter Levesque	55	1. 27 Katlyn Pavlick	19	1. 14 Brie Horrell	5
2. 48 Gabrielle Fredericks	50	2. 5 Hunter Levesque	14	2. 5 Hunter Levesque	3
3. 27 Katlyn Pavlick	48	3. 10 Olivia Gray	10	3. 18 Walker Barbee	2
4. 22 Alexis Solak	37	4. 48 Gabrielle Fredericks	9	13 Chandler Walter	2
5. 31 Alexee Haynes	32	5. 7 Kaitlyn Kruger	8	5. 3 tied at.....	1
Sac bunts		Sac flies		Stolen bases	
1. 5 Hunter Levesque	6	1. 18 Walker Barbee	2	1. 27 Katlyn Pavlick	5
2. 48 Gabrielle Fredericks	4	2. 31 Alexee Haynes	1	5 Hunter Levesque	5
3. 22 Alexis Solak	2	16 Nava Susi	1	3. 3 Hannah Bach	4
6 Taylor Myers	2	22 Alexis Solak	1	4. 3 tied at.....	2
13 Chandler Walter	2				
Caught stealing		Steal attempts		Stolen base pct	
1. 26 Morgan Batesole	2	1. 3 Hannah Bach	6	1. 27 Katlyn Pavlick	1.000
10 Olivia Gray	2	5 Hunter Levesque	6	13 Chandler Walter	1.000
3 Hannah Bach	2	3. 27 Katlyn Pavlick	5	6 Taylor Myers	1.000
4. 3 tied at.....	1	4. 26 Morgan Batesole	4	4. 5 Hunter Levesque	.833
		5. 4 tied at.....	2	5. 26 Morgan Batesole	.500
Strikeouts		Grounded into DP		Total plate appearances	
1. 27 Katlyn Pavlick	25	1. 31 Alexee Haynes	3	1. 5 Hunter Levesque	125
2. 48 Gabrielle Fredericks	23	2. 6 tied at.....	1	2. 27 Katlyn Pavlick	116
3. 1 Connor McGaffic	20			3. 22 Alexis Solak	113
5 Hunter Levesque	20			4. 48 Gabrielle Fredericks	104
5. 26 Morgan Batesole	19			5. 31 Alexee Haynes	92
At bats		Games played		Game starts	
1. 22 Alexis Solak	106	1. 5 Hunter Levesque	38	1. 5 Hunter Levesque	38
2. 5 Hunter Levesque	102	2. 22 Alexis Solak	36	2. 22 Alexis Solak	35
3. 27 Katlyn Pavlick	97	3. 48 Gabrielle Fredericks	35	3. 48 Gabrielle Fredericks	34
4. 48 Gabrielle Fredericks	91	4. 27 Katlyn Pavlick	34	4. 27 Katlyn Pavlick	33
5. 31 Alexee Haynes	87	6 Taylor Myers	34	5. 13 Chandler Walter	30
Games as sub					
1. 3 Hannah Bach	31				
2. 6 Taylor Myers	18				
3. 20 Sarah Seamans	17				
4. 7 Kaitlyn Kruger	11				
14 Brie Horrell	11				



2019 Pitt Softball
Batting Per-Game Leaders for Pitt (as of Apr 07, 2019)
(All games)



Hitting minimums - 10 Games 25% of Games 20 AB 1.0 AB/Game 20 TPA 1.0 TPA/Game
 Pitching minimums - 1 Games 10% of Games 5 IP 5 BF

Hits per game

1. 10 Olivia Gray	0.94
2. 5 Hunter Levesque	0.76
3. 22 Alexis Solak	0.75
4. 27 Katlyn Pavlick	0.74
5. 48 Gabrielle Fredericks	0.71

Runs scored per game

1. 27 Katlyn Pavlick	0.65
2. 10 Olivia Gray	0.56
3. 5 Hunter Levesque	0.53
4. 6 Taylor Myers	0.29
5. 48 Gabrielle Fredericks	0.23

Doubles per game

1. 10 Olivia Gray	0.28
2. 5 Hunter Levesque	0.16
3. 27 Katlyn Pavlick	0.15
4. 1 Connor McGaffic	0.12
5. 48 Gabrielle Fredericks	0.11

Triples per game

1. 31 Alexee Haynes	0.03
2. 5 Hunter Levesque	0.03
3. 22 Alexis Solak	0.00
27 Katlyn Pavlick	0.00
48 Gabrielle Fredericks	0.00

Homers per game

1. 48 Gabrielle Fredericks	0.20
2. 27 Katlyn Pavlick	0.18
3. 10 Olivia Gray	0.17
4. 5 Hunter Levesque	0.16
5. 31 Alexee Haynes	0.09

RBIs per game

1. 10 Olivia Gray	0.61
2. 5 Hunter Levesque	0.53
3. 48 Gabrielle Fredericks	0.46
4. 31 Alexee Haynes	0.39
5. 22 Alexis Solak	0.33

Stolen bases per game

1. 27 Katlyn Pavlick	0.15
2. 5 Hunter Levesque	0.13
3. 26 Morgan Batesole	0.07
4. 13 Chandler Walter	0.07
5. 6 Taylor Myers	0.06

Walks per game

1. 27 Katlyn Pavlick	0.56
2. 10 Olivia Gray	0.56
3. 5 Hunter Levesque	0.37
4. 48 Gabrielle Fredericks	0.26
5. 18 Walker Barbee	0.25

Strikeouts per game

1. 31 Alexee Haynes	0.27
2. 6 Taylor Myers	0.29
3. 10 Olivia Gray	0.33
4. 14 Brie Horrell	0.42
5. 18 Walker Barbee	0.43

At bats per game

1. 22 Alexis Solak	2.94
2. 27 Katlyn Pavlick	2.85
3. 10 Olivia Gray	2.83
4. 5 Hunter Levesque	2.68
5. 31 Alexee Haynes	2.64

Plate appearances/gam

1. 27 Katlyn Pavlick	3.41
2. 10 Olivia Gray	3.39
3. 5 Hunter Levesque	3.29
4. 22 Alexis Solak	3.14
5. 48 Gabrielle Fredericks	2.97



2019 Pitt Softball
Pitching Leaders for Pitt (as of Apr 07, 2019)
(All games)



Hitting minimums - 10 Games 25% of Games 20 AB 1.0 AB/Game 20 TPA 1.0 TPA/Game
 Pitching minimums - 1 Games 10% of Games 5 IP 5 BF

Earned run avg		Opposing bat avg		Won-loss pct	
1. 23 Abby Edwards	5.33	1. 30 Brittany Knight	.314	1. 23 Abby Edwards	.308
2. 30 Brittany Knight	6.19	2. 23 Abby Edwards	.352	2. 30 Brittany Knight	.118
3. 11 Taylor Rahach	9.79	3. 11 Taylor Rahach	.374	3. 11 Taylor Rahach	.000
Wins		Losses		Saves	
1. 23 Abby Edwards	4	1. 30 Brittany Knight	15	1. 11 Taylor Rahach	1
2. 30 Brittany Knight	2	2. 23 Abby Edwards	9		
		3. 11 Taylor Rahach	8		
Innings pitched		Batters struck out		Appearances	
1. 30 Brittany Knight	113.0	1. 30 Brittany Knight	52	1. 30 Brittany Knight	26
2. 23 Abby Edwards	82.2	2. 23 Abby Edwards	24	2. 23 Abby Edwards	25
3. 11 Taylor Rahach	44.1	3. 11 Taylor Rahach	13	3. 11 Taylor Rahach	21
		4. 4 Sarah Dawson	3	4. 31 Alexee Haynes	2
				5. 4 Sarah Dawson	1
Games started		Games finished		Games in relief	
1. 23 Abby Edwards	14	1. 23 Abby Edwards	9	1. 11 Taylor Rahach	12
2. 30 Brittany Knight	14	2. 30 Brittany Knight	8	2. 30 Brittany Knight	12
3. 11 Taylor Rahach	9	3. 11 Taylor Rahach	6	3. 23 Abby Edwards	11
4. 4 Sarah Dawson	1			4. 31 Alexee Haynes	2
Wild pitches		Balks		Hit batters	
1. 11 Taylor Rahach	13			1. 11 Taylor Rahach	8
2. 30 Brittany Knight	8			2. 30 Brittany Knight	7
3. 23 Abby Edwards	5			3. 23 Abby Edwards	5
4. 31 Alexee Haynes	2			4. 31 Alexee Haynes	2
Intentional BB allowed		Runners picked off		Batters SO out looking	
				1. 30 Brittany Knight	14
				2. 23 Abby Edwards	8
				3. 11 Taylor Rahach	5
Sac bunts allowed		Sac flies allowed		Hits allowed	
1. 30 Brittany Knight	11	1. 30 Brittany Knight	10	1. 11 Taylor Rahach	73
2. 11 Taylor Rahach	9	2. 23 Abby Edwards	4	2. 23 Abby Edwards	125
3. 23 Abby Edwards	7	3. 11 Taylor Rahach	3	3. 30 Brittany Knight	149
Runs allowed		Earned runs allowed		Walks allowed	
1. 11 Taylor Rahach	73	1. 11 Taylor Rahach	62	1. 23 Abby Edwards	50
2. 23 Abby Edwards	75	2. 23 Abby Edwards	63	2. 11 Taylor Rahach	50
3. 30 Brittany Knight	122	3. 30 Brittany Knight	100	3. 30 Brittany Knight	55
Doubles allowed		Triples allowed		Home runs allowed	
1. 11 Taylor Rahach	12	1. 23 Abby Edwards	2	1. 23 Abby Edwards	11
2. 23 Abby Edwards	21	2. 11 Taylor Rahach	5	2. 11 Taylor Rahach	12
3. 30 Brittany Knight	28	3. 30 Brittany Knight	9	3. 30 Brittany Knight	24



2019 Pitt Softball
Pitching Per-Game leaders for Pitt (as of Apr 07, 2019)
(All games)



Hitting minimums - 10 Games 25% of Games 20 AB 1.0 AB/Game 20 TPA 1.0 TPA/Game
 Pitching minimums - 1 Games 10% of Games 5 IP 5 BF

Innings per game

1. 30 Brittany Knight	4.35
2. 23 Abby Edwards	3.31
3. 11 Taylor Rahach	2.11

Strikeouts/game

1. 30 Brittany Knight	3.22
2. 11 Taylor Rahach	2.05
3. 23 Abby Edwards	2.03

Walks allowed/game

1. 30 Brittany Knight	3.41
2. 23 Abby Edwards	4.23
3. 11 Taylor Rahach	7.89

Doubles allowed/game

1. 30 Brittany Knight	1.73
2. 23 Abby Edwards	1.78
3. 11 Taylor Rahach	1.89

Triples allowed/game

1. 23 Abby Edwards	0.17
2. 30 Brittany Knight	0.56
3. 11 Taylor Rahach	0.79

Homers allowed/game

1. 23 Abby Edwards	0.93
2. 30 Brittany Knight	1.49
3. 11 Taylor Rahach	1.89

Fly outs/game

1. 11 Taylor Rahach	12.63
2. 30 Brittany Knight	8.86
3. 23 Abby Edwards	6.69

Ground outs/game

1. 23 Abby Edwards	10.16
2. 30 Brittany Knight	7.99
3. 11 Taylor Rahach	5.53

Batters faced/game

1. 11 Taylor Rahach	41.84
2. 23 Abby Edwards	35.73
3. 30 Brittany Knight	34.50

Hits allowed/game

1. 30 Brittany Knight	9.23
2. 23 Abby Edwards	10.58
3. 11 Taylor Rahach	11.53

Runs allowed/game

1. 23 Abby Edwards	6.35
2. 30 Brittany Knight	7.56
3. 11 Taylor Rahach	11.53

Earned runs/game

1. 23 Abby Edwards	5.33
2. 30 Brittany Knight	6.19
3. 11 Taylor Rahach	9.79



**2019 Pitt Softball
Fielding Leaders for Pitt (as of Apr 07, 2019)
(All games)**



Hitting minimums - 10 Games 25% of Games
Pitching minimums - 1 Games 10% of Games 5 IP 5 BF

Fielding pct		Chances		Putouts	
1. 31 Alexee Haynes	1.000	1. 48 Gabrielle Fredericks	228	1. 48 Gabrielle Fredericks	216
7 Kaitlyn Kruger	1.000	2. 22 Alexis Solak	125	2. 5 Hunter Levesque	76
20 Sarah Seamans	1.000	3. 18 Walker Barbee	91	3. 18 Walker Barbee	75
4. 48 Gabrielle Fredericks	.996	4. 13 Chandler Walter	86	4. 22 Alexis Solak	58
5. 27 Katlyn Pavlick	.980	5. 5 Hunter Levesque	82	5. 27 Katlyn Pavlick	49
Assists		Errors		Fielding double plays	
1. 22 Alexis Solak	56	1. 22 Alexis Solak	11	1. 48 Gabrielle Fredericks	12
2. 13 Chandler Walter	47	2. 10 Olivia Gray	9	2. 13 Chandler Walter	6
3. 26 Morgan Batesole	44	3. 13 Chandler Walter	7	22 Alexis Solak	6
4. 10 Olivia Gray	36	4. 26 Morgan Batesole	5	4. 10 Olivia Gray	4
5. 23 Abby Edwards	23	5. 18 Walker Barbee	4	5. 3 tied at.....	2
Stolen bases against		Caught stealing by		Steal attempts against	
1. 18 Walker Barbee	35	1. 18 Walker Barbee	8	1. 18 Walker Barbee	43
2. 14 Brie Horrell	26	2. 30 Brittany Knight	5	2. 30 Brittany Knight	29
3. 30 Brittany Knight	24	3. 23 Abby Edwards	4	3. 14 Brie Horrell	26
4. 11 Taylor Rahach	19			4. 23 Abby Edwards	22
5. 23 Abby Edwards	18			5. 11 Taylor Rahach	19
Passed balls		Catchers interference			
1. 18 Walker Barbee	6	1. 14 Brie Horrell	1		
2. 14 Brie Horrell	2				



**2019 Pitt Softball
Season Game Highs for Pitt (as of Apr 07, 2019)
(All games)**

TEAM GAME HIGHS

Batting

At bats:	40	-	vs Ohio (Mar 19, 2019)
Runs scored:	14	-	vs North Carolina (Mar 30, 2019)
Hits:	15	-	vs North Carolina (Mar 30, 2019)
RBIs:	14	-	vs North Carolina (Mar 30, 2019)
Doubles:	3	-	vs Purdue (Feb 08, 2019 at Mt. Pleasant, S.C.)
	3	-	at Duke (Mar 17, 2019)
	3	-	vs North Carolina (Mar 30, 2019)
Triples:	1	-	vs Central Michigan (Feb 09, 2019 at Mt. Pleasant, S.C.)
	1	-	vs Penn State (Feb 24, 2019 at Orlando, Fla.)
Home runs:	5	-	vs North Carolina (Mar 30, 2019)
Total bases:	33	-	vs North Carolina (Mar 30, 2019)
Walks:	8	-	vs Purdue (Feb 08, 2019 at Mt. Pleasant, S.C.)
Strikeouts:	13	-	vs Virginia Tech (Mar 24, 2019)
Sac hits:	4	-	at Duke (Mar 17, 2019)
Sac flies:	1	-	(5 times)
Stolen bases:	5	-	at Virginia (Mar 10, 2019)
Hit by pitch:	3	-	at Duke (Mar 15, 2019)
Caught stealing:	2	-	at Ole Miss (Mar 02, 2019)
	2	-	at Duke (Mar 15, 2019)
Runners LOB:	10	-	vs Purdue (Feb 08, 2019 at Mt. Pleasant, S.C.)
	10	-	at Duke (Mar 17, 2019)
Hit into DP:	2	-	at Ole Miss (Mar 01, 2019)
	2	-	at Duke (Mar 17, 2019)
	2	-	vs North Carolina (Mar 29, 2019)

Fielding

Putouts:	30	-	vs Ohio (Mar 19, 2019)
Assists:	16	-	vs Ohio (Mar 19, 2019)
Errors:	5	-	vs Central Michigan (Feb 09, 2019 at Mt. Pleasant, S.C.)
Passed balls:	1	-	(8 times)
DPs turned:	2	-	vs Virginia Tech (Mar 23, 2019)
	2	-	vs North Carolina (Mar 30, 2019)

Pitching

Innings pitched:	10.0	-	vs Ohio (Mar 19, 2019)
Runs allowed:	18	-	vs Virginia Tech (Mar 23, 2019)
Earned runs:	18	-	vs Virginia Tech (Mar 23, 2019)
Walks allowed:	8	-	vs Purdue (Feb 08, 2019 at Mt. Pleasant, S.C.)
	8	-	vs North Carolina (Mar 29, 2019)
Strikeouts:	8	-	vs Wisconsin (Feb 15, 2019 at Raleigh, N.C.)
	8	-	vs Virginia Tech (Mar 23, 2019)
Hits allowed:	14	-	vs Ohio (Mar 19, 2019)
	14	-	vs Virginia Tech (Mar 23, 2019)
	14	-	vs North Carolina (Mar 30, 2019)
Doubles allowed:	5	-	vs Coastal Carolina (Feb 23, 2019 at Orlando, Fla.)
Triples allowed:	2	-	vs Purdue (Feb 08, 2019 at Mt. Pleasant, S.C.)
	2	-	vs Coastal Carolina (Feb 22, 2019 at Orlando, Fla.)
	2	-	at Ole Miss (Mar 01, 2019)



**2019 Pitt Softball
Season Game Highs for Pitt (as of Apr 07, 2019)
(All games)**

INDIVIDUAL GAME HIGHS

Batting

At bats:	5	- (7 times)
Runs scored:	3	- Hunter Levesque vs Ohio (Mar 19, 2019)
	3	- Hunter Levesque at Mizzou (Apr 06, 2019)
Hits:	4	- Hunter Levesque vs North Carolina (Mar 30, 2019)
RBIs:	4	- (4 times)
Doubles:	2	- Olivia Gray vs Central Michigan (Feb 09, 2019 at Mt. Pleasant, S.C.)
	2	- Katlyn Pavlick at Duke (Mar 17, 2019)
	2	- Alexis Solak vs North Carolina (Mar 30, 2019)
Triples:	1	- Hunter Levesque vs Central Michigan (Feb 09, 2019 at Mt. Pleasant, S.C.)
	1	- Alexee Haynes vs Penn State (Feb 24, 2019 at Orlando, Fla.)
Home runs:	2	- Hunter Levesque vs Ohio (Mar 19, 2019)
	2	- Gabrielle Fredericks vs North Carolina (Mar 30, 2019)
Total bases:	8	- Hunter Levesque vs Ohio (Mar 19, 2019)
	8	- Gabrielle Fredericks vs North Carolina (Mar 30, 2019)
Walks:	4	- Kaitlyn Kruger vs Purdue (Feb 08, 2019 at Mt. Pleasant, S.C.)
Strikeouts:	3	- Connor McGaffic vs Virginia Tech (Mar 24, 2019)
	3	- Gabrielle Fredericks vs North Carolina (Mar 29, 2019)
Sac hits:	2	- Taylor Myers at Duke (Mar 17, 2019)
Sac flies:	1	- (5 times)
Stolen bases:	2	- Hunter Levesque at Virginia (Mar 10, 2019)
Hit by pitch:	1	- (15 times)
Caught stealing:	1	- (9 times)
Runners LOB:	5	- Hunter Levesque vs Purdue (Feb 08, 2019 at Mt. Pleasant, S.C.)

Fielding

Putouts:	13	- Gabrielle Fredericks vs North Carolina (Mar 30, 2019)
Assists:	5	- (4 times)
Errors:	2	- (4 times)
Passed balls:	1	- (8 times)

Pitching

Innings pitched:	8.2	- Abby Edwards at Duke (Mar 15, 2019)
Runs allowed:	10	- Brittany Knight vs Purdue (Feb 08, 2019 at Mt. Pleasant, S.C.)
	10	- Taylor Rahach vs Virginia Tech (Mar 23, 2019)
	10	- Brittany Knight vs Virginia Tech (Mar 24, 2019)
Earned runs:	10	- Taylor Rahach vs Virginia Tech (Mar 23, 2019)
	10	- Brittany Knight vs Virginia Tech (Mar 24, 2019)
Walks allowed:	7	- Taylor Rahach at UCF (2/22/19)
Strikeouts:	8	- Brittany Knight vs Wisconsin (Feb 15, 2019 at Raleigh, N.C.)
	8	- Brittany Knight vs Virginia Tech (Mar 23, 2019)
Hits allowed:	12	- Brittany Knight vs Virginia Tech (Mar 23, 2019)
Doubles allowed:	4	- Brittany Knight vs Coastal Carolina (Feb 23, 2019 at Orlando, Fla.)
	4	- Brittany Knight vs Virginia Tech (Mar 24, 2019)
Triples allowed:	2	- Brittany Knight vs Purdue (Feb 08, 2019 at Mt. Pleasant, S.C.)
	2	- Brittany Knight vs Coastal Carolina (Feb 22, 2019 at Orlando, Fla.)
Homers allowed:	3	- Brittany Knight vs Nicholls (Mar 01, 2019 at Oxford, Miss.)
	3	- Abby Edwards at Virginia (Mar 10, 2019)
	3	- Abby Edwards vs Virginia Tech (Mar 23, 2019)

2019 PITT SOFTBALL ROSTER
NUMERICAL

NO.	NAME	YR.	POS.	B/T	HOMETOWN / HIGH SCHOOL / LAST SCHOOL	PRONUNCIATION
1	Connor McGaffic	JR	OF	R/R	Georgetown, Pa. / South Side Beaver HS	
3	Hannah Bach	FR	C/U	R/R	Smithton, Pa. / Yough Senior HS	Hannah Bay-Tch
4	Sarah Dawson	SR	P	R/R	Bridgewater, Mass. / Bridgewater-Raynham HS	
5	Hunter Levesque	SO	OF/INF	R/R	Troy, N.Y. / Troy HS	Hunter La-Vek
6	Taylor Myers	SR	OF	R/R	San Diego, Calif. / Point Loma HS	
7	Kaitlyn Kruger	JR	INF/OF	R/R	Calabasas, Calif. / Oaks Christian HS	Kaitlyn Crew-Ger
10	Olivia Gray	SR	INF	R/R	Washington, Pa. / Trinity HS	
11	Taylor Rahach	SR	P	R/R	Kent, Ohio / Walsh Jesuit HS / Coastal Carolina	Taylor Ray-Hotch
12	Marissa DeMatteo	SR	INF	L/R	New Castle, Pa. / Neshannock HS	Marissa Di-Matty-O
13	Chandler Walter	SO	INF	R/R	Chandler, Ariz. / Perry HS / Utah	
14	Brie Horrell	SO	INF/U	R/R	Gibsonia, Pa. / Pine-Richland HS	Brie Hore-L
16	Nava Susi	SR	INF/U	R/L	Boynton Beach, Fla. / Western HS	Nava Sue-See
18	Walker Barbee	JR	C	R/R	Oakboro, N.C. / West Stanly HS / Elon	
20	Sarah Seamans	FR	OF	R/R	New Castle, Pa. / Union Area HS	
22	Alexis Solak	SR	INF	R/R	Woodridge, Ill. / Naperville North HS	Alexis Soul-Ak
23	Abby Edwards	FR	P/U	R/R	Dwight, Ill. / Dwight Township HS	
26	Morgan Batesole	SO	INF	R/R	Walnut Creek, Calif. / Northgate HS	Morgan Bait-Sole
27	Katlyn Pavlick	FR	OF/INF	R/R	South Park, Pa. / South Park HS	
30	Brittany Knight	RS-SO	P/INF	L/R	Windham, Ohio / Windham HS	
31	Alexee Haynes	JR	INF	R/R	Charleston, W.Va. / Sissonville HS	
48	Gabrielle Fredericks	SR	INF/C	L/L	New Philadelphia, Ohio / Tuscarawas Central Catholic HS / Akron	Gabrielle Fred-Ricks

ALPHABETICAL

NO.	NAME	YR.	POS.	B/T	HOMETOWN / HIGH SCHOOL / LAST SCHOOL	PRONUNCIATION
3	Hannah Bach	FR	C/U	R/R	Smithton, Pa. / Yough Senior HS	Hannah Bay-Tch
18	Walker Barbee	JR	C	R/R	Oakboro, N.C. / West Stanly HS / Elon	
26	Morgan Batesole	SO	INF	R/R	Walnut Creek, Calif. / Northgate HS	Morgan Bait-Sole
4	Sarah Dawson	SR	P	R/R	Bridgewater, Mass. / Bridgewater-Raynham HS	
12	Marissa DeMatteo	SR	INF	L/R	New Castle, Pa. / Neshannock HS	Marissa Di-Matty-O
23	Abby Edwards	FR	P/U	R/R	Dwight, Ill. / Dwight Township HS	
48	Gabrielle Fredericks	SR	INF/C	L/L	New Philadelphia, Ohio / Tuscarawas Central Catholic HS / Akron	Gabrielle Fred-Ricks
10	Olivia Gray	SR	INF	R/R	Washington, Pa. / Trinity HS	
31	Alexee Haynes	JR	INF	R/R	Charleston, W.Va. / Sissonville HS	
14	Brie Horrell	SO	INF/U	R/R	Gibsonia, Pa. / Pine-Richland HS	Brie Hore-L
30	Brittany Knight	RS-SO	P/INF	L/R	Windham, Ohio / Windham HS	
7	Kaitlyn Kruger	JR	INF/OF	R/R	Calabasas, Calif. / Oaks Christian HS	Kaitlyn Crew-Ger
5	Hunter Levesque	SO	OF/INF	R/R	Troy, N.Y. / Troy HS	Hunter La-Vek
1	Connor McGaffic	JR	OF	R/R	Georgetown, Pa. / South Side Beaver HS	
6	Taylor Myers	SR	OF	R/R	San Diego, Calif. / Point Loma HS	
27	Katlyn Pavlick	FR	OF/INF	R/R	South Park, Pa. / South Park HS	
11	Taylor Rahach	SR	P	R/R	Kent, Ohio / Walsh Jesuit HS / Coastal Carolina	Taylor Ray-Hotch
20	Sarah Seamans	FR	OF	R/R	New Castle, Pa. / Union Area HS	
22	Alexis Solak	SR	INF	R/R	Woodridge, Ill. / Naperville North HS	Alexis Soul-Ak
16	Nava Susi	SR	INF/U	R/L	Boynton Beach, Fla. / Western HS	Nava Sue-See
13	Chandler Walter	SO	INF	R/R	Chandler, Ariz. / Perry HS / Utah	

PITT COACHING STAFF
Head Coach: Jodi Hermanek [Colorado State University - Pueblo, '00 | 1st Season]

Her-Man-Ick

Assistant Coach: Jillian Van Wagnen [Ohio, '12 | 1st Season]

Assistant Coach: Brock Van Faussien [Liberty, '97 | 1st Season]

Volunteer Assistant: Maddy Grimm [Kent State, '17 | 1st Season]



#1

Connor McGaffic
JR | OF | R/R
Georgetown, Pa.



#3

Hannah Bach
FR | C/U | R/R
Smithton, Pa.



#4

Sarah Dawson
SR | P | R/R
Bridgewater, Mass.



#5

Hunter Levesque
SO | OF/INF | R/R
Troy, N.Y.



#6

Taylor Myers
SR | OF | R/R
San Diego, Calif.



#7

Kaitlyn Kruger
JR | INF/OF | R/R
Calabasas, Calif.



#10

Olivia Gray
SR | INF | R/R
Washington, Pa.



#11

Taylor Rahach
SR | P | R/R
Kent, Ohio



#12

Marissa DeMatteo
SR | INF | L/R
New Castle, Pa.



#13

Chandler Walter
SO | INF | R/R
Chandler, Ariz.



#14

Brie Horrell
SO | INF/U | R/R
Gibsonia, Pa.



#16

Nava Susi
SR | INF/U | R/L
Mars, Pa.



#18

Walker Barbee
JR | C | R/R
Oakboro, N.C.



#20

Sarah Seamans
FR | OF | R/R
New Castle, Pa.



#22

Alexis Solak
SR | INF | R/R
Woodridge, ILL.



#23

Abby Edwards
FR | P/U | R/R
Dwight, Ill.



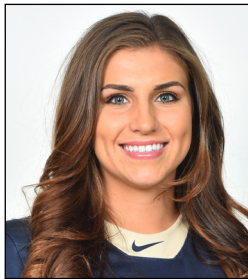
#26

Morgan Batesole
SO | INF | R/R
Walnut Creek, Calif.



#27

Katlyn Pavlick
FR | OF | R/R
South Park, Pa.



#30

Brittany Knight
RS-SO | P/INF | L/R
Windham, Ohio



#31

Alexee Haynes
JR | INF | R/R
Charleston, W.Va.



#48

Gabrielle Fredericks
SR | INF/C | L/L
New Philadelphia, Ohio



HC

Jodi Hermanek
Head Coach
1st Season



AC

Jillian Van Wagnen
Assistant Coach
1st Season



AC

Brock Van Faussien
Assistant Coach
1st Season



VA

Maddy Grimm
Volunteer Assistant
1st Season

JODI HERMANEK

Title Head Coach
 Seasons at Pitt First
 Seasons as HC 15th
 Coaching Record 403-408-1
 Alma Mater CSU-Pueblo, '00

**Career Coaching Highlights and Awards**

- 397 career wins in 14 seasons as a head coach
- Four NCAA Tournament Appearances (2018, 2014, 2007, 2006)
- Two MAC Tournament Championships (2018, 2014)
- MAC Regular Season Championship (2018)
- Two Mid-Continent Conference Regular Season Championships (2007, 2006)
- Two MCC Tournament Titles (2007, 2006)
- Three MAC East Division Championships (2018, 2017, 2011)
- Six All-Region selections (nine honors)
- 22 All-MAC Team selections (39 honors)
- Two MAC Pitchers of the Year (2017, 2016)
- Winningest coach in Ohio University history

University of Ohio | Head Coach | 2018

- Received 2018 National Fastpitch Coaching Association (NFCA) East Regional Coaching Staff of the Year award
- Guided the Bobcats to a 40-17 record, marking the second consecutive season with 40-plus wins
- Led Ohio to a MAC Regular Season Championship and MAC Tournament Championship, receiving a bid to the 2018 NCAA Tournament
- Secured the first NCAA regional victory in program history with a win over Monmouth
- Saw three players earn NFCA All-Mideast Region honors in Danielle Stiene (First Team), Alex Day (First Team) and Michaela Dorsey (Third Team)
- Led two players to the All-MAC First Team in Danielle Stiene and Alex Day
- Coached seven members of the Academic All-MAC Team in Taylor Saxton, Danielle Stiene, Michaela Dorsey, Deanna Cole, Alex Day, Morgan Geno and Alexa Holland
- Guided pitcher Danielle Stiene to a program-record 27 wins, finishing the season with a 27-6 record and a 1.51 ERA, including a 12-1 record in conference, earning her MAC Pitcher of the Year honors
- Led Alex Day to a .344 batting average while registering a team-high 63 hits, eight doubles, three triples, a team-leading 12 homeruns and 44 RBI

University of Ohio | Head Coach | 2017

- Directed the Bobcats to a 42-18 record
- Collected a MAC East Division Title after going 17-7 in conference games
- Coached six players to All-MAC honors, with Mikalya Cooper, Savannah Jo Dorsey and Morgan Geno receiving First Team accolades and Madison Claytor, Alex Day and Danielle Stiene earning Second Team honors
- Saw six players named to the Academic All-MAC Team in Madison Claytor, Deanna Cole, Alex Day, Savannah Jo Dorsey, Taylor Saxton and Danielle Stiene
- Led pitcher Savannah Jo Dorsey to national finishes of sixth in strikeouts per seven innings (11.1), third in hits allowed per seven innings (3.27) and 15th in ERA (1.15).
- Directed pitcher Danielle Stiene to MAC East Pitcher of the Week and Second Team All-MAC honors for the second time in her career with a 7-4 record and 2.04 ERA in 12 MAC appearances (11 starts)

University of Ohio | Head Coach | 2016

- Tallied a 37-23 record, including a 14-9 mark in conference games
- Coached Morgan Geno, who was named to the All-MAC Second Team and to the MAC All-Freshman Team while also being named MAC East Player of the Week during the season
- Saw Savannah Jo Dorsey strike out 336 batters to lead the nation and set a program record for strikeouts in a single season
- Dorsey was also named a NFCA First Team All-Mideast Region member, awarded Mid-American Conference Pitcher of the Year honors, named to the All-MAC First Team and MAC All-Tournament Team and earned a spot on the Academic All-MAC Team

University of Ohio | Head Coach | 2015

- Coached Cassie Hutchinson, who led the team with 35 RBIs, 59 total bases and 14 doubles while leading the MAC in sac flies

University of Ohio | Head Coach | 2014

- Tallied a 32-26 record, including an 8-3 mark at home and a 12-8 record versus MAC opponents
- The teams' 32 wins matched the 2001 squad for second most victories in program history
- Recorded Bobcat's first-ever MAC Tournament Championship and advanced to the NCAA Tournament for the first time in 19 years
- Ohio's pitching staff earned a program record with 397 total strikeouts
- Offensively, the Bobcats recorded the second-most walks (167), third most home runs (41), fifth most runs scored (214) and sixth most RBIs (189) in single-season program history

University of Ohio | Head Coach | 2013

- Led team to a program and MAC record 80 home runs
- Saw Lauren Gellerman earn NFCA Mideast Region Second Team honors for second consecutive year
- Directed Chelsea Hortman to Second Team All-MAC accolades
- Saw Savannah Jo Dorsey garner MAC All-Freshman Team honors while also earning MAC East Pitcher of the Week awards
- Had four players earn the Capital One CoSIDA Academic All-American status
- Had five players receive Academic All-MAC Honorable Mention honors

University of Ohio | Head Coach | 2012

- Led Ohio's offense to seven program marks, both single-season and single-game
- The Bobcats recorded the most runs, home runs and RBIs in a season while also collecting the most runs, doubles, home runs and RBIs in a game
- Saw freshman pitcher Lauren McClary have a tremendous season in the circle, setting the single-season strikeout record and finishing third all-time in single-season victories
- Had one NFCA Second Team All-Region selection, one First Team All-MAC selection, four Second Team All-MAC selections, one All-MAC Freshman Team selection, one Academic All-MAC recognition and eight Academic All-MAC Honorable Mentions
- Junior catcher Lauren Gellerman was named Second Team All-Region by the NFCA and First Team All-MAC by the league office

University of Ohio | Head Coach | 2011

- Led the Bobcats to unreached heights as the team won the MAC East Regular Season Title and claimed the No. 2 seed in the MAC Tournament
- Ohio won its first three games of the tournament and advanced to the championship game, including an upset of top-seeded Western Michigan in the semifinals
- Collected 26 wins in 2011, the most wins since the 2008 season
- Team blasted 35 home runs, then the best total in program history, and ranked third in RBIs with 190 during the year
- Individually, three-time All-MAC choice Melissa Bonner and two-way standout Emily Wethington ranked in the top-10 of nearly every offensive category
- Guided Wethington to become the all-time leader in wins and strikeouts, as well as top-10 spots in nearly every pitching category

University of Ohio | Head Coach | 2010

- Led the Bobcats to their most conference wins since the 2002 season while ranking among the Mid-American Conference leaders in both batting and ERA in conference play
- Team also garnered five Player of the Week awards

University of Ohio | Head Coach | 2009

- The Bobcats hit .292 as a team and recorded a .351 on base percentage, both tops in the conference
- The team posted marks that rank in the top-10 in school history in seven offensive categories, including hitting, runs scored, hits, home runs, doubles, triples and RBIs
- Five players picked up awards that season led by freshman Alexis Zambrana, who was named both First Team All-MAC and First Team All-Mideast Region
- In addition, Melissa Bonner, Deanna Hartsough, Brooke Morgart and Shalene Petrich all garnered Second Team All-MAC honors, with Zambrana being named to All-Freshman Team

Southern Utah University | Head Coach | 2004-2008

- Two NCAA Tournament appearances (2007, 2006)
- Two MCC Regular Season Championships (2007, 2006)
- Two Mid-Con Tournament Titles (2007, 2006)
- The 2007 team set program records for hits, home runs, slugging percentage, walks and players hit by pitches and finished second in the school's record books in runs scored, RBIs and total bases with top-10 finishes in doubles, walks and on-base percentage
- Saw senior Marci Pratt earn her second straight Mid-Con MVP Honor, with five other players earning All-Conference recognition
- Led the 2005 team to a MCC Regular Season Championship
- The 2005 Thunderbirds belted a then-school-record 49 home runs and ranked among the nation's leaders in home runs, double plays, slugging percentage and doubles
- Hermanek also helped make history by coaching shortstop Tiffany Burt to Mid-Con Player and Newcomer of the Year honors in the same season, the first time an individual had swept the awards

Denton High School | Head Coach | 2003-04

- In her two seasons at Denton, Hermanek led the Broncos to back-to-back winning seasons, including a 14-8 record and a fourth-place finish in the district standings in 2004

Colorado State University-Pueblo | Assistant Head Coach | 2000-03

- As an assistant at CSU-Pueblo, Hermanek helped coach the squad to its best-ever season in 2001
- That year, the Thunderwolves finished 51-14, were ranked seventh in NCAA Division II and claimed Rocky Mountain Athletic Conference and Region Championships
- In 2000, she helped guide the team to a third-place finish in the RMAC



Playing Career

- Four-year varsity softball letterwinner at Colorado State University-Pueblo from 1995-1999
- Served as a team captain her junior and senior seasons

Education

- Graduated from Colorado State University-Pueblo in 2000 with a degree in English
- Earned her Master of Science in kinesiology, with an emphasis on coaching, in 2006 from Texas Woman's University

Personal

- Married to Dr. David Horton Jr.
- Couple has one daughter, Emma Fay

CAREER RECORDS
CAREER BATTING LEADERS
BATTING AVERAGE

1. Shelby Pickett	.340	2015-16
2. Kelly Hmiel	.330	2011-12
3. Francesca DiMaria	.329	2003-06
4. Jessica Dignon	.327	2005-08
5. Jenna Modic	.324	2015-16

AT-BATS

1. Maggie Sevilla	675	2012-16
2. Sheena Hellon	669	2004-07
3. Francesca DiMaria	662	2003-06
4. Casey Pickard	648	2002-05
5. Ashley Amistade	642	2008-11

RUNS

1. Reba Tutt	147	2008-11
2. Maggie Sevilla	145	2012-16
3. Mckayla Taylor	140	2015-18
4. Francesca DiMaria	133	2003-06
5. Ashley Amistade	131	2008-11

HITS

1. Francesca DiMaria	218	2003-06
2. Maggie Sevilla	212	2012-16
3. Jessica Dignon	209	2005-08
4. McKayla Taylor	187	2015-18
5. Ashley Amistade	179	2008-11

DOUBLES

1. Jessica Dignon	45	2005-08
2. Samantha Card	41	2006-09
Casey Pickard	41	2002-05
4. Francesca DiMaria	39	2003-06
5. McKayla Taylor	38	2015-18

TRIPLES

1. Francesca DiMaria	15	2003-06
2. Reba Tutt	14	2008-11
3. Carissa Throckmorton	6	2011-15
Kristen Cheesebrew	6	2009-12
Jessica Dignon	6	2005-08
Casey Pickard	6	2002-05

HOME RUNS

1. Giorgia Zeremenko	46	2015-18
2. McKayla Taylor	43	2015-18
3. Holly Stevens	34	2010-13
4. Maggie Sevilla	33	2012-16
5. Jacki Haar	23	1999-00

RUNS BATTED IN

1. Mckayla Taylor	150	2015-18
2. Giorgia Zeremenko	127	2015-18
Holly Stevens	127	2010-13
3. Maggie Sevilla	126	2012-16
4. Samantha Card	120	2006-09
5. Jessica Dignon	112	2005-08

STOLEN BASES

1. Ashley Amistade	73	2008-11
2. Reba Tutt	69	2008-11
3. Sheena Hellon	64	2004-07
4. Morgan Howard	59	2004-07
5. Beth Gill	50	2001-04

WALKS

1. Reba Tutt	101	2008-11
2. Francesca DiMaria	85	2003-06
3. Mckayla Taylor	84	2015-18
4. Samantha Card	78	2006-09
5. Yvette Bravo	77	2009-12

SACRIFICE HITS

1. Joey Scarf	44	2004-07
2. Mary Hecker	35	2004-07
3. Amy Steich	29	1999-02
4. Sheena Hellon	27	2004-07
5. Morgan Howard	26	2004-07

CAREER FIELDING LEADERS
PUTOUTS

1. Kaitlin Manuel	1,529	2014-17
2. Casey Pickard	1,385	2002-05
3. Ciera Damon	1,304	2009-12
4. Kate Mitchell	916	1999-02
5. Samantha Card	895	2007-09

ASSISTS

1. Mckayla Taylor	597	2015-18
2. Sheena Hellon	587	2004-07
3. Jessica Dignon	470	2006-09
4. Niki Cognigni	463	2009-12
5. Kristen Cheesebrew	435	2009-12

CHANCES

1. Kaitlin Manuel	1,542	2014-17
2. Casey Pickard	1,473	2002-05
3. Ciera Damon	1,426	2009-12
4. Holly Stevens	1,061	2010-13
5. Sheena Hellon	1,037	2004-07

CAREER PITCHING LEADERS
APPEARANCES

1. Savannah King	156	2012-15
2. Kayla Harris	134	2015-18
3. Laura Belardinelli	127	2004-07
4. Nikki Gasti	124	2000-03
5. Meghan Bostick	117	2004-07

COMPLETE GAMES

1. Savannah King	69	2012-15
2. Cory Berliner	62	2008-11
3. Nikki Gasti	61	2000-03
4. Gina Bessolo	53	1999-02
5. Laura Belardinelli	49	2004-07

SHUTOUTS

1. Nikki Gasti	17	2000-03
2. Kayla Harris	15	2015-18
Savannah King	15	2012-15
4. Cory Berliner	13	2008-11
Gina Bessolo	13	1999-02

INNINGS

1. Savannah King	743.1	2012-15
2. Nikki Gasti	686.2	2000-03
3. Cory Berliner	632.2	2008-11
4. Laura Belardinelli	623.0	2004-07
5. Kayla Harris	567.1	2015-18

WINS

1. Savannah King	56	2012-15
2. Kayla Harris	54	2015-18
3. Cory Berliner	49	2008-11
4. Laura Belardinelli	44	2004-07
5. Nikki Gasti	42	2000-03

SAVES

1. Laura LeViere	11	1998-00
2. Savannah King	8	2012-15
3. Kayla Harris	7	2015-18
4. Kaitlyn Schuster	6	2006-09
5. Laura Belardinelli	5	2004-07

ERA (MIN. 100 IP)

1. Cory Berliner	2.03	2008-11
2. Alyssa O'Connell	2.16	2008-11
3. Nikki Gasti	2.54	2000-03

STRIKEOUTS

1. Nikki Gasti	584	2000-03
2. Savannah King	484	2012-15
3. Meghan Bostick	456	2004-07
4. Cory Berliner	414	2008-11
5. Gina Bessolo	383	1999-02

SINGLE-SEASON RECORDS
SINGLE-SEASON BATTING LEADERS
BATTING AVERAGE

1. Kelly Hmiel	.393	2011
2. Giorgiana Zeremenko	.392	2016
3. Carly Thea	.388	2014
4. Samantha Card	.384	2008
5. Jessica Dignon	.377	2008

ON-BASE PERCENTAGE

1. Giorgiana Zeremenko	.487	2016
2. Carly Thea	.471	2014
Francesca DiMaria	.471	2003
4. Samantha Card	.465	2008
5. Giorgiana Zeremenko	.464	2018

SLUGGING PERCENTAGE

1. Giorgiana Zeremenko	.888	2016
2. Kelly Hmiel	.786	2011
3. Giorgiana Zeremenko	.714	2018
4. Jacki Haar	.685	1999
5. Samantha Card	.679	2008

AT-BATS

1. Shelby Pickett	203	2015
2. Maggie Sevilla	198	2015
3. Jenna Modic	191	2015
4. Jessica Dignon	184	2006
5. Sheena Hellon	181	2007

RUNS

1. Shelby Pickett	50	2015
2. Reba Tutt	47	2011
3. Maggie Sevilla	45	2016
4. Jessica Dignon	43	2008
5. Mckayla Taylor	42	2018
Maggie Sevilla	42	2015
Francesca DiMaria	42	2006

HITS

1. Shelby Pickett	71	2015
Maggie Sevilla	71	2015
3. Jessica Dignon	66	2008
4. Jessica Dignon	62	2006
5. Jenna Modic	61	2015
Samantha Card	61	2008

DOUBLES

1. Jessica Dignon	17	2008
2. Shelby Pickett	15	2015
Carly Thea	15	2015
Reba Tutt	15	2011
Yvette Bravo	15	2010
6. Mckayla Taylor	13	2015
Jessica Dignon	13	2007
Joey Scarf	13	2006
Casey Pickard	13	2004
Francesca DiMaria	13	2003

TRIPLES

1. Reba Tutt	6	2011
2. Francesca DiMaria	5	2006
Francesca DiMaria	5	2004
4. Carissa Throckmorton	4	2012
Reba Tutt	4	2009

HOME RUNS

1. Giorgiana Zeremenko	17	2016
2. Giorgiana Zeremenko	15	2018
Kelly Hmiel	15	2011
Jacki Haar	15	2009
5. Mckayla Taylor	14	2015

RUNS BATTED IN

1. Mckayla Taylor	59	2015
2. Giorgiana Zeremenko	52	2016
3. Kelly Hmiel	50	2011
4. Samantha Card	44	2008
Jessica Dignon	44	2008

STOLEN BASES

1. Sheena Hellon	31	2007
2. Ashley Amistade	27	2011
3. Reba Tutt	26	2008
4. Robin Johnston	24	2000
5. Morgan Howard	23	2007
Sheena Hellon	23	2006

WALKS

1. Reba Tutt	35	2011
2. Giorgiana Zeremenko	34	2018
3. Mckayla Taylor	32	2016
4. Kayla Zinger	29	2008
5. Yvette Bravo	28	2009

SACRIFICE HITS

1. Joey Scarf	17	2006
2. Joey Scarf	13	2007
3. Niki Cognigni	12	2010
Mary Hecker	12	2008
5. Mary Hecker	11	2006



**Giorgiana Zeremenko broke the single-season record for home runs during just her sophomore season, hitting 17 long balls. She also owns the school record for career home runs with 46.*

SINGLE-SEASON RECORDS
SINGLE-SEASON FIELDING LEADERS
PUTOUTS

1. Alicia Broudy	527	2008
2. Kaitlin Manuel	496	2015
3. Casey Pickard	482	2005
4. Ciera Damon	419	2012
5. Ciera Damon	411	2010

ASSISTS

1. Jessica Dignon	192	2008
2. Casey Pickard	183	2005
3. Olivia Gray	173	2018
4. McKayla Taylor	165	2015
5. Jessica Dignon	155	2006

CHANCES

1. Alicia Broudy	561	2008
2. Casey Pickard	502	2005
3. Kaitlin Manuel	484	2015
4. Kaitlin Manuel	435	2016
5. Ciera Damon	431	2012



**Olivia Gray finished the 2018 season with 173 assists, which ranks third in single-season program history.*

SINGLE-SEASON PITCHING LEADERS
APPEARANCES

1. Laura Belardinelli	45	2004
2. Savannah King	40	2015
3. Savannah King	40	2012
4. Savannah King	39	2014
5. Nikki Gasti	39	2003

COMPLETE GAMES

1. Savannah King	26	2012
2. Cory Berliner	24	2008
3. Nikki Gasti	23	2002
4. Laura Belardinelli	19	2004
5. Nikki Gasti	19	2001

SHUTOUTS

1. Alyssa O'Connell	7	2011
2. Nikki Gasti	7	2003
3. Kayla Harris	6	2018
4. Savannah King	6	2012
5. Kayla Harris	5	2016
6. Savannah King	5	2015
7. Cory Berliner	5	2008

INNINGS

1. Savannah King	227.1	2012
2. Nikki Gasti	212.1	2003
3. Laura Belardinelli	207.2	2004
4. Cory Berliner	202.2	2008
5. Savannah King	179.2	2015

WINS

1. Savannah King	20	2015
2. Savannah King	19	2012
3. Kayla Harris	16	2018
4. Kayla Harris	16	2016
5. Cory Berliner	16	2008

SAVES

1. Laura LeViere	11	1999
2. Savannah King	4	2014
3. Sarah Dawson	3	2017
4. Jenna Modic	3	2016
5. Kayla Harris	3	2015
6. Savannah King	3	2013
7. Cory Berliner	3	2008
8. Kaitlyn Schuster	3	2007
9. Laura Belardinelli	3	2004

ERA (MIN. 85 IP)

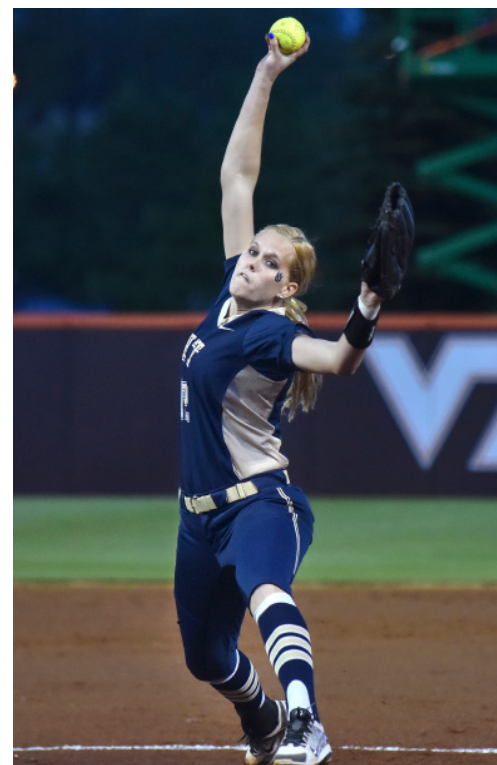
1. Savannah King	1.72	2012
2. Cory Berliner	1.72	2009
3. Kayla Zinger	1.88	2008
4. Gina Bessolo	1.96	2000

STRIKEOUTS

1. Nikki Gasti	213	2003
2. Savannah King	196	2012
3. Nikki Gasti	156	2002
4. Meghan Bostick	150	2006
5. Cory Berliner	149	2008

BATTING AVERAGE AGAINST

1. Savannah King	.221	2012
2. Nikki Gasti	.223	2003
3. Laura LeViere	.224	2000
4. Gina Bessolo	.226	2001



**Savannah King, who played for Pitt from 2012-2015, holds five single-season records, while ranking in the top five 15 times.*

SINGLE-GAME RECORDS

SINGLE-GAME PITCHING RECORDS

INNINGS

11.....	Savannah King	vs. Fordham (March 17, 2012)
11.....	Cory Berliner	at Robert Morris (March 22, 2011)
11.....	Nikki Gasti	vs. Syracuse (April 7, 2001)
10.....	Kayla Harris	vs. Georgia Tech (April 16, 2016)
10.....	Cory Berliner	vs. Kansas (March 9, 2008)
10.....	Christa Hunter	vs. USF (March 4, 2005)
10.....	Nikki Gasti	vs. Seton Hall (April 6, 2003)
10.....	Nikki Gasti	vs. Virginia Tech (April 19, 2003)
10.....	Nikki Gasti	vs. Cleveland State (April 10, 2001)
9.1.....	Gina Bessolo	vs. St. John's (April 30, 2000)
9.....	Laura Belardinelli	vs. Houston (Feb. 27, 2004)
9.....	Nikki Gasti	vs. Connecticut (April 14, 2002)
9.....	Nikki Gasti	vs. Villanova (April 1, 2002)
9.....	Gina Bessolo	vs. Rutgers (March 24, 2002)
9.....	Nikki Gasti	vs. St. Francis (PA) (April 5, 2001)
8.2.....	Abby Edwards	at Duke (March 15, 2019)
8.....	Kayla Zinger	vs. Akron (March 9, 2007)
8.....	Christa Hunter	vs. Winthrop (Feb. 26, 2005)
8.....	Christa Hunter	vs. Connecticut (April 16, 2005)
8.....	Kayla Harris	vs. Northwestern (February 18, 2017)
8.....	Kayla Harris	at Florida State (April 6, 2018)

STRIKEOUTS

17.....	Laura LeViere	vs. Morgan State (March 17, 2000)
13.....	Alexa Larkin	vs. St. John's (March 23, 2013)
13.....	Savannah King	vs. Robert Morris (May 2, 2012)
13.....	Gina Bessolo	vs. Virginia Tech (April 21, 2002)
12.....	Karlyn Jones	vs. Penn State (March 29, 2011)
12.....	Alyssa O'Connell	vs. South Carolina St. (March 11, 2011)
12.....	Meghan Bostick	vs. South Carolina (March 4, 2007)
12.....	Meghan Bostick	vs. St. Francis (PA) (April 12, 2006)
12.....	Meghan Bostick	vs. Eastern Michigan (March 6, 2004)
11.....	Kayla Harris	vs. Georgia Tech (April 16, 2016)
11.....	Alexa Larkin	at Rutgers (May 4, 2013)
11.....	Nikki Gasti	vs. Robert Morris (May 1, 2003)
11.....	Nikki Gasti	vs. Seton Hall (April 6, 2003)
11.....	Nikki Gasti	vs. Cleveland State (March 26, 2003)
11.....	Nikki Gasti	vs. College of Charleston (March 23, 2003)
11.....	Nikki Gasti	vs. Connecticut (April 14, 2002)
11.....	Nikki Gasti	vs. Jacksonville State (March 16, 2002)
10.....	Alexa Larkin	vs. Stephen F. Austin (Feb. 16, 2013)
10.....	Savannah King	vs. North Carolina State (Feb. 25, 2012)
10.....	Cory Berliner	vs. Connecticut (April 5, 2008)
10.....	Cory Berliner	at Akron (March 16, 2008)
10.....	Meghan Bostick	vs. Western Carolina (March 7, 2006)
10.....	Gina Bessolo	vs. Cleveland State (April 18, 2002)
10.....	Gina Bessolo	vs. Seton Hall (April 6, 2002)
10.....	Gina Bessolo	vs. Villanova (April 1, 2002)
10.....	Nikki Gasti	vs. Temple (April 16, 2001)
10.....	Nikki Gasti	vs. St. Francis (PA) (April 5, 2001)
10.....	Kayla Harris	vs. California (May 16, 2015)

SINGLE-GAME FIELDING RECORDS

PUTOUTS

18.....	Casey Pickard	vs. Connecticut (April 16, 2005)
17.....	Jacki Haar	vs. Morgan State (March 17, 2000)
16.....	Kaitlin Manuel	vs. Southeastern La. (February 26, 2017)
16.....	Casey Pickard	vs. USF (March 14, 2005)
16.....	Casey Pickard	vs. USF (March 12, 2005)
16.....	Kate Mitchell	vs. Syracuse (April 7, 2001)
15.....	Kaitlin Manuel	vs. Florida A&M (February 11, 2017)
15.....	Kaitlin Manuel	vs. North Carolina (March 19, 2016)
15.....	Kaitlin Manuel	vs. Saint Mary's College (Feb. 14, 2015)
15.....	Kaitlin Manuel	vs. Penn State (Feb. 22, 2014)
15.....	Taylor Henry	vs. Western Kentucky (Feb. 23, 2013)
15.....	Ciera Damon	vs. Providence (April 5, 2012)
15.....	Ciera Damon	vs. Illinois (Feb. 17, 2012)
14.....	Kaitlin Manuel	at Virginia (Feb. 28, 2015)
14.....	Kaitlin Manuel	vs. Virginia (March, 25, 2016)
14.....	Kaitlin Manuel	vs. Virginia (March 26, 2016)
14.....	Kaitlin Manuel	at North Carolina (March 5, 2017)
14.....	Taylor Henry	at Seton Hall (April 14, 2013)
14.....	Casey Pickard	vs. Coastal Carolina (March 11, 2005)
14.....	Casey Pickard	vs. St. Francis (PA) (April 6, 2004)
14.....	Casey Pickard	vs. Boston College (April 11, 2003)
14.....	Kate Mitchell	vs. Cleveland State (April 10, 2001)

ASSISTS

10.....	Olivia Gray	at UCF (February 12, 2017)
8.....	8x: last by Olivia Gray.....	vs. Loyola Marymount (Feb. 11, 2018)

TEAM RECORDS

SINGLE-SEASON HIGHS

Wins	37	2015
Hits	475	2015
Average	.326	2016
RBI	291	2015
Doubles	86	2015
Triples	14	2006
Home Runs	66	2016
Runs	319	2015
Stolen Bases	117	2007
Walks	186	2016
Games	59	2004 & 2011
Shutouts	14	2011

LONGEST STREAKS

Wins	11	2003
Losses	12	1998 & 1999
Home Wins	11	2002 & 2003
Road Wins	11	2015
Neutral Wins	16	2015
Home Losses	9	2013
Road Losses	12	1999 & 2013
Neutral Losses	9	2003
Shutout Wins	5	2013
Shutout Losses	11	2013

TEAM/MISCELLANEOUS RECORDS

MISCELLANEOUS RECORDS

PERFECT GAMES

Feb. 27, 2016 Sarah Dawson vs. Providence..... W, 13-0 (5)

NO-HITTERS

March 11, 2000 Gina Bessolo vs. Colgate W, 8-0
 April 7, 2001 Gina Bessolo at Syracuse W, 2-0
 March 18, 2002 Nikki Gasti vs. Jacksonville State W, 2-0
 April 3, 2002 Gina Bessolo vs. Youngstown State W, 10-0
 Feb. 23, 2003 Nikki Gasti vs. Charlotte W, 1-0
 April 5, 2008 Kayla Zinger vs. Connecticut W, 1-0
 March 31, 2010 Alyssa O'Connell vs. St. Francis W, 9-0
 March 26, 2011 Cory Berliner vs. Seton Hall W, 9-0
 Feb. 27, 2016 Sarah Dawson vs. Providence..... W, 13-0 (5)

GRAND SLAMS

March 5, 2006 Heather Connor vs. Charlotte L, 6-5
 March 7, 2006 Lisa McGregor vs. Western Carolina W, 13-1
 April 15, 2006 Sheena Hellon vs. Syracuse W, 6-5
 April 29, 2007 Kelly Stiles vs. Rutgers W, 10-1
 April 2, 2008 Jessica Dignon vs. Akron W, 10-2
 March 12, 2011 Yvette Bravo vs. North Carolina W, 15-0
 March 26, 2011 Amanda Heitmeier vs. Seton Hall W, 9-0
 April 10, 2013 Holly Stevens vs. Penn State L, 11-7
 April 14, 2013 Carly Thea vs. Seton Hall W, 8-7
 Feb. 8, 2014 Carly Thea vs. CSU Bakersfield W, 7-5
 Feb. 12, 2016 Alexis Solak vs. St. Bonaventure W, 10-0
 Feb. 13, 2016 McKayla Taylor vs. Mercer W, 19-1
 May 10, 2018 McKayla Taylor vs. Virginia Tech W, 6-4
 March 19, 2019 Alexee Haynes vs. Ohio L, 11-9



**Sarah Dawson tossed Pitt's first perfect game in program history as a freshman, leading the Panthers past Providence, 13-0 (five innings), on February 27, 2016. Dawson retired 15 straight batters with the help of her defense.*