

# PIEDMONT SOFTBALL

GAMES 37-38 | APRIL 16 | 1:00 & 3:00 PM | THE WAC

## 2025 SCHEDULE

### FEBRUARY (4-2)

14	MT. ST. JOSEPH (DH)	W, 3-2; L 9-3
24	ALMA (DH)	W, 11-10; W, 7-3
28	vs. Wisconsin-Eau Claire*	L, 11-2
28	vs. Chicago*	W, 7-6

### MARCH (15-7)

1	vs. Denison*	L, 13-5
1	vs. Pacific Lutheran*	L, 8-6
2	vs. Redlands*	L, 17-2
2	vs. LeTourneau*	L, 6-2
5	BUENA VISTA (DH)	W, 9-1; W 10-0
7	vs. Rowan^	L, 8-0
7	vs. Muskingum^	W, 5-4
8	vs. Lynchburg^	L, 1-0
8	vs. William Peace^	L, 9-7
9	vs. Methodist^	W, 7-6
9	vs. Averett^	W, 4-1
14	ASBURY (DH)	W, 4-3; W, 6-4
22	AGNES SCOTT (DH)	W, 8-0; W 15-1
23	WESLEYAN (DH)	W, 16-8; W, 10-2
26	Centre (DH)	W, 8-0; W, 9-1
29	at Covenant (DH)	W, 10-2; W, 11-0

### APRIL (3-5)

2	at #19 Berry (DH)	W, 8-3; L, 7-5
4	#12 BELHAVEN (DH)	W, 3-2; L 4-2
12	at #9 Huntingdon (DH)	L, 5-1; L, 7-2
13	at LaGrange (DH)	L, 12-4; W, 4-3
16	vs. EMORY	1:00, 3:00
18	at Maryville (DH)	2:00, 4:00
30	CCS Tournament	TBA

### MAY

1-3	CCS Tournament	TBA
-----	----------------	-----

vs. = Neutral Site Contest  
 ALL CAPS = HOME GAME  
**Bold** = Collegiate Conference of the South  
 \* = NFCA Leadoff Classic in Columbus, Ga.  
 ^ = Diamond Classic in Raleigh, N.C.

## PIEDMONT (22-14, 10-4)



### Lions Stat Leaders

Hits: #3 Jasmine Lowery - 47  
 Runs: #7 Mandi Peretti - 35  
 RBI: #7 Mandi Peretti - 28  
 Home Runs: #7 Mandi Peretti - 4  
 Stolen Bases: #7 Mandi Peretti - 23  
 Strikeouts: #26 Megan Steinmeyer - 56

### NEED TO KNOW

Series record: 12-34

At The WAC: 5-12

At Emory: 4-18

Last meeting: L, 10-6

## EMORY (24-6)



### Eagles Stat Leaders

Hits: #21 Ella Hoyle - 42  
 Runs: #1 Ashley Chu - 37  
 RBI: #18 Ellie Zerr - 35  
 Home Runs: #18 Ellie Zerr - 7  
 Stolen Bases: #1 Ashley Chu - 26  
 Strikeouts: #25 Mackenzie Duford - 50

## QUICK HITS

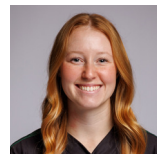
- ◇ Piedmont is coming off a tough slate with six of the last eight contests coming against opponents ranked in the top-25.
- ◇ The Lions were able to take two of those six contests with a win against #19 Berry and #12 Belhaven in that stretch.
- ◇ Piedmont concludes the season at home with the contests against Emory Wednesday in rescheduled games from the opening weekend of the season.
- ◇ The CCS Tournament is set to begin Wednesday, April 30 and conclude with the championship on Saturday, May 3. All games will take place at the highest seed at the conclusion of the regular season.

## STAR WATCH



**0 TAYLOR SPIVEY**  
So. | P | Jefferson, Ga.

.435 ERA / 11-5 W/L / 83.2 IP  
21 app. | 17 starts | 38 K



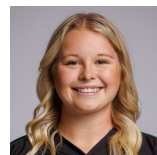
**3 JASMINE LOWERY**  
Sr. | Util. | Toccoa, Ga.

.416 AVG / .429 OBP / .655 SLG  
47 H | 31 R | 24 RBI | 4-5 SB



**7 MANDI PERETTI**  
Fr. | OF | Cumming, Ga.

.405 AVG / .444 OBP / .604 SLG  
45 H | 35 R | 28 RBI | 23-25 SB



**26 MEGAN STEINMEYER**  
Sr. | P | Appling, Ga.

.381 AVG / 3.93 ERA / 92.2 IP  
20 app. | 16 starts | 56 K



**32 KENNEDY VOTAVA**  
Sr. | OF | Walnut Grove, Ga.

.430 AVG / .521 OBP / .494 SLG  
34 H | 26 R | 20-23 SB



**33 MADI CRONIC**  
Jr. | IF | Commerce, Ga.

.304 AVG / .369 OBP / .337 SLG  
28 H | 10 R | 8 BB

## 2025 CCS STANDINGS

TEAM	CCS	OVR	STREAK
Huntingdon	12-1	30-3	W8
Belhaven	12-2	26-7	W4
Piedmont	10-4	22-14	W1
Maryville	8-6	16-18	L2
Asbury	5-5	16-10	W2
LaGrange	6-6	16-18	L1
Covenant	2-10	11-23	W2
Agnes Scott	2-12	6-25	L7
Wesleyan	0-12	1-25	L14

## BY THE NUMBERS

	LIONS	EAGLES
AVG	.342	.356
OBP	.406	.421
SLG	.446	.503
HR	6	17
K'S	114	96

## KEEP UP WITH THE LIONS

WATCH: [Piedmont University Athletics on YouTube](#)  
 FOLLOW: [piedmontlions.com](#)  
 FACEBOOK: [PiedmontLions](#)  
 INSTAGRAM: @piedmontlions / @PiedmontUSoftball  
 X/TWITTER: [@PiedmontLions](#) / [@PiedmontSB](#)

# PIEDMONT ROSTER

NO.	NAME	PRONUNCIATION	YR	POS	HT	B/T	HOMETOWN / LAST SCHOOL
0	Taylor Spivey		So.	RHP	5-4	R/R	Jefferson, Ga. / Jefferson
1	Madison Hawkins		Fr.	OF	5-8	R/R	Watkinsville, Ga. / Oconee County
2	Mia Harrington		So.	P	5-9	R/R	Acworth, Ga. / North Paulding
3	Jasmine Lowery		Sr.	UTIL	5-6	R/R	Toccoa, Ga. / Stephens County
4	Logan Hawkins		Sr.	RHP	5-5	R/R	Barnwell, S.C. / Barnwell
5	Rylie Erickson		Jr.	UTIL	5-5	R/R	Dawsonville, Ga. / Dawson County
6	Emilee Sanders		So.	IF	5-9	L/R	Hartwell, Ga. / Hart County
7	Mandi Peretti		Fr.	OF	5-6	R/R	Cumming, Ga. / North Forsyth
8	Jordyn Green		Sr.	C	5-2	R/R	Loganville, Ga. / Grayson (Birm. Southern)
9	Kaylee Taylor		Jr.	UTIL	5-4	R/R	Winston, Ga. / Douglas County (Mt. Olive)
10	Heartly Nepveux	NERVE-uh	Sr.	OF	5-5	R/L	Macon, Ga. /Mt. De Sales
11	Hannah Cintron	Sin-TRAHN	So.	UTIL	5-2	R/R	Acworth, Ga. / Etowah
13	Addy Perkins		Fr.	IF	5-7	R/R	Monroe, Ga. / Monroe Area
14	Alyson Whitaker		So.	P	5-3	R/R	Milner, Ga. / Locust Grove
15	Lea Smith	LEE-uh	So.	UTIL	5-3	R/R	Norcross, Ga. / Norcross
18	Jayden Bailey		Fr.	OF	5-6	L/R	Blue Ridge, Ga. / Fannin
21	Alyssa Jarrett		So.	C	5-5	L/R	Adairsville, Ga. / Adairsville
22	Kasey White		Sr.	IF	5-6	R/R	Jackson, Cailf. / Argonaut
23	Summer McCranie	Mc-CRANE-ee	So.	P	5-2	R/R	Gray, Ga. / John Milledge Academy
24	Maddi Spieks	Speaks	So.	IF	5-3	L/R	Monticello, Ga. / Jasper County
25	Avarie Easters	Avery	So.	UTIL	5-4	R/R	Hartsville, S.C. / Hartsville
26	Megan Steinmeyer	STINE-my-ur	Sr.	P	5-5	R/R	Appling, Ga. / Greenbrier
29	Valerie Bailey		Fr.	C	5-11	R/R	Cleveland, Ga. / White County
32	Kennedy Votava	Vo-TAH-vuh	Sr.	OF	5-4	L/R	Walnut Grove, Ga./Walnut Grove
33	Madi Cronic	CRAH-nick	Jr.	IF	5-3	R/R	Commerce, Ga. / Banks County (West Georgia)
37	Bailey Davis		Sr.	OF	5-6	L/R	Ringgold, Ga. / Heritage

Head Coach: Terry Martin (27th Season)

Assistant Coach: Drew Greer (2nd season)

# PIEDMONT STATISTICS

## 2025 Piedmont University Softball Overall Statistics (as of Apr 13, 2025)

Overall Record: 22-14 Conf: 10-4 Home: 14-2 Away: 4-4 Neutral: 4-8

### All games Sorted by Batting Avg

#	Player	AVG	GP-GS	AB	R	H	2B	3B	HR	RBI	TB	SLG%	BB	HBP	SO	GDP	OB%	SF	SH	SB-ATT	PO	A	E	FLD%
32	Votava, Kennedy	.430	34-33	79	26	34	1	2	0	8	39	.494	14	1	7	0	.521	0	2	20-23	44	1	1	.978
3	Lowery, Jasmine	.416	36-36	113	31	47	14	5	1	24	74	.655	3	1	7	0	.429	2	9	4-5	148	27	5	.972
7	Peretti, Mandi	.405	36-35	111	35	45	4	3	4	28	67	.604	10	0	7	0	.444	3	0	23-25	62	1	2	.969
26	Steinmeyer, Megan	.381	32-31	63	5	24	2	1	0	15	28	.444	8	0	10	0	.444	1	0	0-0	6	11	1	.944
33	Cronic, Madi	.304	33-33	92	10	28	3	0	0	20	31	.337	10	0	7	0	.369	1	1	1-1	52	28	8	.909
11	Cintron, Hannah	.284	33-32	81	18	23	3	0	0	17	26	.321	13	0	7	0	.379	1	1	10-13	30	54	7	.923
10	Nepveux, Heartly	.262	36-36	84	16	22	2	2	0	13	28	.333	13	2	14	0	.374	0	3	4-7	72	2	0	1.000
24	Spieks, Maddi	.507	21-21	73	23	37	6	3	0	18	49	.671	6	0	4	0	.538	1	0	7-10	40	34	4	.949
25	Easters, Avarie	.500	7-1	6	3	3	0	0	0	1	3	.500	0	1	0	0	.571	0	0	0-0	1	0	0	1.000
22	White, Kasey	.364	13-0	11	2	4	0	0	0	5	4	.364	0	0	1	0	.364	0	0	3-3	2	0	0	1.000
8	Green, Jordyn	.333	23-23	63	14	21	1	0	0	6	22	.349	8	1	2	1	.417	0	1	5-5	67	7	3	.961
37	Davis, Bailey	.318	13-6	22	2	7	1	1	0	5	10	.455	1	0	4	0	.348	0	0	1-1	0	1	1	.500
13	Perkins, Addy	.269	23-5	26	8	7	2	0	0	3	9	.346	3	0	7	0	.345	0	1	3-3	9	10	0	1.000
1	Hawkins, Madison	.263	15-4	19	5	5	1	1	1	2	11	.579	0	0	3	0	.263	0	0	3-3	9	0	1	.900
21	Jarrett, Alyssa	.214	19-12	28	3	6	1	0	0	8	7	.250	4	1	4	0	.324	1	1	1-1	55	5	3	.952
15	Smith, Lea	.182	23-4	11	8	2	0	0	0	3	2	.182	0	0	1	0	.182	0	1	2-3	2	2	1	.800
5	Erickson, Rylie	.176	15-8	17	2	3	1	1	0	7	6	.353	3	0	3	0	.273	2	4	1-1	42	3	1	.978
9	Taylor, Kaylee	.143	12-12	28	2	4	0	0	0	3	4	.143	7	0	8	0	.314	0	1	1-2	24	17	7	.854
6	Sanders, Emilee	.100	12-5	10	3	1	0	0	0	1	1	.100	0	0	3	0	.100	0	0	0-1	1	0	0	1.000
29	Bailey, Valerie	.000	7-2	8	0	0	0	0	0	0	0	.000	1	0	2	0	.111	0	0	0-0	9	1	0	1.000
<b>Totals</b>		<b>.342</b>	<b>36-36</b>	<b>945</b>	<b>216</b>	<b>323</b>	<b>42</b>	<b>19</b>	<b>6</b>	<b>187</b>	<b>421</b>	<b>.446</b>	<b>104</b>	<b>7</b>	<b>101</b>	<b>1</b>	<b>.406</b>	<b>12</b>	<b>25</b>	<b>89-107</b>	<b>678</b>	<b>229</b>	<b>45</b>	<b>.953</b>
<b>Opponents</b>		<b>.292</b>	<b>36-36</b>	<b>925</b>	<b>179</b>	<b>270</b>	<b>38</b>	<b>2</b>	<b>21</b>	<b>165</b>	<b>375</b>	<b>.405</b>	<b>72</b>	<b>29</b>	<b>114</b>	<b>1</b>	<b>.357</b>	<b>14</b>	<b>27</b>	<b>36-42</b>	<b>656</b>	<b>294</b>	<b>69</b>	<b>.932</b>

**LOB:** Team (209), Opp (207) **DPs Turned:** Team (7), Opp (9) **IBB:** Team (0), Opp (0) **Picked Off:** Easters (1)

### All games Sorted by Earned Run Avg

#	Player	ERA	W-L	APP	GS	CG	SHO	SV	IP	H	R	ER	BB	SO	2B	3B	HR	B/AVG	WP	HP	BK	SFA	SHA
15	Smith, Lea	0.00	0-0	1	1	0	0-0	0	0.0	0	0	0	0	0	0	0	0	.000	0	0	0	0	0
6	Sanders, Emilee	0.00	0-0	1	1	0	0-0	0	0.0	0	0	0	0	0	0	0	0	.000	0	0	0	0	0
4	Hawkins, Logan	2.78	0-1	11	1	0	0-0	1	22.2	36	19	9	7	11	2	0	3	.340	1	3	0	1	2
26	Steinmeyer, Megan	3.93	9-7	20	16	7	2-0	0	92.2	86	69	52	32	56	12	1	7	.240	3	10	0	5	12
0	Spivey, Taylor	4.35	11-5	21	17	7	1-0	0	83.2	113	60	52	15	38	18	1	10	.323	2	9	0	5	10
23	McCranie, Summer	5.92	2-1	13	0	0	0-0	1	26.0	33	24	22	14	9	6	0	1	.311	3	5	0	2	3
14	Whitaker, Alyson	28.00	0-0	3	0	0	0-0	0	1.0	0	4	4	4	0	0	0	0	.000	0	0	0	0	0
2	Harrington, Mia	63.00	0-0	1	0	0	0-0	0	0.1	2	3	3	0	0	0	0	0	1.000	0	2	0	1	0
<b>Totals</b>		<b>4.39</b>	<b>22-14</b>	<b>71</b>	<b>36</b>	<b>14</b>	<b>4</b>	<b>2</b>	<b>226.1</b>	<b>270</b>	<b>179</b>	<b>142</b>	<b>72</b>	<b>114</b>	<b>38</b>	<b>2</b>	<b>21</b>	<b>.292</b>	<b>9</b>	<b>29</b>	<b>0</b>	<b>14</b>	<b>27</b>
<b>Opponents</b>		<b>5.38</b>	<b>14-22</b>	<b>65</b>	<b>36</b>	<b>10</b>	<b>2</b>	<b>1</b>	<b>218.2</b>	<b>323</b>	<b>215</b>	<b>168</b>	<b>104</b>	<b>101</b>	<b>42</b>	<b>19</b>	<b>6</b>	<b>.342</b>	<b>15</b>	<b>7</b>	<b>0</b>	<b>12</b>	<b>25</b>

**PB:** Team (4), Totals (4), Green (3), Jarrett (1), Opp (4) **Pickoffs:** Team (2), Steinmeyer 2, Totals , Opp (1) **SBA/ATT:** Totals (72-84), Green (19-22), Steinmeyer (17-18), Jarrett (16-18), Spivey (10-14), McCranie (6-7), Hawkins (2-2), Bailey (1-2), Whitaker (1-1)

# EMORY STATISTICS

## 2025 Emory University Softball Overall Statistics (as of Apr 12, 2025)

Overall Record: 24-6 Conf: 8-4 Home: 12-4 Away: 6-2 Neutral: 6-0

### All games Sorted by Batting Avg

#	Player	AVG	GP-GS	AB	R	H	2B	3B	HR	RBI	TB	SLG%	BB	HBP	SO	GDP	OB%	SF	SH	SB-ATT	PO	A	E	FLD%
21	Hoyle, Ella	.429	30-30	98	14	42	6	0	3	28	57	.582	5	0	4	1	.452	1	0	1-2	151	10	2	.988
1	Chu, Ashley	.413	30-30	109	37	45	2	1	0	13	49	.450	8	0	8	0	.453	0	0	26-27	55	5	2	.968
3	Ware, Lillian	.387	24-23	62	16	24	2	2	1	12	33	.532	8	0	6	0	.457	0	1	2-2	97	12	3	.973
33	Klein, Sonia	.384	28-24	73	19	28	6	0	2	16	40	.548	3	0	8	0	.403	1	0	4-4	23	43	11	.857
18	Zerr, Ellie	.359	30-30	92	25	33	9	0	7	35	63	.685	11	4	8	0	.440	2	0	4-4	14	0	2	.875
2	Cooper, Grace	.339	24-21	59	11	20	5	1	0	12	27	.458	6	0	4	0	.394	1	3	4-6	32	37	4	.945
16	Nangia, Shivani	.333	28-24	66	17	22	5	3	2	16	39	.591	14	1	21	0	.457	0	0	8-9	57	32	7	.927
15	Ballog, Rylie	.321	27-22	56	11	18	0	1	0	5	20	.357	5	0	8	0	.377	0	1	5-5	40	3	1	.977
10	Janish, Ella	.293	25-12	41	8	12	5	0	0	8	17	.415	5	3	5	0	.400	1	0	1-1	12	5	0	1.000
8	Wylie, Abby	.292	24-21	48	7	14	4	0	0	9	18	.375	2	1	9	0	.333	0	1	2-2	30	0	2	.938
7	Sutton, Megan	.288	25-18	52	12	15	5	0	1	9	23	.442	4	0	2	0	.339	0	0	1-1	27	26	2	.964
5	Kwong, Addison	.372	21-13	43	14	16	2	1	1	9	23	.535	9	0	11	0	.481	0	3	1-1	24	3	0	1.000
9	Johnson, Shea	.250	18-2	12	9	3	0	1	0	5	5	.417	2	2	6	0	.412	1	0	3-3	1	0	1	.500
4	Gonzalez, Marisol	.222	10-0	9	1	2	0	0	0	3	2	.222	0	2	3	0	.364	0	0	0-0	1	2	0	1.000
32	Estridge, Ellie	.125	13-0	8	3	1	0	0	0	1	1	.125	2	2	1	0	.417	0	0	0-0	4	0	0	1.000
22	Cohen, Isabel	.000	13-0	1	0	0	0	0	0	0	0	.000	0	0	0	0	.000	0	0	0-0	0	1	0	1.000
37	Pineda, Georgia	.000	14-2	0	4	0	0	0	0	0	0	.000	0	0	0	0	.000	0	0	0-0	0	3	0	1.000
<b>Totals</b>		<b>.356</b>	<b>30-30</b>	<b>829</b>	<b>208</b>	<b>295</b>	<b>51</b>	<b>10</b>	<b>17</b>	<b>181</b>	<b>417</b>	<b>.503</b>	<b>84</b>	<b>15</b>	<b>104</b>	<b>1</b>	<b>.421</b>	<b>7</b>	<b>9</b>	<b>62-67</b>	<b>576</b>	<b>207</b>	<b>39</b>	<b>.953</b>
<b>Opponents</b>		<b>.244</b>	<b>30-30</b>	<b>747</b>	<b>82</b>	<b>182</b>	<b>25</b>	<b>0</b>	<b>5</b>	<b>70</b>	<b>222</b>	<b>.297</b>	<b>88</b>	<b>11</b>	<b>96</b>	<b>3</b>	<b>.330</b>	<b>6</b>	<b>15</b>	<b>17-24</b>	<b>545</b>	<b>190</b>	<b>41</b>	<b>.947</b>

LOB: Team (175), Opp (207) DPs Turned: Team (5), Opp (2) IBB: Team (0), Opp (0)

### All games Sorted by Earned Run Avg

#	Player	ERA	W-L	APP	GS	CG	SHO	SV	IP	H	R	ER	BB	SO	2B	3B	HR	B/AVG	WP	HP	BK	SFA	SHA
25	Duford, Mackenzie	1.36	11-2	17	11	5	2-0	1	72.0	55	20	14	29	50	7	0	0	.208	2	6	0	2	6
22	Cohen, Isabel	2.10	1-1	12	0	0	0-0	2	20.0	18	6	6	16	3	3	0	0	.257	0	3	0	0	3
30	Selvaraj, Lauryn	2.39	5-0	13	5	0	0-0	0	41.0	43	20	14	19	19	7	0	0	.265	1	2	0	3	2
37	Pineda, Georgia	2.80	2-0	4	2	1	0-0	0	10.0	11	5	4	5	3	1	0	1	.256	5	0	0	0	0
29	Bach, Lexi	2.86	5-3	13	12	3	0-0	0	49.0	55	31	20	19	21	7	0	4	.264	5	0	0	1	4
<b>Totals</b>		<b>2.11</b>	<b>24-6</b>	<b>59</b>	<b>30</b>	<b>9</b>	<b>7</b>	<b>3</b>	<b>192.0</b>	<b>182</b>	<b>82</b>	<b>58</b>	<b>88</b>	<b>96</b>	<b>25</b>	<b>0</b>	<b>5</b>	<b>.244</b>	<b>13</b>	<b>11</b>	<b>0</b>	<b>6</b>	<b>15</b>
<b>Opponents</b>		<b>6.59</b>	<b>6-24</b>	<b>57</b>	<b>30</b>	<b>9</b>	<b>0</b>	<b>1</b>	<b>181.2</b>	<b>295</b>	<b>208</b>	<b>171</b>	<b>84</b>	<b>104</b>	<b>51</b>	<b>10</b>	<b>17</b>	<b>.356</b>	<b>23</b>	<b>15</b>	<b>0</b>	<b>7</b>	<b>9</b>

PB: Team (2), Totals (2), Zerr (2), Opp (7) Pickoffs: Team (0), Totals , Opp (0) SBA/ATT: Totals (34-47), Ware (13-19), Duford (8-12), Bach (5-5), Selvaraj (4-7), Zerr (4-4)