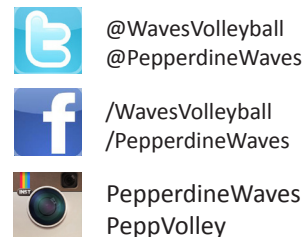


All-Time Accomplishments:
25 NCAA Tournaments
11 WCC Championships
22 All-American Selections
47 Seasons Played
896-540-2 All-Time Record
408-146 WCC All-Time Record



2022 WOMEN'S VOLLEYBALL MATCH NOTES

| 2022 SCHEDULE/RESULTS | | |
|-------------------------------------|----------------------|-------------|
| OVERALL RECORD: 2-1 WCC RECORD: 0-0 | | |
| HOME: 0-0 AWAY: 0-1 NEUTRAL: 2-0 | | |
| Date | Opponent | Time/Result |
| <i>Ameritas Players Challenge</i> | | |
| 8/26 | vs. Tulsa | W, 3-1 |
| 8/26 | vs. Texas A&M - CC | W, 3-0 |
| 8/27 | at #1 Nebraska | L, 0-3 |
| <i>Pepperdine Asics Classic</i> | | |
| 9/1 | #9 Baylor | 6 PM |
| 9/2 | UC Santa Barbara | 6 PM |
| 9/3 | San Diego State | 12 PM |
| <i>Alaska Airlines Invitational</i> | | |
| 9/8 | vs. Cal Poly | 5 PM |
| 9/9 | at Washington | 11 AM |
| 9/9 | vs. Northwestern | 5 PM |
| <i>Diet Coke Classic</i> | | |
| 9/15 | at Minnesota | 5 PM |
| 9/16 | vs. Washington State | 3 PM |
| 9/22 | at San Diego* | 7 PM |
| 9/24 | at BYU* | 12 PM |
| 9/27 | Gonzaga* | 7 PM |
| 9/29 | at San Francisco* | 7 PM |
| 10/1 | at Santa Clara* | 1 PM |
| 10/6 | Pacific* | 7 PM |
| 10/8 | Saint Mary's* | 12 PM |
| 10/14 | at LMU* | 7 PM |
| 10/20 | at Portland* | 7 PM |
| 10/22 | at Gonzaga* | 12 PM |
| 10/27 | Santa Clara* | 7 PM |
| 10/29 | San Francisco* | 12 PM |
| 11/3 | at Saint Mary's* | 7 PM |
| 11/5 | at Pacific* | 12 PM |
| 11/11 | LMU* | 7 PM |
| 11/17 | BYU* | 7 PM |
| 11/19 | San Diego* | 12 PM |
| 11/22 | Portland* | 1 PM |

Home matches in bold and played at Firestone Fieldhouse | All times Pacific | # Neutral | * West Coast Conference match
 Dates and times subject to change.

August 31, 2022

MALIBU, Calif. — The Pepperdine women's volleyball team, a squad receiving votes in the AVCA Coaches Poll for the second week, will host the 24th annual Pepperdine Asics Classic this week. The Waves will face #9 Baylor for the home opener on Thursday night in Firestone Fieldhouse, before hosting UC Santa Barbara and San Diego State on Friday and Saturday respectively.

MATCH #4 — Thursday (September 1) at Firestone Fieldhouse in Malibu, Calif.: Pepperdine vs. #9 Baylor at 6 p.m. | Watch: WCC Network

MATCH #5 — Friday (September 2) at Firestone Fieldhouse in Malibu, Calif.: Pepperdine vs. UC Santa Barbara at 6 p.m. | Watch: WCC Network

MATCH #6 — Saturday (September 3) at Firestone Fieldhouse in Malibu, Calif.: Pepperdine vs. San Diego State at 12 p.m. | Watch: WCC Network

SOCIAL MEDIA — Follow @WavesVolleyball on Twitter for updates and check out PepperdineWaves.com and Facebook (/WavesVolleyball) for releases and more information.

WAVECASTS — All Pepperdine matches for the Asics Classic will be streamed live on the WCC Network with links found on www.PepperdineWaves.com. Veteran play-by-play man El Epstein, a 2015 Pepperdine Athletics Hall of Fame inductee who is now in his 37th season, will be behind the microphone. The other three matches not including Pepperdine will be streamed live via Wavecasts on YouTube.

FURTHER COVERAGE — Live stats will be provided for all matches with links available on PepperdineWaves.com.

UP NEXT — After the weekend in Malibu, the Waves will hit the road again - this time up north to Seattle for the Alaska Airlines Invitational on September 8-9. Pepperdine will face off against Cal Poly on Thursday before challenging tournament-host #14 Washington and Northwestern on Friday.

TICKETS & SPECTATOR GUIDELINES — Tickets to all Pepperdine home women's volleyball matches will be available via e-ticket ONLY. Pepperdine faculty, staff and students must show Pepperdine ID card for entry — no ticket purchase is required.

To purchase e-tickets and read the spectator guidelines, visit: www.PepperdineWaves.com/Tickets. Due to campus construction, nearby parking is limited and guests are advised to arrive early.

Each match costs \$10 for adults, \$8 for seniors (65+) and \$5 for children and non-Pepperdine students.

PROMOTIONS — On Thursday, the first 150 students with a valid Pepperdine ID will receive Chick-Fil-A chicken sandwiches from Chick-Fil-A Westlake Village.

ASICS CLASSIC — This year marks the 24th season that Pepperdine has hosted the Asics Classic, beginning the tradition with the inaugural tournament in 1997. The Waves went 23-6 that year, starting out with three-straight wins at the Classic against Fresno

Match #4

Thursday, September 1

6 p.m.

Opponent.....#9 Baylor
 Head Coach.....Ryan McGuyre
 Record.....1-1
 Website.....BaylorBears.com
 Series.....Baylor leads 2-0
 First Meeting.....2020, A, L, 2-3
 Last Meeting.....2020, N, L, 2-3
 Watch.....WCC Network

Match #5

Friday, September 2

6 p.m.

Opponent.....UC Santa Barbara
 Head Coach.....Nicole Lantagne Welch
 Record.....0-3
 Website.....UCSBGauchos.com
 Series.....PEPP leads 32-30
 First Meeting.....1976, A, W, 3-0
 Last Meeting.....2021, A, W, 3-2
 Watch.....WCC Network

Match #6

Saturday, September 3

12 p.m.

Opponent.....San Diego State
 Head Coach.....Brent Hilliard
 Record.....2-1
 Website.....GoAztecs.com
 Series.....SDSU leads 21-20
 First Meeting.....1976, H, W, 3-0
 Last Meeting.....2021, N, W, 3-1
 Watch.....WCC Network

WCC STANDINGS

| RK | TEAM | WCC RECORD | OVERALL RECORD |
|-----|-----------------|------------|----------------|
| #7 | BYU | 0-0 | 3-0 |
| #15 | SAN DIEGO | 0-0 | 3-0 |
| | PORTLAND | 0-0 | 3-0 |
| | SAN FRANCISCO | 0-0 | 3-0 |
| | PEPPERDINE (RV) | 0-0 | 2-1 |
| | GONZAGA | 0-0 | 1-2 |
| | LMU | 0-0 | 1-2 |
| | PACIFIC | 0-0 | 1-2 |
| | SANTA CLARA | 0-0 | 1-2 |
| | SAINT MARY'S | 0-0 | 0-2 |

Volleyball Contact: Sarah Otteman

Assistant Director of Athletics
 for Marketing & Digital Content
 sarah.otteman@pepperdine.edu
 Phone: 310-506-4160

QUICK FACTS

General

| | |
|--------------------------------|---------------------------------|
| School..... | Pepperdine University |
| Location | Malibu, Calif. 90263 |
| Founded | 1937 (Malibu Campus in 1972) |
| Enrollment... | 8,000 total/3,000 undergraduate |
| Colors | Blue and Orange |
| Affiliationa | NCAA Division I |
| Conference | West Coast Conference |
| President | James A. Gash |
| Athletic Director | Dr. Steve Potts |
| Athletic Department Phone..... | (310) 506-4150 |
| Ticket Office Phone..... | (866) WAVE-TIX |
| Home Arena | Firestone Fieldhouse |
| Capacity | 3,104 |
| Opened..... | 1973 |

Coaching Staff

| | |
|------------------------|-----------------------------|
| Head Coach | Scott Wong (8th season) |
| Alma Mater..... | Pepperdine '01 |
| Office Phone | (310) 506-4521 |
| E-Mail | scott.wong@pepperdine.edu |
| Pepperdine record..... | 125-76 (7 seasons) |
| Assistant Coach | Steve Astor (3rd season) |
| Alma Mater..... | Vanguard, '12 |
| Office Phone | (310) 506-4104 |
| E-Mail | Steve.Astor@pepperdine.edu |
| Assistant Coach | Blossom Sato (1st season) |
| Alma Mater..... | Pepperdine, '19 |
| Office Phone | (310) 506-4945 |
| E-Mail | blossom.sato@pepperdine.edu |

Team Information

| | |
|------------------------------------|------------------|
| 2021 Overall Record | 22-6 |
| 2021 Conference Record | 14-4 |
| 2021 Postseason..... | NCAA First Round |
| Starters Returning/Lost | 5/2+libero |
| Letterwinners Returning/Lost | 7/8+libero |
| Newcomers..... | 8 |

Women's Volleyball Information

| | |
|---|-------------------------|
| First Year | 1975 |
| All-Time Record | *894-539-2 (47 seasons) |
| All-Time WCC Record.... | *408-146 (37 seasons) |
| Regular-Season Titles | 11 (last in 2011) |
| NCAA Tournament Appearances | 25 |
| Last in | 2021 (first round) |
| *record at the start of the 2022 season | |

Athletic Communications

| | |
|--|------------------------------|
| WVB Contact | Sarah Otteman |
| Assistant AD of Marketing & Digital Content | |
| Office Phone | (310) 506-4160 |
| Cell Phone | (815) 545-0497 |
| E-Mail | sarah.otteman@pepperdine.edu |
| SID Mailing Address.... | 24255 Pacific Coast Hwy |
| | Malibu, CA 90263 |
| Website | www.PepperdineWaves.com |

*Stat Info from prior to 2020-21 season

State (3-2), Tulane (3-1) and Northern Arizona (3-2). In the 22-season span of the tournament, the Waves have tallied a 48-19 record against opponents and have gone undefeated on six separate occasions including most recently in the 2018 season. The tournament went on a brief one-year hiatus during the COVID-19 pandemic in 2020.

SQUAD GOALS — Pepperdine opened the 2022 season with two wins against Tulsa and Texas A&M - Corpus Christi last weekend, before falling to top-ranked Nebraska at the Ameritas Players Challenge. The Waves impressed with 12.70 kills, 12.30 assists, 0.80 aces, 17.10 digs and 3.60 team blocks per set to open the season. The squad's blocks/set and total blocks rank 5th and 7th nationally after week one as well.

Grace Chillingworth, Emily Hellmuth and Meg Brown led the attack front with 2.70 kills/set respectively. All three had 27 kills in 10 sets, while Brown fired away at a .355 clip. She and Hellmuth each added 1.20 assists/set and posted team-bests 37.5 and 33.5 points respectively. Avery Shimaitis and Vanessa Polk also added 2.29 and 1.40 kills/set respectively.

Polk was a force at the net, putting in 23 total blocks with five solos to average 2.30 blocks/set for the Waves. On the back line, the Waves put in 17.10 team digs/set as well and featured six players with more than two digs per set on average. Riley Patterson was solid with 4.00 digs/set and 40 total digs, while Kayleigh Hames and Trinity Stanger added 3.22 and 3.11 digs/set respectively. Chillingworth, Isabel Zelaya and Rachel Ahrens rounded it out with 2.33 digs/set as well. Zelaya was the primary playmaker for the Waves with 9.60 assists/set, while adding 0.50 blocks/set as well.

THE COMPETITION — #9 Baylor has gone 1-1 overall this season, first falling to #5 Minnesota in four sets before picking up the upset over #3 Wisconsin in five. The Waves have faced off with the Bears twice before, in 2020, falling in five set battles in both - including the final bout that year in the second round of the NCAA Tournament. Pepperdine holds a 32-30 lead over UC Santa Barbara all-time, dating back to 1976 when the Waves won in straight sets for the opener. Each team has had a few streaks throughout, but the Waves have recently gone 8-2 in the last 10 matches against the Gauchos, including a 3-2 win on the road last season. UCSB has gone 0-3 so far this season, falling to Northern Colorado, North Carolina and Colorado State. San Diego State has a narrow 21-20 overall record against Pepperdine all-time, dating back to 1976 when the Waves won the first match and then the following five matches. SDSU had a streak from 1980-1986, but the Waves have won seven-straight most recently since 1995, including a 3-1 win last season at a neutral site. The Aztecs have gone 2-1 so far this season with a loss to Cal and wins over Army West Point and UC San Diego.

FRESH DEBUTS — The newcomers had quite the debut for their first outings in the navy and orange last week, with six seeing action as the Waves went 2-1 at Nebraska. Riley Patterson, grad transfer from Pacific was clutch on the back line, amassing 4.00 digs/set with 40 digs in 10 sets of action for the squad. She added 1.20 assists/set and 0.10 aces/set as well.

Freshmen Vanessa Polk, Emily Hellmuth and Avery Shimaitis also came out ready to impress for their collegiate debuts. Polk now ranks 3rd nationally with 2.30 blocks/set and 23 total blocks including three solo rejections. She also added 1.40 kills/set and had 28.0 total points in her 10 sets. Hellmuth averaged 2.70 kills/set with a tied-team high 27 kills over her 10 sets of action. She added 1.20 blocks/set for 33.5 total points as well. Shimaitis put down 2.29 kills and 0.57 blocks per set as well.

MILESTONES & RECORD WATCH — Rachel Ahrens tops the career record books for Pepperdine in aces and aces/set already after four years as a Wave. She had amassed 153 aces in 370 sets and 0.41 aces/set before this season. Ahrens also currently ranks 5th in career kills with 1,397. Nicole Sanderson leads the category with 2,028 kills in 431 sets from 1994-97, while these Waves fill in the following three spots: Julie Evans (84-87) with 1,955 kills in 425 sets, Julie Rubenstein (05-08) with 1,743 kills in 423 sets and Katie Wilkins (00-03) with 1,672 kills in 368 sets.

Ahrens also ranks 5th with 1,666.0 points, 7th with 4.47 points/set and 3.75 kills/set and 3,328 total attempts. Isabel Zelaya has also been climbing the record books at Pepperdine, ranking 6th with 10.52 assists/set and 8th with 3,018 total assists.

Ahrens also stands out in the single-season rally scoring era record books, having topped the service aces category with 51 aces in 105 sets in 2021 and 49 aces in 113 sets in 2019. She ranks 2nd, 3rd and 4th with 0.49, 0.44 and 0.43 aces in 2021, 2020 and 2019 respectively. She ranked 3rd with 513 kills and 4.89 kills/set in 2021 and 5th with 4.42 kills/set in 2020. She also ranked 3rd with 591.0 points in 2021, 2nd with 5.63 points/set in 2021 and 6th with 5.13 points/set in 2020. Zelaya ranked 10th with 11.19 assist/set and 1,144 total assists as well.

Ahrens is also the only Wave to have cracked 30 kills since 2008 last season, collecting 30 kills against Saint Mary's which ranks 3rd in the single-match kills/set records. The Waves have only accomplished that feat three times throughout the program's history as well.

POSITION BREAKDOWNS:

CANNONS — Rachel Ahrens, Emma Ammerman, Grace Chillingworth, Emily Hellmuth, Avery Shimaitis, Maselina Tuufuli

MALIBU ROOFING COMPANY — Meg Brown, Kenadie Patterson, Vanessa Polk

PLAYMAKERS — Rosemary Archer, Isabel Zelaya

CAN YOU DIG IT? — Cameron Baklenko, Kayleigh Hames, Riley Patterson, Trinity Stanger

COMPETING WITH PURPOSE — The Pepperdine University Athletics Department is committed to Christian values, to the academic well-being of all our student-athletes and to competing for championships. The Competing with Purpose campaign highlights the commitment to our core values that we dedicate ourselves to daily.

SCOTT WONG — Pepperdine alum Scott Wong was named head coach in December 2014, becoming the fifth head coach in program history. Entering his eighth season at the helm of the Waves, Wong has marked a 125-75 (.622) overall record and winning percentage for Pepperdine. He helped the program to three NCAA Tournament berths in four years and finished with second-round appearances in 2018 and 2020 and a first-round appearance in 2021. The 2018 appearance was the Waves' first since 2012. He hit his 100-win milestone as the Waves downed #21 San Diego on the road in four sets in 2020. He was also an assistant with the Waves' men's program from 2005-09 (and was part of the 2005 NCAA championship-winning team) before moving back to his home state of Hawaii and serving as associate coach with the Rainbow Wahine's women's squad for five seasons. He was also Hawaii's sand volleyball head coach. Wong was a three-time All-American with the Waves between 1998-01.

THE SIDELINES — Along with Head Coach Scott Wong, Steve Astor returns for his third season on the sidelines as assistant coach and recruiting coordinator in 2022. Additionally, Pepperdine alumna Blossom Sato returned to Malibu to coach on the sidelines in 2022. This season, the Waves also added volunteer assistant Cole Murray to the squad. Astor graduated from Vanguard in 2012. He brings over 20 years of coaching experience, spanning multiple sports at various levels, including college, high school and club to the program. He most recently comes after having served as a volunteer assistant at University of Washington. Sato graduated from Pepperdine in 2019 and had an All-WCC first team nod. She had a stint as volunteer assistant for the Waves in 2019, while also tabbing two years as an assistant for Portland State. Murray most recently coached girls club volleyball at Saddleback Volleyball Club from 2020-22 and was a high school coach at Northwood High School in Irvine, Calif. since 2017. He played collegiately at Irvine Valley College before transferring to Loyola Chicago to finish his collegiate career.

INDOOR VOLLEYBALL HISTORY — The Pepperdine women's volleyball program is synonymous with the word excellence, as the Waves are a perennial national power. The Waves have advanced to postseason play 30 times in 47 seasons, including 16 trips to the NCAA Championships in the last 24 seasons. Pepperdine's best finishes in recent years came when the team made the regional final of the NCAA Tournament in 2002 and again in 2011. 12 players have earned AVCA or Volleyball Magazine All-American honors a combined 22 times, while six players have been dubbed the WCC Player of the Year nine total times. Nina Matthies, who stepped down after the 2013 season, was inducted into the AVCA Hall of Fame in December, 2015.

ABOUT PEPPERDINE — Pepperdine boasts a one-of-a-kind athletic department with unprecedented success for a school of its size. The Waves have won NCAA Division I Championships in five different men's sports — one of just 20 schools to have accomplished this feat — and 10 overall. Of this elite group, Pepperdine has the smallest undergraduate enrollment, is the only school without football and is the only university that has not been affiliated with a "major" conference. The Waves have won a total of 26 team or individual national championships in their history. Pepperdine has also earned the Division I-AAA All-Sports Trophy, an award based on postseason success that's given to the top non-football school, four times, most recently this year in 2021-22. Located in scenic Malibu, Calif., the university overlooks the Pacific Ocean and its campus and athletic facilities are regularly voted among the nation's most beautiful. Pepperdine, which is affiliated with the Church of Christ, ranks No. 49 overall on U.S. News and World Report's list of America's best colleges.

2022 ROSTER

| NO. | NAME | POS. | HT. | YR. | EXP. | HOMETOWN (HIGH SCHOOL/LAST SCHOOL) |
|-----|---------------------|--------|-----|-----|------|---|
| 1 | GRACE CHILLINGWORTH | OH/OPP | 6-3 | SO. | 1V | TUSTIN, CALIF. (FOOTHILL HS) |
| 2 | ISABEL ZELAYA | S | 6-0 | SR. | 3V | TOMBALL, TEXAS (CONCORDIA LUTHERAN HS) |
| 4 | KAYLEIGH HAMES | DS | 6-0 | SR. | 3V | MARYVILLE, TENN. (WEBB SCHOOL OF KNOXVILLE) |
| 5 | MASELINA TUUFULI | OH | 6-0 | FR. | HS | CIBOLO, TEXAS (BYRON P. STEELE HS) |
| 9 | ROSEMARY ARCHER | S | 6-0 | FR. | HS | FAIRVIEW, TEXAS (LOVEJOY HS) |
| 10 | EMILY HELLMUTH | OH | 6-3 | FR. | HS | DALLAS TEXAS (HIGHLAND PARK HS) |
| 11 | EMMA AMMERMAN | OH/OPP | 6-3 | JR. | 2V | PARKER, COLO. (CHAPARRAL HS) |
| 12 | MEG BROWN | MB | 6-3 | JR. | 2V | SANTA ANA, CALIF. (MATER DEI HS) |
| 14 | KENADIE PATTERSON | MB | 6-5 | FR. | HS | OAKDALE, CALIF. (GREGORI HS) |
| 16 | TRINITY STANGER | L/DS | 5-6 | SO. | 1V | LOS ANGELES, CALIF. (VIEWPOINT HS) |
| 17 | AVERY SHIMAITIS | OH | 6-0 | FR. | HS | SUGAR LAND, TEXAS (GEORGE RANCH HS) |
| 18 | RACHEL AHRENS | OH | 6-4 | GR. | 4V | TRABUCO CANYON, CALIF. (TESORO HS) |
| 19 | RILEY PATTERSON | L/DS | 5-7 | GR. | TR | SONORA, CALIF. (SONOR HS/PACIFIC) |
| 20 | VANESSA POLK | MB | 6-2 | FR. | HS | SAINT LOUIS, MO. (JOHN BURROUGHS SCHOOL) |

Pronunciation Guide

Rachel Ahrens
AIR-rehns
Kayleigh Hames
KAY-lee
Avery Shimaitis
shu-MIGH-tuhs
Maselina Tuufuli
MAH-suh-lee-nuh
TOO-foo-lee
Isabel Zelaya
iz-uhBELL zuh-LIE-uh

HEAD COACH: SCOTT WONG, 8TH SEASON, PEPPERDINE '01

ASSISTANT COACHES: STEVE ASTOR, 3RD SEASON, VANGUARD '12; BLOSSOM SATO, 1ST SEASON, PEPPERDINE '19

VOLUNTEER ASSISTANT COACH: COLE MURRAY, 1ST SEASON, LOYOLA CHICAGO '17

WAVES' RESUMES

#1 GRACE CHILLINGWORTH | SO | OH/OPP | 6-3

- 2021: WCC Freshman of the Year ... WCC All-Freshman Team ... Played in all 106 sets and started all 29 matches ... 315 kills and 2.97 kills/set.
- HS: All-Crestview League first team ... Under Armour AVCA All-Region ... Led HS to Crestview League Championships in 2018 and 2019.

#2 ISABEL ZELAYA | SR | S/OPP | 6-0

- 2021: All-WCC first team ... Played in all 106 sets and started all 29 matches throughout the season... 10.79 assists/set and 1,144 assists.
- 2020: AVCA All-Pacific South Region first team ... All-WCC first team ... One of six Waves to have played and started in all 21 matches ... Led the Waves in assists in all matches ... Averaged 906 total assists to lead the WCC with 11.19 assist/set.
- 2019: WCC All-Freshman, Played in 27 matches with 22 starts and saw action in 90 sets as a true freshman ... Led the team with 872 total assists and 9.69 assists/set ... Amassed 194 digs to average 2.16 digs/set and led the Waves in assists in 21 matches.
- HS: AVCA All-American All-Greater Houston first team and AVCA Phenom List ... All-time CLHS assist leader ... four-time All-State and All-District.

#4 KAYLEIGH HAMES | SR | OH | 6-0

- 2021: Played in 20 sets ... Tabbed 0.45 kills/set, 0.85 digs/set and marked four aces.
- 2020: Played in all 81 sets and 21 matches, with nine starts ... Marked 0.48 kills and 1.49 digs/set.
- 2019: Played in 26 matches with seven starts ... Averaged 1.29 kills/set, 1.71 digs/set.
- HS: Under Armour All-American ... AVCA Phenom List ... All-District, All-Reign and All-State honors.

#5 MASELINA TUUFULI | FR | OH | 6-0

- HS: Played in multiple tournament in 2022, finishing in the finals at the Tour of Texas and the Lone Star Regionals.

#9 ROSEMARY ARCHER | FR | S | 6-0

- HS: AVCA All-American, District 10-5A Co-MVP, Max Preps All-American second team ... TGCA 5A All-State, Dallas Morning News Setter of the Year, VYPE DFW Setter of the Year, Volleyball Magazine 2021 All-American and AVCA Best and Brightest first team in 2021 ... UIL State 5A Championship All-Tournament Team ... AVCA All-Region Team, USA Volleyball National Team Development Program ... DFW Public School Female Athlete of the Year nominee, UIL State Champion in 2021 ... PrepVolleyball top 150, ranked 15th ... Volleyball Magazine Fab 50 and JVA National Team ... In 2020, named to AVCA Phenom List, PrepVolleyball Top 150, District 5A second team and State Champion honors ... In 2019, District 5A honorable mention and State Champion.

#10 EMILY HELLMUTH | FR | OH | 6-3

- HS: As a senior ... AVCA Best and Brightest first team ... AVCA All-American first team ... AVCA All-Region first team ... District 11-5A and Highland Park Volleyball MVP ... TGCA Legacy All Star and All-State Team ... Dallas Morning News Outstanding Player ... As a junior ... All-District first team ... Outstanding Hitter District 13-5A ... Offensive Player of the Year (HPVB) ... TGCA All-Star Team ... All-District second team as a freshman and sophomore ... Helped team to District Championship four times ... Ranked top-10 in the nation and #1 in Texas in 2022.

#11 EMMA AMMERMAN | JR | OH | 6-3

- 2021: Started in all 29 matches and played 104 sets for the Waves ... Tabbed 1.91 kills/set, 0.44 digs/set and 0.43 blocks/set.
- 2020: Played in 18 matches with two starts ... Tallied 123 kills and averaged 1.95 kills/set ... Put up 0.48 blocks and 0.56 digs per set.
- HS: All-League first team and All-State first team honors once and All-League second team honors twice ... Under Armour All-American honorable mention ... Led CHS to League titles twice and a State title in 2019.

#12 MEG BROWN | JR | MB | 6-3

- 2021: All-WCC second team ... One WCC Defensive Player of the Week honor ... Played in 96 sets for the Waves, missing only a few starts due to injury for a week ... Amassed 2.29 kills/set on a team-high .304 hitting % ... Tabbed 26 aces and 0.27 aces/set, as well as 0.63 digs/set and 0.84 blocks/set.
- 2020: WCC Freshman of the Year ... All-WCC first team ... WCC All-Freshman Team ... One of six Waves to have started all 21 matches ... Second on the team with 0.88 blocks/set and amassed 2.41 kills/set on a .331 clip ... Led squad in hitting % in 13 matches and blocks in nine.
- HS: All-State, All-CIF, All-County, All-Trinity League first team honors, with Under Armour All-American honors as a senior ... Recipient of the Mater Dei Andi Collins Award ... All-Trinity League second team as a sophomore and junior ... Trinity League Champions in 2017, 18, 19 ... CIF Champions in 2017, 18 ... Stat Championships and National Champions in 2018.

#14 KENADIE PATTERSON | FR | MB | 6-5

- HS: First Team All-League CCAL ... Team MVP ... Led league with a .545 hitting %, 2.5 kills/set and 103 total blocks ... PrepVolleyball Top 150 recruit ... Led team to AAU Junior Nationals in 2020 and JVA Nationals in 2017, 2018 and 2019.

#16 TRINITY STANGER | SO | L/DS | 5-6

- 2021: Played in all 106 sets for the Waves as the first to come off the bench for back row or service support ... Totaled 1.78 digs/set and 189 digs, as well as 0.17 aces/set with 18 aces in the season.
- HS: In her career, amassed 1,167 career digs ... Gold Coast All-League first team ... Team MVP as junior, sophomore and freshman ... Also lettered in beach volleyball.

#17 AVERY SHIMAITIS | FR | OH | 6-0

- HS: AVCA All-America Watch List ... VYPE Player of the Week and Hitter of the Year ... AVCA Best and Brightest first team ... AVCA HS All-Region Team, AVCA All-American first team ... District 20-6A MVP and All-District first team three times ... prepVolleyball HS All-American Nominee. AVCA Top-150 Phenom List... AVCA All-American Phenom.

#18 RACHEL AHRENS | GR | OH/OPP | 6-4

- 2021: AVCA All-America honorable mention ... AVCA Pacific South All-Region first team ... All-WCC first team ... AVCA Player of the Week (1st award of it's kind for Pepperdine program) ... WCC Offensive Player of the Week three times ... Marked 1,000th career kill ... Led the Waves with 513 total kills, marking 4.89 kills/set on a .279 clip ... Added 0.49 aces/set and 51 total aces ... Also posted 1.90 digs/set and 0.49 blocks/set.
- 2020: AVCA All-America honorable mention ... AVCA Pacific South All-Region first team ... All-WCC first team ... One of six Waves to have started in all 21 matches ... Led the WCC with 4.42 kills/set (358), 0.44 aces/set (36) and 5.13 points/set (415).
- 2019: All-WCC second team ... Played in all 29 matches with 25 starts ... In 113 sets, led the team with a Pepperdine women's volleyball program-best 49 aces ... Led with 0.43 aces/set ... Posted 291 kills for 2.58 kills/set, with 0.66 blocks/set and a .229 hit%.
- 2018: WCC All-Freshman Team ... Played in 22 matches with 17 starts ... Third on the team with 3.17 kills/set with 225 smashes on a .297 clip ... Totaled 0.24 aces/set, 1.30 dgis/set and 0.68 blocks/set.
- HS: PrepVolleyball's Top 100 Senior Ace List ... JVA All-National Team ... All-League honorable mention.

#19 RILEY PATTERSON | GR | L/DS | 5-7

- PACIFIC (:): All-WCC second team as a sophomore ... As a junior, tabbed a team-high 139.5 points, 123 kills and 128 digs ... As a sophomore, marked 419 kills and ranked 2nd in WCC action with 272 kills.
- HS: All-Mother Load League two times ... Helped team to Division IV State Championship and Sac Joaquin Section Championship in 2014 ... Led team to DII Sac Joaquin Section Championship and DIIINorCal Championship appearances.

#20 VANESSA POLK | FR | MB | 6-2

- HS: All-Metro League ... Metro League Player of the Year ... All-State first team ... All-District first team ... Amassed 1,164 kills, 200 blocks, 700 digs and 180 aces throughout her high school career.

2022 TV/RADIO ROSTER



#1 Grace Chillingworth
SO | OH/OPP | 6-3
Tustin, Calif.



#2 Isabel Zelaya
SR | S/OPP | 6-0
Tomball, Texas



#4 Kayleigh Hames
SR | OH | 6-0
Maryville, Tenn.



#5 Maselina Tuufuli
FR | OH | 6-0
Cibolo, Texas



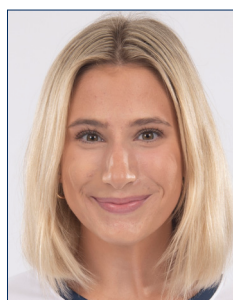
#9 Rosemary Archer
FR | S | 6-0
Fairview, Texas



#10 Emily Hellmuth
FR | OH | 6-3
Dallas, Texas



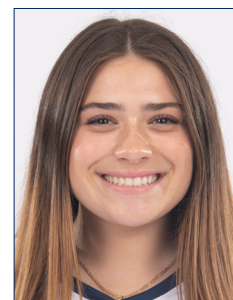
#11 Emma Ammerman
JR | OH | 6-3
Parker, Colo.



#12 Meg Brown
JR | MB | 6-3
Santa Ana, Calif.



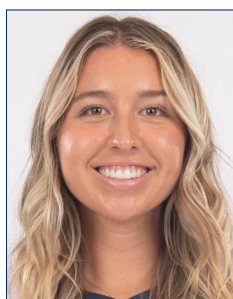
#14 Kenadie Patterson
FR | MB | 6-5
Oakdale, Calif.



#16 Trinity Stanger
SO | L/DS | 5-6
Los Angeles, Calif.



#17 Avery Shimaitis
FR | OH | 6-0
Sugar Land, Texas



#18 Rachel Ahrens
SR | OH | 6-4
Trabuco Canyon, Calif.



#19 Riley Patterson
GR | L/DS | 5-7
Sonora, Calif.



#20 Vanessa Polk
FR | MB | 6-2
Saint Louis, Mo.



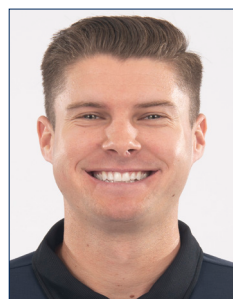
Scott Wong
Head Coach
8th Season



Steve Astor
Assistant Coach
& Recruiting Coordinator
3rd Season



Blossom Sato
Assistant Coach
1st Season



Cole Murray
Volunteer Assistant
1st Season

WAVES BY THE NUMBERS

2022 TOP 25 COACHES

AVCA PRESEASON POLL

RANK TEAM (1st Place Votes) '22 RECORD

| | | |
|----|---------------------|-----|
| 1 | Texas (41) | 2-0 |
| 2 | Nebraska (23) | 3-0 |
| 3 | Louisville | 3-0 |
| 4 | Minnesota | 2-0 |
| 5 | Georgia Tech | 2-0 |
| 6 | Wisconsin | 1-1 |
| 7 | BYU | 3-0 |
| 8 | Ohio State | 0-2 |
| 9 | Baylor | 1-1 |
| 10 | Pittsburgh | 2-1 |
| 11 | Purdue | 3-0 |
| 12 | Stanford | 2-0 |
| 13 | Florida | 3-0 |
| 14 | Washington | 1-1 |
| 15 | San Diego | 3-0 |
| 16 | Kentucky | 1-1 |
| 17 | Creighton | 3-0 |
| 18 | Oregon | 2-0 |
| 19 | Illinois | 1-1 |
| 20 | Kansas | 3-0 |
| 21 | Penn State | 3-0 |
| 22 | Western Kentucky | 3-0 |
| 23 | UCLA | 1-1 |
| 24 | Marquette | 2-0 |
| 25 | Southern California | 3-0 |

Others receiving votes:

Utah, Mississippi State,
Miami (FL), Arkansas,
Rice, Washington State,
Michigan, Utah State,
Pepperdine, UCF, Ball State,
Texas State.

2022 TEAM STAT RANKINGS (TOP 115)

| Category | Stat | Nat'l Rank | WCC Rank |
|---------------|-------|------------|----------|
| Blocks/Set | 3.60 | 5th | 1st |
| Total Blocks | 36.0 | 7th | 1st |
| Attacks/Set | 39.00 | 9th | 1st |
| Digs/Set | 17.10 | 24th | 1st |
| Opponent Hit% | 0.151 | 71st | 3rd |
| Assists/Set | 12.30 | 76th | 1st |
| Digs | 171 | 84th | 2nd |

2022 INDIVIDUAL RANKINGS

| TOTAL ASSISTS | Stat | Nat'l Rank | WCC Rank |
|---------------|------|------------|----------|
| Player | Stat | Rank | Rank |
| Isabel Zelaya | 96 | 90th | 5th |

| ASSISTS/SET | Stat | Nat'l Rank | WCC Rank |
|---------------|------|------------|----------|
| Player | Stat | Rank | Rank |
| Isabel Zelaya | 9.60 | 90th | 4th |

| TOTAL ATTACKS | Stat | Nat'l Rank | WCC Rank |
|---------------------|------|------------|----------|
| Player | Stat | Rank | Rank |
| Grace Chillingworth | 105 | 134th | 3th |

| ATTACKS/SET | Stat | Nat'l Rank | WCC Rank |
|---------------------|-------|------------|----------|
| Player | Stat | Rank | Rank |
| Grace Chillingworth | 10.50 | 83rd | 2nd |

| TOTAL BLOCKS | Stat | Nat'l Rank | WCC Rank |
|----------------|------|------------|----------|
| Player | Stat | Rank | Rank |
| Vanessa Polk | 23 | 3rd | 2nd |
| Meg Brown | 12 | 124th | 4th |
| Emily Hellmuth | 12 | 124th | 4th |

| BLOCKS/SET | Stat | Nat'l Rank | WCC Rank |
|----------------|------|------------|----------|
| Player | Stat | Rank | Rank |
| Vanessa Polk | 2.30 | 3rd | 1st |
| Meg Brown | 1.20 | 125th | 4th |
| Emily Hellmuth | 1.20 | 125th | 4th |

| TOTAL DIGS | Stat | Nat'l Rank | WCC Rank |
|-----------------|------|------------|----------|
| Player | Stat | Rank | Rank |
| Riley Patterson | 40 | 171st | 3rd |

| DIGS/SET | Stat | Nat'l Rank | WCC Rank |
|-----------------|------|------------|----------|
| Player | Stat | Rank | Rank |
| Riley Patterson | 4.00 | 122nd | 2nd |

2022 WIN-LOSS RECORD BY...

| | |
|---------------|-----|
| Overall | 2-1 |
| Home | 0-0 |
| Away | 0-1 |
| Neutral Sites | 2-0 |

| | |
|----------------------|-----|
| vs. Ranked Opponents | 0-1 |
| vs. Unranked | 2-0 |
| vs. WCC | 0-0 |
| vs. Non-Conference | 2-0 |

| | |
|-------------------|-----|
| Three-Set Matches | 1-1 |
| Four-Set Matches | 1-0 |
| Five-Set Matches | 0-0 |

| | |
|-----------------|-----|
| Winning Set One | 1-0 |
| Losing Set One | 1-1 |

| | |
|-----------------|-----|
| Winning Set Two | 2-0 |
| Losing Set Two | 0-1 |

| | |
|-------------------|-----|
| Winning Set Three | 2-0 |
| Losing Set Three | 0-1 |

| | |
|------------------|-----|
| Winning Set Four | 1-0 |
| Losing Set Four | 0-0 |

| | |
|----------|-----|
| Up 2-0 | 1-0 |
| Down 0-2 | 0-1 |
| Tied 1-1 | 1-0 |

| | |
|----------------------------|-----|
| Pepperdine leads in Hit. % | 2-0 |
| Opponents leads in Hit. % | 0-1 |

| | |
|---------------------------|-----|
| Pepperdine Has More Kills | 1-0 |
| Opponent Has More Kills | 0-1 |
| Kills Are Equal | 1-0 |

| | |
|--------------------------|-----|
| Pepperdine Has More Aces | 2-1 |
| Opponent Has More Aces | 0-0 |
| Aces Are Equal | 0-0 |

| | |
|--------------------------|-----|
| Pepperdine Has More Digs | 1-1 |
| Opponent Has More Digs | 1-0 |
| Digs Are Equal | 0-0 |

| | |
|----------------------------|-----|
| Pepperdine Has More Blocks | 2-1 |
| Opponent Has More Blocks | 0-0 |
| Blocks Are Equal | 0-0 |

| | |
|--------------|-----|
| In August | 2-1 |
| In September | 0-0 |
| In October | 0-0 |
| In November | 0-0 |
| In December | 0-0 |

| | |
|-------------------------------|------|
| Longest Pepperdine Win Streak | 2 |
| Current Streak | L, 1 |

PEPPERDINE LEADERS...

Double-Doubles (Kills-Digs)

| Player | 2022 | Career |
|---------------------|------|--------|
| Grace Chillingworth | 1 | 1 |
| Rachel Ahrens | 0 | 10 |
| Kayleigh Hames | 0 | 4 |

Double-Doubles (Assists-Digs)

| Player | 2022 | Career |
|---------------|------|--------|
| Isabel Zelaya | 1 | 18 |

Double-Figure Kills

| Player | 2022 | Career |
|---------------------|------|--------|
| Grace Chillingworth | 1 | 18 |
| Meg Brown | 1 | 18 |
| Emily Hellmuth | 1 | 1 |
| Rachel Ahrens | 0 | 75 |
| Emma Ammerman | 0 | 10 |
| Kayleigh Hames | 0 | 6 |

20+ Kills

| Player | 2022 | Career |
|---------------------|------|--------|
| Rachel Ahrens | 0 | 14 |
| Grace Chillingworth | 0 | 1 |

30+ Kills

| Player | 2022 | Career |
|---------------|------|--------|
| Rachel Ahrens | 0 | 1 |

Double-Figure Digs

| Player | 2022 | Career |
|---------------------|------|--------|
| Trinity Stanger | 2 | 6 |
| Riley Patterson | 2 | 2 |
| Isabel Zelaya | 1 | 18 |
| Kayleigh Hames | 1 | 11 |
| Grace Chillingworth | 1 | 1 |
| Rachel Ahrens | 0 | 11 |

20+ Digs

| Player | 2022 | Career |
|-----------------|------|--------|
| Riley Patterson | 1 | 1 |

* For transfers, career totals only reflect their numbers at Pepperdine.

2022 MATCH-BY-MATCH LEADERS

| Date | Opponent | Results | Kills | Hit % (Min 7K) | Assists | Aces | Digs | Blocks |
|-------|--------------------|---------|---------------|------------------|-------------|-------------------|----------------|-----------|
| 8/26 | vs. Tulsa | W, 3-1 | Brown (17) | Shimaitis (.400) | Zelaya (46) | Chillingworth (2) | Patterson (21) | Polk (10) |
| 8/26 | vs. UTAMCC | W, 3-0 | Shimaitis (9) | Brown (.500) | Zelaya (27) | Brown (2) | Hames (10) | Polk (5) |
| 8/27 | at #1 Nebraska | L, 0-3 | Ahrens (9) | Hellmuth (.105) | Zelaya (23) | Brown (2) | Patterson (11) | Polk (8) |
| 9/1 | #9 Baylor | | | | | | | |
| 9/2 | UC Santa Barbara | | | | | | | |
| 9/3 | San Diego State | | | | | | | |
| 9/8 | vs Cal Poly | | | | | | | |
| 9/9 | at Washington | | | | | | | |
| 9/9 | vs. Northwestern | | | | | | | |
| 9/15 | at Minnesota | | | | | | | |
| 9/16 | vs. Washington St. | | | | | | | |
| 9/22 | at San Diego | | | | | | | |
| 9/24 | at BYU | | | | | | | |
| 9/27 | Gonzaga | | | | | | | |
| 10/1 | at San Francisco | | | | | | | |
| 10/6 | Pacific | | | | | | | |
| 10/8 | Saint Mary's | | | | | | | |
| 10/14 | at LMU | | | | | | | |
| 10/20 | at Portland | | | | | | | |
| 10/22 | at Gonzaga | | | | | | | |
| 10/27 | Santa Clara | | | | | | | |
| 10/29 | San Francisco | | | | | | | |
| 11/3 | at Saint Mary's | | | | | | | |
| 11/5 | at Pacific | | | | | | | |
| 11/11 | LMU | | | | | | | |
| 11/17 | BYU | | | | | | | |
| 11/19 | San Diego | | | | | | | |
| 11/22 | Portland | | | | | | | |

WAVES' SEASON/CAREER HIGHS

2022 SEASON HIGHS **#1 GRACE CHILLINGWORTH | SO | OH/OPP | 6-3** CAREER HIGHS
 15, vs. Tulsa (8/26/22) Kills 22, vs. San Diego (10/14/21)
 .138 (15-7-58), vs. Tulsa (8/26/22) Hit % (min. 7K)389 (9-2-18), vs. Pacific (11/6/21)
 3, vs. Tulsa (8/26/22) Blocks 3 (6x), last vs. Tulsa (8/26/22)
 2, vs. Tulsa (8/26/22) Assists 2, vs. Tulsa (8/26/22)
 2, vs. Tulsa (8/26/22) Aces 2 (2x), last vs. Tulsa (8/26/22)
 13, vs. Tulsa (8/26/22) Digs 13, vs. Tulsa (8/26/22)

2022 SEASON HIGHS **#2 ISABEL ZELAYA | SR | S/OPP | 6-0** CAREER HIGHS
 2, vs. Tulsa (8/26/22) Kills 5, at San Diego (11/13/21)
 2 (2x), last vs. A&M CC (8/26/22) Blocks 8, at Georgia (8/28/21)
 46, vs. Tulsa (8/26/22) Assists 66, vs. San Diego (10/14/21)
 Aces 3, vs. LMU (10/2/21)
 14, vs. Tulsa (8/26/22) Digs 17 (2x), last at San Diego (11/13/21)

2022 SEASON HIGHS **#4 KAYLEIGH HAMES | SR | OH | 6-0** CAREER HIGHS
 1, vs. Tulsa (8/26/22) Kills 14 (2x), last vs. California Baptist (9/5/19)
 Hit % (min. 7K)385 (7-2-13) vs. BYU (10/26/19)
 Blocks 3, at Santa Clara (4/2/21)
 2, vs. Tulsa (8/26/22) Assists 3 (2x), last vs. Pacific (2/16/21)
 Aces 2 (3x), last vs. BYU (10/16/21)
 12, vs. Tulsa (8/26/22) Digs 14 (3x), last at Santa Clara (4/3/21)

2022 SEASON HIGHS **#5 MASELINA TUUFULI | FR | OH | 6-0** CAREER HIGHS
 Kills
 Hit % (min. 7K)
 Blocks
 Assists
 Aces
 Digs

2022 SEASON HIGHS **#9 ROSEMARY ARCHER | FR | S | 6-0** CAREER HIGHS
 Kills
 Hit % (min. 7K)
 Blocks
 4, vs. A&M CC (8/26/22) Assists
 Aces
 Digs

2022 SEASON HIGHS **#10 EMILY HELLMUTH | FR | OH | 6-3** CAREER HIGHS
 15, vs. Tulsa (8/26/22) Kills
 .229 (15-7-35), vs. Tulsa (8/26/22) Hit % (min. 7K)
 5 (2x), last vs. Nebraska (8/27/22) Blocks
 Assists
 Aces
 1, vs. Nebraska (8/27/22) Digs

2022 SEASON HIGHS **#11 EMMA AMMERMAN | JR | OH | 6-3** CAREER HIGHS
 3, vs. A&M CC (8/26/22) Kills 16, vs. Saint Mary's (11/4/21)
 Hit % (min. 7K)667 (9-1-12), at Portland (10/23/21)
 3, vs. A&M CC (8/26/22) Blocks 7, vs. San Francisco (11/18/21)
 Assists 2, at Santa Clara (9/25/21)
 Aces 1 (3x), last vs. Santa Clara (11/20/21)
 2, vs. A&M CC (8/26/22) Digs 6, at Portland (3/12/21)

2022 SEASON HIGHS **#12 MEG BROWN | JR | MB | 6-3** CAREER HIGHS
 17, vs. Tulsa (8/26/22) Kills 17 (2x), last vs. Tulsa (8/26/22)
 .500 (8-1-14), vs. A&M CC (8/26/22) Hit % (min. 7K)600 (10-1-15), vs. Portland (9/28/21)
 5, vs. Tulsa (8/26/22) Blocks 8 (2x), last at Georgia (8/28/21)
 Assists 3, vs. UMBC (4/14/21)
 2 (2x), last vs. Nebraska (8/27/22) Aces 3 (4x), last at Portland (10/23/21)
 4, vs. Tulsa (8/26/22) Digs 8, at Gonzaga (10/21/21)

2022 SEASON HIGHS **#14 KENADIE PATTERSON | FR | MB | 6-5** CAREER HIGHS
 Kills
 Hit % (min. 7K)
 Blocks
 Assists
 Aces
 Digs

2022 SEASON HIGHS **#16 TRINITY STANGER | SO | L/DS |** CAREER HIGHS
 3, vs. Tulsa (8/26/22) Assists 4, vs. Cal Poly (9/12/21)
 Aces 3, vs. San Diego (10/14/21)
 13, vs. Tulsa (8/26/22) Digs 13, vs. Tulsa (8/26/22)

2022 SEASON HIGHS **#17 AVERY SHIMAITIS | FR | OH | 6-0** CAREER HIGHS
 9, vs. A&M CC (8/26/22) Kills
 .304 (9-2-23), vs. A&M CC (8/26/22) Hit % (min. 7K)
 2, vs. Tulsa (8/26/22) Blocks
 Assists
 Aces
 Digs

2022 SEASON HIGHS **#18 RACHEL AHRENS | GR | OH | 6-4** CAREER HIGHS
 9, vs. Nebraska (8/27/22) Kills 30, vs. Saint Mary's (11/4/21)
 .000 (9-9-25), vs. Nebraska (8/27/22) Hit % (min. 7K)531 (20-3-32), at San Francisco (9/27/18)
 2, vs. Nebraska (8/27/22) Blocks 6 (2x), last at San Diego (10/1/19)
 2, vs. Tulsa (8/26/22) Assists 3, vs. Pacific (10/4/18)
 1, vs. Tulsa (8/26/22) Aces 7, vs. San Diego State (9/4/21)
 5, vs. Tulsa (8/26/22) Digs 17, at Pacific (10/7/21)

2022 SEASON HIGHS **#19 RILEY PATTERSON | GR | L/DS | 5-7** CAREER HIGHS
 6, vs. Tulsa (8/26/22) Assists
 1, vs. Tulsa (8/26/22) Aces
 21, vs. Tulsa (8/26/22) Digs

2022 SEASON HIGHS **#20 VANESSA POLK | FR | MB | 6-2** CAREER HIGHS
 7, vs. A&M CC (8/26/22) Kills
 .429 (7-1-14), vs. A&M CC (8/26/22) Hit % (min. 7K)
 10, vs. Tulsa (8/26/22) Blocks
 Assists
 Aces
 2, vs. A&M CC (8/26/22) Digs

* For transfers, career highs only reflect their numbers at Pepperdine.

2022 COMBINED STATISTICS

2022 Pepperdine Women's Volleyball Pepperdine Combined Team Statistics (as of Aug 27, 2022) All matches

| RECORD: | OVERALL | HOME | AWAY | NEUTRAL |
|----------------|---------|------|------|---------|
| ALL GAMES | 2-1 | 0-0 | 0-1 | 2-0 |
| CONFERENCE | 0-0 | 0-0 | 0-0 | 0-0 |
| NON-CONFERENCE | 2-1 | 0-0 | 0-1 | 2-0 |

| # | Player | sp | Attack | | | | | Set | | Serve | | | re | Dig | | Blocking | | | | | | points |
|----|----------------------|----|--------|-------|----|-----|-------|-----|-------|-------|----|------|----|-----|-------|----------|----|-------|-------|----|-----|--------|
| | | | k | k/s | e | ta | pct | a | a/s | sa | se | sa/s | | dig | dig/s | bs | ba | total | blk/s | be | bhe | |
| 18 | Ahrens, Rachel | 3 | 10 | 3.33 | 12 | 33 | -.061 | 2 | 0.67 | 1 | 2 | 0.33 | 1 | 7 | 2.33 | 0 | 2 | 2 | 0.67 | 0 | 0 | 12.0 |
| 1 | Chillingworth, Grace | 10 | 27 | 2.70 | 15 | 105 | .114 | 2 | 0.20 | 2 | 2 | 0.20 | 0 | 27 | 2.70 | 0 | 4 | 4 | 0.40 | 0 | 0 | 31.0 |
| 10 | Hellmuth, Emily | 10 | 27 | 2.70 | 15 | 69 | .174 | 0 | 0.00 | 0 | 0 | 0.00 | 0 | 1 | 0.10 | 1 | 11 | 12 | 1.20 | 3 | 0 | 33.5 |
| 12 | Brown, Meg | 10 | 27 | 2.70 | 5 | 62 | .355 | 0 | 0.00 | 4 | 5 | 0.40 | 0 | 6 | 0.60 | 1 | 11 | 12 | 1.20 | 2 | 0 | 37.5 |
| 17 | Shimaitis, Avery | 7 | 16 | 2.29 | 6 | 46 | .217 | 0 | 0.00 | 0 | 0 | 0.00 | 0 | 0 | 0.00 | 0 | 4 | 4 | 0.57 | 0 | 0 | 18.0 |
| 20 | Polk, Vanessa | 10 | 14 | 1.40 | 6 | 44 | .182 | 0 | 0.00 | 0 | 0 | 0.00 | 0 | 4 | 0.40 | 5 | 18 | 23 | 2.30 | 0 | 0 | 28.0 |
| 11 | Ammerman, Emma | 5 | 3 | 0.60 | 5 | 14 | -.143 | 0 | 0.00 | 0 | 1 | 0.00 | 0 | 2 | 0.40 | 0 | 3 | 3 | 0.60 | 0 | 0 | 4.5 |
| 2 | Zelaya, Isabel | 10 | 2 | 0.20 | 1 | 9 | .111 | 96 | 9.60 | 0 | 2 | 0.00 | 0 | 27 | 2.70 | 0 | 5 | 5 | 0.50 | 2 | 1 | 4.5 |
| 4 | Hames, Kayleigh | 9 | 1 | 0.11 | 0 | 5 | .200 | 3 | 0.33 | 0 | 5 | 0.00 | 0 | 29 | 3.22 | 0 | 0 | 0 | 0.00 | 0 | 0 | 1.0 |
| 9 | Archer, Rosemary | 1 | 0 | 0.00 | 0 | 0 | .000 | 4 | 4.00 | 0 | 0 | 0.00 | 0 | 0 | 0.00 | 0 | 0 | 0 | 0.00 | 0 | 0 | 0.0 |
| 19 | Patterson, Riley | 10 | 0 | 0.00 | 0 | 0 | .000 | 12 | 1.20 | 1 | 4 | 0.10 | 1 | 40 | 4.00 | 0 | 0 | 0 | 0.00 | 0 | 0 | 1.0 |
| 16 | Stanger, Trinity | 9 | 0 | 0.00 | 0 | 1 | .000 | 4 | 0.44 | 0 | 1 | 0.00 | 1 | 28 | 3.11 | 0 | 0 | 0 | 0.00 | 0 | 0 | 0.0 |
| 14 | Patterson, Kenadie | 1 | 0 | 0.00 | 1 | 2 | -.500 | 0 | 0.00 | 0 | 0 | 0.00 | 0 | 0 | 0.00 | 0 | 0 | 0 | 0.00 | 0 | 0 | 0.0 |
| | TEAM | - | - | - | - | - | - | - | - | - | - | - | 0 | - | - | - | - | - | - | - | - | - |
| | PEPPERDINE | 10 | 127 | 12.70 | 66 | 390 | .156 | 123 | 12.30 | 8 | 22 | 0.80 | 3 | 171 | 17.10 | 7 | 58 | 36.0 | 3.60 | 7 | 1 | 171.0 |
| | Opponents | 10 | 126 | 12.60 | 67 | 390 | .151 | 115 | 11.50 | 3 | 28 | 0.30 | 8 | 164 | 16.40 | 2 | 53 | 28.5 | 2.85 | 3 | 3 | 157.5 |

| Team Statistics | PEP | OPP |
|----------------------|------|--------|
| ATTACK | | |
| Kills | 127 | 126 |
| Errors | 66 | 67 |
| Total Attacks | 390 | 390 |
| Attack Pct | .156 | .151 |
| Kills/Set | 12.7 | 12.6 |
| SET | | |
| Assists | 123 | 115 |
| Assists/Set | 12.3 | 11.5 |
| SERVE | | |
| Aces | 8 | 3 |
| Errors | 22 | 28 |
| Aces/Set | 0.8 | 0.3 |
| SERVE RECEPTIONS | | |
| Errors | 3 | 8 |
| Errors/Set | 0.3 | 0.8 |
| Attempts | 191 | 218 |
| Reception Pct | .984 | .963 |
| DEFENSE | | |
| Digs | 171 | 164 |
| Digs/Set | 17.1 | 16.4 |
| BLOCKING | | |
| Block Solo | 7 | 2 |
| Block Assist | 58 | 53 |
| Total Blocks | 36.0 | 28.5 |
| Blocks/Set | 3.6 | 2.8 |
| Block Errors | 7 | 3 |
| Ball handling errors | 1 | 3 |
| ATTENDANCE | | |
| Total | 0 | 8066 |
| Dates/Avg Per Date | 0/0 | 1/8066 |
| Neutral site #/Avg | 2/0 | |
| Current win streak | 0 | - |
| Home win streak | 0 | - |

| Date | Opponent | Score | Score by set | Att. |
|----------|-----------------------|-------|-------------------------|------|
| 08/26/22 | vs Tulsa | w 3-1 | 22-25,25-21,28-26,25-16 | 0 |
| 08/26/22 | vs A&M-Corpus Christi | w 3-0 | 25-20,25-13,25-22 | 0 |
| 08/27/22 | at Nebraska | L 0-3 | 24-26,19-25,22-25 | 8066 |

Record in 3-set matches: 1-1
Record in 4-set matches: 1-0
Record in 5-set matches: 0-0

2022 SEASON-CAREER STATISTICS

2022 Pepperdine Women's Volleyball Pepperdine Individual Season/Career Statistics (as of Aug 27, 2022) All matches

SEASON

CAREER

| ## | Player | sp | Attack | | | | | Set | | pts/s | sp | Attack | | | | | Set | | pts/s |
|------------|----------------------|----|--------|-------|----|-----|-------|-----|-------|-------|-----|--------|------|-----|------|-------|------|-------|-------|
| | | | k | k/s | e | ta | pct | a | a/s | | | k | k/s | e | ta | pct | a | a/s | |
| 18 | Ahrens, Rachel | 3 | 10 | 3.33 | 12 | 33 | -.061 | 2 | 0.67 | 4.00 | 373 | 1397 | 3.75 | 525 | 3328 | .262 | 30 | 0.08 | 4.47 |
| 1 | Chillingworth, Grace | 10 | 27 | 2.70 | 15 | 105 | .114 | 2 | 0.20 | 3.10 | 116 | 342 | 2.95 | 131 | 926 | .228 | 10 | 0.09 | 3.17 |
| 10 | Hellmuth, Emily | 10 | 27 | 2.70 | 15 | 69 | .174 | 0 | 0.00 | 3.30 | 10 | 27 | 2.70 | 15 | 69 | .174 | 0 | 0.00 | 3.30 |
| 12 | Brown, Meg | 10 | 27 | 2.70 | 5 | 62 | .355 | 0 | 0.00 | 3.70 | 187 | 442 | 2.36 | 138 | 952 | .319 | 26 | 0.14 | 3.02 |
| 17 | Shimaitis, Avery | 7 | 16 | 2.29 | 6 | 46 | .217 | 0 | 0.00 | 2.57 | 7 | 16 | 2.29 | 6 | 46 | .217 | 0 | 0.00 | 2.57 |
| 20 | Polk, Vanessa | 10 | 14 | 1.40 | 6 | 44 | .182 | 0 | 0.00 | 2.80 | 10 | 14 | 1.40 | 6 | 44 | .182 | 0 | 0.00 | 2.80 |
| 11 | Ammerman, Emma | 5 | 3 | 0.60 | 5 | 14 | -.143 | 0 | 0.00 | 0.80 | 172 | 325 | 1.89 | 161 | 853 | .192 | 4 | 0.02 | 2.13 |
| 2 | Zelaya, Isabel | 10 | 2 | 0.20 | 1 | 9 | .111 | 96 | 9.60 | 0.40 | 287 | 103 | 0.36 | 30 | 350 | .209 | 3018 | 10.52 | 0.72 |
| 4 | Hames, Kayleigh | 9 | 1 | 0.11 | 0 | 5 | .200 | 3 | 0.33 | 0.11 | 195 | 159 | 0.82 | 75 | 492 | .171 | 26 | 0.13 | 0.92 |
| 9 | Archer, Rosemary | 1 | 0 | 0.00 | 0 | 0 | .000 | 4 | 4.00 | 0.00 | 1 | 0 | 0.00 | 0 | 0 | .000 | 4 | 4.00 | 0.00 |
| 19 | Patterson, Riley | 10 | 0 | 0.00 | 0 | 0 | .000 | 12 | 1.20 | 0.10 | 10 | 0 | 0.00 | 0 | 0 | .000 | 12 | 1.20 | 0.10 |
| 16 | Stanger, Trinity | 9 | 0 | 0.00 | 0 | 1 | .000 | 4 | 0.44 | 0.00 | 115 | 0 | 0.00 | 1 | 4 | -.250 | 25 | 0.22 | 0.16 |
| 14 | Patterson, Kenadie | 1 | 0 | 0.00 | 1 | 2 | -.500 | 0 | 0.00 | 0.00 | 1 | 0 | 0.00 | 1 | 2 | -.500 | 0 | 0.00 | 0.00 |
| PEPPERDINE | | 10 | 127 | 12.70 | 66 | 390 | .156 | 123 | 12.30 | 17.10 | | | | | | | | | |
| Opponents | | 10 | 126 | 12.60 | 67 | 390 | .151 | 115 | 11.50 | 15.70 | | | | | | | | | |

| | Serve | | | Dig | | Blocking | | | | Serve | | | Dig | | Blocking | | | |
|----------------------|-------|------|----|-----|-------|----------|----|-------|------|-------|------|-----|-----|-------|----------|-----|-------|------|
| Player | sa | sa/s | se | dig | dig/s | bs | ba | total | b/s | sa | sa/s | se | dig | dig/s | bs | ba | total | b/s |
| Ahrens, Rachel | 1 | 0.33 | 2 | 7 | 2.33 | 0 | 2 | 2 | 0.67 | 154 | 0.41 | 274 | 470 | 1.26 | 13 | 204 | 217 | 0.58 |
| Chillingworth, Grace | 2 | 0.20 | 2 | 27 | 2.70 | 0 | 4 | 4 | 0.40 | 6 | 0.05 | 8 | 84 | 0.72 | 4 | 33 | 37 | 0.32 |
| Hellmuth, Emily | 0 | 0.00 | 0 | 1 | 0.10 | 1 | 11 | 12 | 1.20 | 0 | 0.00 | 0 | 1 | 0.10 | 1 | 11 | 12 | 1.20 |
| Brown, Meg | 4 | 0.40 | 5 | 6 | 0.60 | 1 | 11 | 12 | 1.20 | 32 | 0.17 | 50 | 107 | 0.57 | 17 | 147 | 164 | 0.88 |
| Shimaitis, Avery | 0 | 0.00 | 0 | 0 | 0.00 | 0 | 4 | 4 | 0.57 | 0 | 0.00 | 0 | 0 | 0.00 | 0 | 4 | 4 | 0.57 |
| Polk, Vanessa | 0 | 0.00 | 0 | 4 | 0.40 | 5 | 18 | 23 | 2.30 | 0 | 0.00 | 0 | 4 | 0.40 | 5 | 18 | 23 | 2.30 |
| Ammerman, Emma | 0 | 0.00 | 1 | 2 | 0.40 | 0 | 3 | 3 | 0.60 | 3 | 0.02 | 5 | 83 | 0.48 | 0 | 78 | 78 | 0.45 |
| Zelaya, Isabel | 0 | 0.00 | 2 | 27 | 2.70 | 0 | 5 | 5 | 0.50 | 28 | 0.10 | 79 | 584 | 2.03 | 7 | 139 | 146 | 0.51 |
| Hames, Kayleigh | 0 | 0.00 | 5 | 29 | 3.22 | 0 | 0 | 0 | 0.00 | 12 | 0.06 | 28 | 312 | 1.60 | 1 | 15 | 16 | 0.08 |
| Archer, Rosemary | 0 | 0.00 | 0 | 0 | 0.00 | 0 | 0 | 0 | 0.00 | 0 | 0.00 | 0 | 0 | 0.00 | 0 | 0 | 0 | 0.00 |
| Patterson, Riley | 1 | 0.10 | 4 | 40 | 4.00 | 0 | 0 | 0 | 0.00 | 1 | 0.10 | 4 | 40 | 4.00 | 0 | 0 | 0 | 0.00 |
| Stanger, Trinity | 0 | 0.00 | 1 | 28 | 3.11 | 0 | 0 | 0 | 0.00 | 18 | 0.16 | 20 | 217 | 1.89 | 0 | 0 | 0 | 0.00 |
| Patterson, Kenadie | 0 | 0.00 | 0 | 0 | 0.00 | 0 | 0 | 0 | 0.00 | 0 | 0.00 | 0 | 0 | 0.00 | 0 | 0 | 0 | 0.00 |
| PEPPERDINE | 8 | 0.80 | 22 | 171 | 17.10 | 7 | 58 | 36.0 | 3.60 | | | | | | | | | |
| Opponents | 3 | 0.30 | 28 | 164 | 16.40 | 2 | 53 | 28.5 | 2.85 | | | | | | | | | |