

TEMPLE

WOMEN'S BASKETBALL



ECU

February, 14 2026 | 2:00 PM ET
The Liacouras Center | Philadelphia, Pa.



2025-26 SCHEDULE

Date	Opponent	Time/Result
Nov. 3	George Mason	W, 94-85
Nov. 7	George Washington	W, 86-50
Nov. 11	at West Virginia	L, 61-89
Nov. 14	La Salle+	W, 75-54
Nov. 18	at Richmond	L, 57-72
Nov. 22	at Villanova+	L, 58-88
Nov. 28	Michigan State ²	L, 50-85
Nov. 30	Western Carolina ²	W, 84-64
Dec. 7	Drexel ¹	L, 52-57
Dec. 13	VCU	W, 88-63
Dec. 19	Coppin State	W, 59-39
Dec. 22	at Princeton	L, 77-87
Jan. 3	UTSA*	L, 47-57
Jan. 6	at Wichita State*	W, 70-50
Jan. 9	at Tulsa*	L, 82-94
Jan. 13	Tulane*	L, 58-71
Jan. 17	at ECU*	L, 65-81
Jan. 20	USF*	W, 86-83
Jan. 24	Charlotte*	W, 83-82
Jan. 28	at Rice*	L, 56-65
Jan. 31	at Tulane*	W, 67-65
Feb. 7	North Texas*	L, 69-66
Feb. 10	at UTSA*	L, 43-52
Feb. 14	ECU*	2:00 PM
Feb. 17	at Charlotte*	6:30 PM
Feb. 22	Memphis*	2:00 PM
Feb. 25	Rice *	7:00 PM
Feb. 28	at UAB*	3:00 PM
Mar. 3	at USF*	7:00 PM
Mar. 7	FAU*	2:00 PM
Mar. 10	American Conference	TBA

2025 AC Championship

Bartow Arena - BIRMINGHAM, AL.

All times Eastern

* AC game | + Big 5 game

1 Women's Big 5 Classic

2 Baha Mar Tournament

NEWS & NOTES

Temple fell to the UTSA Roadrunners, 52-43, on Tuesday night in San Antonio.

Saniyah Craig led the Owls with 13 points, going 4-for-11 from the field. She also grabbed 11 rebounds to record her third double-double of the season.

Kaylah Turner registered 12 points, shooting 5-for-14 from the field.

Temple finished with eight turnovers, its fewest in a game this season.

Both teams combined for just 12 points in the second quarter — Temple scored four and UTSA added eight. Temple's four points marked its fewest in a quarter since facing Charlotte in March of last season.

SCOUTING THE PIRATES

East Carolina comes to town on a three-game winning streak. The Pirates currently sit second in the American Athletic Conference with a 10-2 league record and are 18-7 overall.

Prior to the season, ECU was predicted to finish seventh out of the 13 teams in the American. That is where the Pirates finished last season, going 17-15 overall and 8-10 in conference play.

The Pirates are led by Kennedy Fauntleroy, who has totaled 338 points through 25 games this season, averaging a team-high 13.5 points per game.

Fauntleroy also leads the team in field goals made (128), three-pointers made (35), assists (114), turnovers (69), steals (70), and blocks (17). The last time she faced the Owls, she scored a season-high 27 points. She also set season highs in field goals made (11-for-18) and three-pointers (4-for-6) in ECU's 81-65 win over Temple on Jan. 17.

ECU is coming off a four-point win over Tulane, 65-61, in which three Pirates scored in double figures. They also limited the Green Wave to just one player in double digits.

TALE OF THE TAPE

Temple	Record	ECU
10-13	18-7	
7-3	Home Record	11-3
2-8	Away Record	5-3
1-2	Neutral Record	2-1
L2	Streak	W3

Head Coach Diane Richardson

Overall: 141-120, 9th year

At Temple: 61-54, 4th year

Per Game	'24-25 Team Stats	AAC	NCAA
66.7	Offense	4th	140th
62.5	Defense	3rd	124th
+4.2	Scoring Margin	2nd	125th
38.7%	FG% (O)	10th	253rd
39.8%	FG% (D)	9th	133rd
32.2%	3-Point % (O)	5th	134th
32.9%	3-Point % (D)	2nd	277th
73.7%	FT %	1st	98th
13.8	Rebounds (O)	8th	36th
25.0	Rebounds (D)	3rd	170th
38.8	Rebounds (T)	6th	74th
+0.8	Rebound Margin	6th	172nd
13.1	Assists	6th	173rd
3.3	Blocks	8th	131st
9.7	Steals	3rd	59th
+3.32	Turnover Margin	1st	67th

PROJECTED TEMPLE STARTERS

P	#	Name	Ht.	Cl.
F	91	Saniyah Craig	6-1	Jr.
F	8	Jaleesa Molina	6-2	Jr.
G	11	Tristen Taylor	5-5	Jr.
G	7	Kaylah Tuner	5-6	Jr.
G	10	Savannah Curry	5-10	So.

TEMPLE RESERVES

P	#	Name	Ht.	Cl.
G	0	Ariana Meriedy	6-2	Fr.
G	2	Briana Mead	5-8	So.
G	3	Kelian Cedano	5-9	So.
F	9	Felicia Jacobs	6-2	So.
F	18	Anastasia Bulanova	6-3	Fr.
F	24	Khloe Miller	6-3	R-Fr.
G	30	Drew Alexander	5-11	R-So.
F	34	Sheyenne Swain-Price	6-0	R-So.

TV AND LIVE STATS

TV
ESPN+

Radio
OwlSports.com

Luke Mell/Ray Dunne

Live Stats
Statbroadcast

SOCIAL MEDIA

	FACEBOOK	@templewbb
	INSTAGRAM	@templewbb
	TWITTER	@templewbb

COMMUNICATIONS

Branford Clay

Strategic Communications Coordinator

Branford.Clay@temple.edu
601-212-0240

Michael Wisienski

Strategic Communications Assistant

michael.wisienski@temple.edu
610-952-9837

2025-26 TEMPLE NUMERICAL ROSTER

#	NAME	YR	POS	HT	HOMETOWN/PREVIOUS
0	Ariana Meriedy	Fr.	F	6-2	Clinton, MD. / Riverdale Baptist
2	Brianna Mead	So.	G	5-7	Thompson, Conn. / Putnam Science Academy / LIU
3	Kelian Cedano	So.	G	5-10	Boston, Mass. / Putnam Science Academy /
7	Kaylah Turner	Jr.	G	5-6	Jacksonville, Fla. / Oakleaf / Alabama A&M
8	Jaleesa Molina	Jr.	F	6-3	The Hague, Netherlands / Landslake
9	Felicia Jacobs	So.	F	6-3	London, Eng. / City of London Academy Southwark
10	Savannah Curry	So.	G	5-11	Fallston, Md. / Westtown School
11	Tristen Taylor	Jr.	G	5-5	Dallas, Texas / Duncanville High School
18	Anastasia Bulanova	Fr.	F	6-3	Novosibirsk, Russia / / BC Enisey
24	Khloe Miller	R-Fr.	F	6-3	Raleigh, N.C. / Wake Young Women's Leadership Academy / ECU
30	Drew Alexander	So.	G	5-11	Durham, N.C. / Shabach Christian Academy
34	Sheyenne Swain-Price	R-So.	F	6-0	Stoughton, MA. / Dexter Southfield School
91	Saniyah Craig	Jr.	F	6-1	Phoenix, AZ / Arizona Compass / Jacksonville Univ.s

2025-26 TEMPLE ALPHABETICAL ROSTER

#	NAME	YR	POS	HT	HOMETOWN/PREVIOUS SCHOOL
18	Anastasia Bulanova	Fr.	F	6-3	Novosibirsk, Russia / / BC Enisey
0	Ariana Meriedy	Fr.	F	6-2	Clinton, MD. / Riverdale Baptist
2	Brianna Mead	So.	G	5-7	Thompson, Conn. / Putnam Science Academy / LIU
30	Drew Alexander	So.	G	5-11	Durham, N.C. / Shabach Christian Academy
9	Felicia Jacobs	So.	F	6-3	London, England / City of London Academy Southwark
8	Jaleesa Molina	Jr.	F	6-3	The Hague, Netherlands / Landslake
7	Kaylah Turner	Jr.	G	5-6	Jacksonville, Fla. / Oakleaf / Alabama A&M
3	Kelian Cedano	So.	G	5-10	Boston, Mass. / Putnam Science Academy /
24	Khloe Miller	R-Fr.	F	6-3	Raleigh, N.C. / Wake Young Women's Leadership Academy / ECU
91	Saniyah Craig	Jr.	F	6-1	Phoenix, AZ / Arizona Compass / Jacksonville University
10	Savannah Curry	So.	G	5-11	Fallston, Md. / Westtown School
34	Sheyenne Swain-Price	R-So.	F	6-0	Stoughton, MA. / Dexter Southfield School
11	Tristen Taylor	Jr.	G	5-5	Dallas, Texas / Duncanville High School

QUICK FACTS

TEMPLE UNIVERSITY

LocationPhiladelphia, Pa.
 Founded1884
 Enrollment33,606
 President..... John Fry
 VP/Debbie & Stanley Lefkowitz '65 Director of
 Athletics.....Arthur Johnson
 Nickname Owls
 Mascot..... Hooter
 Colors Cherry (201c) and White
 Affiliation.....NCAA Division I
 Conference American Athletic
 Home Court Liacouras Center (10,000)
 Website www.owlsports.com
 Twitter.....@templewbb
 Instagram.....@templewbb

HISTORY

First Year of Competition..... 1923-24
 Record 921-774
 NCAA Appearances 11 (last time 2017)
 NCAA Record 5-11
 WNIT Appearances..... 6
 WNIT Record 12-7

COACHING & SUPPORT STAFF

Head CoachDiane Richardson (Frostburg State '82, CMU '84)
 Associate Head Coach..... Wanisha Smith (Duke '07)
 Assistant Coach.....Myles Jackson (Towson '18)
 Assistant Coach.....Cheyenne Curley (Howard '13, '18)
 Assistant Coach.....Shenita Landry (Temple'09)
 Assistant Coach.....Aaron Thomas
 Director of Operations.....LaKaitlin Wirght
 Asst. Director of Operations.Shelby Bailey-Smiley
 Strength Coach.....Tim Teefy
 Athletic Trainer.....Emily Stein
 CommunicationsBranford Clay
 Sport Admin./SWA.....Kristy Bannon

PRO-NUN-SEE-AY-SHUNS

Saniyah - Sa-Ni-Yah
 Anastasia - Ana-stas-ia
 Kelian- Kil - ian
 Meriedy - MARE-uh-Dee

2025-26 TEMPLE ROSTER INFORMATION

BY STATE

Arizona(1)Saniyah Craig
 Conneticut(1).....Brianna Mead
 England (1).....Felicia Jacobs
 Florida (1) Kaylah Turner
 Maryland (2)..... Savannah Curry
Ariana Meriedy
 Massachusetts (2) Kelian Cedano
Sheyenne Swain-Price
 North Carolina (2)..... Drew Alexander
 Khloe Miller
 Netherlands (1)..... Jaleesa Molina
 Russia(1).....Anastasia Bullanova
 Texas (1)..... Tristen Taylor

BY CLASS

Freshmen (3) Khloe Miller
Anastasia Bulanova
 Ariana Meriedy
 Sophomores (6) Drew Alexander
 Kelian Cedano
Savannah Curry
 Felicia Jacobs
 Sheyenne Swain Price
 Brianna Mead
 Juniors (4)
Kaylah Turner
Jaleesa Molina
Saniyah Craig
Tristen Taylor

BY HEIGHT

6-3 (3)Jaleesa Molina
Anastasia Bulanova
 Khloe Miller
 6-1 (2) Saniyah Graig
 Anissa Rivera
 6-0 (1).....Sheyenne Swain-Price
 5-11 (2) Drew Alexander
Savannah Curry
 5-10 (1) Kelian Cedano
 5-7 (1) Brianna Mead
 5-6 (1) Kaylah Turner
 5-5 (1) Tristen Taylor

NEWS AND NOTES

THE ASSITER

- * Tristen Taylor leads the conference in assist-to-turnover ratio (1.98).
- * Taylor led the conference last season in assist-to-turnover ratio (2.40), finishing 55th nationally.
- * Taylor finished sixth in the American in assists per game last season with 3.6 and currently ranks fifth this season at 4.3 per game.

BANKING FROM BEYOND

- *Kaylah Turner ranks among the top 50 players nationally and top-five in the conference in the following categories:
- *Three-Point Percentage (34th): 41.6%
- *Three-Pointers Made (49th): 62
- *Three-Pointers Per Game (41th): 2.70

GRABBING BOARDS

- *The Owls picked up 54 rebounds against La Salle on Friday which was the most rebounds since against Tulane last year.
- *The Owls had 36 defensive rebounds while grabbing 18 offensive rebounds against La Salle.
- *Saniyah Craig and Jaleesa Molina both had eight defensive rebounds against La Salle.
- *The Owls outrebounded La Salle by 20 rebounds in the 75-54 win.

SEEING DOUBLE

- *Saniyah Craig and Jaleesa Molina both had double-doubles for the second time this season against La Salle.
- *Saniyah Craig recorded 11 rebounds and 11 points on Friday against La Salle.
- *Jaleesa Molina added 11 points and 10 rebounds in the matchup against La Salle.

KNOW YOUR ROLE

- *Drew Alexander tied a career-high 13 pts and had a career-high 7 rebounds against George Washington.
- *Kelian Cedano had a career-high 10 points in 20 minutes of action on Monday against George Mason.
- *Drew Alexander recorded a career-high 13 points in 11 minutes of action, going 5-8 from the field against George Mason on Monday.

UNDER NEW LEADERSHIP

- *Jaleesa Molina, Tristen Taylor and Kaylah Turner named captains this year.
- *Taylor and Molina are the only returning starters from the 2024-25 team.
- *Taylor averaged 6.7 points per game (ppg) and 3.6 (led the team) assists per game
- *Molina Averaged 7.4 PPG and 7 REB per game with a 52.5% field goal percent
- *Turner played in 31 games, starting in two, and averaged 10.1 points per game—third highest on the team—while shooting 41% from the field and 37% from three.

SHE'S A REBOUNDER

- *Saniyah Craig dedicated her number 91 because of Dennis Rodman

TRENDS

At home	7-3
On the Road.....	2-8
On a Neutral Court.....	1-2
When Leading at Halftime	7-3
When Trailing at Halftime	2-10
When Tied at Halftime	0-1
In Overtime	2-0
At Night (5p.m. or later local time)	6-8
During the Day.....	4-5
When Outrebounding Opponent.....	8-5
When Outrebounded	2-7
When Tied in Rebounds	0-0
When Shooting Better than Opponent.....	8-4
When Shooting Worse than Opponent	2-9
When Shooting the Same as Opponent	0-1
When Scoring 59 points or less	1-8
When Scoring 60-69 Points	1-2
When Scoring 70-79 Points	2-1
When Scoring 80+ points.....	6-1
In Games Decided by 3 Points or Less.....	3-2
In Games Decided by 4-9 Points	1-3
In Games Decided by 10-19 Points	1-4
In Games Decided by 20+ Points	2-3
Following a Win	3-7
Following a Loss	7-5
In November	4-5
In December	2-1
In January	4-5
In February	0-2
In March	0-0
Current Streak.....	L2
Longest Winning Streak	W2
Longest Losing Streak	L3
Smallest Margin of Victory	1 pts, Charlotte
Largest Margin of Victory	36 pts, GW
Smallest Margin of Defeat.....	3 pts, UTSA/UNT
Largest Margin of Defeat	35 pts, Michigan St.

NEWS AND NOTES

- *Craig finished the 2024-25 ranked 9th in the country in rebounding.
- *Craig ranked 2nd nationally in offensive rebounds per game.
- *She set a Jacksonville single-game record with 23 rebounds.

KAY YOW SERVANT LEADER

- *This year the award spans 22 conferences, all divisions - DI, DII, DIII and JUCO. Provided. Below is a list of the Award Winners in your conference who will be distinguished as a Servant Leader through a patch they will each wear on their jersey during the season of their selection.
- *TEMPLE UNIVERSITY: TRISTEN TAYLOR

TURNER TIME

- *In the 2024–25 season, Turner was named the AAC Sixth Player of the Year and earned a spot on the AAC All-Newcomer Team.
- *She played in 31 games, starting in two, and averaged 10.1 points per game, third highest on the team—while shooting 41% from the field and 37% from three.
- *Turner scored a career-high 25 points against FAU and recorded her first collegiate double-double with 22 points and a career-best 11 rebounds against Tulane.

TOP OF THE PACK

- *Temple ranked first in Free Throw Percentage and Turnover Margin.
- *The Owls ranked second in Steals per Game and Turnovers Forced per Game, and fourth in Scoring Defense.
- *The Owls ranked between fourth and sixth in Scoring Margin, Winning Percentage, Rebounding, and Assist/Turnover Ratio.

IT'S ABOUT HEIGHT

- *In the 2025 Signing class 4 out of 5 new Owls all have heights over 6 ft.
- Saniyah Craig - 6'1"
- Khloe Miller- 6'3"
- Ari Meriedy - 6'2"
- Anastasia Bulanova - 6'3"

FRESHMAN WITH EXPERIENCE

- *Anastasia Bulanova is a 6'1" forward from Novosibirsk, Russia, and a key player for BC Enisey.
- *She competed in both Russia's Major League and the Premier League.
- *Her breakout season came in 2022–2023, when she averaged 16.8 points, 12.1 rebounds, and over 2 blocks and steals per game.
- *That season, she led Enisey to a championship title and earned Major League MVP honors.
- *In 2023–2024, Bulanova elevated her play, averaging 20.3 points and 11.2 rebounds.
- *She was named league MVP for the second consecutive year, helping Enisey to a third-place finish.

NEW FACES IN THE 215

- *Ariana Meriedy – Played in 65 games at Riverdale Baptist, averaging 11.3 points and 6.2 rebounds per game.

2025-26 SEASON HONORS

2025-26 AMERICAN ATHLETIC CONFERENCE ALL-PRESEASON

Player	School
Carla Brito, Sr., F,	South Florida

2025-26 AC PLAYER OF THE WEEK

Player	Date
Tristen Taylor	1/26/26

2025-26 PHILLYCOLLEGE SPORTS PLAYER OF THE WEEK

Player	Date
--------	------

CO-PLAYER OF THE WEEK

WEEKLY HONOR ROLL

TEMPLE ATHLETICS ATHLETE OF THE MONTH

Player	Date
Jaleesa Molina	11/10/25
Kaylah Turner	12/1/25
Tristen Taylor	1/26/26

AMERICAN PRESEASON PLAYER OF THE YEAR

Player	School
Carla Brito, Sr., F,	South Florida

AMERICAN PRESEASON FIRST TEAM

Player	School
Dominique Ennis, Sr., G,	Rice
Carla Brito, Sr., F,	South Florida*
L'or Mputu, Gr., F,	South Florida
Kaylah Turner, Jr., G,	Temple

AMERICAN PRESEASON SECOND TEAM

Player	School
Aniah Alexis, So., G,	Rice
Victoria Flores, Jr., G,	Rice
Amira Mabry, Sr., F,	Tulane
Kendall Sneed, So., G,	Tulane
Mady Cartwright, Jr., G,	Tulsa

NEWS AND NOTES

- *Brianna Mead – Averaged 30.3 minutes, 8.8 points, 2.2 rebounds and 1.6 assists per game at LIU, while shooting 37.2% from the field, 34.6% from 3-point range and 76.5% from the free-throw line.
- *Khloe Miller – Redshirted her freshman season at ECU.
- *Anastasia Bullanova – Averaged 16.8 points, 12.1 rebounds and more than two blocks and steals per game, leading BC Enisey to a championship title.
- *Saniyah Craig – Ranked ninth nationally in rebounds per game and second in offensive rebounds per game, while averaging 11.3 points and 11.4 rebounds at Jacksonville.

HIGH SCHOOL BESTIES

- *Brianna Mead and Kelian Cedano both attended Putnam Science Academy

WINNING WAYS

- *Temple put together a seven-game winning streak from February 11 to March 10—their longest since 2016–17—and notched five straight double-digit victories during that span, a feat last accomplished in 2011–12.
- *The Owls also claimed their first Big 5 title since 2019–20 and their first outright Big 5 championship since 2016–17.

YEAR FOUR OF COACH RICH

- *Head coach Diane Richardson enters her fourth season at Temple.
- *Last season, Coach Rich led the Owls to a 13-5 record in conference play, earning the Owls achieved back-to-back 13-win seasons in conference play for the first time since 2015–16 and 2016–17, and their 6-1 start matched the best AAC start in program history (2016–17).

YEAH! YEAH!

- *Temple tends to wear pregame warmups that are emblazoned with "Yeah! Yeah!" a battle-cry from Coach Richardson used on many occasions.

FUNKY COLD MOLINA

- *Jaleesa Molina is believed to be the first number 8 in Temple women's basketball history.

WNBA CONNECTIONS

- *Temple alumnus Shey Peddy spent four seasons with the Phoenix Mercury, including a run to the WNBA Finals in 2021. Peddy set a career high in 2022, averaging 9.9 points per game and starting in 24 contests. She also had a stint with the Los Angeles Sparks and Indiana Fever during the 2025 season.
- * WNBA superstar Jonquel Jones of the New York Liberty is the daughter of Coach Diane Richardson. The Liberty defeated the Minnesota Lynx in the 2024 WNBA Finals, with Jones earning WNBA Finals MVP honors.
- * Coach Richardson attended several games during the playoff run, including the Game 5 victory in the Finals. With a regular season MVP trophy also to her name, Jones has accomplished a great deal in her seven professional seasons.
- *2021 WNBA Finals MVP Kahleah Copper (Phoenix Mercury) is a friend

2025-26 AMERICAN PRESEASON POLL

Rank	School (First Place Votes)	Points
1.	South Florida (11)	143
2.	UTSA (1)	119
3.	Rice (1)	113
4.	Temple	107
5.	Tulane	104
6.	North Texas	95
7.	East Carolina	82
8.	Tulsa	72
9.	Memphis	52
10.	Charlotte	50
11.	UAB	38
12.	Wichita State	23
13.	Florida Atlantic	16

SUPERLATIVES

2025-26 Double-Doubles

Date/Opp.	Player	Stat
11/3/ George Mason	Saniyah Craig	16 pts, 15 reb
11/3/ George Mason	Jaleesa Molina	12 pts, 10 reb
11/14/ La Salle	Saniyah Craig	11 pts, 11 reb
11/14/ La Salle	Jaleesa Molina	11 pts, 10 reb
11/18/ Richmond	Jaleesa Molina	11 pts, 11 reb
12/13/ VCU	Jaleesa Molina	11 pts, 10 reb
12/19/ Coppin State	Jaleesa Molina	10 pts, 13 reb
1/13/ Tulane	Jaleesa Molina	20 pts, 10 reb

2025-26 Double-Digit Rebounds

Date/Opp.	Player	Stat
11/3/ George Mason	Saniyah Craig	16 pts, 15 reb
11/3/ George Mason	Jaleesa Molina	12 pts, 10 reb
11/14/ La Salle	Saniyah Craig	11 pts, 11 reb
11/14/ La Salle	Jaleesa Molina	11 pts, 10 reb
11/14/ La Salle	Jaleesa Molina	11 pts, 10 reb
11/18/ Richmond	Jaleesa Molina	11 pts, 11 reb
12/13/ VCU	Jaleesa Molina	11 pts, 10 reb
12/19/ Coppin State	Jaleesa Molina	10 pts, 13 reb
1/3/ UTSA	Saniyah Craig	8 pts, 11 reb
1/13/ Tulane	Jaleesa Molina	20 pts, 10 reb
1/31/ Tulane	Jaleesa Molina	9 pts, 13 reb
2/10/ UTSA	Saniyah Craig	13 pts, 11 reb

2025-26 Double-Digit Assists

Date/Opp.	Player	Stat
-----------	--------	------

TEMPLE'S RECORD WHEN... (2025-26 SEASON)

At home	7-3	Shooting 70% or better FTs	5-6
On the road	2-8	Shooting under 70% FTs	5-7
At a neutral site	1-2	Opp. shoots 70% or better FTs	5-9
		Opp. shoots under 70% FTs	5-4
Playing in November	4-4	Shooting 40% or better 3PTs	5-2
Playing in December	2-2	Shooting under 40% 3PTs	5-11
Playing in January	4-5	Opp. shoots 40% or better 3PTs	3-6
Playing in February	0-2	Opp. shoots under 40% 3PTs	7-7
Playing in March	0-0		
Playing on Monday	1-0	Out-rebounding its opponent	8-5
Playing on Tuesday	2-3	Out-rebounded by opponent	2-8
Playing on Wednesday	0-1	Same in rebounding	0-0
Playing on Thursday	0-0		
Playing on Friday	3-3	Has more turnovers	4-7
Playing on Saturday	3-4	Has fewer turnovers	6-4
Playing on Sunday	1-1	Has equal turnovers	0-1
Wearing white	5-5	Has more steals	8-4
Wearing cherry	5-8	Has fewer steals	2-7
Wearing black	0-0	Has equal steals	0-2
Wearing gray	0-0		
Coming off a win	4-7	Has more blocks	1-3
Coming off a loss	6-5	Has fewer blocks	8-10
		Has equal blocks	0-1
Scoring first	8-6	No Owls score in double figures	0-0
Leading entering 4th quarter	8-1	Five Owls score in double figures	0-0
Trailing entering 4th quarter	2-11	More than five in double figures	1-0
Tied entering 4th quarter	0-1	All starters score in double figures	0-0
In overtime games	2-0	Highest Scoring Quarter	
Margin is 3 points or less	3-2	1Q	18
Margin is between 3-10 points	1-3	2Q	26
Margin is more than 10	6-8	3Q	30
		4Q	32
Scoring 65 or more points	9-4	Lowest Scoring Quarter	
Scoring fewer than 65 points	1-9	1Q	8
		2Q	4
Scoring 100+ points	0-0	3Q	9
Scoring 90-99 points	1-0	4Q	10
Scoring 80-89 points	6-1	Opponent's Highest Scoring Quarter	
Scoring 70-79 points	1-1	1Q	27
Scoring 60-69 points	0-3	2Q	31
Scoring 50-59 points	1-6	3Q	29
Scoring less than 50 points	0-2	4Q	28
Opp. scores 100+ points	0-0	Opponent's Lowest Scoring Quarter	
Opp. scores 90-99 points	1-1	1Q	6
Opp. scores 80-89 points	3-5	2Q	5
Opp. scores 70-79 points	1-2	3Q	10
Opp. scores 60-69 points	2-2	4Q	6
Opp. scores 50-59 points	3-2	Largest Halftime/Final Score	
Opp. scores less than 50 points	1-0	Half	44
Shooting 40% or better	7-4	Final	94
Shooting under 40%	3-9	Lowest Halftime/Final Score	
Opp. shoots 40% or better	2-8	Half	18
Opp. shoots under 40%	8-4	Final	43
Out-shooting its opponent	8-0	Opponent's Largest Halftime/Final Score	
Out-shot by opponent	2-7	Half	53
Equal shooting	0-2	Final	94
		Opponent's Lowest Halftime/Final Score	
		Half	13
		Final	39

SUPERLATIVES

2025-26 Double-Digit Points

Date/Opp.	Player	Stat
11/3/ George Mason	Saniyah Craig	16 pts
11/3/ George Mason	Jaleesa Molina	12 pts
11/3/ George Mason	Tristen Taylor	19 pts
11/3/George Mason	Kaylah Turner	12 pts
11/3/ George Mason	Drew Alexander	13 pts
11/3/ George Mason	Kelian Cedano	10 pts
11/7/ George Washington	Jaleesa Molina	15 pts
11/7/ George Washington	Kaylah Turner	14 pts
11/7/ George Washington	Drew Alexander	13 pts
11/7/ George Washington	Tristen Taylor	11 pts
11/11/ West Virginia	Kaylah Turner	23 pts
11/11/ West Virginia	Tristen Taylor	11 pts
11/11/ West Virginia	Drew Alexander	11 pts
11/14/ La Salle	Kaylah Turner	12 pts
11/14/ La Salle	Saniyah Craig	11 pts
11/14/ La Salle	Jaleesa Molina	11 pts
11/14/ La Salle	Kelian Cedano	11 pts
11/18/ Richmond	Kaylah Turner	22 pts
11/18/ Richmond	Jaleesa Molina	11 pts
11/22/ Villanova	Tristen Taylor	15 pts
11/22/ Villanova	Felicia Jacobs	10 pts
11/28/ Michigan St.	Kaylah Turner	10 pts
11/28/ Michigan St.	Saniyah Craig	11 pts
11/30/ Western Carolina	Kaylah Turner	23 pts
11/30/ Western Carolina	Jaleesa Molina	12 pts
11/30/ Western Carolina	Savannah Curry	11 pts
12/7/ Drexel	Kaylah Turner	16 pts
12/7/ Drexel	Jaleesa Molina	10 pts
12/13/ VCU	Kaylah Turner	29 pts
12/13/ VCU	Savannah Curry	16 pts
12/13/ VCU	Jaleesa Molina	11 pts
12/13/ VCU	Brianna Mead	11 pts
12/19/ Coppin State	Kelian Cedano	12 pts
12/19/ Coppin State	Drew Alexander	12 pts
12/19/ Coppin State	Kaylah Turner	11 pts
12/19/ Coppin State	Jaleesa Molina	10 pts
12/21/ Princeton	Kaylah Turner	36 pts
12/21/ Princeton	Jaleesa Molina	12 pts
1/3/ UTSA	Tristen Taylor	18 pts
1/3/ UTSA	Drew Alexander	11 pts
1/6/ Wichita State	Kaylah Turner	13 pts
1/6/ Wichita State	Saniyah Craig	13 pts
1/6/ Wichita State	Jaleesa Molina	13 pts
1/6/ Wichita State	Tristen Taylor	11 pts
1/9/ Tulsa	Tristen Talyor	31 pts
1/9/ Tulsa	Drew Alexander	27 pts
1/9/ Tulsa	Saniyah Craig	14 pts
1/13/ Tulane	Jaleesa Molina	20 pts
1/13/ Tulane	Drew Alexander	11 pts
1/13/ Tulane	Saniyah Craig	10 pts
1/13/ Tulane	Kaylah Turner	10 pts
1/17/ ECU	Kaylah Turner	17 pts
1/17/ ECU	Saniyah Craig	14 pts
1/17/ ECU	Jaleesa Molina	11 pts
1/17/ ECU	Tristen Taylor	16 pts
1/23/ USF	Kaylah Turner	23 pts
1/23/ USF	Saniyah Craig	22 pts
1/23/ USF	Jaleesa Molina	19 pts
1/23/ USF	Tristen Taylor	16 pts
1/24/ Charlotte	Tristen Taylor	32 pts
1/24/ Charlotte	Kaylah Turner	17 pts
1/28/ Rice	Kaylah Turner	16 pts
1/28/ Rice	Saniyah Craig	14 pts
1/28/ Rice	Jaleesa Molina	13 pts
1/31/ Tulane	Kaylah Turner	27 pts
1/31/ Tulane	Saniyah Craig	16 pts
2/7/ North Texas	Savannah Curry	14 pts
2/7/ North Texas	Saniyah Craig	10 pts
2/10/ UTSA	Kaylah Turner	12 pts
2/10/ UTSA	Saniyah Craig	13 pts



HEAD COACH DIANE RICHARDSON

Diane Richardson was named the 21st head women's basketball coach of Temple University on April 5, 2022.

Richardson, who led Towson to more postseason appearances (2) in her five years at the helm than in the program's previous 49 seasons of existence (1), owns an 80-66 overall head coaching record at Towson. In 2021-22, she led Towson to a school record 24 wins and only its second berth in the Women's National Invitation Tournament (WNIT).

In 2018-19, her second season as Towson's head coach, Richardson led the Tigers to the Colonial Athletic Association Tournament Championship and the program's first NCAA Tournament berth in program history. Towson finished that season with a 20-13 overall record, marking just the second 20-win season in program history.

Under Richardson, Towson's Kionna Jeter became the first player in program history to be selected in the WNBA Draft when she was drafted in the third round of the 2021 draft. Jeter enjoyed sustained success under Richardson's guidance as she was also the first player in program history to earn three consecutive All-CAA first team selections.

Before Towson, Richardson worked as an assistant coach and recruiting coordinator at West Virginia University (2016-17) following coaching stints at George Washington University (2012-16), the University of Maryland (2007-08), and American University (2006-07). As the recruiting coordinator at West Virginia, Richardson led the efforts which helped the Mountaineers' 2017 recruiting class being ranked No. 17 by ESPNW.

At Maryland, she helped lead the Terrapins to a 33-4 record and a number one seed in the NCAA Tournament. In eight years of head coaching experience at the high school level, Richardson led Riverdale Baptist High School in Upper Marlboro, Md. to five National Championships and was ranked in USA Today's Top 10 in five of her eight years. Richardson was named the National High School Coach of the Year in 2005 and coached a host of talented players including Temple alum Tyonna Williams, a 1,000-point career scorer.

From 2009-2016, Richardson coached WNBA All-Star Jonquel Jones at Riverdale Baptist (2009-12) and again at George Washington (2012-16). Jones was selected sixth overall in the 2016 WNBA Draft after being one of the most decorated players in George Washington's history.

Richardson's path to coaching was a unique one. A highly successful businesswoman who was named one of the top female executives in the country in 1995, Richardson, who at the time was the Founder and COO of American Security Corporation, decided to walk away from corporate America to pursue her passion for mentoring young women through coaching basketball.

Richardson earned her master's degree in management from Central Michigan in 1984 and holds a bachelor's degree in psychology and sociology from Frostburg State. As the 1979 NCAA Regional Champion in the 200- and 400-meter races, she earned a spot on the 1980 U.S. Olympic team.

Richardson and her husband, Larry, have four children – Dana, Larry "Donnie" II, Jonquel and Michael.

THE COACH RICH REPORT

PERSONAL

Year Coaching: 24th
College: Frostburg State '82,
Central Michigan '84
Hometown: Bowie, Md

PLAYING CAREER

Frostburg State (1976-80)

COACHING ACCOLADES

2019 CAA Coach of the Year
2019 ECAC Coach of the Year

COACHING EXPERIENCE

Temple University (2022-present)
Head Coach, rd season

Season	Overall	Postseason
2024-25	20-11	---
2023-24	20-12	---
2022-23	11-18	---
Totals	51-40	

Towson University (2017-2022)
Head Coach, 5 seasons

Season	Overall	Postseason
2021-22	24-8	WNIT (First)
2020-21	13-9	—
2019-20	14-15	—
2018-19	20-13	NCAA (First)
2017-18	9-21	—
Totals	80-66	

West Virginia University (2016-2017)
Assistant Coach, 1 season

Season	Overall	Postseason
2016-17	24-11	Second Round

George Washington University (2012-2016)
Assistant Coach, 4 seasons

Season	Overall	Postseason
2015-16	26-7	First Round
2014-15	29-4	First Round
2013-14	23-11	WNIT (Round of 8)
2012-13	14-16	—

Riverdale Baptist (2009-2012)
Head Coach, 3 seasons

Season	Overall	Postseason
2011-12	34-4	Playoffs
2010-11	26-12	Playoffs
2009-10	18-13	Playoffs

University of Maryland (2007-2008)
Assistant Coach, 1 season

Season	Overall	Postseason
2007-08	33-4	Elite Eight

American University (2006-2007)
Assistant Coach, 1 season

Season	Overall	Postseason
2006-07	13-19	-



AMERICAN CONFERENCE WOMEN'S BASKETBALL REPORT FRIDAY, FEBRUARY 13

Contact: Ian Applegate, Director for Communications
iapplegate@theamerican.org • 469.840.3136 • @Ian_Applegate
545 East John Carpenter Freeway, Third Floor • Irving, TX 75062 • @American_Conf

2025-26 STANDINGS

SCHOOL	AMERICAN		OVERALL		W-L	PCT	H	A	N	STREAK
	W-L	PCT								
Rice	11-0	1.000	21-3	.875	11-0	8-2	2-1			W16
East Carolina	10-2	.833	18-7	.720	11-3	5-3	2-1			W3
Tulsa	8-4	.667	16-8	.667	10-2	6-4	0-2			L2
South Florida	8-4	.667	15-10	.600	12-3	2-4	1-3			W2
North Texas	7-5	.583	13-11	.542	7-6	5-4	1-1			L1
UTSA	7-5	.583	12-11	.522	7-3	4-7	1-1			W2
Charlotte	5-6	.455	11-13	.458	8-4	2-7	1-2			W2
Florida Atlantic	5-7	.417	11-13	.458	6-6	5-6	0-1			W2
Temple	4-7	.364	10-13	.435	7-3	2-8	1-2			L2
Tulane	3-8	.273	8-15	.348	5-9	2-5	1-1			L5
UAB	3-9	.250	10-14	.417	7-6	2-7	1-1			W1
Memphis	2-8	.200	8-15	.348	5-5	3-8	0-2			L3
Wichita State	2-10	.167	5-20	.200	4-11	1-7	0-2			L4

Rankings listed as AP/USA Today

SCHEDULE & RESULTS

TUESDAY, FEBRUARY 10

Florida Atlantic 79, Wichita State 77
UAB 58, Memphis 56
UTSA 52, Temple 43
East Carolina 65, Tulane 61
Rice 70, North Texas 68

WEDNESDAY, FEBRUARY 11

South Florida 72, Tulsa 60

FRIDAY, FEBRUARY 13

Wichita State at Rice* 8 p.m.

SATURDAY, FEBRUARY 14

Tulsa at Florida Atlantic* 2 p.m.
East Carolina at Temple* 2 p.m.
Tulane at North Texas* 3 p.m.
Charlotte at Memphis* 3 p.m.
South Florida at UTSA* 7:30 p.m.

TUESDAY, FEBRUARY 17

Florida Atlantic at East Carolina* 6 p.m.
Temple at Charlotte* 6:30 p.m.
UAB at North Texas* 7:30 p.m.
Tulane at Memphis* 8 p.m.
South Florida at Rice* 8 p.m.

THURSDAY, FEBRUARY 19

Memphis at Tulane* 7:30 p.m.

FRIDAY, FEBRUARY 20

UAB at Tulsa* 7:30 p.m.

SATURDAY, FEBRUARY 21

Rice at East Carolina* 1 p.m.
UTSA at Wichita State* 2 p.m.
North Texas at Charlotte* 5 p.m.
Florida Atlantic at South Florida* 7 p.m.

SUNDAY, FEBRUARY 22

Memphis at Temple* 2 p.m.

All times Eastern and subject to change

THE AMERICAN TODAY

RICE REMAINS LONE UNBEATEN

Sitting at 11-0 and winners of 16 straight games, the Rice Owls remain the lone unbeaten team in conference play this season. They defeated North Texas on Saturday and host Wichita State on Friday at 8 p.m. ET.

BOXING OUT

Megan Nestor of North Texas has 316 rebounds on the season (1st in the NCAA). She needs 102 to tie the American single season record. She's also averaging 13.7 rebounds per game (1st in the NCAA) and 5.6 offensive rebounds per game (1st in the NCAA). Her rebounds per game would set the single-season record.

WINNING STREAK

The Rice Owls are one of the hottest teams in the country right now, having won 15 straight games with their last loss coming in November. Their winning streak is tied for the 4th longest in the nation.

CLINCHING SPOTS

The 2026 American Conference Women's Basketball Championship is officially under one month away with first round games beginning on Tuesday, March 10. Rice was the first team to clinch a spot in the championship with their win over North Texas. East Carolina can join with a win on Saturday, or a loss from Tulane or Memphis.

AMERICAN IN THE NET

Two American teams rank in the top 100 of the NCAA NET rankings. Rice leads the way with a NET ranking of 64, while South Florida is just behind at 76.

AMERICAN HONORS

PLAYER OF THE WEEK

Megan Nestor, Sr., F, North Texas

Nestor scored 20 points and collected 13 rebounds in the come-from behind win over Temple. The senior scored all 13 points in the final quarter for the Mean Green, hitting the game-tying and go-ahead baskets in the final minutes.

FRESHMAN OF THE WEEK

Adriana Robles, Fr., G, UTSA

Robles averaged 5.5 points, three rebounds, 2.5 assists and two steals per game. She scored seven points and collected four rebounds in the road win at Tulsa.

HONORABLE MENTION

Asianae Nicholson, Sr., F, Charlotte

Nicholson recorded a pair of double-doubles, averaging 12 points and 15 rebounds in wins over Wichita State and Tulane.

Jayla Hearp, R-Jr., G, East Carolina

Hearp scored a season-high 18 points, while adding five rebounds and three assists in the 64-62 win over South Florida.

Erin Rodgers, So., G, Florida Atlantic

Rodgers tallied a career-high 25 points on 9-of-14 shooting to lead the Owls pas UAB, 68-63.

Dominique Ennis, Sr., G, Rice

Ennis led the Owls to a win over Memphis, scoring 22 points, including six made three-pointers.

Carla Brito, Sr., F, South Florida

Brito averaged 12 points, 15.5 rebounds and 5.5 assists in games against East Carolina and Tulane.

AMERICAN SOCIAL



theamerican.org



@American_Conf



@American_Conf



facebook.com/AmericanConf



www.youtube.com/@AmericanConf

2025-26 SEASON STATISTICS



Combined Team Statistics All games

Page 1/1
as of Feb 12, 2026

Game Records

Record	Overall	Home	Away	Neutral
ALL GAMES	10-13	7-3	2-8	1-2
CONFERENCE	4-7	2-3	2-4	0-0
NON-CONFERENCE	6-6	5-0	0-4	1-2

Score by Periods

Team	1st	2nd	3rd	4th	OT	TOT
Temple	327	371	420	416	30	1564
Opponents	353	369	420	436	19	1597

Team Box Score

No.	Player				Total		3-Point		F-Throw		Rebounds											
		GP-GS	MIN	AVG	FG-FGA	FG%	3FG-3FGA	3FG%	FT-FTA	FT%	OFF	DEF	TOT	AVG	PF	DQ	A	TO	BLK	STL	PTS	AVG
7	TURNER, Kaylah	23-23	795:28	34.6	141-345	.409	62-149	.416	51-68	.750	18	61	79	3.4	48	1	61	57	1	37	395	17.2
11	TAYLOR, Tristen	19-19	634:12	33.4	66-172	.384	14-46	.304	55-70	.786	9	49	58	3.1	59	1	81	41	3	20	201	10.6
91	CRAIG, Saniyah	23-23	663:21	28.8	85-206	.413	1-10	.100	68-105	.648	79	108	187	8.1	67	4	33	47	6	28	239	10.4
8	MOLINA, Jaleesa	22-22	638:20	29.0	88-173	.509	12-37	.324	39-56	.696	53	114	167	7.6	58	1	36	78	14	30	227	10.3
10	CURRY, Savannah	19-16	467:59	24.6	46-136	.338	13-50	.260	13-16	.813	24	35	59	3.1	25	0	28	40	2	32	118	6.2
30	ALEXANDER, Drew	23-11	365:42	15.9	47-138	.341	34-102	.333	12-14	.857	21	32	53	2.3	31	1	12	22	3	13	140	6.1
3	CEDANO, Kelian	23-0	287:28	12.5	25-67	.373	4-22	.182	11-18	.611	17	17	34	1.5	31	0	9	24	2	18	65	2.8
2	MEAD, Brianna	22-0	256:44	11.7	20-69	.290	11-41	.268	11-13	.846	3	19	22	1.0	15	0	22	24	1	6	62	2.8
0	MERIEDY, Ariana	16-1	95:19	6.0	16-34	.471	2-2	1.000	3-11	.273	3	11	14	0.9	14	0	4	8	6	2	37	2.3
24	MILLER, Khloe	17-0	109:17	6.4	13-27	.481	1-4	.250	9-10	.900	8	12	20	1.2	12	0	0	12	2	3	36	2.1
9	JACOBS, Felicia	23-0	336:10	14.6	15-42	.357	0-0	.000	14-24	.583	23	62	85	3.7	40	0	18	27	3	4	44	1.9
Team											52	46	98					13				
Total		23	4650		562-1409	.399	154-463	.333	286-405	.706	310	566	876	38.1	400	8	304	393	43	193	1564	68.0
Opponents		23	4650		585-1394	.420	163-472	.345	262-355	.738	263	570	833	36.2	382	3	374	380	93	183	1597	69.4

2025-26 GAME-BY-GAME STATISTICS



2025-26 Temple Women's Basketball Team Game-by-Game All games

Page 1/1
as of Feb 12, 2026

				Total		3-Pointers		Free throws		Rebounds											
Opponent	Date	Score		FG-FGA	PCT	3FG-3FGA	PCT	FT-FTA	PCT	OFF	DEF	TOT	AVG	PF	A	TO	BLK	STL	PTS	AVG	
George Mason	11/03/2025	94-85	Wot	31-67	.463	7-24	.292	25-32	.781	14	33	47	47.0	24	14	20	0	8	94	94.0	
George Washington	11/07/2025	86-50	W	31-68	.456	12-19	.632	12-14	.857	18	30	48	47.5	16	21	14	0	10	86	90.0	
at West Virginia	11/11/2025	61-89	L	22-66	.333	6-24	.250	11-15	.733	14	22	36	43.7	19	15	19	1	11	61	80.3	
La Salle	11/14/2025	75-54	W	27-68	.397	5-20	.250	16-17	.941	18	36	54	46.3	19	13	20	6	9	75	79.0	
at Richmond	11/18/2025	57-72	L	19-62	.306	7-25	.280	12-15	.800	12	27	39	44.8	12	15	14	4	5	57	74.6	
at Villanova	11/22/2025	58-88	L	22-55	.400	2-13	.154	12-17	.706	12	22	34	43.0	13	7	19	0	4	58	71.8	
vs Michigan St.	11/28/2025	50-85	L	19-64	.297	2-18	.111	10-15	.667	14	22	36	42.0	19	10	17	2	4	50	68.7	
vs Western Caro.	11/30/2025	84-64	W	31-57	.544	9-22	.409	13-22	.591	14	27	41	41.9	20	21	17	2	7	84	70.6	
vs Drexel	12/07/2025	52-59	L	21-53	.396	4-17	.235	6-7	.857	9	19	28	40.3	9	11	18	2	7	52	68.6	
VCU	12/13/2025	88-63	W	29-55	.527	12-25	.480	18-22	.818	11	25	36	39.9	18	18	27	4	17	88	70.5	
Coppin St.	12/19/2025	59-39	W	22-57	.386	6-21	.286	9-18	.500	12	33	45	40.4	22	12	28	1	13	59	69.5	
at Princeton	12/22/2025	77-87	L	30-60	.500	12-24	.500	5-12	.417	13	20	33	39.8	18	15	22	0	10	77	70.1	
UTSA	01/03/2026	47-50	L	16-57	.281	6-26	.231	9-13	.692	8	29	37	39.5	20	10	16	0	8	47	68.3	
at Wichita St.	01/06/2026	70-50	W	29-71	.408	4-20	.200	8-12	.667	17	25	42	39.7	17	12	14	3	14	70	68.4	
at Tulsa	01/09/2026	82-94	L	26-65	.400	10-24	.417	20-27	.741	17	16	33	39.3	17	9	17	2	6	82	69.3	
Tulane	01/13/2026	58-71	L	18-56	.321	5-23	.217	17-22	.773	14	17	31	38.8	21	10	15	5	7	58	68.6	
at East Carolina	01/17/2026	65-81	L	23-70	.329	4-20	.200	15-25	.600	23	23	46	39.2	23	8	14	1	7	65	68.4	
South Fla.	01/20/2026	86-83	W	29-55	.527	8-16	.500	20-27	.741	9	18	27	38.5	16	14	11	0	8	86	69.4	
Charlotte	01/24/2026	83-82	W	28-59	.475	12-22	.545	15-18	.833	10	15	25	37.8	14	20	11	1	5	83	70.1	
at Rice	01/28/2026	56-65	L	21-61	.344	3-9	.333	11-19	.579	14	24	38	37.8	17	11	14	0	5	56	69.4	
at Tulane	01/31/2026	67-65	Wot	26-71	.366	7-20	.350	8-12	.667	16	31	47	38.2	18	18	18	1	15	67	69.3	
North Texas	02/07/2026	66-69	L	26-58	.448	7-18	.389	7-12	.583	10	34	44	38.5	15	10	20	5	7	66	69.1	
at UTSA	02/10/2026	43-52	L	16-54	.296	4-13	.308	7-12	.583	11	18	29	38.1	13	10	8	3	6	43	68.0	
Total		1564		562-1409	.399	154-463	.333	286-405	.706	310	566	876	38.1	400	304	393	43	193	1564	68.0	
Opponents		1597		585-1394	.420	163-472	.345	262-355	.738	263	570	833	36.2	382	374	380	93	183	1597	69.4	

Temple Averages

Games Played	Points/game	FG Pct	3FG Pct	FT Pct	Rebounds/game	Assists/game	Turnovers/game	Assist/Turnover ratio	Steals/game	Blocks/game
23	68.0	39.9	33.3	70.6	38.1	13.2	17.1	0.8	8.4	1.9



2025-26 Temple Women's Basketball
Team High/Low Analysis
All games

Page 1/4
as of Feb 12, 2026

Temple - Game Highs

POINTS	94		George Mason (11/03/2025)
	88		VCU (12/13/2025)
	86		South Fla. (01/20/2026)
	86		George Washington (11/07/2025)
	84		vs Western Caro. (N) (11/30/2025)
FIELD GOALS MADE	31		vs Western Caro. (N) (11/30/2025)
	31		George Washington (11/07/2025)
	31		George Mason (11/03/2025)
FIELD GOAL ATTEMPTS	71		at Tulane (01/31/2026)
	71		at Wichita St. (01/06/2026)
FIELD GOAL PERCENTAGE	.544	(31-57)	vs Western Caro. (N) (11/30/2025)
	.527	(29-55)	South Fla. (01/20/2026)
	.527	(29-55)	VCU (12/13/2025)
3 PT FG MADE	12		Charlotte (01/24/2026)
	12		at Princeton (12/22/2025)
	12		VCU (12/13/2025)
	12		George Washington (11/07/2025)
3 PT FG ATTEMPTS	26		UTSA (01/03/2026)
	25		VCU (12/13/2025)
	25		at Richmond (11/18/2025)
3 PT FG PERCENTAGE	.632	(12-19)	George Washington (11/07/2025)
	.545	(12-22)	Charlotte (01/24/2026)
FREE THROWS MADE	25		George Mason (11/03/2025)
	20		South Fla. (01/20/2026)
	20		at Tulsa (01/09/2026)
FREE THROW ATTEMPTS	32		George Mason (11/03/2025)
	27		South Fla. (01/20/2026)
	27		at Tulsa (01/09/2026)
FREE THROW PERCENTAGE	.941	(16-17)	La Salle (11/14/2025)
	.857	(12-14)	George Washington (11/07/2025)
	.857	(6-7)	vs Drexel (N) (12/07/2025)
REBOUNDS	54		La Salle (11/14/2025)
	48		George Washington (11/07/2025)
ASSISTS	21		vs Western Caro. (N) (11/30/2025)
	21		George Washington (11/07/2025)
STEALS	17		VCU (12/13/2025)
	15		at Tulane (01/31/2026)
BLOCKED SHOTS	6		La Salle (11/14/2025)
	5		North Texas (02/07/2026)
	5		Tulane (01/13/2026)
TURNOVERS	28		Coppin St. (12/19/2025)
	27		VCU (12/13/2025)
FOULS	24		George Mason (11/03/2025)
	23		at East Carolina (01/17/2026)



**2025-26 Temple Women's Basketball
Team High/Low Analysis
All games**

Page 2/4
as of Feb 12, 2026

Opponent - Game Highs

POINTS	94		at Tulsa (01/09/2026)
	89		at West Virginia (11/11/2025)
	88		at Villanova (11/22/2025)
	87		at Princeton (12/22/2025)
	85		vs Michigan St. (N) (11/28/2025)
	85		George Mason (11/03/2025)
FIELD GOALS MADE	35		at Villanova (11/22/2025)
	33		at Tulsa (01/09/2026)
FIELD GOAL ATTEMPTS	81		George Mason (11/03/2025)
	70		North Texas (02/07/2026)
FIELD GOAL PERCENTAGE	.589	(33-56)	at Tulsa (01/09/2026)
	.565	(35-62)	at Villanova (11/22/2025)
3 PT FG MADE	13		at Tulsa (01/09/2026)
	13		vs Michigan St. (N) (11/28/2025)
3 PT FG ATTEMPTS	32		at Richmond (11/18/2025)
	32		George Mason (11/03/2025)
3 PT FG PERCENTAGE	.765	(13-17)	at Tulsa (01/09/2026)
	.667	(8-12)	South Fla. (01/20/2026)
FREE THROWS MADE	20		at East Carolina (01/17/2026)
	19		George Mason (11/03/2025)
FREE THROW ATTEMPTS	26		at East Carolina (01/17/2026)
	23		at West Virginia (11/11/2025)
FREE THROW PERCENTAGE	1.000	(6-6)	vs Drexel (N) (12/07/2025)
	.900	(18-20)	at Princeton (12/22/2025)
REBOUNDS	43		at UTSA (02/10/2026)
	43		George Mason (11/03/2025)
ASSISTS	28		South Fla. (01/20/2026)
	27		at Villanova (11/22/2025)
STEALS	14		VCU (12/13/2025)
	13		North Texas (02/07/2026)
	13		La Salle (11/14/2025)
BLOCKED SHOTS	11		La Salle (11/14/2025)
	9		at Rice (01/28/2026)
TURNOVERS	29		Coppin St. (12/19/2025)
	26		VCU (12/13/2025)
FOULS	27		George Mason (11/03/2025)
	21		South Fla. (01/20/2026)
	21		VCU (12/13/2025)



**2025-26 Temple Women's Basketball
Team High/Low Analysis
All games**

Page 4/4
as of Feb 12, 2026

Opponent - Game Lows

POINTS	39		Coppin St. (12/19/2025)
	50		at Wichita St. (01/06/2026)
	50		UTSA (01/03/2026)
	50		George Washington (11/07/2025)
	52		at UTSA (02/10/2026)
FIELD GOALS MADE	14		Coppin St. (12/19/2025)
	18		at Wichita St. (01/06/2026)
	18		UTSA (01/03/2026)
FIELD GOAL ATTEMPTS	51		at Wichita St. (01/06/2026)
	53		UTSA (01/03/2026)
FIELD GOAL PERCENTAGE	.237	(14-59)	Coppin St. (12/19/2025)
	.323	(21-65)	La Salle (11/14/2025)
3 PT FG MADE	0		Coppin St. (12/19/2025)
	1		at UTSA (02/10/2026)
	1		La Salle (11/14/2025)
3 PT FG ATTEMPTS	12		South Fla. (01/20/2026)
	12		at Wichita St. (01/06/2026)
3 PT FG PERCENTAGE	.000	(0-17)	Coppin St. (12/19/2025)
	.067	(1-15)	at UTSA (02/10/2026)
	.067	(1-15)	La Salle (11/14/2025)
FREE THROWS MADE	4		at Richmond (11/18/2025)
	6		vs Drexel (N) (12/07/2025)
	6		at Villanova (11/22/2025)
FREE THROW ATTEMPTS	6		vs Drexel (N) (12/07/2025)
	7		at Villanova (11/22/2025)
	7		at Richmond (11/18/2025)
FREE THROW PERCENTAGE	.529	(9-17)	vs Western Caro. (N) (11/30/2025)
	.571	(4-7)	at Richmond (11/18/2025)
REBOUNDS	19		vs Western Caro. (N) (11/30/2025)
	27		at Princeton (12/22/2025)
ASSISTS	5		Coppin St. (12/19/2025)
	10		UTSA (01/03/2026)
	10		George Washington (11/07/2025)
STEALS	3		South Fla. (01/20/2026)
	4		vs Western Caro. (N) (11/30/2025)
	4		George Washington (11/07/2025)
BLOCKED SHOTS	0		vs Drexel (N) (12/07/2025)
	1		VCU (12/13/2025)
TURNOVERS	8		at Villanova (11/22/2025)
	10		North Texas (02/07/2026)
FOULS	9		vs Drexel (N) (12/07/2025)
	11		North Texas (02/07/2026)

Temple - Game Lows

POINTS	43		at UTSA (02/10/2026)
	47		UTSA (01/03/2026)
	50		vs Michigan St. (N) (11/28/2025)
	52		vs Drexel (N) (12/07/2025)
	56		at Rice (01/28/2026)
FIELD GOALS MADE	16		at UTSA (02/10/2026)
	16		UTSA (01/03/2026)
FIELD GOAL ATTEMPTS	53		vs Drexel (N) (12/07/2025)
	54		at UTSA (02/10/2026)
FIELD GOAL PERCENTAGE	.281	(16-57)	UTSA (01/03/2026)
	.296	(16-54)	at UTSA (02/10/2026)
3 PT FG MADE	2		vs Michigan St. (N) (11/28/2025)
	2		at Villanova (11/22/2025)
3 PT FG ATTEMPTS	9		at Rice (01/28/2026)
	13		at UTSA (02/10/2026)
	13		at Villanova (11/22/2025)
3 PT FG PERCENTAGE	.111	(2-18)	vs Michigan St. (N) (11/28/2025)
	.154	(2-13)	at Villanova (11/22/2025)
FREE THROWS MADE	5		at Princeton (12/22/2025)
	6		vs Drexel (N) (12/07/2025)
FREE THROW ATTEMPTS	7		vs Drexel (N) (12/07/2025)
	12		at UTSA (02/10/2026)
	12		North Texas (02/07/2026)
	12		at Tulane (01/31/2026)
	12		at Wichita St. (01/06/2026)
	12		at Princeton (12/22/2025)
FREE THROW PERCENTAGE	.417	(5-12)	at Princeton (12/22/2025)
	.500	(9-18)	Coppin St. (12/19/2025)
REBOUNDS	25		Charlotte (01/24/2026)
	27		South Fla. (01/20/2026)
ASSISTS	7		at Villanova (11/22/2025)
	8		at East Carolina (01/17/2026)
STEALS	4		vs Michigan St. (N) (11/28/2025)
	4		at Villanova (11/22/2025)
BLOCKED SHOTS	0		at Rice (01/28/2026)
	0		South Fla. (01/20/2026)
	0		UTSA (01/03/2026)
	0		at Princeton (12/22/2025)
	0		at Villanova (11/22/2025)
	0		George Washington (11/07/2025)
	0		George Mason (11/03/2025)
TURNOVERS	8		at UTSA (02/10/2026)
	11		Charlotte (01/24/2026)
	11		South Fla. (01/20/2026)
FOULS	9		vs Drexel (N) (12/07/2025)

2025-26 INDIVIDUAL HIGHS

	STAT	PLAYER	OPPONENT	DATE
Points	36	Kaylah Turner	at Princeton	12/22/25
FG Made	13	Kaylah Turner	at Princeton	12/22/25
FG Attempted	24	Kaylah Turner	at Tulsa	1/9/26
*FG %	69%	Kaylah Turner	vs. VCU	12/13/25
3PT FG Made	8	Kaylah Turner	at Princeton	12/22/25
3PT FG Attempted	13	Kaylah Turner	at West Virginia	11/11/25
3PT %	100%	Tristen Taylor	vs. Charlotte	1/24/26
FT Made	11	Tristen Taylor	vs. George Mason	11/3/25
FT Attempted	13	Saniyah Craig	vs. South Florida	1/20/26
**FT %	91.7%	Kaylah Turner	vs. George Mason	11/3/25
Rebounds	15	Saniyah Craig	vs. George Mason	11/3/25
Assists	8	Tristen Taylor	vs. George Washington	11/7/25
Blocked Shots	2	Jaleesa Molina	vs. Tulane	12/13/25
Steals	7	Savannah Curry	vs. VCU	12/13/25

*minimum 10 field goals attempted

**minimum five free-throws attempted

THE LAST TIME...

AN OWL...

SCORED 40+ POINTS

Kristen McCarthy42
Charlotte, 2/13/10

SCORED 30+ POINTS

Tristen Taylor32..... vs. Charlotte, 1/24/26
Kaylah Turner31..... at Tulsa, 1/9/26
Kaylah Turner36..... at Princeton, 12/22/25
Tiarra East33..... vs. Rice, 2/29/25
Aleah Nelson30
Duquesne, 12/16/22

SCORED 20+ POINTS

Kaylah Turner27..... at Tulane, 1/31/26
Kaylah Turner23..... vs. USF, 1/20/26
Saniyah Craig22..... vs. USF, 1/20/26
Jaleesa Molina20..... vs. Tulane, 1/13/26
Drew Alexander27..... at Tulsa, 1/9/26
Kaylah Turner23..... vs. Western Carolina, 11/30/25
Kaylah Turner22..... at Richmond, 11/18/25
Kaylah Turner23..... at WVU, 11/11/25
Kaylah Turner22..... at Memphis, 2/25/25
Tiarra East21..... at Memphis, 2/25/25
Tarriyonna Gary25..... vs. Wichita State, 2/19/25
Kaylah Turner22..... at Tulane, 2/15/25
Tarriyonna Gary23..... vs. Tulane, 1/25/25
Tarriyonna Gary21..... vs. Tulsa, 1/11/25
Kaylah Turner25..... at FAU, 1/8/25
Tarriyonna Gary26..... vs. ECU, 1/1/25
Tiarra East21..... vs. Xavier, 12/21/24
Tiarra East26..... at Villanova, 12/6/24
Tiarra East28..... at VCU, 11/15/24
Tiarra East23..... vs. Richmond 11/4/24

TWO PLAYERS SCORED 20+ POINTS

Kaylah Turner23..... vs. USF, 1/20/26
Saniyah Craig22..... vs. USF, 1/20/26
Drew Alexander27..... at Tulsa, 1/9/26
Kaylah Turner31..... at Tulsa, 1/9/26
Aleah Nelson20..... at Cincinnati 1/7/23
Jasha Clinton21..... at Cincinnati, 1/7/23

HAD 20 REBOUNDS

Tanaya Atkinson20
at Memphis, 2/18/16

HAD 10 OFFENSIVE REBOUNDS

Rayne Tucker15
at ECU, 3/3/24

HAD 10 DEFENSIVE REBOUNDS

Saniyah Craig11
vs. George Mason, 11/3/25
Jaleesa Molina10
at Tulane, 2/15/25
Tiarra East10
vs. Tulane, 2/19/24

TWO PLAYERS HAD 10 REBOUNDS

Saniyah Craig11
vs. La Salle, 11/14/25
Jaleesa Molina10
vs. La Salle, 11/14/25
Saniyah Craig15
vs. George Mason, 11/03/25
Jaleesa Molina10
vs. George Mason, 11/03/25
Kaylah Turner11

at Tulane, 2/15/25
Jaleesa Molina15
at Tulane, 2/15/25
Rayne Tucker15
at ECU, 3/3/24
Tiarra East13
at ECU, 3/3/24

HAD A DOUBLE-DOUBLE IN POINTS AND REBOUNDS

Saniyah Craig 13 Points, 11 rebounds at UTSA 2/10/26
Jaleesa Molina 20 Points, 10 rebounds vs Tulane, 1/13/26
Saniyah Craig 11 pts, 11 rebs vs. La Salle, 11/14/25
Jaleesa Molina 11 pts, 10 rebs
vs. La Salle, 11/14/25
Saniyah Craig 16 pts, 15 rebs
vs. George Mason, 11/03/25
Jaleesa Molina 12 Pts, 10 Rebs
vs. George Mason, 11/03/25
Kaylah Turner 22 Points, 11 rebounds at Tulane, 2/15/25
Jaleesa Molina 17 Points, 15 rebounds at Tulane, 2/15/25
Jaleesa Molina 17 Points, 11 rebounds vs. UAB, 2/11/25
Jaleesa Molina 17 Points, 11 rebounds vs. UAB, 2/11/25
Jaleesa Molina 15 Points, 11 rebounds .. vs. Charlotte, 1/18/25
Jaleesa Molina 10 Points, 11 rebounds vs. Tulsa, 1/11/25
Jaleesa Molina 10 Points, 10 rebounds vs. ECU, 1/1/25
Jaleesa Molina 17 Point, 10 rebounds at UAB, 12/29/24
Amaya Oliver 12 Points, 14 rebounds vs. Xavier, 12/21/24
Anissa Rivera 16 Points, 12 rebounds at GT., 11/19/24
Anissa Rivera 12 Points, 16 rebounds at VCU, 11/15/24
Rayne Tucker 10 points, 15 rebounds at ECU, 3/3/2
Tiarra East 28 points, 13 rebounds
at ECU, 3/3/24

HAD A DOUBLE-DOUBLE IN POINTS AND ASSISTS

Aleah Nelson13 points, 11 assists
at ECU, 3/3/24

TWO PLAYERS HAD DOUBLE-DOUBLES

Saniyah Craig 11 pts, 11 rebs
vs. La Salle, 11/14/25
Jaleesa Molina 11 pts, 10 rebs
vs. La Salle, 11/14/25
Saniyah Craig 16 pts, 15 rebs
vs. George Mason, 11/03/25
Jaleesa Molina 12 Pts, 10 Rebs
vs. George Mason, 11/03/25
Kaylah Turner 22 points, 11 rebounds
at Tulane, 2/15/25
Jaleesa Molina 17 points, 15 rebounds
at Tulane, 2/15/25
Rayne Tucker 10 points, 15 rebounds
at ECU, 3/3/24
Tiarra East 28 points, 13 rebounds
at ECU, 3/3/24
Aleah Nelson 13 points, 11 assists
at ECU, 3/3/24

HAD A TRIPLE-DOUBLE

Aniya Gouridine 11 points, 15 rebounds, 10 assists
at Tulsa, 2/12/22

MADE 15 FIELD GOALS

Tanaya Atkinson 17
at Cincinnati, 1/13/18

ATTEMPTED 20 FIELD GOALS

Kaylah Turner 24
at Tulsa 1/9/26

THE LAST TIME...

TEMPLE...

Kaylah Turner21	at FAU, 3/6/24
at Princeton 12/21/25	
Kaylah Turner22	HAD 10 ASSISTS
at. WVU 11/11/25	Aleah Nelson10
Tiarra East20	at ECU, 3/3/24
vs VCU, 11/15/24	
Tiarra East20	HAD 5 BLOCKS
vs Tulane, 3/11/24	Ines Piper 6
	vs. Houston, 2/28/24
SHOT 75% FROM THE FIELD (min. 10 att)	
Tristen Taylor10-13	HAD 5 STEALS
vs. Charlotte, 1/24/26	Tristen Taylor 6
Demi Washington8-10, 80%	at Richmond 11/4/24
vs. Rice , 3/12/24	Anissa Rivera 5
MADE 10 FREE THROWS	at VCU 11/15/24
Tristen Taylor.....	
11-12 vs. George Mason, 11/3/25	LED THE TEAM IN POINTS, REBOUNDS, ASSISTS
Tiarra East10-12	Aleah Nelson 16 pts, 4 reb, 9 ast
vs. Rice, 2/28/25	at Wichita State, 2/25/23
Aleah Nelson10-12	
vs Wichita State, 2/1/23	
SHOT 100% FROM THE LINE (min. 7 att.)	HIT LAST SECOND SHOT TO WIN THE GAME
Jaleesa Molina 7-7	Jaleesa Molina.....
..... at UAB, 12/29/24	at Tulane, 1/31/26
Tiarra East9-9	Tristen Taylor.....
at #23 Ole Miss, 11/15/23	vs. Charlotte, 1/24/26
	Amaya Oliver.....
MADE 5 THREE-POINTERS	vs. Tulsa, 1/11/25
Tristen Taylor 6	Erica Covile
vs. Charlotte 1/24/26	#19/17 USF, 2/6/16
Drew Alexander 5	PLAYED EVERY MINUTE OF A GAME
at Tulsa 1/9/25	Kaylah Turner40
Kaylah Turner 5	vs. Tulane, 1/13/26
at Tulsa 1/9/25	Aleah Nelson.....40
Kaylah Turner 8	at UCF, 2/21/23
at Princeton 12/21/25	
Kaylah Turner 5	HAD TWO CONSECUTIVE DOUBLE-DOUBLES
at. Western Carolina 11/30/25	Jaleesa Molina 11 Points, 11 rebounds at Richmond, 11/18/25
Kaylah Turner 5	Jaleesa Molina 11 Points, 10 rebounds vs. La Salle, 11/14/25
at. WVU 11/11/25	Jaleesa Molina 17 Points, 15 rebounds at Tulane, 2/15/25
Tarriyona Gary7	Jaleesa Molina 17 Points, 11 rebounds vs. UAB, 2/11/25
vs. Wichita State, 2/19/25	Jaleesa Molina 15 Points, 11 rebounds .. vs. Charlotte, 1/18/25
Kaylah Turner 5	Jaleesa Molina 10 Points, 11 rebounds vs. Tulsa, 1/11/25
at. FAU,, 1/8/25	Jaleesa Molina 10 Points, 10 rebounds vs. ECU, 1/1/25
Tarriyona Gary 5	Jaleesa Molina 17 Points, 10 rebounds at UAB, 12/29/24
vs. Tulsa, 1/11/25	Anissa Rivera 16 Points, 12 rebounds at GT., 11/19/24
Tarriyona Gary 5	Anissa Rivera 12 Points, 16 rebounds at VCU, 11/15/24
vs. Tulane, 1/25/25	Rayne Tucker.....19 points, 13 rebounds
Tarriyona Gary 6	at Northwestern, 12/21/23
vs. FAU, 3/6/24	Rayne Tucker.....10 points, 11 rebounds
	vs. UTSA, 12/30/23
ATTEMPTED 10 THREE-POINTERS	
Drew Alexander10	HAD THREE CONSECUTIVE DOUBLE-DOUBLES
at Tulsa 1/9/25	Mia Davis 22 points, 15 rebounds..... SMU, 12/20/20
Kaylah Turner11	17 points, 11 rebounds..... Tulsa, 12/23/20
at Tulsa 1/9/25	17 points, 11 rebounds.....at ECU, 1/6/21
Kaylah Turner12	
at Princeton 12/21/25	FIVE PLAYERS SCORED 10 POINTS
Kaylah Turner13	Saniyah Craig16 vs George Mason, 11/3
at. WVU 11/11/25	Jaleesa Molina12 vs George Mason, 11/3
Tarriyonna Gary10	Tristen Taylor.....19 vs George Mason, 11/3
at La Salle, 12/17/23	Kaylah Turner.....12 vs George Mason, 11/3
	Drew Alexander13 vs George Mason, 11/3
SHOT 75% FROM 3-PT RANGE (min. 5 att.)	Kelian Cedano10 vs George Mason, 11/3
Tristen Taylor 6-6, 100% vs. Charlotte 1/24/26	
Kaylah Turner 4-5, 80% vs. USF 1/20/26	WON BY 30+ POINTS
Kaylah Turner8-12, 75% at. Princeton 12/21/25	Temple 84, Xavier 41..... 12/1/23
Tarriyonna Gary.....6-7, 85.7%	WON BY 40+ POINTS

Temple Women's Basketball Record Book

Temple 109, Delaware State 43 11/6/23

WON BY 50+ POINTS

Temple 109, Delaware State 43 11/6/23

SCORED 100+ POINTS

Temple 109, Delaware State 43 11/6/23

GAVE UP 100+ POINTS

103 at #5 South Carolina 12/17/20

SCORED LESS THAN 40 POINTS

31 at UCF 2/19/22

SCORED LESS THAN 50 POINTS

46 vs. #15 West Virginia 12/15/24

45 vs. Georgetown 11/9/23

SCORED 50 POINTS IN A HALF

55 (1st half) at UAB 12/29/24

57 (2nd half) vs. Delaware State 11/6/23

SCORED 25 POINTS IN A QUARTER

29 (4th quarter) vs. Charlotte 1/24/26

27 (3rd quarter) vs. ECU 1/22/25

25 (3rd quarter) vs. George Washington 11/7/25

26 (2nd quarter) vs. Western Carolina 11/30/25

26 (4th quarter) vs. La Salle 11/14/25

SCORED 30 POINTS IN A QUARTER

32 (2nd quarter) at UAB 2/14/24

SCORED UNDER 20 POINTS IN A HALF

17 (1st half) vs. Princeton 11/26/24

17 (1st half) vs. Tulsa 1/17/23

HAD A 20+ REBOUND MARGIN

+25 vs. Western Carolina 11/30/25

+20 vs. La Salle 11/14/25

+24 vs. Delaware State 11/6/23

HAD A 30+ REBOUND MARGIN

+35 vs. Toledo 12/10/08

HAD 50 OR MORE REBOUNDS

54 vs. La Salle 11/14/25

54 at Tulane 2/15/25

50 vs. Tulane 3/11/24

HAD LESS THAN 25 REBOUNDS

22 vs. Georgetown 11/9/23

HAD 25 OFFENSIVE REBOUNDS

27 vs. Northwestern 12/21/23

HAD LESS THAN 5 OFFENSIVE REBOUNDS

4 vs. Stanford 11/25/07

HAD 30 DEFENSIVE REBOUNDS

33 vs. Wichita State 2/19/25

33 vs. UAB 2/11/25

32 vs. Charlotte 1/18/25

30 vs. Delaware 11/12/24

31 vs. Tulane 3/11/24

MADE 35 OR FIELD GOALS

36 vs. La Salle 12/17/23

MADE LESS THAN 15 FIELD GOALS

12 vs. UCF 2/19/22

ATTEMPTED LESS THAN 40 FIELD GOALS

38 at Rutgers 12/30/07

ATTEMPTED 75 OR MORE FIELD GOALS

80 vs. Tulane 3/11/24

SHOT AT LEAST 50% FG

52.7% (29-55) vs. USF 1/20/26

50 % (30-60) at Princeton 12/21/25

55.8% (29-52) at Villanova 12/6/24

52.3% (34-65) at UAB 2/14/24

MADE 25 OR MORE FREE THROWS

28 vs. Charlotte 1/18/25

29 vs. SMU 12/20/20

MADE LESS THAN 5 FREE THROWS

4 at California 12/21/24

4 at Bucknell 11/27/22

ATTEMPTED 35 OR MORE FREE THROWS

37 vs. SMU 12/20/20

ATTEMPTED LESS THAN 10 FREE THROWS

10 vs. ECU 1/22/25

6 vs. Princeton 11/26/24

8 vs. FAU 3/6/24

SHOT 90% FROM THE LINE (min. 10 att.)

94% (16-17) vs. La Salle 11/14/25

100% (17-17) at Memphis 2/25/25

100% (12-12) vs. UCF 1/28/23

MADE 10 THREE-POINTERS

12 vs. Charlotte 1/24/26

10 at Tulsa 1/9/26

12 at Princeton 12/22/25

12 at ECU 3/6/24

MADE NO THREE-POINTERS

0 at FGCU 11/12/21

SHOT 40% FROM 3-PT RANGE (min. 5 att.)

54.5% vs. Charlotte 1/24/26

50% vs. USF 1/20/26

41% at Tulsa 1/9/26

50% at Princeton 12/22/25

50% at Memphis 2/25/25

47.4% vs. Wichita State 2/19/25

50% at Villanova 12/6/24

47% vs. Princeton 11/26/24

42% (8-19) vs. FAU 3/6/24

40% vs. Western Carolina 11/30/25

ATTEMPTED AT LEAST 25 THREES

30 at FAU 1/8/25

29 vs. Richmond 11/4/24

25 vs. Tulane 1/25/25

ATTEMPTED LESS THAN 5 THREES

4 at Cincinnati 2/3/21

HAD 25 ASSISTS

26 vs. Delaware State 11/6/23

HAD LESS THAN 5 ASSISTS

1 vs. USF 3/8/14

HAD 25 TURNOVERS

25 at Wichita State 1/9/24

HAD LESS THAN 5 TURNOVERS

4 at Cincinnati 2/11/16



#0

ARIANA MERIEDY

CLINTON, Md. / RIVERDALE BAPTIST

AWARDS & HONORS

SEASON HIGHS

Points	5	vs. North Texas 2/7/26
Rebounds	6	vs. George Washington 11/7/25
Assists	1	at UTSA 2/10/26
Steals	1	at UTSA 2/10/26
Blocks	3	vs. North Texas 2/7/26
Minutes	21	at UTSA 2/10/26

CAREER HIGHS

Points	5	vs. North Texas 2/7/26
Rebounds	6	vs. George Washington 11/7/25
Assists	1	at UTSA 2/10/26
Steals	1	at UTSA 2/10/26
Blocks	3	vs. North Texas 2/7/26
Minutes	21	at UTSA 2/10/26
Double-Doubles		

OVERVIEW

Prior to Temple:

- Played in a total of 65 games at Riverdale Baptist
- Averaged 11.3 points and 6.2 rebounds per game overall
- As a senior, averaged 13.8 points and 5.8 rebounds per game
- Helped lead Riverdale Baptist to a 24–12 season in her senior year
- Surpassed 1,000 career points during her high school career

GAME-BY-GAME

Opponent	Date	GS	MIN	Total		3-Pointers		Free throws		Rebounds											
				FG-FGA	PCT	3FG-3FGA	PCT	FT-FTA	PCT	OFF	DEF	TOT	AVG	PF	A	TO	BLK	STL	PTS	AVG	
George Mason	11/03/2025		01:54	1-1	1.000	0-0	.000	0-0	.000	0	0	0	0.0	0	0	1	0	0	2	2.0	
George Washington	11/07/2025		05:37	1-1	1.000	0-0	.000	0-0	.000	1	0	1	0.5	0	0	0	0	0	2	2.0	
at West Virginia	11/11/2025		03:07	0-2	.000	0-0	.000	0-0	.000	0	0	0	0.3	2	1	0	0	0	0	1.3	
La Salle	11/14/2025		02:28	0-1	.000	0-0	.000	0-0	.000	0	0	0	0.3	0	0	0	0	0	0	1.0	
at Villanova	11/22/2025		02:54	0-0	.000	0-0	.000	0-0	.000	0	0	0	0.2	0	0	0	0	0	0	0.8	
vs Michigan St.	11/28/2025		06:01	2-3	.667	0-0	.000	1-1	1.000	0	0	0	0.2	1	0	0	0	0	5	1.5	
vs Western Caro.	11/30/2025		04:35	2-4	.500	0-0	.000	0-2	.000	0	0	0	0.1	0	0	0	1	0	4	1.9	
vs Drexel	12/07/2025		03:39	0-2	.000	0-0	.000	0-0	.000	0	0	0	0.1	0	1	0	1	0	0	1.6	
VCU	12/13/2025		05:44	2-2	1.000	0-0	.000	0-0	.000	0	0	0	0.1	1	0	1	0	0	4	1.9	
Coppin St.	12/19/2025		06:12	1-1	1.000	0-0	.000	0-2	.000	1	1	2	0.3	3	0	2	0	0	2	1.9	
UTSA	01/03/2026		04:10	0-0	.000	0-0	.000	0-2	.000	0	1	1	0.4	2	0	2	0	0	0	1.7	
at Wichita St.	01/06/2026		04:54	2-4	.500	0-0	.000	1-2	.500	1	2	3	0.6	1	0	0	0	1	5	2.0	
Charlotte	01/24/2026		04:18	1-2	.500	0-0	.000	0-0	.000	0	1	1	0.6	0	0	1	0	0	2	2.0	
at Tulane	01/31/2026		03:52	1-2	.500	1-1	1.000	0-0	.000	0	0	0	0.6	0	0	0	0	0	3	2.1	
North Texas	02/07/2026		15:11	2-4	.500	1-1	1.000	0-0	.000	0	4	4	0.8	2	1	0	3	0	5	2.3	
at UTSA	02/10/2026	*	20:42	1-5	.200	0-0	.000	1-2	.500	0	2	2	0.9	2	1	1	1	1	3	2.3	
Totals			1:95:19	16-34	.471	2-2	1.000	3-11	.273	3	11	14	0.9	14	4	8	6	2	37	2.3	

Player Averages

Games Played	Minutes/game	Points/game	FG Pct	3FG Pct	FT Pct	Rebounds/game	Assists/game	Turnovers/game	Assist/Turnover ratio	Steals/game	Blocks/game
16	6.8	2.3	47.1	100.0	27.3	0.9	0.3	0.5	0.5	0.1	0.4

ARIANA MERIEDY CAREER STATISTICS

MERIEDY, Ariana

		Field Goals		3-Point		F-Throws		Rebounds				Scoring			
SEASON	TEAM	GP-GS	MIN/AVG	FG-FGA	FG%	3FG-3FGA	3FG%	FT-FTA	FT%	OFF	DEF	TOT	AVG	PF-FO	A TO BLK STL PTS AVG
2025-26	Temple	16-1	95/6.0	16-34	.471	2-2	1.000	3-11	.273	3	11	14	0.9	14-0	4 8 6 2 37 2.3
TOTAL		16-1	95/6.0	16-34	.471	2-2	1.000	3-11	.273	3	11	14	0.9	14-0	4 8 6 2 37 2.3



#2 BRIANNA MEAD

THOMPSON, Conn. / PUTNAM SCIENCE ACADEMY/ LIU

AWARDS & HONORS

OVERVIEW

Before Temple: 2024–2025 season at Long Island University (27 games).... Averaged 30.3 minutes, 8.8 points, 2.2 rebounds, and 1.6 assists per game.... Shot 37.2% overall, 34.6% from three, and 76.5% from the free-throw line.

Notable performances: Scored 22 points (5-for-8 from three, 5-for-5 FT, 8 rebounds) in 51 minutes vs. Wagner....Posted 16 points and 4 steals in 39 minutes at FDU....Scored 13 points in 40 minutes during NEC Tournament game vs. Central Connecticut State....Hit seven field goals inside against Chicago State....Recorded five assists vs. Mercyhurst.

High school and prep career: Graduated from Putnam Science Academy (Putnam, Conn.) in 2023....Played five years of varsity basketball....Completed post-grad season at South Shore Christian Academy....Averaged 14 points, 6 assists, and 3 rebounds per game....Played club basketball with MCW Starz and NYC Gauchos.

SEASON HIGHS

Points	11	vs. VCU 12/13/25
Rebounds	5	at Wichita State 1/6/26
Assists	4	vs. Coppin State 12/19/25
Steals	1	at UTSA 2/10/26
Blocks	1	vs. Tulane 1/13/26
Minutes	23	vs. Coppin State 12/19/25

CAREER HIGHS

Points	22	vs. Wagner 2/6/25
Rebounds	8	at Chicago St. 1/4/25
Assists	5	vs. Mercyhurst 1/25/25
Steals	4	at FDU 3/10/25
Blocks	1	vs. Tulane 1/13/26
Minutes	51	vs. Wagner 2/6/25

GAME-BY-GAME

Opponent	Date	GS	MIN	Total		3-Pointers		Free throws		Rebounds		PF		A		TO		BLK		STL		PTS	
				FG	FGA	PCT	3FG	3FGA	PCT	FT	FTA	PCT	OFF	DEF	TOT	AVG	PF	A	TO	BLK	STL	PTS	AVG
George Mason	11/03/2025		13:06	1-4	.250		0-2	.000	0-0	.000	0	0	0	0.0	0	2	2	0	0	0	2	2.0	
George Washington	11/07/2025		18:20	1-3	.333		1-2	.500	3-3	1.000	0	1	1	0.5	2	2	1	0	1	0	6	4.0	
at West Virginia	11/11/2025		08:22	0-2	.000		0-2	.000	0-0	.000	1	1	2	1.0	1	1	2	0	1	0	2	2.7	
La Salle	11/14/2025		14:51	3-9	.333		1-4	.250	0-0	.000	0	2	2	1.3	1	2	1	0	0	0	7	3.8	
at Richmond	11/18/2025		04:54	0-1	.000		0-1	.000	0-0	.000	1	1	2	1.4	0	0	1	0	0	0	0	3.0	
at Villanova	11/22/2025		10:05	1-4	.250		1-2	.500	0-0	.000	0	0	0	1.2	1	0	0	0	0	0	3	3.0	
vs Michigan St.	11/28/2025		16:49	0-2	.000		0-1	.000	1-2	.500	0	0	0	1.0	0	1	3	0	0	0	1	2.7	
vs Western Caro.	11/30/2025		19:41	2-4	.500		1-3	.333	2-2	1.000	0	0	0	0.9	0	1	0	0	0	0	7	3.3	
vs Drexel	12/07/2025		20:42	2-5	.400		0-2	.000	0-0	.000	0	1	1	0.9	0	2	1	0	0	0	4	3.3	
VCU	12/13/2025		17:50	3-5	.600		3-5	.600	2-2	1.000	0	1	1	0.9	1	1	5	0	1	1	11	4.1	
Coppin St.	12/19/2025		22:34	0-4	.000		0-3	.000	0-0	.000	0	0	0	0.8	1	4	4	0	0	0	0	3.7	
at Princeton	12/22/2025		10:23	1-3	.333		1-2	.500	1-1	1.000	0	1	1	0.8	2	2	1	0	1	1	4	3.8	
UTSA	01/03/2026		06:56	0-3	.000		0-1	.000	0-0	.000	0	1	1	0.8	2	0	0	0	0	0	0	3.5	
at Wichita St.	01/06/2026		13:25	0-5	.000		0-2	.000	0-0	.000	1	4	5	1.1	1	0	1	0	0	0	0	3.2	
at Tulsa	01/09/2026		03:19	0-1	.000		0-1	.000	0-0	.000	0	0	0	1.1	1	0	0	0	0	0	0	3.0	
Tulane	01/13/2026		10:30	1-2	.500		1-2	.500	0-0	.000	0	0	0	1.0	0	0	0	1	0	1	3	3.0	
South Fla.	01/20/2026		05:25	0-0	.000		0-0	.000	0-0	.000	0	0	0	0.9	0	0	0	0	0	0	0	2.8	
Charlotte	01/24/2026		02:56	1-1	1.000		1-1	1.000	0-0	.000	0	0	0	0.9	0	0	0	0	0	0	3	2.8	
at Rice	01/28/2026		05:52	1-1	1.000		0-0	.000	2-3	.667	0	0	0	0.8	0	0	0	0	0	1	4	2.9	
at Tulane	01/31/2026		04:56	0-1	.000		0-0	.000	0-0	.000	0	1	1	0.9	1	0	1	0	0	0	0	2.8	
North Texas	02/07/2026		11:52	3-5	.600		1-3	.333	0-0	.000	0	4	4	1.0	0	2	0	0	0	0	7	3.0	
at UTSA	02/10/2026		13:57	0-4	.000		0-2	.000	0-0	.000	0	1	1	1.0	1	2	1	0	1	0	1	2.8	
Totals		0	256:44	20-69	.290	11-41	.268	11-13	.846	3	19	22	1.0	15	22	24	1	6	62	2.8			

Player Averages

Games Played	Minutes/ game	Points/ game	FG Pct	3FG Pct	FT Pct	Rebounds/ game	Assists/ game	Turnovers/ game	Assist/Turnover ratio	Steals/ game	Blocks/ game
22	11.7	2.8	.290	.268	.846	1.0	1.0	1.1	0.9	0.3	0.0

BRIANNA MEAD CAREER STATISTICS

MEAD, Brianna

				Field Goals		3-Point		F-Throws		Rebounds										Scoring	
SEASON	TEAM	GP-GS	MIN/AVG	FG-FGA	FG%	3FG-3FGA	3FG%	FT-FTA	FT%	OFF	DEF	TOT	AVG	PF-FO	A	TO	BLK	STL	PTS	AVG	
2024-25	LIU	27-12	819/30.3	84-226	.372	44-127	.346	26-34	.765	21	39	60	2.2	43-0	44	66	1	39	238	8.8	
2025-26	Temple	22-0	257/11.7	20-69	.290	11-41	.268	11-13	.846	3	19	22	1.0	15-0	22	24	1	6	62	2.8	
TOTAL FOR Temple		22-0	257/11.7	20-69	.290	11-41	.268	11-13	.846	3	19	22	1.0	15-0	22	24	1	6	62	2.8	
TOTAL		49-12	1076/22.0	104-295	.353	55-168	.327	37-47	.787	24	58	82	1.7	58-0	66	90	2	45	300	6.1	



#3

KELIAN CEDANO

BOSTON, MASS. / PUTNAM SCIENCE ACADEMY

AWARDS & HONORS

SEASON HIGHS

CAREER HIGHS

Points	12	vs. Coppin State 12/19/25
Rebounds	4	at Villanova 11/22/25
Assists	2	vs. George Washington 11/7/25
Steals	3	vs. George Mason 11/3/25
Blocks	1	vs. VCU 12/13/25
Minutes	27	vs. Coppin State 12/19/25

Points	12	vs. Coppin State 12/19/25
Rebounds	4	at Villanova 11/22/25
Assists	2	vs. George Washington 11/7/25
Steals	3	vs. George Mason 11/3/25
Blocks	1	vs. VCU 12/13/25
Minutes	27	vs. Coppin State 12/19/25

OVERVIEW

2024-25: Played in 20 games...Played 13 minutes on 12/01/24 at La Salle... Had 2 steals on 12/21/24 against Xavier...Scored 5 points on 01/04/25 at South Florida...Grabbed 4 rebounds on 03/10/25 against Charlotte.

Prior to Temple: Averaged 16 points and five assists per game as a senior at Putnam Science Academy...Third place at the national tournament...team MVP as a junior, averaging 15 points and eight rebounds...high honor roll student.

GAME-BY-GAME

Opponent	Date	GS	MIN	Total		3-Pointers		Free throws		Rebounds		PF	A	TO	BLK	STL	PTS	AVG		
				FG-FGA	PCT	3FG-3FGA	PCT	FT-FTA	PCT	OFF	DEF								TOT	AVG
George Mason	11/03/2025		20:07	4-7	.571	1-2	.500	1-2	.500	2	0	2	2.0	3	0	2	10	10.0		
George Washington	11/07/2025		14:52	1-3	.333	0-1	.000	0-0	.000	2	0	2	2.0	1	2	1	0	6.0		
at West Virginia	11/11/2025		11:38	1-2	.500	0-1	.000	0-0	.000	0	1	1	1.7	2	1	0	2	4.7		
La Salle	11/14/2025		17:03	4-9	.444	0-2	.000	3-3	1.000	2	2	4	2.3	0	0	1	0	6.3		
at Richmond	11/18/2025		03:30	0-0	.000	0-0	.000	0-0	.000	0	1	1	2.0	0	0	1	0	5.0		
at Villanova	11/22/2025		15:38	1-6	.167	0-1	.000	0-0	.000	3	1	4	2.3	2	0	0	0	4.5		
vs Michigan St.	11/28/2025		09:13	0-1	.000	0-1	.000	1-2	.500	0	0	0	2.0	0	0	2	0	4.0		
vs Western Caro.	11/30/2025		10:23	0-6	.000	0-3	.000	0-2	.000	2	1	3	2.1	2	1	1	0	3.5		
vs Drexel	12/07/2025		11:49	0-1	.000	0-1	.000	0-0	.000	0	0	0	1.9	0	0	0	0	3.1		
VCU	12/13/2025		11:27	1-2	.500	0-0	.000	0-0	.000	0	0	0	1.7	3	1	2	1	3.0		
Coppin St.	12/19/2025		27:10	4-7	.571	1-1	1.000	3-4	.750	1	2	3	1.8	1	0	2	0	12	3.8	
at Princeton	12/22/2025		13:14	2-2	1.000	0-0	.000	1-1	1.000	1	0	1	1.8	2	1	1	0	5	3.9	
UTSA	01/03/2026		10:60	0-2	.000	0-2	.000	0-0	.000	0	2	2	1.8	0	0	2	0	0	3.6	
at Wichita St.	01/06/2026		15:26	2-4	.500	1-3	.333	0-0	.000	0	2	2	1.8	3	0	3	0	1	5	3.7
at Tulsa	01/09/2026		12:38	0-2	.000	0-0	.000	1-2	.500	1	0	1	1.7	2	0	0	0	0	1	3.5
Tulane	01/13/2026		04:09	0-0	.000	0-0	.000	0-0	.000	0	0	0	1.6	2	0	2	0	0	0	3.3
at East Carolina	01/17/2026		14:53	1-1	1.000	0-0	.000	0-0	.000	1	1	2	1.6	2	1	2	0	2	2	3.2
South Fla.	01/20/2026		12:51	1-3	.333	0-1	.000	0-0	.000	0	2	2	1.7	2	0	0	0	2	2	3.2
Charlotte	01/24/2026		13:06	1-2	.500	0-0	.000	0-0	.000	1	1	2	1.7	0	1	0	0	0	2	3.1
at Rice	01/28/2026		06:52	0-0	.000	0-0	.000	0-0	.000	0	0	0	1.6	1	0	0	0	0	0	3.0
at Tulane	01/31/2026		02:49	0-1	.000	0-0	.000	0-0	.000	0	0	0	1.5	2	0	0	0	0	0	2.8
North Texas	02/07/2026		12:01	2-3	.667	1-2	.500	1-2	.500	1	0	1	1.5	1	1	2	0	1	6	3.0
at UTSA	02/10/2026		15:38	0-3	.000	0-1	.000	0-0	.000	0	1	1	1.5	0	0	0	0	0	0	2.8
Totals		0	287:28	25-67	.373	4-22	.182	11-18	.611	17	17	34	1.5	31	9	24	2	18	65	2.8

Player Averages

Games Played	Minutes/ game	Points/ game	FG Pct	3FG Pct	FT Pct	Rebounds/ game	Assists/ game	Turnovers/ game	Assist/Turnover ratio	Steals/ game	Blocks/ game
29	12.5	2.8	37.3	18.2	61.1	1.5	0.4	1.0	0.4	0.8	0.1

KELIAN CEDANO CAREER STATISTICS

CEDANO, Kelian

SEASON	TEAM	GP-GS	MIN/AVG	Field Goals		3-Point		F-Throws		Rebounds				Scoring						
				FG-FGA	FG%	3FG-3FGA	3FG%	FT-FTA	FT%	OFF	DEF	TOT	AVG	PF-FO	A	TO	BLK	STL	PTS	AVG
2024-25	Temple	20-0	103/5.1	12-30	.400	4-15	.267	2-2	1.000	9	12	21	1.1	12-0	5	9	1	6	30	1.5
2025-26	Temple	23-0	287/12.5	25-67	.373	4-22	.182	11-18	.611	17	17	34	1.5	31-0	9	24	2	18	65	2.8
TOTAL		43-0	390/9.1	37-97	.381	8-37	.216	13-20	.650	26	29	55	1.3	43-0	14	33	3	24	95	2.2



#7

KAYLAH TURNER

JACKSONVILLE, FLA. / OAKLEAF / ALABAMA A&M

AWARDS & HONORS

- > AAC Honorable Mention (12/2)
- > American Conference Sixth Player of The Year
- > American Conference All-New Comer Team
- > American Conference Preseason First-Team

OVERVIEW

2024-25 (Sophomore): 2024-25 AAC Sixth Player of the Year....2024-25 AAC All-New Comer Team....AAC Honorable Mention (12/2)....Played in 31 games, starting in 2....Averaging 10.1 points per game (3rd on the team).... Shooting 41% from the floor and 37% from behind the arc....Scored a career-high 25 points against FAU....Earned her first collegiate double-double with 22 points and a career-high 11 rebounds against Tulane.

2023-24 (at Alabama A&M University): 2024 SWAC Freshman of the Year... Dean's List...appeared in all 31 games for the Bulldogs, starting 29....averaged 11.2 PPG, 3.2 RPG and 2.4 APG...scored in double figures 18 times and went for 20+ on two occasions...posted a career-best 21 points at Auburn (11/26)... scored 20 with seven rebounds against Alcorn State (1/14)...personal best eight assists at Arkansas-Pine Bluff (1/6).

Prior to Temple: FACA Player of the Year as a senior at Oakleaf High School... set the school record for scoring and steals per game...helped lead the team to three district championships as well as an appearance in the state final four as a sophomore...Four time All-County First Team.

SEASON HIGHS

Points	36	at Princeton 12/22/25
Rebounds	7	vs. North Texas 2/7/26
Assists	6	vs. VCU 12/13/25
Steals	4	vs. Tulane 1/13/26
Blocks	---	
Minutes	44	at Tulane 1/31/26

CAREER HIGHS

Points	36	at Princeton 12/22/25
Rebounds	11	at Tulane 2/15/25
Assists	8	vs. Arkansas-Pine Bluff 1/6/24
Steals	4	vs. Tulane 1/13/26
Blocks	1(6x) last	vs. Arkansas-Pine 3/14/24
Minutes	44	at Tulane 1/31/26

GAME-BY-GAME

				Total		3-Pointers		Free throws		Rebounds											
Opponent	Date	GS	MIN	FG-FGA	PCT	3FG-3FGA	PCT	FT-FTA	PCT	OFF	DEF	TOT	AVG	PF	A	TO	BLK	STL	PTS	AVG	
George Mason	11/03/2025	*	37:10	4-15	.267	1-7	.143	3-6	.500	1	3	4	4.0	1	3	1	0	1	12	12.0	
George Washington	11/07/2025	*	23:47	5-9	.556	4-6	.667	0-0	.000	1	2	3	3.5	3	1	2	0	0	14	13.0	
at West Virginia	11/11/2025	*	34:40	9-22	.409	5-13	.385	0-0	.000	0	3	3	3.3	1	2	0	0	2	23	16.3	
La Salle	11/14/2025	*	28:48	5-11	.455	2-5	.400	0-0	.000	1	4	5	3.8	3	0	5	0	1	12	15.3	
at Richmond	11/18/2025	*	37:59	7-18	.389	4-9	.444	4-5	.800	0	4	4	3.8	2	2	0	0	0	22	16.6	
at Villanova	11/22/2025	*	27:42	2-11	.182	1-5	.200	0-1	.000	0	1	1	3.3	0	1	1	0	0	5	14.7	
vs Michigan St.	11/28/2025	*	29:53	5-17	.294	0-5	.000	0-0	.000	3	3	6	3.7	3	2	4	0	0	10	14.0	
vs Western Caro.	11/30/2025	*	31:10	7-10	.700	5-7	.714	4-5	.800	0	5	5	3.9	3	4	1	0	2	23	15.1	
vs Drexel	12/07/2025	*	36:30	5-11	.455	3-5	.600	3-4	.750	0	1	1	3.6	2	3	3	0	1	16	15.2	
VCU	12/13/2025	*	31:12	9-13	.692	6-8	.750	5-6	.833	0	1	1	3.3	1	6	4	0	4	29	16.6	
Coppin St.	12/19/2025	*	24:04	5-11	.455	1-5	.200	0-0	.000	0	4	4	3.4	3	2	2	0	1	11	16.1	
at Princeton	12/22/2025	*	38:11	13-21	.619	8-12	.667	2-2	1.000	0	3	3	3.3	3	6	0	2	36	17.8		
UTSA	01/03/2026	*	37:38	3-18	.167	1-7	.143	0-0	.000	2	5	7	3.6	2	2	1	0	2	7	16.9	
at Wichita St.	01/06/2026	*	37:34	5-14	.357	1-5	.200	2-2	1.000	2	1	3	3.6	2	4	2	0	4	13	16.6	
at Tulsa	01/09/2026	*	39:01	10-24	.417	5-10	.500	6-8	.750	3	1	4	3.6	2	0	5	0	3	31	17.6	
Tulane	01/13/2026	*	39:16	4-20	.200	0-8	.000	2-2	1.000	0	1	1	3.4	5	2	2	0	4	10	17.1	
at East Carolina	01/17/2026	*	39:15	6-18	.333	3-10	.300	2-2	1.000	3	3	6	3.6	0	1	3	1	2	17	17.1	
South Fla.	01/20/2026	*	37:57	7-15	.467	4-5	.800	5-5	1.000	0	2	2	3.5	2	4	3	0	2	23	17.4	
Charlotte	01/24/2026	*	33:56	5-10	.500	2-3	.667	5-6	.833	0	0	0	3.3	3	4	1	0	1	17	17.4	
at Rice	01/28/2026	*	36:25	6-18	.333	1-4	.250	3-6	.500	2	3	5	3.4	2	4	1	0	0	16	17.4	
at Tulane	01/31/2026	*	44:14	10-17	.588	3-5	.600	4-6	.667	0	3	3	3.4	2	5	4	0	2	27	17.8	
North Texas	02/07/2026	*	36:14	4-8	.500	1-3	.333	0-0	.000	0	7	7	3.5	2	4	5	0	2	9	17.4	
at UTSA	02/10/2026	*	32:53	5-14	.357	1-2	.500	1-2	.500	0	1	1	3.4	1	2	1	0	1	12	17.2	
Totals			23	795:28	141-345	.409	62-149	.416	51-68	.750	18	61	79	3.4	48	61	57	1	37	395	17.2

Player Averages

Games Played	Minutes/ game	Points/ game	FG Pct	3FG Pct	FT Pct	Rebounds/ game	Assists/ game	Turnovers/ game	Assist/Turnover ratio	Steals/ game	Blocks/ game
23	34.6	17.2	40.9	41.6	75.0	3.4	2.7	2.5	1.1	1.6	0.0

KAYLAH TURNER CAREER STATISTICS

TURNER, Kaylah

				Field Goals		3-Point		F-Throws		Rebounds									Scoring	
SEASON	TEAM	GP-GS	MIN/AVG	FG-FGA	FG%	3FG-3FGA	3FG%	FT-FTA	FT%	OFF	DEF	TOT	AVG	PF-FO	A	TO	BLK	STL	PTS	AVG
2023-24	AAMU	31-29	980/31.6	135-402	.336	34-128	.266	43-62	.694	28	78	106	3.4	56-0	73	109	7	42	347	11.2
2024-25	Temple	30-2	587/19.6	111-288	.385	34-100	.340	41-54	.759	14	58	72	2.4	48-0	49	60	3	33	297	9.9
2025-26	Temple	23-23	795/34.6	141-345	.409	62-149	.416	51-68	.750	18	61	79	3.4	48-1	61	57	1	37	395	17.2
TOTAL FOR Temple		53-25	1383/26.1	252-633	.398	96-249	.386	92-122	.754	32	119	151	2.8	96-1	110	117	4	70	692	13.1
TOTAL		84-54	2362/28.1	387-1035	.374	130-377	.345	135-184	.734	60	197	257	3.1	152-1	183	226	11	112	1039	12.4



#8

JALEESA MOLINA

THE HAGUE, NETHERLANDS / LANDSLAKE

OVERVIEW

2024-25 (Sophomore): Played and started in all 31 games....Averaged 7.4 PPG and 7 REB per game with a 52.5% field goal percentage....Led the team in double-doubles with eight....Scored a season-high 17 points and 15 rebounds at Tulane on February 15, 2025....Three times in the 2024-25 season, Molina had back-to-back games with a double-double....Scored in double-figures ten times

2023-24 (Freshman): Appeared in 27 games for the Owls....Averaged 3.6 points and 2.4 rebounds per game....Added 26 steals....Scored in double figures twice....Posted a career-high 16 points against Delaware State (11/6/23)....Netted 12 points against Xavier (12/1/23)....Grabbed a personal best six rebounds against Delaware State, Bucknell (11/11/23), and at Villanova (11/19/23).

Prior to Temple: Represented her home nation of the Netherlands in 27 FIBA 3x3 events on the international stage including the U18 World Cup in August 2022 where she led her country to 6th place ... Represented her country again in the FIBA U18 European Championships where she averaged 21.3 minutes per game, scored 6.8 points, shot 47.1% from the field, and dominated the glass with 6.3 rebounds per game in the tournament ... Played for several clubs in the Netherlands, last school with Landslake of the Dutch Basketball League ... Averaged 12.6 mpg, 6.9 ppg, 73.3 FG%, 4.0 rpg, 1.1 apg, 0.7 bpg, and 1.3 spg in seven games.

SEASON HIGHS

Points	20	vs. Tulane 1/13/26
Rebounds	13	at Tulane 1/31/26
Assists	6	vs. VCU 12/13/25
Steals	4	at Tulane 1/31/26
Blocks	2	vs. Tulane 1/13/26
Minutes	43	at Tulane 1/31/26
Double-Doubles	6	vs. Tulane 1/13/26

CAREER HIGHS

Points	20	vs. Tulane 1/13/26
Rebounds	15	at Tulane 2/15/25
Assists	6	vs. VCU 12/13/25
Steals	4	at Tulane 1/31/26
Blocks	2	vs. Tulane 1/13/26
Minutes	43	at Tulane 1/31/26
Double-Doubles	13	vs. Tulane 1/13/26

GAME-BY-GAME

Opponent	Date	GS	MIN	Total		3-Pointers		Free throws		Rebounds		PF	A	TO	BLK	STL	PTS	AVG		
				FG-FGA	PCT	3FG-3FGA	PCT	FT-FTA	PCT	OFF	DEF								TOT	AVG
George Mason	11/03/2025	*	29:20	4-8	.500	1-3	.333	3-3	1.000	1	9	10	10.0	4	1	1	0	1	12	12.0
George Washington	11/07/2025	*	24:04	5-8	.625	0-0	.000	5-6	.833	1	6	7	8.5	2	1	1	0	1	15	13.5
at West Virginia	11/11/2025	*	30:22	2-6	.333	1-4	.250	2-4	.500	2	3	5	7.3	1	2	7	0	4	7	11.3
La Salle	11/14/2025	*	27:27	4-7	.571	0-0	.000	3-3	1.000	2	8	10	8.0	2	4	4	2	2	11	11.3
at Richmond	11/18/2025	*	29:20	5-13	.385	1-3	.333	0-0	.000	4	7	11	8.6	4	1	4	1	2	11	11.2
at Villanova	11/22/2025	*	21:35	3-3	1.000	0-0	.000	0-0	.000	2	7	9	8.7	3	0	3	0	1	6	10.3
vs Michigan St.	11/28/2025	*	24:02	2-9	.222	0-1	.000	2-2	1.000	2	2	4	8.0	2	2	3	1	0	6	9.7
vs Western Caro.	11/30/2025	*	24:37	6-7	.857	0-1	.000	0-0	.000	1	8	9	8.1	5	2	3	1	1	12	10.0
vs Drexel	12/07/2025	*	33:25	5-10	.500	0-2	.000	0-0	.000	4	4	8	8.1	0	1	6	1	1	10	10.0
VCU	12/13/2025	*	31:37	4-11	.364	1-4	.250	2-2	1.000	1	9	10	8.3	3	6	4	2	2	11	10.1
Coppin St.	12/19/2025	*	26:31	4-6	.667	0-0	.000	2-6	.333	4	9	13	8.7	2	3	5	1	3	10	10.1
at Princeton	12/22/2025	*	30:31	5-8	.625	1-1	1.000	1-2	.500	2	3	5	8.4	4	0	4	0	1	12	10.3
UTSA	01/03/2026	*	20:23	1-3	.333	0-1	.000	1-1	1.000	1	1	2	7.9	4	2	3	0	0	3	9.7
at Wichita St.	01/06/2026	*	27:56	5-8	.625	1-2	.500	2-3	.667	5	2	7	7.9	0	1	2	1	2	13	9.9
at Tulsa	01/09/2026	*	30:36	2-5	.400	0-0	.000	1-2	.500	3	4	7	7.8	3	1	2	1	0	5	9.6
Tulane	01/13/2026	*	36:60	6-11	.545	1-2	.500	7-9	.778	5	5	10	7.9	4	1	4	2	1	20	10.3
at East Carolina	01/17/2026	*	27:46	4-11	.364	0-2	.000	3-5	.600	2	4	6	7.8	4	0	4	0	3	11	10.3
South Fla.	01/20/2026	*	30:60	7-8	.875	4-4	1.000	1-1	1.000	2	3	5	7.7	3	1	2	0	0	19	10.8
Charlotte	01/24/2026	*	23:06	3-8	.375	0-3	.000	1-2	.500	1	1	2	7.4	1	2	3	0	0	7	10.6
at Rice	01/28/2026	*	37:16	5-8	.625	1-2	.500	2-4	.500	3	5	8	7.4	2	2	6	0	1	13	10.7
at Tulane	01/31/2026	*	42:54	4-8	.500	0-2	.000	1-1	1.000	3	10	13	7.7	4	3	3	1	4	9	10.6
North Texas	02/07/2026	*	27:32	2-7	.286	0-0	.000	0-0	.000	2	4	6	7.6	1	0	4	0	0	4	10.3
Totals		22	638:20	88-173	.509	12-37	.324	39-56	.696	53	114	167	7.6	58	36	78	14	30	227	10.3

Player Averages

Games Played	Minutes/game	Points/game	FG Pct	3FG Pct	FT Pct	Rebounds/game	Assists/game	Turnovers/game	Assist/Turnover ratio	Steals/game	Blocks/game
22	29.0	10.3	50.9	32.4	69.6	7.6	1.6	3.5	0.5	1.4	0.6

JALEESA MOLINA CAREER STATISTICS

MOLINA, Jaleesa

				Field Goals		3-Point		F-Throws		Rebounds									Scoring	
SEASON	TEAM	GP-GS	MIN/AVG	FG-FGA	FG%	3FG-3FGA	3FG%	FT-FTA	FT%	OFF	DEF	TOT	AVG	PF-FO	A	TO	BLK	STL	PTS	AVG
2023-24	Temple	27-0	307/11.4	39-68	.574	1-5	.200	17-32	.531	34	31	65	2.4	43-1	12	35	8	26	96	3.6
2024-25	Temple	31-31	781/25.2	93-177	.525	3-11	.273	44-70	.629	74	143	217	7.0	83-1	27	80	17	45	233	7.5
2025-26	Temple	22-22	638/29.0	88-173	.509	12-37	.324	39-56	.696	53	114	167	7.6	58-1	36	78	14	30	227	10.3
TOTAL		80-53	1726/21.6	220-418	.526	16-53	.302	100-158	.633	161	288	449	5.6	184-3	75	193	39	101	556	7.0



#9

FELICIA JACOBS

LONDON, ENGLAND / CITY OF LONDON ACADEMY SOUTHWARK

OVERVIEW

2024-25 (Freshman): Played in 28 games this season....Scored her first basket against Drexel....Recorded a season-high four points and seven rebounds against ECU.

Prior to Temple: MVP of U18 Cup Final at City of London Academy Southwark...averaged 11.5 points and 11 rebounds per game in her final season...has international experience as a member of the Great Britain U18 National Team where she was team captain...invited to NBA Basketball Without Borders Camp...represented Great Britain at the 2023 European Championships.

SEASON HIGHS

Points	10	at Villanova 11/22/25
Rebounds	8	at Wichita State 1/6/26
Assists	3	at Western Carolina 11/30/25
Steals	1	at Wichita State 1/6/26
Blocks	1	at UTSA 2/10/26
Minutes	23	at UTSA 2/10/26

CAREER HIGHS

Points	10	at Villanova 11/22/25
Rebounds	8	at Wichita State 1/6/26
Assists	3	at Western Carolina 11/30/25
Steals	1	at Wichita State 1/6/26
Blocks	2	vs West Virginia 12/15/24
Minutes	23	at UTSA 2/10/26

GAME-BY-GAME

Opponent	Date	GS	MIN	Total		3-Pointers		Free throws		Rebounds			PF	A	TO	BLK	STL	PTS	AVG	
				FG	FGA	PCT	3FG	3FGA	PCT	FT	FTA	PCT								OFF
George Mason	11/03/2025		16:55	1-2	.500	0-0	.000	0-0	.000	1	2	3	3.0	4	0	1	0	2	2.0	
George Washington	11/07/2025		09:40	2-3	.667	0-0	.000	0-0	.000	1	0	1	2.0	1	1	2	0	1	4	3.0
at West Virginia	11/11/2025		12:08	0-1	.000	0-0	.000	0-0	.000	2	2	4	2.7	3	0	2	0	0	2.0	
La Salle	11/14/2025		13:55	0-2	.000	0-0	.000	2-2	1.000	1	3	4	3.0	3	0	1	0	1	2	2.0
at Richmond	11/18/2025		11:48	1-3	.333	0-0	.000	1-2	.500	1	1	2	2.8	0	2	1	1	0	3	2.2
at Villanova	11/22/2025		21:58	2-3	.667	0-0	.000	6-8	.750	1	4	5	3.2	1	1	1	0	1	10	3.5
vs Michigan St.	11/28/2025		16:09	0-2	.000	0-0	.000	0-0	.000	0	5	5	3.4	1	1	0	1	0	0	3.0
vs Western Caro.	11/30/2025		16:04	0-1	.000	0-0	.000	3-6	.500	0	3	3	3.4	0	3	0	0	0	3	3.0
vs Drexel	12/07/2025		12:31	1-2	.500	0-0	.000	0-0	.000	1	2	3	3.3	3	1	2	0	0	2	2.9
VCU	12/13/2025		13:23	1-1	1.000	0-0	.000	1-2	.500	1	4	5	3.5	0	1	1	0	0	3	2.9
Coppin St.	12/19/2025		12:41	0-2	.000	0-0	.000	0-0	.000	0	3	3	3.5	1	0	5	0	0	0	2.6
at Princeton	12/22/2025		20:09	1-2	.500	0-0	.000	0-2	.000	2	2	4	3.5	0	2	1	0	0	2	2.6
UTSA	01/03/2026		15:25	0-0	.000	0-0	.000	0-0	.000	0	2	2	3.4	1	1	0	0	0	0	2.4
at Wichita St.	01/06/2026		20:08	1-5	.200	0-0	.000	0-0	.000	2	6	8	3.7	1	1	0	0	1	2	2.4
at Tulsa	01/09/2026		14:49	0-1	.000	0-0	.000	0-0	.000	2	5	7	3.9	1	2	2	0	0	0	2.2
Tulane	01/13/2026		08:21	0-0	.000	0-0	.000	0-0	.000	0	2	2	3.8	1	0	1	0	0	0	2.1
at East Carolina	01/17/2026		23:51	2-2	1.000	0-0	.000	1-2	.500	4	4	8	4.1	3	0	1	0	0	5	2.2
South Fla.	01/20/2026		11:34	0-0	.000	0-0	.000	0-0	.000	0	3	3	4.0	4	0	3	0	0	0	2.1
Charlotte	01/24/2026		13:45	0-1	.000	0-0	.000	0-0	.000	1	3	4	4.0	2	1	0	0	0	0	2.0
at Rice	01/28/2026		12:27	0-1	.000	0-0	.000	0-0	.000	1	1	2	3.9	4	0	2	0	0	0	1.9
at Tulane	01/31/2026		11:41	0-1	.000	0-0	.000	0-0	.000	1	2	3	3.9	1	0	1	0	0	0	1.8
North Texas	02/07/2026		03:17	0-0	.000	0-0	.000	0-0	.000	0	0	0	3.7	1	0	0	0	0	0	1.7
at UTSA	02/10/2026		23:33	3-7	.429	0-0	.000	0-0	.000	1	3	4	3.7	4	1	0	1	0	6	1.9
Totals		0	336:10	15-42	.357	0-0	.000	14-24	.583	23	62	85	3.7	40	18	27	3	4	44	1.9

Player Averages

Games Played	Minutes/game	Points/game	FG Pct	3FG Pct	Rebounds/game	Assists/game	Turnovers/game	Assist/Turnover ratio	Steals/game	Blocks/game
23	14.6	1.9	.35.7	0.0	3.7	0.0	1.2	0.7	0.2	0.1

FELICIA JACOBS CAREER STATISTICS

JACOBS, Felicia

				Field Goals		3-Point		F-Throws		Rebounds										Scoring	
SEASON	TEAM	GP-GS	MIN/AVG	FG-FGA	FG%	3FG-3FGA	3FG%	FT-FTA	FT%	OFF	DEF	TOT	AVG	PF-FO	A	TO	BLK	STL	PTS	AVG	
2024-25	Temple	28-0	218/7.8	8-30	.267	0-1	.000	1-3	.333	18	34	52	1.9	20-0	3	13	6	7	17	0.6	
2025-26	Temple	23-0	336/14.6	15-42	.357	0-0	.000	14-24	.583	23	62	85	3.7	40-0	18	27	3	4	44	1.9	
TOTAL		51-0	554/10.9	23-72	.319	0-1	.000	15-27	.556	41	96	137	2.7	60-0	21	40	9	11	61	1.2	



#10

SAVANNAH CURRY

FALLSTON, MD/ WESTTOWN SCHOOL

AWARDS & HONORS

All-Freshman Team American Conference

SEASON HIGHS

Points	16	vs. VCU 12/13/25
Rebounds	6	vs. North Texas 2/7/26
Assists	4	at Western Carolina 11/30/25
Steals	7	vs. VCU 12/13/25
Blocks	1	at UTSA 2/10/26
Minutes	39	at Tulane 1/31/26

CAREER HIGHS

Points	16	vs. VCU 12/13/24
Rebounds	6	vs. North Texas 2/7/26
Assists	4	at Western Carolina 11/30/25
Steals	7	vs. VCU 12/13/25
Blocks	1	at UTSA 2/10/26
Minutes	39	at Tulane 1/31/26

OVERVIEW

2024-25 (Freshman): 2024-25 AAC All-Freshman Team....Played in all 31 games....Scored a season-high 12 points and 5 rebounds against Georgetown, also went 5-8 from the field....Had a season-high three steals against FAU....Averaged 2.2 PPG with a Shooting % of 32.9.

Prior to Temple: McDonald's All-American Nominee....Team Captain at The Westtown School....2x State Champion....Scored over 1,000 career points....2x Pennsylvania All-State....2x All-Conference selection....Team Captain at Roland Park Country School (Baltimore)....All-Conference & All-Metro selection....Averaged 16.4 points, 5.4 rebounds, and 3.3 assists per game....41% career 3-point shooter....Played AAU for Team Takeover (Nike EYBL)

GAME-BY-GAME

Opponent	Date	GS	MIN	FG-FGA	PCT	3FG-3FGA	PCT	FT-FTA	PCT	OFF	DEF	TOT	AVG	PF	A	TO	BLK	STL	PTS	AVG	
George Mason	11/03/2025	*	17:52	2-7	.286	1-2	.500	1-1	1.000	1	0	1	1.0	4	0	2	0	0	6	6.0	
George Washington	11/07/2025	*	21:33	2-9	.222	2-4	.500	0-0	.000	2	1	3	2.0	1	4	1	0	3	6	6.0	
at West Virginia	11/11/2025	*	25:39	5-10	.500	0-1	.000	1-1	1.000	3	2	5	3.0	2	2	3	0	1	11	7.7	
La Salle	11/14/2025	*	21:38	1-7	.143	1-3	.333	1-1	1.000	1	4	5	3.5	1	1	2	0	0	4	6.8	
at Richmond	11/18/2025	*	25:53	1-5	.200	0-1	.000	0-0	.000	1	4	5	3.8	0	2	1	1	0	2	5.8	
at Villanova	11/22/2025	*	24:52	4-7	.571	0-2	.000	0-0	.000	2	3	5	4.0	1	0	6	0	1	8	6.2	
vs Michigan St.	11/28/2025	*	21:04	1-2	.500	0-0	.000	0-0	.000	2	1	3	3.9	2	0	0	0	1	2	5.6	
vs Western Caro.	11/30/2025	*	24:22	4-8	.500	2-3	.667	1-1	1.000	1	1	2	3.6	1	4	3	0	2	11	6.3	
vs Drexel	12/07/2025	*	29:17	4-10	.400	0-3	.000	1-1	1.000	1	4	5	3.8	0	1	2	0	3	9	6.6	
VCU	12/13/2025	*	33:39	5-8	.625	0-1	.000	6-7	.857	0	2	2	3.6	2	2	7	0	7	16	7.5	
Coppin St.	12/19/2025	*	23:26	1-7	.143	0-3	.000	0-0	.000	0	0	0	3.3	0	2	2	0	1	2	7.0	
at Princeton	12/22/2025	*	30:04	2-6	.333	0-2	.000	0-0	.000	1	0	1	3.1	0	1	3	0	1	4	6.8	
at East Carolina	01/17/2026		13:23	0-1	.000	0-0	.000	0-0	.000	1	0	1	2.9	4	1	1	0	0	0	6.2	
South Fla.	01/20/2026		21:47	2-6	.333	0-1	.000	0-0	.000	2	2	4	3.0	0	0	0	0	2	4	6.1	
Charlotte	01/24/2026		20:33	2-6	.333	2-4	.500	0-0	.000	1	0	1	2.9	3	2	1	0	2	6	6.1	
at Rice	01/28/2026	*	22:56	0-4	.000	0-0	.000	0-0	.000	2	0	2	2.8	3	1	0	0	1	0	5.7	
at Tulane	01/31/2026	*	39:29	3-14	.214	1-8	.125	0-0	.000	1	5	6	3.0	0	3	4	0	4	7	5.8	
North Texas	02/07/2026	*	32:12	5-13	.385	2-7	.286	2-4	.500	1	5	6	3.2	1	2	1	0	2	14	6.2	
at UTSA	02/10/2026	*	18:21	2-6	.333	2-5	.400	0-0	.000	1	1	2	3.1	0	0	1	1	1	6	6.2	
Totals			16	467:59	46-136	.338	13-50	.260	13-16	.813	24	35	59	3.1	25	28	40	2	32	118	6.2

Major Averages

Games Played	Minutes/ game	Points/ game	FG Pct	3FG Pct	FT Pct	Rebounds/ game	Assists/ game	Turnovers/ game	Assist/Turnover ratio	Steals/ game	Blocks/ game
19	24.6	6.2	.33.0	.26.0	.81.3	9.1	1.5	2.1	0.7	1.7	0.1

SAVANNAH CURRY CAREER STATISTICS

CURRY, Savannah

				Field Goals		3-Point		F-Throws		Rebounds									Scoring	
SEASON	TEAM	GP-GS	MIN/AVG	FG-FGA	FG%	3FG-3FGA	3FG%	FT-FTA	FT%	OFF	DEF	TOT	AVG	PF-FO	A	TO	BLK	STL	PTS	AVG
2024-25	Temple	31-0	256/8.3	26-79	.329	7-22	.318	10-14	.714	16	29	45	1.5	22-0	8	13	5	16	69	2.2
2025-26	Temple	19-16	468/24.6	46-136	.338	13-50	.260	13-16	.813	24	35	59	3.1	25-0	28	40	2	32	118	6.2
TOTAL		50-16	724/14.5	72-215	.335	20-72	.278	23-30	.767	40	64	104	2.1	47-0	36	53	7	48	187	3.7



#11

TRISTEN TAYLOR

DUNCANVILLE, TEXAS / DUNCANVILLE HIGH SCHOOL

AWARDS & HONORS

SEASON HIGHS

Points	32	vs. Charlotte 1/24/26
Rebounds	5	at Tulane 1/31/26
Assists	8	vs. George Washington 11/7/25
Steals	3	at Wichita State 1/6/26
Blocks	1	vs. Charlotte 1/24/26
Minutes	39	vs. Charlotte 1/24/26

CAREER HIGHS

Points	32	vs. Charlotte 1/24/26
Rebounds	7	(2x) last at Tulsa 1/6/23
Assists	8	vs. George Washington 11/7/25
Steals	4	(3x) last vs. Richmond 11/4/24
Blocks	1	vs. Charlotte 1/24/26
Minutes	39	vs. Charlotte 1/26

OVERVIEW

2024-25: Started and played in all 31 games....Averaged 6.7 points per game (ppg) and 3.6 (led the team) assists per game....Scored a season-high 17 points against #24 Cal went 7-10 from the floor....Tied her career-high twice this season with 8 assists (against Delaware & USF)....Scored in double-figures nine times

2023-24 (Freshman): Established herself as a presence on the court from the very first game ... collected 8 assists in her debut vs. Delaware State ... had 4 steals in each of her first two games ... had her first 20-point game by the sixth game of her career with 21 against Big 5 rival St. Joseph's ... went 4-4 from three point range at Rice.

Prior to Temple: Starting point guard for nationally ranked Duncanville High School where she led the school to a 40-3 record and the Texas 6A Championship game in 2020, 2021 6A Regional Finals (34-7 overall), the 2022 regional finals, and a perfect 13-0 record in 2023 before the Duncanville season was cut short ... 2023 Dallas Morning News All-Area Second Team, District 11-6A co-Defensive Player of the Year and 2023 First Team All-District ... 2022 First Team All-District ... Led AAU Team Lex Nation, where she played with eight other Division I players, to both the 2022 PBR Super 64 Championship and the 2022 Girls 3SSB Adidas Championship ... 2021 Dallas Morning News All-Area First Team ... 2020 Dallas Morning News All-Area First Team

GAME-BY-GAME

Opponent	Date	GS	MIN	Total		3-Pointers		Free throws		Rebounds		PF	A	TO	BLK	STL	PTS	AVG			
				FG-FGA	PCT	3FG-3FGA	PCT	FT-FTA	PCT	OFF	DEF								TOT	AVG	
George Mason	11/03/2025	*	35:45	4-8	.500	0-2	.000	11-12	.917	0	4	4	4.0	3	7	6	0	2	19	19.0	
George Washington	11/07/2025	*	28:18	4-9	.444	1-1	1.000	2-2	1.000	0	4	4	4.0	3	8	3	0	0	11	15.0	
at West Virginia	11/11/2025	*	34:49	2-7	.286	0-2	.000	7-8	.875	1	4	5	4.3	3	5	0	0	3	11	13.7	
La Salle	11/14/2025	*	29:35	2-6	.333	0-2	.000	2-2	1.000	0	1	1	3.5	3	4	3	0	0	6	11.8	
at Richmond	11/18/2025	*	37:07	1-9	.111	0-3	.000	2-2	1.000	0	1	1	3.0	4	5	1	0	1	4	10.2	
at Villanova	11/22/2025	*	34:03	6-11	.545	0-0	.000	3-4	.750	0	2	2	2.8	2	4	1	0	0	15	11.0	
vs Michigan St.	11/28/2025	*	25:28	4-11	.364	1-3	.333	0-0	.000	1	2	3	2.9	5	3	1	0	1	9	10.7	
vs Western Caro.	11/30/2025	*	21:24	3-5	.600	0-2	.000	0-0	.000	0	0	0	2.5	3	1	3	0	0	6	10.1	
UTSA	01/03/2026	*	36:39	5-12	.417	2-5	.400	6-8	.750	0	2	2	2.4	4	3	5	0	2	18	11.0	
at Wichita St.	01/06/2026	*	26:35	5-11	.455	1-3	.333	0-0	.000	1	3	4	2.6	4	5	2	1	3	11	11.0	
at Tulsa	01/09/2026	*	36:41	1-9	.111	0-2	.000	2-2	1.000	1	1	2	2.5	3	6	1	0	0	4	10.4	
Tulane	01/13/2026	*	39:05	1-6	.167	1-4	.250	1-2	.500	1	4	5	2.8	3	3	1	1	0	4	9.8	
at East Carolina	01/17/2026	*	37:34	5-16	.313	1-3	.333	5-8	.625	1	4	5	2.9	4	3	0	0	0	16	10.3	
South Fla.	01/20/2026	*	35:51	6-10	.600	0-3	.000	4-8	.500	0	1	1	2.8	2	5	2	0	2	16	10.7	
Charlotte	01/24/2026	*	38:55	10-13	.769	6-6	1.000	6-6	1.000	1	3	4	2.9	0	6	2	1	1	32	12.1	
at Rice	01/28/2026	*	37:43	2-12	.167	0-1	.000	2-2	1.000	1	3	4	2.9	3	3	2	0	2	6	11.8	
at Tulane	01/31/2026	*	38:09	2-9	.222	1-3	.333	0-0	.000	1	4	5	3.1	3	7	2	0	2	5	11.4	
North Texas	02/07/2026	*	27:21	3-6	.500	0-0	.000	2-4	.500	0	3	3	3.1	4	0	3	0	0	8	11.2	
at UTSA	02/10/2026	*	33:10	0-2	.000	0-1	.000	0-0	.000	0	3	3	3.1	3	3	3	0	1	0	10.6	
Totals			19	634:12	66-172	.384	14-46	.304	55-70	.786	9	49	58	3.1	59	81	41	3	20	201	10.6

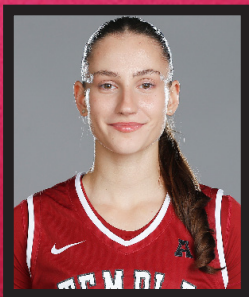
Player Averages

Games Played	Minutes/ game	Points/ game	FG Pct	3FG Pct	FT Pct	Rebounds/ game	Assists/ game	Turnovers/ game	Assist/Turnover ratio	Steals/ game	Blocks/ game
19	33.4	10.6	38.4	30.4	78.6	3.1	4.3	2.2	2.0	1.1	0.2

TRISTEN TAYLOR CAREER STATISTICS

TAYLOR, Tristen

				Field Goals		3-Point		F-Throws		Rebounds										Scoring	
SEASON	TEAM	GP-GS	MIN/AVG	FG-FGA	FG%	3FG-3FGA	3FG%	FT-FTA	FT%	OFF	DEF	TOT	AVG	PF-FO	A	TO	BLK	STL	PTS	AVG	
2023-24	Temple	32-0	589/18.4	75-184	.408	24-58	.414	36-43	.837	17	43	60	1.9	75-0	75	35	1	34	210	6.6	
2024-25	Temple	31-31	902/29.1	76-223	.341	17-59	.288	39-47	.830	7	50	57	1.8	66-0	113	47	1	39	208	6.7	
2025-26	Temple	19-19	634/33.4	66-172	.384	14-46	.304	55-70	.786	9	49	58	3.1	59-1	81	41	3	20	201	10.6	
TOTAL		82-50	2125/25.9	217-579	.375	55-163	.337	130-160	.813	33	142	175	2.1	200-1	269	123	5	93	619	7.5	



#18

ANASTASIA BULANOVA

NOVOSIBIRSK, RUSSIA / BC ENISEY

AWARDS & HONORS

OVERVIEW

Before Temple:

2022–2023: Major League season....Averaged 16.8 points, 12.1 rebounds, and over 2 blocks and steals per game....Led her team to a championship title....Earned MVP honors

2023–2024 season: Averaged 20.3 points and 11.2 rebounds....Named league MVP again....Helped Enisey secure a third-place finish

2024–2025 season: BC Enisey promoted to the Premier League (top-tier Russian basketball) team finished in fourth place....Bulanova averaged 6.1 points and 4.1 rebounds....Represents Russia on the National Team....Scored a career-high 15 points against UMMC....Grabbed a career-best 11 rebounds (including 5 offensive) vs. NIKA....Recorded 4 steals and 3 assists in another key game vs. UMMC.

SEASON HIGHS

Points
Rebounds
Assists
Steals
Blocks
Minutes

CAREER HIGHS

Points 12 vs. Prince George CC, 12/10/22
Rebounds 18 vs. CC Beaver County, 12/4/22
Assists 2 (N) Grand Rapids CC, 3/21/23
Steals 5 vs. Prince George CC, 12/10/22
Blocks 3 (3x) last at Hartford CC, 12/21/22
Minutes 22 vs. CC Beaver County, 12/4/22

GAME-BY-GAME

ANASTASIA BULANOVA CAREER STATISTICS



#24

KHLOE MILLER

RALEIGH, N.C. / WAKE YOUNG WOMEN'S LEADERSHIP ACADEMY/ ECU

AWARDS & HONORS

SEASON HIGHS

Points	8	at Western Carolina 11/30/25
Rebounds	5	vs. La Salle 11/14/25
Assists	---	
Steals	1	at Western Carolina 11/30/25
Blocks	2	vs. La Salle 11/14/25
Minutes	13	vs. La Salle 11/14/25
Double-Doubles	---	

CAREER HIGHS

Points	8	at Western Carolina 11/30/25
Rebounds	5	vs. La Salle 11/14/25
Assist	---	
Steals	1	at Western Carolina 11/30/25
Blocks	2	vs. La Salle 11/14/25
Minutes	13	vs. La Salle 11/14/25
Double-Doubles	---	

OVERVIEW

Before Temple: Redshirted at ECU....Served as team captain at Wake Young Women's Leadership Academy....Named Cap-6 Player of the Year for the 2022-23 season....Three-time All-Conference selection.... As a senior, led her team in; Scoring, Rebounding, Blocks, and Field goal percentage....Helped guide her team to the 2024 CAA4SC state championship

GAME-BY-GAME

Opponent	Date	GS	MIN	Total		3-Pointers		Free throws		Rebounds			PF	A	TO	BLK	STL	PTS	AVG	
				FG-FGA	PCT	3FG-3FGA	PCT	FT-FTA	PCT	OFF	DEF	TOT								AVG
George Mason	11/03/2025		09:04	0-0	.000	0-0	.000	0-0	.000	0	0	0	0.0	0	0	0	0	0	0.0	
George Washington	11/07/2025		12:06	3-5	.600	1-1	1.000	0-0	.000	1	0	1	0.5	2	0	3	0	7	3.5	
at West Virginia	11/11/2025		07:23	2-4	.500	0-0	.000	0-0	.000	1	0	1	0.7	2	0	2	0	4	3.7	
La Salle	11/14/2025		12:33	2-3	.667	0-0	.000	2-2	1.000	3	2	5	1.8	1	0	1	2	1	6	4.3
at Richmond	11/18/2025		04:04	0-2	.000	0-1	.000	0-0	.000	0	0	0	1.4	0	0	0	0	0	3.4	
at Villanova	11/22/2025		04:42	0-0	.000	0-0	.000	0-0	.000	0	1	1	1.3	0	0	0	0	0	2.8	
vs Michigan St.	11/28/2025		07:43	0-0	.000	0-0	.000	2-2	1.000	0	1	1	1.3	1	0	2	0	2	2.7	
vs Western Caro.	11/30/2025		11:21	3-6	.500	0-1	.000	2-2	1.000	2	0	2	1.4	0	0	1	0	8	3.4	
vs Drexel	12/07/2025		03:53	1-2	.500	0-1	.000	2-2	1.000	1	1	2	1.4	0	0	0	0	4	3.4	
VCU	12/13/2025		04:51	0-0	.000	0-0	.000	0-0	.000	0	0	0	1.3	0	0	1	0	0	3.1	
Coppin St.	12/19/2025		07:52	0-0	.000	0-0	.000	1-2	.500	0	2	2	1.4	3	0	2	0	1	2.9	
UTSA	01/03/2026		01:32	0-0	.000	0-0	.000	0-0	.000	0	0	0	1.3	0	0	0	0	0	2.7	
at Wichita St.	01/06/2026		09:38	2-3	.667	0-0	.000	0-0	.000	0	2	2	1.3	0	0	0	0	4	2.8	
Tulane	01/13/2026		03:00	0-0	.000	0-0	.000	0-0	.000	0	0	0	1.2	1	0	0	0	0	2.6	
at East Carolina	01/17/2026		04:09	0-2	.000	0-0	.000	0-0	.000	0	3	3	1.3	0	0	0	0	0	2.4	
Charlotte	01/24/2026		03:02	0-0	.000	0-0	.000	0-0	.000	0	0	0	1.3	2	0	0	0	0	2.3	
at UTSA	02/10/2026		02:24	0-0	.000	0-0	.000	0-0	.000	0	0	0	1.2	0	0	0	0	0	2.1	
Totals		0	109:17	13-27	.481	1-4	.250	9-10	.900	8	12	20	1.2	12	0	12	2	36	2.1	

Player Averages

Games Played	Minutes/ game	Points/ game	FG Pct	3FG Pct	FT Pct	Rebounds/ game	Assists/ game	Turnovers/ game	Assist/Turnover ratio	Steals/ game	Blocks/ game
17	6.4	2.1	48.1	25.0	90.0	1.2	0.0	0.7	0.0	0.2	0.1

KHLOE MILLER CAREER STATISTICS

MILLER, Khloe

				Field Goals		3-Point		F-Throws		Rebounds									Scoring	
SEASON	TEAM	GP-GS	MIN/AVG	FG-FGA	FG%	3FG-3FGA	3FG%	FT-FTA	FT%	OFF	DEF	TOT	AVG	PF-FO	A	TO	BLK	STL	PTS	AVG
2025-26	Temple	17-0	109/6.4	13-27	.481	1-4	.250	9-10	.900	8	12	20	1.2	12-0	0	12	2	3	36	2.1
TOTAL		17-0	109/6.4	13-27	.481	1-4	.250	9-10	.900	8	12	20	1.2	12-0	0	12	2	3	36	2.1



#30

DREW ALEXANDER

DURHAM, N.C. / SHABACH CHRISTIAN ACADEMY

AWARDS & HONORS

OVERVIEW

2024-25: Had a season-high 6pts against UAB...Went 2-4 against UAB, which was a season-high....Made two threes against UAB

2023-24: Did not see game action.

Prior to Temple: Played three seasons at the high school level, reclassifying after her sophomore year...In her final season of high school, was named to the Nike Tournament of Champions and Mecca Showcase All-Tournament teams while guiding prep power Shabach Christian Academy (MD), to a 19-11 record...Was selected to the Insider Exposure National Tournament All-Tournament team In her sophomore year....During her freshman season at Greensboro Day, she was selected to the Greensboro All-City Team, was ranked as a top 50 prospect nationally by ASGR Basketball, and was the named one of the top players in North Carolina by Prep Hoops...Suited up for the AAU squad DMV Lady onthe Nike circuit...Was also invited to participate in the NCAA College Basketball Academy in Memphis TN and John Lucas Top 160 Camp in Houston TX...Set the single game three pointer record (8) for club lady phoenix...Excelled academically, making the honor roll each of her four years, and was dually enrolled at Prince George's Community College (MD) in her junior year, completing her high school requirements.

SEASON HIGHS

Points	27	at Tulsa 1/9/26
Rebounds	7	vs. George Washington 11/7/25
Assists	2	vs. Drexel 12/7/25
Steals	2	at Tulsa 1/9/26
Blocks	1	at Tulsa 1/9/26
Minutes	34	at Tulsa 1/9/26
Double-Doubles	---	

CAREER HIGHS

Points	27	at Tulsa 1/9/26
Rebounds	7	vs. George Washington 11/7/25
Assists	2	vs. Drexel 12/7/25
Steals	2	at Tulsa 1/9/26
Blocks	1	at Tulsa 1/9/26
Minutes	34	at Tulsa 1/9/26
Double-Doubles		

GAME-BY-GAME

Opponent	Date	GS	MIN	Total		3-Pointers		Free throws		Rebounds				PF	A	TO	BLK	STL	PTS	AVG
				FG-FGA	PCT	3FG-3FGA	PCT	FT-FTA	PCT	OFF	DEF	TOT	AVG							
George Mason	11/03/2025		11:01	5-8	.625	3-5	.600	0-0	.000	1	0	1	1.0	0	1	0	0	13	13.0	
George Washington	11/07/2025		13:10	5-8	.625	3-4	.750	0-1	.000	1	6	7	4.0	0	1	0	0	13	13.0	
at West Virginia	11/11/2025		04:52	0-1	.000	0-1	.000	0-0	.000	0	0	0	2.7	0	0	0	0	0	8.7	
La Salle	11/14/2025		08:05	2-5	.400	1-4	.250	0-0	.000	0	0	0	2.0	2	1	0	0	1	5.8	
at Richmond	11/18/2025		10:37	2-7	.286	2-6	.333	0-0	.000	0	2	2	2.0	0	1	2	1	2	6.7	
at Villanova	11/22/2025		07:40	0-2	.000	0-2	.000	0-0	.000	1	0	1	1.8	1	0	2	0	0	6.2	
vs Michigan St.	11/28/2025		17:33	1-8	.125	1-7	.143	0-0	.000	3	2	5	2.3	2	1	0	0	0	5.7	
vs Western Caro.	11/30/2025		13:00	1-3	.333	1-2	.500	0-0	.000	2	2	4	2.5	1	1	1	0	0	3	5.4
vs Drexel	12/07/2025	*	21:43	2-5	.400	1-3	.333	0-0	.000	0	1	1	2.3	2	2	0	0	1	5.3	
VCU	12/13/2025	*	28:38	2-8	.250	2-7	.286	0-0	.000	3	2	5	2.6	3	1	2	1	1	6	5.4
Coppin St.	12/19/2025	*	19:54	4-7	.571	4-7	.571	0-0	.000	1	1	2	2.5	3	1	2	0	2	12	6.0
at Princeton	12/22/2025	*	28:21	2-8	.250	2-7	.286	0-0	.000	1	4	5	2.8	5	1	2	0	2	6	6.0
UTSA	01/03/2026	*	27:47	4-10	.400	3-9	.333	0-0	.000	1	3	4	2.8	2	0	2	0	1	11	6.4
at Wichita St.	01/06/2026	*	27:00	2-10	.200	0-5	.000	0-0	.000	1	1	2	2.8	2	1	0	0	1	4	6.2
at Tulsa	01/09/2026	*	33:36	8-17	.471	5-11	.455	6-7	.857	2	2	4	2.9	1	0	3	1	2	27	7.6
Tulane	01/13/2026	*	27:00	2-9	.222	2-7	.286	5-5	1.000	0	2	2	2.8	1	1	1	0	0	11	7.8
at East Carolina	01/17/2026	*	14:55	0-6	.000	0-5	.000	0-0	.000	0	1	1	2.7	1	0	0	0	0	0	7.4
South Fla.	01/20/2026	*	11:11	0-4	.000	0-2	.000	0-0	.000	0	0	0	2.6	0	0	0	0	0	0	6.9
Charlotte	01/24/2026	*	12:06	2-7	.286	1-4	.250	1-1	1.000	1	0	1	2.5	1	0	1	0	0	6	6.9
at Rice	01/28/2026		12:14	1-1	1.000	1-1	1.000	0-0	.000	2	1	3	2.5	1	0	1	0	0	3	6.7
at Tulane	01/31/2026		05:24	0-1	.000	0-0	.000	0-0	.000	0	0	0	2.4	1	0	1	0	0	0	6.4
North Texas	02/07/2026		03:53	1-1	1.000	1-1	1.000	0-0	.000	0	0	0	2.3	1	0	1	0	0	3	6.2
at UTSA	02/10/2026		06:01	1-2	.500	1-2	.500	0-0	.000	1	2	3	2.3	1	0	0	0	0	3	6.1
Totals		11	365:42	47-138	.341	34-102	.333	12-14	.857	21	32	53	2.3	31	12	22	3	13	140	6.1

Player Averages

Games Played	Minutes/ game	Points/ game	FG Pct	3FG Pct	FT Pct	Rebounds/ game	Assists/ game	Turnovers/ game	Assist/Turnover ratio	Steals/ game	Blocks/ game
23	15.9	6.1	.341	.333	.857	2.3	0.5	1.0	0.5	0.6	0.1

DREW ALEXANDER CAREER STATISTICS

ALEXANDER, Drew

				Field Goals		3-Point		F-Throws		Rebounds				Scoring						
SEASON	TEAM	GP-GS	MIN/AVG	FG-FGA	FG%	3FG-3FGA	3FG%	FT-FTA	FT%	OFF	DEF	TOT	AVG	PF-FO	A	TO	BLK	STL	PTS	AVG
2024-25	Temple	15-0	61/4.1	6-20	.300	5-15	.333	0-1	.000	4	2	6	0.4	2-0	1	2	1	1	17	1.1
2025-26	Temple	23-11	366/15.9	47-138	.341	34-102	.333	12-14	.857	21	32	53	2.3	31-1	12	22	3	13	140	6.1
TOTAL		38-11	427/11.2	53-158	.335	39-117	.333	12-15	.800	25	34	59	1.6	33-1	13	24	4	14	157	4.1



#34

SHEYENNE SWAIN-PRICE

STOUGHTON, Mass. / Dexter Southfield School

AWARDS & HONORS

OVERVIEW

2024-25: Did not see game action.

2023-24: Did not see game action.

Prior to Temple: Named a 2022-23 New England Preparatory School Athletic Council (NEPSAC) All-Star...2023 McDonald's All-American game nominee...10.8 ppg, 8.5 rpg, 2.0 apg, 2.3 spg in her senior season...2021-22 NEPSAC Honorable Mention...2020-21 Class B Player of the Year in the NEPSAC.

SEASON HIGHS

Points
Rebounds
Assists
Steals
Blocks
Minutes

CAREER HIGHS

Points
Rebounds
Assists
Steals
Blocks
Minutes

GAME-BY-GAME

SHEYENNE SWAIN-PRICE CAREER STATISTICS



#91

SANIYAH CRAIG

PHOENIX, AZ. / ARIZONA COMPASS/ JACKSONVILLE UNIVERSITY

AWARDS & HONORS

OVERVIEW

Before Temple:

2024–2025 season (Sophomore): Earned Third-Team All-ASUN honors.... Set Jacksonville's single-season rebounding record with 326 rebounds (11.6 per game)....Only player in the ASUN to average a double-double....Led the ASUN in rebounding....Ranked 9th in the country in rebounds per game..... Ranked 2nd nationally in offensive rebounds per game....Set a Jacksonville single-game record with 23 rebounds....Scored a season-high 27 points vs. Eastern Kentucky

2023–2024 season (Freshman): Named to the ASUN All-Freshman Team.... Started 26 of 27 games for Jacksonville....Led team with 199 total rebounds (75 offensive, 137 defensive)....Shot 46.0% from the field....Made 91 field goals and 87 free throws....Scored 272 total points....Recorded 5 double-doubles....Ranked 2nd in the ASUN in rebounding....Named ASUN Freshman of the Week three times

SEASON HIGHS

Points	22	vs. South Florida 1/20/26
Rebounds	15	vs. George Mason 11/3/25
Assists	5	at Princeton 12/22/25
Steals	4	vs. Coppin State 12/19/25
Blocks	2	vs. North Texas 2/7/26
Minutes	38	vs. UTSA 1/3/25
Double-Doubles	3	at UTSA 2/10/26

CAREER HIGHS

Points	27	vs. Eastern Ky. 2/22/25
Rebounds	25	at FGCU 2/27/25
Assists	5	at Princeton 12/22/25
Steals	4	vs. Coppin State 12/19/25
Blocks	2	vs. North Texas 2/7/26
Minutes	38	vs. UTSA 1/3/25
Double-Doubles	3	last at UTSA 2/10/26

GAME-BY-GAME

Opponent	Date	GS	MIN	Total		3-Pointers		Free throws		Rebounds			PF	A	TO	BLK	STL	PTS	AVG	
				FG-FGA	PCT	3FG-3FGA	PCT	FT-FTA	PCT	OFF	DEF	TOT								AVG
George Mason	11/03/2025	*	32:48	5-7	.714	0-1	.000	6-8	.750	4	11	15	15.0	5	1	3	0	1	16	16.0
George Washington	11/07/2025	*	28:33	2-10	.200	0-0	.000	2-2	1.000	5	7	12	13.5	1	1	0	0	1	6	11.0
at West Virginia	11/11/2025	*	27:00	1-9	.111	0-0	.000	1-2	.500	3	5	8	11.7	2	1	0	0	0	3	8.3
La Salle	11/14/2025	*	23:37	4-8	.500	0-0	.000	3-4	.750	3	8	11	11.5	3	1	1	2	2	11	9.0
at Richmond	11/18/2025	*	34:48	2-4	.500	0-1	.000	5-6	.833	3	5	8	10.8	2	2	2	0	0	9	9.0
at Villanova	11/22/2025	*	28:51	3-8	.375	0-1	.000	3-4	.750	3	1	4	9.7	2	1	4	0	1	9	9.0
vs Michigan St.	11/28/2025	*	26:05	4-9	.444	0-0	.000	3-6	.500	1	5	6	9.1	2	0	2	0	2	11	9.3
vs Western Caro.	11/30/2025	*	23:23	3-3	1.000	0-0	.000	1-2	.500	3	5	8	9.0	5	4	3	0	0	7	9.0
vs Drexel	12/07/2025	*	26:32	1-5	.200	0-0	.000	0-0	.000	1	5	6	8.7	2	0	4	0	1	2	8.2
VCU	12/13/2025	*	21:39	2-5	.400	0-0	.000	2-3	.667	3	4	7	8.5	4	0	0	0	0	6	8.0
Coppin St.	12/19/2025	*	29:36	3-12	.250	0-2	.000	3-4	.750	3	7	10	8.6	5	0	2	0	4	9	8.1
at Princeton	12/22/2025	*	29:07	4-10	.400	0-0	.000	0-4	.000	5	7	12	8.9	2	5	4	0	2	8	8.1
UTSA	01/03/2026	*	38:30	3-9	.333	0-1	.000	2-2	1.000	4	7	11	9.1	3	2	1	0	3	8	8.1
at Wichita St.	01/06/2026	*	17:24	5-7	.714	0-0	.000	3-5	.600	3	2	5	8.8	3	0	2	1	1	13	8.4
at Tulsa	01/09/2026	*	29:19	5-6	.833	0-0	.000	4-6	.667	4	3	7	8.7	4	0	4	0	1	14	8.8
Tulane	01/13/2026	*	31:39	4-8	.500	0-0	.000	2-4	.500	5	1	6	8.5	4	3	3	1	2	10	8.9
at East Carolina	01/17/2026	*	24:14	5-13	.385	0-0	.000	4-8	.500	6	1	7	8.4	5	2	1	0	0	14	9.2
South Fla.	01/20/2026	*	32:24	6-9	.667	0-0	.000	10-13	.769	2	4	6	8.3	3	4	1	0	0	22	9.9
Charlotte	01/24/2026	*	34:17	3-9	.333	0-1	.000	2-3	.667	3	3	6	8.2	2	4	2	0	1	8	9.8
at Rice	01/28/2026	*	28:15	6-16	.375	0-1	.000	2-4	.500	1	6	7	8.1	1	1	2	0	0	14	10.0
at Tulane	01/31/2026	*	31:33	6-17	.353	1-1	1.000	3-5	.600	4	4	8	8.1	4	0	2	0	3	16	10.3
North Texas	02/07/2026	*	30:27	4-11	.364	0-1	.000	2-2	1.000	3	3	6	8.0	2	0	3	2	2	10	10.3
at UTSA	02/10/2026	*	33:21	4-11	.364	0-0	.000	5-8	.625	7	4	11	8.1	1	1	1	0	1	13	10.4
Totals		23	663:21	85-206	.413	1-10	.100	68-105	.648	79	108	187	8.1	67	33	47	6	28	239	10.4

Player Averages

Games Played	Minutes/ game	Points/ game	FG Pct	3FG Pct	FT Pct	Rebounds/ game	Assists/ game	Turnovers/ game	Assist/Turnover ratio	Steals/ game	Blocks/ game
23	28.8	10.4	.413	10.0	.648	8.1	1.4	2.0	0.7	1.2	0.3

SANIYAH CRAIG CAREER STATISTICS

CRAIG, Saniyah

				Field Goals		3-Point		F-Throws		Rebounds										Scoring	
SEASON	TEAM	GP-GS	MIN/AVG	FG-FGA	FG%	3FG-3FGA	3FG%	FT-FTA	FT%	OFF	DEF	TOT	AVG	PF-FO	A	TO	BLK	STL	PTS	AVG	
2023-24	Jville	27-26	738/27.3	91-199	.457	3-25	.120	87-132	.659	76	137	213	7.9	79-4	19	87	10	22	272	10.1	
2024-25	Jville	29-26	853/29.4	112-259	.432	12-45	.267	91-148	.615	142	190	332	11.4	82-2	26	55	5	22	327	11.3	
2025-26	Temple	23-23	663/28.8	85-206	.413	1-10	.100	68-105	.648	79	108	187	8.1	67-4	33	47	6	28	239	10.4	
TOTAL FOR Temple		23-23	663/28.8	85-206	.413	1-10	.100	68-105	.648	79	108	187	8.1	67-4	33	47	6	28	239	10.4	
TOTAL		79-75	2254/28.5	288-664	.434	16-80	.200	246-385	.639	297	435	732	9.3	228-10	78	189	21	72	838	10.6	

TV ROSTER



#0 ARIANA MERIEDY
FR | F | 6-3
CLINTON, MD.



#2 BRIANNA MEAD
SO | G | 5-7
THOMPSON, CONNECTICUT.



#3 KELIAN CEDANO
SO | G | 5-10
BOSTON, MASS.



#7 KAYLAH TURNER
JR | G | 5-6
JACKSONVILLE, FLA.



#8 JALESSA MOLINA
JR | F | 6-3
THE HAGUE, NETHERLANDS



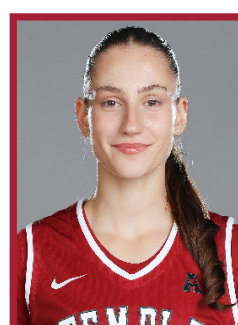
#9 FELICIA JACOBS
SO | F | 6-3
LONDON, ENGLAND



#10 SAVANNAH CURRY
SO | G | 6-0
FALLSTON, MD



#11 TRISTEN TAYLOR
JR | G | 5-5
DUNCANVILLE, TX



#18 ANASTASIA BULANOVA
FR | F | 6-3
NOVOSIBIRSK, RUSSIA



#24 KHLOE MILLER
R-FR | F | 6-3
RALEIGH, N.C.



#30 DREW ALEXANDER
SO | G | 5-11
DURHAM, N.C.



#34 SHEYENNE SWAIN-PRICE
R-SO | C | 6-0
STOUGHTON, MASS.



#91 SANIYAH CRAIG
JR | F | 6-1
PHOENIX, AZ



DIANE RICHARDSON
HEAD COACH



WANISHA SMITH
ASSOCIATE HEAD COACH



CHEYENNE CURLEY
ASSISTANT COACH



MYLES JACKSON
ASSISTANT COACH



AARON THOMAS
ASSISTANT COACH



SHENITA LANDRY
ASSISTANT COACH