

TEMPLE WOMEN'S BASKETBALL



GAME
19

TEMPLE (9-9, 9-6 AAC) at **UCF** (9-8, 9-5 AAC)
Saturday, February 27, 2021 | 12:00 PM EST
Orlando, Fla. | Addition Financial Arena



2020-21 SCHEDULE/RESULTS

Date	Opponent	Time/Result
Dec. 4	Villanova +	L, 90-72
Dec. 6	at FGCU	L, 78-69
Dec. 17	at #1 South Carolina	L, 103-41
Dec. 20	SMU *	W, 73-57
Dec. 23	Tulsa *	W, 69-52
Dec. 30	at Tulane *	Postponed
Jan. 6	at ECU *	W, 66-57
Jan. 9	UCF *	W, 61-58
Jan. 13	Cincinnati *	L, 71-65
Jan. 16	at SMU *	Cancelled
Jan. 20	at Houston *	L, 46-80
Jan. 23	Wichita State *	W, 65-55
Jan. 27	at USF *	Postponed
Jan. 30	at Tulane *	L, 44-80
Jan. 31	at Tulane *	L, 69-71
Feb. 3	at Cincinnati *	W, 69-53
Feb. 6	at Wichita State *	W, 65-57
Feb. 10	Houston *	L, 52-89
Feb. 13	ECU *	W, 58-57
Feb. 17	at Tulsa *	W, 68-46
Feb. 20	at Memphis *	Postponed
Feb. 24	#13 USF *	L, 47-56
Feb. 27	at UCF *	1:00 PM
Mar. 2	Memphis *	3:30 PM
Mar. 4	Memphis *	12:00 PM

2021 American Athletic Conference Championship

Dickies Arena - Fort Worth, Texas

Mon., March 8	First Round
Tues., March 9	Quarterfinals
Wed., March 10	Semifinals
Thurs., March 11	Championship

All times Eastern | Home games in **cherry**

* American Athletic Conference game | + Philadelphia Big 5 game | ^ Played at the Liacouras Center

HEADLINES

THE OWLS

- > Temple arrives in Orlando with a record of 9-9 (9-6 AAC). The Owls currently sit at fifth in the AAC standings.
- > Mia Davis leads the Owls with 18.7 points and 7.9 rebounds per game.
- > Davis is just three foul shots away from becoming Temple's all-time leader in made free throws. The current record is 402, set by Feyonda Fitzgerald (2013-2017).
- > Jasha Clinton is Temple's second-leading scorer with 13.4 points per game. The guard adds 3.9 rebounds, 3.7 assists and 1.6 steals per game for the Owls. Clinton leads Temple in three-pointers (31) and steals (30).
- > Alexa Williamson is the third Owl averaging double-digits this season with 11.3 per game. The forward boasts a team-best field goal percentage of 48.3% and adds 6.5 rebounds per game for Temple. Williamson leads the Owls and ranks second in the AAC with 1.5 blocks per game.

SCOUTING UCF

- > The Knights enter Saturday's contest with a record of 12-2 (10-1). UCF is currently on a seven-game winning streak as they rank second in the AAC.
- > UCF's sole conference loss came at the hands of Temple on Jan. 9 in Philadelphia. The Knights fell 61-58 as they committed 23 turnovers.
- > The Knights lead the conference in both three-point percentage (33.6) and scoring defense (50.4).
- > Courtajia Sanders leads the Knights in scoring with 11.2 points per night while adding 5.0 rebounds.
- > Leading UCF on the boards is Brittney Smith with 6.2 rebounds per game. Smith is the only other Knight averaging double-digit points with her 10.2 per game.
- > Alisha Lewis' three-point percentage of 45.6 leads both UCF and the AAC.

UCF'S LAST TIME OUT

- > UCF won their seventh-straight game on Feb. 20 with a 55-53 decision against Tulsa.
- > Lewis knocked down four three-pointers to lead the Knights with 15 points.
- > Smith registered her second double-double of the year with 10 points and 13 rebounds.
- > Tulsa recorded better shooting percentages than the Knights from both the field (46.8% to 38.2%) and beyond the arc (50% to 30%).
- > What proved to be the difference was UCF's 36-24 advantage on the boards, including 15 offensive rebounds that led to 12 second-chance points.

TEMPLE

Overall	AAC	Record	Overall	AAC
9-9	9-6	Record	12-2	10-1
5-4	5-3	Home	6-1	5-0
4-5	4-3	Away	6-1	5-1
0-0	0-0	Neutral	0-0	0-0
L1	L1	Streak	W7	W7
0-2	0-1	AP/Coaches	0-0	0-0

Tonya Cardoza

Record	Yr.
236-171	13th
236-171	13th

Katie Abrahamson-Henderson

Record	Yr.
101-42	5th
342-150	15th

Individual Leaders

Davis	18.7	Points	11.2	Sanders
Davis	7.9	Rebounds	6.2	Smith
Alexander	4.9	Assists	4.0	Battles
Williamson	1.5	Blocks	0.9	Kaba
Clinton	1.6	Steals	2.2	Battles

AAC	Per Game	Team Stats	Per Game	AAC
6th	61.1	Offense	58.0	9th
8th	67.2	Defense	50.4	1st
7th	-6.1	Scoring Margin	+7.6	3rd
6th	38.9%	FG %	41.4%	2nd
7th	39.7%	FG % Defense	34.1%	2nd
11th	24.5%	3-Point %	33.6%	1st
8th	64.7%	FT %	65.9%	6th
6th	37.8	Rebounds	36.9	8th
9th	-2.2	Rebound Margin	+4.6	3rd
4th	13.9	Assists	13.4	7th
6th	3.6	Blocks	2.9	8th
7th	7.5	Steals	9.4	4th
8th	-2.7	Turnover Margin	+0.8	5th
5th	0.8	A-TO Ratio	0.7	7th

TEMPLE PROBABLE STARTERS

P	#	Name	Ht.	Cl.	PPG	RPG
G	1	Jasha Clinton	5-8	Fr.	13.4	3.9
G	2	Asonah Alexander	5-10	So.	4.7	5.8
G	12	Emani Mayo	5-8	Sr.	6.7	3.7
F	20	Alexa Williamson	6-1	Jr.	11.3	6.5
F	25	Mia Davis	6-0	Sr.	18.7	7.9

TEMPLE KEY RESERVES

P	#	Name	Ht.	Cl.	PPG	RPG
G	3	Rayniah Walker	5-10	So.	2.5	2.4
G	5	Jada Graves	5-9	Gr.	2.2	2.6
G	11	Kash Ayuso	5-6	Fr.	3.0	1.3

UCF PROBABLE STARTERS

P	#	Name	Ht.	Cl.	PPG	RPG
G	1	Courtajia Sanders	6-1	Sr.	11.2	5.0
G	3	Diamond Battles	5-8	Jr.	9.9	3.9
F	5	Masseny Kaba	6-3	Sr.	8.4	5.7
G	23	Alisha Lewis	5-7	So.	8.6	3.0
F	32	Brittney Smith	6-3	Jr.	10.2	6.2

TUNING IN

	FACEBOOK	@templewbb
	INSTAGRAM	@templewbb
	TWITTER	@templewbb
	TELECAST	ESPN+
	LIVE STATS	StatBroadcast

COMMUNICATIONS

NOREEN MULLEDY

Strategic Communications Coordinator

noreen.mulledy@temple.edu

508-344-0166

2021-20 TEMPLE NUMERICAL ROSTER

#	NAME	YR	POS	HT	HOMETOWN/PREVIOUS SCHOOL
1	Jasha Clinton	Fr.	G	5-8	Virginia Beach, Va./Princess Anne
2	Asonah Alexander	So.	G	5-10	Prospect Park, N.J./The Patrick School
3	Rayniah Walker	So.	G	5-10	Cheltenham, Md./Bullis School
5	Jada Graves	Gr.	G	5-9	Alexandria, Va./Thomas Edison/Elon
10	Nicolette Mayo	Jr.	G	5-8	Hephzibah, Ga./Hephzibah
11	Kash Ayuson	Fr.	G	5-6	West Palm Beach, Fla./Palm Beach Lakes
12	Emani Mayo	Jr.	G	5-8	Hephzibah, Ga./Hephzibah
14	Janelle Johnson	Fr.	G	5-9	Bridgeport, Conn./St. Luke's School
20	Alexa Williamson	Jr.	F	6-1	Houston, Pa./Chartiers-Houston
22	Aniya Matthews	Fr.	C	6-3	York, Pa./Dallastown Area
24	Shantay Taylor	Gr.	F	6-3	Columbia, S.C./Spring Valley
25	Mia Davis	Sr.	F	6-0	Baltimore, Md./St. Frances Academy

2021-20 TEMPLE ALPHABETICAL ROSTER

#	NAME	YR	POS	HT	HOMETOWN/PREVIOUS SCHOOL
2	Asonah Alexander	So.	G	5-10	Prospect Park, N.J./The Patrick School
11	Kash Ayuso	Fr.	G	5-6	West Palm Beach, Fla./Palm Beach Lakes
1	Jasha Clinton	Fr.	G	5-8	Virginia Beach, Va./Princess Anne
25	Mia Davis	Sr.	F	6-0	Baltimore, Md./St. Frances Academy
5	Jada Graves	Gr.	G	5-9	Alexandria, Va./Thomas Edison/Elon
14	Janelle Johnson	Fr.	G	5-9	Bridgeport, Conn./St. Luke's School
22	Aniya Matthews	Fr.	C	6-3	York, Pa./Dallastown Area
12	Emani Mayo	Sr.	G	5-8	Hephzibah, Ga./Hephzibah
10	Nicolette Mayo	Sr.	G	5-8	Hephzibah, Ga./Hephzibah
24	Shantay Taylor	Gr.	C	6-3	Columbia, S.C./Spring Valley
3	Rayniah Walker	So.	G	5-10	Cheltenham, Md./Bullis School
20	Alexa Williamson	Jr.	F	6-1	Houston, Pa./Chartiers-Houston

COACHING STAFF

Head Coach: Tonya Cardoza (13th season – Virginia '91)

Associate Head Coach: Way Veney (13th season – East Carolina '00)

Assistant Coach: Willnett Crockett (12th season – UConn '06)

Assistant Coach: Sam Guastella (1st season – Quinnipiac '15)

PRONUNCIATION GUIDE

JASHA Clinton JAY-shuh
 ASONAH Alexander uh-SAWN-uh
 RAYNIAH Walker ruh-NYE-uh
 JADA Graves JAY-duh
 KASH AYUSO Cash eye-YOU-so
 EMANI Mayo ee-MON-ee

ANIYA Matthews uh-NYE-uh
 SHANTAY Taylor shon-TAY
 MIA Davis ME-uh
 Way VENey VEE-nee
 Sam GUASTELLA gwuh-STELL-uh

2021-20 TEMPLE ROSTER INFORMATION

BY STATE

Connecticut (1) Janelle Johnson
Florida (1) Kash Ayuso
Georgia (2) Emani Mayo
 Nicolette Mayo
Maryland (2) Mia Davis
 Rayniah Walker
New Jersey (1) Asonah Alexander
Pennsylvania (2) Alexa Williamson
 Aniya Matthews
South Carolina (1) Shantay Taylor
Virginia (2) Jasha Clinton
 Jada Graves

BY CLASS

Freshmen (4) Kash Ayuso
 Jasha Clinton
 Janelle Johnson
 Aniya Matthews
Sophomores (2) Asonah Alexander
 Rayniah Walker
Juniors (1) Alexa Williamson
Seniors (3) Mia Davis
 Emani Mayo
 Nicolette Mayo
Graduate Students (2) Jada Graves
 Shantay Taylor

BY HEIGHT

6-3 (2) Aniya Matthews
 Shantay Taylor
6-1 (1) Alexa Williamson
6-0 (1) Mia Davis
5-10 (2) Asonah Alexander
 Rayniah Walker
5-9 (2) Jada Graves
 Janelle Johnson
5-8 (3) Jasha Clinton
 Emani Mayo
 Nicolette Mayo
5-6 (1) Kash Ayuso

QUICK FACTS

TEMPLE UNIVERSITY

Location Philadelphia, Pa.
 Founded 1884
 Enrollment 41,000
 President Richard M. Englert
 Interim Director of Athletics Fran Dunphy
 Nickname Owls
 Mascot Hooter
 Colors Cherry (201c) and White
 Affiliation NCAA Division I
 Conference American Athletic
 Home Court McGonigle Hall (3,900)
 Alt. Home Court Liacouras Center (10,000)
 Website www.owlsports.com
 Twitter @templewbb
 Instagram @templewbb

HISTORY

First Year of Competition 1923-24
 Record 845-706-3 (.545)
 NCAA Appearances 11
 NCAA Record 5-11
 WNIT Appearances 6
 WNIT Record 12-7

COACHING STAFF

Head Coach **Tonya Cardoza** (Virginia '91)
 Associate Head Coach **Way Veney** (ECU '00)
 Assistant Coach **Willnett Crockett** (UConn '06)
 Assistant Coach **Sam Guastella** (Quinnipiac '15)
 Dir. of Operations .. **Jazmin Horne** (St. Joseph's '17)
 Asst. Dir. of Ops. **Talisa Samano** (Temple '10)
 Video Coordinator **Joey Raniero** (Temple '18)
 Strength Coach **Tim Teefy** (West Virginia '99)
 Athletic Trainer **Christina Kennedy** (Cortland '10)

MEDIA RELATIONS

WBB Contact **Noreen Mulledy**
 Office Phone (215) 204-2587
 Cell Phone (508) 344-0166
 E-mail noreen.mulledy@temple.edu

NEWS AND NOTES

THE GAME

> Temple heads to Orlando, Fla. for a 12 p.m. tip against UCF on Saturday, Feb. 27 at Addition Financial Arena.

THE OWLS' LAST TIME OUT: #13 USF 56, Temple 47

- > The Owls battled #13 USF until the very end before ultimately falling 56-47 Wednesday afternoon at McGonigle Hall.
- > Temple came out of the gate with some scrappy defense, holding USF below 25% shooting for the first three quarters.
- > The Bulls caught fire in the final quarter, reeling off 21 points on 50% (5-10) shooting to propel them to victory.
- > The Owls were out-rebounded on both ends of the floor, with USF picking up 17 offensive rebounds over the course of the game.
- > Davis and Clinton led the way for the Owls, scoring 23 and 20 points, respectively. Clinton knocked down four three-pointers to lead all players beyond the arc.
- > E. Mayo grabbed nine rebounds, including two key offensive boards in the fourth quarter to keep Temple alive.
- > Williamson contributed across the statsheet, adding four points, four rebounds, two blocks, and an assist.

400 AND COUNTING

- > January 30th's game at Tulane marked head coach Tonya Cardoza's 400th game coaching the Temple Owls.
- > Cardoza has coached the most games for the women's basketball program than any other coach in program history. Linda MacDonald, who coached the Owls from 1980-90, holds the second-most games coached with 296.
- > Cardoza holds a 236-171 record with a winning percentage of .579 in her 13th season in North Philly.
- > She's led the Owls to seven postseason berths, including four NCAA Tournament appearances and a spot in the WNIT Final Four.
- > Cardoza is a two-time conference Coach of the Year and four-time Big 5 Coach of the Year.
- > In 2017, she was one of 10 finalists for WBCA National Coach of the Year Honors.
- > Prior to taking the reigns at TU from former college teammate Dawn Staley, Cardoza spent 14 seasons as an assistant coach at UConn with Geno Auriemma.
- > During her tenure, the Huskies captured five national championships.

ALWAYS THE STARTER

- > On Saturday, Jan. 24, Mia Davis played and started in her 100th career game in the Cherry and White.
- > The most games played by an Owl is 134 by both Alliya Butts and Feyonda Fitzgerald.

FREE THROW RECORD

- > Davis currently has 400 career made foul shots, placing her at second in Temple women's basketball history.
- > The forward is just three free throws away from breaking Feyonda Fitzgerald's career record of 402.

CHASING GREATNESS

- > Davis passed the 1,000 point milestone during the fifth game of her junior season. She currently ranks fifth in program history with 1,796 points.
- > The Baltimore, Md. native is chasing down Feyonda Fitzgerald's career mark of 1,824.
- > Davis has the fourth-most career rebounds with 944. The forward needs just six more rebounds to pass Lynn Blaszczyk's fourth-place record of 940 career boards.
- > The forward ranks fourth in program history in made field goals with 665.

ROOKIE RISING

- > Freshman Jasha Clinton is having an impressive first season in North Philly.
- > The 2020 Virginia Gatorade Girls Basketball Player of the Year is averaging 13.4 points, 3.9 rebounds, 3.7 assists and 1.6 steals per game for the Owls.
- > Clinton has been named the AAC Freshman of the Week twice thus far this season, along with earning Big 5 Player of the Week on Jan. 25.

ALL-TIME SERIES VS. UCF

DATE	RESULT	LOCATION
12/28/95	L, 66-84	A
1/4/14	W, 75-54	A
3/1/14	W, 64-54	A
1/17/15	W, 72-57	H
1/27/15	W, 71-54	A
1/13/16	W, 71-63	A
2/29/16	W, 78-64	H
2/27/17	W, 66-60	H
12/30/17	L, 46-76	A
2/10/18	L, 57-64	H
3/4/18	L, 70-77	N
2/23/19	L, 54-62	A
1/29/20	W, 86-81	H
2/26/20	L, 64-67	A
1/9/21	W, 61-58	H

SERIES NOTES

OVERALL.....	Temple leads, 9-6
Home	5-1
Away	4-4
Neutral site	0-1
Current Streak	Temple, Won 1
Longest TEM Winning Streak	W7
Longest UCF Winning Streak	W4
Largest TEM Margin of Victory	21 (1/4/14)
Largest UCF Margin of Victory	30 (12/30/17)

SERIES HISTORY

- > Temple leads the all-time series against the Knights, 9-6.
- > The first meeting between the two programs came on Dec. 28, 1995 in Orlando, where the Owls fell 84-66.

LAST TIME THEY MET

- > The Owls edged UCF 61-58 on Jan. 9 at McGonigle Hall.
- > Both teams started slow, with defense being the name of the game for the first quarter. Only 19 points were scored by both teams in the first.
- > The Cherry and White offense found a spark heading into the second quarter, scoring immediately out of the break and going on a 12-4 run to take the lead.
- > The Owls were able to earn a two-point lead at halftime (26-24), with the defense holding the Knights to 12 points in each half.
- > UCF got within one after the half, but Davis' three points gave Temple some breathing room.
- > The Knights cut Temple's lead to just one with less than a minute left in the game, but the Owls were able to seal the win with two pairs of free throws.
- > Clinton and Kash Ayuso both posted career-high points, with Clinton scoring 17 and Ayuso scoring seven.
- > E. Mayo's three steals were a season-high while Alexander's three were a career-high.
- > Temple shot 34.5 percent from the field (19-of-55), while the Knights shot 43.8 percent (21-of-48).
- > Davis' 19 points led both teams, while Brittney Smith's 17 led UCF.

2020-21 PRESEASON HONORS

AMERICAN PRESEASON POLL

Rank	School (1st Place Votes)	Points
1.	USF (8)	98
2.	UCF (1)	79
3.	Tulane	78
4.	Cincinnati (2)	73
5.	Temple	57
6.	Wichita State	54
7.	Houston	49
8.	Memphis	40
9.	East Carolina	36
10.	SMU	31
11.	Tulsa	10

*(First-place votes in (parentheses))

AMERICAN PRESEASON PLAYER OF THE YEAR

Player	School
Ilmar'I Thomas	Cincinnati
Mia Davis	Temple

AMERICAN PRESEASON FIRST TEAM

Player	School
Brittney Smith	UCF
Ilmar'I Thomas*	Cincinnati
Lashonda Monk	East Carolina
Mia Davis*	Temple
Krystal Freeman*	Tulane

*denotes unanimous selection

AMERICAN PRESEASON SECOND TEAM

Player	School
Dulcy Fankam Mendjiadeu	Memphis
Elisa Pinzan	USF
Elena Tsineke	USF
Arsula Clark	Tulane
Mariah McCully	Wichita State

NEWS AND NOTES

CHERYL MILLER AWARD

- > Davis was one of 20 women's basketball players named to the 2021 Cheryl Miller Award Watch List at the beginning of the 2020-21 season.
- > This marks the second-straight season the Naismith Memorial Basketball Hall of Fame and the Women's Basketball Coaches Association have added Davis to this prestigious award watch list.
- > On Feb. 3, 2021, Davis was named a Top 10 Finalist for the 2021 Miller Award.
- > The annual award in its third year recognizes the top small forwards in Women's NCAA Division I college basketball and named in honor of three-time Naismith Player of the Year, Cheryl Miller.
- > The winner of the 2021 Cheryl Miller Award will be announced on Friday, April 9, 2021 along with the other four members of the Women's Starting Five Awards.

MOURNING A LEGEND

- > John Chaney, the Hall of Fame Temple coach who drove his student-athletes to excellence on the court while teaching them to succeed off it, died on January 29, 2021 after a short illness. He celebrated his 89th birthday the week prior (Jan. 21).
- > One of the most respected coaches in college sports, Coach Chaney led Temple's men's basketball program for 24 years. He was twice named the national Division I coach of the year, and his 1987-88 team ended the season ranked No. 1 in the country.
- > Coach Chaney's run at Temple was one of the most successful of any coach in the nation. Twenty-three of his 24 Temple teams played in postseason tournaments, including 17 NCAA Tournament appearances.
- > Before Coach Chaney's arrival in 1982, the men's basketball program had never participated in back-to-back NCAA Tournaments. Under his leadership, the Owls earned five consecutive berths between 1984 and 1988.
- > The program rode a school-record streak of 12 straight appearances in the March Madness field from 1990 through 2001, including five trips to the Elite Eight (1988, 1991, 1993, 1999 and 2001). Only four schools went to as many regional finals in those 16 years.
- > "John Chaney was more than just a Hall of Fame basketball coach. He was a Hall of Famer in life. He touched countless lives, including my own. I will miss him dearly and my thoughts and prayers go out to his family during this difficult time." - Fran Dunphy, Acting Director of Athletics and former Temple men's basketball coach (2006-19).
- > "John Chaney lived his life with purpose and dedicated so many years impacting and serving others. He had passion for not only the game of basketball but impacting the lives of every single person he encountered. He will forever be a legend. Rest well, Coach." - Temple women's basketball coach Tonya Cardoza

SEEING DOUBLE

- > The 2020-21 Temple rosters features twin sisters Emani and Nicolette Mayo.
- > The senior duo have each played important roles for the Owls. Emani was named to the 2018 American Athletic Conference All-Freshman team and was team captain her sophomore year (2018-19).
- > Nicolette served as a captain for the 2019-20 season.
- > The Mayos are one of 24 known twin sisters playing NCAA Division I basketball for the 2020-21 season.

TEMPLE VS. THE TOP TEAMS

- > Temple is 0-2 against nationally ranked teams this season, falling to #5 South Carolina on Dec. 17, 103-41, in Columbia, S.C.
- > The Owls battled to the end against #13 USF at home on Feb. 24 but ultimately fell 56-47.
- > The Owls finished the 2019-20 season 0-3 against nationally ranked teams.
- > Temple's last win against a nationally ranked team was a 77-71 victory at No. 22 USF on Feb. 19, 2017.

SCHEDULE CHANGES

- > Temple has had four schedule changes this season due to COVID-19 related issues.
- > The Owls were able to start their season two days earlier than expected when they added a home game against Villanova on Dec. 4.
- > Temple was scheduled to head to Tulane on Dec. 30, but COVID related issues

NEWS AND NOTES

in the program forced the game to be postponed. The two teams will now face each other in back-to-back games on Jan. 30 and 31 in New Orleans.

> Temple's Jan. 16 game at SMU has been canceled as a result of the Mustangs cancelling the remainder of their season. SMU finished the season at 0-6.

> The Owls were set to play #13 USF on Wednesday, Jan. 27 but a positive case in the Bulls' program forced the contest to be postponed.

> Temple's Feb. 20th game at Memphis was postponed due to inclement weather. The game has been rescheduled to Mar. 4 at noon in Philadelphia.

OWL OPENERS

> Temple is 55-26 all-time in season openers, including an 11-2 mark under Cardoza.

> The Owls opened the 2019-20 season with a 77-59 win over Fairfield at home.

> This year marks the first time Temple has started their schedule in December since the 1996-97 season.

> Temple fell to Villanova in their 2020-21 debut, breaking their nine-year streak of winning home openers.

AMERICAN PRESEASON PICKS

> Temple was picked to finish fifth in the American Preseason Poll this year, three spots ahead of where they finished in 2019-20.

> For the first time since the conference's inception in 2013, USF was selected as the favorites to win the American this year.

> Mia Davis earned a unanimous selection to the Preseason All-Conference First Team while being named the Preseason co-Player of the Year alongside Cincinnati's Ilmar'i Thomas.

CARDOZA SIGNS FIVE IMPRESSIVE RECRUITS

> Cardoza announced the signing of five notable recruits from the class of 2021.

> Hailing from Louisville, Ky., 5-10 guard Tierra East signed her national letter of intent to play for the Owls in the 2021-22 season. East is ranked the No. 65 overall player and No. 27 guard from the 2021 recruiting class by ESPN HoopGurlz.

> Buffalo, N.Y. native Kyra Wood is an impressive 6-2 forward out of City Honors School. Wood crossed the 1,000 point milestone during her sophomore year and enters her senior season on track to join the 2,000 point club.

> Jada Williams comes from nearby Williamstown, N.J. The Gloucester Catholic senior holds a career average of 13.5 points per game as she heads into her final season of high school basketball.

> Aniya Gourdine of Baltimore, Md. is a senior at St. Frances Academy - where current Temple star Mia Davis graduated from in 2017. Gourdine is a three-time IAAM Champion and two-time All-Metro First Team honoree.

> Upper Marlboro, Md. native Makayla Waleed rounds out the 2021 recruiting class for the Owls. Waleed helped her St. Vincent Pallotti High School team to a 21-6 record during the 2019-20 season, before falling to local rival St. Frances and future teammate Aniya Gourdine in the IAAM Championship.

HALL OF FAMER

> The Temple Hall of Fame Class of 2020 was announced on December 14, 2020 and included Temple women's basketball great Kamesha Hairston.

> Hairston was named the 2007 Atlantic 10 and Big 5 Player of the Year at the conclusion of her senior season.

> The Toledo, Ohio native ended her career with 1,573 points (9th all-time at TU), 757 rebounds (11th) and 235 steals (5th).

> Hairston was selected with the 12th pick of the 2007 WNBA Draft by the Connecticut Sun.

> In 2019, The Temple star was inducted into the Philadelphia Big 5 Hall of Fame.

UP NEXT

> The Owls return to McGonigle Hall to host Memphis on Tuesday, Mar. 2 for a 3:30 p.m. tip-off.

2020-21 AMERICAN STANDINGS

School	Conf.	%	Overall	%	Streak
#13 USF	11-0	1.000	14-1	0.933	W13
UCF	10-1	0.909	12-2	0.857	W7
Houston	11-4	0.733	14-5	0.737	W6
Tulane	11-6	0.647	15-7	0.682	W1
Temple	9-6	0.600	9-9	0.500	L1
ECU	5-9	0.357	7-12	0.368	L1
Tulsa	4-11	0.267	5-11	0.313	L5
Cincinnati	4-12	0.250	5-15	0.250	W1
Memphis	2-8	0.200	4-11	0.267	L4
Wichita St.	1-9	0.100	4-11	0.267	L5
SMU^	0-2	0.000	0-6	0.000	L6

^opted out of 2020-21 season on 12/29/20

as of end of day Feb. 25, 2021

2020-21 SEASON HONORS

2020-21 AAC PRESEASON CO-PLAYER OF THE YEAR

Player

Mia Davis

2021 CHERYL MILLER AWARD WATCH LIST

Player

Mia Davis

2021 BECKY HAMMON MID-MAJOR PLAYER OF THE YEAR WATCH LIST

Player

Mia Davis

2021 CHERYL MILLER AWARD TOP 10 FINALIST

Player

Mia Davis

2020-21 BIG 5 PLAYER OF THE WEEK

Player

Alexa Williamson

Jasha Clinton

Date

12/28/20

1/25/21

2020-21 AAC FRESHMAN OF THE WEEK

Player

Jasha Clinton

Jasha Clinton

Date

12/28/20

2/8/21

2020-21 AAC WEEKLY HONOR ROLL

Player

Mia Davis

Mia Davis

Alexa Williamson

Jasha Clinton

Mia Davis

Jasha Clinton

Jasha Clinton

Mia Davis

Mia Davis

Mia Davis

Alexa Williamson

Date

12/7/20

12/21/20

12/28/20

1/11/21

1/11/21

1/18/21

1/25/21

2/1/21

2/8/21

2/15/21

2/22/21

TEMPLE'S RECORD WHEN...

At home	6-3	Opp. scores 100+ points	0-1	Out-rebounding its opponent	7-2
On the road	4-5	Opp. scores 90-99 points	0-1	Out-rebounded by opponent	2-7
At a neutral site	0-0	Opp. scores 80-89 points	0-3	Same in rebounding	0-0
		Opp. scores 70-79 points	0-2		
Coming off a loss	4-4	Opp. scores 60-69 points	0-1	Has more turnovers	5-5
Coming off a win	5-4	Opp. scores 50-59 points	8-1	Has fewer turnovers	4-3
		Opp. scores less than 50 points	1-0	Has equal turnovers	0-1
Scoring first	6-2				
Leading at halftime	6-3	No Owls score in double figures	0-0	Has more steals	2-3
Trailing at halftime	3-5	Five Owls score in double figures	0-0	Has fewer steals	7-4
Tied at halftime	0-0	More than 5 in double figures	0-0	Has equal steals	0-2
		All starters score in double figures	0-0		
Leading entering 4th quarter	7-1			Has more blocks	5-1
Trailing entering 4th quarter	2-8	In overtime games	0-0	Has fewer blocks	2-6
Tied entering 4th quarter	0-0			Has equal blocks	2-2
Scoring 65 or more points	7-4	Shooting 40% or better	8-2	Playing in November	0-0
Scoring fewer than 65 points	2-5	Shooting under 40%	1-7	Playing in December	2-3
		Opp. shoots 40% or better	1-6	Playing in January	3-4
Margin is 3 points or less	2-1	Opp. shoots under 40%	8-3	Playing in February	4-2
Margin is between 3-10 points	2-3	Out-shooting its opponent	1-2	Playing in March	0-0
Margin is more than 10	5-5	Out-shot by opponent	8-7		
Scoring 100+ points	0-0	Shooting 70% or better FTs	3-1	Playing on Monday	0-0
Scoring 90-99 points	0-0	Shooting under 70% FTs	6-8	Playing on Tuesday	0-0
Scoring 80-89 points	0-0	Opp. shoots 70% or better FTs	2-3	Playing on Wednesday	3-4
Scoring 70-79 points	1-1	Opp. shoots under 70% FTs	8-5	Playing on Thursday	0-1
Scoring 60-69 points	7-3			Playing on Friday	0-1
Scoring 50-59 points	1-1	Shooting 40% or better 3PTs	1-0	Playing on Saturday	5-1
Scoring less than 50 points	0-4	Shooting under 40% 3PTs	8-9	Playing on Sunday	1-2
		Opp. shoots 40% or better 3PTs	1-2		
		Opp. shoots under 40% 3PTs	8-7	Wearing white	5-4
				Wearing cherry	2-2
				Wearing black	2-3
				Wearing pink/grey	0-0

CAREER RECORD WATCH

POINTS			FREE THROWS		
1.	Marilyn Stephens (1980-84)	2,194	1.	Feyonda Fitzgerald (2013-17)	402
2.	Alliya Butts (2014-19)	1,936	2.	Mia Davis (2017-)	400
3.	Tanaya Atkinson (2014-18)	1,890	3.	Marilyn Stephens (1980-84)	356
4.	Feyonda Fitzgerald (2013-17)	1,824	4.	Tanaya Atkinson (2014-18)	343
5.	Mia Davis (2017-)	1,796	5.	Lisa Jakubowicz (1998-02)	335
6.	Candice Dupree (2002-06)	1,698	6.	Pam Balogh (1985-89)	323
7.	Pam Balogh (1985-89)	1,636	7.	Candice Dupree (2002-06)	303
8.	Kristen McCarthy (2008-12)	1,619	8.	Alliya Butts (2014-19)	302
9.	Kamesha Hairston (2003-07)	1,573	9.	Kamesha Hairston (2003-07)	290
10.	Lynn Blaszczyk (1979-83)	1,329	10.	Mimi Carroll (1982-86)	264
REBOUNDS			FIELD GOALS		
1.	Marilyn Stephens (1980-84)	1,519	1.	Marilyn Stephens (1980-84)	919
2.	Tanaya Atkinson (2014-18)	1,053	2.	Candice Dupree (2002-06)	696
3.	Lynn Blaszczyk (1979-83)	949	3.	Alliya Butts (2014-19)	671
4.	Mia Davis (2017-)	944	4.	Mia Davis (2017-)	665
5.	Candice Dupree (2002-06)	940	5.	Pam Balogh (1985-89)	655
6.	Rhonda Bates (1986-90)	896	6.	Tanaya Atkinson (2014-18)	649
7.	Theresa Govens (1982-86)	847	7.	Feyonda Fitzgerald (2013-17)	637
8.	Natasha Thames (2009-14)	825	8.	Kristen McCarthy (2008-12)	626
9.	Erica Covile (2012-16)	821	9.	Kamesha Hairston (2003-07)	615
10.	Lady Comfort (2004-08)	771	10.	Lynn Blaszczyk (1979-83)	543

TEAM HIGHS/LOWS

		#	TEMPLE	DATE	#	OPPONENT	DATE
Points, 1st Half	High	42	at Tulsa	2/17/20	44	South Carolina	12/17/20
	Low	18	vs. Houston	2/10/21	20	Tulsa	2/17/21
Points, 2nd Half	High	44	vs. Villanova	12/4/20	59	South Carolina	12/17/20
	Low	9	at Tulane	1/30/21	20	Tulsa	12/23/20
Total Points	High	73	vs. SMU	12/20/20	103	South Carolina	12/17/20
	Low	41	at South Carolina	12/17/20	46	Tulsa	2/17/21
FG Made	High	29	vs. Villanova	12/4/20	39	South Carolina	12/17/20
	Low	14	at South Carolina	12/17/20	16	Tulsa	2/17/21
FG Attempted	High	71	vs. Villanova	12/4/20	81	Houston	1/20/21
	Low	51	vs. Tulsa	12/23/20	48	UCF	1/9/21
FG %	High	54.9%	vs. Tulsa	12/23/20	55.7%	Tulane	1/30/21
	Low	23.3%	at South Carolina	12/17/20	27.8%	SMU	12/20/20
3PT FG Made	High	7	vs. Cincinnati	1/13/21	11	Houston	2/10/21
	Low	0	SMU	12/20/20	1	Cincinnati	1/13/21
3PT FG Attempts	High	26	vs. UCF	1/9/21	36	FGCU	12/6/20
	Low	9	vs. Villanova	12/4/20	8	UCF	1/9/21
3PT FG %	High	50%	at Cincinnati	2/3/21	47.4%	Tulane	1/31/21
	Low	0%	vs. SMU	12/20/20	9.1%	Cincinnati	1/13/21
FT Made	High	29	vs. SMU	12/20/20	20	Tulane	1/31/21
	Low	7	vs. Tulsa/USF	12/23/20, 2/24/21	4	Wichita State	1/23/21
FT Attempted	High	37	vs. SMU	12/20/20	26	UCF	1/9/21
	Low	11	vs. Tulsa	12/23/20	6	Wichita State	1/23/21
FT %	High	78.4%	vs. SMU	12/20/20	82.6%	USF	2/24/21
	Low	50%	at Tulane	1/30/21	46.2%	ECU	1/6/21
Off. Rebounds	High	17	at FGCU	12/6/20	31	Houston	1/20/21
	Low	7	vs. & @ Cincinnati	1/13/21; 2/3/21	5	Wichita State	2/6/21
Def. Rebounds	High	37	vs. SMU	12/20/20	35	South Carolina	12/17/20
	Low	17	at South Carolina	12/17/20	14	Tulsa	12/23/20
Total Rebounds	High	53	at FGCU	12/6/20	61	Houston	1/20/21
	Low	29	at Tulane	1/30/21	29	Tulsa; Tulane	12/23; 1/31
Rebound Margin	High	+13	at FGCU	12/6/20	+25	Houston	1/20/21
	Low	-25	at Houston	1/20/21	-13	FGCU	12/6/20
Assists	High	21	vs. Cincinnati	1/13/21	22	South Carolina	12/17/20
	Low	5	at Houston	1/20/21	9	Wichita State	2/6/21
Blocked Shots	High	7	vs. SMU	12/20/20	7	FGCU/S. Carolina	12/6, 12/17
	Low	1	vs. Villanova, Cincinnati, x2 vs Tulane		0	Wichita St./Tulsa	1/23, 2/17
Steals	High	14	at Houston	1/20/21	15	Houston	2/10/21
	Low	1	at South Carolina	12/17/20	1	USF	2/24/21
Turnovers Forced	High	23	vs. UCF	1/9/21	30	Houston	1/20/21
	Low	6	at South Carolina	12/17/20	11	Cincinnati/USF	2/3, 2/24
Personal Fouls	High	21	at Tulane	1/31/21	26	SMU	12/20/20
	Low	10	vs. Wichita State	1/23/21	8	South Carolina	12/17/20

INDIVIDUAL HIGHS

	STAT	PLAYER	OPPONENT	DATE
Points	34	Mia Davis	FGCU	12/6/20
FG Made	12	Mia Davis	FGCU	12/6/20
FG Attempted	22	Mia Davis	Villanova	12/4/20
FG %	80% (8-10)	Mia Davis	Tulsa	12/23/20
3PT FG Made	5	Jasha Clinton	UCF	1/9/21
3PT FG Attempted	12	Jasha Clinton	UCF	1/9/21
3PT %	66.7% (2-3)	Mia Davis	FGCU	12/6/20
FT Made	14	Mia Davis	SMU	12/20/20
FT Attempted	17	Mia Davis	SMU	12/20/20
FT %	100% (9-9)	Mia Davis	SMU	12/20/20
Rebounds	15	Mia Davis	SMU	12/20/20
Assists	10	Asonah Alexander	Tulsa	12/23/20
Blocked Shots	4	Alexa Williamson; Asonah Alexander	SMU; Wichita St.	12/20/20; 1/23/21
Steals	6	Jasha Clinton	Houston	1/20/21

THE LAST TIME...

AN OWL...

SCORED 40+ POINTS

Kristen McCarthy 42 Charlotte, 2/13/10

SCORED 30+ POINTS

Mia Davis 34 at FGCU, 12/6/20

SCORED 20+ POINTS

Mia Davis 23 #13 USF, 2/24/21

TWO PLAYERS SCORED 20+ POINTS

Mia Davis 23 #13 USF, 2/24/21

Jasha Clinton..... 20

HAD 20 REBOUNDS

Tanaya Atkinson 20 at Memphis, 2/18/16

HAD 10 OFFENSIVE REBOUNDS

Taylor Robinson 10 Penn, 1/22/14

HAD 10 DEFENSIVE REBOUNDS

Mia Davis 10 Tulsa, 12/23/20

TWO PLAYERS HAD 10 REBOUNDS

Mia Davis 10 at Tulsa, 2/17/21

Alexa Williamson 10

HAD A DOUBLE-DOUBLE IN POINTS AND REBOUNDS

Mia Davis 17 points, 10 rebounds..... at Tulsa, 2/17/21

Alexa Williamson 18 points, 10 rebounds

HAD A DOUBLE-DOUBLE IN POINTS AND ASSISTS

Feyonda Fitzgerald ... 18 points, 11 assists Cincinnati, 2/25/17

TWO PLAYERS HAD DOUBLE-DOUBLES

Mia Davis 17 points, 10 rebounds..... at Tulsa, 2/17/21

Alexa Williamson 18 points, 10 rebounds

MADE 15 FIELD GOALS

Tanaya Atkinson 17 at Cincinnati, 1/13/18

ATTEMPTED 20 FIELD GOALS

Mia Davis 22 Villanova, 12/4/20

SHOT 75% FROM THE FIELD (min. 10 att)

Mia Davis ... 8-10, 80%..... Tulsa, 12/23/20

MADE 10 FREE THROWS

Mia Davis 14-17 SMU, 12/20/20

SHOT 100% FROM THE LINE (min. 7 att.)

Mia Davis 9-9 ECU, 2/13/21

MADE 5 THREE-POINTERS

Jasha Clinton 5 UCF, 1/9/21

ATTEMPTED 10 THREE-POINTERS

Jasha Clinton..... 11 #13 USF, 2/24/21

SHOT 75% FROM 3-PT RANGE (min. 5 att.)

Mia Davis 4-5, 80% at #16/14 DePaul, 12/3/18

HAD 10 ASSISTS

Asonah Alexander ... 10 Tulsa, 12/23/20

HAD 5 BLOCKS

Ugo Nwaigwe 6 Penn, 1/21/16

HAD 5 STEALS

Jasha Clinton..... 6 at Houston, 1/20/21

LED THE TEAM IN POINTS, REBOUNDS, ASSISTS

Mia Davis 23 pts, 14 reb, 6 ast at UCF, 2/26/20

HIT LAST SECOND SHOT TO WIN THE GAME

Erica Covile #19/17 USF, 2/6/16

PLAYED EVERY MINUTE OF A GAME

Mia Davis 40 #13 USF, 2/24/21

Jasha Clinton..... 40

Emani Mayo..... 40

HAD TWO CONSECUTIVE DOUBLE-DOUBLES

Mia Davis 17 points, 11 rebounds Tulsa, 12/23/20

..... 17 points, 11 rebounds at ECU, 1/6/21

HAD THREE CONSECUTIVE DOUBLE-DOUBLES

Mia Davis 22 points, 15 rebounds..... SMU, 12/20/20

..... 17 points, 11 rebounds Tulsa, 12/23/20

..... 17 points, 11 rebounds at ECU, 1/6/21

FIVE PLAYERS SCORED 10 POINTS

Emani Mayo 18 La Salle, 12/30/18

Mia Davis 14

Shantay Taylor 14

Alexa Williamson 11

Marissa Mackins 11

TEMPLE...

WON BY 30+ POINTS

Temple 84, Memphis 53 3/4/19

WON BY 40+ POINTS

Temple 79, Kennesaw State 48 1/4/17

SCORED 100+ POINTS

100 vs. Delaware State 12/19/15

GAVE UP 100+ POINTS

103 at #5 South Carolina..... 12/17/20

SCORED UNDER 50 POINTS

47 vs. #13 USF 2/24/21

SCORED UNDER 40 POINTS

36 at #1 UConn 1/11/14

THE LAST TIME...

TEMPLE (cont.)...

SCORED 50 POINTS IN A HALF

54 (2nd half) vs. Marist..... 12/16/17

SCORED UNDER 20 POINTS IN A HALF

18 (1st half) vs. Houston..... 2/10/21

HAD A 20+ REBOUND MARGIN

+21 at La Salle..... 12/30/19

HAD A 30+ REBOUND MARGIN

+35 vs. Toledo..... 12/10/08

HAD 50 REBOUNDS

53 at FGCU..... 12/6/20

HAD LESS THAN 25 REBOUNDS

22 vs. #1 UConn..... 1/21/18

HAD 25 OFFENSIVE REBOUNDS

26 vs. #1 UConn..... 2/1/17

HAD LESS THAN 5 OFFENSIVE REBOUNDS

4 vs. Stanford..... 11/25/07

HAD 30 DEFENSIVE REBOUNDS

34 at Tulsa..... 2/17/21

MADE 35 FIELD GOALS

38 vs. Sacred Heart..... 12/9/15

MADE LESS THAN 15 FIELD GOALS

14 at #5 South Carolina..... 12/17/20

ATTEMPTED 75 FIELD GOALS

86 at Memphis..... 2/18/16

ATTEMPTED LESS THAN 40 FIELD GOALS

38 vs. Rutgers..... 12/30/07

SHOT AT LEAST 50% FG

50.9% (28-55) at Tulsa..... 2/17/21

MADE 25 FREE THROWS

29 vs. SMU..... 12/20/20

MADE LESS THAN 5 FREE THROWS

4 at ECU..... 2/22/20

ATTEMPTED 35 FREE THROWS

37 vs. SMU..... 12/20/20

ATTEMPTED LESS THAN 10 FREE THROWS

9 vs. #5 UConn..... 3/7/20

SHOT 90% FROM THE LINE

100% (10-10) at Tulane..... 3/2/20

MADE 10 THREE-POINTERS

10 vs. SMU..... 1/11/20

MADE NO THREE-POINTERS

0 vs. SMU..... 12/20/20

SHOT 40% FROM 3-PT RANGE (min. 5 att.)

47.4% (9-19) vs. UCF..... 1/29/20

ATTEMPTED AT LEAST 25 THREES

26 vs. UCF..... 1/9/21

ATTEMPTED LESS THAN 5 THREES

4 at Cincinnati..... 2/3/21

HAD 25 ASSISTS

27 vs. SMU..... 1/11/20

HAD LESS THAN 5 ASSISTS

1 vs. USF..... 3/8/14

HAD 25 TURNOVERS

30 at Houston..... 1/20/21

HAD LESS THAN 5 TURNOVERS

4 at Cincinnati..... 2/11/16

HAD 10 BLOCKS

10 vs. Delaware State..... 11/10/17

HAD NO BLOCKS

0 at ECU..... 2/22/20

HAD 15 STEALS

18 at SMU..... 1/5/16

HAD LESS THAN 5 STEALS

3 vs. Wichita State..... 1/23/21

LAST OVERTIME GAME

OT at Tulsa (W, 74-65)..... 1/4/20

LAST OVERTIME VICTORY AT HOME

80-79 (OT) vs. NC State..... 3/26/15

LAST OVERTIME VICTORY ON THE ROAD

74-65 (OT) at Tulsa..... 1/4/20

DEFEATED A RANKED OPPONENT

77-71 at #22 USF..... 2/19/17

STARTING LINEUPS						
DATE	OPPONENT	STARTER	STARTER	STARTER	STARTER	STARTER
Dec. 4	Villanova	Clinton	Alexander	E. Mayo	Williamson	Davis
Dec. 6	FGCU	Clinton	Alexander	E. Mayo	Williamson	Davis
Dec. 17	South Carolina	Clinton	Alexander	E. Mayo	Williamson	Davis
Dec. 20	SMU	Clinton	Alexander	E. Mayo	Williamson	Davis
Dec. 23	Tulsa	Clinton	Alexander	E. Mayo	Williamson	Davis
Jan. 6	ECU	Clinton	Alexander	E. Mayo	Williamson	Davis
Jan. 9	UCF	Clinton	Alexander	E. Mayo	Williamson	Davis
Jan. 13	Cincinnati	Clinton	Alexander	E. Mayo	Walker	Davis
Jan. 20	Houston	Clinton	Alexander	E. Mayo	Williamson	Davis
Jan. 23	Wichita State	Clinton	Alexander	E. Mayo	Williamson	Davis
Jan. 30	Tulane	Clinton	Alexnader	E. Mayo	Williamson	Davis
Jan. 31	Tulane	Clinton	Alexander	E. Mayo	Williamson	Davis
Feb. 3	Cincinnati	Clinton	Alexander	E. Mayo	Williamson	Davis
Feb. 6	Wichita State	Clinton	Alexander	E. Mayo	Williamson	Davis
Feb. 10	Houston	Clinton	Alexander	E. Mayo	Williamson	Davis
Feb. 13	ECU	Clinton	Alexander	E. Mayo	Williamson	Davis
Feb. 17	Tulsa	Clinton	Alexander	E. Mayo	Williamson	Davis
Feb. 24	USF	Clinton	Alexander	E. Mayo	Williamson	Davis
Feb. 27	UCF					
Mar. 2	Memphis					
Mar. 4	Memphis					
Mar. 8	AAC First Round					
Mar. 9	AAC Quarterfinal					
Mar. 10	AAC Semifinal					
Mar. 11	AAC Chmapionship					

RECORD BY STARTING LINEUP	
LINEUP	RECORD
Clinton, Alexander, E. Mayo, Williamson, Davis	9-8
Clinton, Alexander, E. Mayo, Walker, Davis	0-1

DOUBLE-DOUBLES			
PLAYER	STATS	OPPONENT	DATE
Mia Davis	34 points, 12 rebounds	at FGCU	12/6/20
Mia Davis	17 points, 11 rebounds	Tulsa	12/23/20
Mia Davis	17 points, 11 rebounds	at ECU	1/6/21
Alexa Williamson	18 points, 10 rebounds	at Tulsa	2/17/21
Mia Davis	17 points, 10 rebounds	at Tulsa	2/17/21



HEAD COACH TONYA CARDOZA

13TH SEASON | 236-171 (.579)

4	NCAA Tournament Bids
4	Philadelphia Big 5 Championships
3	WNIT Bids
1	Conference Regular Season Title

Temple's all-time winningest head coach Tonya Cardoza enters her 13th season at the helm of the nationally recognized Owls.

Cardoza led the 2019-20 Owls to a 16-15 record for their best finish in three seasons. Junior Mia Davis led Temple with her 18.8 points and 10.2 rebounds per game. Davis garnered national recognition in her third season in the Cherry and White, as she was named a Top 10 Cheryl Miller Award Finalist and earned USB-WA All-America Honorable Mention. Davis was named the 2019-20 Big 5 Player of the Year, First Team All-Big 5 and First Team All-AAC.

Cardoza's 2016-17 season was one of her best, as Temple went 24-8 overall, earned an NCAA bid, and finished second in the tough American Athletic Conference. The Owls' success garnered her several individual honors, among them being named one of 10 finalists for the WBCA National Coach of the Year Award. Cardoza shared American Athletic Conference Coach of the Year honors with UConn's Geno Auriemma and was also named the Philadelphia Big 5 Coach of the Year for the fourth time in her career.

Temple's 2015-16 season marked the second-straight 20-win campaign, as Cardoza guided the Owls to an overall mark of 23-12. In the AAC, Temple finished third, compiling an impressive 13-5 record, the best finish for the team in American history. The culmination of the 2015-16 season saw the Owls earn a post-season bid, where they advanced to the quarterfinals of the 2016 WNIT, before a narrow 77-76 loss at Michigan.

Cardoza's 2014-15 squad made the first post-season final four in program history, advancing to the WNIT semifinals before falling in overtime at West Virginia. The Owls finished with a 20-win season, going 20-17 overall, including a 12-6 mark in the tough American Athletic Conference.

2013-14 marked a new era of women's basketball at Temple for Cardoza— competing in the inaugural season of the American Athletic Conference. The Owls faced seven nationally ranked opponents— tying the school record for the most in season— including two games against defending national champion and No. 1 Connecticut and Final Four participant Louisville. The young Owls finished fifth in American play after predicted to finish ninth, showing the league and the nation that they had fight.

The 2010-11 Atlantic 10 Coach of the Year, Cardoza led the Owls to three consecutive NCAA Tournament appearances, advancing to the Second Round in both 2010 and 2011. The Owls narrowly missed earning a berth in the NCAA Tournament in 2011-12, but took a top spot in the Women's National Invitation Tourna-

ment (WNIT) and advanced to the third round.

Along with earning Atlantic 10 Coach of the Year honors for the Owls' performance in 2010-11, Cardoza was honored as the Big 5 Coach of the Year for a third time. She earned that honor in each of her first three seasons at Temple, and the Owls earned their sixth straight Big 5 title in her first year with the program. Temple won the Big 5 again in 2011, and finished as runner-up in both 2010 and 2012.

Cardoza led Temple to at least 20 wins in her first four years at the helm. During her inaugural season in 2008-09, Cardoza guided TU to a 21-10 mark and an NCAA Tournament appearance. She was a finalist for the National Rookie Coach of the Year award. The Owls reached 25 wins in 2009-10 which tied for the second-most in the history of the program. In 2010-11, the Owls finished 24-9 which included a 15-game win streak and a 13-1 record in the A10. The 2011-12 season saw Temple go 23-10 and win 14 in a row, once again with a 13-1 mark in the conference. During their final year of A10 Conference play in 2012-13, Cardoza guided the nation's second-youngest team (six freshmen).

The Owls finished in the Top 3 in the A10 for three consecutive seasons. In Cardoza's first season she coached the squad to an upset over No. 13 Xavier, making her the first coach in TU women's basketball history to upset a ranked team during her rookie season.

Arriving at Connecticut at the start of the 1994-95 season, Cardoza helped guide the Huskies to an unprecedented 465-41 record, seven Final Four appearances and six No. 1 National Rankings in the final Associated Press poll. Cardoza was a part of four undefeated regular seasons, including two unbeaten national championship teams in 1994-95 and 2001-02.

A 1991 University of Virginia graduate with a degree in anthropology, Cardoza starred for the Cavaliers, leading the team to four consecutive NCAA National Tournament appearances. As a senior, she led UVA in scoring (15.5 ppg), while earning the following honors: Kodak Honorable Mention All-America; Kodak First Team All-District III; First Team All-ACC; NCAA Final Four All-Tournament Team, and NCAA Regional All-Tournament Team. She was also a First Team All-ACC pick in 1988-89.

Cardoza played in 121 games for UVA and graduated ranked third on the career steals list (375), fifth on the career blocked shots list (110), eighth in points (1,622) and 10th in rebounds (667).

In 2002, Cardoza was named to the ACC 50th Anniversary Women's Basketball Team along with seven other former Cavaliers including Staley.

CARDOZA'S CARD

PERSONAL

Year Coaching: 27th
College: University of Virginia '91
Hometown: Roxbury, Mass.
High School: Boston English

PLAYING CAREER

University of Virginia (1987-91)
NCAA Tournament 1987, 88, 89, 91
NCAA Final Four 1991
1987, 1988, 1991 ACC Champions
1991 Team Captain
1991 Final Four All-Tournament Team
1991 Midwest Regional All-Tourn. Team
1991 Kodak District All-American
1989, 1991 First-team All-ACC
1988, 1989, 1991 VaSIDA All-State

Professional Basketball (1991) –
Segovia, Spain

COACHING ACCOLADES

4x Big 5 Coach of the Year ('09, '10, '11, '17)
2011 Atlantic 10 Coach of the Year
2017 AAC Coach of the Year
2017 WBCA National COY Finalist

COACHING EXPERIENCE

Temple University (2008-present)
Head Coach, 12 seasons

Season	Overall	Conf.	Postseason	
2008-09	21-10	11-3	A-10	NCAA
2009-10	25-9	11-3	A-10	NCAA
2010-11	24-9	13-1	A-10	NCAA
2011-12	23-10	13-1	A-10	WNIT
2012-13	14-18	5-9	A-10	—
2013-14	14-16	8-10	AAC	—
2014-15	20-17	12-6	AAC	WNIT
2015-16	23-12	13-5	AAC	WNIT
2016-17	24-8	13-3	AAC	NCAA
2017-18	12-19	3-13	AAC	—
2018-19	11-19	7-9	AAC	—
2019-20	16-15	7-9	AAC	—
Totals	227-162	116-72		

University of Connecticut (1994-2008)
Assistant Coach, 14 seasons

Season	Overall	Postseason
1994-95	35-0	NCAA Champions
1995-96	34-4	Final Four
1996-97	33-1	Elite 8
1997-98	34-3	Elite 8
1998-99	29-5	Sweet 16
1999-00	36-1	NCAA Champions
2000-01	32-3	Final Four
2001-02	39-0	NCAA Champions
2002-03	37-1	NCAA Champions
2003-04	31-4	NCAA Champions
2004-05	25-8	Sweet 16
2005-06	32-5	Elite 8
2006-07	32-4	Elite 8
2007-08	36-2	Final Four



#1

JASHA CLINTON

5-8 / FRESHMAN / GUARD**VIRGINIA BEACH, VA. / PRINCESS ANNE**

OVERVIEW

2020-21: Has started in all 18 games played...Scored a career-high 16 points in her Temple debut against Villanova (12/4)...Registered seven points, seven rebounds and five assists against SMU (12/20)...Collected 12 points, six boards, three assists and two steals against Tulsa (12/23)...Dished out a career-best nine assists at ECU (1/6) while adding 11 points, seven rebounds and three steals...Scored 17 points against UCF (1/9) as she knocked down five threes...Played a career-high 40 minutes as she registered a career-best 23 points with five assists, four steals and four rebounds against Cincinnati (1/13)...Led Temple 14 points and a career-high six steals at Houston (1/20)...Scored a game-high 21 points against Wichita State (1/23)...Registered 17 points at Tulane (1/31)...Pulled down a career-high eight rebounds at Cincinnati (2/3) while chipping in 18 points and five assists...Recorded 16 points and five assists at Wichita State (2/6)...Had 10 points, five rebounds, three assists, two steals and a block against Houston (2/10)...Collected 13 points, five rebounds, five assists, two steals and a block against ECU (2/13)...Totaled 12 points, four assists and three rebounds at Tulsa (2/17)...Registered 20 points, three rebounds and three assists against #13 USF (2/24).

High School: Named the 2020 Virginia Gatorade Player of the Year...Collected an 80-4 record with three-straight state championships heading into her senior season at Princess Anne High School...Named All-Class 5 Region A Player of the Year, First Team All-State, First Team All-Beach District and First Team All-Tidewater her junior year.

Personal: Daughter of Lakesha and Joel Clinton...Majoring in Science and Technology.

AWARDS & HONORS

> American Athletic Conference Freshman of the Week (12/28/20, 2/8/21)
> Philadelphia Big 5 Player of the Week (1/25/21)

SEASON HIGHS

		Opponent	Date
PTS	23	Cincinnati	1/13/21
REB	8	Cincinnati	2/3/21
AST	9	ECU	1/6/21
STL	6	Houston	1/20/21
BLK	1	x2, last ECU	2/13/21
MIN	40	x3, last USF	2/24/21

CAREER HIGHS

		Opponent	Date
PTS	23	Cincinnati	1/13/21
REB	8	Cincinnati	2/3/21
AST	9	ECU	1/6/21
STL	6	Houston	1/20/21
BLK	1	x2, last ECU	2/13/21
MIN	40	x3, last USF	2/24/21

GAME-BY-GAME

Opponent	MIN	FG-A	3PT-A	FT-A	OR	DR	TR	F	A	TO	BL	S	PTS
vs. Villanova	21	7-12	1-3	1-3	1	1	2	3	2	4	0	2	16
at FGCU	32	2-12	0-3	2-3	0	1	1	5	2	4	0	3	6
at S. Carolina	24	1-9	1-4	0-0	2	0	2	1	0	3	0	0	3
vs. SMU	25	2-9	0-3	3-4	3	4	7	4	5	3	0	0	7
vs. Tulsa	27	5-10	1-5	1-2	1	5	6	3	3	6	0	2	12
at ECU	31	5-16	0-4	1-2	4	3	7	3	9	5	0	3	11
vs. UCF	37	6-17	5-12	0-0	0	3	3	4	3	7	0	1	17
vs. Cincinnati	40	9-20	4-9	1-2	1	3	4	3	5	3	0	4	23
at Houston	34	6-12	1-3	1-3	0	4	4	4	1	5	0	6	14
vs. Wichita St.	38	8-13	3-6	2-4	0	3	3	2	3	2	0	1	21
at Tulane (1/30)	31	2-12	1-4	0-2	0	3	3	1	4	4	0	1	5
at Tulane (1/31)	40	6-14	2-7	3-3	2	0	2	5	5	7	0	0	17
at Cincinnati	39	7-13	1-3	3-6	0	8	8	2	5	3	0	1	18
at Wichita St.	39	4-10	2-8	6-8	0	2	2	3	5	2	0	1	16
vs. Houston	32	4-11	1-4	1-3	1	4	5	3	3	5	1	2	10
vs. ECU	38	3-16	2-9	5-6	0	5	5	4	5	8	1	2	13
at Tulsa	23	5-12	2-5	0-0	0	3	3	3	4	2	0	0	12
vs. USF	40	7-21	4-11	2-2	0	3	3	4	3	5	0	1	20
at UCF													
vs. Memphis													
vs. Memphis													

JASHA CLINTON CAREER STATISTICS

YEAR	GP-GS	MIN-AVG.	FG-FGA	PCT	3P-3PA	PCT	FT-FTA	PCT	OFF	DEF	TOT	AVG	PF-FO	A	TO	BLK	ST	PTS	AVG
2020-21	18-18	591-32.8	89-239	.372	31-103	.301	32-53	.604	15	55	70	3.9	57-2	67	78	2	30	241	13.4
TOTAL	18-18	591-32.8	89-239	.372	31-103	.301	32-53	.604	15	55	70	3.9	57-2	67	78	2	30	241	13.4



#2

ASONAH ALEXANDER

5-10 / SOPHOMORE / GUARD

PROSPECT PARK, N.J. / THE PATRICK SCHOOL

OVERVIEW

2020-21: Has started in all 18 games played...Pulled down a career-best 14 rebounds at FGCU (12/6) along with dishing out seven assists... Totaled 10 assists, nine rebounds, six points and two blocks against Tulsa (12/23)...Played a career-high 40 minutes at ECU (1/6), finishing with eight rebounds, eight assists, five points, two blocks and two steals...Recorded a career-high three steals against UCF (1/9) while pulling down nine boards...Dished out nine assists and tied her career-best three steals against Cincinnati (1/13)...Scored a season-high 12 points, handed out seven assists and delivered a career-best four blocks against Wichita State (1/23)...Pulled down nine boards and handed out seven assists at Tulane (1/31)...Had nine points, eight rebounds, four assists, two blocks and a steal at Cincinnati (2/3)...Scored a season-best 17 points at Wichita State (2/6).

2019-20: Played in all 31 games, drawing 13 starts...Saw 27 minutes of action in her first collegiate game against Fairfield and dished out seven assists...Registered her first career points against Duquesne while adding eight assists...Tallied 11 points after hitting three shots from beyond the arc against No. 4 UConn...Handed out eight assists at Bucknell... Collected her first career double-double against North Carolina with 16 points and 11 rebounds along with five assists...Drew her first collegiate start against Creighton...Finished just shy of a triple-double against Villanova with a career-high 19 points, 11 rebounds and seven assists to register her second double-double of the season... Recorded a team-high five assists at La Salle while adding five boards... Had a team-high eight assists with zero turnovers at Tulsa...Collected five rebounds and dished out three assists at Houston...Dished out a career-high 10 assists while adding eight points and eight rebounds against SMU...Chipped in seven points against USF...Recorded six assists against Penn...Added 12 points, seven rebounds and three assists against Wichita State.

High School: Led The Patrick School with 101 assists her senior year.

Personal: Daughter of Tamoray Evans Gray and Antoine Alexander... Majoring in English.

AWARDS & HONORS

- > 2020 American Athletic Conference All-Freshman Team
- > American Athletic Conference Freshman of the Week (12/16/19)
- > Philadelphia Big 5 Player of the Week (12/16/19)

SEASON HIGHS

		Opponent	Date
PTS	17	Wichita State	2/6/21
REB	14	FGCU	12/6/20
AST	10	Tulsa	12/23/20
STL	3	x3, last Cincinnati	2/3/21
BLK	4	Wichita State	1/23/21
MIN	40	x2, last Wichita St.	1/23/21
Total Double Doubles		0	

CAREER HIGHS

		Opponent	Date
PTS	19	Villanova	12/10/19
REB	14	FGCU	12/6/20
AST	10	x2, last Tulsa	12/23/20
STL	3	x3, last Cincinnati	2/3/21
BLK	4	Wichita State	1/23/21
MIN	40	x2, last Wichita St.	1/23/21
Total Double Doubles		2	

GAME-BY-GAME

Opponent	MIN	FG-A	3PT-A	FT-A	OR	DR	TR	F	A	TO	BL	S	PTS
vs. Villanova	29	2-8	1-2	1-1	2	2	4	2	6	2	0	1	6
at FGCU	35	2-10	0-2	0-1	2	12	14	2	7	7	3	0	4
at S. Carolina	30	1-7	0-4	0-0	0	4	4	2	3	5	2	0	2
vs. SMU	33	2-6	0-4	2-2	1	7	8	3	4	7	2	2	6
vs. Tulsa	36	2-6	0-3	2-2	3	6	9	4	10	4	2	0	6
at ECU	40	1-6	1-5	2-4	1	7	8	2	8	3	2	2	5
vs. UCF	35	1-7	0-5	2-2	2	7	9	2	5	3	0	3	4
vs. Cincinnati	33	1-3	0-0	0-1	0	6	6	1	9	1	0	3	2
at Houston	20	1-5	0-3	0-0	2	0	2	2	2	7	0	2	2
vs. Wichita St.	40	4-11	1-6	3-4	2	3	5	1	7	3	4	1	12
at Tulane (1/30)	25	0-5	0-4	0-0	2	0	2	3	2	3	0	1	0
at Tulane (1/31)	28	1-5	0-3	1-2	1	8	9	3	7	2	1	1	3
at Cincinnati	39	3-8	1-1	2-3	0	8	8	1	4	1	2	1	9
at Wichita St.	37	6-13	1-7	4-4	1	5	6	1	2	5	1	1	17
vs. Houston	30	0-2	0-1	2-2	1	3	4	1	6	5	2	2	2
vs. ECU	28	1-5	1-2	0-0	1	1	2	3	1	3	0	2	3
at Tulsa	28	1-3	0-2	0-0	0	2	2	1	2	1	2	0	2
vs. USF	25	0-3	0-2	0-0	0	3	3	4	4	1	0	2	0
at UCF													
vs. Memphis													
vs. Memphis													

ASONAH ALEXANDER CAREER STATISTICS

YEAR	GP-GS	MIN-AVG.	FG-FGA	PCT	3P-3PA	PCT	FT-FTA	PCT	OFF	DEF	TOT	AVG	PF-FO	A	TO	BLK	ST	PTS	AVG
2019-20	31-13	786-25.4	51-139	.367	17-56	.304	28-44	.636	44	80	124	4.0	49-2	117	46	10	19	147	4.7
2020-21	18-18	571-31.7	29-113	.257	6-52	.107	21-28	.750	21	84	105	5.8	38-0	89	63	23	24	85	4.7
TOTAL	49-31	1357-27.7	80-252	.317	23-112	.205	49-72	.681	65	164	229	4.7	87-2	206	109	33	43	232	4.7



#3

RAYNIAH WALKER

5-10 / SOPHOMORE / GUARD

CHELTENHAM, MD. / BULLIS SCHOOL

OVERVIEW

2020-21: Has seen action in 17 games, drawing one start...Delivered a career-high three blocks at #5 South Carolina (12/17)...Tied her career-best six points against SMU (12/20)...Pulled down a career-high five boards at ECU (1/6)...Made her first career start against Cincinnati (1/13) where she logged a career-high 32 minutes and dished out a career-best two assists...Scored a career-best eight points and collected a career-high three steals at Houston (1/20)...Registered a career-high 10 points at Tulane (1/30)...Dished out a career-best four assists at Wichita State (2/6).

2019-20: Saw action in 17 games... Recorded her first collegiate points with back-to-back crucial threes against Xavier... Played a career-high 20 minutes against No. 4 UConn where she recorded three rebounds, two points and an assist...Pulled down a career-best four rebounds in the AAC Quarterfinal against UConn.

High School: Named to the All-Tournament team three out of her four years at the Bullis School, while earning MVP honors both her freshman and sophomore years...Also earned two varsity letters in volleyball.

SEASON HIGHS

		Opponent	Date
PTS	10	Tulane	1/30/21
REB	5	x2, last Houston	1/20/21
AST	4	Wichita State	2/6/21
STL	3	Houston	1/20/21
BLK	3	#5 S. Carolina	12/17/20
MIN	32	Cincinnati	1/13/21

CAREER HIGHS

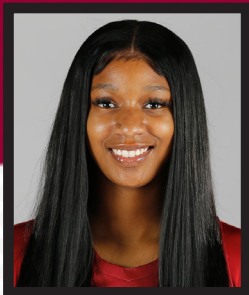
		Opponent	Date
PTS	10	Tulane	1/30/21
REB	5	x2, last Houston	1/20/21
AST	4	Wichita State	2/6/21
STL	3	Houston	1/20/21
BLK	3	#5 S. Carolina	12/17/20
MIN	32	Cincinnati	1/13/21

GAME-BY-GAME

Opponent	MIN	FG-A	3PT-A	FT-A	OR	DR	TR	F	A	TO	BL	S	PTS
vs. Villanova	9	0-0	0-0	0-0	0	0	0	3	0	1	0	0	0
at FGCU	3	0-0	0-0	0-0	0	1	1	0	0	0	0	0	0
at S. Carolina	23	0-8	0-4	0-0	0	2	2	1	1	1	3	0	0
vs. SMU	25	3-5	0-0	0-0	0	2	2	3	1	5	0	1	6
vs. Tulsa	14	1-3	1-2	0-0	0	3	3	1	0	1	1	0	3
at ECU	21	2-4	0-0	1-2	1	4	5	1	0	1	0	1	5
vs. UCF	24	0-3	0-0	1-2	1	2	3	2	1	1	1	2	1
vs. Cincinnati	32	1-4	0-1	2-2	0	4	4	4	2	1	0	0	4
at Houston	22	4-9	0-3	0-0	4	1	5	0	1	2	0	3	8
vs. Wichita St.	did not play												
at Tulane (1/30)	26	2-3	1-1	5-8	2	1	3	2	1	1	0	0	10
at Tulane (1/31)	16	1-2	0-0	0-0	2	1	3	4	0	0	0	0	2
at Cincinnati	9	0-0	0-0	0-0	0	1	1	3	1	1	0	0	0
at Wichita St.	21	0-3	0-0	2-4	1	1	2	1	4	3	2	0	2
vs. Houston	4	0-1	0-0	0-0	0	0	0	2	0	1	0	0	0
vs. ECU	21	0-3	0-0	1-2	1	1	2	0	0	0	1	0	1
at Tulsa	10	0-1	0-1	0-0	0	2	2	3	0	1	0	0	0
vs. USF	17	0-2	0-0	0-0	0	2	2	1	0	0	0	0	0
at UCF													
vs. Memphis													
vs. Memphis													

RAYNIAH WALKER CAREER STATISTICS

YEAR	GP-GS	MIN-AVG.	FG-FGA	PCT	3P-3PA	PCT	FT-FTA	PCT	OFF	DEF	TOT	AVG	PF-FO	A	TO	BLK	ST	PTS	AVG
2019-20	17-0	64-3.8	4-11	.364	2-7	.286	0-0	.000	2	8	10	0.6	6-0	4	4	1	0	10	0.6
2020-21	17-1	297-17.5	14-51	.275	2-12	.167	12-20	.600	12	28	40	2.4	31-0	12	20	8	7	42	2.5
TOTAL	34-1	361-10.6	18-62	.290	4-19	.211	12-20	.600	14	36	50	1.5	37-0	16	24	9	7	52	1.5



#5

JADA GRAVES

5-9 / GRAD STUDENT / GUARD**ALEXANDRIA, VA. / THOMAS EDISON / ELON**

OVERVIEW

2020-21: Has seen action in all 18 games played...Recorded a season-best 11 points in her Temple debut against Villanova (12/4), adding five boards and three steals...Collected six points, three steals and two rebounds against SMU (12/20)...Pulled down five boards in just nine minutes of action against Wichita State (1/23)...Collected five rebounds and an assist at Tulane (1/30)...Recorded four points, four rebounds, three assists and two steals against ECU (2/13)...Registered five rebounds, two points and a block at Tulsa (2/17).

2019-20 (Elon): Played in all 30 games, making 12 starts...Ranked fifth in the conference while leading the team in steals (58)...Finished third on the team in total rebounds (133)...Averaged 5.3 points per game and a career-best 4.4 rebounds on 21.2 minutes of play per game...Scored a season-best 13 points in the win at Charleston (2/9)...Recorded at least three steals in nine games, including two five-steal games against IUPUI (12/1) and Hofstra (1/19)...Pulled down nine rebounds in back-to-back games against IUPUI (12/1) and NC State (12/15).

2018-19 (Elon): Played in one game before missing the remainder of the season due to injury.

2017-18 (Elon): Played in 32 of Elon's 33 games on the season, making 10 starts...Averaged 6.5 points with 4.3 rebounds and 2.1 assists per contest...Finished with 73 steals and 2.3 swipes per game to place second in the conference in both categories...Posted a season-high 15 points with six rebounds and four steals in the home win over Drexel (2/9)...Had a strong night with 12 points, seven steals and six rebounds in the non-conference finale win against NC Central (12/19)...Pulled down 10 rebounds in the win at Davidson (12/6)...Matched her season high of 10 rebounds in the home win over James Madison (2/4) while also coming away with four steals...Narrowly missed her first-career double-double with 11 points and nine assists at William & Mary (1/14)...Scored 12 points to go with seven rebounds and five assists in the win at UCF (11/22).

2016-17 (Elon): Appeared in 33 of 34 games, averaging four points per outing...Averaged 12.5 points per game in her first four games after opening the year with 12 points at Green Bay, 13 against Eastern Washington and a season high 20 against Central Michigan in the Preseason WNIT...Shot 61.1 percent from three-point range in the opening four games of the year...Also tallied double-figure games against King and College of Charleston...Played at least 19 minutes per game in each postseason contest, seeing a season-high 24 minutes of action against West Virginia in the NCAA Tournament...Pulled down a season high six rebounds in the CAA Semifinals against William & Mary...Ended the year shooting 35.3 percent from the floor.

High School: Reached the 1,000-point career milestone as a junior...Named the conference rookie of the year in 2012...Earned Player of the Year honors in 2013 and 2014...Named to the 2014 All-State First Team...Earned regional MVP honors twice...Helped team to two Conference Championships, three Regional Championships and three State Final Four appearances.

Personal: Daughter of Ebony Stradford and Curtis Graves... Pursuing her Masters in Business Administration at TU.

AWARDS & HONORS

- > 2017-18 Colonial Athletic Conference Defensive Player of the Year
- > 2017-18 CAA All-Defensive Team
- > CAA Rookie of the Week (11/21/16)

SEASON HIGHS

		Opponent	Date
PTS	11	Villanova	12/4/20
REB	5	x6, last Tulsa	2/17/21
AST	3	ECU	2/13/21
STL	3	x2, last SMU	12/20/20
BLK	1	x2, last Tulsa	2/17/21
MIN	29	Villanova	12/4/20

CAREER HIGHS

		Opponent	Date
PTS	20	Central Michigan	11/19/16
REB	10	JMU	2/4/18
AST	7	Coker	11/27/17
STL	3	x2, last SMU	12/20/20
BLK	1	x23, last SMU	12/20/20
MIN	36	JMU	1/12/18

GAME-BY-GAME

Opponent	MIN	FG-A	3PT-A	FT-A	OR	DR	TR	F	A	TO	BL	S	PTS
vs. Villanova	29	5-7	0-0	1-3	1	4	5	4	1	1	0	3	11
at FGCU	18	2-4	0-1	1-4	2	2	4	2	1	1	0	2	5
at S. Carolina	15	0-1	0-0	2-2	1	0	1	4	0	2	0	0	2
vs. SMU	17	2-4	0-0	2-4	0	2	2	1	1	1	1	3	6
vs. Tulsa	7	0-0	0-0	0-0	0	0	0	1	0	3	0	1	0
at ECU	13	0-0	0-0	0-0	1	0	1	0	1	1	0	0	0
vs. UCF	2	0-0	0-0	0-0	0	0	0	1	0	0	0	0	0
vs. Cincinnati	5	0-0	0-0	0-0	0	0	0	1	0	1	0	0	0
at Houston	12	0-1	0-0	1-2	1	0	1	2	0	1	0	0	1
vs. Wichita St.	9	0-0	0-0	1-2	1	4	5	0	0	0	0	0	1
at Tulane (1/30)	22	1-4	0-1	0-0	0	5	5	4	1	2	0	0	2
at Tulane (1/31)	2	0-0	0-0	0-0	1	0	1	0	0	0	0	1	0
at Cincinnati	19	0-2	0-0	0-0	0	1	1	1	1	0	0	1	0
at Wichita St.	16	1-3	0-0	0-0	2	3	5	1	1	1	0	1	2
vs. Houston	17	2-3	0-0	0-2	3	2	5	3	1	2	0	1	4
vs. ECU	30	2-3	0-0	0-0	2	2	4	3	3	3	0	2	4
at Tulsa	19	1-2	0-0	0-0	1	4	5	1	1	3	1	1	2
vs. USF	8	0-1	0-0	0-0	0	2	2	3	0	0	0	0	0
at UCF													
vs. Memphis													
vs. Memphis													

JADA GRAVES CAREER STATISTICS

YEAR	GP-GS	MIN-AVG.	FG-FGA	PCT	3P-3PA	PCT	FT-FTA	PCT	OFF	DEF	TOT	AVG	PF-FO	A	TO	BLK	ST	PTS	AVG
2016-17*	33-0	451-13.7	42-119	.353	14-50	.280	34-63	.540	21	50	71	2.2	61-0	25	37	7	39	132	4.0
2017-18*	32-10	776-24.3	74-193	.383	18-73	.247	43-101	.426	37	101	138	4.3	82-2	66	64	8	73	209	6.5
2018-19*	1-1	23-23.0	4-10	.400	0-2	.000	2-4	.500	0	2	2	2.0	3-0	4	5	0	0	10	10.0
2019-20*	30-12	637-21.2	57-163	.350	10-45	.222	37-77	.481	42	91	133	4.4	71-3	29	53	7	58	161	5.4
2020-21	18-0	260-14.4	16-35	.457	0-2	.000	8-19	.421	16	31	47	2.6	32-0	12	22	2	16	40	2.2
TOTAL	114-23	2147-18.8	193-520	.371	42-172	.244	124-264	.470	116	275	391	3.4	249-5	136	181	24	186	552	4.8

*at Elon



#10 NICOLETTE MAYO

5-8 / SENIOR / GUARD
HEPHZIBAH, GA. / HEPHZIBAH

OVERVIEW

2020-21: Has seen action in five games...Collected one rebound at #5 South Carolina (12/17)...Played a season-high six minutes at Tulane (1/30).

2019-20: Saw action in six games...Played a season-high six minutes against SMU.

2018-19: Scored her first collegiate points with a driving lay-up against ECU... Played six minutes against La Salle.

2017-18: Saw action in seven games during the season.

High School: Played for Hephzibah High School... Helped the Rebels to the Class AAA state playoffs... Averaged 17.9 points per game as a senior.

Personal: Daughter of Colette and Manuel Mayo... National Honor Society member... Eric J. Smalls Memorial Scholarship winner... Twin sister of #12 Emani Mayo.

SEASON HIGHS

	Opponent	Date
PTS	-	-
REB	1 #5 S. Carolina	12/17/20
AST	-	-
STL	-	-
BLK	-	-
MIN	6 Tulane	1/30/21

CAREER HIGHS

	Opponent	Date
PTS	2 ECU	1/26/19
REB	1 x2, last #5 S.C.	12/17/20
AST	-	-
STL	-	-
BLK	-	-
MIN	6 x2, last Tulane	1/30/21

GAME-BY-GAME

Opponent	MIN	FG-A	3PT-A	FT-A	OR	DR	TR	F	A	TO	BL	S	PTS
vs. Villanova	did not play												
at FGCU	did not play												
at S. Carolina	2	0-0	0-0	0-0	0	1	1	0	0	0	0	0	0
vs. SMU	did not play												
vs. Tulsa	did not play												
at ECU	did not play												
vs. UCF	did not play												
vs. Cincinnati	did not play												
at Houston	did not play												
vs. Wichita St.	did not play												
at Tulane (1/30)	6	0-2	0-1	0-0	0	0	0	0	0	0	0	0	0
at Tulane (1/31)	did not play												
at Cincinnati	1	0-0	0-0	0-0	0	0	0	0	0	0	0	0	0
at Wichita St.	did not play												
vs. Houston	3	0-0	0-0	0-0	0	0	0	1	0	0	0	0	0
vs. ECU	did not play												
at Tulsa	1	0-1	0-1	0-0	0	0	0	0	0	0	0	0	0
vs. USF	did not play												
at UCF													
vs. Memphis													
vs. Memphis													

NICOLETTE MAYO CAREER STATISTICS

YEAR	GP-GS	MIN-AVG.	FG-FGA	PCT	3P-3PA	PCT	FT-FTA	PCT	OFF	DEF	TOT	AVG	PF-FO	A	TO	BLK	ST	PTS	AVG
2017-18	7-0	5-0.7	0-3	.000	0-1	.000	0-0	.000	1	0	1	0.1	0-0	0	1	0	0	0	0.0
2018-19	6-0	13-2.8	1-3	.333	0-2	.000	0-0	.000	0	0	0	0.0	4-0	0	1	0	0	2	0.2
2019-20	6-0	16-2.7	0-2	.000	0-2	.000	0-0	.000	0	0	0	0.0	2-0	0	0	0	0	0	0.0
2020-21	5-0	13-2.6	0-3	.000	0-2	.000	0-0	.000	0	1	1	0.2	1-0	0	0	0	0	0	0.0
TOTAL	24-0	47-2.0	1-11	.091	0-7	.000	0-0	.000	1	1	2	0.1	7-0	0	2	0	0	2	0.1



#11 KASH AYUSO

5-6 / FRESHMAN / GUARD

WEST PALM BEACH, FLA. / PALM BEACH LAKES

OVERVIEW

2020-21: Has seen action in 14 games...Scored six points in her first game in the Cherry and White against Villanova (12/4)...Registered three points, two rebounds and a steal against Tulsa (12/23)...Recorded a career-best seven points against UCF (1/9)...Had a career performance against Cincinnati (1/13), where she logged career-bests in minutes played (21), rebounds (6), assists (3), steals (3), blocks (1) and tied her career-high mark of seven points..Scored a career-high eight points and grabbed five rebounds at Tulsa (2/17).

High School: Led her Palm Beach Lakes High School team to a state semifinal appearance in 2020 as she averaged 18 points, five rebounds and five assists per game...Was named the 2020 Palm Beach 7A-6A Sun Sentinel Girls Basketball Player of the Year.

Personal: Daughter of Elizabeth Radinson and Luis Esteban Ayuso...Majoring in Criminal Justice.

SEASON HIGHS

		Opponent	Date
PTS	8	Tulsa	2/17/21
REB	6	Cincinnati	1/3/21
AST	3	Cincinnati	1/13/21
STL	3	Cincinnati	1/13/21
BLK	1	Cincinnati	1/13/21
MIN	21	Cincinnati	1/13/21

CAREER HIGHS

		Opponent	Date
PTS	7	x2, last Cincinnati	1/13/21
REB	6	Cincinnati	1/3/21
AST	3	Cincinnati	1/13/21
STL	3	Cincinnati	1/13/21
BLK	1	Cincinnati	1/13/21
MIN	21	Cincinnati	1/13/21

GAME-BY-GAME

Opponent	MIN	FG-A	3PT-A	FT-A	OR	DR	TR	F	A	TO	BL	S	PTS
vs. Villanova	14	1-6	0-2	4-5	0	1	1	1	1	3	0	0	6
at FGCU	10	1-7	0-0	0-0	0	0	0	2	0	3	0	0	2
at S. Carolina	19	1-5	1-3	0-0	0	1	1	2	1	1	0	0	3
vs. SMU	1	0-1	0-1	0-0	0	0	0	0	0	0	0	0	0
vs. Tulsa	15	1-4	1-2	0-0	0	2	2	2	0	2	0	1	3
at ECU	2	0-1	0-1	0-0	0	0	0	0	0	0	0	0	0
vs. UCF	15	3-7	1-4	0-2	0	0	0	1	1	2	0	1	7
vs. Cincinnati	21	2-5	1-3	2-2	2	4	6	1	3	3	1	3	7
at Houston	10	0-3	0-1	2-2	0	0	0	1	0	4	0	0	2
vs. Wichita St.	4	1-3	0-2	0-0	0	0	0	1	0	2	0	0	2
at Tulane (1/30)	did not play												
at Tulane (1/31)	did not play												
at Cincinnati	did not play												
at Wichita St.	did not play												
vs. Houston	7	0-0	0-0	0-0	0	0	0	0	0	1	0	0	0
vs. ECU	15	1-2	0-1	0-0	0	1	1	0	2	2	0	1	2
at Tulsa	20	4-7	0-0	0-0	3	2	5	1	1	1	0	0	8
vs. USF	7	0-0	0-0	0-0	1	1	2	0	0	0	0	0	0
at UCF													
vs. Memphis													
vs. Memphis													

KASH AYUSO CAREER STATISTICS

YEAR	GP-GS	MIN-AVG.	FG-FGA	PCT	3P-3PA	PCT	FT-FTA	PCT	OFF	DEF	TOT	AVG	PF-FO	A	TO	BLK	ST	PTS	AVG
2020-21	14-0	160-11.4	15-51	.294	4-20	.200	8-11	.727	6	12	18	1.3	12-0	9	24	1	6	42	3.0
TOTAL	14-0	160-11.4	15-51	.294	4-20	.200	8-11	.727	6	12	18	1.3	12-0	9	24	1	6	42	3.0



#12 EMANI MAYO

5-8 / SENIOR / GUARD
HEPHZIBAH, GA. / HEPHZIBAH

OVERVIEW

2020-21: Has started in all 18 games played...Logged 40 minutes against Villanova (12/4) with seven points, seven rebounds, two steals, an assist and a block...Scored a season-best 11 points at #5 South Carolina (12/17)...Tied her season-best 11 points against SMU (12/20) with six boards and a steal...Collected eight points, four rebounds and two assists against Tulsa (12/23)...Added nine points and two boards at ECU (1/6)...Registered nine points and a season-high three steals against UCF (1/9)...Scored nine points and tied her season-best of two assists against Cincinnati (1/13)...Shot 50% from the floor as she collected 10 points at Tulane (1/31)...Registered a season-high three assists at Cincinnati (2/3)...Had nine points, seven rebounds, six assists and two steals at Wichita State (2/6)...Tied her career-high of nine rebounds against #13 USF (2/24).

2019-20: Started in 12 of 27 games played...Collected her first points of the season with a three against Duquesne...Registered three points and three rebounds in back-to-back games against Creighton and Towson...Tallied a season-best nine points against No. 6 South Carolina...Added five points at Cincinnati...Registered a season-high 11 points at UCF...Collected season-highs in rebounds (5) and steals (2) against Tulsa.

2018-19: Started in 25 of 30 games played for the Owls...Had six points and five boards against Tulsa...Notched 11 points on 4-of-7 shooting at #5 UConn...Pulled down a career-high nine rebounds to go with five points and two steals at Tulsa...Tallied 11 points with a career-high tying six assists in a win over ECU...Tied career-high with seven rebounds in a season-high 39 minutes at Penn...Notched four points with three steals at Houston...Had 11 points with four assists and two steals against Tulane...Racked up 18 points, six rebounds, and a career-best six steals against La Salle...Had eight points and a pair of assists without a turnover at #16/14 DePaul...Notched five points with three steals against #24/22 Miami...Had five points, five rebounds, and a team-best four assists at Saint Joseph's...Tallied 13 points in the season opener against Delaware State.

2017-18: Played in all 31 games in her freshman campaign, starting the final 27 games of the season...Averaged 9.7 points, 2.7 rebounds, and 2.2 assists per game...Led the Owls with 54 makes from beyond-the-arc...Had the team's best free throw percentage, making 87.8% (36-41) from the line... Finished second on the team in steals with 27...Scored in double figures in 17 games during the season, including nine of Temple's final 11 games...Had a career-high 20 points at SMU...Dished out multiple assists in 22 of 31 games...Pulled down five or more rebounds in four different games, including a career-high seven against Harvard...Dished out a season-high five assists three different times...Played all 40 minutes in four different games during the season.

High School: A first-team All-State selection out of Hephzibah High School...Averaged 20 points per game as a senior...Finished her high school career with 1,693 points...Reached the 1,000 career point mark as a junior, averaging 22 points per game, including a career-best 34 in one game...Selected to play in the CSRA All-Star game.

Personal: Daughter of Colette and Manuel Mayo...Valediction of Hephzibah High School...National Honor Society member...Twin sister of #10 Nicolette Mayo.

AWARDS & HONORS

- > 2018 American Athletic Conference All-Freshman Team
- > American Athletic Conference Freshman of the Week (2/19/18)
- > American Athletic Conference Weekly Honor Roll (12/31/18)

SEASON HIGHS

		Opponent	Date
PTS	11	x2, last SMU	12/20/20
REB	9	USF	2/24/21
AST	6	Wichita State	2/6/21
STL	3	UCF	1/9/21
BLK	1	x2, last Cincinnati	2/3/21
MIN	40	x4, last Tulane	1/31/21

CAREER HIGHS

		Opponent	Date
PTS	20	x2, last Wichita St.	3/3/18
REB	9	x2, last USF	2/24/21
AST	6	x3, last Wichita St.	2/6/21
STL	6	La Salle	12/30/18
BLK	1	x5, last Villanova	12/4/20
MIN	40	x8, last Tulane	1/31/21

GAME-BY-GAME

Opponent	MIN	FG-A	3PT-A	FT-A	OR	DR	TR	F	A	TO	BL	S	PTS
vs. Villanova	40	2-7	1-1	2-2	1	6	7	2	1	0	1	2	7
at FGCU	38	4-6	1-2	0-0	2	3	5	3	0	1	0	0	9
at S. Carolina	40	4-11	1-4	2-3	2	2	4	2	0	3	0	1	11
vs. SMU	36	3-9	0-4	5-6	1	5	6	2	1	1	0	1	11
vs. Tulsa	37	3-7	2-6	0-0	1	3	4	3	2	1	0	0	8
at ECU	39	3-8	3-6	0-2	0	2	2	1	0	0	0	1	9
vs. UCF	33	3-8	0-4	3-3	1	2	3	2	2	1	0	3	9
vs. Cincinnati	29	4-9	0-3	1-2	0	1	1	1	2	0	0	2	9
at Houston	40	1-4	1-1	2-3	0	5	5	3	0	1	0	2	5
vs. Wichita St.	39	1-8	1-7	2-2	0	0	0	1	1	1	0	0	5
at Tulane (1/30)	16	0-3	0-3	0-0	0	1	1	2	0	0	0	0	0
at Tulane (1/31)	40	4-8	1-3	1-2	1	3	4	2	3	1	0	1	10
at Cincinnati	23	2-5	0-0	0-0	0	2	2	1	3	1	1	2	4
at Wichita St.	34	3-10	1-5	2-2	0	7	7	2	6	0	0	2	9
vs. Houston	34	0-5	0-2	0-0	0	1	1	3	1	1	0	2	0
vs. ECU	23	3-7	0-2	0-2	1	2	3	1	0	2	0	1	6
at Tulsa	32	3-5	2-3	0-0	1	1	2	0	2	0	0	1	8
vs. USF	40	0-1	0-0	0-0	3	6	9	2	3	1	0	1	0
at UCF													
vs. Memphis													
vs. Memphis													

EMANI MAYO CAREER STATISTICS

YEAR	GP-GS	MIN-AVG.	FG-FGA	PCT	3P-3PA	PCT	FT-FTA	PCT	OFF	DEF	TOT	AVG	PF-FO	A	TO	BLK	ST	PTS	AVG
2017-18	31-27	1009-32.5	106-305	.348	54-169	.320	36-41	.878	31	52	83	2.7	67-0	69	47	5	27	302	9.7
2018-19	30-25	777-25.9	49-158	.310	23-91	.253	20-27	.741	39	64	103	3.4	52-1	44	34	2	29	141	4.7
2019-20	27-12	423-15.7	23-78	.295	9-32	.281	9-12	.750	14	31	45	1.7	33-0	12	17	2	6	64	2.4
2020-21	18-18	613-34.1	43-121	.355	14-56	.250	20-29	.690	14	52	66	3.7	33-0	27	15	2	22	120	6.7
TOTAL	106-82	2822-26.6	221-662	.334	100-348	.287	85-109	.780	98	199	297	2.8	185-1	152	113	11	84	627	5.9



#14

JANELLE JOHNSON

5-9 / FRESHMAN / GUARD

BRIDGEPORT, CONN. / ST. LUKE'S SCHOOL

OVERVIEW

2020-21: Has seen action in five games...Made her collegiate debut at #5 South Carolina where she logged two minutes of action...Played a career-high six minutes at Tulane...Scored her first career point at Tulsa with a good foul shot.

High School: Four-time All-Fairchester Athletic Association (FAA) honoree...Two-time All-New England Preparatory School Council (NEPSAC) recipient...Team captain her junior and senior years...High school team won the FAA Championship five years in a row starting in 2016...NEPSAC Championship Finalist her senior year and Quarterfinalist her junior year...Scored 1,000 points during her junior season...JCC Schoolboy/Schoolgirl Classic All-Star in 2020...Averaged 15 points, five rebounds and four assists her senior year.

Personal: Daughter of Lenora Matthews and Daryl Johnson...Uncle Wes Matthews was 2x NBA Champion with the Los Angeles Lakers (1987 & 1988) and cousin Wesley Matthews currently plays for the Milwaukee Bucks...Majoring in Business Administration at TU.

SEASON HIGHS

		Opponent	Date
PTS	1	Tulsa	2/17/21
REB	-	-	-
AST	-	-	-
STL	-	-	-
BLK	-	-	-
MIN	6	Tulane	1/30/21

CAREER HIGHS

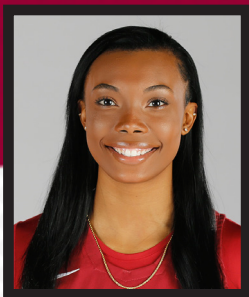
		Opponent	Date
PTS	1	Tulsa	2/17/21
REB	-	-	-
AST	-	-	-
STL	-	-	-
BLK	-	-	-
MIN	6	Tulane	1/30/21

GAME-BY-GAME

Opponent	MIN	FG-A	3PT-A	FT-A	OR	DR	TR	F	A	TO	BL	S	PTS
vs. Villanova	did not play												
at FGCU	did not play												
at S. Carolina	2	0-0	0-0	0-0	0	0	0	0	0	0	0	0	0
vs. SMU	did not play												
vs. Tulsa	did not play												
at ECU	did not play												
vs. UCF	did not play												
vs. Cincinnati	did not play												
at Houston	did not play												
vs. Wichita St.	did not play												
at Tulane (1/30)	6	0-0	0-0	0-0	0	0	0	0	0	0	0	0	0
at Tulane (1/31)	0	0-0	0-0	0-0	0	0	0	0	0	0	0	0	0
at Cincinnati	did not play												
at Wichita St.	did not play												
vs. Houston	3	0-1	0-1	0-0	0	0	0	0	0	1	0	0	0
vs. ECU	did not play												
at Tulsa	1	0-0	0-0	1-2	0	0	0	0	0	0	0	0	1
vs. USF	did not play												
at UCF													
vs. Memphis													
vs. Memphis													

JANELLE JOHNSON CAREER STATISTICS

YEAR	GP-GS	MIN-AVG.	FG-FGA	PCT	3P-3PA	PCT	FT-FTA	PCT	OFF	DEF	TOT	AVG	PF-FO	A	TO	BLK	ST	PTS	AVG
2020-21	5-0	12-2.4	0-1	.000	0-1	.000	1-2	.500	0	0	0	0.0	0-0	0	1	0	0	1	0.2
TOTAL	5-0	12-2.4	0-1	.000	0-1	.000	1-2	.500	0	0	0	0.0	0-0	0	1	0	0	1	0.2



#20

ALEXA WILLIAMSON

6-1 / JUNIOR / FORWARD

HOUSTON, PA. / CHARTIERS-HOUSTON

OVERVIEW

2020-21: Has started in all 17 games played...Pulled down 11 boards at FGCU and added nine points (12/6)...Collected 15 points with five rebounds, four blocks, two assists and a steal against SMU (12/20)... Scored a career-high 20 points against Tulsa (12/23)...Tallied a game-high 19 points and recorded seven rebounds at ECU (1/6)...Played a career-high 36 minutes at Houston (1/20) as she pulled down a career-best 13 boards...Added eight points and seven rebounds against Wichita State (1/23)...Tallied 13 points and seven rebounds at Tulane (1/30)...Added 15 points and seven boards at Tulane (1/31)...Recorded career-highs with 21 points and three steals at Cincinnati (2/3)...Had 19 points, eight rebounds and three blocks against Houston (2/10)...Registered her first double double at Tulsa (2/17) with 18 points and 10 rebounds.

2019-20: Started in 24 of 30 games played...Registered an all-around performance against Fairfield with seven points, six rebounds, two blocks and two steals...Added a season-high nine points, six rebounds, two steals and a block against Duquesne...Chipped in five points against Xavier...Netted six points at Towson...Recorded eight points, three boards and two blocks against Villanova...Added six points and four rebounds at La Salle...Collected eight points and eight rebounds at Tulsa...Tied her season-high nine points at Houston while delivering a season-best three blocks...Pulled down seven boards against SMU...Added six points at Wichita State...Recorded her second career double-double with 12 points and 12 rebounds against Penn...Added 12 points, two steals and two blocks against Wichita State...Tallied 10 points at USF...Collected seven points and five rebounds against Memphis...Registered 12 points and seven rebounds in AAC First Round game against ECU.

2018-19: Played in 25 games, making seven starts in her first year in the Cherry and White...Averaged 4.7 points and 3.8 rebounds per game... Had seven points and four boards against Wichita State...Pulled down six rebounds against Tulsa...Tallied nine points with seven rebounds at UCF... Had 11 points with five rebounds against #2 UConn...Led Temple with 16 points, four blocks, and three steals against Tulane...Notched nine points with eight rebounds against USF...Had six points and four rebounds at Duquesne...In her first career start, notched her first collegiate double-double with 11 points and 12 rebounds against La Salle...Had four points with four boards and two blocks at #25 South Carolina...Pulled down a season-best six rebounds at Villanova, adding a pair of steals...Scored nine points on 4-of-5 from the field at #16/14 DePaul...Made her collegiate debut in the season opener against Delaware State, tallying 11 points with four rebounds.

High School: The top-ranked player in Pittsburgh, she was named the Post-Gazette 2A Player of the Year in 2017... As a junior, averaged 23 points and 12 rebounds per game, leading her high school to the WPIAL Class 2A championship.

AWARDS & HONORS

- > American Athletic Conference Freshman of the Week (12/31/18)
- > American Athletic Conference Weekly Honor Roll (12/28/20)
- > Philadelphia Big 5 Player of the Week (12/28/20)

SEASON HIGHS

		Opponent	Date
PTS	21	Cincinnati	2/3/21
REB	13	Houston	1/20/21
AST	2	x2, last Tulsa	12/23/20
STL	3	Cincinnati	2/3/21
BLK	4	SMU	12/20/20
MIN	36	Houston	1/20/21
Total Double Doubles		1	

CAREER HIGHS

		Opponent	Date
PTS	21	Cincinnati	2/3/21
REB	13	Houston	1/20/21
AST	2	x2, last Tulsa	12/23/20
STL	3	Cincinnati	2/3/21
BLK	4	SMU	12/20/20
MIN	36	Houston	1/20/21
Total Double Doubles		3	

GAME-BY-GAME

Opponent	MIN	FG-A	3PT-A	FT-A	OR	DR	TR	F	A	TO	BL	S	PTS
vs. Villanova	23	2-9	0-0	0-2	1	3	4	2	0	2	0	0	4
at FGCU	29	4-8	0-0	1-3	2	9	11	4	0	3	0	1	9
at S. Carolina	14	1-3	0-0	1-4	1	2	3	3	0	0	0	0	3
vs. SMU	26	6-12	0-0	3-4	1	4	5	4	2	2	4	1	15
vs. Tulsa	27	8-11	0-0	4-5	3	2	5	3	2	1	1	2	20
at ECU	19	7-9	0-0	5-8	3	4	7	5	0	1	2	1	19
vs. UCF	17	1-2	0-0	2-2	1	4	5	4	0	2	1	0	4
vs. Cincinnati	did not play												
at Houston	36	4-15	0-0	1-2	3	10	13	2	0	8	3	0	9
vs. Wichita St.	32	3-7	0-0	2-3	2	5	7	3	0	0	2	1	8
at Tulane (1/30)	34	5-11	0-0	3-6	3	4	7	3	0	5	1	0	13
at Tulane (1/31)	34	5-8	0-0	5-10	3	4	7	4	0	3	0	0	15
at Cincinnati	31	7-15	0-0	7-10	2	3	5	1	1	1	3	3	21
Wichita St.	18	1-5	0-0	0-2	3	4	7	4	0	2	1	1	2
vs. Houston	35	7-12	0-0	0-0	5	3	8	3	0	6	3	1	19
vs. ECU	16	4-6	0-0	1-2	0	2	2	4	2	0	1	0	9
at Tulsa	29	6-10	0-0	6-10	0	10	10	3	1	4	2	2	18
vs. USF	23	2-8	0-0	0-0	0	4	4	4	1	2	2	0	4
at UCF													
vs. Memphis													
vs. Memphis													

ALEXA WILLIAMSON CAREER STATISTICS

YEAR	GP-GS	MIN-AVG.	FG-FGA	PCT	3P-3PA	PCT	FT-FTA	PCT	OFF	DEF	TOT	AVG	PF-FO	A	TO	BLK	ST	PTS	AVG
2018-19	25-7	377-15.1	47-114	.412	0-0	.000	24-39	.615	36	58	94	3.8	51-0	5	19	12	19	118	4.7
2019-20	30-24	561-18.7	72-173	.416	0-1	.000	41-66	.621	48	86	134	4.5	82-1	9	35	17	19	185	6.2
2020-21	17-17	443-26.1	73-151	.483	0-0	.000	46-79	.582	33	77	110	6.5	56-1	9	42	26	13	192	11.3
TOTAL	72-48	1381-19.2	192-438	.438	0-1	.000	111-184	.603	117	221	338	4.7	189-2	23	96	55	51	495	6.9



#22 ANIYA MATTHEWS

6-3 / FRESHMAN / CENTER
YORK, PA. / DALLASTOWN AREA

OVERVIEW

2020-21: Will sit out this season due to injury.

High School: Named a York-Adams League Division I Second Team All-Star for the 2019-2020 season, helping her Dallastown Area High School win a second straight York-Adams tournament title...Named First Team All-Division and earned the Best Post Player Award following the 2018-19 season.

Personal: Daughter of April Haskins...Intends to pursue a career in Physical Therapy.

SEASON HIGHS

	Opponent	Date
PTS	-	-
REB	-	-
AST	-	-
STL	-	-
BLK	-	-
MIN	-	-

CAREER HIGHS

	Opponent	Date
PTS	-	-
REB	-	-
AST	-	-
STL	-	-
BLK	-	-
MIN	-	-

GAME-BY-GAME

Opponent	MIN	FG-A	3PT-A	FT-A	OR	DR	TR	F	A	TO	BL	S	PTS
vs. Villanova	did not play												
at FGCU	did not play												
at S. Carolina	did not play												
vs. SMU	did not play												
vs. Tulsa	did not play												
at ECU	did not play												
vs. UCF	did not play												
vs. Cincinnati	did not play												
at Houston	did not play												
vs. Wichita St.	did not play												
at Tulane (1/30)	did not play												
at Tulane (1/31)	did not play												
at Cincinnati	did not play												
at Wichita St.	did not play												
vs. Houston	did not play												
vs. ECU	did not play												
at Tulsa	did not play												
vs. USF	did not play												
at UCF													
vs. Memphis													
vs. Memphis													

ANIYA MATTHEWS CAREER STATISTICS

YEAR	GP-GS	MIN-AVG.	FG-FGA	PCT	3P-3PA	PCT	FT-FTA	PCT	OFF	DEF	TOT	AVG	PF-FO	A	TO	BLK	ST	PTS	AVG
2020-21	0-0	0-0	0-0	.000	0-0	.000	0-0	.000	0	0	0	0.0	0-0	0	0	0	0	0	0.0
TOTAL	0-0	0-0	0-0	.000	0-0	.000	0-0	.000	0	0	0	0.0	0-0	0	0	0	0	0	0.0



#24

SHANTAY TAYLOR

6-3 / GRAD STUDENT / CENTER
COLUMBIA, S.C. / SPRING VALLEY

OVERVIEW

2019-20: Saw action in five games for the Owls before sitting out the rest of the season due to injury...Played a season-best 20 minutes against No. 4 UConn where she went 2-for-2 from the foul line...Registered a season-high four points against North Carolina.

2018-19: Started in 20 of 26 games played for Temple...Tied career-high of 16 points in the American Athletic Conference First Round game against Memphis and pulled down 14 rebounds for a double-double... Set a career-high 16 points and tied a career best with three blocks at Memphis...Finished with six points and seven rebounds at UCF... Recorded her second-career double-double against Cincinnati with 12 points and 11 rebounds...Tallied eight points with 10 rebounds at Wichita State...Notched a career-best three blocks to go along with five boards and four points at Tulsa...Tallied seven points with seven rebounds against ECU...Had six points and five rebounds at Houston... Pulled down six rebounds against Tulane...Tallied eight points and four rebounds at Duquesne...Notched her first career double-double with 14 points and 13 rebounds against La Salle...Set career highs in points (14), steals (3), and minutes (32) with a career high tying nine rebounds in a start at #25 South Carolina...Pulled down a career-best eight rebounds at #24/22 Miami.

2017-18: Played in 28 games for the Owls...Averaged 2.3 points and 2.3 rebounds per game...Finished tied for second on the team with 11 total blocks...Scored a season-best eight points against Cincinnati and #4 South Carolina...Pulled down five or more rebounds in six different games...ied her career high with a pair of blocks at SMU...Had a career-best two steals at La Salle.

2016-17: Appeared in 26 games for the Owls making one start...Scored a career-high nine points at Harvard...Notched a career-high seven rebounds at Kennesaw State...Had eight points against both Tulane and East Carolina...Started her first collegiate game against Vermont...Made her collegiate debut in the season opener at Saint Joseph's.

High School: An All-State, All-Conference and All-Region player out of Spring Valley High School...Led the Vikings to back-to-back South Carolina Class 4A State Championship titles...Named to the North-South All-Star team...As a junior, averaged 9.4 points, 8.7 rebounds, 1.9 blocks, and 1.0 assists per game, while helping her team to a 25-4 record... Carried a 3.5 GPA while taking honor courses.

Personal: Majoring in Recreational Therapy with a minor in Public Health

AWARDS & HONORS

> Big 5 Player of the Week (1/1/19)

SEASON HIGHS

	Opponent	Date
PTS	-	-
REB	-	-
AST	-	-
STL	-	-
BLK	-	-
MIN	-	-
Total Double Doubles	0	

CAREER HIGHS

	Opponent	Date
PTS	16	x2, last Memphis 3/8/19
REB	13	La Salle 12/30/18
AST	1	x6, last Memphis 3/8/19
STL	3	#25 S. Carolina 12/21/18
BLK	3	x4, last Memphis 3/8/19
MIN	33	Memphis 3/8/19
Total Double Doubles	3	

GAME-BY-GAME

Opponent	MIN	FG-A	3PT-A	FT-A	OR	DR	TR	F	A	TO	BL	S	PTS
vs. Villanova	did not play												
at FGCU	did not play												
at S. Carolina	did not play												
vs. SMU	did not play												
vs. Tulsa	did not play												
at ECU	did not play												
vs. UCF	did not play												
vs. Cincinnati	did not play												
at Houston	did not play												
vs. Wichita St.	did not play												
at Tulane (1/30)	did not play												
at Tulane (1/31)	did not play												
at Cincinnati	did not play												
at Wichita St.	did not play												
vs. Houston	did not play												
vs. ECU	did not play												
at Tulsa	did not play												
vs. USF	did not play												
at UCF													
vs. Memphis													
vs. Memphis													

SHANTAY TAYLOR CAREER STATISTICS

YEAR	GP-GS	MIN-AVG.	FG-FGA	PCT	3P-3PA	PCT	FT-FTA	PCT	OFF	DEF	TOT	AVG	PF-FO	A	TO	BLK	ST	PTS	AVG
2016-17	26-1	230-8.8	18-45	.400	0-0	.000	14-26	.538	18	37	55	2.1	38-0	1	23	9	2	50	1.9
2017-18	28-0	246-8.8	25-60	.417	0-0	.000	13-23	.565	35	30	65	2.3	38-0	3	21	11	5	63	2.3
2018-19	26-20	505-19.4	57-101	.564	0-0	.000	27-36	.750	57	91	148	5.7	74-2	5	37	26	9	141	5.4
2019-20	5-0	53-10.6	3-9	.333	0-0	.000	2-4	.500	3	7	10	2.0	11-1	0	5	0	1	8	1.6
2020-21	0-0	0-0	0-0	.000	0-0	.000	0-0	.000	0	0	0	0.0	0-0	0	0	0	0	0	0.0
TOTAL	85-21	1034-12.2	103-215	.479	0-0	.000	56-89	.629	113	165	278	3.3	161-3	9	86	46	17	262	31.



#25 MIA DAVIS

6-0 / SENIOR / FORWARD
BALTIMORE, MD. / ST. FRANCES ACADEMY

OVERVIEW

2020-21: Has started in all 18 games played...Scoreed 22 points against Villanova (12/4)...Collected a career-high 34 points and 12 rebounds at FGCU (12/6)...Registered a double-double of 22 points and a season-high 15 rebounds against SMU (12/20)...Recorded back-to-back double-doubles of 17 points and 11 rebounds against Tulsa (12/23) and ECU (1/6)...Scored 19 points and added six rebounds against UCF (1/9)...Played a season-high 40 minutes against Cincinnati where she recorded 20 points and six rebounds (1/13)...Chipped in 16 points and nine rebounds against Wichita State (1/23)...Recorded 14 points and a career-best four steals at Tulane (1/30)...Collected a game-high 22 points at Tulane (1/31)...Added 17 points and eight rebounds at Cincinnati (2/3)...Tallied 17 points with seven boards at Wichita State (2/6)...Recorded 17 points and six rebounds against Houston (2/10)...Registered a double-double of 17 points and 10 rebounds at Tulsa (2/17)...Tallied 23 points, nine rebounds and two steals against #13 USF (2/24).

2019-20: Started in all 30 games played...Recorded 18 double-doubles on the year, marking sixth most double-doubles by a single player in the country...Finished the year averaging a double-double of 18.8 points and 10.2 rebounds to lead Temple in both categories...Opened the season with back-to-back double-doubles against Fairfield (18 pt, 11 reb) and Duquesne (26 pt, 11 reb)...Tallied a season-best 29 points at St. Joseph's...Scored her 1,000th career point against No. 4 UConn with her 18-point effort...Registered seven-straight double-doubles (Dec. 4-Jan. 11)...Pulled down a career-high 18 rebounds and tallied 16 points for her sixth consecutive double-double at Houston...Had 23 points, 11 rebounds and a career-high six assists for her seventh-straight double-double against SMU...Poured in 25 points against USF...Registered 23 points, 14 rebounds, and six assists at UCF...Recorded her 18th double-double of the season against ECU with 24 points and 12 rebounds, adding six assists...Collected 20 points as she went 9-for-9 at the foul line against ECU (2/13).

2018-19: Played and started in 29 games for Temple during her sophomore campaign...Led the Owls with 18.9 points and 9.2 rebounds per game while finishing second in the conference in both categories...Recorded 12 double-doubles on the year...Notched a huge 27 point, 14 rebound double-double at Memphis...Tallied 20 points with nine rebounds and three assists at SMU...Notched a double-double with 17 points and 13 rebounds against Cincinnati... Scored 20 points and pulled down nine boards at #5 UConn...Improved her career high with 33 points, adding a career-high tying 17 rebounds in a win over Houston... Set a new career best with 30 points at Wichita State, adding 13 rebounds...Had 10 points and six rebounds at #25 South Carolina...Racked up 25 points and a season-high 14 rebounds against Iona...Tallied a double-double with 26 points and 11 rebounds at #16/14 DePaul...Notched a double-double with team highs of 19 points and 11 rebounds at #24/22 Miami...Improved her career high with 28 points at Marist, adding 11 rebounds for a double-double...Opened the season with a double-double of 21 points and 12 rebounds against Delaware State.

2017-18: Played in all 31 games for the Owls' during her freshman campaign, starting all 31...Averaged 11.2 points and 7.5 rebounds per game...Finished second on the Owls in both scoring and rebounding...Tallied five double-doubles during the season, including 19 points and 10 rebounds against #4 South Carolina...Scored in double-figures in 20 different games...Reached the 20-point mark twice during the season, including a career-high 21 points against Delaware State...Tallied 10 or more rebounds in seven different games with a career-best 17 against Delaware State...Dished out a career-high five assists against Hampton...Finished second on the Owls with a 79.2% (84-106) free throw percentage.

High School: All-Metro Player of the Year...Three-time All-Conference selection...Led the Panthers to their second-straight IAAM Championship... Helped her team to a No. 10 ranking in the USA Today Super 25...MVP of the Bishop Walsh Tournament...Led her HS team to a berth in the Dick's Sporting Goods High School Nationals...Averaged a double-double of 14.6 points and 10.0 rebounds as a senior...Finished her high school career with 1,731 points and more than 1,000 rebounds.

Personal: Senior Class President...Honor Roll student...A three-time All-Conference volleyball player.

AWARDS & HONORS

- > 2020-21 AAC Preseason co-Player of the Year
- > 2020-21 Becky Hammon Mid-Major Player of the Year Watch List
- > 2021 Cheryl Miller Award Watch List
- > 2021 Cheryl Miller Award Top 10 Finalist
- > 2020 USBWA All-American Honorable Mention
- > 2020 Big 5 Player of the Year
- > 2020 First Team All-Big 5
- > 2019 & 2020 First Team All-AAC
- > 2020 Cheryl Miller Award Top 10 Finalist
- > 2x Preseason First Team All-AAC,
- > 7x Big 5 Player of the Week
- > AAC Player of the Week (2/4/19)
- > 2018 AAC All-Freshman Team
- > 3x AAC Freshman of the Week

SEASON HIGHS

		Opponent	Date
PTS	34	FGCU	12/6/20
REB	12	FGCU	12/6/20
AST	3	x2, last Tulane	1/30/21
STL	4	Tulane	1/30/20
BLK	-	-	-
MIN	40	Cincinnati	1/13/21
Total Double Doubles			5

CAREER HIGHS

		Opponent	Date
PTS	34	FGCU	12/6/20
REB	18	Houston	1/8/20
AST	6	x3, last ECU	3/6/20
STL	4	Tulane	1/30/20
BLK	2	Xavier	11/14/19
MIN	42	Tulsa	1/4/20
Total Double Doubles			40

GAME-BY-GAME

Opponent	MIN	FG-A	3PT-A	FT-A	OR	DR	TR	F	A	TO	BL	S	PTS
vs. Villanova	35	10-22	0-1	2-4	3	4	7	3	1	1	0	1	22
at FGCU	35	12-18	2-3	8-12	5	7	12	2	1	1	0	0	34
at S. Carolina	31	6-16	1-4	4-4	4	3	7	4	1	2	0	0	17
vs. SMU	37	4-8	0-1	14-17	5	10	15	3	1	3	0	2	22
vs. Tulsa	37	8-10	1-1	0-2	1	10	11	3	3	5	0	0	17
at ECU	35	7-16	0-1	3-5	3	8	11	5	2	3	0	1	17
vs. UCF	37	5-11	0-1	9-12	0	6	6	4	0	3	0	0	19
vs. Cincinnati	40	7-21	2-4	4-4	1	5	6	3	0	5	0	0	20
at Houston	26	2-8	0-1	1-1	3	0	3	4	1	2	0	1	5
vs. Wichita St.	38	5-11	0-0	6-9	5	4	9	2	2	4	0	0	16
at Tulane (1/30)	34	6-13	2-6	0-0	0	4	4	0	3	1	0	4	14
at Tulane (1/31)	40	8-15	1-1	5-6	1	4	5	3	2	3	0	3	22
at Cincinnati	39	5-17	0-0	7-9	1	7	8	3	2	4	0	2	17
at Wichita St.	35	7-11	1-1	2-4	1	6	7	3	1	3	0	0	17
vs. Houston	35	7-19	0-3	3-5	3	3	6	3	0	4	0	0	17
vs. ECU	29	5-10	1-2	9-9	3	3	6	3	2	0	0	0	20
at Tulsa	37	8-14	0-0	1-3	3	7	10	2	4	2	0	1	17
vs. USF	40	8-21	2-4	5-10	3	6	9	2	0	4	0	2	23
at UCF													
vs. Memphis													
vs. Memphis													

MIA DAVIS CAREER STATISTICS

YEAR	GP-GS	MIN-AVG.	FG-FGA	PCT	3P-3PA	PCT	FT-FTA	PCT	OFF	DEF	TOT	AVG	PF-FO	A	TO	BLK	ST	PTS	AVG
2017-18	31-31	872-28.1	126-304	.414	12-47	.255	12-47	.792	93	138	231	7.5	108-3	31	72	4	17	348	11.2
2018-19	29-29	1002-34.6	206-346	.472	29-79	.367	106-141	.752	100	165	265	9.1	85-4	37	102	3	23	547	18.9
2019-20	30-30	1068-35.6	213-451	.472	12-46	.261	127-164	.774	122	184	306	10.2	95-1	51	93	4	15	565	18.8
2020-21	18-18	640-35.6	120-261	.460	13-34	.382	83-116	.716	45	97	142	7.9	52-1	26	50	0	17	336	18.7
TOTAL	108-108	3582-33.2	665-1452	.458	66-206	.320	400-527	.759	360	584	944	8.7	340-9	145	317	11	72	1796	16.6



2020-21 Temple Women's Basketball Combined Team Statistics In Conference games

Page 1/1
as of Feb 25, 2021

Game Records

Record	Overall	Home	Away	Neutral
ALL GAMES	9-6	5-3	4-3	0-0
CONFERENCE	9-6	5-3	4-3	0-0
NON-CONFERENCE	0-0	0-0	0-0	0-0

Score by Periods

Team	1st	2nd	3rd	4th	OT	TOT
Temple	241	216	239	221	0	917
Opponents	228	227	251	233	0	939

Team Box Score

No.	Player				Total		3-Point		F-Throw		Rebounds													
		GP-GS	MIN	AVG	FG-FGA	FG%	3FG-FGA	3FG%	FT-FTA	FT%	OFF	DEF	TOT	AVG	PF	DQ	A	TO	BLK	STL	PTS	AVG		
25	DAVIS, Mia	15-15	538:33	35.9	92-205	.449	10-26	.385	69-96	.719	33	83	116	7.7	43	1	23	46	0	16	263	17.5		
1	CLINTON, Jasha	15-15	512:32	34.2	79-206	.383	29-93	.312	29-47	.617	12	53	65	4.3	48	1	63	67	2	25	216	14.4		
20	WILLIAMSON, Alexa	14-14	380:30	27.2	66-131	.504	0-0	.000	44-70	.629	29	63	92	6.6	47	1	9	37	26	12	176	12.6		
12	MAYO, Emani	15-15	495:32	33.0	33-97	.340	11-49	.224	16-24	.667	9	41	50	3.3	26	0	26	11	1	19	93	6.2		
02	ALEXANDER, Asonah	15-15	475:25	31.7	24-88	.273	5-48	.104	20-26	.769	17	66	83	5.5	32	0	73	49	18	23	73	4.9		
03	WALKER, Rayniah	14-1	259:29	18.5	14-43	.326	2-8	.250	12-20	.600	12	25	37	2.6	27	0	11	18	5	7	42	3.0		
11	AYUSO, Kash	11-0	113:18	10.3	12-33	.364	3-15	.200	4-6	.667	6	10	16	1.5	7	0	7	17	1	6	31	2.8		
5	GRAVES, Jada	15-0	203:14	13.5	9-23	.391	0-1	.000	4-10	.400	12	25	37	2.5	22	0	10	18	2	11	22	1.5		
14	JOHNSON, Janelle	4-0	10:26	2.6	0-1	.000	0-1	.000	1-2	.500	0	0	0	0.0	0	0	0	1	0	0	1	0.3		
10	MAYO, Nicolette	4-0	10:59	2.7	0-3	.000	0-2	.000	0-0	.000	0	0	0	0.0	1	0	0	0	0	0	0	0.0		
Team											30	36	66					4						
Total		15	3000		329-830	.396	60-243	.247	199-301	.661	160	402	562	37.5	253	3	222	268	55	119	917	61.1		
Opponents		15	3000		346-916	.378	81-264	.307	166-257	.646	206	374	580	38.7	256	5	210	239	42	134	939	62.6		

Team Statistics

	TEMPLE	OPP
Scoring	917	939
Points per game	61.1	62.6
Scoring margin	-1.5	-
Field goals-att	329-830	346-916
Field goal pct	.396	.378
3 point fg-att	60-243	81-264
3-point FG pct	.247	.307
3-pt FG made per game	4.0	5.4
Free throws-att	199-301	166-257
Free throw pct	.661	.646
F-Throws made per game	13.3	11.1
Rebounds	562	580
Rebounds per game	37.5	38.7
Rebounding margin	-1.2	-
Assists	222	210
Assists per game	14.8	14.0
Turnovers	268	239
Turnovers per game	17.9	15.9
Turnover margin	-1.9	-
Assist/turnover ratio	0.8	0.9
Steals	119	134
Steals per game	7.9	8.9
Blocks	55	42
Blocks per game	3.7	2.8
Winning streak	0	-
Home win streak	0	-
Attendance	0	1492
Home games-Avg/Game	8-0	7-213
Neutral site-Avg/Game	-	0-0

Team Results

Date	Opponent		Score	Att.
12/20/2020	SMU	W	73-57	0
12/23/2020	Tulsa	W	69-52	0
01/06/2021	at East Carolina	W	66-57	29
01/09/2021	UCF	W	61-58	0
01/13/2021	Cincinnati	L	65-71	0
01/20/2021	at Houston	L	46-80	365
01/23/2021	Wichita St.	W	65-55	0
01/30/2021	at Tulane	L	44-80	0
01/31/2021	at Tulane	L	69-71	0
02/03/2021	at Cincinnati	W	69-53	300
02/06/2021	at Wichita St.	W	65-57	698
02/10/2021	Houston	L	52-89	0
02/13/2021	East Carolina	W	58-57	0
02/17/2021	at Tulsa	W	68-46	100
02/24/2021	South Fla.	L	47-56	0



2020-21 Temple Women's Basketball Combined Team Statistics All games

Page 1/1
as of Feb 25, 2021

Game Records

Record	Overall	Home	Away	Neutral
ALL GAMES	9-9	5-4	4-5	0-0
CONFERENCE	9-6	5-3	4-3	0-0
NON-CONFERENCE	0-3	0-1	0-2	0-0

Score by Periods

Team	1st	2nd	3rd	4th	OT	TOT
Temple	296	251	283	269	0	1099
Opponents	289	290	338	293	0	1210

Team Box Score

No.	Player				Total		3-Point		F-Throw		Rebounds											
		GP-GS	MIN	AVG	FG-FGA	FG%	3FG-FGA	3FG%	FT-FTA	FT%	OFF	DEF	TOT	AVG	PF	DQ	A	TO	BLK	STL	PTS	AVG
25	DAVIS, Mia	18-18	638:32	35.5	120-261	.460	13-34	.382	83-116	.716	45	97	142	7.9	52	1	26	50	0	17	336	18.7
1	CLINTON, Jasha	18-18	588:59	32.7	89-239	.372	31-103	.301	32-53	.604	15	55	70	3.9	57	2	67	78	2	30	241	13.4
20	WILLIAMSON, Alexa	17-17	444:24	26.1	73-151	.483	0-0	.000	46-79	.582	33	77	110	6.5	56	1	9	42	26	13	192	11.3
12	MAYO, Emani	18-18	613:57	34.1	43-121	.355	14-56	.250	20-29	.690	14	52	66	3.7	33	0	27	15	2	22	120	6.7
02	ALEXANDER, Asonah	18-18	569:50	31.7	29-113	.257	6-56	.107	21-28	.750	21	84	105	5.8	38	0	89	63	23	24	85	4.7
11	AYUSO, Kash	14-0	158:01	11.3	15-51	.294	4-20	.200	8-11	.727	6	12	18	1.3	12	0	9	24	1	6	42	3.0
03	WALKER, Rayniah	17-1	294:57	17.4	14-51	.275	2-12	.167	12-20	.600	12	28	40	2.4	31	0	12	20	8	7	42	2.5
5	GRAVES, Jada	18-0	265:48	14.8	16-35	.457	0-2	.000	8-19	.421	16	31	47	2.6	32	0	12	22	2	16	40	2.2
14	JOHNSON, Janelle	5-0	12:29	2.5	0-1	.000	0-1	.000	1-2	.500	0	0	0	0.0	0	0	0	1	0	0	1	0.2
10	MAYO, Nicolette	5-0	13:02	2.6	0-3	.000	0-2	.000	0-0	.000	0	1	1	0.2	1	0	0	0	0	0	0	0.0
Team											42	40	82					5				
Total		18	3600		399-1026	.389	70-286	.245	231-357	.647	204	477	681	37.8	312	4	251	320	64	135	1099	61.1
Opponents		18	3600		446-1124	.397	105-349	.301	213-328	.649	249	471	720	40.0	306	5	266	272	59	165	1210	67.2

Team Statistics

	TEMPLE	OPP
Scoring	1099	1210
Points per game	61.1	67.2
Scoring margin	-6.2	-
Field goals-att	399-1026	446-1124
Field goal pct	.389	.397
3 point fg-att	70-286	105-349
3-point FG pct	.245	.301
3-pt FG made per game	3.9	5.8
Free throws-att	231-357	213-328
Free throw pct	.647	.649
F-Throws made per game	12.8	11.8
Rebounds	681	720
Rebounds per game	37.8	40.0
Rebounding margin	-2.2	-
Assists	251	266
Assists per game	13.9	14.8
Turnovers	320	272
Turnovers per game	17.8	15.1
Turnover margin	-2.7	-
Assist/turnover ratio	0.8	1.0
Steals	135	165
Steals per game	7.5	9.2
Blocks	64	59
Blocks per game	3.6	3.3
Winning streak	0	-
Home win streak	0	-
Attendance	0	5700
Home games-Avg/Game	9-0	9-633
Neutral site-Avg/Game	-	0-0

Team Results

Date	Opponent		Score	Att.
12/04/2020	Villanova	L	72-90	0
12/06/2020	at FGCU	L	69-78	708
12/17/2020	at South Carolina	L	41-103	3500
12/20/2020	SMU	W	73-57	0
12/23/2020	Tulsa	W	69-52	0
01/06/2021	at East Carolina	W	66-57	29
01/09/2021	UCF	W	61-58	0
01/13/2021	Cincinnati	L	65-71	0
01/20/2021	at Houston	L	46-80	365
01/23/2021	Wichita St.	W	65-55	0
01/30/2021	at Tulane	L	44-80	0
01/31/2021	at Tulane	L	69-71	0
02/03/2021	at Cincinnati	W	69-53	300
02/06/2021	at Wichita St.	W	65-57	698
02/10/2021	Houston	L	52-89	0
02/13/2021	East Carolina	W	58-57	0
02/17/2021	at Tulsa	W	68-46	100
02/24/2021	South Fla.	L	47-56	0

RADIO/TV ROSTER



**#1 JASHA
CLINTON**

FR | 6 | 5-8
VIRGINIA BEACH, VA.



**#2 ASONAH
ALEXANDER**

SO | 6 | 5-10
PROSPECT PARK, N.J.



**#3 RAYNIAH
WALKER**

SO | 6 | 5-10
CHELTENHAM, MD.



**#5 JADA
GRAVES**

GR | 6 | 5-9
ALEXANDRIA, VA./ELON



**#10 NICOLETTE
MAYO**

SR | 6 | 5-8
HEPHZIBAH, GA.



**#11 KASH
AYUSO**

FR | 6 | 5-6
WEST PALM BEACH, FLA.



**#12 EMANT
MAYO**

SR | 6 | 5-8
HEPHZIBAH, GA.



**#14 JANELLE
JOHNSON**

FR | 6 | 5-9
BRIDGEPORT, CONN.



**#20 ALEXA
WILLIAMSON**

JR | F | 6-1
HOUSTON, PA.



**#22 ANIYA
MATTHEWS**

FR | F | 6-3
YORK, PA.



**#24 SHANTAY
TAYLOR**

GR | C | 6-3
COLUMBUS, S.C.



**#25 MIA
DAVIS**

SR | F | 6-0
BALTIMORE, MD.



TONYA CARDOZA
HEAD COACH



WAY VENEY
ASSOCIATE HEAD COACH



WILLNETT CROCKETT
ASSISTANT COACH



SAM GUASTELLA
ASSISTANT COACH