

2015 MURPHY CUP DIRECTIONS & PARKING UPDATES

Please note that due to ongoing construction parking at the course (for both spectators and team trailers/trucks) has been modified. Follow all instructions below and observe all signs or directions. Please also share this info with any parents, spectators & bus drivers.

Trailers & Tow Vehicles

This year all trailers will be parked in the trailer overflow lot – in the field near the 1500m mark (near the former Lobster Trap restaurant). The field will be lined and only trailers are to be parked here. Team trucks will be issued a hangtag and directed to a designated tow vehicle lot up river from the trailer lot.

*See attached Trailer Parking map for details.

The ideal way to access the entrance to this lot is to come down North Park Drive from the start line to turn right into the field. Coming from Cuthbert Blvd will necessitate an extremely sharp left turn into the lot.

Also note that Donahue Ave is also closed to through traffic so the best options are to come from Rt. 130 or via McClellan Ave. See below for details.

Option 1:

Take Rt 130 South, turn left onto North Park Drive & proceed to trailer lot.

Option 2:

From Rt 70 East – turn right onto McClellan Ave (near the Wawa and the Wendy's) then left onto North Park Drive & proceed to trailer lot.

Option 3:

From Rt. 70 West – take jug handle left turn onto McClellan Ave (near Wawa & Wendy's), then left onto North Park Drive & proceed to trailer lot.

Spectators & Team Tents

Angled parking for spectators will be available along North Park Drive heading east (toward Cuthbert Blvd), beginning near the finish line viewing area.

To avoid congestion in the trailer lot, all team food tents must be set up in the finish line/grandstand area – between the grandstands and the old trailer parking lot.

*See attached map of Vending Area and Food Tents.

Please also note that the field between the trailer lot and the finish area is closed to pedestrian traffic. Please use the sidewalk along North Park Drive to walk to the finish line/grandstands.

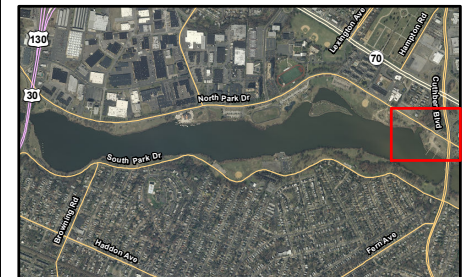
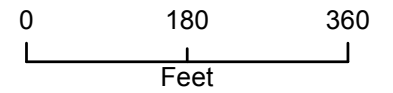
Team Busses

Team busses are not permitted to idle along the road. After dropping teams at the trailer lot they should proceed to the Yacht Club parking lot across the river (same as previous years).

Cooper River Park

2015 Regatta Details

- ① Important Locations
- County Roads
- State Hwy
- US Hwy



Making It Better, Together.

Cooper River Park

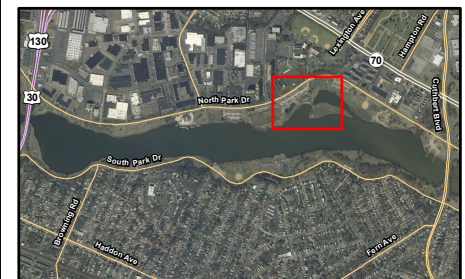
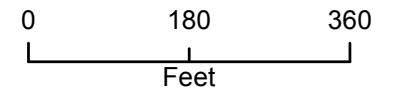
2015 Regatta Details

① Important Locations

County Roads

State Hwy

US Hwy



Making It Better, Together.

Cooper River Park

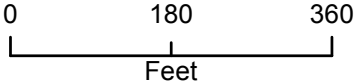
2015 Regatta Details

① Important Locations

County Roads

State Hwy

US Hwy



Making It Better, Together.