

OREGON STATE



FOUR PAC-12 TITLES
1983 • 2015
2016 • 2017

2016
FINAL
FOUR

SIX NCAA SWEET SIXTEENS
1983 • 2016 • 2017
2018 • 2019 • 2024

2025-26 GAME NOTES

#WEAREFAMILY | @BEAVERWBB

OSU SCHEDULE

NOVEMBER (4-0)

Date	Opponent	Watch	Time/Result
2	AK-FAIRBANKS (EX)-		W, 104-27
12	CORBAN	ESPN+	W, 86-45
10	AIR FORCE	ESPN+	W, 60-49
14	ILLINOIS	ESPN+	W, 64-59
18	UTAH STATE @	ESPN+	W, 71-52
21	COLORADO STATE	ESPN+	L, 64-58
23	LONG BEACH STATE	ESPN+	1PM
27	Vanderbilt %	ESPN+	5pm
29	BYU/Virginia Tech %	ESPN+	11:30am

DECEMBER

Date	Opponent	Watch	Time/Result
3	Oregon	ESPN+	6pm
7	AK ANCHORAGE	ESPN+	1PM
14	ARIZONA STATE	ESPN+	1PM
19	Montana State &	OSU YT	7pm
20	Liberty &	OSU YT	8pm
28	San Francisco	ESPN+	2pm
30	Saint Mary's	ESPN+	5pm

JANUARY

Date	Opponent	Watch	Time/Result
2	PACIFIC	ESPN+	6PM
8	Wazzu	ESPN+	6pm
10	SEATTLE	ESPN+	1PM
15	LMU	ESPN+	6pm
17	Pepperdine	ESPN+	2pm
22	GONZAGA	ESPN+	6PM
29	SAN DIEGO	ESPN+	6PM
31	SAN FRANCISCO	ESPN+	1PM

FEBRUARY

Date	Opponent	Watch	Time/Result
5	Gonzaga	ESPN+	6pm
7	Portland	ESPN+	2pm
12	SANTA CLARA	ESPN+	6PM
14	Pacific	ESPN+	2pm
19	PORTLAND	ESPN+	6PM
21	WAZZU	ESPN+	1PM
26	San Diego	ESPN+	6pm
28	LMU	ESPN+	1PM

* - Conference game;
% - Paradise Jam (St. Thomas, US Virgin Islands)
& - Maui Classic (Makawao, Hawaii)
@ - Field Trip Game
\$ - WCC Tournament
AP Top 25 rankings used
Home games in BOLD;
All times PST

THE MATCHUP: GAME 6

OREGON STATE 4-1, 0-0)



Coach: Scott Rueck (OSU '91)
Overall: 608-251 (30th Season)
at OSU: 319-169 (16th Season)

LONG BEACH STATE (0-5, 0-0)



Coach: Amy Wright (SD '92)
Overall: 31-32 (3rd Season)
at LBSU: 31-32 (3rd Season)

WATCH

PxP	Ann Schatz
Analyst	Jennifer Mountain
LISTEN	OSU RADIO NETWORK
PxP	Ron Callan
Radio	Varsity Network

ESPN+

OVERALL

OSU LEADS 5-3

In Long Beach	1-2
In Corvallis	4-1
Last Meeting - 3/17/22	W, 70-59
Rueck vs. Long Beach State	3-0
Last 10 games	5-3

LAST TIME OUT

OREGON STATE 58, COLORADO STATE 64

Scoring: Villa 22, Bolden 9, Alonso 8, Shuler 7, Field 4, Schimel 3, Mehyar 2, Williamson 2, Sow 1
Rebounding leader: Williamson (8)
Assists leader: Villa/Shuler (5)
Steals: Shuler/Schimel/Lindemans (1)
Blocks: Sow/Field (1)
Best (±): Field (+1)

NOTABLES

- » Villa - Three career highs: 22 points, 7 rebounds, 5 assists
- » Shuler: 5+ assists in last 4 of 5 games
- » Limited CSU to second lowest shooting percentage of the season (.403)
- » First time the Beavs were held to below .45% from the floor

STARTING FIVE

- » Oregon State looks to bounce back from its first loss of the 2025-26 season on Sunday when it hosts Long Beach State at Gill Coliseum
- » With three career highs against Colorado State, Jenna Villa (22p/7r/5a) is the first Beav with at least a 20pt - 5ast - 5reb game since Talia von Oelhoffen in 2022
- » The Beavs limited all of their opponents to their lowest or second lowest shooting percentage of the season. On the year, OSU has held foes to 33% on field goals
- » Despite having their second-highest foul game against Colorado State, Oregon State still leads the nation with just 9.6 fouls per game
- » After Sunday's game, the Beavs will head to the US Virgin Islands to play Vanderbilt and BYU or Virginia Tech in the Paradise Jam tournament

NUMBERS TO KNOW

1

Oregon State simply does not foul. The Beavers rank **first in the nation in fewest fouls per game** with 9.6.

Since Scott Rueck started coaching the Beavs in 2010-11 **they rank fifth in the nation in FG% defense**, holding opponents to 35.7% shooting from the field

5

3

Posting three career highs against CSU, Jenna Villa (22p/7r/5a) is the first Beav with a 20+pt - 5ast - 5reb game since Talia von Oelhoffen vs. Nevada on 12/17/2022



Lara Alonso-Basurto is the first OSU player to record a double-double in her first two college games

COMMUNICATIONS

Women's Basketball Contact

Andrew Goodwin
c: 541-760-1497
e: andrew.goodwin@oregonstate.edu

NUMERICAL ROSTER

#	NAME	POS.	HT.	YR.	HOMETOWN	PREV. TEAM
0	Tiara Bolden	G	5-11	Sr.	Eugene, Ore.	La Salle
1	Kennedie Shuler	G	5-10	Jr.	Gresham, Ore.	Barlow HS
2	Katelyn Field	G	5-11	Fr.	Melbourne, Australia	Casey Cavaliers
3	Jenna Villa	G	6-1	Jr.	Arlington, Wash.	Washington State
4	Ally Schimel	G	5-10	So.	Corbett, Ore.	Corbett HS
7	Lucia Navarro	G	6-0	Jr.	Valencia, Spain	Florida State
10	Susana Yepes	G	6-0	R-Sr.	Medellin, Columbia	S. Georgia Tech
12	Mackenzie Shivers	G	5-6	R-Jr.	Mesa, Ariz.	Mesa CC
15	Lizzy Williamson	F	6-5	Gr.	Adelaide, Australia	NC State
16	Elisa Mehyar	F	6-5	So.	Copenhagen, Den.	SISU Copenhagen
22	Lara Alonso	F	6-3	Fr.	Madrid, Spain	Distrito Olimpico
25	Keira Lindemans	G	6-0	Fr.	Melbourne, Australia	Bulleen Boomers
30	Catarina Ferreira	G	6-0	Gr.	Sao Paulo, Brazil	Baylor
31	Cloe Vecina	G	5-8	So.	Vigo, Spain	Celta Baloncesto
32	Néné Sow	C	6-8	R-Sr.	Brussels, Belgium	Utah

A » Z ROSTER

#	NAME	POS.
22	Lara Alonso-Basurto	F
0	Tiara Bolden	G
30	Catarina Ferreira	G
2	Katelyn Field	G
25	Keira Lindermans	G
16	Elisa Mehyar	F
7	Lucia Navarro	G
4	Ally Schimel	G
12	Mackenzie Shivers	G
1	Kennedie Shuler	G
32	Néné Sow	C
31	Cloe Vecina	G
3	Jenna Villa	G
15	Lizzy Williamson	F
10	Susana Yepes	G

ROSTER BREAKDOWN

BY CLASS

Seniors (5): Bolden, Yepes, Sow, Williamson, Ferreira
Juniors (3): Shuler, Villa, Navarro, Shivers
Sophomores (3): Schimel, Mehyar, Vecina
Freshmen (3): Field, Alonso, Lindemans

BY POSITION

Guard	Forward
Bolden	Alonso-Basurto
Ferreira	Mehyar
Field	Williamson
Lindermans	Sow
Navarro	
Schimel	
Shivers	
Shuler	
Vecina	
Villa	

BY HOME STATE

Oregon (3), Arizona, Washington

BY COUNTRY

United States (5), Spain (3), Australia (3), Colombia, Denmark, Belgium, Brazil

PRONUNCIATIONS

Tiara Bolden	Tee-are-uh
Kennedie Shuler	Shoe-ler
Ally Schimel	Allie Shih-mull
Lucia Navarro	Luthia
Susana Yepes	JYep-ess (J is not a typo)
Mackenzie Shivers	Shy-vers
Elisa Mehyar	Ee-lee-sah Meh-heh-yar
Keira Lindemans	Keer-ah Lin-da-mens
Catarina Ferreira	Cat-uh-reena Fuh-HEY-duh
Cloe Vecina	CLO-eh Vethina
Néné Sow	Neh-NAY s-OW

Scott Rueck	ROO-ick
Sydney Wiese	WE-ss
Jared Vedus	Vee-dus

*player photo roster on back page

COACHING & SUPPORT STAFF



Scott Rueck
Head Coach
16th Season



Deven Hunter
Assistant Coach
5th Season



Sydney Wiese
Assistant Coach
2nd Season



Eric Ely
Assistant Coach
14th Season



Jared Vedus
Assistant Coach/
Video Coordinator
3rd Season



Elizabeth Rudisill
Director of Operations
1st Season



Jeff Macy
Associate AD/Sports
Performance
14th Season



Jason Lieu
Athletic Trainer
17th Season

2024-25 SEASON STATISTICS



2025-26 Oregon St. Women's Basketball
Combined Team Statistics
All games

Page 1/1
as of Nov 22, 2025

Game Records

Record	Overall	Home	Away	Neutral
ALL GAMES	4-1	4-1	0-0	0-0
CONFERENCE	0-0	0-0	0-0	0-0
NON-CONFERENCE	4-1	4-1	0-0	0-0

Score by Periods

Team	1st	2nd	3rd	4th	OT	TOT
Oregon St.	97	72	84	86	0	339
Opponents	59	65	72	73	0	269

Team Box Score

No.	Player				Total		3-Point		F-Throw		Rebounds											
		GP-GS	MIN	AVG	FG-FGA	FG%	3FG-3FGA	3FG%	FT-FTA	FT%	OFF	DEF	TOT	AVG	PF	DQ	A	TO	BLK	STL	PTS	AVG
0	BOLDEN, Tiara	5-5	154:36	30.9	35-60	.583	11-22	.500	12-14	.857	8	24	32	6.4	7	0	6	15	1	13	93	18.6
22	ALONSO, Lara	5-0	118:46	23.8	17-34	.500	2-8	.250	12-17	.706	13	19	32	6.4	8	0	2	11	6	1	48	9.6
1	SHULER, Kennedie	5-5	147:02	29.4	20-46	.435	1-10	.100	3-14	.214	1	19	20	4.0	10	0	25	14	6	3	44	8.8
3	VILLA, Jenna	5-5	145:15	29.1	13-32	.406	7-20	.350	10-11	.909	3	18	21	4.2	3	0	16	4	3	0	43	8.6
4	SCHIMEL, Ally	5-5	113:38	22.7	11-27	.407	9-19	.474	0-0	.000	0	5	5	1.0	4	0	2	8	0	4	31	6.2
15	WILLIAMSON, Lizzy	5-0	72:15	14.4	12-25	.480	0-1	.000	2-2	1.000	10	16	26	5.2	4	0	2	2	2	3	26	5.2
32	SOW, Nene	5-5	86:59	17.4	9-15	.600	0-0	.000	3-5	.600	7	30	37	7.4	5	0	0	5	8	3	21	4.2
2	FIELD, Katelyn	3-0	23:18	7.8	3-7	.429	1-3	.333	2-2	1.000	1	0	1	0.3	1	0	1	2	2	0	9	3.0
31	VECINA, Cloe	5-0	42:27	8.5	5-10	.500	1-1	1.000	1-3	.333	1	0	1	0.2	5	0	4	5	1	3	12	2.4
16	MEHYAR, Elisa	3-0	14:47	4.9	3-4	.750	0-0	.000	0-0	.000	0	2	2	0.7	0	0	0	0	0	0	6	2.0
25	LINDEMANS, Keira	4-0	31:51	8.0	2-7	.286	0-3	.000	1-1	1.000	1	6	7	1.8	0	0	1	4	0	4	5	1.3
12	SHIVERS, Mackenzie	2-0	08:49	4.4	0-4	.000	0-3	.000	1-2	.500	0	0	0	0.0	0	0	0	0	0	0	1	0.5
10	YEPES, Susana	4-0	37:52	9.5	0-3	.000	0-0	.000	0-0	.000	0	2	2	0.5	1	0	6	2	0	0	0	0.0
7	NAVARRO, Lucia	1-0	02:27	2.5	0-0	.000	0-0	.000	0-0	.000	0	0	0	0.0	0	0	0	2	0	0	0	0.0
Team											8	10	18				3					
Total		5	1000		130-274	.474	32-90	.356	47-71	.662	53	151	204	40.8	48	0	65	77	29	34	339	67.8
Opponents		5	1000		103-312	.330	30-108	.278	33-48	.688	55	99	154	30.8	75	1	49	56	12	42	269	53.8

Team Statistics

	OSU	OPP
Scoring	339	269
Points per game	67.8	53.8
Scoring margin	+14.0	-
Field goals-att	130-274	103-312
Field goal pct	.474	.330
3 point fg-att	32-90	30-108
3-point FG pct	.356	.278
3-pt FG made per game	6.4	6.0
Free throws-att	47-71	33-48
Free throw pct	.662	.688
F-Throws made per game	9.4	6.6
Rebounds	204	154
Rebounds per game	40.8	30.8
Rebounding margin	+10.0	-
Assists	65	49
Assists per game	13.0	9.8
Turnovers	77	56
Turnovers per game	15.4	11.2
Turnover margin	-4.2	-
Assist/turnover ratio	0.8	0.9
Steals	34	42
Steals per game	6.8	8.4
Blocks	29	12
Blocks per game	5.8	2.4
Winning streak	0	-
Home win streak	0	-
Attendance	21727	0
Home games-Avg/Game	5-4345	0-0
Neutral site-Avg/Game	-	0-0

Team Results

Date	Opponent		Score	Att.
11/07/2025	Corban	W	86-45	3100
11/10/2025	Air Force	W	60-49	3079
11/14/2025	Illinois	W	64-59	3353
11/18/2025	Utah St.	W	71-52	8613
11/21/2025	Colorado St.	L	58-64	3582

DID YOU KNOW?



Scott Rueck got a ringing endorsement about Néné Sow's fit at Oregon State from her former head coach at Utah (now with the LA Sparks) Lynne Roberts.

BY THE NUMBERS

3

Kennedie Shuler is ranked **third in the WCC in assist-to-turnover ratio**, averaging 2.25 dimes for every giveaway.

OSU has the **fifth-most international roster in the NCAA** with 10 international players on the squad, repping six countries.

5

4

Oregon State shot 45% or better from the floor in its **first four games for the first time since the 2019-20 season**

Susana Yepes didn't score once against Illinois, but she impacted the game in a major way, **leading the team in plus-minus at +15**

15

AWARDS & HONORS

CATARINA FERREIRA

WCC Preseason All-Conference Team (2025)
WCC Tournament M.O.P. (2025)
Maui Classic All-Tournament Team (2024)

ALLY SCHIMEL

WCC Co-Freshman of the Week (12/31/24)

KENNEDIE SHULER

WCC Preseason All-Conference Team (2025)
First Team WCC All-Academic (2024)

TIARA BOLDEN

WCC Player of the Week (11/17/25)
WCC Preseason All-Conference Team (2025)

PROGRAMMING NOTE:

These notes are only fully updated when there are at least two days between games. For Thursday/Saturday and Friday/Sunday weekends, the overall stats, season-highs, misc. stats and front and back pages will be updated but the written notes and other sidebars will be updated as of the weekend's first game.

TEAM NOTES

HEADED BACK TO THE PAC (12)

The Beavs are grateful to be affiliate members of the WCC for the 2024-25 and 2025-26 seasons. Next year, Oregon State and fellow original league member, Washington State will resume Pac-12 play with the new members on the conference: Boise State, Colorado State, Fresno State, Gonzaga, San Diego State, Texas State and Utah State. New members will officially join on July 1, 2026.

TRIPLE CROWN

Tiara Bolden is one of 15 players and six guards in the country to be averaging 20 points on 50% or better shooting. Bolden leads the squad, averaging 21.0 points per game, giving a buffer of 11 points between her and second place. Bolden is the first Beav to have 20+ point games in a row since Raegan Beers in 2024. The last to score 20+ points in four straight games was Marie Gulich in 2018.

CLEAN AS A WHISTLE

Oregon State set a school record in Tuesday's field trip game with just four fouls called against the Beavers. The mark beat the previous record (6 vs. Washington, 2/28/20) by two and helped OSU regain the lead with the fewest personal fouls per game in the nation with 8.5. The next-closest team averages 10.7 fouls per game.

DOUBLE TROUBLE

Tiara Bolden and Nene Sow each earned their first career double-doubles against Utah State, leading the team in points and rebounds, respectively. Bolden finished with 23 points and 11 rebounds for her third 20+ point game. Sow posted 15 rebounds and 11 points, blowing her previous season high of 2 out of the water.

BEST ON THE BOARDS

Averaging 42.5 rebounds per game, the Beavs lead the WCC and hold three of the top five spots. Nene Sow sits at second in the conference with 8.0 boards per game. Tiara Bolden sits in fourth with 7.5 and Lara Alonso-Basurto is tied for fifth, averaging 7.3.

MS. MAKE IT HAPPEN

Kennedie Shuler's growth is on full display. After struggling at points last season, she is emerging as one of the top table-setters in the WCC. Shuler sits fifth in the WCC with an assist/turnover ratio of 1.82. Averaging 5.0 assists per game, the playmaker ranks second in the WCC. Dating back to last season, Shuler dished out at least five assists in five of her last six games including the last four in a row.

CLUTCH KENNEDIE

The Beavers turned to Kennedie Shuler with the game on the line three times last season. She delivered all three times. The then-sophomore point guard hit game-winning and-ones against LMU (in regulation), at Santa Clara (in overtime) to secure crucial conference play victories. With 0.8 seconds left in the WCC Semifinal game against Gonzaga, Shuler clutched up once again with a layup to secure the ticket to the finals.

BOLDEN'S BIG SUMMER

Scott Rueck challenged Tiara Bolden to take 10,000 three-pointers this summer. She doubled that, and the results are plain to see. It's early, but Bolden is shooting more than 10% better from three (43.8% vs. 31.5% in 2024-25) this season on two more attempts per game. The work with Rueck over the summer helped refine the senior's jumper and she's averaged 20.3 points per game through the Beavs opening three games.

BOLD(EN) ON THE BOARDS

In addition to elite speed and work ethic, Tiara Bolden makes an extra impact on the boards with 7.5 per game to open the season. The senior averaged 3.9 rebounds per game in 2024-25, which ranks third among returning conference guards. Bolden pulled down 5+ rebounds 13 times last season.

NEW ELEMENTS IN THE LAB

Just two games into the season, true freshman Lara Alonso-Basurto has already made Oregon State history to have two double-doubles in a row in her college debut. In the same weekend, LAB led the Beavs against Corban with 14 points and 11 rebounds and posted 12 rebounds and 11 points against Air Force. A powerhouse on the court, LAB ranks second in the WCC with 3.0 offensive rebounds per game and she is tied for fifth with 7.3 total rebounds per game.

MILESTONE WATCH

LIZZY WILLIAMSON

Milestone: 700 points	Current Total: 666	Needs: 34
Milestone: 700 rebounds	Current Total: 628	Needs: 72

TIARA BOLDEN

Milestone: 600 points	Current Total: 583	Needs: 17
-----------------------	--------------------	-----------

KENNEDIE SHULER

Milestone: 400 points	Current Total: 374	Needs: 26
Milestone: 200 assists	Current Total: 208	Reached: 11/14

JENNA VILLA

Milestone: 500 points	Current Total: 442	Needs: 58
Milestone: 200 rebounds	Current Total: 172	Needs: 28

*All stats are career stats unless otherwise noted with a 1S for single-season or the player's year for a Oregon State Freshman/Sophomore/Junior/Senior single-season record

NOTES

BUILT BETTER

Scott Rueck's next act as an elite post coach might take on a new look with players who received limited touches before OSU developing into difference-makers as Beavers. The veteran coach may have his next two all-conference bigs on the team in Néné Sow and Lizzy Williamson. The duo will look to become his 13th and 14th posts to earn all-league honors in Year 16.

- Before playing under Rueck, Kelsey Rees averaged 3.3 points per game and 16.3% from three. Last season, Rees averaged 12.9 points per game and 32.1% three-point shooting en route to All-WCC First Team and All-WCC Tournament honors.
- Sela Heide's 2.4 points per game grew to 7.3 and she improved her field goal percentage from 53.7% to 71.3%.

AGE IS JUST A NUMBER

Due to a mix of injuries, redshirts, covid years and Pavia waivers, three Beavers will be in at least their sixth season of college basketball this year: Catarina Ferreira (6th), Néné Sow (6th) and Lizzy Williamson (7th).

SHOOTIN' SCHIMEL

Ally Schimel joined Oregon State as a walk-on after dominating 3A Oregon high schools for four years at Corbett on the way to two state runner-ups and a title as a senior. The freshman quickly proved herself as a Beav, leading the team in season plus-minus, and earned a scholarship at the team's holiday party. This year, the sharpshooting sophomore is already a major threat from downtown, making 53.8% of her triples and ranking 29th nationally with 3.5 3PM/G.

HELP WANTED FOUND: SHOOTING

Adding shooting - internally and externally - was a priority during Oregon State's offseason. So far, so good. The Beavs shot better than 50% from the floor in back-to-back games against Air Force and Illinois. OSU shot over 50% four times in 2024-25 and just once in back-to-back games. Among internal improvements Kennedie Shuler and Tiara Bolden are each shooting at least 7% better and the additions of Lizzy Williamson and Lara Alonso-Basurto each aided the team's offense as well.

CLEAN DEFENSE

One of the tenants of a Scott Rueck-coached team is defending without fouling. Over the last 10 seasons, the Beavers are the second-most whistle-averse team in the nation. Only UConn does a better job at defending without fouling.

Team	Fouls/Game(15/16-24/25 Seasons)
1. UConn	12.7
2. Oregon State	13.2
3. Marist	13.4
4. Penn	13.6
5. Colorado State	13.6

RECORD WHEN...

	NON-CON	CONF.	OVR
Scoring First	4-1	0-0	4-1
Opponent Scores First	0-0	0-0	0-0

Lead at Half	4-1	0-0	4-1
Trail at Half	0-0	0-0	0-0
Tied at Half	0-0	0-0	0-0

Overtime	0-0	0-0	0-0
vs. Top-25	0-0	0-0	0-0

Decided by 1-5 Points	1-0	0-0	1-0
Decided by 6-9 Points	0-1	0-0	0-1
Decided by 10+ Points	3-0	0-0	3-0

Scoring 100+	0-0	0-0	0-0
Scoring 90-99	0-0	0-0	0-0
Scoring 80-89	1-0	0-0	1-0
Scoring 70-79	1-0	0-0	1-0
Scoring 60-69	2-0	0-0	2-0
Scoring 50-59	0-1	0-0	0-1
Scoring 49 or fewer	0-0	0-0	0-0

Opp. Scoring 100+	0-0	0-0	0-0
Opp. Scoring 90-99	0-0	0-0	0-0
Opp. Scoring 80-89	0-0	0-0	0-0
Opp. Scoring 70-79	0-0	0-0	0-0
Opp. Scoring 60-69	0-1	0-0	0-1
Opp. Scoring 50-59	2-0	0-0	2-0
Opp. 49 or Fewer	2-0	0-0	2-0

50%-plus FG Pct.	2-0	0-0	2-0
40-49% FG Pct.	2-1	0-0	2-1
39.9%-minus FG Pct.	0-0	0-0	0-0

Opp. 50%-plus FG Pct.	0-0	0-0	0-0
Opp. 40-49% FG Pct.	0-1	0-0	0-1
Opp. 39.9%-minus	4-0	0-0	4-0

Better FG% than Opp.	4-1	0-0	4-1
FG% is Equal	0-0	0-0	0-0
Opp. Better FG%	0-0	0-0	0-0

80%-plus FT Pct.	1-0	0-0	1-0
70-79% FT Pct.	1-1	0-0	1-1
69%-minus FT Pct.	2-0	0-0	2-0

Better FT% than Opp.	2-0	0-0	2-0
FT% is Equal	0-0	0-0	0-0
Opp. Better FT%	2-1	0-0	2-1

Outrebounding Opp.	3-1	0-0	3-1
Rebounds are Equal	0-0	0-0	0-0
Outrebounded by Opp.	1-0	0-0	1-0

Fewer TO than Opp.	1-0	0-0	1-0
Turnovers are Equal	1-0	0-0	1-0
More TO than Opp.	2-1	0-0	2-1

6 in Double-Figures	0-0	0-0	0-0
5 in Double-Figures	1-0	0-0	1-0
4 in Double-Figures	1-0	0-0	1-0
3 in Double-Figures	1-0	0-0	1-0
2 in Double-Figures	1-0	0-0	1-0
1 in Double-Figures	0-1	0-0	0-1

Bench Scores More	3-1	0-0	3-1
Bench Scoring Equal	0-0	0-0	0-0
Opp. Bench Scrs. More	1-0	0-0	1-0

Wearing Black	0-0	0-0	0-0
Wearing White	4-1	0-0	4-1
Wearing Retros	0-0	0-0	0-0
Wearing Pink	0-0	0-0	0-0

NUMBERS TO KNOW

DOUBLE-DOUBLES	2025-26	CAREER
Lizzy Williamson	0	16
Cat Ferreira	0	8
Lara Alonso	2	2
Kennedie Shuler	0	1
Tiara Bolden	1	1
Néné Sow	1	1

DOUBLE-FIGURE PTS	2025-26	CAREER
Lizzy Williamson	3	30
Tiara Bolden	5	22
Catarina Ferreira	0	15
Kennedie Shuler	2	13
Ally Schimel	2	3
Lara Alonso	2	2
Néné Sow	1	1
Jenna Villa	2	2

20+ POINT GAMES	2025-26	CAREER
Tiara Bolden	2	5
Cat Ferreira	0	2
Lizzy Williamson	0	2
Tiara Bolden	2	2
Jenna Villa	1	1

DOUBLE-FIGURE REB.	2025-26	CAREER
Lizzy Williamson	0	25
Cat Ferreira	0	10
Lara Alonso	2	2
Tiara Bolden	1	1
Néné Sow	1	1

DOUBLE-FIGURE AST.	2025-26	CAREER
Kennedie Shuler	0	1

MULTI STEAL GAMES	2025-26	CAREER
Lizzy Williamson	2	19
Cat Ferreira	0	16
Tiara Bolden	4	18
Kennedie Shuler	0	7
Ally Schimel	1	5
Cloe Vecina	1	3
Keira Lindemans	1	1
Néné Sow	2	2

MULTI BLOCK GAMES	2025-26	CAREER
Lizzy Williamson	1	42
Jenna Villa	1	3
Néné Sow	2	2
Kennedie Shuler	1	1

STL + BLK GAMES	2025-26	CAREER
Lizzy Williamson	1	32
Cat Ferreira	0	7
Tiara Bolden	1	6
Ally Schimel	0	6
Kennedie Shuler	3	6
Néné Sow	2	2
Cloe Vecina	1	1
Jenna Villa	0	1



Washington State transfer Jenna Villa brings the versatility to play in Oregon State's system both on the wing and at the four. The junior impacts the game as a smart secondary playmaker and deadeye shooter.

NOTES

TALK TO YOUR DOCTOR ABOUT OREGON STATE WOMEN'S BASKETBALL

With six overtime games last season, watching Beaver basketball wasn't exactly cardiologist-recommended. The Beavs went to overtime in their first three WCC games this season (at Pacific, Gonzaga and Portland), and set a school record with their fifth OT game at Pacific (the second time). Three overtime wins also ties a school record with the 2002-03 and 2018-19 teams.

- The Beavers led the nation in OT games and OT periods played with six.
- Chicago State was in second with five OT games and 10 teams played in four overtime games
- Back-to-back OT contests vs. the Zags and Pilots were the first since at UW and WSU in 2013 (1/25-27)
- The Beavs played overtime in both games against Pacific and Gonzaga

OWNING THE BOARDS

Oregon State has been one of the top rebounding teams in the country over the last ten seasons. The Beavs have a rebounding margin of +8.1 during that time, which ranks ninth nationally. In five of those seasons, OSU ranked top-10 in the country in rebounding margin while finishing in the top-25 twice more (#23 last season at +7.1)

FLOOR GENERAL

Shuler had a steep learning curve to open the 2024-25 season, taking on the starting point guard role after playing just 9.8 minutes per game as a freshman. There were some early bumps in the road, but Shuler came into her own over the last half of the season, averaging 9.5 points, 4.5 assists, 3.5 rebounds and a 2.68 A/TO ratio in the regular season's final 13 games. Shuler also grew from 3 assists per game and an assist/turnover ratio of .91 in her first 17 games to 4.4 assists per game and an assist/turnover ratio of 1.93 in last 18 games of the regular season.

A MILE IN HER SHOES

It's going to take the whole squad to fill Catarina Ferreira's shoes after she suffered a season-ending injury. Her direct minutes are likely to be absorbed by Jenna Villa and Lara Alonso at the 4, but only a team effort can account for her impact. The senior had eight double-doubles last season to lead returning conference players, shot 79.2 percent from the free throw line and recorded 64 offensive rebounds (4th in the WCC last season).

STAYING IN THE PAC

Bringing experience from within the conference, intra-Pac-12 transfer Jenna Villa adds shooting depth and versatility to the Beavers' lineup, showing potential to make an immediate difference on both ends of the floor. The junior from Arlington, Wash. shot better than 33 percent from three in each of the last two seasons at Washington State.

AUSSIE! AUSSIE! AUSSIE!

After successfully developing Aussies like Kelsey Rees and Jasmine Simmons into key contributors, the Beavs added three players from Down Under to this year's roster. Super senior Lizzy Williamson transferred in from NC State while Keira Lindemans and Katie Field joined Oregon State as freshmen. Lindemans and Field made an impression on OSU staff while beating strong American AAU competition in the Phoenix Nike Tournament of Champions together with ATC Academy.



Tiara Bolden (Eugene, Ore. | Churchill HS) is one of three Beaver State products on this year's OSU team. She's joined by two Portland-area guards in Kennedie Shuler (Gresham, Ore. | Sam Barlow HS) and Ally Schimel (Corbett, Ore. | Corbett HS). All three project for major roles in 2025-26.

NOTES

¡VAMOS ESPAÑA!

Lara Alonso, Cloe Vecina and Lucia Navarro make up the Spanish trio on Oregon State's roster. The latter duo were the first Spanish players at OSU under Scott Rueck. Navarro and Alonso played together during tryouts for the U20 Spanish EuroBasket team this summer.

GILL GOT 'EM

Beaver Nation has long been among the best women's basketball fan bases in the nation and last year they set several new records in support of the 2023-24 Beavs as the team went 18-2 at home including the postseason (7,227), single-season (103, 110) and student (2,329 vs. UCLA) attendance records. In 2024-25, Beaver Nation ranked second in the WCC in average attendance at 4,263, more than 3,000 fans better than the third place school and under 1,000 back of Gonzaga.

HOME SWEET HOME

Oregon State played just 12 home games last year, a result of needing to schedule a more challenging non-conference slate. With return trips from multiple power conference teams slated for this season, the Beavs will spend much more time at home. They play their 13th home game on January 31 vs. San Francisco.

VOICE OF THE BEAVS

Voice of the Beavers Ron Callan has called 541 Oregon State women's basketball games since joining the program in the 2007-08 season, holding a record of 332-209 during that span. Ron called his 500th game of OSU women's basketball against Utah in 2024, a 91-66 victory.

PRO BEAVS

Development in the Oregon State program helped several former players earn spots on pro teams all over the world. Numbers fluctuate as seasons start and end, but OSU has 12 alumni playing professionally. Notable performances include Kat Tudor earning a spot on the WBL Team of the Year and Mikayla Pivec earning NBL1 East First-Team honors. Tudor and Tea Adams also led the Caledonia Gladiators to their first Super League Basketball Final with a 68-62 win over the Sheffield Hatters. Marie Gulich (Germany) and Ali Gibson (Puerto Rico) each represented their countries at the most-recent Olympics. Gibson was OSU's first two-time Olympian in women's basketball.

Pro Beav	Current Team
Jasmine Simmons	Central Coast (AUS)
Marie Gulich*	Taiyuen (TAI)
Maddie Washington	Sheffield (UK)
Mikayla Pivec &	Bendigo Lady Braves (AUS)
Téa Adams	Caledonia Gladiators (UK)
Destiny Slocum	UNI Gyor (HUN)
Jo Grymek	Doni Mulistore Vigarano (ITA)
Ali Gibson*	Puerto Rican Olympic Team
Kat Tudor	Caledonia Gladiators (UK)
AJ Marotte	Barca CBS (SPA)
Bendu Yeaney	ZKK Sebinik (CRO)
Kelsey Rees	Bendigo Spirit (AUS)

*Denotes 2024 Olympians

& Denotes Pro Beavs who are currently out with an injury but intend to keep playing after recovery. Their last team is listed.

BEAVER STAFF NOTES

» Assistant Coach **Deven Hunter** enters her fifth season on the Oregon State staff. Hunter worked at San Diego prior to joining the Beavers, and was part of OSU's 2016 Final Four squad as a player. She played a major role in developing All-American post Raegan Beers and All-WCC Forward Kelsey Rees

» Fellow assistant and 2016 Final Four team member **Sydney Wiese** returned to her second home last season after a lengthy professional career that included stints with the LA Sparks, Washington Mystics and several international teams.

» Director of Player Personnel and Assistant Coach **Eric Ely** is back on the bench for his 14th season with the Beavs. A post coach by trade, Ely played a major role in developing players like Pac-12 DPOYs Ruth Hamblin and Marie Gulich during his earlier coaching stint in Corvallis. Ely - whose wife is from Brazil and speaks Portuguese - was the primary recruiter for Catarina Ferreira.

» Assistant Coach/Video Coordinator **Jared Vedus** joined the staff two years ago as a GA after spending three years as a practice player for the Beavers. He joined the full-time staff this summer.

» Associate AD for Sport Performance **Jeff Macy** oversees all of Oregon State's strength and conditioning programs and is the strength coach for the Beaver women. He spent ten years in the NBA, five with the Chicago Bulls (2001-2006) and five with the Milwaukee Bucks (2008-2013). Macy is in his second stint with Oregon State.

» First-year Director of Ops **Elizabeth Rudisill** was a career diplomat with the US Department of State. She spent years working at embassies in South Korea, Mexico, Cuba, Australia, and Côte d'Ivoire.

» Athletic Trainer **Jason Lieuw** is the longest serving member of the Oregon State staff, currently in his 17th year and worked his 500th game with the program last year (at Pacific, 1/25/25).

THE LAST TIME OREGON STATE...

BEAT A TOP 25 TEAM:

3/7/24 v. #18 Colorado (85-79)

BEAT A TOP 25 TEAM ON THE ROAD:

2/11/24 at #4 Colorado (65-59)

BEAT BACK-TO-BACK TOP 25 TEAMS:

2/9/24 at #20 Utah (58-44)

2/11/24 at #4 Colorado (65-59)

BEAT A TOP 15 TEAM:

3/29/24 vs. #9 Notre Dame (70-65)

BEAT A TOP 15 TEAM ON THE ROAD:

2/11/24 at #4 Colorado (65-59)

BEAT A TOP 10 TEAM:

3/29/24 vs. #9 Notre Dame (70-65)

BEAT A TOP 10 TEAM ON THE ROAD:

2/11/24 at #4 Colorado (65-59)

BEAT A TOP 5 TEAM:

2/11/24 at #4 Colorado (65-59)

BEAT A TOP 5 TEAM ON THE ROAD:

2/11/24 at #4 Colorado (65-59)

SCORED 100+ POINTS:

11/19/22 v. Prairie View A&M

ALLOWED 100+ POINTS:

1/8/99 at UCLA (105)

SCORED FEWER THAN 50 POINTS:

11/27/22 v. Duke (41)

ALLOWED FEWER THAN 50 POINTS:

11/10/25 v. Air Force (49)

ALLOWED FEWER THAN 40 POINTS:

12/2/22 v. Southern (36)

HAD 25+ ASSISTS:

1/28/24 v. #16 Utah (25)

HAD 30+ ASSISTS:

12/10/17 v. San Jose State (31)

HAD 10+ STEALS:

11/7/25 v. Corban (13)

HAD 10+ BLOCKS:

11/7/25 v. Corban (14)

MADE 10+ 3-POINTERS:

12/28/24 v. Gonzaga (10)

MADE 15+ 3-POINTERS

12/1/22 v. Southern University (15)

HAD 30+ FREE THROW ATTEMPTS:

2/13/22 at #24 Oregon (38)

HAD 35+ FREE THROW ATTEMPTS:

2/13/22 at #24 Oregon (38)

HAD 25+ FREE THROW MAKES:

11/15/13 v. Sacramento State (25)

HAD 30+ FREE THROW MAKES:

2/12/09 v. Washington (30)

HAD LESS THAN 10 FOULS:

11/17/25 v. Utah State (4) &

HAD LESS THAN 5 TURNOVERS:

2/3/19 v. #14 Utah (3)

HAD LESS THAN 10 TURNOVERS:

2/8/25 at San Diego (9)

SHOT 60+ PERCENT:

3/29/24 v. #9 Notre Dame (60.4%)

OPPONENT SHOT 60+ PERCENT:

2/20/10 at Stanford (67.3%)

SHOT LESS THAN 30 PERCENT:

11/6/24 at ASU (28%)

OPPONENT SHOT LESS THAN 30 PERCENT:

11/10/25 v. Air Force (27.7%)

SIX BEAVERS IN DOUBLE-FIGURES:

2/28/21 at #14 Oregon (88-77)
(Goodman 20, Goforth 17, Mack 14,
Corosdale 14, 11 Jones, von Oelhoffen 10)

FIVE BEAVERS IN DOUBLE-FIGURES:

11/7/25 v. Corban (86-45)

(L. Alonso 14, T. Bolden 13, A. Schimel 11,
K. Shuler 10, L. Williamson 10)

THREE PLAYERS WITH 20+ POINTS:

12/15/08 v. UNLV

(A. Mitchell 23, B. Davis 22 and T. Rhea 20)

TWO PLAYERS WITH 20+ POINTS:

2/16/24 v. UCLA

(T. von Oelhoffen 22 and T. Gardiner 21)

TWO PLAYERS HAD A DOUBLE-DOUBLE:

11/18/25 v. Utah State(71-52)

(Tiara Bolden 23 pts, 11 rebs

Néné Sow 11 pts, 15 rebs)

THREE PLAYERS HAD A DOUBLE-DOUBLE

12/12/99 v. UW-Milwaukee

(Sissel Pierce 11 pts, 15 reb, Felicia Ragland 19
pts, 12 reb, Reda Petraitis 17 pts, 10 reb)

PLAYER SCORED 50+ POINTS:

2/7/80, Carol Menken v. Alaska-Anch. (51)

PLAYER SCORED 40+ POINTS:

12/17/22, Talia von Oelhoffen v. Nevada (41)

PLAYER SCORED 30+ POINTS:

12/17/22, Talia von Oelhoffen v. Nevada (41)

PLAYER MADE 5+ 3-POINTERS:

3/2/23, Timea Gardiner vs. California (5)

PLAYER MADE 7+ 3-POINTERS:

2/11/18, Kat Tudor v. Washington (7)

PLAYER MADE 15+ FREE THROWS:

2/7/04, Brina Chaney v. Oregon (15)

PLAYER SHOT 75%+ FROM THREE*:

3/1/25, Kelsey Rees v. Pepperdine (83%, 5/6)

PLAYER SHOT 85%+**:

12/17/22, Talia von Oelhoffen v. Nevada

(85%, 17 for 20)

PLAYER HAD 10+ ASSISTS:

2/27/25, Kennedie Shuler vs. SMC (10)

THREE PLAYERS WITH 10+ REBOUNDS:

11/17/22 v. Eastern Washington

(Mitrovic 12, Beers 12, von Oelhoffen 10)

PLAYER HAD 15+ REBOUNDS:

12/9/23, Timea Gardiner v. Jackson State (15)

PLAYER HAD 20+ REBOUNDS:

1/12/24, Raegan Beers v. Arizona (20)

PLAYER HAD 5+ BLOCKED SHOTS:

12/3/25, Sela Heide v. Grambling (8)

PLAYER HAD 10+ BLOCKED SHOTS:

1/13/14, Ruth Hamblin v. Oregon (10)

PLAYER HAD 5+ STEALS:

11/7/25, Tiara Bolden v. Corban (6)

PLAYER HAD 10+ STEALS:

11/23/83, Juli Coleman v. BYU (10)

PLAYER HAD A DOUBLE-DOUBLE IN DEBUT:

11/7/25, Lara Alonso-Basurto v. Corban

(14 pts, 11 rebs)

PLAYER HAD A DOUBLE-DOUBLE WITH ASSISTS:

2/27/25, Kennedie Shuler vs. SMC

(12 pts, 10 ast)

PLAYER HAD A TRIPLE-DOUBLE:

12/14/16, Sydney Wiese v. UC Davis

(27 pts, 10 reb, 10 ast)

PLAYER HAD 30+ POINTS AND 10+ REBOUNDS:

11/17/22, Talia von Oelhoffen v. Eastern

Washington (32 pts, 10 reb)

*minimum 5 attempts

**minimum 10 attempts

& School Record

SEASON LEADERS

MOST POINTS SCORED IN A QUARTER:

11/7/25 v. Corban (26)

MOST POINTS SCORED IN FIRST QUARTER:

11/7/25 v. Corban (23)

MOST POINTS SCORED IN SECOND QUARTER:

11/10/25 v. Air Force (20)

MOST POINTS SCORED IN THIRD QUARTER:

11/7/25 v. Corban (25)

MOST POINTS SCORED IN FOURTH QUARTER:

11/7/25 v. Corban (26)

MOST POINTS SCORED IN A HALF:

11/7/25 v. Corban (51)

MOST POINTS SCORED IN FIRST HALF:

11/18/25 v. Utah State (38)

MOST POINTS SCORED IN SECOND HALF:

11/7/25 v. Corban (51)

MOST POINTS SCORED IN A GAME:

11/7/25 v. Corban (86)

MOST ASSISTS IN A GAME:

11/7/25 v. Corban (17)

MOST REBOUNDS IN A GAME:

11/7/25 v. Corban (50)

BEST REBOUND MARGIN IN A GAME:

11/18/25 v. Utah State (+20)

MOST STEALS IN A GAME:

11/7/25 v. Corban (13)

MOST BLOCKS IN A GAME:

11/7/25 v. Corban (14)

MOST 3-POINTERS MADE IN A GAME:

11/21/25 v. Colorado State (8)

MOST FG MADE IN A GAME:

11/7/25 v. Corban (34)

MOST FREE THROWS ATTEMPTED IN A GAME:

11/10/25 v. Air Force (19)

MOST FREE THROWS MADE IN A GAME:

11/7/25 v. Corban (11)

FEWEST POINTS ALLOWED IN A GAME:

11/7/25 v. Corban (45)

FEWEST POINTS ALLOWED IN A HALF:

11/7/25 v. Corban (14) - 1st

FEWEST POINTS ALLOWED IN A QUARTER:

11/7/25 v. Corban (7) - 1st & 2nd

FEWEST FOULS COMMITTED IN A GAME:

11/18/25 v. Utah State (4)

*Denotes multiple performances with the most recent listed

SEASON HIGHS

OREGON STATE

FIELD GOALS MADE:

11/7/25 v. Corban (34)

FIELD GOALS ATTEMPTED:

11/7/25 v. Corban (74)

FIELD GOAL PERCENTAGE:

11/14/25 v. Illinois (.521)

3-POINT MADE:

11/7/25 v. Corban (7)

11/10/25 v. Air Force (7)

3-POINT ATTEMPTS:

11/7/25 v. Corban (22)

3-POINT PERCENTAGE:

11/21/25 v. Colorado State (.470)

FREE THROWS MADE:

11/7/25 v. Corban (11)

FREE THROWS ATTEMPTED:

11/10/25 v. Air Force (19)

FREE THROW PERCENTAGE:

11/14/25 v. Illinois (.833)

OFFENSIVE REBOUNDS:

11/7/25 v. Corban (18)

DEFENSIVE REBOUNDS:

11/7/25 v. Corban (32)

TOTAL REBOUNDS:

11/7/25 v. Corban (50)

ASSISTS:

11/7/25 v. Corban (17)

STEALS:

11/7/25 v. Corban (13)

BLOCKS:

11/7/25 v. Corban (14)

POINTS:

11/7/25 v. Corban (86)

SEASON LEADERS

FIELD GOALS MADE PER GAME:

Tiara Bolden (7.3)

3-POINTERS MADE PER GAME:

Ally Schimel & Tiara Bolden (2.3)

FREE THROWS MADE PER GAME:

Tiara Bolden (3.3)

OFFENSIVE REBOUNDS PER GAME:

Lara Alonso-Basurto (3.7)

DEFENSIVE REBOUNDS PER GAME:

Tiara Bolden (5)

TOTAL REBOUNDS PER GAME:

Lara Alonso-Basurto (8.3)

ASSISTS PER GAME:

Kennedie Shuler (6)

STEALS PER GAME:

Tiara Bolden (3)

BLOCKS PER GAME:

Kennedie Shuler & Nene Sow (1.7)

POINTS PER GAME:

Tiara Bolden (20.3)

COLORADO STATE

FEWEST FIELD GOALS MADE:

11/17/25 v. San Diego (27)

FEWEST FIELD GOALS ATTEMPTED:

11/17/25 v. San Diego (52)

LOWEST FIELD GOAL PERCENTAGE:

11/9/25 v. Long Beach State (.389)

FEWEST 3-POINT MADE:

11/4/25 v. Weber State (5)

FEWEST 3-POINT ATTEMPTED:

11/4/25 v. Weber State (18)

LOWEST 3-POINT PERCENTAGE:

11/9/25 v. Long Beach State (.176)

FEWEST FREE THROWS MADE:

11/17/25 v. San Diego (6)

FEWEST FREE THROWS ATTEMPTED:

11/17/25 v. San Diego (12)

LOWEST FREE THROW PERCENTAGE:

11/17/25 v. San Diego (.500)

FEWEST OFFENSIVE REBOUNDS:

11/17/25 v. San Diego (3)

FEWEST DEFENSIVE REBOUNDS:

11/13/25 v. Gonzaga (23)

FEWEST TOTAL REBOUNDS:

11/13/25 v. Gonzaga (23)

FEWEST ASSISTS:

11/13/25 v. Gonzaga (8)

FEWEST STEALS:

11/13/25 v. Gonzaga (7)

FEWEST BLOCKS:

11/13/25 v. Gonzaga (0)

FEWEST POINTS:

11/13/25 v. Gonzaga (70)

SEASON LEADERS

FIELD GOALS MADE PER GAME:

Lexus Bargesser (7.3)

3-POINTERS MADE PER GAME:

Hannah Ronsiek (2.3)

FREE THROWS MADE PER GAME:

Lexus Bargesser (2.3)

OFFENSIVE REBOUNDS PER GAME:

Maddy Bragg (1.8)

Kloe Froebe (1.8)

DEFENSIVE REBOUNDS PER GAME:

Hannah Ronsiek (6.0)

TOTAL REBOUNDS PER GAME:

Hannah Ronsiek (6.5)

ASSISTS PER GAME:

Kloe Froebe (3.3)

STEALS PER GAME:

Hannah Ronsiek (2.25)

BLOCKS PER GAME:

Lexus Bargesser (.75)

Maddy Bragg (.75)

Hannah Ronsiek (.75)

POINTS PER GAME:

Lexus Bargesser (17.3)

LONG BEACH STATE

FEWEST FIELD GOALS MADE:

11/9/25 v. Colorado State (12)

FEWEST FIELD GOALS ATTEMPTED:

11/15/25 v. Sacramento State (47)

LOWEST FIELD GOAL PERCENTAGE:

11/9/25 v. Colorado State (.231)

FEWEST 3-POINT MADE:

11/15/25 v. Sacramento State (2)

FEWEST 3-POINT ATTEMPTED:

11/15/25 v. Sacramento State (10)

LOWEST 3-POINT PERCENTAGE:

11/7/25 v. Wyoming (.182)

FEWEST FREE THROWS MADE:

11/9/25 v. Colorado State (4)

FEWEST FREE THROWS ATTEMPTED:

11/7/25 v. Wyoming (8)

11/9/25 v. Colorado State (12)

LOWEST FREE THROW PERCENTAGE:

11/9/25 v. Colorado State (.500)

FEWEST OFFENSIVE REBOUNDS:

11/15/25 v. Sacramento State (4)

FEWEST DEFENSIVE REBOUNDS:

11/7/25 v. Wyoming (21)

FEWEST TOTAL REBOUNDS:

11/15/25 v. Sacramento State (26)

FEWEST ASSISTS:

11/7/25 v. Wyoming (6)

FEWEST STEALS:

11/9/25 v. Colorado State (2)

FEWEST BLOCKS:

11/7/25 v. Wyoming (2)

11/12/25 v. Cal Baptist (2)

11/15/25 v. Sacramento State (2)

FEWEST POINTS:

11/9/25 v. Colorado State (34)

SEASON LEADERS

FIELD GOALS MADE PER GAME:

JaQuoia Jones-Brown (6.5)

3-POINTERS MADE PER GAME:

Brynna Pukis (1.0)

FREE THROWS MADE PER GAME:

JaQuoia Jones-Brown (4.8)

OFFENSIVE REBOUNDS PER GAME:

Lauren Cummings (2.0)

DEFENSIVE REBOUNDS PER GAME:

JaQuoia Jones-Brown (5.3)

TOTAL REBOUNDS PER GAME:

Khylee Pepe (6.5)

ASSISTS PER GAME:

JaQuoia Jones-Brown (1.8)

Khylee Pepe (1.8)

STEALS PER GAME:

JaQuoia Jones-Brown (1.5)

Khylee Pepe (1.5)

BLOCKS PER GAME:

Judit Olivia Fernandez (1)

POINTS PER GAME:

JaQuoia Jones-Brown (18.5)

STARTING LINEUPS

GAME	RESULT	G	G	G	G/F	F/C
Corban	W, 86-45	Shuler	Bolden	Schimel	Villa	Sow
Air Force	W, 60-49	Shuler	Bolden	Schimel	Villa	Sow
Illinois	W, 64-59	Shuler	Bolden	Schimel	Villa	Sow
Utah State	W, 71-52	Shuler	Bolden	Schimel	Villa	Sow
Colorado State	L, 64-58	Shuler	Bolden	Schimel	Villa	Sow

QUICK FACTS

The University

Location.....Corvallis, Ore.
 Founded.....1868
 Enrollment.....38,460
 Nickname.....Beavers
 Colors.....Orange and Black
 Affiliation.....NCAA Division I
 Conference.....Pac-12
 President.....Jayathi Y. Murphy
 Director of Athletics.....Scott Barnes
 Athletic Department Phone.....541-737-2547
 Ticket Office Phone.....800-GO-BEAVS
 Home Facility.....Gill Coliseum
 Capacity.....9,301
 Web Site.....www.osubeavers.com

Oregon State Women's Basketball History

First Year.....1976-77 (48 seasons)
 All-Time Record.....807-638 (.554)
 NCAA Tourn. Appearances.....14 (19-13)
 Last NCAA Tournament Appearance.....2025
 WNIT Appearances.....Nine (14-7, .667)
 Last WNIT Appearance.....2022
 WNIT Championships.....Two (1980, 1982)

Staff Information

Head Coach.....Scott Rueck (16th Season)
 Alma Mater.....Oregon State, 1991
 OSU Record.....319-168 15th Season
 Career Record.....608-256, 29th season
 Assistant Coach.....Deven Hunter (5th season)
 Alma Mater.....Oregon State, 2016
 Assistant Coach.....Sydney Wiese (2nd season)
 Alma Mater.....Oregon State, 2017
 Assistant Coach.....Eric Ely (14th season)
 Alma Mater.....NW Nazerene, 1982
 Assistant Coach/VC.....Jared Vedus (3rd season)
 Alma Mater.....Oregon State, 2025
 Director of Operations.....Elizabeth Rudisill (1st season)
 Alma Mater.....Duke
 Basketball Office Phone.....(541) 737-2800
 Athletic Trainer.....Jason Lieuw
 Alma Mater.....Pacific, 1997

Team Information

Letterwinners Returning/Lost.....8/3
 Starters Returning/Lost.....3/2
 Newcomers.....6
 2024-25 Record.....19-16
 Home.....8-4
 Away.....6-9
 Neutral.....5-3
 2024-25 WCC.....12-8
 Finish.....4th

MISC. STATS

GAME	BENCH	PAINT	2ND CHANCE	FAST BRK	PTS OFF TO
Corban	46-13 (+33)	42-20 (+22)	19-9 (+10)	14-2 (+12)	26-7 (+19)
Air Force	15-14 (+1)	28-12 (+16)	19-0 (+19)	6-2 (+4)	17-10 (-7)
Illinois	22-5 (+17)	34-12 (+22)	9-2 (-7)	7-5 (-2)	14-7 (-7)
Utah State	25-8 (-17)	38-24 (+14)	18-5 (+13)	5-4 (-1)	14-6 (-8)
Colorado State	16-9 (-7)	26-20 (-6)	8-3 (-5)	7-2 (-5)	14-4 (-10)

HEAD COACH SCOTT RUECK (16TH SEASON)



It was a homecoming of sorts for OSU alumnus Scott Rueck, who was named the fifth head coach in the history of the Oregon State women's basketball program on June 30, 2010.

Rueck has been the architect of an accelerated turnaround of the women's basketball program at Oregon State, bringing the team onto the national stage.

Rueck has led the Beavers to eight NCAA Tournaments, including the 2024 event where he took a team picked 10th in the Pac-12 preseason poll to the Elite 8. OSU was also poised to earn a top-4 seed prior to the cancellation of the 2019-20 Tournament due to COVID-19. Oregon State won three-straight Pac-12 titles from 2015-17, and has made five Sweet-16's, three Elite Eight's and a Final Four.

The two-time OSU graduate entered the Oregon State Hall of Fame for the first time with his 2016 Final Four Team on November 10, 2023. Rueck led the Beavers to a sweep of the Pac-12 regular season and conference titles in addition to the Final Four

The now-15th-year coach has led the Beavers to 49 wins over AP Top 25 programs during his time at Oregon State, including 16 over top-10 teams. Squaring off against some of the best players in the nation, the Beavers have often at least held their own. OSU went 4-4 against Oregon during Sabrina Ionescu's time in Eugene and recorded an 7-1 mark against Washington while Pac-12 all-time leading scorer Kelsey Plum played for the Huskies.

Oregon State also developed its own superstars under Rueck. Five players earned All-America honors in six years between 2015-2020. Jamie Weisner and Ruth Hamblin won back-to-back Pac-12 Player of the Year honors in 2015-16 and Hamblin, Gabby Hansen and Marie Gulich won Pac-12 Defensive Player of the Year in four straight seasons between 2015-18. Sydney Weise was another of the All-Americans and also won the Senior Class Award in 2017 after earning All-Pac-12 recognition for four straight seasons.

AWARD-WINNERS UNDER COACH RUECK

Pac-12 Player of the Year

Ruth Hamblin (2015)
Jamie Weisner (2016)

Pac-12 Defensive Player of the Year

Ruth Hamblin (2015, 16)
Gabriella Hansen (2017)*
Marie Gulich (2018)\$

Pac-12 6th Player of the Year

Aleah Goodman (2019)
Raegan Beers (2023)
Timea Gardiner (2024)

Pac-12 Freshman of the Year

Raegan Beers (2023)

WCC Tournament M.O.P

Catarina Ferreira (2025)

Pac-12 Scholar-Athlete of the Year

Ruth Hamblin (2016)
Sydney Weise (2017)
Mikayla Pivec (2020)
Aleah Goodman (2021)

All-Pac-12

Timea Gardiner (2024)*
Raegan Beers (2023*, 24)
Talia von Delhoffen (2022, 24)
Aleah Goodman (2021)
Taylor Jones (2021)
Mikayla Pivec (2019, 20)
Destiny Slocum (2019, 20)
Marie Gulich (2017, 18)
Sydney Weise (2014-17)
Ruth Hamblin (2015, 16)
Jamie Weisner (2015, 16)
Earlysia Marchbanks (2012)

Pac-12 All-Defense

Mikayla Pivec (2020)
Taylor Jones (2020)\$
Marie Gulich (2018)
Gabriella Hansen (2017)
Ruth Hamblin (2014-16)
Patricia Bright (2012)
El Sara Greer (2011)

All-WCC

AJ Marotte (2025)
Kelsey Rees (2025)

All-Americans

Ruth Hamblin (2015)
Jamie Weisner (2016)
Sydney Weise (2017)
Marie Gulich (2018)
Mikayla Pivec (2020)
Raegan Beers (2024)

RUECK'S RESUME

COACHING CAREER

Year	School	Overall	Conf.	Post.
96-97	George Fox	15-10	9-5	
97-98	George Fox	16-9	13-5	
98-99	George Fox	18-6	14-4	
99-00	George Fox	23-5	14-2	NCAA
00-01	George Fox	23-3	15-1	NCAA
01-02	George Fox	20-6	11-5	
02-03	George Fox	15-10	10-6	
03-04	George Fox	13-12	7-9	
04-05	George Fox	22-6	14-2	NCAA
05-06	George Fox	19-6	10-6	
06-07	George Fox	19-7	13-3	NCAA
07-08	George Fox	25-5	14-2	NCAA
08-09	George Fox	32-0	16-0	NCAA
09-10	George Fox	28-3	16-0	NCAA
10-11	Oregon State	9-21	2-16	
11-12	Oregon State	20-13	9-9	WNIT
12-13	Oregon State	10-21	4-14	
13-14	Oregon State	24-11	13-5	NCAA
14-15	Oregon State	27-5	16-2	NCAA
15-16	Oregon State	32-5	16-2	NCAA
16-17	Oregon State	31-5	16-2	NCAA
17-18	Oregon State	26-8	14-4	NCAA
18-19	Oregon State	26-8	14-4	NCAA
19-20	Oregon State	23-9	10-8	Top-16
20-21	Oregon State	12-8	7-6	NCAA
21-22	Oregon State	17-14	6-9	WNIT
22-23	Oregon State	14-18	4-14	
23-24	Oregon State	27-8	12-6	NCAA
24-25	Oregon State	19-16	12-8	NCAA
25-26	Oregon State	4-1	0-0	TBD
Total	28+ Seasons	608-258	329-158	

COACHING HIGHLIGHTS

Conference Titles Won: 11
Northwest Conf: 2000, '01, '05, '07, '08, '09, '10
Pac-12 Conf: 2015, '16, '17
WCC: 2025

Postseason Appearances: 18

NCAA Division I: 2014, '15, '16, '17, '18, '19, '21, '24, '25
NCAA Division III: 2000, '01, '05, '07, '08, '09, '10
WNIT: 2012, '22

Sweet 16 Appearances: 12

NCAA Division I: 2016, '17, '18, '19, '24
NCAA Division III: 2000, '05, '08, '09, '10
WNIT: 2012, '22

Elite Eight Appearances: 7

NCAA Division I: 2016, '18, '24
NCAA Division III: 2005, '09, '10
WNIT: 2022

Final Fours: 2

NCAA Division I: 2016
NCAA Division III: 2009

National Titles: 1

NCAA Division III: 2009

Overall Postseason Record: 25-11 (.676)

NCAA Division I Tournament: 17-9 (.654)
20-Win Seasons: 12; Winning Seasons: 23
NCAA All-Americans: 7; NAIA All-Americans: 4
Final Top 25 National Rankings: 11
All-Conference Honorees: 63
All-Northwest Conference: 33
All-Pac-12: 20
All-Pac-12 Honorable Mention: 11
Pac-12 All-Freshman: 9
Pac-12 All-Defensive: 6

HONORS AND AWARDS

- 2024 Pac-12 Coach of the Year
- Most wins as a coach in program history (275)
- 2020 Naismith Defensive Coach of the Year Semifinalist
- 2017 Pac-12 Coach of the Year
- 2016 AP Coach of the Year runner-up
- 2015 Russell Athletic/WBCA Region 8 Coach of the Year
- 2015 Pac-12 Coach of the Year (Coaches and Media)
- 2014 Russell Athletic/WBCA Region 8 Coach of the Year

*Only Conference Coaches | \$ Only Conference Media | No Honorable-Mentions Listed

OREGON STATE BROADCAST ROSTER

**Tee-ARE-uh Bolden** G • 5-11 • Sr.

	GP	FG%	3P%	FT%	REB	AST	STL	BLK	PTS
24-25	35	37.6	31.5	76.9	3.9	1.5	0.9	0.2	8.1
25-26	5	58.3	50	85.7	6.4	1.2	2.6	0.2	18.6
Career	66	39.9	32.9	75.3	4.2	1.0	1.1	0.1	8.8

CAREER HIGHS

*Most Recent

Points	Rebounds	Assists	Steals	Blocks
25 v. Ill.	11 v. USU.	4 v. LMU	6 v. Corb.	1 v. USU.
11/14/25*	11/17/25	2/6/25*	11/7/25	11/17/25*

**Katelyn Field** G • 5-11 • Fr.

	GP	FG%	3P%	FT%	REB	AST	STL	BLK	PTS
24-25	DNP - True Freshman								
25-26	3	42.9	33.3	100	0.3	0.3	0.0	0.7	3.0
Career	3	42.9	33.3	100	0.3	0.3	0.0	0.7	3.0

CAREER HIGHS

*Most Recent

Points	Rebounds	Assists	Steals	Blocks
5 v. Corb.	-	1 v. CSU	-	1 v. CSU.
11/7/25	-	11/22/25	-	11/22/25*

**Allie SHIH-MUL** G • 5-10 • So.

	GP	FG%	3P%	FT%	REB	AST	STL	BLK	PTS
24-25	35	32.8	27.5	83.3	1.5	0.7	0.7	0.2	3.4
25-26	5	40.7	47.4	-	1.0	0.4	0.8	0.0	6.2
Career	40	34.2	30.9	83.3	1.5	0.7	0.7	0.2	3.8

CAREER HIGHS

*Most Recent

Points	Rebounds	Assists	Steals	Blocks
13 v. LMU	4 v. Port.	4 v. USD	3 v. USD	1 v. Port.
2/6/25	12/30/24	2/8/25	2/8/25*	3/11/25*

**Susana JYEP-ess** F • 6-0 • R-Sr.

	GP	FG%	3P%	FT%	REB	AST	STL	BLK	PTS
24-25	25	22.6	22.2	100	0.7	0.3	0.0	0.0	0.9
25-26	4	0	-	-	0.5	1.5	0.0	0.0	0.0
Career	29	20.6	22.2	100	0.7	0.5	0.0	0.0	0.8

CAREER HIGHS

*Most Recent

Points	Rebounds	Assists	Steals	Blocks
6 v. USF	4 v. SC	4 v. Ill.	-	-
1/8/25	2/20/25	11/14/25	-	-

**Lizzy Williamson** F • 6-5 • Sr.

	GP	FG%	3P%	FT%	REB	AST	STL	BLK	PTS
24-25	5	50	-	-	2.0	0.0	0.2	0.0	1.6
25-26	5	48	-	100	5.2	0.4	0.6	0.4	5.2
Career	98	51.3	0	57.8	6.4	1.0	0.6	1.4	6.8

CAREER HIGHS

*Most Recent

Points	Rebounds	Assists	Steals	Blocks
35 v. UTRGV	23 v. UTRGV	5 v. Cal Bap	3 v. UTRGV	6 v. Cal Bap
11/27/21	11/27/21	2/28/23*	2/16/23	2/28/23

**LAR-uh UH-lawn-so** F • 6-3 • Fr.

	GP	FG%	3P%	FT%	REB	AST	STL	BLK	PTS
24-25	DNP - True Freshman								
25-26	5	50	25	70.6	6.4	0.4	0.2	1.2	9.6
Career	5	50	25	70.6	6.4	0.4	0.2	1.2	9.6

CAREER HIGHS

*Most Recent

Points	Rebounds	Assists	Steals	Blocks
14 v. Corb.	12 v. AFA	2 v. Corb.	1 v. Ill.	3 v. Corb.
11/7/25	11/10/25	11/7/25	11/14/25	11/7/25

**CLO-EH VETHINA** G • 5-8 • So.

	GP	FG%	3P%	FT%	REB	AST	STL	BLK	PTS
24-25	25	33.3	11.1	81.8	0.5	0.5	0.5	0.0	1.1
25-26	5	50	100	33.3	0.2	0.8	0.6	0.2	2.4
Career	30	37.8	20	71.4	0.5	0.5	0.5	0.0	1.3

CAREER HIGHS

*Most Recent

Points	Rebounds	Assists	Steals	Blocks
8 v. Corb.	2 v. Minn.	2 v. Corb.	4 v. NNU	1 v. Corb.
11/7/25	11/16/24	11/7/25	11/12/24	11/7/25

**Kennedie SHOE-ler** G • 5-10 • Jr.

	GP	FG%	3P%	FT%	REB	AST	STL	BLK	PTS
24-25	35	42.4	21	58	3.8	3.7	1.3	0.1	7.9
25-26	5	43.5	10	21.4	4.0	5.0	0.6	1.2	8.8
Career	73	42	19	52.7	2.5	2.8	0.7	0.2	5.1

CAREER HIGHS

*Most Recent

Points	Rebounds	Assists	Steals	Blocks
17 at ASU	8 v. SMC	10 v. SMC.	6 v. SMC	3 v. Corb.
11/17/24	2/1/25*	2/27/25	2/1/25	11/7/25*

**Jenna Vill-uh** G • 6-1 • Jr.

	GP	FG%	3P%	FT%	REB	AST	STL	BLK	PTS
24-25	35	34.1	33.8	81.8	2.5	1.4	0.5	0.3	5.6
25-26	5	40.6	35	90.9	4.2	3.2	0.0	0.6	8.6
Career	76	37.9	33.7	88.1	2.3	1.2	0.4	0.2	5.8

CAREER HIGHS

*Most Recent

Points	Rebounds	Assists	Steals	Blocks
22 v. CSU	7 v. CSU	5 v. CSU	2 v. Pac.	2 v. Corb.
11/22/25	11/22/25*	11/22/25*	12/30/24	11/7/25*

**LUTHIA Navarro** G • 6-0 • Jr.

	GP	FG%	3P%	FT%	REB	AST	STL	BLK	PTS
24-25	10	0	0	75	0.8	0.2	0.0	0.0	0.3
25-26	1	-	-	-	0.0	0.0	0.0	0.0	0.0
Career	16	18.2	0	71.4	0.7	0.1	0.1	0.0	0.6

CAREER HIGHS

*Most Recent

Points	Rebounds	Assists	Steals	Blocks
3 v. NNU	5 v. WSU	2 v. NNU	1 v. NNU	-
11/12/24*	1/5/25	11/12/24	11/12/24*	-

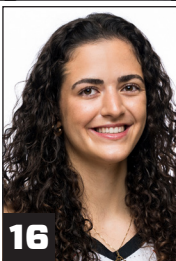
**Mackenzie Shy-vers** G • 5-6 • R-Jr.

	GP	FG%	3P%	FT%	REB	AST	STL	BLK	PTS
24-25	DNP - Knee Injury								
25-26	2	0	0	50	0.0	0.0	0.0	0.0	0.5
Career	2	0	0	50	0.0	0.0	0.0	0.0	0.5

CAREER HIGHS

*Most Recent

Points	Rebounds	Assists	Steals	Blocks
1 v. USU	-	-	-	-
11/17/25	-	-	-	-

**EE-lee-sa Meh-heh-yar** F • 6-5 • So.

	GP	FG%	3P%	FT%	REB	AST	STL	BLK	PTS
24-25	7	33.3	-	-	0.6	0.0	0.0	0.0	0.3
25-26	3	75	-	-	0.7	0.0	0.0	0.0	2.0
Career	10	57.1	-	-	0.6	0.0	0.0	0.0	0.8

CAREER HIGHS

*Most Recent

Points	Rebounds	Assists	Steals	Blocks
4 v. Corb.	2 v. SMC	-	-	-
11/7/25	2/1/25	-	-	-

**KEER-uh Lindemans** G • 6-0 • Fr.

	GP	FG%	3P%	FT%	REB	AST	STL	BLK	PTS
24-25	DNP - True Freshman								
25-26	4	28.6	0	100	1.8	0.3	1.0	0.0	1.3
Career	4	28.6	0	100	1.8	0.3	1.0	0.0	1.3

CAREER HIGHS

*Most Recent

Points	Rebounds	Assists	Steals	Blocks
5 v. Corb.	2 v. AFA	1 v. Corb.	2 v. Corb.	-
11/7/25	11/10/25	11/7/25	11/7/25	-

**Neh-NAY s-OW** C • 6-8 • R-Sr.

	GP	FG%	3P%	FT%	REB	AST	STL	BLK	PTS
24-25	9	16.7	-	40	0.7	0.0	0.0	0.1	0.7
25-26	5	60	-	60	7.4	0.0	0.6	1.6	4.2
Career	26	48.5	-	47.1	1.9	0.0	0.1	0.4	1.5

CAREER HIGHS

*Most Recent

Points	Rebounds	Assists	Steals	Blocks
11 v. USU	15 v. USU	1 v. So. UT	2 v. Ill.	3 v. Corb.
11/17/25	11/17/25	12/16/23	11/14/25	11/7/25

**IGNORE EVERYTHING AFTER THIS
PAGE!!!**

**I kept the original formats in case we
ended up using those instead :)**

MEET THE BEAVS: AN INTRODUCTION TO OREGON STATE WBB

ON THE COURT

THE PORTAL TAKETH

After realignment cost the old Pac-12, the Beavs lost eight players to the transfer portal, comprising a significant portion of last year's production including...

- Points – 81.8% lost (2030/2483)
- Rebounds – 68.9% lost (964/1399)
- Assists – 79.9% lost (494/618)
- Minutes – 72.3% lost (5125/7089)

THE PORTAL GIVETH

Despite entering the fray nearly after the portal had closed (all 13 players could have returned and playing in the Elite 8 forced them to make decisions late), Scott Rueck and co. found some gems in the portal. Notably, Cat Ferreira - the WCC Tournament MVP - came from Baylor. Local product and 32-game starter Tiara Bolden joined OSU from La Salle.

STAYING LOW

Of the 19 teams they faced, the Beavs held 17 of them to FG% below their season averages. In the WCC championship game, the Beavs handed Portland their lowest FG% of the season, 21.7%.

LEADING THE OFFENSE

Offensively, the Beavers have been led by forward Kelsey Rees, who averages 12.8 points and 7.6 rebounds per game. Point guard Kennedie Shuler contributes significantly with 7.9 points and a team-high 3.6 assists per game. Forward Sela Heide leads in field goal percentage, converting 71.6% of her attempts.

STEPPING UP

Oregon State's starting five is stepping up across the board. Every member of the Beavers' first unit—Kelsey Rees (12.8), AJ Marotte (11.4), Cat Ferreira (10.0), Tiara Bolden (8.2), and Kennedie Shuler (7.9)—is averaging a career high in points per game. Sixth woman Sela Heide also owns a career-best mark with 7.4 points per game this season.

HEAD OF THE BOARD(S)

Oregon State owned the glass in the West Coast Conference. The Beavs ranked second in the league in rebound margin at +6.4 and outrebounded WCC foes in 15 of 20 league games. Kelsey Rees (7.8) and Catarina Ferreira (7.7) ranked fourth and fifth in the conference in rebounding, making OSU the only team with two in the top-10.

BEHIND THE SCENES

WE ARE FAMILY

Anyone can tell you what Oregon State doesn't have. But what makes the Beavers' special is the culture built by Rueck, the players and the staff over 15 seasons in Corvallis where the team - even one representing six countries and with four languages spoken - is truly more than the sum of its parts.

A few quotes from the team on how the 2024-25 senior class set the tone for a close-knit group:

"She's the glue of the team, I feel, and she just connects everyone" - Elisa Mehyar on Sela Heide

"She's the true definition of a senior, always helping others all the time." - Cloe Vecina on Kelsey Rees

"AJ is such a great teammate and a great person. She has been there since the moment I came to Corvallis" - Lucia Navarro on AJ Marotte

"When I got here, she was the person who made me feel so welcome and like I was home" - Catarina Ferreira on AJ Marotte

RETURN OF THE BEAVS

Deven Hunter and Sydney Wiese were members of perhaps the two most impactful classes in Oregon State women's basketball history: 2016 and 2017. The duo made history in 2016 with the team's first Final Four appearance and OSU won back-to-back-to-back Pac-12 titles in 2015, 2016 and 2017. Now, both returned to Corvallis as members of the coaching staff. Hunter, in her fourth season, works primarily with posts and is the staff's lead assistant. Wiese, in her first season, takes the lead with the guards and had the scouts for WCC Tournament games against San Francisco and Portland en route to the tournament title.

THE CONFERENCE STUFF

Oregon State has joined the West Coast Conference as an affiliate member for the next two years but will join the new Pac-12 in 2026-27.

THEY SAID IT BEST

"I don't know if we've had a better athlete here overall, as far as speed, quickness and the ability to elevate," OSU's 15th-year coach Scott Rueck said of the 6-foot **Ferreira**.

"When we execute, along with the defensive intensity that's become so consistent, I think we're a tough out," OSU coach **Scott Rueck** said.

"With a relatively young and inexperienced team, it's just put so much more importance on her role," Rueck said. "**(Shuler's)** carrying the burden of ball control, communication, being the quarterback (and) basically keeping everybody on the same page."

"Making sure my team doesn't go on (scoring) droughts, being disciplined, knowing our scouts, the personnel we're playing," **Shuler** said explaining all the things she has to be aware of when on the court. "Those are just a few."

"I haven't looked back since to be honest," **Sydney Wiese** said. "... And this (job at Oregon State) felt like the best one for where I was at as a person, as a competitor in my own life, and then obviously everything that is taking place here and how it, just for me, it was like, how could I say no to an opportunity like that?"

"A year ago, I didn't believe in myself. I didn't believe I could play at this level," **Ferreira** said. "I took a chance, and see what happened? That's why I get so emotional. This team, and this staff, they believed in me more than anybody."

"The student-athletes who stayed, and those who joined them, just proved that you can throw any adversity you want in our way. Beavers will find a way to rise above it," said **Sara Elcano**, an OSU senior administrator who was with the team in Las Vegas.

"We've had turnover, but Oregon State is still Oregon State. I'm still who I am," **Rueck** said. "The people have changed, the confidence has changed, but the culture and who we are, I don't how to be anything else."

"You saw from Day One, they played hard. I think Beaver Nation is proud of that," **Rueck** said. "So, this team hopefully put a big smile on everyone's face, because yeah, it's been tough to be us."

OREGON STATE



FOUR PAC-12 TITLES
1983 • 2015
2016 • 2017

2016
FINAL
FOUR

SIX NCAA SWEET SIXTEENS
1983 • 2016 • 2017
2018 • 2019 • 2024

2025-26 GAME NOTES

#WEAREFAMILY | @BEAVERWBB

OSU SCHEDULE

NOVEMBER (2-5)

Date	Opponent	Watch	Time/Result
8	at Colorado State	MWN	L, 65-59
12	NORTHWEST NAZ.	ESPN+	W, 80-52
16	Minnesota %	-	L, 73-38
17	at Arizona State %	ESPN+	L, 79-60
22	at #22 Illinois	B1G+	L, 85-66
25	#2 UConn &	FloCollege	L, 71-52
27	BC &	FloCollege	W, 54-49

DECEMBER (4-3)

Date	Opponent	Watch	Time/Result
3	GRAMBLING ST. @	ESPN+	W, 63-56
5	at Pacific*	ESPN+	L, 66-63 (OT)
15	UC IRVINE	ESPN+	L, 60-48
19	WKU #	OSU YT	W, 80-58
20	Miami (FL) #	OSU YT	L, 61-56
28	at Gonzaga*	ESPN2	W, 71-67 (OT)
30	at Portland*	ESPN+	W, 76-72 (OT)

JANUARY (4-5)

Date	Opponent	Watch	Time/Result
2	LMU*	ESPN+	W, 59-56
4	at Washington St.*	ESPN+	L, 66-52
9	SAN FRANCISCO*	ESPN+	W, 64-57
16	at Santa Clara*	ESPN+	W, 74-72 (OT)
18	PORTLAND*	ESPN+	L, 86-61
23	at San Francisco*	ESPN+	L, 54-52
25	at Pacific*	ESPN+	L, 67-66 (OT)
27	WASHINGTON ST.*	ESPN+	L, 65-57
30	PEPPERDINE*	ESPN+	W, 63-54

FEBRUARY (5-2)

Date	Opponent	Watch	Time/Result
1	ST. MARY'S*	ESPN+	W, 80-45
6	at LMU*	ESPN+	W, 66-49
8	at San Diego*	ESPN+	W, 58-50
13	GONZAGA*	ESPN+	L, 66-62 (OT)
20	SANTA CLARA*	ESPN+	W, 68-51
22	SAN DIEGO*	ESPN+	W, 64-51
27	at St. Mary's*	ESPN+	L, 69-66

MARCH (3-0)

Date	Opponent	Watch	Time/Result
1	at Pepperdine*	ESPN+	W, 73-46
9	San Francisco \$	ESPN+	W, 61-59
10	Gonzaga \$	ESPN+	W, 63-61
11	Portland	ESPN2	1pm

* - Conference game;
% - Briann January Classic (Tempe, Ariz)
& - Baha Mar Championship (Nassau, Bahamas)
@ - Field Trip Game
- Maui Jim Maui Classic (Kihei, Hawaii)
\$ - WCC Tournament (Las Vegas, Nev.)
AP Top 25 rankings used

COMMUNICATIONS

Women's Basketball Contact

Andrew Goodwin
c: 541-760-1497
e: andrew.goodwin@oregonstate.edu

THE MATCHUP: GAME 33

OREGON STATE (18-15, 12-8)



Coach: Scott Rueck (OSU '91)
Overall: 603-256 (29th Season)
at OSU: 315-168 (15th Season)

vs

PORTLAND (29-3, 17-3)



Coach: Michael Meek (EQU '99)
Overall: 358-95 (15th Season)
at Portland: 115-60 (6th Season)

WATCH

PxP	Ann Schatz
Analyst	Mary Murphy
LISTEN	OSU RADIO NETWORK
PxP	Ron Callan
Radio	Varsity Network

ESPN2

OVERALL

In Portland	8-3
In Corvallis	13-2
Last Meeting - 1/18/25	L, 86-61
Rueck vs. Portland	5-1
Last 10 games	7-3

OSU LEADS 21-5

LAST TIME: BEAVS VS. PILOTS

LAST MEETING:

1/18/25 - Portland 86, Oregon State 61

NOTABLE:

Kennedie Shuler - 13 points, 8 rebounds

LAST TIME OUT

OREGON STATE 63, GONZAGA 61

Scoring: Ferreira 19, Marotte 15, Rees 11, Bolden 9, Schimel 5, Shuler 4
Rebounding leader: Ferreira (9)
Assists leader: Shuler (5)
Best (±): Rees (+9)

NOTABLES

» Second-straight game where team's low-scorer hit the game-winning shot
» Beavs won 3/4 quarters (1st, 3rd, 4th)
» OSU hit season-high 11 three-pointers (prev: 10 vs. Gonzaga and Pepperdine)

STARTING FIVE

» A new hero for Oregon State emerges each game of the WCC Tournament with the latest being Kennedie Shuler, who hit her third game-winning shot to beat Gonzaga
» Shuler made two baskets in Monday's game - primarily contributing excellent defense on Gonzaga point guard Allie Turner - but both gave OSU late leads
» Catarina Ferreira led the team in scoring with 19 points for the second straight game, grabbing nine rebounds to bring her total to 38pts/15reb in the tournament
» AJ Marotte refused to lose, scoring 13 of her 15 points in the second half
» The Beavs and Pilots each won on the other's home court in the two previous matchups - OSU's first two WCC Tournament games were also rubber matches

NUMBERS TO KNOW

11

Oregon State simply does not foul. The Beavers rank **11th in the nation committing just 13.3 fouls per game**, just over 1 foul behind the national leaders.

The Beavs' **8 blocks against San Francisco were their most since 1/23/25** when they played the Dons on the road and second-most this season (10 vs. Grambling)

8

36

The Beavers are holding opponents to just **36 percent shooting from the floor over their last 10 games**, a mark that would rank in the top-20 nationally



Defensively, the Beavers have held three teams to a six-point quarter this year (SC, SMC, PEPP)

OREGON STATE BROADCAST ROSTER

**Tee-ARE-uh Bolden** G • 5-11 • Sr.

	GP	FG%	3P%	FT%	REB	AST	STL	BLK	PTS
24-25	34	37.7	31.5	76.9	3.9	1.5	0.9	0.2	8.2
Career	60	37.6	31.3	73.4	4.0	1.1	1.0	0.1	8.1

CAREER HIGHS *Most Recent

Points	Rebounds	Assists	Steals	Blocks
--------	----------	---------	--------	--------

25 v. Ford.	8 v. Ford.	4 v. LMU	5 v. PAC.	1 v. Gonz.
-------------	------------	----------	-----------	------------

3/2/24	3/2/24*	2/6/25*	1/25/25	2/16/25*
--------	---------	---------	---------	----------

» Excellent in transition, plays 2/3/4 for OSU

» Scored 20 pts on 9/12 FG w/ 5 stls vs. Pacific

» Prev. teammates with Cat Ferreira at E. Arizona JC

**Kennedie SHOE-ler** G • 5-10 • So.

	GP	FG%	3P%	FT%	REB	AST	STL	BLK	PTS
24-25	34	42.2	21.3	58.3	3.8	3.6	1.3	0.1	7.9
Career	67	41.6	20.6	56.1	2.4	2.6	0.7	0.1	4.8

CAREER HIGHS *Most Recent

Points	Rebounds	Assists	Steals	Blocks
--------	----------	---------	--------	--------

17 at ASU	8 v. SMC	10 v. SMC.	6 v. SMC	1 v. USF
-----------	----------	------------	----------	----------

11/17/24	2/1/25*	2/27/25	2/1/25	1/23/25*
----------	---------	---------	--------	----------

» Made game-winning layups vs. LMU & Santa Clara

» Starting PG in 24-25 as a Soph, backup as Fr.

» HS Conf. Player of the Yr. in Soccer & Basketball

**Allie SHIH-MUL** G • 5-11 • Fr.

	GP	FG%	3P%	FT%	REB	AST	STL	BLK	PTS
24-25	34	34.1	28.4	83.3	1.6	0.7	0.7	0.2	3.6
Career	34	34.1	28.4	83.3	1.6	0.7	0.7	0.2	3.6

CAREER HIGHS *Most Recent

Points	Rebounds	Assists	Steals	Blocks
--------	----------	---------	--------	--------

13 v. LMU	4 v. Port.	4 v. USD	3 v. USD	1 v. Port.
-----------	------------	----------	----------	------------

2/6/25	12/30/24	2/8/25	2/8/25*	3/11/25*
--------	----------	--------	---------	----------

» Frmr walk-on, plays 2/3, gaining confidence in shot

» WCC Co-Freshman of the Week vs. Port/Gonz

» Set state 3A tourney record w/ 42 pts in title game

**Lucia Navarro** G • 6-0 • So.

	GP	FG%	3P%	FT%	REB	AST	STL	BLK	PTS
24-25	10	0	0	75	0.8	0.2	0.0	0.0	0.3
Career	15	18.2	0	71.4	0.7	0.1	0.1	0.0	0.6

CAREER HIGHS *Most Recent

Points	Rebounds	Assists	Steals	Blocks
--------	----------	---------	--------	--------

3 v. NNU	5 v. WSU	2 v. NNU	1 v. NNU	-
----------	----------	----------	----------	---

11/12/24*	1/5/25	11/12/24	11/12/24*	-
-----------	--------	----------	-----------	---

» +7 in 17 minutes vs. WSU, best perf. of season

» Transfer from Florida State, played 5 games

» First Spanish player at OSU under Coach Rueck

**Susana JYEP-ess** F • 6-0 • R-Jr.

	GP	FG%	3P%	FT%	REB	AST	STL	BLK	PTS
24-25	24	22.6	22.2	100	0.8	0.3	0.0	0.0	0.9
Career	24	22.6	22.2	100	0.8	0.3	0.0	0.0	0.9

CAREER HIGHS *Most Recent

Points	Rebounds	Assists	Steals	Blocks
--------	----------	---------	--------	--------

6 v. USF	4 v. SC	1 v. SCU	-	-
----------	---------	----------	---	---

1/8/25	2/20/25	1/16/25*	-	-
--------	---------	----------	---	---

» Made back-to-back corner 3's vs. USF at home

» Redshirted in 2023-24, playing on scout team

» Led S. GA Tech to Region Champ, NJCCA #1 seed

**AJ Muh-rott** G • 6-1 • Sr.

	GP	FG%	3P%	FT%	REB	AST	STL	BLK	PTS
24-25	34	38	30	81.6	3.3	2.4	0.5	0.1	11.4
Career	129	38.3	30	81.4	2.4	1.4	0.3	0.2	7.0

CAREER HIGHS *Most Recent

Points	Rebounds	Assists	Steals	Blocks
--------	----------	---------	--------	--------

23 v. WKU	9 v. LMU	6 v. NNU	2 v. SCU	1 v. Port.
-----------	----------	----------	----------	------------

12/2/23	1/2/25*	11/12/24	1/16/25*	3/11/25*
---------	---------	----------	----------	----------

» Deadly mid-range jumper, team will run plays for it

» Plays 1-4 (mostly 2/3), team's highest usage player

» Team's social coordinator and emotional leader

**Mackenzie Shy-vers** G • 5-6 • Jr.

	GP	FG%	3P%	FT%	REB	AST	STL	BLK	PTS
24-25	-	-	-	-	-	-	-	-	-
Career	-	-	-	-	-	-	-	-	-

CAREER HIGHS *Most Recent

Points	Rebounds	Assists	Steals	Blocks
--------	----------	---------	--------	--------

-	-	-	-	-
---	---	---	---	---

-	-	-	-	-
---	---	---	---	---

» Out for 24-25 season w/ injury

» Led Mesa CC to 3rd in NJCCA D2 as a soph.

» Avg. 10.9 ppg, 34.9% 3PT as soph, 16 ppg in postszn

**EE-lee-sa Meh-heh-yar** F • 6-5 • Fr.

	GP	FG%	3P%	FT%	REB	AST	STL	BLK	PTS
24-25	7	33.3	-	-	0.6	0.0	0.0	0.0	0.3
Career	7	33.3	-	-	0.6	0.0	0.0	0.0	0.3

CAREER HIGHS *Most Recent

Points	Rebounds	Assists	Steals	Blocks
--------	----------	---------	--------	--------

2 v. SMC	2 v. SMC	-	-	-
----------	----------	---	---	---

2/1/25	2/1/25	-	-	-
--------	--------	---	---	---

» Made debut basket last Sat. vs. SMC, Gill went nuts

» Avg. 2.3 pts, 6.9 reb, 2 blk in U18 Euros

» Played as Am. w/ SISU Copenhagen, 4.1 reb/game

**Cat-uh-reena Feh-HEY-duh** G • 6-0 • Sr.

	GP	FG%	3P%	FT%	REB	AST	STL	BLK	PTS
24-25	34	37	29.2	79.2	7.3	2.0	1.7	0.3	10.0
Career	72	36.5	26.5	78.5	4.3	1.2	1.0	0.2	5.7

CAREER HIGHS *Most Recent

Points	Rebounds	Assists	Steals	Blocks
--------	----------	---------	--------	--------

26 v. WKU	14 v. Pepp.	4 v. PAC	6 vs. PAC	1 v. WSU.
-----------	-------------	----------	-----------	-----------

12/19/24	1/30/25	1/25/25	1/25/25	1/27/25*
----------	---------	---------	---------	----------

» 7 double-doubles at OSU, none previously

» Maui Classic All-Tournament Team member

» Baylor transfer, played in 2 NCAA Tournaments

**CLO-EH VETHINA** G • 5-8 • Fr.

	GP	FG%	3P%	FT%	REB	AST	STL	BLK	PTS
24-25	24	30.8	11.1	81.8	0.5	0.5	0.5	0.0	1.1
Career	24	30.8	11.1	81.8	0.5	0.5	0.5	0.0	1.1

CAREER HIGHS *Most Recent

Points	Rebounds	Assists	Steals	Blocks
--------	----------	---------	--------	--------

7 v. WKU	2 v. Minn.	2 v. USF	4 v. NNU	-
----------	------------	----------	----------	---

12/19/24	11/16/24	1/8/25	11/12/24	-
----------	----------	--------	----------	---

» Plus-minus of +21 vs. WKU, +7 at #22 Illinois

» Struggled w/ TOs early, much less in last 10 gms

» Combo guard, coaches love her vision & shooting

**SEE-Luh HIDE-EE** F • 6-8 • Sr.

	GP	FG%	3P%	FT%	REB	AST	STL	BLK	PTS
24-25	34	71.6	-	63.6	5.6	0.4	0.1	1.6	7.4
Career	76	67.2	-	60.9	3.7	0.3	0.1	1.2	4.7

CAREER HIGHS *Before OSU

Points	Rebounds	Assists	Steals	Blocks
--------	----------	---------	--------	--------

26 v. NNU	12 v. Gram.	4 v. UCONN	1 v. Stan.	8 v. Gram.
-----------	-------------	------------	------------	------------

11/12/24	12/3/24	11/25/24	12/13/20*	12/3/24
----------	---------	----------	-----------	---------

» Scored 10 pts in 3rd Quarter vs. LMU, 18 pts vs SCU

» Brother, Miles, also made Sweet 16 w/ SDSU last yr.

» Daughter of OSU BKB Alums Sissel & Jason Heide

**Kelsey Rees** F • 6-5 • Sr.

	GP	FG%	3P%	FT%	REB	AST	STL	BLK	PTS
24-25	34	41.8	32.6	83.3	7.6	1.7	0.4	0.8	12.8
Career	152	44.3	30.6	74.9	4.5	0.9	0.3	0.8	6.0

CAREER HIGHS *Before OSU

Points	Rebounds	Assists	Steals	Blocks
--------	----------	---------	--------	--------

25 v. Port.	17 at CSU	5 v. USC	4 v. USC	5 v. Colo
-------------	-----------	----------	----------	-----------

12/30/24	11/8/24	2/9/22*	2/9/22*	1/28/22*
----------	---------	---------	---------	----------

» Four road games w/ 20+ pts (Pac, Gonz, Por, Pep)

» Versatile big: Plays both 4 & 5 but primarily 5

» Improved 3PT by 7% after coming to OSU from UU

OREGON STATE BROADCAST ROSTER

**Tee-ARE-uh Bolden****G • 5-11 • Sr.****CAREER HIGHS****Most Recent*

	GP	FG%	3P%	FT%	REB	AST	STL	BLK	PTS
25-26									
24-25	34	37.7	31.5	76.9	3.9	1.5	0.9	0.2	8.2
Career	60	37.6	31.3	73.4	4.0	1.1	1.0	0.1	8.1

Points	Rebounds	Assists	Steals	Blocks
25 v. Ford.	8 v. Ford.	4 v. LMU	5 v. PAC.	1 v. Gonz.
3/2/24	3/2/24*	2/6/25*	1/25/25	2/16/25*

SEASON HIGHS**Most Recent*

Points	Rebounds	Assists	Steals	Blocks
25 v. Ford.	8 v. Ford.	4 v. LMU	5 v. PAC.	1 v. Gonz.
3/2/24	3/2/24*	2/6/25*	1/25/25	2/16/25*

**ALLIE SHIH-MUL****G • 5-11 • Fr.**

	GP	FG%	3P%	FT%	REB	AST	STL	BLK	PTS
24-25	34	34.1	28.4	83.3	1.6	0.7	0.7	0.2	3.6
Ca-									

Points	Rebounds	Assists	Steals	Blocks
13 v. LMU	4 v. Port.	4 v. USD	3 v. USD	1 v. Port.

Fmr walk-on, plays 2/3, gaining confidence in shot

**Susana JYEP-ess****F • 6-0 • R-Jr.**

	GP	FG%	3P%	FT%	REB	AST	STL	BLK	PTS
24-25	24	22.6	22.2	100	0.8	0.3	0.0	0.0	0.9
Career	24	22.6	22.2	100	0.8	0.3	0.0	0.0	0.9

CAREER HIGHS**Most Recent*

Points	Rebounds	Assists	Steals	Blocks
6 v. USF	4 v. SC	1 v. SCU	-	-
1/8/25	2/20/25	1/16/25*	-	-

» Made back-to-back corner 3's vs. USF at home

» Redshirted in 2023-24, playing on scout team

» Led S. GA Tech to Region Champ, NJCCA #1 seed

**Mackenzie Shy-vers****G • 5-6 • Jr.**

	GP	FG%	3P%	FT%	REB	AST	STL	BLK	PTS
24-25	-	-	-	-	-	-	-	-	-
Career	-	-	-	-	-	-	-	-	-

CAREER HIGHS**Most Recent*

Points	Rebounds	Assists	Steals	Blocks
-	-	-	-	-
-	-	-	-	-

» Out for 24-25 season w/ injury

» Led Mesa CC to 3rd in NJCCA D2 as a soph.

» Avg. 10.9 ppg, 34.9% 3PT as soph, 16 ppg in postszn

**Cat-uh-reena Feh-HEY-duh****G • 6-0 • Sr.**

	GP	FG%	3P%	FT%	REB	AST	STL	BLK	PTS
24-25	34	37	29.2	79.2	7.3	2.0	1.7	0.3	10.0
Career	72	36.5	26.5	78.5	4.3	1.2	1.0	0.2	5.7

CAREER HIGHS**Most Recent*

Points	Rebounds	Assists	Steals	Blocks
26 v. WKU	14 v. Pepp.	4 v. PAC	6 vs. PAC	1 v. WSU.
12/19/24	1/30/25	1/25/25	1/25/25	1/27/25*

» 7 double-doubles at OSU, none previously

» Maui Classic All-Tournament Team member

» Baylor transfer, played in 2 NCAA Tournaments

**SEE-Luh HIDE-EE****F • 6-8 • Sr.**

	GP	FG%	3P%	FT%	REB	AST	STL	BLK	PTS
24-25	34	71.6	-	63.6	5.6	0.4	0.1	1.6	7.4
Career	76	67.2	-	60.9	3.7	0.3	0.1	1.2	4.7

CAREER HIGHS**Before OSU*

Points	Rebounds	Assists	Steals	Blocks
26 v. NNU	12 v. Gram.	4 v. UCONN	1 v. Stan.	8 v. Gram.
11/12/24	12/3/24	11/25/24	12/13/20*	12/3/24

» Scored 10 pts in 3rd Quarter vs. LMU, 18 pts vs SCU

» Brother, Miles, also made Sweet 16 w/ SDSU last yr.

» Daughter of OSU BKB Alums Sissel & Jason Heide

SEASON HIGHS

OREGON STATE

MOST POINTS SCORED IN A QUARTER:

11/12/24 v. NW Nazarene (30)

MOST POINTS SCORED IN FIRST QUARTER:

3/1/25 at Pepperdine (22)*

MOST POINTS SCORED IN SECOND QUARTER:

3/9/25 v. San Francisco (21)

MOST POINTS SCORED IN THIRD QUARTER:

11/12/24 v. NW Nazarene (30)

MOST POINTS SCORED IN FOURTH QUARTER:

2/20/25 v. Santa Clara (23)*

MOST POINTS SCORED IN A HALF:

11/12/24 v. NW Nazarene (47)

MOST POINTS SCORED IN FIRST HALF:

3/1/25 at Pepperdine (39)

MOST POINTS SCORED IN SECOND HALF:

11/12/24 v. NW Nazarene (47)

MOST POINTS SCORED IN A GAME:

2/1/25 v. St. Mary's (80)*

MOST ASSISTS IN A GAME:

2/1/25 v. St. Mary's (20)

MOST REBOUNDS IN A GAME:

3/11/25 v. Portland (54)

BEST REBOUND MARGIN IN A GAME:

12/30/24 at Portland (+24)

MOST STEALS IN A GAME:

11/12/24 v. NW Nazarene (17)

MOST BLOCKS IN A GAME:

12/3/24 v. Grambling (10)

MOST 3-POINTERS MADE IN A GAME:

3/10/25 v. Gonzaga (11)

MOST FG MADE IN A GAME:

2/1/25 v. St. Mary's (30)*

MOST FREE THROWS ATTEMPTED IN A GAME:

12/30/24 v. Portland (32)

MOST FREE THROWS MADE IN A GAME:

12/30/24 v. Portland (23)

FEWEST POINTS ALLOWED IN A GAME:

2/1/25 v. St. Mary's (45) - 1st

FEWEST POINTS ALLOWED IN A HALF:

2/1/25 v. St. Mary's (15) - 1st

FEWEST POINTS ALLOWED IN A QUARTER:

3/11/25 v. Portland (4) - 2nd

FEWEST FOULS COMMITTED IN A GAME:

2/8/25 at San Diego (7)

*Denotes multiple performances with the most recent listed

OPP #1

MOST POINTS SCORED IN A QUARTER:

XX

MOST POINTS SCORED IN FIRST QUARTER:

XX

MOST POINTS SCORED IN SECOND QUARTER:

XX

MOST POINTS SCORED IN THIRD QUARTER:

XX

MOST POINTS SCORED IN FOURTH QUARTER:

XX

MOST POINTS SCORED IN A HALF:

XX

MOST POINTS SCORED IN FIRST HALF:

XX

MOST POINTS SCORED IN SECOND HALF:

XX

MOST POINTS SCORED IN A GAME:

XX

MOST ASSISTS IN A GAME:

XX

MOST REBOUNDS IN A GAME:

XX

BEST REBOUND MARGIN IN A GAME:

XX

MOST STEALS IN A GAME:

XX

MOST BLOCKS IN A GAME:

XX

MOST 3-POINTERS MADE IN A GAME:

XX

MOST FG MADE IN A GAME:

XX

MOST FREE THROWS ATTEMPTED IN A GAME:

XX

MOST FREE THROWS MADE IN A GAME:

XX

FEWEST POINTS ALLOWED IN A GAME:

XX

FEWEST POINTS ALLOWED IN A HALF:

XX

FEWEST POINTS ALLOWED IN A QUARTER:

XX

FEWEST FOULS COMMITTED IN A GAME:

XX

*Denotes multiple performances with the most recent listed

OPP #2

MOST POINTS SCORED IN A QUARTER:

XX

MOST POINTS SCORED IN FIRST QUARTER:

XX

MOST POINTS SCORED IN SECOND QUARTER:

XX

MOST POINTS SCORED IN THIRD QUARTER:

XX

MOST POINTS SCORED IN FOURTH QUARTER:

XX

MOST POINTS SCORED IN A HALF:

XX

MOST POINTS SCORED IN FIRST HALF:

XX

MOST POINTS SCORED IN SECOND HALF:

XX

MOST POINTS SCORED IN A GAME:

XX

MOST ASSISTS IN A GAME:

XX

MOST REBOUNDS IN A GAME:

XX

BEST REBOUND MARGIN IN A GAME:

XX

MOST STEALS IN A GAME:

XX

MOST BLOCKS IN A GAME:

XX

MOST 3-POINTERS MADE IN A GAME:

XX

MOST FG MADE IN A GAME:

XX

MOST FREE THROWS ATTEMPTED IN A GAME:

XX

MOST FREE THROWS MADE IN A GAME:

XX

FEWEST POINTS ALLOWED IN A GAME:

XX

FEWEST POINTS ALLOWED IN A HALF:

XX

FEWEST POINTS ALLOWED IN A QUARTER:

XX

FEWEST FOULS COMMITTED IN A GAME:

XX

*Denotes multiple performances with the most recent listed