



60th AutoZone Liberty Bowl



GAMEDAY INFORMATION

Monday, December 31st, 2018

Schedule

- Stadium Parking Lots open at 8:00am
- Pre-Game Buffet opens at 11:30am
- Stadium Gates open at 12:30pm
- Pre-Game Show starts at 2:15pm
- Kick-Off is at 2:45am

Seating Locations

- Ok State allotment sections located on WEST SIDE of Stadium: enter through Gates 2, 3 & 4
- Missouri allotment sections located on EAST SIDE of Stadium: enter through Gates 1, 5 & 6

Ticket and Will Call Locations

- Ticket Sales/Will Call Opens at 9:00am
- Ticket Sales are at Stadium Gate 1 and North Tiger Lane Tower
- General AutoZone Liberty Bowl Will Call is located at the Gate 1 Ticket Office
- Ok State Will Call/Player-Guest Pick-up is located at the Gate 4 Ticket Office
- Missouri Will Call/Player-Guest Pick-up is located at the Gate 6 Ticket Office

Clear Bag and Prohibited Items Policy

- Please see attachment for information on the Stadium's Clear Bag and Prohibited Items Policy

Stadium Parking Lots

- Tiger Lane & RV Parking (Blue Lot 15) will open for set-up on Sunday, Dec. 30th at 8:00am
- All Stadium parking lots open on Game Day at 8:00am
- Please see map and check back of parking pass for Access Point Entry for Pass Lots
- Parking Pass Holders are reminded to have their passes displayed on their dash board/hung from rear view mirror prior to arrival at the Stadium parking lots
- ADA Lot is first come, first serve to patrons with ADA placard. Please show upon entry.
- General Parking (CASH ONLY) will be available in the following lots:
 - Tiger Lane (\$50) with dedicated tailgating space and power services: enter at Access 9 (East Parkway and Tiger Lane South)
 - Blue Lot 11, Blue Lot 12 and Blue Lot 14 (\$20): enter at Access 7 (Central Ave. and Early Maxwell)
 - Purple Lot (\$20): enter at Access 10 (E. Parkway and Young) or Access 11 (Early Maxwell and Southern Ave.)
 - RV Parking is available in Blue Lot 15 (\$60, NO Electrical or Water Service): enter at Access 7 (Central Ave. and Early Maxwell)
 - NO BUS PARKING AVAILABLE – see Off-Site Parking Locations

Park-N-Ride Shuttle Service

- Park-N-Ride shuttle service to and from the Stadium will be available at the Benjamin L. Hooks Central Library parking lot, located 3030 Poplar Avenue (Memphis, TN 38111).
- Service is provided by Blues City Transportation (BCT).
- \$15 charge per rider, round trip service
- Shuttle service starts running to the Stadium at 11:00am
- Shuttle service is round-trip transportation, dropping-off and picking-up near the Stadium
- Shuttle Service returns start 30 minutes after the game and will run up to 1 hour after end of game
- Drop-off and Pick-up for Shuttles will be located at the Coca-Cola Plant at 499 S. Hollywood

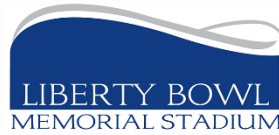
Hotel Shuttles

- Hotel shuttle service to and from the stadium will be offered at all AutoZone Liberty Bowl partner hotels in Downtown, Midtown and East Memphis (Hilton).
- Blues City Transportation (BCT) will provide the service and have representatives located in the hotel lobbies for sign-ups to ride. Sign-ups will begin on Friday, December 28th. BCT representatives will have information on shuttle service schedule for Game Day.
- \$15 charge per rider, round trip service
- Please register in advance by calling 901.522.9229 or visit www.bluescitytours.com
- BCT will also have a sign-up booth at 2nd Street and Peabody Place during the AutoZone Liberty Bowl Parade on Sunday, Dec. 30
- Shuttle service starts running to the Stadium at 9:00am, and will return 30 minutes after the game
- Drop-off and Pick-up location will be near Mid-South Coliseum, and allow for patrons to attend pre-game buffet in Pipkin & Creative Arts Buildings
- Please ask your hotel attendants for more information.

Off-Site Parking Locations

- Christian Brothers University, lot entrance at Central Ave. and Early Maxwell.
 - Opens at 8:00am
 - \$20 cash-only, per space
 - RVs and Buses are permitted, must pay per space used
- Fairview Complex (Maxine Smith Steam Academy & Middle College School), lot entrances on Central between East Parkway and Early Maxwell
 - Opens at 8:00am
 - \$20 cash-only, per space
 - RVs and Buses are permitted, must pay per space used
- Shelby County School Board, lot entrance at 160 South Hollywood St
 - Opens at 8:00am
 - \$20 cash-only, per space
 - RVs and Buses are permitted, \$40 rate per vehicle

LIBERTY BOWL
MEMORIAL STADIUM
CLEAR BAG POLICY



To provide a safer environment for the public and significantly expedite guest entry into the stadium, Liberty Bowl Memorial Stadium will implement a new bag policy in 2017-18 for **all ticketed Stadium events** that limits the size and type of bags that may be brought into the venue.

Guests will be able to carry the following style and size bag, package or container into the venue:

- Bags that are clear plastic, vinyl or PVC and do not exceed 12" x 6" x 12."
- One-gallon clear plastic freezer bag (Ziploc bag or similar).
- Small clutch bags, approximately the size of a hand, with or without a handle or strap can be taken into the venue with one of the clear plastic bags.
- An exception will be made for medically necessary items after proper inspection.

Prohibited bags include, but are not limited to: purses larger than a clutch bag, briefcases, backpacks, fanny packs, cinch bags, luggage of any kind, non-approved seat cushions or seatbacks * (see below) computer bags, diaper bags, binocular cases, and camera bags.

Guests will continue to be able to enjoy their tailgate activities in the parking lots and to do so with greater safety and the knowledge that their entry into the venue will be smoother and faster. They also will continue to be able to carry items allowed into the venue, such as binoculars, cameras, and smart phones.

**Non-approved seat cushions and seatbacks include large traditional seat cushions that have pockets, zippers, compartments, or covers. Seat cushions and seatbacks must be 18" or less in width with no armrests.*



Guests to the Liberty Bowl Memorial Stadium are prohibited from entering the stadium with the following:

- Bags not compliant with the stadium's Clear Bag Policy (small clutches & purses permitted, 5"x7"; clear bags & totes only, 12" x 6" x12" maximum size). Please See Clear Bag Policy
- Briefcases, luggage of any kind, computer bags, camera/video recorder bags
- Seat Cushions larger than a single seat (a maximum of 18" wide, 12" deep with arms)
- Baby Strollers
- Umbrellas
- Cameras with lens greater than 12" and audio or audio/visual recording devices
- Laptop computers, televisions or any electronic device that may interfere with technology related services provided by the stadium or for its use
- Drones or Remote Controlled Model Aircraft (RCMA)
- Laser pens or laser products of any type
- Air horns or any other artificial noise makers other than those approved by the playing teams or their respective conferences
- Animals (excluding service animals, those approved for shows, entertainment, etc.)
- Outside food or beverages of any kind (alcoholic beverages included) except for medical or infant needs
- Coolers/Ice Chests
- Glass, plastic, aluminum & liquid containers
- Balloons, confetti, glitter, objectionable banners or device that may interfere with and/or distract any sports or event participant or stadium guest
- Mask or costumes other than those in support of the playing teams excluding any Stadium Management approved themed events
- Projectiles of any type including frisbees, baseballs and beach balls
- Poles or sticks
- Fireworks or other explosives
- Weapons of any type, including guns and knives
- Any other item deemed unacceptable by Stadium Management

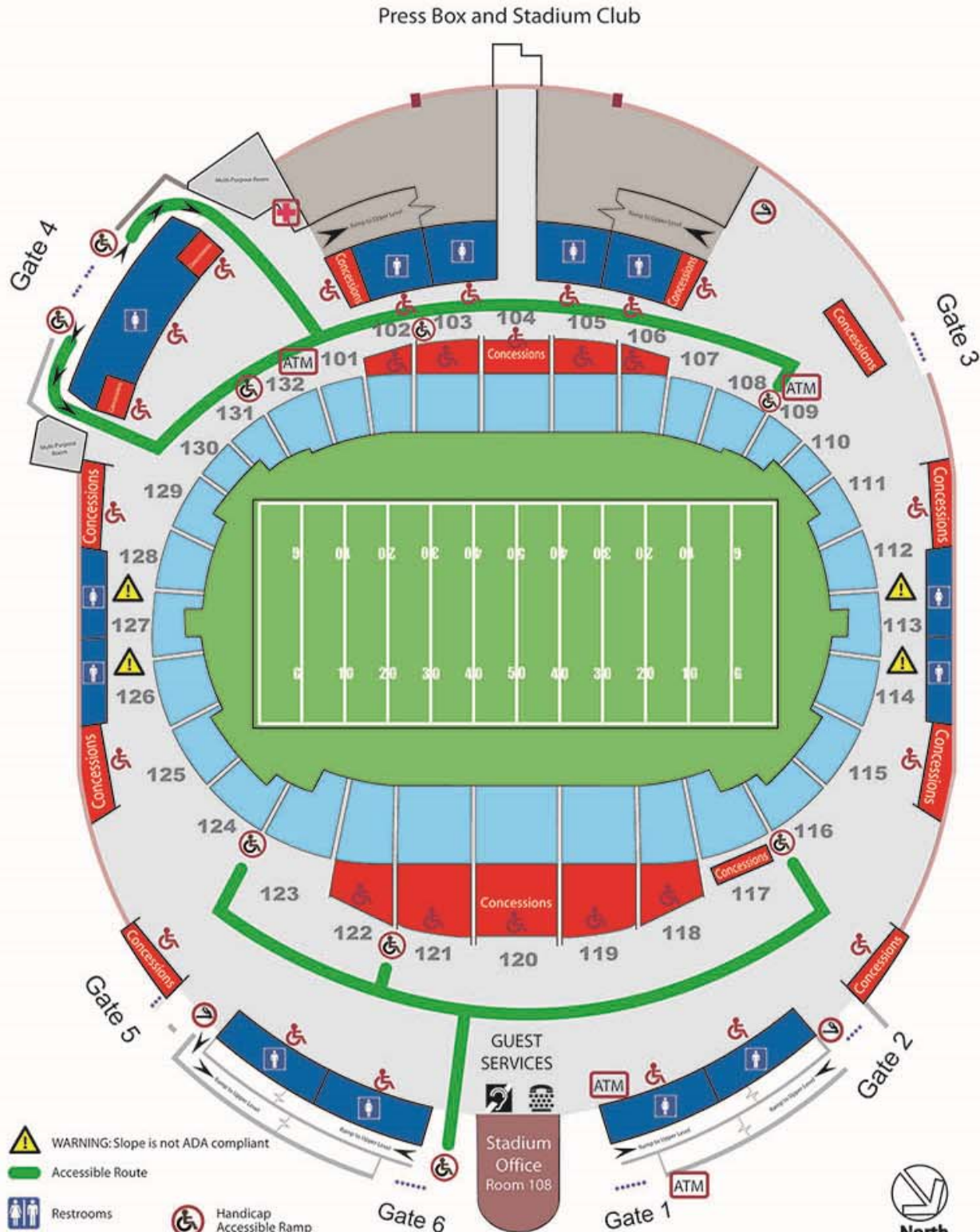
In the event any of these items are revealed during a search, guests must dispose of the items or return the prohibited item to their vehicle prior to entry. If you have any questions, please contact the Stadium Office at 901.729.4344 prior to the event.

SECTION MAP



Liberty Bowl Memorial Stadium

CIRCULATION MAP

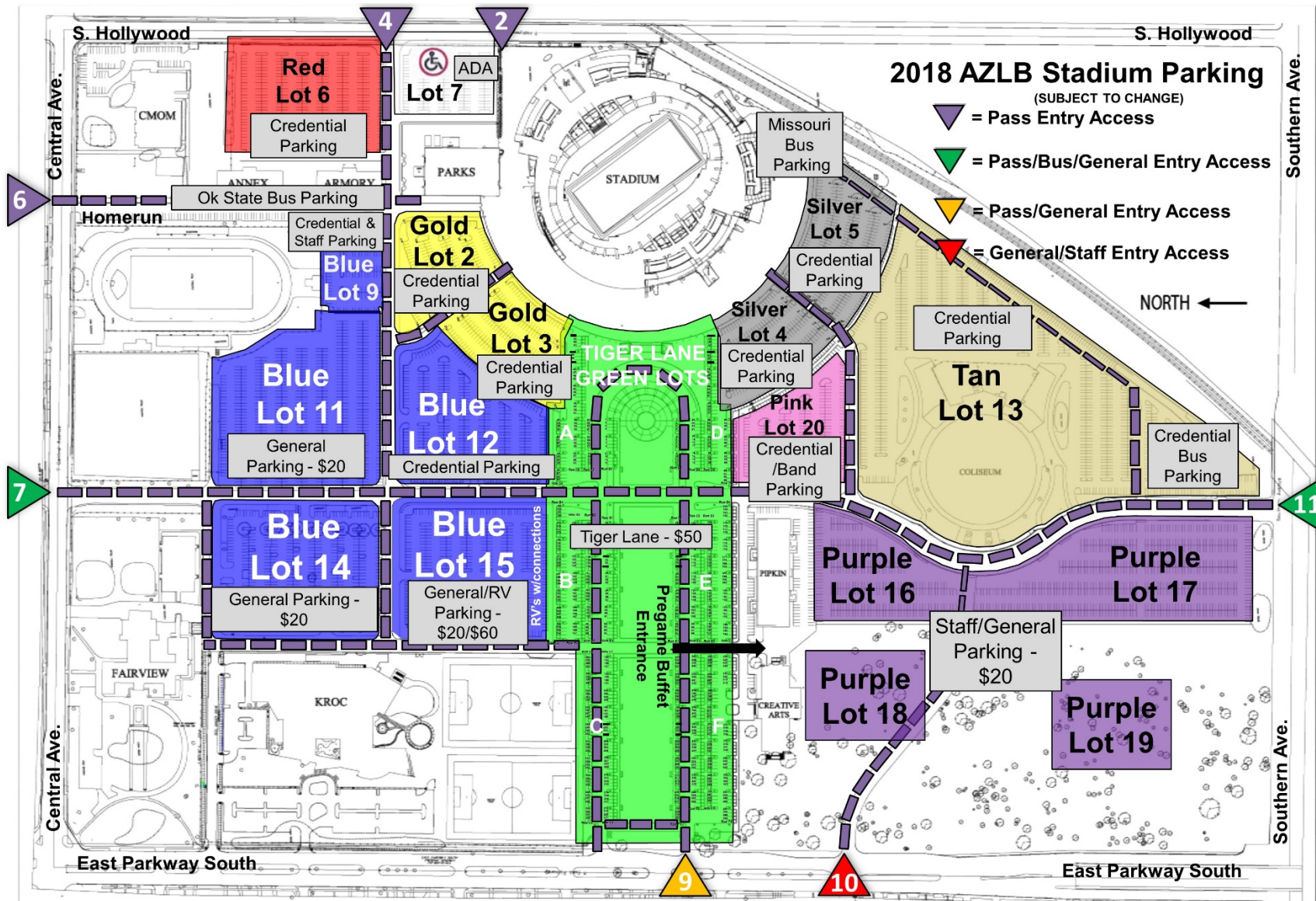


- WARNING: Slope is not ADA compliant
- Accessible Route
- Restrooms
- Handicap Accessible Ramp
- First Aid Station
- Automated Teller Machine
- Designated Smoking Areas
- Handicap Accessible Facility
- Assistive Listening Systems
- Telecommunications Device for the Deaf (TDD)

Stadium Office and Sky Boxes

Liberty Bowl Memorial Stadium

STADIUM PARKING MAP



Red, Gold and ADA Lots: use Access 4 on Hollywood

Blue and RV Lots: Access 7 on Central

Tiger Lane: use Access 9 on East Parkway

Pink, Silver and Tan Lots: use Access 11 on Southern Avenue

General Parking: use Access 7 on Central, Access 10 on East Parkway or Access 11 on Southern Avenue

2018 AutoZone Liberty Bowl General Parking Lot Locations



500 ft

GENERAL PARKING LOT LOCATIONS/CASH ONLY

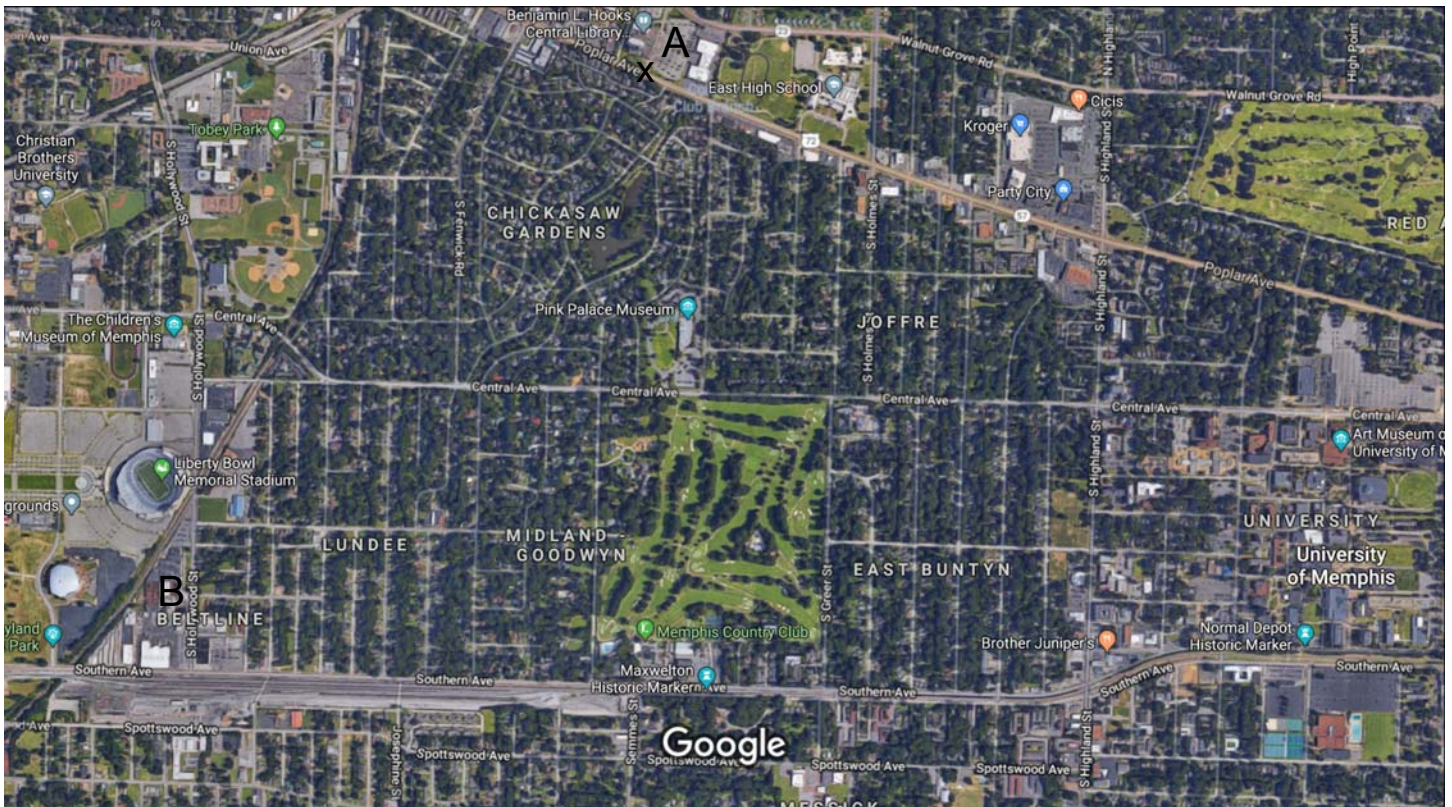
A: Liberty Bowl Stadium Purple Lot: \$20 per vehicle
Enter via Access 7, 9, 10 or 11/RVs \$60, ONLY Access 7

B: Fairview School: General Parking, \$20 per vehicle
Enter on Central (X)/RVs and Buses allowed

C: Christian Brothers University: \$20 per vehicle Enter on
Central (Y)/RVs or Buses allowed

D: Shelby County School Board: \$20 per vehicle Enter
on South Hollywood (Z)/RVs and Buses allowed

2018 AutoZone Liberty Bowl Park-N-Ride Shuttle Service



1000 ft

PARK-N-RIDE SHUTTLE SERVICE

A: Benjamin L. Hooks Central Library

Enter on Poplar Ave (3030) and park in any open space. Buses will pick-up near Library Entrance.

B: Coca-Cola Bottling Plant/Drop-off & Pick-Up Location

Buses will drop off in Coke Plant circle drive and pick up in same location
Shuttle service will run from 11:00am until 60 minutes after the game