



# GAME NOTES



# NORTHWESTERN

## BASKETBALL

# Game Day

### MEDIA CONTACTS

Women's Basketball.....Andrew Santangelo  
ajsantangelo@nwosu.edu  
(580) 327-8639 (o)

Men's Basketball.....Andrew Santangelo  
ajsantangelo@nwosu.edu  
(580) 327-8639 (o)

### MEDIA POLICY

The Northwestern Athletic Communications Office assists members of the media with their coverage of all 13 Ranger sports programs by coordinating interviews and providing feature ideas, notes, statistics and any other information needed. Valid credentials are required for access to sideline and pressbox areas. They may be requested in advance of the game by contacting Athletic Communications.

### INTERVIEWS

All interviews with Northwestern student-athletes must be arranged in advance through the Athletic Communications office. Telephone interviews are available to the media on a call-back basis at a time convenient to the student-athlete.

### RIDERANGERSIDE.COM

For updated statistics, rosters, game notes and all Ranger news on the internet, go to the official Northwestern Athletics site at [www.riderangerside.com](http://www.riderangerside.com). For those out of range of the Alva radio broadcast, live audio is available through the site. Fans can also access, streaming video by clicking on the 'Live Video' tab under 'Multimedia'.

### MARKETING OPPORTUNITIES

The Athletic Marketing Department at Northwestern strives to maximize attendance and support for all Ranger Athletic programs and events by creating an exciting collegiate atmosphere for our fans and student-athletes. NWOSU Athletics has programs in place for game day promotions to entertain the crowd and increase the experience for all Ranger fans.

In addition, we focus on generating revenue through corporate sponsorships and ticket sales. Northwestern Oklahoma State Athletics offers corporate customers a multitude of marketing and sponsorship opportunities that will enhance your company's exposure. We offer direct access to alumni, students, donors and fans as well as our network of other partners.

Sponsorship opportunities with NWOSU include:

Venue signage

Print advertising

Game Sponsorships

Pre-game, in-game, half-time and post-game promotions

For more information about corporate sponsorships with Northwestern Athletics, contact:

Brad Franz  
Director of Athletics  
[bmfranz@nwosu.edu](mailto:bmfranz@nwosu.edu)  
(580) 327-8578



### THURSDAY MATCHUP

**7 LADY RANGERS (6-0, 0-0 GAC) @ East Central (3-0, 0-0 GAC)**  
Thursday, November 30th >> 5:30 p.m. CT >> Ada, Oklahoma . >> Kerr Activities Center  
All-Time Series: ECU leads 16-8 (Back to 2013) ECU 1-game win streak (L80-50: 12/3/22)

**6 RANGERS (2-3, 0-0 GAC) @ East Central (3-2, 0-0 GAC)**  
Thursday, November 30th >> 7:30 p.m. CT >> Ada. >> Kerr Activities Center  
All-Time Series: ECU Leads 13-10 (Back to 2013), ECU 2-game win streak (L97-63) 1/19/23

### GAC WOMEN'S STANDINGS

Team	GAC	Overall	Streak
EAST CENTRAL	0-0	3-0	W3
NORTHWESTERN	0-0	6-0	W6
Southern Arkansas	0-0	5-0	W5
Southern Nazarene	0-0	6-0	W6
Harding	0-0	4-1	W4
Arkansas Tech	0-0	2-1	W1
Arkansas- Monticello	0-0	4-2	W2
Henderson State	0-0	4-2	W1
Southeastern	0-0	4-2	L1
Ouachita Baptist	0-0	2-2	L2
Oklahoma Baptist	0-0	3-3	W1
Southwestern	0-0	2-3	L2

### GAC MEN'S STANDINGS

Team	GAC	Overall	Streak
Southern Nazarene	0-0	3-1	W1
<b>East Central</b>	<b>0-0</b>	<b>3-2</b>	<b>L1</b>
Arkansas Tech	0-0	2-2	W2
Harding	0-0	3-3	W1
Oklahoma Baptist	0-0	3-3	W1
Southeastern	0-0	4-4	L1
<b>Northwestern</b>	<b>0-0</b>	<b>2-3</b>	<b>L1</b>
Ouachita Baptist	0-0	2-3	W1
Southern Arkansas	0-0	2-3	L1
Henderson State	0-0	1-2	W1
Arkansas-Monticello	0-0	1-3	L1
Southwestern	0-0	0-4	L4

### LIVE COVERAGE

**Radio:** KRDR-FM Classic Hits 105.7 in Alva - <http://mixlr.com/classic-hits-1057-krdr/>

**Broadcast Team:** Dustin Goodno (Play by Play) Andrew Santangelo (Color)

**Video:** <https://nwosu.tv>

**Live Statistics:** <http://www.sidearmstats.com/nwosu/wball> (women's) /<http://www.sidearmstats.com/nwosu/mbball/> (men's)

**Twitter:** Northwestern Athletics - @NWOSUAthletics...Rangers - @NWOSUBasketball #RRR

### QUICK FACTS

Location.....Alva, Okla.  
Founded.....1897  
Enrollment.....2,100  
President.....Dr. Bo Hannaford  
Nickname.....Rangers & Lady Rangers  
Arena.....Percefull Fieldhouse (1953)  
Capacity.....1,250  
Affiliation.....NCAA Division II  
Conference.....Great American Conference (2012)  
Athletic Director.....Brad Franz

### LADY RANGER BASKETBALL

First Season.....1971-72  
All-Time Record.....686-722 (.485)  
Record at Percefull Fieldhouse.....356-233 (.602)  
Conference Titles.....3  
National Tournament Appearances.....5  
As of 1/6/21

### RANGER BASKETBALL

First Season.....1907-08  
All-Time Record.....1216-1185 (.506)  
Record at Percefull Fieldhouse.....606-352 (.633)  
Conference Titles.....12  
National Tournament Appearances.....16  
As of 12/7/22

**2023-24 LADY RANGER SCHEDULE**

DATE	OPPONENT	TIME/RESULT
<b>November:</b>		
Nov. 10	Northeastern State	W, 68-58
Nov. 11	Central Oklahoma	W, 68-60
<b>Nov. 14</b>	<b>vs. Kansas Christian</b>	<b>W, 124-50</b>
Nov. 17	at. Oklahoma Panhandle St.	W, 99-50
Nov. 24	Chaminade University	W, 82-49
Nov. 25	Stanislaus State	W, 71-61
Nov. 30	at. East Central*	5:30 PM

<b>December:</b>		
<b>Dec. 2</b>	<b>vs. Oklahoma Baptist*</b>	<b>1:00 PM</b>
Dec. 9	at. Southern Nazarene*	1:00 PM
<b>Dec. 13</b>	<b>vs. McPherson College</b>	<b>5:30 PM</b>
<b>Dec. 16</b>	<b>vs. Southeastern*</b>	<b>1:00 PM</b>
<b>Dec. 31</b>	<b>vs. Bethel College</b>	<b>2:00 PM</b>

<b>January:</b>		
Jan. 4	at. Arkansas Monticello*	5:30 PM
Jan. 6	at. Southern Arkansas*	1:00 PM
<b>Jan. 11</b>	<b>vs. Ouachita Baptist*</b>	<b>5:30 PM</b>
<b>Jan. 13</b>	<b>vs. Henderson State*</b>	<b>1:00 PM</b>
Jan. 18	at. Arkansas Tech*	5:30 PM
Jan. 20	at. Harding*	1:00 PM
Jan. 25	at. Southwestern*	5:30 PM
<b>Jan 27</b>	<b>vs. East Central</b>	<b>1:00 PM</b>

<b>February</b>		
<b>Feb. 1</b>	<b>vs. Southern Arkansas</b>	<b>5:30 PM</b>
<b>Feb. 3</b>	<b>vs. Arkansas Monticello*</b>	<b>1:00 PM</b>
Feb. 8	at. Henderson State*	5:30 PM
Feb. 10	at. Ouachita Baptist*	1:00 PM
<b>Feb. 15</b>	<b>vs. Southwestern*</b>	<b>5:30 PM</b>
Feb. 17	at Oklahoma Baptist*	1:00 PM
<b>Feb. 22</b>	<b>vs. Harding*</b>	<b>5:30 PM</b>
<b>Feb. 24</b>	<b>vs. Arkansas Tech*</b>	<b>1:00 PM</b>
<b>Feb. 29</b>	<b>vs. Southern Nazarene*</b>	<b>5:30 PM</b>

<b>March:</b>		
Mar. 2	at. Southeastern	1:00 PM

Home games listed in BOLD  
Great American Conference game \*  
All times local



**Northwestern Drops Close Battle With East Central**

HONOLULU, HAWAII- Northwestern Oklahoma State Lady Rangers closed out their trip to Hawaii Saturday evening with a 71-61 victory over Stanislaus State. The Lady Rangers used a big second half to secure the win out scoring the Warriors by 15 in the second half.

The win pushed the Lady Rangers record to 6-0 heading into conference play Thursday evening. The Warriors drop to 3-4 on the year.

Northwestern was led by Faith Simpson finishing Saturday's game with a double-double of 23 points and 14 rebounds, both team highs. Carly Craig finished with a team high of six assists while Camille Thomas and Payton Jones each had four steals.

The opening minutes of the game belonged to the defenses as neither team were able to score in the opening three minutes of the game before Paige Scott drilled a three pointer for a 3-0 lead assisted by Craig. The Warriors came back with their own three pointer to tie the game at 3-3. The defensive intensity continued through the opening quarter as Northwestern was tied 5-5 halfway through the quarter before the Warriors scored five straight to take a 9-5 lead. Carly Craig and Josena Frame though quickly tied the game with back to back layups as the score was tied at 9-9. Stanislaus State closed the quarter though with the lead following a foul shot making it a 10-9 quarter through one.

In the second quarter Payton Jones pushed the Rangers in front 11-10 starting an 8-1 run to open the second quarter in the first two and half minutes of the quarter. Northwestern held the Warriors scoreless by forcing two turnovers and holding them to 0-3 shooting in that time frame. Jones led the way with five of her seven second quarter points to start the quarter. A three pointer by Marques ended the Lady Ranger run as the Warriors tied the score at 19-19, before even taking the lead at 22-19 following a three pointer by Patterson. The lead was 25-19 before Simpson ended their run. Camille Thomas hit two foul shots right before halftime to make it 28-23 at the break.

Northwestern heated up to start the second half with a 7-0 run to take a 30-28 lead after halftime. It was all started by a Faith Simpson layup assisted by Craig, her fourth of the game. Craig knocked down a three pointer following her first steal of the game. Two minutes into the third quarter the Warriors scored their first points to tie the game at 30-30. Camille Thomas took advantage of second chance points scoring off an offensive rebound before the teams went back and forth trading leads. After the game was tied at 38-38 with 2:56 left in the third quarter. Northwestern scored four points in the final thirty seconds of the quarter to take a 45-41 lead into the fourth quarter. Faith Simpson and Camille Thomas hit layups following Payton Jones' fourth steal of the game.

In the fourth quarter Nikya Orange was the first to score at the 8:33 mark of the quarter following a layup assisted by P. Jones. Two straight three pointers by the Warriors tied the game at 47-47. With the game tied Josena Frame made two straight shots to take a 56-52 lead over the Warriors about halfway through the final quarter. The game remained a four point game when Faith Simpson finished a shot taking the lead to 62-56 but the Warriors were not ready to go away drilling a three pointer by Marques for her 25th point of the evening. The Lady Rangers were able to seal the win with seven foul shots in the final minute of the game pushing their lead even further as the Lady Rangers closed out a double digit win 71-61 over the Warriors.

Northwestern closes out the non-conference start to the season with a 6-0 record as conference play begins on the road Thursday in Ada against East Central. The first conference home game will be Saturday December 2nd against Oklahoma Baptist.

For the latest news and updates on NWOSU Athletics, follow @NWOSUAthletics on TWITTER or visit www.riderangersride.com.

# TASHA DIESSELHORST



Tasha Diesselhorst is heading into her eighth season as the head coach for Northwestern Lady Ranger basketball team, the ninth coach the program has had.

In 2022-2023 season the Lady Rangers finished 12-14 overall on the season. Northwestern had two all conference players in Faith Simpson and Carly Craig. Simpson earned newcomer of the year for the GAC and first time while Craig earned honorable mention.

Northwestern Oklahoma State had their best season in the Division II era in 2021-2022 after winning 15 games and 11 in conference. They earned a Great American Conference playoff berth during that season. Bailey Brown and Scout Frame led the way for the Lady Rangers as Brown earned All-GAC first team while Frame earned second team.

Kalea King and Bailey Brown led the Lady Rangers for the second consecutive year, with Brown being named to the GAC Second-team and King received Honorable Mention. Brown averaged 15.2 points per game and 8.1 rebounds per game, King averaged 14.9 points.

The 2018-19 year, the team matched their NCAA DII record in wins at the time with 12 and made it to the Great American Conference tournament for the first time.

In the 2017-18 season, the team won more games than they have in recent memory 2, but once again narrowly missed out on the GAC tournament.

The Lady Rangers were led by junior transfer guard, Jade Jones who was rewarded with a Honorable Mention All GAC selection, following a year of averaging 13.7 points and 5.3 assists per game. The assists numbers were good enough for tops in the league.

The 2016-17 Lady Rangers experienced a rebirth during coach Diesselhorst's first season in Alva. Despite losing the tiebreaker to claim the final play-off spot in the GAC Tournament, her Lady Rangers finished with a conference record of 8-14 that included a win over arch-rival Southwestern Oklahoma State and a near-upset win over eventual league champion Harding.

Individually, Kalea King flourished in coach Diesselhorst's guard orientated offense and finished the year second in the GAC with an average of 16.2 points per game. King's performance led her to a Second-Team All-GAC selection, while Kori Barrios also received conference recognition during the season with a Conference Player of the Week nomination.

Diesselhorst arrived at Northwestern following a nine-year stint at Pond Creek-Hunter where she had tremendous success during her time as the Lady Panthers' head coach. Her team won the Class A state championship in 2014 and finished as the runner-up in 2016. The Lady Panthers also qualified for the state tournament in 2013 and 2015.

From 2010-16, Diesselhorst led the Lady Panthers to seven straight Skeltur Conference Championships, an undefeated record of 49-0 in conference play, and a 170-29 record. During her nine years at PC-H she coached four all-state players and 10 all-conference selections, compiling an overall record of 187-63.

She was selected as the Skeltur Conference Coach of the Year seven times and was named the coach of the year in 2014 by the Enid News and Eagle and CTB Sports. That same year she also was named the Oklahoma Coaches Association Region I Coach of the Year and the Oklahoma Girls Basketball Coaches Association All-State Coach. The Fellowship of Christian Athletes named her its Northwest Coach of the Year in 2015.

Diesselhorst is a 2006 graduate of Oklahoma Christian University where she had a stellar career, leading her teams to four straight NAIA National Tournament appearances. She earned 2005 all-America honors and was an All-Sooner Athletic Conference selection in her final three years at OC. She is ranked in the top 10 all-time leading scorers in school history.

Diesselhorst graduated with honors in 2006 with a degree in physical education. She was awarded the President's Medal for having the highest grade point average of the graduating class. She later earned a master's degree from the University of Central Oklahoma.

Diesselhorst comes from a long line of successful coaches. Her father, Randy Turney, was a highly successful basketball coach at several schools in northwest Oklahoma, and coached her at Medford High School. Her grandfather, Bob Kramer was a legendary coach at Balko High School in the Oklahoma Panhandle. Her sister, Tana Turney, also coaches high school basketball.

Diesselhorst and her husband, Adam, currently reside in Enid.

**Record at Northwestern: 86-110 (11/28/23)**



**#1 • Carly Craig**  
5-6 | PG | Jr.  
Blanchard, Oklahoma



**#2 • Mia Jones**  
5-11 | F | Fr.  
Alva, Oklahoma



**#3 • Chelsea Lindsey**  
5-5 | G | Jr.  
Noble, Oklahoma



**#4 • Talayah Thomas**  
5-7 | G | So.  
Topeka, Kansas



**#5 • Josena Frame**  
5-8 | G | JR.  
Kinsley, Kan.



**#10 • Camille Thomas**  
5-11 | F | Jr.  
Carrollton, Texas.



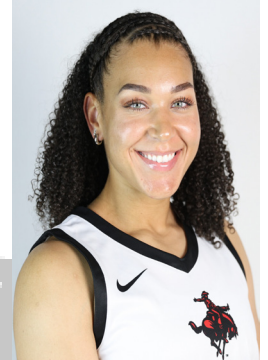
**#11 • Chrissen Harland**  
5-9 | G | So.  
Stillwater, Oklahoma



**#12 • Summya Adigun**  
5-9 | G | Fr.  
Hugoton, Kansas



**#14 • Anna Motycka**  
5-9 | G | Sr.  
Burlington Oklahoma



**#15 • Nikya Orange**  
5-11 | F | Sr.  
Tucson, Arizona



**#20 • Tegan Jones**  
5-8 | G | JR.  
Shattuck, Oklahoma



**#21 • Payton Jones**  
5-10 | G | JR.  
Alva, Oklahoma



**#23 • Charmayne Marshall**  
5-10 | G | So.  
Porter Oklahoma



**#24 • Paige Scott**  
5-8 | G | Sr.  
Blackwell, Oklahoma



**#25 • Ali Zeka**  
5-9 | G | So.  
Wellington Kansas



**#30 • Faith Simposn**  
6-2 | F | JR.  
Palisade Nebraska



**#32 • Camree Johnson**  
5-9 | G | So.  
Alva, Oklahoma



**#33 • Kynsey Dixon**  
5-8 | G | Sr.  
Caddo, Okla.



**#34 • Syncere Harrod**  
5-11 | F | Jr.  
Oklahoma City

# NORTHWESTERN OKLAHOMA STATE LADY RANGERS

No.	Name	Pos.	Ht.	Yr.	Hometown	Previous School
1	Carly Craig	G	5-6	Jr.	Blanchard, Oklahoma	Blanchard High School
2	Mia Jones	F	5-11	Fr.	Alva, Oklahoma	Dawson Community College
3	Chelsea Lindsey	G	5-5	Jr.	Noble, Oklahoma	Neosho Community College
4	Talayah Thomas	G	5-7	So.	Topeka, Kansas	Topeka High School
5	Josena Frame	G	5-8	Sr.	Kinsley, Kan.	Kinsley High School
10	Camille Thomas	F	5-11	Jr.	Carrollton, Texas	Hebron High School
11	Chrissen Harland	G	5-9	So.	Stillwater, Oklahoma	Stillwater High School
12	Summya Adigun	G	5-9	Fr.	Hugoton, Kansas	Hugoton High School
14	Anna Motycka	G	5-9	Sr.	Burlington, Oklahoma	Burlington HS
15	Nikya Orange	F	5-11	Sr.	Tucson, Arizona	Pima Community College
20	Tegan Jones	G	5-8	Jr.	Shattuck, Oklahoma	Northern Oklahoma College Enid
21	Payton Jones	G	5-10	Jr.	Alva, Oklahoma	Southern Nazarene University
23	Charmayne Marshall	G	5-10	So.	Porter, Oklahoma	Porter High School
24	Paige Scott	G	5-8	Sr.	Blackwell, Oklahoma	Coffeyville Community College
25	Ali Zeka	G	5-9	So.	Wellington, Kansas	Wellington High School
30	Faith Simpson	F	6-2	Sr.	Palisade, Nebraska	Coffeyville Community College
32	Camree Johnson	G	5-9	So.	Alva, Oklahoma	Hutchinson Community College
33	Kynsey Dixon	G	5-8	Sr.	Caddo, Oklahoma	Caddo High School
34	Syncere Harrod	F	5-11	Jr.	Oklahoma City, Oklahoma	Butler Community College

**Head Coach: Tasha Diesselhorst - 8th Season**

**Assistant Coach: Kinsey Neiderer**

**Assistant Coach: Randy Turney**

**Student Assistant: Taylor Ellis**

TM

# EAST CENTRAL TIGERS

<b>No.</b>	<b>Name</b>	<b>Ht.</b>	<b>Pos.</b>	<b>Yr.</b>	<b>Hometown</b>	<b>Previous School</b>
<b>0</b>	<b>Makenzy Herman</b>	<b>5-4</b>	<b>G</b>	<b>Fr.</b>	<b>Shawnee, OK</b>	<b>Dale High School</b>
<b>1</b>	<b>Kennedy Cummings</b>	<b>5-6</b>	<b>G</b>	<b>Jr.</b>	<b>Moore, OK</b>	<b>Norman North HS</b>
<b>3</b>	<b>Jayden Weiberg</b>	<b>5-7</b>	<b>G</b>	<b>So.</b>	<b>Madill, OK</b>	<b>Madill HS</b>
<b>4</b>	<b>Alexus Belcher</b>	<b>5-7</b>	<b>G</b>	<b>So.</b>	<b>Vanoss, OK</b>	<b>Vanoss HS</b>
<b>11</b>	<b>Sincere McCallister</b>	<b>5-8</b>	<b>G</b>	<b>Fr.</b>	<b>Hutto, TX</b>	<b>Hutto HS</b>
<b>12</b>	<b>Chloe Malone</b>	<b>5-8</b>	<b>G/F</b>	<b>Jr.</b>	<b>Sanger, TX</b>	<b>Ranger College</b>
<b>13</b>	<b>Aubrie Megehee</b>	<b>5-10</b>	<b>F</b>	<b>Jr.</b>	<b>Shawnee, OK</b>	<b>Western Oklahoma State</b>
<b>14</b>	<b>Kate Ogle</b>	<b>5-11</b>	<b>F</b>	<b>Gr.</b>	<b>Baldwin City, KS</b>	<b>Hutchinson CC</b>
<b>15</b>	<b>Eriel West</b>	<b>5-5</b>	<b>G</b>	<b>Sr.</b>	<b>Fort Smith, AR</b>	<b>Bluefield State</b>
<b>20</b>	<b>Mackenzie Crusoe</b>	<b>5-7</b>	<b>G</b>	<b>Sr.</b>	<b>Choctaw, OK</b>	<b>Choctaw HS</b>
<b>21</b>	<b>Tatum Havens</b>	<b>5-9</b>	<b>G</b>	<b>So.</b>	<b>Tahlequah, OK</b>	<b>Tahlequah HS</b>
<b>22</b>	<b>Kayley Alt</b>	<b>5-9</b>	<b>G</b>	<b>Fr.</b>	<b>Pryor, OK</b>	<b>Pryor HS</b>
<b>24</b>	<b>Natalie Payne</b>	<b>5-11</b>	<b>F</b>	<b>Jr.</b>	<b>Lenexa, KS</b>	<b>Hutchinson CC</b>

**Head Coach: Heather Hurt (Robben)**

**Assistant Coach: Kaitlyn Hodgins**

**Assistant Coach: Jeff McGaha**

**Assistant Coach: Mia Meshell**

# SCOUTING THE TEAMS



## 2023-24 Northwestern Okla. Women's Basketball Combined Team Statistics All games

Page 1/1  
as of Nov 29, 2023

### Game Records

Record	Overall	Home	Away	Neutral
ALL GAMES	6-0	1-0	2-0	3-0
CONFERENCE	0-0	0-0	0-0	0-0
NON-CONFERENCE	6-0	1-0	2-0	3-0

### Score by Periods

Team	1st	2nd	3rd	4th	OT	TOT
Northwestern Okla.	142	116	132	122	0	512
Opponents	61	91	70	106	0	328

### Team Box Score

No.	Player				Total		3-Point		F-Throw		Rebounds											
		GP-GS	MIN	AVG	FG-FGA	FG%	3FG-3FGA	3FG%	FT-FTA	FT%	OFF	DEF	TOT	AVG	PF	DQ	A	TO	BLK	STL	PTS	AVG
30	SIMPSON, Faith	6-6	121:30	20.2	41-75	.547	0-0	.000	10-18	.556	24	24	48	8.0	16	1	6	14	6	8	92	15.3
1	CRAIG, Carly	6-6	161:46	27.0	24-57	.421	18-41	.439	18-20	.900	2	11	13	2.2	5	0	26	17	0	12	84	14.0
21	JONES, Payton	6-6	138:20	23.1	21-53	.396	6-22	.273	11-15	.733	9	12	21	3.5	9	0	14	11	3	21	59	9.8
10	THOMAS, Camille	6-6	124:53	20.8	22-37	.595	0-0	.000	11-19	.579	15	18	33	5.5	7	0	14	11	0	12	55	9.2
34	HARROD, Syncere	6-0	90:19	15.1	17-36	.472	0-0	.000	15-22	.682	6	11	17	2.8	8	0	4	7	0	1	49	8.2
15	ORANGE, Nikya	6-0	101:30	16.9	22-42	.524	0-0	.000	2-3	.667	14	21	35	5.8	15	1	7	6	4	6	46	7.7
11	HARLAND, Chrissen	3-0	31:15	10.4	6-14	.429	3-7	.429	2-2	1.000	0	2	2	0.7	2	0	4	3	1	2	17	5.7
33	DIXON, Kynsey	3-0	35:34	11.9	4-8	.500	4-8	.500	0-0	.000	1	2	3	1.0	3	0	4	1	0	3	12	4.0
2	JONES, Mia	3-0	37:03	12.4	4-11	.364	3-7	.429	1-1	1.000	4	6	10	3.3	2	0	3	1	0	0	12	4.0
12	ADIGUN, Summya	6-0	98:13	16.4	9-23	.391	1-8	.125	2-5	.400	4	12	16	2.7	9	0	5	8	0	2	21	3.5
24	SCOTT, Paige	6-6	84:48	14.1	8-21	.381	3-12	.250	0-0	.000	7	5	12	2.0	10	0	8	4	0	7	19	3.2
5	FRAME, Josena	6-0	78:22	13.1	7-12	.583	2-5	.400	2-4	.500	4	12	16	2.7	4	0	8	1	0	4	18	3.0
4	THOMAS, Talayah	6-0	53:06	8.8	6-11	.545	2-6	.333	2-2	1.000	1	5	6	1.0	6	0	11	5	0	6	16	2.7
14	MOTYCKA, Anna	4-0	33:04	8.3	4-9	.444	1-3	.333	0-0	.000	2	4	6	1.5	3	0	2	0	0	0	9	2.3
20	JONES, Tegan	2-0	06:57	3.5	0-1	.000	0-0	.000	3-4	.750	0	0	0	0.0	0	0	1	0	0	0	3	1.5
23	MARSHALL, Charmayne	1-0	03:20	3.3	0-2	.000	0-0	.000	0-0	.000	0	0	0	0.0	0	0	0	0	0	0	0	0.0
Team											15	18	33				2					
<b>Total</b>		<b>6</b>	<b>1200</b>		<b>195-412</b>	<b>.473</b>	<b>43-119</b>	<b>.361</b>	<b>79-115</b>	<b>.687</b>	<b>108</b>	<b>163</b>	<b>271</b>	<b>45.2</b>	<b>99</b>	<b>2</b>	<b>117</b>	<b>91</b>	<b>14</b>	<b>84</b>	<b>512</b>	<b>85.3</b>
<b>Opponents</b>		<b>6</b>	<b>1200</b>		<b>114-332</b>	<b>.343</b>	<b>43-130</b>	<b>.331</b>	<b>57-84</b>	<b>.679</b>	<b>65</b>	<b>123</b>	<b>188</b>	<b>31.3</b>	<b>105</b>	<b>3</b>	<b>68</b>	<b>143</b>	<b>14</b>	<b>44</b>	<b>328</b>	<b>54.7</b>

### Team Statistics

	NW	OPP
<b>Scoring</b>	<b>512</b>	<b>328</b>
Points per game	85.3	54.7
Scoring margin	+30.7	-
<b>Field goals-att</b>	<b>195-412</b>	<b>114-332</b>
Field goal pct	.473	.343
<b>3 point fg-att</b>	<b>43-119</b>	<b>43-130</b>
3-point FG pct	.361	.331
3-pt FG made per game	7.2	7.2
<b>Free throws-att</b>	<b>79-115</b>	<b>57-84</b>
Free throw pct	.687	.679
F-Throws made per game	13.2	9.5
<b>Rebounds</b>	<b>271</b>	<b>188</b>
Rebounds per game	45.2	31.3
Rebounding margin	+13.8	-
<b>Assists</b>	<b>117</b>	<b>68</b>
Assists per game	19.5	11.3
<b>Turnovers</b>	<b>91</b>	<b>143</b>
Turnovers per game	15.2	23.8
Turnover margin	+8.7	-
Assist/turnover ratio	1.3	0.5
<b>Steals</b>	<b>84</b>	<b>44</b>
Steals per game	14.0	7.3
<b>Blocks</b>	<b>14</b>	<b>14</b>
Blocks per game	2.3	2.3

### Team Results

Date	Opponent		Score	Att.
11/10/2023	at Northeastern St.	W	68-58	642
11/11/2023	vs Central Okla.	W	68-60	346
11/14/2023	Kansas Christian	W	124-50	412
11/17/2023	at Okla. Panhandle	W	99-50	0
11/24/2023	vs Chaminade	W	82-49	0
11/25/2023	vs Stanislaus St.	W	71-61	90



**2023-24 East Central Women's Basketball  
Combined Team Statistics  
All games**

**Game Records**

Record	Overall	Home	Away	Neutral
ALL GAMES	3-0	1-0	1-0	1-0
CONFERENCE	0-0	0-0	0-0	0-0
NON-CONFERENCE	3-0	1-0	1-0	1-0

**Score by Periods**

Team	1st	2nd	3rd	4th	OT	TOT
East Central	41	53	52	67	0	213
Opponents	30	37	34	42	0	143

**Team Box Score**

No.	Player	Total			3-Point			F-Throw		Rebounds				Other Stats								
		GP-GS	MIN	AVG	FG-FGA	FG%	3FG-3FGA	3FG%	FT-FTA	FT%	OFF	DEF	TOT	AVG	PF	DQ	A	TO	BLK	STL	PTS	AVG
20	CRUSOE, Mackenzie	3-3	74:31	24.8	16-42	.381	7-16	.438	14-19	.737	5	17	22	7.3	9	1	8	5	0	10	53	17.7
3	WEIBERG, Jayden	3-3	84:07	28.0	11-21	.524	6-14	.429	3-3	1.000	2	8	10	3.3	2	0	4	4	0	2	31	10.3
24	PAYNE, Natalie	3-3	84:23	28.1	11-23	.478	1-2	.500	7-10	.700	5	7	12	4.0	6	0	2	7	0	1	30	10.0
14	OGLE, Kate	3-3	60:32	20.2	6-14	.429	1-4	.250	6-10	.600	5	7	12	4.0	9	0	0	6	1	3	19	6.3
1	CUMMINGS, Kennedy	3-3	61:45	20.6	5-16	.313	3-6	.500	6-10	.600	3	4	7	2.3	8	0	7	5	0	2	19	6.3
12	MALONE, Chloe	3-0	41:28	13.8	7-16	.438	0-0	.000	4-5	.800	3	15	18	6.0	6	0	5	4	2	0	18	6.0
4	BELCHER, Alexis	1-0	18:59	19.0	3-3	1.000	0-0	.000	0-1	.000	0	2	2	2.0	2	0	2	1	0	3	6	6.0
11	MCCALLISTER, Sincere	1-0	14:12	14.2	2-5	.400	2-4	.500	0-2	.000	0	4	4	4.0	2	0	0	0	0	1	6	6.0
21	HAVENS, Tatum	3-0	32:19	10.8	4-10	.400	3-7	.429	1-2	.500	5	9	14	4.7	6	0	2	3	0	4	12	4.0
15	WEST, Eriel	3-0	54:15	18.1	3-13	.231	3-7	.429	2-2	1.000	1	5	6	2.0	4	0	3	6	0	1	11	3.7
22	ALT, Kayley	2-0	32:39	16.3	2-10	.200	0-5	.000	0-0	.000	2	1	3	1.5	2	0	3	2	0	0	4	2.0
0	HERMAN, Makenzy	3-0	40:50	13.6	2-3	.667	0-0	.000	0-0	.000	2	1	3	1.0	1	0	6	2	0	2	4	1.3
Team											4	9	13									
<b>Total</b>		<b>3</b>	<b>600</b>		<b>72-176</b>	<b>.409</b>	<b>26-65</b>	<b>.400</b>	<b>43-64</b>	<b>.672</b>	<b>37</b>	<b>89</b>	<b>126</b>	<b>42.0</b>	<b>57</b>	<b>1</b>	<b>42</b>	<b>45</b>	<b>3</b>	<b>29</b>	<b>213</b>	<b>71.0</b>
<b>Opponents</b>		<b>3</b>	<b>600</b>		<b>46-151</b>	<b>.305</b>	<b>13-60</b>	<b>.217</b>	<b>38-59</b>	<b>.644</b>	<b>26</b>	<b>75</b>	<b>101</b>	<b>33.7</b>	<b>57</b>	<b>2</b>	<b>28</b>	<b>60</b>	<b>7</b>	<b>24</b>	<b>143</b>	<b>47.7</b>

**Team Statistics**

	ECU	OPP
<b>Scoring</b>	<b>213</b>	<b>143</b>
Points per game	71.0	47.7
Scoring margin	+23.3	-
<b>Field goals-att</b>	<b>72-176</b>	<b>46-151</b>
Field goal pct	.409	.305
<b>3 point fg-att</b>	<b>26-65</b>	<b>13-60</b>
3-point FG pct	.400	.217
3-pt FG made per game	8.7	4.3
<b>Free throws-att</b>	<b>43-64</b>	<b>38-59</b>
Free throw pct	.672	.644
F-Throws made per game	14.3	12.7
<b>Rebounds</b>	<b>126</b>	<b>101</b>
Rebounds per game	42.0	33.7
Rebounding margin	+8.3	-
<b>Assists</b>	<b>42</b>	<b>28</b>
Assists per game	14.0	9.3
<b>Turnovers</b>	<b>45</b>	<b>60</b>
Turnovers per game	15.0	20.0
Turnover margin	+5.0	-
Assist/turnover ratio	0.9	0.5
<b>Steals</b>	<b>29</b>	<b>24</b>
Steals per game	9.7	8.0
<b>Blocks</b>	<b>3</b>	<b>7</b>
Blocks per game	1.0	2.3
<b>Winning streak</b>	<b>3</b>	<b>-</b>
Home win streak	1	-
<b>Attendance</b>	<b>257</b>	<b>500</b>
Home games-Avg/Game	1-257	1-500
Neutral site-Avg/Game	-	1-100

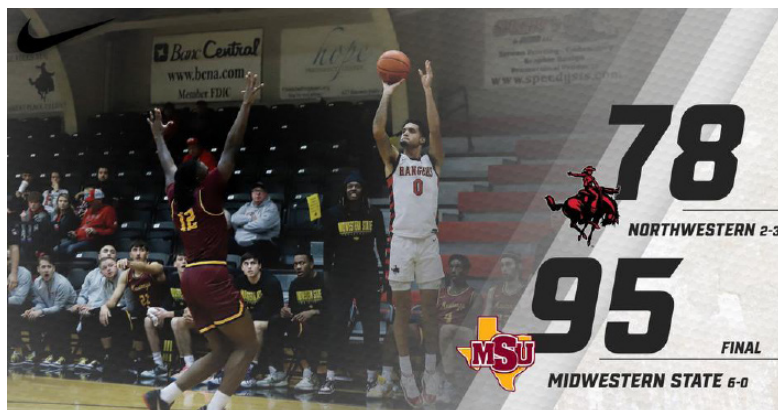
**Team Results**

Date	Opponent	Score	Att.
11/14/2023	Ecclesia	W 76-16	257
11/17/2023	at Newman	W 78-74	500
11/18/2023	vs Okla. Christian	W 59-53	100

**2023-24 RANGER SCHEDULE**

DATE	OPPONENT	TIME/RESULT
<b>November:</b>		
Nov. 10	Northeastern State	L, 73-52
Nov. 11	Central Oklahoma	L, 58-41
<b>Nov. 15</b>	<b>vs. Oklahoma Panhandle St.</b>	<b>W, 80-50</b>
<b>Nov. 18</b>	<b>vs. Oklahoma City</b>	<b>W, 78-62</b>
<b>Nov. 25</b>	<b>vs. Midwestern State</b>	<b>L, 95-78</b>
Nov. 30	at. East Central*	7:30 PM
<b>December:</b>		
<b>Dec. 2</b>	<b>vs. Oklahoma Baptist*</b>	<b>3:00 PM</b>
Dec. 9	at. Southern Nazarene*	3:00 PM
Dec. 14	at. Cameron University	7:00 PM
<b>Dec. 16</b>	<b>vs. Southeastern*</b>	<b>3:00 PM</b>
<b>January:</b>		
Jan. 4	at. Arkansas Monticello*	7:30 PM
Jan. 6	at. Southern Arkansas*	3:00 PM
<b>Jan. 11</b>	<b>vs. Ouachita Baptist*</b>	<b>7:30 PM</b>
<b>Jan. 13</b>	<b>vs. Henderson State*</b>	<b>3:00 PM</b>
Jan. 18	at. Arkansas Tech*	7:30 PM
Jan. 20	at. Harding*	3:00 PM
Jan. 25	at. Southwestern*	7:30 PM
<b>Jan 27</b>	<b>vs. East Central</b>	<b>3:00 PM</b>
<b>February</b>		
<b>Feb. 1</b>	<b>vs. Southern Arkansas</b>	<b>7:30 PM</b>
<b>Feb. 3</b>	<b>vs. Arkansas Monticello*</b>	<b>3:00 PM</b>
Feb. 8	at. Henderson State*	7:30 PM
Feb. 10	at. Ouachita Baptist*	3:00 PM
<b>Feb. 15</b>	<b>vs. Southwestern*</b>	<b>7:30 PM</b>
Feb. 17	at Oklahoma Baptist*	3:00 PM
<b>Feb. 22</b>	<b>vs. Harding*</b>	<b>7:30 PM</b>
<b>Feb. 24</b>	<b>vs. Arkansas Tech*</b>	<b>3:00 PM</b>
<b>Feb. 29</b>	<b>vs. Southern Nazarene*</b>	<b>7:30 PM</b>
<b>March:</b>		
Mar. 2	at. Southeastern	3:00 PM

Home games listed in BOLD  
Great American Conference game \*  
All times local



**Slow Start Cost Rangers in Loss to Midwestern State**

ALVA, OKLAHOMA - Northwestern Oklahoma State hosted Midwestern State Saturday afternoon for the final non-conference game before starting conference play. Midwestern used a fast start in this game taking a 13-2 lead in the early part before closing out a 95-78 victory over the Rangers after holding off the comeback try by Northwestern.

Northwestern drops to 2-3 on the season while Midwestern State improves to 6-0 on the season.

The Rangers were led in scoring by Brian Free after knocking down seven three pointers as one of two players in double figures joined by Camron McDowell with 14 points. Larry White led with six rebounds and Kennedy Milton with four assists.

After both teams started with a miss to open the game Midwestern State scored the first five points of the game following a layup and a three pointer before Kabeya Tshibangu finished a layup assisted by Larry White. Midwestern State took advantage of the foul line early on getting to the line three times while also knocking down two three pointers. The Mustang defense held the Rangers to 1-4 shooting to start the game as the visitors opened a 13-2 lead. McDowell drilled a three pointer for the Rangers to bring the deficit back under double digits at 13-5.

Following the first media timeout Chance Love hit his first foul shots of the game, however back to back layups by the Mustangs pushed their lead back to 18-7. Kennedy Milton had a layup off a pass by Shavaul Butters. The Mustangs continued to lead through the opening half taking their largest lead at 19 points at 30-11 following an Austin Lewis jumper at the 11:35 mark of the half. Northwestern went on a 7-0 run cutting the deficit back down to 12 trying to get closer to Midwestern State. DaRaun Clark hit back to back three pointers to help the Rangers close the gap to 31-19 at the 8:54 mark of the half. The Mustangs answered back with a 7-0 run of their own to push the lead back to 19 following four foul shots and a three pointer by Will Shepherd.

Midwestern State took a 20 point lead at the 4:45 mark following a hook shot in the pain assisted by Pierre Sanders. Chance Love finished a put back dunk in the final seconds of the first half as Northwestern trailed 50-33 at the halftime break.

LaStrap of Midwestern State opened the second half with a dunk before Northwestern started cutting into the deficit started by a Brian Free three pointer. Love followed with back to back layups assisted by Free as Northwestern was back within 13 at 58-45. Antwan Taylor stopped the run with a layup but back-to-back three pointers for Northwestern by Clark and Free kept the comeback try in gear at 64-51. Four straight points by Marquise Milton had the Rangers back within single digits at 66-57. The two teams traded three pointers as Justin Norris knocked down his second of the game as the Rangers trailed 69-60 halfway through the second half.

Three straight 3-pointers for the Rangers two from Brian Free and one from McDowell had the Rangers within five at 76-71 with eight minutes remaining in the game. Midwestern State answered back with a 12-0 run to push their lead back to 17 points at 88-71 with 1:50 left in the game. This run helped seal the Midwestern State win as the Mustangs won 95-78 over the Rangers.

Northwestern begins conference play on Thursday evening against East Central with a 7:30 PM tip-off following the Lady Rangers game. First home conference game will be December 2nd against Oklahoma Baptist.

For the latest news and updates on NWOSU Athletics, follow @NWOSUAthletics on TWITTER or visit [www.riderangersride.com](http://www.riderangersride.com).



# ROBBIE HARMAN



Northwestern Oklahoma State head coach Robbie Harman enters his second season as the men's basketball coach for the Rangers after being hired in May of 2022.

In his first season with the Rangers, Northwestern finished 11-15 overall with a 7-15 conference record. He coached the conference leading scorer in Malik Parsons averaged 24.8 points per game and broke the school record with 45 in a single game. Parsons is one of two players named to the all-conference team along with Brian Free. Parsons was first team all conference as Brian Free was awarded honorable mention.

Prior to being named head coach at Northwestern, Harman has spent the last five years at Davenport University as an assistant coach where he was the team's defensive coordinator, along with being in charge of recruiting, scouting opponents, academic assistance, team's social media, and alumni/ fan newsletter. Throughout those five seasons Harman and Davenport accomplished many accolades.

As a team Davenport led the GLIAC in steals per game along with turnovers forced per game, helping lead to a 10-win improvement from year one to year two at the Division II level. He helped lead the Panthers to two wins over nationally ranked No. 7 Ashland and No. 8 Ferris State. Davenport basketball won its first regular season GLIAC championship from any sport. It also secured

the program's first ever ranking inside the top-25 as the team went as high as eighth before finishing ranked 12th.

Before Harman was at Davenport University he spent a year at Oklahoma City University, two years as a graduate assistant at Central Michigan and one at University of Minnesota Crookston. In his time at Oklahoma City in 2016-2017 Harman helped lead the team to 13-1 start that season, the best in 10 years for the program. They achieved the first 20 win season for Oklahoma City since 2007-2008, was ranked for 18 consecutive weeks in the top 25 going as high as fifth. The team qualified for the NAIA National Tournament. He coached three all-conference players including the Player of the Year and Defensive Player of the year, along with two of his players going professional.

Harman was a two sport athlete in college before he went into coaching. At Central Michigan Harman played four years of baseball and basketball. On the court he was a part of two NCAA Division I MAC West Division Championships. He reached the 1,000 point mark and led the NCAA in three-pointers made per game in 2010 with 3.5 per game. He achieved second team all MAC honors in 2010.

After graduating from Central Michigan the Traverse City native played professional basketball in the Netherlands earning all-league honors that year. Harman graduated from Central Michigan with a Bachelor's degree in Sports Management and a Master's degree in Sports Administration.

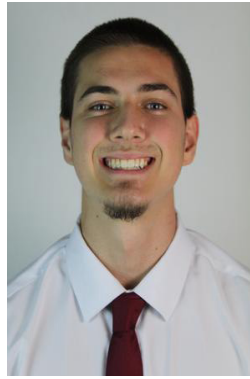
**Record at Northwestern: 13-18 (11/29/23)**



**#0 • DaRaun Clark**  
6-6 | 185 | G | R-JR.  
San Antonio, Texas



**#1 • Kennedy Milton**  
6-3 | 180 | G | Sr.  
Garland, Texas



**#2 • Justin Norris**  
6-7 | 195 | G/F | R-Fr.  
Houston, Texas



**#3 • Camron McDowell**  
6-6 | 195 | G | R-So.  
Powder Springs, Georgia



**#4 • Brian Free**  
5-8 | 160 | G | GS.  
Greensboro, NC



**#5 • Larry White**  
6-5 | 215 | F | R-Jr.  
Topeka, Kansas



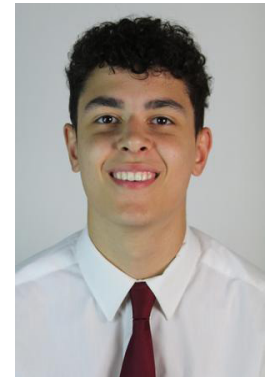
**#10 • Jabiri Smith**  
6-6 | 200 | G | Jr.  
Duluth, Georgia



**#11 • Jackson Feely**  
6-6 | G/F | R-FR.  
Alva, Oklahoma



**#12 • Marquise Milton**  
5-10 | 165 | G | Sr.  
Racine, Wisconsin



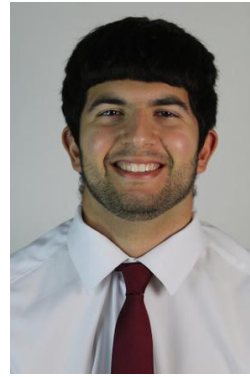
**#13 • Kyler Penco**  
6-5 | 175 | G | FR.  
Alva, Oklahoma



**#15 • Shavaul Butters**  
6-8 | 215 | F | R-So.  
Freeport, Bahamas



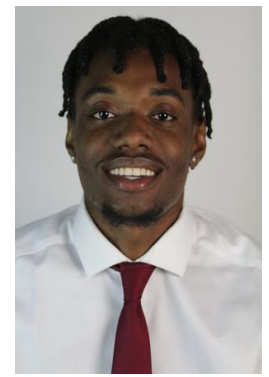
**#21 • Skyler Kimberlin**  
6-9 | 190 | C | R-FR.  
Mountain View, Oklahoma



**#22 • Thomas Prado**  
5-11 | 190 | G | R-Sr.  
Cedar Creek, Texas



**#23 • Kabeya Tshibangu**  
6-9 | 190 | F | R-So.  
Justin, Texas



**#24 • Chance Love**  
6-5 | 185 | F | Sr.  
Matteson Illinois



**#25 • Joshua Lordge**  
6-1 | 170 | G | So.  
Fairburn, Georgia



**#30 • Amer Rizvanoglu**  
6-6 | 205 | F | Fr.  
Istanbul, Turkey



**#32 • Jake LaSpisa**  
6-2 | 185 | G | R-FR.  
Dewey, Oklahoma



**#33 • Deatrick Pashell**  
6-10 | 220 | C | Sr.  
Orlando Florida



# NORTHWESTERN OKLAHOMA STATE RANGERS

No.	Name	Pos.	Ht.	Yr.	Hometown	Previous School
0	DaRaun Clark	G	6-6	185	R-Jr. San Antonio, Texas	Mid-American Christian
1	Kennedy Milton	G	6-3	185	Sr. Garland, Texas	Southeastern CC
2	Justin Norris	G	6-7	195	R-Fr. Houston, Texas	McNeese State
3	Camron McDowell	G	6-6	195	R-So. Powder Springs, Georgia	Georgia
4	Brian Free	G	5-8	160	Gr. Greensboro, North Carolina	Young Harris College
5	Larry White	F	6-6	210	R-Sr. Topeka, Kansas	Coffeyville CC
10	Jabiri Smith	G	6-6	200	Jr. Duluth, Georgia	Alabama A&M
11	Jackson Feely	G	6-6	175	R-Fr. Alva, Oklahoma	Alva High School
12	Marquise Milton	G	5-10	165	Sr. Racine, Wisconsin	Highland CC
13	Kyler Penco	G	6-5	175	Fr. Alva, Oklahoma	Alva High School
15	Shavaul Butters	F	6-8	215	R-So. Freeport, Bahamas	Elevation Prep
21	Skyler Kimberlin	F	6-9	190	R-Fr. Mountain View, Oklahoma	Mountain View Gotebo
22	Thomas Prado	G	5-11	190	R-Sr. Cedar Creek, Texas	Cedar Creek HS
23	Kabeya Tshibangu	F	6-9	190	R-So. Justin, Texas	Emporia State
24	Chance Love	F	6-6	185	Sr. Matteson, Illinois	South Suburban College
25	Joshua Lordge	G	6-1	170	So. Fairburn, Georgia	Missouri Valley
30	Amer Rizvanoglu	F	6-6	205	Fr. Istanbul, Turkey	Universal School
32	Jake LaSpisa	G	6-2	185	R-Fr. Dewey, Oklahoma	Dewey High School
33	Deatrick Pashell	F	6-10	220	Sr. Orlando, Florida	Vincennes CC

**Head Coach: Robbie Harman**

**Assistant Coach: Cody Henson**

**Assistant Coach: Chris Sanford**

TM

# EAST CENTRAL TIGERS

No.	Name	Ht.	WT	Yr.	Hometown	Previous School
0	Najee Williams	6-4	190	Jr.	Kansas City, MO	Metropolitan CC
2	Mark Rucha	6-1	165	Fr.	Fort Worth, TX	Richland HS
3	Malik Nash	5-11	165	Jr.	Houston, TX	Coastal Bend
4	Mason Jones	6-5	200	So.	Fort Worth, TX	Keller Central HS
5	Godsgift Ezedinma	6-6	200	Jr.	Enugu, Nigeria	Incarnate Word
10	Jaden Miller	6-1	155	Fr.	Pearland, TX	Glenda Dawson HS
11	Mohamed Elgohary	6-7	220	Sr.	Giza, Egypt	Life University
12	Ryan Kelly	6-0	180	Jr.	Snyder, OK	NOC Enid
14	Cade Roady	6-3	200	So.	Frederick, OK	Frederick HS
15	Robel Desta	6-8	190	Jr.	Houston, TX	Western Colorado
22	Nikk Williams	6-7	188	Fr.	Dallas, TX	Plano Senior HS
24	Keyon Thomas	5-11	165	Sr.	Kansas City, KS	Butler CC
25	Bishop Jones	6-6	219	Fr.	Frisco, TX	TACA Storm
30	Cooper Pillion	6-6	188	Fr.	Amarillo, TX	Amarillo HS
32	Bryce Woolridge	6-3	200	Jr.	Flower Mound, TX	Webster University

**Head Coach: Daniel Wheeler**

**Assistant Coach: Zack Price**

**Assistant Coach: Bryan Yngeberg**

**Assistant Coach: Juan Hood**

# SCOUTING THE TEAMS



## 2023-24 Northwestern Okla. Men's Basketball Combined Team Statistics All games

Page 1/1  
as of Nov 29, 2023

### Game Records

Record	Overall	Home	Away	Neutral
ALL GAMES	2-3	2-1	0-1	0-1
CONFERENCE	0-0	0-0	0-0	0-0
NON-CONFERENCE	2-3	2-1	0-1	0-1

### Score by Periods

Team	1st	2nd	OT	TOT
Northwestern Okla.	159	170	0	329
Opponents	159	179	0	338

### Team Box Score

No.	Player	Total					3-Point		F-Throw		Rebounds				Other							
		GP-GS	MIN	AVG	FG-FGA	FG%	3FG-3FGA	3FG%	FT-FTA	FT%	OFF	DEF	TOT	AVG	PF	DQ	A	TO	BLK	STL	PTS	AVG
4	FREE, Brian	5-5	143:12	28.6	23-59	.390	16-39	.410	6-7	.857	3	8	11	2.2	11	0	11	7	1	1	68	13.6
3	MCDOWELL, Cam	5-4	135:20	27.1	21-41	.512	4-13	.308	7-16	.438	10	14	24	4.8	9	0	16	12	2	5	53	10.6
5	WHITE, Larry	5-5	97:41	19.5	17-46	.370	0-4	.000	6-13	.462	15	22	37	7.4	12	0	5	6	4	9	40	8.0
24	LOVE, Chance	5-0	95:08	19.0	14-23	.609	2-2	1.000	8-10	.800	4	14	18	3.6	4	0	3	5	1	3	38	7.6
2	NORRIS, Justin	5-3	74:11	14.8	9-22	.409	6-16	.375	5-6	.833	1	7	8	1.6	9	0	6	1	0	2	29	5.8
0	CLARK, DaRaun	5-2	124:05	24.8	8-35	.229	5-17	.294	5-10	.500	3	9	12	2.4	8	0	4	6	2	2	26	5.2
23	TSHIBANGU, Kabeya	5-5	93:03	18.6	12-21	.571	0-0	.000	2-4	.500	4	7	11	2.2	14	0	2	4	2	1	26	5.2
12	MILTON, Marquise	5-1	50:33	10.1	9-21	.429	1-5	.200	0-0	.000	0	6	6	1.2	3	0	2	0	0	3	19	3.8
1	MILTON, Kennedy	3-0	36:16	12.1	4-11	.364	0-2	.000	0-1	.000	0	1	1	0.3	8	0	5	5	0	2	8	2.7
10	SMITH, Jabiri	5-0	69:42	13.9	3-19	.158	1-13	.077	1-2	.500	1	2	3	0.6	4	0	1	1	2	1	8	1.6
21	KIMBERLIN, Skyler	2-0	05:08	2.6	1-1	1.000	1-1	1.000	0-0	.000	0	2	2	1.0	0	0	0	1	0	0	3	1.5
33	PASHELL, Deatrick	5-0	25:37	5.1	3-9	.333	0-0	.000	0-0	.000	2	3	5	1.0	4	0	2	1	2	1	6	1.2
15	BUTTERS, Shavaul	5-0	36:58	7.4	1-3	.333	0-2	.000	3-4	.750	3	10	13	2.6	6	0	1	0	2	0	5	1.0
14	LASPISA, Jake	1-0	01:16	1.3	0-0	.000	0-0	.000	0-0	.000	0	0	0	0.0	0	0	0	0	0	0	0	0.0
22	PRADO, Thomas	3-0	06:33	2.2	0-1	.000	0-0	.000	0-0	.000	0	1	1	0.3	1	0	0	3	0	0	0	0.0
11	FEELY, Jackson	2-0	05:17	2.6	0-0	.000	0-0	.000	0-0	.000	0	0	0	0.0	0	0	1	0	0	0	0	0.0
Team											12	12	24				3					
<b>Total</b>		<b>5</b>	<b>1000</b>		<b>125-312</b>	<b>.401</b>	<b>36-114</b>	<b>.316</b>	<b>43-73</b>	<b>.589</b>	<b>58</b>	<b>118</b>	<b>176</b>	<b>35.2</b>	<b>93</b>	<b>0</b>	<b>59</b>	<b>55</b>	<b>18</b>	<b>30</b>	<b>329</b>	<b>65.8</b>
<b>Opponents</b>		<b>5</b>	<b>1000</b>		<b>113-270</b>	<b>.419</b>	<b>30-101</b>	<b>.297</b>	<b>82-108</b>	<b>.759</b>	<b>56</b>	<b>147</b>	<b>203</b>	<b>40.6</b>	<b>71</b>	<b>1</b>	<b>61</b>	<b>68</b>	<b>25</b>	<b>22</b>	<b>338</b>	<b>67.6</b>

### Team Statistics

	NW	OPP
<b>Scoring</b>	<b>329</b>	<b>338</b>
Points per game	65.8	67.6
Scoring margin	-1.8	-
<b>Field goals-att</b>	<b>125-312</b>	<b>113-270</b>
Field goal pct	.401	.419
<b>3 point fg-att</b>	<b>36-114</b>	<b>30-101</b>
3-point FG pct	.316	.297
3-pt FG made per game	7.2	6.0
<b>Free throws-att</b>	<b>43-73</b>	<b>82-108</b>
Free throw pct	.589	.759
F-Throws made per game	8.6	16.4
<b>Rebounds</b>	<b>176</b>	<b>203</b>
Rebounds per game	35.2	40.6
Rebounding margin	-5.4	-
<b>Assists</b>	<b>59</b>	<b>61</b>
Assists per game	11.8	12.2
<b>Turnovers</b>	<b>55</b>	<b>68</b>
Turnovers per game	11.0	13.6
Turnover margin	+2.6	-
Assist/turnover ratio	1.1	0.9
<b>Steals</b>	<b>30</b>	<b>22</b>
Steals per game	6.0	4.4
<b>Blocks</b>	<b>18</b>	<b>25</b>
Blocks per game	3.6	5.0
<b>Winning streak</b>	<b>0</b>	<b>-</b>
Home win streak	0	-
<b>Attendance</b>	<b>1000</b>	<b>1132</b>
Home games-Avg/Game	3-333	1-1132
Neutral site-Avg/Game	-	1-342

### Team Results

Date	Opponent		Score	Att.
11/10/2023	at Northeastern St.	L	52-73	1132
11/11/2023	vs Central Okla.	L	41-58	342
11/15/2023	Okla. Panhandle	W	80-50	473
11/18/2023	Oklahoma City	W	78-62	326
11/25/2023	Midwestern St.	L	78-95	201



**2023-24 East Central Men's Basketball  
Combined Team Statistics  
All games**

**Game Records**

Record	Overall	Home	Away	Neutral
ALL GAMES	3-2	2-0	0-1	1-1
CONFERENCE	0-0	0-0	0-0	0-0
NON-CONFERENCE	3-2	2-0	0-1	1-1

**Score by Periods**

Team	1st	2nd	OT	TOT
East Central	157	206	0	363
Opponents	160	175	0	335

**Team Box Score**

No.	Player				Total		3-Point		F-Throw		Rebounds											
		GP-GS	MIN	AVG	FG-FGA	FG%	3FG-3FGA	3FG%	FT-FTA	FT%	OFF	DEF	TOT	AVG	PF	DQ	A	TO	BLK	STL	PTS	AVG
32	WOOLRIDGE, Bryce	5-5	147:16	29.5	19-37	.514	8-15	.533	13-15	.867	12	10	22	4.4	9	0	5	9	0	5	59	11.8
24	THOMAS, Keyon	5-5	164:35	32.9	20-49	.408	3-14	.214	12-15	.800	1	8	9	1.8	8	0	12	15	1	6	55	11.0
5	EZEDINMA, Godsgift	5-5	146:36	29.3	18-50	.360	9-26	.346	7-9	.778	6	27	33	6.6	10	0	4	9	3	8	52	10.4
22	WILLIAMS, Nikk	5-0	87:33	17.5	19-42	.452	4-13	.308	6-7	.857	12	14	26	5.2	8	0	4	0	1	2	48	9.6
11	ELGOHARY, Mohamed	5-5	102:48	20.6	14-34	.412	3-11	.273	9-14	.643	7	22	29	5.8	13	0	7	15	6	3	40	8.0
10	MILLER, Jaden	5-0	91:52	18.4	10-17	.588	4-6	.667	10-12	.833	2	4	6	1.2	6	0	6	7	0	4	34	6.8
4	JONES, Mason	5-5	121:08	24.2	9-20	.450	2-8	.250	5-9	.556	6	14	20	4.0	12	0	4	9	0	2	25	5.0
15	DESTA, Robel	5-0	52:41	10.5	6-17	.353	5-13	.385	7-8	.875	2	14	16	3.2	8	0	1	3	0	3	24	4.8
3	NASH, Malik	4-0	58:02	14.5	9-15	.600	0-0	.000	0-0	.000	0	5	5	1.3	4	0	9	4	0	2	18	4.5
12	KELLY, Ryan	2-0	18:30	9.3	2-5	.400	2-4	.500	2-2	1.000	0	1	1	0.5	2	0	0	0	0	1	8	4.0
14	ROADY, Cade	1-0	08:58	9.0	0-2	.000	0-1	.000	0-0	.000	0	1	1	1.0	2	0	0	0	0	0	0	0.0
Team											3	6	9				4					
<b>Total</b>		<b>5</b>	<b>1000</b>		<b>126-288</b>	<b>.438</b>	<b>40-111</b>	<b>.360</b>	<b>71-91</b>	<b>.780</b>	<b>51</b>	<b>126</b>	<b>177</b>	<b>35.4</b>	<b>82</b>	<b>0</b>	<b>52</b>	<b>75</b>	<b>11</b>	<b>36</b>	<b>363</b>	<b>72.6</b>
<b>Opponents</b>		<b>5</b>	<b>1000</b>		<b>123-280</b>	<b>.439</b>	<b>38-106</b>	<b>.358</b>	<b>51-88</b>	<b>.580</b>	<b>43</b>	<b>120</b>	<b>163</b>	<b>32.6</b>	<b>79</b>	<b>1</b>	<b>64</b>	<b>73</b>	<b>9</b>	<b>37</b>	<b>335</b>	<b>67.0</b>

**Team Statistics**

	ECU	OPP
<b>Scoring</b>	<b>363</b>	<b>335</b>
Points per game	72.6	67.0
Scoring margin	+5.6	-
<b>Field goals-att</b>	<b>126-288</b>	<b>123-280</b>
Field goal pct	.438	.439
<b>3 point fg-att</b>	<b>40-111</b>	<b>38-106</b>
3-point FG pct	.360	.358
3-pt FG made per game	8.0	7.6
<b>Free throws-att</b>	<b>71-91</b>	<b>51-88</b>
Free throw pct	.780	.580
F-Throws made per game	14.2	10.2
<b>Rebounds</b>	<b>177</b>	<b>163</b>
Rebounds per game	35.4	32.6
Rebounding margin	+2.8	-
<b>Assists</b>	<b>52</b>	<b>64</b>
Assists per game	10.4	12.8
<b>Turnovers</b>	<b>75</b>	<b>73</b>
Turnovers per game	15.0	14.6
Turnover margin	-0.4	-
Assist/turnover ratio	0.7	0.9
<b>Steals</b>	<b>36</b>	<b>37</b>
Steals per game	7.2	7.4
<b>Blocks</b>	<b>11</b>	<b>9</b>
Blocks per game	2.2	1.8
<b>Winning streak</b>	<b>0</b>	<b>-</b>
Home win streak	2	-
<b>Attendance</b>	<b>389</b>	<b>315</b>
Home games-Avg/Game	2-195	1-315
Neutral site-Avg/Game	-	2-67

**Team Results**

Date	Opponent		Score	Att.
11/10/2023	vs Minn.-Crookston	L	56-62	77
11/11/2023	vs Minn. Duluth	W	62-58	57
11/16/2023	Okla. Christian	W	70-61	253
11/18/2023	Kansas Christian	W	100-50	136
11/22/2023	at DBU	L	75-104	315

# NORTHWESTERN

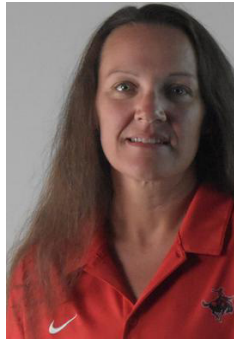
## RANGERS



Brad Franz  
Director of Athletics



Tim Lauderdale  
Associate AD for  
Internal Operations



Jeremy Jones  
Assistant AD for Compli-  
ance / Student Services



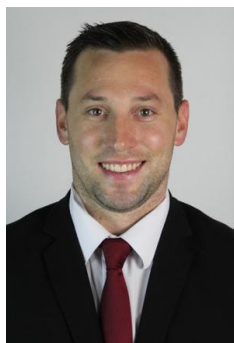
Andrew Santangelo  
Assistant AD for  
Athletic Communications



Tasha Diesselhorst  
Head Women's  
Basketball Coach



Kinsey Neiderer  
Assistant Women's  
Basketball Coach



Robbie Harman  
Head Men's  
Basketball Coach



Cody Henson  
Associate Head  
Basketball Coach



Keith Wear  
Head  
Athletic Trainer



Michael Trauba  
Athletic Trainer



Brett Purnell  
Athletic Trainer





OPEN 24 hours      EBT Accepted  
**Shepherd's Travel Center**

We offer 100% Unleaded Gas and E10 Unleaded Gas  
4 Diesel Lanes with DEF at the Pump, Farm Fuel available  
High speed Diesel pumps, Truck Parking and accessories  
All at very competitive prices and friendly service !!!

We take most major credit cards and fleet cards

Open Daily 6 a.m. to 9 p.m

Try our fresh breakfast, lunch or dinner



1512 E. Oklahoma Blvd. Alva, Oklahoma



orthopedic associates



**Pizza Hut**

SERVING ALVA SINCE 1966



**Larry G. Smith, D.D.S., Inc.**  
(580) 327-4522  
www.alvadentist.com

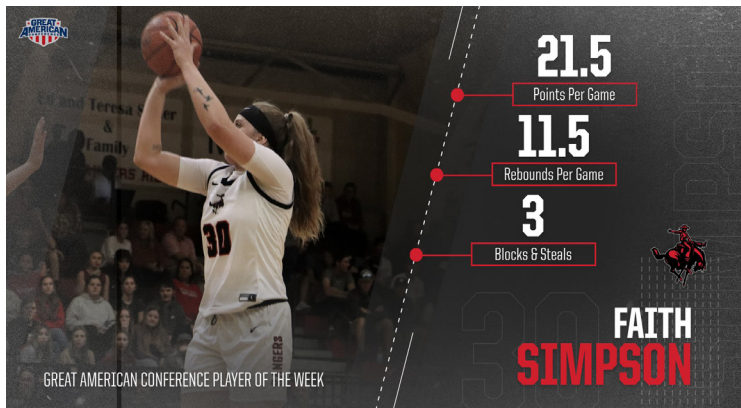


MAPLES, NIX & DIESSELHORST  
Standing with You.  
www.oklahomainjurylaw.com

**MIKE & RHONDA COOK**  
PROUD SUPPORTERS OF  
RANGER ATHLETICS



**SMITH DRUG STORE**  
121 S. Grand - Cherokee, OK 73728  
(580) 596-2764 • (580) 596-2411  
Fax (580) 596-2471



### Faith Simpson Wins GAC Player of the Week

ALVA, OKLAHOMA - Northwestern Oklahoma State Women's Basketball team closed out their trip to Hawaii with a 2-0 record with two wins over Chaminade and Stanislaus State.

Faith Simpson earned conference player of the week after helping lead the Rangers to the two wins. Simpson finished the week averaging a double-double. Simpson is the first Lady Ranger to earned conference player of the week award this season.

The Northwestern forward finished the week with a total of 43 points on the week for an average of 21.5 per game, while adding 23 rebounds on the week for 11.5 per game. She finished the week shooting 57.5 percent from the field. She got it done on the defensive end as well after finishing with three blocks and three steals between the two games.

In the win over Chaminade she finished with 20 points and nine rebounds while shooting 81.8 percent from the field. She finished with her current season high of 23 points and 14 rebounds for her second double-double of the season in the second half comeback win over Stanislaus State.

Northwestern Oklahoma State is in action Thursday evening for the conference opener against East Central University with a 5:30 PM tip-off with the first conference home game Saturday afternoon at 1:00 PM.

For the latest news and updates on NWOSU Athletics, follow @NWOSUAthletics on TWITTER or visit [www.riderangerside.com](http://www.riderangerside.com).



### Northwestern Announces Hall of Fame Class of 2024

ALVA, Okla. - The 2024 Hall of Fame inductee class is composed of four Ranger legends. Shane Hansen (Basketball), Cody Hooper (Baseball / Softball), Steve Barrows (Women's Soccer) and Steve Byford (Football).

These four will be inducted into the Ranger Hall of Fame with ceremonies on Saturday, Jan. 27, 2024. The 32nd Hall of Fame class will be honored at a luncheon in the Student Center Ballroom at 11:30 a.m., and formally inducted during halftime of the men's basketball game against East Central University later that afternoon in Percefull Fieldhouse at 3 p.m.

"We are really excited once again about this year's class of inductees. They show the tremendous success of past Rangers with high honors and success. We look forward to inducting them into Northwestern's Hall of Fame in January," stated Brad Franz Director of Athletics.

The luncheon is open to the public, but reservations are required by January 22nd. Tickets are \$20 per person. If you have questions or would like to make reservations, please feel free to contact us at 580-327-8593, by email at [nwalumni@nwsu.edu](mailto:nwalumni@nwsu.edu) or you may contact Andrew Santangelo in Athletic Communications at 580-327-8639 or [ajsantangelo@nwsu.edu](mailto:ajsantangelo@nwsu.edu). Past inductees will be recognized during halftime of the women's game. The women's game will tip off at 1 p.m., and the men's game is scheduled for 3 p.m.

For the latest news and updates on NWOSU Athletics, follow @NWOSUAthletics on TWITTER or visit [www.riderangerside.com](http://www.riderangerside.com).

# GREAT AMERICAN CONFERENCE



University of Arkansas at Monticello  
Monticello, Arkansas



Arkansas Tech University  
Russellville, Arkansas



East Central University  
Ada, Oklahoma



Harding University  
Searcy, Arkansas



Henderson State University  
Arkadelphia, Arkansas



Northwestern Oklahoma State University  
Alva, Oklahoma



Oklahoma Baptist University  
Shawnee, Oklahoma



Ouachita Baptist University  
Arkadelphia, Arkansas



Southeastern Oklahoma State University  
Durant, Oklahoma



Southern Arkansas University  
Magnolia, Arkansas



Southern Nazarene University  
Bethany, Oklahoma



Southwestern Oklahoma State University  
Weatherford, Oklahoma

The GREAT AMERICAN CONFERENCE - the NCAA's 23rd Division II league enters its 12th year of supporting and promoting intercollegiate athletics. During the 2021-22 academic year, the league produced its third individual national champion, two national players of the year and its highest NFL Draft selection. In the classroom, the GAC's student-athletes set records for Academic All-GAC, Elite Scholar and Distinguished Scholar Athlete honorees.

[www.greatamericanconference.com](http://www.greatamericanconference.com)