

2015

# NORTHWESTERN VOLLEYBALL

@NUVBALL



#BIGCATS

## NORTHWESTERN SCHEDULE

### 2015 SCHEDULE/RESULTS (14-16, 6-13 Big Ten)

Date	Day	Opponent	Time/Result
<b>AUGUST</b>			
<i>Rambler Challenge (Chicago, Ill.)</i>			
28	Fri.	vs. Wake Forest.....	W, 3-0
		vs. New Hampshire.....	W, 3-0
29	Sat.	at Loyola-Chicago.....	W, 3-0

### SEPTEMBER

<i>Boise State Tournament (Boise, Idaho)</i>			
4	Fri.	vs. Idaho State.....	L, 3-0
		vs. Texas A&M-Corpus Christi.....	W, 3-1
5	Sat.	at Boise State.....	L, 3-0

<i>Holiday Inn University Plaza Invitational (Bowling Green, Ky.)</i>			
11	Fri.	vs. Furman.....	W, 3-0
		at Western Kentucky.....	L, 3-0
12	Sat.	vs. Missouri State.....	W, 3-2

<i>Wildcat Challenge (Evanston, Ill.)</i>			
18	Fri.	Lipscomb.....	W, 3-1
20	Sun.	Milwaukee.....	W, 3-0
25	Fri.	at Rutgers *.....	W, 3-0
26	Sat.	at Maryland *.....	W, 3-0
30	Wed.	at #16 Minnesota *.....	L, 3-0

### OCTOBER

4	Sun.	at #19 Wisconsin *.....	L, 3-0
9	Fri.	#9 Ohio State *.....	L, 3-0
10	Sat.	#3 Penn State *.....	W, 3-2
16	Fri.	#3 Nebraska *.....	L, 3-0
18	Sun.	Iowa *.....	W, 3-1
23	Fri.	at #19 Purdue *.....	L, 3-0
24	Sat.	at Indiana *.....	L, 3-0
30	Fri.	#25 Michigan *.....	L, 3-0
31	Sat.	Michigan State *.....	W, 3-1

### NOVEMBER

4	Wed.	#18 Illinois *.....	L, 3-2
7	Sat.	at #18 Illinois *.....	L, 3-1
11	Wed.	#4 Minnesota *.....	L, 3-1
15	Sun.	#17 Purdue *.....	L, 3-1
18	Wed.	at Michigan State *.....	L, 3-1
21	Sat.	at Iowa *.....	W, 3-0
25	Wed.	at #7 Penn State *.....	L, 3-0
28	Sat.	Maryland *.....	2 p.m.



\* Big Ten Conference match • Home matches **BOLD**

## UPCOMING EVENTS





Northwestern vs. Maryland  
Nov. 28 • 2 p.m.  
Welsh-Ryan Arena • Evanston, Ill.  
TV: Studio N Live  
Last Result: Sept. 26, 2015 (NU, 3-0)  
Last MD Win: Nov. 29, 2014 (3-2)

## TALE OF THE TAPE

		
	Northwestern	Maryland
<b>Statistical Category</b>		
Hitting percentage	(.213)	(.195)
Opponent hitting percentage	(.221)	(.250)
Kills per set	13.3	12.9
Assists per set	12.4	12.3
Blocks per set	2.1	2.4
Service aces per set	1.1	1.0
Digs per set	14.3	14.1

## INDIVIDUAL LEADERS

		
	Northwestern	Maryland
<b>Statistical Category</b>		
Hitting percentage	Maddie Slater (.342)	Adreene Elliott (.228)
Kills per set	Symone Abbott (3.60)	Adreene Elliott (3.52)
Assists per set	Taylor Tashima (10.83)	Whitney Craigo (8.91)
Blocks per set	Gabrielle Hazen (1.08)	Ashlyn MacGregor (0.95)
Service aces per set	Abbie Kraus (0.30)	Adrienne Elliott (0.29)
Digs per set	Caroline Niedojsial (4.65)	Amy Dion (3.26)

### Nation's Most Tested

Northwestern has the toughest schedule in the nation based off of opponents' won-loss record. The Wildcats opponents, past and future, in 2015 have compiled a cumulative winning percentage of .656. Oklahoma is next closest, having played a schedule with a combined winning percentage of .653. Northwestern's non-conference and Big Ten slate so far is rated the second-hardest in the country.

### Serve's Up

Abbie Kraus tallied at least one service ace in six straight matches from Sept. 12 to Sept. 30. Her season high is four, which she has reached twice - most recently vs. Purdue on Nov. 15. She also served three in a win over Iowa on Oct. 18. Kraus has served an ace in 17 matches this year and has a total of 30 on the season. She is fourth in the Big Ten in aces and aces per set.

### Athletic Communications

Volleyball Contact: Carsten Parmenter

Office Phone: (847) 467-3724

Office Fax: (847) 491-8818

Cell Phone: (319) 330-3296

E-mail: cparmenter@northwestern.edu

## 2015 QUICK FACTS

### NORTHWESTERN UNIVERSITY

<b>Location</b> .....	Evanston, Ill.
<b>Founded</b> .....	1851
<b>Enrollment</b> .....	8,385
<b>President</b> .....	Morton O. Schapiro
<b>V.P. Athletics and Recreation</b> .....	Jim Phillips
<b>Senior Woman Administrator</b> .....	Janna Blais
<b>Nickname</b> .....	Wildcats
<b>Colors</b> .....	Purple and White
<b>Conference</b> .....	Big Ten
<b>Facility</b> .....	Welsh-Ryan Arena (8,117)

### WOMEN'S VOLLEYBALL FACTS

<b>Head Coach</b> .....	Keylor Chan
<b>Alma Mater</b> .....	Florida, 1995
<b>Record at NU</b> .....	236-260 (16 <sup>th</sup> season)
<b>Career Record</b> .....	254-275 (17 <sup>th</sup> season)
<b>Associate Head Coach</b> .....	Kirstine Jensen
<b>Alma Mater</b> .....	Ohio State, 1996
<b>Assistant Coach</b> .....	Joe Julkowski
<b>Alma Mater</b> .....	Lakeland College, 2009
<b>2014 Overall Record</b> .....	16-15 (.516)
<b>2014 Big Ten Record/Finish</b> .....	6-14 (.300)/10 <sup>th</sup>
<b>Letterwinners Returning/Lost</b> .....	12/4
<b>Starters Returning/Lost</b> .....	4 + Libero/2
<b>First Season of Competition</b> .....	1976
<b>Overall Program Record</b> .....	670-662-5 (.503)

### PRONUNCIATION GUIDE

Rachael Fara: FAIR-uh
Katie Kniep: Kuh-NEEP
Kayla Morin: more-EEN
Caroline Niedospial: care-oh-LINE NEED-us-paul
Caleigh Ryan: KAY-lee
Rafae Strobos: RAH-fee
Keylor Chan: KEE-lur



### 2015 BIG TEN STANDINGS as of Nov. 27

School	Conference		Overall	
	W-L	Pct.	W-L	Pct.
Minnesota	17-2	.895	25-4	.862
Nebraska	16-3	.842	25-4	.862
Penn State	15-4	.789	26-4	.867
Wisconsin	15-4	.789	23-6	.793
Purdue	13-6	.684	22-8	.733
Ohio State	11-8	.579	22-9	.710
Illinois	10-9	.526	19-11	.633
Michigan State	9-10	.474	17-13	.567
Michigan	8-11	.421	18-12	.600
Indiana	6-13	.316	16-15	.516
Northwestern	6-13	.316	14-16	.467
Maryland	4-15	.211	14-19	.424
Iowa	2-17	.105	12-20	.375
Rutgers	1-18	.053	4-27	.129

## 2015 WILDCAT ROSTER

No.	Name	Pos.	Ht.	Cl.	Hometown/High School/Last
1	Taylor Tashima	S	6-0	So.	Wilmette, Ill./New Trier
2	Symone Abbott	OH	6-1	So.	Northville, Mich./Northville
3	Abby Hofmeister	DS	5-4	R-So.	Columbus, Ohio/Bishop Watterson
4	Rachael Fara	MB	6-3	Fr.	Naperville, Ill./Benet Academy
5	Caroline Niedospial	DS/L	5-7	R-Sr.	Chicago, Ill./Marist
6	Caleigh Ryan	S	5-10	Jr.	Glen Ellyn, Ill./Glenbard West
7	Katie Kniep	DS/L	5-7	R-Fr.	Roscoe, Ill./Hononegah
8	Gabrielle Hazen	MB	6-3	So.	Columbia City, Ind./Columbia City
10	Rafae Strobos	OH	6-0	Jr.	New Braunfels, Texas/Canyon
11	Maddie Slater	MB	6-3	Jr.	The Woodlands, Texas/The Woodlands
12	Cassidy Nussman	OH	6-4	Fr.	Pearland, Texas/Pearland
13	Abbie Kraus	DS	5-4	Sr.	Birmingham, Ala./Vestavia Hills
14	Ashley Bush	OH	5-11	Fr.	Union, Ky./Ryle
15	Kayla Morin	RS/OH	6-2	Jr.	Portage, Mich./Portage Northern
16	Sofia Lavin	OH	6-2	Jr.	Aliso Viejo, Calif./Santa Margarita
17	Kaitlin Tavarez	DS/L	5-6	Fr.	Menlo Park, Calif./Menlo-Atherton

**Head Coach:** Keylor Chan (16<sup>th</sup> season at NU), Florida, 1995

**Associate Head Coach:** Kirstine Jensen (Seventh season), Ohio State, 1997

**Assistant Coach:** Joe Julkowski (Second Season), Lakeland College, 2009

**Volunteer Assistant Coach:** Jay Petty (First Season), Lewis, 2011

**Director of Operations:** Cori Cooper (Second season), Lake Forest College, 2013

### Three and Done

19 of Northwestern's matches have gone only three sets in 2015. Northwestern has won six of the matches to go longer than three sets, including four-setters over Texas A&M-Corpus Christi, Lipscomb, Iowa and Michigan State and a five-set comeback win over Missouri State. The Wildcats also upset No. 3 Penn State on Oct. 10 in five thrilling sets at Welsh-Ryan Arena.

### Double-Trouble

Northwestern sophomore setter Taylor Tashima has recorded eight double-doubles in the 2015 season. Each time she has reached double digits in assists and digs. She notched three in a row at the Holiday Inn University Plaza Invitational from Sept. 11-12 and tallied two more in a row in matches at Maryland (9/26) and Minnesota (9/30). Tashima produced another to help lead Northwestern over No. 3 Penn State. She also had 48 assists and 12 digs against Illinois on Nov. 4 and 53 assists and a season-high 16 digs vs. then-No. 4 Minnesota on Nov. 11. Outside hitter Kayla Morin picked up her third of the season in that match as well with 16 kills and 13 digs. Symone Abbott also tallied a double-double in the second match of the season vs. New Hampshire with 10 kills and 10 digs.

### Block Party

Northwestern matched its season high with 14 blocks against Michigan State on Oct. 31. The Wildcats did it previously on Oct. 18 against Iowa, crushing the previous total of 10.5. Saturday's total included nine solo blocks, five of which came from sophomore middle blocker Gabrielle Hazen. Six players recorded at least one block with four registering solo blocks.

### Defensive Dominance

Sophomore Gabrielle Hazen has been a defensive force for Northwestern all year, racking up team highs in solo blocks (20), assisted blocks (73) and total blocks (93) so far in 2015. Her strong play culminated in a career-high eight block night in a win over Michigan State on Oct. 31. Hazen tallied five solo blocks, becoming only the second Big Ten player to do so this season. She currently ranks 16th in the conference with 1.08 blocks per set.

### An Efficient Attack

Junior Maddie Slater has been incredibly efficient attacking the ball in 2015 with a .342 mark through 30 contests. Slater has recorded 209 kills on 445 attempts, while committing only 57 errors. Slater is close to No. 1 on the single-season attack percentage list at Northwestern. The current leader is Sabel Moffett, who hit .349 in 2009. Slater's teammate, sophomore Taylor Tashima, is also hitting the ball remarkably well with a .329 mark on 210 attempts.

### Bush Impresses in First Career Appearance

Freshman Ashley Bush appeared in her first collegiate match against No. 25 Michigan on Oct. 30. Bush tallied nine kills, three digs and a block. She was an important part of the Northwestern attack, racking up 27 attempts for the Wildcats.

## AVCA DIVISION I COACHES TOP 25 POLL

2015 POLL  
NOVEMBER 23

No.	School	Total Points	2015 Record	Last
1	USC (55)	1591	29-1	1
2	Washington (9)	1542	26-2	2
3	Texas	1450	24-2	5
4	Minnesota	1347	24-4	3
5	Nebraska	1325	24-4	6
6	Stanford	1228	20-6	7
7	Penn State	1215	24-4	4
8	Hawaii	1188	26-1	8
9	Kansas	1091	24-2	9
10	Wisconsin	1069	22-6	10
11	BYU	939	25-3	12
12	Colorado State	840	24-3	13
13	UCLA	818	22-6	11
14	Purdue	795	22-7	15
15	Louisville	629	23-5	17
16	Ohio State	577	22-8	16
17	Florida	518	21-6	14
18	Illinois	453	19-10	18
19	Texas A&M	424	21-6	25
20	Florida State	317	22-7	20
21	Western Kentucky	275	31-3	21
22	North Carolina	261	19-8	22
23	Arizona	227	18-12	23
24	Kentucky	215	19-9	19
25	Arkansas State	89	28-1	NR

**Dropped Out:** Arizona State

**Others receiving votes:** Missouri (81), Arizona State (72), **Michigan (67)**, San Diego (45), Colorado (33), Creighton (26), SMU (25), Long Beach State (24)

opponents in **bold**

## 2015 WILDCAT TEAM HIGHS

### KILLS

**68** — vs. Missouri State (Sept. 12)

### ATTEMPTS

**196** — vs. Illinois (Nov. 4)

### HITTING ERRORS (Fewest)

**8** — vs. Wake Forest (Aug. 28)

### HITTING PERCENTAGE

**.374** — vs. Wake Forest (Aug. 28)

### ASSISTS

**62** — (3X), last vs. Minnesota (Nov. 11)

### SERVICE ACES

**8** — (2X) last vs. Illinois (Nov. 4)

### BLOCKS

**14** — (2X) last vs. Michigan State (Oct. 31)

### DIGS

**75** — (2X), last vs. Penn State (Oct. 10)

## Fara Makes Immediate Impact

True freshman Rachael Fara earned her first career start at Minnesota on Sept. 30 and turned in a solid performance. Fara hit .375 over the course of the match with nine kills. Her .375 mark was a match high. She led Northwestern with seven kills through the first two sets. Fara added five kills, three digs and an assist in her second start at Wisconsin on Oct. 4. She recorded five more kills and a career high six blocks against Ohio State. She continued her strong play with eight kills and the first two aces of her career in the win over No. 3 Penn State on Oct. 10.

## Dig It

Carks Niedospial ranks among the best liberos in program history. The senior currently sits in second place all-time with 1,773 digs. She moved to second with a dig late in the second set at home vs. Illinois on Nov. 4. She has the fourth (553 in 2013) and fifth (548 in 2014) highest single-season dig totals in Wildcat volleyball history and is currently at 484 this season.

### Northwestern All-Time Dig Leaders

1. Kate Nobilio	2006-09	2,194
2. Caroline Niedospial	2011-Pres.	1,773
3. Christie Gardner	2002-05	1,658
4. Janine Makar	1985-88	1,430
5. Julie Chin	2009-12	1,415
6. Jennifer Jostes	1988-91	1,409
7. Stephanie Holthus	2010-13	1,347
8. Jessica Holloway	1995-98	1,335

## Where They Rank

Caroline Niedospial is second in the Big Ten with 4.65 digs per set. Niedospial trails Annika Olsen of Iowa, who averages 4.78 per game. Taylor Tashima is also among the best in the conference with 10.83 assists per set, good for sixth in that category. Abbie Kraus is fourth in the Big Ten in service aces and aces per game, and Maddie Slater has settled into top territory with her .342 hitting mark.

## Big Ten Player of the Week

Maddie Slater was named the Big Ten's Player of the Week on Monday, Sept. 28 after leading Northwestern to a pair of straight-set sweeps on the road to open conference play. The junior middle blocker posted a .536 hitting percentage during wins at Rutgers and Maryland. She hit 7-for-9 vs. Maryland and tallied a match-high 11 kills vs. Rutgers. The award was the first for Slater.

## "Faces in the Crowd"

Northwestern sophomore setter Taylor Tashima was featured in the Sept. 7 issue of Sports Illustrated as part of the magazine's weekly "Faces in the Crowd" section. The SI piece reads, "Tashima...came back from surgery to remove a benign tumor from her right sinus and orbital cavity last February to help the junior national team win the European Global Challenge in Pula, Croatia, with a 3-2 win over Italy in July. Last season she led all Big Ten freshmen in double-doubles."

## Fast Starts

Northwestern jumped out to a 10-3 record in 2015 to continue the trend for the Wildcats getting off to quick starts in recent years. Last season, Northwestern jumped out to a 12-1 start through the nonconference portion of the schedule. Chicago's Big Ten Team won its first 11 matches in 2012 and started 13-1 in 2010, the last time the 'Cats qualified for the NCAA tournament.

## Getting to Know

Northwestern played seven nonconference matches versus teams it had never faced before. The Wildcats won six of those first-time meetings with victories over Wake Forest, New Hampshire, Texas A&M-Corpus Christi, Furman, Missouri State and Lipscomb. Northwestern has also played four teams this season it had only ever met once or twice before in program history in Boise State, Western Kentucky, Rutgers and Maryland.

## Have to Beat the Best...

15 of Northwestern's 31 matches in 2015 are against teams that were ranked or receiving votes in the preseason AVCA Coaches' Poll. According to the most recent poll, released Nov. 23, the Wildcats have played nine foes ranked or receiving votes. Northwestern played at No. 21 Western Kentucky in the Holiday Inn University Plaza Invitational on Sept. 11. Chicago's Big Ten Team has played 12 of its 18 Big Ten matches so far against nationally recognized programs.

## Home Sweet Home

Home court advantage served the Wildcats well in 2014 as the team went 10-3 inside Welsh-Ryan Arena. Northwestern won its first seven matches at home as part of a 12-1 start to the season. In the 10 home wins, the 'Cats won 30 games to their opponents' seven. Northwestern is 5-6 so far in 2015, but all six losses have come against top-25 opponents.

## National Audience

The Halloween night match between Michigan State and Northwestern was shown live to a national viewing audience courtesy of the Big Ten Network. That audience saw the Wildcats pick up a 3-1 win with an attack that hit .310 and a defense that registered a season high 14 blocks.

## Stream Every Home Match in 2015

Each of Northwestern's 12 home matches will be available to stream online. Eight conference matches will be viewable on BTN2Go, while the regular-season finale vs. Maryland can be seen on NUSports.com. The two early-season home contests vs. Lipscomb and Milwaukee were also streamed by NUSports.

## Northwestern Picked 10th in Big Ten Coaches' Preseason Poll

Big Ten coaches picked Northwestern to finish 10th in 2015, in the annual preseason poll conducted by the conference. Coaches vote on team order of finish and for the preseason All-Big Ten team. Northwestern has finished 10th or better in every season since 2008 and has finished sixth during Keylor Chan's tenure three times ('02, '05, '09), the best regular-season conference finishes under Chan.

## Bring Home the Gold

Taylor Tashima won gold with the United States Junior National volleyball team in July at the European Global Challenge. She was one of two Big Ten setters on the squad, joining Illinois newcomer Jordyn Poulter. The U.S. spent much of July in Europe, playing in Italy, Slovenia and Croatia. The team played 11 matches and defeated Italy 3-2 in the championship.

## AS OF NOVEMBER 24, 2015

### 2015 BIG TEN TEAM LEADERS

KILLS	S	No.	K/S
1. Nebraska	105	1508	14.36
2. Wisconsin	102	1451	14.23
3. Minnesota	108	1521	14.08
4. Purdue	111	1546	13.93
5. Michigan	110	1526	13.87
10. Northwestern	104	1386	13.33

HITTING PCT.	S	K	E	TA	Pct.
1. Penn State	102	1381	408	3280	.297
2. Nebraska	105	1508	480	3781	.272
3. Purdue	111	1546	551	3743	.266
4. Wisconsin	102	1451	496	3593	.266
5. Minnesota	108	1521	504	3909	.260
11. Northwestern	104	1386	592	3729	.213

OPP. HITTING PCT.	S	K	E	TA	Pct.
1. Penn State	102	1193	661	3480	.153
2. Wisconsin	102	1194	613	3653	.159
3. Nebraska	105	1262	613	3833	.169
4. Minnesota	108	1372	673	4025	.174
5. Illinois	108	1356	668	3937	.175
10. Northwestern	104	1310	525	3549	.221

ASSISTS	S	No.	A/S
1. Wisconsin	102	1381	13.54
2. Minnesota	108	1447	13.40
3. Nebraska	105	1387	13.21
4. Purdue	111	1454	13.10
5. Michigan	110	1437	13.06
11. Northwestern	104	1290	12.40

BLOCKS	S	BS	BA	TB	B/S
1. Penn State	102	81	485	323.5	3.17
2. Minnesota	108	49	515	306.5	2.84
3. Wisconsin	102	33	503	284.5	2.79
4. Illinois	108	51	498	300.0	2.78
5. Nebraska	105	44	481	284.5	2.71
11. Northwestern	104	73	283	214.5	2.06

SERVICE ACES	S	No.	SA/S
1. Maryland	119	171	1.44
2. Indiana	112	149	1.33
3. Purdue	111	136	1.23
4. Minnesota	108	128	1.19
5. Iowa	112	131	1.17
7. Northwestern	104	117	1.13

DIGS	S	No.	D/S
1. Nebraska	105	1652	15.73
2. Minnesota	108	1686	15.61
3. Wisconsin	102	1584	15.53
4. Michigan	110	1698	15.44
5. Illinois	108	1639	15.18
8. Northwestern	104	1484	14.27

### 2015 BIG TEN INDIVIDUAL LEADERS

KILLS	S	No.	K/S
1. Daly Santana, MINN	108	483	4.47
2. Annie Drews, PUR	111	473	4.26
3. Jocelynn Birks, ILL	96	375	3.91
4. Meme Fletcher, RUT	90	326	3.62
5. Elizabeth Campbell, OSU	116	420	3.62
6. Symone Abbott, NU	104	374	3.60

HITTING PCT.	S	K	E	TA	Pct.
1. Haleigh Washington, PSU	102	269	51	490	.445
2. Haleigh Nelson, WIS	102	267	43	534	.419
3. Faye Adelaja, PUR	100	235	53	441	.413
4. Taylor Sandbothe, OSU	116	339	71	736	.364
5. Amber Rolfzen, NEB	91	207	47	457	.350
8. Maddie Slater, NU	104	209	57	445	.342

ASSISTS	S	No.	A/S
1. Lauren Carlini, WIS	102	1202	11.78
2. S Seliger-Swenson, MINN	107	1234	11.53
3. Kelly Hunter, NEB	105	1195	11.38
4. Ashley Evans, PUR	110	1217	11.06
5. Loxley Keala, IOWA	112	1222	10.91
6. Taylor Tashima, NU	104	1126	10.83

BLOCKS	S	BS	BA	TB	B/S
1. Amber Rolfzen, NEB	91	11	130	141	1.55
2. Haleigh Washington, PSU	102	23	121	144	1.41
3. Tionna Williams, WIS	97	8	123	131	1.35
4. Ali Bastianelli, ILL	106	13	126	139	1.31
5. Haleigh Nelson, WIS	102	14	117	131	1.28
16. Gabrielle Hazen, NU	86	20	73	93	1.08

SERVICE ACES	S	No.	SA/S
1. Bryanna Weiskircher, PSU	102	38	0.37
2. Annika Albrecht, NEB	105	35	0.33
3. Daly Santana, MINN	108	35	0.32
4. Abbie Kraus, NU	101	30	0.30
5. Rachel Minarick, MSU	108	32	0.30

DIGS	S	No.	D/S
1. Annika Olsen, IOWA	112	535	4.78
2. Caroline Niedospial, NU	104	484	4.65
3. Taylor Morey, WIS	102	459	4.50
4. Brandi Donnelly, ILL	108	484	4.48
5. Justine Wong-Orantes, NEB	98	438	4.47

## HEAD COACH BIO



**KEYLOR CHAN**  
**16<sup>TH</sup> SEASON**  
**FLORIDA, '95**

Keylor Chan, having completed his 15<sup>th</sup> season as Northwestern's head volleyball coach, has proven to be one of the nation's most talented coaches. Chan took over the program in 2000, inheriting a team that had won just four matches in 1999, and in three short years he turned the program around and led the Wildcats back to the NCAA Tournament for the first time since 1984. Northwestern also made the tournament in 2003, 2005 and 2010, and have been on the cusp of reaching the postseason in several other seasons while competing in the nation's top volleyball conference.

Chan currently is the second-winningest coach in Northwestern history with 235 wins as a Wildcat and 252 overall. He recorded his 200th career victory as a head coach on Sept. 8, 2012 at Yale and is 240-259 overall in his head coaching career after spending the 1999 season at Furman. Prior to his arrival in 2000, the Wildcat volleyball program had not experienced a winning season since 1990. Now, Northwestern has finished .500 or better in 10 of the last 13 years under Chan with a trio of NCAA tournament appearances.

2014 marked the sixth consecutive season that Northwestern finished at .500 or better. The Wildcats posted 16 wins, including two over top-25 teams, one of which came against in-state rival, and No. 9 ranked, Illinois. NU remained dominant at home, winning two-thirds of its matches in Evanston. Chan guided Caroline Niedospial (All-Big Ten Honorable Mention) and Katie Dutchman (AVCA All-America Honorable Mention) to postseason honors.

The Northwestern coach was selected to lead the 2014 Big Ten Volleyball Foreign Tour Team to Slovenia, Croatia and Italy during the summer months. Chan coached players from each of the 14 conference schools during the international trip.

Chan helped bring the Wildcats to the cusp of postseason play in 2013. Northwestern improved its Big Ten ledger by three wins, including a two-match sweep of nationally-ranked Purdue and a thrilling five-set victory over in-state rival Illinois, another team that was nationally recognized in 2013. The head coach helped Stephanie Holthus, the program's all-time leader in kills, receive All-America accolades for a second consecutive season last year.

Chan graduated from Florida in 1995, with a bachelor of science degree in microbiology and cell science. He currently resides in Evanston, Ill., and is married to the former Maren Witzel, a three-year letterwinner at outside hitter for Michigan State. The Chans have two daughters, Elinor and Casey.



## NORTHWESTERN'S RECORD WHEN...

Overall .....	14-16
Home .....	5-6
Away .....	4-9
Neutral .....	5-1
Big Ten .....	6-13
Home .....	3-6
Away .....	3-7
Non-Conference .....	8-3
vs. Ranked .....	1-11
vs. Top-10 .....	1-4
vs. Unranked .....	13-5
By Match Length	
3-Set Match .....	8-11
4-Set Match .....	4-4
5-Set Match .....	2-1
By Match Score	
Leading 1-0 .....	13-0
Leading 2-0 .....	10-0
Leading 2-1 .....	5-2
Tied 1-1 .....	4-2
Trailing 1-0 .....	1-16
Trailing 2-0 .....	0-14
Trailing 2-1 .....	1-3
By Set	
First set .....	13-17
Second set .....	13-17
Third set .....	15-15
Fourth set .....	5-6
Fifth set .....	2-1
By Kills	
Leading in kills .....	13-2
Trailing in kills .....	1-13
Tied in kills .....	0-1
By Hitting Percentage	
Leading in hitting % ...	14-0
Trailing in hitting %....	0-16
Hitting over .200 .....	14-5
Hitting over .300 .....	9-1
By Month	
August .....	3-0
September .....	7-4
October .....	3-6
November .....	1-6
By Day	
Wednesday .....	0-5
Friday .....	5-6
Saturday .....	7-3
Sunday .....	2-2
Longest Winning Streak .....	5
Longest Losing Streak .....	5
Current Streak .....	L1

## MATCH-BY-MATCH LEADERS

### Match

Wake Forest (W, 3-0)
New Hampshire (W, 3-0)
Loyola-Chicago (W, 3-0)
Idaho State (L, 3-0)
Texas A&M-CC (W, 3-1)
Boise State (L, 0-3)
Furman (W, 3-0)
Western Kentucky (L, 3-0)
Missouri State (W, 3-2)
Lipscomb (W, 3-1)
Milwaukee (W, 3-0)
Rutgers (W, 3-0)
Maryland (W, 3-0)
Minnesota (L, 3-0)
Wisconsin (L, 3-0)
Ohio State (L, 3-0)
Penn State (W, 3-2)
Nebraska (L, 3-0)
Iowa (W, 3-1)
Purdue (L, 3-0)
Indiana (L, 3-0)
Michigan (L, 3-0)
Michigan State (W, 3-1)
Illinois (L, 3-2)
Illinois (L, 3-1)
Minnesota (L, 3-1)
Purdue (L, 3-1)
Michigan State (L, 3-1)
Iowa (W, 3-0)
Penn State (L, 3-0)
Maryland

### Kills

Abbott (12)
Abbott (10)
Abbott (15)
Morin (10)
Abbott (24)
Morin (8)
Lavin (14)
Slater (10)
Abbott (19)
Abbott/Slater (13)
Hazen (13)
Slater (11)
Lavin (12)
Morin (10)
Abbott (10)
Slater (13)
Abbott (17)
Abbott (9)
Lavin/Abbott (12)
Abbott (10)
Abbott/Morin (9)
Abbott (12)
Abbott (17)
Abbott (16)
Abbott (17)
Morin (16)
Abbott (16)
Abbott (25)
Abbott/Morin (11)
Abbott (13)

### Assists

Tashima (36)
Tashima (32)
Tashima (35)
Tashima (28)
Tashima (54)
Tashima (24)
Tashima (41)
Tashima (30)
Tashima (57)
Tashima (45)
Tashima (37)
Tashima (32)
Tashima (36)
Tashima (36)
Tashima (31)
Tashima (33)
Tashima (52)
Tashima (25)
Tashima (41)
Tashima (21)
Tashima (26)
Tashima (32)
Tashima (45)
Tashima (48)
Tashima (41)
Tashima (53)
Tashima (37)
Tashima (48)
Tashima (35)
Tashima (35)

### Digs

Niedospial (12)
Niedospial (17)
Niedospial (11)
Niedospial (11)
Niedospial (31)
Niedospial (15)
Niedospial (23)
Niedospial (14)
Niedospial (26)
Niedospial (21)
Kraus (11)
Niedospial (17)
Tashima (13)
Niedospial (22)
Niedospial (16)
Niedospial (15)
Niedospial (21)
Niedospial (11)
Niedospial (19)
Niedospial (9)
Niedospial (11)
Niedospial (11)
Niedospial/Morin (16)
Niedospial (23)
Niedospial (20)
Niedospial (19)
Niedospial (22)
Niedospial (13)
Niedospial (10)

### Blocks

Hazen (4)
Hazen (4)
2 tied (2)
Hazen (5)
Morin (6)
4 tied (1)
Abbott (3)
Hazen (6)
Hazen (7)
3 tied (3)
Hazen (5)
Hazen (5)
Hazen (3)
2 tied (3)
Slater (3)
Fara (6)
Slater (7)
Abbott (2)
Hazen (7)
N/A
Slater (3)
Hazen (4)
Hazen (8)
Hazen (7)
Hazen (7)
Slater (5)
Slater (7)
Slater (4)
Slater (6)
Hazen (3)

## RECORD BOOK

### Kills

1. Stephanie Holthus (2010-13) .....	1,797
2. Janine Makar (1985-88) .....	1,666
3. Erika Lange (2000-03) .....	1,618
4. Dawn Reig (1980-83) .....	1,546
5. Lindsay Anderson (2004-07) .....	1,516
6. Madelyn Meneghetti (1981-84) .....	1,490
7. Liz Douglass (1980-83) .....	1,428
8. Stacey Kammes (1989-92) .....	1,408
9. Jessica Holloway (1995-98) .....	1,396
10. Shelley Brzozowski (1986-89) .....	1,304

ACTIVE LEADER

**Kayla Morin (2013-) .....839**

### Assists

1. Drew Robertson (2001-04) .....	5,126
2. Elyse Glab (2007-10) .....	4,890
3. Liz Renius (1995-98) .....	4,743
4. Jeanne Wohlberg (1991-94) .....	3,634
5. Andrea Proos (1985-88) .....	2,874
6. Madalyn Shalter (2008-12) .....	2,537
7. Kelli Meyer (1999-2002) .....	2,466
8. Jackie Nuñez (1983-85) .....	2,335
9. Heather Fredin (1988-91) .....	2,194
10. Stephanie Jurivich (2004-07) .....	2,108

ACTIVE LEADER

**Taylor Tashima (2014-).....1,997**

### Digs

1. Kate Nobilio (2006-09) .....	2,194
<b>2. Caroline Niedospial (2011-).....1,773</b>	
3. Christie Gardner (2002-05) .....	1,658
4. Janine Makar (1985-88) .....	1,430
5. Julie Chin (2009-12) .....	1,415
6. Jennifer Jostes (1988-91) .....	1,409
7. Stephanie Holthus (2010-13) .....	1,347
8. Jessica Holloway (1995-98) .....	1,335
9. Shelley Brzozowski (1986-89) .....	1,239
10. Kathy Burns (1984-87) .....	1,237
<b>...Kayla Morin (2013-) .....773</b>	

### Total Blocks

1. Erika Lange (2000-03) .....	647
2. Liz Douglass (1980-83) .....	573
3. Stephanie Kammes (1986-89) .....	513
4. Sabel Moffett (2007-10) .....	510
5. Shawn Karey (1990-93) .....	478
6. Brittney Aldridge (2004-07) .....	465
7. Katie Dutchman (2011-14) .....	456
8. Chelsy Hyser (2005-08) .....	435
9. Mary Stack (1981-84) .....	407
10. Sarah Ballog (1999-2002) .....	397

ACTIVE LEADER

**Kayla Morin (2013-) .....160**

# NATIONAL RANKINGS

## NCAA DIVISION I RPI TOP 25 POLL

2015 POLL  
NOVEMBER 23

No.	School	Record	Away	Neutral	Home
1	Texas	24-2	7-1	2-0	15-1
2	USC	29-1	11-1	3-0	15-0
3	<b>Minnesota</b>	<b>24-4</b>	<b>9-3</b>	<b>3-1</b>	<b>12-0</b>
4	<b>Wisconsin</b>	<b>22-6</b>	<b>8-3</b>	<b>2-1</b>	<b>12-2</b>
5	Florida	21-6	8-5	3-0	10-1
6	Washington	26-2	9-2	3-0	14-0
7	<b>Nebraska</b>	<b>24-4</b>	<b>11-2</b>	<b>1-0</b>	<b>12-2</b>
8	Kansas	24-2	8-1	4-0	12-1
9	<b>Penn State</b>	<b>25-4</b>	<b>9-2</b>	<b>4-0</b>	<b>12-2</b>
10	Texas A&M	21-6	7-4	2-1	12-1
11	<b>Ohio State</b>	<b>22-8</b>	<b>7-5</b>	<b>6-0</b>	<b>9-3</b>
12	Stanford	20-6	7-5	1-0	12-1
13	UCLA	22-6	11-2	4-0	7-4
14	Louisville	23-5	8-3	2-0	13-2
15	BYU	25-3	10-3	4-0	11-0
16	<b>Western Kentucky</b>	<b>31-3</b>	<b>12-1</b>	<b>7-1</b>	<b>12-1</b>
17	Missouri	25-4	10-4	6-0	9-0
18	Arkansas State	28-1	13-0	7-1	8-0
19	Kentucky	19-9	10-2	1-3	8-4
20	North Carolina	19-8	7-2	1-3	11-3
21	Creighton	23-8	8-3	2-2	13-3
22	Florida State	22-7	7-6	3-0	12-1
23	Iowa State	17-9	5-5	4-0	8-4
24	<b>Illinois</b>	<b>19-10</b>	<b>5-5</b>	<b>5-1</b>	<b>9-4</b>
25	Dayton	25-5	8-2	4-2	13-1

opponents in **bold**

## NCAA DIVISION I TOUGHEST SCHEDULE

2015 RANKINGS  
NOVEMBER 23

No.	School	Opponent W-L	Opponent Pct.
1	<b>Northwestern</b>	<b>455-239</b>	<b>.656</b>
2	Oklahoma	361-192	.653
3	Kentucky	439-237	.649
4	UCLA	370-208	.640
5	Oregon State	350-198	.639
6	Creighton	396-255	.638
7	Iowa State	348-198	.637
8	Baylor	384-223	.633
9	Stanford	325-190	.631
10	<b>Wisconsin</b>	<b>409-239</b>	<b>.631</b>
11	Texas	320-189	.629
12	Florida	382-226	.628
13	Oregon	351-210	.626
14	<b>Rutgers</b>	<b>427-261</b>	<b>.621</b>
15	<b>Minnesota</b>	<b>403-246</b>	<b>.621</b>
16	North Carolina	397-244	.619
17	Northern Iowa	394-244	.618
18	<b>Illinois</b>	<b>420-261</b>	<b>.617</b>
19	LSU	388-246	.612
20	Louisville	413-263	.611
21	<b>Iowa</b>	<b>431-274</b>	<b>.611</b>
22	Marquette	384-246	.610
23	Texas A&M	387-251	.607
24	<b>Ohio State</b>	<b>412-269</b>	<b>.605</b>
25	Utah	369-244	.602

opponents in **bold**

## NORTHWESTERN INDIVIDUAL SEASON HIGHS

### Three-Set Match

	Individual	Team
Kills:	14, Sofia Lavin vs. Furman (9/11)	49 vs. Furman (9/11)
Attempts:	36, Kayla Morin vs. Furman (9/11)	139 at Western Kentucky (9/11)
Hitting Percentage:	.636, Maddie Slater at Wisconsin (10/4)	.374 vs. Wake Forest (8/28)
Assists:	41, Taylor Tashima vs. Furman (9/11)	45 vs. Furman (9/11)
Aces:	4, Abbie Kraus vs. Milwaukee (9/20)	8 at Loyola-Chicago (8/29)
Digs:	23, Caroline Niedospial vs. Furman (9/11)	60 vs. Furman (9/11)
Solo Blocks:	3 (2X), last - Rachael Fara vs. Ohio State (10/9)	5 (2X), last vs. Ohio State (10/9)
Block Assists:	6, Maddie Slater at Iowa (11/21)	18 at Iowa (11/21)
Total Blocks:	6 (3X), last - Maddie Slater at Iowa (11/21)	10 (3X), last at Iowa (11/21)

### Four-Set Match

	Individual	Team
Kills:	25, Symone Abbott vs. Michigan State (11/18)	63 vs. Minnesota (11/11)
Attempts:	54, Symone Abbott vs. Michigan State (11/18)	167 vs. Illinois (11/7)
Hitting Percentage:	.571, Gabrielle Hazen vs. Lipscomb (9/18)	.310 vs. Michigan State (10/31)
Assists:	54, Taylor Tashima vs. Texas A&M-Corpus Christi (9/5)	62 vs. Minnesota (11/11)
Aces:	4, Abbie Kraus vs. Purdue (11/15)	7 vs. Purdue (11/15)
Digs:	31, Caroline Niedospial vs. Texas A&M-Corpus Christi (9/5)	75 vs. Texas A&M-Corpus Christi (9/5)
Solo Blocks:	5, Gabrielle Hazen vs. Michigan State (10/31)	9 vs. Michigan State (10/31)
Block Assists:	6, Gabrielle Hazen vs. Illinois (11/7)	16 vs. Iowa (10/18)
Total Blocks:	8, Gabrielle Hazen vs. Michigan State (10/31)	14 (2X), last vs. Michigan State (10/31)

### Five-Set Match

	Individual	Team
Kills:	19, Symone Abbott vs. Missouri State (9/12)	68 vs. Missouri State (9/12)
Attempts:	55, Symone Abbott vs. Illinois (11/4)	196 vs. Illinois (11/4)
Hitting Percentage:	.545, Taylor Tashima vs. Illinois (11/4)	.251 vs. Missouri State (9/12)
Assists:	57, Taylor Tashima vs. Missouri State (9/12)	62 (2X), last vs. Penn State (10/10)
Aces:	3, Kayla Morin vs. Illinois (11/4)	8 vs. Illinois (11/4)
Digs:	26, Caroline Niedospial vs. Missouri State (9/12)	75 vs. Penn State (10/10)
Solo Blocks:	3, Gabrielle Hazen vs. Illinois (11/4)	5 vs. Missouri State (9/12)
Block Assists:	7, Maddie Slater vs. Penn State (10/10)	16 vs. Penn State (10/10)
Total Blocks:	7 (3X), last - Gabrielle Hazen vs. Illinois (11/4)	10 vs. Missouri State (9/12)

**2015 Northwestern Volleyball**  
**Northwestern Combined Team Statistics (as of Nov 27, 2015)**  
**All matches**

<b>RECORD:</b>	<b>OVERALL</b>	<b>HOME</b>	<b>AWAY</b>	<b>NEUTRAL</b>
ALL GAMES	14-16	5-6	4-9	5-1
CONFERENCE	6-13	3-6	3-7	0-0
NON-CONFERENCE	8-3	2-0	1-2	5-1

#	Player	sp	Attack					Set		Serve			Dig			Blocking						points
			k	k/s	e	ta	pct	a	a/s	sa	se	sa/s	re	dig	dig/s	bs	ba	total	blk/s	be	bhe	
5	Caroline Niedospial	104	2	0.02	0	2	1.000	78	0.75	14	15	0.13	14	484	4.65	0	0	0	0.00	0	0	-
6	Caleigh Ryan	9	1	0.11	0	2	.500	1	0.11	0	2	0.00	0	2	0.22	0	0	0	0.00	0	0	-
11	Maddie Slater	104	209	2.01	57	445	.342	6	0.06	0	0	0.00	1	12	0.12	20	61	81	0.78	12	2	-
1	Taylor Tashima	104	92	0.88	23	210	.329	1126	10.83	15	34	0.14	1	223	2.14	6	46	52	0.50	13	20	-
8	Gabrielle Hazen	86	175	2.03	62	392	.288	2	0.02	3	15	0.03	0	23	0.27	20	73	93	1.08	13	0	-
4	Rachael Fara	29	38	1.31	15	89	.258	3	0.10	2	9	0.07	0	4	0.14	4	5	9	0.31	4	1	-
2	Symone Abbott	104	374	3.60	176	987	.201	3	0.03	3	15	0.03	5	58	0.56	8	28	36	0.35	16	2	-
15	Kayla Morin	104	253	2.43	90	845	.193	26	0.25	20	32	0.19	18	222	2.13	10	55	65	0.62	7	1	-
16	Sofia Lavin	90	202	2.24	134	595	.114	6	0.07	6	14	0.07	2	69	0.77	3	13	16	0.18	13	2	-
10	Rafae Strobos	91	25	0.27	19	103	.058	9	0.10	13	32	0.14	6	70	0.77	1	1	2	0.02	1	0	-
13	Abbie Kraus	101	0	0.00	0	5	.000	12	0.12	30	29	0.30	21	124	1.23	0	0	0	0.00	0	0	-
14	Ashley Bush	8	15	1.88	15	53	.000	1	0.12	0	0	0.00	0	5	0.62	1	1	2	0.25	1	0	-
7	Katie Kniep	104	0	0.00	1	1	-1.000	17	0.16	11	21	0.11	34	188	1.81	0	0	0	0.00	0	0	-
	TEAM	-	-	-	-	-	-	-	-	-	-	-	6	-	-	-	-	-	-	-	-	-
	NORTHWESTERN	104	1386	13.33	592	3729	.213	1290	12.40	117	218	1.12	108	1484	14.27	73	283	214.5	2.06	80	28	-
	Opponents	104	1310	12.60	525	3549	.221	1223	11.76	108	184	1.04	117	1491	14.34	43	448	267.0	2.57	59	24	-

<b>Team Statistics</b>	<b>NU</b>	<b>OPP</b>	<b>Date</b>	<b>Opponent</b>	<b>Score</b>	<b>Score by set</b>	<b>Att.</b>
ATTACK			Aug 28	vs Wake Forest	w 3-0	25-15,25-12,25-18	213
Kills	1386	1310	Aug 28	vs New Hampshire	w 3-0	25-12,25-14,25-14	0
Errors	592	525	Aug 29	at Loyola Chicago	w 3-0	25-20,25-19,25-19	516
Total Attacks	3729	3549	9-4-2015	vs Idaho State	L 0-3	23-25,22-25,22-25	0
Attack Pct	.213	.221	Sep 05	at Boise State	L 0-3	12-25,21-25,23-25	829
Kills/Set	13.3	12.6	9/5/15	vs AM-Corpus Christi	w 3-1	25-23,25-22,23-25,25-18	76
SET			Sep 11	vs Furman	w 3-0	25-14,25-22,25-20	0
Assists	1290	1223	Sep 11	at WKU	L 0-3	22-25,25-27,21-25	593
Assists/Set	12.4	11.8	Sep 12	vs Missouri State	w 3-2	25-18,20-25,21-25,25-23,15-7	0
SERVE			Sep 18	LIPSCOMB	w 3-1	25-20,25-20,19-25,25-19	520
Aces	117	108	Sep 20	MILWAUKEE	w 3-0	25-14,25-19,25-21	450
Errors	218	184	*Sep 26	at Maryland	w 3-0	28-26,25-23,25-9	851
Aces/Set	1.1	1.0	*Sep 25	at Rutgers	w 3-0	25-23,25-15,25-20	233
SERVE RECEPTIONS			*Sep 30	at #16 Minnesota	L 0-3	16-25,23-25,21-25	1979
Errors	108	117	*Oct 04	at #19 Wisconsin	L 0-3	20-25,16-25,19-25	5609
Errors/Set	1.0	1.1	*Oct 09	#9 OHIO STATE	L 0-3	19-25,20-25,18-25	667
Attempts	2099	2040	*Oct 10	#3 PENN STATE	w 3-2	25-18,23-25,26-24,17-25,15-12	1697
Reception Pct	.949	.943	*Oct 16	#3 NEBRASKA	L 0-3	13-25,19-25,19-25	1203
DEFENSE			*Oct 18	IOWA	w 3-1	25-16,22-25,25-11,25-20	624
Digs	1484	1491	*Oct 23	at #19 Purdue	L 0-3	14-25,18-25,17-25	2415
Digs/Set	14.3	14.3	*Oct 24	at Indiana	L 0-3	21-25,16-25,21-25	578
BLOCKING			*Oct 30	#25 MICHIGAN	L 0-3	24-26,13-25,18-25	1070
Block Solo	73	43	*Oct 31	MICHIGAN STATE	w 3-1	18-25,25-15,25-20,25-21	409
Block Assist	283	448	*Nov 04	#18 ILLINOIS	L 2-3	18-25,28-26,25-21,16-25,14-16	973
Total Blocks	214.5	267.0	*Nov 07	at #18 Illinois	L 1-3	17-25,18-25,27-25,18-25	3462
Blocks/Set	2.1	2.6	*Nov 11	#4 MINNESOTA	L 1-3	23-25,19-25,25-22,18-25	520
Block Errors	80	59	*Nov 15	#17 PURDUE	L 1-3	21-25,19-25,25-17,19-25	1237
Ball handling errors	28	24	*Nov 18	at Michigan State	L 1-3	26-28,25-20,23-25,9-25	2528
ATTENDANCE			*Nov 21	at Iowa	w 3-0	25-23,25-21,25-18	1072
Total	9370	23741	*Nov 25	at #7 Penn State	L 0-3	18-25,14-25,24-26	3076
Dates/Avg Per Date	11/852	13/1826					
Neutral site #/Avg	6/48						
Current win streak	0	-					
Home win streak	0	-					

Record in 3-set matches: 8-11  
Record in 4-set matches: 4-4  
Record in 5-set matches: 2-1

**2015 Northwestern Volleyball**  
**Northwestern Combined Team Statistics (as of Nov 27, 2015)**  
**Conference matches**

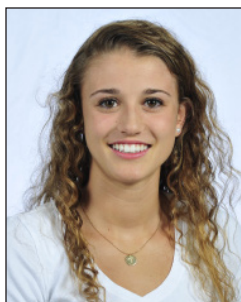
<b>RECORD:</b>	<b>OVERALL</b>	<b>HOME</b>	<b>AWAY</b>	<b>NEUTRAL</b>
ALL GAMES	6-13	3-6	3-7	0-0
CONFERENCE	6-13	3-6	3-7	0-0
NON-CONFERENCE	0-0	0-0	0-0	0-0

##	Player	sp	Attack				Set		Serve			re	Dig			Blocking						points
			k	k/s	e	ta	pct	a	a/s	sa	se		sa/s	dig	dig/s	bs	ba	total	blk/s	be	bhe	
5	Caroline Niedospial	67	1	0.01	0	1	1.000	48	0.72	8	9	0.12	7	294	4.39	0	0	0	0.00	0	0	-
11	Maddie Slater	67	133	1.99	39	296	.318	3	0.04	0	0	0.00	1	9	0.13	13	44	57	0.85	10	0	-
1	Taylor Tashima	67	66	0.99	20	157	.293	707	10.55	11	26	0.16	1	142	2.12	5	30	35	0.52	9	18	-
8	Gabrielle Hazen	50	103	2.06	36	231	.290	1	0.02	3	9	0.06	0	12	0.24	13	38	51	1.02	6	0	-
4	Rachael Fara	22	34	1.55	14	80	.250	3	0.14	2	9	0.09	0	4	0.18	3	5	8	0.36	4	1	-
15	Kayla Morin	67	158	2.36	55	507	.203	23	0.34	15	22	0.22	13	155	2.31	6	30	36	0.54	3	1	-
2	Symone Abbott	67	240	3.58	118	648	.188	1	0.01	0	1	0.00	0	22	0.33	4	20	24	0.36	6	2	-
16	Sofia Lavin	53	101	1.91	77	322	.075	5	0.09	5	6	0.09	2	37	0.70	2	5	7	0.13	8	2	-
10	Rafae Strobos	61	25	0.41	18	99	.071	9	0.15	7	25	0.11	6	61	1.00	1	1	2	0.03	1	0	-
6	Caleigh Ryan	7	0	0.00	0	0	.000	1	0.14	0	2	0.00	0	2	0.29	0	0	0	0.00	0	0	-
14	Ashley Bush	8	15	1.88	15	53	.000	1	0.12	0	0	0.00	0	5	0.62	1	1	2	0.25	1	0	-
13	Abbie Kraus	64	0	0.00	0	2	.000	8	0.12	15	23	0.23	17	84	1.31	0	0	0	0.00	0	0	-
7	Katie Kniep	67	0	0.00	1	1	-1.000	8	0.12	5	9	0.07	22	102	1.52	0	0	0	0.00	0	0	-
	TEAM	-	-	-	-	-	-	-	-	-	-	-	5	-	-	-	-	-	-	-	-	-
	NORTHWESTERN	67	876	13.07	393	2397	.202	818	12.21	71	141	1.06	74	929	13.87	48	174	135.0	2.01	48	24	-
	Opponents	67	885	13.21	315	2257	.253	822	12.27	74	107	1.10	71	970	14.48	31	315	188.5	2.81	36	17	-

Team Statistics	NU	OPP	Date	Opponent	Score	Score by set	Att.
ATTACK			*Sep 26	at Maryland	w 3-0	28-26,25-23,25-9	851
Kills	876	885	*Sep 25	at Rutgers	w 3-0	25-23,25-15,25-20	233
Errors	393	315	*Sep 30	at #16 Minnesota	L 0-3	16-25,23-25,21-25	1979
Total Attacks	2397	2257	*Oct 04	at #19 Wisconsin	L 0-3	20-25,16-25,19-25	5609
Attack Pct	.202	.253	*Oct 09	#9 OHIO STATE	L 0-3	19-25,20-25,18-25	667
Kills/Set	13.1	13.2	*Oct 10	#3 PENN STATE	w 3-2	25-18,23-25,26-24,17-25,15-12	1697
SET			*Oct 16	#3 NEBRASKA	L 0-3	13-25,19-25,19-25	1203
Assists	818	822	*Oct 18	IOWA	w 3-1	25-16,22-25,25-11,25-20	624
Assists/Set	12.2	12.3	*Oct 23	at #19 Purdue	L 0-3	14-25,18-25,17-25	2415
SERVE			*Oct 24	at Indiana	L 0-3	21-25,16-25,21-25	578
Aces	71	74	*Oct 30	#25 MICHIGAN	L 0-3	24-26,13-25,18-25	1070
Errors	141	107	*Oct 31	MICHIGAN STATE	w 3-1	18-25,25-15,25-20,25-21	409
Aces/Set	1.1	1.1	*Nov 04	#18 ILLINOIS	L 2-3	18-25,28-26,25-21,16-25,14-16	973
SERVE RECEPTIONS			*Nov 07	at #18 Illinois	L 1-3	17-25,18-25,27-25,18-25	3462
Errors	74	71	*Nov 11	#4 MINNESOTA	L 1-3	23-25,19-25,25-22,18-25	520
Errors/Set	1.1	1.1	*Nov 15	#17 PURDUE	L 1-3	21-25,19-25,25-17,19-25	1237
Attempts	1421	1258	*Nov 18	at Michigan State	L 1-3	26-28,25-20,23-25,9-25	2528
Reception Pct	.948	.944	*Nov 21	at Iowa	w 3-0	25-23,25-21,25-18	1072
DEFENSE			*Nov 25	at #7 Penn State	L 0-3	18-25,14-25,24-26	3076
Digs	929	970					
Digs/Set	13.9	14.5					
BLOCKING							
Block Solo	48	31					
Block Assist	174	315					
Total Blocks	135.0	188.5					
Blocks/Set	2.0	2.8					
Block Errors	48	36					
Ball handling errors	24	17					
ATTENDANCE							
Total	8400	21803					
Dates/Avg Per Date	9/933	10/2180					
Neutral site #/Avg	0/0						
Current win streak	0	-					
Home win streak	0	-					

Record in 3-set matches: 3-8  
Record in 4-set matches: 2-4  
Record in 5-set matches: 1-1





# TAYLOR TASHIMA

6-0 • Sophomore  
Setter  
Wilmette, Ill.  
New Trier



## 2015 SEASON

Appeared in Sports Illustrated's "Faces in the Crowd" in the Sept. 7 issue ... Smashed down a season high eight kills vs. Purdue (11/15) ... Set a new season high with 16 digs vs. Minnesota (11/11) ... Registered 53 assists in that match for her eighth double-double ... Posted her seventh double-double of the season with 48 assists and 12 digs vs. Illinois (11/4) ... Tied a season high with seven kills in that match ... Set a season high with two aces in a win over Michigan State (10/31) ... Tallied 41 assists, six kills, five digs and four blocks in a win over Iowa (10/18) ... Recorded her sixth double-double of the season with 52 assists and 10 digs in Northwestern's upset win over No. 3 Penn State (Oct. 10) ... Notched a double-double with 36 assists and 10 digs at Minnesota (9/30) ... Tied a season-high with five kills in Northwestern's sweep at Rutgers (9/25) ... Named MVP of the Wildcat Challenge after averaging nearly 12.0 assists per set over both matches (9/20) ... Rewrote her personal record book with performances at the Holiday Inn University Plaza Invitational at Western Kentucky ... Broke her week-old assists career high with 57 vs. Missouri State ... Set new season highs for kills (5), hitting percentage (.833) and blocks (4) at Western Kentucky (9/11) ... Also set new marks in attempts (9) and digs (15) vs. Missouri State (9/12) ... Posted a double-double in all three matches of the invite at Western Kentucky ... Set a new career high with 54 assists in the Wildcats' win over Texas A&M-Corpus Christi (9/5) ... Also tallied season bests with two blocks and eight digs in that match ... Recorded four kills on five attempts for a career best .800 hitting percentage in the Northwestern match at Boise State (9/5) ... Recorded a then-career high .750 (3-4) hitting percentage at Loyola (8/29) ... Totaled 32 assists and 7 digs vs. New Hampshire (8/28) ... Tallied more than 30 assists in all three matches at the Rambler Challenge.

1

## TASHIMA'S CAREER STATISTICS

Year	MP-SP	K	E	TA	PCT	AST	SA	BS	BA	DG
2015	30-104	92	23	210	.329	1126	15	6	46	223
2014	28-104	131	62	315	.219	871	15	4	43	232
<b>Career</b>	<b>58-208</b>	<b>223</b>	<b>85</b>	<b>525</b>	<b>.263</b>	<b>1997</b>	<b>30</b>	<b>10</b>	<b>89</b>	<b>455</b>

## SEASON SINGLE-MATCH HIGHS (2015)

<b>KILLS:</b>	8, vs Purdue (Nov. 15)	
<b>ATTEMPTS:</b>	18, at Illinois (Nov. 7)	
<b>HITTING PCT.:</b>	.833, at Western Kentucky (Sept. 11)*	
<b>SERVICE ACES:</b>	2 (3X), last at Iowa (Nov. 21)	
<b>ASSISTS:</b>	57, vs. Missouri State (Sept. 12)*	
<b>TOTAL BLOCKS:</b>	4 (2X), last vs. Iowa (Oct. 18)	
<b>DIGS:</b>	16, vs. Minnesota (Nov. 11)	*denotes career high

## CAREER SINGLE-MATCH HIGHS

<b>KILLS:</b>	14, vs. Indiana (Oct. 25, 2014)
<b>ATTEMPTS:</b>	31, twice, last vs. Michigan (Oct. 31, 2014)
<b>HITTING PCT.:</b>	.833, at Western Kentucky (Sept. 11, 2015)
<b>SERVICE ACES:</b>	3, vs. Cal State Fullerton (Sept. 5, 2014)
<b>ASSISTS:</b>	57, vs. Missouri State (Sept. 12, 2015)
<b>TOTAL BLOCKS:</b>	6, vs. Michigan (Oct. 31, 2014)
<b>DIGS:</b>	20, vs. Purdue (Oct. 24, 2014)



# SYMONE ABBOTT

6-1 • Sophomore  
Outside Hitter  
Northville, Mich.  
Northville



2

## 2015 SEASON

Set a new career high by hammering home 25 kills at Michigan State (11/18) ... Had 18 kills in just two sets in that match ... Attempted a career high 55 attacks vs. Illinois (11/4) ... Slammed down a match-high 17 kills on .519 hitting in a win over Michigan State (10/31) ... Registered a team high 10 kills at Purdue (10/23) ... Matched her career high with three blocks in a Northwestern win over Furman (9/11) ... Set a new career high with 24 kills vs. Texas A&M-Corpus Christi (9/5) ... Hit .373 in that match on 51 attempts, one attempt shy of another career mark ... Broke two personal career records in a 3-0 win at Loyola by hitting .591 and serving two aces (8/29) ... Set or matched two career highs in Northwestern's sweep of New Hampshire, tallying 10 digs and her second career assist (8/28) ... First double-double of the season in that match with 10 kills and 10 digs.

## ABBOTT'S CAREER STATISTICS

Year	MP-SP	K	E	TA	PCT	AST	SA	BS	BA	DG
2015	30-104	374	176	987	.201	3	3	8	28	58
2014	31-116	370	175	978	.199	1	0	6	29	47
<b>Career</b>	<b>61-220</b>	<b>744</b>	<b>351</b>	<b>1965</b>	<b>.200</b>	<b>4</b>	<b>3</b>	<b>14</b>	<b>57</b>	<b>105</b>

## SEASON SINGLE-MATCH HIGHS (2015)

<b>KILLS:</b>	25, at Michigan State (Nov. 18)*	
<b>ATTEMPTS:</b>	55, vs. Illinois (Nov. 4)*	
<b>HITTING PCT.:</b>	.591, at Loyola (Aug. 29)*	
<b>SERVICE ACES:</b>	2, at Loyola (Aug. 29)*	
<b>ASSISTS:</b>	1 (3X), last vs. Michigan (Oct. 30)*	
<b>TOTAL BLOCKS:</b>	3 (3X), last vs. Milwaukee (Sept. 20)*	
<b>DIGS:</b>	10, vs. New Hampshire (Aug. 28)*	*denotes career high

## CAREER SINGLE-MATCH HIGHS

<b>KILLS:</b>	25, at Michigan State (Nov. 18, 2015)
<b>ATTEMPTS:</b>	55, vs. Illinois (Nov. 4, 2015)
<b>HITTING PCT.:</b>	.591, at Loyola (Aug. 29, 2015)
<b>SERVICE ACES:</b>	2, at Loyola (Aug. 29, 2015)
<b>ASSISTS:</b>	1 (3X), last vs. Michigan (Oct. 30, 2015)
<b>TOTAL BLOCKS:</b>	3 (3X), last vs. Milwaukee (Sept. 20, 2015)
<b>DIGS:</b>	10, vs. New Hampshire (Aug. 28, 2015)



## ABBY HOFMEISTER

5-4 • R-Sophomore  
Defensive Specialist  
Columbus, Ohio  
Bishop Watterson

3

### 2015 SEASON

Has not appeared in a match.

### HOFMEISTER'S CAREER STATISTICS

Year	MP-SP	K	E	TA	PCT	AST	SA	BS	BA	DG
2015	---	-	-	-	-	-	-	-	-	-
2014	---	-	-	-	-	-	-	-	-	-
<b>Career</b>	---	-	-	-	-	-	-	-	-	-

### SEASON SINGLE-MATCH HIGHS (2015)

<b>KILLS:</b>	N/A
<b>ATTEMPTS:</b>	N/A
<b>HITTING PCT.:</b>	N/A
<b>SERVICE ACES:</b>	N/A
<b>ASSISTS:</b>	N/A
<b>TOTAL BLOCKS:</b>	N/A
<b>DIGS:</b>	N/A

\*denotes career high

### CAREER SINGLE-MATCH HIGHS

<b>KILLS:</b>	N/A
<b>ATTEMPTS:</b>	N/A
<b>HITTING PCT.:</b>	N/A
<b>SERVICE ACES:</b>	N/A
<b>ASSISTS:</b>	N/A
<b>TOTAL BLOCKS:</b>	N/A
<b>DIGS:</b>	N/A



## RACHAEL FARA

6-3 • Freshman  
Middle Blocker  
Naperville, Ill.  
Benet Academy

4

### 2015 SEASON

Served the first two aces of her career in a win over No. 3 Penn State (10/10) ... Had a career high six total blocks (three solo, three assisted) vs. Ohio State (10/9) ... Recorded her first career assist and dig at Wisconsin (10/4) ... Made her first career start at Minnesota (9/30) ... Tallied nine kills and hit at a .375 clip in that match ... Matched her season high with two kills at Boise State (9/5) ... Hit a career best .667 in that match ... Notched two kills on four attempts vs. New Hampshire (8/28) ... Recorded first collegiate point with a solo block vs. Wake Forest in the first match of the season (8/28).

### FARA'S CAREER STATISTICS

Year	MP-SP	K	E	TA	PCT	AST	SA	BS	BA	DG
2015	12-29	38	15	89	.258	3	2	4	5	4
<b>Career</b>	<b>12-29</b>	<b>38</b>	<b>15</b>	<b>89</b>	<b>.258</b>	<b>3</b>	<b>2</b>	<b>4</b>	<b>5</b>	<b>4</b>

### SEASON SINGLE-MATCH HIGHS (2015)

<b>KILLS:</b>	9, at Minnesota (Sept. 30)*
<b>ATTEMPTS:</b>	16, at Minnesota (Sept. 30)*
<b>HITTING PCT.:</b>	.375, at Minnesota (Sept. 30)*
<b>SERVICE ACES:</b>	2, vs. Penn State (Oct. 10)*
<b>ASSISTS:</b>	2, vs. Penn State (Oct. 10)*
<b>TOTAL BLOCKS:</b>	6, vs. Ohio State (Oct. 9)*
<b>DIGS:</b>	3, at Wisconsin (Oct. 4)*

\*denotes career high

### CAREER SINGLE-MATCH HIGHS

<b>KILLS:</b>	9, at Minnesota (Sept. 30, 2015)
<b>ATTEMPTS:</b>	16, at Minnesota (Sept. 30, 2015)
<b>HITTING PCT.:</b>	.375, at Minnesota (Sept. 30, 2015)
<b>SERVICE ACES:</b>	2, vs. Penn State (Oct. 10, 2015)
<b>ASSISTS:</b>	2, vs. Penn State (Oct. 10, 2015)
<b>TOTAL BLOCKS:</b>	6, vs. Ohio State (Oct. 9, 2015)
<b>DIGS:</b>	3, at Wisconsin (Oct. 4, 2015)



## CAROLINE NIEDOSPIAL

5-7 • R-Senior  
Defensive Specialist/Libero  
Chicago, Ill.  
Marist

5

### 2015 SEASON

Moved into second place all-time at Northwestern in career digs with number 1,659 late in the second set vs. Illinois (11/4) ... Reached 1500 career digs in the Wildcats' match at Maryland (9/26) ... Earned All-Tournament honors at the Wildcat Challenge, making it four all-tournament teams in four chances this offseason ... Jumped up three spots to third all-time at Northwestern with her 63 dig performance over three matches at Western Kentucky ... Passed out a season high six assists in the match vs. Western Kentucky (9/11) ... Moved into sixth place on the all-time digs list at Northwestern vs. Texas A&M-Corpus Christi (9/5) ... Named to the Boise State All-Tournament Team ... Notched her first kill of the season on her only attempt vs. Idaho State (9/4) ... Recorded 11 digs, four assists and an ace in a 3-0 win at Loyola (8/29) ... Set a season high with 17 digs vs. New Hampshire (8/28) ... Named to the Rambler Challenge All-Tournament Team after tallying 40 digs and nine assists in three Northwestern wins (8/29).

### NIEDOSPIAL'S CAREER STATISTICS

Year	MP-SP	K	E	TA	PCT	AST	SA	BS	BA	DG
2015	30-104	2	0	2	1.000	78	14	0	0	484
2014	31-116	2	0	5	.400	82	13	0	0	548
2013	32-124	1	1	4	.000	57	24	0	0	553
2012	-	-	-	-	-	-	-	-	-	-
2011	26-90	3	0	6	.500	16	7	0	0	188
<b>Career</b>	<b>119-434</b>	<b>8</b>	<b>1</b>	<b>17</b>	<b>.412</b>	<b>233</b>	<b>58</b>	<b>0</b>	<b>0</b>	<b>1773</b>

### SEASON SINGLE-MATCH HIGHS (2015)

<b>KILLS:</b>	1 (2X), last at Purdue (Oct. 23)
<b>ATTEMPTS:</b>	1 (2X), last at Purdue (Oct. 23)
<b>HITTING PCT.:</b>	1.000 (2X), last vs. Purdue (Oct. 23)*
<b>SERVICE ACES:</b>	2, at Boise State (Sept. 5)*
<b>ASSISTS:</b>	6 (2X), last vs. Minnesota (Nov. 11)
<b>TOTAL BLOCKS:</b>	N/A
<b>DIGS:</b>	31, vs. Texas A&M-Corpus Christi (Sept. 5) *denotes career high

### CAREER SINGLE-MATCH HIGHS

<b>KILLS:</b>	2, at Indiana (Nov. 4, 2011)
<b>ATTEMPTS:</b>	4, at Indiana (Nov. 4, 2011)
<b>HITTING PCT.:</b>	1.000 (2X), last at Purdue (Oct. 23, 2015)
<b>SERVICE ACES:</b>	2, (10X), last at Boise State (Sept. 5, 2015)
<b>ASSISTS:</b>	8, vs. Rutgers (Sept. 26, 2014)
<b>TOTAL BLOCKS:</b>	N/A
<b>DIGS:</b>	34, vs. Purdue (Oct. 24, 2014)



## CALEIGH RYAN

5-10 • Junior  
Setter  
Glen Ellyn, Ill.  
Glenbard West

6

### 2015 SEASON

Saw significant floor time in conference matches against Michigan (10/30) and Illinois (11/4) ... Appeared in Northwestern's match vs. Idaho State (9/4) ... Recorded a kill on one attempt in that match.

### RYAN'S CAREER STATISTICS

Year	MP-SP	K	E	TA	PCT	AST	SA	BS	BA	DG
2015	4-8	1	0	2	.500	1	0	0	0	2
2014	17-58	0	1	4	-.250	397	8	0	7	91
2013	31-117	14	9	59	.085	1,314	5	0	55	257
<b>Career</b>	<b>52-183</b>	<b>15</b>	<b>10</b>	<b>65</b>	<b>.077</b>	<b>1,712</b>	<b>13</b>	<b>0</b>	<b>62</b>	<b>350</b>

### SEASON SINGLE-MATCH HIGHS (2015)

<b>KILLS:</b>	1, vs. Idaho State (Sept. 4)
<b>ATTEMPTS:</b>	1, vs. Idaho State (Sept. 4)
<b>HITTING PCT.:</b>	1.000, vs. Idaho State (Sept. 4)
<b>SERVICE ACES:</b>	N/A
<b>ASSISTS:</b>	1, vs. Michigan (Oct. 30)
<b>TOTAL BLOCKS:</b>	N/A
<b>DIGS:</b>	2, vs. Michigan (Oct. 30) *denotes career high

### CAREER SINGLE-MATCH HIGHS

<b>KILLS:</b>	2, at Indiana (Oct. 11, 2013)
<b>ATTEMPTS:</b>	5, twice, last at Indiana (Oct. 11, 2013)
<b>HITTING PCT.:</b>	.400, at Indiana (Oct. 11, 2013)
<b>SERVICE ACES:</b>	2, twice, last vs. Illinois (Nov. 8, 2014)
<b>ASSISTS:</b>	67, at Purdue (Oct. 12, 2013)
<b>TOTAL BLOCKS:</b>	5, twice, last vs. Indiana (Nov. 17, 2013)
<b>DIGS:</b>	15, vs. Illinois (Oct. 23, 2013)



## KATIE KNIEP

5-7 • R-Freshman  
Defensive Specialist/Libero  
Roscoe, Ill.  
Hononegah

7

### 2015 SEASON

Handed out a career high three assists vs. Illinois (11/4) ... Matched career highs with two aces at Rutgers (9/25) and two assists at Maryland (9/26) ... Two aces vs. Furman is a new career high (9/11) ... Matched her career best in assists with two vs. Missouri State (9/12) ... Set a new career high with 17 digs vs. Texas A&M-Corpus Christi (9/5) ... Recorded her first two career assists at Boise State (9/5) ... Established a then-career single-match high with six digs vs. New Hampshire (8/28) ... Tallied 15 digs total over Northwestern's three matches at the Rambler Challenge.

### KNIEP'S CAREER STATISTICS

Year	MP-SP	K	E	TA	PCT	AST	SA	BS	BA	DG
2015	30-104	0	1	1	-1.000	17	11	0	0	188
2014	-	-	-	-	-	-	-	-	-	-
<b>Career</b>	<b>30-104</b>	<b>0</b>	<b>1</b>	<b>1</b>	<b>-1.000</b>	<b>17</b>	<b>11</b>	<b>0</b>	<b>0</b>	<b>188</b>

### SEASON SINGLE-MATCH HIGHS (2015)

<b>KILLS:</b>	N/A
<b>ATTEMPTS:</b>	N/A
<b>HITTING PCT.:</b>	N/A
<b>SERVICE ACES:</b>	2 (3X), last vs. Purdue (Nov. 15)*
<b>ASSISTS:</b>	3, vs. Illinois (Nov. 4)*
<b>TOTAL BLOCKS:</b>	N/A
<b>DIGS:</b>	17, vs. Texas A&M-Corpus Christi (Sept. 5)*

\*denotes career high

### CAREER SINGLE-MATCH HIGHS

<b>KILLS:</b>	N/A
<b>ATTEMPTS:</b>	N/A
<b>HITTING PCT.:</b>	N/A
<b>SERVICE ACES:</b>	2 (3X), last vs. Purdue (Nov. 15, 2015)
<b>ASSISTS:</b>	3, vs. Illinois (Nov. 4, 2015)
<b>TOTAL BLOCKS:</b>	N/A
<b>DIGS:</b>	17, vs. Texas A&M-Corpus Christi (Sept. 5, 2015)



## GABRIELLE HAZEN

6-3 • Sophomore  
Middle Blocker  
Columbia City, Ind.  
Columbia City

8

### 2015 SEASON

Notched a career high 29 attempts vs. Illinois and posted seven blocks (11/4) ... Set a new career high with eight blocks vs. Michigan State (10/31) ... Five solo blocks in that match is tied for the most by a player in the Big Ten this season ... Was a force at the net against Iowa, recording a career high seven blocks, including three solo (10/18) ... Served the first ace of her career against Nebraska (10/16) ... Crushed her previous career totals with 13 kills and a .571 hitting percentage vs. Milwaukee at the Wildcat Challenge (9/20) ... Set then career highs in kills (8), attempts (20) and blocks (7) at the Holiday Inn University Plaza Invitational at Western Kentucky ... Set all those marks in the finale vs. Missouri State (9/12) ... Matched her career high with six kills against both Idaho State (9/4) and Texas A&M-Corpus Christi (9/5) ... Hit at a career best .556 clip vs. Idaho State (9/4) with six kills on nine attempts ... Set a career high with five total blocks vs. Idaho State (9/4) ... Hit .500 vs. New Hampshire on eight attempts (8/28) ... Set a career high in kills with six in the season-opener vs. Wake Forest (8/28) ... Blocked four attacks, including a solo in that match.

### HAZEN'S CAREER STATISTICS

Year	MP-SP	K	E	TA	PCT	AST	SA	BS	BA	DG
2015	26-86	175	62	392	.288	2	3	20	73	23
2014	5-6	1	4	7	-.429	0	0	0	0	0
<b>Career</b>	<b>31-92</b>	<b>176</b>	<b>66</b>	<b>399</b>	<b>.276</b>	<b>2</b>	<b>3</b>	<b>20</b>	<b>73</b>	<b>23</b>

### SEASON SINGLE-MATCH HIGHS (2015)

<b>KILLS:</b>	13, vs. Milwaukee (Sept. 20)*
<b>ATTEMPTS:</b>	29, vs. Illinois (Nov. 4)*
<b>HITTING PCT.:</b>	.571 vs. Milwaukee (Sept. 20)*
<b>SERVICE ACES:</b>	1 (3X), last at Michigan State (Nov. 18)*
<b>ASSISTS:</b>	1 (2X), last at Rutgers (Sept. 25)*
<b>TOTAL BLOCKS:</b>	8, vs. Michigan State (Oct. 31)*
<b>DIGS:</b>	3 (3X), last vs. Iowa (Oct. 18)*

\*denotes career high

### CAREER SINGLE-MATCH HIGHS

<b>KILLS:</b>	13, vs. Milwaukee (Sept. 20, 2015)
<b>ATTEMPTS:</b>	29, vs. Illinois (Nov. 4, 2015)
<b>HITTING PCT.:</b>	.571, vs. Milwaukee (Sept. 20, 2015)
<b>SERVICE ACES:</b>	1 (3X), last at Michigan State (Nov. 18, 2015)
<b>ASSISTS:</b>	1 (2X), last at Rutgers (Sept. 25, 2015)
<b>TOTAL BLOCKS:</b>	8, vs. Michigan State (Oct. 31, 2015)
<b>DIGS:</b>	3 (3X), last vs. Iowa (Oct. 18, 2015)





## RAFAE STROBOS

6-0 • Junior  
Outside Hitter  
New Braunfels, Texas  
Canyon

10



### 2015 SEASON

Tied a career high with seven kills at Iowa (11/21) ... Recorded the first two blocks of her career at Michigan State and set a new career high in digs (13) in that match (11/18) ... Received extended playing time against No. 4 Minnesota and racked up career highs in kills (7) and attempts (25) (11/11) ... Set new career highs in kills, attempts, assists and digs at Illinois (11/7) ... Handed out the first three assists of her career in that match ... Tallied a then-career high with five digs vs. Illinois and matched her career best with two aces (11/4) ... Registered career highs in kills (3) and attempts (10) at Indiana (10/24) ... Served two aces to help Northwestern upset No. 3 Penn State (10/10) ... Set a career high with two digs vs. Milwaukee at the Wildcat Challenge (9/20) ... Matched her aces total with two more in the finale of the Holiday Inn University Plaza Invitational at Western Kentucky against Missouri State (9/12) ... Served the first two aces of her career in the season opener vs. Wake Forest (8/28).

### STROBOS' CAREER STATISTICS

Year	MP-SP	K	E	TA	PCT	AST	SA	BS	BA	DG
2015	30-91	25	19	103	.058	9	13	1	1	70
2014	8-12	0	0	1	.000	0	0	0	0	2
2013	2-3	2	0	3	.667	0	0	0	0	1
<b>Career</b>	<b>40-106</b>	<b>27</b>	<b>19</b>	<b>107</b>	<b>.075</b>	<b>9</b>	<b>13</b>	<b>1</b>	<b>1</b>	<b>73</b>

### SEASON SINGLE-MATCH HIGHS (2015)

**KILLS:** 7 (2X), last at Iowa (Nov. 21)\*  
**ATTEMPTS:** 25, vs. Minnesota (Nov. 11)\*  
**HITTING PCT.:** .250, at Illinois (Nov. 7)\*  
**SERVICE ACES:** 2 (4X), last vs. Illinois (Nov. 4)\*  
**ASSISTS:** 3 (2X), last vs. Purdue (Nov. 15)\*  
**TOTAL BLOCKS:** 2, at Michigan State (Nov. 18)\*  
**DIGS:** 13, at Michigan State (Nov. 18)\*

\*denotes career high

### CAREER SINGLE-MATCH HIGHS

**KILLS:** 7, (2X) last at Iowa (Nov. 21, 2015)  
**ATTEMPTS:** 25, vs. Minnesota (Nov. 11, 2015)  
**HITTING PCT.:** .250, at Illinois (Nov. 7, 2015)  
**SERVICE ACES:** 2 (4X), last vs. Illinois (Nov. 4, 2015)  
**ASSISTS:** 3 (2X), last vs. Purdue (Nov. 15, 2015)  
**TOTAL BLOCKS:** 2, at Michigan State (Nov. 18, 2015)  
**DIGS:** 13, at Michigan State (Nov. 18, 2015)



## MADDIE SLATER

6-3 • Junior  
Middle Blocker  
The Woodlands, Texas  
The Woodlands

11



### 2015 SEASON

Named the Big Ten Player of the Week on Sept. 28 ... Tallied season highs in digs (2) and blocks (7) vs. Purdue (11/15) ... Paced the Northwestern offense with 14 kills and a .417 hitting percentage vs. Illinois (11/4) ... Dominant at the net in Northwestern's win over No. 3 Penn State with seven blocks (10/10) ... Hit at a season high mark of .636 at Wisconsin with seven kills in 11 attempts (10/4) ... Tied her season-high with four blocks in the Northwestern win at Rutgers (9/25) ... Set a new career in hitting percentage with a .583 mark vs. Milwaukee at the Wildcat Challenge (9/20) ... Had a great offensive showing to help lead Northwestern over Missouri State in five sets with a career high 15 kills on 31 assists (9/12) ... Put forth a good all-around performance vs. Texas A&M-Corpus Christi, setting season highs in kills (6), attempts (14), assists (2) and blocks (4), with her 14 attempts and two assists also setting career bests (9/5) ... Notched four kills on eight attempts in Northwestern's 3-0 win over New Hampshire (8/28).

### SLATER'S CAREER STATISTICS

Year	MP-SP	K	E	TA	PCT	AST	SA	BS	BA	DG
2015	30-104	209	57	445	.342	6	0	20	61	12
2014	31-107	104	36	226	.301	6	0	10	92	2
2013	15-50	22	14	68	.118	3	0	5	31	7
<b>Career</b>	<b>76-261</b>	<b>335</b>	<b>107</b>	<b>739</b>	<b>.309</b>	<b>15</b>	<b>0</b>	<b>35</b>	<b>184</b>	<b>21</b>

### SEASON SINGLE-MATCH HIGHS (2015)

**KILLS:** 15, vs. Missouri State (Sept. 12)\*  
**ATTEMPTS:** 31, vs. Missouri State (Sept. 12)\*  
**HITTING PCT.:** .636, at Wisconsin (Oct. 4)  
**SERVICE ACES:** N/A  
**ASSISTS:** 2 (2X), last at Illinois (Nov. 7)\*  
**TOTAL BLOCKS:** 7 (2X), last vs. Purdue (Nov. 15)  
**DIGS:** 2, vs. Purdue (Nov. 15)\*

\*denotes career high

### CAREER SINGLE-MATCH HIGHS

**KILLS:** 15, vs. Missouri State (Sept. 12, 2015)  
**ATTEMPTS:** 31, vs. Missouri State (Sept. 12, 2015)  
**HITTING PCT.:** .800 vs. Maryland (Nov. 29, 2014)  
**SERVICE ACES:** N/A  
**ASSISTS:** 2 (2X), last at Illinois (Nov. 7, 2015)  
**TOTAL BLOCKS:** 9, vs. Illinois (Nov. 5, 2014)  
**DIGS:** 2 (4X), last vs. Purdue (Nov. 15, 2015)





**CASSIDY  
NUSSMAN**

6-4 • Freshman  
Outside Hitter  
Pearland, Texas  
Pearland

12



### 2015 SEASON

Has not appeared in a match.

### NUSSMAN'S CAREER STATISTICS

Year	MP-SP	K	E	TA	PCT	AST	SA	BS	BA	DG
2015	-	-	-	-	-	-	-	-	-	-
<b>Career</b>	-	-	-	-	-	-	-	-	-	-

### SEASON SINGLE-MATCH HIGHS (2015)

<b>KILLS:</b>	N/A
<b>ATTEMPTS:</b>	N/A
<b>HITTING PCT.:</b>	N/A
<b>SERVICE ACES:</b>	N/A
<b>ASSISTS:</b>	N/A
<b>TOTAL BLOCKS:</b>	N/A
<b>DIGS:</b>	N/A

\*denotes career high

### CAREER SINGLE-MATCH HIGHS

<b>KILLS:</b>	N/A
<b>ATTEMPTS:</b>	N/A
<b>HITTING PCT.:</b>	N/A
<b>SERVICE ACES:</b>	N/A
<b>ASSISTS:</b>	N/A
<b>TOTAL BLOCKS:</b>	N/A
<b>DIGS:</b>	N/A



**ABBIE  
KRAUS**

5-4 • Senior  
Defensive Specialist  
Birmingham, Ala.  
Vestavia Hills

13



### 2015 SEASON

Tied a career high with four aces against Purdue (11/15) ... Tallied her 25th ace of the season in a win over Michigan State (10/31) ... Recorded a season-high 12 digs in a win over Iowa (10/18) ... Served three aces in that match ... Notched an ace at Minnesota to run her streak to six straight with at least one (9/30) ... Tied her season high with 11 digs at Maryland (9/26) ... Notched three consecutive aces to begin the second set vs. Milwaukee at the Wildcat Challenge on the way to a career high four in the match (9/20) ... Served two aces in a match for the third time this year in the Holiday Inn University Plaza Invitational at Western Kentucky ... Matched her season high with two aces at Boise State (9/5) ... Set a career high with two hitting attempts in that match ... Tallied an ace in every match of the Rambler Challenge, including a pair of them in the finale at Loyola (8/29).

### KRAUS' CAREER STATISTICS

Year	MP-SP	K	E	TA	PCT	AST	SA	BS	BA	DG
2015	30-101	0	0	5	.000	12	30	0	0	124
2014	20-46	0	0	0	.000	4	3	0	0	30
2013	27-76	1	0	1	1.000	2	13	0	0	66
2012	31-114	3	2	5	.200	28	23	0	0	203
<b>Career</b>	<b>108-337</b>	<b>4</b>	<b>2</b>	<b>11</b>	<b>.182</b>	<b>46</b>	<b>69</b>	<b>0</b>	<b>0</b>	<b>423</b>

### SEASON SINGLE-MATCH HIGHS (2015)

<b>KILLS:</b>	N/A
<b>ATTEMPTS:</b>	2, at Boise State (Sept. 5)*
<b>HITTING PCT.:</b>	N/A
<b>SERVICE ACES:</b>	4 (2X), last vs. Purdue (Nov. 15)*
<b>ASSISTS:</b>	2, at Wisconsin (Oct. 4)
<b>TOTAL BLOCKS:</b>	N/A
<b>DIGS:</b>	12, vs. Iowa (Oct. 18)

\*denotes career high

### CAREER SINGLE-MATCH HIGHS

<b>KILLS:</b>	1 (4X), last vs. Boise State (Sept. 8, 2013)
<b>ATTEMPTS:</b>	2, at Boise State (Sept. 5, 2015)
<b>HITTING PCT.:</b>	N/A
<b>SERVICE ACES:</b>	4 (3X), last vs. Purdue (Nov. 15, 2015)
<b>ASSISTS:</b>	4, at Nebraska (Nov. 24, 2012)
<b>TOTAL BLOCKS:</b>	N/A
<b>DIGS:</b>	15, vs. Wisconsin (Sept. 21, 2012)



**ASHLEY  
BUSH**

5-11 • Freshman  
Outside Hitter  
Union, Ky.  
Ryle

14



### 2015 SEASON

Saw significant floor time vs. Illinois and posted five kills, two digs, a block and her first career assist (11/4) ... Played in her first career match at home against Michigan (10/30) ... Tallied nine kills, three digs and a block in that match.

### BUSH'S CAREER STATISTICS

Year	MP-SP	K	E	TA	PCT	AST	SA	BS	BA	DG
2015	4-8	15	15	53	.000	1	-	1	1	5
<b>Career</b>	<b>4-8</b>	<b>15</b>	<b>15</b>	<b>53</b>	<b>.000</b>	<b>1</b>	<b>-</b>	<b>1</b>	<b>1</b>	<b>5</b>

### SEASON SINGLE-MATCH HIGHS (2015)

<b>KILLS:</b>	9, vs. Michigan (Oct. 30)*
<b>ATTEMPTS:</b>	27, vs. Michigan (Oct. 30)*
<b>HITTING PCT.:</b>	.111, vs. Michigan (Oct. 30)*
<b>SERVICE ACES:</b>	N/A
<b>ASSISTS:</b>	1, vs. Illinois (Nov. 4)*
<b>TOTAL BLOCKS:</b>	1 (2X), last vs. Illinois (Nov. 4)*
<b>DIGS:</b>	3, vs. Michigan (Oct. 30)*

\*denotes career high

### CAREER SINGLE-MATCH HIGHS

<b>KILLS:</b>	9, vs. Michigan (Oct. 30, 2015)
<b>ATTEMPTS:</b>	27, vs. Michigan (Oct. 30, 2015)
<b>HITTING PCT.:</b>	.111, vs. Michigan (Oct. 30, 2015)
<b>SERVICE ACES:</b>	N/A
<b>ASSISTS:</b>	N/A
<b>TOTAL BLOCKS:</b>	1 (2X), last vs. Illinois (Nov. 4, 2015)
<b>DIGS:</b>	3, vs. Michigan (Oct. 30, 2015)



KAYLA  
MORIN

6-2 • Junior  
Outside Hitter  
Portage, Mich.  
Portage Northern

15



## 2015 SEASON

Notched her second double-double of the season with 16 kills and 13 digs against Minnesota (11/11) ... Served a career high three aces and tallied a season high 16 digs vs. Illinois (11/4) ... Hit at a career high .500 clip with nine kills on 18 attempts at Indiana (10/24) ... Recorded her second double-double of the season with 15 kills and 14 digs to go along with a career high three assists in leading Northwestern to a win over No. 3 Penn State (10/10) ... Notched a double-double at Minnesota that included a season-high 14 digs (9/30) ... Paced the Northwestern offense vs. Missouri State with a season high 18 kills on 47 assists ... Rewrote her season highs at the Boise State Tournament with 10 kills vs. Idaho State (9/4), 35 attempts, six blocks and 12 digs vs. Texas A&M-Corpus Christi (9/5) and an ace and two assists at Boise State (9/5) ... Proved versatile in the Wildcats' 3-0 win over New Hampshire with seven kills, an ace, nine digs and three blocks (8/28) ... Served an ace in all three matches of the Rambler Challenge.

## MORIN'S CAREER STATISTICS

Year	MP-SP	K	E	TA	PCT	AST	SA	BS	BA	DG
2015	30-104	253	90	845	.193	26	20	10	55	222
2014	31-116	321	119	1053	.192	21	22	8	63	279
2013	32-124	265	106	886	.179	9	22	5	19	280
<b>Career</b>	<b>93-344</b>	<b>839</b>	<b>315</b>	<b>2784</b>	<b>.188</b>	<b>56</b>	<b>64</b>	<b>23</b>	<b>137</b>	<b>781</b>

## SEASON SINGLE-MATCH HIGHS (2015)

<b>KILLS:</b>	18, vs. Missouri State (Sept. 12)
<b>ATTEMPTS:</b>	47, vs. Missouri State (Sept. 12)
<b>HITTING PCT.:</b>	.500, at Indiana (Oct. 24)*
<b>SERVICE ACES:</b>	3, vs. Illinois (Nov. 4)*
<b>ASSISTS:</b>	3, vs. Penn State (Oct. 10)*
<b>TOTAL BLOCKS:</b>	6, vs. Texas A&M-Corpus Christi (Sept. 5)
<b>DIGS:</b>	16, vs. Illinois (Nov. 4)

## CAREER SINGLE-MATCH HIGHS

<b>KILLS:</b>	22, vs. Purdue (Oct. 24, 2014)
<b>ATTEMPTS:</b>	59, vs. Purdue (Oct. 24, 2014)
<b>HITTING PCT.:</b>	.500, at Indiana (Oct. 24, 2015)
<b>SERVICE ACES:</b>	3 (2X), last vs. Illinois (Nov. 4, 2015)
<b>ASSISTS:</b>	3, vs. Penn State (Oct. 10, 2015)
<b>TOTAL BLOCKS:</b>	8, vs. Ohio (Sept. 18, 2014)
<b>DIGS:</b>	22, vs. Milwaukee (Aug. 31, 2013)



SOFIA  
LAVIN

6-2 • Junior  
Outside Hitter  
Aliso Viejo, Calif.  
Santa Margarita/San Diego

16



## 2015 SEASON

Served a career high two aces at Purdue (10/23) ... Handed out two assists vs. Nebraska to set a new career high (10/16) ... Recorded her first career ace and assist in a Northwestern uniform in the Wildcats match vs. Missouri State (9/12) ... Set her high mark at Northwestern with 14 kills on 35 attempts vs. Texas A&M-Corpus Christi (9/5) ... Recorded a block in each match at the Boise State Tournament ... Made her Northwestern debut vs. Wake Forest at the Rambler Challenge (8/28) ... Put together an all-around performance with 11 kills on 20 attempts, three digs and a block ... Totalled 30 kills across all three matches.

## LAVIN'S CAREER STATISTICS

Year	MP-SP	K	E	TA	PCT	AST	SA	BS	BA	DG
2015	28-90	202	134	595	.114	6	6	3	13	69
2014 (USD)	23-50	80	40	206	.194	3	1	2	5	31
<b>Career (NU)</b>	<b>28-90</b>	<b>202</b>	<b>134</b>	<b>595</b>	<b>.114</b>	<b>6</b>	<b>6</b>	<b>3</b>	<b>13</b>	<b>69</b>

## SEASON SINGLE-MATCH HIGHS (2015)

<b>KILLS:</b>	14 (2X), last vs. Furman (Sept. 11)*
<b>ATTEMPTS:</b>	35, vs. Texas A&M-Corpus Christi (Sept. 5)*
<b>HITTING PCT.:</b>	.500 vs. Wake Forest (Aug. 28)*
<b>SERVICE ACES:</b>	2, at Purdue (Oct. 23)*
<b>ASSISTS:</b>	2, vs. Nebraska (Oct. 16)*
<b>TOTAL BLOCKS:</b>	2, vs. Iowa (Oct. 18)*
<b>DIGS:</b>	8, vs. Missouri State (Sept. 12)*

\* denotes career high

## CAREER SINGLE-MATCH HIGHS

<b>KILLS:</b>	14 (2X), last vs. Furman (Sept. 11, 2015)
<b>ATTEMPTS:</b>	35, vs. Texas A&M-Corpus Christi (Sept. 5, 2015)
<b>HITTING PCT.:</b>	.500 vs. Wake Forest (Aug. 28, 2015)
<b>SERVICE ACES:</b>	2, at Purdue (Oct. 23, 2015)
<b>ASSISTS:</b>	2, vs. Nebraska (Oct. 16, 2015)
<b>TOTAL BLOCKS:</b>	2, vs. Iowa (Oct. 18, 2015)
<b>DIGS:</b>	8, vs. Missouri State (Sept. 12, 2015)



**KAITLIN  
TAVAREZ**

5-6 • Freshman  
Defensive Specialist/Libero  
Menlo Park, Calif.  
Menlo-Atherton

**17**

#### TAVAREZ'S CAREER STATISTICS

Year	MP-SP	K	E	TA	PCT	AST	SA	BS	BA	DG
2015	---	-	-	-	-	-	-	-	-	-
Career	---	-	-	-	-	-	-	-	-	-

#### SEASON SINGLE-MATCH HIGHS (2015)

<b>KILLS:</b>	N/A
<b>ATTEMPTS:</b>	N/A
<b>HITTING PCT.:</b>	N/A
<b>SERVICE ACES:</b>	N/A
<b>ASSISTS:</b>	N/A
<b>TOTAL BLOCKS:</b>	N/A
<b>DIGS:</b>	N/A

*\*denotes career high*

#### CAREER SINGLE-MATCH HIGHS

<b>KILLS:</b>	N/A
<b>ATTEMPTS:</b>	N/A
<b>HITTING PCT.:</b>	N/A
<b>SERVICE ACES:</b>	N/A
<b>ASSISTS:</b>	N/A
<b>TOTAL BLOCKS:</b>	N/A
<b>DIGS:</b>	N/A

#### 2015 SEASON

Has not appeared in a match.