



NORTHERN

WOLVES CLUB

INVESTING IN EXCELLENCE

2025-26 GIVING GUIDE | [NSUWOLVES.COM](https://www.nsuwolves.com)





NATE DAVIS
Director of Athletics



LACI HETTICK
Sr. Director of Development -
Major Gifts & Athletics



JARED JACOBSON
Wolves Club
Committee Chair

WOLVES COUNTRY,

Thank you for your incredible and ongoing support of NSU's 400+ student-athletes. Your generosity, combined with the amazing community support we witness, significantly impacts their lives and ability to excel. Your dedication and passion to support specific areas of NSU Athletics has direct impact on the success of our programs.

Beyond sports and academics, our student-athletes actively engage in the Aberdeen community; volunteering and serving as positive role models for area youth, strengthening the connection between the university, the Aberdeen area and beyond.

We invite you to continue this vital partnership. If you're seeking a new way to support NSU Athletics, please consider the **Wolves Championship Fund**. This fund provides crucial scholarship support and enhances the overall experience for all our student-athletes, ensuring they have the resources for effective training and competition. Your contribution offers a powerful way to invest in their holistic development.

With your continued commitment, we can empower our student-athletes to achieve on the field, in the classroom, and as engaged members of the Aberdeen community. **Together, we are building a stronger future for NSU Athletics and the next generation of champions.**

Go Wolves!

Nate Davis Laci Hettick Jared Jacobson



ABBY (MEISTER) SCHAUER VOLLEYBALL

Hometown: Sioux Falls, SD

Majors: Nursing and Human
Performance & Fitness

Honors: NSIC Libero of the Year, AVCA
All-American, CSC Academic All-American®

"Earning an athletic scholarship has been incredible, making education affordable and allowing me to pursue two degrees while still dedicating time to volleyball. Choosing NSU felt like finding a home away from home. I was drawn by the competitive conference, a great coaching staff and a team that truly feels like family. Being an NSU student-athlete has been nothing but awesome, filled with meeting my best friends, thriving in a really great team culture and being afforded hands-on educational opportunities. One of my favorite memories was playing against the #1 seed in the country at home in a packed Wachs Arena, feeling the amazing community support. To the NSU Athletics donors and fans, thank you for the opportunities; your support has allowed me to focus on both academics and athletics, shaping my progress in both."



THE PRICE OF CHAMPIONS

Together, we have the power to shape the future of NSU Athletics! The Wolves Club is making a tangible impact on the lives of more than 400 student-athletes who wear maroon and gold with pride. Join us in this crucial moment to capitalize on our growing momentum and achieve our \$2.7M annual support goal for our athletes and programs. Join the Wolves Club and help us turn this momentum into lasting success!



ANNUAL COST

PER STUDENT-ATHLETE	\$25,400
In-State tuition fees, room, board, books and supplies	\$21,500
Equipment and uniforms	\$1,300
Team travel	\$1,800
Athletic performance, fueling station, strength & conditioning	\$800



TOTAL COST PER STUDENT-ATHLETE

\$25,400 In-State
\$27,650 Out-of-State

To keep pace with rising tuition and operational costs, your financial support is **more crucial than ever** for our annual operations. Investing in a student-athlete experience that aligns with the competitive standards of the NSIC is not just a goal, it's a necessity. Your support of the Wolves directly equips our student-athletes with the vital resources they need to excel athletically, academically and within our community.

IZZY MOORE WOMEN'S BASKETBALL

Hometown: Sioux Falls, SD

Majors: English and Secondary Education

"I chose NSU because I was familiar with the coaching staff and for the opportunity to play collegiately with my sister. I was also drawn by the amazing community and supportive professors and administration. Being an NSU student-athlete has been special because of the incredible crowd and fans, the constant support of close teammates, and coaches who genuinely care about us both on and off the court. The community support here is truly what sets NSU apart, with so many involved and passionate about women's basketball, making this an amazing place that has already surpassed my expectations."



JERSEYS

GAME: \$100
PRACTICE: \$80
WORKOUT: \$60
COMPRESSION GEAR: \$80

SHORTS

GAME: \$100
PRACTICE: \$40
WORKOUT: \$40

WARM-UP GEAR

SHOOTING SHIRT: \$50

TRAVEL GEAR

JACKET: \$70
PANTS: \$50
PARKA: \$150

BASKETBALL SHOES

GAME: \$75
TRAINERS: \$75



MEMBERSHIP BENEFITS

Wolves Club Memberships start at \$100 annually. Members who donate to the Wolves Championship Fund, scholarships or season tickets enjoy these benefits. Members who donate to a specific sport will enjoy NSU team-specific benefits outlined on page 8, while corporate partners will have benefits built into their specific contract.

<div> <div>WOLVES CLUB</div> <div>MEMBERSHIP BENEFITS</div> </div>			<div> <div>Varsity \$100-\$249</div> <div>Coach \$250-\$499</div> <div>Captain \$500-\$999</div> <div>Victory \$1,000-\$2,499</div> <div>Maroon & Gold \$2,500-\$4,999</div> <div>MVP \$5,000-\$9,999</div> <div>All-American \$10,000-\$14,999</div> <div>Champion \$15,000+</div> </div>					
Wolves Club Membership Card and Club Gift	N	N	N	N	N	N	N	N
10% Discount at Wolves Team Store	N	N	N	N	N	N	N	N
Discounts at Select Local Businesses	N	N	N	N	N	N	N	N
Website Recognition	N	N	N	N	N	N	N	N
Exclusive Wolves Club Communication	N	N	N	N	N	N	N	N
Invitation to Football Opener Tailgate	N	N	N	N	N	N	N	N
Invitation to Wolves Club Special Events		N	N	N	N	N	N	N
Invitation to Football Signing Party			N	N	N	N	N	N
Invitation to Wolves Club Student -Athlete Maroon Tie Event				N	N	N	N	N
Wolves Club Luggage Tag					N	N	N	N
Exclusive Nike Wolves Club Apparel						N	N	N
Autographed Ball <i>(Upon Request)</i>						N	N	N
Two Passes to VIP Hall of Fame Hospitality Room for Home Basketball Games						N	N	N
Invitation to President's Football Suite for One Game							N	N
Football Sideline Passes for One Game <i>(Upon Request)</i>							N	N
Special Events with AD and Coaches								N

Student-athlete graduates within the last year will receive a complimentary Varsity level membership.

Present your Wolves Club membership card at the following businesses to receive exclusive discounts.

\$5 OFF
a purchase of
\$20 or more



LAGERS INN

 **ALLEVERY**
ENTERTAINMENT
PLAY EAT REPEAT

10% OFF
**unlimited attraction
packages**

Not to be combined with
other offers or discounts



**Free
Beer
or
Wine**
with any
service



\$6 Classes
for Yoga, Fitness
and Wellness

10% off
spa treatments

FIT and FIRE
studios

Heiser's
JEWELRY^{LLC}
15% OFF
your purchase of
regular price, in stock
merchandise

THE MARKET
food • coffee • gifts • bar • events

75¢ OFF
a Coffee drink
of your choice

karisma
BOUTIQUE

20% OFF
one regular priced item



\$5 OFF
your purchase of
\$20 or more.

NSU WOLF SHOPPE
Everything you need to be part of the pack!
20% OFF
total purchase of regular
priced clothing and giftware

 **WOLVES
TEAM STORE**
10% OFF
regular price merchandise
Will receive a code for 10% off
online purchases and free shipping

BUILDING CHAMPIONS

DONATE TO THE WOLVES CHAMPIONSHIP FUND

A gift to the **Wolves Championship Fund** plays a crucial role in enhancing the experiences of **ALL NSU student-athletes**, allowing them to thrive in both their sports and academic endeavors. Supporting this fund provides access to:

- **Top-Notch Facilities:** enabling us to maintain and improve our training facilities, ensuring our athletes have the best environment to practice and compete.
- **Expert Coaching:** bringing in experienced coaches who can mentor our athletes, helping them develop their skills and reach their full potential.
- **Scholarship Opportunities:** providing scholarships to deserving athletes, enabling them to focus on their sport and education without financial burden.
- **Competitive Experiences:** opening doors for our athletes to participate in top-notch competitive environments, showcasing their talents and gaining invaluable experience.
- **Holistic Development:** aiming to foster well-rounded individuals who excel not just in sports but also in academics, your donations will help fund programs that support this dual focus.



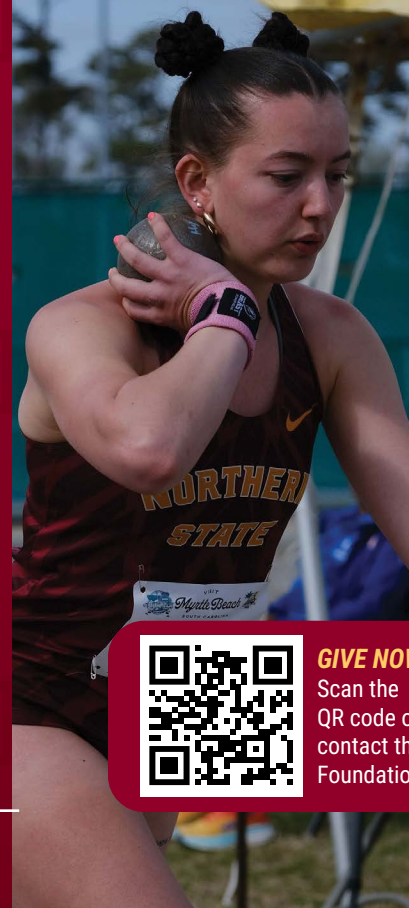
BECOME A DIFFERENCE MAKER

DONATE TO THE TEAM OF YOUR CHOICE

Make a significant impact on the sport of your choice by contributing to their Championship Fund. Funds go directly to what the program needs most – scholarship funding, improving the program's operating budget and enhancing the student-athlete experience.



SCAN
to give to
a specific
sport!



GIVE NOW
Scan the
QR code or
contact the
Foundation.

CHOOSE YOUR IMPACT

Wolves Championship Fund

Your support benefits all athletes and goes to what is needed most to build champions.

Support the Team of your Choice

Donate to a championship fund for the team of your choice.

Named Athletic Scholarship

Minimum of \$1,500/year

Purchase Wolves Club Season Tickets

Cheer on the Wolves at all home events

Become a Corporate Partner

Let NSU showcase your business

Gifts-In-Kind

Support the Wolves by providing gifts such as meals, lodging and service work.

For more information contact the NSU Foundation at 605-626-2550.

WAYS TO GIVE

Cash, Check or Credit Card

Complete the enclosed pledge card or pay online at nsuwolves.com/givenow

Pledge/Payment Plans

You can pledge your donation and set up a convenient payment plan – monthly, quarterly, or whatever works best for you! All pledges must be paid in full by June 2026.

Electronic Funds Transfer (EFT/ACH)

Simply fill out the enclosed pledge form and attach a voided check to start your monthly payment to the Wolves Club. Fast and easy - contact the NSU Foundation at 605-626-2550.

Payroll Deduction (NSU Employees Only)

Contact the NSU Foundation to set up!

Matching Gifts

Many companies have a matching gift program for contributions of employees. The NSU Foundation qualifies for many of these programs and the member receives full credit for the total gift.



JAKE ADAMS | FOOTBALL

Hometown: Pulaski, WI

Major: Business Management

Honors: AFCA/D2CCA/Don Hansen All-American, D2Football.com Elite 100, NSIC All-Conference First Team

"Sitting in Coach Schmidt's office during my visit, looking out over Dacotah Bank Stadium, was a surreal moment that confirmed NSU was the right choice for me. The facilities are amazing, and the coaches' belief in me made a big impression. Since arriving, I've felt truly welcomed by the Northern and Aberdeen communities, where support for athletes is everywhere — from packed stands on game days to professors giving personalized help, and coaches pushing us to be resilient and strive for more. The scholarship I have been awarded has been a game-changer, easing financial stress so I can focus on school and football. Thanks to the donors and fans — your support is unmatched by any other DII school in the country."

SEASON TICKET AND PARKING OPTIONS

Support Wolves Athletics | Become a Season Ticket Holder

WOLVES CLUB SEASON TICKETS

General Admission	General admission seating to all sporting events	\$350
Basketball Chairback	Reserved seat to BB; GA seating to all other sports	\$450
Basketball Courtside	Reserved courtside seat to BB; GA seating to all other sports	\$800-\$900
FB/BB Chairback	Reserved seat to FB/BB; GA seating to all other sports	\$550
Football Club	Reserved club seat to FB; reserved seat for BB; GA to all other sports	\$800
Football Loge	Reserved loge seat for FB; reserved seat for BB; GA to all other sports	\$1,285
NSU Faculty & Staff	General admission seating to all sporting events (each faculty & staff member can purchase up to 2 tickets at this price)	\$150

BASKETBALL ONLY

General Admission	General admission seating to all basketball contests only	\$215
Basketball Chairback	Reserved seat to all basketball contests only	\$330

FOOTBALL ONLY

Football Chairback	Reserved seat to all football contests only	\$220
Football Club	Reserved club seat to all football contests only	\$600
Football Loge	Reserved loge seat to all football contests only	\$970

WOLVES BUDDIES *Wolves buddies is open to all kids in 12th grade and under*

General Admission (1, 2 or 3+ members)	General admission seating to all sporting events	\$60-\$90-\$110
FB/BB Chairback	Reserved seat for BB w/parent; GA to all other sports (depending on seat availability)	\$100

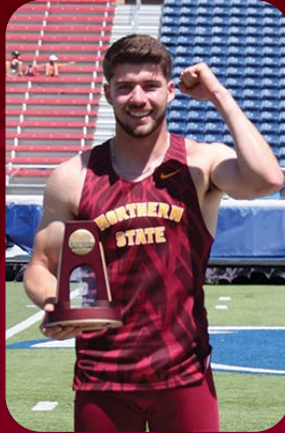
PARKING

Barnett Center Lot (BB Only)	GA parking in reserved section of lot for basketball	\$350
Barnett Center Lot (FB/BB)	GA parking in reserved section of lot for FB & BB	\$400
Football Premier Lot (FB Only)	Reserved parking for football	\$410
Football Premier Lot (FB/BB)	Reserved parking at FB and GA parking in BC for BB	\$600



For more information
on season ticket prices,
scan the QR code.

Current season ticket holders will be contacted in July 2025 to renew tickets. First-time season ticket holders can purchase tickets starting August 1, 2025.



**NORTHERN STATE
UNIVERSITY
WOLVES CLUB**

LACI HETTICK

Sr. Director of Development
Major Gifts & Athletics
laci.hettick@northern.edu
605-626-2550

SAM MASTEN

Assistant Athletic Director
of External Operations
samuel.masten@northern.edu
605-626-3336

✕ f
[@nsuwolvesclub](https://www.instagram.com/nsuwolvesclub)