



OUT OF THE PAST

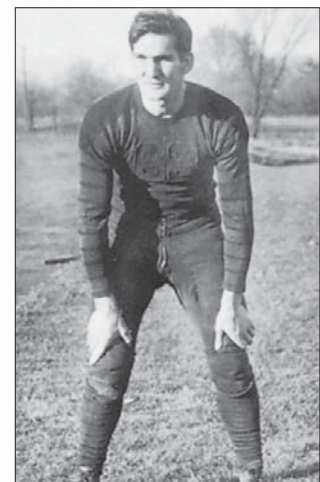
YEAR	COACH	CAPTAINS	RECORD	PTS.	OPP.
1899	John L. Keith	Victor Kays	1-0-2	21	15
1900	John L. Keith	Sanford Givens	2-2-2	50	50
1901	John L. Keith	Henry Hausen	6-1-0	108	18
1902	John L. Keith	Sanford Givens	5-1-1	75	16
1903●	John L. Keith	Floyd Ritzman, Donald Kays	3-3-0	44	43
TOTALS			17-7-5	298	142
●—Two scores unreported					
1904	Dixie Fleager	Alvin Farr	5-0-0	90	17
TOTALS			5-0-0	90	17
1905	Harry Sauthoff		3-1-1	25	12
TOTALS			3-1-1	25	12
1906	Nelson A. Kellogg	Warren Madden	4-2-1	38	23
1907	Nelson A. Kellogg		1-4-1	67	63
1908	Nelson A. Kellogg	Irwin Madden	1-5-1	31	81
1909	Nelson A. Kellogg		2-6-0	74	171
TOTALS			8-17-3	210	338
1910	William W. Wirtz		4-2-1	67	39
1911	William W. Wirtz	James Sawyer	8-1-2	196	84
1912	William W. Wirtz	William Baker	3-5-0	114	167
1913	William W. Wirtz	Jesse Donyes	3-3-3	56	236
1914	William W. Wirtz	Kennard Seyller	7-0-1	148	13
1915	William W. Wirtz	Henry Barton	2-5-1	81	210
1916	William W. Wirtz	Paul Harrison	6-1-1	105	19
TOTALS			33-17-9	767	768
1917-18-19 No teams due to World War I					
1920	Paul Harrison	Crawford King	3-5-0	153	93
1921	Paul Harrison	Allan Newman	3-5-0	193	168
1922	Paul Harrison	Leo Conahan	5-4-1	138	94
TOTALS			11-14-1	484	355
1923	William Muir	Elmer Kujala	1-4-3	73	171
1924	William Muir	Pete Ball	4-4-0	156	85
1925	William Muir	Junior Hahn	6-1-0	52	5
TOTALS			11-9-3	281	261
1926	Roland Cowell	Wesley Concidine	5-1-1	71	26
1927	Roland Cowell	Howard Larson, Ivan Nicholas	1-4-1	49	92
1928	Roland Cowell	Leslie Hedberg	0-6-1	12	139
TOTALS			6-11-3	132	257
1929	George Evans	Leland Strombom	6-1-1	124	24
1930	George Evans	John McNamara	6-2-1	152	60
1931	George Evans	Vernon Sutfin	5-3-0	76	59
1932	George Evans	Byron Kaiser	4-2-1	76	27
1933	George Evans	Art Court, Jack Mustapha	5-4-0	113	58
1934	George Evans	Russ Erb	5-1-2	109	42
1935	George Evans	Reino Nori, William Howard	7-1-1	201	20
1936	George Evans	William Walters, Karl Hein	4-3-1	60	59
1937	George Evans	Louis DeRango, Joseph Rockenbach	3-2-3	53	40
1938	George Evans	Curtis Larsen	6-1-1	133	34
1939	George Evans	John Young, Paul Blair	5-2-1	96	44
1940	George Evans	Sam Smith	6-3-0	115	116
1941	George Evans	Fred Spear	7-1-1	167	45
1942	George Evans	John Farney	4-2-2	75	75
1943	George Evans	Sievert Block, Wayne Cook	4-1-1	117	53



Huskie football near Altgeld Hall (1900)



Jack Mustapha (1933)

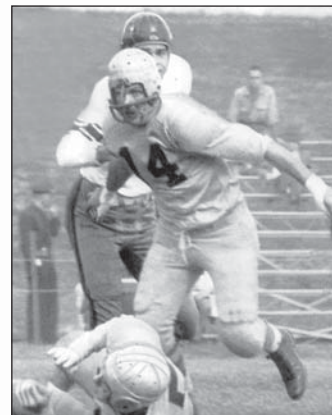


Joseph Rockenbach (1937)



OUT OF THE PAST

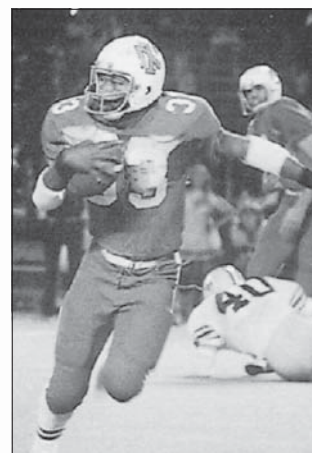
YEAR	COACH	CAPTAINS	RECORD	PTS.	OPP.
1944	George Evans	Henry Leskovec	7-0-0	113	48
1945	George Evans	Al Hodous, Richard Piatt	4-3-0	110	70
1946	George Evans	Robert Duffield	9-2-0	207	99
1947	George Evans	Larry Brink	4-3-3	131	97
1948	George Evans	Robert Walker	6-4-0	175	147
1949	George Evans	Robert Fowlie	7-2-1	273	157
1950	George Evans	Eugene Duda	3-6-0	193	256
1951	George Evans	George Acker, Frank Bieber	9-0-0	223	101
1952	George Evans	Designated by games	3-6-0	110	194
1953	George Evans	Len Jacobson	1-8-0	74	255
1954	George Evans	John Smith	2-7-0	79	187
TOTALS			132-70-20	3,355	2,367
1955	Robert Kahler	Ed Bauer	0-8-1	31	233
TOTALS			0-8-1	31	233
1956	Howard Fletcher	Dan Biddick, Tom Skubich	1-8-0	46	188
1957	Howard Fletcher	Larry Leadley	2-7-0	132	268
1958	Howard Fletcher	Ronald Hansen, Richard Stilling	4-5-0	184	184
1959	Howard Fletcher	Wayne Dannehl, Dale Berman	7-2-0	246	124
1960	Howard Fletcher	Robert Seamans, Derril Corbett	7-2-0	217	126
1961	Howard Fletcher	Marv Baker, Tom Beck	4-4-1	159	129
TOTALS			44-41-1	1,551	1,029
1962	Howard Fletcher	Michael Henigan	8-2-0	274	87
1963	Howard Fletcher	Michael Henigan, George Bork	10-0-0	337	97
1964	Howard Fletcher	Jack Dean, Lynn McCann	7-2-0	190	131
1965	Howard Fletcher	Ron Christian, Terry Henigan	9-1-0	290	147
1966	Howard Fletcher	Dan Meyer, Joseph Bertone	8-2-0	293	153
1967	Howard Fletcher	Jack Frost, Eugene Johnston	5-5-0	162	198
1968	Howard Fletcher	John Spilis, James Faggetti	2-8-0	154	258
TOTALS			74-48-1	2,684	2,090
1969	Richard Urich	James Patterson, Bruce Bray	3-7-0	191	284
1970	Richard Urich	Mike Batina, Dan DeVito, John Lalonde, Phil Szukis	3-7-0	168	281
TOTALS			6-14-0	359	565
1971	Jerry Ippoliti	Jim Montgomery, Leo Hudetz, Steve Goehl, Terry Drugan	5-5-1	202	232
1972	Jerry Ippoliti	Larry Clark, Terry Drugan	7-4-0	198	141
1973	Jerry Ippoliti	Mark Kellar, Don Martin, Rich Marks, Dan Adams	6-5-0	327	270
1974	Jerry Ippoliti	Jerry Golsteyn, Tom Plesha	4-7-0	186	261
1975	Jerry Ippoliti	Jerry Golsteyn, Tim Peters, Jerry Meyers, Bob Gregolunas	3-8-0	193	230
TOTALS			25-29-1	1,106	1,134
1976	Pat Culpepper	Tim Dacy, Tim Miller, Don Palochko, Vince Smith	1-10-0	56	366
1977	Pat Culpepper	All seniors of 1977 team	3-8-0	138	249
1978	Pat Culpepper	All seniors of 1978 team	5-6-0	232	284
1979	Pat Culpepper	All seniors of 1979 team	5-5-1	177	206
TOTALS			14-29-1	603	1,105
1980	Bill Mallory	Mike Terna, Jim Hannula	7-4-0	216	175
1981	Bill Mallory	Mike Pinckney, Jim Latanski, Mike Chelovich, John Gibbons, Pat O'Shea	3-8-0	160	217
1982	Bill Mallory	Larry Alleyne, Rich Barrent, Max Gill, Jim Keogh, Larry Tharp	5-5-0	137	136
1983	Bill Mallory	Scott Bolzan, Steve Hirsch, Jim Mukite	10-2-0	314	203
TOTALS			25-19-0	827	731



Bill Minnihhan (14)
(1947)



Tom Karac (70) and Howard Fletcher
(1967)

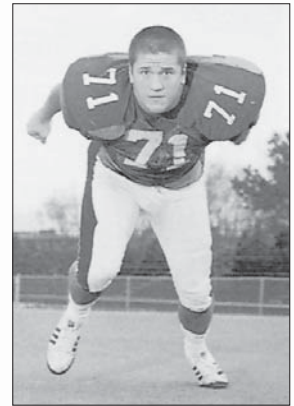


Vince Smith, TB-HB (33)
(1974-76)

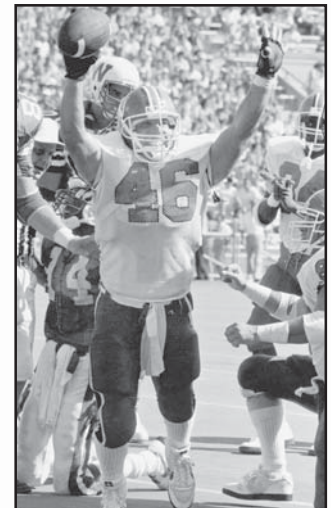


OUT OF THE PAST

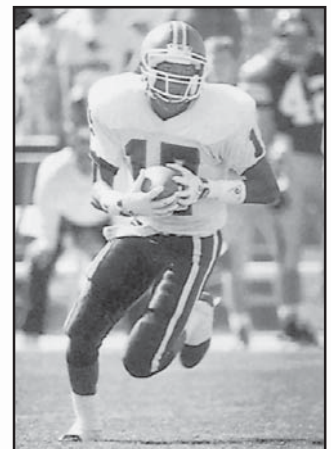
YEAR	COACH	CAPTAINS	RECORD	PTS.	OPP.
1984	Lee Corso	Dan Feely, Lee Hicks	4-6-1	153	188
TOTALS			4-6-1	153	188
1985	Jerry Pettibone	Tim Griffin, Scott Kellar, Curt Pardridge	4-7-0	174	259
1986	Jerry Pettibone	Doug Bartlett, Todd Peat	2-9-0	144	308
1987	Jerry Pettibone	Ted Karamanos, Tony Savegnago	5-5-1	305	262
1988	Jerry Pettibone	Mike Hollingshed, Bob Montel, Marshall Taylor	7-4-0	155	185
1989	Jerry Pettibone	Ron Delisi, Joe Gucwa	9-2-0	344	269
1990	Jerry Pettibone	Kevin Cassidy, Paul Rogan, Claude Royster	6-5-0	333	260
TOTALS			33-32-1	1,455	1,543
1991	Charlie Sadler	Adam Dach, Nick Jones, Mike Westrick	2-9-0	143	364
1992	Charlie Sadler	Brad Capes, Rob Wagner, Larry Wynn	5-6-0	203	193
1993	Charlie Sadler	LeShon Johnson, Tim O'Brien, Raymond Roberts, Tony Smith	4-7-0	227	334
1994	Charlie Sadler	Sean Allgood, Chris O'Neal, Gerald Nickelberry, Vaurice Patterson	4-7-0	301	294
1995	Charlie Sadler	Derek Sholdice, Hollis Thomas	3-8-0	220	420
TOTALS			18-37-0	1,094	1,605
1996	Joe Novak	Mandel Hester, Mitch Jacoby	1-10-0	157	400
1997	Joe Novak	Kent Booth, Jamie Macdonald, Steve Smith	0-11-0	129	382
1998	Joe Novak	Perry Amoo, Orlando Bowen, Deon Mitchell	2-9-0	160	329
1999	Joe Novak	Donnavan Carter, Ryan Diem, Chris Finlen, Lamain Rucker, Mike Stack	5-6-0	289	289
2000	Joe Novak	Ryan Diem, Chris Finlen, Justin McCareins, Cameron Saulsby, Kevin Selover	6-5-0	409	280
2001	Joe Novak	Trent Clemen, Darrell Hill, Chris Finlen, Alan Rood, Larry Williams	6-5-0	303	292
2002	Joe Novak	Eric Didesch, P.J. Fleck, Thomas Hammock, Vince Thompson, Tim Vincent, Larry Williams	8-4-0	375	298
2003	Joe Novak	Randee Drew, Nick Duffy, P.J. Fleck, Akil Grant, Michael Turner	10-2-0	386	258
2004	Joe Novak	Brian Atkinson, Josh Haldi, Lionel Hickebottom, Jake VerStraete	9-3-0	421	304
TOTALS			47-55-0	2,629	2,832
(103-Year Totals / .526 Winning Percentage)			472-423-51	16,583	16,543



Scott Bolzan, OT (71)
(1980-83)



Ron Delisi, LB (46)
(1986-89)



Larry Wynn, FLK (17)
(1989-92)

COACHING VICTORY LIST

Head Coach (Years)	G	W	L	T	Pct.	Head Coach (Years)	G	W	L	T	Pct.
George "Chick" Evans (1929-54)	222	132	70	20	.640	William Muir (1923-25)	23	11	9	3	.543
Howard Fletcher (1956-68)	123	74	48	1	.606	Paul Harrison (1920-22)	26	11	14	1	.442
Joe Novak (1996-2004)	102	47	55	0	.461	Nelson A. Kellogg (1906-09)	28	8	17	3	.339
William W. Wirtz (1910-16)	59	33	17	9	.636	Roland Cowell (1926-28)	20	6	11	3	.375
Jerry Pettibone (1985-90)	66	33	32	1	.508	Richard Urich (1969-70)	20	6	14	0	.300
Bill Mallory (1980-83)	44	25	19	0	.568	Dixie Fleager (1904)	5	5	0	0	1.000
Jerry Ippoliti (1971-75)	55	25	29	1	.464	Lee Corso (1984)	11	4	6	1	.409
Charlie Sadler (1991-95)	55	18	37	0	.327	Harry Sauthoff (1905)	5	3	1	1	.700
John L. Keith (1899-1903)	29	17	7	5	.672	Robert Kahler (1955)	9	0	8	1	.056
Pat Culpepper (1976-79)	44	14	29	1	.330	TOTALS	946	472	423	51	.526



GAME-BY-GAME RECORDS

The College Division Years (1899-1968)



John L. Keith (1899-1903)

Date	W-L-T	NIU	Opponent (Site)	Opp.
1901: 2-1-0				
N 2	W	10	North Central (H)	0
N 16	W	17	North Central (A)	6
N 28	L	0	UW-Whitewater (H)	12
1902: 1-1-0				
N 15	W	10	Eastern Illinois (H)	0
N 27	L	5	UW-Whitewater (A)	16
1903: 2-2-0				
O 24	L	0	UW-Platteville (A)	12
N 7	W	23	Western Illinois (H)	0
N 14	L	0	Eastern Illinois (A)	29
N 21	W	15	Belvidere (H)	0
1904: 4-0-0				
O 8	W	28	Sterling (H)	0
O 22	W	11	UW-Platteville (H)	6
N 12	W	15	Western Illinois (A)	0
N 24	W	12	UW-Whitewater (A)	11
1905: 1-1-0				
O 14	W	15	Sterling (H)	0
O 28	L	0	UW-Platteville (A)	12
1906: 4-1-0				
O 6	L	0	Beloit (A)	12
O 27	W	10	Belvidere (A)	0
N 10	W	12	UW-Platteville (H)	0
N 17	W	10	Belvidere (H)	0
N 24	W	6	Illinois State (A)	5
1907: 0-1-1				
O 26	L	0	Illinois State (H)	16
N 16	T	0	UW-Platteville (A)	0
1908: 0-1-0				
O 3	L	0	Dubuque (A)	16
1909: 1-2-0				
N 10	W	35	Dixon (H)	0
N 13	L	6	German Pres. Sem. (A)	34
N 20	L	11	Sterling (H)	30



William Wirtz (1910-1916)

1910: 0-1-0				
N 12	L	3	Dixon (A)	23
1911: 2-1-0				
S 30	L	0	Beloit (A)	42
O 21	W	21	Dixon (A)	7
O 28	W	15	Dixon (H)	10
1912: 1-2-0				
S 28	L	0	Beloit (A)	65
O 19	W	114	Wheaton (H)	7
O 26	L	7	Dixon (A)	37
1913: 1-2-0				
O 4	L	0	Beloit (A)	115
N 15	W	12	Aurora (H)	9
N 22	L	0	North Central (A)	66
1914: 6-0-1				
O 3	W	7	Wheaton (A)	3
O 10	W	38	Mt. Morris (H)	0
O 17	W	14	Aurora (A)	7
O 24	W	29	Wheaton (H)	3
O 31	W	7	Mt. Morris (A)	0
N 7	W	10	North Central (A)	0
N 21	T	0	Aurora (H)	0
1915: 2-3-0				
O 9	W	25	North Central (H)	14
O 16	L	3	Wheaton (A)	37
O 23	L	0	St. Viator's (A)	96
O 30	L	0	North Central (A)	13
N 13	W	41	Wheaton (H)	0
1916: 6-0-0				
O 7	W	13	Wheaton (A)	0
O 14	W	16	North Central (H)	0
O 21	W	7	Lewis (A)	0
N 4	W	52	Chicago Teachers (H)	0
N 11	W	7	North Central (A)	6
N 18	W	7	Wheaton (H)	0
1917-18-19 (No teams---World War I)				
1920: 2-5-0				
O 2	L	14	Wheaton (H)	16
O 9	L	7	North Central (H)	13
O 16	W	64	Mt. Morris (H)	0
O 23	W	12	Mt. Morris (A)	0
O 30	L	0	Cornell (A)	3
N 6	L	7	Wheaton (A)	16
N 11	L	7	St. Viator's (H)	32

1921: 2-5-0

O 8	L	0	Millikin (H)	63
O 15	L	0	Bradley (A)	41
O 22	W	64	Mt. Morris (H)	9
O 29	L	10	St. Viator's (A)	19
N 5	W	91	Elmhurst (H)	10
N 11	L	0	UW-Milwaukee (H)	26
N 19	L	7	Wheaton (A)	10

1922: 5-4-1 / Little 19: 3-1-1

S 23	W	48	Elmhurst (H)	0
S 30	L	0	Beloit (A)	34
O 7	W	6	North Central (A)-●	0
O 14	L	6	UW-Whitewater (H)	19
O 21	W	13	Mt. Morris (A)-●	7
O 28	L	0	Millikin (A)-●	15
N 4	W	21	UW-Platteville (H)	7
N 11	T	0	Illinois State (A)-●	0
N 17	L	6	UW-Milwaukee (A)	12
N 25	W	38	Wheaton (H)-●	0

1923: 1-4-3 / Little 19: 0-2-3

S 22	W	40	Elmhurst (H)	0
S 29	L	7	Beloit (A)	33
O 6	L	0	UW-Whitewater (A)	28
O 13	T	0	Illinois State (H)-●	0
O 26	L	0	Eureka (A)-●	28
N 9	L	6	Lombard (A)-●	62
N 16	T	13	Mt. Morris (H)-●	13
N 24	T	7	Wheaton (A)-●	7

1924: 4-4-0 / Little 19: 1-3-0

O 4	W	45	Elmhurst (H)	0
O 9	W	17	Milton (H)	7
O 18	L	6	DePaul (A)	9
O 25	L	6	Illinois State (A)-●	9
N 1	L	0	Mt. Morris (A)-●	37
N 8	W	42	St. Joseph's (A)	0
N 15	W	33	Wheaton (H)-●	14
N 22	L	7	Eureka (H)-●	9

1925: 6-1-0 / Little 19: 4-0-0

S 25	W	6	St. Bede's (H)	0
O 10	W	13	North Central (A)-●	0
O 16	W	7	Milton (A)	2
O 24	W	8	Illinois State (H)-●	0
O 31	L	0	Chicago YMCA (H)	3
N 7	W	12	Mt. Morris (H)-●	0
N 14	W	6	Wheaton (A)-●	0



Roland Cowell (1926-1928)

1926: 5-1-1 / Independent

O 2	W	9	American Coll. of PE (H)	0
O 9	T	7	St. Bede's (A)	7
O 23	L	0	Dubuque (A)	19
O 30	W	32	Elmhurst (H)	0
N 6	W	14	UW-Platteville (H)	0
N 13	W	3	Indiana State (H)	0
N 20	W	6	Crane J.C. (H)	0

1927: 1-4-1 / Independent

O 8	L	6	Eastern Michigan (A)	25
O 15	W	12	Valparaiso (A)	2
O 21	L	13	Chicago YMCA (H)	18
N 5	L	6	Northern Iowa (H)	20
N 11	T	0	UW-Milwaukee (H)	0
N 19	L	12	Indiana State (A)	27

1928: 0-6-1 / Little 19: 0-2-1

O 6	L	0	Illinois State (H)-●	10
O 13	L	6	UW-Milwaukee (A)	16
O 20	L	6	Valparaiso (H)	12
O 27	L	0	Northern Iowa (A)	39
N 3	L	0	Eastern Michigan (H)	43
N 10	L	0	Mt. Morris (A)-●	19
N 17	T	0	Wheaton (A)-●	0



George Evans (1929-1954)

1929: 6-1-1 / Little 19: 3-1-1

S 28	W	12	LaSalle-Peru J.C. (H)	0
O 5	T	6	North Central (A)-●	6
O 12	W	14	Elmhurst (A)	0
O 19	W	26	Mt. Morris (H)-●	0
O 26	L	0	Shurtleff (A)-●	6
N 2	W	34	Valparaiso (A)	0
N 9	W	12	Illinois State (A)-●	6
N 15	W	20	Wheaton (H)-●	6

1930: 6-2-1 / Little 19: 3-1-1

S 26	W	18	St. Viator's (A)	0
O 4	W	7	UW-Whitewater (H)	0
O 11	W	35	Wheaton (A)-●	0
O 18	W	13	Illinois College (A)-●	0
O 25	L	0	Shurtleff (A)-●	7
N 1	L	13	UW-Milwaukee (A)	20
N 7	W	19	Illinois State (H)-●	7
N 11	W	34	Crane J.C. (H)	13
N 20	T	13	North Central (H)-●	13



GAME-BY-GAME RECORDS

1931: 5-3-0 / Little 19: 4-2-0

S26	L	0	UW-Whitewater (A)
O 3	W	12	Illinois State (A)-●
O10	W	19	UW-Milwaukee (H)
O17	W	7	Illinois College (H)-●
O31	W	6	St. Viator's (H)-●
N 7	L	6	North Central (A)-●
N14	W	20	Wheaton (H)-●
N21	L	6	Southern Illinois (A)-●

1932: 4-2-1 / Little 19: 2-2-1

O 1	L	7	Illinois State (H)-●
O 8	L	0	Eureka (A)-●
O15	T	0	Southern Illinois (H)-●
O22	W	31	Crane J.C. (A)
O29	W	25	UW-Platteville (H)
N 4	W	7	North Central (H)-●
N12	W	6	Wheaton (A)-●

1933: 5-4-0 / Little 19: 4-3-0

S31	L	7	Illinois State (A)-●
O 7	W	12	Eureka (H)-●
O14	L	0	Gary J.C. (A)
O21	W	12	Eastern Illinois (H)-●
O27	W	40	UW-Platteville (H)
N 4	L	0	Millikin (A)-●
N10	W	25	Wheaton (H)-●
N18	W	17	Elmhurst (H)-●
N25	L	0	Southern Illinois (A)-●

1934: 5-1-2 / Little 19: 4-1-2

O 6	W	24	Eureka (A)-●
O13	T	6	Illinois Wesleyan (H)-●
O20	W	7	Wheaton (A)-●
O27	L	0	Southern Illinois (H)-●
N 3	T	0	Illinois State (H)-●
N10	W	40	Elmhurst (A)-●
N17	W	14	UW-Whitewater (H)
N24	W	18	Eastern Illinois (A)-●

1935: 7-1-1 / Little 19: 5-1-1

S28	W	27	UW-Whitewater (A)
O 5	T	0	Illinois State (A)-●
O12	W	27	St. Viator's (H)-●
O19	W	34	Chicago City College (H)
O26	W	28	Southern Illinois (A)-●
N 1	W	18	Wheaton (H)-●
N 9	L	0	Illinois Wesleyan (A)-●
N16	W	18	Eureka (H)-●
N23	W	49	Eastern Illinois (H)-●

1936: 4-3-1 / Little 19: 3-2-1

S26	L	0	UW-Whitewater (H)
O 3	W	7	Elmhurst (H)-●
O10	W	14	Southern Illinois (H)-●
O17	W	19	Wheaton (A)-●
O24	W	14	UW-Stevens Point (A)
O31	T	6	Illinois State (A)-●
N 7	L	0	Illinois Wesleyan (H)-●
N14	L	0	St. Viator's (A)-●

1937: 3-2-3 / Little 19: 3-2-1

S25	T	0	UW-Whitewater (A)
O 2	T	7	Elmhurst (A)-●
O 9	L	2	Illinois State (H)-●
O16	W	7	Wheaton (H)-●
O30	W	24	Eastern Illinois (A)-●
N 6	L	0	Illinois Wesleyan (A)-●
N12	T	6	UW-Stevens Point (H)
N20	W	7	Southern Illinois (A)-●

1938: 6-1-1 / Little 19: 4-0-0, 1st

O 1	W	7	Eastern Illinois (H)-●
O 8	W	26	Southern Illinois (H)-●
O15	W	18	Wheaton (A)
O22	T	6	Dubuque (A)
O29	W	28	Mankato State (H)
N 4	W	39	Elmhurst (H)-●
N12	W	2	Illinois State (A)-●
N24	L	7	Northeast Louisiana (A)

1939: 5-2-1 / Little 19: 3-1-0

S30	L	0	Central Michigan (A)
O 7	W	13	Elmhurst (H)-●
O14	W	19	Wheaton (A)
O21	W	20	Dubuque (H)
O28	T	0	UW-Milwaukee (H)
N 4	W	13	Southern Illinois (A)-●
N11	L	7	Illinois State (H)-●
N18	W	22	Eastern Illinois (A)-●

1940: 6-3-0 / Little 19: 2-2-0

S28	W	7	UW-Whitewater (H)
O 5	L	0	Eastern Kentucky (A)
O12	W	9	Central Michigan (H)
O19	W	21	UW-Oshkosh (A)
O26	W	12	Wheaton (A)
N 2	W	20	Southern Illinois (H)-●
N 9	L	14	Illinois State (A)-●
N16	L	0	Eastern Illinois (H)-●
N21	W	32	Western Illinois (H)-●

1941: 7-1-1 / Little 19: 3-1-0

S27	W	14	UW-Whitewater (A)
O 4	T	6	Ball State (H)
O11	W	6	Illinois State (H)-●
O18	W	24	Wheaton (H)
O25	W	33	UW-Oshkosh (A)
N 1	L	7	Southern Illinois (A)-●
N 8	W	32	UW-Stevens Point (H)
N15	W	19	Eastern Illinois (A)-●
N20	W	25	Western Illinois (A)-●

1942: 4-1-2 / Little 19: 2-0-2

S26	W	13	UW-Whitewater (H)
O10	T	14	Western Illinois (H)-●
O17	L	0	Ball State (A)
O24	W	7	UW-Stevens Point (A)
O31	W	34	Southern Illinois (H)-●
N11	T	6	Illinois State (A)-●
N14	W	1	Eastern Ill. (Forfeit) (H)-●

1943: 4-1-1 / Little 19: 1-0-0

O 9	T	0	Wheaton (H)
O16	W	33	Western Illinois (A)-●
O23	W	39	Wilson J.C. (H)
O30	L	13	Wheaton (A)
N 6	W	12	Concordia (H)
N13	W	20	Elmhurst (H)

1944: 7-0-0 / Little 19: 3-0-0, 1st

S30	W	6	Elmhurst (A)
O 7	W	25	Eastern Illinois (H)-●
O14	W	25	Elmhurst (H)
O21	W	13	Western Illinois (A)-●
O28	W	12	Concordia (A)
N 4	W	19	Wheaton (H)
N10	W	13	Southern Illinois (A)-●

1945: 4-3-0 / Little 19: 2-2-0

O 6	W	7	Wheaton (A)
O13	W	13	Western Illinois (H)-●
O20	L	0	Illinois Wesleyan (A)
O27	L	7	Illinois State (A)-●
N 3	W	59	Elmhurst (H)
N10	W	13	Southern Illinois (H)-●
N17	L	14	Eastern Illinois (A)-●

1946: 8-2-0 / Little 19: 4-0-0, 1st

S28	W	49	Elmhurst (A)
O 4	W	26	Eastern Illinois (H)-●
O12	W	20	Wheaton (H)
O19	W	20	Illinois Wesleyan (H)
O25	L	7	Central Michigan (A)
N 2	W	14	Western Illinois (A)-●
N 9	W	14	Illinois State (H)-●
N16	W	10	Southern Illinois (A)-●
N23	W	20	Millikin (A)
N28	L	7	Evansville (A)-*

*-Turkey Bowl at Evansville, IN

1947: 4-3-2 / IAC: 2-1-1

S26	L	7	St. Ambrose (A)
O 3	T	6	Central Michigan (H)
O11	W	21	Eastern Michigan (H)
O18	T	7	Illinois State (A)-◆
O25	L	0	Southern Illinois (A)-◆
N 1	W	33	Western Illinois (H)-◆
N 8	W	25	Eastern Illinois (H)-◆
N22	W	26	Millikin (H)
N29	L	0	Evansville (A)-*

*-Refrigerator Bowl at Evansville, IN

1948: 5-4-0 / IAC: 2-2-0

S24	W	30	Washburn (A)
O 1	L	13	St. Ambrose (H)
O 9	L	12	Illinois State (H)-◆
O16	L	6	Eastern Illinois (A)-◆
O23	W	25	Southern Illinois (H)-◆
O29	W	10	Eastern Michigan (A)
N 5	W	18	Western Illinois (A)-◆
N13	W	28	UW-Stevens Point (H)
N19	L	7	Eastern Kentucky (A)

1949: 6-2-1 / IAC: 2-1-1

S23	W	40	Washburn (H)
O 1	W	27	Nebraska-Omaha (A)
O 8	W	39	Eastern Michigan (H)
O15	L	6	Western Illinois (H)-◆
O22	W	47	Illinois Wesleyan (A)
O29	W	20	Southern Illinois (A)-◆
N 5	T	14	Illinois State (A)-◆
N12	W	40	Eastern Illinois (H)-◆
N18	L	19	Kent State (H)

1950: 3-6-0 / IAC: 2-4-0

S23	L	13	Western Michigan (A)
S30	W	27	Nebraska-Omaha (H)
O 7	W	35	Eastern Michigan (A)-■
O14	W	44	Southern Illinois (H)-■
O21	L	27	Western Illinois (A)-■
O27	L	7	Kent State (A)
N 3	L	14	Central Michigan (H)-■
N11	L	12	Illinois State (H)-■
N18	L	13	Eastern Illinois (A)-■

1951: 9-0-0 / IAC: 6-0-0, 1st

S22	W	20	UW-Whitewater (A)
S29	W	21	Eastern Illinois (A)-■
O 6	W	14	Southern Illinois (A)-■
O13	W	35	Eastern Michigan (H)-■
O20	W	39	Illinois State (H)-■
O27	W	21	Nebraska-Peru (H)
N 2	W	26	Central Michigan (A)-■
N10	W	20	Western Illinois (H)-■
N17	W	27	Nebraska-Omaha (A)

1952: 3-6-0 / IAC: 2-4-0

S20	L	7	Lewis (A)
S27	L	7	Central Michigan (H)-■
O 4	L	6	Beloit (A)
O11	W	21	Southern Illinois (H)-■
O18	L	7	Eastern Michigan (H)-■
O25	W	28	Illinois State (A)-■
N 1	W	20	Nebraska-Omaha (H)
N15	L	14	Western Illinois (H)-■
N22	L	0	Eastern Illinois (H)-■

1953: 1-8-0 / IAC: 1-5-0

S16	L	6	Lewis (A)
O 3	L	7	Beloit (A)
O10	L	14	Southern Illinois (A)-■
O17	L	14	Eastern Michigan (H)-■
O24	L	0	Illinois State (H)-■
O31	L	14	Nebraska-Omaha (A)
N 6	L	0	Central Michigan (A)-■
N14	L	0	Western Illinois (H)-■
N21	W	19	Eastern Illinois (A)-■

1954: 2-7-0 / IAC: 1-5-0

S25	L	8	Wheaton (A)
O 2	W	18	Beloit (A)
O 9	W	24	Southern Illinois (H)-■
O16	L	0	Eastern Michigan (A)-■
O23	L	6	Illinois State (A)-■
O30	L	7	Nebraska-Omaha (H)
N 6	L	7	Central Michigan (H)-■
N13	L	0	Western Illinois (A)-■
N20	L	9	Eastern Illinois (H)-■



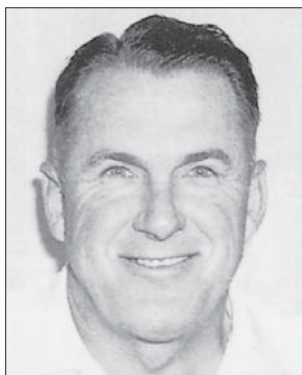
Bob Kahler (1955)

1955: 0-8-1 / IAC: 0-5-1

S24	L	0	Wheaton (A)
O 1	T	7	Illinois State (H)-■
O 8	L	0	Central Michigan (A)-■
O15	L	0	Bradley (H)
O22	L	6	Western Illinois (H)-■
O29	L	12	Nebraska-Omaha (A)
N 5	L	0	Eastern Illinois (A)-■
N12	L	6	Eastern Michigan (H)-■
N19	L	0	Southern Illinois (A)-■



GAME-BY-GAME RECORDS



Howard Fletcher (1956-1968)

1956: 1-8-0 / IAC: 0-6-0

S 22	W	7	Wheaton (A)	6
S 29	L	0	Illinois State (A)-■	3
O 6	L	0	Central Michigan (H)-■	41
O 13	L	7	Bradley (A)	26
O 19	L	6	Western Illinois (A)-■	34
O 27	L	0	Nebraska-Omaha (H)	12
N 3	L	6	Eastern Illinois (H)-■	13
N 10	L	7	Eastern Michigan (A)-■	25
N 17	L	13	Southern Illinois (H)-■	28

1957: 2-7-0 / IAC: 1-5-0

S 21	L	7	Wheaton (H)	25
S 28	W	19	Beloit (A)	12
O 5	W	27	Eastern Illinois (A)-■	20
O 12	L	13	Western Illinois (H)-■	33
O 19	L	13	Central Michigan (A)-■	52
O 26	L	7	Illinois State (H)-■	13
N 2	L	20	Eastern Michigan (H)-■	54
N 9	L	7	Nebraska-Omaha (A)	14
N 16	L	19	Southern Illinois (A)-■	45

1958: 4-5-0 / IAC: 2-4-0

S 20	L	20	Wheaton (A)	40
S 27	W	27	Beloit (H)	6
O 4	W	24	Eastern Illinois (H)-■	12
O 11	L	7	Western Illinois (A)-■	38
O 18	L	23	Central Michigan (H)-■	33
O 25	L	18	Illinois State (A)-■	33
N 1	L	7	Eastern Michigan (A)-■	15
N 8	W	41	Nebraska-Omaha (H)	0
N 15	W	17	Southern Illinois (H)-■	7

1959: 7-2-0 / IAC: 4-2-0, T2nd

S 19	W	35	Wheaton (H)	8
S 26	W	26	North Central (A)	7
O 3	W	20	Southern Illinois (A)-■	15
O 10	W	38	Eastern Illinois (A)-■	6
O 17	L	13	Western Illinois (H)-■	18
O 24	L	7	Central Michigan (A)-■	29
O 31	W	40	Illinois State (H)-■	14
N 7	W	34	Eastern Michigan (H)-■	0
N 14	W	33	Hillsdale (A)	27

1960: 7-2-0 / IAC: 4-2-0, 3rd

S 17	W	26	North Central (H)	6
S 24	W	21	Wheaton (A)	8
O 1	L	20	Southern Illinois (H)-■	21
O 8	W	28	Eastern Illinois (H)-■	20
O 15	L	19	Western Illinois (A)-■	30
O 22	W	36	Central Michigan (H)-■	15
O 29	W	20	Illinois State (A)-■	0
N 5	W	19	Eastern Michigan (A)-■	0
N 12	W	28	UW-La Crosse (H)	26

1961: 4-4-1 / IAC: 3-2-1, T4th

S 16	W	49	N.W. Missouri State (H)	0
S 23	L	2	Wheaton (H)	7
S 29	L	13	N.E. Missouri State (A)	28
O 7	L	6	Southern Illinois (A)-■	35
O 14	T	20	Eastern Illinois (A)-■	20
O 21	W	23	Western Illinois (H)-■	22
O 28	W	11	Central Michigan (A)-■	0
N 4	L	0	Illinois State (H)-■	7
N 11	W	35	Eastern Michigan (H)-■	10

1962: 8-2-0 / IAC: 3-1-0, 2nd

S 15	W	17	UW-Whitewater (A)	0
S 22	W	27	Winona State (H)	0
S 29	W	37	N.E. Missouri State (H)	8
O 6	W	13	Nebraska-Omaha (A)	7
O 13	W	21	Eastern Illinois (H)-■	0
O 20	W	14	Western Illinois (A)-■	0
O 27	L	27	Central Michigan (H)-■	35
N 3	W	48	Illinois State (A)-■	7
N 10	W	50	UW-La Crosse (H)	7
N 24	L	20	Adams (CO) St. (N)-*	23

*-Mineral Water Bowl
at Excelsior Springs, MO

1963: 10-0-0 / IAC: 4-0-0, 1st

NCAA College Division Champion				
S 14	W	55	UW-Whitewater (H)	7
S 21	W	61	Winona State (A)	0
S 28	W	21	N.E. Missouri State (A)	12
O 5	W	18	Nebraska-Omaha (H)	7
O 12	W	19	Hillsdale (H)	13
O 19	W	43	Illinois State (H)-■	0
O 26	W	43	Eastern Illinois (A)-■	0
N 2	W	29	Western Illinois (H)-■	22
N 9	W	27	Central Michigan (A)-■	22
N 30	W	21	S.W. Missouri State (N)-*	14

*-Mineral Water Bowl
at Excelsior Springs, MO

1964: 7-2-0 / IAC: 3-1-0, T1st

S 19	W	32	UW-Whitewater (A)	13
S 26	L	20	Nebraska-Omaha (A)	26
O 3	W	29	UW-Milwaukee (H)	18
O 10	W	20	Illinois State (A)-■	14
O 17	W	14	Bradley (H)	3
O 24	W	35	Eastern Illinois (H)-■	14
O 31	L	7	Western Illinois (A)-■	20
N 7	W	19	Central Michigan (H)-■	14
N 14	W	14	Northern Iowa (H)	9

1965: 9-1-0 / IAC: 4-0-0, 1st

S 18	W	28	UW-Whitewater (H)	14
S 25	W	28	Nebraska-Omaha (H)	13
O 2	W	19	Central Michigan (A)-■	14
O 9	W	22	N.E. Missouri State (H)	20
O 16	W	27	Bradley (A)	7
O 23	W	38	UW-Milwaukee (A)	12
O 30	W	20	Eastern Illinois (A)-■	11
N 6	W	48	Illinois State (H)-■	6
N 13	W	40	Western Illinois (H)-■	13
N 27	L	20	North Dakota (N)-*	37

*-Mineral Water Bowl
at Excelsior Springs, MO

1966: 8-2-0 / Independent

S 17	W	34	Butler (H)	6
S 24	L	7	Kent State (H)	26
O 1	W	20	Central Michigan (H)	13
O 8	W	38	Ball State (A)	24
O 15	W	49	Bradley (H)	18
O 22	W	14	Hillsdale (A)	7
O 29	W	31	Akron (H)	18
N 5	L	8	Illinois State (A)	27
N 12	W	44	Western Illinois (A)	6
N 19	W	48	UW-Milwaukee (H)	8

1967: 5-5-0 / Independent

S 16	W	24	Butler (A)	7
S 23	L	0	Kent State (A)	35
S 30	W	34	Indiana State (H)	0
O 7	W	28	Ball State (H)	14
O 14	W	29	Bradley (A)	12
O 21	L	6	San Diego State (H)	47
O 28	W	24	Hillsdale (H)	14
N 4	L	10	West Texas State (H)	17
N 11	L	0	Toledo (A)	35
N 18	L	7	Bowling Green (A)	17

1968: 2-8-0 / Independent

S 14	W	40	Ball State (A)	20
S 20	L	21	San Diego State (A)	40
S 28	L	13	North Dakota State (H)	31
O 5	L	7	Indiana State (A)	19
O 12	L	14	Northern Arizona (H)	43
O 19	L	20	Xavier (OH) (H)	24
O 26	L	13	New Mexico State (H)	27
N 9	L	7	Buffalo (H)	20
N 16	W	7	Bowling Green (H)	6
N 23	L	12	Ohio (A)	28

The Major College Years (1969-Present)



Richard Ulrich (1969-1970)

1969: 3-7-0 / Independent

S 13	L	0	North Dakota State (A)	28
S 20	W	47	Idaho (H)	30
S 27	L	7	West Texas State (A)	22
O 4	W	18	Marshall (A)	17
O 11	L	12	Western Kentucky (H)	14
O 18	L	24	Dayton (A)	56
O 25	W	17	Ball State (H)	13
N 8	L	21	Toledo (H)	35
N 15	L	22	Western Michigan (H)	31
N 22	L	23	Bowling Green (A)	38

1970: 3-7-0 / Independent

S 12	L	3	San Diego State (H)	35
S 19	L	6	Montana (H)	30
S 26	W	18	Xavier (OH) (A)	0
O 3	L	0	Miami (OH) (A)	48
O 10	L	22	West Texas State (H)	24
O 24	W	31	Ball State (A)	14
O 31	L	20	Dayton (H)	21
N 7	L	7	Toledo (A)	45
N 14	L	18	Western Michigan (A)	38
N 21	W	43	Buffalo (H)	26



Jerry Ippoliti (1971-1975)

1971: 5-5-1 / Independent

S 11	L	0	Wisconsin (A)	31
S 18	W	48	Long Beach State (H)	38
S 25	L	17	Western Michigan (A)	27
O 2	L	10	San Diego State (A)	30
O 9	W	37	Marshall (H)	18
O 16	W	22	West Texas State (A)	19
O 23	T	10	Ball State (H)	10
O 30	W	26	Kent State (A)	7
N 6	L	8	Toledo (H)	23
N 13	L	10	Boston College (A)	20
N 20	W	14	Xavier (OH) (H)	9

1972: 7-4-0 / Independent

S 9	W	21	Illinois State (H)	7
S 16	L	7	Wisconsin (A)	31
S 23	L	10	Western Michigan (H)	14
S 30	W	24	Marshall (A)	7
O 7	W	20	Xavier (OH) (H)	7
O 14	L	13	Idaho (A)	31
O 21	W	17	West Texas State (H)	8
O 28	W	28	Kent State (H)	7
N 4	W	30	Toledo (A)	7
N 11	L	6	Fresno State (H)	9
N 17	W	22	Long Beach State (A)	13

1973: 6-5-0 / Independent

S 8	W	42	Indiana State (H)	24
S 15	W	34	Southern Illinois (H)	28
S 22	L	14	Western Michigan (A)	28
S 29	W	21	West Texas State (A)	14
O 6	W	24	Fresno State (A)	15
O 13	L	36	Marshall (H)	39
O 20	W	45	Ball State (H)	17
O 27	W	28	Illinois State (A)	14
N 3	L	27	Western Illinois (H)	30
N 10	L	36	Xavier (OH) (A)	40
N 17	L	20	Bowling Green (A)	21



GAME-BY-GAME RECORDS

1974: 4-7-0 / Independent

S 7	L 16	McNeese State (A)	19
S 14	W 16	Long Beach State (H)	14
S 21	L 13	Western Michigan (H)	30
S 28	L 14	Indiana State (H)	23
O 5	L 14	Ohio (A)	31
O 12	W 20	Marshall (A)	17
O 19	W 17	Southern Illinois (A)	7
O 26	L 14	Illinois State (H)	24
N 2	L 14	Toledo (A)	44
N 9	L 21	Ball State (A)	31
N 16	W 27	Idaho (H)	21

1975: 3-8-0 / MAC: 2-3-0, 7th

S 13	L 7	Long Beach State (H)	24
S 20	L 3	Northwestern (A)	10
S 27	W 20	Western Michigan (A)-▼	0
O 4	W 38	Kent State (H)-▼	15
O 11	L 10	Indiana State (A)	21
O 18	W 52	Southern Illinois (H)	12
O 25	L 0	Ball State (H)-▼	3
N 1	L 10	Illinois State (A)	27
N 8	L 22	Toledo (H)-▼	24
N 15	L 7	Central Michigan (A)-▼	69
N 22	L 24	Idaho (A)	25



Pat Culpepper (1976-1979)

1976: 1-10-0 / MAC: 0-6-0, 10th

S 11	L 0	Wichita State (A)	21
S 18	L 6	Western Michigan (H)-▼	37
S 25	L 0	Long Beach State (A)	37
O 9	L 10	Indiana State (A)	28
O 16	W 7	Illinois State (H)	3
O 23	L 0	Southern Illinois (A)	54
O 30	L 7	Ball State (H)-▼	33
N 6	L 2	Toledo (A)-▼	17
N 13	L 9	Central Michigan (H)-▼	31
N 20	L 15	Ohio (A)-▼	63
N 25	L 0	Kent State (A)-▼	42

1977: 3-8-0 / MAC: 2-5-0, 8th

S 3	L 2	Eastern Michigan (H)-▼	25
S 10	L 0	Louisville (A)	38
S 17	L 3	Wisconsin (A)	14
S 24	L 21	Western Michigan (A)-▼	49
O 1	L 7	Illinois State (A)	16
O 8	L 21	Central Michigan (H)-▼	25
O 15	L 6	Ball State (A)-▼	31
O 22	W 28	Southern Illinois (H)	0
O 29	W 21	Kent State (A)-▼	18
N 5	L 9	Toledo (H)-▼	27
N 19	W 20	Ohio (H)-▼	6

1978: 5-6-0 / MAC: 2-4-0, 7th

S 16	L 30	Western Michigan (H)-▼	44
S 23	L 10	Northeast Louisiana (A)	27
S 30	W 49	Illinois State (H)	21
O 7	L 19	Long Beach State (A)	24
O 14	W 24	Western Illinois (H)	20
O 21	L 7	Central Michigan (A)-▼	34
O 28	W 14	Southern Illinois (A)	13
N 4	W 27	Kent State (H)-▼	21
N 11	L 16	Toledo (A)-▼	35
N 18	L 13	Ball State (H)-▼	31
N 25	W 23	Ohio (A)-▼	14

1979: 5-5-1 / MAC: 3-3-1, 6th

S 15	W 21	East Tennessee St. (H)	14
S 22	L 17	Western Michigan (A)-▼	45
S 29	L 3	Long Beach State (H)	9
O 6	T 0	Eastern Michigan (A)-▼	0
O 13	L 11	Central Michigan (A)-▼	31
O 20	W 33	Illinois State (A)	7
O 27	L 11	Southern Illinois (H)	21
N 3	W 25	Kent State (H)-▼	0
N 10	W 28	Toledo (H)-▼	10
N 17	L 0	Ball State (A)-▼	42
N 24	W 28	Ohio (H)-▼	27



Bill Mallory (1980-1983)

1980: 7-4-0 / MAC: 4-3-0, T3rd

S 5	W 16	Long Beach State (A)	9
S 13	L 17	Ball State (H)-▼	18
S 20	L 6	Western Michigan (H)-▼	35
S 27	W 22	Ohio (A)-▼	21
O 4	W 20	Southern Illinois (A)	17
O 11	L 18	Illinois State (H)	28
O 18	W 21	Central Michigan (H)-▼	0
O 25	W 17	Wichita State (A)	14
N 1	W 35	Kent State (A)-▼	14
N 8	L 6	Toledo (A)-▼	13
N 15	W 38	Eastern Michigan (H)-▼	6

1981: 3-8-0 / MAC: 2-7-0, 9th

S 12	L 7	Long Beach State (H)	17
S 19	L 10	Central Michigan (A)-▼	17
S 26	W 40	Illinois State (H)	7
O 3	L 0	Ball State (A)-▼	23
O 10	L 10	Kent State (A)-▼	31
O 17	L 10	Bowling Green (H)-▼	17
O 24	W 30	Eastern Michigan (A)-▼	7
O 31	L 12	Western Michigan (H)-▼	23
N 7	W 38	Ohio (H)-▼	14
N 14	L 3	Miami (OH) (A)-▼	30
N 21	L 0	Toledo (H)-▼	31

1982: 5-5-0 / MAC: 5-4-0, T5th

S 4	L 3	Toledo (A)-▼	9
S 18	W 23	Kent State (H)-▼	15
S 25	L 6	Northwestern (A)	31
O 2	L 7	Ball State (H)-▼	14
O 16	L 18	Bowling Green (A)-▼	20
O 23	W 10	Eastern Michigan (H)-▼	0
O 30	L 3	Western Michigan (A)-▼	27
N 6	W 36	Ohio (A)-▼	0
N 13	W 12	Miami (OH) (H)-▼	7
N 20	W 19	Central Michigan (H)-▼	13

1983: 10-2-0 / MAC: 8-1-0, 1st

California Bowl III Champion

S 3	W 37	Kansas (A)	34
S 10	L 9	Wisconsin (A)	37
S 24	W 38	Kent State (A)-▼	7
O 1	W 27	Ball State (A)-▼	14
O 8	W 27	Western Michigan (H)-▼	3
O 15	W 34	Eastern Michigan (A)-▼	15
O 22	W 24	Bowling Green (H)-▼	23
O 29	W 17	Miami (OH) (A)-▼	0
N 5	L 14	Central Michigan (A)-▼	30
N 12	W 26	Toledo (H)-▼	10
N 19	W 41	Ohio (H)-▼	17
D 17	W 20	Cal State-Fullerton (N)-*	13

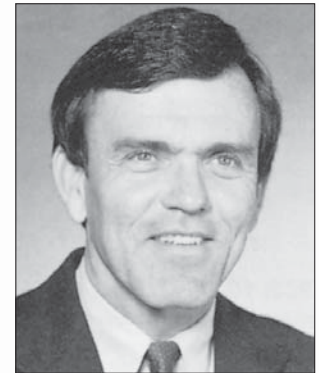
*-California Bowl III at Fresno, CA



Lee Corso (1984)

1984: 4-6-1 / MAC: 3-5-1, 5th

S 1	W 40	West Texas State (H)	33
S 8	L 14	Wisconsin (A)	27
S 22	W 24	Kent State (H)-▼	10
S 29	L 14	Ball State (H)-▼	15
O 6	W 20	Western Michigan (A)-▼	15
O 13	T 10	Eastern Michigan (H)-▼	10
O 20	L 6	Bowling Green (A)-▼	28
O 27	L 7	Miami (OH) (H)-▼	20
N 3	W 8	Central Michigan (H)-▼	7
N 10	L 7	Toledo (A)-▼	13
N 17	L 3	Ohio (A)-▼	10



Jerry Pettibone (1985-1990)

1985: 4-7-0 / MAC: 4-4-0, 5th

S 7	W 17	Western Michigan (H)-▼	0
S 14	L 17	Wisconsin (A)	38
S 21	L 20	Iowa (A)	48
S 28	L 16	Northwestern (A)	38
O 5	L 0	Ball State (A)-▼	29
O 19	W 16	Toledo (H)-▼	3
O 26	L 15	Miami (OH) (A)-▼	32
N 2	L 14	Bowling Green (H)-▼	34
N 9	W 3	Eastern Michigan (A)-▼	0
N 16	W 35	Ohio (H)-▼	7
N 23	L 21	Central Michigan (A)-▼	30

1986: 2-9-0 / Independent

A 30	L 10	Ball State (H)	20
S 6	L 14	West Virginia (A)	47
S 13	L 20	Wisconsin (A)	35
S 20	L 3	Iowa (A)	57
S 27	L 0	Western Illinois (H)	10
O 4	L 0	Miami (FL) (A)	34
O 18	L 28	Toledo (A)	29
O 25	L 6	Miami (OH) (H)	20
N 1	W 16	Bowling Green (A)	8
N 8	W 21	Eastern Michigan (H)	14
N 15	L 26	Ohio (A)	34

1987: 5-5-1 / Independent

S 12	L 35	Lamar (H)	39
S 19	W 34	Western Michigan (A)	14
S 26	T 16	Northwestern (A)	16
O 3	L 31	Eastern Michigan (A)	32
O 10	W 41	Toledo (H)	5
O 17	W 27	S.W. Missouri State (H)	21
O 24	L 20	Cal State-Fullerton (H)	21
O 31	L 17	Ball State (A)	42
N 7	W 29	Western Illinois (H)	14
N 14	L 21	Akron (H)	27
N 28	W 34	Nevada-Las Vegas (A)	31

1988: 7-4-0 / Independent

S 3	W 7	Akron (H)	6
S 10	W 14	Middle Tennessee St. (H)	10
S 17	W 19	Wisconsin (A)	17
S 24	L 20	Minnesota (A)	31
O 1	W 17	S.W. Missouri State (H)	3
O 8	L 20	Toledo (A)	33
O 15	L 0	Louisiana-Lafayette (A)	45
O 22	W 10	Southern Illinois (A)	9
O 29	L 17	Ball State (H)	18
N 5	W 16	Western Illinois (H)	6
N 12	W 15	Western Michigan (H)	7



GAME-BY-GAME RECORDS

1989: 9-2-0 / Independent

S 2	W 26	Cal State-Fullerton (H)	17
S 9	L 17	Nebraska (A)	48
S 23	W 37	Kansas State (A)	20
S 30	W 34	Western Illinois (H)	27
O 7	W 29	Southern Illinois (H)	24
O 14	L 21	Louisiana Tech (A)	42
O 21	W 42	Nevada-Las Vegas (H)	24
O 28	W 20	Temple (A)	17
N 4	W 23	Louisiana-Lafayette (H)	20
N 11	W 39	Toledo (H)	27
N 18	W 56	Cincinnati (A)	3

1990: 6-5-0 / Independent

S 1	W 28	Eastern Illinois (H)	17
S 8	L 14	Nebraska (A)	60
S 15	L 14	Toledo (A)	23
S 22	W 42	Kansas State (H)	35
S 29	L 7	Northwestern (A)	24
O 6	W 73	Fresno State (H)	18
O 13	W 35	Arkansas State (H)	0
O 20	W 49	Murray State (H)	7
N 3	W 31	Akron (A)	28
N 10	L 20	East Carolina (A)	24
N 17	L 20	Louisiana-Lafayette (A)	24

1993: 4-7-0 / BWC: 3-3-0, 5th

S 2	L 10	Iowa State (A)	54
S 11	L 10	Indiana (A)	28
S 18	W 23	Arkansas State (H)-▲	7
S 25	W 46	Nevada (A)-▲	42
O 2	W 45	Southern Illinois (H)	15
O 9	L 17	New Mexico State (A)-▲	24
O 16	W 21	Pacific (H)-▲	16
O 23	L 19	Louisiana-Lafayette (H)-▲	33
O 30	L 16	Louisiana Tech (A)-▲	17
N 6	L 20	Iowa (A)	54
N 13	L 0	Mississippi (A)	44

1997: 0-11 / MAC-W: 0-8, 6th

A 28	L 10	Central Michigan (A)-▼	44
S 6	L 7	Kansas State (H)	47
S 13	L 13	Western Michigan (H)-▼	21
S 20	L 14	N. Carolina State (A)	41
O 4	L 10	Bowling Green (A)-▼	35
O 11	L 7	Vanderbilt (H)	17
O 18	L 14	Toledo (A)-▼	41
O 25	L 14	Ball State (H)-▼	21
N 1	L 30	Ohio (H)-▼	35
N 8	L 10	Eastern Michigan (H)-▼	38
N 15	L 0	Miami (OH) (A)-▼	42

2002: 8-4 / MAC-W: 7-1, T1st

A 29	W 42	Wake Forest (OT) (H)	41
S 7	L 6	South Florida (A)	37
S 14	L 21	Wisconsin (A)	24
S 21	L 26	Western Illinois (H)	29
S 28	W 13	Kent State (H)-▼	6
O 5	W 41	Ball State (A)-▼	29
O 12	W 48	Miami (OH) (A)-▼	41
O 19	W 49	Central Michigan (H)-▼	0
O 26	W 24	Western Michigan (A)-▼	20
N 9	W 26	Bowling Green (H)-▼	17
N 16	W 49	Eastern Michigan (A)-▼	21
N 23	L 30	Toledo (H)-▼	33

1994: 4-7-0 / BWC: 3-3-0, T5th

S 1	L 14	Oklahoma State (H)	31
S 10	L 9	Louisiana-Lafayette (A)-▲	29
S 17	L 10	Illinois (A)	34
S 24	W 49	Eastern Illinois (H)	17
O 1	L 31	Nevada (H)-▲	35
O 8	W 48	New Mexico State (H)-▲	27
O 15	L 32	Pacific (A)-▲	41
O 22	W 27	Louisiana Tech (H)-▲	17
O 29	L 16	Vanderbilt (A)	17
N 5	W 38	Arkansas State (A)-▲	16
N 12	L 27	Arkansas (A)	30

1998: 2-9 / MAC-W: 2-6, 5th

S 3	L 23	Western Michigan (A)-▼	37
S 12	L 7	Kansas State (A)	73
S 19	L 10	Eastern Illinois (H)	24
O 3	L 13	Ball State (A)-▼	18
O 10	L 17	Central Florida (A)	38
O 17	W 16	Central Michigan (H)-▼	6
O 24	W 26	Eastern Michigan (A)-▼	14
O 31	L 3	Toledo (H)-▼	16
N 7	L 10	Miami (OH) (H)-▼	41
N 14	L 12	Ohio (A)-▼	28
N 21	L 23	Bowling Green (H)-▼	34

2003: 10-2 / MAC-W: 6-2, T2nd

A 28	W 20	Maryland (OT) (H)	13
S 6	W 42	Tennessee Tech (H)	17
S 20	W 19	Alabama (A)	16
S 27	W 24	Iowa State (H)	16
O 4	W 30	Ohio (OT) (H)-▼	23
O 11	W 40	Central Michigan (A)-▼	24
O 18	W 37	Western Michigan (H)-▼	10
O 25	L 18	Bowling Green (A)-▼	34
N 1	W 48	Ball State (H)-▼	23
N 8	W 40	Buffalo (A)-▼	9
N 15	L 30	Toledo (A)-▼	49
N 22	W 38	Eastern Michigan (H)-▼	24

1995: 3-8-0 / BWC: 3-3-0, T4th

A 31	L 13	Southern Mississippi (A)	45
S 9	L 21	Louisville (H)	34
S 16	W 18	San Jose State (A)-▲	17
S 23	W 25	Louisiana-Lafayette (H)-▲	24
S 30	L 0	Kansas State (A)	44
O 7	W 62	Nevada-Las Vegas (H)-▲	14
O 14	L 7	Utah State (A)-▲	42
O 28	L 19	Cincinnati (H)	55
N 4	L 20	Florida (A)	58
N 11	L 21	Arkansas State (H)-▲	28
N 18	L 14	Louisiana Tech (A)-▲	59

1999: 5-6 / MAC-W: 5-3, T2nd

S 2	L 21	Western Illinois (H)	27
S 11	L 31	Vanderbilt (A)	34
S 18	L 0	Iowa (A)	24
S 25	L 21	Western Michigan (H)-▼	24
O 2	W 45	Buffalo (A)-▼	21
O 9	W 37	Ball State (H)-▼	17
O 16	W 31	Central Michigan (A)-▼	27
O 23	W 50	Kent State (H)-▼	7
O 30	L 9	Marshall (A)-▼	41
N 13	L 14	Toledo (A)-▼	44
N 20	W 30	Eastern Michigan (H)-▼	23

2000: 6-5 / MAC-W: 4-3, T3rd

A 31	L 17	Northwestern (A)	35
S 9	W 52	Illinois State (H)	0
S 23	L 14	Auburn (A)	31
S 30	W 43	Ball State (A)-▼	14
O 7	W 40	Central Florida (H)	20
O 14	W 52	Akron (A)-▼	35
O 21	L 22	Western Michigan (A)-▼	52
O 28	W 73	Buffalo (H)-▼	10
N 4	L 24	Toledo (H)-▼	38
N 11	L 32	Eastern Michigan (A)-▼	39
N 18	W 40	Central Michigan (H)-▼	6

2001: 6-5 / MAC-W: 4-3, T1st

A 30	W 20	South Florida (H)	17
S 8	L 12	Illinois (A)	17
S 22	W 41	Sam Houston State (H)	16
S 29	L 20	Toledo (A)-▼	41
O 6	L 15	Marshall (H)-▼	37
O 13	L 34	Kent State (A)-▼	44
O 20	W 20	Western Michigan (H)-▼	12
O 27	W 33	Central Michigan (A)-▼	24
N 3	W 40	Eastern Michigan (H)-▼	17
N 17	W 33	Ball State (H)-▼	29
N 24	L 35	Wake Forest (A)	38

1996: 1-10-0 / Independent

A 31	L 6	Maryland (A)	30
S 7	L 0	Western Illinois (H)	17
S 14	L 0	Penn State (A)	49
S 21	W 31	Arkansas State (A)	30
S 28	L 6	Texas-El Paso (H)	37
O 5	L 21	North Texas (H)	24
O 19	L 3	Louisville (A)	27
O 26	L 17	Akron (H)	34
N 2	L 14	Louisiana Tech (H)	40
N 9	L 31	Louisiana-Lafayette (A)	45
N 16	L 28	Oregon State (A)	67



Charlie Sadler (1991-1995)

1991: 2-9-0 / Independent

S 7	L 7	Fresno State (A)	55
S 14	W 22	Arkansas State (H)	21
S 21	L 17	Kansas State (A)	34
S 28	L 7	Iowa (A)	58
O 5	L 3	Louisiana Tech (H)	37
O 12	L 10	Western Michigan (H)	22
O 19	L 10	Florida (A)	41
O 26	L 7	Akron (A)	17
N 2	L 12	Louisiana-Lafayette (H)	13
N 16	W 27	Illinois State (H)	24
N 23	L 21	Toledo (A)	42

1992: 5-6-0 / Independent

S 5	L 14	Illinois (A)	30
S 12	W 26	Illinois State (H)	19
S 19	W 31	Arkansas State (A)	0
S 26	L 17	Wisconsin (A)	18
O 3	L 13	Middle Tennessee St. (H)	21
O 10	W 23	Southern Mississippi (H)	10
O 24	W 27	Liberty (H)	21
O 31	L 7	Western Michigan (A)	13
N 7	W 23	Louisiana-Lafayette (A)	15
N 14	L 14	Army (A)	21
N 21	L 8	Toledo (H)	25



Joe Novak (1996-present)

2004: 9-3 / MAC-W: 7-1, T1st

S 4	L 20	Maryland (A)	23
S 11	W 23	Southern Illinois (H)	22
S 18	L 41	Iowa State (A)	48
S 24	W 34	Bowling Green (H)-▼	17
O 2	W 49	Akron (H)-▼	19
O 9	W 30	Central Florida (A)-▼	28
O 16	W 42	Central Michigan (H)-▼	10
O 23	W 59	Western Michigan (A)-▼	38
O 30	W 38	Ball State (OT) (A)-▼	31
N 9	L 17	Toledo (H)-▼	31
N 20	W 34	Eastern Michigan (A)-▼	16
D 30	W 34	Troy (N)-*	21

* - Silicon Valley Classic at San Jose, CA

KEY: (H)--Home / (A)--Away / (N)--Neutral
W--Won / L--Lost / T--Tied

(Note: Records do not include competition against NIU Alumni All-Star and Semi-Pro teams, Military Bases, High Schools, etc. Records indicate competition against intercollegiate opposition only.)

- Little 19 Conference Games (1922-1925 / 1928-1946)
- ◆--Illinois Intercollegiate Athletic Conference Games (1947-1949)
- Interstate Intercollegiate Athletic Conference Games (1950-1965)
- ▼--Mid-American Conference Games (1975-1985, 1997-2004)
- ▲--Big West Conference Games (1993-1995)



ALL-TIME SERIES RECORDS

OPPONENT	G	W	L	T	PCT.	FIRST-LAST MTG	OPPONENT	G	W	L	T	PCT.	FIRST-LAST MTG
Adams State	1	0	1	0	.000	1962 - 1962	Middle Tennessee St.	2	1	1	0	.500	1988 - 1992
Akron	8	5	3	0	.625	1966 - 2004	Millikin	5	2	3	0	.400	1921 - 1947
Alabama	1	1	0	0	1.000	2003 - 2003	Milton	2	2	0	0	1.000	1924 - 1925
American Coll. of PE	1	1	0	0	1.000	1926 - 1926	Minnesota	1	0	1	0	.000	1988 - 1988
Arkansas	1	0	1	0	.000	1994 - 1994	Mississippi	1	0	1	0	.000	1993 - 1993
Arkansas State	7	6	1	0	.857	1990 - 1996	Montana	1	0	1	0	.000	1970 - 1970
Army	1	0	1	0	.000	1992 - 1992	Mt. Morris	11	8	2	1	.773	1914 - 1929
Auburn	1	0	1	0	.000	2000 - 2000	Murray State	1	1	0	0	1.000	1990 - 1990
Aurora	3	2	0	1	.833	1913 - 1914	Nebraska	2	0	2	0	.000	1989 - 1990
Ball State	32	13	17	2	.438	1941 - 2004	Nebraska-Omaha	14	8	6	0	.571	1949 - 1965
Beloit College	11	3	8	0	.272	1906 - 1958	Nebraska-Peru	1	1	0	0	1.000	1951 - 1951
Belvidere Business Col.	3	3	0	0	1.000	1903 - 1906	Nevada	2	1	1	0	.500	1993 - 1994
Boston College	1	0	1	0	.000	1971 - 1971	Nevada-Las Vegas	3	3	0	0	1.000	1987 - 1995
Bowling Green State	15	5	10	0	.333	1967 - 2004	New Mexico State	3	1	2	0	.333	1968 - 1994
Bradley	7	4	3	0	.571	1921 - 1967	North Carolina State	1	0	1	0	.000	1997 - 1997
Buffalo	5	4	1	0	.800	1968 - 2003	North Central College	17	11	4	2	.706	1901 - 1960
Butler	2	2	0	0	1.000	1966 - 1967	North Dakota	1	0	1	0	.000	1965 - 1965
Cal State-Fullerton	3	2	1	0	.667	1983 - 1989	North Dakota State	2	0	2	0	.000	1968 - 1969
Central Florida	3	2	1	0	.667	1998 - 2004	North Texas	1	0	1	0	.000	1996 - 1996
Central Michigan	40	18	21	1	.463	1939 - 2004	Northeast Louisiana	2	0	2	0	.000	1938 - 1978
Chicago City College	1	1	0	0	1.000	1935 - 1935	Northeast Missouri St.	4	3	1	0	.750	1951 - 1965
Chicago Teachers	1	1	0	0	1.000	1916 - 1916	Northern Arizona	1	0	1	0	.000	1968 - 1968
Chicago YMCA	2	0	2	0	.000	1925 - 1927	Northern Iowa	3	1	2	0	.333	1927 - 1964
Cincinnati	2	1	1	0	.500	1989 - 1995	Northwest Missouri St.	1	1	0	0	1.000	1961 - 1961
Concordia	2	2	0	0	1.000	1943 - 1944	Northwestern	6	0	5	1	.083	1975 - 2000
Cornell (IA)	1	0	1	0	.000	1920 - 1920	Ohio	16	9	7	0	.563	1968 - 2003
Crane J. C.	3	3	0	0	1.000	1926 - 1932	Oklahoma State	1	0	1	0	.000	1994 - 1994
Dayton	2	0	2	0	.000	1969 - 1970	Oregon State	1	0	1	0	.000	1996 - 1996
DePaul	1	0	1	0	.000	1924 - 1924	Pacific	2	1	1	0	.500	1993 - 1994
Dixon	5	3	2	0	.600	1909 - 1912	Penn State	1	0	1	0	.000	1996 - 1996
Dubuque	4	1	2	1	.375	1908 - 1939	St. Ambrose	2	0	2	0	.000	1947 - 1948
East Carolina	1	0	1	0	.000	1990 - 1990	St. Bede's	2	1	0	1	.750	1925 - 1926
East Tennessee St.	1	1	0	0	1.000	1979 - 1979	St. Joseph's	1	1	0	0	1.000	1924 - 1924
Eastern Illinois	36	25	10	1	.708	1902 - 1998	St. Viator's	7	3	4	0	.429	1915 - 1936
Eastern Kentucky	2	0	2	0	.000	1940 - 1948	Sam Houston St.	1	1	0	0	1.000	2001 - 2001
Eastern Michigan	35	20	13	2	.600	1927 - 2004	San Diego State	4	0	4	0	.000	1967 - 1971
Elmhurst College	17	16	0	1	.971	1921 - 1946	San Jose State	1	1	0	0	1.000	1995 - 1995
Eureka College	6	3	3	0	.500	1923 - 1935	Shurtleff	2	0	2	0	.000	1929 - 1930
Evansville	2	0	2	0	.000	1946 - 1947	South Florida	2	1	1	0	.500	2001 - 2002
Florida	2	0	2	0	.000	1991 - 1995	Southern Illinois	42	28	13	1	.679	1931 - 2004
Fresno State	4	2	2	0	.500	1972 - 1991	Southern Mississippi	2	1	1	0	.500	1992 - 1995
Gary J. C.	1	0	1	0	.000	1933 - 1933	Southwest Missouri St.	3	3	0	0	1.000	1963 - 1988
German Pres. Sem.	1	0	1	0	.000	1909 - 1909	Sterling Business Col.	3	2	1	0	.667	1904 - 1909
Hillsdale College	4	4	0	0	1.000	1959 - 1967	Temple	1	1	0	0	1.000	1989 - 1989
Idaho	4	2	2	0	.500	1969 - 1975	Tennessee Tech	1	1	0	0	1.000	2003 - 2003
Illinois	3	0	3	0	.000	1992 - 2001	Texas-El Paso	1	0	1	0	.000	1996 - 1996
Illinois College	2	2	0	0	1.000	1930 - 1931	Toledo	32	6	26	0	.188	1967 - 2004
Illinois State	56	25	22	9	.527	1906 - 2000	Troy	1	1	0	0	1.000	2004-2004
Illinois Wesleyan	7	2	4	1	.357	1934 - 1949	Utah State	1	0	1	0	.000	1995 - 1995
Indiana	1	0	1	0	.000	1993 - 1993	Valparaiso	3	2	1	0	.667	1927 - 1929
Indiana State	8	3	5	0	.375	1926 - 1976	Vanderbilt	3	0	3	0	.000	1994 - 1999
Iowa	5	0	5	0	.000	1985 - 1999	Wake Forest	2	1	1	0	.500	2001 - 2002
Iowa State	3	1	2	0	.333	1993 - 2004	Washburn	2	2	0	0	1.000	1948 - 1949
Kansas	1	1	0	0	1.000	1983 - 1983	West Texas State	7	4	3	0	.571	1967 - 1984
Kansas State	6	2	4	0	.333	1989 - 1998	West Virginia	1	0	1	0	.000	1986 - 1986
Kent State	19	12	7	0	.632	1949 - 2002	Western Illinois	38	20	17	1	.539	1903 - 2002
Lamar	1	0	1	0	.000	1987 - 1987	Western Kentucky	1	0	1	0	.000	1969 - 1969
LaSalle-Peru J. C.	1	1	0	0	1.000	1929 - 1929	Western Michigan	30	10	20	0	.333	1950 - 2004
Lewis	3	1	2	0	.333	1916 - 1953	Wheaton College	41	28	10	3	.720	1912 - 1961
Liberty	1	1	0	0	1.000	1992 - 1992	Wichita State	2	1	1	0	.500	1976 - 1980
Lombard	1	0	1	0	.000	1923 - 1923	Wilson J. C.	1	1	0	0	1.000	1943 - 1943
Long Beach State	9	4	5	0	.444	1971 - 1981	Winona State	2	2	0	0	1.000	1962 - 1963
Louisiana-Lafayette	9	3	6	0	.333	1988 - 1996	Wisconsin	10	1	9	0	.100	1971 - 2002
Louisiana Tech	6	1	5	0	.167	1989 - 1996	Wisconsin-La Crosse	2	2	0	0	1.000	1960 - 1962
Louisville	3	0	3	0	.000	1977 - 1996	Wisconsin-Milwaukee	10	4	4	2	.500	1921 - 1966
Mankato State	1	1	0	0	1.000	1938 - 1938	Wisconsin-Oshkosh	2	2	0	0	1.000	1940 - 1941
Marshall	7	4	3	0	.571	1969 - 2001	Wisconsin-Platteville	9	6	2	1	.722	1903 - 1933
Maryland	3	1	2	0	.333	1996 - 2004	Wisconsin-Stevens Point	5	4	0	1	.900	1936 - 1948
McNeese State	1	0	1	0	.000	1974 - 1974	Wisconsin-Whitewater	19	12	6	1	.658	1901 - 1965
Miami (FL)	1	0	1	0	.000	1986 - 1986	Xavier (OH)	5	3	2	0	.600	1968 - 1973
Miami (OH)	10	3	7	0	.300	1970 - 2002	COL. TOTALS	867	434	399	34	.520	1901 - 2004
Michigan	0	0	0	0	.000	2005-2005	NON-COL. TOTALS	79	38	24	17	.589	1899 - 1949
							OVERALL TOTALS	946	472	423	51	.526	1899 - 2004



HUSKIE HERITAGE

The Mascot

Northern Illinois University's athletics mascot wasn't always a Huskie dog.

During a century of intercollegiate competition, old "NI" has been identified with several memorable nicknames.

Profs was a monicker used in the early days, an obvious expression of the institution's mission as a teacher's college. Cardinals stuck in the 1920s, probably due to the school's jersey colors.

The Evansmen tag became a cognomen in the 1930s, a reverent recognition of athletics pioneer George G. "Chick" Evans. Other more provincial terms included Northerners and Teachers.

In 1940, a four-man committee of Evans, Harold Taxman, Walter Lorimer, and Harry Telman, all members of the Varsity Club, was appointed to search for "... a term with a trifle more dash..."

After much debate, a final accord was reached as reported in a three-paragraph story on page three of the January 25, 1940, *Northern Illinois*,

the student newspaper and forerunner of *The Northern Star*.

"Not only does the term have color and meaning, but it is particularly apt as in regard to NI's varsity teams," the unsigned article noted.

"From now on the

word 'Huskies' will be used constantly in this paper and in other papers to indicate our athletics squads."

Since being elevated to National Collegiate Athletic Association Division I status in the late 1960s, the Northern Illinois mascot has had several incarnations—a series of real dogs, a "live" Victor E. Huskie in costume, and several line drawing logo versions. Probably the most popular logo among the Baby Boomers set would be the "fighting" Huskie in the boxer's stance commissioned in the late 1950s. In 1985-86, the dog's head—known to insiders as the "wolf" Huskie—made its debut. The recently "decommissioned" running Huskie dog was designed by John Viecelel of McMillan Associates in 1988. The current Huskie dog—designed by Eric Rickabaugh of Rickabaugh Graphics in 2001—was unveiled at Media Day that August.

Further note to Noah Webster and copy readers: Evans made reference in that 1940 story to a Huskie dog, not H-U-S-K-Y. So the singular collective form is indeed H-U-S-K-I-E, as in Huskie victory, Huskie touchdown, Huskie basket, Huskie spike, and Huskie All-America.



The Colors

Yes, it is true. Originally, the Northern Illinois State Normal School and a committee headed by Emma F. Stratford adopted yellow and white as the school's official colors in 1899. According to the *Northern Illinois*—Volume 1, Number 1—the official school song was named "The Yellow and White."

Wonder where the yellow went? Seven years later, NISNS desired some brighter hues and ones that would not be obscured on the football uniforms by mud or grass stains. By December 1906, the Athletic Association discussed "the plan of having an athletic monogram, and have finally decided on one they think will be appropriate. It is to be a cardinal monogram, N.I. on a black diamond, and it is to be for team members only."

So NISNS established a second set of colors. "A round black background on which is a Wisconsin-red N.I.... The red and black are very showy and much more suitable for athletic colors than yellow and white," the then-monthly (February, 1907) *Northern Illinois* wrote. "The school colors are very pretty to decorate with, but they did not show up very well at games. Many colleges have athletic colors aside from the school colors, and it seemed to the Athletic Association that it would be very suitable for us to adopt the same plan."

Note to graphic artists and printers: The NIU cardinal red is Pantone Matching System 1935.



Victor E. Huskie with friends Harry Caray (left) and Ray Meyer (right) (1980)

The Music

Music professor A. Neil Annas wrote the classics which served for Northern Illinois University's first half century—"Castle on the Hill," "Alma Mater," and "Loyalty Song"—according to NIU archivist Glen A. Gildemeister.

The current "Huskie Fight Song" dates back to the 1961-62 academic year and an editorial appeal from *The Northern Star* asking for a snappier tune for students, fans, and alums at athletics events.

Former Northern Illinois men's swimming coach and physical education professor Francis Stroup answered the call with new lyrics and a modest rewrite of the chorus of Annas' "Loyalty Song."

While *The Northern Star* first published Stroup's lyrics to the "Huskie Fight Song" on November 17, 1961, and it was sung at pep rallies and basketball games, it was not formally approved by the Student Senate until April 30, 1963. Stroup was inducted into the NIU Athletics Hall of Fame in 1998.

The updated version of the "Alma Mater"—written by former NIU band director Wilbur Smith and English professor Orville Baker—originated in 1957 and made its debut at a campus Pops Concert in January, 1961. Smith authored the music and most of the lyrics—with some help by Baker.

HUSKIE FIGHT SONG

Huskies, come on you Huskies
and make a score or two
Huskies, you're Northern Huskies
the team to pull us through
Forward, together forward
there's victory in view
Come on you Huskies, Fight on you
Huskies and win for N.I.U.

—Lyrics by Francis Stroup
—Music by A. Neil Annas

ALMA MATER

Hail to you our Alma Mater
Ever shall we praise your name
Here, we proudly lift our voices
Thousands strong we sing your fame
Free, steadfast, devoted, true
We will always stand by you
Let our cheers resound for Northern
Hail, N.I.U.

—Lyrics by Wilbur Smith / Orville Baker
—Music by Wilbur Smith



HOMECOMING TRADITION

Northern Illinois University has the longest current major-college Homecoming tradition in the state and one of the oldest in the Midwest among National Collegiate Athletic Association Division 1-A institutions. This fall, the Huskies will play in their 99th Homecoming Game on October 15, 2005, against Eastern Michigan University.

According to documented university archive records, the origins of the Huskie Homecoming celebration dates back to an alumni football contest played on October 10, 1903. Called "The Eventful Game" by the student newspaper, the Northern Illinois State Normal School varsity blanked the Alumni, 6-0, as the "Cubs" proved worthy of "defending the Yellow and White (the then NISNS school colors)."

The earliest Homecomings in the Big Ten Conference go back to the University of Michigan (1897), University of Wisconsin (1908), Indiana University (1909), University of Illinois (1910), Northwestern University (1911), University of Iowa (1912), University of Minnesota (1914), Michigan State University (1915), Penn State University (1920), and Purdue University (1921). Among state schools, the tradition began at Eastern Illinois University (1915), Illinois State University (1916), and Southern Illinois University (1925). In the Mid-American Conference, Miami (OH) University (1914), Bowling Green State University (1919), and the University of Akron (1921) own the league's oldest Homecoming game heritages.

While the Northern Illinois alumni game tradition started in 1903, the institution's first formal Homecoming was the weekend of October 12-13, 1906, according to university historian Glen Gildemeister. The term "Homecoming" first appeared in the October, 1906, issue of (then) monthly *Northern Illinois*. In 1907, the NIU Alumni Association's constitution stated "there shall be a social meeting of the alumni and guests, following the annual football game, on the evening of the second Saturday in October."

The first 11 NIU Homecoming football games were against the alums. That continued until 1913 when the series was curtailed by the alumni team because "few of the members (were) in condition." A year later, the student newspaper asked the rhetorical question "Why no alumni game?" and answered by writing "instead they (alumni) witnessed a game played between our team and a team representing another school which brought back their old school spirit..."

For the record, the first Northern Illinois game against an intercollegiate football opponent at Homecoming happened on October 24, 1914,

when the hosts defeated Wheaton College, 29-3. Over the years, there have been many memorable triumphs at Huskie alumni gatherings. In the modern age, Northern Illinois scored a 48-6 triumph over Illinois State on November 6, 1965, in

the Huskie Stadium dedication game. On October 22, 1983, NIU posted one of its greatest comebacks in school history by rallying from a 20-0 halftime deficit for a 24-23 victory over Bowling Green State en route to the MAC title during The Championship Season. On October 6, 1990, Northern Illinois set a national record by scoring the most points ever versus an Associated Press Top 25 team in a 73-18 success against No. 24-ranked Fresno State.

And for the ultimate Huskie trivia buff,

Lois Goetz, a sophomore from Chicago, was the first Northern Illinois Homecoming Queen in 1947. The first two NIU Homecoming kings wound up as inductees into the school's Athletics Hall of Fame—football guard George Acker, a junior from Dixon in 1950, and quarterback Bob Heimerdinger, a senior from Riverside in 1951.

Inaugural Midwest Homecoming Games

Institution	Date
Michigan	1897
Northern Illinois	1903
Marshall	1906
Wisconsin	1908
Indiana	1909
Illinois	1910
Northwestern	1911
Iowa	1912
Miami (OH)	1914
Minnesota	1914

Source: Northern Illinois survey

Overall: Won 60, Lost 28, Tied 10 (.663 Pct.) / Huskie Stadium: Won 26, Lost 12, Tied 2 (.675 Pct.)

- 10-10-03— NIU 6, Alumni 0
- 11- 5-04— NIU 24, Alumni 0
- 10- 7-05— NIU 5, Alumni 0
- 10-13-06— NIU 0, Alumni 0 (Tie)
- 10-12-07— Alumni 6, NIU 5
- 10-10-08— Alumni 24, NIU 0
- 10- 9-09— Alumni 22, NIU 11
- 10- 8-10— NIU 24, Alumni 0
- 10-14-11— NIU 16, Alumni 0
- 10-12-12— NIU 47, Alumni 0
- 10-11-13— NIU 0, Alumni 0 (Tie)
- 10-24-14— NIU 29, Wheaton College 3
- 10- 9-15— NIU 25, North Central 14
- 10-14-16— NIU 16, North Central 0
- 1917— No Game Played
- 1918— No Game Played
- 1919— No Game Played
- 10- 9-20— North Central 13, NIU 7
- 10- 8-21— Millikin 63, NIU 0
- 10-14-22— UW-Whitewater 19, NIU 6
- 10-13-23— NIU 0, Illinois State 0 (Tie)
- 1924— No Game Played
- 10-24-25— NIU 8, Illinois State 0
- 11-13-26— NIU 3, Indiana State 0
- 11-11-27— NIU 0, UW-Milwaukee 0 (Tie)
- 10-20-28— Valparaiso 12, NIU 6
- 10-19-29— NIU 26, Mount Morris 0
- 11- 7-30— NIU 19, Illinois State 7
- 10-10-31— NIU 19, UW-Milwaukee 2
- 10-15-32— NIU 0, Southern Illinois 0 (Tie)
- 10-21-33— NIU 12, Eastern Illinois 6
- 10-13-34— NIU 6, Illinois Wesleyan 6 (Tie)
- 10-12-35— NIU 27, St. Viator's 0
- 10-10-36— NIU 14, Southern Illinois 2

- 10- 9-37— Illinois State 14, NIU 2
- 10- 8-38— NIU 26, Southern Illinois 0
- 10-14-39— NIU 19, Wheaton College 7
- 10-12-40— NIU 9, Central Michigan 6
- 10-11-41— NIU 6, Illinois State 0
- 10-10-42— NIU 14, Western Illinois 14 (Tie)
- 10- 9-43— NIU 0, Wheaton College 0 (Tie)
- 10-14-44— NIU 25, Elmhurst College 12
- 10-13-45— NIU 13, Western Illinois 6
- 10-12-46— NIU 20, Wheaton College 0
- 10-11-47— NIU 21, Eastern Michigan 6
- 10- 9-48— Illinois State 14, NIU 12
- 10- 8-49— NIU 39, Eastern Michigan 14
- 10-14-50— NIU 44, Southern Illinois 20
- 10-20-51— NIU 39, Illinois State 13
- 10-11-52— NIU 21, Southern Illinois 7
- 10-17-53— Eastern Michigan 20, NIU 14
- 10-30-54— Nebraska-Omaha 26, NIU 7
- 10-15-55— Bradley 40, NIU 0
- 11- 3-56— Eastern Illinois 13, NIU 6
- 10-12-57— Western Illinois 33, NIU 13
- 10-18-58— Central Michigan 33, NIU 23
- 10-17-59— Western Illinois 18, NIU 13
- 10-22-60— NIU 36, Central Michigan 15
- 10-21-61— NIU 23, Western Illinois 22
- 10-13-62— NIU 21, Eastern Illinois 0
- 10-19-63— NIU 43, Illinois State 0
- 10-24-64— NIU 35, Eastern Illinois 14
- 11- 6-65— NIU 48, Illinois State 6-●
- 10-29-66— NIU 31, Akron 18-●
- 10-28-67— NIU 24, Hillsdale College 14-●
- 10-26-68— New Mexico State 27, NIU 13-●
- 10-25-69— NIU 17, Ball State 13-●
- 10-31-70— Dayton 21, NIU 20-●

- 10-23-71— NIU 10, Ball State 10 (Tie)-●
- 10-28-72— NIU 28, Kent State 7-●
- 10-20-73— NIU 45, Ball State 17-●
- 10-26-74— Illinois State 24, NIU 14-●
- 10-18-75— NIU 52, Southern Illinois 12-●
- 10-30-76— Ball State 33, NIU 7-●
- 10-22-77— NIU 28, Southern Illinois 0-●
- 10-14-78— NIU 24, Western Illinois 20-●
- 10-27-79— Southern Illinois 21, NIU 11-●
- 10-11-80— Illinois State 28, NIU 18-●
- 10-17-81— Bowling Green State 17, NIU 10-●
- 10-23-82— NIU 10, Eastern Michigan 0-●
- 10-22-83— NIU 24, Bowling Green State 23-●
- 10-13-84— NIU 10, Eastern Michigan 10 (Tie)-●
- 10-19-85— NIU 16, Toledo 3-●
- 10-25-86— Miami (OH) 20, NIU 6-●
- 10-10-87— NIU 41, Toledo 5-●
- 10-29-88— Ball State 18, NIU 17-●
- 10- 7-89— NIU 29, Southern Illinois 24-●
- 10- 6-90— NIU 73, Fresno State 18-●
- 10-12-91— Western Michigan 22, NIU 10-●
- 10-10-92— NIU 23, Southern Mississippi 10-●
- 10-16-93— NIU 21, Pacific 16-●
- 10- 8-94— NIU 48, New Mexico State 27-●
- 10- 7-95— NIU 62, Nevada-Las Vegas 14-●
- 10- 5-96— North Texas 24, NIU 21-●
- 10-11-97— Vanderbilt 17, NIU 7-●
- 10-17-98— NIU 16, Central Michigan 6-●
- 10- 9-99— NIU 37, Ball State 17-●
- 10- 7-00— NIU 40, Central Florida 20-●
- 10-20-01— NIU 20, Western Michigan 12-●
- 10-19-02— NIU 49, Central Michigan 0-●
- 10-18-03— NIU 37, Western Michigan 10-●
- 10-16-04— NIU 42, Central Michigan 10-●

● - Brigham Field at Huskie Stadium game



HUSKIES ON TV: 1983-2004

Northern Illinois Originations: Won 37, Lost 38, Tied 1 (.493 Pct.)

- 1983 — **Northern Illinois 20, Cal State-Fullerton 13 (N)**
(California Bowl III at Fresno, CA)
ESPN / Mizlou Network (Live / National), WPWR-TV
(Channel 60 / Chicago), WQRF-TV (Channel 39 /
Rockford) (12-17-83)
- 1984 — **Northern Illinois 40, West Texas State 33 (H)**
WLS-TV (Channel 7 / Chicago) (Live) (9-1-84)
Northern Illinois 10, Eastern Michigan 10 (H)
Sports Time Cable Network (Live) (10-13-84)
Bowling Green State 28, Northern Illinois 6 (A)
Sports Time Cable Network (Live) (10-20-84)
- 1985 — **Northern Illinois 17, Western Michigan 0 (H)**
SportsVision (Live) (9-7-85)
Wisconsin 38, Northern Illinois 17 (A)
SportsVision (Tape Delay) (9-14-85)
Northern Illinois 16, Toledo 3 (H)
SportsVision (Live & Tape Delay)
Pro-Am Sports System (Tape Delay) (10-19-85)
Northern Illinois 3, Eastern Michigan 0 (A)
SportsVision (Tape Delay)
Pro-Am Sports System (Tape Delay) (11-9-85)
Central Michigan 30, Northern Illinois 21 (A)
SportsVision (Live)
Pro-Am Sports System (Tape Delay) (11-23-85)
- 1986 — **Ball State 20, Northern Illinois 10 (H)**
SportsVision (Live) (8-30-86)
Wisconsin 35, Northern Illinois 20 (A)
SportsVision (Tape Delay) (9-13-86)
Iowa 57, Northern Illinois 3 (A)
SportsVision (Tape Delay) (9-20-86)
Miami (OH) 20, Northern Illinois 6 (H)
SportsVision (Tape Delay) (10-25-86)
Northern Illinois 21, Eastern Michigan 14 (H)
SportsVision (Tape Delay) (11-8-86)
- 1987 — **Lamar 39, Northern Illinois 35 (H)**
SportsVision (Live) (9-12-87)
Northern Illinois 41, Toledo 5 (H)
SportsVision (Live)
Buckeye Cablevision (Live) (10-10-87)
Northern Illinois 29, Western Illinois 14 (H)
SportsVision (Tape Delay) (11-7-87)
Akron 27, Northern Illinois 21 (H)
SportsVision (Tape Delay) (11-14-87)
Northern Illinois 34, Nevada-Las Vegas 31 (A)
ESPN (Live / National) (11-28-87)
- 1988 — **Northern Illinois 7, Akron 6 (H)**
SportsVision (Tape Delay) (9-3-88)
Northern Illinois 19, Wisconsin 17 (A)
SportsVision (Tape Delay) (9-17-88)
Northern Illinois 16, Western Illinois 6 (H)
SportsVision (Tape Delay) (11-5-88)

- 1989 — **Northern Illinois 29, Southern Illinois 24 (H)**
SportsChannel (Live) (10-7-89)
Northern Illinois 42, Nevada-Las Vegas 24 (H)
SportsChannel (Live) (10-21-89)
- 1990 — **Northwestern 24, Northern Illinois 7 (A)**
ESPN (Live / National) (9-29-90)
Northern Illinois 73, Fresno State 18 (H)
KMPH-TV (Channel 26 / Fresno-Visalia, CA)
(Live) (10-6-90)
- 1991 — **Western Michigan 22, Northern Illinois 10 (H)**
SportsChannel (Live) (10-12-91)
Florida 41, Northern Illinois 10 (A)
SportsChannel (Tape Delay) (10-19-91)
Southwestern La. 13, Northern Illinois 12 (H)
SportsChannel (Live) (11-2-91)
- 1992 — **Northern Illinois 26, Illinois State 19 (H)**
SportsChannel (Tape Delay) (9-12-92)
Northern Illinois 23, Southern Mississippi 10 (H)
SportsChannel (Live / National) (10-10-92)
Toledo 25, Northern Illinois 8 (H)
SportsChannel (Live) (11-21-92)
- 1994 — **Nevada 35, Northern Illinois 31 (H)**
SportsChannel (Tape Delay) (10-1-94)
- 1995 — **Louisville 34, Northern Illinois 21 (H)**
SportsChannel (Tape Delay) (9-9-95)
Northern Illinois 62, Nevada-Las Vegas 14 (H)
SportsChannel (Live) (10-7-95)
Cincinnati 55, Northern Illinois 19 (H)
SportsChannel (Live) (10-28-95)
Florida 58, Northern Illinois 20 (A)
SportsChannel (Tape Delay) (11-4-95)
- 1996 — **Penn State 49, Northern Illinois 0 (A)**
Creative Sports / Big Ten Network (Live / Regional),
WBBM-TV (Channel 2 / Chicago), WIFR-TV (Channel
23 / Rockford) (9-14-96)
North Texas 24, Northern Illinois 21 (H)
SportsChannel (Live) (10-5-96)
Louisville 27, Northern Illinois 3 (A)
SportsChannel (Live) (10-19-96)
Akron 34, Northern Illinois 17 (H)
SportsChannel (Live) (10-26-96)
- 1997 — **Central Michigan 44, Northern Illinois 10 (A)**
SportsChannel (Tape Delay) (8-28-97)
Ball State 21, Northern Illinois 14 (H)
SportsChannel (Live) (10-25-97)
- 1998 — **Kansas State 73, Northern Illinois 7 (A)**
Big 12 Network (Regional)
Fox Sports Net (Live) (9-12-98)
Northern Illinois 16, Central Michigan 6 (H)
Fox Sports Net (Live) (10-17-98)
Toledo 16, Northern Illinois 3 (H)
Fox Sports Net (Live) (10-31-98)
- 1999 — **Vanderbilt 34, Northern Illinois 31 (A)**
WJYS-TV (Channel 62 / Chicago) (Live) (9-11-99)
Iowa 24, Northern Illinois 0 (A)
ESPN Regional (Live) (9-18-99)
Northern Illinois 50, Kent State 7 (H)
Fox Sports Net (Live) (10-23-99)
Marshall 41, Northern Illinois 9 (A)
Fox Sports Net (Live & Tape Delay) (10-30-99)
- 2000 — **Western Michigan 52, Northern Illinois 22 (A)**
Fox Sports Net (Live & Tape Delay) (10-21-00)
Northern Illinois 73, Buffalo 10 (H)
ESPN Plus (Live) (10-28-00)
- 2001 — **Illinois 17, Northern Illinois 12 (A)**
ESPN Regional (Live), WLS-TV (Channel 7 / Chicago)
(9-8-01)

- Marshall 37, Northern Illinois 15 (H)**
ESPN GamePlan (Live) (10-6-01)
- Northern Illinois 20, Western Michigan 12 (H)**
Fox Sports Net (Live) (10-20-01)
- Northern Illinois 40, Eastern Michigan 17 (H)**
Fox Sports Net (Live) (11-3-01)
- 2002 — **Northern Illinois 42, Wake Forest 41 (OT) (H)**
Fox Sports Net (Live) (8-29-02)
Wisconsin 24, Northern Illinois 21 (A)
ESPN Regional (Live), WIFR-TV (Channel 23 /
Rockford) (9-14-02)
Northern Illinois 26, Bowling Green St. 17 (H)
Fox Sports Net / Sunshine Network
(Live & Tape Delay) (11-9-02)
Toledo 33, Northern Illinois 30 (H)
Fox Sports Net (Live) (11-23-02)
- 2003 — **Northern Illinois 20, Maryland 13 (OT) (H)**
Fox Sports Net (Live / National) (8-28-03)
Northern Illinois 19, Alabama 16 (A)
ESPN GamePlan (Live) (9-20-03)
Northern Illinois 30, Ohio 23 (OT) (H)
ESPN GamePlan (Live) (10-4-03)
Bowling Green St. 34, Northern Illinois 18 (A)
ESPN2 (Live / National) (10-25-03)
Northern Illinois 48, Ball State 23 (H)
Fox Sports Net Chicago (Live) (11-1-03)
Toledo 49, Northern Illinois 30 (A)
Fox Sports Net (Live / Regional) (11-15-03)
- 2004 — **Northern Illinois 23, Southern Illinois 22 (H)**
Fox Sports Net (Live) (9-11-04)
Iowa State 48, Northern Illinois 41 (A)
Fox Sports Net (Live) (9-18-04)
Northern Illinois 34, Bowling Green St. 17 (H)
ESPN2 (National / Live) (9-24-04)
Northern Illinois 49, Akron 19 (H)
Comcast SportsNet (Live) (10-2-04)
Northern Illinois 42, Central Michigan 10 (H)
Comcast SportsNet (Live) (10-16-04)
Northern Illinois 59, Western Michigan 38 (A)
Comcast SportsNet (Live) (10-23-04)
Northern Illinois 38, Ball State 31 (OT) (A)
Comcast SportsNet (Live) (10-30-04)
Toledo 31, Northern Illinois 17 (H)
ESPN2 (National / Live) (11-9-04)
Northern Illinois 34, Eastern Michigan 16 (A)
Comcast SportsNet (Live) (11-20-04)
Northern Illinois 34, Troy 21 (N)
(Silicon Valley Football Classic at San Jose, CA)
ESPN2 (National / Live) (12-30-04)



ESPN2 originated two games from Huskie Stadium in 2004.



ESPN2's Dave Pasch (left) and Trevor Matich worked the NIU-BGSU game last fall.



HUSKIE SPORTS RADIO NETWORK

Big league. With the addition of "670 The Score"—Chicago's powerful 50,000-watt sports radio AM outlet, you can't miss Northern Illinois University's expanded Huskie Sports Radio Network.

Boasting a signal heard in 38 states and a potential audience in the millions, WSCR-AM (670 khz) joined the network in mid-July. NIU Athletics Director Jim Phillips and WSCR-AM Vice President-General Manager Paul Agase made the joint announcement that "The Score" would carry Huskie football and men's basketball for four years through 2008-09. Next summer, WSCR-AM will also become the exclusive home for Chicago White Sox baseball.

"This is certainly an awesome package not only for Huskie athletics, but tremendous exposure for our entire institution in the nation's No. 3 market," Phillips said. Owned by Infinity Broadcasting, "The Score" will broadcast



Bill Baker

all 11 regular-season Northern Illinois football contests and a select 20-game Huskie men's basketball package. In 2003, WSCR-AM carried NIU's historic 19-16 triumph over the University of Alabama.

With the addition of "The Score," the Huskie Sports Radio Network includes six stations whose signals blanket the region. This fall, for the 17th



Sid Simmons

consecutive year, WLBK-AM (1360 khz) in DeKalb, serves as the flagship station. One of the pioneer AM outlets in the area, WLBK-AM first aired in 1947. Other affiliates include WRHL-AM (1060 khz) in Rochelle, WSEY-FM (95.7 mhz) in Oregon-Mount Morris, WMKB-FM (102.9 mhz) in LaSalle-Peru, and WRMN-AM (1410 khz) in Elgin.

Home and away, Bill Baker, Mark Lindo, and Sid Simmons handle the on-air duties for the Huskie Sports Radio Network. Baker, 57, begins his 26th year as the play-by-play voice of Northern Illinois football and basketball. A reporter on the Chicagoland sports scene for the past 32 years, the Chicago native has covered NIU's postseason success in football, men's and women's basketball, softball, plus women's volleyball. Currently, he



Mark Lindo

670 THE SCORE
CHICAGO SPORTS RADIO

doubles as the marketing director of the Kane County Cougars, the Midwest League (Class A) affiliate of the Oakland Athletics.

Lindo, 47, returns as the network analyst and statistician. The Aurora product joined the Northern Illinois radio team 20 years ago. A long-time veteran of local radio prep coverage, he enters his 15th season as head boys basketball coach at Naperville North High School. The last three seasons, Lindo has handled the color for the Class AA boys' state basketball tournament on the Illinois High School Association TV network.

Simmons, 63, is in his second stint with the network and works the football sidelines home and away. A retired math teacher with the Oswego school system, he is a registered official, a former sportswriter with the *Aurora Beacon-News*, and an area radio personality.

This season, both the pre-game and post-game shows on the network have been expanded to 30 minutes. Lindo hosts the pre-game show. Simmons provides updates direct from the sidelines. Each week, the broadcast concludes with interviews from outside the locker room, statistics, and a college scoreboard.

Northern Illinois fans can also catch the Huskie Sports Radio Network via the internet and BroadcastMonsters.com. Users will need the Windows Media Player by Microsoft, which can be downloaded for free.

To download Windows Media Player, go to NIU's Athletics Web page <www.niuhuskies.com> and follow the "BroadcastMonsters" links.

HUSKIE RADIO NETWORK

Flagship Station:

WLBK-AM (1360 khz), DeKalb

Network Affiliates:

WSCR-AM (670 khz), Chicago
WRHL-AM (1060 khz), Rochelle
WSEY-FM (95.7 mhz), Oregon-Mount Morris
WMKB-FM (102.9 mhz), LaSalle-Peru
WRMN-AM (1410 khz), Elgin

TELEVISION EXPOSURE

Joe Novak meets Marshall McLuhan again. With at least eight regular-season games on television in 2005, Northern Illinois University football goes Global Village for the second year in a row.

Even with a school-record 10 telecasts in 12 games last season, the Huskies accomplish another major TV "first" in 2005—the program's initial appearance on ABC Regional. Northern Illinois opens the season in "The Big House" at the University of Michigan on September 3. Locally, the ABC Regional Huskies vs. Wolverines feed should be carried by WLS-TV (Channel 7 / Chicago) and WTOV-TV (Channel 17 / Rockford).

Three more 2005 Northern Illinois contests will be aired nationally on ESPN2—(1) Miami (OH) University at NIU on October 5, (2) NIU at the University of Toledo on November 16, and (3) Western Michigan University at NIU on November 23.

A fourth game—NIU at Northwestern University on September 10—will appear live on ESPN Classic. Three more home dates will be carried on Comcast SportsNet Chicago—(1) Tennessee Tech on September 17, (2) Eastern Michigan on October 15, and (3) Ball State on October 29.

In 2004, the Huskies appeared on ESPN2 three times—including the 34-21 triumph over Troy University in the Silicon Valley Football Classic, five times on Comcast SportsNet Chicago, and twice on Fox SportsNet Chicago. 2005 marks the second straight year that the entire Northern Illinois home schedule has made TV. During the last three seasons (2003-05), Huskie football has been featured on an

ESPN or ESPN2 national telecast seven times.

"All of this is a reflection of what head coach Joe Novak and our student-athletes have accomplished here," said Northern Illinois Athletics Director Jim Phillips. "We have a quality product for people to see in person or on television. The bottom line is that Joe Novak and the Huskies have gotten the job done. These telecasts offer us a wonderful opportunity to showcase our football program, our institution, and our community across the country."

And there's still more Cardinal and Black TV in the regional market. Beginning in August, Comcast

SportsNet

ESPN



Comcast
SportsNet



Dave Kaplan



Tom Waddle

Chicago will carry the weekly "Inside Huskie Sports" show on Thursdays at 5 p.m. (CDT / CST). Featuring coach Novak and producer / host Brad Hoey of NIU Media Services, the 30-minute show includes game highlights and interviews. A special one-hour preseason edition of "Inside Huskie Sports" premieres on August 18. The show will run 13 weeks during the football season. Check your local sport listings.

WGN-AM radio's award-winning sports talk duo of Dave Kaplan and Tom Waddle will provide the play-by-play and color commentary, respectively, on the three Northern Illinois Comcast SportsNet gridiron cablecasts this fall. Comcast SportsNet is the current TV home of the Chicago Cubs, White Sox, Bulls, Blackhawks, and Fire.

Since 1985, Northern Illinois Intercollegiate Athletics has enjoyed a strong presence in the Chicago TV market—starting with SportsVision—the predecessor of

SportsChannel-Chicago and Fox SportsNet Chicago. In 1992, the NIU-University of Southern Mississippi game went national on SportsChannel America. In 2003, the Northern Illinois-University of Maryland contest reached 94 million households on a national Fox SportsNet hook-up.

NIU's first national television football exposure came on ESPN against (1) Cal State University-Fullerton in California Bowl III (1983), (2) at Nevada-Las Vegas (1987), and (3) at Northwestern (1990). During the 2005 football campaign, various ESPN outlets will carry 24 games involving Mid-American Conference institutions.



HUSKIE MEDIA OUTLETS

Newspapers

Nick Gerts , Sports Editor Bobby Narang , Beat Writer	DeKalb Daily Chronicle	P.O. Box 587, DeKalb IL 60115	(815) 756-4841, Ext. 226 (815) 756-4841, Ext. 229	fax 758-5059	n.gerts@daily-chronicle.com bobnarang@yahoo.com
Josh Albrecht , Managing Editor	DeKalb MidWeek	650 Peace Road, Suite F, DeKalb IL 60115	(815) 758-0696, Ext. 238	fax 758-1418	readit@midweeknews.com
Doug Oleson , Sports Editor	Sycamore Journal	513 W. State St., Sycamore IL 60178	(815) 899-6397	fax 899-4329	doleson@shawnews.com
Randy Ruef , Sports Editor Matt Trowbridge , College Writer	Rockford Register-Star	99 E. State St., Rockford IL 61105	(815) 987-1380	fax 987-1204	rrssports@ registerstartower.com
Dan McGrath , Sports Editor Teddy Greenstein , College Writer Bill Jauss , Beat Writer	Chicago Tribune	435 N. Michigan Ave., Chicago IL 60611	(312) 222-3474 (312) 208-0374 (847) 256-3693	fax 828-9392 fax 864-9819 fax 256-3691	dmcgrath@tribune.com tgreen558@aol.com wjauss@tribune.com
Stu Courtney , Sports Editor Joe Goddard , Beat Writer	Chicago Sun-Times	401 N. Wabash Ave., Chicago IL 60611	(312) 321-2663 (708) 771-1615	fax 645-9213 fax 255-3380	scourtney@suntimes.com youngjoe37@aol.com
Tom Quinlan , Sports Editor Lindsey Willhite , College Writer Adam Rittenberg , Beat Writer	The Daily Herald	155 E. Algonquin Road, Arlington Heights IL 60005	(847) 427-4455 (847) 427-4457 (847) 427-4438	fax 427-1173	tquinlan@dailyherald.com lwillhite@dailyherald.com arittenberg@dailyherald.com sports@dailyherald.com
Larry Gross , Sports Editor	Chicago Defender	2400 S. Michigan Ave., Chicago IL 60616	(312) 225-2400, Ext. 121	fax 225-5659	
Rick Gano , Sports Editor	AP Sports - Chicago	10 S. Wacker Dr., Suite 2500, Chicago IL 60606	(312) 781-0511	fax 781-1989	chifax@ap.org
Brian Schaumburg , Sports Editor	Kane County Chronicle	1000 Randall Road, Geneva IL 60134	(630) 232-9222, Ext. 382	fax 232-4962	sports@kccronicle.com
Dave Schwartz , Sports Editor	The Northwest Herald	P.O. Box 250, Crystal Lake IL 60039-0250	(815) 459-4122	fax 459-5640	sportsdesk@nwherald.com
Dean Magnavite , Sports Editor	Daily Southtown	6901 W. 159th St., Tinley Park IL 60477	(708) 633-5946	fax 633-5999	sports@dailysouthtown.com
Dave Parro , Sports Editor Rick Armstrong , Beat Writer	Aurora Beacon-News	101 S. River St., Aurora IL 60506	(630) 844-5878 (630) 844-5912	fax 844-1043	dparro@scn1.com rarmstrong@scn1.com
Don Wojciechowski , Sports Editor	Elgin Courier-News	P.O. Box 531, Elgin IL 60121	(847) 888-7768	fax 888-7730	couriersports@scn1.com
Todd Merchant , Sports Editor	Freeport Journal-Standard	P.O. Box 330, Freeport IL 61032	(815) 232-0145	fax 232-0105	todd.merchant @journalstandard.com
Brad Nolan , Sports Editor	Naperville Sun	1500 W. Ogden Ave., Naperville, IL 60540	(630) 355-8010	fax 416-5163	sunsports@scn1.com
Larry Hanson , Sports Editor	Rochelle News-Leader	P.O. Box 46, Rochelle IL 61068	(815) 562-4171, Ext. 150	fax 562-2161	hanson@rochellenews-leader.com
Steve Brown , Sports Editor	The Northern Star	130 Campus Life Building, NIU, DeKalb IL 60115	(815) 753-9640	fax 753-0708	sbrown4@niu.edu

Television

Jesse Abdenour , Sports Director	WREX-TV (NBC-13)	P.O. Box 530, Rockford IL 61105	(815) 335-2213, Ext. 239	fax 335-2297	sports@wrex.com
Scott Leber , Sports Director	WTVO-TV (ABC-17)	P.O. Box 470, Rockford IL 61105-0470	(815) 963-2773	fax 963-0029	sports@wtvo.com
Mike Garrigan , Sports Director	WIFR-TV (CBS-23)	P.O. Box 123, Rockford IL 61105	(815) 987-5330	fax 987-5333	sports@wifr.com
Tim Folke , Producer	Comcast SportsNet	350 N. Orleans St., Suite 51-100, Chicago IL 60654	(312) 222-6080	fax 527-5840	chicagopressreleases @comcastsportsnet.com
Mark Malone , Sports Director Krista Ruch , Executive Producer	WBBM-TV (CBS-2)	630 N. McClurg Court, Chicago IL 60611	(312) 202-3641 (312) 202-2993	fax 202-3642	mmalone@cbs.com klruch@cbs.com
Mark Schanowski , Sports Director	WMAQ-TV (NBC-5)	454 N. Columbus Dr., Chicago IL 60611-5555	(312) 836-5665	fax 527-9495	mark.schanowski@nbc.com
Mark Giangreco , Sports Director	WLS-TV (ABC-7)	190 N. State St., Chicago IL 60601	(312) 750-7108	fax 899-8019	
Dan Roan , Sports Director	WGN-TV (WB-9)	2501 W. Bradley Place, Chicago IL 60618	(773) 883-3326	fax 883-3314	danroan@wgn.com
Corey McPherrin , Sports Director	WFLD-TV (Fox-32)	205 N. Michigan Ave., Chicago IL 60601	(312) 565-5529	fax 565-5517	wfldsports@foxtv.com
Kevin Cross , Sports Producer Sports Director	Chicagoland Television Headline News-Local	2000 York Road, Suite 114, Oak Brook IL 60523 Northern Television Center, NIU, DeKalb IL 60115	(630) 368-4365 (815) 753-8888	fax 368-4468 fax 753-8889	kcross@tribune.com

Radio

Bill Baker , Play-by-Play	Huskie Radio Network	10 Sommerset Road, Montgomery IL 60538	(630) 232-8811, Ext. 120 Home: (630) 892-6241 (630) 554-4729	fax 232-8815	niradioguy@aol.com
Mark Lindo , Commentator Sid Simmons , Analyst		248 Islevue Drive, Oswego IL 60543 P.O. Box 132, Oswego IL 60543			m1nn11@aol.com sidoswego@aol.com
Craig Hess , Sports Director	WLBK-AM	P.O. Box 448, DeKalb IL 60115	(815) 758-8686	fax 756-9723	chess@1360wlbk.com
Brian Adams , Sports Director	WDKB-FM	2201 N. First St., DeKalb IL 60115	(815) 758-0950	fax 758-6226	news@b95fm.com
Jeff Leon , Sports Director	WRHL-AM/FM	P.O. Box 177, Rochelle IL 61068	(815) 562-7001	fax 562-7002	wrlamfm@rochelle.net
Sam Ramirez , Sports Director	WIXN-AM/FM	1460 S. College Ave., Dixon IL 61021	(815) 288-3341	fax 284-1017	sports@wixn.com
Bryan Spies , Sports Director	WMKB-FM	4756 East Fourth Rd., Mendota IL 61342	(815) 538-7500	fax 538-7505	
Kyle Bault , Sports Director	WRMN-AM	14 Douglas Ave., Elgin IL 60120	(847) 741-7700	fax 888-4227	mail@wrmn1410.com
Chris Pagoria , Sports Director	WSPY-FM	One Broadcast Center, Plano, IL 60545	(630) 552-1000, Ext. 301	fax 552-9000	wspy-news@nelsonmultimedia.net
Mitch Rosen , Program Director	WSCR-AM	455 N. Cityfront Plaza, 6th Floor, Chicago IL 60611	(312) 245-6000	fax 245-6072	programming@670thescore.com
Dave Juday , Sports	WMVP-AM	190 N. State St., 7th Floor, Chicago IL 60601	(312) 980-1070	fax 980-2440	dave.s.juday@abc.com
Dave Eanet , Sports Director	WGN-AM	435 N. Michigan Ave., Chicago IL 60611	(312) 222-5094	fax 222-5977	daveeanet@tribune.com
Josh Liss , Sports Director	WBBM-AM	630 N. McClurg Court, Chicago IL 60611	(312) 202-3831	fax 202-3674	jdliiss@cbs.com