

# OMAHA WOMEN'S BASKETBALL

2018-19 WEEKLY RELEASE

For Immediate Release: Tuesday, Feb. 5, 2019 • Contact: Shad Beam • Email: sbeam@omavs.com • Office: (402) 554-2591 • Cell: (402) 306-1150

## 2018-19 SCHEDULE

<b>RECORD:</b>	<b>7-15</b>
<b>SUMMIT LEAGUE:</b>	<b>1-8</b>
<b>NON-CONFERENCE:</b>	<b>6-7</b>
<b>HOME:</b>	<b>5-6</b>
<b>AWAY:</b>	<b>1-8</b>
<b>NEUTRAL:</b>	<b>1-1</b>

Date	Opponent	Time (CT)
Nov. 4	Avila (Exh.)	W, 74-44
Nov. 9	USC Upstate	W, 96-69
Nov. 12	at Kansas State	L, 46-61
Nov. 16	CSUN	L, 52-64
Nov. 23	vs. Campbell^	L, 52-65
Nov. 25	vs. Florida A&M^	W, 57-50
Nov. 29	at Detroit Mercy	W, 51-42
Dec. 2	Graceland	W, 81-39
Dec. 5	at Creighton	L, 51-66
Dec. 9	CSU Bakersfield	W, 53-46
Dec. 14	Bradley (Sapp Fieldhouse)	L, 60-80
Dec. 16	at Montana State	L, 56-59
Dec. 21	at Northern Iowa	L, 50-79
Dec. 28	Denver*	L, 68-95
Dec. 30	Oral Roberts*	L, 56-71
Jan. 6	North Dakota State*	W, 78-61
Jan. 9	at North Dakota*	L, 57-68
Jan. 16	at Western Illinois*	L, 70-78
Jan. 20	South Dakota*	L, 49-80
Jan. 24	at Purdue Fort Wayne*	L, 48-56
Jan. 26	at South Dakota State*	L, 47-81
Jan. 30	Peru State	W, 91-44
Feb. 3	North Dakota*	L, 68-69
Feb. 6	at South Dakota*	7 p.m.
Feb. 9	Western Illinois*	2 p.m.
Feb. 13	South Dakota State*	7 p.m.
Feb. 16	Purdue Fort Wayne*	2 p.m.
Feb. 23	at North Dakota State*	1 p.m.
Feb. 28	at Oral Roberts*	5 p.m.
March 2	at Denver*	8 p.m.
March 9-12	at Summit League Tournament	TBA

\* - Summit League game • ^ - FIU Tournament

Home games in **bold italics** and played at Baxter Arena, unless otherwise noted. • For the most up-to-date schedule information, visit OMavs.com.

## WE ARE OMAHA

As part of a university-wide rebranding effort that began in 2011, media and fans are reminded to refer to the school as "The University of Nebraska Omaha," "Omaha" or "UNO." "Nebraska Omaha" and "Nebraska-Omaha" are **no longer** acceptable references.



Primary Logo      Secondary Logo

**Everyone  
FOR  
OMAHA**



## OMAHA MAVERICKS

**Record:** 7-15 (1-8 Summit League)  
**Head Coach:** Brittany Lange  
**Record at School:** 72-95 (6th Year)  
**Career Record:** Same

## Statistical Leaders

**Scoring:** Rayanna Carter -- 10.2 ppg  
**Rebounding:** Josie Filer -- 7.6 rpg  
**Assists:** Rayanna Carter -- 1.8 apg  
**Steals:** Claire Killian -- 1.4 spg  
**Blocks:** Elena Pilakouta -- 0.9 bpg



## SOUTH DAKOTA

**Record:** 20-3 (8-1 Summit League)  
**Head Coach:** Dawn Plitzuweit  
**Record at School:** 72-19 (3rd Year)  
**Career Record:** 260-112 (12th Year)

**All-Time Series:** Omaha trails 45-35  
**Division I Era:** South Dakota leads 13-1  
**Current Streak:** South Dakota - W9  
**Series Streak:** USD defeated Omaha 80-49 on Jan. 20 in Vermillion, S.D.

## GAME INFORMATION

**Wednesday, Feb. 6, 2019 • 7 p.m. • OMAHA vs. South Dakota • Sanford Coyotes Sports Center - Vermillion, S.D.**  
**Stats:** OMavs.com • **Video:** OMavs.com • **Audio:** OMavs.com • **TV:** YurView Cox 1013/ESPN+/MidCo • **Radio:** 1180 Zone 2

## OMAHA PROBABLE STARTERS

2018-19 Stats



#2 • Rayanna Carter



#5 • Elena Pilakouta



#11 • Claire Killian



#25 • Josie Filer



#42 • Sophie Johnston

No.	Player	Pos.	Cl.	Ht.	PPG	RPG	APG	SPG	BPG
2	Rayanna Carter	G	Jr.	5-7	10.2	2.5	1.8	1.1	0.1
5	Elena Pilakouta	C	Fr.	6-3	8.8	5.5	1.7	0.7	0.9
11	Claire Killian	G	So.	5-10	8.7	3.1	1.5	1.4	0.2
25	Josie Filer	F	Fr.	6-0	6.5	7.6	1.2	0.7	0.4
42	Sophie Johnston	G	Fr.	5-10	6.3	2.8	1.7	0.5	0.1

## SOUTH DAKOTA STARTERS

Based on Last Game

No.	Player	Pos.	Cl.	Ht.	PPG	RPG	APG	SPG	BPG
10	Allison Arens	G	Sr.	5-10	11.8	5.1	2.7	1.9	0.3
15	Taylor Frederick	F	Jr.	6-0	7.6	3.3	1.0	1.0	0.2
22	Chloe Lamb	G	So.	5-9	9.0	2.4	1.7	0.8	0.1
23	Madison McKeever	G	Jr.	5-7	9.0	3.0	2.0	1.3	0.0
24	Ciera Duffy	G	Jr.	6-1	15.2	4.9	3.2	0.9	0.6

## MEDIA AVAILABILITY

Student-athletes and coaches are available for interviews by arrangement through the Omaha athletic communications office. All women's basketball interview requests must be arranged through Assistant Director of Communications Shad Beam at least one day in advance.

## MAVERICKS ON SOCIAL MEDIA

f omahawbb

@omahawbb

@omahawbb

OMavs.com

@omavs

## 2018-19 OMAHA WOMEN'S BASKETBALL NUMERICAL ROSTER

No.	Name	Cl.	Pos.	Ht.	Hometown (High School/Previous Schools)
0	Juliana Chagas	Jr.	G	5-6	Santo Andre, Sao Paulo, Brazil (Colegio Singular/Barton County CC)
1	Kalen Phillips	Sr.	G	5-9	Ellisville, Miss. (South Jones)
2	Rayanna Carter	Jr.	G	5-7	Cedar Park, Texas (Leander/Blinn College/Texas A&M Corpus Christi)
5	Elena Pilakouta	Fr.	C	6-3	Nicosia, Cyprus (Kykkos B)
11	Claire Killian	So.	G	5-10	Watertown, Minn. (Watertown-Mayer)
13	Kylee Coulter	RFr.	G	5-9	Fayetteville, Ark. (Fayetteville)
20	Emily Petersen	So.	G	5-10	Omaha, Neb. (Bellevue West)
21	Alicia Mountain	Sr.	G	5-8	Elkhorn, Neb. (Elkhorn/Iowa Western CC)
25	Josie Filer	Fr.	F	6-0	Des Moines, Iowa (Dowling Catholic)
33	Romekia Wallace	Sr.	F	6-0	St. Louis, Mo. (Cardinal Ritter/Moberly Area CC)
35	Mariah Murdie	Fr.	C	6-3	Meriden, Kan. (Jefferson West)
40	Jay Bridgeman	Jr.	F	6-1	Omaha, Neb. (Westside)
42	Sophie Johnston	Fr.	G	5-10	Gold Coast, Queensland, Australia (Hillcrest Christian College)

**Head Coach:** Brittany Lange (6th Year)

**Assistant Coaches:** Rodney Rogan (6th Year), Josh Keister (1st Year), Janet Butler (1st Year)

**Director of Women's Basketball Operations:** Emily Wacker (1st Year)

## PRONUNCIATION GUIDE

**Juliana Chagas** - SHAY - gus • **Josie Filer** - FY-luhr • **Mariah Murdie** - MUHR-dee

**Kalen Phillips** - KAY-len • **Elena Pilakouta** - PEE-lah-koo-tah

## ROSTER BREAKDOWN

**BY ELIGIBILITY:** Seniors (3), Juniors (3), Sophomores (2), and Freshman (5).

**BY POSITION:** Guard (8), Forward (2), Forward/Center (2), and Center (1).

**BY STATE/COUNTRY:** Australia (1), Cyprus (1), Brazil (1), Arkansas (1), Iowa (1), Kansas (1), Minnesota (1), Mississippi (1), Missouri (1), Nebraska (3), and Texas (1).



**2018-19 Omaha Women's Basketball Front Row (L-R):** Rayanna Carter, Julianna Chagas, Alicia Mountain, Romekia Wallace, Kalen Phillips, Claire Killian, Emily Petersen. **Back Row (L-R):** Kylee Coulter, Sophie Johnston, Josie Filer, Elena Pilakouta, Mariah Murdie, Jay Bridgeman.

## CLEAR BAG POLICY

Omaha Athletics' clear bag system will be in effect for all home UNO women's and men's basketball games in an effort to increase the safety of all fans in attendance. Information on that clear bag system, along with other important game day information, can be found on the OMavs.com game day page.

## QUICK FACTS

## GENERAL INFORMATION

Name ..... University of Nebraska Omaha  
 City ..... Omaha, Neb.  
 Founded ..... 1908  
 Enrollment ..... 15,432  
 Nickname ..... Mavericks  
 School Colors ..... Crimson (PMS 186) and Black  
 Affiliation ..... NCAA Division I  
 Conference ..... The Summit League  
 Chancellor ..... Dr. John Christensen  
 Vice Chancellor, Athletics ..... Trev Alberts  
 Home Facility ..... Baxter Arena (7,898)

## WOMEN'S BASKETBALL INFORMATION

First Year of Women's Basketball ..... 1970-71  
 All-Time Record ..... 623-603  
 Conference All-Time Record ..... 223-343  
 NCC Record ..... 173-255  
 MIAA Record ..... 23-39  
 Summit League Record ..... 34-56  
 Summit League Tournament Appearances ..... 3  
 NCAA Division II Tournament Appearances ..... 8 (last 1991-92)  
 AIAW National Tournament Appearances ..... 1 (last 1979-80)

## TEAM INFORMATION

2017-18 Overall Record ..... 12-16  
 2017-18 Summit League Record/Finish ..... 3-11/6th  
 Letterwinners Returning/Lost ..... 6/6  
 Starters Returning/Lost ..... 1/4  
 Reshirts Returning ..... 1  
 Newcomers ..... 7

## COACHING/SUPPORT STAFF

Head Coach ..... Brittany Lange (6th year)  
 Alma Mater ..... Iowa State (2010)  
 Record at UNO ..... 65-80 (.448)  
 Career Record ..... same  
 Office Phone ..... (402) 554-3269  
 Email ..... balange@omavs.com  
 Assistant Coach ..... Rodney Rogan (6th year)  
 Assistant Coach ..... Josh Keister (1st year)  
 Assistant Coach ..... Janet Butler (1st year)  
 Director of Women's Basketball Operations ..... Emily Wacker

## MEDIA INFORMATION

Women's Basketball SID ..... Shad Beam  
 Office Phone ..... (402) 554-2140  
 Cell Phone ..... (402) 306-1150  
 Email ..... sbeam@omavs.com  
 Mailing Address ..... Sapp Fieldhouse  
 ..... 6001 Dodge Street, Omaha, NE, 68182

## UNO FIGHT!

We will fight, fight, fight, for our Mavericks,  
 We will fight, fight, fight, for our team.  
 Ev'ryone knows when that old whistle blows,  
 We will shout, we'll yell and we'll scream!  
 We will fight, fight, fight, for our Mavericks,  
 We will cheer so all fans will know.  
 Be it win or lose or draw,  
 Ev'ryone for Omaha, We will fight for UNO!

**This Week**

Omaha returns to the road on Wednesday, Feb. 6 with a visit to South Dakota. Tipoff is set for 7 p.m., and the game will be broadcast on YurView Cox Channel 1013, MidcoSN2 and ESPN+. Donny Baarns will have the radio call on 1180 Zone 2. Links to live video, audio and stats will be available on OMavs.com.

**The Opening Tip**

- Omaha fell 69-68 to North Dakota on Sunday afternoon at Baxter Arena.
- Sophie Johnston scored a game-high 20 points on 7-of-9 shooting, including four 3-pointers, to lead UNO.
- Rayanna Carter added 18 points, three rebounds, and three assists.
- Romekia Wallace chipped in seven points, seven rebounds and two assists.
- Carter paces the Mavericks, averaging 10.2 points and 1.8 assists per game.
- Josie Filer leads Omaha in rebounding, averaging 7.6 rebounds per contest.
- Omaha ranks third in the league in points per game allowed (64.7 ppg).
- The Mavericks are third in 3-point field goal defense (32.1 pct.).
- As a team, UNO ranks in the top five in seven different rebounding categories.
- Coaches and members of the media picked Omaha to finish eighth in the Preseason Coaches' Poll.
- The Mavericks returned one starter, Claire Killian, and six letterwinners from last season's team.
- Last season, Omaha finished 12-16 overall and sixth in The Summit League with a mark of 3-11.
- Returning in 2018-19 for UNO are Killian, Wallace, Jay Bridgeman, Alicia Mountain, Emily Petersen and Kalen Phillips.
- Kylee Coulter returns to action after redshirting last season.
- The Mavericks welcome six newcomers in Carter and Juliana Chagas, and freshmen Josie Filer, Sophie Johnston, Mariah Murdie and Elena Pilakouta.

**Scouting the South Dakota Coyotes**

South Dakota is 20-3 overall and 8-1 in Summit League action following a 71-49 victory at Purdue Fort Wayne. Allison Arens and Ciara Duffy each scored 19 points, while Taylor Frederick added 15 points in the win.

Head coach Dawn Plitzuweit is in her third season in Vermillion, S.D. with a mark of 72-19 and has a career mark of 260-112 in 12 years.

**Series History**

Wednesday's game marks the 81st meeting all-time between Omaha and South Dakota, with the Coyotes leading the series, 45-35. In the Division I era, USD holds a 13-1 advantage in the series. The two teams last met Jan. 20, 2018, where South Dakota prevailed 80-49.

**Up Next**

Omaha returns to action on Saturday, Feb. 9, hosting Western Illinois. Tipoff is set for 2 p.m. at Baxter Arena, and Donny Baarns will have the radio call on 1180 Zone 2. Links to live stats, audio and video will be available on OMavs.com.

**Social Media Shout Outs**

Fans are encouraged to connect with the women's basketball team on Facebook (OmahaWBB), Instagram (@OmahaWBB) and Twitter (@OmahaWBB). Supporters also are urged to use #EveryoneForOmaha in social media posts.

**Last Time Out**

North Dakota 69, Omaha 68 • Sunday, Feb. 3 • Baxter Arena • Omaha, Neb.

Score by periods	1	2	3	4	Total
North Dakota	17	14	22	16	69
Omaha	18	19	16	15	68

GAME LEADERS	OMAHA	UND
Points	Johnston, 20	Fleecs, 15
Rebounds	Wallace, 7	Fleecs/Reinke, 6
Assists	Carter, 3	Jarnot, 5
Steals	Phillips, 2	Reinke, 2

- Sophie Johnston led Omaha with a game-high 20 points on 7-of-9 shooting, including four 3-pointers.
- Rayanna Carter added 18 points, three rebounds and three assists.
- Romekia Wallace chipped in seven points, seven rebounds and two assists.
- Julia Fleecs led three Fighting Hawks in double figures with 15 points and six rebounds.
- Jill Morton had 11 points and four boards, while Alaina Jarnot added 10 points and five assists.
- Omaha shot 42.6 percent (23-of-54) from the field including a 46.7 percent (7-of-15) effort from long range.
- North Dakota converted 44.3 percent (27-of-61) of its shots from the floor.

**TALE OF THE TAPE**

CATEGORY	OMAHA	USD
Points Per Game	60.8	77.2
Points Allowed Per Game	64.7	58.6
Scoring Margin	-3.9	+18.6
Field Goal %	39.2%	45.1%
3 Point FG Made-Att.	119-399	191-514
3-point FG pct	29.8%	37.2%
3-pt FG Made Per Game	5.4	8.3
Free Throws Made-Att.	242-346	335-427
Free Throw %	69.9%	78.5%
Rebounds Per Game	37.5	37.9
Rebounding Margin	+1.8	+7.7
Assists Per Game	11.7	15.3
Turnovers Per Game	15.9	13.9
Turnover Margin	-1.7	+5.2
Assist/Turnover Ratio	0.7	1.1
Steals Per Game	7.0	9.7
Blocks Per Game	2.7	3.3

**TEAM LEADERS**

CATEGORY	OMAHA
Pts/Game	Carter, 10.2
FG%	Murdie, 47.7%
3pt FG	Killian, 30-122
3pt FG%	Phillips, 42.1%
FT%	Phillips, 84.0%
Reb/game	Filer, 7.6
Ast/game	Carter, 1.8
Steals	Killian, 1.4
Blocks	Pilkouta, 0.9
CATEGORY	SOUTH DAKOTA
Pts/Game	Duffy, 15.2
FG%	Sjerven, 55.4%
3pt FG	Duffy, 42-107
3pt FG%	Arens, 50.0%
FT%	McKeever, 91.3%
Reb/game	Sjerven, 5.6
Ast/game	Duffy, 3.2
Steals	Arens, 1.9
Blocks	Sjerven, 1.7

**SERIES HISTORY****SOUTH DAKOTA COYOTES - SUMMIT LEAGUE**

**All-Time Series:** Omaha trails 45-35

**Division I Era:** South Dakota leads 13-1

**Current Streak:** South Dakota - W9

**Series Streak:** USD defeated Omaha 80-49 on Jan. 20 in Vermillion, S.D.

Jan. 20, 2019.....	at Vermillion, S.D.....	L, 49-80
Feb. 14, 2018.....	Omaha .....	L, 50-72
Jan. 20, 2018.....	at South Dakota .....	L, 46-70
Feb. 18, 2017.....	at South Dakota .....	L, 56-91
Jan. 14, 2017.....	Omaha .....	L, 52-60
Feb. 7, 2016.....	Omaha .....	L, 55-70
Jan. 9, 2016.....	at South Dakota .....	L, 76-82
Feb. 12, 2015.....	at South Dakota .....	L, 69-83
Jan. 2, 2015.....	Omaha .....	L, 48-64
Feb. 20, 2014.....	Omaha .....	W, 69-61



### Sizzling Sophie

Over the past two games, Sophie Johnston averaged 17.5 points on 66.7 percent (12-of-18) shooting from the floor, including a 71.4 percent (5-of-7) mark from long range. The Aussie also averaged 3.0 assists and 2.5 rebounds per contest.

On Sunday against North Dakota, the freshman scored a career-high 20 points on 7-of-9 shooting, including four 3-pointers. She also set a season-high with six assists against Peru State on Wednesday.

### Story of Two Halves

Since joining the Summit League seven seasons ago, Omaha has improved its record from the first half to the second half.

Year	First Half	Second Half	Overall
2012-13	4-4	3-5	7-9
2013-14	1-6	3-4	4-10
2014-15	1-7	4-4	5-11
2015-16	4-4	3-5	7-9
2016-17	3-5	5-3	8-8
2017-18	1-6	2-5	3-11
2018-19	1-7	0-1	??

### Freshman Making a Mark

This season Omaha's five freshmen are making their mark on the program. The five have accounted for over 50 percent or more of the teams' minutes, points, rebounds, assists and blocks.

Minutes	2202	50.1 pct.
Points	685	51.2 pct.
Rebounds	468	56.8 pct.
Assists	129	50.0 pct.
Blocks	48	80.0 pct.
Steals	62	40.0 pct.

### Maturing Murdie

Mariah Murdie has stepped up her game over the past six games. The freshman averaged 12.3 points per game while shooting 60.0 percent (30-50) from the field. Murdie also averaged 5.3 rebounds, 1.3 assists and 1.3 steals.

The Kansas native scored a career-high 24 points against Purdue Fort Wayne on Jan. 24, going 9-of-14 from the field and grabbing six rebounds with four steals.

### Boarding 101

Josie Filer and Elena Pilakouta are the Mavericks top rebounders as freshmen. The duo ranks third and 10th in rebounds per game this season. Filer averages 7.6 boards per game, while Pilakouta grabs 5.5 rebounds per contest.

### Looking to Complete Summit Collection

Brittany Lange is looking to complete her Summit League collection with a win against every Summit League member. Lange only needs a win against North Dakota to accomplish this feat. She claimed wins against Denver (8), North Dakota State (9), Oral Roberts (1), Purdue Fort Wayne (5), South Dakota (1), South Dakota State (1) and Western Illinois (2). Lange also had three wins against former league member IUPUI.

#### Lange's Summit League Overall Record (30-55)

Denver	8-5
IUPUI	3-5
North Dakota	0-2
North Dakota State	9-2
Oral Roberts	1-8
Purdue Fort Wayne	5-4
South Dakota	1-10
South Dakota State	1-10
Western Illinois	2-9

### Runnin' with Ray

### MAVERICK LEADERS

Games Leading	Pt.	Reb.	Ast.	Stl.	Blk.
Rayanna Carter	8	-	6	2	1
Julianna Chagas	-	-	1	1	-
Kylee Coulter	-	-	1	-	1
Josie Filer	2	13	2	5	5
Sophie Johnston	2	-	6	2	-
Claire Killian	4	1	4	9	3
Alicia Mountain	-	-	3	2	-
Mariah Murdie	4	2	1	2	9
Emily Petersen	-	-	-	-	1
Kalen Phillips	1	-	1	5	1
Andi Pierce	-	-	1	1	-
Elena Pilakouta	4	6	4	3	7
Romekia Wallace	-	5	4	-	3

### ACTIVE CAREER LEADERS

Points.....	Killian .....	427
FG Made.....	Killian .....	154
3-Pt. FG Made .....	Killian .....	54
FT Made .....	Killian .....	65
Rebounds.....	Filer .....	168
Off. Reb. ....	Filer .....	27
Def. Reb.....	Killian .....	114
Assists.....	Killian .....	64
Steals.....	Killian .....	69
Blocks.....	Pilakouta .....	19
Games.....	Phillips.....	77
Starts.....	Killian .....	38
Minutes.....	Killian .....	1,240



Senior Kalen Phillips scored a career-high 25 points against Western Illinois, including 22 points in the fourth quarter.

## MAVERICK MENTIONS

### #0 Juliana Chagas – Jr. – G 5-6

Chagas set career-highs in points (12), rebounds (4) and assists (3) against Graceland on Dec. 2, 2018. She is out for the rest of the season due to injury.

### #1 Kalen Phillips – Sr. – G

Kalen exploded for a career-high 25 against Western Illinois. She went 7-of-11 from the field with seven 3-pointers and was perfect (4-4) at the free throw line.

### #2 – Rayanna Carter – Jr. – G

Rayanna Carter had her sixth game of the season with 15+ points. Carter scored 18 points against North Dakota on Sunday. The junior also had three rebounds and three assists against UND. She leads the Mavericks in points and assists this season.

### #5 – Elena Pilakouta – Fr. – C

Elena tied a career-high with 14 points against Peru State on Jan. 30. This season, she has started 21 games, averaged 8.8 points, 5.5 rebounds, and 1.7 per game. Pilakouta first career double-double came against Detroit Mercy with 12 points and 11 assists.

### #11 – Claire Killian – So. – G

Killian is the Mavericks third-leading scorer this season, averaging 8.7 points per game. Her first career double-double was an 11 point, 10 rebound performance at Creighton on Dec. 5, 2018. She scored a career-high 21 points against Denver on Dec. 28.

### #13 Kylee Coulter – RFr. – G

Coulter tied a career-high with nine points against Peru State. Kylee also scored nine points against Western Illinois on Jan. 16.

### #20 Emily Petersen – So. – G

Emily made her first appearance of the season against Peru State. The sophomore scored three points with a rebounds, assist, steal and a blocked shot.

### #21 Alicia Mountain – Sr. – G

Mountain grabbed a season-best six rebounds against Peru State on Jan. 30. She also had three assists and two steals.

### #25 Josie Filer – Fr. – F

Josie leads Omaha with 7.6 rebounds per game. Filer tallied her first career double-double with 12 points and 10 points against Campbell on Nov. 23. She grabbed a season-best 14 rebounds against Florida A&M.

### #33 Romekia Wallace – Sr. – F

Romekia earned her first career start against Northern Iowa on Dec. 21. Wallace tied a season-high with 10 points against Peru State on Jan. 30. The senior forward tied a career-best with seven rebounds against North Dakota.

### #35 Mariah Murdie – Fr. – C

Mariah exploded for a career-best 24 points on 9-of-14 shooting with six rebounds and four steals at Purdue Fort Wayne on Jan. 24.

### #40 Jay Bridgeman – Jr. – F

Jay will not play this season due to injury.

### #42 Sophie Johnston – Fr. – G

Sophie eclipsed her career best for the second-straight game on Sunday, scoring 20 points against North Dakota on 7-of-9 shooting from the field. She dished out a season-best six assists against Peru State last week. This season she is averaging 6.3 points, 2.8 rebounds and 1.7 assists per game.

Rayanna Carter hit the ground running this season with the Mavericks. The junior leads Omaha with 10.2 points and 1.8 assists per game. Carter scored in double figures 13 times this season, including a career-high 19 points against Oral Roberts Dec. 30, 2018.

## Classic Claire

Claire Killian went 6-of-14, including four 3-points, to score a career-high 21 points against Denver on Dec. 28. Killian has scored in double-figures in four straight games for the Mavericks. She also tallied her first-career double-double against Creighton on Dec. 5, scoring 11 points and grabbing 10 boards.

## Ro Gets First Nod

Senior Romekia Wallace secured her first career start against Northern Iowa. Wallace went on to grab six rebounds and block one shot in 21 minutes.

## Freshman Double-Double

Josie Filer and Elena Pilakouta each notched their first collegiate double-doubles. Filer put up a team-high 12 points and 10 rebounds against Campbell on Nov. 23 in Miami, Fla. Pilakouta joined the double-double club on Nov. 29 against Detroit Mercy with 12 points and 11 rebounds.

## Cleaning Up on the Glass

Josie Filer grabbed a career-best 14 rebounds in a victory over Florida A&M. Filer's 14 boards were the most in a game by a Maverick since Mikaela Shaw pulled down 14 against Indiana State on Nov. 25, 2016.

## FIU All-Tournament

Josie Filer picked up all-tournament accolades at the FIU Thanksgiving Tournament. Filer posted a two-game average of 9.0 points, 12.0 rebounds and 2.0 assists. It was the first all-tournament accolades of her collegiate career.

## Omaha Coverage

Eight of Omaha's 16 Summit League games are set to air locally on Cox YurView in 2019. Among the games selected for home coverage are North Dakota State (Jan. 6, 2 p.m.), South Dakota (Jan. 20, 2 p.m.), North Dakota (Feb. 3, 2:30 p.m.) and South Dakota State (Feb. 13, 7 p.m.).

Donny Baarns will handle play-by-play duties and former Maverick Mikaela Shaw will provide color commentary for home contests.

UNO's Yurview schedule includes road matchups at North Dakota (Jan. 9, 8 p.m.) South Dakota State (Jan. 26, 2 p.m.), South Dakota (Feb. 6, 7 p.m.) and North Dakota State (Feb. 23, 1 p.m.).



Freshman guard Sophie Johnston broke her career scoring mark twice last week, first going for 15 points against Peru State before scoring 20 against North Dakota. Johnston also set a season-high with six assists against the Bobcats.

## TRACKING OMAHA'S OPPONENTS

Through Feb. 4, 2019

Team	Record	Streak
Bradley	15-5	W1
Campbell	12-8	W1
Creighton	10-12	L4
CSU Bakersfield	9-12	W1
CSUN	11-11	L1
Detroit Mercy	3-19	L6
Florida A&M	3-17	L3
Graceland	13-11	L1
Kansas State	13-9	L3
Montana State	11-9	W1
Northern Iowa	13-9	L1
Peru State	2-20	L11
USC Upstate	6-14	L2

## MAVERICKS VS. OTHER CONFERENCES

Big 12 (1) .....	0-1
Big East (1) .....	0-1
Big Sky (1) .....	0-1
Big South (2) .....	1-1
Big West (1) .....	0-1
HAAC (2) .....	2-0
Horizon League (2) .....	1-0
MEAC (1) .....	1-0
MVC (2) .....	0-2
WAC .....	1-0



Freshman forward Mariah Murdie scored a career-high against Purdue Fort Wayne on Jan. 24.

## The Returners

The Mavericks return one starter and six letterwinners from last season.

- Sophomore Claire Killian and senior Kalen Phillips each appeared in all 28 games in 2017-18.
- Killian started 16 games averaged 8.4 points and 2.9 rebounds in 23.6 minutes per game.
- Phillips started 12 games averaged 3.6 points and 2.6 boards per contest.
- Seniors Alicia Mountain and Romekia Wallace also saw significant action.
- Mountain appeared in 25 contests and started the final 10 games at the point, averaged 2.6 points, 2.1 boards and 1.3 assists.
- Wallace played in 27 games after transferring from Moberly Area Community College.
- Sophomore Emily Petersen appeared in 27 games and averaged 3.1 points.
- Senior Jay Bridgeman played in 12 games before missing the rest of the season due to injury.

## New Blood

The new faces for the Mavericks come in the form of four freshmen and two transfers.

Omaha added much-needed experience in transfers Rayanna Carter and Julianna Chagas. The Mavericks also dipped into the international pool with the additions of Australian Sophie Johnston and Cypriot Elena Pilakouta.

- Johnston averaged 19 points, 10 rebounds and five assists in club ball.
- Pilakouta represented Cyprus in several high-level international competitions.

UNO also added length and athleticism with the additions of Josie Filer and Mariah Murdie.

- Filer was a four-time letterwinner at Dowling Catholic in Des Moines, Iowa.
- Murdie was a four-year starter and all-state performer in basketball. She also earned all-state accolades in track and volleyball.

## International Movement

This fall Omaha welcomed a trio of international players to its roster and the three expect to make an immediate impact.

- Juliana Chagas (Jr., G) played two years at Barton County Community College before joining the Mavericks. Chagas averaged 9.5 points, 3.6 rebounds and 3.1 assists in 2017-18 for the Cougars. She shot 50.4 percent from the field, 64 percent from 3-point range and 76 percent at the free throw line.
- Sophie Johnston (Fr., G) prepped at Hill Crest Christian College in Gold Coast, Australia. Johnston played for the Gold Coast Waves, averaging 19 points, 10 rebounds and five assists while serving as team captain.
- Elena Pilakouta (Fr., C) enters her freshman season for Omaha and has a decorated youth career. Pilakouta is a two-time Cyprus women's basketball player of the year and has represented her country in several high-

level international tournaments. She led Cyprus to the U18 Women's European Division C championship last summer, averaging 12.0 points, 8.5 rebounds and 3.0 assists per contest in the tournament.

## Summit Preseason Coaches' Poll

The Summit League Preseason Coaches' Poll picked Omaha to finish eighth in the 2018-19 season.

South Dakota State has been tabbed the preseason favorite with 24 first-place votes, and South Dakota was picked second with the remaining nine first-place votes.

Western Illinois is third, followed by Oral Roberts, Denver, North Dakota and NDSU. Omaha and Purdue Fort Wayne round out the poll in eighth and ninth, respectively. The Summit League finished 12th out of 32 conferences in RPI last season.

## Omaha Announces 2019-20 Signing Class

Head coach Brittany Lange announced the signing of four student-athletes on Nov. 14. Akili Felici (Bellevue West/Bellevue, Ne.), Abby Johnson (Eden Prairie/Eden Prairie, Minn.), Sarah Schmitt (Prairie/Cedar Rapids, Iowa) and Kia Wilson (Manhattan/Manhattan, Kan.) all signed national letters of intent to play at Omaha.

• Felici is a 5-10 guard from Bellevue, Neb. As a junior, she was named to the Class A All-State Second Team, after averaging 15.8 points per game.

• Johnson is a 6-1 forward from Eden Prairie, Minn. Last season, she averaged 8.5 points and 3.1 rebounds per game for the Eagles on the way to her second all-conference award.

• Schmitt is a 5-8 guard from Cedar Rapids, Iowa. She averaged 13.1 points, 3.8 rebounds and 2.4 assists last season for Cedar Rapids Prairie High School as the Hawks finished 16-7 overall and were regional finalists.

• Wilson is a 6-1 post player from Manhattan, Kan. Last season, she averaged 10.9 points and 6.9 rebounds per game. She also is a two-time Kansas 6A State All-Tournament selection.

## Staff Changes

The Omaha bench has three new faces this season. Assistant coaches Josh Keister and Janet Butler joined the staff over the summer. Emily Wacker became the team's new Director of Operations in August.

Keister joined the Mavericks after spending three seasons on the staff at Indiana State and served as the Sycamore's interim head coach on Jan. 2, 2018. ISU finished 9-8 under his tenure. Butler came to Omaha after a season at Monmouth University, where she was named to the WBCA's Thirty Under 30 list last season.

Wacker was a four-year letterwinner at Nebraska before earning her undergraduate degree in May 2018.



## HEAD COACH: BRITTANY LANGE

## SIXTH SEASON



Head coach Brittany Lange enters her sixth season as the head coach for the Mavericks and eighth with the program overall. Lange came to Omaha at the start of its Division I era (2012-13), and became the youngest head coach in all of Division I basketball (2013-14).

The eighth head coach in UNO history, she ranks third all-time in school history with 65 career victories, behind only Cherri Mankenbergh, who had 345 wins over 22 years, and Patty Patton Shearer, who had 102 wins over seven years.

In 2017-18, UNO finished 12-16 overall and 3-11 in The Summit League. The Mavericks made their third appearance in The Summit League Championship, falling to third-seed Western Illinois 97-57 in the quarterfinals. Amber Vidal led the team in scoring (13.5 ppg) and assists (3.6 apg). Omaha started the season 0-2 before reeling off seven-straight wins in November and December. UNO topped Montana State, Florida A&M, USC-Upstate, Wofford and Northern Iowa over that stretch. The Mavericks then dropped their first six Summit League games before defeating North Dakota State 80-67 at home on Jan. 24, 2018.

## CAREER NOTES

## PLAYING EXPERIENCE

- started her playing career at Creighton under Jim Flannery (2005-6)
- transferred to Iowa State under Bill Fennelly (2006-8)
- ISU Scholar-Athlete (2007)
- Dean's List (F06)
- Big 12 Commissioner's Honor Roll (F06, S07)

## YEAR-BY-YEAR COACHING

2017-18: 12-16 Overall / 3-11 Summit League • Head Coach  
 2016-17: 16-15 Overall / 8-8 Summit League • Head Coach  
 2015-16: 15-15 Overall / 7-9 Summit League • Head Coach  
 2014-15: 10-18 Overall / 5-11 Summit League • Head Coach  
 2013-14: 12-16 Overall / 4-10 Summit League • Head Coach  
 2012-13: 17-11 Overall / 7-9 Summit League • Assistant Coach  
 2011-12: 12-16 Overall • Director of Women's Basketball Operations

## PLAYER AWARDS

2013-14: Taijhe Kelly - HM All-Summit  
 2013-14: Taijhe Kelly - Summit League Defensive Player of the Year  
 2013-14: Mikaela Shaw - All-Newcomer Team  
 2014-15: Mikaela Shaw - Second Team All-Summit League  
 2014-15: Mikaela Shaw - Academic All-League  
 2015-16: Mikaela Shaw - CoSIDA First Team Academic All-District 7  
 2015-16: Mikaela Shaw, CoSIDA Second Team Academic All-American  
 2015-16: Mikaela Shaw - First Team All-Summit League  
 2015-16: Caroline Houge - All-Newcomer Team  
 2015-16: Mikaela Shaw - Academic All-League  
 2016-17: Mikaela Shaw - Second Team All-Summit League  
 2016-17: Michaela Dapprich - All-Newcomer Team  
 2016-17: Mikaela Shaw - Academic All-League



Omaha continued its upward trend in Lange's fourth season, finishing 16-15 overall and 8-8 in Summit League action. The Mavericks made their first appearance in the Preseason WNIT and picked up an 85-57 win over North Texas. Omaha took an 83-82 victory over South Dakota State on Jan. 28, 2017. UNO qualified for its second Summit League Tournament in Sioux Fall, S.D. and upset No. 4 seed South Dakota 64-58 in the quarterfinals before falling to top-seeded Western Illinois in the semis.

The Mavericks became one of the best shooting teams in the country in Lange's fourth season. Omaha ranked 12th nationally in 3-pointers per game (8.4), 18th in assists per game (16.6) and 19th in 3-point field goal percentage (35.6 percent). UNO ranked second in the Summit League in assists per game, field goal percentage, field goals made per game and 3-pointers made per game. UNO's defense held the opposition to 60 points or less 13 times in 2016-17 and kept seven teams under 50 points.

Mikaela Shaw wrapped up her stellar career at UNO under Lange by becoming the first Omaha women's basketball player to reach 1,800 points, 900 rebounds and 310 assists for a career. Shaw also garnered Second Team All-League honors. She also earned her third-straight Marian Ivers Female Athlete of the Year award. Senior Michaela Dapprich picked up Honorable Mention All-League honors and a spot on the All-Newcomer Team.

In her third season, Lange directed the Mavericks to a 15-15 overall record and earned the program's first berth into the Summit League Tournament as the sixth seed. In the tournament quarterfinals, Omaha upset third-seeded IUPUI, 62-51. Omaha continued to be one of the top defensive teams in the Summit League in Lange's third year. The Mavericks led the league in blocked shots (5.8 bpg). They ranked second in opponents' field goal percentage (38.5 pct.) and third in opponents' three-point field goal percentage (31.3 pct.). Omaha allowed the fourth-fewest points per game (63.5 ppg). UNO's defense held the opposition to 60 points or less 12 times in 2015-16.

Under Lange's direction, the Mavericks accomplished a first in their NCAA Division I transition - defeating a team that went on to make the NCAA Tournament. UNO achieved that feat with a 69-61 win over South Dakota on Feb. 20, 2014, at the Sapp Fieldhouse. The Coyotes went on to win the Summit League conference tournament. The Mavs also nearly stunned defending league champion South Dakota State, becoming the first team to lead the Jackrabbits at the half on their home court in more than a year.

A native of Sac City, Iowa, Lange started her collegiate playing career at Creighton University in 2005-06, before transferring to Iowa State for the 2006-07 season. A former guard on four NCAA Tournament teams at Iowa State with an overall record of 98-37, Lange was a part of one of the most successful classes in Cyclone history. After battling nagging injuries throughout her career, Lange's career was cut short, and she spent 2008-10 on legendary Head Coach Bill Fennelly's staff. Lange helped assist the Cyclones in reaching the NCAA Tournament Elite Eight in 2009 against Stanford and the NCAA Sweet 16 in 2010 against the undefeated UCONN Huskies, after reaching the second round of the NCAA Tournament the previous two years as a player. She also served as a strength and conditioning intern for Iowa State men's and women's basketball for Iowa State.

# SUMMIT LEAGUE STANDINGS

Team	SUMMIT LEAGUE				OVERALL				Home	Away	Neut	Last 10	Streak
	W-L	Pct.	PF	PA	W-L	Pct.	PF	PA					
South Dakota State	9-1	.900	81.0	61.5	17-6	.739	77.3	64.0	9-1	8-3	0-2	9-1	W 7
South Dakota	8-1	.889	82.1	62.6	20-3	.870	77.2	58.6	8-0	9-2	3-1	8-2	W 7
Western Illinois	6-4	.600	78.0	76.8	10-13	.435	75.6	77.7	8-3	1-7	1-3	6-4	W 2
Denver	5-4	.556	79.9	75.4	12-10	.545	81.4	76.2	10-2	2-8	0-0	5-5	L 2
Oral Roberts	5-5	.500	71.3	69.5	12-11	.522	71.4	68.3	7-5	5-6	0-0	5-5	L 1
North Dakota	4-6	.400	68.2	75.7	9-14	.391	64.7	72.0	3-4	4-10	2-0	4-6	W 1
North Dakota State	3-6	.333	59.8	74.0	6-15	.286	58.2	69.9	5-4	1-9	0-2	3-7	L 3
Purdue Fort Wayne	2-8	.200	56.8	68.8	6-16	.273	62.0	68.4	5-6	1-10	0-0	2-8	L 2
Omaha	1-8	.111	60.1	73.2	7-15	.318	60.8	64.7	5-6	1-8	1-1	2-8	L 1

## PLAYER OF THE WEEK

Date	Player (School)
Nov. 12	Taylor Frederick (USD)
Nov. 19	Macy Miller (SDSU)
Nov. 26	Madison Nelson (Denver)
Dec. 3	Lexi Klabo (UND)
Dec. 10	Hannah Sjerven (USD)
Dec. 17	Ciara Duffy (USD)
Dec. 22	Taylor Higginbotham (WIU)
Dec. 31	Lexi Klabo (UND)
Jan. 7	Lauren Loven (Denver)
Jan. 14	Myah Selland (SDSU)
Jan. 21	Olivia Kaufmann (WIU)
Jan. 28	De'Jour Young (PFW) Jeni Jo Lippe (ORU)
Feb. 4	Taylor Higginbotham (WIU)

## PRESEASON ALL-LEAGUE TEAMS

### First Team

Macy Miller, SDSU, Sr., G  
 Madison Guebert, SDSU, Sr., G  
 Ciara Duffy, USD, Jr., G  
 Allison Arens, USD, Sr., G  
 Taylor Higginbotham, Western Illinois, Sr., G  
 Lexi Klabo, UND, Sr., F

### Second Team

Myah Selland, SDSU, So., G/F  
 Maya Mayberry, Oral Roberts, So., G  
 Claire Gritt, Denver, So., G  
 Madison McKeever, USD, Jr., G  
 Tagyn Larson, SDSU, Jr., F

Preseason Player of the Year: Macy Miller, SDSU

## THIS WEEK IN THE SUMMIT LEAGUE

### Wednesday, Feb. 6

Omaha at South Dakota\* ..... 7 p.m.  
 Denver at Oral Roberts\* ..... 7 p.m.  
 Western Illinois at Purdue Fort Wayne\* ..... 7 p.m.

### Thursday, Feb. 7

North Dakota State at North Dakota\* ..... 7 p.m.

### Saturday, Feb. 9

Denver at North Dakota State\* ..... 1 p.m.  
 Oral Roberts at South Dakota\* ..... 1 p.m.  
 Western Illinois at Omaha\* ..... 2 p.m.  
 North Dakota at South Dakota State\* ..... 2 p.m.

## MAVERICK OVERALL TEAM RANKS

Scoring Offense ..... 8th (60.8)  
 Scoring Defense ..... 3rd (64.7)  
 Scoring Margin ..... 6th (-3.9)  
 FG Percentage ..... 9th (39.2%)  
 FG Pct. Defense ..... 5th (40.8%)  
 3-Point FG Pct. .... 8th (29.8%)  
 3-Point FG Pct. Defense ..... 3rd (32.1%)  
 3-Point FG Made ..... 8th (5.4)  
 Free Throw Pct. .... 7th (69.9%)  
 Rebounding ..... 5th (37.5)  
 Rebounding Defense ..... 5th (35.6)  
 Offensive Rebounds ..... 4th (11.6)  
 Offensive Reb Pct. .... 5th (32.2%)  
 Defensive Rebounds ..... 3rd (25.9)  
 Defensive Reb Pct. .... 4th (69.7%)  
 Rebounding Margin ..... 4th (+1.8)  
 Assists ..... 7th (11.7)  
 Assist/Turnover Ratio ..... 6th (0.7)  
 Blocked Shots ..... 6th (2.7)  
 Steals ..... 6th (7.0)  
 Turnover Margin ..... 6th (-1.7)

\* as of 2/4/19

## MAVERICKS IN SUMMIT LEAGUE TOP 10

### Rebounds per Game

6. Josie Filer ..... 6.4

### Field Goal Pct.

8. Mariah Murdie ..... 51.6%

### Free Throw Pct.

7. Rayanna Carter ..... 87.0%

### Steals per Game

9t. Claire Killian ..... 1.3

9t. Rayanna Carter ..... 1.3

### Blocked Shots per Game

9t. Elena Pilakouta ..... 0.9

9t. Mariah Murdie ..... 0.9

### Offensive Reb. per Game

3t. Josie Filer ..... 2.7

### Minutes Played

6t. Rayanna Carter ..... 32.8

\* as of 2/4/19

## 2018-19 PRESEASON COACHES POLL

PLACE	TEAM	RANK
1.	South Dakota State (24)	624
2.	South Dakota (9)	557
3.	Western Illinois	469
4.	Oral Roberts	435
5.	Denver	431
6.	North Dakota	380
7.	North Dakota State	271
8.	Omaha	233
9.	Purdue Fort Wayne	181



# 2018-19 SITUATIONAL STATS

## OMAHA'S RECORD WHEN

Overall.....	7-15
At Home.....	5-6
On the road.....	1-8
Neutral.....	1-1

In games decided by 1-5 points.....	0-2
In games decided by 6-10 points.....	3-2
In games decided by 11-15 points.....	0-6
In games decided by 16-20 points.....	1-1
In games decided by 21 or more.....	3-4

Leading at half.....	5-4
Trailing at half.....	2-11

Omaha shoots 50% or better.....	2-0
Omaha shoots less than 50%.....	5-15
Omaha shoots better than opponent.....	5-2
Omaha shoots worse than opponent.....	2-13

Omaha out-rebounds opponent.....	6-6
Opponent out-rebounds Omaha.....	1-9

Omaha shoots 70% or better at FT line.....	3-9
Omaha has more FT attempts.....	7-6
Omaha has less FT attempts.....	0-9

Omaha shoots 40% or better from 3-point.....	2-4
Omaha shoots under 40% from 3-point.....	5-11

Omaha has more turnovers than opponent.....	2-12
Omaha has less turnovers than opponent.....	5-3

Omaha scores 90-plus points.....	2-0
Omaha scores 80-89 points.....	1-0
Omaha scores 70-79 points.....	1-1
Omaha scores 60-69 points.....	0-3
Omaha scores 50-59 points.....	3-7
Omaha scores 49 or less points.....	0-4

Opponent scores 90-plus points.....	0-1
Opponent scores 80-89 points.....	0-3
Opponent scores 70-79 points.....	0-3
Opponent scores 60-69 points.....	2-6
Opponent scores 50-59 point.....	1-2
Opponent scores 49 or less points.....	4-0

### Omaha Streaks

Current Streak.....	L1
Home Court Streak.....	L1
Road Streak.....	L7
Neutral Court Streak.....	W1
Last 5 Games.....	1-4
Last 10 Games.....	2-8

### Omaha By Month

November.....	3-3
December.....	2-6
January.....	2-5
February.....	0-1

### Omaha By Day of the Week

Sunday.....	4-4
Monday.....	0-1
Wednesday.....	1-3
Thursday.....	1-1
Friday.....	1-5
Saturday.....	0-1

10+ POINTS	2018-19	CAREER
Claire Killian	10	21
Rayanna Carter	13	13
Elena Pilakouta	11	11
Jay Bridgeman	-	6
Kalen Phillips	3	6
Josie Filer	4	4
Sophie Johnston	4	4
Mariah Murdie	3	3
Romekia Wallace	2	2
Juliana Chagas	1	1
Andi Pierce	1	1

10+ REBOUNDS	2018-19	CAREER
Josie Filer	4	4
Claire Killian	1	1
Elena Pilakouta	1	1

DOUBLED-DOUBLES	2018-19	CAREER
Josie Filer	1	1
Claire Killian	1	1
Elena Pilakouta	1	1

FILLS THE BOX SCORE	2018-19	CAREER
Elena Pilakouta	4	4
Rayanna Carter	1	1
Josie Filer	1	1
Claire Killian	1	1
Mariah Murdie	1	1

• At least four in three statistical categories with (pt, reb, blk, ast, stl)

### CONSECUTIVE 10-POINT GAMES

Claire Killian	6
Rayanna Carter (current 2 games)	5
Mariah Murdie	4
Elena Pilakouta	3
Josie Filer	2
Sophie Johnston (current 2 games)	2

CONSECUTIVE GAMES WITH A 3-POINTER	
Claire Killian (current streak 4 games)	5
Kalen Phillips	5
Sophie Johnston (current streak 2 games)	4
Andi Pierce	3
Rayanna Carter	2
Kylee Coulter	2
Mariah Murdie	2
<i>* Bold and italic donates active streak</i>	

CAREER STARTS	2018-19	CAREER
Claire Killian	22	38
Rayanna Carter	22	22
Josie Filer	22	22
Sophie Johnston	22	22
Elena Pilakouta	21	21
Romekia Wallace	1	1
Kalen Phillips	-	12
Alicia Mountain	-	10
Jay Bridgeman	-	2

FIRST SUB	2018-19	CAREER
Kalen Phillips	11	18
Mariah Murdie	13	13
Romekia Wallace	7	10
Juliana Chagas	1	1
Kylee Coulter	1	1
Alicia Mountain	1	1
Andi Pierce	1	1

FIRST POINTS	2P	3P	FT	TOTAL
Elena Pilakouta	7			7
Rayanna Carter	6			6
Sophie Johnston	2	1		3
Josie Filer	2	1		3
Claire Killian	2			2
Mariah Murdie	1			1

# 2018-19 INDIVIDUAL STATS

## OMAHA HIGHS

<b>Points</b>	25, Kalen Phillips at Western Illinois (1/16/19)
<b>Field Goals</b>	9, Mariah Murdie at Purdue Fort Wayne (1/24/19)
<b>Field Goal Attempts</b>	17, Claire Killian vs. CSUN (11/16/18)
<b>FG Pct. (min. 5 made)</b>	1.000 (7-7) Elena Pilakouta vs. Peru State (1/30/19)
	1.000 (5-5) Rayanna Carter at Detroit Mercy (11/26/18)
	1.000 (5-5) Romekia Wallace vs. USC Upstate (11/9/18)
<b>3-Point Field Goals</b>	7, Kalen Phillips at Western Illinois (1/16/19)
<b>3-Point Field Goal Attempts</b>	14, Claire Killian vs. CSUN (11/9/18)
<b>3-Point FG Pct. (min. 2 made)</b>	1.000 (4-4), Sophie Johnston vs. North Dakota (2/3/19)
<b>Free Throws</b>	7, Mariah Murdie vs. North Dakota State (1/6/19)
<b>Free Throw Attempts</b>	8, Mariah Murdie vs. North Dakota State (1/6/19)
	8, Mariah Murdie vs. USC Upstate (11/9/18)
<b>Free Throw Pct. (min. 4 made)</b>	1.000 (5-5) Elena Pilakouta vs. Denver (12/28/18)
<b>Rebounds</b>	14, Josie Filer vs. Florida A&M (11/25/18)
<b>Assists</b>	6, Sophie Johnston vs. Peru State (1/30/19)
<b>Turnovers</b>	7, Rayanna Carter at Purdue Fort Wayne (1/24/19)
<b>Blocked Shots</b>	4, Elena Pilakouta at Western Illinois (1/16/19)
	4, Elena Pilakouta at Detroit Mercy (11/29/18)
<b>Steals</b>	4, Mariah Murdie at Purdue Fort Wayne (1/24/19)
	4, Alicia Mountain vs. Western Illinois (1/16/19)
	4, Claire Killian at North Dakota (1/9/19)
<b>Minutes</b>	39, Rayanna Carter vs. Oral Roberts (12/30/18)

## OPPONENTS

<b>Points</b>	28, Lasha Petree vs. Bradley (12/14/18)
<b>Field Goals</b>	10, DeJour Young at Purdue Fort Wayne (1/24/19)
<b>Field Goal Attempts</b>	20, Audrey Faber at Creighton (12/5/18)
<b>FG Pct. (min. 5 made)</b>	1.000 (5-5) Regan Schumacher vs. Oral Roberts (12/30/18)
<b>3-Point Field Goals</b>	6, Lasha Petree vs. Bradley (12/14/18)
<b>3-Point Field Goal Attempts</b>	14, Audrey Faber at Creighton (12/5/18)
<b>3-Point FG Pct. (min. 2 made)</b>	1.000, Denisha Swain vs. USC Upstate (11/9/18)
<b>Free Throws</b>	9, Madison Nelson vs. Denver (12/28/19)
<b>Free Throw Attempts</b>	10, Madison Nelson vs. Denver (12/28/18)
<b>Free Throw Pct. (min. 4 made)</b>	1.000 (6-6), Jordan Gilbert vs. Oral Roberts (12/30/18)
<b>Rebounds</b>	17, Taya Bolden vs. Campbell (11/23/18)
<b>Assists</b>	9, Rylie Cascio Jensen (1/26/19)
	9, Olivia Kaufmann at Western Illinois (1/16/19)
	9, Samantha Romanowskivs. Denver (12/28/18)
<b>Turnovers</b>	9, Aricca Daye vs. Graceland (12/2/18)
<b>Blocked Shots</b>	5, Emma Burns vs. Graceland (12/2/18)
<b>Steals</b>	5, Allison Arens, vs. South Dakota (1/20/19)
	5, Olivia Kaufmann at Western Illinois (1/16/19)
	5, Martha Kuderer at Montana State (12/16/18)
	5, Zoey Oatis at Detroit Mercy (11/29/18)

## OMAHA'S TOP INDIVIDUAL PERFORMANCES

### POINTS

25	Kalen Phillips at Western Illinois (1/16/19)
24	Mariah Murdie at Purdue Fort Wayne (1/24/19)
21	Claire Killian vs. Denver (12/28/18)
20	Sophie Johnston vs. North Dakota (2/3/19)
19	Rayanna Carter vs. Oral Roberts (12/30/18)
18	Rayanna Carter vs. North Dakota (2/3/19)
18	Rayanna Carter at Creighton (12/5/18)
17	Rayanna Carter vs. USC Upstate (11/9/18)

### REBOUNDS

14	Josie Filer vs. Florida A&M (11/25/18)
11	Josie Filer vs. Peru State (1/30/19)
11	Josie Filer vs. CSU Bakersfield (12/9/18)
11	Elena Pilakouta at Detroit Mercy (11/29/18)

### ASSISTS

6	Sophie Johnston vs. Peru State (1/30/19)
5	Rayanna Carter vs. Florida A&M (11/25/18)
4	Elena Pilakouta at South Dakota State (1/26/19)
4	Alicia Mountain at Western Illinois (1/16/19)
4	Sophie Johnston at Montana State (12/14/18)
4	Sophie Johnston at Creighton (12/5/18)
4	Elena Pilakouta at Detroit Mercy (11/29/18)
4	Josie Filer vs. Florida A&M (11/25/18)
4	Rayanna Carter vs. CSUN (11/16/18)
4	Elena Pilakouta vs USC Upstate (11/9/18)

### STEALS

4	Mariah Murdie at Purdue Fort Wayne (1/24/19)
4	Alicia Mountain at Western Illinois (1/16/19)
4	Claire Killian, at North Dakota (1/9/18)

### BLOCKS

4	Elena Pilakouta at Western Illinois (1/16/19)
4	Elena Pilakouta at Detroit Mercy (11/29/18)

### 3-POINT FIELD GOALS

7	Kalen Phillips at Western Illinois (1/16/19)
---	--

### FREE THROW MAKES

7	Mariah Murdie vs. North Dakota State (1/6/19)
---	---

# 2018-19 TEAM AND OPPONENT HIGH/LOW

## OMAHA HIGHS

	HIGH	LOW
Points	96, vs. USC Upstate (11/9/18)	46, at Kansas State (11/12/18)
Points in a Half	49 (first half), vs. USC Upstate(11/9/18)	14, at Purdue Fort Wayne (1/24/19)
Points in a Quarter	32 (2nd quarter), vs. USC Upstate (11/9/18)	3 (3rd quarter), at South Dakota State (1/26/19)
Winning Margin	47, vs. Peru State (1/30/19)	7, (2x) last vs. CSU Bakersfield (12/9/18)
Field Goals	37, vs. Peru State (1/30/19)	17, (4x) last at South Dakota State (1/26/19)
Field Goal Attempts	72, vs. Graceland 12/2/18)	39, at Detroit Mercy (11/29/18)
Field Goal Percentage	.529 (37-70), vs. Peru State (1/30/19)	.288 (17-59) at South Dakota State (1/26/19)
3-Points Field Goals	10, (2x) last at Western Illinois (1/16/19)	2, (2x) last at Purdue Fort Wayne (1/24/19)
3-Point Field Goal Attempts	31, at Western Illinois (1/16/19)	7, vs. Campbell (11/23/18)
3-Point Field Goal Percentage	.571 (4-7), vs. Campbell (11/23/18)	.100 (2-20), at Purdue Fort Wayne (1/24/19)
Free Throws Made	22, vs. USC Upstate (11/9/18)	3, at Creighton (12/5/18)
Free Throws Attempted	30, vs. USC Upstate (11/9/18)	8, vs. Graceland (12/2/18)
Free Throw Percentage	1.000 (11-11), vs. Bradley (12/14/18)	.333 (3-9), at Creighton (12/5/18)
Rebounds	56, vs. Graceland (12/2/18)	22, vs. South Dakota (1/20/19)
Personal Fouls	22, at Western Illinois (1/16/19)	6, (2x) last vs. Graceland (12/2/18)
Assists	20, vs. Peru State (1/30/19)	4, at Northern Iowa (12/21/18)
Turnovers	23, at Detroit Mercy (11/29/18)	4, vs. Peru State (1/30/19)
Blocked Shots	6, (2x) last vs. CSUN (11/16/18)	0, (2x) last vs. Oral Roberts (12/30/18)
Steals	14, at Western Illinois (1/16/19)	2, at Detroit Mercy (11/29/18)

## OPPONENTS

	HIGH	LOW
Points	95, DENVER (12/28/19)	39, GRACELAND (12/2/18)
Points in a Half	51 (second half), DENVER(12/28/19)	14 (second half), GRACELAND (12/2/18)
Points in a Quarter	26 (4th quarter), (3x) last DENVER (12/28/19)	5 (2nd quarter), USC UPSTATE (11/9/18)
Winning Margin	34, at South Dakota State (1/26/19)	1, vs. North Dakota (2/3/19)
Field Goals	33, (2x) last at South Dakota State (1/26/19)	15, vs. Peru State (1/30/19)
Field Goal Attempts	71, DENVER(12/28/19)	49, ORAL ROBERTS (12/30/18)
Field Goal Percentage	.566 (30-53), SOUTH DAKOTA (1/20/19)	.273 (15-55), vs. Peru State (1/30/19)
3-Points Field Goals	14, (2x) last DENVER (12/28/19)	2, CSU BAKERSFIELD (12/9/18)
3-Point Field Goal Attempts	44, at Creighton (12/5/18)	8, CSU BAKERSFIELD (12/9/18)
3-Point Field Goal Percentage	.563 (9-16), CSUN (11/16/18)	.174 (4-23), at Kansas State (11/12/18)
Free Throws Made	17, at Western Illinois (1/16/19)	0, GRACELAND (12/2/18)
Free Throws Attempted	22, at Western Illinois (1/16/19)	2, GRACELAND (12/2/18)
Free Throw Percentage	.882, DENVER(12/28/19)	.000, GRACELAND (12/2/18)
Rebounds	45, at Northern Iowa (12/21/18)	23, SOUTH DAKOTA (1/20/19)
Personal Fouls	24, CSU BAKERSFIELD (12/9/18)	6, GRACELAND (12/2/18)
Assists	25, at South Dakota State (1/26/19)	8, vs. Peru State (1/30/19)
Turnovers	23, GRACELAND (12/2/18)	8, CSU BAKERSFIELD (12/9/18)
Blocked Shots	13, at Creighton (12/5/18)	7, at South Dakota State (1/26/19)
Steals	16, at Detroit Mercy (11/29/18)	0, at Western Illinois (1/16/19)
		2, vs. Peru State (1/30/19)



# 2018-19 MISCELLANEOUS STATS

## OMAHA'S BENCH SCORING

Game (Date)	UNO	Opp	Diff	W/L
USC Upstate (11/9/18)	40	12	+28	W
at Kansas State (11/12/18)	15	16	-1	L
CSUN (11/16/18)	13	21	-8	L
vs. Campbell (11/23/18)	13	28	-15	L
vs. Florida A&M (11/25/18)	17	8	+9	W
at Detroit Mercy (11/29/18)	17	8	+9	W
GRACELAND (12/2/18)	43	13	+30	W
at Creighton (12/5/18)	8	40	-32	L
CSU BAKERSFIELD (12/10/18)	7	13	-6	W
BRADLEY (12/14/18)	14	15	-1	L
at Montana State (12/16/18)	15	15	-	L
at Northern Iowa (12/21/18)	20	41	-21	L
DENVER (12/28/18)	21	11	+10	L
ORAL ROBERTS (12/30/18)	4	22	-18	L
NORTH DAKOTA STATE (1/6/19)	27	19	+8	W
at North Dakota (1/9/19)	14	23	-9	L
at Western Illinois (1/16/19)	45	15	+30	L
SOUTH DAKOTA (1/20/19)	20	18	+2	L
at Purdue Fort Wayne (1/24/19)	8	4	+4	L
at South Dakota State (1/26/19)	24	19	+5	L
PERU STATE (1/30/19)	40	11	+19	W
NORTH DAKOTA (2/3/19)	14	25	-11	L

## OMAHA'S POINTS IN THE PAINT

Game (Date)	UNO	Opp	Diff	W/L
USC Upstate (11/9/18)	54	30	+24	W
at Kansas State (11/12/18)	24	34	-10	L
CSUN (11/16/18)	14	28	-14	L
vs. Campbell (11/23/18)	22	18	+4	L
vs. Florida A&M (11/25/18)	22	16	+6	W
at Detroit Mercy (11/29/18)	24	16	+8	W
GRACELAND (12/2/18)	50	12	+38	W
at Creighton (12/5/18)	28	12	+16	L
CSU BAKERSFIELD (12/10/18)	28	26	+2	W
BRADLEY (12/14/18)	38	40	-1	L
at Montana State (12/16/18)	26	28	-2	L
at Northern Iowa (12/21/18)	32	42	-10	L
DENVER (12/28/18)	24	24	-	L
ORAL ROBERTS (12/30/18)	28	18	+10	L
NORTH DAKOTA STATE (1/6/19)	26	28	-2	W
at North Dakota (1/9/19)	24	20	+4	L
at Western Illinois (1/16/19)	33	30	+3	L
SOUTH DAKOTA (1/20/19)	20	34	-14	L
at Purdue Fort Wayne (1/24/19)	28	24	-4	L
at South Dakota State (1/26/19)	22	54	-32	L
PERU STATE (1/30/19)	54	16	+38	W
NORTH DAKOTA (2/3/19)	26	32	-6	L

## OMAHA'S SECOND-CHANCE POINTS

Game (Date)	UNO	Opp	Diff	W/L
USC Upstate (11/9/18)	18	13	+5	W
at Kansas State (11/12/18)	6	4	+2	L
CSUN (11/16/18)	12	16	-4	L
vs. Campbell (11/23/18)	2	18	-2	L
vs. Florida A&M (11/25/18)	5	4	+1	W
at Detroit Mercy (11/29/18)	9	7	+2	W
GRACELAND (12/2/18)	10	5	+5	W
at Creighton (12/5/18)	8	19	-11	L
CSU BAKERSFIELD (12/10/18)	9	5	+4	W
BRADLEY (12/14/18)	10	10	-	L
at Montana State (12/16/18)	6	9	-3	L
at Northern Iowa (12/21/18)	6	16	-10	L
DENVER (12/28/18)	11	17	-6	L
ORAL ROBERTS (12/30/18)	8	7	+1	L
NORTH DAKOTA STATE (1/6/19)	12	14	-2	W
at North Dakota (1/9/19)	4	8	-4	L
at Western Illinois (1/16/19)	9	10	-1	L
SOUTH DAKOTA (1/20/19)	2	2	-	L
at Purdue Fort Wayne (1/24/19)	8	8	-	L
at South Dakota State (1/26/19)	4	11	-7	L
PERU STATE (1/30/19)	9	5	+4	W
NORTH DAKOTA (2/3/19)	14	14	-	L

## OMAHA'S POINTS OFF TURNOVERS

Game (Date)	UNO	Opp	Diff	W/L
USC Upstate (11/9/18)	15	18	-3	W
at Kansas State (11/12/18)	11	20	-9	L
CSUN (11/16/18)	9	8	+1	L
vs. Campbell (11/23/18)	11	16	-5	L
vs. Florida A&M (11/25/18)	10	7	+3	W
at Detroit Mercy (11/29/18)	12	14	-2	W
GRACELAND (12/2/18)	19	2	+17	W
at Creighton (12/5/18)	7	10	-3	L
CSU BAKERSFIELD (12/10/18)	16	12	+4	W
BRADLEY (12/14/18)	7	19	-12	L
at Montana State (12/16/18)	7	23	-16	L
at Northern Iowa (12/21/18)	13	19	-6	L
DENVER (12/28/18)	12	16	-4	L
ORAL ROBERTS (12/30/18)	17	21	-4	L
NORTH DAKOTA STATE (1/6/19)	17	6	+11	W
at North Dakota (1/9/19)	14	14	-	L
at Western Illinois (1/16/19)	18	20	-2	L
SOUTH DAKOTA (1/20/19)	16	28	-12	L
at Purdue Fort Wayne (1/24/19)	12	17	-5	L
at South Dakota State (1/26/19)	2	22	-20	L
PERU STATE (1/30/19)	20	2	+18	W
NORTH DAKOTA (2/3/19)	13	15	-2	L

# 2018-19 MISCELLANEOUS STATS

## OMAHA'S STARTING LINEUPS

Starters					Record
Carter	Killian	Johnston	Filer	Pilakouta	7-14
Carter	Killian	Johnston	Filer	Wallace	0-1

## OMAHA'S LEADS AND DEFICITS

Game (Date)	Largest Lead	Largest Deficit	Time UNO Led	Time Opponent Led	Time Tied
USC Upstate (11/9/18)	34 (4th - 5:47)	4 (1st - 7:38)	33:30	3:38	2:52
at Kansas State (11/12/18)	13 (3rd - 7:11)	18 (4th - 2:23)	26:48	9:40	3:24
CSUN (11/16/18)	1 (2nd - 9:48)	14 (4th - 9:52)	0:29	38:19	1:12
vs. Campbell (11/23/18)	7 (1st - 8:39)	19 (4th - 3:49)	17:50	19:52	2:18
vs. Florida A&M (11/25/18)	9 (4th - 8:20)	--	3:17	--	--
at Detroit Mercy (11/29/18)	9 (4th - 4:25)	11 (2nd - 8:09)	14:23	24:08	1:29
GRACELAND (12/2/18)	42 (4th - 1:50)	--	39:42	--	0:18
at Creighton (12/5/18)	3 (1st - 5:38)	16 (4th - 5:58)	3:02	34:41	2:15
CSU BAKERSFIELD (12/9/18)	12 (4th - 9:51)	6 (2nd - 1:13)	22:56	13:52	3:12
BRADLEY (12/14/18)	7 (2nd - 9:09)	23 (3rd - 5:15)	11:01	24:06	4:53
at Montana State (12/16/18)	15 (3rd - 2:01)	3 (4th - 0:21)	36:09	0:21	3:30
at Northern Iowa (12/21/18)	--	29 (4th - 0:15)	--	39:13	0:26
DENVER (12/28/18)	--	27 (4th -- 1:32)	--	39:14	0:39
ORAL ROBERTS (12/30/18)	6 (3rd - 9:13)	15 (4th-4:49)	6:26	31:26	1:43
NORTH DAKOTA STATE (1/6/19)	22 (4th - 1:55)	--	38:13	--	1:24
at North Dakota (1/9/19)	--	15 (3rd - 1:38)	--	39:20	0:40
at Western Illinois (1/16/19)	2 (1st - 8:03)	25 (4th - 9:04)	0:13	38:30	1:17
SOUTH DAKOTA (1/20/19)	--	31 (4th - 2:42)	--	38:33	1:10
at Purdue Fort Wayne (1/24/19)	1 (2nd - 9:46)	13 (4th - 5:46)	0:44	35:33	3:36
at South Dakota State (1/26/19)	--	36 (4th - 3:52)	--	39:18	0:42
PERU STATE (1/30/19)	47 (4th - 1:17)	--	39:46	--	0:13
NORTH DAKOTA (2/3/19)	12 (2nd - 4:41)	9 (4th - 3:11)	26:20	9:02	4:38

## 2018-19 OVERALL STATS

#	Player	gp-gs	min	avg	Total		3-Point		F-Throw		Rebounds				pf	dq	a	to	blk	stl	pts	avg
					fg-fga	fg%	3fg-fga	3fg%	ft-fa	ft%	off	def	tot	avg								
02	Carter,Rayanna	22-22	609	27.7	89-223	.399	7-22	.318	40-51	.784	17	39	56	2.5	23	0	40	49	2	25	225	10.2
11	Killian,Claire	22-22	578	26.3	65-206	.316	30-122	.246	31-46	.674	8	60	68	3.1	38	0	32	51	5	31	191	8.7
05	Pilakouta,Elena	21-21	465	22.1	75-160	.469	0-1	.000	34-57	.596	34	81	115	5.5	32	0	35	34	19	14	184	8.8
35	Murdie,Mariah	22-0	404	18.4	61-128	.477	9-23	.391	39-62	.629	30	70	100	4.5	54	1	21	43	15	14	170	7.7
25	Filer,Josie	22-22	561	25.5	51-129	.395	7-35	.200	35-47	.745	57	111	168	7.6	46	1	27	43	9	16	144	6.5
42	Johnston,Sophie	22-22	570	25.9	49-125	.392	21-62	.339	19-26	.731	18	44	62	2.8	29	0	37	38	2	11	138	6.3
01	Phillips,Kalen	21-0	371	17.7	39-98	.398	24-57	.421	21-25	.840	8	34	42	2.0	49	3	11	27	0	16	123	5.9
33	Wallace,Romekia	22-1	239	10.9	20-52	.385	0-1	.000	9-17	.529	31	42	73	3.3	17	0	11	10	4	6	49	2.2
13	Coulter,Kylee	20-0	202	10.1	18-57	.316	12-44	.273	1-2	.500	6	17	23	1.2	13	0	9	14	3	7	49	2.5
22	Pierce,Andi	9-0	141	15.7	9-31	.290	7-20	.350	9-9	1.000	1	9	10	1.1	6	0	7	12	0	4	34	3.8
21	Mountain,Alicia	18-0	181	10.1	5-14	.357	1-4	.250	4-4	1.000	6	13	19	1.1	18	0	17	17	0	8	15	0.8
00	Chagas,Juliana	6-0	65	10.8	6-16	.375	0-3	.000	0-0	.000	3	6	9	1.5	0	0	10	8	0	2	12	2.0
20	Petersen,Emily	1-0	14	14.0	1-6	.167	1-5	.200	0-0	.000	0	1	1	1.0	2	0	1	1	1	1	3	3.0
Team											36	42	78					3				
Total.....		22	4400		488-1245	.392	119-399	.298	242-346	.699	255	569	824	37.5	327	5	258	350	60	155	1337	60.8
Opponents.....		22	4400		535-1311	.408	157-489	.321	196-295	.664	247	537	784	35.6	329	-	351	312	94	207	1423	64.7

Score by Periods	1st	2nd	3rd	4th	Totals
Omaha	320	319	339	359	1337
Opponents	344	333	333	334	1344

## 2018-19 SUMMIT LEAGUE STATS

#	Player	gp-gs	min	avg	Total		3-Point		F-Throw		Rebounds				pf	dq	a	to	blk	stl	pts	avg
					fg-fga	fg%	3fg-fga	3fg%	ft-fa	ft%	off	def	tot	avg								
02	Carter,Rayanna	9-9	298	33.1	38-107	.355	3-12	.250	20-23	.870	7	16	23	2.6	9	0	16	23	2	12	99	11.0
35	Murdie,Mariah	9-0	184	20.4	33-64	.516	4-10	.400	20-32	.625	13	31	44	4.9	28	1	13	19	8	8	90	10.0
11	Killian,Claire	9-9	235	26.1	24-78	.308	15-52	.288	16-18	.889	4	18	22	2.4	19	0	13	25	0	12	79	8.8
05	Pilakouta,Elena	9-9	200	22.2	27-65	.415	0-1	.000	18-25	.720	15	36	51	5.7	13	0	11	13	8	8	72	8.0
01	Phillips,Kalen	9-0	184	20.4	18-49	.367	14-31	.452	12-13	.923	4	14	18	2.0	23	2	5	12	0	8	62	6.9
42	Johnston,Sophie	9-9	240	26.7	18-48	.375	10-27	.370	10-14	.714	5	18	23	2.6	18	0	12	16	1	3	56	6.2
25	Filer,Josie	9-9	213	23.7	15-38	.395	2-11	.182	10-12	.833	24	34	58	6.4	24	1	8	23	2	2	42	4.7
13	Coulter,Kylee	9-0	96	10.7	8-29	.276	7-25	.280	0-0	.000	3	9	12	1.3	7	0	1	8	1	2	23	2.6
33	Wallace,Romekia	9-0	82	9.1	4-11	.364	0-1	.000	7-13	.538	11	13	24	2.7	7	0	6	1	1	1	15	1.7
21	Mountain,Alicia	8-0	68	8.5	1-4	.250	1-3	.333	0-0	.000	0	5	5	0.6	8	0	7	9	0	5	3	0.4
Team											13	16	29					3				
Total.....		9	1800		186-493	.377	56-173	.324	113-150	.753	99	210	309	34.3	156	4	92	152	23	61	541	60.1
Opponents.....		9	1800		246-543	.453	68-189	.360	99-141	.702	102	218	320	35.6	138	-	166	117	31	90	659	73.2



# 2018-19 RESULTS

RECORD:	OVERALL	HOME	AWAY	NEUTRAL
ALL GAMES	7-15	5-6	1-8	1-1
CONFERENCE	1-8	1-4	0-4	0-0
NON-CONFERENCE	6-7	4-2	1-4	1-1

Date	Opponent	Score	Att.	High Points	High Rebounds
11/9/18	USC UPSTATE	W 96-69	365	(17)Carter, Rayanna	(8)Murdie, Mariah
11/12/18	at Kansas State	46-61 L	3498	(10)Pilakouta, Elena	(5)Pilakouta, Elena
11/16/18	CSUN	52-64 L	449	(12)Killian, Claire	(8)Filer, Josie
11/23/18	^vs Campbell	52-65 L	312	(12)Filer, Josie	(10)Filer, Josie
11/25/18	^vs FAMU	W 57-50	314	(14)Killian, Claire	(14)Filer, Josie
11/29/18	at Detroit Mercy	W 51-42	3106	(12)Pilakouta, Elena	(11)Pilakouta, Elena
12/2/18	GRACELAND	W 81-39	248	(14)Carter, Rayanna	(7)Filer, Josie
12/05/18	at Creighton	51-66 L	863	(18)Carter, Rayanna	(10)Killian, Claire
12/9/18	CSU BAKERSFIELD	W 53-46	387	(15)Carter, Rayanna	(11)Filer, Josie
12/14/18	BRAD	60-80 L	1503	(14)Pilakouta, Elena	(9)Pilakouta, Elena
12/16/18	at Montana State	56-59 L	1489	(15)Filer, Josie	(7)Wallace, Romekia
12/21/18	at UNI	50-79 L	1129	(16)Murdie, Mariah	(7)Filer, Josie
12/28/18	*DENVER	68-95 L	295	(21)Killian, Claire	(9)Pilakouta, Elena
12/30/18	*ORAL ROBERTS	56-71 L	278	(19)Carter, Rayanna	(8)Filer, Josie
1/6/19	*NO DAKOTA ST	W 78-61	351	(16)Killian, Claire	(8)Filer, Josie
01/09/19	*at North Dakota	57-68 L	1354	(13)Pilakouta, Elena	(8)Pilakouta, Elena
1/16/19	*at Western Illinois	70-78 L	712	(25)Phillips, Kalen	(9)Pilakouta, Elena
1/20/19	*SOUTH DAKOTA	49-80 L	632	(12)Murdie, Mariah	(6)Filer, Josie
01/24/19	*at Purdue Fort Wayne	48-56 L	418	(24)Murdie, Mariah	(7)Filer, Josie
1/26/19	*at South Dakota State	47-81 L	3021	(12)Murdie, Mariah	(9)Filer, Josie
1/30/19	PERU STATE	W 91-44	377	(15)Johnston, Sophie	(11)Filer, Josie
2/3/19	*NORTH DAKOTA	68-69 L	301	(20)Johnston, Sophie	(7)Wallace, Romekia

\* = Conference game

^ = FIU Thanksgiving Invitational

Attendance Summary	Games	Attend	Avg/Game
Home	11	5186	471
Away	9	15590	1732
Neutral	2	626	313
Total	22	21402	973

# 2018-19 SUMMIT LEAGUE RESULTS

RECORD:	OVERALL	HOME	AWAY	NEUTRAL
ALL GAMES	1-8	1-4	0-4	0-0
CONFERENCE	1-8	1-4	0-4	0-0
NON-CONFERENCE	0-0	0-0	0-0	0-0

Date	Opponent	Score	Att.	High Points	High Rebounds
12/28/18	*DENVER	68-95 L	295	(21)Killian, Claire	(9)Pilakouta, Elena
12/30/18	*ORAL ROBERTS	56-71 L	278	(19)Carter, Rayanna	(8)Filer, Josie
1/6/19	*NO DAKOTA ST	W 78-61	351	(16)Killian, Claire	(8)Filer, Josie
01/09/19	*at North Dakota	57-68 L	1354	(13)Pilakouta, Elena	(8)Pilakouta, Elena
1/16/19	*at Western Illinois	70-78 L	712	(25)Phillips, Kalen	(9)Pilakouta, Elena
1/20/19	*SOUTH DAKOTA	49-80 L	632	(12)Murdie, Mariah	(6)Filer, Josie
01/24/19	*at Purdue Fort Wayne	48-56 L	418	(24)Murdie, Mariah	(7)Filer, Josie
1/26/19	*at South Dakota State	47-81 L	3021	(12)Murdie, Mariah	(9)Filer, Josie
2/3/19	*NORTH DAKOTA	68-69 L	301	(20)Johnston, Sophie	(7)Wallace, Romekia

\* = Conference game

^ = FIU Thanksgiving Invitational

# 2018-19 POINTS, REBOUNDS, ASSISTS

				00	01	02	05	11	13	20	21	22	25	33	35
Opponent	Date	Score		CHAGAS,JUL	PHILLIPS,K	CARTER,RA	PILAKOUTA,	KILLIAN,CL	COULTER,KY	PETERSEN,E	MOUNTAIN,A	PIERCE,AND	FILER,JOSI	WALLACE,R	MURDIE,MAR
UPST	11/9/18	96-69	w	DNP	14-7-0	17-4-0	12-7-4	11-2-3	3-2-2	DNP	2-0-0	2-1-1	5-7-1	10-6-0	9-8-3
at K-STATE	11/12/18	46-61	L	DNP	3-2-0	3-4-1	10-5-1	7-4-1	0-2-2	DNP	0-0-0	3-2-0	5-5-1	2-3-0	7-3-1
CSUN	11/16/18	52-64	L	DNP	7-3-1	0-6-4	5-4-2	12-2-1	2-2-3	DNP	DNP	2-0-0	11-8-3	0-0-0	2-6-0
vs CAM	11/23/18	52-65	L	0-0-2	5-0-0	8-2-0	10-6-3	4-4-2	0-1-0	DNP	0-0-0	0-0-0	12-10-0	2-3-0	6-1-1
vs FAMUW	11/25/18	57-50	w	0-2-2	3-4-0	5-5-5	13-4-3	14-3-1	0-1-0	DNP	DNP	8-0-0	6-14-4	0-2-0	6-2-0
at DM	11/29/18	51-42	w	0-2-3	0-0-0	12-1-3	12-11-4	2-5-1	DNP	DNP	DNP	9-3-1	5-9-2	4-0-0	4-2-1
GU	12/2/18	81-39	w	12-4-3	DNP	14-1-3	6-1-1	12-2-1	7-1-1	DNP	4-5-3	10-3-3	6-7-2	2-6-0	8-6-0
at CU	12/05/18	51-66	L	0-1-0	3-1-1	18-3-1	6-9-2	11-10-1	3-0-0	DNP	0-2-2	0-0-1	8-8-0	0-0-0	2-2-1
CSUB	12/9/18	53-46	w	0-0-0	3-0-0	15-1-0	10-6-2	6-2-3	0-0-0	DNP	2-0-0	0-1-1	8-11-1	0-6-1	2-8-0
BRAD	12/14/18	60-80	L	DNP	5-0-0	12-3-3	14-9-2	2-5-3	2-1-0	DNP	0-0-0	DNP	10-7-0	0-4-0	7-3-0
at MSU	12/16/18	56-59	L	DNP	7-2-2	2-0-0	0-0-0	14-4-1	DNP	DNP	2-0-2	DNP	15-6-1	4-7-2	2-3-1
at UNI	12/21/18	50-79	L	DNP	4-3-0	10-1-2	DNP	10-1-0	0-1-0	DNP	0-1-0	DNP	6-7-1	0-6-0	16-6-0
DEN	12/28/18	68-95	L	DNP	10-1-1	4-3-2	13-9-0	21-5-3	5-2-0	DNP	0-0-0	DNP	0-2-0	2-6-1	4-6-1
ORU	12/30/18	56-71	L	DNP	2-4-0	19-2-2	7-6-2	15-4-3	0-1-0	DNP	0-1-0	DNP	8-8-1	2-3-1	0-0-0
NDSU	1/6/19	78-61	w	DNP	6-2-1	16-1-2	8-6-0	16-1-2	6-3-0	DNP	0-0-0	DNP	4-8-3	0-1-0	15-7-2
at UND	01/09/19	57-68	L	DNP	4-5-1	6-1-1	13-8-1	10-5-0	0-2-0	DNP	DNP	DNP	5-6-2	4-3-1	6-5-2
at WIUWW	1/16/19	70-78	L	DNP	25-2-0	10-4-3	11-9-2	2-1-1	9-1-1	DNP	0-1-4	DNP	0-7-0	0-0-0	11-9-1
SODAK	1/20/19	49-80	L	DNP	8-0-1	12-3-3	2-1-0	2-0-0	0-1-0	DNP	0-0-1	DNP	7-6-1	0-1-0	12-2-1
at PFW	01/24/19	48-56	L	DNP	0-1-1	7-4-0	1-2-0	7-1-3	0-1-0	DNP	0-2-0	DNP	9-7-0	0-2-1	24-6-1
at SDSU	1/26/19	47-81	L	DNP	6-2-0	7-2-0	8-5-4	3-3-0	3-0-0	DNP	3-1-2	DNP	5-9-0	0-1-0	12-4-3
PERU	1/30/19	91-44	w	DNP	7-2-2	10-2-2	14-2-0	7-2-1	9-0-0	3-1-1	2-6-3	DNP	5-11-3	10-6-2	9-6-0
UND	2/3/19	68-69	L	DNP	1-1-0	18-3-3	9-5-2	3-2-1	0-1-0	DNP	0-0-0	DNP	4-5-1	7-7-2	6-5-2

42

# 2018-19 GAME BY GAME STATS

Opponent	Date	Score		Total		3-Pointers		Free throws		Rebounds				pts		avg
				fg-fga	pct	3fg-fga	pct	ft-fa	pct	off	def	tot	avg			
USC UPSTATE	11/9/18	96-69	w	35-71	.493	4-19	.211	22-30	.733	19	37	56	56.0	15	14	96
at Kansas State	11/12/18	46-61	L	18-57	.316	4-11	.364	6-10	.600	9	28	37	46.5	18	8	46
CSUN	11/16/18	52-64	L	18-60	.300	8-30	.267	8-10	.800	16	21	37	43.3	10	17	52
vs Campbell	11/23/18	52-65	L	17-48	.354	4-7	.571	14-21	.667	7	25	32	40.5	18	9	52
vs FAMU	11/25/18	57-50	w	18-56	.321	7-23	.304	14-24	.583	13	27	40	40.4	12	16	57
at Detroit Mercy	11/29/18	51-42	w	20-39	.513	7-16	.438	4-10	.400	6	29	35	39.5	6	16	51
GRACELAND	12/2/18	81-39	w	35-72	.486	4-19	.211	7-8	.875	16	27	43	40.0	6	18	81
at Creighton	12/05/18	51-66	L	22-59	.373	4-16	.250	3-9	.333	11	32	43	40.4	12	13	51
CSU BAKERSFIELD	12/9/18	53-46	w	17-52	.327	3-18	.167	16-23	.696	18	24	42	40.6	13	9	53
BRAD	12/14/18	60-80	L	23-56	.411	3-13	.231	11-11	1.000	8	29	37	40.2	17	12	60
at Montana State	12/16/18	56-59	L	22-51	.431	6-13	.462	6-8	.750	10	23	33	39.5	19	10	56
at UNI	12/21/18	50-79	L	20-61	.328	2-18	.111	8-15	.533	12	22	34	39.1	13	4	50
DENVER	12/28/18	68-95	L	21-59	.356	9-18	.500	17-22	.773	12	23	35	38.8	18	11	68
ORAL ROBERTS	12/30/18	56-71	L	20-52	.385	4-15	.267	12-16	.750	12	21	33	38.4	15	12	56
NO DAKOTA ST	1/6/19	78-61	w	25-56	.446	10-22	.455	18-19	.947	13	25	38	38.3	12	13	78
at North Dakota	01/09/19	57-68	L	19-52	.365	3-17	.176	16-23	.696	9	27	36	38.2	15	8	57
at Western Illinois	1/16/19	70-78	L	26-63	.413	10-31	.323	8-14	.571	13	27	40	38.3	22	14	70
SOUTH DAKOTA	1/20/19	49-80	L	18-46	.391	5-16	.313	8-10	.800	7	15	22	37.4	20	8	49
at Purdue Fort Wayne	01/24/19	48-56	L	17-52	.327	2-20	.100	12-16	.750	12	23	35	37.3	20	6	48
at South Dakota State	1/26/19	47-81	L	17-59	.288	6-19	.316	7-10	.700	11	24	35	37.2	18	9	47
PERU STATE	1/30/19	91-44	w	37-70	.529	7-23	.304	10-17	.588	11	35	46	37.6	12	20	91
NORTH DAKOTA	2/3/19	68-69	L	23-54	.426	7-15	.467	15-20	.750	10	25	35	37.5	16	11	68
Omaha		1337		488-1245	.392	119-399	.298	242-346	.699	255	569	824	37.5	327	258	1337
Opponents		1423		535-1311	.408	157-489	.321	196-295	.664	247	537	784	35.6	329	351	1423

Games played: 22

Points/game: 60.8

FG Pct: 39.2

3FG Pct: 29.8

FT Pct: 69.9

Rebounds/game: 37.5

Assists/game: 11.7

Turnovers/game: 15.9

Assist/turnover ratio: 0.7

Steals/game: 7.0

Blocks/game: 2.7

# 2018-19 GAME BY GAME COMPARISON

Opponent	1st	2nd	Score	Mar	Total FG	FG Pct	3-Pointers	3FG Pct	Free Throws	FT Pct	Rebounds	Assist	T/Over	Block	Steal	Fouls
USC UPSTATE	49/21	47/48	96-69	+27	35-71/25-67	.493/.373	4-19/9-30	.211/.300	22-30/10-15	.733/.667	56/25 +31	14/12	16/17	6/5	9/11	15/21
Kansas State	30/22	16/39	46-61	(15)	18-57/21-57	.316/.368	4-11/4-23	.364/.174	6-10/15-22	.600/.682	37/43 (6)	8/11	19/15	2/8	8/10	18/15
CSUN	23/31	29/33	52-64	(12)	18-60/25-55	.300/.455	8-30/9-16	.267/.563	8-10/5-13	.800/.385	37/36 +1	17/16	17/16	6/5	9/11	10/12
Campbell	27/26	25/39	52-65	(13)	17-48/23-61	.354/.377	4-7/8-27	.571/.296	14-21/11-16	.667/.688	32/44 (12)	9/16	14/13	4/2	5/3	18/16
FAMU	24/20	33/30	57-50	+7	18-56/20-54	.321/.370	7-23/4-16	.304/.250	14-24/6-12	.583/.500	40/42 (2)	16/10	11/17	3/4	10/5	12/20
Detroit Mercy	17/24	34/18	51-42	+9	20-39/17-59	.513/.288	7-16/6-21	.438/.286	4-10/2-4	.400/.500	35/28 +7	16/9	23/13	4/3	2/16	6/13
GRACELAND	38/25	43/14	81-39	+42	35-72/17-51	.486/.333	4-19/5-21	.211/.238	7-8/0-2	.875/.000	43/27 +16	18/12	8/23	3/7	13/4	6/6
Creighton	26/30	25/36	51-66	(15)	22-59/24-66	.373/.364	4-16/14-44	.250/.318	3-9/4-5	.333/.800	43/40 +3	13/24	13/9	2/10	4/7	12/17
CSU BAKERSFIELD	21/25	32/21	53-46	+7	17-52/18-52	.327/.346	3-18/2-8	.167/.250	16-23/8-14	.696/.571	42/32 +10	9/8	19/17	0/4	7/12	13/24
BRAD	28/38	32/42	60-80	(20)	23-56/30-66	.411/.455	3-13/9-23	.231/.391	11-11/11-15	1000/.733	37/34 +3	12/20	16/8	1/4	3/12	17/11
Montana State	30/23	26/36	56-59	(3)	22-51/22-59	.431/.373	6-13/6-30	.462/.200	6-8/9-15	.750/.600	33/36 (3)	10/16	20/11	2/3	3/14	19/12
UNI	20/34	30/45	50-79	(29)	20-61/32-66	.328/.485	2-18/8-27	.111/.296	8-15/7-9	.533/.778	34/45 (11)	4/23	18/21	1/6	12/10	13/11
DENVER	30/44	38/51	68-95	(27)	21-59/33-71	.356/.465	9-18/14-32	.500/.438	17-22/15-17	.773/.882	35/42 (7)	11/20	18/12	3/4	4/10	18/19
ORAL ROBERTS	32/30	24/41	56-71	(15)	20-52/24-49	.385/.490	4-15/10-27	.267/.370	12-16/13-18	.750/.722	33/29 +4	12/18	19/14	0/5	8/14	15/19
NO DAKOTA ST	33/27	45/34	78-61	+17	25-56/26-67	.446/.388	10-22/5-24	.455/.208	18-19/4-7	.947/.571	38/33 +5	13/16	11/12	2/3	8/8	12/13
North Dakota	22/31	35/37	57-68	(11)	19-52/27-66	.365/.409	3-17/6-13	.176/.462	16-23/8-13	.696/.615	36/43 (7)	8/21	16/15	3/6	7/7	15/18
Western Illinois	32/40	38/38	70-78	(8)	26-63/26-61	.413/.426	10-31/9-27	.323/.333	8-14/17-22	.571/.773	40/39 +1	14/18	22/18	6/0	14/13	22/10
SOUTH DAKOTA	31/44	18/36	49-80	(31)	18-46/30-53	.391/.566	5-16/10-19	.313/.526	8-10/10-15	.800/.667	22/23 (1)	8/22	21/12	1/4	7/13	20/16
Purdue Fort Wayne	14/24	34/32	48-56	(8)	17-52/20-51	.327/.392	2-20/3-12	.100/.250	12-16/13-18	.750/.722	35/31 +4	6/7	16/15	3/3	6/10	20/14
South Dakota State	29/35	18/46	47-81	(34)	17-59/33-64	.288/.516	6-19/6-19	.316/.316	7-10/9-17	.700/.529	35/44 (9)	9/25	15/7	4/4	3/10	18/13
PERU STATE	46/21	45/23	91-44	+47	37-70/15-55	.529/.273	7-23/5-14	.304/.357	10-17/9-12	.588/.750	46/32 +14	20/8	4/15	3/2	9/2	12/13
NORTH DAKOTA	37/31	31/38	68-69	(1)	23-54/27-61	.426/.443	7-15/5-16	.467/.313	15-20/10-14	.750/.714	35/36 (1)	11/19	14/12	1/2	4/5	16/16

Note: Game totals are displayed in the format TEAM/OPPONENT for each category



## 2018-19 ROSTER

#0 JULIANA CHAGAS 5-6 JUNIOR GUARD SANTA ANDRE, BRAZIL (COLEGIO SINGULAR/BARTON COUNTY CC)



**Barton County CC:** Two-year letterwinner at Barton County Community College under coach Alan Clark...averaged 9.5 points, 3.6 rebounds and 3.1 assists in 2017-18 for the Cougars...shot 50.4 percent from the field, 64 percent from 3-point range and 76 percent at the free throw line.

**Personal:** Born Jan. 10 in Marilia, Brazil...daughter of Carlos Jose de Oliveira Chagas and Andrea Aparecida Goncalves Chagas...has one sister, Ana Flavia...played club basketball for Santo Andre/APABA under coach Luana Roseman...planning to major in criminal justice.

## 2018-19 AVERAGES

GP-GS	Min/G	FG%	3PT%	FT%	Reb/G	Ast/G	Stl	Blk	Pts/G
6-0	10.8	.375	.000	.000	1.5	1.7	2	0	2.0

## SEASON HIGHS

Points: 12, vs. Graceland (12/2/18)  
Rebounds: 4, vs. Graceland (12/2/18)  
Assists: 3, (2x) last vs. Graceland (12/2/18)  
Steals: 1, (2x) last vs. Graceland (12/2/18)  
Blocks: --  
Minutes: 19, vs. Graceland (12/2/18)

## CAREER AVERAGES

GP-GS	Min/G	FG%	3PT%	FT%	Reb/G	Ast/G	Stl	Blk	Pts/G
6-0	10.8	.375	.000	.000	1.5	1.7	2	0	2.0

## CAREER HIGHS

Points: Same  
Rebounds: Same  
Assists: Same  
Steals: Same  
Blocks: Same  
Minutes: Same

#1 KALEN PHILLIPS 5-9 SENIOR GUARD ELLISVILLE, MISS. (SOUTH JONES)



**As a Junior (2017-18):** Appeared in all 28 games with 12 starts...made her first career start vs. Denver (Jan. 18, 2018)...played a career-best 32 minutes versus Fort Wayne (Feb. 14, 2018)...scored a career-high 14 points against Denver (Jan. 18, 2018)...also snagged a season-best three steals against Peru State (Jan. 29, 2018)...

**As a Sophomore (2016-17):** Appeared in 11 games, averaging 1.4 points, 0.8 rebounds and 0.3 assists per game...scored a season-high six points against Lincoln University on Dec. 1, 2016...dished out two assists against York on Jan. 1, 2017...

**As a Freshman (2015-16):** Appeared in 17 games, averaging 2.5 points, 1.0 rebounds, 0.2 assists, and 0.6 steals per game...scored a season high nine points twice against Waldorf (Nov. 24) and Utah Valley (Dec. 22)...grabbed a season-best six rebounds and had five steals against Waldorf (Nov. 24)...

**South Jones High School:** Averaged 19.0 points, 7.6 assists, 5.4 rebounds, 4.9 steals, and 2.0 blocks per game as a senior...led her high school team to two Region 5-5A championship games...selected to play in the Mississippi/Alabama All-Star Game...three time South Jones Academic Award winner...also lettered in softball at South Jones High School...played AAU for South Mississippi Elite...ranked a 3-star recruit on ESPN...**Personal:** Born Nov. 22 in Laurel, Miss...daughter of Jason Phillips and Nundra Jones...has two sisters, Madison and Mackenzie...majoring in physical education.

## 2018-19 AVERAGES

GP-GS	Min/G	FG%	3PT%	FT%	Reb/G	Ast/G	Stl	Blk	Pts/G
21-0	17.7	.398	.421	.840	2.0	0.5	16	0	5.9

## SEASON HIGHS

Points: 25 at Western Illinois (1/16/19)  
Rebounds: 7, vs. USC Upstate (11/19/18)  
Assists: 2, (2x) last vs. Peru State (1/30/19)  
Steals: 3, (2x) last at Northern Iowa (12/21/18)  
Blocks: --  
Minutes: 25, at Northern Iowa (12/30/18)

## CAREER AVERAGES

GP-GS	Min/G	FG%	3PT%	FT%	Reb/G	Ast	Stl	Blk	Pts/G
76-12	13.2	.366	.330	.779	1.8	49	49	4	3.7

## CAREER HIGHS

Points: same  
Rebounds: Same  
Assists: 4, ORAL ROBERTS (12/30/17)  
Steals: 3, (4x) last at Northern Iowa (12/21/18)  
Blocks: 1, (4x) last vs. Western Illinois (3/4/18)  
Minutes: 32, PURDUE FORT WAYNE (2/11/18)

#2 RAYANNA CARTER 5-7 JUNIOR GUARD CEDAR PARK, TEXAS (LEANDER/UTAMCC/BLINN COLLEGE)



**Blinn College (2017-18):** Played one season for coach Jeff Jenkins...earned NJCAA Region XIV Honorable Mention recognition, averaging 9.8 points and 3.0 assists per game.

**Texas A&M – Corpus Christi (2016-17):** Appeared in 10 games for the Islanders...averaged 0.5 points, 0.5 rebounds and 0.2 assists per game. Leander High School: Lettered four year and was a three-time all-district honoree...named a Texas Girls Coaches Association All-State player and Legacy All-Star.

**Personal:** Born Nov. 26 in Austin, Texas...daughter of Raquel and Roderick Carter...has two brothers, Roderick Jr. and Rashad...planning to major in Kinesiology.

## 2018-19 AVERAGES

GP-GS	Min/G	FG%	3PT%	FT%	Reb/G	Ast/G	Stl	Blk	Pts/G
22-22	27.7	.399	.318	.784	2.5	1.8	25	2	10.2

## SEASON HIGHS

Points: 19, vs. Oral Roberts (12/30/18)  
Rebounds: 6, vs. CSUN (11/16/18)  
Assists: 5, vs. Florida A&M (11/25/18)  
Steals: 3, vs. Graceland (12/2/18)  
Blocks: 2, at Purdue Fort Wayne (1/24/19)  
Minutes: 39, vs. Oral Roberts (12/30/18)

## CAREER AVERAGES

GP-GS	Min/G	FG%	3PT%	FT%	Reb/G	Ast/G	Stl	Blk	Pts/G
22-22	27.7	.399	.318	.784	2.5	1.8	25	2	10.2

## CAREER HIGHS

Points: Same  
Rebounds: Same  
Assists: Same  
Steals: Same  
Blocks: Same  
Minutes: Same

## #5 ELENA PILAKOUTA

6-3

FRESHMAN

CENTER

NICOSIA, CYPRUS (KYKKOS B)



**Prior to Omaha:** A two-time Cyprus women's basketball player of the year...represented Cyprus in several high-level international competitions...played for the U16 and U18 Cyprus national teams...led her country to the 2017 FIBA U18 Women's European Division C championship last summer, averaging 12.0 points, 8.5 rebounds and 3.0 assists per contest in the tournament...a four-time Cyprus national champion and a part of two Cyprus Cup championship teams...**Personal:** Born Sept. 5 in Nicosia, Cyprus.

## 2018-19 AVERAGES

GP-GS	Min/G	FG%	3PT%	FT%	Reb/G	Ast/G	Stl	Blk	Pts/G
21-21	22.1	.469	.000	.596	5.5	1.7	14	19	8.8

## SEASON HIGHS

**Points:** 14, (2x) last vs. Peru State (1/30/19)  
**Rebounds:** 11, at Detroit Mercy (11/29/18)  
**Assists:** 4, (3x) last at South Dakota State (1/26/19)  
**Steals:** 3, vs. Oral Roberts (12/30/18)  
**Blocks:** 4, (2x) last at Western Illinois (1/16/19)  
**Minutes:** 29, vs. Denver (12/30/18)

## CAREER AVERAGES

GP-GS	Min/G	FG%	3PT%	FT%	Reb/G	Ast/G	Stl	Blk	Pts/G
21-21	22.1	.469	.000	.596	5.5	1.7	14	19	8.8

## CAREER HIGHS

**Points:** Same  
**Rebounds:** Same  
**Assists:** Same  
**Steals:** Same  
**Blocks:** Same  
**Minutes:** Same

## #11 CLAIRE KILLIAN

5-10

SOPHOMORE

GUARD

WATERTOWN, MINN. (WATERTOWN-MAYER)



**Honors and Awards:** Summit League Academic Honor Roll (2017-18)...**As a Freshman (2107-18):** Appeared in all 28 games for the Mavericks, earning a start in 16 games...played a season-high 35 minutes on Nov. 19 versus Florida A&M...set season-bests in points (17) and steals (four) against CSUN (Dec. 20, 2017)...snagged eight boards against College of Saint Mary (Dec. 3, 2017)...**Watertown-Mayer High School:** A two-time all-state and a three-time all-conference performer...averaged 19.2 points per game and 6.4 rebounds per game in her junior season...played AAU ball for Coach Mike Durbin of the Minnesota Comets program.

**Personal:** Born November 1998...daughter of Joanne and Shawn Killian...has one brother, Cameron, and one sister, Carly...is undecided on a major.

## 2018-19 AVERAGES

GP-GS	Min/G	FG%	3PT%	FT%	Reb/G	Ast/G	Stl	Blk	Pts/G
22-22	26.3	.316	.246	.674	3.1	1.5	31	5	8.7

## SEASON HIGHS

**Points:** 21, vs. Oral Roberts (12/30/18)  
**Rebounds:** 10, at Creighton (12/5/18)  
**Assists:** 3, (5x) last at Purdue Fort Wayne (1/24/19)  
**Steals:** 4, at North Dakota (1/9/19)  
**Blocks:** 2, (2x) last vs. Florida A&M (11/25/18)  
**Minutes:** 35, at Purdue Fort Wayne (1/24/19)

## CAREER AVERAGES

GP-GS	Min/G	FG%	3PT%	FT%	Reb/G	Ast	Stl	Blk	Pts/G
50-38	24.8	.366	.249	.707	3.0	64	69	11	8.5

## CAREER HIGHS

**Points:** Same  
**Rebounds:** Same  
**Assists:** 6, vs. College of Saint Mary (12/3/17)  
**Steals:** 4, (2x) last at North Dakota (1/9/19)  
**Blocks:** Same  
**Minutes:** 35, (2x) last at Purdue Fort Wayne (1/24/19)

## #13 KYLEE COULTER

5-9

RS-FRESHMAN

GUARD

FAYETTEVILLE, ARK. (FAYETTEVILLE)



**As a Freshman (2017-18):** Redshirted...**Fayetteville High School:** An all-conference selection, Coulter averaged 11 points per game while shooting 50% from the field as well as totaling six assists per game during her junior season...helped her team to the 2015 Arkansas 7A State Championship...played AAU for Coach Lee Shannon and the Arkansas Banshees program.

**Personal:** Born February 1998...daughter of Casey Coulter and Kara Crone...her father played college football at Arkansas Tech...has three sisters, Carsyn, Connley and Lily, and three brothers, Blake, Kolson and Trey...is undecided about a major.

## 2018-19 AVERAGES

GP-GS	Min/G	FG%	3PT%	FT%	Reb/G	Ast/G	Stl	Blk	Pts/G
20-0	10.1	.316	.273	.500	1.2	0.5	7	3	2.5

## SEASON HIGHS

**Points:** 9, (2x) last vs. Peru State (1/30/19)  
**Rebounds:** 3, vs. North Dakota State (1/6/19)  
**Assists:** 3, vs. CSUN (11/16/18)  
**Steals:** 2, vs. Graceland (12/2/18)  
**Blocks:** 1, (3x) last vs. Peru State (1/30/19)  
**Minutes:** 19, at Western Illinois (1/16/19)

## CAREER AVERAGES

GP-GS	Min/G	FG%	3PT%	FT%	Reb/G	Ast/G	Stl	Blk	Pts/G
20-0	10.1	.316	.273	.500	1.2	0.5	7	3	2.5

## CAREER HIGHS

**Points:** Same  
**Rebounds:** Same  
**Assists:** Same  
**Steals:** Same  
**Blocks:** Same  
**Minutes:** Same

## #20 EMILY PETERSEN

5-10

SOPHOMORE

GUARD

OMAHA, NEB. (CONCORDIA JR./SR. /BELLEVUE WEST)



**Honors and Awards:** Summit League Academic Honor Roll (2017-18)...**As a Freshman (2017-18):** Appeared in 27 games...played a season-high 28 minutes against Western Illinois (Feb. 7, 2018)...scored a career-best 17 points, including five 3-pointers, in the game against Western Illinois...**Prior to Omaha:** Played her senior season at Bellevue West High School and played her first three years of high school at Omaha Concordia... averaged 14.4 points, 2.7 assists and 3.6 steals over two seasons and earned all-state honors during her Freshman and Sophomore years at Concordia High School... played AAU ball for Coach Jon Lewis of the Moka Eclipse program.

**Personal:** Born April 1998 in Omaha...daughter of Mark and Kathy Petersen...has a brother, Ethan...has not declared a major.

## 2018-19 AVERAGES

GP-GS	Min/G	FG%	3PT%	FT%	Reb/G	Ast/G	Stl	Blk	Pts/G
1-0	14.0	.167	.200	.000	1.0	1.0	1	1	3.0

## SEASON HIGHS

**Points:** 3, vs. Peru State (1/30/19)  
**Rebounds:** 1, vs. Peru State (1/30/19)  
**Assists:** 1, vs. Peru State (1/30/19)  
**Steals:** 1, vs. Peru State (1/30/19)  
**Blocks:** 1, vs. Peru State (1/30/19)  
**Minutes:** 14, vs. Peru State (1/30/19)

## CAREER AVERAGES

GP-GS	Min/G	FG%	3PT%	FT%	Reb/G	Ast	Stl	Blk	Pts/G
28-0	10.4	.257	.263	1.000	0.8	15	6	7	3.1

## CAREER HIGHS

**Points:** 17, at Western Illinois (2/7/18)  
**Rebounds:** 3, (2x) last vs. South Dakota (2/14/18)  
**Assists:** 3, (2x) last vs. South Dakota (2/14/18)  
**Steals:** 1, (6x) last vs. Peru State (1/30/19)  
**Blocks:** 2, vs. Western Illinois (1/13/18)  
**Minutes:** 28, at Western Illinois (2/7/18)

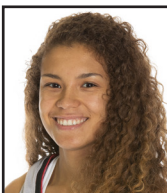
## #21 ALICIA MOUNTAIN

5-8

SENIOR

GUARD

ELKHORN, NEB. (ELKHORN/IOWA WESTERN)



**Honors and Awards:** Summit League Academic Honor Roll (2017-18)...**As a Junior (2017-18):** Appeared in 25 games with 10 starts in her first season with the Mavericks...played a season-high 34 minutes against Peru State (Jan. 29, 2018) and Western Illinois (March 4, 2018)...earned her first UNO start against North Dakota State (Jan. 24, 2018) and scored a career-best 12 points...set a career-high with eight boards vs. Western Illinois (Feb. 7, 2018)...dished out seven assists against Peru State...**Iowa Western Community College:** Averaged 8.9 points, 3.3 rebounds and 1.8 assists per contest as a sophomore...garnered First Team All-Region for the Reivers.

**At Elkhorn High School:** Averaged 13.0 points and 5.6 rebounds per game and was named to Class B Second Team All-State.

## 2018-19 AVERAGES

GP-GS	Min/G	FG%	3PT%	FT%	Reb/G	Ast/G	Stl	Blk	Pts/G
18-0	10.1	.357	.250	1.000	1.1	0.9	8	0	0.8

## SEASON HIGHS

**Points:** 4, vs. Graceland (12/2/18)  
**Rebounds:** 6, vs. Peru State (1/30/19)  
**Assists:** 4, at Western Illinois (1/16/19)  
**Steals:** 4, at Western Illinois (1/16/19)  
**Blocks:** --  
**Minutes:** 23, at Montana State (12/16/18)

## CAREER AVERAGES

GP-GS	Min/G	FG%	3PT%	FT%	Reb/G	Ast	Stl	Blk	Pts/G
43-10	14.1	.333	.227	.857	1.7	50	26	3	1.9

## CAREER HIGHS

**Points:** 12, vs. North Dakota State (1/24/18)  
**Rebounds:** 8, at Western Illinois (2/7/18)  
**Assists:** 7, vs. Peru State (1/29/18)  
**Steals:** 4, at Western Illinois (1/16/19)  
**Blocks:** 1, (3x) last vs. Western Illinois (3/4/18)  
**Minutes:** 34, (2x) last vs. Western Illinois (3/4/18)

## #25 JOSIE FILER

6-0

FRESHMAN

FORWARD

DES MOINES, IOWA (DOWLING)



**Before Omaha:** A four-year letter winner for coach Kristen Meyer at Dowling Catholic High School...as a junior, averaged 12.3 points, 9.2 rebounds and 1.5 assists per game while helping her team to a 19-5 record and a state tournament appearance...earned first team all-conference and all-region plaudits...set a Maroons' school-record with 25 rebounds in a game...played travel basketball for the All-Iowa Attack under head coach Dickson Jensen...

**Personal:** Born April 3...daughter of Gigi and Rodney Filer...has one brother, Jackson...plans to major in nursing.

## 2018-19 AVERAGES

GP-GS	Min/G	FG%	3PT%	FT%	Reb/G	Ast/G	Stl	Blk	Pts/G
22-22	25.5	.395	.200	.745	7.6	1.2	16	9	6.5

## SEASON HIGHS

**Points:** 15, at Montana State (12/16/18)  
**Rebounds:** 14, vs. Florida A&M (11/25/18)  
**Assists:** 4, vs. Florida A&M (11/25/18)  
**Steals:** 3, (2x) last at Northern Iowa (12/21/18)  
**Blocks:** 2, vs. CSUN (11/16/18)  
**Minutes:** 37, at Purdue Fort Wayne (1/24/19)

## CAREER AVERAGES

GP-GS	Min/G	FG%	3PT%	FT%	Reb/G	Ast/G	Stl	Blk	Pts/G
22-22	25.5	.395	.200	.745	7.6	1.2	16	9	6.5

## CAREER HIGHS

**Points:** Same  
**Rebounds:** Same  
**Assists:** Same  
**Steals:** Same  
**Blocks:** Same  
**Minutes:** Same



**#33 ROMEKIA WALLACE**      **6-0**      **SENIOR**      **FORWARD**      **ST. LOUIS, MO. (CARDINAL RITTER/MOBERLY AREA CC)**



**As a Junior (2017-18):** Appeared in 27 games for the Mavericks this season racking up a season-high 15 minutes versus Denver on Jan. 18, a game where she also recorded two assists...grabbed a season-best eight rebounds on Dec. 10 vs. Creighton...**Moberly Area Community College:** Played two seasons at Moberly Area Community College...averaged 11.1 points, 10.2 rebounds, 1.6 assists and 1.5 steals during her two-year career... played in the NJCAA All-Star Weekend and earned WBCA Junior/Community College Coaches' All-America Honorable Mention honors in 2016... is a two-time NJCAA Division I All-Region honoree.

**Cardinal Ritter High School:** Averaged 10.9 points and 13.6 rebounds per game...led the Lions to the Missouri High School Class 3 finals as a senior.

**2018-19 AVERAGES**

GP-GS	Min/G	FG%	3PT%	FT%	Reb/G	Ast/G	Stl	Blk	Pts/G
22-1	10.9	.385	.000	.529	3.3	0.5	6	4	2.2

**SEASON HIGHS**

**Points:** 10, (2x) last vs. Peru State (1/30/19)  
**Rebounds:** 7 (2x) last vs. NORTH DAKOTA (2/3/19)  
**Assists:** 2, (3x) last vs. North Dakota (2/3/19)  
**Steals:** 1, (6x) last vs. Peru State (1/30/19)  
**Blocks:** 1, (4x) last vs. NORTH DAKOTA (2/3/19)  
**Minutes:** 21, at Northern Iowa (12/21/18)

**CAREER AVERAGES**

GP-GS	Min/G	FG%	3PT%	FT%	Reb/G	Ast	Stl	Blk	Pts/G
49-1	9.0	.396	.000	.585	2.8	16	13	8	2.0

**CAREER HIGHS**

**Points:** Same  
**Rebounds:** 8, vs. Creighton (12/10/17)  
**Assists:** 2, (4x) last vs. NORTH DAKOTA (2/3/19)  
**Steals:** 1, (12x) last vs. Peru State (1/30/19)  
**Blocks:** 1, (8x) last vs. NORTH DAKOTA (2/3/19)  
**Minutes:** Same

**#35 MARIAH MURDIE**      **6-3**      **FRESHMAN**      **CENTER**      **MERIDEN, KAN. (JEFFERSON WEST)**



**Prior to Omaha:** A four-year letter winner and starter for coach John Malloy at Jefferson West High School...as a junior, averaged 10.4 points, 9.4 rebounds, 2.0 steals and 3.2 blocks per game while helping her team to a 20-5 record, a league title and a second-place finish at state...earned First Team All-State accolades...as a sophomore, earned All-State Honorable Mention while averaging 11.0 points, 8.4 rebounds and 3.9 blocks per contest...also is a four-time volleyball and three-time track letterwinner...was an All-State performer in volleyball as a junior...placed third in the long jump as a sophomore at the Kansas State Track Meet...played travel basketball for Ohlde Elite 2018 for coach Nicole Ohlde-Johnson and club volleyball for the Topeka Saints...**Personal:** Born May 2 in Manhattan, Kan...parents are Laurel and Steve Murdie.

**2018-19 AVERAGES**

GP-GS	Min/G	FG%	3PT%	FT%	Reb/G	Ast/G	Stl	Blk	Pts/G
22-0	18.4	.477	.391	.629	4.5	1.0	14	15	7.7

**SEASON HIGHS**

**Points:** 24, at Purdue Fort Wayne (1/24/19)  
**Rebounds:** 9, at Western Illinois (1/16/19)  
**Assists:** 3, (2x) last at South Dakota State (1/26/19)  
**Steals:** 4, at Purdue Fort Wayne (1/24/19)  
**Blocks:** 2, (5x) last at South Dakota State (1/26/19)  
**Minutes:** 30, South Dakota State (1/26/19)

**CAREER AVERAGES**

GP-GS	Min/G	FG%	3PT%	FT%	Reb/G	Ast/G	Stl	Blk	Pts/G
22-0	18.4	.477	.391	.629	4.5	1.0	14	15	7.7

**CAREER HIGHS**

**Points:** Same  
**Rebounds:** Same  
**Assists:** Same  
**Steals:** Same  
**Blocks:** Same  
**Minutes:** Same

**#40 JAY BRIDGEMAN**      **6-1**      **JUNIOR**      **FORWARD**      **OMAHA, NEB. (WESTSIDE)**



**Honors and Awards:** Summit League Academic Honor Roll (2017-18)...**As a Sophomore (2017-18):** Appeared in 12 games with two starts...tallied a season-high eight rebounds in 29 minutes on Dec. 18 at CSU Bakersfield...scored a season-best 14 points vs. Creighton on eight field goal attempts, while also blocking two shots...missed the final 18 games due to injury...**As a Redshirt Freshman (2016-17):** Appeared in 30 games...averaged 3.6 points and 2.3 rebounds per game...made her collegiate debut at Colorado State scoring six points in 12 minutes of action...scored in double figures three times, including a season-high 11 at Creighton (12/7/16) and vs. York (1/1/17)...grabbed a season-high seven rebounds vs. Western Illinois on Jan. 11, 2017...had three steals vs. York...**As a Freshman (2015-16):** Redshirt season...**Westside High School:** Averaged 15.2 points and 7.5 rebounds per game, while hitting 54 percent of her field goal attempts and 65 percent of her free throws during her senior season...blocked 42 shots...led the Warriors to the Nebraska Class A state title with a 24-4 record...named captain of the Nebraska All-State Basketball team...earned first team all-metro and all-state honors during her senior year...earned first team all-metro and all-state during her junior season...earned first team all-metro honors as a freshman and sophomore...**Personal:** Born June 3 in Omaha...daughter of James and Patricia Bridgeman...majoring in journalism and media communication.

**2018-19 AVERAGES**

GP-GS	Min/G	FG%	3PT%	FT%	Reb/G	Ast/G	Stl	Blk	Pts/G
--	--	--	--	--	--	--	--	--	--

**SEASON HIGHS**

**Points:** --  
**Rebounds:** --  
**Assists:** --  
**Steals:** --  
**Blocks:** --  
**Minutes:** --

**CAREER AVERAGES**

GP-GS	Min/G	FG%	3PT%	FT%	Reb/G	Ast/G	Stl	Blk	Pts/G
42-2	11.5	.530	.500	.493	2.8	0.4	18	12	4.5

**CAREER HIGHS**

**Points:** 14, CREIGHTON (12/10/17)  
**Rebounds:** 8, (2x) last at CSU Bakersfield (12/18/17)  
**Assists:** 4, FLORIDA A&M (11/19/17)  
**Steals:** 3, YORK (1/1/17)  
**Blocks:** 2, CREIGHTON (12/10/17)  
**Minutes:** 29, at CSU Bakersfield (12/18/17)

#42 SOPHIE JOHNSTON

5-10

FRESHMAN

GUARD

GOLD COAST, AUSTRALIA (HILLCREST CHRISTIAN COLLEGE)



**Hill Crest Christian College:** Attended Hill Crest Christian College. . . played for the Gold Coast Waves under coach Cassie Dover. . . averaged 19 points, 10 rebounds and five assists while serving as team captain.

**Personal:** Born Feb. 25 in Gold Coast, Australia. . . daughter of David and Jo Johnston. . . has one sister, Phoebe, and one brother, Jack. . . her father played professional Australian Rules Football for Essendon and Fitzroy. . . planning to major in Early Childhood Education.

**2018-19 AVERAGES**

GP-GS	Min/G	FG%	3PT%	FT%	Reb/G	Ast/G	Stl	Blk	Pts/G
22-22	25.9	.392	.339	.731	2.8	1.7	11	2	6.3

**SEASON HIGHS**

**Points:** 20, vs. NORTH DAKOTA (2/3/19)

**Rebounds:** 6, USC UPSTATE (11/9/18)

**Assists:** 6, vs. Peru State (1/30/19)

**Steals:** 3, at Northern Iowa (12/21/18)

**Blocks:** 1, USC UPSTATE (11/9/18)

**Minutes:** 36, vs. NORTH DAKOTA (2/3/19)

**CAREER AVERAGES**

GP-GS	Min/G	FG%	3PT%	FT%	Reb/G	Ast/G	Stl	Blk	Pts/G
22-22	25.9	.392	.339	.731	2.8	1.7	11	2	6.3

**CAREER HIGHS**

**Points:** Same

**Rebounds:** Same

**Assists:** Same

**Steals:** Same

**Blocks:** Same

**Minutes:** Same

# 2018-19 PHOTO ROSTER



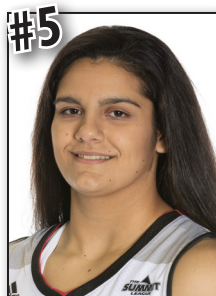
**JULIANA CHAGAS**  
G • Jr. • 5-6  
Santo Andre, Sao Paulo, Brazil



**KALEN PHILLIPS**  
G • Sr. • 5-9  
Ellisville, Miss.



**RAYANNA CARTER**  
G • Jr. • 5-7  
Cedar Park, Texas



**ELENA PILAKOUTA**  
C • Fr. • 6-3  
Nicosia, Cyprus



**CLAIRE KILLIAN**  
G • So. • 5-10  
Watertown, Minn.



**KYLEE COULTER**  
G • RFr. • 5-9  
Fayetteville, Ark.



**EMILY PETERSEN**  
G • So. • 5-10  
Omaha, Neb.



**ALICIA MOUNTAIN**  
G • Sr. • 5-8  
Elkhorn, Neb.



**JOSIE FILER**  
F • Fr. • 6-0  
Des Moines, Iowa



**ROMEKIA WALLACE**  
F • Sr. • 6-0  
St. Louis, Mo.



**MARIAH MURDIE**  
C • Fr. • 6-3  
Meriden, Kan.



**JAY BRIDGEMAN**  
F • Jr. • 6-1  
Omaha, Neb.



**SOPHIE JOHNSTON**  
G • Fr. • 5-10  
Queensland, Australia



**BRITTANY LANGE**  
Head Coach  
6th Year



**RODNEY ROGAN**  
Assistant Coach  
6th Year



**JANET BUTLER**  
Assistant Coach  
1st Year



**JOSH KEISTER**  
Assistant Coach  
1st Year



**EMILY WACKER**  
Dir. of Operations  
1st Year

