



# George Kyte Classic

Hosted by Northern Arizona University at Buffalo Park  
August 30, 2025

APPROXIMATE RACE TIMES – Please report to starting line 10 minutes prior to the start

Men – 4.5 miles - 1:30 PM

Women – 2.5 miles - 2:30 PM

## ENTRY INFORMATION

Please enter through [www.directathletics.com](http://www.directathletics.com)

Entry Deadline – Wednesday, August 27, 2025 – 11:59 PM

## SCORING

Conventional cross country scoring (first 5 runners for each team score)

Division I Teams will be scored separately.

## RESULTS

Official results will be available at [www.nauathletics.com](http://www.nauathletics.com)

Chip timing will be used – please ensure each runner receives correct bib number.

ENTRY FEES – Payment will be requested on DirectAthletics during the registration process.

\$250 per team.

Open athletes - \$25 entry fee

NAU Students – no entry fee with valid NAU Student ID. Send entry request to [jarred.cornfield@nau.edu](mailto:jarred.cornfield@nau.edu)

## COURSE DESCRIPTION

Women will run one large outer loop counterclockwise, then cut up the middle and turn right finishing clockwise to the finish.

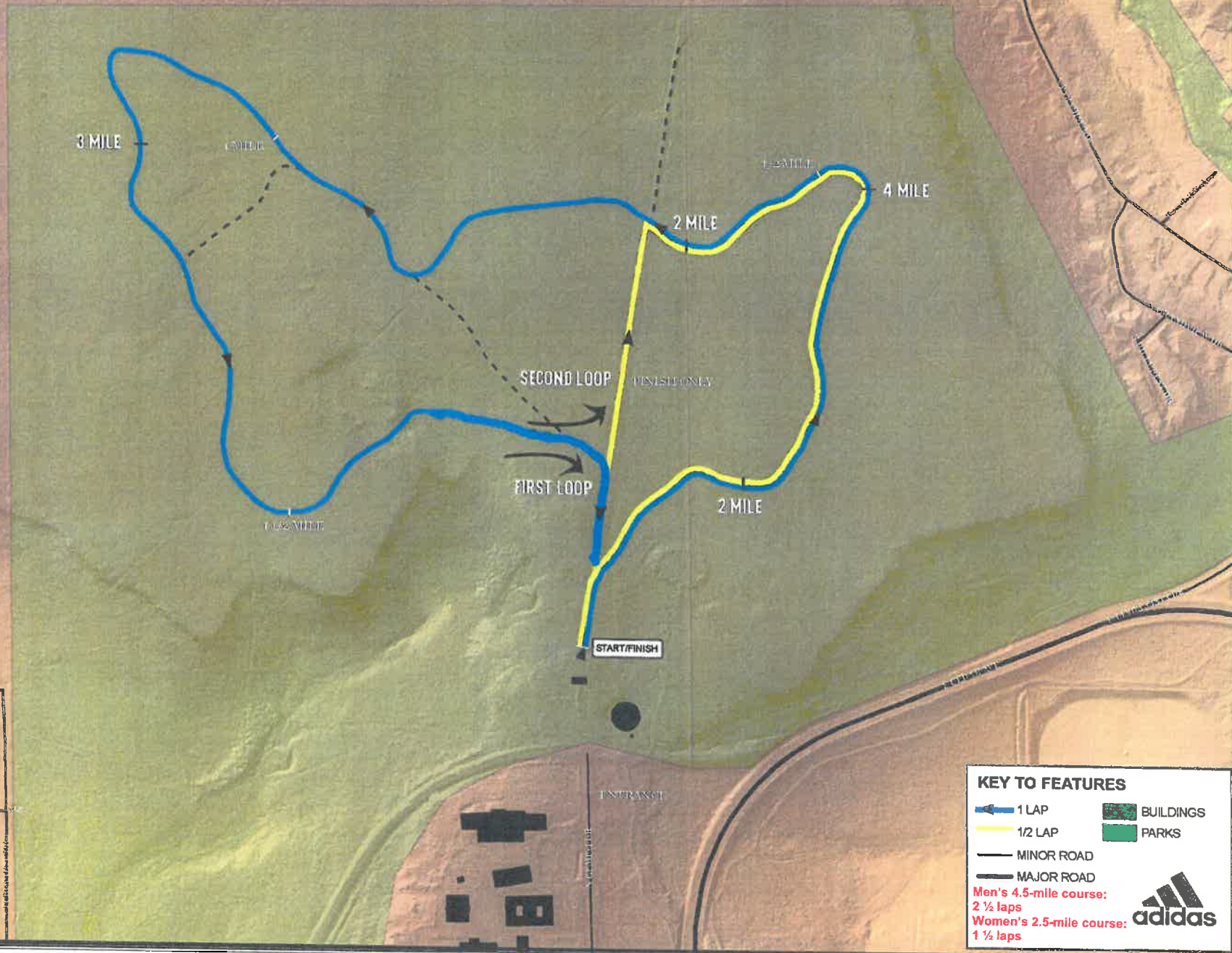
Men will run two large outer loops counterclockwise, then cut up the middle and turn right finishing clockwise to the finish.

## CONTACT

Jarred Cornfield [jarred.cornfield@nau.edu](mailto:jarred.cornfield@nau.edu)



# MEN'S COURSE MAP



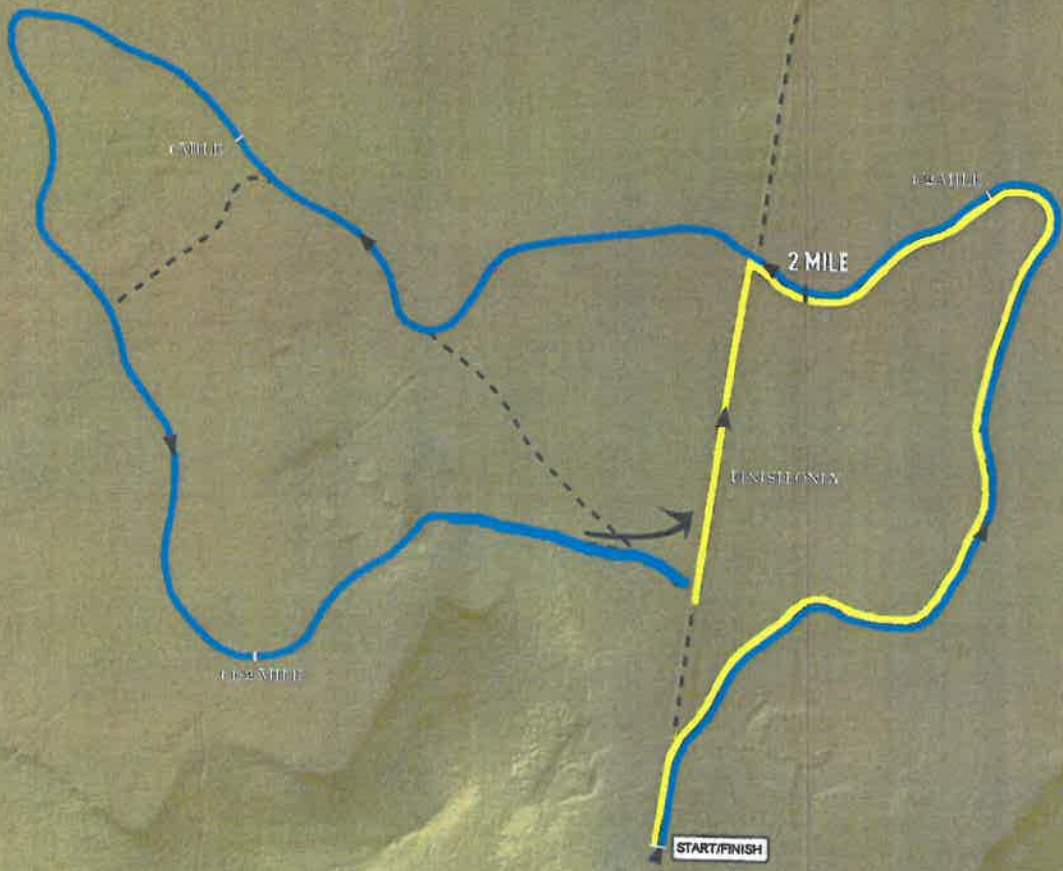
**KEY TO FEATURES**

- 1 LAP
- 1/2 LAP
- MINOR ROAD
- MAJOR ROAD
- BUILDINGS
- PARKS

Men's 4.5-mile course:  
2 1/2 laps

Women's 2.5-mile course:  
1 1/4 laps

# WOMEN'S COURSE MAP



### KEY TO FEATURES

- 1 LAP
- 1/2 LAP
- MINOR ROAD
- MAJOR ROAD
- BUILDINGS
- PARKS

Men's 4.5-mile course:  
2 1/2 laps  
Women's 2.5-mile course:  
1 1/2 laps

