



# Mississippi Valley State University

## 2022 Women's Soccer Game Notes



### TABLE OF CONTENTS

Quick Facts & 2022 Schedule .....	2
Where Is Home? .....	3
Home Opponents / Road Trips .....	4
Head Coach Frank Davies .....	5
Coaching Records .....	6
TV & Radio Roster .....	7
Numerical & Alphabetical Roster .....	8
Preseason All-SWAC Teams .....	9
SWAC Preseason Awards .....	10
SWAC Scoreboard .....	11
SWAC Composite Schedule .....	12
SWAC Preseason Poll .....	13
SWAC Standings.....	14
NCAA & SWAC Rankings .....	15
Stat Comparison .....	16
SWAC Players of the Week.....	17
The Last Time Mississippi Valley .....	18
Team Program Records .....	19
The Last Time A Devilette .....	20
Individual Program Records .....	21
Miscellaneous Stats / Last Outing / Single Game-Highs .....	22
Team Leaders .....	23
All-Time One-Goal Games.....	24
Player Profiles.....	25-39
All-Time Series Records .....	40-42
Team-By-Team Series Results .....	43-45
Mississippi Valley State University History .....	46-47



# Mississippi Valley State University

## 2022 Women's Soccer Game Notes



0-11-1 (0-6-1 SWAC)

4-7-4 (2-2-3 SWAC)

### GENERAL INFORMATION

Name: ..... Mississippi Valley State University  
 Location: ..... Itta Bena, Mississippi  
 Founded: ..... February 10, 1950  
 Enrollment: ..... 2,147  
 President: ..... Dr. Jerryl Briggs Sr.  
 Director of Athletics: ..... Hakim McClellan  
 Conference: ..... Southwestern Athletic Conference (SWAC)  
 First Year in SWAC: ..... 1968  
 Nickname: ..... Delta Devils & Devilettes  
 Colors: ..... Forest Green & White | Secondary: Red  
 Stadium: ..... Mississippi Valley Soccer Complex  
 First Year: ..... 2006  
 Capacity: ..... 500  
 Athletics Website: ..... <https://mvsusports.com/>  
 Athletics Facebook: ..... Mississippi Valley State Athletics  
 Athletics Twitter: ..... @MVSUDevilSports  
 Athletics Instagram: ..... @ValleyStateAthletics  
 Soccer Twitter: ..... @ValleyStateSoc  
 Soccer Instagram: ..... @ValleyStateSoc

### MEDIA INFORMATION

SID: ..... Brian Baublitz Jr.  
 Email: ..... [brian.baublitz@mvsu.edu](mailto:brian.baublitz@mvsu.edu)  
 Office Phone: ..... 662-254-3011  
 Mailing Address: ..... 14000 US-82, Itta Bena, MS 38941

### WOMEN'S SOCCER HISTORY

First Season ..... 2003 (19th Season)  
 All-Time Record ..... 110-190-26 (37.7%)  
 All-Time SWAC Record ..... 86-70-22 (54.5%)  
 SWAC East Titles ..... 1 (2008)  
 SWAC Regular Season Championships ..... 1 (2015)  
 SWAC Championship Appearances ..... 7 (2005, 2006, 2007, 2008, 2010, 2011, 2012)  
 SWAC Tournament Championships ..... 3 (2005, 2008, 2012)  
 NCAA Appearances ..... 3 (2005, 2008, 2012)

### 2021 SEASON RECAP

Overall Record ..... 0-13 (0%)  
 SWAC Record ..... 0-9 (0%)

## 2022 SCHEDULE

August 19	Southern Utah	L, 10-0
August 21	at Little Rock	Canceled
August 28	at Southern Miss	Canceled
September 2	at Middle Tennessee	L, 3-0
September 4	Louisiana-Monroe	L, 4-0
September 16	North Dakota	L, 1-0
September 25	Chicago State	L, 4-3
September 30	Southern*	L, 3-1
October 2	Jackson State*	L, 1-0
October 7	Prairie View A&M*	L, Forfeit
October 9	Texas Southern*	L, Forfeit
October 14	at Grambling State*	L, 7-0
October 16	at Arkansas-Pine Bluff*	L, 10-1
October 21	at Alabama A&M*	T, 0-0
October 23	at Alabama State*	1 p.m.
October 28	Alcorn*#	6 p.m.
November 3-6	SWAC Tournament%	TBD

All times Central and subject to change.

**Bold indicates home game**

\* - SWAC game

# - Senior Day (Itta Bena, Mississippi)

% - SWAC Tournament (Prairie View, Texas)



# Mississippi Valley State University

## 2022 Women's Soccer Game Notes



## WHERE IS HOME?

7 Countries | 6 States

RANK		COUNTRY / STATE	PLAYERS
T1.		PUERTO RICO	2
T1.		TEXAS	2
T1.		FLORIDA	2
T3.		SAINT KITTS & NEVIS	1
T3.		GUYANA	1
T3.		GHANA	1
T3.		NEW ZEALAND	1
T3.		ENGLAND	1
T3.		MISSISSIPPI	1
T3.		ALABAMA	1
T3.		MINNESOTA	1
T3.		CALIFORNIA	1







# Mississippi Valley State University

## 2022 Women's Soccer Game Notes



## HOME OPPONENTS

Longest To Shortest Travel Distance

RANK	TEAM	MILES
1.	SOUTHERN UTAH	1,613
2.	NORTH DAKOTA	1,272
3.	CHICAGO STATE	654
4.	PRAIRIE VIEW A&M	508
5.	TEXAS SOUTHERN	485
6.	SOUTHERN	253
7.	ALCORN	146
8.	LOUISIANA-MONROE	145
9.	JACKSON STATE	100



## ROAD TRIPS

Longest To Shortest Travel Distance

RANK	TEAM	MILES
1.	MIDDLE TENNESSEE	372
2.	ALABAMA STATE	283
3.	ALABAMA A&M	281
4.	LITTLE ROCK	194
5.	SOUTHERN MISS	189
6.	GRAMBLING STATE	186
7.	ARKANSAS-PINE BLUFF	148





# Mississippi Valley State University

## 2022 Women's Soccer Game Notes



# FRANK DAVIES

Head Coach • 0-24-1 Overall, 0-15-1 SWAC (2nd Season)

Frank Davies, the most decorated soccer coach in the Southwestern Athletic Conference, joined Mississippi Valley State University in January 2020 as Head Coach of the women's soccer program. Davies leads the conference with five divisional titles and he's tied for second with two conference tournament championships.

Davies brings 22 years of collegiate coaching experience to MVSU, and has had a United States Soccer Coaching Federation Level A License since 2007. Prior to Valley, Davies was the women's soccer coach at Alabama A&M from 1999 to 2016. He led his Lady Bulldogs soccer teams to SWAC tournament championships in 2003 and 2007 with the latter season earning AAMU its lone trip to the NCAA Tournament. The team was SWAC runner-up in 2004 and 2006 to go along with semifinals appearances in 2005 and 2009.

Prior to A&M, Davies was a head coach of the girl's program at Grissom High School where he led the varsity team to consecutive State Championships. He then coached both the boy's and girls' soccer programs at Huntsville High School in 1998. While managing both squads, Davies led the boys to a state semifinals appearance and the girls made the state tournament for the first time in school history.

Davies also spent time as the Head Coach of Martin Methodist from 1995-97. Davies, while the leader of the men's program at Martin Methodist, took the initiative to start the women's program and within two years he took the women's team to the conference playoffs. During his tenure, Davies also led the men to the TranSouth Conference Tournament, where they finished as a semifinalist. His two-year record with the Martin Methodist men's squad was 13-20.

From 1990–1991, he was the Assistant Coach at the University of Alabama in Huntsville, his alma mater, where he was responsible for player development and on-field coaching with an emphasis on forwards and midfielders. Davies graduated from UAH with a Bachelors of Science in engineering.



# Mississippi Valley State University 2022 Women's Soccer Game Notes



## ALL-TIME COACHES LIST

### RANKING BY WIN %

#### Mississippi Valley State Devilettes

RANK	NAME	%
1.	JOSEPH DEAN	54.2%
2.	FABIO BOATENG	48.8%
3.	SONIA CURVELO	37.4%
4.	ROHAN NARAIN	6%
5.	SEAN MAPSON	4.8%
6.	FRANK DAVIES	2%

### RANKING BY WINS

#### Mississippi Valley State Devilettes

RANK	NAME	WINS
1.	JOSEPH DEAN	61
2.	SONIA CURVELO	30
3.	FABIO BOATENG	17
T4.	ROHAN NARAIN	1
T4.	SEAN MAPSON	1
6.	FRANK DAVIES	0

### RANKING BY SEASONS

#### Mississippi Valley State Devilettes

RANK	NAME	SEASONS
1.	JOSEPH DEAN	6
2.	SONIA CURVELO	5
T3.	FRANK DAVIES	2
T3.	FABIO BOATENG	2
T3.	ROHAN NARAIN	2
T3.	SEAN MAPSON	2



# Mississippi Valley State University

## 2022 Women's Soccer Game Notes



### TV & RADIO ROSTER



**#00**  
**McKENZIE MCCARTHY**  
SENIOR  
GOALKEEPER  
OLIVE BRANCH, MISS.



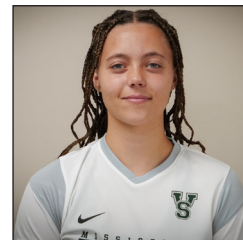
**#2**  
**BAILEE WASHINGTON**  
FRESHMAN  
FORWARD / DEFENDER  
BIRMINGHAM, ALA.



**#3**  
**TALLULAH NEMET-SARGENT**  
SOPHOMORE  
MIDFIELDER  
WELLINGTON, NEW ZEALAND



**#6**  
**OLUJEDE BRIDGEWATER**  
FRESHMAN  
FORWARD / DEFENDER  
SAINT KITTS & NEVIS



**#7**  
**BROOKE EDYVANE**  
FRESHMAN  
MIDFIELDER  
HAMPSHIRE, PORTSMOUTH, ENGLAND



**#9**  
**ARYANA SAENZ**  
SENIOR  
MIDFIELDER  
CAPE CORAL, FLA.



**#10**  
**CIELO MAZANTINI**  
SENIOR  
MIDFIELDER  
BAKERSFIELD, CALIF.



**#12**  
**CAMBREE CATALANO**  
SOPHOMORE  
MIDFIELDER  
HOUSTON, TEXAS



**#15**  
**ZULEMA SALOME**  
SOPHOMORE  
DEFENDER  
SAN JUAN, PUERTO RICO



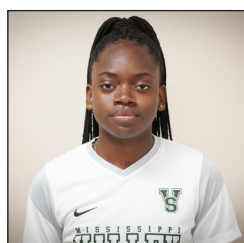
**#16**  
**KAYLA EVANS**  
SOPHOMORE  
DEFENDER / FORWARD  
FORT MYERS, FLA.



**#19**  
**MARIATU KANU**  
FRESHMAN  
DEFENDER  
ST. PAUL, MINN.



**#20**  
**RAHAEL AKA-ETY**  
SENIOR  
DEFENDER / MIDFIELDER  
BOLGATANGA, GHANA



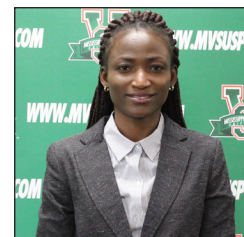
**#22**  
**LUDESHA REYNOLDS**  
FRESHMAN  
GOALKEEPER  
GEORGETOWN, GUYANA



**#26**  
**JULIETTE CHARRIEZ**  
SOPHOMORE  
FORWARD / MIDFIELDER  
SAN JUAN, PUERTO RICO



**FRANK DAVIES**  
HEAD COACH



**LAADI ISSAKA**  
GRADUATE ASSISTANT





# Mississippi Valley State University

## 2022 Women's Soccer Game Notes



### NUMERICAL ROSTER

No.	Player	Pos.	Ht.	Cl.	Hometown / Previous School
00	McKenzie McCarthy	GK	6-0	Sr.	Olive Branch, Mississippi / Olive Branch HS
2	Bailee Washington	F / D	5-6	Fr.	Birmingham, Alabama / Helena HS
3	Tallulah Nemet-Sargent	M	5-4	So.	Wellington, New Zealand / Queen Margaret HS
6	Olujede Bridgewater	F / D	5-10	Fr.	Saint Kitts & Nevis / Basseterre HS
7	Brooke Edyvane	M	5-7	Fr.	Hampshire, Portsmouth, England / Mayville HS
9	Aryana Saenz	M	5-2	Sr.	Cape Coral, Florida / Mariner HS
10	Cielo Mazantini	M	5-2	Sr.	Bakersfield, California / Independence HS
11	Taliya Spurlock	F	5-4	Fr.	Galveston, Texas / Galveston Ball HS
12	Cambree Catalano	M	5-5	So.	Houston, Texas / Channelview HS
15	Zulema Salome	D	5-5	So.	San Juan, Puerto Rico / University of Puerto Rico / Colegio Santa Gema
16	Kayla Evans	D / F	5-8	So.	Fort Lauderdale, Florida / Fort Lauderdale HS
19	Mariatu Kanu	D	5-8	Fr.	St. Paul, Minnesota / Como Park Senior HS
20	Rahael Aka-Ety	D / M	5-4	Sr.	Bolgatanga, Ghana / Arizona Western CC / Bolgatanga HS
22	Ludesha Reynolds	GK	5-8	Fr.	Georgetown, Guyana / Saint Joseph HS
26	Juliette Charriez	F / M	5-10	So.	San Juan, Puerto Rico / University of Puerto Rico / Colegio Bautista De Carolina

### ALPHABETICAL ROSTER

No.	Player	Pos.	Ht.	Cl.	Hometown / Previous School
20	Rahael Aka-Ety	D / M	5-4	Sr.	Bolgatanga, Ghana / Arizona Western CC / Bolgatanga HS
6	Olujede Bridgewater	F / D	5-10	Fr.	Saint Kitts & Nevis / Basseterre HS
12	Cambree Catalano	M	5-4	R-Fr.	Houston, Texas / Channelview HS
26	Juliette Charriez	F / M	5-10	So.	San Juan, Puerto Rico / University of Puerto Rico / Colegio Bautista De Carolina
7	Brooke Edyvane	M	5-7	Fr.	Hampshire, Portsmouth, England / Mayville HS
16	Kayla Evans	D / F	5-8	Fr.	Fort Lauderdale, Florida / Fort Lauderdale HS
19	Mariatu Kanu	D	5-8	Fr.	St. Paul, Minnesota / Como Park Senior HS
10	Cielo Mazantini	M	5-2	Sr.	Bakersfield, California / Independence HS
00	McKenzie McCarthy	GK	6-0	So.	Olive Branch, Mississippi / Olive Branch HS
3	Tallulah Nemet-Sargent	M	5-4	Fr.	Wellington, New Zealand / Queen Margaret HS
22	Ludesha Reynolds	GK	5-8	Fr.	Georgetown, Guyana / Saint Joseph HS
9	Aryana Saenz	M	5-2	Sr.	Cape Coral, Florida / Mariner HS
15	Zulema Salome	D	5-5	So.	San Juan, Puerto Rico / University of Puerto Rico / Colegio Santa Gema
11	Taliya Spurlock	F	5-4	Fr.	Galveston, Texas / Galveston Ball HS
2	Bailee Washington	F / D	5-6	Fr.	Birmingham, Alabama / Helena HS

**3 NCAA Tournament Appearances (2005, 2008, 2012) | 3x SWAC Champions (2005, 2008, 2012)**

**2015 SWAC Regular Season Champions | 2008 SWAC East Division Champions | 4x SWAC Runner-Up (2006, 2007, 2010, 2011)**



# Mississippi Valley State University

## 2022 Women's Soccer Game Notes



### PRESEASON ALL-SWAC 1ST TEAM



#### MIDFIELDERS



#### FORWARDS



#### DEFENDERS



GOALKEEPER

### PRESEASON ALL-SWAC 2ND TEAM



#### MIDFIELDERS



#### FORWARDS



#### DEFENDERS



GOALKEEPER



# Mississippi Valley State University

## 2022 Women's Soccer Game Notes



### S O U T H W E S T E R N   A T H L E T I C   C O N F E R E N C E



**NATALIE FREEMAN**

Offensive



**ANDREA NUGENT**

Defensive



**SHEILA SANCHEZ**

Goalkeeper



### PRESEASON SWAC INDIVIDUAL AWARDS

3 NCAA Tournament Appearances (2005, 2008, 2012) | 3x SWAC Champions (2005, 2008, 2012)

2015 SWAC Regular Season Champions | 2008 SWAC East Division Champions | 4x SWAC Runner-Up (2006, 2007, 2010, 2011)





# Mississippi Valley State University

## 2022 Women's Soccer Game Notes



# SWAC SOCCER SCOREBOARD



SUNDAY, OCTOBER 16 - FRIDAY, OCTOBER 21



1

MISSISSIPPI VALLEY  
0-11 (0-6 SWAC)



0

ALABAMA A&M  
4-9-1 (2-3-1 SWAC)



0

ALCORN  
4-8-3 (2-3-2 SWAC)



10

ARKANSAS-PINE BLUFF  
9-9-1 (4-3-1 SWAC)

PINE BLUFF, ARKANSAS



2

JACKSON STATE  
6-6-1 (5-0-1 SWAC)

JACKSON, MISSISSIPPI



0

ALABAMA STATE  
4-7-4 (2-2-3 SWAC)

MONTGOMERY, ALABAMA



1

ALCORN  
4-8-2 (2-3-1 SWAC)



0

CHICAGO STATE  
3-13-1



3

JACKSON STATE  
7-6-1 (6-0-1 SWAC)



1

GRAMBLING STATE  
7-7-3 (4-1-3 SWAC)

GRAMBLING, LOUISIANA



2

GRAMBLING STATE  
8-7-3 (4-1-3 SWAC)

GRAMBLING, LOUISIANA



1

PRAIRIE VIEW A&M  
1-10 (1-6 SWAC)

PRAIRIE VIEW, TEXAS



0

ALABAMA STATE  
4-7-3 (2-2-2 SWAC)



0

MISSISSIPPI VALLEY  
0-11-1 (0-6-1 SWAC)



1

SOUTHERN  
6-8-2 (3-3-1 SWAC)



2

SOUTHERN  
6-8-1 (3-3 SWAC)

BATON ROUGE, LOUISIANA



0

ALABAMA A&M  
4-9-2 (2-3-2 SWAC)

HUNTSVILLE, ALABAMA



1

TEXAS SOUTHERN  
4-8-3 (4-1-2 SWAC)

HOUSTON, TEXAS



# Mississippi Valley State University

## 2022 Women's Soccer Game Notes



# SWAC SOCCER SCHEDULE

SATURDAY, OCTOBER 22 - FRIDAY, OCTOBER 28



VS



**ALABAMA A&M**  
4-9-2 (2-3-2 SWAC)

**ALABAMA STATE**  
4-7-4 (2-2-3 SWAC)

MONTGOMERY, ALABAMA



VS



**CHICAGO STATE**  
3-13-1

**GRAMBLING STATE**  
8-7-3 (4-1-3 SWAC)

GRAMBLING, LOUISIANA



VS



**JACKSON STATE**  
7-6-1 (6-0-1 SWAC)

**TEXAS SOUTHERN**  
4-8-3 (4-1-2 SWAC)

HOUSTON, TEXAS



VS



**MISSISSIPPI VALLEY**  
0-11-1 (0-6-1 SWAC)

**ALABAMA STATE**  
4-7-4 (2-2-3 SWAC)

MONTGOMERY, ALABAMA



VS



**SOUTHERN**  
6-8-2 (3-3-1 SWAC)

**PRAIRIE VIEW A&M**  
1-10 (1-6 SWAC)

PRAIRIE VIEW, TEXAS



VS



**ALCORN**  
4-8-3 (2-3-2 SWAC)

**ALABAMA A&M**  
4-9-2 (2-3-2 SWAC)

HUNTSVILLE, ALABAMA



VS



**PRAIRIE VIEW A&M**  
1-10 (1-6 SWAC)

**TEXAS SOUTHERN**  
4-8-3 (4-1-2 SWAC)

HOUSTON, TEXAS



VS



**ALCORN**  
4-8-3 (2-3-2 SWAC)

**MISSISSIPPI VALLEY**  
0-11-1 (0-6-1 SWAC)

ITTA BENA, MISSISSIPPI



VS



**GRAMBLING STATE**  
8-7-3 (4-1-3 SWAC)

**ARKANSAS-PINE BLUFF**  
9-9-1 (4-3-1 SWAC)

PINE BLUFF, ARKANSAS



VS



**JACKSON STATE**  
7-6-1 (6-0-1 SWAC)

**SOUTHERN**  
6-8-2 (3-3-1 SWAC)

BATON ROUGE, LOUISIANA

3 NCAA Tournament Appearances (2005, 2008, 2012) | 3x SWAC Champions (2005, 2008, 2012)

2015 SWAC Regular Season Champions | 2008 SWAC East Division Champions | 4x SWAC Runner-Up (2006, 2007, 2010, 2011)



# Mississippi Valley State University

## 2022 Women's Soccer Game Notes



# PRESEASON POLL

Southwestern Athletic Conference

RANK	TEAM	POINTS	1ST PLACE
1.	 <b>GRAMBLING STATE</b>	136	1
2.	 <b>PRAIRIE VIEW A&amp;M</b>	132	6
3.	 <b>ALABAMA A&amp;M</b>	129	3
4.	 <b>ALABAMA STATE</b>	127	1
5.	 <b>JACKSON STATE</b>	124	1
6.	 <b>SOUTHERN</b>	96	2
7.	 <b>TEXAS SOUTHERN</b>	84	---
8.	 <b>ALCORN</b>	73	2
9.	 <b>ARKANSAS-PINE BLUFF</b>	51	---
10.	 <b>MISSISSIPPI VALLEY</b>	38	---





# Mississippi Valley State University

## 2022 Women's Soccer Game Notes



# STANDINGS

## Southwestern Athletic Conference

RANK	TEAM	RECORD	GB
1.	 <b>JACKSON STATE</b>	7-6-1 (6-0-1 SWAC)	---
2.	 <b>GRAMBLING STATE</b>	8-7-3 (4-1-3 SWAC)	1
3.	 <b>TEXAS SOUTHERN</b>	4-8-3 (4-1-2 SWAC)	1.25
T4.	 <b>ARKANSAS-PINE BLUFF</b>	9-9-1 (4-3-1 SWAC)	2.5
T4.	 <b>ALABAMA STATE</b>	4-7-4 (2-2-3 SWAC)	2.5
6.	 <b>SOUTHERN</b>	6-8-2 (3-3-1 SWAC)	3
T7.	 <b>ALCORN</b>	4-8-3 (2-3-2 SWAC)	3.25
T7.	 <b>ALABAMA A&amp;M</b>	4-9-2 (2-3-2 SWAC)	3.25
9.	 <b>PRAIRIE VIEW A&amp;M</b>	1-10 (1-6 SWAC)	5.75
10.	 <b>MISSISSIPPI VALLEY</b>	0-11-1 (0-6-1 SWAC)	6

3 NCAA Tournament Appearances (2005, 2008, 2012) | 3x SWAC Champions (2005, 2008, 2012)

2015 SWAC Regular Season Champions | 2008 SWAC East Division Champions | 4x SWAC Runner-Up (2006, 2007, 2010, 2011)



# Mississippi Valley State University

## 2022 Women's Soccer Game Notes



### Team Rankings (As Of October 19, 2022)

Category	Value	NCAA	SWAC
Assists Per Game	0.44	315th	6th
Corner Kicks Per Game	0.44	337th	10th
Fouls Per Game	8.44	107th	8th
Goals-Against Average	4.867	336th	9th
Penalty Kicks	0.000	227th	6th
Points Per Game	1.56	326th	9th
Red Cards	6	1st	1st
Save Percentage	0.717	256th	7th
Saves Per Game	12.11	1st	1st
Scoring Offense	0.56	325th	10th
Shot Accuracy	0.548	14th	3rd
Shots Per Game	3.44	337th	10th
Shots-On-Goal Per Game	1.89	337th	10th
Shutout Percentage	0.000	336th	9th
Total Assists	4	329th	7th
Total Goals	5	335th	10th
Total Points	14	335th	10th
Won-Lost-Tied Percentage	0.000	336th	9th
Yellow Cards	12	140th	7th

### Individual Rankings (As Of October 19, 2022)

Category	Player	Value	NCAA	SWAC
Assists PG	R. Aka-Ety   A. Saenz	0.14	N/A	N/A
GW Goals	N/A	0	N/A	N/A
Goalie Min	McKenzie McCarthy	767:06	N/A	9th
GAA	McKenzie McCarthy	4.341	N/A	10th
Goals PG	Bailee Washington	0.33	N/A	5th
Penalty Kicks	N/A	0	N/A	N/A
Points PG	Bailee Washington	0.78	N/A	8th
Red Cards	Six Tied	1	2nd	1st
Save %	McKenzie McCarthy	0.734	N/A	6th
Saves PG	McKenzie McCarthy	11.33	1st	1st
Shot Acc.	Bailee Washington	0.800	N/A	N/A
Shots PG	Rahael Aka-Ety	1.14	N/A	N/A
SOG PG	Bailee Washington	0.44	N/A	N/A
Shutouts	N/A	0	N/A	N/A
Assists	Four Tied	1	N/A	N/A
Total Goals	Bailee Washington	3	N/A	N/A
Total Points	Bailee Washington	7	N/A	9th
Total Saves	McKenzie McCarthy	102	4th	2nd
Yellow Cards	Aryana Saenz	4	15th	1st
Yellow Cards	Cielo Mazantini	3	88th	6th



# Mississippi Valley State University

## 2022 Women's Soccer Game Notes



5 **VS** 43

MISSISSIPPI VALLEY

OPPONENTS

### STATS

35 SHOTS 303



19 SHOTS-ON-GOAL 166



5 CORNER KICKS 83



83 FOULS 68



3 NCAA Tournament Appearances (2005, 2008, 2012) | 3x SWAC Champions (2005, 2008, 2012)

2015 SWAC Regular Season Champions | 2008 SWAC East Division Champions | 4x SWAC Runner-Up (2006, 2007, 2010, 2011)





# Mississippi Valley State University 2022 Women's Soccer Game Notes



## SWAC . . . Of The Week

### OFFENSIVE

### DEFENSIVE

### GOALKEEPER

**RAHAEL  
AKA-ETY**  
SWAC Defender of the Week (9/16/22)

★SWAC	2
CG	
MINUTES	180
TEAM SAVES	2
SHOT	1

**MCKENZIE  
MCCARTHY**  
SWAC Goalkeeper of the Week (9/16/22)

★SWAC	180
MINUTES	
29 (14.5)	
SAVES (PG)	
80.6%	
SAVE%	
78	
SHOTS FACED	

**MCKENZIE  
MCCARTHY**  
SWAC Goalkeeper of the Week (9/21/22)

★SWAC	1
GOALS ALLOWED	
10	
SAVES	
90.9%	
SAVE%	
31	
SHOTS FACED	



# Mississippi Valley State University

## 2022 Women's Soccer Game Notes



### THE LAST TIME MISSISSIPPI VALLEY ...

#### 3+ Goal Victory

Mississippi Valley Win ..... 3 vs. Alcorn (10/25/18) \*Win Vacated  
Mississippi Valley Loss ..... 9 at Arkansas-Pine Bluff (10/16/22)

#### 4+ Goal Victory

Mississippi Valley Win ..... 6 vs. Millsaps (9/16/18) \*Win Vacated  
Mississippi Valley Loss ..... 9 at Arkansas-Pine Bluff (10/16/22)

#### 5+ Goal Victory

Mississippi Valley Win ..... 6 vs. Millsaps (9/16/18) \*Win Vacated  
Mississippi Valley Loss ..... 9 at Arkansas-Pine Bluff (10/16/22)

#### Ranked Opponent

Mississippi Valley Win ..... None Since 2003  
Mississippi Valley Loss ..... None Since 2003

#### Shutout

Mississippi Valley Win ..... 3-0 vs. MUW (9/14/18) \*Win Vacated  
Mississippi Valley Loss ..... 7-0 at Grambling State (10/14/22)  
Mississippi Valley Tie ..... 0-0 at Alabama A&M (10/21/22)

#### Overtime

Mississippi Valley Win ..... 1-0 (2 OT) vs. Southern (10/2/16) \*Win Vacated  
Mississippi Valley Loss ..... 2-1 (OT) vs. Alabama State (9/26/21)

#### Penalty Kick Shootout

Mississippi Valley Win ..... 1-1 (9-8 PKs) vs. Arkansas-Pine Bluff (11/2/12)  
Mississippi Valley Loss ..... 1-1 (4-3 PKs) vs. Howard (11/6/15)

#### Scored 5+ Goals

Mississippi Valley ..... 5 vs. Alcorn (10/25/18)  
Opponent ..... 10 at Arkansas-Pine Bluff (10/16/22)

#### Scored 10+ Goals

Mississippi Valley ..... 10 at Alcorn (10/30/15)  
Opponent ..... 10 at Arkansas-Pine Bluff (10/16/22)

#### Scored 15+ Goals

Mississippi Valley ..... 15 at Lincoln-Pennsylvania (10/25/15)  
Opponent ..... None Since 2003

#### Zero Saves

Mississippi Valley ..... October 29, 2021 at Alcorn  
Opponent ..... October 2, 2022 vs. Jackson State

#### 10+ Saves

Mississippi Valley ..... 14 at Alabama A&M (10/21/22)  
Opponent ..... 11 vs. Alcorn (10/25/18)

#### 15+ Saves

Mississippi Valley ..... 19 at Arkansas-Pine Bluff (10/16/22)  
Opponent ..... 18 vs. Alcorn (10/1/10)

#### 20+ Saves

Mississippi Valley ..... 21 vs. Louisiana-Monroe (9/4/22)  
Opponent ..... None Since 2010

#### 5 Shots or Less

Mississippi Valley ..... 4 at Alabama A&M (10/21/22)  
Opponent ..... 1 vs. Alabama A&M (9/22/17)

#### 20+ Shots

Mississippi Valley ..... 29 vs. Alcorn (10/25/18)  
Opponent ..... 28 at Alabama A&M (10/21/22)

#### 25+ Shots

Mississippi Valley ..... 29 vs. Alcorn (10/25/18)  
Opponent ..... 28 at Alabama A&M (10/21/22)

#### 30+ Shots

Mississippi Valley ..... 30 vs. MUW (9/14/18)  
Opponent ..... 41 at Arkansas-Pine Bluff (10/16/22)

#### 5 Shots On Goal or Less

Mississippi Valley ..... 2 at Alabama A&M (10/21/22)  
Opponent ..... 4 vs. Alcorn (10/25/18)

#### 10+ Shots On Goal

Mississippi Valley ..... 10 vs. Alabama A&M (10/11/19)  
Opponent ..... 14 at Alabama A&M (10/21/22)

#### 15+ Shots On Goal

Mississippi Valley ..... 16 vs. Alcorn (10/25/18)  
Opponent ..... 29 at Arkansas-Pine Bluff (10/16/22)

#### 20+ Shots On Goal

Mississippi Valley ..... 29 at Lincoln-Pennsylvania (10/25/15)  
Opponent ..... 29 at Arkansas-Pine Bluff (10/16/22)

#### Zero Corner Kicks

Mississippi Valley ..... October 14, 2022 at Grambling State (10/14/22)  
Opponent ..... September 3, 2021 at Mercer

#### 5+ Corner Kicks

Mississippi Valley ..... 5 at Nicholls (8/23/19)  
Opponent ..... 8 at Alabama A&M (10/21/22)

#### 10+ Corner Kicks

Mississippi Valley ..... 10 vs. Grambling State (10/28/15)  
Opponent ..... 13 at Arkansas-Pine Bluff (10/16/22)

#### 10+ Fouls

Mississippi Valley ..... 11 at Grambling State (10/14/22)  
Opponent ..... 10 vs. Chicago State (9/25/22)



# Mississippi Valley State University

## 2022 Women's Soccer Game Notes



### Team Program Records

Most Goals In Game ..... 25 vs. Alcorn (10/13/06)	Most Assists In Season ..... 68 (2015)
Most Goals In Season ..... 91 (2004)	Best Assists Per Game Average ..... 3.1 (2015)
Best Goals Per Game Average ..... 5.06 (2004) *7th-Best All-Time	Most Saves In Season ..... 186 (2003)
Fewest Goals Allowed In Season ..... 21 (2004)	Most Shutouts In Season ..... 7 (2005, 2006, 2007, 2015, 2017)
Lowest Goals Allowed Against Average ..... 1.33 (2005)	Most Wins In Season ..... 13 (2006 & 2015)
Most Shots In Season ..... 365 (2015)	Most Consecutive Wins ..... 6 (2006 & 2008)
Most Shots-On-Goal In Season ..... 222 (2015)	Longest Unbeaten Streak ..... 12 (2008)
Best Shot-On-Goal Percentage ..... 67.4% (2016)	Best Winning Percentage ..... 0.711 (13-5-1) in 2006





# Mississippi Valley State University

## 2022 Women's Soccer Game Notes



### THE LAST TIME A DEVILETTE ...

#### Hat Trick

By Mississippi Valley ..... Laadi Issaka (3) vs. Alcorn (10/25/18)  
By Opponent..... Iyanah Hicks (3) at Arkansas-Pine Bluff (10/16/22)

#### Had 5+ Points

By Mississippi Valley ..... Laadi Issaka (7) vs. Alcorn (10/25/18)  
By Opponent..... Iyanah Hicks (7) at Arkansas-Pine Bluff (10/16/22)

#### Had 7+ Points

By Mississippi Valley ..... Laadi Issaka (7) vs. Alcorn (10/25/18)  
By Opponent..... Iyanah Hicks (7) at Arkansas-Pine Bluff (10/16/22)

#### Had Multiple Goals

By Mississippi Valley ..... Bailee Washington (2) vs. Chicago State (9/25/22)  
By Opponent..... Iyanah Hicks (3) at Arkansas-Pine Bluff (10/16/22)

#### Had 5+ Shots

By Mississippi Valley ..... Merica Abnathy (5) at Texas Southern (10/17/21)  
By Opponent.... Makayla Rushing (6) & Taylor McNeal (5) at Alabama A&M (10/21/22)

#### Had 10+ Shots

By Mississippi Valley ..... Laadi Issaka (13) vs. MUW (9/14/18)  
By Opponent..... Elisabeth Sullivan (11) at Mississippi State (9/7/12)

#### Had 5+ SOG

By Mississippi Valley ..... Beatriz Kretteis (5) vs. Arkansas-Pine Bluff (10/6/19)  
By Opponent..... Tiana Johnson (5) at Arkansas-Pine Bluff (10/16/22)

#### Had Multiple Assists

By Mississippi Valley ..... Yeni Calles (2) vs. Alabama A&M (10/11/19)  
By Opponent..... Three Players (2) at Arkansas-Pine Bluff (10/16/22)

#### Scored a Penalty Kick Goal

By Mississippi Valley ..... Beatriz Kretteis at Alcorn (11/1/19)  
By Opponent..... Evangelia Sandoval-Belmudez at Arkansas-Pine Bluff (10/16/22)

#### Played More Than 90 Minutes

By Mississippi Valley .... Eight Tied (109) & Shay McCool (106) vs. Alabama State (10/13/19)  
By Opponent..... Nine Tied (109) vs. Alabama State (10/13/19)

#### Recorded a Shutout (Goalkeeper)

By Mississippi Valley .... McKenzie McCarthy (14 Saves) at Alabama A&M (10/21/22)  
By Opponent..... Ma'Kayla Prince (2 Saves) at Alabama A&M (10/21/22)

#### Had 10+ Saves (Goalkeeper)

By Mississippi Valley ..... McKenzie McCarthy (14) at Alabama A&M (10/21/22)  
By Opponent..... Kaylee Dennis (14) at Lincoln-Pennsylvania (10/25/15)

#### Had 15+ Saves (Goalkeeper)

By Mississippi Valley ..... McKenzie McCarthy (19) at Arkansas-Pine Bluff (10/16/22)  
By Opponent..... None Since 2010

#### Had 20+ Saves (Goalkeeper)

By Mississippi Valley ..... McKenzie McCarthy (24) at Louisiana-Monroe (9/15/21)  
By Opponent..... None Since 2010

#### Received Yellow Card

By Mississippi Valley ..... Zulema Salome & Aryana Saenz vs. Jackson State (10/2/22)  
By Opponent.... Taylor Watson, Makayla Rushing & Team at Alabama A&M (10/21/22)

#### Received Red Card

By Mississippi Valley ..... Six Tied vs. Jackson State (10/2/22)  
By Opponent..... Four Tied vs. Jackson State (10/2/22)



# Mississippi Valley State University

## 2022 Women's Soccer Game Notes



### Individual Program Records (NCAA Record If Bold | In NCAA Record Books If \* | Active If Underlined)

#### Points

Game..... Laadi Issaka (15) vs. Alcorn (10/28/16) **\*3rd-Most All-Time**

Season .....Nykosi Simmons (57) in 2015

Season Average ..... Nykosi Simmons (2.6) in 2015 & Laadi Issaka (2.6) in 2016

Career.....Laadi Issaka (140) from 2015-18

Career Average ..... Laadi Issaka (2.36) from 2015-16 **\*23rd-Most All-Time**

Career Average .....Laadi Issaka (2.1) from 2015-18

#### Goals Scored

**Game..... Laadi Issaka (7) vs. Alcorn (10/28/16)**

Season .....Nykosi Simmons (26) in 2015

Season Average ..... Laadi Issaka (1.2) in 2016

Career.....Laadi Issaka (53) from 2015-18

Career Average .....Laadi Issaka (0.8) from 2015-18

#### Shots

Game..... Laadi Issaka (14) vs. Alcorn (10/28/16)

Season .....Nykosi Simmons (87) in 2015

Career..... Laadi Issaka (270) in 2015-18

#### Shots-On-Goal

Game..... Laadi Issaka (9) vs. Alcorn (10/28/16)

Season .....Nykosi Simmons (60) in 2015

Career.....Laadi Issaka (162) from 2015-18

#### Assists

Game.....Laadi Issaka (4) vs. UAPB (9/20/15) & Laadi Issaka (4) at Lincoln-PA (10/25/15)

Season ..... Laadi Issaka (19) in 2015

Season Average ..... Laadi Issaka (1.1) in 2015

Career.....Laadi Issaka (35) from 2015-18

Career Average .....Laadi Issaka (0.5) from 2015-18

#### Saves

Game.....McKenzie McCarthy (24) at Louisiana-Monroe (9/15/21)

Season ..... Natasha McFadden (186) in 2003

Season Average ..... McKenzie McCarthy (12.58) in 2021

Career..... McKenzie McCarthy (393) from 2018-Present

Career Average ..... McKenzie McCarthy (8.36) from 2018-Present

#### Most Shutouts

Season ..... Maria Del Guerico (7) in 2005 & 2006

Career.....Maria Del Guerico (19) from 2004-07

#### Fewest Goals Allowed

Season ..... Maria Del Guerico (20) in 2004

Career Average .....Maria Del Guerico (1.3) from 2004-07



# Mississippi Valley State University

## 2022 Women's Soccer Game Notes



## Record When...

**Home:** 0-8 (0-4 SWAC)

**Road:** 0-3-1 (0-2-1 SWAC)

**Neutral:** 0-0 (0-0 SWAC)

**Day (Before 5 p.m.):** 0-8-1 (0-6-1 SWAC)

**Night (After 5 p.m.):** 0-3 (0-0 SWAC)

**Leading At Halftime:** 0-0 (0-0 SWAC)

**Trailing At Halftime:** 0-7 (0-3 SWAC)

**Tied At Halftime:** 0-2-1 (0-1-1 SWAC)

**Overtime:** 0-0 (0-0 SWAC)

**Took More Shots Than Opponent:** 0-0 (0-0 SWAC)

**Took Less Shots Than Opponent:** 0-9-1 (0-4-1 SWAC)

**Shots Were Tied:** 0-0 (0-0 SWAC)

**Has More Fouls:** 0-4-1 (0-3-1 SWAC)

**Has Less Fouls:** 0-4 (0-0 SWAC)

**Fouls Tied:** 0-1 (0-1 SWAC)

**Took More Corner Kicks:** 0-0 (0-0 SWAC)

**Took Less Corner Kicks:** 0-9-1 (0-4-1 SWAC)

**Corner Kicks Tied:** 0-0 (0-0 SWAC)

**Scored First:** 0-1 (0-1 SWAC)

**Opponent Scored First:** 0-8 (0-3 SWAC)

**Scoring 1 Goal:** 0-2 (0-2 SWAC)

**Scoring 2 Goals:** 0-0 (0-0 SWAC)

**Scoring 3+ Goals:** 0-1 (0-0 SWAC)

**Allows 1 Goal:** 0-2 (0-1 SWAC)

**Allows 2 Goals:** 0-0 (0-0 SWAC)

**Allows +3 Goals:** 0-7 (0-3 SWAC)

**August:** 0-1 (0-0 SWAC)

**September:** 0-5 (0-1 SWAC)

**October:** 0-5-1 (0-5-1 SWAC)

**Monday:** 0-0 (0-0 SWAC)

**Tuesday:** 0-0 (0-0 SWAC)

**Wednesday:** 0-0 (0-0 SWAC)

**Thursday:** 0-0 (0-0 SWAC)

**Friday:** 0-6-1 (0-3-1 SWAC)

**Saturday:** 0-0 (0-0 SWAC)

**Sunday:** 0-5 (0-3 SWAC)

## In Mississippi Valley's Last Outing...

Mississippi Valley (0-11-1, 0-6-1 SWAC) -vs- Alabama A&M (4-9-2, 2-3-2 SWAC)  
10/21/2022 at Huntsville, Ala. (Bulldog Field)

Date: 10/21/2022  
Attendance: 47  
Stadium: Bulldog Field  
Officials: Timekeeper, Vann Pettaway Scorer, Joshua J. Darling

Goals By Period	1	2	Total
Mississippi Valley	0	0	0
Alabama A&M	0	0	0

### Mississippi Valley 0

Pos	#	Player	Starters	SH	SOG	G	A	MIN
	00	McKenzie McCarthy		0	0	0	0	90
	2	Bailee Washington		0	0	0	0	90
	4	T. Nemet-Sargent		0	0	0	0	90
	6	Olujede Bridgewater		0	0	0	0	90
	9	Aryana Saenz		1	0	0	0	90
	10	Cielo Mazzantini		0	0	0	0	90
	12	Cambree Catalano		0	0	0	0	90
	15	Zulema Salome		0	0	0	0	90
	16	Kayla Evans		0	0	0	0	90
	20	Rahael Aka-Ety		2	1	0	0	88
	26	Juliette Charriez		1	1	0	0	90
Substitutes								
Totals				4	2	0	0	988
#	Goalkeepers			Minutes	GA	Saves		
00	McKenzie McCarthy			90:00	0	14		
Totals					0	14		

### Alabama A&M 0

Pos	#	Player	Starters	SH	SOG	G	A	MIN
	1	Ma'Kayla Prince		0	0	0	0	90
	2	K. Barnes-Blackwood		3	1	0	0	66
	3	Taylor Stokes		0	0	0	0	79
	4	Taylor Watson		3	3	0	0	82
	6	Jameela Barrett		3	0	0	0	84
	8	Taylor McNeal		5	3	0	0	79
	10	Leyla Molina		1	0	0	0	34
	13	Anouck Heyer		1	1	0	0	78
	16	Alana Paul		1	1	0	0	78
	19	Makayla Rushing		6	4	0	0	90
	28	Victoria Mealing		2	1	0	0	90
		Substitutes						
	11	Tahlaya Kell		0	0	0	0	19
	17	Laniaya Del Valle		0	0	0	0	7
	22	Arianna Kinsey		2	0	0	0	52
	23	Averlee Kibbles		0	0	0	0	6
	26	Zyliah Mikes		1	0	0	0	56
	30	Phoenix Caesar		0	0	0	0	0
Totals				28	14	0	0	990
#	Goalkeepers		Minutes	GA	Saves			
1	Ma'Kayla Prince		90:00	0	2			
Totals				0	2			

Shots By Period	1	2	Total
Mississippi Valley	3	1	4
Alabama A&M	14	14	28
Saves By Period	1	2	Total
Mississippi Valley	5	9	14
Alabama A&M	2	0	2

### Scoring Summary

Time	Team	Goal Scorer	Assist	Description
Cautions and Ejections: 36:40 (YELLOW), #4 Taylor Watson (AAMU) 31:42 (YELLOW), #TM TEAM (AAMU) 75:41 (YELLOW), #19 Makayla Rushing (AAMU)				

## Single-Game Individual Categorical Highs

**Points** ..... Bailee Washington (4) vs. Chicago State (9/25/22)

**Goals** ..... Bailee Washington (2) vs. Chicago State (9/25/22)

**Assists** ..... 1, Four Times

**Shots** ..... 2, Eight Times

**Shots-On-Goal** ..... Bailee Washington (2) vs. Chicago State (9/25/22)

**Saves** ..... McKenzie McCarthy (19), Two Times





# Mississippi Valley State University

## 2022 Women's Soccer Game Notes



### OFFENSIVE

## LEADERS

MINUTES	MAZANTINI & MCCARTHY (886)
POINTS	WASHINGTON (7)
GOALS	WASHINGTON (3)
ASSISTS	FOUR TIED (1)
SHOTS	AKA-ETY (10)
SHOT%	WASHINGTON (60%)
SHOTS-ON-GOAL	THREE TIED (4)
SOG%	WASHINGTON & CHARRIEZ (80%)



### GOALKEEPER

## LEADERS

MINUTES	MCCARTHY (857:06)
GAA	MCCARTHY (3.89)
SAVES	MCCARTHY (116)
SAVE%	MCCARTHY (75.8%)
WINS	N/A
SHUTOUTS	MCCARTHY (1)
SHOTS FACED	MCCARTHY (287)





# Mississippi Valley State University

## 2022 Women's Soccer Game Notes



### ONE-GOAL GAMES (34-49, 23-25 SWAC) | V - VACATED

2003	Grambling State	L, 1-0	2007	Alabama A&M	L, 2-1	2012	Southern	W, 2-1
2004	Nicholls	W, 2-1	2008	Tennessee-Martin	L, 1-0	2012	Grambling State	W, 1-0
2004	Jacksonville State	L, 1-0	2008	Troy	L, 1-0	2012	Alabama State	W, 1-0
2004	Austin Peay	L, 2-1	2008	Southern Miss	L, 1-0	2012	Grambling State	W, 1-0
2004	McNeese	W, 2-1	2008	Alabama	L, 1-0	2013	Louisiana-Monroe	L, 2-1
2004	Grambling State	L, 1-0	2008	Delta State	L, 2-1	2013	Alabama State	L, 2-1
2004	Alabama A&M	L, 2-1	2008	Louisiana Tech	L, 1-0	2013	Arkansas-Pine Bluff	W, 2-1
2004	Alabama	L, 2-1	2008	Texas Southern	W, 1-0	2013	Southern	L, 1-0
2004	Grambling State	L, 1-0	2008	Prairie View A&M	W, 1-0	2013	Prairie View A&M	L, 1-0
2005	Louisiana-Monroe	L, 2-1	2008	Arkansas-Pine Bluff	W, 2-1	2014	Prairie View A&M	L, 4-3
2005	McNeese	L, 2-1	2008	Jackson State	W, 2-1	2016	Southeastern Louisiana	L, 2-1
2005	Prairie View A&M	W, 1-0	2009	Texas Southern	L, 1-0	2016	Arkansas State	L, 3-2
2005	Grambling State	L, 1-0	2010	Nicholls	L, 1-0	2016	Jackson State	V, 1-0
2005	Mississippi State	L, 1-0	2010	Jackson State	L, 1-0	2016	Southern	V, 1-0
2005	Prairie View A&M	W, 3-2	2010	Southern	W, 2-1	2016	Arkansas-Pine Bluff	L, 3-2
2005	Jackson State	W, 2-1	2010	Prairie View A&M	L, 3-2	2016	Arkansas-Pine Bluff	L, 1-0
2006	Troy	W, 1-0	2010	Arkansas-Pine Bluff	L, 2-1	2017	Nicholls	V, 1-0
2006	Arkansas State	W, 1-0	2010	Grambling State	L, 3-2	2017	Alabama State	L, 1-0
2006	Nicholls	W, 1-0	2010	Alabama State	W, 1-0	2017	Grambling State	V, 1-0
2006	Louisiana-Monroe	W, 1-0	2010	Prairie View A&M	W, 2-1	2017	Alcorn	W, 1-0
2006	William Carey	W, 3-2	2011	Louisiana-Monroe	L, 2-1	2018	Howard	L, 1-0
2006	Southern	W, 2-1	2011	Alabama A&M	W, 2-1	2019	South Carolina State	W, 3-2
2006	Jackson State	W, 2-1	2011	Grambling State	W, 2-1	2019	Arkansas-Pine Bluff	L, 3-2
2007	Harding	W, 2-1	2011	Arkansas-Pine Bluff	L, 1-0	2019	Alabama State	L, 1-0
2007	Southern Miss	W, 2-1	2011	Prairie View A&M	W, 1-0	2019	Jackson State	L, 1-0
2007	Troy	L, 1-0	2011	Texas Southern	W, 3-2	2021	Alabama State	L, 2-1
2007	Louisiana-Monroe	W, 1-0	2011	Southern	W, 1-0	2022	North Dakota	L, 1-0
2007	Jackson State	L, 1-0	2012	Western Illinois	L, 1-0	2022	Chicago State	L, 4-3
2007	Centenary (Louisiana)	L, 1-0	2012	Nicholls	L, 1-0	2022	Jackson State	L, 1-0

3 NCAA Tournament Appearances (2005, 2008, 2012) | 3x SWAC Champions (2005, 2008, 2012)

2015 SWAC Regular Season Champions | 2008 SWAC East Division Champions | 4x SWAC Runner-Up (2006, 2007, 2010, 2011)



# Mississippi Valley State University

## 2022 Women's Soccer Game Notes



# #00 McKENZIE McCARTHY

**Senior • Goalkeeper • 6-0**

**Olive Branch, Mississippi • Olive Branch HS**

**SEASON-HIGH..... MCCARTHY'S ..... CAREER-HIGH**  
 90 (9x, last at Alabama A&M, 10/21/22).... **MINUTES** ..... 110 (3x, last at Nicholls, 8/24/19)  
 0 at Alabama A&M (10/21/22)..... **GOALS (LOW)** ....0 (3x, last at Alabama A&M, 10/21/22)  
 19 (2x, last at Arkansas-Pine Bluff, 10/16/22) .... **SAVES**..... 24 at Louisiana-Monroe (9/15/21)  
 100.0 at Alabama A&M (10/21/22)..... **SAVE %**.... 100.0 (3x, last at Alabama A&M, 10/21/22)  
 47 vs. Louisiana-Monroe (9/4/22) ..... **SHOTS FACED** ..... 61 at Louisiana-Monroe (9/15/21)

Shutouts (Season) - 1 at Alabama A&M (10/21/22)  
 Shutouts (Career) - 3 (last at Alabama A&M, 10/21/22)

### Accomplishments & Accolades:

- Program record holder for career saves (473)
- Program record holder for career saves per game (8.76)
- Program record holder for most saves in a single match (24)
- Program record holder for saves per game in a single season (12.58)
- 2nd among all active NCAA players in career saves (473)
- 15th among all active NCAA players in career saves per game (8.76)
- 2022 - Leads NCAA in saves per game (11.60)
- 2022 - 4th in NCAA in total saves (116)
- 2022 - SWAC Goalkeeper Of The Week (9/21)
- 2022 - SWAC Goalkeeper Of The Week (9/6)
- 2021 - Led NCAA in saves per game (12.58)
- 2021 - Led NCAA in total saves (151)
- 2019 - Led NCAA in saves per game (11.07)
- 2019 - Led NCAA in total saves (155)

Season	GP-GS	Total		CG	MCCARTHY'S CAREER GOALIE			STATISTICS		SHO	Goals Allowed		SF
		MIN			W	Record L	T	SV	Saves SV%		GA	GAA	
2018	8-8	643:49		6	2	4	2	51	82.3	1	11	1.54	68
2019	8-8	1,296:47		8	1	11	1	155	76.4	1	48	3.33	374
2021	4-3	1,102:35		3	0	12	0	151	68.6	0	69	5.63	375
2022	10-9	857:06		9	0	8	1	116	75.8	1	37	3.89	287
<b>TOTAL</b>	<b>30-28</b>	<b>3,608:53</b>		<b>26</b>	<b>3</b>	<b>36</b>	<b>4</b>	<b>473</b>	<b>74.1</b>	<b>3</b>	<b>165</b>	<b>3.81</b>	<b>1,104</b>

**3 NCAA Tournament Appearances (2005, 2008, 2012) | 3x SWAC Champions (2005, 2008, 2012)**

25

**2015 SWAC Regular Season Champions | 2008 SWAC East Division Champions | 4x SWAC Runner-Up (2006, 2007, 2010, 2011)**





# Mississippi Valley State University

## 2022 Women's Soccer Game Notes



# #2 BAILEE WASHINGTON

**Freshman • Forward / Defender • 5-6**

**Birmingham, Alabama • Helena HS**

**SEASON-HIGH..... WASHINGTON'S ..... CAREER-HIGH**

90 (6x, last at Alabama A&M, 10/21/22) .... **MINUTES** .... 90 (6x, last at Alabama A&M, 10/21/22)

4 vs. Chicago State (9/25/22) ..... **POINTS** ..... 4 vs. Chicago State (9/25/22)

2 vs. Chicago State (9/25/22) ..... **GOALS** ..... 2 vs. Chicago State (9/25/22)

1 vs. Southern (9/30/22) ..... **ASSISTS** ..... 1 vs. Southern (9/30/22)

2 (2x, last vs. Chicago State, 9/25/22) ..... **SHOTS** .... 2 (2x, last vs. Chicago State, 9/25/22)

2 vs. Chicago State (9/25/22) ..... **SOG** ..... 2 vs. Chicago State (9/25/22)

Hat Tricks (Season): 0

Hat Tricks (Career): 0

Season	GP-GS	Total		WASHINGTON'S CAREER STATS				Shooting			
		MIN	CG	Scoring				SH	SH%	SOG	SOG%
				G	A	PTS	GW				
2022	10-10	815	7	3	1	7	0	5	60.0	4	80.0
<b>TOTAL</b>	<b>10-10</b>	<b>815</b>	<b>7</b>	<b>3</b>	<b>1</b>	<b>7</b>	<b>0</b>	<b>5</b>	<b>60.0</b>	<b>4</b>	<b>80.0</b>

**3 NCAA Tournament Appearances (2005, 2008, 2012) | 3x SWAC Champions (2005, 2008, 2012)**

**2015 SWAC Regular Season Champions | 2008 SWAC East Division Champions | 4x SWAC Runner-Up (2006, 2007, 2010, 2011)**



# Mississippi Valley State University

## 2022 Women's Soccer Game Notes



### #3 TALLULAH NEMET-SARGENT

**Sophomore • Midfielder • 5-4**

**Wellington, New Zealand • Queen Margaret HS**

**SEASON-HIGH.....NEMET-SARGENT'S.....CAREER-HIGH**

90 (9x, last at Alabama A&M, 10/21/22) ..... **MINUTES** ..... 100 vs. Alabama State (9/26/21)

N/A..... **POINTS** ..... N/A

N/A..... **GOALS**..... N/A

N/A..... **ASSISTS** ..... N/A

1 (2x, last at Arkansas-Pine Bluff, 10/16/22).... **SHOTS** .... 1 (3x, last at Arkansas-Pine Bluff, 10/16/22)

1 at Arkansas-Pine Bluff (10/16/22)..... **SOG** ..... 1 at Arkansas-Pine Bluff (10/16/22)

Hat Tricks (Season): 0

Hat Tricks (Career): 0

Season	GP-GS	Total MIN	CG	NEMET-SARGENT'S CAREER STATS				Shooting			
				G	A	PTS	GW	SH	SH%	SOG	SOG%
2021	13-13	1,090	13	0	0	0	0	1	0.0	0	0.0
2022	10-10	886	10	0	0	0	0	2	0.0	1	50.0
<b>TOTAL</b>	<b>23-23</b>	<b>1,976</b>	<b>23</b>	<b>0</b>	<b>0</b>	<b>0</b>	<b>0</b>	<b>3</b>	<b>0.0</b>	<b>1</b>	<b>33.3</b>

**3 NCAA Tournament Appearances (2005, 2008, 2012) | 3x SWAC Champions (2005, 2008, 2012)**

27

**2015 SWAC Regular Season Champions | 2008 SWAC East Division Champions | 4x SWAC Runner-Up (2006, 2007, 2010, 2011)**



# Mississippi Valley State University

## 2022 Women's Soccer Game Notes



# #6 OLUJEDE BRIDGEWATER

**Freshman • Forward / Defender • 5-10**

**Saint Kitts & Nevis • Basseterre HS**

**SEASON-HIGH..... BRIDGEWATER'S ..... CAREER-HIGH**

90 (5x, last at Alabama A&M, 10/21/22).... **MINUTES** ....90 (5x, last at Alabama A&M, 10/21/22)

N/A..... **POINTS** ..... N/A

N/A..... **GOALS** ..... N/A

N/A..... **ASSISTS** ..... N/A

2 vs. Chicago State (9/25/22)..... **SHOTS** .....2 vs. Chicago State (9/25/22)

1 (2x, last vs. Southern, 9/30/22)..... **SOG** ..... 1 (2x, last vs. Southern, 9/30/22)

Hat Tricks (Season): 0

Hat Tricks (Career): 0

Season	GP-GS	Total		BRIDGEWATER'S CAREER STATS				Shooting			
		MIN	CG	G	A	PTS	GW	SH	SH%	SOG	SOG%
2022	7-6	580	6	0	0	0	0	3	0.0	2	66.7
<b>TOTAL</b>	<b>7-6</b>	<b>580</b>	<b>6</b>	<b>0</b>	<b>0</b>	<b>0</b>	<b>0</b>	<b>3</b>	<b>0.0</b>	<b>2</b>	<b>66.7</b>

**3 NCAA Tournament Appearances (2005, 2008, 2012) | 3x SWAC Champions (2005, 2008, 2012)**

**2015 SWAC Regular Season Champions | 2008 SWAC East Division Champions | 4x SWAC Runner-Up (2006, 2007, 2010, 2011)**





# Mississippi Valley State University

## 2022 Women's Soccer Game Notes



# #7 BROOKE EDYVANE

**Freshman • Midfielder • 5-7**

**Hampshire, Portsmouth, England • Mayville HS**

SEASON-HIGH.....EDYVANE'S.....CAREER-HIGH

N/A..... MINUTES ..... N/A

N/A..... POINTS ..... N/A

N/A..... GOALS..... N/A

N/A..... ASSISTS ..... N/A

N/A..... SHOTS..... N/A

N/A..... SOG ..... N/A

Hat Tricks (Season): 0

Hat Tricks (Career): 0

Season	GP-GS	Total		EDYVANE'S CAREER STATS				Shooting			
		MIN	CG	G	A	PTS	GW	SH	SH%	SOG	SOG%
2022	0-0	0	0	0	0	0	0	0	0.0	0	0.0
TOTAL	0-0	0	0	0	0	0	0	0	0.0	0	0.0

3 NCAA Tournament Appearances (2005, 2008, 2012) | 3x SWAC Champions (2005, 2008, 2012)

29

2015 SWAC Regular Season Champions | 2008 SWAC East Division Champions | 4x SWAC Runner-Up (2006, 2007, 2010, 2011)



# Mississippi Valley State University

## 2022 Women's Soccer Game Notes



# #9 ARYANA SAENZ

**Senior • Midfielder • 5-2**  
**Cape Coral, Florida • Mariner HS**

**SEASON-HIGH..... SAENZ'S ..... CAREER-HIGH**

90 (6x, last at Alabama A&M, 10/21/22) .... **MINUTES** .... 110 (2x, last vs. Texas Southern, 10/19/18)

1 vs. Southern (9/30/22) ..... **POINTS** ..... 2 vs. Alcorn (10/25/18)

N/A..... **GOALS**..... N/A

1 vs. Southern (9/30/22) ..... **ASSISTS** ..... 2 vs. Alcorn (10/25/18)

1 (3x, last at Alabama A&M, 10/21/22) ..... **SHOTS** .... 3 (2x, last vs. South Carolina State, 9/6/19)

1 at Middle Tennessee (9/2/22) ..... **SOG** ..... 3 vs. South Carolina State (9/6/19)

Hat Tricks (Season): 0

Hat Tricks (Career): 0

Season	GP-GS	Total MIN	CG	SAENZ'S CAREER STATS				SH	SH%	Shooting SOG	SOG%
				G	A	PTS	GW				
2018	17-17	1,420	10	0	3	3	0	21	0.0	13	61.9
2019	6-6	395	3	0	0	0	0	7	0.0	5	71.4
2021	10-10	906	8	0	1	1	0	3	0.0	3	100.0
2022	8-8	704	7	0	1	1	0	3	0.0	1	33.3
<b>TOTAL</b>	<b>41-41</b>	<b>3,425</b>	<b>28</b>	<b>0</b>	<b>5</b>	<b>5</b>	<b>0</b>	<b>34</b>	<b>0.0</b>	<b>22</b>	<b>64.7</b>

**3 NCAA Tournament Appearances (2005, 2008, 2012) | 3x SWAC Champions (2005, 2008, 2012)**

**2015 SWAC Regular Season Champions | 2008 SWAC East Division Champions | 4x SWAC Runner-Up (2006, 2007, 2010, 2011)**



# Mississippi Valley State University

## 2022 Women's Soccer Game Notes



# #10 CIELO MAZANTINI

**Senior • Midfielder • 5-2**

**Bakersfield, California • Independence HS**

**SEASON-HIGH..... MANZANTINI'S ..... CAREER-HIGH**

90 (9x, last at Alabama A&M, 10/21/22).... **MINUTES** ..... 109 vs. Alabama State (10/13/19)

N/A..... **POINTS** ..... 1 vs. Arkansas-Pine Bluff (10/6/19)

N/A..... **GOALS**..... N/A

N/A..... **ASSISTS** ..... 1 vs. Arkansas-Pine Bluff (10/6/19)

N/A..... **SHOTS**..... 2 (2x, last at Prairie View A&M, 9/27/19)

N/A..... **SOG** ..... 1 (2x, last vs. Alabama A&M, 10/11/19)

Hat Tricks (Season): 0

Hat Tricks (Career): 0

Season	GP-GS	Total MIN	CG	MAZANTINI'S CAREER STATS				SH	Shooting		
				G	A	PTS	GW		SH%	SOG	SOG%
2019	13-13	1,181	12	0	1	1	0	7	0.0	2	28.6
2021	12-12	1,090	12	0	0	0	0	0	0.0	0	0.0
2022	10-10	886	10	0	0	0	0	0	0.0	0	0.0
<b>TOTAL</b>	<b>35-35</b>	<b>3,157</b>	<b>34</b>	<b>0</b>	<b>1</b>	<b>1</b>	<b>0</b>	<b>7</b>	<b>0.0</b>	<b>2</b>	<b>28.6</b>

**3 NCAA Tournament Appearances (2005, 2008, 2012) | 3x SWAC Champions (2005, 2008, 2012)**

31

**2015 SWAC Regular Season Champions | 2008 SWAC East Division Champions | 4x SWAC Runner-Up (2006, 2007, 2010, 2011)**



# Mississippi Valley State University

## 2022 Women's Soccer Game Notes



# #11 TALIYA SPURLOCK

**Freshman • Forward • 5-4**

**Galveston, Texas • Galveston Ball HS**

SEASON-HIGH..... SPURLOCK'S ..... CAREER-HIGH

90 (2x, last vs. Arkansas-Pine Bluff, 10/16/22).... **MINUTES** .... 90 (2x, last vs. Arkansas-Pine Bluff, 10/16/22)

N/A..... **POINTS** ..... N/A

N/A..... **GOALS**..... N/A

N/A..... **ASSISTS** ..... N/A

N/A..... **SHOTS**..... N/A

N/A..... **SOG** ..... N/A

Hat Tricks (Season): 0

Hat Tricks (Career): 0

Season	GP-GS	Total		SPURLOCK'S CAREER STATS				Shooting			
		MIN	CG	G	A	PTS	GW	SH	SH%	SOG	SOG%
2022	2-2	180	2	0	0	0	0	0	0.0	0	0.0
<b>TOTAL</b>	<b>2-2</b>	<b>180</b>	<b>2</b>	<b>0</b>	<b>0</b>	<b>0</b>	<b>0</b>	<b>0</b>	<b>0.0</b>	<b>0</b>	<b>0.0</b>

**3 NCAA Tournament Appearances (2005, 2008, 2012) | 3x SWAC Champions (2005, 2008, 2012)**

**2015 SWAC Regular Season Champions | 2008 SWAC East Division Champions | 4x SWAC Runner-Up (2006, 2007, 2010, 2011)**





# Mississippi Valley State University

## 2022 Women's Soccer Game Notes



# #12 CAMBREE CATALANO

**Sophomore • Midfielder • 5-5**

**Houston, Texas • Channelview HS**

SEASON-HIGH.....CATALANO'S.....CAREER-HIGH

90 (5x, last at Alabama A&M, 10/21/22).... **MINUTES** ....90 (5x, last at Alabama A&M, 10/21/22)

N/A..... **POINTS** ..... N/A

N/A..... **GOALS** ..... N/A

N/A..... **ASSISTS** ..... N/A

2 vs. Louisiana-Monroe (9/4/22)..... **SHOTS** ..... 2 vs. Louisiana-Monroe (9/4/22)

1 (2x, last vs. Chicago State, 9/25/22)..... **SOG** ..... 1 (2x, last vs. Chicago State, 9/25/22)

Hat Tricks (Season): 0

Hat Tricks (Career): 0

Season	GP-GS	Total MIN	CG	CATALANO'S CAREER STATS				Shooting			
				G	A	PTS	GW	SH	SH%	SOG	SOG%
2021	0-0	0	0	0	0	0	0	0	0.0	0	0.0
2022	10-7	640	5	0	0	0	0	4	0.0	2	50.0
<b>TOTAL</b>	<b>10-7</b>	<b>640</b>	<b>5</b>	<b>0</b>	<b>0</b>	<b>0</b>	<b>0</b>	<b>4</b>	<b>0.0</b>	<b>2</b>	<b>50.0</b>

3 NCAA Tournament Appearances (2005, 2008, 2012) | 3x SWAC Champions (2005, 2008, 2012)

33

2015 SWAC Regular Season Champions | 2008 SWAC East Division Champions | 4x SWAC Runner-Up (2006, 2007, 2010, 2011)



# Mississippi Valley State University

## 2022 Women's Soccer Game Notes



# #15 ZULEMA SALOME

**Sophomore • Defender • 5-5**

**San Juan, Puerto Rico • University of Puerto Rico • Colegio Santa Gema**

**SEASON-HIGH.....SALOME'S.....CAREER-HIGH**

90 (6x, last at Alabama A&M, 10/21/22).... **MINUTES** ....90 (5x, last at Alabama A&M, 10/21/22)

1 vs. Southern (9/30/22)..... **POINTS** .....1 vs. Southern (9/30/22)

N/A..... **GOALS**..... N/A

1 vs. Southern (9/30/22)..... **ASSISTS** .....1 vs. Southern (9/30/22)

1 (2x, last at Arkansas-Pine Bluff, 10/16/22).... **SHOTS** .... 1 (2x, last at Arkansas-Pine Bluff, 10/16/22)

1 vs. Chicago State (9/25/22)..... **SOG** .....1 vs. Chicago State (9/25/22)

Hat Tricks (Season): 0

Hat Tricks (Career): 0

Season	GP-GS	Total MIN	CG	SALOME'S CAREER STATS				Shooting			
				Scoring				SH	SH%	SOG	SOG%
				G	A	PTS	GW				
2022	10-10	703	6	0	0	0	0	2	0.0	1	50.0
<b>TOTAL</b>	<b>10-10</b>	<b>703</b>	<b>6</b>	<b>0</b>	<b>0</b>	<b>0</b>	<b>0</b>	<b>2</b>	<b>0.0</b>	<b>1</b>	<b>50.0</b>

**3 NCAA Tournament Appearances (2005, 2008, 2012) | 3x SWAC Champions (2005, 2008, 2012)**

**2015 SWAC Regular Season Champions | 2008 SWAC East Division Champions | 4x SWAC Runner-Up (2006, 2007, 2010, 2011)**



# Mississippi Valley State University

## 2022 Women's Soccer Game Notes



# #16 KAYLA EVANS

**Sophomore • Defender / Forward • 5-8**

**Fort Lauderdale, Florida • Fort Lauderdale HS**

**SEASON-HIGH.....EVANS'.....CAREER-HIGH**

90 (6x, last at Alabama A&M, 10/21/22).... **MINUTES** ..... 100 vs. Alabama State (9/26/21)

N/A..... **POINTS** ..... N/A

N/A..... **GOALS**..... N/A

N/A..... **ASSISTS** ..... N/A

1 vs. Louisiana-Monroe (9/4/22)..... **SHOTS**..... 2 at Jackson State (10/10/21)

N/A..... **SOG** ..... 2 at Jackson State (10/10/21)

Hat Tricks (Season): 0

Hat Tricks (Career): 0

Season	GP-GS	Total MIN	CG	EVANS' CAREER STATS				Shooting			
				G	A	PTS	GW	SH	SH%	SOG	SOG%
2021	11-11	1,000	11	0	0	0	0	3	0.0	3	100.0
2022	8-8	702	7	0	0	0	0	1	0.0	0	0.0
<b>TOTAL</b>	<b>19-19</b>	<b>1,702</b>	<b>18</b>	<b>0</b>	<b>0</b>	<b>0</b>	<b>0</b>	<b>4</b>	<b>0.0</b>	<b>3</b>	<b>75.0</b>

**3 NCAA Tournament Appearances (2005, 2008, 2012) | 3x SWAC Champions (2005, 2008, 2012)**

35

**2015 SWAC Regular Season Champions | 2008 SWAC East Division Champions | 4x SWAC Runner-Up (2006, 2007, 2010, 2011)**



# Mississippi Valley State University

## 2022 Women's Soccer Game Notes



# #19 MARIATU KANU

**Freshman • Defender • 5-8**

**St. Paul, Minnesota • Como Park Senior HS**

SEASON-HIGH..... KANU'S ..... CAREER-HIGH

N/A..... MINUTES ..... N/A

N/A..... POINTS ..... N/A

N/A..... GOALS..... N/A

N/A..... ASSISTS ..... N/A

N/A..... SHOTS..... N/A

N/A..... SOG ..... N/A

Hat Tricks (Season): 0

Hat Tricks (Career): 0

Season	GP-GS	Total		KANU'S CAREER STATS				Shooting			
		MIN	CG	G	A	PTS	GW	SH	SH%	SOG	SOG%
2022	0-0	0	0	0	0	0	0	0	0.0	0	0.0
TOTAL	0-0	0	0	0	0	0	0	0	0.0	0	0.0

**3 NCAA Tournament Appearances (2005, 2008, 2012) | 3x SWAC Champions (2005, 2008, 2012)**

**2015 SWAC Regular Season Champions | 2008 SWAC East Division Champions | 4x SWAC Runner-Up (2006, 2007, 2010, 2011)**





# Mississippi Valley State University

## 2022 Women's Soccer Game Notes



# #20 RAHAEL AKA-ETY

**Senior • Defender / Midfielder • 5-4**

**Bolgatanga, Ghana • Arizona Western CC • Bolgatanga HS**

### SEASON-HIGH..... AKA-ETY'S ..... CAREER-HIGH

90 (6x, last vs. Southern, 9/30/22)..... **MINUTES** ..... 90 (12x, last vs. Southern, 9/30/22)

2 vs. Southern (9/30/22)..... **POINTS** ..... 2 (2x, last vs. Southern, 9/30/22)

1 vs. Southern (9/30/22)..... **GOALS**..... 1 (2x, last vs. Southern, 9/30/22)

1 vs. Chicago State (9/25/22)..... **ASSISTS** .... 1 (2x, last vs. Chicago State, 9/25/22)

2 (4x, last at Alabama A&M, 10/21/22) ..... **SHOTS** .... 2 (5x, last at Alabama A&M, 10/21/22)

1 (4x, last at Alabama A&M, 10/21/22) ..... **SOG** ..... 1 (6x, last at Alabama A&M, 10/21/22)

Hat Tricks (Season): 0

Hat Tricks (Career): 0

### Accomplishments & Accolades:

### 2022 - SWAC Defender Of The Week (9/6)

Season	GP-GS	Total MIN	CG	AKA-ETY'S CAREER STATS				Shooting			
				G	A	PTS	GW	SH	SH%	SOG	SOG%
2021	7-7	547	6	1	1	3	0	4	25.0	2	50.0
2022	8-8	699	6	1	1	3	0	10	10.0	4	40.0
<b>TOTAL</b>	<b>15-15</b>	<b>1,246</b>	<b>12</b>	<b>2</b>	<b>2</b>	<b>6</b>	<b>0</b>	<b>14</b>	<b>14.3</b>	<b>6</b>	<b>42.9</b>

**3 NCAA Tournament Appearances (2005, 2008, 2012) | 3x SWAC Champions (2005, 2008, 2012)**

37

**2015 SWAC Regular Season Champions | 2008 SWAC East Division Champions | 4x SWAC Runner-Up (2006, 2007, 2010, 2011)**



# Mississippi Valley State University

## 2022 Women's Soccer Game Notes



# #22 LUDESHA REYNOLDS

**Freshman • Goalkeeper / Defender • 5-8**

**Georgetown, Guyana • Saint Joseph HS**

**SEASON-HIGH.....REYNOLDS'.....CAREER-HIGH**

28 vs. Southern Utah (8/19/22) ..... **MINUTES** ..... 28 vs. Southern Utah (8/19/22)

6 vs. Southern Utah (8/19/22) ..... **GOALS (LOW)** ..... 6 vs. Southern Utah (8/19/22)

3 vs. Southern Utah (8/19/22) ..... **SAVES** ..... 3 vs. Southern Utah (8/19/22)

33.3 vs. Southern Utah (8/19/22) ..... **SAVE %** ..... 33.3 vs. Southern Utah (8/19/22)

16 vs. Southern Utah (8/19/22) ..... **SHOTS FACED** ..... 16 vs. Southern Utah (8/19/22)

Shutouts (Season): 0

Shutouts (Career): 0

Total				REYNOLDS' CAREER GOALIE			STATISTICS		Goals Allowed			
Season	GP-GS	MIN	CG	Record			Saves					
				W	L	T	SV	SV%	SHO	GA	GAA	SF
2022	1-1	28:00	0	0	1	0	3	33.3	0	6	19.29	16
<b>TOTAL</b>	<b>1-1</b>	<b>28:00</b>	<b>0</b>	<b>0</b>	<b>1</b>	<b>0</b>	<b>3</b>	<b>33.3</b>	<b>0</b>	<b>6</b>	<b>19.29</b>	<b>16</b>

**3 NCAA Tournament Appearances (2005, 2008, 2012) | 3x SWAC Champions (2005, 2008, 2012)**

**2015 SWAC Regular Season Champions | 2008 SWAC East Division Champions | 4x SWAC Runner-Up (2006, 2007, 2010, 2011)**



# Mississippi Valley State University

## 2022 Women's Soccer Game Notes



# #26 JULIETTE CHARRIEZ

Sophomore • Forward / Midfielder • 5-10

San Juan, Puerto Rico • University of Puerto Rico • Colegio Bautista De Carolina

SEASON-HIGH..... CHARRIEZ'S ..... CAREER-HIGH

90 (6x, last at Alabama A&M, 10/21/22) .... **MINUTES** .... 90 (6x, last at Alabama A&M, 10/21/22)

3 vs. Chicago State (9/25/22) ..... **POINTS** ..... 3 vs. Chicago State (9/25/22)

1 vs. Chicago State (9/25/22) ..... **GOALS** ..... 1 vs. Chicago State (9/25/22)

1 vs. Chicago State (9/25/22) ..... **ASSISTS** ..... 1 vs. Chicago State (9/25/22)

1 (5x, last at Alabama A&M, 10/21/22) ..... **SHOTS** .... 1 (5x, last at Alabama A&M, 10/21/22)

1 (4x, last at Alabama A&M, 10/21/22) ..... **SOG** ..... 1 (4x, last at Alabama A&M, 10/21/22)

Hat Tricks (Season): 0

Hat Tricks (Career): 0

Season	GP-GS	Total		CHARRIEZ'S CAREER STATS				Shooting			
		MIN	CG	Scoring				SH	SH%	SOG	SOG%
				G	A	PTS	GW				
2022	9-9	788	7	1	1	3	0	5	20.0	4	80.0
<b>TOTAL</b>	<b>9-9</b>	<b>788</b>	<b>7</b>	<b>1</b>	<b>1</b>	<b>3</b>	<b>0</b>	<b>5</b>	<b>20.0</b>	<b>4</b>	<b>80.0</b>

3 NCAA Tournament Appearances (2005, 2008, 2012) | 3x SWAC Champions (2005, 2008, 2012)

39

2015 SWAC Regular Season Champions | 2008 SWAC East Division Champions | 4x SWAC Runner-Up (2006, 2007, 2010, 2011)



# Mississippi Valley State University

## 2022 Women's Soccer Game Notes



### ALL-TIME SERIES RECORDS (SINCE 2003)

Record Against				Longest Winning Streak			High/Low		Point Differential			Win%
Team	W	L	T	Curr	MVSU	Opp.	MVSU	Opp.	Goals For	Goals Agst	Diff.	%
Alabama	0	3	0	L3	---	W3	1/0	5/1	1	8	-7	0%
<b>Alabama A&amp;M</b>	<b>5</b>	<b>9</b>	<b>6</b>	<b>T1</b>	<b>W3</b>	<b>W3</b>	<b>5/0</b>	<b>5/0</b>	<b>41</b>	<b>43</b>	<b>-2</b>	<b>40%</b>
<b>Alabama State</b>	<b>10</b>	<b>8</b>	<b>0</b>	<b>L5</b>	<b>W9</b>	<b>W5</b>	<b>22/0</b>	<b>3/0</b>	<b>72</b>	<b>18</b>	<b>+54</b>	<b>55.6%</b>
<b>Alcorn</b>	<b>13</b>	<b>3</b>	<b>0</b>	<b>L2</b>	<b>W8</b>	<b>W2</b>	<b>25/0</b>	<b>7/0</b>	<b>117</b>	<b>23</b>	<b>+94</b>	<b>81.3%</b>
Arkansas	0	1	0	L1	---	W1	0/0	11/11	0	11	-11	0%
<b>Arkansas-Pine Bluff</b>	<b>10</b>	<b>9</b>	<b>2</b>	<b>L3</b>	<b>W5</b>	<b>W3</b>	<b>11/0</b>	<b>10/0</b>	<b>67</b>	<b>44</b>	<b>+13</b>	<b>52.4%</b>
Arkansas State	1	5	0	L4	W1	W4	2/0	5/0	5	20	-15	16.7%
Austin Peay	0	3	0	L3	---	W3	1/0	3/2	1	7	-6	0%
California Baptist	0	0	0	---	---	---	1/1	1/1	1	1	0	---
Centenary (Louisiana)	1	4	0	W1	W1	W4	2/0	5/0	3	10	-7	20%
Central Arkansas	0	5	1	L4	---	W4	2/0	10/0	4	30	-26	8.3%
Chicago State	0	1	0	L1	---	L1	3/3	4/4	3	4	-1	0%
Delta State	5	1	0	W2	W3	W1	8/1	2/0	26	3	+23	83.3%
Florida State	0	2	0	L2	---	W2	0/0	7/6	0	13	-13	0%
Georgia State	0	1	0	L1	---	W1	0/0	4/4	0	4	-4	0%
<b>Grambling State</b>	<b>8</b>	<b>12</b>	<b>2</b>	<b>L4</b>	<b>W6</b>	<b>W5</b>	<b>6/0</b>	<b>7/0</b>	<b>36</b>	<b>40</b>	<b>-4</b>	<b>40.9%</b>
Green Bay	0	1	0	L1	---	W1	0/0	4/4	0	4	-4	0%
Harding	1	0	0	W1	W1	---	2/2	1/1	2	1	+1	100%
Howard	0	6	1	L4	---	W4	2/0	4/1	6	20	-14	7.1%
<b>Jackson State</b>	<b>7</b>	<b>8</b>	<b>7</b>	<b>L3</b>	<b>W3</b>	<b>W3</b>	<b>4/0</b>	<b>5/0</b>	<b>34</b>	<b>39</b>	<b>-5</b>	<b>47.7%</b>
Jacksonville	0	1	0	L1	---	W1	0/0	2/2	0	2	-2	0%
Jacksonville State	0	5	0	L5	---	W5	0/0	15/1	0	25	-25	0%
Lincoln (Pennsylvania)	1	0	0	W1	W1	---	15/15	1/1	15	1	+14	100%
Little Rock	0	8	0	L8	---	W8	1/0	9/2	1	34	-33	0%
Louisiana	0	4	0	L4	---	W4	0/0	4/2	0	12	-12	0%
Louisiana-Monroe	2	8	0	L7	W2	W7	1/0	7/0	6	27	-21	20%
Louisiana Tech	0	5	0	L5	---	W5	1/0	5/1	2	15	-13	0%
Loyola-New Orleans	1	0	0	W1	W1	---	2/2	0/0	2	0	+2	100%

3 NCAA Tournament Appearances (2005, 2008, 2012) | 3x SWAC Champions (2005, 2008, 2012)

2015 SWAC Regular Season Champions | 2008 SWAC East Division Champions | 4x SWAC Runner-Up (2006, 2007, 2010, 2011)





# Mississippi Valley State University

## 2022 Women's Soccer Game Notes



### ALL-TIME SERIES RECORDS (SINCE 2003)

Record Against				Longest Winning Streak			High/Low		Point Differential			Win%
Team	W	L	T	Curr	MVSU	Opp.	MVSU	Opp.	Goals For	Goals Agst	Diff.	%
LSU	0	1	0	L1	---	W1	0/0	5/5	0	5	-5	0%
McNeese	1	2	0	L2	W1	W2	2/0	2/1	3	5	-2	33.3%
Mercer	0	2	0	L2	---	W2	0/0	10/5	0	15	-15	0%
Middle Tennessee	0	1	0	L1	---	W1	0/0	3/0	0	3	-3	0%
Millsaps	0	0	0	---	---	---	7/5	1/0	12	1	+11	---
Mississippi State	0	4	0	L4	---	W4	0/0	5/1	0	11	-11	0%
Murray State	0	1	0	L1	---	W1	1/1	5/5	1	5	-4	0%
MUW	0	0	0	---	---	---	3/3	0/0	3	0	+3	---
Nicholls	4	5	1	T1	W4	W4	4/0	5/0	17	20	-3	45%
North Dakota	0	1	0	L1	---	W1	0/0	1/1	0	1	-1	0%
Northwestern State	0	2	0	L2	---	W2	2/0	4/4	2	8	-6	0%
Oral Roberts	0	2	0	L2	---	W2	0/0	4/3	0	7	-7	0%
<b>Prairie View A&amp;M</b>	<b>10</b>	<b>10</b>	<b>2</b>	<b>L5</b>	<b>W6</b>	<b>W5</b>	<b>7/0</b>	<b>6/0</b>	<b>38</b>	<b>38</b>	<b>0</b>	<b>50%</b>
South Alabama	0	4	0	L4	---	W4	2/0	6/2	2	17	-15	0%
South Carolina State	1	0	1	W1	W1	---	3/0	2/0	3	2	+1	75%
Southeastern Louisiana	0	8	0	L8	---	W8	2/0	9/2	3	36	-33	0%
<b>Southern</b>	<b>13</b>	<b>4</b>	<b>1</b>	<b>L3</b>	<b>W12</b>	<b>W3</b>	<b>12/0</b>	<b>5/0</b>	<b>68</b>	<b>25</b>	<b>+43</b>	<b>75%</b>
Southern Miss	1	9	0	L6	W1	W6	2/0	8/1	4	48	-44	10%
Southern Utah	1	1	0	L1	W1	W1	4/0	10/0	4	10	-6	50%
Tennessee-Martin	0	2	0	L2	---	W2	1/0	6/1	1	7	-6	0%
<b>Texas Southern</b>	<b>10</b>	<b>7</b>	<b>2</b>	<b>L3</b>	<b>W6</b>	<b>W3</b>	<b>18/0</b>	<b>8/0</b>	<b>53</b>	<b>30</b>	<b>+23</b>	<b>57.9%</b>
The Citadel	0	1	0	L1	---	W1	2/2	5/5	2	5	-3	0%
Troy	1	4	1	L1	W1	W2	1/0	6/0	3	14	-11	0%
UAB	0	1	0	L1	---	W1	0/0	3/3	0	3	-3	0%
UCLA	0	1	0	L1	---	W1	0/0	9/9	0	9	-9	0%
UTRGV	1	0	0	W1	W1	---	2/2	0/0	2	0	+2	100%
William Carey	1	2	0	L1	W1	W1	3/1	5/2	5	12	-7	33.3%
Western Illinois	0	2	0	L2	---	W2	0/0	3/1	0	4	-4	0%



# Mississippi Valley State University

## 2022 Women's Soccer Game Notes



### ALL-TIME SERIES RECORDS (SINCE 2003)

Record Against				Longest Winning Streak			High/Low		Point Differential			Win%
Team	W	L	T	Curr	MVSU	Opp.	MVSU	Opp.	Goals For	Goals Agst	Diff.	%
<b>BY CONFERENCE</b>	---	---	---	---	---	---	---	---	---	---	---	---
Atlantic Sun	0	14	1	---	---	---	2/0	15/0	5	64	-59	3.3%
America East	---	---	---	---	---	---	---	---	---	---	---	---
American	---	---	---	---	---	---	---	---	---	---	---	---
Atlantic 10	---	---	---	---	---	---	---	---	---	---	---	---
ACC	0	2	0	---	---	---	0/0	7/6	0	13	-13	0%
Big 12	---	---	---	---	---	---	---	---	---	---	---	---
Big East	---	---	---	---	---	---	---	---	---	---	---	---
Big Sky	---	---	---	---	---	---	---	---	---	---	---	---
Big South	---	---	---	---	---	---	---	---	---	---	---	---
Big Ten	---	---	---	---	---	---	---	---	---	---	---	---
Big West	---	---	---	---	---	---	---	---	---	---	---	---
Colonial	---	---	---	---	---	---	---	---	---	---	---	---
Conference USA	0	7	0	---	---	---	1/0	5/1	2	21	-19	0%
Horizon	0	1	0	---	---	---	0/0	4/4	0	4	-4	0%
Independent	1	1	1	---	---	---	3/0	4/0	6	6	0	50%
Ivy	---	---	---	---	---	---	---	---	---	---	---	---
MAAC	---	---	---	---	---	---	---	---	---	---	---	---
MAC	---	---	---	---	---	---	---	---	---	---	---	---
Missouri Valley	0	1	0	---	---	---	1/1	5/5	1	5	-4	0%
Mountain West	---	---	---	---	---	---	---	---	---	---	---	---
Northeast	0	6	1	---	---	---	2/0	4/1	6	20	-14	7.1%
Ohio Valley	0	10	0	---	---	---	1/0	9/1	2	41	-39	0%
Pac-12	0	1	0	---	---	---	0/0	9/9	0	9	-9	0%
Patriot	---	---	---	---	---	---	---	---	---	---	---	---
SEC	0	9	0	---	---	---	1/0	11/1	1	35	-34	0%
Southern	0	3	0	---	---	---	2/0	10/5	2	20	-18	0%
<b>SWAC</b>	<b>86</b>	<b>70</b>	<b>22</b>	---	---	---	<b>25/0</b>	<b>10/0</b>	<b>526</b>	<b>300</b>	<b>+226</b>	<b>54.5%</b>
Southland	5	17	1	---	---	---	4/0	9/0	25	69	-44	23.9%
Summit	0	5	0	---	---	---	0/0	4/1	0	12	-12	0%
Sun Belt	5	35	1	---	---	---	2/0	8/0	20	142	-122	13.4%
West Coast	---	---	---	---	---	---	---	---	---	---	---	---
WAC	2	1	0	---	---	---	4/0	10/0	7	11	-4	66.7%
Non-Conference	24	120	4	---	---	---	15/0	15/0	145	500	-355	17.6%
<b>OVERALL</b>	<b>110</b>	<b>190</b>	<b>26</b>	---	---	---	<b>25/0</b>	<b>15/0</b>	<b>671</b>	<b>800</b>	<b>-129</b>	<b>37.7%</b>

3 NCAA Tournament Appearances (2005, 2008, 2012) | 3x SWAC Champions (2005, 2008, 2012)

2015 SWAC Regular Season Champions | 2008 SWAC East Division Champions | 4x SWAC Runner-Up (2006, 2007, 2010, 2011)



# Mississippi Valley State University

## 2022 Women's Soccer Game Notes



### TEAM-BY-TEAM RESULTS (SINCE 2003 | V - VACATED | NCAA TOURNAMENT - BOLD | SWAC TOURNAMENT - ITALIC)

#### Alabama (0-3)

2004.....L, 2-1  
2007.....L, 5-0  
2008.....L, 1-0

#### Alabama A&M (5-9-6)

2003.....L, 4-1  
2004.....L, 2-1  
2005.....T, 2-2  
2005.....T, 1-1  
2006.....L, 4-1  
2007.....T, 1-1  
2007.....L, 2-1  
2008.....T, 2-2  
2009.....W, 4-1  
2010.....L, 2-0  
2011.....W, 2-1  
2012.....L, 2-0  
2013.....T, 2-2  
2014.....W, 2-0  
2015.....W, 5-1  
2015.....W, 2-0  
2016.....V, 6-2  
2017.....V, 3-0  
2018.....L, 5-2  
2019.....L, 5-2  
2021.....L, 4-1  
2022.....T, 0-0

#### Alabama State (10-8)

2004.....W, 22-0  
2005.....W, 2-0  
2006.....W, 7-0  
2007.....W, 8-1  
2008.....W, 9-0  
2009.....W, 11-0  
2010.....W, 1-0  
2011.....W, 2-0  
2012.....W, 1-0

2013.....L, 2-1  
2014.....L, 3-1  
2014.....L, 2-0  
2015.....W, 5-1  
2016.....L, 3-1  
2017.....L, 1-0  
2018.....L, 2-0  
2019.....L, 1-0  
2021.....L, 2-1

#### Alcorn (13-3)

2003.....W, 9-0  
2004.....W, 14-1  
2005.....W, 8-1  
2006.....W, 25-0  
2007.....W, 5-0  
2008.....W, 3-1  
2009.....W, 2-0  
2010.....W, 7-0  
2011.....L, 2-0  
2012.....W, 2-0  
2013.....W, 7-0  
2014.....W, 5-0  
2015.....W, 10-0  
2016.....V, 9-3  
2017.....W, 1-0  
2018.....V, 5-2  
2019.....L, 6-3  
2021.....L, 7-2

#### Arkansas (0-1)

2017.....L, 11-0

#### Arkansas-Pine Bluff (10-9-2)

2003.....W, 8-0  
2005.....W, 5-0  
2006.....W, 11-1  
2007.....W, 5-0  
2008.....W, 2-1

2009.....L, 4-0  
2010.....L, 2-1  
2010.....W, 2-0  
2011.....L, 1-0  
2011.....L, 3-0  
2012.....T, 0-0  
2012.....T, 1-1  
2013.....W, 2-1  
2014.....W, 5-1  
2015.....W, 8-2  
2015.....W, 4-0  
2016.....L, 3-2

#### Arkansas State (1-5)

2003.....L, 4-1  
2006.....W, 1-0  
2009.....L, 4-0  
2014.....L, 5-1  
2015.....L, 4-0  
2016.....L, 3-2

#### Austin Peay (0-3)

2003.....L, 2-0  
2004.....L, 2-1  
2017.....L, 3-0

#### California Baptist (0-0)

2018.....V, 1-1

#### Centenary-Louisiana (1-4)

2003.....L, 5-1  
2007.....L, 1-0  
2008.....L, 2-0

2009.....L, 2-0  
2010.....W, 2-0

#### Central Arkansas (0-5-1)

2009.....L, 4-1  
2011.....T, 0-0  
2012.....L, 7-1  
2013.....L, 4-0  
2014.....L, 10-0  
2015.....L, 5-2

#### Chicago State (0-1)

2022.....L, 4-3

#### Delta State (5-1)

2003.....W, 8-0  
2005.....W, 5-0  
2006.....W, 4-1  
2008.....L, 2-1  
2013.....W, 2-0  
2015.....W, 6-0

#### Florida State (0-2)

**2008 .....L, 7-0**  
**2012 .....L, 6-0**

#### Georgia State (0-1)

2021.....L, 4-0

#### Grambling State (8-12-2)

2003.....L, 4-2  
2003.....L, 1-0  
2004.....L, 1-0  
2004.....L, 1-0  
2005.....L, 1-0  
2006.....T, 2-2  
2006.....L, 2-0  
2007.....T, 1-1  
2008.....W, 3-0



# Mississippi Valley State University

## 2022 Women's Soccer Game Notes



### TEAM-BY-TEAM RESULTS (SINCE 2003 | V - VACATED | NCAA TOURNAMENT - BOLD | SWAC TOURNAMENT - ITALIC)

2008.....W, 2-0  
2009.....L, 2-0  
2010.....L, 3-2  
2011.....W, 2-1  
2012.....W, 1-0  
2012.....W, 1-0  
2013.....W, 4-0  
2014.....W, 5-1  
2015.....W, 6-0  
2016.....V, 3-1  
2017.....V, 1-0  
2018.....L, 2-0  
2019.....L, 4-1  
2021.....L, 6-0  
2022.....L, 7-0

#### Green Bay (0-1)

2019.....L, 4-0

#### Harding (1-0)

2007.....W, 2-1

#### Howard (0-6-1)

2014.....L, 3-1  
2015.....L, 4-1  
2015.....T, 1-1  
2016.....V, 2-2  
2017.....L, 2-0  
2017.....L, 4-1  
2018.....L, 1-0  
2019.....L, 3-0

#### Jackson State (7-8-7)

2003.....W, 4-2  
2004.....W, 4-0  
2004.....W, 4-2  
2005.....L, 5-0  
2005.....W, 2-1  
2006.....W, 2-1

2007.....L, 1-0  
2007.....T, 2-2  
2008.....T, 1-1  
2008.....W, 2-1  
2009.....T, 0-0  
2010.....L, 1-0  
2010.....L, 2-0  
2011.....L, 5-0  
2012.....T, 1-1  
2012.....W, 2-0  
2013.....T, 2-2  
2014.....T, 2-2  
2015.....T, 2-2  
2016.....V, 1-0  
2017.....V, 0-0  
2018.....V, 3-1  
2019.....L, 1-0  
2021.....L, 5-0  
2022.....L, 1-0

#### Jacksonville (0-1)

2008.....L, 0-2

#### Jacksonville State (0-5)

2003.....L, 3-0  
2004.....L, 1-0  
2009.....L, 4-0  
2010.....L, 2-0  
2014.....L, 15-0

#### Lincoln-Pennsylvania (1-0)

2015.....W, 15-1

#### Little Rock (0-8)

2003.....L, 6-0  
2010.....L, 3-0  
2014.....L, 9-0  
2015.....L, 3-1  
2016.....L, 2-0

2018.....L, 3-0  
2019.....L, 3-0  
2021.....L, 5-0

#### Louisiana (0-4)

2004.....L, 2-0  
2010.....L, 4-0  
2011.....L, 3-0  
2013.....L, 3-0

#### Louisiana-Monroe (2-8)

2005.....L, 2-1  
2006.....W, 1-0  
2007.....W, 1-0  
2011.....L, 2-1  
2013.....L, 2-1  
2014.....L, 3-1  
2015.....L, 3-0  
2016.....L, 4-0  
2021.....L, 7-0  
2022.....L, 4-0

#### Louisiana Tech (0-5)

2005.....L, 2-0  
2008.....L, 1-0  
2009.....L, 4-1  
2016.....L, 3-0  
2017.....L, 5-1

#### Loyola-New Orleans (1-0)

2003.....W, 2-0

#### LSU (0-1)

2017.....L, 5-0

#### McNeese (1-2)

2004.....W, 2-1  
2005.....L, 2-1  
2006.....L, 2-0

#### Mercer (0-2)

2018.....L, 5-0  
2021.....L, 10-0

#### Middle Tennessee (0-1)

2022.....L, 3-0

#### Millsaps (0-0)

2017.....V, 5-0  
2018.....V, 7-1

#### Mississippi State (0-4)

2005.....L, 1-0  
2008.....L, 3-0  
2010.....L, 5-0  
2012.....L, 2-0

#### Murray State (0-1)

2008.....L, 5-1

#### MUW (0-0)

2018.....V, 3-0

#### Nicholls (4-5-1)

2004.....W, 2-1  
2005.....W, 3-0  
2006.....W, 1-0  
2007.....W, 4-2  
2010.....L, 1-0  
2011.....L, 3-1  
2012.....L, 1-0  
2013.....L, 5-1  
2017.....V, 1-0  
2018.....V, 3-1  
2019.....L, 5-0  
2019.....T, 1-1

#### North Dakota (0-1)

3 NCAA Tournament Appearances (2005, 2008, 2012) | 3x SWAC Champions (2005, 2008, 2012)

2015 SWAC Regular Season Champions | 2008 SWAC East Division Champions | 4x SWAC Runner-Up (2006, 2007, 2010, 2011)





# Mississippi Valley State University

## 2022 Women's Soccer Game Notes



### TEAM-BY-TEAM RESULTS (SINCE 2003 | V - VACATED | NCAA TOURNAMENT - BOLD | SWAC TOURNAMENT - ITALIC)

2022.....L, 1-0

#### **Northwestern State (0-2)**

2017.....L, 4-0

2018.....L, 4-2

#### **Oral Roberts (0-2)**

2012.....L, 4-0

2015.....L, 3-0

#### **Prairie View A&M (10-10-2)**

2003.....W, 3-1

2005.....W, 1-0

2005.....W, 3-2

2007.....W, 7-0

2007.....W, 3-0

2008.....W, 1-0

2009.....L, 3-0

2009.....L, 3-0

2010.....L, 3-2

2010.....W, 2-1

2011.....W, 1-0

2011.....T, 1-1

2012.....W, 4-2

2013.....T, 0-0

2013.....L, 1-0

2014.....L, 4-3

2015.....W, 6-1

2016.....V, 1-1

2017.....L, 3-0

2018.....L, 3-0

2019.....L, 3-0

2021.....L, 6-0

2022.....L, Forfeit

#### **South Alabama (0-4)**

2004.....L, 4-0

2006.....L, 6-2

2007.....L, 5-0

2012.....L, 2-0

#### **South Carolina State (1-0-1)**

2011.....T, 0-0

2019.....W, 3-2

#### **Southeastern Louisiana (0-8)**

2003.....L, 4-0

2010.....L, 2-0

2011.....L, 4-0

2012.....L, 3-0

2013.....L, 7-0

2014.....L, 9-0

2015.....L, 5-2

2016.....L, 2-1

#### **Southern (13-4-1)**

2003.....W, 4-3

2004.....W, 12-1

2004.....W, 6-0

2005.....W, 6-0

2006.....W, 2-1

2006.....W, 3-1

2007.....W, 3-0

2008.....W, 4-2

2009.....W, 7-1

2010.....W, 2-1

2011.....W, 1-0

2012.....W, 2-1

2013.....L, 1-0

2014.....T, 0-0

2015.....W, 4-0

2016.....V, 1-0

2017.....V, 7-0

2018.....V, 0-0

2019.....L, 5-2

2021.....L, 5-1

2022.....L, 3-1

#### **Southern Miss (1-9)**

2003.....L, 5-0

2005.....L, 8-1

2006.....L, 3-1

2007.....W, 2-1

2008.....L, 1-0

2009.....L, 4-0

2010.....L, 4-0

2013.....L, 6-0

2014.....L, 8-0

2019.....L, 8-0

#### **Southern Utah (1-1)**

2004.....W, 4-0

2022.....L, 10-0

#### **Tennessee-Martin (0-2)**

2008.....L, 1-0

2012.....L, 6-1

#### **Texas Southern (10-7-2)**

2004.....W, 18-0

2005.....W, 5-0

2006.....W, 2-0

2007.....W, 4-0

2008.....W, 1-0

2008.....W, 5-0

2009.....L, 1-0

2010.....W, 4-2

2011.....W, 3-2

2011.....T, 1-1

2012.....W, 3-1

2013.....L, 2-0

2014.....T, 0-0

2015.....W, 3-1

2016.....L, 3-1

2017.....L, 8-1

2018.....V, 1-1

2019.....L, 2-0

2021.....L, 6-1

2022.....L, Forfeit

#### **The Citadel (0-1)**

2018.....L, 5-2

#### **Troy (1-4-1)**

2003.....L, 6-1

2006.....W, 1-0

2007.....L, 1-0

2008.....L, 1-0

2009.....T, 1-1

2010.....L, 5-0

#### **UAB (0-1)**

2017.....L, 3-0

#### **UCLA (0-1)**

2005.....L, 9-0

#### **UTRGV (1-0)**

2015.....W, 2-0

#### **William Carey (1-2)**

2003.....L, 5-1

2006.....W, 3-2

2007.....L, 5-1

#### **Western Illinois (0-2)**

2011.....L, 3-0

2012.....L, 1-0



# Mississippi Valley State University

## 2022 Women's Soccer Game Notes



### About Mississippi Valley State University

The institution, which opened in 1950, was created by the Mississippi Legislature as Mississippi Vocational College. The legislation to form the institution was signed into law by Governor Thomas L. Bailey on April 5, 1946. On February 10, 1950, Governor Fielding L. Wright served as the main speaker at the opening ceremony.[5]

The legislature anticipated that legal segregation of public education was in danger because there were increasing challenges to it through legal suits (in 1954 it was declared unconstitutional in the United States Supreme Court's decision in *Brown v. Board of Education*). It created this institution in the hopes that it would attract African-American applicants who might otherwise apply to Mississippi's premier whites-only institutions: the University of Mississippi, Mississippi State University, and the University of Southern Mississippi.

State leaders hoped that founding separate institutions of higher learning for Mississippi's black population would reduce the pressure to integrate the state's premier universities. To attract the support of those who opposed any government action to provide higher education to blacks, those proposing creation of M.V.C. used the term "vocational" to imply that the institution's main purpose would be to train blacks to take on blue-collar jobs.

The site selection committee appointed by the Board of Trustees of State Institutions of Higher Learning had originally selected as a site the former Greenwood Army Air Base, which had many facilities ready for use and thus would have been a very cost-effective choice. The Greenwood Commonwealth celebrated the choice. However, residents of Carroll County, Mississippi objected to having the institution located near their properties.

After further study, the committee selected a site in Itta Bena. Whites of that town also objected to having a black institution nearby, so the final site chosen was away from the downtown area, and on land that was not good for cultivation.

In 1964, Mississippi Vocational College was renamed Mississippi Valley State College. In February 1969, a nonviolent student boycott, which included eight hundred students, male and female, was organized to protest President James Herbert White's administration. The students demanded re-



# Mississippi Valley State University

## 2022 Women's Soccer Game Notes



### About Mississippi Valley State University

quired courses in black history, more library purchases of works by black writers, remedial courses in English and Math, scheduling of prominent black speakers, and fewer curfew restrictions.

In the early 1970s, civil rights leaders continued to protest the inequalities in higher education opportunities offered to whites and blacks in Mississippi. In an effort to defuse some of the criticism, Gov. Bill Waller proposed changing the names of three black institutions from "colleges" to "universities". Thus, in 1974, the institution was renamed again, as Mississippi Valley State University.

Following President White, Dr. Ernest A. Boykins, Jr. took office in July 1971. Dr. Joe L. Boyer became MVSU's third president in January 1982 and was followed by Dr. William W. Sutton in July 1988. Dr. Lester C. Newman became the fifth president of MVSU on July 1, 1998. Dr. Donna H. Oliver became MVSU's sixth president and first female president on January 1, 2009. On November 6, 2013, Dr. William Bynum took office as MVSU's seventh president.

In May 2017, Bynum departed MVSU to become president of Jackson State University. Dr. Jerryl Briggs, who served as executive vice president and chief operating officer in Bynum's administration, was named interim president of the university shortly afterwards. On October 19, 2017, Briggs was officially named as the university's eighth president.

In a 1997 article in Innovative Higher Education, the journalist Dale Thorn describes MVSU's successful attempt to avoid a merger with another institution and to remain a separate entity.

In 1998, the university renamed many of the buildings on campus, except for those named for white supremacist politicians Walter Sillers, Jr., Fielding Wright, and J. H. White

