



NORTHWESTERN STATE WOMEN'S BASKETBALL

Southland Conference Champions: 1994-95 • 1998-99 • 2003-04
NCAA Tournament Appearances: 1989 • 2004 • 2014 • 2015

Southland Conference Tournament Champions: 2004, 2014, 2015
WNIT Appearances: 1986 • 1993 • 1995 • 1999

Brad Welborn, Assistant Director of Communications • Office: 318-357-5694 • Cell: 318-393-0936 • welbornb@nsula.edu • @welbornbs
NSUDemons.com • /forkemdemons • @NSUDemons (Department) • @NSUDemonsWBB (Women's Basketball) • Press Row: 318-357-4544

8

AT MISSISSIPPI VALLEY STATE

Saturday, Dec. 11, 2021 • 2 p.m.

Itta Bena, Miss. • R.W. Harrison HPER Complex (5,000)

2021-22 SCHEDULE

November (3-3)

9	CENTENARY	W, 91-50
13	TEXAS A&M-TEXARKANA	W, 71-56
17	at Grambling	L, 68-60
19	LOUISIANA CHRISTIAN	W, 78-36
27	at Kansas State	L, 70-36
29	at Wichita State	L, 70-61

December (1-0)

2	at Arkansas State	W, 80-76
11	at Mississippi Valley State	2 p.m.
15	at ULM	6:30 p.m.
18	TARLETON STATE	1 P.M.
28	at Kansas	7 p.m.

January (0-0)

3	^New Orleans	11 a.m.
4	^SLC Preseason Tip Off	
5	^SLC Preseason Tip Off	
12	CHAMPIONS COLLEGE	5:30 P.M.
15	*at Southeastern	1 p.m.
20	*at Nicholls	TBD
22	*at New Orleans	2 p.m.
27	*UIW	5:30 P.M.
29	*TEXAS A&M-CORPUS CHRISTI	1 P.M.

February (0-0)

3	*at Houston Baptist	5 p.m.
5	*at McNeese	1 p.m.
10	*HOUSTON BAPTIST	5:30 P.M.
12	*MCNEESE	1 P.M.
17	*at UIW	5:30 p.m.
19	*at Texas A&M-Corpus Christi	1 p.m.
24	*NICHOLLS	5:30 P.M.
26	*NEW ORLEANS	1 P.M.

March (0-0)

5	*SOUTHEASTERN	1 P.M.
10-14	%SLC Tournament	TBA

* Southland Conference Game
^ SLC Tip Off Tournament (Katy, Texas)
% SLC Tournament (Katy, Texas)
BOLD - Home Game

NSU Style Guide

NAME
NORTHWESTERN STATE

NICKNAME
LADY DEMONS

COLORS
PURPLE, WHITE, ORANGE TRIM



MASCOT
VIC THE DEMON



MATCHUP

Northwestern State

Lady Demons

Record: 4-3, 0-0 Southland

Head Coach: Anna Nimz

Career Record: 5-22 (2nd season)

Northwestern State Record: Same

Last Game: W 80-76 at Arkansas State

RADIO

Demon Sports Network (95.9-FM Natchitoches, NSUDemons.com)

PxP: Tyler Moody



Mississippi Valley State

Devilettes

Record: 0-6, 0-0 SWAC

Head Coach: Ashley Walker-Johnson

Career Record: 53-115 (7th season)

Miss. Valley Record: 14-101 (5th season)

Last Game: L 69-56 at Louisiana Tech



TIPOFF

• Northwestern State continues its stretch of five consecutive road games and nine of 10 away from Prather Coliseum today at Mississippi Valley State, its first trip to Itta Bena in 30 years. NSU last played at Valley on Jan. 28, 1991.

• The Lady Demons picked up an 80-76 road win at Arkansas State last time out. It was the first road win for second-year head coach Anna Nimz and the first non-conference road win since a 70-48 win at ULM four years ago. It was the first non-conference road win outside of Louisiana since a 79-69 win at Prairie View A&M in 2011.

• Following her dynamic performances on the road last week **Jiselle Woodson** was named Southland Conference Player of the Week. She averaged 20.5 points and shot 81 percent (9-for-11) from long range in two games.

SCOUTING THE OPPONENT

• Coming in to the game at 0-6, Mississippi Valley has lost its first six games of the season for the fifth time in nine seasons.

• In all but one game this season, the opener at Ole Miss, Valley has forced more turnovers than it has committed, including three straight games forcing 24 or more. They were +11 in the category in the 72-53 loss at Southern Miss, but were outshot .433 to .261 from the field.

PREVIOUS GAME STARTERS



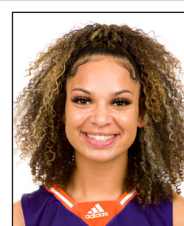
Monette BOLDEN

#5 • G • Gr. • 5-6
GP/GS.....7/7
PPG.....12.3
RBD.....6.6
AST.....3.1
BLK.....0.0
STL.....2.0
MIN.....32.4



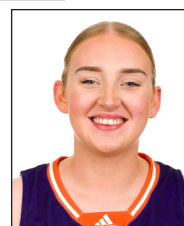
Karmelah DEAN

#4 • G • Jr. • 5-7
GP/GS.....7/7
PPG.....9.0
RBD.....2.6
AST.....2.8
BLK.....0.0
STL.....1.7
MIN.....25.9



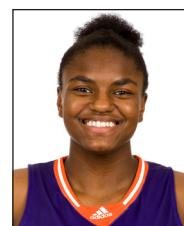
Candice PARRAMORE

#15 • G • Sr. • 5-7
GP/GS.....7/7
PPG.....10.9
RBD.....3.3
AST.....0.6
BLK.....0.0
STL.....1.7
MIN.....25.1



Sharna AYRES

#35 • G • So. • 5-10
GP/GS.....4/2
PPG.....3.5
RBD.....2.8
AST.....0.7
BLK.....0.0
STL.....0.7
MIN.....18.0



Jordan TODD

#24 • C • Jr. • 6-3
GP/GS.....7/7
PPG.....9.1
RBD.....9.4
AST.....0.6
BLK.....1.4
STL.....0.8
MIN.....22.0

UNIVERSITY INFORMATION

Name: Northwestern State
Founded: 1884, as Louisiana Normal
Location: Natchitoches, La.
Enrollment: 10,749
Nickname: Lady Demons
Colors: Purple, White, and orange trim
Print Specs: Purple (492f92)/Orange (f78426)
Affiliation: NCAA Division I, Southland Conference
President: Dr. Marcus Jones
Director of Athletics: Greg Burke

TEAM INFORMATION

2020-21 Overall Record: 1-19
2020-21 Southland Record/Finish: 1-14/13th
2020-21 Postseason: None
Letterman Returning/Lost: 3/8
Starters Returning/Lost: 2/3
-Starters Returning:

- **Osha Cummings** (20-13, 4.0 ppg, 4.3 rpg)
- **Erin Harris** (20-17, 6.7 ppg, 2.6 rpg)

-Starters Lost:

- **Anessa Dussette** (20-10, 8.7 ppg, 4.8 rpg)
- **Julia Sion** (19-17, 5.8 ppg, 5.3 rpg)
- **Tristen Washington** (20-13, 8.5 ppg, 1.4 rpg)

Newcomers: 11

First Year of Basketball: 1974-75

Joined Southland Conference: 1987-88

All-Time Record: 793-587

Southland Conference Record/Years: 327-250/33

Southland Conference Titles: 3 (94-95, 98-99, 03-04)

Southland Tournament Titles: 3 (2004, 2014, 2015)

NCAA Appearances: 4 (1989, 2004, 2014, 2015)

WNIT Appearances: 4 (1986, 1993, 1995, 1999)

WBI Appearances: 1 (2016)

COACHING INFORMATION

Head Coach: Anna Nimz (Pittsburg State, 2008)

Overall Coaching Record/Years: 1-19/2nd season

NSU Coaching Record/Years: Same

Associate Head Coach: Leasa Ailshie (Sam Houston State, 2009)

Assistant Coach: Mike Pittman (Grambling, 1996)

Assistant Coach: Mike Brown (Drake, 1996)

Athletic Trainer: Kolleen Brown (Morrisville State, 2014)

SPORTS INFORMATION

Director: Jason Pugh

Assistant Directors: Matt Vines; Brad Welborn (SID contact)

Administrative Assistant: Ronnette Pellegrin

Office Phone: (318) 357-6467

Welborn's Cell: (318) 393-0936

Welborn's Email: welbornb@nsula.edu

Athletics Website: NSUDemons.com

SOCIAL MEDIA

Twitter:

@NSUDemons | @NSUDemonsWBB

Facebook:

/nsudemons | /nsudemonswbb

Instagram:

@nsudemons | @nsudemons_wbb

THE SERIES WITH MISSISSIPPI VALLEY

- This is the sixth meeting between Northwestern State and Mississippi Valley State with the Devilettes leading the series 3-2 and winners of the past two matchups.
- This is the first trip to Itta Bena for the Lady Demons since Jan. 28, 1991, the only game prior to today in this series played in Mississippi. The teams played a neutral site game in Arkansas in 1993, a 90-81 NSU win, and didn't play again until 2016.
- The teams played the past season, a 73-58 Valley win in Natchitoches, where five Devilettes scored in double figures and **Zakiya Mahoney** (16p/13r) and **Diamond Wraggs** (11p/10r) each had double-doubles. For NSU, **Anessa Dussette** had a career-best 20 points and **Tristen Washington** a career-best 18 in the loss.

GLASS CLEANER

- The Lady Demons put on a clinic on the glass in the season-opening win against Centenary collecting 63 rebounds, including 22 offensive boards.
- It was the most rebounds in a game since Nov. 15, 2011, the last time NSU pulled in 60 or more in one night.
- They added a 55-rebound night against Louisiana Christian a week later. NSU only crossed the 50-rebound mark once in the past four seasons. They've done so twice now in the first four games of this season.
- In the past three games NSU has been outrebounded by their opponents, including a minus-seven margin in the 80-76 win at Arkansas State.
- The most rebounds the Lady Demons had in a game this past season was 42, a mark they reached twice, once at McNeese on Jan. 9 and then again against HBU on Feb. 6. NSU lost both games.
- The Lady Demons do lead the Southland Conference in rebounds per game (43.0) and Jordan Todd leads the league in offensive rebounds per game (4.1) and is second in boards per game (9.4) behind Corpus' Alecia Westbrook (11.4).

THREAT-LEVEL MIDNIGHT

- The Lady Demons are getting offensive production from a lot of different sources this season.
- In three of the first four games this season NSU has had three or more players score in double figures. Against Centenary, Louisiana Christian and Arkansas State, four players had 10 or more points.
- In the season-opening win against Centenary, the Lady Demons had their highest point total under head coach Anna Nimz. The 91 points tied for the most scored by NSU in a season opener in the past 20 years.
- NSU had 12 different players score in the win against Louisiana Christian with 10 of the 12 scoring four points or more.
- The Lady Demons currently have four players averaging nine points or more per game this year led by Monette Bolden's 12.3.

TOIL AND TROUBLE

- **Jordan Todd** recorded a double-double in each of her first four games as a Lady Demon.
- She started her career with 15 and 15 against Centenary and followed that with 15 and 14 against Texas A&M-Texarkana, to earn conference player of the week honors.
- Her four straight is the most consecutive for a Lady Demon since **Jasmine Bradley** had five straight in the 2010-11 season. Entering this week she was tied for second in the nation in total double-doubles behind Yale's Camilla Emsbo who had five in five games.
- She was the first player to record double-doubles in consecutive games since **Cheyenne Brown** did it twice during conference play of the 2016-17 season.
- She failed to reach double-figure points in the past three games and only had double-digit rebounds against Arkansas State with exactly 10.

FROM DOWNTOWN

- The 3-pointer is an important part of head coach Anna Nimz's offensive philosophy, idealizing attempting 30 shots from long distance per game.
- While the Lady Demons haven't quite hit the 30 attempt mark in a game thus far, they haven't been far off with an average of 23.0 per game. The most in a single game was the 28 against Texas A&M-Texarkana and NSU has attempted 161 shots from beyond the arc so far. Only McNeese has attempted more 3s per game (30.6) and total 3s (214) this season in the conference than the Lady Demons.
- The most efficient performance from deep came in the 80-76 win at Arkansas State where NSU shot 50 percent (11-for-22) in the game. That was the highest percentage for a game with 10 or more attempts since NSU went for 62 percent (10-for-16) at McNeese during the 2018-19 season.
- Jiselle Woodson leads the Lady Demons in 3pt FG and 3pt% this season with 11 makes at a .647 clip. Freshman Josie Fleischmann is second on the team with 10 makes and a .323 percentage.

RADIO/TV ROSTER



3 - JISELLE WOODSON
G • 5-5 • Jr.
CORNER, ALA.



4 - KARMELAH DEAN
G • 5-7 • Jr.
SEATTLE, WASH.



5 - MONETTE BOLDEN
G • 5-6 • Gr.
ABBEVILLE, LA.



11 - ERIN HARRIS
G • 5-7 • So.
WEST HAVEN, CONN.



12 - OSHA CUMMINGS
G • 5-5 • So.
ZACHARY, LA.



13 - JASMIN DIXON
F • 6-3 • So.
SPRING, TEXAS



15 - CANDICE PARRAMORE
G • 5-7 • Sr.
DALLAS, TEXAS



20 - JORDAN MCLEMORE
G • 5-11 • Fr.
SHREVEPORT, LA.



21 - ALECIA WHYTE
G • 5-10 • Jr.
HOUSTON, TEXAS



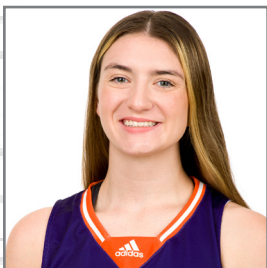
22 - JOSIE FLEISCHMANN
G • 5-7 • Fr.
HUXLEY, IOWA



23 - JAMIYA BRAXTON
G • 5-7 • Sr.
MCKINNEY, TEXAS



24 - JORDAN TODD
C • 6-1 • Jr.
EAGLE RIVER, ALASKA



32 - ALEX HARRISON
F • 5-10 • Jr.
PLAINVIEW, LA.



35 - SHARNA AYRES
G • 5-10 • So.
MELBOURNE, AUSTRALIA



ANNA NIMZ
HEAD COACH
SECOND SEASON



LEASA AILSHIE
ASSOCIATE HEAD COACH
SECOND SEASON



MIKE PITTMAN
ASSISTANT COACH
SECOND SEASON



MIKE BROWN
ASSISTANT COACH
SECOND SEASON

RETURNERS (3)

20-21 Stats	PPG	RPG
G-Osha Cummings	4.0	4.3
G-Erin Harris	6.7	2.6
G-JaMiya Braxton	5.7	2.6

NEWCOMERS (11)

Sharna Ayres	5-10	G-So.
Monette Bolden	5-6	G-Gr.
Karmelah Dean	5-7	G-Jr.
Jasmin Dixon	6-3	F-So.
Josie Fleischmann	5-7	G-Fr.
Alex Harrison	5-10	F-Jr.
Jordan McLeMore	5-11	G-Fr.
Candice Parramore	5-7	G-Sr.
Jordan Todd	6-1	F-Jr.
Alecia Whyte	5-10	G-Jr.
Jiselle Woodson	5-5	G-Jr.

PLAYERS LOST (10)

20-21 Stats	PPG	RPG
G-Andreea Cojocariu	2.1	2.1
G-Anessa Dussette	8.7	4.8
F-Karyn Ford	0.0	0.0
G-Kalen Green	5.4	2.6
G-Alexia Marsh	1.3	1.3
F-Julia Sion*	5.8	5.3
G-Makayla VanNett	5.3	1.8
F-Clàudia Vidal	1.5	1.9
G-Nakaylis Washington	0.0	0.0
G-Tristen Washington*	8.5	1.4

*20-21 starter

BY STATE

Alabama (1)

Corner - Jiselle Woodson

Alaska (1)

Eagle River - Jordan Todd

Australia (1)

Melbourne - Sharna Ayres

Connecticut (1)

West Haven - Erin Harris

Iowa (1)

Huxley - Josie Fleischmann

Louisiana (4)

Abbeville - Monette Bolden

Plainview - Alex Harrison

Shreveport - Jordan McLeMore

Zachary - Osha Cummings

Texas (4)

Dallas - Candice Parramore

Houston - Alecia Whyte

McKinney - JaMiya Braxton

Spring - Jasmin Dixon

Washington (1)

Seattle - Karmelah Dean

TEAM COMPARISON

	NSU	MVSU
Scoring	477	341
• Points per game	68.1	56.8
• Scoring Margin	+7.2	-21.0
Field Goals - Att.	169-479	119-398
• Field Goal Percentage	.353	.299
3-Point FG - Att.	42-161	38-131
• 3-point FG pct.	.261	.290
• 3-point FG made per game	6.0	6.3
Free Throws - Att.	97-128	65-89
• Free Throw pct.	.758	.730
• FT made per game	13.9	10.8
Rebounds	301	210
• Rebounds per game	43.0	35.0
• Rebounding margin	-0.6	-13.8
Assists	77	55
• Assists per game	11.0	9.2
Turnovers	107	115
• Turnovers per game	15.3	19.2
• Turnover margin	+5.6	+2.1
• Assist/Turnover ratio	0.7	0.5
Steals	69	55
• Steals per game	9.9	9.2
Blocks	20	10
• Blocks per game	2.9	1.7

TEAM LEADERS

Scoring (PPG)	Bolden (12.3)	Etienne (13.2)
Rebounding (RPG)	Todd (9.4)	Moore (8.0)
Assists (APG)	Bolden (3.1)	Williams (3.8)
Blocks (BPG)	Todd (1.4)	Moss (0.8)
Steals (SPG)	Bolden (2.0)	Etienne (2.3)

THE SERIES**Mississippi Valley leads 3-2**

Nov. 10, 1990	at NSU 108, Mississippi Valley St. 56
Jan. 28, 1991	at Mississippi Valley St. 72, NSU 64
Dec. 17, 1993#	NSU 90, Mississippi Valley St. 81
Nov. 25, 2016	Mississippi Valley St. 68, at NSU 64
Dec. 20, 2020	Mississippi Valley St. 73, at NSU 58

#Arkansas Dial Classic

Current Streak: Mississippi Valley W2**Longest NSU win streak:** 1**Longest MVSU win streak:** 2**Series in Natchitoches:** Mississippi Valley leads 2-1**Series in Itta Bena:** Mississippi Valley leads 1-0**Series at neutral sites:** NSU leads 1-0**NORTHWESTERN STATE ROSTER**

#	Name	Pos.	Ht.	Cl.-Exp.	Hometown/Previous School
3	Jiselle Woodson	G	5-5	Jr.-TR	Corner, Ala. / Corner HS / Wallace State CC
4	Karmelah Dean	G	5-7	Jr.-TR	Seattle, Wash. / Roosevelt HS / Southern Idaho
5	Monette Bolden	G	5-6	Gr.-TR	Abbeville, La. / Erath HS / Louisiana Tech
11	Erin Harris	G	5-7	So.-1	West Haven, Conn. / Notre Dame Catholic HS
12	Osha Cummings	G	5-5	So.-1	Zachary, La. / Zachary HS
13	Jasmin Dixon	F	6-3	So.-TR	Spring, Texas / Klein Forest HS / Prairie View A&M
15	Candice Parramore	G	5-7	Sr.-TR	Dallas, Texas / Lakeview Centennial / Grambling
20	Jordan McLemore	G	5-11	Fr.-HS	Shreveport, La. / Captain Shreve HS
21	Alecia Whyte	G	5-10	Jr.-TR	Houston, Texas / Oak Ridge HS / Northern Colorado
22	Josie Fleischmann	G	5-7	Fr.-HS	Huxley, Iowa / Ballard HS
23	JaMiya Braxton	G	5-7	Sr.-1	McKinney, Texas / McKinney HS / Cleveland State
24	Jordan Todd	C	6-1	Jr.-TR	Eagle River, Alaska / Anchorage Christian / Southern Idaho
32	Alex Harrison	F	5-10	Jr.-TR	Plainview, La. / Plainview HS / Louisiana College
35	Sharna Ayres	G	5-10	So.-TR	Melbourne, Australia / Box Hill Senior Secondary / LSU

Head Coach: Anna Nimz (Pittsburg State, 2008)**Associate Head Coach:** Leasa Ailshie (Sam Houston State, 2009)**Assistant Coach:** Mike Pittman (Grambling, 1996)**Assistant Coach:** Mike Brown (Drake, 1996)**Say that again...****MONETTE** Bolden - mo-NET**OSHA** Cummings - OH-sha (like the safety organization)**ALECIA WHYTE** - ah-LEE-sha whiteJosie **FLEISCHMANN** - FLYSH-man**JAMIYA** Braxton - juh-MY-uh**LEASA AILSHIE** - lisa EL-shy**NATCHITOCHES**, Louisiana - NACK-uh-dish**ABBEVILLE**, Louisiana - ABBIE-ville**Game-by-Game Starters**

Opponent (Lineup number)	Result	Record with lineup	1	2	3	4	5
Centenary (1)	W, 91-50	1-0	Bolden	Parramore	Dean	Fleischmann	Todd
Texas A&M-Texarkana (1)	W, 71-56	2-0	Bolden	Parramore	Dean	Fleischmann	Todd
at Grambling (1)	L, 68-60	2-1	Bolden	Parramore	Dean	Fleischmann	Todd
Louisiana Christian (1)	W, 78-36	3-1	Bolden	Parramore	Dean	Fleischmann	Todd
at Kansas State (1)	L, 70-36	3-2	Bolden	Parramore	Dean	Fleischmann	Todd
at Wichita State (2)	L, 70-61	0-1	Bolden	Parramore	Dean	Ayres	Todd
at Arkansas State (2)	W, 80-76	1-1	Bolden	Parramore	Dean	Ayres	Todd
at Mississippi Valley State							
at ULM							
Tarleton State							
at Kansas							
New Orleans							
SLC Tip Off Tournament							
SLC Tip Off Tournament							
at Southeastern							
at Nicholls							
at New Orleans							
UIW							
Texas A&M-Corpus Christi							
at Houston Baptist							
at McNeese							
Houston Baptist							
McNeese							
at UIW							
at Texas A&M-Corpus Christi							
Nicholls							
New Orleans							
Southeastern							

MISCELLANEOUS STATS

DOUBLE-DOUBLES

	21-22	Career Streak	Current Streak	Career
Candice Parramore	1	1	-	1
Jordan Todd	4	4	-	4

20+ POINT SCORING GAMES

	21-22	Career
Candice Parramore	1	1
Jiselle Woodson	1	1

DOUBLE-FIGURE SCORING GAMES

	21-22	Career Streak	Current Streak	Career
Monette Bolden	5	2	2	5
JaMiya Braxton	-	2	-	2
Osha Cummings	-	1	-	1
Karmelah Dean	3	2	2	3
Erin Harris	-	1	-	4
Candice Parramore	4	3	1	4
Jordan Todd	4	4	-	4
Jiselle Woodson	4	2	2	4

DOUBLE-FIGURE REBOUNDING GAMES

	21-22	Career
Jasmin Dixon	1	1
Candice Parramore	1	1
Jordan Todd	5	5

LEADING SCORER

	21-22	Career
JaMiya Braxton	-	1
Karmelah Dean	1	1
Erin Harris	-	2
Candice Parramore	4	4
Jiselle Woodson	2	2

LEADING REBOUNDER

	21-22	Career
Monette Bolden	1	1
Osha Cummings	-	4
Jasmin Dixon	1	1
Erin Harris	-	1
Jordan Todd	5	5
Jiselle Woodson	1	1

LEADER IN ASSISTS

	21-22	Career
Monette Bolden	3	3
JaMiya Braxton	1	2
Osha Cummings	-	4
Karmelah Dean	3	3
Erin Harris	2	8
Jordan Todd	1	1

CLASS SCORING

	Points	Percent
Freshmen	46	9.6
Sophomores	49	10.3
Juniors	205	43.0
Seniors	177	37.1

BENCH SCORING

	Points	Percent	PG
Starters	327	68.5	46.7
Bench	150	31.4	21.4

POINTS IN THE PAINT

	Points	PG
Northwestern State	176	29.3
Opponents	170	28.3

SECOND-CHANCE POINTS

	Points	PG
Northwestern State	112	16.0
Opponents	77	11.0

POINTS OFF TURNOVERS

	Points	PG
Northwestern State	134	19.1
Opponents	87	12.4

Last Time Out...

Thursday, Dec. 2, 2021

JONESBORO, Ark. — A game that was a week in the making came to fruition for Northwestern State on Thursday night in an 80-76 win at Arkansas State to close a week-long road trip.

"What's fun to see is how we were able to put four quarters together tonight," head coach Anna Nimz said. "It was exciting to see that, it was exciting to see the maturity on the court and it's really great having a grad transfer that understands the game and the feel of it sometimes."

"But every single kid, whether they played or didn't play impacted the game. The genuine growth in these past three games is really exciting and not just in the win-loss category but the contribution of different players when we needed it."

The Lady Demons (4-3) had four players score 13 or more points in the game with several more finding hot streaks to contribute to the best shooting performance of the year from the floor and from beyond the arc.

After two tremendous starts for NSU in the previous two games, it was Arkansas State (4-5) that came out on fire in the first quarter making six of the first nine shots to take a 15-6 lead. The Lady Demons weathered the early storm and after a timeout at the 3:53 mark, turned the tables on the Red Wolves.

One of the hottest shooters for the Lady Demons, Jiselle Woodson, drilled a 3-pointer from the wing out of the break and immediately took one of her five charges in the game on the ensuing defensive possession to spark a run.

NSU ended the first with an 8-0 run and after just one more field goal from the home team, held ASU scoreless across the final three minutes, forcing a pair of turnovers along the way, to make it a 26-21 game, erasing the 13-point lead ASU right before the timeout.

NSU carried its hot shooting into the second quarter starting the period 4-for-9 from the field, but ASU was equal to the task converting the exact same rate. JaMiya Braxton drained a pair of 3s in just over a minute to officially erase the ASU lead and tie the game at 32 with 5:25 to go.

Both teams finished the half with a flurry and each time ASU made a couple of shots in a row, NSU answered. Woodson, Monette Bolden and Karmelah Dean all had game-tying shots in the final three minutes of the half for the Lady Demons. Dean capped the exciting first 20 minutes with a left-handed driving layup as the buzzer sounded to knot the game at 45 going into the break.

"I think everybody was on fire tonight," Woodson said who finished the game with a team-leading 18 points off the bench on a 4-for-6 effort from beyond the arc. "Everybody contributed and played a huge role in the win tonight and that's really important. We had some hot shooters in the paint, made some big layups and the 3-pointers from everyone, it was really well played."

It was Candice Parramore's turn in the third quarter to come up with clutch shots for the Lady Demons. In the span of a minute, the senior transfer knocked down three straight 3-pointers that gave NSU its first lead and a four-point lead (54-50) four minutes into the second half.

The Red Wolves answered with a 6-0 run to move back ahead, but Bolden tied the game at 56 to end the small run and Woodson hit a jumper a minute later to answer another ASU score. A late bucket and free throw for the Wolves gave them the slim 61-60 lead going into the final frame.

Eight straight points from Dean in the fourth quarter were some of the most needed and clutch of the night for the Lady Demons. Her 3-pointer with 6:06 left, the only make of her three attempts of the game, cut the ASU lead down to one and an and-1 play 90 seconds later put NSU up 70-68. Each of her eight points in the run answered ASU points from the possession before.

Up by one (73-72) with 1:41 left in the game, Woodson took her final charge of the night to get the ball back into the hands of Bolden and the offense. With the shooter's bounce, Bolden got the bucket as the shot clock expired that put the Demons ahead by three and forced ASU into the foul game to extend the time.

NSU made 5-of-6 from the stripe in the final 26 seconds while ASU missed both shots from the line that would have tied the game with just over a second to go.

"We wanted it more," Woodson said. "You could tell that the pressure was getting to them and defense is what we're about, it's what we thrive on and really work on and put a lot of effort into in practice. It really paid off tonight."

The Lady Demons shot 46 percent from the field in the game and went 11-for-22 from beyond the arc, their best numbers this season.

Bolden matched a career high with 17 points, adding eight rebounds and a pair of assists in her second straight 40-minute effort. Dean had career high points (17) and rebounds (5) and Parramore finished with 13 behind her 3-for-4 effort from deep in the third quarter. Jordan Todd reached double figures with 10 rebounds.

"I think this is the catalyst and just the beginning," Nimz said. "They're buying in to one another and we still have some tools that haven't had their 'ah-ha' moment yet. We have some players that may still be playing a little bit reserved, but when everybody breaks out, this group is special."

Two Games Ago...

Monday, Nov. 29, 2021

WICHITA, Kan. — Stretches of hot shooting, tenacious defense and overall fight and effort defined Northwestern State's performance on Monday night. It was a seven-minute scoreless stretch in the second quarter that proved to be the deciding factor in NSU's 70-61 loss to Wichita State.

For the second game in a row, the Lady Demons (3-3) led after the first 10 minutes of play. Unfortunately, for the second game in a row, a second-quarter drought was costly as NSU missed its first 12 shots in the quarter that allowed Wichita State (6-1) to create just enough separation to pull out the victory.

"I thought the girls laid it all out on the line," head coach Anna Nimz said. "We went through some droughts, but we had some kids step up at different times tonight. It's like what we talked about after Kansas State, where we have people with so many tools that haven't shown them quite yet and they did a phenomenal job, Jiselle (Woodson) being one of them."

"So many positives, but it's disappointing for the kids and that's the only disappointment. They played tremendously, followed the scout how we wanted and hats off to Wichita State, but I am just very, very proud of our team."

NSU came out with the same intensity and drive it had two days prior at Kansas State led by Monette Bolden. After a blocked shot on her first attempt, Bolden tracked down the rebound and found Sharna Ayres under the basket for the first points of the game.

She drilled a 3-pointer two minutes later that put the Lady Demons up by two, scoring nine of NSU's next 11 total points that gave them the 17-15 lead after the first 10 minutes of play.

"Mo came out ready to go," Nimz said. "She was ready to take this game and win it, regardless of if she had to put the team on her back. I feel like she kind of did that there in the first quarter. She was the spark and the fight."

The Shockers scored the first six points of the second quarter to take the lead before two Bolden free throws ended the run. Overall, it was a 13-2 run during the lengthy field goal drought for the Demons that was finally broken by Woodson.

Slicing through the defense she dropped in a jumper from the elbow and after an Erin Harris steal on the other end, climbed the ladder for a high pass and the drilled a corner 3-ball for five quick points. She scored the final seven points of the quarter for NSU to close the gap down to just five, 31-26, at the half.

Despite a sluggish start to the second half for both teams, Wichita State was able to stretch the lead to 10 three minutes into the quarter. Once again it was a spark from Bolden that lit the NSU fire.

Her 3-pointer on the next possession started a barrage from both teams who combined to make seven of the next 10 shot attempts. Three of the four from the Lady Demons during the stretch came from Bolden and Woodson behind the arc with Karmelah Dean's old-fashioned three-point play capping the run and bringing NSU within a pair at 41-39.

Dean answered a Shocker layup with a 3-ball of her own to cut it to a one-point game with 3:03 left in the third. The Shockers withstood to NSU scoring outburst and thanks to a pair of distance shots of their own were able to stretch the lead back to seven as NSU had a stretch of three turnover in the span of a minute and went scoreless over the final two minutes of the quarter.

WSU pushed the lead back to 10 early in the fourth and to as much as 13 on a couple of different occasions by the midway point of the quarter. A Jordan Todd layup with 1:55 remaining made it a 64-54 game, and thanks to some early missed free throws from the Shockers, left the door slightly open for a potential comeback.

Dean and Woodson both converted clutch shots in the final minute, but when the free throws mattered most for WSU, they fell allowing the home team to escape with the win.

Woodson led all scorers with 23 points on the night going 5-for-5 from distance and 8-for-10 from the field. Bolden played the full 40 minutes and had 17 points, five rebounds, and five assists. Dean had 12 to match a career high.

The Last Meeting...

Tuesday, December 20, 2021

NATCHITOCHES – Career-high performances from Anessa Dussette and Tristen Washington were not enough for Northwestern State on Sunday afternoon, falling 73-58 to Mississippi Valley State.

The sophomore duo combined for 38 points for the Lady Demons (0-4) but a five-minute scoreless start to the fourth allowed the Devilettes (2-2) to pull away for their second straight road win.

"We've had a lot of opportunities so far this season to not only be in the game but pull ahead and take the game," first-year head coach Anna Nimz said. "We have to continue to buy into that effort."

"We're going to make mistakes and that's ok, but it's about finding that consistent effort. I told them in the locker room, 'I believe in you, I love you and if you guys will really allow yourselves to push forward with energy and effort, you'll be shocked with what you can do.'"

After just one day between games, the Lady Demons showed no sign of tired legs jumping out to an 8-2 lead in the first two minutes of the game forcing an early Valley timeout. The break worked like a charm for the Devilettes who enjoyed a 10-0 run before Washington's 3-pointer with 3:23 left made it a one-point game.

The Lady Demons scored on their final two possessions of the quarter, taking a short lead with a minute to go on a jumper from Julia Sion. Valley's 3-pointer put them back on top 18 seconds later but Dussette's runner at the end of the quarter knotted the score at 15.

The first nine minutes of the second quarter were not kind to NSU. Valley jumped ahead with an 11-1 run and the Lady Demons didn't get their first field goal of the quarter until an Erin Harris layup near the midway point.

The next 11 minutes of game time however would be some of the best for NSU on the young season.

The Lady Demons scored on three straight possessions to end the first half, two layups from Washington and another from Dussette. Although Valley answered with points of their own to make it a 37-26 game at the break, NSU had momentum going into halftime.

Four quick points from Dussette right out of the break sparked an 8-2 run and her 3-ball at the 6:13 mark of the quarter made it a two-possession game at 41-37. Valley converted on their next four trips down the floor, keeping the Lady Demons at arm's length and eventually pushing the lead back to nine with 3:20 left.

NSU finished with a flurry scoring 10 points in the final two minutes. Osha Cummings' 3-ball with 12 seconds on the clock pulled the Lady Demons within a point at 52-51 but an offensive rebound and put back at the buzzer gave Valley the 54-51 lead entering the final quarter.

The Lady Demons went 8-for-13 from the field in the quarter and 11-for-16 over the 11-minute period, paced by Dussette's 12 points in the third quarter alone.

"We challenged A.D. at halftime," Nimz said. "She wasn't quite there in the first half and part of maturity is being able to show up right from the beginning and put two halves together. We challenged her at the half, and she responded, and that's growth."

The NSU momentum would end with the final buzzer of the third. Two quick fouls by Dussette put the hot hand on the bench with four fouls and Valley took advantage scoring the first nine points of the quarter to push the lead back to double digits.

After a quick burst of energy near the midway point of the quarter with two jumpers and a blocked shot to break the scoreless start, Valley put together another run, this time 8-2, over a three-minute span to pull away.

NSU went 3-for-10 from the field in the final 10 minutes with five turnovers.



TURN AROUND

• NSU has had fewer turnovers than its opponent in six of the seven games so far this season, already more than the five instances from a season ago.

• The Lady Demons were able to pull out one win in five tries with a plus turnover margin last year, the 50-45 season final against Central Arkansas. They are 4-2 in such games this year.

• NSU is yet to have a game with 20 or more turnovers this season. In 11 games a year ago they had 20 or more. The most in a single game so far is 18 against Texas A&M-Texas and Kansas State.

• So far this season opponents have scored and average of 12.4 points per game off NSU turnovers, down from the 25.7 per game through the first seven games a season ago and the 19.8 from two years ago. It is the lowest average at this point in the season in the past six years.

CSI: NATCHITOCHES

• Newcomers **Karmelah Dean** and **Jordan Todd** have already spent two years as teammates prior to their arrival to NSU. The duo played the past two seasons at the College of Southern Idaho where they enjoyed plenty of success.

• Dean and Todd helped lead CSI to a Region 18 Championship a year ago, earning them a spot in the NJCAA National Tournament.

• Together they averaged 20.8 points per game and made 47 percent of their shots from the field.

• Dean is a two-time First-Team All-Region 18 player and scored 11.5 points, handed out 3.8 assists and had a team-best 1.7 steals per game during the 2020-21 season.

• Todd earned a Second-Team All-Region 18 spot a year ago with 9.7 points and 6.9 rebounds per game. She set the single-game CSI record with 23 rebounds and had 15 points and 18 boards in the Region 18 title game this past season.

ALL-AMERICAN CALIBER

• **Jiselle Woodson** is one of the most decorated junior college transfers in NSU's history.

• Along with her All-Region 22 selection, Woodson was named Alabama Community College Conference North Division Player of the Year and received an honorable mention All-American honor from the NJCAA a year ago.

• She averaged 17.4 points, 5.1 rebounds, 3.5 assists and 1.8 steals per game this past season.

• Woodson is the first junior college All-American to sign with the Lady Demons since **TaSheena Moore** prior to the 2014-15 season. Moore earned WBCA All-American honors along with all-region and all-conference accolades out of South Plains College in Levelland, Texas.

• Following her freshman season at Wallace State, Woodson was named to the NJCAA Women's Basketball Coaches Association All-Star team, one of 50 athletes across the country to receive that honor.

NEW TEAM...WHO DIS? PART DEUX

• For the second straight season the Lady Demons have six or more new players on their roster, with 11 players suiting up for NSU for the first time this season.

• Of the 11 newcomers, five make their way to Natchitoches from other Division I programs and three come from the JUCO ranks, giving the Lady Demons a significant boost in the experience department over the squad from a year ago. The DI transfers have a combined 58 starts under their belts and the JUCO standouts have 100 starts in the past two seasons before every playing a game for NSU.

• Alex Harrison, the lone transfer not from a JUCO or DI program, also brings starting experience from her two seasons at Louisiana College.

• Pulling the majority of the squad from the collegiate ranks, the Lady Demons only added two true freshmen this season.

• Sophomores **Osha Cummings** and **Erin Harris** are the only two players returning that were on the team to start the season a year ago. **JaMiya Braxton**, who joined in January of last season, is the third and final returnee.

THROUGH THE FIRE AND FLAMES

- **Erin Harris** and **Osha Cummings** gained a world of experience during their first year as college basketball players during the 2020-21 season.
- On a team filled with young players, eight of the 11 being either freshmen or sophomores, the duo were forced into roles normally reserved for upperclassmen.
- Harris led the team with 17 starts, the fifth most by a true freshman, and was third in minutes per game (24.5) and scoring (6.7). Cumming made 13 starts and was second on the team in minutes (27.7) and third in rebounding (4.3).
- With a 2021-22 roster full of more experienced players, Nimz is hopeful the experience the now sophomores earned a season ago will add more depth to a completed roster.

OUT WITH A BANG

- The 2021-22 Lady Demon freshman class brings a championship pedigree with it to campus. Both **Josie Fleischmann** and **Jordan McLemore** won state titles a year ago to cap off stellar prep campaigns.
- Fleischmann led Ballard to the 4A title in Iowa making the game-tying and game-winning shots in the final minute, while McLemore helped Captain Shreve win its second 5A title in three years in Louisiana.
- Transfer **Alex Harrison** also owns two Louisiana high school state titles like McLemore, winning back-to-back Class C championships in 2018 and 2019, earning MVP honors each time.

GET YOUR START HERE

- Second-year head coach **Anna Nimz** joined the list of young head coaches in Lady Demon history when she accepted the job a year ago.
- She is the seventh coach to get their first Division I job at Northwestern State.
- She joins the list along with Pat Nolen Pierson, James Smith, Jennifer Graf, Brooke and Scott Stoeher, Jordan Dupuy and Missy Bilderback, the past six consecutive coaches hired to lead the Lady Demons.
- Smith spent 17 seasons as head coach for the Lady Demons, the most among the list, compiling a 340-155 record with seven SLC Tournament Championship appearances, one Southland title, and five trips to the postseason.

EARLY INK

- The reach of Lady Demons basketball continues to expand as head coach Anna Nimz added another Australian forward to her roster for the coming season.
- During the early signing period, Melbourne's Bella Peterson signed her name to join the Lady Demons and fellow Aussie Sharna Ayres next year.
- Peterson is a 5-foot-8 athletics forward with championship experience in the Victorian Junior Basketball League, the top junior competition in the state of Victoria.
- "Bella is going to bring length and incredible speed to our backcourt," Nimz said. "She is a high-energy player that can score on all three levels and create well off the bounce. Bella is an exciting addition and we can't wait to get her to campus."

HOME IS WHERE THE HEART IS

- Although the stretch of the Northwestern State recruiting footprint has grown in the past two seasons, Nimz and her staff still like to recruit close to home as well.
- Eight players on this year's roster are "local" recruits, meaning they live within four hours of campus, in this case in Texas or Louisiana.
- The addition of Jordan McLemore, Monette Bolden and Alex Harrison, all Pelican-state natives, the Lady Demons now have four, along with Osha Cummings, Louisiana-born players on the roster. That is the most in the past five seasons.
- There are two Dallas area players on this year's roster, in JaMiya Braxton and Candice Paramore, and two from the Houston area in Jasmin Dixon and Alecia Whyte.

MINOR CARTOGRAPHER

- The reach of Northwestern State women's basketball continued its expansion prior to the 2021-22 season. A year after having a roster filled with players from six states and one foreign country, the most diverse in program history, players from seven states and one foreign country will wear the Purple and White this season.
- The 2021-22 roster features players from Louisiana, Texas, Alabama, Iowa, Connecticut, Washington, Alaska and Australia.
- **Josie Fleischmann** (Iowa), **Jordan Todd** (Alaska) and **Erin Harris** (Connecticut) are the first Lady Demons from their states to play at NSU.
- Despite its relatively close proximity **Jiselle Woodson** is just the second player from the state of Alabama to play for the Lady Demons.
- **Sharna Ayres** is the second Australian to play at NSU, joining Jessica McPhail who played here from 2007-11.

PULL OUT THE FOLDING TABLE

- The Lady Demon basketball program, and Northwestern State as a whole, prides itself on fostering a family atmosphere.
- Coach Anna Nimz is notorious for inviting players into her home for home-cooked meals that include taco bars, breakfast burritos, lasagna and plenty of other things, usually one of the players' favorite meals.
- The family dynamic is also present in several of the players on the roster who come from large families.
- Six different Lady Demons have at least three other siblings with **Jiselle Woodson**, **Josie Fleischmann** and **Osha Cummings** one of five children and **Alex Harrison** one of six in her family.

NSU'S RECORD WHEN...

	21-22	SLC	Under Nimz
Winning the Tip	1-0	0-0	1-4
Scoring First	2-1	0-0	2-6
Opponent Scores First	2-2	0-0	3-16
Leads at Halftime	2-0	0-0	2-2
Trails at Halftime	0-3	0-0	1-20
Tied at Halftime	2-0	0-0	2-0
Leading after three quarters	3-0	0-0	3-1
Trailing after three quarters	1-3	0-0	2-21
Tied after three quarters	0-0	0-0	0-0
Leading with five mins. left	4-0	0-0	4-1
Trailing with five mins. left	0-2	0-0	0-20
Tied with five mins. left	0-1	0-0	0-1
Shoots 45% or better	1-0	0-0	1-0
Shoots less than 45%	3-3	0-0	4-22
Opponent shoots 45% or better	1-1	0-0	1-11
Opponent shoots less than 45%	3-2	0-0	3-11
More made 3pt FGs than the opponent	4-0	0-0	5-6
Fewer made 3pt FGs than the opponent	0-1	0-0	0-13
Equal made 3pt FGs as the opponent	0-2	0-0	0-3
Outrebounds the opponent	3-0	0-0	3-1
Outrebounded by the opponent	1-3	0-0	2-21
Ties the opponent in rebounds	0-0	0-0	0-0
Fewer turnovers than the opponent	4-2	0-0	5-6
More turnovers than the opponent	0-1	0-0	0-16
Equal turnovers as the opponent	0-0	0-0	0-0
Scoring 50 points or less	0-1	0-0	1-13
Scoring 51-60 points	0-1	0-0	0-7
Scoring 61-70 points	0-1	0-0	0-2
Scoring 71-80 points	3-0	0-0	3-0
Scoring 81-90 points	0-0	0-0	0-0
Scoring 91-100 points	1-0	0-0	1-0
Allowing 50 points or less	2-0	0-0	3-0
Allowing 51-60 points	1-0	0-0	1-1
Allowing 61-70 points	0-3	0-0	0-9
Allowing 71-80 points	1-0	0-0	1-6
Allowing 81-90 points	0-0	0-0	0-3
Allowing 91-100 points	0-0	0-0	0-0
Allowing 100+ points	0-0	0-0	0-3
Decided by 5 points or less	1-0	0-0	2-0
Decided by 6-10 points	0-2	0-0	0-4
Home Games	3-0	0-0	4-9
Road Games	1-3	0-0	1-13
Neutral Sites	0-0	0-0	0-0
Non-SLC Games	4-3	0-0	4-8
Non-SLC Home Games	3-0	0-0	3-2
Non-SLC Away Games	1-3	0-0	1-6
Non-SLC Neutral Games	0-0	0-0	0-0
SLC Games	0-0	0-0	1-14
SLC Home Games	0-0	0-0	1-7
SLC Away Games	0-0	0-0	0-7
SLC Tournament	0-0	0-0	0-0
November Games	3-3	0-0	3-3
December Games	1-0	0-0	1-5
January Games	0-0	0-0	0-7
February Games	0-0	0-0	0-6
March Games	0-0	0-0	1-1
Monday Games	0-1	0-0	0-3
Tuesday Games	1-0	0-0	1-1
Wednesday Games	0-1	0-0	0-7
Thursday Games	1-0	0-0	1-0
Friday Games	1-0	0-0	1-1
Saturday Games	1-1	0-0	2-9
Sunday Games	0-0	0-0	0-1
Overtime Games	0-0	0-0	0-0
TV Games	0-0	0-0	0-0
vs. Ranked Opponents	0-0	0-0	0-2

LAGNIAPPE RECORDS...

Day Games	0-1
Night Games	4-2
When it Rains	0-0
When it Snows	0-0
When National Anthem is sung live	0-1
When National Anthem is played by band	2-2
When National Anthem is recorded	2-0
When National Anthem is 1:40 or more*	0-1
When National Anthem is less than 1:40	4-2
Wearing purple uniforms	1-2
Wearing black uniforms	0-1
Wearing white NSU uniforms	3-0
Wearing white retro uniforms	0-0
vs. fowl	0-0
vs. canines	1-0
vs. felines	1-2
vs. reptiles	0-0
vs. mammals	3-2
vs. birds of prey	1-0
vs. women of nobility	1-0
vs. those who surprise	0-1
vs. malignant spirits	0-0
vs. Whataburger enthusiasts	0-0
vs. mythical avian creatures	0-0
vs. military commanders	0-0
vs. sanctioned marauders	0-0
vs. beach dwellers	0-0
vs. bovine herders	0-0

*Longest anthem: 2:03 at Grambling, Nov. 17, 2021



JaMiya Braxton | 5-7 | Sr. | McKinney, Texas

THE LAST TIME AN NSU TEAM...

Scored 100 points at home	100, vs. LeTourneau (Nov. 12, 2018)
Scored 100 points on the road	102, at Centenary (2000)
Scored fewer than 50 points	48, vs. New Orleans (March 3, 2021)
Scored fewer than 40 points	36, at Kansas State (Nov. 27, 2021)
Scored fewer than 50 points and won	45-43, vs. UTSA (2001)
Made 40+ field goals	43, vs. Centenary (Nov. 15, 2011)
Shot over 60 pct from the field	61.3, vs. LeTourneau (Nov. 12, 2018)
Shot less than 25 pct from the field	18.3% (11-60) at Kansas State (Nov. 27, 2021)
Shot 60 pct from 3-point range	62.5% (10-16) at McNeese (Feb. 9, 2019)
Shot less than 20 pct from 3-point range	0.0% (0-12) at K-State (Nov. 27, 2021)
Failed to make a 3-point field goal	0-12 at Kansas State (Nov. 27, 2021)
Made 10 3-point field goals	11, at Arkansas State (Dec. 2, 2021)
Made 25 free throws	25, at Sam Houston State (Jan. 23, 2019)
Made 30 free throws	35, at Stephen F. Austin (Jan. 27, 2010)
Attempted 35 free throws	37, at Sam Houston State (Jan. 23, 2019)
Attempted 40 free throws	43, vs. Ouachita Baptist (Nov. 12, 2010)
Shot 100 pct from the FT line	2-2, at #7 Baylor (Dec. 18, 2020)
Shot less than 50 pct from the FT line	40.0% (8-20) vs. UNO (March 3, 2021)
Had 50 rebounds	55, vs. Louisiana Christian (Nov. 19, 2021)
Had 60 rebounds	63, vs. Centenary (Nov. 9, 2021)
Had 25 offensive rebounds	25, vs. Louisiana Christian (Nov. 19, 2021)
Had 20+ rebounding margin	21, vs. Southeastern La. (Feb. 16, 2017)
Had 30+ rebounding margin	30, vs. Centenary (Nov. 9, 2021)
Had 20 assists	24, at Incarnate Word (Feb. 27, 2018)
Had 25 assists	25, vs. LeTourneau (Nov. 12, 2018)
Had 30 turnovers	30, at Stephen F. Austin (Feb. 24, 2021)
Had 35 turnovers	36, vs. Xavier (La.) (Nov. 16, 2007)
Had 10 or less turnovers	10, vs. Central Arkansas (March 9, 2019)
Forced 30 turnovers	31, vs. Louisiana Christian (Nov. 19, 2021)
Forced 35 turnovers	39, vs. LSUS (Nov. 27, 2019)
Had 15 steals	15, vs. Louisiana Christian (Nov. 19, 2021)
Had 20 steals	25, vs. LSUS (Nov. 27, 2019)
Had 25 steals	35, vs. Central Baptist (Dec. 20, 2017)
Blocked 10 shots	11, vs. Southeastern La. (Feb. 11, 2012)
Had five players in double figures	Kira Bonner (17), Nautica Grant (15) Leah Barnes (15), RaVon Nero (13), Libba Gilliam (10) at McNeese (Feb. 9, 2019)
Had all starters in double figures	Beatrice Attura (23), Shahd Abboud (18) Cheyenne Brown (12), Tia Youngblood (11), Nia Randall (11) vs. Nicholls (Jan. 12, 2017)
Had no players score in double figures	at Kansas State (Nov. 27, 2021)
Kept opposing players from double figures	at Houston Baptist (Feb. 8, 2020)
Had multiple 20-point scorers	Nautica Grant (27), RaVon Nero (24) vs. Incarnate Word (Feb. 27, 2019)
Scored 50 pts or more in first half	56 vs. LeTourneau (Nov. 12, 2018)
Scored 60 pts or more in first half	64 vs. Louisiana College (Dec. 20, 2016)
Scored 50 pts or more in second half	50 vs. Central Arkansas (March 9, 2019)
Scored 20 points or less in first half	18 at Kansas State (Nov. 27, 2021)
Scored 20 points or less in second half	18 at Kansas State (Nov. 27, 2021)
Won an overtime game	76-72, vs. Stephen F. Austin (Feb. 4, 2017)
Lost an overtime game	69-67, vs. Incarnate Word (Jan. 8, 2020)
Won a double-overtime game	60-56, at Southeastern La. (March 2, 2019)
Lost a double-overtime game	
Won an SLC Tournament game	58-50, vs. Houston Baptist (March 15, 2015)

THE LAST TIME AN NSU INDIVIDUAL...

Recorded a double-double	Jordan Todd (11p/12r) vs. LCU (Nov. 19, 2021)
Recorded a triple-double	Joskeen Garner (19p,13r,10a) vs. SFA (1996)
Had a 20/20 performance (Pts/Reb)	Joskeen Garner (20p/21r) vs. UTA (1996)
Scored 20 points	Jiselle Woodson (23) at Wichita State (Nov. 29, 2021)
Scored 30 points	Kira Bonner (31) vs. Southeastern La. (Jan. 25, 2020)

Scored 40 points	Angela Simpson (45) vs. Texas State (1996)
Made 5 3-pointers	Jiselle Woodson (5) at Wichita State (Nov. 29, 2021)
Made 10 free throws	RaVon Nero (13) at Sam Houston State (Jan. 23, 2019)
Had 15 rebounds	Jordan Todd (15) vs. Centenary (Nov. 9, 2021)
Had 20 rebounds	Kia Converse (20) vs. ULM (1999)
Had 10 assists	Nautica Grant (10) vs. LSU-Alexandria (Nov. 22, 2017)
Had 15 assists	Cooda Dobin (19) vs. Sam Houston State (2004)
Had 5 steals	Erin Harris (5) vs. Houston Baptist (Feb. 6, 2021)
Had 5 blocks	Libba Gilliam (5) vs. Southeastern La. (Feb. 24, 2018)
Had 9 blocks	Ashley Sparkman (9) vs. Sam Houston State (March 9, 2004)
Played 40 minutes	Monette Bolden at Arkansas State (Dec. 2, 2021)

THE LAST TIME AN NSU OPPONENT...

Scored 100 points	114 at Stephen F. Austin (Feb. 24, 2021)
Scored 100 points in Natchitoches	108 by Northeast La. (1984)
Scored fewer than 50 points	45 vs. Central Arkansas (March 6, 2021)
Scored fewer than 40 points	36 vs. Louisiana Christian (Nov. 19, 2021)
Shot 60 pct from the floor	60.3% (41-68) at Stephen F. Austin (Feb. 24, 2021)
Shot 50 pct from the floor	56.4% (31-55) at Southeastern La. (Jan. 23, 2021)
Shot less than 25 pct from the floor	16.2% (6-37) vs. Central Arkansas (Dec. 20, 2017)
Shot 50 pct from 3-point range	51.6% (16-31) at Stephen F. Austin (Feb. 24, 2021)
Shot less than 20 pct from 3-point range	13.6% (3-22) vs. LCU (Nov. 19, 2021)
Made 10 3-point field goals	(16-31) at Stephen F. Austin (Feb. 24, 2021)
Shot less than 50 pct from the FT line	46.2% (12-26) vs. Centenary (Nov. 9, 2021)
Had 50 rebounds	54 at Wichita State (Nov. 29, 2021)
Had 60 rebounds	61 at Kansas State (Nov. 27, 2021)
Had 70 rebounds	71 at ULM (Dec. 21, 2011)
Had 20 offensive rebounds	23 at Wichita State (Nov. 29, 2021)
Had 30 offensive rebounds	30 vs. Central Arkansas (March 6, 2021)
Had 20 assists	22 vs. Stephen F. Austin (Jan. 20, 2021)
Had 25 assists	26 at #9 Texas A&M (Dec. 28, 2020)
Had 30 assists	31 at Stephen F. Austin (Feb. 24, 2021)
Had 45 assists	45 at #7 Baylor (Dec. 18, 2020) - NCAA record
Had 25 turnovers	25 vs. TXAMUT (Nov. 13, 2021)
Had 30 turnovers	31 vs. Louisiana Christian (Nov. 19, 2021)
Had 35 turnovers	39 vs. LSUS (Nov. 27, 2019)
Had less than 10 turnovers	9 at Central Arkansas (March 7, 2020)
Had 15 steals	16 at Stephen F. Austin (Feb. 24, 2021)
Had 20 steals	23 at Prairie View A&M (Nov. 29, 2011)
Had 10 blocked shots	10 vs. Houston Baptist (Feb. 6, 2021)
Failed to make a 3-point field goal	(0-7) vs. Southeastern La. (Jan. 28, 2012)

THE LAST TIME AN OPPONENT INDIVIDUAL...

Scored 20 points	Trinitee Jackson (20) at Arkansas State (Dec. 2, 2021)
Scored 30 points	NaLyssa Smith (30) at #7 Baylor (Dec. 18, 2020)
Scored 40 points	Kevia Council (48) vs. Loyola (Nov. 25, 2011)
Had 15 rebounds	Lucy Ibeh (15) vs. Central Arkansas (March 6, 2021)
Had 20 rebounds	Megan Herbert (20) vs. Central Arkansas (Jan. 30, 2010)
Had 10 assists	Jordyn Oliver (10) at #7 Baylor (Dec. 18, 2020)
Had 5 steals	Anna McKendree (8)/Terris McKay (7) vs. Nicholls (Feb. 22, 2021)
Had 10 steals	Chastade Barrs (10) vs. Lamar (Feb. 13, 2019)
Had 5 blocks	Brittany Brewer (7) at Texas Tech (Nov. 22, 2019)
Had 10 blocks	Jazmin Cain (10) vs. Southeastern La. (Jan. 27, 2007)
Recorded a double-double	T. Jackson (20p/14r) at Arkansas State (Dec. 2, 2021)
Recorded a triple-double	Ray Alexander (15p/12a/10s) vs. SHSU (March 3, 2010)
Had a 20/20 performance (Pts/Reb)	Megan Herbert (24p/20r) vs. UCA (Jan. 30, 2010)



2020-21 Southland Conference Standings

Team	SLC			All Games				
	W-L	Pct.	W-L	Pct.	Home	Away	Neutral	Streak
Texas A&M-Corpus Christi	0-0	.000	4-3	.571	4-0	0-2	0-1	W1
Northwestern State	0-0	.000	4-3	.571	3-0	1-3	0-0	W1
UIW	0-0	.000	3-3	.500	3-0	0-3	0-0	W2
McNeese	0-0	.000	3-4	.429	2-1	1-3	0-0	L2
Southeastern	0-0	.000	3-5	.375	1-2	2-3	0-0	W1
Houston Baptist	0-0	.000	3-6	.333	3-1	0-4	0-1	L5
Nicholls	0-0	.000	2-6	.250	2-1	0-4	0-1	L4
New Orleans	0-0	.000	1-5	.167	1-0	0-5	0-0	L3

2021-22 Southland Conference Head-to-Head Regular-Season Results

TEAM	HBU	UIW	MCN	UNO	NICH	NSU	SLU	AMCC
Houston Baptist	•	-/-	-/-	-/-	-/-	-/-	-/-	-/-
Incarinate Word	-/-	•	-/-	-/-	-/-	-/-	-/-	-/-
McNeese	-/-	-/-	•	-/-	-/-	-/-	-/-	-/-
New Orleans	-/-	-/-	-/-	•	-/-	-/-	-/-	-/-
Nicholls	-/-	-/-	-/-	-/-	•	-/-	-/-	-/-
Northwestern State	-/-	-/-	-/-	-/-	-/-	•	-/-	-/-
Southeastern	-/-	-/-	-/-	-/-	-/-	-/-	•	-/-
A&M-Corpus Christi	-/-	-/-	-/-	-/-	-/-	-/-	-/-	•

Southland Conference
2021-22 Preseason All-SLC

First Team

Name	Class	Pos.	School
Timia Jefferson	Jr.	G	Houston Baptist
Divine Tanks	Jr.	F	McNeese
Chelsea Cain	Jr.	F	Nicholls
Morgan Carrier	Sr.	G/F	Southeastern
Hailey Giaratano	So.	G	Southeastern

Second Team

Name	Class	Pos.	School
Alecia Westbrook	Jr.	G	TAMUCC
Caitlyn Williams	Sr.	F	Southeastern
Kennedy Wilson	So.	G	Houston Baptist
Jaaucklyn Moore	So.	G	UIW
Chyna Allen	Sr.	G	Nicholls

Southland Conference
2021-22 Preseason Poll

Place	Team (First-Place Votes)	Points
1.	Southeastern (13)	168
2.	Houston Baptist (1)	148
3.	UIW	147
4.	Nicholls (1)	136
5.	Texas A&M-Corpus Christi	133
6.	McNeese	110
7.	New Orleans	90
8.	Northwestern State	89

NSU IN NCAA RANKINGS

(Listed if in Top 50 - Rankings as of 12/6)

Rank	Category	Total	Rank	Category	Total
34	Turnover Margin	+5.6	14	Candice Parramore (FT%)	92.3
37	Rebounds/Game	43.0	17	Jordan Todd (Dbl-Dbls)	4
42	Turnovers Forced/Game	20.9	19	Jordan Todd (Off Reb/Gm)	4.1
			50	Jordan Todd (Reb/Gm)	9.4

NSU LEADING SLC RANKINGS

(Listed if first in conference - Rankings as of 12/6)

Rank	Category	Total	Rank	Category	Total
1	Fewest Turnovers	107	1	Jordan Todd (Blocks)	10
1	Free Throw Percentage	75.8	1	Jordan Todd (Blocks/Gm)	1.4
1	Rebounds/Game	43.0	1	Jordan Todd (Dbl-Dbl)	4
1	Turnover Margin	+5.6	1	Candice Parramore (FT%)	92.3
1	Turnovers Forced/Game	20.1	1	Jordan Todd (Off Reb/Gm)	4.1



Monday, December 6

at UTRGV 67 HBU 58

Tuesday, December 7

McNeese at Lamar 7 p.m.

Saturday, December 11

William Carey at Southeastern 1 p.m.
 UIW at UTRGV 1 p.m.
 South Alabama at Nicholls 1 p.m.
 Northwestern State at Mississippi Valley St. 2 p.m.
 Texas A&M-Corpus Christi at Rice 2 p.m.
 SW Assemblies of God at HBU 3 p.m.
 McNeese at Cal 4 p.m.

Sunday, December 12

New Orleans at Auburn

Monday, December 13

McNeese at Oregon 8 p.m.

Tuesday, December 14

Nicholls at De Paul 11 a.m.
 Texas A&M-Corpus Christi 5 p.m.
 Jacksonville State at New Orleans 6 p.m.

Wednesday, December 15

North American at UIW 6 p.m.
 Northwestern State at ULM 6:30 p.m.

Friday, December 17

Schreiner at Texas A&M-Corpus Christi 7 p.m.

Saturday, December 18

New Orleans at LSU 12 p.m.
 McNeese at ULM 12 p.m.
 Tarleton State at Northwestern State 1 p.m.

Sunday, December 19

UIW at TCU 1 p.m.

Monday, December 20

New Orleans at Alcorn State
 Southeastern at Stephen F. Austin 2 p.m.
 Nicholls at Memphis 2 p.m.

Tuesday, December 21

HBU at New Mexico State 12 p.m.
 Texas A&M-Corpus Christi at Houston 1 p.m.

Southland Conference
Players of the Week

- 1 - Jordan Todd, Northwestern State
- 2 - Timia Jefferson, Houston Baptist
- 3 - Alecia Westbrook, Texas A&M-Corpus Christi
- 4 - Jiselle Woodson, Northwestern State

Louisiana Sport's Writers Association
Players of the Week

- 1 - Alexis Morris, LSU

GAME-BY-GAME TEAM STATISTICS

Opponent	FG	FGA	%	3FG	3FGA	%	FT	FTA	%	OR	DR	TR	AVG.	PF	A	TO	BLK	STL	PTS	AVG
Centenary	17	53	.321	4	14	.286	12	26	.462	2	31	33	33.0	23	9	20	0	5	50	50.0
Northwestern State	32	82	.390	6	27	.222	21	27	.778	22	41	63	63.0	22	11	13	5	10	91	91.0
Texas A&M-Texarkana	21	55	.382	3	13	.231	11	13	.846	7	27	34	33.5	21	13	25	4	8	56	53.0
Northwestern State	25	65	.385	7	28	.250	14	19	.737	15	28	43	53.0	18	14	18	2	11	71	81.0
at Grambling	24	53	.453	5	18	.278	15	20	.750	11	33	44	37.0	18	16	20	4	10	68	58.0
Northwestern State	21	63	.333	5	24	.208	13	16	.813	11	23	34	46.7	17	7	15	2	11	60	74.0
Louisiana Christian	13	52	.250	3	22	.136	7	10	.700	11	28	39	37.5	21	10	31	4	9	36	52.5
Northwestern State	29	81	.358	4	23	.174	16	22	.727	25	30	55	48.8	14	16	14	4	15	78	75.0
at Kansas State	28	78	.359	4	28	.143	10	15	.667	21	40	61	42.2	17	19	15	9	11	70	56.0
Northwestern State	11	60	.183	0	12	.000	14	19	.737	9	28	37	46.4	14	5	18	3	9	36	67.2
at Wichita State	22	65	.338	9	21	.429	17	25	.680	23	31	54	44.2	11	17	21	3	10	70	58.3
Northwestern State	23	67	.343	9	25	.360	6	9	.667	13	23	36	44.7	23	10	17	2	7	61	66.2
at Arkansas State	29	63	.460	8	18	.444	10	17	.588	15	25	40	43.6	21	16	14	1	7	76	60.9
Northwestern State	28	61	.459	11	22	.500	13	16	.813	10	23	33	43.0	15	14	12	2	6	80	68.1
at Mississippi Valley State																				
Northwestern State																				
at ULM																				
Northwestern State																				
Tarleton State																				
Northwestern State																				
at Kansas																				
Northwestern State																				
New Orleans																				
Northwestern State																				
SLC Tip Off 2																				
Northwestern State																				
SLC Tip Off 3																				
Northwestern State																				
at Southeastern																				
Northwestern State																				
at Nicholls																				
Northwestern State																				
at New Orleans																				
Northwestern State																				
UIW																				
Northwestern State																				
Texas A&M-Corpus Christi																				
Northwestern State																				
at Houston Baptist																				
Northwestern State																				
at McNeese																				
Northwestern State																				
Houston Baptist																				
Northwestern State																				
McNeese																				
Northwestern State																				
at UIW																				
Northwestern State																				
at Texas A&M-Corpus Christi																				
Northwestern State																				
Nicholls																				
Northwestern State																				
New Orleans																				
Northwestern State																				
Southeastern																				
Northwestern State																				

HEAD COACH ANNA NIMZ • 2ND SEASON



The tradition-rich Northwestern State women's basketball team long has enjoyed success with first-time Division I head coaches.

Anna Nimz was named the 10th full-time head coach in program history, joining a list with six other whose first Division I success started at Northwestern State.

Nimz and her staff faced the challenge of the 2020-21 COVID season head on as they began to build NSU women's basketball back to a perennial contender in the Southland Conference.

A two-year letterwinner and team captain at Pittsburg State, Nimz served as the associate head coach at UTRGV in the two seasons prior to coming to Natchitoches. She helped the Vaqueros reach the 2019 Western Athletic Conference Tournament championship game and earn a 2019 Women's Basketball Invitational berth.

With Nimz on staff, the Vaqueros led the WAC in scoring defense in 2018-19, produced five All-WAC selections and tallied the most WAC wins (10) in program history.

Nimz arrived at UTRGV after eight years as a junior college head coach, spending five seasons at Labette Community College in Parsons, Kansas, before coaching three years at Kilgore College in Texas.

Nimz took over the Labette program at 25 years old, giving her ample opportunities to grow in an on-the-job atmosphere.

"Having an opportunity at such a young age, being thrown into the fire, made me grow quickly as a coach," Nimz said. "I was going to clinics, watching videos, working through trial and error, and it made me grow into the coach I am today. Labette provided me a great opportunity to step in and figure out who I was as a coach and I am forever grateful for that."

That approach helped Nimz recruit three all-conference and three all-region players at Labette while five of her student-athletes earned scholarships to NCAA institutions.

From Labette, Nimz was hired to rebuild a once-proud Kilgore College program that had fallen to seven wins in 2013-14. Hired in June 2014, Nimz took the standing Kilgore roster

season.

She followed with consecutive 21-win seasons, marking the first time in 21 years Kilgore College had won at least 20 games in consecutive seasons.

In three seasons at Kilgore, Nimz posted a 58-36 overall record, reaching a pair of NJCAA Region 14 championship games.

Nimz credited her time at both junior college programs for giving her insight into the totality of running a college basketball program, something that was evident in her two seasons at UTRGV.

"Anna is a hard-working winner," said UTRGV head coach Lane Lord, who took Nimz on his Pittsburg State staff as a graduate assistant after her playing career ended.

"She knows how to handle every facet of our program to the point I could leave for a week and she would not miss a beat overseeing the team. She will win games but academics and family will both be high priorities for her, too. People are going to love her because she will take an interest in them. She is going to make somebody feel important every day."

In addition to averaging 10.9 points and 3.1 assists per game in her two seasons at Pittsburg State, Nimz was named the Pittsburg State Outstanding Student-Athlete of the Year for 2006-07 and was a named Student Major of the Year in Health, Human Performance and Recreation. A two-time Pittsburg State graduate, Nimz was the 2008-09 Graduate Student of the Year in Health, Human Performance and Recreation.

She was Kilgore College's Employee of the Year in 2016-17.

"Anna's resume also reflects one who leads by example and gets involved," Burke said. "She is going to be a great addition to our department, our campus and in our community. She will place value on cultivating relationships and engaging all constituencies, including Lady Demon alumni. She has a tremendous work ethic and will work tirelessly to enhance the profile of the program."

Nimz began her coaching career at Pittsburg State as a graduate assistant, helping lead the Go-rillas to their first 20-win season in 14 years while recruiting and coaching eight All-Mid-America Intercollegiate Athletics Association honorees.

The similarities in Pittsburg and Natchitoches appealed to Nimz.

"I enjoy the small town and heard how fam-

EDUCATION

- Bachelor of Science, Education, Pittsburg State (2008)
- Master of Education, Pittsburg State (2009)

COACHING EXPERIENCE

Year	School	Position	Record
2020-21	NSU	Head Coach	1-19
2019-20	UT-RGV	Associate Head Coach	--
2018-19	UT-RGV	Associate Head Coach	--
2017-18	Kilgore*	Head Coach	21-11
2016-17	Kilgore*	Head Coach	21-11
2015-16	Kilgore*	Head Coach	16-14
2014-15	Labette^	Head Coach	15-16
2013-14	Labette^	Head Coach	16-14
2012-13	Labette^	Head Coach	12-19
2011-12	Labette^	Head Coach	12-20
2010-11	Labette^	Head Coach	10-21

*NJCAA-D1 | ^NJCAA-DII

NIMZ VS. 2021-22 OPPONENTS

Arkansas State	1-0
Centenary	1-0
Champions College.....	0-0
Grambling	0-1
Houston Baptist	0-2
Incarinate Word.....	0-1
Kansas.....	0-0
Kansas State.....	0-1
Louisiana College/Christian.....	1-0
McNeese	0-2
Mississippi Valley State.....	0-1
New Orleans.....	0-2
Nicholls	0-2
Southeastern Louisiana.....	0-2
Tarleton State.....	0-0
Texas A&M-Corpus Christi	0-0
Texas A&M-TeXarkana	1-0
ULM	0-1
Wichita State.....	0-1
Total	4-16
Overall	5-22

NOTEABLE GAMES

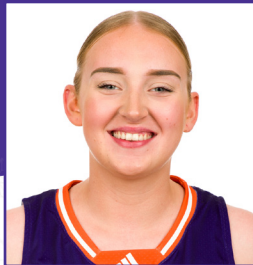
First win	50-45 vs. UCA (March 6, 2021)
First home win	50-45 vs. UCA (March 6, 2021)
First conference win	50-45 vs. UCA (March 6, 2021)
First road win	80-76 at Arkansas State (Dec. 2, 2021)

ily-oriented the university is," Nimz said. "I heard amazing things about the people in town and the people at the university. For me, that's attractive."

The Lady Demon tradition also appealed to Nimz.

"It's a place you can win," she said. "It has a strong basketball tradition. The facilities put you in a position to excite kids. It presents itself as an exciting opportunity. I like the Southland Conference. It's a very competitive, tradition-rich conference."

Nimz joins Pat Nolen Pierson, James Smith, Jennifer Graf, Brooke and Scott Stoehr, Jordan Dupuy and Bilderback as coaches whose first Division I job came at Northwestern State.



35 SHARNA AYRES

5-10 • SOPHOMORE • GUARD

MELBOURNE, AUSTRALIA • BOX HILL SR. SECONDARY • LSU

2021-22 Season:

- Made her NSU debut against Louisiana Christian (Nov. 19) scoring five points off the bench including her first 3pt FG with a pair of rebounds and assists.

Prior to NSU:

- Began her collegiate career at Marquette, joining the team in January of 2019, before transferring to LSU, forcing her to sit out the 2019-20 season due to NCAA transfer rules.
- Played in nine games for the Tigers during the 2020-21 season scoring two points each against UCF (Dec. 4) and Auburn (Dec. 31).
- Saw her most extended action against Auburn, playing 10 minutes scoring two points with both a rebound and an assist.

Personal:

- Born May 8, 2000.
- Daughter of Donna and Sean Ayres.
- Has one brother, Declan.
- Majoring in psychology
- Career plans include starting her own mentoring company to help international athletes around the world.

Opponent	MIN	FG	Pct.	3FG	Pct.	FT	Pct.	ORB	DRB	TRB	PF	AST	T/O	BLK	STL	PTS
Centenary						***	DNP	***								
Texas A&M-TeXarkana						***	DNP	***								
at Grambling						***	DNP	***								
Louisiana Christian	15	2-9	.222	1-6	.167	0-0	.000	1	1	2	3	2	1	0	0	5
at Kansas State	17	2-5	.400	0-2	.000	1-2	.500	2	3	5	3	0	0	0	2	5
at Wichita State*	19	1-9	.111	0-5	.000	0-0	.000	2	0	2	1	0	1	0	0	2
at Arkansas State*	21	1-5	.200	0-1	.000	0-0	.000	0	2	2	1	1	3	0	1	2
at Miss. Valley State																
at ULM																
Tarleton State																
at Kansas																
New Orleans																
SLC Tip Off 2																
SLC Tip Off 3																
at Southeastern																
at Nicholls																
at New Orleans																
UIW																
Texas A&M-CC																
at Houston Baptist																
at McNeese																
Houston Baptist																
McNeese																
at UIW																
at Texas A&M-CC																
Nicholls																
New Orleans																
Southeastern																

SEASON HIGHS

		Opponent	Date
Pts	5	2x, last at Kansas State	11/27/21
Reb	5	at Kansas State	11/27/21
Ast	2	vs. Louisiana Christian	11/19/21
FGM	2	2x, last at Kansas State	11/27/21
3PM	1	vs. Louisiana Christian	11/19/21
FTM	1	at Kansas State	11/27/21
Stl	2	at Kansas State	11/27/21
Blk	-	- - -	-
Min	21	at Arkansas State	12/2/21
Total Double Doubles			0

CAREER HIGHS *AT LSU

		Opponent	Date
Pts		Same as season high	
Reb		Same as season high	
Ast		Same as season high	
FGM		Same as season high	
3PM		Same as season high	
FTM		Same as season high	
Stl		Same as season high	
Blk*	1	at Ole Miss	1/4/21
Min		Same as season high	
Total Double Doubles			0

TOP SCORING GAMES

1.	5	at Kansas State	11/27/21
	5	vs. Louisiana Christian	11/19/21
3.	*2	vs. Auburn	12/31/20
	*2	UCF	12/4/20

AYRES' CAREER STATISTICS *AT LSU

Year	G-GS	M-Avg.	FG-A	Pct.	3FG-A	Pct.	FT-A	Pct.	ORB	DRB	Reb.	Avg.	PF-DQ	A	TO	BL	ST	Pts.	Avg.
20-21*	9-0	32-3.6	2-11	.182	0-5	.000	0-0	.000	1	4	5	0.6	4-0	2	2	1	0	4	0.4
21-22	4-2	71-17.7	6-28	.214	1-14	.071	1-2	.500	5	6	11	2.8	8-0	3	5	0	3	14	3.5
NSU Totals	4-2	71-17.7	6-28	.214	1-14	.071	1-2	.500	5	6	11	2.8	8-0	3	5	0	3	14	3.5
Totals	13-2	105-8.1	8-39	.205	1-19	.053	1-2	.500	6	10	16	1.2	12-0	5	7	1	3	18	1.4



5 MONETTE BOLDEN

5-7 • GRADUATE STUDENT • GUARD

ABBEVILLE, LA. • ERATH HS • LOUISIANA TECH

2021-22 Season:

- Made first start as a Lady Demons on opening night against Centenary (Nov. 9). Scored 14 points with five rebounds on 5-of-9 shooting in her debut.
- Dished out a career-high nine assists in the win against Texas A&M-Texarkana (Nov. 13).
- Scored 11 points against Louisiana Christian (Nov. 19) for three double-digit scoring games in the first four of the season.
- Scored nine points in the first quarter against Wichita State (Nov. 29) in route to a 17-point, five-rebound, five-assist night.
- Played consecutive 40-minute games against Wichita State (Nov. 29) and Arkansas State (Dec. 2), scoring 17 points in each outing averaging 17.0 points, 6.5 rebounds, 3.5 assists and 2.0 steals during the stretch.

Prior to NSU:

- Played the past two seasons for former NSU coaches Brooke and Scott Stoeher at Louisiana Tech after beginning her collegiate career at Bossier Parish Community College.
- Appeared in 36 games for the Lady Techsters in the past two seasons.
- Averaged two points, one rebound and one assist per game and in 24 games during the 20-21 season.

- Scored a career-best eight points in the season opener against McNeese on 3-of-5 shooting from the field.
- At BPCC she was named first-team all-region and set the single-season scoring record with 668 points during the 2018-19 season.
- Became the first player in BPCC history to eclipse 1,000 points (1,157), averaging 22.2 points, 5.0 rebounds, and 4.1 assists as a sophomore.
- During her freshman season she averaged 15.1 points and scored a career-high 38 points against Kilgore.
- Reached double figures 56 times in two seasons, 31 times as a sophomore.

Personal:

- Born Aug. 18, 1999.
- Daughter of Felicia Freeman and Buford and Layla Bolden.
- Has 10 siblings.

Opponent	MIN	FG	Pct.	3FG	Pct.	FT	Pct.	ORB	DRB	TRB	PF	AST	T/O	BLK	STL	PTS
Centenary*	21	5-9	.555	2-3	.667	2-2	1.000	1	4	5	0	1	2	0	2	14
Texas A&M-Texarkana*	37	1-10	.100	0-2	.000	3-4	.750	3	3	6	3	9	2	0	2	5
at Grambling*	34	6-15	.400	0-3	.000	2-2	1.000	0	6	6	3	2	3	0	3	14
Louisiana Christian*	24	5-13	.385	0-2	.000	1-1	1.000	4	3	7	2	2	1	0	3	11
at Kansas State*	30	4-12	.333	0-2	.000	0-0	.000	0	9	9	0	1	1	0	0	8
at Wichita State*	40	6-18	.333	3-7	.428	2-2	1.000	1	4	5	3	5	7	0	2	17
at Arkansas State*	40	7-16	.437	1-5	.200	2-2	1.000	3	5	8	1	2	3	0	2	17
at Miss. Valley State																
at ULM																
Tarleton State																
at Kansas																
New Orleans																
SLC Tip Off 2																
SLC Tip Off 3																
at Southeastern																
at Nicholls																
at New Orleans																
UIW																
Texas A&M-CC																
at Houston Baptist																
at McNeese																
Houston Baptist																
McNeese																
at UIW																
at Texas A&M-CC																
Nicholls																
New Orleans																
Southeastern																

SEASON HIGHS

	Opponent	Date
Pts	17 2x, last at Arkansas State	12/2/21
Reb	9 at Kansas State	11/27/21
Ast	9 vs. Texas A&M-Texarkana	11/13/21
FGM	7 at Arkansas State	12/2/21
3PM	3 at Wichita State	11/29/21
FTM	3 vs. Texas A&M-Texarkana	11/13/21
Stl	3 2x, last vs. LCU	11/19/21
Blk	- - -	-
Min	40 2x, last at Arkansas State	12/2/21
Total Double Doubles		0

CAREER HIGHS *AT LA TECH

	Opponent	Date
Pts	Same as season high	
Reb	Same as season high	
Ast	Same as season high	
FGM	Same as season high	
3PM	Same as season high	
FTM	Same as season high	
Stl	Same as season high	
Blk*	1 2x, last vs. Marshall	3/10/21
Min	Same as season high	
Total Double Doubles		0

TOP SCORING GAMES

1.	17	at Arkansas State	12/2/21
	17	at Wichita State	11/29/21
3.	14	vs. Centenary	11/9/21
	14	at Grambling	11/17/21

BOLDEN'S CAREER STATISTICS *AT LA TECH

Year	G-GS	M-Avg.	FG-A	Pct.	3FG-A	Pct.	FT-A	Pct.	ORB	DRB	Reb.	Avg.	PF-DQ	A	TO	BL	ST	Pts.	Avg.
19-20*	12-0	59-4.9	6-22	.273	1-3	.333	5-8	.625	3	6	9	0.8	7-0	4	8	1	1	18	1.5
20-21*	24-2	335-14.0	19-65	.292	2-19	.105	11-18	.611	1	29	30	0.9	22-0	23	21	2	16	51	2.1
21-22	7-7	227-32.4	34-93	.366	6-24	.250	12-13	.923	12	34	46	6.6	12-0	22	19	0	14	86	12.3
NSU Totals	7-7	227-32.4	34-93	.366	6-24	.250	12-13	.923	12	34	46	6.6	12-0	22	19	0	14	86	12.3
Totals	43-9	623-14.5	59-180	.328	9-46	.196	28-39	.718	16	69	85	2.0	41-0	49	48	2	31	155	3.6



23 JAMIYA-BRAXTON

5-7 • SENIOR • GUARD

McKINNEY, TEXAS • McKINNEY HS • CLEVELAND ST.

2021-22 Season:

- Matched a career high with four assists and set a career high with six rebounds against Louisiana Christian (Nov. 19).
- Made two clutch 3s in the span of just over a minute to officially erase a 13-point deficit at Arkansas State and tie the game, her only two attempts from distance of the game.

2020-21 Season:

- Played in seven games making four starts after being granted eligibility late in the season.
- Made her NSU debut and first start after being ruled eligible to play on the morning of the game against UIW.
- Scored a bucket, pulled in four rebounds and dished out a pair of assists in her first game for the Lady Demons.
- Scored five straight of her career-best 16 against Nicholls to ignite a 20-4 first-quarter run. Added four assists to her first big game as a Lady Demon.
- Reached double-digits for the second straight time at Stephen F. Austin (Feb. 24) with 10 points.
- Played a season-high 37 minutes against Central Arkansas (March 6), scoring nine

points all coming from behind the 3-point arc.

Personal:

- Born Dec. 17, 1999.
- daughter of Sabrina Campbell.
- has 10 siblings.
- majoring in biology with a biomedical concentration and minoring in psychology.
- hopes to play basketball overseas before operating her own dentistry/orthodontist practice.

Opponent	MIN	FG	Pct.	3FG	Pct.	FT	Pct.	ORB	DRB	TRB	PF	AST	T/O	BLK	STL	PTS
Centenary	13	1-5	.200	1-5	.200	0-0	.000	0	0	0	2	1	0	0	0	3
Texas A&M-Texarkana	23	3-11	.273	3-11	.273	0-0	.000	1	1	2	3	1	0	1	0	9
at Grambling	5	0-4	.000	0-3	.000	0-0	.000	0	0	0	0	0	0	0	0	0
Louisiana Christian	20	0-4	.000	0-2	.000	0-0	.000	2	4	6	1	4	1	0	1	0
at Kansas State	12	0-0	.000	0-0	.000	0-0	.000	0	2	2	0	1	1	0	0	0
at Wichita State	5	0-2	.000	0-2	.000	0-0	.000	0	0	0	0	0	0	0	0	0
at Arkansas State	10	2-3	.667	2-2	1.000	0-0	.000	1	1	2	0	0	0	0	0	6
at Miss. Valley State																
at ULM																
Tarleton State																
at Kansas																
New Orleans																
SLC Tip Off 2																
SLC Tip Off 3																
at Southeastern																
at Nicholls																
at New Orleans																
UIW																
Texas A&M-CC																
at Houston Baptist																
at McNeese																
Houston Baptist																
McNeese																
at UIW																
at Texas A&M-CC																
Nicholls																
New Orleans																
Southeastern																

SEASON HIGHS

		Opponent	Date
Pts	9	vs. Texas A&M-Texarkana	11/13/21
Reb	6	vs. Louisiana Christian	11/19/21
Ast	4	vs. Louisiana Christian	11/19/21
FGM	3	vs. Texas A&M-Texarkana	11/13/21
3PM	3	vs. Texas A&M-Texarkana	11/13/21
FTM	-	-	-
Stl	1	vs. Louisiana Christian	11/19/21
Blk	1	vs. Texas A&M-Texarkana	11/13/21
Min	23	vs. Texas A&M-Texarkana	11/13/21
Total Double Doubles	0		

CAREER HIGHS AT NSU

		Opponent	Date
Pts	16	vs. Nicholls	2/22/21
Reb	Same as season high		
Ast	4	2x, last vs. LCU	11/19/21
FGM	5	vs. Nicholls	2/22/21
3PM	4	vs. Nicholls	2/22/21
FTM	2	vs. Nicholls	2/22/21
Stl	2	3x, last vs. Central Arkansas	3/6/21
Blk	Same as season high		
Min	28	at Stephen F. Austin	2/24/21
Total Double Doubles	0		

TOP SCORING GAMES

1.	16	vs. Nicholls	2/22/21
2.	10	at Stephen F. Austin	2/24/21
3.	9	2x, last vs. TXAMUT	11/13/21

BRAXTON'S CAREER STATISTICS *AT CSU

Year	G-GS	M-Avg.	FG-A	Pct.	3FG-A	Pct.	FT-A	Pct.	ORB	DRB	Reb.	Avg.	PF-DQ	A	TO	BL	ST	Pts.	Avg.
18-19*	30-15	765-25.5	61-202	.302	49-162	.302	3-4	.750	9	39	48	1.6	37-0	40	21	3	26	174	5.8
19-20*	31-31	914-29.5	85-230	.370	72-177	.407	11-18	.611	18	41	59	1.9	39-0	43	22	2	33	253	8.2
20-21	7-4	156-22.3	14-41	.341	10-33	.303	2-2	1.000	5	13	18	2.6	6-0	8	8	0	6	40	5.7
21-22	7-0	89-12.7	6-29	.207	6-25	.240	0-0	.000	4	8	12	1.7	6-0	7	2	1	1	18	2.6
NSU Totals	14-4	245-17.5	20-70	.286	16-58	.276	2-2	1.000	9	21	30	2.1	12-0	15	10	1	7	58	4.1
Totals	75-50	1924-25.7	166-502	.331	137-397	.345	16-24	.667	36	101	137	1.8	88-0	98	53	6	66	485	6.5



12 OSHA CUMMINGS

5-5 • SOPHOMORE • GUARD
ZACHARY, LA. • ZACHARY HS

2020-21 Season:

- Started 13 games in her freshman season, appearing in every game on the year, averaging 27.7 minutes per game, the second most by a true freshman in the Southland Conference that season.
- Grabbed four rebounds in her NSU debut against ULM (Dec. 12).
- Made her first career start at #9 Texas A&M (Dec. 28), scoring five points in 27 minutes and pulling in four rebounds.
- Had one of the best games of her young career at Southeastern (Jan. 23), playing the full 40 minute game and filling the stat line with 14 points, a season high, four rebounds, an assist and a steal.
- Grabbed six rebounds in the first half against New Orleans (Jan. 27) on the way to a new season-best eight total.
- Recorded the first blocked shot of her career against New Orleans (Jan. 27).
- Matched a season best by securing eight rebounds in three straight games against Nicholls (Feb. 22), Stephen F. Austin (Feb. 24) and Southeastern La. (Feb. 27), leading the Lady Demons in the category each time.
- Set a new season best snatching four steals against Nicholls (Feb. 22). Totaled seven steals in two games against the Colonels on the season.

Personal:

- Born December 10, 2001
- daughter of Ovid and Brenda Cummings.
- has four older siblings, step-brother Renard, step-sister Renee, brother Shaun and sister Breanca.
- sister Breanca Cummings ran track at Southern University and now serves the Zachary PD as a police communication officer and was the top female graduate in her class.
- majoring in physical therapy and plans to run her own practice one day.
- life's ambition is to continue to be a Godly person, love her family, be a great person and be successful in her practice.

Opponent	MIN	FG	Pct.	3FG	Pct.	FT	Pct.	ORB	DRB	TRB	PF	AST	T/O	BLK	STL	PTS
Centenary	11	1-4	.250	0-1	.000	0-0	.000	0	1	1	1	0	2	0	0	2
Texas A&M-Texarkana	4	0-0	.000	0-0	.000	0-0	.000	0	2	2	0	1	1	0	0	0
at Grambling						*** DNP - Coach's Decision ***										
Louisiana Christian	8	2-4	.500	0-0	.000	0-1	.000	0	1	1	1	0	0	0	1	4
at Kansas State	2	0-0	.000	0-0	.000	0-0	.000	0	0	0	0	0	0	0	0	0
at Wichita State						*** DNP - Coach's Decision ***										
at Arkansas State						*** DNP - Coach's Decision ***										
at Miss. Valley State																
at ULM																
Tarleton State																
at Kansas																
New Orleans																
SLC Tip Off 2																
SLC Tip Off 3																
at Southeastern																
at Nicholls																
at New Orleans																
UIW																
Texas A&M-CC																
at Houston Baptist																
at McNeese																
Houston Baptist																
McNeese																
at UIW																
at Texas A&M-CC																
Nicholls																
New Orleans																
Southeastern																

SEASON HIGHS

	Opponent	Date
Pts	4 vs. Louisiana Christian	11/19/21
Reb	2 vs. Texas A&M-Texarkana	11/13/21
Ast	1 vs. Texas A&M-Texarkana	11/13/21
FGM	2 vs. Louisiana Christian	11/19/21
3PM	- - -	-
FTM	- - -	-
Stl	1 vs. Louisiana Christian	11/19/21
Blk	- - -	-
Min	11 vs. Centenary	11/9/21
Total Double Doubles		0

CAREER HIGHS

	Opponent	Date
Pts	14 at Southeastern La.	1/23/21
Reb	8 4x, last vs. Southeastern La.	2/27/21
Ast	3 vs. Miss. Valley State	12/20/20
FGM	6 at Southeastern La.	1/23/21
3PM	1 4x, last at Houston Baptist	1/27/21
FTM	3 vs. Stephen F. Austin	1/20/21
Stl	4 vs. Nicholls	2/22/21
Blk	1 at New Orleans	1/27/21
Min	40 at Southeastern La.	1/23/21
Total Double Doubles		0

TOP SCORING GAMES

1.	14	at Southeastern La.	1/23/21
2.	7	3x, last vs. New Orleans	3/3/21

CUMMINGS' CAREER STATISTICS

Year	G-GS	M-Avg.	FG-A	Pct.	3FG-A	Pct.	FT-A	Pct.	ORB	DRB	Reb.	Avg.	PF-DQ	A	TO	BL	ST	Pts.	Avg.
20-21	20-13	552-27.6	33-110	.300	4-24	.167	10-24	.417	38	47	85	4.3	26-0	22	51	1	22	80	4.0
21-22	4-0	25-6.2	3-8	.375	0-1	.000	0-1	.000	0	4	4	1.0	2-0	1	3	0	1	6	1.5
Totals	24-13	577-24.0	36-118	.305	4-25	.160	10-25	.400	38	51	89	3.7	28-0	23	54	1	23	86	3.6



4 KARMELAH DEAN

5-7 • JUNIOR • GUARD

SHORELINE, WASH • ROOSEVELT HS • SOUTHERN IDAHO

2021-22 Season:

- Made her NSU debut and first start in opening-night win against Centenary (Nov. 9) scoring six points and leading the team with three assists.
- Scored eight of her career-high 12 points in the first quarter in the win against Louisiana Christian (Nov. 19)
- Scored a career-high 16 points against Arkansas State (Dec. 2) going 5-for-12 from the field in the game and 5-for-7 from the line.
- Had a career-high five assists at Arkansas State (Dec. 2), the fourth straight game with three or more assists on the season and fifth overall.

Prior to NSU:

- Played two seasons at the College of Southern Idaho in Twin Falls, Idaho.
- Two-time First-Team All-Region 18 player following both her freshman and sophomore seasons at CSI.
- Helped lead her team to the NJCAA National Tournament and Region 18 Championship during the 2020-21 season.
- Averaged 11.5 points and 3.8 assists per game as a sophomore and led the team with 1.7 steals per game.

Personal:

- Born December 30, 2000.
- Daughter of Nichole Harmon and Anthony Dean.
- Has two older brothers, Derrik and Curtis.
- Majoring in education.
- Wants to play basketball after leaving NSU or work with those with special needs.

Opponent	MIN	FG	Pct.	3FG	Pct.	FT	Pct.	ORB	DRB	TRB	PF	AST	T/O	BLK	STL	PTS
Centenary*	17	2-11	.182	0-5	.000	2-2	1.000	1	3	4	2	3	2	0	1	6
Texas A&M-Texarkana*	20	2-8	.250	1-3	.333	1-2	.500	1	1	2	3	2	5	0	3	6
at Grambling*	33	4-13	.308	1-4	.250	0-0	.000	1	2	3	1	1	3	0	1	9
Louisiana Christian*	22	3-10	.300	0-2	.000	6-7	.857	1	0	1	0	3	1	0	2	12
at Kansas State*	27	0-11	.000	0-3	.000	2-4	.500	0	4	4	0	3	6	0	2	2
at Wichita State*	31	5-17	.294	1-5	.200	1-1	1.000	0	2	2	2	3	2	0	2	12
at Arkansas State*	31	5-12	.417	1-3	.333	5-7	.714	0	2	2	2	5	2	0	1	16
at Miss. Valley State																
at ULM																
Tarleton State																
at Kansas																
New Orleans																
SLC Tip Off 2																
SLC Tip Off 3																
at Southeastern																
at Nicholls																
at New Orleans																
UIW																
Texas A&M-CC																
at Houston Baptist																
at McNeese																
Houston Baptist																
McNeese																
at UIW																
at Texas A&M-CC																
Nicholls																
New Orleans																
Southeastern																

SEASON HIGHS

		Opponent	Date
Pts	16	at Arkansas State	12/2/21
Reb	4	2x, last at Kansas State	11/27/21
Asst	5	at Arkansas State	12/2/21
FGM	5	2x, last at Arkansas State	12/2/21
3PM	1	4x, last at Arkansas State	12/2/21
FTM	6	vs. Louisiana Christian	11/19/21
Stl	3	vs. Texas A&M-Texarkana	11/13/21
Blk	-	-	-
Min	33	at Grambling	11/17/21
Total Double Doubles	0		

CAREER HIGHS

		Opponent	Date
Pts	Same as Season High		
Reb	Same as Season High		
Asst	Same as Season High		
FGM	Same as Season High		
3PM	Same as Season High		
FTM	Same as Season High		
Stl	Same as Season High		
Blk	Same as Season High		
Min	Same as Season High		
Total Double Doubles	0		

TOP SCORING GAMES

1.	16	at Arkansas State	12/2/21
2.	12	at Wichita State	11/29/21
	12	vs. Louisiana Christian	11/19/21

DEAN'S CAREER STATISTICS

Year	G-GS	M-Avg.	FG-A	Pct.	3FG-A	Pct.	FT-A	Pct.	ORB	DRB	Reb.	Avg.	PF-DQ	A	TO	BL	ST	Pts.	Avg.
21-22	7-7	182-26.1	21-82	.256	4-25	.160	17-23	.739	4	14	18	2.6	10-0	20	21	0	12	63	9.0
Totals	7-7	182-26.1	21-82	.256	4-25	.160	17-23	.739	4	14	18	2.6	10-0	20	21	0	12	63	9.0



13 JASMIN DIXON

6-3 • SOPHOMORE • FORWARD

SPRING, TEXAS • KLEIN FOREST HS • PRAIRIE VIEW A&M

2021-22:

- Pulled in 13 rebounds in her first game as a Lady Demon against Centenary (Nov. 9).
- Had her second game with two blocks against Louisiana Christian (Nov. 19) and scored her first points for NSU going 2-for-4 from the field and grabbing five rebounds in just seven minutes of playing time.
- Had one block against Arkansas State (Dec. 2) to extend a streak of five straight games with at least one block.
- Took the first charge of her career at Arkansas State (Dec. 2) coming at the 6:20 mark of the second quarter.

Prior to NSU:

- Played one season at Prairie View A&M appearing in all 16 games making seven starts averaging 18.2 minutes per game along the way.
- Made her first collegiate start at UTRGV scoring a season-high nine points going 4-for-4 from the field in the game.
- Played a career high 33 minutes against Mississippi Valley State where she pulled in a career-high 13 rebounds and dished out three assists.
- Led the Panthers with 29 blocked shots, 18 more than her next closest teammate, and had six games with three or more blocks.

Opponent	MIN	FG	Pct.	3FG	Pct.	FT	Pct.	ORB	DRB	TRB	PF	AST	T/O	BLK	STL	PTS
Centenary	19	0-3	.000	0-0	.000	0-2	.000	3	10	13	2	0	1	2	0	0
Texas A&M-Texarkana	10	0-1	.000	0-0	.000	0-0	.000	0	1	1	2	0	0	0	0	0
at Grambling	15	0-0	.000	0-0	.000	0-0	.000	0	1	1	2	0	1	1	0	0
Louisiana Christian	7	2-4	.500	0-0	.000	0-1	.000	1	4	5	0	0	0	2	0	4
at Kansas State	12	1-3	.333	0-0	.000	3-4	.750	1	1	2	3	0	2	1	1	5
at Wichita State	16	0-1	.000	0-0	.000	0-0	.000	0	6	6	2	0	1	2	0	0
at Arkansas State	17	0-0	.000	0-0	.000	2-2	.000	0	4	4	2	2	0	1	0	2
at Miss. Valley State																
at ULM																
Tarleton State																
at Kansas																
New Orleans																
SLC Tip Off 2																
SLC Tip Off 3																
at Southeastern																
at Nicholls																
at New Orleans																
UIW																
Texas A&M-CC																
at Houston Baptist																
at McNeese																
Houston Baptist																
McNeese																
at UIW																
at Texas A&M-CC																
Nicholls																
New Orleans																
Southeastern																

SEASON HIGHS

		Opponent	Date
Pts	5	at Kansas State	11/27/21
Reb	13	vs. Centenary	11/9/21
Ast	2	at Arkansas State	12/2/21
FGM	2	vs. Louisiana Christian	11/19/21
3PM	-	-	-
FTM	3	at Kansas State	11/27/21
Stl	1	at Kansas State	11/27/21
Blk	2	3x, last at Wichita State	11/29/21
Min	19	vs. Centenary	11/9/21
Total Double Doubles	0		

CAREER HIGHS *AT PVAMU

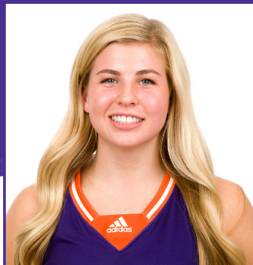
		Opponent	Date
Pts*	9	at UTRGV	12/19/20
Reb	Same as season high		
Ast*	3	vs. Miss. Valley State	2/25/21
FGM*	4	2x, last vs. Grambling	1/18/21
3PM	-	-	-
FTM	Same as season high		
Stl*	3	2x, last vs. Ark.-Pine Bluff	2/22/21
Blk*	4	3x, last vs. Ark.-Pine Bluff	2/22/21
Min*	33	vs. Miss. Valley State	2/25/21
Total Double Doubles	0		

TOP SCORING GAMES

1.	9*	at UTRGV	12/19/20
2.	8*	vs. Grambling	1/18/21
3.	5	at Kansas State	11/27/21
	5*	vs. Houston Baptist	12/29/20

DIXON'S CAREER STATISTICS *AT PVAMU

Year	G-GS	M-Avg.	FG-A	Pct.	3FG-A	Pct.	FT-A	Pct.	ORB	DRB	Reb.	Avg.	PF-DQ	A	TO	BL	ST	Pts.	Avg.
20-21*	16-7	291-18.2	22-41	.537	0-1	.000	7-14	.500	23	45	68	4.3	33-0	12	22	29	8	51	3.2
21-22	7-0	95-13.6	3-12	.250	0-0	.000	5-9	.556	5	27	32	4.6	13-0	2	5	9	1	11	1.6
NSU Totals	7-0	95-13.6	3-12	.250	0-0	.000	5-9	.556	5	27	32	4.6	13-0	2	5	9	1	11	1.6
Totals	23-7	384-16.7	25-53	.472	0-1	.000	12-23	.522	28	72	100	4.3	46-0	14	27	38	9	62	2.7



22 JOSIE FLEISCHMANN

5-7 • FRESHMAN • GUARD
HUXLEY, IOWA • BALLARD HS

2021-22 Season:

- Started the first game of her collegiate career in the win against Centenary (Nov. 9). Converted her first attempt from beyond the arc and scored eight points in her debut.
- Converted her first 3-point attempt of the game in each of the first three games of the season, giving the Lady Demons their fifth points of each game.

High School

- Two-sport letter winner at Ballard High School in basketball and cross country.
- Was a four-time all-conference recipient and named Second-Team All-State after her senior season in basketball.
- Instrumental in her team's 2020-21 4A Iowa State Championship win making the game-tying and game-winning shots in the final minute of the title game.
- Set the Ballard record for 3's in a season as a junior with 73 shooting 46 percent for the season.
- Named first-team all-conference all four years in cross country winning back-to-back team state titles her junior and senior seasons and four conference and district championships.

Personal

- Born August 30, 2002
- Daughter of Shelly and Aron Fleischmann
- Has four brothers -- Brooks, Blake, Jakson and Breken
- Not yet decided on a major
- Plans to find a job and start a family after graduating and would like to coach and own her own business.

Opponent	MIN	FG	Pct.	3FG	Pct.	FT	Pct.	ORB	DRB	TRB	PF	AST	T/O	BLK	STL	PTS
Centenary*	16	3-8	.375	2-7	.286	0-0	.000	2	0	2	2	0	0	0	0	8
Texas A&M-Texarkana*	22	3-8	.375	3-8	.375	0-0	.000	0	0	0	0	0	0	0	2	9
at Grambling*	23	3-9	.333	3-9	.333	0-0	.000	0	2	2	0	0	2	0	0	9
Louisiana Christian*	22	3-6	.500	2-5	.400	0-0	.000	2	1	3	0	0	1	0	0	8
at Kansas State*	11	0-2	.000	0-2	.000	0-0	.000	0	1	1	0	0	1	0	0	0
at Wichita State	6	0-0	.000	0-0	.000	0-0	.000	1	1	2	1	1	0	0	0	0
at Arkansas State	1	0-0	.000	0-0	.000	0-0	.000	0	0	0	0	0	0	0	0	0
at Miss. Valley State																
at ULM																
Tarleton State																
at Kansas																
New Orleans																
SLC Tip Off 2																
SLC Tip Off 3																
at Southeastern																
at Nicholls																
at New Orleans																
UIW																
Texas A&M-CC																
at Houston Baptist																
at McNeese																
Houston Baptist																
McNeese																
at UIW																
at Texas A&M-CC																
Nicholls																
New Orleans																
Southeastern																

SEASON HIGHS

	Opponent	Date
Pts	9 2x, last at Grambling	11/17/21
Reb	3 vs. Louisiana Christian	11/19/21
Asst	1 at Wichita State	11/29/21
FGM	3 4x, last vs. LCU	11/19/21
3PM	3 2x, last at Grambling	11/17/21
FTM	- - - -	-
Stl	2 vs. Texas A&M-Texarkana	11/13/21
Blk	- - - -	-
Min	23 at Grambling	11/17/21
Total Double Doubles		0

CAREER HIGHS

	Opponent	Date
Pts	Same as Season High	
Reb	Same as Season High	
Asst	Same as Season High	
FGM	Same as Season High	
3PM	Same as Season High	
FTM	Same as Season High	
Stl	Same as Season High	
Blk	Same as Season High	
Min	Same as Season High	
Total Double Doubles		0

TOP SCORING GAMES

1.	9	at Grambling	11/17/21
	9	vs. Texas A&M-Texarkana	11/13/21
3.	8	vs. Louisiana Christian	11/19/21
	8	vs. Centenary	11/9/21

FLEISCHMANN'S CAREER STATISTICS

Year	G-GS	M-Avg.	FG-A	Pct.	3FG-A	Pct.	FT-A	Pct.	ORB	DRB	Reb.	Avg.	PF-DQ	A	TO	BL	ST	Pts.	Avg.
21-22	7-5	100-14.4	12-33	.364	10-31	.323	0-0	.000	5	5	10	1.4	3-0	1	4	0	2	34	4.9
Totals	7-5	100-14.4	12-33	.364	10-31	.323	0-0	.000	5	5	10	1.4	3-0	1	4	0	2	34	4.9



11 ERIN HARRIS

5-7 • SOPHOMORE • GUARD

WEST HAVEN, CONN. • NOTRE DAME CATHOLIC HS

2020-21 Season:

- Played in every game on the season making 17 starts, the fifth most starts by a Lady Demon true freshman in the past 10 seasons.
- Averaged 6.7 points and 24.5 minutes per game in her freshman season.
- Scored eight points and had four assists in her NSU debut against ULM (Dec. 12) and went 2-for-5 from beyond the arc.
- Reached double figures for the first time in her career with 11 points against UTSA (Dec. 15).
- Made first career start at #7 Baylor (Dec. 18) putting in eight points with four rebounds.
- Played 34 plus minutes in consecutive games against McNeese (Jan. 9) and Nicholls (Jan. 13).
- Had five steals against Houston Baptist (Feb. 6), setting a new career best, her first game with more than two steals on the season.
- Followed her career-best five steals against HBU with four more against UIW (Feb. 10).
- Scored 14 against Nicholls (Feb. 22) going 3-for-5 from beyond the arc.
- Reached double figures for the second time in three games by setting a new season best with 15 points against Southeastern La. (Feb. 27).

Personal:

- Born January 11, 2002.
- daughter of Janette Quiles and Edsel Harris.
- has one older brother, Jovani Cappozziello.
- majoring in computer science.
- plans to work in the computer science field after graduation
- life's ambition is to be the best version of herself and live life to the fullest.

Opponent	MIN	FG	Pct.	3FG	Pct.	FT	Pct.	ORB	DRB	TRB	PF	AST	T/O	BLK	STL	PTS
Centenary	18	2-6	.333	0-1	.000	1-1	1.000	0	2	2	4	3	2	0	0	5
Texas A&M-Texarkana	17	1-2	.500	0-1	.000	0-0	.000	0	2	2	2	0	2	0	2	2
at Grambling	18	0-2	.000	0-1	.000	3-4	.750	0	2	2	2	2	1	0	2	3
Louisiana Christian	10	1-1	1.000	0-0	.000	2-2	1.000	0	2	2	0	0	2	0	1	4
at Kansas State	6	0-0	.000	0-0	.000	2-2	1.000	0	0	0	0	0	1	0	0	2
at Wichita State	11	1-2	.500	0-0	.000	0-0	.000	2	1	3	2	0	1	0	1	2
at Arkansas State	5	0-1	.000	0-1	.000	0-0	.000	1	0	1	0	1	1	0	0	0
at Miss. Valley State																
at ULM																
Tarleton State																
at Kansas																
New Orleans																
SLC Tip Off 2																
SLC Tip Off 3																
at Southeastern																
at Nicholls																
at New Orleans																
UIW																
Texas A&M-CC																
at Houston Baptist																
at McNeese																
Houston Baptist																
McNeese																
at UIW																
at Texas A&M-CC																
Nicholls																
New Orleans																
Southeastern																

SEASON HIGHS

	Opponent	Date
Pts	5 vs. Centenary	11/9/21
Reb	3 at Wichita State	11/29/21
Ast	3 vs. Centenary	11/9/21
FGM	2 vs. Centenary	11/9/21
3PM	- - -	-
FTM	3 at Grambling	11/17/21
Stl	2 2x, last at Grambling	11/17/21
Blk	- - -	-
Min	18 2x, last at Grambling	11/17/21
Total Double Doubles		0

CAREER HIGHS

	Opponent	Date
Pts	15 vs. Southeastern La.	2/27/21
Reb	6 vs. UIW	2/10/21
Ast	4 vs. ULM	12/12/20
FGM	7 vs. Southeastern La.	2/27/21
3PM	3 vs. Nicholls	2/22/21
FTM	5 vs. Central Arkansas	3/6/21
Stl	5 vs. Houston Baptist	2/6/21
Blk	1 2x, last at New Orleans	1/27/21
Min	34 at McNeese	1/9/21
Total Double Doubles		0

TOP SCORING GAMES

1.	15	vs. Southeastern La.	2/27/21
2.	14	vs. Nicholls	2/22/21
3.	13	at McNeese	1/9/21

HARRIS' CAREER STATISTICS

Year	G-GS	M-Avg.	FG-A	Pct.	3FG-A	Pct.	FT-A	Pct.	ORB	DRB	Reb.	Avg.	PF-DQ	A	TO	BL	ST	Pts.	Avg.
20-21	20-17	488-24.4	48-195	.246	15-70	.214	22-37	.595	19	33	52	2.6	61-4	27	75	2	22	133	6.7
21-22	7-0	86-12.3	5-14	.357	0-4	.000	8-9	.889	3	9	12	1.7	10-0	6	10	0	6	18	2.6
Totals	27-17	574-21.3	53-209	.254	15-74	.203	30-46	.652	22	42	64	2.4	71-4	33	85	2	28	151	5.6



32 ALEX HARRISON

5-10 • JUNIOR • FORWARD

PLAINVIEW, LA. • PLAINVIEW HS • LOUISIANA COLLEGE

2021-22 Season:

- Made her NSU debut on opening night against Centenary (Nov. 9) going 2-for-3 from the floor with a couple of steals.
- Scored a basket and pulled down four rebounds, three on the offensive end, against her former team Louisiana Christian (Nov. 19).
- Had a steal and an assist in one minute of play at Arkansas State (Dec. 2).

Prior to NSU:

- Played two seasons at Division III Louisiana College starting 31 of the team's 33 total games during that stretch.
- Named Second-Team All-East Division in the American Southwest Conference following the 2020-21 season after leading the Wildcats with a 13.2 point and 7.7 rebound per game average, finishing in the top 10 in the conference in both categories.
- Scored a career-high 29 points, her third 20-point outing of the shortened nine-game season in 20-21, at Belhaven.
- Turned in a 21-point, 20-rebound game against Ozarks garnering conference and LSWA Player of the Week honors after scoring 14 of her 21 points in the fourth quarter and overtime of the 84-75 win.

Personal:

- Born Nov. 21, 2000.
- Daughter of Sherron Ashworth and Darrell Harrison.
- Has five siblings, brothers Zachary, Ryan and Dallas and sisters Ashtyn and Kelsey.
- Uncle, Don Ashworth, played for NSU from 1965-69.
- Majoring in biology.
- Career plan's after graduation are to start working in a hospital as a medical lab scientist or go to medical school.
- Life's ambition is to "make a difference in the world and follow God's plan for my life."

Opponent	MIN	FG	Pct.	3FG	Pct.	FT	Pct.	ORB	DRB	TRB	PF	AST	T/O	BLK	STL	PTS
Centenary	13	2-3	.667	0-1	.000	0-1	.000	1	1	2	3	0	1	0	2	4
Texas A&M-Texarkana						*** DNP - Coach's Decision ***										
at Grambling						*** DNP - Coach's Decision ***										
Louisiana Christian	7	1-2	.500	0-1	.000	0-0	.000	3	1	4	1	0	0	0	0	2
at Kansas State	2	0-0	.000	0-0	.000	0-0	.000	0	0	0	0	0	1	0	1	0
at Wichita State	3	0-1	.000	0-0	.000	0-0	.000	1	0	1	0	0	0	0	0	0
at Arkansas State	1	0-0	.000	0-0	.000	0-0	.000	0	0	0	0	1	0	0	1	0
at Miss. Valley State																
at ULM																
Tarleton State																
at Kansas																
New Orleans																
SLC Tip Off 2																
SLC Tip Off 3																
at Southeastern																
at Nicholls																
at New Orleans																
UIW																
Texas A&M-CC																
at Houston Baptist																
at McNeese																
Houston Baptist																
McNeese																
at UIW																
at Texas A&M-CC																
Nicholls																
New Orleans																
Southeastern																

SEASON HIGHS

		Opponent	Date
Pts	4	vs. Centenary	11/9/21
Reb	4	vs. Louisiana Christian	11/19/21
Ast	1	at Arkansas State	12/2/21
FGM	2	vs. Centenary	11/9/21
3PM	-	- - -	-
FTM	-	- - -	-
Stl	2	vs. Centenary	11/9/21
Blk	-	- - -	-
Min	13	vs. Centenary	11/9/21
Total Double Doubles			0

CAREER HIGHS *AT LC

		Opponent	Date
Pts*	29	at Belhaven	2/25/21
Reb*	20	vs. Ozarks	1/23/21
Ast*	5	vs. Belhaven	2/1/20
FGM*	9	at Howard Payne	1/4/20
3PM*	4	at Belhaven	2/25/21
FTM*	9	at Belhaven	2/25/21
Stl*	4	vs. Ozarks	1/23/21
Blk*	2	at Huntingdon	12/8/19
Min*		Same as Season High	
Total Double Doubles			0

TOP SCORING GAMES

1.	29*	at Belhaven	2/25/21
2.			
3.			

HARRISON'S CAREER STATISTICS *AT LC

Year	G-GS	M-Avg.	FG-A	Pct.	3FG-A	Pct.	FT-A	Pct.	ORB	DRB	Reb.	Avg.	PF-DQ	A	TO	BL	ST	Pts.	Avg.
19-20*	24-22	572-23.8	82-258	.318	19-86	.221	39-51	.765	33	92	125	5.2	46-0	23	40	7	24	222	9.3
20-21*	9-9	248-27.6	39-107	.364	18-49	.367	23-31	.742	16	53	69	7.7	26-1	5	25	3	11	119	13.2
21-22	5-0	20-4.1	3-6	.500	0-2	.000	0-1	.000	5	2	7	1.4	4-0	1	2	0	4	6	1.2
NSU Totals	5-0	20-4.1	3-6	.500	0-2	.000	0-1	.000	5	2	7	1.4	4-0	1	2	0	4	6	1.2
Totals	38-31	841-22.1	124-371	.334	37-137	.270	62-83	.747	54	147	201	5.3	76-1	29	67	10	39	347	9.1



20 JORDAN-McLEMORE

5-11 • FRESHMAN • GUARD
SHREVEPORT, LA. • CAPTAIN SHREVE HS

2021-22 Season:

- Went 6-for-6 from the free throw line and grabbed three rebounds in her first college game, the season opener against Centenary (Nov. 9).

High School

- Four-year letter winner at Captain Shreve HS in Shreveport.
- Four-time all-district selection and two-time 5A State Champion after 2018-19 and 2020-21 seasons.
- Won the LHSAA 5A Horizon Award given to the player who exhibits great work in the classroom and the community.
- Named an LHSCA All-Star following her senior season.
- Finalist for the 2019 Hugh O'Brian Your Leadership award.
- Distinguished Scholar at Captain Shreve and member of National Honor Society and National English Honor Society.
- Member of student council and Black Studies Association.

Personal

- Born January 29, 2003.
- Daughter of Danielle and Thomas McLemore.
- Father Thomas was a third-round NFL draft pick out of Southern playing for Detroit, Cleveland and Indianapolis during his year.
- Mom Danielle was a three-year starter for legendary coach Leon Barmore at Louisiana Tech where we scored over 1,000 points and was named NCAA Regional Most Outstanding Player and to the NCAA Regional All-Tournament team her senior season in 92-93.
- Has one older brother Evan and one younger brother Zanden.
- General studies major.
- Plans to pursue physical or occupational therapy school.
- Life's ambition is to "become the best version of myself and live life to the fullest."

Opponent	MIN	FG	Pct.	3FG	Pct.	FT	Pct.	ORB	DRB	TRB	PF	AST	T/O	BLK	STL	PTS
Centenary	8	0-3	.000	0-1	.000	6-6	1.000	3	0	3	1	0	1	0	0	6
Texas A&M-Texarkana	4	1-1	1.000	0-0	.000	0-0	.000	0	0	0	1	0	1	0	0	2
at Grambling	3	0-1	.000	0-1	.000	0-0	.000	0	1	1	0	0	0	0	0	0
Louisiana Christian	11	1-4	.250	0-0	.000	2-4	.500	2	1	3	2	1	1	0	0	4
at Kansas State	10	0-4	.000	0-1	.000	0-0	.000	0	0	0	3	0	2	0	0	0
at Wichita State	8	0-1	.000	0-0	.000	0-2	.000	1	0	1	2	0	1	0	0	0
at Arkansas State						*** DNP - Coach's Decision ***										
at Miss. Valley State																
at ULM																
Tarleton State																
at Kansas																
New Orleans																
SLC Tip Off 2																
SLC Tip Off 3																
at Southeastern																
at Nicholls																
at New Orleans																
UIW																
Texas A&M-CC																
at Houston Baptist																
at McNeese																
Houston Baptist																
McNeese																
at UIW																
at Texas A&M-CC																
Nicholls																
New Orleans																
Southeastern																

SEASON HIGHS

	Opponent	Date
Pts	6 vs. Centenary	11/9/21
Reb	3 2x, last vs. LCU	11/19/21
Ast	1 vs. Louisiana Christian	11/19/21
FGM	1 2x, last vs. LCU	11/19/21
3PM	- - -	-
FTM	6 vs. Centenary	11/9/21
Stl	- - -	-
Blk	- - -	-
Min	11 vs. Louisiana Christian	11/19/21
Total Double Doubles		0

CAREER HIGHS

	Opponent	Date
Pts	Same as Season High	
Reb	Same as Season High	
Ast	Same as Season High	
FGM	Same as Season High	
3PM	Same as Season High	
FTM	Same as Season High	
Stl	Same as Season High	
Blk	Same as Season High	
Min	Same as Season High	
Total Double Doubles		0

TOP SCORING GAMES

1.	6	vs. Centenary	11/9/21
2.	4	vs. Louisiana Christian	11/19/21
3.	2	vs. Texas A&M-Texarkana	11/13/21

McLEMORE'S CAREER STATISTICS

Year	G-GS	M-Avg.	FG-A	Pct.	3FG-A	Pct.	FT-A	Pct.	ORB	DRB	Reb.	Avg.	PF-DQ	A	TO	BL	ST	Pts.	Avg.
21-22	6-0	44-7.3	2-14	.143	0-3	.000	8-12	.667	6	2	8	1.3	9-0	1	6	0	0	12	2.0
Totals	6-0	44-7.3	2-14	.143	0-3	.000	8-12	.667	6	2	8	1.3	9-0	1	6	0	0	12	2.0



15 CANDICE PARRAMORE

5-7 • SENIOR • GUARD

DALLAS, TEXAS • LAKEVIEW CENTENNIAL • GRAMBLING

2021-22 Season:

- Scored 16 points and grabbed 10 rebounds in her first game and start for NSU against Centenary (Nov. 9).
- Went 7-for-14 from the field and 7-for-8 from the line in route to a 21-point outing against Texas A&M-Texarkana (Nov. 13). It was the second time in her career she scored 21 points on Nov. 13, doing so against Centenary in 2019 during her time with Grambling.
- Scored 15 points against her former team Grambling (Nov. 17), for her third straight double-digit scoring effort to start the season.
- Made three consecutive 3s in the third quarter at Arkansas State (Dec. 2) that gave NSU its first lead of the game four minutes into the second half.

Prior to NSU:

- Started 38 games in two seasons at Grambling.
- Played an average of 26.0 minutes per game the past two seasons.
- Averaged 10.2 points per game during the 2020-21 season, reaching double figures 13 times with a season best 17 twice against Prairie View A&M and Southern.
- Scored a career-high 22 points her sophomore season against Texas Southern.
- Recorded her first career double-double with a 21-point, 10-steal performance

against Centenary on Nov. 13, 2019.

Personal:

- Born January 27, 2000.
- daughter of Shari and Corey Parramore.
- has three older siblings, sisters Courtney and Carissa and brother Anthony.
- cousin of NFL receiver Odell Beckham Jr.
- majoring in criminal justice.
- wants to play basketball overseas, begin coaching or work in criminal justice after graduation.
- life's ambition is to be successful in anything she decides to do, whether that be in basketball or any other aspect of her life.

Opponent	MIN	FG	Pct.	3FG	Pct.	FT	Pct.	ORB	DRB	TRB	PF	AST	T/O	BLK	STL	PTS
Centenary*	23	5-11	.454	0-1	.000	6-7	.857	3	7	10	1	1	2	0	3	16
Texas A&M-Texarkana*	32	7-14	.500	0-3	.000	7-8	.875	2	1	3	2	1	3	0	0	21
at Grambling*	32	5-11	.454	1-3	.333	4-4	1.000	1	2	3	4	0	3	0	2	15
Louisiana Christian*	14	1-10	.100	0-2	.000	0-0	.000	1	1	2	2	2	2	0	3	2
at Kansas State*	35	2-15	.133	0-1	.000	5-5	1.000	0	1	1	2	0	3	0	1	9
at Wichita State*	20	0-4	.000	0-1	.000	0-0	.000	0	3	3	3	0	2	0	2	0
at Arkansas State*	20	4-6	.667	3-4	.750	2-2	1.000	0	1	1	2	0	0	0	1	13
at Miss. Valley State																
at ULM																
Tarleton State																
at Kansas																
New Orleans																
SLC Tip Off 2																
SLC Tip Off 3																
at Southeastern																
at Nicholls																
at New Orleans																
UIW																
Texas A&M-CC																
at Houston Baptist																
at McNeese																
Houston Baptist																
McNeese																
at UIW																
at Texas A&M-CC																
Nicholls																
New Orleans																
Southeastern																

SEASON HIGHS

	Opponent	Date
Pts	21 vs. Texas A&M-Texarkana	11/13/21
Reb	10 vs. Centenary	11/9/21
Ast	2 vs. Louisiana Christian	11/19/21
FGM	7 vs. Texas A&M-Texarkana	11/13/21
3PM	3 at Arkansas State	12/2/21
FTM	7 vs. Texas A&M-Texarkana	11/13/21
Stl	3 2x, last vs. LCU	11/19/21
Blk	- - -	-
Min	35 at Kansas State	11/27/21
Total Double Doubles		1

CAREER HIGHS *AT GSU

	Opponent	Date
Pts*	22 vs. Texas Southern	1/20/20
Reb	Same as season high	
Ast*	5 2x, last at Texas Southern	2/17/20
FGM*	8 vs. Centenary	11/13/19
3PM*	3 2x, last at Arkansas State	12/2/21
FTM*	10 vs. Binghamton	12/20/19
Stl*	10 vs. Centenary	11/13/19
Blk*	1 4x, last vs. Miss. Valley St.	2/1/21
Min*	39 at Northwestern State	1/20/20
Total Double Doubles		2

TOP SCORING GAMES

1.	22*	vs. Texas Southern	1/20/20
2.	21	vs. Texas A&M-Texarkana	11/13/21
	21*	vs. Centenary	11/13/19

PARRAMORE'S CAREER STATISTICS *AT GRAMBLING

Year	G-GS	M-Avg.	FG-A	Pct.	3FG-A	Pct.	FT-A	Pct.	ORB	DRB	Reb.	Avg.	PF-DQ	A	TO	BL	ST	Pts.	Avg.
18-19*	23-0	163-7.1	7-40	.175	3-14	.214	12-14	.857	4	8	12	0.5	13-0	8	26	0	6	27	1.2
19-20*	29-21	795-27.4	83-267	.311	29-117	.248	77-101	.762	10	45	55	1.9	72-2	56	109	3	46	272	9.4
20-21*	20-18	517-25.8	59-170	.347	23-76	.303	61-78	.782	8	17	25	1.3	40-0	25	52	1	14	202	10.1
21-22	7-7	177-25.3	24-71	.338	4-15	.267	24-26	.923	7	16	23	3.3	16-0	4	15	0	12	76	10.9
NSU Totals	7-7	177-25.3	24-71	.338	4-15	.267	24-26	.923	7	16	23	3.3	16-0	4	15	0	12	76	10.9
Totals	79-46	1653-20.9	173-548	.316	57-227	.251	174-219	.795	29	86	115	1.5	141-2	93	202	4	78	577	7.3



24 JORDAN TODD

6-1 • JUNIOR • CENTER

ANCHORAGE, ALASKA • ANCHORAGE CHRISTIAN • SOUTHERN IDAHO

2021-22 Season:

- Began her NSU career with an impressive 15-point, 15-rebound double-double against Centenary (Nov. 9), her first start as a Lady Demon.
- Became first players since 2016-17 season to record consecutive double-doubles after her 15-point, 14-rebound night against Texas A&M-Texarkana (Nov. 13).
- Recorded fourth straight double-double of the season with an 11-point, 12-rebound game against Louisiana Christian (Nov. 19), becoming the first player in more than 10 seasons with four straight double-doubles.
- Grabbed 10 rebounds at Arkansas State (Dec. 2) for her fifth double-digit rebounding game of the year and first in three games.

Prior to NSU

- Played two seasons at the College of Southern Idaho in Twin Falls, Idaho.
- Named Second-Team All-Region 18 following her sophomore season.
- Helped lead the Golden Eagles to a 2020-21 Region 18 championship earning a trip to the NJCAA National Tournament, scoring 15 points with seven rebounds in the Region 18 title game.
- Set the CSI single game record for rebounds with 23 against the University of Southern Utah.
- Averaged 9.7 points and 6.9 rebounds per game during her sophomore season.

Personal:

- Born March 30, 2001.
- Daughter of Monique and John Todd.
- Has one older brother, Michael.
- Majoring in nursing.

Opponent	MIN	FG	Pct.	3FG	Pct.	FT	Pct.	ORB	DRB	TRB	PF	AST	T/O	BLK	STL	PTS
Centenary*	19	6-11	.545	0-0	.000	3-4	.750	6	9	15	3	1	0	3	0	15
Texas A&M-Texarkana*	28	6-9	.667	0-0	.000	3-5	.600	5	9	14	2	0	1	1	2	15
at Grambling*	24	3-6	.500	0-0	.000	4-6	.667	7	3	10	2	2	2	1	1	10
Louisiana Christian*	22	3-7	.428	0-0	.000	5-6	.833	5	7	12	0	0	2	2	3	11
at Kansas State*	20	1-4	.250	0-0	.000	0-0	.000	1	2	3	2	0	0	2	0	2
at Wichita State*	17	2-2	1.000	0-0	.000	1-2	.500	1	1	2	3	0	1	0	0	5
at Arkansas State*	23	3-5	.600	0-0	.000	0-1	.000	4	6	10	5	1	3	1	0	6
at Miss. Valley State																
at ULM																
Tarleton State																
at Kansas																
New Orleans																
SLC Tip Off 2																
SLC Tip Off 3																
at Southeastern																
at Nicholls																
at New Orleans																
UIW																
Texas A&M-CC																
at Houston Baptist																
at McNeese																
Houston Baptist																
McNeese																
at UIW																
at Texas A&M-CC																
Nicholls																
New Orleans																
Southeastern																

SEASON HIGHS

	Opponent	Date
Pts	15 2x, last vs. TXAMUT	11/13/21
Reb	15 vs. Centenary	11/9/21
Ast	2 at Grambling	11/17/21
FGM	6 2x, last vs. TXAMUT	11/13/21
3PM	- - -	-
FTM	5 vs. Louisiana Christian	11/19/21
Stl	3 vs. Louisiana Christian	11/19/21
Blk	3 vs. Centenary	11/9/21
Min	28 vs. Texas A&M-Texarkana	11/13/21
Total Double Doubles		4

CAREER HIGHS

	Opponent	Date
Pts	Same as Season High	
Reb	Same as Season High	
Ast	Same as Season High	
FGM	Same as Season High	
3PM	Same as Season High	
FTM	Same as Season High	
Stl	Same as Season High	
Blk	Same as Season High	
Min	Same as Season High	
Total Double Doubles		0

TOP SCORING GAMES

1.	15	vs. Texas A&M-Texarkana	11/13/21
	15	vs. Centenary	11/9/21
3.	11	vs. Louisiana Christian	11/19/21

TODD'S CAREER STATISTICS

Year	G-GS	M-Avg.	FG-A	Pct.	3FG-A	Pct.	FT-A	Pct.	ORB	DRB	Reb.	Avg.	PF-DQ	A	TO	BL	ST	Pts.	Avg.
21-22	7-7	154-22.0	24-44	.545	0-0	.000	16-24	.667	29	37	66	9.4	17-1	4	9	10	6	64	9.1
Totals	7-7	154-22.0	24-44	.545	0-0	.000	16-24	.667	29	37	66	9.4	17-1	4	9	10	6	64	9.1



21 ALECIA WHYTE

5-10 • JUNIOR • GUARD

HOUSTON, TEXAS • OAK RIDGE HS • NORTHERN COLORADO

2021-22 Season

- Missed the first six games due to concussion protocols.

Prior to NSU

- Played two seasons at the University of Northern Colorado appearing in 50 games and making 11 starts during that time averaging 14.5 minutes per game.
- Averaged 5.7 points and 2.3 rebounds during the 2020-21 season.
- Set a career high with 16 points at Idaho State, the third of three straight double-digit scoring games. Averaged 11.3 points against Idaho State during the 20-21 season.
- Started first two games of her freshman season setting a then career high with 12 points and five rebounds against San Francisco.

Personal

- Born July 18, 2000.
- Daughter of Marcia and Reginald Whyte Jr.
- Has a younger brother, Reginald III, and an older sister, Abigail.
- Majoring in nursing with a psychology minor.
- Career plans include becoming a travel nurse or nurse practitioner.
- Life's ambition is to travel the world, learn a different language and be successful.

Opponent	MIN	FG	Pct.	3FG	Pct.	FT	Pct.	ORB	DRB	TRB	PF	AST	T/O	BLK	STL	PTS
Centenary						***	DNP - Injured	***								
Texas A&M-Texarkana						***	DNP - Injured	***								
at Grambling						***	DNP - Injured	***								
Louisiana Christian						***	DNP - Injured	***								
at Kansas State						***	DNP - Injured	***								
at Wichita State						***	DNP - Injured	***								
at Arkansas State						***	DNP - Injured	***								
at Miss. Valley State																
at ULM																
Tarleton State																
at Kansas																
New Orleans																
SLC Tip Off 2																
SLC Tip Off 3																
at Southeastern																
at Nicholls																
at New Orleans																
UIW																
Texas A&M-CC																
at Houston Baptist																
at McNeese																
Houston Baptist																
McNeese																
at UIW																
at Texas A&M-CC																
Nicholls																
New Orleans																
Southeastern																

SEASON HIGHS

	Opponent	Date
Pts	- - - -	-
Reb	- - - -	-
Ast	- - - -	-
FGM	- - - -	-
3PM	- - - -	-
FTM	- - - -	-
Stl	- - - -	-
Blk	- - - -	-
Min	- - - -	-
Total Double Doubles		0

CAREER HIGHS *AT UNC

	Opponent	Date
Pts*	16 at Idaho St.	12/14/20
Reb*	6 2x, last vs. Sacramento St.	2/13/21
Ast*	3 2x, last vs. Denver	12/1/20
FGM*	7 at Idaho St.	12/14/20
3PM*	1 2x, last vs. Abilene Christian	12/4/20
FTM*	8 vs. Idaho St.	3/10/21
Stl*	3 vs. Idaho	1/25/20
Blk*	1 4x, last vs. Weber St.	3/3/21
Min*	37 vs. Wyoming	12/20/20
Total Double Doubles		0

TOP SCORING GAMES

1.	*16	at Idaho St.	12/14/20
2.	*14	vs. Idaho St.	3/10/21
3.	*12	vs. San Francisco	11/5/19

WHYTE'S CAREER STATISTICS *AT UNC

Year	G-GS	M-Avg.	FG-A	Pct.	3FG-A	Pct.	FT-A	Pct.	ORB	DRB	Reb.	Avg.	PF-DQ	A	TO	BL	ST	Pts.	Avg.
19-20*	27-4	316-11.7	25-71	.352	1-13	.077	13-21	.619	13	26	39	1.4	38	7	20	2	12	64	2.4
20-21*	23-7	410-17.8	46-117	.393	1-2	.500	38-61	.594	19	35	54	2.3	48	20	33	2	22	131	5.7
Totals	50-11	726-14.5	71-188	.378	2-15	.133	51-82	.622	32	61	93	1.9	86	27	53	4	34	195	3.9



3

JISELLE WOODSON

5-5 • JUNIOR • GUARD

CORNER, ALA. • CORNER HS • WALLACE STATE CC

2021-22:

- Named the week four Southland Conference Player of the Week following an 81 percent shooting effort from beyond the arc at Wichita State and Arkansas State and a 20.5 point and 4.5 rebound average.
- Scored 12 points off the bench against Centenary (Nov. 9) in her first game for NSU on an efficient 5-for-8 effort from the field.
- Filled the stat sheet with 11 points on 5-of-7 shooting with four rebounds, two assists and a steal against Louisiana Christian (Nov. 19) in less than 20 minutes of playing time.
- Scored the final seven points of the second quarter against Wichita State (Nov. 29) on her way to a career game with 23 points on 8-of-10 shooting and a perfect 5-for-5 effort from beyond the arc.
- Went 4-for-6 from long range against Arkansas State (Dec. 2) to follow the 5-for-5 effort from the previous game in route to an 18-point outing and go 9-for-11 from deep over the course of two games.
- Took four of the seven total charges called against Arkansas State (Dec. 2).

Prior to NSU:

- Played two seasons at Wallace State CC in Hanceville, Ala.
- Averaged double figures in scoring both seasons -- 12.5 as freshman, 17.4 as

sophomore

- Named 2020-1 NJCAA Division I All-American
- Named First-Team All-Region 22, ACCC North Division Player of the Year and First-Team North Division as a sophomore.
- Scored 17.4 points per game in her second season, second best average in the conference, adding 5.1 rebounds, 3.5 assists and 1.8 steals per game.
- Earned an NJCAA All-Star honor following her freshman season and ACCC Second-Team North Division.
- Led the ACCC in 3-point shooting her freshman season making 40.8 percent from beyond the arc.

Personal:

- Born April 17, 2001
- Daughter of Danielle Atchley and Barry Woodson.
- Has one older brother, Dominic, and three younger siblings, brother Cayden and sisters Ava and Maliyah.
- Majoring in education
- Plans to play basketball overseas, be a teacher or work in the medical field.

Opponent	MIN	FG	Pct.	3FG	Pct.	FT	Pct.	ORB	DRB	TRB	PF	AST	T/O	BLK	STL	PTS
Centenary	21	5-8	.625	1-2	.500	1-2	.500	1	1	2	1	1	0	0	2	12
Texas A&M-TeXarkana	3	1-1	1.000	0-0	.000	0-0	.000	0	0	0	0	0	2	0	0	2
at Grambling	13	0-2	.000	0-0	.000	0-0	.000	1	2	3	3	0	0	0	2	0
Louisiana Christian	18	5-7	.714	1-3	.333	0-0	.000	0	4	4	2	2	2	0	1	11
at Kansas State	16	1-4	.250	0-1	.000	1-2	.500	0	1	1	1	0	0	0	2	3
at Wichita State	24	8-10	.800	5-5	1.000	2-2	1.000	3	3	6	4	1	1	0	0	23
at Arkansas State	31	6-13	.461	4-6	.667	2-2	1.000	1	2	3	2	1	0	0	0	18
at Miss. Valley State																
at ULM																
Tarleton State																
at Kansas																
New Orleans																
SLC Tip Off 2																
SLC Tip Off 3																
at Southeastern																
at Nicholls																
at New Orleans																
UIW																
Texas A&M-CC																
at Houston Baptist																
at McNeese																
Houston Baptist																
McNeese																
at UIW																
at Texas A&M-CC																
Nicholls																
New Orleans																
Southeastern																

SEASON HIGHS

		Opponent	Date
Pts	23	at Wichita State	11/29/21
Reb	6	at Wichita State	11/29/21
Asst	2	vs. Louisiana Christian	11/19/21
FGM	8	at Wichita State	11/29/21
3PM	5	at Wichita State	11/29/21
FTM	2	2x, last at Arkansas State	12/2/21
Stl	2	3x, last at Kansas State	11/27/21
Blk	-	-	-
Min	31	at Arkansas State	12/2/21
Total Double Doubles	0		

CAREER HIGHS

		Opponent	Date
Pts	Same as Season High		
Reb	Same as Season High		
Asst	Same as Season High		
FGM	Same as Season High		
3PM	Same as Season High		
FTM	Same as Season High		
Stl	Same as Season High		
Blk	Same as Season High		
Min	Same as Season High		
Total Double Doubles	0		

TOP SCORING GAMES

1.	23	at Wichita State	11/29/21
2.	18	at Arkansas State	12/2/21
3.	12	vs. Centenary	11/9/21

WOODSON'S CAREER STATISTICS

Year	G-GS	M-Avg.	FG-A	Pct.	3FG-A	Pct.	FT-A	Pct.	ORB	DRB	Reb.	Avg.	PF-DQ	A	TO	BL	ST	Pts.	Avg.
21-22	7-0	129-18.4	26-45	.578	11-17	.647	6-8	.750	6	13	19	2.7	13-0	5	5	0	7	69	9.9
Totals	7-0	129-18.4	26-45	.578	11-17	.647	6-8	.750	6	13	19	2.7	13-0	5	5	0	7	69	9.9



2021-22 Northwestern St. Women's Basketball Combined Team Statistics All games

Page 1/1
as of Dec 03, 2021

Game Records

Record	Overall	Home	Away	Neutral
ALL GAMES	4-3	3-0	1-3	0-0
CONFERENCE	0-0	0-0	0-0	0-0
NON-CONFERENCE	4-3	3-0	1-3	0-0

Score by Periods

Team	1st	2nd	3rd	4th	OT	TOT
Northwestern St.	142	124	109	102	0	477
Opponents	135	118	91	82	0	426

Team Box Score

No.	Player				Total		3-Point		F-Throw		Rebounds											
		GP-GS	MIN	AVG	FG-FGA	FG%	3FG-3FGA	3FG%	FT-FTA	FT%	OFF	DEF	TOT	AVG	PF	DQ	A	TO	BLK	STL	PTS	AVG
5	BOLDEN, Monette	7-7	226:53	32.4	34-93	.366	6-24	.250	12-13	.923	12	34	46	6.6	12	0	22	19	0	14	86	12.3
15	PARRAMORE, Candice	7-7	176:48	25.3	24-71	.338	4-15	.267	24-26	.923	7	16	23	3.3	16	0	4	15	0	12	76	10.9
3	WOODSON, Jiselle	7-0	129:06	18.4	26-45	.578	11-17	.647	6-8	.750	6	13	19	2.7	13	0	5	5	0	7	69	9.9
24	TODD, Jordan	7-7	153:46	22.0	24-44	.545	0-0	.000	16-24	.667	29	37	66	9.4	17	1	4	9	10	6	64	9.1
4	DEAN, Karmelah	7-7	182:28	26.1	21-82	.256	4-25	.160	17-23	.739	4	14	18	2.6	10	0	20	21	0	12	63	9.0
22	FLEISCHMANN, Josie	7-5	100:29	14.4	12-33	.364	10-31	.323	0-0	.000	5	5	10	1.4	3	0	1	4	0	2	34	4.9
35	AYRES, Sharna	4-2	70:51	17.7	6-28	.214	1-14	.071	1-2	.500	5	6	11	2.8	8	0	3	5	0	3	14	3.5
11	HARRIS, Erin	7-0	86:09	12.3	5-14	.357	0-4	.000	8-9	.889	3	9	12	1.7	10	0	6	10	0	6	18	2.6
23	BRAXTON, JaMiya	7-0	89:08	12.7	6-29	.207	6-25	.240	0-0	.000	4	8	12	1.7	6	0	7	2	1	1	18	2.6
20	MCLEMORE, Jordan	6-0	43:47	7.3	2-14	.143	0-3	.000	8-12	.667	6	2	8	1.3	9	0	1	6	0	0	12	2.0
13	DIXON, Jasmin	7-0	95:25	13.6	3-12	.250	0-0	.000	5-9	.556	5	27	32	4.6	13	0	2	5	9	1	11	1.6
12	CUMMINGS, Osha	4-0	24:47	6.2	3-8	.375	0-1	.000	0-1	.000	0	4	4	1.0	2	0	1	3	0	1	6	1.5
32	HARRISON, Alex	5-0	20:24	4.1	3-6	.500	0-2	.000	0-1	.000	5	2	7	1.4	4	0	1	2	0	4	6	1.2
Team											14	19	33					1				
Total		7	1400		169-479	.353	42-161	.261	97-128	.758	105	196	301	43.0	123	1	77	107	20	69	477	68.1
Opponents		7	1400		154-419	.368	36-134	.269	82-126	.651	90	215	305	43.6	132	3	100	146	25	60	426	60.9

Team Statistics

	NW	OPP
Scoring	477	426
Points per game	68.1	60.9
Scoring margin	+7.3	-
Field goals-att	169-479	154-419
Field goal pct	.353	.368
3 point fg-att	42-161	36-134
3-point FG pct	.261	.269
3-pt FG made per game	6.0	5.1
Free throws-att	97-128	82-126
Free throw pct	.758	.651
F-Throws made per game	13.9	11.7
Rebounds	301	305
Rebounds per game	43.0	43.6
Rebounding margin	-0.6	-
Assists	77	100
Assists per game	11.0	14.3
Turnovers	107	146
Turnovers per game	15.3	20.9
Turnover margin	+5.6	-
Assist/turnover ratio	0.7	0.7
Steals	69	60
Steals per game	9.9	8.6
Blocks	20	25
Blocks per game	2.9	3.6
Winning streak	1	-
Home win streak	3	-
Attendance	1163	5015
Home games-Avg/Game	3-388	4-1254
Neutral site-Avg/Game	-	0-0

Team Results

Date	Opponent		Score	Att.
11/09/2021	Centenary (LA)	W	91-50	156
11/13/2021	Tex. A&M-Texarkana	W	71-56	462
11/17/2021	at Grambling	L	60-68	1019
11/19/2021	Louisiana Col.	W	78-36	545
11/27/2021	at Kansas St.	L	36-70	2344
11/29/2021	at Wichita St.	L	61-70	1186
12/02/2021	at Arkansas St.	W	80-76	466



2021-22 Northwestern St. Women's Basketball
Overall Team Statistics
All games

Page 1/1
as of Dec 03, 2021

Team Statistics

	NW	OPP
Scoring	477	426
Points per game	68.1	60.9
Scoring margin	+7.3	-
Field goals-att	169-479	154-419
Field goal pct	.353	.368
3 point fg-att	42-161	36-134
3-point FG pct	.261	.269
3-pt FG made per game	6.0	5.1
Free throws-att	97-128	82-126
Free throw pct	.758	.651
F-Throws made per game	13.9	11.7
Rebounds	301	305
Rebounds per game	43.0	43.6
Rebounding margin	-0.6	-
Assists	77	100
Assists per game	11.0	14.3
Turnovers	107	146
Turnovers per game	15.3	20.9
Turnover margin	+5.6	-
Assist/turnover ratio	0.7	0.7
Steals	69	60
Steals per game	9.9	8.6
Blocks	20	25
Blocks per game	2.9	3.6
Winning streak	1	-
Home win streak	3	-
Attendance	1163	5015
Home games-Avg/Game	3-388	4-1254
Neutral site-Avg/Game	-	0-0

Score by Periods

Team	1st	2nd	3rd	4th	OT	TOT
Northwestern St.	142	124	109	102	0	477
Opponents	135	118	91	82	0	426



2021-22 Northwestern St. Women's Basketball
Season Box Score
All games

Page 1/1
as of Dec 03, 2021

Game Records

Record	Overall	Home	Away	Neutral
ALL GAMES	4-3	3-0	1-3	0-0
CONFERENCE	0-0	0-0	0-0	0-0
NON-CONFERENCE	4-3	3-0	1-3	0-0

Team Box Score

No.	Player				Total		3-Point		F-Throw		Rebounds											
		GP-GS	MIN	AVG	FG-FGA	FG%	3FG-3FGA	3FG%	FT-FTA	FT%	OFF	DEF	TOT	AVG	PF	DQ	A	TO	BLK	STL	PTS	AVG
5	BOLDEN, Monette	7-7	226:53	32.4	34-93	.366	6-24	.250	12-13	.923	12	34	46	6.6	12	0	22	19	0	14	86	12.3
15	PARRAMORE, Candice	7-7	176:48	25.3	24-71	.338	4-15	.267	24-26	.923	7	16	23	3.3	16	0	4	15	0	12	76	10.9
3	WOODSON, Jiselle	7-0	129:06	18.4	26-45	.578	11-17	.647	6-8	.750	6	13	19	2.7	13	0	5	5	0	7	69	9.9
24	TODD, Jordan	7-7	153:46	22.0	24-44	.545	0-0	.000	16-24	.667	29	37	66	9.4	17	1	4	9	10	6	64	9.1
4	DEAN, Karmelah	7-7	182:28	26.1	21-82	.256	4-25	.160	17-23	.739	4	14	18	2.6	10	0	20	21	0	12	63	9.0
22	FLEISCHMANN, Josie	7-5	100:29	14.4	12-33	.364	10-31	.323	0-0	.000	5	5	10	1.4	3	0	1	4	0	2	34	4.9
35	AYRES, Sharna	4-2	70:51	17.7	6-28	.214	1-14	.071	1-2	.500	5	6	11	2.8	8	0	3	5	0	3	14	3.5
11	HARRIS, Erin	7-0	86:09	12.3	5-14	.357	0-4	.000	8-9	.889	3	9	12	1.7	10	0	6	10	0	6	18	2.6
23	BRAXTON, JaMiya	7-0	89:08	12.7	6-29	.207	6-25	.240	0-0	.000	4	8	12	1.7	6	0	7	2	1	1	18	2.6
20	MCLEMORE, Jordan	6-0	43:47	7.3	2-14	.143	0-3	.000	8-12	.667	6	2	8	1.3	9	0	1	6	0	0	12	2.0
13	DIXON, Jasmin	7-0	95:25	13.6	3-12	.250	0-0	.000	5-9	.556	5	27	32	4.6	13	0	2	5	9	1	11	1.6
12	CUMMINGS, Osha	4-0	24:47	6.2	3-8	.375	0-1	.000	0-1	.000	0	4	4	1.0	2	0	1	3	0	1	6	1.5
32	HARRISON, Alex	5-0	20:24	4.1	3-6	.500	0-2	.000	0-1	.000	5	2	7	1.4	4	0	1	2	0	4	6	1.2
Team											14	19	33					1				
Total		7	1400		169-479	.353	42-161	.261	97-128	.758	105	196	301	43.0	123	1	77	107	20	69	477	68.1
Opponents		7	1400		154-419	.368	36-134	.269	82-126	.651	90	215	305	43.6	132	3	100	146	25	60	426	60.9

Score by Periods

Team	1st	2nd	3rd	4th	OT	TOT
Northwestern St.	142	124	109	102	0	477
Opponents	135	118	91	82	0	426



2021-22 Northwestern St. Women's Basketball
Team Game-by-Game
All games

Page 1/1
as of Dec 03, 2021

				Total		3-Pointers		Free throws		Rebounds											
Opponent	Date	Score		FG-FGA	PCT	3FG-3FGA	PCT	FT-FTA	PCT	OFF	DEF	TOT	AVG	PF	A	TO	BLK	STL	PTS	AVG	
Centenary (LA)	11/09/2021	91-50	W	32-82	.390	6-27	.222	21-27	.778	22	41	63	63.0	22	11	13	5	10	91	91.0	
Tex. A&M-Texarkana	11/13/2021	71-56	W	25-65	.385	7-28	.250	14-19	.737	15	28	43	53.0	18	14	18	2	11	71	81.0	
at Grambling	11/17/2021	60-68	L	21-63	.333	5-24	.208	13-16	.813	11	23	34	46.7	17	7	15	2	11	60	74.0	
Louisiana Col.	11/19/2021	78-36	W	29-81	.358	4-23	.174	16-22	.727	25	30	55	48.8	14	16	14	4	15	78	75.0	
at Kansas St.	11/27/2021	36-70	L	11-60	.183	0-12	.000	14-19	.737	9	28	37	46.4	14	5	18	3	9	36	67.2	
at Wichita St.	11/29/2021	61-70	L	23-67	.343	9-25	.360	6-9	.667	13	23	36	44.7	23	10	17	2	7	61	66.2	
at Arkansas St.	12/02/2021	80-76	W	28-61	.459	11-22	.500	13-16	.813	10	23	33	43.0	15	14	12	2	6	80	68.1	
Total		477		169-479	.353	42-161	.261	97-128	.758	105	196	301	43.0	123	77	107	20	69	477	68.1	
Opponents		426		154-419	.368	36-134	.269	82-126	.651	90	215	305	43.6	132	100	146	25	60	426	60.9	

Northwestern St. Averages

Games Played	Points/game	FG Pct	3FG Pct	FT Pct	Rebounds/game	Assists/game	Turnovers/game	Assist/Turnover ratio	Steals/game	Blocks/game
7	68.1	35.3	26.1	75.8	43.0	11.0	15.3	0.7	9.9	2.9



2021-22 Northwestern St. Women's Basketball

Points-rebounds-assists

All games

Page 1/1
as of Dec 03, 2021

Opponent	Date	Score	3	4	5	11	12	13	15	20	22	23	24	
Centenary (LA)	11/09/2021	91-50	W	12-2-1	6-4-3	14-5-1	5-2-3	2-1-0	0-13-0	16-10-1	6-3-0	8-2-0	3-0-1	15-15-1
Tex. A&M-Texarkana	11/13/2021	71-56	W	2-0-0	6-2-2	5-6-9	2-2-0	0-2-1	0-1-0	21-3-1	2-0-0	9-0-0	9-2-1	15-14-0
at Grambling	11/17/2021	60-68	L	0-3-0	9-3-1	14-6-2	3-2-2	DNP	0-1-0	15-3-0	0-1-0	9-2-0	0-0-0	10-10-2
Louisiana Col.	11/19/2021	78-36	W	11-4-2	12-1-3	11-7-2	4-2-0	4-1-0	4-5-0	2-2-2	4-3-1	8-3-0	0-6-4	11-12-0
at Kansas St.	11/27/2021	36-70	L	3-1-0	2-4-3	8-9-1	2-0-0	0-0-0	5-2-0	9-1-0	0-0-0	0-1-0	0-2-1	2-3-0
at Wichita St.	11/29/2021	61-70	L	23-6-1	12-2-3	17-5-5	2-3-0	DNP	0-6-0	0-3-0	0-1-0	0-2-1	0-0-0	5-2-0
at Arkansas St.	12/02/2021	80-76	W	18-3-1	16-2-5	17-8-2	0-1-1	DNP	2-4-2	13-1-0	DNP	0-0-0	6-2-0	6-10-1
Opponent	Date	Score	32	35										
Centenary (LA)	11/09/2021	91-50	W	4-2-0	DNP									
Tex. A&M-Texarkana	11/13/2021	71-56	W	DNP	DNP									
at Grambling	11/17/2021	60-68	L	DNP	DNP									
Louisiana Col.	11/19/2021	78-36	W	2-4-0	5-2-2									
at Kansas St.	11/27/2021	36-70	L	0-0-0	5-5-0									
at Wichita St.	11/29/2021	61-70	L	0-1-0	2-2-0									
at Arkansas St.	12/02/2021	80-76	W	0-0-1	2-2-1									



**2021-22 Northwestern St. Women's Basketball
Team High/Low Analysis
All games**

Page 1/4
as of Dec 03, 2021

Northwestern St. - Game Highs

POINTS	91 80 78 71 61		Centenary (LA) (11/09/2021) at Arkansas St. (12/02/2021) Louisiana Col. (11/19/2021) Tex. A&M-Texarkana (11/13/2021) at Wichita St. (11/29/2021)
FIELD GOALS MADE	32 29		Centenary (LA) (11/09/2021) Louisiana Col. (11/19/2021)
FIELD GOAL ATTEMPTS	82 81		Centenary (LA) (11/09/2021) Louisiana Col. (11/19/2021)
FIELD GOAL PERCENTAGE	.459 (28-61) .390 (32-82)		at Arkansas St. (12/02/2021) Centenary (LA) (11/09/2021)
3 PT FG MADE	11 9		at Arkansas St. (12/02/2021) at Wichita St. (11/29/2021)
3 PT FG ATTEMPTS	28 27		Tex. A&M-Texarkana (11/13/2021) Centenary (LA) (11/09/2021)
3 PT FG PERCENTAGE	.500 (11-22) .360 (9-25)		at Arkansas St. (12/02/2021) at Wichita St. (11/29/2021)
FREE THROWS MADE	21 16		Centenary (LA) (11/09/2021) Louisiana Col. (11/19/2021)
FREE THROW ATTEMPTS	27 22		Centenary (LA) (11/09/2021) Louisiana Col. (11/19/2021)
FREE THROW PERCENTAGE	.813 (13-16) .813 (13-16)		at Arkansas St. (12/02/2021) at Grambling (11/17/2021)
REBOUNDS	63 55		Centenary (LA) (11/09/2021) Louisiana Col. (11/19/2021)
ASSISTS	16 14 14		Louisiana Col. (11/19/2021) at Arkansas St. (12/02/2021) Tex. A&M-Texarkana (11/13/2021)
STEALS	15 11 11		Louisiana Col. (11/19/2021) at Grambling (11/17/2021) Tex. A&M-Texarkana (11/13/2021)
BLOCKED SHOTS	5 4		Centenary (LA) (11/09/2021) Louisiana Col. (11/19/2021)
TURNOVERS	18 18		at Kansas St. (11/27/2021) Tex. A&M-Texarkana (11/13/2021)
FOULS	23 22		at Wichita St. (11/29/2021) Centenary (LA) (11/09/2021)



**2021-22 Northwestern St. Women's Basketball
Team High/Low Analysis
All games**

Page 2/4
as of Dec 03, 2021

Opponent - Game Highs

POINTS	76		at Arkansas St. (12/02/2021)
	70		at Wichita St. (11/29/2021)
	70		at Kansas St. (11/27/2021)
	68		at Grambling (11/17/2021)
	56		Tex. A&M-Texarkana (11/13/2021)
FIELD GOALS MADE	29		at Arkansas St. (12/02/2021)
	28		at Kansas St. (11/27/2021)
FIELD GOAL ATTEMPTS	78		at Kansas St. (11/27/2021)
	65		at Wichita St. (11/29/2021)
FIELD GOAL PERCENTAGE	.460	(29-63)	at Arkansas St. (12/02/2021)
	.453	(24-53)	at Grambling (11/17/2021)
3 PT FG MADE	9		at Wichita St. (11/29/2021)
	8		at Arkansas St. (12/02/2021)
3 PT FG ATTEMPTS	28		at Kansas St. (11/27/2021)
	22		Louisiana Col. (11/19/2021)
3 PT FG PERCENTAGE	.444	(8-18)	at Arkansas St. (12/02/2021)
	.429	(9-21)	at Wichita St. (11/29/2021)
FREE THROWS MADE	17		at Wichita St. (11/29/2021)
	15		at Grambling (11/17/2021)
FREE THROW ATTEMPTS	26		Centenary (LA) (11/09/2021)
	25		at Wichita St. (11/29/2021)
FREE THROW PERCENTAGE	.846	(11-13)	Tex. A&M-Texarkana (11/13/2021)
	.750	(15-20)	at Grambling (11/17/2021)
REBOUNDS	61		at Kansas St. (11/27/2021)
	54		at Wichita St. (11/29/2021)
ASSISTS	19		at Kansas St. (11/27/2021)
	17		at Wichita St. (11/29/2021)
STEALS	11		at Kansas St. (11/27/2021)
	10		at Wichita St. (11/29/2021)
	10		at Grambling (11/17/2021)
BLOCKED SHOTS	9		at Kansas St. (11/27/2021)
	4		Louisiana Col. (11/19/2021)
	4		at Grambling (11/17/2021)
	4		Tex. A&M-Texarkana (11/13/2021)
TURNOVERS	31		Louisiana Col. (11/19/2021)
	25		Tex. A&M-Texarkana (11/13/2021)
FOULS	23		Centenary (LA) (11/09/2021)
	21		at Arkansas St. (12/02/2021)
	21		Louisiana Col. (11/19/2021)
	21		Tex. A&M-Texarkana (11/13/2021)



2021-22 Northwestern St. Women's Basketball
Team High/Low Analysis
All games

Page 3/4
as of Dec 03, 2021

Northwestern St. - Game Lows

POINTS	36 60 61 71 78		at Kansas St. (11/27/2021) at Grambling (11/17/2021) at Wichita St. (11/29/2021) Tex. A&M-Texarkana (11/13/2021) Louisiana Col. (11/19/2021)
FIELD GOALS MADE	11 21		at Kansas St. (11/27/2021) at Grambling (11/17/2021)
FIELD GOAL ATTEMPTS	60 61		at Kansas St. (11/27/2021) at Arkansas St. (12/02/2021)
FIELD GOAL PERCENTAGE	.183 .333	(11-60) (21-63)	at Kansas St. (11/27/2021) at Grambling (11/17/2021)
3 PT FG MADE	0 4		at Kansas St. (11/27/2021) Louisiana Col. (11/19/2021)
3 PT FG ATTEMPTS	12 22		at Kansas St. (11/27/2021) at Arkansas St. (12/02/2021)
3 PT FG PERCENTAGE	.000 .174	(0-12) (4-23)	at Kansas St. (11/27/2021) Louisiana Col. (11/19/2021)
FREE THROWS MADE	6 13 13		at Wichita St. (11/29/2021) at Arkansas St. (12/02/2021) at Grambling (11/17/2021)
FREE THROW ATTEMPTS	9 16 16		at Wichita St. (11/29/2021) at Arkansas St. (12/02/2021) at Grambling (11/17/2021)
FREE THROW PERCENTAGE	.667 .727	(6-9) (16-22)	at Wichita St. (11/29/2021) Louisiana Col. (11/19/2021)
REBOUNDS	33 34		at Arkansas St. (12/02/2021) at Grambling (11/17/2021)
ASSISTS	5 7		at Kansas St. (11/27/2021) at Grambling (11/17/2021)
STEALS	6 7		at Arkansas St. (12/02/2021) at Wichita St. (11/29/2021)
BLOCKED SHOTS	2 2 2 2		at Arkansas St. (12/02/2021) at Wichita St. (11/29/2021) at Grambling (11/17/2021) Tex. A&M-Texarkana (11/13/2021)
TURNOVERS	12 13		at Arkansas St. (12/02/2021) Centenary (LA) (11/09/2021)
FOULS	14 14		at Kansas St. (11/27/2021) Louisiana Col. (11/19/2021)



**2021-22 Northwestern St. Women's Basketball
Team High/Low Analysis
All games**

Page 4/4
as of Dec 03, 2021

Opponent - Game Lows

POINTS	36		Louisiana Col. (11/19/2021)
	50		Centenary (LA) (11/09/2021)
	56		Tex. A&M-Texarkana (11/13/2021)
	68		at Grambling (11/17/2021)
	70		at Wichita St. (11/29/2021)
	70		at Kansas St. (11/27/2021)
FIELD GOALS MADE	13		Louisiana Col. (11/19/2021)
	17		Centenary (LA) (11/09/2021)
FIELD GOAL ATTEMPTS	52		Louisiana Col. (11/19/2021)
	53		at Grambling (11/17/2021)
	53		Centenary (LA) (11/09/2021)
FIELD GOAL PERCENTAGE	.250	(13-52)	Louisiana Col. (11/19/2021)
	.321	(17-53)	Centenary (LA) (11/09/2021)
3 PT FG MADE	3		Louisiana Col. (11/19/2021)
	3		Tex. A&M-Texarkana (11/13/2021)
3 PT FG ATTEMPTS	13		Tex. A&M-Texarkana (11/13/2021)
	14		Centenary (LA) (11/09/2021)
3 PT FG PERCENTAGE	.136	(3-22)	Louisiana Col. (11/19/2021)
	.143	(4-28)	at Kansas St. (11/27/2021)
FREE THROWS MADE	7		Louisiana Col. (11/19/2021)
	10		at Arkansas St. (12/02/2021)
	10		at Kansas St. (11/27/2021)
FREE THROW ATTEMPTS	10		Louisiana Col. (11/19/2021)
	13		Tex. A&M-Texarkana (11/13/2021)
FREE THROW PERCENTAGE	.462	(12-26)	Centenary (LA) (11/09/2021)
	.588	(10-17)	at Arkansas St. (12/02/2021)
REBOUNDS	33		Centenary (LA) (11/09/2021)
	34		Tex. A&M-Texarkana (11/13/2021)
ASSISTS	9		Centenary (LA) (11/09/2021)
	10		Louisiana Col. (11/19/2021)
STEALS	5		Centenary (LA) (11/09/2021)
	7		at Arkansas St. (12/02/2021)
BLOCKED SHOTS	0		Centenary (LA) (11/09/2021)
	1		at Arkansas St. (12/02/2021)
TURNOVERS	14		at Arkansas St. (12/02/2021)
	15		at Kansas St. (11/27/2021)
FOULS	11		at Wichita St. (11/29/2021)
	17		at Kansas St. (11/27/2021)



2021-22 Northwestern St. Women's Basketball
Player Highs Analysis
All games

Page 1/2
as of Dec 03, 2021

Northwestern St. - Individual Game Highs

POINTS	23		Jiselle Woodson at Wichita St. (11/29/2021)
	21		Candice Parramore vs Tex. A&M-Texarkana (11/13/2021)
	18		Jiselle Woodson at Arkansas St. (12/02/2021)
	17		Monette Bolden at Arkansas St. (12/02/2021)
	17		Monette Bolden at Wichita St. (11/29/2021)
FIELD GOALS MADE	8		Jiselle Woodson at Wichita St. (11/29/2021)
	7		Monette Bolden at Arkansas St. (12/02/2021)
	7		Candice Parramore vs Tex. A&M-Texarkana (11/13/2021)
FIELD GOAL ATTEMPTS	18		Monette Bolden at Wichita St. (11/29/2021)
	17		Karmelah Dean at Wichita St. (11/29/2021)
FIELD GOAL PERCENTAGE (min 5 made)	.800	(8-10)	Jiselle Woodson at Wichita St. (11/29/2021)
	.714	(5-7)	Jiselle Woodson vs Louisiana Col. (11/19/2021)
3 PT FG MADE	5		Jiselle Woodson at Wichita St. (11/29/2021)
	4		Jiselle Woodson at Arkansas St. (12/02/2021)
3 PT FG ATTEMPTS	11		JaMiya Braxton vs Tex. A&M-Texarkana (11/13/2021)
	9		Josie Fleischmann at Grambling (11/17/2021)
3 PT FG PERCENTAGE (min 2 made)	1.000	(5-5)	Jiselle Woodson at Wichita St. (11/29/2021)
	1.000	(2-2)	JaMiya Braxton at Arkansas St. (12/02/2021)
FREE THROWS MADE	7		Candice Parramore vs Tex. A&M-Texarkana (11/13/2021)
	6		Karmelah Dean vs Louisiana Col. (11/19/2021)
	6		Candice Parramore vs Centenary (LA) (11/09/2021)
	6		Jordan McLemore vs Centenary (LA) (11/09/2021)
FREE THROW ATTEMPTS	8		Candice Parramore vs Tex. A&M-Texarkana (11/13/2021)
	7		Karmelah Dean at Arkansas St. (12/02/2021)
	7		Karmelah Dean vs Louisiana Col. (11/19/2021)
	7		Candice Parramore vs Centenary (LA) (11/09/2021)
FREE THROW PERCENTAGE (min 3 made)	1.000	(6-6)	Jordan McLemore vs Centenary (LA) (11/09/2021)
	1.000	(5-5)	Candice Parramore at Kansas St. (11/27/2021)
	1.000	(4-4)	Candice Parramore at Grambling (11/17/2021)
REBOUNDS	15		Jordan Todd vs Centenary (LA) (11/09/2021)
	14		Jordan Todd vs Tex. A&M-Texarkana (11/13/2021)
ASSISTS	9		Monette Bolden vs Tex. A&M-Texarkana (11/13/2021)
	5		Karmelah Dean at Arkansas St. (12/02/2021)
	5		Monette Bolden at Wichita St. (11/29/2021)
STEALS	3		Monette Bolden vs Louisiana Col. (11/19/2021)
	3		Jordan Todd vs Louisiana Col. (11/19/2021)
	3		Candice Parramore vs Louisiana Col. (11/19/2021)
	3		Monette Bolden at Grambling (11/17/2021)
	3		Karmelah Dean vs Tex. A&M-Texarkana (11/13/2021)
	3		Candice Parramore vs Centenary (LA) (11/09/2021)
BLOCKED SHOTS	3		Jordan Todd vs Centenary (LA) (11/09/2021)
	2		Jasmin Dixon at Wichita St. (11/29/2021)
	2		Jordan Todd at Kansas St. (11/27/2021)
	2		Jasmin Dixon vs Louisiana Col. (11/19/2021)
	2		Jordan Todd vs Louisiana Col. (11/19/2021)
	2		Jasmin Dixon vs Centenary (LA) (11/09/2021)
TURNOVERS	7		Monette Bolden at Wichita St. (11/29/2021)
	6		Karmelah Dean at Kansas St. (11/27/2021)
FOULS	5		Jordan Todd at Arkansas St. (12/02/2021)
	4		Jiselle Woodson at Wichita St. (11/29/2021)
	4		Candice Parramore at Grambling (11/17/2021)
	4		Erin Harris vs Centenary (LA) (11/09/2021)



2021-22 Northwestern St. Women's Basketball
Player Highs Analysis
All games

Page 2/2
as of Dec 03, 2021

Opponent - Individual Game Highs

POINTS	21		Alexus Holt at Grambling (11/17/2021)
	20		Trinitee Jackson at Arkansas St. (12/02/2021)
	18		Lauryn Pendleton at Arkansas St. (12/02/2021)
	16		DJ McCarty at Wichita St. (11/29/2021)
	15		Ayoka Lee at Kansas St. (11/27/2021)
FIELD GOALS MADE	7		Lauryn Pendleton at Arkansas St. (12/02/2021)
	7		Trinitee Jackson at Arkansas St. (12/02/2021)
FIELD GOAL ATTEMPTS	16		Trinitee Jackson at Arkansas St. (12/02/2021)
	16		Lauryn Pendleton at Arkansas St. (12/02/2021)
FIELD GOAL PERCENTAGE (min 5 made)	.625	(5-8)	DJ McCarty at Wichita St. (11/29/2021)
	.625	(5-8)	Miya McKinney vs Louisiana Col. (11/19/2021)
	.625	(5-8)	Justice Coleman at Grambling (11/17/2021)
3 PT FG MADE	5		DJ McCarty at Wichita St. (11/29/2021)
	3		Carla Bremaud at Wichita St. (11/29/2021)
3 PT FG ATTEMPTS	8		Brylee Glenn at Kansas St. (11/27/2021)
	7		Amiya Dartez vs Louisiana Col. (11/19/2021)
	7		Addy Tremie vs Centenary (LA) (11/09/2021)
3 PT FG PERCENTAGE (min 2 made)	1.000	(2-2)	Mya Love at Arkansas St. (12/02/2021)
	.833	(5-6)	DJ McCarty at Wichita St. (11/29/2021)
FREE THROWS MADE	7		Alexus Holt at Grambling (11/17/2021)
	6		Trinitee Jackson at Arkansas St. (12/02/2021)
	6		Jane Asinde at Wichita St. (11/29/2021)
FREE THROW ATTEMPTS	12		Jazzmyn Jones vs Centenary (LA) (11/09/2021)
	9		Trinitee Jackson at Arkansas St. (12/02/2021)
FREE THROW PERCENTAGE (min 3 made)	1.000	(7-7)	Alexus Holt at Grambling (11/17/2021)
	1.000	(4-4)	Yasmine Arogunjo vs Tex. A&M-Texarkana (11/13/2021)
REBOUNDS	14		Trinitee Jackson at Arkansas St. (12/02/2021)
	14		Emilee Ebert at Kansas St. (11/27/2021)
ASSISTS	8		Seraphine Bastin at Wichita St. (11/29/2021)
	6		Morgan Wallace at Arkansas St. (12/02/2021)
	6		Emilee Ebert at Kansas St. (11/27/2021)
STEALS	4		Keya Patton at Arkansas St. (12/02/2021)
	4		Jada Moore at Kansas St. (11/27/2021)
BLOCKED SHOTS	4		Ayoka Lee at Kansas St. (11/27/2021)
	2		Brylee Glenn at Kansas St. (11/27/2021)
	2		Taylor Lauterbach at Kansas St. (11/27/2021)
	2		Claire Borot vs Louisiana Col. (11/19/2021)
	2		Ashanti Lavergne at Grambling (11/17/2021)
	2		Jasmine Forte at Grambling (11/17/2021)
TURNOVERS	7		Kieyoomia Benally vs Louisiana Col. (11/19/2021)
	5		Jane Asinde at Wichita St. (11/29/2021)
	5		Trastasia Hester vs Louisiana Col. (11/19/2021)
	5		Noa Fuente vs Louisiana Col. (11/19/2021)
	5		Miya McKinney vs Louisiana Col. (11/19/2021)
	5		Morgan Strawder vs Tex. A&M-Texarkana (11/13/2021)
	5		Naomi Tekleab vs Tex. A&M-Texarkana (11/13/2021)
FOULS	5		Morgan Wallace at Arkansas St. (12/02/2021)
	5		Janee Knorr vs Tex. A&M-Texarkana (11/13/2021)
	5		Kaci Johnson vs Tex. A&M-Texarkana (11/13/2021)