



2015-16 MIZZOU TENNIS MATCH NOTES

**SPRING
MATCHES**
14&15

No. 57 MIZZOU



VS.

MARCH 3
No. 12
SOUTH CAROLINA



MARCH 5
No. 15 FLORIDA



INSIDE THE MATCH

MIZZOU

2015-16 Record: 12-1

SEC Record: 0-0

Neutral Record: 1-0

Head Coach: Sasha Schmid (5th season)

Career Record: 182-165 (50-64 at Mizzou)

SOUTH CAROLINA

2015-16 Record: 8-2

SEC Record: 0-0

FLORIDA

2015-16 Record: 5-2

SEC Record: 0-0

QUICK SERVES

- Mizzou (12-1, 0-0) continues its 2016 spring schedule with its first weekend of SEC play, visiting two ranked foes. The Tigers visit Columbia, S.C. on Thursday to face No. 12 South Carolina (8-2, 0-0) at 5 p.m. ET, before traveling south to face No. 15 Florida (5-2, 0-0) in Gainesville, Fla. on Saturday at 11 a.m. ET.
- Mizzou entered the Oracle/ITA Collegiate Tennis Rankings for the first time in two years, coming in at No. 57 in the March 1 edition of the rankings. The Tigers have posted 12 wins this season, the most wins in program history since 2005.
- As a doubles duo, junior **Bea Machado Santos** and senior **Kelli Hine** are 15-5 on the season and 8-2 in the spring, tallying all eight of their wins at the No. 1 position. The doubles team is ranked No. 46 and defeated the then-No. 35 ranked doubles team of Katarina Adamovic and Vladica Babic (Oklahoma State) on Oct. 17 at the ITA Central Regional in Stillwater, Okla.

TIGERS TO WATCH

**BEA
MACHADO
SANTOS**



**KELLI
HINE**



- Junior **Bea Machado Santos** has 90 career wins to her credit, including an incredible 50-19 mark in doubles play.
- Santos has solidified herself as the Tigers' No. 1 singles player this season, recording a 9-2 record at the position and a 10-2 overall singles record.

- Senior Kelli Hine recorded her 100th career win on Feb. 19 in a 6-1, 6-0, singles win over Mercer's Xandra Fougner.
- Hine is 12-1 in singles play this spring season and 8-2 in doubles action, playing every doubles match with junior Bea Machado Santos at the No. 1 position.



MATCH DETAILS

Date: March 3 & 5
Time: March 3: 5 p.m. ET
 March 5: 11 a.m. ET
Location: Columbia, S.C. & Gainesville, Fla.
Live Updates: Twitter.com/MizzouTennis

2015-16 SCHEDULE

Fall

Sept. 18-20	at Mizzou Invite	ALL DAY
Oct. 3-11	at Riviera All-American Champs#	ALL DAY
Oct. 16-19	at ITA Central Regionals	ALL DAY
Nov. 6-8	at Midwest Blast	ALL DAY

Spring

Jan. 5-7	Hawaii Invite	ALL DAY
Jan. 23	vs. Bradley	W 6-1
Jan. 23	vs. SIUE	W 4-3
Jan. 30	vs. Northern Iowa	W 7-0
Jan. 30	vs. UMKC	W 6-1
Feb. 6	vs. Saint Louis	W 4-3
Feb. 6	vs. Missouri State	W 7-0
Feb. 10	vs. Kansas State	W 5-2
Feb. 11	vs. Wichita State	L 4-2
Feb. 12	vs. BYU	W 5-2
Feb. 19	at Savannah State	W 7-0
Feb. 19	at Mercer	W 4-0
Feb. 21	at Furman	W 4-3
Feb. 21	at USC Upstate	W 6-1
March 3	at South Carolina*	4 p.m.
March 5	at Florida *	10 a.m.
March 12	vs. Arkansas*	12 p.m.
March 18	vs. Auburn*	5 p.m.
March 20	vs. Alabama*	12 p.m.
March 25	at Texas A&M*	5 p.m.
March 27	at LSU*	11 a.m.
March 29	at Grambling State	10 a.m.
March 29	at New Orleans	3 p.m.
March 31	at Tennessee*	3 p.m.
April 2	at Georgia*	12 p.m.
April 8	vs. Vanderbilt*	5 p.m.
April 10	vs. Kentucky*	12 p.m.
April 14	vs. Mississippi State*	5 p.m.
April 16	vs. Ole Miss*	12 p.m.
April 20-24	SEC Tournament	TBD

All times Central Daylight Time (CDT)

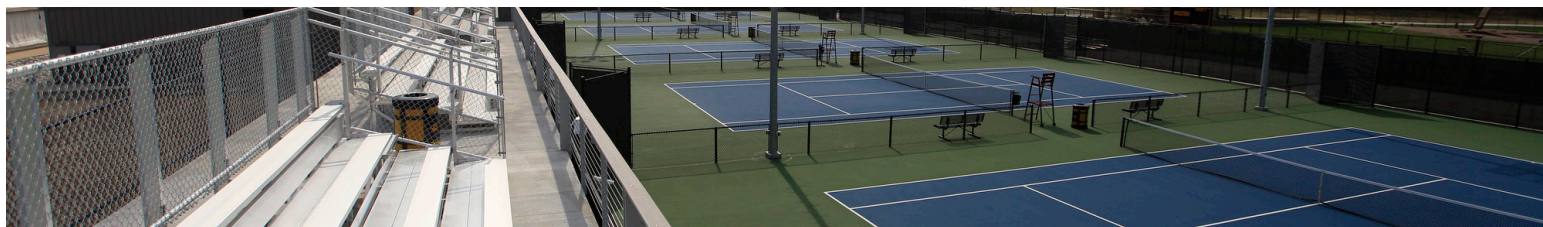
Bold denotes home match

Kelli Hine is the lone Mizzou competitor at this event

* Denotes SEC match

^ Denotes neutral location

MEET THE TIGERS



Kelli Hine // Sr.

New Braunfels, Texas

2015-16

Singles: 19-5 Doubles: 17-5

CAREER

Singles: 56-46 Doubles: 47-36

Quick Facts

- Recorded her 100th career win on Feb. 19 in a 6-1, 6-0, singles win over Mercer's Xandra Fougner. For her career, Hine is 56-46 in singles play and 47-36 in doubles play.
- Qualified for the 2015 Riviera/ITA All-American Championships in October, which hosts the top tennis players in the NCAA for a preseason tournament.



Brianna Lashway // So.

Bradenton, Fla.

2015-16

Singles: 16-11 Doubles: 18-9

CAREER

Singles: 33-31 Doubles: 30-21

Quick Facts

- 10-2 mark in singles play during the spring season, recording a 4-2 mark at the No. 2 position and a 6-0 mark at the No. 3 position.
- Took home No. 1 doubles play title at 2015 Mizzou Invite
- Has a knack for dominating the fall season as she collected four event championships last year with two singles titles and two doubles titles



Brittany Lashway // Jr.

Bradenton, Fla.

2015-16

Singles: 22-7 Doubles: 14-9

CAREER

Singles: 38-26 Doubles: 40-25

Quick Facts

- Leads Mizzou in singles wins with 22, improving her career singles record to 38-26.
- Took home two event titles at the 2015 Mizzou Invite, securing a No. 6 singles title and a No. 3 doubles title with partner Clare Raley.



Clare Raley // So.

Atlanta, Ga.

2015-16

Singles: 12-12 Doubles: 15-6

CAREER

Singles: 20-25 Doubles: 18-11

Quick Facts

- Took home No. 3 doubles title at 2015 Mizzou Invite
- Was the first ever Top-50 recruit in Mizzou tennis history. She was a five-star recruit for six years according to TennisRecruiting.net and was ranked as high as No. 35 in the nation within the Class of 2015.



Beatriz Machado Santos // Jr.

Lisbon, Portugal

2015-16

Singles: 16-9 Doubles: 19-7

CAREER

Singles: 40-32 Doubles: 50-19

Quick Facts

- Her .638 career winning percentage is a team-high (90-51), highlighted by a dominant 50-19 doubles mark.
- Has began the 2016 spring season with a 10-2 singles record, including nine wins at the No. 1 position.



Cassidy Spearman // Jr.

Laguna Nigel, Calif.

2015-16

Singles: 8-11 Doubles: 13-8

CAREER

Singles: 34-50 Doubles: 41-40

Quick Facts

- Elected 2015-16 team captain
- Coming off a career-best season playing most of the year at No. 2 singles in the vaunted SEC
- Racked up a career-high 13 singles wins



Turner Yates // Fr.

Jackson, Miss.

2015-16

Singles: 11-10 Doubles: 4-4

CAREER

Singles: 11-10 Doubles: 4-4

Quick Facts

- Earned first singles victory of spring season in 6-2, 6-3, win over Faty Khamissi (Missouri State) on Feb. 6.
- Went 4-3 in singles play over fall season
- Played on the same travel circuit as Clare Raley during prep career

ITA RANKINGS

Last Ranking: March 1, 2016

Rank	Team
1	Ohio State
2	California
3	North Carolina
4	Michigan
5	Texas Tech
6	Duke
7	Georgia
8	Vanderbilt
9	LSU
10	Oklahoma State
11	Pepperdine
12	South Carolina
13	Wichita State
14	Texas A&M
15	Florida
16	Virginia
17	Kentucky
18	Tulsa
19	Clemson
20	Stanford
21	Miami (Fla.)
22	Fresno State
23	Kansas
24	Syracuse
25	Mississippi State



OF NOTE

MIZZOU ENTERS ORACLE/ITA COLLEGIATE TENNIS RANKINGS AT NO. 57

Mizzou Tennis (12-1) entered the national rankings for the first time in two years, coming in at No. 57 of the Oracle/ITA Collegiate Tennis Rankings, announced by the publication on March 1. The ranking is the first time the Tigers have been ranked in the nation's top-75 since Feb. 11, 2014, when Mizzou was ranked No. 74 and is the highest ranking since the Tigers were ranked No. 56 on April 16, 2013. The Tigers will begin Southeastern Conference play with a record of 12-1, the highest win total in program history since 2005 when Mizzou won 15 matches.

HINE GETS WIN NO. 100

Senior Kelli Hine recorded her 100th career victory on Feb. 19 in a 6-1, 6-0, singles win over Mercer's Xandra Fougner at the No. 2 position. The Tigers' lone senior maintains an overall career record of 103-82, posting a 56-46 mark in singles play and 47-36 in doubles action. Of Hine's 103 wins, 90 have come at Mizzou (87.3 percent), with 13 coming in 2012-13 at Texas Tech.

HINE & SANTOS RANKED NO. 46 IN ITA DOUBLES RANKINGS

For the second time this season, the Mizzou Tennis doubles team of senior **Kelli Hine** and junior **Bea Machado Santos** is ranked in the Oracle/ITA Division I Women's Doubles Rankings by the Intercollegiate Tennis Association, announced on Tuesday. Hine and Santos enter the rankings at No. 46 with a record of 15-5, including an 8-2 mark at the No. 1 position in spring play. The duo was ranked No. 56 in the Jan. 5 edition of the rankings before falling out of the Feb. 10 edition. The team is also ranked No. 4 in the central region rankings announced on Jan. 5.

TIGERS MATCH BEST START IN PROGRAM HISTORY WITH WIN OVER KANSAS STATE

Mizzou Tennis defeated Kansas State, 5-2, on Feb. 10. The victory improved the team's record to 7-0, tied for the best start in program history (2002-03). The Tigers won the doubles point for the match without taking a defeat. The No. 2 pair, junior **Cassidy Spearman** and sophomore **Brianna Lashway**, teamed up for a 6-4 victory. At the No. 3 position, junior **Brittany Lashway** and sophomore **Clare Raley** won their match, 6-3. In singles, junior **Bea Machado Santos** and senior **Kelli Hine** both won in straight sets. Santos took her match 6-4, 6-3, over Sara Castellano while Hine dominated Carolina Costamagna for a 6-1, 6-1 victory. After losing her opening set, Brianna Lashway won the next two sets to clinch the match for the Tigers, defeating Anna Garcia Navas, 4-6, 6-3, 6-2. At the No. 4 position, playing in her first singles match of the dual season, Spearman defeated Iva Bago, 6-3, 2-6, 6-2.



2016 SPRING SEC STANDINGS

	SEC	Pct.	Overall	Pct.	Home	Away	Neutral	Streak
Ole Miss	0-0	.000	7-0	1.000	4-0	1-0	2-0	W7
Mizzou	0-0	.000	12-1	.923	8-1	3-0	1-0	W5
Mississippi State	0-0	.000	9-1	.900	4-0	2-1	3-0	W6
Auburn	0-0	.000	12-2	.857	10-0	0-1	2-1	L1
Georgia	0-0	.000	6-1	.857	3-0	1-0	2-1	W1
Kentucky	0-0	.000	11-1	.846	5-0	5-1	1-0	W10
South Carolina	0-0	.000	8-2	.800	4-1	3-1	1-0	W3
LSU	0-0	.000	11-3	.786	7-1	2-0	2-2	W3
Vanderbilt	0-0	.000	7-2	.778	3-0	2-1	2-1	W2
Texas A&M	0-0	.000	8-3	.727	6-0	2-1	0-2	W4
Florida	0-0	.000	5-2	.714	4-0	1-2	0-0	L2
Arkansas	0-0	.000	6-4	.600	5-3	0-0	1-1	W2
Tennessee	0-0	.000	6-4	.600	2-2	2-2	2-0	W2
Alabama	0-0	.000	4-4	.500	3-0	0-0	1-4	L1



OF NOTE

2016 RECRUITING CLASS RANKED NO. 22 BY TENNISRECRUITING.NET

Mizzou Tennis' fall signing class of **Tate Schroeder** (Denver, Colo.) and **Mackenzey Middlebrooks** (Fort Lauderdale, Fla.) was selected as the No. 22-ranked recruiting class in the nation in the 2016 Winter Rankings by TennisRecruiting.net, as announced on Feb. 1. Both of Mizzou's recruits are ranked top-50 individually among high school seniors and have received a five-star ranking by the top recruiting website. The Tigers were one of five SEC teams to be ranked in the 2016 Winter Rankings, with LSU, Alabama, Florida and Auburn also appearing in the top-25. Schroeder, ranked No. 32 among seniors by TennisRecruiting.net, captured the 2014 5A State Championship in Colorado before joining the IMG Academy in Florida. The Tiger-commit recently competed in the USTA National Winter Championships in Scottsdale, Ariz., where she posted a 7-2 record. Schroeder is currently 24-13 in prep competition with a 6-2 record against fellow five-star recruits. Middlebrooks, ranked No. 41 among seniors by TennisRecruiting.net, won the Florida State Double Tournament in September and is currently playing for the Blackman Tennis Academy. Middlebrooks owns a 21-15 record this season, including a 9-0 record against four-star recruits. The two Mizzou Tennis commits will join current Tigers sophomore **Clare Raley** (Atlanta, Ga.) and freshman **Turner Yates** (Jackson, Miss.) as top-50 recruits to sign with the Tigers. Raley was Mizzou's first ever top-50 recruit. Schroeder and Middlebrooks will begin their careers in black and gold for the 2016 fall semester and will look to contribute immediately.



TIGERS TAKE DOWN NORTHERN IOWA, UMKC

Mizzou Tennis continued its hot start to the 2016 spring season with a doubleheader sweep of Northern Iowa and UMKC on Jan. 30. The Tigers blanked the Panthers, 7-0, in the first match of the day, then defeated the Kangaroos, 6-1, in the night cap. Senior **Kelli Hine** and junior **Bea Machado Santos** led Mizzou in the victories, each recording four wins on the day, two in doubles play (as partners) and two in singles play. In the first match of the day, the Tigers won by default in one doubles match and one singles match after UNI was only able to dress five players. Hine and Santos, the #56 ranked doubles team in the country, teamed up to defeat UNI's Jieke Stroobant and Elvira Lopez, 6-2. In singles matches, No. 3 sophomore **Brianna Lashway** and No. 5 sophomore **Clare Raley** both dominated, losing only one game apiece to secure a Tigers victory before No. 1 Santos, No. 2 Hine, and No. 4 junior **Brittany Lashway** finished their own victories. In the second match of the day, the Tigers won the doubles team point over UMKC after picking up victories at the No. 1 and No. 2 positions. Mizzou picked up five wins at the top-five slotted positions in singles play, including a 6-0, 6-0, win at No. 3 from Hine. Brittany Lashway clinched the match win in the No. 4 position with a 6-4, 6-1, win over Argenal.

DOUBLEHEADER SWEEP

Mizzou Tennis kicked off its 2016 spring match schedule in style, defeating Bradley and SIU Edwardsville, 6-1 and 4-3, respectively, Saturday at the Green Tennis Center. The Tigers were down two players due to injury for the majority of the day, but still pulled off the victories necessary to complete the doubleheader sweep. In the first match of the day, Mizzou beat Bradley, 6-1, winning every match it actually played. The Tigers were forced to suffer defeats by default in the No. 3 doubles and No. 6 singles matches due to injuries. In the second match of the day, SIUE won the doubles point, but Mizzou won four of the six singles matches to take the match, 4-3. Senior **Kelli Hine** and junior **Bea Machado Santos** both went 4-0 on the day to lead the way for the Tigers.

ALOHA FROM HAWAII

Mizzou Tennis spent a week in Maui, Hawaii after the turn of the new year. While the snow began to fall in Columbia, the tennis team awoke to the sun-shinning and warm temperatures as they prepared for the upcoming 2016 spring season. While in Maui, Mizzou competed in the Weinman Foundation Invitational, a four-team tournament with Hawaii, Texas Tech, and Washington State. In the first day of the tournament, Mizzou swept its three matches in doubles play, earning a victory over a team from each school competing in the Invitational. Mizzou also played in seven singles matches during the first day of competition, with Mizzou winning four contests. Junior **Brittany Lashway**, sophomore **Clare Raley**, senior **Kelli Hine**, and sophomore **Brianna Lashway** all won their singles match on day one. On day two, the newly appointed No. 56-ranked doubles team of Hine and junior **Bea Machado Santos** each picked up two wins on the day, one as a team in doubles play, and one individually in singles play. Brittany Lashway also picked up two wins on the day, one in singles play and one in doubles with Raley. On day three, Mizzou picked up two wins in doubles play and three wins in singles play. The doubles team of Brianna Lashway and junior **Cassidy Spearman** picked up both of the doubles wins for Mizzou, while Brittany Lashway, Brianna Lashway, and Raley all won singles matches. For the Invitational, Brittany Lashway led the team in singles wins, recording a 3-1 record over the three days. The tandem of Brianna Lashway and Spearman led the way for Mizzou after posting a 3-1 record in doubles play.

NEW FACES ON THE COACHING STAFF

Mizzou welcomes many new faces to the 2015-16 coaching staff under fifth-year head coach **Sasha Schmid**. Assistant coach **Colt Gaston** brings SEC flavor to the Mizzou squad as he was a 2007 All-American for LSU as a student-athlete. The Tigers also welcome volunteer assistant **Majorie Muller**, who will handle camps, clinics and other activities at the Mizzou Tennis Complex. Muller played at Texas A&M and spent time coaching the Aggies as an assistant before moving to Columbia to become an instructor in the area. Additionally, Mizzou is excited to work with new strength and conditioning intern, **Dawn Malone** this season. Malone joins the Tigers after a stop at Coastal Carolina, where she worked under the supervision of former Mizzou staffer Antwan Floyd.

QUICK START

BEST START IN PROGRAM HISTORY

7-0

BEST STARTS IN PROGRAM HISTORY:

7-0:	5-0:
2015-16	2010-11
2002-03	2003-04
	2001-02
6-0:	2000-01
1980-81	

7-0 IN DOUBLES ACTION IN 2016 SPRING PLAY

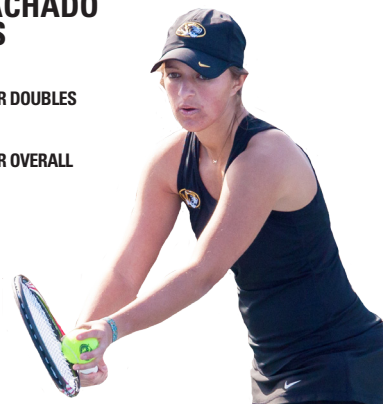
KELLI HINE
SENIOR

47 CAREER DOUBLES
WINS
103 CAREER OVERALL
WINS



**BEA MACHADO
SANTOS**
JUNIOR

50 CAREER DOUBLES
WINS
90 CAREER OVERALL
WINS



BRITTANY LASHWAY
JUNIOR

22-7 2015-16 SINGLES
RECORD



TEAM RECORD DURING SPRING SEASON:

56-18

SINGLES PLAY

23-7

DOUBLES PLAY

TRAINING CHAMPIONS FOR LIFE

MIZZOU TENNIS
MAINTAINED A

3.46

GPA AS A PROGRAM
DURING THE 2015 FALL SEMESTER,
THE HIGHEST-GPA IN

PROGRAM HISTORY



**ADDITIONALLY, CASSIDY SPEARMAN &
RECENT GRADUATE ALEX CLARK
WERE NAMED 2015 ITA SCHOLAR-ATHLETES FOR
UPHOLDING A GPA OF AT LEAST**

3.50

**HEAD COACH SASHA SCHMID'S PROGRAM ALSO
DEDICATED TIME TO GIVE BACK
TO THE COMMUNITY LAST YEAR, LOGGING**

80

HOURS OF COMMUNITY SERVICE TOGETHER.

2015 Fall Events Individual Match-by-Match

Singles

Date	Event	Pos.	Rd.	Opponent	School	Result/Score
------	-------	------	-----	----------	--------	--------------

Kelli Hine

Sept. 18	Mizzou Inv.	1	-	Maggy Lehmicke	Nebraska	W/6-2, 6-2
Sept. 19	Mizzou Inv.	1	-	Ekaterina Blik	Penn State	W/7-6 (5), 6-1
Sept. 20	Mizzou Inv.	1	-	Ariana Rodriguez	Louisville	W/7-6 (5), 6-0
Oct. 7	ITA/Rivera AA	-	1	Kennedy Shaffer	Georgia	L/1-6, 13-15
Oct. 7	ITA Rivera AA	-	Cons.	Yuilya Shupenia	DePaul	L/0-6, 3-6
Oct. 16	ITA Central	-	2	Sydney Harlow	Nebraska	W/6-2, 6-0
Oct. 16	ITA Central	-	3	Mahitha Daddireddy	Tulsa	W/6-4, 7-5
Oct. 17	ITA Central	-	-	Caroline Ryba	Minnesota	L/1-6, 6-4, 6-3

Brianna Lashway

Sept. 18	Mizzou Inv.	3	-	Katerina Matysova	Nebraska	L/6-2, 1-6, 3-6
Sept. 19	Mizzou Inv.	3	-	Sam Tutelman	Penn State	W/1-6, 6-2, 7-6 (2)
Sept. 20	Mizzou Inv.	3	-	Sena Suswam	Louisville	L/4-6, 1-6
Oct. 15	ITA Central	-	1	Maja Vujic	Minnesota	W/6-4, 6-2
Oct. 16	ITA Central	-	2	Kelsey Laurente	Oklahoma State	L/6-2, 6-1
Oct. 17	ITA Central	-	-	Maria Jose Cardona	Kansas	W/6-4, 6-3
Oct. 17	ITA Central	-	-	Malene Stripp	Oklahoma	L/2-6, 6-4, 10-6
Oct. 18	ITA Central	-	-	Mehvish Safdar	Minnesota	L/8-4
Nov. 6	Midwest Blast	-	-	Andjela Djokovic	Purdue	W/6-3, 6-2
Nov. 7	Midwest Blast	-	-	Alexis Casati	Illinois	L/7-5, 3-6, 7-6 (7-3)
Nov. 8	Midwest Blast	-	-	Rachel Chong	Notre Dame	L/3-6, 6-1, 6-2

Brittany Lashway

Sept. 18	Mizzou Inv.	7	-	Lauren Wagner	Nebraska	W/8-1
Sept. 18	Mizzou Inv.	6	-	Mackenna Herr	Nebraska	W/7-6 (6), 6-2
Sept. 19	Mizzou Inv.	5	-	Kelly Mengel	Penn State	W/6-2, 6-2
Sept. 20	Mizzou Inv.	5	-	Abbie Pahz	Louisville	W/6-0, 4-6, 6-4
Oct. 15	ITA Central	-	1	Meagan Monaghan	SIU	W/6-2, 4-6, 6-3
Oct. 16	ITA Central	-	2	Ana Garcia-Navas	Kansas State	L/6-3, 3-6, 6-4
Oct. 17	ITA Central	-	-	Morgan Steffes	SIUE	W/6-1, 6-3
Oct. 17	ITA Central	-	-	Katerina Matysova	Nebraska	L/6-4, 6-4
Oct. 18	ITA Central	-	-	Annemarie Emme	Minnesota	W/8-0
Nov. 6	Midwest Blast	-	-	Claudia Escribens	Purdue	W/7-5, 4-6, 6-2
Nov. 7	Midwest Blast	-	-	Jade Hilton	Illinois	W/6-7 (0-7), 6-2, 6-3
Nov. 8	Midwest Blast	-	-	Quinn Gleason	Notre Dame	L/6-2, 6-0

Clare Raley

Sept. 18	Mizzou Inv.	5	-	Vasanti Shinde	Nebraska	W/6-2, 7-5
Sept. 19	Mizzou Inv.	4	-	Taylor Shukow	Penn State	L/6-2, 4-6, 2-6
Sept. 20	Mizzou Inv.	6	-	Olivia Boesing	Louisville	W/6-4, 6-4
Oct. 15	ITA Central	-	1	MariaJose Cardona	Kansas	W/6-3, 7-6 (5)
Oct. 16	ITA Central	-	2	Alexsandra Trifunovic	Wichita State	L/1-6, 6-1, 6-0
Oct. 17	ITA Central	-	-	Alexandra Bergman	Minnesota	W/6-2, 6-3
Oct. 18	ITA Central	-	-	Julia Courter	Minnesota	L/7-6
Nov. 6	Midwest Blast	-	-	Nicole Robinson	Purdue	W/6-1, 4-6, 6-2
Nov. 7	Midwest Blast	-	-	Daniela Pedraza Novak	Illinois	L/6-3, 6-3
Nov. 8	Midwest Blast	-	-	Brooke Broda	Notre Dame	L/6-2, 6-4

2015 Fall Events Individual Match-by-Match & Results

Singles

<i>Date</i>	<i>Event</i>	<i>Pos.</i>	<i>Rd.</i>	<i>Opponent</i>	<i>School</i>	<i>Result/Score</i>
Bea Machado Santos						
Sept. 18	Mizzou Inv.	2	-	Mary Hanna	Nebraska	W/6-0, 6-0
Sept. 19	Mizzou Inv.	2	-	Daria Sapogova	Penn State	W/6-2, 3-6, 6-1
Sept. 20	Mizzou Inv.	2	-	Elle Stokes	Louisville	W/6-2, 7-5
Oct. 15	ITA Central	-	-	Julia Courter	Minnesota	L/7-5, 7-5
Oct. 16	ITA Central	-	2	Ally McKenzie	SLU	W/7-5, 6-4
Oct. 16	ITA Central	-	3	Shelby King	Arkansas State	L/6-3, 6-7, 10-5
Oct. 17	ITA Central	-	-	Madeline Hill	SIUE	L/6-1, 6-3
Nov. 6	Midwest Blast	-	-	Kristina Kapitany	Purdue	L/6-0, 1-6, 7-6 (8-6)
Nov. 7	Midwest Blast	-	-	Louise Kwong	Illinois	L/7-5, 6-7 (2-7), 7-5
Nov. 8	Midwest Blast	-	-	Allison Miller	Notre Dame	W/4-6, 6-1, 7-6 (12-10)

Cassidy Spearman

Sept. 18	Mizzou Inv.	4	-	Lisa Andersson	Nebraska	L/1-6, 1-6
Sept. 19	Mizzou Inv.	4	-	Chloe Willets	Louisville	L/6-2, 4-6, 2-6
Oct. 15	ITA Central	-	-	Alina Pepper	Oklahoma	W/6-0, 6-1
Oct. 16	ITA Central	-	2	Makenzie Craft	Arkansas	W/6-4, 6-4
Oct. 16	ITA Central	-	3	Viktoriya Lushkova	Oklahoma State	L/6-3, 6-2
Oct. 17	ITA Central	-	-	Simran Sethi	Oklahoma	W/6-2, 1-6, 10-6
Oct. 17	ITA Central	-	-	Mahitha Daddiredy	Tulsa	L/2-6, 6-2, 10-1
Oct. 18	ITA Central	-	-	Alexandra Bergman	Minnesota	W/8-0
Oct. 18	ITA Central	-	-	Vargas Gomez	Minnesota	W/8-3
Nov. 6	Midwest Blast	-	-	Deborah Suarez	Purdue	L/6-4, 6-4
Nov. 7	Midwest Blast	-	-	Jerricka Boone	Illinois	L/1-6, 6-4, 6-2
Nov. 8	Midwest Blast	-	-	Mary Closs	Notre Dame	L/6-2, 6-2

Turner Yates

Sept. 18	Mizzou Inv.	-	-	Hannah Kratky	Penn State	W/8-0
Sept. 18	Mizzou Inv.	7	-	Sydney Harlow	Nebraska	L/7-6(5), 3-6, 0-6
Sept. 19	Mizzou Inv.	-	-	Mackenna Herr	Nebraska	L, 1-6
Sept. 19	Mizzou Inv.	-	-	Elizabeth Gould	Nebraska	W, 8-2
Sept. 19	Mizzou Inv.	6	-	Liyin Xu	Penn State	W, 6-2, 6-0
Sept. 20	Mizzou Inv.	-	-	Elizabeth Gould	Nebraska	W, 6-3
Sept. 20	Mizzou Inv.	7	-	Jessie Lynn Paul	Louisville	L, 2-6, 6-7 (4)
Oct. 15	ITA Central	-	-	Rebecca Pedrazzi	Wichita State	L/6-1, 4-6, 6-4
Oct. 16	ITA Central	-	Cons.	Tacy Haws-Lay	South Dakota St.	W/6-2, 6-1
Oct. 17	ITA Central	-	-	Shelby King	Arkansas State	W/4-6, 7-5 (5), 11-9
Oct. 17	ITA Central	-	-	Maddie Johnson	Drake	L/2-6, 6-4, 10-6
Oct. 18	ITA Central	-	-	Maja Vujic	Minnesota	W/8-6
Nov. 6	Midwest Blast	-	-	Marta Ruedas-Burgos	Purdue	L/7-6 (7-1), 2-6, 6-2
Nov. 7	Midwest Blast	-	-	Jaclyn Switkes	Illinois	L/6-0, 7-5
Nov. 8	Midwest Blast	-	-	Jane Fennelly	Notre Dame	L/6-4, 6-3

2015 Fall Events Individual Match-by-Match & Results

DOUBLES (individual)	No. 1		No. 2		No. 3		Total	
	W	L	W	L	W	L	W	L
Kelli Hine	-	-	3	1	1	0	8	1
Brianna Lashway	4	1	-	-	-	-	6	5
Brittany Lashway	-	-	0	1	3	0	5	6
Clare Raley	-	-	-	-	5	0	8	3
Bea Machado Santos	2	0	2	1	-	-	9	4
Cassidy Spearman	2	1	1	1	-	-	5	6
Turner Yates	-	-	-	-	1	0	1	4
TOTALS	8	2	6	4	10	0	42	29

DOUBLES (TEAM)						
Date	Event	Pos.	Rd.	Opponent	School	Result/Score
Kelli Hine/Bea Machado Santos						
Sept. 18	Mizzou Inv.	2	-	Taylor Shukow/Kelly Mengel	Penn State	W/6-1
Sept. 18	Mizzou Inv.	2	-	Sena Suswam/Ariana Rodriguez	Louisville	L/5-7
Sept. 19	Mizzou Inv.	2	-	Chloe Willets/Olivia Boesing	Louisville	W/6-3
Oct. 15	ITA Central	-	1	Renta Kuricova/Marelin Cichon	Tulsa	W/8-6
Oct. 15	ITA Central	-	2	Maria Jose Cardona/Nina Khmelnitckaia	Kansas	W/8-5
Oct. 17	ITA Central	-	-	Pedrazzi/Trifunovic	Wichita State	W/8-5
Oct. 17	ITA Central	-	-	Adamovic/Babic	Oklahoma State	W/8-4
Oct. 18	ITA Central	-	-	Maria Alvarez/Kelsey Laurente	Oklahoma State	L/8-5
Kelli Hine/Clare Raley						
Sept. 19	Mizzou Inv.	3	-	Mackennda Herr/Lisa Andersson	Nebraska	W/6-1
Kelli Hine/Cassidy Spearman						
Sept. 20	Mizzou Inv.	2	-	Ekaterina Blik/Taylor Shukow	Penn State	W/6-4
Brianna Lashway/Cassidy Spearman						
Sept. 18	Mizzou Inv.	1	-	Ekaterina Blik/Sam Tutelman	Penn State	W/6-3
Sept. 18	Mizzou Inv.	1	-	Ola Mally/Chloe Willets	Louisville	L/3-6
Sept. 19	Mizzou Inv.	1	-	Ariana Rodriguez/Elle Stokes	Louisville	W/6-2
Oct. 15	ITA Central	-	1	Elif Gabb/Florencia Magni	South Dakota St.	W/8-4
Oct. 15	ITA Central	-	2	Lily Myazaki/Simran Sethi	Oklahoma	W/8-5
Oct. 17	ITA Central	-	-	Leenabanchong/Matoula	Tulsa	L/8-5
Nov. 6	Midwest Blast	-	-	Louise Kwong/Ines Vias	Illinois	L/8-5
Nov. 7	Midwest Blast	-	-	Nicole Robinson/Andjela Djokovic	Purdue	L/8-4
Brianna Lashway/Bea Machado Santos						
Sept. 19	Mizzou Inv.	1	-	Maggy Lehmicke/Vasanti Shinde	Nebraska	W/ 6-1
Sept. 20	Mizzou Inv.	1	-	Daria Sapogova/Sam Tutleman	Penn State	W/6-2
Brittany Lashway/Clare Raley						
Sept. 18	Mizzou Inv.	3	-	Daria Sapogova/Liyin Xu	Penn State	W/7-5
Sept. 19	Mizzou Inv.	3	-	Sena Suswam/Abbie Pahz	Louisville	W/6-3
Sept. 20	Mizzou Inv.	3	-	Kelly Mengel/Liyin Xu	Penn State	W/6-2
Oct. 15	ITA Central	-	1	Caroline Ryba/Mehvish Safdar	Minnesota	W/8-6
Oct. 15	ITA Central	-	2	Kylie Boyer/Molly Matricardi	UNO	W/8-0
Nov. 7	Midwest Blast	-	-	Claudia Escribens/Natalia Davila	Purdue	L/8-4

2015 Fall Events Individual Match-by-Match & Results

DOUBLES (TEAM)

Date	Event	Pos.	Rd.	Opponent	School	Result/Score
------	-------	------	-----	----------	--------	--------------

Brittany Lashway/Cassidy Spearman

Sept. 19	Mizzou Inv.	2	-	Katerina Matysova/Mary Hanna	Nebraska	L/3-6
Nov. 6	Midwest Blast	-	-	Quinn Gleason/Mary Cross	Notre Dame	L/8-1

Clare Raley/Turner Yates

Sept. 18	Mizzou Inv.	3	-	Olivia Boesing/Elle Stokes	Louisville	W/7-5
----------	-------------	---	---	----------------------------	------------	-------

Brittany Lashway/Turner Yates

Oct. 18	ITA Central	-	-	Annemarie Emme/Caitlyn Merzbacher	Minnesota	L/8-4
Nov. 6	Midwest Blast	-	-	Daniela Pedraza Novak/Jade Hilton	Illinois	L/8-2
Nov. 6	Midwest Blast	-	-	Rachel Chong/Julie Vrabel	Notre Dame	L/8-4

Brianna Lashway/Clare Raley

Oct. 18	ITA Central	-	-	Julia Courter/Paula Rincon-Cotero	Minnesota	L/7-6 (5)
---------	-------------	---	---	-----------------------------------	-----------	-----------

Bea Machado Santos/Clare Raley

Nov. 6	Midwest Blast	-	-	Alexis Casati/Jerricka Boone	Illinois	L/8-7 (7-5)
Nov. 6	Midwest Blast	-	-	Brooke Broda/Allison Miller	Notre Dame	W/8-3

Bea Machado Santos/Turner Yates

Nov. 7	Midwest Blast	-	-	Deborah Suarez/Kristina Kapitany	Purdue	L/8-6
--------	---------------	---	---	----------------------------------	--------	-------

Team Match-by-Match SPRING

Mizzou Tennis Mizzou Team Match-by-Match (Through matches of Mar 01, 2016)

Date	Opponent	Score	Singles						Doubles		
			1	2	3	4	5	6	1	2	3
% Jan 23, 2016	BRADLEY	W 6-1	W	W	W	W	W	Ld	W	W	Ld
% Jan 23, 2016	SIU EDWARDSVILLE	W 4-3	W	W	W	W	L	Lr	W	L	Ld
% Jan 30, 2016	UNIV. OF NORTHERN IOWA	W 7-0	W	W	W	W	W	Wd	W	u	Wd
% Jan 30, 2016	UMKC	W 6-1	W	W	W	W	W	L	W	W	u
% Feb 6, 2016.	SAINT LOUIS	W 4-3	W	L	W	L	W	L	W	u	W
% Feb 6, 2016.	MISSOURI STATE	W 7-0	W	W	W	W	W	W	W	W	u
% Feb 10, 2016	KANSAS STATE	W 5-2	W	W	W	W	Lr	L	u	W	W
% Feb 11, 2016	#32 WICHITA STATE	L 2-4	L	W	W	L	L	u	u	L	L
Feb 12, 2016	BYU	W 5-2	W	L	W	W	L	W	W	W	u
Feb 19, 2016	at Savannah State University	W 7-0	W	W	W	W	W	W	u	W	W
Feb 19, 2016	at Mercer	W 4-0	u	W	W	u	W	u	L	W	W
Feb 21, 2016	at Furman	W 4-3	L	L	W	W	L	W	W	W	.
Feb 21, 2016	vs USC Upstate	W 6-1	W	W	W	Lr	W	W	L	W	W

2016 STATISTICS

Overall record: 12-1 • SEC: 0-0 • Region: 7-1 • Home: 8-1 • Away: 3-0 • Neutral: 1-0
vs National ranked: 0-0 • vs Regional ranked: 0-0

SINGLES	Overall	Dual	Tour	SEC	1	2	3	4	5	6	vs ranked		Strk	Last 10
											Nat'l	Reg'l		
Lucy Givens	0-1	0-1	0-0	0-0	---	---	---	---	---	0-1	0-0	0-0	L1	0-1
Kelli Hine	19-5	12-1	7-4	0-0	1-0	5-1	6-0	---	---	---	0-1	0-0	W1	9-1
Brianna Lashway	16-11	10-2	6-9	0-0	---	4-2	6-0	---	---	---	0-0	0-0	W3	8-2
Brittany Lashway	22-7	10-3	12-4	0-0	---	---	---	7-2	3-1	---	0-0	0-0	W5	7-3
Clare Raley	12-12	6-5	6-7	0-0	---	---	---	---	5-4	1-1	0-0	0-0	L1	5-4
Bea Machado Santos	16-9	10-2	6-7	0-0	9-2	1-0	---	---	---	---	0-1	0-0	W1	7-2
Cassidy Spearman	8-11	3-1	5-10	0-0	---	---	1-0	2-1	---	---	0-0	0-0	L1	3-6
Turner Yates	11-10	4-2	7-8	0-0	---	---	---	---	---	4-2	0-0	0-0	W4	4-5
Totals	105-67	56-18	49-49	0-0	10-2	10-3	13-0	9-3	8-5	6-5	0-2	0-0		
Percentage	.610	.757	.500	.000	.833	.769	1.000	.750	.615	.545	.000	.000		

DOUBLES TEAMS	Overall	Dual	Tour	SEC	1	2	3	vs ranked		Strk	Last 10
								Nat'l	Reg'l		
Brianna Lashway/Cassidy Spearman	12-7	5-1	7-6	0-0	---	5-1	---	0-0	0-0	W4	8-2
Kelli Hine/Bea Machado Santos	15-5	8-2	7-3	0-0	8-2	---	---	1-0	0-0	L1	8-2
Brittany Lashway/Clare Raley	9-4	3-1	6-3	0-0	---	---	3-1	0-0	0-0	W2	6-4
Clare Raley/Turner Yates	3-0	1-0	2-0	0-0	---	---	1-0	0-0	0-0	W3	3-0
Brianna Lashway/Bea Machado Santos	2-0	0-0	2-0	0-0	---	---	---	0-0	0-0	W2	2-0
Brittany Lashway/Cassidy Spearman	0-1	0-0	0-1	0-0	---	---	---	0-0	0-0	L1	0-1
Kelli Hine/Clare Raley	1-0	0-0	1-0	0-0	---	---	---	0-0	0-0	W1	1-0
Kelli Hine/Cassidy Spearman	1-0	0-0	1-0	0-0	---	---	---	0-0	0-0	W1	1-0
Brittany Lashway/Turner Yates	1-3	1-0	0-3	0-0	---	---	1-0	0-0	0-0	W1	1-3
Brianna Lashway/Clare Raley	1-1	1-0	0-1	0-0	---	1-0	---	0-0	0-0	W1	1-1
Clare Raley/Bea Machado Santos	1-1	0-0	1-1	0-0	---	---	---	0-0	0-0	W1	1-1
Bea Machado Santos/Turner Yates	0-1	0-0	0-1	0-0	---	---	---	0-0	0-0	L1	0-1
Brittany Lashway/Bea Machado Santos	1-0	0-0	1-0	0-0	---	---	---	0-0	0-0	W1	1-0
Brianna Lashway/Brittany Lashway	3-1	3-1	0-0	0-0	---	3-1	---	0-0	0-0	W2	3-1
Totals	51-26	23-7	28-19	0-0	8-2	9-2	6-3	1-0	0-0		
Percentage	.662	.767	.596	.000	.800	.818	.667	1.000	.000		

Date	Opponent	Score	Overall	SEC	Nation	Region
Sept 18-20, 2015	Mizzou Invite	(Kansas City, Mo.)				
Oct. 7, 2015	ITA/Rivera All-American Championship	(Pacific Palisades, Calif.)				
Oct. 15-19, 2015	ITA Central Regional	(Stillwater, Okla.)				
Nov. 6-8, 2015	Midwest Blast	(Champaign, Ill.)				
Jan. 5-7, 2016	Weinman Foundation Invitational	(Maui, Hawaii)				
% Jan 23, 2016	BRADLEY	W 6-1	1-0	0-0		
% Jan 23, 2016	SIU EDWARDSVILLE	W 4-3	2-0	0-0		
% Jan 30, 2016	UNIV. OF NORTHERN IOWA	W 7-0	3-0	0-0		
% Jan 30, 2016	UMKC	W 6-1	4-0	0-0		
% Feb 6, 2016	SAINT LOUIS	W 4-3	5-0	0-0		
% Feb 6, 2016	MISSOURI STATE	W 7-0	6-0	0-0		
% Feb 10, 2016	KANSAS STATE	W 5-2	7-0	0-0		
% Feb 11, 2016	#32 WICHITA STATE	L 2-4	7-1	0-0		
Feb 12, 2016	BYU	W 5-2	8-1	0-0		
Feb 19, 2016	at Savannah State University	W 7-0	9-1	0-0		
Feb 19, 2016	at Mercer	W 4-0	10-1	0-0		
Feb 21, 2016	at Furman	W 4-3	11-1	0-0		
Feb 21, 2016	vs USC Upstate	W 6-1	12-1	0-0		

DOUBLES	Overall	Dual	Tour	SEC	1	2	3	vs ranked	
								Nat'l	Reg'l
Hine, Kelli	17-5	8-2	9-3	0-0	8-2	---	---	1-0	0-0
Santos, Bea Machado	19-7	8-2	11-5	0-0	8-2	---	---	1-0	0-0
Lashway, Brianna	18-9	9-2	9-7	0-0	---	9-2	---	0-0	0-0
Spearman, Cassidy	13-8	5-1	8-7	0-0	---	5-1	---	0-0	0-0
Raley, Clare	15-6	5-1	10-5	0-0	---	1-0	4-1	0-0	0-0
Lashway, Brittany	14-9	7-2	7-7	0-0	---	3-1	4-1	0-0	0-0
Yates, Turner	4-4	2-0	2-4	0-0	---	---	2-0	0-0	0-0
Givens, Lucy	0-0	0-0	0-0	0-0	---	---	---	0-0	0-0
Totals	51-26	23-7	28-19	0-0	8-2	9-2	6-3	1-0	0-0
Percentage	.662	.767	.596	.000	.800	.818	.667	1.000	.000

Individual Match-by-Match (Spring 2016)

SINGLES PLAY

Singles

<i>Date</i>	<i>Opponent</i>	<i>School</i>	<i>Score</i>	<i>Pos.</i>
-------------	-----------------	---------------	--------------	-------------

Lucy Givens

<i>Date</i>	<i>Opponent</i>	<i>School</i>	<i>Score</i>	<i>Pos.</i>
Jan. 30	N/A	Northern Iowa	W/Default	6
Jan. 30	Allie Schulte	UMKC	L/6-0, 6-0	6

Kelli Hine

<i>Date</i>	<i>Opponent</i>	<i>School</i>	<i>Score</i>	<i>Pos.</i>
Jan. 5	Katelyn Jackson	Texas Tech	W/6-4	-
Jan. 6	Klara Pribylova	Hawaii	W/8-5	-
Jan. 7	Marina Hrubá	Hawaii	L/6-3, 6-4	-
Jan. 23	Alejandra de Lasá	Bradley	W/6-2, 6-1	2
Jan. 23	Lexi Aranda	SIUE	W/6-3, 6-2	1
Jan. 30	Elvira Lopez	Northern Iowa	W/7-5, 6-3	2
Jan. 30	Marina Albert	UMKC	W/6-0, 6-0	3
Feb. 6	Verginie Tchakarova	Saint Louis	W/3-6, 6-4, 6-0	3
Feb. 6	Anelisse Torrico	Missouri State	W/6-0, 6-2	2
Feb. 10	Carolina Costamagna	Kansas State	W/6-1, 6-1	3
Feb. 11	Giulia Guidetti	Wichita State	W/6-3, 6-3	3
Feb. 12	Nicolette Poulsen	BYU	W/6-1, 6-3	3
Feb. 19	Elizabeth Geronimo	Savannah State	W/6-3, 7-5	2
Feb. 19	Xandra Fougner	Mercer	W/6-1, 6-0	2
Feb. 21	Katarina Weymouth	Furman	L/6-3, 6-2	2
Feb. 21	Carol Sigaki	USC-Upstate	W/6-1, 6-0	3

Brianna Lashway

<i>Date</i>	<i>Opponent</i>	<i>School</i>	<i>Score</i>	<i>Pos.</i>
Jan. 5	Gabriela Talaba	Texas Tech	L/6-2, 6-3	-
Jan. 5	Paulina Petriskova	Hawaii	W/6-4	-
Jan. 6	Donika Bashota	Washington State	L/7-6, 6-4	-
Jan. 7	Lynn Kiro	Texas Tech	W/6-7 (7-5), 6-4, 6-4	-
Jan. 23	Alexa Brandt	Bradley	W/6-1, 6-2	3
Jan. 23	Madeline Hill	SIUE	W/2-6, 6-4, 6-3	3
Jan. 30	Gisela Kemper	Northern Iowa	W/6-0, 6-1	3
Jan. 30	Dimitra Stavrianakou	UMKC	W/7-6, 6-1	2
Feb. 6	Eleonore Tchakarova	Saint Louis	L/3-6, 7-5, 6-4	2
Feb. 6	Ekaterina Donetskova	Missouri State	W/6-1, 6-2	3
Feb. 10	Ana Garcia Navas	Kansas State	W/4-6, 6-3, 6-2	2
Feb. 11	Rebecca Pedrazzi	Wichita State	W/6-3, 6-4	2
Feb. 12	Toby Miclat	BYU	L/6-4, 6-4	2
Feb. 19	Rachida Kateb	Savannah State	W/6-1, 6-3	3
Feb. 19	Grace Korta	Mercer	W/6-0, 6-4	4
Feb. 21	Flippa Ericson	USC-Upstate	W/6-2, 6-1	2

Individual Match-by-Match (Spring 2016)

Singles

<i>Date</i>	<i>Opponent</i>	<i>School</i>	<i>Score</i>	<i>Pos.</i>
Brittany Lashway				
<i>Date</i>	<i>Opponent</i>	<i>School</i>	<i>Score</i>	<i>Pos.</i>
Jan. 5	Barbora Michalkova	Washington State	W/6-2, 1-6, 7-5	-
Jan. 6	Alex Valenstein	Texas Tech	L/6-2, 6-3	-
Jan. 6	Klara Pribylova	Hawaii	W/8-6	-
Jan. 7	Victoria Matejevic	Washington State	W/1-6, 6-4, 6-2	-
Jan. 23	Irinka Toidze	Bradley	W/6-2, 6-4	4
Jan. 23	McKenzie Thomas	SIUE	W/6-2, 6-1	4
Jan. 30	Sydeny Wolfe	Northern Iowa	W/6-1, 6-2	4
Jan. 30	Raquel Argenal	UMKC	W/6-4, 6-1	4
Feb. 6	Madison Cook	Saint Louis	L/5-7, 6-2, 6-1	4
Feb. 6	Miranda Poile	Missouri State	W/6-0, 6-1	4
Feb. 10	Livia Cirnu	Kansas State	L/6-4, 2-3, retired	5
Feb. 11	Alexsandra Trifunovic	Wichita State	L/6-1, 6-0	4
Feb. 12	Savannah Ware	BYU	W/6-1, 7-5	4
Feb. 19	Jennyfer Vivas	Savannah State	W/6-0, 6-3	5
Feb. 19	Roxy Bartz	Mercer	W/6-1, 6-4	5
Feb. 21	Karlee Bryde	Furman	W/7-6 (7-4), 6-0	4
Feb. 21	Anna Nemeth	USC-Upstate	W/6-0, 6-0	5

Clare Raley

<i>Date</i>	<i>Opponent</i>	<i>School</i>	<i>Score</i>	<i>Pos.</i>
Jan. 5	Roxanne Resma	Hawaii	W/3-6, 6-4, 6-3	-
Jan. 6	Felicity Maltby	Texas Tech	L/6-2, 6-1	-
Jan. 7	Holly Monoham	Washington State	W/6-4, 6-1	-
Jan. 23	Aimee Manfredo	Bradley	W/6-1, 6-4	5
Jan. 23	Morgan Steffes	SIUE	L/3-6, 6-1, 10-7	5
Jan. 30	Savanna Hunt	Northern Iowa	W/6-1, 6-0	5
Jan. 30	Mariam Kurasbediani	UMKC	W/7-6, 6-3	5
Feb. 6	Kelsey King	Saint Louis	W/6-3, 7-5	5
Feb. 6	Phoebe Boesch	Missouri State	W/6-1, 6-1	5
Feb. 10	Millie Stretton	Kansas State	L/ 3-6, 6-2, 10-7	6
Feb. 11	Abby Stevens	Wichita State	L/6-4, 6-1	5
Feb. 12	Natella Nabieva	BYU	L/7-5, 6-3	5
Feb. 19	Tiffany Williams	Savannah State	W/6-1, 6-0	6
Feb. 21	Gabby Rodriguez	Furman	L/ 7-6 (7-2), 1-6, 6-1	5

Individual Match-by-Match (Spring 2016)

Singles

<i>Date</i>	<i>Opponent</i>	<i>School</i>	<i>Score</i>	<i>Pos.</i>
-------------	-----------------	---------------	--------------	-------------

Bea Machado Santos

<i>Date</i>	<i>Opponent</i>	<i>School</i>	<i>Score</i>	<i>Pos.</i>
Jan. 5	Sarah Dvorak	Texas Tech	L/6-4, 6-0	-
Jan. 6	Trang Huynh	Washington State	W/7-5, 7-6 (2)	-
Jan. 7	Cindy Nguyen	Hawaii	L/6-3, 6-4	-
Jan. 23	Ariel Dechter	Bradley	W/6-1, 6-3	1
Jan. 23	Mia Fronger	SIUE	W/6-4, 6-1	2
Jan. 30	Jieke Stroobant	Northern Iowa	W/6-2, 6-2	1
Jan. 30	Melinda Johnson	UMKC	W/6-2, 6-1	1
Feb. 6	Aspen Cervin	Saint Louis	W/6-2, 6-2	1
Feb. 6	Ema Turudija	Missouri State	W/6-1, 6-0	1
Feb. 10	Sara Castellano	Kansas State	W/6-4, 6-3	1
Feb. 11	Gabriela Porubin	Wichita State	L/6-3, 6-4	1
Feb. 12	Mayci Jones	BYU	W/6-1, 6-1	1
Feb. 19	Sandy Lochu	Savannah State	W/6-1, 6-0	1
Feb. 21	Ansley Speaks	Furman	L/ 6-3, 6-1	1
Feb. 21	Anna Zoske	USC-Upstate	W/6-2, 6-0	1

Cassidy Spearman

<i>Date</i>	<i>Opponent</i>	<i>School</i>	<i>Score</i>	<i>Pos.</i>
Jan. 5	Trang Huynh	Washington State	L/7-5, 4-6, 6-3	-
Jan. 6	Marina Hrubá	Hawaii	W/6-3, 7-6 (8)	-
Jan. 7	Alex Valenstein	Texas Tech	L/6-3, 6-2	-
Feb. 10	Iva Bago	Kansas State	W/6-3, 2-6, 6-2	4
Feb. 19	Bria Burrow	Savannah State	W/6-0, 6-1	4
Feb. 21	Blair Martin	Furman	W/7-6 (7-5), 6-7 (2-7), 7-5	3
Feb. 21	Vale Zarama	USC-Upstate	L/6-2, 3-2, retired	4

Turner Yates

<i>Date</i>	<i>Opponent</i>	<i>School</i>	<i>Score</i>	<i>Pos.</i>
Jan. 23	Ann-Christine Link	SIUE	L/0-2, retired	6
Feb. 6	Ally McKenzie	Saint Louis	W/6-4, 6-4	6
Feb. 6	Faty Khamissi	Missouri State	W/6-2, 6-3	6
Feb. 12	Taylah Beckman	BYU	W/7-6 (7-4), 6-3	6
Feb. 21	Harper Caswell	Furman	W/7-6 (7-5), 6-1	6
Feb. 21	Ruby Kubac	USC-Upstate	W/6-0, 6-0	6

Individual Match-by-Match (Spring 2016)

Doubles

Date	Opponent	School	Score	Pos.
------	----------	--------	-------	------

Kelli Hine/Bea Machado Santos

Jan. 6	Barbora Michalkova/Aneta Miksovska	Washington State	W/6-4	-
Jan. 7	Sarah Dvorak/Lynn Kiro	Texas Tech	W/7-5	-
Jan. 23	Alejandra de Las/Ashley Thai	Bradley	W/6-3	1
Jan. 23	Mia Fronger/Madeline Hill	SIUE	W/6-2	1
Jan. 30	Jieke Stroobant/Elvira Lopez	Northern Iowa	W/6-2	1
Jan. 30	Melinda Johnson/Raquel Argenal	UMKC	W/6-3	1
Feb. 6	Eleonore Tchakarova/Verginie Tchakarova	Saint Louis	W/6-2	1
Feb. 6	Ema Turudija/Miranda Poile	Missouri State	W/6-4	1
Feb. 12	Mayci Jones/Toby Miclat	BYU	W/6-3	1
Feb. 19	Katia Stravroulaki/Grace Korta	Mercer	L/6-4	1
Feb. 21	Ansley Speaks/Katarina Weymouth	Furman	W/6-3	1
Feb. 21	Anna Zoske/Flippa Ericson	USC-Upstate	L/6-2	1

Bea Machado Santos/Brittany Lashway

Jan.5	Cindy Nguyen/Raxanne Resma	Hawaii	W/6-4	-
-------	----------------------------	--------	-------	---

Cassidy Spearman/Brianna Lashway

Jan. 5	Lynn Kiro/Sarah Dvorak	Texas Tech	W/7-6 (7-5)	-
Jan. 6	Gabriela Talaba/Lynn Kiro	Texas Tech	L/6-2	-
Jan. 7	Donika Bashota/Lize Leenkecht	Washington State	W/7-5	-
Jan. 7	Katelyn Jackson/Sarah Dvorak	Texas Tech	W/6-4	-
Feb. 10	Ana Garcia Navas/Iva Bago	Kansas State	W/6-4	2
Feb. 11	Rebecca Pedrazzi/Alexsandra Trifunovic	Wichita State	L/7-5	2
Feb. 12	Nicolette Poulsen/Brittanie Eraso	BYU	W/6-3	2
Feb. 19	Rachida Kateb/Jennyfer Vivas	Savannah State	W/6-0	2
Feb. 19	Haley Powell/Xandra Founger	Mercer	W/6-1	2
Feb. 21	Blair Martin/Gabby Rodriguez	Furman	W/6-3	2

Brianna Lashway/Clare Raley

Feb. 21	Carol Sigaki/Vale Zarama	USC-Upstate	W/6-2	2
---------	--------------------------	-------------	-------	---

Clare Raley/Turner Yates

Jan. 5	Barbora Michalkova	Washington State	W/6-4	-
Feb. 6	Kelsey King/Natalia Yacaman	Saint Louis	W/6-0	3

Clare Raley/Brittany Lashway

Jan. 6	Marina Hrubá/Paulina Petriskova	Hawaii	W/6-0	-
Jan. 6	Felicity Maltby/Autumn Crossnoe	Texas Tech	L/6-4	-
Jan. 7	Sarah Gealer/Paulina Pribylova	Hawaii	L/7-6 (7-5)	-
Feb. 10	Sara Castellano/Maria Panaite	Kansas State	W/6-3	3
Feb. 11	Giulia Guidetti/Luca Pump	Wichita State	L/6-2	3
Feb. 19	Bria Burrow/Tiffany Williams	Savannah State	W/6-1	3
Feb. 19	Roxy Bartz/Katie Sidor	Mercer	W/6-4	3

Brianna Lashway/Brittany Lashway

Jan. 23	Malini Wijesinghe/Alexa Brandt	Bradley	W/6-4	2
Jan. 23	Lexi Aranda/Sierra Halverson	SIUE	L/7-5	2
Jan. 30	Dimitra Stavrianakou/Marina Albert	UMKC	W/6-0	2
Feb. 6	Phoebe Boeschen/Faty Khamissi	Missouri State	W/6-1	2

Brittany Lashway/Turner Yates

Feb. 21	Ruby Kubac/Anna Nemeth	USC-Upstate	W/6-0	3
---------	------------------------	-------------	-------	---

Brittany Lashway/Lucy Givens

Jan. 30	N/A	Northern Iowa	W/Default	3
---------	-----	---------------	-----------	---

HEAD COACH SASHA SCHMID

Sasha Schmid

Head Coach
5th Year At Mizzou

Alma Mater

- University of Iowa, '96
Juris Doctorate Degree, '99
Bar Admission, '00

Playing Experience

- University of Iowa, '96
Four-year letterwinner
No. 1 and No. 2 Singles
Team MVP Senior Year

Coaching Experience

- University of Missouri
Head Coach, 2011-present
- Stetson University
Head Coach, 2001-11
- University of Iowa
Assistant Coach, 1998-2000
- Northwestern University
Assistant Coach, 1996-97

Coaching Record

Overall:

- Head Coach
182-165 (15 years)
132-101 (10 years at Stetson)
50-64 (5 years at Mizzou)

Coaching Awards

- Atlantic Sun Conference
Coach of the Year Award:
2005, 2008, 2009

Entering her fifth year at the helm for Mizzou Tennis, Sasha Schmid continues to build success for the Tigers program both on-and-off the court. The Tigers have posted a 38-63 overall record in Schmid's first four years in Columbia. Now inside one of the top collegiate tennis conferences in the SEC, which featured 12 NCAA Tournament teams and the eventual NCAA Champion (Vanderbilt) in 2015, the Tigers continue to face fierce competition each fall and spring season.

The 2014-15 season started off hot as Mizzou won seven of its first nine matches to begin the spring season. The Tigers didn't lose a single team point in five of those seven victories. Mizzou's campaign ended on a high note as Schmid's squad knocked off Arkansas in the opening round of the SEC Tournament. The Tigers toppled the Razorbacks 4-3 in a dramatic comeback. Down 3-1, freshman Clare Raley, sophomore Bea Machado Santos and junior Madison Rhyner won three consecutive singles matches to deliver the win. After the season, the Tigers were named an ITA All-American Team for having a combined GPA of 3.2 or above.

This past 2013-14 campaign, Mizzou had a pair of program firsts inside the Southeastern Conference (SEC), including their first conference win over Mississippi State on April 11, 2014 and their first SEC Tournament win over Arkansas on April 16, 2014. Under Schmid's guidance, Cierra Gaytan-Leach was named to the 2014 All-SEC second team, marking the first time a Tigers tennis player earned All-Conference honors since 2005.

Heading in to the 2012-13 season, Mizzou was ranked in the preseason polls to start the year for the first time since 2005. The Tigers would go on to defeat four ranked squads during that year, including a 4-3 win over No. 23 Tennessee on Mar. 31, 2013. Of the team's 12 losses that season, 11 came against ranked opponents, including four to top-10 squads and six to programs ranked within the top-25.

The 2011-12 Tigers posted an 11-12 record and narrowly missed the NCAA Tournament, while facing a difficult schedule that included 15 matches against ranked teams. Over the course of the spring season, Mizzou reached as high as 42nd in the national rankings, the program's highest recognition since 2003. The Tigers earned five wins over ranked foes and earned their first-ever appearance in the Intercollegiate Tennis Association (ITA) Kick-Off Weekend. Additionally, the doubles duo of Tigers' Jamie Mera and Nina Pantic finished the season ranked as the 50th-best doubles team in the nation.

Schmid was named Mizzou's tennis coach on April 26, 2011, following a highly successful 10-year run as head coach at Stetson University. During her tenure at Stetson, Schmid posted an 132-101 overall record, including an impressive 35 combined wins over her last two seasons in DeLand, Fla. The Hatters tennis program tied the school season win total in 2010 with 18 victories, and followed with another impressive 2011 campaign which saw them claim 17 more wins. Stetson went 49-21 overall under Schmid's guidance the last three seasons (2009-11).

In 2009, Schmid earned her third overall and second consecutive Atlantic Sun Conference Coach of the Year award after her Hatters went 14-8 overall and 8-1 in Atlantic Sun conference play. The impressive campaign earned the team a share of the regular season championship and the top seed heading into that year's conference tournament. Stetson advanced to the tournament finals for the third time in their last five years.

Also while at Stetson, Schmid served as the chairperson of both the ITA Southeast Regional Committee and Atlantic Sun Women's Tennis Coaches Committee, and a member of the ITA National Coaches Committee. In 2007, she received the USTA Florida Section Community Service Award, and coached the Florida Section 18U Girls Team at the Federation Cup in Summer 2007.

Overall, Schmid coached 42 Atlantic Sun All-Academic honorees, 19 ITA All-America Academic Award winners, 20 Atlantic Sun All-Conference performers, and 11 Atlantic Sun All-Freshmen Team selections, including 2007 and 2010 Atlantic-Sun Freshmen of the Year Valentina Galbarini and Carolina de los Santos, respectively.

From 1998-2000, Schmid served as an assistant coach for the Iowa women's tennis team. She was responsible for recruiting, team travel, booster correspondence, and organizing free tennis clinics sponsored by the women's tennis team. During the 1999 Hawkeyes season, Schmid helped the team reach the Sweet 16 in their first-ever NCAA Tournament appearance. Iowa also returned to NCAA's the following year in 2000.

In 1996-97, Schmid served as the assistant women's tennis coach at Northwestern University. She was responsible for recruiting, organizing team travel and maintaining the program's budget. A 1996 graduate of the University of Iowa, Schmid was a four-year letterwinner on the Hawkeys tennis team. A mainstay at the team's No. 1 and No. 2 singles spot, Schmid earned the team's Most Valuable Player Award her senior year.

Schmid earned her Juris Doctorate degree from the University of Iowa in Dec. 1999, and gained her Bar Admission from the State of Iowa in Feb. 2000. In addition to her coaching, Schmid teaches Sport Law in the Applied Sport Psychology Master's Program at the University of Missouri.

Schmid's husband, Jeff, is a teaching professional at Perche Creek Golf Club and was a volunteer assistant coach for the Mizzou men's golf team for the 2012-13 season. Sasha and Jeff have two daughters, Lucy and Lily.



ASSISTANT COACH COLT GASTON

Colt Gaston

Assistant Coach
1st Year At Mizzou

Alma Mater

- LSU '08

Coaching Experience

- University of Missouri Assistant Coach, 2015-Present
- Furman University (asst. coach), 2014-2015
- IMG Tennis Academy, 2009-12
- Weil Tennis Academy, 2008



Former ATP professional and ITA All-American at LSU, Colt Gaston enters his first year as the assistant coach for the Mizzou Tennis program. The Rome, Ga., native joins the Tigers coaching staff after serving as the assistant coach for Furman University men's tennis during the 2014-15 academic year.

Following his successful collegiate and professional playing career, Gaston has continued to build his coaching resume throughout the national tennis community. Gaston's coaching experience began in 2008, as he served as a High Performance Coach for Weil Tennis Academy in Ojai, Calif. From 2009-12, he continued his experience as a private coach for IMG Tennis Academy and ATP/WTB.

Before joining Furman's men's tennis program in 2014, Gaston served as the Head of Tennis for Made Scholarships, and Tennis Director at ATI Tennis Academy.

Gaston's professional and collegiate playing career included a top 500 ranking on the ATP Tour and three Future Doubles Championship Titles. He also served as a member of the Dunlop ATP traveling squad.

Before breaking through on the professional circuit, Gaston was a four-year letterwinner at LSU from 2003-08, culminating his career with ITA Doubles All-American honors in 2007. During his junior season in Baton Rouge, La., Gaston and teammate Danny Bryan claimed the SEC Indoor Doubles Championship. The duo reached as high as No. 3 in the country according to the ITA Division I rankings.

Further personal accolades at LSU included Second-Team All-SEC honors in 2006 and SEC Honor Roll and Director Cub honors in 2007 and 2008.

VOLUNTEER ASST. MAJORIE MULLER

Majorie Muller

Volunteer Assistant Coach
1st Year At Mizzou

Alma Mater

- Texas A&M, '02

Coaching Experience

- University of Missouri Volunteer Assistant Coach, 2015-Present
- Texas Tech (asst. coach), 2003
- Texas A&M (asst. coach), 2004-07



Majorie Muller, a former assistant coach at both Texas Tech and Texas A&M, enters her first year on staff with the Mizzou Tennis program after stints as a tennis instructor at the Country Club of Missouri and the Mizzou Tennis Complex.

In addition to her responsibilities as a volunteer assistant coach, Muller serves as the Director of Camps and Clinics, using her extensive background as an instructor to help the program with outreach in the local community.

Muller's tennis career launched at an early age. The Bloemfontein, South Africa, native learned how to play the game on her childhood farm, where she hit barefoot against a barn for hours on end. The repetition paid off and eventually she moved to the U.S. to pursue a tennis career.

Muller was a two-time All-American at Tyler Junior College in 1999 and 2000. She carried her squad to back-to-back national titles and wrapped up the 2000 campaign as the No. 1-ranked singles player in Junior College.

That success earned her a scholarship at Texas A&M University, where she won 40 singles matches and 47 doubles matches over her final two collegiate seasons. In 2001, Muller was given the Texas Aggie Heart Award, which

honors the hardest worker and biggest heart in women's sports at the university.

After graduating from Texas A&M with a Bachelor's Degree in Kinesiology, Muller moved to Lubbock, Texas to be an assistant coach at Texas Tech in 2003. A year later, she found herself back at Texas A&M and spent four years as an assistant at her alma mater.

In 2008, Muller brought her expertise to Columbia and has been teaching tennis to players of all ages throughout Mid-Missouri ever since.



KELLI HINE

Sr. // New Braunfels, Texas

CAREER TOTALS

Singles (56-46)
Doubles (47-36)
OVERALL (103-82)

2014-15

- Finished the season with 28-34 overall record, including 15-21 mark in singles play and 13-13 record in doubles action.
- Tallied three singles wins over nationally ranked opponents during spring action: Defeated No. 42 Georgiana Patrasc (Mississippi State) on Sept. 20, 2014, defeated No. 85 Nadia Ravita (Kentucky) on March 22, 2015, and took down No. 28 Erin Routliffe (Alabama) on April 12, 2015.
- Cracked the ITA national singles rankings (No. 122) on April 14, 2015
- Produced two SEC singles wins, second most on the team.
- Went 8-4 in spring non-conference competition, including a seven match winning streak.
- Best success in spring doubles action came with Bea Machado Santos and Madison Rhyner, as the tandems finished with 2-0 and 4-5 records, respectively.

2013-14

- Posted a 15-18 record in her first Tigers season
- Played at No. 2 singles in both the fall and spring
- Earned two wins against SEC opponents
- Defeated Mississippi State's Alexandra Perper (6-3, 6-2) and Kentucky's Aldila Sutjiadi (6-4, 6-4)
- Also recorded wins over Princeton and Oklahoma State in the fall
- Went 12-18 in No. 2 and No. 3 doubles
- With partner Cassidy Spearman, went 3-1 at No. 3 doubles to close out the year
- Earned spot on 2014 SEC Academic Honor Roll
- Named to SEC Women's Tennis Community Service Team

2012-13 (TEXAS TECH)

- Compiled an overall record of 13-4, including 7-2 in singles and 6-2 in doubles
- Earned a straight set win in the Red Raiders' dual win over UTEP on Mar. 22
- In doubles action, posted a 6-2 record in the fall and was ranked as high as No. 88 in ITA doubles rankings in the spring



BRIANNA LASHWAY

So. // Bradenton, Fla.

CAREER TOTALS

Singles (33-31)
Doubles (30-21)
OVERALL (63-52)

2014-15

- Went 29-33 overall during her first collegiate season, including 17-20 record in singles play and 12-13 record in doubles action.
- Was one-of-five Tigers to record an SEC singles victory this season. Her lone conference triumph came on March 27, 2015 after defeating Laurence Guevremont (Tennessee).
- Her 17 season singles wins paced all Mizzou competitors.
- Compiled a perfect 4-0 record at #6 singles action throughout the spring season.
- Won six of her first seven spring matches, all in non-conference play.
- First career singles win came on Sept. 20, 2014 against Alex Corder (Mississippi State), first career doubles victory came on Sept. 19, 2014 with partner Alex Clark against Timea Guibe & Louise Ronaldson (Mississippi State).
- T-1st on team with two SEC doubles wins during spring campaign.
- Took home a team leading four event championships during fall season, including two singles wins and two doubles victories.

PREP

- Reached semifinals and placed fourth at the 2013 Regional National Florida Open Girl's 18-U Tournament after winning the qualifying tournament for the event
- Also qualified for the 2013 \$10,000 Tournament in Hilton Head, S.C.
- In 2012, paired up with younger sister Brooke to win doubles in the Regional National Florida Open and qualified for the 2012 \$10,000 Gainesville (Fla.) in doubles as well
- At the Serendipity Designated Girls' 14-U in Apr. 2009, she reached the semifinals and placed third



BRITTANY LASHWAY

Jr. // Bradenton, Fla.

CAREER TOTALS

Singles (38-26)
Doubles (40-25)
OVERALL (78-51)

2014-15

- Finished season with 25-27 overall record, including 10-15 singles record and 15-12 doubles record.
- Her 10 singles wins and 15 doubles wins both marked new career highs.
- Concluded spring non-conference schedule with three straight wins at #6 play.
- T-1st on team with eight doubles wins during spring season.
- Greatest spring doubles success came with Bea Machado Santos, as they went 5-1 and a win in SEC competition.
- Closed out her Fall 2014 campaign with a 3-0 singles record at SDSU Fall Classic and an event title.

2013-14

- Did not compete

2012-13 (SYRACUSE)

- Went 11-4 in doubles, including a 11-1 mark at No. 1 play, earning Rookie of the Year honors at the Syracuse Athletic Awards
- Tallied a 6-4 record in singles competition
- Went 3-0 from the No. 1 doubles position with partner Maddie Kobelt in the Big East Tournament and also racked up two singles victories in postseason play
- Named to the Honor Roll every semester while at Syracuse, and earned a spot on the Academic All-Big East team



CLARE RALEY
So. // Atlanta, Ga.

CAREER TOTALS

Singles (20-25)
Doubles (18-11)
OVERALL (38-36)

2014-15

- Finished the season with a 10-18 total record, including an 8-12 mark in singles and 2-6 record in doubles.
- T-1st on the team with three SEC singles victories.
- Tallied first career SEC singles win on March 20, 2015 against Ellie Yates (Vanderbilt).
- Final two conference singles wins came against Skylar Holloway (LSU) on April 5, 2015 and Mia Jurasic (Arkansas) on April 15, 2015 at SEC Tournament.
- Posted season best three match singles winning streak between Feb. 7-14, 2015.
- Claimed first NCAA career singles win on Jan. 28, 2015 with 6-2, 7-5 triumph over Jake Stroobant (Northern Iowa).
- Won first career doubles match against UT-Arlington on Jan. 17, 2015 with partner Madison Rhyner.

JUNIOR TENNIS

- One of the top Class of 2015 recruits in the nation, as TennisRecruiting.net tabbed Raley as a 5-Star recruit the past six years
- Ranked as high as No. 35 in the nation within her graduating class
- Ranked as high as No. 4 in the USTA Girls' 18s Southern Section, which is considered one of the toughest competitive sections in the country
- Won numerous doubles titles on the National, Sectional and State levels, including National Opens and Sectional Championships in the Girls' 18s, 16s, 14s, and 12s
- In June 2014, Raley was a finalist in the Girls' 18s Southern Closed Singles Championship, and was later selected to represent the Southern Section in the 2014 USTA Girls' 18s National Team Championships



BEA MACHADO SANTOS
Jr. // Lisbon, Portugal

CAREER TOTALS

Singles (40-32)
Doubles (50-19)
OVERALL (90-51)

2014-15

- Accumulated a 30-24 overall record this season, including a 14-17 singles record and 16-7 doubles record.
- Her 30 total wins during 2014-15 campaign were the most among Mizzou tennis competitors.
- Additionally, her 16 doubles wins led the Tigers for the season (8-3 Spring 2015, 8-4 Fall 2014).
- T-1st on the team with 10 spring singles victories, and T-1st with three SEC singles wins.
- Victorious in each of her first six spring singles matches.
- Finished the Spring 2015 season with back-to-back singles wins at 2015 SEC Tournament.
- Went a perfect 5-0 between #4, #5, and #6 singles play this spring.
- Tallied two SEC doubles victories, T-1st on Mizzou joining teammates Brianna Lashway & Cassidy Spearman.
- Earned a singles and a doubles title during fall season

2013-14 (TEXAS TECH)

- Went 16-5 in doubles and 10-6 in singles competition
- Ended the fall season on a four-match winning streak and won the Turquoise Singles Title at the Lobo Fall Invitational
- In the spring, won four-of-five matches to start the dual season, including wins against Big 12 foes Oklahoma, Kansas and Kansas State
- In doubles, went 10-3 in dual action with a 7-2 mark in Big 12 Conference play
- Santos and teammate Lynn Kiro paired in late Mar. and went undefeated in Big 12 matches to win the conference's No. 3 doubles title
- Altogether, the duo went 9-1 to end the season, including an 8-4 win over Ole Miss' Julia Jones and Zalina Khairundinova in the NCAA Tournament



CASSIDY SPEARMAN
Jr. // Laguna Niguel, Calif.

CAREER TOTALS

Singles (34-50)
Doubles (41-40)
OVERALL (75-90)

2014-15

- Tallied an overall season record of 24-31, including a 13-18 mark in singles and 11-13 record in doubles.
- Her 13 singles wins marked a new career high, while her 11 doubles victories tied her first-year total.
- Nine spring singles wins ranked third most on Tiger roster.
- Was the team's primary competitor at #2 singles during spring action, racking up five total victories.
- Went a perfect 4-0 between #3, #4, #5 and #6 singles during spring season.
- Opened spring competition with four straight wins, and a 9-2 overall record in non-conference action.
- T-1st on Mizzou roster with two SEC doubles wins (one with Brianna Lashway, one with Bea Machado Santos).
- Had an outstanding 4-1 fall singles record, including a #5 singles championship at Mizzou Invite.

2013-14

- Went 9-16 in singles during her first year with the Tigers
- Played mostly at the No. 5 singles position
- Posted big wins against Mississippi State, Nebraska and Oklahoma State
- Won her match against Arkansas' Flavia Araujo to help the Tigers advance to the second round of the SEC Tennis Championships
- Finished her freshmen campaign on a three match winning streak
- Had an overall doubles record of 11-15
- During the spring, went 3-3 at No. 1 doubles with teammate Gaytan-Leach
- Posted a 3-1 record at No. 3 doubles with Kelli Hine in the spring



TURNER YATES

Fr. // Jackson, Miss.

CAREER TOTALS

Singles (11-10)

Doubles (4-4)

OVERALL (15-14)

PREP

- 2015 Mississippi Tennis Association Player of the Year as a high school senior
- Did not play HS tennis as a junior or senior, opting to put more focus on the travel circuit
- Mississippi HS Hall of Fame inductee in 2013
- Won the Mississippi state No. 1 singles title as a sophomore in 2013
- Named MVP for Jackson Acamedy as a freshman
- On the academic honor roll in 2012 and 2015
- Won a community service award as a freshman

FLASHBACK: 2015 MIZZOU FALL SEASON ACCOLADES

KELLI HINE

- No. 1 Singles Title (Mizzou Invite)

BRIANNA LASHWAY

- No. 1 Doubles Title (Mizzou Invite)

BRITTANY LASHWAY

- No. 6 Singles Title (Mizzou Invite)
- No. 3 Doubles Title (Mizzou Invite)

BEA MACHADO SANTOS

- No. 2 Singles Title (Mizzou Invite)
- No. 1 Doubles Title (Mizzou Invite)

CLARE RALEY

- No. 3 Doubles Title (Mizzou Invite)



TV/RADIO CHART



Kelli Hine

Sr. // New Braunfels, Texas



Brianna Lashway

So. // Bradenton, Fla.



Brittany Lashway

Jr. // Bradenton, Fla.



Bea Machado Santos

Jr. // Lisbon, Portugal



Clare Raley

So. // Atlanta, Ga.



Cassidy Spearman

Jr. // Laguna Niguel, Calif.



Turner Yates

Fr. // Jackson, Miss.



Sasha Schmid

Head Coach



Colt Gaston

Assistant Coach



Majorie Muller

Volunteer Assistant Coach

2015-16 ROSTER

<i>NAME</i>	<i>PRONUNCIATION</i>	<i>YEAR</i>	<i>HOMETOWN / LAST SCHOOL</i>
Kadi Fauble	(foul-ble)	Jr.	Quincy, Ill. / Quincy HS
Lucy Givens		Jr.	Branson, Mo. / Drury
Kelli Hine		Sr.	New Braunfels, Texas / Texas Tech
Brianna Lashway		So.	Bradenton, Fla. / Florida Virtual
Brittany Lashway		Jr.	Bradenton, Fla. / Syracuse
Bea Machado Santos	(Be-a)	Jr.	Lisbon, Portugal / Texas Tech
Clare Raley	(rail-ley)	So.	Atlanta, Ga. / Laurel Springs HS
Cassidy Spearman		Jr.	Laguna Niguel, Calif. / Dana Hills
Turner Yates		Fr.	Jackson, Miss. / Jackson Academy

Head Coach

Sasha Schmid

Assistant Coaches

Colt Gaston & Majorie Muller

Athletic Trainer

Brittany Overman

Strength & Conditioning Coach

Dawn Malone

MTC Director of Operations

Steven Stuckenschneider



2015-16 Mizzou Tennis

Back row (L-R): Head Coach Sasha Schmid, Steven Stuckenschneider, Dawn Malone, Brianna Lashway, Bea Machado Santos, Molly Mugge, Assistant Coach Majorie Muller, Assistant Coach Colt Gaston
Front row (L-R): Brittany Lashway, Kelli Hine, Turner Yates, Clare Raley, Cassidy Spearman