



2015-16 UNIVERSITY OF MISSOURI MEN'S BASKETBALL GAME NOTES

2015-16 SCHEDULE

DATE	OPPONENT	TV	SCORE/TIME (CT)
N 13 F	Wofford #	SECN +	W, 83-74
N 15 U	UMES #	SECN	W, 73-55
N 17 T	at Xavier (RV)	FS1	L, 78-66
N 23 M	vs. Kansas State &	ESPNU	L, 66-42
N 25 T	vs. Northwestern &	ESPN3	L, 67-62
D 1 T	Arkansas State	SECN	W, 88-78
D 4 F	Northern Illinois	SECN +	W, 78-71
D 9 W	Omaha	SECN	7 p.m.
D 13 U	at Arizona	Pac-12 Networks	7 p.m.
D 19 S	NC State	SECN	5 p.m.
D 23 W	vs. Illinois %	ESPN2	6 p.m.
D 29 T	Arkansas-Pine Bluff	SECN +	8 p.m.
J 2 S	Savannah State	SECN +	2 p.m.
J 6 W	at Georgia *	SECN ^	6 p.m.
J 9 S	Auburn *	ESPN2	8 p.m.
J 12 T	Arkansas *	SECN ^	8 p.m.
J 16 S	at South Carolina *	SECN ^	Noon
J 20 W	Georgia *	SECN ^	6 p.m.
J 23 S	at Texas A&M *	SECN ^	3 p.m.
J 27 W	at Kentucky *	SECN ^	8 p.m.
J 30 S	Mississippi State *	SECN ^	7:30 p.m.
F 3 W	Ole Miss *	SECN ^	8 p.m.
F 6 S	at Alabama *	SECN ^	2 p.m.
F 10 W	at Vanderbilt *	SECN ^	8 p.m.
F 13 S	Tennessee *	SECN ^	2 p.m.
F 16 T	South Carolina *	SECN ^	6 p.m.
F 20 S	at Arkansas *	SECN ^	6:30 p.m.
F 23 T	at Ole Miss *	SECN ^	8 p.m.
F 27 S	Texas A&M *	ESPNU	3 p.m.
M 1 T	at LSU *	SECN ^	8 p.m.
M 5 S	Florida	SECN ^	6:30 p.m.
M 9-13	vs. SEC Tournament	SECN/ESPN ^	

Bold denotes home // * denotes SEC game
 # - CBE HOF Classic Host Games (Mizzou Arena, Columbia, Mo.)
 & - CBE HOF Classic Championship Rounds (Sprint Center, Kansas City, Mo.)
 % - Mizzou will play either North Carolina or Northwestern on Nov. 24
 - 34th Annual Braggins' Rights Game (Scottrade Center, St. Louis, Mo.)
 ^ - SEC Network broadcasts are additionally available through
 WatchESPN apps and the website, WatchESPN.com
 + - SEC Network + events are digitally exclusive events available on
 WatchESPN apps or WatchESPN.com

PROJECTED #MIZZOU LINEUP

G 1
 terrence PHILLIPS
 FR // 5-11 // 175 // ORANGE COUNTY, CALIF.

G 15
 wes CLARK
 JR // 6-0 // 180 // DETROIT, MICH.

G 12
 namon WRIGHT
 SO // 6-5 // 202 // LOS ANGELES, CALIF.

F 24
 kevin PURYEAR
 FR // 6-7 // 236 // BLUE SPRINGS, MO.

F 44
 ryan ROSBURG
 SR // 6-10 // 260 // CHESTERFIELD, MO.

@FloorGeneral103

PPG	RPG	APG	SPG
9.4	3.4	3.4	1.3

- 13 points vs. Northern Illinois
- 7 assists (season-high) vs. Ark. St.
- 16 points vs. Northwestern, a new season-high (3-of-6 three-pointers)

@Im_back_15

PPG	RPG	APG	SPG
7.7	3.4	3.6	0.9

- Returned to lineup after right elbow dislocation caused him to miss final eight games of 2014-15
- Averaged 10.1 PPG last season

@kharyw

PPG	RPG	APG	SPG
9.7	4.7	1.3	0.4

- 18 points off the bench in win vs. Wofford (Nov. 13)
- Career-high 28 points vs. Florida last season

@CallMe_KP24

PPG	RPG	SPG	APG
13.6	4.3	0.3	0.4

- Double digit scoring in six of seven games this season
- KC Star Metro Player of the Year as a senior at Blue Springs South

@RyRos44

PPG	RPG	APG	BPG
4.1	3.7	0.3	0.6

- 10 points (5-of-9 FG) vs. Ark. St.
- 8 points, 9 rebounds in 28 minutes vs. Northwestern
- Had 7 points through first 4 games

PROJECTED OMAHA LINEUP

G 3 DEVIN PATTERSON (5-11, 160) 16.6 PPG // 1.6 RPG // 2.3 APG	G 21 ZACH JACKSON (6-5, 180) 6.8 PPG // 3.9 RPG // 1.6 APG	G 24 TRA-DEON HOLLINS (6-2, 190) 9.1 PPG // 5.4 RPG // 6.3 APG	F 15 TRE'SHAWN THURMAN (6-7, 230) 16.8 PPG // 8.1 RPG // 1.0 BPG	F 43 JAKE WHITE (6-8, 235) 14.5 PPG // 4.9 RPG // .557 FG%
--	--	--	--	--

GAME 8

MIZZOU TIGERS (4-3) VS. OMAHA MAVERICKS (4-4)

WEDNESDAY, DEC. 9, 2015 // 7 P.M. (CT) // MIZZOU ARENA // COLUMBIA, MO.

@MIZZOUHOOPS
4-3

PTS/GAME	70.3
PTS ALLOWED/GAME	69.9
FG %	.445
FG DEFENSE %	.392
3-PT FG %	.336
3-PT FG DEFENSE %	.354
REB/GAME	34.1
REB ALLOWED/GAME	35.7
LEADING SCORER	PURYEAR (13.6)
LEADING REBOUNDER	WRIGHT (4.7)
LEADER IN ASSISTS	CLARK (3.6)
HEAD COACH	Kim Anderson (Missouri, '79, '81)
SCHOOL RECORD	13-26 (Second season)
CAREER RECORD	287-121 (14th season)
RECORD VS. OMAHA	3-3 ^

SERIES INFORMATION

ALL-TIME SERIES.....1-0 Mizzou
IN COLUMBIA.....1-0 Mizzou
IN OMAHA.....N/A
NEUTRAL SITE.....N/A
LAST MEETING.....W, 105-83
 Nov. 29, 1983 (Columbia, Mo.)

FOLLOW #MIZZOU

ON TELEVISION.....SEC Network
 7:01 p.m. CT
 Mitch Holthus (Play-by-Play)
 Jarrett Sutton (Analyst)
 Lori Mancini (Producer)
ON RADIO.....Tiger Radio Network
 Mike Kelly (Play-by-Play)
 Gary Link (Analyst)
 Matt Winegardner (Engineer)
ONLINE.....@MizzouHoops
 MUTigers.com
 Mizzou.Statbroadcast.com



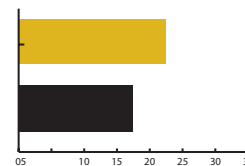
@UNO_BASKETBALL
4-4

PTS/GAME	88.5
PTS ALLOWED/GAME	81.1
FG %	.462
FG DEFENSE %	.408
3-PT FG %	.301
3-PT FG DEFENSE %	.355
REB/GAME	41.4
REB ALLOWED/GAME	40.4
LEADING SCORER	THURMAN (16.8)
LEADING REBOUNDER	THURMAN (8.1)
LEADER IN ASSISTS	HOLLINS (6.3)
HEAD COACH	Derrin Hansen (Nebraska Wesleyan, '91)
SCHOOL RECORD	165-142 (11th season)
CAREER RECORD	Same
RECORD VS. MISSOURI	N/A

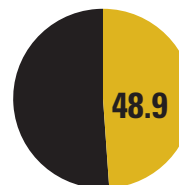
#ZOUNOTES

- Mizzou Men's Basketball faces Omaha in Mizzou Arena on Wednesday, Dec. 9, tipping off at 7 p.m. on the SEC Network.
- The Tigers (4-3) turned away previously undefeated Northern Illinois (7-1) by a score of 78-71 on Friday, Dec. 4. Freshman forward Kevin Puryear scored 17 points in the win.
- Puryear has 95 points through the first seven games of his freshman season, putting him on pace amongst the likes of Mizzou greats Steve Stipanovich (114), Kelly Thames (97) and Jevon Crudup (88).
- Mizzou is averaging 70.3 points per game after seven games, an improvement from last season's seven-game average of 64.0.
- Mizzou's two 80-point efforts in 2015 (83 points vs. Wofford, Nov. 13, 88 vs. Arkansas State) are two more than the Tigers had a season ago. Mizzou scored a season-high 79 points in a road setback at Auburn (Jan. 10, 2015).
- Head coach **Kim Anderson** went 3-3 vs. Omaha (Div. II prior 2011-12) while at the helm of Central Missouri ^.

#ZOUGRAPHS



The Tigers are shooting 22.4 free throws per game to start the 2015-16 season. In comparison, Mizzou averaged 17.5 free throw attempts per game last season (560 in 32 games).



Mizzou's freshmen (Phillips, Puryear, Walton, VanLeer) have combined to score nearly half of the team's points through seven games (240 of 492).

QUICK FACTS

INSTITUTIONAL INFORMATION

Location _____ Columbia, Mo.
 Founded: _____ 1839
 Enrollment: _____ 35,050
 Nickname: _____ Tigers
 Colors: _____ Old Gold and Black
 Arena (Capacity): _____ Mizzou Arena (15,061)
 Conference: _____ Southeastern
 Interim System President: _____ Mike Middleton
 Phone _____ 573-882-2011
 Interim Chancellor: _____ Hank Foley
 Phone: _____ 573-882-3387
 Director of Athletics: _____ Mack Rhoades
 Department Phone: _____ 573-882-6501
 Ticket Office Phone: _____ 573-884-7297
 _____ 800-228-7297

THE MIZZOU TIGERS

Head Coach: _____ Kim Anderson (Second season)
 _____ University of Missouri, 1979, '81
 Missouri Record _____ 13-26 (2nd season)
 Overall Record: _____ 287-121 / .703 (14th season)
 Assistant Coaches: _____ Rob Fulford (Second season)
 _____ Brad Loos (Second season)
 _____ Corey Tate (First season)
 Special Assistant to the Head Coach _____
 _____ Steve Shields (First season)
 Basketball Operations: _____ Paul Rorvig
 _____ (Second season)
 Basketball Performance: _____ Matt Herring
 _____ (Second season)
 Operations Assistant _____ John Poettgen
 Graduate Assistants: _____ Brett Anderson
 _____ Jon Gilliam
 2014-15 Record: _____ 9-23
 SEC Record (Finish): _____ 3-15 (14th)
 Starters Returning / Lost: _____ 3/2
 Lettermen Returning / Lost: _____ 6/5

STRATEGIC COMMUNICATIONS

Senior Assoc. Athletics Director: _____ Ryan Bradley
 Office Phone _____ 573-882-9805
 E-Mail: _____ bradleyry@missouri.edu
 Associate Athletics Director: _____ Chad Moller
 Office Phone: _____ 573-882-0712
 E-Mail: _____ mollerc@missouri.edu
Men's Basketball Contact: _____ Patrick Crawford
Office Phone: _____ 573-882-2531
E-Mail: _____ crawfordpa@missouri.edu
 Associate Director: _____ Kate Lakin
 Assistant Director: _____ Shawn Davis
 Assistant Director: _____ Tyler Koonce
 Assistant Director: _____ Andy Oldenburg
 Web Coordinator: _____ Kevin Fletcher
 Digital Media: _____ Ali Fisher
 Associate (Secondary Contact): _____ Andrew Melroe
 E-Mail: _____ melroea@missouri.edu
 Twitter/Instagram _____ @MizzouHoops
 Website: _____ mutigers.com

Pro-nun-SEE-A-shun GUIDE

Kevin Puryear _____ Per-YEAR
 Namon Wright _____ NAY-mun

KIM ANDERSON



HOMETOWN
 Sedalia, Mo.
HIGH SCHOOL
 Smith-Cotton
TWITTER
 @CoachAndersonMU
FAMILY
 Wife, Melissa
 Son, Ryan
 Son, Brett

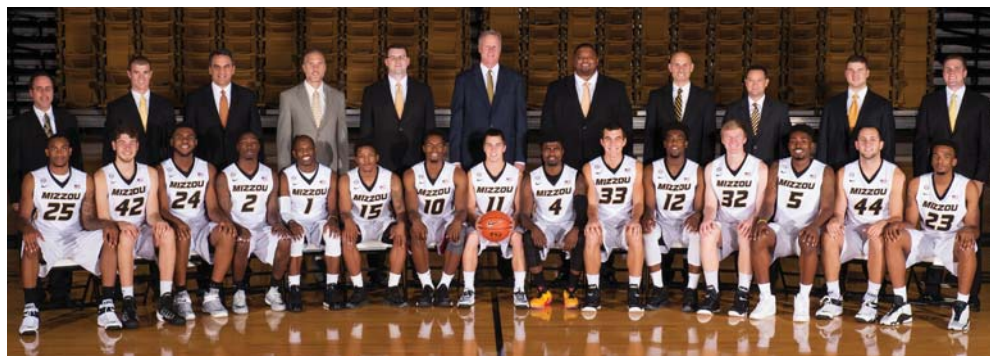
In his second season leading the Mizzou Men's Basketball program, head coach **Kim Anderson** continues to turn the Tigers in the right direction, both on and off the court. With five newcomers on the 2015-16 roster that his staff personally recruited, Anderson hopes a higher comfort level and familiarity amongst his squad will translate into better team basketball. The Tigers already did their part in the offseason, posting the highest summer session grade point average for a Mizzou team in more than five seasons.

The Tiger leader took on the role of architect during the summer of 2014, beginning with establishing an identity for the Mizzou program. It would be built to last, with sturdy roots of character, discipline and competitiveness to reignite the passion of the many Black & Gold fans who clamor into Mizzou Arena. The first step was finding student-athletes, so Anderson and his staff brought in five freshmen and a graduate transfer for a total of six new faces. The following step was to get the newcomers and returning players to work as a team, which is not as simple of a process as it sounds.

Anderson knew sustained success could start with bumps in the road, and as the inexperience and unfamiliarity between his Tigers began to show down the stretch of the 2014-15 season, it became clear that changes would need to be made. Following Mizzou's 9-23 season, Anderson made it known what he and his staff's focuses would be going forward into the offseason. For the offseason, the Tiger coaching staff emphasized academic achievement, staff efficiency, athletic performance, team chemistry and a targeted recruiting focus.

2015-16 MIZZOU ROSTER

#	Name	Ht.	Wt.	Pos.	Yr.	Exp.
1	Terrence Phillips	5-11	175	G	Fr.	HS
	Orange County, Calif. / Oak Hill Academy (Va.) Note: 88-4 record as starting point guard at Oak Hill					
4	Tramaine Isabell	6-0	178	G	So.	1L
	Seattle, Wash. / Garfield H.S. Note: Multiple assists in eight games in 14-15					
5	D'Angelo Allen	6-7	216	F	So.	1L
	Dallas, Texas / Kimball H.S. Note: Started last 8 games of 14-15 season					
10	K.J. Walton	6-3	197	G	Fr.	HS
	Brownsburg, Ind. / Brownsburg H.S. Note: Former 103rd-ranked <i>Rivals.com</i> prospect					
11	Jimmy Barton	5-9	160	G	R-So.	RS
	St. Louis, Mo. / DeSmet Jesuit H.S. / Houston Baptist Note: Walk-on with 13 games at H-Baptist in 13-14					
12	Namon Wright	6-5	202	G	So.	1L
	Los Angeles, Calif. / Pacific Hills Note: Averaged 13.6 PPG in last five games of 14-15					
13	Trevor Glassman	6-3	200	G	Jr.	TR
	Bedford, N.H. / New Hampton School / Manhattan Note: Walk-on, sitting out the 2015-16 season after transfer					
15	Wes Clark	6-0	180	G	Jr.	2L
	Detroit, Mich. / Romulus H.S. Note: Returns after season-ending inj. to right elbow					
23	Jakeenan Gant	6-8	212	F	So.	1L
	Springfield, Ga. / Effingham County Note: Won Mizzou's annual Black & Gold dunk contest					
24	Kevin Puryear	6-7	236	F	Fr.	HS
	Blue Springs, Mo. / South H.S. Note: 20.1 pts., 7.8 reb. per game as a senior					
25	Russell Woods	6-8	225	F	Jr.	JC
	Chicago, Ill. / Simeon High School / John A. Logan College (Ill.) Note: 14.1 pts., 7.2 reb. per game at JUCO in 14-15					
32	Adam Wolf	6-7	202	F	Fr.	HS
	Beaver Dam, Wis. / Beaver Dam H.S. Note: Walk-on who avg. 17.0 pts. per game as senior					
33	Cullen VanLeer	6-4	200	G	Fr.	HS
	Pacific, Mo. / Pacific H.S. Note: 23.5 pts., 7.3 reb. per game as a senior					
44	Ryan Rosburg	6-10	260	F	Sr.	3L
	Chesterfield, Mo. / Marquette H.S. Note: 52 career starts at Mizzou, 103 career app.					



Back Row: Trainer Pat Beckmann, Graduate Assistant Jon Gilliam, Special Assistant to the Head Coach Steve Shields, Athletic Performance Coach Matt Herring, Director of Basketball Operations Paul Rorvig, Head Coach Kim Anderson, Assistant Coach Corey Tate, Assistant Coach Brad Loos, Assistant Coach Rob Fulford, Operations Assistant John Poettgen, Graduate Assistant Brett Anderson.

Front Row: Russell Woods (25), Kevin Puryear (24), Terrence Phillips (1), Wes Clark (15), K.J. Walton (10), Jimmy Barton (11), Tramaine Isabell (4), Cullen VanLeer (33), Namon Wright (12), Adam Wolf (32), D'Angelo Allen (5), Ryan Rosburg (44), Jakeenan Gant (23).

NOTEWORTHY NOTES

LAST TIME OUT

- Mizzou improved to 4-0 at home this season with its 78-71 victory over Northern Illinois on Dec. 4. Previously undefeated (7-1), the Huskies entered the game shooting 46.5 percent from the field and were held to 34.9 percent (22-of-63 FG) against the Tigers. Mizzou is now 2-0 all-time against Northern Illinois.
- Northern Illinois' 34.9-percent FG mark was a season-low for Mizzou opponents. The Tigers have held five of their seven opponents to less than 40 percent shooting this season.
- Head coach **Kim Anderson** has had ten or more of his Mizzou players score in two-straight games, which happened twice over the entire 2014-15 season.
- Sophomore guard **Namon Wright** grabbed six rebounds, recording his 100th career rebound in the process. This marked the sixth time in seven games this season that he has grabbed at least four.
- Freshman forward **Kevin Puryear** has scored in double digits in six of seven career games
- Freshman guard **Terrence Phillips** has three-straight games with four or more assists, which was a career best total for him when he first reached it.

PURYEAR COMES UP BIG LATE

- Mizzou freshman forward **Kevin Puryear** scored 13 of his 17 points vs. Northern Illinois (Dec. 4) in the second half, but did even more damage after subbing back into action with 4:16 left in the game.
- Puryear scored seven points in the last 2:30 of action, shooting a perfect 3-for-3 and completing a three-point play with 58 seconds left.

ALWAYS BETTER TO GIVE

- Mizzou recorded 18 assists (on 28 field goals) as team in the 78-71 win vs. Northern Illinois (Dec. 4), the highest total of assists in the Kim Anderson era.
- The Tigers last posted 18 assists or more with 19 against Mississippi State on March 1, 2014.

SHARP-SHOOTING TIGERS

- Mizzou's **Terrence Phillips** (13-of-22, 59.1), **Kevin Puryear** (16-of-28, 57.1) and **Ryan Rosburg** (11-of-20, 55.0) are all shooting 55.0 percent or better from the field over the Tigers' last three games.

BLOCK PARTY

- Mizzou sophomore forward **Jakeenan Gant** has recorded a block in 6-of-7 games and has a team-leading seven so far in the 2015-16 campaign.
- Gant has already reached the halfway point of his 2014-15 total (14), which he reached in 23 games.

#RALLYFORRHAN

- Rhyann Loos, the 5-year-old daughter of assistant Mizzou coach **Brad Loos** and his wife, Jen, has been diagnosed with neuroblastoma, a type of pediatric cancer. The Mizzou Men's Basketball program will be supporting Rhyann and the Loos Family throughout the season.
- To find out more about Rhyann and how you can offer support, visit www.mutigers.com/RallyForRhyann.



BY THE NUMBERS

16

► Mizzou has the 16th-youngest roster in all of Division I basketball this season, according to Ken Pomeroy (kenpom.com). Head coach Kim Anderson's team ranks 336 out of 351 teams in terms of experience.

18

► Mizzou recorded 18 assists as a team vs. Northern Illinois (Dec. 4), its most in the Kim Anderson era and most since March 1, 2014, vs. Mississippi State.

5

► Mizzou has five scholarship newcomers, including four talented freshmen and an experienced JUCO transfer. In total, the squad features eight freshmen/sophomores out of its 12 allocated scholarships.

GAME PREVIEW - OMAHA

ABOUT OMAHA

- A former opponent of head coach **Kim Anderson's** during his tenure at Central Missouri (Div. II), Omaha has transitioned to Division I basketball under longtime head coach **Derrin Hansen**.
- The Mules and Mavericks were MIAA foes from 2008-11. Omaha kept Anderson's Mules from repeating as MIAA Tournament champions in 2010, although UCM did claim the 2009-10 regular season conference crown with an outstanding 18-2 league record.
- Anderson went 3-3 vs. Omaha during that time period, with the Mavericks then moving to independent status in Division I for the 2011-12 season. Omaha has been members of the Summit League since the 2012-13 season.

CLOSER LOOK AT THE MAVERICKS

- Omaha is led by two players averaging more than 16 points per game in sophomore forward **Tre'Shawn Thurman** (16.8) and senior guard **Devin Patterson** (16.6).
- Not far behind Thurman and Patterson is senior forward **Jake White**, who is averaging 14.5 points per game to round out Omaha's double-digit scorers.
- Patterson scored 38 points on 14-of-22 FG shooting in Omaha's most game, a 100-97 win at Montana State. He additionally hit the buzzer-beating three-pointer to secure the victory. Thurman was also a factor in the win with 20 points (6-of-9 FG).
- Mizzou is 22-1 all-time against members of the Summit League.

MOVIE SCOUTING REPORT

TOP GUN (1986)

Senior guard **Devin Patterson** is averaging 12.6 field goal attempts per game.

RISKY BUSINESS (1983)

Senior forward **Jake White** has averaged a personal foul nearly ever 6:30 of gameplay.

DAYS OF THUNDER (1997)

Sophomore forward **Tre'Shawn Thurman** has a team-best eight blocks through Omaha's eight games thus far.

GETTING TO THE LINE

- ▶ Mizzou is shooting 22.4 free throws per game to start the 2015-16 season, a welcome sign of improvement in an area of need from a season ago. The Tigers averaged just 17.5 attempts from the charity stripe last season.
- ▶ Most noticeably, sophomore guard **Namon Wright** has made it a focus to earn more trips to the free throw line. Wright (20-of-26 FT) has already surpassed his free throw makes and attempts from last season (10-of-18 FT).

STRONG DEBUT FOR PURYEAR

- ▶ Freshman forward **Kevin Puryear** averaged 16.5 points per game over the first two games of his collegiate career.
- ▶ With his 20-point outburst in Mizzou's season-opening, 83-74 win vs. Wofford (Nov. 13), Puryear joined an exclusive list of debuts.
- ▶ Other 20-point Tiger freshman debuts in the last 40 years: Montaque Gill-Ceaser, 21 points vs. UMKC (Nov. 14, 2014), Jevon Crudup, 22 points at Rutgers (Nov. 27, 1990), Steve Stipanovich, 23 points vs. Southwest Texas State (Nov. 30, 1979).

WALTON TO THE LINE

- ▶ Freshman guard **K.J. Walton** earned the start for Mizzou in its season-opener vs. Wofford (Nov. 13), but was called upon from the bench vs. UMES (Nov. 15). The slight change did not faze Walton, as the newcomer surged in the second half, scoring 11 points and shooting 9-of-10 at the free throw line.
- ▶ At just the second game of the 2015-16 season, Walton's aggressive play already holds significance. Only one game occurred during the 2014-15 season in which a Mizzou guard took 10 or more free throw attempts.

SOLO SENIOR

- ▶ Senior forward **Ryan Rosburg** is the first Mizzou senior on the team's roster to have spent his entire eligibility in the program since the 2012-13 season.
- ▶ Laurence Bowers was a redshirt senior that season, in which Rosburg was a true freshman.

SEC FEARFUL OF CLARK'S RETURN

- ▶ Junior guard **Wes Clark** averaged 11.7 points per game in Mizzou's 11 Southeastern Conference games before he was sidelined for the remainder of the 2014-15 season due to his right elbow dislocation.
- ▶ That average would have ranked tied for 20th among fellow SEC players if Clark had appeared in 75 percent of the Tigers' conference contests.

STRONG START FOR PURYEAR



- ▶ Freshman forward **Kevin Puryear** has been a go-to option for Mizzou's offense to start the 2015-16 season. Puryear leads the Tigers with his 13.0 points per game.
- ▶ Puryear has started his first collegiate campaign with three-straight games scoring in double figures. In Mizzou's season-opener vs. Wofford (Nov. 13), the Tiger newcomer dropped a team-leading 20 points.
- ▶ Through Mizzou's first seven games of the 2015-16 season, Puryear has scored in double figures in six contests.



MIKE YOUNG

Wofford Head Coach on Friday, Nov. 13

On Puryear's breakout game vs. Wofford...

"I think as much as anything, with it being early in the year and he being a true freshman, we had some high school film on him, but just not quite enough. He made a three, or two, and he's a little bit bigger and a little wider than we thought he was. We just weren't as familiar with him. That's a pretty good kick-start to a year for that young man. He was good."

PHILLIPS TURNING HEADS EARLY



CHRIS COLLINS

Northwestern Head Coach on Tuesday, Nov. 24

On Phillips' performance vs. Northwestern...

"I thought he played great. I've always been a big fan of his. I remember seeing him a couple times last year when he played for Oak Hill. Just always loving his energy. I love high energy guys. Energy is infectious. I thought Phillips, when they were struggling, I thought he was the guy who was the catalyst to get them going."



BOBBY COLLINS

Maryland-Eastern Shore Head Coach on Sunday, Nov. 15

On Phillips' performance vs. Maryland-Eastern Shore...

"The surprise was Phillips. He hit some big shots for them. It seemed like he was on the end of every big run they had. I see that he was 3-of-4 from the three and he did a very good job of knocking down those shots. Shots that we were not counting on."

LAST GAME

Northern Illinois vs Mizzou

12-4-15 7:01 p.m. at Columbia, Mo. // Mizzou Arena

VISITORS: Northern Illinois 7-1

##	Player	*	tot-fg		3-pt		ft		rebounds					a		to	blks	min
			fg	fga	fg	fga	ft	fta	of	de	tot	pf	tp	a				
05	BAKER	*	3	10	2	8	3	5	1	3	4	3	11	4	1	0	2	32
11	IROGBU	*	1	1	0	0	0	0	2	0	2	2	2	1	0	0	0	10
23	ARMSTEAD	*	3	11	1	5	3	5	1	4	5	2	10	0	2	1	4	32
24	ORRIS	*	0	2	0	0	0	0	1	1	2	1	0	0	2	0	0	17
34	MARIC	*	5	13	0	0	4	4	5	2	7	3	14	0	3	0	0	32
00	WILSON		5	12	4	9	10	10	1	1	2	3	24	0	1	0	0	27
02	PORTER		1	2	0	1	0	0	0	2	2	3	2	4	0	0	0	13
15	KEY		2	8	0	0	0	0	1	3	4	3	4	2	0	0	2	26
42	BRADLEY		2	4	0	0	0	0	1	0	1	2	4	0	0	0	0	11
	TEAM								4	1	5							
Totals.....			22	63	7	23	20	24	17	17	34	22	71	11	9	1	8	200

TOTAL FG%	1st Half: 8-29 27.6%	2nd Half: 14-34 41.2%	Game: 34.9%	DEADBALL
3-Pt. FG%	1st Half: 4-9 44.4%	2nd Half: 3-14 21.4%	Game: 30.4%	REBOUNDS
F Throw %	1st Half: 6-8 75.0%	2nd Half: 14-16 87.5%	Game: 83.3%	0,1

HOME TEAM: Mizzou 4-3

##	Player		tot-fg		3-pt		ft	fta	rebounds					a	to	blks	min	
			fg	fga	fg	fga			of	de	tot	pf	tp					
01	PHILLIPS, Terrence	*	5	7	1	3	2	3	0	1	1	4	13	6	5	0	2	35
12	WRIGHT, Namon	*	3	7	2	5	2	4	0	5	5	3	10	3	2	0	0	26
15	CLARK, Wes	*	1	4	1	1	3	6	0	7	7	4	6	4	1	0	0	20
24	PURYEAR, Kevin	*	6	10	0	0	5	5	0	1	1	1	17	0	4	0	0	24
44	ROSBURG, Ryan	*	2	2	0	0	0	0	3	4	7	4	4	1	1	2	0	21
04	ISABELL, Tramaine		1	5	1	1	0	1	1	1	2	0	3	1	0	0	1	16
05	ALLEN, D'Angelo		0	0	0	0	0	0	0	0	0	1	0	0	0	0	0	2
10	WALTON, K.J.		1	3	0	1	0	0	0	0	0	0	2	0	0	0	1	9
23	GANT, Jakeenan		4	6	0	0	3	3	2	4	6	1	11	0	1	1	1	18
25	WOODS, Russell		4	4	0	0	1	2	1	3	4	4	9	1	1	0	0	15
33	VANLEER, Cullen		1	4	1	4	0	0	0	0	0	0	3	2	0	0	1	14
	TEAM								3	2	5							
Totals.....			28	52	6	15	16	24	10	28	38	22	78	18	15	3	6	200

TOTAL FG%	1st Half: 10-24 41.7%	2nd Half: 18-28 64.3%	Game: 53.8%	DEADBALL
3-Pt. FG%	1st Half: 3-8 37.5%	2nd Half: 3-7 42.9%	Game: 40.0%	REBOUNDS
F Throw %	1st Half: 4-4 100%	2nd Half: 12-20 60.0%	Game: 66.7%	4

Officials: John Hampton, Michael Roberts, Jamie Luckie

Technical fouls: Northern Illinois-None. Mizzou-None.

Attendance: 6214

Score by Periods	1st	2nd	Total
Northern Illinois	26	45	71
Mizzou	27	51	78

@MIZZOUHOOPS REMAINS UNDEFEATED AT HOME WITH 78-71 WIN OVER NORTHERN ILLINOIS



Mizzou Men's Basketball (4-3) started the game on a 12-0 run and eventually turned away Northern Illinois (7-1), 78-71, Friday night at Mizzou Arena, giving the Huskies their first loss of the season. Freshman guard **Terrence Phillips** (Orange County, Calif.) sparked the run with a three-pointer, three of his 13 points, marking the second game in a row that the Tigers have started off on a run of 12 points or more.

The Tigers were led by freshman forward **Kevin Puryear** (Blue Springs, Mo.) who scored 17 points, followed by Phillips, who also dished out six assists. Sophomore forward **Jakeenan Gant** (Springfield, Ga.) came off the bench and finished with 11 points and six rebounds. Junior forward **Russell Woods** (Chicago, Ill.) scored seven points within two minutes of game action early on in the second half and finished the game with nine points.

Northern Illinois fought back with a late surge in the first half, making it a one-point game at halftime. The back-and-forth action continued with a total of five lead changes throughout the beginning of the second half.

Mizzou took off on a 13-4 run with just under nine minutes to play. Sophomore guard **Tramaine Isabell** (Seattle, Wash.) started the scoring spree off with a three-pointer, while three other Tigers added buckets to give Mizzou a 10-point lead with just under seven minutes left in the contest.



TERRENCE PHILLIPS

FR | G | 5-11 | 175

Orange County, Calif.

Oak Hill Academy (Va.)

LAST GAME (NORTHERN ILLINOIS 12-4-15)

FG	FGA	3FG	FGA	FT	FTA	REB	AST	PTS
5	7	1	3	2	3	1	6	8

PHILLIPS 2015-16 GAME-BY-GAME

Opponent	Date	GS	Min	FG	FGA	Pct	3FG	FGA	Pct	FT	FTA	Pct	Off	Def	Tot	Avg	PF	FO	A	TO	Blk	Stl	Pts	Avg
WOFFORD	11-13-15	*	29	2-5	.400	0-1	.000	3-4	.750	0	3	3	3.0	3	0	3	2	0	0	0	7	7.0		
UMES	11-15-15	*	27	5-7	.714	3-4	.750	0-0	.000	1	2	3	3.0	3	0	2	1	0	1	13	10.0			
at Xavier	11-17-15	*	12	1-2	.500	1-2	.500	0-0	.000	0	1	1	2.3	4	0	0	2	0	0	3	7.7			
vs Kansas State	11-23-15	*	24	3-8	.375	0-2	.000	0-0	.000	0	6	6	3.3	2	0	2	5	0	1	6	7.3			
vs Northwestern	11-24-15	*	31	6-11	.545	3-6	.500	1-1	1.000	0	6	6	3.8	5	1	4	4	1	4	16	9.0			
ARKANSAS ST.	12-1-15	*	23	2-4	.500	0-2	.000	4-4	1.000	0	4	4	3.8	4	0	7	0	0	1	8	8.8			
NORTHERN ILL.	12-4-15	*	35	5-7	.714	1-3	.333	2-3	.667	0	1	1	3.4	4	0	6	5	0	2	13	9.4			
OMAHA	12-9-15																							
at Arizona	12-13-15																							
NC STATE	12-19-15																							
vs Illinois	12-23-15																							
ARKANSAS-PB	12-29-15																							
SAVANNAH ST	1-2-16																							
at Georgia	1-6-16																							
AUBURN	1-9-16																							
ARKANSAS	1-12-16																							
at S. Carolina	1-16-16																							
GEORGIA	1-20-16																							
at Texas A&M	1-23-16																							
at Kentucky	1-27-16																							
MISSISSIPPI ST	1-30-16																							
OLE MISS	2-3-16																							
at Alabama	2-6-16																							
at Vanderbilt	2-10-16																							
TENNESSEE	2-13-16																							
S. CAROLINA	2-16-16																							
at Arkansas	2-20-16																							
at Ole Miss	2-23-16																							
TEXAS A&M	2-27-16																							
at LSU	3-1-16																							
FLORIDA	3-5-16																							

2015-16 (FRESHMAN):

- Season-high seven assists in the win vs. Arkansas State (Dec. 1).
- Nearly willed Mizzou to a comeback vs. Northwestern (Nov. 23), scoring 13 of his 16 points (6-of-11 FG) after the break of the 67-62 result.
- Rained in 3-of-4 from three-point land en route to 13 points vs. UMES (Nov. 14), playing 27 minutes in his second career start.
- Earned the start in his collegiate debut vs. Wofford (Nov. 13), recording 7 points, 3 assists and 3 rebounds in 29 minutes.

OAK HILL ACADEMY:

- Led national powerhouse Oak Hill Academy (Mouth of Wilson, Va.) to an 88-4 record as the team's starting point guard his last two seasons.
- Averaged 8.7 assists, 7.7 points and 4.2 steals per game while leading Oak Hill to a 47-1 season as a senior, with the squad also spending 10 weeks as the nation's No. 1-ranked boys basketball team.
- Broke Oak Hill's career assists record that was previously held by former North Carolina standout Jeff McInnis.

PERSONAL:

- Son of Alice Knox and Ted Phillips, and born on Jan. 12, 1996, in Los Angeles, California.
- Athlete he most looks up to and models his game after is Chris Paul.
- Favorite TV show is 'Friends'.
- Considered Mizzou the most in the recruiting process due to the Tigers coaching staff's ongoing presence.
- Mentions NBA star Kobe Bryant as the most influential person he has ever met.

#1 AT A GLANCE

2015-16 Career

Scored 5+ points	6	-
Scored 10+ points	2	-
Scored 15+ points	1	-
Hit 2+ 3-pointers	2	-
Recorded 3+ rebounds	5	-
Dished 3+ assists	4	-
Played 20+ minutes	6	-
Played 30+ minutes	2	-

#1 GAME HIGHS

2015-16 Career

16, vs. Northwestern		-
11-24-15	PTS	-
6, vs. Northwestern		-
11-24-15	FGM	-
11, vs. Northwestern		-
11-24-15	FGA	-
3, Twice		-
	3PTM	-
6, vs. Northwestern		-
11-24-15	3PTA	-
4, Arkansas State		-
12-1-15	FTM	-
4, Twice		-
	FTA	-
6, Twice		-
	REB	-
7, Arkansas State		-
12-1-15	ASST	-
1, vs. Northwestern		-
11-24-15	BLKS	-
4, vs. Northwestern		-
11-24-15	STLS	-
35, Northern Illinois		-
12-4-15	MIN	-

PHILLIPS CAREER STATS

SEASON	G-GS	MIN	MPG	FG-A	FG%	3FG-A	3FG%	FT-A	FT%	REB / AVG.	AST / TO	BS / S	TP	AVG.
2015-16	7-7	181	25.9	24-44	.545	8-20	.400	10-12	.833	24 / 3.4	24 / 19	1 / 9	66	9.4
TOTAL	7-7	181	25.9	24-44	.545	8-20	.400	10-12	.833	24 / 3.4	24 / 19	1 / 9	66	9.4



TRAMAINE ISABELL

SO // G // 6-0 // 178

Seattle, Wash.

Garfield High School

LAST GAME (NORTHERN ILLINOIS 12-4-15)

FG	FGA	3FG	FGA	FT	FTA	AST	PTS
1	5	1	1	0	1	1	3

ISABELL 2015-16 GAME-BY-GAME

Opponent	Date	GS	Min	FG	FGA	Pct	3FG	FGA	Pct	FT	FTA	Pct	Off	Def	Tot	Avg	PF	FO	A	TO	Blk	Stl	Pts	Avg
WOFFORD	11-13-15	10	2-2	1.000	0-0	.000	0-0	.000	0-0	.000	0	3	3	3.0	1	0	2	3	0	1	4	4.0		
UMES	11-15-15	12	2-5	.400	0-1	.000	0-0	.000	0-0	.000	2	2	4	3.5	0	0	1	0	0	0	4	4.0		
at Xavier	11-17-15	13	3-6	.500	1-1	1.000	4-4	1.000	0	1	1	2.7	2	0	1	5	0	1	11	6.3				
vs Kansas State	11-23-15	12	2-3	.667	0-0	.000	0-0	.000	0	1	1	2.3	0	0	0	0	0	1	4	5.8				
vs Northwestern	11-24-15	8	1-4	.250	0-1	.000	0-0	.000	0	1	1	2.0	1	0	0	0	0	0	2	5.0				
ARKANSAS ST.	12-1-15	16	4-6	.667	2-2	1.000	1-1	1.000	0	0	0	1.7	1	0	2	0	0	1	11	6.0				
NORTHERN ILL.	12-4-15	16	1-5	.200	1-1	1.000	0-1	.000	1	1	2	1.7	0	0	1	0	0	1	3	5.6				
OMAHA	12-9-15																							
at Arizona	12-13-15																							
NC STATE	12-19-15																							
vs Illinois	12-23-15																							
ARKANSAS-PB	12-29-15																							
SAVANNAH ST	1-2-16																							
at Georgia	1-6-16																							
AUBURN	1-9-16																							
ARKANSAS	1-12-16																							
at S. Carolina	1-16-16																							
GEORGIA	1-20-16																							
at Texas A&M	1-23-16																							
at Kentucky	1-27-16																							
MISSISSIPPI ST	1-30-16																							
OLE MISS	2-3-16																							
at Alabama	2-6-16																							
at Vanderbilt	2-10-16																							
TENNESSEE	2-13-16																							
S. CAROLINA	2-16-16																							
at Arkansas	2-20-16																							
at Ole Miss	2-23-16																							
TEXAS A&M	2-27-16																							
at LSU	3-1-16																							
FLORIDA	3-5-16																							

2015-16 (SOPHOMORE):

- Matched season-high point total (11) with season-best four FGs (4-of-6) vs. Arkansas State (Dec. 1).

2014-15 (FRESHMAN):

- Dished out multiple assists in 8 different games, including a season-high 6 dimes (against just one turnover) in the win vs. LSU (Jan. 8).
- Season-best 14 points (4-of-8 FG, 1-of-3 3PT, 5-of-6 FT) vs. Lipscomb (Jan. 3), with his work at the charity stripe setting season-high marks in FT makes and attempts.
- Made ESPN SportsCenter's Top 10 with his buzzer-beating, game-tying three-pointer vs. Oklahoma State (Dec. 30), dropping the bucket with 0.2 seconds left in regulation.

HIGH SCHOOL:

- Was named first team all-state as a senior after leading Garfield High School to a 25-1 overall record and the Class 4A state championship.

- Averaged 23.6 points and 3.5 assists as a senior for Garfield, which also produced NBA players Tony Wroten and Brandon Roy.
- Poured in 34 points in the state title win over Richland and was named the state tournament's Most Valuable Player.
- Began his high school career at Lakeside High School, the same high school as Microsoft co-founders Bill Gates and Paul Allen, and led the Lions to the 2013 state championship game.

PERSONAL:

- Full name is Tramaine Andre' Isabell.
- Son of Aiyana Brown and Tramaine Isabell Sr.
- Has a younger sister, Queen, and younger brother, Se'jhe.
- Born June 27, 1995.
- Considers his grandfather, Rich Padden, his greatest influence and an important mentor.
- Outside of pursuing basketball, would like to find success in the fields of real estate or private investment.

ISABELL CAREER STATS

CAREER	G-GS	MIN	MPG	FG-A	FG%	3FG-A	3FG%	FT-A	FT%	REB / AVG.	AST / TO	BS / S	TP	AVG.
2014-15	27-1	405	15.0	37-118	.314	16-52	.308	22-28	.786	36 / 1.3	39 / 33	0 / 17	112	4.1
2015-16	7-0	87	12.4	15-31	.484	4-6	.667	5-6	.833	12 / 1.7	7 / 8	0 / 5	39	5.6
TOTAL	34-1	492	14.5	52-149	.349	20-58	.345	27-34	.794	48 / 1.4	46 / 41	0 / 22	151	4.4

#4 AT A GLANCE

2015-16 Career

Scored 5+ points	2	12
Scored 10+ points	2	5
Hit 2+ 3-pointers	1	5
Multiple steals	-	5
Multiple assists	2	11
Recorded 3+ rebounds	2	6
Dished 3+ assists	-	6
Played 20+ minutes	-	7
Played 30+ minutes	-	2

#4 GAME HIGHS

2015-16 Career

11, Twice	14, Lipscomb
PTS	1-3-15
4, Arkansas State	5, at Arkansas
12-1-15	FGM
6, Twice	9, at Arkansas
FGA	2-18-15
2, Arkansas State	3, at Arkansas
12-1-15	3PTM
2, Arkansas State	5, 3 times
12-1-15	3PTA
4, at Xavier	5, Lipscomb
11-15-15	FTM
4, at Xavier	6, Lipscomb
11-17-15	FTA
3, Wofford	4, 3 times
11-13-15	REB
2, Twice	6, LSU
ASST	1-8-15
-	-
BLKS	-
1. 3 times	2, 4 times
STLS	-



D'ANGELO ALLEN

SO // F // 6-7 // 216

Dallas, Texas

Kimball High School

LAST GAME (NORTHERN ILLINOIS 12-4-15)

FG	FGA	3FG	FGA	FT	FTA	REB	PTS
0	0	0	0	0	0	0	0

ALLEN 2015-16 GAME-BY-GAME

Opponent	Date	GS	Min	FG	FGA	Pct	3FG	FGA	Pct	FT	FTA	Pct	Off	Def	Tot	Avg	PF	FO	A	TO	Blk	Stl	Pts	Avg
WOFFORD	11-13-15	DNP																						
UMES	11-15-15	15	1-1	1.000	0-0	.000	0-0	.000	0-0	.000	0	2	2	2	4	4.0	2	0	0	0	0	1	2	2.0
at Xavier	11-17-15	12	0-0	.000	0-0	.000	0-0	.000	0-0	.000	0	3	3	3	3.5	2	0	0	1	0	0	0	1.0	
vs Kansas State	11-23-15	16	0-3	.000	0-0	.000	0-0	.000	0-0	.000	3	0	3	3.3	1	0	0	2	0	2	0	2	0	0.7
vs Northwestern	11-24-15	5	1-1	1.000	0-0	.000	0-0	.000	0-0	.000	0	0	0	0	2.5	0	0	1	0	0	0	2	1.0	
ARKANSAS ST.	12-1-15	7	0-0	.000	0-0	.000	0-0	.000	1-2	.500	0	2	2	2	2.4	1	0	0	0	1	0	1	1.0	
NORTHERN ILL.	12-4-15	2	0-0	.000	0-0	.000	0-0	.000	0-0	.000	0	0	0	0	2.0	1	0	0	0	0	0	0	0.8	
OMAHA	12-9-15																							
at Arizona	12-13-15																							
NC STATE	12-19-15																							
vs Illinois	12-23-15																							
ARKANSAS-PB	12-29-15																							
SAVANNAH ST	1-2-16																							
at Georgia	1-6-16																							
AUBURN	1-9-16																							
ARKANSAS	1-12-16																							
at S. Carolina	1-16-16																							
GEORGIA	1-20-16																							
at Texas A&M	1-23-16																							
at Kentucky	1-27-16																							
MISSISSIPPI ST	1-30-16																							
OLE MISS	2-3-16																							
at Alabama	2-6-16																							
at Vanderbilt	2-10-16																							
TENNESSEE	2-13-16																							
S. CAROLINA	2-16-16																							
at Arkansas	2-20-16																							
at Ole Miss	2-23-16																							
TEXAS A&M	2-27-16																							
at LSU	3-1-16																							
FLORIDA	3-5-16																							

2015-16 (SOPHOMORE):

- First appearance of the season vs. UMES (Nov. 15), logging 15 high-energy minutes off the bench with 4 rebounds.

2014-15 (FRESHMAN):

- Made all 8 of his starts in Mizzou's final eight games of the season.
- Shot an impressive 53.8-percent from the field (14-of-26) over the final 10 games of the Tigers' campaign.
- Matched his season-high in rebounds (7) in the first of those eight starts at Mississippi State (Feb. 14).
- Season-best 3-of-3 3PT shooting en-route to 10 points at South Carolina (Feb. 10).
- 8 points (3-of-4 FG, 2-of-2 3PT) vs. Illinois (Dec. 20) in the Scottrade Center, draining two 3-pointers.
- Breakout game vs. Elon (Dec. 11), scoring 12 points (5-of-7 FG, 2-of-2 FT) and grabbing 7 rebounds in 21 minutes of action off the bench.

KIMBALL HIGH SCHOOL:

- Was a winner throughout his high school career and was a part of three Texas Class 4A State Championship teams (2011, 2012 and 2014) at Kimball High School in Dallas.
- Averaged 13.3 points and 10.2 rebounds as a senior.
- Named to the Texas Association of Basketball Coaches All-Star Team in 2014.
- Named to the Class 4A All-Tournament Team as well and was an All-Region II selection.

PERSONAL:

- Full name is D'Angelo Malik Allen.
- Born May 10, 1996, in Dallas, Texas.
- Son of Evelyn Allen.
- Hobbies include playing video games, watching movies and hanging out with friends.

ALLEN CAREER STATS

SEASON	G-GS	MIN	MPG	FG-A	FG%	3FG-A	3FG%	FT-A	FT%	REB / AVG.	AST / TO	BS / S	TP	AVG.
2014-15	32-8	544	17.0	40-98	.408	9-20	.450	17-28	.607	100 / 3.1	21 / 18	7 / 11	106	3.3
2015-16	6-0	57	9.5	2-5	.400	0-0	.000	1-4	.250	12 / 2.0	1 / 3	1 / 3	5	0.8
TOTAL	38-8	601	15.8	42-103	.408	9-20	.450	18-32	.563	112 / 2.9	22 / 21	8 / 14	111	2.9

#5 AT A GLANCE

2015-16 Career

Scored 5+ points	-	9
Scored 10+ points	-	2
Attempted 5+ FGs	-	6
Grabbed 5+ rebounds	-	8
Multiple steals	1	3
Played 20+ minutes	-	13

#5 GAME HIGHS

2015-16	Career
2, UMES	12, Elon
11-15-15 PTS	12-11-14
1, UMES	5, Elon
11-15-15 FGM	12-11-14
1, UMES	7, Elon
11-15-15 FGA	12-11-14
-	3, South Carolina
- 3PTM	2-10-15
-	3, South Carolina
- 3PTA	2-10-15
1, Arkansas State	3, Lipscomb
12-1-15 FTM	1-3-15
1, UMES	4, Lipscomb
11-15-15 FTA	1-3-15
3, Twice	7, Twice
REB	
-	2, 3 times
- ASST	
-	1, 7 times
- BLKS	-
1, UMES	2, Twice
11-15-15 STLS	-



K.J. WALTON

FR // G // 6-3 // 197

Brownsburg, Ind.

Brownsburg High School

LAST GAME (NORTHERN ILLINOIS 12-4-15)

FG	FGA	3FG	FGA	FT	FTA	REB	PTS
1	3	0	1	0	0	0	2

WALTON 2015-16 GAME-BY-GAME

Opponent	Date	GS	Min	FG	FGA	Pct	3FG	FGA	Pct	FT	FTA	Pct	Off	Def	Tot	Avg	PF	FO	A	TO	Blk	Stl	Pts	Avg
WOFFORD	11-13-15	*	17	3-5	.600	0-0	.000	0-1	.000	0	1	0	1	1	1.0	2	0	2	0	0	1	6	6.0	
UMES	11-15-15		15	1-3	.333	0-1	.000	9-10	.900	0	0	0	0	0	0.5	1	0	3	0	0	1	11	8.5	
at Xavier	11-17-15		21	3-8	.375	0-1	.000	2-2	1.000	1	2	3	1.3	2	0	1	0	0	0	0	8	8.3		
vs Kansas State	11-23-15		17	1-7	.143	0-1	.000	1-4	.250	2	1	3	1.8	2	0	1	3	0	0	0	3	7.0		
vs Northwestern	11-24-15		5	0-1	.000	0-0	.000	0-0	.000	0	0	0	1.4	2	0	1	0	0	0	0	0	5.6		
ARKANSAS ST.	12-1-15		15	2-7	.286	0-0	.000	6-7	.857	3	2	5	2.0	0	0	0	1	1	0	10	6.3			
NORTHERN ILL.	12-4-15		9	1-3	.333	0-1	.000	0-0	.000	0	0	0	1.7	0	0	0	0	0	0	1	2	5.7		
OMAHA	12-9-15																							
at Arizona	12-13-15																							
NC STATE	12-19-15																							
vs Illinois	12-23-15																							
ARKANSAS-PB	12-29-15																							
SAVANNAH ST	1-2-16																							
at Georgia	1-6-16																							
AUBURN	1-9-16																							
ARKANSAS	1-12-16																							
at S. Carolina	1-16-16																							
GEORGIA	1-20-16																							
at Texas A&M	1-23-16																							
at Kentucky	1-27-16																							
MISSISSIPPI ST	1-30-16																							
OLE MISS	2-3-16																							
at Alabama	2-6-16																							
at Vanderbilt	2-10-16																							
TENNESSEE	2-13-16																							
S. CAROLINA	2-16-16																							
at Arkansas	2-20-16																							
at Ole Miss	2-23-16																							
TEXAS A&M	2-27-16																							
at LSU	3-1-16																							
FLORIDA	3-5-16																							

2015-16 (FRESHMAN):

- Second game this season making 5 or more FTs in the win vs. Arkansas State (Dec. 1), making 6-of-7.
- Came off bench and sparked Mizzou in second half action vs. UMES (Nov. 15), scoring all 11 of his points after the break.
- Earned the start in his collegiate debut vs. Wofford (Nov. 13), scoring 6 points (3-of-5 FG) in the 83-74 win.

BROWNSBURG HIGH SCHOOL:

- Averaged 19.7 points, 5.0 rebounds and 1.9 steals per game for Brownsburg High School as a senior.
- Shot an impressive 44.0 percent from the floor in his final high school season.
- Named an *Indy Star* Indiana All-Star at the conclusion of his final high school campaign.
- Rated a four-star prospect and ranked as the 103rd best basketball recruit in the nation by Rivals.com.

- Participant at the 28th annual Hoosier Basketball Magazine Top 60 Workout which features Indiana's best upperclassmen
- Chose Mizzou over Cincinnati and Xavier.

PERSONAL:

- Son of Kenneth and Michelle Walton.
- Father, Kenneth, played basketball at Nebraska from 1981-83.
- Born on July 20, 1996, in Indianapolis, Ind.
- Enjoys watching 'Fresh Prince of Bel-Air' in his spare time.
- Favorite sports movie is *Remember the Titans*.
- Favorite professional athlete to follow is Carmelo Anthony.
- Would like to pursue a career in basketball.

#10 AT A GLANCE

2015-16 Career

Scored 5+ points	3	-
Scored 10+ points	2	-
Hit 2+ 3-pointers	-	-
Hit 5+ free throws	2	-
Multiple assists	2	-
Dished 3+ assists	1	-
Played 20+ minutes	1	-
Played 30+ minutes	-	-

#10 GAME HIGHS

2015-16 Career

11, UMES	-
11-15-15	PTS
3, Twice	-
	FGM
8, at Xavier	-
11-17-15	FGA
-	-
-	3PTM
1, Twice	-
	3PTA
9, UMES	-
11-15-15	FTM
10, UMES	-
11-15-15	FTA
5, Arkansas State	-
12-1-15	REB
3, UMES	-
11-15-15	ASST
1, Arkansas State	-
12-1-15	BLKS
1, Twice	-
	STLS

WALTON CAREER STATS

SEASON	G-GS	MIN	MPG	FG-A	FG%	3FG-A	3FG%	FT-A	FT%	REB / AVG.	AST / TO	BS / S	TP	AVG.
2015-16	7-1	99	14.1	11-34	.324	0-4	.000	18-24	.750	12 / 1.7	8 / 4	1 / 3	40	5.7
TOTAL	7-1	99	14.1	11-34	.324	0-4	.000	18-24	.750	12 / 1.7	8 / 4	1 / 3	40	5.7



JIMMY BARTON

RS SO // G // 5-9 // 160

St. Louis, Mo. // DeSmet Jesuit HS

Houston Baptist

LAST GAME (VS. KANSAS STATE 11-23-15)

FG	FGA	3FG	FGA	FT	FTA	AST	PTS
0	0	0	0	0	0	0	0

BARTON 2015-16 GAME-BY-GAME

Opponent	Date	GS	Min	FG	FGA	Pct	3FG	FGA	Pct	FT	FTA	Pct	Off	Def	Tot	Avg	PF	FO	A	TO	Blk	Stl	Pts	Avg
WOFFORD	11-13-15	DNP																						
UMES	11-15-15	1		0-0	.000		0-0	.000		0-0	.000		0	0	0	0.0	0	0	0	1	0	0	0	0.0
at Xavier	11-17-15	DNP																						
vs Kansas State	11-23-15	1		0-0	.000		0-0	.000		0-0	.000		0	0	0	0.0	0	0	0	0	0	0	0	0.0
vs Northwestern	11-24-15	DNP																						
ARKANSAS ST.	12-1-15	DNP																						
NORTHERN ILL.	12-4-15	DNP																						
OMAHA	12-9-15																							
at Arizona	12-13-15																							
NC STATE	12-19-15																							
vs Illinois	12-23-15																							
ARKANSAS-PB	12-29-15																							
SAVANNAH ST	1-2-16																							
at Georgia	1-6-16																							
AUBURN	1-9-16																							
ARKANSAS	1-12-16																							
at S. Carolina	1-16-16																							
GEORGIA	1-20-16																							
at Texas A&M	1-23-16																							
at Kentucky	1-27-16																							
MISSISSIPPI ST	1-30-16																							
OLE MISS	2-3-16																							
at Alabama	2-6-16																							
at Vanderbilt	2-10-16																							
TENNESSEE	2-13-16																							
S. CAROLINA	2-16-16																							
at Arkansas	2-20-16																							
at Ole Miss	2-23-16																							
TEXAS A&M	2-27-16																							
at LSU	3-1-16																							
FLORIDA	3-5-16																							

2015-16 (REDSHIRT SOPHOMORE):

▼ Made first appearance for Mizzou in the win vs. UMES (Nov. 15), coming off the bench in the final moments of the victory.

2014-15 (SOPHOMORE):

▼ Walked onto the Tiger program after playing his freshman season at Division I Houston Baptist.

AT HOUSTON BAPTIST

2013-14 (FRESHMAN):

▼ Played in 31 games for Houston Baptist, making 13 starts.
 ▼ Saw his averages improve to 3.1 points in 19.2 minutes during Southland Conference play.
 ▼ Passed out a career-high eight assists at Abilene Christian and seven more at Sam Houston State in back-to-back contests.
 ▼ Scored a career high nine points and was a perfect 3-of-3 from three-point range in a loss to Southern Miss.

DESMET JESUIT HIGH SCHOOL:

▼ Was a four-year letterwinner and three-year team captain for coach Kevin Poelker at De Smet Jesuit High School in St. Louis, Mo.
 ▼ Averaged 14.0 points, 6.5 assists and 3.5 rebounds per game in leading the Spartans to the state finals, earning Metro Catholic Conference Co-Player of the Year, first-team all-state and second-team All-Metro honors as a senior.

PERSONAL:

▼ Full name is James Edward Barton.
 ▼ Born Oct. 7, 1994, in St. Louis, Mo.
 ▼ Son of Jim Sr. and Christy Barton.
 ▼ Has two sisters, Paige and Mary and one brother, Tommy.
 ▼ Considers his father, Jim Sr., his greatest influence.

#11 AT A GLANCE

2015-16 Career

Scored 5+ points	-	7
Hit 2+ 3-pointers	-	1
Multiple steals	-	4
Multiple assists	-	14
Dished 3+ assists	-	7
Played 20+ minutes	-	9
Played 30+ minutes	-	2

#11 GAME HIGHS

2015-16 Career

	PTS	-
	FGM	-
	FGA	-
	3PTM	-
	3PTA	-
	FTM	-
	FTA	-
	REB	-
	ASST	-
	BLKS	-
	STLS	-

BARTON CAREER STATS

SEASON	G-GS	MIN	MPG	FG-A	FG%	3FG-A	3FG%	FT-A	FT%	REB / AVG.	AST / TO	BS / S	TP	AVG.
2013-14	31-13	515	16.6	34-98	.347	14-50	.280	12-16	.750	35 / 1.1	57 / 43	0 / 15	94	3.0
2014-15	REDSHIRTED													
2015-16	2-0	2	1.0	0-0	.000	0-0	.000	0-0	.000	0 / 0.0	0 / 0	0 / 0	0	0.0
TOTAL	33-13	517	16.6	34-98	.347	14-50	.280	12-16	.750	35 / 1.1	57 / 44	0 / 15	94	3.0

NCAA APPEARANCES: '44, '76, '78, '80, '81, '82, '83, '86, '87, '88, '89, '90, '92, '93, '95, '99, '00, '01, '02, '03, '09, '10, '11, '12, '13



NAMON WRIGHT

SO // G // 6-5 // 202

Los Angeles, Calif.

Pacific Hills High School

LAST GAME (NORTHERN ILLINOIS 12-4-15)

FG	FGA	3FG	3FGA	FT	FTA	REB	PTS
3	7	2	5	2	4	5	10

WRIGHT 2015-16 GAME-BY-GAME

Opponent	Date	GS	Min	FG	FGA	Pct	3FG	FGA	Pct	FT	FTA	Pct	Off	Def	Tot	Avg	PF	FO	A	TO	Blk	Stl	Pts	Avg
WOFFORD	11-13-15		23	5-7	.714		3-4	.750		5-8	.625	2	5	7	7.0	3	0	0	0	0	0	18	18.0	
UMES	11-15-15	*	26	1-8	.125		1-4	.250		4-4	1.000	2	3	5	6.0	2	0	1	2	0	0	7	12.5	
at Xavier	11-17-15	*	28	2-6	.333		0-4	.000		2-3	.667	0	4	4	5.3	3	0	2	2	0	2	6	10.3	
vs Kansas State	11-23-15	*	23	1-6	.167		1-5	.200		2-2	1.000	0	4	4	5.0	1	0	0	2	2	1	5	9.0	
vs Northwestern	11-24-15	*	31	2-6	.333		0-2	.000		4-4	1.000	1	1	2	4.4	0	0	3	1	0	0	8	8.8	
ARKANSAS ST.	12-1-15	*	28	5-9	.556		3-5	.600		1-1	1.000	0	6	6	4.7	3	0	0	0	1	0	14	9.7	
NORTHERN ILL.	12-4-15	*	26	3-7	.429		2-5	.400		2-4	.500	0	5	5	4.7	3	0	3	2	0	0	10	9.7	
OMAHA	12-9-15																							
at Arizona	12-13-15																							
NC STATE	12-19-15																							
vs Illinois	12-23-15																							
ARKANSAS-PB	12-29-15																							
SAVANNAH ST	1-2-16																							
at Georgia	1-6-16																							
AUBURN	1-9-16																							
ARKANSAS	1-12-16																							
at S. Carolina	1-16-16																							
GEORGIA	1-20-16																							
at Texas A&M	1-23-16																							
at Kentucky	1-27-16																							
MISSISSIPPI ST	1-30-16																							
OLE MISS	2-3-16																							
at Alabama	2-6-16																							
at Vanderbilt	2-10-16																							
TENNESSEE	2-13-16																							
S. CAROLINA	2-16-16																							
at Arkansas	2-20-16																							
at Ole Miss	2-23-16																							
TEXAS A&M	2-27-16																							
at LSU	3-1-16																							
FLORIDA	3-5-16																							

2015-16 (SOPHOMORE):

- Team-high 14 points (5-of-9 FG, 3-of-5 3PT, 1-of-1 FT) with 6 rebounds and 1 block vs. Arkansas State (Dec. 1).
- Matched his career-high with two assists in the game at Xavier (Nov. 17), the sixth such time he has accomplished the feat.
- Fired in 18 points (5-of-7 FG, 3-of-4 3PT, 5-of-8 FT) in 23 minutes off the bench in the season-opening win vs. Wofford (Nov. 13).
- Also grabbed a career-best 7 rebounds against the Terriers, along with setting new career highs in free throws and attempts.

2014-15 (FRESHMAN):

- Scored double figures in seven different games in his first campaign for Mizzou, averaging 6.8 points per game in 30 games played (20 starts).
- Finished the season as the Tigers' go-to scorer, averaging 13.6 points per game over Mizzou's final five contests.
- Season-ending flurry of points included an impressive 28 points vs.

Florida (Feb. 24), leading the Tigers to a 64-52 win over the Gators.

- His scoring output vs. UF was the third-highest scoring performance by a freshman in Mizzou history, a game in which he shot 10-of-13 FG, 6-of-8 3PT, 2-of-3 FT.

PACIFIC HILLS HIGH SCHOOL:

- Averaged 24.2 points, 9.4 rebounds, 3.0 assists and 1.4 steals for Pacific Hills High School in 2014.
- Ranked as one of the Top 100 players in the class of 2014.
- Helped lead Pacific Hills to the Division IV state championship as a junior and averaged 15.6 points, 7.3 rebounds and 3.1 assists.

PERSONAL:

- Full name is Namon Khary Wright.
- Son of Michelle Burnside.
- Born June 25, 1994, in Los Angeles, Calif.

WRIGHT CAREER STATS

SEASON	G-GS	MIN	MPG	FG-A	FG%	3FG-A	3FG%	FT-A	FT%	REB / AVG.	AST / TO	BS / S	TP	AVG.
2014-15	30-20	607	20.2	77-186	.414	40-103	.388	10-18	.556	69 / 2.3	19 / 37	3 / 17	204	6.8
2015-16	7-6	185	26.4	19-49	.388	10-29	.345	20-26	.769	33 / 4.7	9 / 9	3 / 3	68	9.7
TOTAL	37-26	792	21.4	96-235	.409	50-132	.379	30-44	.682	102 / 2.8	28 / 46	6 / 20	272	7.4

#12 AT A GLANCE

2015-16 Career

Scored 10+ points	3	10
Scored 20+ points	-	2
Hit 2+ 3-pointers	2	14
Made 5+ FGs	2	7
Attempted 5+ FGs	7	25
Attempted 10+ FGs	-	5
Recorded 5+ rebounds	4	8
Multiple assists	2	7
Multiple steals	1	6
Played 20+ minutes	6	22
Played 30+ minutes	1	7

#12 GAME HIGHS

2015-16 Career

18, Wofford	28, Florida
11-13-15	PTS 2-24-15
5, Twice	10, Florida
	FGM 2-24-15
9, Arkansas State	14, at Mississippi St.
12-1-15	FGA 3-7-15
3, Twice	6, Florida
	3PTM 2-24-15
5, Twice	8, Florida
	3PTA 2-24-15
5, Wofford	5, Wofford
11-13-15	FTM 11-13-15
8, Wofford	8, Wofford
11-13-15	FTA 11-13-15
7, Wofford	7, Wofford
11-13-15	REB 11-13-15
3, vs. Northwestern	3, vs. Northwestern
11-24-15	ASST 11-24-15
2, vs. Kansas St.	2, vs. Kansas St.
11-23-15	BLKS 11-23-15
2, at Xavier	3, at Georgia
11-17-15	STLS 2-28-15



WES CLARK

JR // G // 6-0 // 180

Detroit, Mich.

Romulus High School

LAST GAME (NORTHERN ILLINOIS 12-4-15)

FG	FGA	3FG	3FGA	FT	FTA	AST	PTS
1	4	1	1	3	6	4	6

CLARK 2015-16 GAME-BY-GAME

Opponent	Date	GS	Min	FG	FGA	Pct	3FG	3FGA	Pct	FT	FTA	Pct	Off	Def	Tot	Avg	PF	FO	A	TO	Blk	Stl	Pts	Avg
WOFFORD	11-13-15	*	28	0-3	.000		0-0	.000		4-5	.800	0	3	3	3.0	3	0	2	2	0	0	4	4.0	
UMES	11-15-15	*	31	4-11	.364		3-6	.500		4-4	1.000	0	1	1	2.0	1	0	3	1	0	0	15	9.5	
at Xavier	11-17-15	*	31	5-12	.417		1-4	.250		0-1	.000	2	1	3	2.3	3	0	3	2	0	3	11	10.0	
vs Kansas State	11-23-15	*	26	2-9	.222		1-5	.200		0-0	.000	0	2	2	2.3	2	0	6	1	0	0	5	8.8	
vs Northwestern	11-24-15	*	31	1-11	.091		1-3	.333		2-2	1.000	1	3	4	2.6	3	0	4	1	0	3	5	8.0	
ARKANSAS ST.	12-1-15	*	26	2-7	.286		0-1	.000		4-4	1.000	1	3	4	2.8	2	0	3	3	0	0	8	8.0	
NORTHERN ILL.	12-4-15	*	20	1-4	.250		1-1	1.000		3-6	.500	0	7	7	3.4	4	0	4	1	0	0	6	7.7	
OMAHA	12-9-15																							
at Arizona	12-13-15																							
NC STATE	12-19-15																							
vs Illinois	12-23-15																							
ARKANSAS-PB	12-29-15																							
SAVANNAH ST	1-2-16																							
at Georgia	1-6-16																							
AUBURN	1-9-16																							
ARKANSAS	1-12-16																							
at S. Carolina	1-16-16																							
GEORGIA	1-20-16																							
at Texas A&M	1-23-16																							
at Kentucky	1-27-16																							
MISSISSIPPI ST	1-30-16																							
OLE MISS	2-3-16																							
at Alabama	2-6-16																							
at Vanderbilt	2-10-16																							
TENNESSEE	2-13-16																							
S. CAROLINA	2-16-16																							
at Arkansas	2-20-16																							
at Ole Miss	2-23-16																							
TEXAS A&M	2-27-16																							
at LSU	3-1-16																							
FLORIDA	3-5-16																							

2015-16 (JUNIOR):

- Scored at least 15 points for the sixth time in his career in the 73-55 win vs. UMES (Nov. 5), hitting 3-of-6 from 3-point range.
- Made his return to Mizzou's lineup in the season-opening win vs. Wofford (Nov. 13), finishing his comeback from the right elbow dislocation that ended his sophomore season.

2014-15 (SOPHOMORE):

- Averaged 10.1 points per game in his first season in a primary role for Mizzou, starting 20 of 23 games played.
- 11 points (4-of-10 FG, 1-of-4 3PT, 2-of-2 FT) at South Carolina (Feb. 10) in 26 minutes of action before a right elbow dislocation forced him off the court for the remainder of the game.
- Career-high 19 points (7-of-16 FG, 3-of-7 3PT, 2-of-2 FT) vs. No. 1 Kentucky (Jan. 29), also recording 4 assists, 3 steals and attempting a career-high 16 field goals.

2013-14 (FRESHMAN):

- Averaged 4.1 points, 2.2 rebounds and 2.1 assists in 20.4 minutes per game as a freshman, playing in 33 contests.
- Had 14 games with three or more assists, including a career-high six dimes in the home win over Mississippi State (3/1) and five in wins against Hawaii (11/16) and West Virginia (12/5).

ROMULUS HIGH SCHOOL:

- Led his team to the 2013 Michigan Class A state title, a 27-1 overall record and a No. 24 ranking in the final ESPN High School Power Rankings.
- Was named first team all-state each of his final two years as a prep, averaging 12.8 points, 4.0 rebounds and 6.5 assists as a senior.

PERSONAL:

- Full name is Wesley Lavert Clark.
- Son of Yvette Johnson and Wes Clark Sr.
- Born Dec. 12, 1994, in Detroit, Mich.

CLARK CAREER STATS

SEASON	G-GS	MIN	MPG	FG-A	FG%	3FG-A	3FG%	FT-A	FT%	REB / AVG.	AST / TO	BS / S	TP	AVG.
2013-14	33-0	672	20.4	42-117	.359	21-57	.368	31-49	.633	72 / 2.2	70 / 53	2 / 26	136	4.1
2014-15	23-20	713	31.0	81-233	.348	32-102	.314	38-51	.745	81 / 3.5	71 / 45	4 / 38	232	10.1
2015-16	7-7	193	27.6	15-57	.263	7-20	.350	17-22	.773	24 / 3.4	25 / 11	0 / 6	54	7.7
TOTAL	63-27	1578	25.0	138-407	.339	60-179	.335	86-122	.705	177 / 2.8	166 / 109	6 / 70	422	6.7

NCAA APPEARANCES: '44, '76, '78, '80, '81, '82, '83, '86, '87, '88, '89, '90, '92, '93, '95, '99, '00, '01, '02, '03, '09, '10, '11, '12, '13

#15 AT A GLANCE

2015-16 Career

Scored 10+ points	2	15
Scored 15+ points	1	6
Dished 3+ assists	6	32
Dished 5+ assists	1	11
Hit 5+ FGs	1	7
Hit 2+ 3-pointers	1	15
Attempted 10+ FGs	3	16
Recorded 3+ steals	2	10
Grabbed 5+ rebounds	1	11
Played 30+ minutes	3	19

#15 GAME HIGHS

2015-16 Career

15, UMES	19, Kentucky
11-15-15	PTS 1-29-15
5, at Xavier	7, Twice
11-17-15	FGM
12, at Xavier	16, Kentucky
11-17-15	FGA 1-29-15
3, UMES	4, at Texas A&M
11-15-15	3PTM 1-21-15
6, UMES	8, Twice
11-15-15	3PTA
4, 3 times	6, Twice
	FTM
6, Northern Illinois	8, 3 times
12-4-15	FTA 12-30-14
7, Northern Illinois	9, vs. Chaminade
12-4-15	REB 11-26-14
6, vs. Kansas State	9, Oral Roberts
11-23-15	ASST 11-19-14
-	1, 6 times
-	BLKS
3, Twice	6, UMKC
	STLS 11-14-14



JAKEENAN GANT

SO // F // 6-8 // 212
Springfield, Ga.
Effingham County High School

LAST GAME (NORTHERN ILLINOIS 12-4-15)

FG	FGA	3FG	3FGA	FT	FTA	REB	PTS
4	6	0	0	3	3	6	11

GANT 2015-16 GAME-BY-GAME

Opponent	Date	GS	Min	FG	FGA	Pct	3FG	3FGA	Pct	FT	FTA	Pct	Off	Def	Tot	Avg	PF	FO	A	TO	Blk	Stl	Pts	Avg
WOFFORD	11-13-15	*	16	1-5	.200		0-3	.000		2-2	1.000		1	3	4	4.0	5	1	1	0	1	0	4	4.0
UMES	11-15-15	*	13	2-2	1.000		0-0	.000		0-0	.000		0	1	1	2.5	4	0	0	1	2	1	4	4.0
at Xavier	11-17-15	*	15	0-3	.000		0-2	.000		1-2	.500		1	1	2	2.3	1	0	1	2	1	0	1	3.0
vs Kansas State	11-23-15	*	7	0-2	.000		0-1	.000		0-0	.000		0	1	1	2.0	4	0	0	0	1	0	0	2.3
vs Northwestern	11-24-15		5	1-1	1.000		0-0	.000		2-3	.667		1	0	1	1.8	3	0	0	0	0	0	4	2.6
ARKANSAS ST.	12-1-15		8	1-4	.250		0-1	.000		0-0	.000		1	0	1	1.7	1	0	0	0	1	0	2	2.5
NORTHERN ILL.	12-4-15		18	4-6	.667		0-0	.000		3-3	1.000		2	4	6	2.3	1	0	0	1	1	1	11	3.7
OMAHA	12-9-15																							
at Arizona	12-13-15																							
NC STATE	12-19-15																							
vs Illinois	12-23-15																							
ARKANSAS-PB	12-29-15																							
SAVANNAH ST	1-2-16																							
at Georgia	1-6-16																							
AUBURN	1-9-16																							
ARKANSAS	1-12-16																							
at S. Carolina	1-16-16																							
GEORGIA	1-20-16																							
at Texas A&M	1-23-16																							
at Kentucky	1-27-16																							
MISSISSIPPI ST	1-30-16																							
OLE MISS	2-3-16																							
at Alabama	2-6-16																							
at Vanderbilt	2-10-16																							
TENNESSEE	2-13-16																							
S. CAROLINA	2-16-16																							
at Arkansas	2-20-16																							
at Ole Miss	2-23-16																							
TEXAS A&M	2-27-16																							
at LSU	3-1-16																							
FLORIDA	3-5-16																							

2015-16 (SOPHOMORE):

- Breakout game of season with 11 points (4-of-6 FG, 3-of-3 FT) vs. Northern Illinois (Dec. 4) in 18 minutes off the bench.
- Fifth career game with at least two blocks in the 73-55 win vs. UMES (Nov. 15)
- Earned seventh start of his career in Mizzou's season-opening, 83-74 win vs. Wofford (Nov. 13).

2014-15 (FRESHMAN):

- Shot an efficient 51.2-percent from the field in his initial season wearing the Black & Gold.
- Finished the season with 14 blocks in 23 games for a team-best average of 0.61 blocks per game.
- 13 points (4-of-8 FG, 1-of-4 3PT, 4-of-4 FT) in 15 minutes off the bench vs. Xavier (Dec. 13), the first action of his collegiate career.
- Did not appear in the first 9 games of 2014-15 during a review of his eligibility by the University of Missouri.

EFFINGHAM COUNTY HIGH SCHOOL:

- One of the premier players in the class of 2014 and was selected to participate in USA Basketball's U18 National Team training camp in Colorado Springs, Colo., at the completion of his senior season.
- Was named Georgia's Mr. Basketball as a senior in 2014.
- Averaged 21.0 points, 10.5 rebounds, 4.0 blocks and 2.8 assists for the Effingham County Rebels as a senior, helping his club to a 20-10 overall record and an appearance in the Georgia Class 5A state playoffs.

PERSONAL:

- Full name is Jakeenan Tyelle Gant.
- Son of La'Kenia Gant and James McDonald.
- Has an older sister, Daira, and younger sister, Arial.
- Born May 6, 1996, in Savannah, Ga.
- Would enjoy working in the restaurant business after basketball.

GANT CAREER STATS

SEASON	G-GS	MIN	MPG	FG-A	FG%	3FG-A	3FG%	FT-A	FT%	REB / AVG.	AST / TO	BS / S	TP	AVG.
2014-15	23-6	324	14.1	47-91	.516	1-14	.071	18-25	.720	50 / 2.2	7 / 16	14 / 9	113	4.9
2015-16	7-4	82	11.7	9-23	.391	0-7	.000	8-10	.800	16 / 2.3	2 / 4	7 / 2	26	3.7
TOTAL	30-10	406	13.5	56-114	.491	1-21	.048	26-35	.743	66 / 2.2	9 / 20	21 / 11	139	4.6

#23 AT A GLANCE

2015-16 Career

Scored 5+ points	1	14
Scored 10+ points	1	4
Hit 3+ FGs	1	11
Grabbed 5+ rebounds	1	3
Recorded 2+ blocks	1	5
Played 20+ minutes	-	3

#23 GAME HIGHS

2015-16 Career

11, Northern Illinois	13, Xavier
12-4-15 PTS	12-13-14
4, Northern Illinois	5, at Arkansas
12-4-15 FGM	2-18-15
6, Northern Illinois	8, Xavier
12-4-15 FGA	12-13-14
-	1, Xavier
- 3PTM	12-13-14
3, Wofford	4, Xavier
11-13-15 3PTA	12-13-14
3, Northern Illinois	4, Twice
12-4-15 FTM	
3, Twice	6, at Georgia
FTA	2-28-15
6, Northern Illinois	7, at Arkansas
12-4-15 REB	2-18-15
1, Twice	3, at Arkansas
ASST	2-18-15
2, UMES	3, Twice
11-15-15 BLKS	
1, Twice	1. 11 times
STLS	



KEVIN PURYEAR

FR // F // 6-7 / 236

Blue Springs, Mo.

South High School

LAST GAME (NORTHERN ILLINOIS 12-4-15)

FG	FGA	3FG	3FGA	FT	FTA	REB	PTS
6	10	0	0	5	5	1	17

PURYEAR 2015-16 GAME-BY-GAME

Opponent	Date	GS	Min	FG	FGA	Pct	3FG	3FGA	Pct	FT	FTA	Pct	Off	Def	Tot	Avg	PF	FO	A	TO	Blk	Stl	Pts	Avg
WOFFORD	11-13-15	*	32	8-14	.571		1-3	.333		3-4	.750	0	5	5	5.0	1	0	0	2	0	1	20	20.0	
UMES	11-15-15	*	26	4-7	.571		0-0	.000		5-6	.833	1	4	5	5.0	0	0	1	2	0	1	13	16.5	
at Xavier	11-17-15	*	29	4-9	.444		0-2	.000		4-4	1.000	0	5	5	5.0	3	0	0	1	0	0	12	15.0	
vs Kansas State	11-23-15	*	31	4-9	.444		0-0	.000		1-2	.500	1	2	3	4.5	2	0	0	0	1	0	9	13.5	
vs Northwestern	11-24-15	*	29	6-11	.545		0-2	.000		2-4	.500	1	3	4	4.4	1	0	1	2	0	0	14	13.6	
ARKANSAS ST.	12-1-15	*	21	4-7	.571		0-1	.000		2-3	.667	2	5	7	4.8	2	0	1	3	0	0	10	13.0	
NORTHERN ILL.	12-4-15	*	24	6-10	.600		0-0	.000		5-5	1.000	0	1	1	4.3	1	0	0	4	0	0	17	13.6	
OMAHA	12-9-15																							
at Arizona	12-13-15																							
NC STATE	12-19-15																							
vs Illinois	12-23-15																							
ARKANSAS-PB	12-29-15																							
SAVANNAH ST	1-2-16																							
at Georgia	1-6-16																							
AUBURN	1-9-16																							
ARKANSAS	1-12-16																							
at S. Carolina	1-16-16																							
GEORGIA	1-20-16																							
at Texas A&M	1-23-16																							
at Kentucky	1-27-16																							
MISSISSIPPI ST	1-30-16																							
OLE MISS	2-3-16																							
at Alabama	2-6-16																							
at Vanderbilt	2-10-16																							
TENNESSEE	2-13-16																							
S. CAROLINA	2-16-16																							
at Arkansas	2-20-16																							
at Ole Miss	2-23-16																							
TEXAS A&M	2-27-16																							
at LSU	3-1-16																							
FLORIDA	3-5-16																							

2015-16 (FRESHMAN):

- Has reached double figures in scoring in 6-of-7 games in 2015-16.
- 17 points (6-of-10 FG, 5-of-5 FT) in Mizzou's 78-71 win vs. Northern Illinois (Dec. 4), his second-highest scoring output of the season.
- Scored 20 points (8-of-14 FG, 1-of-3 3PT, 3-of-4 FT) in his collegiate debut, leading Mizzou past Wofford (Nov. 13), 83-74.
- Joined an exclusive list of debuts, with other recent 20-point Tiger freshman performances including: Montaque Gill-Ceaser, 21 points vs. UMKC (Nov. 14, 2014), Jevon Crudup, 22 points at Rutgers (Nov. 27, 1990), Steve Stipanovich, 23 points vs. Southwest Texas State (Nov. 30, 1979).

BLUE SPRINGS SOUTH HIGH SCHOOL:

- Averaged 20.1 points and 7.8 rebounds per game while shooting 53.4 percent from the floor as a senior at Blue Springs South.
- Led South to its first Missouri Class 5 State Championship in school history at Mizzou Arena as a senior.
- Was a Missouri Class 5 All-State selection as a junior and senior.

- Named to the Kansas City Star's 2015 All-Metro Player of the Year.
- All-Suburban Golden Conference Player of the Year and First Team member as a senior.
- Fueled his team to a 21-4 record as a junior and a 22-2 mark as a sophomore.
- Chose Mizzou over offers from Arkansas, Ole Miss, Nebraska, Oklahoma State and Creighton.

PERSONAL:

- Son of Kevin and Vicki Puryear.
- Born Nov. 18, 1996, in New Brunswick, N.J.
- Has two sisters, Aleyse and Kendall.
- Grew up dreaming of chance to play at Mizzou.
- Favorite sports movie is *Coach Carter*.
- Favorite professional athlete to follow is LeBron James.
- Would like to pursue a career in basketball.

PURYEAR CAREER STATS

SEASON	G-GS	MIN	MPG	FG-A	FG%	3FG-A	3FG%	FT-A	FT%	REB / AVG.	AST / TO	BS / S	TP	AVG.
2015-16	7-7	192	27.4	36-67	.537	1-8	.125	22-28	.786	30 / 4.3	3 / 14	1 / 2	95	13.6
Total	7-7	192	27.4	36-67	.537	1-8	.125	22-28	.786	30 / 4.3	3 / 14	1 / 2	95	13.6

#24 AT A GLANCE

2015-16 Career

Scored 10+ points	6	-
Scored 15+ points	2	-
Scored 20+ points	1	-
Hit 5+ FGs	3	-
Hit 2+ 3-pointers	-	-
Attempted 10+ FGs	3	-
Grabbed 5+ rebounds	4	-
Played 20+ minutes	7	-
Played 30+ minutes	2	-

#24 GAME HIGHS

2015-16 Career

20, Wofford		-
11-13-15	PTS	-
8, Wofford		-
11-13-15	FGM	-
14, Wofford		-
11-13-15	FGA	-
1, Wofford		-
11-13-15	3PTM	-
3, Wofford		-
11-13-15	3PTA	-
5, Twice		-
	FTM	-
6, UMES		-
11-15-15	FTA	-
7. Arkansas St.		-
	REB	-
1, Twice		-
	ASST	-
1, vs. Kansas State		-
11-23-15	BLKS	-
1, Twice		-
	STLS	-



RUSSELL WOODS

JR // F // 6-8 // 225

Chicago, Ill. // Simeon Career Academy

John A. Logan College (Ill.)

LAST GAME (NORTHERN ILLINOIS 12-4-15)

FG	FGA	3FG	3FGA	FT	FTA	REB	PTS
4	4	0	0	1	2	4	9

WOODS 2015-16 GAME-BY-GAME

Opponent	Date	GS	Min	FG	FGA	Pct	3FG	FGA	Pct	FT	FTA	Pct	Off	Def	Tot	Avg	PF	FO	A	TO	Blk	Stl	Pts	Avg
WOFFORD	11-13-15	13	4-5	.800	0-0	.000	1-1	1.000	1	2	3	3.0	3	0	0	0	0	0	0	0	0	9	9.0	
UMES	11-15-15	15	0-0	.000	0-0	.000	1-4	.250	0	1	1	2.0	2	0	1	0	1	0	1	0	1	5.0		
at Xavier	11-17-15	8	0-0	.000	0-0	.000	0-0	.000	2	1	3	2.3	3	0	0	0	0	0	0	0	0	3.3		
vs Kansas State	11-23-15	19	2-3	.667	0-0	.000	0-0	.000	1	0	1	2.0	3	0	0	0	0	0	0	0	4	3.5		
vs Northwestern	11-24-15	12	0-0	.000	0-0	.000	0-0	.000	0	1	1	1.8	3	0	0	0	0	0	0	0	0	2.8		
ARKANSAS ST.	12-1-15	11	4-6	.667	0-0	.000	0-4	.000	2	2	4	2.2	3	0	0	1	1	0	8	3.7				
NORTHERN ILL.	12-4-15	15	4-4	1.000	0-0	.000	1-2	.500	1	3	4	2.4	4	0	1	1	0	0	9	4.4				
OMAHA	12-9-15																							
at Arizona	12-13-15																							
NC STATE	12-19-15																							
vs Illinois	12-23-15																							
ARKANSAS-PB	12-29-15																							
SAVANNAH ST	1-2-16																							
at Georgia	1-6-16																							
AUBURN	1-9-16																							
ARKANSAS	1-12-16																							
at S. Carolina	1-16-16																							
GEORGIA	1-20-16																							
at Texas A&M	1-23-16																							
at Kentucky	1-27-16																							
MISSISSIPPI ST	1-30-16																							
OLE MISS	2-3-16																							
at Alabama	2-6-16																							
at Vanderbilt	2-10-16																							
TENNESSEE	2-13-16																							
S. CAROLINA	2-16-16																							
at Arkansas	2-20-16																							
at Ole Miss	2-23-16																							
TEXAS A&M	2-27-16																							
at LSU	3-1-16																							
FLORIDA	3-5-16																							

2015-16 (JUNIOR):

Matched season highs in points (9) and rebounds (4) on a perfect night of shooting from the field (4-of-4 FG, 1-of-2 FT) in the 78-71 win vs. Northern Illinois (Dec. 4).

Scored 9 points (4-of-5 FG, 1-of-1 FT) in his Mizzou debut vs. Wofford (Nov. 13), logging 13 minutes off the bench.

JUNIOR COLLEGE (JOHN A. LOGAN COLLEGE):

Averaged 14.1 points and 7.2 rebounds per game and shot 61-percent from the field during the 2014-15 season at John A. Logan.

Led John A. Logan College to a 27-7 record in 2014-15.

Anchored the post as John A. Logan captured a Great Rivers Athletic Conference title and an NJCAA National Tournament berth.

As a freshman, recorded 6.1 points per game while shooting 49.6-percent from the field.

HIGH SCHOOL:

Won an Illinois state title as a senior at Simeon Career Academy.
Played alongside Milwaukee Bucks forward and former No. 2 NBA Draft selection Jabari Parker.

Transferred to Simeon from Leo Catholic High School in Chicago after his junior year.

Earned all-state recognition as a junior at Leo Catholic.

PERSONAL:

Son of Vivian Winters and Russell Woods, Sr.

Born Dec. 5, 1994, in Chicago, Ill.

Enjoys cooking in his spare time.

#25 AT A GLANCE

2015-16 Career

Scored 5+ points	2	-
Scored 10+ points	-	-
Hit 3+ FGs	2	-
Grabbed 5+ rebounds	-	-
Recorded 2+ blocks	-	-
Played 20+ minutes	-	-

#25 GAME HIGHS

2015-16 Career

9, Twice		-
	PTS	-
4, 3 times		-
	FGM	-
6, Arkansas St.		-
12-1-15	FGA	-
-		-
-	3PTM	-
-		-
-	3PTA	-
1, Wofford		-
11-13-15	FTM	-
4, Twice		-
	FTA	-
4, Twice		-
	REB	-
1, Twice		-
	ASST	-
1, Twice		-
	BLKS	-
-		-
-	STLS	-

WOODS CAREER STATS

SEASON	G-GS	MIN	MPG	FG-A	FG%	3FG-A	3FG%	FT-A	FT%	REB / AVG.	AST / TO	BS / S	TP	AVG.
2015-16	7-0	93	13.3	14-18	.778	0-0	.000	3-11	.273	17 / 2.4	2 / 2	2 / 0	31	4.4
TOTAL	7-0	93	13.3	14-18	.778	0-0	.000	3-11	.273	17 / 2.4	2 / 2	2 / 0	31	4.4



ADAM WOLF

FR // F // 6-7 // 202

Beaver Dam, Wis.

Beaver Dam High School

LAST GAME (N/A)

FG	FGA	3FG	FGA	FT	FTA	REB	PTS
-	-	-	-	-	-	-	-

WOLF 2015-16 GAME-BY-GAME

Opponent	Date	GS	Min	FG	FGA	Pct	3FG	FGA	Pct	FT	FTA	Pct	Off	Def	Tot	Avg	PF	FO	A	TO	Blk	Stl	Pts	Avg
WOFFORD	11-13-15	DNP																						
UMES	11-15-15	DNP																						
at Xavier	11-17-15	DNP																						
vs Kansas State	11-23-15	DNP																						
vs Northwestern	11-24-15	DNP																						
ARKANSAS ST.	12-1-15	DNP																						
NORTHERN ILL.	12-4-15	DNP																						
OMAHA	12-9-15																							
at Arizona	12-13-15																							
NC STATE	12-19-15																							
vs Illinois	12-23-15																							
ARKANSAS-PB	12-29-15																							
SAVANNAH ST	1-2-16																							
at Georgia	1-6-16																							
AUBURN	1-9-16																							
ARKANSAS	1-12-16																							
at S. Carolina	1-16-16																							
GEORGIA	1-20-16																							
at Texas A&M	1-23-16																							
at Kentucky	1-27-16																							
MISSISSIPPI ST	1-30-16																							
OLE MISS	2-3-16																							
at Alabama	2-6-16																							
at Vanderbilt	2-10-16																							
TENNESSEE	2-13-16																							
S. CAROLINA	2-16-16																							
at Arkansas	2-20-16																							
at Ole Miss	2-23-16																							
TEXAS A&M	2-27-16																							
at LSU	3-1-16																							
FLORIDA	3-5-16																							

HIGH SCHOOL:

- Averaged 17.0 points and 7.5 rebounds per game and helped lead Beaver Dam High School to a 19-win season as a senior.
- Earned Little Ten Conference Co-Player of the Year honors for his tremendous play on the court.
- Played three seasons at Lake Forest High School in Illinois before transferring to Beaver Dam High School in Wisconsin for his senior season.
- Battled injuries through career at Lake Forest, averaging 6.3 points and 3.3 points per game as a junior while playing through a stress fracture.
- Passed up several Division II scholarship offers to accept Coach Anderson's walk-on opportunity at Mizzou.

PERSONAL:

- Son of John and Jamie Wolf.
- Born on March 21, 1997, in Milwaukee, Wis.
- Has an older sister, Danielle, and younger sister, Lilly.
- Would like to work in business at the conclusion of his basketball-playing career.
- Father, John, was a walk-on basketball player at Marquette from 1989-91.
- Favorite movie is *Star Wars*.

WOLF CAREER STATS

SEASON	G-GS	MIN	MPG	FG-A	FG%	3FG-A	3FG%	FT-A	FT%	REB / AVG.	AST / TO	BS / S	TP	AVG.
2015-16	-	-	-	-	-	-	-	-	-	-	-	-	-	-
TOTAL	-	-	-	-	-	-	-	-	-	-	-	-	-	-

#32 AT A GLANCE

2015-16 Career

Scored 5+ points	-	-
Scored 10+ points	-	-
Hit 3+ FGs	-	-
Grabbed 5+ rebounds	-	-
Recorded 2+ blocks	-	-
Played 20+ minutes	-	-

#32 GAME HIGHS

2015-16 Career

		-
	PTS	-
		-
	FGM	-
		-
	FGA	-
		-
	3PTM	-
		-
	3PTA	-
		-
	FTM	-
		-
	FTA	-
		-
	REB	-
		-
	ASST	-
		-
	BLKS	-
		-
	STLS	-



CULLEN VANLEER

FR // G // 6-4 // 200

Pacific, Mo.

Pacific High School

LAST GAME (NORTHERN ILLINOIS 12-4-15)

FG	FGA	3FG	3FGA	FT	FTA	AST	PTS
1	4	1	4	0	0	2	3

VANLEER 2015-16 GAME-BY-GAME

Opponent	Date	GS	Min	FG	FGA	Pct	3FG	FGA	Pct	FT	FTA	Pct	Off	Def	Tot	Avg	PF	FO	A	TO	Blk	Stl	Pts	Avg
WOFFORD	11-13-15	12	2-2	1.000	1-1	1.000	0-1	.000	1	0	1	1.0	0	0	1	1.0	0	0	2	0	0	0	5	5.0
UMES	11-15-15	9	1-3	.333	1-3	.333	0-0	.000	0	0	0	0.5	1	0	0	0	0	0	0	0	1	3	4.0	
at Xavier	11-17-15	22	5-9	.556	3-7	.429	0-0	.000	0	0	0	0.3	2	0	0	1	0	2	13	7.0				
vs Kansas State	11-23-15	17	2-5	.400	2-5	.400	0-0	.000	0	3	3	1.0	2	0	0	0	0	0	0	0	6	6.8		
vs Northwestern	11-24-15	15	1-5	.200	1-4	.250	0-0	.000	1	1	2	1.2	2	0	1	0	0	0	3	6.0				
ARKANSAS ST.	12-1-15	16	2-6	.333	2-4	.500	0-0	.000	1	2	3	1.5	3	0	1	1	0	0	6	6.0				
NORTHERN ILL.	12-4-15	14	1-4	.250	1-4	.250	0-0	.000	0	0	0	1.3	0	0	2	0	0	1	3	5.6				
OMAHA	12-9-15																							
at Arizona	12-13-15																							
NC STATE	12-19-15																							
vs Illinois	12-23-15																							
ARKANSAS-PB	12-29-15																							
SAVANNAH ST	1-2-16																							
at Georgia	1-6-16																							
AUBURN	1-9-16																							
ARKANSAS	1-12-16																							
at S. Carolina	1-16-16																							
GEORGIA	1-20-16																							
at Texas A&M	1-23-16																							
at Kentucky	1-27-16																							
MISSISSIPPI ST	1-30-16																							
OLE MISS	2-3-16																							
at Alabama	2-6-16																							
at Vanderbilt	2-10-16																							
TENNESSEE	2-13-16																							
S. CAROLINA	2-16-16																							
at Arkansas	2-20-16																							
at Ole Miss	2-23-16																							
TEXAS A&M	2-27-16																							
at LSU	3-1-16																							
FLORIDA	3-5-16																							

2015-16 (FRESHMAN):

- Season-best 13 points (5-of-9 FG, 3-of-7 3PT) at Xavier (Nov. 17), leading the Tigers in scoring for the first time.
- Hit on his two field goal attempts in his collegiate debut vs. Wofford (Nov. 13), including his first career 3-pointer.

PACIFIC HIGH SCHOOL:

- Averaged 23.5 points and 7.3 rebounds per game for Pacific High School as a senior.
- Became the all-time leading scorer in Pacific history, snapping a record that stood since 1954.
- Reached 1,000 career points in just 58 games
- Named Missouri Class 4 Co-Player of the Year.
- Was a MBCA Class 4 All-State selection.
- Added academic all-conference honors as a senior.
- Also competed in golf in high school, receiving first team all-conference recognition.

PERSONAL:

- Son of John and Lori VanLeer.
- Born on May 25, 1996, in Beaufort, Mo.
- Both parents attended Missouri State and work as educators, with mother, Lori, working as a superintendent and father, John, working as a physical education teacher and coach.
- Has been a fan of Mizzou Basketball since childhood.
- Showed cattle as a youngster.
- Has a younger brother named Cameron.
- Favorite sports movie is *Glory Road*.
- Would like to follow in his parents' footsteps and become a teacher or coach, or work in the physical therapy field.

VANLEER CAREER STATS

SEASON	G-GS	MIN	MPG	FG-A	FG%	3FG-A	3FG%	FT-A	FT%	REB / AVG.	AST / TO	BS / S	TP	AVG.
2015-16	7-0	105	15.0	14-34	.412	11-28	.393	0-1	.000	9 / 1.3	6 / 2	0 / 4	39	5.6
TOTAL	7-0	105	15.0	14-34	.412	11-28	.393	0-1	.000	9 / 1.3	6 / 2	0 / 4	39	5.6

#33 AT A GLANCE

2015-16 Career

Scored 5+ points	4	-
Scored 10+ points	1	-
Hit 3+ FGs	1	-
Hit 2+ 3PT FGs	3	-
Multiple assists	2	-
Multiple steals	1	-
Played 15+ minutes	4	-

#33 GAME HIGHS

2015-16 Career

13, at Xavier	PTS	-
11-17-15	PTS	-
5, at Xavier	FGM	-
11-17-15	FGM	-
9, at Xavier	FGA	-
11-17-15	FGA	-
3, at Xavier	3PTM	-
11-17-15	3PTM	-
7, at Xavier	3PTA	-
11-17-15	3PTA	-
-	FTM	-
-	FTM	-
1, Wofford	FTA	-
11-13-15	FTA	-
3, Twice	REB	-
-	REB	-
2, Twice	ASST	-
-	ASST	-
-	BLKS	-
2, at Xavier	STLS	-
11-17-15	STLS	-



RYAN ROSBURG

SR // F // 6-10 // 260

Chesterfield, Mo.

Marquette High School

LAST GAME (NORTHERN ILLINOIS 12-4-15)

FG	FGA	3FG	FGA	FT	FTA	REB	PTS
2	2	0	0	0	0	7	4

ROSBURG 2015-16 GAME-BY-GAME

Opponent	Date	GS	Min	FG	FGA	Pct	3FG	FGA	Pct	FT	FTA	Pct	Off	Def	Tot	Avg	PF	FO	A	TO	Blk	Stl	Pts	Avg
WOFFORD	11-13-15	20	1-2		.500		0-0		.000	4-6		.667	0	3	3	3.0	3	0	0	0	0	1	6	6.0
UMES	11-15-15	10	0-0		.000		0-0		.000	0-0		.000	0	3	3	3.0	1	0	0	0	1	0	0	3.0
at Xavier	11-17-15	9	0-0		.000		0-0		.000	1-2		.500	1	0	1	2.3	1	0	0	1	1	0	1	2.3
vs Kansas State	11-23-15	7	0-0		.000		0-0		.000	0-2		.000	1	0	1	2.0	3	0	1	0	0	0	0	1.8
vs Northwestern	11-24-15	*	28	4-9		.444	0-0		.000	0-3		.000	3	6	9	3.4	3	0	0	1	0	0	8	3.0
ARKANSAS ST.	12-1-15	*	29	5-9		.556	0-0		.000	0-0		.000	0	2	2	3.2	3	0	0	1	0	0	10	4.2
NORTHERN ILL.	12-4-15	*	21	2-2		1.000	0-0		.000	0-0		.000	3	4	7	3.7	4	0	1	1	2	0	4	4.1
OMAHA	12-9-15																							
at Arizona	12-13-15																							
NC STATE	12-19-15																							
vs Illinois	12-23-15																							
ARKANSAS-PB	12-29-15																							
SAVANNAH ST	1-2-16																							
at Georgia	1-6-16																							
AUBURN	1-9-16																							
ARKANSAS	1-12-16																							
at S. Carolina	1-16-16																							
GEORGIA	1-20-16																							
at Texas A&M	1-23-16																							
at Kentucky	1-27-16																							
MISSISSIPPI ST	1-30-16																							
OLE MISS	2-3-16																							
at Alabama	2-6-16																							
at Vanderbilt	2-10-16																							
TENNESSEE	2-13-16																							
S. CAROLINA	2-16-16																							
at Arkansas	2-20-16																							
at Ole Miss	2-23-16																							
TEXAS A&M	2-27-16																							
at LSU	3-1-16																							
FLORIDA	3-5-16																							

2015-16 (SENIOR):

▼ 8 points (4-of-9 FG), 9 rebounds in first start of season vs. Northwestern (Nov. 24).

2014-15 (JUNIOR):

▼ Appeared in 30 or more games for the third consecutive season, earning 17 starts for Mizzou as a junior.

▼ Season-best 12 points on impressive 6-of-7 FG shooting vs. Mississippi State (Feb. 14).

2013-14 (SOPHOMORE):

▼ Played in all 35 games as a sophomore, making 32 starts.

▼ Averaged 4.8 points and 4.1 rebounds while shooting an incredibly efficient 71.6 percent from the floor.

2012-13 (FRESHMAN):

▼ Played in 31 games as a reserve for Alex Oriakhi and averaged 6.9 minutes per contest.

MARQUETTE HIGH SCHOOL:

▼ One of Missouri's top players his final two seasons of high school and twice earned all-state honors.

▼ Finished with 1,862 career points, second all-time in school history and is the school's career leaders in rebounding and blocked shots.

PERSONAL:

▼ Son of Cindy and Paul Rosburg.

▼ Born Nov. 12, 1993, in Chesterfield, Mo.

▼ Has one brother, Andy, who played at Mizzou in 2011-12.

▼ Is majoring in marketing.

#44 AT A GLANCE

2015-16 Career

Scored 5+ points	3	26
Scored 10+ points	1	3
Grabbed 5+ rebounds	2	21
Grabbed 10+ rebounds	-	2
Recorded 2+ blocks	1	9
Played 20+ minutes	4	38

#44 GAME HIGHS

2015-16 Career

10, Arkansas St. 14, vs. Northwestern

12-1-15 **PTS** 11-28-13

5, Arkansas St. 6, Mississippi State

12-1-15 **FGM** 2-14-15

9, Twice 7, Twice

FGA

-

3PTM

-

3PTA

-

4, Wofford 4, 3 times

11-13-15 **FTM**

6, Wofford 7, vs. Chaminade

11-13-15 **FTA** 11-26-14

9, vs. Northwestern 12, at Georgia

11-24-15 **REB** 2-25-14

1, Twice 2, 4 times

ASST

2, Northern Illinois 2, 9 times

12-4-15 **BLKS**

1, Wofford 2, 3 times

11-13-15 **STLS**

ROSBURG CAREER STATS

SEASON	G-GS	MIN	MPG	FG-A	FG%	3FG-A	3FG%	FT-A	FT%	REB / AVG.	AST / TO	BS / S	TP	AVG.
2012-13	31-0	213	6.9	11-27	.407	0-0	.000	8-14	.571	41 / 1.3	7 / 6	6 / 1	30	1.0
2013-14	35-32	778	22.2	68-95	.716	0-0	.000	33-58	.569	145 / 4.1	10 / 41	22 / 7	169	4.8
2014-15	30-17	501	16.7	42-84	.500	0-0	.000	15-45	.333	78 / 2.6	8 / 19	18 / 6	99	3.3
2015-16	7-3	124	17.7	12-22	.545	0-0	.000	5-13	.385	26 / 3.7	2 / 4	4 / 1	29	4.1
TOTAL	103-52	1616	15.7	133-228	.583	0-0	.000	61-130	.469	290 / 2.8	27 / 70	50 / 15	327	3.2

NCAA APPEARANCES: '44, '76, '78, '80, '81, '82, '83, '86, '87, '88, '89, '90, '92, '93, '95, '99, '00, '01, '02, '03, '09, '10, '11, '12, '13

2015-16 MIZZOU OVERALL STATISTICS

Record	Overall	Home	Away	Neutral
ALL GAMES	4-3	4-0	0-1	0-2
CONFERENCE	0-0	0-0	0-0	0-0
NON-CONFERENCE	4-3	4-0	0-1	0-2

##	Player	GP	GS	Min	TOTAL			3-PTS			REBOUNDS															
					Avg	FG	FGA	Pct	3FG	FGA	Pct	FT	FTA	Pct	Off	Def	Tot	Avg	PF	FO	A	TO	Blk	Stl	Pts	Avg
24	PURYEAR, Kevin	7	7	192	27.4	36	67	.537	1	8	.125	22	28	.786	5	25	30	4.3	10	0	3	14	1	2	95	13.6
12	WRIGHT, Namon	7	6	185	26.4	19	49	.388	10	29	.345	20	26	.769	5	28	33	4.7	15	0	9	9	3	3	68	9.7
01	PHILLIPS, Terrence	7	7	181	25.9	24	44	.545	8	20	.400	10	12	.833	1	23	24	3.4	25	1	24	19	1	9	66	9.4
15	CLARK, Wes	7	7	193	27.6	15	57	.263	7	20	.350	17	22	.773	4	20	24	3.4	18	0	25	11	0	6	54	7.7
10	WALTON, K.J.	7	1	99	14.1	11	34	.324	0	4	.000	18	24	.750	6	6	12	1.7	9	0	8	4	1	3	40	5.7
04	ISABELL, Tramaine	7	0	87	12.4	15	31	.484	4	6	.667	5	6	.833	3	9	12	1.7	5	0	7	8	0	5	39	5.6
33	VANLEER, Cullen	7	0	105	15.0	14	34	.412	11	28	.393	0	1	.000	3	6	9	1.3	10	0	6	2	0	4	39	5.6
25	WOODS, Russell	7	0	93	13.3	14	18	.778	0	0	.000	3	11	.273	7	10	17	2.4	21	0	2	2	2	0	31	4.4
44	ROSBURG, Ryan	7	3	124	17.7	12	22	.545	0	0	.000	5	13	.385	8	18	26	3.7	18	0	2	4	4	1	29	4.1
23	GANT, Jakeenan	7	4	82	11.7	9	23	.391	0	7	.000	8	10	.800	6	10	16	2.3	19	1	2	4	7	2	26	3.7
05	ALLEN, D'Angelo	6	0	57	9.5	2	5	.400	0	0	.000	1	4	.250	5	7	12	2.0	7	0	1	3	1	3	5	0.8
11	BARTON, Jimmy	2	0	2	1.0	0	0	.000	0	0	.000	0	0	.000	0	0	0	0.0	0	0	0	1	0	0	0	0.0
TM	TEAM.....														6	18	24	3.4	0			1			0	
Total.....		7				171	384	.445	41	122	.336	109	157	.694	59	180	239	34.1	157	2	89	82	20	38	492	70.3
Opponents.....		7				152	388	.392	52	147	.354	133	184	.723	80	170	250	35.7	143	-	84	71	17	44	489	69.9

2015-16 Statistical Summaries

Team Statistics	MU	OPP
SCORING	492	489
Points per game	70.3	69.9
Scoring margin	+0.4	-
FIELD GOALS-ATT	171-384	152-388
Field goal pct	.445	.392
3 POINT FG-ATT	41-122	52-147
3-point FG pct	.336	.354
3-pt FG made per game	5.9	7.4
FREE THROWS-ATT	109-157	133-184
Free throw pct	.694	.723
F-Throws made per game	15.6	19.0
REBOUNDS	239	250
Rebounds per game	34.1	35.7
Rebounding margin	-1.6	-
ASSISTS	89	84
Assists per game	12.7	12.0
TURNOVERS	82	71
Turnovers per game	11.7	10.1
Turnover margin	-1.6	-
Assist/turnover ratio	1.1	1.2
STEALS	38	44
Steals per game	5.4	6.3
BLOCKS	20	17
Blocks per game	2.9	2.4
ATTENDANCE	21437	36538
Home games-Avg/Game	4-5359	1-9751
Neutral site-Avg/Game	-	2-13394

2015-16 Game-By-Game Scores

Date	Opponent	W/L	Score	Att.
11-13-15	WOFFORD	W	83-74	5037
11-15-15	UMES	W	73-55	5082
11-17-15	at Xavier	L	66-78	9751
11-23-15	vs Kansas State	L	42-66	13598
11-24-15	vs Northwestern	L	62-67	13189
12-1-15	ARKANSAS STATE	W	88-78	5104
12-4-15	NORTHERN ILLINOIS	W	78-71	6214

SCORE BY PERIODS:	1st	2nd	OT	Total
Mizzou	222	270	-	492
Opponents	222	267	-	489

LAST TIME...

INDIVIDUAL: THE LAST TIME MIZZOU HAD A...

Player score 25 points _____ Namon Wight (28) vs. Florida; Feb. 24, 2015

Player score 30 points _____ Jabari Brown (30) vs. Davidson; March 18, 2014

Player score 35 points _____ Thomas Gardner (40) vs. Kansas; Jan. 16, 2006

Player score 40 points _____ Thomas Gardner (40) vs. Kansas; Jan. 16, 2006

Player grab 15 rebounds _____ Jonathan Williams III (15) vs. Texas A&M; March 14, 2014

Player grab 20 rebounds _____ Curtis Berry (20) vs. Kansas; Jan. 9, 1980

Player record a double-double _____ Jonathan Williams III (10 p, 12 r) at Miss. St.; March 7, 2015

Two players record a double-double _____ Laurence Bowers (23 p, 10 r)
_____ Alex Oriakhi (18 p, 10 r) vs. LSU; March 2, 2013

Player record a triple-double _____ Never

Player dish out 10 assists _____ Keith Shamburger (11) at Alabama; Feb. 4, 2015

Player block 10 shots _____ Never

A player collect five steals _____ Wes Clark (5) at Texas A&M; Jan. 21, 2015

A player hit five three-pointer baskets _____ Keith Shamburger (5) at Auburn; Jan. 10, 2015

A player make 10 free throws _____ Jabari Brown (11-15) vs. Davidson; March 18, 2014

Two players score 20 points in a game _____ Jabari Brown (26)
_____ Earnest Ross (24) vs. Texas A&M; March 14, 2014

Three players score 20 points in a game _____ Earnest Ross (24)
_____ Jordan Clarkson (23)
_____ Jabari Brown (20) at Ole Miss; Feb. 8, 2014

Two players grab 10 rebounds in a game _____ Jonathan Williams III (10)
_____ Keanau Post (10) vs. Lipscomb; Jan. 3, 2015

Three players grab 10 rebounds in a game _____ Negus Webster-Chan (11)
_____ Earnest Ross (10)
_____ Alex Oriakhi (10) vs. Alcorn State; Nov. 13, 2012

Five players score in double figures _____ Namon Wright (14)
_____ Tramaine Isabell (11)
_____ Kevin Puryear (10)
_____ Ryan Rosburg (10)
_____ K.J. Walton (10) vs. Arkansas State, Dec. 1, 2015

Six players score in double figures _____ Matt Pressey (14)
_____ Phil Pressey (12)
_____ Ricardo Ratiliffe (12)
_____ Michael Dixon Jr. (12)
_____ Kim English (10)
_____ Steve Moore (10) at Iowa State; Jan. 11, 2012

Seven players score in double figures _____ Kim English (20)
_____ Justin Stafford (16)
_____ Laurence Bowers (16)
_____ Marcus Denmon (12)
_____ Matt Pressey (10)
_____ Michael Dixon Jr. (10)
_____ Ricky Kreklow (10) vs. North Alabama; Jan. 5, 2011

TEAM: THE LAST TIME MIZZOU...

Scored 100 points or more _____ Dec. 17, 2012; Mizzou 102, South Carolina State 51

Scored less than 50 points _____ Jan. 31, 2015; Kentucky 67, Mizzou 47

Scored less than 50 points and won _____ Nov. 14, 1997; Mizzou 45, Depaul 42

Allowed 100 points or more _____ Feb. 7, 2011; Kansas 103, Mizzou 86

Held an opponent to less than 40 points _____ Dec. 8, 2012; Mizzou 68, Tennessee State 38

Held an opponent to less than 50 points _____ Nov. 16, 2014; Mizzou 56, Valparaiso 41

Had 50 rebounds _____ Feb. 9, 2013, vs. Ole Miss (50)

Had 30 assists _____ Dec. 18, 2010, vs. Central Arkansas (33)

Had 10 steals _____ Jan. 29, 2015 vs. Kentucky (10)

Held an opponent to less than 25 percent shooting _____ March 14, 2013, vs. Texas A&M (24.1)

Shot better than 70 percent from the field _____ Dec. 6, 1989, vs. Hawaii Loa (.752)

Shot under 30 percent from the field _____ Dec. 7, 2004, vs. Arkansas (.298)

Shot better than 90 percent from the free throw line _____
_____ March 8, 2014 at Tennessee (13-for-14, .921)

Attempted 40 free throws _____ March 14, 2014, vs. Texas A&M (53)

Made 10 3-pointers _____ Jan. 10, 2015, vs. Auburn (10-for-27)

Won an overtime game _____ Jan. 8, 2015 vs. LSU; Mizzou 74, LSU 67 (OT)

Lost an overtime game _____ Dec. 30, 2014 vs. Oklahoma State; OSU 74, Mizzou 72 (OT)

Played a double-OT game _____ March 14, 2014; Mizzou 91, Texas A&M 83

Played a triple-overtime game _____ Jan. 13, 2001; Mizzou 112, Iowa State 109 (4OT)

Defeated a top 25 team _____ Dec. 15, 2013; Mizzou 80, No. 18 UCLA 71

Had a 30-point win _____ Nov. 8, 2013; Mizzou 89, Southeastern Louisiana 53

Had a 40-point win _____ Dec. 17, 2012; Mizzou 102, South Carolina State 51

Had a 50-point win _____ Dec. 17, 2012; Mizzou 102, South Carolina State 51

Won back-to-back road games _____ Dec. 28, 2013 at North Carolina State (68-64)
_____ Jan. 11, 2014 at Auburn (70-68)

Won by double digits over an SEC team _____ March 1, 2014; Mizzou 85, Mississippi State 66

MORE NOTES...

MIZZOU STARTERS

Opponent	G	G	G	F	F	Record **
Nov. 13 Wofford	Phillips	Walton	Clark	Gant	Puryear	1-0
Nov. 15 UMES	Phillips	Wright	Clark	Gant	Puryear	1-0
Nov. 17 at Xavier	Phillips	Wright	Clark	Gant	Puryear	1-1
Nov. 23 vs. Kansas State	Phillips	Wright	Clark	Gant	Puryear	1-2
Nov. 24 vs. Northwestern	Phillips	Wright	Clark	Rosburg	Puryear	0-1
Dec. 1 Arkansas State	Phillips	Wright	Clark	Rosburg	Puryear	1-1
Dec. 4 Northern Illinois	Phillips	Wright	Clark	Rosburg	Puryear	2-1

MIZZOU WHEN...

Playing at home	4-0
Playing on the road	0-1
Playing on a neutral court	0-2
SEC games	0-0
SEC at home	0-0
SEC on the road	0-0
Following a win	2-1
Following a loss	1-2
Leading at half	4-0
Trailing at half	0-3
Tied at half	0-0
Shoots at least 50%	2-0
Shoots less than 50%	2-1
Opponent shoots 50%	0-0
Shoots more FT than Opp.	1-0
Shoots fewer FT than Opp.	2-3
Shoots same FT as Opp.	1-0
Makes more FT than Opp.	2-0
Makes fewer FT than Opp.	1-3
Makes same FT as Opp.	1-0
Scores 90-110	0-0
Scores 80-89	2-0
Scores 70-79	2-0
Scores 69 or fewer	0-3
Leads in rebounding	3-0
Trails in rebounding	1-2
Tied in rebounding	0-1
More turnovers than Opp.	3-2
Fewer turnovers than Opp.	1-1
Same turnovers as Opp.	0-0
In November	2-3
In December	2-0
In January	0-0
In February	0-0
In March	0-0
Margin between 1-5	0-1
Margin between 6-10	3-0
Margin between 11-20	1-1
Margin 20+	0-1
Overtime Games	0-0
On Sunday	1-0
On Monday	0-1
On Tuesday	1-2
On Wednesday	0-0
On Thursday	0-0
On Friday	2-0
On Saturday	0-0
Wearing White	4-1
Wearing Black	0-2
Wearing Gold	0-0
Wearing Anthracite	0-0

POINTS-REBOUNDS-ASSISTS

	01	04	05	10	11	12	15	23	24	25	32	33	44
Opponent	PHILLIPS	ISABELL	ALLEN	WALTON	BARTON	WRIGHT	CLARK	GANT	PURYEAR	WOODS	WOLF	VANLEER	ROSBURG
WOFFORD // 11-13-15 // 83-74 // W	7-3-3	4-3-2	DNP	6-1-2	DNP	18-7-0	4-3-2	4-4-1	20-5-0	9-3-0	DNP	5-1-2	6-3-0
UMES // 11-15-15 // 73-55 // W	13-3-2	4-4-1	2-4-0	11-0-3	0-0-0	7-5-1	15-1-3	4-1-0	13-5-1	1-1-1	DNP	3-0-0	0-3-0
at Xavier // 11/17/15 // 66-78 // L	3-1-0	11-1-1	0-3-0	8-3-1	DNP	6-4-2	11-3-3	1-2-1	12-5-0	0-3-0	DNP	13-0-0	1-1-0
vs Kansas State // 11/23/15 // 42-66 // L	6-6-2	4-1-0	0-3-0	3-3-1	0-0-0	5-4-0	5-2-6	0-1-0	9-3-0	4-1-0	DNP	6-3-0	0-1-1
vs Northwestern // 11/24/15 // 62-67 // L	16-6-4	2-1-0	2-0-1	0-0-1	DNP	8-2-3	5-4-4	4-1-0	14-4-1	0-1-0	DNP	3-2-1	8-9-0
ARKANSAS ST. // 12-1-15 // 88-78 // W	8-4-7	11-0-2	1-2-0	10-5-0	DNP	14-6-0	8-4-3	2-1-0	10-7-1	8-4-0	DNP	6-3-1	10-2-0
NORTHERN ILL. // 12-4-15 // 78-71 // W	13-1-6	3-2-1	0-0-0	2-0-0	DNP	10-5-3	6-7-4	11-6-0	17-1-0	9-4-1	DNP	3-0-2	4-7-1

2015-16 MIZZOU GAME-BY-GAME STATISTICS

Opponent	Date	Score	TOTAL				3-PTRS				REBOUNDS												
			W/L	FG	FGA	Pct	3FG	FGA	Pct	FT	FTA	Pct	Off	Def	Tot	Avg	PF	A	TO	Blk	Stl	Pts	Avg
WOFFORD	11-13-15	83-74	W	28	50	.560	5	12	.417	22	32	.688	5	32	37	37.0	24	12	9	1	4	83	83.0
UMES	11-15-15	73-55	W	21	47	.447	8	19	.421	23	30	.767	8	21	29	33.0	17	12	8	4	6	73	78.0
at Xavier	11-17-15	66-78	L	23	55	.418	6	23	.261	14	18	.778	7	21	28	31.3	26	8	18	2	8	66	74.0
vs Kansas State	11-23-15	42-66	L	17	55	.309	4	19	.211	4	10	.400	8	23	31	31.3	22	10	13	4	5	42	66.0
vs Northwestern	11-24-15	62-67	L	23	60	.383	5	18	.278	11	17	.647	10	23	33	31.6	23	15	9	1	7	62	65.2
ARKANSAS STATE	12-1-15	88-78	W	31	65	.477	7	16	.438	19	26	.731	11	32	43	33.5	23	14	10	5	2	88	69.0
NORTHERN ILLINOIS	12-4-15	78-71	W	28	52	.538	6	15	.400	16	24	.667	10	28	38	34.1	22	18	15	3	6	78	70.3
Mizzou		492		171	384	.445	41	122	.336	109	157	.694	59	180	239	34.1	157	89	82	20	38	492	70.3
Opponents		489		152	388	.392	52	147	.354	133	184	.723	80	170	250	35.7	143	84	71	17	44	489	69.9

Games played: 7

Points/game: 70.3

FG Pct: 44.5

3FG Pct: 33.6

FT Pct: 69.4

Rebounds/game: 34.1

Assists/game: 12.7

Turnovers/game: 11.7

Assist/turnover ratio: 1.1

Steals/game: 5.4

Blocks/game: 2.9

2015-16 OPPONENT GAME-BY-GAME STATISTICS

Opponent	Date	Score	TOTAL			3-PTRS			REBOUNDS														
			W/L	FG	FGA Pct	3FG	FGA Pct	FT	FTA Pct	Off	Def	Tot	Avg	PF	A	TO	Blk	Stl	Pts	Avg			
WOFFORD	11-13-15	83-74	W	21	55	.382	10	27	.370	22	33	.667	8	21	29	29.0	24	12	7	0	3	74	74.0
UMES	11-15-15	73-55	W	17	44	.386	7	20	.350	14	22	.636	10	21	31	30.0	25	7	13	1	4	55	64.5
at Xavier	11-17-15	66-78	L	24	56	.429	6	18	.333	24	29	.828	13	27	40	33.3	18	13	13	4	9	78	69.0
vs Kansas State	11-23-15	42-66	L	21	57	.368	4	17	.235	20	26	.769	13	31	44	36.0	12	11	8	3	8	66	68.2
vs Northwestern	11-24-15	62-67	L	21	45	.467	10	23	.435	15	23	.652	5	28	33	35.4	20	15	14	1	6	67	68.0
ARKANSAS STATE	12-1-15	88-78	W	26	68	.382	8	19	.421	18	27	.667	14	25	39	36.0	22	15	7	7	6	78	69.7
NORTHERN ILLINOIS	12-4-15	78-71	W	22	63	.349	7	23	.304	20	24	.833	17	17	34	35.7	22	11	9	1	8	71	69.9
Opponents		489		152	388	.392	52	147	.354	133	184	.723	80	170	250	35.7	143	84	71	17	44	489	69.9
Mizzou		492		171	384	.445	41	122	.336	109	157	.694	59	180	239	34.1	157	89	82	20	38	492	70.3

Games played: 7

Points/game: 69.9

FG Pct: 39.2

3FG Pct: 35.4

FT Pct: 72.3

Rebounds/game: 35.7

Assists/game: 12.0

Turnovers/game: 10.1

Assist/turnover ratio: 1.2

Steals/game: 6.3

Blocks/game: 2.4

2014-15 MIZZOU OVERALL STATISTICS

Record	Overall	Home	Away	Neutral
ALL GAMES	9-23	8-9	0-10	1-4
CONFERENCE	3-15	3-6	0-9	0-0
NON-CONFERENCE	6-8	5-3	0-1	1-4

##	Player	GP	GS	Min	TOTAL			3-PTS			REBOUNDS															
					Avg	FG	FGA	Pct	3FG	FGA	Pct	FT	FTA	Pct	Off	Def	Tot	Avg	PF	FO	A	TO	Blk	Stl	Pts	Avg
03	Williams III, Johnat	32	32	941	29.4	128	311	.412	22	64	.344	103	167	.617	78	150	228	7.1	86	1	27	82	19	10	381	11.9
15	Clark, Wes	23	20	713	31.0	81	233	.348	32	102	.314	38	51	.745	10	71	81	3.5	54	2	71	45	4	38	232	10.1
13	Gill-Caesar, Montagu	27	13	647	24.0	84	231	.364	29	94	.309	49	66	.742	20	60	80	3.0	55	1	14	52	2	19	246	9.1
14	Shamburger, Keith	32	31	1092	34.1	80	211	.379	43	131	.328	77	86	.895	17	89	106	3.3	68	0	124	60	4	37	280	8.8
12	Wright, Namon	30	20	607	20.2	77	186	.414	40	103	.388	10	18	.556	6	63	69	2.3	64	1	19	37	3	17	204	6.8
23	Gant, Jakeenan	23	6	324	14.1	47	91	.516	1	14	.071	18	25	.720	20	30	50	2.2	33	0	7	16	14	9	113	4.9
04	Isabell, Tramaine	27	1	405	15.0	37	118	.314	16	52	.308	22	28	.786	9	27	36	1.3	35	0	39	33	0	17	112	4.1
45	Post, Keanau	30	9	424	14.1	51	89	.573	0	0	.000	19	31	.613	42	65	107	3.6	70	3	4	24	14	9	121	4.0
05	Allen, D'Angelo	32	8	544	17.0	40	98	.408	9	20	.450	17	28	.607	37	63	100	3.1	62	0	21	18	7	11	106	3.3
44	Rosburg, Ryan	30	17	501	16.7	42	84	.500	0	0	.000	15	45	.333	37	41	78	2.6	56	1	8	19	18	6	99	3.3
02	Bello, Deuce	23	3	251	10.9	16	42	.381	4	16	.250	5	15	.333	5	20	25	1.1	40	2	9	18	5	6	41	1.8
42	Barnard, Hayden	1	0	1	1.0	0	0	.000	0	0	.000	0	0	.000	0	0	0	0.0	0	0	0	0	0	0	0	0.0
TM	TEAM.....														46	44	90	2.8	1		13			0		
Total.....		32				683	1694	.403	196	596	.329	373	560	.666	327	723	1050	32.8	624	11	343	417	90	179	1935	60.5
Opponents.....		32				726	1691	.429	206	601	.343	515	735	.701	355	775	1130	35.3	568	-	377	353	111	190	2173	67.9

2014-15 Statistical Summaries

Team Statistics	MU	OPP
SCORING	1935	2173
Points per game	60.5	67.9
Scoring margin	-7.4	-
FIELD GOALS-ATT	683-1694	726-1691
Field goal pct	.403	.429
3 POINT FG-ATT	196-596	206-601
3-point FG pct	.329	.343
3-pt FG made per game	6.1	6.4
FREE THROWS-ATT	373-560	515-735
Free throw pct	.666	.701
F-Throws made per game	11.7	16.1
REBOUNDS	1050	1130
Rebounds per game	32.8	35.3
Rebounding margin	-2.5	-
ASSISTS	343	377
Assists per game	10.7	11.8
TURNOVERS	417	353
Turnovers per game	13.0	11.0
Turnover margin	-2.0	-
Assist/turnover ratio	0.8	1.1
STEALS	179	190
Steals per game	5.6	5.9
BLOCKS	90	111
Blocks per game	2.8	3.5
ATTENDANCE	137086	147795
Home games-Avg/Game	17-8064	10-11048
Neutral site-Avg/Game	-	5-7464

SCORE BY PERIODS:

	1st	2nd	OT	Total
Mizzou	904	1012	19	1935
Opponents	1051	1108	14	2173

2014-15 Game-By-Game Scores

Date	Opponent	W/L	Score	Att.
11/14/14	UMKC	L	61-69	7014
11/16/14	VALPO	W	56-41	5369
11/19/14	ORAL ROBERTS	W	78-64	5563
11/24/14	vs ARIZONA	L	53-72	2400
11/25/14	vs PURDUE	L	61-82	2400
11/26/14	vs Chaminade	W	74-60	2400
12/2/14	SEMO	W	65-61	5506
12/05/14	at Oklahoma	L	63-82	11652
12/11/14	ELON	W	78-73	4514
12/13/14	XAVIER	L	58-74	7854
12/20/14	vs Illinois	L	59-62	20079
12/30/14	OKLAHOMA STATE	LOT	72-74	11376
1/3/15	LIPSCOMB	W	72-60	7415
*1/8/15	LSU	WOT	74-67	7509
*01/10/15	at Auburn	L	79-85	8365
*01/13/15	at Kentucky	L	37-86	24248
*1/17/15	TENNESSEE	L	51-59	10359
*01/21/15	at Texas A&M	L	50-62	6849
*1/24/15	ARKANSAS	L	60-61	11022
*1/29/15	KENTUCKY	L	53-69	13034
*1/31/15	OLE MISS	L	47-67	9053
*2/4/15	at Alabama	L	49-62	9343
*2/7/15	TEXAS A&M	L	61-83	8970
*2/10/15	at South Carolina	L	60-65	8840
*2/14/15	MISSISSIPPI STATE	L	74-77	8278
*02/18/15	at Arkansas	L	69-84	15740
*02/21/15	at Vanderbilt	L	53-76	10154
*2/24/15	FLORIDA	W	64-52	7631
*02/28/15	at Georgia	L	44-68	9389
*3/3/15	AUBURN	W	63-61	6619
*03-07-15	at Mississippi State	L	43-52	5897
03/11/15	vs South Carolina	L	54-63	10039

TV/RADIO CHART

5-11 G FR  1	6-0 G SO  4	6-7 F SO  5	6-3 G FR  10
5-9 G R-SO  11	6-5 G SO  12	6-3 G JR  13	6-0 G JR  15
6-8 F SO  23	6-7 F FR  24	6-8 F JR  25	
6-7 F FR  32	6-4 G FR  33	6-10 F SR  44	

MIZZOU NUMERICAL ROSTER

No.	Name	Ht.	Wt.	Pos.	Yr.	Exp.	Hometown / High School / Previous School
1	Terrence Phillips	5-11	175	G	Fr.	HS	Orange County, Calif. / Oak Hill Academy (Va.)
4	Tramaine Isabell	6-0	178	G	So.	1L	Seattle, Wash. / Garfield H.S.
5	D'Angelo Allen	6-7	216	F	So.	1L	Dallas, Texas / Kimball H.S.
10	K.J. Walton	6-3	197	G	Fr.	HS	Brownsburg, Ind. / Brownsburg H.S.
11	Jimmy Barton	5-9	160	G	R-So.	RS	St. Louis, Mo. / DeSmet Jesuit H.S. / Houston Baptist
12	Namon Wright	6-5	202	G	So.	1L	Los Angeles, Calif. / Pacific Hills
13	Trevor Glassman	6-3	200	G	Jr.	TR	Bedford, N.H. / New Hampton School
15	Wes Clark	6-0	180	G	Jr.	2L	Detroit, Mich. / Romulus H.S.
23	Jakeenan Gant	6-8	212	F	So.	1L	Springfield, Ga. / Effingham County
24	Kevin Puryear	6-7	236	F	Fr.	HS	Blue Springs, Mo. / South H.S.
25	Russell Woods	6-8	225	F	Jr.	JC	Chicago, Ill. / Simeon High School / John A. Logan College (Ill.)
32	Adam Wolf	6-7	202	F	Fr.	HS	Beaver Dam, Wis. / Beaver Dam H.S.
33	Cullen VanLeer	6-4	200	G	Fr.	HS	Pacific, Mo. / Pacific H.S.
44	Ryan Rosburg	6-10	260	F	Sr.	3L	Chesterfield, Mo. / Marquette H.S.

MIZZOU COACHING STAFF

Coach	Position	Year	Alma Mater, Year
Kim Anderson	Head Coach	Second	Missouri, 1979, '81
Rob Fulford	Assistant Coach	Second	Marshall, 1997
Brad Loos	Assistant Coach	Second	Austin Peay State, 2002
Corey Tate	Assistant Coach	First	Missouri, 1997
Paul Rorvig	Basketball Operations	Second	Central Missouri, 2005
Steve Shields	Special Assistant to the Head Coach	First	Baylor, 1988, '92
Matt Herring	Athletic Performance	Second	Southwest Texas State, 1994