



2015-16 UNIVERSITY OF MISSOURI MEN'S BASKETBALL GAME NOTES

2015-16 SCHEDULE

DATE	OPPONENT	TV	SCORE/TIME (CT)
N 13 F	Wofford #	SECN +	W, 83-74
N 15 U	UMES #	SECN	W, 73-55
N 17 T	at Xavier (RV)	FS1	L, 78-66
N 23 M	vs. Kansas State &	ESPNU	L, 66-42
N 25 T	vs. Northwestern &	ESPN3	L, 67-62
D 1 T	Arkansas State	SECN	W, 88-78
D 4 F	Northern Illinois	SECN +	7 p.m.
D 9 W	Omaha	SECN	7 p.m.
D 13 U	at Arizona	Pac-12 Networks	7 p.m.
D 19 S	NC State	SECN	5 p.m.
D 23 W	vs. Illinois %	ESPN2	6 p.m.
D 29 T	Arkansas-Pine Bluff	SECN +	8 p.m.
J 2 S	Savannah State	SECN +	2 p.m.
J 6 W	at Georgia *	SECN ^	6 p.m.
J 9 S	Auburn *	ESPN2	8 p.m.
J 12 T	Arkansas *	SECN ^	8 p.m.
J 16 S	at South Carolina *	SECN ^	Noon
J 20 W	Georgia *	SECN ^	6 p.m.
J 23 S	at Texas A&M *	SECN ^	3 p.m.
J 27 W	at Kentucky *	SECN ^	8 p.m.
J 30 S	Mississippi State *	SECN ^	7:30 p.m.
F 3 W	Ole Miss *	SECN ^	8 p.m.
F 6 S	at Alabama *	SECN ^	2 p.m.
F 10 W	at Vanderbilt *	SECN ^	8 p.m.
F 13 S	Tennessee *	SECN ^	2 p.m.
F 16 T	South Carolina *	SECN ^	6 p.m.
F 20 S	at Arkansas *	SECN ^	6:30 p.m.
F 23 T	at Ole Miss *	SECN ^	8 p.m.
F 27 S	Texas A&M *	ESPNU	3 p.m.
M 1 T	at LSU *	SECN ^	8 p.m.
M 5 S	Florida	SECN ^	6:30 p.m.
M 9-13	vs. SEC Tournament	SECN/ESPN ^	

Bold denotes home // * denotes SEC game
 # - CBE HOF Classic Host Games (Mizzou Arena, Columbia, Mo.)
 & - CBE HOF Classic Championship Rounds (Sprint Center, Kansas City, Mo.)
 % - Mizzou will play either North Carolina or Northwestern on Nov. 24
 - 34th Annual Braggins' Rights Game (Scottrade Center, St. Louis, Mo.)
 ^ - SEC Network broadcasts are additionally available through
 WatchESPN apps and the website, WatchESPN.com
 + - SEC Network + events are digitally exclusive events available on
 WatchESPN apps or WatchESPN.com

GAME

7

MIZZOU TIGERS (3-3) VS. NORTHERN ILLINOIS HUSKIES (7-0)

FRIDAY, DEC. 4, 2015 // 7 P.M. (CT) // MIZZOU ARENA // COLUMBIA, MO.

@MIZZOUHOOPS	
3-3	
PTS / GAME	69.0
PTS ALLOWED / GAME	69.7
FG %	43.1
FG DEFENSE %	40.0
3-PT FG %	32.7
3-PT FG DEFENSE %	36.3
REB / GAME	33.5
REB ALLOWED / GAME	36.0
LEADING SCORER	PURYEAR (13.0)
LEADING REBOUNDER	PURYEAR (4.8)
LEADER IN ASSISTS	CLARK (3.5)
HEAD COACH	Kim Anderson (Missouri, '79, '81)
SCHOOL RECORD	12-26 (Second season)
CAREER RECORD	296-121 (14th season)
RECORD VS. NORTHERN ILLINOIS	N/A

SERIES INFORMATION

ALL-TIME SERIES 1-0 Mizzou
IN COLUMBIA 1-0 Mizzou
IN DEKALB N/A
NEUTRAL SITE N/A
LAST MEETING W, 97-61
 Dec. 27, 2010 (Columbia, Mo.)

FOLLOW #MIZZOU

ON TELEVISION SEC Network
 7:01 p.m. CT
 Ben Arnet (Play-by-Play)
 Jarrett Sutton (Analyst)
 Parker Leppien (Producer)
ON RADIO Tiger Radio Network
 Mike Kelly (Play-by-Play)
 Gary Link (Analyst)
 Matt Winegardner (Engineer)
ONLINE @MizzouHoops
 MUTigers.com
 Mizzou.Statbroadcast.com

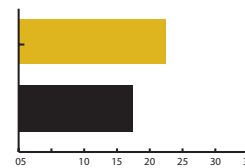


@GOHUSKIESMBB	
7-0	
PTS / GAME	79.0
PTS ALLOWED / GAME	59.0
FG %	46.5
FG DEFENSE %	36.6
3-PT FG %	34.9
3-PT FG DEFENSE %	33.1
REB / GAME	44.0
REB ALLOWED / GAME	31.7
LEADING SCORER	ARMSTEAD (13.0)
LEADING REBOUNDER	MARIC (7.9)
LEADER IN ASSISTS	BAKER (5.4)
HEAD COACH	Mark Montgomery (Michigan State, '03)
SCHOOL RECORD	46-84 (5th season)
CAREER RECORD	Same
RECORD VS. MISSOURI	N/A

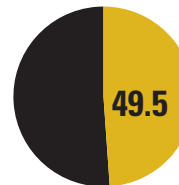
#ZOUNOTES

- Mizzou Men's Basketball hosts Northern Illinois in the second game of a three-game home stand on Friday, Dec. 4 at Mizzou Arena. Tipoff is slated for 7:01 p.m. on the SEC Network+.
- The Tigers surged ahead of Arkansas State early in its win on Tuesday, Dec. 1, keeping the Red Wolves at arm's distance down the stretch. Head coach **Kim Anderson's** group scored a season-high 88 points.
- Mizzou's two 80-point efforts in 2015 (83 points vs. Wofford, Nov. 13) are two more than the Tigers had a season ago. Mizzou scored a season-high 79 points in a road setback at Auburn (Jan. 10, 2015).
- Five Tigers scored in double figures vs. Arkansas State for the first time since the 2012-13 season as **Namon Wright** (14), **Tramaine Isabell** (11), **Kevin Puryear** (10), **Ryan Rosburg** (10) and **K.J. Walton** (10) also scored at least 10 points to help Mizzou to the win.

#ZOUGRAPHS



The Tigers are shooting 22.2 free throws per game to start the 2015-16 season. In comparison, Mizzou averaged 17.5 free throw attempts per game last season (560 in 32 games).



Mizzou's freshmen (Phillips, Puryear, Walton, VanLeer) have combined to score nearly half of the team's points through six games (205 of 414).

PROJECTED #MIZZOU LINEUP



G

1

terrence
PHILLIPS

FR // 5-11 // 175 // ORANGE COUNTY, CALIF.

@FloorGeneral103

PPG	RPG	APG	SPG
8.8	3.8	3.0	1.2
▶ 8 points, 7 assists (season-high) in win vs. Arkansas State			
▶ 16 points vs. Northwestern, a new season-high (3-of-6 three-pointers)			



G

15

wes
CLARK

JR // 6-0 // 180 // DETROIT, MICH.

@Im_back_15

PPG	RPG	APG	SPG
8.0	2.8	3.5	1.0
▶ Returned to lineup after right elbow dislocation caused him to miss final eight games of 2014-15			
▶ Averaged 10.1 PPG last season			



G

12

namon
WRIGHT

SO // 6-5 // 202 // LOS ANGELES, CALIF.

@kharyw

PPG	RPG	APG	SPG
9.7	4.7	1.0	0.5
▶ 18 points off the bench in win vs. Wofford (Nov. 13)			
▶ Career-high 28 points vs. Florida last season			



F

24

kevin
PURYEAR

FR // 6-7 // 236 // BLUE SPRINGS, MO.

@CallMe_KP24

PPG	RPG	SPG	APG
13.0	4.8	0.3	0.5
▶ 20 points in Mizzou debut vs. Wofford			
▶ KC Star Metro Player of the Year as a senior at Blue Springs South			



F

44

ryan
ROSBURG

SR // 6-10 // 260 // CHESTERFIELD, MO.

@RyRos44

PPG	RPG	APG	BPG
4.2	3.2	0.2	0.3
▶ 10 points (5-of-9 FG) vs. Ark. St.			
▶ 8 points, 9 rebounds in 28 minutes vs. Northwestern			
▶ Had 7 points through first 4 games			

PROJECTED NORTHERN ILLINOIS LINEUP

G 5 TRAVON BAKER (5-11, 170) 8.3 PPG // 4.6 RPG // 5.4 APG	G 11 CHUKS IROGBU (6-4, 210) 6.9 PPG // 3.0 RPG // .514 FG%	G 23 AARIC ARMSTEAD (6-5, 195) 13.0 PPG // 5.7 RPG // .711 FT%	F 24 MICHAEL ORRIS (6-2, 200) 5.3 PPG // 2.2 RPG // 4.0 APG	F 34 MARIN MARIC (6-10, 250) 10.6 PPG // 7.9 RPG // .592 FG%
--	---	--	---	--

QUICK FACTS

INSTITUTIONAL INFORMATION

Location _____ Columbia, Mo.
 Founded: _____ 1839
 Enrollment: _____ 35,050
 Nickname: _____ Tigers
 Colors: _____ Old Gold and Black
 Arena (Capacity): _____ Mizzou Arena (15,061)
 Conference: _____ Southeastern
 Interim System President: _____ Mike Middleton
 Phone _____ 573-882-2011
 Interim Chancellor: _____ Hank Foley
 Phone: _____ 573-882-3387
 Director of Athletics: _____ Mack Rhoades
 Department Phone: _____ 573-882-6501
 Ticket Office Phone: _____ 573-884-7297
 _____ 800-228-7297

THE MIZZOU TIGERS

Head Coach: _____ Kim Anderson (Second season)
 _____ University of Missouri, 1979, '81
 Missouri Record _____ 12-26 (2nd season)
 Overall Record: _____ 286-121 / .703 (14th season)
 Assistant Coaches: _____ Rob Fulford (Second season)
 _____ Brad Loos (Second season)
 _____ Corey Tate (First season)
 Special Assistant to the Head Coach _____
 _____ Steve Shields (First season)
 Basketball Operations: _____ Paul Rorvig
 _____ (Second season)
 Basketball Performance: _____ Matt Herring
 _____ (Second season)
 Operations Assistant _____ John Poettgen
 Graduate Assistants: _____ Brett Anderson
 _____ Jon Gilliam
 2014-15 Record: _____ 9-23
 SEC Record (Finish): _____ 3-15 (14th)
 Starters Returning / Lost: _____ 3/2
 Lettermen Returning / Lost: _____ 6/5

STRATEGIC COMMUNICATIONS

Senior Assoc. Athletics Director: _____ Ryan Bradley
 Office Phone _____ 573-882-9805
 E-Mail: _____ bradleyry@missouri.edu
 Associate Athletics Director: _____ Chad Moller
 Office Phone: _____ 573-882-0712
 E-Mail: _____ mollerc@missouri.edu
Men's Basketball Contact: _____ Patrick Crawford
Office Phone: _____ 573-882-2531
E-Mail: _____ crawfordpa@missouri.edu
 Associate Director: _____ Kate Lakin
 Assistant Director: _____ Shawn Davis
 Assistant Director: _____ Tyler Koonce
 Assistant Director: _____ Andy Oldenburg
 Web Coordinator: _____ Kevin Fletcher
 Digital Media: _____ Ali Fisher
 Associate (Secondary Contact): _____ Andrew Melroe
 E-Mail: _____ melroea@missouri.edu
 Twitter/Instagram _____ @MizzouHoops
 Website: _____ mutigers.com

Pro-nun-SEE-A-shun GUIDE

Kevin Puryear _____ Purr-EE-err
 Namon Wright _____ NAY-mun

KIM ANDERSON



HOMETOWN
 Sedalia, Mo.
HIGH SCHOOL
 Smith-Cotton
TWITTER
 @CoachAndersonMU
FAMILY
 Wife, Melissa
 Son, Ryan
 Son, Brett

In his second season leading the Mizzou Men's Basketball program, head coach **Kim Anderson** continues to turn the Tigers in the right direction, both on and off the court. With five newcomers on the 2015-16 roster that his staff personally recruited, Anderson hopes a higher comfort level and familiarity amongst his squad will translate into better team basketball. The Tigers already did their part in the offseason, posting the highest summer session grade point average for a Mizzou team in more than five seasons.

The Tiger leader took on the role of architect during the summer of 2014, beginning with establishing an identity for the Mizzou program. It would be built to last, with sturdy roots of character, discipline and competitiveness to reignite the passion of the many Black & Gold fans who clamor into Mizzou Arena. The first step was finding student-athletes, so Anderson and his staff brought in five freshmen and a graduate transfer for a total of six new faces. The following step was to get the newcomers and returning players to work as a team, which is not as simple of a process as it sounds.

Anderson knew sustained success could start with bumps in the road, and as the inexperience and unfamiliarity between his Tigers began to show down the stretch of the 2014-15 season, it became clear that changes would need to be made. Following Mizzou's 9-23 season, Anderson made it known what he and his staff's focuses would be going forward into the offseason. For the offseason, the Tiger coaching staff emphasized academic achievement, staff efficiency, athletic performance, team chemistry and a targeted recruiting focus.

2015-16 MIZZOU ROSTER

#	Name	Ht.	Wt.	Pos.	Yr.	Exp.
1	Terrence Phillips	5-11	175	G	Fr.	HS
	Orange County, Calif. / Oak Hill Academy (Va.) Note: 88-4 record as starting point guard at Oak Hill					
4	Tramaine Isabell	6-0	178	G	So.	1L
	Seattle, Wash. / Garfield H.S. Note: Multiple assists in eight games in 14-15					
5	D'Angelo Allen	6-7	216	F	So.	1L
	Dallas, Texas / Kimball H.S. Note: Started last 8 games of 14-15 season					
10	K.J. Walton	6-3	197	G	Fr.	HS
	Brownsburg, Ind. / Brownsburg H.S. Note: Former 103rd-ranked <i>Rivals.com</i> prospect					
11	Jimmy Barton	5-9	160	G	R-So.	RS
	St. Louis, Mo. / DeSmet Jesuit H.S. / Houston Baptist Note: Walk-on with 13 games at H-Baptist in 13-14					
12	Namon Wright	6-5	202	G	So.	1L
	Los Angeles, Calif. / Pacific Hills Note: Averaged 13.6 PPG in last five games of 14-15					
13	Trevor Glassman	6-3	200	G	Jr.	TR
	Bedford, N.H. / New Hampton School / Manhattan Note: Walk-on, sitting out the 2015-16 season after transfer					
15	Wes Clark	6-0	180	G	Jr.	2L
	Detroit, Mich. / Romulus H.S. Note: Returns after season-ending inj. to right elbow					
23	Jakeenan Gant	6-8	212	F	So.	1L
	Springfield, Ga. / Effingham County Note: Won Mizzou's annual Black & Gold dunk contest					
24	Kevin Puryear	6-7	236	F	Fr.	HS
	Blue Springs, Mo. / South H.S. Note: 20.1 pts., 7.8 reb. per game as a senior					
25	Russell Woods	6-8	225	F	Jr.	JC
	Chicago, Ill. / Simeon High School / John A. Logan College (Ill.) Note: 14.1 pts., 7.2 reb. per game at JUCO in 14-15					
32	Adam Wolf	6-7	202	F	Fr.	HS
	Beaver Dam, Wis. / Beaver Dam H.S. Note: Walk-on who avg. 17.0 pts. per game as senior					
33	Cullen VanLeer	6-4	200	G	Fr.	HS
	Pacific, Mo. / Pacific H.S. Note: 23.5 pts., 7.3 reb. per game as a senior					
44	Ryan Rosburg	6-10	260	F	Sr.	3L
	Chesterfield, Mo. / Marquette H.S. Note: 51 career starts at Mizzou, 102 career app.					



Back Row: Trainer Pat Beckmann, Graduate Assistant Jon Gilliam, Special Assistant to the Head Coach Steve Shields, Athletic Performance Coach Matt Herring, Director of Basketball Operations Paul Rorvig, Head Coach Kim Anderson, Assistant Coach Corey Tate, Assistant Coach Brad Loos, Assistant Coach Rob Fulford, Operations Assistant John Poettgen, Graduate Assistant Brett Anderson.

Front Row: Russell Woods (25), Kevin Puryear (24), Terrence Phillips (1), Wes Clark (15), K.J. Walton (10), Jimmy Barton (11), Tramaine Isabell (4), Cullen VanLeer (33), Namon Wright (12), Adam Wolf (32), D'Angelo Allen (5), Ryan Rosburg (44), Jakeenan Gant (23).

NOTEWORTHY NOTES

LAST TIME OUT

- Mizzou opened its game vs. Arkansas State (Dec. 1) on a 13-0 run, setting the tone for a first half in which the Tigers would shoot 52.9 percent from the field to take a 48-29 halftime lead. The advantage proved crucial as the Red Wolves tightened the gap in the second half with the Tigers the eventual winners, 88-78.
- Starting fast has been an emphasis of head coach **Kim Anderson** for his young Mizzou squad. The Tigers' hot shooting in the opening half was especially noteworthy, as it was just the sixth time Mizzou has hit on 50.0 percent or more of its field goal attempts over the last two seasons.
- Sophomore guard **Namon Wright** led the Tigers with 14 points, including six key points in the second half to halt an Arkansas State surge. The total marked his second double figure outing of the season and the ninth of his career.
- Freshman forward **Kevin Puryear** scored 10 points to reach double figures for the fifth time in six career contests.
- Freshman guard **Terrence Phillips** dished out a career best seven assists one game after notching a then-personal high four vs. Northwestern (Nov. 24).

SHARP-SHOOTING TIGERS

- Mizzou's **Kevin Puryear** (10-of-18, 55.6), **Terrence Phillips** (8-of-15, 53.3) and **Ryan Rosburg** (9-of-18, 50.0), and are all shooting 50.0 percent or better from the field over the Tigers' last two games.

GETTING TO THE LINE

- Mizzou is shooting 22.6 free throws per game to start the 2015-16 season, a welcome sign of improvement in an area of need from a season ago. The Tigers averaged just 17.5 attempts from the charity stripe last season.
- Most noticeably, sophomore guard **Namon Wright** has made it a focus to earn more trips to the free throw line. Wright (18-of-22 FT) has already surpassed his free throw makes and attempts from last season (10-of-18 FT).

ROSBURG JOINED CENTURY CLUB

- Senior forward **Ryan Rosburg** appeared in his 100th career game for Mizzou when the Tigers faced Kansas State on Monday, Nov. 23.
- Only one of other Tiger has appeared in even half as many games, as junior guard **Wes Clark** has played in 61 games for Mizzou.
- Rosburg has been a mainstay in the Tigers' lineup throughout his career wearing the Black & Gold. He has appeared in at least 30 games in all three of his previous seasons and has registered 51 career starts, including 32 of 35 games as a sophomore in 2013-14.

#RALLYFORRHAN

- Rhyen Loos, the 5-year-old daughter of assistant Mizzou coach **Brad Loos** and his wife, Jen, has been diagnosed with neuroblastoma, a type of pediatric cancer. The Mizzou Men's Basketball program will be supporting Rhyen and the Loos Family throughout the season.
- To find out more about Rhyen and how you can offer support, visit www.mutigers.com/RallyForRhyen.



BY THE NUMBERS

14

► Mizzou has the 14th-youngest roster in all of Division I basketball this season, according to Ken Pomeroy (kenpom.com). Head coach Kim Anderson's team ranks 338 out of 351 teams in terms of experience.

5

► Mizzou has five scholarship newcomers, including four talented freshmen and an experienced JUCO transfer. In total, the squad features eight freshmen/sophomores out of its 12 allocated scholarships.

GAME PREVIEW - NORTHERN ILLINOIS

ABOUT NORTHERN ILLINOIS

- Led by head coach **Mark Montgomery**, Northern Illinois is out to a 7-0 start for the first time since the 1994-95 season. The hot start to the 2015-16 season is NIU's third-best win streak to start a season in school history.
- The Huskies are scoring 79.0 points per game through their first seven games, with three players averaging double figures in scoring.
- NIU's primary scorer, junior guard **Aaric Armstead**, is averaging 13.0 points per game. Armstead is also the team's second-leading rebounder, pulling down 5.7 per game.
- Down low for the Huskies is 6-10, 260-pound **Marin Maric**. The native Croatian is averaging 10.6 points and 7.9 points per game for NIU.

CLOSER LOOK AT THE HUSKIES

- Northern Illinois has run off seven-straight victories to start the 2015-16 season, winning by an average margin of 19.1 points. Also notably, the Huskies have outrebounded their opponents by an average margin of 12.3 rebounds per game.
- NIU's freshmen class has shouldered a large portion of the workload, much like Mizzou's freshmen. The Huskies' freshmen have combined to score 41.8 percent of NIU's total points this season.
- Most recently, Northern Illinois dispatched Chicago State by a score of 80-58 at home on Dec. 2. Armstead led the Huskies with his 14 points, while Maric grabbed 14 rebounds.

MOVIE SCOUTING REPORT

THE DEPARTED (2006)

Freshman forward **Jaylen Key** averages one personal foul for every 7.8 minutes of game play.

TRUE GRIT (2010)

Sophomore center **Marin Maric** is grabbing 2.7 offensive rebounds per game.

THE RAINMAKER (1997)

Junior guard **Aaric Armstead** averages 9.6 field goal attempts per game, more than two more than the next closest NIU player (Marshawn Wilson, 7.3).

STRONG DEBUT FOR PURYEAR

- ▶ Freshman forward **Kevin Puryear** averaged 16.5 points per game over the first two games of his collegiate career.
- ▶ With his 20-point outburst in Mizzou's season-opening, 83-74 win vs. Wofford (Nov. 13), Puryear joined an exclusive list of debuts.
- ▶ Other 20-point Tiger freshman debuts in the last 40 years: Montaque Gill-Ceaser, 21 points vs. UMKC (Nov. 14, 2014), Jevon Crudup, 22 points at Rutgers (Nov. 27, 1990), Steve Stipanovich, 23 points vs. Southwest Texas State (Nov. 30, 1979).

WALTON TO THE LINE

- ▶ Freshman guard **K.J. Walton** earned the start for Mizzou in its season-opener vs. Wofford (Nov. 13), but was called upon from the bench vs. UMES (Nov. 15). The slight change did not faze Walton, as the newcomer surged in the second half, scoring 11 points and shooting 9-of-10 at the free throw line.
- ▶ At just the second game of the 2015-16 season, Walton's aggressive play already holds significance. Only one game occurred during the 2014-15 season in which a Mizzou guard took 10 or more free throw attempts.

SOLO SENIOR

- ▶ Senior forward **Ryan Rosburg** is the first Mizzou senior on the team's roster to have spent his entire eligibility in the program since the 2012-13 season.
- ▶ Laurence Bowers was a redshirt senior that season, in which Rosburg was a true freshman.

SEC FEARFUL OF CLARK'S RETURN

- ▶ Junior guard **Wes Clark** averaged 11.7 points per game in Mizzou's 11 Southeastern Conference games before he was sidelined for the remainder of the 2014-15 season due to his right elbow dislocation.
- ▶ That average would have ranked tied for 20th among fellow SEC players if Clark had appeared in 75 percent of the Tigers' conference contests.

PHILLIPS TURNING HEADS EARLY



CHRIS COLLINS

Northwestern Head Coach on Tuesday, Nov. 24

On Phillips' performance vs. Northwestern...

"I thought he played great. I've always been a big fan of his. I remember seeing him a couple times last year when he played for Oak Hill. Just always loving his energy. I love high energy guys. Energy is infectious. I thought Phillips, when they were struggling, I thought he was the guy who was the catalyst to get them going.

"He was really good. He's going to have an outstanding career at Missouri. He's a tough guy to play against, because he gets underneath you. He's really quick. Pushing that ball, getting it to the basket. Big fan of his game."



BOBBY COLLINS

Maryland-Eastern Shore Head Coach on Sunday, Nov. 15

On Phillips' performance vs. Maryland-Eastern Shore...

"The surprise was Phillips. He hit some big shots for them. It seemed like he was on the end of every big run they had. I see that he was 3-of-4 from the three and he did a very good job of knocking down those shots. Shots that we were not counting on."

STRONG START FOR PURYEAR



- ▶ Freshman forward **Kevin Puryear** has been a go-to option for Mizzou's offense to start the 2015-16 season. Puryear leads the Tigers with his 13.0 points per game.
- ▶ Puryear has started his first collegiate campaign with three-straight games scoring in double figures. In Mizzou's season-opener vs. Wofford (Nov. 13), the Tiger newcomer dropped a team-leading 20 points.
- ▶ Through Mizzou's first six games of the 2015-16 season, Puryear has scored in double figures in five contests.



MIKE YOUNG

Wofford Head Coach on Friday, Nov. 13

On Puryear's breakout game vs. Wofford...

"I think as much as anything, with it being early in the year and he being a true freshman, we had some high school film on him, but just not quite enough. He made a three, or two, and he's a little bit bigger and a little wider than we thought he was. We just weren't as familiar with him. That's a pretty good kick-start to a year for that young man. He was good."

LAST GAME

Arkansas State vs Mizzou

12-1-15 8:05 p.m. at Columbia, Mo. // Mizzou Arena

VISITORS: Arkansas State 2-5

##	Player		tot-fg		3-pt		ft	fta	rebounds				tp	a	to	blks	min	
			fg	fga	fg	fga			of	de	tot	pf						
03	Carter, Devin	*	8	14	5	8	3	6	1	5	6	3	24	4	3	1	0	39
12	Gardner, Sean	*	6	20	2	6	3	4	3	1	4	3	17	1	0	1	1	29
14	Downs, Kelvin	*	1	2	0	0	0	0	0	4	4	3	2	1	0	2	0	14
24	Thomas, Donte	*	5	11	0	0	8	11	3	4	7	3	18	5	0	1	2	35
50	Livingston, Anthony	*	1	7	0	1	2	3	0	5	5	2	4	1	1	0	1	24
10	Dure, Frederic		3	8	1	4	0	1	0	1	1	3	7	1	1	1	0	22
11	Waters, Charles		0	1	0	0	0	0	0	0	0	1	0	0	0	1	0	4
15	Davis, Christian		1	2	0	0	0	0	0	1	1	0	2	0	0	0	0	3
33	Bocoum, Nouhoum		0	0	0	0	2	2	0	1	1	0	2	0	0	0	0	4
42	Hardwick, PJ		1	3	0	0	0	0	2	3	5	3	2	2	2	0	2	26
TEAM									5	5	1							
Totals.....			26	68	8	19	18	27	14	25	39	22	78	15	7	7	6	200

TOTAL FG%	1st Half: 11-35 31.4%	2nd Half: 15-33 45.5%	Game: 38.2%	DEADBALL
3-Pt. FG%	1st Half: 3-10 30.0%	2nd Half: 5-9 55.6%	Game: 42.1%	REBOUNDS
F Throw %	1st Half: 4-6 66.7%	2nd Half: 14-21 66.7%	Game: 66.7%	5

HOME TEAM: Mizzou 3-3

##	Player		tot-fg		3-pt		ft	fta	rebounds				tp	a	to	blks	min	
			fg	fga	fg	fga			of	de	tot	pf						
01	PHILLIPS, Terrence	*	2	4	0	2	4	4	0	4	4	4	8	7	0	0	1	23
12	WRIGHT, Namon	*	5	9	3	5	1	1	0	6	6	3	14	0	0	1	0	28
15	CLARK, Wes	*	2	7	0	1	4	4	1	3	4	2	8	3	3	0	0	26
24	PURYEAR, Kevin	*	4	7	0	1	2	3	2	5	7	2	10	1	3	0	0	21
44	ROSBURG, Ryan	*	5	9	0	0	0	0	0	2	2	3	10	0	1	0	0	29
04	ISABELL, Tramaine		4	6	2	2	1	1	0	0	0	1	11	2	0	0	1	16
05	ALLEN, D'Angelo		0	0	0	0	1	2	0	2	2	1	1	0	0	1	0	7
10	WALTON, K.J.		2	7	0	0	6	7	3	2	5	0	10	0	1	1	0	15
23	GANT, Jakeenan		1	4	0	1	0	0	1	0	1	1	2	0	0	1	0	8
25	WOODS, Russell		4	6	0	0	0	4	2	2	4	3	8	0	1	1	0	11
33	VANLEER, Cullen		2	6	2	4	0	0	1	2	3	3	6	1	1	0	0	16
TEAM									1	4	5							
Totals.....			31	65	7	16	19	26	11	32	43	23	88	14	10	5	2	200

TOTAL FG%	1st Half: 18-34 52.9%	2nd Half: 13-31 41.9%	Game: 47.7%	DEADBALL
3-Pt. FG%	1st Half: 4-7 57.1%	2nd Half: 3-9 33.3%	Game: 43.8%	REBOUNDS
F Throw %	1st Half: 8-11 72.7%	2nd Half: 11-15 73.3%	Game: 73.1%	5

Officials: Doug Shows, Ron Groover, Olandis Poole

Technical fouls: Arkansas State-TEAM. Mizzou-None.

Attendance: 5104

Score by Periods 1st 2nd Total

Arkansas State 29 49 78

Mizzou 48 40 88

BALANCED ATTACK LEADS @MIZZOUHOOPS TO 88-78 WIN VS. ARKANSAS STATE



Jumping out to an early lead proved to be crucial as Mizzou Men's Basketball (3-3) opened Tuesday's game on a 13-0 run and never looked back, defeating Arkansas State (2-5), 88-78, Tuesday night at Mizzou Arena. Five Tigers scored in double-digits, the first time Mizzou has accomplished the feat since March 2, 2013. Sophomore guard **Namon Wright** (Los Angeles, Calif.) led the way with 14 points on 5-of-9 shooting, hitting on 3-of-5 from beyond the arc.

Joining Wright in double-figures were sophomore guard **Tramaine Isabell** (Seattle, Wash.), who contributed 11 points, while senior forward **Ryan Rosburg** (Chesterfield, Mo.), freshman forward **Kevin Puryear** (Blue Springs, Mo.) and freshman guard **K.J. Walton** (Brownsburg, Ind.) each chipped in 10.

Mizzou outrebounded Arkansas State 43-39, and three Tigers set season-high rebounding marks, while two matched season-highs. Puryear, Walton, and junior forward **Russell Woods** (Chicago, Ill.) marked season and career-highs with seven, five, and four, respectively. Junior guard **Wes Clark** (Detroit, Mich.) and freshman guard **Cullen VanLeer** (Pacific, Mo.) matched season-highs with four and three, respectively.

Freshman guard **Terrence Phillips** (Orange County, Calif.) dished out seven assists, a season and career-high for the point guard.

Rosburg contributed the first four points of the night, while four different Tigers dumped in baskets for the other nine points during Mizzou's 13-0 run over the first six minutes. Arkansas State cut the lead to 11 points at 31-20 with an 8-0 run with 4:36 remaining in the half, but the Tigers combated with 13 of the next 15 points to open its largest lead of the half at 44-23 with 1:28 remaining before the break. Isabell scored six straight points on the back-half of the run, first with a three-pointer, then next with a three-point play to give Mizzou the 21-point cushion. Four Tigers had at least six points in the half, led by eight a piece from Isabell and Walton.

The Red Wolves would not go away easily in the second half as the Tigers' lead shrunk to as little as four at 70-66 with 4:54 left to go. Wright stepped up to lead the Tigers through, as he drained a three-pointer on the next possession and converted a free throw after getting fouled for a four-point play to get the lead back to eight. Mizzou sunk 6-of-6 free throws in the final two minutes to seal the 88-78 win.



TERRENCE PHILLIPS

FR | G | 5-11 | 175

Orange County, Calif.

Oak Hill Academy (Va.)

LAST GAME (ARKANSAS STATE 12-1-15)

FG	FGA	3FG	FGA	FT	FTA	REB	AST	PTS
2	4	0	2	4	4	4	7	8

PHILLIPS 2015-16 GAME-BY-GAME

Opponent	Date	GS	Min	FG	FGA	Pct	3FG	FGA	Pct	FT	FTA	Pct	Off	Def	Tot	Avg	PF	FO	A	TO	Blk	Stl	Pts	Avg
WOFFORD	11-13-15	*	29	2-5	.400	0-1	.000	3-4	.750	0	3	3	3.0	3	0	3	2	0	0	0	7	7.0		
UMES	11-15-15	*	27	5-7	.714	3-4	.750	0-0	.000	1	2	3	3.0	3	0	2	1	0	1	13	10.0			
at Xavier	11-17-15	*	12	1-2	.500	1-2	.500	0-0	.000	0	1	1	2.3	4	0	0	2	0	0	3	7.7			
vs Kansas State	11-23-15	*	24	3-8	.375	0-2	.000	0-0	.000	0	6	6	3.3	2	0	2	5	0	1	6	7.3			
vs Northwestern	11-24-15	*	31	6-11	.545	3-6	.500	1-1	1.000	0	6	6	3.8	5	1	4	4	1	4	16	9.0			
ARKANSAS ST.	12-1-15	*	23	2-4	.500	0-2	.000	4-4	1.000	0	4	4	3.8	4	0	7	0	0	1	8	8.8			
NORTHERN ILL.	12-4-15																							
OMAHA	12-9-15																							
at Arizona	12-13-15																							
NC STATE	12-19-15																							
vs Illinois	12-23-15																							
ARKANSAS-PB	12-29-15																							
SAVANNAH ST	1-2-16																							
at Georgia	1-6-16																							
AUBURN	1-9-16																							
ARKANSAS	1-12-16																							
at S. Carolina	1-16-16																							
GEORGIA	1-20-16																							
at Texas A&M	1-23-16																							
at Kentucky	1-27-16																							
MISSISSIPPI ST	1-30-16																							
OLE MISS	2-3-16																							
at Alabama	2-6-16																							
at Vanderbilt	2-10-16																							
TENNESSEE	2-13-16																							
S. CAROLINA	2-16-16																							
at Arkansas	2-20-16																							
at Ole Miss	2-23-16																							
TEXAS A&M	2-27-16																							
at LSU	3-1-16																							
FLORIDA	3-5-16																							

2015-16 (FRESHMAN):

- Season-high seven assists in the win vs. Arkansas State (Dec. 1).
- Nearly willed Mizzou to a comeback vs. Northwestern (Nov. 23), scoring 13 of his 16 points (6-of-11 FG) after the break of the 67-62 result.
- Rained in 3-of-4 from three-point land en route to 13 points vs. UMES (Nov. 14), playing 27 minutes in his second career start.
- Earned the start in his collegiate debut vs. Wofford (Nov. 13), recording 7 points, 3 assists and 3 rebounds in 29 minutes.

OAK HILL ACADEMY:

- Led national powerhouse Oak Hill Academy (Mouth of Wilson, Va.) to an 88-4 record as the team's starting point guard his last two seasons.
- Averaged 8.7 assists, 7.7 points and 4.2 steals per game while leading Oak Hill to a 47-1 season as a senior, with the squad also spending 10 weeks as the nation's No. 1-ranked boys basketball team.
- Broke Oak Hill's career assists record that was previously held by former North Carolina standout Jeff McInnis.

PERSONAL:

- Son of Alice Knox and Ted Phillips, and born on Jan. 12, 1996, in Los Angeles, California.
- Athlete he most looks up to and models his game after is Chris Paul.
- Favorite TV show is 'Friends'.
- Considered Mizzou the most in the recruiting process due to the Tigers coaching staff's ongoing presence.
- Mentions NBA star Kobe Bryant as the most influential person he has ever met.

#1 AT A GLANCE

2015-16 Career

Scored 5+ points	5	-
Scored 10+ points	2	-
Scored 15+ points	1	-
Hit 2+ 3-pointers	2	-
Recorded 3+ rebounds	5	-
Dished 3+ assists	3	-
Played 20+ minutes	5	-
Played 30+ minutes	1	-

#1 GAME HIGHS

2015-16 Career

16, vs. Northwestern	-
11-24-15 PTS	-
6, vs. Northwestern	-
11-24-15 FGM	-
11, vs. Northwestern	-
11-24-15 FGA	-
3, Twice	-
3PTM	-
6, vs. Northwestern	-
11-24-15 3PTA	-
4, Arkansas State	-
12-1-15 FTM	-
4, Twice	-
FTA	-
6, Twice	-
REB	-
7, Arkansas State	-
12-1-15 ASST	-
1, vs. Northwestern	-
11-24-15 BLKS	-
4, vs. Northwestern	-
11-24-15 STLS	-
31, vs. Northwestern	-
11-24-15 MIN	-

PHILLIPS CAREER STATS

SEASON	G-GS	MIN	MPG	FG-A	FG%	3FG-A	3FG%	FT-A	FT%	REB / AVG.	AST / TO	BS / S	TP	AVG.
2015-16	6-6	146	24.3	19-37	.514	7-17	.412	8-9	.889	23 / 3.8	18 / 14	1 / 7	53	8.8
TOTAL	6-6	146	24.3	19-37	.514	7-17	.412	8-9	.889	23 / 3.8	18 / 14	1 / 7	53	8.8



TRAMAINÉ ISABELL

SO // G // 6-0 // 178

Seattle, Wash.

Garfield High School

LAST GAME (ARKANSAS STATE 12-1-15)

FG	FGA	3FG	FGA	FT	FTA	AST	PTS
4	6	2	2	1	1	2	11

ISABELL 2015-16 GAME-BY-GAME

Opponent	Date	GS	Min	FG	FGA	Pct	3FG	FGA	Pct	FT	FTA	Pct	Off	Def	Tot	Avg	PF	FO	A	TO	Blk	Stl	Pts	Avg
WOFFORD	11-13-15	10	2-2	1.000	0-0	.000	0-0	.000	0-0	.000	0	3	3	3.0	1	0	2	3	0	1	4	4.0		
UMES	11-15-15	12	2-5	.400	0-1	.000	0-0	.000	0-0	.000	2	2	4	3.5	0	0	1	0	0	0	4	4.0		
at Xavier	11-17-15	13	3-6	.500	1-1	1.000	4-4	1.000	0	1	1	2.7	2	0	1	5	0	1	11	6.3				
vs Kansas State	11-23-15	12	2-3	.667	0-0	.000	0-0	.000	0	1	1	2.3	0	0	0	0	0	1	4	5.8				
vs Northwestern	11-24-15	8	1-4	.250	0-1	.000	0-0	.000	0	1	1	2.0	1	0	0	0	0	0	2	5.0				
ARKANSAS ST.	12-1-15	16	4-6	.667	2-2	1.000	1-1	1.000	0	0	0	1.7	1	0	2	0	0	1	11	6.0				
NORTHERN ILL.	12-4-15																							
OMAHA	12-9-15																							
at Arizona	12-13-15																							
NC STATE	12-19-15																							
vs Illinois	12-23-15																							
ARKANSAS-PB	12-29-15																							
SAVANNAH ST	1-2-16																							
at Georgia	1-6-16																							
AUBURN	1-9-16																							
ARKANSAS	1-12-16																							
at S. Carolina	1-16-16																							
GEORGIA	1-20-16																							
at Texas A&M	1-23-16																							
at Kentucky	1-27-16																							
MISSISSIPPI ST	1-30-16																							
OLE MISS	2-3-16																							
at Alabama	2-6-16																							
at Vanderbilt	2-10-16																							
TENNESSEE	2-13-16																							
S. CAROLINA	2-16-16																							
at Arkansas	2-20-16																							
at Ole Miss	2-23-16																							
TEXAS A&M	2-27-16																							
at LSU	3-1-16																							
FLORIDA	3-5-16																							

2015-16 (SOPHOMORE):

- Matched season-high point total (11) with season-best four FGs (4-of-6) vs. Arkansas State (Dec. 1).

2014-15 (FRESHMAN):

- Dished out multiple assists in 8 different games, including a season-high 6 dimes (against just one turnover) in the win vs. LSU (Jan. 8).
- Season-best 14 points (4-of-8 FG, 1-of-3 3PT, 5-of-6 FT) vs. Lipscomb (Jan. 3), with his work at the charity stripe setting season-high marks in FT makes and attempts.
- Made ESPN SportsCenter's Top 10 with his buzzer-beating, game-tying three-pointer vs. Oklahoma State (Dec. 30), dropping the bucket with 0.2 seconds left in regulation.

HIGH SCHOOL:

- Was named first team all-state as a senior after leading Garfield High School to a 25-1 overall record and the Class 4A state championship.

- Averaged 23.6 points and 3.5 assists as a senior for Garfield, which also produced NBA players Tony Wroten and Brandon Roy.
- Poured in 34 points in the state title win over Richland and was named the state tournament's Most Valuable Player.
- Began his high school career at Lakeside High School, the same high school as Microsoft co-founders Bill Gates and Paul Allen, and led the Lions to the 2013 state championship game.

PERSONAL:

- Full name is Tramaine Andre' Isabell.
- Son of Aiyana Brown and Tramaine Isabell Sr.
- Has a younger sister, Queen, and younger brother, Se'jhe.
- Born June 27, 1995.
- Considers his grandfather, Rich Padden, his greatest influence and an important mentor.
- Outside of pursuing basketball, would like to find success in the fields of real estate or private investment.

ISABELL CAREER STATS

CAREER	G-GS	MIN	MPG	FG-A	FG%	3FG-A	3FG%	FT-A	FT%	REB / AVG.	AST / TO	BS / S	TP	AVG.
2014-15	27-1	405	15.0	37-118	.314	16-52	.308	22-28	.786	36 / 1.3	39 / 33	0 / 17	112	4.1
2015-16	6-0	71	11.8	14-26	.538	3-5	.600	5-5	1.000	10 / 1.7	6 / 8	0 / 4	36	6.0
TOTAL	33-1	476	14.4	51-144	.354	19-57	.333	27-33	.818	46 / 1.4	45 / 41	0 / 21	148	4.5

#4 AT A GLANCE

2015-16 Career

Scored 5+ points	2	11
Scored 10+ points	2	5
Hit 2+ 3-pointers	1	5
Multiple steals	-	5
Multiple assists	2	11
Dished 3+ assists	-	6
Played 20+ minutes	-	7
Played 30+ minutes	-	2

#4 GAME HIGHS

2015-16 Career

11, Twice	14, Lipscomb
PTS	1-3-15
4, Arkansas State	5, at Arkansas
12-1-15	FGM
6, Twice	9, at Arkansas
FGA	2-18-15
2, Arkansas State	3, at Arkansas
12-1-15	3PTM
2, Arkansas State	5, 3 times
12-1-15	3PTA
4, at Xavier	5, Lipscomb
11-15-15	FTM
4, at Xavier	6, Lipscomb
11-17-15	FTA
3, Wofford	4, 3 times
11-13-15	REB
2, Twice	6, LSU
ASST	1-8-15
-	-
BLKS	-
1. 3 times	2, 4 times
STLS	-



D'ANGELO ALLEN

SO // F // 6-7 // 216

Dallas, Texas

Kimball High School

LAST GAME (ARKANSAS STATE 12-1-15)

FG	FGA	3FG	FGA	FT	FTA	REB	PTS
0	0	0	0	1	2	2	1

ALLEN 2015-16 GAME-BY-GAME

Opponent	Date	GS	Min	FG	FGA	Pct	3FG	FGA	Pct	FT	FTA	Pct	Off	Def	Tot	Avg	PF	FO	A	TO	Blk	Stl	Pts	Avg
WOFFORD	11-13-15	DNP																						
UMES	11-15-15	15	1-1	1.000	0-0	.000	0-0	.000	0-2	.000	2	2	4	4.0	2	0	0	0	0	0	1	2	2.0	
at Xavier	11-17-15	12	0-0	.000	0-0	.000	0-0	.000	0-0	.000	0	3	3	3.5	2	0	0	1	0	0	0	0	1.0	
vs Kansas State	11-23-15	16	0-3	.000	0-0	.000	0-0	.000	0-0	.000	3	0	3	3.3	1	0	0	2	0	2	0	0	0.7	
vs Northwestern	11-24-15	5	1-1	1.000	0-0	.000	0-0	.000	0-0	.000	0	0	0	2.5	0	0	1	0	0	0	0	2	1.0	
ARKANSAS ST.	12-1-15	7	0-0	.000	0-0	.000	1-2	.500	0	2	2	2.4	1	0	0	0	0	1	0	1	0	1	1.0	
NORTHERN ILL.	12-4-15																							
OMAHA	12-9-15																							
at Arizona	12-13-15																							
NC STATE	12-19-15																							
vs Illinois	12-23-15																							
ARKANSAS-PB	12-29-15																							
SAVANNAH ST	1-2-16																							
at Georgia	1-6-16																							
AUBURN	1-9-16																							
ARKANSAS	1-12-16																							
at S. Carolina	1-16-16																							
GEORGIA	1-20-16																							
at Texas A&M	1-23-16																							
at Kentucky	1-27-16																							
MISSISSIPPI ST	1-30-16																							
OLE MISS	2-3-16																							
at Alabama	2-6-16																							
at Vanderbilt	2-10-16																							
TENNESSEE	2-13-16																							
S. CAROLINA	2-16-16																							
at Arkansas	2-20-16																							
at Ole Miss	2-23-16																							
TEXAS A&M	2-27-16																							
at LSU	3-1-16																							
FLORIDA	3-5-16																							

2015-16 (SOPHOMORE):

First appearance of the season vs. UMES (Nov. 15), logging 15 high-energy minutes off the bench with 4 rebounds.

2014-15 (FRESHMAN):

Made all 8 of his starts in Mizzou's final eight games of the season. Shot an impressive 53.8-percent from the field (14-of-26) over the final 10 games of the Tigers' campaign. Matched his season-high in rebounds (7) in the first of those eight starts at Mississippi State (Feb. 14). Season-best 3-of-3 3PT shooting en-route to 10 points at South Carolina (Feb. 10). 8 points (3-of-4 FG, 2-of-2 3PT) vs. Illinois (Dec. 20) in the Scottrade Center, draining two 3-pointers. Breakout game vs. Elon (Dec. 11), scoring 12 points (5-of-7 FG, 2-of-2 FT) and grabbing 7 rebounds in 21 minutes of action off the bench.

KIMBALL HIGH SCHOOL:

Was a winner throughout his high school career and was a part of three Texas Class 4A State Championship teams (2011, 2012 and 2014) at Kimball High School in Dallas. Averaged 13.3 points and 10.2 rebounds as a senior. Named to the Texas Association of Basketball Coaches All-Star Team in 2014. Named to the Class 4A All-Tournament Team as well and was an All-Region II selection.

PERSONAL:

Full name is D'Angelo Malik Allen. Born May 10, 1996, in Dallas, Texas. Son of Evelyn Allen. Hobbies include playing video games, watching movies and hanging out with friends.

#5 AT A GLANCE

2015-16 Career

Scored 5+ points	-	9
Scored 10+ points	-	2
Attempted 5+ FGs	-	6
Grabbed 5+ rebounds	-	8
Played 20+ minutes	-	13

#5 GAME HIGHS

2015-16	Career
2, UMES	12, Elon
11-15-15	PTS 12-11-14
1, UMES	5, Elon
11-15-15	FGM 12-11-14
1, UMES	7, Elon
11-15-15	FGA 12-11-14
-	3, South Carolina
-	3PTM 2-10-15
-	3, South Carolina
-	3PTA 2-10-15
1, Arkansas State	3, Lipscomb
12-1-15	FTM 1-3-15
1, UMES	4, Lipscomb
11-15-15	FTA 1-3-15
3, Twice	7, Twice
	REB
-	2, 3 times
-	ASST
-	1, 7 times
-	BLKS
1, UMES	2, Twice
11-15-15	STLS

ALLEN CAREER STATS

SEASON	G-GS	MIN	MPG	FG-A	FG%	3FG-A	3FG%	FT-A	FT%	REB / AVG.	AST / TO	BS / S	TP	AVG.
2014-15	32-8	544	17.0	40-98	.408	9-20	.450	17-28	.607	100 / 3.1	21 / 18	7 / 11	106	3.3
2015-16	5-0	55	11.0	2-5	.400	0-0	.000	1-4	.250	12 / 2.4	1 / 3	1 / 3	5	1.0
TOTAL	37-8	599	16.2	42-103	.408	9-20	.450	18-32	.563	112 / 3.0	68 / 0	8 / 14	111	3.0



K.J. WALTON

FR // G // 6-3 // 197

Brownsburg, Ind.

Brownsburg High School

LAST GAME (ARKANSAS STATE 12-1-15)

FG	FGA	3FG	FGA	FT	FTA	REB	PTS
2	7	0	0	6	7	5	10

WALTON 2015-16 GAME-BY-GAME

Opponent	Date	GS	Min	FG	FGA	Pct	3FG	FGA	Pct	FT	FTA	Pct	Off	Def	Tot	Avg	PF	FO	A	TO	Blk	Stl	Pts	Avg
WOFFORD	11-13-15	*	17	3-5	.600	0-0	.000	0-1	.000	0	1	0	1	1	1.0	2	0	2	0	0	1	6	6.0	
UMES	11-15-15		15	1-3	.333	0-1	.000	9-10	.900	0	0	0	0	0	0.5	1	0	3	0	0	1	11	8.5	
at Xavier	11-17-15		21	3-8	.375	0-1	.000	2-2	1.000	1	2	3	1.3	2	0	1	0	0	0	0	8	8.3		
vs Kansas State	11-23-15		17	1-7	.143	0-1	.000	1-4	.250	2	1	3	1.8	2	0	1	3	0	0	0	3	7.0		
vs Northwestern	11-24-15		5	0-1	.000	0-0	.000	0-0	.000	0	0	0	1.4	2	0	1	0	0	0	0	0	5.6		
ARKANSAS ST.	12-1-15		15	2-7	.286	0-0	.000	6-7	.857	3	2	5	2.0	0	0	0	1	1	0	10	6.3			
NORTHERN ILL.	12-4-15																							
OMAHA	12-9-15																							
at Arizona	12-13-15																							
NC STATE	12-19-15																							
vs Illinois	12-23-15																							
ARKANSAS-PB	12-29-15																							
SAVANNAH ST	1-2-16																							
at Georgia	1-6-16																							
AUBURN	1-9-16																							
ARKANSAS	1-12-16																							
at S. Carolina	1-16-16																							
GEORGIA	1-20-16																							
at Texas A&M	1-23-16																							
at Kentucky	1-27-16																							
MISSISSIPPI ST	1-30-16																							
OLE MISS	2-3-16																							
at Alabama	2-6-16																							
at Vanderbilt	2-10-16																							
TENNESSEE	2-13-16																							
S. CAROLINA	2-16-16																							
at Arkansas	2-20-16																							
at Ole Miss	2-23-16																							
TEXAS A&M	2-27-16																							
at LSU	3-1-16																							
FLORIDA	3-5-16																							

2015-16 (FRESHMAN):

- Second game this season making 5 or more FTs in the win vs. Arkansas State (Dec. 1), making 6-of-7.
- Came off bench and sparked Mizzou in second half action vs. UMES (Nov. 15), scoring all 11 of his points after the break.
- Earned the start in his collegiate debut vs. Wofford (Nov. 13), scoring 6 points (3-of-5 FG) in the 83-74 win.

BROWNSBURG HIGH SCHOOL:

- Averaged 19.7 points, 5.0 rebounds and 1.9 steals per game for Brownsburg High School as a senior.
- Shot an impressive 44.0 percent from the floor in his final high school season.
- Named an *Indy Star* Indiana All-Star at the conclusion of his final high school campaign.
- Rated a four-star prospect and ranked as the 103rd best basketball recruit in the nation by Rivals.com.

- Participant at the 28th annual Hoosier Basketball Magazine Top 60 Workout which features Indiana's best upperclassmen
- Chose Mizzou over Cincinnati and Xavier.

PERSONAL:

- Son of Kenneth and Michelle Walton.
- Father, Kenneth, played basketball at Nebraska from 1981-83.
- Born on July 20, 1996, in Indianapolis, Ind.
- Enjoys watching 'Fresh Prince of Bel-Air' in his spare time.
- Favorite sports movie is *Remember the Titans*.
- Favorite professional athlete to follow is Carmelo Anthony.
- Would like to pursue a career in basketball.

#10 AT A GLANCE

2015-16 Career

Scored 5+ points	3	-
Scored 10+ points	2	-
Hit 2+ 3-pointers	-	-
Hit 5+ free throws	2	-
Multiple assists	2	-
Dished 3+ assists	1	-
Played 20+ minutes	1	-
Played 30+ minutes	-	-

#10 GAME HIGHS

2015-16 Career

11, UMES	-
11-15-15	PTS
3, Twice	-
	FGM
8, at Xavier	-
11-17-15	FGA
-	-
-	3PTM
1, Twice	-
	3PTA
9, UMES	-
11-15-15	FTM
10, UMES	-
11-15-15	FTA
5, Arkansas State	-
12-1-15	REB
3, UMES	-
11-15-15	ASST
1, Arkansas State	-
12-1-15	BLKS
1, Twice	-
	STLS

WALTON CAREER STATS

SEASON	G-GS	MIN	MPG	FG-A	FG%	3FG-A	3FG%	FT-A	FT%	REB / AVG.	AST / TO	BS / S	TP	AVG.
2015-16	6-1	90	15.0	10-31	.323	0-3	.000	18-24	.750	12 / 2.0	8 / 4	1 / 2	38	6.3
TOTAL	6-1	90	15.0	10-31	.323	0-3	.000	18-24	.750	12 / 2.0	8 / 4	1 / 2	38	6.3



JIMMY BARTON

RS SO // G // 5-9 // 160

St. Louis, Mo. // DeSmet Jesuit HS

Houston Baptist

LAST GAME (VS. KANSAS STATE 11-23-15)

FG	FGA	3FG	FGA	FT	FTA	AST	PTS
0	0	0	0	0	0	0	0

BARTON 2015-16 GAME-BY-GAME

Opponent	Date	GS	Min	FG	FGA	Pct	3FG	FGA	Pct	FT	FTA	Pct	Off	Def	Tot	Avg	PF	FO	A	TO	Blk	Stl	Pts	Avg
WOFFORD	11-13-15	DNP																						
UMES	11-15-15	1	0-0	.000	0-0	.000	0-0	.000	0-0	.000	0-0	.000	0	0	0	0.0	0	0	0	1	0	0	0	0.0
at Xavier	11-17-15	DNP																						
vs Kansas State	11-23-15	1	0-0	.000	0-0	.000	0-0	.000	0-0	.000	0-0	.000	0	0	0	0.0	0	0	0	0	0	0	0	0.0
vs Northwestern	11-24-15	DNP																						
ARKANSAS ST.	12-1-15	DNP																						
NORTHERN ILL.	12-4-15																							
OMAHA	12-9-15																							
at Arizona	12-13-15																							
NC STATE	12-19-15																							
vs Illinois	12-23-15																							
ARKANSAS-PB	12-29-15																							
SAVANNAH ST	1-2-16																							
at Georgia	1-6-16																							
AUBURN	1-9-16																							
ARKANSAS	1-12-16																							
at S. Carolina	1-16-16																							
GEORGIA	1-20-16																							
at Texas A&M	1-23-16																							
at Kentucky	1-27-16																							
MISSISSIPPI ST	1-30-16																							
OLE MISS	2-3-16																							
at Alabama	2-6-16																							
at Vanderbilt	2-10-16																							
TENNESSEE	2-13-16																							
S. CAROLINA	2-16-16																							
at Arkansas	2-20-16																							
at Ole Miss	2-23-16																							
TEXAS A&M	2-27-16																							
at LSU	3-1-16																							
FLORIDA	3-5-16																							

2015-16 (REDSHIRT SOPHOMORE):

▼ Made first appearance for Mizzou in the win vs. UMES (Nov. 15), coming off the bench in the final moments of the victory.

2014-15 (SOPHOMORE):

▼ Walked onto the Tiger program after playing his freshman season at Division I Houston Baptist.

AT HOUSTON BAPTIST

2013-14 (FRESHMAN):

▼ Played in 31 games for Houston Baptist, making 13 starts.
 ▼ Saw his averages improve to 3.1 points in 19.2 minutes during Southland Conference play.
 ▼ Passed out a career-high eight assists at Abilene Christian and seven more at Sam Houston State in back-to-back contests.
 ▼ Scored a career high nine points and was a perfect 3-of-3 from three-point range in a loss to Southern Miss.

DESMET JESUIT HIGH SCHOOL:

▼ Was a four-year letterwinner and three-year team captain for coach Kevin Poelker at De Smet Jesuit High School in St. Louis, Mo.
 ▼ Averaged 14.0 points, 6.5 assists and 3.5 rebounds per game in leading the Spartans to the state finals, earning Metro Catholic Conference Co-Player of the Year, first-team all-state and second-team All-Metro honors as a senior.

PERSONAL:

▼ Full name is James Edward Barton.
 ▼ Born Oct. 7, 1994, in St. Louis, Mo.
 ▼ Son of Jim Sr. and Christy Barton.
 ▼ Has two sisters, Paige and Mary and one brother, Tommy.
 ▼ Considers his father, Jim Sr., his greatest influence.

#11 AT A GLANCE

2015-16 Career

Scored 5+ points	-	7
Hit 2+ 3-pointers	-	1
Multiple steals	-	4
Multiple assists	-	14
Dished 3+ assists	-	7
Played 20+ minutes	-	9
Played 30+ minutes	-	2

#11 GAME HIGHS

2015-16 Career

	PTS	-
	FGM	-
	FGA	-
	3PTM	-
	3PTA	-
	FTM	-
	FTA	-
	REB	-
	ASST	-
	BLKS	-
	STLS	-

BARTON CAREER STATS

SEASON	G-GS	MIN	MPG	FG-A	FG%	3FG-A	3FG%	FT-A	FT%	REB / AVG.	AST / TO	BS / S	TP	AVG.
2013-14	31-13	515	16.6	34-98	.347	14-50	.280	12-16	.750	35 / 1.1	57 / 43	0 / 15	94	3.0
2014-15	REDSHIRTED													
2015-16	2-0	2	1.0	0-0	.000	0-0	.000	0-0	.000	0 / 0.0	0 / 0	0 / 0	0	0.0
TOTAL	33-13	517	16.6	34-98	.347	14-50	.280	12-16	.750	35 / 1.1	57 / 44	0 / 15	94	3.0

NCAA APPEARANCES: '44, '76, '78, '80, '81, '82, '83, '86, '87, '88, '89, '90, '92, '93, '95, '99, '00, '01, '02, '03, '09, '10, '11, '12, '13



NAMON WRIGHT

SO // G // 6-5 // 202

Los Angeles, Calif.

Pacific Hills High School

LAST GAME (ARKANSAS STATE 12-1-15)

FG	FGA	3FG	3FGA	FT	FTA	REB	PTS
5	9	3	5	1	1	6	14

WRIGHT 2015-16 GAME-BY-GAME

Opponent	Date	GS	Min	FG	FGA	Pct	3FG	FGA	Pct	FT	FTA	Pct	Off	Def	Tot	Avg	PF	FO	A	TO	Blk	Stl	Pts	Avg
WOFFORD	11-13-15		23	5-7		.714	3-4		.750	5-8		.625	2	5	7	7.0	3	0	0	0	0	0	18	18.0
UMES	11-15-15	*	26	1-8		.125	1-4		.250	4-4		1.000	2	3	5	6.0	2	0	1	2	0	0	7	12.5
at Xavier	11-17-15	*	28	2-6		.333	0-4		.000	2-3		.667	0	4	4	5.3	3	0	2	2	0	2	6	10.3
vs Kansas State	11-23-15	*	23	1-6		.167	1-5		.200	2-2		1.000	0	4	4	5.0	1	0	0	2	2	1	5	9.0
vs Northwestern	11-24-15	*	31	2-6		.333	0-2		.000	4-4		1.000	1	1	2	4.4	0	0	3	1	0	0	8	8.8
ARKANSAS ST.	12-1-15	*	28	5-9		.556	3-5		.600	1-1		1.000	0	6	6	4.7	3	0	0	0	1	0	14	9.7
NORTHERN ILL.	12-4-15																							
OMAHA	12-9-15																							
at Arizona	12-13-15																							
NC STATE	12-19-15																							
vs Illinois	12-23-15																							
ARKANSAS-PB	12-29-15																							
SAVANNAH ST	1-2-16																							
at Georgia	1-6-16																							
AUBURN	1-9-16																							
ARKANSAS	1-12-16																							
at S. Carolina	1-16-16																							
GEORGIA	1-20-16																							
at Texas A&M	1-23-16																							
at Kentucky	1-27-16																							
MISSISSIPPI ST	1-30-16																							
OLE MISS	2-3-16																							
at Alabama	2-6-16																							
at Vanderbilt	2-10-16																							
TENNESSEE	2-13-16																							
S. CAROLINA	2-16-16																							
at Arkansas	2-20-16																							
at Ole Miss	2-23-16																							
TEXAS A&M	2-27-16																							
at LSU	3-1-16																							
FLORIDA	3-5-16																							

2015-16 (SOPHOMORE):

- Team-high 14 points (5-of-9 FG, 3-of-5 3PT, 1-of-1 FT) with 6 rebounds and 1 block vs. Arkansas State (Dec. 1).
- Matched his career-high with two assists in the game at Xavier (Nov. 17), the sixth such time he has accomplished the feat.
- Fired in 18 points (5-of-7 FG, 3-of-4 3PT, 5-of-8 FT) in 23 minutes off the bench in the season-opening win vs. Wofford (Nov. 13).
- Also grabbed a career-best 7 rebounds against the Terriers, along with setting new career highs in free throws and attempts.

2014-15 (FRESHMAN):

- Scored double figures in seven different games in his first campaign for Mizzou, averaging 6.8 points per game in 30 games played (20 starts).
- Finished the season as the Tigers' go-to scorer, averaging 13.6 points per game over Mizzou's final five contests.
- Season-ending flurry of points included an impressive 28 points vs.

Florida (Feb. 24), leading the Tigers to a 64-52 win over the Gators.

- His scoring output vs. UF was the third-highest scoring performance by a freshman in Mizzou history, a game in which he shot 10-of-13 FG, 6-of-8 3PT, 2-of-3 FT.

PACIFIC HILLS HIGH SCHOOL:

- Averaged 24.2 points, 9.4 rebounds, 3.0 assists and 1.4 steals for Pacific Hills High School in 2014.
- Ranked as one of the Top 100 players in the class of 2014.
- Helped lead Pacific Hills to the Division IV state championship as a junior and averaged 15.6 points, 7.3 rebounds and 3.1 assists.

PERSONAL:

- Full name is Namon Khary Wright.
- Son of Michelle Burnside.
- Born June 25, 1994, in Los Angeles, Calif.

WRIGHT CAREER STATS

SEASON	G-GS	MIN	MPG	FG-A	FG%	3FG-A	3FG%	FT-A	FT%	REB / AVG.	AST / TO	BS / S	TP	AVG.
2014-15	30-20	607	20.2	77-186	.414	40-103	.388	10-18	.556	69 / 2.3	19 / 37	3 / 17	204	6.8
2015-16	6-5	159	26.5	16-42	.381	8-24	.333	18-22	.818	28 / 4.7	6 / 7	3 / 3	58	9.7
TOTAL	36-25	766	21.3	93-228	.408	48-127	.378	28-40	.700	97 / 2.7	25 / 44	6 / 20	262	7.3

#12 AT A GLANCE

2015-16 Career

Scored 10+ points	2	9
Scored 20+ points	-	2
Hit 2+ 3-pointers	2	14
Made 5+ FGs	2	7
Attempted 5+ FGs	6	23
Attempted 10+ FGs	-	5
Multiple assists	2	7
Multiple steals	1	6
Played 20+ minutes	6	20
Played 30+ minutes	1	7

#12 GAME HIGHS

2015-16 Career

18, Wofford	28, Florida
11-13-15	PTS 2-24-15
5, Twice	10, Florida
	FGM 2-24-15
9, Arkansas State	14, at Mississippi St.
12-1-15	FGA 3-7-15
3, Twice	6, Florida
	3PTM 2-24-15
5, Twice	8, Florida
	3PTA 2-24-15
5, Wofford	5, Wofford
11-13-15	FTM 11-13-15
8, Wofford	8, Wofford
11-13-15	FTA 11-13-15
7, Wofford	7, Wofford
11-13-15	REB 11-13-15
3, vs. Northwestern	3, vs. Northwestern
11-24-15	ASST 11-24-15
2, vs. Kansas St.	2, vs. Kansas St.
11-23-15	BLKS 11-23-15
2, at Xavier	3, at Georgia
11-17-15	STLS 2-28-15



WES CLARK

JR // G // 6-0 // 180

Detroit, Mich.

Romulus High School

LAST GAME (ARKANSAS STATE 12-1-15)

FG	FGA	3FG	3FGA	FT	FTA	AST	PTS
2	7	0	1	4	4	3	8

CLARK 2015-16 GAME-BY-GAME

Opponent	Date	GS	Min	FG	FGA	Pct	3FG	FGA	Pct	FT	FTA	Pct	Off	Def	Tot	Avg	PF	FO	A	TO	Blk	Stl	Pts	Avg
WOFFORD	11-13-15	*	28	0-3	.000	0-0	.000	4-5	.800	0	3	3	3.0	3	0	2	2	0	0	4	4.0			
UMES	11-15-15	*	31	4-11	.364	3-6	.500	4-4	1.000	0	1	1	2.0	1	0	3	1	0	0	15	9.5			
at Xavier	11-17-15	*	31	5-12	.417	1-4	.250	0-1	.000	2	1	3	2.3	3	0	3	2	0	3	11	10.0			
vs Kansas State	11-23-15	*	26	2-9	.222	1-5	.200	0-0	.000	0	2	2	2.3	2	0	6	1	0	0	5	8.8			
vs Northwestern	11-24-15	*	31	1-11	.091	1-3	.333	2-2	1.000	1	3	4	2.6	3	0	4	1	0	3	5	8.0			
ARKANSAS ST.	12-1-15	*	26	2-7	.286	0-1	.000	4-4	1.000	1	3	4	2.8	2	0	3	3	0	0	8	8.0			
NORTHERN ILL.	12-4-15																							
OMAHA	12-9-15																							
at Arizona	12-13-15																							
NC STATE	12-19-15																							
vs Illinois	12-23-15																							
ARKANSAS-PB	12-29-15																							
SAVANNAH ST	1-2-16																							
at Georgia	1-6-16																							
AUBURN	1-9-16																							
ARKANSAS	1-12-16																							
at S. Carolina	1-16-16																							
GEORGIA	1-20-16																							
at Texas A&M	1-23-16																							
at Kentucky	1-27-16																							
MISSISSIPPI ST	1-30-16																							
OLE MISS	2-3-16																							
at Alabama	2-6-16																							
at Vanderbilt	2-10-16																							
TENNESSEE	2-13-16																							
S. CAROLINA	2-16-16																							
at Arkansas	2-20-16																							
at Ole Miss	2-23-16																							
TEXAS A&M	2-27-16																							
at LSU	3-1-16																							
FLORIDA	3-5-16																							

2015-16 (JUNIOR):

- Scored at least 15 points for the sixth time in his career in the 73-55 win vs. UMES (Nov. 5), hitting 3-of-6 from 3-point range.
- Made his return to Mizzou's lineup in the season-opening win vs. Wofford (Nov. 13), finishing his comeback from the right elbow dislocation that ended his sophomore season.

2014-15 (SOPHOMORE):

- Averaged 10.1 points per game in his first season in a primary role for Mizzou, starting 20 of 23 games played.
- 11 points (4-of-10 FG, 1-of-4 3PT, 2-of-2 FT) at South Carolina (Feb. 10) in 26 minutes of action before a right elbow dislocation forced him off the court for the remainder of the game.
- Career-high 19 points (7-of-16 FG, 3-of-7 3PT, 2-of-2 FT) vs. No. 1 Kentucky (Jan. 29), also recording 4 assists, 3 steals and attempting a career-high 16 field goals.

2013-14 (FRESHMAN):

- Averaged 4.1 points, 2.2 rebounds and 2.1 assists in 20.4 minutes per game as a freshman, playing in 33 contests.
- Had 14 games with three or more assists, including a career-high six dimes in the home win over Mississippi State (3/1) and five in wins against Hawaii (11/16) and West Virginia (12/5).

ROMULUS HIGH SCHOOL:

- Led his team to the 2013 Michigan Class A state title, a 27-1 overall record and a No. 24 ranking in the final ESPN High School Power Rankings.
- Was named first team all-state each of his final two years as a prep, averaging 12.8 points, 4.0 rebounds and 6.5 assists as a senior.

PERSONAL:

- Full name is Wesley Lavert Clark.
- Son of Yvette Johnson and Wes Clark Sr.
- Born Dec. 12, 1994, in Detroit, Mich.

CLARK CAREER STATS

SEASON	G-GS	MIN	MPG	FG-A	FG%	3FG-A	3FG%	FT-A	FT%	REB / AVG.	AST / TO	BS / S	TP	AVG.
2013-14	33-0	672	20.4	42-117	.359	21-57	.368	31-49	.633	72 / 2.2	70 / 53	2 / 26	136	4.1
2014-15	23-20	713	31.0	81-233	.348	32-102	.314	38-51	.745	81 / 3.5	71 / 45	4 / 38	232	10.1
2015-16	6-6	173	28.8	14-53	.264	6-19	.316	14-16	.875	17 / 2.8	21 / 10	0 / 6	48	8.0
TOTAL	62-26	1558	25.1	137-403	.340	59-178	.331	83-116	.716	170 / 2.7	162 / 108	6 / 70	416	6.7

NCAA APPEARANCES: '44, '76, '78, '80, '81, '82, '83, '86, '87, '88, '89, '90, '92, '93, '95, '99, '00, '01, '02, '03, '09, '10, '11, '12, '13

#15 AT A GLANCE

2015-16 Career

Scored 10+ points	2	15
Scored 15+ points	1	6
Dished 3+ assists	5	31
Dished 5+ assists	1	11
Hit 5+ FGs	1	7
Hit 2+ 3-pointers	1	15
Attempted 10+ FGs	3	16
Recorded 3+ steals	2	10
Grabbed 5+ rebounds	-	10
Played 30+ minutes	3	18

#15 GAME HIGHS

2015-16 Career

15, UMES	19, Kentucky
11-15-15	PTS 1-29-15
5, at Xavier	7, Twice
11-17-15	FGM
12, at Xavier	16, Kentucky
11-17-15	FGA 1-29-15
3, UMES	4, at Texas A&M
11-15-15	3PTM 1-21-15
6, UMES	7, Kentucky
11-15-15	3PTA 1-29-15
4, 3 times	6, Twice
	FTM
5, Wofford	8, vs. Oklahoma State
11-13-15	FTA 12-30-14
4, vs. Northwestern	6, vs. Chaminade
11-24-15	REB 11-26-14
6, vs. Kansas State	9, Oral Roberts
11-23-15	ASST 11-19-14
-	1, Twice
-	BLKS
3, Twice	6, UMKC
	STLS 11-14-14



JAKEENAN GANT

SO // F // 6-8 // 212

Springfield, Ga.

Effingham County High School

LAST GAME (ARKANSAS STATE 12-1-15)

FG	FGA	3FG	3FGA	FT	FTA	REB	PTS
1	4	0	1	2	3	1	2

GANT 2015-16 GAME-BY-GAME

Opponent	Date	GS	Min	FG	FGA	Pct	3FG	FGA	Pct	FT	FTA	Pct	Off	Def	Tot	Avg	PF	FO	A	TO	Blk	Stl	Pts	Avg
WOFFORD	11-13-15	*	16	1-5	.200		0-3	.000		2-2	1.000	1	3	4	4.0	5	1	1	0	1	0	4	4.0	
UMES	11-15-15	*	13	2-2	1.000		0-0	.000		0-0	.000	0	1	1	2.5	4	0	0	1	2	1	4	4.0	
at Xavier	11-17-15	*	15	0-3	.000		0-2	.000		1-2	.500	1	1	2	2.3	1	0	1	2	1	0	1	3.0	
vs Kansas State	11-23-15	*	7	0-2	.000		0-1	.000		0-0	.000	0	1	1	2.0	4	0	0	0	1	0	0	2.3	
vs Northwestern	11-24-15		5	1-1	1.000		0-0	.000		2-3	.667	1	0	1	1.8	3	0	0	0	0	0	4	2.6	
ARKANSAS ST.	12-1-15		8	1-4	.250		0-1	.000		0-0	.000	1	0	1	1.7	1	0	0	0	1	0	2	2.5	
NORTHERN ILL.	12-4-15																							
OMAHA	12-9-15																							
at Arizona	12-13-15																							
NC STATE	12-19-15																							
vs Illinois	12-23-15																							
ARKANSAS-PB	12-29-15																							
SAVANNAH ST	1-2-16																							
at Georgia	1-6-16																							
AUBURN	1-9-16																							
ARKANSAS	1-12-16																							
at S. Carolina	1-16-16																							
GEORGIA	1-20-16																							
at Texas A&M	1-23-16																							
at Kentucky	1-27-16																							
MISSISSIPPI ST	1-30-16																							
OLE MISS	2-3-16																							
at Alabama	2-6-16																							
at Vanderbilt	2-10-16																							
TENNESSEE	2-13-16																							
S. CAROLINA	2-16-16																							
at Arkansas	2-20-16																							
at Ole Miss	2-23-16																							
TEXAS A&M	2-27-16																							
at LSU	3-1-16																							
FLORIDA	3-5-16																							

2015-16 (SOPHOMORE):

- Fifth career game with at least two blocks in the 73-55 win vs. UMES (Nov. 15)
- Earned seventh start of his career in Mizzou's season-opening, 83-74 win vs. Wofford (Nov. 13).

2014-15 (FRESHMAN):

- Shot an efficient 51.2-percent from the field in his initial season wearing the Black & Gold.
- Finished the season with 14 blocks in 23 games for a team-best average of 0.61 blocks per game.
- 13 points (4-of-8 FG, 1-of-4 3PT, 4-of-4 FT) in 15 minutes off the bench vs. Xavier (Dec. 13), the first action of his collegiate career.
- Did not appear in the first 9 games of 2014-15 during a review of his eligibility by the University of Missouri.

EFFINGHAM COUNTY HIGH SCHOOL:

- One of the premier players in the class of 2014 and was selected to participate in USA Basketball's U18 National Team training camp in Colorado Springs, Colo., at the completion of his senior season.
- Was named Georgia's Mr. Basketball as a senior in 2014.
- Averaged 21.0 points, 10.5 rebounds, 4.0 blocks and 2.8 assists for the Effingham County Rebels as a senior, helping his club to a 20-10 overall record and an appearance in the Georgia Class 5A state playoffs.

PERSONAL:

- Full name is Jakeenan Tyelle Gant.
- Son of La'Kenia Gant and James McDonald.
- Has an older sister, Daira, and younger sister, Arial.
- Born May 6, 1996, in Savannah, Ga.
- Would enjoy working in the restaurant business after basketball.

#23 AT A GLANCE

2015-16 Career

Scored 5+ points	-	13
Scored 10+ points	-	3
Hit 3+ FGs	-	10
Grabbed 5+ rebounds	-	2
Recorded 2+ blocks	1	5
Played 20+ minutes	-	3

#23 GAME HIGHS

2015-16 Career

4, Twice	13, Xavier
PTS	12-13-14
2, UMES	5, at Arkansas
11-15-15	FGM
5, Wofford	13, Xavier
11-13-15	FGA
-	1, Xavier
-	3PTM
3, Wofford	4, Xavier
11-13-15	3PTA
2, Twice	4, Twice
FTM	
3, vs. Northwestern	6, at Georgia
11-24-15	FTA
4	7, at Arkansas
11-13-15	REB
1, Twice	3, at Arkansas
ASST	2-18-15
2, UMES	3, Twice
11-15-15	BLKS
1, UMES	1. 9 times
11-15-15	STLS

GANT CAREER STATS

SEASON	G-GS	MIN	MPG	FG-A	FG%	3FG-A	3FG%	FT-A	FT%	REB / AVG.	AST / TO	BS / S	TP	AVG.
2014-15	23-6	324	14.1	47-91	.516	1-14	.071	18-25	.720	50 / 2.2	7 / 16	14 / 9	113	4.9
2015-16	6-4	64	10.7	5-17	.294	0-7	.000	5-7	.714	10 / 1.7	2 / 3	6 / 1	15	2.5
TOTAL	29-10	388	13.4	52-108	.481	1-21	.048	23-32	.719	60 / 2.1	9 / 19	20 / 10	128	4.4



KEVIN PURYEAR

FR // F // 6-7 / 236

Blue Springs, Mo.

South High School

LAST GAME (ARKANSAS STATE 12-1-15)

FG	FGA	3FG	3FGA	FT	FTA	REB	PTS
6	11	0	2	2	4	4	14

PURYEAR 2015-16 GAME-BY-GAME

Opponent	Date	GS	Min	FG	FGA	Pct	3FG	3FGA	Pct	FT	FTA	Pct	Off	Def	Tot	Avg	PF	FO	A	TO	Blk	Stl	Pts	Avg
WOFFORD	11-13-15	*	32	8-14	.571	1-3	.333	3-4	.750	0	5	5	5.0	1	0	0	2	0	1	20	20.0			
UMES	11-15-15	*	26	4-7	.571	0-0	.000	5-6	.833	1	4	5	5.0	0	0	1	2	0	1	13	16.5			
at Xavier	11-17-15	*	29	4-9	.444	0-2	.000	4-4	1.000	0	5	5	5.0	3	0	0	1	0	0	12	15.0			
vs Kansas State	11-23-15	*	31	4-9	.444	0-0	.000	1-2	.500	1	2	3	4.5	2	0	0	0	1	0	9	13.5			
vs Northwestern	11-24-15	*	29	6-11	.545	0-2	.000	2-4	.500	1	3	4	4.4	1	0	1	2	0	0	14	13.6			
ARKANSAS ST.	12-1-15	*	21	4-7	.571	0-1	.000	2-3	.667	2	5	7	4.8	2	0	1	3	0	0	10	13.0			
NORTHERN ILL.	12-4-15																							
OMAHA	12-9-15																							
at Arizona	12-13-15																							
NC STATE	12-19-15																							
vs Illinois	12-23-15																							
ARKANSAS-PB	12-29-15																							
SAVANNAH ST	1-2-16																							
at Georgia	1-6-16																							
AUBURN	1-9-16																							
ARKANSAS	1-12-16																							
at S. Carolina	1-16-16																							
GEORGIA	1-20-16																							
at Texas A&M	1-23-16																							
at Kentucky	1-27-16																							
MISSISSIPPI ST	1-30-16																							
OLE MISS	2-3-16																							
at Alabama	2-6-16																							
at Vanderbilt	2-10-16																							
TENNESSEE	2-13-16																							
S. CAROLINA	2-16-16																							
at Arkansas	2-20-16																							
at Ole Miss	2-23-16																							
TEXAS A&M	2-27-16																							
at LSU	3-1-16																							
FLORIDA	3-5-16																							

2015-16 (FRESHMAN):

- Has reached double figures in scoring in 5-of-6 games in 2015-16.
- Scored 20 points (8-of-14 FG, 1-of-3 3PT, 3-of-4 FT) in his collegiate debut, leading Mizzou past Wofford (Nov. 13), 83-74.
- Joined an exclusive list of debuts, with other recent 20-point Tiger freshman performances including: Montague Gill-Ceaser, 21 points vs. UMKC (Nov. 14, 2014), Jevon Crudup, 22 points at Rutgers (Nov. 27, 1990), Steve Stipanovich, 23 points vs. Southwest Texas State (Nov. 30, 1979).

BLUE SPRINGS SOUTH HIGH SCHOOL:

- Averaged 20.1 points and 7.8 rebounds per game while shooting 53.4 percent from the floor as a senior at Blue Springs South.
- Led South to its first Missouri Class 5 State Championship in school history at Mizzou Arena as a senior.
- Was a Missouri Class 5 All-State selection as a junior and senior.
- Named to the Kansas City Star's 2015 All-Metro Player of the Year.
- All-Suburban Golden Conference Player of the Year and First Team

member as a senior.

- Fueled his team to a 21-4 record as a junior and a 22-2 mark as a sophomore.
- Chose Mizzou over offers from Arkansas, Ole Miss, Nebraska, Oklahoma State and Creighton.

PERSONAL:

- Son of Kevin and Vicki Puryear.
- Born Nov. 18, 1996, in New Brunswick, N.J.
- Has two sisters, Aleyse and Kendall.
- Grew up dreaming of chance to play at Mizzou.
- Favorite sports movie is *Coach Carter*.
- Favorite professional athlete to follow is LeBron James.
- Would like to pursue a career in basketball.

#24 AT A GLANCE

2015-16 Career

Scored 10+ points	5	-
Scored 15+ points	1	-
Scored 20+ points	1	-
Hit 5+ FGs	2	-
Hit 2+ 3-pointers	-	-
Attempted 10+ FGs	2	-
Grabbed 5+ rebounds	4	-
Played 20+ minutes	6	-
Played 30+ minutes	2	-

#24 GAME HIGHS

2015-16 Career

20, Wofford		-
11-13-15	PTS	-
8, Wofford		-
11-13-15	FGM	-
14, Wofford		-
11-13-15	FGA	-
1, Wofford		-
11-13-15	3PTM	-
3, Wofford		-
11-13-15	3PTA	-
5, UMES		-
11-15-15	FTM	-
6, UMES		-
11-15-15	FTA	-
7. Arkansas St.		-
	REB	-
1, Twice		-
	ASST	-
1, vs. Kansas State		-
11-23-15	BLKS	-
1, Twice		-
	STLS	-

PURYEAR CAREER STATS

SEASON	G-GS	MIN	MPG	FG-A	FG%	3FG-A	3FG%	FT-A	FT%	REB / AVG.	AST / TO	BS / S	TP	AVG.
2015-16	6-6	168	28.0	30-57	.526	1-8	.125	17-23	.739	29 / 4.8	3 / 10	1 / 2	78	13.0
Total	6-6	168	28.0	30-57	.526	1-8	.125	17-23	.739	29 / 4.8	3 / 10	1 / 2	78	13.0



RUSSELL WOODS

JR // F // 6-8 // 225

Chicago, Ill. // Simeon Career Academy

John A. Logan College (Ill.)

LAST GAME (ARKANSAS STATE 12-1-15)

FG	FGA	3FG	3FGA	FT	FTA	REB	PTS
4	6	0	0	0	4	4	8

WOODS 2015-16 GAME-BY-GAME

Opponent	Date	GS	Min	FG	FGA	Pct	3FG	FGA	Pct	FT	FTA	Pct	Off	Def	Tot	Avg	PF	FO	A	TO	Blk	Stl	Pts	Avg
WOFFORD	11-13-15	13	4-5	.800	0-0	.000	1-1	1.000	1	2	3	3.0	3	0	0	0	0	0	0	0	0	9	9.0	
UMES	11-15-15	15	0-0	.000	0-0	.000	1-4	.250	0	1	1	2.0	2	0	1	0	1	0	1	0	1	5.0		
at Xavier	11-17-15	8	0-0	.000	0-0	.000	0-0	.000	2	1	3	2.3	3	0	0	0	0	0	0	0	0	3.3		
vs Kansas State	11-23-15	19	2-3	.667	0-0	.000	0-0	.000	1	0	1	2.0	3	0	0	0	0	0	0	0	4	3.5		
vs Northwestern	11-24-15	12	0-0	.000	0-0	.000	0-0	.000	0	1	1	1.8	3	0	0	0	0	0	0	0	0	2.8		
ARKANSAS ST.	12-1-15	11	4-6	.667	0-0	.000	0-4	.000	2	2	4	2.2	3	0	0	1	1	0	8	3.7				
NORTHERN ILL.	12-4-15																							
OMAHA	12-9-15																							
at Arizona	12-13-15																							
NC STATE	12-19-15																							
vs Illinois	12-23-15																							
ARKANSAS-PB	12-29-15																							
SAVANNAH ST	1-2-16																							
at Georgia	1-6-16																							
AUBURN	1-9-16																							
ARKANSAS	1-12-16																							
at S. Carolina	1-16-16																							
GEORGIA	1-20-16																							
at Texas A&M	1-23-16																							
at Kentucky	1-27-16																							
MISSISSIPPI ST	1-30-16																							
OLE MISS	2-3-16																							
at Alabama	2-6-16																							
at Vanderbilt	2-10-16																							
TENNESSEE	2-13-16																							
S. CAROLINA	2-16-16																							
at Arkansas	2-20-16																							
at Ole Miss	2-23-16																							
TEXAS A&M	2-27-16																							
at LSU	3-1-16																							
FLORIDA	3-5-16																							

2015-16 (JUNIOR):

- Scored 9 points (4-of-5 FG, 1-of-1 FT) in his Mizzou debut vs. Wofford (Nov. 13), logging 13 minutes off the bench.

JUNIOR COLLEGE (JOHN A. LOGAN COLLEGE):

- Averaged 14.1 points and 7.2 rebounds per game and shot 61-percent from the field during the 2014-15 season at John A. Logan.
- Led John A. Logan College to a 27-7 record in 2014-15.
- Anchored the post as John A. Logan captured a Great Rivers Athletic Conference title and an NJCAA National Tournament berth.
- As a freshman, recorded 6.1 points per game while shooting 49.6-percent from the field.

HIGH SCHOOL:

- Won an Illinois state title as a senior at Simeon Career Academy.
- Played alongside Milwaukee Bucks forward and former No. 2 NBA Draft selection Jabari Parker.

- Transferred to Simeon from Leo Catholic High School in Chicago after his junior year.
- Earned all-state recognition as a junior at Leo Catholic.

PERSONAL:

- Son of Vivian Winters and Russell Woods, Sr.
- Born Dec. 5, 1994, in Chicago, Ill.
- Enjoys cooking in his spare time.

WOODS CAREER STATS

SEASON	G-GS	MIN	MPG	FG-A	FG%	3FG-A	3FG%	FT-A	FT%	REB / AVG.	AST / TO	BS / S	TP	AVG.
2015-16	6-0	78	13.0	10-14	.714	0-0	.000	2-9	.222	13 / 2.2	1 / 1	2 / 0	22	3.7
TOTAL	6-0	78	13.0	10-14	.714	0-0	.000	2-9	.222	13 / 2.2	1 / 1	2 / 0	22	3.7

#25 AT A GLANCE

2015-16 Career

Scored 5+ points	2	-
Scored 10+ points	-	-
Hit 3+ FGs	2	-
Grabbed 5+ rebounds	-	-
Recorded 2+ blocks	-	-
Played 20+ minutes	-	-

#25 GAME HIGHS

2015-16 Career

9, Wofford	-
11-13-15	PTS
4, Twice	-
	FGM
6, Arkansas St.	-
12-1-15	FGA
-	-
-	3PTM
-	-
-	3PTA
1, Wofford	-
11-13-15	FTM
4, Twice	-
	FTA
4, Arkansas St.	-
12-1-15	REB
1, UMES	-
11-15-15	ASST
1, Twice	-
	BLKS
-	-
-	STLS
-	-



ADAM WOLF

FR // F // 6-7 // 202
Beaver Dam, Wis.
Beaver Dam High School

LAST GAME (N/A)

FG	FGA	3FG	FGA	FT	FTA	REB	PTS
-	-	-	-	-	-	-	-

WOLF 2015-16 GAME-BY-GAME

Opponent	Date	GS	Min	FG	FGA	Pct	3FG	FGA	Pct	FT	FTA	Pct	Off	Def	Tot	Avg	PF	FO	A	TO	Blk	Stl	Pts	Avg
WOFFORD	11-13-15	DNP																						
UMES	11-15-15	DNP																						
at Xavier	11-17-15	DNP																						
vs Kansas State	11-23-15	DNP																						
vs Northwestern	11-24-15	DNP																						
ARKANSAS ST.	12-1-15	DNP																						
NORTHERN ILL.	12-4-15																							
OMAHA	12-9-15																							
at Arizona	12-13-15																							
NC STATE	12-19-15																							
vs Illinois	12-23-15																							
ARKANSAS-PB	12-29-15																							
SAVANNAH ST	1-2-16																							
at Georgia	1-6-16																							
AUBURN	1-9-16																							
ARKANSAS	1-12-16																							
at S. Carolina	1-16-16																							
GEORGIA	1-20-16																							
at Texas A&M	1-23-16																							
at Kentucky	1-27-16																							
MISSISSIPPI ST	1-30-16																							
OLE MISS	2-3-16																							
at Alabama	2-6-16																							
at Vanderbilt	2-10-16																							
TENNESSEE	2-13-16																							
S. CAROLINA	2-16-16																							
at Arkansas	2-20-16																							
at Ole Miss	2-23-16																							
TEXAS A&M	2-27-16																							
at LSU	3-1-16																							
FLORIDA	3-5-16																							

HIGH SCHOOL:

- Averaged 17.0 points and 7.5 rebounds per game and helped lead Beaver Dam High School to a 19-win season as a senior.
- Earned Little Ten Conference Co-Player of the Year honors for his tremendous play on the court.
- Played three seasons at Lake Forest High School in Illinois before transferring to Beaver Dam High School in Wisconsin for his senior season.
- Battled injuries through career at Lake Forest, averaging 6.3 points and 3.3 points per game as a junior while playing through a stress fracture.
- Passed up several Division II scholarship offers to accept Coach Anderson's walk-on opportunity at Mizzou.

PERSONAL:

- Son of John and Jamie Wolf.
- Born on March 21, 1997, in Milwaukee, Wis.
- Has an older sister, Danielle, and younger sister, Lilly.
- Would like to work in business at the conclusion of his basketball-playing career.
- Father, John, was a walk-on basketball player at Marquette from 1989-91.
- Favorite movie is *Star Wars*.

WOLF CAREER STATS

SEASON	G-GS	MIN	MPG	FG-A	FG%	3FG-A	3FG%	FT-A	FT%	REB / AVG.	AST / TO	BS / S	TP	AVG.
2015-16	-	-	-	-	-	-	-	-	-	-	-	-	-	-
TOTAL	-	-	-	-	-	-	-	-	-	-	-	-	-	-

#32 AT A GLANCE

2015-16 Career

Scored 5+ points	-	-
Scored 10+ points	-	-
Hit 3+ FGs	-	-
Grabbed 5+ rebounds	-	-
Recorded 2+ blocks	-	-
Played 20+ minutes	-	-

#32 GAME HIGHS

2015-16 Career

		-
PTS		-
		-
FGM		-
		-
FGA		-
		-
3PTM		-
		-
3PTA		-
		-
FTM		-
		-
FTA		-
		-
REB		-
		-
ASST		-
		-
BLKS		-
		-
STLS		-



CULLEN VANLEER

FR // G // 6-4 // 200

Pacific, Mo.

Pacific High School

LAST GAME (ARKANSAS STATE 12-1-15)

FG	FGA	3FG	3FGA	FT	FTA	AST	PTS
2	6	2	4	0	0	1	6

VANLEER 2015-16 GAME-BY-GAME

Opponent	Date	GS	Min	FG	FGA	Pct	3FG	FGA	Pct	FT	FTA	Pct	Off	Def	Tot	Avg	PF	FO	A	TO	Blk	Stl	Pts	Avg
WOFFORD	11-13-15	12	2-2	1.000	1-1	1.000	0-1	.000	1	0	1	1.0	0	0	2	0	0	0	0	0	0	5	5.0	
UMES	11-15-15	9	1-3	.333	1-3	.333	0-0	.000	0	0	0	0.5	1	0	0	0	0	0	0	0	1	3	4.0	
at Xavier	11-17-15	22	5-9	.556	3-7	.429	0-0	.000	0	0	0	0.3	2	0	0	1	0	2	13	7.0				
vs Kansas State	11-23-15	17	2-5	.400	2-5	.400	0-0	.000	0	3	3	1.0	2	0	0	0	0	0	0	0	6	6.8		
vs Northwestern	11-24-15	15	1-5	.200	1-4	.250	0-0	.000	1	1	2	1.2	2	0	1	0	0	0	3	6.0				
ARKANSAS ST.	12-1-15	16	2-6	.333	2-4	.500	0-0	.000	1	2	3	1.5	3	0	1	1	0	0	6	6.0				
NORTHERN ILL.	12-4-15																							
OMAHA	12-9-15																							
at Arizona	12-13-15																							
NC STATE	12-19-15																							
vs Illinois	12-23-15																							
ARKANSAS-PB	12-29-15																							
SAVANNAH ST	1-2-16																							
at Georgia	1-6-16																							
AUBURN	1-9-16																							
ARKANSAS	1-12-16																							
at S. Carolina	1-16-16																							
GEORGIA	1-20-16																							
at Texas A&M	1-23-16																							
at Kentucky	1-27-16																							
MISSISSIPPI ST	1-30-16																							
OLE MISS	2-3-16																							
at Alabama	2-6-16																							
at Vanderbilt	2-10-16																							
TENNESSEE	2-13-16																							
S. CAROLINA	2-16-16																							
at Arkansas	2-20-16																							
at Ole Miss	2-23-16																							
TEXAS A&M	2-27-16																							
at LSU	3-1-16																							
FLORIDA	3-5-16																							

2015-16 (FRESHMAN):

- Season-best 13 points (5-of-9 FG, 3-of-7 3PT) at Xavier (Nov. 17), leading the Tigers in scoring for the first time.
- Hit on his two field goal attempts in his collegiate debut vs. Wofford (Nov. 13), including his first career 3-pointer.

PACIFIC HIGH SCHOOL:

- Averaged 23.5 points and 7.3 rebounds per game for Pacific High School as a senior.
- Became the all-time leading scorer in Pacific history, snapping a record that stood since 1954.
- Reached 1,000 career points in just 58 games
- Named Missouri Class 4 Co-Player of the Year.
- Was a MBCA Class 4 All-State selection.
- Added academic all-conference honors as a senior.
- Also competed in golf in high school, receiving first team all-conference recognition.

PERSONAL:

- Son of John and Lori VanLeer.
- Born on May 25, 1996, in Beaufort, Mo.
- Both parents attended Missouri State and work as educators, with mother, Lori, working as a superintendent and father, John, working as a physical education teacher and coach.
- Has been a fan of Mizzou Basketball since childhood.
- Showed cattle as a youngster.
- Has a younger brother named Cameron.
- Favorite sports movie is *Glory Road*.
- Would like to follow in his parents' footsteps and become a teacher or coach, or work in the physical therapy field.

VANLEER CAREER STATS

SEASON	G-GS	MIN	MPG	FG-A	FG%	3FG-A	3FG%	FT-A	FT%	REB / AVG.	AST / TO	BS / S	TP	AVG.
2015-16	6-0	91	15.2	13-30	.433	10-24	.417	0-1	.000	9 / 1.5	4 / 2	0 / 3	36	6.0
TOTAL	6-0	91	15.2	13-30	.433	10-24	.417	0-1	.000	9 / 1.5	4 / 2	0 / 3	36	6.0

#33 AT A GLANCE

2015-16 Career

Scored 5+ points	4	-
Scored 10+ points	1	-
Hit 3+ FGs	1	-
Hit 2+ 3PT FGs	3	-
Multiple assists	1	-
Multiple steals	1	-
Played 15+ minutes	4	-

#33 GAME HIGHS

2015-16 Career

13, at Xavier	PTS	-
11-17-15	PTS	-
5, at Xavier	FGM	-
11-17-15	FGM	-
9, at Xavier	FGA	-
11-17-15	FGA	-
3, at Xavier	3PTM	-
11-17-15	3PTM	-
7, at Xavier	3PTA	-
11-17-15	3PTA	-
-	FTM	-
1, Wofford	FTA	-
11-13-15	FTA	-
3, Twice	REB	-
2, Wofford	ASST	-
11-13-15	ASST	-
-	BLKS	-
2, at Xavier	STLS	-
11-17-15	STLS	-



RYAN ROSBURG

SR // F // 6-10 // 260

Chesterfield, Mo.

Marquette High School

LAST GAME (ARKANSAS STATE 12-1-15)

FG	FGA	3FG	FGA	FT	FTA	REB	PTS
5	9	0	0	0	2	2	10

ROSBURG 2015-16 GAME-BY-GAME

Opponent	Date	GS	Min	FG	FGA	Pct	3FG	FGA	Pct	FT	FTA	Pct	Off	Def	Tot	Avg	PF	FO	A	TO	Blk	Stl	Pts	Avg
WOFFORD	11-13-15	20	1-2	.500	0-0	.000	4-6	.667	0	3	3	3.0	3	0	0	0	0	0	0	0	1	6	6.0	
UMES	11-15-15	10	0-0	.000	0-0	.000	0-0	.000	0	3	3	3.0	1	0	0	0	1	0	0	1	0	0	3.0	
at Xavier	11-17-15	9	0-0	.000	0-0	.000	1-2	.500	1	0	1	2.3	1	0	0	1	1	0	1	1	0	1	2.3	
vs Kansas State	11-23-15	7	0-0	.000	0-0	.000	0-2	.000	1	0	1	2.0	3	0	1	0	0	0	0	0	0	0	1.8	
vs Northwestern	11-24-15	*	28	4-9	.444	0-0	.000	0-3	.000	3	6	9	3.4	3	0	0	1	0	0	0	0	8	3.0	
ARKANSAS ST.	12-1-15	*	29	5-9	.556	0-0	.000	0-0	.000	0	2	2	3.2	3	0	0	1	0	0	0	0	10	4.2	
NORTHERN ILL.	12-4-15																							
OMAHA	12-9-15																							
at Arizona	12-13-15																							
NC STATE	12-19-15																							
vs Illinois	12-23-15																							
ARKANSAS-PB	12-29-15																							
SAVANNAH ST	1-2-16																							
at Georgia	1-6-16																							
AUBURN	1-9-16																							
ARKANSAS	1-12-16																							
at S. Carolina	1-16-16																							
GEORGIA	1-20-16																							
at Texas A&M	1-23-16																							
at Kentucky	1-27-16																							
MISSISSIPPI ST	1-30-16																							
OLE MISS	2-3-16																							
at Alabama	2-6-16																							
at Vanderbilt	2-10-16																							
TENNESSEE	2-13-16																							
S. CAROLINA	2-16-16																							
at Arkansas	2-20-16																							
at Ole Miss	2-23-16																							
TEXAS A&M	2-27-16																							
at LSU	3-1-16																							
FLORIDA	3-5-16																							

2015-16 (SENIOR):

- Matched career-high with 4 free throw makes vs. Wofford (Nov. 13), scoring 6 points in 20 minutes off the bench.

2014-15 (JUNIOR):

- Appeared in 30 or more games for the third consecutive season, earning 17 starts for Mizzou as a junior.
- Season-best 12 points on impressive 6-of-7 FG shooting vs. Mississippi State (Feb. 14).

2013-14 (SOPHOMORE):

- Played in all 35 games as a sophomore, making 32 starts.
- Averaged 4.8 points and 4.1 rebounds while shooting an incredibly efficient 71.6 percent from the floor.

2012-13 (FRESHMAN):

- Played in 31 games as a reserve for Alex Oriakhi and averaged 6.9 minutes per contest.

MARQUETTE HIGH SCHOOL:

- One of Missouri's top players his final two seasons of high school and twice earned all-state honors.
- Finished with 1,862 career points, second all-time in school history and is the school's career leaders in rebounding and blocked shots.

PERSONAL:

- Son of Cindy and Paul Rosburg.
- Born Nov. 12, 1993, in Chesterfield, Mo.
- Has one brother, Andy, who played at Mizzou in 2011-12.
- Is majoring in marketing.

#44 AT A GLANCE

2015-16 Career

Scored 5+ points	3	26
Scored 10+ points	1	3
Grabbed 10+ rebounds	-	2
Recorded 2+ blocks	-	8
Played 20+ minutes	3	37

#44 GAME HIGHS

2015-16 Career

10, Arkansas St.	14, vs. Northwestern
12-1-15	PTS 11-28-13
5, Arkansas St.	6, Mississippi State
12-1-15	FGM 2-14-15
9, Twic	7, Mississippi State
	FGA 2-14-15
-	-
-	3PTM -
-	-
-	3PTA -
4, Woffrd	4, 3 times
11-13-15	FTM
6, Wofford	7, vs. Chaminade
11-13-15	FTA 11-26-14
9, vs. Northwestern	12, at Georgia
11-24-15	REB 2-25-14
1, vs. Kansas State	2, SEMO
11-23-15	ASST 12-2-14
1, Twice	2, 8 times
	BLKS
1, Wofford	2, 3 times
11-13-15	STLS

ROSBURG CAREER STATS

SEASON	G-GS	MIN	MPG	FG-A	FG%	3FG-A	3FG%	FT-A	FT%	REB / AVG.	AST / TO	BS / S	TP	AVG.
2012-13	31-0	213	6.9	11-27	.407	0-0	.000	8-14	.571	41 / 1.3	7 / 6	6 / 1	30	1.0
2013-14	35-32	778	22.2	68-95	.716	0-0	.000	33-58	.569	145 / 4.1	10 / 41	22 / 7	169	4.8
2014-15	30-17	501	16.7	42-84	.500	0-0	.000	15-45	.333	78 / 2.6	8 / 19	18 / 6	99	3.3
2015-16	6-2	103	17.2	10-20	.500	0-0	.000	5-13	.385	19 / 3.2	1 / 3	2 / 1	25	4.2
TOTAL	102-51	1595	15.6	131-226	.580	0-0	.000	61-130	.469	283 / 2.8	26 / 69	48 / 15	323	3.2

NCAA APPEARANCES: '44, '76, '78, '80, '81, '82, '83, '86, '87, '88, '89, '90, '92, '93, '95, '99, '00, '01, '02, '03, '09, '10, '11, '12, '13

2015-16 MIZZOU OVERALL STATISTICS

Record	Overall	Home	Away	Neutral
ALL GAMES	3-3	3-0	0-1	0-2
CONFERENCE	0-0	0-0	0-0	0-0
NON-CONFERENCE	3-3	3-0	0-1	0-2

#	Player	TOTAL							3-PTS			REBOUNDS																
		GP	GS	Min	Avg	FG	FGA	Pct	3FG	FGA	Pct	FT	FTA	Pct	Off	Def	Tot	Avg	PF	FO	A	TO	Blk	Stl	Pts	Avg		
24	PURYEAR, Kevin	6	6	168	28.0	30	57	.526	1	8	.125	17	23	.739	5	24	29	4.8	9	0	3	10	1	2	78	13.0		
12	WRIGHT, Namon	6	5	159	26.5	16	42	.381	8	24	.333	18	22	.818	5	23	28	4.7	12	0	6	7	3	3	58	9.7		
01	PHILLIPS, Terrence	6	6	146	24.3	19	37	.514	7	17	.412	8	9	.889	1	22	23	3.8	21	1	18	14	1	7	53	8.8		
15	CLARK, Wes	6	6	173	28.8	14	53	.264	6	19	.316	14	16	.875	4	13	17	2.8	14	0	21	10	0	6	48	8.0		
10	WALTON, K.J.	6	1	90	15.0	10	31	.323	0	3	.000	18	24	.750	6	6	12	2.0	9	0	8	4	1	2	38	6.3		
04	ISABELL, Tramaine	6	0	71	11.8	14	26	.538	3	5	.600	5	5	1.000	2	8	10	1.7	5	0	6	8	0	4	36	6.0		
33	VANLEER, Cullen	6	0	91	15.2	13	30	.433	10	24	.417	0	1	.000	3	6	9	1.5	10	0	4	2	0	3	36	6.0		
44	ROSBURG, Ryan	6	2	103	17.2	10	20	.500	0	0	.000	5	13	.385	5	14	19	3.2	14	0	1	3	2	1	25	4.2		
25	WOODS, Russell	6	0	78	13.0	10	14	.714	0	0	.000	2	9	.222	6	7	13	2.2	17	0	1	1	2	0	22	3.7		
23	GANT, Jakeenan	6	4	64	10.7	5	17	.294	0	7	.000	5	7	.714	4	6	10	1.7	18	1	2	3	6	1	15	2.5		
05	ALLEN, D'Angelo	5	0	55	11.0	2	5	.400	0	0	.000	1	4	.250	5	7	12	2.4	6	0	1	3	1	3	5	1.0		
11	BARTON, Jimmy	2	0	2	1.0	0	0	.000	0	0	.000	0	0	.000	0	0	0	0.0	0	0	0	1	0	0	0	0.0		
TM	TEAM.....														3	16	19	3.2	0			1		0				
	Total.....	6				143	332	.431	35	107	.327	93	133	.699	49	152	201	33.5	135	2	71	67	17	32	414	69.0		
	Opponents.....	6				130	325	.400	45	124	.363	113	160	.706	63	153	216	36.0	121	-	73	62	16	36	418	69.7		

2015-16 Statistical Summaries

Team Statistics	MU	OPP
SCORING	414	418
Points per game	69.0	69.7
Scoring margin	-0.7	-
FIELD GOALS-ATT	143-332	130-325
Field goal pct	.431	.400
3 POINT FG-ATT	35-107	45-124
3-point FG pct	.327	.363
3-pt FG made per game	5.8	7.5
FREE THROWS-ATT	93-133	113-160
Free throw pct	.699	.706
F-Throws made per game	15.5	18.8
REBOUNDS	201	216
Rebounds per game	33.5	36.0
Rebounding margin	-2.5	-
ASSISTS	71	73
Assists per game	11.8	12.2
TURNOVERS	67	62
Turnovers per game	11.2	10.3
Turnover margin	-0.8	-
Assist/turnover ratio	1.1	1.2
STEALS	32	36
Steals per game	5.3	6.0
BLOCKS	17	16
Blocks per game	2.8	2.7
ATTENDANCE	15223	36538
Home games-Avg/Game	3-5074	1-9751
Neutral site-Avg/Game	-	2-13394

2015-16 Game-By-Game Scores

Date	Opponent	W/L	Score	Att.
11-13-15	WOFFORD	W	83-74	5037
11-15-15	UMES	W	73-55	5082
11-17-15	at Xavier	L	66-78	9751
11-23-15	vs Kansas State	L	42-66	13598
11-24-15	vs Northwestern	L	62-67	13189
12-1-15	ARKANSAS STATE	W	88-78	5104

SCORE BY PERIODS:	1st	2nd	OT	Total
Mizzou	195	219	-	414
Opponents	196	222	-	418

2014-15 MIZZOU OVERALL STATISTICS

Record	Overall	Home	Away	Neutral
ALL GAMES	9-23	8-9	0-10	1-4
CONFERENCE	3-15	3-6	0-9	0-0
NON-CONFERENCE	6-8	5-3	0-1	1-4

##	Player	TOTAL							3-PTS			REBOUNDS														
		GP	GS	Min	Avg	FG	FGA	Pct	3FG	FGA	Pct	FT	FTA	Pct	Off	Def	Tot	Avg	PF	FO	A	TO	Blk	Stl	Pts	Avg
03	Williams III, Johnat	32	32	941	29.4	128	311	.412	22	64	.344	103	167	.617	78	150	228	7.1	86	1	27	82	19	10	381	11.9
15	Clark, Wes	23	20	713	31.0	81	233	.348	32	102	.314	38	51	.745	10	71	81	3.5	54	2	71	45	4	38	232	10.1
13	Gill-Caesar, Montagu	27	13	647	24.0	84	231	.364	29	94	.309	49	66	.742	20	60	80	3.0	55	1	14	52	2	19	246	9.1
14	Shamburger, Keith	32	31	1092	34.1	80	211	.379	43	131	.328	77	86	.895	17	89	106	3.3	68	0	124	60	4	37	280	8.8
12	Wright, Namon	30	20	607	20.2	77	186	.414	40	103	.388	10	18	.556	6	63	69	2.3	64	1	19	37	3	17	204	6.8
23	Gant, Jakeenan	23	6	324	14.1	47	91	.516	1	14	.071	18	25	.720	20	30	50	2.2	33	0	7	16	14	9	113	4.9
04	Isabell, Tramaine	27	1	405	15.0	37	118	.314	16	52	.308	22	28	.786	9	27	36	1.3	35	0	39	33	0	17	112	4.1
45	Post, Keanau	30	9	424	14.1	51	89	.573	0	0	.000	19	31	.613	42	65	107	3.6	70	3	4	24	14	9	121	4.0
05	Allen, D'Angelo	32	8	544	17.0	40	98	.408	9	20	.450	17	28	.607	37	63	100	3.1	62	0	21	18	7	11	106	3.3
44	Rosburg, Ryan	30	17	501	16.7	42	84	.500	0	0	.000	15	45	.333	37	41	78	2.6	56	1	8	19	18	6	99	3.3
02	Bello, Deuce	23	3	251	10.9	16	42	.381	4	16	.250	5	15	.333	5	20	25	1.1	40	2	9	18	5	6	41	1.8
42	Barnard, Hayden	1	0	1	1.0	0	0	.000	0	0	.000	0	0	.000	0	0	0	0.0	0	0	0	0	0	0	0	0.0
TM	TEAM.....														46	44	90	2.8	1		13			0		
	Total.....	32				683	1694	.403	196	596	.329	373	560	.666	327	723	1050	32.8	624	11	343	417	90	179	1935	60.5
	Opponents.....	32				726	1691	.429	206	601	.343	515	735	.701	355	775	1130	35.3	568	-	377	353	111	190	2173	67.9

2014-15 Statistical Summaries

Team Statistics	MU	OPP
SCORING	1935	2173
Points per game	60.5	67.9
Scoring margin	-7.4	-
FIELD GOALS-ATT	683-1694	726-1691
Field goal pct	.403	.429
3 POINT FG-ATT	196-596	206-601
3-point FG pct	.329	.343
3-pt FG made per game	6.1	6.4
FREE THROWS-ATT	373-560	515-735
Free throw pct	.666	.701
F-Throws made per game	11.7	16.1
REBOUNDS	1050	1130
Rebounds per game	32.8	35.3
Rebounding margin	-2.5	-
ASSISTS	343	377
Assists per game	10.7	11.8
TURNOVERS	417	353
Turnovers per game	13.0	11.0
Turnover margin	-2.0	-
Assist/turnover ratio	0.8	1.1
STEALS	179	190
Steals per game	5.6	5.9
BLOCKS	90	111
Blocks per game	2.8	3.5
ATTENDANCE	137086	147795
Home games-Avg/Game	17-8064	10-11048
Neutral site-Avg/Game	-	5-7464

SCORE BY PERIODS:

	1st	2nd	OT	Total
Mizzou	904	1012	19	1935
Opponents	1051	1108	14	2173

2014-15 Game-By-Game Scores

Date	Opponent	W/L	Score	Att.
11/14/14	UMKC	L	61-69	7014
11/16/14	VALPO	W	56-41	5369
11/19/14	ORAL ROBERTS	W	78-64	5563
11/24/14	vs ARIZONA	L	53-72	2400
11/25/14	vs PURDUE	L	61-82	2400
11/26/14	vs Chaminade	W	74-60	2400
12/2/14	SEMO	W	65-61	5506
12/05/14	at Oklahoma	L	63-82	11652
12/11/14	ELON	W	78-73	4514
12/13/14	XAVIER	L	58-74	7854
12/20/14	vs Illinois	L	59-62	20079
12/30/14	OKLAHOMA STATE	LOT	72-74	11376
1/3/15	LIPSCOMB	W	72-60	7415
*1/8/15	LSU	WOT	74-67	7509
*01/10/15	at Auburn	L	79-85	8365
*01/13/15	at Kentucky	L	37-86	24248
*1/17/15	TENNESSEE	L	51-59	10359
*01/21/15	at Texas A&M	L	50-62	6849
*1/24/15	ARKANSAS	L	60-61	11022
*1/29/15	KENTUCKY	L	53-69	13034
*1/31/15	OLE MISS	L	47-67	9053
*2/4/15	at Alabama	L	49-62	9343
*2/7/15	TEXAS A&M	L	61-83	8970
*2/10/15	at South Carolina	L	60-65	8840
*2/14/15	MISSISSIPPI STATE	L	74-77	8278
*02/18/15	at Arkansas	L	69-84	15740
*02/21/15	at Vanderbilt	L	53-76	10154
*2/24/15	FLORIDA	W	64-52	7631
*02/28/15	at Georgia	L	44-68	9389
*3/3/15	AUBURN	W	63-61	6619
*03-07-15	at Mississippi State	L	43-52	5897
03/11/15	vs South Carolina	L	54-63	10039

LAST TIME...

INDIVIDUAL: THE LAST TIME MIZZOU HAD A...

Player score 25 points _____ Namon Wight (28) vs. Florida; Feb. 24, 2015

Player score 30 points _____ Jabari Brown (30) vs. Davidson; March 18, 2014

Player score 35 points _____ Thomas Gardner (40) vs. Kansas; Jan. 16, 2006

Player score 40 points _____ Thomas Gardner (40) vs. Kansas; Jan. 16, 2006

Player grab 15 rebounds _____ Jonathan Williams III (15) vs. Texas A&M; March 14, 2014

Player grab 20 rebounds _____ Curtis Berry (20) vs. Kansas; Jan. 9, 1980

Player record a double-double _____ Jonathan Williams III (10 p, 12 r) at Miss. St.; March 7, 2015

Two players record a double-double _____ Laurence Bowers (23 p, 10 r)
_____ Alex Oriakhi (18 p, 10 r) vs. LSU; March 2, 2013

Player record a triple-double _____ Never

Player dish out 10 assists _____ Keith Shamburger (11) at Alabama; Feb. 4, 2015

Player block 10 shots _____ Never

A player collect five steals _____ Wes Clark (5) at Texas A&M; Jan. 21, 2015

A player hit five three-pointer baskets _____ Keith Shamburger (5) at Auburn; Jan. 10, 2015

A player make 10 free throws _____ Jabari Brown (11-15) vs. Davidson; March 18, 2014

Two players score 20 points in a game _____ Jabari Brown (26)
_____ Earnest Ross (24) vs. Texas A&M; March 14, 2014

Three players score 20 points in a game _____ Earnest Ross (24)
_____ Jordan Clarkson (23)
_____ Jabari Brown (20) at Ole Miss; Feb. 8, 2014

Two players grab 10 rebounds in a game _____ Jonathan Williams III (10)
_____ Keanau Post (10) vs. Lipscomb; Jan. 3, 2015

Three players grab 10 rebounds in a game _____ Negus Webster-Chan (11)
_____ Earnest Ross (10)
_____ Alex Oriakhi (10) vs. Alcorn State; Nov. 13, 2012

Five players score in double figures _____ Namon Wright (14)
_____ Tramaine Isabell (11)
_____ Kevin Puryear (10)
_____ Ryan Rosburg (10)
_____ K.J. Walton (10) vs. Arkansas State; Dec. 1, 2015

Six players score in double figures _____ Matt Pressey (14)
_____ Phil Pressey (12)
_____ Ricardo Ratiliffe (12)
_____ Michael Dixon Jr. (12)
_____ Kim English (10)
_____ Steve Moore (10) at Iowa State; Jan. 11, 2012

Seven players score in double figures _____ Kim English (20)
_____ Justin Stafford (16)
_____ Laurence Bowers (16)
_____ Marcus Denmon (12)
_____ Matt Pressey (10)
_____ Michael Dixon Jr. (10)
_____ Ricky Krecklow (10) vs. North Alabama; Jan. 5, 2011

TEAM: THE LAST TIME MIZZOU...

Scored 100 points or more _____ Dec. 17, 2012; Mizzou 102, South Carolina State 51

Scored less than 50 points _____ Jan. 31, 2015; Kentucky 67, Mizzou 47

Scored less than 50 points and won _____ Nov. 14, 1997; Mizzou 45, Depaul 42

Allowed 100 points or more _____ Feb. 7, 2011; Kansas 103, Mizzou 86

Held an opponent to less than 40 points _____ Dec. 8, 2012; Mizzou 68, Tennessee State 38

Held an opponent to less than 50 points _____ Nov. 16, 2014; Mizzou 56, Valparaiso 41

Had 50 rebounds _____ Feb. 9, 2013, vs. Ole Miss (50)

Had 30 assists _____ Dec. 18, 2010, vs. Central Arkansas (33)

Had 10 steals _____ Jan. 29, 2015 vs. Kentucky (10)

Held an opponent to less than 25 percent shooting _____ March 14, 2013, vs. Texas A&M (24.1)

Shot better than 70 percent from the field _____ Dec. 6, 1989, vs. Hawaii Loa (.752)

Shot under 30 percent from the field _____ Dec. 7, 2004, vs. Arkansas (.298)

Shot better than 90 percent from the free throw line _____
_____ March 8, 2014 at Tennessee (13-for-14, .921)

Attempted 40 free throws _____ March 14, 2014, vs. Texas A&M (53)

Made 10 3-pointers _____ Jan. 10, 2015, vs. Auburn (10-for-27)

Won an overtime game _____ Jan. 8, 2015 vs. LSU; Mizzou 74, LSU 67 (OT)

Lost an overtime game _____ Dec. 30, 2014 vs. Oklahoma State; OSU 74, Mizzou 72 (OT)

Played a double-OT game _____ March 14, 2014; Mizzou 91, Texas A&M 83

Played a triple-overtime game _____ Jan. 13, 2001; Mizzou 112, Iowa State 109 (4OT)

Defeated a top 25 team _____ Dec. 15, 2013; Mizzou 80, No. 18 UCLA 71

Had a 30-point win _____ Nov. 8, 2013; Mizzou 89, Southeastern Louisiana 53

Had a 40-point win _____ Dec. 17, 2012; Mizzou 102, South Carolina State 51

Had a 50-point win _____ Dec. 17, 2012; Mizzou 102, South Carolina State 51

Won back-to-back road games _____ Dec. 28, 2013 at North Carolina State (68-64)
_____ Jan. 11, 2014 at Auburn (70-68)

Won by double digits over an SEC team _____ March 1, 2014; Mizzou 85, Mississippi State 66

MORE NOTES...

MIZZOU STARTERS

Opponent	G	G	G	F	F	Record **
Nov. 13 Wofford	Phillips	Walton	Clark	Gant	Puryear	1-0
Nov. 15 UMES	Phillips	Wright	Clark	Gant	Puryear	1-0
Nov. 17 at Xavier	Phillips	Wright	Clark	Gant	Puryear	1-1
Nov. 23 vs. Kansas State	Phillips	Wright	Clark	Gant	Puryear	1-2
Nov. 24 vs. Northwestern	Phillips	Wright	Clark	Rosburg	Puryear	0-1
Dec. 1 Arkansas State	Phillips	Wright	Clark	Rosburg	Puryear	1-1

MIZZOU WHEN...

Playing at home	3-0
Playing on the road	0-1
Playing on a neutral court	0-2
SEC games	0-0
SEC at home	0-0
SEC on the road	0-0
Following a win	1-1
Following a loss	1-2
Leading at half	3-0
Trailing at half	0-3
Tied at half	0-0
Shoots at least 50%	1-0
Shoots less than 50%	2-1
Opponent shoots 50%	0-0
Shoots more FT than Opp.	1-0
Shoots fewer FT than Opp.	2-3
Shoots same FT as Opp.	0-0
Makes more FT than Opp.	2-0
Makes fewer FT than Opp.	0-3
Makes same FT as Opp.	1-0
Scores 90-110	0-0
Scores 80-89	2-0
Scores 70-79	1-0
Scores 69 or fewer	0-3
Leads in rebounding	2-0
Trails in rebounding	1-2
Tied in rebounding	0-1
More turnovers than Opp.	2-2
Fewer turnovers than Opp.	1-1
Same turnovers as Opp.	0-0
In November	2-3
In December	1-0
In January	0-0
In February	0-0
In March	0-0
Margin between 1-5	0-1
Margin between 6-10	2-0
Margin between 11-20	1-1
Margin 20+	0-1
Overtime Games	0-0
On Sunday	1-0
On Monday	0-1
On Tuesday	1-2
On Wednesday	0-0
On Thursday	0-0
On Friday	1-0
On Saturday	0-0
Wearing White	3-1
Wearing Black	0-2
Wearing Gold	0-0
Wearing Anthracite	0-0

POINTS-REBOUNDS-ASSISTS

	01	04	05	10	11	12	15	23	24	25	33	44
Opponent	PHILLIPS	ISABELL	ALLEN	WALTON	BARTON	WRIGHT	CLARK	GANT	PURYEAR	WOODS	VANLEER	ROSBURG
WOFFORD // 11-13-15 // 83-74 // W	7-3-3	4-3-2	DNP	6-1-2	DNP	18-7-0	4-3-2	4-4-1	20-5-0	9-3-0	5-1-2	6-3-0
UMES // 11-15-15 // 73-55 // W	13-3-2	4-4-1	2-4-0	11-0-3	0-0-0	7-5-1	15-1-3	4-1-0	13-5-1	1-1-1	3-0-0	0-3-0
at Xavier // 11/17/15 // 66-78 // L	3-1-0	11-1-1	0-3-0	8-3-1	DNP	6-4-2	11-3-3	1-2-1	12-5-0	0-3-0	13-0-0	1-1-0
vs Kansas State // 11/23/15 // 42-66 // L	6-6-2	4-1-0	0-3-0	3-3-1	0-0-0	5-4-0	5-2-6	0-1-0	9-3-0	4-1-0	6-3-0	0-1-1
vs Northwestern // 11/24/15 // 62-67 // L	16-6-4	2-1-0	2-0-1	0-0-1	DNP	8-2-3	5-4-4	4-1-0	14-4-1	0-1-0	3-2-1	8-9-0
ARKANSAS ST. // 12-1-15 // 88-78 // W	8-4-7	11-0-2	1-2-0	10-5-0	DNP	14-6-0	8-4-3	2-1-0	10-7-1	8-4-0	6-3-1	10-2-0

2015-16 MIZZOU GAME-BY-GAME STATISTICS

Opponent	Date	Score	TOTAL			3-PTRS			REBOUNDS														
			W/L	FG	FGA Pct	3FG	FGA Pct	FT	FTA Pct	Off	Def	Tot	Avg	PF	A	TO	Blk	Stl	Pts	Avg			
WOFFORD	11-13-15	83-74	W	28	50	.560	5	12	.417	22	32	.688	5	32	37	37.0	24	12	9	1	4	83	83.0
UMES	11-15-15	73-55	W	21	47	.447	8	19	.421	23	30	.767	8	21	29	33.0	17	12	8	4	6	73	78.0
at Xavier	11-17-15	66-78	L	23	55	.418	6	23	.261	14	18	.778	7	21	28	31.3	26	8	18	2	8	66	74.0
vs Kansas State	11-23-15	42-66	L	17	55	.309	4	19	.211	4	10	.400	8	23	31	31.3	22	10	13	4	5	42	66.0
vs Northwestern	11-24-15	62-67	L	23	60	.383	5	18	.278	11	17	.647	10	23	33	31.6	23	15	9	1	7	62	65.2
ARKANSAS STATE	12-1-15	88-78	W	31	65	.477	7	16	.438	19	26	.731	11	32	43	33.5	23	14	10	5	2	88	69.0
Mizzou		414		143	332	.431	35	107	.327	93	133	.699	49	152	201	33.5	135	71	67	17	32	414	69.0
Opponents		418		130	325	.400	45	124	.363	113	160	.706	63	153	216	36.0	121	73	62	16	36	418	69.7

Games played: 6

Points/game: 69.0

FG Pct: 43.1

3FG Pct: 32.7

FT Pct: 69.9

Rebounds/game: 33.5

Assists/game: 11.8

Turnovers/game: 11.2

Assist/turnover ratio: 1.1

Steals/game: 5.3

Blocks/game: 2.8

2015-16 OPPONENT GAME-BY-GAME STATISTICS

Opponent	Date	Score	TOTAL			3-PTRS			REBOUNDS				PF	A	TO	Blk	Stl	Pts	Avg	
			W/L	FG	FGA Pct	3FG	FGA Pct	FT	FTA Pct	Off	Def	Tot								Avg
WOFFORD	11-13-15	83-74	W	21	55 .382	10	27 .370	22	33 .667	8	21	29	29.0	24	12	7	0	3	74	74.0
UMES	11-15-15	73-55	W	17	44 .386	7	20 .350	14	22 .636	10	21	31	30.0	25	7	13	1	4	55	64.5
at Xavier	11-17-15	66-78	L	24	56 .429	6	18 .333	24	29 .828	13	27	40	33.3	18	13	13	4	9	78	69.0
vs Kansas State	11-23-15	42-66	L	21	57 .368	4	17 .235	20	26 .769	13	31	44	36.0	12	11	8	3	8	66	68.2
vs Northwestern	11-24-15	62-67	L	21	45 .467	10	23 .435	15	23 .652	5	28	33	35.4	20	15	14	1	6	67	68.0
ARKANSAS STATE	12-1-15	88-78	W	26	68 .382	8	19 .421	18	27 .667	14	25	39	36.0	22	15	7	7	6	78	69.7
Opponents		418		130	325 .400	45	124 .363	113	160 .706	63	153	216	36.0	121	73	62	16	36	418	69.7
Mizzou		414		143	332 .431	35	107 .327	93	133 .699	49	152	201	33.5	135	71	67	17	32	414	69.0

Games played: 6

Points/game: 69.7

FG Pct: 40.0

3FG Pct: 36.3

FT Pct: 70.6

Rebounds/game: 36.0

Assists/game: 12.2

Turnovers/game: 10.3

Assist/turnover ratio: 1.2

Steals/game: 6.0

Blocks/game: 2.7

TV/RADIO CHART

5-11 G FR  1	6-0 G SO  4	6-7 F SO  5	6-3 G FR  10
5-9 G R-SO  11	6-5 G SO  12	6-3 G JR  13	6-0 G JR  15
6-8 F SO  23	6-7 F FR  24	6-8 F JR  25	
6-7 F FR  32	6-4 G FR  33	6-10 F SR  44	

MIZZOU NUMERICAL ROSTER

No.	Name	Ht.	Wt.	Pos.	Yr.	Exp.	Hometown / High School / Previous School
1	Terrence Phillips	5-11	175	G	Fr.	HS	Orange County, Calif. / Oak Hill Academy (Va.)
4	Tramaine Isabell	6-0	178	G	So.	1L	Seattle, Wash. / Garfield H.S.
5	D'Angelo Allen	6-7	216	F	So.	1L	Dallas, Texas / Kimball H.S.
10	K.J. Walton	6-3	197	G	Fr.	HS	Brownsburg, Ind. / Brownsburg H.S.
11	Jimmy Barton	5-9	160	G	R-So.	RS	St. Louis, Mo. / DeSmet Jesuit H.S. / Houston Baptist
12	Namon Wright	6-5	202	G	So.	1L	Los Angeles, Calif. / Pacific Hills
13	Trevor Glassman	6-3	200	G	Jr.	TR	Bedford, N.H. / New Hampton School
15	Wes Clark	6-0	180	G	Jr.	2L	Detroit, Mich. / Romulus H.S.
23	Jakeenan Gant	6-8	212	F	So.	1L	Springfield, Ga. / Effingham County
24	Kevin Puryear	6-7	236	F	Fr.	HS	Blue Springs, Mo. / South H.S.
25	Russell Woods	6-8	225	F	Jr.	JC	Chicago, Ill. / Simeon High School / John A. Logan College (Ill.)
32	Adam Wolf	6-7	202	F	Fr.	HS	Beaver Dam, Wis. / Beaver Dam H.S.
33	Cullen VanLeer	6-4	200	G	Fr.	HS	Pacific, Mo. / Pacific H.S.
44	Ryan Rosburg	6-10	260	F	Sr.	3L	Chesterfield, Mo. / Marquette H.S.

MIZZOU COACHING STAFF

Coach	Position	Year	Alma Mater, Year
Kim Anderson	Head Coach	Second	Missouri, 1979, '81
Rob Fulford	Assistant Coach	Second	Marshall, 1997
Brad Loos	Assistant Coach	Second	Austin Peay State, 2002
Corey Tate	Assistant Coach	First	Missouri, 1997
Paul Rorvig	Basketball Operations	Second	Central Missouri, 2005
Steve Shields	Special Assistant to the Head Coach	First	Baylor, 1988, '92
Matt Herring	Athletic Performance	Second	Southwest Texas State, 1994