



2015-16 UNIVERSITY OF MISSOURI MEN'S BASKETBALL GAME NOTES

2015-16 SCHEDULE

DATE	OPPONENT	TV	SCORE/TIME (CT)
N 13 F	Wofford #	SECN +	W, 83-74
N 15 U	UMES #	SECN	W, 73-55
N 17 T	at Xavier (RV)	FS1	L, 78-66
N 23 M	vs. Kansas State &	ESPNU	L, 66-42
N 25 T	vs. Northwestern &	ESPN3	L, 67-62
D 1 T	Arkansas State	SECN	8 p.m.
D 4 F	Northern Illinois	SECN +	7 p.m.
D 9 W	Omaha	SECN	7 p.m.
D 13 U	at Arizona	Pac-12 Networks	7 p.m.
D 19 S	NC State	SECN	5 p.m.
D 23 W	vs. Illinois %	ESPN2	6 p.m.
D 29 T	Arkansas-Pine Bluff	SECN +	8 p.m.
J 2 S	Savannah State	SECN +	2 p.m.
J 6 W	at Georgia *	SECN ^	6 p.m.
J 9 S	Auburn *	ESPN2	8 p.m.
J 12 T	Arkansas *	SECN ^	8 p.m.
J 16 S	at South Carolina *	SECN ^	Noon
J 20 W	Georgia *	SECN ^	6 p.m.
J 23 S	at Texas A&M *	SECN ^	3 p.m.
J 27 W	at Kentucky *	SECN ^	8 p.m.
J 30 S	Mississippi State *	SECN ^	7:30 p.m.
F 3 W	Ole Miss *	SECN ^	8 p.m.
F 6 S	at Alabama *	SECN ^	2 p.m.
F 10 W	at Vanderbilt *	SECN ^	8 p.m.
F 13 S	Tennessee *	SECN ^	2 p.m.
F 16 T	South Carolina *	SECN ^	6 p.m.
F 20 S	at Arkansas *	SECN ^	6:30 p.m.
F 23 T	at Ole Miss *	SECN ^	8 p.m.
F 27 S	Texas A&M *	ESPNU	3 p.m.
M 1 T	at LSU *	SECN ^	8 p.m.
M 5 S	Florida	SECN ^	6:30 p.m.
M 9-13	vs. SEC Tournament	SECN/ESPN ^	

Bold denotes home // * denotes SEC game
 # - CBE HOF Classic Host Games (Mizzou Arena, Columbia, Mo.)
 & - CBE HOF Classic Championship Rounds (Sprint Center, Kansas City, Mo.)
 % - Mizzou will play either North Carolina or Northwestern on Nov. 24
 - 34th Annual Braggins' Rights Game (Scottrade Center, St. Louis, Mo.)
 ^ - SEC Network broadcasts are additionally available through
 WatchESPN apps and the website, WatchESPN.com
 + - SEC Network + events are digitally exclusive events available on
 WatchESPN apps or WatchESPN.com

PROJECTED #MIZZOU LINEUP

G 1
 terrence PHILLIPS
 FR // 5-11 // 175 // ORANGE COUNTY, CALIF.

G 15
 wes CLARK
 JR // 6-0 // 180 // DETROIT, MICH.

G 12
 namon WRIGHT
 SO // 6-5 // 202 // LOS ANGELES, CALIF.

F 24
 kevin PURYEAR
 FR // 6-7 // 236 // BLUE SPRINGS, MO.

F 44
 ryan ROSBURG
 SR // 6-10 // 260 // CHESTERFIELD, MO.

@FloorGeneral103

PPG	RPG	APG	SPG
9.0	3.8	2.8	1.2

- 16 points vs. Northwestern, a new season-high (3-of-6 three-pointers)
- 13 points in win vs. UMES (Nov. 15), hitting 3-of-4 three-pointers

@Im_back_15

PPG	RPG	APG	SPG
8.0	2.6	3.6	1.2

- Returned to lineup after right elbow dislocation caused him to miss final eight games of 2014-15
- Averaged 10.1 PPG last season

@kharyw

PPG	RPG	APG	SPG
8.8	4.4	1.2	0.6

- 18 points off the bench in win vs. Wofford (Nov. 13)
- Career-high 28 points vs. Florida last season

@CallMe_KP24

PPG	RPG	SPG	APG
13.6	4.4	0.4	0.4

- 20 points in Mizzou debut vs. Wofford.
- KC Star Metro Player of the Year as a senior at Blue Springs South.

@RyRos44

PPG	RPG	APG	BPG
3.0	3.4	0.3	0.4

- 8 points, 9 rebounds in 28 minutes vs. Northwestern
- Had 7 points through first 4 games
- 50th career start vs. Northwestern

ARKANSAS STATE PROJECTED LINEUP

G 3 DEVIN CARTER (6-5, 205) 15.5 PPG // 4.2 RPG // 1.3 APG	G 10 FREDERIC DURE (6-5, 175) 4.0 PPG // 1.5 RPG // 0.8 APG	G 24 DONTÉ THOMAS (6-3, 210) 12.2 PPG // 5.8 RPG // 5.7 APG	F 14 KELVIN DOWNS (6-9, 230) 5.2 PPG // 2.8 RPG // 0.5 APG	F 50 ANTHONY LIVINGSTON (6-8, 230) 15.0 PPG // 9.8 RPG // 0.8 APG
--	---	---	--	---

GAME 6

MIZZOU TIGERS (2-3) VS. ARKANSAS STATE RED WOLVES (2-4)

TUESDAY, DEC. 1, 2015 // 8 P.M. (CT) // MIZZOU ARENA // COLUMBIA, MO.

@MIZZOUHOOPS
2-3

PTS / GAME	65.2
PTS ALLOWED / GAME	68.0
FG %	41.9
FG DEFENSE %	40.5
3-PT FG %	30.8
3-PT FG DEFENSE %	35.2
REB / GAME	31.6
REB ALLOWED / GAME	35.4
LEADING SCORER	PURYEAR (13.6)
LEADING REBOUNDER	WRIGHT (4.4)
LEADER IN ASSISTS	CLARK (3.6)

HEAD COACH..... Kim Anderson (Missouri, '79, '81)
SCHOOL RECORD..... 11-26 (Second season)
CAREER RECORD..... 285-121 (14th season)
RECORD VS. ARKANSAS STATE..... N/A

@ASTATEMB
2-4

PTS / GAME	74.0
PTS ALLOWED / GAME	74.3
FG %	41.0
FG DEFENSE %	39.1
3-PT FG %	31.3
3-PT FG DEFENSE %	34.7
REB / GAME	42.7
REB ALLOWED / GAME	40.0
LEADING SCORER	CARTER (15.5)
LEADING REBOUNDER	LIVINGSTON (9.8)
LEADER IN ASSISTS	THOMAS (5.7)

HEAD COACH..... John Brady (Belhaven College, '76)
SCHOOL RECORD..... 112-113 (8th season)
CAREER RECORD..... 393-329 (25th season)
RECORD VS. MISSOURI..... N/A

FOLLOW #MIZZOU

ON TELEVISION..... SEC Network
 8:05 p.m. CT
 Mitch Holthus (Play-by-Play)
 Jon Sundvold (Analyst)
 Trevor Towle (Producer)

ON RADIO..... Tiger Radio Network
 Mike Kelly (Play-by-Play)
 Gary Link (Analyst)
 Matt Winegardner (Engineer)

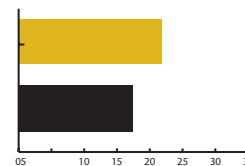
ONLINE..... @MizzouHoops
 MUTigers.com
 Mizzou.Statbroadcast.com



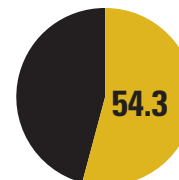
#ZOUNOTES

- Mizzou Men's Basketball returns to the friendly confines of Mizzou Arena for a three-game home stand that begins with Arkansas State on Tuesday, Dec. 1. Tipoff is slated for 8:05 p.m. on the SEC Network.
- Although the Tigers dropped both their games at the CBE Hall of Fame Classic (Nov. 23-24), head coach **Kim Anderson**'s squad found positivity in its comeback attempt vs. Northwestern.
- Mizzou ultimately fell to the Wildcats by a score of 67-62, but tightened the deficit to just three points inside the final minute after trailing by 14 points at the half.
- The second half surge vs. Northwestern was keyed by freshman guard **Terrence Phillips**, who scored 13 of his 16 points after the break. Phillips hit 3-of-6 shots from behind the arc.
- Mizzou is 7-1 all-time against member schools of the Sun Belt Conference, in which Arkansas State resides. The Tigers last dropped a result to a Sun Belt school in 1974 (74-64 vs. South Alabama, Jan. 3, 1974, in Mobile, Ala.).

#ZOUGRAPHS



The Tigers are shooting 21.4 free throws per game to start the 2015-16 season. In comparison, Mizzou averaged 17.5 free throw attempts per game last season (560 in 32 games).



Mizzou's freshmen (Phillips, Puryear, Walton, VanLeer) have combined to score more than half of the team's points through five games (171 of 326).

QUICK FACTS

INSTITUTIONAL INFORMATION

Location _____ Columbia, Mo.
 Founded: _____ 1839
 Enrollment: _____ 35,050
 Nickname: _____ Tigers
 Colors: _____ Old Gold and Black
 Arena (Capacity): _____ Mizzou Arena (15,061)
 Conference: _____ Southeastern
 Interim System President: _____ Mike Middleton
 Phone _____ 573-882-2011
 Interim Chancellor: _____ Hank Foley
 Phone: _____ 573-882-3387
 Director of Athletics: _____ Mack Rhoades
 Department Phone: _____ 573-882-6501
 Ticket Office Phone: _____ 573-884-7297
 _____ 800-228-7297

THE MIZZOU TIGERS

Head Coach: _____ Kim Anderson (Second season)
 _____ University of Missouri, 1979, '81
 Missouri Record _____ 11-26 (2nd season)
 Overall Record: _____ 285-121 / .702 (14th season)
 Assistant Coaches: _____ Rob Fulford (Second season)
 _____ Brad Loos (Second season)
 _____ Corey Tate (First season)
 Special Assistant to the Head Coach _____
 _____ Steve Shields (First season)
 Basketball Operations: _____ Paul Rorvig
 _____ (Second season)
 Basketball Performance: _____ Matt Herring
 _____ (Second season)
 Operations Assistant _____ John Poettgen
 Graduate Assistants: _____ Brett Anderson
 _____ Jon Gilliam
 2014-15 Record: _____ 9-23
 SEC Record (Finish): _____ 3-15 (14th)
 Starters Returning / Lost: _____ 3/2
 Lettermen Returning / Lost: _____ 6/5

STRATEGIC COMMUNICATIONS

Senior Assoc. Athletics Director: _____ Ryan Bradley
 Office Phone _____ 573-882-9805
 E-Mail: _____ bradleyry@missouri.edu
 Associate Athletics Director: _____ Chad Moller
 Office Phone: _____ 573-882-0712
 E-Mail: _____ mollerc@missouri.edu
Men's Basketball Contact: _____ Patrick Crawford
Office Phone: _____ 573-882-2531
E-Mail: _____ crawfordpa@missouri.edu
 Associate Director: _____ Kate Lakin
 Assistant Director: _____ Shawn Davis
 Assistant Director: _____ Tyler Koonce
 Assistant Director: _____ Andy Oldenburg
 Web Coordinator: _____ Kevin Fletcher
 Digital Media: _____ Ali Fisher
 Associate (Secondary Contact): _____ Andrew Melroe
 E-Mail: _____ melroea@missouri.edu
 Twitter/Instagram _____ @MizzouHoops
 Website: _____ mutigers.com

Pro-nun-SEE-A-shun GUIDE

Kevin Puryear _____ Purr-EE-err
 Namon Wright _____ NAY-mun

KIM ANDERSON



HOMETOWN
 Sedalia, Mo.
HIGH SCHOOL
 Smith-Cotton
TWITTER
 @CoachAndersonMU
FAMILY
 Wife, Melissa
 Son, Ryan
 Son, Brett

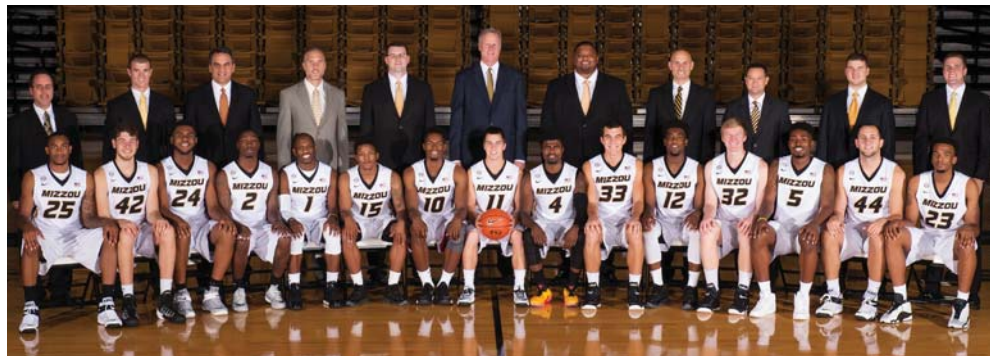
In his second season leading the Mizzou Men's Basketball program, head coach **Kim Anderson** continues to turn the Tigers in the right direction, both on and off the court. With five newcomers on the 2015-16 roster that his staff personally recruited, Anderson hopes a higher comfort level and familiarity amongst his squad will translate into better team basketball. The Tigers already did their part in the offseason, posting the highest summer session grade point average for a Mizzou team in more than five seasons.

The Tiger leader took on the role of architect during the summer of 2014, beginning with establishing an identity for the Mizzou program. It would be built to last, with sturdy roots of character, discipline and competitiveness to reignite the passion of the many Black & Gold fans who clamor into Mizzou Arena. The first step was finding student-athletes, so Anderson and his staff brought in five freshmen and a graduate transfer for a total of six new faces. The following step was to get the newcomers and returning players to work as a team, which is not as simple of a process as it sounds.

Anderson knew sustained success could start with bumps in the road, and as the inexperience and unfamiliarity between his Tigers began to show down the stretch of the 2014-15 season, it became clear that changes would need to be made. Following Mizzou's 9-23 season, Anderson made it known what he and his staff's focuses would be going forward into the offseason. For the offseason, the Tiger coaching staff emphasized academic achievement, staff efficiency, athletic performance, team chemistry and a targeted recruiting focus.

2015-16 MIZZOU ROSTER

#	Name	Ht.	Wt.	Pos.	Yr.	Exp.
1	Terrence Phillips	5-11	175	G	Fr.	HS
	Orange County, Calif. / Oak Hill Academy (Va.) Note: 88-4 record as starting point guard at Oak Hill					
4	Tramaine Isabell	6-0	178	G	So.	1L
	Seattle, Wash. / Garfield H.S. Note: Multiple assists in eight games in 14-15					
5	D'Angelo Allen	6-7	216	F	So.	1L
	Dallas, Texas / Kimball H.S. Note: Started last 8 games of 14-15 season					
10	K.J. Walton	6-3	197	G	Fr.	HS
	Brownsburg, Ind. / Brownsburg H.S. Note: Former 103rd-ranked <i>Rivals.com</i> prospect					
11	Jimmy Barton	5-9	160	G	R-So.	RS
	St. Louis, Mo. / DeSmet Jesuit H.S. / Houston Baptist Note: Walk-on with 13 games at H-Baptist in 13-14					
12	Namon Wright	6-5	202	G	So.	1L
	Los Angeles, Calif. / Pacific Hills Note: Averaged 13.6 PPG in last five games of 14-15					
13	Trevor Glassman	6-3	200	G	Jr.	TR
	Bedford, N.H. / New Hampton School / Manhattan Note: Walk-on, sitting out the 2015-16 season after transfer					
15	Wes Clark	6-0	180	G	Jr.	2L
	Detroit, Mich. / Romulus H.S. Note: Returns after season-ending inj. to right elbow					
23	Jakeenan Gant	6-8	212	F	So.	1L
	Springfield, Ga. / Effingham County Note: Won Mizzou's annual Black & Gold dunk contest					
24	Kevin Puryear	6-7	236	F	Fr.	HS
	Blue Springs, Mo. / South H.S. Note: 20.1 pts., 7.8 reb. per game as a senior					
25	Russell Woods	6-8	225	F	Jr.	JC
	Chicago, Ill. / Simeon High School / John A. Logan College (Ill.) Note: 14.1 pts., 7.2 reb. per game at JUCO in 14-15					
32	Adam Wolf	6-7	202	F	Fr.	HS
	Beaver Dam, Wis. / Beaver Dam H.S. Note: Walk-on who avg. 17.0 pts. per game as senior					
33	Cullen VanLeer	6-4	200	G	Fr.	HS
	Pacific, Mo. / Pacific H.S. Note: 23.5 pts., 7.3 reb. per game as a senior					
44	Ryan Rosburg	6-10	260	F	Sr.	3L
	Chesterfield, Mo. / Marquette H.S. Note: 50 career starts at Mizzou, 101 career app.					



Back Row: Trainer Pat Beckmann, Graduate Assistant Jon Gilliam, Special Assistant to the Head Coach Steve Shields, Athletic Performance Coach Matt Herring, Director of Basketball Operations Paul Rorvig, Head Coach Kim Anderson, Assistant Coach Corey Tate, Assistant Coach Brad Loos, Assistant Coach Rob Fulford, Operations Assistant John Poettgen, Graduate Assistant Brett Anderson.

Front Row: Russell Woods (25), Kevin Puryear (24), Terrence Phillips (1), Wes Clark (15), K.J. Walton (10), Jimmy Barton (11), Tramaine Isabell (4), Cullen VanLeer (33), Namon Wright (12), Adam Wolf (32), D'Angelo Allen (5), Ryan Rosburg (44), Jakeenan Gant (23).

GAME PREVIEW - ARKANSAS STATE

ABOUT ARKANSAS STATE

► Mizzou returns home for a three-game stretch to begin the month of December, first welcoming Arkansas State to Mizzou Arena on Tuesday, Dec. 1 for an 8 p.m. tipoff on the SEC Network.

► Head coach **Kim Anderson's** group will face an Arkansas State (2-4) team led in scoring by junior guard **Devin Carter** at 15.5 points per game. Junior forward **Anthony Livingston** follows Carter up with his 15.0 points-per-game average. Livingston is also the team's principal rebounder, pulling down 9.8 rebounds per game for head coach **John Brady**.

► The Red Wolves have dropped two-straight games, falling on the road at Oregon (91-68) on Nov. 25 and at Baylor (94-72) on Nov. 27. ASU owns victories over Lyon College (81-37) on Nov. 16 and Jackson State (78-69) on Nov. 22. Both wins came at home in Jonesboro, Ark.

CLOSER LOOK AT THE RED WOLVES

► Arkansas State head coach **John Brady** announced on Nov. 16 that he would resign at the end of the 2015-16 season. Brady has compiled a 112-113 record in eight seasons at the school. Brady is most well known for his run at LSU (1997-2008), in which he led the squad to the 2006 NCAA Final Four. Brady compiled a 184-126 record during his 10-year stint at LSU.

► The Red Wolves went 11-18 a season ago. The group was led in scoring by Livingston, who averaged 15.9 points per game. The forward averaged a double-double, grabbing 10.0 rebounds per game.

► ASU picked up a notable non-conference win last season on the road at Mississippi State, defeating the Bulldogs 69-55 on Dec. 17, 2014.

MOVIE SCOUTING REPORT

LAND OF THE LOST (2009)

Junior forward **Anthony Livingston** is averaging a team-high 13.7 field goal attempts per game.

THE PRODUCERS (2005)

Junior guard **Donte Thomas** is dishing out 5.7 assists per game through Arkansas State's first six games of the 2015-16 season.

STRANGER THAN FICTION (2006)

Senior forward **Charles Waters** has a team-best 10 blocks in just 79 minutes off the bench this season, averaging one block in less than every eight minutes played.

BY THE NUMBERS

14

► Mizzou has the 14th-youngest roster in all of Division I basketball this season, according to Ken Pomeroy (kenpom.com). Head coach Kim Anderson's team ranks 338 out of 351 teams in terms of experience.

5

► Mizzou has five scholarship newcomers, including four talented freshmen and an experienced JUCO transfer. In total, the squad features eight freshmen/sophomores out of its 12 allocated scholarships.

MORE ON MIZZOU

LITTLE MORE ON ARKANSAS STATE

► Mizzou is 5-0 all-time vs. Arkansas State, last playing the Red Wolves on Dec. 4, 1996, a game that ended in an 81-47 victory for the Tigers.

► The Tigers have beaten Arkansas State by an average of 20.2 points in its five victories.

► The tightest margin of victory was a 10-point win (73-63) on Dec. 16, 1995, in Jonesboro, Ark.

ROSBURG JOINED CENTURY CLUB

► Senior forward **Ryan Rosburg** appeared in his 100th career game for Mizzou when the Tigers faced Kansas State on Monday, Nov. 23.

► Only one of other Tiger has appeared in even half as many games, as junior guard **Wes Clark** has played in 61 games for Mizzou.

► Rosburg has been a mainstay in the Tigers' lineup throughout his career wearing the Black & Gold. He has appeared in at least 30 games in all three of his previous seasons and has registered 50 career starts, including 32 of 35 games as a sophomore in 2013-14.

GETTING TO THE LINE

► Mizzou is shooting 21.4 free throws per game to start the 2015-16 season, a welcome sign of improvement in an area of need from a season ago. The Tigers averaged just 17.5 attempts from the charity stripe last season.

► Most noticeably, sophomore guard **Namon Wright** has made it a focus to earn more trips to the free throw line. Wright (17-of-21 FT) has already surpassed his free throw makes and attempts from last season (10-of-18 FT).

#RALLYFORRHAN

► Rhyen Loos, the 5-year-old daughter of assistant Mizzou coach **Brad Loos** and his wife, Jen, has been diagnosed with neuroblastoma, a type of pediatric cancer. The Mizzou Men's Basketball program will be supporting Rhyen and the Loos Family throughout the season.

► To find out more about Rhyen and how you can offer support, visit www.mutigers.com/RallyForRhyen.



PHILLIPS TURNING HEADS EARLY



CHRIS COLLINS

Northwestern Head Coach on Tuesday, Nov. 24

On Phillips' performance vs. Northwestern...

"I thought he played great. I've always been a big fan of his. I remember seeing him a couple times last year when he played for Oak Hill. Just always loving his energy. I love high energy guys. Energy is infectious. I thought Phillips, when they were struggling, I thought he was the guy who was the catalyst to get them going.

"He was really good. He's going to have an outstanding career at Missouri. He's a tough guy to play against, because he gets underneath you. He's really quick. Pushing that ball, getting it to the basket. Big fan of his game."



BOBBY COLLINS

Maryland-Eastern Shore Head Coach on Sunday, Nov. 15

On Phillips' performance vs. Maryland-Eastern Shore...

"The surprise was Phillips. He hit some big shots for them. It seemed like he was on the end of every big run they had. I see that he was 3-of-4 from the three and he did a very good job of knocking down those shots. Shots that we were not counting on."

STRONG START FOR PURYEAR



► Freshman forward **Kevin Puryear** has been a go-to option for Mizzou's offense to start the 2015-16 season. Puryear leads the Tigers with his 13.6 points per game.

► Puryear has started his first collegiate campaign with three-straight games scoring in double figures. In Mizzou's season-opener vs. Wofford (Nov. 13), the Tiger newcomer dropped a team-leading 20 points.

► Through Mizzou's first five games of the 2015-16 season, Puryear has scored in double figures in four contests.



MIKE YOUNG

Wofford Head Coach on Friday, Nov. 13

On Puryear's breakout game vs. Wofford...

"I think as much as anything, with it being early in the year and he being a true freshman, we had some high school film on him, but just not quite enough. He made a three, or two, and he's a little bit bigger and a little wider than we thought he was. We just weren't as familiar with him. That's a pretty good kick-start to a year for that young man. He was good."

LAST GAME

Northwestern vs Mizzou

11/24/15 6:31 p.m. CT at Kansas City, Mo. - Sprint Center

VISITORS: Northwestern 4-1

##	Player	tot-fg		3-pt		ft		rebounds				a	to	blks	min
		fg	fga	fg	fga	ft	fta	of	de	tot	pf	tp			
34	Lumpkin, Sanjay	f	2	4	2	3	6	0	2	2	4	9	0	2	0
35	Falzon, Aaron	f	1	6	1	6	0	1	5	6	1	3	2	0	1
22	Olah, Alex	c	2	7	1	2	3	2	4	6	3	8	0	1	0
14	Demps, Tre	g	5	9	1	2	3	0	4	4	1	13	2	3	0
30	McIntosh, Bryant	g	5	8	3	4	0	0	3	3	5	13	2	3	0
01	van Zegeren, Joey		3	3	0	0	2	4	1	4	5	2	8	0	3
20	Lindsey, Scottie		1	6	1	5	0	0	0	1	1	1	3	7	1
23	Ash, Jordan		1	1	1	1	0	0	0	1	1	0	3	0	0
44	Skelly, Gavin		1	1	0	0	5	5	0	3	3	3	7	2	1
Totals.....			21	45	10	23	15	23	5	28	33	20	67	15	14

TOTAL FG%	1st Half: 13-25 52.0%	2nd Half: 8-20 40.0%	Game: 46.7%	DEADBALL
3-Pt. FG%	1st Half: 7-15 46.7%	2nd Half: 3-8 37.5%	Game: 43.5%	REBOUNDS
F Throw %	1st Half: 5-7 71.4%	2nd Half: 10-16 62.5%	Game: 65.2%	3,1

HOME TEAM: Mizzou 2-3

##	Player	tot-fg		3-pt		ft		rebounds				a	to	blks	min
		fg	fga	fg	fga	ft	fta	of	de	tot	pf	tp			
24	PURYEAR, Kevin	f	6	11	0	2	2	4	1	3	4	1	14	1	2
44	ROSBURG, Ryan	f	4	9	0	0	3	3	6	9	3	8	0	1	0
01	PHILLIPS, Terrence	g	6	11	3	6	1	1	0	6	6	5	16	4	4
12	WRIGHT, Namon	g	2	6	0	2	4	4	1	1	2	0	8	3	1
15	CLARK, Wes	g	1	11	1	3	2	2	1	3	4	3	5	4	1
04	ISABELL, Tramaine		1	4	0	1	0	0	0	1	1	1	2	0	0
05	ALLEN, D'Angelo		1	1	0	0	0	0	0	0	0	0	2	1	0
10	WALTON, K.J.		0	1	0	0	0	0	0	0	0	2	0	1	0
23	GANT, Jakeenan		1	1	0	0	2	3	1	0	1	3	4	0	0
25	WOODS, Russell		0	0	0	0	0	0	0	1	1	3	0	0	0
33	VANLEER, Cullen		1	5	1	4	0	0	1	1	2	2	3	1	0
TEAM								2	1	3					
Totals.....			23	60	5	18	11	17	10	23	33	23	62	15	9

TOTAL FG%	1st Half: 9-24 37.5%	2nd Half: 14-36 38.9%	Game: 38.3%	DEADBALL
3-Pt. FG%	1st Half: 1-7 14.3%	2nd Half: 4-11 36.4%	Game: 27.8%	REBOUNDS
F Throw %	1st Half: 5-8 62.5%	2nd Half: 6-9 66.7%	Game: 64.7%	4,1

Officials: John Higgins, Tom Eades, Kipp Kissinger
Technical fouls: Northwestern-None. Mizzou-None.

Attendance:

Score by Periods 1st2ndTotal

Northwestern 38 29 67

Mizzou 24 38 62

CBE Hall of Fame Classic Consolation Game

SECOND HALF COMEBACK FOR @MIZZOUHOOPS COMES UP SHORT VS. NORTHWESTERN



KANSAS CITY, Mo. - After trailing by as many as 20 points in the first half, Mizzou Men's Basketball (2-3) cut the lead to as little as three points with under a minute to play, but fell 67-62 to Northwestern (4-1) on Saturday in the consolation round of the CBE Hall of Fame Classic. Freshman guard **Terrance Phillips** (Orange County, Calif.) lead the charge in the second half, posting season-highs in points (16), rebounds (6, matching last night's total), and assists (4). Thirteen of Phillips' 16 points came in the second half of the setback at the Sprint Center.

"I'm proud of these guys for staying with it and turning it around in the second half," head coach **Kim Anderson** said. "We had the necessary opportunities to come away with a victory, but just couldn't convert. I'm proud of these guys' effort."

Joining Phillips in double figures was freshman forward **Kevin Puryear** (Blue Springs, Mo.) with 14 points on 6-of-11 shooting. Tuesday was the fourth time in five games Puryear has posted double-digits in scoring. Senior forward **Ryan Rosburg** (Chesterfield, Mo.), who started his 50th game as a Tiger on Tuesday, led the team with nine rebounds, the most rebounds he has recorded since grabbing 12 against Georgia on Feb. 25, 2014.

In the first half, Northwestern connected on 6-of-7 field goal attempts during a 22-4 run to open a 31-11 lead in the game's first 13 minutes. After the under-eight media timeout, Mizzou went on a 6-0 run of its own to cut the deficit to 14. Puryear scored the first four points of the run, followed by a two-handed slam from Rosburg off a pick-and-roll. Despite connecting on only four more shots than Mizzou in the half (13-9), seven of the Wildcats' shots came from beyond the arc and Northwestern took a 14-point lead into the locker room at halftime, 38-24.

The Tigers came out of the gates firing in the second half, opening the half on a 5-0 run thanks to a three-pointer from junior guard **Wes Clark** (Detroit, Mich.) and a steal from Phillips on the defensive end which resulted in a layup for him in transition on the other end. Mizzou cut the lead to single digits for the first time since the 12:39 mark in the first half when Phillips connected on a three-pointer off an out-of-bounds save from freshman guard **Cullen VanLeer** (Pacific, Mo.) with 12:46 left in the game. After trading baskets back-and-forth, Puryear connected on a free throw with 34 seconds to play to cut Northwestern's lead to three. It would be the closest the Tigers would get, as Northwestern converted 2-of-4 free throws in the final 30 seconds to pull out a 67-62 nail biter.



TERRENCE PHILLIPS

FR | G | 5-11 | 175

Orange County, Calif.

Oak Hill Academy (Va.)

LAST GAME (VS. NORTHWESTERN 11-24-15)

FG	FGA	3FG	FGA	FT	FTA	REB	PTS
6	11	3	6	1	1	6	16

PHILLIPS 2015-16 GAME-BY-GAME

Opponent	Date	GS	Min	FG	FGA	Pct	3FG	FGA	Pct	FT	FTA	Pct	Off	Def	Tot	Avg	PF	FO	A	TO	Blk	Stl	Pts	Avg
WOFFORD	11-13-15	*	29	2-5	.400	0-1	.000	3-4	.750	0	3	.000	0	3	3	3.0	3	0	3	2	0	0	7	7.0
UMES	11-15-15	*	27	5-7	.714	3-4	.750	0-0	.000	1	2	.500	1	2	3	3.0	3	0	2	1	0	1	13	10.0
at Xavier	11-17-15	*	12	1-2	.500	1-2	.500	0-0	.000	0	1	.000	0	1	1	2.3	4	0	0	2	0	0	3	7.7
vs Kansas State	11-23-15	*	24	3-8	.375	0-2	.000	0-0	.000	0	6	.000	0	6	6	3.3	2	0	2	5	0	1	6	7.3
vs Northwestern	11-24-15	*	31	6-11	.545	3-6	.500	1-1	1.000	0	6	.000	0	6	6	3.8	5	1	4	4	1	4	16	9.0
ARKANSAS ST.	12-1-15																							
NORTHERN ILL.	12-4-15																							
OMAHA	12-9-15																							
at Arizona	12-13-15																							
NC STATE	12-19-15																							
vs Illinois	12-23-15																							
ARKANSAS-PB	12-29-15																							
SAVANNAH ST	1-2-16																							
at Georgia	1-6-16																							
AUBURN	1-9-16																							
ARKANSAS	1-12-16																							
at S. Carolina	1-16-16																							
GEORGIA	1-20-16																							
at Texas A&M	1-23-16																							
at Kentucky	1-27-16																							
MISSISSIPPI ST	1-30-16																							
OLE MISS	2-3-16																							
at Alabama	2-6-16																							
at Vanderbilt	2-10-16																							
TENNESSEE	2-13-16																							
S. CAROLINA	2-16-16																							
at Arkansas	2-20-16																							
at Ole Miss	2-23-16																							
TEXAS A&M	2-27-16																							
at LSU	3-1-16																							
FLORIDA	3-5-16																							

2015-16 (FRESHMAN):

- Nearly willed Mizzou to a comeback vs. Northwestern (Nov. 23), scoring 13 of his 16 points (6-of-11 FG) after the break of the 67-62 result.
- Rained in 3-of-4 from three-point land en route to 13 points vs. UMES (Nov. 14), playing 27 minutes in his second career start.
- Earned the start in his collegiate debut vs. Wofford (Nov. 13), recording 7 points, 3 assists and 3 rebounds in 29 minutes.

OAK HILL ACADEMY:

- Led national powerhouse Oak Hill Academy (Mouth of Wilson, Va.) to an 88-4 record as the team's starting point guard his last two seasons.
- Averaged 8.7 assists, 7.7 points and 4.2 steals per game while leading Oak Hill to a 47-1 season as a senior, with the squad also spending 10 weeks as the nation's No. 1-ranked boys basketball team.
- Broke Oak Hill's career assists record that was previously held by former North Carolina standout Jeff McInnis.

PERSONAL:

- Son of Alice Knox and Ted Phillips, and born on Jan. 12, 1996, in Los Angeles, California.
- Athlete he most looks up to and models his game after is Chris Paul.
- Favorite TV show is 'Friends'.
- Considered Mizzou the most in the recruiting process due to the Tigers coaching staff's ongoing presence.
- Mentions NBA star Kobe Bryant as the most influential person he has ever met.

PHILLIPS CAREER STATS

SEASON	G-GS	MIN	MPG	FG-A	FG%	3FG-A	3FG%	FT-A	FT%	REB / AVG.	AST / TO	BS / S	TP	AVG.
2015-16	5-5	123	24.6	17-33	.515	7-15	.467	4-5	.800	19 / 3.8	11 / 14	1 / 6	45	9.0
TOTAL	5-5	123	24.6	17-33	.515	7-15	.467	4-5	.800	19 / 3.8	11 / 14	1 / 6	45	9.0

#1 AT A GLANCE

2015-16 Career

Scored 5+ points	4	-
Scored 10+ points	2	-
Scored 15+ points	1	-
Hit 2+ 3-pointers	2	-
Recorded 3+ rebounds	4	-
Dished 3+ assists	2	-
Played 20+ minutes	4	-
Played 30+ minutes	1	-

#1 GAME HIGHS

2015-16 Career

16, vs. Northwestern	-
11-24-15 PTS	-
6, vs. Northwestern	-
11-24-15 FGM	-
11, vs. Northwestern	-
11-24-15 FGA	-
3, Twice	-
3PTM	-
6, vs. Northwestern	-
11-24-15 3PTA	-
3, Wofford	-
11-13-15 FTM	-
4, Wofford	-
11-13-15 FTA	-
6, Twice	-
REB	-
4, vs. Northwestern	-
11-24-15 ASST	-
1, vs. Northwestern	-
11-24-15 BLKS	-
4, vs. Northwestern	-
11-24-15 STLS	-
31, vs. Northwestern	-
11-24-15 MIN	-



TRAMAINÉ ISABELL

SO // G // 6-0 // 178

Seattle, Wash.

Garfield High School

LAST GAME (VS. NORTHWESTERN 11-24-15)

FG	FGA	3FG	FGA	FT	FTA	AST	PTS
1	4	0	1	0	0	0	2

ISABELL 2015-16 GAME-BY-GAME

Opponent	Date	GS	Min	FG	FGA	Pct	3FG	FGA	Pct	FT	FTA	Pct	Off	Def	Tot	Avg	PF	FO	A	TO	Blk	Stl	Pts	Avg
WOFFORD	11-13-15	10	2-2	1.000	0-0	.000	0-0	.000	0-0	.000	0	3	3	3.0	1	0	2	3	0	1	4	4.0		
UMES	11-15-15	12	2-5	.400	0-1	.000	0-0	.000	0-0	.000	2	2	4	3.5	0	0	1	0	0	0	4	4.0		
at Xavier	11-17-15	13	3-6	.500	1-1	1.000	4-4	1.000	0	1	1	2.7	2	0	1	5	0	1	11	6.3				
vs Kansas State	11-23-15	12	2-3	.667	0-0	.000	0-0	.000	0	1	1	2.3	0	0	0	0	0	1	4	5.8				
vs Northwestern	11-24-15	8	1-4	.250	0-1	.000	0-0	.000	0	1	1	2.0	1	0	0	0	0	0	2	5.0				
ARKANSAS ST.	12-1-15																							
NORTHERN ILL.	12-4-15																							
OMAHA	12-9-15																							
at Arizona	12-13-15																							
NC STATE	12-19-15																							
vs Illinois	12-23-15																							
ARKANSAS-PB	12-29-15																							
SAVANNAH ST	1-2-16																							
at Georgia	1-6-16																							
AUBURN	1-9-16																							
ARKANSAS	1-12-16																							
at S. Carolina	1-16-16																							
GEORGIA	1-20-16																							
at Texas A&M	1-23-16																							
at Kentucky	1-27-16																							
MISSISSIPPI ST	1-30-16																							
OLE MISS	2-3-16																							
at Alabama	2-6-16																							
at Vanderbilt	2-10-16																							
TENNESSEE	2-13-16																							
S. CAROLINA	2-16-16																							
at Arkansas	2-20-16																							
at Ole Miss	2-23-16																							
TEXAS A&M	2-27-16																							
at LSU	3-1-16																							
FLORIDA	3-5-16																							

2015-16 (SOPHOMORE):

Hit on both his field goal attempts in the season-opening win vs. Wofford (Nov. 13), scoring 4 points and dishing 2 assists.

2014-15 (FRESHMAN):

Dished out multiple assists in 8 different games, including a season-high 6 dimes (against just one turnover) in the win vs. LSU (Jan. 8).

Season-best 14 points (4-of-8 FG, 1-of-3 3PT, 5-of-6 FT) vs. Lipscomb (Jan. 3), with his work at the charity stripe setting season-high marks in FT makes and attempts.

Made ESPN SportsCenter's Top 10 with his buzzer-beating, game-tying three-pointer vs. Oklahoma State (Dec. 30), dropping the bucket with 0.2 seconds left in regulation.

HIGH SCHOOL:

Was named first team all-state as a senior after leading Garfield High School to a 25-1 overall record and the Class 4A state championship.

Averaged 23.6 points and 3.5 assists as a senior for Garfield, which also produced NBA players Tony Wroten and Brandon Roy.

Poured in 34 points in the state title win over Richland and was named the state tournament's Most Valuable Player.

Began his high school career at Lakeside High School, the same high school as Microsoft co-founders Bill Gates and Paul Allen, and led the Lions to the 2013 state championship game.

PERSONAL:

- Full name is Tramaine Andre' Isabell.
- Son of Aiyana Brown and Tramaine Isabell Sr.
- Has a younger sister, Queen, and younger brother, Se'jhe.
- Born June 27, 1995.
- Considers his grandfather, Rich Padden, his greatest influence and an important mentor.
- Outside of pursuing basketball, would like to find success in the fields of real estate or private investment.

ISABELL CAREER STATS

CAREER	G-GS	MIN	MPG	FG-A	FG%	3FG-A	3FG%	FT-A	FT%	REB / AVG.	AST / TO	BS / S	TP	AVG.
2014-15	27-1	405	15.0	37-118	.314	16-52	.308	22-28	.786	36 / 1.3	39 / 33	0 / 17	112	4.1
2015-16	5-0	55	11.0	10-20	.500	1-3	.333	4-4	1.000	10 / 2.0	4 / 8	0 / 3	25	5.0
TOTAL	32-1	460	14.4	47-138	.341	17-55	.309	26-32	.813	46 / 1.4	43 / 41	0 / 20	137	4.3

#4 AT A GLANCE

2015-16 Career

Scored 5+ points	1	10
Scored 10+ points	1	4
Hit 2+ 3-pointers	-	4
Multiple steals	-	5
Multiple assists	1	10
Dished 3+ assists	-	6
Played 20+ minutes	-	7
Played 30+ minutes	-	2

#4 GAME HIGHS

2015-16 Career

11, at Xavier	12, Elon
11-17-15	PTS 12-11-14
3, at Xavier	5, at Arkansas
11-17-15	FGM 2-18-15
6, at Xavier	9, at Arkansas
11-17-15	FGA 2-18-15
1, at Xavier	3, at Arkansas
11-17-15	3PTM 2-18-15
1, Twice	5, 3 times
11-15-15	3PTA
4, at Xavier	5, Lipscomb
11-15-15	FTM 1-3-15
4, at Xavier	6, Lipscomb
11-17-15	FTA 1-3-15
3, Wofford	4, 3 times
11-13-15	REB
2	6, LSU
11-13-15	ASST 1-8-15
-	-
-	BLKS -
1, Twice	2, 4 times
-	STLS -



D'ANGELO ALLEN

SO // F // 6-7 // 216

Dallas, Texas

Kimball High School

LAST GAME (VS. NORTHWESTERN 11-24-15)

FG	FGA	3FG	FGA	FT	FTA	REB	PTS
1	1	0	0	0	0	0	2

ALLEN 2015-16 GAME-BY-GAME

Opponent	Date	GS	Min	FG	FGA	Pct	3FG	FGA	Pct	FT	FTA	Pct	Off	Def	Tot	Avg	PF	FO	A	TO	Blk	Stl	Pts	Avg
WOFFORD	11-13-15	DNP																						
UMES	11-15-15	15	1-1	1.000	0-0	.000	0-0	.000	0-0	.000	2	2	4	4.0	2	0	0	0	0	0	1	2	2.0	
at Xavier	11-17-15	12	0-0	.000	0-0	.000	0-0	.000	0-0	.000	0	3	3	3.5	2	0	0	1	0	0	0	0	1.0	
vs Kansas State	11-23-15	16	0-3	.000	0-0	.000	0-0	.000	0-0	.000	3	0	3	3.3	1	0	0	2	0	2	0	0	0.7	
vs Northwestern	11-24-15	5	1-1	1.000	0-0	.000	0-0	.000	0-0	.000	0	0	0	2.5	0	0	1	0	0	0	2	1.0		
ARKANSAS ST.	12-1-15																							
NORTHERN ILL.	12-4-15																							
OMAHA	12-9-15																							
at Arizona	12-13-15																							
NC STATE	12-19-15																							
vs Illinois	12-23-15																							
ARKANSAS-PB	12-29-15																							
SAVANNAH ST	1-2-16																							
at Georgia	1-6-16																							
AUBURN	1-9-16																							
ARKANSAS	1-12-16																							
at S. Carolina	1-16-16																							
GEORGIA	1-20-16																							
at Texas A&M	1-23-16																							
at Kentucky	1-27-16																							
MISSISSIPPI ST	1-30-16																							
OLE MISS	2-3-16																							
at Alabama	2-6-16																							
at Vanderbilt	2-10-16																							
TENNESSEE	2-13-16																							
S. CAROLINA	2-16-16																							
at Arkansas	2-20-16																							
at Ole Miss	2-23-16																							
TEXAS A&M	2-27-16																							
at LSU	3-1-16																							
FLORIDA	3-5-16																							

2015-16 (SOPHOMORE):

- First appearance of the season vs. UMES (Nov. 15), logging 15 high-energy minutes off the bench with 4 rebounds.

2014-15 (FRESHMAN):

- Made all 8 of his starts in Mizzou's final eight games of the season.
- Shot an impressive 53.8-percent from the field (14-of-26) over the final 10 games of the Tigers' campaign.
- Matched his season-high in rebounds (7) in the first of those eight starts at Mississippi State (Feb. 14).
- Season-best 3-of-3 3PT shooting en-route to 10 points at South Carolina (Feb. 10).
- 8 points (3-of-4 FG, 2-of-2 3PT) vs. Illinois (Dec. 20) in the Scottrade Center, draining two 3-pointers.
- Breakout game vs. Elon (Dec. 11), scoring 12 points (5-of-7 FG, 2-of-2 FT) and grabbing 7 rebounds in 21 minutes of action off the bench.

KIMBALL HIGH SCHOOL:

- Was a winner throughout his high school career and was a part of three Texas Class 4A State Championship teams (2011, 2012 and 2014) at Kimball High School in Dallas.
- Averaged 13.3 points and 10.2 rebounds as a senior.
- Named to the Texas Association of Basketball Coaches All-Star Team in 2014.
- Named to the Class 4A All-Tournament Team as well and was an All-Region II selection.

PERSONAL:

- Full name is D'Angelo Malik Allen.
- Born May 10, 1996, in Dallas, Texas.
- Son of Evelyn Allen.
- Hobbies include playing video games, watching movies and hanging out with friends.

#5 AT A GLANCE

2015-16 Career

Scored 5+ points	-	9
Scored 10+ points	-	2
Attempted 5+ FGs	-	6
Grabbed 5+ rebounds	-	8
Played 20+ minutes	-	13

#5 GAME HIGHS

2015-16	Career
2, UMES	12, Elon
11-15-15	PTS 12-11-14
1, UMES	5, Elon
11-15-15	FGM 12-11-14
1, UMES	7, Elon
11-15-15	FGA 12-11-14
-	3, South Carolina
-	3PTM 2-10-15
-	3, South Carolina
-	3PTA 2-10-15
-	3, Lipscomb
-	FTM 1-3-15
1, UMES	4, Lipscomb
11-15-15	FTA 1-3-15
3, Twice	7, Twice
	REB
-	2, 3 times
-	ASST
-	1, 7 times
-	BLKS
1, UMES	2, Twice
11-15-15	STLS

ALLEN CAREER STATS

SEASON	G-GS	MIN	MPG	FG-A	FG%	3FG-A	3FG%	FT-A	FT%	REB / AVG.	AST / TO	BS / S	TP	AVG.
2014-15	32-8	544	17.0	40-98	.408	9-20	.450	17-28	.607	100 / 3.1	21 / 18	7 / 11	106	3.3
2015-16	4-0	48	12.0	2-5	.400	0-0	.000	0-2	.000	10 / 2.5	1 / 3	0 / 3	4	1.0
TOTAL	36-8	592	16.4	42-103	.408	9-20	.450	17-30	.567	110 / 3.1	22 / 21	7 / 14	110	3.1



K.J. WALTON

FR // G // 6-3 // 197

Brownsburg, Ind.

Brownsburg High School

LAST GAME (VS. NORTHWESTERN 11-24-15)

FG	FGA	3FG	FGA	FT	FTA	REB	PTS
3	8	0	1	2	2	3	8

WALTON 2015-16 GAME-BY-GAME

Opponent	Date	GS	Min	FG	FGA	Pct	3FG	FGA	Pct	FT	FTA	Pct	Off	Def	Tot	Avg	PF	FO	A	TO	Blk	Stl	Pts	Avg
WOFFORD	11-13-15	*	17	3-5	.600	0-0	.000	0-1	.000	0	1	0	1	1	1.0	2	0	2	0	0	1	6	6.0	
UMES	11-15-15		15	1-3	.333	0-1	.000	9-10	.900	0	0	0	0.5	1	0	3	0	0	0	1	11	8.5		
at Xavier	11-17-15		21	3-8	.375	0-1	.000	2-2	1.000	1	2	3	1.3	2	0	1	0	0	0	0	8	8.3		
vs Kansas State	11-23-15		17	1-7	.143	0-1	.000	1-4	.250	2	1	3	1.8	2	0	1	3	0	0	3	7.0			
vs Northwestern	11-24-15		5	0-1	.000	0-0	.000	0-0	.000	0	0	0	1.4	2	0	1	0	0	0	0	5.6			
ARKANSAS ST.	12-1-15																							
NORTHERN ILL.	12-4-15																							
OMAHA	12-9-15																							
at Arizona	12-13-15																							
NC STATE	12-19-15																							
vs Illinois	12-23-15																							
ARKANSAS-PB	12-29-15																							
SAVANNAH ST	1-2-16																							
at Georgia	1-6-16																							
AUBURN	1-9-16																							
ARKANSAS	1-12-16																							
at S. Carolina	1-16-16																							
GEORGIA	1-20-16																							
at Texas A&M	1-23-16																							
at Kentucky	1-27-16																							
MISSISSIPPI ST	1-30-16																							
OLE MISS	2-3-16																							
at Alabama	2-6-16																							
at Vanderbilt	2-10-16																							
TENNESSEE	2-13-16																							
S. CAROLINA	2-16-16																							
at Arkansas	2-20-16																							
at Ole Miss	2-23-16																							
TEXAS A&M	2-27-16																							
at LSU	3-1-16																							
FLORIDA	3-5-16																							

2015-16 (FRESHMAN):

- Came off bench and sparked Mizzou in second half action vs. UMES (Nov. 15), scoring all 11 of his points after the break.
- Earned the start in his collegiate debut vs. Wofford (Nov. 13), scoring 6 points (3-of-5 FG) in the 83-74 win.

BROWNSBURG HIGH SCHOOL:

- Averaged 19.7 points, 5.0 rebounds and 1.9 steals per game for Brownsburg High School as a senior.
- Shot an impressive 44.0 percent from the floor in his final high school season.
- Named an *Indy Star* Indiana All-Star at the conclusion of his final high school campaign.
- Rated a four-star prospect and ranked as the 103rd best basketball recruit in the nation by Rivals.com.
- Participant at the 28th annual Hoosier Basketball Magazine Top 60 Workout which features Indiana's best upperclassmen

- Chose Mizzou over Cincinnati and Xavier.

PERSONAL:

- Son of Kenneth and Michelle Walton.
- Father, Kenneth, played basketball at Nebraska from 1981-83.
- Born on July 20, 1996, in Indianapolis, Ind.
- Enjoys watching 'Fresh Prince of Bel-Air' in his spare time.
- Favorite sports movie is *Remember the Titans*.
- Favorite professional athlete to follow is Carmelo Anthony.
- Would like to pursue a career in basketball.

#10 AT A GLANCE

2015-16 Career

Scored 5+ points	3	-
Scored 10+ points	1	-
Hit 2+ 3-pointers	-	-
Hit 5+ free throws	1	-
Multiple assists	2	-
Dished 3+ assists	1	-
Played 20+ minutes	1	-
Played 30+ minutes	-	-

#10 GAME HIGHS

2015-16 Career

11, UMES	-
11-15-15	PTS
3, Twice	-
	FGM
8, at Xavier	-
11-17-15	FGA
-	-
-	3PTM
1, Twice	-
	3PTA
9, UMES	-
11-15-15	FTM
10, UMES	-
11-15-15	FTA
3, at Xavier	-
11-17-15	REB
3, UMES	-
11-15-15	ASST
-	-
-	BLKS
1, Twice	-
	STLS

WALTON CAREER STATS

SEASON	G-GS	MIN	MPG	FG-A	FG%	3FG-A	3FG%	FT-A	FT%	REB / AVG.	AST / TO	BS / S	TP	AVG.
2015-16	5-1	75	15.0	8-24	.333	0-3	.000	12-17	.706	7 / 1.4	8 / 3	0 / 2	28	5.6
TOTAL	5-1	75	15.0	8-24	.333	0-3	.000	12-17	.706	7 / 1.4	8 / 3	0 / 2	28	5.6



JIMMY BARTON

RS SO // G // 5-9 // 160

St. Louis, Mo. // DeSmet Jesuit HS

Houston Baptist

LAST GAME (VS. KANSAS STATE 11-23-15)

FG	FGA	3FG	FGA	FT	FTA	AST	PTS
0	0	0	0	0	0	0	0

BARTON 2015-16 GAME-BY-GAME

Opponent	Date	GS	Min	FG	FGA	Pct	3FG	FGA	Pct	FT	FTA	Pct	Off	Def	Tot	Avg	PF	FO	A	TO	Blk	Stl	Pts	Avg
WOFFORD	11-13-15	DNP																						
UMES	11-15-15	1		0-0	.000		0-0	.000		0-0	.000		0	0	0	0.0	0	0	0	1	0	0	0	0.0
at Xavier	11-17-15	DNP																						
vs Kansas State	11-23-15	1		0-0	.000		0-0	.000		0-0	.000		0	0	0	0.0	0	0	0	0	0	0	0	0.0
vs Northwestern	11-24-15	DNP																						
ARKANSAS ST.	12-1-15																							
NORTHERN ILL.	12-4-15																							
OMAHA	12-9-15																							
at Arizona	12-13-15																							
NC STATE	12-19-15																							
vs Illinois	12-23-15																							
ARKANSAS-PB	12-29-15																							
SAVANNAH ST	1-2-16																							
at Georgia	1-6-16																							
AUBURN	1-9-16																							
ARKANSAS	1-12-16																							
at S. Carolina	1-16-16																							
GEORGIA	1-20-16																							
at Texas A&M	1-23-16																							
at Kentucky	1-27-16																							
MISSISSIPPI ST	1-30-16																							
OLE MISS	2-3-16																							
at Alabama	2-6-16																							
at Vanderbilt	2-10-16																							
TENNESSEE	2-13-16																							
S. CAROLINA	2-16-16																							
at Arkansas	2-20-16																							
at Ole Miss	2-23-16																							
TEXAS A&M	2-27-16																							
at LSU	3-1-16																							
FLORIDA	3-5-16																							

2015-16 (REDSHIRT SOPHOMORE):

▼ Made first appearance for Mizzou in the win vs. UMES (Nov. 15), coming off the bench in the final moments of the victory.

2014-15 (SOPHOMORE):

▼ Walked onto the Tiger program after playing his freshman season at Division I Houston Baptist.

AT HOUSTON BAPTIST

2013-14 (FRESHMAN):

▼ Played in 31 games for Houston Baptist, making 13 starts.
 ▼ Saw his averages improve to 3.1 points in 19.2 minutes during Southland Conference play.
 ▼ Passed out a career-high eight assists at Abilene Christian and seven more at Sam Houston State in back-to-back contests.
 ▼ Scored a career high nine points and was a perfect 3-of-3 from three-point range in a loss to Southern Miss.

DESMET JESUIT HIGH SCHOOL:

▼ Was a four-year letterwinner and three-year team captain for coach Kevin Poelker at De Smet Jesuit High School in St. Louis, Mo.
 ▼ Averaged 14.0 points, 6.5 assists and 3.5 rebounds per game in leading the Spartans to the state finals, earning Metro Catholic Conference Co-Player of the Year, first-team all-state and second-team All-Metro honors as a senior.

PERSONAL:

▼ Full name is James Edward Barton.
 ▼ Born Oct. 7, 1994, in St. Louis, Mo.
 ▼ Son of Jim Sr. and Christy Barton.
 ▼ Has two sisters, Paige and Mary and one brother, Tommy.
 ▼ Considers his father, Jim Sr., his greatest influence.

#11 AT A GLANCE

2015-16 Career

Scored 5+ points	-	7
Hit 2+ 3-pointers	-	1
Multiple steals	-	4
Multiple assists	-	14
Dished 3+ assists	-	7
Played 20+ minutes	-	9
Played 30+ minutes	-	2

#11 GAME HIGHS

2015-16 Career

	PTS	-
	FGM	-
	FGA	-
	3PTM	-
	3PTA	-
	FTM	-
	FTA	-
	REB	-
	ASST	-
	BLKS	-
	STLS	-

BARTON CAREER STATS

SEASON	G-GS	MIN	MPG	FG-A	FG%	3FG-A	3FG%	FT-A	FT%	REB / AVG.	AST / TO	BS / S	TP	AVG.
2013-14	31-13	515	16.6	34-98	.347	14-50	.280	12-16	.750	35 / 1.1	57 / 43	0 / 15	94	3.0
2014-15	REDSHIRTED													
2015-16	2-0	2	1.0	0-0	.000	0-0	.000	0-0	.000	0 / 0.0	0 / 0	0 / 0	0	0.0
TOTAL	33-13	517	16.6	34-98	.347	14-50	.280	12-16	.750	35 / 1.1	57 / 44	0 / 15	94	3.0

NCAA APPEARANCES: '44, '76, '78, '80, '81, '82, '83, '86, '87, '88, '89, '90, '92, '93, '95, '99, '00, '01, '02, '03, '09, '10, '11, '12, '13



NAMON WRIGHT

SO // G // 6-5 // 202

Los Angeles, Calif.

Pacific Hills High School

LAST GAME (VS. NORTHWESTERN 11-24-15)

FG	FGA	3FG	3FGA	FT	FTA	REB	PTS
2	6	0	2	4	4	2	8

WRIGHT 2015-16 GAME-BY-GAME

Opponent	Date	GS	Min	FG	FGA	Pct	3FG	FGA	Pct	FT	FTA	Pct	Off	Def	Tot	Avg	PF	FO	A	TO	Blk	Stl	Pts	Avg
WOFFORD	11-13-15		23	5-7		.714	3-4		.750	5-8		.625	2	5	7	7.0	3	0	0	0	0	0	18	18.0
UMES	11-15-15	*	26	1-8		.125	1-4		.250	4-4		1.000	2	3	5	6.0	2	0	1	2	0	0	7	12.5
at Xavier	11-17-15	*	28	2-6		.333	0-4		.000	2-3		.667	0	4	4	5.3	3	0	2	2	0	2	6	10.3
vs Kansas State	11-23-15	*	23	1-6		.167	1-5		.200	2-2		1.000	0	4	4	5.0	1	0	0	2	2	1	5	9.0
vs Northwestern	11-24-15	*	31	2-6		.333	0-2		.000	4-4		1.000	1	1	2	4.4	0	0	3	1	0	0	8	8.8
ARKANSAS ST.	12-1-15																							
NORTHERN ILL.	12-4-15																							
OMAHA	12-9-15																							
at Arizona	12-13-15																							
NC STATE	12-19-15																							
vs Illinois	12-23-15																							
ARKANSAS-PB	12-29-15																							
SAVANNAH ST	1-2-16																							
at Georgia	1-6-16																							
AUBURN	1-9-16																							
ARKANSAS	1-12-16																							
at S. Carolina	1-16-16																							
GEORGIA	1-20-16																							
at Texas A&M	1-23-16																							
at Kentucky	1-27-16																							
MISSISSIPPI ST	1-30-16																							
OLE MISS	2-3-16																							
at Alabama	2-6-16																							
at Vanderbilt	2-10-16																							
TENNESSEE	2-13-16																							
S. CAROLINA	2-16-16																							
at Arkansas	2-20-16																							
at Ole Miss	2-23-16																							
TEXAS A&M	2-27-16																							
at LSU	3-1-16																							
FLORIDA	3-5-16																							

2015-16 (SOPHOMORE):

- Filled the stat line with 6 points (2-of-6 FG, 2-of-3 FT), 4 rebounds, 2 assists and 2 steals at Xavier (Nov. 17).
- Matched his career-high with two assists in the game at Xavier (Nov. 17), the sixth such time he has accomplished the feat.
- Fired in 18 points (5-of-7 FG, 3-of-4 3PT, 5-of-8 FT) in 23 minutes off the bench in the season-opening win vs. Wofford (Nov. 13).
- Also grabbed a career-best 7 rebounds against the Terriers, along with setting new career highs in free throws and attempts.

2014-15 (FRESHMAN):

- Scored double figures in seven different games in his first campaign for Mizzou, averaging 6.8 points per game in 30 games played (20 starts).
- Finished the season as the Tigers' go-to scorer, averaging 13.6 points per game over Mizzou's final five contests.
- Season-ending flurry of points included an impressive 28 points vs.

Florida (Feb. 24), leading the Tigers to a 64-52 win over the Gators.

- His scoring output vs. UF was the third-highest scoring performance by a freshman in Mizzou history, a game in which he shot 10-of-13 FG, 6-of-8 3PT, 2-of-3 FT.

PACIFIC HILLS HIGH SCHOOL:

- Averaged 24.2 points, 9.4 rebounds, 3.0 assists and 1.4 steals for Pacific Hills High School in 2014.
- Ranked as one of the Top 100 players in the class of 2014.
- Helped lead Pacific Hills to the Division IV state championship as a junior and averaged 15.6 points, 7.3 rebounds and 3.1 assists.

PERSONAL:

- Full name is Namon Khary Wright.
- Son of Michelle Burnside.
- Born June 25, 1994, in Los Angeles, Calif.

WRIGHT CAREER STATS

SEASON	G-GS	MIN	MPG	FG-A	FG%	3FG-A	3FG%	FT-A	FT%	REB / AVG.	AST / TO	BS / S	TP	AVG.
2014-15	30-20	607	20.2	77-186	.414	40-103	.388	10-18	.556	69 / 2.3	19 / 37	3 / 17	204	6.8
2015-16	5-4	131	26.2	11-33	.333	5-19	.263	17-21	.810	22 / 4.4	6 / 7	2 / 3	44	8.8
TOTAL	35-24	738	21.1	88-219	.402	45-122	.369	27-39	.692	91 / 2.6	25 / 44	5 / 20	248	7.1

#12 AT A GLANCE

2015-16 Career

Scored 10+ points	1	8
Scored 20+ points	-	2
Hit 2+ 3-pointers	1	13
Made 5+ FGs	1	6
Attempted 5+ FGs	5	22
Attempted 10+ FGs	-	5
Multiple assists	2	7
Multiple steals	1	6
Played 20+ minutes	5	19
Played 30+ minutes	1	7

#12 GAME HIGHS

2015-16 Career

18, Wofford	28, Florida
11-13-15	PTS 2-24-15
5, Wofford	10, Florida
11-13-15	FGM 2-24-15
8, UMES	14, at Mississippi St.
11-15-15	FGA 3-7-15
3, Wofford	6, Florida
11-13-15	3PTM 2-24-15
5, vs. Kansas State	8, Florida
11-23-15	3PTA 2-24-15
5, Wofford	5, Wofford
11-13-15	FTM 11-13-15
8, Wofford	8, Wofford
11-13-15	FTA 11-13-15
7, Wofford	7, Wofford
11-13-15	REB 11-13-15
3, vs. Northwestern	3, vs. Northwestern
11-24-15	ASST 11-24-15
-	1, Twice
-	BLKS
2, at Xavier	3, at Georgia
11-17-15	STLS 2-28-15



WES CLARK

JR // G // 6-0 // 180

Detroit, Mich.

Romulus High School

LAST GAME (VS. NORTHWESTERN 11-24-15)

FG	FGA	3FG	3FGA	FT	FTA	AST	PTS
1	11	1	3	2	2	4	5

CLARK 2015-16 GAME-BY-GAME

Opponent	Date	GS	Min	FG	FGA	Pct	3FG	FGA	Pct	FT	FTA	Pct	Off	Def	Tot	Avg	PF	FO	A	TO	Blk	Stl	Pts	Avg
WOFFORD	11-13-15	*	28	0-3	.000	0-0	.000	4-5	.800	0	3	3	3.0	3	0	2	2	0	0	4	4.0			
UMES	11-15-15	*	31	4-11	.364	3-6	.500	4-4	1.000	0	1	1	2.0	1	0	3	1	0	0	15	9.5			
at Xavier	11-17-15	*	31	5-12	.417	1-4	.250	0-1	.000	2	1	3	2.3	3	0	3	2	0	3	11	10.0			
vs Kansas State	11-23-15	*	26	2-9	.222	1-5	.200	0-0	.000	0	2	2	2.3	2	0	6	1	0	0	5	8.8			
vs Northwestern	11-24-15	*	31	1-11	.091	1-3	.333	2-2	1.000	1	3	4	2.6	3	0	4	1	0	3	5	8.0			
ARKANSAS ST.	12-1-15																							
NORTHERN ILL.	12-4-15																							
OMAHA	12-9-15																							
at Arizona	12-13-15																							
NC STATE	12-19-15																							
vs Illinois	12-23-15																							
ARKANSAS-PB	12-29-15																							
SAVANNAH ST	1-2-16																							
at Georgia	1-6-16																							
AUBURN	1-9-16																							
ARKANSAS	1-12-16																							
at S. Carolina	1-16-16																							
GEORGIA	1-20-16																							
at Texas A&M	1-23-16																							
at Kentucky	1-27-16																							
MISSISSIPPI ST	1-30-16																							
OLE MISS	2-3-16																							
at Alabama	2-6-16																							
at Vanderbilt	2-10-16																							
TENNESSEE	2-13-16																							
S. CAROLINA	2-16-16																							
at Arkansas	2-20-16																							
at Ole Miss	2-23-16																							
TEXAS A&M	2-27-16																							
at LSU	3-1-16																							
FLORIDA	3-5-16																							

2015-16 (JUNIOR):

- Scored at least 15 points for the sixth time in his career in the 73-55 win vs. UMES (Nov. 5), hitting 3-of-6 from 3-point range.
- Made his return to Mizzou's lineup in the season-opening win vs. Wofford (Nov. 13), finishing his comeback from the right elbow dislocation that ended his sophomore season.

2014-15 (SOPHOMORE):

- Averaged 10.1 points per game in his first season in a primary role for Mizzou, starting 20 of 23 games played.
- 11 points (4-of-10 FG, 1-of-4 3PT, 2-of-2 FT) at South Carolina (Feb. 10) in 26 minutes of action before a right elbow dislocation forced him off the court for the remainder of the game.
- Career-high 19 points (7-of-16 FG, 3-of-7 3PT, 2-of-2 FT) vs. No. 1 Kentucky (Jan. 29), also recording 4 assists, 3 steals and attempting a career-high 16 field goals.

2013-14 (FRESHMAN):

- Averaged 4.1 points, 2.2 rebounds and 2.1 assists in 20.4 minutes per game as a freshman, playing in 33 contests.
- Had 14 games with three or more assists, including a career-high six dimes in the home win over Mississippi State (3/1) and five in wins against Hawaii (11/16) and West Virginia (12/5).

ROMULUS HIGH SCHOOL:

- Led his team to the 2013 Michigan Class A state title, a 27-1 overall record and a No. 24 ranking in the final ESPN High School Power Rankings.
- Was named first team all-state each of his final two years as a prep, averaging 12.8 points, 4.0 rebounds and 6.5 assists as a senior.

PERSONAL:

- Full name is Wesley Lavert Clark.
- Son of Yvette Johnson and Wes Clark Sr.
- Born Dec. 12, 1994, in Detroit, Mich.

CLARK CAREER STATS

SEASON	G-GS	MIN	MPG	FG-A	FG%	3FG-A	3FG%	FT-A	FT%	REB / AVG.	AST / TO	BS / S	TP	AVG.
2013-14	33-0	672	20.4	42-117	.359	21-57	.368	31-49	.633	72 / 2.2	70 / 53	2 / 26	136	4.1
2014-15	23-20	713	31.0	81-233	.348	32-102	.314	38-51	.745	81 / 3.5	71 / 45	4 / 38	232	10.1
2015-16	5-5	147	29.4	12-46	.261	6-18	.333	10-12	.833	13 / 2.6	18 / 7	0 / 6	40	8.0
TOTAL	61-25	1532	25.1	135-396	.341	59-177	.333	79-112	.705	166 / 2.7	159 / 105	6 / 70	408	6.7

NCAA APPEARANCES: '44, '76, '78, '80, '81, '82, '83, '86, '87, '88, '89, '90, '92, '93, '95, '99, '00, '01, '02, '03, '09, '10, '11, '12, '13

#15 AT A GLANCE

2015-16 Career

Scored 10+ points	2	15
Scored 15+ points	1	6
Dished 3+ assists	4	30
Dished 5+ assists	1	11
Hit 5+ FGs	1	7
Hit 2+ 3-pointers	1	15
Attempted 10+ FGs	3	16
Recorded 3+ steals	2	10
Grabbed 5+ rebounds	-	10
Played 30+ minutes	3	18

#15 GAME HIGHS

2015-16 Career

15, UMES	19, Kentucky
11-15-15	PTS 1-29-15
5, at Xavier	7, Twice
11-17-15	FGM
12, at Xavier	16, Kentucky
11-17-15	FGA 1-29-15
3, UMES	4, at Texas A&M
11-15-15	3PTM 1-21-15
6, UMES	7, Kentucky
11-15-15	3PTA 1-29-15
4, Twice	6, Twice
	FTM
5, Wofford	8, vs. Oklahoma State
11-13-15	FTA 12-30-14
4, vs. Northwestern	6, vs. Chaminade
11-24-15	REB 11-26-14
6, vs. Kansas State	9, Oral Roberts
11-23-15	ASST 11-19-14
-	1, Twice
-	BLKS
3, Twice	6, UMKC
	STLS 11-14-14



JAKEENAN GANT

SO // F // 6-8 // 212

Springfield, Ga.

Effingham County High School

LAST GAME (VS. NORTHWESTERN 11-24-15)

FG	FGA	3FG	3FGA	FT	FTA	REB	PTS
1	1	0	0	2	3	1	4

GANT 2015-16 GAME-BY-GAME

Opponent	Date	GS	Min	FG	FGA	Pct	3FG	FGA	Pct	FT	FTA	Pct	Off	Def	Tot	Avg	PF	FO	A	TO	Blk	Stl	Pts	Avg
WOFFORD	11-13-15	*	16	1-5	.200		0-3	.000		2-2	1.000		1	3	4	4.0	5	1	1	0	1	0	4	4.0
UMES	11-15-15	*	13	2-2	1.000		0-0	.000		0-0	.000		0	1	1	2.5	4	0	0	1	2	1	4	4.0
at Xavier	11-17-15	*	15	0-3	.000		0-2	.000		1-2	.500		1	1	2	2.3	1	0	1	2	1	0	1	3.0
vs Kansas State	11-23-15	*	7	0-2	.000		0-1	.000		0-0	.000		0	1	1	2.0	4	0	0	0	1	0	0	2.3
vs Northwestern	11-24-15		5	1-1	1.000		0-0	.000		2-3	.667		1	0	1	1.8	3	0	0	0	0	4	2.6	
ARKANSAS ST.	12-1-15																							
NORTHERN ILL.	12-4-15																							
OMAHA	12-9-15																							
at Arizona	12-13-15																							
NC STATE	12-19-15																							
vs Illinois	12-23-15																							
ARKANSAS-PB	12-29-15																							
SAVANNAH ST	1-2-16																							
at Georgia	1-6-16																							
AUBURN	1-9-16																							
ARKANSAS	1-12-16																							
at S. Carolina	1-16-16																							
GEORGIA	1-20-16																							
at Texas A&M	1-23-16																							
at Kentucky	1-27-16																							
MISSISSIPPI ST	1-30-16																							
OLE MISS	2-3-16																							
at Alabama	2-6-16																							
at Vanderbilt	2-10-16																							
TENNESSEE	2-13-16																							
S. CAROLINA	2-16-16																							
at Arkansas	2-20-16																							
at Ole Miss	2-23-16																							
TEXAS A&M	2-27-16																							
at LSU	3-1-16																							
FLORIDA	3-5-16																							

2015-16 (SOPHOMORE):

- Fifth career game with at least two blocks in the 73-55 win vs. UMES (Nov. 15)
- Earned seventh start of his career in Mizzou's season-opening, 83-74 win vs. Wofford (Nov. 13).

2014-15 (FRESHMAN):

- Shot an efficient 51.2-percent from the field in his initial season wearing the Black & Gold.
- Finished the season with 14 blocks in 23 games for a team-best average of 0.61 blocks per game.
- 13 points (4-of-8 FG, 1-of-4 3PT, 4-of-4 FT) in 15 minutes off the bench vs. Xavier (Dec. 13), the first action of his collegiate career.
- Did not appear in the first 9 games of 2014-15 during a review of his eligibility by the University of Missouri.

EFFINGHAM COUNTY HIGH SCHOOL:

- One of the premier players in the class of 2014 and was selected to participate in USA Basketball's U18 National Team training camp in Colorado Springs, Colo., at the completion of his senior season.
- Was named Georgia's Mr. Basketball as a senior in 2014.
- Averaged 21.0 points, 10.5 rebounds, 4.0 blocks and 2.8 assists for the Effingham County Rebels as a senior, helping his club to a 20-10 overall record and an appearance in the Georgia Class 5A state playoffs.

PERSONAL:

- Full name is Jakeenan Tyelle Gant.
- Son of La'Kenia Gant and James McDonald.
- Has an older sister, Daira, and younger sister, Arial.
- Born May 6, 1996, in Savannah, Ga.
- Would enjoy working in the restaurant business after basketball.

GANT CAREER STATS

SEASON	G-GS	MIN	MPG	FG-A	FG%	3FG-A	3FG%	FT-A	FT%	REB / AVG.	AST / TO	BS / S	TP	AVG.
2014-15	23-6	324	14.1	47-91	.516	1-14	.071	18-25	.720	50 / 2.2	7 / 16	14 / 9	113	4.9
2015-16	5-4	56	11.2	4-13	.308	0-6	.000	5-7	.714	9 / 1.8	2 / 3	5 / 1	13	2.6
TOTAL	28-10	380	13.6	51-104	.490	1-20	.050	23-32	.719	59 / 2.1	9 / 19	19 / 10	126	4.5

#23 AT A GLANCE

2015-16 Career

Scored 5+ points	-	13
Scored 10+ points	-	3
Hit 3+ FGs	-	10
Grabbed 5+ rebounds	-	2
Recorded 2+ blocks	1	5
Played 20+ minutes	-	3

#23 GAME HIGHS

2015-16 Career

4, Twice	13, Xavier
PTS	12-13-14
2, UMES	5, at Arkansas
11-15-15	FGM 2-18-15
5, Wofford	13, Xavier
11-13-15	FGA 12-13-14
-	1, Xavier
-	3PTM 12-13-14
3, Wofford	4, Xavier
11-13-15	3PTA 12-13-14
2, Twice	4, Twice
	FTM
3, vs. Northwestern	6, at Georgia
11-24-15	FTA 2-28-15
4	7, at Arkansas
11-13-15	REB 2-18-15
1, Twice	3, at Arkansas
	ASST 2-18-15
2, UMES	3, Twice
11-15-15	BLKS
1, UMES	1. 9 times
11-15-15	STLS



KEVIN PURYEAR

FR // F // 6-7 / 236

Blue Springs, Mo.

South High School

LAST GAME (VS. NORTHWESTERN 11-24-15)

FG	FGA	3FG	3FGA	FT	FTA	REB	PTS
6	11	0	2	2	4	4	14

PURYEAR 2015-16 GAME-BY-GAME

Opponent	Date	GS	Min	FG	FGA	Pct	3FG	3FGA	Pct	FT	FTA	Pct	Off	Def	Tot	Avg	PF	FO	A	TO	Blk	Stl	Pts	Avg
WOFFORD	11-13-15	*	32	8-14	.571	1-3	.333	3-4	.750	0	5	5	5.0	1	0	0	2	0	1	20	20.0			
UMES	11-15-15	*	26	4-7	.571	0-0	.000	5-6	.833	1	4	5	5.0	0	0	1	2	0	1	13	16.5			
at Xavier	11-17-15	*	29	4-9	.444	0-2	.000	4-4	1.000	0	5	5	5.0	3	0	0	1	0	0	12	15.0			
vs Kansas State	11-23-15	*	31	4-9	.444	0-0	.000	1-2	.500	1	2	3	4.5	2	0	0	0	1	0	9	13.5			
vs Northwestern	11-24-15	*	29	6-11	.545	0-2	.000	2-4	.500	1	3	4	4.4	1	0	1	2	0	0	14	13.6			
ARKANSAS ST.	12-1-15																							
NORTHERN ILL.	12-4-15																							
OMAHA	12-9-15																							
at Arizona	12-13-15																							
NC STATE	12-19-15																							
vs Illinois	12-23-15																							
ARKANSAS-PB	12-29-15																							
SAVANNAH ST	1-2-16																							
at Georgia	1-6-16																							
AUBURN	1-9-16																							
ARKANSAS	1-12-16																							
at S. Carolina	1-16-16																							
GEORGIA	1-20-16																							
at Texas A&M	1-23-16																							
at Kentucky	1-27-16																							
MISSISSIPPI ST	1-30-16																							
OLE MISS	2-3-16																							
at Alabama	2-6-16																							
at Vanderbilt	2-10-16																							
TENNESSEE	2-13-16																							
S. CAROLINA	2-16-16																							
at Arkansas	2-20-16																							
at Ole Miss	2-23-16																							
TEXAS A&M	2-27-16																							
at LSU	3-1-16																							
FLORIDA	3-5-16																							

2015-16 (FRESHMAN):

- Started freshman campaign with three-straight games scoring in double digits.
- Scored 20 points (8-of-14 FG, 1-of-3 3PT, 3-of-4 FT) in his collegiate debut, leading Mizzou past Wofford (Nov. 13), 83-74.
- Joined an exclusive list of debuts, with other recent 20-point Tiger freshman performances including: Montague Gill-Ceaser, 21 points vs. UMKC (Nov. 14, 2014), Jevon Crudup, 22 points at Rutgers (Nov. 27, 1990), Steve Stipanovich, 23 points vs. Southwest Texas State (Nov. 30, 1979).

BLUE SPRINGS SOUTH HIGH SCHOOL:

- Averaged 20.1 points and 7.8 rebounds per game while shooting 53.4 percent from the floor as a senior at Blue Springs South.
- Led South to its first Missouri Class 5 State Championship in school history at Mizzou Arena as a senior.
- Was a Missouri Class 5 All-State selection as a junior and senior.
- Named to the Kansas City Star's 2015 All-Metro Player of the Year.

- All-Suburban Golden Conference Player of the Year and First Team member as a senior.
- Fueled his team to a 21-4 record as a junior and a 22-2 mark as a sophomore.
- Chose Mizzou over offers from Arkansas, Ole Miss, Nebraska, Oklahoma State and Creighton.

PERSONAL:

- Son of Kevin and Vicki Puryear.
- Born Nov. 18, 1996, in New Brunswick, N.J.
- Has two sisters, Aleyse and Kendall.
- Grew up dreaming of chance to play at Mizzou.
- Favorite sports movie is *Coach Carter*.
- Favorite professional athlete to follow is LeBron James.
- Would like to pursue a career in basketball.

PURYEAR CAREER STATS

SEASON	G-GS	MIN	MPG	FG-A	FG%	3FG-A	3FG%	FT-A	FT%	REB / AVG.	AST / TO	BS / S	TP	AVG.
2015-16	5-5	147	29.4	26-50	.520	1-7	.143	15-20	.750	22 / 4.4	2 / 7	1 / 2	68	13.6
Total	5-5	147	29.4	26-50	.520	1-7	.143	15-20	.750	22 / 4.4	2 / 7	1 / 2	68	13.6

#24 AT A GLANCE

2015-16 Career

Scored 10+ points	4	-
Scored 15+ points	1	-
Scored 20+ points	1	-
Hit 5+ FGs	2	-
Hit 2+ 3-pointers	-	-
Attempted 10+ FGs	2	-
Grabbed 5+ rebounds	3	-
Played 20+ minutes	5	-
Played 30+ minutes	2	-

#24 GAME HIGHS

2015-16 Career

20, Wofford		-
11-13-15	PTS	-
8, Wofford		-
11-13-15	FGM	-
14, Wofford		-
11-13-15	FGA	-
1, Wofford		-
11-13-15	3PTM	-
3, Wofford		-
11-13-15	3PTA	-
5, UMES		-
11-15-15	FTM	-
6, UMES		-
11-15-15	FTA	-
5, 3 times		-
	REB	-
1, Twice		-
	ASST	-
1, vs. Kansas State		-
11-23-15	BLKS	-
1, Twice		-
	STLS	-



RUSSELL WOODS

JR // F // 6-8 // 225

Chicago, Ill. // Simeon Career Academy

John A. Logan College (Ill.)

LAST GAME (VS. NORTHWESTERN 11-24-15)

FG	FGA	3FG	3FGA	FT	FTA	REB	PTS
0	0	0	0	0	0	1	0

WOODS 2015-16 GAME-BY-GAME

Opponent	Date	GS	Min	FG	FGA	Pct	3FG	FGA	Pct	FT	FTA	Pct	Off	Def	Tot	Avg	PF	FO	A	TO	Blk	Stl	Pts	Avg
WOFFORD	11-13-15	13	4-5	.800	0-0	.000	1-1	1.000	1	2	3	3.0	3	0	0	0	0	0	0	0	0	9	9.0	
UMES	11-15-15	15	0-0	.000	0-0	.000	1-4	.250	0	1	1	2.0	2	0	1	0	1	0	1	0	1	5.0		
at Xavier	11-17-15	8	0-0	.000	0-0	.000	0-0	.000	2	1	3	2.3	3	0	0	0	0	0	0	0	0	3.3		
vs Kansas State	11-23-15	19	2-3	.667	0-0	.000	0-0	.000	1	0	1	2.0	3	0	0	0	0	0	0	0	4	3.5		
vs Northwestern	11-24-15	12	0-0	.000	0-0	.000	0-0	.000	0	1	1	1.8	3	0	0	0	0	0	0	0	0	2.8		
ARKANSAS ST.	12-1-15																							
NORTHERN ILL.	12-4-15																							
OMAHA	12-9-15																							
at Arizona	12-13-15																							
NC STATE	12-19-15																							
vs Illinois	12-23-15																							
ARKANSAS-PB	12-29-15																							
SAVANNAH ST	1-2-16																							
at Georgia	1-6-16																							
AUBURN	1-9-16																							
ARKANSAS	1-12-16																							
at S. Carolina	1-16-16																							
GEORGIA	1-20-16																							
at Texas A&M	1-23-16																							
at Kentucky	1-27-16																							
MISSISSIPPI ST	1-30-16																							
OLE MISS	2-3-16																							
at Alabama	2-6-16																							
at Vanderbilt	2-10-16																							
TENNESSEE	2-13-16																							
S. CAROLINA	2-16-16																							
at Arkansas	2-20-16																							
at Ole Miss	2-23-16																							
TEXAS A&M	2-27-16																							
at LSU	3-1-16																							
FLORIDA	3-5-16																							

2015-16 (JUNIOR):

- Scored 9 points (4-of-5 FG, 1-of-1 FT) in his Mizzou debut vs. Wofford (Nov. 13), logging 13 minutes off the bench.

JUNIOR COLLEGE (JOHN A. LOGAN COLLEGE):

- Averaged 14.1 points and 7.2 rebounds per game and shot 61-percent from the field during the 2014-15 season at John A. Logan.
- Led John A. Logan College to a 27-7 record in 2014-15.
- Anchored the post as John A. Logan captured a Great Rivers Athletic Conference title and an NJCAA National Tournament berth.
- As a freshman, recorded 6.1 points per game while shooting 49.6-percent from the field.

HIGH SCHOOL:

- Won an Illinois state title as a senior at Simeon Career Academy.
- Played alongside Milwaukee Bucks forward and former No. 2 NBA Draft selection Jabari Parker.

- Transferred to Simeon from Leo Catholic High School in Chicago after his junior year.
- Earned all-state recognition as a junior at Leo Catholic.

PERSONAL:

- Son of Vivian Winters and Russell Woods, Sr.
- Born Dec. 5, 1994, in Chicago, Ill.
- Enjoys cooking in his spare time.

WOODS CAREER STATS

SEASON	G-GS	MIN	MPG	FG-A	FG%	3FG-A	3FG%	FT-A	FT%	REB / AVG.	AST / TO	BS / S	TP	AVG.
2015-16	5-0	67	13.4	6-8	.750	0-0	.000	2-5	.400	9 / 1.8	1 / 0	1 / 0	14	2.8
TOTAL	5-0	67	13.4	6-8	.750	0-0	.000	2-5	.400	9 / 1.8	1 / 0	1 / 0	14	2.8

#25 AT A GLANCE

2015-16 Career

Scored 5+ points	1	-
Scored 10+ points	-	-
Hit 3+ FGs	1	-
Grabbed 5+ rebounds	-	-
Recorded 2+ blocks	-	-
Played 20+ minutes	-	-

#25 GAME HIGHS

2015-16 Career

9, Wofford	-
11-13-15 PTS	-
4, Wofford	-
11-13-15 FGM	-
5, Wofford	-
11-13-15 FGA	-
-	-
- 3PTM	-
-	-
- 3PTA	-
1, Wofford	-
11-13-15 FTM	-
4, UMES	-
11-15-15 FTA	-
3, Twice	-
REB	-
1, UMES	-
11-15-15 ASST	-
1, UMES	-
11-15-15 BLKS	-
-	-
- STLS	-



ADAM WOLF

FR // F // 6-7 // 202
Beaver Dam, Wis.
Beaver Dam High School

LAST GAME (N/A)

FG	FGA	3FG	FGA	FT	FTA	REB	PTS
-	-	-	-	-	-	-	-

WOLF 2015-16 GAME-BY-GAME

Opponent	Date	GS	Min	FG	FGA	Pct	3FG	FGA	Pct	FT	FTA	Pct	Off	Def	Tot	Avg	PF	FO	A	TO	Blk	Stl	Pts	Avg
WOFFORD	11-13-15	DNP																						
UMES	11-15-15	DNP																						
at Xavier	11-17-15	DNP																						
vs Kansas State	11-23-15	DNP																						
vs Northwestern	11-24-15	DNP																						
ARKANSAS ST.	12-1-15																							
NORTHERN ILL.	12-4-15																							
OMAHA	12-9-15																							
at Arizona	12-13-15																							
NC STATE	12-19-15																							
vs Illinois	12-23-15																							
ARKANSAS-PB	12-29-15																							
SAVANNAH ST	1-2-16																							
at Georgia	1-6-16																							
AUBURN	1-9-16																							
ARKANSAS	1-12-16																							
at S. Carolina	1-16-16																							
GEORGIA	1-20-16																							
at Texas A&M	1-23-16																							
at Kentucky	1-27-16																							
MISSISSIPPI ST	1-30-16																							
OLE MISS	2-3-16																							
at Alabama	2-6-16																							
at Vanderbilt	2-10-16																							
TENNESSEE	2-13-16																							
S. CAROLINA	2-16-16																							
at Arkansas	2-20-16																							
at Ole Miss	2-23-16																							
TEXAS A&M	2-27-16																							
at LSU	3-1-16																							
FLORIDA	3-5-16																							

HIGH SCHOOL:

- Averaged 17.0 points and 7.5 rebounds per game and helped lead Beaver Dam High School to a 19-win season as a senior.
- Earned Little Ten Conference Co-Player of the Year honors for his tremendous play on the court.
- Played three seasons at Lake Forest High School in Illinois before transferring to Beaver Dam High School in Wisconsin for his senior season.
- Battled injuries through career at Lake Forest, averaging 6.3 points and 3.3 points per game as a junior while playing through a stress fracture.
- Passed up several Division II scholarship offers to accept Coach Anderson's walk-on opportunity at Mizzou.

PERSONAL:

- Son of John and Jamie Wolf.
- Born on March 21, 1997, in Milwaukee, Wis.
- Has an older sister, Danielle, and younger sister, Lilly.
- Would like to work in business at the conclusion of his basketball-playing career.
- Father, John, was a walk-on basketball player at Marquette from 1989-91.
- Favorite movie is *Star Wars*.

WOLF CAREER STATS

SEASON	G-GS	MIN	MPG	FG-A	FG%	3FG-A	3FG%	FT-A	FT%	REB / AVG.	AST / TO	BS / S	TP	AVG.
2015-16	-	-	-	-	-	-	-	-	-	-	-	-	-	-
TOTAL	-	-	-	-	-	-	-	-	-	-	-	-	-	-

#32 AT A GLANCE

2015-16 Career

Scored 5+ points	-	-
Scored 10+ points	-	-
Hit 3+ FGs	-	-
Grabbed 5+ rebounds	-	-
Recorded 2+ blocks	-	-
Played 20+ minutes	-	-

#32 GAME HIGHS

2015-16 Career

		-
PTS		-
		-
FGM		-
		-
FGA		-
		-
3PTM		-
		-
3PTA		-
		-
FTM		-
		-
FTA		-
		-
REB		-
		-
ASST		-
		-
BLKS		-
		-
STLS		-



CULLEN VANLEER

FR // G // 6-4 // 200

Pacific, Mo.

Pacific High School

LAST GAME (VS. NORTHWESTERN 11-24-15)

FG	FGA	3FG	3FGA	FT	FTA	AST	PTS
1	5	1	4	0	0	1	3

VANLEER 2015-16 GAME-BY-GAME

Opponent	Date	GS	Min	FG	FGA	Pct	3FG	FGA	Pct	FT	FTA	Pct	Off	Def	Tot	Avg	PF	FO	A	TO	Blk	Stl	Pts	Avg
WOFFORD	11-13-15	12	2-2	1.000	1-1	1.000	0-1	.000	1	0	1	1.0	0	0	1	1.0	0	0	2	0	0	0	5	5.0
UMES	11-15-15	9	1-3	.333	1-3	.333	0-0	.000	0	0	0	0.5	1	0	0	0	0	0	0	0	1	3	4.0	
at Xavier	11-17-15	22	5-9	.556	3-7	.429	0-0	.000	0	0	0	0.3	2	0	0	1	0	0	1	0	2	13	7.0	
vs Kansas State	11-23-15	17	2-5	.400	2-5	.400	0-0	.000	0	3	3	1.0	2	0	0	0	0	0	0	0	0	6	6.8	
vs Northwestern	11-24-15	15	1-5	.200	1-4	.250	0-0	.000	1	1	2	1.2	2	0	1	0	0	0	0	0	3	6		
ARKANSAS ST.	12-1-15																							
NORTHERN ILL.	12-4-15																							
OMAHA	12-9-15																							
at Arizona	12-13-15																							
NC STATE	12-19-15																							
vs Illinois	12-23-15																							
ARKANSAS-PB	12-29-15																							
SAVANNAH ST	1-2-16																							
at Georgia	1-6-16																							
AUBURN	1-9-16																							
ARKANSAS	1-12-16																							
at S. Carolina	1-16-16																							
GEORGIA	1-20-16																							
at Texas A&M	1-23-16																							
at Kentucky	1-27-16																							
MISSISSIPPI ST	1-30-16																							
OLE MISS	2-3-16																							
at Alabama	2-6-16																							
at Vanderbilt	2-10-16																							
TENNESSEE	2-13-16																							
S. CAROLINA	2-16-16																							
at Arkansas	2-20-16																							
at Ole Miss	2-23-16																							
TEXAS A&M	2-27-16																							
at LSU	3-1-16																							
FLORIDA	3-5-16																							

2015-16 (FRESHMAN):

- Season-best 13 points (5-of-9 FG, 3-of-7 3PT) at Xavier (Nov. 17), leading the Tigers in scoring for the first time.
- Hit on his two field goal attempts in his collegiate debut vs. Wofford (Nov. 13), including his first career 3-pointer.

PACIFIC HIGH SCHOOL:

- Averaged 23.5 points and 7.3 rebounds per game for Pacific High School as a senior.
- Became the all-time leading scorer in Pacific history, snapping a record that stood since 1954.
- Reached 1,000 career points in just 58 games
- Named Missouri Class 4 Co-Player of the Year.
- Was a MBCA Class 4 All-State selection.
- Added academic all-conference honors as a senior.
- Also competed in golf in high school, receiving first team all-conference recognition.

PERSONAL:

- Son of John and Lori VanLeer.
- Born on May 25, 1996, in Beaufort, Mo.
- Both parents attended Missouri State and work as educators, with mother, Lori, working as a superintendent and father, John, working as a physical education teacher and coach.
- Has been a fan of Mizzou Basketball since childhood.
- Showed cattle as a youngster.
- Has a younger brother named Cameron.
- Favorite sports movie is *Glory Road*.
- Would like to follow in his parents' footsteps and become a teacher or coach, or work in the physical therapy field.

VANLEER CAREER STATS

SEASON	G-GS	MIN	MPG	FG-A	FG%	3FG-A	3FG%	FT-A	FT%	REB / AVG.	AST / TO	BS / S	TP	AVG.
2015-16	5-0	75	15.0	11-24	.458	8-20	.400	0-1	.000	6 / 1.2	3 / 1	0 / 3	30	6.0
TOTAL	5-0	75	15.0	11-24	.458	8-20	.400	0-1	.000	6 / 1.2	3 / 1	0 / 3	30	6.0

#33 AT A GLANCE

2015-16 Career

Scored 5+ points	3	-
Scored 10+ points	1	-
Hit 3+ FGs	1	-
Hit 2+ 3PT FGs	2	-
Multiple assists	1	-
Multiple steals	1	-
Played 15+ minutes	3	-

#33 GAME HIGHS

2015-16 Career

13, at Xavier	PTS	-
11-17-15	PTS	-
5, at Xavier	FGM	-
11-17-15	FGM	-
9, at Xavier	FGA	-
11-17-15	FGA	-
3, at Xavier	3PTM	-
11-17-15	3PTM	-
7, at Xavier	3PTA	-
11-17-15	3PTA	-
-	FTM	-
1, Wofford	FTA	-
11-13-15	FTA	-
3, vs. Kansas State	REB	-
11-23-15	REB	-
2, Wofford	ASST	-
11-13-15	ASST	-
-	BLKS	-
2, at Xavier	STLS	-
11-17-15	STLS	-



RYAN ROSBURG

SR // F // 6-10 // 260

Chesterfield, Mo.

Marquette High School

LAST GAME (VS. NORTHWESTERN 11-24-15)

FG	FGA	3FG	FGA	FT	FTA	REB	PTS
4	9	0	0	0	3	9	8

ROSBURG 2015-16 GAME-BY-GAME

Opponent	Date	GS	Min	FG	FGA	Pct	3FG	FGA	Pct	FT	FTA	Pct	Off	Def	Tot	Avg	PF	FO	A	TO	Blk	Stl	Pts	Avg
WOFFORD	11-13-15	20	1-2	.500	0-0	.000	4-6	.667	0	3	3	3.0	3	0	0	0	0	0	0	0	1	6	6.0	
UMES	11-15-15	10	0-0	.000	0-0	.000	0-0	.000	0	3	3	3.0	1	0	0	0	1	0	0	1	0	0	3.0	
at Xavier	11-17-15	9	0-0	.000	0-0	.000	1-2	.500	1	0	1	2.3	1	0	0	1	1	0	1	1	0	1	2.3	
vs Kansas State	11-23-15	7	0-0	.000	0-0	.000	0-2	.000	1	0	1	2.0	3	0	1	0	0	0	0	0	0	0	1.8	
vs Northwestern	11-24-15 *	28	4-9	.444	0-0	.000	0-3	.000	3	6	9	3.4	3	0	0	1	0	0	1	0	0	8	3.0	
ARKANSAS ST.	12-1-15																							
NORTHERN ILL.	12-4-15																							
OMAHA	12-9-15																							
at Arizona	12-13-15																							
NC STATE	12-19-15																							
vs Illinois	12-23-15																							
ARKANSAS-PB	12-29-15																							
SAVANNAH ST	1-2-16																							
at Georgia	1-6-16																							
AUBURN	1-9-16																							
ARKANSAS	1-12-16																							
at S. Carolina	1-16-16																							
GEORGIA	1-20-16																							
at Texas A&M	1-23-16																							
at Kentucky	1-27-16																							
MISSISSIPPI ST	1-30-16																							
OLE MISS	2-3-16																							
at Alabama	2-6-16																							
at Vanderbilt	2-10-16																							
TENNESSEE	2-13-16																							
S. CAROLINA	2-16-16																							
at Arkansas	2-20-16																							
at Ole Miss	2-23-16																							
TEXAS A&M	2-27-16																							
at LSU	3-1-16																							
FLORIDA	3-5-16																							

2015-16 (SENIOR):

- Matched career-high with 4 free throw makes vs. Wofford (Nov. 13), scoring 6 points in 20 minutes off the bench.

2014-15 (JUNIOR):

- Appeared in 30 or more games for the third consecutive season, earning 17 starts for Mizzou as a junior.
- Season-best 12 points on impressive 6-of-7 FG shooting vs. Mississippi State (Feb. 14).

2013-14 (SOPHOMORE):

- Played in all 35 games as a sophomore, making 32 starts.
- Averaged 4.8 points and 4.1 rebounds while shooting an incredibly efficient 71.6 percent from the floor.

2012-13 (FRESHMAN):

- Played in 31 games as a reserve for Alex Oriakhi and averaged 6.9 minutes per contest.

MARQUETTE HIGH SCHOOL:

- One of Missouri's top players his final two seasons of high school and twice earned all-state honors.
- Finished with 1,862 career points, second all-time in school history and is the school's career leaders in rebounding and blocked shots.

PERSONAL:

- Son of Cindy and Paul Rosburg.
- Born Nov. 12, 1993, in Chesterfield, Mo.
- Has one brother, Andy, who played at Mizzou in 2011-12.
- Is majoring in marketing.

#44 AT A GLANCE

2015-16 Career

Scored 5+ points	2	26
Scored 10+ points	-	3
Grabbed 10+ rebounds	-	2
Recorded 2+ blocks	-	8
Played 20+ minutes	2	37

#44 GAME HIGHS

2015-16 Career

8, vs. Northwestern	14, vs. Northwestern	
11-24-15	PTS	11-28-13
4, vs. Northwestern	6, Mississippi State	
11-13-15	FGM	2-14-15
9, vs. Northwestern	7, Mississippi State	
11-13-15	FGA	2-14-15
-		-
-	3PTM	-
-		-
-	3PTA	-
4, Wofford		4, 3 times
11-13-15	FTM	
6, Wofford		7, vs. Chaminade
11-13-15	FTA	11-26-14
9, vs. Northwestern		12, at Georgia
11-24-15	REB	2-25-14
1, vs. Kansas State		2, SEMO
11-23-15	ASST	12-2-14
1, Twice		2, 8 times
	BLKS	
1, Wofford		2, 3 times
11-13-15	STLS	

ROSBURG CAREER STATS

SEASON	G-GS	MIN	MPG	FG-A	FG%	3FG-A	3FG%	FT-A	FT%	REB / AVG.	AST / TO	BS / S	TP	AVG.
2012-13	31-0	213	6.9	11-27	.407	0-0	.000	8-14	.571	41 / 1.3	7 / 6	6 / 1	30	1.0
2013-14	35-32	778	22.2	68-95	.716	0-0	.000	33-58	.569	145 / 4.1	10 / 41	22 / 7	169	4.8
2014-15	30-17	501	16.7	42-84	.500	0-0	.000	15-45	.333	78 / 2.6	8 / 19	18 / 6	99	3.3
2015-16	5-1	74	14.8	5-11	.455	0-0	.000	5-13	.385	17 / 3.4	1 / 2	2 / 1	15	3.0
TOTAL	101-50	1566	15.5	126-217	.581	0-0	.000	61-130	.469	281 / 2.8	26 / 68	48 / 15	313	3.1

NCAA APPEARANCES: '44, '76, '78, '80, '81, '82, '83, '86, '87, '88, '89, '90, '92, '93, '95, '99, '00, '01, '02, '03, '09, '10, '11, '12, '13

2015-16 MIZZOU OVERALL STATISTICS

Record	Overall	Home	Away	Neutral
ALL GAMES	2-3	2-0	0-1	0-2
CONFERENCE	0-0	0-0	0-0	0-0
NON-CONFERENCE	2-3	2-0	0-1	0-2

##	Player	GP	GS	Min	TOTAL			3-PTS			REBOUNDS															
					Avg	FG	FGA	Pct	3FG	FGA	Pct	FT	FTA	Pct	Off	Def	Tot	Avg	PF	FO	A	TO	Blk	Stl	Pts	Avg
24	PURYEAR, Kevin	5	5	147	29.4	26	50	.520	1	7	.143	15	20	.750	3	19	22	4.4	7	0	2	7	1	2	68	13.6
01	PHILLIPS, Terrence	5	5	123	24.6	17	33	.515	7	15	.467	4	5	.800	1	18	19	3.8	17	1	11	14	1	6	45	9.0
12	WRIGHT, Namon	5	4	131	26.2	11	33	.333	5	19	.263	17	21	.810	5	17	22	4.4	9	0	6	7	2	3	44	8.8
15	CLARK, Wes	5	5	147	29.4	12	46	.261	6	18	.333	10	12	.833	3	10	13	2.6	12	0	18	7	0	6	40	8.0
33	VANLEER, Cullen	5	0	75	15.0	11	24	.458	8	20	.400	0	1	.000	2	4	6	1.2	7	0	3	1	0	3	30	6.0
10	WALTON, K.J.	5	1	75	15.0	8	24	.333	0	3	.000	12	17	.706	3	4	7	1.4	9	0	8	3	0	2	28	5.6
04	ISABELL, Tramaine	5	0	55	11.0	10	20	.500	1	3	.333	4	4	1.000	2	8	10	2.0	4	0	4	8	0	3	25	5.0
44	ROSBURG, Ryan	5	1	74	14.8	5	11	.455	0	0	.000	5	13	.385	5	12	17	3.4	11	0	1	2	2	1	15	3.0
25	WOODS, Russell	5	0	67	13.4	6	8	.750	0	0	.000	2	5	.400	4	5	9	1.8	14	0	1	0	1	0	14	2.8
23	GANT, Jakeenan	5	4	56	11.2	4	13	.308	0	6	.000	5	7	.714	3	6	9	1.8	17	1	2	3	5	1	13	2.6
05	ALLEN, D'Angelo	4	0	48	12.0	2	5	.400	0	0	.000	0	2	.000	5	5	10	2.5	5	0	1	3	0	3	4	1.0
11	BARTON, Jimmy	2	0	2	1.0	0	0	.000	0	0	.000	0	0	.000	0	0	0	0.0	0	0	0	1	0	0	0	0.0
TM	TEAM.....														2	12	14	2.8	0			1			0	
	Total.....	5				112	267	.419	28	91	.308	74	107	.692	38	120	158	31.6	112	2	57	57	12	30	326	65.2
	Opponents.....	5				104	257	.405	37	105	.352	95	133	.714	49	128	177	35.4	99	-	58	55	9	30	340	68.0

2015-16 Statistical Summaries

Team Statistics	MU	OPP
SCORING	326	340
Points per game	65.2	68.0
Scoring margin	-2.8	-
FIELD GOALS-ATT	112-267	104-257
Field goal pct	.419	.405
3 POINT FG-ATT	28-91	37-105
3-point FG pct	.308	.352
3-pt FG made per game	5.6	7.4
FREE THROWS-ATT	74-107	95-133
Free throw pct	.692	.714
F-Throws made per game	14.8	19.0
REBOUNDS	158	177
Rebounds per game	31.6	35.4
Rebounding margin	-3.8	-
ASSISTS	57	58
Assists per game	11.4	11.6
TURNOVERS	57	55
Turnovers per game	11.4	11.0
Turnover margin	-0.4	-
Assist/turnover ratio	1.0	1.1
STEALS	30	30
Steals per game	6.0	6.0
BLOCKS	12	9
Blocks per game	2.4	1.8
ATTENDANCE	10119	23349
Home games-Avg/Game	2-5060	1-9751
Neutral site-Avg/Game	-	2-6799

2015-16 Game-By-Game Scores

Date	Opponent	W/L	Score	Att.
11-13-15	WOFFORD	W	83-74	5037
11-15-15	UMES	W	73-55	5082
11/17/15	at Xavier	L	66-78	9751
11/23/15	vs Kansas State	L	42-66	13598
11/24/15	vs Northwestern	L	62-67	13189

SCORE BY PERIODS:	1st	2nd	OT	Total
Mizzou	147	179	-	326
Opponents	167	173	-	340

2014-15 MIZZOU OVERALL STATISTICS

Record	Overall	Home	Away	Neutral
ALL GAMES	9-23	8-9	0-10	1-4
CONFERENCE	3-15	3-6	0-9	0-0
NON-CONFERENCE	6-8	5-3	0-1	1-4

##	Player	GP	GS	Min	TOTAL				3-PTS				REBOUNDS										PF	FO	A	TO	Blk	Stl	Pts	Avg
					Avg	FG	FGA	Pct	3FG	FGA	Pct	FT	FTA	Pct	Off	Def	Tot	Avg												
03	Williams III, Johnat	32	32	941	29.4	128	311	.412	22	64	.344	103	167	.617	78	150	228	7.1	86	1	27	82	19	10	381	11.9				
15	Clark, Wes	23	20	713	31.0	81	233	.348	32	102	.314	38	51	.745	10	71	81	3.5	54	2	71	45	4	38	232	10.1				
13	Gill-Caesar, Montagu	27	13	647	24.0	84	231	.364	29	94	.309	49	66	.742	20	60	80	3.0	55	1	14	52	2	19	246	9.1				
14	Shamburger, Keith	32	31	1092	34.1	80	211	.379	43	131	.328	77	86	.895	17	89	106	3.3	68	0	124	60	4	37	280	8.8				
12	Wright, Namon	30	20	607	20.2	77	186	.414	40	103	.388	10	18	.556	6	63	69	2.3	64	1	19	37	3	17	204	6.8				
23	Gant, Jakeenan	23	6	324	14.1	47	91	.516	1	14	.071	18	25	.720	20	30	50	2.2	33	0	7	16	14	9	113	4.9				
04	Isabell, Tramaine	27	1	405	15.0	37	118	.314	16	52	.308	22	28	.786	9	27	36	1.3	35	0	39	33	0	17	112	4.1				
45	Post, Keanau	30	9	424	14.1	51	89	.573	0	0	.000	19	31	.613	42	65	107	3.6	70	3	4	24	14	9	121	4.0				
05	Allen, D'Angelo	32	8	544	17.0	40	98	.408	9	20	.450	17	28	.607	37	63	100	3.1	62	0	21	18	7	11	106	3.3				
44	Rosburg, Ryan	30	17	501	16.7	42	84	.500	0	0	.000	15	45	.333	37	41	78	2.6	56	1	8	19	18	6	99	3.3				
02	Bello, Deuce	23	3	251	10.9	16	42	.381	4	16	.250	5	15	.333	5	20	25	1.1	40	2	9	18	5	6	41	1.8				
42	Barnard, Hayden	1	0	1	1.0	0	0	.000	0	0	.000	0	0	.000	0	0	0	0.0	0	0	0	0	0	0	0	0.0				
TM	TEAM.....														46	44	90	2.8	1			13			0					
Total.....		32				683	1694	.403	196	596	.329	373	560	.666	327	723	1050	32.8	624	11	343	417	90	179	1935	60.5				
Opponents.....		32				726	1691	.429	206	601	.343	515	735	.701	355	775	1130	35.3	568	-	377	353	111	190	2173	67.9				

2014-15 Statistical Summaries

Team Statistics	MU	OPP
SCORING	1935	2173
Points per game	60.5	67.9
Scoring margin	-7.4	-
FIELD GOALS-ATT	683-1694	726-1691
Field goal pct	.403	.429
3 POINT FG-ATT	196-596	206-601
3-point FG pct	.329	.343
3-pt FG made per game	6.1	6.4
FREE THROWS-ATT	373-560	515-735
Free throw pct	.666	.701
F-Throws made per game	11.7	16.1
REBOUNDS	1050	1130
Rebounds per game	32.8	35.3
Rebounding margin	-2.5	-
ASSISTS	343	377
Assists per game	10.7	11.8
TURNOVERS	417	353
Turnovers per game	13.0	11.0
Turnover margin	-2.0	-
Assist/turnover ratio	0.8	1.1
STEALS	179	190
Steals per game	5.6	5.9
BLOCKS	90	111
Blocks per game	2.8	3.5
ATTENDANCE	137086	147795
Home games-Avg/Game	17-8064	10-11048
Neutral site-Avg/Game	-	5-7464

SCORE BY PERIODS:

	1st	2nd	OT	Total
Mizzou	904	1012	19	1935
Opponents	1051	1108	14	2173

2014-15 Game-By-Game Scores

Date	Opponent	W/L	Score	Att.
11/14/14	UMKC	L	61-69	7014
11/16/14	VALPO	W	56-41	5369
11/19/14	ORAL ROBERTS	W	78-64	5563
11/24/14	vs ARIZONA	L	53-72	2400
11/25/14	vs PURDUE	L	61-82	2400
11/26/14	vs Chaminade	W	74-60	2400
12/2/14	SEMO	W	65-61	5506
12/05/14	at Oklahoma	L	63-82	11652
12/11/14	ELON	W	78-73	4514
12/13/14	XAVIER	L	58-74	7854
12/20/14	vs Illinois	L	59-62	20079
12/30/14	OKLAHOMA STATE	LOT	72-74	11376
1/3/15	LIPSCOMB	W	72-60	7415
*1/8/15	LSU	WOT	74-67	7509
*01/10/15	at Auburn	L	79-85	8365
*01/13/15	at Kentucky	L	37-86	24248
*1/17/15	TENNESSEE	L	51-59	10359
*01/21/15	at Texas A&M	L	50-62	6849
*1/24/15	ARKANSAS	L	60-61	11022
*1/29/15	KENTUCKY	L	53-69	13034
*1/31/15	OLE MISS	L	47-67	9053
*2/4/15	at Alabama	L	49-62	9343
*2/7/15	TEXAS A&M	L	61-83	8970
*2/10/15	at South Carolina	L	60-65	8840
*2/14/15	MISSISSIPPI STATE	L	74-77	8278
*02/18/15	at Arkansas	L	69-84	15740
*02/21/15	at Vanderbilt	L	53-76	10154
*2/24/15	FLORIDA	W	64-52	7631
*02/28/15	at Georgia	L	44-68	9389
*3/3/15	AUBURN	W	63-61	6619
*03-07-15	at Mississippi State	L	43-52	5897
03/11/15	vs South Carolina	L	54-63	10039

LAST TIME...

INDIVIDUAL: THE LAST TIME MISSOURI HAD A...

Player score 25 points _____ Jabari Brown (30) vs. Davidson; March 18, 2014

Player score 30 points _____ Jabari Brown (30) vs. Davidson; March 18, 2014

Player score 35 points _____ Thomas Gardner (40) vs. Kansas; Jan. 16, 2006

Player score 40 points _____ Thomas Gardner (40) vs. Kansas; Jan. 16, 2006

Player grab 15 rebounds _____ Jonathan Williams III (15) vs. Texas A&M; March 14, 2004

Player grab 20 rebounds _____ Curtis Berry (20) vs. Kansas; Jan. 9, 1980

Player record a double-double _____ Jonathan Williams III (15 p, 10 r) vs. Arkansas; Jan. 24, 2015

Two players record a double-double _____ Laurence Bowers (23 p, 10 r)
_____ Alex Oriakhi (18 p, 10 r) vs. LSU; March 2, 2013

Player record a triple-double _____ Never

Player dish out 10 assists _____ Keith Shamburger (11) at Alabama; Feb. 4, 2015

Player block 10 shots _____ Never

A player collect five steals _____ Wes Clark (5) at Texas A&M; Jan. 21, 2015

A player hit five three-pointer baskets _____ Keith Shamburger (5) at Auburn; Jan. 10, 2015

A player make 10 free throws _____ Jabari Brown (11-15) vs. Davidson; March 18, 2014

Two players score 20 points in a game _____ Jabari Brown (26)
_____ Earnest Ross (24) vs. Texas A&M; March 14, 2014

Three players score 20 points in a game _____ Earnest Ross (24)
_____ Jordan Clarkson (23)
_____ Jabari Brown (20) at Ole Miss; Feb. 8, 2014

Two players grab 10 rebounds in a game _____ Jonathan Williams III (10)
_____ Keanau Post (10) vs. Lipscomb; Jan. 3, 2015

Three players grab 10 rebounds in a game _____ Negus Webster-Chan (11)
_____ Earnest Ross (10)
_____ Alex Oriakhi (10) vs. Alcorn State; Nov. 13, 2012

Five players score in double figures _____ Laurence Bowers (23)
_____ Alex Oriakhi (18)
_____ Phil Pressey (15)
_____ Earnest Ross (13)
_____ Keion Bell (11) vs. LSU; March 2, 2013

Six players score in double figures _____ Matt Pressey (14)
_____ Phil Pressey (12)
_____ Ricardo Ratiliffe (12)
_____ Michael Dixon Jr. (12)
_____ Kim English (10)
_____ Steve Moore (10) at Iowa State; Jan. 11, 2012

Seven players score in double figures _____ Kim English (20)
_____ Justin Stafford (16)
_____ Laurence Bowers (16)
_____ Marcus Denmon (12)
_____ Matt Pressey (10)
_____ Michael Dixon Jr. (10)
_____ Ricky Krecklow (10) vs. North Alabama; Jan. 5, 2011

TEAM: THE LAST TIME MISSOURI...

Scored 100 points or more _____ Dec. 17, 2012; Missouri 102, South Carolina State 51

Scored less than 50 points _____ Jan. 31, 2015; Kentucky 67, Missouri 47

Scored less than 50 points and won _____ Nov. 14, 1997; Missouri 45, DePaul 42

Allowed 100 points or more _____ Feb. 7, 2011; Kansas 103, Missouri 86

Held an opponent to less than 40 points _____ Dec. 8, 2012; Missouri 68, Tennessee State 38

Held an opponent to less than 50 points _____ Nov. 16, 2014; Missouri 56, Valparaiso 41

Had 50 rebounds _____ Feb. 9, 2013, vs. Ole Miss (50)

Had 30 assists _____ Dec. 18, 2010, vs. Central Arkansas (33)

Had 10 steals _____ Jan. 29, 2015 vs. Kentucky (10)

Held an opponent to less than 25 percent shooting _____ March 14, 2013, vs. Texas A&M (24.1)

Shot better than 70 percent from the field _____ Dec. 6, 1989, vs. Hawaii Loa (.752)

Shot under 30 percent from the field _____ Dec. 7, 2004, vs. Arkansas (.298)

Shot better than 90 percent from the free throw line _____
_____ March 8, 2014 at Tennessee (13-for-14, .921)

Attempted 40 free throws _____ March 14, 2014, vs. Texas A&M (53)

Made 10 3-pointers _____ Jan. 10, 2015, vs. Auburn (10-for-27)

Won an overtime game _____ Jan. 8, 2015 vs. LSU; Missouri 74, LSU 67 (OT)

Lost an overtime game _____ Dec. 30, 2014 vs. Oklahoma State; OSU 74, Missouri 72 (OT)

Played a double-OT game _____ March 14, 2014; Missouri 91, Texas A&M 83

Played a triple-overtime game _____ Jan. 13, 2001; Missouri 112, Iowa State 109 (4OT)

Defeated a top 25 team _____ Dec. 15, 2013; Missouri 80, No. 18 UCLA 71

Had a 30-point win _____ Nov. 8, 2013; Missouri 89, Southeastern Louisiana 53

Had a 40-point win _____ Dec. 17, 2012; Missouri 102, South Carolina State 51

Had a 50-point win _____ Dec. 17, 2012; Missouri 102, South Carolina State 51

Won back-to-back road games _____ Dec. 28, 2013 at North Carolina State (68-64)
_____ Jan. 11, 2014 at Auburn (70-68)

Won by double digits over an SEC team _____ March 1, 2014; Missouri 85, Mississippi State 66

MORE NOTES...

MIZZOU STARTERS

Opponent	G	G	G	F	F	Record **
Nov. 13 Wofford	Phillips	Walton	Clark	Gant	Puryear	1-0
Nov. 15 UMES	Phillips	Wright	Clark	Gant	Puryear	1-0
Nov. 17 at Xavier	Phillips	Wright	Clark	Gant	Puryear	1-1
Nov. 23 vs. Kansas State	Phillips	Wright	Clark	Gant	Puryear	1-2
Nov. 24 vs. Northwestern	Phillips	Wright	Clark	Rosburg	Puryear	0-1

MIZZOU WHEN...

Playing at home	2-0
Playing on the road	0-1
Playing on a neutral court	0-2
SEC games	0-0
SEC at home	0-0
SEC on the road	0-0
Following a win	1-1
Following a loss	0-2
Leading at half	2-0
Trailing at half	0-3
Tied at half	0-0
Shoots at least 50%	1-0
Shoots less than 50%	1-1
Opponent shoots 50%	0-0
Shoots more FT than Opp.	1-0
Shoots fewer FT than Opp.	1-3
Shoots same FT as Opp.	0-0
Makes more FT than Opp.	1-0
Makes fewer FT than Opp.	0-3
Makes same FT as Opp.	1-0
Scores 90-110	0-0
Scores 80-89	1-0
Scores 70-79	1-0
Scores 69 or fewer	0-3
Leads in rebounding	1-0
Trails in rebounding	1-2
Tied in rebounding	0-1
More turnovers than Opp.	1-2
Fewer turnovers than Opp.	1-1
Same turnovers as Opp.	0-0
In November	2-3
In December	0-0
In January	0-0
In February	0-0
In March	0-0
Margin between 1-5	0-1
Margin between 6-10	1-0
Margin between 11-20	1-1
Margin 20+	0-1
Overtime Games	0-0
On Sunday	1-0
On Monday	0-1
On Tuesday	0-2
On Wednesday	0-0
On Thursday	0-0
On Friday	1-0
On Saturday	0-0
Wearing White	2-1
Wearing Black	0-2
Wearing Gold	0-0
Wearing Anthracite	0-0

POINTS-REBOUNDS-ASSISTS

	01	04	05	10	11	12	15	23	24	25	33	44
Opponent	PHILLIPS	ISABELL	ALLEN	WALTON	BARTON	WRIGHT	CLARK	GANT	PURYEAR	WOODS	VANLEER	ROSBURG
WOFFORD // 11-13-15 // 83-74 // W	7-3-3	4-3-2	DNP	6-1-2	DNP	18-7-0	4-3-2	4-4-1	20-5-0	9-3-0	5-1-2	6-3-0
UMES // 11-15-15 // 73-55 // W	13-3-2	4-4-1	2-4-0	11-0-3	0-0-0	7-5-1	15-1-3	4-1-0	13-5-1	1-1-1	3-0-0	0-3-0
at Xavier // 11/17/15 // 66-78 // L	3-1-0	11-1-1	0-3-0	8-3-1	DNP	6-4-2	11-3-3	1-2-1	12-5-0	0-3-0	13-0-0	1-1-0
vs Kansas State // 11/23/15 // 42-66 // L	6-6-2	4-1-0	0-3-0	3-3-1	0-0-0	5-4-0	5-2-6	0-1-0	9-3-0	4-1-0	6-3-0	0-1-1
vs Northwestern // 11/24/15 // 62-67 // L	16-6-4	2-1-0	2-0-1	0-0-1	DNP	8-2-3	5-4-4	4-1-0	14-4-1	0-1-0	3-2-1	8-9-0

2015-16 MIZZOU GAME-BY-GAME STATISTICS

Opponent	Date	Score	TOTAL			3-PTRS			REBOUNDS							PF	A	TO	Blk	Stl	Pts	Avg	
			W/L	FG	FGA Pct	3FG	FGA Pct	FT	FTA Pct	Off	Def	Tot	Avg										
WOFFORD	11-13-15	83-74	W	28	50	.560	5	12	.417	22	32	.688	5	32	37	37.0	24	12	9	1	4	83	83.0
UMES	11-15-15	73-55	W	21	47	.447	8	19	.421	23	30	.767	8	21	29	33.0	17	12	8	4	6	73	78.0
at Xavier	11/17/15	66-78	L	23	55	.418	6	23	.261	14	18	.778	7	21	28	31.3	26	8	18	2	8	66	74.0
vs Kansas State	11/23/15	42-66	L	17	55	.309	4	19	.211	4	10	.400	8	23	31	31.3	22	10	13	4	5	42	66.0
vs Northwestern	11/24/15	62-67	L	23	60	.383	5	18	.278	11	17	.647	10	23	33	31.6	23	15	9	1	7	62	65.2
Mizzou		326		112	267	.419	28	91	.308	74	107	.692	38	120	158	31.6	112	57	57	12	30	326	65.2
Opponents		340		104	257	.405	37	105	.352	95	133	.714	49	128	177	35.4	99	58	55	9	30	340	68.0

Games played: 5

Points/game: 65.2

FG Pct: 41.9

3FG Pct: 30.8

FT Pct: 69.2

Rebounds/game: 31.6

Assists/game: 11.4

Turnovers/game: 11.4

Assist/turnover ratio: 1.0

Steals/game: 6.0

Blocks/game: 2.4

2015-16 OPPONENT GAME-BY-GAME STATISTICS

Opponent	Date	Score	TOTAL			3-PTRS			REBOUNDS				PF	A	TO	Blk	Stl	Pts	Avg				
			W/L	FG	FGA Pct	3FG	FGA Pct	FT	FTA Pct	Off	Def	Tot								Avg			
WOFFORD	11-13-15	83-74	W	21	55	.382	10	27	.370	22	33	.667	8	21	29	29.0	24	12	7	0	3	74	74.0
UMES	11-15-15	73-55	W	17	44	.386	7	20	.350	14	22	.636	10	21	31	30.0	25	7	13	1	4	55	64.5
at Xavier	11/17/15	66-78	L	24	56	.429	6	18	.333	24	29	.828	13	27	40	33.3	18	13	13	4	9	78	69.0
vs Kansas State	11/23/15	42-66	L	21	57	.368	4	17	.235	20	26	.769	13	31	44	36.0	12	11	8	3	8	66	68.2
vs Northwestern	11/24/15	62-67	L	21	45	.467	10	23	.435	15	23	.652	5	28	33	35.4	20	15	14	1	6	67	68.0
Opponents		340		104	257	.405	37	105	.352	95	133	.714	49	128	177	35.4	99	58	55	9	30	340	68.0
Mizzou		326		112	267	.419	28	91	.308	74	107	.692	38	120	158	31.6	112	57	57	12	30	326	65.2

Games played: 5

Points/game: 68.0

FG Pct: 40.5

3FG Pct: 35.2

FT Pct: 71.4

Rebounds/game: 35.4

Assists/game: 11.6

Turnovers/game: 11.0

Assist/turnover ratio: 1.1

Steals/game: 6.0

Blocks/game: 1.8

TV/RADIO CHART

5-11 G FR  1	6-0 G SO  4	6-7 F SO  5	6-3 G FR  10
5-9 G R-SO  11	6-5 G SO  12	6-3 G JR  13	6-0 G JR  15
6-8 F SO  23	6-7 F FR  24	6-8 F JR  25	
6-7 F FR  32	6-4 G FR  33	6-10 F SR  44	

MIZZOU NUMERICAL ROSTER

No.	Name	Ht.	Wt.	Pos.	Yr.	Exp.	Hometown / High School / Previous School
1	Terrence Phillips	5-11	175	G	Fr.	HS	Orange County, Calif. / Oak Hill Academy (Va.)
4	Tramaine Isabell	6-0	178	G	So.	1L	Seattle, Wash. / Garfield H.S.
5	D'Angelo Allen	6-7	216	F	So.	1L	Dallas, Texas / Kimball H.S.
10	K.J. Walton	6-3	197	G	Fr.	HS	Brownsburg, Ind. / Brownsburg H.S.
11	Jimmy Barton	5-9	160	G	R-So.	RS	St. Louis, Mo. / DeSmet Jesuit H.S. / Houston Baptist
12	Namon Wright	6-5	202	G	So.	1L	Los Angeles, Calif. / Pacific Hills
13	Trevor Glassman	6-3	200	G	Jr.	TR	Bedford, N.H. / New Hampton School
15	Wes Clark	6-0	180	G	Jr.	2L	Detroit, Mich. / Romulus H.S.
23	Jakeenan Gant	6-8	212	F	So.	1L	Springfield, Ga. / Effingham County
24	Kevin Puryear	6-7	236	F	Fr.	HS	Blue Springs, Mo. / South H.S.
25	Russell Woods	6-8	225	F	Jr.	JC	Chicago, Ill. / Simeon High School / John A. Logan College (Ill.)
32	Adam Wolf	6-7	202	F	Fr.	HS	Beaver Dam, Wis. / Beaver Dam H.S.
33	Cullen VanLeer	6-4	200	G	Fr.	HS	Pacific, Mo. / Pacific H.S.
44	Ryan Rosburg	6-10	260	F	Sr.	3L	Chesterfield, Mo. / Marquette H.S.

MIZZOU COACHING STAFF

Coach	Position	Year	Alma Mater, Year
Kim Anderson	Head Coach	Second	Missouri, 1979, '81
Rob Fulford	Assistant Coach	Second	Marshall, 1997
Brad Loos	Assistant Coach	Second	Austin Peay State, 2002
Corey Tate	Assistant Coach	First	Missouri, 1997
Paul Rorvig	Basketball Operations	Second	Central Missouri, 2005
Steve Shields	Special Assistant to the Head Coach	First	Baylor, 1988, '92
Matt Herring	Athletic Performance	Second	Southwest Texas State, 1994