



### 2015-16 UNIVERSITY OF MISSOURI MEN'S BASKETBALL GAME NOTES

#### 2015-16 SCHEDULE

| DATE   | OPPONENT            | TV              | SCORE/TIME (CT) |
|--------|---------------------|-----------------|-----------------|
| N 13 F | Wofford #           | SECN +          | W, 83-74        |
| N 15 U | UMES #              | SECN            | W, 73-55        |
| N 17 T | at Xavier (RV)      | FS1             | L, 78-66        |
| N 23 M | vs. Kansas State &  | ESPNU           | 6 p.m.          |
| N 25 T | vs. TBD &           | ESPN2/ESPN3     | TBD             |
| D 1 T  | Arkansas State      | SECN            | 8 p.m.          |
| D 4 F  | Northern Illinois   | SECN +          | 7 p.m.          |
| D 9 W  | Omaha               | SECN            | 7 p.m.          |
| D 13 U | at Arizona          | Pac-12 Networks | 7 p.m.          |
| D 19 S | NC State            | SECN            | 5 p.m.          |
| D 23 W | vs. Illinois %      | ESPN2           | 6 p.m.          |
| D 29 T | Arkansas-Pine Bluff | SECN +          | 8 p.m.          |
| J 2 S  | Savannah State      | SECN +          | 2 p.m.          |
| J 6 W  | at Georgia *        | SECN ^          | 6 p.m.          |
| J 9 S  | Auburn *            | ESPN2           | 8 p.m.          |
| J 12 T | Arkansas *          | SECN ^          | 8 p.m.          |
| J 16 S | at South Carolina * | SECN ^          | Noon            |
| J 20 W | Georgia *           | SECN ^          | 6 p.m.          |
| J 23 S | at Texas A&M *      | SECN ^          | 3 p.m.          |
| J 27 W | at Kentucky *       | SECN ^          | 8 p.m.          |
| J 30 S | Mississippi State * | SECN ^          | 7:30 p.m.       |
| F 3 W  | Ole Miss *          | SECN ^          | 8 p.m.          |
| F 6 S  | at Alabama *        | SECN ^          | 2 p.m.          |
| F 10 W | at Vanderbilt *     | SECN ^          | 8 p.m.          |
| F 13 S | Tennessee *         | SECN ^          | 2 p.m.          |
| F 16 T | South Carolina *    | SECN ^          | 6 p.m.          |
| F 20 S | at Arkansas *       | SECN ^          | 6:30 p.m.       |
| F 23 T | at Ole Miss *       | SECN ^          | 8 p.m.          |
| F 27 S | Texas A&M *         | ESPNU           | 3 p.m.          |
| M 1 T  | at LSU *            | SECN ^          | 8 p.m.          |
| M 5 S  | Florida             | SECN ^          | 6:30 p.m.       |
| M 9-13 | vs. SEC Tournament  | SECN/ESPN ^     |                 |

**Bold** denotes home // \* denotes SEC game  
 # - CBE HOF Classic Host Games (Mizzou Arena, Columbia, Mo.)  
 & - CBE HOF Classic Championship Rounds (Sprint Center, Kansas City, Mo.)  
 % - Mizzou will play either North Carolina or Northwestern on Nov. 24  
 - 34th Annual Braggins' Rights Game (Scottrade Center, St. Louis, Mo.)  
 ^ - SEC Network broadcasts are additionally available through  
 WatchESPN apps and the website, WatchESPN.com  
 + - SEC Network + events are digitally exclusive events available on  
 WatchESPN apps or WatchESPN.com

#### GAME

# 4

## MIZZOU TIGERS (2-1) VS. KANSAS STATE WILDCATS (3-0)

MONDAY, NOV. 23, 2015 // 6 P.M. (CT) // SPRINT CENTER // KANSAS CITY, MO.

| @MIZZOUHOOPS            |                                   |
|-------------------------|-----------------------------------|
| 2-1                     |                                   |
| PTS / GAME              | 74.0                              |
| PTS ALLOWED / GAME      | 69.0                              |
| FG %                    | 47.4                              |
| FG DEFENSE %            | 40.0                              |
| 3-PT FG %               | 35.2                              |
| 3-PT FG DEFENSE %       | 35.4                              |
| REB / GAME              | 31.3                              |
| REB ALLOWED / GAME      | 33.3                              |
| LEADING SCORER          | PURYEAR (15.0)                    |
| LEADING REBOUNDER       | WRIGHT (5.3)                      |
| LEADER IN ASSISTS       | CLARK (2.7)                       |
| HEAD COACH              | Kim Anderson (Missouri, '79, '81) |
| SCHOOL RECORD           | 11-24 (Second season)             |
| CAREER RECORD           | 285-119 (14th season)             |
| RECORD VS. KANSAS STATE | 0-1                               |

#### SERIES INFORMATION

**ALL-TIME SERIES**..... 118-117 Kansas State  
**IN COLUMBIA**..... 65-42 Mizzou  
**IN MANHATTAN**..... 61-44 Kansas State  
**NEUTRAL SITE**..... 15-8 Kansas State  
**LAST MEETING**..... L, 78-68  
 ..... Feb. 21, 2012 (Columbia, Mo.)

#### FOLLOW #MIZZOU

**ON TELEVISION**..... ESPNU  
 ..... 6:00 p.m. CT  
 ..... Bob Wischusen (Play-by-Play)  
 ..... Dan Dakich (Analyst)  
**ON RADIO**..... Tiger Radio Network  
 ..... Mike Kelly (Play-by-Play)  
 ..... Gary Link (Analyst)  
 ..... Matt Winegardner (Engineer)  
**ONLINE**..... @MizzouHoops

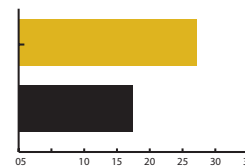


| @KSTATEMBB          |                                   |
|---------------------|-----------------------------------|
| 3-0                 |                                   |
| PTS / GAME          | 84.7                              |
| PTS ALLOWED / GAME  | 65.3                              |
| FG %                | 44.0                              |
| FG DEFENSE %        | 40.0                              |
| 3-PT FG %           | 27.0                              |
| 3-PT FG DEFENSE %   | 23.0                              |
| REB / GAME          | 41.3                              |
| REB ALLOWED / GAME  | 31.3                              |
| LEADING SCORER      | EDWARDS (17.0)                    |
| LEADING REBOUNDER   | EDWARDS (6.7)                     |
| LEADER IN ASSISTS   | 3 AVERAGING 4.0                   |
| HEAD COACH          | Bruce Weber (Wisconsin-Mil., '78) |
| SCHOOL RECORD       | 133-71 (7th season)               |
| CAREER RECORD       | 377-193 (.660)                    |
| RECORD VS. MISSOURI | 6-4                               |

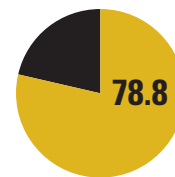
#### #ZOUNOTES

- Mizzou Men's Basketball next travels to Kansas City for the CBE Hall of Fame Classic (Monday, Nov. 23-Tuesday, Nov. 24), its fifth overall appearance in the event since its establishment in 2001 as the NABC Guardians Classic.
- The Tigers have participated in the CBE Hall of Fame Classic more than any program, with no other school appearing more than three times in the event's history.
- Head coach **Kim Anderson** is no stranger to facing Kansas State (Monday, Nov. 23, 6 p.m.), an old foe of Mizzou's from its Big Eight Conference days. As an assistant to legendary head coach Norm Stewart, Anderson helped guide the Tigers to an 18-9 record vs. the Wildcats over his two stints in Columbia (1982-85, 1991-99).
- Mizzou's offensive improvement, although early in the 2015-16 season, is noticeable. The Tigers have averaged 74.0 points per game to start the season, +9.0 points from last season's start (65.0).

#### #ZOUGRAPHS



The Tigers are shooting 26.7 free throws per game to start the 2015-16 season. In comparison, Mizzou averaged 17.5 free throw attempts per game last season (560 in 32 games).



Mizzou's freshmen and sophomores have accounted for 78.8 percent of the team's scoring through the first three games of the season.

#### PROJECTED #MIZZOU LINEUP



G

1

terrence  
PHILLIPS

FR // 5-11 // 175 // ORANGE COUNTY, CALIF.

| @FloorGeneral103   |     |     |     |
|--|-----|-----|-----|
| PPG  | RPG | APG | SPG |
| 7.7  | 2.3 | 1.7 | 0.3 |
| ▶ 13 points in win vs. UMES (Nov. 15), hitting 3-of-4 three-pointers |     |     |     |
| ▶ Started in his first collegiate game vs. Wofford (Nov. 13)         |     |     |     |



G

15

wes  
CLARK

JR // 6-0 // 180 // DETROIT, MICH.

| @Im_back_15  |     |     |     |
|--|-----|-----|-----|
| PPG  | RPG | APG | SPG |
| 10.0   | 2.3 | 2.7 | 1.0 |
| ▶ Returned to lineup after right elbow dislocation caused him to miss final eight games of 2014-15 |     |     |     |
| ▶ Averaged 10.1 PPG last season  |     |     |     |



G

12

namon  
WRIGHT

SO // 6-5 // 202 // LOS ANGELES, CALIF.

| @kharyw  |     |     |     |
|--|-----|-----|-----|
| PPG  | RPG | APG | SPG |
| 10.3   | 5.3 | 1.0 | 0.7 |
| ▶ 18 points off the bench in win vs. Wofford (Nov. 13) |     |     |     |
| ▶ Career-high 28 points vs. Florida last season        |     |     |     |



F

24

kevin  
PURYEAR

FR // 6-7 // 236 // BLUE SPRINGS, MO.

| @CallMe_KP24  |     |     |     |
|---|-----|-----|-----|
| PPG   | RPG | SPG | APG |
| 15.0  | 5.0 | 0.7 | 0.3 |
| ▶ 20 points in Mizzou debut vs. Wofford.                              |     |     |     |
| ▶ KC Star Metro Player of the Year as a senior at Blue Springs South. |     |     |     |



F

23

jakeenan  
GANT

SO // 6-8 // 212 // SPRINGFIELD, GA.

| @JakeenanG23   |     |     |     |
|--|-----|-----|-----|
| PPG  | RPG | APG | BPG |
| 3.0  | 2.3 | 0.7 | 1.3 |
| ▶ 4 blocks through 3 games                                 |     |     |     |
| ▶ Career-high 13 pts., in debut vs. Xavier (Dec. 13, 2014) |     |     |     |
| ▶ Started 6 games last season                              |     |     |     |

#### KANSAS STATE PROJECTED LINEUP

|   |   |   |   |  |
|---|---|---|---|--|
| G 3 KAMAU STOKES (6-0, FR)<br>6.3 PPG // 3.0 RPG // 4.0 APG | G 5 BARRY BROWN (6-3, FR)<br>12.3 PPG // 2.3 RPG // 1.3 APG | G 14 JUSTIN EDWARDS (6-4, SR)<br>17.0 PPG // 6.7 RPG // 4.0 APG | F 32 DEAN WADE (6-10, FR)<br>13.3 PPG // 4.0 RPG // 0.7 APG | F 25 WESLEY IWUNDU (6-7, JR)<br>15.3 PPG // 5.0 RPG // 4.0 APG |
|---|---|---|---|--|

# QUICK FACTS

## INSTITUTIONAL INFORMATION

Location \_\_\_\_\_ Columbia, Mo.  
 Founded: \_\_\_\_\_ 1839  
 Enrollment: \_\_\_\_\_ 35,050  
 Nickname: \_\_\_\_\_ Tigers  
 Colors: \_\_\_\_\_ Old Gold and Black  
 Arena (Capacity): \_\_\_\_\_ Mizzou Arena (15,061)  
 Conference: \_\_\_\_\_ Southeastern  
 Interim System President: \_\_\_\_\_ Mike Middleton  
 Phone \_\_\_\_\_ 573-882-2011  
 Interim Chancellor: \_\_\_\_\_ Hank Foley  
 Phone: \_\_\_\_\_ 573-882-3387  
 Director of Athletics: \_\_\_\_\_ Mack Rhoades  
 Department Phone: \_\_\_\_\_ 573-882-6501  
 Ticket Office Phone: \_\_\_\_\_ 573-884-7297  
 \_\_\_\_\_ 800-228-7297

## THE MIZZOU TIGERS

Head Coach: \_\_\_\_\_ Kim Anderson (Second season)  
 \_\_\_\_\_ University of Missouri, 1979, '81  
 Missouri Record \_\_\_\_\_ 11-24 (2nd season)  
 Overall Record: \_\_\_\_\_ 285-119 / .705 (14th season)  
 Assistant Coaches: \_\_\_\_\_ Rob Fulford (Second season)  
 \_\_\_\_\_ Brad Loos (Second season)  
 \_\_\_\_\_ Corey Tate (First season)  
 Special Assistant to the Head Coach \_\_\_\_\_  
 \_\_\_\_\_ Steve Shields (First season)  
 Basketball Operations: \_\_\_\_\_ Paul Rorvig  
 \_\_\_\_\_ (Second season)  
 Basketball Performance: \_\_\_\_\_ Matt Herring  
 \_\_\_\_\_ (Second season)  
 Operations Assistant \_\_\_\_\_ John Poettgen  
 Graduate Assistants: \_\_\_\_\_ Brett Anderson  
 \_\_\_\_\_ Jon Gilliam  
 2014-15 Record: \_\_\_\_\_ 9-23  
 SEC Record (Finish): \_\_\_\_\_ 3-15 (14th)  
 Starters Returning / Lost: \_\_\_\_\_ 3/2  
 Lettermen Returning / Lost: \_\_\_\_\_ 6/5

## STRATEGIC COMMUNICATIONS

Senior Assoc. Athletics Director: \_\_\_\_\_ Ryan Bradley  
 Office Phone \_\_\_\_\_ 573-882-9805  
 E-Mail: \_\_\_\_\_ bradleyry@missouri.edu  
 Associate Athletics Director: \_\_\_\_\_ Chad Moller  
 Office Phone: \_\_\_\_\_ 573-882-0712  
 E-Mail: \_\_\_\_\_ mollerc@missouri.edu  
**Men's Basketball Contact: \_\_\_\_\_ Patrick Crawford**  
**Office Phone: \_\_\_\_\_ 573-882-2531**  
**E-Mail: \_\_\_\_\_ crawfordpa@missouri.edu**  
 Associate Director: \_\_\_\_\_ Kate Lakin  
 Assistant Director: \_\_\_\_\_ Shawn Davis  
 Assistant Director: \_\_\_\_\_ Tyler Koonce  
 Assistant Director: \_\_\_\_\_ Andy Oldenburg  
 Web Coordinator: \_\_\_\_\_ Kevin Fletcher  
 Digital Media: \_\_\_\_\_ Ali Fisher  
 Associate (Secondary Contact): \_\_\_\_\_ Andrew Melroe  
 E-Mail: \_\_\_\_\_ melroea@missouri.edu  
 Twitter/Instagram \_\_\_\_\_ @MizzouHoops  
 Website: \_\_\_\_\_ mutigers.com

## Pro-nun-SEE-A-shun GUIDE

Kevin Puryear \_\_\_\_\_ Purr-EE-err  
 Namon Wright \_\_\_\_\_ NAY-mun

# KIM ANDERSON



**HOMETOWN**  
 Sedalia, Mo.  
**HIGH SCHOOL**  
 Smith-Cotton  
**TWITTER**  
 @CoachAndersonMU  
**FAMILY**  
 Wife, Melissa  
 Son, Ryan  
 Son, Brett

Entering his second season leading the Mizzou Men's Basketball program, head coach **Kim Anderson** continues to turn the Tigers in the right direction, both on and off the court. With six newcomers on the 2015-16 roster that his staff personally recruited, Anderson hopes a higher comfort level and familiarity amongst his squad will translate into better team basketball. The Tigers already did their part in the offseason, posting the highest summer session grade point average for a Mizzou team in more than five seasons.

## QUOTING COACH A (Friday, Nov. 20, 2015)

### On Mizzou's performance at Xavier...

"I think that we competed the whole game. Obviously they had a run there in the second half where they pulled away a little bit. I thought the big key was their zone bothered us, and we had worked against it, we had a day to prepare. The main thing about it was their length and we just had a hard time getting the ball into the paint area. One of our problems is, obviously, we're not as big as some teams. They were big."

### On what the coaching staff sees in Kansas State...

"The two biggest concerns that I have about them is I think they do a great job of pushing the basketball. I think they run the floor really well and then the other thing is they rebound. They rebound. Everybody rebounds."

# 2015-16 MIZZOU ROSTER

| #  | Name  | Ht.  | Wt. | Pos. | Yr.   | Exp. |
|----|---|------|-----|------|-------|------|
| 1  | <b>Terrence Phillips</b>  | 5-11 | 175 | G    | Fr.   | HS   |
|    | Orange County, Calif. / Oak Hill Academy (Va.)                      |      |     |      |       |      |
|    | <b>Note:</b> 88-4 record as starting point guard at Oak Hill        |      |     |      |       |      |
| 4  | <b>Tramaine Isabell</b>   | 6-0  | 178 | G    | So.   | 1L   |
|    | Seattle, Wash. / Garfield H.S.                                      |      |     |      |       |      |
|    | <b>Note:</b> Multiple assists in eight games in 14-15               |      |     |      |       |      |
| 5  | <b>D'Angelo Allen</b>   | 6-7  | 216 | F    | So.   | 1L   |
|    | Dallas, Texas / Kimball H.S.  |      |     |      |       |      |
|    | <b>Note:</b> Started last 8 games of 14-15 season                   |      |     |      |       |      |
| 10 | <b>K.J. Walton</b>  | 6-3  | 197 | G    | Fr.   | HS   |
|    | Brownsburg, Ind. / Brownsburg H.S.                                  |      |     |      |       |      |
|    | <b>Note:</b> Former 103rd-ranked <i>Rivals.com</i> prospect         |      |     |      |       |      |
| 11 | <b>Jimmy Barton</b>   | 5-9  | 160 | G    | R-So. | RS   |
|    | St. Louis, Mo. / DeSmet Jesuit H.S. / Houston Baptist               |      |     |      |       |      |
|    | <b>Note:</b> Walk-on with 13 games at H-Baptist in 13-14            |      |     |      |       |      |
| 12 | <b>Namon Wright</b>   | 6-5  | 202 | G    | So.   | 1L   |
|    | Los Angeles, Calif. / Pacific Hills                                 |      |     |      |       |      |
|    | <b>Note:</b> Averaged 13.6 PPG in last five games of 14-15          |      |     |      |       |      |
| 13 | <b>Trevor Glassman</b>  | 6-3  | 200 | G    | Jr.   | TR   |
|    | Bedford, N.H. / New Hampton School / Manhattan                      |      |     |      |       |      |
|    | <b>Note:</b> Walk-on, sitting out the 2015-16 season after transfer |      |     |      |       |      |
| 15 | <b>Wes Clark</b>  | 6-0  | 180 | G    | Jr.   | 2L   |
|    | Detroit, Mich. / Romulus H.S.                                       |      |     |      |       |      |
|    | <b>Note:</b> Returns after season-ending inj. to right elbow        |      |     |      |       |      |
| 23 | <b>Jakeenan Gant</b>  | 6-8  | 212 | F    | So.   | 1L   |
|    | Springfield, Ga. / Effingham County                                 |      |     |      |       |      |
|    | <b>Note:</b> Won Mizzou's annual Black & Gold dunk contest          |      |     |      |       |      |
| 24 | <b>Kevin Puryear</b>  | 6-7  | 236 | F    | Fr.   | HS   |
|    | Blue Springs, Mo. / South H.S.                                      |      |     |      |       |      |
|    | <b>Note:</b> 20.1 pts., 7.8 reb. per game as a senior               |      |     |      |       |      |
| 25 | <b>Russell Woods</b>  | 6-8  | 225 | F    | Jr.   | JC   |
|    | Chicago, Ill. / Simeon High School / John A. Logan College (Ill.)   |      |     |      |       |      |
|    | <b>Note:</b> 14.1 pts., 7.2 reb. per game at JUCO in 14-15          |      |     |      |       |      |
| 32 | <b>Adam Wolf</b>  | 6-7  | 202 | F    | Fr.   | HS   |
|    | Beaver Dam, Wis. / Beaver Dam H.S.                                  |      |     |      |       |      |
|    | <b>Note:</b> Walk-on who avg. 17.0 pts. per game as senior          |      |     |      |       |      |
| 33 | <b>Cullen VanLeer</b>   | 6-4  | 200 | G    | Fr.   | HS   |
|    | Pacific, Mo. / Pacific H.S.   |      |     |      |       |      |
|    | <b>Note:</b> 23.5 pts., 7.3 reb. per game as a senior               |      |     |      |       |      |
| 44 | <b>Ryan Rosburg</b>   | 6-10 | 260 | F    | Sr.   | 3L   |
|    | Chesterfield, Mo. / Marquette H.S.                                  |      |     |      |       |      |
|    | <b>Note:</b> 49 career starts at Mizzou, 98 career app.             |      |     |      |       |      |

# **GAME PREVIEW - VS. KANSAS STATE**

## **ABOUT KANSAS STATE**

- ▶ Head coach **Kim Anderson's** group begins its CBE Hall of Fame Classic with old Big Eight Conference rival Kansas State (3-0) on Monday, Nov. 23, with a 6 p.m. tipoff on ESPNU. The Tigers will face either Northwestern (3-0) or No. 1-ranked North Carolina (3-1) in their second game of the event on Tuesday, Nov. 24 (6:30 p.m. or 9 p.m.).
- ▶ Kansas State, led by fourth-year head coach Bruce Weber, has started the season unbeaten through its three games thanks to the play of senior guard **Justin Edwards**. The Wildcat leads his team in scoring and rebounding, averaging 17.0 points and 6.7 rebounds per game.
- ▶ Three other Wildcats are also averaging 10.0 points per game or better in junior forward **Wesley Iwundu** (15.3), freshman forward **Dean Wade** (13.3) and freshman guard **Barry Brown** (12.3).

## **CLOSER LOOK AT THE WILDCATS**

- ▶ The Wildcats are averaging 84.7 points per game and allowing 65.3 points per game to its opponents to start their 2015-16 campaign. Weber's squad has done well on the boards, averaging 41.3 rebounds per game compared to its opponent's 31.3.
- ▶ Kansas State has not found its groove from three-point territory, shooting just 27.9 percent from deep. The Wildcats' opponents have had even more trouble, shooting just 23.6 percent from beyond the arc.
- ▶ Mizzou and Kansas State's common opponent, Maryland-Eastern Shore, suffered losses to both the Tigers and the Wildcats. Mizzou defeated UMES by a score of 73-55 on Nov. 15, while Kansas State won, 80-53, on Nov. 13.

## **MOVIE SCOUTING REPORT**

### **OCEAN'S ELEVEN (2001)**

Senior guard **Justin Edwards** is averaging a team-high 2.0 steals per game

### **GRAVITY (2013)**

Junior forward **D.J. Johnson** has pulled down 18 rebounds in 39 minutes of play for a team-best average of 0.46 rebounds per minute.

### **UP IN THE AIR (2009)**

Freshman guard **Barry Brown** is averaging a team-high 4.7 three-point field goal attempts per game.

## **BY THE NUMBERS**

**5**

▶ Mizzou welcomes five scholarship newcomers, including four talented freshmen and an experienced JUCO transfer. In total, the squad features eight freshmen/sophomores out of its 12 allocated scholarships.

## **MORE ON MIZZOU**

### **ROSBURG JOINS CENTURY CLUB**

- ▶ Senior forward **Ryan Rosburg** will have the opportunity to appear in his 100th career game for Mizzou when the Tigers face Kansas State on Monday, Nov. 23.
- ▶ Only one of other Tiger has appeared in even half as many games, as junior guard **Wes Clark** has played in 59 games for Mizzou.
- ▶ Rosburg has been a mainstay in the Tigers' lineup throughout his career wearing the Black & Gold. He has appeared in at least 30 games in all three of his previous seasons and has registered 49 career starts, including 32 of 35 games as a sophomore in 2013-14.

### **STRONG START FOR PURYEAR**

- ▶ Freshman forward **Kevin Puryear** has been a go-to option for Mizzou's offense to start the 2015-16 season. Puryear leads the Tigers with his 15.0 points per game.
- ▶ Puryear has started his first collegiate campaign with three-straight games scoring in double figures. In Mizzou's season-opener vs. Wofford (Nov. 13), the Tiger newcomer dropped a team-leading 20 points.

### **CLARK SETTLES IN**

- ▶ Junior guard **Wes Clark** has looked like his old self in Mizzou's latest two games, confirming the fact that he has recovered from his season-ending arm injury.
- ▶ Clark scored 15 points (4-of-11 FG, 3-of-6 3PT, 4-of-4 FT) in the 73-55 win vs. Maryland-Eastern Shore (Nov. 15). He followed that up with 11 points (5-of-12 FG, 1-of-4 3PT, 0-for-1 FT) at Xavier.
- ▶ The efforts were the 14th and 15th games in Clark's career in which he has scored in double digits.

### **GETTING TO THE LINE**

- ▶ Mizzou is shooting 26.7 free throws per game to start the 2015-16 season, a welcome sign of improvement in an area of need from a season ago. The Tigers averaged just 17.5 attempts from the charity stripe last season.
- ▶ Most noticeably, sophomore guard **Namon Wright** has made it a focus to earn more trips to the free throw line. Wright (11-of-15 FT) has already surpassed his free throw makes from last season (10) and has nearly matched his attempts (18) in just three games.

### **#RALLYFORRHAN**

- ▶ Rhan Loos, the 5-year-old daughter of assistant Mizzou coach **Brad Loos** and his wife, Jen, has been diagnosed with neuroblastoma, a type of pediatric cancer. The Mizzou Men's Basketball program will be supporting Rhan and the Loos Family throughout the season.
- ▶ To find out more about Rhan and how you can offer support, visit [www.mutigers.com/RallyForRhan](http://www.mutigers.com/RallyForRhan).



### **UP NEXT FOR MIZZOU**

- ▶ Head coach **Kim Anderson's** returns to Mizzou Arena to play Arkansas State on Tuesday, Dec. 1, tipping off at 8 p.m. on the SEC Network.
- ▶ Mizzou is 5-0 all-time vs. Arkansas State, last playing the Red Wolves on Dec. 4, 1996, a game that ended in an 81-47 victory for the Tigers.
- ▶ The Tigers have beaten Arkansas State by an average of 20.2 points in its five victories. The tightest margin of victory was a 10-point win (73-63) on Dec. 16, 1995, in Jonesboro, Ark.

## LAST GAME

Mizzou vs Xavier

11/17/15 6:30 p.m. at Cincinnati, Ohio (Cintas Center)

VISITORS: Mizzou 2-1

| ##          | Player             |   | tot-fg |     | 3-pt |     | rebounds |     |    |    |     |    |    | a | to | blks | min |     |
|-------------|--------------------|---|--------|-----|------|-----|----------|-----|----|----|-----|----|----|---|----|------|-----|-----|
|             |                    |   | fg     | fga | fg   | fga | ft       | fta | of | de | tot | pf | tp |   |    |      |     |     |
| 23          | GANT, Jakeenan     | f | 0      | 3   | 0    | 2   | 1        | 2   | 1  | 1  | 2   | 1  | 1  | 1 | 2  | 1    | 0   | 15  |
| 24          | PURYEAR, Kevin     | f | 4      | 9   | 0    | 2   | 4        | 4   | 0  | 5  | 5   | 3  | 12 | 0 | 1  | 0    | 0   | 29  |
| 01          | PHILLIPS, Terrence | g | 1      | 2   | 1    | 2   | 0        | 0   | 0  | 1  | 1   | 4  | 3  | 0 | 2  | 0    | 0   | 12  |
| 12          | WRIGHT, Namon      | g | 2      | 6   | 0    | 4   | 2        | 3   | 0  | 4  | 4   | 3  | 6  | 2 | 2  | 0    | 2   | 28  |
| 15          | CLARK, Wes         | g | 5      | 12  | 1    | 4   | 0        | 1   | 2  | 1  | 3   | 3  | 11 | 3 | 2  | 0    | 3   | 31  |
| 04          | ISABELL, Tramaine  |   | 3      | 6   | 1    | 1   | 4        | 4   | 0  | 1  | 1   | 2  | 11 | 1 | 5  | 0    | 1   | 13  |
| 05          | ALLEN, D'Angelo    |   | 0      | 0   | 0    | 0   | 0        | 0   | 0  | 3  | 3   | 2  | 0  | 0 | 1  | 0    | 0   | 12  |
| 10          | WALTON, K.J.       |   | 3      | 8   | 0    | 1   | 2        | 2   | 1  | 2  | 3   | 2  | 8  | 1 | 0  | 0    | 0   | 21  |
| 25          | WOODS, Russell     |   | 0      | 0   | 0    | 0   | 0        | 0   | 2  | 1  | 3   | 3  | 0  | 0 | 0  | 0    | 0   | 8   |
| 33          | VANLEER, Cullen    |   | 5      | 9   | 3    | 7   | 0        | 0   | 0  | 0  | 0   | 2  | 13 | 0 | 1  | 0    | 2   | 22  |
| 44          | ROSBURG, Ryan      |   | 0      | 0   | 0    | 0   | 1        | 2   | 1  | 0  | 1   | 1  | 1  | 0 | 1  | 1    | 0   | 9   |
| TEAM        |                    |   |        |     |      |     |          |     | 2  |    | 2   |    |    | 1 |    |      |     |     |
| Totals..... |                    |   | 23     | 55  | 6    | 23  | 14       | 18  | 7  | 21 | 28  | 26 | 66 | 8 | 18 | 2    | 8   | 200 |

|           |                       |                       |             |          |
|-----------|-----------------------|-----------------------|-------------|----------|
| TOTAL FG% | 1st Half: 12-26 46.2% | 2nd Half: 11-29 37.9% | Game: 41.8% | DEADBALL |
| 3-Pt. FG% | 1st Half: 1-7 14.3%   | 2nd Half: 5-16 31.3%  | Game: 26.1% | REBOUNDS |
| F Throw % | 1st Half: 11-14 78.6% | 2nd Half: 3-4 75.0%   | Game: 77.8% | 1,1      |

HOME TEAM: Xavier 2-0

| ##          | Player            |   | tot-fg |     | 3-pt |     | ft |     | rebounds |    |     |    |    |    |    | a | to | blks | min |
|-------------|-------------------|---|--------|-----|------|-----|----|-----|----------|----|-----|----|----|----|----|---|----|------|-----|
|             |                   |   | fg     | fga | fg   | fga | ft | fta | of       | de | tot | pf | tp |    |    |   |    |      |     |
| 01          | REYNOLDS, Jalen   | f | 0      | 2   | 0    | 0   | 0  | 0   | 0        | 2  | 2   | 4  | 0  | 1  | 2  | 2 | 1  | 15   |     |
| 04          | SUMNER, Edmond    | g | 2      | 7   | 1    | 3   | 7  | 10  | 0        | 5  | 5   | 1  | 12 | 2  | 3  | 1 | 1  | 29   |     |
| 05          | BLUIETT, Trevon   | g | 6      | 12  | 3    | 5   | 3  | 4   | 2        | 5  | 7   | 2  | 18 | 0  | 3  | 0 | 0  | 31   |     |
| 10          | ABELL, Remy       | g | 1      | 6   | 1    | 4   | 0  | 0   | 0        | 1  | 1   | 1  | 3  | 2  | 2  | 0 | 0  | 21   |     |
| 15          | DAVIS, Myles      | g | 3      | 7   | 0    | 4   | 4  | 4   | 1        | 2  | 3   | 1  | 10 | 4  | 1  | 0 | 2  | 31   |     |
| 00          | AUSTIN JR., Larry |   | 2      | 4   | 0    | 0   | 0  | 0   | 0        | 0  | 0   | 2  | 4  | 0  | 0  | 0 | 3  | 15   |     |
| 02          | FARR, James       |   | 6      | 12  | 0    | 0   | 3  | 4   | 7        | 7  | 14  | 4  | 15 | 2  | 0  | 1 | 1  | 24   |     |
| 13          | LONDON, Makinde   |   | 0      | 1   | 0    | 0   | 0  | 0   | 0        | 2  | 2   | 1  | 0  | 0  | 0  | 0 | 0  | 4    |     |
| 54          | O'MARA, Sean      |   | 0      | 0   | 0    | 0   | 0  | 0   | 0        | 0  | 0   | 1  | 0  | 0  | 0  | 0 | 0  | 8    |     |
| 55          | MACURA, J.P.      |   | 4      | 5   | 1    | 2   | 7  | 7   | 2        | 1  | 3   | 1  | 16 | 2  | 2  | 0 | 1  | 22   |     |
| TEAM        |                   |   |        |     |      |     |    |     | 1        |    | 2   | 3  |    |    |    |   |    |      |     |
| Totals..... |                   |   | 24     | 56  | 6    | 18  | 24 | 29  | 13       | 27 | 40  | 18 | 78 | 13 | 13 | 4 | 9  | 200  |     |

|           |                       |                       |             |          |
|-----------|-----------------------|-----------------------|-------------|----------|
| TOTAL FG% | 1st Half: 11-30 36.7% | 2nd Half: 13-26 50.0% | Game: 42.9% | DEADBALL |
| 3-Pt. FG% | 1st Half: 3-11 27.3%  | 2nd Half: 3-7 42.9%   | Game: 33.3% | REBOUNDS |
| F Throw % | 1st Half: 12-14 85.7% | 2nd Half: 12-15 80.0% | Game: 82.8% | 2,1      |

Officials: Michael Stephens, Jeffrey Anderson, Doug Shows

Technical fouls: Mizzou-None. Xavier-None.

Attendance: 9751

**Score by Periods**

|        | 1st | 2nd | Total |
|--------|-----|-----|-------|
| Mizzou | 36  | 30  | 66    |
| Xavier | 37  | 41  | 78    |

**VANLEER PACES @MIZZOUHOOPS WITH 13, TIGERS FALL SHORT AT XAVIER**


In its first road game of the 2015-16 season, Mizzou Men's Basketball (2-1) fell to Xavier (2-0), 78-66, on Nov. 17 at the Cintas Center. Mizzou's youth movement was impactful once again, as 54 of the Tigers' 66 points (82 percent) came from freshmen or sophomores.

Freshman guard **Cullen VanLeer** (Pacific, Mo.) paced the Tigers with 13 points. Mizzou held the lead at 38-37 less than one minute into the second half, but Xavier responded with a 12-2 run to snag control back from head coach Kim Anderson's group.

Joining VanLeer in double digits for the Tigers was freshman forward **Kevin Puryear** (Blue Springs, Mo.) with 12 points, junior guard **Wes Clark** (Detroit, Mich.) with 11 points and sophomore guard **Tramaine Isabell** with 11 points (Seattle, Wash.). Puryear led the team in rebounds with five, while Clark led the team in assists with three.

Xavier jumped out to a 17-10 lead in the first half, but Mizzou used a 17-7 run to get back into the game. Defense was the key to the run as the Tigers' tough play led to 11-straight missed shots from Xavier. Two free throws from Puryear gave Mizzou a 30-26 lead with 3:09 left in the half, the largest lead of the night for the Tigers.

Trailing by 14 with under six minutes to play in the game, VanLeer hit two consecutive three-pointers to cut the lead to 10, but the deficit was too much to overcome in the end for the Tigers.





## TERRENCE PHILLIPS

Orange County, Calif.  
Oak Hill Academy (Va.)  
FR \ G \ 5-11 \ 175

### LAST GAME (AT XAVIER 11-17-15)

| FG | FGA | 3FG | FGA | FT | FTA | REB | PTS |
|----|-----|-----|-----|----|-----|-----|-----|
| 1  | 2   | 1   | 2   | 0  | 0   | 1   | 3   |

### 2015-16 (FRESHMAN):

- Rained in 3-of-4 from three-point land en route to 13 points vs. UMES (Nov. 14), playing 27 minutes in his second career start.
- Earned the start in his collegiate debut vs. Wofford (Nov. 13), recording 7 points, 3 assists and 3 rebounds in 29 minutes.

### OAK HILL ACADEMY:

- Proven winner, leading national powerhouse Oak Hill Academy (Mouth of Wilson, Va.) to an 88-4 record as the team's starting point guard his last two seasons.
- Averaged an eye-popping 8.7 assists per game en route to setting Oak Hill's career assist record as a senior during the 2014-15 season.
- Averaged 7.7 points and 4.2 steals per game while leading Oak Hill to a 47-1 season as a senior, with the squad also spending 10 weeks as the nation's No. 1-ranked boys basketball team.
- Broke Oak Hill's career assists record that was previously held by former North Carolina standout Jeff McInnis.
- Lone Oak Hill setback came in the championship game of the DICK's Sporting Goods High School Nationals, a 70-61 result to No. 2-ranked Montverde Academy.
- Recorded team-highs in points (15), rebounds (9), assists (5) and steals (5) in the nationally televised final (ESPN2) of the DICK's Sporting Goods tournament.

### PERSONAL:

- Son of Alice Knox and Ted Phillips.
- Born on Jan. 12, 1996, in Los Angeles, California.
- Athlete he most looks up to and models his game after is Chris Paul.
- Favorite TV show is 'Friends'.
- Considered Mizzou the most in the recruiting process due to the Tigers coaching staff's ongoing presence.
- Mentions NBA star Kobe Bryant as the most influential person he has ever met.

## PHILLIPS 2015-16 GAME-BY-GAME

| Opponent  | Date     | GS | Min | FG | FGA | Pct  | 3FG | FGA | Pct  | FT | FTA | Pct  | Off | Def | Tot | Avg | PF | FO | A | TO | Blk | Stl | Pts | Avg  |
|-----------|----------|----|-----|----|-----|------|-----|-----|------|----|-----|------|-----|-----|-----|-----|----|----|---|----|-----|-----|-----|------|
| WOFFORD   | 11-13-15 | *  | 29  | 2  | 5   | .400 | 0   | 1   | .000 | 3  | 4   | .750 | 0   | 3   | 3   | 3.0 | 3  | 0  | 3 | 2  | 0   | 0   | 7   | 7.0  |
| UMES      | 11-15-15 | *  | 27  | 5  | 7   | .714 | 3   | 4   | .750 | 0  | 0   | .000 | 1   | 2   | 3   | 3.0 | 3  | 0  | 2 | 1  | 0   | 1   | 13  | 10.0 |
| at Xavier | 11-17-15 | *  | 12  | 1  | 2   | .500 | 1   | 2   | .500 | 0  | 0   | .000 | 0   | 1   | 1   | 2.3 | 4  | 0  | 0 | 2  | 0   | 0   | 3   | 7.7  |

| SEASON  | G-GS | MIN | MPG  | FG-A | FG%  | 3FG-A | 3FG% | FT-A | FT%  | REB / AVG. | AST / TO | BS / S | TP | AVG. |
|---------|------|-----|------|------|------|-------|------|------|------|------------|----------|--------|----|------|
| 2015-16 | 3-3  | 68  | 22.7 | 8-14 | .571 | 4-7   | .571 | 3-4  | .750 | 7 / 2.3    | 5 / 5    | 0 / 1  | 23 | 7.7  |
| TOTAL   | 3-3  | 68  | 22.7 | 8-14 | .571 | 4-7   | .571 | 3-4  | .750 | 7 / 2.3    | 5 / 5    | 0 / 1  | 23 | 7.7  |

## #1 AT A GLANCE

### 2015-16 Career

|                      |   |   |
|----------------------|---|---|
| Scored 5+ points     | 2 | - |
| Scored 10+ points    | 1 | - |
| Hit 2+ 3-pointers    | 1 | - |
| Recorded 2+ rebounds | 2 | - |
| Multiple assists     | 2 | - |
| Dished 3+ assists    | 1 | - |
| Played 20+ minutes   | 2 | - |
| Played 30+ minutes   | - | - |

## #1 GAME HIGHS

### 2015-16 Career

|             |      |
|-------------|------|
| 13, UMES    | -    |
| 11-15-15    | PTS  |
| 5, UMES     | -    |
| 11-15-15    | FGM  |
| 7, UMES     | -    |
| 11-15-15    | FGA  |
| 3, UMES     | -    |
| 11-15-15    | 3PTM |
| 4, UMES     | -    |
| 11-15-15    | 3PTA |
| 3, Wofford  | -    |
| 11-13-15    | FTM  |
| 4, Wofford  | -    |
| 11-13-15    | FTA  |
| 3, Twice    | -    |
|             | REB  |
| 3, Wofford  | -    |
| 11-13-15    | ASST |
| -           | -    |
| -           | BLKS |
| 1, UMES     | -    |
| 11-15-15    | STLS |
| 29, Wofford | -    |
| 11-13-15    | MIN  |

4

## TRAMAINE ISABELL

Seattle, Wash.  
Garfield High School  
SO \ \ G \ \ 6-0 \ \ 178

### LAST GAME (AT XAVIER 11-17-15)

| FG | FGA | 3FG | FGA | FT | FTA | AST | PTS |
|----|-----|-----|-----|----|-----|-----|-----|
| 3  | 6   | 1   | 1   | 4  | 4   | 1   | 11  |

### 2015-16 (SOPHOMORE):

- Hit on both his field goal attempts in the season-opening win vs. Wofford (Nov. 13), scoring 4 points and dishing 2 assists.

### 2014-15 (FRESHMAN):

- Averaged 4.1 points per game coming off the bench for the Tigers as a freshman, but also reached double-digits in scoring three times.
- Dished out multiple assists in eight different games, including a season-high six dimes (against just one turnover) in the win vs. LSU (Jan. 8).
- Season-best 14 points (4-of-8 FG, 1-of-3 3PT, 5-of-6 FT) vs. Lipscomb (Jan. 3), with his work at the charity stripe setting season-high marks in FT makes and attempts.
- Made ESPN SportsCenter's Top 10 with his buzzer-beating, game-tying three-pointer vs. Oklahoma State (Dec. 30), dropping the bucket with 0.2 seconds left in regulation.

### HIGH SCHOOL:

- Was named first team all-state as a senior after leading Garfield High School to a 25-1 overall record and the Washington Class 4A state championship.
- Averaged 23.6 points and 3.5 assists as a senior for Garfield, which also produced NBA players Tony Wroten and Brandon Roy.
- Poured in 34 points in the state title win over Richland and was named the state tournament's Most Valuable Player.
- Was named the Las Vegas Championship Most Valuable Player thanks to a 47-point outburst vs. Las Vegas High School.
- Began his high school career at Lakeside High School, the same high school as Microsoft co-founders Bill Gates and Paul Allen, and led the Lions to the 2013 state championship game.

### PERSONAL:

- Full name is Tramaine Andre' Isabell.
- Son of Aiyana Brown and Tramaine Isabell Sr.
- Has a younger sister, Queen, and younger brother, Se'jhe.
- Born June 27, 1995.
- Enjoys listening to music and playing video games when not on the basketball court.
- Considers his grandfather, Rich Padden, his greatest influence and an important mentor.
- Outside of pursuing basketball, would like to find success in the fields of real estate or private investment.

## ISABELL 2015-16 GAME-BY-GAME

| Opponent  | Date     | GS | Min | FG | FGA   | Pct | 3FG | FGA   | Pct | FT | FTA   | Pct | Off | Def | Tot | Avg | PF | FO | A | TO | Blk | Stl | Pts | Avg |
|-----------|----------|----|-----|----|-------|-----|-----|-------|-----|----|-------|-----|-----|-----|-----|-----|----|----|---|----|-----|-----|-----|-----|
| WOFFORD   | 11-13-15 | 10 | 2   | 2  | 1.000 | 0   | 0   | .000  | 0   | 0  | .000  | 0   | 3   | 3   | 3.0 | 1   | 0  | 2  | 3 | 0  | 1   | 4   | 4.0 |     |
| UMES      | 11-15-15 | 12 | 2   | 5  | .400  | 0   | 1   | .000  | 0   | 0  | .000  | 2   | 2   | 4   | 3.5 | 0   | 0  | 1  | 0 | 0  | 0   | 4   | 4.0 |     |
| at Xavier | 11-17-15 | 13 | 3   | 6  | .500  | 1   | 1   | 1.000 | 4   | 4  | 1.000 | 0   | 1   | 1   | 2.7 | 2   | 0  | 1  | 5 | 0  | 1   | 11  | 6.3 |     |

| CAREER  | G-GS | MIN | MPG  | FG-A   | FG%  | 3FG-A | 3FG% | FT-A  | FT%   | REB / AVG. | AST / TO | BS / S | TP  | AVG. |
|---------|------|-----|------|--------|------|-------|------|-------|-------|------------|----------|--------|-----|------|
| 2014-15 | 27-1 | 405 | 15.0 | 37-118 | .314 | 16-52 | .308 | 22-28 | .786  | 36 / 1.3   | 39 / 33  | 0 / 17 | 112 | 4.1  |
| 2015-16 | 3-0  | 35  | 11.7 | 7-13   | .538 | 1-2   | .500 | 4-4   | 1.000 | 8 / 2.7    | 4 / 8    | 0 / 2  | 19  | 6.3  |
| TOTAL   | 30-1 | 440 | 14.7 | 44-131 | .336 | 17-54 | .315 | 26-32 | .813  | 44 / 1.5   | 43 / 41  | 0 / 19 | 131 | 4.4  |

## #4 AT A GLANCE

### 2015-16 Career

|                    |   |    |
|--------------------|---|----|
| Scored 5+ points   | 1 | 10 |
| Scored 10+ points  | 1 | 4  |
| Hit 2+ 3-pointers  | - | 4  |
| Multiple steals    | - | 5  |
| Multiple assists   | 1 | 10 |
| Dished 3+ assists  | - | 6  |
| Played 20+ minutes | - | 7  |
| Played 30+ minutes | - | 2  |

## #4 GAME HIGHS

### 2015-16 Career

|               |                |
|---------------|----------------|
| 11, at Xavier | 12, Elon       |
| 11-17-15      | PTS 12-11-14   |
| 3, at Xavier  | 5, at Arkansas |
| 11-17-15      | FGM 2-18-15    |
| 6, at Xavier  | 9, at Arkansas |
| 11-17-15      | FGA 2-18-15    |
| 1, at Xavier  | 3, at Arkansas |
| 11-17-15      | 3PTM 2-18-15   |
| 1, Twice      | 5, 3 times     |
| 11-15-15      | 3PTA           |
| 4, at Xavier  | 5, Lipscomb    |
| 11-15-15      | FTM 1-3-15     |
| 4, at Xavier  | 6, Lipscomb    |
| 11-17-15      | FTA 1-3-15     |
| 3, Wofford    | 4, 3 times     |
| 11-13-15      | REB            |
| 2             | 6, LSU         |
| 11-13-15      | ASST 1-8-15    |
| -             | -              |
| -             | BLKS -         |
| 1, Twice      | 2, 4 times     |
| -             | STLS -         |

5

## D'ANGELO ALLEN

Dallas, Texas  
Kimball High School  
SO \ F \ 6-7 \ 216

### LAST GAME (AT XAVIER 11-17-15)

| FG | FGA | 3FG | FGA | FT | FTA | REB | PTS |
|----|-----|-----|-----|----|-----|-----|-----|
| 0  | 0   | 0   | 0   | 0  | 0   | 3   | 0   |

### 2015-16 (SOPHOMORE):

- First appearance of the season vs. UMES (Nov. 15), logging 15 high-energy minutes off the bench with 4 rebounds.
- Did not appear in the Wofford (Nov. 13) game.

### 2014-15 (FRESHMAN):

- Made all eight of his starts in Mizzou's final eight games of the season.
- Shot an impressive 53.8-percent from the field (14-of-26) over the final 10 games of the Tigers' campaign.
- Matched his season-high in rebounds (7) in the first of those eight starts at Mississippi State (Feb. 14).
- Season-best 3-of-3 3PT shooting en-route to 10 points at South Carolina (Feb. 10).
- 4 points (2-of-3 FG) in the game vs. Oklahoma State (Dec. 30), battling through an ankle injury to give 16 minutes off the bench, also grabbing 5 rebounds.
- 8 points (3-of-4 FG, 2-of-2 3PT) vs. Illinois (Dec. 20) in the Scottrade Center, draining two 3-pointers during his 20 minutes off the bench.
- Breakout game vs. Elon (Dec. 11), scoring 12 points (5-of-7 FG, 2-of-2 FT) and grabbing 7 rebounds in 21 minutes of action off the bench.

### KIMBALL HIGH SCHOOL:

- Was a winner throughout his high school career and was a part of three Texas Class 4A State Championship teams (2011, 2012 and 2014) at Kimball High School in Dallas.
- Averaged 13.3 points and 10.2 rebounds as a senior.
- Named to the Texas Association of Basketball Coaches All-Star Team in 2014.
- Named to the Class 4A All-Tournament Team as well and was an All-Region II selection.

### PERSONAL:

- Full name is D'Angelo Malik Allen.
- Born May 10, 1996, in Dallas, Texas.
- Son of Evelyn Allen.
- Hobbies include playing video games, watching movies and hanging out with friends.

## ALLEN 2015-16 GAME-BY-GAME

| Opponent  | Date     | GS  | Min | FG | FGA  | Pct   | 3FG | FGA  | Pct  | FT | FTA  | Pct  | Off | Def | Tot | Avg | PF | FO | A | TO | Blk | Stl | Pts | Avg |
|-----------|----------|-----|-----|----|------|-------|-----|------|------|----|------|------|-----|-----|-----|-----|----|----|---|----|-----|-----|-----|-----|
| WOFFORD   | 11-13-15 | DNP |     |    |      |       |     |      |      |    |      |      |     |     |     |     |    |    |   |    |     |     |     |     |
| UMES      | 11-15-15 | 15  | 11  | 1  | 1    | 1.000 | 0   | 0    | .000 | 0  | 2    | .000 | 2   | 2   | 4   | 4.0 | 2  | 0  | 0 | 0  | 0   | 1   | 2   | 2.0 |
| at Xavier | 11/17/15 | 12  | 0   | 0  | .000 | 0     | 0   | .000 | 0    | 0  | .000 | 0    | 0   | 3   | 3   | 3.5 | 2  | 0  | 0 | 1  | 0   | 0   | 0   | 1.0 |

| SEASON       | G-GS        | MIN        | MPG         | FG-A         | FG%         | 3FG-A       | 3FG%        | FT-A         | FT%         | REB / AVG.       | AST / TO       | BS / S        | TP         | AVG.       |
|--------------|-------------|------------|-------------|--------------|-------------|-------------|-------------|--------------|-------------|------------------|----------------|---------------|------------|------------|
| 2014-15      | 32-8        | 544        | 17.0        | 40-98        | .408        | 9-20        | .450        | 17-28        | .607        | 100 / 3.1        | 21 / 18        | 7 / 11        | 106        | 3.3        |
| 2015-16      | 2-0         | 27         | 13.5        | 1-1          | 1.000       | 0-0         | .000        | 0-2          | .000        | 7 / 3.5          | 0 / 1          | 0 / 1         | 2          | 1.0        |
| <b>TOTAL</b> | <b>34-8</b> | <b>571</b> | <b>16.8</b> | <b>41-99</b> | <b>.414</b> | <b>9-20</b> | <b>.450</b> | <b>17-30</b> | <b>.567</b> | <b>107 / 3.1</b> | <b>21 / 19</b> | <b>7 / 12</b> | <b>108</b> | <b>3.2</b> |

## #5 AT A GLANCE

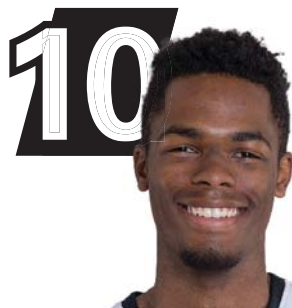
### 2015-16 Career

|                     |   |    |
|---------------------|---|----|
| Scored 5+ points    | - | 9  |
| Scored 10+ points   | - | 2  |
| Attempted 5+ FGs    | - | 6  |
| Grabbed 5+ rebounds | - | 8  |
| Played 20+ minutes  | - | 13 |

## #5 GAME HIGHS

### 2015-16 Career

|          |                   |
|----------|-------------------|
| 2, UMES  | 12, Elon          |
| 11-15-15 | PTS 12-11-14      |
| 1, UMES  | 5, Elon           |
| 11-15-15 | FGM 12-11-14      |
| 1, UMES  | 7, Elon           |
| 11-15-15 | FGA 12-11-14      |
| -        | 3, South Carolina |
| -        | 3PTM 2-10-15      |
| -        | 3, South Carolina |
| -        | 3PTA 2-10-15      |
| -        | 3, Lipscomb       |
| -        | FTM 1-3-15        |
| 1, UMES  | 4, Lipscomb       |
| 11-15-15 | FTA 1-3-15        |
| 3, Twice | 7, Twice          |
| -        | REB               |
| -        | 2, 3 times        |
| -        | ASST              |
| -        | 1, 7 times        |
| -        | BLKS              |
| 1, UMES  | 2, Twice          |
| 11-15-15 | STLS              |



## K.J. WALTON

Brownsburg, Ind.  
Brownsburg High School  
FR \ G \ 6-3 \ 197

### LAST GAME (AT XAVIER 1-17-15)

| FG | FGA | 3FG | FGA | FT | FTA | REB | PTS |
|----|-----|-----|-----|----|-----|-----|-----|
| 3  | 8   | 0   | 1   | 2  | 2   | 3   | 8   |

### 2015-16 (FRESHMAN):

- Came off bench and sparked Mizzou in second half action vs. UMES (Nov. 15), scoring all 11 of his points after the break.
- Earned the start in his collegiate debut vs. Wofford (Nov. 13), scoring 6 points (3-of-5 FG) in the 83-74 win.

### BROWNSBURG HIGH SCHOOL:

- Averaged 19.7 points, 5.0 rebounds and 1.9 steals per game for Brownsburg High School as a senior.
- Shot an impressive 44.0 percent from the floor in his final high school season.
- Captured back-to-back sectional titles at Brownsburg as the team's leading scorer, fueling the Bulldogs to a 21-7 record as a senior.
- Named an *Indy Star* Indiana All-Star at the conclusion of his final high school campaign.
- Rated a four-star prospect and ranked as the 103rd best basketball recruit in the nation by Rivals.com.
- Participant at the 28th annual Hoosier Basketball Magazine Top 60 Workout which features Indiana's best upperclassmen
- Earned Hoosier Conference Crossroads All-Conference honors.
- Chose Mizzou over Cincinnati and Xavier.

### PERSONAL:

- Son of Kenneth and Michelle Walton.
- Father, Kenneth, played basketball at Nebraska from 1981-83.
- Born on July 20, 1996, in Indianapolis, Ind.
- Enjoys watching 'Fresh Prince of Bel-Air' in his spare time.
- Favorite sports movie is *Remember the Titans*.
- Favorite professional athlete to follow is Carmelo Anthony.
- Would like to pursue a career in basketball.

## WALTON 2015-16 GAME-BY-GAME

| Opponent  | Date     | GS | Min | FG | FGA | Pct  | 3FG | FGA | Pct  | FT | FTA | Pct   | Off | Def | Tot | Avg | PF | FO | A | TO | Blk | Stl | Pts | Avg |
|-----------|----------|----|-----|----|-----|------|-----|-----|------|----|-----|-------|-----|-----|-----|-----|----|----|---|----|-----|-----|-----|-----|
| WOFFORD   | 11-13-15 | *  | 17  | 3  | 5   | .600 | 0   | 0   | .000 | 0  | 1   | .000  | 0   | 1   | 1   | 1.0 | 2  | 0  | 2 | 0  | 0   | 1   | 6   | 6.0 |
| UMES      | 11-15-15 |    | 15  | 1  | 3   | .333 | 0   | 1   | .000 | 9  | 10  | .900  | 0   | 0   | 0   | 0.5 | 1  | 0  | 3 | 0  | 0   | 1   | 11  | 8.5 |
| at Xavier | 11/17/15 |    | 21  | 3  | 8   | .375 | 0   | 1   | .000 | 2  | 2   | 1.000 | 1   | 2   | 3   | 1.3 | 2  | 0  | 1 | 0  | 0   | 0   | 8   | 8.3 |

| SEASON       | G-GS       | MIN       | MPG         | FG-A        | FG%         | 3FG-A      | 3FG%        | FT-A         | FT%         | REB / AVG.     | AST / TO     | BS / S       | TP        | AVG.       |
|--------------|------------|-----------|-------------|-------------|-------------|------------|-------------|--------------|-------------|----------------|--------------|--------------|-----------|------------|
| 2015-16      | 3-1        | 53        | 17.7        | 7-16        | .438        | 0-2        | .000        | 11-13        | .846        | 4 / 1.3        | 6 / 0        | 0 / 2        | 25        | 8.3        |
| <b>TOTAL</b> | <b>3-1</b> | <b>53</b> | <b>17.7</b> | <b>7-16</b> | <b>.438</b> | <b>0-2</b> | <b>.000</b> | <b>11-13</b> | <b>.846</b> | <b>4 / 1.3</b> | <b>6 / 0</b> | <b>0 / 2</b> | <b>25</b> | <b>8.3</b> |

## #10 AT A GLANCE

### 2015-16 Career

|                    |   |   |
|--------------------|---|---|
| Scored 5+ points   | 3 | - |
| Scored 10+ points  | 1 | - |
| Hit 2+ 3-pointers  | - | - |
| Hit 5+ free throws | 1 | - |
| Multiple assists   | 2 | - |
| Dished 3+ assists  | 1 | - |
| Played 20+ minutes | 1 | - |
| Played 30+ minutes | - | - |

## #10 GAME HIGHS

### 2015-16 Career

|              |             |   |
|--------------|-------------|---|
| 11, UMES     |             | - |
| 11-15-15     | <b>PTS</b>  | - |
| 3, Twice     |             | - |
|              | <b>FGM</b>  | - |
| 8, at Xavier |             | - |
| 11-17-15     | <b>FGA</b>  | - |
| -            |             | - |
| -            | <b>3PTM</b> | - |
| 1, Twice     |             | - |
|              | <b>3PTA</b> | - |
| 9, UMES      |             | - |
| 11-15-15     | <b>FTM</b>  | - |
| 10, UMES     |             | - |
| 11-15-15     | <b>FTA</b>  | - |
| 3, at Xavier |             | - |
| 11-17-15     | <b>REB</b>  | - |
| 3, UMES      |             | - |
| 11-15-15     | <b>ASST</b> | - |
| -            |             | - |
| -            | <b>BLKS</b> | - |
| 1, Twice     |             | - |
|              | <b>STLS</b> | - |





## JIMMY BARTON

St. Louis, Mo. \ DeSmet Jesuit HS  
Houston Baptist  
RS SO \ G \ 5-9 \ 160

### LAST GAME (AT XAVIER 11-17-15)

| FG | FGA | 3FG | FGA | FT | FTA | AST | PTS |
|----|-----|-----|-----|----|-----|-----|-----|
| -  | -   | -   | -   | -  | -   | -   | -   |

### 2015-16 (REDSHIRT SOPHOMORE):

- Made first appearance for Mizzou in the win vs. UMES (Nov. 15), coming off the bench in the final moments of the victory.

### 2014-15 (SOPHOMORE):

- Walked onto the Tiger program after playing his freshman season at Division I Houston Baptist.

### AT HOUSTON BAPTIST

#### 2013-14 (FRESHMAN):

- Played in 31 games for Houston Baptist as a true freshman, making 13 starts.
- Saw his averages improve to 3.1 points in 19.2 minutes during Southland Conference play.
- Passed out a career-high eight assists at Abilene Christian and seven more at Sam Houston State in back-to-back contests.
- Scored a career high nine points and was a perfect 3-of-3 from three-point range in a loss to Southern Miss.

### DESMET JESUIT HIGH SCHOOL:

- Was a four-year letterwinner and three-year team captain for coach Kevin Poelker at De Smet Jesuit High School in St. Louis, Mo.
- Averaged 14.0 points, 6.5 assists and 3.5 rebounds per game in leading the Spartans to the state finals, earning Metro Catholic Conference Co-Player of the Year, first-team all-state and second-team All-Metro honors as a senior.
- Was a member of the 1,000-Point Club and is De Smet's all-time assists leader.

### PERSONAL:

- Full name is James Edward Barton.
- Born Oct. 7, 1994, in St. Louis, Mo.
- Son of Jim Sr. and Christy Barton.
- Has two sisters, Paige and Mary and one brother, Tommy.
- Considers his father, Jim Sr., his greatest influence.

## BARTON 2015-16 GAME-BY-GAME

| Opponent  | Date     | GS  | Min | FG | FGA  | Pct | 3FG | FGA | Pct  | FT | FTA | Pct  | Off | Def | Tot | Avg | PF | FO | A | TO | Blk | Stl | Pts | Avg |
|-----------|----------|-----|-----|----|------|-----|-----|-----|------|----|-----|------|-----|-----|-----|-----|----|----|---|----|-----|-----|-----|-----|
| WOFFORD   | 11-13-15 | DNP |     |    |      |     |     |     |      |    |     |      |     |     |     |     |    |    |   |    |     |     |     |     |
| UMES      | 11-15-15 | 1   | 0   | 0  | .000 |     | 0   | 0   | .000 | 0  | 0   | .000 | 0   | 0   | 0   | 0.0 | 0  | 0  | 0 | 1  | 0   | 0   | 0   | 0.0 |
| at Xavier | 11-17-15 | DNP |     |    |      |     |     |     |      |    |     |      |     |     |     |     |    |    |   |    |     |     |     |     |

| SEASON       | G-GS         | MIN        | MPG         | FG-A         | FG%         | 3FG-A        | 3FG%        | FT-A         | FT%         | REB / AVG.      | AST / TO       | BS / S        | TP        | AVG.       |
|--------------|--------------|------------|-------------|--------------|-------------|--------------|-------------|--------------|-------------|-----------------|----------------|---------------|-----------|------------|
| 2013-14      | 31-13        | 515        | 16.6        | 34-98        | .347        | 14-50        | .280        | 12-16        | .750        | 35 / 1.1        | 57 / 43        | 0 / 15        | 94        | 3.0        |
| 2014-15      | REDSHIRTED   |            |             |              |             |              |             |              |             |                 |                |               |           |            |
| 2015-16      | 1-0          | 1          | 1.0         | 0-0          | .000        | 0-0          | .000        | 0-0          | .000        | 0 / 0           | 0 / 1          | 0 / 0         | 0         | 0.0        |
| <b>TOTAL</b> | <b>32-13</b> | <b>516</b> | <b>16.6</b> | <b>34-98</b> | <b>.347</b> | <b>14-50</b> | <b>.280</b> | <b>12-16</b> | <b>.750</b> | <b>35 / 1.1</b> | <b>57 / 44</b> | <b>0 / 15</b> | <b>94</b> | <b>3.0</b> |

## #11 AT A GLANCE

### 2015-16 Career

|                    |   |    |
|--------------------|---|----|
| Scored 5+ points   | - | 7  |
| Hit 2+ 3-pointers  | - | 1  |
| Multiple steals    | - | 4  |
| Multiple assists   | - | 14 |
| Dished 3+ assists  | - | 7  |
| Played 20+ minutes | - | 9  |
| Played 30+ minutes | - | 2  |

## #11 GAME HIGHS

### 2015-16 Career

|  |      |   |
|--|------|---|
|  |      |   |
|  | PTS  | - |
|  |      | - |
|  | FGM  | - |
|  |      | - |
|  | FGA  | - |
|  |      | - |
|  | 3PTM | - |
|  |      | - |
|  | 3PTA | - |
|  |      | - |
|  | FTM  | - |
|  |      | - |
|  | FTA  | - |
|  |      | - |
|  | REB  | - |
|  |      | - |
|  | ASST | - |
|  |      | - |
|  | BLKS | - |
|  |      | - |
|  | STLS | - |
|  |      | - |



## NAMON WRIGHT

Los Angeles, Calif.  
Pacific Hills High School  
SO \ G \ 6-5 \ 202

### LAST GAME (AT XAVIER 11-17-15)

| FG | FGA | 3FG | 3FGA | FT | FTA | REB | PTS |
|----|-----|-----|------|----|-----|-----|-----|
| 2  | 6   | 0   | 4    | 2  | 3   | 4   | 6   |

### 2015-16 (SOPHOMORE):

- Filled the stat line with 6 points (2-of-6 FG, 2-of-3 FT), 4 rebounds, 2 assists and 2 steals at Xavier (Nov. 17).
- Matched his career-high with two assists in the game at Xavier (Nov. 17), the sixth such time he has accomplished the feat.
- Fired in 18 points (5-of-7 FG, 3-of-4 3PT, 5-of-8 FT) in 23 minutes off the bench in the season-opening win vs. Wofford (Nov. 13).
- Also grabbed a career-best 7 rebounds against the Terriers, along with setting new career highs in free throws and attempts.

### 2014-15 (FRESHMAN):

- Scored double figures in seven different games in his opening campaign for Mizzou, averaging 6.8 points per game in 30 games played (20 starts).
- Finished the season as the Tigers' go-to scorer, averaging 13.6 points per game over Mizzou's final five contests.
- Season-ending flurry of points included an impressive 28 points vs. Florida (Feb. 24), leading the Tigers to a 64-52 win over the Gators.
- His scoring output vs. UF was the third-highest scoring performance by a freshman in Mizzou history, a game in which he shot 10-of-13 FG, 6-of-8 3PT, 2-of-3 FT.
- Those 28 points were the most for a Tiger freshman since 2000.
- 21 points off the bench on perfect 7-of-7 FG (4-of-4 3PT) shooting in the win vs. Chaminade in Maui (Nov. 26), hitting 3-of-4 FT and grabbing 6 rebounds.

### PACIFIC HILLS HIGH SCHOOL:

- Averaged 24.2 points, 9.4 rebounds, 3.0 assists and 1.4 steals for Pacific Hills High School in 2014.
- Shot 51 percent from the floor and 41 percent from three-point range.
- Ranked as one of the Top 100 players in the class of 2014.
- Helped lead Pacific Hills to the Division IV state championship as a junior and averaged 15.6 points, 7.3 rebounds and 3.1 assists for the balanced squad.
- Participated in the Pangos All-America camp in both 2012 and 2013.

### PERSONAL:

- Full name is Namon Khary Wright.
- Son of Michelle Burnside.
- Born June 25, 1994, in Los Angeles, Calif.

## WRIGHT 2015-16 GAME-BY-GAME

| Opponent  | Date       | GS | Min | FG | FGA | Pct  | 3FG | 3FGA | Pct  | FT | FTA | Pct   | Off | Def | Tot | Avg | PF | FO | A | TO | Blk | Stl | Pts | Avg  |
|-----------|------------|----|-----|----|-----|------|-----|------|------|----|-----|-------|-----|-----|-----|-----|----|----|---|----|-----|-----|-----|------|
| WOFFORD   | 11-13-15   |    | 23  | 5  | 7   | .714 | 3   | 4    | .750 | 5  | 8   | .625  | 2   | 5   | 7   | 7.0 | 3  | 0  | 0 | 0  | 0   | 0   | 18  | 18.0 |
| UMES      | 11-15-15 * |    | 26  | 1  | 8   | .125 | 1   | 4    | .250 | 4  | 4   | 1.000 | 2   | 3   | 5   | 6.0 | 2  | 0  | 1 | 2  | 0   | 0   | 7   | 12.5 |
| at Xavier | 11/17/15 * |    | 28  | 2  | 6   | .333 | 0   | 4    | .000 | 2  | 3   | .667  | 0   | 4   | 4   | 5.3 | 3  | 0  | 2 | 2  | 0   | 2   | 6   | 10.3 |

| SEASON       | G-GS         | MIN        | MPG         | FG-A          | FG%         | 3FG-A         | 3FG%        | FT-A         | FT%         | REB / AVG.      | AST / TO       | BS / S        | TP         | AVG.       |
|--------------|--------------|------------|-------------|---------------|-------------|---------------|-------------|--------------|-------------|-----------------|----------------|---------------|------------|------------|
| 2014-15      | 30-20        | 607        | 20.2        | 77-186        | .414        | 40-103        | .388        | 10-18        | .556        | 69 / 2.3        | 19 / 37        | 3 / 17        | 204        | 6.8        |
| 2015-16      | 3-2          | 77         | 25.7        | 8-21          | .381        | 4-12          | .333        | 11-15        | .733        | 16 / 5.3        | 3 / 4          | 0 / 2         | 31         | 10.3       |
| <b>TOTAL</b> | <b>33-22</b> | <b>684</b> | <b>20.7</b> | <b>85-207</b> | <b>.411</b> | <b>44-115</b> | <b>.383</b> | <b>21-33</b> | <b>.636</b> | <b>85 / 2.6</b> | <b>22 / 41</b> | <b>3 / 19</b> | <b>235</b> | <b>7.1</b> |

## #12 AT A GLANCE

### 2015-16 Career

|                    |   |    |
|--------------------|---|----|
| Scored 10+ points  | 1 | 8  |
| Scored 20+ points  | - | 2  |
| Hit 2+ 3-pointers  | 1 | 13 |
| Made 5+ FGs        | 1 | 6  |
| Attempted 5+ FGs   | 3 | 20 |
| Attempted 10+ FGs  | - | 5  |
| Multiple assists   | 1 | 6  |
| Multiple steals    | 1 | 6  |
| Played 20+ minutes | 3 | 18 |
| Played 30+ minutes | - | 6  |

## #12 GAME HIGHS

### 2015-16 Career

|              |                        |
|--------------|------------------------|
| 18, Wofford  | 28, Florida            |
| 11-13-15     | PTS 2-24-15            |
| 5, Wofford   | 10, Florida            |
| 11-13-15     | FGM 2-24-15            |
| 8, UMES      | 14, at Mississippi St. |
| 11-15-15     | FGA 3-7-15             |
| 3, Wofford   | 6, Florida             |
| 11-13-15     | 3PTM 2-24-15           |
| 4, 3 times   | 8, Florida             |
|              | 3PTA 2-24-15           |
| 5, Wofford   | 5, Wofford             |
| 11-13-15     | FTM 11-13-15           |
| 8, Wofford   | 8, Wofford             |
| 11-13-15     | FTA 11-13-15           |
| 7, Wofford   | 7, Wofford             |
| 11-13-15     | REB 11-13-15           |
| 2, at Xavier | 2, 6 times             |
| 11-17-15     | ASST                   |
| -            | 1, Twice               |
| -            | BLKS                   |
| 2, at Xavier | 3, at Georgia          |
| 11-17-15     | STLS 2-28-15           |

15

## WES CLARK

Detroit, Mich.  
Romulus High School  
JR \ \ G \ \ 6-0 \ \ 180

### LAST GAME (AT XAVIER 11-17-15)

| FG | FGA | 3FG | 3FGA | FT | FTA | AST | PTS |
|----|-----|-----|------|----|-----|-----|-----|
| 5  | 12  | 1   | 4    | 0  | 1   | 3   | 11  |

### 2015-16 (JUNIOR):

- Scored at least 15 points for the sixth time in his career while leading Mizzou in the 73-55 win vs. UMES (Nov. 5), hitting 3-of-6 from three-point range.
- Made his return to Mizzou's lineup in the season-opening win vs. Wofford (Nov. 13), finishing his comeback from the right elbow dislocation that ended his sophomore season.

### 2014-15 (SOPHOMORE):

- Averaged 10.1 points per game in his first season in a primary role for Mizzou, starting 20 of 23 games played.
- Ruled out for the rest of the 2014-15 season due a right elbow dislocation at South Carolina (Feb. 10).
- 11 points (4-of-10 FG, 1-of-4 3PT, 2-of-2 FT) at South Carolina (Feb. 10) in 26 minutes of action before a right elbow dislocation forced him off the court for the remainder of the game.
- Career-high 19 points (7-of-16 FG, 3-of-7 3PT, 2-of-2 FT) vs. No. 1 Kentucky (Jan. 29), also recording 4 assists, 3 steals and attempting a career-high 16 field goals.

### 2013-14 (FRESHMAN):

- Averaged 4.1 points, 2.2 rebounds and 2.1 assists in 20.4 minutes per game as a freshman, playing in 33 contests.
- Ranked second on the team with 70 assists and his 1.3 assist/turnover ratio was tops on the club.
- Had 14 games with three or more assists, including a career-high six dimes in the home win over Mississippi State (3/1) and five in wins against Hawaii (11/16) and West Virginia (12/5).

### ROMULUS HIGH SCHOOL:

- Tough-minded floor general that led his team to the 2013 Michigan Class A state championship, a 27-1 overall record and a No. 24 ranking in the final ESPN High School Power Rankings.
- Was named first team all-state each of his final two years as a prep, averaging 12.8 points, 4.0 rebounds and 6.5 assists during his senior season.

### PERSONAL:

- Full name is Wesley Lavert Clark.
- Son of Yvette Johnson and Wes Clark Sr.
- Born Dec. 12, 1994, in Detroit, Mich.

## CLARK 2015-16 GAME-BY-GAME

| Opponent  | Date     | GS | Min | FG | FGA | Pct  | 3FG | 3FGA | Pct  | FT | FTA | Pct   | Off | Def | Tot | Avg | PF | FO | A | TO | Blk | Stl | Pts | Avg  |
|-----------|----------|----|-----|----|-----|------|-----|------|------|----|-----|-------|-----|-----|-----|-----|----|----|---|----|-----|-----|-----|------|
| WOFFORD   | 11-13-15 | *  | 28  | 0  | 3   | .000 | 0   | 0    | .000 | 4  | 5   | .800  | 0   | 3   | 3   | 3.0 | 3  | 0  | 2 | 2  | 0   | 0   | 4   | 4.0  |
| UMES      | 11-15-15 | *  | 31  | 4  | 11  | .364 | 3   | 6    | .500 | 4  | 4   | 1.000 | 0   | 1   | 1   | 2.0 | 1  | 0  | 3 | 1  | 0   | 0   | 15  | 9.5  |
| at Xavier | 11-17-15 | *  | 31  | 5  | 12  | .417 | 1   | 4    | .250 | 0  | 1   | .000  | 2   | 1   | 3   | 2.3 | 3  | 0  | 3 | 2  | 0   | 3   | 11  | 10.0 |

| SEASON       | G-GS         | MIN         | MPG         | FG-A           | FG%         | 3FG-A         | 3FG%        | FT-A          | FT%         | REB / AVG.       | AST / TO         | BS / S        | TP         | AVG.       |
|--------------|--------------|-------------|-------------|----------------|-------------|---------------|-------------|---------------|-------------|------------------|------------------|---------------|------------|------------|
| 2013-14      | 33-0         | 672         | 20.4        | 42-117         | .359        | 21-57         | .368        | 31-49         | .633        | 72 / 2.2         | 70 / 53          | 2 / 26        | 136        | 4.1        |
| 2014-15      | 23-20        | 713         | 31.0        | 81-233         | .348        | 32-102        | .314        | 38-51         | .745        | 81 / 3.5         | 71 / 45          | 4 / 38        | 232        | 10.1       |
| 2015-16      | 3-3          | 90          | 30.0        | 9-26           | .346        | 4-10          | .400        | 8-10          | .800        | 7 / 2.3          | 8 / 5            | 0 / 3         | 30         | 10.0       |
| <b>TOTAL</b> | <b>59-23</b> | <b>1475</b> | <b>25.0</b> | <b>132-376</b> | <b>.351</b> | <b>57-169</b> | <b>.337</b> | <b>77-110</b> | <b>.700</b> | <b>160 / 2.7</b> | <b>149 / 103</b> | <b>6 / 67</b> | <b>398</b> | <b>6.7</b> |

## #15 AT A GLANCE

### 2015-16 Career

|                     |   |    |
|---------------------|---|----|
| Scored 10+ points   | 2 | 15 |
| Scored 15+ points   | 1 | 6  |
| Dished 3+ assists   | 2 | 28 |
| Dished 5+ assists   | - | 10 |
| Hit 5+ FGs          | 1 | 7  |
| Hit 2+ 3-pointers   | 1 | 15 |
| Attempted 10+ FGs   | 2 | 15 |
| Recorded 3+ steals  | 1 | 9  |
| Grabbed 5+ rebounds | - | 10 |
| Played 30+ minutes  | 2 | 17 |

## #15 GAME HIGHS

### 2015-16 Career

|                      |                       |
|----------------------|-----------------------|
| 15, UMES             | 19, Kentucky          |
| 11-15-15 <b>PTS</b>  | 1-29-15               |
| 5, at Xavier         | 7, Twice              |
| 11-17-15 <b>FGM</b>  |                       |
| 12, at Xavier        | 16, Kentucky          |
| 11-17-15 <b>FGA</b>  | 1-29-15               |
| 3, UMES              | 4, at Texas A&M       |
| 11-15-15 <b>3PTM</b> | 1-21-15               |
| 6, UMES              | 7, Kentucky           |
| 11-15-15 <b>3PTA</b> | 1-29-15               |
| 4, Twice             | 6, Twice              |
| <b>FTM</b>           |                       |
| 5, Wofford           | 8, vs. Oklahoma State |
| 11-13-15 <b>FTA</b>  | 12-30-14              |
| 3, Twice             | 6, vs. Chaminade      |
| <b>REB</b>           | 11-26-14              |
| 3, Twice             | 9, Oral Roberts       |
| <b>ASST</b>          | 11-19-14              |
| -                    | 1, Twice              |
| <b>BLKS</b>          |                       |
| 3, at Xavier         | 6, UMKC               |
| 11-17-15 <b>STLS</b> | 11-14-14              |



## JAKEENAN GANT

Springfield, Ga.  
Effingham County High School  
SO \ F \ 6-8 \ 212

### LAST GAME (AT XAVIER 11-17-15)

| FG | FGA | 3FG | 3FGA | FT | FTA | REB | PTS |
|----|-----|-----|------|----|-----|-----|-----|
| 0  | 3   | 0   | 2    | 1  | 2   | 2   | 1   |

### 2015-16 (SOPHOMORE):

- Five career game with at least two blocks in the 73-55 win vs. UMES (Nov. 15)
- Earned seventh start of his career in Mizzou's season-opening, 83-74 win vs. Wofford (Nov. 13).

### 2014-15 (FRESHMAN):

- Bouncy athlete with developing outside shooting range who averaged 4.9 points and 2.2 rebounds per game as a freshman.
- Shot an efficient 51.2-percent from the field in his initial season wearing the Black & Gold.
- Finished the season with 14 blocks in 23 games for a team-best average of 0.61 blocks per game.
- Made one of the plays of the season vs. Florida (Feb. 24) with a block of a Gator shot attempt to set-up a fastbreak alley-oop, which he finished off with an emphatic dunk to put Mizzou up 48-45 with 6:45 left in the game.
- 13 points (4-of-8 FG, 1-of-4 3PT, 4-of-4 FT) in 15 minutes off the bench vs. Xavier (Dec. 13), the first action of his collegiate career.
- Did not appear in the first 9 games of 2014-15 during a review of his eligibility by the University of Missouri.

### EFFINGHAM COUNTY HIGH SCHOOL:

- One of the premier players in the class of 2014 and was selected to participate in USA Basketball's U18 National Team training camp in Colorado Springs, Colo., at the completion of his senior season.
- Was named Mr. Basketball in the state of Georgia as a senior in 2014.
- Averaged 21.0 points, 10.5 rebounds, 4.0 blocks and 2.8 assists for the Effingham County Rebels as a senior, helping his club to a 20-10 overall record and an appearance in the Georgia Class 5A state playoffs.

### PERSONAL:

- Full name is Jakeenan Tyelle Gant.
- Son of La'Kenia Gant and James McDonald.
- Has an older sister, Daira, and younger sister, Arial.
- Born May 6, 1996, in Savannah, Ga.
- Would enjoy working in the restaurant business after his basketball career.

## GANT 2015-16 GAME-BY-GAME

| Opponent  | Date     | GS | Min | FG | FGA | Pct   | 3FG | 3FGA | Pct  | FT | FTA | Pct   | Off | Def | Tot | Avg | PF | FO | A | TO | Blk | Stl | Pts | Avg |
|-----------|----------|----|-----|----|-----|-------|-----|------|------|----|-----|-------|-----|-----|-----|-----|----|----|---|----|-----|-----|-----|-----|
| WOFFORD   | 11-13-15 | *  | 16  | 1  | 5   | .200  | 0   | 3    | .000 | 2  | 2   | 1.000 | 1   | 3   | 4   | 4.0 | 5  | 1  | 1 | 0  | 1   | 0   | 4   | 4.0 |
| UMES      | 11-15-15 | *  | 13  | 2  | 2   | 1.000 | 0   | 0    | .000 | 0  | 0   | .000  | 0   | 1   | 1   | 2.5 | 4  | 0  | 0 | 1  | 2   | 1   | 4   | 4.0 |
| at Xavier | 11/17/15 | *  | 15  | 0  | 3   | .000  | 0   | 2    | .000 | 1  | 2   | .500  | 1   | 1   | 2   | 2.3 | 1  | 0  | 1 | 2  | 1   | 0   | 1   | 3.0 |

| SEASON       | G-GS        | MIN        | MPG         | FG-A          | FG%         | 3FG-A       | 3FG%        | FT-A         | FT%         | REB / AVG.      | AST / TO      | BS / S         | TP         | AVG.       |
|--------------|-------------|------------|-------------|---------------|-------------|-------------|-------------|--------------|-------------|-----------------|---------------|----------------|------------|------------|
| 2014-15      | 23-6        | 324        | 14.1        | 47-91         | .516        | 1-14        | .071        | 18-25        | .720        | 50 / 2.2        | 7 / 16        | 14 / 9         | 113        | 4.9        |
| 2015-16      | 3-3         | 44         | 14.7        | 3-10          | .300        | 0-5         | .000        | 3-4          | .750        | 7 / 2.3         | 2 / 3         | 4 / 1          | 9          | 3.0        |
| <b>TOTAL</b> | <b>26-9</b> | <b>368</b> | <b>14.2</b> | <b>50-101</b> | <b>.495</b> | <b>1-19</b> | <b>.053</b> | <b>21-29</b> | <b>.724</b> | <b>57 / 2.2</b> | <b>9 / 19</b> | <b>18 / 10</b> | <b>122</b> | <b>4.7</b> |

## #23 AT A GLANCE

### 2015-16 Career

|                     |   |    |
|---------------------|---|----|
| Scored 5+ points    | - | 13 |
| Scored 10+ points   | - | 3  |
| Hit 3+ FGs          | - | 10 |
| Grabbed 5+ rebounds | - | 2  |
| Recorded 2+ blocks  | 1 | 5  |
| Played 20+ minutes  | - | 3  |

## #23 GAME HIGHS

### 2015-16 Career

|            |                      |
|------------|----------------------|
| 4, Twice   | 13, Xavier           |
| <b>PTS</b> | 12-13-14             |
| 2, UMES    | 5, at Arkansas       |
| 11-15-15   | <b>FGM</b> 2-18-15   |
| 5, Wofford | 13, Xavier           |
| 11-13-15   | <b>FGA</b> 12-13-14  |
| -          | 1, Xavier            |
| -          | <b>3PTM</b> 12-13-14 |
| 3, Wofford | 4, Xavier            |
| 11-13-15   | <b>3PTA</b> 12-13-14 |
| 2, Wofford | 4, Twice             |
| 11-13-15   | <b>FTM</b>           |
| 2, Twice   | 6, at Georgia        |
| -          | <b>FTA</b> 2-28-15   |
| 4          | 7, at Arkansas       |
| 11-13-15   | <b>REB</b> 2-18-15   |
| 1, Twice   | 3, at Arkansas       |
| -          | <b>ASST</b> 2-18-15  |
| 2, UMES    | 3, Twice             |
| 11-15-15   | <b>BLKS</b>          |
| 1, UMES    | 1. 9 times           |
| 11-15-15   | <b>STLS</b>          |



## KEVIN PURYEAR

Blue Springs, Mo.  
South High School  
FR \ F \ 6-7 \ 236

### LAST GAME (AT XAVIER 11-17-15)

| FG | FGA | 3FG | 3FGA | FT | FTA | REB | PTS |
|----|-----|-----|------|----|-----|-----|-----|
| 4  | 9   | 0   | 2    | 4  | 4   | 5   | 12  |

### 2015-16 (FRESHMAN):

- Started freshman campaign with three-straight games scoring in double digits.
- Scored 20 points (8-of-14 FG, 1-of-3 3PT, 3-of-4 FT) in his collegiate debut, leading Mizzou past Wofford (Nov. 13), 83-74.
- Joined an exclusive list of debuts, with other recent 20-point Tiger freshman performances including: Montaque Gill-Ceaser, 21 points vs. UMKC (Nov. 14, 2014), Jevon Crudup, 22 points at Rutgers (Nov. 27, 1990), Steve Stipanovich, 23 points vs. Southwest Texas State (Nov. 30, 1979).

### BLUE SPRINGS SOUTH HIGH SCHOOL:

- Averaged 20.1 points and 7.8 rebounds per game while shooting 53.4 percent from the floor as a senior at Blue Springs South.
- Led South to its first Missouri Class 5 State Championship in school history at Mizzou Arena as a senior.
- Was a 2015 Missouri Class 5 All-State selection.
- Named to the Kansas City Star's 2015 All-Metro Player of the Year.
- All-Suburban Golden Conference Player of the Year and First Team member as a senior.
- First Team All-State honoree by the MBCA as a junior.
- Fueled his team to a 21-4 record as a junior and a 22-2 mark as a sophomore.
- Chose Mizzou over offers from Arkansas, Ole Miss, Nebraska, Oklahoma State and Creighton.

### PERSONAL:

- Son of Kevin and Vicki Puryear.
- Born Nov. 18, 1996, in New Brunswick, N.J.
- Has two sisters, Aleyse and Kendall.
- Grew up dreaming of chance to play at Mizzou.
- Favorite sports movie is *Coach Carter*.
- Favorite professional athlete to follow is LeBron James.
- Would like to pursue a career in basketball.

## PURYEAR 2015-16 GAME-BY-GAME

| Opponent  | Date     | GS | Min | FG | FGA | Pct  | 3FG | 3FGA | Pct  | FT | FTA | Pct   | Off | Def | Tot | Avg | PF | FO | A | TO | Blk | Stl | Pts | Avg  |
|-----------|----------|----|-----|----|-----|------|-----|------|------|----|-----|-------|-----|-----|-----|-----|----|----|---|----|-----|-----|-----|------|
| WOFFORD   | 11-13-15 | *  | 32  | 8  | 14  | .571 | 1   | 3    | .333 | 3  | 4   | .750  | 0   | 5   | 5   | 5.0 | 1  | 0  | 0 | 2  | 0   | 1   | 20  | 20.0 |
| UMES      | 11-15-15 | *  | 26  | 4  | 7   | .571 | 0   | 0    | .000 | 5  | 6   | .833  | 1   | 4   | 5   | 5.0 | 0  | 0  | 1 | 2  | 0   | 1   | 13  | 16.5 |
| at Xavier | 11/17/15 | *  | 29  | 4  | 9   | .444 | 0   | 2    | .000 | 4  | 4   | 1.000 | 0   | 5   | 5   | 5.0 | 3  | 0  | 0 | 1  | 0   | 0   | 12  | 15.0 |

| SEASON  | G-GS | MIN | MPG  | FG-A  | FG%  | 3FG-A | 3FG% | FT-A  | FT%  | REB / AVG. | AST / TO | BS / S | TP | AVG. |
|---------|------|-----|------|-------|------|-------|------|-------|------|------------|----------|--------|----|------|
| 2015-16 | 3-3  | 87  | 29.0 | 16-30 | .533 | 1-5   | .200 | 12-14 | .857 | 15 / 5.0   | 1 / 5    | 0 / 2  | 45 | 15.0 |
| Total   | 3-3  | 87  | 29.0 | 16-30 | .533 | 1-5   | .200 | 12-14 | .857 | 15 / 5.0   | 1 / 5    | 0 / 2  | 45 | 15.0 |

## #24 AT A GLANCE

### 2015-16 Career

|                     |   |   |
|---------------------|---|---|
| Scored 10+ points   | 3 | - |
| Scored 15+ points   | 1 | - |
| Scored 20+ points   | 1 | - |
| Hit 5+ FGs          | 1 | - |
| Hit 2+ 3-pointers   | - | - |
| Attempted 10+ FGs   | - | - |
| Grabbed 5+ rebounds | 3 | - |
| Played 20+ minutes  | 3 | - |
| Played 30+ minutes  | 1 | - |

## #24 GAME HIGHS

### 2015-16 Career

|                      |   |
|----------------------|---|
| 20, Wofford          | - |
| 11-13-15 <b>PTS</b>  | - |
| 8, Wofford           | - |
| 11-13-15 <b>FGM</b>  | - |
| 14, Wofford          | - |
| 11-13-15 <b>FGA</b>  | - |
| 1, Wofford           | - |
| 11-13-15 <b>3PTM</b> | - |
| 3, Wofford           | - |
| 11-13-15 <b>3PTA</b> | - |
| 5, UMES              | - |
| 11-15-15 <b>FTM</b>  | - |
| 6, UMES              | - |
| 11-15-15 <b>FTA</b>  | - |
| 5, 3 times           | - |
| <b>REB</b>           | - |
| 1, UMES              | - |
| 11-15-15 <b>ASST</b> | - |
| -                    | - |
| <b>BLKS</b>          | - |
| 1, Twice             | - |
| <b>STLS</b>          | - |





## RUSSELL WOODS

Chicago, Ill. \ Simeon Career Academy  
John A. Logan College (Ill.)  
JR \ F \ 6-8 \ 225

### LAST GAME (AT XAVIER 11-17-15)

| FG | FGA | 3FG | 3FGA | FT | FTA | REB | PTS |
|----|-----|-----|------|----|-----|-----|-----|
| 0  | 0   | 0   | 0    | 0  | 0   | 3   | 0   |

### 2015-16 (JUNIOR):

- Scored 9 points (4-of-5 FG, 1-of-1 FT) in his Mizzou debut vs. Wofford (Nov. 13), logging 13 minutes off the bench.

### JUNIOR COLLEGE (JOHN A. LOGAN COLLEGE):

- Averaged 14.1 points and 7.2 rebounds per game and shot 61-percent from the field during the 2014-15 season at John A. Logan.
- Led John A. Logan College to a 27-7 record in 2014-15.
- Anchored the post as John A. Logan captured a Great Rivers Athletic Conference title and an NJCAA National Tournament berth.
- As a freshman, recorded 6.1 points per game while shooting 49.6-percent from the field.

### HIGH SCHOOL:

- Won an Illinois state title as a senior at Simeon Career Academy.
- Played alongside Milwaukee Bucks forward and former No. 2 NBA Draft selection Jabari Parker.
- Transferred to Simeon from Leo Catholic High School in Chicago after his junior year.
- Earned all-state recognition as a junior at Leo Catholic.

### PERSONAL:

- Son of Vivian Winters and Russell Woods, Sr.
- Born Dec. 5, 1994, in Chicago, Ill.
- Enjoys cooking in his spare time.

## WOODS 2015-16 GAME-BY-GAME

| Opponent  | Date     | GS | Min | FG | FGA  | Pct | 3FG | FGA  | Pct | FT | FTA   | Pct | Off | Def | Tot | Avg | PF | FO | A | TO | Blk | Stl | Pts | Avg |
|-----------|----------|----|-----|----|------|-----|-----|------|-----|----|-------|-----|-----|-----|-----|-----|----|----|---|----|-----|-----|-----|-----|
| WOFFORD   | 11-13-15 | 13 | 4   | 5  | .800 | 0   | 0   | .000 | 1   | 1  | 1.000 | 1   | 2   | 3   | 3.0 | 3   | 0  | 0  | 0 | 0  | 0   | 9   | 9.0 |     |
| UMES      | 11-15-15 | 15 | 0   | 0  | .000 | 0   | 0   | .000 | 1   | 4  | .250  | 0   | 1   | 1   | 2.0 | 2   | 0  | 1  | 0 | 1  | 0   | 1   | 5.0 |     |
| at Xavier | 11/17/15 | 8  | 0   | 0  | .000 | 0   | 0   | .000 | 0   | 0  | .000  | 2   | 1   | 3   | 2.3 | 3   | 0  | 0  | 0 | 0  | 0   | 0   | 3.3 |     |

| SEASON  | G-GS | MIN | MPG  | FG-A | FG%  | 3FG-A | 3FG% | FT-A | FT%  | REB / AVG. | AST / TO | BS / S | TP | AVG. |
|---------|------|-----|------|------|------|-------|------|------|------|------------|----------|--------|----|------|
| 2015-16 | 3-0  | 36  | 12.0 | 4-5  | .800 | 0-0   | .000 | 2-5  | .400 | 7 / 2.3    | 1 / 0    | 1 / 0  | 10 | 3.3  |
| TOTAL   | 3-0  | 36  | 12.0 | 4-5  | .800 | 0-0   | .000 | 2-5  | .400 | 7 / 2.3    | 1 / 0    | 1 / 0  | 10 | 3.3  |

## #25 AT A GLANCE

### 2015-16 Career

|                     |   |   |
|---------------------|---|---|
| Scored 5+ points    | 1 | - |
| Scored 10+ points   | - | - |
| Hit 3+ FGs          | 1 | - |
| Grabbed 5+ rebounds | - | - |
| Recorded 2+ blocks  | - | - |
| Played 20+ minutes  | - | - |

## #25 GAME HIGHS

### 2015-16 Career

|            |      |
|------------|------|
| 9, Wofford | -    |
| 11-13-15   | PTS  |
| 4, Wofford | -    |
| 11-13-15   | FGM  |
| 5, Wofford | -    |
| 11-13-15   | FGA  |
| -          | -    |
| -          | 3PTM |
| -          | -    |
| -          | 3PTA |
| 1, Wofford | -    |
| 11-13-15   | FTM  |
| 4, UMES    | -    |
| 11-15-15   | FTA  |
| 3, Twice   | -    |
| -          | REB  |
| 1, UMES    | -    |
| 11-15-15   | ASST |
| 1, UMES    | -    |
| 11-15-15   | BLKS |
| -          | -    |
| -          | STLS |



## ADAM WOLF

Beaver Dam, Wis.  
Beaver Dam High School  
FR \ F \ 6-7 \ 202

### LAST GAME (N/A)

| FG | FGA | 3FG | FGA | FT | FTA | REB | PTS |
|----|-----|-----|-----|----|-----|-----|-----|
| -  | -   | -   | -   | -  | -   | -   | -   |

### HIGH SCHOOL:

- ▼ Averaged 17.0 points and 7.5 rebounds per game and helped lead Beaver Dam High School to a 19-win season as a senior.
- ▼ Earned Little Ten Conference Co-Player of the Year honors for his tremendous play on the court.
- ▼ Played three seasons at Lake Forest High School in Illinois before transferring to Beaver Dam High School in Wisconsin for his senior season.
- ▼ Battled injuries through career at Lake Forest, averaging 6.3 points and 3.3 points per game as a junior while playing through a stress fracture.
- ▼ Passed up several Division II scholarship offers to accept Coach Anderson's walk-on opportunity at Mizzou.

### PERSONAL:

- ▼ Son of John and Jamie Wolf.
- ▼ Born on March 21, 1997, in Milwaukee, Wis.
- ▼ Has an older sister, Danielle, and younger sister, Lilly.
- ▼ Would like to work in business at the conclusion of his basketball-playing career.
- ▼ Father, John, was a walk-on basketball player at Marquette from 1989-91.
- ▼ Favorite movie is *Star Wars*.

## WOLF 2015-16 GAME-BY-GAME

| Opponent  | Date     | GS  | Min | FG | FGA | Pct | 3FG | FGA | Pct | FT | FTA | Pct | Off | Def | Tot | Avg | PF | FO | A | TO | Blk | Stl | Pts | Avg |
|-----------|----------|-----|-----|----|-----|-----|-----|-----|-----|----|-----|-----|-----|-----|-----|-----|----|----|---|----|-----|-----|-----|-----|
| WOFFORD   | 11-13-15 | DNP |     |    |     |     |     |     |     |    |     |     |     |     |     |     |    |    |   |    |     |     |     |     |
| UMES      | 11-15-15 | DNP |     |    |     |     |     |     |     |    |     |     |     |     |     |     |    |    |   |    |     |     |     |     |
| at Xavier | 11-17-15 | DNP |     |    |     |     |     |     |     |    |     |     |     |     |     |     |    |    |   |    |     |     |     |     |

| SEASON  | G-GS | MIN | MPG | FG-A | FG% | 3FG-A | 3FG% | FT-A | FT% | REB / AVG. | AST / TO | BS / S | TP | AVG. |
|---------|------|-----|-----|------|-----|-------|------|------|-----|------------|----------|--------|----|------|
| 2015-16 | -    | -   | -   | -    | -   | -     | -    | -    | -   | -          | -        | -      | -  | -    |
| TOTAL   | -    | -   | -   | -    | -   | -     | -    | -    | -   | -          | -        | -      | -  | -    |

## #32 AT A GLANCE

### 2015-16 Career

|                     |   |   |
|---------------------|---|---|
| Scored 5+ points    | - | - |
| Scored 10+ points   | - | - |
| Hit 3+ FGs          | - | - |
| Grabbed 5+ rebounds | - | - |
| Recorded 2+ blocks  | - | - |
| Played 20+ minutes  | - | - |

## #32 GAME HIGHS

### 2015-16 Career

|  |      |   |
|--|------|---|
|  |      | - |
|  | PTS  | - |
|  |      | - |
|  | FGM  | - |
|  |      | - |
|  | FGA  | - |
|  |      | - |
|  | 3PTM | - |
|  |      | - |
|  | 3PTA | - |
|  |      | - |
|  | FTM  | - |
|  |      | - |
|  | FTA  | - |
|  |      | - |
|  | REB  | - |
|  |      | - |
|  | ASST | - |
|  |      | - |
|  | BLKS | - |
|  |      | - |
|  | STLS | - |



## CULLEN VANLEER

Pacific, Mo.  
Pacific High School  
FR \ G \ 6-4 \ 200

### LAST GAME (AT XAVIER 11-17-15)

| FG | FGA | 3FG | 3FGA | FT | FTA | AST | PTS |
|----|-----|-----|------|----|-----|-----|-----|
| 5  | 9   | 3   | 7    | 0  | 0   | 0   | 13  |

### 2015-16 (FRESHMAN):

- Season-best 13 points (5-of-9 FG, 3-of-7 3PT) at Xavier (Nov. 17), leading the Tigers in scoring for the first time.
- Hit on his two field goal attempts in his collegiate debut vs. Wofford (Nov. 13), including his first career 3-pointer.

### PACIFIC HIGH SCHOOL:

- Averaged 23.5 points and 7.3 rebounds per game for Pacific High School as a senior.
- Became the all-time leading scorer in Pacific history, snapping a record that stood since 1954.
- Reached 1,000 career points in just 58 games, ahead of his senior season.
- Named Missouri Class 4 Co-Player of the Year.
- Was a MBCA Class 4 All-State selection.
- Added academic all-conference honors as a senior.
- Also competed in golf in high school, receiving first team all-conference recognition.

### PERSONAL:

- Son of John and Lori VanLeer.
- Born on May 25, 1996, in Beaufort, Mo.
- Both parents attended Missouri State and work as educators, with mother, Lori, working as a superintendent and father, John, working as a physical education teacher and coach.
- Has been a fan of Mizzou Basketball since childhood.
- Showed cattle as a youngster.
- Has a younger brother named Cameron.
- Favorite sports movie is *Glory Road*.
- Would like to follow in his parents' footsteps and become a teacher or coach, or work in the physical therapy field.

## VANLEER 2015-16 GAME-BY-GAME

| Opponent  | Date     | GS | Min | FG | FGA   | Pct | 3FG | FGA   | Pct | FT | FTA  | Pct | Off | Def | Tot | Avg | PF | FO | A | TO | Blk | Stl | Pts | Avg |
|-----------|----------|----|-----|----|-------|-----|-----|-------|-----|----|------|-----|-----|-----|-----|-----|----|----|---|----|-----|-----|-----|-----|
| WOFFORD   | 11-13-15 | 12 | 2   | 2  | 1.000 | 1   | 1   | 1.000 | 0   | 1  | .000 | 1   | 0   | 1   | 1.0 | 0   | 0  | 2  | 0 | 0  | 0   | 5   | 5.0 |     |
| UMES      | 11-15-15 | 9  | 1   | 3  | .333  | 1   | 3   | .333  | 0   | 0  | .000 | 0   | 0   | 0   | 0.5 | 1   | 0  | 0  | 0 | 0  | 1   | 3   | 4.0 |     |
| at Xavier | 11/17/15 | 22 | 5   | 9  | .556  | 3   | 7   | .429  | 0   | 0  | .000 | 0   | 0   | 0   | 0.3 | 2   | 0  | 0  | 1 | 0  | 2   | 13  | 7.0 |     |

| SEASON  | G-GS | MIN | MPG  | FG-A | FG%  | 3FG-A | 3FG% | FT-A | FT%  | REB / AVG. | AST / TO | BS / S | TP | AVG. |
|---------|------|-----|------|------|------|-------|------|------|------|------------|----------|--------|----|------|
| 2015-16 | 3-0  | 43  | 14.3 | 8-14 | .571 | 5-11  | .455 | 0-1  | .000 | 1 / 0.3    | 2 / 1    | 0 / 3  | 21 | 7.0  |
| TOTAL   | 3-0  | 43  | 14.3 | 8-14 | .571 | 5-11  | .455 | 0-1  | .000 | 1 / 0.3    | 2 / 1    | 0 / 3  | 21 | 7.0  |

## #33 AT A GLANCE

### 2015-16 Career

|                    |   |   |
|--------------------|---|---|
| Scored 5+ points   | 2 | - |
| Scored 10+ points  | 1 | - |
| Hit 3+ FGs         | 1 | - |
| Hit 2+ 3PT FGs     | 1 | - |
| Multiple assists   | 1 | - |
| Multiple steals    | 1 | - |
| Played 15+ minutes | 1 | - |

## #33 GAME HIGHS

### 2015-16 Career

|               |      |
|---------------|------|
| 13, at Xavier | -    |
| 11-17-15      | PTS  |
| 5, at Xavier  | -    |
| 11-17-15      | FGM  |
| 9, at Xavier  | -    |
| 11-17-15      | FGA  |
| 3, at Xavier  | -    |
| 11-17-15      | 3PTM |
| 7, at Xavier  | -    |
| 11-17-15      | 3PTA |
| -             | -    |
| -             | FTM  |
| 1, Wofford    | -    |
| 11-13-15      | FTA  |
| 1, Wofford    | -    |
| 11-13-15      | REB  |
| 2, Wofford    | -    |
| 11-13-15      | ASST |
| -             | -    |
| -             | BLKS |
| 2, at Xavier  | -    |
| 11-17-15      | STLS |

44

# RYAN ROSBURG

Chesterfield, Mo.  
Marquette High School  
SR \ F \ 6-10 \ 260

## LAST GAME (AT XAVIER 11-17-15)

| FG | FGA | 3FG | FGA | FT | FTA | REB | PTS |
|----|-----|-----|-----|----|-----|-----|-----|
| 0  | 0   | 0   | 0   | 1  | 2   | 1   | 1   |

## 2015-16 (SENIOR):

- Matched career-high with 4 free throw makes vs. Wofford (Nov. 13), scoring 6 points in 20 minutes off the bench.

## 2014-15 (JUNIOR):

- Appeared in 30 or more games for the third consecutive season, earning 17 starts for Mizzou as a junior.
- Averaged 3.3 points and 2.6 rebounds per game, while shooting 50.0-percent from the field (42-of-84 FG).
- Season-best 12 points on impressive 6-of-7 FG shooting vs. Mississippi State (Feb. 14).

## 2013-14 (SOPHOMORE):

- Played in all 35 games as a sophomore, making 32 starts.
- Averaged 4.8 points and 4.1 rebounds while shooting an incredibly efficient 71.6 percent from the floor.

## 2012-13 (FRESHMAN):

- Played in 31 games as a reserve for Alex Oriakhi and averaged 6.9 minutes per contest.
- Scored a season-high six points in the win over South Carolina State.

## MARQUETTE HIGH SCHOOL:

- One of Missouri's top players his final two seasons of high school and twice earned all-state honors.
- Finished with 1,862 career points, second all-time in school history and is the school's career leaders in rebounding and blocked shots.

## PERSONAL:

- Son of Cindy and Paul Rosburg.
- Born Nov. 12, 1993, in Chesterfield, Mo.
- Has one brother, Andy, who played at Mizzou in 2011-12.
- Is majoring in marketing.

## ROSBURG 2015-16 GAME-BY-GAME

| Opponent  | Date     | GS | Min | FG | FGA | Pct  | 3FG | FGA | Pct  | FT | FTA | Pct  | Off | Def | Tot | Avg | PF | FO | A | TO | Blk | Stl | Pts | Avg |
|-----------|----------|----|-----|----|-----|------|-----|-----|------|----|-----|------|-----|-----|-----|-----|----|----|---|----|-----|-----|-----|-----|
| WOFFORD   | 11-13-15 | 20 | 12  | 1  | 2   | .500 | 0   | 0   | .000 | 4  | 6   | .667 | 0   | 3   | 3   | 3.0 | 3  | 0  | 0 | 0  | 0   | 1   | 6   | 6.0 |
| UMES      | 11-15-15 | 10 | 0   | 0  | 0   | .000 | 0   | 0   | .000 | 0  | 0   | .000 | 0   | 3   | 3   | 3.0 | 1  | 0  | 0 | 0  | 1   | 0   | 0   | 3.0 |
| at Xavier | 11/17/15 | 9  | 0   | 0  | 0   | .000 | 0   | 0   | .000 | 1  | 2   | .500 | 1   | 0   | 1   | 2.3 | 1  | 0  | 0 | 1  | 1   | 0   | 1   | 2.3 |

| SEASON       | G-GS         | MIN         | MPG         | FG-A           | FG%         | 3FG-A      | 3FG%        | FT-A          | FT%         | REB / AVG.       | AST / TO       | BS / S         | TP         | AVG.       |
|--------------|--------------|-------------|-------------|----------------|-------------|------------|-------------|---------------|-------------|------------------|----------------|----------------|------------|------------|
| 2012-13      | 31-0         | 213         | 6.9         | 11-27          | .407        | 0-0        | .000        | 8-14          | .571        | 41 / 1.3         | 7 / 6          | 6 / 1          | 30         | 1.0        |
| 2013-14      | 35-32        | 778         | 22.2        | 68-95          | .716        | 0-0        | .000        | 33-58         | .569        | 145 / 4.1        | 10 / 41        | 22 / 7         | 169        | 4.8        |
| 2014-15      | 30-17        | 501         | 16.7        | 42-84          | .500        | 0-0        | .000        | 15-45         | .333        | 78 / 2.6         | 8 / 19         | 18 / 6         | 99         | 3.3        |
| 2015-16      | 3-0          | 39          | 13.0        | 1-2            | .500        | 0-0        | .000        | 5-8           | .625        | 7 / 2.3          | 0 / 1          | 2 / 1          | 7          | 2.3        |
| <b>TOTAL</b> | <b>99-49</b> | <b>1531</b> | <b>15.5</b> | <b>122-208</b> | <b>.587</b> | <b>0-0</b> | <b>.000</b> | <b>61-125</b> | <b>.488</b> | <b>271 / 2.7</b> | <b>25 / 67</b> | <b>48 / 15</b> | <b>305</b> | <b>3.1</b> |

## #44 AT A GLANCE

### 2015-16 Career

|                      |   |    |
|----------------------|---|----|
| Scored 5+ points     | 1 | 25 |
| Scored 10+ points    | - | 3  |
| Grabbed 10+ rebounds | - | 2  |
| Recorded 2+ blocks   | - | 8  |
| Played 20+ minutes   | 1 | 36 |

## #44 GAME HIGHS

### 2015-16 Career

|            |                      |
|------------|----------------------|
| 6, Wofford | 14, vs. Northwestern |
| 11-13-15   | <b>PTS</b> 11-28-13  |
| 1, Wofford | 6, Mississippi State |
| 11-13-15   | <b>FGM</b> 2-14-15   |
| 2, Wofford | 7, Mississippi State |
| 11-13-15   | <b>FGA</b> 2-14-15   |
| -          | -                    |
| -          | <b>3PTM</b> -        |
| -          | -                    |
| -          | <b>3PTA</b> -        |
| 4, Wofford | 4, 3 times           |
| 11-13-15   | <b>FTM</b> -         |
| 6, Wofford | 7, vs. Chaminade     |
| 11-13-15   | <b>FTA</b> 11-26-14  |
| 3, Twice   | 8, Valparaiso        |
| -          | <b>REB</b> 11-16-14  |
| -          | 2, SEMO              |
| -          | <b>ASST</b> 12-2-14  |
| 1, Twice   | 2, 8 times           |
| -          | <b>BLKS</b> -        |
| 1, Wofford | 2, 3 times           |
| 11-13-15   | <b>STLS</b> -        |

## 2015-16 MIZZOU OVERALL STATISTICS

|                |         |      |      |         |
|----------------|---------|------|------|---------|
| Record         | Overall | Home | Away | Neutral |
| ALL GAMES      | 2-1     | 2-0  | 0-1  | 0-0     |
| CONFERENCE     | 0-0     | 0-0  | 0-0  | 0-0     |
| NON-CONFERENCE | 2-1     | 2-0  | 0-1  | 0-0     |

| ## | Player             | GP | GS | Min | TOTAL |    |     | 3-PTS |     |     | REBOUNDS |    |     | PF    | FO | A  | TO  | Blk  | Stl | Pts | Avg |     |     |     |     |      |
|----|--------------------|----|----|-----|-------|----|-----|-------|-----|-----|----------|----|-----|-------|----|----|-----|------|-----|-----|-----|-----|-----|-----|-----|------|
|    |                    |    |    |     | Avg   | FG | FGA | Pct   | 3FG | FGA | Pct      | FT | FTA |       |    |    |     |      |     |     |     | Pct | Off | Def | Tot | Avg  |
| 24 | PURYEAR, Kevin     | 3  | 3  | 87  | 29.0  | 16 | 30  | .533  | 1   | 5   | .200     | 12 | 14  | .857  | 1  | 14 | 15  | 5.0  | 4   | 0   | 1   | 5   | 0   | 2   | 45  | 15.0 |
| 12 | WRIGHT, Namon      | 3  | 2  | 77  | 25.7  | 8  | 21  | .381  | 4   | 12  | .333     | 11 | 15  | .733  | 4  | 12 | 16  | 5.3  | 8   | 0   | 3   | 4   | 0   | 2   | 31  | 10.3 |
| 15 | CLARK, Wes         | 3  | 3  | 90  | 30.0  | 9  | 26  | .346  | 4   | 10  | .400     | 8  | 10  | .800  | 2  | 5  | 7   | 2.3  | 7   | 0   | 8   | 5   | 0   | 3   | 30  | 10.0 |
| 10 | WALTON, K.J.       | 3  | 1  | 53  | 17.7  | 7  | 16  | .438  | 0   | 2   | .000     | 11 | 13  | .846  | 1  | 3  | 4   | 1.3  | 5   | 0   | 6   | 0   | 0   | 2   | 25  | 8.3  |
| 01 | PHILLIPS, Terrence | 3  | 3  | 68  | 22.7  | 8  | 14  | .571  | 4   | 7   | .571     | 3  | 4   | .750  | 1  | 6  | 7   | 2.3  | 10  | 0   | 5   | 5   | 0   | 1   | 23  | 7.7  |
| 33 | VANLEER, Cullen    | 3  | 0  | 43  | 14.3  | 8  | 14  | .571  | 5   | 11  | .455     | 0  | 1   | .000  | 1  | 0  | 1   | 0.3  | 3   | 0   | 2   | 1   | 0   | 3   | 21  | 7.0  |
| 04 | ISABELL, Tramaine  | 3  | 0  | 35  | 11.7  | 7  | 13  | .538  | 1   | 2   | .500     | 4  | 4   | 1.000 | 2  | 6  | 8   | 2.7  | 3   | 0   | 4   | 8   | 0   | 2   | 19  | 6.3  |
| 25 | WOODS, Russell     | 3  | 0  | 36  | 12.0  | 4  | 5   | .800  | 0   | 0   | .000     | 2  | 5   | .400  | 3  | 4  | 7   | 2.3  | 8   | 0   | 1   | 0   | 1   | 0   | 10  | 3.3  |
| 23 | GANT, Jakeenan     | 3  | 3  | 44  | 14.7  | 3  | 10  | .300  | 0   | 5   | .000     | 3  | 4   | .750  | 2  | 5  | 7   | 2.3  | 10  | 1   | 2   | 3   | 4   | 1   | 9   | 3.0  |
| 44 | ROSBURG, Ryan      | 3  | 0  | 39  | 13.0  | 1  | 2   | .500  | 0   | 0   | .000     | 5  | 8   | .625  | 1  | 6  | 7   | 2.3  | 5   | 0   | 0   | 1   | 2   | 1   | 7   | 2.3  |
| 05 | ALLEN, D'Angelo    | 2  | 0  | 27  | 13.5  | 1  | 1   | 1.000 | 0   | 0   | .000     | 0  | 2   | .000  | 2  | 5  | 7   | 3.5  | 4   | 0   | 0   | 1   | 0   | 1   | 2   | 1.0  |
| 11 | BARTON, Jimmy      | 1  | 0  | 1   | 1.0   | 0  | 0   | .000  | 0   | 0   | .000     | 0  | 0   | .000  | 0  | 0  | 0   | 0.0  | 0   | 0   | 0   | 1   | 0   | 0   | 0   | 0.0  |
| TM | TEAM.....          |    |    |     |       |    |     |       |     |     |          |    |     |       | 0  | 8  | 8   | 2.7  | 0   |     |     | 1   |     |     | 0   |      |
|    | Total.....         | 3  |    |     |       | 72 | 152 | .474  | 19  | 54  | .352     | 59 | 80  | .738  | 20 | 74 | 94  | 31.3 | 67  | 1   | 32  | 35  | 7   | 18  | 222 | 74.0 |
|    | Opponents.....     | 3  |    |     |       | 62 | 155 | .400  | 23  | 65  | .354     | 60 | 84  | .714  | 31 | 69 | 100 | 33.3 | 67  | -   | 32  | 33  | 5   | 16  | 207 | 69.0 |

## 2015-16 Statistical Summaries

| Team Statistics        | MU     | OPP    |
|------------------------|--------|--------|
| SCORING                | 222    | 207    |
| Points per game        | 74.0   | 69.0   |
| Scoring margin         | +5.0   | -      |
| FIELD GOALS-ATT        | 72-152 | 62-155 |
| Field goal pct         | .474   | .400   |
| 3 POINT FG-ATT         | 19-54  | 23-65  |
| 3-point FG pct         | .352   | .354   |
| 3-pt FG made per game  | 6.3    | 7.7    |
| FREE THROWS-ATT        | 59-80  | 60-84  |
| Free throw pct         | .738   | .714   |
| F-Throws made per game | 19.7   | 20.0   |
| REBOUNDS               | 94     | 100    |
| Rebounds per game      | 31.3   | 33.3   |
| Rebounding margin      | -2.0   | -      |
| ASSISTS                | 32     | 32     |
| Assists per game       | 10.7   | 10.7   |
| TURNOVERS              | 35     | 33     |
| Turnovers per game     | 11.7   | 11.0   |
| Turnover margin        | -0.7   | -      |
| Assist/turnover ratio  | 0.9    | 1.0    |
| STEALS                 | 18     | 16     |
| Steals per game        | 6.0    | 5.3    |
| BLOCKS                 | 7      | 5      |
| Blocks per game        | 2.3    | 1.7    |
| WINNING STREAK         | 0      | -      |
| Home win streak        | 2      | -      |
| ATTENDANCE             | 10119  | 9751   |
| Home games-Avg/Game    | 2-5060 | 1-9751 |
| Neutral site-Avg/Game  | -      | 0-0    |

## 2015-16 Game-By-Game Scores

| Date     | Opponent  | W/L | Score | Att. |
|----------|-----------|-----|-------|------|
| 11-13-15 | WOFFORD   | W   | 83-74 | 5037 |
| 11-15-15 | UMES      | W   | 73-55 | 5082 |
| 11-17-15 | at Xavier | L   | 66-78 | 9751 |

|                          |            |            |           |              |
|--------------------------|------------|------------|-----------|--------------|
| <b>SCORE BY PERIODS:</b> | <b>1st</b> | <b>2nd</b> | <b>OT</b> | <b>Total</b> |
| Mizzou                   | 109        | 113        | 222       |              |
| Opponents                | 98         | 109        | 207       |              |



**2014-15 MIZZOU OVERALL STATISTICS**

|                |         |      |      |         |
|----------------|---------|------|------|---------|
| Record         | Overall | Home | Away | Neutral |
| ALL GAMES      | 9-23    | 8-9  | 0-10 | 1-4     |
| CONFERENCE     | 3-15    | 3-6  | 0-9  | 0-0     |
| NON-CONFERENCE | 6-8     | 5-3  | 0-1  | 1-4     |

| ## | Player               | TOTAL |    |      |      |     |      |      | 3-PTS |     |      | REBOUNDS |     |      |     |     |      |      |     |    |     |     |     |     |      |      |
|----|----------------------|-------|----|------|------|-----|------|------|-------|-----|------|----------|-----|------|-----|-----|------|------|-----|----|-----|-----|-----|-----|------|------|
|    |                      | GP    | GS | Min  | Avg  | FG  | FGA  | Pct  | 3FG   | FGA | Pct  | FT       | FTA | Pct  | Off | Def | Tot  | Avg  | PF  | FO | A   | TO  | Blk | Stl | Pts  | Avg  |
| 03 | Williams III, Johnat | 32    | 32 | 941  | 29.4 | 128 | 311  | .412 | 22    | 64  | .344 | 103      | 167 | .617 | 78  | 150 | 228  | 7.1  | 86  | 1  | 27  | 82  | 19  | 10  | 381  | 11.9 |
| 15 | Clark, Wes           | 23    | 20 | 713  | 31.0 | 81  | 233  | .348 | 32    | 102 | .314 | 38       | 51  | .745 | 10  | 71  | 81   | 3.5  | 54  | 2  | 71  | 45  | 4   | 38  | 232  | 10.1 |
| 13 | Gill-Caesar, Montagu | 27    | 13 | 647  | 24.0 | 84  | 231  | .364 | 29    | 94  | .309 | 49       | 66  | .742 | 20  | 60  | 80   | 3.0  | 55  | 1  | 14  | 52  | 2   | 19  | 246  | 9.1  |
| 14 | Shamburger, Keith    | 32    | 31 | 1092 | 34.1 | 80  | 211  | .379 | 43    | 131 | .328 | 77       | 86  | .895 | 17  | 89  | 106  | 3.3  | 68  | 0  | 124 | 60  | 4   | 37  | 280  | 8.8  |
| 12 | Wright, Namon        | 30    | 20 | 607  | 20.2 | 77  | 186  | .414 | 40    | 103 | .388 | 10       | 18  | .556 | 6   | 63  | 69   | 2.3  | 64  | 1  | 19  | 37  | 3   | 17  | 204  | 6.8  |
| 23 | Gant, Jakeenan       | 23    | 6  | 324  | 14.1 | 47  | 91   | .516 | 1     | 14  | .071 | 18       | 25  | .720 | 20  | 30  | 50   | 2.2  | 33  | 0  | 7   | 16  | 14  | 9   | 113  | 4.9  |
| 04 | Isabell, Tramaine    | 27    | 1  | 405  | 15.0 | 37  | 118  | .314 | 16    | 52  | .308 | 22       | 28  | .786 | 9   | 27  | 36   | 1.3  | 35  | 0  | 39  | 33  | 0   | 17  | 112  | 4.1  |
| 45 | Post, Keanau         | 30    | 9  | 424  | 14.1 | 51  | 89   | .573 | 0     | 0   | .000 | 19       | 31  | .613 | 42  | 65  | 107  | 3.6  | 70  | 3  | 4   | 24  | 14  | 9   | 121  | 4.0  |
| 05 | Allen, D'Angelo      | 32    | 8  | 544  | 17.0 | 40  | 98   | .408 | 9     | 20  | .450 | 17       | 28  | .607 | 37  | 63  | 100  | 3.1  | 62  | 0  | 21  | 18  | 7   | 11  | 106  | 3.3  |
| 44 | Rosburg, Ryan        | 30    | 17 | 501  | 16.7 | 42  | 84   | .500 | 0     | 0   | .000 | 15       | 45  | .333 | 37  | 41  | 78   | 2.6  | 56  | 1  | 8   | 19  | 18  | 6   | 99   | 3.3  |
| 02 | Bello, Deuce         | 23    | 3  | 251  | 10.9 | 16  | 42   | .381 | 4     | 16  | .250 | 5        | 15  | .333 | 5   | 20  | 25   | 1.1  | 40  | 2  | 9   | 18  | 5   | 6   | 41   | 1.8  |
| 42 | Barnard, Hayden      | 1     | 0  | 1    | 1.0  | 0   | 0    | .000 | 0     | 0   | .000 | 0        | 0   | .000 | 0   | 0   | 0    | 0.0  | 0   | 0  | 0   | 0   | 0   | 0   | 0    | 0.0  |
| TM | TEAM.....            |       |    |      |      |     |      |      |       |     |      |          |     |      | 46  | 44  | 90   | 2.8  | 1   |    | 13  |     |     | 0   |      |      |
|    | Total.....           | 32    |    |      |      | 683 | 1694 | .403 | 196   | 596 | .329 | 373      | 560 | .666 | 327 | 723 | 1050 | 32.8 | 624 | 11 | 343 | 417 | 90  | 179 | 1935 | 60.5 |
|    | Opponents.....       | 32    |    |      |      | 726 | 1691 | .429 | 206   | 601 | .343 | 515      | 735 | .701 | 355 | 775 | 1130 | 35.3 | 568 | -  | 377 | 353 | 111 | 190 | 2173 | 67.9 |

**2014-15 Statistical Summaries**

| Team Statistics        | MU       | OPP      |
|------------------------|----------|----------|
| SCORING                | 1935     | 2173     |
| Points per game        | 60.5     | 67.9     |
| Scoring margin         | -7.4     | -        |
| FIELD GOALS-ATT        | 683-1694 | 726-1691 |
| Field goal pct         | .403     | .429     |
| 3 POINT FG-ATT         | 196-596  | 206-601  |
| 3-point FG pct         | .329     | .343     |
| 3-pt FG made per game  | 6.1      | 6.4      |
| FREE THROWS-ATT        | 373-560  | 515-735  |
| Free throw pct         | .666     | .701     |
| F-Throws made per game | 11.7     | 16.1     |
| REBOUNDS               | 1050     | 1130     |
| Rebounds per game      | 32.8     | 35.3     |
| Rebounding margin      | -2.5     | -        |
| ASSISTS                | 343      | 377      |
| Assists per game       | 10.7     | 11.8     |
| TURNOVERS              | 417      | 353      |
| Turnovers per game     | 13.0     | 11.0     |
| Turnover margin        | -2.0     | -        |
| Assist/turnover ratio  | 0.8      | 1.1      |
| STEALS                 | 179      | 190      |
| Steals per game        | 5.6      | 5.9      |
| BLOCKS                 | 90       | 111      |
| Blocks per game        | 2.8      | 3.5      |
| ATTENDANCE             | 137086   | 147795   |
| Home games-Avg/Game    | 17-8064  | 10-11048 |
| Neutral site-Avg/Game  | -        | 5-7464   |

**SCORE BY PERIODS:**

|           | 1st  | 2nd  | OT | Total |
|-----------|------|------|----|-------|
| Mizzou    | 904  | 1012 | 19 | 1935  |
| Opponents | 1051 | 1108 | 14 | 2173  |

**2014-15 Game-By-Game Scores**

| Date      | Opponent             | W/L | Score | Att.  |
|-----------|----------------------|-----|-------|-------|
| 11/14/14  | UMKC                 | L   | 61-69 | 7014  |
| 11/16/14  | VALPO                | W   | 56-41 | 5369  |
| 11/19/14  | ORAL ROBERTS         | W   | 78-64 | 5563  |
| 11/24/14  | vs ARIZONA           | L   | 53-72 | 2400  |
| 11/25/14  | vs PURDUE            | L   | 61-82 | 2400  |
| 11/26/14  | vs Chaminade         | W   | 74-60 | 2400  |
| 12/2/14   | SEMO                 | W   | 65-61 | 5506  |
| 12/05/14  | at Oklahoma          | L   | 63-82 | 11652 |
| 12/11/14  | ELON                 | W   | 78-73 | 4514  |
| 12/13/14  | XAVIER               | L   | 58-74 | 7854  |
| 12/20/14  | vs Illinois          | L   | 59-62 | 20079 |
| 12/30/14  | OKLAHOMA STATE       | LOT | 72-74 | 11376 |
| 1/3/15    | LIPSCOMB             | W   | 72-60 | 7415  |
| *1/8/15   | LSU                  | WOT | 74-67 | 7509  |
| *01/10/15 | at Auburn            | L   | 79-85 | 8365  |
| *01/13/15 | at Kentucky          | L   | 37-86 | 24248 |
| *1/17/15  | TENNESSEE            | L   | 51-59 | 10359 |
| *01/21/15 | at Texas A&M         | L   | 50-62 | 6849  |
| *1/24/15  | ARKANSAS             | L   | 60-61 | 11022 |
| *1/29/15  | KENTUCKY             | L   | 53-69 | 13034 |
| *1/31/15  | OLE MISS             | L   | 47-67 | 9053  |
| *2/4/15   | at Alabama           | L   | 49-62 | 9343  |
| *2/7/15   | TEXAS A&M            | L   | 61-83 | 8970  |
| *2/10/15  | at South Carolina    | L   | 60-65 | 8840  |
| *2/14/15  | MISSISSIPPI STATE    | L   | 74-77 | 8278  |
| *02/18/15 | at Arkansas          | L   | 69-84 | 15740 |
| *02/21/15 | at Vanderbilt        | L   | 53-76 | 10154 |
| *2/24/15  | FLORIDA              | W   | 64-52 | 7631  |
| *02/28/15 | at Georgia           | L   | 44-68 | 9389  |
| *3/3/15   | AUBURN               | W   | 63-61 | 6619  |
| *03-07-15 | at Mississippi State | L   | 43-52 | 5897  |
| 03/11/15  | vs South Carolina    | L   | 54-63 | 10039 |

## LAST TIME...

### INDIVIDUAL: THE LAST TIME MIZZOU HAD A...

**Player score 25 points** \_\_\_\_\_ Jabari Brown (30) vs. Davidson; March 18, 2014

**Player score 30 points** \_\_\_\_\_ Jabari Brown (30) vs. Davidson; March 18, 2014

**Player score 35 points** \_\_\_\_\_ Thomas Gardner (40) vs. Kansas; Jan. 16, 2006

**Player score 40 points** \_\_\_\_\_ Thomas Gardner (40) vs. Kansas; Jan. 16, 2006

**Player grab 15 rebounds** \_\_\_\_\_ Jonathan Williams III (15) vs. Texas A&M; March 14, 2004

**Player grab 20 rebounds** \_\_\_\_\_ Curtis Berry (20) vs. Kansas; Jan. 9, 1980

**Player record a double-double** \_\_\_\_\_ Jonathan Williams III (15 p, 10 r) vs. Arkansas; Jan. 24, 2015

**Two players record a double-double** \_\_\_\_\_ Laurence Bowers (23 p, 10 r)  
\_\_\_\_\_ Alex Oriakhi (18 p, 10 r) vs. LSU; March 2, 2013

**Player record a triple-double** \_\_\_\_\_ Never

**Player dish out 10 assists** \_\_\_\_\_ Keith Shamburger (11) at Alabama; Feb. 4, 2015

**Player block 10 shots** \_\_\_\_\_ Never

**A player collect five steals** \_\_\_\_\_ Wes Clark (5) at Texas A&M; Jan. 21, 2015

**A player hit five three-pointer baskets** \_\_\_\_\_ Keith Shamburger (5) at Auburn; Jan. 10, 2015

**A player make 10 free throws** \_\_\_\_\_ Jabari Brown (11-15) vs. Davidson; March 18, 2014

**Two players score 20 points in a game** \_\_\_\_\_ Jabari Brown (26)  
\_\_\_\_\_ Earnest Ross (24) vs. Texas A&M; March 14, 2014

**Three players score 20 points in a game** \_\_\_\_\_ Earnest Ross (24)  
\_\_\_\_\_ Jordan Clarkson (23)  
\_\_\_\_\_ Jabari Brown (20) at Ole Miss; Feb. 8, 2014

**Two players grab 10 rebounds in a game** \_\_\_\_\_ Jonathan Williams III (10)  
\_\_\_\_\_ Keanau Post (10) vs. Lipscomb; Jan. 3, 2015

**Three players grab 10 rebounds in a game** \_\_\_\_\_ Negus Webster-Chan (11)  
\_\_\_\_\_ Earnest Ross (10)  
\_\_\_\_\_ Alex Oriakhi (10) vs. Alcorn State; Nov. 13, 2012

**Five players score in double figures** \_\_\_\_\_ Laurence Bowers (23)  
\_\_\_\_\_ Alex Oriakhi (18)  
\_\_\_\_\_ Phil Pressey (15)  
\_\_\_\_\_ Earnest Ross (13)  
\_\_\_\_\_ Keion Bell (11) vs. LSU; March 2, 2013

**Six players score in double figures** \_\_\_\_\_ Matt Pressey (14)  
\_\_\_\_\_ Phil Pressey (12)  
\_\_\_\_\_ Ricardo Ratiliffe (12)  
\_\_\_\_\_ Michael Dixon Jr. (12)  
\_\_\_\_\_ Kim English (10)  
\_\_\_\_\_ Steve Moore (10) at Iowa State; Jan. 11, 2012

**Seven players score in double figures** \_\_\_\_\_ Kim English (20)  
\_\_\_\_\_ Justin Stafford (16)  
\_\_\_\_\_ Laurence Bowers (16)  
\_\_\_\_\_ Marcus Denmon (12)  
\_\_\_\_\_ Matt Pressey (10)  
\_\_\_\_\_ Michael Dixon Jr. (10)  
\_\_\_\_\_ Ricky Kreklow (10) vs. North Alabama; Jan. 5, 2011

### TEAM: THE LAST TIME MIZZOU...

**Scored 100 points or more** \_\_\_\_\_ Dec. 17, 2012; Mizzou 102, South Carolina State 51

**Scored less than 50 points** \_\_\_\_\_ Jan. 31, 2015; Kentucky 67, Mizzou 47

**Scored less than 50 points and won** \_\_\_\_\_ Nov. 14, 1997; Mizzou 45, Depaul 42

**Allowed 100 points or more** \_\_\_\_\_ Feb. 7, 2011; Kansas 103, Mizzou 86

**Held an opponent to less than 40 points** \_\_\_\_\_ Dec. 8, 2012; Mizzou 68, Tennessee State 38

**Held an opponent to less than 50 points** \_\_\_\_\_ Nov. 16, 2014; Mizzou 56, Valparaiso 41

**Had 50 rebounds** \_\_\_\_\_ Feb. 9, 2013, vs. Ole Miss (50)

**Had 30 assists** \_\_\_\_\_ Dec. 18, 2010, vs. Central Arkansas (33)

**Had 10 steals** \_\_\_\_\_ Jan. 29, 2015 vs. Kentucky (10)

**Held an opponent to less than 25 percent shooting** \_\_\_\_\_ March 14, 2013, vs. Texas A&M (24.1)

**Shot better than 70 percent from the field** \_\_\_\_\_ Dec. 6, 1989, vs. Hawaii Loa (.752)

**Shot under 30 percent from the field** \_\_\_\_\_ Dec. 7, 2004, vs. Arkansas (.298)

**Shot better than 90 percent from the free throw line** \_\_\_\_\_  
\_\_\_\_\_ March 8, 2014 at Tennessee (13-for-14, .921)

**Attempted 40 free throws** \_\_\_\_\_ March 14, 2014, vs. Texas A&M (53)

**Made 10 3-pointers** \_\_\_\_\_ Jan. 10, 2015, vs. Auburn (10-for-27)

**Won an overtime game** \_\_\_\_\_ Jan. 8, 2015 vs. LSU; Mizzou 74, LSU 67 (OT)

**Lost an overtime game** \_\_\_\_\_ Dec. 30, 2014 vs. Oklahoma State; OSU 74, Mizzou 72 (OT)

**Played a double-OT game** \_\_\_\_\_ March 14, 2014; Mizzou 91, Texas A&M 83

**Played a triple-overtime game** \_\_\_\_\_ Jan. 13, 2001; Mizzou 112, Iowa State 109 (4OT)

**Defeated a top 25 team** \_\_\_\_\_ Dec. 15, 2013; Mizzou 80, No. 18 UCLA 71

**Had a 30-point win** \_\_\_\_\_ Nov. 8, 2013; Mizzou 89, Southeastern Louisiana 53

**Had a 40-point win** \_\_\_\_\_ Dec. 17, 2012; Mizzou 102, South Carolina State 51

**Had a 50-point win** \_\_\_\_\_ Dec. 17, 2012; Mizzou 102, South Carolina State 51

**Won back-to-back road games** \_\_\_\_\_ Dec. 28, 2013 at North Carolina State (68-64)  
\_\_\_\_\_ Jan. 11, 2014 at Auburn (70-68)

**Won by double digits over an SEC team** \_\_\_\_\_ March 1, 2014; Mizzou 85, Mississippi State 66

## MORE NOTES...

### MIZZOU STARTERS

| Opponent |           | G        | G      | G     | F    | F       | Record ** |
|----------|-----------|----------|--------|-------|------|---------|-----------|
| Nov. 13  | Wofford   | Phillips | Walton | Clark | Gant | Puryear | 1-0       |
| Nov. 15  | UMES      | Phillips | Wright | Clark | Gant | Puryear | 1-0       |
| Nov. 17  | at Xavier | Phillips | Wright | Clark | Gant | Puryear | 1-1       |

### MIZZOU WHEN...

|                            |     |
|----------------------------|-----|
| Playing at home            | 2-0 |
| Playing on the road        | 0-1 |
| Playing on a neutral court | 0-0 |
| SEC games                  | 0-0 |
| SEC at home                | 0-0 |
| SEC on the road            | 0-0 |
| Following a win            | 1-1 |
| Following a loss           | 0-0 |
| Leading at half            | 2-0 |
| Trailing at half           | 0-1 |
| Tied at half               | 0-0 |
| Shoots at least 50%        | 1-0 |
| Shoots less than 50%       | 1-1 |
| Opponent shoots 50%        | 0-0 |
| Shoots more FT than Opp.   | 1-0 |
| Shoots fewer FT than Opp.  | 1-1 |
| Shoots same FT as Opp.     | 0-0 |
| Makes more FT than Opp.    | 1-0 |
| Makes fewer FT than Opp.   | 0-1 |
| Makes same FT as Opp.      | 1-0 |
| Scores 90-110              | 0-0 |
| Scores 80-89               | 1-0 |
| Scores 70-79               | 1-0 |
| Scores 69 or fewer         | 0-1 |
| Leads in rebounding        | 1-0 |
| Trails in rebounding       | 1-1 |
| Tied in rebounding         | 0-0 |
| More turnovers than Opp.   | 1-1 |
| Fewer turnovers than Opp.  | 1-0 |
| Same turnovers as Opp.     | 0-0 |
| In November                | 2-1 |
| In December                | 0-0 |
| In January                 | 0-0 |
| In February                | 0-0 |
| In March                   | 0-0 |
| Margin between 1-5         | 0-0 |
| Margin between 6-10        | 1-0 |
| Margin between 11-20       | 1-1 |
| Margin 20+                 | 0-0 |
| Overtime Games             | 0-0 |

**TV/RADIO CHART**

|   |   |  |   |
|---|---|--|---|
| <b>5-11</b><br><b>G</b><br><b>FR</b><br><br><b>1</b>    | <b>6-0</b><br><b>G</b><br><b>SO</b><br><br><b>4</b>    | <b>6-7</b><br><b>F</b><br><b>SO</b><br><br><b>5</b>      | <b>6-3</b><br><b>G</b><br><b>FR</b><br><br><b>10</b> |
| <b>5-9</b><br><b>G</b><br><b>R-SO</b><br><br><b>11</b>  | <b>6-5</b><br><b>G</b><br><b>SO</b><br><br><b>12</b>   | <b>6-3</b><br><b>G</b><br><b>JR</b><br><br><b>13</b>     | <b>6-0</b><br><b>G</b><br><b>JR</b><br><br><b>15</b> |
| <b>6-8</b><br><b>F</b><br><b>SO</b><br><br><b>23</b>   | <b>6-7</b><br><b>F</b><br><b>FR</b><br><br><b>24</b>   | <b>6-8</b><br><b>F</b><br><b>JR</b><br><br><b>25</b>    |   |
| <b>6-7</b><br><b>F</b><br><b>FR</b><br><br><b>32</b> | <b>6-4</b><br><b>G</b><br><b>FR</b><br><br><b>33</b> | <b>6-10</b><br><b>F</b><br><b>SR</b><br><br><b>44</b> |   |

**MIZZOU NUMERICAL ROSTER**

| No. | Name              | Ht.  | Wt. | Pos. | Yr.   | Exp. | Hometown / High School / Previous School                          |
|-----|-------------------|------|-----|------|-------|------|---|
| 1   | Terrence Phillips | 5-11 | 175 | G    | Fr.   | HS   | Orange County, Calif. / Oak Hill Academy (Va.)                    |
| 4   | Tramaine Isabell  | 6-0  | 178 | G    | So.   | 1L   | Seattle, Wash. / Garfield H.S.                                    |
| 5   | D'Angelo Allen    | 6-7  | 216 | F    | So.   | 1L   | Dallas, Texas / Kimball H.S.                                      |
| 10  | K.J. Walton       | 6-3  | 197 | G    | Fr.   | HS   | Brownsburg, Ind. / Brownsburg H.S.                                |
| 11  | Jimmy Barton      | 5-9  | 160 | G    | R-So. | RS   | St. Louis, Mo. / DeSmet Jesuit H.S. / Houston Baptist             |
| 12  | Namon Wright      | 6-5  | 202 | G    | So.   | 1L   | Los Angeles, Calif. / Pacific Hills                               |
| 13  | Trevor Glassman   | 6-3  | 200 | G    | Jr.   | TR   | Bedford, N.H. / New Hampton School                                |
| 15  | Wes Clark         | 6-0  | 180 | G    | Jr.   | 2L   | Detroit, Mich. / Romulus H.S.                                     |
| 23  | Jakeenan Gant     | 6-8  | 212 | F    | So.   | 1L   | Springfield, Ga. / Effingham County                               |
| 24  | Kevin Puryear     | 6-7  | 236 | F    | Fr.   | HS   | Blue Springs, Mo. / South H.S.                                    |
| 25  | Russell Woods     | 6-8  | 225 | F    | Jr.   | JC   | Chicago, Ill. / Simeon High School / John A. Logan College (Ill.) |
| 32  | Adam Wolf         | 6-7  | 202 | F    | Fr.   | HS   | Beaver Dam, Wis. / Beaver Dam H.S.                                |
| 33  | Cullen VanLeer    | 6-4  | 200 | G    | Fr.   | HS   | Pacific, Mo. / Pacific H.S.                                       |
| 44  | Ryan Rosburg      | 6-10 | 260 | F    | Sr.   | 3L   | Chesterfield, Mo. / Marquette H.S.                                |

**MIZZOU COACHING STAFF**

| Coach         | Position                            | Year   | Alma Mater, Year            |
|---------------|-------------------------------------|--------|-----------------------------|
| Kim Anderson  | Head Coach                          | Second | Missouri, 1979, '81         |
| Rob Fulford   | Assistant Coach                     | Second | Marshall, 1997              |
| Brad Loos     | Assistant Coach                     | Second | Austin Peay State, 2002     |
| Corey Tate    | Assistant Coach                     | First  | Missouri, 1997              |
| Paul Rorvig   | Basketball Operations               | Second | Central Missouri, 2005      |
| Steve Shields | Special Assistant to the Head Coach | First  | Baylor, 1988, '92           |
| Matt Herring  | Athletic Performance                | Second | Southwest Texas State, 1994 |