



11 NCAA TOURNAMENT APPEARANCES SINCE 2000 // 14 ALL-AMERICANS SINCE 2000 // 2013 SEC CHAMPIONS

2015 SCHEDULE

Date	Opponent	TV	Score/Time (CT)
Aug. 28	North Dakota St. !	SECN +	W, 3-2
Aug. 29	Winthrop !	SECN +	W, 3-0
Aug. 29	North Texas !	SECN +	W, 3-0
Sept. 4	vs. Florida Gulf Coast #		W, 3-0
Sept. 5	vs. Arkansas St. #		W, 3-2
Sept. 5	vs. South Florida #		W, 3-1
Sept. 11	vs. Appalachian St. %		W, 3-2
Sept. 12	vs. UNC Charlotte %		W, 3-1
Sept. 12	vs. Liberty %		W, 3-1
Sept. 18	vs. Southern Illinois ^		W, 3-1
Sept. 18	vs. Butler ^		W, 3-1
Sept. 19	vs. Youngstown St. ^		W, 3-0
Sept. 23	at Saint Louis		L, 3-0
Sept. 30	Florida *	SECN	W, 3-2
Oct. 4	Tennessee *	SECN+	1:30 pm
Oct. 9	at Mississippi State *	SECN +	7:00 pm
Oct. 11	at Alabama *	SECN	4:00 pm
Oct. 16	Ole Miss *		6:30 pm
Oct. 18	at Georgia *	SECN +	12:30 pm
Oct. 23	Mississippi State *		6:30 pm
Oct. 25	at Florida *	SECN +	12:30 pm
Oct. 28	Alabama *	SECN	7:00 pm
Nov. 1	Auburn *	SECN	4:00 pm
Nov. 4	at Texas A&M *	ESPNU	5:00 pm
Nov. 8	at LSU *	SECN	4:00 pm
Nov. 13	Georgia *		6:30 pm
Nov. 15	at Kentucky *		12:30 pm
Nov. 18	at Arkansas *	ESPNU	5:00 pm
Nov. 22	at Ole Miss *		1:30 pm
Nov. 25	Texas A&M *		6:30 pm
Nov. 27	South Carolina *		6:30 pm

Bold denotes home

! Tiger Invitational, Columbia, Mo.

South Florida Invitational, Tampa, Fla.

% Appalachian State Invitational, Boone, N.C.

^ Butler Invitational, Indianapolis, Ind.

* SEC Game

All times central

SEC Network + games can be found through the WatchESPN app

MATCH

15

MIZZOU TIGERS (13-1) VS. TENNESSEE VOLUNTEERS (16-2)

SUNDAY, OCT. 4, 2015 // 1:30 PM (CT) // HEARNES CENTER // COLUMBIA, MO

@MIZZOUVB	
13-1 (1-0 SEC)	
HEAD COACH	Wayne Kreklow
MIZZOU RECORD	217-117 (16th season)
CAREER RECORD	537-170 (19th season)
KILLS	759
ERRORS	231
TOTAL ATTACKS	1798
HITTING PERCENTAGE	.294
KILLS/SET	13.80
ASSISTS	702
ASSISTS/SET	12.76
ACES	76
DIGS	764
DIGS/SET	13.89
SOLO BLOCKS	47
ASSIST BLOCKS	178
TOTAL BLOCKS	136.0
BLOCK/SET	2.47

SERIES INFORMATION

ALL-TIME SERIES ... Mizzou leads, 5-2
IN COLUMBIA ... Mizzou leads, 3-0
LAST MEETING ... Mizzou 3, Tennessee 0
 ...on Nov. 7, 2014, at Knoxville, Tenn.

FOLLOW #MIZZOU

ON TELEVISION ... SEC Network +
 ... Ben Arnet (Play-by-Play)
 ... Alexis Steinbach (Color Analyst)
ONLINE ... [Twitter.com/MizzouVB](https://twitter.com/MizzouVB)
STATS ... Mizzou.StatBroadcast.com

TIGER OF THE WEEK



Kira Larson // RS-MD // RS So
 129 Kills This Season (2nd-Best on Mizzou)
 .338 Hitting Percentage (2nd-Best on Mizzou)
 162.0 Points This Season (2nd-Best on Mizzou)

@VOL_VBALL	
16-2 (2-1 SEC)	
HEAD COACH	Rob Patrick
TENNESSEE RECORD	375-211 (19th season)
CAREER RECORD	375-211 (19th season)
KILLS	821
ERRORS	301
TOTAL ATTACKS	2197
HITTING PERCENTAGE	.237
KILLS/SET	12.80
ASSISTS	770
ASSISTS/SET	12.0
ACES	77
DIGS	1054
DIGS/SET	16.47
SOLO BLOCKS	41
ASSIST BLOCKS	229
TOTAL BLOCKS	155.5
BLOCK/SET	2.43

LAST TIME OUT...

- ▶ After falling down 0-2 and trailing by as many as eight points in the third set, Mizzou rallied in exciting fashion to claim three consecutive sets and complete a thrilling 3-2 (22-25, 20-25, 25-21, 25-19, 15-10) victory in its 2015 SEC opener.
- ▶ The exciting win at the Hearnese Center marked Mizzou's third all-time victory against Florida. The Tigers are just one of four SEC teams with at least three wins over the Gators in the Mary Wise era.
- ▶ Mizzou is now 3-4 all-time against Florida. That record stands out as the other three SEC teams to record at least three wins against the Gators took at least 40 matches to accomplish the feat. The complete list can be found below: Tennessee (7 wins in 48 matches), Kentucky (4 wins in 51 matches) and LSU (5 wins in 40 matches).

MATCH 14



3



2

Date: Sept. 30, 2015
Location: Hearnese Center
 Columbia, Mo.
 2,954
Attendance:
Top Tiger Performers:
 Carly Kan - 17 Kills, 13 Digs
 Ali Kreklow - 25 Assists, 12 Digs

#MIZZOU STORYLINES

- ▶ Black and Gold fans were treated to a thrilling match Wednesday as the Tigers completed a 3-2 comeback victory over No. 9 Florida. Mizzou trailed the Gators 2-0 and faced a deficit as large as nine points in the third set. Head Coach **Wayne Kreklow** gathered the troops and led a thunderous attack en route to three consecutive set victories and an overall match triumph.
- ▶ The Tigers are now 4-0 all-time in SEC season openers. Oddly enough, the last time Mizzou came back from a 0-2 disadvantage was in 2012 in that season's SEC opener vs. Tennessee. On Sept. 12, 2012 against the Volunteers, Mizzou reeled off three straight sets and stunned the 17th ranked team in the country.
- ▶ Mizzou's 3-2 triumph Wednesday over No. 9 Florida marked its first win over a top-10 opponent since its 3-0 victory at No. 5 Florida on Nov. 15, 2013.
- ▶ Three Tigers finished with double-digit kills against the Gators. Junior **Carly Kan** tallied 17, junior **Julia Towler** finished with 10 and senior **Regan Peltier** produced 12. Kan also finished with 13 digs, marking her eighth double-double of the season.
- ▶ Sophomore setting duo of **Courtney Eckenrode** and **Ali Kreklow** helped key the Tiger comeback with 20 and 25 assists, respectively. Kreklow also chipped in 12 digs for Mizzou, giving her three double-doubles on the year.
- ▶ For the sixth time this season, Mizzou finished with double-digit blocks. Wednesday's 11 block performance against Florida played a big role into the team's comeback victory. Freshman **Alyssa Munlyn** paced the Tigers with six total blocks on the evening.
- ▶ Another key stat leading to Mizzou's upset was its season-high nine service aces. Six different Tigers recorded an ace, including a season-high of three from junior **Alexa Ethridge**. The Lee's Summit, Mo., native also had a team-high 15 digs, marking the 11th time this season that she has led Mizzou in the respective category.

QUICK FACTS

Location _____ Columbia, Mo.
 Founded: _____ 1839
 Enrollment: _____ 35,441
 Nickname: _____ Tigers
 Colors: _____ Old Gold and Black
 Stadium (Capacity): _____ Hearn Center (13,611)
 Conference: _____ Southeastern
 2014 Record: _____ 16-17
 SEC Record (Finish): _____ 7-11 (9th)
 Starters Returning / Lost: _____ 4/3
 Lettermen Returning / Lost: _____ 8/6

Mizzou Coaching Staff

Head Coach: _____ Wayne Kreklow (16th Season)
 Alma Mater _____ Drake University, 1980
 Missouri Record _____ 217-117 / .650 (11th Season)
 Overall Record: _____ 537-170 / .760 (19th season)
 Assistant Coach: _____ Susan Kreklow (16th Season)
 Assistant Coach: _____ Deng Yang (16th Season)
 Volunteer Assistant: _____ Dawei Shen (2nd Season)

Mizzou Administration

President: _____ Tim Wolfe
 Chancellor: _____ R. Bowen Loftin
 Director of Athletics: _____ Mack Rhoades
 Department Phone: _____ 573-882-6501
 Ticket Office Phone: _____ 573-884-7297

Mizzou Strategic Communications

Senior Associate AD _____ Ryan Bradley
 Associate AD: _____ Chad Moller
 Office Phone: _____ 573-882-0712
 E-Mail: _____ mollerc@missouri.edu
 Volleyball Contact: _____ Andy Oldenburg
 Office Phone: _____ 573-882-1645
 Cell Phone: _____ 314-954-2400
 E-Mail: _____ oldenburga@missouri.edu
 Associate Director: _____ Kate Lakin
 Assistant Director: _____ Patrick Crawford
 Assistant Director: _____ Shawn Davis
 Assistant Director: _____ Tyler Koonce
 Associate: _____ R.J. Layton
 Digital Media Specialist: _____ Ali Fisher
 Web Coordinator: _____ Kevin Fletcher
 Media Relations Fax: _____ 573-882-4720
 Twitter: _____ @MizzouVB
 Facebook: _____ Facebook.com/MizzouVolleyball
 Instagram: _____ @MizzouVB
 Website: _____ MUTigers.com

Pronunciation Guide

Julia Towler _____ TOLL-er
 Regan Peltier _____ PELL-tier
 Hao Jin _____ GIN
 Kasey Reuter _____ WRITE-er

2015 MIZZOU VOLLEYBALL ROSTER

No.	Name	Yr.	Pos.	Ht.	Hometown / High School
1	Alexa Armendariz	So	DS	5-6	Blue Springs, Mo. / Blue Springs South
2	Emily Thater	Jr	MB	6-3	Springfield, Mo. / Kickapoo
3	Riley Sents	Fr	DS	5-4	Grundy Center, Iowa / Grundy Center
4	Courtney Eckenrode	So	S	5-9	The Woodlands, Texas / The Woodlands
5	Ali Kreklow	So	S	5-9	Columbia, Mo. / Rock Bridge
7	Julia Towler	Jr	RS/MB	6-2	Blue Springs, Mo. / Blue Springs South
8	Alyssa Munlyn	Fr	MB	6-2	Suwanee, Ga. / North Gwinnett
9	Carly Kan	Jr	OH	5-9	Honolulu, Hawaii / Punahou
10	Kira Larson	R-So	RS/MB	6-2	Fargo, N.D. / Fargo North
11	Regan Peltier	Sr	OH/MB	6-2	Nixa, Mo. / Nixa
12	Hao Jin	Fr	MB	6-2	Shijiazhuang, China / Shijiazhuang #1
13	Alexa Ethridge	Jr	DS	5-7	Lee's Summit, Mo. / Lee's Summit North
14	Sydney Deeken	So	OH	6-1	California, Mo. / California
15	Kasey Reuter	So	OH	6-1	Sioux City, Iowa / Hinton

HEAD COACH: Wayne Kreklow (16th season)

ASSISTANT COACH: Susan Kreklow (16th season)

ASSISTANT COACH: Deng Yang (16th season)

VOLUNTEER ASSISTANT COACH: Dawei Shen (2nd season)

NUMBERS TO KNOW

11

trips to the NCAA Tournament since 2000, all of which coming under the helm of Wayne and Susan Kreklow

13

the Tigers have been in the top-25 national attendance rankings in each of the past 13 seasons

.295

Mizzou enters this weekend with a .295 team hitting percentage, ranking 2nd in the SEC

1ST

Junior Carly Kan ranks first in the SEC in total kills (252), kills per set (4.58) and points per set (5.13)

2.47

The Tigers are averaging 2.47 blocks per set, ranking 3rd in the SEC

MIZZOU AMONG NATION'S BEST SINCE 2000

- ▶ Since Wayne and Susan Kreklow took over at Mizzou in 2000, the Tigers have won 326 matches (.667 winning percentage). Over that 15 season span, the Tigers have averaged over 20 wins a year, been to the NCAA Tournament 11 times, and produced 14 All-Americans.
- ▶ The 326 wins also ranks Mizzou 16th nationally among teams from power conferences since 2000.

WINS SINCE 2000

1. Penn State.....483	10. UCLA355
2. Florida.....447	11. Wisconsin350
3. Nebraska447	12. Duke346
4. Stanford.....427	13. UNC342
5. USC.....401	14. Florida State.....336
6. Minnesota394	15. Ohio State331
T-7. Louisville376	16. MIZZOU326
T-7. Washington...376	17. Georgia Tech325
9. Texas370	

TIGERS KNOCK OFF NO. 9 FLORIDA IN SEC OPENER

- Mizou fans witnessed one of the more thrilling matches in program history on Wednesday, Sept. 30, as the Tigers knocked off No. 9 Florida Gators, 3-2. Mizou trailed the Gators 2-0 and faced a deficit as large as nine points in the third set. Coach Kreklow gathered the troops and sparked a thunderous comeback en route to three consecutive set victories and an overall match triumph.
- The Tigers are now 4-0 all-time in SEC season opener. Oddly enough, the last time Mizou came from a 0-2 match disadvantage was in 2012 in that season's SEC opener vs. Tennessee. On Sept. 12, 2012 against the Volunteers, Mizou reeled off three straight sets and stunned the 17th ranked team in the country.
- Mizou's 3-2 win over No. 9 Florida marked its first victory over a top-10 opponent since its 3-0 triumph at No. 5 Florida on Nov. 15, 2013.
- Three Tigers finished with double-digit kills against Florida. Junior **Carly Kan** tallied 17, junior **Julia Towler** finished with 10 and senior **Regan Peltier** produced 12. Kan also finished with 13 digs, marking her eighth double-double of the season.
- For the sixth time this season, Mizou finished with double-digit blocks. Its 11 block performance against Florida played a big role into the team's comeback victory. Freshman **Alyssa Munlyn** paced the Tigers with six total blocks on the evening.

MIZZOU 4-FOR-4 IN TOURNAMENT CHAMPIONSHIPS

- The Tigers concluded its early season tournament schedule from Sept. 18-19 in Indianapolis at the 2015 Butler Invitational. For the fourth straight tournament the Tigers produced three consecutive wins and improved its season record to 12-0. Mizou saved its best performance for last in Indianapolis with a 3-0 sweep over Youngstown State. The Tigers collectively hit .371 against the Penguins, marking their second-highest team hitting percentage of the season (only trailing .411 hitting percentage vs. North Texas on Aug. 29).
- Junior **Carly Kan** (MVP), redshirt sophomore **Kira Larson** and junior **Alexa Ethridge** were all named to the Butler Invitational All-Tournament Team for their outstanding performances. Kan and Larson have been named to all four tournament All-Tournament Teams this season. The honor was Ethridge's first All-Tournament Team nod of the year.
- Larson totaled 28 kills on .348 hitting to increase her team-leading hitting percentage to .377. Ethridge had a team-best 51 digs (4.64 per set) along with 11 assists to lead Mizou's back row defense.

KAN HONORED BY SEC OFFICE YET AGAIN

- For the second straight week, junior **Carly Kan** was honored by the Southeastern Conference office. For the week of Sept. 14-20, the Honolulu native was named the SEC Volleyball Co-Offensive Player of the Week. Kan was named the Butler Invitational MVP after recording 55 kills on .307 hitting and two double-doubles. In her last two matches, she recorded 44 kills on .435 hitting to close out another impressive tournament. Kan upped her season double-double total and 20-plus kill outputs to seven each.
- The award was Kan's second honor from the SEC office this season. She was previously named SEC Player of the Week on Monday, Sept. 14, after tallying 72 kills on .299 hitting at the 2015 Appalachian State Invitational.
- Kan has been honored by the SEC office three times in her career. Her first came in 2013 when she was named SEC Freshman of the Week on Oct. 14, 2013.

MIZZOU IN THE SEC & NCAA STATISTICS RANKINGS

- Mizou is off to an outstanding start this season, as they possess a 13-1 (1-0 SEC) record, four tournament championships and an upset victory over No. 9 Florida. Both Tiger individuals and team statistics currently sit well in the national rankings. A snapshot of those rankings can be found below:

TEAM

Category	Stat	SEC Rank	NCAA Rank
Hitting Percentage	.294	2	-
Kills Per Set	13.80	4	-
Assists Per Set	12.76	5	-
Blocks Per Set	2.47	3	-
Service Aces Per Set	1.38	3	-

INDIVIDUAL

Category	Stat	SEC Rank	NCAA Rank
CARLY KAN			
Total Kills	252	1	T-19
Kills Per Set	4.58	1	11
Points Per Set	5.13	1	T-11
Service Aces Per Set	0.31	10	

JULIA TOWLER

Hitting Percentage	.339	10	-
--------------------	------	----	---

ALYSSA MUNLYN

Blocks Per Set	1.07	10	-
----------------	------	----	---

ALEXA ETHRIDGE

Digs Per Set	3.84	T-7	-
--------------	------	-----	---

MIZZOU'S RECORD...

at home	4-0
on the road	3-1
at neutral site	6-0
when leading 1-0	7-0
when leading 2-0	6-0
when leading 2-1	7-0
when tied 1-1	6-0
when tied 2-2	4-0
when trailing 1-0	6-1
when trailing 2-0	1-1
when trailing 2-1	2-0
Hitting % is higher than opponent's	12-0
Opponent's Hitting % is higher than Mizou's	0-1
when Mizou out-kills opponent	9-0
when opponent out-kills Mizou	3-1
when Mizou out-digs opponent	9-0
when opponent out-digs Mizou	4-1
when Mizou out-blocks opponent	11-1
when opponent out-blocks Mizou	1-0
when Mizou serves more aces	10-0
when opponent serves more aces	3-0
on Wednesdays	1-1
on Fridays	5-0
on Saturdays	7-0
on Sundays	0-0
in morning/afternoon matches	5-0
in evening matches	8-1

A LOOK AROUND THE SEC...

(all times Central)

SUNDAY, OCT. 4

South Carolina at Mississippi State	11 a.m.
Alabama at (21) Kentucky	12:30 p.m.
Ole Miss at Texas A&M	1 p.m.
(9) Florida at Arkansas	1:30 p.m.
LSU at Auburn	5 p.m.

WEDNESDAY, OCT. 7

Arkansas at (21) Kentucky	6 p.m.
Tennessee at LSU	8 p.m.

FRIDAY, OCT. 9

Auburn at South Carolina	6 p.m.
Texas A&M at (9) Florida	6 p.m.
Georgia at Ole Miss	6:30 p.m.

SUNDAY, OCT. 11

Georgia at Mississippi State	12 p.m.
Texas A&M at South Carolina	12 p.m.
Arkansas at Tennessee	12:30 p.m.
Auburn at (9) Florida	3 p.m.

2015 SEC STANDINGS

Team	SEC	Overall	Streak
Kentucky	3-0	10-5	W6
Arkansas	2-0	12-2	W4
MIZZOU	1-0	13-1	W1
Tennessee	2-1	16-2	W2
LSU	2-1	6-8	W2
Auburn	1-1	9-5	L1
Texas A&M	1-1	8-5	W1
Alabama	1-1	7-9	L1
Ole Miss	1-2	15-3	W1
Florida	1-2	9-3	L2
Mississippi State	1-2	11-5	L1
Georgia	0-2	5-9	L2
South Carolina	0-3	7-9	L4



AVCA TOP-25 POLL

PRESEASON (SEPT. 28, 2015)

Rank	School	Record	Points
1	Penn State (63)	13-0	1,599
2	USC (1)	14-0	1,502
3	Texas	12-1	1,494
4	Nebraska	11-1	1,401
5	Washington	13-0	1,319
6	Arizona State	13-0	1,296
7	Illinois	11-2	1,159
8	Stanford	7-3	1,139
9	Florida	9-2	1,121
10	Hawaii	12-1	1,014
11	UCLA	10-2	863
12	Kansas	14-0	852
13	Ohio State	12-2	794
14	Arizona	11-3	766
15	BYU	11-2	756
16	Minnesota	9-3	596
17	Florida State	9-4	551
18	Purdue	11-2	488
19	Wisconsin	8-4	447
20	Colorado State	9-3	388
21	Kentucky	10-5	351
22	Oregon	7-4	346
23	Michigan	11-2	155
24	Long Beach State	12-3	138
25	Wyoming	12-2	63

Others Receiving Votes: Arkansas (56), Western Kentucky (39), Pacific (20), San Diego (16), North Carolina (10), Gonzaga (9), Michigan State (9), Iowa (7), Ohio (7), Creighton (5), Pittsburgh (4), Iowa State (3)

TIGERS NET THIRD STRAIGHT TOURNAMENT TITLE

- ▶ Mizzou improved to 9-0 on the season following its three victories and championship at the 2015 Appalachian State Invitational. It marked the team's third consecutive tournament title to open the season.
- ▶ Junior **Carly Kan** (MVP), redshirt sophomore **Kira Larson**, and freshman **Alyssa Munlyn** were all named to the Appalachian State Invitational All-Tournament Team for their outstanding performances. Kan earned her third straight tournament MVP honors this season after tallying 72 kills on .299 hitting in three matches. The Honolulu, Hawaii, native finished with 20-plus kills in each of Mizzou's matches in Boone, North Carolina. She has six 20-plus kill outputs in the Tigers' nine matches so far this season.
- ▶ Larson joins Kan as being a three-time All-Tournament honoree this season. The Fargo, North Dakota, native produced 35 kills on .444 hitting and eight total blocks at the invite. Munlyn is now a two-time All-Tournament recipient, as she had 22 kills on .452 hitting and a team-leading 18 total blocks at the Appalachian State Invitational.
- ▶ Mizzou saw contributions up-and-down the lineup last weekend, as senior **Regan Peltier** (28 kills & 35 digs), junior **Emily Thater** (20 kills on .395 hitting, eight total blocks) and junior **Julia Towler** (17 kills and 13 total blocks) also turned in strong performances.

KAN NAMED SEC PLAYER OF THE WEEK

- ▶ Junior **Carly Kan** was on a mission in Boone, North Carolina, at the 2015 Appalachian State Invitational, as she recorded three consecutive 20-plus kill matches. Overall that weekend, she tallied 72 kills on .299 hitting and twice had a career-high 26 kills in single matches.
- ▶ For her outstanding weekend, Kan was named the SEC Volleyball Week Three Player of the Week. (Sept. 7-13, 2015). It marked the second career SEC weekly honor for Kan, as she was also named Freshman of the Week on Oct. 14, 2013.
- ▶ Currently, the Honolulu, Hawaii, native ranks first in the SEC in kills (252), kills per set (4.58), and points per set (5.13). Those numbers also rank highly nationally, as she currently stands at T-19th, 11th, and th place, respectively.

KAN REACHES 1,000 CAREER POINTS

- ▶ In her 75th career match, junior outside hitter **Carly Kan** surpassed 1,000 points for her Mizzou Volleyball career. To cap her MVP performance at the USF Invite (Sept. 4-5), Kan tallied 22 kills on .340 hitting and led the Tigers to their second tournament title of the season.
- ▶ Kan's quick rise to 1,000 career points ranks her at the top of Mizzou Volleyball history. Former 3x All-American outside hitter **Lisa Henning** was previously the fastest to reach that mark, as both Kan and Henning tallied the historic number at 75 career matches.
- ▶ After her breakout 2013 freshman season where she earned SEC Freshman of the Year honors, Kan has continued to get better and better each season. The Honolulu, Hawaii, native had 383 kills in 2013, 418 kills in 2014, and has already amassed 168 kills through the team's first nine matches.
- ▶ The talented Tiger also tallied 1,000 career kills this season and is on the verge of posting 1,000 career digs. Kan would become just one-of-five Tigers to ever record 1,000 career kills / digs / points. Currently on the list is Shen Danru (2002-05), Jessica Vander Kooi (2003-06), Yvette Buhlig (1988-92) and Naaron Branson (1998-01).

MIZZOU WINS SECOND STRAIGHT TOURNAMENT

- ▶ Mizzou improved to 6-0 on the young season following its second consecutive tournament victory in many weeks. The Tigers defeated Florida Gulf Coast (3-0), Arkansas State (3-2), and South Florida (3-1) in the two day span.
- ▶ The Tigers continued their impressive combination of effective hitting and defense throughout their trip in Tampa, Florida. After hitting over .300 as a team in two of three matches, the Tigers' .328 hitting percentage for the season ranks second in the SEC. Defensively, Mizzou had double-digit blocks in each match at the USF Invite, adding onto their outstanding block totals for the season. In fact, the Tigers' 2.78 blocks per set through six matches ranks second best in the conference.
- ▶ Leading the blocking brigade in Tampa was junior middle blocker **Emily Thater**. The Springfield, Missouri, native had 12 total blocks in the tournament, including three in the solo fashion. Thater's greatest effort at the net came against Arkansas State, when she finished with six total blocks (two solo).
- ▶ In the tournament finale against South Florida, coach Kreklow was welcomed with an outstanding performance off the bench by freshman middle blocker **Hao Jin**. Heading into that match, Jin had not recorded a kill all season long, but she exploded against the Bulls with nine kills on .600 hitting and six total blocks.

TIGERS IMPRESSIVE AT TIGER INVITATIONAL

- ▶ Mizzou Volleyball opened the season (Aug. 28-29) in the friendly confines of the Hearn Center, recording three consecutive wins en route to a tournament title at the 20th annual Tiger Invitational.
- ▶ In each match of the tournament, the Tigers improved upon their previous team hitting percentage number. Mizzou began with 58 kills on .309 hitting against North Dakota State, followed by 42 kills on .343 hitting against Winthrop, and culminated with an outstanding 43 kills on .411 hitting versus North Texas.
- ▶ The Tigers used a balanced attack throughout the weekend, led by junior outside hitter **Carly Kan** (50 kills on .430 hitting). Also leading the offense was senior outside hitter **Regan Peltier** (26 kills, three aces, 12 digs), redshirt sophomore right side/middle blocker **Kira Larson** (24 kills on .392 hitting), freshman middle blocker **Alyssa Munlyn** (23 kills on .364 hitting, 16 total blocks), and junior right side/middle blocker **Julia Towler** (13 kills on .312 hitting, 10 total blocks).
- ▶ The Tigers' 6-2 offensive rotation saw consistent performances from sophomore setting duos of **Ali Kreklow** and **Courtney Eckenrode**. Both Tigers finished with over 5.00 assists per set, as Kreklow tallied 57 assists and Eckenrode finished with 60 assists in the three matches.

KAN CONTINUES THE DOUBLE-DOUBLE MACHINE

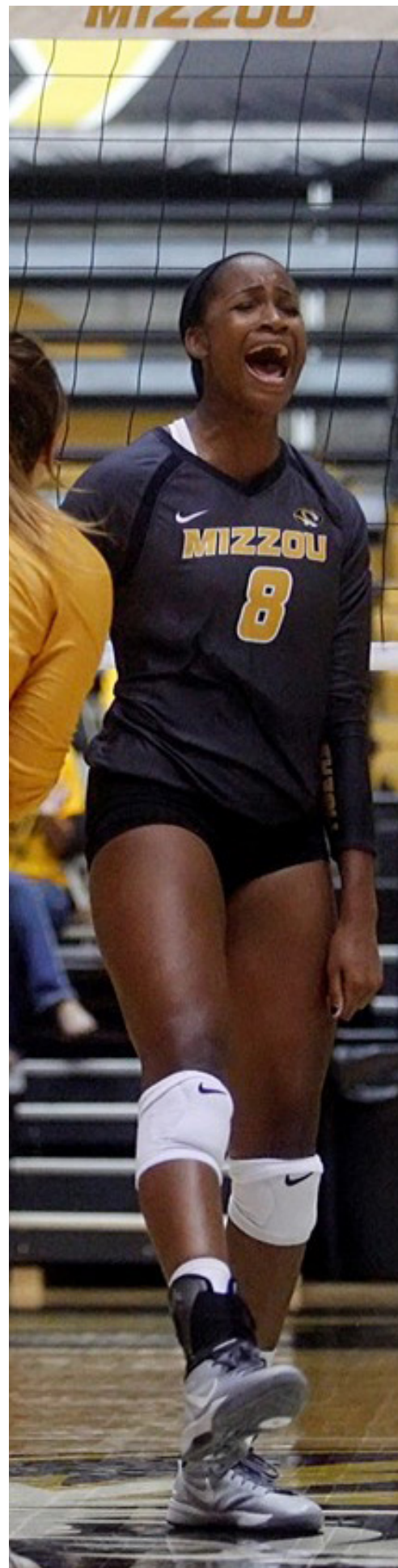
- ▶ Junior outside hitter **Carly Kan** had a historical freshman campaign in 2013, where she was named SEC Freshman of the Year and an AVCA All-American. Kan didn't disappoint in her sophomore encore, as she once again earned AVCA All-American honors.
- ▶ Along with leading the nation in combined kills and digs a season ago, Kan put up historical double-double numbers on the court. Overall, the Honolulu, Hawaii, native tallied 19 double-doubles in 2014, matching the school record for most double-doubles in a season during the 25-point set era (since 2008). She is now tied at the top with former Tiger All-American setter, **Molly Kreklow**.
- ▶ In 2015, Kan has already racked up eight more double-doubles, totaling 35 for her standout Tiger career.

KAN NAMED TO 2015 PRESEASON ALL-SEC TEAM

- ▶ Junior outside hitter **Carly Kan** was named to the 2015 Preseason Volleyball All-SEC Team in mid-August by the Southeastern Conference office. She was the lone outside hitter on this year's list.
- ▶ Kan was one of nine student-athletes to be named to this season's Preseason All-SEC Team, and it marked the second consecutive preseason recognition for the Honolulu, Hawaii, native.
- ▶ The talented Tiger proved to be one of the nation's top outside hitters in 2014, leading the SEC with 19 double-doubles. That number matched the Mizzou Volleyball program record for double-doubles in a season during the 25-point set era.
- ▶ Overall, Kan tallied 418 kills, 394 digs, and 457.5 points in her sophomore campaign for Mizzou. She also led the nation in combined kills and digs in 2014.
- ▶ Joining Kan on the 2015 Preseason All-SEC Team were Krystal Rivers (OPP - Alabama), Chanell Clark-Biggs (MB - Arkansas), Rhamat Alhassan (MB - Florida), Mackenzie Dagostino (S - Florida), Alex Holston (RS - Florida), Morgan Bergren (S - Kentucky), Nakeyta Clair (MB - Ole Miss) and Shelby Sullivan (MB - Texas A&M).

MIZZOU MAKING IMPACT WITH TEAM USA

- ▶ A pair of Tigers, former All-American setter **Molly Kreklow** and current star outside hitter **Carly Kan**, have enjoyed tremendous success recently with Team USA Volleyball.
- ▶ Kreklow played a huge role into the U.S. National Team's FIVB World Grand Prix Championship in July. Team USA finished the World Grand Prix a perfect 5-0, and the former Tiger was named the Grand Prix's Most Outstanding Setter.
- ▶ Kreklow started at setter for Team USA in all five matches of the FIVB World Grand Prix, as the team dropped just one set during the entire tournament.
- ▶ More great news for Kreklow came a month later when she was one of 14 players to make the final U.S. roster for the 2015 FIVB World Cup. Beginning in late August, the U.S. National Team will look to finish either first or second at the FIVB World Cup and guarantee qualification into the 2016 Rio Olympic Games.
- ▶ Also shining for Team USA this summer was Kan, who was selected to a USA Volleyball roster for the second consecutive year. In July, Kan made her way to South Korea with Team USA at the World University Games.
- ▶ Kan was one of 12 players selected to the team that was part of USA Volleyball's High Performance program's Collegiate National Team.
- ▶ The Honolulu native had arguably her best match with Team USA on July 1 when she produced seven points on six kills (.545 hitting percentage).





MISSOURI SET FOR SEVEN NATIONAL TV MATCHES

- ▶ The Tigers will be featured in seven nationally-televised broadcasts in 2015, as announced in late June by the Southeastern Conference. Five Missouri contests are set for SEC Network coverage, while two matches will air on ESPN.
- ▶ Missouri will be a part of four "Wednesday Night Volleyball" matches this season, beginning with the team's SEC and home opener on Sept. 30 against Florida. The Tigers' first televised road contest is set for Oct. 11 at Alabama on SEC Network.
- ▶ Beginning on Oct. 28 vs. Alabama, the Tigers have four consecutive matches set for national television coverage. Following its matchup against the Crimson Tide, Missouri's contest versus Auburn at the Hearnest Center on Nov. 1 will also be broadcasted on SEC Network.
- ▶ The string of four consecutive televised games continues on Nov. 4 with another "Wednesday Night Volleyball" match at Texas A&M on ESPN. SEC Network coverage returns on Nov. 8 as Missouri travels to LSU.
- ▶ Missouri's last nationally-televised match in 2015 is its fourth and final "Wednesday Night Volleyball" contest, as it heads to Arkansas on Nov. 18. The Tigers and Razorbacks will be viewable on ESPN.
- ▶ Tigers fans will also have the opportunity to view numerous matches through SEC Network + via WatchESPN. The season opening tournament matches will all be viewable on SEC Network +, in addition to three future conference matchups.

FANS CONTINUE TO FILL THE HEARNES CENTER

- ▶ Matchdays at the Hearnest Center have an excitement that is unmatched. Since 2000 and the arrival of Wayne and Susan Kreklow, the Tigers faithful have continued to come through the turnstiles in incredible fashion.
- ▶ For the past 13 seasons, Missouri has finished in the top-25 national attendance rankings. In fact, the Tigers have 11 top-20 national attendance numbers, and three top-10 totals since 2002.
- ▶ The program's most highly attended season came in 2013, as the team went 34-0 and claimed Missouri Athletics' first ever SEC Championship. On Nov. 22, 2013 - the SEC Championship clinching match - the Tigers took home the crown in front of a school-record 7,879 fans (the first of two 7,000 + crowds that season).
- ▶ Below is a snapshot of Missouri Volleyball's top attendance seasons since 2000:
 - 2013 (62,717 fans - 3,301 average - 3rd best in the nation)
 - 2012 (26,767 fans - 1,784 average - 20th best in the nation)
 - 2011 (25,279 fans - 2,298 average - 13th best in the nation)
 - 2010 (26,632 fans - 2,049 average - 16th best in the nation)
 - 2009 (27,302 fans - 1,820 average - 20th best in the nation)
 - 2008 (17,875 fans - 1,625 average - 16th best in the nation)
 - 2007 (27,337 fans - 2,103 average - 11th best in the nation)
 - 2006 (28,216 fans - 2,565 average - 7th best in the nation)
 - 2005 (40,052 fans - 2,670 average - 6th best in the nation)

TIGERS HONORED FOR ACADEMIC EXCELLENCE

- ▶ Missouri Volleyball has routinely excelled in the classroom, and the program was honored for its outstanding achievements for the 2014-15 academic year.
- ▶ Beginning in late May following the Spring 2015 semester at the University of Missouri, the Tigers finished with a 3.55 cumulative GPA and it was the team's highest GPA in more than a decade. In fact, according to Missouri's Total Person Program (TPP), the 3.55 Spring 2015 semester GPA was the highest as a program since 2004.
- ▶ Individually, the Tigers swept up a slew of impressive academic awards in 2014-15. They included the following:
 - **Alexa Armendariz** (2014-15 First-Year SEC Academic Honor Roll)
 - **Sydney Deeken** (2014-15 First-Year SEC Academic Honor Roll)
 - **Lydia Ely** (Missouri '39 recipient, Chancellor's Excellence Award)
 - **Carly Kan** (2014 SEC Scholar Athlete of the Year, 2014 CoSIDA Academic All-District Team, 2014 Fall SEC Academic Honor Roll)
 - **Ali Kreklow** (2014-15 First-Year SEC Academic Honor Roll)
 - **Regan Peltier** (2014 Fall SEC Academic Honor Roll)
 - **Kasey Reuter** (2014-15 First-Year SEC Academic Honor Roll)
 - **Emily Thater** (2014 Fall SEC Academic Honor Roll)
 - **Julia Towler** (2014 Fall SEC Academic Honor Roll)
- ▶ Last but not least, in late July the Tigers received the 2014-15 AVCA Team Academic Award.
- ▶ The AVCA Team Academic Award honors collegiate and high school volleyball teams that displayed excellence in the classroom during the school year by maintaining at least a 3.30 cumulative team grade-point average on a 4.0 scale or a 4.10 cumulative team GPA on a 5.0 scale.

#1 • ALEXA ARMENDARIZ • SO • DS • BLUE SPRINGS, MO

2014-15 FIRST-YEAR SEC ACADEMIC HONOR ROLL

QUICK FACTS

- ▶ Younger sister of former Tiger libero, Priscilla Armendariz
- ▶ Was the first ever Blue Springs South player to be named an AVCA/Under Armour High School AA
- ▶ Valuable defensive specialist for the Tigers in 2015, twice recording two dig matches already
- ▶ Tallied a career-high 11 digs vs. Xavier last season
- ▶ Mizzou lost just once a season ago when she had 10 or more digs in a match

CAREER HIGHS

Assists 3 - vs. SLU (9-9-14)
Aces 4 - vs. UNCG (9-20-14)
Digs 11 - vs. Xavier (9-6-14)
Points 4.0 - vs. UNCG (9-20-14)

SEASON HIGHS

Assists N/A
Aces N/A
Digs 4 - vs. Appalachian State (9-11-15)
Points N/A


CAREER STATISTICS

Year	MP/MS	SP	K	E	TA	H%	A	SA	D	BS	TB	PTS
2014	27-8	89	0	0	0	.000	8	8	114	0	0	8.0
2015	10-0	22	0	0	0	.000	0	0	14	0	0	0.0
Totals	37-8	111	0	0	0	.000	8	8	128	0	0	8.0

2015 MATCH-BY-MATCH STATISTICS

DATE	OPPONENT	MP/MS	SP	K	E	TA	H%	A	SA	D	BS	TB	PTS
Aug. 28	North Dakota State	1-0	3	0	0	0	.000	0	0	2	0	0	0.0
Aug. 29	Winthrop	1-0	2	0	0	0	.000	0	0	0	0	0	0.0
Aug. 29	North Texas	1-0	3	0	0	0	.000	0	0	2	0	0	0.0
Sept. 4	vs. Florida Gulf Coast	DNP											
Sept. 5	vs. Arkansas State	1-0	1	0	0	0	.000	0	0	1	0	0	0.0
Sept. 5	at South Florida	1-0	2	0	0	0	.000	0	0	2	0	0	0.0
Sept. 11	at Appalachian State	1-0	3	0	0	0	.000	0	0	4	0	0	0.0
Sept. 12	vs. Charlotte	1-0	4	0	0	0	.000	0	0	2	0	0	0.0
Sept. 12	vs. Liberty	1-0	1	0	0	0	.000	0	0	0	0	0	0.0
Sept. 18	vs. Southern Illinois	1-0	1	0	0	0	.000	0	0	0	0	0	0.0
Sept. 18	vs. Butler	DNP											
Sept. 19	vs. Youngstown State	DNP											
Sept. 23	at Saint Louis	1-0	2	0	0	0	.000	0	0	1	0	0	0.0
Sept. 30	Florida	DNP											
Oct. 4	Tennessee												
Oct. 9	at Mississippi State												
Oct. 11	at Alabama												
Oct. 16	Ole Miss												
Oct. 18	at Georgia												
Oct. 23	Mississippi State												
Oct. 25	at Florida												
Oct. 28	Alabama												
Nov. 1	Auburn												
Nov. 4	at Texas A&M												
Nov. 8	at LSU												
Nov. 13	Georgia												
Nov. 15	at Kentucky												
Nov. 18	at Arkansas												
Nov. 22	at Ole Miss												
Nov. 25	Texas A&M												
Nov. 27	South Carolina												
TOTALS		10-0	22	0	0	0	.000	0	0	14	0	0	0.0

#2 • EMILY THATER • JR • MB • SPRINGFIELD, MO

2014 FALL SEC ACADEMIC HONOR ROLL

QUICK FACTS

- ▶ Pursuing major through renowned Missouri School of Journalism
- ▶ Hit an outstanding .889 (8 kills on 9 attacks) vs. Youngstown State (Sept. 19) in Butler Invitational finale
- ▶ Breakout match in USF Invite opener (Sept. 4), tallying 10 kills on .667 hitting and five total blocks
- ▶ Established new career highs in kills, attacks, assists, aces, total blocks, digs and points in 2014
- ▶ Paced Mizzou in blocks 14 times last season, second most on the team

CAREER HIGHS

Kills13 - vs. Xavier (9-6-14)
Attacks24 - Twice - MR vs. SLU (9-9-14)
Hitting %889 - vs. Youngstown State (9-19-15)
Assists2 - Twice - MR vs. SLU (9-9-14)
Aces4 - vs. Xavier (9-6-14)
Solo Blocks3 - vs. SLU (9-9-14)
Total Blocks8 - 3x - MR at LSU (11-21-14)
Digs8 - at Idaho (9-11-14)
Points19.0 - vs. Xavier (9-6-14)

SEASON HIGHS

Kills10 - vs. Florida Gulf Coast (9-4-15)
Attacks19 - vs. Liberty (9-12-15)
Hitting %889 - vs. Youngstown State (9-19-15)
Assists1 - 2x - MR vs. Charlotte (9-12-15)
AcesN/A
Solo Blocks2 - vs. Arkansas State (9-5-15)
Total Blocks6 - vs. Arkansas State (9-5-15)
Digs2 - vs. Arkansas State (9-5-15)
Points13.0 - vs. Florida Gulf Coast (9-4-15)



CAREER STATISTICS

Year	MP/MS	SP	K	E	TA	H%	A	SA	D	BS	TB	PTS
2013	36-36	110	151	41	292	.377	5	37	39	17	93	243.0
2014	32-30	108	171	75	393	.244	25	24	57	18	95	251.5
2015	14-7	49	70	21	151	.325	2	0	6	7	38	92.5
Totals	82-73	267	392	137	836	.305	32	61	102	42	226	587.0

2015 MATCH-BY-MATCH STATISTICS

DATE	OPPONENT	MP/MS	SP	K	E	TA	H%	A	SA	D	BS	TB	PTS
Aug. 28	North Dakota State	1-1	5	2	1	7	.143	0	0	0	0	0	2.0
Aug. 29	Winthrop	1-1	3	1	1	7	.000	0	0	1	1	2	2.5
Aug. 29	North Texas	1-1	3	4	0	7	.571	0	0	1	0	3	5.5
Sept. 4	vs. Florida Gulf Coast	1-1	3	10	0	15	.667	0	0	0	1	5	13.0
Sept. 5	vs. Arkansas State	1-0	5	2	1	5	.200	1	0	2	2	6	6.0
Sept. 5	at South Florida	1-0	1	1	0	2	.500	0	0	0	0	1	1.5
Sept. 11	at Appalachian State	1-0	3	4	1	9	.333	0	0	0	0	2	5.0
Sept. 12	vs. Charlotte	1-0	4	8	1	15	.467	1	0	0	0	4	10.0
Sept. 12	vs. Liberty	1-1	4	8	1	19	.368	0	0	1	0	2	9.0
Sept. 18	vs. Southern Illinois	1-0	4	9	3	17	.353	0	0	0	1	1	10.0
Sept. 18	vs. Butler	1-1	4	2	3	12	-.083	0	0	1	1	3	4.0
Sept. 19	vs. Youngstown State	1-0	3	8	0	9	.889	0	0	0	1	3	10.0
Sept. 23	at Saint Louis	1-0	2	3	4	11	-.091	0	0	0	0	2	4.0
Sept. 30	Florida	1-1	5	8	5	16	.188	0	0	0	0	4	10.0
Oct. 4	Tennessee												
Oct. 9	at Mississippi State												
Oct. 11	at Alabama												
Oct. 16	Ole Miss												
Oct. 18	at Georgia												
Oct. 23	Mississippi State												
Oct. 25	at Florida												
Oct. 28	Alabama												
Nov. 1	Auburn												
Nov. 4	at Texas A&M												
Nov. 8	at LSU												
Nov. 13	Georgia												
Nov. 15	at Kentucky												
Nov. 18	at Arkansas												
Nov. 22	at Ole Miss												
Nov. 25	Texas A&M												
Nov. 27	South Carolina												
TOTALS		14-7	49	70	21	151	.325	2	0	6	7	38	92.5

QUICK FACTS

- ▶ Was coached by her dad throughout high school at Grundy Center
- ▶ Led the state of Iowa in digs as a sophomore and junior
- ▶ 2x North Iowa Cedar League First Team selection, Conference Player of the Year as a junior
- ▶ In all, boasted a .972 service reception percentage in four years of high school
- ▶ Guided Grundy Center to conference titles in every year with the program

SEASON / CAREER HIGHS

Attacks.....	N/A
Assists	N/A
Aces	N/A
Digs	N/A
Points	N/A



CAREER STATISTICS

Year	MP/MS	SP	K	E	TA	H%	A	SA	D	BS	TB	PTS
2015	0-0	0	0	0	0	.000	0	0	0	0	0	0.0
Totals	0-0	0	0	0	0	.000	0	0	0	0	0	0.0

2015 MATCH-BY-MATCH STATISTICS

DATE	OPPONENT	MP/MS	SP	K	E	TA	H%	A	SA	D	BS	TB	PTS
Aug. 28	North Dakota State	DNP											
Aug. 29	Winthrop	DNP											
Aug. 29	North Texas	DNP											
Sept. 4	vs. Florida Gulf Coast	DNP											
Sept. 5	vs. Arkansas State	DNP											
Sept. 5	at South Florida	DNP											
Sept. 11	at Appalachian State	DNP											
Sept. 12	vs. Charlotte	DNP											
Sept. 12	vs. Liberty	DNP											
Sept. 18	vs. Southern Illinois	DNP											
Sept. 18	vs. Butler	DNP											
Sept. 19	vs. Youngstown State	DNP											
Sept. 23	at Saint Louis	DNP											
Sept. 30	Florida	DNP											
Oct. 4	Tennessee												
Oct. 9	at Mississippi State												
Oct. 11	at Alabama												
Oct. 16	Ole Miss												
Oct. 18	at Georgia												
Oct. 23	Mississippi State												
Oct. 25	at Florida												
Oct. 28	Alabama												
Nov. 1	Auburn												
Nov. 4	at Texas A&M												
Nov. 8	at LSU												
Nov. 13	Georgia												
Nov. 15	at Kentucky												
Nov. 18	at Arkansas												
Nov. 22	at Ole Miss												
Nov. 25	Texas A&M												
Nov. 27	South Carolina												
TOTALS		0-0	0	0	0	0	.000	0	0	0	0	0	0.0

QUICK FACTS

- ▶ Posted first two double-doubles of the season at the Butler Invitational (Sept. 18-19)
- ▶ Recorded her 1,000th career assist at the 2015 Appalachian State Invitational (Sept. 11-12)
- ▶ One of three transfers this season, coming to Mizzou from San Diego State
- ▶ Her 9.72 assists per set ranked eighth in the Mountain West Conference last year at SDSU
- ▶ 2013 Texas Gatorade Player of the Year at The Woodlands High School
- ▶ 2013 *USA Today* Player of the Year and *MaxPreps* Player of the Year

CAREER HIGHS

Kills 4 - Three Times, MR at UNLV (11-25-14)
Attacks 13 - vs. Wyoming (11-1-14)
Assists 55 - at UNLV (11-25-14)
Aces 3 - at San Jose State (10-18-14)
Solo Blocks 1 - at San Jose State (10-18-14)
Total Blocks 4 - at San Jose State (10-18-14)
Digs 17 - vs. New Mexico (10-9-14)
Points 6.5 - at San Jose State (10-18-14)

SEASON HIGHS

Kills 1 - 2x - MR vs. Charlotte (9-12-15)
Attacks 1 - 5x - MR vs. Liberty (9-12-15)
Assists 31 - vs. South Florida (9-5-15)
Aces 2 - 4x - MR vs. Southern Illinois (9-18-15)
Solo Blocks N/A
Total Blocks N/A
Digs 12 - vs. Southern Illinois (9-18-15)
Points 2.0 - 4x - MR vs. Southern Illinois (9-18-15)



CAREER STATISTICS

Year	MP/MS	SP	K	E	TA	H%	A	SA	D	BS	TB	PTS
2014	27-19	89	52	27	141	.177	865	9	186	1	17	70.0
2015	14-7	55	2	1	6	.167	322	12	87	0	0	14.0
Totals	41-26	144	54	28	147	.177	1,187	21	273	1	17	84.0

2015 MATCH-BY-MATCH STATISTICS

DATE	OPPONENT	MP/MS	SP	K	E	TA	H%	A	SA	D	BS	TB	PTS
Aug. 28	North Dakota State	1-1	5	0	0	1	.000	25	0	5	0	0	0.0
Aug. 29	Winthrop	1-1	3	0	0	0	.000	16	0	5	0	0	0.0
Aug. 29	North Texas	1-1	3	0	0	0	.000	19	2	2	0	0	2.0
Sept. 4	vs. Florida Gulf Coast	1-1	3	0	0	0	.000	15	2	2	0	0	2.0
Sept. 5	vs. Arkansas State	1-0	5	0	0	0	.000	26	2	5	0	0	2.0
Sept. 5	at South Florida	1-0	4	0	0	1	.000	31	1	9	0	0	1.0
Sept. 11	at Appalachian State	1-0	5	1	0	1	1.000	28	0	3	0	0	1.0
Sept. 12	vs. Charlotte	1-0	4	1	0	1	1.000	25	0	8	0	0	1.0
Sept. 12	vs. Liberty	1-1	4	0	1	1	-1.000	30	1	9	0	0	1.0
Sept. 18	vs. Southern Illinois	1-0	4	0	0	0	.000	24	2	12	0	0	2.0
Sept. 18	vs. Butler	1-1	4	0	0	0	.000	24	0	11	0	0	0.0
Sept. 19	vs. Youngstown State	1-0	3	0	0	0	.000	18	1	5	0	0	1.0
Sept. 23	at Saint Louis	1-0	3	0	0	0	.000	21	0	5	0	0	0.0
Sept. 30	Florida	1-1	5	0	0	0	.000	20	1	6	0	0	1.0
Oct. 4	Tennessee												
Oct. 9	at Mississippi State												
Oct. 11	at Alabama												
Oct. 16	Ole Miss												
Oct. 18	at Georgia												
Oct. 23	Mississippi State												
Oct. 25	at Florida												
Oct. 28	Alabama												
Nov. 1	Auburn												
Nov. 4	at Texas A&M												
Nov. 8	at LSU												
Nov. 13	Georgia												
Nov. 15	at Kentucky												
Nov. 18	at Arkansas												
Nov. 22	at Ole Miss												
Nov. 25	Texas A&M												
Nov. 27	South Carolina												
TOTALS		14-7	55	2	1	6	.167	322	12	87	0	0	14.0

#5 • ALI KREKLOW • SO • S • COLUMBIA, MO

2014-15 FIRST-YEAR SEC ACADEMIC HONOR ROLL

QUICK FACTS

- ▶ Posted season-high 12 digs, along with 25 assists (3rd double-double of season) vs. Florida (Sept. 30)
- ▶ Earned second double-double of 2015 season with 34 assists & 10 digs vs. Appalachian St. (Sept. 15)
- ▶ Daughter of Mizzou Volleyball coaches Wayne and Susan Kreklow
- ▶ Cousin of former Tiger All-American and U.S. National Team setter, Molly Kreklow
- ▶ Tallied her first career double-double at Tennessee last season (11-7-14) with 13 assists and 14 digs
- ▶ Led or tied with the most assists on the team 12 times in 2014

CAREER HIGHS

Kills 2 - vs. Alabama (11-26-14)
Attacks 4 - vs. Idaho (9-11-14)
Assists 34 - vs. Appalachian State (9-11-15)
Aces 5 - vs. North Dakota State (8-28-15)
Solo Blocks N/A
Total Blocks 1 - vs. Appalachian State (9-11-15)
Digs 14 - at Tennessee (11-7-14)
Points 5.0 - vs. North Dakota State (8-28-15)

SEASON HIGHS

Kills N/A
Attacks 3 - vs. Youngstown State (9-19-15)
Assists 34 - vs. Appalachian State (9-11-15)
Aces 5 vs. North Dakota State (8-28-15)
Solo Blocks N/A
Total Blocks 1 - vs. Appalachian State (9-11-15)
Digs 12 - vs. Florida (9-30-15)
Points 5.0 - vs. North Dakota State (8-28-15)


CAREER STATISTICS

Year	MP/MS	SP	K	E	TA	H%	A	SA	D	BS	TB	PTS
2014	33-9	128	9	3	31	.194	657	20	173	0	0	29.0
2015	14-7	55	0	3	5	-.600	306	13	102	0	1	13.5
Totals	47-16	178	9	6	36	.083	963	33	275	0	1	42.5

2015 MATCH-BY-MATCH STATISTICS

DATE	OPPONENT	MP/MS	SP	K	E	TA	H%	A	SA	D	BS	TB	PTS
Aug. 28	North Dakota State	1-0	5	0	0	0	.000	24	5	7	0	0	5.0
Aug. 29	Winthrop	1-0	3	0	0	0	.000	17	0	4	0	0	0.0
Aug. 29	North Texas	1-0	3	0	0	0	.000	16	1	6	0	0	1.0
Sept. 4	vs. Florida Gulf Coast	1-0	3	0	0	0	.000	10	0	1	0	0	0.0
Sept. 5	vs. Arkansas State	1-1	5	0	0	0	.000	18	0	8	0	0	0.0
Sept. 5	at South Florida	1-1	4	0	0	0	.000	28	0	10	0	0	0.0
Sept. 11	at Appalachian State	1-1	5	0	1	1	-1.000	34	0	10	0	1	0.5
Sept. 12	vs. Charlotte	1-1	4	0	0	0	.000	27	1	9	0	0	1.0
Sept. 12	vs. Liberty	1-0	4	0	0	0	.000	29	0	7	0	0	0.0
Sept. 18	vs. Southern Illinois	1-1	4	0	0	0	.000	21	1	9	0	0	1.0
Sept. 18	vs. Butler	1-0	4	0	0	0	.000	26	2	7	0	0	2.0
Sept. 19	vs. Youngstown State	1-1	3	0	2	3	-.667	20	2	8	0	0	2.0
Sept. 23	at Saint Louis	1-1	3	0	0	0	.000	11	0	4	0	0	0.0
Sept. 30	Florida	1-0	5	0	0	0	.000	25	1	12	0	0	1.0
Oct. 4	Tennessee												
Oct. 9	at Mississippi State												
Oct. 11	at Alabama												
Oct. 16	Ole Miss												
Oct. 18	at Georgia												
Oct. 23	Mississippi State												
Oct. 25	at Florida												
Oct. 28	Alabama												
Nov. 1	Auburn												
Nov. 4	at Texas A&M												
Nov. 8	at LSU												
Nov. 13	Georgia												
Nov. 15	at Kentucky												
Nov. 18	at Arkansas												
Nov. 22	at Ole Miss												
Nov. 25	Texas A&M												
Nov. 27	South Carolina												
TOTALS		14-7	55	0	3	5	-.600	306	13	102	0	1	13.5

#7 • JULIA TOWLER • JR • RS / MB • BLUE SPRINGS, MO

2014 FALL SEC ACADEMIC HONOR ROLL

QUICK FACTS

- ▶ Hit an outstanding .588 (career-high) with 10 kills in Tigers' 3-2 upset over No. 9 Florida (Sept. 30)
- ▶ Had career match vs. South Florida (Sept. 5), setting career-highs in kills, hitting % and points
- ▶ Has been an effective hitter last two years for Mizzou (.429 in 2014, .307 in 2015, .368 career)
- ▶ Current member of Mizzou's new Tiger Leadership Institute
- ▶ Tied the school record with five solo blocks vs. Seton Hall in 2013

CAREER HIGHS

Kills 12 - vs. South Florida (9-5-15)
Attacks 19 - vs. South Florida (9-5-15)
Hitting %588 - vs. Florida (9-30-15)
Assists 3 - vs. MVSU (8-29-14)
Aces 1 - Twice - MR at South Carolina (10-26-14)
Solo Blocks 5 - vs. Seton Hall (9-7-13)
Total Blocks 6 - 3x - MR - vs. Charlotte (9-12-15)
Digs 3 - vs. South Florida (9-5-15)
Points 13.0 - vs. South Florida (9-5-15)

SEASON HIGHS

Kills 12 - vs. South Florida (9-5-15)
Attacks 19 - vs. South Florida (9-5-15)
Hitting %588 - vs. Florida (9-30-15)
Assists 1 - 2x - MR at Saint Louis (9-23-15)
Aces N/A
Solo Blocks 2 - vs. Charlotte (9-12-15)
Total Blocks 6 - vs. Charlotte (9-12-15)
Digs 3 - vs. South Florida (9-5-15)
Points 13.0 - vs. South Florida (9-5-15)


CAREER STATISTICS

Year	MP/MS	SP	K	E	TA	H%	A	SA	D	BS	TB	PTS
2013	32-1	59	67	21	121	.380	1	0	8	8	54	98.0
2014	28-3	62	70	16	126	.429	13	2	11	3	34	90.5
2015	14-14	55	78	18	177	.339	2	0	19	7	40	101.5
Totals	74-18	176	215	55	424	.377	16	2	38	18	128	290.0

2015 MATCH-BY-MATCH STATISTICS

DATE	OPPONENT	MP/MS	SP	K	E	TA	H%	A	SA	D	BS	TB	PTS
Aug. 28	North Dakota State	1-1	5	5	1	11	.364	0	0	2	0	5	7.5
Aug. 29	Winthrop	1-1	3	6	2	16	.250	1	0	0	1	5	9.0
Aug. 29	North Texas	1-1	3	2	0	5	.400	0	0	2	0	0	2.0
Sept. 4	vs. Florida Gulf Coast	1-1	3	2	0	6	.333	0	0	1	0	2	3.0
Sept. 5	vs. Arkansas State	1-1	5	6	1	14	.357	0	0	1	0	4	8.0
Sept. 5	at South Florida	1-1	4	12	1	19	.579	0	0	3	1	1	13.0
Sept. 11	at Appalachian State	1-1	5	4	3	12	.083	0	0	1	0	4	6.0
Sept. 12	vs. Charlotte	1-1	4	7	1	13	.462	0	0	0	2	6	11.0
Sept. 12	vs. Liberty	1-1	4	6	4	17	.118	0	0	2	0	3	7.5
Sept. 18	vs. Southern Illinois	1-1	4	7	2	13	.385	0	0	2	0	1	7.5
Sept. 18	vs. Butler	1-1	4	4	2	15	.133	0	0	1	1	3	6.0
Sept. 19	vs. Youngstown State	1-1	3	4	1	12	.250	0	0	0	1	1	5.0
Sept. 23	at Saint Louis	1-1	3	3	0	7	.429	1	0	2	0	1	3.5
Sept. 30	Florida	1-1	5	10	0	17	.588	0	0	2	1	4	12.5
Oct. 4	Tennessee												
Oct. 9	at Mississippi State												
Oct. 11	at Alabama												
Oct. 16	Ole Miss												
Oct. 18	at Georgia												
Oct. 23	Mississippi State												
Oct. 25	at Florida												
Oct. 28	Alabama												
Nov. 1	Auburn												
Nov. 4	at Texas A&M												
Nov. 8	at LSU												
Nov. 13	Georgia												
Nov. 15	at Kentucky												
Nov. 18	at Arkansas												
Nov. 22	at Ole Miss												
Nov. 25	Texas A&M												
Nov. 27	South Carolina												
TOTALS		14-14	55	78	18	177	.339	2	0	19	7	40	101.5

MATCH 15: TENNESSEE

#8 • ALYSSA MUNLYN • FR • MB • SUWANEE, GA

2015 APPALACHIAN STATE ALL-TOURNAMENT TEAM // 2015 TIGER INVITATIONAL ALL-TOURNAMENT TEAM

QUICK FACTS

- ▶ Matched her career-high in kills (12) twice at Butler Invitational (Sept. 18-19)
- ▶ Tallied season-high in kills (12) and points (15.0) at Appalachian State (Sept. 15)
- ▶ Impressive first weekend in collegiate debut, racking up 16 total blocks (1.45 BPS) at Tiger Invite
- ▶ Wows fans with incredible athleticism, including a 10'7" vertical approach at the net
- ▶ Named *Volleyball Magazine* All-American her senior season at North Gwinnett High School
- ▶ Rated as No. 36 prospect nationally by *PrepVolleyball*

SEASON / CAREER HIGHS

Kills	12 - 3x - MR at Butler (9-18-15)
Attacks	23 - 3x - MR at Butler (9-18-15)
Hitting %625 - vs. North Texas (8-29-15)
Assists	1 - 2x - MR - vs. Arkansas State (9-5-15)
Aces	N/A
Solo Blocks	2 - vs. Charlotte (9-12-15)
Total Blocks	8 - vs. North Dakota State (8-28-15)
Digs	4 - vs. Liberty (9-12-15)
Points	15.0 - vs. Appalachian State (9-11-15)


CAREER STATISTICS

Year	MP/MS	SP	K	E	TA	H%	A	SA	D	BS	TB	PTS
2015	14-10	55	93	34	205	.288	2	0	14	9	59	127.0
Totals	14-10	55	93	34	205	.288	2	0	14	9	59	127.0

2015 MATCH-BY-MATCH STATISTICS

DATE	OPPONENT	MP/MS	SP	K	E	TA	H%	A	SA	D	BS	TB	PTS
Aug. 28	North Dakota State	1-1	5	10	5	23	.217	1	0	2	1	8	14.5
Aug. 29	Winthrop	1-1	3	7	1	13	.462	0	0	0	0	5	9.5
Aug. 29	North Texas	1-1	3	6	1	8	.625	0	0	0	0	3	7.5
Sept. 4	vs. Florida Gulf Coast	1-0	3	4	2	11	.182	0	0	1	0	5	6.5
Sept. 5	vs. Arkansas State	1-1	5	3	3	14	.000	1	0	0	0	6	6.0
Sept. 5	at South Florida	1-1	4	6	1	16	.312	0	0	0	0	0	0.0
Sept. 11	at Appalachian State	1-1	5	12	1	19	.579	0	0	0	0	6	15.0
Sept. 12	vs. Charlotte	1-1	4	5	1	12	.333	0	0	1	2	7	9.5
Sept. 12	vs. Liberty	1-0	4	5	1	11	.364	0	0	4	1	5	8.0
Sept. 18	vs. Southern Illinois	1-1	4	12	3	23	.391	0	0	3	1	4	14.5
Sept. 18	vs. Butler	1-0	4	12	5	23	.304	0	0	1	1	1	13.0
Sept. 19	vs. Youngstown State	1-1	3	3	3	10	.000	0	0	1	0	0	3.0
Sept. 23	at Saint Louis	1-1	3	1	3	8	-.250	0	0	0	2	3	3.5
Sept. 30	Florida	1-0	5	7	4	14	.214	0	0	1	1	6	10.5
Oct. 4	Tennessee												
Oct. 9	at Mississippi State												
Oct. 11	at Alabama												
Oct. 16	Ole Miss												
Oct. 18	at Georgia												
Oct. 23	Mississippi State												
Oct. 25	at Florida												
Oct. 28	Alabama												
Nov. 1	Auburn												
Nov. 4	at Texas A&M												
Nov. 8	at LSU												
Nov. 13	Georgia												
Nov. 15	at Kentucky												
Nov. 18	at Arkansas												
Nov. 22	at Ole Miss												
Nov. 25	Texas A&M												
Nov. 27	South Carolina												
TOTALS		14-10	55	93	34	205	.288	2	0	14	9	59	127.0

#9 • CARLY KAN • JR • OH • HONOLULU, HAWAII

2014, 2013 AVCA ALL-AMERICAN // 2014 SEC SCHOLAR ATHLETE OF THE YEAR // 2013 SEC FRESHMAN OF THE YEAR

QUICK FACTS

- ▶ Named SEC Co-Offensive Player of the Week (Sept. 14-20) with 55 kills on .307 hitting at Butler Invite
- ▶ Earned SEC Player of the Week (Sept. 7-13) with 72 kills on .299 hitting at App. State Invite
- ▶ Tallied 20-plus kills and double-doubles each in seven matches this season
- ▶ Led the nation in combined kills (418) and digs (394) a season ago
- ▶ Competed for Team USA at the USA Volleyball World University Games this past summer

CAREER HIGHS

Kills 26 - 2x - MR vs. Liberty (9-12-15)
Attacks 66 - vs. Illinois State (9-5-14)
Hitting %706 - vs. South Carolina (9-27-13)
Assists 5 - vs. South Carolina (9-27-13)
Aces 4 - 2x - MR vs. South Florida (9-5-15)
Solo Blocks 1 - 4x - MR - vs. South Florida (9-5-15)
Total Blocks 5 - vs. South Florida (9-5-15)
Digs 24 - vs. Alabama (11-26-14)
Points 29.0 - vs. South Florida (9-5-15)

SEASON HIGHS

Kills 26 - 2x - MR vs. Liberty (9-12-15)
Attacks 65 - vs. Appalachian State (9-11-15)
Hitting %489 - vs. Liberty (9-12-15)
Assists 3 - vs. Arkansas State (9-5-15)
Aces 4 - vs. South Florida (9-5-15)
Solo Blocks 1 - 4x - MR - vs. South Florida (9-5-15)
Total Blocks 5 - vs. South Florida (9-5-15)
Digs 15 - 2x - MR - vs. Arkansas State (9-5-15)
Points 29.0 - vs. South Florida (9-5-15)


CAREER STATISTICS

Year	MP/MS	SP	K	E	TA	H%	A	SA	D	BS	TB	PTS
2013	36-36	117	383	82	826	.364	51	36	315	1	42	440.5
2014	33-33	128	418	166	1,178	.214	35	17	394	6	39	457.5
2015	14-14	55	252	65	606	.309	9	17	142	7	19	282.0
Totals	83-83	300	1,053	313	2,610	.284	95	70	851	14	100	1,180.0

2015 MATCH-BY-MATCH STATISTICS

DATE	OPPONENT	MP/MS	SP	K	E	TA	H%	A	SA	D	BS	TB	PTS
Aug. 28	North Dakota State	1-1	5	21	2	44	.432	1	0	15	0	1	21.5
Aug. 29	Winthrop	1-1	3	14	1	28	.464	0	1	6	0	0	15.0
Aug. 29	North Texas	1-1	3	15	1	35	.400	0	1	10	1	2	17.5
Sept. 4	vs. Florida Gulf Coast	1-1	3	4	1	14	.214	0	1	8	1	2	6.5
Sept. 5	vs. Arkansas State	1-1	5	20	5	52	.288	3	3	15	1	2	24.5
Sept. 5	at South Florida	1-1	4	22	4	53	.340	0	4	13	1	5	29.0
Sept. 11	at Appalachian State	1-1	5	26	13	65	.200	0	0	9	0	0	26.0
Sept. 12	vs. Charlotte	1-1	4	20	8	47	.255	1	2	9	0	0	22.0
Sept. 12	vs. Liberty	1-1	4	26	4	45	.489	0	0	10	0	0	26.0
Sept. 18	vs. Southern Illinois	1-1	4	11	8	48	.062	3	1	10	1	2	13.5
Sept. 18	vs. Butler	1-1	4	25	2	55	.418	1	0	14	2	2	27.0
Sept. 19	vs. Youngstown State	1-1	3	19	2	37	.459	0	0	6	0	0	19.0
Sept. 23	at Saint Louis	1-1	3	12	6	34	.176	0	2	4	0	1	14.5
Sept. 30	Florida	1-1	5	17	8	49	.184	0	2	13	0	2	20.0
Oct. 4	Tennessee												
Oct. 9	at Mississippi State												
Oct. 11	at Alabama												
Oct. 16	Ole Miss												
Oct. 18	at Georgia												
Oct. 23	Mississippi State												
Oct. 25	at Florida												
Oct. 28	Alabama												
Nov. 1	Auburn												
Nov. 4	at Texas A&M												
Nov. 8	at LSU												
Nov. 13	Georgia												
Nov. 15	at Kentucky												
Nov. 18	at Arkansas												
Nov. 22	at Ole Miss												
Nov. 25	Texas A&M												
Nov. 27	South Carolina												
TOTALS		14-14	55	252	65	606	.309	9	17	142	7	19	282.0

MATCH 15: TENNESSEE

#10 • KIRA LARSON • RS SO • RS / MB • FARGO, ND

NAMED TO ALL FOUR 2015 ALL-TOURNAMENT TEAMS THIS SEASON

QUICK FACTS

- ▶ Joins teammate Carly Kan as Tigers to be named to all four All-Tournament Teams in 2015
- ▶ Has recorded double-digit points in nine of 12 matches this season
- ▶ Comes to Mizzou this season after transferring from Nebraska
- ▶ 10-time State Champion in high school track and field
- ▶ Ranked as No. 23 player in the country by *PrepVolleyball* coming out of high school

SEASON / CAREER HIGHS

Kills	15 - vs. Charlotte (9-12-15)
Attacks	29 - vs. Arkansas State (9-5-15)
Hitting %667 - vs. Floriad Gulf Coast (9-4-15)
Assists	1 - 3x - MR at Butler (9-18-15)
Aces	3 - 2x - MR vs. Youngstown State (9-19-15)
Solo Blocks	2 - vs. Southern Illinois (9-18-15)
Total Blocks	5 - vs. Florida Gulf Coast (9-4-15)
Digs	6 - vs. Southern Illinois (9-18-15)
Points	17.5 - vs. Charlotte (9-12-15)


CAREER STATISTICS

Year	MP/MS	SP	K	E	TA	H%	A	SA	D	BS	TB	PTS
2014	15-2	24	13	7	41	.146	0	1	1	0	10	19.0
2015	14-13	55	129	33	284	.338	3	12	37	6	36	162.0
Totals	29-15	79	142	40	325	.339	3	13	38	6	46	181.0

2015 MATCH-BY-MATCH STATISTICS

DATE	OPPONENT	MP/MS	SP	K	E	TA	H%	A	SA	D	BS	TB	PTS
Aug. 28	North Dakota State	1-0	5	8	2	19	.316	0	0	5	0	0	8.0
Aug. 29	Winthrop	1-1	3	9	1	19	.421	0	1	1	0	2	11.0
Aug. 29	North Texas	1-1	3	7	1	13	.462	0	0	0	1	4	9.5
Sept. 4	vs. Florida Gulf Coast	1-1	3	8	0	12	.667	1	2	1	0	5	12.5
Sept. 5	vs. Arkansas State	1-1	5	13	5	29	.276	0	0	2	0	3	14.5
Sept. 5	at South Florida	1-1	4	8	2	26	.231	0	0	5	1	3	10.0
Sept. 11	at Appalachian State	1-1	5	6	3	12	.250	0	0	3	0	2	7.0
Sept. 12	vs. Charlotte	1-1	4	15	1	24	.583	0	1	3	0	3	17.5
Sept. 12	vs. Liberty	1-1	4	14	3	27	.407	1	0	0	0	3	15.5
Sept. 18	vs. Southern Illinois	1-1	4	9	4	27	.185	0	3	6	2	3	14.5
Sept. 18	vs. Butler	1-1	4	12	0	22	.545	1	1	2	1	1	14.0
Sept. 19	vs. Youngstown State	1-1	3	7	1	17	.353	0	3	4	1	1	11.0
Sept. 23	at Saint Louis	1-1	3	6	3	13	.231	0	0	1	0	2	7.0
Sept. 30	Florida	1-1	5	7	7	24	.000	0	1	4	0	4	10.0
Oct. 4	Tennessee												
Oct. 9	at Mississippi State												
Oct. 11	at Alabama												
Oct. 16	Ole Miss												
Oct. 18	at Georgia												
Oct. 23	Mississippi State												
Oct. 25	at Florida												
Oct. 28	Alabama												
Nov. 1	Auburn												
Nov. 4	at Texas A&M												
Nov. 8	at LSU												
Nov. 13	Georgia												
Nov. 15	at Kentucky												
Nov. 18	at Arkansas												
Nov. 22	at Ole Miss												
Nov. 25	Texas A&M												
Nov. 27	South Carolina												
TOTALS		14-13	55	129	33	284	.338	3	12	37	6	36	162.0

#11 • REGAN PELTIER • SR • OH • NIXA, MO

2015 SOUTH FLORIDA INVITATIONAL ALL-TOURNAMENT TEAM // 2013-14 FALL SEC ACADEMIC HONOR ROLL

QUICK FACTS

- ▶ Named to 2015 South Florida Invitational All-Tournament Team with 26 kills & 28 digs
- ▶ Opened the 2015 campaign with strong Tiger Invitational, ranking 2nd on team with 33.5 points
- ▶ Had career-high 22 kills last season at Mississippi State (second highest Tiger kill output of year)
- ▶ Dad played collegiate basketball at Missouri Southern, brother played hoops at Drury University
- ▶ Top-100 recruit out of high school, 2nd Team AVCA/Under Armour High School All-American in 2011

CAREER HIGHS

Kills22 - at Mississippi State (10-19-14)
Attacks49 - at Mississippi State (10-19-14)
Hitting %625 - vs. Youngstown State (9-19-15)
Assists5 - vs. LSU (10-25-13)
Aces4 - Twice - MR vs. SEMO (9-21-13)
Solo Blocks3 - vs. Florida Gulf Coast (9-4-15)
Total Blocks8 - at Alabama (11-10-13)
Digs18 - at LSU (10-25-13)
Points23.0 - at Mississippi State (10-19-14)

SEASON HIGHS

Kills13 - vs. Appalachian State (9-11-15)
Attacks34 - vs. Appalachian State (9-11-15)
Hitting %625 - vs. Youngstown State (9-19-15)
Assists1 - 2x - MR vs. Southern Illinois (9-18-15)
Aces2 - 3x - MR - at Butler (9-18-15)
Solo Blocks3 - vs. Florida Gulf Coast (9-4-15)
Total Blocks4 - vs. Florida Gulf Coast (9-4-15)
Digs17 - 2x - MR at Butler (9-18-15)
Points14.5 - vs. Appalachian State (9-11-15)


CAREER STATISTICS

Year	MP/MS	SP	K	E	TA	H%	A	SA	D	BS	TB	PTS
2012	30-23	97	167	82	533	.159	22	8	129	12	58	210.0
2013	20-0	33	45	14	100	.310	0	0	9	3	13	53.0
2014	33-24	127	181	88	522	.178	8	0	52	6	71	219.5
2015	14-14	55	117	49	316	.215	2	11	129	10	25	145.5
Totals	97-61	312	510	233	1,471	.188	32	19	319	31	167	628.0

2015 MATCH-BY-MATCH STATISTICS

DATE	OPPONENT	MP/MS	SP	K	E	TA	H%	A	SA	D	BS	TB	PTS
Aug. 28	North Dakota State	1-1	5	12	3	31	.290	1	0	4	1	2	13.5
Aug. 29	Winthrop	1-1	3	5	2	16	.188	0	2	4	2	2	9.0
Aug. 29	North Texas	1-1	3	9	3	22	.273	0	1	4	0	2	11.0
Sept. 4	vs. Florida Gulf Coast	1-1	3	4	3	15	.067	0	0	4	3	4	7.5
Sept. 5	vs. Arkansas State	1-1	5	11	4	31	.226	0	2	17	0	2	14.0
Sept. 5	at South Florida	1-1	4	11	4	28	.250	0	1	7	0	1	12.5
Sept. 11	at Appalachian State	1-1	5	13	6	34	.206	0	1	12	0	1	14.5
Sept. 12	vs. Charlotte	1-1	4	6	4	16	.125	0	0	7	0	2	7.0
Sept. 12	vs. Liberty	1-1	4	9	5	23	.174	0	1	16	2	2	12.0
Sept. 18	vs. Southern Illinois	1-1	4	7	6	19	.053	1	0	15	0	0	7.0
Sept. 18	vs. Butler	1-1	4	7	3	25	.160	0	2	17	0	2	10.0
Sept. 19	vs. Youngstown State	1-1	3	5	0	8	.625	0	0	8	1	3	7.0
Sept. 23	at Saint Louis	1-1	3	6	2	16	.250	0	0	9	1	2	7.5
Sept. 30	Florida	1-1	5	12	4	32	.250	0	1	5	0	0	13.0
Oct. 4	Tennessee												
Oct. 9	at Mississippi State												
Oct. 11	at Alabama												
Oct. 16	Ole Miss												
Oct. 18	at Georgia												
Oct. 23	Mississippi State												
Oct. 25	at Florida												
Oct. 28	Alabama												
Nov. 1	Auburn												
Nov. 4	at Texas A&M												
Nov. 8	at LSU												
Nov. 13	Georgia												
Nov. 15	at Kentucky												
Nov. 18	at Arkansas												
Nov. 22	at Ole Miss												
Nov. 25	Texas A&M												
Nov. 27	South Carolina												
TOTALS		14-14	55	117	49	316	.215	2	11	129	10	25	145.5

MATCH 15: TENNESSEE

#12 • HAO JIN • FR • MB • SHIJIAZHUANG, CHINA
QUICK FACTS

- Exploded for nine kills on .600 hitting and six blocks against South Florida (Sept. 15)
- Recruited from China by Mizzou assistant coaches Deng Yang and Dawei Shen, continuing the Tigers' successful history of international recruiting
- Starred in volleyball, basketball, and track and field for Hebei Province teams in China throughout her youth career

SEASON / CAREER HIGHS

Kills	9 - vs. South Florida (9-5-15)
Attacks	15 - vs. South Florida (9-5-15)
Hitting %	.600 - vs. South Florida (9-5-15)
Assists	N/A
Aces	N/A
Solo Blocks	1 - vs. Appalachian State (9-11-15)
Total Blocks	6 - vs. South Florida (9-5-15)
Digs	N/A
Points	12.0 - vs. South Florida (9-5-15)


CAREER STATISTICS

Year	MP/MS	SP	K	E	TA	H%	A	SA	D	BS	TB	PTS
2015	7-0	14	12	1	25	.440	0	0	0	1	7	16.0
Totals	7-0	14	12	1	25	.440	0	0	0	1	7	16.0

2015 MATCH-BY-MATCH STATISTICS

DATE	OPPONENT	MP/MS	SP	K	E	TA	H%	A	SA	D	BS	TB	PTS
Aug. 28	North Dakota State	1-0	3	0	1	2	-.500	0	0	0	0	0	0.0
Aug. 29	Winthrop	1-0	1	0	0	0	.000	0	0	0	0	0	0.0
Aug. 29	North Texas	DNP											
Sept. 4	vs. Florida Gulf Coast	DNP											
Sept. 5	vs. Arkansas State	DNP											
Sept. 5	at South Florida	1-0	4	9	0	15	.600	0	0	0	0	6	12.0
Sept. 11	at Appalachian State	1-0	3	2	0	7	.286	0	0	0	1	1	3.0
Sept. 12	vs. Charlotte	DNP											
Sept. 12	vs. Liberty	DNP											
Sept. 18	vs. Southern Illinois	DNP											
Sept. 18	vs. Butler	DNP											
Sept. 19	vs. Youngstown State	DNP											
Sept. 23	at Saint Louis	1-0	1	1	0	1	1.000	0	0	0	0	0	1.0
Sept. 30	Florida	1-0	2	0	0	0	.000	0	0	0	0	0	0.0
Oct. 4	Tennessee												
Oct. 9	at Mississippi State												
Oct. 11	at Alabama												
Oct. 16	Ole Miss												
Oct. 18	at Georgia												
Oct. 23	Mississippi State												
Oct. 25	at Florida												
Oct. 28	Alabama												
Nov. 1	Auburn												
Nov. 4	at Texas A&M												
Nov. 8	at LSU												
Nov. 13	Georgia												
Nov. 15	at Kentucky												
Nov. 18	at Arkansas												
Nov. 22	at Ole Miss												
Nov. 25	Texas A&M												
Nov. 27	South Carolina												
TOTALS		7-0	14	12	1	25	.440	0	0	0	1	7	16.0

#13 • ALEXA ETHRIDGE • JR • DS • LEE'S SUMMIT, MO

2015 BUTLER INVITATIONAL ALL-TOURNAMENT TEAM

QUICK FACTS

- ▶ Posted season highs in assists, aces and points in Mizzou's 3-2 upset over No. 9 Florida (9-30-15)
- ▶ Named to Butler Invitational All-Tournament Team after 51 digs (4.64 per set) and 11 assists
- ▶ Has paced Mizzou in digs in 10-of-12 matches this season, including career-high of 27
- ▶ Is one of three transfers this season, coming to Mizzou from Nebraska alongside Kira Larson
- ▶ Owns the Missouri High School volleyball record for most assists (2,973)

CAREER HIGHS

Kills 1 - 3x - MR vs. Arkansas State (9-5-15)
Attacks 2 - 2x - MR at Butler (9-18-15)
Assists 7 - vs. Florida (9-30-15)
Aces 4 - at Iowa (11-27-13)
Digs 27 - vs. Appalachian State (9-11-15)
Points 4.0 - at Iowa (11-27-13)

SEASON HIGHS

Kills 1 - vs. Arkansas State (9-5-15)
Attacks 2 - 2x - MR at Butler (9-18-15)
Assists 7 - vs. Florida (9-30-15)
Aces 3 - vs. Florida (9-30-15)
Digs 27 - vs. Appalachian State (9-11-15)
Points 3.0 - vs. Florida (9-30-15)


CAREER STATISTICS

Year	MP/MS	SP	K	E	TA	H%	A	SA	D	BS	TB	PTS
2013	30-1	99	1	0	2	.500	8	21	30	0	0	22.0
2014	33-0	109	1	0	3	.333	7	15	44	0	0	16.0
2015	14-14	55	1	0	5	.200	54	11	211	0	0	12.0
Totals	77-15	263	3	0	10	.300	69	47	285	0	0	50.0

2015 MATCH-BY-MATCH STATISTICS

DATE	OPPONENT	MP/MS	SP	K	E	TA	H%	A	SA	D	BS	TB	PTS
Aug. 28	North Dakota State	1-1	5	0	0	0	.000	4	1	17	0	0	1.0
Aug. 29	Winthrop	1-1	3	0	0	0	.000	3	0	12	0	0	0.0
Aug. 29	North Texas	1-1	3	0	0	0	.000	6	1	5	0	0	1.0
Sept. 4	vs. Florida Gulf Coast	1-1	3	0	0	0	.000	3	0	9	0	0	0.0
Sept. 5	vs. Arkansas State	1-1	5	1	0	2	.500	3	0	18	0	0	1.0
Sept. 5	at South Florida	1-1	4	0	0	0	.000	4	1	23	0	0	1.0
Sept. 11	at Appalachian State	1-1	5	0	0	0	.000	3	1	27	0	0	1.0
Sept. 12	vs. Charlotte	1-1	4	0	0	1	.000	5	1	10	0	0	1.0
Sept. 12	vs. Liberty	1-1	4	0	0	0	.000	3	0	14	0	0	0.0
Sept. 18	vs. Southern Illinois	1-1	4	0	0	0	.000	3	0	14	0	0	0.0
Sept. 18	vs. Butler	1-1	4	0	0	2	.000	5	0	23	0	0	0.0
Sept. 19	vs. Youngstown State	1-1	3	0	0	0	.000	3	2	14	0	0	2.0
Sept. 23	at Saint Louis	1-1	3	0	0	0	.000	2	1	10	0	0	1.0
Sept. 30	Florida	1-1	5	0	0	0	.000	7	3	15	0	0	3.0
Oct. 4	Tennessee												
Oct. 9	at Mississippi State												
Oct. 11	at Alabama												
Oct. 16	Ole Miss												
Oct. 18	at Georgia												
Oct. 23	Mississippi State												
Oct. 25	at Florida												
Oct. 28	Alabama												
Nov. 1	Auburn												
Nov. 4	at Texas A&M												
Nov. 8	at LSU												
Nov. 13	Georgia												
Nov. 15	at Kentucky												
Nov. 18	at Arkansas												
Nov. 22	at Ole Miss												
Nov. 25	Texas A&M												
Nov. 27	South Carolina												
TOTALS		14-14	55	1	0	5	.200	54	11	211	0	0	12.0

MATCH 15: TENNESSEE

#14 • SYDNEY DEEKEN • SO • OH • CALIFORNIA, MO

2014-15 FIRST-YEAR SEC ACADEMIC HONOR ROLL

QUICK FACTS

- ▶ Solid first-year with Mizzou last season, highlighted by SEC Freshman of the Week honors on Sept. 29
- ▶ Averaged 3.42 points and 2.83 kills per set to open SEC play en route of winning award
- ▶ Yet another outstanding all-around athlete on this year's Tiger roster
- ▶ Was a two-time high school high jump champion, three-time triple jump champion, and long jump champion

CAREER HIGHS

Kills 10 - vs. Mississippi State (9-26-14)
Attacks 19 - vs. Mississippi State (9-26-14)
Hitting %368 - vs. Mississippi State (9-26-14)
Assists N/A
Aces 2 - vs. Tennessee (9-28-14)
Solo Blocks N/A
Total Blocks 4 - at Georgia (10-5-14)
Digs 12 - Twice - MR at Mississippi State (10-19-14)
Points 10.5 - vs. Tennessee (9-28-14)

SEASON HIGHS

Kills 4 - at Saint Louis (9-23-15)
Attacks 13 - at Saint Louis (9-23-15)
Hitting %333 - vs. Arkansas State (9-5-15)
Assists N/A
Aces N/A
Solo Blocks N/A
Total Blocks N/A
Digs 2 - vs. Youngstown State (9-19-15)
Points 4.0 - at Saint Louis (9-23-15)


CAREER STATISTICS

Year	MP/MS	SP	K	E	TA	H%	A	SA	D	BS	TB	PTS
2014	16-7	45	57	40	179	.095	1	8	73	1	14	72.5
2015	4-0	5	5	6	18	-.056	0	0	3	0	0	5.0
Totals	20-7	50	62	46	197	.081	1	8	76	1	14	77.5

2015 MATCH-BY-MATCH STATISTICS

DATE	OPPONENT	MP/MS	SP	K	E	TA	H%	A	SA	D	BS	TB	PTS
Aug. 28	North Dakota State	DNP											
Aug. 29	Winthrop	DNP											
Aug. 29	North Texas	DNP											
Sept. 4	vs. Florida Gulf Coast	1-0	1	0	1	1	-1.000	0	0	0	0	0	0.0
Sept. 5	vs. Arkansas State	1-0	1	1	0	3	.333	0	0	1	0	0	1.0
Sept. 5	at South Florida	DNP											
Sept. 11	at Appalachian State	DNP											
Sept. 12	vs. Charlotte	DNP											
Sept. 12	vs. Liberty	DNP											
Sept. 18	vs. Southern Illinois	DNP											
Sept. 18	vs. Butler	DNP											
Sept. 19	vs. Youngstown State	1-0	2	0	1	1	-1.000	0	0	2	0	0	0.0
Sept. 23	at Saint Louis	1-0	1	4	4	13	.000	0	0	0	0	0	4.0
Sept. 30	Florida	DNP											
Oct. 4	Tennessee												
Oct. 9	at Mississippi State												
Oct. 11	at Alabama												
Oct. 16	Ole Miss												
Oct. 18	at Georgia												
Oct. 23	Mississippi State												
Oct. 25	at Florida												
Oct. 28	Alabama												
Nov. 1	Auburn												
Nov. 4	at Texas A&M												
Nov. 8	at LSU												
Nov. 13	Georgia												
Nov. 15	at Kentucky												
Nov. 18	at Arkansas												
Nov. 22	at Ole Miss												
Nov. 25	Texas A&M												
Nov. 27	South Carolina												
TOTALS		4-0	5	5	6	18	-.056	0	0	3	0	0	5.0

#15 • KASEY REUTER • SO • OH • SIOUX CITY, IOWA

2014-15 FIRST-YEAR SEC ACADEMIC HONOR ROLL

QUICK FACTS

- ▶ Made impact as a freshman last year for the Tigers, finishing with the team's sixth most points
- ▶ Tallied first double-double vs. Ole Miss (11-14-14)
- ▶ In that match, set career highs in kills, hitting percentage, and digs
- ▶ Hails from the same high school as former Tiger All-American Jessica Vander Kooi (Hinton HS)
- ▶ Multi-sport athlete in high school, including 2013 state champion in high jump

CAREER HIGHS

Kills	15 - Twice - MR vs. Ole Miss (11-16-14)
Attacks	37 - vs. UGA (11-14-14)
Hitting %609 - vs. Ole Miss (11-16-14)
Assists	1 - vs. LSU (10-17-14)
Aces	1 - Twice - MR vs. Alabama (11-26-14)
Solo Blocks	N/A
Total Blocks	4 - vs. Alabama (11-26-14)
Digs	12 - vs. Ole Miss (11-16-14)
Points	16.5 - vs. UGA (11-14-14)

SEASON HIGHS

Kills	N/A
Attacks	N/A
Hitting %	N/A
Assists	N/A
Aces	N/A
Solo Blocks	N/A
Total Blocks	N/A
Digs	N/A
Points	N/A



CAREER STATISTICS

Year	MP/MS	SP	K	E	TA	H%	A	SA	D	BS	TB	PTS
2014	31-12	85	124	55	342	.202	3	8	65	2	28	147.0
2015	0-0	0	0	0	0	.000	0	0	0	0	0	0.0
Totals	31-12	85	124	55	342	.202	3	8	65	2	28	147.0

2015 MATCH-BY-MATCH STATISTICS

DATE	OPPONENT	MP/MS	SP	K	E	TA	H%	A	SA	D	BS	TB	PTS
Aug. 28	North Dakota State	DNP											
Aug. 29	Winthrop	DNP											
Aug. 29	North Texas	DNP											
Sept. 4	vs. Florida Gulf Coast	DNP											
Sept. 5	vs. Arkansas State	DNP											
Sept. 5	at South Florida	DNP											
Sept. 11	at Appalachian State	DNP											
Sept. 12	vs. Charlotte	DNP											
Sept. 12	vs. Liberty	DNP											
Sept. 18	vs. Southern Illinois	DNP											
Sept. 18	vs. Butler	DNP											
Sept. 19	vs. Youngstown State	DNP											
Sept. 23	at Saint Louis	DNP											
Sept. 30	Florida	DNP											
Oct. 4	Tennessee												
Oct. 9	at Mississippi State												
Oct. 11	at Alabama												
Oct. 16	Ole Miss												
Oct. 18	at Georgia												
Oct. 23	Mississippi State												
Oct. 25	at Florida												
Oct. 28	Alabama												
Nov. 1	Auburn												
Nov. 4	at Texas A&M												
Nov. 8	at LSU												
Nov. 13	Georgia												
Nov. 15	at Kentucky												
Nov. 18	at Arkansas												
Nov. 22	at Ole Miss												
Nov. 25	Texas A&M												
Nov. 27	South Carolina												
TOTALS		0-0	0	0	0	0	.000	0	0	0	0	0	0.0

2015 MATCH-BY-MATCH INDIVIDUAL LEADERS

DATE	OPPONENT	KILLS	ATTACKS	ASSISTS	DIGS	TOTAL BLOCKS
Aug. 28	North Dakota State	Kan (21)	Kan (44)	Eckenrode (25)	Ethridge (17)	Munlyn (8)
Aug. 29	Winthrop	Kan (14)	Kan (28)	Kreklow (17)	Ethridge (12)	Towler (5)
						Munlyn (5)
Aug. 29	North Texas	Kan (15)	Kan (35)	Eckenrode (19)	Kan (10)	Larson (4)
Sept. 4	at Florida Gulf Coast	Thater (10)	Thater (15)	Eckenrode (15)	Ethridge (9)	Munlyn (5)
			Peltier (15)			Thater (5)
						Larson (5)
Sept. 5	vs. Arkansas State	Kan (20)	Kan (52)	Eckenrode (26)	Ethridge (18)	Munlyn (6)
						Thater (6)
Sept. 5	vs. South Florida	Kan (22)	Kan (53)	Eckenrode (31)	Ethridge (23)	Jin (6)
Sept. 11	at Appalachian State	Kan (26)	Kan (65)	Kreklow (34)	Ethridge (27)	Munlyn (6)
Sept. 12	vs. Charlotte	Kan (20)	Kan (47)	Kreklow (27)	Ethridge (10)	Munlyn (7)
Sept. 12	vs. Liberty	Kan (26)	Kan (45)	Eckenrode (30)	Peltier (16)	Munlyn (5)
Sept. 18	vs. Southern Illinois	Munlyn (12)	Kan (48)	Eckenrode (24)	Peltier (15)	Munlyn (4)
Sept. 18	at Butler	Kan (25)	Kan (55)	Kreklow (26)	Ethridge (23)	Thater (3)
						Towler (3)
Sept. 19	vs. Youngstown State	Kan (19)	Kan (37)	Kreklow (20)	Ethridge (14)	Peltier (3)
						Thater (3)
Sept. 23	at Saint Louis	Kan (12)	Kan (34)	Eckenrode (21)	Ethridge (10)	Munlyn (3)
Sept. 30	vs. Florida	Kan (17)	Kan (49)	Kreklow (25)	Ethridge (15)	Munlyn (6)
TOTALS		Kan (12) Thater (1) Munlyn (1)	Kan (13) Thater (1) Peltier (1)	Eckenrode (8) Kreklow (6)	Ethridge (11) Peltier (2) Kan (1)	Munlyn (10) Thater (4) Larson (2) Towler (2) Jin (1) Peltier (1)

2015 MATCH-BY-MATCH TEAM HIGHS

DATE	OPPONENT	KILLS	ATTACKS	PCT	ASSISTS	ACES	DIGS	BLOCKS
Aug. 28	North Dakota State	58	139	.309	56	6	59	9.0
Aug. 29	Winthrop	42	99	.343	37	4	33	10.0
Aug. 29	North Texas	43	90	.411	41	6	32	8.0
Sept. 4	vs. Florida Gulf Coast	32	75	.333	29	5	27	14.0
Sept. 5	vs. Arkansas State	57	150	.253	52	7	70	13.0
Sept. 5	at South Florida	69	160	.356	63	7	72	10.0
Sept. 11	at Appalachian State	68	160	.250	65	2	69	9.0
Sept. 12	vs. Charlotte	62	129	.357	59	5	49	13.0
Sept. 12	vs. Liberty	68	143	.343	63	2	63	9.0
Sept. 18	vs. Southern Illinois	55	147	.197	52	7	71	8.0
Sept. 18	at Butler	62	154	.305	57	5	77	9.0
Sept. 19	vs. Youngstown State	46	97	.371	41	8	48	6.0
Sept. 23	at Saint Louis	36	103	.136	35	3	36	7.0
Sept. 30	vs. Florida	61	152	.217	52	9	58	11.0

DOUBLE-DOUBLES
COURTNEY ECKENRODE // S // SO
2 TOTAL

- 24 Assists, 12 Digs (vs. Southern Illinois)
- 24 Assists, 11 Digs (at Butler)

CARLY KAN // OH // JR //
8 TOTAL

- 21 Kills, 15 Digs (vs. North Dakota State)
- 15 Kills, 10 Digs (vs. North Texas)
- 20 Kills, 15 Digs (vs. Arkansas State)
- 22 Kills, 13 Digs (at South Florida)
- 26 Kills, 10 Digs (vs. Liberty)
- 11 Kills, 10 Digs (vs. Southern Illinois)
- 25 Kills, 14 Digs (at Butler)
- 17 Kills, 13 Digs (vs. Florida)

ALI KREKLOW // S // SO
3 TOTAL

- 28 Assists, 10 Digs (at South Florida)
- 34 Assists, 10 Digs (at Appalachian State)
- 25 Assists, 12 Digs (vs. Florida)

REGAN PELTIER // OH // SR
2 TOTAL

- 11 Kills, 17 Digs (vs. Arkansas State)
- 13 Kills, 12 Digs (at Appalachian State)

20-KILL MATCHES
CARLY KAN // OH // JR
7 TOTAL

- 21 Kills (vs. North Dakota State)
- 20 Kills (vs. Arkansas State)
- 22 Kills (at South Florida)
- 26 Kills (at Appalachian State)
- 20 Kills (vs. Charlotte)
- 26 Kills (vs. Liberty)
- 25 Kills (at Butler)

2015 SEASON HONORS
ALEXA ETHRIDGE // LB // JR

- Butler Invitational All-Tournament Team

CARLY KAN // OH // JR

- Preseason All-SEC Team
- Tiger Invitational MVP
- South Florida Invitational MVP
- Appalachian State Invitational MVP
- Butler Invitational MVP
- SEC Player of the Week (Sept. 7-13)
- SEC Offensive Player of the Week (Sept. 7-13)
- SEC Co-Offensive Player of the Week (Sept. 14-20)

KIRA LARSON // RS-MB // RS SO

- Tiger Invitational All-Tournament Team
- South Florida Invitational All-Tournament Team
- Appalachian State Invitational All-Tournament Team
- Butler Invitational All-Tournament Team

ALYSSA MUNLYN // MB // FR

- Tiger Invitational All-Tournament Team
- App State Invitational All-Tournament Team

REGAN PELTIER // OH // SR

- USF Invitational All-Tournament Team

CAREER RECORD WATCH
KILLS

1.	1,794	Lisa Henning	2010-13
2.	1,658	Shen Danru	2002-05
3.	1,519	Jessica Vander Kooi	2003-06
4.	1,478	Yvette Buhlig	1988-92
5.	1,476	Christi Myers	1999-02
6.	1,475	Na Yang	2004-07
7.	1,464	Julianna Klein	2006-10
8.	1,156	Nicole Wilson	2003-06
9.	1,141	Jodi Maune	1995-98
10.	1,120	Naaron Branson	1998-01

1,053 Carly Kan 2013-present
KILLS PER SET

1.	4.03	Paola Ampudia	2009-10
2.	3.83	Lisa Henning	2010-13
3.	3.73	Shen Danru	2002-05
4.	3.69	Yvette Buhlig	1988-92
5.	3.64	Na Yang	2004-07
6.	3.55	Lisa Morris	1999-02
7.	3.51	Carly Kan	2013-present
8.	3.46	Christi Myers	1999-02
T-9.	3.45	Mary Lauren Smith	2001-03
T-9.	3.45	Jessica Vander Kooi	2003-06

POINTS

1.	2,033.0	Lisa Henning	2010-13
2.	1,941.0	Shen Danru	2002-05
3.	1,841.0	Jessica Vander Kooi	2003-06
4.	1,817.0	Christi Myers	1999-02
5.	1,761.5	Yvette Buhlig	1988-92
6.	1,703.0	Julianna Klein	2006-10
7.	1,655.5	Na Yang	2004-07
8.	1,526.0	Nicole Wilson	2003-06
9.	1,356.5	Jodi Maune	1995-98
10.	1,337.5	Naaron Branson	1998-01

1,180.0 Carly Kan 2013-present
ATTACKS

1.	4,538	Lisa Henning	2010-13
2.	4,481	Shen Danru	2002-05
3.	4,425	Julianna Klein	2006-10
4.	3,867	Jessica Vander Kooi	2003-06
5.	3,855	Na Yang	2004-07
6.	3,515	Yvette Buhlig	1988-92
7.	3,247	Christi Myers	1999-02
8.	2,988	Lisa Morris	1999-02
9.	2,982	Jodi Maune	1995-98
10.	2,927	Emily Wilson	2011-14

2,610 Carly Kan 2013-present
DIGS

1.	2,017	Tatum Ailes	2004-07
2.	1,997	Caitlyn Vann	2007-09
3.	1,565	Sarah Meister	2011-14
4.	1,372	Shen Danru	2002-05
5.	1,306	Jessica Vander Kooi	2003-06
6.	1,281	Priscilla Armendariz	2008-11
7.	1,176	Naaron Branson	1998-01
8.	1,149	Yvette Buhlig	1988-92
9.	1,103	Gwen Mullens	1991-94
10.	1,066	Margaret Yanics	1984-88

851 Carly Kan 2013-present
HITTING PERCENTAGE

1.	.370	Whitney Little	2011-14
2.	.350	Nicole Wilson	2003-06
3.	.321	Christi Myers	1999-02
4.	.318	Brittney Brimmage	2008-11
5.	.317	Lisa Boyd	2002-05
6.	.308	Dianne Berg	1983-85
7.	.284	Carly Kan	2013-present
8.	.283	Yvette Buhlig	1988-92
T-9.	.279	Lindsey Hunter	2002-05
T-9.	.279	Catie Wilson	2007-10

DIGS PER SET

1.	4.58	Tatum Ailes	2004-07
2.	4.34	Caitlyn Vann	2007-10
3.	3.34	Sarah Meister	2011-14
4.	3.12	Amy Tuma	1987-88
5.	3.08	Shen Danru	2002-05
6.	2.99	Margaret Yanics	1984-88
7.	2.98	Jessica Vander Kooi	2003-06
8.	2.96	Sharen Olmstead	1983-84
9.	2.93	Sara Parks	2002-03
10.	2.84	Carly Kan	2013-present

WAYNE & SUSAN KREKLOW AT MIZZOU

WAYNE KREKLOW

16th Season at Mizzou

Alma Mater

Drake University

B.A. in Social Studies, 1980

University of Missouri

 Masters of Education and
Counseling Psychology, 1997

Playing Experience

 U.S. Volleyball Association Men's AA
Team, 1977-79

Coaching Experience

University of Missouri

Head Coach, 2005-present

University of Missouri

Associate Head Coach, 2000-04

Columbia College (Men's)

Co-Head Coach, 1997-99

Columbia College (Women's)

Co-Head Coach, 1994-99

University of Missouri

Assistant Coach, 1989-93

Coaching Record

At Mizzou:

217-117 (.650)

Overall:

537-170 (.760)

Coaching Awards

NAIA Coach of the Year:

1997, 1998

NAIA Regional Coach of the Year:

1995, 1996, 1997, 1998, 1999

American Midwest Co-Coach of the Year:

1995, 1996, 1999

CVU.com Honorable Mention National

Coach of the Year:

2005

SEC Coach of the Year:

2013

AVCA Southeast Region Coach of the

Year:

2013



Mizzou volleyball's rise to national prominence since 2000 can be easily tied to its leadership at the helm of the program as Wayne and Susan Kreklow have built a national power. Heading into the 2013 season, the résumé was impressive enough: 10 NCAA Tournaments, one Elite Eight, two Sweet 16s, 12 winning seasons and an average of 20 wins per season.

But the Kreklows and the 2013 team rewrote the record books with the most successful season in program history. Not only did the Tigers become the first ever team at Mizzou to win a Southeastern Conference Championship and the program's first conference championship, but the team finished the regular season unblemished at 34-0. The team earned the No. 4 overall seed in the NCAA Tournament and saw four players earn AVCA All-America honors, including a pair of first team honorees in senior setter Molly Kreklow and senior right side Lisa Henning. Wayne Kreklow was named SEC Coach of the Year for engineering the whole thing. Below is just a snapshot of the achievements by the 2013 team.

- SEC Champions - School's first ever SEC title and program's first ever league championship
- First ever SEC team to finish a regular season unbeaten
- Reset school records in wins, conference wins, consecutive wins, sweeps and team hitting percentage
- Led the nation in hitting, kills, assists, wins and points per set while averaging the fewest errors per set
- Saw four players - Molly Kreklow, Lisa Henning, Carly Kan, Whitney Little - land on the All-SEC team
- Molly Kreklow was named SEC Player of the Year, Carly Kan was SEC Freshman of the Year and Wayne Kreklow was SEC coach of the Year
- Four Tigers were AVCA All-Americans - Molly Kreklow and Lisa Henning (First Team) and Carly Kan and Whitney Little (honorable mention)
- Wayne Kreklow was the SEC Coach of the Year and the AVCA Southeast Region Coach of the Year
- Carly Kan earned AVCA Southeast Region Freshman of the Year

Aside from all of the accomplishments for the 2013 team, Wayne and Susan Kreklow had built a power at Mizzou since arriving in 2000. In fact, now that the Tigers have reached the NCAA Tournament in 11 of the last 15 seasons, Mizzou is one of only 22 teams nationally to qualify for at least 10 NCAA Tournaments in the last 15 seasons. In the Kreklow's first eight seasons at the helm of the program, Mizzou qualified for the NCAA Tournament in each year, joining Nebraska as the only two programs to accomplish that feat during the span.

In their inaugural season as an SEC member, the Kreklows guided Mizzou to a 19-win season while finishing fourth in the SEC East division. They also guided three players - Molly Kreklow, Lisa Henning and Whitney Little - to All-SEC honors. Henning was a unanimous All-SEC First Team pick while Kreklow and Little were second-team honorees. Henning also went on to garner AVCA All-America Third Team honors, becoming the second Tiger to earn AVCA All-America honors in two consecutive seasons.


SUSAN KREKLOW

16th Season at Mizzou

Alma Mater

Missouri State

B.S. in Physical Education, 1984

M.S. in Counseling Psych., 1987

Playing Experience

Central Missouri State, 1979-80

Missouri State, 1981-82

 U.S. Volleyball Association Women's
AA Team, 1993-98

Coaching Experience

University of Missouri

Director of Volleyball, 2007-present

University of Missouri

Associate Head Coach, 2005-06

University of Missouri

Head Coach, 2000-04

Columbia College (Men's)

Co-Head Coach, 1997-99

Columbia College (Women's)

Co-Head Coach, 1994-99

Head Coach, 1990-93

St. Clair (Mo.) High School

Head Coach, 1988-90

Coaching Record

At Mizzou:

109-46 (.703)

Overall:

618-156 (.798)

Coaching Awards

Big 12 Coach of the Year:

2000

NAIA Co-Coach of the Year:

1997, 1998

NAIA Regional Coach of the Year:

1995, 1996, 1997, 1998, 1999

American Midwest Co-Coach of the Year:

1995, 1996, 1999

WAYNE & SUSAN KREKLOW AT MIZZOU

KREKLOWS YEAR-BY-YEAR

Year	Team	Head Coach(es)	W	L	Pct.	Postseason
1990	Columbia College (W)	Susan Kreklow	46	14	.767	
1991	Columbia College (W)	Susan Kreklow	56	3	.949	
1992	Columbia College (W)	Susan Kreklow	37	21	.638	
1993	Columbia College (W)	Susan Kreklow	50	19	.725	
1994	Columbia College (W)	Susan & Wayne Kreklow	40	19	.679	NAIA Top-12
1995	Columbia College (W)	Susan & Wayne Kreklow	55	5	.917	NAIA Quarterfinals
1996	Columbia College (W)	Susan & Wayne Kreklow	44	2	.957	NAIA Semifinals
1997	Columbia College (M)	Susan & Wayne Kreklow	9	14	.391	
1997	Columbia College (W)	Susan & Wayne Kreklow	43	3	.935	NAIA Quarterfinals
1998	Columbia College (M)	Susan & Wayne Kreklow	25	5	.833	
1998	Columbia College (W)	Susan & Wayne Kreklow	45	0	1.000	NAIA Champions
1999	Columbia College (M)	Susan & Wayne Kreklow	19	5	.792	
1999	Columbia College (W)	Susan & Wayne Kreklow	40	0	1.000	NAIA Champions
2000	Missouri	Susan Kreklow	24	7	.774	NCAA First Round
2001	Missouri	Susan Kreklow	20	11	.645	NCAA First Round
2002	Missouri	Susan Kreklow	26	8	.765	NCAA Second Round
2003	Missouri	Susan Kreklow	19	11	.633	NCAA First Round
2004	Missouri	Susan Kreklow	20	9	.690	NCAA Second Round
2005	Missouri	Wayne Kreklow	25	5	.833	NCAA Regional Final
2006	Missouri	Wayne Kreklow	18	13	.581	NCAA Second Round
2007	Missouri	Wayne Kreklow	17	13	.567	NCAA First Round
2008	Missouri	Wayne Kreklow	13	17	.433	
2009	Missouri	Wayne Kreklow	18	14	.563	
2010	Missouri	Wayne Kreklow	22	11	.667	NCAA Sweet 16
2011	Missouri	Wayne Kreklow	21	13	.617	NCAA First Round
2012	Missouri	Wayne Kreklow	19	12	.613	
2013	Missouri	Wayne Kreklow	35	1	.972	NCAA Second Round
2014	Missouri	Wayne Kreklow	16	17	.485	
2015	Missouri	Wayne Kreklow	13	1	.929	

The 2011 season may have showcased the Kreklow's coaching prowess unlike ever before. With just two seniors on the 2011 squad, the Kreklows took a group comprised primarily of freshmen and sophomores to the NCAA Tournament for the 10th time in 12 seasons. In fact, the Tigers were the youngest team to qualify for the field of 64 as 11 of its 13 players were underclassmen. The Kreklows also guided Henning to AVCA Third Team All-America honors, becoming the first Tiger underclassman to earn AVCA All-America honors.

In 2010, the Kreklows took the Tigers back to the NCAA Sweet 16, marking the program's second-deepest run into the NCAA Tournament in history. The Tigers also pulled the biggest first-round upset in NCAA Tournament history in 2010, knocking off fifth-seeded Northern Iowa in Cedar Falls in a thrilling five-set match. The Tigers boasted four wins over ranked teams in 2010, including two in the NCAA Tournament, and took home 14 Big 12 Athlete of the Week honors, the most by any team in the league in 2010. The Tigers also ranked 16th nationally in average attendance last season.

Under the Kreklow's guidance in 2010, senior outside hitter Paola Ampudia was named honorable mention All-American by the AVCA was a member of the first team All-Central Region and All-Big 12 teams. She was a unanimous selection to the All-Big 12 team. The Kreklows also saw freshman setter Molly Kreklow garner AVCA Central Region Freshman of the Year honors and honorable mention All-Big 12 status as well. She and classmate Lisa Henning also appeared on the All-Big 12 Freshman team.

Under the direction of the Kreklow's, academics and community involvement continue to be a cornerstone of the program. In 2009, six Tigers earned a spot on the Academic All-Big 12 team while senior setter Lei Wang-Francisco became the program's first-ever four-time Academic All-Big 12 honoree.

While the Kreklow's success at Missouri was immediate, the apex of their successes came at the end of the 2005 season. The Tigers were selected to host NCAA First and Second rounds for the second-consecutive year, achieving an overall No. 10 seed in the tournament. After defeating Missouri State in the first round, Mizzou swept Arkansas to advance to the team's first regional in school history. At the Penn State Regional, the Tigers took perennial power Hawaii head-on in the regional

semifinal, defeating UH in four games. The Tigers accumulated a 25-5 record in 2005, the winningest season in school history, and were a step away from the Final Four.

Also in 2005, Wayne Kreklow was named College Volleyball Update's honorable mention National Coach of the Year as the team surged to the national top-10 for the first time in school history, sweeping three top-10 teams along the way. In all, the Kreklows have amassed a 200-108 (.649) winning record in their Mizzou tenure with 117 wins coming in Big 12 play, averaging 12 conference wins per season. The Tigers have won 21 matches over Top-25 teams since 2000, toppling five during the magical 2005 season. Mizzou itself has spent 76 weeks in the national top 25 since 2000.

Upon arrival, the Kreklows wasted no time in putting their winning mark on a program that had not experienced success since the early 1980's. In their first three years at Mizzou (2000, 2001 and 2002) they recorded the program's first back-to-back-to-back 20-win seasons since 1981-83. In fact, the Tigers won 70 matches in the first three years under the Kreklows, more than the previous seven years combined. Missouri posted the first postseason victory in school history by defeating Northwestern in the first round of the 2002 NCAA Tournament. In 2004, Missouri had the honor of hosting first and second rounds of the NCAA Tournament for the first time in school history.

In 2000, the Kreklows' first season at MU, the Tigers finished second in the Big 12 Conference after finishing ninth the previous year. For her efforts, Susan was named as the 2000 Big 12 Coach of the Year by her peers. The Kreklows have made Mizzou Volleyball an exciting marketable entity, and the growth in attendance has been effected, as Missouri has ranked in the nation's top seven in the category in 2005 and 2006, averaging more than 2,600 fans per competition. On Oct. 5, 2005, 7,298 fans packed the Hearn Center for the Tigers' match against Nebraska. Both teams entered the contest undefeated and ranked in the national top-10.

Before the 2005 season, Wayne and Susan officially switched titles within the University system to allow for more family flexibility. While the official coaching records of both are affected, their coaching philosophy is one built on a co-op instead of a one-headed system.

Before coming to Missouri, the Kreklows were co-head coaches of both the men's and women's volleyball teams at Columbia College. They enjoyed great success, taking their women's team to the NAIA National Tournament six times and winning consecutive national titles in 1998 and 1999.

The Cougars also won five regional championships and seven consecutive American Midwest Conference championships under their guidance. In 1998 and 1999, Columbia College achieved consecutive undefeated seasons with a combined record of 85-0. The Cougars' undefeated record included 78 consecutive wins at home and 227 consecutive game victories.

WAYNE & SUSAN KREKLOW AT MIZZOU

In 1997 and 1998, the Kreklows shared NAIA/AVCA National Coach of the Year and Midwest Region Coach of the Year honors. In 1999, the coaching tandem took home the regional award for the fifth consecutive year. In 1998 and 1999, the Kreklows also received the NAIA National Tournament Coach of the Year award.

Along with the success of the women's program, the Kreklows started the men's volleyball program at Columbia College in 1997. In 1999, the Cougars finished the season with a 19-5 overall record, enjoying their second consecutive undefeated run through the Midwest Intercollegiate Volleyball Association. They also took second place at the inaugural SSI Volleyball National Invitational Tournament in 1999.

Susan Kreklow played volleyball for Central Missouri State University and Missouri State. She received her bachelor's degree in physical education and a Master's of Science degree from Missouri State in 1984 and 1987, respectively. Kreklow began her coaching career at St. Clair (Mo.) High School. She began her collegiate coaching career at Columbia College in 1990. Susan was the founder of Columbia Juniors Volleyball Club and the Columbia Developmental Volleyball Leagues. She has served as a member of the USA Volleyball Board of Directors as the NAIA representative and was president-elect of the NAIA National Coaches Association.

Wayne Kreklow earned a bachelor's degree in social science in 1980 from Drake University. While at Drake, Wayne was a member of the men's basketball team, where he earned All-America, all-conference and all-district awards as a two-time team captain, and is fifth on Drake's career scoring list. He is also a member of Drake's All-Century basketball team and was a member of the NBA World Champion Boston Celtics in 1980-81. Wayne began coaching basketball for Central Decatur (Iowa) High School in 1986. He began coaching volleyball as an assistant under Craig Sherman at Missouri. He was with the Tigers from 1989 to 1994 before moving over to Columbia College to join his wife at the helm of the Cougar program.



KREKLOWS AT MIZZOU

As Head Coach	W	L	Pct.	Seasons
Wayne Kreklow	217	117	.650	11
Susan Kreklow	109	46	.703	5
TOTAL	326	163	.667	16

TEAM KREKLOW TOTALS

By Gender	W	L	Pct.	Seasons
Women	782	249	.758	25
Men	53	24	.688	3
TOTAL	835	273	.754	28

WAYNE KREKLOW TOTALS

Head Coach

By Gender	W	L	Pct.	Seasons
Women*	484	146	.768	16
Men	53	24	.688	3
TOTAL	537	170	.760	19

Assistant Coach

	W	L	Pct.	Seasons
At Mizzou (90-93)	51	66	.436	4
At Mizzou (00-04)	109	46	.703	5
TOTAL	160	112	.588	9

All Coaching

	W	L	Pct.	Seasons
TOTAL	697	282	.712	26

KREKLOWS AT COLUMBIA COLLEGE

Team Coached	W	L	Pct.	Seasons
Women	456	87	.840	10
Men	53	24	.688	3
TOTAL	509	111	.821	13

Wayne as Co-Head Coach

	W	L	Pct.	Seasons
Overall	267	29	.902	6

2015 OVERALL STATS

Mizzou Volleyball
MIZZOU Combined Team Statistics (as of Oct 01, 2015)
All matches

RECORD:	OVERALL	HOME	AWAY	NEUTRAL
ALL GAMES	13-1	4-0	3-1	6-0
CONFERENCE	1-0	1-0	0-0	0-0
NON-CONFERENCE	12-1	3-0	3-1	6-0

#	Player	sp	Attack					Set		Serve			re	Dig		Blocking					bhe	points
			k	k/s	e	ta	pct	a	a/s	sa	se	sa/s		dig	dig/s	bs	ba	total	blk/s	be		
9	Carly Kan	55	252	4.58	65	606	.309	9	0.16	17	12	0.31	19	142	2.58	7	12	19	0.35	1	0	282.0
10	Kira Larson	55	129	2.35	33	284	.338	3	0.05	12	21	0.22	0	37	0.67	6	30	36	0.65	7	2	162.0
11	Regan Peltier	55	117	2.13	49	316	.215	2	0.04	11	10	0.20	19	129	2.35	10	15	25	0.45	3	3	145.5
8	Alyssa Munlyn	55	93	1.69	34	205	.288	2	0.04	0	0	0.00	0	14	0.25	9	50	59	1.07	3	0	127.0
7	Julia Towler	55	78	1.42	18	177	.339	2	0.04	0	0	0.00	0	19	0.35	7	33	40	0.73	4	0	101.5
2	Emily Thater	49	70	1.43	21	151	.325	2	0.04	0	0	0.00	0	6	0.12	7	31	38	0.78	0	1	92.5
12	Hao Jin	14	12	0.86	1	25	.440	0	0.00	0	0	0.00	1	0	0.00	1	6	7	0.50	0	1	16.0
14	Sydney Deeken	5	5	1.00	6	18	-.056	0	0.00	0	2	0.00	0	3	0.60	0	0	0	0.00	0	0	5.0
4	Courtney Eckenrode	55	2	0.04	1	6	.167	322	5.85	12	7	0.22	0	87	1.58	0	0	0	0.00	1	5	14.0
13	Alexa Ethridge	55	1	0.02	0	5	.200	54	0.98	11	7	0.20	8	211	3.84	0	0	0	0.00	0	4	12.0
1	Alexa Armendariz	22	0	0.00	0	0	.000	0	0.00	0	0	0.00	3	14	0.64	0	0	0	0.00	0	0	0.0
5	Ali Kreklow	55	0	0.00	3	5	-.600	306	5.56	13	12	0.24	0	102	1.85	0	1	1	0.02	0	11	13.5
	TEAM	-	-	-	-	-	-	-	-	-	-	-	8	-	-	-	-	-	-	-	-	-
	MIZZOU	55	759	13.80	231	1798	.294	702	12.76	76	71	1.38	58	764	13.89	47	178	136.0	2.47	19	27	971.0
	Opponents	55	690	12.55	305	1872	.206	644	11.71	58	101	1.05	76	718	13.05	31	90	76.0	1.38	15	20	824.0

Team Statistics	MIZ	OPP
ATTACK		
Kills	759	690
Errors	231	305
Total Attacks	1798	1872
Attack Pct	.294	.206
Kills/Set	13.8	12.5
SET		
Assists	702	644
Assists/Set	12.8	11.7
SERVE		
Aces	76	58
Errors	71	101
Aces/Set	1.4	1.1
SERVE RECEPTIONS		
Errors	58	76
Errors/Set	1.1	1.4
DEFENSE		
Digs	764	718
Digs/Set	13.9	13.1
BLOCKING		
Block Solo	47	31
Block Assist	178	90
Total Blocks	136.0	76.0
Blocks/Set	2.5	1.4
Block Errors	19	15
Ball handling errors	27	20
ATTENDANCE		
Total	12380	2178
Dates/Avg Per Date	4/3095	4/544
Neutral site #/Avg	6/94	
Current win streak	1	-
Home win streak	4	-

Date	Opponent	Score	Score by set	Att.
Aug 28	NDAKOTA STATE	w 3-2	22-25,25-16,25-18,18-25,15-9	2462
Aug 29	WINTHROP	w 3-0	25-21,25-20,25-23	3482
Aug 29	NTEXAS	w 3-0	25-21,25-15,25-17	3482
Sep 04	vs FGCU	w 3-0	25-18,25-19,25-16	146
Sep 05	vs Arkansas State	w 3-2	20-25,25-20,18-25,25-14,15-11	241
Sep 05	at USF	w 3-1	22-25,26-24,25-19,29-27	386
Sep 11	at Appalachian State	w 3-2	25-23,25-21,19-25,18-25,20-18	502
Sep 12	vs Charlotte	w 3-1	25-19,25-18,23-25,25-20	105
Sep 12	vs Liberty	w 3-1	20-25,25-18,25-11,25-23	72
Sep 18	vs Southern Illinois	w 3-1	25-15,25-27,25-18,25-21	0
Sep 18	at Butler	w 3-1	23-25,25-22,25-11,25-19	481
Sep 19	vs Youngstown State	w 3-0	25-12,25-11,25-22	0
Sep 23	at Saint Louis	L 0-3	16-25,22-25,19-25	809
*Sep 30	FLORIDA	w 3-2	22-25,20-25,25-21,25-19,15-10	2954

Record in 3-set matches: 4-1
Record in 4-set matches: 5-0
Record in 5-set matches: 4-0

2015 STATS (SEC ONLY)

Mizzou Volleyball
MIZZOU Combined Team Statistics (as of Oct 01, 2015)
Conference matches

RECORD:	OVERALL	HOME	AWAY	NEUTRAL
ALL GAMES	1-0	1-0	0-0	0-0
CONFERENCE	1-0	1-0	0-0	0-0
NON-CONFERENCE	0-0	0-0	0-0	0-0

##	Player	sp	Attack					Set		Serve			re	Dig		Blocking						points
			k	k/s	e	ta	pct	a	a/s	sa	se	sa/s		dig	dig/s	bs	ba	total	blk/s	be	bhe	
9	Carly Kan	5	17	3.40	8	49	.184	0	0.00	2	4	0.40	2	13	2.60	0	2	2	0.40	0	0	20.0
11	Regan Peltier	5	12	2.40	4	32	.250	0	0.00	1	1	0.20	0	5	1.00	0	0	0	0.00	0	0	13.0
7	Julia Towler	5	10	2.00	0	17	.588	0	0.00	0	0	0.00	0	2	0.40	1	3	4	0.80	0	0	12.5
2	Emily Thater	5	8	1.60	5	16	.188	0	0.00	0	0	0.00	0	0	0.00	0	4	4	0.80	0	0	10.0
10	Kira Larson	5	7	1.40	7	24	.000	0	0.00	1	0	0.20	0	4	0.80	0	4	4	0.80	0	0	10.0
8	Alyssa Munlyn	5	7	1.40	4	14	.214	0	0.00	0	0	0.00	0	1	0.20	1	5	6	1.20	0	0	10.5
5	Ali Kreklow	5	0	0.00	0	0	.000	25	5.00	1	0	0.20	0	12	2.40	0	0	0	0.00	0	0	1.0
4	Courtney Eckenrode	5	0	0.00	0	0	.000	20	4.00	1	1	0.20	0	6	1.20	0	0	0	0.00	0	0	1.0
12	Hao Jin	2	0	0.00	0	0	.000	0	0.00	0	0	0.00	1	0	0.00	0	0	0	0.00	0	0	0.0
13	Alexa Ethridge	5	0	0.00	0	0	.000	7	1.40	3	1	0.60	2	15	3.00	0	0	0	0.00	0	0	3.0
	#TM	-	-	-	-	-	-	-	-	-	-	-	0	-	-	-	-	-	-	-	-	-
	MIZZOU	5	61	12.20	28	152	.217	52	10.40	9	7	1.80	5	58	11.60	2	18	11.0	2.20	0	0	81.0
	Opponents	5	55	11.00	24	149	.208	49	9.80	5	12	1.00	9	52	10.40	6	14	13.0	2.60	0	0	73.0

Team Statistics	MIZ	OPP
ATTACK		
Kills	61	55
Errors	28	24
Total Attacks	152	149
Attack Pct	.217	.208
Kills/Set	12.2	11.0
SET		
Assists	52	49
Assists/Set	10.4	9.8
SERVE		
Aces	9	5
Errors	7	12
Aces/Set	1.8	1.0
SERVE RECEPTIONS		
Errors	5	9
Errors/Set	1.0	1.8
DEFENSE		
Digs	58	52
Digs/Set	11.6	10.4
BLOCKING		
Block Solo	2	6
Block Assist	18	14
Total Blocks	11.0	13.0
Blocks/Set	2.2	2.6
Block Errors	0	0
Ball handling errors	0	0
ATTENDANCE		
Total	2954	0
Dates/Avg Per Date	1/2954	0/0
Neutral site #/Avg	0/0	
Current win streak	1	-
Home win streak	1	-

Date	Opponent	Score	Score by set	Att.
*Sep 30	FLORIDA	w 3-2	22-25,20-25,25-21,25-19,15-10	2954
Record in 3-set matches: 0-0				
Record in 4-set matches: 0-0				
Record in 5-set matches: 1-0				

MIZZOU TV / RADIO CHART



#1 Alexa
Armendariz
So. ♦ 5-6 ♦ DS
Blue Springs, Mo.



#2 Emily
Thater
Jr. ♦ 6-3 ♦ MB
Springfield, Mo.



#3 Riley
Sents
Fr. ♦ 5-4 ♦ DS
Grundy Center, Iowa



#4 Courtney
Eckenrode
So. ♦ 5-9 ♦ S
The Woodlands, Texas



#5 Ali
Kreklow
So. ♦ 5-9 ♦ S
Columbia, Mo.



#7 Julia
Towler
Jr. ♦ 6-2 ♦ RS/MB
Blue Springs, Mo.



#8 Alyssa
Munlyn
Fr. ♦ 6-2 ♦ MB
Suwanee, Ga.



#9 Carly
Kan
Jr. ♦ 5-9 ♦ OH
Honolulu, Hawaii



#10 Kira
Larson
RSo. ♦ 6-2 ♦ RS/MB
 Fargo, N.D.



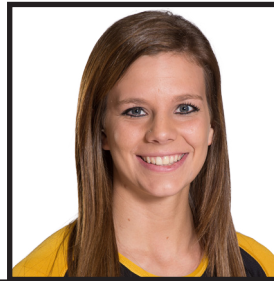
#11 Regan
Peltier
Sr. ♦ 6-2 ♦ OH
Nixa, Mo.



#12 Hao
Jin
Fr. ♦ 6-2 ♦ MB
Shijiazhuang, China



#13 Alexa
Ethridge
Jr. ♦ 5-7 ♦ DS
Lee's Summit, Mo.



#14 Sydney
Deeken
So. ♦ 6-1 ♦ OH
California, Mo.



#15 Kasey
Reuter
So. ♦ 6-1 ♦ OH
Sioux City, Iowa



HC Wayne
Kreklow
16th Season



AC Susan
Kreklow
16th Season



AC Deng
Yang
16th Season



AC Dawei
Shen
2nd Season