



Montana State University
2025 Athletic Master Plan

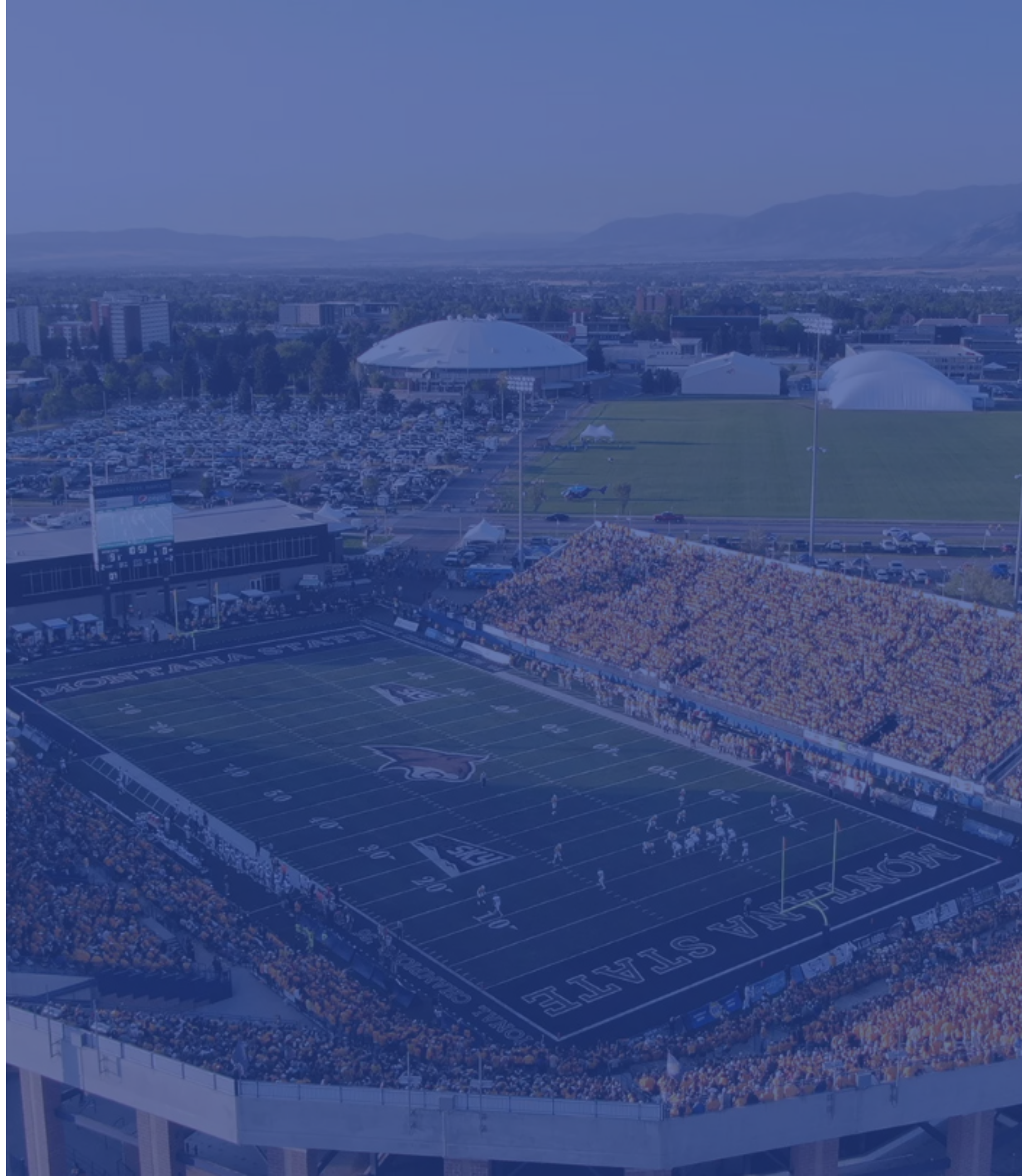


Table of Contents

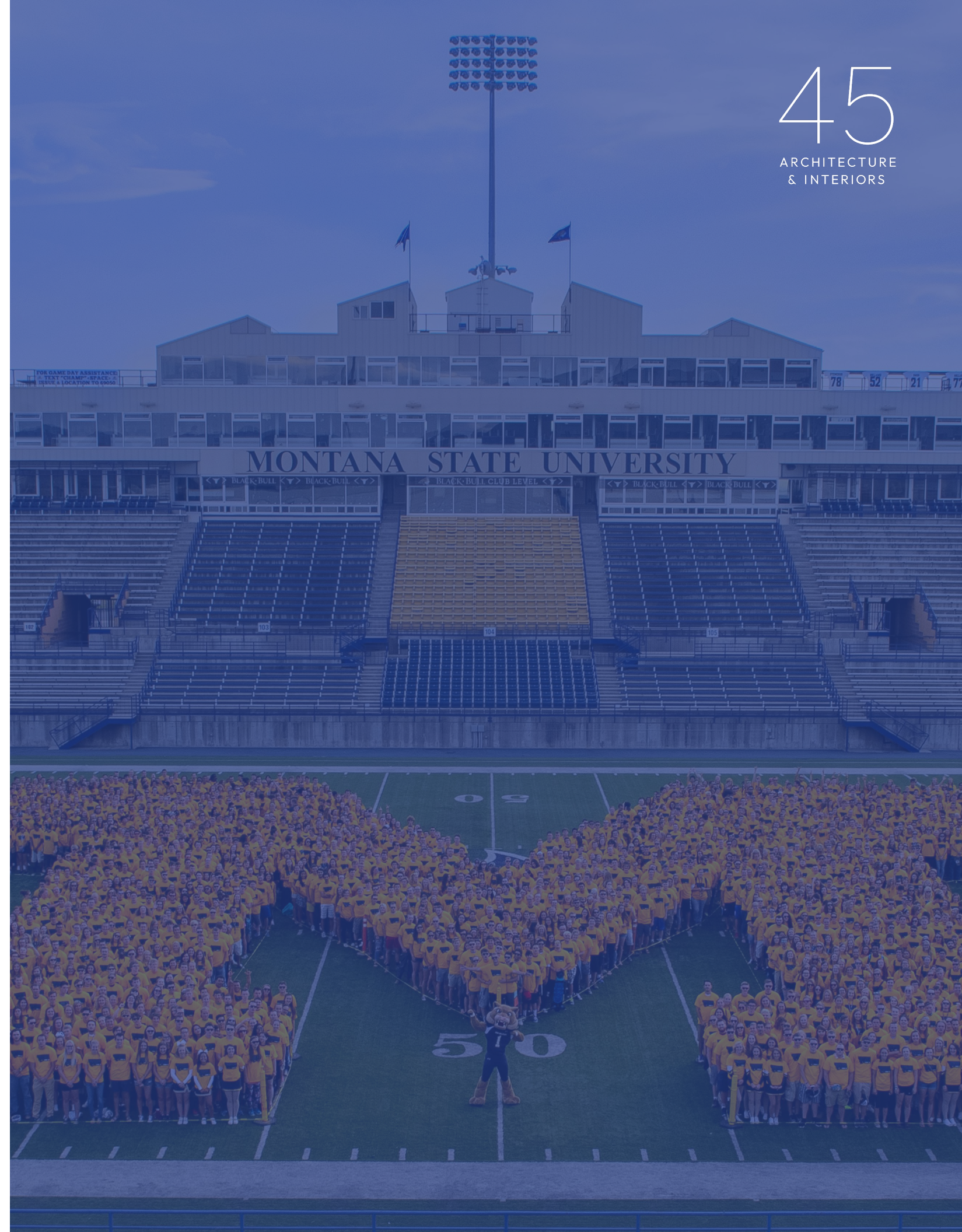
2025 MSU Athletic Master Plan

01 Vision, Framework, & Goals

02 Athletic Master Plan

03 Emerging Projects

45
ARCHITECTURE
& INTERIORS



01 Vision, Framework, & Goals

02 Athletic Master Plan

03 Emerging Projects



Vision, Framework & Goals

2025 MSU Athletic Master Plan

“Our goal is to create centers of excellence that embrace our mission to create champions — both on and off the field.”

- Leon Costello, Director of Athletics

VISION

Create modern and student focused facilities that foster and create champions both on and off the field, positioning Montana State University as a leader in collegiate athletics.

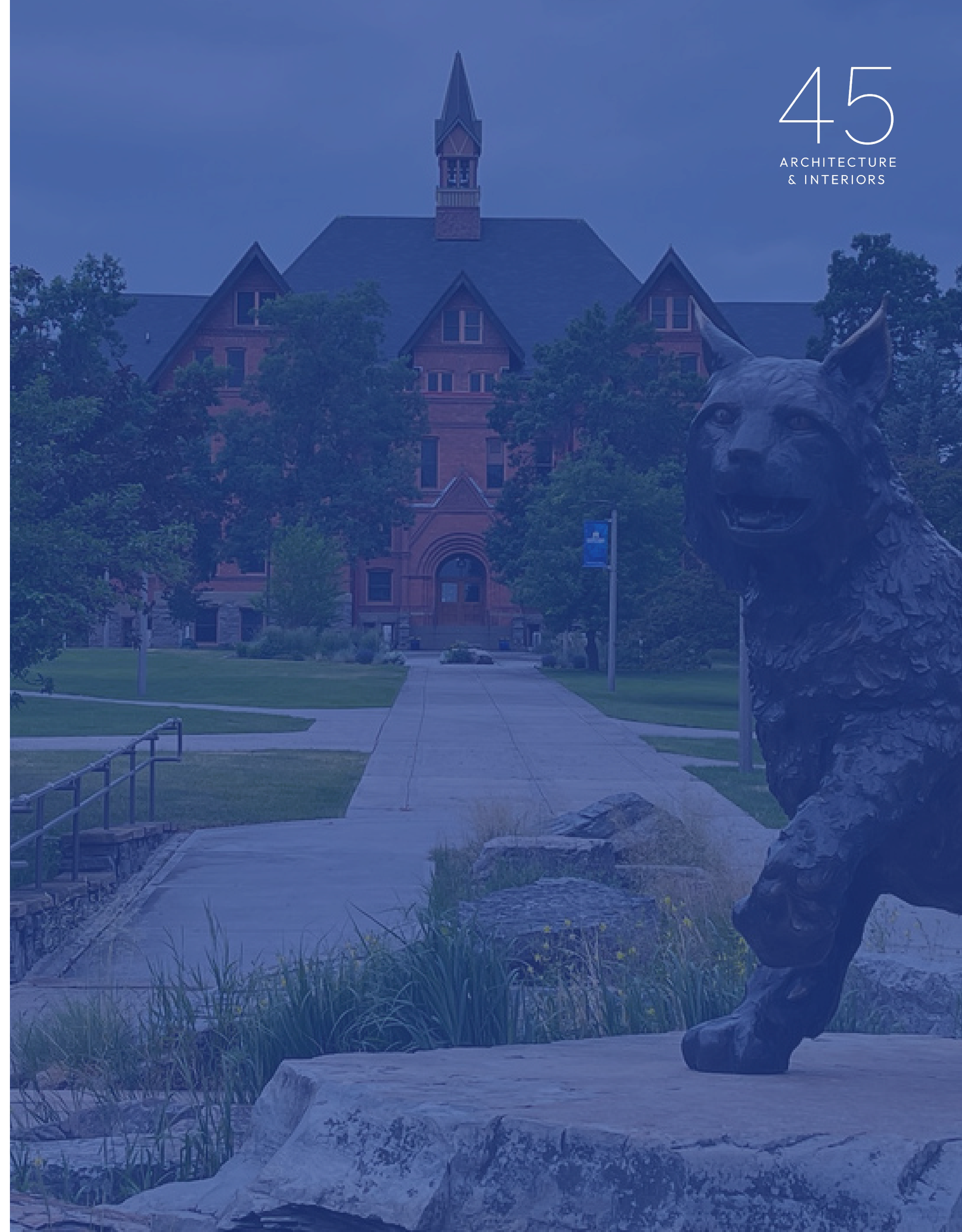
FRAMEWORK

Draw insights from case studies of top-tier universities to ensure MSU’s facilities meet industry standards and support future growth.

GOALS

Develop world-class athletic facilities that provide the resources for success and foster long-term community engagement.

45
ARCHITECTURE
& INTERIORS



01 Vision, Framework, & Goals

02 Athletic Master Plan

03 Emerging Projects



01 Vision, Framework, & Goals

02 Athletic Master Plan

03 Emerging Projects



Emerging Projects

2025 MSU Athletic Master Plan

Strategic Prioritization

“Facility enhancements are rooted in our vision to create a first-class student-athlete experience dedicated to academic success, competitive excellence, and personal development.”

- Leon Costello, Director of Athletics

Building on the foundation of earlier research and planning, the 2025 Athletic Master Plan outlines a focused set of emerging projects identified in close collaboration with university leadership. Each project was evaluated and prioritized based on demonstrated need, alignment with institutional goals, and its potential to support the continued evolution of MSU’s athletic programs. Together, these initiatives form a forward-looking roadmap designed to elevate competitiveness, enrich the student-athlete experience, and position the university for long-term success in a rapidly shifting athletic landscape.



Emerging Projects

2025 MSU Athletic Master Plan

PROJECT ORDER DOES NOT INDICATE PRIORITY, APPROVAL, OR GUARANTEED TIMELINES.

A Brick Breeden Fieldhouse and Shroyer Gym

Future enhancements to Brick Breeden Fieldhouse and Shroyer Gymnasium will upgrade amenities and infrastructure to better serve athletes and spectators. The improvements will support evolving needs and allow for building re-programming as the athletic department grows and transforms.

B Bobcat Anderson Tennis Center, Golf & Ski Expansion

A state-of-the-art facility featuring two additional competition tennis courts, match viewing area, locker rooms, and team space, providing year-round training for student-athletes and access for the community. The design allows for future expansion to support MSU Golf and Ski teams.

C Dyche Field Developments

An enhanced outdoor tennis venue with upgraded courts and seating will provide a top-tier setting for competition, training, and community use. Adjacent to the courts, a new athletic performance building will support athletic administration and athlete development with space for training, recovery, and team operations. Dyche Field offers potential for future development, creating flexible space that can support athletic activities, campus programs, and community events.

D Bobcat Stadium

A comprehensive stadium expansion strategy designed to increase capacity, elevate the fan experience, and enhance overall functionality. The plan includes new seating, upgraded bleachers, and the addition of premium club and suite-level amenities, along with modernized restrooms and expanded concessions to support long-term growth and game day excellence.

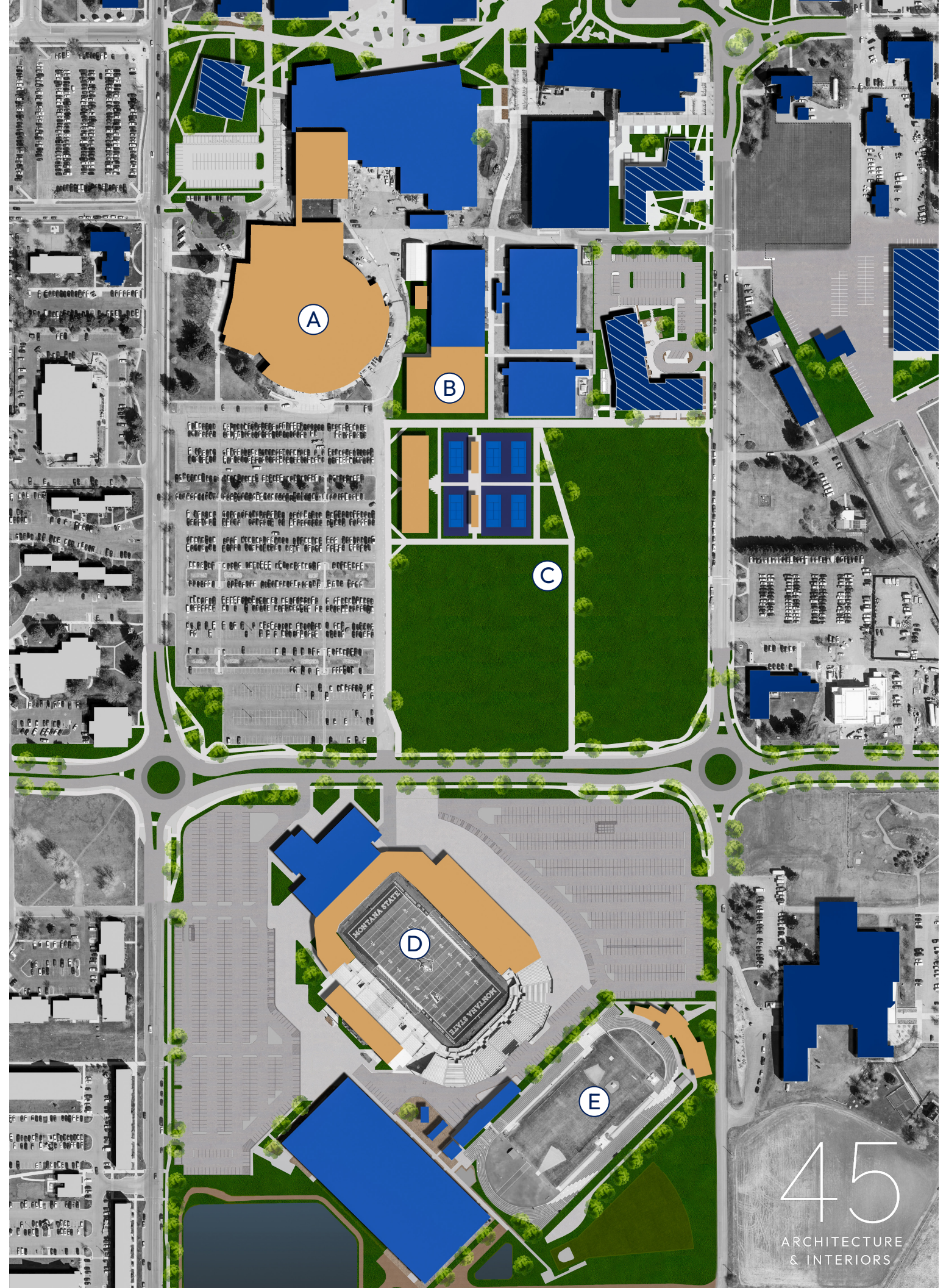
E Track & Field Complex

A dedicated facility offering modern locker rooms, offices, storage, and concessions, enhancing support and experience for track and field athletes and events.

LEGEND



- University Buildings
- Athletic Facilities
- New/Upcoming
- Future Expansion



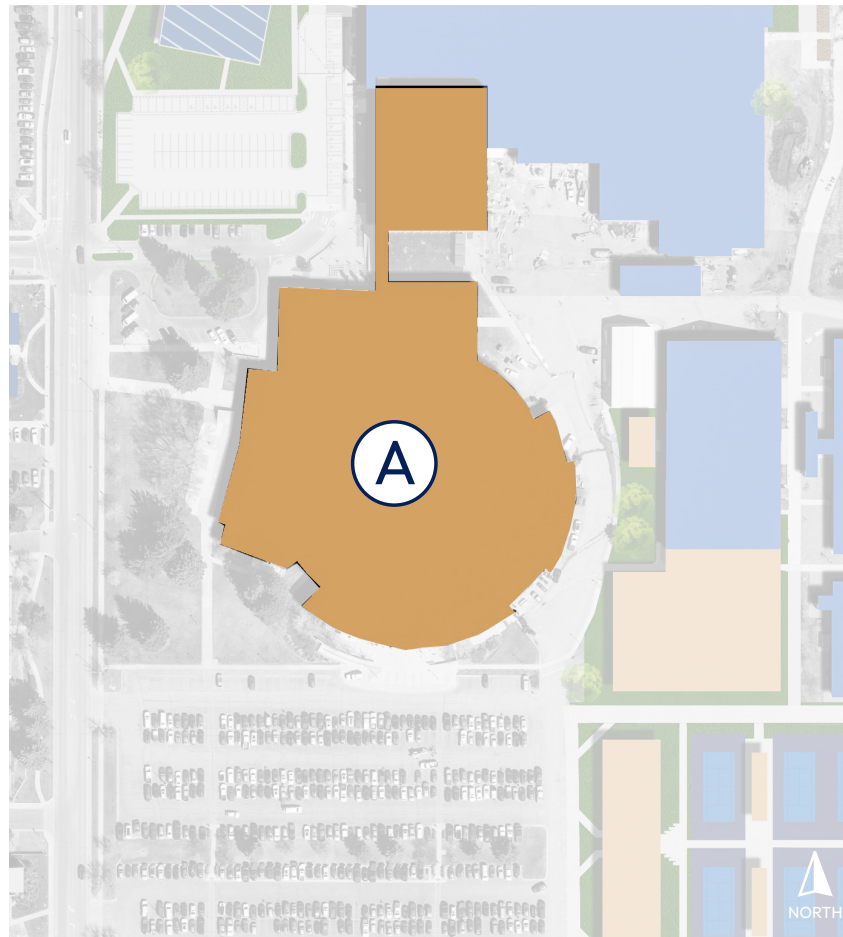
ALL VISUALIZATIONS ARE CONCEPTUAL AND INTENDED FOR ILLUSTRATIVE PURPOSES ONLY. THEY DO NOT REPRESENT FINALIZED DESIGNS, APPROVALS, OR CONFIRMED IMPLEMENTATION PLANS.

Brick Breeden Fieldhouse & Shroyer Gymnasium

2025 MSU Athletic Master Plan

Project Narrative

The Fieldhouse and Shroyer Gymnasium is slated for future upgrades that will enhance the experience for student-athletes, coaches, and fans alike. Planned improvements aim to benefit basketball, volleyball, and rodeo programs, with updates to team locker rooms, training areas, and other essential support spaces. The project may also include the addition of premium suites and broader design enhancements that reimagine the venue as a true arena setting—improving the atmosphere, elevating energy on game days, and creating a more engaging and competitive environment for all who step inside.



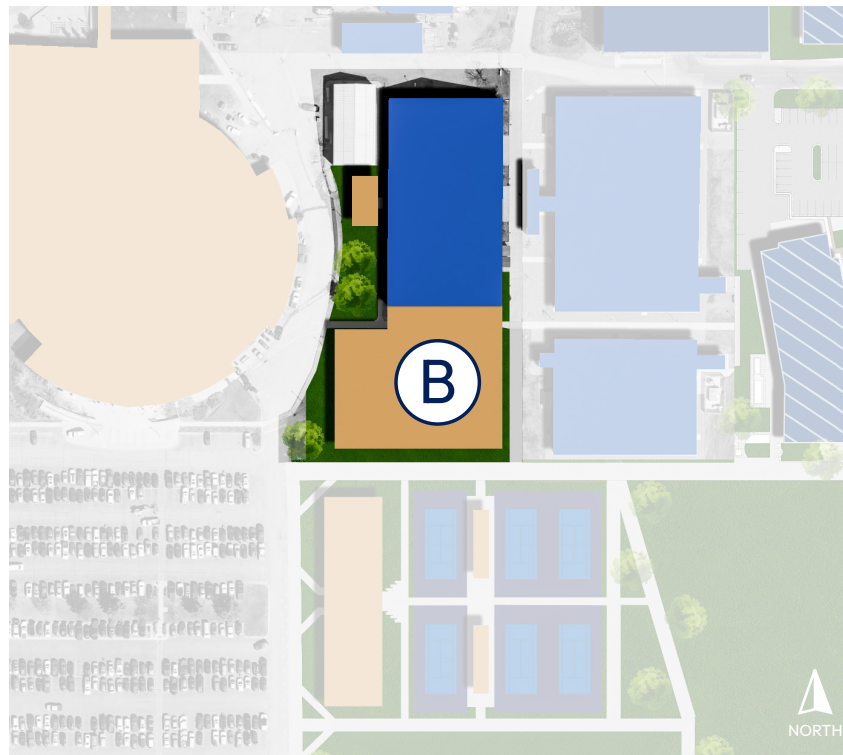
Bobcat Anderson Tennis Center

2025 MSU Athletic Master Plan

Program Components

The expanded Bobcat Anderson Tennis Center will feature two new indoor competition courts with spacious match viewing areas, dedicated coaching offices, locker rooms, and thoughtfully designed support spaces. Centered on creating a high-performance environment, the facility blends function and comfort to elevate the experience for athletes, coaches, and fans alike.

Providing all-weather access to elite training and competition, this complex will serve as a year-round home for excellence. With modern amenities and a focus on the student-athlete experience, it will stand as a vibrant hub for development, connection, and the continued elevation of the program. More than a facility, it represents a bold investment in championship-caliber tennis.



ALL VISUALIZATIONS ARE CONCEPTUAL AND INTENDED FOR ILLUSTRATIVE PURPOSES ONLY. THEY DO NOT REPRESENT FINALIZED DESIGNS, APPROVALS, OR CONFIRMED IMPLEMENTATION PLANS.

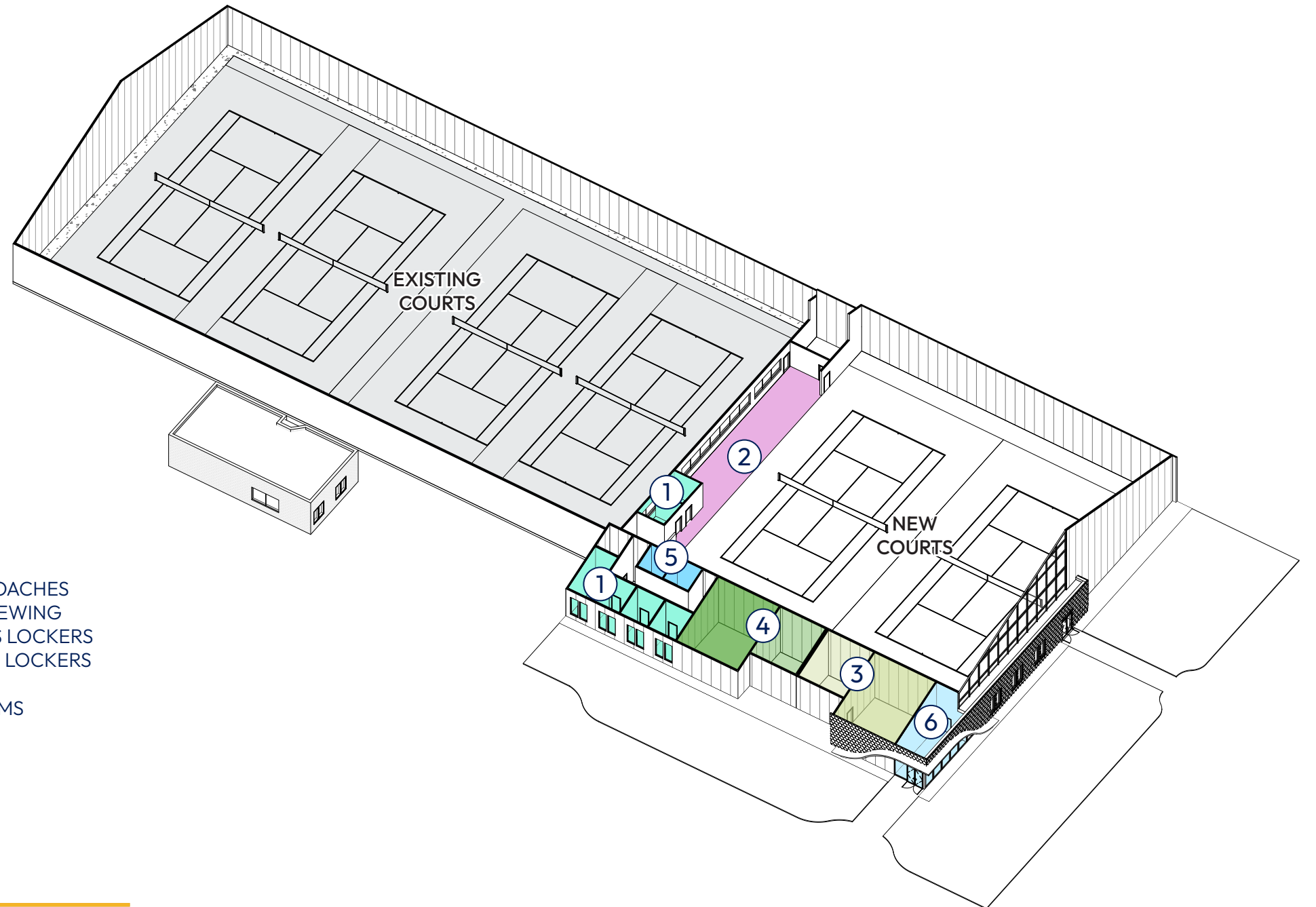
Bobcat Anderson Tennis Center

2025 MSU Athletic Master Plan

Program Components

Golf & Tennis Center			
Program	Unit Count	Unit Area	Area Req.
Existing Courts & Support space	1	27000	0
GENERAL			
Lobby	1	367	367
Public Unisex Family Toilets	2	75	150
TENNIS			
Head Coaches	1	135	135
Coaches Offices	5	103	515
Tennis Womens Locker	1	414	414
Tennis Womens - Wet Area	1	300	300
Tennis Mens Locker	1	568	568
Tennis Mens - Wet Area	1	300	300
Competition Court (Expansion)	2	7614	15228
Standing Room / Instruction Area	1	1315	1315
Mechanical / Support	1	289	289
Sub Total Area			19,581

LEVEL 2



1. TENNIS COACHES
2. MATCH VIEWING
3. W. TENNIS LOCKERS
4. M. TENNIS LOCKERS
5. RESTROOMS
6. LOBBY

LEVEL 1

SOUTHWEST VIEW: EXPLODED PLAN DIAGRAM

Bobcat Anderson Tennis Center

2025 MSU Athletic Master Plan

45
ARCHITECTURE
& INTERIORS



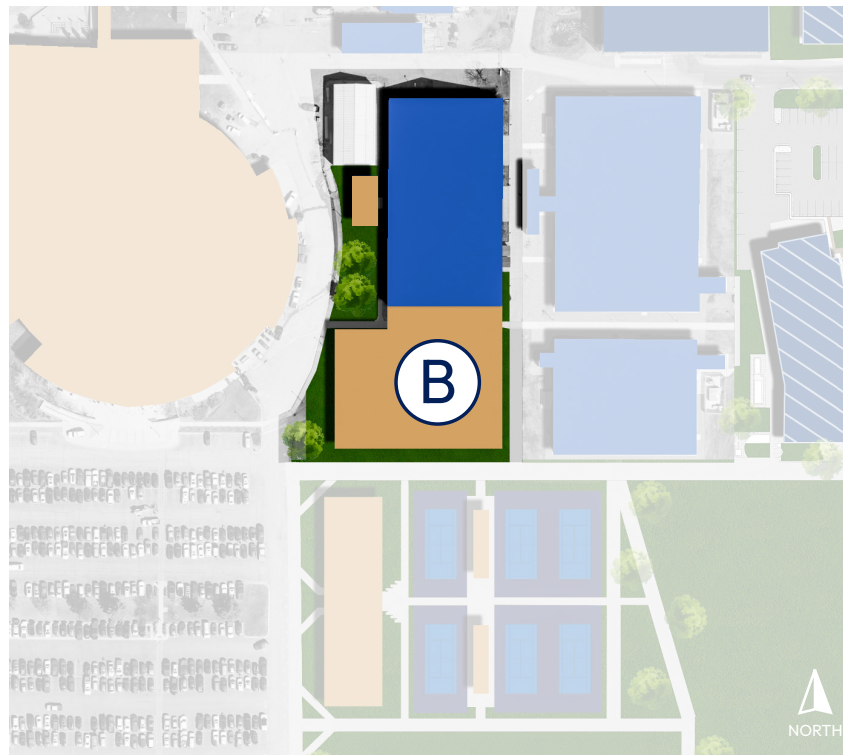
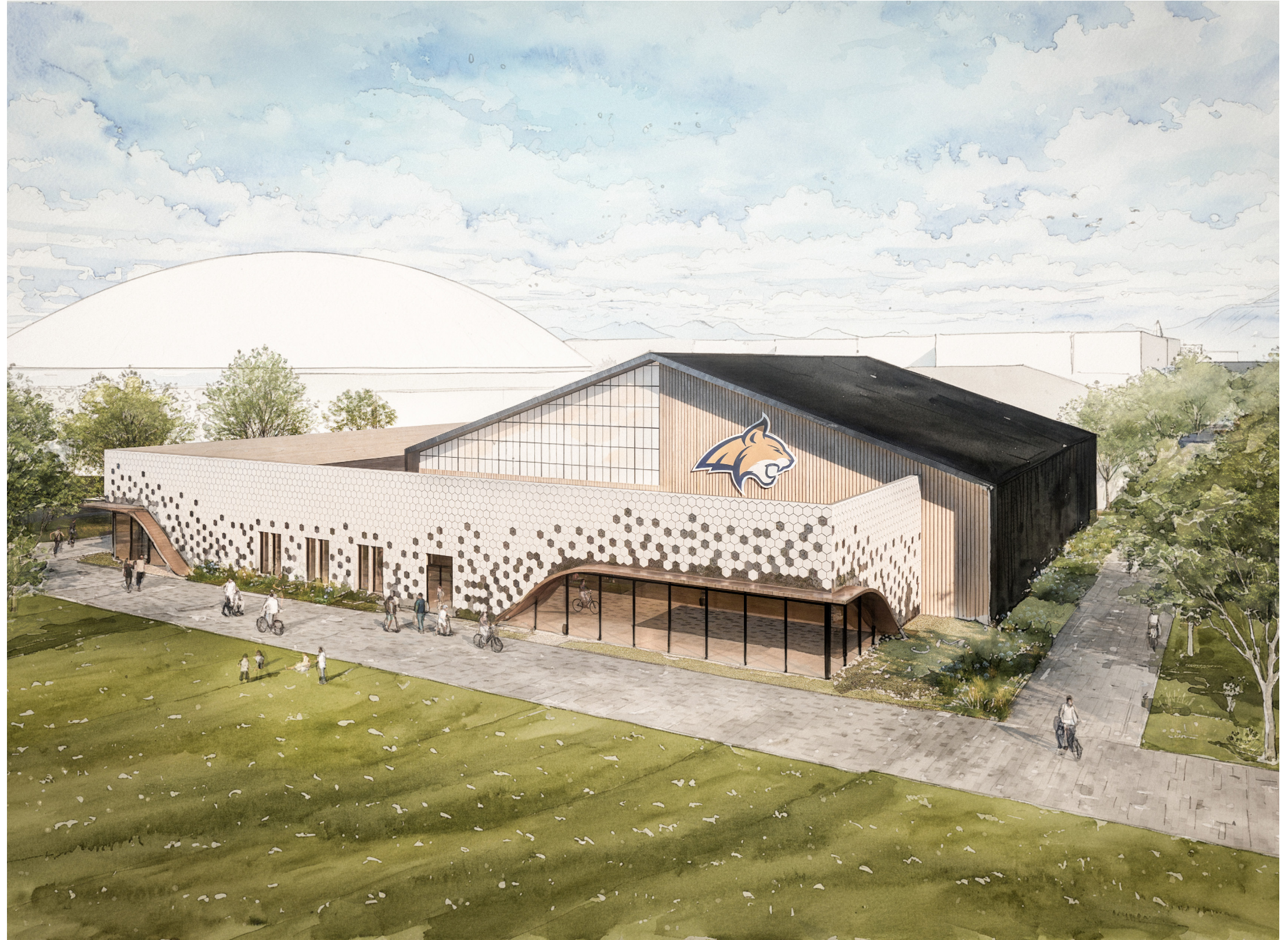
ALL VISUALIZATIONS ARE CONCEPTUAL AND INTENDED FOR ILLUSTRATIVE PURPOSES ONLY. THEY DO NOT REPRESENT FINALIZED DESIGNS, APPROVALS, OR CONFIRMED IMPLEMENTATION PLANS.

Bobcat Anderson Tennis Center, Golf & Ski Expansion

2025 MSU Athletic Master Plan

Project Narrative

The new tennis facility has the ability to expand to include a permanent home for the MSU Golf and Ski teams. The facility will provide year-round access to elite practice space, including multiple simulators and dedicated short game areas. It will also include new coaching offices, locker rooms and support spaces. This state-of-the-art facility allows the entire program the resources to practice all year with no worries about inclement weather.



Bobcat Anderson Tennis Center, Golf & Ski Expansion

2025 MSU Athletic Master Plan

Program Components

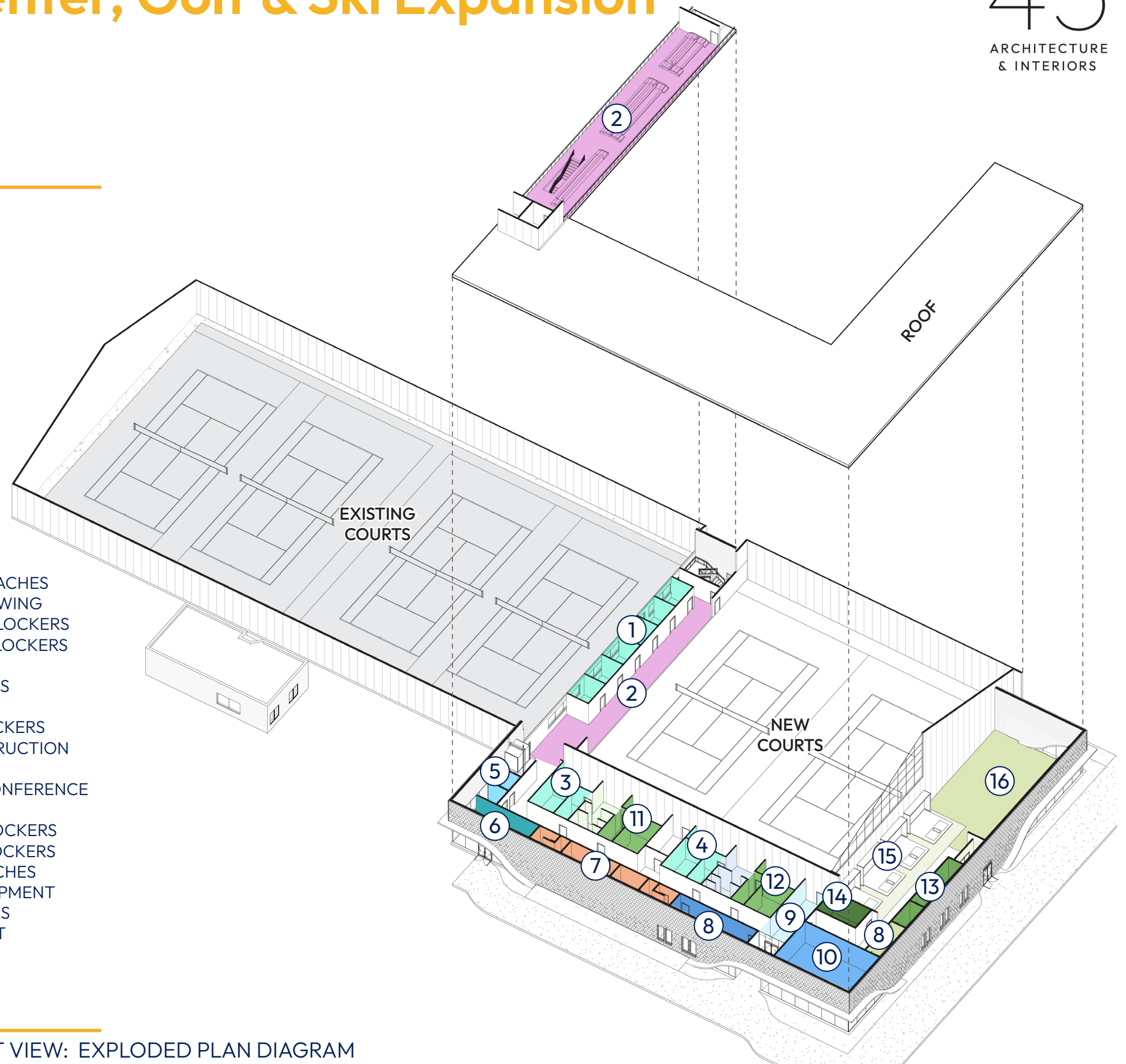
Golf & Tennis Center			
Program	Unit Count	Unit Area	Area Req.
Existing Courts & Support space	1	27000	0
GENERAL			
Future Lobby Retail Conference	1	1152	1152
Lobby	1	367	367
Public Unisex Family Toilets	2	63	126
Conference Room			
Classroom			
TENNIS			
Head Coaches	2	108	216
Coaches Offices	4	108	432
Tennis Womens Locker	1	414	414
Tennis Mens Locker	1	420	420
Competition Court (Expansion)	1	7510	7510
Additional Court (Expansion)	1	7510	7510
Standing Room / Instruction Area	1	1110	1110
Seating at Competition Court (100 seats)	1	1976	1976
Seating - Accessible (incl.*)	1		0
GOLF			
Golf Hitting Bays (Simulators)	4	296	1184
Golf Putting Green	1	2158	2158
Golf Pitching Area (30 yds indoors) - incl.*	1	0	0
Golf Instructional Classroom	1	206	206
Head Coaches	1	145	145
Coaches Offices	2	152	304
Golf Mens Locker	1	414	414
Golf Womens Locker	1	421	421
Equipment Room Storage	1	182	182
SKI			
Ski Team Storage and Maintenance	1	443	443
SHARED			
Team Instruction	1	539	539
Golf & Tennis Locker Restroom - Men	1	300	300
Golf & Tennis Locker Restroom - Women	1	299	299
General Public Locker Room	2	466	932
Mechanical Gross Up Factor	0.18	55760	10036.8
Sub Total Area			38,797

LEVEL 2

1. TENNIS COACHES
2. MATCH VIEWING
3. W. TENNIS LOCKERS
4. M. TENNIS LOCKERS
5. RESTROOMS
6. SKI TEAM
7. PUBLIC LOCKERS
8. TEAM INSTRUCTION
9. LOBBY
10. RETAIL / CONFERENCE
11. W. GOLF LOCKERS
12. M. GOLF LOCKERS
13. GOLF COACHES
14. GOLF EQUIPMENT
15. SIMULATORS
16. PITCH/PUTT

LEVEL 1

SOUTHWEST VIEW: EXPLODED PLAN DIAGRAM



Bobcat Anderson Tennis Center, Golf & Ski Expansion

2025 MSU Athletic Master Plan

45
ARCHITECTURE
& INTERIORS



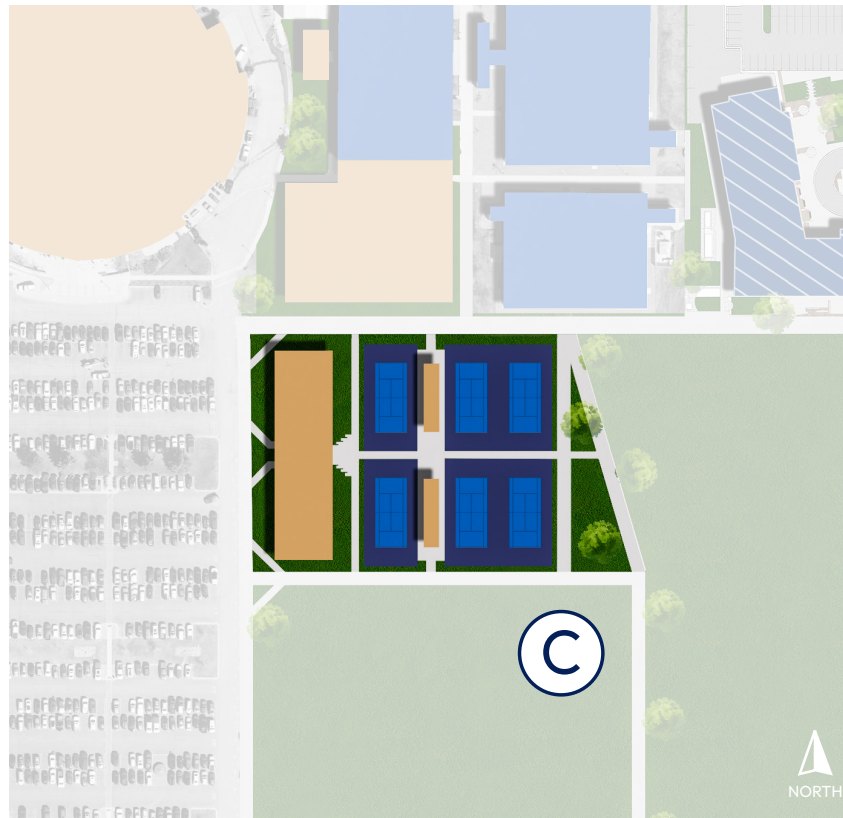
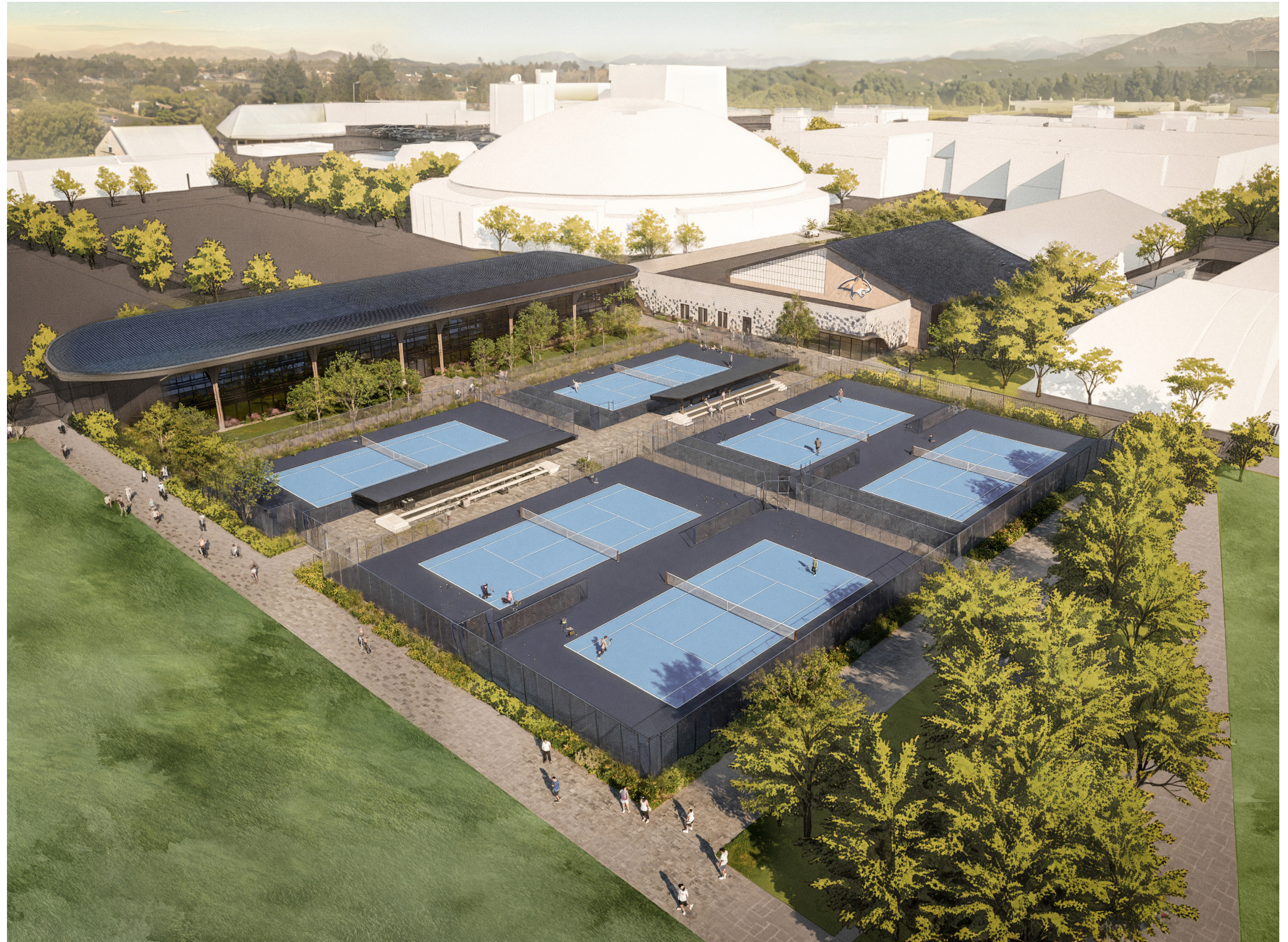
ALL VISUALIZATIONS ARE CONCEPTUAL AND INTENDED FOR ILLUSTRATIVE PURPOSES ONLY. THEY DO NOT REPRESENT FINALIZED DESIGNS, APPROVALS, OR CONFIRMED IMPLEMENTATION PLANS.

Dyche Fields - Outdoor Tennis

2025 MSU Athletic Master Plan

Project Narrative

The new outdoor tennis courts, located adjacent to the Bobcat Anderson Tennis Center, will offer seamless and convenient access for players, coaches, and fans, enhancing connectivity between indoor and outdoor training environments. These courts are designed to support competitive play and practice while fostering a vibrant community atmosphere. The proposed adjacent athletic performance center will provide comprehensive support services, including tutoring, nutrition, and wellness resources, all aimed at optimizing athlete development. The center will feature additional athletic offices, promoting collaboration and streamlined operations to better serve the athletic programs.



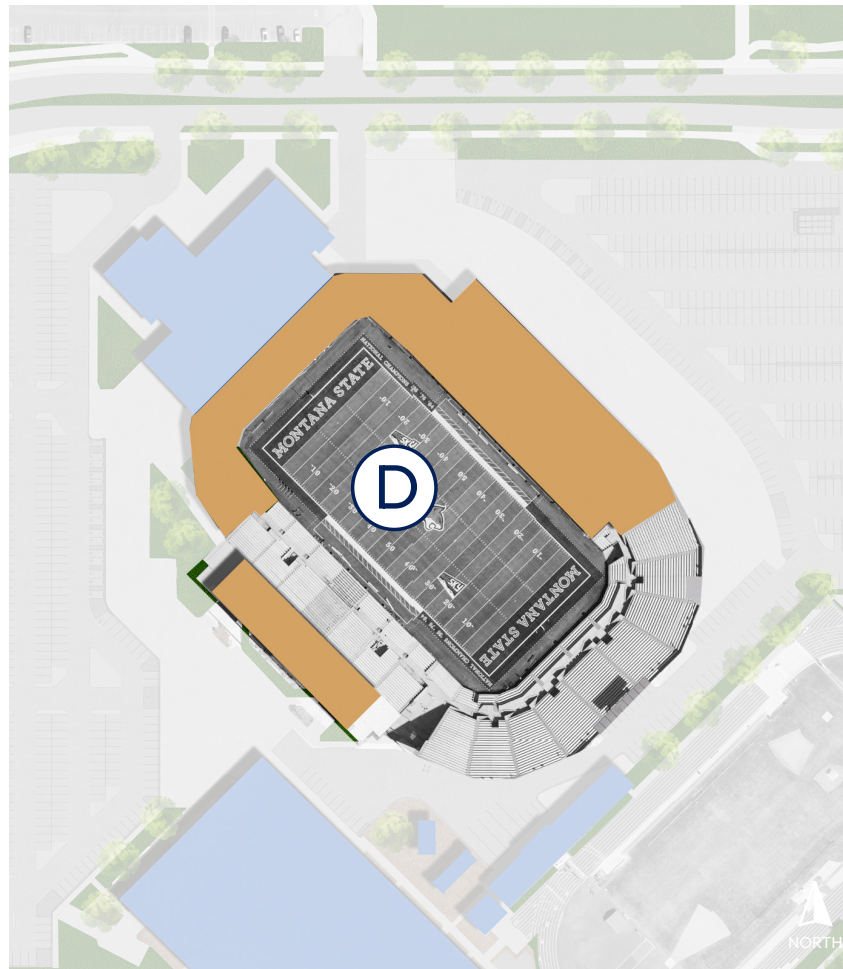
ALL VISUALIZATIONS ARE CONCEPTUAL AND INTENDED FOR ILLUSTRATIVE PURPOSES ONLY. THEY DO NOT REPRESENT FINALIZED DESIGNS, APPROVALS, OR CONFIRMED IMPLEMENTATION PLANS.

Bobcat Stadium

2025 MSU Athletic Master Plan

Project Narrative

The Masterplan contains conceptual renderings of a reimagined Bobcat Stadium. Bobcat Stadium has served MSU fans and the Bozeman community for many years, but through incredible support and successful Bobcat football teams, we have outgrown its current configuration. Concepts include enhanced fan amenities, increased premium seating options including suite and club seats, and will increase the total capacity of the stadium. Feasibility and case studies will be conducted in the near future to determine final design elements.



Bobcat Stadium

2025 MSU Athletic Master Plan

45
ARCHITECTURE
& INTERIORS



ALL VISUALIZATIONS ARE CONCEPTUAL AND INTENDED FOR ILLUSTRATIVE PURPOSES ONLY. THEY DO NOT REPRESENT FINALIZED DESIGNS, APPROVALS, OR CONFIRMED IMPLEMENTATION PLANS.

Bobcat Stadium

2025 MSU Athletic Master Plan



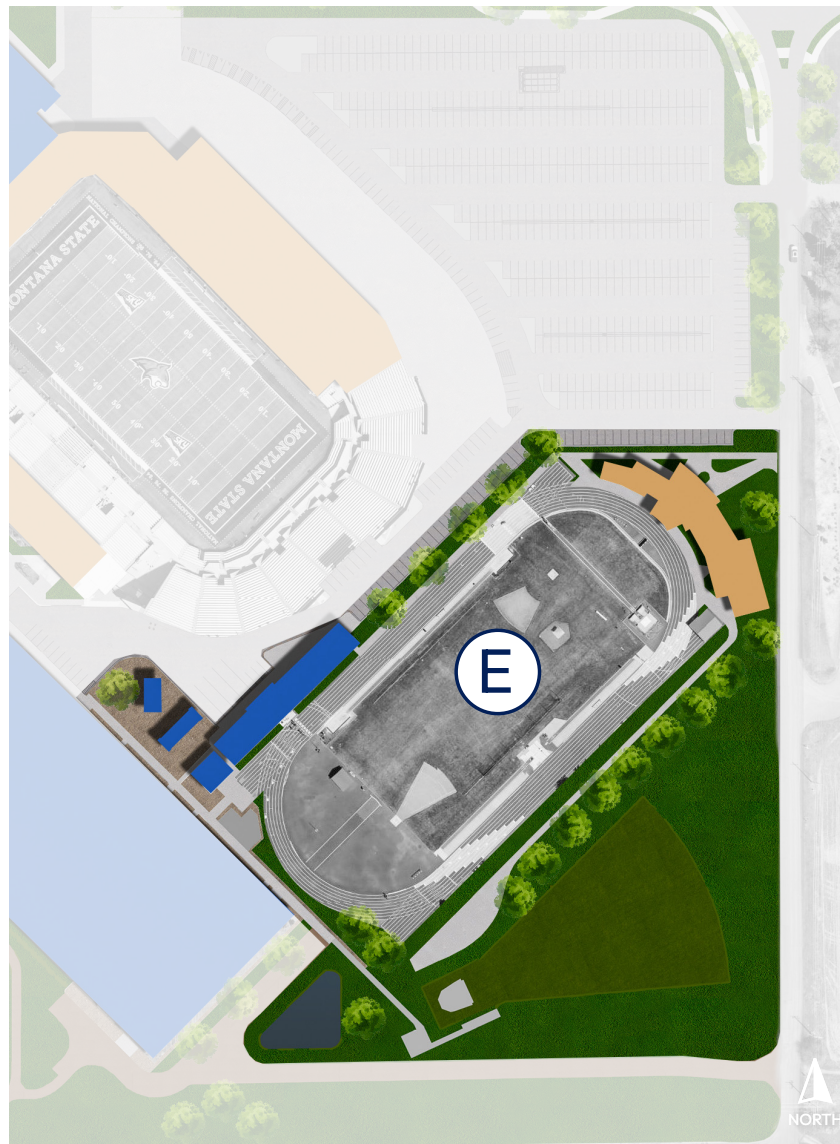
ALL VISUALIZATIONS ARE CONCEPTUAL AND INTENDED FOR ILLUSTRATIVE PURPOSES ONLY. THEY DO NOT REPRESENT FINALIZED DESIGNS, APPROVALS, OR CONFIRMED IMPLEMENTATION PLANS.

Track & Field Complex

2025 MSU Athletic Master Plan

Project Narrative

The upgraded track and field complex will feature team and visitor locker rooms, meeting spaces, concessions, ticketing, public restrooms, and a dedicated officials' area—all conveniently located adjacent to the track. This thoughtfully designed setup supports athletes, coaches, officials, and fans, enhancing event-day experiences and streamlining overall operations.



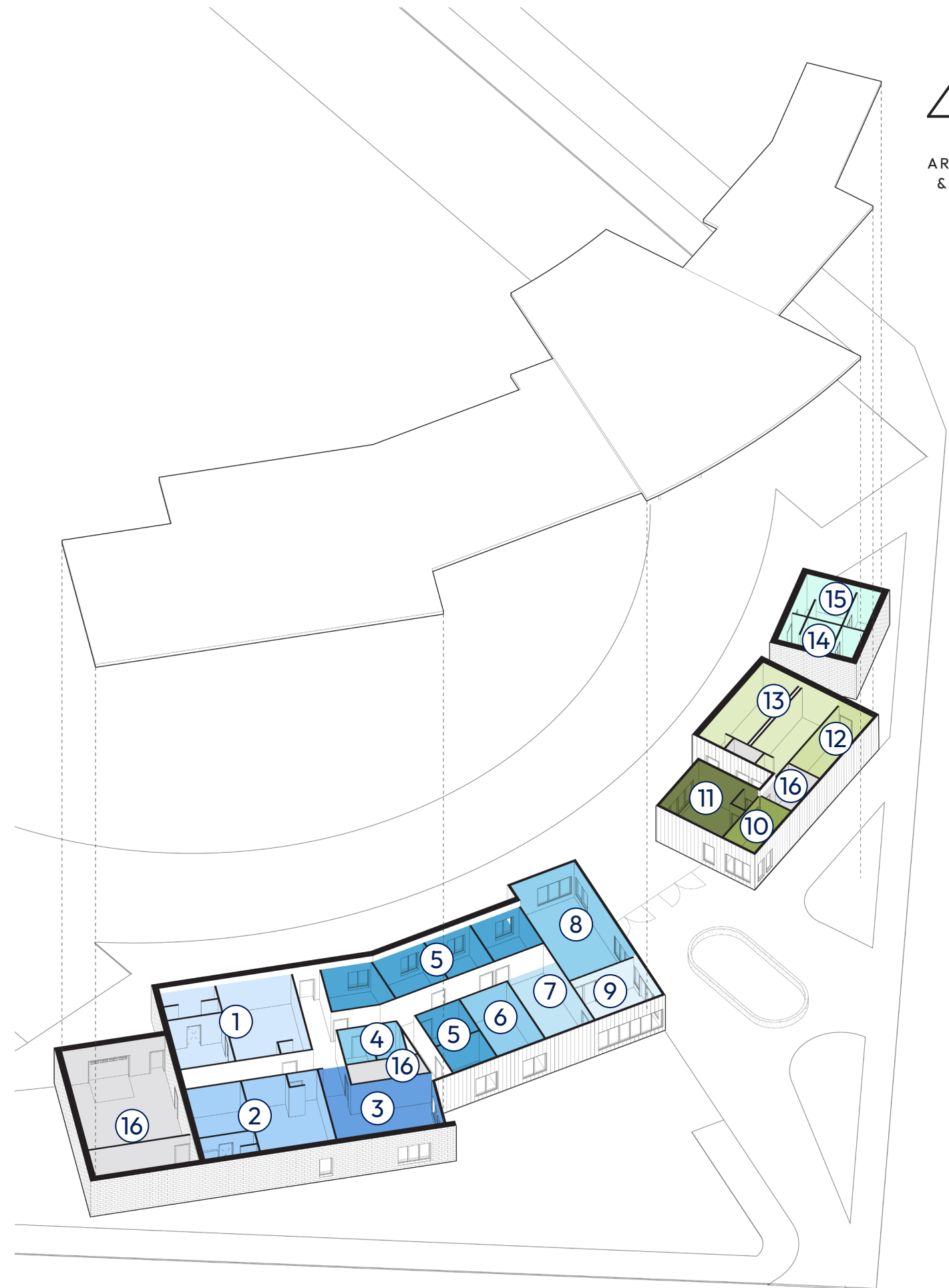
Track & Field Complex

2025 MSU Athletic Master Plan

Program Components

Track & Field			
Program	Unit Count	Unit Area	Area Req.
GENERAL			
Public RR - M	1	237	237
Public RR - W	1	228	228
Officials Room	1	187	187
Ticketing	1	145	145
Concessions	1	231	231
Janitor	1	38	38
Visitor Locker Rooms - M	1	194	194
Visitor Locker Rooms - W	1	188	188
TRACK			
Lobby / Reception	1	222	222
Lounge & Nutrition	1	245	245
Classroom	1	234	234
Conference	1	468	468
Head Coaches Offices	2	161	322
Coaches Offices	2	142	284
Coaches Offices	2	105	210
Training / Equipment	1	447	447
Track & Field Locker Room - Men	1	694	694
Track & Field Locker Room - Women	1	694	694
Storage	1	787	787
Unisex Family Toilets	2	67	134
Mechanical Gross Up Factor	0.18	2966	533.88
Sub Total Area			6723

1. WOMEN'S LOCKER ROOM - HOME
2. MEN'S LOCKER ROOM - HOME
3. TRAINING/EQUIPMENT
4. RESTROOMS
5. COACHING STAFF
6. CLASSROOM
7. LOUNGE / NUTRITION
8. CONFERENCE
9. LOBBY / RECEPTION
10. TICKETING
11. CONCESSIONS
12. OFFICIALS ROOM
13. PUBLIC RESTROOMS
14. MEN'S LOCKER ROOM - VISITOR
15. WOMEN'S LOCKER ROOM - VISITOR
16. STORAGE / MECH.



LEVEL 1

NORTHEAST VIEW: EXPLODED PLAN DIAGRAM

Track & Field Complex

2025 MSU Athletic Master Plan

45
ARCHITECTURE
& INTERIORS



ALL VISUALIZATIONS ARE CONCEPTUAL AND INTENDED FOR ILLUSTRATIVE PURPOSES ONLY. THEY DO NOT REPRESENT FINALIZED DESIGNS, APPROVALS, OR CONFIRMED IMPLEMENTATION PLANS.

THANK YOU

