



MISSISSIPPI STATE SOCCER

2016 GAME NOTES | GAME 9 | #HAILSTATE

Contact: Tyson Rodgers | Email: TRodgers@athletics.msstate.edu | Cell: 662.418.2982

2016 SCHEDULE

Overall Record (5-3-0, 0-1-0 SEC)

Date	Opponent	TV	Time/Result
Aug. 19	at College of Charleston		W, 2-0
Aug. 21	! vs. #17 Virginia Tech		L, 1-2
Aug. 26	Lipscomb		L, 0-1
Aug. 28	UT Martin		W, 3-1
Sept. 2	at South Alabama		W, 2-1 (2OT)
Sept. 4	at Southern Miss		W, 1-0
Sept. 9	*#25 Arkansas		L, 2-5
Sept. 11	% Louisiana Lafayette		W, 2-1
Sept. 18	*Vanderbilt		2:00 p.m.
Sept. 22	*at Ole Miss		6:00 p.m.
Sept. 25	*at Missouri		1:00 p.m.
Sept. 30	*Alabama		7:00 p.m.
Oct. 6	*South Carolina		7:00 p.m.
Oct. 9	*at Auburn		2:00 p.m.
Oct. 14	*LSU		7:00 p.m.
Oct. 20	*at Tennessee		6:00 p.m.
Oct. 23	*at Florida		12:00 p.m.
Oct. 27	*Texas A&M		7:00 p.m.
Oct. 31	SEC Tournament		TBA

! - Game in Charleston, S.C. * - SEC Game % - Senior Day

Home Games **BOLD** // All Times CST // Subject To Change

GAME 9

MISSISSIPPI STATE BULLDOGS VS

VANDERBILT COMMODORES

SEPT. 18, 2016 | 2:00 P.M. CT

MSU SOCCER FIELD | STARKVILLE, MISS.



(5-3-0, 0-1-0 SEC)

Head Coach: Aaron Gordon
MSU Record: 16-43-3

2016 Stat Comparison

13	Goals	17
10	Assists	12
11	GA	10
42	Saves	35
117	Shots	107
61	SOG	50
59	CKs	52
.111	Shot%	.159
.521	SOG%	.467



(4-4-0, 0-1-0 SEC)

Head Coach: Darren Ambrose
VU Record: 14-12-4

Television: ESPNU | Play-By-Play: Trey Bender | Color Analyst: Jordan Angeli
Live Stats: HailState.com | In-Game Updates: [Twitter.com/HailStateSOC](https://twitter.com/HailStateSOC)

Having won four out of their last five games, the Mississippi State Bulldogs welcome SEC-foe Vanderbilt to the MSU Soccer Field for a Sunday afternoon contest. The match-up will be televised on ESPNU at 2 p.m. CT.

Quick Hitters

- MSU has turned in the program's best eight-game stretch since 2012's 7-0-1 start
- With 10 games still to be played, head coach Aaron Gordon has already tied his season-high in wins at five
- Sunday's opponent Vanderbilt is 16-2-0 against MSU all-time, winning four-straight in the series
- The Bulldogs last win against Vanderbilt came in Nashville on Oct. 23, 2011 (2-1)
- The Commodores have won all nine meetings in Starkville
- MSU's last appearance on ESPNU resulted in a 2-1 win against Alabama in Tuscaloosa on Oct. 25, 2015.

How To Follow

Sunday's game will be available digitally on SEC Network +, via the WatchESPN app and SECSports.com. Those not able to watch the contest can follow along on Twitter with in-game updates on the @HailStateSOC account.

Last Time Out

Riding a wave of momentum on Senior Day, the Bulldogs downed visiting Louisiana-Lafayette, 2-1, as MSU capped its non-conference slate for the season. Senior Mila Coner propelled the team to victory after she tapped in the go-ahead goal in the 54th minute.

Who To Watch For MSU

Junior Mallory Eubanks has recorded six points in only seven games this season, which is four shy of her career-high set in 2015. The forward has earned all six of her points in two games this season, as she turned in three-point performances against UT Martin and Louisiana-Lafayette.

Who To Watch For Vandy

Senior Sasha Gray leads the team with four goals on the season. Her six-point effort against Jackson State on Aug. 28, remains her best outing of the season and ranks as the second-most points by a player in the SEC for 2016.

MSU MEDIA RELATIONS

Tyson Rodgers

Soccer Contact

Cell: 662-418-2982

Email: trodgers@athletics.msstate.edu

Twitter: [tysonrodgers](https://twitter.com/tysonrodgers)

BULLDOG SOCIAL MEDIA



@HailStateSOC



Facebook/HailStateSOC

[illegible]



MISSISSIPPI STATE SOCCER

2016 GAME NOTES | GAME 9 | #HAILSTATE

Non-Conference Success

MSU earned a winning record in non-conference play for the first time since 2012, as the Maroon and White finished 5-2-0 out of conference.

Clean Sheet Debut

In her first start since Oct. 23, 2015, sophomore Courtney Tompkins held Southern Miss scoreless in 90 minutes of action for the second clean sheet of her career. Tompkins stopped six shots in the 1-0 win.

Own Goal Winner

In the 50th minute of a scoreless game between MSU and USM, junior Ari Holmes sent a throw in into the box, which found its way into the goal after bouncing off a Golden Eagle player. The own goal was enough for the win as MSU left Hattiesburg with the 1-0 victory.

Jags Upset No. 1

After falling to MSU on Sept. 2, South Alabama has followed up the loss with a pair of 1-0 wins against No. 1 Florida State and SEC foe Ole Miss.

Double-Overtime Thriller

Trailing 1-0 to defending Sun Belt champion South Alabama, sophomore Kennadi Carbin netted her first goal of the season to set up an overtime winner for freshman McKenna de Graaf. For de Graaf, the game was her first back from injury and her first start as a Bulldog as she sealed the comeback win in the 101st minute. The overtime win was MSU's first on the road since 2004.

August Improvement

Last season the Bulldogs were 0-4 in the month of August, as State managed to only score one goal in the first four games. This year the Bulldogs posted a 2-2 mark with six goals scored over the same stretch.

Double Trouble For Adams

Before the Aug. 28th game against UT Martin, junior McKenzie Adams had only two assists for her career at MSU. The Madison, Miss., native doubled that total after her two-assist performance in the 3-1 win.

Waldner Playing Like A Vet

Freshman forward MaKayla Waldner has played above her class for the Bulldogs this season, as the newbie has scored twice in her

first four games for the Maroon and White to lead the team in goals.

Juniors Get Career Firsts

The junior duo of Khalyn Harmon and Kelly Dorney found their way into the scoring column for the first time after the pair scored against College of Charleston and UT Martin respectively.

All-Tournament Team Honors

Captain Mallory Eubanks, along with freshmen Johanna Hamblett and MaKayla Waldner each earned spots on the Charleston Classic All-Tournament Team in the opening weekend after their great performances on the pitch.

De Souza's 11 Saves Best In SEC

Junior Tanya de Souza kicked off the 2016 season tying her career-high in saves after stopping 11 shots against College of Charleston. The 11 saves are tied for first in the SEC with Georgia's Louise Hogrell, who saved 11 on the same night as de Souza on August 19.

Welcome To America

In her first collegiate game, New Zealand native Johanna Hamblett earned her first goal as a Bulldog. The freshman followed up that performance with an assist in her next game, as she aided MaKayla Waldner's score against No. 17 Virginia Tech.

Trio Named To SEC Watch List

Senior Ari Holmes, junior Mallory Eubanks and sophomore Carly Mauldin were each named to the SEC Preseason Watch List on Aug. 17 by the league's coaches after their outstanding play in the 2015 season.

Junior Team

Gordon's squad features 10 juniors on the roster, the most at any time during his tenure at MSU. Over his first three years, Gordon has had a combined total of seven before 2016's team.

Freshmen Presence

MSU welcomes eight newcomers to the roster in 2016, which is a low total compared to past seasons. Freshman Johanna Hamblett has received starts in every MSU game this season.

Friendly Fire

MSU netted four goals in their two preseason friendlies, as the Maroon and White downed Memphis 3-0 and Iowa State 1-0 to cap its scoring barrage.

Where The Bulldogs Stack Up

Category	Stat	SEC Rank
Goals	13	t8th
Goals per Game	1.62	t9th
Shots	117	9th
Assists	8	t11th
Corner Kicks	59	2nd
Goals Allowed	11	t10th
Saves	42	t2nd
Fouls	77	4th
Yellow Cards	10	1st

Freshmen Production

Name	Points	Goals	Assists
MaKayla Waldner	5	2	1
Johanna Hamblett	3	1	1
McKenna de Graaf	2	1	0

Iron Bulldogs

Players Who Have Played Full Distance

Name	Times	Total Mins
Carly Mauldin	8	731
Courtney Robicheaux	7	722
Tanya de Souza	7	641
Khalyn Harmon	5	592
Ari Holmes	4	649
Kiley Martens	2	510
Mallory Eubanks	1	573
Courtney Tompkins	1	90

De Souza's Ranks

Category	Stat	SEC Rank
Goals Against	11	N/A
Goals Against Average	1.55	N/A
Saves	35	3rd
Saves %	.761	6th
Saves Per Game	5.00	3rd
Shutouts	1	t10th
Shutouts Per Game	0.17	t10th

Goal Order

No.	Name	Game
1.	Johanna Hamblett	College of Charleston
2.	Khalyn Harmon	College of Charleston
3.	MaKayla Waldner	Virginia Tech
4.	MaKayla Waldner	UT Martin
5.	Mallory Eubanks	UT Martin
6.	Kelly Dorney	UT Martin
7.	Kennadi Carbin	South Alabama
8.	McKenna de Graaf	South Alabama
9.	USM Own Goal	Southern Miss
10.	Kennadi Carbin	Arkansas
11.	Ari Holmes	Arkansas
12.	Mallory Eubanks	ULL
13.	Mila Coner	ULL

Assists Order

Goal #	Name	Game
2nd	Johanna Hamblett	College of Charleston
4th	McKenzie Adams, Alexa England	UT Martin
5th	McKenzie Adams	UT Martin
6th	Carly Mauldin, Mallory Eubanks	UT Martin
9th	Team	Southern Miss
10th	MaKayla Waldner	Arkansas
13th	Mallory Eubanks	ULL

2016 Scoring Breakdown

Home

Minute	0-15	16-30	31-45	46-60	61-75	76-90	91-100	101-110	Total
Bulldogs	1	3	1	1	0	1	-	-	7
Opponents	2	1	3	1	1	0	-	-	8

Road/Neutral

Minute	0-15	16-30	31-45	46-60	61-75	76-90	91-100	101-110	Total
Bulldogs	0	0	1	1	1	2	0	1	6
Opponents	0	0	0	1	0	2	0	0	3



MISSISSIPPI STATE SOCCER

PLAYER NOTES | GAME 9 | #HAILSTATE

#0 RHYLEE DeCRANE

GK, 5-6, Jr., Myrtle Beach, S.C.

Career Game Highs

Saves: 10, at Auburn (10/23/14)

Mins: 106, vs. Southern Miss (08/31/14)

Season Highlights

N/A

#1 TANYA DE SOUZA

GK, 5-7, Jr., Paris, France

Career Game Highs

Saves: 11, at College of Charleston (08/19/16)

Mins: 110:00, 3xs, last vs. Missouri (09/27/15)

Season Highlights

Collected a career-high 11 saves against College of Charleston to open the season... In the 2-0 win earned her first clean sheet of the season... Named SEC Defensive Player of the Week after her nine-save performance against South Alabama... Has started in six games for the Maroon and White, allowing only five goals... Her 30 saves for the season ranks fourth in the SEC.

#2 KATELYN WATSON

M, 5-7, Jr., New Albany, Miss.

Career Game Highs

Goals: None

Assists: 1, 1x, vs. Arkansas State (09/05/14)

Mins: 90, 5xs, last vs. Arkansas (10/26/14)

Season Highlights

Has played in all games for the Bulldogs in 2016, recording three shots in 238 minutes of action.

#3 JAMILA CONER

M, 5-1, Sr., Dallas, Texas

Career Game Highs

Goals: 1, 1x, vs. Louisiana-Lafayette (9/11/16)

Assists: 1, 1x, at Southern Miss (08/31/14)

Mins: 90, 6xs, last vs. Vanderbilt (10/17/14)

Season Highlights

Earned her first collegiate goal on Senior Day, a go-ahead score to lift the Bulldogs past ULL... Earned her first start of the season on Senior Day... Has played in six games for MSU.

#4 KHALYN HARMON

D, 5-5, Jr., Ocean Springs, Miss.

Career Game Highs

Goals: 1, 1x, at College of Charleston (08/19/16)

Assists: None

Mins: 110, 2xs, last vs. Missouri (09/27/15)

Season Highlights

Has started and played in all but one game for MSU, going the full distance five times... Scored her career-first goal against College of Charleston, aiding in State's 2-0 win on the road.

#5 KENNADI CARBIN

F, 5-11, So., Louisville, Ky.

Career Game Highs

Goals: 1, 6xs, last vs. Arkansas (09/09/16)

Assists: 1, 1x, at Arkansas (09/20/15)

Mins: 71, vs. Arkansas (09/09/16)

Season Highlights

Has earned the start in every game for the Maroon and White this season... Netted her first goal of the season against South Alabama, aiding in MSU's 2-1 double-overtime win... Co-leader on the team with two goals scored.

#6 PAYTON GRUENEWALD

F, 5-9, Jr., Southlake, Texas

Career Game Highs

Goals: 1, 1x, vs. Nicholls State (09/04/15)

Assists: None

Mins: 82, at Furman (08/28/14)

Season Highlights

Given her first start of the season in MSU's 2-1 OT win against South Alabama... Has played in six games for the Bulldogs for a total of 88 minutes.

#7 MALLORY EUBANKS

F, 5-4, Jr., Lexington, Ky.

Career Game Highs

Goals: 1, 6xs, last vs. ULL (09/11/16)

Assists: 2, 1x, vs. Louisiana Tech (09/14/14)

Mins: 110, vs. Missouri (09/27/16)

Season Highlights

Has posted two three-point performances this season (UT Martin & ULL)... Has started in every game she has played for the Bulldogs, logging a total of 573 minutes at forward... Named MSU's captain in 2016.

#8 JOHANNA HAMBLETT

M, 5-7, Fr., Christchurch, New Zealand

Career Game Highs

Goals: 1, 1x, at College of Charleston (08/19/16)

Assists: 1, 1x, at College of Charleston (08/19/16)

Mins: 94, at South Alabama (09/02/16)

Season Highlights

In her first collegiate game, scored a goal while adding an assist in MSU's 2-0 win against College of Charleston... Has started every game as a Bulldog, logging 609 minutes... Only MSU freshman to start in every game this season.

#10 MaKAYLA WALDNER

F, 5-6, Fr., Dexter, Mo.

Career Game Highs

Goals: 1, 2xs, last vs. UT Martin (08/28/16)

Assists: 1, vs. Arkansas (09/09/16)

Mins: 85, at South Alabama (09/02/16)

Season Highlights

Scored her first collegiate goal against No. 17 Virginia Tech... Added one of MSU's three goals against UT Martin... Earned her first collegiate assist against Arkansas... Has started in all but one game for the Bulldogs.

#11 ELVA ASTTHORSDDOTTIR

M, 5-4, So., Reykjavik, Iceland

Career Game Highs

Goals: None

Assists: 1, 1x, vs. Murray State (08/23/15)

Mins: 58, vs. Murray State (08/23/15)

Season Highlights

Has played in three games for the Bulldogs, recording 26 minutes.

#12 SARAH HULETT

M, 5-8, Sr., Macon, Ga.

Career Game Highs

Goals: None

Mins: 4, 1x, vs. Nicholls State (09/04/15)

Season Highlights

N/A

#13 HANNAH SMITH

F, 5-7, Jr., Dallas, Texas

Career Game Highs

Goals: None

Assists: 1, 1x, at Florida (10/10/14)

Mins: 110, 2xs, last vs. Missouri (09/27/15)

Season Highlights

N/A

#14 CIARA DONNELLY

M, 5-2, Fr., Rowlett, Texas

Career Game Highs

Goals: None

Assists: None

Mins: 2, vs. UT Martin (08/28/16)

Season Highlights

Made an appearance against UT Martin, as the Bulldogs won, 3-1.



MISSISSIPPI STATE SOCCER

PLAYER NOTES | GAME 9 | #HAILSTATE

#15 KAYLEIGH HENRY

M, 5-3, Jr., Hattiesburg, Miss.

Career Game Highs

Goals: None

Assists: 1, 4xs, last vs. Missouri (09/27/15)

Mins: 90, 10xs, last at USF (08/30/15)

Season Highlights

Has started in all but two games for the Bulldogs...

Logged a total of 411 minutes for the Maroon and White this season at midfield.

#16 JEN HUCKABY

D, 5-3, So., Frisco, Texas

Career Game Highs

Goals: None

Assists: None

Mins: 73, 1x, vs. Kentucky (10/11/15)

Season Highlights

Earned her first start of the season against UT Martin... Has played in six contests logging 119 minutes.

#17 KILEY MARTENS

D, 5-4, So., Midlothian, Texas

Career Game Highs

Goals: 1, 4xs, last at Arkansas (09/20/15)

Assists: 1, vs. Kentucky (10/11/15)

Mins: 102, at South Alabama (09/02/16)

Season Highlights

Started in all but two games for the Bulldogs, each at the defender spot... Has seen action in every game for MSU.

#18 COURTNEY ROBICHEAUX

D, 5-5, So., Mandeville, La.

Career Game Highs

Goals: None

Assists: 1, 1x vs. Florida (10/16/15)

Mins: 110, 3xs, last vs. Missouri (09/27/15)

Season Highlights

Has started in every game for the Bulldogs, going the distance seven times... Has logged 722 minutes at the defender position.

#19 EMILY MALONE

D, 5-5, Fr., Greenville, S.C.

Career Game Highs

Goals: None

Assists: None

Mins: 69, vs. Virginia Tech (08/21/16)

Season Highlights

Earned her first collegiate start against UT Martin, aiding the Bulldogs to the 3-1 win... Has played in every game for MSU, logging 318 minutes.

#21 MCKENZIE ADAMS

M, 5-7, Jr., Madison, Miss.

Career Game Highs

Goals: 1, 1x, at Furman (08/28/14)

Assists: 2, vs. UT Martin (08/28/16)

Mins: 90, vs. Iowa State (08/22/14)

Season Highlights

Earned a career-high two assists against UT Martin, helping MSU to the 3-1 win... Saw her first start of the season on her birthday against Southern Miss.

#22 KELLY DORNEY

D, 5-6, Jr., Huntsville, Ala.

Career Game Highs

Goals: 1, vs. UT Martin (08/28/16)

Assists: None

Mins: 90, 2xs, last vs. FGCU (08/28/15)

Season Highlights

Scored her first collegiate goal against UT Martin, aiding the Bulldogs to the 3-1 win... Has seen action in all but two games for MSU.

#23 CARLY ENGLISH

D, 5-6, So., Red Oak, Texas

Career Game Highs

Goals: None

Assists: None

Mins: 57, 1x, vs. Southern Miss (09/06/15)

Season Highlights

N/A

#24 ARI HOLMES

D, 5-10, Sr., Alta Loma, Calif.

Career Game Highs

Goals: 1, 2xs, vs. Arkansas (09/09/16)

Assists: 2, 1x, at Eastern Washington (Fresno State)

Mins: 110, 2xs, last vs. Missouri (09/27/15)

Season Highlights

Earned her first goal as a Bulldog against No. 25 Arkansas... Started in every game for the Bulldogs in 2016, going the distance four times... Her throw in against Southern Miss caused an own goal, giving MSU the 1-0 win.

#25 CARLY MAULDIN

M, 5-5, So., Laurel, Miss.

Career Game Highs

Goals: None

Assists: 1, vs. UT Martin (08/28/16)

Mins: 110, 3xs, last vs. Missouri (09/27/15)

Season Highlights

Earned her career-first assist against UT Martin... Has started in every game for the Bulldogs logging a team-high 731 minutes... She has gone the distance in every game.

#27 ALEXA ENGLAND

D, 5-7, Fr., Midlothian, Texas

Career Game Highs

Goals: None

Assists: 1, vs. UT Martin (08/28/16)

Mins: 39, vs. UT Martin (08/28/16)

Season Highlights

Recorded her first assist as a Bulldog against UT Martin... Has played in every game for the Maroon and White.

#28 MCKENNA DE GRAAF

D, 5-10, Fr., Martinez, Ga.

Career Game Highs

Goals: 1, at South Alabama (09/04/16)

Assists: None

Mins: 64, vs. Arkansas (09/09/16)

Season Highlights

Her first-collegiate goal was a game-winner, as she helped the Bulldogs defeat South Alabama in double-overtime... Earned her first start as a Bulldog against Southern Miss.

#33 COURTNEY TOMPKINS

GK, 5-7, So., Palm City, Fla.

Career Game Highs

Saves: 6, 1x, at Southern Miss (09/04/16)

Mins: 90, 4xs, last at Southern Miss (09/04/16)

Season Highlights

Grabbed a career-high six saves in the shutout win against Southern Miss... The start was her first since Oct. 23, 2015 (LSU)... Her cleansheet against USM was her second-career shutout as a Bulldog.



MISSISSIPPI STATE SOCCER

HEAD COACH AARON GORDON | #HAILSTATE



North Texas, '97 | 4th Season | 16-43-3

The Aaron Gordon File

Coaching Experience

2012-Present - Head Coach, MSU
2012 - Associate Head Coach, Texas Tech University
2007-11 - Assistant Coach, Texas Tech University
2003-07 - Director of Coaching, FC Dallas (MLS)
2001-03 - Assistant Coach, Atlanta Beat (WUSA)
2004, 2009-10 - Region III ODP Staff
1997-00 - Dir. of Coaching, Dallas Inter Soccer Club
1996-98 - Head Coach, Texas Lightning (USWISL)
1993-97 - Staff Coach, Dallas Inter Soccer Club
1992-98 - Staff Coach, Texas Lightning Soccer Club
1992 - Richland Junior College

Professional Playing Experience

1993, 1995-96 - Texas Lightning (USISL)
1994 - Dallas Rockets (USISL)

Collegiate Playing Experience

1990 - University of South Carolina, Spartanburg
1989 - Richland Junior College
1988 - Hardin Simmons University

Soccer Coaching License

1993 - U.S. Soccer Assoc. "A" Coaching License

Personal

Joined MSU Staff - November, 2012
Born - Oct. 20, 1969
Hometown - Dallas, Texas
Family - Wife: Ashley; Daughters: Addison (16), Avery (12)
Education - Bachelor of Science in Kinesiology (North Texas, 1997)

When Mississippi State Director of Athletics Scott Stricklin was searching for the fourth head coach in Mississippi State soccer history, one name that repeatedly came up in his search was Aaron Gordon.

Hailed by many as one of the top up-and-coming coaches in the nation, Gordon was tabbed to take the reigns of the Bulldog soccer program on Nov. 27, 2012. Entering his fourth year at the helm, Gordon continues MSU's rise as a soccer program. Under the tutelage of Gordon, the Bulldogs have had three players earn postseason honors, including one SEC All-Freshman Team honor.

In 2015, Gordon led the Maroon and White to one of its most successful seasons in over a decade as the Bulldogs earned three wins and two draws in conference play. The season was filled with many accomplishments, with the first coming in Fayetteville as the Bulldogs downed Arkansas on the road for the first time in school history. Gordon's squad followed up that accomplishment by earning a pair of draws with Tennessee and Missouri, which was a first against either team in the series history. The highlight of 2015 came against Kentucky however; as the Bulldogs downed the 20th-ranked Wildcats, 3-0, for MSU's first ranked win since 2011.

Gordon made the move to Starkville following six seasons on the staff at Texas Tech University, where he was named associate head coach of the Red Raiders on Feb. 15, 2012, after five seasons as an assistant at the school. His time in Lubbock helped prepare him for his first college head coaching opportunity, as he oversaw all areas of the program, including recruiting, scouting, team training and video match analysis.

During his six-year tenure as a member of head coach Tom Stone's staff, the Red Raiders became a regular fixture around the top of the Big 12 Conference table.

The 2012 season, his final at Texas Tech, was a record-setting one for the Red Raiders. The team won a school-record 16 games, advanced to the semifinals of the Big 12 Tournament for the first time, and made its first trip to the NCAA Tournament, where it advanced to the second round. The 2012 Red Raiders tallied 130 points behind 46 goals and 38 assists, and defensively registered an 0.97 goals-against average while posting 10 shutouts.

Texas Tech's 16-win campaign was the school's third-straight double-digit win season, another first for the program. During his time in Lubbock, Gordon helped the Red Raiders to more overall (60) and conference (23) wins than the previous nine years combined, and a spot in the Big 12 Tournament all six seasons. He helped mentor seven players to Big 12 All-Freshman honors, including the Big 12 Freshman of the Year two of the past three seasons, and five to First Team All-Big 12 accolades. During his tenure, he also helped mentor a pair of players that were selected to United States youth national teams.

Gordon stayed in the state of Texas following a three-year stint with his hometown FC Dallas of Major League Soccer. With the team, he served as the director of coaching for the second-largest youth club program in North Texas. Gordon moved back to the Lone Star State following a tenure as the top assistant for the Atlanta Beat of the WUSA. While there, he coordinated the daily training schedule and served as head of scouting and video analysis among other duties.

He joined the Beat following a stint as director of coaching for Dallas Inter Soccer Club, where he oversaw a program that won numerous state and regional championships. In addition to his duties at Dallas Inter, Gordon also served as head coach of the Women's Texas Lightning team of the W-League, guiding the program to back-to-back United States Amateur Championships.

The Dallas native prepped at Lake Highlands High School before going on to Hardin Simmons University. He transferred to the University of South Carolina-Spartanburg before coming back to his home state in 1997 to receive his B.S. in Kinesiology from the University of North Texas. After college, Gordon played professionally in the USL, where he led the indoor league in goals in 1996.

Gordon, who holds a USSF "A" License and a USSF Goalkeeper Diploma, spent a tenure as the head coach for the 93 Region 3 ODP team.

Gordon and his wife Ashley, an assistant coach at MSU the past four seasons, have two daughters, Addison (16) and Avery (12).

2016 QUICK FACTS | #HAILSTATE

GENERAL INFORMATION

Name Mississippi State University
Location Starkville, Miss.
Founded Feb. 28, 1878
Enrollment 20,873
Nickname Bulldogs
Colors Maroon & White
Conference Southeastern
NSCAA Region Central
President Dr. Mark E. Keenum
Athletic Director Scott Stricklin
Sr. Assoc. AD/SWA Ann Carr
Facility MSU Soccer Field
Capacity 500
Record at MSU Soccer Field 83-99-15

PROGRAM INFORMATION

First Year of Soccer 1995
Overall Record (21 seasons) 142-236-26
SEC Tournament Appearances 2 (2001, '04)
SEC Tournament Record 0-2 (.000)

TEAM INFORMATION

2015 Overall Record 5-10-3
Home Record 2-4-3
Away Record 3-5-0
Neutral Record 0-0-0
SEC Record/Finish 3-6-2/12th
Starters Returning/Lost 16/3
Letterwinners Returning/Lost 21/4
Newcomers 8



MISSISSIPPI STATE SOCCER

SOUTHEASTERN CONFERENCE NOTES | #HAILSTATE

This Week In The SEC

Thursday, September 8

#5 Florida 2, at Kentucky 1 (2OT)
LSU 1, at Western Kentucky 0

Friday, September 9

at #15 South Carolina 3, Georgia 0
at Auburn 2, Vanderbilt 1
Alabama 5, at Tennessee 1
#25 Arkansas 5, at Mississippi State 2
Missouri 5, at Ole Miss 0

Sunday, September 11

at Mississippi State 2, UL-Lafayette 1
at Tennessee 3, Middle Tennessee 0
at Auburn 1, Baylor 0
at Georgia 1, Kennesaw State 0
Northern Kentucky 1, at Vanderbilt 0 (2OT)
at Kentucky 5, Murray State 0
at #25 Arkansas 1, North Texas 0
at #11 Texas A&M 3, LSU 0
South Alabama 1, at Ole Miss 0

Tuesday, September 13

at Samford 1, Alabama 0

Wednesday, September 14

at South Carolina 3, Charlotte 0

Thursday, September 15

at South Carolina 3, UNC Greensboro 0
at Tennessee 2, Missouri 0

Friday, September 16

at Texas A&M 1, Georgia 0
at Arkansas 2, Florida 1
at LSU 3, Ole Miss 0

Sunday, September 18	TV	Time (CT)
Lipscomb at Arkansas		1:00 p.m.
Lamar at LSU	SECN+	1:00 p.m.
Weber State at Missouri	SECN+	1:00 p.m.
Vanderbilt at Mississippi State	ESPNU	2:00 p.m.
Alabama at Kentucky	SECN	4:00 p.m.
UCF at Florida	SECN+	6:00 p.m.
South Carolina at Auburn	SECN	6:00 p.m.
UC Riverside at Texas A&M	SECN+	6:00 p.m.
Ole Miss at Tulsa		7:00 p.m.

Thursday, September 22	TV	Time (CT)
Auburn at Florida	SECN+	5:00 p.m.
Tennessee at Georgia	SECN+	6:00 p.m.
LSU at South Carolina		6:00 p.m.
Mississippi State at Ole Miss	SECN	6:00 p.m.
Kentucky at Missouri		6:30 p.m.
Arkansas at Alabama		7:00 p.m.
Texas A&M at Vanderbilt		7:00 p.m.

Sunday September 25	TV	Time (CT)
Auburn at Georgia	SECN+	1:00 p.m.
Kentucky at South Carolina		1:00 p.m.
LSU at Vanderbilt		1:00 p.m.
Mississippi State at Missouri		1:00 p.m.
Arkansas at Ole Miss	SECN	2:00 p.m.
Tennessee at Florida	SECN	4:00 p.m.
Texas A&M at Alabama		6:00 p.m.

The Race For Orange Beach

	Conference					Overall					
	W-L-T	Pts	Home	Away		W-L-T	Pct.	Home	Away	Neutral	Str
Arkansas	2-0-0	6	1-0-0	1-0-0		8-1-0	.889	5-0-0	2-1-0	1-0-0	W3
Texas A&M	2-0-0	6	2-0-0	0-0-0		6-2-0	.750	6-2-0	0-0-0	0-0-0	W5
Alabama	1-0-0	3	0-0-0	1-0-0		6-2-0	.750	3-0-0	3-2-0	0-0-0	L1
Auburn	1-0-0	3	1-0-0	0-0-0		5-3-0	.625	3-3-0	2-0-0	0-0-0	W2
Florida	1-1-0	3	0-0-0	1-1-0		5-2-0	.714	2-0-0	3-2-0	0-0-0	L1
LSU	1-1-0	3	1-0-0	0-1-0		5-4-0	.556	1-2-0	4-1-0	0-1-0	W1
Missouri	1-1-0	3	0-0-0	1-1-0		5-3-0	.625	4-1-0	1-2-0	0-0-0	L1
South Carolina	1-0-0	3	1-0-0	0-0-0		7-0-1	.875	5-0-0	1-0-1	1-0-0	W7
Tennessee	1-1-0	3	1-1-0	0-0-0		5-4-0	.556	4-3-0	1-1-0	0-0-0	W2
Georgia	0-2-0	0	0-0-0	0-2-0		3-5-1	.389	3-0-1	0-3-0	0-2-0	L1
Kentucky	0-1-0	0	0-1-0	0-0-0		4-3-1	.563	3-2-0	1-1-1	0-0-0	W2
Ole Miss	0-2-0	0	0-1-0	0-1-0		4-5-0	.444	4-3-0	0-2-0	0-0-0	L2
Mississippi State	0-1-0	0	0-1-0	0-0-0		5-3-0	.625	2-2-0	3-0-0	0-1-0	W1
Vanderbilt	0-1-0	0	0-0-0	0-1-0		4-4-0	.500	3-2-0	1-2-0	0-0-0	L2

SEC Offensive Player of the Week

Alabama's Chatham DeProspero, a junior midfielder from Goshen, N.Y., has played a vital role Alabama's 6-2 start, which is the best start to a campaign since the 2005 season. In UA's conference opener she registered a hat trick in the first half, scoring on each of her shot attempts. The three goals surpassed her season total of two from last year.

SEC Defensive Player of the Week

Texas A&M's Danielle Rice, a senior goalkeeper from Westlake, Texas, Rice rolled up her fourth consecutive shutout in the Aggies' 3-0 victory over LSU. Rice made three saves in the contest and snuffed out all four of LSU's corner kicks, not allowing the Tigers to get a set-piece shot off. During her current four-match shutout string, Rice has directed a defense that has featured three different backline lineups due to injuries.

SEC Freshman of the Week

Missouri's Sarah Luebbert, a freshman forward from Jefferson City, Mo., notched a goal and an assist in Mizzou's 5-0 win at Ole Miss Friday in the SEC opener. She assisted on the first score of the match, the ultimate game-winner, and tallied Mizzou's third goal of the game. Luebbert leads the Tigers with 13 points on five goals and three assists and has scored in five of the team's seven matches.

Other Notes

- Florida is ranked fourth and is receiving one first place vote in the latest National Soccer Coaches Association of America Rankings while Texas A&M is eighth and South Carolina 14th. Arkansas and Auburn are among the teams receiving votes in the poll.
- Florida's Savannah Jordan is leading the nation with 3.17 points per game (6 goals and 7 assists) this season. Her 71 career goals scored

are tied for the second-most in SEC history, trailing only Abby Wambach's 96 (1998-01).

- Florida was predicted to win to the 2016 Southeastern Conference women's soccer title in voting by the league's 14 head coaches. This marks the 18th time that the Gators have been tabbed by the coaches to win the title. The Gators received 165 points that included 10 first-place votes, topping Texas A&M's 154 points (four first-place votes).

- Forty-nine players were named to the Preseason SEC Watch List.

- Seven SEC students were among the 36 women named to the MAC Hermann Trophy Watch Lists. Meggie Dougherty Howard (Florida), Mikaela Harvey (Texas A&M), Casie Ramsier (Auburn), Gabby Seiler (Florida), Savannah Jordan (Florida), Savannah McCaskill (South Carolina), Hannah Wilkinson (Tennessee) were listed on the preseason watch list for the most prestigious individual award in college soccer presented annually.

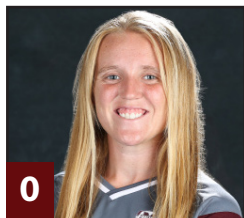
- Fifteen players (out of 26 possible) that earned All-SEC honors last year return for the 2016 campaign.

Included in that group is 2015 Offensive Player of the Year Savannah Jordan (UF) and first team selections Jorian Baucom (LSU), Addie Forbus (UM), Savannah McCaskill (SC), Casie Ramsier (AU), CeCe Kizer (UM), and Mikaela Harvey (AM).

- Two SEC coaches rank among the all-time winningest Division I coaches – Florida's Becky Burleigh (third with 456 wins) and Texas A&M's G Guerrieri (fifth with 412 wins).

- Twenty-one regular season matches will be televised to a national television audience this year on the SEC Network in addition to one more game on ESPNU. SEC Network will then feature the first eight games of the SEC Tournament before ESPNU shows the championship match. Additionally, more than 100 matches will be shown digitally on SEC Network +.

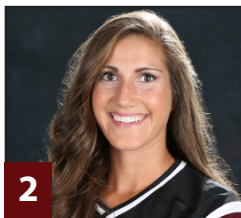
PHOTO ROSTER | #HAILSTATE



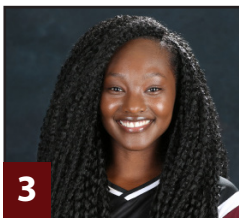
0 Rhylee DeCrane
5-6 • Goalkeeper • Junior
Myrtle Beach, S.C.



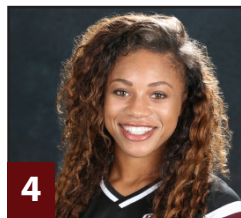
1 Tanya de Souza
5-7 • Goalkeeper • Junior
Paris, France



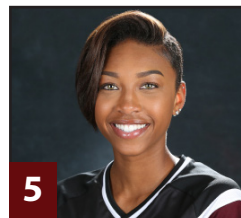
2 Katelyn Watson
5-7 • Midfielder • Junior
New Albany, Miss.



3 Jamila Coner
5-1 • Midfielder • Senior
Dallas, Texas



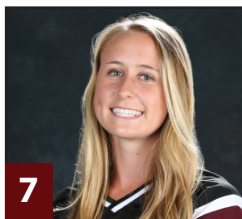
4 Khalyn Harmon
5-5 • Defender • Junior
Ocean Springs, Miss.



5 Kennadi Carbin
5-11 • Forward • Sophomore
Louisville, Ky.



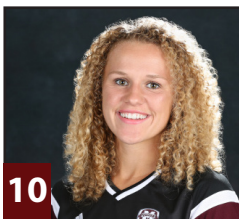
6 Payton Gruenewald
5-9 • Forward • Junior
Christchurch, New Zealand



7 Mallory Eubanks
5-4 • Forward • Junior
Lexington, Ky.



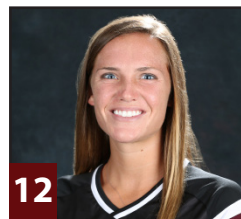
8 Johanna Hamblett
5-7 • Defender • Fr
Christchurch, New Zealand



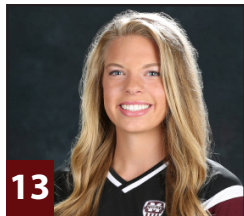
10 MaKayla Waldner
5-6 • Forward • Fr
Dexter, Mo.



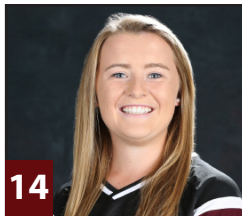
11 Elva Astthorsdottir
5-4 • Midfielder • Sophomore
Reykjavik, Iceland



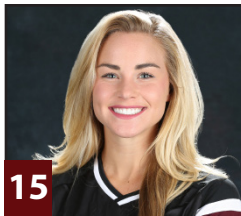
12 Sarah Hulett
5-8 • Midfielder • Senior
Macon, Ga.



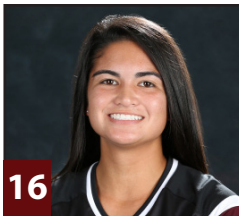
13 Hannah Smith
5-7 • Defender • Junior
Dallas, Texas



14 Ciara Donnelly
5-2 • Midfielder • Fr
Rowlett, Texas



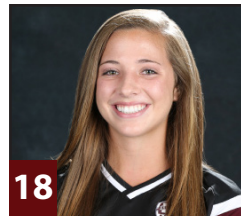
15 Kayleigh Henry
5-3 • Defender • Junior
Hattiesburg, Mis..



16 Jen Huckaby
5-3 • Midfielder • Sophomore
Frisco, Texas



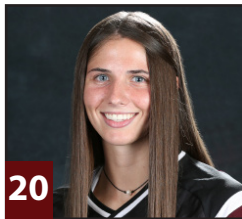
17 Kiley Martens
5-4 • Midfielder • Sophomore
Midlothian, Texas



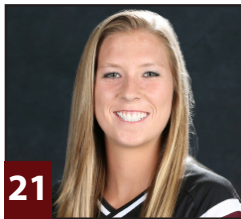
18 Courtney Robicheaux
5-5 • Defender • Fr
Mandeville, La.



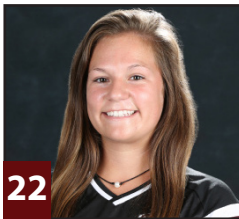
19 Emily Malone
5-5 • Defender • Freshman
Greenville, S.C.



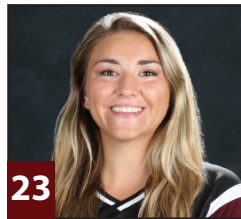
20 Natalee Heiser
5-10 • Forward • Freshman
Arlington, Texas



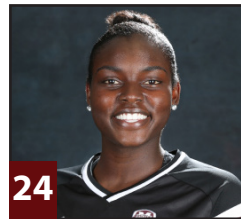
21 McKenzie Adams
5-7 • Forward • Junior
Madison, Miss.



22 Kelly Dorney
5-6 • Midfielder • Junior
Huntsville, Ala.



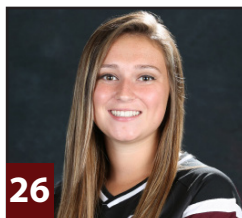
23 Carly English
5-6 • Defender • Sophomore
Red Oak, Texas



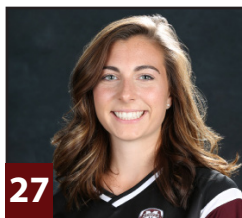
24 Ari Holmes
5-10 • Defender • Senior
Alta Loma, Calif.



25 Carly Mauldin
5-5 • Midfielder • Sophomore
Laurel, Miss.



26 Kaleigh Fowler
5-8 • D • Freshman
Albany, N.Y.



27 Alexa England
5-7 • Defender • Freshman
Midlothian, Texas



28 McKenna de Graaf
5-10 • Defender • Fr
Martinez, Ga.



33 Courtney Tompkins
5-7 • Goalkeeper • Sophomore
Palm City, Fla.



HC Aaron Gordon
Head Coach



AC Ashley Gordon
Assistant Coach



AC Phil Casella
Assistant Coach



VC Pat Barton
Volunteer Assistant Coach

NUMERICAL

No.	Name	Pos.	Ht.	Yr.	Exp.	Hometown (Previous School)
0	Rhylee DeCrane	GK	5-6	Jr.	2L	Myrtle Beach, S.C. (Myrtle Beach HS)
1	Tanya de Souza	GK	5-7	Jr.	2L	Paris, France (Lycée Henry Darras)
2	Katelyn Watson	M	5-7	Jr.	2L	New Albany, Miss. (New Albany HS)
3	Mila Coner	M	5-1	Sr.	3L	Dallas, Texas (American Heritage [Fla.] HS)
4	Khalyn Harmon	D	5-5	Jr.	2L	Ocean Springs, Miss. (Ocean Springs HS)
5	Kennadi Carbin	F	5-11	So.	1L	Louisville, Ky. (Waggener HS)
6	Payton Gruenewald	F	5-9	Jr.	2L	Southlake, Texas (Southlake Carroll HS)
7	Mallory Eubanks	F	5-4	Jr.	2L	Lexington, Ky. (Tates Creek HS)
8	Johanna Hamblett	M	5-7	Fr.	HS	Christchurch, New Zealand (Burnside HS)
10	MaKayla Waldner	F	5-6	Fr.	HS	Dexter, Mo. (Dexter HS)
11	Elva Astthorsdottir	M	5-4	So.	1L	Reykjavik, Iceland (Flensborgarskolinn i Hafnarfirdi)
12	Sarah Hulett	M	5-8	Sr.	1L	Macon, Ga. (South Georgia State College) (Rutland HS)
13	Hannah Smith	F	5-7	Jr.	2L	Dallas, Texas (Grace Prep. Academy)
14	Ciara Donnelly	M	5-2	Fr.	HS	Rowlett, Texas (IMG Academy [Fla.])
15	Kayleigh Henry	D	5-3	Jr.	2L	Hattiesburg, Miss. (Oak Grove HS)
16	Jen Huckaby	D	5-3	So.	1L	Frisco, Texas (Heritage HS)
17	Kiley Martens	M	5-4	So.	1L	Midlothian, Texas (Midlothian HS)
18	Courtney Robicheaux	D	5-5	So.	1L	Mandeville, La. (Saint Scholastica Academy)
19	Emily Malone	D	5-5	Fr.	HS	Greenville, S.C. (JL Mann HS)
20	Natalee Heiser	F	5-10	Fr.	HS	Arlington, Texas (Martin HS)
21	McKenzie Adams	F	5-7	Jr.	2L	Madison, Miss. (Madison Central HS)
22	Kelly Dorney	D	5-6	Jr.	2L	Huntsville, Ala. (Huntsville HS)
23	Carly English	D/M	5-6	So.	1L	Red Oak, Texas (Red Oak HS)
24	Ari Holmes	D	5-10	Sr.	1L	Alta Loma, Calif. (Fresno State [Calif]) (Claremont HS)
25	Carly Mauldin	M	5-5	So.	1L	Laurel, Miss. (West Jones HS)
26	Kaleigh Fowler	D	5-8	Fr.	HS	Albany, N.Y. (Colonie Central HS)
27	Alexa England	D	5-7	Fr.	HS	Midlothian, Texas (Midlothian HS)
28	McKenna de Graaf	D	5-10	Fr.	HS	Martinez, Ga. (Augusta Prep. Day School)
33	Courtney Tompkins	GK	5-7	So.	1L	Palm City, Fla. (American Heritage HS)

ALPHABETICAL

No.	Name	No.	Name	No.	Name
21	Adams, Mckenzie	23	English, Carly	12	Hulett, Sarah
11	Astthorsdottir, Elva	7	Eubanks, Mallory	19	Malone, Emily
5	Carbin, Kennadi	28	Fowler, Kaleigh	17	Martens, Kiley
3	Coner, Mila	6	Gruenewald, Payton	25	Mauldin, Carly
28	de Graaf, McKenna	8	Hamblett, Johanna	18	Robicheaux, Courtney
1	de Souza, Tanya	4	Harmon, Khalyn	13	Smith, Hannah
0	DeCrane, Rhylee	20	Heiser, Natalee	33	Tompkins, Courtney
14	Donnelly, Ciara	15	Henry, Kayleigh	10	Waldner, MaKayla
22	Dorney, Kelly	24	Holmes, Ari	2	Watson, Katelyn
27	England, Alexa	16	Huckaby, Jen		

TEAM STAFF

Head Coach: Aaron Gordon (North Texas, 1997)
Assistant Coach: Ashley Gordon (SMU, 1994)
Assistant Coach: Phil Casella (Fairleigh Dickinson, 1997)
Volunteer Assistant Coach: Pat Barton
Athletic Trainer: Matt Rabalais (Clemson, 2009)
Managers: Efrem Egede, Thomas Gilmam, Wesley Keesling

PRONUNCIATION GUIDE

Elva **Astthorsdottir**: Ah-stores-doter
McKenna **de Graaf**: Da-GRAPH
Tanya de Souza: Ton-ya Da-SUE-sa
Ciara Donnelly: KER-ah Don-elly
Mallory **Eubanks**: YOU-banks
Payton **Gruenewald**: GREEN-a-wald
Johanna Hamblett: YO-HAN-ah HAM-blet
Khalyn Harmon: KAY-lyn
Kiley **Martens**: KYLE-ee MART-ens
Carly **Mauldin**: MAL-den
Courtney **Robicheaux**: ROBE-a-show
MaKayla **Waldner**: WALD-ner

STARTERS RETURNING (17)

No.	Name	Pos.	Ht.	CL	GS/GP	Mins	Pts	G	A	SH	SOG	CK	SVS	SV%	GA	SO
25	Carly Mauldin	M	5-5	So.	18/18	1,663	0	0	0	23	9	0	N/A	N/A	N/A	N/A
7	Mallory Eubanks	F	5-4	Jr.	18/18	1,541	10	3	4	40	14	22	N/A	N/A	N/A	N/A
24	Ari Holmes	D	5-10	Sr.	18/18	1,520	3	0	3	22	10	2	N/A	N/A	N/A	N/A
18	Courtney Robicheaux	D	5-5	So.	17/17	1,557	1	0	1	12	4	0	N/A	N/A	N/A	N/A
4	Khayln Harmon	D	5-5	Jr.	17/18	1,521	0	0	0	0	0	0	N/A	N/A	N/A	N/A
13	Hannah Smith	D	5-7	Jr.	15/17	1,413	0	0	0	2	2	0	N/A	N/A	N/A	N/A
1	Tanya de Souza	GK	5-7	Jr.	15/15	1,378	0	0	0	0	0	0	60	73%	22	3/1
17	Kiley Martens	M	5-4	So.	11/18	987	9	4	1	17	10	52	N/A	N/A	N/A	N/A
5	Kennadi Carbin	F	5-11	So.	5/18	886	9	4	1	25	9	0	N/A	N/A	N/A	N/A
15	Kayleigh Henry	D	5-3	Jr.	5/16	742	2	0	2	9	6	0	N/A	N/A	N/A	N/A
11	Elva Astthorsdottir	F	5-4	So.	5/12	334	1	0	1	3	2	22	N/A	N/A	N/A	N/A
16	Jen Huckaby	F	5-3	So.	5/6	225	0	0	0	0	0	0	N/A	N/A	N/A	N/A
2	Katelyn Watson	F	5-7	Jr.	4/16	658	0	0	0	5	3	1	N/A	N/A	N/A	N/A
21	McKenzie Adams	F	5-7	Jr.	4/10	312	1	0	1	2	1	2	N/A	N/A	N/A	N/A
6	Payton Gruenewald	F	5-9	Jr.	2/12	271	2	1	0	5	1	0	N/A	N/A	N/A	N/A
33	Courtney Tompkins	GK	5-7	So.	3/3	270	0	0	0	0	0	0	10	77%	3	1
22	Kelly Dorney	F	5-6	Jr.	1/2	149	0	0	0	0	0	0	N/A	N/A	N/A	N/A

NON-STARTERS RETURNING (4)

No.	Name	Pos.	Ht.	CL	GS/GP	Mins	Pts	G	A	SH	SOG	CK	SVS	SV%	GA	SO
3	Mila Coner	M	5-1	Sr.	0/11	215	0	0	0	4	2	0	N/A	N/A	N/A	N/A
23	Carly English	M/D	5-6	So.	0/4	91	1	0	1	0	0	0	N/A	N/A	N/A	N/A
0	Rhylee DeCrane	GK	5-6	Jr.	0/2	32	0	0	0	0	0	0	0	0%	0	0/1
12	Sarah Hulett	M	5-8	Sr.	0/1	4	0	0	0	0	0	0	N/A	N/A	N/A	N/A

PLAYERS LOST (4)

No.	Name	Pos.	Ht.	CL	GS/GP	Mins	Pts	G	A	SH	SOG	CK	SVS	SV%	GA	SO
20	Red Bruffett	F	5-9	So.	15/18	1,249	7	3	1	27	10	1	N/A	N/A	N/A	N/A
9	Morgan Mills	F	5-9	So.	10/17	762	3	1	1	17	9	0	N/A	N/A	N/A	N/A
10	Shelby Jordan*	F	5-5	Sr.	10/18	662	2	1	0	5	2	1	N/A	N/A	N/A	N/A
26	Peyton Shaffer	M	5-5	So.	0/2	16	0	0	0	0	0	0	N/A	N/A	N/A	N/A

* - Graduated

NEWCOMERS (8)

No.	Name	Pos.	Ht.	CL
28	McKenna de Graaf	D	5-10	Fr.
14	Ciara Donnelly	M/F	5-2	Fr.
27	Alexa England	D	5-7	Fr.
28	Kaleigh Fowler	D	5-8	Fr.
8	Johanna Hamblett	M/D	5-7	Fr.
20	Natalee Heiser	F	5-10	Fr.
19	Emily Malone	D	5-5	Fr.
10	MaKayla Waldner	F	5-6	Fr.

BY POSITION

Forwards:	7	United States:	26	International:	3
Midfielders:	9	Alabama:	1	France:	1
Defenders:	10	California:	1	Iceland:	1
Goalkeepers:	3	Georgia:	2	New Zealand:	1

BY CLASS

Seniors :	3	Kentucky:	2
Juniors:	10	Louisiana:	1
Sophomores:	8	Mississippi:	5
Freshmen:	8	Missouri:	1
		New York:	1
		South Carolina:	2
		Texas:	9



2016 Mississippi State Soccer
Mississippi State Combined Team Statistics (as of Sep 09, 2016)
All games

RECORD:	OVERALL	HOME	AWAY	NEUTRAL
ALL GAMES	5-3	2-2	3-0	0-1
CONFERENCE	0-1	0-1	0-0	0-0
NON-CONFERENCE	5-2	2-1	3-0	0-1

Date	Opponent		Score	Att.	#	Player	gp	g	a	pts	sh	sh%	sog	sog%	gw	pk-att
Aug 19	at Col. of Charleston	w	2-0	364	7	Mallory Eubanks	7	2	2	6	17	.118	12	.706	1	0-0
Aug 21	vs #17 Virginia Tech	L	1-2	483	10	MaKayla Waldner	8	2	1	5	13	.154	8	.615	0	0-0
Aug 26	LIPSCOMB	L	0-1	776	5	Kennadi Carbin	8	2	0	4	11	.182	4	.364	0	0-0
Aug 28	UT MARTIN	w	3-1	537	8	Johanna Hamblett	8	1	1	3	16	.062	6	.375	1	0-0
Sep 02	at South Alabama	Wo2	2-1	441	4	Khalyn Harmon	7	1	1	3	2	.500	1	.500	0	0-0
Sep 04	at Southern Miss	w	1-0	950	24	Ariana Holmes	8	1	0	2	13	.077	7	.538	0	0-0
* Sep 09	#25 ARKANSAS	L	2-5	1106	3	Jamila Coner	6	1	0	2	5	.200	3	.600	1	0-0
Sep 11	LOUISIANA-LAFAYETTE	w	2-1	637	28	McKenna de Graaf	4	1	0	2	3	.333	1	.333	1	0-0

TEAM STATISTICS	MSU	OPP
SHOT STATISTICS		
Goals-Shot attempts	13-117	11-90
Goals scored per game	1.62	1.38
Shot pct.	.111	.122
Shots on goal-Attempts	61-117	53-90
SOG pct.	.521	.589
Shots/Game	14.6	11.2
CORNER KICKS	59	37
PENALTY KICKS	0-0	1-2
PENALTIES		
Fouls	77	69
Yellow cards	10	4
Red cards	0	0
ATTENDANCE		
Total	3056	1755
Dates/Avg Per Date	4/764	3/585
Neutral Site #/Avg	1/483	

#	Player	gp	g	a	pts	sh	sh%	sog	sog%	gw	pk-att
22	Kelly Dorney	6	1	0	2	1	1.000	1	1.000	0	0-0
21	McKenzie Adams	7	0	2	2	2	.000	1	.500	0	0-0
25	Carly Mauldin	8	0	1	1	10	.000	4	.400	0	0-0
27	Alexa England	8	0	1	1	0	.000	0	.000	0	0-0
18	Courtney Robicheaux	8	0	0	0	8	.000	5	.625	0	0-0
19	Emily Malone	8	0	0	0	3	.000	1	.333	0	0-0
15	Kayleigh Henry	8	0	0	0	3	.000	2	.667	0	0-0
2	Katelyn Watson	8	0	0	0	3	.000	0	.000	0	0-0
17	Kiley Martens	8	0	0	0	2	.000	2	1.000	0	0-0
16	Jen Huckaby	6	0	0	0	2	.000	1	.500	0	0-0
6	Payton Gruenewald	6	0	0	0	2	.000	1	.500	0	0-0
11	Elva Astthorsdottir	3	0	0	0	1	.000	0	.000	0	0-0
23	Carly English	2	0	0	0	0	.000	0	.000	0	0-0
14	Ciara Donnelly	1	0	0	0	0	.000	0	.000	0	0-0
1	Tanya de Souza	7	0	0	0	0	.000	0	.000	0	0-0
	Total	8	13	10	36	117	.111	61	.521	5	0-0
	Opponents	8	11	9	31	90	.122	53	.589	3	1-2

#	Goalie	GP	Min.	GA	GAAvg	Saves	Pct	W-L-T	Sf
33	Courtney Tompkins	1	90:00	0	0.00	6	1.000	1-0-0	1
1	Tanya de Souza	7	640:37	11	1.55	35	.761	4-3-0	1
	Total	8	730:37	11	1.36	42	.792	5-3-0	
	Opponents	8	730:37	13	1.60	48	.787	3-5-0	

Goals by Period	1st	2nd	OT	OT2	Total
Mississippi State	6	6	0	1	13
Opponents	6	5	0	0	11

Shots by Period	1st	2nd	OT	OT2	Total
Mississippi State	67	49	0	1	117
Opponents	38	45	7	0	90

Saves by Period	1st	2nd	OT	OT2	Total
Mississippi State	17	21	4	0	42
Opponents	32	16	0	0	48

Corners by Period	1st	2nd	OT	OT2	Total
Mississippi State	28	31	0	0	59
Opponents	17	17	3	0	37

Fouls by Period	1st	2nd	OT	OT2	Total
Mississippi State	40	36	0	1	77
Opponents	39	28	2	0	69



Soccer Box Score (Final)

2016 Mississippi State Soccer

MSU vs Col. of Charleston (Aug 19, 2016 at Mt. Pleasant, S.C.)

MSU (1-0) vs.
Col. of Charleston (0-1)
Date: Aug 19, 2016 • Attendance: 364
Weather: Clear night skies

Goals by period	1	2	Total
MSU	1	1	2
Col. of Charleston	0	0	0

MSU

Po #	Player	Sh	SO	G	A	Fo	Min
gk 1	Tanya de Souza	-	-	-	-	-	90
4	Khalyn Harmon	1	1	1	-	-	71
5	Kennadi Carbin	2	-	-	-	-	49
7	Mallory Eubanks	1	-	-	-	-	84
8	Johanna Hamblett	3	2	1	1	-	77
10	MaKayla Waldner	1	1	-	-	-	56
15	Kayleigh Henry	-	-	-	-	-	72
17	Kiley Martens	2	2	-	-	-	60
18	Courtney Robicheaux	1	-	-	-	-	90
24	Ariana Holmes	2	1	-	-	-	85
25	Carly Mauldin	1	-	-	-	-	90
-- Substitutes --							
0	Rhylee DeCrane	-	-	-	-	-	0
2	Katelyn Watson	2	-	-	-	-	18
3	Jamila Coner	-	-	-	-	-	29
6	Payton Gruenewald	-	-	-	-	-	0
11	Elva Astthorsdottir	-	-	-	-	-	0
19	Emily Malone	-	-	-	-	-	56
21	McKenzie Adams	-	-	-	-	-	15
22	Kelly Dorney	-	-	-	-	-	10
23	Carly English	-	-	-	-	-	0
27	Alexa England	-	-	-	-	-	22
28	McKenna de Graaf	2	-	-	-	-	30
Totals		18	7	2	1	12	

Col. of Charleston

Po #	Player	Sh	SO	G	A	Fo	Min
gk 00	Killian, Lauren	-	-	-	-	-	90
4	Brill-Edwards, M.	-	-	-	-	-	84
6	Bowers, Mary Kate	1	1	-	-	-	44
7	Narum, Riley	1	-	-	-	-	79
11	Huizenga, Hannah	-	-	-	-	-	54
14	Blakely, Sarah	4	2	-	-	-	79
18	Tunney, Meredith	-	-	-	-	-	90
21	Webster, Tracey	3	2	-	-	-	76
22	Deutsch, Sara	1	1	-	-	-	59
23	Ortega, Laura	1	-	-	-	-	81
28	Freitas, Ali	1	1	-	-	-	59
-- Substitutes --							
3	Preedom, Jessica	1	-	-	-	-	10
8	Speller-Drews, Rio	1	-	-	-	-	65
9	Beck, Alyssa	2	2	-	-	-	45
10	Barreto, Raymara	1	1	-	-	-	44
24	Vallez, Suzi	-	-	-	-	-	17
33	Colchico, Talia	1	1	-	-	-	14
Totals		18	11	0	0	4	

#	Goalkeepers	Min	GA	Saves
1	Tanya de Souza	90:00	0	11

#	Goalkeepers	Min	GA	Saves
00	Killian, Lauren	90:00	2	5

Shots by period	1	2	Total
MSU	11	7	18
Col. of Charleston	5	13	18

Saves by period	1	2	Total
MSU	3	8	11
Col. of Charleston	3	2	5

Corner kicks	1	2	Total
MSU	3	4	7
Col. of Charleston	3	2	5

Fouls	1	2	Total
MSU	8	4	12
Col. of Charleston	2	2	4

Scoring summary:

No.	Time	Team	Goal scorer	Assist	Description
1.	43:32	MSU	Johanna Hamblett (1)	(unassisted)	Ball deflected, rebound went wide and in
2.	84:34	MSU	Khalyn Harmon (1)	Johanna Hamblett	Clean look on run from far side.

Cautions and ejections:

Win-Tanya de Souza (1-0). Loss-Killian, Lauren (0-1).
Stadium: Patriots Point
Officials: Referee: Wayne Pavlischek; Asst. Referee: Joel Barber; Jason Kent;
Scorer: CofC Athletics;
Offsides: MSU 0, Col. of Charleston 1.

Official's signature



Soccer Box Score (Final)

2016 Mississippi State Soccer

#17 Virginia Tech vs MSU (Aug 21, 2016 at Mt. Pleasant, S.C.)

Virginia Tech (2-0) vs.
MSU (1-1)
Date: Aug 21, 2016 • Attendance: 483
Weather: Light clouds and warm

Goals by period	1	2	Total
Virginia Tech	0	2	2
MSU	0	1	1

Virginia Tech

Po #	Player	Sh	SO	G	A	Fo	Min
gk 1	Mandy McGlynn	-	-	-	-	-	89
3	Anissa Dadkhah	-	-	-	-	-	62
7	Laila Gray	1	-	-	-	-	55
8	Kelsey Irwin	-	-	-	-	-	89
14	Sydney Curtis	-	-	-	-	-	82
18	Candace Cephers	2	2	2	-	-	79
20	Murielle Tiernan	2	1	-	-	-	55
21	Madi Conyers	1	1	-	-	-	70
22	Kristina Diana	1	-	-	-	-	55
26	Alia Abu El Hawa	-	-	-	-	-	85
28	Jaylyn Thompson	-	-	-	-	-	45
-- Substitutes --							
2	Chandler McDaniel	-	-	-	-	-	11
4	Megan Goudy	-	-	-	-	-	44
9	Heather Timothy	1	-	-	-	-	37
10	Jess Boytim	-	-	-	1	-	5
13	Alani Johnson	3	3	-	-	-	46
15	Caroline Kerns	-	-	-	-	-	0
16	Jordan Hemmen	-	-	-	-	-	10
23	Kallie Peurifoy	-	-	-	-	-	31
25	Mikayla Mance	-	-	-	-	-	12
30	Bridget Patch	1	-	-	-	-	19
Totals		12	7	2	1	11	

MSU

Po #	Player	Sh	SO	G	A	Fo	Min
gk 1	Tanya de Souza	-	-	-	-	-	89
4	Khalyn Harmon	1	-	-	-	-	89
5	Kennadi Carbin	1	-	-	-	-	43
7	Mallory Eubanks	1	1	-	-	-	80
8	Johanna Hamblett	-	-	-	-	-	70
10	MaKayla Waldner	2	2	1	-	-	53
15	Kayleigh Henry	-	-	-	-	-	61
17	Kiley Martens	-	-	-	-	-	46
18	Courtney Robicheaux	-	-	-	-	-	89
24	Ariana Holmes	1	-	-	-	-	65
25	Carly Mauldin	-	-	-	-	-	89
-- Substitutes --							
2	Katelyn Watson	-	-	-	-	-	28
3	Jamila Coner	1	-	-	-	-	25
6	Payton Gruenewald	-	-	-	-	-	5
16	Jen Huckaby	-	-	-	-	-	1
19	Emily Malone	1	1	-	-	-	69
21	McKenzie Adams	1	-	-	-	-	35
22	Kelly Dorney	-	-	-	-	-	12
23	Carly English	-	-	-	-	-	0
27	Alexa England	-	-	-	-	-	33
Totals		9	4	1	0	9	

#	Goalkeepers	Min	GA	Saves
1	Mandy McGlynn	89:05	1	3

#	Goalkeepers	Min	GA	Saves
1	Tanya de Souza	89:05	2	5

Shots by period	1	2	Total
Virginia Tech	4	8	12
MSU	4	5	9

Saves by period	1	2	Total
Virginia Tech	1	2	3
MSU	2	3	5

Corner kicks	1	2	Total
Virginia Tech	1	0	1
MSU	2	1	3

Fouls	1	2	Total
Virginia Tech	7	4	11
MSU	3	6	9

Scoring summary:

No.	Time	Team	Goal scorer	Assist	Description
1.	81:52	MSU	MaKayla Waldner (1)	(unassisted)	Chased down rebound from previous shot
2.	88:18	VT	Candace Cephers (1)	Penalty kick	
3.	89:05	VT	Candace Cephers (2)	Jess Boytim	Header off of free kick

Cautions and ejections:

YC-MSU #15 (86:20)

Win-Mandy McGlynn (2-0). Loss-Tanya de Souza (1-1).

Stadium: Patriots Point

Officials: Referee: Brian Bozard; Asst. Referee: Patrick Schmidt; Joseph Rieck;

Scorer: CofC Athletics;

Offsides: Virginia Tech 3, MSU 1.

Official's signature _____



Soccer Box Score (Final)

2016 Mississippi State Soccer

Lipscomb vs Mississippi State (Aug 26, 2016 at Starkville, Miss.)

Lipscomb (2-0-1) vs.
Mississippi State (1-2-0)
Date: Aug 26, 2016 • Attendance: 776
Weather: Partly Cloudy, 93 degrees

Goals by period	1	2	Total
Lipscomb	1	0	1
Mississippi State	0	0	0

Lipscomb

Po #	Player	Sh	SO	G	A	Fo	Min
gk 1	BUHIGAS, Anna	-	-	-	-	-	90
m 2	MILLER, Paige	-	-	-	-	-	54
d 3	BAILEY, Justis	-	-	-	-	-	90
m 5	CERNICKY, Leah	1	-	-	-	-	64
f 9	DOAK, Olivia	-	-	-	-	-	80
m 12	BRENNER, Brooke	-	-	-	-	-	90
f 13	MCKAY, Maycie	1	-	-	-	-	71
d 15	ROGERS, Emily	-	-	-	-	-	72
m 16	DUBOISE, Natalie	-	-	-	1	-	90
f 19	LUNDY, Ellen	1	1	1	-	-	90
m 21	ABARCA, Jade	1	-	-	-	-	69
-- Substitutes --							
17	BRENT, Lindsay	-	-	-	-	-	42
18	COLBERT, Alesondra	-	-	-	-	-	17
20	DILLER, Dominique	1	1	-	-	-	40
22	HANSFORD, Arielle	1	1	-	-	-	6
24	ECK, Hailey	-	-	-	-	-	18
28	SPRINGSTEEN, Carol	-	-	-	-	-	0
Totals		6	3	1	1	11	

#	Goalkeepers	Min	GA	Saves
1	BUHIGAS, Anna	90:00	0	9

Shots by period	1	2	Total
Lipscomb	5	1	6
Mississippi State	10	8	18

Corner kicks	1	2	Total
Lipscomb	1	0	1
Mississippi State	0	6	6

Mississippi State

Po #	Player	Sh	SO	G	A	Fo	Min
gk 1	Tanya de Souza	-	-	-	-	-	90
d 4	Khalyn Harmon	-	-	-	-	-	90
m 5	Kennadi Carbin	-	-	-	-	-	66
f 7	Mallory Eubanks	3	2	-	-	-	81
m 8	Johanna Hamblett	3	2	-	-	-	77
f 10	MaKayla Waldner	-	-	-	-	-	71
m 15	Kayleigh Henry	1	-	-	-	-	54
d 17	Kiley Martens	-	-	-	-	-	83
d 18	Courtney Robicheaux	2	2	-	-	-	90
d 24	Ariana Holmes	4	2	-	-	-	90
m 25	Carly Mauldin	3	1	-	-	-	90
-- Substitutes --							
2	Katelyn Watson	1	-	-	-	-	22
3	Jamila Coner	-	-	-	-	-	22
6	Payton Gruenewald	-	-	-	-	-	14
16	Jen Huckaby	-	-	-	-	-	0
19	Emily Malone	1	-	-	-	-	35
21	McKenzie Adams	-	-	-	-	-	12
27	Alexa England	-	-	-	-	-	7
Totals		18	9	0	0	8	

#	Goalkeepers	Min	GA	Saves
1	Tanya de Souza	90:00	1	2

Saves by period	1	2	Total
Lipscomb	7	2	9
Mississippi State	1	1	2

Fouls	1	2	Total
Lipscomb	8	3	11
Mississippi State	6	2	8

Scoring summary:

No.	Time	Team	Goal scorer	Assist	Description
1.	15:31	LIP	LUNDY, Ellen (1)	DUBOISE, Natalie	Lundy scores off of the corner by DuBoise

Cautions and ejections:

YC-LIP #19 (70:25)

Win-BUHIGAS, Anna (2-0-1). Loss-Tanya de Souza (1-2-0).

Stadium: MSU Soccer Field

Officials: Referee: Mark Herrington; Asst. Referee: Ryan Starr; John White;

Alt. Official: Eric Zimmer; Scorer: Allie Bradford;

Offsides: Lipscomb 1, Mississippi State 1.

Official's signature



Soccer Box Score (Final)

2016 Mississippi State Soccer

UT Martin vs Mississippi State (Aug 28, 2016 at Starkville, Miss.)

UT Martin (0-3-0) vs.
Mississippi State (2-2-0)
Date: Aug 28, 2016 • Attendance: 537
Weather: Sunny, 89 degrees

Goals by period	1	2	Total
UT Martin	1	0	1
Mississippi State	2	1	3

UT Martin

Po #	Player	Sh	SO	G	A	Fo	Min
gk 0	JAMISON, Maya	-	-	-	-	-	90
m 3	BURKETT, Maggie	-	-	-	-	-	90
d 4	STARNE, Rebecca	-	-	-	-	-	47
d 5	MCFARLAND, Bianca	-	-	-	-	-	90
m 6	COLVIN, Katelyn	-	-	-	-	-	81
d 9	GRATTON, Shannon	-	-	-	1	-	90
f 12	COLLINS, Nicole	-	-	-	-	-	72
f 13	COOMBS-JAMES, Sap	2	2	1	-	-	84
m 15	SHAROS, Sophia	-	-	-	-	-	78
m 16	MCGIVERN, Amy	-	-	-	-	-	90
d 19	THOMAS, Alexius	-	-	-	-	-	76
-- Substitutes --							
2	CLYMER, Sam	-	-	-	-	-	21
10	MITCHELL, Kaci	-	-	-	-	-	29
17	KILDARIDOU, Danae	-	-	-	-	-	51
Totals		2	2	1	1	8	

Mississippi State

Po #	Player	Sh	SO	G	A	Fo	Min
gk 1	Tanya de Souza	-	-	-	-	-	90
d 4	Khalyn Harmon	-	-	-	-	-	60
f 5	Kennadi Carbin	1	-	-	-	-	40
f 7	Mallory Eubanks	5	3	1	1	-	83
m 8	Johanna Hamblett	1	1	-	-	-	51
f 10	MaKayla Waldner	4	3	1	-	-	69
m 16	Jen Huckaby	1	-	-	-	-	29
d 18	Courtney Robicheaux	2	1	-	-	-	90
m 19	Emily Malone	-	-	-	-	-	45
d 24	Ariana Holmes	1	-	-	-	-	69
m 25	Carly Mauldin	2	1	-	1	-	90
-- Substitutes --							
2	Katelyn Watson	-	-	-	-	-	85
6	Payton Gruenewald	-	-	-	-	-	15
11	Elva Astthorsdottir	1	-	-	-	-	13
14	Ciara Donnelly	-	-	-	-	-	2
15	Kayleigh Henry	1	1	-	-	-	23
17	Kiley Martens	-	-	-	-	-	42
21	McKenzie Adams	1	1	-	2	-	37
22	Kelly Dorney	1	1	1	-	-	18
27	Alexa England	-	-	-	1	-	39
Totals		21	12	3	5	7	

#	Goalkeepers	Min	GA	Saves
0	JAMISON, Maya	90:00	3	9

Shots by period	1	2	Total
UT Martin	1	1	2
Mississippi State	11	10	21

Corner kicks	1	2	Total
UT Martin	0	3	3
Mississippi State	10	4	14

#	Goalkeepers	Min	GA	Saves
1	Tanya de Souza	90:00	1	1

Saves by period	1	2	Total
UT Martin	4	5	9
Mississippi State	0	1	1

Fouls	1	2	Total
UT Martin	6	2	8
Mississippi State	3	4	7

Scoring summary:

No.	Time	Team	Goal scorer	Assist	Description
1.	14:19	UTM	COOMBS-JAMES, Saphyra (2)	GRATTON, Shannon	Coombs-James scores on the set play by
2.	29:57	MSU	MaKayla Waldner (2)	McKenzie Adams Alexa England	Waldner scores on the deflection by Adan
3.	40:49	MSU	Mallory Eubanks (1)	McKenzie Adams	Eubanks scores on the midfield pass by A
4.	79:32	MSU	Kelly Dorney (1)	Carly Mauldin Mallory Eubanks	

Cautions and ejections:

YC-MSU #TM (51:34); YC-MSU #6 (58:25); YC-MSU #21 (72:37)

Win-Tanya de Souza (2-2-0). Loss-JAMISON, Maya (0-3-0).

Stadium: MSU Soccer Field

Officials: Referee: Randy Cook; Asst. Referee: Louie Tran; Uwe Tittl; Alt. Official: Rhiannon Harrison;

Scorer: Allie Bradford;

Offsides: UT Martin 0, Mississippi State 1.

Official's signature



Soccer Box Score (Final)

2016 Mississippi State Soccer

Mississippi State vs South Alabama (Sep 02, 2016 at Mobile, Ala.)

Mississippi State (3-2) vs.
 South Alabama (2-2-1)
 Date: Sep 02, 2016 • Attendance: 441
 Weather: 90 degrees, partly cloudy

Goals by period	1	2	OT	O2	Total
Mississippi State	0	1	0	1	2
South Alabama	0	1	0	0	1

Mississippi State

Po #	Player	Sh	SO	G	A	Fo	Min
gk 1	Tanya de Souza	-	-	-	-	-	102
4	Khalyn Harmon	-	-	-	-	-	102
5	Kennadi Carbin	5	2	1	-	-	69
6	Payton Gruenewald	2	1	-	-	-	42
8	Johanna Hamblett	2	1	-	-	-	94
10	MaKayla Waldner	-	-	-	-	-	85
15	Kayleigh Henry	-	-	-	-	-	34
17	Kiley Martens	-	-	-	-	-	102
18	Courtney Robicheaux	1	-	-	-	-	93
24	Ariana Holmes	1	1	-	-	-	102
25	Carly Mauldin	-	-	-	-	-	102
-- Substitutes --							
2	Katelyn Watson	-	-	-	-	-	42
3	Jamila Coner	-	-	-	-	-	11
16	Jen Huckaby	-	-	-	-	-	31
19	Emily Malone	1	-	-	-	-	33
21	McKenzie Adams	-	-	-	-	-	24
22	Kelly Dorney	-	-	-	-	-	21
27	Alexa England	-	-	-	-	-	19
28	McKenna de Graaf	1	1	1	-	-	11
Totals		13	6	2	0	16	

South Alabama

Po #	Player	Sh	SO	G	A	Fo	Min
gk 2	Hay, Sarah	-	-	-	-	-	102
6	Hardy, Steffi	1	-	-	-	-	97
7	Followwell, Chelsea	2	2	-	-	-	102
8	Purfield, Jemma	5	2	-	1	-	102
9	Hardy, Rio	3	3	1	-	-	69
11	Hannah, Charde	2	-	-	-	-	78
12	Autmon, Monique	-	-	-	-	-	102
14	Henley, Danielle	5	1	-	-	-	102
16	Jordan, Alexis	-	-	-	-	-	54
18	Dixon, Kory	-	-	-	-	-	59
25	Godfrey, Hannah	3	1	-	-	-	102
-- Substitutes --							
5	Loeber, Jana	2	1	-	-	-	52
10	Trutsi, Tiina	2	-	-	-	-	31
22	Jones, Ashlynn	1	1	-	-	-	60
23	Morris, Briana	-	-	-	-	-	7
Totals		26	11	1	1	7	

#	Goalkeepers	Min	GA	Saves
1	Tanya de Souza	101:32	1	9
TM	TEAM	0:00	0	1

#	Goalkeepers	Min	GA	Saves
2	Hay, Sarah	101:32	2	4

Shots by period	1	2	OT	O2	Total
Mississippi State	7	5	0	1	13
South Alabama	10	9	7	0	26

Saves by period	1	2	OT	O2	Total
Mississippi State	5	1	4	0	10
South Alabama	4	0	0	0	4

Corner kicks	1	2	OT	O2	Total
Mississippi State	2	3	0	0	5
South Alabama	2	8	3	0	13

Fouls	1	2	OT	O2	Total
Mississippi State	8	7	0	1	16
South Alabama	3	2	2	0	7

Scoring summary:

No.	Time	Team	Goal scorer	Assist	Description
1.	53:27	USA	Hardy, Rio (3)	Purfield, Jemma	Deflected in off free kick
2.	66:09	MSU	Kennadi Carbin (1)	(unassisted)	Solo effort, dribbled across top of box int side of net
3.	101:32	MSU	McKenna de Graaf (1)	(unassisted)	Clearance bounced off MSU player

Cautions and ejections:

YC-MSU #4 (21:10); YC-MSU #1 (39:39); YC-MSU #5 (67:27)

Win-Tanya de Souza (3-2). Loss-Hay, Sarah (1-2-1).

Stadium: The Cage

Officials: Referee: Tyler Mitcham; Asst. Referee: Sam Bierster; Gustavo Sanchez;

Alt. Official: Jesse McBride; Timekeeper: Mike Ford; Scorer: Matt Horne;

Offsides: Mississippi State 1, South Alabama 1.

Game delayed 25 minutes due to lightning

 Official's signature



Soccer Box Score (Final)

2016 Mississippi State Soccer

Mississippi State vs Southern Miss (Sep 04, 2016 at Hattiesburg, Miss.)

Mississippi State (4-2) vs.
Southern Miss (3-1)
Date: Sep 04, 2016 • Attendance: 950
Weather: Cloudy

Goals by period	1	2	Total
Mississippi State	0	1	1
Southern Miss	0	0	0

Mississippi State

Po #	Player	Sh	SO	G	A	Fo	Min
4	Khalyn Harmon	-	-	-	-	-	90
5	Kennadi Carbin	-	-	-	-	-	47
7	Mallory Eubanks	2	2	-	-	-	65
8	Johanna Hamblett	3	-	-	-	-	69
15	Kayleigh Henry	1	1	-	-	-	50
18	Courtney Robicheaux	2	2	-	-	-	90
21	McKenzie Adams	-	-	-	-	-	29
24	Ariana Holmes	1	-	-	-	-	90
25	Carly Mauldin	1	1	-	-	-	90
28	McKenna de Graaf	-	-	-	-	-	58
33	Courtney Tompkins	-	-	-	-	-	90
-- Substitutes --							
2	Katelyn Watson	-	-	-	-	-	4
3	Jamila Coner	-	-	-	-	-	13
10	MaKayla Waldner	2	2	-	-	-	38
11	Elva Astthorsdottir	-	-	-	-	-	13
16	Jen Huckaby	-	-	-	-	-	28
17	Kiley Martens	-	-	-	-	-	41
19	Emily Malone	-	-	-	-	-	28
22	Kelly Dorney	-	-	-	-	-	25
27	Alexa England	-	-	-	-	-	32
TM TEAM		-	1	1	1	10	0
Totals		12	9	1	1	10	

Southern Miss

Po #	Player	Sh	SO	G	A	Fo	Min
2	RICHMOND, Katie	-	-	-	-	-	31
6	TORRES, Karen	-	-	-	-	-	90
7	AKINNIYI, Ola	-	-	-	-	-	25
9	RANDRUP, Rikke	1	1	-	-	-	87
12	COLEMAN, Beth	1	1	-	-	-	86
13	JONES, Somer	-	-	-	-	-	43
17	TAYLOR, Brittany	-	-	-	-	-	90
22	McMULLAN, Becky	2	2	-	-	-	35
23	STENNIS, Ashton	-	-	-	-	-	90
27	GARCIA, Adriana	-	-	-	-	-	90
28	LEE, Lyndsey	1	1	-	-	-	87
-- Substitutes --							
8	MALDONADO, Monica	-	-	-	-	-	22
10	ABRAMS, Hannah	-	-	-	-	-	36
15	SCHUBECK, Bri	-	-	-	-	-	7
18	BRADLEY, Kierstin	1	-	-	-	-	55
19	GARCIA, Stephanie	-	-	-	-	-	59
20	HEDIN, Breann	2	1	-	-	-	47
Totals		8	6	0	0	10	

#	Goalkeepers	Min	GA	Saves
33	Courtney Tompkins	90:00	0	6

#	Goalkeepers	Min	GA	Saves
17	TAYLOR, Brittany	90:00	1	8

Shots by period	1	2	Total
Mississippi State	8	4	12
Southern Miss	2	6	8

Saves by period	1	2	Total
Mississippi State	2	4	6
Southern Miss	6	2	8

Corner kicks	1	2	Total
Mississippi State	4	4	8
Southern Miss	1	0	1

Fouls	1	2	Total
Mississippi State	6	4	10
Southern Miss	6	4	10

Scoring summary:

No.	Time	Team	Goal scorer	Assist	Description
1.	50:45	MSU	OWN GOAL (1)	TEAM	Own Goal by Southern Miss

Cautions and ejections:

YC-USM #27 (75:43)

Win-Courtney Tompkins (4-2-0). Loss-TAYLOR, Brittany (3-1-0).
Stadium: Soccer Complex
Officials: Referee: Uwe Tittl; Asst. Referee: Rainier Kelly; Sam Bilbo;
Timekeeper: Ashleigh Young; Scorer: Ashleigh Young;
Offsides: Mississippi State 3, Southern Miss 1.
Yellow Card, Adrianna Garcia

Official's signature



Soccer Box Score (Final) 2016 Mississippi State Soccer

#25 Arkansas vs Mississippi State (Sep 09, 2016 at STARKVILLE, MISS.)

Arkansas (6-1-0, 1-0-0) vs.
Mississippi State (4-3-0, 0-1-0)
Date: Sep 09, 2016 • Attendance: 1106
Weather:

Goals by period	1	2	Total
Arkansas	3	2	5
Mississippi State	2	0	2

Arkansas

Po #	Player	Sh	SO	G	A	Fo	Min
gk 1	CAMERON CARTER	-	-	-	-	-	90
d 4	ERIKA MILLER	-	-	-	-	-	90
d 6	CARLY HOKE	-	-	-	1	-	90
f 11	ALEXANDRA FISCHER	1	1	-	-	-	62
m 12	CLAIRE KELLEY	3	1	1	1	-	90
d 15	JESSI HARTZLER	-	-	-	1	-	84
m 17	STEFANI DOYLE	1	1	-	-	-	83
m 18	REECE CHRISTOPHE	-	-	-	1	-	54
m 24	KAYLA MCKEON	3	2	2	-	-	81
m 25	LINDSEY MAYO	2	2	2	-	-	67
d 32	QYARA WINSTON	-	-	-	-	-	90
-- Substitutes --							
3	VICTORIA CANNATA	-	-	-	-	-	14
13	KATIE MOORE	-	-	-	-	-	9
14	REID SIBLEY	-	-	-	-	-	36
22	RACHEL RIGGS	-	-	-	-	-	5
29	HANNAH NEECE	-	-	-	-	-	45
Totals		10	7	5	4	12	

#	Goalkeepers	Min	GA	Saves
1	CAMERON CARTER	90:00	2	4

Shots by period	1	2	Total
Arkansas	5	5	10
Mississippi State	8	3	11

Corner kicks	1	2	Total
Arkansas	6	3	9
Mississippi State	5	4	9

Mississippi State

Po #	Player	Sh	SO	G	A	Fo	Min
gk 1	Tanya de Souza	-	-	-	-	-	90
d 4	Khalyn Harmon	-	-	-	1	-	90
m 5	Kennadi Carbin	1	1	1	-	-	71
f 7	Mallory Eubanks	3	2	-	-	-	90
m 8	Johanna Hamblett	3	-	-	-	-	90
f 10	MaKayla Waldner	-	-	-	1	-	79
m 17	Kiley Martens	-	-	-	-	-	46
d 18	Courtney Robicheaux	-	-	-	-	-	90
d 24	Ariana Holmes	2	2	1	-	-	90
m 25	Carly Mauldin	2	1	-	-	-	90
d 28	McKenna de Graaf	-	-	-	-	-	64
-- Substitutes --							
2	Katelyn Watson	-	-	-	-	-	8
15	Kayleigh Henry	-	-	-	-	-	33
19	Emily Malone	-	-	-	-	-	26
22	Kelly Dorney	-	-	-	-	-	11
27	Alexa England	-	-	-	-	-	22
Totals		11	6	2	2	12	

#	Goalkeepers	Min	GA	Saves
1	Tanya de Souza	90:00	5	2

Saves by period	1	2	Total
Arkansas	3	1	4
Mississippi State	0	2	2

Fouls	1	2	Total
Arkansas	4	8	12
Mississippi State	5	7	12

Scoring summary:

No.	Time	Team	Goal scorer	Assist	Description
1.	10:00	MSU	Kennadi Carbin (2)	MaKayla Waldner	Carbin scores on the midfield pass from
2.	19:10	ARK	KAYLA MCKEON (5)	CLAIRE KELLEY	McKeon scores on the tight pass from Kell
3.	28:46	MSU	Ariana Holmes (1)	Khalyn Harmon	Holmes scores on the midfield pass from
4.	37:35	ARK	LINDSEY MAYO (3)	JESSI HARTZLER	Mayo scores on quick pass from Hartzler.
5.	42:15	ARK	LINDSEY MAYO (4)	REECE CHRISTOPHERSON	Mayo scores in a packed box on the pass Christophe.
6.	56:58	ARK	KAYLA MCKEON (6)	CARLY HOKE	McKeon scores on the short pass from Ho
7.	69:51	ARK	CLAIRE KELLEY (1)	(unassisted)	Kelley scores on the foul shot.

Cautions and ejections:

YC-MSU #5 (10:35); YC-MSU #TM (19:47); YC-MSU #10 (83:20)

Win-CAMERON CARTER (6-1-0). Loss-Tanya de Souza (3-3-0).

Stadium: MSU SOCCER FIELD

Officials: Referee: Fernando Galvan; Asst. Referee: Chris Strickland; Ryan Starr;

Alt. Official: Sam Bilbo; Scorer: Allie Bradford;

Offsides: Arkansas 1, Mississippi State 1.

Official's signature



Soccer Box Score (Final) 2016 Mississippi State Soccer

Louisiana-Lafayette vs Mississippi State (Sep 11, 2016 at Starkville, Miss.)

Louisiana-Lafayette (4-4-0) vs.
Mississippi State (5-3-0)
Date: Sep 11, 2016 • Attendance: 637
Weather: Cloudy & humid, 85 degrees

Goals by period	1	2	Total
Louisiana-Lafayette	1	0	1
Mississippi State	1	1	2

Louisiana-Lafayette

Po #	Player	Sh	SO	G	A	Fo	Min
gk 1	Morche, Cosette	-	-	-	-	-	90
m 4	Rumpf, Celine	-	-	-	-	-	90
d 6	Kozlowski, Sarah	2	1	-	-	-	90
d 9	Sierra, Erika	1	1	-	-	-	90
f 12	Montoya, Yazmin	1	1	-	-	-	68
m 13	Walters, Mary	-	-	-	-	-	8
f 14	Higgins, Mackenzie	3	3	1	-	-	90
f 16	Cade, Ashleigh	-	-	-	1	-	90
m 23	Newman, Natalie	-	-	-	-	-	78
m 25	Brammer, Lindsay	-	-	-	-	-	82
d 26	Ellender, Carly	1	-	-	-	-	90
-- Substitutes --							
2	Boroch, Haley	-	-	-	-	-	19
5	Taggart, Whitney	-	-	-	-	-	40
10	Schmidt, Annika	-	-	-	-	-	12
15	Palsdottir, Sigridur	-	-	-	-	-	39
19	Groves, Melanie	-	-	-	-	-	8
24	Powell, Kaylie	-	-	-	-	-	7
Totals		8	6	1	1	6	

#	Goalkeepers	Min	GA	Saves
1	Morche, Cosette	90:00	2	6

Shots by period	1	2	Total
Louisiana-Lafayette	6	2	8
Mississippi State	8	7	15

Corner kicks	1	2	Total
Louisiana-Lafayette	3	1	4
Mississippi State	2	5	7

Mississippi State

Po #	Player	Sh	SO	G	A	Fo	Min
gk 1	Tanya de Souza	-	-	-	-	-	90
m 3	Jamila Coner	4	3	1	-	-	67
m 5	Kennadi Carbin	1	1	-	-	-	60
f 7	Mallory Eubanks	2	2	1	1	-	90
m 8	Johanna Hamblett	1	-	-	-	-	81
f 10	MaKayla Waldner	4	-	-	-	-	63
d 15	Kayleigh Henry	-	-	-	-	-	84
d 17	Kiley Martens	-	-	-	-	-	90
d 18	Courtney Robicheaux	-	-	-	-	-	90
d 24	Ariana Holmes	1	1	-	-	-	68
m 25	Carly Mauldin	1	-	-	-	-	90
-- Substitutes --							
2	Katelyn Watson	-	-	-	-	-	31
6	Payton Gruenewald	-	-	-	-	-	12
16	Jen Huckaby	1	1	-	-	-	30
19	Emily Malone	-	-	-	-	-	26
21	McKenzie Adams	-	-	-	-	-	12
27	Alexa England	-	-	-	-	-	6
Totals		15	8	2	1	3	

#	Goalkeepers	Min	GA	Saves
1	Tanya de Souza	90:00	1	5

Saves by period	1	2	Total
Louisiana-Lafayette	4	2	6
Mississippi State	4	1	5

Fouls	1	2	Total
Louisiana-Lafayette	3	3	6
Mississippi State	1	2	3

Scoring summary:

No.	Time	Team	Goal scorer	Assist	Description
1.	21:35	MSU	Mallory Eubanks (2)	(unassisted)	Eubanks scores on the run from midfield.
2.	42:09	ULL	Higgins, Mackenzie (8)	Cade, Ashleigh	Higgins scores during the scrum in the bo
3.	54:26	MSU	Jamila Coner (1)	Mallory Eubanks	Coner scores on the pass from Eubanks.

Cautions and ejections:

YC-ULL #23 (26:47); YC-ULL #26 (78:11)

Win-Tanya de Souza (4-3-0). Loss-Morche, Cosette (2-2-0).

Stadium: MSU Soccer Field

Officials: Referee: Rhiannon Harrison; Asst. Referee: Amanda Ross; Isaac Martinez;

Alt. Official: Patrick Murray; Scorer: Allie Bradford;

Offsides: Louisiana-Lafayette 0, Mississippi State 3.

Official's signature