



MOUNT ST. MARY'S WOMEN'S BASKETBALL

2020-21 GAME NOTES

47th Season of Competition | 769 Wins | 9 NEC Regular Season Titles

NEC Champions
1993, 1994, 1995
NCAA Tournament
1994, 1995
WNIT Tournament
2014

MOUNT ST. MARY'S (11-4, 10-2 NEC) vs. MERRIMACK (3-8, 3-8 NEC)

February 24-25, 2021 • 4 p.m. | 1 p.m. • North Andover, Mass. • Hammel Court
Stream: NEC Front Row

2020-2021 SCHEDULE

Overall: 11-4 | Northeast Conference: 10-2
Home: 8-1 | Away: 3-3 | Neutral: 0-0

11/25	at #RV James Madison	L, 55-69
11/30	at Howard	L, 83-87
12/2	COPPIN STATE	Canceled
12/5	UMBC	W, 72-58
12/8	at #14 Maryland	Canceled
12/12	LA SALLE	Canceled
12/22	at Hofstra	Canceled
1/7	ST. FRANCIS BROOKLYN *	W, 76-68
1/8	ST. FRANCIS BROOKLYN *	W, 65-59
1/14	at Sacred Heart * (from 1/28)	W, 84-60
1/15	at Sacred Heart * (from 1/29)	L, 71-79
1/23	CENTRAL CONNECTICUT *	W, 81-52
1/24	CENTRAL CONNECTICUT *	W, 95-61
1/28	FAIRLEIGH DICKINSON * (from 2/18)	L, 54-59
1/29	FAIRLEIGH DICKINSON * (from 2/19)	W, 68-55
2/13	at Long Island *	W, 85-64
2/14	at Long Island *	W, 65-41
2/20	BRYANT * (from 2/4)	W, 92-54
2/21	BRYANT * (from 2/5)	W, 87-49
2/24	at Merrimack * (from 1/14)	4pm
2/25	at Merrimack * (from 1/15)	1pm
2/28	SAINT FRANCIS U *	2pm
3/1	at Saint Francis U * (from 1/19)	6pm
3/4	at Wagner * (from 2/9)	4pm
3/5	at Wagner * (from 2/10)	4pm

LAST GAME'S STARTERS

	3 Kendall Bresee 5-10 • G/F • R-Sr. Frederick, Md. Urbana 14.9 PPG 8.9 RPG 3.9 APG 31.0 MPG
	10 Michaela Harrison 5-7 • G • Jr. Cleveland, Ohio Lake Ridge Academy 13.3 PPG 1.7 RPG 1.8 APG 28.5 MPG
	13 Aryna Taylor 5-10 • G • R-Sr. Ashland, Va. Patrick Henry 11.4 PPG 2.7 RPG 1.3 APG 28.0 MPG
	21 Kayla Agentowicz 5-11 • G • R-Sr. Scott Township, Pa. Lakeland Jr./Sr. 6.5 PPG 3.4 RPG 2.1 APG 27.1 MPG
	34 Rebecca Lee 6-2 • C • Sr. Severn, Md. Old Mill Senior 7.7 PPG 5.8 RPG 0.9 APG 18.2 MPG

BY THE NUMBERS

359 Mount St. Mary's three-point percentage for the year, which would rank fourth all-time in program history. The record is .427, set in 1988-89.

12 Points remaining for Michaela Harrison to reach the 1,000 point mark. The Clevelander will become the 27th person in school history to achieve the feat. The Mountaineers are 11-2 when crossing the 60 point threshold, and undefeated when holding opponents under 70.

60

THE MATCHUP



75.5	PPG	64.8
61.0	OPP. PPG	68.5
.441	FG%	.408
.389	OPP. FG%	.407
.359	3FG%	.359
.315	OPP. 3FG%	.310
.791	FT%	.655
37.2	REBS/GM.	37.1
+1.9	REBS +/-	+0.1
14.4	AST/GM.	13.2
10.1	STL/GM.	9.5
3.5	BLKS/GM.	1.6

THE ALL-TIME SERIES

Overall	1-1
Division I	1-1
In Emmitsburg	1-0
In North Andover	0-1
Neutral Site	0-0
Current Streak	Mount, 1 game

Last Meeting 2/23/20
Mount, 62-53 in Emmitsburg
Last Merrimack Win - 1/13/20
55-76, in North Andover

STAT LEADERS

POINTS PER GAME		
MSM	Kendall Bresee	14.9
MC	Mayson Kimball	13.2
REBOUNDS PER GAME		
MSM	Kendall Bresee	8.9
MC	Mayson Kimball	5.5
ASSISTS PER GAME		
MSM	Kendall Bresee	3.9
MC	Jayne Decesare	3.2
STEALS PER GAME		
MSM	Kendall Bresee	2.5
MC	Diamond Christian	1.9
3-POINTERS		
MSM	Michaela Harrison	37
MC	Kate Mager	30
FIELD-GOAL PERCENTAGE (Min. 50)		
MSM	Jessica Tomasetti	.538
MC	Casey/Christian	.500
FREE-THROW PERCENTAGE (Min. 15)		
MSM	Michaela Harrison	.840
MC	Kate Mager	.952

NEWS & NOTES

THIS WEEK'S GAMES

- The Mount brings their season-long five game winning streak to North Andover.
- Winning both games by 38 points this weekend, the Mountaineers stormed past Bryant to remain in second place in the NEC.
- Merrimack had one of the latest starts to the season due to COVID-19 pauses. The Warriors played their first game on January 23rd. By then, the Mount had competed seven times.

SERIES BITS

- Merrimack joined Division I and the Northeast Conference in 2019-2020, and the teams split their first meetings last season.
- In the first-ever game between the two, the Warriors almost doubled the Mount in field goal percentage for a 76-55 win.
- The Mount got their revenge at home a month later, using defense to hold Merrimack to 32.8 percent from the floor and winning 62-53.

THE MOUNT'S TRACK RECORD

- The Mountaineers stand at 11-4 (10-2 NEC) on the year, after going 20-11 (14-4 NEC) in 2019-2020, clinching the #2 seed in the conference tournament. They trail Saint Francis U in the NEC standings.
- Redshirt senior Kendall Bresee leads the Mount in four major statistical categories - points, rebounds, assists and steals. She leads the conference in steals, second in the conference for scoring and rebounding, and fourth in assists.
- Bolstered by five blocks in a game and six for the series with St. Francis Brooklyn, Rebecca Lee leads the team with 22 blocks, with stands fifth in the NEC.
- Michaela Harrison leads in triples with 37. Harrison is second in the conference at 2.64 treys per game. In the win over Bryant on February 20th, she hit nine triples for a new school record. Aryna Taylor and Bridget Birkhead is also top ten in the NEC in ninth.
- Seven of the 10 victories in NEC play were by 20 points or more, including sweeps over LIU, Central Connecticut and Bryant, and an 84-60 against Sacred Heart.
- The win against CCSU on January 24th marked the most points in a game for the Mount since 2014, when they scored 97 against Saint Francis U.

HOME GAMES IN BOLD CAPS

* NEC Game | % NEC Playoffs
- Dates/Times subject to change due to COVID-19

CONNECT WITH MOUNT



FACEBOOK

/MountAthletics



YOUTUBE

/MountAthletics



TWITTER

@MountAthletics

@Mount_WBB



INSTAGRAM

@MountAthletics

#MountUp #GoMount



QUICK FACTS

MOUNT ST. MARY'S UNIVERSITY

Location Emmitsburg, Md.
Founded 1808
Enrollment 2,166
Nickname Mountaineers, Mount
Colors Blue and White
National Affiliation NCAA Division I
Conference Northeast (NEC)
Athletic Website mountathletics.com
University Website msmary.edu
President Dr. Timothy Trainor
Athletic Director Lynne Robinson

STAFF/INFORMATION

Head Coach Maria Marchesano
Associate Head Coach Antoine White
Assistant Coach Julie Kaufman
Assistant Coach Kelsey Funderburgh
Director of Operations Katrice Dickson

KNOTT ARENA

Opened Nov. 28, 1987
Season 34th
Capacity 3,121
Student Section Mount Maniacs
Marchesano's Record at Home 32-16

WOMEN'S BASKETBALL HISTORY

All-Time Record 769-536
NEC Record 342-224
First Season 1974-75
Season 47th
NCAA Tournament 9 (2 DI, 7 DII)
- Tournament Record 5-9 (0-2 DI/5-7 DII)
Last NCAA Tourn. Appearance - 1994-95
Regular Season Conference Titles - 9 (DI)
Conference Tournament Titles - 7 (3 DI, 4 DII)
Most wins in a season 26 in '83-'84
Most wins in DI season 25 in '93-'94
Last winning season 20-11 in '19-'20

2019-20 RECORD

Record 20-11 (14-4 NEC)
Home Games 10-4
Road Games 9-5
Neutral Games 1-2

2019-20 OUTLOOK

Letterwinners Returning/Lost 11/2
Starters Returning/Lost 5/0
Newcomers 4
Returning Scoring 1,716/2,076 (82.6%)
Returning Rebounds 814/1,046 (77.8%)
Returning Assists 330/441 (74.8%)
Returning Minutes 4,882/6,197 (78.8%)

MOUNT ST. MARY'S NEWS AND NOTES

MULLING MERRIMACK

This week's game features the two top three-point shooting teams in the league. Merrimack and Mount are tied at the top with a .359 percentage from downtown. Kate Mager leads the conference with a .423 percentage (30-for-71). Mager and Mayson Kimball are the Warriors' pair of double-digit scorers. Kimball is the overall leader on the team at 13.2 points per game. Merrimack stands at 3-8 on the year, with the victories coming in a three-game winning streak that included a sweep of LIU and a win over Central Connecticut.

FROM PAUSE TO PLAY

Mount St. Mary's paused team activities for over a month following positive COVID-19 tests within the program. Contests affected were non-conference meetings with Maryland, La Salle and Hofstra, which were canceled, and three NEC games with Wagner at Saint Francis U were postponed. The Wagner contests have been rescheduled a second time to March 4th and 5th. Merrimack had their own pause due to COVID, so the Mount will challenge them on February 24th and 25th in Massachusetts. Saint Francis U has also been postponed twice, and the Bryant series moved two weeks to February 20th and 21st.

MIND THE GAP

From December 5th to January 7th, 33 days passed since between games. That in-season gap is the fifth longest in team history, and the longest since 1978. The longest is 56 days going back to the team's inaugural season of 1974-75. After their first-ever game against Loyola on December 4th, the team's next game didn't occur until January 29th versus Frederick Community College.

LONGEST IN-SEASON GAPS IN WBB HISTORY:

- December 4, 1974-January 29, 1975 - 56 days
December 10, 1975-January 29, 1976 - 50 days
December 10, 1977-January 21, 1978 - 42 days
December 10, 1976-January 15, 1977 - 36 days
December 5, 2020-January 7, 2021 - 33 days
December 7, 1991-January 7, 1992 - 31 days

TYING UP OPPONENTS IN KNOTT

December 5th's win against UMBC was the program's 100th non-conference victory at Knott Arena since the facility opened in 1987. Mount stands 286-156 all-time on their home floor,

including a 32-16 mark in the Marchesano era.

FROM DOWNTOWN!

The Mountaineers under Coach Marchesano have rewritten the record books for making three pointers. Under her three seasons, her teams are 1st, 2nd and 4th for triples made in a season. Last season, the team once again set the record with 264 made three pointers. That accomplishment also ranked 15th among all NCAA Division I teams. This past February 20th, the squad set a school record with 18 triples. Michaela Harrison set the individual school record with nine three-pointers. The previous record of 16 was set in December 2019 in a game with Maryland Eastern Shore. So far in 2020-21, Mount has 133 triples for an average of 8.87 per game.

NEC HONOREES

Senior Kendall Bresee is a two-time NEC Player of the Week honor, receiving the award on January 11th and February 1st. Freshman Jessica Tomasetti has also won Rookie of the Week twice. She is a model of efficiency, making 28 of 52 shots, good for a .538 percentage. Isabella Hunt became the third straight winner on January 26th, after averaging 9.5 points and 3.5 rebounds against CCSU to earn ROTW honors. It's the first time since 2007-08 (Mary Dunn, Lauren Howell) that two rookies from the Mount were honored, and the first time since 2004-05 (Tiffany Green, Dita Krumberga) that players were honored back-to-back.

THAT'S DOWNRIGHT OFFENSIVE

Mount St. Mary's led the NEC in offensive output last year, averaging 67 points per game. The recent scoring outburst catapulted the Mount to tops in the NEC again this year. The squad also topped the NEC in field goal percentage (.406) and three point percentage (.342). When they upped their point totals to 70 or more in a game last season, the Mount went 11-1, as opposed to 9-10 when scoring 60 or less. This season, the team is averaging 75.5 points, and have earned a double-digit scoring margin against opponents. By going 18-for-19 at the line against CCSU on January 24th, the team tied the second-highest free throw percentage in program history.

27TH HEAVEN

Junior guard Michaela Harrison stands at 988





MOUNT ST. MARY'S NEWS AND NOTES

career points, 12 away from becoming the 27th member of the 1,000 point club.

- Harrison is on the fast track to becoming the 10th member to push past the milestone in three seasons. The last Mountaineer to achieve this was Jacqueline Brewer in 2015.

PRESEASON COACHES POLL

- For the first time in 20 years, Mount's women were on top of the NEC Preseason Poll. The unanimous decision came from a poll of the conference's coaches.
- It is the fifth time in program history they sit atop the preseason poll, and twice prior a Mountaineer team that was predicted first ended in first by season's end.

MARCHESANO'S MILESTONES

- Entering her fourth season, Maria Marchesano needed two wins for 125 career wins and six victories for 50 as Mount head coach. She crossed the 125 threshold with a win over St. Francis Brooklyn on January 7th, and the 50 win mark versus Central Connecticut on January 24th.
- A 17-win season would put Marchesano fourth on the all-time list, bolting ahead of Rev. James Delaney (45) and Fred Carter (60).

AWARD-WINNING ACHIEVEMENTS

- A pair of players last season received All-NEC honors at season's conclusion.
- Leading scorer Michaela Harrison earned a First Team nod, while leading rebounder and assister Kendall Bresee received a Third Team selection.

HARRISON'S HILL

- Michaela Harrison earned a spot on the All-NEC Preseason Team following her strong sophomore season.
- The Clevelander led the charge in the scoring department for the Mount, averaging 12.6 points per game. Her 75 three pointers were a school record for an individual's season.
- Along with her scoring ability, she tied the team lead in steals (61) and ranked third on the team with 75 assists.

20/20

- Just like their first place vote in the NEC Preseason poll, Mount is coming off a 20 win season for the first time in 20 years.
- The 20-11 record was the team's highest since a 20-9 mark during the 1999-2000 season.

KELSEY HAPPY RETURNS

- Coach Marchesano welcomed back Kelsey Funderburgh to the coaching staff for her first-ever role as a college assistant coach.
- Funderburgh played for Marchesano at Walsh, finishing with 1,304 career points. A three-point shooter, she ranked in the top 50 in Division II for long-range shots.
- Since graduating, she worked three seasons as a Director of Basketball Operations - two here at the Mount and last season at Monmouth.

MIRROR, MIRROR ON THE COURT

- The Northeast Conference introduced a new format for conference games. When the Mount women play at home, the men will play the same opponent on the road, and vice versa.

LOCAL FLAIR

- Last November, Coach Marchesano and her staff signed four new players to NLI's. All four were local talents, either from Maryland or Pennsylvania.
- The quartet is split between a duo of forwards both named Isabella (Hunt, Pelaia) and a pair of guards, Jada Lee and Jessica Tomasetti.
- Hunt was a two-time district champion; Pelaia the leading scorer on a PIAA Class 5A champion; Lee a three-time All-Section awardee; and Tomasetti a 2018-19 WCAC First Team and team captain.

HOME VS. ROAD

- During the 2019-20 season, Mount St. Mary's played 14 contests in Emmitsburg, 15 on the road, and two at neutral sites.
- The Mount split the neutral contests 1-1, carried a 10-4 mark at home and were 9-6 on the road.
- This year the Mountaineers are 8-1 at Knott Arena and 3-3 on the road. Scoring has stayed consistent throughout, with the Mount averaging 76.7 points at home and 73.8 on the road.

RECORD RANKINGS

KENDALL BRESEE

- > 72nd - Career Points - 517
- > 6th - Career Rebounds per Game - 7.4
- > 6th - 3 Pointers in a Junior Season - 38
- > 7th - Career Assists per Game - 3.8
- > T-11th - Double-Doubles - 10

MICHAELA HARRISON

- > 28th - Career Points - 982
- > 1st - 3 Pointers in a Game - 9
- > 1st - 3 Pointers in a Season - 84, 2018-19
 - > Also most for a Freshman Season
- > 2nd - Career 3 Pointers Made - 196
- > 3rd - 3 Pointers in a Season - 75, 2019-20
 - > Also most for a Sophomore Season
- > 4th - Points in a Game - 35
- > 6th - Points in a Freshman Season - 412
- > 8th - Steals in a Sophomore Season - 61
- > 9th - Field Goals in a Freshman Season - 135
- > 10th - Points in a Sophomore Season - 390
- > 10th - Steals in a Freshman Season - 45
- > 10th - 3 Pointers in a Junior Season - 37

BRIDGET BIRKHEAD

- > 56th - Career Points - 641
- > 1st - 3 Pointers in a Junior Season - 60
- > T-2nd - 3 Pointers in a Game - 8
- > 6th - 3 Pointers in a Sophomore Season - 52
- > 6th - Career 3 Pointers Made - 163
- > 8th - Career 3 Point Pct. (Min. 100) - .365
- > T-8th - 3 Point Pct. in a Season - .411, 2019-20

ARYNA TAYLOR

- > 85th - Career Points - 390
- > 5th - 3 Pointers in a Freshman Season - 43
- > 6th - Career 3 Point Pct. (Min. 100) - .376

KAYLA AGENTOWICZ

- > 65th - Career Points - 551
- > T-9th - 3 Pointers in a Sophomore Season - 35

REBECCA LEE

- > 55th - Career Points - 667
- > 2nd - Career Blocked Shots - 124
- > T-2nd/T-8th - Blocks in a Game - 7/5
- > T-3rd - Blocks in a Freshman Season - 26
- > 4th - Blocks in a Season - 43, 2019-20
 - > Also 2nd most for a Junior Season
- > 6th - Blocks in a Season - 31, 2018-19
 - > Also 3rd most for a Sophomore Season
- > 5th - Rebounds in a Sophomore Season - 226
- > T-6th - Blocks in a Senior Season - 22
- > T-6th - Rebounds in a Game - 16
- > T-17th - Double-Doubles - 5















AROUND THE NORTHEAST CONFERENCE



2020-2021 NORTHEAST CONFERENCE STANDINGS



SCHOOL	NEC	PCT.	OVERALL PCT.	STREAK	HOME	AWAY	NEUTRAL
 Saint Francis U	9-1	0.900	11-5 0.688	L1	5-1	6-4	0-0
 Mount St. Mary's	10-2	0.833	11-4 0.733	W5	8-1	3-3	0-0
 Wagner	7-3	0.700	7-4 0.636	L2	2-1	5-3	0-0
 Sacred Heart	7-3	0.700	7-5 0.583	W5	3-2	4-3	0-0
 Fairleigh Dickinson	8-6	0.571	12-7 0.632	W3	6-4	6-3	0-0
 Bryant	4-7	0.364	6-9 0.400	L2	4-5	2-4	0-0
 LIU	5-11	0.312	5-11 0.312	W2	1-6	4-5	0-0
 Central Connecticut	4-10	0.286	4-10 0.286	L2	2-5	2-5	0-0
 St. Francis Brooklyn	4-10	0.286	4-10 0.286	W1	3-4	1-6	0-0
 Merrimack	3-8	0.273	3-8 0.273	L2	3-3	0-5	0-0

NEC SCHEDULEWEDNESDAY, FEBRUARY 24

Bryant at Wagner, 4

Mount St. Mary's at Merrimack, 4

THURSDAY, FEBRUARY 25

Mount St. Mary's at Merrimack, 1

Bryant at Wagner, 4

SUNDAY, FEBRUARY 28

Saint Francis U at Mount St. Mary's, 2

Central Connecticut at Wagner, 4

Sacred Heart at Fairleigh Dickinson, 4

Merrimack at St. Francis Brooklyn, 7

Bryant at Long Island, 7

RANKINGS AND POLLS

THE MOUNT'S TEAM RANKS IN THE NEC

Category	Rank	Average
Scoring Offense	1st	75.5
Scoring Defense	3rd	61.0
Free Throw %	2nd	.791
Field Goal %	1st	.441
3-Point %	1st	.359
Rebounding Margin	4th	+1.9
Blocks/Game	5th	3.5
Assists/Game	1st	14.4
Steals/Game	1st	10.1
Assist/Turnover Ratio	1st	1.0

2020-21 NEC PRESEASON COACHES POLL

Rank	Team
1.	Mount St. Mary's (unanimous)
2.	Sacred Heart
3.	Saint Francis U
4.	Fairleigh Dickinson
5.	Long Island
6.	Wagner
7.	Merrimack
8.	Bryant
9.	St. Francis Brooklyn
10.	Central Connecticut





2020-21 NUMERICAL ROSTER

Table with 6 columns: #, Name, Pos., Cl., Ht., Hometown / High School / Previous School. Lists 16 players including Isabella Hunt, Mikayla Watkinson, Kendall Bresee, etc.

Head Coach: Maria Marchesano (Butler '05), 4th season
Associate Head Coach: Antoine White (Southern Vermont '16), 5th season
Assistant Coach: Julie Kaufman (Catawba '05), 4th season
Assistant Coach: Kelsey Funderburgh (Walsh '16), 3rd season
Director of Basketball Operations: Katrice Dickson (Mount St. Mary's '18) 2nd Season

2020-21 ALPHABETICAL ROSTER

Table with 6 columns: #, Name, Pos., Cl., Ht., Hometown / High School / Previous School. Lists 11 players in alphabetical order including Kayla Agentowicz, Bridget Birkhead, etc.

Head Coach: Maria Marchesano (Butler '05), 4th season
Associate Head Coach: Antoine White (Southern Vermont '16), 5th season
Assistant Coach: Julie Kaufman (Catawba '05), 4th season
Assistant Coach: Kelsey Funderburgh (Walsh '16), 3rd season
Director of Basketball Operations: Katrice Dickson (Mount St. Mary's '18) 2nd Season

PRONUNCIATION GUIDE

Table with 3 columns: ##, Name, Pronunciation. Lists pronunciation for Kendall Bresee, Jatarrikah Settle, Annaliese Watkinson, Aryna Taylor, Kayla Agentowicz, and Maria Marchesano.



ROSTER BREAKDOWN

Table with 2 columns: BY STATE/PROVINCE, Count. Lists counts for Maryland, Pennsylvania, Queensland (AUS.), Ohio, Connecticut, Virginia, and Taylor.

Table with 2 columns: BY CLASS, Count. Lists counts for Freshmen, Sophomores, Juniors, and Seniors.

Table with 2 columns: BY POSITION, Count. Lists counts for Guard, Guard/Forward, Forward, Center, and R. Lee.

Table with 2 columns: BY HEIGHT, Count. Lists counts for heights from 5'5" to 6'2" and R. Lee.





2020-21 TV/RADIO CHART



00 Isabella Hunt
F | 5-11 | Freshman
Johnstown, Pa.



1 Mikayla Watkinson
G | 5-8 | Sophomore
Brisbane, Australia



3 Kendall Bresee
G/F | 5-10 | R-Senior
Frederick, Md.



10 Michaela Harrison
G | 5-7 | Junior
Cleveland, Ohio



11 Bridget Birkhead
G | 5-11 | Senior
Doylestown, Pa.



12 Annaliese Watkinson
G | 5-9 | Sophomore
Brisbane, Australia



13 Aryna Taylor
G | 5-10 | R-Sophomore
Ashland, Va.



14 Jessica Tomasetti
G | 5-5 | Freshman
North Potomac, Md.



15 Jada Lee
G | 5-5 | Freshman
Pittsburgh, Pa.



21 Kayla Agentowicz
G | 5-9 | R-Senior
Scott Township, Pa.



33 Isabella Pelaia
F | 6-0 | Freshman
Mars, Pa.



34 Rebecca Lee
C | 6-2 | Senior
Severn, Md.



HC Maria Marchesano
4th Season
Butler '05





HEAD COACH

MARIA MARCHESANO



4th Season at the Mount | Butler '05
Career Record: 134-108
Record at the Mount: 55-51

THE MARCHESANO FILE

Table with columns: SEASON, RECORD, NOTE. Rows for Urbana University (2011-12, 2012-13, 2 SEASONS) and a note about taking over midway through the 2011-12 season.

Table with columns: SEASON, RECORD, NOTE. Rows for Walsh University (2013-14, 2014-15, 2015-16, 3 SEASONS) and notes about GLIAC Semifinals.

Table with columns: SEASON, RECORD, NEC, NOTE. Rows for Mount St. Mary's (2017-18, 2018-19, 2019-20, 2020-21, 4 SEASONS) and notes about NEC Semis.

Overall (9th season): 134-108

MOUNT'S RECORD VS. 2020-21 OPPONENTS

Table with columns: TEAM, ALL-TIME. Lists opponents like James Madison, Howard, UMBC, Saint Francis U, St. Francis Brooklyn, Merrimack, Central Connecticut, Sacred Heart, Bryant, Wagner, Long Island, and Fairleigh Dickinson with their respective all-time records.

MEET THE STAFF

MARIA MARCHESANO - 4th Season (Butler '05)

Table listing coaching roles for Maria Marchesano from 2010-12 to 2017-present at various institutions.

ANTOINE WHITE - 5th Season (Southern Vermont '16)

Table listing coaching roles for Antoine White from 2016-18 to 2019-present at Mount St. Mary's.

JULIE KAUFMAN - 4th Season (Catawba '05)

Table listing coaching roles for Julie Kaufman from 2008-11 to 2017-present at various institutions.

KELSEY FUNDERBURGH - 3rd Season (Walsh '16)

Table listing coaching roles for Kelsey Funderburgh from 2017-19 to 2019-20 at Mount St. Mary's and Monmouth.

KATRICE DICKSON - 2nd Season (MSM '18)

Table listing coaching roles for Katrice Dickson from 2019-present at Mount St. Mary's.

MARIA MARCHESANO BIO

Maria Marchesano was named the sixth head coach in Mount St. Mary's women's basketball history on May 1, 2017.

In charge for three full seasons, Marchesano has orchestrated a full program turnaround, which culminated in her third year. The Mount reached heights not seen in Emmitsburg since the beginning of the century...

In her first two seasons at the helm, Marchesano guided the squad to a 24-36 overall record and a 14-22 mark in Northeast Conference play. Under Marchesano's guidance, the Mount averaged its most points per game since the 2013-14 season.

Marchesano came to the Mount following a stint as an associate head coach at IUPUI, where she helped guide the squad to the most wins in a season in program history in 2016-17, as the Jaguars finished at 24-9 overall and 12-4 in Summit League play.

Prior to her time at IUPUI, Marchesano served for three years as the head coach at Walsh University in North Canton, Ohio. Marchesano led the team to 52 wins during her three seasons, including back-to-back 20-win campaigns in 2014-15 and 2015-16.

In her final season at Walsh, she guided the Cavaliers to a 20-9 overall record and 16-6 mark in GLIAC play, as they earned home-court advantage for the first time ever in the conference tournament.

Marchesano got her first experience as a head coach at Urbana University in Urbana, Ohio midway through the 2011-12 season. She inherited a 2-8 team in January, before turning the season around, guiding the Knights to a 12-7 record after taking over the helm.

Before her time at Urbana, Marchesano served as an assistant coach for both the women's basketball and softball programs at Manchester College in North Manchester, Indiana from 2010-12.

During her collegiate career, Marchesano was a four-year letter winner at Butler University in women's basketball, and also played one season on the softball team. The Fort Wayne, Indiana native was named the Butler Freshman Female Athlete of the Year.





THE MOUNT'S RECORD WHEN...

Venue	20-21 Season	Marchesano's Mount Career
Overall	11-4	55-51
Home	8-1	32-16
Away	3-3	22-34
Neutral	0-0	1-1

Halftime	20-21 Season	Marchesano's Mount Career
MSM led at halftime	9-0	43-8
Opponent led at halftime	1-3	9-40
Tied at halftime	1-1	3-3

Scoring Offense	20-21 Season	Marchesano's Mount Career
MSM scored 100+ points	0-0	0-0
MSM scored 90-99 points	2-0	3-0
MSM scored 80-89 points	4-1	12-2
MSM scored 70-79 points	2-1	16-7
MSM scored 60-69 points	3-0	22-19
MSM scored 50-59 points	0-2	2-15
MSM scored 40-49 points	0-0	0-7
MSM scored 30-39 points	0-0	0-1

Scoring Defense	20-21 Season	Marchesano's Mount Career
MSM allowed 100+ points	0-0	0-1
MSM allowed 90-99 points	0-0	0-3
MSM allowed 80-89 points	0-1	0-9
MSM allowed 70-79 points	0-1	7-18
MSM allowed 60-69 points	4-1	17-14
MSM allowed 50-59 points	5-1	23-5
MSM allowed 40-49 points	2-0	8-0
MSM allowed 30-39 points	0-0	0-0

Overtime	20-21 Season	Marchesano's Mount Career
Overtime	0-0	0-1
Double Overtime	0-0	0-0
Triple Overtime	0-0	0-0

Month	20-21 Season	Marchesano's Mount Career
November	0-2	5-14
December	1-0	11-8
January	6-2	18-13
February	4-0	18-9
March	0-0	2-6

Day	20-21 Season	Marchesano's Mount Career
Sunday	3-0	5-5
Monday	0-1	14-11
Tuesday	0-0	4-3
Wednesday	0-1	2-3
Thursday	2-1	4-7
Friday	2-1	6-3
Saturday	4-0	20-19

Field Goal Percentage	20-21 Season	Marchesano's Mount Career
MSM led in FG%	11-0	49-8
Opponent led in FG%	0-4	6-43
Game ended tied in FG%	0-0	0-0

3-point FG Percentage	20-21 Season	Marchesano's Mount Career
MSM led in 3FG%	7-2	37-15
Opponent led in 3FG%	4-2	16-34
Game ended tied in 3FG%	0-0	2-2

Free Throw Percentage	20-21 Season	Marchesano's Mount Career
MSM led in FT%	7-2	25-22
Opponent led in FT%	3-2	28-27
Game ended tied in FT%	1-0	2-2

Rebounds	20-21 Season	Marchesano's Mount Career
MSM led in rebounds	7-1	30-10
Opponent led in rebounds	3-3	23-40
Game ended tied in rbs	1-0	2-1

Assists	20-21 Season	Marchesano's Mount Career
MSM led in assists	7-2	36-16
Opponent led in assists	2-2	13-32
Game ended tied in assists	2-0	6-3

Steals	20-21 Season	Marchesano's Mount Career
MSM led in steals	8-3	33-24
Opponent led in steals	3-1	17-23
Game ended tied in steals	0-0	5-4

Blocks	20-21 Season	Marchesano's Mount Career
MSM led in blocks	5-1	29-12
Opponent led in blocks	5-3	21-33
Game ended tied in blocks	1-0	5-6

Turnovers	20-21 Season	Marchesano's Mount Career
MSM had fewer turnovers	6-3	30-29
Opponent fewer turnovers	5-1	18-18
Game ended tied in TO's	0-0	7-3

Team Records	20-21 Season	Marchesano's Mount Career
Against Winning Teams	1-1	13-18
Against Losing Teams	9-1	38-25
Against .500 Teams	1-2	4-8

Streak Builder	20-21 Season	Marchesano's Mount Career
Coming off a Win	8-2	30-23
Coming off a Loss	3-1	24-25

Longest Streaks	20-21 Season	Marchesano's Mount Career
Winning	5 games	9 games
Losing	2 games	6 games

MISCELLANEOUS STATS

DOUBLE-DIGIT SCORING	2020-21	CAREER
Michaela Harrison (Jr.)	10 (9-1)	52 (36-16)
Jatarrikah Settle (Sr.)	1 (0-1)	35 (20-15)
Kendall Bresee (R-Sr.)	12 (8-4)	29 (20-9)
Rebecca Lee (Sr.)	3 (2-1)	28 (19-9)
Bridget Birkhead (Sr.)	7 (6-1)	25 (16-9)
Kayla Agentowicz (R-Sr.)	3 (1-2)	19 (11-8)
Aryna Taylor (R-Sa.)	9 (7-2)	18 (13-5)
Taylor Addison (Jr.)	2 (1-1)	9 (6-3)
Jessica Tomasetti (Fr.)	3 (3-0)	3 (3-0)
Isabella Hunt (Fr.)	1 (1-0)	1 (1-0)

DOUBLE-DOUBLES	2020-21	CAREER
Kendall Bresee (R-Sr.)	8 (6-2)	10 (7-3)
Rebecca Lee (Sr.)	1 (0-1)	5 (2-3)
Michaela Harrison (Jr.)	----	1 (0-1)

20+ POINT SCORING	2020-21	CAREER
Michaela Harrison (Jr.)	1 (1-0)	9 (5-4)
Kendall Bresee (R-Sr.)	5 (3-2)	7 (4-3)
Kayla Agentowicz (R-Sr.)	----	4 (1-3)
Rebecca Lee (Sr.)	----	2 (2-0)
Bridget Birkhead (Sr.)	----	1 (0-1)

30+ POINT SCORING	2020-21	CAREER
Michaela Harrison (Jr.)	1 (1-0)	3 (2-1)

10+ REBOUNDING	2020-21	CAREER
Rebecca Lee (Sr.)	2 (1-1)	14 (8-6)
Kendall Bresee (R-Sr.)	8 (6-2)	12 (8-4)
Michaela Harrison (Jr.)	----	1 (0-1)
Taylor Addison (Jr.)	----	1 (0-1)

LED TEAM IN SCORING	2020-21	CAREER
Michaela Harrison (Jr.)	5 (5-0)	25 (16-9)
Kendall Bresee (R-Sr.)	8 (5-3)	14 (8-6)
Kayla Agentowicz (R-Sr.)	----	6 (3-3)
Bridget Birkhead (Sr.)	----	5 (3-2)
Aryna Taylor (R-Sa.)	----	5 (2-3)
Rebecca Lee (Sr.)	1 (0-1)	3 (2-1)
Taylor Addison (Jr.)	1 (1-0)	2 (1-1)

LED TEAM IN REBOUNDS	2020-21	CAREER
Rebecca Lee (Sr.)	2 (1-1)	30 (15-15)
Kendall Bresee (R-Sr.)	10 (7-3)	18 (12-6)
Kayla Agentowicz (R-Sr.)	----	8 (3-5)
Taylor Addison (Jr.)	----	5 (1-4)
Isabella Hunt (Fr.)	3 (3-0)	3 (3-0)
Michaela Harrison (Jr.)	----	3 (1-2)
Bridget Birkhead (Sr.)	1 (1-0)	2 (2-0)
Aryna Taylor (R-Sa.)	----	1 (0-1)

LED TEAM IN ASSISTS	2020-21	CAREER
Kendall Bresee (R-Sr.)	11 (9-2)	25 (19-6)
Jatarrikah Settle (Sr.)	1 (0-1)	24 (11-13)
Michaela Harrison (Jr.)	2 (2-0)	15 (9-6)
Kayla Agentowicz (R-Sr.)	2 (0-2)	9 (3-6)
Taylor Addison (Jr.)	----	5 (2-3)
Bridget Birkhead (Sr.)	1 (1-0)	3 (2-1)
Aryna Taylor (R-Sa.)	1 (1-0)	2 (2-0)
Rebecca Lee (Sr.)	1 (0-1)	1 (0-1)
Isabella Hunt (Fr.)	1 (0-1)	1 (0-1)

() denotes team's record in those games





2020-21 MOUNT ST. MARY'S WOMEN'S BASKETBALL

2020-21 SUPERLATIVES

Mount Individual Superlatives

Points	35, Harrison, BRYANT (2-20-21)
Field Goals	12, Harrison, BRYANT (2-20-21)
3-Point FG	9, Harrison, BRYANT (2-20-21)
Free Throws	11, Bresee, at Sacred Heart (1-15-21)
	11, Bresee, BRYANT (2-21-21)
Rebounds	15, Bresee, CENTRAL CONNECTICUT (1-24-21)
Assists	7, at LIU (2-13-21)
Steals	6, Harrison, FAIRLEIGH DICKINSON (1-28-21)
Blocks	5, R. Lee, ST. FRANCIS BROOKLYN (1-8-21)

Mount Team Superlatives

Points	95, CENTRAL CONNECTICUT (1-24-21)
Field Goals	36, CENTRAL CONNECTICUT (1-23-21)
3-Point FG	18, BRYANT (2-20-21)
Free Throws	18, CENTRAL CONNECTICUT (1-24-21)
	18, at LIU (2-13-21)
Rebounds	49, at LIU (2-14-21)
Assists	24, BRYANT (2-20-21)
Steals	16, CENTRAL CONNECTICUT (1-23-21)
Blocks	7, at Sacred Heart (1-15-21)

Miscellaneous Mount Numbers

Most points scored	95, CENTRAL CONNECTICUT (1-24-21)
Fewest points scored	54, FAIRLEIGH DICKINSON (1-28-21)
Most points allowed	87, at Howard (11-30-20)
Fewest points allowed	55, FAIRLEIGH DICKINSON (1-29-21)
Largest halftime lead	30, BRYANT (2-20-21)
Largest halftime deficit	10, at Sacred Heart (1-15-21)
Most 1st quarter points	31, BRYANT (2-20-21)
Fewest 1st quarter	9, FAIRLEIGH DICKINSON (1-29-21)
Most 2nd quarter	31, at LIU (2-13-21)
Fewest 2nd quarter	10, at James Madison (11-25-20)
Most 3rd quarter	25, ST. FRANCIS BROOKLYN (1-7-21)
Fewest 3rd quarter	17, at James Madison (11-25-20)
	17, FAIRLEIGH DICKINSON (1-28-21)
Most 4th quarter	26, at Howard (11-30-20)
Fewest 4th quarter	12, UMBC (12-5-20)
Largest margin of victory	38, BRYANT (2-20-21)
	38, BRYANT (2-21-21)
Smallest margin of defeat	4, at Howard (11-30-20)
Largest lead surrendered	8, ST. FRANCIS BROOKLYN (1-8-21)
Largest deficit overcome	12, at Sacred Heart (1-15-21)

Opponent Team Superlatives (2019-2020 Season)

Points	87, at Howard (11-30-20)
Field Goals	31, at Howard (11-30-20)
3-Point FG	10, CENTRAL CONNECTICUT (1-24-21)
Free Throws	20, at Howard (11-30-20)
	20, ST. FRANCIS BROOKLYN (1-7-21)
Rebounds	51, at James Madison (11-25-20)
Assists	17, at LIU (2-13-21)
Steals	13, at LIU (2-14-21)
Blocks	12, at Howard (11-30-20)

2020-21 SCORING BREAKDOWN

Date	Opponent	STARTERS	BENCH	TOTAL
11/25	at James Madison	33	22	55
11/30	at Howard	45	38	83
12/5	UMBC	50	22	72
1/7	ST. FRANCIS BROOKLYN *	56	20	76
1/8	ST. FRANCIS BROOKLYN *	58	7	65
1/14	at Sacred Heart *	52	32	84
1/15	at Sacred Heart *	61	10	71
1/23	CENTRAL CONNECTICUT *	48	33	81
1/24	CENTRAL CONNECTICUT *	72	23	95
1/28	FAIRLEIGH DICKINSON *	44	10	55
1/28	FAIRLEIGH DICKINSON *	54	14	68
2/13	at Long Island *	66	19	85
2/14	at Long Island *	49	16	65
2/20	BRYANT *	61	31	92
2/21	BRYANT *	54	33	87
2/24	at Merrimack *			
2/25	at Merrimack *			
2/28	SAINT FRANCIS U *			
3/1	at Saint Francis U *			
3/4	at Wagner *			
3/5	at Wagner *			

2020-21 REBOUNDING BREAKDOWN

Date	Opponent	MOUNT	OPP.	+/-
11/25	at James Madison	34	51	-17
11/30	at Howard	35	38	-3
12/5	UMBC	33	35	-2
1/7	ST. FRANCIS BROOKLYN *	35	41	-6
1/8	ST. FRANCIS BROOKLYN *	39	38	+1
1/14	at Sacred Heart *	30	30	0
1/15	at Sacred Heart *	39	38	+1
1/23	CENTRAL CONNECTICUT *	43	36	+7
1/24	CENTRAL CONNECTICUT *	40	30	+10
1/28	FAIRLEIGH DICKINSON *	32	41	-9
1/29	FAIRLEIGH DICKINSON *	31	32	-1
2/13	at Long Island *	46	31	+15
2/14	at Long Island *	49	31	+18
2/20	BRYANT *	42	31	+11
2/21	BRYANT *	38	34	+4
2/24	at Merrimack *			
2/25	at Merrimack *			
2/28	SAINT FRANCIS U *			
3/1	at Saint Francis U *			
3/4	at Wagner *			
3/5	at Wagner *			

2020-21 MOUNT ST. MARY'S GAME-BY-GAME STARTERS

Date	Opponent	1	2	3	4	5	Together	Lineup
11/25	at James Madison	Bresee	Settle	Harrison	Agentowicz	Lee	0-1	1
11/30	at Howard	Bresee	Settle	Harrison	Agentowicz	Lee	0-2	1
12/5	UMBC	Bresee	Taylor	Agentowicz	Addison	Lee	1-0	2
1/7	ST. FRANCIS BROOKLYN *	Bresee	Harrison	Taylor	Agentowicz	Lee	1-0	3
1/8	ST. FRANCIS BROOKLYN *	Bresee	Harrison	Taylor	Agentowicz	Lee	2-0	3
1/14	at Sacred Heart *	Bresee	Harrison	Taylor	Agentowicz	Lee	3-0	3
1/15	at Sacred Heart *	Bresee	Harrison	Taylor	Agentowicz	Lee	3-1	3
1/23	CENTRAL CONNECTICUT *	Bresee	Harrison	Taylor	Agentowicz	Lee	4-1	3
1/24	CENTRAL CONNECTICUT *	Bresee	Harrison	Taylor	Agentowicz	Lee	5-1	3
1/28	FAIRLEIGH DICKINSON *	Bresee	Harrison	Taylor	Agentowicz	Lee	5-2	3
1/29	FAIRLEIGH DICKINSON *	Bresee	Harrison	Taylor	Agentowicz	Lee	6-2	3
2/13	at Long Island *	Bresee	Harrison	Taylor	Agentowicz	Lee	7-2	3
2/13	at Long Island *	Bresee	Harrison	Taylor	Agentowicz	Lee	8-2	3
2/20	BRYANT *	Bresee	Harrison	Taylor	Agentowicz	Lee	9-2	3
2/21	BRYANT *	Bresee	Harrison	Taylor	Agentowicz	Lee	10-2	3
2/24	at Merrimack *							
2/25	at Merrimack *							
2/28	SAINT FRANCIS U *							
3/1	at Saint Francis U *							
3/4	at Wagner *							
3/5	at Wagner *							





LAST TIME IT HAPPENED FOR THE MOUNT

Mount won back-to-back games: BRYANT (2-20-21) & (2-21-21)
Mount lost back-to-back games: at James Madison (11-25-20), at Howard (11-30-20)
Mount played an overtime game: at Saint Francis U (1-20-18), L, 92-88
Mount played a multi-overtime game: ST. FRANCIS BROOKLYN (1-13-14), W, 85-79 2ot
Mount won an overtime game: at FDU (2-18-17), W, 75-71
Mount lost an overtime game: at Saint Francis U (1-20-18), L, 92-88
Mount scored 100+ points in a game: MONMOUTH (1-31-04) L, 104-100 3ot
Mount allowed 100+ points in a game: at Notre Dame (11-11-17), L 121-65
Mount scored 90-99 points in a game: BRYANT (2-20-21), W, 92-54
Mount allowed 90-99 points in a game: at Wagner (1-19-19), L, 92-76
Mount won a game on a neutral site: vs. Richmond (12-20-19), W 75-67
Mount lost a game on a neutral site: vs. Hampton (12-19-19), L, 68-60
Mount won by 20-29 points: at Long Island (2-14-21), W, 65-41
Mount lost by 20-29 points: at Merrimack (1-13-20), L, 76-55
Mount won by 30-39 points: BRYANT (2-21-21), W, 87-49
Mount lost by 30-39 points: at Sacred Heart (2-9-19), L, 76-41
Mount won by 40 or more points: FROSTBURG (11-11-19), W 94-40
Mount lost by 40 or more points: at Old Dominion (12-21-19), L, 85-34
A Mount player had a triple double: Kim Rhock, St. Francis Brooklyn (2-13-90), 19 p, 14 r, 10 s
A Mount player had a double double: Kendall Bresee, BRYANT (2-21-21), 18 p, 10 r
Two Mount players had a double double: Wagner (1-31-09) Dunn (16-14); Westbrooks (12-10)
Two Mount players with 20 points: CENTRAL CONNECTICUT (1-24-21), Bresee (26), Harrison (20)
Three Mount players with 20 points: WAGNER (1-18-14) Brewer (23); Henderson (21); Grossett (20)
Mount player with 20 points and 10 rebounds: Kendall Bresee, FAIRLEIGH DICKINSON (1-28-21), 23 p, 13 r
Five or more Mount players scored 10 points or more: BRYANT (2-21-21)
- Bresee 18, Tomasetti 14, Harrison 13, Taylor 11, Birkhead 11
Two Mount players had 10 or more rebounds: at Long Island (2-14-21), Bresee 11, R. Lee 10
A Mount player had 20 or more points:
Home: Kendall Bresee, FAIRLEIGH DICKINSON (1-28-21), 23 | Away: Kendall Bresee, at Long Island (2-13-21), 21
A Mount player had 30 or more points:
Home: Michaela Harrison, BRYANT (2-20-21), 35 | Away: Michaela Harrison, at Long Island (2-11-19), 31
A Mount player had 40 or more points:
Home: Kim Rhock, Monmouth (2-8-90), 50 | Away: Margaret Diaz, at West Chester (12-11-81), 41
A Mount player had 10 or more rebounds:
Home: Kendall Bresee, BRYANT (2-21-21), 10 | Away: Bresee, 11, and R. Lee, 10, at Long Island (2-14-21)
A Mount player had 15 or more rebounds:
Home: Kendall Bresee, CENTRAL CONNECTICUT (1-24-21), 15 | Away: Rebecca Lee, Gardner-Webb (12-3-18), 16
A Mount player had 20 or more rebounds:
Home: Vanessa Blair, Navy (11-21-91), 21 | Away: Beth Foster, at Monmouth (1-24-02), 23
A Mount player had 10 or more assists:
Home: Hassanah Oliver, Quinnipiac (1-30-10), 12 | Away: Ashley Christie, at FDU (2-10-14), 10
A Mount player had 10 or more ft made:
Home: Kendall Bresee, BRYANT (2-21-21), 11 | Away: Kendall Bresee, at Sacred Heart (1-15-21), 11
A Mount player had 10 or more field goals made:
Home: Michaela Harrison, BRYANT (2-20-21), 12 | Away: Michaela Harrison, at Long Island (2-11-19), 11
A Mount player had 5 or more 3-pt field goals:
Home: Michaela Harrison, BRYANT (2-20-21), 9 | Away: Aryna Taylor, at Long Island (2-13-21), 5
A Mount player had 5 or more steals:
Home: Michaela Harrison, FAIRLEIGH DICKINSON (1-28-21), 6 | Away: Bridget Birkhead, at MDES (12-14-19), 5
A Mount player had 5 or more blocks:
Home: Rebecca Lee, ST. FRANCIS BROOKLYN (1-8-21), 5 | Away: Rebecca Lee, at Sacred Heart (2-3-20), 7
Mount won a Northeast Conference Playoff Game:
Home: LONG ISLAND (3-9-20), W 80-47 (QF) | Away: at SFBK (3-11-19), W, 80-74 (QF)
Mount lost a Northeast Conference Playoff Game:
Home: SAINT FRANCIS U (3-12-14), L, 68-63 (SF) | Away: at Robert Morris (3-4-19), L, 69-65 (SF)
Mount played a Northeast Conference Playoff Game:
Home: LONG ISLAND (3-9-20), W 80-47 (QF) | Away: at Robert Morris (3-4-19), L, 69-65 (SF)

POSTSEASON HISTORY

NCAA Tournament Appearances: 9 (2 DI, 7 DII)
* Division I (2): '94, '95
* Division II (7): '82, '83, '84, '85, '86, '87, '88
NCAA Tournament Record: 5-9 Overall
* Division I: 0-2
* Division II: 5-7
NCAA Tournament Appearances:
* Last Appearance: 3/16/95 (82-55 loss to Alabama)
* Last Win: 3/7/87 (88-75 win over Virginia State)
Regular Season Conference Titles: 9 (ALL DI)
* Northeast (DI): '90, '91, '92, '93, '94, '95, '96, '99, '01
Conference Tournament Titles: 7 (3 DI, 4 DII)
* Northeast Conference (DI): '93, '94, '95
* Mason-Dixon Conference (DII): '85, '86, '87, '88
NEC Tournament Appearances: 25
* '90, '91, '92, '93, '94, '95, '96, '97, '98, '99, '00, '01, '02, '03, '04, '05, '06, '07, '08, '09, '12, '13, '14, '15, '16, '17, '19
NEC Tournament Record: 20-24
WNIT Postseason Appearances: 1
* '14

WOMEN'S BASKETBALL TIMELINE

-- Mount St. Mary's is founded in 1808
-- First admitted women in 1972
-- First women's basketball season in 1974-75 coached by Rev. James Delaney
-- Former Mount Men's Basketball and NBA player Fred Carter takes over as Head Coach in 1978-79
-- Mount plays its final season in the AIAW in 1980-81; makes move to NCAA Division II before the 1981-82 season
-- Bill Sheahan hired before the 1981-82 season and leads the Mount to third place in the Division II NCAA Tournament
-- First season in Knott Arena in 1987-88
-- Moved from Division II to Division I in 1988-89
-- Joined the Northeast Conference in 1989-90
-- Mount wins first NEC Tournament title in 1992-93 season
-- Mount wins NEC Tournament and berth in NCAA Tournament in back-to-back seasons in 1993-94 and 1994-95
-- Former Mount great Vanessa Blair named Head Coach and earns NEC Coach of the Year in first season in 1998-99
-- Gained University status in 2004; switches name from Mount St. Mary's College to Mount St. Mary's University
-- Bryan Whitten named Head Coach before start of 2007-08 season
-- Mount makes Postseason WNIT for first time in school history in 2013-14
-- Maria Marchesano named Head Coach prior to 2017-18 season





2020-21 MOUNT ST. MARY'S WOMEN'S BASKETBALL



00

**Isabella
HUNT**

5-11 | Forward | Freshman
Johnstown, Pennsylvania
Bishop McCort

HIGH SCHOOL: Lettered all four years in basketball with an additional three in soccer for Bishop McCort ... averaged a double-double with four assists per game for the Crimson Crushers ... Hunt was named Second Team All-State as a junior and senior ... Captain for basketball and soccer her junior and senior years ... Team were state runners-up for 2016-17 and were district champions in both 2016-17 and 2017-18 ... Soccer team won two district titles with Hunt earning an all-conference honor as a junior ... Member of the high honor roll all four years.

PERSONAL: Sports Management major at the Mount ... Competed for USA Basketball 3x3

2020-21
AVERAGES
POINTS
3.9

REBOUNDS
3.7

ASSISTS
1.1

FG%
56.8

3FG%
-

FT%
62.5

CAREER HIGHS

POINTS	FIELD GOALS	THREE POINTERS	FREE THROWS	REBOUNDS
13	5		5	9
CCSU January 24, 2021	CCSU January 24, 2021		at LIU February 13, 2021	at LIU February 13, 2021
ASSISTS	STEALS	BLOCKS	MINUTES	
3 4x	2 2x	1 2x	19	
BRYANT February 21, 2021	last at LIU February 13, 2021	last BRYANT February 20, 2021	at Sacred Heart January 14, 2021	

SEASON HIGHS

POINTS	FIELD GOALS	THREE POINTERS	FREE THROWS	REBOUNDS
13	5		5	9
CCSU January 24, 2021	CCSU January 24, 2021		at LIU February 13, 2021	at LIU February 13, 2021
ASSISTS	STEALS	BLOCKS	MINUTES	
3	2 2x	1 2x	19	
BRYANT February 21, 2021	last at LIU February 13, 2021	last BRYANT February 20, 2021	at Sacred Heart January 14, 2021	

2020-2021 GAME LOG

Date	Opponent	GS	MIN	FG	3FG	FT	OFF	DEF	TOT	AST	STL	BLK	TO	PF	PTS
11/25	at James Madison						DID NOT PLAY								
11/30	at Howard	-	1	0-0	0-0	0-0	0	0	0	0	0	0	0	2	0
12/5	UMBC	-	6	1-1	0-0	0-0	1	2	3	1	0	0	0	1	2
1/7	ST. FRANCIS BROOKLYN *	-	8	2-3	0-0	0-0	0	0	0	1	2	0	0	4	4
1/8	ST. FRANCIS BROOKLYN *	-	10	1-3	0-0	1-1	3	1	4	0	0	1	2	2	3
1/14	at Sacred Heart *	-	19	4-6	0-0	0-0	3	4	7	2	0	0	0	3	8
1/15	at Sacred Heart *	-	8	1-2	0-0	0-0	1	0	1	2	0	0	0	1	2
1/23	CENTRAL CONNECTICUT *	-	13	3-5	0-0	0-0	2	1	3	2	1	0	1	1	6
1/24	CENTRAL CONNECTICUT *	-	17	5-6	0-0	3-3	2	2	4	1	1	0	5	2	13
1/28	FAIRLEIGH DICKINSON *	-	10	1-4	0-0	1-2	3	1	4	0	0	0	0	0	3
1/29	FAIRLEIGH DICKINSON *	-	9	1-2	0-0	0-0	1	0	1	2	0	0	1	0	2
2/13	at Long Island *	-	16	3-7	0-0	5-6	7	2	9	0	2	0	2	1	6
2/14	at Long Island *	-	8	2-2	0-0	0-0	2	0	2	1	0	0	2	4	4
2/20	BRYANT *	-	20	1-1	0-0	0-0	2	6	8	1	0	1	1	4	2
2/21	BRYANT *	-	19	0-2	0-0	0-2	2	4	6	3	0	0	1	3	0
2/24	at Merrimack *														
2/25	at Merrimack *														
2/28	SAINT FRANCIS U *														
3/1	at Saint Francis U *														
3/4	at Wagner *														
3/5	at Wagner *														

CAREER STATS

	GP	GS	MIN	FG	PCT	3PT	PCT	FT	PCT	PTS	OFF-DEF-REB	PF	AST	TO	STL	BLK
2020-21	14	0	167	25-44	0.568	---	---	5-8	62.5	55	29-23-52	28	16	16	8	2
Total	14	0	167	25-44	0.568	---	---	5-8	62.5	55	29-23-52	28	16	16	8	2



@MOUNTATHLETICS | #MOUNTUP



2020-21 MOUNT ST. MARY'S WOMEN'S BASKETBALL



3

**Kendall
BRESEE**

5-10 | Guard/Forward | R-Senior
Frederick, Maryland
Urbana (George Washington)

2019-20 SEASON: Made an impact in her first season of competition for the Mount ... Earned an All-NEC Third Team Selection after averaging 11.3 points, 6.5 rebounds and 3.7 assists ... Assist and rebounding totals led the team and rank third and ninth in the NEC, respectively ... Tallied double-digit points in seven of her first eight games as a Mountaineer, including a career-high 25 points against Loyola ... Also earned 11 rebounds in that game and followed that with another double-double of 17 points and 10 rebounds against Lehigh to earn NEC Player of the Week honors ... Finished with 13 rebounds against Hampton on December 19th for a career high ... Ended her redshirt junior season with an 11 point, seven assist, five steal effort against Long Island in the NEC Quarterfinals.

2018-19 SEASON: Sat out the 2018-19 season due to NCAA transfer rules.

BEFORE THE MOUNT: Transfer from George Washington ... Played in 47 career games at George Washington ... Averaged 2.3 points, 2.7 rebounds, and 1.0 assists per game with the Colonials ... Two-time Frederick County Player of the Year in high school ... Maryland First Team All-State selection as a senior ... Scored 1,000-plus points in just two seasons at Urbana ... Led Urbana to a regional title and the Maryland 3A state finals in 2015 ... Averaged 23 points and 12 rebounds per game as a senior ... Team captain in each of her final two seasons at Urbana

PERSONAL: Born August 5, 1998 ... Parents are Meghan and Richie Bresee ... Has one brother, Brian, and two sisters, Bailey and Ella ... Majoring in criminal justice and earning an MBA at the Mount... Brother plays football at Clemson and parents played football (JMU) and basketball (Shippensburg) in college.

2020-21
AVERAGES
POINTS
14.9

REBOUNDS
8.9

ASSISTS
3.9

FG%
37.6

3FG%
30.4

FT%
79.1

CAREER HIGHS

POINTS	FIELD GOALS	THREE POINTERS	FREE THROWS	REBOUNDS
26	9	6	11 2x	15
CCSU January 24, 2021	CCSU January 24, 2021	FDU March 5, 2020	last BRYANT February 21, 2021	CCSU January 24, 2021
ASSISTS	STEALS	BLOCKS	MINUTES	
7 3x	5	4	40	
last at LIU February 13, 2021	LONG ISLAND March 9, 2020	at Sacred Heart January 15, 2021	LOYOLA December 6, 2019	

SEASON HIGHS

POINTS	FIELD GOALS	THREE POINTERS	FREE THROWS	REBOUNDS
26	10	3	11 2x	15
CCSU January 24, 2021	CCSU January 24, 2021	CCSU January 24, 2021	last BRYANT February 21, 2021	CCSU January 24, 2021
ASSISTS	STEALS	BLOCKS	MINUTES	
7	4 5x	4	37	
at LIU February 13, 2021	last BRYANT February 21, 2021	at Sacred Heart January 15, 2021	at Sacred Heart January 15, 2021	

2020-2021 GAME LOG

Date	Opponent	GS	MIN	FG	3FG	FT	OFF	DEF	TOT	AST	STL	BLK	TO	PF	PTS
11/25	at James Madison	*	35	1-12	1-5	5-6	4	3	7	2	3	0	3	3	8
11/30	at Howard	*	32	4-11	2-6	6-8	3	4	7	1	1	1	3	5	16
12/5	UMBC	*	22	4-8	1-4	1-1	0	1	1	3	1	0	2	4	10
1/7	ST. FRANCIS BROOKLYN*	*	35	7-16	2-4	4-5	2	8	10	6	2	1	1	5	20
1/8	ST. FRANCIS BROOKLYN*	*	28	7-14	0-4	4-9	2	9	11	3	3	0	3	3	18
1/14	at Sacred Heart*	*	31	4-12	1-4	1-2	0	7	7	5	4	0	4	2	10
1/15	at Sacred Heart*	*	37	4-11	1-3	11-15	0	10	10	2	1	4	2	2	20
1/23	CENTRAL CONNECTICUT*	*	28	2-10	0-2	1-2	0	5	5	3	2	0	4	0	5
1/24	CENTRAL CONNECTICUT*	*	26	9-15	3-4	5-5	4	11	15	5	1	0	2	4	26
1/28	FAIRLEIGH DICKINSON*	*	36	10-20	0-4	3-5	3	10	13	4	4	2	0	1	23
1/29	FAIRLEIGH DICKINSON*	*	35	5-15	2-3	3-3	2	12	14	4	4	0	8	0	15
2/13	at Long Island*	*	33	5-13	1-4	10-10	3	5	8	7	4	0	2	2	21
2/14	at Long Island*	*	36	1-7	1-2	7-8	5	6	11	4	2	0	5	2	10
2/20	BRYANT*	*	26	1-7	1-3	0-0	1	4	5	6	1	1	2	2	3
2/21	BRYANT*	*	28	3-7	1-4	11-12	1	9	10	4	4	0	1	2	18
2/24	at Merrimack*														
2/25	at Merrimack*														
2/28	SAINT FRANCIS U*														
3/1	at Saint Francis U*														
3/4	at Wagner*														
3/5	at Wagner*														

CAREER STATS

	GP	GS	MIN	FG	PCT	3PT	PCT	FT	PCT	PTS	OFF-DEF-REB	PF	AST	TO	STL	BLK
2019-20	26	25	797	95-267	35.6	38-112	33.9	66-88	75.0	294	41-128-169	61	97	88	50	14
2020-21	15	15	468	67-168	37.6	17-56	30.4	72-91	79.1	223	30-104-134	34	59	45	37	9
Total	41	40	1265	162-445	36.4	55-168	32.7	138-179	77.1	517	71-232-302	95	156	133	87	23



@MOUNTATHLETICS | #MOUNTUP



2020-21 MOUNT ST. MARY'S WOMEN'S BASKETBALL



10

Michaela HARRISON

5-7 | Guard | Junior

Cleveland, Ohio

Lake Ridge Academy

2019-20 SEASON: Key scorer for the Mount, starting all 31 games ... All-NEC First Team Selection ... Averaged 12.6 points, 2.2 rebounds and 2.4 assists for the season ... Finished 8th in the NEC in scoring, 2nd in three-pointers made and tied for 2nd in steals ... Made 75 triples, good for a third place tie on the Mount's all-time list (Daly Sullivan) and the most by a sophomore in team history after setting the freshman record ... Ended season sixth on the all-time career list with 159 treys ... Is 42nd on the all-time scoring list with 802 points ... Topped the 20-point mark on three occasions, including 25 against Long Island on January 4th ... Tied her career high in assists with six in the Loyola game on December 6th ... Finished season earning a career-high six steals in the NEC quarterfinal against Long Island.

2018-19 SEASON: Appeared in 31 games and made 24 starts ... Averaged 13.3 points, 3.5 rebounds, 2.4 assists, and 1.5 steals per game ... Ranked 10th in the NEC in points and steals per game ... Shot 85.3 percent from the free-throw line ... Scored in double-figures in 20 of the 31 games she played ... Posted a season high 31 points in the win at LIU Brooklyn ... Scored 20 points or more in five games ... Made NEC all-rookie team

BEFORE THE MOUNT: Two-time Lorain County Player of the Year ... Two-time Northeast Great Lakes Player of the Year ... Earned All-Ohio honors on three occasions, including First Team honors as a junior ... All-time leading scorer at Lake Ridge Academy with 1,303 career points ... Led her team to a district championship and regional finals appearance in 2015-16 ... Team captain her senior season

PERSONAL: Born April 11, 2000 ... Parents are Natasha and Lemoyne ... Has one brother, Kenneth, and one sister, Ciara ... Majoring in business

2020-21
AVERAGES
POINTS
13.3

REBOUNDS
1.7

ASSISTS
1.8

FG%
42.7

3FG%
37.8

FT%
84.0

CAREER HIGHS

POINTS	FIELD GOALS	THREE POINTERS	FREE THROWS	REBOUNDS
35	12	9	9	10
BRYANT February 20, 2021	BRYANT February 20, 2021	BRYANT February 20, 2021	GARDNER-WEBB December 3, 2018	at LIU BROOKLYN February 11, 2019
ASSISTS	STEALS	BLOCKS	MINUTES	
6 2x	6 2x	2	40	
last LOYOLA December 6, 2019	last FDU January 28, 2021	last at Wagner February 17, 2020	ROBERT MORRIS February 16, 2019	

SEASON HIGHS

POINTS	FIELD GOALS	THREE POINTERS	FREE THROWS	REBOUNDS
35	12	9	4	4
BRYANT February 20, 2021	BRYANT February 20, 2021	BRYANT February 20, 2021	FDU January 29, 2021	ST. FRANCIS BKLN January 8, 2021
ASSISTS	STEALS	BLOCKS	MINUTES	
4	6	1 5x	37	
BRYANT February 21, 2021	FDU January 28, 2021	last BRYANT February 21, 2021	at Sacred Heart January 15, 2021	

2020-2021 GAME LOG

Date	Opponent	GS	MIN	FG	3FG	FT	OFF	DEF	TOT	AST	STL	BLK	TO	PF	PTS
11/25	at James Madison	*	27	3-14	0-8	0-0	0	1	1	3	2	0	2	3	6
11/30	at Howard	*	18	1-8	1-6	2-2	0	1	1	2	1	0	1	0	5
12/5	UMBC						DID NOT PLAY								
1/7	ST. FRANCIS BROOKLYN *	*	28	2-8	1-5	2-2	0	3	3	1	0	1	3	3	7
1/8	ST. FRANCIS BROOKLYN *	*	29	5-12	3-9	0-0	1	3	4	3	0	0	4	2	13
1/14	at Sacred Heart *	*	26	5-11	3-6	2-3	0	1	1	1	1	0	2	2	15
1/15	at Sacred Heart *	*	37	4-10	2-6	0-1	0	3	3	0	1	0	6	4	10
1/23	CENTRAL CONNECTICUT *	*	31	6-12	1-5	3-3	0	1	1	2	1	0	1	0	16
1/24	CENTRAL CONNECTICUT *	*	25	7-11	4-6	2-2	1	1	2	1	1	1	2	2	20
1/28	FAIRLEIGH DICKINSON *	*	36	0-9	0-5	1-2	0	0	0	2	6	1	4	2	1
1/29	FAIRLEIGH DICKINSON *	*	32	5-10	3-7	4-4	1	1	2	3	1	0	0	0	17
2/13	at Long Island *	*	25	3-4	3-4	2-2	0	1	1	1	0	0	0	1	11
2/14	at Long Island *	*	24	6-10	4-7	1-2	0	2	2	1	0	0	4	3	17
2/20	BRYANT *	*	28	12-17	9-14	2-2	0	2	2	1	4	0	1	1	35
2/21	BRYANT *	*	25	5-14	3-10	0-0	0	1	1	4	4	1	1	2	13
2/24	at Merrimack *														
2/25	at Merrimack *														
2/28	SAINT FRANCIS U *														
3/1	at Saint Francis U *														
3/4	at Wagner *														
3/5	at Wagner *														

CAREER STATS

	GP	GS	MIN	FG	PCT	3PT	PCT	FT	PCT	PTS	OFF-DEF-REB	PF	AST	TO	STL	BLK
2018-19	31	24	967	135-371	36.4	84-247	34.0	58-68	85.3	412	30-80-110	65	73	74	45	7
2019-20	31	31	1021	142-366	38.8	75-223	33.6	31-44	70.5	390	12-57-69	66	75	87	61	15
2020-21	14	14	397	64-150	42.7	37-98	37.8	21-25	84.0	186	3-21-24	24	25	30	22	5
Total	76	69	2385	341-887	38.4	196-568	34.5	110-137	80.3	988	45-158-203	155	173	191	128	27



@MOUNTATHLETICS | #MOUNTUP



2020-21 MOUNT ST. MARY'S WOMEN'S BASKETBALL



11

**Bridget
BIRKHEAD**

5-11 | Guard | Senior
Doylestown, Pennsylvania
Central Bucks East

2019-20 SEASON: Sharpshooter for the Mountaineers, appearing in all 31 games with 11 starts ... Averaged 7.9 points, two rebounds, and 0.8 assists per contest ... Hit three-point shots at a 41.1 percent clip, best on the team and second-best in the NEC ... her 60 triples were second behind Michaela Harrison on the team and helped the team earn the most three-pointers in program history with 264 ... Had her biggest game against Maryland Eastern Shore on December 14th, finishing with career-highs in points (26), field goals (8) - all of which were three-pointers, assists (5) and steals (4) ... Led the Mount with 17 points in the NEC Quarterfinal win over Long Island.

2018-19 SEASON: Appeared in 31 games and started 20 of them ... Averaged 6.4 points, 3.0 rebounds, and 0.8 assists per game ... Ranked 3rd on the team in 3PT percentage shooting 32.7 percent ... Scored in double-figures in seven games ... Posted a season high 18 points in the win against Radford ... Made 2 or more three-pointers in 15 games ... On the year made 52 three-pointers.

2017-18 SEASON: Appeared in all 29 games and made three starts during her rookie campaign ... Averaged 2.6 points and 1.2 rebounds per game ... Ranked second among Mount St. Mary's rookies with 22 three-pointers on the year ... Registered a season-high 14 points on 5-of-9 shooting and a 4-for-7 mark from deep in a win at Central Connecticut (Dec. 29) ... Went 3-of-4 from long range for nine points against Robert Morris (Jan. 22) ... Named to the NEC Academic and Commissioner's Honor Rolls.

BEFORE THE MOUNT: Received All-Conference honors in both 2014-15 and 2015-16 ... Named to the All-Tournament Team her sophomore and junior seasons ... Received the Jim Ford Award at the Diamond State Classic as a junior ... Registered 575 points in her first three seasons at Central Bucks East HS.

PERSONAL: Elementary and Special Education major at the Mount ... member of SAAC ... Dad was a two-sport athlete (baseball, football) at New Haven.

2020-21
AVERAGES
POINTS
8.4

REBOUNDS
2.5

ASSISTS
1.1

FG%
41.8

3FG%
40.8

FT%
88.2

CAREER HIGHS

POINTS	FIELD GOALS	THREE POINTERS	FREE THROWS	REBOUNDS
26	8	8	6	8
at Eastern Shore December 14, 2019	at Eastern Shore December 14, 2019	at Eastern Shore December 14, 2019	LOYOLA December 6, 2019	at Loyola December 1, 2018
ASSISTS	STEALS	BLOCKS	MINUTES	
5	4	2	37	
at Eastern Shore December 14, 2019	at Eastern Shore December 14, 2019	CCSU January 23, 2021	FDU January 21, 2019	

SEASON HIGHS

POINTS	FIELD GOALS	THREE POINTERS	FREE THROWS	REBOUNDS
16	6	5	4	6
BRYANT February 20, 2021	BRYANT February 20, 2021	ST. FRANCIS BKLN January 7, 2021	at Sacred Heart January 14, 2021	UMBC December 5, 2020
ASSISTS	STEALS	BLOCKS	MINUTES	
4	3	2	34	
UMBC December 5, 2020	UMBC December 5, 2020	CCSU January 23, 2021	ST. FRANCIS BKLN January 7, 2021	

2020-2021 GAME LOG

Date	Opponent	GS	MIN	FG	3FG	FT	OFF	DEF	TOT	AST	STL	BLK	TO	PF	PTS
11/25	at James Madison	-	18	1-10	1-10	2-2	0	0	0	1	0	0	0	2	5
11/30	at Howard	-	21	4-7	3-5	0-0	1	2	3	1	0	0	0	4	11
12/5	UMBC	-	32	5-9	4-8	0-0	1	5	6	4	3	0	4	2	14
1/7	ST. FRANCIS BROOKLYN*	-	34	5-7	5-6	0-0	0	5	5	0	1	0	1	2	15
1/8	ST. FRANCIS BROOKLYN*	-	23	1-7	0-4	2-2	1	4	5	1	0	0	0	0	4
1/14	at Sacred Heart*	-	21	2-4	2-3	4-4	0	0	0	0	1	0	0	3	10
1/15	at Sacred Heart*	-	16	0-3	0-3	0-0	0	0	0	1	0	0	0	3	0
1/23	CENTRAL CONNECTICUT*	-	22	3-9	2-6	0-0	0	3	3	2	1	2	0	1	8
1/24	CENTRAL CONNECTICUT*	-	21	2-5	1-2	2-2	0	3	3	0	1	1	0	4	7
1/28	FAIRLEIGH DICKINSON*	-	19	1-5	1-3	0-0	0	1	1	0	1	1	1	1	3
1/29	FAIRLEIGH DICKINSON*	-	22	3-4	1-1	3-4	0	1	1	0	1	0	1	3	10
2/13	at Long Island*	-	25	2-5	1-4	1-2	1	3	4	0	2	0	1	1	6
2/14	at Long Island*	-	23	2-7	2-5	0-0	0	3	3	3	0	0	2	3	6
2/20	BRYANT*	-	17	6-10	3-6	1-1	2	0	2	1	0	0	3	4	16
2/21	BRYANT*	-	23	4-6	3-5	0-0	1	1	2	2	0	0	0	2	11
2/24	at Merrimack*														
2/25	at Merrimack*														
2/28	SAINT FRANCIS U*														
3/1	at Saint Francis U*														
3/4	at Wagner*														
3/5	at Wagner*														

CAREER STATS

	GP	GS	MIN	FG	PCT	3PT	PCT	FT	PCT	PTS	OFF-DEF-REB	PF	AST	TO	STL	BLK
2017-18	29	3	272	24-81	29.6	22-70	31.4	4-6	66.7	74	4-30-34	36	8	22	4	0
2018-19	31	20	749	67-199	33.7	52-159	32.7	11-14	78.6	197	15-79-94	77	25	35	23	2
2019-20	31	11	658	83-193	43.0	60-146	41.1	18-21	85.7	244	15-47-62	57	26	32	23	7
2020-21	15	0	342	41-98	41.8	23-60	38.3	15-17	88.2	126	7-31-38	35	16	12	11	5
Total	106	34	2021	215-571	37.7	157-435	36.1	48-58	82.8	641	41-187-228	205	75	101	61	14



@MOUNTATHLETICS | #MOUNTUP



13

Aryna
TAYLOR

5-10 | Guard | R-Sophomore
Ashland, Virginia
Patrick Henry

2019-20 SEASON: Returned to the floor after several injuries, competing in all 31 games ... Averaged 7.1 points, 2.3 rebounds and 1.2 assists ... Gained NEC Rookie of the Week after a 14 effort in the Mount's win over Radford on November 26th ... Made 43 treys on the season, which is the third most on the team ... Debuted with eight points and two rebounds against Kentucky before leading the team with 15 and eight against Indiana ... Added five steals on the Hoosiers, which she replicated January 18th versus Central Connecticut ... Season's best point total came when she hit six three-pointers over Saint Francis U on February 15th.

2018-19 SEASON: Missed the season due to injury.

2017-18 SEASON: Missed the season due to injury (medical redshirt).

BEFORE THE MOUNT: Named the Player of the Year in her conference in 2015-16 ... Received First Team All-Conference honors her sophomore and junior seasons ... Three-year team captain at Patrick Henry HS ... Named Team MVP following her junior season ... Scored 875 points combined during her sophomore and junior campaigns ... Averaged 25.0 ppg, 4 rpg, and 4 apg as a junior.

PERSONAL: Majoring in psychology at Mount St. Mary's.

2020-21
AVERAGES
POINTS
11.4

REBOUNDS
2.7

ASSISTS
1.3

FG%
45.3

3FG%
37.5

FT%
83.3

CAREER HIGHS

POINTS 19 at LIU February 13, 2021	FIELD GOALS 7 at LIU February 13, 2021	THREE POINTERS 6 SAINT FRANCIS U February 15, 2020	FREE THROWS 4 3x last UMBC December 5, 2020	REBOUNDS 8 at Indiana February 11, 2019
ASSISTS 5 at Sacred Heart January 14, 2021	STEALS 5 2x last CCSU November 11, 2019	BLOCKS 1 8x last CCSU January 23, 2021	MINUTES 37 3x last SFBK January 8, 2021	

POINTS 19 at LIU February 13, 2021	FIELD GOALS 7 at LIU February 13, 2021	THREE POINTERS 5 at LIU February 13, 2021	FREE THROWS 4 UMBC December 5, 2020	REBOUNDS 5 3x last BRYANT February 21, 2021
ASSISTS 5 at Sacred Heart January 14, 2021	STEALS 4 last SFBK January 7, 2021	BLOCKS 1 2x last CCSU January 23, 2021	MINUTES 37 2x last SFBK January 8, 2021	

2020-2021 GAME LOG

Date	Opponent	GS	MIN	FG	3FG	FT	OFF	DEF	TOT	AST	STL	BLK	TO	PF	PTS
11/25	at James Madison	-	21	3-6	3-5	0-0	0	2	2	0	1	0	2	3	9
11/30	at Howard	-	24	4-8	2-6	2-2	0	0	0	1	2	0	1	5	12
12/5	UMBC	*	37	3-9	1-6	4-4	1	4	5	2	0	1	5	3	11
1/7	ST. FRANCIS BROOKLYN*	*	34	6-11	0-2	1-2	0	2	2	1	2	0	5	0	13
1/8	ST. FRANCIS BROOKLYN*	*	37	4-11	3-7	3-4	3	1	4	1	1	0	1	1	14
1/14	at Sacred Heart*	*	36	5-13	1-5	3-3	0	0	0	5	1	0	0	3	14
1/15	at Sacred Heart*	*	25	4-7	1-3	0-0	0	3	3	0	0	1	2	2	9
1/23	CENTRAL CONNECTICUT*	*	24	4-8	0-1	0-0	1	4	5	1	3	1	2	4	8
1/24	CENTRAL CONNECTICUT*	*	25	5-8	2-4	1-1	0	1	1	2	4	0	3	2	13
1/28	FAIRLEIGH DICKINSON*	*	28	6-13	4-9	0-0	0	0	0	1	0	0	3	3	16
1/29	FAIRLEIGH DICKINSON*	*	29	2-9	1-7	1-2	1	2	3	0	0	0	0	2	6
2/13	at Long Island*	*	24	7-10	5-8	0-0	2	2	4	1	1	0	1	1	19
2/14	at Long Island*	*	26	3-8	2-4	0-0	1	3	4	1	0	0	2	3	8
2/20	BRYANT*	*	25	3-9	2-7	0-0	0	2	2	3	1	0	1	5	8
2/21	BRYANT*	*	26	4-9	3-6	0-0	0	5	5	1	1	0	2	0	11
2/24	at Merrimack*														
2/25	at Merrimack*														
2/28	SAINT FRANCIS U*														
3/1	at Saint Francis U*														
3/4	at Wagner*														
3/5	at Wagner*														

CAREER STATS

	GP	GS	MIN	FG	PCT	3PT	PCT	FT	PCT	PTS	OFF-DEF-REB	PF	AST	TO	STL	BLK
2019-20	31	0	612	77-181	42.5	43-114	37.7	22-29	75.9	219	16-56-72	60	36	59	27	6
2020-21	15	13	415	63-139	45.3	30-80	37.5	15-18	83.3	171	9-31-40	34	20	32	17	3
Total	46	13	1027	140-320	43.8	73-194	37.6	37-47	78.7	390	25-87-112	94	56	91	44	9





14

Jessica TOMASETTI

5-5 | Guard | Freshman

North Potomac, Maryland

Our Lady of Good Counsel

HIGH SCHOOL: First Team All-WCAC member her junior and senior seasons ... Also served as a team captain in those years ... Additionally named to the Montgomery County Girls Basketball Private School First Team in 2019-2020 ... Averaged 14 points, five rebounds and four assists ... On the honor roll all four years and a member of the Principal's List.

PERSONAL: Environmental Science major at the Mount.

2020-21 AVERAGES
POINTS
4.7

REBOUNDS
2.1

ASSISTS
0.9

FG%
53.8

3FG%
42.1

FT%
85.7

CAREER HIGHS

Table with 5 columns: POINTS (14), FIELD GOALS (6), THREE POINTERS (2), FREE THROWS (2), REBOUNDS (5). Includes location and date for each stat.

SEASON HIGHS

Table with 5 columns: POINTS (14), FIELD GOALS (6), THREE POINTERS (2), FREE THROWS (2), REBOUNDS (5). Includes location and date for each stat.

2020-2021 GAME LOG

Game log table with columns: Date, Opponent, GS, MIN, FG, 3FG, FT, OFF, DEF, TOT, AST, STL, BLK, TO, PF, PTS. Lists games from 11/25 to 3/5.

CAREER STATS

Summary table for career stats with columns: GP, GS, MIN, FG, PCT, 3PT, PCT, FT, PCT, PTS, OFF-DEF-REB, PF, AST, TO, STL, BLK.





2020-21 MOUNT ST. MARY'S WOMEN'S BASKETBALL



15

Jada
LEE

5-5 | Guard | Freshman
Pittsburgh, Pennsylvania
Carlynton Jr./Sr.

HIGH SCHOOL: Competed in basketball and track & field at Carlynton Jr./Sr. ... Named All Section First Team each year from 2016 to 2018 ... Earned a Class 3A Fab Five Award in 2018 ... Finished career with 18.9 points, 9.1 rebounds, and 8.3 assists with 11 triple doubles and over 1,000 points ... Scholar Athlete award recipient with four years on the High Honor Roll and membership in the National Honor Society.

PERSONAL: Undecided on major at the Mount.

2020-21
AVERAGES
POINTS
2.7

REBOUNDS
1.9

ASSISTS
1.1

FG%
32.0

3FG%
11.1

FT%
76.9

CAREER HIGHS

POINTS	FIELD GOALS	THREE POINTERS	FREE THROWS	REBOUNDS
8	4	1	5	4
CCSU January 23, 2021	CCSU January 23, 2021	BRYANT February 21, 2021	at LIU February 13, 2021	CCSU January 23, 2021

ASSISTS	STEALS	BLOCKS	MINUTES
3	2	1	18
BRYANT February 20, 2021	last BRYANT February 21, 2021	BRYANT February 20, 2021	CCSU January 23, 2021

SEASON HIGHS

POINTS	FIELD GOALS	THREE POINTERS	FREE THROWS	REBOUNDS
8	4	1	5	4
CCSU January 23, 2021	CCSU January 23, 2021	BRYANT February 21, 2021	at LIU February 13, 2021	CCSU January 23, 2021

ASSISTS	STEALS	BLOCKS	MINUTES
3	2	1	18
BRYANT February 20, 2021	last BRYANT February 21, 2021	BRYANT February 20, 2021	CCSU January 23, 2021

2020-2021 GAME LOG

Date	Opponent	GS	MIN	FG	3FG	FT	OFF	DEF	TOT	AST	STL	BLK	TO	PF	PTS
11/25	at James Madison														
11/30	at Howard														
12/5	UMBK														
1/7	ST. FRANCIS BROOKLYN*														
1/8	ST. FRANCIS BROOKLYN*														
1/14	at Sacred Heart*	-	12	0-1	0-1	2-2	0	2	2	2	0	0	3	1	2
1/15	at Sacred Heart*	-	3	0-0	0-0	0-0	0	0	0	0	0	0	0	0	0
1/23	CENTRAL CONNECTICUT*	-	18	4-5	0-0	0-0	2	2	4	2	2	0	0	0	8
1/24	CENTRAL CONNECTICUT*	-	14	1-4	0-1	0-0	0	1	1	1	1	0	0	0	2
1/28	FAIRLEIGH DICKINSON*	-	7	0-1	0-1	0-0	0	1	1	0	0	0	1	1	0
1/29	FAIRLEIGH DICKINSON*	-	12	0-0	0-0	0-0	0	3	3	2	2	0	1	0	0
2/13	at Long Island*	-	17	1-3	0-0	5-6	2	1	3	0	0	0	2	3	7
2/14	at Long Island*	-	6	0-3	0-0	0-0	0	1	1	0	1	0	0	1	0
2/20	BRYANT*	-	17	1-4	0-3	1-3	0	1	1	3	0	1	1	3	3
2/21	BRYANT*	-	14	1-4	1-3	2-2	3	0	3	1	2	0	1	2	5
2/24	at Merrimack*														
2/25	at Merrimack*														
2/28	SAINT FRANCIS U*														
3/1	at Saint Francis U*														
3/4	at Wagner*														
3/5	at Wagner*														

CAREER STATS

	GP	GS	MIN	FG	PCT	3PT	PCT	FT	PCT	PTS	OFF-DEF-REB	PF	AST	TO	STL	BLK
2020-21	10	0	119	8-25	32.0	1-9	11.1	10-13	76.9	27	7-12-19	13	11	8	8	1
Total	10	0	119	8-25	32.0	1-9	11.1	10-13	76.9	27	7-12-19	13	11	8	8	1



@MOUNTATHLETICS | #MOUNTUP



2020-21 MOUNT ST. MARY'S WOMEN'S BASKETBALL



21

**Kayla
AGENTOWICZ**

5-9 | Guard | R-Senior
Scott Twp., Pennsylvania
Lakeland Jr./Sr.

2019-20 SEASON: Returned to the floor for the Mount, making 26 appearances with 20 starts ... Averaged 4.9 points, 2.9 rebounds and 1.3 assists per game ... Mountaineers were 14-6 when Agentowicz started and 12-4 with the original starting lineup (Bresee, Settle, Harrison, Agentowicz, Lee) ... Scored six points and six rebounds in her first game back against #13 Kentucky, adding two assists and a block ... Was instrumental in the Mount's 62-59 victory over Robert Morris, contributing a season-high 20 points and a career-best 8-for-9 from the line ... Also reached double figures in points against Central Connecticut (12), at St. Francis Brooklyn (14), and in the NEC Quarterfinal versus Long Island (10) ... Tied for a career-high in rebounds with eight in the home matchup with St. Francis Brooklyn and twice in assists with four against CCSU and at SFBK.

2018-19 SEASON: Sat out the 2018-19 season due to injury.

2017-18 SEASON: Started 18 games for the Mountaineers before suffering a season-ending injury ... Averaged 9.9 points, 3.9 rebounds and 1.6 assists per game ... Ranked fourth on the team in rebounding, and fifth in both points and assists per game ... Scored 20-plus points in three straight games early in the season against Fairfield, Morgan State and Lehigh ... Posted seven games with double-digit points ... Registered a career-high 24 points on 6-of-15 shooting and a 3-for-4 mark from deep at Fairfield (Nov. 21) ... Named to the NEC Academic Honor Roll.

2016-17 SEASON: Played in all 30 games and made a pair of starts as a freshman ... Averaged 4.9 points and 2.4 rebounds per game ... Ranked fifth on the team in rebounds per game ... Led the squad in free throw percentage (.828) and fifth in field goal percentage (.385) ... Registered five double-digit scoring performances on the season ... Netted a career-high 15 points on 6-of-10 shooting and a 3-for-4 mark from downtown vs. Wagner ... Registered 12 points on 4-for-5 shooting at St. Francis Brooklyn ... Dropped 11 points in contests at home vs. CCSU and St. Francis Brooklyn.

BEFORE THE MOUNT: Four-year letterwinner at Lakeland Jr./Sr. High School in Jermyn, Pa. ... finished her career as the school's all-time leading scorer with 1,598 points ... ranked the 81st best guard in this year's class by ESPN ... Named second team all-state and the Lackawanna League DIII Player of the Year her senior season, scoring 502 points (20.9 ppg) ... named a first team all-star her junior season ... Led the Lackawanna League in scoring with 495 points her junior year.

PERSONAL: Born May 5, 1998 ... daughter of Sandra and Edward Agentowicz ... has an older brother, Zakkary ... also ran track for three years in high school and made the all-star team.

2020-21
AVERAGES
POINTS
6.5

REBOUNDS
3.4
ASSISTS
2.1

FG%
47.5

3FG%
34.6

FT%
70.6

CAREER HIGHS

POINTS 24 at Fairfield November 21, 2017	FIELD GOALS 10 at Fairfield November 21, 2017	THREE POINTERS 4 3x last WAGNER January 27, 2018	FREE THROWS 8 at Robert Morris February 21, 2020	REBOUNDS 8 2x last SFBK January 20, 2020
ASSISTS 4 3x last at SFBK February 8, 2020	STEALS 6 at Lehigh November 29, 2017	BLOCKS 2 at Saint Francis U January 20, 2018	MINUTES 40 at Fairfield November 21, 2017	

SEASON HIGHS

POINTS 14 at Howard November 30, 2020	FIELD GOALS 6 at Sacred Heart January 15, 2021	THREE POINTERS 2 2x BRYANT February 20, 2021	FREE THROWS 5 ST. FRANCIS BKLN January 7, 2021	REBOUNDS 8 at LIU February 13, 2021
ASSISTS 5 at LIU February 13, 2021	STEALS 4 2x last at LIU February 14, 2021	BLOCKS 1 4x BRYANT February 21, 2021	MINUTES 35 at Howard November 30, 2020	

2020-2021 GAME LOG

Date	Opponent	GS	MIN	FG	3FG	FT	OFF	DEF	TOT	AST	STL	BLK	TO	PF	PTS
11/25	at James Madison	*	17	0-3	0-1	0-0	0	1	1	0	2	0	2	2	0
11/30	at Howard	*	35	4-8	2-5	4-6	0	3	3	4	1	0	1	1	14
12/5	UMBC	*	28	2-7	0-3	0-0	1	3	4	3	0	1	2	3	4
1/7	ST. FRANCIS BROOKLYN *	*	34	2-3	0-1	5-7	1	3	4	3	1	0	0	2	9
1/8	ST. FRANCIS BROOKLYN *	*	33	2-2	1-1	0-0	2	1	3	2	0	0	0	3	5
1/14	at Sacred Heart *	*	16	3-4	0-0	1-1	0	1	1	0	1	0	0	3	7
1/15	at Sacred Heart *	*	31	6-8	0-1	1-1	2	1	3	2	0	0	1	2	13
1/23	CENTRAL CONNECTICUT *	*	25	5-6	1-1	0-0	0	5	5	2	2	0	1	1	11
1/24	CENTRAL CONNECTICUT *	*	26	3-5	1-2	0-0	0	0	0	4	3	1	1	2	7
1/28	FAIRLEIGH DICKINSON *	*	31	1-4	0-0	0-0	1	1	2	0	1	0	2	3	2
1/29	FAIRLEIGH DICKINSON *	*	28	2-5	0-2	0-0	0	1	1	2	4	0	1	0	4
2/13	at Long Island *	*	28	2-7	1-3	0-0	1	7	8	5	3	1	2	2	5
2/14	at Long Island *	*	30	2-5	1-1	1-2	1	6	7	2	4	0	3	1	6
2/20	BRYANT *	*	26	2-7	2-3	0-0	4	3	7	2	1	0	1	2	6
2/21	BRYANT *	*	21	2-6	0-2	0-0	0	2	2	1	0	1	1	2	4
2/24	at Merrimack *														
2/25	at Merrimack *														
2/28	SAINT FRANCIS U *														
3/1	at Saint Francis U *														
3/4	at Wagner *														
3/5	at Wagner *														

CAREER STATS

	GP	GS	MIN	FG	PCT	3PT	PCT	FT	PCT	PTS	OFF-DEF-REB	PF	AST	TO	STL	BLK
2016-17	30	2	498	55-143	38.5	14-52	26.9	24-29	82.8	148	19-52-71	44	17	40	23	3
2017-18	18	18	519	66-164	40.2	35-100	35.0	12-14	85.7	179	7-64-71	36	28	35	22	6
2019-20	26	20	550	47-113	41.6	18-55	32.7	15-19	78.9	127	22-54-76	32	34	23	23	2
2020-21	15	15	416	38-80	47.5	9-26	34.6	12-17	70.6	97	13-38-51	29	32	19	23	4
Total	88	55	1983	206-500	41.2	76-233	32.6	63-79	79.7	551	61-208-269	141	111	117	91	15



@MOUNTATHLETICS | #MOUNTUP



33

Isabella
PELAIIA

6-0 | Forward | Freshman
Mars, Pennsylvania
Mars

HIGH SCHOOL: First Team All-Section Big 56 honoree as a sophomore (2017-18) and a senior (2019-20) ... Named to the Pittsburgh Post Gazette First Team her senior year as well ... Butler County Player of the Year for 2020 ... Finished career with 1,233 points and averaged a double-double ... Mars Area won Pennsylvania 5A State Championship in her sophomore year, with Pelaiia as the leading scorer ... Graduated with high honors.

PERSONAL: Biochemistry major at the Mount.

2020-21
AVERAGES
POINTS
0.9

REBOUNDS
0.3

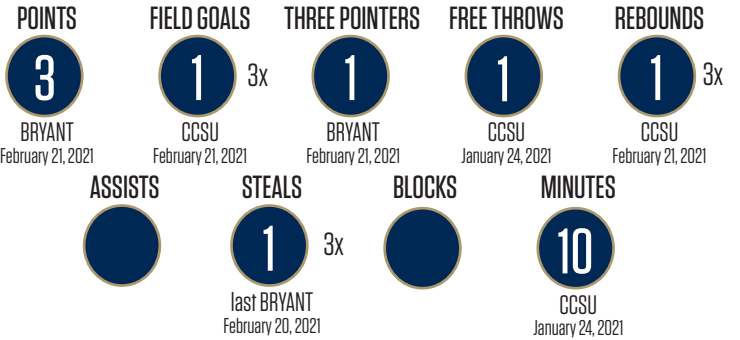
ASSISTS
0.0

FG%
20.0

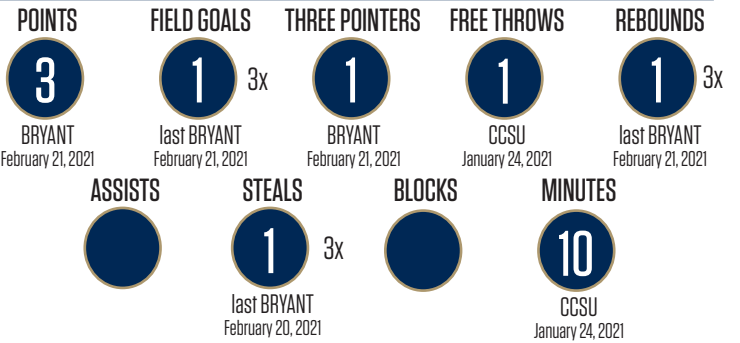
3FG%
14.3

FT%
50.0

CAREER HIGHS



SEASON HIGHS



2020-2021 GAME LOG

Date	Opponent	GS	MIN	FG	3FG	FT	OFF	DEF	TOT	AST	STL	BLK	TO	PF	PTS
11/25	at James Madison														
11/30	at Howard	-	0+	0-0	0-0	0-0	0	0	0	0	0	0	0	0	0
12/5	UMBC	-	1	0-0	0-1	0-0	0	0	0	0	0	0	0	0	0
1/7	ST. FRANCIS BROOKLYN*														
1/8	ST. FRANCIS BROOKLYN*														
1/14	at Sacred Heart*	-	4	0-0	0-0	0-0	0	0	0	0	0	0	0	0	0
1/15	at Sacred Heart*														
1/23	CENTRAL CONNECTICUT*	-	8	1-6	0-3	0-0	0	0	0	0	1	0	0	0	2
1/24	CENTRAL CONNECTICUT*	-	10	0-4	0-1	1-2	1	0	1	0	1	0	0	1	1
1/28	FAIRLEIGH DICKINSON*														
1/29	FAIRLEIGH DICKINSON*														
2/13	at Long Island*	-	5	0-0	0-0	0-0	0	0	0	0	0	0	0	1	0
2/14	at Long Island*	-	2	1-2	0-1	0-0	0	0	0	0	0	0	0	0	2
2/20	BRYANT*	-	6	0-1	0-0	0-0	1	0	1	0	1	0	0	0	0
2/21	BRYANT*	-	4	1-1	1-1	0-0	0	1	1	0	0	0	0	1	3
2/24	at Merrimack*														
2/25	at Merrimack*														
2/28	SAINT FRANCIS U*														
3/1	at Saint Francis U*														
3/4	at Wagner*														
3/5	at Wagner*														

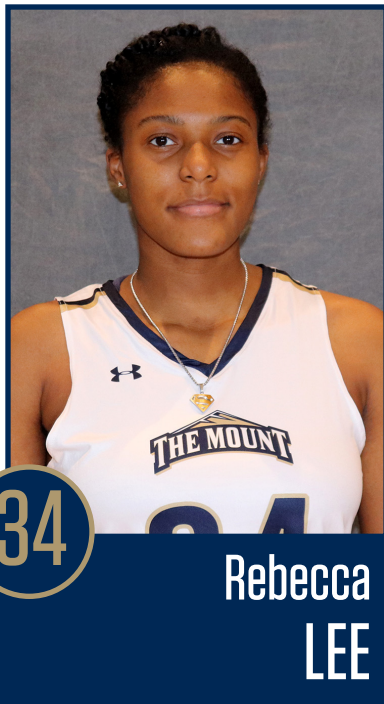
CAREER STATS

	GP	GS	MIN	FG	PCT	3PT	PCT	FT	PCT	PTS	OFF-DEF-REB	PF	AST	TO	STL	BLK
2020-21	9	0	37	3-15	20.0	1-7	14.3	1-2	50.0	8	2-1-3	3	0	0	3	0
Total	9	0	37	3-15	20.0	1-7	14.3	1-2	50.0	8	2-1-3	3	0	0	3	0





2020-21 MOUNT ST. MARY'S WOMEN'S BASKETBALL



34

Rebecca LEE

6-2 | Center | Senior
Severn, Maryland
Old Mill Senior

2019-20 SEASON: Controlled frontcourt play for the Mount, playing in all 31 games with 29 starts ... Averaged 8.1 points, 4.6 rebounds, 0.7 assists, and 1.4 blocks ... Became the second player in Mount history to register 100 blocks for a career with a pair of rejections in the season finale against Long Island March 9th ... Ranked sixth in the NEC with her 1.4 blocks per game ... Second-most efficient scorer on the squad, scoring on 50.8 percent of her shots ... Best game came at Sacred Heart on February 3rd with a double-double of 16 points and 10 rebounds, along with seven blocks - a career high and the most by a Mountaineer since 1990 when Vanessa Blair had eight ... Scored a career best 23 points at Long Island on February 10th.

2018-19 SEASON: Played in 31 games and made 28 starts ... Averaged 8.1 points, 7.3 rebounds, 0.4 assists, and 1.0 blocks per game ... Scored in double-figures in 11 games on the season ... Posted a season high 22 points in the win against Wagner ... Grabbed 10 or more rebounds in 8 games during her sophomore season ... Had 4 double-doubles on the season ... Ranked 5th in the NEC in rebounding, 4th in field goal percentage, and 8th in blocked shots.

2017-18 SEASON: Made 27 appearances and started three games during her freshman campaign ... Averaged 1.7 points and 3.8 rebounds per game ... Led the team with 26 blocks on the year and ranked sixth on the squad in rebounding ... Posted a season-high eight points and four blocks in her collegiate debut at Notre Dame (Nov. 11) ... Pulled down a season-high 12 rebounds in a win at Fairleigh Dickinson (Jan. 8) ... Named to the NEC Academic Honor Roll.

BEFORE THE MOUNT: Helped lead her team to county and regional championships as a sophomore, and another county title as a junior as the team finished 26-1 on the season ... Received Adidas All-American honors in 2014-15 ... Collected Capital Gazette All-County honors her sophomore and junior seasons ... Named an All-Metro First Team performer in 2015-16.

PERSONAL: Majoring in economics with a minor in business ... Sister is a volleyball player at Alderson Broaddus University.

2020-21
AVERAGES
POINTS
7.7

REBOUNDS
5.8

ASSISTS
0.9

FG%
46.6

3FG%
-

FT%
76.9

CAREER HIGHS

POINTS	FIELD GOALS	THREE POINTERS	FREE THROWS	REBOUNDS
23	9		7	16
at Long Island February 10, 2020	WAGNER February 18, 2019		at Long Island February 10, 2020	at Gardner-Webb December 3, 2018
ASSISTS	STEALS	BLOCKS	MINUTES	
4	2	7	32	
at JMU November 25, 2020	last SFBK January 8, 2021	at Sacred Heart February 3, 2020	at Radford November 26, 2019	

SEASON HIGHS

POINTS	FIELD GOALS	THREE POINTERS	FREE THROWS	REBOUNDS
15	6		4	12
at JMU November 25, 2020	last FDU January 29, 2021		CCSU January 24, 2021	at JMU November 25, 2020
ASSISTS	STEALS	BLOCKS	MINUTES	
4	2	5	31	
at JMU November 25, 2020	ST. FRANCIS BKLN January 8, 2021	ST. FRANCIS BKLN January 8, 2021	at LIU February 14, 2021	

2020-2021 GAME LOG

Date	Opponent	GS	MIN	FG	3FG	FT	OFF	DEF	TOT	AST	STL	BLK	TO	PF	PTS
11/25	at James Madison	*	23	6-13	0-0	3-3	4	8	12	4	0	1	1	3	15
11/30	at Howard	*	7	0-5	0-0	2-2	2	2	4	0	0	0	4	2	0
12/5	UMBC	*	24	4-6	0-0	0-1	4	1	5	0	0	0	6	2	8
1/7	ST. FRANCIS BROOKLYN*	*	16	3-7	0-0	1-2	1	6	7	0	0	3	3	2	7
1/8	ST. FRANCIS BROOKLYN*	*	27	3-7	0-0	2-2	1	3	4	2	2	5	0	2	8
1/14	at Sacred Heart*	*	16	2-4	0-0	2-2	1	2	3	0	0	2	1	1	6
1/15	at Sacred Heart*	*	20	4-10	0-0	1-2	5	4	9	0	0	2	5	2	9
1/23	CENTRAL CONNECTICUT*	*	16	4-7	0-0	0-0	2	7	9	1	0	0	3	3	8
1/24	CENTRAL CONNECTICUT*	*	14	1-4	0-0	4-4	2	3	5	0	0	0	3	1	6
1/28	FAIRLEIGH DICKINSON*	*	9	1-4	0-0	0-0	1	0	1	0	0	0	2	1	2
1/29	FAIRLEIGH DICKINSON*	*	17	6-8	0-0	0-0	0	3	3	0	0	1	1	0	12
2/13	at Long Island*	*	13	5-9	0-0	0-2	2	3	5	0	0	2	2	4	10
2/14	at Long Island*	*	31	3-8	0-0	2-4	3	7	10	3	1	1	1	3	8
2/20	BRYANT*	*	19	4-7	0-0	1-2	0	7	7	3	0	2	3	4	9
2/21	BRYANT*	*	20	2-4	0-0	4-4	2	1	3	1	1	3	2	2	8
2/24	at Merrimack*														
2/25	at Merrimack*														
2/28	SAINT FRANCIS U*														
3/1	at Saint Francis U*														
3/4	at Wagner*														
3/5	at Wagner*														

CAREER STATS

	GP	GS	MIN	FG	PCT	3PT	PCT	FT	PCT	PTS	OFF-DEF-REB	PF	AST	TO	STL	BLK
2017-18	27	3	213	17-43	39.5	0-0	-	13-24	54.2	47	45-57-102	37	2	19	8	26
2018-19	31	28	661	104-204	51.0	0-0	-	44-80	55.0	252	102-124-226	85	13	58	14	31
2019-20	31	29	546	97-191	50.8	0-0	-	58-89	65.2	252	58-85-143	61	21	79	7	43
2020-21	15	15	265	48-103	46.6	0-0	-	20-26	76.9	116	30-57-87	32	14	37	4	22
Total	104	75	1685	266-541	49.2	0-0	-	135-219	61.6	667	235-323-558	215	50	193	33	122



@MOUNTATHLETICS | #MOUNTUP



2020-21 MOUNT ST. MARY'S WOMEN'S BASKETBALL

2020-2021 BOX SCORES

GAME 1 (JAMES MADISON)



Official Basketball Box Score - Final
Mount St. Mary's at James Madison
11/25/20 Atlantic Union Bank Center, Harrisonburg
2020-21 Women's Basketball

Game Time: 3:00 PM
Game Duration: 1:53

Officials: Brian Wallace, Kris Denson, Michael Johnson

Mount St. Mary's - 55 Record: 0-1

NO. Name	Min	FG		3P		FT		Rebounds		Fouls		TP	AS	TO	ST	Blocks		+/-
		M/A	A	M/A	A	OR	DR	OR	DR	PF	FD					BS	BA	
34 Rebecca Lee	C	25:00	6-13	0-0	3-3	4	8	12	3	3	15	4	1	0	1	2	-3	
3 Kendall Breesee	G	33:31	1-12	1-5	5-6	4	3	7	3	5	8	2	3	3	0	1	-6	
4 Jatarriah Settle	G	24:56	2-5	0-2	0-0	1	0	1	2	1	4	0	1	1	0	1	-15	
10 Michaela Harrison	G	35:20	3-14	0-8	0-0	0	1	1	3	0	6	3	2	2	0	0	-10	
21 Kayla Agentowicz	G	17:18	0-3	0-1	0-0	0	1	1	2	0	0	0	2	2	0	1	-6	
11 Bridget Birkhead	G	17:50	1-10	1-10	2-2	0	0	0	2	4	5	1	0	0	0	0	-10	
25 Taylor Addison	G	20:29	3-5	0-0	2-2	3	3	6	1	1	8	1	2	0	0	1	-10	
13 Aryna Taylor	G	20:42	3-6	3-5	0-0	0	2	2	3	0	9	0	2	1	0	0	-9	
14 Jessica Tomasetti	G	04:54	0-0	0-0	0-0	0	0	0	2	0	0	0	0	0	0	0	-1	
Team																		
Totals		19:58	5-31	12-13	14	20	34	21	14	55	11	13	9	1	6	-14		

Technical Fouls:NONE

Shooting By Period	
1st FG%	4.14 28.6%
3PT%	0.6 0.0%
FT%	4.5 80%
2nd FG%	3.13 23.1%
3PT%	0.4 0.0%
FT%	4.4 100%
3rd FG%	7.22 31.8%
3PT%	1.9 11.1%
FT%	2.2 100%
4th FG%	5.19 26.3%
3PT%	4.12 33.3%
FT%	2.2 100%
GM FG%	19.68 27.9%
3PT%	5.31 16.1%
FT%	12.13 92.3%

Dead Ball Rebounds:0

James Madison - 69 Record: 1-0

NO. Name	Min	FG		3P		FT		Rebounds		Fouls		TP	AS	TO	ST	Blocks		+/-
		M/A	A	M/A	A	OR	DR	OR	DR	PF	FD					BS	BA	
21 Rayne Tucker	F	33:54	8-13	0-0	0-0	8	10	18	3	1	16	0	4	1	3	1	5	
24 Anne Francoise Diouf	F	14:59	2-2	0-0	0-0	0	0	0	1	1	4	0	2	1	1	0	4	
4 Madison Green	G	27:44	2-4	0-1	7-8	0	3	3	1	7	11	1	5	1	0	0	7	
22 Peyton McDaniel	G	30:35	0-9	0-8	0-0	0	4	4	1	2	0	0	1	4	1	0	1	
30 Kiki Jefferson	G	25:09	5-9	0-2	2-3	0	8	8	3	5	12	0	2	1	0	0	18	
25 Jamia Hazell	G	28:01	7-16	2-5	2-2	1	4	5	3	3	18	3	4	0	0	0	15	
33 Steph Ouderkirik	G	25:48	2-6	0-1	2-2	3	2	5	2	1	6	1	1	0	1	0	12	
13 Eleanor Marciszewski	G	11:52	0-1	0-1	2-2	1	3	4	0	1	2	0	0	0	0	0	-3	
14 Annalicia Goodman	G	01:58	0-0	0-0	0-0	0	0	0	0	0	0	0	0	0	0	0	5	
Team																		
Totals		26:60	2-18	15-17	15	36	51	14	21	69	5	19	8	1	6	1	14	

Technical Fouls:NONE

Shooting By Period	
1st FG%	7.18 38.9%
3PT%	0.6 0.0%
FT%	0-0 0%
2nd FG%	7.16 43.8%
3PT%	1.5 20%
FT%	0-0 0%
3rd FG%	4.10 40.0%
3PT%	1.4 25.0%
FT%	9.9 100%
4th FG%	8.16 50.0%
3PT%	0-3 0%
FT%	6-8 75%
GM FG%	26.60 43.3%
3PT%	2.18 11.1%
FT%	15.17 89.2%

Dead Ball Rebounds:1

	MSM	JMU
Biggest lead	3 (1st 8:47)	15 (4th 1:34)
Best Scoring Run	6 (2nd 0:09)	11 (2nd 3:59)
Lead Changes	1	
Times Tied	1	
Time with Lead	01:21	36:58

Points from		MSM		JMU	
Turnovers	1st	2nd	3rd	4th	TOT
Paint	26	38			
Second Chance	14	12			
Fast Breaks	0	12			
Bench	22	26			

Period by Period Scoring					
1st	2nd	3rd	4th	TOT	
MSM	12	10	17	16	55
JMU	14	15	18	22	69

GAME 2 (HOWARD)

Mount St. Mary's (0-2) -vs- Howard University (1-0)
11/30/20 at Washington, DC

Date: 11/30/20
Time: 6:55 p.m.
Site: Washington, DC

Score By Period	1	2	3	4	Total
Mount St. Mary's	19	19	19	26	83
Howard University	27	11	21	28	87

Mount St. Mary's 83

#	Player	GS	MIN	FG	3PT	FT	ORB-DRB	REB	PF	A	TO	BLK	STL	PTS
03	Kendall Breesee	*	32	4-11	2-6	6-8	3-4	7	5	1	3	0	1	16
21	Kayla Agentowicz	*	35	4-8	2-5	4-6	0-3	3	1	4	1	0	1	14
4	Jatarriah Settle	*	31	4-11	0-0	2-2	1-3	4	5	4	1	0	2	10
10	Michaela Harrison	*	18	1-8	1-6	2-2	0-1	1	0	2	1	0	1	5
34	Rebecca Lee	*	7	0-5	0-0	0-0	2-2	4	2	0	4	0	0	0
25	Taylor Addison	*	19	7-12	1-2	0-3	4-2	6	1	1	0	0	0	15
13	Aryna Taylor	*	24	4-8	2-6	2-2	0-0	0	5	1	1	0	2	12
11	Bridget Birkhead	*	21	4-7	3-5	0-0	1-2	3	4	1	0	0	0	11
14	Jessica Tomasetti	*	2	0-0	0-0	0-0	0-0	0	1	0	0	0	0	0
00	Isabella Hunt	*	1	0-0	0-0	0-0	0-0	0	2	0	0	0	0	0
33	Isabella Peltai	*	0	0-0	0-0	0-0	0-0	0	0	0	0	0	0	0
TM	TEAM			0	0-0	0-0	0-0	5-2	7	0	0	0	0	0
Totals			200	28-70	11-30	16-20	16-19	35	26	14	11	0	7	83

Team Summary

	FG	3PT	FT
1st Quarter	6-18 33.33%	2-7 28.57%	5-8 62.50%
2nd Quarter	7-17 41.18%	3-8 37.50%	2-2 100.00%
3rd Quarter	8-19 42.11%	3-8 37.50%	0-0 0.00%
4th Quarter	7-16 43.75%	3-7 42.86%	9-10 90.00%
Total	26-70 40.0%	11-30 36.7%	16-20 80.0%

Technical Fouls:	(1) Jatarriah Settle, (1) Bridget Birkhead
Second Chance Points:	13
Scores Tied:	6 times(s)
Points in the Paint:	32
Fast Break Points:	8
Lead Changed:	2 times(s)
Points off Turnovers:	16
Bench Points:	38
Largest Lead:	4 3rd-08:24

Howard University 87

#	Player	GS	MIN	FG	3PT	FT	ORB-DRB	REB	PF	A	TO	BLK	STL	PTS
23	Jayla Thornton	*	38	6-15	5-10	9-9	0-6	6	1	1	1	1	2	26
00	Anzhane Hutton	*	33	8-9	0-0	2-2	4-2	6	4	0	2	3	0	18
02	Iyanna Warren	*	37	4-10	0-1	2-6	2-5	7	3	7	5	1	1	10
01	Destiny Howell	*	21	3-7	0-1	0-0	1-0	1	1	0	0	1	1	6
10	Makayla Minnett	*	9	1-2	0-0	0-0	1-1	2	3	0	2	0	2	2
24	Brooklyn Fort-Davis	*	24	5-8	0-0	3-5	1-7	8	4	0	5	1	0	13
22	Kayla Creek	*	24	4-9	0-3	2-2	1-2	3	0	2	1	3	0	10
03	Cashay Dixon	*	12	0-0	0-0	2-4	1-0	1	0	3	1	0	0	2
15	Aniya Wilson	*	2	0-0	0-0	0-0	0-0	0	0	0	0	0	0	0
TM	TEAM			0	0-0	0-0	0-0	0-4	4	0	0	0	0	0
Totals			200	31-60	5-15	20-28	11-27	38	16	13	17	12	4	87

Team Summary

	FG	3PT	FT
1st Quarter	10-17 58.82%	1-2 50.00%	6-6 100.00%
2nd Quarter	2-8 25.00%	1-3 33.33%	6-9 66.67%
3rd Quarter	9-17 52.94%	1-3 33.33%	2-2 100.00%
4th Quarter	10-18 55.56%	2-7 28.57%	6-11 54.55%
Total	31-60 51.7%	5-15 33.3%	20-28 71.4%

Technical Fouls:	(1) Anzhane Hutton
Second Chance Points:	15
Scores Tied:	2 times(s)
Points in the Paint:	44
Fast Break Points:	15
Lead Changed:	9 times(s)
Points off Turnovers:	15
Bench Points:	25
Largest Lead:	10 2nd-05:52

GAME 3 (UMBC)



Official Basketball Box Score - Final
UMBC at Mount St. Mary's
12/05/20 Knott Arena, Emmitsburg
2020-21 Women's Basketball

Game Time: 1:00 PM
Game Duration: 1:36

Officials: Sharlene Davis, Gerda Galting, Cara Segge

UMBC - 58 Record: 0-2

NO. Name	Min	FG		3P		FT		Rebounds		Fouls		TP	AS	TO	ST	Blocks		+/-
		M/A	A	M/A	A	OR	DR	OR	DR	PF	FD					BS	BA	
1 Jane'a Summers	F	18:53	3-7	0-1	5-6	2	3	5	2	4	11	0	1	1	0	0	-3	
14 Julief Esadah	F	32:21	4-11	0-0	0-0	6	5	11	1	0	8	0	2	1	0	2	-4	
3 Alexia Nelson	G	17:22	0-3	0-0	1-2	0	0	0	4	2	1	1	2	1	0	0	-14	
20 Lyric Swann	G	30:52	5-12	1-2	0-0	1	1	1	0	11	2	4	3	0	0	0	14	
24 Patricia Anumba	G	32:33	3-7	0-0	1-2	1	3	4	2	1	7	4	3	3	0	0	0	
25 Jasmine Braswell	G	05:39	0-0	0-0	0-0	0	0	0	1	0	0	0	0	0	0	0	-10	
0 Mya Moye	G	20:15	1-6	0-1	0-0	0	2	2	1	0	2	2	1	0	1	0	-18	
2 Kasey Gagan	G	10:10	0-0	0-0	0-0	0	1	1	0	0	0	1	1	0	0	0	-3	
30 Jada Clowers	G	20:37	4-10	0-0	2-4	4	1	5	1	5	10	1	1	1	0	4		
13 Jen Gast	G	11:18	3-6	0-0	2-2	2	1	3	1	2	8	0	1	0	0	0	-8	
Team																		
Totals		23:62	1-4	11-18	17	18	35	14	16	58	9	17	12	1	3	-14		

Technical Fouls:NONE

Shooting By Period	
1st FG%	6.16 37.5%
3PT%	0.0 0.0%
FT%	2.2 100%
2nd FG%	7.15 46.7%
3PT%	0.0 0.0%
FT%	1.2 50%
3rd FG%	4.15 26.7%
3PT%	0.2 0.0%
FT%	4.8 50%
4th FG%	6.16 37.5%
3PT%	1.2 50%
FT%	4.4 100%
GM FG%	23.62 37.1%
3PT%	1.4 25.0%
FT%	11.16 68.8%

Dead Ball Rebounds:2

Mount St. Mary's - 72 Record: 1-2



2020-21 MOUNT ST. MARY'S WOMEN'S BASKETBALL

2020-2021 BOX SCORES

GAME 5 (ST. FRANCIS BROOKLYN)



Official Basketball Box Score - Final
St. Francis Brooklyn at Mount St. Mary's
01/08/21 Knott Arena, Emmitsburg
2020-21 Women's Basketball

Game Time: 4:00 PM
Game Duration: 1:40

Officials: Timothy Greene, Gerda Gallig, Alex Leap

St. Francis Brooklyn - 59

Record: 1-5 (1-5)

NO. Name	Min	FG	3P	FT	Rebounds	Fouls	TP	AS	TO	ST	Blocks	+/-
		M/A	M/A	M/A	OR DR TOT	PF	FD				BS BA	
31 Ally Lassen	F 33:22	4-14	0-0	8-9	3 2 5	4 6	16	0	1	1	0 3 4	
1 Nevena Dimitrijevic	G 32:07	3-9	1-5	2-2	1 0 1	1 3	9	7	5	2	0 0 -7	
3 Alyssa Fisher	G 25:14	0-5	0-2	2-4	0 4 4	1 3	2	0	0	0	0 0 -21	
20 Melody Van Ness	G 31:33	6-10	4-8	0-0	3 4 7	2 0	16	1	1	1	0 0 -6	
32 Eszter Varga	G 27:22	2-5	0-0	0-0	1 4 5	2 1	4	2	1	0	0 -10	
12 Carmen Segura	19:44	2-5	1-2	0-0	1 1 2	2 0	5	1	0	0	0 0 9	
23 Fruzsina Horvath	24:53	3-10	0-1	1-1	5 3 8	3 1	7	0	2	0	0 3 -9	
13 Jada McMillan	03:51	0-0	0-0	0-0	0 0 0	3 0	0	0	0	0	0 0 9	
14 Marta Zori	01:54	0-1	0-1	0-0	0 1 1	0 0	0	0	0	0	0 0 1	
Team					2 3 5			0	1			
Totals		20-59	6-19	13-16	16 22 38	18 14	59	13	12	5	0 6 -8	

Technical Fouls: NONE

Shooting By Period	
1st FG%	6-17 35.3%
3PT%	2-5 40.0%
FT%	3-3 100%
2nd FG%	6-14 42.9%
3PT%	2-5 40.0%
FT%	7-9 77.8%
3rd FG%	2-16 12.5%
3PT%	0-5 0.0%
FT%	1-2 50%
4th FG%	6-12 50.0%
3PT%	2-4 50.0%
FT%	2-2 100%
GM FG%	20-59 33.9%
3PT%	6-19 31.6%
FT%	13-16 81.3%

Dead Ball Rebounds: 2

Mount St. Mary's - 65

Record: 3-2 (2-0)

NO. Name	Min	FG	3P	FT	Rebounds	Fouls	TP	AS	TO	ST	Blocks	+/-
		M/A	M/A	M/A	OR DR TOT	PF	FD				BS BA	
34 Rebecca Lee	C 26:48	3-7	0-0	2-2	1 3 4	2 1	8	2	0	2	5 0 13	
3 Kendall Bresee	G 28:00	7-14	0-4	4-9	2 9 11	3 7	18	3	3	3	0 0 12	
10 Michaela Harrison	G 28:42	5-12	3-9	0-0	1 3 4	2 1	13	3	4	0	0 0 15	
13 Aryna Taylor	G 38:48	4-11	3-7	3-4	3 1 4	1 4	14	1	1	1	0 0 10	
21 Kayla Agentowicz	G 32:46	2-2	1-1	0-0	2 1 3	3 0	5	2	0	0	0 0 8	
11 Bridget Birkhead	22:49	1-7	0-4	2-2	1 4 5	0 1	4	1	0	0	0 -12	
14 Jessica Tomasetti	14:27	0-0	0-0	0-0	0 1 1	1 2	0	0	0	0	0 0 -9	
00 Isabella Hunt	09:50	1-3	0-0	1-1	3 1 4	2 2	3	0	2	0	1 0 -7	
Team					2 1 3			0	2			
Totals		23-56	7-25	12-18	15 24 39	14 18	65	12	13	6	6 0 6	

Technical Fouls: NONE

Shooting By Period	
1st FG%	7-13 53.8%
3PT%	2-6 33.3%
FT%	2-3 66.7%
2nd FG%	6-13 46.2%
3PT%	2-5 40.0%
FT%	0-0 0%
3rd FG%	5-18 27.8%
3PT%	1-7 14.3%
FT%	2-4 50%
4th FG%	5-12 41.7%
3PT%	2-7 28.6%
FT%	8-11 72.7%
GM FG%	23-56 41.1%
3PT%	7-25 28.0%
FT%	12-18 66.7%

Dead Ball Rebounds: 2

	SFBK	MSM
Biggest lead	7 (2 nd 1:41)	8 (1 st 3:55)
Best Scoring Run	9 (2 nd 1:41)	9 (4 th 9:18)
Lead Changes	11	
Times Tied	7	
Time with Lead	13:34	22:18

Points from Turnovers		Points from SFBK		Points from MSM	
1st	2nd	3rd	4th	TOT	TOT
1st	17	21	5	16	59
2nd	18	14	13	20	65



Official Basketball Box Score - Final
Mount St. Mary's at Sacred Heart
01/14/21 William H. Pitt Center, Fairfield
2020-21 Women's Basketball

Game Time: 12:00 PM
Game Duration: 1:43

Officials: Kathleen Lonergan, Ken Kelly, Timothy Greene

Mount St. Mary's - 84

Record: 4-2 (3-0)

NO. Name	Min	FG	3P	FT	Rebounds	Fouls	TP	AS	TO	ST	Blocks	+/-
		M/A	M/A	M/A	OR DR TOT	PF	FD				BS BA	
34 Rebecca Lee	C 15:46	2-4	0-0	2-2	1 2 3	1 1	6	0	1	0	2 1 0	
3 Kendall Bresee	G 31:06	4-12	1-4	1-2	0 7 7	2 2	10	5	4	4	0 1 17	
10 Michaela Harrison	G 26:09	5-11	3-6	2-3	0 1 1	2 2	15	1	2	1	0 1 12	
13 Aryna Taylor	G 35:52	5-13	1-5	3-3	0 0 0	3 2	14	5	0	1	0 0 26	
21 Kayla Agentowicz	G 15:38	3-4	0-0	1-1	0 1 1	3 1	7	0	0	0	0 0 10	
11 Bridget Birkhead	20:46	2-4	2-3	4-4	0 0 0	3 2	10	0	0	1	0 0 4	
14 Jessica Tomasetti	20:45	4-5	2-2	2-2	1 1 2	2 2	12	1	0	2	0 0 17	
00 Isabella Hunt	18:35	4-6	0-0	0-0	3 4 7	3 3	8	2	0	0	0 0 21	
15 Jada Lee	11:39	0-1	0-1	2-2	0 2 2	1 1	2	3	0	0	0 0 9	
33 Isabella Pelcia	03:44	0-0	0-0	0-0	0 0 0	0 0	0	0	0	0	0 0 4	
Team					6 1 7			0	0			
Totals		29-60	9-21	17-19	11 19 30	20 16	84	16	10	10	2 3 24	

Technical Fouls: NONE

Shooting By Period	
1st FG%	9-16 56.3%
3PT%	0-3 0.0%
FT%	5-5 100%
2nd FG%	8-14 57.1%
3PT%	5-8 62.5%
FT%	2-3 66.7%
3rd FG%	5-18 27.8%
3PT%	3-8 37.5%
FT%	6-6 100%
4th FG%	7-12 58.3%
3PT%	1-2 50.0%
FT%	4-5 80%
GM FG%	29-60 48.3%
3PT%	9-21 42.9%
FT%	17-19 89.5%

Dead Ball Rebounds: 1

Sacred Heart - 60

Record: 2-5 (2-3)

NO. Name	Min	FG	3P	FT	Rebounds	Fouls	TP	AS	TO	ST	Blocks	+/-
		M/A	M/A	M/A	OR DR TOT	PF	FD				BS BA	
13 Carly Stroemel	F 23:41	5-9	0-0	0-0	1 1 2	3 2	10	0	1	0	0 0 -15	
3 Nikki Johnson	G 23:47	3-4	1-1	2-2	1 3 4	4 1	9	3	2	0	0 1 -16	
4 Jayla Davis	G 20:04	1-3	0-1	4-4	1 2 3	1 3	6	2	2	1	1 0 -19	
15 Asia McCray	G 21:28	1-6	0-2	0-0	2 0 2	2 0	2	0	1	0	0 0 -2	
22 Adrienne Hagood	G 30:14	4-6	2-3	4-4	0 3 3	1 4	13	1	3	2	1 0 -22	
34 Kelsey Wood	16:19	2-8	0-1	4-5	1 7 8	2 5	8	0	4	0	1 1 -9	
1 Tiffany Hammond	19:16	1-2	1-1	0-0	1 1 2	0 0	3	1	5	0	0 -23	
2 Sonia Smith	29:34	4-9	0-0	1-2	0 3 3	2 5	9	2	2	0	0 -7	
00 Marlie-Laetia Ziba	05:08	0-0	0-0	0-0	0 0 0	0 0	0	0	0	0	0 0 -4	
5 Wiflisha Jackson	04:31	0-1	0-0	0-0	0 1 1	0 0	0	1	0	0	0 0 -3	
Team					2 0 2			0	0			
Totals		21-48	4-9	14-17	9 21 30	16 20	60	10	20	5	3 2 -24	

Technical Fouls: NONE

Shooting By Period	
1st FG%	5-14 35.7%
3PT%	1-3 33.3%
FT%	3-4 75%
2nd FG%	6-13 46.2%
3PT%	1-2 50.0%
FT%	2-2 100%
3rd FG%	5-12 41.7%
3PT%	1-3 33.3%
FT%	4-4 100%
4th FG%	5-9 55.6%
3PT%	1-1 100.0%
FT%	5-7 71.4%
GM FG%	21-48 43.8%
3PT%	4-9 44.4%
FT%	14-17 82.4%

Dead Ball Rebounds: 2

MOUNT SHU		Points from Turnovers		Points from MOUNT		Points from SHU	
1st	2nd	3rd	4th	TOT	TOT	TOT	TOT
1st	17	21	5	16	59	17	9
2nd	18	14	13	20	65	40	32
3rd	1			1		15	4
4th	1			1		2	8
5th						3	20
Time with Lead	38:50		00:21				

GAME 7 (SACRED HEART)



Official Basketball Box Score - Final
Mount St. Mary's at Sacred Heart
01/15/21 William H. Pitt Center, Fairfield
2020-21 Women's Basketball

Game Time: 1:30 PM
Game Duration: 1:49

Officials: Kathleen Lonergan, Ken Kelly, Timothy Greene

Mount St. Mary's - 71

Record: 4-3 (3-1)

NO. Name	Min	FG	3P	FT	Rebounds	Fouls	TP	AS	TO	ST	Blocks	+/-
		M/A	M/A	M/A	OR DR TOT	PF	FD				BS BA	
34 Rebecca Lee	C 19:54	4-10	0-0	1-2	5 4 9	2 2	9	0	5	0	2 0 1	
3 Nikki Johnson	G 37:07	4-11	1-3	11-15	0 10 10	2 8	20	2	2	1	4 2 -1	
10 Michaela Harrison	G 37:01	4-10	2-6	0-1	0 3 3	4 1	10	6	1	0	0 -9	
13 Aryna Taylor	G 24:42	4-7	1-3	0-0	0 3 3	2 1	9	0	2	0	1 0 6	
21 Kayla Agentowicz	G 30:36	6-8	0-1	1-1	2 1 3	2 1	13	2	1	0	0 1 3	
00 Isabella Hunt	08:25	1-2	0-0	0-0	1 0 1	1 0	2	2	1	0	0 -13	
11 Bridget Birkhead	16:23	0-3	0-3	0-0	0 0 0	3 0	0	1	0	0	0 -11	
14 Jessica Tomasetti	22:26	4-4	0-0	0-0	0 1 1	1 0	8	1	0	2	0 0 -6	
15 Jada Lee	03:26	0-0	0-0	0-0	0 0 0	2 0	0	0	0	0	0 -10	
Team					0 1 1			0	1			
Totals		27-55	4-16	13-19	8 23 31	19 13	71	8	18	4	7 3 -8	

Technical Fouls: NONE

Shooting By Period	
1st FG%	9-14 64.3%
3PT%	0-3 0.0%
FT%	1-2 50%
2nd FG%	6-17 35.3%
3PT%	2-3 66.7%
FT%	1-2 50%
3rd FG%	7-13 53.8%
3PT%	1-5 20.0%
FT%	5-8 62.5%
4th FG%	5-11 45.5%
3PT%	1-5 20.0%
FT%	6-7 85.7%
GM FG%	27-55 49.1%
3PT%	4-16 25.0%
FT%	13-19 68.4%

Dead Ball Rebounds: 2

Sacred Heart - 79

Record: 3-5 (3-3)

NO. Name	Min	FG	3P	FT	Rebounds	Fouls	TP	AS	TO	ST	Blocks	+/-
		M/A	M/A	M/A	OR DR TOT	PF	FD				BS BA	
13 Carly Stroemel	F 21:13	5-8	0-0	0-0	1 2 3	0 1	10	0	0	0	1 1 -14	
3 Kendall Bresee	G 36:58	5-9	2-4	4-4	1 3 4	1 3	16	4	3	2	1 0 2	
4 Jayla Davis	G 27:40	2-4	0-0	2-2	0 4 4	2 3	6	1	2	1	0 2 15	
15 Asia McCray	G 15:51	0-2	0-0	0-0	2 2 4	0 0	0	0	0	0	0 -10	
22 Adrienne Hagood	G 34:03	4-16	2-7	6-6	0 0 0	4 5	16	2	2	0	0 3 5	
2 Sonia Smith	27:49	6-9	1-2	1-2	0 3 3	0 1	14					



GAME 9 (CENTRAL CONNECTICUT)

GAME 10 (FAIRLEIGH DICKINSON)

Official Basketball Box Score - Final
Central Conn. St. at Mount St. Mary's
01/24/21 Knott Arena, Emmitsburg
2020-21 Women's Basketball
Game Time: 2:00 PM
Game Duration: 1:41
Officials: Kelly Calahan, Latifa Boyce, Sharlene Davis

Official Basketball Box Score - Final
Fairleigh Dickinson at Mount St. Mary's
01/28/21 Knott Arena, Emmitsburg
2020-21 Women's Basketball
Game Time: 7:00 PM
Game Duration: 1:31
Officials: Shawn Goode, Skelly Wingard, Sarah Wilms

Central Conn. St. - 61
Record: 2-4 (2-4)
Table with columns: NO. Name, Min, FG, 3P, FT, Rebounds, Fouls, TP, AS, TO, ST, Blocks, +/-, Shooting By Period, 1st FG%, 3PT%, 2nd FG%, 3PT%, 3rd FG%, 3PT%, 4th FG%, 3PT%, GM FG%, 3PT%, FT%

Fairleigh Dickinson - 59
Record: 8-4 (4-3)
Table with columns: NO. Name, Min, FG, 3P, FT, Rebounds, Fouls, TP, AS, TO, ST, Blocks, +/-, Shooting By Period, 1st FG%, 3PT%, 2nd FG%, 3PT%, 3rd FG%, 3PT%, 4th FG%, 3PT%, GM FG%, 3PT%, FT%

Mount St. Mary's - 95
Record: 6-3 (5-1)
Table with columns: NO. Name, Min, FG, 3P, FT, Rebounds, Fouls, TP, AS, TO, ST, Blocks, +/-, Shooting By Period, 1st FG%, 3PT%, 2nd FG%, 3PT%, 3rd FG%, 3PT%, 4th FG%, 3PT%, GM FG%, 3PT%, FT%

Mount St. Mary's - 54
Record: 6-4 (5-2)
Table with columns: NO. Name, Min, FG, 3P, FT, Rebounds, Fouls, TP, AS, TO, ST, Blocks, +/-, Shooting By Period, 1st FG%, 3PT%, 2nd FG%, 3PT%, 3rd FG%, 3PT%, 4th FG%, 3PT%, GM FG%, 3PT%, FT%

Summary table for Game 9: CCSU, MSM, Points from Turnovers, Period by Period Scoring, Best Scoring Run, Lead Changes, Times Tied, Time with Lead

Summary table for Game 10: FDU, MSM, Points from Turnovers, Period by Period Scoring, Best Scoring Run, Lead Changes, Times Tied, Time with Lead

GAME 11 (FAIRLEIGH DICKINSON)

GAME 12 (LONG ISLAND)

Official Basketball Box Score - Final
Fairleigh Dickinson at Mount St. Mary's
01/29/21 Knott Arena, Emmitsburg
2020-21 Women's Basketball
Game Time: 4:00 PM
Game Duration: 1:30
Officials: Shawn Goode, Skelly Wingard, Sarah Wilms

Official Basketball Box Score - Final
Mount St. Mary's at LIU
01/29/21 Steinberg Wellness Center, Brooklyn, NY
2020-21 Women's Basketball
Game Time: 4:00 PM
Game Duration: 1:41
Officials:

Fairleigh Dickinson - 85
Record: 8-5 (4-4)
Table with columns: NO. Name, Min, FG, 3P, FT, Rebounds, Fouls, TP, AS, TO, ST, Blocks, +/-, Shooting By Period, 1st FG%, 3PT%, 2nd FG%, 3PT%, 3rd FG%, 3PT%, 4th FG%, 3PT%, GM FG%, 3PT%, FT%

Mount St. Mary's - 85
Record: 8-4 (7-3)
Table with columns: NO. Name, Min, FG, 3P, FT, Rebounds, Fouls, TP, AS, TO, ST, Blocks, +/-, Shooting By Period, 1st FG%, 3PT%, 2nd FG%, 3PT%, 3rd FG%, 3PT%, 4th FG%, 3PT%, GM FG%, 3PT%, FT%

Mount St. Mary's - 68
Record: 7-4 (6-2)
Table with columns: NO. Name, Min, FG, 3P, FT, Rebounds, Fouls, TP, AS, TO, ST, Blocks, +/-, Shooting By Period, 1st FG%, 3PT%, 2nd FG%, 3PT%, 3rd FG%, 3PT%, 4th FG%, 3PT%, GM FG%, 3PT%, FT%

LIU - 64
Record: 3-10 (3-10)
Table with columns: NO. Name, Min, FG, 3P, FT, Rebounds, Fouls, TP, AS, TO, ST, Blocks, +/-, Shooting By Period, 1st FG%, 3PT%, 2nd FG%, 3PT%, 3rd FG%, 3PT%, 4th FG%, 3PT%, GM FG%, 3PT%, FT%

Summary table for Game 11: FDU, MSM, Points from Turnovers, Period by Period Scoring, Best Scoring Run, Lead Changes, Times Tied, Time with Lead

Summary table for Game 12: MSM, LIU, Points from Turnovers, Period by Period Scoring, Best Scoring Run, Lead Changes, Times Tied, Time with Lead



GAME 13 (LONG ISLAND)

GAME 14 (BRYANT)



Official Basketball Box Score - Final
Mount St. Mary's at LIU
02/14/21 Steinberg Wellness Center, Brooklyn, NY
2020-21 Women's Basketball

Game Time: 1:00 PM
Game Duration: 1:53

Officials: Laura Isabella, Lamar Diamond, David Trayan

Box score for Game 13 (Long Island) showing player stats for Mount St. Mary's and LIU, including FG, 3P, FT, Rebounds, Fouls, TP, AS, TO, ST, Blocks, and Shooting By Period.

Box score for Game 14 (Bryant) showing player stats for Mount St. Mary's and LIU, including FG, 3P, FT, Rebounds, Fouls, TP, AS, TO, ST, Blocks, and Shooting By Period.

Summary statistics for Game 13, including Biggest lead, Best Scoring Run, Lead Changes, Times Tied, Time with Lead, Points from Turnovers, Paint, Second Chance, Fast Breaks, Bench, and Period by Period Scoring.



Official Basketball Box Score - Final
Bryant at Mount St. Mary's
02/20/21 Knott Arena, Emmitsburg
2020-21 Women's Basketball

Game Time: 2:00 PM
Game Duration: 1:42

Officials: Kelly Callahan, Gina Catanzarzi, Kelly Mitchell

Box score for Game 14 (Bryant) showing player stats for Mount St. Mary's and Bryant, including FG, 3P, FT, Rebounds, Fouls, TP, AS, TO, ST, Blocks, and Shooting By Period.

Box score for Game 15 (Bryant) showing player stats for Mount St. Mary's and Bryant, including FG, 3P, FT, Rebounds, Fouls, TP, AS, TO, ST, Blocks, and Shooting By Period.

Summary statistics for Game 14, including Biggest lead, Best Scoring Run, Lead Changes, Times Tied, Time with Lead, Points from Turnovers, Paint, Second Chance, Fast Breaks, Bench, and Period by Period Scoring.

GAME 15 (BRYANT)



Official Basketball Box Score - Final
Bryant at Mount St. Mary's
02/21/21 Knott Arena, Emmitsburg
2020-21 Women's Basketball

Game Time: 2:00 PM
Game Duration: 1:33

Officials: Kelly Callahan, Gina Catanzarzi, Kelly Mitchell

Box score for Game 15 (Bryant) showing player stats for Mount St. Mary's and Bryant, including FG, 3P, FT, Rebounds, Fouls, TP, AS, TO, ST, Blocks, and Shooting By Period.

Box score for Game 15 (Bryant) showing player stats for Mount St. Mary's and Bryant, including FG, 3P, FT, Rebounds, Fouls, TP, AS, TO, ST, Blocks, and Shooting By Period.

Summary statistics for Game 15, including Biggest lead, Best Scoring Run, Lead Changes, Times Tied, Time with Lead, Points from Turnovers, Paint, Second Chance, Fast Breaks, Bench, and Period by Period Scoring.





2019-2020 SEASON STATS



2019-20 Mount St. Mary's Women's Basketball
Combined Team Statistics
All games

Game Records

Record	Overall	Home	Away	Neutral
ALL GAMES	20-11	10-4	9-6	1-1
CONFERENCE	14-4	6-3	8-1	0-0
NON-CONFERENCE	6-7	4-1	1-5	1-1

Score by Periods

Team	1st	2nd	3rd	4th	OT	TOT
Mount St. Mary's	556	550	459	511	0	2076
Opponents	529	513	428	476	0	1946

Team Box Score

No.	Player	GP-GS	MIN	AVG	Total		3-Point		F-Throw		Rebounds				PF	DQ	A	TO	BLK	STL	PTS	AVG
					FG-FGA	FG%	3FG-FGA	3FG%	FT-FTA	FT%	OFF	DEF	TOT	AVG								
10	HARRISON, Michaela	31-31	1022:42	33.0	142-366	.388	75-223	.336	31-44	.705	12	57	69	2.2	66	0	75	87	15	61	390	12.6
3	BRESEE, Kendall	26-25	797:53	30.7	95-267	.356	38-112	.339	66-88	.750	41	128	169	6.5	61	0	97	88	14	50	294	11.3
4	SETTLE, Jatarrikah	31-31	971:37	31.3	100-286	.350	15-69	.217	85-116	.733	51	119	170	5.5	75	3	85	93	3	61	300	9.7
34	LEE, Rebecca	31-29	543:51	17.5	97-191	.508	0-0	.000	58-89	.652	58	85	143	4.6	61	1	21	79	43	7	252	8.1
11	BIRKHEAD, Bridget	31-11	657:31	21.2	83-193	.430	60-146	.411	18-21	.857	15	47	62	2.0	57	1	26	32	7	23	244	7.9
13	TAYLOR, Aryna	31-0	613:35	19.8	77-181	.425	43-114	.377	22-29	.759	16	56	72	2.3	60	0	36	59	6	27	219	7.1
25	ADDISON, Taylor	29-7	574:11	19.8	64-116	.552	5-13	.385	32-47	.681	35	61	96	3.3	62	0	37	37	7	31	165	5.7
21	AGENTOWICZ, Kayla	26-20	550:27	21.2	47-113	.416	18-55	.327	15-19	.789	22	54	76	2.9	32	0	34	23	2	23	127	4.9
22	CONNORS, Delaney	27-1	230:54	8.6	14-37	.378	8-20	.400	6-10	.600	10	30	40	1.5	13	0	13	8	0	16	42	1.6
12	WATKINSON, Annaliese	16-0	95:35	6.0	6-29	.207	2-18	.111	8-10	.800	3	6	9	0.6	6	0	2	8	0	4	22	1.4
23	CARRILLO ADE, Maqui	18-0	109:52	6.1	6-19	.316	0-0	.000	6-10	.600	8	14	22	1.2	21	0	13	13	2	4	18	1.0
1	WATKINSON, Mikayla	10-0	30:52	3.1	1-4	.250	0-3	.000	1-4	.250	1	0	1	0.1	3	0	2	2	0	2	3	0.3
Team											54	63	117				10					
Total		31	6199		732-1802	.406	264-773	.342	348-487	.715	326	720	1046	33.7	517	5	441	539	99	309	2076	67.0
Opponents		31	6200		679-1741	.390	172-581	.296	416-561	.742	391	782	1173	37.8	497	5	395	635	98	232	1946	62.8

Team Statistics

	MSM	OPP
Scoring	2076	1946
Points per game	67.0	62.8
Scoring margin	+4.2	-
Field goals-att	732-1802	679-1741
Field goal pct	.406	.390
3 point fg-att	264-773	172-581
3-point FG pct	.342	.296
3-pt FG made per game	8.5	5.5
Free throws-att	348-487	416-561
Free throw pct	.715	.742
F-Throws made per game	11.2	13.4
Rebounds	1046	1173
Rebounds per game	33.7	37.8
Rebounding margin	-4.1	-
Assists	441	395
Assists per game	14.2	12.7
Turnovers	539	635
Turnovers per game	17.4	20.5
Turnover margin	+3.1	-
Assist/turnover ratio	0.8	0.6
Steals	309	232
Steals per game	10.0	7.5
Blocks	99	98
Blocks per game	3.2	3.2
Winning streak	1	-
Home win streak	1	-
Attendance	6620	14372
Home games-Avg/Game	14-473	15-958
Neutral site-Avg/Game	-	2-1859

Team Results

Date	Opponent	Score	Att.
11/05/2019	at Kentucky	L 44-67	3575
11/07/2019	at Indiana	L 52-75	2831
11/11/2019	Frostburg St.	W 94-40	412
11/16/2019	at Towson	L 57-73	412
11/20/2019	UMBC	W 71-61	422
11/26/2019	at Radford	W 75-58	769
12/06/2019	Loyola Maryland	W 81-75	506
12/08/2019	Lehigh	L 65-66	232
12/14/2019	at UMES	L 76-78	224
12/19/2019	vs Hampton	L 60-68	1795
12/20/2019	vs Richmond	W 75-67	1923
12/21/2019	at Old Dominion	L 34-85	1885
01/02/2020	Wagner	W 78-63	162
01/04/2020	LIU	W 75-57	702
01/11/2020	at Bryant	W 76-70	1151
01/13/2020	at Merrimack	L 55-76	211
01/18/2020	Central Conn. St.	W 72-64	450
01/20/2020	St. Francis Brooklyn	W 69-60	350
01/25/2020	Bryant	L 67-72	725
02/01/2020	at Fairleigh Dickinson	W 69-61	362
02/03/2020	at Sacred Heart	W 67-58	571
02/08/2020	at St. Francis Brooklyn	W 67-62	312
02/10/2020	at LIU	W 77-57	111
02/15/2020	Saint Francis (PA)	W 68-44	785
02/17/2020	at Wagner	W 67-52	649
02/21/2020	at Robert Morris	W 62-59	666
02/23/2020	Merrimack	W 62-53	616
02/29/2020	at Saint Francis (PA)	W 66-55	643
03/02/2020	Robert Morris	L 52-57	462
03/05/2020	Fairleigh Dickinson	L 63-66	384
03/09/2020	LIU	W 80-47	412





2020-2021 SEASON STATS

2020-21 Mount St. Mary's Women's Basketball
Combined Team Statistics
All gamesPage 1/1
as of Feb 22, 2021

Game Records

Record	Overall	Home	Away	Neutral
ALL GAMES	11-4	8-1	3-3	0-0
CONFERENCE	10-2	7-1	3-1	0-0
NON-CONFERENCE	1-2	1-0	0-2	0-0

Score by Periods

Team	1st	2nd	3rd	4th	OT	TOT
Mount St. Mary's	301	309	274	249	0	1133
Opponents	224	276	198	217	0	915

Team Box Score

No.	Player	Total			3-Point		F-Throw		Rebounds				Other				PTS	AVG				
		GP-GS	MIN	AVG	FG-FGA	FG%	3FG-FGA	3FG%	FT-FTA	FT%	OFF	DEF	TOT	AVG	PF	DQ			A	TO	BLK	STL
3	BRESEE, Kendall	15-15	465:21	31.0	67-178	.376	17-56	.304	72-91	.791	30	104	134	8.9	34	2	59	45	9	37	223	14.9
25	ADDISON, Taylor	3-1	79:49	26.6	18-27	.667	1-2	.500	3-4	.750	8	9	17	5.7	2	0	5	6	0	1	40	13.3
10	HARRISON, Michaela	14-14	399:02	28.5	64-150	.427	37-98	.378	21-25	.840	3	21	24	1.7	24	0	25	30	5	22	186	13.3
13	TAYLOR, Aryna	15-13	420:16	28.0	63-139	.453	30-80	.375	15-18	.833	9	31	40	2.7	34	1	20	32	3	17	171	11.4
11	BIRKHEAD, Bridget	15-0	335:41	22.4	41-98	.418	29-71	.408	15-17	.882	7	31	38	2.5	35	0	16	12	5	11	126	8.4
34	LEE, Rebecca	15-15	272:23	18.2	48-103	.466	0-0	.000	20-26	.769	30	57	87	5.8	32	0	14	37	22	4	116	7.7
4	SETTLE, Jatarrikah	2-2	55:56	28.0	6-16	.375	0-2	.000	2-2	1.000	2	3	5	2.5	7	2	4	2	0	3	14	7.0
21	AGENTOWICZ, Kayla	15-15	407:15	27.1	38-80	.475	9-26	.346	12-17	.706	13	38	51	3.4	29	0	32	19	4	23	97	6.5
14	TOMASETTI, Jessica	15-0	239:03	15.9	28-52	.538	8-19	.421	6-7	.857	7	25	32	2.1	18	0	14	12	1	15	70	4.7
00	HUNT, Isabella	14-0	165:20	11.8	25-44	.568	0-0	.000	5-8	.625	29	23	52	3.7	28	0	16	16	2	8	55	3.9
15	LEE, Jada	10-0	121:28	12.1	8-25	.320	1-9	.111	10-13	.769	7	12	19	1.9	13	0	11	8	1	8	27	2.7
33	PELAIA, Isabella	9-0	38:26	4.3	3-15	.200	1-7	.143	1-2	.500	2	1	3	0.3	3	0	0	0	0	3	8	0.9
Team											32	24	56				4					
Total		15	3000		409-927	.441	133-370	.359	182-230	.791	179	379	558	37.2	259	5	216	223	52	152	1133	75.5
Opponents		15	3000		329-851	.387	75-238	.315	182-250	.728	168	361	529	35.3	242	2	178	277	58	99	915	61.0

Team Statistics

	MSM	OPP
Scoring	1133	915
Points per game	75.5	61.0
Scoring margin	+14.5	-
Field goals-att	409-927	329-851
Field goal pct	.441	.387
3 point fg-att	133-370	75-238
3-point FG pct	.359	.315
3-pt FG made per game	8.9	5.0
Free throws-att	182-230	182-250
Free throw pct	.791	.728
F-Throws made per game	12.1	12.1
Rebounds	558	529
Rebounds per game	37.2	35.3
Rebounding margin	+1.9	-
Assists	216	178
Assists per game	14.4	11.9
Turnovers	223	277
Turnovers per game	14.9	18.5
Turnover margin	+3.6	-
Assist/turnover ratio	1.0	0.6
Steals	152	99
Steals per game	10.1	6.6
Blocks	52	58
Blocks per game	3.5	3.9
Winning streak	5	-
Home win streak	3	-
Attendance	0	0
Home games-Avg/Game	9-0	6-0
Neutral site-Avg/Game	-	0-0

Team Results

Date	Opponent	Score	Att.
11/25/2020	at James Madison	L 55-69	0
11/30/2020	at Howard	L 83-87	0
12/05/2020	UMBC	W 72-58	0
01/07/2021	St. Francis Brooklyn	W 76-68	0
01/08/2021	St. Francis Brooklyn	W 65-59	0
01/14/2021	at Sacred Heart	W 84-60	0
01/15/2021	at Sacred Heart	L 71-79	0
01/23/2021	Central Conn. St.	W 81-52	0
01/24/2021	Central Conn. St.	W 95-61	0
01/28/2021	Fairleigh Dickinson	L 54-59	0
01/29/2021	Fairleigh Dickinson	W 68-55	0
02/13/2021	at LIU	W 85-64	0
02/14/2021	at LIU	W 65-41	0
02/20/2021	Bryant	W 92-54	0
02/21/2021	Bryant	W 87-49	0





2020-2021 CONFERENCE STATS

2020-21 Mount St. Mary's Women's Basketball
Combined Team Statistics
In Conference gamesPage 1/1
as of Feb 22, 2021

Game Records

Record	Overall	Home	Away	Neutral
ALL GAMES	10-2	7-1	3-1	0-0
CONFERENCE	10-2	7-1	3-1	0-0
NON-CONFERENCE	0-0	0-0	0-0	0-0

Score by Periods

Team	1st	2nd	3rd	4th	OT	TOT
Mount St. Mary's	227	241	234	221	0	923
Opponents	158	197	168	178	0	701

Team Box Score

No.	Player				Total		3-Point		F-Throw		Rebounds											
		GP-GS	MIN	AVG	FG-FGA	FG%	3FG-FGA	3FG%	FT-FTA	FT%	OFF	DEF	TOT	AVG	PF	DQ	A	TO	BLK	STL	PTS	AVG
3	BRESEE, Kendall	12-12	378:13	31.5	58-147	.395	13-41	.317	60-76	.789	23	96	119	9.9	22	1	53	37	8	32	189	15.8
10	HARRISON, Michaela	12-12	345:42	28.8	60-128	.469	36-84	.429	19-23	.826	3	19	22	1.8	21	0	20	27	5	19	175	14.6
13	TAYLOR, Aryna	12-12	338:53	28.2	53-116	.457	24-63	.381	9-12	.750	8	25	33	2.8	23	0	17	24	2	14	139	11.6
11	BIRKHEAD, Bridget	12-0	265:08	22.1	31-72	.431	21-48	.438	13-15	.867	5	24	29	2.4	27	0	10	8	5	8	96	8.0
34	LEE, Rebecca	12-12	216:52	18.1	38-79	.481	0-0	.000	17-22	.773	20	46	66	5.5	25	0	10	26	21	4	93	7.8
21	AGENTOWICZ, Kayla	12-12	327:11	27.3	32-62	.516	7-17	.412	8-11	.727	12	31	43	3.6	23	0	25	14	3	20	79	6.6
14	TOMASETTI, Jessica	12-0	211:02	17.6	26-48	.542	6-15	.400	6-7	.857	7	23	30	2.5	14	0	14	12	1	15	64	5.3
00	HUNT, Isabella	12-0	158:06	13.2	24-43	.558	0-0	.000	5-8	.625	28	21	49	4.1	25	0	15	16	2	8	53	4.4
15	LEE, Jada	10-0	121:28	12.1	8-25	.320	1-9	.111	10-13	.769	7	12	19	1.9	13	0	11	8	1	8	27	2.7
33	PELAIA, Isabella	7-0	37:26	5.3	3-14	.214	1-6	.167	1-2	.500	2	1	3	0.4	3	0	0	0	0	3	8	1.1
Team											25	18	43					4				
Total		12	2400		333-734	.454	109-283	.385	148-189	.783	140	316	456	38.0	196	1	175	176	48	131	923	76.9
Opponents		12	2400		249-669	.372	67-201	.333	136-189	.720	125	280	405	33.8	198	2	151	224	39	75	701	58.4

Team Statistics

	MSM	OPP
Scoring	923	701
Points per game	76.9	58.4
Scoring margin	+18.5	-
Field goals-att	333-734	249-669
Field goal pct	.454	.372
3 point fg-att	109-283	67-201
3-point FG pct	.385	.333
3-pt FG made per game	9.1	5.6
Free throws-att	148-189	136-189
Free throw pct	.783	.720
F-Throws made per game	12.3	11.3
Rebounds	456	405
Rebounds per game	38.0	33.8
Rebounding margin	+4.3	-
Assists	175	151
Assists per game	14.6	12.6
Turnovers	176	224
Turnovers per game	14.7	18.7
Turnover margin	+4.0	-
Assist/turnover ratio	1.0	0.7
Steals	131	75
Steals per game	10.9	6.3
Blocks	48	39
Blocks per game	4.0	3.3
Winning streak	5	-
Home win streak	3	-
Attendance	0	0
Home games-Avg/Game	8-0	4-0
Neutral site-Avg/Game	-	0-0

Team Results

Date	Opponent		Score	Att.
01/07/2021	St. Francis Brooklyn	W	76-68	0
01/08/2021	St. Francis Brooklyn	W	65-59	0
01/14/2021	at Sacred Heart	W	84-60	0
01/15/2021	at Sacred Heart	L	71-79	0
01/23/2021	Central Conn. St.	W	81-52	0
01/24/2021	Central Conn. St.	W	95-61	0
01/28/2021	Fairleigh Dickinson	L	54-59	0
01/29/2021	Fairleigh Dickinson	W	68-55	0
02/13/2021	at LIU	W	85-64	0
02/14/2021	at LIU	W	65-41	0
02/20/2021	Bryant	W	92-54	0
02/21/2021	Bryant	W	87-49	0

