

2020-21 CENTRAL CONNECTICUT

CENTRAL CONNECTICUT BLUE DEVILS (2-2, 2-2 NEC)
VS. MOUNT ST. MARY'S (4-3, 3-1 NEC)



WOMEN'S BASKETBALL NOTES

GAME FIVE

Knott Arena • Emmitsburg, MD
Saturday, January 23 • 2:00 PM
Video • NEC Front Row

• Trevor Biel • Athletic Communications Graduate Intern • 1615 Stanley Street • New Britain, CT 06050 • Ph: (860) 832 3089 • Fax: (860) 832-3084 • CCSUBlueDevils.com •

2020-21 Schedule

Date	Opponent	Time
------	----------	------

DEC: FOUR GAMES

Dec. 14	at St. Francis Brooklyn*	W, 87-72
Dec. 15	at St. Francis Brooklyn*	L, 77-80
Dec. 19	FAIRLEIGH DICKINSON*	L, 54-55
Dec. 20	FAIRLEIGH DICKINSON*	W, 77-56

JAN: FOUR GAMES

Jan. 23	at Mount St. Mary's*	2:00 PM
Jan. 24	at Mount St. Mary's*	2:00 PM
Jan. 28	at Sacred Heart*	7:00 PM
Jan. 30	SACRED HEART*	1:00 PM

FEB: NINE GAMES

Feb. 9	BRYANT*	4:00 PM
Feb. 10	BRYANT*	4:00 PM
Feb. 13	at Merrimack*	4:00 PM
Feb. 14	at Merrimack*	4:00 PM
Feb. 18	LIU*	7:00 PM
Feb. 19	LIU*	7:00 PM
Feb. 23	SAINT FRANCIS U*	7:00 PM
Feb. 24	SAINT FRANCIS U*	4:00 PM
Feb. 28	at Wagner*	TBD

MAR: ONE GAME

Mar. 1	at Wagner*	4:00 PM
--------	------------	---------

Mar. 10 NEC SEMIFINAL# TBD

Mar. 14 NEC CHAMPIONSHIP# TBD

*Northeast Conference Game

HOME GAMES

NEC TOURNAMENT

Projected Starters (Pos., Cl., Ht.)		Hometown/Last School	Pts.	Reb.	Other
1	Forever Toppin (G, Jr., 5-8)	Paterson, NJ/Sinai Christian Academy	8.0	1.5	3.3 AST/G
14	Ashley Forker (G/F, Sr., 5-10)*	Telford, PA/ Faith Christian Academy	10.0	4.5	32.2 MIN/G
15	Emma McCamus (G, Sr., 5-7)*	Cavan Ontario/Bill Crothers Secondary	16.8	3.8	40.0 3PT%
32	Tiffany Slicklein (F, Sr., 5-11)	Kings Park, NY/Kings Park	2.5	6.0	1.5 BLKS/G
33	Ashley Berube (C, Sr., 6-2)*	Londonberry, NH/Tilton	15.0	9.3	54.2 FG%
Reserves (Pos., Cl., Ht.)		Hometown/Last School			
22	Jamey Napoleon (F, So., 6-0)	Pittsburgh, PA/Mount Lebanon	3.0	6.3	54.5 FG%
11	Dejah Jenkins (G, So., 5-7)	Dorchester, MA/Cathedral High School	7.5	1.3	57.1 3PT%
2	Belle Lanpher (G, Fr., 5-5)	Princeton, MA/Wachusett Regional	5.3	1.8	71.4 FT%
30	Carly Reynolds (C, Jr., 6-2)	Williamsville, NY/Clarence	1.8	1.0	11.6 MIN/G
23	Danielle Delano (G/F, Jr., 5-9)	Enfield, CT / Enfield	0.0	0.3	0.3 STL/G
21	Claire Sutherland-Case (F, So., 6-1)	Hamilton, Ontario/Westdale Secondary	4.8	2.0	70.0 FT%
24	Angelique Rodriguez (G, R.Sr., 6-0)	New Britain, CT/Pittsburgh	0.0	1.3	5.3 MIN/G
10	Samantha Chadwick (G, Fr., 5-8)	Litchfield, CT/Lewis S. Mills	1.0	0.0	100% FG%
20	Alli Napoli (F, Fr., 6-0)	Amesbury, MA/Amesbury	0.0	0.0	5.3 MIN/G
12	Jewel Porter (F, Sr., 6-1)	Baltimore, MD/Hartford CC	—	—	—

2020-21 NEC WOMEN'S BASKETBALL STANDINGS (AS OF 1/21/21)

	School	NEC	Pct.	Overall	Pct.	Streak	Home	Away	Neutral
1.	Saint Francis U	6-0	1.000	8-4	0.667	W8	3-1	5-3	0-0
2.	Wagner	3-1	0.750	3-2	0.600	W2	0-0	3-2	0-0
	Mount St. Mary's	3-1	0.750	4-3	0.571	L1	3-0	1-3	0-0
4.	Central Connecticut	2-2	0.500	2-2	0.500	W1	1-1	1-1	0-0
	Bryant	2-2	0.500	4-4	0.500	L2	3-3	1-1	0-0
	Sacred Heart	3-3	0.500	3-5	0.375	W1	2-2	1-3	0-0
7.	Fairleigh Dickinson	1-3	0.250	5-4	0.556	W1	2-3	3-1	0-0
8.	LIU	1-5	0.167	1-5	0.167	L4	1-3	0-2	0-0
	St. Francis Brooklyn	1-5	0.167	1-5	0.167	L2	1-1	0-4	0-0
10.	Merrimack	0-0	0.000	0-0	0.000	—	0-0	0-0	0-0

Opening Notes

- Central Connecticut women's basketball looks to get their first win in 2021 as the team heads to Maryland to take on Mount St. Mary's. This will be the first game for the Blue Devils in over a month.

- The two teams will meet on Saturday and Sunday, with both games tipping at 2 pm.

Last Time Out

- The Blue Devils took down the Knights of Fairleigh Dickinson in dominating fashion, by a score of 77-56.
- Forever Toppin scored a season high 16 points and added 5 assists.
- The team had four players score in double figures.
- Claire Sutherland-Case posted a career high 11 points. She knocked down 2 three pointers and went 5-6 from the free throw line.

With a Win

- CCSU would move to 3-2 overall and in conference play.
- The Blue Devils would be above .500 in NEC play through five or more games for the first time since the 2016-17 season.

Series History with The Mount

- The Blue Devils trail the all-time series at 12-30 against the Mountaineers.
- Mount St. Mary's beat CCSU last season by a score of 72-64. The last win versus Mount St. Mary's came during the 2016-17 season in a 68-58 victory on Jan. 9.

Most Recent for Mount St. Mary's

- The Mount lost its last game at Sacred Heart back on Jan. 15 by a score of 79-71.
- Kendall Bresee led the way for MSM scoring 20 points and grabbing 10 rebounds. Kayla Agentowicz and Michaela Harrison also scored in double figures.

Superb Seniors

- Emma McCamus leads the way averaging a team high 16.8 ppg. She is a perfect 11-11 from the free throw line and is shooting 40.0% from three. She was named a Prime Performer for week 4 in the NEC.
- Ashley Berube recorded two double-doubles in the first two games of the season, scoring 14 points and gathering 12 rebounds in a win, and 23 points, 11 rebounds in a loss. She was also named a Prime Performer.
- Ashley Forker adds 10.0 ppg and leads the team in assists with 21 (5.3 per game) which leads the NEC. She also averages 4.5 rebounds per game and only has 6 total turnovers on the season.

At the Top of the NEC

- The Blue Devils rank second in scoring offense at 73.75 ppg and fourth in scoring defense allowing 65.75 ppg.
- CCSU is the one of two teams in the NEC with a positive scoring margin, leading the conference at +8.00.
- The team continues their free throw success from last season, shooting 80.3% which is first in the league.
- The Blue Devils are ranked second in field goal percentage (.430) and first in defensive field goal percentage (.381).
- CCSU also ranks first in blocks (6.75), assists (16.75), turnover margin (+2.50), and assist/turnover ratio (1.22).

Returning Players

- CCSU returns a projected 3/5 starters and 84% of its scoring from last season.
- The two leading scorers from last season, Ashley Berube (12.1 PPG) and Emma McCamus (10.8 PPG) also return.

The New Crew

- CCSU adds three true freshman to the roster this season. The Blue Devils also gain Angelique Rodriguez to the roster after she sat out last year due to transfer rules.
- Interim head coach Kerri Reaves takes over, seeking her first career win.

NEC Preseason Polls

- Central Connecticut was picked 10th in the 2020-21 NEC Preseason Coaches poll.
- Mount St. Mary's was unanimously picked to finish first, followed by Sacred Heart picked to finish second.

COVID-19 Protocols

- Numerous protocols and precautions have been put into place to protect the health and safety of teams, while schedules have been structured to minimize the risk as well.
- CCSU will begin the season playing without fans at Detrick Gymnasium. Benches have been moved to the opposite side of the court to minimize contact with individuals outside "Tier 1".
- The Blue Devils do not have any Non-Conference games scheduled at the moment, but is subject to change.

50 Years of CCSU Women's Basketball

- This is the 50th season of women's basketball at Central Connecticut. The Blue Devils are 507-762 all-time (.400).
- This is the 36th season at Division I for Central. The first year as a D1 program was in 1986-87 under Dr. Brenda Reilly. CCSU's first year of competition was in 1971-72, also under Reilly.

- Reilly coached for 25 seasons (10 Division I) and had 219 victories (86 Division I victories).
- Interim coach Kerri Reaves looks to get her first career win as a head coach.

KEY MOMENTS FROM THE 2019-20 SEASON

Ending on a high note

- The Blue Devils were able to capture commanding victories during their two final games of the season.
- Double digit wins came against LIU (71-57) and St. Francis Brooklyn (75-54).

Toppin Emerges

- During her Freshman year, Toppin averaged 6.2 minutes per game but increased her playing time to 17.1 this past season.
- Her scoring also increased up to 4.6 PPG (5th on the team) from 1.6 PPG.
- Toppin scored a career high 18 points versus LIU on 3/2/20.

Win at Hartford

- On Dec. 21 Central took down their interstate rivals in a 61-54 victory.
- Ashley Berube led the way scoring a season high 25 points, including 8-8 from the foul line.
- CCSU held the Hawks to just 26.3% from the floor (20-76 shooting)
- The win marked the 150th career win for now retired head coach Beryl Piper.

Forker Furthers Her Game

- Ashley Forker nearly tripled her scoring average from her sophomore year (3.3 PPG) to her junior year (9.2 PPG).
- She scored a career high 23 points against Wagner on Jan. 25, leading the Blue Devils to their first conference win of the season.
- Forker led the team in assists, averaging 3.1 per game

Berube Stays on Pace

- In the 2019-20 season, Ashley Berube led the way averaging 12. ppg, shooting over 46% from the floor.
- Berube was able to keep her blocks per game at 1.8, which ranked 2nd in the NEC
- Recorded three double-doubles last season.

OTHER INFORMATION

1000 Point Watch

- Both Ashley Berube and Emma McCamus have the chance to reach a career 1000 points.
- Berube comes into the season with 708 career points. She scored a career high 352 points last season, 12.1 PPG.
- McCamus comes in with 658 career points. Her career high in points came against Brown in 2019, where she put up 30.

Solid From Free Throw Line

- For the season, the Blue Devils shot 72.2% as a team from the charity stripe. That number ranked 4th in the NEC
- Jenkins, Forker, McCamus, Napoleon, Delano, Reynolds,

and Berube all finished the season over 70%

Quality Defense

- The Blue Devils played scrappy defense all season, racking up 115 total blocks and 207 steals.
- The three main guards led the way in forcing turnovers. Ashley Forker had 38 steals, including a season high 5 at Bryant on Feb. 8. Emma McCamus was right behind her with 37, and had 4 steals three separate times last season. Forever Toppin also was a huge contributor with 34 steals.
- Berube led the way in that paint, blocking nearly two shots per game.

History

- This is the 36th season for Central Connecticut women's basketball as a NCAA Division I program.
- The Blue Devils have gone 342-624 in their previous 35 years at the D1 level, which they joined prior to the 1986-87 campaign.
- Their best season, a 21-7 effort, came in 1989-90.





KERRI REAVES • 1st Season, MARQUETTE '96

- 2020-21 Interim Head Coach
- Seven NEC Tournament Appearances as assistant (2009-10, 2011, 2013, 2015, 2017-18)
- Five NEC Tournament Semifinals as assistant (2009-11, 2015, 2017)

Kerri Reaves begins her 14th season on the women's basketball staff at Central Connecticut State University. Reaves will serve as interim head coach for the 2020-21 season.

Reaves, who came to New Britain after serving as an assistant at Providence, is CCSU's recruiting coordinator and primarily works with CCSU's forwards and centers. She also assists in game preparation while working with compliance and academic advising efforts.

"Kerri's experience coaching and recruiting at the Division I level, combined with her head coaching experience, makes her the perfect addition to our staff," Piper said. "She is a hard worker who will promote CCSU athletics in a positive way. I am so excited that she is on board to help us move the Central Connecticut women's basketball program to a new level."

Prior to arriving at CCSU, Reaves spent two seasons in her second stint as an assistant coach for the Friars. In addition to acting as the team's academic liaison, Reaves's responsibilities included recruiting, working with the Friar wing players and on-floor coaching. She also served as an assistant coach with Providence for six seasons from 1996-2002. From 1999-2002, the former Marquette standout was the recruiting coordinator for the Friars.

Before her return to Providence College, Reaves spent 2002-05 as the head women's basketball coach at Saint Leo University, an NCAA Division II program affiliated with the Sunshine State Conference.

Reaves, a 1996 graduate of Marquette University, played for the Golden Eagles from 1991-95. She finished her career at Marquette among the top-10 all-time in scoring (1,203 points), rebounding (608 rebounds), free-throws made (297), steals (195), three-point field goals made (84) and blocked shots (47).

She led the Golden Eagles to the Women's National Invitational Tournament in 1993 as a sophomore and, as team captain, helped guide the program to consecutive NCAA Tournament appearances in 1994 and 1995. During her four-year career, Marquette posted a 79-41 record.

Upon completion of her eligibility, Reaves worked as a student assistant with the Golden Eagles during the 1995-96 season.

VS. THE NEC YEAR-BY-YEAR*

Year	Record	%	Home	Away
2020-21	2-2	.500	1-1	1-1

Total:	0-0	—	0-0	0-0
--------	-----	---	-----	-----

OVERALL YEAR-BY-YEAR

Year	Record	%	Home	Away	Neutral
2020-21	2-2	.500	1-1	1-1	—

Total:	—	—	—	—	—
--------	---	---	---	---	---

REAVES VS. NEC**

Opponent	Record	%	Home	Away	Neutral
Bryant	—	—	—	—	—
FDU	1-1	.500	1-1	—	—
LJU Brooklyn	—	—	—	—	—
Merrimack	—	—	—	—	—
Mount St. Mary's	—	—	—	—	—
Sacred Heart	—	—	—	—	—
Saint Francis U	—	—	—	—	—
St. Francis Brooklyn	1-1	.500	—	1-1	—
Wagner	—	—	—	—	—

* Record in NEC Regular Season Contests

** Includes NEC Tournament Games

2020-21 CENTRAL CONNECTICUT WOMEN'S BASKETBALL ROSTER



NUMERICAL ROSTER

No.	Name	Pos.	Cl.	Ht.	Hometown/Last School
1	Forever Toppin	G	Jr.	5-8	Paterson, NJ / Sinai Christain Academy
2	Belle Lanpher	G	Fr.	5-5	Princeton, MA / Wachusett Regional
10	Samantha Chadwick	G	Fr.	5-8	Litchfield, CT / Lewis S. Mills
11	Dejah Jenkins	G	So.	5-7	Dorchester, MA / Cathedral High School
12	Jewel Porter	F	Sr.	6-1	Baltimore, MD / Hartford CC
14	Ashley Forker	G/F	Sr.	5-10	Telford, PA / Faith Christian Academy
15	Emma McCamus	G	Sr.	5-7	Cavan, Ontario / Bill Crothers Secondary
20	Alli Napoli	F	Fr.	6-0	Amesbury, MA / Amesbury
21	Claire Sutherland-Case	F	So.	6-1	Hamilton, Ontario / Westdale Secondary
22	Jamey Napoleon	F	So.	6-0	Pittsburgh, PA / Mouth Lebanon
23	Danielle Delano	G/F	Jr.	5-9	Enfield, CT / Enfield
24	Angelique Rodriguez	G	R. Sr.	6-0	New Britain, CT / Pittsburgh
30	Carly Reynolds	C	Jr.	6-2	Buffalo, NY / Clarence
32	Tiffany Slicklein	F	Sr.	5-11	Kings Park, NY / Kings Park
33	Ashley Berube	C	Sr.	6-2	Lonberry, NH / Tilton

Head Coach: Kerri Reaves (13th Season, Marquette '96)
Assistant Coaches: Jason Marshall (7th Season, Ramapo '07),
Andrew Stephens (3rd Season, ASU '97)

PRONUNCIATION GUIDE

#1 - Top-in
#15 - mc-CAM-mus
#23 - DELL-an-O
#24- Ann-GEL-EEK
#32 - slick-LINE
#33 - Beh-ROO-bee

ROSTER BY POSITION

No.	Name	Cl.
Center • 2		
30	Carly Reynolds	Jr.
33	Ashley Berube	Sr.
Forward • 5		
12	Jewel Porter	Sr.
20	Alli Napoli	Fr.
21	Claire Sutherland-Case	So.
22	Jamey Napoleon	So.
32	Tiffany Slicklein	Sr.
Guard/Forward • 2		
14	Ashley Forker	Sr.
23	Danielle Delano	Jr.
Guard • 6		
1	Forever Toppin	Jr.
2	Belle Lanpher	Fr.
10	Samantha Chadwick	Fr.
11	Dejah Jenkins	So.
15	Emma McCamus	Sr.
24	Angelique Rodriguez	Sr.

ALPHABETICAL ROSTER

No.	Name	Cl.
33	Ashley Berube	Sr.
10	Samantha Chadwick	Fr.
23	Danielle Delano	Jr.
14	Ashley Forker	Sr.
11	Dejah Jenkins	So.
2	Belle Lanpher	Fr.
15	Emma McCamus	Sr.
22	Jamey Napoleon	So.
20	Alli Napoli	Fr.
12	Jewel Porter	Sr.
30	Carly Reynolds	So.
24	Angelique Rodriguez	Jr.
32	Tiffany Slicklein	Jr.
21	Claire Sutherland-Case	So.
1	Forever Toppin	So.

ROSTER BY STATE

No.	Name	Cl.	No.	Name	Cl.
Maryland • 1			New Jersey • 1		
12	Jewel Porter	Sr.	24	Forever Toppin	Jr.
Massachusetts • 3			Connecticut • 3		
2	Belle Lanpher	Fr.	10	Samantha Chadwick	Fr.
11	Dejah Jenkins	So.	23	Danielle Delano	Jr.
20	Alli Napoli	Fr.	24	Angelique Rodriguez	Sr.
New York • 2			Pennsylvania • 2		
32	Tiffany Slicklein	Sr.	14	Ashley Forker	Sr.
30	Carly Reynolds	Jr.	20	Jamie Napoleon	So.
New Hampshire • 1			Canada • 2		
33	Ashley Berube	Sr.	15	Emma McCamus	Sr.
			21	Claire Sutherland-Case	So.

WHEN WAS THE LAST TIME THE BLUE DEVILS...

Individual

50+ Points.....	Has Never Happened
40-49 Points in a game.....	Hope Linthicum, 42 at Maine 1/9/87
30-39 Points in a game.....	*Emma McCamus, 30 vs. SFBK 12/14/20
30-39 Rebounds in a game.....	Has Never Happened
20-29 Rebounds in a game.....	Giocelis Reynoso 20, at Saint Francis U 1/21/17
15+ Rebounds in a game.....	Ashley Berube, 18 rebs, at SHU 1/8/2020
10+ Assists in a game.....	*Ashley Forker, 10, vs. UMass Lowell 12/5/19
5+ Blocks in a game.....	*Ashley Berube, 5 vs. SFBK 12/14/20
5+ Steals in a game.....	Tiffany Slicklein, 7, at Mount St. Mary's 1/14/19
5+ 3pt FG in a game.....	Ashley Forker, 5, at Pitt 11/11/19
10+ FT in a game.....	Aleah Epps, 11-of-12, vs. UMass 12/12/15
Double-Double (pts/rebs).....	*Ashley Berube, 23 pts, 11 rebs, vs SFBK 12/14/20
Double-Double (pts/asts)	Ashley Forker, 12 pts, 10 ast, vs. UMass Lowell 12/5/19
Triple-Double.....	Jessica Babe, 15 pts, 10 rbs, 10 asts, at Rider 12/21/13
Two Players Score 20+ Points.....	TeJahne Malone (22), Kayla Miller (20)
.....	at Wagner (W, 83-67) 1/31/15
Five Players Score 10+ Points.....	Aleah Epps (24), Camden Musgrave (13),
.....	Andi Lydon (15), Emma McCamus (15), Sydney Hines (13)
.....	at St. Francis Brooklyn (83-77), 3/2/18
Six Players Score 10+ Points.....	Has Never Happened

Team

One-point win.....	66-65, vs. Bryant 2/2/19
One-point loss.....	54-55, vs FDU 12/19/20
30+ Margin of victory.....	82-50 at Hartford 11/26/13
30+ Margin of defeat.....	80-42 @ Robert Morris 2/1/20
100+ points scored.....	101-82 vs. Utica 11/29/86
100+ points allowed.....	106-97 (OT) vs. Saint Francis U 1/6/14
Both teams scoring 100 points.....	Has Never Happened
Overtime win.....	83-77 (OT) vs. St. Francis Brooklyn 3/2/18
Overtime loss.....	61-57 (2OT) vs. Sacred Heart 1/18/16

****BOLD DENOTES 2020-21 SEASON***

LAST TIME OUT

vs. Fairleigh Dickinson 12/20/20

- The Central Connecticut women's basketball team returned to winning fashion, with a dominant 77-56 victory over Fairleigh Dickinson. CCSU took control in the second quarter and never let the Knights back into the game. The Blue Devils get back to .500 on the season (2-2, 2-2 NEC), while Fairleigh Dickinson falls to 4-4 and 1-3 in conference play.
- Point guard Forever Toppin scored a season high 16 points and dished out 5 assists. Claire Sutherland-Case scored a career high 11 points. It marks the first time she has ever scored in double figures as well.
- The Blue Devils shot 42.6% from the floor and led for over 30 minutes of the game.
- Junior Lindsey Mack tried to keep the Knights in the game, scoring 17 points and went 4-5 from the foul line. The only other player in double figures for the Knights was Madison Stanley, who provided 11 points.
- The Blue Devils snap a five game losing streak to FDU that dated back to the 2017-18 season.

Player Quote:

"We pushed the ball, we got out in transition. We stuck to what we do best and that's running the floor. This year we really wanted to focus on us, and believe that we're good enough because we are."

-Forever Toppin

KEY MOMENTS

- The game started off as a back and forth affair. There were four lead changes in the first quarter. Each team led by four at one point, but no larger than that. The first quarter ended with CCSU having a 16-15 lead.
- The flood gates opened up in the second quarter for the Blue Devils. CCSU went on a 15-0 run, which started from a pair of threes by senior Emma McCamus.
- The Blue Devils then went on another big run to extend their lead to 45-27 at the half.
- Ashley Berube started to get going in the second half. She scored 6 points in a row in the middle of the third quarter. The senior forward finished with 12 points on the night.
- The Blue Devils outscored the Knights 17-12 in the final quarter and held on to their huge lead.

NUMBER TO KNOW

29 – The Blue Devils scored 29 points off of turnovers, compared to just 10 for Fairleigh Dickinson.

NOTES

- Claire Sutherland-Case scored a career high 11 points in 17 minutes of play. She knocked down two big three point shots and went 5-6 from the foul line.
- Four different players scored in double figures for CCSU.
- The Blue Devils scored over 75 points for the third time this season, and now are averaging 73.8 points per game.
- Senior Ashley Forker added 9 points and 4 rebounds to the stat sheet. She also only had 1 turnover in over 28 minutes of play.
- Dejah Jenkins was once again solid off the bench, scoring 12 points on 3-6 shooting.
- The Blue Devils continue to shoot lights out from the foul line, going 24-30 tonight as a team



2020-21 COMBINED STATISTICS



2020-21 Central Conn. St. Women's Basketball Combined Team Statistics All games

Page 1/1
as of Dec 21, 2020

Game Records

Record	Overall	Home	Away	Neutral
ALL GAMES	2-2	1-1	1-1	0-0
CONFERENCE	2-2	1-1	1-1	0-0
NON-CONFERENCE	0-0	0-0	0-0	0-0

Score by Periods

Team	1st	2nd	3rd	4th	OT	TOT
Central Conn. St.	78	80	64	73	0	295
Opponents	75	63	61	64	0	263

Team Box Score

No.	Player				Total		3-Point		F-Throw		Rebounds													
		GP-GS	MIN	AVG	FG-FGA	FG%	3FG-FGA	3FG%	FT-FTA	FT%	OFF	DEF	TOT	AVG	PF	DQ	A	TO	BLK	STL	PTS	AVG		
15	MCCAMUS, Emma	4-4	104:48	26.2	24-52	.462	8-20	.400	11-11	1.000	6	9	15	3.8	5	0	7	5	4	6	67	16.8		
33	BERUBE, Ashley	4-4	113:14	28.3	26-48	.542	2-6	.333	6-6	1.000	9	28	37	9.3	7	0	3	7	9	2	60	15.0		
14	FORKER, Ashley	4-4	128:44	32.2	18-34	.529	3-10	.300	1-2	.500	7	11	18	4.5	2	0	21	6	2	6	40	10.0		
1	TOPPIN, Forever	4-4	110:24	27.6	11-38	.289	6-21	.286	4-7	.571	1	5	6	1.5	5	0	13	13	2	3	32	8.0		
11	JENKINS, Dejah	4-0	43:08	10.8	9-17	.529	4-7	.571	8-9	.889	1	4	5	1.3	1	0	1	5	0	2	30	7.5		
2	LANPHER, Belle	4-0	49:00	12.3	5-15	.333	1-8	.125	10-14	.714	1	6	7	1.8	7	0	7	6	0	3	21	5.3		
21	SUTHERLAND-CASE, Claire	4-0	36:43	9.2	4-16	.250	4-11	.364	7-10	.700	3	5	8	2.0	8	0	1	1	0	0	19	4.8		
22	NAPOLEON, Jamey	4-3	92:16	23.1	6-11	.545	0-1	.000	0-0	.000	4	21	25	6.3	5	0	5	7	5	2	12	3.0		
32	SLICKLEIN, Tiffany	2-1	39:12	19.6	2-6	.333	1-2	.500	0-0	.000	3	9	12	6.0	5	0	5	0	3	0	5	2.5		
30	REYNOLDS, Carly	4-0	46:35	11.6	2-6	.333	1-2	.500	2-2	1.000	0	4	4	1.0	4	0	3	2	2	0	7	1.8		
10	CHADWICK, Samantha	2-0	01:18	0.6	1-1	1.000	0-0	.000	0-0	.000	0	0	0	0.0	1	0	0	0	0	0	2	1.0		
20	NAPOLI, Alli	2-0	10:34	5.3	0-4	.000	0-2	.000	0-0	.000	0	0	0	0.0	1	0	0	0	0	0	0	0.0		
24	RODRIGUEZ, Angelique	3-0	15:60	5.3	0-2	.000	0-2	.000	0-0	.000	0	4	4	1.3	2	0	1	0	0	0	0	0.0		
23	DELANO, Danielle	3-0	08:04	2.7	0-1	.000	0-0	.000	0-0	.000	1	0	1	0.3	0	0	0	0	0	1	0	0.0		
Team											4	7	11					3						
Total		4	800		108-251	.430	30-92	.326	49-61	.803	40	113	153	38.3	53	0	67	55	27	25	295	73.8		
Opponents		4	800		103-270	.381	25-80	.313	32-51	.627	64	108	172	43.0	64	3	61	65	9	23	263	65.8		

Team Statistics

	CCSU	OPP
Scoring	295	263
Points per game	73.8	65.8
Scoring margin	+8.0	-
Field goals-att	108-251	103-270
Field goal pct	.430	.381
3 point fg-att	30-92	25-80
3-point FG pct	.326	.313
3-pt FG made per game	7.5	6.3
Free throws-att	49-61	32-51
Free throw pct	.803	.627
F-Throws made per game	12.3	8.0
Rebounds	153	172
Rebounds per game	38.3	43.0
Rebounding margin	-4.8	-
Assists	67	61
Assists per game	16.8	15.3
Turnovers	55	65
Turnovers per game	13.8	16.3
Turnover margin	+2.5	-
Assist/turnover ratio	1.2	0.9
Steals	25	23
Steals per game	6.3	5.8
Blocks	27	9
Blocks per game	6.8	2.3
Winning streak	1	-
Home win streak	1	-
Attendance	0	0
Home games-Avg/Game	2-0	2-0
Neutral site-Avg/Game	-	0-0

Team Results

Date	Opponent		Score	Att.
12/14/2020	at St. Francis Brooklyn	W	87-72	0
12/15/2020	at St. Francis Brooklyn	L	77-80	0
12/19/2020	Fairleigh Dickinson	L	54-55	0
12/20/2020	Fairleigh Dickinson	W	77-56	0

2020-21 STATISTICAL TRENDS

The Blue Devils are:

1-1..... at home
1-1..... on the road
0-0..... at neutral sites

1-0..... on Sunday
1-0..... on Monday
0-0..... on Tuesday
0-0..... on Wednesday
0-0..... on Thursday
0-0..... on Friday
0-1..... on Saturday

0-0..... when playing day games:
2-2..... when playing night games:

0-0..... in November
2-2..... in December
0-0..... in January
0-0..... in February
0-0..... in March

0-0..... in overtime
0-0..... when scoring 90+ points
1-0..... when scoring 80-89 points
1-1..... when scoring 70-79 points
0-0..... when scoring 60-69 points
0-1..... when scoring 50-59 points
0-0..... when scoring 40-49 points
0-0..... when scoring below 40 points

0-0..... when allowing 90+ points
0-1..... when allowing 80-89 points
1-0..... when allowing 70-79 points
0-0..... when allowing 60-69 points
1-1..... when allowing 50-59 points
0-0..... when allowing 40-49 points
0-0..... when allowing below 40 points

0-0..... when shooting 50%+ FG
1-1..... when shooting 45-49.9%
1-0..... when shooting 40-44.9%
0-0..... when shooting below 40%

0-0..... when opponent shoots 50%+
0-0..... when opponent shoots 45-49.9%
1-1..... when opponent shoots 40-44.9%
0-1..... when opponent shoots below 40%

1-0..... when outrebounding opponent
0-2..... when being outrebounded
1-0..... when equal number of rebounds

2-1..... when shooting 70%+ FT
0-1..... when shooting 65-69.9%
0-0..... when shooting 60-64.9%
0-0..... when shooting 55-59.9%
0-0..... when shooting 50-54.9%
0-0..... when shooting less than 50%

0-0..... when shooting 50%+ 3 PT FG
0-1..... when shooting 40-49.9%
0-1..... when shooting 30-39.9%
2-0..... when shooting 20-29.9%
0-0..... when shooting 10-19.9%
0-0..... when shooting less than 10%

0-0..... with 50+ rebounds
0-0..... with 45-49 rebounds
1-0..... with 40-44 rebounds
1-2..... with 30-39 rebounds
0-0..... with less than 30 rebounds

2-1..... when leading after 1st qtr
0-1..... when trailing after 1st qtr
0-0..... when tied after 1st qtr

2-0..... when leading at half
0-1..... when trailing at half
0-1..... when tied at the half

2-1..... when leading after 3rd qtr
0-1..... when trailing after 3rd qtr
0-0..... when tied after 3rd qtr

2-0..... when leading with 2:00 to play
0-1..... when trailing with 2:00 to play
0-1..... when tied with 2:00 to play

Biggest Lead:
24, vs FDU 12/20/20

Biggest Deficit:
14, at SFBK 12/15/20

Biggest Lead in a Loss:
11, vs FDU 12/19/20

Biggest Deficit in a Win:
4, vs FDU 12/20/20

Biggest Halftime Lead:
18, vs FDU 12/20/20

Biggest Halftime Deficit:
3, at SFBK 12/15/20

Best 1st Half Shooting Percentage:
56.0%, vs FDU 12/20/20

Worst 1st Half Shooting Percentage:
44.7%, at SFBK 12/14/20

Best 2nd Half Shooting Percentage:
48.6%, at SFBK 12/14/20

Worst 2nd Half Shooting Percentage:
25.8%, vs FDU 12/19/20

Best Overall Shooting Percentage:
46.7%, at SFBK 12/14/20

Worst Overall Shooting Percentage:
36.7%, vs FDU 12/19/20

Opponent Best 1st Half Shooting Percentage:
42.1%, at SFBK 12/15/20

Opponent Worst 1st Half Shooting Percentage:
37.1 %, at SFBK 12/14/20

Opponent Best 2nd Half Shooting Percentage:
53.6%, at SFBK 12/14/20

Opponent Worst 2nd Half Shooting Percentage:
35.7%, vs FDU 12/20/20

Opponent Best Overall Shooting Percentage:
41.3%, at SFBK 12/15/20

Opponent Worst Overall Shooting Percentage:
33.9%, vs FDU 12/19/20

Most Points in First Half:
45, vs FDU 12/20/20

Least Points in First Half:
34, vs FDU 12/19/20

Most Points in Second Half:
44, at SFBK 12/14/20

Least Points in Second Half:
20, vs FDU 12/19/20

Most Points by Opponent in First Half:
39, at SFBK 12/15/20

Least Points by Opponent in First Half:
27, vs FDU 12/20/20

Most Points by Opponent in Second Half:
41 at SFBK 12/15/20

Least Points by Opponent in Second Half:
21, vs FDU 12/19/20

Most Points Scored in a Game:
87, at SFBK 12/14/20

Least Points Scored in a Game:
54, vs FDU 12/19/20

Most Points Allowed in a Game:
80, at SFBK 12/15/20

Least Points Allowed in a Game:
55, vs FDU 12/19/20

Double-Doubles

Berube, 14pts, 12rebs, at SFBK 12/14/20
Berube, 23pts 11rebs, at SFBK 12/15/20

20+ Point Games

McCamus, 30, at SFBK 12/14/20
Berube, 23, at SFBK 12/15/20

10+ Rebound Games

Berube, 12, at SFBK 12/14/20
Berube, 11, at SFBK 12/15/20

7+ Assist Games

Forker, 7, at SFBK 12/15/20
Forker, 8, vs FDU 12/19/20

Records by Starting Lineup

Berube, Forker, McCamus, Napoleon, Toppin 2-1
Berube, Forker, McCamus, Slicklein, Toppin 0-1

From The Free Throw Line

In the Final Five Minutes of the Fourth Quarter:

TEAM	10-12	83.3%
Berube	2-2	100%
Lanpher	1-2	50.0%
Forker	1-2	50.0%
McCamus	4-4	100%
Toppin	2-2	100%

In the Final Minute of the Fourth Quarter:

TEAM	0-0	—
------	-----	---

In Overtime

TEAM	0-0	—
------	-----	---



1

• Forever Toppin • Jr. • G • 5-8 •
• Paterson, NJ • Sinai Christian Academy •

2020-21 GAME-BY-GAME STATS



2020-21 Central Conn. St. Women's Basketball
Individual Game-by-Game
All games

Page 1/14
as of Dec 22, 2020

2020-21 GAME HIGHS

PTS: 16, vs FDU 12/20/20
REB: 2, vs FDU 12/20/20
FGM: 5, vs FDU 12/20/20
FGA: 14, at SFBK 12/14/20
3FGM: 3, vs FDU 12/20/20
3FGA: 7 (2x), last vs FDU 12/20/20
FTM: 3, vs FDU 12/20/20
FTA: 3, vs FDU 12/20/20
AST: 5 (2x), last vs FDU 12/20/20
BLK: 1 (2x), last vs FDU 12/20/20
STL: 1 (3x), last vs FDU 12/20/20
MIN: 31, vs FDU 12/20/20

CAREER HIGHS

PTS: 18, vs. LIU 3/2/2020
REB: 8, at Merrimack 2/29/2020
FGM: 7, vs. LIU 3/2/2020
FGA: 14, at SFBK 12/14/20
3FGM: 2, vs. LIU 3/2/2020
3FGA: 7 (2x), last vs FDU 12/20/20
FTM: 3 (6x), last vs FDU 12/20/20
FTA: 7, vs. Wagner 1/7/19
AST: 5, at SFBK 12/14/20
BLK: 1 (4x), last vs FDU 12/20/20
STL: 4, vs. Wagner 1/25/2020
MIN: 31, vs FDU 12/20/20

#1 TOPPIN, Forever

Opponent	Date	GS	MIN	Total		3-Pointers		Free throws		Rebounds				PF	A	T/O	BLK	STL	PTS	AVG	
				FG-FGA	PCT	3FG-3FGA	PCT	FT-FTA	PCT	OFF	DEF	TOT	AVG								
at St. Francis Brooklyn	12/14/2020	*	26:36	3-14	.214	1-7	.143	0-0	.000	0	1	1	1.0	1	5	5	0	1	7	7.0	
at St. Francis Brooklyn	12/15/2020	*	27:29	1-5	.200	1-5	.200	0-2	.000	0	1	1	1.0	1	1	4	1	0	3	5.0	
Fairleigh Dickinson	12/19/2020	*	24:51	2-6	.333	1-2	.500	1-2	.500	0	1	1	1.0	2	2	3	0	1	6	5.3	
Fairleigh Dickinson	12/20/2020	*	31:28	5-13	.385	3-7	.429	3-3	1.000	1	2	3	1.5	1	5	1	1	1	16	8.0	
Totals			4	110:24	11-38	.289	6-21	.286	4-7	.571	1	5	6	1.5	5	13	13	2	3	32	8.0

Player Averages

Games Played	Minutes/game	Points/game	FG Pct	3FG Pct	FT Pct	Rebounds/game	Assists/game	Turnovers/game	Assist/Turnover ratio	Steals/game	Blocks/game
4	27.6	8.0	28.9	28.6	57.1	1.5	3.3	3.3	1.0	0.8	0.5

2020-21: Started in all four games...Scored a season high 16 points vs FDU and tied a career high 5 assists

Christain Academy Helped the team to a state championship.

2019-20: Saw action in 28 games making seven starts a sophomore...Averaged 17.1 minutes per game...Totaled 130 points, 76 rebounds, 51 assists and 38 steals... Scored a career-high 18 points against LIU and grabbed a career-high eight rebounds at Merrimack.

2018-19: Saw action in 19 games for the Blue Devils as a rookie...Averaged 6.2 minutes per game, 1.6 points, and 0.7 rebounds...Scored a season-high seven points and played a season-high 12 minutes against LIU Brooklyn... Had a season-high two steals against Wagner.

Before Central: Played for head coach Jio Fontan at Sinai

				Field Goals		3-Point		F-Throws		Rebounds										Scoring	
SEASON	TEAM	GP-GS	MIN/AVG	FG-FGA	FG%	3FG-FGA	3FG%	FT-FTA	FT%	OFF	DEF	TOT	AVG	PF-FO	AST	TO	BLK	STL	PTS	AVG	
2018-19	CCSU	19-0	119/6.2	11-26	.423	3-6	.500	5-17	.294	1	13	14	0.7	17-0	7	21	0	4	30	1.6	
2019-20	CCSU	28-7	480/17.1	39-140	.279	15-57	.263	37-62	.597	12	50	62	2.2	65-3	44	69	7	34	130	4.6	
2020-21	CCSU	4-4	110/27.6	11-38	.289	6-21	.286	4-7	.571	1	5	6	1.5	5-0	13	13	2	3	32	8.0	



• Belle Lanpher • Fr. • G • 5-5 •
• Princeton, MA • Wachusett Regional •

2020-21 GAME-BY-GAME STATS



2020-21 Central Conn. St. Women's Basketball
Individual Game-by-Game
All games

Page 2/14
as of Dec 22, 2020

2020-21 GAME HIGHS

PTS: 12, at SFBK 12/15/20

REB: 3, at SFBK 12/15/20

FGM: 3, at SFBK 12/15/20

FGA: 5, at SFBK 12/15/20

3FGM: 1, at SFBK 12/15/20

3FGA: 3, at SFBK 12/15/20

FTM: 5, at SFBK 12/15/20

FTA: 5 (2x), last vs FDU 12/20/20

AST: 2 (3x), last vs FDU 12/20/20

BLK: —

STL: 2, at SFBK 12/15/20

MIN: 15, vs FDU 12/19/20

#2 LANPHER, Belle

Opponent	Date	GS	MIN	Total		3-Pointers		Free throws		Rebounds				PF	A	T/O	BLK	STL	PTS	AVG
				FG-FGA	PCT	3FG-3FGA	PCT	FT-FTA	PCT	OFF	DEF	TOT	AVG							
at St. Francis Brooklyn	12/14/2020		11:46	1-4	.250	0-1	.000	1-2	.500	0	0	0	0.0	3	2	1	0	0	3	3.0
at St. Francis Brooklyn	12/15/2020		12:31	3-5	.600	1-3	.333	5-5	1.000	1	2	3	1.5	0	2	1	0	2	12	7.5
Fairleigh Dickinson	12/19/2020		15:09	0-4	.000	0-3	.000	2-2	1.000	0	2	2	1.7	2	1	2	0	1	2	5.7
Fairleigh Dickinson	12/20/2020		09:34	1-2	.500	0-1	.000	2-5	.400	0	2	2	1.8	2	2	2	0	0	4	5.3
Totals		0	49:00	5-15	.333	1-8	.125	10-14	.714	1	6	7	1.8	7	7	6	0	3	21	5.3

Player Averages

Games Played	Minutes/ game	Points/ game	FG Pct	3FG Pct	FT Pct	Rebounds/ game	Assists/ game	Turnovers/ game	Assist/Turnover ratio	Steals/ game	Blocks/ game
4	12.3	5.3	33.3	12.5	71.4	1.8	1.8	1.5	1.2	0.8	0.0

CAREER HIGHS

PTS: 12, at SFBK 12/15/20

REB: 3, at SFBK 12/15/20

FGM: 3, at SFBK 12/15/20

FGA: 5, at SFBK 12/15/20

3FGM: 1, at SFBK 12/15/20

3FGA: 3, at SFBK 12/15/20

FTM: 5, at SFBK 12/15/20

FTA: 5 (2x), last vs FDU 12/20/20

AST: 2 (3x), last vs FDU 12/20/20

BLK: —

STL: 2, at SFBK 12/15/20

MIN: 15, vs FDU 12/19/20

2020-21: Has made an appearance in each game...
Scored a career best 12 pts vs SFBK, including 5-5 FT

BEFORE CCSU: Named league All-Star...Made Worcester Telegram Super Team...Won Mid-Watch MVP award...Named Telegram and Gazette Player of the Year...Named Player of the Year in Central Massachusetts by the Women's Basketball Coaches Association.

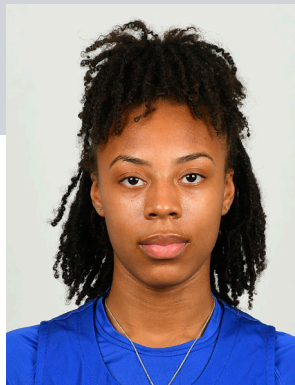


LANPHER, Belle

				Field Goals		3-Point		F-Throws		Rebounds				Scoring						
SEASON	TEAM	GP-GS	MIN/AVG	FG-FGA	FG%	3FG-FGA	3FG%	FT-FTA	FT%	OFF	DEF	TOT	AVG	PF-FO	AST	TOT	BLK	STL	PTS	AVG
2020-21	CCSU	4-0	49/12.3	5-15	.333	1-8	.125	10-14	.714	1	6	7	1.8	7-0	7	6	0	3	21	5.3
TOTAL		4-0	49/12.3	5-15	.333	1-8	.125	10-14	.714	1	6	7	1.8	7-0	7	6	0	3	21	5.3



				Field Goals		3-Point		F-Throws		Rebounds										Scoring	
SEASON	TEAM	GP-GS	MIN/AVG	FG-FGA	FG%	3FG-FGA	3FG%	FT-FTA	FT%	OFF	DEF	TOT	AVG	PF-FO	AST	TO	BLK	STL	PTS	AVG	
2020-21	CCSU	2-0	1/0.6	1-1	1.000	0-0	.000	0-0	.000	0	0	0	0.0	1-0	0	0	0	0	2	1.0	
TOTAL		2-0	1/0.6	1-1	1.000	0-0	.000	0-0	.000	0	0	0	0.0	1-0	0	0	0	0	2	1.0	



11

• Dejah Jenkins • So. • G • 5-7 •
• Dorchester, MA • Cathedral High School •

2020-21 GAME-BY-GAME STATS



2020-21 Central Conn. St. Women's Basketball
Individual Game-by-Game
All games

Page 4/14
as of Dec 22, 2020

2020-21 GAME HIGHS

PTS: 12, vs FDU 12/20/20

REB: 4, vs FDU 12/20/20

FGM: 3 (2x), last vs FDU 12/20/20

FGA: 6, last vs FDU 12/20/20

3FGM: 2, vs FDU 12/19/20

3FGA: 2 (3x), last vs FDU 12/20/20

FTM: 5, vs FDU 12/20/20

FTA: 6, vs FDU 12/20/20

AST: 1, at SFBK 12/14/20

BLK: —

STL: 1 (2x), last at SFBK 12/15/20

MIN: 13, vs FDU 12/20/20

#11 JENKINS, Dejah

Opponent	Date	GS	MIN	Total		3-Pointers		Free throws		Rebounds		PF	A	T/O	BLK	STL	PTS	AVG	
				FG-FGA	PCT	3FG-3FGA	PCT	FT-FTA	PCT	OFF	DEF								TOT
at St. Francis Brooklyn	12/14/2020		11:07	1-2	.500	0-1	.000	2-2	1.000	1	0	1	1.0	0	1	2	4	4.0	
at St. Francis Brooklyn	12/15/2020		11:49	2-3	.667	1-2	.500	1-1	1.000	0	0	0	0.5	0	0	2	6	5.0	
Fairleigh Dickinson	12/19/2020		06:55	3-6	.500	2-2	1.000	0-0	.000	0	0	0	0.3	0	0	1	0	8	6.0
Fairleigh Dickinson	12/20/2020		13:17	3-6	.500	1-2	.500	5-6	.833	0	4	4	1.3	1	0	0	12	7.5	
Totals		0	43:08	9-17	.529	4-7	.571	8-9	.889	1	4	5	1.3	1	5	0	2	30	7.5

Player Averages

Games Played	Minutes/ game	Points/ game	FG Pct	3FG Pct	FT Pct	Rebounds/ game	Assists/ game	Turnovers/ game	Assist/Turnover ratio	Steals/ game	Blocks/ game
4	10.8	7.5	52.9	57.1	88.9	1.3	0.3	1.3	0.2	0.5	0.0

CAREER HIGHS

PTS: 12 (2x), last vs FDU 12/20/20

REB: 4 (2x), last vs FDU 12/20/20

FGM: 5, at FGCU 12/17/19

FGA: 14, vs. SFU 1/4/20

3FGM: 2 (4x), last vs FDU 12/19/20

3FGA: 8, vs. SFU 1/4/20

FTM: 5 (2x), vs FDU 12/20/20

FTA: 6 (2x), vs FDU 12/20/20

AST: 3, at Merrimack 2/29/2020

BLK: —

STL: 2, at Merrimack 2/29/2020

MIN: 22, vs. SFU 1/4/20

2020-21: Scored in each game...Tied a career high 12 points vs FDU...Averaging 11 minutes

and senior...Graduated on the honor roll.

2019-20: Saw action in 26 games in her rookie season...Averaged 9.4 minutes per game...Totaled 102 points, while averaging 3.9 points per game...Finished the season going 24-33 (.727) from the foul line... Scored a career-high 12 points at Florida Gulf Coast... Grabbed a career-high five rebounds at Fairleigh Dickinson.

Before Central: Varsity starter since seventh grade... Three-time state champion...Scored 1,600 career points at Cathedral...Made the All-Scholastic Team as a junior

SEASON	TEAM	GP-GS	MIN/AVG	FG-FGA	FG%	3FG-FGA	3FG%	FT-FTA	FT%	OFF	DEF	TOT	AVG	PF-FO	AST	TO	BLK	STL	PTS	AVG
2019-20	CCSU	26-0	244/9.4	34-102	.333	10-37	.270	24-33	.727	4	20	24	0.9	15-0	17	20	1	7	102	3.9
2020-21	CCSU	4-0	43/10.8	9-17	.529	4-7	.571	8-9	.889	1	4	5	1.3	1-0	1	5	0	2	30	7.5
TOTAL		30-0	287/9.6	43-119	.361	14-44	.318	32-42	.762	5	24	29	1.0	16-0	18	25	1	9	132	4.4



12

• Jewel Porter • Sr. • F • 6-1 •
• Baltimore, MD • Hartford Community College •

CAREER HIGHS

PTS: 4 (2x), last at UNH 12/8/19
REB: 2 (2x), last at FGCU 12/17/19
FGM: 2 (3x), last at Wagner 2/21/2020
FGA: 4 (2x), last at RMU 2/1/2020
3FGM: 1, at Bryant 2/8/2020
3FGA: 1 (4x), last at Merrimack 2/29/2020
FTM: 2, at FDU 1/20/2020
FTA: 2 (3x), last at RMU 2/1/2020
AST: 1 (3x), last at Bryant 2/8/2020
BLK:
STL: 2, at Bryant 2/8/2020
MIN: 12, at Bryant 2/8/2020

2020-21: Opted out due to COVID-19 concerns

2019-20: Saw action in 19 games in her first season with Central...Averaged 5.5 minutes, 1.4 points and 0.7 rebounds per game...Totaled 26 points and 13 rebounds her junior year.

Before Central: Two-time high school state champion (2015, '16)...Basketball academy MVP in 2017...Transfer

from Hartford Community College...Recognized as 695 Hoops MVP for Junior College...Two-time NJCAA Region Champion...Two-time NJCAA District Champion...Honorable Mention All MD-JUCO.

				Field Goals		3-Point		F-Throws		Rebounds								Scoring		
SEASON	TEAM	GP-GS	MIN/AVG	FG-FGA	FG%	3FG-FGA	3FG%	FT-FTA	FT%	OFF	DEF	TOT	AVG	PF-FO	AST	TO	BLK	STL	PTS	AVG
2019-20	CCSU	18-0	101/5.6	10-29	.345	1-3	.333	3-7	.429	5	8	13	0.7	21-0	3	13	0	4	24	1.3
TOTAL		18-0	101/5.6	10-29	.345	1-3	.333	3-7	.429	5	8	13	0.7	21-0	3	13	0	4	24	1.3



14

• Ashley Forker • Sr. • G/F • 5-10 •
• Telford, PA • Faith Christian Academy •

2020-21 GAME-BY-GAME STATS



2020-21 Central Conn. St. Women's Basketball
Individual Game-by-Game
All games

Page 5/14
as of Dec 22, 2020

#14 FORKER, Ashley

Opponent	Date	GS	MIN	Total		3-Pointers		Free throws		Rebounds			PF	A	T/O	BLK	STL	PTS	AVG	
				FG-FA	PCT	3FG-3FGA	PCT	FT-FTA	PCT	OFF	DEF	TOT								AVG
at St. Francis Brooklyn	12/14/2020	*	31:29	8-12	.667	1-3	.333	0-0	.000	4	2	6	6.0	0	5	0	0	3	17	17.0
at St. Francis Brooklyn	12/15/2020	*	33:22	3-8	.375	2-4	.500	0-0	.000	2	2	4	5.0	0	7	3	1	0	8	12.5
Fairleigh Dickinson	12/19/2020	*	35:14	3-7	.429	0-1	.000	0-0	.000	0	4	4	4.7	1	8	2	1	2	6	10.3
Fairleigh Dickinson	12/20/2020	*	28:39	4-7	.571	0-2	.000	1-2	.500	1	3	4	4.5	1	1	1	0	1	9	10.0
Totals		4	128:44	18-34	.529	3-10	.300	1-2	.500	7	11	18	4.5	2	21	6	2	6	40	10.0

Player Averages

Games Played	Minutes/game	Points/game	FG Pct	3FG Pct	FT Pct	Rebounds/game	Assists/game	Turnovers/game	Assist/Turnover ratio	Steals/game	Blocks/game
4	32.2	10.0	52.9	30.0	50.0	4.5	5.3	1.5	3.5	1.5	0.5

2020-21 GAME HIGHS

PTS: 17, at SFBK 12/14/20
REB: 6, at SFBK 12/14/20
FGM: 8, at SFBK 12/14/20
FGA: 12, at SFBK 12/14/20
3FGM: 2, at SFBK 12/15/20
3FGA: 4 at SFBK 12/15/20
FTM: 1, vs FDU 12/20/20
FTA: 2, vs FDU 12/20/20
AST: 8, vs FDU 12/19/20
BLK: 1 (2x), last vs FDU 12/19/20
STL: 3, at SFBK 12/14/20
MIN: 35, vs FDU 12/19/20

CAREER HIGHS

PTS: 23, vs. Wagner 1/25/2020
REB: 13, at Hartford 12/21/19
FGM: 8, at SFBK 12/14/20
FGA: 16, at LIU 1/13/2020
3FGM: 5, at Pitt 11/11/19
3FGA: 7, at Pitt 11/11/19
FTM: 9, at Hartford 12/21/19
FTA: 9, at Hartford 12/21/19
AST: 10, vs. UML 12/5/19
BLK: 2 (2x), last at Bryant 2/8/2020
STL: 5, at Bryant 2/8/2020
MIN: 36 (2x), last vs. UML 12/5/19

2020-21: Has started in every game...Made a career high 8 FG vs SFBK

2019-20: Played in all 29 games making 28 starts as a junior...Averaged 30.6 minutes, 9.3 points and 4.5 rebounds...Shot .393 from the field and .383 from behind the arc...Led the team in assists with 89...Third in scoring finishing the season with 269 points...Scored a career-high 23 points against Wagner...Posted a double-double against UMass Lowell scoring 12 points and dishing a career-high 10 assists...Had her second double-double at Hartford with 16 points and 13 rebounds...NEC Academic Honor Roll...NEC Commissioners Honor Roll.

2018-19: Saw action in all 28 games and made 23 starts as a sophomore...Averaged 22.1 minutes, 3.3

points and 4.6 rebounds...Shot .407 from the field...Scored a season-high 11 points at Sacred Heart (5-of-7 shooting)...Grabbed nine rebounds at Fairleigh Dickinson...Dished seven assists at Saint Francis U...Had three games with three steals...Dished 65 assists on the season, the second highest on the team.

2017-18: Played in all 30 games and made 14 starts...Averaged 3.0 points and 2.5 rebounds in 17.1 minutes...Shot .417 from the field and .414 from three-point range...Scored a career-high 12 points (5-of-6 shooting) in 28 minutes against St. Francis Brooklyn...Grabbed six rebounds against Fairleigh Dickinson...Dished out four assists with nine points against Saint Francis U...Blocked two shots and grabbed five rebounds against Bryant.

Before Central: Faith Christian Academy's all-time leader in scoring, assists, steals, blocks, rebounds...Named the League MVP during her senior season...Selected as the MVP runner-up in her junior year...Was a four-time First Team All-League pick...Earned Second Team All-State as a senior.

SEASON	TEAM	GP-GS	MIN/AVG	FG-FGA	FG%	3FG-FGA	3FG%	FT-FTA	FT%	OFF	DEF	TOT	AVG	PF-FO	AST	TO	BLK	STL	PTS	AVG
2017-18	CCSU	30-14	514/17.1	35-84	.417	12-29	.414	9-15	.600	34	41	75	2.5	32-0	33	44	9	10	91	3.0
2018-19	CCSU	28-23	623/22.2	37-91	.407	10-30	.333	8-13	.615	36	92	128	4.6	35-0	65	52	6	31	92	3.3
2019-20	CCSU	29-28	886/30.6	97-247	.393	31-81	.383	44-51	.863	53	78	131	4.5	51-0	89	71	11	38	269	9.3
2020-21	CCSU	4-4	129/32.2	18-34	.529	3-10	.300	1-2	.500	7	11	18	4.5	2-0	21	6	2	6	40	10.0
TOTAL		91-69	2151/23.6	187-456	.410	56-150	.373	62-81	.765	130	222	352	3.9	120-0	208	173	28	85	492	5.4



15

• Emma McCamus • Sr. • G • 5-7 •
• Cavan, Ontario • Bill Crothers Secondary •

2020-21 GAME-BY-GAME STATS



2020-21 Central Conn. St. Women's Basketball
Individual Game-by-Game
All games

Page 6/14
as of Dec 22, 2020

#15 MCCAMUS, Emma

Opponent	Date	GS	MIN	Total		3-Pointers		Free throws		Rebounds				PF	T/O	BLK	STL	PTS	AVG
				FG-FGA	PCT	3FG-3FGA	PCT	FT-FTA	PCT	OFF	DEF	TOT	AVG						
at St. Francis Brooklyn	12/14/2020	*	25:29	11-14	.786	3-4	.750	5-5	1.000	1	1	2	2.0	0	1	0	1	3	30.0
at St. Francis Brooklyn	12/15/2020	*	28:11	4-14	.286	2-6	.333	4-4	1.000	1	2	3	2.5	0	3	1	3	1	22.0
Fairleigh Dickinson	12/19/2020	*	27:18	6-16	.375	2-6	.333	0-0	.000	2	4	6	3.7	3	1	1	0	1	14
Fairleigh Dickinson	12/20/2020	*	23:50	3-8	.375	1-4	.250	2-2	1.000	2	2	4	3.8	2	2	3	0	1	9
Totals			4	104:48	24-52	.462	8-20	.400	11-11	1.000	6	9	15	3.8	5	7	5	4	67

Player Averages

Games Played	Minutes/game	Points/game	FG Pct	3FG Pct	FT Pct	Rebounds/game	Assists/game	Turnovers/game	Assist/Turnover ratio	Steals/game	Blocks/game
4	26.2	16.8	46.2	40.0	100.0	3.8	1.8	1.3	1.4	1.5	1.0

2020-21 GAME HIGHS

PTS: 30, at SFBK 12/14/20

REB: 6, vs FDU 12/19/20

FGM: 11, at SFBK 12/14/20

FGA: 16, vs FDU 12/19/20

3FGM: 3, at SFBK 12/14/20

3FGA: 6 (2x), last vs FDU 12/19/20

FTM: 5, at SFBK 12/14/20

FTA: 5, at SFBK 12/14/20

ASST: 3, at SFBK 12/15/20

BLK: 3, at SFBK 12/15/20

STL: 3, at SFBK 12/14/20

MIN: 28, at SFBK 12/14/20

CAREER HIGHS

PTS: 30 (2x), last at SFBK 12/14/20

REB: 9, at St. Francis Brooklyn 2/18/19

FGM: 11, at SFBK 12/14/20

FGA: 16 (3x), last vs FDU 12/19/20

3FGM: 3, at SFBK 12/14/20

3FGA: 8, at Buffalo 11/5/19

FTM: 9, vs. RMU 1/2/20

FTA: 11, vs. St. Francis Brooklyn 1/20/18

ASST: 5, vs. Merrimack 1/11/2020

BLK: 3, at SFBK 12/15/20

STL: 4 (3x), last at Bryant 2/8/2020

MIN: 32 (2x), last at Wagner 2/21/2020

2020-21: Has started in each game...Leads team in scoring at 16.8 ppg...Tied career high 30 pts at SFBK

2019-20: Saw action in 26 games making 24 starts as a junior...Averaged 25.7 minutes, 10.8 points and 2.2 rebounds per game...Finished the season second in scoring with 280 points...Went 71-92 (.772) from the foul line...Scored double-figures in 14 games...Scored a career-high 30 points against Brown shooting 9-16 (.563) from the floor and a perfect 7-7 from the foul line...Had her second 20+ point game of the season after scoring 25 points against Fairleigh Dickinson...Grabbed a career-high nine rebounds against St. Francis Brooklyn...NEC Academic Honor Roll...NEC Commissioners Honor Roll.

2018-19: Made an appearance in 27 games and made

two starts as a sophomore...Averaged 28.8 minutes, 7.8 points, and 2.6 rebounds...Had nine double-figure scoring games...Scored a career-high 19 points at Bryant (7-of-15 shooting)...Made a season-high seven free throws against New Hampshire...Had 10 points, five rebounds, and three assists at Brown...Post 17 points, three rebounds, and three assists against Buffalo...Recorded 10 points nine rebounds and one block at St. Francis Brooklyn...Shot .500 or better in eight games...Shot .757 from the foul line...Totaled 210 points.

2017-18: Played in 30 games and made four starts...Averaged 5.6 points and 1.4 rebounds in 16.1 minutes per game...Had eight double-figure scoring games...Scored a career-high 15 points in 27 minutes at St. Francis Brooklyn...Had 12 points with eight rebounds and three steals in 25 minutes against St. Francis

Brooklyn...Dished out four assists without a turnover at Saint Francis U...Scored 13 points on 5-of-5 shooting against Robert Morris...Made her first career start at Duquesne and grabbed five rebounds.

Before Central: Named captain of the 2016-17 Bill Crothers Prep Basketball Team and the 2017 Matrix AAU Basketball Team...Received the Hustler Award at the 2015 Centennial Colts Classic Tournament...Was the 2013 Advantage Titans Defensive Player of the Year...Earned Honour Roll from 2012-17...Also competed in track and field...At the 2014 YRAA Track & Field Championships, took first in the 100m and 4x100m relay...At the 2014 OFSAA Central Championships, placed third in the 100m and won the 4x100m.

SEASON	TEAM	GP-GS	MIN/AVG	FG-FGA	FG%	3FG-FGA	3FG%	FT-FTA	FT%	OFF	DEF	TOT	AVG	PF-FO	AST	TO	BLK	STL	PTS	AVG
2017-18	CCSU	30-4	484/16.1	55-144	.382	10-30	.333	48-64	.750	19	22	41	1.4	45-1	33	44	4	19	168	5.6
2018-19	CCSU	27-2	593/22.0	71-191	.372	15-57	.263	53-70	.757	27	44	71	2.6	55-1	30	27	4	19	210	7.8
2019-20	CCSU	26-24	668/25.7	93-258	.360	23-82	.280	71-92	.772	32	26	58	2.2	47-0	49	41	9	37	280	10.8
2020-21	CCSU	4-4	105/26.2	24-52	.462	8-20	.400	11-11	1.000	6	9	15	3.8	5-0	7	5	4	6	67	16.8
TOTAL		87-34	1850/21.3	243-645	.377	56-189	.296	183-237	.772	84	101	185	2.1	152-2	119	117	21	81	725	8.3



• Ali Napoli • Fr. • F • 6-0 •
• Amesbury, MA • Amesbury •



2020-21 Central Conn. St. Women's Basketball
Individual Game-by-Game
All games

Page 7/14
as of Dec 22, 2020

PTS: —
REB: —
FGM: —
FGA: 3, at SFBK 12/14/20
3FGM: —
3FGA: 2, at SFBK 12/14/20
FTM: —
FTA: —
ASST: —
BLK: —
STL: —
MIN: 6, vs FDU 12/19/20

#20 NAPOLI, Alli

				Total		3-Pointers		Free throws		Rebounds										
Opponent	Date	GS	MIN	FG-FGA	PCT	3FG-3FGA	PCT	FT-FTA	PCT	OFF	DEF	TOT	AVG	PF	A	T/O	BLK	STL	PTS	AVG
at St. Francis Brooklyn	12/14/2020		03:45	0-3	.000	0-2	.000	0-0	.000	0	0	0	0.0	0	0	0	0	0	0	0.0
Fairleigh Dickinson	12/19/2020		06:49	0-1	.000	0-0	.000	0-0	.000	0	0	0	0.0	1	0	0	0	0	0	0.0
Totals		0	10:34	0-4	.000	0-2	.000	0-0	.000	0	0	0	0.0	1	0	0	0	0	0	0.0

Player Averages

[illegible]

PTS: —
REB: —
FGM: —
FGA: 3, at SFBK 12/14/20
3FGM: —
3FGA: 2, at SFBK 12/14/20
FTM: —
FTA: —
ASST: —
BLK: —
STL: —
MIN: 6, vs FDU 12/19/20

2020-21: Made appearances vs SFBK and FDU

NOTES: In her collegiate debut, posted nine points and seven rebounds at Buffalo...Had four assists against Pitt...Grabbed five rebounds and had one basket at Duquesne...Posted eight points, six rebounds, one assist and two blocks vs. Albany...Scored six points and had seven rebounds vs. UMass Lowell...Grabbed five rebounds at Hartford...Scored four points at

Sacred Heart...Scored four points and had one steal at LIU...Had two points, three rebounds, one assist and one steal at Wagner...Scored a basket, grabbed five rebounds and had two steals at Merrimack

				Field Goals		3-Point		F-Throws		Rebounds									Scoring	
SEASON	TEAM	GP-GS	MIN/AVG	FG-FGA	FG%	3FG-FGA	3FG%	FT-FTA	FT%	OFF	DEF	TOT	AVG	PF-FO	AST	TO	BLK	STL	PTS	AVG
2020-21	CCSU	2-0	11/5.3	0-4	.000	0-2	.000	0-0	.000	0	0	0	0.0	1-0	0	0	0	0	0	0.0
TOTAL		2-0	11/5.3	0-4	.000	0-2	.000	0-0	.000	0	0	0	0.0	1-0	0	0	0	0	0	0.0



21

• Claire Sutherland-Case • So. • F • 6-1 •
• Hamilton, Ontario • Westdale Secondary •

2020-21 GAME-BY-GAME STATS



2020-21 Central Conn. St. Women's Basketball
Individual Game-by-Game
All games

Page 8/14
as of Dec 22, 2020

2020-21 GAME HIGHS

PTS: 11, vs FDU 12/20/20
REB: 6, vs FDU 12/20/20
FGM: 2, vs FDU 12/20/20
FGA: 10, vs FDU 12/20/20
3FGM: 2, vs FDU 12/20/20
3FGA: 7, vs FDU 12/20/20
FTM: 5, vs FDU 12/20/20
FTA: 6, vs FDU 12/20/20
AST: 1, at SFBK 12/14/20
BLK: —
STL: —
MIN: 17, vs FDU 12/20/20

#21 SUTHERLAND-CASE, Claire

Opponent	Date	GS	MIN	FG-FGA	PCT	3FG-3FGA	PCT	FT-FTA	PCT	OFF	DEF	TOT	AVG	PF	A	T/O	BLK	STL	PTS	AVG
at St. Francis Brooklyn	12/14/2020		06:24	1-4	.250	1-3	.333	0-0	.000	0	0	0	0.0	0	1	0	0	0	3	3.0
at St. Francis Brooklyn	12/15/2020		06:38	1-1	1.000	1-1	1.000	1-2	.500	0	0	0	0.0	3	0	0	0	0	4	3.5
Fairleigh Dickinson	12/19/2020		06:27	0-1	.000	0-0	.000	1-2	.500	0	2	2	0.7	2	0	1	0	0	1	2.7
Fairleigh Dickinson	12/20/2020		17:14	2-10	.200	2-7	.286	5-6	.833	3	3	6	2.0	3	0	0	0	0	11	4.8
Totals		0	36:43	4-16	.250	4-11	.364	7-10	.700	3	5	8	2.0	8	1	1	0	0	19	4.8

Player Averages

Games Played	Minutes/game	Points/game	FG Pct	3FG Pct	FT Pct	Rebounds/game	Assists/game	Turnovers/game	Assist/Turnover ratio	Steals/game	Blocks/game
4	9.2	4.8	25.0	36.4	70.0	2.0	0.3	0.3	1.0	0.0	0.0

CAREER HIGHS

PTS: 11, vs FDU 12/20/20
REB: 7, at Duquesne 11/26/19
FGM: 2, vs FDU 12/20/20
FGA: 10, vs FDU 12/20/20
3FGM: 2, vs FDU 12/20/20
3FGA: 7, vs FDU 12/20/20
FTM: 5, vs FDU 12/20/20
FTA: 6 (2x), last vs FDU 12/20/20
AST: 1, at SFBK 12/14/20
BLK: —
STL: 1, vs. UML 12/5/19
MIN: 17, vs FDU 12/20/20

2020-21: Appeared in every game this season...Scored a career high 11 points vs FDU

2019-20: Saw action in 11 games as a rookie...Averaged 5.3 minutes, 0.4 points and 1.5 rebounds...Grabbed a season-high seven rebounds and had four blocks at Duquesne...Scored her first career basket at Merrimack.

Before Central: Ontario High School Player of the Year...OFSAA AAA Champion...Named to the Ontario High School All-Star Team...Member of the Juel All-Star Team...Voted high school basketball MVP.

SEASON	TEAM	GP-GS	MIN/AVG	FG-FGA	FG%	3FG-FGA	3FG%	FT-FTA	FT%	OFF	DEF	TOT	AVG	PF-FO	AST	TO	BLK	STL	PTS	AVG
2019-20	CCSU	11-0	59/5.3	1-18	.056	0-12	.000	2-8	.250	2	14	16	1.5	8-0	0	6	6	1	4	0.4
2020-21	CCSU	4-0	37/9.2	4-16	.250	4-11	.364	7-10	.700	3	5	8	2.0	8-0	1	1	0	0	19	4.8
TOTAL		15-0	95/6.3	5-34	.147	4-23	.174	9-18	.500	5	19	24	1.6	16-0	1	7	6	1	23	1.5



22

• Jamey Napoleon • So. • F • 6-0 •
• Pittsburgh, PA • Mount Lebanon •

2020-21 GAME-BY-GAME STATS



2020-21 Central Conn. St. Women's Basketball
Individual Game-by-Game
All games

Page 9/14
as of Dec 22, 2020

2020-21 GAME HIGHS

PTS: 4 (2x), last vs FDU 12/19/20

REB: 8, at SFBK 12/14/20

FGM: 2 (2x), last vs FDU 12/19/20

FGA: 5, at SFBK 12/15/20

3FGM: —

3FGA: 1, vs FDU 12/19/20

FTM: —

FTA: —

ASST: 3, vs FDU 12/19/20

BLK: 2, at SFBK 12/14/20

STL: 2, vs FDU 12/19/20

MIN: 29, vs FDU 12/19/20

#22 NAPOLEON, Jamey

Opponent	Date	GS	MIN	Total		3-Pointers		Free throws		Rebounds				PF	A	T/O	BLK	STL	PTS	AVG
				FG-FGA	PCT	3FG-3FGA	PCT	FT-FTA	PCT	OFF	DEF	TOT	AVG							
at St. Francis Brooklyn	12/14/2020	*	19:30	1-1	1.000	0-0	.000	0-0	.000	1	8	9	9.0	2	1	2	2	0	2	2.0
at St. Francis Brooklyn	12/15/2020		20:29	2-5	.400	0-0	.000	0-0	.000	2	4	6	7.5	1	1	2	1	0	4	3.0
Fairleigh Dickinson	12/19/2020	*	29:13	2-3	.667	0-1	.000	0-0	.000	1	5	6	7.0	0	3	1	1	2	4	3.3
Fairleigh Dickinson	12/20/2020	*	23:04	1-2	.500	0-0	.000	0-0	.000	0	4	4	6.3	2	0	2	1	0	2	3.0
Totals			3 92:16	6-11	.545	0-1	.000	0-0	.000	4	21	25	6.3	5	5	7	5	2	12	3.0

Player Averages

Games Played	Minutes/ game	Points/ game	FG Pct	3FG Pct	FT Pct	Rebounds/ game	Assists/ game	Turnovers/ game	Assist/Turnover ratio	Steals/ game	Blocks/ game
4	23.1	3.0	54.5	0.0	0.0	6.3	1.3	1.8	0.7	0.5	1.3

CAREER HIGHS

PTS: 12, at Pitt 11/11/19

REB: 8 (2x), last at SFBK 12/14/20

FGM: 5, at FDU 1/12/19

FGA: 13, at LIU 3/2/19

3FGM: 3, at Pitt 11/11/19

3FGA: 8, at Pitt 11/11/19

FTM: 4, at Wagner 2/6/17

FTA: 4 (2x), last at Wagner 2/6/17

ASST: 4, at Brown 11/7/18

BLK: 2 (2x), last at SFBK 12/14/20

STL: 3, vs. Bryant 2/15/2020

MIN: 32, at Pitt 11/11/19

2020-21: Started in 3 out of 4 games...Tied a career high 8 rebounds at SFBK

2019-20: Saw action in all 29 games making four starts as a rookie...Averaged 14.8 minutes, 1.8 points and 2.9 rebounds...Shot .432 from the floor and went 19-20 (.950) from the foul line...Totaled 51 points, 84 rebounds, 12 assists, 14 blocks and 11 steals...Scored nine points, grabbed seven rebounds and had three steals in her college debut against Buffalo...Dished four assists at Pittsburgh...Went 6-6 from the foul line against Albany...NEC Academic Honor Roll.

Before Central: Four-year varsity letter winner for basketball and volleyball...Varsity letter winner in

track (Second-Team All Selection)...National Honors Society member...Graduated Cum Laude...Recipient of the Junior Book Awards.

NAPOLEON, Jamey

				Field Goals		3-Point		F-Throws		Rebounds				Scoring						
SEASON	TEAM	GP-GS	MIN/AVG	FG-FGA	FG%	3FG-FGA	3FG%	FT-FTA	FT%	OFF	DEF	TOT	AVG	PF-FO	AST	TO	BLK	STL	PTS	AVG
2019-20	CCSU	29-4	430/14.8	16-37	.432	0-0	.000	19-20	.950	19	65	84	2.9	30-0	12	25	14	11	51	1.8
2020-21	CCSU	4-3	92/23.1	6-11	.545	0-1	.000	0-0	.000	4	21	25	6.3	5-0	5	7	5	2	12	3.0
TOTAL		33-7	523/15.8	22-48	.458	0-1	.000	19-20	.950	23	86	109	3.3	35-0	17	32	19	13	63	1.9



23

• Danielle Delano • Jr. • G/F • 5-9 •
• Enfield, CT • Enfield •

2020-21 GAME-BY-GAME STATS



2020-21 Central Conn. St. Women's Basketball
Individual Game-by-Game
All games

Page 10/14
as of Dec 22, 2020

2020-21 GAME HIGHS

PTS: —
REB: 1, vs FDU 12/19/20
FGM: —
FGA: 1, vs FDU 12/19/20
3FGM: —
3FGA: —
FTM: —
FTA: —
ASST: —
BLK: —
STL: 1, at SFBK 12/14/20
MIN: 3, vs FDU 12/20/20

#23 DELANO, Danielle

Opponent	Date	GS	MIN	Total		3-Pointers		Free throws		Rebounds				PF	A	T/O	BLK	STL	PTS	AVG
				FG-FGA	PCT	3FG-3FGA	PCT	FT-FTA	PCT	OFF	DEF	TOT	AVG							
at St. Francis Brooklyn	12/14/2020		02:24	0-0	.000	0-0	.000	0-0	.000	0	0	0	0.0	0	0	0	0	1	0	0.0
Fairleigh Dickinson	12/19/2020		02:26	0-1	.000	0-0	.000	0-0	.000	1	0	1	0.5	0	0	0	0	0	0	0.0
Fairleigh Dickinson	12/20/2020		03:14	0-0	.000	0-0	.000	0-0	.000	0	0	0	0.3	0	0	0	0	0	0	0.0
Totals		0	08:04	0-1	.000	0-0	.000	0-0	.000	1	0	1	0.3	0	0	0	0	1	0	0.0

Player Averages

Games Played	Minutes/game	Points/game	FG Pct	3FG Pct	FT Pct	Rebounds/game	Assists/game	Turnovers/game	Assist/Turnover ratio	Steals/game	Blocks/game
3	2.7	0.0	0.0	0.0	0.0	0.3	0.0	0.0	0.0	0.3	0.0

CAREER HIGHS

PTS: 11, vs. UML 12/5/19
REB: 7, vs. Merrimack 1/11/2020
FGM: 4, vs. UML 12/5/19
FGA: 12 (2x), last vs. UML 12/5/19
3FGM: 3, vs. UML 12/5/19
3FGA: 7, vs. UML 12/5/19
FTM: 3, at Pitt 11/11/19
FTA: 3, at Pitt 11/11/19
ASST: 5, vs. Albany 12/01/19
BLK: 1, at Bryant 2/8/2020
STL: 4, vs. Albany 12/01/19
MIN: 32, vs. UML 12/5/19

2020-21: Appeared in three games...Recorded a steal at SFBK

2019-20: Saw action in 27 games making three starts as a sophomore...Averaged 12.3 minutes per game...Posted 3.3 points and 1.1 rebounds per game...Scored 89 points, grabbed 31 rebounds, dished 23 assists and had 17 steals on the year...Scored a career-high 11 points against UMass Lowell...Grabbed a career-high seven rebounds against Merrimack...Shot .833 (10-12) from the foul line.

2018-19: Made an appearance in 14 games for Central as a freshman...Averaged 5.1 minutes per game, 1.1 points, and 0.8 rebounds...Played a season-high 15 minutes against Lehigh...Had a season-high five

rebounds, two assists, and two steals against Massachusetts.

Before Central: Attended Enfield High School, playing for head coach Jay Gaucher A 1,000-point scorer in her high school career A two-time all-conference selection Named to the all-tournament team three times Earned Rotary Tournament MVP and HoopHall MVP honors Helped team to semifinals four times Played for CT Attack and coach Ulysses Garcia

SEASON	TEAM	GP-GS	MIN/AVG	FG-FGA	FG%	3FG-FGA	3FG%	FT-FTA	FT%	OFF	DEF	TOT	AVG	PF-FO	AST	TO	BLK	STL	PTS	AVG
2018-19	CCSU	14-0	72/5.1	5-21	.238	2-7	.286	3-4	.750	5	6	11	0.8	5-0	3	9	2	2	15	1.1
2019-20	CCSU	27-3	333/12.3	33-108	.306	13-53	.245	10-12	.833	11	20	31	1.1	21-0	23	35	1	17	89	3.3
2020-21	CCSU	3-0	8/2.7	0-1	.000	0-0	.000	0-0	.000	1	0	1	0.3	0-0	0	0	0	1	0	0.0
TOTAL		44-3	413/9.4	38-130	.292	15-60	.250	13-16	.813	17	26	43	1.0	26-0	26	44	3	20	104	2.4



24

• Angelique Rodriguez • R. Sr. • G • 6-0 •
• New Britain, CT • Pittsburgh •

2020-21 GAME-BY-GAME STATS



2020-21 Central Conn. St. Women's Basketball
Individual Game-by-Game
All games

Page 11/14
as of Dec 22, 2020

2020-21 GAME HIGHS

PTS: —
REB: 2 (2x), last vs FDU 12/20/20
FGM: —
FGA: 1 (2x), last vs FDU 12/20/20
3FGM: —
3FGA: 1 (2x), last vs FDU 12/20/20
FTM: —
FTA: —
ASST: 1, vs FDU 12/19/20
BLK: —
STL: —
MIN: 9, vs FDU 12/20/20

CAREER HIGHS

PTS: —
REB: 2 (2x), last vs FDU 12/20/20
FGM: —
FGA: 1 (2x), last vs FDU 12/20/20
3FGM: —
3FGA: 1 (2x), last vs FDU 12/20/20
FTM: —
FTA: —
ASST: 1, vs FDU 12/19/20
BLK: —
STL: —
MIN: 9, vs FDU 12/20/20

#24 RODRIQUEZ, Angelique

Opponent	Date	GS	MIN	FG-FGA	PCT	3FG-3FGA	PCT	FT-FTA	PCT	OFF	DEF	TOT	AVG	PF	A	T/O	BLK	STL	PTS	AVG
at St. Francis Brooklyn	12/14/2020		00:60	0-0	.000	0-0	.000	0-0	.000	0	0	0	0.0	0	0	0	0	0	0	0.0
Fairleigh Dickinson	12/19/2020		05:38	0-1	.000	0-1	.000	0-0	.000	0	2	2	1.0	2	1	0	0	0	0	0.0
Fairleigh Dickinson	12/20/2020		09:22	0-1	.000	0-1	.000	0-0	.000	0	2	2	1.3	0	0	0	0	0	0	0.0
Totals		0	15:60	0-2	.000	0-2	.000	0-0	.000	0	4	4	1.3	2	1	0	0	0	0	0.0

Player Averages

Games Played	Minutes/ game	Points/ game	FG Pct	3FG Pct	FT Pct	Rebounds/ game	Assists/ game	Turnovers/ game	Assist/Turnover ratio	Steals/ game	Blocks/ game
3	5.3	0.0	0.0	0.0	0.0	1.3	0.3	0.0	1.0	0.0	0.0

2020-21: Appeared in three games

2019-20: Did not compete due to NCAA transfer rules.

Before Central: Transfer from University of Pittsburgh.

RODRIQUEZ, Angelique

				Field Goals		3-Point		F-Throws		Rebounds									Scoring	
SEASON	TEAM	GP-GS	MIN/AVG	FG-FGA	FG%	3FG-FGA	3FG%	FT-FTA	FT%	OFF	DEF	TOT	AVG	PF-FO	AST	TO	BLK	STL	PTS	AVG
2020-21	CCSU	3-0	16/5.3	0-2	.000	0-2	.000	0-0	.000	0	4	4	1.3	2-0	1	0	0	0	0	0.0
TOTAL		3-0	16/5.3	0-2	.000	0-2	.000	0-0	.000	0	4	4	1.3	2-0	1	0	0	0	0	0.0



30

• Carly Reynolds • Jr. • C • 6-2 •
• Buffalo, NY • Clarence •

2020-21 GAME-BY-GAME STATS



2020-21 Central Conn. St. Women's Basketball
Individual Game-by-Game
All games

Page 12/14
as of Dec 22, 2020

2020-21 GAME HIGHS

PTS: 3, at SFBK 12/14/20
REB: 3, vs FDU 12/19/20
FGM: 1 (2x), last vs FDU 12/19/20
FGA: 3, vs FDU 12/19/20
3FGM: 1, at SFBK 12/14/20
3FGA: 1 (2x), last vs FDU 12/19/20
FTM: 2, vs FDU 12/20/20
FTA: 2, vs FDU 12/20/20
ASST: 2, vs FDU 12/19/20
BLK: 1 (2x), last at SFBK 12/15/20
STL: —
MIN: 13, vs FDU 12/19/20

CAREER HIGHS

PTS: 11, at UNH 12/8/19
REB: 4, at SFU 2/3/2020
FGM: 3 (2x), last at SFU 2/3/2020
FGA: 5, at SFU 2/3/2020
3FGM: 1, at SFBK 12/14/20
3FGA: 1 (2x), last vs FDU 12/19/20
FTM: 5, at UNH 12/8/19
FTA: 5, at UNH 12/8/19
ASST: 1 (7x), last at UNH 12/8/19
BLK: 1 (3x), last at SFBK 12/15/20
STL: 2 (2x), at Bryant 2/8/2020
MIN: 15, at UNH 12/8/19

#30 REYNOLDS, Carly

Opponent	Date	GS	MIN	Total		3-Pointers		Free throws		Rebounds			PF			A			BLK			STL			PTS			AVG		
				FG	FGA	PCT	3FG	3FGA	PCT	FT	FTA	PCT	OFF	DEF	TOT	AVG	PF	A	T/O	BLK	STL	PTS	AVG							
at St. Francis Brooklyn	12/14/2020		12:58	1-2	.500	1-1	1.000	0-0	.000	0	0	0	0.0	0	0	0	0	0	1	0	3	3.0								
at St. Francis Brooklyn	12/15/2020		08:35	0-0	.000	0-0	.000	0-0	.000	0	1	1	0.5	1	0	0	1	0	0	0	1.5									
Fairleigh Dickinson	12/19/2020		13:23	1-3	.333	0-1	.000	0-0	.000	0	3	3	1.3	1	2	1	0	0	0	2	1.7									
Fairleigh Dickinson	12/20/2020		11:39	0-1	.000	0-0	.000	2-2	1.000	0	0	0	1.0	2	1	1	0	0	0	2	1.8									
Totals			0	46:35	2-6	.333	1-2	.500	2-2	1.000	0	4	4	1.0	4	3	2	2	0	7	1.8									

Player Averages

Games Played	Minutes/ game	Points/ game	FG Pct	3FG Pct	FT Pct	Rebounds/ game	Assists/ game	Turnovers/ game	Assist/Turnover ratio	Steals/ game	Blocks/ game
4	11.6	1.8	33.3	50.0	100.0	1.0	0.8	0.5	1.5	0.0	0.5

2020-21: Made first career three pointer at SFBK

2019-20: Made an appearance in all 29 games as a sophomore...Averaged 9.2 minutes per game...Posted 1.9 points and 1.0 rebounds per game...Had a career-high 11 points at New Hampshire after shooting 5-4 from the floor and 5-5 from the foul line...Finished the season with 55 points, 28 rebounds and eight assists...Shot a perfect 11-11 from the foul line on the season...NEC Academic Honor Roll.

2018-19: Saw action in 21 games as a freshman...Averaged 5.5 minutes per game, 0.6 points and 0.7 rebounds...Had a season-high four points and two

rebounds at Morgan State...Had a season-high two steals vs. Sacred Heart.

Before Central: Earned Clarence High School's first five-year letter...Also recognized as a scholar-athlete...Team captain her senior year and led her team to the NYS Section 6 semi-finals...Named ECIC Division 1 leader in rebounds...Named 2018 NY State's Top 10 Centers by NYG Hoops Report...Lead her team to a NYS Section 6 championship title her junior year...Honorable Mention All-WNY and All-Bee all-star as a junior...USJN U14 All-Star...OP Holiday tournament MVP.

SEASON	TEAM	GP-GS	MIN/AVG	FG-FGA	FG%	3FG-FGA	3FG%	FT-FTA	FT%	OFF	DEF	TOT	AVG	PF-FO	AST	TO	BLK	STL	PTS	AVG
2018-19	CCSU	21-0	112/5.3	5-20	.250	0-0	.000	2-6	.333	4	11	15	0.7	14-0	4	9	1	3	12	0.6
2019-20	CCSU	29-0	267/9.2	22-49	.449	0-0	.000	11-11	1.000	6	22	28	1.0	31-0	8	17	2	4	55	1.9
2020-21	CCSU	4-0	47/11.6	2-6	.333	1-2	.500	2-2	1.000	0	4	4	1.0	4-0	3	2	2	0	7	1.8
TOTAL		54-0	425/7.9	29-75	.387	1-2	.500	15-19	.789	10	37	47	0.9	49-0	15	28	5	7	74	1.4



32

• Tiffany Slicklein • Sr. • F • 5-11 •
• Kings Park, NY • Kings Park •

2020-21 GAME-BY-GAME STATS



2020-21 Central Conn. St. Women's Basketball
Individual Game-by-Game
All games

Page 13/14
as of Dec 17, 2020

2020-21 GAME HIGHS

PTS: 3, at SFBK 12/15/20
REB: 6 (2x), last at SFBK 12/15/20
FGM: 2 (2x), last at SFBK 12/15/20
FGA: 4, at SFBK 12/14/20
3FGM: 1, at SFBK 12/15/20
3FGA: 1 (2x), last at SFBK 12/15/20
FTM: —
FTA: —
ASST: 4, at SFBK 12/15/20
BLK: 2, at SFBK 12/15/20
STL: —
MIN: 19 (2x), last at SFBK 12/15/20

#32 SLICKLEIN, Tiffany

				Total		3-Pointers		Free throws		Rebounds										
Opponent	Date	GS	MIN	FG-FGA	PCT	3FG-3FGA	PCT	FT-FTA	PCT	OFF	DEF	TOT	AVG	PF	A	T/O	BLK	STL	PTS	AVG
at St. Francis Brooklyn	12/14/2020		19:30	1-4	.250	0-1	.000	0-0	.000	1	5	6	6.0	2	1	0	1	0	2	2.0
at St. Francis Brooklyn	12/15/2020	*	19:42	1-2	.500	1-1	1.000	0-0	.000	2	4	6	6.0	3	4	0	2	0	3	2.5
Totals			1 39:12	2-6	.333	1-2	.500	0-0	.000	3	9	12	6.0	5	5	0	3	0	5	2.5

Player Averages

Games Played	Minutes/game	Points/game	FG Pct	3FG Pct	FT Pct	Rebounds/game	Assists/game	Turnovers/game	Assist/Turnover ratio	Steals/game	Blocks/game
2	19.6	2.5	33.3	50.0	0.0	6.0	2.5	0.0	5.0	0.0	1.5

CAREER HIGHS

PTS: 17, at Mount St. Mary's 1/14/19
REB: 11 (2x), last vs St. Francis Brooklyn 3/5/20
FGM: 6, at Mount St. Mary's 1/14/19
FGA: 9, at SFU 1/27/18
3FGM: 1 (8x) last at SFBK 12/15/20
3FGA: 3, vs. Robert Morris 1/21/19
FTM: 4 (2x), last at Mount St. Mary's 1/14/19
FTA: 5 (3x), last vs St. Francis Brooklyn 3/5/20
ASST: 4 (2x), last at SFBK 12/15/20
BLK: 2 (3x), last at SFBK 12/15/20
STL: 7, at Mount St. Mary's 1/14/19
MIN: 35, vs. Hartford 12/28/18

2020-21: Started one game at SFBK...Missed previous two games due to injury

2019-20: Made an apperance in 21 games with five starts as a junior...Averaged 17.1 minutes per game...Posted 4.0 and 2.9 points per game...Scored a season-high 14 points on 5-6 shooting, including 3-3 from behind the arc against Saint Francis U...Matched her career-high 11 rebounds against St. Francis Brooklyn...NEC Academic Honor Roll...NEC Commissioners Honor Roll.

2018-19: Saw action in 26 games and made nine starts as a sophomore...Averaged 14.7 minutes, 3.2 points and 2.9 rebounds...Shot .411 from the field...Scored a career-high 17 points (6-of-9 shooting) and made seven steals at Mount St. Mary's...Played a season-

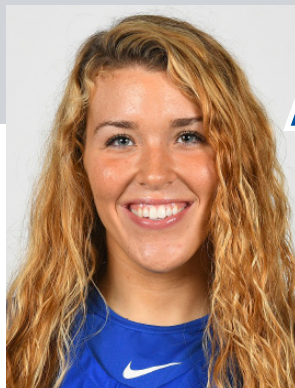
high 35 minutes and grabbed 11 rebounds against Hartford...Dished a career-high four assists vs. Saint Francis U.

2017-18: Played in 27 games and made six starts...Contribued 2.1 points and 2.2 rebounds in 10.6 minutes...Had a nine-point, seven-rebound game with two blocked shots against Fairleigh Dickinson in her first career start, playing 25 minutes...Matched a season-high nine points at Saint Francis U...Grabbed a season-best nine rebounds at Bryant...Grabbed eight rebounds and had two assists against St. Francis Brooklyn.

Before Central: Was a 1,000 point scorer and rebounder at Kings Park High School...Named to the All-Conference First Team...Was a four-time All-League pick...A three-time All-County selection...Chosen as

the league Player of the Year...Earned an All-Long Island Second Team recognition... Received the Coaches Choice Award...Was a three-time MVP...Was a scholar athlete and member of the national honor society.

SEASON	TEAM	GP-GS	MIN/AVG	FG-FGA	FG%	3FG-FGA	3FG%	FT-FTA	FT%	OFF	DEF	TOT	AVG	PF-FO	AST	TO	BLK	STL	PTS	AVG
2017-18	CCSU	26-6	282/10.8	22-60	.367	4-18	.222	10-22	.455	17	43	60	2.3	33-0	12	18	6	8	58	2.2
2018-19	CCSU	26-9	384/14.8	30-73	.411	3-18	.167	21-32	.656	24	52	76	2.9	54-0	18	33	3	21	84	3.2
2019-20	CCSU	21-5	359/17.1	28-86	.326	9-30	.300	19-35	.543	23	37	60	2.9	47-0	10	28	6	11	84	4.0
2020-21	CCSU	2-1	39/19.6	2-6	.333	1-2	.500	0-0	.000	3	9	12	6.0	5-0	5	0	3	0	5	2.5
TOTAL		75-21	1064/14.2	82-225	.364	17-68	.250	50-89	.562	67	141	208	2.8	139-0	45	79	18	40	231	3.1



33

• Ashley Berube • Sr. • C • 6-2 •
• Londonderry, NH • Tilton •

2020-21 GAME-BY-GAME STATS

2020-21 Central Conn. St. Women's Basketball
Individual Game-by-Game
All games

Page 14/14
as of Dec 22, 2020



2020-21 GAME HIGHS

PTS: 23, at SFBK 12/15/20
REB: 12, at SFBK 12/14/20
FGM: 11, at SFBK 12/15/20
FGA: 19, at SFBK 12/15/20
3FGM: 1 (2x), last vs FDU 12/19/20
3FGA: 3, at SFBK 12/15/20
FTM: 4, vs FDU 12/20/20
FTA: 4, vs FDU 12/20/20
ASST: 1 (3x), last vs FDU 12/20/20
BLK: 5, at SFBK 12/14/20
STL: 1 (2x), last vs FDU 12/20/20
MIN: 31, at SFBK 12/15/20

CAREER HIGHS

PTS: 26, vs. St. Francis Brooklyn 3/7/19
REB: 18, at SHU 1/8/2020
FGM: 11 (2x), last at SFBK 12/15/20
FGA: 19, at SFBK 12/15/20
3FGM: 1, (4x), last vs FDU 12/19/20
3FGA: 3 (2x), last at SFBK 12/15/20
FTM: 8, at Hartford 12/21/19
FTA: 8 (2x), last at Hartford 12/21/19
ASST: 6, vs. Albany 12/01/19
BLK: 5 (7x), last at SFBK 12/14/20
STL: 3, vs. New Hampshire 12/16/18
MIN: 35, vs. UML 12/5/19

2020-21: Started in all four games...Double double in first two games of the season

2019-20: Started all 29 games averaging 26.6 minutes per game as a junior...Posted 12.1 points and 6.9 rebounds per game...Led the team in scoring and rebounding...Shot .462 from the floor, the highest on the team...Totaled 352 points, 200 rebounds and 52 blocks...Had 19 double-digits games...Scored a season-high 25 points at Hartford shooting 8-16 from the floor and 8-8 from the foul line...Posted a double-double against Sacred Heart scoring 13 points and grabbing a career-high 18 rebounds...Tied for fifth in the record books for most rebounds in a single game...She sits at second in the record books for most career blocked shots with 154.

2018-19: Saw action in all 28 games and made 25

starts for Central as a sophomore...Averaged 24.4 minutes per game...Led the team with 6.7 rebounds per game...Second leading scorer with 9.6 points per game...Second in the NEC in blocked shots (1.8 pg), third in field goal percentage (.514), and eighth in rebounding (6.7)...Blocked 49 shots and grabbed 188 rebounds...Had the highest shooting percentage on the team (.514)...Scored double-digits in 17 games...Posted six double-doubles...Scored a career-high 26 points and grabbed eight rebounds against St. Francis Brooklyn...Grabbed a career-high 12 rebounds against Hartford...Totaled five blocks in three games...Had three steals against New Hampshire...Totaled 17 points and 11 rebounds and five blocks against Bryant...Totaled 269 points.

2017-18: Played in all 30 games and made 13 starts as a rookie...Blocked 53 shots, the fourth-highest

single-season total in program history...Ranked fifth in the Northeast Conference with 1.8 blocks per game...Averaged 2.9 points and 4.5 rebounds per game in 15.3 minutes...Scored a career-high eight points with nine rebounds and four blocked shots against Sacred Heart...Grabbed 10 rebounds with five blocked shots and four points at Penn State...Had five blocked shots at Fairleigh Dickinson and at Sacred Heart...Had two steals against Yale...Had seven points and eight rebounds at Robert Morris in NEC Tournament...Grabbed six rebounds in first career start at Virginia.

Before Central: Earned Divison 1 First Team All-State recognition...Selected as a NEPSAC All-Star.

#33 BERUBE, Ashley

				Total		3-Pointers		Free throws		Rebounds											
Opponent	Date	GS	MIN	FG-FGA	PCT	3FG-3FGA	PCT	FT-FTA	PCT	OFF	DEF	TOT	AVG	PF	A	T/O	BLK	STL	PTS	AVG	
at St. Francis Brooklyn	12/14/2020	*	27:02	6-14	.429	0-2	.000	2-2	1.000	2	10	12	12.0	3	1	2	5	0	14	14.0	
at St. Francis Brooklyn	12/15/2020	*	31:14	11-19	.579	1-3	.333	0-0	.000	4	7	11	11.5	0	1	1	4	1	23	18.5	
Fairleigh Dickinson	12/19/2020	*	26:37	5-11	.455	1-1	1.000	0-0	.000	1	5	6	9.7	0	0	1	0	0	11	16.0	
Fairleigh Dickinson	12/20/2020	*	28:21	4-4	1.000	0-0	.000	4-4	1.000	2	6	8	9.3	4	1	3	0	1	12	15.0	
Totals		4	113:14	26-48	.542	2-6	.333	6-6	1.000	9	28	37	9.3	7	3	7	9	2	60	15.0	

Player Averages

Games Played	Minutes/game	Points/game	FG Pct	3FG Pct	FT Pct	Rebounds/game	Assists/game	Turnovers/game	Assist/Turnover ratio	Steals/game	Blocks/game
4	28.3	15.0	54.2	33.3	100.0	9.3	0.8	1.8	0.4	0.5	2.3

SEASON	TEAM	GP-GS	MIN/AVG	FG-FGA	FG%	3FG-FGA	3FG%	FT-FTA	FT%	OFF	DEF	TOT	AVG	PF-FO	AST	TO	BLK	STL	PTS	AVG
2017-18	CCSU	30-13	459/15.3	38-102	.373	0-0	.000	11-21	.524	17	118	135	4.5	63-3	18	45	53	6	87	2.9
2018-19	CCSU	28-25	688/24.6	111-216	.514	0-2	.000	47-76	.618	53	135	188	6.7	76-0	19	65	49	8	269	9.6
2019-20	CCSU	29-29	770/26.6	139-301	.462	7-18	.389	67-94	.713	45	155	200	6.9	69-2	24	82	52	8	352	12.1
2020-21	CCSU	4-4	113/28.3	26-48	.542	2-6	.333	6-6	1.000	9	28	37	9.3	7-0	3	7	9	2	60	15.0
TOTAL		91-71	2030/22.3	314-667	.471	9-26	.346	131-197	.665	124	436	560	6.2	215-5	64	199	163	24	768	8.4

2020-21 BOX SCORES

GAME 1: CCSU AT SFBK



Central Conn. St. at St. Francis Brooklyn

12/14/20 Daniel Lynch '38 Gymnasium at the Pope Physical Education Center, Brooklyn, NY
2020-21 Women's Basketball

Game Time: 4:00 PM
Game Duration: 1:45

Officials: Timothy Green, Zoe Robbins, Kevin Ruland

Central Conn. St. - 87

Record: 1-0 (1-0)

NO. Name	Min	FG	3P	FT	Rebounds	Fouls	TP	AS	TO	ST	Blocks	+/-	Shooting By Period
		M-A	M-A	M-A	OR DR TOT	PF					BS BA		
14 Ashley Forker	F 31:28	8-12	1-3	0-0	4 2 6	0 0	17	5	0	3	0 0	15	1st FG% 10-18 55.6%
22 Jamey Napoleon	F 19:30	1-1	0-0	0-0	1 8 9	2 2	2	1	2	0	2 0	5	3PT% 3-6 50.0%
33 Ashley Berube	C 27:02	6-14	0-2	2-2	2 10 12	3 1	14	1	2	0	5 1	7	FT% 4-5 80%
1 Forever Toppin	G 26:36	3-14	1-7	0-0	0 1 1	1 2	7	5	5	1	0 0	19	2nd FG% 7-20 35.0%
1 Emma McCamus	G 25:29	11-14	3-4	5-5	1 1 2	0 5	30	1	0	3	1 0	14	3PT% 2-8 25.0%
2 Belle Lanpher	11:46	1-4	0-1	1-2	0 0 0	3 1	3	2	1	0	0 0	1	FT% 0-0 0%
22 Tiffany Slickleins	19:30	1-4	0-1	0-0	1 5 6	2 0	2	1	0	0	1 1	13	3rd FG% 8-20 40.0%
30 Carly Reynolds	12:58	1-2	1-1	0-0	0 0 0	0 0	3	0	0	0	1 0	8	3PT% 1-5 20.0%
11 Dejah Jenkins	11:07	1-2	0-1	2-2	1 0 1	0 1	4	1	2	1	0 0	5	FT% 2-2 100%
21 Claire Sutherland-Case	06:25	1-4	1-3	0-0	0 0 0	0 0	3	1	0	0	0 1	3	4th FG% 10-17 58.8%
20 Ali Napoli	03:45	0-3	0-2	0-0	0 0 0	0 0	0	0	0	0	0 0	0	3PT% 1-6 16.7%
23 Danielle Delano	02:24	0-0	0-0	0-0	0 0 0	0 0	1	0	0	0	1 0	0	FT% 4-4 100%
1 Samantha Chadwick	01:00	1-1	0-0	0-0	0 0 0	1 0	2	0	0	0	0 0	0	GM FG% 35-75 46.7%
24 Angelique Rodriguez	01:00	0-0	0-0	0-0	0 0 0	1 0	2	0	0	0	0 0	0	3PT% 7-25 28.0%
Team					2 3 5	0	0	1					FT% 10-11 90.9%
Totals		35-75	7-25	10-11	12 30 42	12 13	87	18	13	9	10	3	15

Technical Fouls: NONE

Dead Ball Rebounds: 1, 0

St. Francis Brooklyn - 72

Record: 0-3 (0-3)

NO. Name	Min	FG	3P	FT	Rebounds	Fouls	TP	AS	TO	ST	Blocks	+/-	Shooting By Period
		M-A	M-A	M-A	OR DR TOT	PF					BS BA		
31 Ally Lassen	F 35:32	10-19	0-0	1-2	4 5 9	2 2	21	0	4	2	1 1	0	1st FG% 7-21 33.3%
33 Zharina Hutchinson	F 11:47	1-3	0-0	1-2	1 1 2	1 1	3	2	0	0	0 1	-13	3PT% 1-7 14.3%
1 Nevena Dimitrijevic	G 32:10	6-16	3-7	0-0	0 5 5	1 2	15	7	4	1	0 3	-4	FT% 5-6 83.3%
3 Alyssa Fisher	G 23:12	1-6	0-4	2-2	1 5 6	3 1	4	2	1	1	0	-16	2nd FG% 6-20 30.0%
12 Carmen Segura	G 30:08	2-7	0-4	2-2	0 1 1	0 2	6	4	3	0	0 1	-17	3PT% 1-6 16.7%
23 Fruzsina Horvath	25:43	4-6	0-0	3-4	2 7 9	1 3	11	0	1	0	1	-2	FT% 5-6 83.3%
32 Eszter Varga	18:01	1-5	0-1	2-2	0 2 2	2 1	4	2	5	1	0	-12	3rd FG% 8-15 53.3%
20 Melody Van Ness	15:59	2-6	2-5	0-0	1 1 2	1 0	6	0	0	0	0 1	6	3PT% 1-4 25.0%
13 Jada McMillan	06:58	1-1	0-0	0-0	0 0 0	2 0	2	0	0	1	0	0	FT% 0-0 0%
14 Marta Zori	00:30	0-0	0-0	0-0	0 0 0	0 0	0	0	0	0	0 0	-2	4th FG% 7-13 53.8%
Team					4 0 4	0	0	0					3PT% 2-4 50.0%
Totals		28-69	5-21	11-14	13 27 40	13 12	72	17	18	6	3	10	15

Technical Fouls: NONE

Dead Ball Rebounds: 1, 1

	CCSU	SFC									
Biggest lead	18 (4 th 1:19)	2 (2 nd 1:59)	Points from	CCSU	SFC	Period by Period Scoring					
Best Scoring Run	9 (3 rd 8:48)	10 (2 nd 3:35)	Turnovers	27	15						
Lead Changes	2		Paint	52	40	1st	2nd	3rd	4th	TOT	
Times Tied	2		Second Chance	20	9	CCSU	27	16	19	25	87
Time with Lead	38:33	00:15	Fast Breaks	20	12						
			Bench	17	23	SFC	20	18	17	17	72

GAME 3: CCSU VS FDU



Fairleigh Dickinson at Central Connecticut

12/19/20 Derrick Gymnasium, New Britain
2020-21 CCSU Women's Basketball

Game Time: 4:00 PM
Game Duration: 1:36

Officials: Corey Potthier, Zoe Robbins, Michael VanGelder

Fairleigh Dickinson - 55

Record: 4-3 (1-2)

NO. Name	Min	FG	3P	FT	Rebounds	Fouls	TP	AS	TO	ST	Blocks	+/-	Shooting By Period
		M-A	M-A	M-A	OR DR TOT	PF					BS BA		
12 Maria Roters	F 19:46	2-5	1-1	0-0	1 6 7	1 2	5	2	0	0	3 0	5	1st FG% 5-12 41.7%
30 Madison Stanley	F 23:04	3-12	1-4	0-0	3 3 6	2 0	7	2	3	0	0 0	-3	3PT% 3-5 60.0%
1 Cella Carbonell	G 20:59	1-7	0-3	0-0	0 0 0	1 1	2	0	1	0	0 0	-7	FT% 4-4 100%
3 Madeline Selvaggi	G 25:32	1-2	1-1	0-0	0 5 5	1 2	3	3	2	1	0 0	3	2nd FG% 6-15 40.0%
10 Devyn Scott	G 25:41	3-8	1-2	0-0	0 5 5	2 1	7	2	3	1	0 0	-7	3PT% 3-7 42.9%
15 Sierra DeAngelo	20:35	6-10	1-1	0-0	6 5 11	3 1	13	2	5	0	0 2	-1	FT% 2-4 50.0%
23 Chloe Wilson	16:35	1-6	1-2	2-4	1 2 3	0 3	5	1	3	0	0 0	1	3rd FG% 5-22 22.7%
22 Lindsey Mack	31:40	3-5	1-3	2-2	1 2 3	0 3	9	2	2	2	0 0	3	3PT% 0-5 0.0%
2 Taylor Crystian	05:48	0-0	0-0	2-2	0 0 0	0 0	1	2	0	0	1 0	-5	FT% 0-0 0%
11 Abby Conklin	08:04	0-5	0-3	0-0	1 0 1	0 0	0	1	0	0	1 0	7	4th FG% 5-13 38.5%
24 Elise Graham	02:16	1-2	0-0	0-0	0 0 0	0 0	2	0	0	0	0 0	2	3PT% 1-3 33.3%
Team					1 4 5	0	0	0					FT% 0-0 0%
Totals		21-62	7-20	6-8	14 32 46	10 14	55	15	19	5	4	2	1

Technical Fouls: NONE

Dead Ball Rebounds: 1, 1

Central Connecticut - 54

Record: 1-2 (1-2)

NO. Name	Min	FG	3P	FT	Rebounds	Fouls	TP	AS	TO	ST	Blocks	+/-	Shooting By Period
		M-A	M-A	M-A	OR DR TOT	PF					BS BA		
14 Ashley Forker	F 35:14	3-7	0-1	0-0	0 4 4	1 0	6	8	2	2	1 0	-5	1st FG% 10-14 71.4%
22 Jamey Napoleon	F 29:13	2-3	0-1	0-0	1 5 6	0 2	4	3	1	2	1 0	0	3PT% 3-5 60.0%
33 Ashley Berube	C 26:37	5-11	1-1	0-0	1 5 6	0 0	11	0	1	0	0 1	-1	FT% 0-0 0%
1 Forever Toppin	G 24:51	2-6	1-2	1-2	0 1 1	1 4	6	2	3	1	0 1	3	2nd FG% 4-15 26.7%
15 Emma McCamus	G 27:18	6-16	2-6	0-0	2 4 6	3 0	14	1	1	1	0 0	-5	3PT% 1-2 50.0%
2 Belle Lanpher	15:09	0-4	0-3	2-2	0 2 2	2 2	2	1	2	1	0 0	-4	FT% 2-4 50.0%
11 Dejah Jenkins	06:55	3-6	2-2	0-0	0 0 0	0 0	8	0	1	0	1 4		3rd FG% 3-16 18.8%
30 Carly Reynolds	13:23	1-3	0-1	0-0	0 3 3	1 0	2	2	1	0	0 0	0	3PT% 0-6 0.0%
20 Ali Napoli	06:49	0-1	0-0	0-0	0 0 0	1 0	0	0	0	0	0 0	0	FT% 2-2 100%
21 Claire Sutherland-Case	06:27	0-1	0-0	1-2	0 2 2	2 1	1	0	1	0	0 0	2	4th FG% 5-15 33.3%
23 Danielle Delano	02:26	0-1	0-0	0-0	1 0 1	0 0	0	0	0	0	0 1	-1	3PT% 2-5 40.0%
24 Angelique Rodriguez	05:38	0-1	0-1	0-0	0 2 2	2 1	0	1	0	0	0 0	2	FT% 0-0 0%
Team					1 0 1	0	1	0					GM FG% 22-60 36.7%
Totals		22-60	6-18	4-6	6 28 34	14 10	54	18	14	7	2	4	1

Technical Fouls: NONE

Dead Ball Rebounds: 1, 0

	FDU	CCSU	Points from		FDU	CCSU	Period by Period Scoring				
Biggest lead	7 (4 th 9:14)	11 (2 nd 9:23)	Turnovers	9	13		1st	2nd	3rd	4th	TOT
Best Scoring Run	11 (3 rd 8:31)	7 (1 st 6:24)	Paint	20	22	FDU	17	17	10	11	55
Lead Changes	6		Second Chance	8	2						
Times Tied	3		Fast Breaks	5	24	CCSU	23	11	8	12	54
Time with Lead	18:57	17:34	Bench	31	13						

GAME 2: CCSU AT SFBK



Central Conn. St. at St. Francis Brooklyn

12/15/20 Daniel Lynch '38 Gymnasium at the Pope Physical Education Center, Brooklyn, NY
2020-21 Women's Basketball

Game Time: 4:00 PM
Game Duration: 1:45

Officials: Zoe Robbins, Timothy Greene, Kevin Ruland

Central Conn. St. - 77

Record: 1-1 (1-1)

NO. Name	Min	FG	3P	FT	Rebounds	Fouls	TP	AS	TO	ST	Blocks	+/-	Shooting By Period
		M-A	M-A	M-A	OR DR TOT	PF					BS BA		
14 Ashley Forker	F 33:22	3-8	2-4	0-0	2 2 4	0 0	8	7	3	0	1 0	8	1st FG% 5-16 31.3%
32 Tiffany Slickleins	F 19:42	1-2	1-1	0-0	2 4 6	3 0	3	4	0	2 0	1		3PT% 2-5 40.0%
33 Ashley Berube	C 31:14	11-19	1-3	0-0	4 7 11	0 1	23	1	1	1 4	0 0	1	FT% 0-2 0%
1 Forever Toppin	G 27:29	1-5	1-5	0-2	0 1 1	1 3	3	1	4	0	0 1	-14	2nd FG% 9-15 60.0%
15 Emma McCamus	G 28:11	4-14	2-6	4-4	1 2 3	0 2	14	3	1	1 3	1	-3	3PT% 3-4 75.0%
2 Belle Lanpher	12:31	3-5	1-3	5-5	1 2 3	0 5	12	2	1	2 0	0 11		3rd FG% 7-17 41.2%
22 Jamey Napoleon	20:23	2-5	0-0	0-0	2 4 6	1 1	4	1	2	0	1 0	-4	3PT% 2-7 28.6%
30 Carly Reynolds	08:35	0-0	0-0	0-0	0 1 1	0 0	0	0	0	0 0	0	-3	FT% 6-6 100%
11 Dejah Jenkins	11:49	2-3	1-2	1-1	0 0 0	0 1	6	0	2	1 0	0 0		4th FG% 7-14 50.0%
21 Claire Sutherland-Case	06:38	1-1	1-1	1-2	0 0 0	3 1	4	0	0	0 0	0	-11	3PT% 3-9 33.3%
Team					1 2 3	0	0	0					FT% 2-2 100%
Totals		28-62	10-25	11-14	13 25 38	9 14	77	19	14	5	13	1	3

Technical Fouls: NONE

Dead Ball Rebounds: 2, 0

St. Francis Brooklyn - 80

Record: 1-3 (1-3)

NO. Name	Min	FG M-A	3P M-A	FT M-A	Rebounds OR DR TOT	Fouls PF FD	TP	AS	TO	ST	Blocks		+/-	Shooting By Period			
											BS	BA		1st	2nd	3rd	
23 Fruzsina Horvath	F 25:22	7-10	1-1	2-4	6 4 10	3 2	17	1	1	1	1	0	14	1st	FG% 9-21	42.9%	
31 Ally Lassen	F 34:54	9-21	0-0	2-2	8 4 12	2 2	20	2	1	3	0	3	9	3PT%	3-5	60.0%	
1 Nevena Dimitrijevic	G 31:09	7-15	2-5	0-0	0 6 6	0 2	16	8	1	1	0	1	9	2nd	FG% 7-17	41.2%	
3 Alyssa Fisher	G 36:19	4-10	4-8	0-0	4 4 8	2 0	12	2	2	2	0	3	1	3PT%	2-4	50.0%	
20 Melody Van Ness	G 26:33	3-9	2-7	0-2	0 1 1	2 1	8	2	0	0	0	1	10	FT%	0-0	0%	
32 Eszter Varga	07:44	0-1	0-0	0-0	0 0 0	1 0	0	1	2	1	0	0	1	3rd	FG%	7-25	28.0%
3 Zharla Hutchinson	17:10	2-10	0-0	0-2	3 0 3	2 2	4	1	0	1	0	4	-15	3PT%	3-8	37.5%	
12 Carmen Secura	15:53	1-4	1-2	0-0	1 2 3	1 0	3	1	1	0	0	1	-4	FT%	0-0	0%	
13 Jada McMillan	03:08	0-0	0-0	0-0	1 0 1	1 0	0	0	0	0	0	0	-3	4th	FG%	10-17	58.8%
14 Marta Zori	01:48	0-0	0-0	0-0	0 0 0	0 0	0	0	0	0	0	0	-3	3PT%	2-6	33.3%	
Team					6 1 7			0	2					FT%	2-6	33.3%	
Totals		33-80	10-23	4-10	25-42	17 19	80	18	10	9	1	13	3	GM FG%	33-80	41.3%	
														3PT%	10-23	43.5%	
														FT%	4-10	40.0%	
Technical Fouls:NONE																	