



Missouri State[®]

VISITOR'S GUIDE

MISSOURISTATEBEARS.COM



SPRINGFIELD HISTORY

There are several versions of how Springfield was named. The most common is that it was named after Springfield, Massachusetts. The story says, James Wilson offered a free whiskey to everyone who would vote for the name of his hometown, Springfield, Massachusetts, as the name for the new town. Some say the name was geographic because the town was on a field near a spring on a hill. Another story says that when a group met to choose a name, they handed in their favorite names. Kindred Rose turned in the name of Springfield after his hometown of Springfield, Tennessee.

SPRINGFIELD WEATHER

The climate for Springfield is seasonal, but milder than much of the surrounding area.

The weather in Springfield is four seasons type.

The average low temperature is 24-55 (winter) degrees F.

The average high temperature is 59-87 (summer) degrees F.

SPRINGFIELD ATTRACTIONS

Springfield offers a unique mix of large-city amenities and hometown hospitality -- a perfect family destination for a city vacation or outdoor getaway, or better yet, a combination to please the entire family. Beautiful scenery, family-oriented recreation and attractions are just a few of the qualities found in Springfield, and all at affordable prices. Visit www.SpringfieldMo.org for more information.

Dickerson Park Zoo

1401 W Norton Rd.
Springfield, Missouri
Phone: (417) 833-1570

Fantastic Caverns

4872 N. Farm Road 125
Springfield, MO 65803
Phone: (417)-833-2010

Bass Pro Shops World Headquarters & Museums

1935 S Campbell
Springfield, MO 65807
Phone: (417).887-7334

Missouri Sports Hall of Fame

3861 E Stan Musial Dr
Springfield, MO 65809
Phone: (417)-889-3100

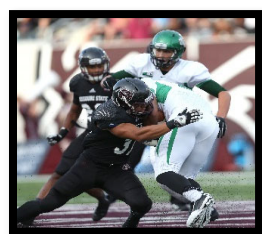
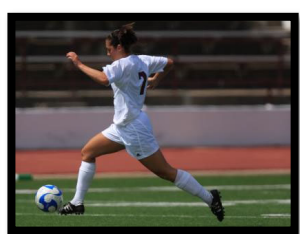
Discovery Center

438 E St Louis
Springfield, MO 65806
Phone: (417).862.9910

Springfield Conservation Nature Center

4601 S Nature Center Way
Springfield, MO 65804
Phone: (417)-888-4237





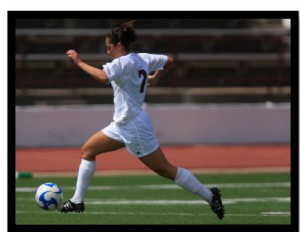
BEARS CONTACT INFORMATION

Athletics Administration (Director of Athletics-Kyle Moats).....	417.836.5244
Sr. Associate Athletics Director/SWA (Casey Hunt).....	417.836.5246
Athletics Communications – (Rick Kindhart).....	417.836.4585
Business Administration (Melissa Goodman)	417.836.5244
Facilities (Keith Boaz/Laree Moore/Melissa Blankenship) –	417.444.5240
JQH Arena and Hammons Student Center.....	417.836.5772
Athletic Training – Forsythe Athletics Ctr. (Jim Penkalski).....	417.836.5461
Ticket Office (JQH Arena).....	417.836.7678
Dr. MaryJo Wynn Academic Achievement Center (Dan Raines).....	417.836.4501
Compliance (Alex Hirdler).....	417.836.4377
Athletics Development (Kerry Dickerson).....	417.836.4143
Missouri State Sports Properties - Learfield Jesse Kirkpatrick)>>	417.836.5234
Strength and Conditioning (Chase Barber).....	417.836.3112
Equipment Manager (Lucas Gant).....	417.836.5430
Women (Adam Mulvey).....	417-836-5056

Administrative Assistants

Men’s Basketball (Terrie Coulter).....	417.836.5250
Women’s Basketball (Terrie Coulter).....	417.836.4136
Football (Lynn Mentzer).....	417.836.5343
Softball/Swimming/Volleyball.....	417.836.5246
Cross Country/Track and Field, Baseball/ Field Hockey/Men’s and Women’s Soccer, Golf	417.836.5242





COACHES DIRECTORY

Baseball- Keith Guttin.....	417.836.4497
Beach Volleyball – Gretchen Hand.....	417.836.8375
Men’s Basketball- Dana Ford.....	417.836.4136
Women’s Basketball- Amaka Agugua-Hamilton.....	417.836.4136
Cross Country- Jordan Fife	417.836.4717
Football- Bobby Petrino.....	417.836.5343
Men’s Golf- Neal Stafford.....	417.836.4863
Women’s Golf- Kevin Kane.....	417.836.4138
Men’s Soccer- Jon Leamy.....	417.836.5243
Women’s Soccer- Rob Brewer.....	417.836.6654
Softball- Holly Hesse.....	417.836.5246
Swimming and Diving- Dave Collins.....	417.836.5466
Women’s Tennis- Randall Knox.....	417.836-8211
Women’s Track and Field- Jordan Fife.....	417.836.4717
Volleyball- Steven McRoberts.....	417.836.8375

GAME DAY PARKING

Plaster Sports Complex

Football Contact Kelly Smulczenski 417.836.4143

JQH Arena

Men’s and Women’s Basketball Contact Kelly Smulczenski 417.836.4143

Hammons Student Center

Volleyball Lots South and Northwest of Hammons Student Center

Hammons Field

Baseball Contact Kelly Smulczenski 417.836.4143

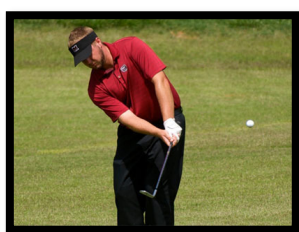
Killian Stadium

Softball Lot South of Stadium off Pythian

Media Parking

All Sports Contact Rick Kindhart 417.836.4585





EMERGENCY LISTINGS

Springfield Police Department	417.864.1810
Campus Security /Springfield Police Substation On campus	417.836.8870
Springfield Fire Department	417.864.1500
Taylor Health and Wellness Center On campus	417.836.4000
Mercy Hospital 1235 E. Cherokee Street	417.820.2000
Cox Medical Center (South) 3801 S. National Ave.	417.269.6000

PHARMACIES NEAR CAMPUS

Taylor Health and Wellness Center On campus (near the bookstore and student union)	417.836.4000
Walgreens 1155 E St. Louis St. (on the corner of National & St. Louis)	417.862.5302
CVS 1153 E Elm St.	417.831.0380
Walgreens 1955 S. National Ave. (across from Mercy)	417.881.6836





SELECT SPRINGFIELD HOTELS

UNIVERSITY PLAZA CONVENTION CENTER
333 S. JOHN Q HAMMONS PARKWAY
SPRINGFIELD, Mo 65804
417.864.7333

DOUBLETREE HOTEL
2431 N. GLENSTONE AVE
SPRINGFIELD, Mo 65804
417.831.3131 OR 800.222.8733



HOTEL VANDIVORT
305 E WALNUT ST
SPRINGFIELD, Mo 65806
417-832-1515

HILTON GARDEN INN
4155 S. NATURE CENTER WAY
SPRINGFIELD, Mo 65804
417.875.8800



HOLIDAY INN EXPRESS AND SUITES
1117 E ST. LOUIS STREET
SPRINGFIELD, Mo 65804
417.862.0070 OR 800. HOLIDAY

HAMPTON INN AND SUITES
2750 N GLENSTONE AVE
SPRINGFIELD, Mo 65804
417.869.5548 OR 800.HAMPTON

RAMADA OASIS CONVENTION CENTER
2546 N. GLENSTONE AVE
SPRINGFIELD, Mo 65804
417.866.5253 OR 888.532.4338

RESIDENCE INN BY MARRIOTT
1303 E. KINGSLEY STREET
SPRINGFIELD, Mo 65804
417.890.0020 OR 800.831.3131

DAYS INN
621 W. SUNSHINE
SPRINGFIELD, Mo 65804
417.862.0153

GREENSTAY HOTEL & SUITES
222 N. INGRAM MILL RD., 65802
417.863-1440

CLARION INN & SUITES
3370 BATTLEFIELD ROAD
SPRINGFIELD, Mo 65804
417.520.6200 OR 877.570.6200

BAYMONT INN AND SUITES
3343 E BATTLEFIELD
SPRINGFIELD, Mo 65804
417.887.2323 OR 800.528.1234

COMFORT INN
3776 S GLENSTONE AVE 65804
417.889.8188





TRANSPORTATION

AIRLINES

Springfield/Branson National Airport (SGF) 15 Minutes/7.7 Miles to Springfield

Allegiant Air	702.505.8888
American Airlines	800.433.7300
Delta Connection	800.221.1212
United Airlines	800.241.6522

Kansas City International Airport (MCI) 2hrs 59 Minutes/186.3 Miles to Springfield

Air Canada	888.247.2262
Alaska Airlines	800.252.7522
Allegiant Airlines	702.505.8888
American Airlines	800.433.7300
Delta Connection	800.221.1212
Frontier Airlines	800.432.1359
Southwest Airlines	800.435.9792
Spirit Airlines	801.401.2222
United Airlines	800.241.6522

Tulsa International Airport (TUL) 2hrs 53 Minutes/193.1 Miles to Springfield

Allegiant Airlines	702.505.8888
American Airlines	800.433.7300
Delta Connection	800.221.1212
Frontier Airlines	800.432.1359
Southwest Airlines	800.435.9792
United Airlines	800.241.6522
ViaAirlines	407.499.4992





St. Louis Lambert International Airport (STL) 3hrs 16 Minutes/212.4 Miles to Springfield

Air Canada	888.247.2262
Air Choice One	866.435.9847
Alaska Airlines	800.252.7522
American Airlines	800.433.7300
Cape Air	800.352.0714
Delta Connection	800.221.1212
Frontier Airlines	800.432.1359
Southwest Airlines	800.435.9792
Swiftair	866.227.9438
United Airlines	800.241.6522
Wow Air	888.209.3170

CAR RENTALS

Avis Rent A Car	417.864.4466
1210 W Sunshine	
Enterprise Rent A Car	417.866.0300
207 E Kearney	
J. Howard Fisk Limousines	417.862.2900
2001 E Trafficway St	
Cavallo Bus Lines	417.869.4190
3755 E Kearney	
Dollar Rent A Car	866.434.2226
2300 North Airport Blvd	
National / Alamo	888.826.6890
2300 North Airport Blvd	
Thrifty Car Rental	877.283.0898
2300 North Airport Blvd	
Hertz	417.865.1681
2300 North Airport Blvd	

TAXI SERVICE

Springfield Orange Taxi	417.234.8828
Yellow Cab	417.862.5511

BUS

Greyhound Bus Line	417.862.6777
2425 E. Kearney Street	
Springfield Car Service and Shuttle	417.894.1071

Charter Bus Rental Village Travel	417.427.6167
--	--------------





ENTERTAINMENT

MOVIE THEATRES

SHOPPING

Alamo Drafthouse 417.890.8457
4005 South Ave

Springfield 11 Starplex 417.882.7469
3200 E Montclair St.

Palace 417.875.6200
2220 W Chesterfield Blvd

Regal Cinemas College Station 844.462.7342
415 W College St

Battlefield Mall 417.883.4111
2825 S Glenstone

Tanger Outlets-Branson 417.337.9328
300 Tanger Blvd

Bass Pro Shops 417.887.7334
1935 S Campbell

Primrose Marketplace 417.882.8876
3408 S Glenstone

BASS PRO

Wonders of Wildlife

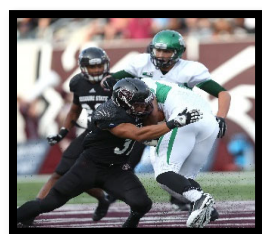
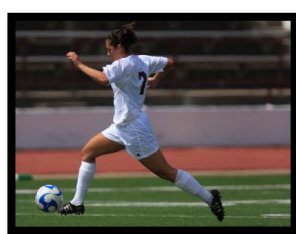
Experience the largest most immersive fish and wildlife attraction in the world, voted best new attraction in the country.

BRANSON INFORMATION

For information on Branson, Mo., sites, entertainment, attractions, shopping and dining, please visit www.ExploreBranson.com. Branson is approximately 30 miles south of Springfield.



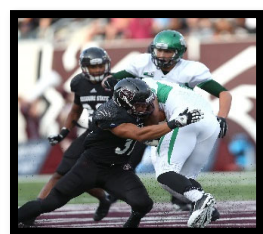
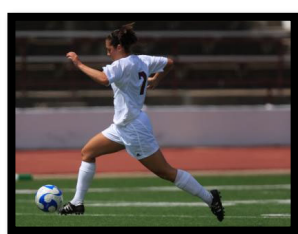
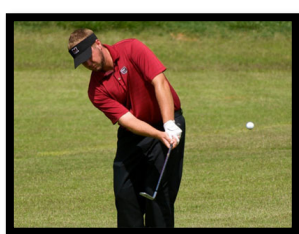
MISSOURISTATEBEARS.COM



FOOD RECOMMENDATIONS

RESTAURANT	ADDRESS	PHONE (417)	TYPE
Andy's Frozen Custard	2726 S Campbell	881.3424	Dessert
Applebees	2430 N Glenstone	863.2200	American
Bair's Campus Grill*	631 S Kimbrough	866.2700	American/Burgers
Bambino's*	1141 E Delmar	862-9999	Italian
Big Whiskey's*	311 Park Central East	862-2449	American/Burgers
Buckingham's BBQ*	2002 S Campbell	866.9979	BBQ
Buffalo Wild Wings	900 E Battlefield	881.9464	American
Chick-Fil-A	2825 S Glenstone	883.2275	Fast Food
Chili's	3020 S Glenstone	886.3630	American
Chipotle Mexican Grill*	1211 E St. Louis	831.2159	Mexican Fast Food
Coyote's Adobe Grill	1742 S. Glenstone	889.7120	American
Domino's (campus)*	538 S National	831.1110	Pizza
Domino's (south side)	2642 W Sunshine	522.3322	Pizza
Domino's (north side)	430 W Kearney	863.0044	Pizza
Ebbet's Field*	1027 E Walnut St	865.5050	American
Fazoli's	2137 N Glenstone	832.8711	Italian
Fazoli's	2055 E Independence St	882.0073	Italian
Five Guys	101 E Battlefield	8835492	Burgers/Hot dogs
Golden Corral	2020 E Primrose	883.6767	Buffet
Houlihan's	2431 N Glenstone	862.7777	American
Houlihan's	2110 E Republic Rd	883.3434	American
HuHot Mongolian Grill	2825 S Glenstone	882.0300	Mongolian
Jason's Deli	1724 E Battlefield Rd	881.1500	Sandwiches
Jimmy John's*	322 E Walnut	832.0500	Sub Shop
Jimm's Steakhouse & Pub	1935 1935 S Glenstone	886.5466	Steakhouse
Jersey Mike's	1903 S. Glenstone	720.4769	Sub Shop
Lambert's Café	1800 W State Highway J	581.7655	American
Leong's Asian Diner	1540 W Republic Rd	887.7500	Chinese
Longhorn Steakhouse	3121 S Glenstone	883.5025	Steakhouse
Maria's*	406 South Ave	831.9339	Mexican
McAlister's Deli*	210 W Sunshine	831.4450	American
Mexican Villa*	1408 S National	869.4459	Mexican
Moe's Southwest Grill	2825 S Glenstone Ave	881.0022	Mexican
Nakato	2615 S Glenstone	881.7171	Japanese
Olive Garden	3105 S Glenstone	886.3188	Italian
Outback	3760 S Glenstone	890.5900	Steakhouse
Panera Bread Co.*	500 S National	862.9898	American
Pickelman's	333 E Walnut St	851.6900	American
Pizza House	312 E Commercial St	881.4073	Pizza
Qdoba Mexican Grill	401 S Kimbrough	866.1388	Mexican Fast Food
Red Robin	3720 S Glenstone	883.9363	American
Rib Crib	1720 S. Campbell	866.1888	BBQ





Springfield Brewing Co*	301 S Market	832.8277	American
Steak N Shake*	1158 E St. Louis	866.0273	American
Subway*	605 E Harrison	863.7827	Sub Shop
Taco Bell*	601 S National	869.5801	Fast Food
Texas Roadhouse	255 E Monastery	877.4650	Steakhouse
Village Inn	2036 S Glenstone Ave	881.0774	American
Wendy's*	3334 E Sunshine	889.9946	Fast Food
Whole Hog Cafe	224 W Sunshine St	868.0042	BBQ
Zio's	1249 E Kingsley	889.1919	Italian

**Near Missouri State campus*

DRIVING DIRECTIONS TO MISSOURI STATE

DIRECTIONS FROM THE NORTH:

From Highway 13: Take Highway 13 into town. Highway changes into Kansas Expressway once in Springfield. Turn East (left) at Chestnut Expressway. Follow Chestnut Expressway for 2 miles, then turn South (right) onto National Ave. Follow National Ave south for 1 mile and then arrive at Missouri State University

From US 65: Take US 65 into town. Take the US 65 Business/Chestnut Expressway exit. Turn West (right) onto Chestnut Expressway. Follow Chestnut Expressway for 2.8 miles, and then turn South (left) onto National Ave. Follow National Ave. south for 1 mile and then arrive at Missouri State University

DIRECTIONS FROM THE SOUTH:

From US 65: Take US 65 North into town. Take the Chestnut Expressway Exit. Turn West (left) onto Chestnut Expressway. Follow Chestnut Expressway for 2 miles, then turn South (left) onto National Ave. Follow National Ave. south for 1 mile and then arrive at Missouri State University.

DIRECTIONS FROM THE WEST:

From I-44: Take I-44 East until you reach exit 72/Chestnut Expressway. Turn East (right) onto Chestnut Expressway. Follow Chestnut Expressway for 5.9 miles until you reach National Ave. Turn south (right) onto National Ave. Follow National Ave. south for 1 mile and then arrive at Missouri State University.

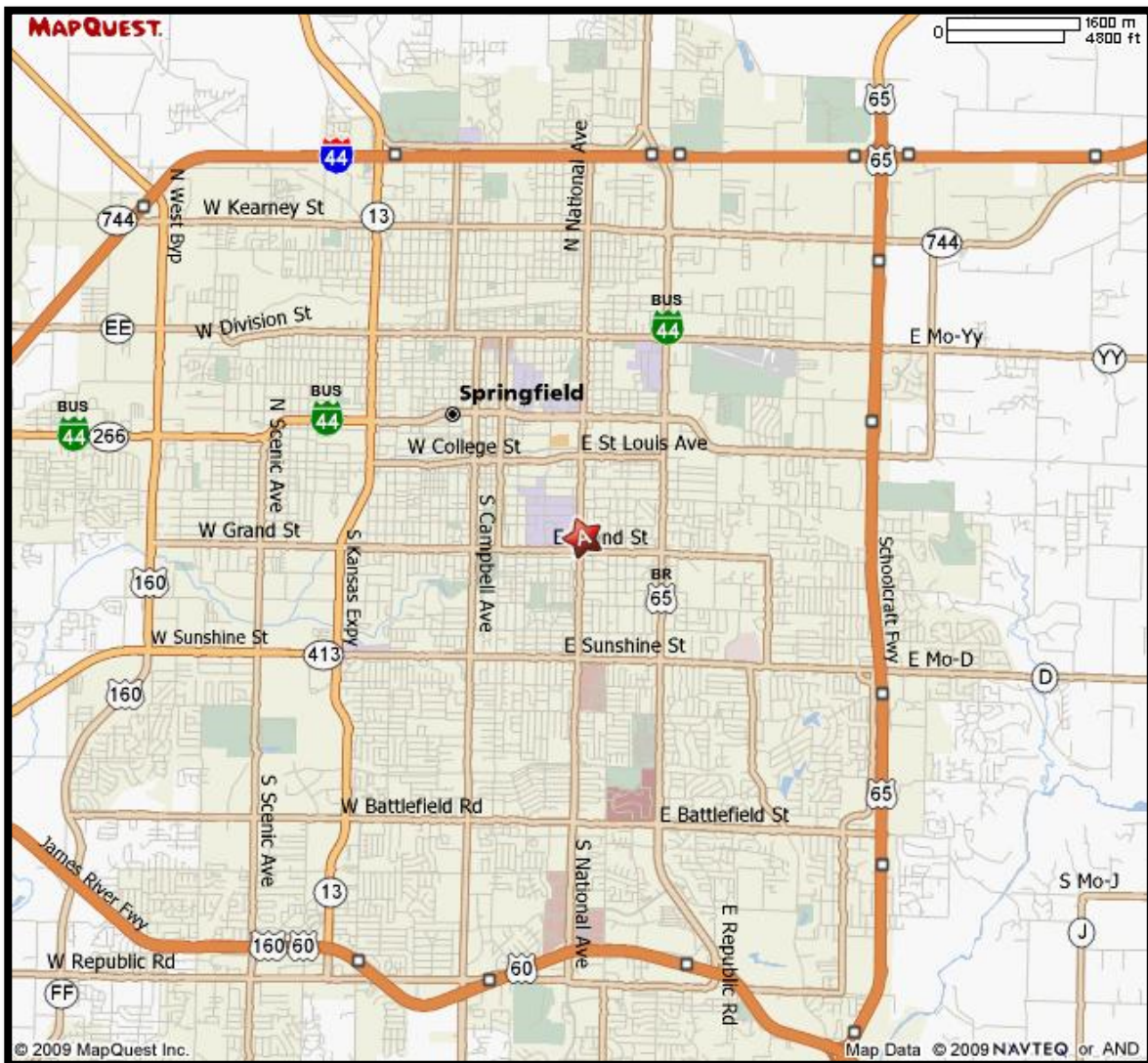
DIRECTIONS FROM THE EAST:



MISSOURISTATEBEARS.COM



From I-44: Take I-44 West until you reach US 65. Merge onto US 65 South via exit 82a toward Branson. Follow US 65 South for 2.8 miles. Take the Chestnut Expressway exit. Turn West (right) onto Chestnut Expressway. Follow Chestnut Expressway for 2.8 miles, then turn South (left) onto National Ave. Take National Ave. south for 1 mile and then arrive at Missouri State University.



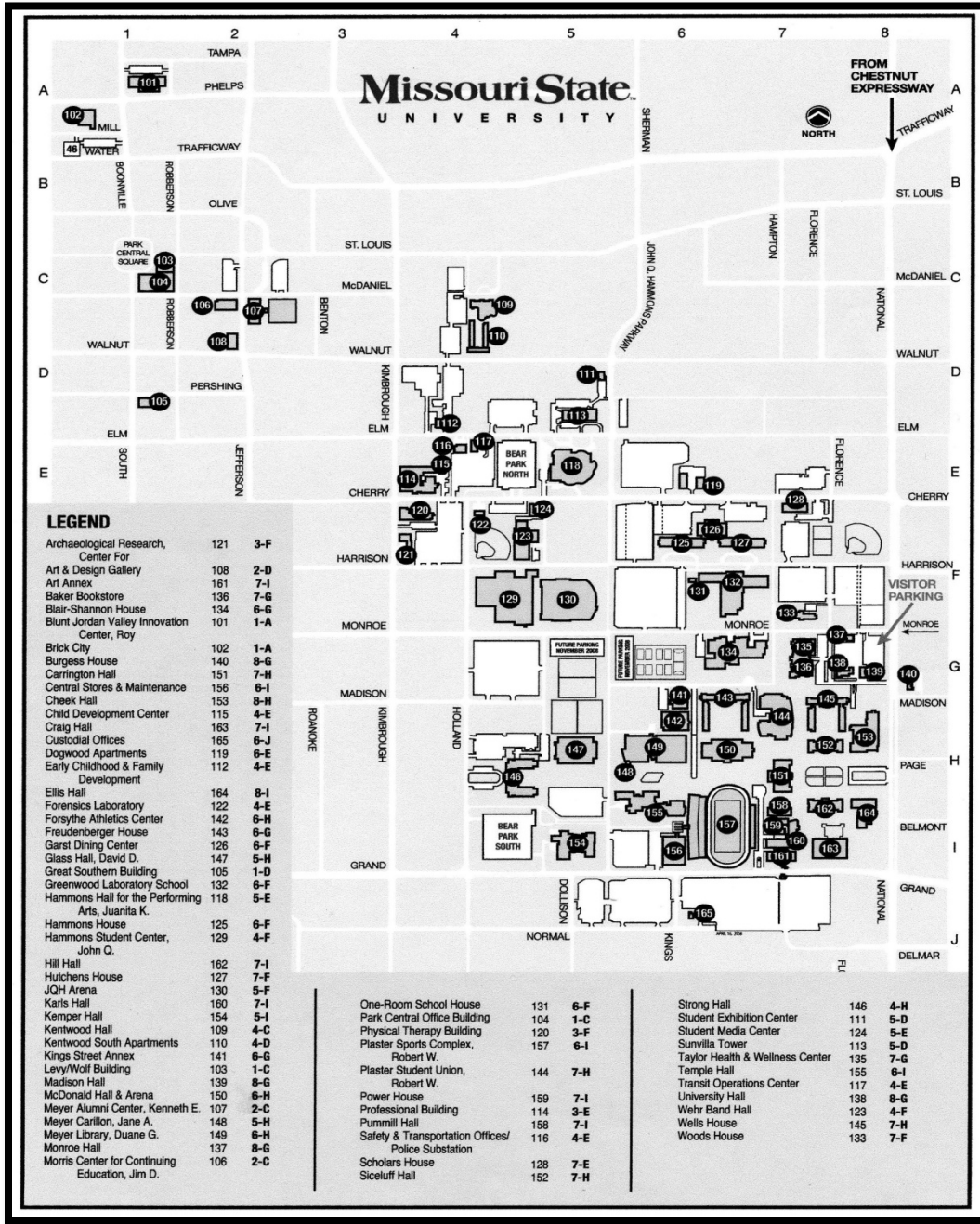
MISSOURI STATE UNIVERSITY AREA MAP



MISSOURISTATEBEARS.COM



MISSOURI STATE UNIVERSITY CAMPUS MAP





MISSOURI STATE BEARS' FACILITIES



JQH Arena
685 S. John Q. Hammons Parkway
Home of MSU Men's and Women's Basketball



Robert W Plaster Stadium
1015 E. Grand St.
Home of MSU Football



Hammons Student Center
661 S. John Q. Hammons Parkway
Home of MSU Volleyball and Swimming & Diving



Killian Softball Stadium
2141 E. Pythian St.
Home of MSU Softball



MISSOURISTATEBEARS.COM



MISSOURI STATE BEARS' FACILITIES



Plaster Strength and Conditioning Center
1015 E. Grand St.
Home to all MSU Athletes



MSU Cross Country Course
2019 N Farm Road 185
Home of MSU Cross Country



Hammons Field
935 E. Trafficway St.
Home of MSU Baseball



 2015 BASEBALL
CHAMPIONSHIP



MISSOURISTATEBEARS.COM



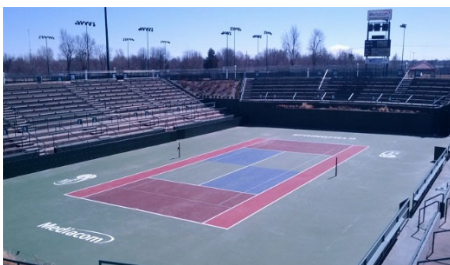
MISSOURI STATE BEARS' FACILITIES



Bobby and Betty Allison South Stadium
830 E. Bear Blvd.
Home to MSU Soccer and Women's Track and Field



Bobby and Betty Allison Sand Volleyball
731 E. Bear Blvd.
Home of MSU Women's Beach Volleyball



Cooper Tennis Complex
2331 E. Pythian Street
Home of MSU Women's Tennis



MISSOURISTATEBEARS.COM