



Griffon Volleyball

Table of Contents.....	1
Volleyball Quick Facts	1
The Future Begins	2-5

Great Faces and Places

MWSU	6-7
Academic Support	8-9
Sports Medicine	10
Championship City	11
The City of St. Joseph	12-13
MWSU Fieldhouse/Game Day	14
Griffons in the Community	15
Griffons in the Classroom	16

Meet the Griffons

Griffons Coaching Staff	18
2009 Season Outlook	19-20
Photo Roster.....	21
Sicner/Gurera/Bates	22
Behnke/Benton	23
Voelz/Tompkins.....	24
Smith/Tuisl.....	25
Burback/Pearl	26
Zimmerman/Teague/Lacey	27
Cline/Schmit/Chambers.....	28

2008 Season in Review

2008 Team Stats.....	30
2008 Individual Stats	31
2008 Category Leaders	32
2008 Match Results.....	33



The Opponents

The MIAA.....	35
2009 Schedule.....	36
2009 Opponents.....	37-44

MWSU Records

Year-by-Year Records	46
Individual/Team Records	47
Records Since 2001 - Rally Scoring.....	48-49
Record vs. Opponents.....	50

MWSU Staff

Athletic Staff	51
Dr. Robert A. Vartabedian / Dave Williams ..	52
Athletic Administration	53



The Administration

President	Dr. Robert A. Vartabedian
Athletic Director	David Williams
Associate AD/SWA	Patsy Smith
Assistant AD/External Relations	Brett Esely
Compliance and Academic Coordinator	Eric Kramer
Director of Development/Special Events	David Lau

Head Coach

Head Coach.....	Cory Frederick
Alma Mater	University of Nebraska (Lincoln) '98
Frederick's Office Phone	(816) 271-4209
Frederick's Email	cfrederick@missouriwestern.edu
Frederick's Career Record	108-16 (6th season)
Frederick's MWSU Record	0-0

Assistant Coaches

Assistant Coach.....	Marian Carbin
Alma Mater	Missouri Western '07
Carbin's Phone.....	816-271-4209
Carbin's Email	mcarbin@missouriwestern.edu

Sports Information

MWSU SID	Trevor Berneking
Office Phone.....	816-271-4257
Sports Information Fax	816-271-5901
Press Row Phone	816-271-4257
Email Address.....	tberneking@missouriwestern.edu
Mailing Address	MWSU Fieldhouse 4525 Downs Drive, St. Joseph, MO 64507

MWSU Volleyball Quick Facts

School.....	Missouri Western State University
Founded.....	1915
Location	St. Joseph, Missouri (76,107)
Enrollment	5,535
School Colors	Black and Gold
Nickname.....	Griffons
National Affiliation	NCAA Division II
Conference	MIAA
Facility	MWSU Fieldhouse @ Looney Complex
Capacity.....	3,750
2008 Record	4-32
2008 MIAA Record/Finish.....	1-19, N/A
Letterwinners Returning/Lost.....	9/3
Starters Returning/Lost.....	7

Credits

The Missouri Western State University volleyball media guide is a production of the MWSU Sports Information Office. Photography credits to Trevor Berneking, Scott Johnson, Eric Callow, Warren Ingram, Marty Ayers and Matthew Fowler.



MWSU Griffons

2009 Missouri Western Volleyball

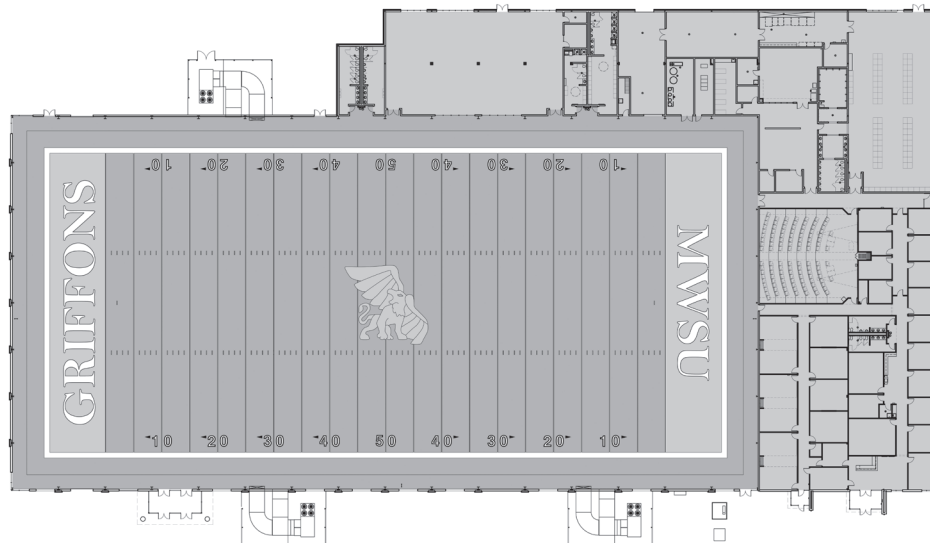




A NEW FACILITY

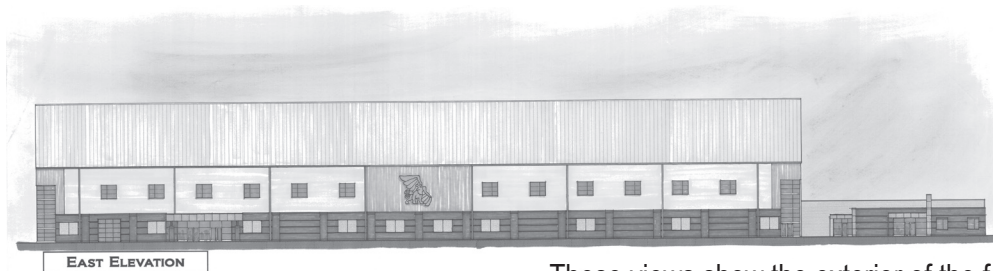
June 29, 2009 is a day that will forever be remembered in Missouri Western and the City of St. Joseph's history as ground broke on a new \$10.3 million indoor practice facility that will serve as the new summer training camp home of the Kansas City Chiefs and house new office space, locker room, training room, weight room and meeting rooms for Griffon Athletics as well as many recreational opportunities for the St. Joseph community.

The Future Begins

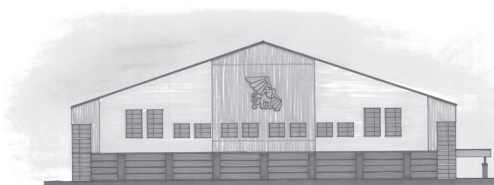


The facility floor plan as shown above includes a full size artificial football surface, 13 coaches offices, meeting rooms, a theater-style lecture hall, new locker room for the Griffon football team, weight room, training room and equipment storage space. The field will run north/south with the support building located on the north end of the facility.

MWSU Griffons



EAST ELEVATION



SOUTH ELEVATION

These views show the exterior of the facility from the east and south side. Construction on the 118,000 square-foot facility is set for completion on July 5, 2010. To keep up with the latest on all construction news including a live webcam, visit the official website of Griffon Athletics at www.gogriffons.com/construction.asp.





TO CALL HOME



Griffon head coaches along with President Dr. Bob Vartabedian and Director of Athletics Dave Williams, officially get construction underway as part of the groundbreaking ceremonies on June 29, 2009.



Heavy dirt work takes place on the construction site. The indoor facility will sit on the site directly in front of Spratt Stadium which was formerly the home of the MWSU Softball Complex. The main portion of the facility will sit on the area formerly occupied by Field Two, while a new 300-space parking lot will occupy the space where the main game field used to be.

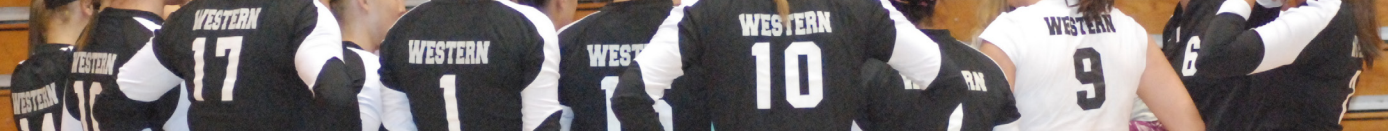


The project leadership team was the first to put the shovel in the dirt during groundbreaking ceremonies. Pictured from left: MWSU President Dr. Bob Vartabedian, Chair of the MWSU Board of Governors Dirck Clark, State Senator Charlie Shields, Chiefs President Denny Thum, Missouri Lieutenant Governor Peter Kinder, MWSU Director of Athletics Dave Williams and Project Architect Jeff Ellison of Ellison-Auxier Architects, Inc.

The Future Begins

MWSU Griffons





MWSU AND THE CITY OF ST. JOSEPH, THE NEW HOME



On June 18, 2009, Missouri Western and Kansas City Chiefs officials reached an agreement to make MWSU the new home of the Chiefs summer training camp. The camp, which has been held in River Falls, Wisconsin the last 19 years, lasts for three weeks annually and traditionally runs from the end of July until the third week of August. The camp will be in St. Joseph for at least five years with a series of five, one-year renewable options to follow. The pictures shown above feature the Chiefs during a 90-minute Organized Team Activity held in Spratt Stadium on June 12, 2008, in front of more than 5,000 fans.





OF THE KANSAS CITY CHIEFS TRAINING CAMP

The Future Begins



Above Left: Lieutenant Governor Peter Kinder speaks during a press conference on January 16, 2009 after the Missouri Development & Finance Board approved funding to help bring the Chiefs Training Camp to MWSU.

Above Right: Griffon student-athletes and supporters gathered in City Hall during the St. Joseph City Council Meeting. The council approved a donation of \$2.25 million from the city toward construction of the indoor facility.

Middle Right: Chiefs President Denny Thum addresses the audience during the June 18, 2009 press conference as Western and Chiefs officials reached an agreement to bring training camp to MWSU.

Bottom Right: The MWSU leadership team poses for a photo at a celebration rally held at The Tap Room on December 16, 2008.



MWSU Griffons



Missouri Western State University in St. Joseph is a learning community focused on students as individuals and as members of society. The institution offers students at all stages of life the opportunity to achieve excellence in the classroom and beyond, as they prepare to be leaders in their work and in their communities.

Western demonstrates a strong commitment to the educational, economic, cultural and social development of the people it serves. The university sets the standard for excellence in student development and community leadership.

Founded as St. Joseph Junior College in 1915, Western was transformed into a four-year institution in 1969 and became a full member of the State of Missouri system in 1977. It was designated a university in 2005. Enrollment is approximately 5,200 with over 180 faculty members.

The student-centered, high-quality instruction focuses on experience-based learning and community service. Every classroom and public meeting room on campus is equipped with presentation technology.

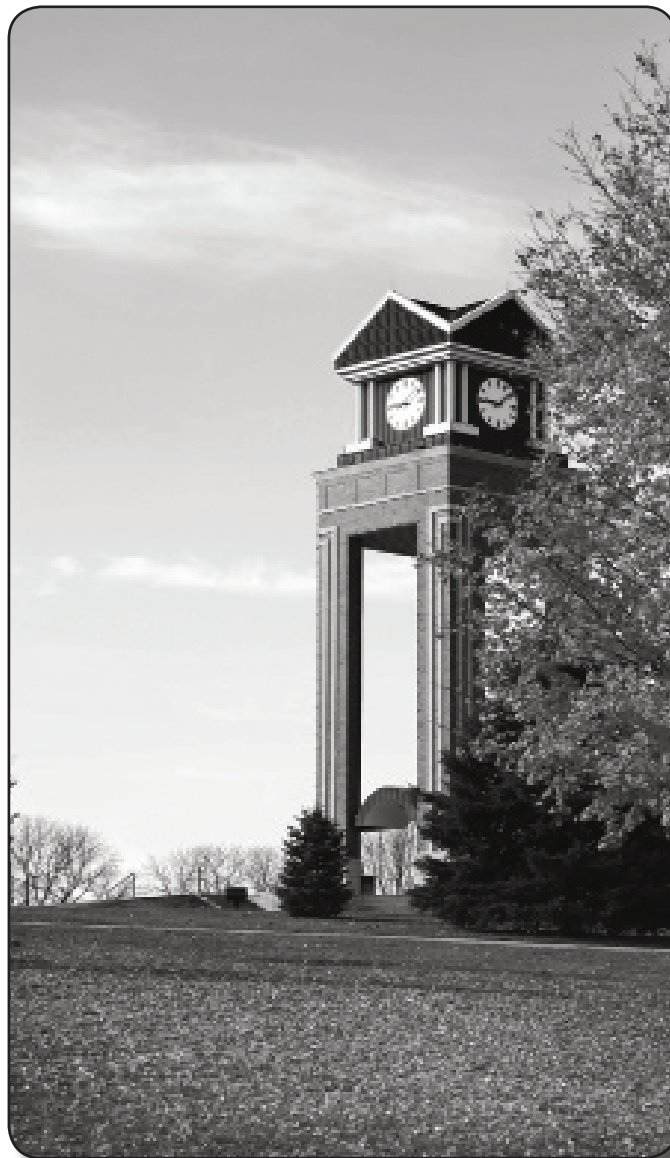
The university provides a blend of traditional liberal arts and career-oriented degree programs, offering one-year certificates, two-year associate degrees, preprofessional transfer programs and four-year baccalaureate degrees and professional master's degrees.

Western's College of Professional Studies and College of Liberal Arts and Sciences offer baccalaureate degrees in the fields of art, biology, business, chemistry, communication, computer science, criminal justice, economics, education, engineering technology, English, French, government, history, interdisciplinary studies, mathematics, music, nursing, physical education, psychology, recreation, social work and Spanish as well as master of applied science and master of applied arts degree.

The Western Institute offers applied learning, business training, applied research support and lifelong learning opportunities for the region. In addition, groups throughout the nation utilize Western's facilities for conferences and seminars.

The institution is accredited by the North Central Association of Colleges and Schools Commission on Institutions of Higher Education. Program accreditations include the Accreditation Board for Engineering and Technology, American Bar Association, American Chemical Society, American Health Information Management Association, Commission on Accreditation in Physical Therapy Education, Commission on Collegiate Nursing Education, Council on Social Work Education, National Accrediting Agency for Clinical Laboratory Science, National Association of Schools of Music and National Council for Accreditation of Teacher Education.

The campus, comprising more than 700 acres, contains six residence halls, a residential commons building and 12 major campus buildings including eight academic buildings, a student union, a fitness center, a conference center and a learning resource center. The campus has a large nature study area, a nature trail and nine ponds.



MWSU Griffons





Western Facts and Figures

- * According to a recent economic impact report conducted by Western, the university had a financial impact of \$183.5 million on the region last year. Western's economic impact increased \$22.6 million since the last study in 2005.
- * Missouri residents comprise 92% of the university's students, and about 4,400 of the total enrollment are from the 10-county region.
- * With 550 employees, Western is St. Joseph's 11th largest employer.
- * Western offers opportunities for applied learning not always found in other colleges and universities. Last year, 89% of Western graduates had participated in applied learning opportunities through internships, practicums, research projects, or study abroad.
- * Last year, 800 area high school students enrolled in dual credit courses.
- * Western is engaged in several community partnerships, including the Institute for Industrial and Applied Life Sciences, Another Smart Move initiative, Northwest Missouri Regional Healthcare Workforce Development Group, and many with the St. Joseph School District.
- * The Western Institute was established in 2004 and serves as an invaluable resource for the country, coordinating the continuing education programs and conference and meeting facilities. Last year, the Institute

hosted 17,000 visitors across the community for conferences.

- * Last year, over 7,300 elementary and secondary students participated in camps, workshops and competitions on campus.
- * Students have high-speed internet ports in every residence hall room and access to computer labs 24 hours a day.
- * The Christopher S. "Kit" Bond Science and Technology Incubator opened on Western's campus in 2008 and has four tenants. The 25,000 sq. ft. incubator provides custom-outfitted space and support for entrepreneurs in the early stages of commercial development.
- * In the last year, Western departments received grants and external funding totaling almost \$1.7 million. The grants fund projects such as incubator lab equipment, a youth computer camp, and training for writing teachers.
- * Remington Hall, an approximately 60,000 sq. ft. addition to Agenstein Hall, will be completed in December 2009. Agenstein Hall, which houses the science and mathematics departments, will be renovated the following year.
- * More than 900 new students participated in a day of service in St. Joseph, Mo., during their orientation to Western. The students served several local organizations.
- * Western was named to the President's Higher Education Community Service Honor Roll. This distinction from the highest levels of government recognizes Western's leadership in helping to build a culture of service and civic engagement.
- * In the past year, Western students provided more than 100,000 hours of service to schools, organizations and businesses through unpaid practica and internships.





Academic Advisement

Each Western student has their own academic advisor within their department of study. Your advisor will put you in the best position to graduate as well as line up valuable applied learning and research opportunities. In addition, the Western Athletics Department has its own compliance and academic coordinator who serves as a direct liaison between the student-athlete and academic faculty to ensure each athlete has the resources they need to succeed.

Center for Academic Support

The Center for Academic Support provides one-on-one and small group tutoring for most courses on campus. Located on the northeast corner of the library building, the center consists of group study spaces and a large open area for students to receive tutoring or work independently. The center also offers free tutoring in math, writing, specific courses, reading and study skills. In addition to these services, students have access to online assistance, Supplemental Instruction (SI), and workshops sponsored by the center.

Athletics Mentor Program

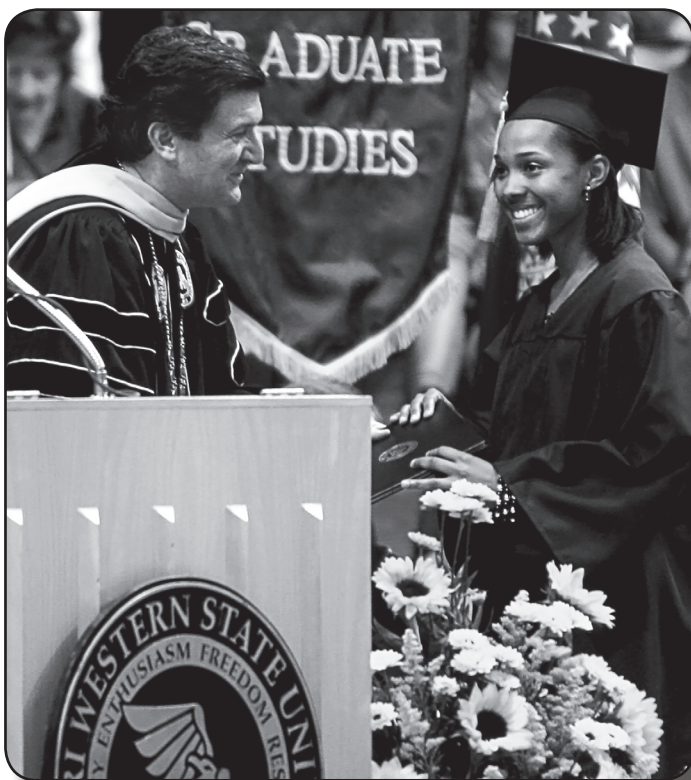
Student-athletes that need additional academic support participate in the athletics mentoring program. The program, which is facilitated through the Center for Academic Support, provides each athlete with a mentor who provides one-on-one attention on all facets of college life.

Class Size

Students will enjoy an excellent learning environment with comfortable class sizes. At Missouri Western, you're more than just a number. With the average class around 30 students, instructors will know your name and know what you need to succeed.

Focus on Applied Learning

Western has been labeled the "New American Regional University" with focus on applied learning and applied research. The emphasis on applied learning allows students real world internship experience. Whether you want to intern at the state capital, run your own fitness center or have a career in collegiate coaching, you will get those opportunities at Western.





DEGREE PROGRAMS AT MISSOURI WESTERN STATE UNIVERSITY

Certificate Program
Health Information Technology
Legal Assistant

Associate of Applied Science
Health Information Technology
Manufacturing Engineering Technology
Physical Therapist Assistant

Associate of Science
Criminal Justice
Legal Assistant
Business

Bachelor of Science
Biochemistry & Molecular Biology
Biology
Biotechnology
Chemistry
Graphic Design
Computer Information Systems
Computer Science
Construction Engineering Technology
Criminal Justice
Economics
Electronics/Computer Engineering Technology
Electronics Engineering Technology
History
Mathematics
Medical Technology
Music
Natural Science/Biology

Natural Science/Chemistry
Physical Education
Government and Public Affairs
Psychology
Recreation Sports Management
Speech Communication
Video and Theatre
Wildlife and Conservation Management

Bachelor of Arts
Art
English
French
History
Music
Government and Public Affairs
Psychology
Spanish
Speech Communication

Bachelor of Science in Business Administration
Accounting
Finance
Management
Marketing

Bachelor of Science in Education
Art
Elementary Education
English
French
Music
Spanish
Secondary Education
Speech and Theatre

Bachelor of Science in Nursing

Bachelor of Science in Social Work

Bachelor of Interdisciplinary Studies
Minor in Childhood Studies

Bachelor of Science in Technology (2+2)

Bachelor of Interdisciplinary Studies
Minor in Childhood Studies

Master's Degree Programs
Master of Applied Science
Options: Chemistry
Human Factors and Usability Testing
Information Technology Management

Master of Applied Science in Assessment
Options: Learning Improvement
Writing

Master of Applied Arts in Integrated Media
Options: Convergent Media
Applied Integrated Media

Master of Applied Arts in Written Communication
Options: Technical Communication
Writing Studies

Graduate Certificate in the Teaching of Writing

MWSU Griffons

Academic Support



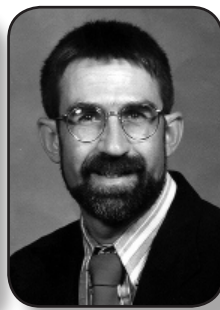


Missouri Western State University's Department of Athletics and Heartland Regional Medical Center of St. Joseph, Mo. have extended their partnership for the nationally known medical group to remain the "Official Medical Provider of Western Athletics."

In the agreement which now enters its fourth year, Heartland Regional Medical Center will provide medical/support services to Missouri Western Athletics teams. Terms of the agreement include the medical services provided by Dr. Brian Crites, MD; Dr. Thomas Alderson, MD and Gary Hazelrigg, ATC. Heartland will also provide a complete



Dr. Brian Crites



Myron Unzicker



Kate Esely



Dr. Tom Alderson



ern. Hazelrigg has previous ties to Western Athletics, serving as an assistant professor and head athletic trainer for the university during the infancy of the athletics department.

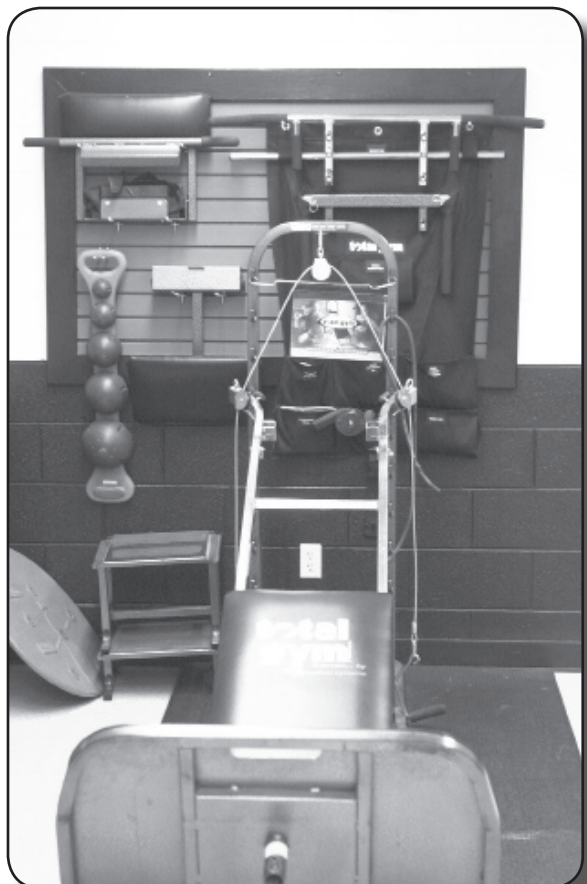
Missouri Western has over 230 student-athletes that compete in 10 intercollegiate athletics programs at the NCAA Division II level. Western is entering its 19th year as a member of the Mid-America Intercollegiate Athletics Association.

multi-specialty, pre-participation physical examination for all student-athletes, ambulance service, physical therapy services and other such medical services that are a necessity for an NCAA Intercollegiate Athletics program.

Dr. Crites is a well known sports medicine physician and has more than 14 years experience as a team physician at both the collegiate and professional levels, including head team physician at the University of Maryland and team physician for the Baltimore Ravens of the National Football League.

Dr. Alderson has served as a team physician at Missouri Western for five years and has a rich history of service to both Western and the St. Joseph Community.

Gary Hazelrigg continues to be the Sports Medicine Coordinator for Heartland Orthopedics and Sports Medicine and coordinates services to West-





The St. Joseph Civic Arena is a 3,800-seat multi-purpose arena in St. Joseph, Missouri. It is used mainly to host indoor sporting events, such as basketball and arena football. It has hosted two American Professional Football League franchises, the St. Joseph Explorers in 2003 and the St. Joseph Storm in 2005. It has also hosted the NCAA Women's Division II Basketball Championship in 2003 and 2004 and will host again in 2010 and 2011.



Heritage Park Softball Complex is the ultimate in softball tournament venues. It features four fields measuring 300', with the fifth field measuring 250'. All fields feature championship level MUSCO lighting systems, scoreboards, and adequate seating. The complex boasts a concession pavilion, children's play area, adequate parking, and much more. Missouri Western State University and the city of St. Joseph will host the 2010 NCAA Division II Softball Championships.

MWSU Griffons

Championship City

2009 TOUR OF MISSOURI
CHAMPION
CHRISTIAN
VANDERVELDE

TOUR OF MISSOURI

SEPTEMBER 7-13 2009

CYCLING'S BEST CONQUER THE MIDWEST

MISSOURI
visitmo.com

Tour of Missouri

For the first time since its inaugural year (2007), the 2009 Tour will route east to west, starting in St. Louis and finishing in Kansas City. The past two years, the race routed west to east, starting in Kansas City and finishing in St. Louis.

The race will be contested over seven days and seven stages. There will be two circuit races (St. Louis, Kansas City), one individual time trial (Sedalia), and four point to point road races (St. Genevieve to Cape Girardeau; Farmington to Rolla; St. James to Jefferson City; Chillicothe to St. Joseph). The overall mileage for the course is expected to be more than 600 miles.

The event drew more than 435,000 spectators in 2008.

The event is sanctioned by USA Cycling, the national federation for cycling in the United States, and the Union Cycliste Internationale, the international governing body for the sport of cycling.

USTA's Heartland Clinic Women's Classic

Every year St. Joseph, Mo. hosts the Heartland Clinic USTA Women's Tennis Classic. In conjunction with the classic is a celebrity tennis tournament with proceeds going to a local charity.





To learn more about St. Joseph visit the following website:
<http://stjomo.com>



St. Joseph, Missouri is located in the Heartland of the United States, at the crossroads of Interstate 29 and Missouri Highway 36. St. Joseph is conveniently located only 35 minutes north of Kansas City International Airport, 30 minutes from North Kansas City and 55 minutes from downtown Kansas City.

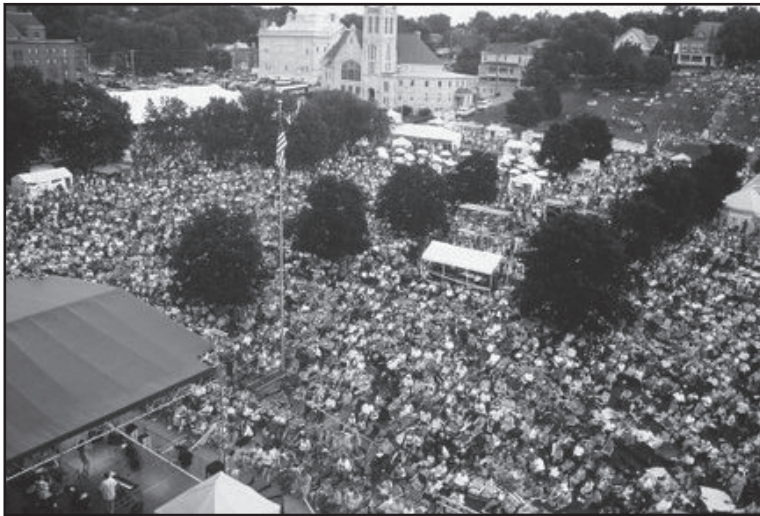
ST. JOSEPH FROM OTHER LOCATIONS

- 1 hour, 30 min from Topeka, Kan.
- 2 hours, 30 min from Lincoln, Neb.
- 2 hours, 45 min from Des Moines, Iowa
- 4 hours from St. Louis
- 4 hours from Springfield, Mo.
- 5 hours from Branson, Mo.
- 5 hours from Tulsa, Okla.
- 8 hours, 30 min. from Chicago



Resting on the bluffs of the Missouri River just half an hour north of the Kansas City International Airport, St. Joseph offers one-of-a-kind attractions, facilities, and hospitality! Located in the heart of the Midwest, St. Joseph's convenience and expertise makes hosting sporting events and conventions here a logical and exciting choice.





Trails West! (shown above) is a fun-filled weekend of entertainment in the St. Joseph downtown area, which takes place every August.

St. Joseph's climate is warm during the summer when temperatures tend to be in the 80s and coldest during winter when temperatures tend to be in the 30s.

The annual average precipitation in St. Joseph is 35.24 Inches. Rainfall is fairly evenly distributed throughout the year. The wettest month of the year is May with an average rainfall of 4.95 Inches.

St. Joseph as a city continues to grow, the current population is more than 76,000.

Take a trip back in time without leaving the comfort of contemporary civilization when you visit **St. Joseph, Mo.**

A town rich in history - famous for being the place where the Pony Express began and Jesse James met his demise - St. Joseph is an exciting city, offering first-rate attractions, upscale shopping and fine



Above: The famous overland mail service began here on April 3, 1860. The state-of-the-art exhibit at the Pony Express National Museum illustrates the need, creation, operation and termination of the Pony Express.



Left: House where outlaw Jesse James was shot and killed. Exhibits include artifacts from Jesse's grave during the 1995 exhumation which showed a 99.7% certainty that it was Jesse who was shot in St. Joseph in 1882.



2009 Missouri Western Volleyball





Missouri Western student-athletes get involved with the community in many ways. During the 2008-09 academic year, Griffon volleyball players were involved in many endeavors including: Athlete Reading Week at Skaith Elementary School, Camp Quality, The Mayors Thanksgiving Dinner and United Way Profit in Education.

The Student-Athlete Advisory Committee takes part in several service projects throughout the year including "Griffs Giving Gifts" and "Night Out on the Griffs."



The volleyball team also takes time in the fall at the St. Joseph Hy-Vee signing autographs and helping sack groceries while promoting the upcoming season.





During the 2008-09 academic year, 13 Griffon Soccer players received recognition for excellence in the classroom. Listed below are players receiving such honors:



**MWSU DEAN'S LIST HONOR ROLL
(Semester GPA of 3.5)**

- Lauren Burbach
- Meghan Voelz
- Eboni Lacey
- Kelli Sicner
- Shari Tompkins

2008-09 MWSU Male and Female Student Athletes of the Year

MWSU Female Student Athlete of the Year: Mandie Nocita - Softball

MWSU Male Student Athlete of the Year: Dustin Stricker: Football

**MWSU ATHLETICS DIRECTOR'S HONOR ROLL
(Semester GPA of 3.0)**

- Women's Volleyball
- Lauren Burbach
- Meghan Voelz



**MWSU PRESIDENT'S ACADEMIC HONOR ROLL
(Semester GPA of 4.0)**

- Brooke Carter
- Allison Smith
- Britny Pearl
- Elise Teague
- Meghan Voelz





MWSU Griffons

Meet the Griffons



2009 Missouri Western Volleyball



Cory Frederick becomes the 6th Head Volleyball Coach in Missouri Western history today (Jan. 30th), replacing Tiffany Mastin who resigned in November of 2008. Frederick returns to Western after a very successful five seasons as the Park University Pirates Men's Volleyball Coach.

Frederick was in his fifth season as the Head Men's Volleyball Coach at Park University. He guided the Pirates to the 2008 NAIA Men's Volleyball National Championship and a 29-1 overall record a season ago. Frederick sports the Pirates best all-time winning percentage in the sport of volleyball with a 108-16

overall record, .871.

In his first four seasons at Park, Frederick led the Pirates to four-straight NAIA National Tournaments, including a National Runner-Up finish in 2007, recording the school's first 30-win season in more than a decade and the first since only varsity matches were counted toward the overall record.

Frederick served as Griffon Assistant Volleyball Coach under Cindy Brauck from 2001-2003. During that time he contributed to scouting, recruiting and practice management.

Before his stint at Western, Frederick spent a year in the high school ranks coaching the girl's program at Fridley (Minn.) High School in 2000.

He has extensive experience working camps during the summer, including serving at the University of Minnesota and University of Stanford camps.

Frederick earned his undergraduate degree in Biology from the University of Nebraska-Lincoln in 1998, where he competed in NIRSA Division I Club Volleyball. In addition, he completed his formal certification in Cytotechnology at the Mayo Clinic in Rochester, Minn., in 2000.

He and his wife Becky reside in Parkville, Mo., with their daughter Sarah.



Missouri Western head volleyball coach Cory Frederick has tabbed former Griffon player Marian "Broderick" Carbin as the team's assistant coach, announced Monday (June 15). Carbin will assist in all aspects of the program under Frederick, including recruiting.

A four-year letterwinner for the Griffons, Carbin played in 393 games and 116 matches in four years. She accumulated 557 kills to go along with 1,009 digs, 135 set assists and 128 services aces. She was also named to the 2005 ESPN the Magazine Academic All-America team.

Carbin graduated with a bachelor's degree in mathematics in the spring of 2007. Before taking this job she taught mathematics at North Kansas City High School where she also was an assistant coach for the high school team. She is the head coach of the Kansas City Extreme Volleyball Club. Her team has been invited to play in the 2009 Junior Olympics National Tournament this coming month.

She was also a student assistant coach for Missouri Western in 2006 and was the 2004-05 Missouri Western Volleyball Student-Athlete of the Year.

Marian and her husband, former Western football player Greg Carbin reside in North Kansas City.



GRIFFONS LOOK TO GET BETTER IN 2009

2009 Season Outlook

When Cory Frederick left Missouri Western as an assistant coach in 2003, he did not say goodbye to the program forever. Just six short years later, he returned to the school where he always felt most at home.

"I got the head coaching experience I needed at Park (University) and am glad that I've been given the opportunity to come back and lead this program," Frederick said. "You have an easy job when you enjoy the environment you work in."

After a successful head coaching stint at Park, he parted ways with his '08 29-1 NAIA Men's National Championship team and returned to coaching at Western with a new wave of talent and the inescapable tough competition of the MIAA.

Frederick inherits a team that won four games last season, with one win in conference play over Fort Hays. Despite the limited number of wins, Frederick has high hopes for the experienced team that anxiously awaits the '09 season.

With six returning upperclassman and six second-year players, most whom already have game exposure from last season, Frederick knows their experience will help the team out this year.

"The first year is tough for any freshman in the MIAA," he said. "The fact that they saw some

court time early on in their careers will be a huge benefit to the program in the long run."

Frederick is looking for several upperclassmen to lead the team both on and off the court this upcoming fall. Senior Madison Benton (Kansas City, Mo.) will lead the offense at setter and will aim to keep the team playing together as one unit this season. Juniors Kelli Sicner (Omaha, Neb.) and Meghan Voelz (Elk Grove, Ill.) will lead the offensive attack from the outside.

They will also have a significant presence on campus as well-rounded student athletes, according to Frederick.

Their work ethic both on the court, in the weight room and class room will be vitally important in leading the team against the thick competition of the MIAA.

The team hopes to maintain its academics with an overall 3.25 gpa average, tough task to follow through on when the team takes on a six-game conference road trip during the month of October.

"We'll get tired through these stretches," Frederick said. "Our aim is to keep everyone healthy and enjoy what they are doing. We want them to love the game they've played since they were little kids."



To start off the year, the team will travel to tournaments in Souix Falls, S. D, Portales, N.M. and Kansas City, Mo., giving Frederick a great chance to see his team on the court in a game setting for the first time. He will base playing time off of practice: the most consistent players in practice who do their job in the game will keep their spot.

“The players have a better understanding of where they are at and know what they have to work on in order to receive playing time,” Frederick said.

He knows that if the team is playing as a unit and not as individuals, the winning will come naturally. The team needs to be focused on what it takes to win and not the winning itself.

The challenge will lie in teaching the techniques of the offense and defense that the team has been working on since Western named Frederick as its sixth head coach in program history.

His specialty comes with the offensive side of the ball; whereas, the defense will rely upon the mastermind of Assistant coach Marian Carbin ('07). Carbin returns to the program after playing for the Griffons under Frederick's tutelage, accumulating over 500 kills and 1,000 digs in her four year career. ESPN the Magazine/ CoSIDA® named her to its Academic All-America team in 2005, equaling her success on the court with academics.

Assistant coach Marian Carbin ('07). Carbin returns to the program after playing for the Griffons under Frederick's tutelage, accumulating over 500 kills and

1,000 digs in her four year career. ESPN the Magazine/ CoSIDA® named her to its Academic All-America team in 2005, equaling her success on the court with academics.

“Her defensive alignments and my offense will compliment one another nicely,” Frederick said. “She knows my coaching style, the offense, and how to interact with me, so the experience from coach to player will help.”

Frederick also notes that having a former player coaching with him on the sidelines will help out in recruiting since she can give an honest opinion about the head coach.

“She loves Missouri Western – and that's why she's here,” he said. “She wants to see this program be successful.”

Success won't come easy since the MIAA consistently turns out some of the best teams in the country such as Central Missouri, Emporia St., Pitt St., Truman and Washburn. A consistent offense and a focused defense will allow the team to stay in the game against conference foes when it comes down to crunch time.

The team's goal is to be competitive in the conference with no expectation of setting a certain number on wins.

“We're the underdogs – we're not supposed to even be close, but they have the confidence to win,” Frederick said. “You have to give a lot of attention to every opponent, but it's fun to come into situations like this. We have nothing to worry about.”





1 Karin Schmit

DS / 5-7 / Freshman
Bellevue, Neb.



2 Kelli Sicner

OH / 5-10 / Junior
Omaha, Neb.



3 Sarah Chambers

OH / 5-9 / Junior
Plano, Texas



4 Brittany Gurera

S / 5-4 / R-Freshman
Lee's Summit, Mo.



5 Amanda Bates

Oh/L / 5-9 / Sophomore
North Liberty, Iowa



6 Alex Behnke

MH / 6-0 / Sophomore
Seymour, Wis.



7 Madison Benton

S / 5-8 / Senior
Kansas City, Mo.



8 Meghan Voelz

OH / 5-8 / Junior
Elk Grove, Ill.



9 Shari Tompkins

L / 5-9 / Senior
West Liberty, Iowa



10 Allison Smith

MH / 6-0 / Sr.
Cullbertson, Neb.



11 Emily Tuisl

OH / 5-10 / Sophomore
Clinton, Iowa



12 Lauren Burbach

S / 5-8 / Junior
Lincoln, Neb.



13 Britny Pearl

OH / 5-6 / Sophomore
Kansas City, Mo.



15 Hannah Zimmerman

RS / 5-10 / Sophomore
Lincoln, Neb.



16 Elise Teague

MH / 6-0 / Sophomore
Littleton, Colo.



17 Eboni Lacey

RS / 6-0 / Freshman
Raytown, Mo.



18 Brittany Cline

MB / 6-0 / Freshman
Kansas City, Mo.



HC Cory Frederick

Nebraska-Lincoln '98



AC Marian Carbin

Missouri Western '07

MWSU Griffons

Photo Roster

5-10 • Junior • RS • Omaha, Neb. • Millard North HS

KELLI SICNER



2



Outlook: Has a lot of talent and athletic ability...got a lot of playing the past two seasons...outgoing personality...will be one of the Griffons leaders on the court this season.

2008 season: Played in 130 games last season...had 263 kills, improving her average to 2.02 kills/game...accumulated 321 digs, second highest total...received all-MIAA honorable mention honors.

2007 season: Played in 94 games...had 144 kills with a 1.53 kill/game average.

High School: Varsity letter winner two years...team placed fourth in state in 2005 and third in 2006...team captain for Millard North in 2006...Colorado Crossroads Tournament Champion (1st of 144)...elite volleyball most improved player.

Personal: Daughter of Marc and Cheryl...majoring in criminal justice...favorite food is buffalo wings...dream vacation would be to Rome...favorite professional sports team is the Boston Red Sox...favorite collegiate sports team is the Nebraska Cornhuskers...one word to describe Kelli: zany...favorite tv show is Keeping up with the Kardashians...favorite professional athlete is Matt Ryan...best sports moment is beating Fort Hays ('08) and getting a career-high 20 kills...favorite candy is sour patch straws...random fact: Kelli doesn't have a spleen...dream job is to be a personal shopper/stylist.

Missouri Western Individual Career History

Sicner, Kelli											
Season	GP-MP	K	K/G	E	TA	Pct	A	A/G	SA	SA/G	SE
2007	94-30	144	1.53	100	533	.083	64	0.68	6	0.06	5
2008	130-36	263	2.02	149	1007	.113	21	0.16	10	0.08	12
TOTAL	224-66	407	1.82	249	1540	.103	85	0.38	16	0.07	17

Season	GP	RE	DIG	D/G	BS	BA	TB	B/G	BE	BHE
2007	94	15	90	0.96	3	64	67	0.71	10	5
2008	130	36	321	2.47	5	43	48	0.37	5	1
TOTAL	224	51	411	1.83	8	107	115	0.51	15	6

4



5-4 • R - Freshman • S • Lee's Summit, Mo. • Raymore-Peculiar HS

BRITTANY GUBERA

Outlook: One of her strongest assets is her quickness...she also has a great work ethic to go a long with excellent setting fundamentals...she will only get better with experience.

2008 season: Redshirted

High School: Played at Raymore-Peculiar High School...was a two year letter winner...helped her team finish last season with a 24-8-1 record...she had a 92-percent serving percentage in high school to go along with 27 aces, 531 set assists and 145 digs...All-Conference performer.

Personal: Daughter of William and Kelly...majoring in nursing...favorite food is chips and salsa...favorite professional sports team is the Green Bay Packers...favorite collegiate sports team is the Mizzou Tigers...favorite tv show is C.S.I. Las Vegas...favorite professional athlete is Brett Favre...best sports moment is watching Brett Favre play in KC on her 18th birthday...favorite candy is Twix...dream job is to be a volleyball coach.

5



5-9 • Sophomore • OH/L • North Liberty, Iowa • Iowa Mennonite HS

AMANDA BATES

Outlook: Has exceptional playing experience...is a great player who will play a dual role of libero/defensive specialist...very quick and knows how to put herself in the right position to be successful.

2008 season: Played in one match a season ago.

High School: Four year letter winner while playing at Iowa Mennonite High School...averaged 3.2 kills per game, 3.5 digs per game .817 service aces per game...she was a first team All-State and All-Conference selection...two time Team MVP...two time voted best offensive and defensive player...was a team captain.

Personal: Daughter of John and Michelle...majoring in nursing...favorite food is pasta...dream vacation would be to Australia...favorite collegiate sports team is the Iowa Hawkeyes...one word to describe Amanda: encouraging...favorite professional athlete is Kerri Walsh...best sports moment is making it to the Junior Olympics four years in a row...favorite tv show growing up was Rugrats...favorite candy is Skittles...dream job is to be a nurse.



6



6-0 • Sophomore • MH • Seymour, Wis. • Seymour HS

ALEX BEHNKE

Outlook: Is very athletic and has tremendous lateral quickness...very hard worker and has only begun to tap into her volleyball potential...she will work very hard to become the best volleyball player she can be.

2008 season: Played in 100 matches...had 148 kills with a 1.48 kills/game average

High School: Played at Seymour High School in Seymour, Wis...named team MVP her senior year...was a captain and a Third Team All-State selection...accumulated 279 kills, 179 solo blocks, 32 block assists, 53 services aces, 189 digs and 11 assists her senior season...third in the conference in total points.

Personal: Daughter of Roger and JoAnn...majoring in nursing...favorite food is beef stew...dream vacation would be to Bahamas...favorite professional sports team is the Boston Red Sox...favorite collegiate sports team is the Wisconsin Badgers...one word to describe Alex: competitive...favorite tv show is House...favorite professional athlete is Jenny Finch...favorite candy is Milky Way...dream job is to be a professional athlete, either softball pitcher or a volleyball player.

Missouri Western Individual Career History

Behnke, Alexandra										
Season	GP-MP	K	K/G	E	TA	Pct	A	A/G	SA	SA/G
2008.....	100-28	148	1.48	98	416	.120	16	0.16	1	0.01
TOTAL.....	100-28	148	1.48	98	416	.120	16	0.16	1	0.01



Season	GP	RE	DIG	D/G	BS	BA	TB	B/G	BE	BHE
2008.....	100	5	30	0.30	11	65	76	0.76	8	2
TOTAL.....	100	5	30	0.30	11	65	76	0.76	8	2

5-8 • R-Senior • S Kansas City, Mo. • Park Hill South HS

MADISON BENTON



7

Outlook: Is a very talented athlete...will be looked upon to be the floor leader in 2009...knows the offense well...great knowledge of the game.

2008 season: Played in 133 games...totaled 574 assists...team-leader with 4.32 assists/game

2007 season: Played in 107 games accumulating 590 assists...led the team with 5.51 assists/game...named to the Best Western Invitational All-Tournament team on September 10, 2007.

2006 season: Played in 108 with four kills....had 674 set assists and 27 service aces.

2005 season: Redshirted

High School: Graduate of Park Hill South High School in Kansas City, Mo.

Personal: Daughter of Ricky Benton and Deborah Way...majoring in elementary education...favorite food is mashed potatoes...favorite collegiate sports team is MWSU Volleyball...role model growing up was her sister...favorite professional athlete is her cousin, Kamerion Wimply...favorite cereal is cinnamon Toast Crunch...cartoon character that best describes Madison is Spongebob...favorite tv show growing up was Rugrats.

Missouri Western Individual Career History (Aug 04, 2009)

Benton, Madison											
Season	GP-MP	K	K/G	E	TA	Pct	A	A/G	SA	SA/G	SE
2006.....	108-31	4	0.04	9	36	-.139	674	6.24	27	0.25	18
2007.....	107-32	33	0.31	15	119	.151	590	5.51	16	0.15	12
2008.....	133-36	15	0.11	9	83	.072	574	4.32	15	0.11	11
TOTAL.....	348-99	52	0.15	33	238	.080	1838	5.28	58	0.17	41

Season	GP	RE	DIG	D/G	BS	BA	TB	B/G	BE	BHE
2006.....	108	1	254	2.35	0	3	3	0.03	1	16
2007.....	107	1	290	2.71	1	14	15	0.14	3	30
2008.....	133	0	259	1.95	0	2	2	0.02	1	25
TOTAL.....	348	2	803	2.31	1	19	20	0.06	5	71



8



MEGHAN VOELZ

5-8 • Junior • OH • Elk Grove, Ill. • Elk Grove HS



Outlook: Explosive player who got a lot of action during her first two seasons...has a lot of talent and athletic ability...confident player who will be looked upon to lead by example.

2008 season: Played in 133 games...lead the Griffons with 271 kills and a 2.04 kills/game average...finished with team-high 23 aces and totaled 309 digs

2007 season: Played in 115 games...had 242 kills for an average of 2.10/game...had 297 digs for and average of 2.58 per game...had 20 services aces and 37 blocks.

High School: Played at Elk Grove High School in Elk Grove Village, Ill...was a two time All-Area and All-Conference selection...second place at nationals and was a regional champion.

Personal: Daughter of Glenn and Kathy...majoring in finance and management...favorite food is chocolate chip cookie dough...dream vacation would be Italy...favorite professional sports team is the Chicago Cubs...listens to R & B...role model growing up was her mom...favorite movie is Cars...favorite television show is True Blood...nickname is Voelz.

Missouri Western Individual Career History

Voelz, Meghan

Season	GP-MP	K	K/G	E	TA	Pct	A	A/G	SA	SA/G	SE	GP	RE	DIG	D/G	BS	BA	TB	B/G	BE	BHE
2007	115-32	242	2.10	175	880	.076	33	0.29	20	0.17	37	115	48	297	2.58	7	30	37	0.32	6	9
2008	133-36	271	2.04	179	1062	.087	19	0.14	23	0.17	25	133	58	309	2.32	10	38	48	0.36	7	2
TOTAL	248-68	513	2.07	354	1942	.082	52	0.21	43	0.17	62	248	106	606	2.44	17	68	85	0.34	13	11

5-9 • Senior • OH/L • West Liberty, Iowa • West Liberty HS



9

SHARI TOMPKINS

Outlook: Has a lot of playing experience at the collegiate level...will be looked upon for leadership on and off the floor...is a versatile player who can play libero or right side.

2008 season: Played in 108 games...accumulated a team-high 372 digs for a 4.33/game average.

2007 season: Played in 90 games accumulating 340 digs for a 3.78/game average...ranked second on the team with 24 service aces...had 13 kills...one block assist.

2006 season: Played in 104 games accumulating 494 digs for a 4.74 digs/game average, which led the 2006 team...led the team in services aces with 34...15 set assists...

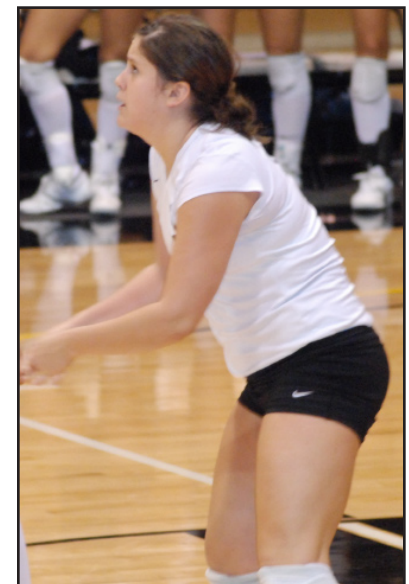
High School: Attended West Liberty High School in West Liberty, Iowa...was her teams MVP...first team All-Area, All-District and All-Conference...voted teams best defensive and offensive player.

Personal: Daughter of Mark and Jacque...majoring in physical education...favorite food is Mexican...dream vacation would be to Scotland...favorite professional sports team is the Chicago Cubs...favorite collegiate sports team is the Iowa Hawkeves...one word to describe Shari: determined...role model growing up was her grandma...favorite professional athlete is Misty May...favorite tv show is That 70s show...dream job is to be a pediatric surgeon...favorite candy is Skittles.

Missouri Western Individual Career History

Tompkins, Shari

Season	GP-MP	K	K/G	E	TA	Pct	A	A/G	SA	SA/G	SE	GP	RE	DIG	D/G	BS	BA	TB	B/G	BE	BHE
2006	104-30	7	0.07	21	66	-.212	15	0.14	34	0.33	26	104	30	493	4.74	0	1	1	0.01	0	1
2007	90-27	13	0.14	11	80	.025	28	0.31	24	0.27	12	90	30	340	3.78	0	1	1	0.01	0	7
2008	108-34	3	0.03	8	45	-.111	16	0.15	8	0.07	21	108	27	372	3.44	0	0	0	0.00	0	0
TOTAL	302-91	23	0.08	40	191	-.089	59	0.20	66	0.22	59	302	87	1205	3.99	0	2	2	0.01	0	8





10



6-0 • Senior • MH • Culbertson, Neb. • Central Community College

ALLISON SMITH



Outlook: She is a very athletic and strong kid...is an extremely versatile athlete who will bring experience to the front line.

2008 season: Played in 123 games...accumulated 128 kills and a team-high 91 blocks

Community College: Played at Central Community College out of Columbus, Neb...was an All-Region and Academic All-NCCAC selection...All-NCCAC and All-Region Tournament selection...named to the National Dean's List.

High School: Went to McCook High School...ranked first out of 97 students academically.

Personal: Daughter of Bob and Marie...majoring in secondary math education...from Culbertson, Neb...greatest sports moment was winning regional's in 2006 to go to nationals...father played basketball and brother participated in track and field in college...favorite food is spaghetti...favorite tv show is Family Guy...role model growing up was her mom...favorite movie is The Sound of Music...favorite candy is Mily Way.

Missouri Western Individual Career History

Smith, Allison

Season	GP-MP	K	K/G	E	TA	Pct	A	A/G	SA	SA/G	SE
2008.....	123-35	129	1.05	103	485	.054	12	0.10	12	0.10	19
TOTAL.....	123-35	129	1.05	103	485	.054	12	0.10	12	0.10	19

Season	GP	RE	DIG	D/G	BS	BA	TB	B/G	BE	BHE
2008.....	123	1	42	0.34	16	75	91	0.74	10	6
TOTAL.....	123	1	42	0.34	16	75	91	0.74	10	6

5-10 • Sophomore • OH • Clinton, Iowa • Clinton HS



11

EMILY TUISL

Outlook: Is a good athlete who will compete for playing time this fall...she has sensational ball control.

2008 season: Played in six matches...had two kills and one block.

High School: Played her high school volleyball at Clinton High School in Clinton, Iowa...was a three year letter winner...averaged 3.1 kills and finished her senior season with 208 digs, 52 blocks and 36 service aces...first team All-Conference...All-Tournament team selection...named to the 2007 and 2008 Iowa High Performance Camp...played club volleyball for the Platform Elite Volleyball Club.

Personal: Daughter of Jim and Carla...majoring in criminal justice...greatest sports moment was making the IAHP team with a broken jaw...favorite food is cheese ravioli with alfredo...dream vacation would be to the Cancun...favorite professional sports teams are the Chicago Cubs and Bears...favorite collegiate sports team is the Iowa Hawkeyes...one word to describe Emily: crazy...favorite candy is Reese's...favorite tv show growing up was Rugrats...nickname is Tus or Tuisl...random fact: Emily was a competitive gymnast for 10 years.



2009 Missouri Western Volleyball

MWSU Griffons

Meet the Griffons



12



LAUREN BURBACH

5-8 • Junior • S • Lincoln, Neb. • Norris HS



Outlook: Has very good hands as a setter...is a good defensive player and should help the Griffons offensively in 2009...quiet personality but will be looked upon to lead by example.

2008 season: Played in 130 games with 420 assists...ranked second on the team with 3.23 assists/game average

2007 season: Played in 81 games with 377 assists...ranked second on the team with a 4.65 assists/ game average...had 13 kills and 11 services aces.

High School: Played at Norris High School in Lincoln, Neb...one year All-State performer...three year All-Conference performer...was her team's MVP.

Personal: Daughter of Steve and Rhonda...majoring in english...dream vacation would be to the Bahamas...favorite collegiate sports team is the Nebraska Cornhuskers...favorite video game is the Original Super Mario Brothers...role model growing up were her parents...favorite professional athletes are Magic Johnson and Misty May...favorite movie is Titanic...nickname is Burby...favorite television shows are Charmed and Friends...used to love the Backstreet Boys and the show Full House.

Missouri Western Individual Career History

Burbach, Lauren											
Season	GP-MP	K	K/G	E	TA	Pct	A	A/G	SA	SA/G	SE
2007	81-29	13	0.16	7	32	.188	377	4.65	11	0.14	18
2008	130-36	12	0.09	12	54	.000	420	3.23	14	0.11	23
TOTAL	211-65	25	0.12	19	86	.070	797	3.78	25	0.12	41

Season	GP	RE	DIG	D/G	BS	BA	TB	B/G	BE	BHE
2007	81	0	155	1.91	1	3	4	0.05	1	24
2008	130	1	234	1.80	1	0	1	0.01	2	14
TOTAL	211	1	389	1.84	2	3	5	0.02	3	38

13



BRITNY PEARL

5-8 • Sophomore • OH/DS • Kansas City, Mo. • Grandview HS

Outlook: A talented player who has a lot of raw skill...very athletic...brings a wealth of hard work and dedication...will continue to get better the longer she is in the program and the more playing time she gets.

2008 season: Played in five matches with three kills...had four digs and one service ace.

High School: Played at Grandview High School out of Kansas City, Mo...earned a total of nine varsity letters and six All-Conference honors...four year letter winner...was a team captain and team MVP her senior season...she had 143 services aces, 313 kills, 37 assists, 152 solo blocks, 87 block assists and 339 digs during her career.

Personal: Daughter of Ivan and Kelly...majoring in elementary education...brother Brandon plays baseball at Truman State University...loves watching football...favorite food is chicken fingers...favorite candy is Swedish fish...mother had the most influence on her life...has met Shaq...favorite video game is guitar hero...pre-game ritual is listening to music...as a kid like the group N'Sync and the show Tom and Jerry.



15



5-10 • Sophomore • RS • Lincoln, Neb. • Piux HS

HANNAH ZIMMERMAN

Outlook: Very powerful left handed player...is athletic and will work extremely hard to make herself and her teammates better...will create match-up problems for other teams.

2008 season: Played in 117 games accumulating 189 kills with a 1.62 kills/game...had 50 digs and 42 blocks.

High School: Played at Lincoln Pius X in Lincoln, Neb...was a three year letter winner and a two year starter...she had 195 kills, 32 ace serves, 21 blocks, 53 assists and 144 digs from her right side hitter position during her senior season... finished career with 280 kills, 40 ace serves, 43 blocks, 77 assists and 178 digs...helped team to a 35-4 record her senior season and a state championship...finished her high school career with a 94-18 record.

Personal: Daughter of Tom and Sonya...majoring in physical education...people that had the greatest impact on her life is her parents and past coaches...would like to have dinner with Elvis...favorite food is Lasagna...favorite candy is Reese's...favorite professional sports team is the Chicago Cubs...favorite collegiate sports team is the Nebraska Cornhuskers...favorite television show is Grey's Anatomy...her dream job would be to travel all over the world.

Missouri Western Individual Career History (Aug 04, 2009)

Zimmerman, Hannah

Season	GP-MP	K	K/G	E	TA	Pct	A	A/G	SA	SA/G	SE
2008.....	117-33	189	1.62	150	645	.060	26	0.22	2	0.02	2
TOTAL.....	117-33	189	1.62	150	645	.060	26	0.22	2	0.02	2

Season	GP	RE	DIG	D/G	BS	BA	TB	B/G	BE	BHE
2008.....	117	6	50	0.43	3	39	42	0.36	15	8
TOTAL.....	117	6	50	0.43	3	39	42	0.36	15	8



16



6-0 • Sophomore • MH • Littleton, Colo. • Chatfield HS

ELISE TEAGUE

Outlook: Very solid player who has a lot of strength and power...very competitive and will work extremely hard...great athlete and should prove to be an asset on the right side or at the middle blocker position.

2008 season: Played in 54 games totaling 45 kills with three service aces.

High School: Went to Chatfield Senior high school in Littleton, Colo...lettered all four years...helped team win the Jeffco League as a sophomore...on a team the finished second at districts her junior season...team captain...All-Conference performer as a senior.

Personal: Daughter of Tom and Sue...plans on majoring in business...favorite food is sushi...dream vacation would be to Italy...favorite professional sports team is the Denver Nuggets...favorite collegiate sports team is the University of Colorado...favorite video game is Rock Band...when she was a kid she wanted to be the Zamboni driver at Colorado Avalanche games...dream job would be to own a ski resort...her parents have had the biggest influence on her life...favorite candy is a three musketeers.

17



6-0 • R - Freshman • RS • Raytown, Mo. • Raytown South HS

EBONI LACEY

Outlook: Will be a right side hitter for the Griffons...has a very bright future and will only get better...attacks the ball well and will add height to the Griffons front line.

2008 season: Redshirted

High School: Went to Raytown High School where she lettered in volleyball two years...All-Conference playing in the Suburban Middle 6 conference...teams most improved player during her sophomore season...had 63 blocks and 114 kills during her senior year.

Personal: Daughter of William and Marsha...plans on majoring in graphic design/journalism...person who had the greatest impact on Ebony was her late coach Kristi Madrid...father played college football at Lincoln University...favorite food is Soul Food/Chinese...dream vacation would be to Hawaii...favorite professional athlete is LeBron James...favorite movie is Seven Pounds...favorite cereal is Frosted Flakes...nickname is Eb...misses nap time as a kid...the cartoon which best describes her is Tweety Bird.

MWSU Griffons

Meet the Griffons





18



6-0 • Freshman • MB • Kansas City, Mo. • Oak Park HS

BRITTANY CLINE

Outlook: A very talented player who would get immediate court time in the middle...will battle for a starting spot right away...is a powerful player who will work hard to improve herself and teammates.

High School: Played at Oak Park high school in Kansas City, Mo...lettered two years...played in the Missouri/Kansas All-Star game...named All-District, All-Conference and Honorable Mention All-Region...played on a team that won districts her junior season.

Personal: Daughter of Dennis and Annette...favorite food is cheesecake...favorite candy is Junior Mints...favorite book is "Pride and Prejudice"...dream vacation would be to Ireland...best sports moment was playing a volleyball game on the football field...favorite cereal is Lucky Charms...she is double jointed...favorite television show when she was a kid was Rugrats...dream job would be an FBI Agent.

1



5-7 • Freshman • DS • Bellevue, Neb. • Bellevue East HS

KARIN SCHMIT

Outlook: A very quick and has excellent defensive skills on the court...has a strong work ethic and skill set...will develop into a good libero during her career at Western.

High School: Played at Bellevue East high school in Bellevue, Neb...helped her team make it to the state tournament...was an Honorable Mention All-State selection and an Academic All-State performer during her senior season...in 89 games she had 23 services aces in 309 attempts to go along with 314 digs and 49 set assist during her senior season.

Personal: Daughter of Greg and Cathie...majoring in wildlife conservation...favorite food is anything my parents make...dream vacation would be to Europe...favorite professional sports team is the Green Bay Packers...favorite collegiate sports team is the Nebraska Cornhuskers...one word to describe Kelli: outgoing...favorite tv show is The Office...favorite musical group growing up was N*Sync...best sports moment is going to state...favorite candy is Twisterz...dream job is to be a wildlife biologist.

3



5-9 • Junior • OH • Plano, Tex. • Coffeyville CC

SARAH CHAMBERS

Outlook: Is a talented player who will bring experience to the squad...she brings the size and speed to be able to compete in the MIAA...a hard worker who is powerful and smart around the net.

High School: Played at the Cenetary College of Louisiana (06-07)...played at Coffeyville CC (07-8)...received first team all-district and second team all-conference at Coffeyville.

Personal: Daughter of Robert and Lynda...majoring in elementary education...favorite food is enchiladas...dream vacation would be to Hawaii...favorite professional sports team is the Philadelphia Phillies...favorite collegiate sports team is the Villanova Wildcats...favorite tv show is Cold Case...favorite musical group growing up was the Backstreet Boys...favorite professional athlete is LeBron James...favorite candy is Reese's...random fact: Sarah is deathly afraid of squirrels...most famous person Sarah has met is Spud Webb.



MWSU Griffons

2008 Season in Review



2008 Missouri Western Volleyball
Missouri Western Overall Team Statistics (as of Aug 10, 2009)
All matches

Overall record: 4-32 Conf: 1-19 Home: 1-9 Away: 0-11 Neutral: 3-12

TEAM STATISTICS	MWSU	OPP

ATTACK.....		
Kills.....	1261	1809
Errors.....	869	728
Total Attacks.....	4730	4711
Attack Pct.....	.083	.229
Kills/Game.....	9.5	13.6
SET.....		
Assists.....	1159	1658
Attempts.....	4364	4397
Assist Pct.....	.266	.377
Assists/Game.....	8.7	12.5
SERVE.....		
Aces.....	100	192
Errors.....	136	266
Aces/Game.....	0.8	1.4
SERVE RECEPTIONS.....		
Errors.....	192	100
Errors/Game.....	1.4	0.8
DEFENSE.....		
Digs.....	1876	2216
Digs/Game.....	14.1	16.7
BLOCKING.....		
Block Solo.....	57	76
Block Assist.....	340	410
Total Blocks.....	227.0	281.0
Blocks Per Game.....	1.7	2.1
Block Errors.....	58	47
BALL HANDLING ERRORS.....	63	37
ATTENDANCE.....		
Total.....	1570	3207
Dates/Avg Per Date.....	10/157	11/292
Neutral site #/Avg.....	15/99	
Current win streak.....	0	-
Home win streak.....	0	-

MATCH WINS BY #GAMES	1	2	3	4	5	Total

Missouri western....	0	0	0	1	3	4
Opponents.....	0	0	17	12	3	32

GAMES WON BY GAME	1	2	3	4	5	Total

Missouri western....	8	9	6	4	3	30
Opponents.....	28	27	30	15	3	103

POINTS BY GAME	1	2	3	4	5	Total

Missouri western....	705	664	653	377	75	2474
Opponents.....	875	852	878	455	87	3147





2008 Missouri Western Volleyball
 Missouri Western Overall Individual Statistics (as of Aug 10, 2009)
 All matches

Overall record: 4-32 Conf: 1-19 Home: 1-9 Away: 0-11 Neutral: 3-12

##	Name	GP-MP-MS	ATTACK					SET				SERVE		
			K	K/Game	E	TA	Pct	A	A/Game	TA	Pct	SA	SA/Gm	SE
8	Voelz, Meghan	133 36-	271	2.04	179	1062	.087	19	0.14	337	.056	23	0.17	25
2	Sicner, Kelli	130 36-	263	2.02	149	1007	.113	21	0.16	289	.073	10	0.08	12
15	Zimmerman, Hannah	117 33-	189	1.62	150	645	.060	26	0.22	133	.195	2	0.02	2
6	Behnke, Alexandra	100 28-	148	1.48	98	416	.120	16	0.16	40	.400	1	0.01	7
3	Rosenhagen, Lindsay	47 14-	57	1.21	45	231	.052	23	0.49	65	.354	0	0.00	0
10	Smith, Allison	123 35-	129	1.05	103	485	.054	12	0.10	50	.240	12	0.10	19
1	Carter, Brooke	105 35-	108	1.03	60	393	.122	8	0.08	60	.133	7	0.07	4
16	Teague, Elise	54 21-	45	0.83	44	201	.005	13	0.24	66	.197	3	0.06	7
13	Pearl, Britny	5 3-	3	0.60	2	16	.062	0	0.00	0	.000	1	0.20	1
11	Tuisl, Emily	6 4-	2	0.33	1	9	.111	1	0.17	2	.500	1	0.17	1
14	Connot, Leigh	56 21-	16	0.29	6	78	.128	10	0.18	189	.053	3	0.05	3
7	Benton, Madison	133 36-	15	0.11	9	83	.072	574	4.32	1618	.355	15	0.11	11
12	Burbach, Lauren	130 36-	12	0.09	12	54	.000	420	3.23	1229	.342	14	0.11	23
9	Tompkins, Shari	108 34-	3	0.03	8	45	-.111	16	0.15	284	.056	8	0.07	21
17	Lacey, Eboni	2 2-	0	0.00	3	5	-.600	0	0.00	2	.000	0	0.00	0
5	Bates, Amanda	1 1-	0	0.00	0	0	.000	0	0.00	0	.000	0	0.00	0
	MISSOURI WESTERN....	133 36-	1261	9.48	869	4730	.083	1159	8.71	4364	.266	100	0.75	136
	Opponents.....	133 36-	1809	13.60	728	4711	.229	1658	12.47	4397	.377	192	1.44	266

##	Name	G	RE	DIG		BLOCKING				BE	BHE
				DIG	Dig/G	BS	BA	Total	B/Game		
8	Voelz, Meghan	133	58	309	2.32	10	38	48	0.36	7	2
2	Sicner, Kelli	130	36	321	2.47	5	43	48	0.37	5	1
15	Zimmerman, Hannah	117	6	50	0.43	3	39	42	0.36	15	8
6	Behnke, Alexandra	100	5	30	0.30	11	65	76	0.76	8	2
3	Rosenhagen, Lindsay	47	1	15	0.32	2	13	15	0.32	3	1
10	Smith, Allison	123	1	42	0.34	16	75	91	0.74	10	6
1	Carter, Brooke	105	1	40	0.38	6	46	52	0.50	3	3
16	Teague, Elise	54	2	21	0.39	3	17	20	0.37	4	0
13	Pearl, Britny	5	1	4	0.80	0	0	0	0.00	0	0
11	Tuisl, Emily	6	1	2	0.33	0	1	1	0.17	0	0
14	Connot, Leigh	56	17	177	3.16	0	1	1	0.02	0	1
7	Benton, Madison	133	0	259	1.95	0	2	2	0.02	1	25
12	Burbach, Lauren	130	1	234	1.80	1	0	1	0.01	2	14
9	Tompkins, Shari	108	27	372	3.44	0	0	0	0.00	0	0
5	Bates, Amanda	1	0	0	0.00	0	0	0	0.00	0	0
17	Lacey, Eboni	2	0	0	0.00	0	0	0	0.00	0	0
	TEAM		35								
	MISSOURI WESTERN....	133	192	1876	14.11	57	340	227.0	1.71	58	63
	Opponents.....	133	100	2216	16.66	76	410	281.0	2.11	47	37



2009 Missouri Western Volleyball

MWSU Griffons

2008 Season in Review





2008 Missouri Western Volleyball
Missouri Western Category Leaders (as of Aug 10, 2009)
All matches

##	ATTACK (by Pct)	G	K	K/Game	E	TA	Pct
14	Connot, Leigh	56	16	0.29	6	78	.128
1	Carter, Brooke	105	108	1.03	60	393	.122
6	Behnke, Alexandra	100	148	1.48	98	416	.120
2	Sicner, Kelli	130	263	2.02	149	1007	.113
11	Tuisl, Emily	6	2	0.33	1	9	.111
8	Voelz, Meghan	133	271	2.04	179	1062	.087
7	Benton, Madison	133	15	0.11	9	83	.072
13	Pearl, Britny	5	3	0.60	2	16	.062
15	Zimmerman, Hannah	117	189	1.62	150	645	.060
10	Smith, Allison	123	129	1.05	103	485	.054
3	Rosenhagen, Lindsay	47	57	1.21	45	231	.052
16	Teague, Elise	54	45	0.83	44	201	.005
12	Burbach, Lauren	130	12	0.09	12	54	.000
9	Tompkins, Shari	108	3	0.03	8	45	-.111
17	Lacey, Eboni	2	0	0.00	3	5	-.600
MISSOURI WESTERN....		133	1261	9.48	869	4730	.083
Opponents.....		133	1809	13.60	728	4711	.229

##	KILL (by K/Game)	G	K	K/Game
8	Voelz, Meghan	133	271	2.04
2	Sicner, Kelli	130	263	2.02
15	Zimmerman, Hannah	117	189	1.62
6	Behnke, Alexandra	100	148	1.48
3	Rosenhagen, Lindsay	47	57	1.21
10	Smith, Allison	123	129	1.05
1	Carter, Brooke	105	108	1.03
16	Teague, Elise	54	45	0.83
13	Pearl, Britny	5	3	0.60
11	Tuisl, Emily	6	2	0.33
14	Connot, Leigh	56	16	0.29
7	Benton, Madison	133	15	0.11
12	Burbach, Lauren	130	12	0.09
9	Tompkins, Shari	108	3	0.03
17	Lacey, Eboni	2	0	0.00
MISSOURI WESTERN....		133	1261	9.48
Opponents.....		133	1809	13.60

##	SET (by A/Game)	G	A	A/Game	TA	Pct
7	Benton, Madison	133	574	4.32	1618	.355
12	Burbach, Lauren	130	420	3.23	1229	.342
3	Rosenhagen, Lindsay	47	23	0.49	65	.354
16	Teague, Elise	54	13	0.24	66	.197
15	Zimmerman, Hannah	117	26	0.22	133	.195
14	Connot, Leigh	56	10	0.18	189	.053
11	Tuisl, Emily	6	1	0.17	2	.500
2	Sicner, Kelli	130	21	0.16	289	.073
6	Behnke, Alexandra	100	16	0.16	40	.400
9	Tompkins, Shari	108	16	0.15	284	.056
8	Voelz, Meghan	133	19	0.14	337	.056
10	Smith, Allison	123	12	0.10	50	.240
1	Carter, Brooke	105	8	0.08	60	.133
17	Lacey, Eboni	2	0	0.00	2	.000
MISSOURI WESTERN....		133	1159	8.71	4364	.266
Opponents.....		133	1658	12.47	4397	.377

##	SERVE (by ##)	G	SA	SE	SA/G
1	Carter, Brooke	105	7	4	0.07
2	Sicner, Kelli	130	10	12	0.08
3	Rosenhagen, Lindsay	47	0	0	0.00
6	Behnke, Alexandra	100	1	7	0.01
7	Benton, Madison	133	15	11	0.11
8	Voelz, Meghan	133	23	25	0.17
9	Tompkins, Shari	108	8	21	0.07
10	Smith, Allison	123	12	19	0.10
11	Tuisl, Emily	6	1	1	0.17
12	Burbach, Lauren	130	14	23	0.11
13	Pearl, Britny	5	1	1	0.20
14	Connot, Leigh	56	3	3	0.05
15	Zimmerman, Hannah	117	2	2	0.02
16	Teague, Elise	54	3	7	0.06
MISSOURI WESTERN....		133	100	136	0.75
Opponents.....		133	192	266	1.44

##	BLOCK (by B/Game)	G	BS	BA	Total	B/Game	BE
6	Behnke, Alexandra	100	11	65	76.0	0.76	8
10	Smith, Allison	123	16	75	91.0	0.74	10
1	Carter, Brooke	105	6	46	52.0	0.50	3
16	Teague, Elise	54	3	17	20.0	0.37	4
2	Sicner, Kelli	130	5	43	48.0	0.37	5
8	Voelz, Meghan	133	10	38	48.0	0.36	7
15	Zimmerman, Hannah	117	3	39	42.0	0.36	15
3	Rosenhagen, Lindsay	47	2	13	15.0	0.32	3
11	Tuisl, Emily	6	0	1	1.0	0.17	0
14	Connot, Leigh	56	0	1	1.0	0.02	0
7	Benton, Madison	133	0	2	2.0	0.02	1
12	Burbach, Lauren	130	1	0	1.0	0.01	2
MISSOURI WESTERN....		133	57	340	227.0	1.71	58
Opponents.....		133	76	410	281.0	2.11	47

##	DEFENSE (by Dig/Gm)	G	DIG	Dig/G	BHE
9	Tompkins, Shari	108	372	3.44	0
14	Connot, Leigh	56	177	3.16	1
2	Sicner, Kelli	130	321	2.47	1
8	Voelz, Meghan	133	309	2.32	2
7	Benton, Madison	133	259	1.95	25
12	Burbach, Lauren	130	234	1.80	14
13	Pearl, Britny	5	4	0.80	0
15	Zimmerman, Hannah	117	50	0.43	8
16	Teague, Elise	54	21	0.39	0
1	Carter, Brooke	105	40	0.38	3
10	Smith, Allison	123	42	0.34	6
11	Tuisl, Emily	6	2	0.33	0
3	Rosenhagen, Lindsay	47	15	0.32	1
6	Behnke, Alexandra	100	30	0.30	2
17	Lacey, Eboni	2	0	0.00	0
5	Bates, Amanda	1	0	0.00	0
MISSOURI WESTERN....		133	1876	14.11	63
Opponents.....		133	2216	16.66	37





2008 Missouri western volleyball
 Missouri Western Match Results (as of Dec 12, 2008)
 All matches

Date	Opponent	Score	Overall		Record	Record	Time	Attend
			Score-by-game	Conference				
	Aug 29, 2008 vs Southwest Okla. St.		W 3-1	25-17,20-25,25-20,25-16		1-0	0-0	
! Aug 29, 2008	vs Southern Indiana	1-3 L	23-25,21-25,25-23,22-25		1-1	0-0	1:56	100
Aug 30, 2008	vs Missouri S & T	1-3 L	22-25,25-20,21-25,23-25		1-2	0-0	1:40	550
	Aug 30, 2008 vs Missouri St. Louis		1-3 L	25-23,20-25,14-25,21-25	1-3	0-0	1:30	
Sep 05, 2008	vs Missouri St. Louis	1-3 L	8-25,25-19,16-25,16-25		1-4	0-0	1:22	87
Sep 05, 2008	vs Quincy	2-3 L	25-23,23-25,25-16,14-25,10-15		1-5	0-0	1:40	44
09/06/2008	vs Colorado Mines	1-3 L	22-25,25-21,18-25,17-25		1-6	0-0	1:35	50
@ Sep 06, 2008	vs Southern Indiana	1-3 L	24-26,25-23,25-27,20-25		1-7	0-0	1:45	50
Sep 12, 2008	vs MSU	0-3 L	11-25,13-25,15-25		1-8	0-0	00:57	60
Sep 12, 2008	vs Central Oklahoma	W 3-2	25-22,24-26,13-25,25-22,17-15		2-8	0-0	1:54	55
Sep 13, 2008	at Tarleton	0-3 L	16-25,14-25,19-25		2-9	0-0	1:00	67
Sep 13, 2008	vs TWU	W 3-2	14-25,26-24,19-25,25-20,16-14		3-9	0-0	1:46	100
* Sep 17, 2008	at Fort Hays State	0-3 L	18-25,13-25,20-25		3-10	0-1	1:17	350
* Sep 18, 2008	EMPORIA STATE	0-3 L	19-25,11-25,12-25		3-11	0-2	1:05	465
* Sep 20, 2008	WASHBURN	1-3 L	15-25,12-25,25-21,14-25		3-12	0-3	1:39	107
* Sep 24, 2008	PITTSBURG STATE	0-3 L	14-25,15-25,10-25		3-13	0-4	1:14	105
* Sep 26, 2008	at Southwest Baptist	1-3 L	25-18,13-25,22-25,15-25		3-14	0-5	1:45	317
* Sep 27, 2008	at MSSU	0-3 L	24-26,12-25,15-25		3-15	0-6	1:10	147
10/03/2008	vs Central Oklahoma	0-3 L	22-25,16-25,8-25		3-16	0-6	1:01	100
10/03/2008	vs East Central	1-3 L	32-34,25-14,19-25,25-27		3-17	0-6	1:40	120
10/04/2008	vs #20 MSU	0-3 L	14-25,21-25,16-25		3-18	0-6	1:04	45
10/04/2008	vs Texas-Permian Basin	2-3 L	25-23,14-25,16-25,25-20,6-15		3-19	0-6	1:36	125
* Oct 10, 2008	NEBRASKA-OMAHA	0-3 L	23-25,15-25,20-25		3-20	0-7	1:22	101
* Oct 11, 2008	CENTAL MISSOURI	0-3 L	15-25,19-25,9-25		3-21	0-8	1:06	67
* Oct 15, 2008	NW MISSOURI STATE	1-3 L	25-16,11-25,21-25,18-25		3-22	0-9	1:31	159
* Oct 18, 2008	TRUMAN STATE	1-3 L	19-25,25-22,21-25,13-25		3-23	0-10	1:34	113
* Oct 22, 2008	FORT HAYS STATE	W 3-2	18-25,25-12,25-23,15-25,15-13		4-23	1-10	1:52	207
* Oct 24, 2008	at #9 Emporia State	0-3 L	16-25,21-25,10-25		4-24	1-11	1:09	324
* 10/25/2008	at #7 Washburn	0-3 L	17-25,18-25,17-25		4-25	1-12	1:08	245
	* Oct 29, 2008 at #18 Pittsburg State		0-3 L	16-25,15-25,18-25	4-26	1-13	1:12	
* Oct 31, 2008	SOUTHWEST BAPTIST	1-3 L	17-25,20-25,25-23,21-25		4-27	1-14	1:43	163
* Nov 01, 2008	MSSU	2-3 L	25-22,25-21,14-25,23-25,11-15		4-28	1-15	1:59	83
* Nov 07, 2008	at Nebraska-Omaha	0-3 L	18-25,17-25,21-25		4-29	1-16	1:17	768
* Nov 08, 2008	at #14 Cental Missouri	0-3 L	14-25,15-25,15-25		4-30	1-17	:54	150
* Nov 12, 2008	at NW Missouri State	0-3 L	21-25,9-25,19-25		4-31	1-18	1:02	301
* Nov 15, 2008	at #9 Truman State	0-3 L	13-25,16-25,20-25		4-32	1-19	1:02	538

MWSU Griffons

2008 Season in Review



2009 Missouri Western Volleyball



2009 Opponents



MWSU Griffons



MIAA Member Directory

University of Central Missouri

Sports Information Department 660-543-4312
 Location (pop.) Warrensburg, Mo. (16,340)
 Enrollment 11,000
 Website www.ucmo.edu/athletics

Emporia State University

Sports Information Department 620-341-5526
 Location (pop.) Emporia, Kan. (26,666)
 Enrollment 6,258
 Website www.emporia.edu/athletics

Fort Hays State University

Sports Information Department 785-628-5903
 Location (pop.) Hays, Kan. (19,841)
 Enrollment 7,500
 Website www.fhsuathletics.com

Missouri Southern

Sports Information Department 417-625-9359
 Location (pop.) Joplin, Mo. (46,373)
 Enrollment 5,740
 Website www.mssu.edu/athletics

Missouri Western

Sports Information Department 816-271-4257
 Location (pop.) St. Joseph, Mo. (76,107)
 Enrollment 5,500
 Website www.gogriffons.com

University of Nebraska-Omaha

Sports Information Department 402-554-3387
 Location (pop.) Omaha, Neb. (500,000)
 Enrollment 14,700
 Website www.OMavs.com

Northwest Missouri State

Sports Information Department 660-562-1118
 Location (pop.) Maryville, Mo. (10,581)
 Enrollment 6,500
 Website www.northwestbearcats.com

Pittsburg State University

Sports Information Department 620-235-4147
 Location (pop.) Pittsburg, Kan. (19,243)
 Enrollment 6,751
 Website www.pittstategorillas.com

Southwest Baptist University

Sports Information Department 417-328-1799
 Location (pop.) Bolivar, Mo. (9,143)
 Enrollment 3,536
 Website www.sbuniv.edu/athletics

Truman State University

Sports Information Department 660-785-4276
 Location (pop.) Kirksville, Mo. (16,988)
 Enrollment 6,000
 Website www.gobulldogs.truman.edu

Washburn University

Sports Information Department 785-670-1791
 Location (pop.) Topeka, Kan. (122,008)
 Enrollment 7,002
 Website www.wusports.com

The Mid-America Intercollegiate Athletics Association (MIAA), an 11-member conference of NCAA Division II institutions in Missouri, Kansas and Nebraska, was first organized in 1912 as the Missouri Intercollegiate Athletic Association.

Over the past 96 years, the MIAA has gained the reputation of being one of the top NCAA Division II conferences in the nation. MIAA student-athletes have won 12 NCAA team championships and, since 1964, 153 individual national titles. The MIAA currently conducts championships in eight sports for men and eight for women.

For the men, champions are crowned in football, cross country, basketball, indoor and outdoor track & field, baseball, tennis and golf. The women compete for titles in volleyball, cross country, soccer, basketball, indoor and outdoor track & field, softball, golf and tennis.

The MIAA turned a new page on July 1, 1992, when the NCAA Division II conference changed its name from the Missouri Intercollegiate Athletic Association to the Mid-America Intercollegiate Athletics Association.

The decision to make the change originated in 1989, when Pittsburg State University and Washburn University became the first schools outside the state of Missouri to gain membership in the MIAA.

The conference was first organized in 1912 with 14 member institutions. Of those original members, the University of Central Missouri, Truman State University, and Northwest Missouri State University still remain a part of the MIAA.

The first change in membership came in 1924, when the MIAA reorganized to include only the five regional Missouri state colleges: Central, Truman (at the time known as Northeast Missouri State), Northwest, Southeast Missouri State University and Southwest Missouri State University (now Missouri State).

Over the next 56 years, three schools joined the membership: the Missouri School of Mines (later the University of Missouri-Rolla) in 1935, Lincoln University in 1970, and the University of Missouri-St. Louis in 1980.

The 1980s brought the biggest changes in the conference. In 1981, Southwest Missouri State University opted to move to NCAA Division I and the MIAA appointed its first full-time commissioner, Ken Jones, in July.

He would be in the position for 16 years, retiring in 1997. Former Gulf South and Metro commissioner Ralph McFillen succeeded Jones, serving 10 years before his retirement in 2007. Jim Johnson succeeded McFillen in July of that year.

Southwest Baptist University brought membership back to eight schools in 1986, before the major expansion of the conference in 1989. Pittsburg State, Washburn, Missouri Southern State College (now University) and Missouri Western State College (now University) °© formerly members of the Central States Intercollegiate Conference °© began competition in the 1989-90 season.

Southeast Missouri State left the MIAA following the 1990-91 season to move on to NCAA Division I, and was replaced by Emporia State University in the 1991-92 season.

In August 1991, Judy Willson was hired as the MIAA's first full-time sports information director. She left in 1994, and was succeeded by Matt Newbery, who worked in that roll until this past summer when the MIAA's newest staff member Kellen Coleman was hired as Assistant to the Commissioner for Media Relations. A third full-time staff member was added in 2005, as former Emporia State track and field athlete Natasha Oakes was hired as the assistant to the commissioner for compliance. Larry House joined the staff in August 2007 as coordinator of external affairs.

The current membership of the MIAA is at 11 schools, with the departure of Missouri-St. Louis in 1996 and Missouri-Rolla in 2005, the forfeiture of membership by Lincoln in 1999 and the addition of Fort Hays State University in 2006 and the University of Nebraska-Omaha in 2008. Lincoln will rejoin the league next season.

School Joined MIAA

University of Central Missouri	1912
Emporia State University	1991
Fort Hays State University	2006
Missouri Southern State University	1989
Missouri Western State University	1989
University of Nebraska-Omaha	2008
Northwest Missouri State University	1912
Pittsburg State University	1989
Southwest Baptist University	1986
Truman State University	1912
Washburn University	1989

MIAA Staff Directory

Mid-America Intercollegiate Athletics Association
 114 W. 11th St.
 Suite 105
 Kansas City, MO 64105
 Phone: (816) 421-MIAA (6422)
 Email: info@theMIAA.com



Jim Johnson
Commissioner



Kellen Coleman
Asst. to the Commissioner/Media Relations



Natasha Oakes
Asst. to the Commissioner/
Senior Woman Administrator



Larry House
Coordinator of
External Affairs



The MIAA

MWSU Griffons

2009 GRIFFON VOLLEYBALL SCHEDULE

<i>Date</i>	<i>Opponent</i>	<i>Location</i>	<i>Time</i>
8/28	Southwest Minnesota State University	Sioux Falls, S.D. - Augustana Tourn.	9:00 am
8/28	Regis University	Sioux Falls, S.D. - Augustana Tourn.	3:00 pm
8/29	Chadron State University	Sioux Falls, S.D. - Augustana Tourn.	1:00 pm
8/29	Augustana College	Sioux Falls, S.D. - Augustana Tourn.	5:30 pm
9/4	Oklahoma-Panhandle State	Portales, NM - Eastern NM Tourn.	11:00 am
9/4	Eastern New Mexico	Portales, NM - Eastern NM Tourn.	7:00 pm
9/5	New Mexico Highlands	Portales, NM - Eastern NM Tourn.	1:00 pm
9/5	CSU-Pueblo	Portales, NM - Eastern NM Tourn.	5:00 pm
9/11	University of Illinois at Springfield	Kansas City, Mo. - Rockhurst Tourn.	11:00 am
9/11	Midwestern State University	Kansas City, Mo. - Rockhurst Tourn.	3:00 pm
9/12	Wayne State College (Neb.)	Kansas City, Mo. - Rockhurst Tourn.	1:00 pm
9/12	Upper Iowa University	Kansas City, Mo. - Rockhurst Tourn.	5:00 pm
9/16	Fort Hays State University	St. Joseph, Mo.	7:00 pm
9/18	Emporia State University	Emporia, Kan.	7:00 pm
9/19	Washburn University	Topeka, Kan.	2:00 pm
9/23	Pittsburg State University	Pittsburg, Kan.	7:00 pm
9/25	Southwest Baptist University	St. Joseph, Mo.	7:00 pm
9/26	Missouri Southern State University	St. Joseph, Mo.	2:00 pm
10/6	Rockhurst University	Kansas City, Mo.	7:00 pm
10/9	University of Nebraska-Omaha	Omaha, Neb.	7:00 pm
10/10	University of Central Missouri	Warrensburg, Mo.	6:30 pm
10/14	Northwest Missouri State University	Maryville, Mo.	7:00 pm
10/17	Truman State University	Kirksville, Mo.	7:00 pm
10/21	Fort Hays State University	Hays, Kan.	7:00 pm
10/23	Emporia State University	St. Joseph, Mo.	7:00 pm
10/24	Washburn University	St. Joseph, Mo.	7:00 pm
10/28	Pittsburg State University	St. Joseph, Mo.	7:00 pm
10/30	Southwest Baptist University	Bolivar, Mo.	7:00 pm
10/31	Missouri Southern State University	Joplin, Mo.	2:00 pm
11/6	University of Nebraska-Omaha	St. Joseph, Mo.	7:00 pm
11/7	University of Central Missouri	St. Joseph, Mo.	7:00 pm
11/11	Northwest Missouri State University	St. Joseph, Mo.	7:00 pm
11/14	Truman State University	Kirksville, Mo.	2:00 pm
11/18-11/21	South Central Regionals	TBD	TBD

2009 Schedule

MWSU Griffons



Southwest
Minnesota State

Aug. 28, 2009
Souix Falls, S.D.
9:00 am

Location: Marshall, Minn.
Enrollment: 3,200
Colors: Brown & Vegas Gold
Nickname: Mustangs
Affiliation: NCAA II
Conference: Northern Sun
SID: Kelly Loft
SID Phone: (507)-537-7177
SID Email: kelly.loft@smsu.edu
Website: <http://www.smsumustangs.com/>
President: Dr. David Danahar
Athletic Director: Chris Hmielewski
Head Coach: Terry Culhane

School Record: 129-41 (6th year)
Coach's Phone: (507)-537-7125



Head Coach:
Terry Culhane

2008 Record: 28-6, 16-4 NS

MWSU Griffons



Regis University
Aug. 28, 2009
Souix Falls, S.D.
3:00 pm

Location: Denver, Colo.
Enrollment: 16,000
Colors: Navy Blue, Gold
Nickname: Rangers
Affiliation: NCAA II
Conference: Rocky Mountain
SID: Jeremy Phillips
SID Phone: (303)-458-4052
SID Email: jshilli@regis.edu
Website: <http://www.regisrangers.com/>
President: Michael J. Sheeran, S.J
Athletic Director: Barbara Schroeder
Athletic Director: Barbara Schroeder
Head Coach: Frank Lavrisha

School Record: 486-261 (23rd year)
Coach's Phone: (303)-458-4053



Head Coach:
Frank Lavrisha

2008 Record: 19-12, 12-7 RMAC



Chadron State
College

Aug. 29, 2009
Souix Falls, S.D.
1:00 pm

Location: Chadron, Neb.
Enrollment: 2,800
Colors: Cardinal and White
Nickname: Eagles
Affiliation: NCAA II
Conference: Rocky Mountain
SID: Alex Helmbrecht
SID Phone: (308)-432-6212
SID Email: ahelmbrecht@csc.edu
Website: www.csc.edu/athletics
President: Dr. Janie Park
Athletic Director: Brad Smith
Head Coach: Amy Spruiell

School Record: 17-75 (4th year)
Coach's Phone: (308)-432-6346



Head Coach:
Amy Spruiell

2008 Record: 3-26, 1-18 RMAC

2009 Opponents



2009 Missouri Western Volleyball



Location: Rock Island, Ill.
 Enrollment: 2,500
 Colors: Blue and Gold
 Nickname: Vikings
 Affiliation: NCAA III
 Conference: Coll. Conf. of Illinois and Wisconsin
 SID: Dave Wrath
 SID Phone: (309) 794-7265
 SID Email: davewrath@augustana.edu
 Website: <http://www.augustana.edu/x353.xml>
 President: Steven Bahls
 Athletic Director: Mike Zapolski
 Head Coach: Janelle Hester

Augustana
 College

Aug. 29, 2009
 Souix Falls, S.D.
 5:30 pm

School Record: 23-12 (2nd year)
 Coach's Phone: (309) 794-7839

Head Coach:
 Janelle Hester

2008 Record: 23-12, 2-5 CCIW



Location: Goodwell, Okla.
 Enrollment: 1,153
 Colors: Royal Blue, Scarlet Red and White
 Nickname: Aggies
 Affiliation: NCAA II
 Conference: Heartland
 SID: Scott Puryear
 SID Phone: (580)-349-1340
 SID Email: scottp@opsu.edu
 Website: <http://www.opsu.edu/Athletics/>
 President: David Bryant
 Athletic Director: Jerry Olson
 Head Coach: Mike Stephens

Oklahoma
 Panhandle St.

Sept. 4, 2009
 Portales, N.M.
 11:00 am

School Record: (1st year)
 Coach's Phone: (580)-349-1320

Head Coach:
 Mike Stephens



2008 Record: 5-25



Location: Portales, N.M.
 Enrollment: 4,135
 Colors: Green and Silver
 Nickname: Zias
 Affiliation: NCAA II
 Conference: Lone Star (South)
 SID: Adam Pitterman
 SID Phone: (575) 562-4309
 SID Email: NA
 Website: <http://www.enmusports.com/>
 President: Dr. Steven G. Gamble
 Athletic Director: Dr. Jeff Geiser
 Head Coach: Kimberly Falkenhagen

Eastern New
 Mexico

Sept. 4, 2009
 Portales, N.M.
 7:00 pm

School Record: 10-53 (3rd year)
 Coach's Phone: (575) 562-2918

Head Coach:
 Kimberly
 Falkenhagen



2008 Record: 6-28, 0-13 LS



New Mexico
Highlands

Sept. 5, 2009
Portales, N.M.
1:00 pm

Location: Las Vegas, N.M.
Enrollment: 3,621
Colors: Navy Blue and Gold
Nickname: Cowgirls
Affiliation: NCAA II
Conference: Rocky Mountain
SID: Gavino Archuleta
SID Phone: (505) 426-2017
SID Email: gjarchuleta@nmhu.edu
Website: <http://www.nmhucowboys.com/>
President: Dr. James Fries
Athletic Director: Ed Manzanares
Head Coach: Jim Deisler

School Record: (1st season)
Coach's Phone: (505) 454-3206



Head Coach:
Jim Deisler

2008 Record: 8-20, 2-17 RMAC

MWSU Griffons

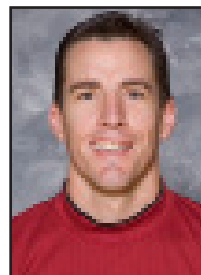


Colorado State U.
Pueblo

Sept. 5, 2009
Portales, N.M.
5:00 pm

Location: Pueblo, Colo.
Enrollment: 4,142
Colors: Red and Blue
Nickname: ThunderWolves
Affiliation: NCAA II
Conference: Rocky Mountain
SID: Anthony Sandstrom
SID Phone: (719) 549-2022
SID Email: Anthony.Sandstrom@colostate-pueblo.edu
Website: <http://www.gothunderwolves.com/>
President: Joseph A. Garcia
Athletic Director: Joe Falda
Head Coach: Chris Johnson

School Record: 12-42 (3rd year)
Coach's Phone: (719) 549-2012



Head Coach:
Chris Johnson

2008 Record: 5-22, 3-16 RMAC



University of
Illinois-Springfield

Sept. 11, 2009
Kansas City, Mo.
11:00 am

Location: Springfield, Ill.
Enrollment: 4,855
Colors: Purple & White
Nickname: Prairiestars
Affiliation: NCAA II
Conference: Great Lakes
SID: Scott Reed
SID Phone: (217) 206-6752
SID Email: sreed9@uis.edu
Website: <http://goprairiestars.com/>
President: B. Joseph White
Athletic Director: Dr. Rodger Jehlicka
Head Coach: Angie Riggle

School Record: (1st year)
Coach's Phone: (217) 206-7903



Head Coach:
Angie Riggle, not a
picture of Angie

2008 Record: 17-22, 10-6 Great Lakes

2009 Opponents



Location: Wichita Falls, Texas
 Enrollment: 6,000
 Colors: Maroon (PMS 201) and Gold (PMS 124)
 Nickname: Mustangs
 Affiliation: NCAA II
 Conference: Lone Star
 SID: Trey Reed
 SID Phone: (940) 397-4818
 SID Email: trey.reed@mwsu.edu
 Website: <http://www.msumustangs.com>
 President: Dr. Jesse W. Rogers
 Athletic Director: Charlie Carr
 Head Coach: Venera Flores-Stafford

Midwestern State University

Sept. 11, 2009
Kansas City, Mo.
3:00 pm

School Record: 106-60 (6th year)
 Coach's Phone: (940) 397-4471



Head Coach:
 Venera Flores-Stafford

2008 Record: 25-9, 9-4 LSC



Location: Wayne, Neb.
 Enrollment: 3,400
 Colors: Black and Gold
 Nickname: Wildcats
 Affiliation: NCAA II
 Conference: Northern Sun
 SID: Mike Grosz
 SID Phone: (402) 375-7326
 SID Email: migrosz1@wsc.edu
 Website: <http://wscwildcats.com/>
 President: Dr. Richard Collings
 Athletic Director: Eric Schoh
 Head Coach: Scott Kneifl

Wayne State College (Neb.)

Sept. 12, 2009
Kansas City, Mo.
1:00 pm

School Record: 102-40 (5th year)
 Coach's Phone: (402) 375-7303



Head Coach:
 Scott Kneifl

2008 Record: 23-10, 12-8 NSIC



Location: Fayette, Iowa
 Enrollment: 875
 Colors: Peacock Blue, Navy and White
 Nickname: Peacocks
 Affiliation: NCAA II
 Conference: Northern Sun
 SID: Howie Thompson
 SID Phone: (563) 425-5307
 SID Email: thompsonh@uiu.edu
 Website: UpperIowaAthletics.com
 President: Alan Walker
 Athletic Director: David Miller
 Head Coach: Shari Robertson

Upper Iowa University

Sept. 12, 2009
Kansas City, Mo.
5:00 pm

School Record: 11-21 (2nd year)
 Coach's Phone: (563) 425-5755



Head Coach:
 Shari Robertson

2008 Record: 11-21, 3-17 NSIC



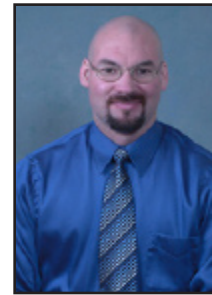
Fort Hays State University

Sept. 16, 2009
St. Joseph, Mo.
7:00 pm

Oct. 21, 2009
Hays, Kan.
7:00 pm

Location: Hays, Kan.
Enrollment: 9,000
Colors: Black & Gold
Nickname: Tigers
Arena: Gross Memorial Coliseum/6,814
Affiliation: NCAA II
Conference: MIAA
SID: Ryan Prickett
SID Phone: (785) 628-5903
SID Email: rprickett@fhsu.edu
Website: <http://www.fhsuathletics.com/>
President: Dr. Edward H. Hammond
Athletic Director: Curtis Hammeke
Head Coach: Steve Smith

School Record: (1st year)
Coach's Phone: (785) 628-4392



Head Coach:
Kurt Kohler

2008 Record: 9-25, 2-18 MIAA

MWSU Griffons



Emporia State University

Sept. 18, 2009
Emporia, Kan.
7:00 pm

Oct. 23, 2009
St. Joseph, Mo.
7:00 pm

Location: Emporia, Kan.
Enrollment: 6,528
Colors: Black and Gold
Nickname: Hornets
Arena: White Auditorium/5,000
Affiliation: NCAA II
Conference: MIAA
SID: Don West
SID Phone: (620) 341-4331
SID Fax: NA
SID Email: dwest@emporia.edu
Website: <http://www.empria.edu/athletics.com>
President: Dr. Michael R. Lane
Athletic Director: Kent Wieser
Head Coach: Bing Xu

School Record: 73-28 (4th year)
Coach's Phone: (620) 341-6085



Head Coach:
Bing Xu

2008 Record: 34-4, 18-2 MIAA



Washburn University

Sept. 19, 2009
Topeka, Kan.
2:00 pm

Oct. 24, 2009
St. Joseph, Mo.
7:00 pm

Location: Topeka, Kan.
Enrollment: 7,350
Colors: Yale Blue and White
Nickname: Lady Blues
Arena: Lee Arena/3,904
Affiliation: NCAA II
Conference: MIAA
SID: Mike Knipper
SID Phone: (785) 670-1948
SID Fax: (785) 670-1091
SID Email: mike.knipper@washburn.edu
Website: <http://www.washburn.edu/athletics>
President: Dr. Jerry Farley
Athletic Director: Loren Ferre'
Head Coach: Chris Herron

School Record: 214-44 (8th year)
Coach's Phone: (785) 670-1946



Head Coach:
Chris Herron

2008 Record: 30-6, 15-5 MIAA

2009 Opponents





Location: Pittsburg, Kan.
 Enrollment: 7,127
 Colors: Crimson & Gold
 Nickname: Gorillas
 Arena: John Lance Arena/5,500
 Affiliation: NCAA II
 Conference: MIAA
 SID: Dan Wilkes
 SID Phone: (620) 235-4147
 SID Fax: (620) 235-4149
 SID Email: dwilkes@pittstate.edu
 Website: <http://www.pittstategorillas.com>
 President: Dr. Steven Scott
 Athletic Director: Chuck Broyles
 Head Coach: Ibraheem Suberu

School Record: 183-157 (11th year)
 Coach's Phone: (785) 628-4392



Head Coach:
 Ibraheem Suberu

2008 Record: 28-8, 14-6 MIAA

Pittsburg State University

Sept. 23, 2008
 Pittsburg, Kan.
 7:00 pm

Oct. 28, 2008
 St. Joseph, Mo.
 7:00 pm



Location: Bolivar, Mo.
 Enrollment: 3,600
 Colors: Purple, Black and White
 Nickname: Bearcats
 Arena: Meyer Sports Center/2,925
 Affiliation: NCAA II
 Conference: MIAA
 SID: Mike Pitts
 SID Phone: (417) 328-8474
 SID Fax: (417) 328-1745
 SID Email: mpitts@sbuniv.edu
 Website: <http://www.SBUBEARCATS.COM>
 President: Dr. C. Pat Taylor
 Athletic Director: L. Renae Myles and Mike Pitts
 Head Coach: Kelly Richardson

School Record: 21-44 (3rd year)
 Coach's Phone: (417) 328-1709



Head Coach:
 Kelly Richardson

2008 Record: 13-20, 5-15 MIAA

Southwest Baptist University

Sept. 25, 2009
 St. Joseph, Mo.
 7:00 pm

Oct. 30, 2009
 Bolivar, Mo.
 7:00 pm



Location: Joplin, Mo.
 Enrollment: 5,740
 Color: Green and Gold
 Nickname: Lions
 Arena: Leggett and Platt/3,240
 Affiliation: NCAA II
 Conference: MIAA
 SID: Justin Maskus
 SID Phone: (417) 625-9330
 SID Fax: (417) 625-9397
 SID Email: maskus-j@mssu.edu
 Website: <http://www.mssu.edu/athletics>
 President: Dr. Bruce W. Speck
 Athletic Director: Jared Bruggeman
 Head Coach: Chris Willis

School Record: 73-91 (6th year)
 Coach's Phone: (417) 625-9705



Head Coach:
 Chris Herron

2008 Record: 10-22, 5-15 MIAA

Missouri Southern State University

Sept. 26, 2009
 St. Joseph, Mo.
 Joplin, Mo.
 2:00 pm

Oct. 31, 2009
 Joplin, Mo.
 2:00 pm



University of
Nebraska-Omaha

Oct. 9, 2009
Omaha, Neb.
7:00 pm

Nov. 6, 2009
St. Joseph, Mo.
7:00 pm

Location: Omaha, Neb.
Enrollment: 14,000
Color: Crimson and Black
Nickname: Mavericks
Arena: Sapp Fieldhouse/3,500
Affiliation: NCAA II
Conference: MIAA
SID: Dave Ahlers
SID Phone: (402) 554-3387
SID Fax: (402) 554-3694
SID Email: dahlers@unomaha.edu
Website: <http://gomavs.unomaha.edu/>
Chancellor: Dr. John Christensen
Athletic Director: Trev Alberts
Head Coach: Rose Shires

School Record: 387-215 (20th year)
Coach's Phone: (402) 554-3407



Head Coach:
Rose Shires

2008 Record: 16-16, 12-8 MIAA

MWSU Griffons



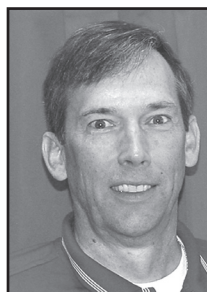
University of
Central Missouri

Oct. 10, 2008
Warrensburg, Mo.
6:30 pm

Nov. 7, 2008
St. Joseph, Mo.
7:00 pm

Location: Warrensburg, Mo.
Enrollment: 11,000
Colors: Cardinal & Black
Nickname: Jennies
Arena: UCM Multipurpose Building/8,500
Affiliation: NCAA II
Conference: MIAA
SID: Rob McCutcheon
SID Phone: (660) 543-4312
SID Fax: (660) 543-8034
SID Email: rmccutcheon@ucmo.edu
Website: <http://www.ucmo.edu/athletic>
President: Dr. Aaron Podolefsky
Athletic Director: Jerry Hughes
Head Coach: Philip "Flip" Piontek

School Record: (1st year)
Coach's Phone: (660) 543-4905



Head Coach:
Philip "Flip" Piontek

2008 Record: 29-10, 15-5 MIAA



Northwest
Missouri State
University

Oct. 14, 2009
Maryville, Mo.
7:00 pm

Nov. 11, 2009
St. Joseph, Mo.
7:00 pm

Location: Maryville, Mo.
Enrollment: 6,500
Colors: Green and White
Nickname: Bearcats
Arena: Bearcat Arena/2,500
Affiliation: NCAA II
Conference: MIAA
SID: Bryan Boettcher
SID Phone: (660) 562-1118
SID Fax: (660) 562-1582
SID Email: sid@nwmissouri.edu
Website: <http://www.northwestbearcats.com>
President: Dr. Dean L. Hubbard
Athletic Director: Dr. Bob Boerigter
Head Coach: Anna Tool

School Record: 41-58 (4th year)
Coach's Phone: (660) 562-1782



Head Coach:
Anna Tool

2008 Record: 10-23, 7-13 MIAA

2009 Opponents





Truman State University

Oct. 17, 2009
Kirksville, Mo.
7:00 pm

Nov. 14, 2009
St. Joseph, Mo.
2:00 pm

Location: Kirksville, Mo.
Enrollment: 5,800
Color: Purple and White
Nickname: Bulldogs
Arena: Pershing Arena/2,600
Affiliation: NCAA II
Conference: MIAA
SID: Tyler Madsen
SID Phone: (660) 785-7778
SID Fax: (660) 785-7475
SID Email: tmadsen@truman.edu
Website: <http://gobulldogs.truman.edu>
President: Dr. Barbara Dixon
Athletic Director: Jerry Wollmering
Head Coach: Ben Priney

School Record: (1st year)
Coach's Phone: (660) 785-4468



Head Coach:
Ben Priney

2008 Record: 33-8, 16-4 MIAA

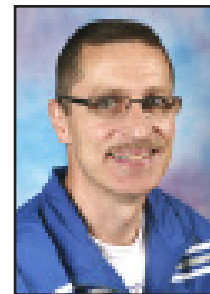


Rockhurst University

Oct. 6, 2009
Kansas City, Mo.
7:00 pm

Location: Kansas City, Mo.
Enrollment: 3,000
Colors: Blue and White
Nickname: Hawks
Affiliation: NCAA II
Conference: Great Lakes
SID: John Dodderidge
SID Phone: (816) 501-4850
SID Email: john.dodderidge@rockhurst.edu
Website: http://www.rockhurst.edu/ru_athletics/
President: Rev. Thomas B. Curran, O.S.F.S
Athletic Director: Richard Konzem
Head Coach: Tracy Rietzke

School Record: 806-137 (21st year)
Coach's Phone: (816) 501-4853



Head Coach:
Tracy Rietzke

2008 Record: 22-11, 12-5 GLVC





MWSU Griffons



Record Book



Kills

1978 - Kay Keller.....	479
1979 - Chris Sumrell.....	382
1980 - Stephanie Miller.....	412
1981 - Laurie Stear.....	300
1982 - Shelly Skoch.....	406
Mendy Chandler.....	406
1983 - Shelly Skoch.....	506
1984 - LeAnn Martens.....	525
1985 - Lynna Cochran.....	428
1986 - Cheryl Williams.....	562
1987 - Cheryl Williams.....	594
1988 - Sahley Harms.....	458
1989 - Kris Riviere.....	646
1990 - Barb Bell.....	291
1991 - Shanna Haslett.....	515
1992 - Barb Bell.....	736
1993 - Jodi Grunewald.....	206
1994 - Shelly Lowery.....	809
1995 - Shelly Lowery.....	684
1996 - Abby Schaer.....	904
1997 - Sherri Lang.....	486
1998 - Sherri Lang.....	464
1999 - Sarah Ekdahl.....	437
2000 - Sarah Edkahl.....	394
2001 - Mary Pickert.....	370
2002 - Lindsay Palaia.....	379
2003 - Shelly Chiles.....	300
2004 - Shelly Chiles.....	326
2005 - Melissa Malone.....	365
2006 - Alyssa Berg.....	315
2007 - Alyssa Berg.....	375
2008 - Meghan Voelz.....	271

Assists

1978 - Sarah Pelster.....	500
1979 - Robyn Areno.....	753
1980 - Robyn Areno.....	484
1981 - Dianna Boulisaw.....	703
1982 - Lynn Umbach.....	732
1983 - Lynn Umbach.....	1,737
1984 - Lynn Umbach.....	1,962
1985 - Lynn Umbach.....	1,213
1986 - Cheryl Ringen.....	1,397
1987 - Roberta McDaniel.....	1,317
1988 - Amber Simpson.....	785
1989 - Amber Simpson.....	2,142
1990 - Amber Simpson.....	915
1991 - Jill Morris.....	664
1992 - Tammy Wollschlager.....	1,677
1993 - Tammy Wollschlager.....	856
1994 - Tiffany Bock.....	1,681
1995 - Tiffany Bock.....	1,504
1996 - Monica Peck.....	798
1997 - Monica Peck.....	1,296
1998 - Jodi Weatherly.....	1,154
1999 - Jodi Weatherly.....	1,201
2000 - Katie Schiesl.....	1,307
2001 - Katie Schiesl.....	882
2002 - Therese Hand.....	1,067
2003 - Therese Hand.....	1,075
2004 - Therese Hand.....	663
2005 - Therese Hand.....	1,125
2006 - Madison Benton.....	674
2007 - Madison Benton.....	590
2008 - Madison Benton.....	574

Blocks

1978 - Chris Summerell.....	100
1979 - Sara Nolte.....	109

1980 - Amy Busch.....	109
1981 - LeAnn Martens.....	132
1982 - Shelly Skoch.....	135
1983 - LeAnn Martens.....	187
1984 - LeAnn Martens.....	242
1985 - Lynna Cochren.....	177
1986 - Cheryl Williams.....	136
1987 - Cheryl Williams.....	214
1988 - Jamie Nienhueser.....	129
1989 - Kris Riviere.....	230
1990 - Barb Bell.....	144
1991 - Barb Bell.....	135
1992 - Jodi Grunewald.....	105
1993 - Jodi Grunewald.....	114
1994 - Shelly Lowery.....	200
1995 - Shelly Lowery.....	361
1996 - Abby Schaer.....	98
1997 - Abby Schaer.....	142
1998 - Corinther Black.....	167
1999 - Lindsay Palaia.....	141
2000 - Lindsay Palaia.....	129
2001 - Lindsay Palaia.....	160
2002 - Lindsay Palaia.....	131
2003 - Becky Brosnahan.....	103
2004 - Lauren Kracl.....	98
2005 - Alyssa Berg.....	129
2006 - Ashley Blickenstaff.....	132
2007 - Alyssa Berg.....	142
2008 - Allison Smith.....	91

Digs

1983 - Mendy Chandler.....	180
1984 - Collins.....	185
1985 - Lynn Umbach.....	158
LeAnn Martens.....	158
1986 - Ashley Harms.....	126
1987 - Ashley Harms.....	440
1988 - Ashley Harms.....	403
1989 - Kris Riviere.....	332
1990 - Stacey Coy.....	286
1991 - Shanna Haglett.....	215
1992 - Stacey Coy.....	320
1993 - Seona Furlong.....	438
1994 - Shelly Lowery.....	468
1995 - Shelly Lowery.....	531
1996 - Shauna Alley.....	402
1997 - Sarah Ekdahl.....	349
1998 - Sherri Lang.....	375
1999 - Sarah Ekdahl.....	411
2000 - Sarah Ekdahl.....	461
2001 - Mary Pickert.....	330
2002 - Mary Pickert.....	374
2003 - Shelly Chiles.....	410
2004 - Shelly Chiles.....	343
2005 - Melissa Malone.....	406
2006 - Shari Tompkins.....	493
2007 - Shari Tompkins.....	340
2008 - Shari Tompkins.....	372

Total Attempts

1986 - Cheryl Williams.....	1,021
1987 - Cheryl Williams.....	1,274
1988 - Ashley Harms.....	1,145
1989 - Jamie Nienhueser.....	1,570
1990 - Barb Bell.....	1,668
1991 - Shanna Haslett.....	1,124
1992 - Barb Bell.....	1,668
1993 - Seona Furlong.....	966
1994 - Shelly Lowery.....	1,751
1995 - Shelly Lowery.....	1,622

1996 - Abby Schaer.....	904
1997 - Sherri Lang.....	1,199
1998 - Sherri Lang.....	1,140
1999 - Sarah Ekdahl.....	1,194
2000 - Sarah Ekdahl.....	1,053
2001 - Mary Pickert.....	963
2002 - Mary Pickert.....	798
2003 - Shelly Chiles.....	862
2004 - Shelly Chiles.....	1,060
2005 - Melissa Malone.....	1,093
2006 - Alyssa Berg.....	923
2007 - Alyssa Berg.....	808
2008 - Meghan Voelz.....	1,062

Aces

1982 - Lynn Umbach.....	109
1983 - Lynn Umbach.....	152
1984 - Lynn Umbach.....	148
1985 - Lynn Umbach.....	83
1986 - Cheryl Rigen.....	72
1987 - Kris Riviere.....	61
1988 - Ashley Harms.....	96
1989 - Kris Riviere.....	89
1990 - Marianne Aston.....	58
1991 - Shanna Haslett.....	59
1992 - Tammy Wollschlager.....	53
1993 - Megan Murphy.....	26
1994 - Tiffany Bock.....	43
1995 - Jenny Carlson.....	47
1996 - Jo Ellen Dobbs.....	22
1997 - Sarah Ekdahl.....	55
1998 - Melissa Bauer.....	50
1999 - Sarah Ekdahl.....	53
2000 - Sarah Ekdahl.....	40
2001 - Mary Pickert.....	41
2002 - Mary Pickert.....	48
2003 - Cathy Mahoney.....	40
2004 - Marian Broderick.....	43
2005 - Marian Broderick.....	41
2006 - Shari Tompkins.....	34
2007 - Alyssa Berg.....	29
2008 - Meghan Voelz.....	23

Hitting Percentage

1985 - Lynna Cochran.....	258
1986 - Cheryl Williams.....	320
1987 - Kris Riviere.....	357
1988 - Ashley Harms.....	248
1989 - Kris Riviere.....	294
1990 - Jamie Nienhuser.....	187
1991 - Shanna Haslett.....	311
1992 - Barb Bell.....	292
1993 - Kelley Dovell.....	215
1994 - Shelly Lowery.....	328
1995 - Shelly Lowery.....	311
1996 - Abby Schaer.....	293
1997 - Abby Schaer.....	418
1998 - Sherri Lang.....	304
1999 - Lindsay Palaia.....	227
2000 - Lindsay Palaia.....	302
2001 - Becky Brosnahan.....	315
2002 - Lindsay Palaia.....	426
2003 - Becky Brosnahan.....	296
2004 - Lauren Kracl.....	266
2005 - Therese Hand.....	329
2006 - Alyssa Berg.....	248
2007 - Alyssa Berg.....	257
2008 - Brooke Carter.....	122

SINGLE SEASON RECORD LIST

Kills

- 809, Shelly Lowery, 1994
- 736, Barb Bell, 1992
- 684, Shelly Lowery, 1995
- 646, Kris Riviere, 1989
- 628, Jamie Nienhueser, 1989

Assists

- 2,142, Amber Simpson, 1989
- 1,681, Tiffany Bock, 1994
- 1,677, Tammy Wollschlager, 1992
- 1,504, Tiffany Bock, 1995
- 1,308, Katie Schiesl, 2000
- 1,269, Monica Peck, 1997

Digs

- 531, Shelly Lowery, 1995
- 493, Shari Thompkins, 2006
- 486, Jenny Carlson, 1995
- 480, Rebbie Maudlin, 1994
- 478, Shari Thompkins, 2007
- 468, Shelly Lowery, 1994
- 461, Sarah Ekdahl, 2001
- 457, Chris Eveleigh, 1995
- 422, Melissa Malone, 2006

Aces

- 152, Lynn Umbach, 1983
- 148, Lynn Umbach, 1984
- 120, Kris Riviere, 1989
- 109, Lynn Umbach, 1982
- 96, Ashley Harms, 1988

CAREER RECORDS LIST

Kills

- 1,826, Barb Bell, 1989-92
- 1,661, Mendy Chandler, 1981-84
- 1,521, LeAnn Martens, 1981, 1983-85
- 1,493, Shelly Lowery, 1994-95
- 1,478, Cheryl Williams, 1984-87
- 1,391, Ashley Harms, 1985-88
- 1,372, Shelly Skoch, 1980-83
- 1,265, Jamie Nienhueser, 1987-90
- 1,244, Sarah Ekdahl, 1997-99
- 1,277, Lindsay Palaia, 1999-02
- 1,177, Kris Riviere, 1987, 1989
- 1,077, Chris Sumrell, 1976-79
- 1,068, Mary Pickert, 1999-2002

Assists

- 5,644, Lynn Umbach, 1982-85
- 3,930, Therese Hand, 2002-05
- 3,811, Amber Simpson, 1987-90
- 3,185, Tiffany Bock, 1994-95
- 3,123, Tammy Wollschlager, 1991-93
- 2,355, Jodi Weatherly, 1998-99
- 2,317, Katie Schiesl, 1998-01

- 2,094, Monica Peck, 1996-97
- 2,044, Roberta McDaniel, 1987-88
- 2,066, Sally Woods, 1976-78
- 1,838, Madison Benton 2006-present
- 1,704, Cheryl Ringen, 1985-86
- 1,330, Sarah Pelster, 1977-80
- 1,237, Robin Areno, 1979-80
- 1,130 Alyssa Berg, 2003, 05-07

Digs

- 1,565, Sarah Ekdahl, 1997-2000
- 1,314, Rebbie Maudlin, 1992-95
- 1,284, Seona Furlong, 1991, 1993-95
- 1,228, Malissa Malone, 2003-06
- 1,205, Shari Tompkins, 2006-present
- 1,109, Mary Pickert, 1999-2002
- 1,029, Ashley Harms, 1985-88
- 1,009, Marian Broderick, 2002-05
- 1,002, Shelly Chiles, 2002-04
- 999, Shelly Lowery, 1994-95
- 887, Jennifer Carlson, 1994-95
- 833, Shari Tompkins, 2006-present
- 829, Therese Hand, 2002-05
- 827, Kathy Bates, 1987-89
- 806, Barb Bell, 1989-92
- 807, Katie Ham, 1999-2002
- 720, Stacey Coy, 1990-92
- 708, Christy Kessler, 1989-93
- 668, Tiffany Bock, 1994-95

Aces

- 492, Lynn Umbach, 1982-85
- 220, Ashley Harms, 1985-88
- 191, Sarah Ekdahl, 1997-00
- 181, Kris Riviere, 1978, 1989
- 160, LeAnn Martens, 1983-85
- 151, Sarah Ekdahl, 1997-99
- 145, Airon Scofield, 1998-01
- 139, Jamie Nienhueser, 1987-90
- 128, Marian Broderick, 2002-05
- 122, Cheryl Ringen, 1985-86
- 122, Shelly Skoch, 1982-83
- 117, Brenda Nelson, 1983-86
- 116, Lindsay Palaia, 1999-03
- 116, Amber Simpson, 1987-90
- 112, Mary Pickert, 1999-2002
- 111, Tammy Wollschlager, 1991-93

INDIVIDUAL RECORDS

Most Kills

- Match:* 37, Barb Bell vs. Henderson State 10/31/92
- Season:* 809, Shelly Lowery, 1994
- Career:* 1,826, Barb Bell, 1989-92

Most Assists

- Match:* 75, Lynn Umbach vs. Washburn, 10/27/84

- Season:* 2,142, Amber Simpson, 1989
- Career:* 5,644, Lynn Umbach, 1982-85

Most Service Aces

- Match:* 12, Ashley Harms vs. Hastings, 10/7/88
- Season:* 152, Lynn Umbach, 1983
- Career:* 492, Lynn Umbach, 1982-85

Most Digs

- Match:* 40, Shari Tompkins vs. Washburn 9/30/06
- Season:* 531, Shelly Lowery, 1995
- Career:* 1,565, Sarah Ekdahl, 1997-2000

TEAM HIGHS

Most Kills

- Match:* 89, vs. Park, 10/24/92
- Season:* 2,623, 1989

Most Assists

- Match:* 115, vs. William Jewell, 9/6/84
- Season:* 2,283, 1989

Most Service Aces

- Match:* 20 vs. Christian Brothers - August 25, 2006.

Most Digs

- Match:* 129, vs. North Florida, 9/30/95
- Season:* 3,068, 1995

Most Blocks

- Match:* 71, vs. Missouri Southern, 11/1/95
- Season:* 1,247, 1995





RALLY SCORING RECORDS (SINCE 2001)

TEAM MATCH RECORDS

Kills

- 84, vs. NW Missouri State; Oct 27, 2006
- 83, vs. Washburn; Sep 30, 2006
- 82, at. SW Baptist; Sep 22, 2007
- 81, at Harding; Aug 28, 2004
- 76, vs Christian Brothers; Aug 27, 2004
- 76, at Central Missouri; Sep 16, 2005
- 75, at SW Baptist; Oct 26, 2002
- 74, at Washburn; Oct 09, 2002
- 74, at Missouri Western; Sep 29, 2004

Attack attempts

- 259, vs. Washburn; Sep 30, 2006
- 242, at Missouri Southern; Sep 26, 2007
- 232, at SW Baptist; Sep 22, 2007
- 231, Central Oklahoma; Sep 03, 2004
- 224, Pittsburg State; Oct 03, 2003
- 222, at Harding; Aug 28, 2004
- 219, at Central Missouri; Sep 10, 2003
- 215, vs. NW Missouri State; Oct 27, 2006
- 211, at Central Missouri; Sep 16, 2005

Attack percentage (10 attempts)

- .522, vs West Georgia; Sep 07, 2002 (42-6-69)
- .406, SW Baptist; Oct 04, 2003 (53-12-101)
- .406, vs UWA; Oct 11, 2003 (50-11-96)
- .396, at Northwest Mo. State; Sep 24, 2003 (51-9-106)
- .394, Northwest Missouri; Nov 13, 2002 (51-10-104)

Assists

- 74, vs. NW Missouri State; Oct 27, 2006
- 73, at Central Missouri; Sep 16, 2005
- 72, at SW Baptist; Sep 22, 2007
- 71, at Harding; Aug 28, 2004
- 69, at Emporia State; Sep 23, 2006
- 69, vs. Washburn; Sep 30, 2006
- 68, Rockhurst; Nov 04, 2004
- 68, at Northwest Missouri; Oct 23, 2002
- 67, Mo. Southern; Sep 21, 2002

Service aces

- 20, at Christian Brothers; Aug 25, 2006
- 19, vs West Georgia; Sep 07, 2002
- 18, vs FVSU; Aug 26, 2005
- 16, vs. Ouachita Baptist; Aug 26, 2006
- 16, Fort Hays State; Sep 02, 2005
- 15, at HSU; Oct 10, 2003
- 15, at Christian Brothers; Sep 06, 2002
- 15, vs Ouachita Baptist; Sep 10, 2004

Digs

- 127, vs. Washburn; Sep 30, 2006
- 122, Pittsburg State; Oct 03, 2003
- 116, at Missouri Southern; Sep 26, 2007
- 110, Washburn; Sep 17, 2003
- 106, vs Christian Brothers; Oct 8, 2005
- 106, Central Oklahoma; Sep 03, 2004
- 100, at Central Missouri; Sep 16, 2005
- 100, at SW Baptist; Sep 22, 2007

Solo blocks

- 16, Montevallo; Aug 29, 2003
- 11, Western State - Colo; Aug 29, 2003
- 10, Washburn; Sep 17, 2003
- 7, vs UWA; Oct 11, 2003
- 7, vs Christian Brothers; Sep 05, 2003

Assist blocks

- 34, Miss. U for Women; Aug 31, 2002
- 30, at Emporia State; Nov 2, 2005
- 30, Fort Hays State; Sep 02, 2005
- 28, Truman; Nov 06, 2002
- 28, at Truman; Sep 25, 2002

Total blocks

- 24.0, at Montevallo; Aug 26, 2006
- 23.0, Montevallo; Aug 29, 2003
- 19.0, Western State - Colo; Aug 29, 2003
- 19.0, Miss. U for Women; Aug 31, 2002
- 18.0, Fort Hays State; Sep 02, 2005
- 17.0, at Emporia State; Nov 2, 2005

**RALLY SCORING RECORDS
INDIVIDUAL MATCH RECORDS**

Kills

- 28, Lindsay Fuller; at Central Missouri; Sep 10, 2003
- 25, Alyssa Berg at SW Baptist; Sep 22, 2007
- 24, Lindsay Fuller; at SW Baptist; Oct 26, 2002
- 23, Alyssa Berg; vs. Washburn; Sep 30, 2006
- 23, Ashley Blickenstaff vs. NW Missouri State; Oct 27, 2006
- 22, Hallie Delegardelle; at NW Missouri; Sep 21, 2005
- 22, Melissa Malone; vs. SW Baptist; Sep 16, 2006
- 22, Ashley Blickenstaff vs. Washburn; Sep 30, 2006

Attack attempts

- 64, Melissa Malone; vs. Washburn; Sep 30, 2006
- 61, Lindsay Fuller; at Central Mo.; Sep 10, 2003
- 59, Alyssa Berg; at SW Baptist; Sep 22, 2007
- 57, Melissa Malone; at Central Mo.; Sep 16, 2005
- 55, Shelly Chiles; at Central Mo.; Sep 10, 2003
- 55, Kelli Sicner; vs. Fort Hays State; Oct 22, 2008
- 53, Katie Ham; vs. Pittsburg State; Sep 20, 2002
- 53, Melissa Malone vs. Montana-Billings; Aug 27, 2005
- 53, Alyssa Berg; vs. Washburn; Sep 30, 2006

Attack percentage (12 attempts)

- .769, Becky Brosnahan; SW Baptist; Oct 04, 2003 (11-1-13)
- .750, Lindsay Fuller; vs Christian Brothers; Sep 05, 2003 (12-0-16)
- .714, Lindsay Palaia; vs West Georgia; Sep 07, 2002 (11-1-14)
- .706, Mary Prickett; Southwestern (Kan.); Sep 12, 2002 (12-0-17)
- .688, Alyssa Berg; at West Alabama; Sep 09, 2005 (11-0-16)
- .625, Emily DeVore; vs. Upper Iowa; Sep 15, 2007 (15-0-24)
- .577; Ashley Blickenstaff; vs. Southern Arkansas; Sep 8, 2006; (16-1-26)
- .571; Audra Ridolfi; at Dixie State College; Oct 16, 2006
- .545, Alyssa Berg; vs. Angelo State; Aug 25, 2007 (15-3-22)

Assists

- 64, Therese Hand; at Washburn; Oct 09, 2002
- 61, Therese Hand; at Truman; Sep 25, 2002
- 59, Therese Hand; at Northwest Missouri; Oct 23, 2002
- 58, Therese Hand; at SW Baptist; Oct 26, 2002
- 58, Therese Hand; at Central Missouri; Sep 10, 2003
- 58, Therese Hand; Mo. Southern; Sep 21, 2002

Service aces

- 9, Mary Pickert; vs West Georgia; Sep 07, 2002
- 7, Brooke Roy; vs. Ouachita Baptist; Sep 26, 2006
- 6, Becky Brosnahan; vs. Colorado Christian; Sep 06, 2003
- 6, Padyen Rose; vs FVSU; Aug 26, 2005
- 6, Shari Tompkins; at Christian Brothers; Aug 25, 2006
- 5, Marian Broderick; vs. Colorado Christian; Sep 06, 2003
- 5, Katie Ham; at Northwest Missouri; Oct 23, 2002
- 5, Cathy Mahoney; at Christian Brothers; Sep 06, 2002
- 5, Lindsay Palaia; Nova Southeastern; Aug 31, 2002
- 5, Mary Pickert; Southwestern (Kan.); Sep 12, 2002
- 5, Audra Ridolfi at Christian Brothers; Aug 25, 2006
- 5, Hallie Delagardelle; at SW Baptist; Oct 21, 2006
- 5, Alyssa Berg; vs. Indianapolis; Sep 1, 2007
- 5, Shari Thompkins vs. Missouri St. Louis; Aug. 24, 2007
- 5, Audra Ridolfi vs. Newman University; Oct. 5, 2007

Digs

- 40, Shari Tompkins; vs. Washburn; Sep 30, 2006
- 31, Melissa Malone; vs. Washburn; Sep 30, 2006
- 30, Shelly Chiles; Pittsburg State; Oct 03, 2003
- 30, Blair Lehr; Pittsburg State; Oct 03, 2003
- 29, Shelly Chiles; Washburn; Sep 17, 2003
- 28, Malissa Malone; vs Christian Brothers; Oct 8, 2005
- 28, Shari Tompkins; at Missouri Southern; Sep 26, 2007

Solo blocks

- 7, Becky Brosnahan; Montevallo; Aug 29, 2003
- 6, Lindsay Fuller; Montevallo; Aug 29, 2003
- 5, Lindsay Fuller; Western State - Colo; Aug 29, 2003
- 4, Ashley Blickenstaff; at Montevallo; Aug 26, 2006
- 4, Allison Smith; at SW Baptist; Sep 26, 2008
- 3, Becky Brosnahan; Washburn; Sep 17, 2003
- 3, Lindsay Fuller; at SW Baptist; Nov 01, 2003
- 3, Lindsay Fuller; vs Christian Brothers; Sep 05, 2003
- 3, Lindsay Fuller; Washburn; Sep 17, 2003
- 3, Therese Hand; vs UWA; Oct 11, 2003
- 3, Lindsay Palaia; at Pittsburg State; Oct 12, 2002
- 3, Lindsay Palaia; at Northwest Missouri; Oct 23, 2002
- 3, Ashley Blickenstaff; vs. SW Baptist; Sep 16, 2006
- 3, Alyssa Berg; vs. South Dakota; Sep 2, 2007

Assist blocks

- 13, Lindsay Palaia; at Washburn; Oct 09, 2002
- 11, Lindsay Palaia; Miss. U for Women; Aug 31, 2002
- 10, Lindsay Palaia; at Truman; Sep 25, 2002
- 10, Alyssa Berg; vs. Emporia State; Sep 28, 2007
- 9, Alyssa Berg; at Emporia State; Nov 2, 2005

Total blocks

- 15, Lindsay Palaia; at Washburn; Oct 09, 2002
- 12, Ashley Blickenstaff; at Montevallo; Aug 26, 2006
- 11, Lindsay Palaia; Miss. U for Women; Aug 31, 2002
- 11, Lindsay Palaia; at Truman; Sep 25, 2002
- 10, Becky Brosnahan; Montevallo; Aug 29, 2003
- 10, Lindsay Palaia; at Northwest Missouri; **Oct 23, 2002**
- 10, Audra Ridolfi; at Montevallo; Aug 26, 2006
- 10, Alyssa Berg; vs. Emporia State; Sep 28, 2007
- 10, Audra Ridolfi; vs. Missouri St. Louis; Aug 24, 2007

Kills (3 games)

- 16, Ashley Blickenstaff; vs. Southern Arkansas; Sep 8, 2006
- 16, Shelly Chiles; vs St. Mary's (Neb.); Sep 06, 2003
- 16, Lindsay Fuller; Emporia State; Oct 18, 2003
- 15, Melissa Malone; Missouri Southern; Oct 26, 2005
- 15, Melissa Malone; at Southwest Baptist; Oct 29, 2005
- 14, Alyssa Berg; SW Baptist; Oct 04, 2003
- 14, Shelly Chiles; Northwest Mo. State; Oct 22, 2003
- 14, Hallie Delagardelle; at Ouachita Lady Tigers; Oct 07, 2005
- 14, Lindsay Fuller; at Pittsburg State; Oct 31, 2003
- 14, Kelli Sicner; at Central Missouri; Oct 24, 2007

Kills (4 games)

- 24, Lindsay Fuller; at SW Baptist; Oct 26, 2002
- 21, Lindsay Palaia; Washburn; Oct 29, 2002
- 21, Lindsay Palaia; at Emporia State; Sep 18, 2002

Kills (5 games)

- 28, Lindsay Fuller; at Central Missouri; Sep 10, 2003
- 25, Alyssa Berg; at SW Baptist; Sep 22, 2007
- 23, Alyssa Berg; vs. Washburn; Sep 30, 2006
- 23, Ashley Blickenstaff; vs. NW Missouri State; Oct 27, 2006
- 22, Hallie Delagardelle; at Northwest Missouri; Sep 21, 2005
- 22, Melissa Malone; vs. SW Baptist; Sep 16, 2006
- 22, Ashley Blickenstaff; vs. Washburn; Sep 30, 2006
- 21, Lindsay Palaia; at Washburn; Oct 09, 2002
- 20, Hallie Delagardelle; at Central Missouri; Sep 16, 2005
- 20, Mary Pickert; Mo. Southern; Sep 21, 2002
- 20, Kellis Sicner; Fort Hays State; Oct 22, 2008

Attempts (3 games)

- 40, Shelly Chiles; vs UAH; Oct 10, 2003
- 40, Melissa Malone; at Southwest Baptist; Oct 29, 2005
- 36, Shelly Chiles; Truman; Oct 24, 2003
- 36, Shelly Chiles; vs St. Mary's (Neb.); Sep 06, 2003
- 36, Hallie Delagardelle; Truman; Oct 21, 2005
- 36, Mary Pickert; at Mo. Southern; Oct 11, 2002

Attempts (4 games)

- 53, Katie Ham; Pittsburg State; Sep 20, 2002
- 52, Meghan Voelz; Southwest Baptist; Oct 31, 2008
- 51, Melissa Malone; at West Alabama; Sep 09, 2005
- 50, Melissa Malone; at NW Missouri State; Sep 20, 2006
- 49, Katie Ham; at Northwest Missouri; Oct 23, 2002

Attempts (5 games)

- 64, Melissa Malone; vs. Washburn; Sep 22, 2006
- 61, Lindsay Fuller; at Central Missouri; Sep 10, 2003
- 59, Alyssa Berg; at SW Baptist; Sep 22, 2007
- 57, Melissa Malone; at Central Missouri; Sep 16, 2005
- 55, Shelly Chiles; at Central Missouri; Sep 10, 2003
- 55, Kelli Sicner; Fort Hays State; Oct 22, 2008

Aces (3 games)

- 9, Mary Pickert; vs West Georgia; Sep 07, 2002
- 6, Pady Rose; vs FVSU; Aug 26, 2005
- 5, Cathy Mahoney; at Christian Brothers; Sep 06, 2002
- 5, Lindsay Palaia; Nova Southeastern; Aug 31, 2002
- 5, Mary Pickert; Southwestern (Kan.); Sep 12, 2002

- 5, Alyssa Berg; vs. Indianapolis; Sep 1, 2007
- 5, Audra Ridolfi; vs. Newman University; Oct 5, 2007

Aces (4 games)

- 5, Katie Ham; at Northwest Missouri; Oct 23, 2002
- 4, Marian Broderick; Montevallo; Aug 29, 2003
- 4, Marian Broderick; South Dakota; Sep 03, 2005
- 4, Shelly Chiles; Missouri Southern; Oct 29, 2003
- 4, Therese Hand; at HSU; Oct 10, 2003
- 4, Lindsay Palaia; at Central; Oct 25, 2002
- 4, Mary Pickert; Northwest Missouri; Nov 13, 2002

Aces (5 games)

- 6, Becky Brosnahan; vs Colorado Christian; Sep 06, 2003
- 5, Marian Broderick; vs Colorado Christian; Sep 06, 2003
- 4, Alyssa Berg; Fort Hays State; Sep 02, 2005
- 4, Cathy Mahoney; Mo. Southern; Sep 21, 2002
- 4, Brooke Roy; Fort Hays State; Sep 02, 2005

Digs (3 games)

- 23, Melissa Malone; at Dixie State College; Oct 16, 2006
- 21, Blair Lehr; at Mo. Southern; Oct 11, 2002
- 20, Shelly Chiles; Ashland University; Aug 30, 2003
- 20, Shelly Chiles; vs St. Mary's (Neb.); Sep 06, 2003
- 20, Brooke Roy; Missouri Southern; Oct 26, 2005
- 20, Lauren Burbach; vs. Tarleton; Sep 13, 2008
- 19, Shari Tompkins; at Christian Brothers; Aug 25, 2006

Digs (4 games)

- 33, Shari Tompkins; at Montevallo; Aug 26, 2006
- 28, Melissa Malone; vs Christian Brothers; Oct 8, 2005
- 26, Brooke Roy; Emporia State; Oct 04, 2005
- 25, Lisa Barslou; Montevallo; Aug 29, 2003
- 25, Melissa Malone; vs Harding; Sep 10, 2005
- 24, Blair Lehr; Emporia State; Oct 16, 2002
- 24, Shari Tompkins; at Fort Hays State; Oct 4, 2007
- 24, Brooke Roy; at SW Baptist; Sep 22, 2007

Digs (5 games)

- 40, Shari Tompkins; vs. Washburn, Sep 30, 2006
- 31, Melissa Malone; vs. Washburn, Sep 30, 2006
- 30, Shelly Chiles; Pittsburg State; Oct 03, 2003
- 30, Blair Lehr; Pittsburg State; Oct 03, 2003
- 29, Shelly Chiles; Washburn; Sep 17, 2003
- 28, Shari Tompkins; at Fort Hays State; Oct 4, 2007

Blocks (3 games)

- 11, Lindsay Palaia; Miss. U for Women; Aug 31, 2002
- 8, Becky Brosnahan; Benedictine; Nov 01, 2002
- 7, Becky Brosnahan; at Truman; Sep 27, 2003
- 6, Becky Brosnahan; Northwest Mo. State; Oct 22, 2003
- 6, Lindsay Fuller; Central Missouri; Oct 17, 2003
- 6, Lindsay Fuller; vs Christian Brothers; Sep 05, 2003
- 6, Lindsay Palaia; Benedictine; Nov 01, 2002
- 6, Lindsay Palaia; at Pittsburg State; Oct 12, 2002
- 6, Mary Pickert; Miss. U for Women; Aug 31, 2002

Blocks (4 games)

- 12, Ashley Blickenstaff; at Montevallo; Aug 26, 2006

- 10, Becky Brosnahan; Montevallo; Aug 29, 2003
- 10, Lindsay Palaia; at Northwest Missouri; Oct 23, 2002
- 10, Audra Ridolfi; at Montevallo; Aug 26, 2006
- 10, Alyssa Berg; vs Emporia State; Sep 28, 2007
- 10, Audra Ridolfi; vs. Missouri St. Louis; Aug 24, 2007
- 9, Audra Ridolfi; vs. Pittsburg State; Oct 31, 2006
- 9, Alyssa Berg; at Emporia State; Nov 2, 2005
- 9, Alyssa Berg; vs Harding; Sep 10, 2005
- 9, Lindsay Fuller; Montevallo; Aug 29, 2003
- 9, Lindsay Fuller; Western State - Colo; Aug 29, 2003

Blocks (5 games)

- 15, Lindsay Palaia; at Washburn; Oct 09, 2002
- 11, Lindsay Palaia; at Truman; Sep 25, 2002
- 10, Alyssa Berg; at Missouri Southern; Sep 26, 2007
- 8, Ashley Blickenstaff; vs. SW Baptist; Sep 16, 2006
- 8, Alyssa Berg; Fort Hays State; Sep 02, 2005
- 8, Ashley Blickenstaff; Fort Hays State; Sep 02, 2005
- 7, Alyssa Berg; vs Montana St.-Billings; Aug 27, 2005
- 7, Alyssa Berg; at Central Missouri; Sep 16, 2005
- 7, Marian Broderick; Fort Hays State; Sep 02, 2005
- 7, Becky Brosnahan; at Central Missouri; Sep 10, 2003
- 7, Lindsay Fuller; at Central Missouri; Sep 10, 2003
- 7, Audra Ridolfi; at SW Baptist; Sep 22, 2007
- 7, Allison Smith; Fort Hays State; Oct 22, 2008

Records since 2001 - Rally Scoring





Volleyball Record vs. Opponents

Record vs. Opponents

Abilene Christian	1	1	Huston-Tillotson (Tex.)	1	0	So. Nazarene (Okla.)	2	0
Air Force Academy	0	1	Iowa State	1	0	Southwest Baptist	36	7
Albany State	1	0	IUPUI-Indianapolis	1	0	Southwest Mo. State	1	1
Alabama-Huntsville	4	2	University of Indianapolis	0	1	Southwest Oklahoma State	1	0
Alaska-Anchorage	0	1	John Brown (Ark.)	1	0	Southwest State (Minn.)	3	2
Angelo State	2	2	Kansas Newman	2	0	Southwestern (Kan.)	2	0
Arkansas-Little Rock	1	1	Lewis (Ill.)	1	1	Southwestern Okla. St.	1	0
Arkansas-Monticello	0	1	Limestone (S.C.)	1	0	Southwestern (Texas)	1	0
Arkansas Tech	6	3	Lincoln (Mo.)	2	0	Tabor (Kan.)	1	0
Ashland	1	0	Loras (Iowa)	1	0	Tarleton State (Texas)	1	0
Augustana (S.D.)	1	4	Lubbock Christian	1	0	Tarkio (Mo.)	12	1
Avila (Mo.)	12	1	Mankato State (Minn.)	0	1	Texas A&M-Commerce	1	0
Baker (Kan.)	2	0	Mars Hill (N.C.)	1	0	Texas-A&M Kingsville	1	0
Benedictine (Kan.)	19	0	Mary Hardin-Baylor	0	1	Texas Lutheran	3	1
Bethany (Kan.)	3	0	McKendree (Ill.)	2	0	Texas-Permian Basin	0	1
Bethel (Kan.)	6	0	Mesa State (Colo.)	0	1	Texas Wesleyan	0	1
Biola (Calif.)	0	2	Metro State (Colo.)	1	5	Texas Woman's Univ.	3	0
Briar Cliff (Iowa)	2	1	Michigan Tech	0	1	Truman State	20	33
Brigham Young-Hawaii	0	3	MidAmerica Naz. (Kan.)	1	0	Tulsa	0	1
Cal-Poly-Pomona	1	0	Midwestern State (Tex.)	2	2	University of Iowa	1	1
Cameron University	0	1	Minnesota-Duluth	1	2	University of Kansas	1	4
Central Arkansas	7	1	Mississippi Univ. for Women	2	0	University of Missouri	0	2
Central Oklahoma	2	5	Missouri Baptist	3	0	University of Nebraska	1	2
Central Methodist	11	0	Missouri-Kansas City	18	1	Univ. of No. Iowa	1	1
Central Mo. State	3	62	Missouri-St. Louis	9	11	Univ. of South Dakota	4	3
Chadron State (Neb.)	1	2	Missouri Southern	48	26	Univ. of Tampa	1	2
Chapman (Calif.)	1	0	Missouri Valley	4	0	Univ. of West Alabama	3	0
Christian Bros. (Tenn.)	6	1	Montana State - Billings	0	1	Univ. of West Georgia	1	0
Col. of Charleston (S.C.)	1	0	Montevallo (Ala.)	6	2	Univ. of West Florida	2	1
Col. of the Ozarks	0	1	Morningside (Iowa)	2	2	Upper Iowa	2	0
Colorado Christian	2	2	Nebraska-Kearney	13	22	Valdosta State	1	1
Colorado Mines	0	1	Nebraska-Omaha	0	11	Washburn	40	22
Columbia (Mo.)	2	2	Nebraska Wesleyan	0	2	Washington (Mo.)	1	0
Concordia (Texas)	0	1	Newman University	2	0	Wayne State (Neb.)	25	3
Creighton	0	1	North Alabama	0	7	Waynesburg (Pa.)	1	0
Culver-Stockton (Mo.)	6	1	North Florida	1	0	West Florida	0	1
Dana (Neb.)	1	0	Northern Colorado	0	1	West Texas A&M	0	2
Denver University	1	0	Northwest Mo. State	52	25	West Texas State	0	2
Dixie State College	2	0	Northwestern (Iowa)	1	0	Western New Mexico	0	1
Doane (Neb.)	7	5	Northwood (Mich.)	1	0	Western Oregon	1	1
Drake	1	0	Oklahoma Baptist	1	0	Western State (Colo.)	1	1
Drury (Mo.)	20	15	Oklahoma Panhandle State	1	0	William Jewell (Mo.)	8	0
East Central (Okla.)	0	1	Oklahoma State	1	0	William Woods (Mo.)	18	1
Eastern New Mexico	0	1	Ouachita Baptist (Ark.)	5	0	Winona State (Minn.)	1	1
East Texas Baptist	1	0	Park (Mo.)	9	1	Wisconsin-Milwaukee	1	4
East Texas State	1	0	Peru State(Neb.)	7	2	Wisconsin-Parkside	3	2
Emporia State	39	28	Pittsburg State	43	17	Wichita State	1	0
Evangel (Mo.)	8	0	Quincy (Ill.)	5	3			
Florida Southern	0	2	Regis (Colo.)	1	0	Ties		
Fontbonne (Mo.)	1	0	Rockhurst (Mo.)	20	11	Benedictine	1	
Fort Hays State	24	9	Simpson (Iowa)	1	0	Kansas State	1	
Fort Lewis (Colo.)	1	0	SIU-Edwardsville	1	0	Kearney State	1	
Fort Valley College	2	0	St. Ambrose (Iowa)	1	0	John Brown	1	
Friends (Kan.)	1	2	St. Cloud State (Minn.)	1	1	Missouri-Kansas City	1	
Geneva (Pa.)	1	0	St. Edwards (Texas)	1	0	Missouri Southern	1	
Gordon (Mass.)	1	0	St. John Fisher (N.Y.)	0	1	Pittsburg State	1	
Graceland (Iowa)	22	7	St. Mary's (Calif.)	1	2	Southeast Mo. State	1	
Grand View (Iowa)	2	0	St. Mary's (Neb.)	0	1	William Woods	1	
Harding (Ark.)	2	3	St. Mary's (Texas)	1	1			
Harris-Stowe (Mo.)	2	0	School of the Ozarks	8	1	Total:	746	474 9 (33-years)
Hastings (Neb.)	2	3	S.C. - Spartanburg	1	0			
Hawaii-Hilo	0	5	South Dakota	2	0			
Henderson State (Ark.)	6	2	South Dakota State	1	5			
High Point (N.C.)	1	0	Southeast Mo. State	2	5			
Hillsdale (Mich.)	0	1	Southern Arkansas	5	0			
Houston Baptist	1	0	Southern Indiana	0	2			

MWSU Griffons





Jen Bagley
Softball Coach
816-271-4480



Kate Esely
Assistant Athletic Trainer
816-271-4483



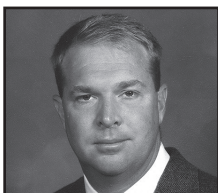
Cathy Habermehl
Women's Golf Coach
816-271-4481



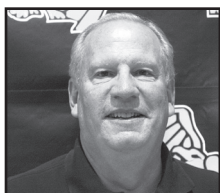
Jeff Hansen
Women's Soccer Coach
816-271-5902



Cory Frederick
Volleyball Coach
816-271-4209



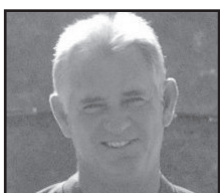
Jerry Partridge
Football Coach
816-271-5944



Jim Perry
Men's Golf Coach
816-271-4481



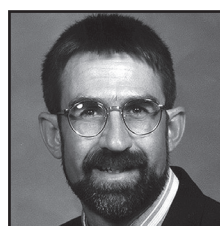
Lynn Plett
Women's Basketball Coach
816-271-5863



Ron Selkirk
Women's Tennis Coach
(816) 233-0261



Tom Smith
Men's Basketball Coach
816-271-4486



Myron Unzicker
Head Athletic Trainer
816-271-4483



Charles "Buzz" Verduzco
Baseball Coach
816-271-4484

Athletics Administration

David Williams816-271-5623
..... Athletic Director (dwilliams@missouriwestern.edu)
Patsy Smith816-271-5903
..... Associate Director of Athletics/SWA (pssmith@missouriwestern.edu)
Brett Esely816-271-5904
..... Assistant AD/External Relations (esely@missouriwestern.edu)
David Lau816-271-5926
.....Athletics Development/Special Events (lau@missouriwestern.edu)
Dr. Brenda Blessing816-271-4493
..... Faculty Athletic Representative (blessing@missouriwestern.edu)
Eric Kramer816-271-4258
..... Compliance Coordinator (ekramer@missouriwestern.edu)
Danielle Hunt816-271-5811
..... Video Production Specialist (hunttr@missouriwestern.edu)

Athletics Media Relations

Trevor Berneking816-271-4257
..... Sports Information Director (tberneking@missouriwestern.edu)
Fax816-271-5901
Spratt Stadium (Football, Women's Soccer)816-271-4257
MWSU Fieldhouse (Basketball/Volleyball)816-271-4257

Athletic Training

Myron Unzicker816-271-4483
..... Head Athletic Trainer (unzick@missouriwestern.edu)
Kate Esely816-271-4483
..... Assistant Athletic Trainer (pierson@missouriwestern.edu)

Head Coaching Staff

Jen Bagley816-271-4480
..... Softball Coach (bagley@missouriwestern.edu)
Cathy Habermehl816-271-4481
..... Women's Golf Coach (c.habermehl@yahoo.com)
Jeff Hansen816-271-5902
..... Women's Soccer Coach (jhansen1@missouriwestern.edu)
Cory Frederick816-271-4209
..... Volleyball Coach (cfrederick@missouriwestern.edu)
Jerry Partridge816-271-5944
..... Football Coach (partjer@missouriwestern.edu)
Jim Perry816-271-4481
..... Men's Golf Coach (james.perry@sjsd.k12.mo.us)
Lynn Plett816-271-5863
..... Women's Basketball Coach (lplett@missouriwestern.edu)
Ron Selkirk816-233-0261
..... Women's Tennis Coach (10sswim@sbcglobal.net)
Tom Smith816-271-4486
..... Men's Basketball Coach (tomsmith@missouriwestern.edu)
Charles "Buzz" Verduzco816-271-4484
..... Baseball Coach (verduzco@missouriwestern.edu)
Athletic Department FAX816-271-5901

MWSU Griffons

Athletics Staff





President Dr. Robert A. Vartabedian

Dr. Robert Vartabedian became the fourth president since 1969 beginning his tenure on July 1, 2008. Dr. Vartabedian succeeds Dr. James Scanlon, who officially retired June 30, 2008, after serving as president for seven years.

Dr. Vartabedian served as vice president for academic affairs at Eastern New Mexico University (ENMU) in Portales, N.M., since 2005. In that role, he was chief academic officer for a university with a total enrollment of about 9,500. He oversaw re-accreditation efforts in six departments. The university's 2007 evaluation by the Higher Learning Commission/ North Central Association was accepted without any deficiencies and was showcased as a model application.

Dr. Vartabedian was dean of the College of Arts and Sciences at Western Carolina University in Cullowhee, N.C. from 1999 to 2005, serving eight months as interim vice chancellor for academic affairs in 2004. As dean, he oversaw 14 academic departments and four centers. As interim vice chancellor, he was the chief administrator for all academic programs for the 8,400 students enrolled.

Both ENMU and Western Carolina created several new academic programs under Dr. Vartabedian's leadership. He has overseen building renovation projects at ENMU for science, technology and music and five major building projects at

Western Carolina totaling \$60 million, including a \$30 million Fine and Performing Arts Center.

Community involvement has been a hallmark of Dr. Vartabedian's career. He created the ENMU "Peanut Project" as a way to forge a partnership with the local peanut industry while providing students with hands-on experience in a marketing campaign. He also recently directed a faculty showcase theatre production of Mitch Albom's "And the Winner Is," with proceeds benefiting ENMU scholarships and the Portales Main Street Project.

Dr. Vartabedian graduated magna cum laude with a bachelor of arts in speech communication from California State University, Fresno, Calif. in 1974. He received a master of arts in speech communication from Wichita State University, and a doctorate in communication from the University of Oklahoma. He and his wife, Dr. Laurel Vartabedian, have two children: Rob, and daughter-in-law, Audrey, of Amarillo, Texas and Sarah, of Austin, Texas.

Since coming to Western, Dr. Vartabedian has taken on a campus beautification initiative, including two new pond fountains and building and entrance signage. He was also one of the campus team members to secure the Kansas City Chiefs training camp at Western beginning in summer 2010, and a new indoor sports and recreation facility that is currently under construction.



Athletics Director David Williams

Dave Williams became Athletics Director in March 2008. He is a graduate of Augustana College in Rock Island, Ill., with a degree in education. He earned a master's degree in educational administration from North Dakota State University, Fargo. Williams was an assistant basketball coach at North Dakota State and later served as the top assistant basketball coach at University of Wisconsin-Parkside. In addition, Williams was the head men's golf coach at Parkside prior to accepting the

Athletics Director position at Parkside in January of 2001.

In August of 2006, Williams was elected as president of the Division II Athletics Directors Association (DII ADA) for 2006-07.

Williams has hit the ground running at Missouri Western, with many facility improvements on the horizon including; improvements to the visitor side Spratt Stadium, an indoor training facility and a new spring sports complex which will include new baseball and softball fields. Williams was also on the team that secured the Kansas City Chiefs summer training camp at Western.

During his tenure at Parkside, Ranger athletics enjoyed a plethora of successes. Under Williams' administration, 12 of 15 Ranger sports qualified for NCAA post-season appearances. Parkside teams won 10 Great Lakes Valley Conference (14 institutions) championships in six different sports. Numerous All-Americans and Academic All-Americans emerged. In fact, the grade point average of the Parkside student-athletes has been consistently higher than the student body at

large. Parkside student-athletes routinely exceed the 3.0 GPA mark each semester.

Facility improvements during Williams' reign were prominent. The Sports and Activities Center saw a facelift in the form of new state-of-the-art scoreboards and the first videoboard in the region. The baseball and softball fields received new scoreboards in the spring of 2007, and in 2006, the baseball field saw new dugouts sprout. Oberbruner Field, home of Ranger baseball, has seats from the former Milwaukee County Stadium, which housed the Green Bay Packers and Milwaukee Brewers for decades. A new outfield fence was also erected under Williams' administration.

Williams lured a number of high-profile events to the Parkside campus including the NCAA Division I fencing national championship and the NCAA Division II national wrestling championship. The NAIA national cross country championship is a staple on Parkside's cross country course as is the Footlocker Regional Championships. In addition, Parkside has hosted a multitude of conference and regional championships in several sports.

Williams and his wife, Suzanne, live in St. Joseph with their children Cooper, Carter, and Caden.



Trevor Berneking **Sports Information Director**

Trevor Berneking enters his third year as Western's Sports Information Director after serving as a graduate assistant at Northern State University in Aberdeen, SD. Trevor is originally from Grand Marais, Minn., where he graduated from Cook County High School in 2000.

Berneking played football at the University of Minnesota, Crookston, for four years where he was a two-year captain and an NSIC All-Conference selection as a defensive lineman. Following his playing career, he served as a student assistant for one year.

Berneking graduated in December 2004 with a bachelor's degree in sport and recreation management and business management with an emphasis in marketing. Berneking also received a minor in coaching. He received his master's in the spring of 2007 in physical education, health and coaching.

Berneking is currently a member of the College Sports Information Directors of America (CoSIDA). He is also on the Health Physical Education and Recreation (HPER) Advisory Board.



David Lau **Development/Special Events**

David Lau came to Missouri Western in 1999 as an assistant baseball coach and administrator. In 2003 he made the switch to full-time administrator as the Athletic Development and Special Events Coordinator. Now in his 10th year at Missouri Western, Lau has established himself as one of the most successful development officers in the MIAA and NCAA Division II, raising more

than \$300,000 annually.

In 2003, Lau created the Missouri Western Celebrity Golf Classic. This golf tournament, now in its seventh year, has raised more than \$400,000 to help support Missouri Western Athletics and the YWCA Shelter for Abused and Homeless Women and Children.

A native of St. Joseph, Mo., Lau is a 1989 graduate of Missouri Western where he played three years of baseball for the Griffons. After his junior season in 1986, he signed a minor league contract with the New York Mets. He spent three seasons with the Mets before returning to St. Joseph to complete his undergraduate degree at Western. Dave was inducted into the Missouri Western Athletics Hall of Fame in 2008.

Currently, Lau serves on the Missouri Western Alumni Board of Directors, Missouri Western Development Council, the Development Ad-hoc Committee and is an active member of the St. Joseph Area Chamber of Commerce.



Patsy Smith **Associate Director of Athletics/SWA**

Patsy Smith serves as the Associate Director of Athletics and the Senior Woman Administrator. She began her career at Missouri Western in the fall of 1990 as a student-athlete in the sport of tennis. Smith graduated cum laude with a BSBA in accounting in 1995.

In 1994, Smith became the Head Women's Tennis Coach and coached the first-ever tennis team to the NCAA Tournament in 1998. That same year, she became the first Athletics Business Manager at Missouri Western. Since that time, she has served in the roles of Compliance and Academics, Director of Finance, Assistant Athletics Director and her current role as Associate AD and SWA.

Smith has served on the NCAA Regional Advisory Committee for tennis and the NCAA Regional Advisory Committee for women's basketball. She is the liaison for the AD/SWA Committee to the women's basketball coaches and a member of the MIAA Budget Committee and the MIAA Championships & Officiating Committee.

Smith was reappointed as a member of the NCAA Division II Championships Committee in the Spring of 2008. Smith's term of service has been extended through Sept. 1, 2012.

In the St. Joseph community, Smith is a board member at the YWCA, a member of their Finance Committee, and Co-Chaired the Women of Excellence Luncheon.

Smith is married to Missouri Western Head Men's Basketball Coach Tom Smith. She has two daughters, both Western graduates, and she and Coach Smith have 11 grandchildren.



Brett Esely **Assistant AD/External Relations**

Brett Esely was promoted to Assistant Athletics Director – External Relations on July 1, 2007. Esely's responsibilities include overseeing the Sports Information Office and media relations, marketing, advertising, public relations, event management, ticketing and being the liaison to the Gold Coat Club for current and prospective members. Esely also serves as the color analyst with Bob Orf on 680 KFEQ for away men's basketball broadcasts and select away football broadcasts as well as play-by-play voice for away women's basketball broadcasts. In addition to his duties within the department, Esely begins the third year of a four-year term as a member of the NCAA Division II Men's Golf National Committee.

For his work with the 2009 MIAA Spring TitleFest, he was recognized as the conferences inaugural "Volunteer of the Year".

Prior to entering his current role, Esely spent four years as the NCAA Compliance & Ticketing Coordinator for the department and served three years as graduate assistant coach for the MWSU men's basketball program under Tom Smith.

Esely holds a bachelor's degree from Missouri Western in sports marketing/management and recently received his master's degree in sports marketing/management from the United States Sports Academy. In his spare time, Esely enjoys watching all sports, playing golf and going to Chiefs games. Esely and his wife, Kate, reside in St. Joseph.



Eric Kramer **NCAA Compliance & Academic Coordinator**

Eric Kramer enters his third year as the NCAA Compliance/Academic Coordinator at Missouri Western. Kramer is responsible for all NCAA rules education, eligibility, and monitoring for student-athletes, coaches, athletic staff and boosters, as well as tracking the academic progress of all student-athletes. He is

also the Student Athlete Advisory Committee (SAAC) advisor and serves as the community service contact for Western.

Prior to his time at Western, he worked in the Wichita State University Athletic Department for four years. During his last two years at WSU, Kramer was the Compliance/Academic Coordinator and was responsible for the academic progress of the women's basketball, track & field, tennis and softball teams as well as assisting with the day-to-day compliance duties. His first two years were spent as a graduate assistant in the Athletic Student Services Office.

Kramer is a 2002 graduate of the University of Missouri-Columbia with a degree in business management. He also received his master's in sport administration from Wichita State in 2005. Kramer resides in St. Joseph with wife, Andrea, and daughter, Kellyn.



Danielle Hunt **Video Production Specialist**

Danielle Hunt serves as the Video Production Specialist for Western Athletics. Hunt will work to produce multi-camera video productions for viewing via the Internet and cable television.

An award-winning producer, Hunt has worked in video and audio production for more than 20 years. A member of Western's campus for 12 years, this is her first year working with Western Athletics.

Hunt holds bachelor's degrees in Mass Media and Spanish, a graduate of the College of the Ozarks and Missouri Western respectively.

A native of St. Louis, Missouri, Hunt is very active in St. Joseph, serving on several community and ad hoc committees. She also serves as president of the Central Neighborhood Watch Group and secretary of the Community Police Advisory Committee.

MWSU Griffons

Athletics Administration

